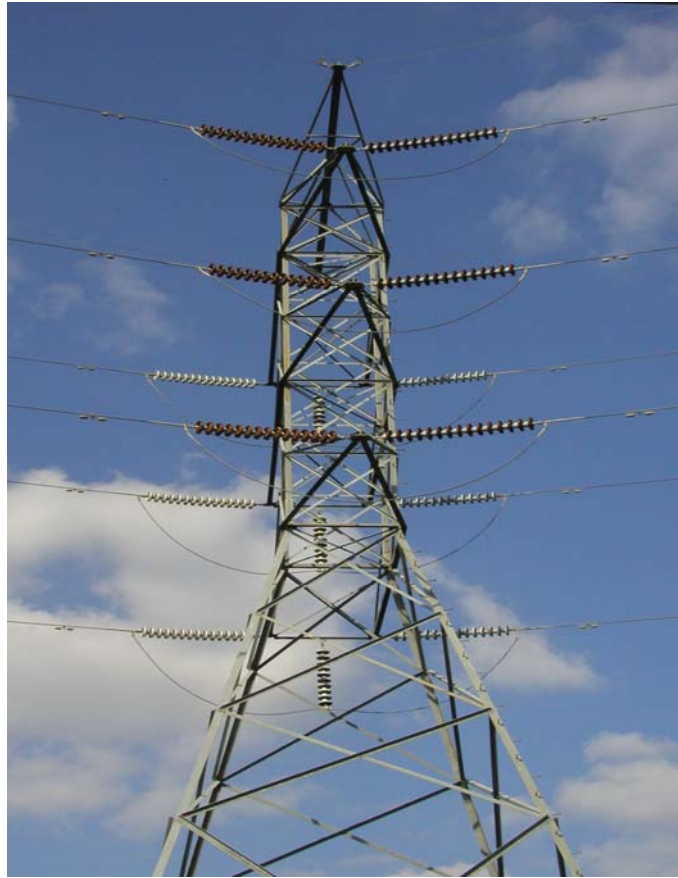


FLORIDA PUBLIC SERVICE COMMISSION



STATISTICS OF THE  
**Florida Electric Utility Industry**

**2008**

Published November 2009



# **STATISTICS OF THE FLORIDA ELECTRIC UTILITY INDUSTRY**

**2008**

In partial fulfillment of Section 377.703, Florida Statutes, this publication provides a single comprehensive source of statistics on Florida's electric utility industry.

Information was compiled primarily from three sources: the Federal Energy Information Administration, the Florida Reliability Coordinating Council, and Florida electric utilities. The Florida Public Service Commission has not audited the data and cannot verify its accuracy. Information compiled from electric utilities may be incomplete or inaccurate; therefore totals may deviate from totals reported by other institutions.

This report compiled by the Florida Public Service Commission's Office of Public Information  
Please contact 850-413-6482 with any questions.



## TABLE OF CONTENTS

Figure	Table	Page
<b>INTRODUCTION</b>		
1	Florida Sources of Electricity by Type of Ownership	1
	Maps of Service Areas and Plant Locations	
2	Investor-Owned Electric Utilities	2
3	Municipal Electric Utilities	3
4	Rural Electric Cooperatives	4
	Florida Electric Utility Industry - 2008 (Company Listing)	5
	Counties Served by Generating Electric Utilities - 2008	6
	Counties Served by Nongenerating Electric Utilities - 2008	7
<b>SUMMARY OF FINANCIAL STATISTICS FOR INVESTOR-OWNED UTILITIES (IOUs)</b>		
1	Summary Statistics - 2004-2008	8
2	Allowed and Actual Rates of Return - 2004-2008	10
	Average per Book Rate of Return	
	Average Adjusted Rate of Return	
	Required Rate of Return	
	Adjusted Jurisdictional Year-End Rate Base	
3	Sources of Revenue - 2004-2008	11
4	Uses of Revenue - 2004-2008	12
5	Proprietary Capital and Long-Term Debt - 2008	13
6	Financial Integrity Indicators - 2004-2008	14
	Times Interest Earned with AFUDC	
	Times Interest Earned without AFUDC	
	AFUDC as a Percentage of Net Income Interest Coverage Ratio	
	Percent Internally Generated Funds	
<b>NET GENERATION</b>		
7	Net Generation by Type of Ownership - 1994-2008	15
8	Net Energy for Load by Fuel Type and Other Sources - 1994-2008	16
9	Interchange and Generation by Fuel Type - 2008-2018	17
10	Interchange and Generation by Fuel Type - (Percentage Basis) - 2008-2018	18
<b>GENERATING CAPACITY AND CAPABILITY</b>		
11	Installed Nameplate Capacity/Summer Net Capability by Prime Mover - 1994-2008	19
12	Installed Nameplate Capacity/Summer Net Capability by Type of Ownership - 1994-2008	20
13	Installed Winter Net Capacity/Summer Net Capability by Utility 2004-2008	21
14	Summer Net Capability by Prime Mover by Utility – 2008	22
15	Nuclear Generating Units – 2008	23

16	Monthly Peak Demand – 2008	24
17	Annual Peak Demand - 1994-2008	26
18	Summer and Winter Peak Demand - Projected - 2009-2018	27
19	Load Factors by Generating Utilities – 2008	28
<b>FUEL ANALYSIS</b>		
20	Fuel Requirements - 1994-2008	29
21	Fuel Requirements - Projected – 2008-2018	30
<b>CONSUMPTION</b>		
22	Monthly Consumption by Class of Service – 2008	31
23	Consumption by Class of Service by Utility – 2008	32
24	Average Annual Consumption per Customer by Class of Service By Utility – 2008	33
25	Sale for Resale by Selected Utility – 2008	34
26	Consumption by Utility – 2004-2008	35
27	Total Consumption and Percentage Change by Class of Service - 1999- 2008	36
28	Consumption as a Percentage of Total by Class of Service - 1994-2008	37
<b>REVENUES</b>		
29	Monthly Revenues by Class of Service by Selected Utility – 2008	38
30	Customer Revenues by Class of Service - 1994-2008	39
31	Customer Revenues as a Percentage of Total by Class of Service - 1994- 2008	40
<b>NUMBER OF CUSTOMERS</b>		
32	Monthly Number of Customers by Class of Service by Selected Utility – 2008	41
33	Average Number of Customers by Class of Service by Utility – 2008	42
34	Average Number of Customers by Utility - 2004-2008	43
35	Average Number of Customers and Percentage Change by Class of Service - 1999-2008	44
36	Population and Customers for Select Investor-Owned Utilities - 1999- 2018	45
<b>PRICES</b>		
37	Price of Residential Service - December 31, 2008	46
38	Price of Commercial and Industrial Service - December 31, 2008	49
<b>ECONOMIC AND FINANCIAL INDICATORS</b>		
39	Population Estimates - 1998-2008	52
40	Population Projections - 2010-2030	52
	Consumer Price Index	
41	All Urban Consumers, Annual Rate of Change - 1999-2008	53
42	For All Items and Fuel and Other Utilities - 1999-2008	53

43	Producer Price Index	
	Total Finished Goods & Capital Equipment - 1999-2008	54

**APPENDIX**

	Abbreviations and Terminology	55
	Glossary of Electric Utility Terms	57



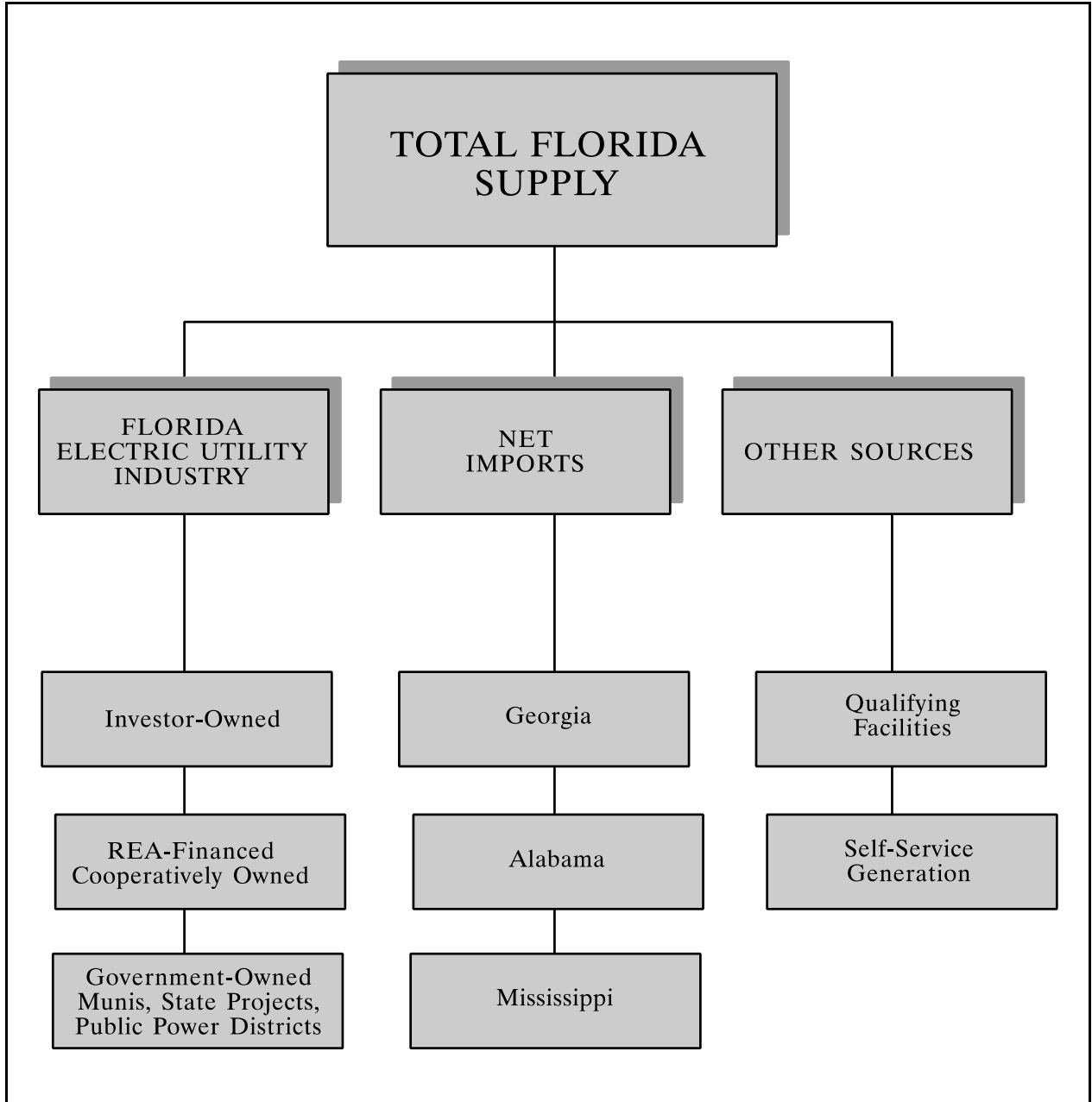


## **INTRODUCTION**



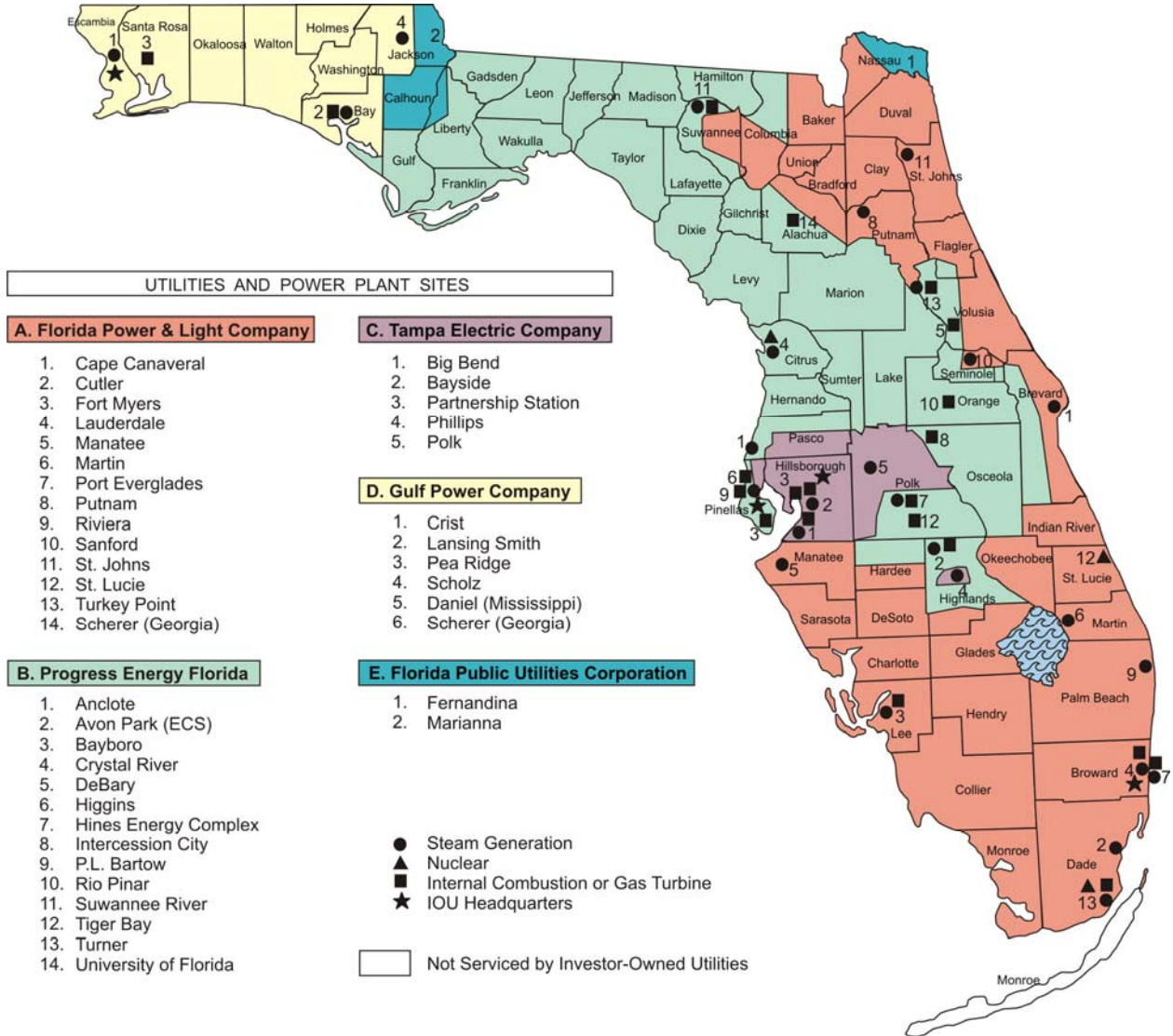
Figure 1

**FLORIDA SOURCES OF ELECTRICITY  
BY TYPE OF OWNERSHIP**



**Figure 2**

Approximate Company Service Areas  
**Investor-Owned Electric Utilities**

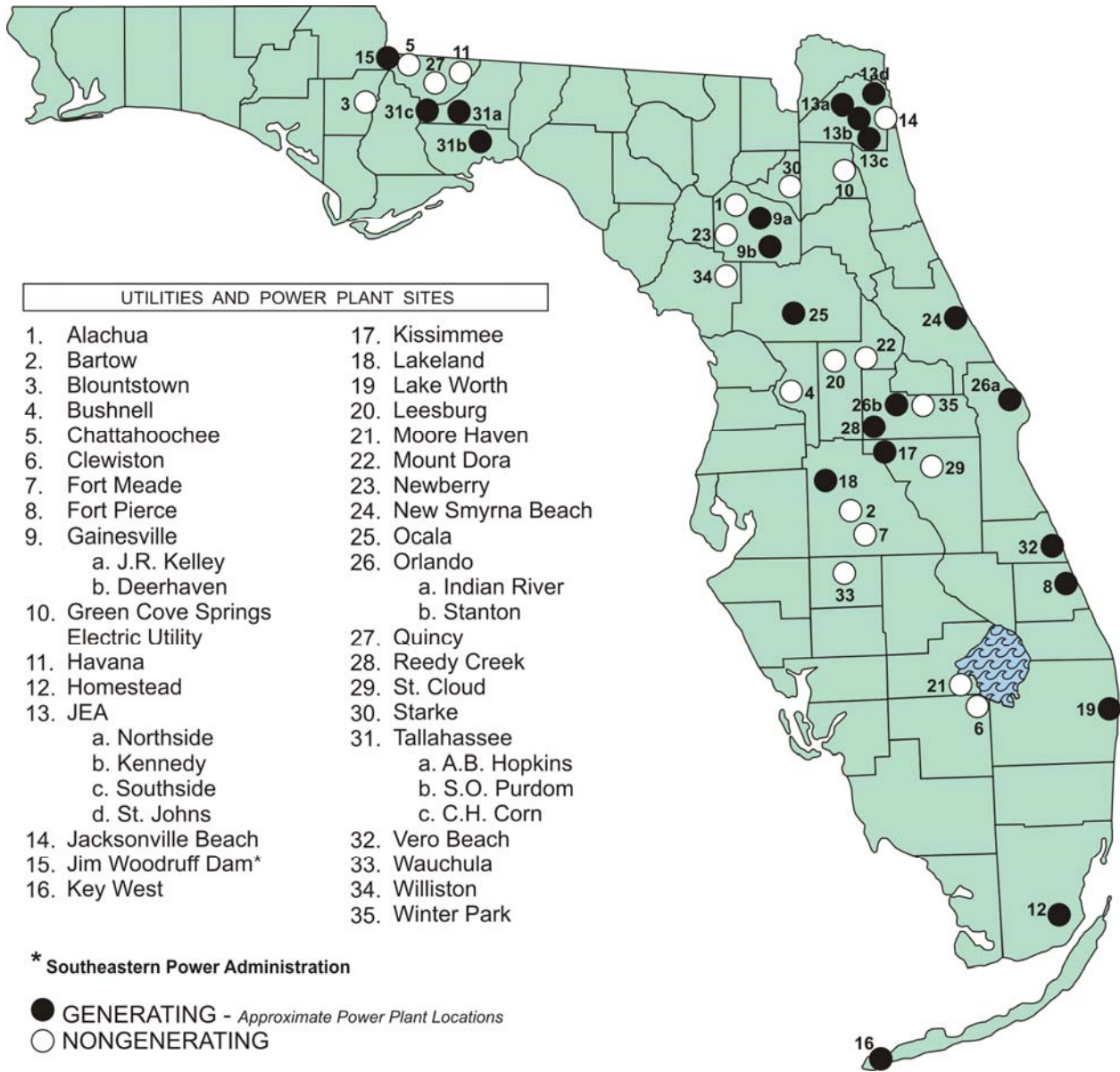


Service areas are approximations.  
 Information on this map should be used only as a general guideline.  
 For more detailed information, contact individual utilities.

Source:  
 Florida Public Service Commission

Figure 3

# Municipal Electric Utilities

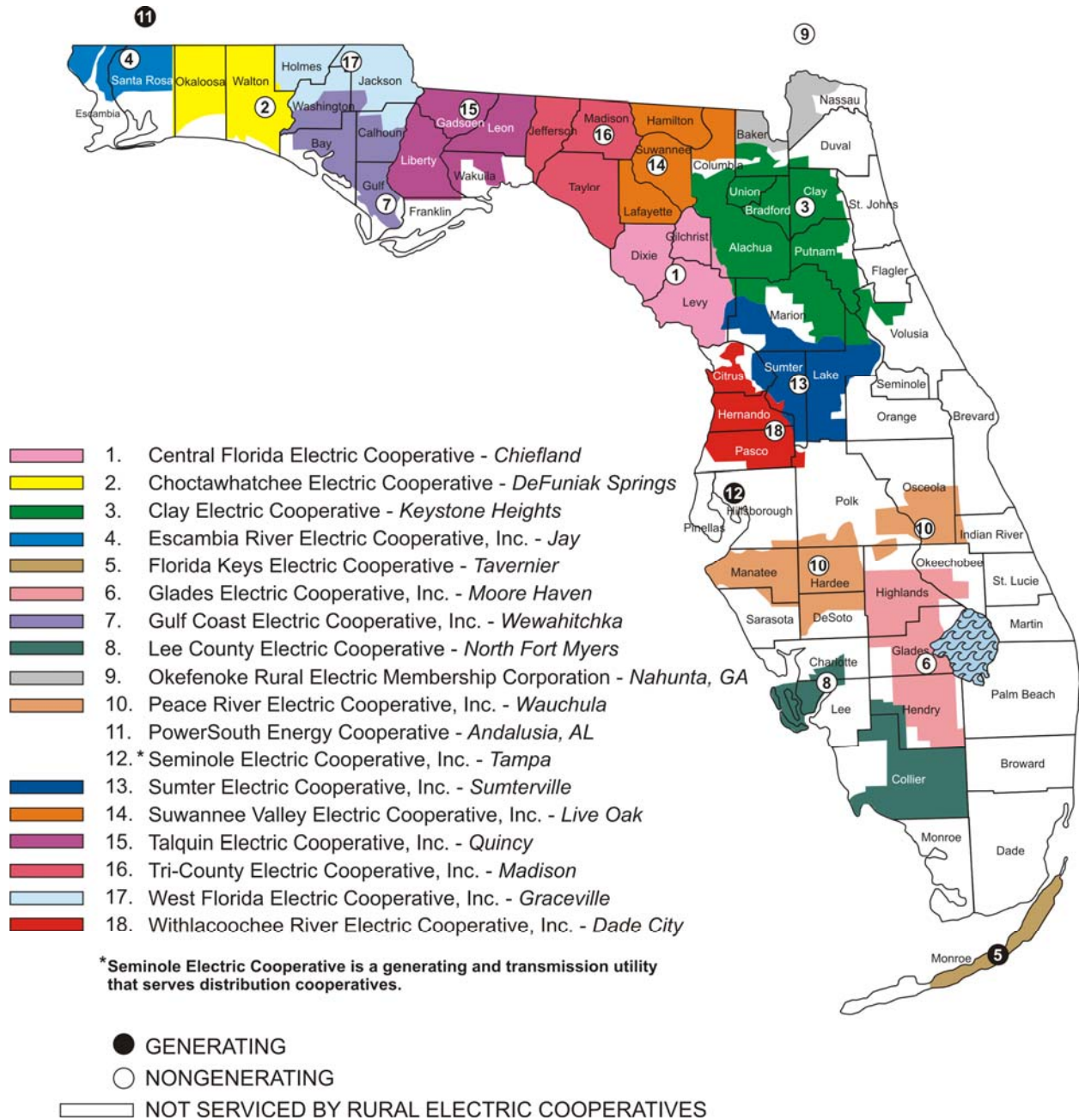


Information on this map should be used only as a general guideline. For more detailed information, contact individual utilities.

Source:  
Florida Public Service Commission

Figure 4

Approximate Company Service Areas  
**Rural Electric Cooperatives**



\*Seminole Electric Cooperative is a generating and transmission utility that serves distribution cooperatives.

Service areas are approximations.  
 Information on this map should be used only as a general guideline.  
 For more detailed information, contact individual utilities.

Source:  
 Florida Public Service Commission

**FLORIDA ELECTRIC UTILITY INDUSTRY  
2008**

**INVESTOR-OWNED SYSTEMS**

Florida Power & Light Company (FPL)  
Florida Public Utilities Company (FPU)  
Gulf Power Company (GPC)  
Progress Energy Florida, Inc. (PEF)  
Tampa Electric Company (TEC)

**GENERATING MUNICIPAL SYSTEMS**

Florida Municipal Power Agency (FMP)  
Fort Pierce Utilities Authority (FTP)  
Gainesville Regional Utilities (GRU)  
Homestead, City of (HST)  
JEA (formerly Jacksonville Electric Authority)  
Key West Utility Board, City of (KEY)  
Kissimmee Utility Authority (KUA)  
Lake Worth Utilities Authority (LWU)  
Lakeland, City of (LAK)  
New Smyrna Beach, Utilities Commission of (NSB)  
Ocala Electric Utility (OEU)  
Orlando Utilities Commission (OUC)  
Reedy Creek Utilities (RCU)  
St. Cloud, City of (STC)\*  
Tallahassee, City of (TAL)  
Vero Beach, City of (VER)

**GENERATING RURAL ELECTRIC  
COOPERATIVES**

Florida Keys Electric Cooperative, Inc. (FKE)  
Seminole Electric Cooperative, Inc. (SEC)  
Alabama Electric Cooperative, Inc. (AEC)

**GENERATING - OTHER**

Southeastern Power Administration (SPA)  
(Jim Woodruff Dam)

**NONGENERATING MUNICIPAL SYSTEMS**

Alachua, City of (ALA)  
Bartow, City of (BAR)  
Blountstown, City of (BLT)  
Bushnell, City of (BUS)  
Chattahoochee, City of (CHA)  
Clewiston, City of (CLE)  
Fort Meade, City of (FMD)  
Green Cove Springs, City of (GCS)  
Havana, Town of (HAV)  
Jacksonville Beach, City of (JBH)  
Leesburg, City of (LEE)  
Moore Haven, City of (MHN)  
Mount Dora, City of (MTD)  
Newberry, City of (NEW)  
Quincy, City of (QUI)  
Starke, City of (STK)  
Wauchula, City of (WAU)  
Williston, City of (WIL)  
Winter Park, City of (WPK)

**NONGENERATING RURAL ELECTRIC  
COOPERATIVES**

Central Florida Electric Cooperative, Inc. (CFC)  
Choctawhatchee Electric Cooperative, Inc. (CHW)  
Clay Electric Cooperative, Inc. (CEC)  
Escambia River Electric Cooperative, Inc. (ESC)  
Glades Electric Cooperative, Inc. (GEC)  
Gulf Coast Electric Cooperative, Inc. (GCC)  
Lee County Electric Cooperative, Inc. (LEC)  
Okefenokee Rural Electric Membership Corp. (OKC)  
Peace River Electric Cooperative, Inc. (PRC)  
Sumter Electric Cooperative, Inc. (SMC)  
Suwannee Valley Electric Cooperative, Inc. (SVC)  
Talquin Electric Cooperative, Inc. (TAC)  
Tri-County Electric Cooperative, Inc. (TRC)  
West Florida Electric Cooperative, Inc. (WFC)  
Withlacoochee River Electric Coop., Inc. (WRC)

\*St. Cloud served by Orlando Utilities Commission

**COUNTIES SERVED BY GENERATING ELECTRIC UTILITIES  
2008**

**UTILITY**

**COUNTY**

**INVESTOR-OWNED SYSTEMS**

Florida Power & Light Company

Alachua, Baker, Bradford, Brevard, Broward,  
Charlotte, Clay, Collier, Columbia, Dade,  
DeSoto, Duval, Flagler, Glades, Hardee,  
Hendry, Highlands, Indian River, Lee,  
Manatee, Martin, Monroe, Nassau,  
Okeechobee, Palm Beach, Putnam, St. Johns,  
St. Lucie, Sarasota, Seminole, Suwannee,  
Union, Volusia

Florida Public Utilities Company

Calhoun, Jackson, Liberty, Nassau

Gulf Power Company

Bay, Escambia, Holmes, Jackson, Okaloosa,  
Santa Rosa, Walton, Washington

Progress Energy Florida, Inc.

Alachua, Bay, Brevard, Citrus, Columbia, Dixie,  
Flagler, Franklin, Gadsden, Gilchrist, Gulf,  
Hamilton, Hardee, Hernando, Highlands,  
Jefferson, Lafayette, Lake, Leon, Levy,  
Liberty, Madison, Marion, Orange, Osceola,  
Pasco, Pinellas, Polk, Seminole, Sumter,  
Suwannee, Taylor, Volusia, Wakulla

Tampa Electric Company

Hillsborough, Pasco, Pinellas, Polk

**MUNICIPAL SYSTEMS**

Fort Pierce

St. Lucie

Gainesville

Alachua

Homestead

Dade

JEA

Clay, Duval, St. Johns

Key West

Monroe

Kissimmee

Osceola

Lakeland

Polk

Lake Worth

Palm Beach

New Smyrna Beach

Volusia

Orlando

Orange

Reedy Creek

Orange

Starke

Bradford

Tallahassee

Leon

Vero Beach

Indian River

**RURAL ELECTRIC  
COOPERATIVES**

Florida Keys Electric Cooperative

Monroe



**COUNTIES SERVED BY NONGENERATING ELECTRIC UTILITIES  
2008**

**UTILITY**

**COUNTY**

**MUNICIPAL SYSTEMS**

Alachua	Alachua
Bartow	Polk
Blountstown	Calhoun
Bushnell	Sumter
Chattahoochee	Gadsden
Clewiston	Hendry
Fort Meade	Polk
Gainesville	Alachua
Green Cove Springs	Clay
Havana	Gadsden
Jacksonville Beach	Duval, St. Johns
Leesburg	Lake
Moore Haven	Glades
Mount Dora	Lake
Newberry	Alachua
Ocala	Marion
Quincy	Gadsden
Wauchula	Hardee
Williston	Levy
Winter Park	Orange

**RURAL ELECTRIC COOPERATIVES**

Central Florida	Alachua, Dixie, Gilchrist, Levy, Marion
Choctawhatchee	Holmes, Okaloosa, Santa Rosa, Walton
Clay	Alachua, Baker, Bradford, Clay, Columbia, Duval, Flagler, Lake, Levy, Marion, Putnam, Suwanee, Union, Volusia
Escambia River	Escambia, Santa Rosa
Glades	Glades, Hendry, Highlands, Okeechobee
Gulf Coast	Bay, Calhoun, Gulf, Jackson, Walton, Washington
Lee County	Charlotte, Collier, Hendry, Lee
Okefenoke	Baker, Nassau
Peace River	Brevard, DeSoto, Hardee, Highlands, Hillsborough, Indian River, Manatee, Osceola, Polk, Sarasota
Sumter	Citrus, Hernando, Lake, Levy, Marion, Pasco, Sumter
Suwannee Valley	Columbia, Hamilton, Lafayette, Suwannee
Talquin	Franklin, Gadsden, Leon, Liberty, Wakulla
Tri-County	Dixie, Jefferson, Madison, Taylor
West Florida	Calhoun, Holmes, Jackson, Washington
Withlacoochee	Citrus, Hernando, Pasco, Polk, Sumter



**SUMMARY OF FINANCIAL STATISTICS FOR  
INVESTOR-OWNED UTILITIES (IOUs)**



**TABLE 1**  
**SUMMARY STATISTICS**  
**2004-2008**

	2004	PERCENT CHANGE 2004-2005	2005	PERCENT CHANGE 2005-2006	2006	PERCENT CHANGE 2006-2007	2007	PERCENT CHANGE 2007-2008	2008
<b>I. NAMEPLATE CAPACITY/CAPABILITY (MW)*</b>									
<b>A. By Prime Mover</b>									
Conventional Steam	22,128	-0.1	22,099	-24.3	16,735	32.0	22,089	-1.7	21,719
Internal Combustion and Gas Turbine	7,514	31.3	9,864	116.3	21,338	-22.8	16,481	0.1	16,499
Combined Cycle	12,273	1.0	12,399	-35.9	7,946	-1.9	7,799	6.8	8,333
Hydroelectric	58	7.8	63	486.4	367	-82.9	63	0.0	63
Steam - Nuclear	3,902	0.0	3,903	0.0	3,903	-0.2	3,896	0.9	3,931
Other	0	-	110	-100.0	0	0.0	0	0.0	0
<b>B. By Type of Ownership</b>									
Investor-Owned	34,171	6.8	36,486	3.6	37,817	1.0	38,203	0.0	38,218
Municipal and Cooperatives	11,704	2.1	11,951	4	12,471	-2.8	12,123	1.7	12,326
<b>Total Nameplate Capacity/Capability</b>	<b>45,875</b>	<b>5.6</b>	<b>48,437</b>	<b>3.8</b>	<b>50,288</b>	<b>0.1</b>	<b>50,326</b>	<b>0.4</b>	<b>50,544</b>
<b>II. INTERCHANGE AND GENERATION (GWH)</b>									
<b>A. By Prime Mover</b>									
Conventional Steam	103,200	-1.1	102,056	-5.1	96,872	-0.9	96,011	0.0	96,011
Internal Combustion and Combustion Turbine	3,444	0.2	3,452	1.6	3,507	6.6	3,737	0.0	3,737
Combined Cycle	60,478	16.2	70,303	13.0	79,465	6.5	84,633	0.0	84,633
Hydroelectric	30	10.0	33	-60.6	13	-30.8	9	0.0	9
Steam - Nuclear	31,220	-8.3	28,632	9.8	31,429	-6.5	29,399	0.0	29,399
<b>B. By Fuel Type (GWH)</b>									
Coal	68,708	1.4	69,683	1.7	70,859	1.9	72,189	-4.3	69,116
Oil	28,513	-1.5	28,096	-42.5	16,164	1.9	16,473	-43.7	9,267
Natural Gas	69,901	11.6	78,032	19.0	92,821	3.1	95,719	1.7	97,386
Nuclear	31,220	-8.3	28,632	9.8	31,429	-6.5	29,399	9.3	32,122
Hydroelectric	30	10.0	33	-60.6	13	-30.8	9	144.4	22
<b>Total Generation</b>	<b>198,372</b>	<b>3.1</b>	<b>204,476</b>	<b>3.3</b>	<b>211,286</b>	<b>1.2</b>	<b>213,789</b>	<b>-2.7</b>	<b>207,913</b>
Net Interchange, Non-Utility Generators, and Other	35,400	0.8	35,691	-8.2	32,777	-0.2	32,703	0.9	32,997
<b>Total Net Interchange and Generation</b>	<b>233,772</b>	<b>2.7</b>	<b>240,167</b>	<b>1.6</b>	<b>244,063</b>	<b>1.0</b>	<b>246,492</b>	<b>-2.3</b>	<b>240,910</b>
<b>III. SALES TO ULTIMATE CONSUMERS (GWH)</b>									
<b>A. By Class of Customer</b>									
Residential	105,168	8.5	114,156	1.0	115,279	0.7	116,132	-3.2	112,431
Commercial	73,382	7.4	78,809	2.1	80,474	2.8	82,758	-0.7	82,205
Industrial	20,372	15.0	23,431	0.0	23,425	-1.4	23,107	-2.1	22,615
Other	5,666	4.3	5,912	1.7	6,013	3.3	6,209	0.1	6,214
<b>B. By Type of Ownership</b>									
Investor-Owned	168,015	2.9	172,968	1.1	174,951	0.9	176,561	-1.8	173,297
Municipal and Cooperatives	36,573	34.9	49,340	1.8	50,240	2.8	51,645	-2.9	50,168
<b>Total Sales to Ultimate Customer</b>	<b>204,588</b>	<b>8.7</b>	<b>222,308</b>	<b>1.3</b>	<b>225,191</b>	<b>1.3</b>	<b>228,206</b>	<b>-2.1</b>	<b>223,465</b>
<b>IV. UTILITY USE &amp; LOSSES &amp; NET Wh. RESALE (GWH)</b>	<b>29,184</b>	<b>-38.8</b>	<b>17,859</b>	<b>5.7</b>	<b>18,872</b>	<b>-3.1</b>	<b>18,286</b>	<b>-4.6</b>	<b>17,445</b>

\*For 2000 onward supply will be reported as Summer Net Capability rather than Winter Net Capacity to be more conservative. Winter Net Capacity will continue to be reported elsewhere in this report.

**TABLE 1 (continued)  
SUMMARY STATISTICS  
2004-2008**

	2004	PERCENT CHANGE 2004-2005	2005	PERCENT CHANGE 2005-2006	2006	PERCENT CHANGE 2006-2007	2007	PERCENT CHANGE 2007-2008	2008
V. FLORIDA POPULATION (THOUSANDS)	17,397	0.6	17,510	3.3	18,090	0.9	18,251	0.4	18,328
VI. CONSUMPTION PER CAPITA (KWH)									
A. Total Sales per Capita	11,760	8.0	12,696	-2.0	12,448	0.4	12,504	-2.5	12,193
B. Residential Sales per Capita	6,045	7.8	6,519	-2.2	6,373	-0.2	6,363	-3.6	6,134
VII. NET GENERATION PER CAPITA (KWH)	13,437	2.1	13,716	-1.6	13,492	0.1	13,506	-2.7	13,144
VIII. AVERAGE ANNUAL RESIDENTIAL CONSUMPTION PER CUSTOMER (KWH)	14,321	-0.9	14,188	0.0	14,184	-3.1	13,747	18.7	16,317
IX. NUMBER OF CUSTOMERS									
By Class of Service									
Residential	7,862,627	3.5	8,134,334	2.5	8,336,451	3.5	8,627,911	-22.8	6,663,254
Commercial	954,014	2.8	980,976	2.5	1,005,431	6.8	1,073,483	-22.4	832,786
Industrial	44,911	9.2	49,054	1.3	49,709	-1.3	49,041	-46.1	26,443
Other	76,363	-2.3	74,580	2.2	76,236	1.3	77,224	-34.5	50,544
Total	<u>8,937,914</u>	3.4	<u>9,238,943</u>	2.5	<u>9,467,827</u>	3.8	<u>9,827,659</u>	-22.9	<u>7,573,027</u>
X. CUSTOMER REVENUES									
A. By Class of Service (in Thousands)									
Residential	\$10,112,821	10.3	\$11,150,043	19.0	\$13,269,751	0.1	\$13,277,193	-4.2	\$12,718,094
Commercial	5,448,432	10.2	6,003,804	25.4	7,528,590	0.9	7,597,120	1.9	7,741,767
Industrial	1,733,191	11.2	1,928,154	22.7	2,366,497	-1.8	2,324,045	-10.1	2,089,924
Other	584,588	10.3	644,515	19.5	770,472	4.8	807,329	-9.7	729,026
Total	<u>\$17,879,033</u>	10.3	<u>\$19,726,515</u>	21.3	<u>\$23,935,310</u>	0.3	<u>\$24,005,687</u>	-3.0	<u>\$23,278,811</u>
B. By Class of Service (as a % of Total)									
Residential	56.6 %		56.5 %		55.4 %		55.3 %		54.6 %
Commercial	30.5		30.4		31.5		31.6		33.3
Industrial	9.7		9.8		9.9		9.7		9.0
Other	3.3		3.3		3.2		3.4		3.1
Total	<u>100 %</u>		<u>100 %</u>		<u>100 %</u>		<u>100 %</u>		<u>100 %</u>

SOURCES: EIA-826  
Form PSC/SCR - 1, 2, 4  
U.S. Census Bureau, Washington D.C. 20233  
Regional Load and Resource Plan, FRCC

**TABLE 2**  
**ALLOWED AND ACTUAL RATES OF RETURN**  
**2004-2008**

	2004	CHANGE (%) 2004-2005	2005	CHANGE (%) 2005-2006	2006	CHANGE (%) 2006-2007	2007	CHANGE (%) 2007-2008	2008
<b>AVERAGE PER BOOK RATE OF RETURN</b>									
Florida Power & Light	9.53 %	-6.51	8.91 %	-4.26	8.53 %	2.93	8.78 %	-12.76	7.66 %
Gulf Power Company	7.35	-0.68	7.30	3.29	7.54	1.72	7.67	-3.39	7.41
Progress Energy Florida	9.04	-25.77	6.71	33.979	8.99	-10.90	8.01	-3.25	7.75
Tampa Electric Company	8.31	-2.65	8.09	-7.17	7.51	4.39	7.84	-9.82	7.07
<b>AVERAGE ADJUSTED RATE OF RETURN</b>									
Florida Power & Light	8.18 %	-3.42	7.90 %	-3.04	7.66 %	1.17	7.75 %	-9.68	7.00 %
Gulf Power Company	7.39	-1.35	7.29	4.66	7.63	0.66	7.68	0.39	7.71
Progress Energy Florida	9.07	-25.69	6.74	26.56	8.53	0.00	8.53	-9.73	7.70
Tampa Electric Company	8.29	-3.62	7.99	-7.1339	7.42	4.45	7.75	-10.06	6.97
<b>REQUIRED RATES OF RETURN*</b>									
Florida Power & Light	7.48 %	-3.07	7.25 %	4.00	7.54 %	1.72	7.67 %	-3.13	7.43 %
Gulf Power Company	7.43	-4.31	7.11	3.52	7.36	20.38	8.86	-14.33	7.59
Progress Energy Florida	8.34	-0.48	8.30	8.19	8.98	0.00	8.98	-2.90	8.72
Tampa Electric Company	8.27	-3.02	8.02	-1.62	7.89	0.13	7.90	5.44	8.33
<b>ADJUSTED JURISDICTIONAL YEAR-END RATE BASE (MILLIONS)</b>									
Florida Power & Light	\$10,912	13.37	\$12,371	9.24	\$13,514	6.68	\$14,417	4.11	\$15,009
Gulf Power Company	1,241	7.01	1,328	-2.71	1,292	1.93	1,317	2.35	1,348
Progress Energy Florida	4,014	11.48	4,475	-2.28	4,373	12.83	4,934	5.01	5,181
Tampa Electric Company	2,872	3.45	2,971	2.12	3,034	5.11	3,189	4.52	3,333

\*Average Capital Structure - Midpoint

SOURCE: December Earnings Surveillance Reports, Schedule 1

**TABLE 3**  
**SOURCES OF REVENUE**  
**INVESTOR-OWNED ELECTRIC UTILITIES**  
**(PERCENTAGE OF TOTAL SALES)**  
**2004-2008**

	2004	CHANGE (%) 2004-2005	2005	CHANGE (%) 2005-2006	2006	CHANGE (%) 2007-2008	2007	CHANGE (%) 2007-2008	2008
<b>FLORIDA POWER &amp; LIGHT</b>									
Residential	55.71 %	0.43	55.95 %	-1.92	54.88 %	-0.01	54.87 %	-1.16	54.24 %
Commercial	38.26	-0.14	38.20	3.73	39.63	0.68	39.90	2.31	40.82
Industrial	2.94	-3.73	2.83	6.91	3.03	-7.42	2.80	-3.30	2.71
Other	0.82	-2.03	0.80	-6.61	0.75	3.88	0.78	0.68	0.78
Resale	2.27	-2.64	2.21	-22.34	1.72	-4.01	1.65	-12.09	1.45
TOTAL SALES (Millions)	\$8,535.51	9.36	\$9,334.77	26.75	\$11,832.15	-3.20	\$11,453.76	0.07	\$11,462.11
<b>GULF POWER COMPANY*</b>									
Residential	43.02 %	2.20	43.97 %	-1.29	43.40 %	1.68	44.13 %	-2.42	43.06 %
Commercial	25.05	2.57	25.69	0.13	25.72	5.49	27.14	0.32	27.22
Industrial	10.76	6.86	11.49	-4.08	11.02	1.38	11.18	8.18	12.09
Other	1.81	2.96	1.86	-6.41	1.74	-1.01	1.73	34.94	2.33
Resale	19.37	-12.30	16.99	6.60	18.11	-12.57	15.83	-3.40	15.29
TOTAL SALES (Millions)	\$949.01	9.00	\$1,034.39	9.58	\$1,133.47	9.62	\$1,242.48	5.21	\$1,307.20
<b>PROGRESS ENERGY FLORIDA</b>									
Residential	57.94 %	-0.41	57.70 %	-1.47	56.85 %	0.63	57.21 %	-0.48	56.94 %
Commercial	27.64	-0.26	27.57	1.18	27.89	0.61	28.06	1.17	28.39
Industrial	7.64	1.23	7.73	3.24	7.98	-8.10	7.34	-0.34	7.31
Other	6.78	3.16	7.00	3.88	7.27	1.67	7.39	-0.40	7.36
Resale	8.71	15.51	10.06	-22.55	7.79	36.33	10.62	30.39	13.85
TOTAL SALES (Millions)	\$3,082.11	11.48	\$3,435.80	19.99	\$4,122.55	-0.47	\$4,103.16	-3.41	\$3,963.35
<b>TAMPA ELECTRIC COMPANY</b>									
Residential	49.05 %	0.21	49.15 %	-1.07	48.62 %	-0.92	48.18 %	-0.79	47.79 %
Commercial	30.23	0.20	30.29	1.08	30.61	1.04	30.93	0.56	31.11
Industrial	9.92	-5.70	9.36	-5.26	8.87	2.04	9.05	-4.59	8.63
Other	8.32	-1.14	8.23	0.15	8.24	2.43	8.44	7.12	9.04
Resale	2.48	19.97	2.97	22.85	3.65	-6.88	3.40	0.69	3.43
TOTAL SALES (Millions)	\$1,672.32	1.96	\$1,705.16	15.39	\$1,967.62	7.39	\$2,112.99	-2.79	\$2,054.09

SOURCE:

Form PSC/SCR - 4  
FERC Form 1



**TABLE 4**  
**USES OF REVENUE**  
**INVESTOR-OWNED ELECTRIC UTILITIES**  
**(PERCENTAGE OF TOTAL OPERATING REVENUE)**  
**2004-2008**

	2004	CHANGE (%) 2004-2005	2005	CHANGE (%) 2005-2006	2006	CHANGE (%) 2006-2007	2007	CHANGE (%) 2007-2008	2008
<b>FLORIDA POWER &amp; LIGHT</b>									
Fuel	34.76 %	38.12	48.01 %	-12.08	42.21 %	15.91	48.92 %	-0.38	48.74 %
Other Operation and Maintenance	30.35	-38.32	18.72	61.98	30.32	-27.74	21.91	-1.86	21.50
Depreciation and Amortization	9.11	-4.24	8.72	-34.58	5.70	5.93	6.04	6.10	6.41
Taxes Other Than Income Taxes	9.37	-2.85	9.10	-3.32	8.80	1.20	8.91	3.62	9.23
Income Taxes	6.07	-8.48	5.56	-24.34	4.20	11.61	4.69	-0.72	4.66
Interest	2.07	12.63	2.33	-2.89	2.26	12.69	2.55	10.63	2.82
Utility Net Operating Income Less Interest	8.29	-8.59	7.57	-14.10	6.51	7.35	6.98	-4.81	6.65
TOTAL OPERATING REVENUE (Millions)	\$8,682.44	8.81	\$9,447.58	26.88	\$11,987.39	-3.06	\$11,620.01	0.23	\$11,646.79
<b>GULF POWER COMPANY</b>									
Fuel	38.24 %	0.32	38.36 %	14.89	44.08 %	1.35	44.67 %	1.46	45.32 %
Other Operation and Maintenance	30.79	4.40	32.14	-12.75	28.05	-0.22	27.99	1.43	28.39
Depreciation and Amortization	8.83	-8.85	8.04	-5.95	7.57	-8.58	6.92	-10.03	6.22
Taxes Other Than Income Taxes	7.28	-3.13	7.05	-5.95	6.63	-0.62	6.59	-4.53	6.29
Income Taxes	4.06	-4.53	3.87	-7.86	3.57	2.53	3.66	9.95	4.02
Interest	3.75	-0.90	3.72	-1.46	3.67	-3.25	3.55	-12.40	3.11
Utility Net Operating Income Less Interest	7.06	-3.56	6.81	-5.28	6.45	2.90	6.64	0.21	6.65
TOTAL OPERATING REVENUE (Millions)	\$960.13	12.89	\$1,083.85	11.09	\$1,204.03	4.64	\$1,259.93	10.12	\$1,387.37
<b>PROGRESS ENERGY FLORIDA</b>									
Fuel	32.45 %	15.73	37.56 %	-15.63	31.69 %	14.07	36.15 %	16.40	42.08 %
Other Operation and Maintenance	33.79	16.16	39.25	-19.56	31.58	15.62	36.51	0.21	36.58
Depreciation and Amortization	8.60	-52.21	4.11	282.37	15.72	-48.55	8.09	-98.77	0.10
Taxes Other Than Income Taxes	7.21	-2.49	7.03	-3.53	6.78	-2.87	6.58	-0.68	6.54
Income Taxes	5.83	-41.00	3.44	30.57	4.49	-25.94	3.33	24.28	4.13
Interest	3.23	-1.73	3.18	3.90	3.30	9.74	3.62	21.49	4.40
Utility Net Operating Income Less Interest	8.89	-38.82	5.44	18.49	6.44	-11.14	5.72	7.76	6.17
TOTAL OPERATING REVENUE (Millions)	\$3,526.63	12.40	\$3,964.00	15.03	\$4,559.91	2.91	\$4,692.52	0.82	\$4,730.89
<b>TAMPA ELECTRIC COMPANY</b>									
Fuel	35.63 %	19.75	42.66 %	-4.26	40.85 %	-2.39	39.87 %	10.65	44.12 %
Other Operation and Maintenance	26.15	17.35	30.69	-10.15	27.58	2.70	28.32	9.11	30.90
Depreciation and Amortization	12.28	-86.04	1.71	585.78	11.75	19.68	14.07	-73.04	3.79
Taxes Other Than Income Taxes	7.07	-2.40	6.90	-0.16	6.89	-5.22	6.53	-0.21	6.51
Income Taxes	4.85	0.50	4.87	-67.15	1.60	-124.36	-0.39	-934.25	3.25
Interest	5.60	-3.85	5.39	-0.56	5.36	-2.63	5.22	4.87	5.47
Utility Net Operating Income Less Interest	8.42	-7.69	7.77	-23.11	5.98	6.83	6.39	-6.74	5.95
TOTAL OPERATING REVENUE (Millions)	\$1,709.19	6.71	\$1,823.92	9.95	\$2,005.35	7.25	\$2,150.65	-2.55	\$2,095.84

SOURCE: FERC Form 1

**TABLE 5**  
**PROPRIETARY CAPITAL AND LONG-TERM DEBT**  
**INVESTOR-OWNED ELECTRIC UTILITIES**  
**2008**

	FLORIDA POWER & LIGHT COMPANY	GULF POWER COMPANY	PROGRESS ENERGY FLORIDA	TAMPA ELECTRIC COMPANY
<b>PROPRIETARY CAPITAL (THOUSANDS)</b>				
Common Stock	\$1,373,069	\$118,060	\$354,405	\$119,697
Preferred Stock	0	100,000	33,497	0
Retained Earnings	2,323,327	197,417	2,283,689	180,122
Other Paid-In Capital	4,397,000	511,546	762,002	1,527,840
Other Adjustments	-3,742	-6,933	-564	-4,977
<b>TOTAL PROPRIETARY CAPITAL</b>	<b>\$8,089,654</b>	<b>\$920,090</b>	<b>\$3,433,029</b>	<b>\$1,822,682</b>
<b>LONG-TERM DEBT (THOUSANDS)</b>				
Bonds	\$5,609,488	\$0	\$4,040,865	\$1,668,835
Other Long-Term Debt and/or Adjustments	-35,191	849,265	141,029	-3,985
<b>TOTAL LONG-TERM DEBT</b>	<b>\$5,574,297</b>	<b>\$849,265</b>	<b>\$4,181,894</b>	<b>\$1,664,850</b>
<b>TOTAL PROPRIETARY CAPITAL AND LONG-TERM DEBT</b>	<b>\$13,663,951</b>	<b>\$1,769,355</b>	<b>\$7,614,923</b>	<b>\$3,487,532</b>
<b>PROPRIETARY CAPITAL</b>				
Common Stock	10.0 %	6.7 %	4.7 %	3.4 %
Preferred Stock	0.0	5.7	0.4	0.0
Retained Earnings	17.0	11.2	30.0	5.2
Other Paid-In Capital	32.2	28.9	10.0	43.8
Other Adjustments	0.0	-0.4	0.0	-0.1
<b>TOTAL PROPRIETARY CAPITAL</b>	<b>59.2 %</b>	<b>52.0 %</b>	<b>45.1 %</b>	<b>52.3 %</b>
<b>LONG-TERM DEBT</b>				
Bonds	41.1 %	0.0 %	53.1 %	47.9 %
Other Long-Term Debt and/or Adjustments	-0.3	48.0	1.9	-0.1
<b>TOTAL LONG-TERM DEBT</b>	<b>40.8 %</b>	<b>48.0 %</b>	<b>54.9 %</b>	<b>47.7 %</b>
<b>TOTAL PROPRIETARY CAPITAL AND LONG-TERM DEBT</b>	<b>100.0 %</b>	<b>100.0 %</b>	<b>100.0 %</b>	<b>100.0 %</b>

SOURCE: FERC Form 1

**TABLE 6**  
**FINANCIAL INTEGRITY INDICATORS**  
**INVESTOR-OWNED ELECTRIC UTILITIES**  
**2004-2008**

	2004	CHANGE (%) 2004-2005	2005	CHANGE (%) 2005-2006	2006	CHANGE (%) 2006-2007	2007	CHANGE (%) 2007-2008	2008
<b>TIMES INTEREST EARNED WITH AFUDC</b>									
Florida Power & Light Company	7.09 %	-15.80	5.97 %	-10.39	5.35 %	-3.55	5.16 %	-11.63	4.56 %
Gulf Power Company	3.93	0.76	3.96	-3.79	3.81	3.67	3.95	10.63	4.37
Progress Energy Florida	6.89	-31.35	4.73	18.82	5.62	-20.64	4.46	-22.42	3.46
Tampa Electric Company	3.39	0.88	3.42	-12.57	2.99	2.68	3.07	-6.84	2.86
<b>TIMES INTEREST EARNED WITHOUT AFUDC</b>									
Florida Power & Light Company	6.84 %	-15.20	5.80 %	-9.48	5.25 %	-4.00	5.04 %	-12.70	4.40 %
Gulf Power Company	3.86	1.55	3.92	-3.06	3.80	2.11	3.88	4.90	4.07
Progress Energy Florida	6.80	-32.79	4.57	19.91	5.48	-24.09	4.16	-29.57	2.93
Tampa Electric Company	3.38	1.18	3.42	-13.45	2.96	1.69	3.01	-7.64	2.78
<b>AFUDC AS A PERCENTAGE OF NET INCOME INTEREST COVERAGE RATIO</b>									
Florida Power & Light Company	5.83 %	-17.32	4.82 %	-27.59	3.49 %	6.30	3.71 %	57.68	5.85 %
Gulf Power Company	3.46	-43.06	1.97	-69.04	0.61	488.52	3.59	251.53	12.62
Progress Energy Florida	3.14	168.47	8.43	-20.52	6.70	151.34	16.84	90.56	32.09
Tampa Electric Company	0.61	-100.00	0.00	0.00	2.49	47.79	3.68	55.16	5.71
<b>PERCENT INTERNALLY GENERATED FUNDS</b>									
Florida Power & Light Company	109.36 %	-31.25	75.19 %	112.06	159.45 %	-73.01	43.03 %	85.20	79.69 %
Gulf Power Company	16.71	398.03	83.22	-61.68	31.89	83.79	58.61	-60.09	23.39
Progress Energy Florida	75.02	-37.30	47.04	146.75	116.07	-55.38	51.79	-77.51	11.65
Tampa Electric Company	194.29	-71.86	54.67	25.85	68.80	13.04	77.77	-53.81	35.92

SOURCE: December Earnings Surveillance Reports, Schedule 5



**NET GENERATION**



**TABLE 7**  
**NET GENERATION BY TYPE OF OWNERSHIP\***  
**1994-2008**

YEAR	TOTAL FOR STATE (GWH)	INVESTOR-OWNED		OTHERS**	
		QUANTITY (GWH)	PERCENT OF TOTAL	QUANTITY (GWH)	PERCENT OF TOTAL
1994	152,779	117,134	76.7	35,645	23.3
1995	159,156	121,496	76.3	37,660	23.7
1996	157,946	120,267	76.1	37,679	23.9
1997	161,961	122,264	75.5	39,697	24.5
1998	181,147	139,909	77.2	41,238	22.8
1999	178,773	NR	-	NR	-
2000	178,253	NR	-	NR	-
2001	178,485	NR	-	NR	-
2002	187,863	NR	-	NR	-
2003	196,563	NR	-	NR	-
2004	198,372	NR	-	NR	-
2005	204,476	NR	-	NR	-
2006	211,286	NR	-	NR	-
2007	213,789	NR	-	NR	-
2008	207,913	NR	-	NR	-

\*Does not include Net Interchange and Non-Utility Generators generation. See Table 8.

\*\*Includes municipals, rural electric cooperatives, and federally-owned utilities.

SOURCES: 1994-1998 EIA-759

1994-1998 Form PSC/ECR - 2

1994-1998 A-Schedules

1999-2003, Regional Load and Resource Plan - State Supplement, FRCC

2004-2008 Table 8

**TABLE 8**  
**NET ENERGY FOR LOAD BY FUEL TYPE AND OTHER SOURCES\***  
**1994-2008**

YEAR	COAL		OIL		NATURAL GAS		NUCLEAR		HYDRO		SUBTOTAL	OTHER SOURCES		TOTAL
	GWH	PERCENT	GWH	PERCENT	GWH	PERCENT	GWH	PERCENT	GWH	PERCENT		NUG	OTHER**	
1994	62,511	40.9	43,553	28.5	20,420	13.4	26,216	17.2	80	0.1	152,779			
1995	65,714	41.3	32,185	20.2	33,483	21.0	27,726	17.4	47	0.0	159,156			
1996	70,008	44.3	33,060	20.9	30,496	19.3	24,333	15.4	49	0.0	157,946			
1997	74,219	45.8	32,561	20.1	33,123	20.5	22,000	13.6	58	0.0	161,961			
1998	73,184	40.4	46,430	25.6	31,319	17.3	30,168	16.7	46	0.0	181,147			
1999	78,413	43.9	33,550	18.8	34,964	19.6	31,772	17.8	74	0.0	178,773	12,820	8,781	200,374
2000***	76,050	42.7	32,763	18.4	36,878	20.7	32,555	18.3	7	0.0	178,253	12,461	18,372	209,086
2001	73,005	40.9	34,858	19.5	39,032	21.9	31,568	17.7	22	0.0	178,485	13,613	18,880	210,978
2002	71,092	37.8	27,494	14.6	55,734	29.7	33,524	17.8	19	0.0	187,863	8,570	26,209	222,642
2003	76,294	38.8	29,030	14.8	60,132	30.6	31,069	15.8	38	0.0	196,563	8,075	25,952	230,590
2004	68,708	34.6	28,513	14.4	69,901	35.2	31,220	15.7	30	0.0	198,372	6,960	28,440	233,772
2005	69,683	34.1	28,096	13.7	78,032	38.2	28,632	14.0	33	0.0	204,476	7,564	28,127	240,167
2006	70,859	33.5	16,164	7.7	92,821	43.9	31,429	14.9	13	0.0	211,286	5,509	27,268	244,063
2007	72,189	33.8	16,473	7.7	95,719	44.8	29,399	13.8	9	0.0	213,789	3,635	29,068	246,492
2008	69,116	33.2	9,267	4.5	97,386	46.8	32,122	15.4	22	0.0	207,913	2,881	30,116	240,910

\*Percentages are calculated for fuel sources only.

\*\*Other includes inter-region interchange.

\*\*\*2000 numbers revised slightly. 2000 numbers throughout the report are as originally released unless otherwise noted.

SOURCES: 1994-1998, EIA Form 759  
1994-1998, FPSC Form AFAD (RRR)-2  
1994-1998, A-Schedules  
1999-2008, Regional Load and Resource Plan - State Supplement, FRCC



**TABLE 9  
INTERCHANGE AND GENERATION BY FUEL TYPE  
(GIGAWATT-HOURS)  
2008-2018**

YEAR	NET ENERGY FOR LOAD	INTERCHANGE & OTHER*	NUCLEAR	COAL	OIL	NATURAL GAS	HYDRO	NUG**
2008 ***	240,910	30,116	32,122	69,116	9,267	97,386	22	2,881
2009	242,349	27,525	30,206	70,061	11,216	100,740	23	2,578
2010	243,609	21,104	30,432	69,462	1,939	118,153	23	2,496
2011	248,453	17,938	30,141	73,712	1,543	122,600	23	2,496
2012	254,530	18,031	34,394	73,224	1,463	124,890	23	2,505
2013	258,918	19,017	36,400	75,933	1,158	124,070	23	2,317
2014	263,013	18,846	37,401	73,875	1,057	130,304	34	1,496
2015	267,927	19,516	35,851	74,971	1,297	134,760	34	1,498
2016	272,973	12,995	43,016	77,660	1,667	136,177	34	1,424
2017	278,707	11,276	52,481	76,490	1,583	135,435	34	1,408
2018	285,156	11,856	62,008	75,250	1,557	133,077	34	1,374

\*Includes "Renewables".

\*\*Non-utility generators.

\*\*\*Figures are actual.

SOURCE: Regional Load and Resource Plan - State Supplement, FRCC

**TABLE 10**  
**INTERCHANGE AND GENERATION BY FUEL TYPE**  
**(% OF GIGAWATT-HOURS)**  
**2008-2018**

YEAR	NET ENERGY FOR LOAD	INTERCHANGE & OTHER*	NUCLEAR	COAL	OIL	NATURAL GAS	HYDRO	NUG**
2008	100.0%	9.3%	11.4%	27.4%	5.0%	44.5%	0.0%	2.4%
2009	100.0%	8.4%	11.7%	26.1%	4.6%	46.7%	0.0%	2.5%
2010	100.0%	7.4%	11.3%	26.4%	5.1%	47.6%	0.0%	2.2%
2011	100.0%	7.8%	11.5%	27.2%	5.6%	45.6%	0.0%	2.3%
2012	100.0%	8.8%	11.0%	29.5%	5.0%	44.3%	0.0%	1.5%
2013	100.0%	8.4%	11.0%	31.6%	4.1%	43.7%	0.0%	1.2%
2014	100.0%	8.1%	10.5%	31.9%	3.2%	45.1%	0.0%	1.2%
2015	100.0%	6.6%	12.0%	31.5%	3.8%	45.0%	0.0%	1.2%
2016	100.0%	6.6%	12.0%	31.5%	3.8%	45.0%	0.0%	1.2%
2017	100.0%	4.4%	16.0%	23.7%	1.1%	54.4%	0.0%	0.5%
2018	100.0%	4.2%	21.7%	26.4%	0.5%	46.7%	0.0%	0.5%

\*Includes "Renewables".

\*\*Non-utility generators.

\*\*\*Figures are actual.

SOURCE: Regional Load and Resource Plan - State Supplement, FRCC

## **GENERATING CAPACITY AND CAPABILITY**



**TABLE 11**  
**INSTALLED NAMEPLATE CAPACITY/ SUMMER NET CAPABILITY BY PRIME MOVER\***  
**(MEGAWATTS)**  
**1994-2008**

YEAR	HYDRO- ELECTRIC	CONVEN- TIONAL STEAM	NUCLEAR STEAM	COMBUSTION TURBINE	INTERNAL COMBUSTION	COMBINED CYCLE	OTHER	TOTAL*
1994	21	27,263	4,124	6,018	216	1,442		39,084
1995	20	27,107	4,124	5,999	262	1,442		38,954
1996	21	25,950	4,110	6,076	267	3,910		40,334
1997	21	28,848	4,110	6,221	229	3,181		42,610
1998	21	28,885	4,110	6,234	259	2,854		42,363
1999	19	27,456	4,110	6,580	262	4,610		43,037
2000 *	19	25,664	3,174	6,260	241	4,326	114	39,798
2001 *	58	23,537	3,898	6,743	245	6,028	6	40,515
2002 *	58	23,360	3,898	6,849	291	8,889	6	43,351
2003 *	59	22,336	3,902	6,858	294	11,642	6	45,097
2004 *	58	22,128	3,902	7,217	297	12,273	0	45,875
2005 *	63	22,099	3,903	9,589	275	12,399	110	48,437
2006 *	367	16,735	3,903	21,092	246	7,946	0	50,288
2007 *	63	22,089	3,896	16,216	265	7,799	0	50,326
2008 *	63	21,719	3,931	16,260	239	8,333	0	50,544

\* Beginning 2000, summer net capability is used instead of nameplate capacity as a more conservative measure of capability.  
Winter net capability averages approximately 5% higher than summer net capability.

SOURCES: 1992-1999, EIA Form 759  
1992-1999, FPSC Form AFAD (RRR)-2  
2000-2006, Regional Load and Resource Plan, FRCC. See Table 14.

**TABLE 12**  
**INSTALLED NAMEPLATE CAPACITY/SUMMER NET CAPABILITY\***  
**BY TYPE OF OWNERSHIP**  
**(MEGAWATTS)**  
**1994-2008**

YEAR	TOTAL FOR STATE	INVESTOR-OWNED		MUNICIPALS, RURAL ELECTRIC COOPERATIVES, AND OTHER	
		QUANTITY	PERCENT OF TOTAL	QUANTITY	PERCENT OF TOTAL
1994	39,084	29,529	75.55	9,555	24.45
1995	38,954	29,231	75.04	9,723	24.96
1996	40,334	30,337	75.22	9,996	24.78
1997	42,610	33,034	77.53	9,576	22.47
1998	42,363	32,094	75.76	10,270	24.24
1999	43,037	32,969	76.61	10,068	23.39
2000*	39,798	30,535	76.72	9,263	23.28
2001*	40,515	30,109	74.32	10,406	25.68
2002*	43,351	31,765	73.27	11,586	26.73
2003*	45,097	33,293	73.82	11,804	26.18
2004*	45,875	34,171	74.49	11,704	25.51
2005*	48,437	36,486	75.33	11,951	24.67
2006*	50,288	37,817	75.20	12,471	24.80
2007*	50,326	38,203	75.91	12,123	24.09
2007*	50,544	38,218	75.61	12,326	24.39

\*In 2000 and onward, summer net capability is used instead of nameplate capacity as a more conservative measure of capability. Winter net capability averages approximately 5% higher than summer net capability.

SOURCES: 1994-1999, EIA Form 759  
1994-1999, FPSC Form AFAD (RRR)-2  
2000-2008, Regional Load and Resource Plan, FRCC

**TABLE 13**  
**INSTALLED WINTER NET CAPACITY AND SUMMER NET CAPABILITY BY UTILITY (MW)\***  
**2004-2008**

UTILITY	2008		2007		2006		2005		2004	
	WINTER NET	SUMMER NET	WINTER NET	SUMMER NET	WINTER NET	SUMMER NET	WINTER NET	SUMMER NET	WINTER NET	SUMMER NET
	CAPACITY	CAPABILITY	CAPACITY	CAPABILITY	CAPACITY	CAPABILITY	CAPACITY	CAPABILITY	CAPACITY	CAPABILITY
Florida Power & Light Company	23,357	22,095	23,492	22,137	22,279	20,983	22,099	20,777	20,158	18,940
Gulf Power Company*	2,018	1,979	2,144	1,887	2,024	1,986	2,824	2,796	2,077	2,049
Progress Energy Florida	10,274	9,289	10,285	9,150	9,778	8,710	9,760	8,842	9,184	8,341
Tampa Electric Company	4,438	4,061	4,604	4,202	4,326	4,012	4,383	4,071	4,423	4,090
Florida Keys Electric Co-op	21	21	21	21	21	21	21	21	27	27
Florida Municipal Power Agency	1,030	977	712	681	712	681	667	636	675	639
Fort Pierce	0	0	119	119	119	119	119	119	119	119
Gainesville Regional Utilities	632	612	632	611	632	611	632	612	630	611
Homestead	53	53	53	53	53	53	53	53	53	53
JEA	3,622	3,371	3,628	3,377	3,628	3,377	3,552	3,387	3,477	3,255
Key West	43	43	43	43	44	44	52	52	52	52
Kissimmee	316	294	316	294	316	294	316	294	333	310
Lake Worth	90	86	98	93	102	94	102	94	105	95
Lakeland	953	905	927	897	981	905	995	913	995	913
Ocala	11	11	11	11	11	11	11	11	11	11
New Smyrna Beach	71	67	71	67	70	66	70	66	66	62
Orlando	1,257	1,199	1,257	1,199	1,257	1,199	1,257	1,199	1,257	1,199
Reedy Creek	61	60	61	60	61	60	44	43	44	43
Seminole	2,185	2,079	2,227	2,089	2,158	2,089	1,886	1,819	1,917	1,819
St. Cloud	0	0	21	21	0	0	21	21	21	21
Starke City of**										
Tallahassee	890	812	795	744	795	744	795	744	699	652
USCE-Mobile District	44	44	44	44	44	44	44	44	39	39
Vero Beach	144	138	155	150	155	150	155	150	158	150
Powersouth Energy Co-op*	0	0	0	0	0	0	10	7	11	8
<b>Total Utility</b>	<b>51,510</b>	<b>48,196</b>	<b>51,716</b>	<b>47,950</b>	<b>49,566</b>	<b>46,253</b>	<b>49,868</b>	<b>46,771</b>	<b>46,531</b>	<b>43,498</b>
<b>Total Nonutility</b>	<b>6,044</b>	<b>5,816</b>	<b>5,546</b>	<b>5,413</b>	<b>5,297</b>	<b>4,948</b>	<b>4,445</b>	<b>4,683</b>	<b>2,565</b>	<b>2,494</b>
<b>Total State of Florida</b>	<b>57,554</b>	<b>54,012</b>	<b>57,262</b>	<b>53,363</b>	<b>54,863</b>	<b>51,201</b>	<b>54,313</b>	<b>51,454</b>	<b>49,096</b>	<b>45,992</b>

\*Excludes generation physically outside Florida regardless of whether it serves load in Florida.

\*\*Reported as part of Orlando.

SOURCE: Regional Load and Resource Plan, FRCC

**TABLE 14**  
**SUMMER NET CAPABILITY (MW) BY PRIME MOVER BY UTILITY\***  
**2008**

COMPANY NAME	HYDRO-ELECTRIC	CONVENTIONAL STEAM	NUCLEAR STEAM	COMBUSTION TURBINE	INTERNAL COMBUSTION	COMBINED CYCLE**	OTHER	UTILITY TOTAL
Florida Power & Light Company		7,929	2,939	7,994	12	3,283		22,157
Gulf Power Company		2,111		44		556		2,711
Progress Energy Florida		3,863	805	2,504		2,117		9,289
Tampa Electric Company		1,550		1,857	42	612		4,061
Florida Keys Electric Co-op					21			21
Florida Municipal Power Agency		244	74	659				977
Fort Pierce								0
Gainesville Regional Utilities		334	12	228		37		611
Homestead					53			53
JEA		2,306		563	1	501		3,371
Key West				20	23			43
Kissimmee		21	6	178		89		294
Lakeland		391		315	55	144		905
Lake Worth		22		46	9	9		86
New Smyrna Beach			5	44	18			67
Ocala			11					11
Orlando		754	64	381				1,199
Reedy Creek					5	55		60
Seminole		1,306	15	584		174		2,079
St. Cloud								0
Tallahassee	11	124		148		529		812
US Corps of Engineers	44							44
Vero Beach		94		32		12		138
Powersouth Energy Co-op	8	670		663		215		1,556
Total State of Florida Utility	<u>63</u>	<u>21,719</u>	<u>3,931</u>	<u>16,260</u>	<u>239</u>	<u>8,333</u>	<u>0</u>	50,544
Total Nonutility Generators***								<u>2,003</u>
<b>Total State of Florida</b>								<b><u>52,547</u></b>

\*Includes generation physically outside Florida if it serves load in Florida.

\*\*Includes steam part of combined cycle.

\*\*\*Does not include the capability of merchant plants

SOURCE: Regional Load and Resource Plan, FRCC



**TABLE 15  
NUCLEAR GENERATING UNITS  
2008**

UTILITY	LOCATION	COMMERCIAL IN-SERVICE MONTH/YEAR	MAXIMUM NAMEPLATE KW	NET CAPABILITY	
				SUMMER MW	WINTER MW
FLORIDA POWER & LIGHT					
Turkey Point #3	Dade County	Dec 1972	760,000	693	717
Turkey Point #4	Dade County	Sep 1973	759,900	693	717
St. Lucie #1	St. Lucie County	May 1976	850,000	839	853
St. Lucie #2	St. Lucie County	Jun 1983	892,000	714*	726*
PROGRESS ENERGY FLORIDA					
Crystal River #3	Citrus County	Mar 1977	898,000	778**	798**

\*14.9% of plant capability is owned by the Orlando Utilities Commission and the Florida Municipal Power Agency, # represents FP&L's share.

\*\*8.2% of plant capability is co-owned by various municipalities and REAs, # represents Progress' share.

SOURCE: Regional Load and Resource Plan, FRCC  
Company Ten-Year Site Plans

**TABLE 16**  
**MONTHLY PEAK DEMAND**  
**(MEGAWATTS)**  
**2008**

UTILITIES	JAN	FEB	MAR	APR	MAY	JUN	JUL	AUG	SEP	OCT	JUL	DEC	YEARLY PEAK
<b>INVESTOR-OWNED SYSTEMS</b>													
Florida Power & Light Company	18,055	15,735	16,226	16,995	20,289	20,565	20,951	21,060	20,456	18,742	16,538	14,849	21,060
Florida Public Utilities Company	NR	NR	NR	NR	NR	NR	NR	NR	NR	NR	NR	NR	NR
Gulf Power Company	2,370	2,155	1,648	1,700	2,231	2,398	2,541	2,529	2,335	1,926	1,896	1,809	2,541
Progress Energy Florida	10,153	8,223	6,794	7,619	9,298	9,898	10,012	10,036	9,501	8,059	7,446	8,064	10,153
Tampa Electric Company	3,709	2,972	2,829	3,154	3,649	3,952	3,895	3,905	3,794	3,421	2,975	3,168	3,952
<b>GENERATING MUNICIPAL SYSTEMS</b>													
Fort Pierce	0	0	0	0	0	0	0	0	0	0	0	0	0
Gainesville	0	0	0	0	0	0	0	0	0	0	0	0	0
Homestead	0	0	0	0	0	0	0	0	0	0	0	0	0
JEA	2,914	2,487	2,053	2,017	2,363	2,634	2,732	2,866	2,647	2,263	2,310	2,473	2,914
Key West	0	0	0	0	0	0	0	0	0	0	0	0	0
Kissimmee	263	206	220	238	277	304	299	315	288	250	217	195	315
Lake Worth	72	69	67	71	86	84	91	88	85	78	69	63	91
Lakeland	723	561	460	516	597	641	643	639	621	561	531	560	723
New Smyrna Beach	85	70	57	66	78	80	84	89	80	65	58	60	89
Orlando	1,019	831	804	952	1,021	1,103	1,132	1,157	1,063	990	914	785	1,157
Reedy Creek	153	161	163	170	174	182	185	191	180	175	166	158	191
Starke	0	0	0	0	0	0	0	0	0	0	0	0	0
Tallahassee	0	0	0	0	0	0	0	0	0	0	0	0	0
Vero Beach	168	119	118	125	143	155	152	155	150	133	122	108	168
<b>NONGENERATING MUNICIPAL SYSTEMS</b>													
Alachua	0	0	0	0	0	0	0	0	0	0	0	0	0
Bartow	71	56	44	48	57	61	62	61	59	54	53	56	71
Blountstown	8	8	6	6	9	9	9	9	9	7	7	7	9
Bushnell	5	5	5	4	5	5	5	5	5	6	5	5	6
Chattahoochee	7	8	7	7	6	7	8	8	8	8	7	6	8
Clewiston	0	0	0	0	0	0	0	0	0	0	0	0	0
Fort Meade	12	9	7	7	9	9	9	9	8	8	8	9	12
Green Cove Springs	0	0	0	0	0	0	0	0	0	0	0	0	0
Havana	0	0	0	0	0	0	0	0	0	0	0	0	0

NR = Not reported

SOURCE: Form PSC/SCR - 1, 3

**TABLE 16 (continued)**  
**MONTHLY PEAK DEMAND**  
**(MEGAWATTS)**  
**2008**

UTILITIES	JAN	FEB	MAR	APR	MAY	JUN	JUL	AUG	SEP	OCT	NOV	DEC	YEARLY PEAK
<b>NONGENERATING MUNICIPAL SYSTEMS</b>													
Jacksonville Beach	179	148	110	124	150	157	171	179	160	132	137	143	179
Leesburg	0	81	0	0	0	0	111	0	0	0	0	0	111
Moore Haven	0	0	0	0	0	0	0	0	0	0	0	0	0
Mount Dora	21	16	14	16	19	23	22	22	22	18	15	16	23
Newberry	7	6	4	5	6	7	7	7	7	6	5	7	7
Ocala	0	0	0	0	0	0	0	0	0	0	0	0	0
Quincy	0	0	0	0	0	0	0	0	0	0	0	0	0
Wauchula	13	10	9	10	12	13	14	14	13	10	10	11	14
Williston	6	6	6	5	6	7	8	7	8	8	7	6	8
Winter Park	89	69	66	74	85	95	94	97	91	81	71	68	97
<b>RURAL ELECTRIC COOPERATIVES</b>													
Powersouth Energy	0	0	0	0	0	0	0	0	0	0	0	0	0
Central Florida	142	119	110	80	99	105	110	107	111	88	117	127	142
Choctawhatchee	200	179	137	108	153	166	169	173	156	122	150	142	200
Clay (Reported as part of Seminole)	N/A	N/A	N/A	N/A	N/A	N/A	N/A	N/A	N/A	N/A	N/A	N/A	N/A
Escambia River	49	45	37	37	37	39	40	40	37	37	41	40	49
Florida Keys	112	108	113	113	136	126	134	134	116	109	99	99	136
Glades	0	0	0	0	0	0	0	0	0	0	0	0	0
Gulf Coast	100	93	74	59	71	72	75	68	69	61	85	72	100
Lee County	0	0	0	0	0	0	0	0	0	0	0	0	0
Peace River	144	98	80	105	131	130	129	124	127	118	98	107	144
Seminole	4	3	3	3	4	4	4	4	4	3	3	3	4
Sumter	670	558	455	461	603	619	612	620	601	518	544	573	670
Suwanee Valley	96	88	92	64	100	91	90	90	104	74	87	99	104
Talquin	0	0	0	0	0	0	0	0	0	0	0	0	0
Tri-County	0	0	0	0	0	0	0	0	0	0	0	0	0
West Florida	120	117	91	71	92	101	103	103	97	75	112	99	120
Withlacoochee River	984	816	654	629	790	822	815	759	832	736	786	853	984
Okefenoke	21	19	16	13	17	19	18	19	18	15	19	20	21

N/A = Not applicable

SOURCE: Form PSC/SCR - 1, 3

**TABLE 17**  
**ANNUAL PEAK DEMAND**  
**SELECTED UTILITIES**  
**(MEGAWATTS)**  
**1994-2008**

UTILITY COMPANY	1994	1995	1996	1997	1998	1999	2000	2001	2002	2003	2004	2005	2006	2007	2008
Florida Power & Light	15,179	16,563	18,096	16,613	17,897	17,615	17,808	18,754	19,219	20,190	20,545	22,361	21,819	21,962	21,060
Gulf Power Company	NR	2,048	2,144	2,040	2,154	2,169	2,281	2,223	2,454	2,500	2,431	2,435	2,483	2,634	2,541
Progress Energy Florida	6,955	7,722	8,807	8,066	8,004	8,318	8,548	8,922	9,045	10,131	9,125	10,226	10,094	10,355	10,153
Tampa Electric Company	2,754	3,170	3,351	3,118	3,266	3,372	3,504	3,782	3,634	3,881	3,737	3,968	4,010	4,123	3,952
Fort Pierce	102	128	126	118	116	121	119	120	130	132	124	131	120	124	NR
Gainesville	331	361	365	373	396	419	425	409	409	417	432	465	464	481	NR
JEA	1,973	2,190	2,401	2,130	2,338	2,427	2,614	2,665	2,607	3,055	2,657	2,860	2,919	2,897	2,914
Lake Worth	69	87	82	74	82	NR	85	88	86	90	93	0	93	94	91
Lakeland	485	538	610	552	535	649	610	655	659	694	580	648	680	648	723
Orlando	749	800	885	846	907	NR	1,058	962	986	1,019	1,203	1,141	1,271	1,719	1,157
Tallahassee	338	497	533	486	530	NR	569	521	580	590	565	598	577	621	0
Vero Beach	113	156	174	155	146	151	175	176	178	203	169	174	172	162	168

NR = Not reported

SOURCES: Form PSC/SCR - 1, 3

**TABLE 18**  
**SUMMER AND WINTER PEAK DEMAND - PROJECTED\***  
**2009-2018**

YEAR	SUMMER PEAK (MW)	YEAR	WINTER PEAK (MW)
2009	52,174	2009-2010	50,662
2010	52,447	2010-2011	51,528
2011	53,290	2011-2012	52,772
2012	54,495	2012-2013	53,811
2013	55,591	2013-2014	54,736
2014	56,722	2014-2015	56,099
2015	57,989	2015-2016	57,261
2016	59,250	2016-2017	58,489
2017	60,567	2017-2018	59,759
2018	61,994	2017-2018	61,035

\*Net Firm Peak Demand

SOURCE: Regional Load and Resource Plan - State Supplement, FRCC

**TABLE 19**  
**LOAD FACTORS BY GENERATING UTILITIES**  
**2008**

GENERATING UTILITIES	NET ENERGY FOR LOAD (GIGAWATT-HOURS)	PEAK LOAD (MEGAWATTS)	LOAD FACTOR (PERCENTAGE)
Florida Power & Light	111,004	21,060	60.2
Gulf Power Company	12,583	2,541	56.5
Progress Energy Florida	47,515	10,153	53.4
Tampa Electric Company	19,934	3,952	57.6
Florida Keys Electric	692	136	58.1
Fort Pierce	575	0	58,105.7
Gainesville	2	0	51.9
Homestead	483	0	62,697.7
JEA	13,531	2,914	53.0
Key West	435	0	35,728.5
Kissimmee	1,422	315	51.5
Lake Worth	435	91	54.7
Lakeland	248	723	3.9
New Smyrna Beach	386	89	49.5
Orlando	5,669	1,157	55.9
Reedy Creek	1,299	191	77.7
Seminole Electric	17,329	4	46,865.6
Starke	76	0	52,217.5
Tallahassee	0	0	NR
Vero Beach	720	168	48.9

NR=Not Reported

SOURCE: Form PSC/SCR - 1, 3 and Table 16.

## **FUEL ANALYSIS**





**TABLE 20**  
**FUEL REQUIREMENTS**  
**1994-2008**

YEAR	COAL (THOUSANDS OF SHORT TONS)	OIL* (THOUSANDS OF BARRELS)	NATURAL GAS (BILLION CUBIC FEET)	NUCLEAR (U-235) (TRILLION BTU)
1994	30,912.1	34,944.9	321.9	300.6
1995	32,082.9	38,138.8	285.4	265.8
1996	34,991.5	30,226.9	299.8	241.9
1997	34,936.3	61,669.2	283.6	326.0
1998	33,654.0	56,294.0	329.6	334.0
1999	34,601.0	53,510.0	324.0	349.0
2000	30,786.0	58,389.0	324.4	339.0
2001	30,977.0	44,573.0	462.9	362.0
2002	30,228.0	47,835.0	470.1	671.0
2003	29,780.0	44,969.0	529.0	336.0
2004	30,639.0	43,559.0	575.0	321.0
2005	30,356.0	45,314.0	576.0	309.0
2006	31,234.0	25,706.0	679.0	339.0
2007	30,957.0	31,190.0	691.0	317.0
2008	36,224.0	14,496.0	436.0	342.0

\*Residual and distillate

SOURCES: 1994-1998, EIA Form 759  
1994-1998, FPSC Form AFAD (RRR)-2  
1994-1998, FCG Form 7.3  
1994-1998, A-Schedules  
1999-2008, Regional Load and Resource Plan, State Supplement, FRCC

**TABLE 21**  
**FUEL REQUIREMENTS - PROJECTED**  
**2008-2018**

YEARS	COAL (THOUSANDS OF SHORT TONS)	OIL (THOUSANDS OF BARRELS)	NATURAL GAS (BILLIONS OF CUBIC FEET)	NUCLEAR (U-235) (TRILLION BTU)
2008 *	36,224	14,496	436	342
2009	36,800	17,319	742	329
2010	30,477	3,197	843	329
2011	32,306	2,594	876	326
2012	31,588	2,490	897	368
2013	32,977	1,991	886	393
2014	32,094	1,839	934	402
2015	32,557	2,132	967	386
2016	33,744	2,819	986	458
2017	33,461	2,728	979	552
2018	36,461	2,785	958	592

\*Actual figures

SOURCE: Regional Load and Resource Plan - State Supplement, FRCC

## **CONSUMPTION**



**TABLE 22**  
**MONTHLY CONSUMPTION BY CLASS OF SERVICE**  
**(MEGAWATT-HOURS)**  
**2008**

		JAN	FEB	MAR	APR	MAY	JUN	JUL	AUG	SEP	OCT	NOV	DEC	TOTAL
Residential	Florida Power & Light	4,234,068	3,604,218	3,598,528	3,779,247	4,283,255	5,282,805	5,301,896	5,331,471	5,632,133	4,805,005	3,672,851	3,703,339	53,228,815
	Florida Public Utilities	29,573	26,891	24,588	20,806	22,002	31,048	35,948	33,694	31,499	25,722	21,429	26,447	329,647
	Gulf Power Company	485,001	384,918	338,590	324,415	444,508	561,431	618,097	554,447	519,067	369,478	342,449	406,241	5,348,642
	Progress Energy Florida	1,456,377	1,301,126	1,247,505	1,354,417	1,452,026	1,948,538	1,830,180	2,027,717	2,235,722	1,641,316	1,399,229	1,434,253	19,328,406
	Tampa Electric Company	685,564	539,960	552,563	606,908	677,878	868,659	854,260	856,898	927,643	775,107	579,263	621,765	8,546,468
	JEA	479,955	392,662	378,640	353,558	386,448	504,170	572,163	524,798	553,847	438,923	288,958	467,227	5,341,349
	Orlando Utilities Commission	176,884	162,446	153,758	161,218	184,008	236,093	233,742	247,785	244,805	216,411	162,929	164,170	2,344,249
Commercial	Florida Power & Light	3,783,449	3,491,304	3,442,605	3,509,771	3,717,190	4,108,255	4,103,113	4,016,556	4,261,071	3,926,048	3,580,327	3,621,740	45,561,430
	Florida Public Utilities	25,012	22,453	23,819	22,600	24,506	29,130	32,434	30,164	29,108	27,877	24,322	23,740	315,165
	Gulf Power Company	306,920	273,728	283,074	303,229	380,401	363,668	406,978	372,720	373,214	320,882	306,339	269,770	3,960,923
	Progress Energy Florida	914,752	873,753	871,953	931,639	972,963	1,164,204	1,105,846	1,166,826	1,250,019	1,028,182	981,596	877,191	12,138,924
	Tampa Electric Company	530,580	462,073	475,362	510,425	522,320	588,776	580,524	586,926	616,614	559,404	491,822	473,893	6,398,719
	JEA	333,470	289,387	305,269	309,949	322,387	369,450	390,432	375,441	389,203	367,516	288,868	323,233	4,064,605
	Orlando Utilities Commission	234,376	220,422	237,854	249,232	257,081	274,829	263,245	286,506	284,854	301,147	254,746	220,638	3,084,930
Industrial	Florida Power & Light	498,677	317,152	282,857	296,408	292,756	323,011	308,290	280,430	300,916	288,124	275,331	289,109	3,753,059
	Florida Public Utilities	7,350	7,190	6,480	5,450	8,030	8,730	8,480	7,130	6,080	6,200	5,180	8,000	84,300
	Gulf Power Company	159,455	146,353	166,963	194,726	194,751	210,030	221,229	217,083	202,616	199,057	170,128	128,207	2,210,598
	Progress Energy Florida	284,847	271,997	308,541	311,450	360,809	336,404	329,327	334,687	316,943	335,901	381,574	213,817	3,786,297
	Tampa Electric Company	190,601	180,605	179,261	177,009	190,767	196,631	178,403	182,475	174,438	182,714	184,697	187,269	2,204,870
	JEA	244,675	216,190	261,237	236,260	226,595	279,218	274,602	271,362	265,606	257,897	226,510	209,387	2,969,539
	Orlando Utilities Commission	31,160	29,135	31,701	32,328	32,415	32,135	37,374	34,994	33,621	35,967	29,275	28,272	388,377
Other	Florida Power & Light	49,418	41,428	46,935	42,793	44,269	45,844	44,185	44,463	44,773	47,015	45,166	45,052	541,343
	Florida Public Utilities	718	703	711	703	709	717	722	717	703	707	702	700	8,512
	Gulf Power Company	38,195	30,501	29,230	28,489	34,843	38,711	41,055	38,706	36,272	31,059	30,690	31,809	409,560
	Progress Energy Florida	252,529	251,102	263,414	255,206	273,738	271,038	275,815	290,094	334,936	294,901	304,192	235,117	3,302,082
	Tampa Electric Company	144,002	134,251	140,332	144,403	151,405	168,190	153,023	160,840	180,613	165,981	152,259	144,249	1,839,548
	JEA	24,831	60,528	54,694	55,822	55,542	63,621	72,158	70,611	70,701	64,414	58,175	49,647	700,744
	Orlando Utilities Commission	12,221	11,829	11,791	13,883	14,674	17,659	16,342	16,825	17,171	15,777	11,672	11,955	171,799
Total	Florida Power & Light	8,565,612	7,454,102	7,370,925	7,628,219	8,337,469	9,759,915	9,757,484	9,672,919	10,238,893	9,066,193	7,573,675	7,659,241	103,084,646
	Florida Public Utilities	62,653	57,237	55,598	49,559	55,247	69,625	77,584	71,705	67,390	60,506	51,633	58,887	737,624
	Gulf Power Company	989,571	835,500	817,857	850,859	1,054,503	1,173,840	1,287,359	1,182,956	1,131,169	920,476	849,606	836,027	11,929,723
	Progress Energy Florida	2,908,505	2,697,978	2,691,413	2,852,712	3,059,536	3,720,184	3,541,168	3,819,324	4,137,620	3,300,300	3,066,591	2,760,378	38,555,709
	Tampa Electric Company	1,550,747	1,316,889	1,347,518	1,438,745	1,542,370	1,822,256	1,766,210	1,787,139	1,899,308	1,683,206	1,408,041	1,427,176	18,989,605
	JEA	1,082,931	958,767	999,840	955,589	990,972	1,216,459	1,309,355	1,242,212	1,279,357	1,128,750	862,511	1,049,494	13,076,237
	Orlando Utilities Commission	454,641	423,832	435,104	456,661	488,178	560,716	550,703	586,110	580,451	569,302	458,622	425,035	5,989,355

SOURCE: Form PSC/SCR - 4

**TABLE 23**  
**CONSUMPTION BY CLASS OF SERVICE BY UTILITY**  
**(MEGAWATT-HOURS)**  
**2008**

UTILITIES	RESIDENTIAL	COMMERCIAL	INDUSTRIAL	OTHER	TOTAL
Florida Power & Light	53,228,815	45,561,430	3,753,059	541,343	103,084,646
Florida Public Utilities	329,647	315,165	84,300	8,512	737,624
Gulf Power Company	5,348,642	3,960,923	2,210,598	409,560	11,929,723
Progress Energy Florida	19,328,406	12,138,924	3,786,297	3,302,082	38,555,709
Tampa Electric Company	8,546,468	6,398,719	2,204,870	1,839,548	18,989,605
Alachua	39,711	74,904	183	0	114,798
Bartow	133,134	21,096	108,277	11,117	273,624
Blountstown	12,015	22,265	0	2,428	36,707
Bushnell	8,528	7,907	6,495	0	22,930
Central Florida Co-op	365,729	39,615	63,328	30,771	499,443
Chattahoochee	12,785	4,325	23,433	1,630	42,173
Choctawhatchee Co-op	532,683	99,653	104,103	0	736,438
Clay Co-op	2,190,994	261,054	693,351	6,052	3,151,451
Clewiston	49,727	9,868	42,958	723	103,275
Escambia River Co-op	129,812	13,689	21,936	517	165,953
Florida Keys Co-op	358,662	100,468	152,884	37,188	649,203
Fort Meade	27,431	5,214	2,676	4,375	39,694
Fort Pierce	217,045	330,422	0	11,659	559,126
Gainesville	820	198	759	26	1,803
Glades Co-op	NR	NR	NR	NR	NR
Green Cove Springs	NR	NR	NR	NR	NR
Gulf Coast Co-op	272,738	33,258	26,188	12,311	344,494
Havana	NR	NR	NR	NR	NR
Homestead	242,716	42,318	119,366	26,890	431,290
JEA	5,341,349	4,064,605	2,969,539	700,744	13,076,237
Jacksonville Beach	438,331	87,920	187,113	12,195	725,559
Key West	327,685	72,866	311,222	4,220	715,992
Kissimmee	703,135	189,439	453,540	13,650	1,359,765
Lake Worth	231,464	90,731	64,184	24,475	410,853
Lakeland	1,383,482	761,928	606,724	95,329	2,847,462
Lee County Co-op	NR	NR	NR	NR	NR
Leesburg	NR	NR	NR	NR	NR
Moore Haven	NR	NR	NR	NR	NR
Mount Dora	48,033	16,119	21,069	6,168	91,389
New Smyrna Beach	233,836	52,464	74,202	3,304	363,806
Newberry	14,655	3,069	5,347	6,641	29,712
Ocala	NR	NR	NR	NR	NR
Okefenoke*	153,524	6,957	4,124	3,096	167,701
Orlando	2,344,249	332,900	388,377	171,799	3,237,325
Peace River Co-op	394,455	73,321	115,634	14,699	598,108
Quincy	NR	NR	NR	NR	NR
Reedy Creek	173	9,266	1,141,583	5,756	1,156,778
Seminole Co-op**	-	-	-	-	-
Starke	24,786	42,861	0	0	67,647
Sumter Co-op	1,895,150	199,355	546,774	1,177	2,642,456
Suwannee Valley Co-op	289,720	45,116	144,115	204	479,155
Tallahassee	NR	NR	NR	NR	NR
Talquin Co-op	NR	NR	NR	NR	NR
Tri-County Co-op	NR	NR	NR	NR	NR
Vero Beach	369,649	86,976	253,681	14,496	724,803
Wauchula	26,919	17,964	14,877	3,365	63,124
West Florida Co-op	332,044	9,499	52,448	32,222	426,212
Williston	12,298	7,385	11,845	1,020	32,547
Winter Park	188,790	14,229	207,593	27,638	438,250
Withlacoochee Co-op	2,594,038	846,074	248,326	19,425	3,707,863
Respondent Total***	108,724,268	76,472,457	21,227,378	7,408,353	213,832,457
FRCC State Total					223,465,000

NR=Not Reported

\*Okefenoke sells power in Florida and Georgia; figures reflect Florida customers only.

\*\*Seminole Electric Cooperative generates only for resale.

\*\*\*Respondent total includes sales to other public authorities. Therefore, respondent totals are not comparable to FRCC totals.

SOURCES: Form PSC/SCR - 1, 4.  
Regional Load and Resource Plan, State Supplement, FRCC.

**TABLE 24**  
**AVERAGE ANNUAL CONSUMPTION PER CUSTOMER BY CLASS OF SERVICE BY UTILITY**  
**(KILOWATT-HOURS)**  
**2008**

UTILITIES	RESIDENTIAL	COMMERCIAL	INDUSTRIAL	OTHER	TOTAL
Florida Power & Light	13,333	90,994	280,503	161,784	22,858
Florida Public Utilities	13,822	73,024	42,150,000	24,222	25,865
Gulf Power Company	14,274	73,610	7,592,208	830,891	27,789
Progress Energy Florida	13,339	74,670	1,463,539	133,612	23,525
Tampa Electric Company	14,545	90,415	1,551,724	246,154	28,459
Alachua	11,534	139,486	1,461	0	27,569
Bartow	13,453	16,876	304,149	85,518	23,523
Blountstown	11,756	73,725	N/A	78,317	27,090
Bushnell	10,947	31,882	927,909	0	21,212
Central Florida Co-op	12,088	19,670	753,906	55,744	15,178
Chattahoochee	12,084	33,270	7,811,117	25,873	33,631
Choctawhatchee Co-op	14,440	17,894	528,439	N/A	17,265
Clay Co-op	14,722	16,530	918,345	108,074	19,051
Clewiston	14,884	18,410	367,162	4,353	24,826
Escambia River Co-op	14,882	13,702	126,067	19,136	16,724
Florida Keys Co-op	13,996	21,454	384,132	79,124	20,823
Fort Meade	11,192	21,907	382,222	48,072	14,243
Fort Pierce	9,241	77,600	0	0	19,528
Gainesville	10	21	636	0	19
Glades Co-op	NR	NR	NR	NR	NR
Green Cove Springs	NR	NR	NR	NR	NR
Gulf Coast Co-op	14,279	33,903	3,273,466	23,720	16,717
Havana	NR	NR	NR	NR	NR
Homestead	12,943	20,714	294,006	316,355	20,262
Jacksonville	14,209	94,515	12,767,635	144,216	30,839
JEA	15,430	20,702	522,663	102,478	21,899
Key West	13,642	22,154	452,358	2,916	24,317
Kissimmee	13,433	21,039	516,561	0	21,852
Lake Worth	10,645	31,658	773,295	34,816	16,178
Lakeland	13,733	64,341	6,973,840	9,843	23,273
Lee County Co-op	NR	NR	NR	NR	NR
Leesburg	NR	NR	NR	NR	NR
Moore Haven	NR	NR	NR	NR	NR
Mount Dora	10,610	21,407	376,226	73,429	16,861
New Smyrna Beach	10,613	28,041	764,964	3,820	14,630
Newberry	12,274	18,827	162,045	75,464	20,103
Ocala	NR	NR	NR	NR	NR
Okefenoke*	16,186	16,927	4,124,440	49,930	16,839
Orlando	13,020	13,756	14,748,494	12,697	14,863
Peace River Co-op	14,692	12,879	485,857	257,870	18,214
Quincy	NR	NR	NR	NR	NR
Reedy Creek	19,224	30,582	1,294,312	100,977	924,682
Seminole Co-op**	-	-	-	-	-
Starke	12,126	57,686	0	0	24,272
Sumter Co-op	12,636	13,455	581,674	36,790	15,940
Suwannee Valley Co-op	13,551	14,880	1,485,725	2,377	19,482
Tallahassee	NR	NR	NR	NR	NR
Talquin Co-op	NR	NR	NR	NR	NR
Tri-County Co-op	NR	NR	NR	NR	NR
Vero Beach	13,331	18,609	379,762	45,019	21,706
Wauchula	12,703	34,413	1,859,660	56,082	23,302
West Florida Co-op	13,314	4,006	409,748	53,260	15,198
Williston	11,109	25,118	257,504	12,591	21,301
Winter Park	1,044	746	4,613,185	69,969	2,187
Withlacoochee Co-op	14,343	44,381	5,518,358	49,178	18,506
Respondent Average	13,402	76,829	731,226	98,439	23,213

NR=Not Reported

N/A=Not Applicable

\*Okefenoke Rural EMC sells power in Florida and Georgia; figures reflect Florida customers only.

\*\*Seminole Electric Cooperative generates only for resale.

SOURCES: Tables 23 and 33 (from Form PSC/SCR - 1.4)

**TABLE 25**  
**SALE FOR RESALE ACTIVITY BY SELECTED UTILITY**  
**(MEGAWATT-HOURS)**  
**2008**

UTILITY	TOTAL RESALES (MWH)	TOTAL SALES TO ULTIMATE CUSTOMERS (MWH)	UTILITY TOTAL SALES (MWH)	AVERAGE RESALES PER MONTH (MWH/MONTH)	RESALES AS PERCENTAGE OF TOTAL (%)
Florida Power & Light	2,657,889	102,918,807	105,576,696	221,491	2.52
Florida Public Utilities	6,777,353	737,624	7,514,977	564,779	90.18
Gulf Power Company	3,687,996	11,929,723	15,617,719	307,333	23.61
Progress Energy Florida	6,777,353	38,555,709	45,333,062	564,779	14.95
Tampa Electric Company	883,970	18,989,605	19,873,575	73,664	4.45
Powersouth Energy Co-op*	0	0	0	0	0.00
Gainesville	196	1,803	2,000	16	9.81
JEA	1,185,115	13,076,237	14,261,352	98,760	8.31
Lake Worth	29,497	410,853	440,350	2,458	6.70
Lakeland	1,233	2,847,462	2,848,695	103	0.04
New Smyrna Beach	341	363,806	29,712	28	0.00
Orlando	1,718,452	5,989,357	7,707,809	143,204	22.29
Reedy Creek	62,432	1,156,778	1,219,210	5,203	5.12
Seminole Electric Cooperative**	0	0	17,329,000	0	100.00 **
Suwannee Valley Co-op	6,649	479,155	485,804	554	1.37
Tallahassee	NR	NR	NR	NR	NR
Talquin Electric Cooperative	NR	NR	NR	NR	NR

NR=Not Reported

\*Alabama Electric Cooperative does all of its Florida business on a resale basis.

\*\*Seminole Electric Cooperative generates only for resale.

SOURCES: FERC Form 1  
Form PSC/SCR - 1, 4



**TABLE 26  
CONSUMPTION BY UTILITY  
(MEGAWATT-HOURS)  
2004-2008**

UTILITIES	2004	2005	2006	2007	2008
Florida Power & Light	99,635,281	99,199,989	102,413,604	105,556,353	103,084,646
Florida Public Utilities	723,030	766,682	824,643	812,897	737,624
Gulf Power Company	11,248,860	11,418,120	11,641,664	11,926,565	11,929,723
Progress Energy Florida	37,956,700	38,193,102	39,176,585	39,281,638	38,555,709
Tampa Electric Company	18,242,316	18,436,669	18,911,837	18,983,753	18,989,605
Alachua	91,030	79,548	97,801	108,909	114,798
Bartow	272,367	264,077	275,035	285,235	273,624
Blountstown	37,750	38,130	37,811	36,817	36,707
Bushnell	NR	25,114	25,660	23,427	22,930
Central Florida	451,892	472,524	490,826	510,728	499,443
Chattahoochee	44,878	44,681	43,771	42,633	42,173
Choctawhatchee	614,875	653,936	686,166	741,951	736,438
Clay	2,873,635	2,951,814	3,079,308	3,197,139	3,151,451
Clewiston	129,711	129,711	116,373	123,043	103,275
Escambia River	160,973	160,518	165,253	173,668	165,953
Florida Keys	698,553	671,672	675,828	670,928	649,203
Fort Meade	NR	40,579	41,665	39,768	39,694
Fort Pierce	611,380	587,590	599,720	579,227	559,126
Gainesville	1,785,967	1,829,927	1,854	1,876,933	1,803
Glades	347,050	338,680	340,932	353,315	NR
Green Cove Springs	104,191	109,760	116,547	112,615	NR
Gulf Coast	295,100	310,208	321,089	347,792	344,494
Havana	23,337	23,328	22,855	24,888	NR
Homestead	354,779	356,608	375,636	426,438	431,290
JEA	12,582,876	12,770,230	13,236,849	13,358,114	13,076,237
Jacksonville Beach	752,881	747,416	761,697	751,441	725,559
Key West	NR	727,744	717,588	718,114	715,992
Kissimmee	1,218,620	1,249,361	1,322,340	1,384,293	1,359,765
Lake Worth	424,852	439,259	512,602	434,123	410,853
Lakeland	2,736,686	2,720,052	2,808,851	2,928,568	2,847,462
Lee County	3,116,182	3,153,920	3,334,418	3,621,892	NR
Leesburg	485,593	497,483	514,179	382,119	NR
Moore Haven	18,032	18,958	18,620	18,096	NR
Mount Dora	91,344	92,505	96,291	95,296	91,389
New Smyrna Beach	363,693	364,640	31,299	383,511	363,806
Newberry	25,602	26,829	26,418	29,756	29,712
Ocala	1,275,044	1,300,762	1,330,623	1,364,610	NR
Okefenoke*	151,790	156,278	164,677	169,834	167,701
Orlando Utilities	7,567,400	3,031,113	3,173,477	3,275,149	3,237,325
Peace River	484,296	503,271	535,469	608,672	598,108
Quincy	NR	154,008	157,039	155,749	NR
Reedy Creek	1,124,269	1,148,878	1,194,607	1,183,620	1,156,778
Starke	69,409	69,777	69,477	69,218	67,647
Sumter	2,099,972	2,234,569	2,425,467	2,677,554	2,642,456
Suwannee Valley	386,251	458,793	481,042	502,831	479,155
Tallahassee	2,601,510	2,681,611	2,723,848	2,755,874	NR
Talquin	935,119	979,847	1,018,333	1,073,680	NR
Tri-County	227,370	249,960	265,599	294,235	NR
Vero Beach	734,368	708,018	737,381	751,966	724,803
Wauchula	NR	58,984	64,247	64,959	63,124
West Florida	361,994	375,415	380,502	397,900	426,212
Williston	29,575	30,029	31,887	33,632	32,547
Winter Park	NR	NR	257,994	446,286	438,250
Withlacoochee	3,210,356	3,316,756	3,452,789	3,697,619	3,707,863
Respondent Total**	219,778,737	217,369,435	222,211,818	229,865,372	213,832,457
FRCC State Total	214,493,000	204,588,000	222,308,000	228,206,000	223,465,000

\*Okefenoke sells power in Florida and Georgia; figures reflect Florida customers only.

\*\*Respondent total includes sales to other public authorities. Therefore, respondent totals are not comparable to FRCC totals.

NR=Not Reported

SOURCES: Table 23 and 27.

**TABLE 27**  
**TOTAL CONSUMPTION AND PERCENTAGE CHANGE BY CLASS OF SERVICE**  
**1999-2008**

YEAR		RESIDENTIAL	COMMERCIAL	INDUSTRIAL	OTHER PUBLIC AUTHORITIES*	TOTAL
1999	Consumption (GWH)	92,386	66,022	21,132	5,138	184,678
	Change from prior year	-0.3%	6.2%	-1.2%	-1.9%	1.8%
2000	Consumption (GWH)	97,258	68,945	21,343	5,320	192,866
	Change from prior year	5.3%	4.4%	1.0%	3.5%	4.4%
2001	Consumption (GWH)	99,765	71,616	21,621	5,086	198,088
	Change from prior year	2.6%	3.9%	1.3%	-4.4%	2.7%
2002	Consumption (GWH)	106,451	73,814	22,040	5,292	207,597
	Change from prior year	6.7%	3.1%	1.9%	4.1%	4.8%
2003	Consumption (GWH)	110,821	75,645	22,468	5,572	214,506
	Change from prior year	4.1%	2.5%	1.9%	5.3%	3.3%
2004	Consumption (GWH)	110,366	76,391	23,187	5,694	215,638
	Change from prior year	-0.4%	1.0%	3.2%	2.2%	0.5%
2005	Consumption (GWH)	114,156	78,809	23,431	5,912	222,308
	Change from prior year	3.4%	3.2%	1.1%	3.8%	3.1%
2006	Consumption (GWH)	115,279	80,474	23,425	6,013	225,191
	Change from prior year	1.0%	2.1%	0.0%	1.7%	1.3%
2007	Consumption (GWH)	116,132	82,758	23,107	6,209	228,206
	Change from prior year	0.7%	2.8%	-1.4%	3.3%	1.3%
2008	Consumption (GWH)	112,431	82,205	22,615	6,214	223,465
	Change from prior year	-3.2%	-0.7%	-2.1%	0.1%	-2.1%

\*Includes Street and Highway Lighting and Interdepartmental  
Occasionally, the FRCC revises figures slightly. Numbers elsewhere in this report may not match for this reason.

SOURCES: Regional Load and Resource Plan, State Supplement, FRCC

**TABLE 28**  
**CONSUMPTION AS A PERCENTAGE OF TOTAL BY CLASS OF SERVICE**  
**1994-2008**

YEAR	RESIDENTIAL	COMMERCIAL	INDUSTRIAL	OTHER
1994	50.39	32.29	13.82	3.50
1995	51.12	30.75	14.93	3.20
1996	51.27	31.18	14.35	3.19
1997	50.06	32.05	14.57	3.32
1998	50.97	31.72	14.13	3.18
1999	50.89	33.97	11.93	3.21
2000	49.79	37.34	9.53	3.34
2001	50.59	34.11	11.83	3.47
2002	50.76	32.25	12.74	4.26
2003	51.03	32.12	12.34	4.51
2004	51.80	32.96	11.63	3.61
2005	51.94	33.16	11.24	3.66
2006	47.61	8.21	40.24	3.94
2007	51.60	33.54	11.15	3.71
2008	50.85	35.76	9.93	3.46

SOURCE: Table 23.



## **REVENUES**



**TABLE 29**  
**MONTHLY REVENUES BY CLASS OF SERVICE BY SELECT UTILITY**  
**(IN THOUSANDS)**  
**2008**

	JAN	FEB	MAR	APR	MAY	JUN	JUL	AUG	SEP	OCT	NOV	DEC	TOTAL
<b>Residential</b>													
Florida Power & Light	\$477,502	\$403,657	\$403,951	\$423,422	\$483,452	\$602,242	\$603,955	\$647,836	\$690,776	\$585,292	\$444,948	\$449,831	\$6,216,865
Florida Public Utilities	3,101	2,828	2,587	2,208	2,349	3,420	3,929	4,184	3,918	3,233	2,730	3,344	37,831
Gulf Power Company	48,772	39,705	35,299	33,773	45,090	55,378	60,606	57,667	57,159	42,210	39,592	47,670	562,921
Progress Energy Florida	167,129	149,136	142,997	156,075	167,579	225,681	212,338	240,340	265,344	193,764	164,207	172,008	2,256,598
Tampa Electric Company	78,975	63,337	64,685	70,513	78,136	98,605	97,056	97,314	104,923	88,542	67,523	72,105	981,714
JEA	46,862	38,509	37,299	36,029	39,099	50,442	61,817	60,673	64,007	52,496	35,531	56,921	579,685
Orlando Utilities Commission	16,524	15,044	19,519	22,496	26,879	27,571	26,679	30,956	26,259	24,884	15,756	16,164	268,731
<b>Commercial</b>													
Florida Power & Light	\$371,849	\$347,276	\$345,676	\$351,544	\$370,886	\$404,138	\$403,183	\$427,424	\$453,602	\$422,940	\$389,821	\$390,427	\$4,678,765
Florida Public Utilities	2,088	2,128	2,110	2,492	2,805	2,942	3,236	3,076	2,877	2,664	2,523	31,314	60,255
Gulf Power Company	26,712	24,161	24,735	25,976	32,124	30,387	33,801	32,902	35,467	31,136	30,455	27,994	355,850
Progress Energy Florida	82,742	79,791	79,561	84,942	89,875	105,809	100,742	109,929	117,098	97,843	93,300	83,617	1,125,249
Tampa Electric Company	52,559	46,862	48,053	51,142	52,454	58,275	57,600	58,083	60,606	55,875	49,731	47,731	638,971
JEA	27,996	24,378	25,624	26,909	27,742	31,452	35,958	37,659	39,030	38,082	30,892	34,800	380,522
Orlando Utilities Commission	17,828	17,510	19,368	21,009	21,868	22,829	21,800	23,953	23,796	26,434	21,749	19,306	257,450
<b>Industrial</b>													
Florida Power & Light	\$27,377	\$26,320	\$23,721	\$24,754	\$24,562	\$26,818	\$25,461	\$25,533	\$27,607	\$26,504	\$25,495	\$26,345	\$310,496
Florida Public Utilities	442	607	502	456	576	678	769	596	757	592	461	813	7,249
Gulf Power Company	10,691	9,898	11,272	12,799	13,208	14,886	15,475	15,117	16,745	14,749	12,961	10,254	158,055
Progress Energy Florida	21,139	20,505	22,841	23,099	26,889	24,980	24,941	26,490	25,152	26,312	29,512	17,939	289,799
Tampa Electric Company	15,139	14,441	14,361	14,452	15,297	17,071	13,412	14,828	14,238	14,802	14,618	14,647	177,306
JEA	15,616	14,288	16,889	16,047	15,376	18,300	19,774	22,060	21,502	21,824	19,820	18,924	220,420
Orlando Utilities Commission	2,067	1,521	2,065	2,285	2,366	2,242	2,465	2,460	2,378	2,770	2,195	1,992	26,806
<b>Other</b>													
Florida Power & Light	\$7,978	\$6,344	\$7,708	\$6,929	\$7,308	\$7,473	\$7,387	\$7,556	\$7,590	\$7,802	\$7,882	\$7,804	\$89,760
Florida Public Utilities	150	149	151	149	154	164	162	169	162	169	168	168	1,915
Gulf Power Company	2,732	2,391	2,337	2,306	2,552	2,716	2,817	2,711	2,633	2,415	2,400	2,454	30,464
Progress Energy Florida	21,671	21,801	22,803	22,170	24,026	23,480	23,954	26,135	30,077	26,734	27,365	21,489	291,705
Tampa Electric Company	14,497	13,803	14,306	14,675	15,347	16,789	15,454	16,096	17,837	16,737	15,494	14,683	185,718
JEA	2,285	4,119	3,787	3,688	3,743	4,147	4,827	5,542	5,647	5,377	7,599	4,251	55,012
Orlando Utilities Commission	855	904	815	1,020	1,057	1,199	1,653	1,251	1,268	1,246	976	955	13,199
<b>Total</b>													
Florida Power & Light	\$884,706	\$783,597	\$781,056	\$806,649	\$886,208	\$1,040,671	\$1,039,986	\$1,108,349	\$1,179,575	\$1,042,538	\$868,145	\$874,407	\$11,295,886
Florida Public Utilities	5,781	5,712	5,350	5,305	5,884	7,204	8,096	8,025	7,714	6,658	5,882	35,639	107,250
Gulf Power Company	88,907	76,155	73,643	74,854	92,974	103,367	112,699	108,397	112,004	90,510	85,408	88,372	1,107,290
Progress Energy Florida	292,681	271,233	268,202	286,286	308,369	379,950	361,975	402,894	437,671	344,653	314,384	295,053	3,963,351
Tampa Electric Company	161,170	138,443	141,405	150,782	161,234	190,740	183,522	186,321	197,604	175,956	147,366	149,166	1,983,709
JEA	92,759	81,294	83,599	82,673	85,960	104,341	122,376	125,934	130,186	117,779	93,842	114,896	1,235,639
Orlando Utilities Commission	37,274	34,979	41,767	46,810	52,170	53,841	52,597	58,620	53,701	55,334	40,676	38,417	566,186

SOURCE: Form PSC/SCR - 4

**TABLE 30**  
**CUSTOMER REVENUES BY CLASS OF SERVICE**  
**(IN THOUSANDS)**  
**1994-2008**

YEAR	RESIDENTIAL	COMMERCIAL	INDUSTRIAL	OTHER PUBLIC AUTHORITIES*	TOTAL
1994	6,252,005	3,259,074	1,226,500	359,252	11,096,831
1995	6,635,847	3,303,139	1,352,628	484,992	11,776,606
1996	7,056,633	3,570,759	1,363,019	376,590	12,367,001
1997	7,074,435	3,722,308	1,382,150	390,703	12,569,596
1998	7,525,835	3,684,867	1,483,475	383,985	13,078,162
1999	6,955,823	3,745,961	1,042,359	357,003	12,101,146
2000	7,598,822	3,973,611	1,373,215	419,513	13,365,161
2001	8,682,796	4,671,712	1,495,201	471,932	15,321,641
2002	8,768,596	4,580,867	1,509,709	472,945	15,332,116
2003	9,566,860	5,017,993	1,580,890	517,843	16,683,586
2004	10,112,821	5,448,432	1,733,191	584,588	17,879,033
2005	11,150,043	6,003,804	1,928,154	644,515	19,726,515
2006	13,269,751	7,528,590	2,366,497	770,472	23,935,310
2007	13,277,193	7,597,120	2,324,045	807,329	24,005,687
2008	12,718,094	7,741,767	2,089,924	729,026	23,278,811

\*Other includes Street and Highway Lighting and Interdepartmental

SOURCE: Form PSC/SCR - 1



**TABLE 31**  
**CUSTOMER REVENUES AS A PERCENTAGE OF TOTAL BY CLASS OF SERVICE**  
**1994-2008**

YEAR	RESIDENTIAL	COMMERCIAL	INDUSTRIAL	OTHER PUBLIC AUTHORITIES*
1994	56.3	29.4	11.1	3.2
1995	56.3	28.0	11.5	4.1
1996	57.1	28.9	11.0	3.0
1997	56.3	31.3	10.1	2.3
1998	57.5	28.2	11.3	2.9
1999	57.5	31.0	8.6	3.0
2000	56.9	29.7	10.3	3.1
2001	56.7	30.5	9.8	3.1
2002	57.2	29.9	9.8	3.1
2003	57.3	30.1	9.5	3.1
2004	56.6	30.5	9.7	3.3
2005	56.5	30.4	9.8	3.3
2006	47.7	26.0	22.2	4.0
2007	55.3	31.6	9.7	3.4
2008	54.6	33.3	9.0	3.1

\*Other includes Street and Highway Lighting and Interdepartmental

SOURCE: Table 30.



**NUMBER OF CUSTOMERS**



**TABLE 32**  
**MONTHLY NUMBER OF CUSTOMERS BY CLASS OF SERVICE BY SELECTED UTILITY**  
**2008**

	JAN	FEB	MAR	APR	MAY	JUN	JUL	AUG	SEP	OCT	NOV	DEC	MONTHLY AVERAGE
<b>Residential</b>													
Florida Power & Light	3,995,419	4,001,656	4,003,028	4,001,790	3,996,915	3,996,834	3,991,815	3,989,192	3,985,035	3,983,528	3,981,143	3,980,790	3,992,262
Florida Public Utilities	23,792	23,779	23,785	23,829	23,811	23,861	23,980	23,922	23,849	23,896	23,811	23,868	23,849
Gulf Power Company	374,050	374,574	374,537	374,650	375,108	375,457	375,879	375,711	374,953	374,100	373,889	373,595	374,709
Progress Energy Florida	1,442,333	1,466,010	1,406,139	1,477,927	1,446,369	1,481,381	1,354,056	1,456,247	1,523,982	1,382,150	1,502,965	1,448,933	1,449,041
Tampa Electric Company	588,903	589,311	589,610	588,850	587,988	587,265	586,889	586,475	586,117	586,286	586,915	586,611	587,602
JEA	386,574	353,476	377,126	390,077	373,117	373,104	397,419	373,190	373,284	409,142	309,754	394,722	375,915
Orlando Utilities Commission	179,513	180,325	180,675	180,325	180,278	180,241	180,543	180,173	179,692	180,067	179,310	179,413	180,046
<b>Commercial</b>													
Florida Power & Light	498,677	499,463	499,083	499,292	500,329	500,726	501,851	501,944	502,474	502,195	501,713	500,751	500,708
Florida Public Utilities	4,290	4,290	4,310	4,317	4,306	4,331	4,326	4,325	4,321	4,330	4,317	4,328	4,316
Gulf Power Company	53,804	53,799	53,847	53,862	53,872	53,904	53,984	53,870	53,832	53,733	53,662	53,548	53,810
Progress Energy Florida	161,944	163,595	159,688	163,540	162,865	164,831	155,026	162,952	170,052	157,338	168,291	160,701	162,569
Tampa Electric Company	70,982	70,955	70,816	70,751	70,724	70,683	70,734	70,789	70,819	70,747	70,720	70,522	70,770
JEA	44,383	40,420	42,848	44,408	42,718	42,440	44,554	42,824	42,837	45,593	38,578	44,454	43,005
Orlando Utilities Commission	24,001	24,020	24,050	24,125	24,106	24,163	24,314	24,220	24,086	24,280	24,537	24,511	24,201
<b>Industrial</b>													
Florida Power & Light	15,145	14,698	14,224	13,926	13,600	13,375	13,158	12,923	12,800	12,551	12,252	11,905	13,380
Florida Public Utilities	2	2	2	2	2	2	2	2	2	2	2	2	2
Gulf Power Company	298	296	295	293	291	291	290	290	289	287	287	287	291
Progress Energy Florida	2,630	2,624	2,602	2,591	2,677	2,570	2,511	2,590	2,630	2,509	2,641	2,470	2,587
Tampa Electric Company	1,415	1,412	1,415	1,415	1,417	1,420	1,429	1,430	1,427	1,422	1,427	1,422	1,421
JEA	221	224	234	245	231	237	236	236	230	237	221	239	233
Orlando Utilities Commission	30	25	27	28	27	26	25	25	25	25	25	28	26
<b>Other</b>													
Florida Power & Light	3,305	3,315	3,326	3,325	3,329	3,336	3,342	3,361	3,367	3,374	3,379	3,394	3,346
Florida Public Utilities	346	346	349	349	347	351	350	357	355	357	355	355	351
Gulf Power Company	490	488	486	485	486	491	494	499	499	499	499	499	493
Progress Energy Florida	24,369	24,725	24,590	24,674	24,804	24,847	23,876	24,769	25,497	24,244	25,527	24,645	24,714
Tampa Electric Company	7,277	7,332	7,392	7,413	7,451	7,475	7,440	7,457	7,484	7,643	7,636	7,678	7,473
JEA	5,092	4,477	4,832	5,172	4,741	4,791	5,179	4,806	4,821	5,280	3,970	5,147	4,859
Orlando Utilities Commission	13,628	13,675	13,662	13,654	13,611	13,583	13,573	13,527	13,414	13,342	13,350	13,350	13,531
<b>Total</b>													
Florida Power & Light	4,512,546	4,519,132	4,519,661	4,518,333	4,514,173	4,514,271	4,510,166	4,507,420	4,503,676	4,501,648	4,498,487	4,496,840	4,509,696
Florida Public Utilities	28,430	28,417	28,446	28,497	28,466	28,545	28,658	28,606	28,527	28,585	28,485	28,553	28,518
Gulf Power Company	428,642	429,157	429,165	429,290	429,757	430,143	430,647	430,370	429,573	428,619	428,337	427,929	429,302
Progress Energy Florida	1,631,276	1,656,954	1,593,019	1,668,732	1,636,715	1,673,629	1,535,469	1,646,558	1,722,161	1,566,241	1,699,424	1,636,749	1,638,911
Tampa Electric Company	668,577	669,010	669,233	668,429	667,580	666,843	666,492	666,151	665,847	666,098	666,698	666,233	667,266
JEA	436,270	398,597	425,040	439,902	420,807	420,572	447,388	421,056	421,172	460,252	352,523	444,562	424,012
Orlando Utilities Commission	217,172	218,045	218,414	218,132	218,022	218,013	218,455	217,945	217,217	217,714	217,222	217,302	217,804

SOURCES: Form PSC/SCR - 4

**TABLE 33**  
**AVERAGE NUMBER OF CUSTOMERS BY CLASS OF SERVICE BY UTILITY**  
**2008**

UTILITIES	RESIDENTIAL	COMMERCIAL	INDUSTRIAL	OTHER	TOTAL
Florida Power & Light	3,992,262	500,708	13,380	3,346	4,509,696
Florida Public Utilities	23,849	4,316	2	351	28,518
Gulf Power Company	374,709	53,810	291	493	429,302
Progress Energy Florida	1,449,041	162,569	2,587	24,714	1,638,911
Tampa Electric Company	587,602	70,770	1,421	7,473	667,266
Alachua	3,443	537	125	59	4,164
Bartow	9,896	1,250	356	130	11,632
Blountstown	1,022	302	0	31	1,355
Bushnell	779	248	7	47	1,081
Central Florida Co-op	30,255	2,014	84	552	32,905
Chattahoochee	1,058	130	3	63	1,254
Choctawhatchee Co-op	36,890	5,569	197	0	42,656
Clay Co-op	148,821	15,793	755	56	165,425
Clewiston	3,341	536	117	166	4,160
Escambia River Co-op	8,723	999	174	27	9,923
Florida Keys Co-op	25,626	4,683	398	470	31,177
Fort Meade	2,451	238	7	91	2,787
Fort Pierce	23,488	4,258	886	0	28,632
Gainesville	82,271	9,331	1,193	3,180	95,975
Glades Co-op	NR	NR	NR	NR	NR
Green Cove Springs	NR	NR	NR	NR	NR
Gulf Coast Co-op	19,100	981	8	519	20,608
Havana	NR	NR	NR	NR	NR
Homestead	18,752	2,043	406	85	21,286
JEA	375,915	43,005	233	4,859	424,012
Jacksonville Beach	28,408	4,247	358	119	33,132
Key West	24,020	3,289	688	1,447	29,444
Kissimmee	52,345	9,004	878	0	62,227
Lake Worth	21,744	2,866	83	703	25,396
Lakeland	100,739	11,842	87	9,685	122,353
Lee County Co-op	NR	NR	NR	NR	NR
Leesburg	NR	NR	NR	NR	NR
Moore Haven	NR	NR	NR	NR	NR
Mount Dora	4,527	753	56	84	5,420
New Smyrna Beach	22,034	1,871	97	865	24,867
Newberry	1,194	163	33	88	1,478
Ocala	NR	NR	NR	NR	NR
Okefenoke*	9,485	411	1	62	9,959
Orlando**	180,046	24,201	26	13,531	217,804
Peace River Co-op	26,849	5,693	238	57	32,837
Quincy	NR	NR	NR	NR	NR
Reedy Creek	9	303	882	57	1,251
Seminole Co-op	NR	NR	NR	NR	NR
Starke	2,044	743	0	0	2,787
Sumter Co-op	149,984	14,816	940	32	165,772
Suwannee Valley Co-op	21,380	3,032	97	86	24,595
Tallahassee	NR	NR	NR	NR	NR
Talquin Co-op	NR	NR	NR	NR	NR
Tri-County Co-op	NR	NR	NR	NR	NR
Vero Beach	27,728	4,674	668	322	33,392
Wauchula	2,119	522	8	60	2,709
West Florida Co-op	24,940	2,371	128	605	28,044
Williston	1,107	294	46	81	1,528
Winter Park	11,442	1,106	1,041	267	13,856
Withlacoochee Co-op	180,857	19,064	45	395	200,361
Respondent Total	8,112,295	995,354	29,030	75,258	9,211,937
FRCC State Total	8,351,253	1,036,598	30,134	N/A	9,417,985

NR=Not Reported

\*Okefenoke sells power in Florida and Georgia; figures reflect Florida customers only.

\*\*St. Cloud data is included as part of Orlando.

SOURCES: Form PSC/SCR - 1, 4  
Regional Load and Resource Plan, FRCC

**TABLE 34  
AVERAGE NUMBER OF CUSTOMERS BY UTILITY  
2004-2008**

UTILITIES	2004	2005	2006	2007	2008
Florida Power & Light	3,975,003	4,064,135	4,321,767	4,496,438	4,509,696
Florida Public Utilities	26,266	26,796	27,546	28,310	28,518
Gulf Power Company	381,520	389,809	404,087	425,793	429,302
Progress Energy Florida	1,475,760	1,510,493	1,583,391	1,632,347	1,638,911
Tampa Electric Company	590,199	590,199	635,747	666,354	667,266
Alachua	NR	3,150	3,525	4,077	4,164
Bartow	10,006	11,714	11,563	11,690	11,632
Blountstown	1,324	1,330	1,314	1,353	1,355
Bushnell	NR	0	1,044	1,081	1,081
Central Florida	29,460	30,146	31,702	32,731	32,905
Chattahoochee	1,288	1,299	1,284	1,268	1,254
Choctawhatchee	34,400	35,627	38,894	42,326	42,656
Clay	142,174	146,531	155,591	164,619	165,425
Clewiston	4,067	4,124	4,164	4,186	4,160
Escambia River	9,390	9,454	9,581	9,878	9,923
Florida Keys	30,668	30,890	30,968	31,126	31,177
Fort Meade	2,730	NR	2,696	2,789	2,787
Fort Pierce	25,301	25,646	25,841	27,279	28,632
Gainesville	85,500	86,400	90,660	90,939	95,975
Glades	14,937	15,763	15,715	196,198	NR
Green Cove Springs	3,153	3,379	3,545	3,778	NR
Gulf Coast	17,991	18,427	19,530	20,424	20,608
Havana	NR	1,295	1,349	1,378	NR
Homestead	16,082	16,576	18,094	21,078	21,286
JEA	372,842	378,921	402,438	420,550	424,012
Jacksonville Beach	31,241	31,474	31,942	33,032	33,132
Key West	28,925	NR	29,223	29,558	29,444
Kissimmee	49,083	51,183	56,028	60,997	62,227
Lake Worth	24,417	24,965	26,823	25,766	25,396
Lakeland	112,733	114,334	118,262	122,464	122,353
Lee County	155,643	160,902	177,634	196,633	NR
Leesburg	19,019	19,731	20,659	21,086	NR
Moore Haven	989	1,014	977	984	NR
Mount Dora	6,427	6,763	5,855	5,366	5,420
New Smyrna Beach	21,811	22,284	22,935	24,621	24,867
Newberry	0	0	0	1,478	1,478
Ocala	47,096	47,180	49,884	52,282	NR
Okefenoke*	8,478	8,744	9,318	9,849	9,959
Orlando Utilities**	183,965	188,056	201,461	215,110	217,804
Peace River	26,295	27,401	29,973	32,906	32,837
Quincy	4,764	0	4,761	4,923	NR
Reedy Creek	1,208	1,208	1,231	1,265	1,251
Starke	2,603	2,600	2,725	2,777	2,787
Sumter	116,202	123,129	142,357	161,649	165,772
Suwannee Valley	21,362	21,900	23,047	24,282	24,595
Tallahassee	97,986	93,809	107,780	112,152	NR
Talquin	49,211	50,696	52,178	53,468	NR
Tri-County	15,901	16,340	17,018	17,751	NR
Vero Beach	31,089	32,354	32,688	33,548	33,392
Wauchula	NR	0	2,625	2,695	2,709
West Florida	25,786	24,684	26,967	27,697	28,044
Williston	1,331	1,304	1,410	1,532	1,528
Winter Park	N/A	0	13,750	13,872	13,856
Withlacoochee	164,671	173,589	186,112	199,928	200,361
Respondent Total***	8,499,401	8,663,582	9,238,943	9,827,659	9,211,937
FRCC State Total	8,325,902	8,528,117	8,980,184	9,383,196	9,417,985

\*Okefenoke sells power in Florida and Georgia; These figures reflect Florida customers only.

\*\*St. Cloud data is included as part of Orlando.

\*\*\*Respondent total includes sales to other public authorities. Therefore, respondent totals are not comparable to FRCC totals.

N/A=Not Applicable

NR=Not Reported

**TABLE 35**  
**AVERAGE NUMBER OF CUSTOMERS AND PERCENTAGE CHANGE BY CLASS OF SERVICE**  
**1999-2008**

YEAR		RESIDENTIAL	COMMERCIAL	INDUSTRIAL	TOTAL
1999	Number of Customers	7,023,628	860,010	31,529	7,915,167
	Change from prior year	6.2%	7.3%		6.4%
2000*	Number of Customers	7,047,302	869,460	28,556	7,945,318
	Change from prior year	0.3%	1.1%	-9.4%	0.4%
2001	Number of Customers	7,220,638	893,241	28,185	8,142,064
	Change from prior year	2.5%	2.7%	-1.3%	2.5%
2002	Number of Customers	7,383,246	914,044	28,612	8,325,902
	Change from prior year	2.3%	2.3%	1.51%	2.3%
2003	Number of Customers	7,564,064	932,976	31,077	8,528,117
	Change from prior year	2.4%	2.1%	8.6%	2.4%
2004	Number of Customers	7,762,998	958,450	32,850	8,754,298
	Change from prior year	2.6%	2.7%	5.7%	2.7%
2005	Number of Customers	7,962,111	981,885	36,188	8,980,184
	Change from prior year	2.6%	2.4%	10.2%	2.6%
2006	Number of Customers	8,158,148	1,006,646	35,304	9,200,098
	Change from prior year	2.5%	2.5%	-2.4%	2.4%
2007	Number of Customers	8,318,132	1,029,331	35,733	9,383,196
	Change from prior year	2.0%	2.3%	1.2%	2.0%
2008	Number of Customers	8,351,253	1,036,598	30,134	9,417,985
	Change from prior year	0.4%	0.7%	-15.7%	0.4%

\*FRCC numbers as revised

SOURCES: FRCC numbers from Table 33.



**TABLE 36**  
**POPULATION AND CUSTOMERS FOR SELECTED INVESTOR-OWNED UTILITIES**  
**(HISTORICAL AND FORECASTED)**  
**1999-2018**

UTILITY	YEAR	POPULATION	RESIDENTIAL CUSTOMERS	COMMERCIAL CUSTOMERS	INDUSTRIAL CUSTOMERS	OTHER CUSTOMERS	TOTAL CUSTOMERS
Florida Power & Light	1999	7,412,744	3,332,422	404,942	16,040	2,605	3,756,009
	2003	8,079,316	3,652,663	444,650	17,029	2,879	4,117,221
	2008	8,771,694	3,992,257	500,748	13,377	3,347	4,509,729
	2013 *	9,287,417	4,226,978	562,200	13,397	3,580	4,806,155
	2018 *	10,200,558	4,642,575	637,980	13,610	3,946	5,298,111
Gulf Power Company	1999	812,993	312,283	47,294	249	286	360,113
	2003	879,011	338,631	50,419	285	473	389,809
	2008	969,757	374,709	53,810	291	493	429,302
	2013 *	1,055,254	415,621	59,080	324	509	475,533
	2018 *	1,166,713	466,676	65,860	343	528	533,407
Progress Energy Florida	1999	3,047,024	1,213,470	140,897	2,629	19,600	1,376,597
	2003	3,287,164	1,331,914	154,294	2,643	21,665	1,510,516
	2008	3,573,335	1,449,041	162,569	2,587	24,738	1,638,935
	2013 *	3,750,377	1,495,098	175,977	2,656	26,415	1,726,408
	2018 *	4,059,992	1,647,724	192,244	2,565	29,173	1,871,706
Tampa Electric Company	1999	962,153	477,533	60,089	740	5,299	543,661
	2003	1,084,198	531,257	66,041	1,203	6,399	604,900
	2008	1,209,625	587,602	70,770	1,421	7,473	667,266
	2013 *	1,316,743	631,966	77,947	1,511	8,055	763,616
	2018 *	1,395,690	688,588	85,450	1,627	8,996	882,785

\*Projected

SOURCE: Individual Ten-Year Site Plans



## **PRICES**



**TABLE 37**  
**PRICE OF RESIDENTIAL SERVICE\***  
**DECEMBER 31, 2008**

INVESTOR-OWNED UTILITIES	MINIMUM BILL OR CUSTOMER CHARGE**	100 KWH	250 KWH	500 KWH	750 KWH	1000 KWH	1500 KWH
Florida Power & Light	\$5.33	\$15.64	\$31.07	\$56.82	\$82.56	\$108.28	\$169.93
Florida Public Utilities Company							
- Northwest Division	\$12.00	\$19.38	\$30.44	\$48.87	\$67.30	\$85.73	\$122.60
- Northeast Division	\$12.00	\$20.39	\$32.96	\$53.91	\$74.85	\$95.80	\$137.71
Gulf Power Company	\$10.00	\$20.14	\$35.33	\$60.67	\$85.99	\$111.31	\$161.98
Progress Energy Florida	\$8.03	\$18.01	\$32.99	\$57.96	\$82.92	\$107.87	\$167.80
Tampa Electric Company	\$8.50	\$18.80	\$34.26	\$60.02	\$85.78	\$111.52	\$163.04

\* Excludes local taxes, franchise fees, and gross receipts taxes that are billed as a separate line item. Includes cost recovery clause factors effective December 2008.

SOURCE: FPSC Comparative Rate Statistics.

**TABLE 37 (continued)**  
**PRICE OF RESIDENTIAL SERVICE\***  
**DECEMBER 31, 2008**

	MINIMUM BILL OR CUSTOMER CHARGE	100 KWH	250 KWH	500 KWH	750 KWH	1000 KWH	1500 KWH
Alachua	\$8.00	\$20.42	\$39.05	\$70.10	\$101.15	\$132.20	\$194.30
Bartow	\$6.70	\$19.14	\$37.81	\$68.90	\$100.01	\$131.10	\$193.30
Blountstown	\$3.50	\$16.32	\$35.55	\$67.61	\$99.66	\$131.71	\$195.82
Bushnell	\$7.40	\$21.37	\$42.31	\$77.23	\$112.14	\$147.05	\$216.88
Chattahoochee	\$6.50	\$17.47	\$33.92	\$61.34	\$88.75	\$116.17	\$171.01
Clewiston	\$6.50	\$17.35	\$33.63	\$60.75	\$87.87	\$114.99	\$169.24
Fort Meade	\$12.96	\$26.95	\$47.94	\$82.91	\$117.89	\$152.86	\$222.81
Fort Pierce	\$6.01	\$17.53	\$34.82	\$63.62	\$92.43	\$123.84	\$486.66
Gainesville	\$7.60	\$16.30	\$29.35	\$61.10	\$92.85	\$132.60	\$212.10
Green Cove Springs	\$6.00	\$18.50	\$37.26	\$68.51	\$101.02	\$133.53	\$198.54
Havana	\$6.00	\$19.23	\$39.08	\$72.14	\$105.22	\$138.28	\$204.42
Homestead	\$5.50	\$16.67	\$33.42	\$61.33	\$89.24	\$117.15	\$172.98
JEA	\$8.05	\$19.05	\$35.55	\$63.05	\$90.55	\$118.04	\$173.04
Jacksonville Beach	\$4.50	\$15.98	\$33.18	\$61.87	\$90.55	\$119.23	\$176.60
Key West	\$6.47	\$21.39	\$43.78	\$81.07	\$118.38	\$155.67	\$230.27
Kissimmee	\$10.17	\$22.36	\$40.65	\$71.12	\$101.59	\$132.06	\$199.34
Lake Worth	\$8.25	\$20.79	\$39.60	\$70.95	\$102.30	\$133.65	\$196.35
Lakeland	\$8.00	\$19.47	\$36.69	\$65.36	\$94.05	\$122.72	\$147.67
Leesburg	\$10.41	\$24.03	\$44.45	\$78.50	\$112.53	\$146.58	\$214.67
Moore Haven	\$8.50	\$19.91	\$37.03	\$65.55	\$94.08	\$122.60	\$179.65
Mount Dora	\$6.06	\$19.69	\$37.65	\$69.24	\$100.83	\$132.42	\$195.60
Newberry	\$7.50	\$20.85	\$40.88	\$74.25	\$107.63	\$141.00	\$207.75
Ocala	\$9.33	\$22.38	\$41.96	\$74.59	\$107.22	\$139.84	\$205.10
Orlando	\$7.00	\$16.72	\$31.30	\$55.60	\$79.90	\$104.19	\$157.79
Quincy	\$6.00	\$16.87	\$33.18	\$60.36	\$87.54	\$114.72	\$169.08
Reedy Creek	\$2.85	\$14.96	\$33.11	\$63.39	\$93.65	\$123.91	\$184.45
Starke	\$6.45	\$19.47	\$39.00	\$71.54	\$104.08	\$136.62	\$212.71
St.Cloud	\$7.28	\$17.39	\$32.55	\$57.82	\$83.09	\$108.35	\$164.09
Tallahassee	\$6.32	\$21.47	\$44.19	\$82.06	\$119.93	\$157.80	\$233.54
Vero Beach	\$7.21	\$20.59	\$40.67	\$74.11	\$107.57	\$141.01	\$207.91
Wauchula	\$8.62	\$20.53	\$38.40	\$68.18	\$97.95	\$127.73	\$187.29
Williston	\$8.00	\$22.36	\$43.91	\$79.82	\$115.73	\$151.64	\$223.46
Winter Park	\$8.03	\$18.01	\$32.98	\$57.94	\$82.88	\$107.83	\$162.74

\* Local taxes, franchise fees, and gross receipts taxes not embedded in rates are excluded. December 2008 Fuel and Purchased Power Costs are included.

SOURCE: FPSC Comparative Rate Statistics.

**TABLE 37 (continued)**  
**PRICE OF RESIDENTIAL SERVICE\***  
**DECEMBER 31, 2008**

COOPERATIVE UTILITIES	MINIMUM BILL OR CUSTOMER CHARGE	100 KWH	250 KWH	500 KWH	750 KWH	1000 KWH	1500 KWH
Central Florida	\$10.50	\$20.26	\$34.91	\$59.30	\$83.71	\$108.10	\$156.90
Choctawhatchee	\$24.00	\$34.56	\$50.38	\$76.76	\$103.14	\$129.52	\$182.28
Clay	\$9.00	\$19.03	\$34.08	\$59.15	\$84.23	\$109.30	\$164.45
Escambia River	\$25.00	\$37.10	\$55.25	\$85.50	\$115.75	\$146.00	\$206.50
Florida Keys	\$10.00	\$21.82	\$39.54	\$69.09	\$98.63	\$128.17	\$187.26
Glades	\$15.50	\$26.56	\$43.15	\$70.80	\$98.45	\$126.10	\$181.40
Gulf Coast	\$19.45	\$29.29	\$44.04	\$68.63	\$93.22	\$117.80	\$166.98
Lee County	\$15.00	\$25.02	\$40.04	\$65.08	\$90.12	\$115.16	\$165.24
Okefenoke	\$10.00	\$20.35	\$35.88	\$61.75	\$87.63	\$113.50	\$165.25
Peace River	\$12.25	\$23.70	\$40.87	\$69.50	\$98.12	\$126.74	\$183.99
Sumter	\$11.50	\$22.64	\$39.34	\$67.18	\$95.01	\$122.85	\$178.53
Suwannee Valley	\$12.00	\$21.93	\$36.83	\$61.66	\$86.49	\$11.32	\$160.98
Talquin	\$10.00	\$22.09	\$40.23	\$70.45	\$100.68	\$130.90	\$191.35
Tri-County	\$12.50	\$24.20	\$41.75	\$71.00	\$100.25	\$129.50	\$188.00
West Florida	\$13.90	\$25.85	\$41.78	\$73.65	\$103.53	\$133.40	\$193.15
Withlacoochee River	\$11.50	\$21.37	\$36.17	\$60.85	\$85.52	\$110.19	\$159.54

\* Local taxes, franchise fees, and gross receipts taxes not embedded in rates are excluded. December 2008 Fuel and Purchased Power Costs are included.

SOURCE: FPSC Comparative Rate Statistics.

**TABLE 38**  
**PRICE OF COMMERCIAL AND INDUSTRIAL SERVICE\***  
**DECEMBER 31, 2008**

INVESTOR-OWNED UTILITIES	75 KW 15,000 KWH	150 KW 45,000 KWH	500 KW 150,000 KWH	1,000 KW 400,000 KWH	2,000 KW 800,000 KWH
Florida Power & Light	\$1,738	\$4,645	\$15,561	\$38,781	\$71,229
Florida Public Utilities Company					
- Northwest Division	\$1,086	\$2,945	\$9,780	\$24,580	\$49,060
- Northeast Division	\$1,219	\$3,342	\$11,436	\$28,996	\$57,892
Gulf Power Company	\$1,398	\$3,717	\$12,527	\$30,229	\$60,303
Progress Energy Florida	\$1,520	\$4,260	\$14,176	\$36,549	\$73,087
Tampa Electric Company	\$1,665	\$4,367	\$14,460	\$35,997	\$71,739

\*Excludes local taxes, franchise fees, and gross receipts taxes that are billed as a separate line item. Includes cost recovery clause factors effective December 2008.

SOURCE: FPSC Comparative Rate Statistics.



**TABLE 38 (continued)**  
**PRICE OF COMMERCIAL AND INDUSTRIAL SERVICE\***  
**DECEMBER 31, 2008**

MUNICIPAL UTILITIES	75 KW 15,000 KWH	150 KW 45,000 KWH	500 KW 150,000 KWH	1,000 KW 400,000 KWH	2,000 KW 800,000 KWH
Alachua	\$1,999	\$5,505	\$18,298	\$46,773	\$93,523
Bartow	\$1,991	\$5,272	\$17,530	\$43,773	\$87,527
Blountstown	\$2,161	\$6,469	\$21,547	\$57,447	\$114,887
Bushnell	\$2,420	\$6,655	\$22,130	\$56,493	\$112,963
Chattahoochee	\$1,539	\$4,710	\$15,684	\$40,137	\$80,266
Clewiston	\$1,857	\$5,232	\$17,359	\$45,031	\$90,027
Fort Meade	\$2,212	\$6,705	\$22,140	\$55,750	\$111,410
Fort Pierce	\$1,933	\$5,212	\$18,597	\$45,152	\$90,266
Gainesville	\$2,058	\$5,433	\$18,033	\$44,465	\$88,665
Green Cove Springs	\$2,185	\$5,906	\$19,629	\$46,985	\$93,846
Havana	\$1,990	\$5,959	\$19,848	\$52,918	\$105,830
Homestead	\$1,958	\$5,335	\$17,703	\$45,065	\$90,095
JEA	\$1,813	\$4,770	\$15,736	\$40,037	\$79,799
Jacksonville Beach	\$2,160	\$5,811	\$19,331	\$48,688	\$97,360
Key West	\$2,388	\$6,624	\$22,034	\$56,489	\$112,959
Kissimmee	\$1,720	\$4,381	\$19,920	\$48,970	\$97,884
Lake Worth	\$2,575	\$6,761	\$22,350	\$55,900	\$111,720
Lakeland	\$1,846	\$4,954	\$16,522	\$41,092	\$81,854
Leesburg	\$2,212	\$5,907	\$19,639	\$49,297	\$98,572
Mount Dora	\$1,562	\$4,235	\$14,078	\$35,656	\$71,296
New Smyrna Beach	\$2,140	\$5,848	\$19,414	\$49,464	\$98,894
Newberry	\$2,285	\$6,074	\$20,210	\$48,645	\$97,245
Ocala	\$2,076	\$5,648	\$19,213	\$49,495	\$97,545
Orlando	\$1,545	\$4,117	\$13,689	\$33,179	\$66,343
Quincy	\$1,494	\$4,084	\$13,471	\$34,588	\$68,068
Reedy Creek	\$2,130	\$5,470	\$18,188	\$44,556	\$89,092
Starke	\$2,269	\$6,789	\$22,610	\$60,278	\$120,547
St.Cloud	\$1,607	\$4,282	\$14,236	\$35,324	\$70,632
Tallahassee	\$2,428	\$6,449	\$21,309	\$53,487	\$106,921
Vero Beach	\$2,094	\$5,623	\$19,641	\$51,021	\$101,971
Wauchula	\$2,101	\$5,759	\$19,047	\$49,839	\$97,613
Williston	\$2,317	\$6,525	\$21,470	\$55,170	\$110,290
Winter Park	\$1,468	\$4,105	\$13,660	\$35,173	\$70,335

\*Local taxes, franchise fees, & gross receipts taxes not embedded in rates are excluded. Dec 2008 Fuel & Purchased Power Costs are included.  
SOURCE: FPSC Comparative Rate Statistics.

**TABLE 38 (continued)**  
**PRICE OF COMMERCIAL AND INDUSTRIAL SERVICE\***  
**DECEMBER 31, 2008**

COOPERATIVE UTILITIES	75 KW 15,000 KWH	150 KW 45,000 KWH	500 KW 150,000 KWH	1,000 KW 400,000 KWH	2,000 KW 800,000 KWH
Central Florida	\$1,745	\$4,524	\$14,893	\$36,705	\$73,330
Choctawhatchee	\$1,667	\$4,465	\$14,151	\$36,034	\$72,027
Clay	\$1,608	\$4,426	\$14,625	\$37,625	\$73,590
Escambia River	\$2,193	\$5,935	\$19,690	\$49,940	\$99,840
Florida Keys	\$1,826	\$5,373	\$17,791	\$47,348	\$94,645
Glades	\$1,895	\$5,270	\$17,365	\$23,535	\$46,895
Gulf Coast	\$1,857	\$4,638	\$15,378	\$36,993	\$73,943
Lee County	\$1,527	\$4,097	\$13,488	\$33,038	\$66,052
Okefenoke	\$1,690	\$4,398	\$14,425	\$36,200	\$72,300
Peace River	\$1,735	\$4,607	\$15,229	\$38,351	\$76,647
Sumter	\$1,675	\$4,485	\$14,822	\$37,517	\$74,979
Suwannee Valley	\$1,675	\$4,480	\$9,509	\$22,489	\$44,937
Talquin	\$1,516	\$4,183	\$14,130	\$33,080	\$65,860
Tri-County	\$1,825	\$4,720	\$15,500	\$38,700	\$77,300
West Florida	\$1,847	\$5,140	\$17,017	\$23,106	\$46,112
Withlacoochee River	\$1,499	\$4,035	\$13,393	\$33,841	\$67,657

\* Local taxes, franchise fees, and gross receipts taxes not embedded in rates are excluded. December 2008 Fuel and Purchased Power Costs are included.

SOURCE: FPSC Comparative Rate Statistics.

## **ECONOMIC AND FINANCIAL INDICATORS**



**TABLE 39**  
**POPULATION ESTIMATES**  
**1999-2008**  
**(000s)**

YEAR	FLORIDA POPULATION	NATIONAL POPULATION
1999	15,983	279,040
2000	16,047	282,172
2001	16,341	285,040
2002	16,653	287,727
2003	16,937	290,211
2004	17,314	292,892
2005	17,702	295,561
2006	18,019	298,363
2007	18,200	301,290
2008	18,328	304,060

**TABLE 40**  
**POPULATION PROJECTIONS**  
**2010-2030**  
**(000s)**

YEAR	FLORIDA POPULATION	NATIONAL POPULATION
2010	19,252	308,936
2020	23,407	335,805
2030	28,686	363,584

SOURCE: U.S. Census Bureau, Washington D.C. 20233

Table 39:

<http://www.census.gov/popest/states/tables/NST-EST2008-01.xls>

Table 40:

<http://www.census.gov/population/projections/SummaryTabA1.pdf>

**TABLE 41**  
**CONSUMER PRICE INDEX**  
**ALL URBAN CONSUMERS**  
**ANNUAL RATE OF CHANGE**  
**1999-2008**

YEAR*	ALL URBAN CONSUMERS
1999	2.7%
2000	3.4%
2001	1.6%
2002	2.4%
2003	1.9%
2004	3.3%
2005	3.4%
2006	2.5%
2007	4.1%
2008	0.1%

**TABLE 42**  
**CONSUMER PRICE INDEX**  
**FOR ALL ITEMS AND FUEL AND OTHER UTILITIES**  
**1999-2008**

YEAR*	ALL ITEMS	FUEL AND OTHER UTILITIES
1999	166.6	128.8
2000	172.2	137.9
2001	177.1	150.2
2002	179.9	143.6
2003	184.0	154.5
2004	188.9	161.9
2005	195.3	179.0
2006	201.6	194.7
2007	207.3	200.6
2008	215.3	220.0

\*Not seasonally adjusted.

SOURCE: ECONOMIC INDICATORS, Council of Economic Advisers, Joint Economic Committee  
 United States Government Printing Office  
<http://origin.www.gpoaccess.gov/indicators/09julbro.html>

**TABLE 43**  
**PRODUCER PRICE INDEX**  
**TOTAL FINISHED GOODS AND CAPITAL EQUIPMENT**  
**1999-2008**

YEAR	FINISHED GOODS	CAPITAL EQUIPMENT
1999	133.0	137.6
2000	138.0	138.8
2001	140.7	139.7
2002	138.9	139.1
2003	143.3	139.5
2004	148.5	141.4
2005	155.7	144.6
2006	160.4	146.9
2007	166.6	149.5
2008	177.1	153.8

SOURCE: ECONOMIC INDICATORS, Council of Economic Advisers, Joint Economic Committee  
 United States Government Printing Office  
<http://origin.www.gpoaccess.gov/indicators/09julbro.html>





## **APPENDIX**



## **ABBREVIATIONS AND TERMINOLOGY**



## ABBREVIATIONS AND TERMINOLOGY

The following abbreviations are used frequently throughout this report.

EIA - Energy Information Administration  
EDC - Florida Energy Data Center  
EEI - Edison Electric Institute  
FCG - Florida Electric Power Coordinating Group, Inc.  
FERC - Federal Energy Regulatory Commission (formerly FPC)  
FPC - Federal Power Commission  
FPSC - Florida Public Service Commission  
FRCC - Florida Reliability Coordinating Council (formerly FCG)  
GEO - Governor's Energy Office, formerly SEO  
SEO - State Energy Office

BBL - Barrel - 42 gallons  
BTU - British Thermal Unit  
ECS - Extended Cold Standby  
IC&GT- Internal Combustion and Gas Turbine  
KW - Kilowatt - 1,000 watts  
KWH - Kilowatt - hour - 3,413 BTUs  
MCF - Thousands of Cubic Feet  
SH-TON - Short Ton - 2,000 pounds  
THERM - 100,000 BTUs

Kilowatts (KW) - 1,000 watts  
Megawatts (MW) - 1,000 kilowatts  
Gigawatts (GW) - 1,000 megawatts  
Kilowatt-Hours (KWH) - 1,000 watt-hours  
Megawatt-Hours (MWH) - 1,000 kilowatt-hours  
Gigawatt-Hours (GWH) - 1,000 megawatt-hours

### Utility

FPL - Florida Power & Light Company	PEF - Progress Energy Florida
FTP - Fort Pierce Utilities Authority	SEC - Seminole Electric Cooperative
GPC - Gulf Power Company	SPA - Southeastern Power Administration
GRU - Gainesville Regional Utilities	STC - City of St. Cloud
HST - City of Homestead	STK - City of Starke
KEY - City of Key West	TEC - Tampa Electric Company
KUA - Kissimmee Utility Authority	TAL - City of Tallahassee
LAK - City of Lakeland	VER - Vero Beach Municipal Utilities
LWU - Lake Worth Utilities Authority	OTH - Other
NSB - New Smyrna Beach Utilities Commission	XXX - Other joint participant utility not listed above
OUC - Orlando Utilities Commission	

### Unit Number (U)

- r - Retirement
- c - Change or modification of unit

### Unit Type (T)

- |                         |                     |
|-------------------------|---------------------|
| FS - Fossil Steam       | CC - Combined Cycle |
| CT - Combustion Turbine | N - Nuclear         |
| D - Diesel              | UN - Unknown        |

### Primary Fuel (F)

- |                  |                  |
|------------------|------------------|
| HO - Heavy Oil   | C - Coal         |
| LO - Light Oil   | SW - Solid Waste |
| NG - Natural Gas | UN - Unknown     |
| N - Nuclear      |                  |

### Capability

- MW-S - Megawatt-Summer
- MW-W - Megawatt-Winter
- NMPLT - Nameplate

Net summer and winter continuous capacity and generator maximum nameplate rating. If unit is to undergo a change or modification, these columns indicate rating change.

### LOAD FACTOR FORMULA

$$\text{Percent Load Factor} = \frac{\text{Net Energy for Load}}{\text{Peak Load (MWH)} \times 8,760} \times 100$$

where:

$$\text{Net Energy for Load} = \text{Total MWH Generated} - \text{Plant Use} + \text{MWH Received} - \text{MWH Delivered}$$

Peak Load = That 60-minute demand interval for which gross generated MWH was highest for the year.

The load factor for a specific utility is an index ranging from one to zero. It reflects the ratio of total MWH actually generated and delivered to ultimate customers to the total MWH that would have been generated and delivered had the utility maintained that level of system net generation observed at the peak period (60 minutes) for every hour of the year or a total of 8,760 hours.

The closer the load factor is to one, the flatter the load curve is or the lower the difference between maximum and minimum levels of use over a one-year period. The closer the load factor is to zero, the greater is this difference, and therefore the greater is the magnitude of peaking across the load curve.

# **GLOSSARY OF ELECTRIC UTILITY TERMS**





## GLOSSARY OF ELECTRIC UTILITY TERMS

**AVERAGE ANNUAL KWH USE PER CUSTOMER** - Annual kilowatt-hour sales of a class of service (see CLASSES OF ELECTRIC SERVICE for list) divided by the average number of customers for the same 12-month period (usually refers to all residential customers, including those with electric space heating). A customer with two or more meters at the same location because of special services, such as water heating, etc., is counted as one customer.

**BTU (BRITISH THERMAL UNIT)** - The standard unit for measuring quantity of heat energy, such as the heat content of fuel. It is the amount of heat energy necessary to raise the temperature of one pound of water one degree Fahrenheit.

Content of Fuel, Average - The heat value per unit quantity of fuel expressed in BTU as determined from tests of fuel samples. Examples: BTU per pound of coal, per gallon of oil, etc.

**BTU PER KILOWATT-HOUR** - See **HEAT RATE**.

**CAPABILITY** - The maximum load which a generating unit, generating station, or other electrical apparatus can carry under specified conditions for a given period of time, without exceeding approved limits of temperature and stress.

**Gross System** - The net generating station capability of a system at a stated period of time (usually at the time of the system's maximum load), plus capability available at such time from other sources through firm power contracts.

Note: The Florida Electric Power Coordinating Group and much of the utility industry prefer a different definition. Their use of the words relates to the capability at the generator terminals and would therefore be defined as the "total capability of a system's generating units measured at their terminals."

**Margin of Reserve** - See **CAPABILITY MARGIN**.

**Net Generating Station** - The capability of a generating station as demonstrated by test or as determined by actual operating experience less power generated and used for auxiliaries and other station uses. Capability may vary with the character of the load, time of year (due to circulating water temperatures in thermal stations or availability of water in hydro stations), and other characteristic causes. Capability is sometimes referred to as Effective Rating.

**Net System** - The net generating station capability of a system at a stated period of time (usually at the time of the system's maximum load), plus capability available at such time from other sources through firm power contracts less firm power obligations at such time to other companies or systems.

**Peaking** - Generating capability normally designed for use during the maximum load period of a designated time interval.

**CAPABILITY MARGIN / RESERVE MARGIN** - The difference between net system capability and system maximum load requirements (peak load). It is the margin of capability available to provide for scheduled maintenance, emergency outages, system operating requirements, and unforeseen loads.

**CAPACITY** - The load for which a generating unit, generating station, or other electrical apparatus is rated either by the user or by the manufacturer. See also **NAMEPLATE RATING**.

**Dependable** - The load-carrying ability for the time interval and period specified when related to the characteristics of the load to be supplied. Dependable capacity of a station is determined by such factors as capability, operating power factor, and portion of the load which the station is to supply.

**Hydraulic** - The rating of a hydroelectric generating unit or the sum of such ratings for all units in a station or stations.

**Installed Generating** - See **NAMEPLATE RATING**.

**Peaking** - Generating units or stations which are available to assist in meeting that portion of peak load which is above base load.

**Purchase** - The amount of power available for purchase from a source outside the system to supply energy or capacity.

**Reserve: Cold** - Thermal generating units available for service but not maintained at operating temperature.

**Hot** - Thermal generating units available, up to temperature and ready for service, although not actually in operation.

**Margin of** - See **CAPABILITY MARGIN**.

**Spinning** - Generating units connected to the bus and ready to take load.

**Thermal** - The rating of a thermal electric generating unit or the sum of such ratings for all units in a station or stations.

**Total Available** - See **CAPABILITY, GROSS SYSTEM**.

**CHARGE, ELECTRIC ENERGY** - See **ENERGY, ELECTRIC**.

**CLASSES OF ELECTRIC SERVICE** - See class name for definition of each.

**Sales to Ultimate Customers:\***

Residential	Public Street and Highway Lighting
Commercial and Industrial	Other Public Authorities
Commercial	Railroads and Railways
Industrial	Interdepartmental
Small Light and Power	
Large Light and Power	

**Sales for Resale (Other Electric Utilities):**

Investor-Owned Companies	Municipally Owned Electric Systems
Cooperatively Owned Electric Systems	Federal and State Electric Agencies

---

\*Companies service rural customers under distinct rural rates and classify these sales as "Rural." However, many companies service customers in rural areas under standard Residential, Commercial and Industrial rates and so classify such sales. Consequently, "Rural" is a rate classification rather than a customer classification and since it is frequently confused with "Farm Service" (a type of Residential and/or Commercial service), the "Rural" classification has been generally discontinued as a customer classification.

**CLASSES OF ELECTRIC SYSTEMS** - Federal Power Commission groupings (as of 1968) of operating systems based on volume and kinds of electric output for the purpose of reporting power system operations.

<b>Basis of Classification</b>	<b>Class of System</b>
Systems which generate all or part of system requirements and whose net energy for system for the year reported was:	
More than 100,000,000 kilowatt-hours	I
20,000,000 to 100,000,000 kilowatt-hours	II
Less than 20,000,000 kilowatt-hours	III
Systems engaged primarily in sales for resale and/or sales to industrial, all other sales being negligible	IV
Systems which obtain entire energy requirements from other systems	V

**COMBINED CYCLE** - Consists of three components: two combustion turbines, each with its own generator, and one steam boiler with associated steam turbine generator. The normally wasted combustion may also be supplementally fired.

**CONVENTIONAL FUELS** - The fossil fuels: coal, oil, or gas.

**COOPERATIVE, RURAL ELECTRIC** - See **RURAL**.

**COOPERATIVES (COOPERATIVELY-OWNED ELECTRIC UTILITIES)** - A joint venture organized for the purpose of supplying electric energy to a specified area. Such ventures are generally exempt from the federal income tax laws. Most cooperatives have been financed by the Rural Electrification Administration.

**CUSTOMER (ELECTRIC)** - A customer is an individual, firm, organization, or other electric utility which purchases electric service at one location under one rate classification, contract, or schedule. If service is supplied to a customer at more than one location, each location shall be counted as a separate customer unless consumption is combined before the bill is calculated.

Note 1: If service is supplied to a customer at one location through more than one meter and under several rate classifications or schedules but only for one class of service (for example, separate meters for residential regular and water heating service), such multiple rate services shall be counted as only one customer at the one location.

Note 2: Where service is used for one part of a month (prorated period), initial bills of customers during such month only shall be counted; final bills should not be counted as customers.

Note 3: See also **ULTIMATE CUSTOMERS**.

**DEMAND** - The rate at which electric energy is delivered to or by a system, part of a system, or a piece of equipment expressed in kilowatts, kilovolt-amperes, or other suitable unit at a given instant or averaged over any designated period of time. The primary source of "Demand" is the power-consuming equipment of the customers. See **LOAD**.

**Annual Maximum** - The greatest of all demands of the load under consideration which occurred during a prescribed demand interval in a calendar year.

**Annual System Maximum** - The greatest demand on an electric system during a prescribed demand interval in a calendar year.

**Average** - The demand on, or the power output of, an electric system or any of its parts over any interval of time, as determined by dividing the total number of kilowatt-hours by the number of units of time in the interval.

**Billing** - The demand upon which billing to a customer is based, as specified in a rate schedule or contract. It may be based on the contract year, a contract minimum, or a previous maximum and, therefore, does not necessarily coincide with the actual measured demand of the billing period.

**Coincident** - The sum of two or more demands which occur in the same demand interval.

**Instantaneous Peak** - The maximum demand at the instant of greatest load, usually determined from the readings of indicating or graphic meters.

**Integrated** - The demand usually determined by an integrating demand meter or by the integration of a load curve. It is the summation of the continuously varying instantaneous demands during a specified demand interval.

**Maximum** - The greatest of all demands of the load under consideration which has occurred during a specified period of time.

**Noncoincident** - The sum of two or more individual demands which do not occur in the same demand interval. Meaningful only when considering demands within a limited period of time, such as a day, week, month, a heating or cooling season, and usually not for more than one year.

**ELECTRIC UTILITY INDUSTRY OR ELECTRIC UTILITIES** - All enterprises engaged in the production and/or distribution of electricity for use by the public, including investor-owned electric utility companies; cooperatively-owned electric utilities; government-owned electric utilities (municipal systems, federal agencies, state projects, and public power districts); and, where the data are not separable, those industrial plants contributing to the public supply.

**ENERGY, ELECTRIC** - As commonly used in the electric utility industry, electric energy means kilowatt-hours.

#### **FUEL COSTS (MOST COMMONLY USED BY ELECTRIC UTILITY COMPANIES)**

**Cents per Million BTU Consumed** - Since coal is purchased on the basis of its heat content, its cost is measured by computing the "cents per million BTU" of the fuel consumed. It is the total cost of fuel consumed divided by its total BTU content, and the answer is divided by one million.

**Coal** - Average cost per (short) ton (dollars per ton) - includes bituminous and anthracite coal and relatively small amounts of coke, lignite, and wood.

**Gas** - Average cost per MCF (cents per thousand cubic feet) - includes natural, manufactured, mixed, and waste gas. Frequently expressed as cost per therm (100,000 BTU).

**Nuclear** - Nuclear fuel costs can be given on a fuel cycle basis. A fuel cycle consists of all the steps associated with procurement, use, and disposal of nuclear fuel. Accounting for the cost of each step in the fuel cycle including interest charges, nuclear fuel costs can be given in cents per million BTU or mills per kilowatt-hour for the cycle lifetime of the fuel which is normally five to six years.

**Oil** - Average cost per barrel - 70 U.S. gallons (dollars per barrel) - includes fuel oil, crude and diesel oil, and small amounts of tar and gasoline.

**FUEL EFFICIENCY** - See **HEAT RATE**.

**FUEL FOR ELECTRIC GENERATION** - This includes all types of fuel (solid, liquid, gaseous, and nuclear) used exclusively for the production of electric energy. Fuel for other purposes, such as building heating or steam sales is excluded.

**GAS** - A fuel burned under boilers by internal combustion engines and gas turbines for electric generation. Includes natural, manufactured, mixed, and waste gas. See **GAS - MCF** and also **THERM**.

**GAS-FUEL COSTS** - See **FUEL COSTS**.

**GAS - MCF** - 1,000 cubic feet of gas.

**GENERATING CAPABILITY** - See **CAPABILITY, NET GENERATING STATION**.

**GENERATING STATION (GENERATING PLANT OR POWER PLANT)** - A station at which are located prime movers, electric generators, and auxiliary equipment for converting mechanical, chemical, and/or nuclear energy into electric energy.

**Atomic** - See **NUCLEAR**.

**Gas Turbine** - An electric generating station in which the prime mover is a gas turbine engine.

**Geothermal** - An electric generating station in which the prime mover is a steam turbine. The steam is generated in the earth by heat from the earth's magma.

**Hydroelectric** - An electric generation station in which the prime mover is a hydraulic turbine.

**Internal Combustion** - An electric generating station in which the prime mover is an internal combustion engine.

**Nuclear** - An electric generation station in which the prime mover is a steam turbine. The steam is generated in a reactor by heat from the fissioning of nuclear fuel.

**Steam (Conventional)** - An electric generating station in which the prime mover is a steam turbine. The steam is generated in a boiler by heat from burning fossil fuels.

**Generating Station Capability** - See **CAPABILITY, NET GENERATING STATION**.

**Generating Unit** - An electric generator together with its prime mover.

**Generation, Electric** - This term refers to the act or process of transforming other forms of energy into electric energy, or to the amount of electric energy so produced, expressed in kilowatt-hours.

**Gross** - The total amount of electric energy produced by the generating units in a generating station or stations.

**Net** - Gross generation less kilowatt-hours consumed out of gross generation for station use.

**GIGAWATT-HOUR (GWH)** - One million kilowatt-hours, one thousand megawatt-hours, or one billion watt-hours.

**HEAT RATE** - A measure of generating station thermal efficiency, generally expressed in BTU per net kilowatt-hour. It is computed by dividing the total BTU content of fuel burned for electric generation by the resulting net kilowatt-hour generation.

**INTERDEPARTMENTAL SALES** - Kilowatt-hour sales of electric energy to other departments (gas, steam, water, etc.) and dollar value of such sales at tariff or other specified rates for the energy supplied.

**INTERNAL COMBUSTION ENGINE** - A prime mover in which energy released from rapid burning of a fuel-air mixture is converted into mechanical energy. Diesel, gasoline, and gas engines are the principal types in this category.

**INVESTOR-OWNED ELECTRIC UTILITIES** - Those electric utilities organized as tax-paying businesses usually financed by the sale of securities in the free market, and whose properties are managed by representatives regularly elected by their shareholders. Investor-owned electric utilities, which may be owned by an individual proprietor or a small group of people, are usually corporations owned by the general public.

**INDUSTRIAL** - See **COMMERCIAL AND INDUSTRIAL**.

**KILOWATT (KW)** - 1,000 watts. See **WATT**.

**KILOWATT-HOUR (KWH)** - The basic unit of electric energy equal to one kilowatt of power supplied to or taken from an electric circuit steadily for one hour.

**KILOWATT-HOURS PER CAPITA** - Net generation in the United States divided by national population, or the corresponding ratio for any other area.

**LARGE LIGHT AND POWER** - See **COMMERCIAL AND INDUSTRIAL**.

**LOAD** - The amount of electric power delivered or required at any specified point or points on a system. Load originates primarily at the power-consuming equipment of the customers. See **DEMAND**.

**Average** - See **DEMAND, AVERAGE**.

**Base** - The minimum load over a given period of time.

**Connected** - Connected load is the sum of the capacities or rating of the electric power-consuming apparatus connected to a supplying system, or any part of the system under consideration.

**Peak** - See **DEMAND, MAXIMUM** and also **DEMAND, INSTANTANEOUS PEAK**.

**LOAD FACTOR** - The ratio of the average load in kilowatts supplied during a designated period to the peak or maximum load in kilowatts occurring in that period. Load factor, in percent, also may be derived by multiplying the kilowatt-hours in the period by 100 and dividing by the product of the maximum demand in kilowatts and the number of hours in the period.

**LOSS (LOSSES)** - The general term applied to energy (kilowatt-hours) and power (kilowatts) lost in the operation of an electric system. Losses occur principally as energy transformations from kilowatt-hours to waste heat in electric conductors and apparatus.

**Average** - The total difference in energy input and output or power input and output (due to losses) averaged over a time interval and expressed either in physical quantities or as a percentage of total input.

**Energy** - The kilowatt-hours lost in the operation of an electric system.

**Line** - Kilowatt-hours and kilowatts lost in transmission and distribution lines under specified conditions.

**Peak Percent** - The difference between the power input and output, as a result of losses due to the transfer of power between two or more points on a system at the time of maximum load, divided by the power input.

**System** - The difference between the system net energy or power input and output, resulting from characteristic losses and unaccounted for between the sources of supply and the metering points of delivery on a system.

**MARGIN OF RESERVE CAPACITY** - See **CAPABILITY MARGIN**.

**MAXIMUM DEMAND** - See **DEMAND, MAXIMUM**.

**MAXIMUM LOAD** - See **DEMAND, MAXIMUM**.

**MEGAWATT (MW)** - 1,000 kilowatts. See **WATT**.

**MEGAWATT-HOUR (MWH)** - 1,000 kilowatt-hours. See **KILOWATT-HOURS**.

**MUNICIPALLY-OWNED ELECTRIC SYSTEM** - An electric utility system owned and/or operated by a municipality engaged in serving residential, commercial, and/or industrial customers, usually, but not always, within the boundaries of the municipality.

**NAMEPLATE RATING** - The full-load continuous rating of a generator, prime mover, or other electrical equipment under specified conditions as designated by the manufacturer. It is usually indicated on a nameplate attached to the individual machine or device. The nameplate rating of a steam electric turbine-generator set is the guaranteed continuous output in kilowatts or KVA (kilovolt-amperes - 1,000 volt-amperes) and power factor at generator terminals when the turbine is clean and operating under specified throttle steam pressure and temperature, specified reheat temperature, specified exhaust pressure, and with full extraction from all extraction openings.

**NET CAPABILITY** - See **CAPABILITY, NET GENERATING STATION**.

**NET ENERGY FOR LOAD** - A term used in Federal Energy Regulatory Commission reports and comprising:

1. The net generation by the system's own plants, plus
2. Energy received from others (exclusive of receipts for borderline customers), less
3. Energy delivered for resale to those Class I and II systems which obtain a part of their power supply from sources other than the company's system.

**NET ENERGY FOR SYSTEM** - A term used in Federal Energy Regulatory Commission reports and comprising:

1. The net generation by the system's own plants, plus
2. Energy received from others (exclusive of receipts for borderline customers), less
3. Energy delivered for resale to those Class I and II systems which obtain a part of their power supply from sources other than this company's system, plus
4. Energy received for borderline customers, less
5. Energy delivered for resale to all systems other than those specified in Item 3 preceding.

**NET GENERATING STATION CAPABILITY** - See **CAPABILITY, NET GENERATING STATION**.

**NET GENERATION** - See **GENERATION, ELECTRIC - NET**.

**NET PLANT CAPABILITY** - See **CAPABILITY, NET GENERATING STATION**.

**NUCLEAR ENERGY** - Energy produced in the form of heat during the fission process in a nuclear reactor. When released in sufficient and controlled quantity, this heat energy may be used to produce steam to drive a turbine-generator and thus be converted to electrical energy.

**NUCLEAR (ATOMIC) FUEL** - Material containing fissionable materials of such composition and enrichment that when placed in a nuclear reactor will support a self-sustaining fission chain reaction and produce heat in a controlled manner for process use.

**PRIME MOVER** - The engine, turbine, water wheel, or similar machine which drives an electric generator.

**PUBLIC STREET AND HIGHWAY LIGHTING** - A customer, sales, and revenue classification covering electric energy supplied and services rendered for the purposes of lighting streets, highways, parks, and other public places, or for traffic or other signal service, for municipalities or other divisions or agencies of federal or state governments.

**PUBLICLY OWNED ELECTRIC UTILITIES (GOVERNMENT-OWNED ELECTRIC UTILITIES AND AGENCIES)** - When used in statistical tables to indicate class of ownership, it includes municipally-owned electric systems and federal and state public power projects. Cooperatives are not included in this grouping.

**RESERVE CAPACITY** - See **CAPACITY**.

**RESIDENTIAL** - A customer, sales, or revenue classification covering electric energy supplied for residential (household) purposes. The classification of an individual customer's account where the use is both residential and commercial is based on principal use.

**RURAL** - A rate classification covering electric energy supplied to rural and farm customers under distinct rural rates. See **CLASSES OF ELECTRIC SERVICE**.

**SALES FOR RESALE** - A customer, sales, and revenue classification covering electric energy supplied (except under interchange agreements) to other electric utilities or to public authorities for resale or distribution. Includes sales for resale to cooperatives, municipalities, and federal and state electric agencies.

**SERVICE AREA** - Territory in which a utility system is required or has the right to supply electric service to ultimate customers.



**STATION USE (GENERATING)** - The kilowatt-hours used at an electric generating station for such purposes as excitation and operation of auxiliary and other facilities essential to the operation of the station. Station use includes electric energy supplied from house generators, main generators, the transmission system, and any other sources. The quantity of energy used is the difference between the gross generation plus any supply from outside the station and the net output of the station.

**SUMMER PEAK** - The greatest load on an electric system during any prescribed demand interval in the summer or cooling season, usually between June 1 and September 30.

**SYSTEM, ELECTRIC** - The physically connected generation, transmission, distribution, and other facilities operated as an integral unit under one control, management, or operating supervision.

**SYSTEM LOAD** - See **DEMAND**.

**SYSTEM LOSS** - See **LOSS (LOSSES)**.

**THERM** - 100,000 BTUs. See **BTU (BRITISH THERMAL UNIT)**.

**THERMAL** - A term used to identify a type of electric generating station, capacity or capability, or output in which the source of energy for the prime mover is heat.

**TURBINE (STEAM OR GAS)** - An enclosed rotary type of prime mover in which heat energy in steam or gas is converted into mechanical energy by the force of a high velocity flow of steam or gases directed against successive rows of radial blades fastened to a central shaft.

**ULTIMATE CUSTOMERS** - Those customers purchasing electricity for their own use and not for resale. See **CLASSES OF ELECTRIC SERVICE**.

**USES AND LOSSES** - "Uses" refers to the electricity used by the electric companies for their own purposes and "losses" refers to transmission losses.

**UTILITY RATE STRUCTURE** - A utility's approved schedule of charges for billing utility service rendered to various classes of its customers.

**VOLT-AMPERE** - The basic unit of Apparent Power. The volt-amperes of an electric circuit are the mathematical product of the volts and amperes of the circuit.

**WATT** - The electrical unit of power or rate of doing work. The rate of energy transfer equivalent to one ampere flowing under a pressure of one volt at unity power factor. It is analogous to horsepower or foot-pounds per minute of mechanical power. One horsepower is equivalent to approximately 746 watts.

**WINTER PEAK** - The greatest load on an electric system during any prescribed demand interval in the winter or heating season, usually between December 1 of a calendar year and March 31 of the next calendar year.

**SOURCES:** Edison Electric Institute  
Florida Electric Power Coordinating Group, Inc.  
Florida Governor's Energy Office