



Florida Public Service Commission **SPECIAL REPORT**

JUNE 2016

Petition for increase in rates by
Florida Power & Light Company

DOCKET NO. 160021-EI

On March 15, 2016, Florida Power & Light Company (FPL) filed a petition with the Florida Public Service Commission (PSC or Commission) for a base rate increase. FPL currently provides electric service to more than 4.8 million retail customers in all or parts of 35 Florida counties.

QUESTIONS & ANSWERS

1 Is there an opportunity for public input on this rate case?

Yes. As part of the evaluation process for FPL's rate request, the Commission will conduct nine service hearings to allow customer feedback about FPL and the rate setting process. Customer comments, written and oral, will be taken into consideration when the Commission reaches a decision. Commissioners will attend and participate during the hearings.

2 Why is FPL requesting a rate increase?

FPL states it is requesting a rate increase to cover increasing operating costs.

3 Presently, how much is a 1,000 kwh monthly bill for residential customers?

Currently, a 1,000 kwh monthly bill for residential customers is \$91.84.

4 Using FPL's proposed rates, how much would a 1,000 kwh monthly bill be for residential customers?

Using FPL's proposed rates, a 1,000 kwh monthly bill for residential customers is estimated to be \$100.66 in January 2017. Effective January 2018, a 1,000 kwh monthly bill for residential customers is estimated to be \$103.31. Effective June 2019, a 1,000 kwh monthly bill for residential customers is estimated to be \$105.45.

5 What if I cannot attend the service hearing or prefer not to speak? Are there other ways to comment on this case?

Any person who wants to comment or provide information to the Commission regarding this matter may do so orally at the meeting or in writing.* Written comments should be mailed to:

Continued on back

If cancelled, notice of meeting cancellation will be provided on the Commission's website (www.floridapsc.com) under the Hot Topics link found on the home page. Cancellation can also be confirmed by contacting the Office of General Counsel at (850) 413-6199.

Florida Public Service Commission
Office of Commission Clerk
2540 Shumard Oak Boulevard
Tallahassee, FL 32399-0850

The PSC will also accept emailed
comments at: clerk@psc.state.fl.us

Please be sure to include the
docket number, **160021-EI**.

Customer comments are placed on the correspondence side of the docket file and are taken into consideration by the Commissioners in reaching their decision. In accordance with Florida Statutes, the PSC will also consider FPL's quality of service and other matters. If you have questions, contact the PSC's Office of Consumer Assistance & Outreach at 1-800-342-3552.

6 Who can answer technical or legal questions?

For technical questions, contact:

Bart Fletcher
(850) 413-7017

Elisabeth Draper
(850) 413-6706

For legal questions, contact:

Suzanne Brownless
(850) 413-6218

7 Where on the Internet can I obtain more detailed information?

Detailed docket information is available on the PSC website at www.FloridaPSC.com. Click on **Clerk's Office** then **Dockets**. Type in the docket number, **160021**.

8 When will the PSC make a decision?

The PSC staff is scheduled to file a recommendation with the Commission on October 14, 2016, that addresses FPL's proposed revenue increase. The Commissioners are expected to vote on this matter at the October 27, 2016 Commission Conference.

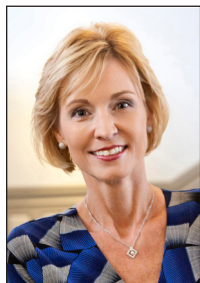
Based on the Commission's decision on FPL's proposed revenue increase, staff will prepare another recommendation that addresses the specific rates to be charged to each class of customers. Staff's second recommendation is scheduled to be filed on November 17, 2016. The Commission is expected to vote on FPL's rates at the November 29, 2016 Commission Conference.

** Any email or other correspondence sent to a Florida Public Service Commissioner, or any other public official and/or employee of the PSC, in the transaction of public business is considered a public record and is subject to Florida's Public Records Law. This means that Florida law generally requires the PSC to provide a copy of any such email or correspondence, upon request, for inspection and copying to any Florida citizen or to any member of the media.*

PSC Commissioners



COMMISSIONER
Ronald A. Brisé



COMMISSIONER
Lisa Polak Edgar



CHAIRMAN
Julie I. Brown



COMMISSIONER
Art Graham



COMMISSIONER
Jimmy Patronis

Service Hearings

<p style="text-align: center;">June 2, 2016 5 p.m. School Board of Lee County Board Room Lee County Education Center 2855 Colonial Boulevard Ft. Myers, FL 33966</p> <p style="text-align: center;">June 3, 2016 9:30 a.m. Sarasota City Commission Chambers Sarasota City Hall 1565 1st Street Sarasota, FL 34236</p> <p style="text-align: center;">June 15, 2016 6:00 p.m. Solid Waste Authority of Palm Beach County 7501 North Jog Road West Palm Beach, FL 33412</p> <p style="text-align: center;">June 16, 2016 9:30 a.m. Brevard County Governmental Center Commission Room, Building C, 1st Floor 2725 Judge Fran Jamieson Way Melbourne, FL 32940</p>	<p style="text-align: center;">June 16, 2016 6:00 p.m. Museum of Arts and Sciences 352 S. Nova Road Daytona Beach, FL 32114</p> <p style="text-align: center;">June 27, 2016 6:00 p.m. Miami-Dade County Auditorium 2901 West Flagler Street Miami, FL 33135</p> <p style="text-align: center;">June 28, 2016 9:30 a.m. County Commission Chambers Broward County Governmental Center 115 S. Andrews Avenue Ft. Lauderdale, FL 33301</p> <p style="text-align: center;">June 28, 2016 5:00 p.m. South Regional/Broward College Library 7300 Pines Boulevard Pembroke Pines, FL 33024</p> <p style="text-align: center;">June 29, 2016 9:30 a.m. Florida Memorial University Lou Rawls Auditorium 15800 N. W. 42nd Avenue Miami Gardens, FL 33054</p>
--	--

Residential Bills at Various Usage Levels

	As of June 2016	Estimated January 2017	Estimated January 2018	Estimated June 2019
1,000 kwh				
Base Rate Charges	\$57.00	\$67.00	\$69.59	\$71.67
Fuel Charge	\$21.73	\$21.73	\$21.73	\$21.73
*Other Charges	\$10.81	\$9.41	\$9.41	\$9.41
Gross Receipts Tax	\$2.30	\$2.52	\$2.58	\$2.64
Total	\$91.84	\$100.66	\$103.31	\$105.45
1,500 kwh				
Base Rate Charges	\$87.19	\$100.50	\$104.39	\$107.51
Fuel Charge	\$37.60	\$37.60	\$37.60	\$37.60
*Other Charges	\$16.22	\$14.12	\$14.12	\$14.12
Gross Receipts Tax	\$3.62	\$3.90	\$4.00	\$4.08
Total	\$144.63	\$156.12	\$160.11	\$163.31
2,000 kwh				
Base Rate Charges	\$117.38	\$134.00	\$139.18	\$143.34
Fuel Charge	\$53.46	\$53.46	\$53.46	\$53.46
*Other Charges	\$21.62	\$18.82	\$18.82	\$18.82
Gross Receipts Tax	\$4.93	\$5.29	\$5.42	\$5.53
Total	\$197.39	\$211.57	\$216.88	\$221.15
3,000 kwh				
Base Rate Charges	\$177.76	\$201.00	\$208.77	\$215.01
Fuel Charge	\$85.19	\$85.19	\$85.19	\$85.19
*Other Charges	\$32.43	\$28.23	\$28.23	\$28.23
Gross Receipts Tax	\$7.57	\$8.06	\$8.26	\$8.42
Total	\$302.95	\$322.48	\$330.45	\$336.85

* Other charges include nuclear and non-nuclear capacity, environmental, conservation, and storm recovery costs.

STAMP

Florida Public Service Commission
Office of Commission Clerk
2540 Shumard Oak Boulevard
Tallahassee, FL 32399-0850

FOLD HERE

TAPE

FOLD HERE