

**Lance J.M. Steinhart, P.C.**  
Attorneys At Law  
1725 Windward Concourse  
Suite 150  
Alpharetta, Georgia 30005

Also Admitted in New York  
Email: lsteinhart@telecomcounsel.com

Telephone: (770) 232-9200  
Facsimile: (770) 232-9208

March 23, 2018

**VIA OVERNIGHT DELIVERY**

Florida Public Service Commission  
Office of Commission Clerk  
2540 Shumard Oak Blvd.  
Tallahassee, Florida 32399-0850  
(850) 413-6770

RECEIVED-FPSC  
2018 MAR 26 AM 9:18  
COMMISSION  
CLERK

Re: Notification of Transfer of Control of Mitel Cloud Services, Inc.

To Whom It May Concern,

With this original and one (1) copy Mitel Networks Corporation ("Mitel Networks Corp."), Mitel US Holdings, Inc. ("Mitel US"), Mitel (Delaware), Inc. ("Mitel DE"), Mitel Networks, Inc., formerly ShoreTel, Inc. ("MNI") and Mitel Cloud Services, Inc. ("Mitel Cloud") (collectively, the "Parties") hereby notify the Florida Public Service Commission (the "Commission"), of the transfer of control of Mitel Cloud from Mitel DE to MNI (the "Transaction"). This transaction is the result of internal restructuring. For the Commission's records, the Parties provide the following information:

**I. THE PARTIES**

**A. Mitel Networks Corporation, Mitel US Holdings, Inc., Mitel (Delaware) Inc.**

Mitel DE, is a Delaware corporation and a direct wholly owned subsidiary of Mitel US. Mitel US is a Delaware corporation and direct wholly owned subsidiary of Mitel Networks Corp. Mitel Networks Corp. is a publicly traded (NASDAQ and TSX) Canadian corporation that, to its knowledge, does not have any 10% or greater owners other than institutional investor: NWQ Investment Management Company, LLC, which publicly reported that it held 12.3% of Mitel Networks Corp. common shares as of February 3, 2017. NWQ Investment Management Company, LLC does not have board representation or any right to board representation and has publicly reported that it holds the Mitel Networks Corp. common shares for investment purposes. Accordingly, it does not hold a controlling interest in Mitel Networks Corp.

COM  
AFD  
APA  
ECO  
ENG  
GCL  
IDM  
CLK

①

Mitel Networks Corp. has its executive offices at 350 Legget Drive, Ottawa, Ontario, Canada K2K 2W7. Mitel Networks Corp. is a leading provider of integrated communications solutions and services for business customers. Mitel Networks Corp.'s internet protocol-based communications offerings consist of a combination of telephony hardware products, such as communications platforms and desktop devices, and software applications that integrate voice, video, and data communications with business applications and processes. Mitel Networks Corp. also offers a range of other services, including the design of communications networks and implementation, maintenance, training and support services. In addition, Mitel Networks Corp. sells packaged software applications that are designed to solve particular business communications challenges, including applications for contact centers, mobility, teleworking, messaging, and collaboration. Mitel Networks Corp. operates from over 40 locations world-wide.

**B. Mitel Networks, Inc.**

Mitel Networks Corporation and Mitel US Holdings, Inc. entered into an Agreement and Plan of Merger with Shelby Acquisition Corporation, dated July 27, 2017, for the purchase of MNI (which was formerly ShoreTel, Inc.) and its subsidiaries. On December 29, 2017, the former Mitel Networks, Inc. (the "Former Mitel Networks") and MNI (which was formerly ShoreTel, Inc.), both Delaware corporations, merged and the surviving company, MNI, was renamed Mitel Networks, Inc., the same name previously held by the Former Mitel Networks. The Former Mitel Networks was dissolved during the merger into MNI. Assets of the Former Mitel Networks now belong to MNI. MNI is not a regulated utility.

**C. Mitel Cloud Services, Inc.**

Mitel Cloud, is certificated to provide competitive local exchange, interexchange, voice over internet protocol ("VOIP"), and commercial mobile radio ("CMRS") services nationwide.<sup>1</sup> Mitel Cloud is a provider of resold interexchange service in the state of Florida. Mitel Cloud was approved by the Commission to provide resold and facilities-based competitive local exchange telecommunications services on December 27<sup>th</sup>, 2005 (Docket No. 050802-TX). Mitel Cloud also provides Voice-over Internet Protocol services within the state. Mitel Cloud is a provider of interstate telecommunications services as a competitive carrier pursuant to Federal Communications Commission ("FCC") regulations.

---

<sup>1</sup> Mitel Cloud is certificated to provide competitive local exchange and interexchange services in Alabama, Alaska, Arizona, Arkansas, California, Canada, Colorado, Connecticut, Delaware, Georgia, Hawaii, Idaho, Illinois, Indiana, Iowa, Kansas, Kentucky, Louisiana, Maine, Maryland, Massachusetts, Michigan, Minnesota, Mississippi, Missouri, Montana, Nebraska, Nevada, New Hampshire, New Jersey, New Mexico, New York, North Carolina, North Dakota, Ohio, Oklahoma, Oregon, Pennsylvania, Rhode Island, South Carolina, South Dakota, Tennessee, Texas, Utah, Vermont, Washington, West Virginia, Wisconsin, and Wyoming. Mitel Cloud is certificated to provide competitive local exchange services in the District of Columbia, Florida, and Virginia. Mitel Cloud is certificated to provide CMRS services in California, Colorado, Delaware, Hawaii, Illinois, Indiana, Louisiana, Michigan, Montana, Nebraska, Nevada, North Dakota, South Dakota, Vermont, and West Virginia. Mitel is certificated to provide VOIP services in Arizona, California, Connecticut, Illinois, Indiana, Iowa, Michigan, Montana, Nebraska, and North Dakota.

## **II. DESIGNATED CONTACT**

Questions, correspondence or other communications concerning this notice should be directed to:

Lance J.M. Steinhart, Esq.  
Managing Attorney  
Lance J.M. Steinhart, P.C.  
1725 Windward Concourse  
Suite 150  
Alpharetta, Georgia 30005  
(770) 232-9200 (Phone)  
lsteinhart@telecomcounsel.com (E-Mail)

## **III. DESCRIPTION OF THE TRANSACTION**

Pursuant to the terms of Common Stock Issuance Agreement, dated December 29, 2017, MNI agreed to issue Mitel DE 100 shares of common stock in exchange for the transfer by Mitel DE of 1,000 shares of common stock of Mitel Cloud. As a result of this Transaction, MNI is wholly owned by Mitel DE. The direct ownership of Mitel Cloud is therefore transferred from Mitel DE to MNI. However, Mitel Cloud remains indirectly owned by Mitel DE.

The Transaction was seamless and communicated to Mitel Cloud's customers, and in no event will it result in the discontinuance or material reduction, loss, or impairment of service to customers, except as otherwise previously agreed by the parties under contract. All existing customers of Mitel Cloud will continue to be served by Mitel Cloud pursuant to its existing authorizations, at existing rates, terms and conditions. For the Commission's reference, charts depicting the current and post-closing entity ownership structure of the Parties are provided as Exhibit A.

## **IV. PUBLIC INTEREST ANALYSIS**

The Transaction is part of internal restructuring due to the previous purchase and transfer of ShoreTel, Inc. The Transaction aims to serve the public interest in that it was designed to strengthen the Mitel entities overall, while maintaining the managerial, technical, and financial resources available to the Parties. The Transaction was structured to have no material adverse impact on Mitel Cloud's current customers, who will continue to receive their existing services at the same rates, terms and conditions as at present, except as otherwise previously agreed by the parties under contract. It is currently intended that Mitel Cloud's present management team remain with the Company, continuing to direct day-to-day operations.

**V. CONCLUSION**

The Parties respectfully request that the Commission note the Transaction for its records.

I have also enclosed an extra copy of this letter to be date stamped and returned to me in the enclosed, self-addressed, postage prepaid envelope. Please contact the undersigned if there are any questions regarding this filing.

Respectfully submitted,

Mitel Networks Corporation  
Mitel US Holdings, Inc.  
Mitel (Delaware), Inc.  
Mitel Networks, Inc.  
Mitel Cloud Services, Inc.



---

Lance J.M. Steinhart  
Managing Attorney  
Lance J.M. Steinhart, P.C.  
1725 Windward Concourse, Suite 150  
Alpharetta, Georgia 30005  
Tel: (770) 232-9200  
Fax: (770) 232-9208  
Email: [lsteinhart@telecomcounsel.com](mailto:lsteinhart@telecomcounsel.com)

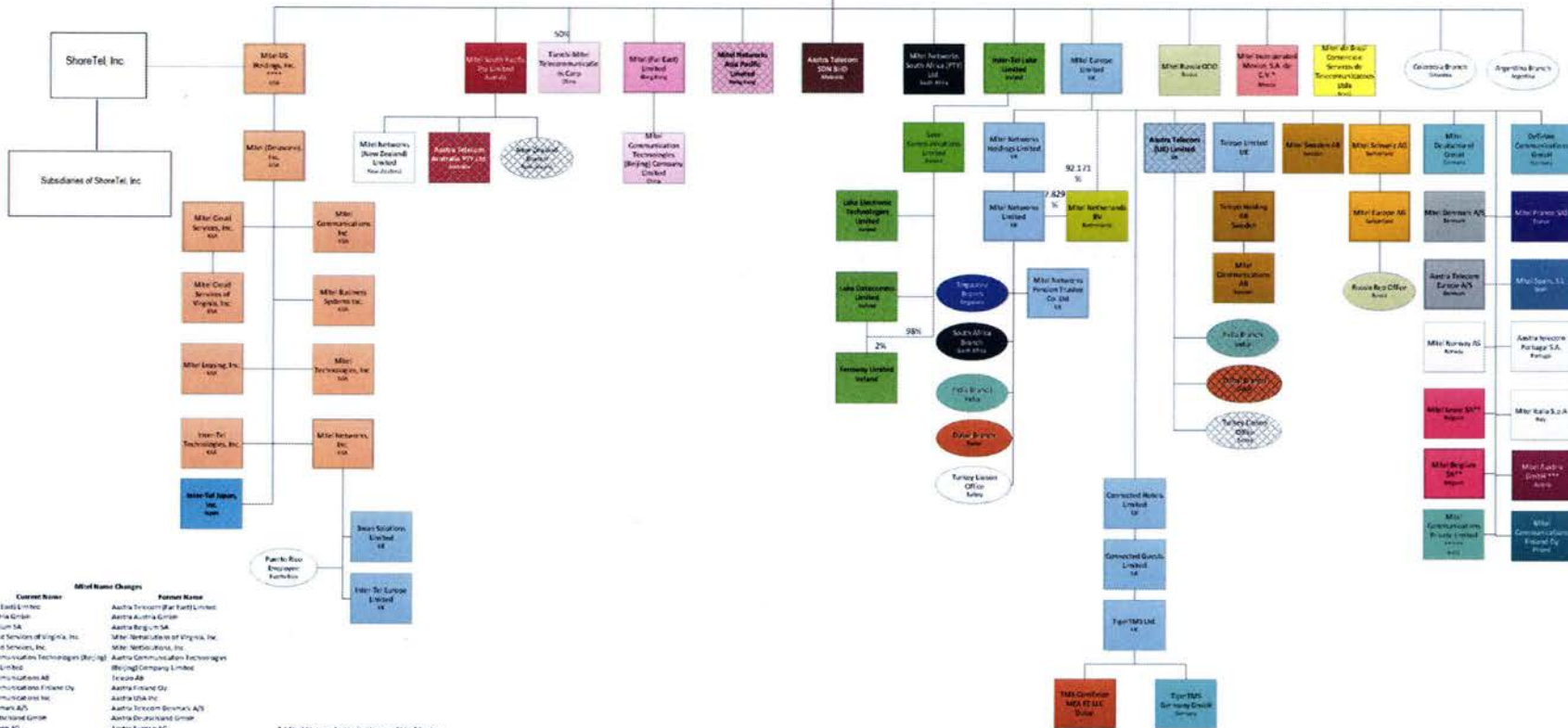
*Its Counsel*

Enclosures

**Exhibit A**

Pre and Post Close Organizational Charts

Mitel Networks Corporation Canada

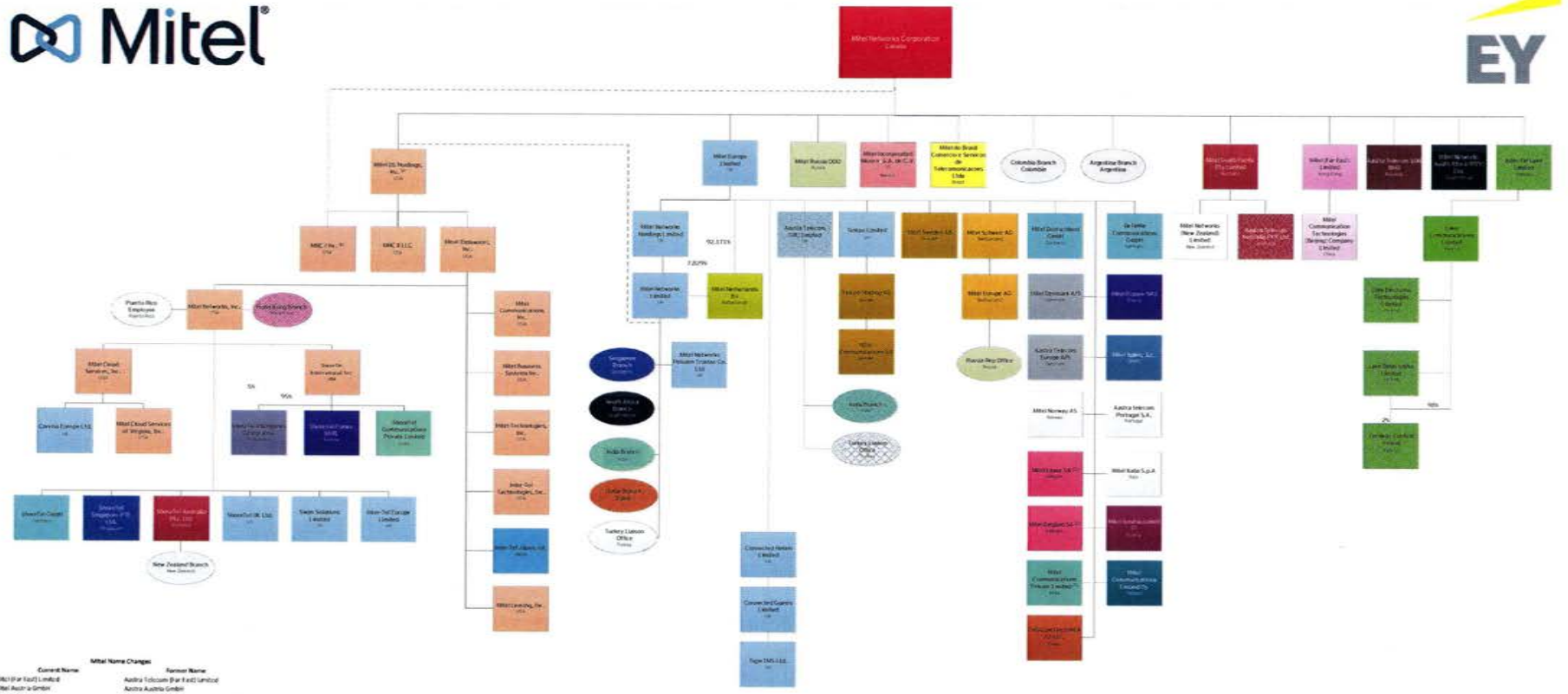


**Mitel Name Changes**

Current Name	Former Name
Mitel (UK) Field Limited	Austria Telecom (UK) Field Limited
Mitel Australia GmbH	Austria Telecom (Australia) GmbH
Mitel Belgium SA	Austria Telecom (Belgium) SA
Mitel Cloud Services of Virginia, Inc.	Mitel Telecommunications of Virginia, Inc.
Mitel Cloud Services, Inc.	Mitel Telecommunications, Inc.
Mitel Communications Technologies (Brazil) S.A.	Austria Communications Technologies (Brazil) S.A.
Mitel Communications (France) Ltd	Telecom AB
Mitel Communications Inc.	Austria (USA) Inc.
Mitel Denmark AS	Austria Telecom (Denmark) AS
Mitel Deutschland GmbH	Austria Deutschland GmbH
Mitel Europe AG	Austria Europe AG
Mitel France SAS	Austria France SAS
Mitel (Indonesia) Mexico, S.A. de C.V.	Austria (Indonesia) Mexico, S.A. de C.V.
Mitel Italia S.p.A.	Austria Italia S.p.A.
Mitel Korea SA	Austria Korea SA
Mitel Netherlands BV	Austria Telecom (Netherlands) BV
Mitel Networks South Africa (Pty) Ltd	Austria Telecom (South Africa) (Pty) Ltd
Mitel Norway AS	Austria Telecom (Norway) AS
Mitel Russia OOO	Austria RUS OOO
Mitel Sweden AB	Austria (Sweden) AB
Mitel Taiwan SA	Austria (Taiwan) SA
Mitel Thailand AB	Austria (Thailand) AB
Mitel (Taiwan) Communications Services, Inc.	Austria Telecom (Taiwan) Communications Services, Inc.
Mitel (Vietnam) Vietnam Data	Austria (Vietnam) Vietnam Data

\* Mitel Networks Limited owns 1% of Entity  
 \*\* Mitel Networks Corporation owns less than 1% interest in Entity  
 \*\*\* Mitel Austria GmbH Slovenia, Poland and Czech Republic employees and a rep office in Hungary  
 \*\*\*\* Mitel Networks Limited owns 1,000 Non Voting Class A Preference Shares  
 \*\*\*\*\* Mitel Europ Limited owns 99% of this Entity and an individual, Siddegritte Simeath owns 1% of Entity  
 ☒ To be dissolved

Pne



**Mitel Name Changes**

Current Name	Former Name
Mitel (Pty) Ltd	Austria Telekom (Pty) Ltd
Mitel Austria GmbH	Austria Austria GmbH
Mitel Belgium BV	Austria Belgium SA
Mitel Cloud Services of Virginia, Inc.	Mitel Networks of Virginia, Inc.
Mitel Cloud Services, Inc.	Mitel Networks, Inc.
Mitel Communication Technologies (Belgium) Company Limited	Austria Communication Technologies (Belgium) Company Limited
Mitel Communications AB	Teleago AB
Mitel Communication - Finland Oy	Austria Finland Oy
Mitel Communications Inc.	Austria USA Inc.
Mitel Denmark A/S	Austria Telecom Denmark A/S
Mitel Czech and GmbH	Austria Deutschland GmbH
Mitel Europe AG	Austria Europe AG
Mitel France SAS	Austria France SAS
Mitel Incorporated Mexico, S.A. de C.V.	Austria Incorporated Mexico, S.A. de C.V.
Mitel Italia S.p.A.	Austria Italia S.p.A.
Mitel Israel SA	Austria Israel SA
Mitel Netherlands BV	Austria Telecom Netherlands BV
Mitel Networks South Africa (PTY) Ltd	Austria Telecom South Africa (Proprietary) Limited
Mitel Norway AS	Austria Telecom Norway AS
Mitel Russia OOO	Austria RUS OOO
Mitel Schweiz AG	Austria Telecom Schweiz AG
Mitel Spain S.L.	Austria Telecom S.L.
Mitel Sweden AB	Austria Telecom Sweden AB
Mitel (Sri Lanka) Communication Services (P) Private Limited	Austria Telecom De Brand Industrie (Commu) Ltd.

(1) Mitel Networks Limited owns 1% of Entity  
 (2) Mitel Networks Corporation owns less than 1% interest in Entity  
 (3) Mitel Austria GmbH, Slovenia, Poland and Czech Republic employees and a rep office in Hungary  
 (4) Mitel Networks Limited owns 1,000 Non-Voting Class A Preference Shares  
 (5) Mitel Europe Limited owns 99% of this Entity and an individual, Sotilagetta Smith owns 1% of Entity  
 (6) Mitel Networks Corporation owns 4,346 preferred shares of MNC 1 Inc.  
 To be dissolved

ORGANIZATIONAL CHART AS AT DECEMBER 31, 2017

Post