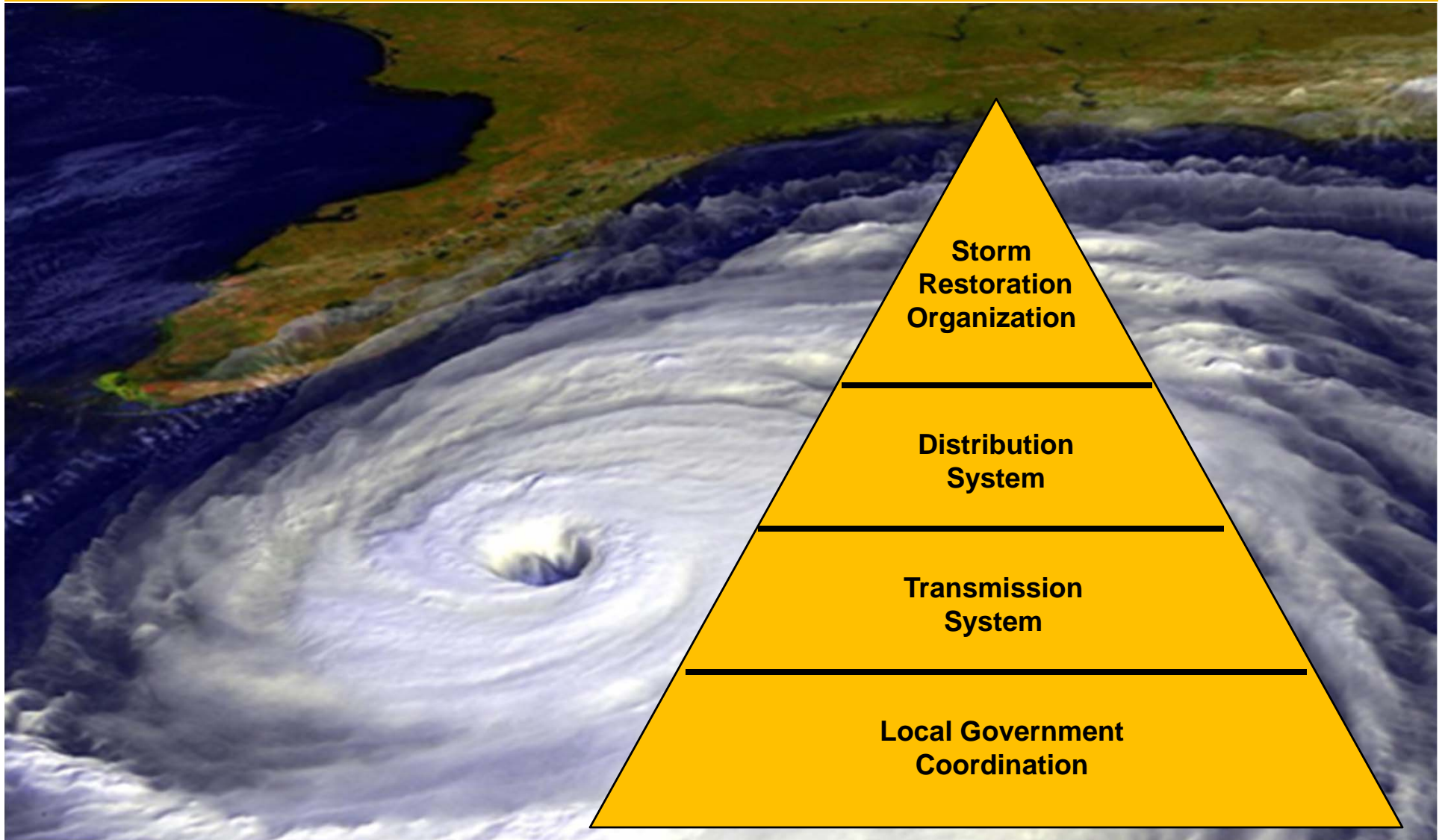


Florida PSC 2013 Hurricane Season Preparation Briefing

Progress Energy Florida

April 3, 2013

Hurricane Preparedness



Storm Restoration Organization

- Storm Plan Continuous Improvement
- Annual Pre-Season Storm Drill
- Internal Resources Secured
- External Resources Committed



Distribution System

- Pole Inspections
- System Maintenance
- Vegetation Management
- 10-Point Ongoing Storm Preparedness Plan
- Storm Hardening Rule



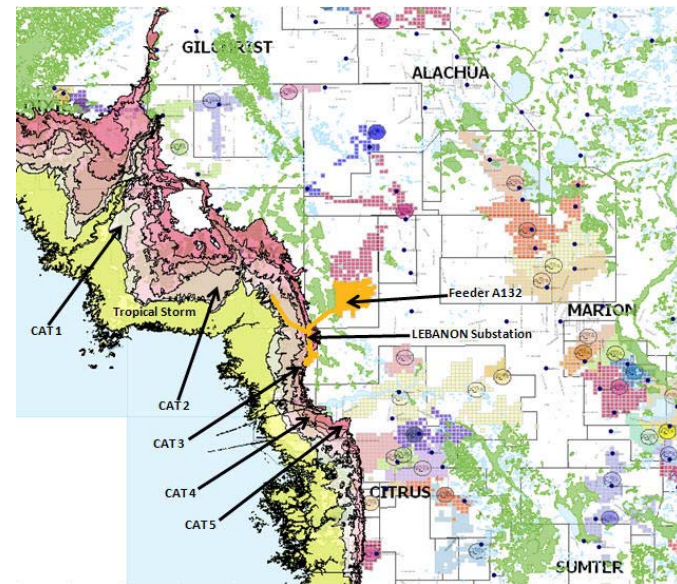
Transmission System

- Pole Inspections
- System Maintenance
- Vegetation Management
- 10-Point Ongoing Storm Preparedness Plan



Local Government Coordination

- **Cross-Functional Coordination Team**
- **Structured Information Sharing Before, During, and After Hurricane**
- **Electronic Outage Data to County EOC's**
- **“Know Where You Grow” Tree Program**
- **Public Communications and Outreach**



Hurricane Season Concerns, Vulnerabilities and Superstorm Sandy Lessons Learned

Concerns and Vulnerabilities

- No system can withstand a catastrophic hurricane without extensive damage and service interruptions
- Multiple hurricanes impacting our service territory has the potential to dilute emergency response resources
- Hurricanes with significant storm surge impacting low lying coastal areas are a concern

Superstorm Sandy

- Process for paying tolls for deployments needs to be established
- Strike teams need to be self-sufficient (DA teams, Nurse, S&L teams)
- 24/7 support for strike teams back home
- Work flow can impact daily productivity by off-system resources
- Staging site proficiency is critical



Hurricane Sandy:
**WORST STORM
EVER!**

More than 10 states along the East Coast suffered damage from Sandy, resulting in power interruptions for more than 9.6 million customers in the Northeast and locally to more than 850,000 PECO customers—making Sandy the largest and worst storm in company history (affecting more than half our customers). Continued on page 3

A photograph showing a utility worker on a bucket truck working on power lines at night. The scene is illuminated by the truck's lights, and the background shows a dark sky and some trees.

Hurricane Season Preparation Conclusion

- **T&D Systems Checked, Maintained**
- **Storm Organization Drilled and Prepared**
- **Internal and External Resources Secured or Committed**
- **Response Plan Tested and Continuously Improved**

