

Tampa Electric Company 2016 Hurricane Season Preparation

Darren Fudge
Manager, Distribution Services
March 30, 2016

Hurricane Preparedness Briefing

- **System Infrastructure**
- Pre-Storm Preparation & Coordination
- Areas of Concern



System Infrastructure

- Wood Pole Inspections
- Ten Point Plan Initiatives
- Three-Year Storm Hardening Plan



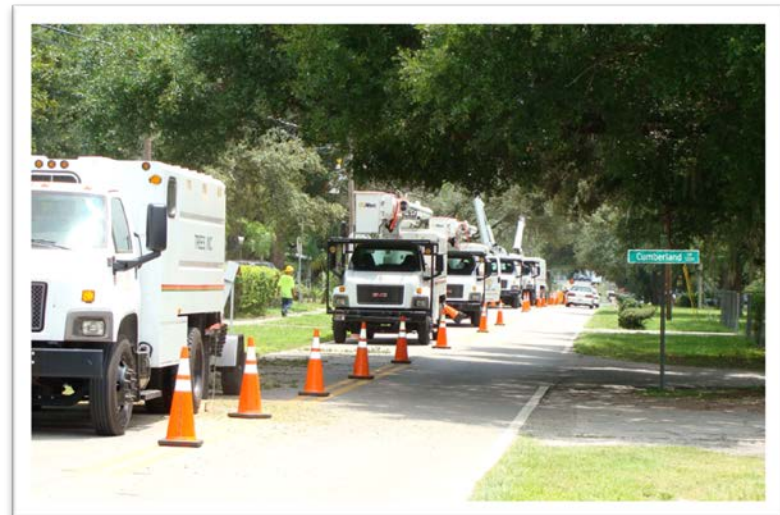
System Infrastructure

- Wood Pole Inspections
 - Inspect the Entire System every Eight Years
 - Repair, Reinforce or Replace
 - Pole Loading Analysis



System Infrastructure

- Ten Point Plan Initiatives
 - Vegetation Management
 - Four-Year Trimming Cycle of the Distribution System
 - Joint Use Attachers / Audit
 - Transmission Inspections
 - One & Eight-Year Cycles



System Infrastructure

- Ten Point Plan Initiatives (cont'd)
 - Transmission Hardening
 - New Construction and Maintenance
 - Post-Storm Forensic Data Collection
 - UG and OH Performance Data Collection



System Infrastructure

- Ten Point Plan Initiatives (cont'd)
 - Coordination with Local Governments
 - Disaster Preparedness and Recovery Plan



System Infrastructure

- Three-Year Storm Hardening
 - Grade B Construction for Distribution
 - Extreme Wind for Transmission
 - Extreme Wind + for 230 kV Transmission
 - Non-wood Construction for Transmission
 - Conversion of Overhead Distribution Interstate Crossings to Underground
 - Network Protectors Inspected, Tested and Repaired
 - Underground Construction – Stainless Steel
 - Submersible Switchgear Deployment

System Infrastructure

- Three-Year Storm Hardening (cont'd)
 - Storm Hardening Projects
 - Submersible Switchgear Downtown Tampa Distribution Network, Tampa International Airport (2015)



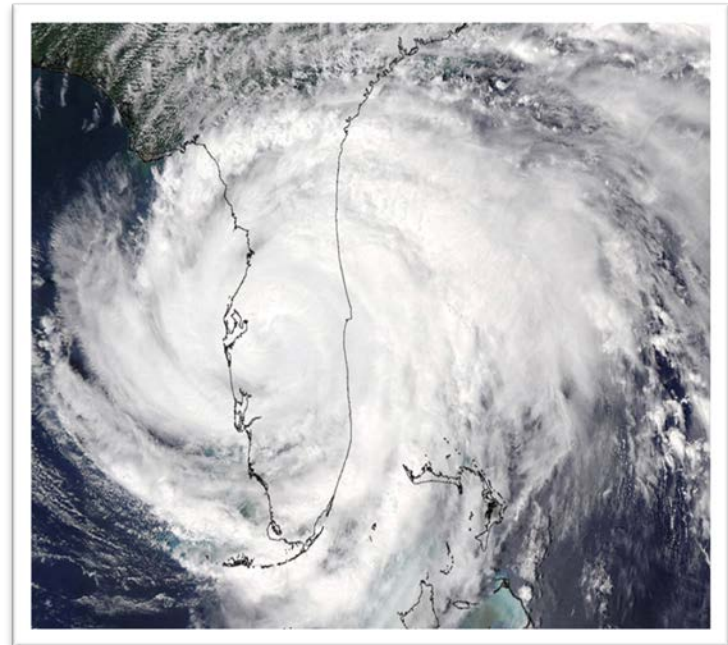
Hurricane Preparedness Briefing

- System Infrastructure
- **Pre-Storm Preparation & Coordination**
- Areas of Concern



Pre-Storm Preparation & Coordination

- Mock Storm Exercise
- Priority Customers and Circuits Review
 - Priorities 1-5
- Storm Readiness Programs
- AEIC Storm Restoration Committee
- Review of Storm Plan by Davies Consulting



Pre-Storm Preparation & Coordination

- Storm Plan Improvements
 - Damage Assessment Tool Implementation
 - 2-man Cut & Clear Crews
 - Damage Isolation Forms for OMS
 - Estimated Time for Restoration (ETR)
 - De-energize Downtown Network
 - Use of Twitter and Facebook
- Material Inventory Review
- Restoration Providers
 - Southeast Electric Exchange
 - Native Contractors



Hurricane Preparedness Briefing

- System Infrastructure
- Pre-Storm Preparation & Coordination
- **Areas of Concern**



Areas of Concern

- Vulnerability to Storm Surge
- Resource Availability
- Catastrophic Storm



Summary

- Storm Ready
 - System
 - People
 - External Relationships and Contracts

