
COMPETITIVE TELECOMMUNICATIONS ACCESS SERVICES PRICE LIST

FLORIDA
COMPETITIVE TELECOMMUNICATIONS ACCESS SERVICES PRICE LIST
OF
Bandwidth.com CLEC, LLC

This tariff contains the descriptions, regulations and rates applicable to the furnishing of competitive telecommunications access services and facilities by Bandwidth.com CLEC, LLC, ("the Company"), within the State of Florida. This tariff is on file with the Florida Public Service Commission. Copies may be inspected during normal business hours at the Company's principal place of business at 900 Main Campus Drive, Suite 500, Raleigh, NC 27606.

(T)
(T)

Issued: July 28, 2014

Effective: July 31, 2014

By: Lisa Jill Freeman, Vice President & Regulatory Compliance Officer
900 Main Campus Drive, Suite 500
Raleigh, NC 27606

 COMPETITIVE TELECOMMUNICATIONS ACCESS SERVICES PRICE LIST

CHECK SHEET

Sheets of this tariff are effective as of the date shown at the bottom of the respective sheet(s). Original and revised sheets as named below comprise all changes from the original tariff and are currently in effect as of the date on the bottom of this sheet.

PAGE	REVISION		PAGE	REVISION	
1	First Revised		28	Original	
2	Fifth Revised	*	29	Original	
3	First Revised		30	First Revised	
4	Original		31	Original	
5	Original		32	Original	
6	Second Revised	*	33	Original	
7	Second Revised	*	34	First Revised	*
8	Second Revised	*	35	Original	
9	Second Revised	*	36	Original	
10	Original		37	First Revised	
11	Original		37.1	Original	
12	Original		38	Second Revised	*
13	Original		39	Second Revised	*
14	First Revised		40	First Revised	
15	First Revised		41	Third Revised	*
16	Original		41.1	Original	*
17	Original		41.2	Original	*
18	Original		41.3	Original	*
19	Original		42	Third Revised	*
20	Original		43	Second Revised	*
21	Original		44	Fifth Revised	*
22	Original		44.0.1	Original	*
23	Original		44.1	Original	
24	Original		45	Original	
25	Original		46	First Revised	*
26	First Revised	*	47	First Revised	*
27	Original		48	First Revised	*
			49	Original	*
			50	Original	*
			51	Original	*
			52	Original	*
			53	Original	*

* Indicates pages included in this filing

 Issued: June 30, 2021

Effective: July 1, 2021

By: Lisa Jill Freeman, Vice President & Regulatory Compliance Officer
900 Main Campus Drive, Suite 100
Raleigh, NC 27606

COMPETITIVE TELECOMMUNICATIONS ACCESS SERVICES PRICE LIST

TABLE OF CONTENTS

CHECK SHEET.....2

TABLE OF CONTENTS.....3

SYMBOLS.....4

TARIFF FORMAT5

SECTION 1- DEFINITIONS.....6

SECTION 2- RULES AND REGULATIONS 10

SECTION 3- ORDERING OPTIONS FOR ACCESS SERVICE.....36

SECTION 4- SWITCHED ACCESS SERVICE38

SECTION 5- SWITCHED ACCESS RATES41

SECTION 6 - CONTRACTS AND INDIVIDUAL CASE BASIS ARRANGEMENTS45

SECTION 7 – CALL FLOW DIAGRAMS.....46

(N)

Issued: August

Lisa Jill Freeman
Vice President & Regulatory Compliance Officer
Venture Center III - 5th Floor
900 Main Campus Drive
Raleigh, North Carolina 27060

Effective: August 26, 2010

COMPETITIVE TELECOMMUNICATIONS ACCESS SERVICES PRICE LIST

SYMBOLS

The following are the only symbols used for the purposes indicated below:

- D Delete or discontinue.
- I Change resulting in an increase to a customers bill.
- M Moved from another tariff location.
- N New.
- R Change resulting in a reduction to a customer's bill.
- T Change in text or regulation but no change in rate or charge.

Issued: Ma
By:

Lisa Jill Freeman
Vice President & Regulatory Compliance Officer
Venture Center III - 5th Floor
900 Main Campus Drive
Raleigh, North Carolina 27060

Effective: MAY 28 2009

COMPETITIVE TELECOMMUNICATIONS ACCESS SERVICES PRICE LIST

TARIFF FORMAT

- A. **Sheet Numbering** - Sheet numbers appear in the upper right corner of the sheet. Sheets are numbered sequentially. However, new sheets are occasionally added to the tariff. When a new sheet is added between sheets already in effect, a decimal is added. For example, a new sheet added between sheets 14 and 15 would be 14.1.
- B. **Sheet Revision Numbers** - Revision numbers also appear in the upper right corner of each sheet. These numbers are used to determine the most current sheet version on file with the Commission. For example, the 4th revised Sheet 14 cancels the 3rd revised Sheet 14. Because of various suspension periods, deferrals, etc. the Commission follows in its tariff approval process, the most current sheet number on file with the Commission is not always the sheet in effect. Consult the Check Sheet for the sheet currently in effect.
- C. **Paragraph Numbering Sequence** - There are nine levels of paragraph coding. Each level of coding is subservient to the next higher level:
- 2.
 - 2.1.
 - 2.1.1.
 - 2.1.1.A.
 - 2.1.1.A.1.
 - 2.1.1.A.1.(a).
 - 2.1.1.A.1.(a).I.(i).
 - 2.1.1.A.1.(a).I.(i).
 - 2.1.1.A.1.(a).I.(i).I.
- D. **Check Sheets** - When a tariff filing is made with the FCC, an updated Check Sheet accompanies the tariff filing. The Check Sheet lists the sheets contained in the tariff, with a cross-reference to the current revision number. When new sheets are added, the Check Sheet is changed to reflect the revision. All revisions made in a given filing are designated by an asterisk (*). There will be no other symbols used on this sheet if these are the only changes made to it (i.e., the format, etc. remain the same, just revised revision levels on some sheets.) The tariff user should refer to the latest Check Sheet to find out if a particular sheet is the most current on file with the FCC.

Issued: May
By:

Lisa Jill Freeman
Vice President & Regulatory Compliance Officer
Venture Center III - 5th Floor
900 Main Campus Drive
Raleigh, North Carolina 27060

Effective: MAY 28 2009

COMPETITIVE TELECOMMUNICATIONS ACCESS SERVICES PRICE LIST

SECTION 1- DEFINITIONS

Certain terms used generally throughout this tariff for the Access Services of this Company are defined below.

Access Code: A uniform seven-digit code assigned by the Company to an individual Customer. The seven-digit code has the form 950-XXXX or 101XXXX.

Access Service: Access to the network of an Interexchange Carrier for the purpose of originating or terminating communications. (T)

Access Service Request (ASR): The industry service order format used by Access Service Customers and access providers as agreed to by the Ordering and Billing Forum.

Authorized User: A person, firm, corporation or other entity that either is authorized by the Customer to use Access Services or is placed in a position by the Customer, either through acts or omissions, to use Access Services.

Carrier or Common Carrier: See Interexchange Carrier or Exchange Carrier.

Channel: A communications path between two or more points.

Commission: The Florida Public Service Commission.

Common Channel Signaling (CCS): A high-speed packet switched communications network that is separate (out of band) from the public packet switched and message networks. It is used to carry addressed signaling messages for individual trunk circuits and/or database related services between signaling points in the CCS network.

Company: Bandwidth.com CLEC, LLC, dba Bandwidth.com, issuer of this tariff.

Constructive Order: Delivery of calls to or acceptance of calls from the Company's End User locations over Company-switched local exchange services constitutes a Constructive Order by the Customer to purchase switched access services as described herein. Similarly the selection by a Company's End User of the Customer as the presubscribed IXC constitutes a Constructive Order of switched access by the Customer.

Issued: June 30, 2021

Effective: July 1, 2021

By: Lisa Jill Freeman, Vice President & Regulatory Compliance Officer
900 Main Campus Drive, Suite 100
Raleigh, NC 27606

COMPETITIVE TELECOMMUNICATIONS ACCESS SERVICES PRICE LIST

SECTION 1- DEFINITIONS, (Cont'd.)

Customer: The person, firm, corporation or other entity that orders Service and is responsible for the payment of charges and for compliance with the Company's tariff regulations. The Customer could be an interexchange carrier, a wireless provider, or any other carrier authorized to operate in the state.

8YY Data Base Access Service: The term "8YY Data Base Access Service" denotes a toll-free originating Trunk side Access Service when the 8YY Service Access Code (i.e., 800, 822, 833, 844, 855, 866, 877, or 888 as available) is used.

End User: Any individual, association, corporation, governmental agency or any other entity subscribing to telecommunications or VoIP service provided by an Exchange Carrier or VoIP Provider Partner where such individual, association, corporation, governmental agency or other entity is not an Interexchange Carrier, Local Exchange Carrier, Wireless Carrier or other entity otherwise utilizing the Company's services to provide a telecommunications service (as defined by applicable law) to its own customers. (C)

Exchange Carrier: Any individual, partnership, association, joint-stock company, trust, governmental entity or corporation engaged in the provision of local exchange telephone service.

Firm Order Confirmation (FOC): Acknowledgment by the Company of receipt of an Access Service Request from the Customer and commitment by the Company of a Service Date.

Individual Case Basis: A service arrangement in which the regulations, rates and charges are developed based on the specific circumstances of the Customer's situation.

Interexchange Carrier (IXC) or Interexchange Common Carrier: Any individual, partnership, association, joint-stock company, trust, governmental entity or corporation engaged in state or foreign communication for hire by wire or radio, between two or more exchanges.

LATA: A local access and transport area established pursuant to the Modification of Final Judgment entered by the United States District Court for the District of Columbia in Civil Action No. 82-0192 for the provision and administration of communications services.

Line Information Data Base (LIDB): The data base which contains base information such as telephone numbers, calling card numbers and associated billed number restriction data used in connection with the validation and billing of calls.

Issued: June 30, 2021

Effective: July 1, 2021

By: Lisa Jill Freeman, Vice President & Regulatory Compliance Officer
900 Main Campus Drive, Suite 100
Raleigh, NC 27606

COMPETITIVE TELECOMMUNICATIONS ACCESS SERVICES PRICE LIST

SECTION 1- DEFINITIONS, (Cont'd.)

Local Switching Center: The switching system that provides service to the End User. (C)

Local Traffic: Traffic is “Local Traffic” under this tariff is: (i) the call originates and terminates in the same exchange area; or (ii) the call originates and terminates within different Company Exchanges that share a common mandatory local calling area, e.g., a mandatory Extended Local Calling Service (ELCS) or Extended Area Service areas (EAS) or other like types of mandatory local calling scopes.

Meet Point: A point of interconnection that is not an end office or tandem.

Meet Point Billing: The arrangement through which multiple Exchange Carriers involved in providing Access Services, divide the ordering, rating, and billing of such services on a proportional basis, so that each Exchange Carrier involved in providing a portion of the Access Service agrees to bill under its respective tariff.

Non-Recurring Charges: The one-time initial charges for services or facilities, including but not limited to charges for construction, installation, or special fees, for which the Customer becomes liable at the time the Service Order is executed.

Issued: June 30, 2021

Effective: July 1, 2021

By: Lisa Jill Freeman, Vice President & Regulatory Compliance Officer
900 Main Campus Drive, Suite 100
Raleigh, NC 27606

COMPETITIVE TELECOMMUNICATIONS ACCESS SERVICES PRICE LIST

SECTION 1- DEFINITIONS, (Cont'd.)

Out of Band Signaling: An exchange access signaling feature which allows customers to exchange call control and signaling information over a communications path which is separate from the message path.

Premises: The space occupied by a Customer or Authorized User in a building or buildings or on contiguous property (except railroad rights-of-way, etc.).

Presubscription: An arrangement whereby an End User or other user of the Company's services may select and designate to the Company an Interexchange Carrier (IXC) or Carriers it wishes to access, without an Access Code, for completing both intraLATA toll calls and/or interLATA calls. The selected IXC(s) are referred to as the End User's or user's Primary Interexchange Carrier (PIC).

Recurring Charges: The monthly charges to the Customer for services, facilities and equipment, which continue for the duration of the service.

Service Order: See Access Service Request.

Signaling Point of Interface: The Customer designated location where the SS7 signaling information is exchanged between the Company and the Customer.

Signaling System 7 (SS7): The common Channel Out of Band Signaling protocol developed by the Consultative Committee for International Telephone and Telegraph (CCITT) and the American National Standards Institute (ANSI).

Station: Refers to telephone, conference bridge, or IP compatible customer premise equipment from or to which calls are placed. (C)
(C)

Tandem Switching: Tandem switching is a communication switching function that provides a concentration and distribution function for originating or terminating traffic between Local Switching Centers. (N)
|
(N)

Trunk: A communications path connecting two switching systems in a network, used in the establishment of an end-to-end connection.

VoIP Service – Transmission of communication by aid of wire, cable, radio, or other like connection using Voice Over Internet Protocol that is originated or terminated in Internet Protocol (IP) format. VoIP services are those services that require the use of IP compatible customer premises equipment. (N)
|
|
|

VoIP Provider Partner – A provider of VoIP Service to End Users where the Company provides the connectivity and supporting functions for PSTN interconnection and/or number resources. A VoIP Provider Partner may or may not provide a physical connection to the last-mile facilities used to serve an End User. (N)
|

Wireless Provider: Any carrier authorized to operate as a provider of cellular, personal communications, paging or any other form of wireless transmission.

Issued: June 30, 2021

Effective: July 1, 2021

By: Lisa Jill Freeman, Vice President & Regulatory Compliance Officer
 900 Main Campus Drive, Suite 100
 Raleigh, NC 27606

COMPETITIVE TELECOMMUNICATIONS ACCESS SERVICES PRICE LIST

SECTION 2- RULES AND REGULATIONS**2.1 Undertaking of the Company****2.1.1 Scope**

The Company's services offered pursuant to this Tariff are furnished for Switched Access Service. The Company may offer these services over its own or resold facilities.

The Company installs, operates, and maintains the communications services provided herein in accordance with the terms and conditions set forth under this Tariff. The Company may act as the Customer's agent for ordering access connection facilities provided by other carriers or entities as required in the Commission's rules and orders, when authorized by the Customer, to allow connection of a Customer's location to the Company's network. The Customer shall be responsible for all charges due for such service agreement.

The Company's services and facilities are provided on a monthly basis unless otherwise indicated, and are available twenty-four hours per day, seven days per week.

2.1.2 Shortage of Equipment or Facilities

- A. The Company reserves the right to limit or to allocate the use of existing facilities, or of additional facilities offered by the Company when necessary because of lack of facilities or due to some other cause beyond the Company's control.
- B. The furnishing of service under this tariff is subject to the availability on a continuing basis of all the necessary facilities and is limited to the capacity of the Company's facilities as well as facilities the company may obtain from other Carriers from time to time, to furnish service as required at the sole discretion of the Company.
- C. The provisioning and restoration of service in emergencies shall be in accordance with Part 64, Subpart D, Appendix A of the Federal Communications Commission's Rules and Regulations, which specifies the priority system for such activities.

Issued: May 2
By:

Lisa Jill Freeman
Vice President & Regulatory Compliance Officer
Venture Center III - 5th Floor
900 Main Campus Drive
Raleigh, North Carolina 27060

Effective: MAY 28 2009

COMPETITIVE TELECOMMUNICATIONS ACCESS SERVICES PRICE LIST

SECTION 2- RULES AND REGULATIONS (Cont'd.)**2.1 Undertaking of the Company (Cont'd.)****2.1.3 Terms and Conditions**

- A. Except as otherwise provided herein, service is provided and billed on the basis of a minimum period of at least one month, and shall continue to be provided until canceled by the Customer, in writing, on not less than 30 days notice. Unless otherwise specified herein, for the purpose of computing charges in this tariff, a month is considered to have 30 days.
- B. Customers seeking to cancel service have an affirmative obligation to block traffic originating from or terminating to the Company's network. By originating traffic from or originating traffic to the Company's network, the Customer will have constructively ordered the Company's switched access service.
- C. The Customer agrees to operate Company-provided equipment in accordance with instructions of the Company or the Company's agent. Failure to do so will void Company liability for interruption of service and may make the Customer responsible for damage to equipment pursuant to section 2.1.3 .D below.
- D. The Customer agrees to return to the Company all Company-provided equipment delivered to Customer within five (5) days of termination of the service in connection with which the equipment was used. Said equipment shall be in the same condition as when delivered to Customer, normal wear and tear only excepted. Customer shall reimburse the Company, upon demand, for any costs incurred by the Company due to Customer's failure to comply with this provision.

Issued: May 2'
By:

Lisa Jill Freeman
Vice President & Regulatory Compliance Officer
Venture Center III - 5th Floor
900 Main Campus Drive
Raleigh, North Carolina 27060

Effective: MAY 2 8 2009

COMPETITIVE TELECOMMUNICATIONS ACCESS SERVICES PRICE LIST

SECTION 2- RULES AND REGULATIONS (Cont'd.)**2.1 Undertaking of the Company (Cont'd.)****2.1.4 Liability of the Company**

- A. The liability of the Company for damages arising out of the furnishing of its Services, including but not limited to mistakes, omissions, interruptions, delays, errors, other defects, or representations by the Company, or use of these services or damages arising out of the failure to furnish the service whether caused by act or omission, shall be limited to the extension of allowances for interruption as set forth in 2.6 below. The extension of such allowances for interruption shall be the sole remedy of the Customer and the sole liability of the Company. The Company will not be liable for any direct, indirect, incidental, special, consequential, exemplary or punitive damages to Customer as a result of any Company service, equipment or facilities, or the acts or omissions or negligence of the Company's employees or agents.
- B. With respect to any other claim or suit, by a Customer or by any others, for damages associated with the ordering (including the reservation of any specific number for use with a service), installation (including delays thereof), provision, termination, maintenance, repair interruption or restoration of any service or facilities offered under this tariff, the Company's liability, if any, shall be limited as provided herein.
- C. The Company shall not be liable for any delay or failure of performance or equipment due to causes beyond its control, including but not limited to: acts of God, fire, flood, explosion or other catastrophes; any law, order, regulation, direction action, or request of The United States government or of any other government, including state and local governments having or claiming jurisdiction over the Company, or of any department, agency, commission, bureau, corporation, or other instrumentality of any one or more of these federal, state, or local governments, or of any military authority; preemption of existing service in compliance with national emergencies; insurrections; riots; wars; unavailability of rights-of-way or materials; or strikes, lockouts work stoppages, or other labor difficulties.

Issued: May
By:

Lisa Jill Freeman
Vice President & Regulatory Compliance Officer
Venture Center III - 5th Floor
900 Main Campus Drive
Raleigh, North Carolina 27060

Effective: MAY 28 2009

COMPETITIVE TELECOMMUNICATIONS ACCESS SERVICES PRICE LIST

SECTION 2- RULES AND REGULATIONS (Cont'd.)**2.1 Undertaking of The Company (Cont'd.)****2.1.4 Liability of the Company (Cont'd)**

- D. The Company shall not be liable for (a) any act or omission of any entity furnishing the Company or the Company's Customers facilities or equipment used for the interconnection with Access Services; or (b) for the acts or omissions of other Common Carriers.
- E. The Company shall not be liable for any damages or losses due to the fault or negligence of the Customer or due to the failure or malfunction of Customer-provided equipment or facilities.
- F. The Customer shall indemnify and hold the Company harmless from any and all loss, claims, demands, suits, or other actions, or any liability whatsoever, whether suffered, made, instituted, or asserted by any other party or person(s), and for any loss, damage, or destruction of any property, whether owned by the Customer or others, caused or claimed to have been caused directly or indirectly by the installation, operation, failure to operate, maintenance, removal, condition, location, or use of any installation or equipment provided by the Company. The Company reserves the right to require each Customer to sign an agreement acknowledging acceptance of the provisions of this Section 2.1.4.F as a condition precedent to such installations.
- G. The Company shall not be liable for any defacement of or damage to Customers Premises resulting from the furnishing of services or equipment on such Premises or the installation or removal thereof, unless such defacement or damage is caused by the gross negligence or willful misconduct of the Company's agents or employees. No agents or employees of other participating Carriers shall be deemed to be agents or employees' of the Company.

Issued: May
By:

Lisa Jill Freeman
Vice President & Regulatory Compliance Officer
Venture Center III - 5th Floor
900 Main Campus Drive
Raleigh, North Carolina 27060

Effective: **MAY 28 2009**

COMPETITIVE TELECOMMUNICATIONS ACCESS SERVICES PRICE LIST

SECTION 2- RULES AND REGULATIONS, (Cont'd.)

2.1 Undertaking of the Company, (Cont'd.)

2.1.4 Liability of the Company (Cont'd)

- H. Notwithstanding the Customer's obligations as set forth in Section 2.3 below, the Company shall be indemnified, defended and held harmless by the Customer, or by others authorized by it to use the service, against any claim, loss or damage arising from Customer's use of services furnished under this tariff, including: claims for libel, slander, invasion of privacy or infringement of copyright arising from the material, data, information, or other content transmitted via the Company's service; and patent infringement claims arising from combining or connecting the service offered by the Company with apparatus and systems of the Customer or others; all other claims arising out of any act or omission of the Customer or others, in connection with any service provided by the Company pursuant to this tariff.
- I. The Company shall be indemnified and held harmless by the End User or other user of the services hereunder against any claim, loss or damage arising from the End User's or such other user's use of services offered under this tariff including: claims for libel, slander, invasion of privacy or infringement of copyright arising from the End User's or such other user's own communications; patent infringement claims arising from the End User's or such other user's combining or connecting the service offered by the Company with facilities or equipment furnished by the End User of another Interexchange Carrier; or all other claims arising out of any act or omission of the End User or such other user in connection with any service provided pursuant to this tariff. (T)
| (T)
- J. The entire liability of the Company for any claim, loss, damage or expense from any cause whatsoever shall in no event exceed sums actually paid to the Company by the Customer for the specific services giving rise to the claim, and no action or proceeding against the Company shall be commenced more than one year after the service is rendered.
- K. The Company makes no warranties or representation, express or implied, including warranties of merchantability or fitness for a particular use, except those expressly set forth herein. (T)

Issued: August

Lisa Jill Freeman
Vice President & Regulatory Compliance Officer
Venture Center III - 5th Floor
900 Main Campus Drive
Raleigh, North Carolina 27060

Effective: August 26, 2010

COMPETITIVE TELECOMMUNICATIONS ACCESS SERVICES PRICE LIST

SECTION 2- RULES AND REGULATIONS, (Cont'd.)

2.1 Undertaking of the Company, (Cont'd.)

2.1.4 Liability of the Company, (Cont'd.)

L. The Company shall not be liable for any act or omission of any other company or companies furnishing a portion of the service, or for damages associated with service, Channels, or equipment which result from the operation of Customer-provided systems, equipment, facilities or service which are interconnected with Company services.

M. The Company does not guarantee nor make any warranty with respect to service installations at locations at which there is present an atmosphere that is explosive, prone to fire, dangerous or otherwise unsuitable for such installations. The Customer and End User or other user of the Company's services shall indemnify and hold the Company harmless from any and all loss, claims, demands, suits or other actions, or any liability whatsoever, whether suffered, made, instituted or asserted by the Customer or by any other party, for any personal injury to, or death of, any person or persons, or for any loss, damage or destruction of any property, whether owned by the Customer or others, caused or claimed to have been caused directly or indirectly, by the installation, operation, failure to operate, maintenance, removal, presence, condition, locations or use of service furnished by the Company at such locations. (T)

Issued: Augt

Lisa Jill Freeman
Vice President & Regulatory Compliance Officer
Venture Center III - 5th Floor
900 Main Campus Drive
Raleigh, North Carolina 27060

Effective: August 26, 2010

COMPETITIVE TELECOMMUNICATIONS ACCESS SERVICES PRICE LIST

SECTION 2- RULES AND REGULATIONS (Cont'd.)**2.1 Undertaking of The Company (Cont'd.)****2.1.4 Liability of the Company (Cont'd.)**

- N. The Company shall not be liable for the Customer's failure to fulfill its obligations to take all necessary steps including, without limitation, obtaining, installing and maintaining all necessary equipment, materials and supplies, for interconnecting the terminal equipment or communications system of the Customer, or any third party acting as its agent, to the Company's Network. The Customer shall secure all licenses, permits, rights-of-way, and other arrangements necessary for such interconnection. In addition, the Customer shall ensure that its equipment and/or system or that of its agent is properly interfaced with the Company's service, that the signals emitted into the Company's Network are of the proper mode, band-width, power, data speed, and signal level for the intended use of the Customer and in compliance with the criteria set forth in Section 2.1.6 following, and that the signals do not damage Company equipment, injure its personnel or degrade service to other Customers. If the Customer or its agent fails to maintain and operate its equipment and/or system or that of its agent properly, with resulting imminent harm to Company equipment, personnel, or the quality of service to other Customers, the Company, may, upon written notice, require the use of protective equipment at the Customer's expense. If this fails to produce satisfactory quality and safety, the Company may, upon written notice, terminate the Customer's service without liability.

2.1.5 Notification of Service-Affecting Activities

The Company will provide the Customer reasonable notification of service-affecting activities within its control that may occur in normal operation of its business. Such activities may include, but are not limited to, equipment or facilities additions, removals or rearrangements and routine preventative maintenance. Generally, such activities are not specific to an individual Customer but affect many Customers' services. No specific advance notification period is applicable to all service activities. The Company will work cooperatively with the Customer to determine the reasonable, notification requirements. With some emergency or unplanned service-affecting conditions, such as an outage resulting from cable damage, notification to the Customer may not be possible.

Issued: May 27
By:

Lisa Jill Freeman
Vice President & Regulatory Compliance Officer
Venture Center III - 5th Floor
900 Main Campus Drive
Raleigh, North Carolina 27060

Effective:
MAY 28 2009

COMPETITIVE TELECOMMUNICATIONS ACCESS SERVICES PRICE LIST

SECTION 2- RULES AND REGULATIONS (Cont'd.)

2.1 Undertaking of The Company (Cont'd.)

2.1.6 Provisions of Equipment and Facilities

- A. The Company shall use reasonable efforts to make available services to a Customer on or before a particular date, subject to the provisions of and compliance by the Customer with, the regulations contained in this tariff. The Company does not guarantee availability by any such date and shall not be liable for any delays in commencing service to any Customer.
- B. The Company shall use reasonable efforts to maintain facilities and equipment that it furnishes to the Customer. The Customer may not, nor may the Customer permit others to, rearrange, disconnect, remove, attempt to repair or otherwise interfere with any of the facilities or equipment installed by the Company, except upon the written consent of the Company.
- C. The Company may substitute, change or rearrange any equipment or facility at any time and from time to time, but shall not thereby alter the technical parameters of the service provided the Customer.
- D. Equipment the Company provides or installs at the Customer Premises for use in connection with the services the Company offers shall not be used for any purpose other than that for which the Company provided it.
- E. The Customer shall be responsible for the payment of service charges imposed on the Company by another entity, for visits to the Customer Premises when the service difficulty or trouble report results from the use of equipment or facilities provided by any party other than the Company, including but not limited to the Customer.

Issued: May
By:

Lisa Jill Freeman
Vice President & Regulatory Compliance Officer
Venture Center III - 5th Floor
900 Main Campus Drive
Raleigh, North Carolina 27060

Effective: MAY 28 2009

COMPETITIVE TELECOMMUNICATIONS ACCESS SERVICES PRICE LIST

SECTION 2- RULES AND REGULATIONS (Cont'd.)**2.1 Undertaking of The Company (Cont'd.)****2.1.6 Provisions of Equipment and Facilities (Cont'd.)**

- F. The Company shall not be responsible for the installation, operation, or maintenance of any Customer provided communications equipment. Where such equipment is connected to the facilities furnished pursuant to this tariff, the responsibility of the Company shall be limited to the furnishing of facilities offered under this tariff and to the maintenance and operation of such facilities. Notwithstanding the above, the Company shall not be responsible for:
1. the transmission of signals by Customer-provided equipment or for the quality of, or defects in, such transmission;
 2. the reception of signals by Customer-provided equipment; or
 3. network control signaling where such signaling is performed by Customer-provided network control signaling equipment.
- G. The Company intends to work cooperatively with the Customer to develop network contingency plans in order to maintain maximum network capability following natural or man-made disasters which affect telecommunications services.
- H. The Company reserves the reasonable right to assign, designate or change telephone numbers, any other call number designations associated with Access Services, or the Company serving central office prefixes associated with such numbers, when necessary in the conduct of its business.

2.1.7 Non-routine Installation

At the Customer's request, installation and/or maintenance may be performed outside the Company's regular business hours or in unusual locations. In such cases, charges based on cost of the actual labor, material, or other costs incurred by or charged to the Company will apply. If installation is started during regular business hours but, at the Customer's request, extends beyond regular business hours into time periods including, but not limited to, weekends, holidays, and/or night hours, additional charges may apply.

Issued: May 2
By:

Lisa Jill Freeman
Vice President & Regulatory Compliance Officer
Venture Center III - 5th Floor
900 Main Campus Drive
Raleigh, North Carolina 27060

Effective: MAY 28 2009

COMPETITIVE TELECOMMUNICATIONS ACCESS SERVICES PRICE LIST

SECTION 2- RULES AND REGULATIONS (Cont'd.)**2.1 Undertaking of The Company (Cont'd.)****2.1.8 Special Construction**

Subject to the arrangement of the Company and to all of the regulations contained in this tariff, special construction of facilities may be undertaken on a reasonable efforts basis at the request of the Customer. Special construction is that construction undertaken and characterized by one or more of the following:

- A. where facilities are not presently available and there is no other requirement for the facilities so constructed;
- B. of a type other than that which the Company would normally utilize in the furnishing of its services;
- C. where facilities are to be installed over a route other than that which the Company would normally utilize in the furnishing of its services;
- D. where facilities are requested in a quantity greater than that which the Company would normally construct;
- E. where installation is on an expedited basis;
- F. on a temporary basis until permanent facilities are available;
- G. installation involving abnormal costs; or
- H. in advance of its normal construction schedules.

Special construction charges for Switched Access Service will be determined on an individual use basis.

2.1.9 Ownership of Facilities

Title to all facilities provided in accordance with this tariff remains in the Company, its agents, contractors or suppliers.

Issued: May
By:

Lisa Jill Freeman
Vice President & Regulatory Compliance Officer
Venture Center III - 5th Floor
900 Main Campus Drive
Raleigh, North Carolina 27060

Effective: **MAY 28 2009**

COMPETITIVE TELECOMMUNICATIONS ACCESS SERVICES PRICE LIST

SECTION 2- RULES AND REGULATIONS (Cont'd.)**2.2 Prohibited Uses**

- 2.2.1 The services the Company offers shall not be used for any unlawful purposes or for any use as to which the Customer has not obtained all required governmental approvals, authorizations, licenses, consents and permits.
- 2.2.2 The Company may require applicants for service who intend to use the Company's offerings for resale and/or for shared use to file a letter with the Company confirming their use of the Company's offerings complies with relevant laws and applicable state regulations, policies, orders, and decisions; and if the Reseller intends to provide intrastate services, is certified with the appropriate state entity.
- 2.2.3 The Company may require a Customer to immediately shut down its transmission of signals if said transmission is causing interference to others.

2.3 Obligations of the Customer**2.3.1 The Customer shall be responsible for:**

- A. the payment of all applicable charges pursuant to this tariff
- B. reimbursing the Company for damage to, or loss of, the Company's facilities or equipment caused by the acts or omissions of the Customer; or the noncompliance by the Customer with these regulations; or by fire or theft or other casualty on the Customer Premises, unless caused by the negligence or willful misconduct of the employees or agents of the Company. The Company will, upon reimbursement for damages to its facilities or equipment, cooperate with the Customer in prosecuting a claim against the person causing such damage and the Customer shall be subjugated in the Company's right of recovery of damages to the extent of such payment;
- C. providing at no charge, as specified from time to time by the Company, any needed personnel, equipment, space, and power to operate Company facilities and equipment installed on the Customer Premises, and the level of heating and air conditioning necessary to maintain the proper operating environment on such Premises;

Issued: May
By:

Lisa Jill Freeman
Vice President & Regulatory Compliance Officer
Venture Center III - 5th Floor
900 Main Campus Drive
Raleigh, North Carolina 27060

Effective: MAY 28 2009

COMPETITIVE TELECOMMUNICATIONS ACCESS SERVICES PRICE LIST

SECTION 2- RULES AND REGULATIONS (Cont'd.)**2.3 Obligations of the Customer (Cont'd.)****2.3.1 The Customer shall be responsible for: (Cont'd.)**

- D. obtaining, maintaining, and otherwise having full responsibility for all rights-of-way and conduit necessary for installation of fiber optic cable and associated equipment used to provide Access Services to the Customer from the cable building entrance or property line to the location of the equipment space described in 2.3.1.C above. Any costs associated with obtaining and maintaining the rights-of-way described herein, including the costs of altering the structure to permit installation of the Company-provided facilities, shall be owned entirely by, or may be charged by the Company to, the Customer. The Company may require the Customer to demonstrate its compliance with this subsection prior to accepting an order for service;
- E. providing a safe place to work and complying with all laws and regulations regarding the working conditions on the Premises at which Company employees and agents shall be installing or maintaining the Company's facilities and equipment. The Customer may be required to install and maintain Company facilities and equipment within a hazardous area if, in the Company's opinion, injury or damage to Company employees or property might result from installation or maintenance by the Company. The Customer shall be responsible for identifying, monitoring, removing, and disposing of any hazardous material (e.g. friable asbestos) prior to any construction or installation work;
- F. complying with all laws and regulations applicable to, and obtaining all consents, approvals, licenses, and permits as may be required with respect to, the location of Company facilities and equipment in any Customer Premises or the rights-of-way for which Customer is responsible obtaining under Section 2.3.1 .D above; and granting or obtaining permission for Company agents or employees to enter the Customer Premises at any time for the purpose of installing, inspecting, maintaining, repairing, or upon termination of service as stated herein, removing the facilities or equipment of the Company; and
- G. not creating or allowing to be placed or maintained any liens or other encumbrances on the Company's equipment or facilities.

Issued:
By:Lisa Jill Freeman
Vice President & Regulatory Compliance Officer
Venture Center III - 5th Floor
900 Main Campus Drive
Raleigh, North Carolina 27060

Effective: MAY 28 2009

COMPETITIVE TELECOMMUNICATIONS ACCESS SERVICES PRICE LIST

SECTION 2- RULES AND REGULATIONS, (Cont'd.)**2.3 Obligations of the Customer, (Cont'd.)****2.3.2 Claims**

With respect to any service or facility provided by the Company, Customer shall indemnify, defend and hold harmless the Company from all claims, actions, damages, liabilities, costs, and expenses, including reasonable attorneys' fees for:

- A. any loss, destruction or damage to property of the Company or any third party, or the death of or injury to persons, including, but not limited to employees or invitees of either the Company or the Customer, to the extent caused by or resulting from the negligent or intentional act or omission of the Customer, its employees, agents, representatives or invitees;
- B. any claim, loss, damage, expense or liability for infringement of any copyright, patent, trade secret, or any proprietary or intellectual property right of any third party, arising from any act or omission by the Customer, including, without limitation, use of the Company's services and facilities in a manner not contemplated by the agreement between the Customer and the Company.

2.3.3 Jurisdictional Reporting

The jurisdictional reporting requirements will be as specified below. When a Customer orders Access Service, its projected Percent Interstate Usage (PIU) must be provided in whole numbers to the Company. These whole number percentages will be used by the Company to apportion the use and/or charges between interstate and intrastate until a revised report is received as set forth herein. Reported or default PIU factors are used only where the call detail is insufficient to determine the appropriate jurisdiction of the traffic.

- A. Originating Access: Originating access minutes are traffic originating from the Company Local Switching Center(s). The Customer should provide the Company with a projected PIU factor on a quarterly basis.

If no PIU for originating minutes is submitted as specified herein, then the projected PIU will be set on a default basis of 50 percent interstate traffic and 50 percent intrastate traffic.

Issued: Ma
By:

Lisa Jill Freeman
Vice President & Regulatory Compliance Officer
Venture Center III - 5th Floor
900 Main Campus Drive
Raleigh, North Carolina 27060

Effective: MAY 28 2009

COMPETITIVE TELECOMMUNICATIONS ACCESS SERVICES PRICE LIST

SECTION 2- RULES AND REGULATIONS (Cont'd.)**2.3 Obligations of the Customer (Cont'd.)****2.3.3 Jurisdictional Reporting. (Cont'd.)**

- B. Terminating Access: For Feature Group D Switched Access Service(s), the Customer should provide the Company with a projected PIU factor by supplying the Company with an interstate percentage of terminating access minutes on a quarterly basis, as described in Sections 2.3.3.D below.

If no projected PIU factor is submitted by the Customer, then the projected PIU will be set on a default basis of 50 percent interstate traffic and 50 percent intrastate traffic.

- C. Except where the Company-measured access minutes are used as set forth above, the Customer-reported Projected PIU factor as set forth above will be used until the Customer reports a different projected PIU factor, as set forth below.
- D. Effective on the first of January, April, July and October of each year the Customer should update its interstate and intrastate jurisdictional report. The Customer should forward to the Company, to be received no later than 15 days after the first of each such month, a revised report showing the interstate and intrastate percentage of use for the past three months ending the last day of December, March, June, and September, respectively, for each service arranged for interstate use, based solely on the traffic originating from or terminating to the Company Local Switching Center. The revised report will serve as the basis for the next three months' billing and will be effective on the bill date for that service. If the Customer does not supply the reports for those services where reports are needed, the Company will assume the percentage to be the same as that provided previously. For those cases in which a quarterly report has never been received from the Customer, the Company will assume the percentages to be the same as those provided in 2.3.3A and 2.3.3B above.
- E. Jurisdictional Reports Verification: For Switched Access Service, if a billing dispute arises or a regulatory commission questions the projected PIU factor, the Customer will provide the data issued to determine the projected PIU factor. The Customer will supply the data within 30 days of the Company request.

Issued: May
By:

Lisa Jill Freeman
Vice President & Regulatory Compliance Officer
Venture Center III - 5th Floor
900 Main Campus Drive
Raleigh, North Carolina 27060

Effective: MAY 28 2009

COMPETITIVE TELECOMMUNICATIONS ACCESS SERVICES PRICE LIST

SECTION 2- RULES AND REGULATIONS (Cont'd.)**2.3 Obligations of the Customer (Cont'd.)****2.3.3 Jurisdictional Reporting. (Cont'd.)**

The Customer shall keep records of call detail from which the percentage of interstate and intrastate use can be ascertained and, upon request of the Company, shall make the records available for inspection as reasonably necessary for purposes of verification of the percentages. The Company reserves the right to conduct an audit at any time during the year. The Customer, as its own expense, has the right to retain an independent auditing firm.

2.4 Customer Equipment and Channels**2.4.1 General**

A Customer may transmit or receive information or signals via the facilities of the Company.

2.4.2 Station Equipment

- A. The Customer is responsible for providing and maintaining any terminal equipment on the Customer Premises. The electric power consumed by such equipment shall be provided by, and maintained at the expense of, the Customer. All such terminal equipment must be registered with the FCC under 47 C.F.R., Part 68 and all wiring must be installed and maintained in compliance with those regulations. The Company will, where practicable, notify the Customer that temporary discontinuance of the use of a service may be required; however, where prior notice is not practicable, nothing contained herein shall be deemed to impair the Company's right to discontinue forthwith the use of a service temporarily if such action is reasonable under the circumstances. In case of such temporary discontinuance, the Customer will be promptly notified and afforded the opportunity to correct the condition which gave rise to the temporary discontinuance. During such period of temporary discontinuance, credit allowance for service interruptions as set forth in Section 2.6 following is not applicable.

Issued: May 27
By:

Lisa Jill Freeman
Vice President & Regulatory Compliance Officer
Venture Center III - 5th Floor
900 Main Campus Drive
Raleigh, North Carolina 27060

Effective: MAY 28 2009

COMPETITIVE TELECOMMUNICATIONS ACCESS SERVICES PRICE LIST

SECTION 2- RULES AND REGULATIONS, (Cont'd.)**2.4 Customer Equipment and Channels, (Cont'd.)****2.4.2 Station Equipment. (cont'd.)**

- B. The Customer is responsible for ensuring that Customer-provided equipment connected to Company equipment and facilities is compatible with such equipment and facilities. The magnitude and character of the voltages and currents impressed on Company-provided equipment and wiring by the connection, operation, or maintenance of such equipment and wiring shall be such as not to cause damage to the Company-provided equipment and wiring or injury to the Company's employees or other persons. Any additional protective equipment required to prevent such damage or injury shall be provided by the Company at the Customer's expense.

2.4.3 Interconnection of Facilities

- A. Any special interface equipment necessary to achieve compatibility between the facilities and equipment of the Company used for furnishing Access Services and the Channels, facilities, or equipment of others shall be provided at the Customer's expense.
- B. Access Services may be connected to the services or facilities of other communications carriers only when authorized by, and in accordance with, the terms and conditions of the tariffs of the other communications carriers which are applicable to such connections.

2.4.4 Inspections

- A. Upon reasonable notification of the Customer, and at reasonable times, the Company may make such tests and inspections as may be necessary to determine that the Customer is complying with the requirements set forth in Section 2.4.2.B for the installation, operation, and wiring in the connection of Customer-provided facilities and equipment to Company-owned facilities and equipment. No credit will be allowed for any interruptions occurring during such inspections.

Issued: N
By:

Lisa Jill Freeman
Vice President & Regulatory Compliance Officer
Venture Center III - 5th Floor
900 Main Campus Drive
Raleigh, North Carolina 27060

Effective: **MAY 28 2009**

COMPETITIVE TELECOMMUNICATIONS ACCESS SERVICES PRICE LIST

SECTION 2- RULES AND REGULATIONS, (Cont'd.)

2.4 Customer Equipment and Channels, (Cont'd.)

2.4.4 Inspections, (Cont'd.)

- B. If the protective requirements for Customer-provided equipment are not being complied with, the Company may take such action as it deems necessary to protect its facilities, equipment, and personnel. The Company will notify the Customer promptly if there is any need for further corrective action. Within ten days of receiving this notice, the Customer must take this corrective action and notify the Company of the action taken. If the Customer fails to do this, the Company may take whatever additional action is deemed necessary, including the suspension of service, to protect its facilities, equipment, and personnel from harm. The Company will, upon request five business days in advance, provide the Customer with a statement of technical parameters that the Customer's equipment must meet.

2.5 Payment Arrangements

2.5.1 Payment for Service

The Customer is responsible for payment of all charges for services and facilities provided by the Company to the Customer or its Joint or Authorized Users. (T)

Taxes - The Customer is responsible for the payment of any sales, use, gross receipts, excise, access or other local, state and federal taxes, charges or surcharges (however designated) excluding taxes on the Company's net income imposed on or based upon the provision, sale or use of Access Services. All such taxes shall be separately designated on the Company's invoices.

COMPETITIVE TELECOMMUNICATIONS ACCESS SERVICES PRICE LIST

SECTION 2- RULES AND REGULATIONS (Cont'd.)**2.5 Payment Arrangements (Cont'd.)****2.5.2 Billing and Collection of Charges**

Unless otherwise specified herein, bills are due and payable upon receipt.

The Company shall bill on a current basis all charges incurred by, and credits due to, the Customer under this tariff attributable to services established, provided, or discontinued during the preceding billing period.

Charges are due and payable within 20 days after the invoice date. The Company shall present invoices to the Customer monthly or quarterly.

Amounts not paid within 20 days after the date of invoice will be considered past due. The Company will assess a late payment charge equal to 1.5% per month for any past due balance that exceeds 20 days. If the Company becomes concerned at any time about the ability of a Customer to pay its bills, the Company may require that the Customer pay its bills within a specified number of days and make such payments in cash or the equivalent of cash.

If a service is disconnected by the Company in accordance with Section 2.5.3 following and later restored, restoration of service will be subject to all applicable installation charges.

The Customer shall notify the Company of any disputed items on an invoice within 90 days of receipt of the invoice. If the Customer and the Company are unable to resolve the dispute to their mutual satisfaction, the Customer may file a complaint with the Commission in accordance with the Commission's rules of procedures.

Issued: May 27, 2009

By: Lisa Jill Freeman
Vice President & Regulatory Compliance Officer
Venture Center III – 5th Floor
900 Main Campus Dr
Raleigh, NC 27060

Effective: MAY 28 2009

COMPETITIVE TELECOMMUNICATIONS ACCESS SERVICES PRICE LIST

SECTION 2- RULES AND REGULATIONS (Cont'd.)**2.5 Payment Arrangements (Cont'd.)****2.5.3 Refusal and Discontinuance of Service**

- A. Upon nonpayment of any amounts owing to the Company, the Company may, by giving requisite prior written notice to the Customer discontinue or suspend service without incurring any liability.
- B. Upon violation of any of the other material terms or conditions for furnishing service the Company may, by giving 30 days' prior notice in writing to the Customer, discontinue or suspend service without incurring any liability if such violation continues during that period.
- C. Upon condemnation of any material portion of the facilities used by the Company to provide service to a Customer or if a casualty renders all or any material portion of such facilities inoperable beyond feasible repair, the Company, by notice to the Customer, may discontinue or suspend service without incurring any liability.
- D. Upon any governmental prohibition, or required alteration of the services to be provided or any violation of an applicable law or regulation, the Company may immediately discontinue service without incurring any Liability.
- E. Upon the Company's discontinuance of service to the Customer under Section 2.5.3.A or 2.5.3.B above, the Company, in addition to all other remedies that may be available to the Company at law or in equity or under any other provision of this tariff, may declare all future monthly and other charges which would have been payable by the Customer during the remainder of the term for which such services would have otherwise been provided to the Customer to be immediately due and payable.

Issued: May 27, 2009**By:**

Lisa Jill Freeman
Vice President & Regulatory Compliance Officer
Venture Center III – 5th Floor
900 Main Campus Dr
Raleigh, NC 27060

Effective: MAY 28 2009

COMPETITIVE TELECOMMUNICATIONS ACCESS SERVICES PRICE LIST

SECTION 2- RULES AND REGULATIONS (Cont'd.)

2.5 Payment Arrangements (Cont'd.)

2.5.3 Refusal and Discontinuance of Service (cont'd.)

F. The Company may discontinue the furnishing of any and/or all service(s) to Customer, without incurring any liability:

1. Immediately and without notice if the Company deems that such action is necessary to prevent or to protect against fraud or to otherwise protect its personnel, agents, facilities or services. The Company may discontinue service pursuant to this sub-section if

(a) The Customer refuses to furnish information to the Company regarding the Customer's credit-worthiness, its past or current use of Common Carrier communications services or its planned use of service(s); or

(b) The Customer provides false information to the Company regarding the Customer's identity, address, creditworthiness, past or current use of Common Carrier communications services, or its planned use of the Company's service(s); or

(c) The Customer states that it will not comply with a request of the Company for security for the payment for service(s) in accordance with Section 2.5.3.A above; or

(d) The Customer has been given written notice by the Company of any past due amount (which remains unpaid in whole or in part) for any of the Company's other Common Carrier communications services to which the Customer either subscribes or had subscribed or used; or

Issued: May 27, 2009

Effective: MAY 28 2009

By: Lisa Jill Freeman
Vice President & Regulatory Compliance Officer
Venture Center III – 5th Floor
900 Main Campus Dr
Raleigh, NC 27060

COMPETITIVE TELECOMMUNICATIONS ACCESS SERVICES PRICE LIST

SECTION 2- RULES AND REGULATIONS, (Cont'd.)

2.5 Payment Arrangements, (Cont'd.)

2.5.3 Refusal and Discontinuance of Service, (Cont'd.)

F. (cont'd.)

1. (cont'd.)

(e) The Customer uses, or attempts or use, service with the intent to avoid the payment, either in whole or in part, of the tariff charges for the service by:

I. Using or attempting to use service by rearranging, tampering with, or making connections to the Company's service not authorized by this tariff, or

II. Using tricks, schemes, false or invalid numbers, false credit devices, electronic devices; or

III. Delivering calls to or accepting calls from the Company's End Users or other users of the Company's services; or

(T)
(T)

IV. Continuing to have Company End Users or other users of the Company's services; or

(T)
(T)

V. Any other Fraudulent means or devices; or

2. Upon ten (10) days' written notice to the Customer of any sum thirty (30) days past due;

3. Upon ten (10) days' written notice to the Customer, after failure of the Customer to comply with a request made by the Company for security for the payment of service in accordance with Section 2.5.3.A, above; or

Issued: August 25, 2010

Effective: August 26, 2010

Lisa Jill Freeman
Vice President & Regulatory Compliance Officer
Venture Center III – 5th Floor
900 Main Campus Dr
Raleigh, NC 27060

COMPETITIVE TELECOMMUNICATIONS ACCESS SERVICES PRICE LIST

SECTION 2- RULES AND REGULATIONS (Cont'd.)**2.5 Payment Arrangements (Cont'd.)****2.5.3 Refusal and Discontinuance of Service (cont'd.)****F. (cont'd.)**

4. Seven (7) days after sending the Customer written notice of noncompliance with any provision of this tariff if the noncompliance is not corrected within that seven (7) day period. The discontinuance of service(s) by the Company pursuant to this Section does not relieve the Customer of any obligation to pay the Company for charges due and owing for service(s) furnished up to the time of discontinuance.

G. In the event the Company incurs fees or expenses, including attorney's fees, in collecting, or attempting to collect, any charges owed the Company, the Customer will be liable to the Company for the payment of all such fees and expenses reasonably incurred.

2.5.4 Cancellation of Application for Service

Where, prior to cancellation by the Customer, the Company incurs any expenses in installing the service or in preparing to install the service that it otherwise would not have incurred, a charge equal to the costs the Company incurred, less net salvage, shall apply, but in no case shall this charge exceed the sum of the charge for the minimum period of services ordered, including installation charges, and all charges others levy against the company that would have been chargeable to the Customer had service begun.

The special charges described will be calculated and applied on a case-by-case basis.

Issued: May 27, 2009**Effective: MAY 28 2009****By:**

Lisa Jill Freeman
Vice President & Regulatory Compliance Officer
Venture Center III – 5th Floor
900 Main Campus Dr
Raleigh, NC 27060

COMPETITIVE TELECOMMUNICATIONS ACCESS SERVICES PRICE LIST

SECTION 2- RULES AND REGULATIONS (Cont'd.)**2.6 Allowances for Interruptions in Service**

Interruptions in service which are not due to the negligence of or noncompliance with the provisions of this tariff by, the Customer or the operation or malfunction of the facilities, power, or equipment provided by the Customer, will be credited to the Customer as set forth in 2.6.1 for the part of the service that the interruption affects.

The credit allowance will be calculated by the Company after the Customer notifies the Company of service interruption. The amount of the allowance will depend on the length of the outage and the service impacted. Service Outage conditions are defined as complete loss of call origination and/or receipt capability. Credit Allowances, if any, will be deducted from the charges payable by the IXC and will be expressly indicated on the next invoice. A Service Outage begins when the IXC reports the outage to the Company. A Service Outage ends when the affected circuit and/or associated Company equipment is fully operational in accordance with the technical specifications.

Credit allowances do not apply to outages (i) caused by the IXC; (ii) due to failure of equipment provided by the IXC; (iii) during any period in which the Company is not given access to the service premises; (iv) resulting from failures of LEC facilities or equipment resulting from the activities or negligence of LEC employees; (v) during which the Company is unable to gain access to the IXC's equipment; and (vi) due to mutually agreed upon maintenance and repair.

Credit Allowances received by the Company from the LEC for Off-Net facility outages which affect the IXC's Switched Services will be passed through to the IXC in the form of a credit on the next invoice.

Issued: May 27, 2009**Effective: MAY 28 2009**

By: Lisa Jill Freeman
Vice President & Regulatory Compliance Officer
Venture Center III – 5th Floor
900 Main Campus Dr
Raleigh, NC 27060

COMPETITIVE TELECOMMUNICATIONS ACCESS SERVICES PRICE LIST

SECTION 2- RULES AND REGULATIONS (Cont'd.)**2.6 Allowances for Interruptions in Service, (Cont'd.)****2.6.1 Limitations on Allowances**

No credit allowance will be made for:

- A. interruptions due to the negligence of, or noncompliance with the provisions of this tariff by, the Customer, Authorized User, Joint-User, or other Common Carrier providing service connected to the service of Company;
- B. interruptions due to the negligence of any person other than the Company, including, but not limited to, the Customer or other Common Carriers connected to the Company's facilities;
- C. interruptions due to the failure or malfunction of non-Company equipment;
- D. interruptions of service during any period in which the Company is not given full and free access to its facilities and equipment for the purpose of investigating and correcting interruptions;
- E. interruptions of service during a period in which the Customer continues to use the service on an impaired basis;
- F. interruptions of service during any period when the Customer has released service to the Company for maintenance purposes or for implementation of a Customer order for a change in service arrangements;
- G. interruption of service due to circumstances or causes beyond the control of the Company.

Issued: May 27, 2009

By:

Lisa Jill Freeman
Vice President & Regulatory Compliance Officer
Venture Center III – 5th Floor
900 Main Campus Dr
Raleigh, NC 27060

Effective: MAY 28 2009

COMPETITIVE TELECOMMUNICATIONS ACCESS SERVICES PRICE LIST

SECTION 2- RULES AND REGULATIONS, (Cont'd.)**2.7 Transfers and Assignments**

Neither the Company nor the Customer may assign or transfer its rights or duties in connection with the services and facilities provided by the Company without the written consent of the other party, except that the Company may assign its rights and duties (a) to any subsidiary, parent Company or affiliate of the Company (b) pursuant to any sale or transfer of substantially all the assets of the Company; or pursuant to any financing, merger or reorganization of the Company.

2.8 Notices and Communications

- 2.8.1 Delivery of calls to or acceptance of calls from the Company's End User Stations over Company-switched local exchange services constitutes an order by the Customer to purchase Switched Access Services as described herein. Similarly, the selection by a Company's End User of the Customer as the presubscribed IXC constitutes an order of switched access by the Customer. In these cases, an invoice will be the first communication from the Company to the Customer. In other instances a Service Order may be used. (C)
(C)
(T)
- 2.8.2 The Customer shall designate on the Service Order an address to which the Company shall mail or deliver all notices and other communications, except that the Customer may also designate a separate address to which the Company's bills for service shall be mailed.
- 2.8.3 The Company shall designate on the Service Order an address to which the Customer shall mail or deliver all notices and other communications, except that the Company may designate a separate address, on each bill for service, to which the Customer shall mail payment of that bill.
- 2.8.4 All notices or other communications required to be given pursuant to this tariff shall be in writing. Notices and other communications of either party, and all bills mailed by the Company, shall be presumed to have been delivered to the other party on the third business day following deposit of the notice, communication, or bill with the U.S. Mail or a private delivery service, prepaid and properly addressed, or when actually received or refused by the addressee, whichever occurs first.
- 2.8.5 The Company or the Customer shall advise the other party of any changes to the addresses designated for notices, other communications or billing, by following the procedures for giving notice set forth herein.

Issued: June 30, 2021

Effective: July 1, 2021

By: Lisa Jill Freeman, Vice President & Regulatory Compliance Officer
900 Main Campus Drive, Suite 100
Raleigh, NC 27606

COMPETITIVE TELECOMMUNICATIONS ACCESS SERVICES PRICE LIST

SECTION 2- RULES AND REGULATIONS, (Cont'd.)

2.9 Meet Point Billing

Meet Point Billing applies when more than one Exchange Telephone Company is involved in the provision of Access Service. All recurring and nonrecurring charges for services provided by each Exchange Telephone Company are billed under each company's applicable rates.

Issued: May 27, 2009

Effective: MAY 28 2009

By:

Lisa Jill Freeman
Vice President & Regulatory Compliance Officer
Venture Center III – 5th Floor
900 Main Campus Dr
Raleigh, NC 27060

COMPETITIVE TELECOMMUNICATIONS ACCESS SERVICES PRICE LIST

SECTION 3- ORDERING OPTIONS FOR ACCESS SERVICE**3.1 General**

This section sets forth the regulations and order related charges for Access Service Requests (ASR) for Switched Access Service, as defined in this tariff. These charges are in addition to other applicable charges set forth in other sections of this tariff.

3.1.1 Ordering Conditions

Customer may order switched access through a Constructive Order, as defined herein, or through an ASR. The format and terms of the ASR will be as specified in the Industry Access Service Order Guidelines, unless otherwise specified herein.

3.1.2 Minimum Period of Service

The minimum period for which Access Service is provided and for which charges are applicable is one month.

- A. The following changes will be treated as a discontinuance of the existing service and a request for installation of a new service. All associated Non-Recurring Charges will apply for the new service, and a new minimum period will be established:
1. a change in the identity of the Customer of record; or
 2. a move by the Customer to a different building.
- B. When Access Service is disconnected prior to the expiration of the minimum period, charges are applicable for the balance of the minimum period. The Minimum Period Charge for monthly billed services will be determined as follows:

For Switched Access Service, the charge for a month or fraction thereof is equivalent to 50,000 billed minutes of use for the applicable service.

All applicable Non-Recurring Charges for the service will be billed in addition to the Minimum Period Charge.

Issued: May 27, 2009

Effective: MAY 28 2009

By: Lisa Jill Freeman
Vice President & Regulatory Compliance Officer
Venture Center III – 5th Floor
900 Main Campus Dr
Raleigh, NC 27060

COMPETITIVE TELECOMMUNICATIONS ACCESS SERVICES PRICE LIST

SECTION 3- ORDERING OPTIONS FOR ACCESS SERVICE, (Cont'd.)

3.2 Ordering, Rating and Billing of Access Services Where More Than One Exchange Telephone Company is Involved

(M)(N)

3.2.1 The billing method set forth herein is applicable to interconnection arrangements between Exchange Telephone Companies involved in the provision of all Access Services. In accordance with the Federal Communications Commission's Memorandum Opinion and Order in CC Docket No. 86-106, adopted July 20, 1987, the Company will adhere to the standards set forth in the Multiple Exchange Carrier Access Billing (MECAB) and the Multiple Exchange Carrier Ordering and Design (MECOD) Guidelines when providing access service under Multiple Telephone Company (Interconnection Point) Billing arrangements. The Exchange Telephone Companies involved in providing the Access Service will develop a mutually agreeable working arrangement to allow one of the Exchange Telephone Companies to perform "Access Service Coordination" (ASC) for all services requested.

(M)(N)

All material on this page is new. Material previously found on this sheet is now located on Sheet 44.1

Issued: August 25, 2010

Effective: August 26, 2010

Lisa Jill Freeman
Vice President & Regulatory Compliance Officer
Venture Center III – 5th Floor
900 Main Campus Dr
Raleigh, NC 27060

COMPETITIVE TELECOMMUNICATIONS ACCESS SERVICES PRICE LIST

SECTION 3- ORDERING OPTIONS FOR ACCESS SERVICE, (Cont'd.)**3.2 Ordering, Rating and Billing of Access Services Where More Than One Exchange Telephone Company is Involved****(N)**

3.2.2 When an Access Service ordered by a Customer involves more than one Exchange Telephone Company, the Exchange Telephone Companies involved will use a Multiple Bill Method. Under the Multiple Bill Method each Exchange Telephone Company involved will provide the portion of the service in its operating territory and bill the Customer in accordance with its Access Service tariff.

A. When Switched Access Service is ordered by a Customer where one end of the Transport element is in the Company operating territory and the other end is in another Exchange Telephone Company operating territory, the orders shall be received as follows:

1. For Switched Access Service ordered to an end office, the Exchange Telephone Company in whose operating territory the end office is located must receive the Service Order from the Customer.
2. For Switched Access Service ordered to an access tandem, the Exchange Telephone Company in whose operating territory the access tandem is located must receive the Service Order from the Customer. A Service Order delivered to the Exchange Telephone Company operating an access tandem that is subtended by this Company's switch will constitute a Service Order for Switched Access Service under this tariff.
3. For the Service ordered set forth in 1. and 2. preceding, the Exchange Telephone Company in whose operating territory the customer point of termination is located must also receive a copy of the order from the customer.
4. Each Exchange Telephone Company will provide the portion of the Transport element in its operating territory to an interconnection point with another Exchange Telephone Company and will bill the charges in accordance with its Access Service tariff. All appropriate charges in each Exchange Telephone Company tariff are applicable.

B. The interconnection points will be determined by the Exchange Telephone Companies involved.

(N)

Issued: August 25, 2010

Effective: August 26, 2010

Lisa Jill Freeman
Vice President & Regulatory Compliance Officer
Venture Center III - 5th Floor
900 Main Campus Drive
Raleigh, North Carolina 27060

COMPETITIVE TELECOMMUNICATIONS ACCESS SERVICES PRICE LIST

SECTION 4- SWITCHED ACCESS SERVICE

4.1 General

Switched Access Service involves the use of common terminating, switching and transport facilities. Switched Access Service provides the ability to originate or terminate calls between an End User's Station, and other Stations on the PSTN. (C)

Rates and charges are set forth in Section 5. The application of rates for Switched Access Service is described in Section 5.

4.2 Provision and Description of Switched Access Service Arrangements

4.2.1 Feature Group Access

Feature Group ("FG") Access provides trunk-side access to Tandem Switches and Local Switching Center switches, for the Customer's use in originating and terminating communications. Basic FG Access service will be provided with Multi-Frequency In-Band Signaling (SS7 is also available, where capabilities exist). (C)

All traffic is routed to and from the Company's Local Switching Center via the Customer's tandem provider or via end office trunking, where available. (T)

4.2.2 Manner of Provision

Trunks used for Switched Access Service may be configured for one-way (either originating only or terminating only) or for two-way directionality.

 COMPETITIVE TELECOMMUNICATIONS ACCESS SERVICES PRICE LIST

SECTION 4- SWITCHED ACCESS SERVICE, (Cont'd.)

4.2 Provision and Description of Switched Access Service Arrangements, (Cont'd.)

4.2.3 Call Types

The following Switched Access Service call types are available:

- A. Originating FG Access
- B. Originating 800 FG Access
- C. Terminating FG Access

4.2.4 Originating FG Access

The access code for FG Access switching is a uniform access code of the form 1+, 011+ or 101XXXX. For 101XXXX dialing a single access code will be the assigned number of all FG Access provided to the Customer by the Company. When the access code is used, FG Access switching also provides for dialing the digit 0 for access to the Customer's operator service, 911 for access to emergency service, and/or the end of dialing digit (#) for cut-through access to the Customer's premises. The Company will provide originating FG access consistent with dialing parity obligations.

4.2.5 Originating 800 FG Access

800 Data Base Access Service is a service utilizing originating Trunk side Switched Access Service. When an 8YY + NXX + XXXX call is originated by an End User, VoIP Provider Partner's End User or other users of the Company's services, the Company will perform Customer identification based on screening of the full ten-digits of the 8YY number to determine the Customer location to which the call is to be routed. This tariff applies only to intrastate 8YY calls originated by End Users and other users of the Company's services served by the Company.

(C)

(C)

(T)

4.2.6 Terminating FG Access

FG Access, when used in the terminating direction, may only be used to access End Users who are subscribing to the Company's Local Exchange Services or other users of the Company's services. Calls in the terminating direction will not be completed to 950-0XXX or 950-1XXX access codes, local operator assistance (0- and 0+), Directory Assistance, (411 or 555-1212) service codes 611 and 911 and 101XXXX access codes.

 Issued: June 30, 2021

Effective: July 1, 2021

By: Lisa Jill Freeman, Vice President & Regulatory Compliance Officer
900 Main Campus Drive, Suite 100
Raleigh, NC 27606

COMPETITIVE TELECOMMUNICATIONS ACCESS SERVICES PRICE LIST

SECTION 4- SWITCHED ACCESS SERVICE, (Cont'd.)

4.3 [Reserved for Future Use]

(D)

(D)

Issued: August 25, 2010

Effective: August 26, 2010

Lisa Jill Freeman
Vice President & Regulatory Compliance Officer
Venture Center III - 5th Floor
900 Main Campus Drive
Raleigh, North Carolina 27060

COMPETITIVE TELECOMMUNICATIONS ACCESS SERVICES PRICE LIST

SECTION 5- SWITCHED ACCESS RATES

5.1 General

This section contains the specific regulations governing the rates and charges that apply for Switched Access Services.

The Company offers Tandem Switching Access Service, Local Switching Access Service – Direct Connection, and Local Switching Access Service – Indirect Connection.

There are three types of rates and charges that apply to Switched Access Service:

- Non-Recurring Charges: One-time charges that apply for a specific work activity.
- Recurring Charges: Fixed charges apply each month and depend on the number and type of facilities in place.
- Usage Charges: Charges that are applied on a per-message or per-access minute basis. Usage rates are accumulated over a monthly period.

5.1.1 The Company will assess and collect switched access rate elements under this tariff for access services, regardless of whether the Company itself delivers such traffic to the called party’s Station or delivers the call to the called party’s Station via contractual or other arrangements with a VoIP Provider Partner that does not itself seek to collect switched access charges for the same traffic. The Company will not charge for functions not performed by the Company or its VoIP Provider Partner. For purposes of this provision, functions provided by the Company or its VoIP Provider Partner as part of transmitting telecommunications between designated points using, in whole or in part, technology other than TDM transmission in a manner that is functionally equivalent to a service offered by a local exchange carrier shall constitute the performance of the functionally equivalent traditionally applicable carrier access service and their related charges. (N)(M)

5.1.2 Identification and rating of VOIP-PSTN Access Traffic.

- A. In the absence of an agreement between the Company and the Customer specifying the treatment of VoIP-PSTN Traffic, all Access traffic will be treated as VoIP-PSTN Access traffic and assessed switched access charges at the rates set forth in Section 5.4 of this tariff. (N)(M)

Material previously located on this sheet has been moved to Sheet 41.3 and 42.

Issued: June 30, 2021

Effective: July 1, 2021

By: Lisa Jill Freeman, Vice President & Regulatory Compliance Officer
900 Main Campus Drive, Suite 100
Raleigh, NC 27606

COMPETITIVE TELECOMMUNICATIONS ACCESS SERVICES PRICE LIST

SECTION 5- SWITCHED ACCESS RATES

5.1 General (cont'd.)

5.1.2 Identification and rating of VOIP-PSTN Access Traffic (cont'd.)

(N)

B. Calculation and application of Facilities-Based VoIP Usage Factors to VOIP-PSTN Access Traffic

Facilities-based (“FB”) refers to VOIP-PSTN Access Traffic that is originated or terminated over a physical connection to the last-mile facilities used to serve an End User. Company will assess switched access charges based upon a FB percent usage factor (“FBU”) that reflects the percentage amount of VOIP-PSTN Access Traffic that travels over a physical connection to the last-mile facilities used to serve an End User. When Customer orders a service from this tariff, the customer shall be responsible for the payment of Access Service charges that reflect Company’s FBU. If the Company or its VoIP Provider Partner provides a physical connection to the last-mile facilities used to serve an End User, the Local Switching Access Service rates will apply. If the Company or its VoIP Provider Partner does not provide a physical connection to the last-mile facilities used to serve the End User, the Tandem Switching Access Service rates will apply.

FCC Form 477 Instructions collect information about two types of interconnected VoIP subscriptions. Those instructions require providers of interconnected VoIP service to report subscriptions as “Over-the-top Subscriptions” if the provider (including affiliates) does not sell to the end user the high capacity connection that terminates at the end user’s premises and delivers the interconnected VoIP service. If a subscription is not an Over-the-top Subscription, providers report it as “All Other Subscriptions”.

The Company FBU shall be based on information such as the number of the Company’s and its VoIP Provider Partner’s reported “All Other Subscriptions” to interconnected VoIP service in the state (e.g. as reported on FCC Form 477), traffic studies, actual call detail or other relevant and verifiable information. The Company shall retain the call detail, work papers, and information used to develop the FBU factors for a minimum of one year.

The Company may update the FBU factors quarterly or annually. The revised FBU factors will serve as the basis for future billing and will be effective on the bill date of each such month and shall serve as the basis for subsequent monthly billing until superseded by new FBU factors. No prorating or back billing will be done based on the updated FBU factors.

(N)

 Issued: June 30, 2021

Effective: July 1, 2021

By: Lisa Jill Freeman, Vice President & Regulatory Compliance Officer
900 Main Campus Drive, Suite 100
Raleigh, NC 27606

COMPETITIVE TELECOMMUNICATIONS ACCESS SERVICES PRICE LIST

SECTION 5- SWITCHED ACCESS RATES

5.1 General (cont'd.)

5.1.2 Identification and rating of VOIP-PSTN Access Traffic (cont'd.)

B. Calculation and application of Facilities-Based VoIP Usage Factors to VOIP-PSTN Access Traffic

The Company may choose to provide credits based on the FBU factors on a quarterly basis until such time as the Company can implement billing system modifications to apply the FBU factors in monthly invoices.

Not more than once in any year, the Customer may request from the Company an overview of the process used to determine the FBU factors and other information used to determine the FBU factors in order to validate the FBU factors supplied. The Company shall reasonably supply the requested data and information within 30 days of the Customer's request.

(N)

(N)

Issued: June 30, 2021

Effective: July 1, 2021

By: Lisa Jill Freeman, Vice President & Regulatory Compliance Officer
900 Main Campus Drive, Suite 100
Raleigh, NC 27606

COMPETITIVE TELECOMMUNICATIONS ACCESS SERVICES PRICE LIST

SECTION 5- SWITCHED ACCESS RATES

5.2 Rate Categories (M)

5.2.1 Tandem Switching Access Service (M)(C)

A. Direct Connection (Originating and Terminating)

Tandem Switching Access Service – Direct Connection is an access service providing transmission and tandem switching between the Customer designated premises and the Company switch(es) where the Customer’s traffic is switched from or to an entity other than an End User, including a (i) VoIP Provider Partner that does not provide the last-mile connection to the End User Station or (ii) a Carrier, for purposes of originating or terminating the Customer’s communications, and where the Customer’s switch is connected directly to the Company’s switch. The following rate elements will apply to Tandem Switching Access Service – Direct Connection. Access Tandem Switching, Tandem-Switched Transport Termination, Tandem-Switched Transport – Facility, Common Multiplexing, Dedicated Trunk Port or Common Trunk Port. For originating 8YY calls, the Toll-Free 8YY Data Base Query charge will also apply. The third-party access tandem provider may apply additional charges for switching and transport functions performed by that provider. For Terminating calls, Access Tandem Switching only applies when calls are terminated to a 3rd Party and not the Company switch. With Direct Connection, Customer is responsible for ordering or providing dedicated facilities or reasonable and appropriate bandwidth to the Company’s point of presence in the access tandem serving area. Where applicable, the Dedicated Trunk Port charge will be applied on an Individual Case Basis. If Customer prefers to connect via IP, the Common Trunk Port charge will apply. The application of access charges to Tandem Switching Access Service is illustrated in diagrams in Section 7.

(M)(C)

B. Indirect Connection (Originating and Terminating) (N)

Tandem Switching Access Service – Indirect Connection is an access service providing transmission and tandem switching between the Customer designated premises and the Company switch(es) as well as transport to or from the Customer’s tandem provider, where the Customer’s traffic is switched from or to an entity other than an End User, including (i) a VoIP Provider Partner that does not provide the last-mile connection to the End User or (ii) a Carrier, for purposes of originating or terminating the Customer’s communications. The following rate elements will apply to Tandem Switching Access Service – Indirect Connection: Access Tandem Switching, Tandem-Switched Transport Termination, Tandem-Switched Transport–Facility, Common Multiplexing, and Common Trunk Port. For originating 8YY calls, the Toll-Free 8YY Data Base Query charge will also apply. The third-party access tandem provider may apply additional charges for switching and transport functions performed by that provider. For Terminating calls, Access Tandem Switching only applies when calls are terminated to a 3rd Party and not the Company switch. The application of access charges to Tandem Switching Access Service is illustrated in diagrams in Section 7.

(N)

Material found on this sheet was previously located on Sheet 41.

Issued: June 30, 2021

Effective: July 1, 2021

By: Lisa Jill Freeman, Vice President & Regulatory Compliance Officer
900 Main Campus Drive, Suite 100
Raleigh, NC 27606

COMPETITIVE TELECOMMUNICATIONS ACCESS SERVICES PRICE LIST

SECTION 5- SWITCHED ACCESS RATES, (Cont'd.)

5.2 Rate Categories, (Cont'd.)

5.2.2 Local Switching Access Service - Direct Connection (Originating and Terminating)

(M)

Local Switching Access Service - Direct Connection is an access service providing the Customer connections to and use of end office switching equipment for the origination or termination of the Customer's communications to the Company's End Users or End Users of a VoIP Provider Partner that provides the last mile connection to the End User. Charges for Local Switching Access Service – Direct Connection include the following rate elements: End Office Switching, Common Trunk Port, Tandem Switched Transport Termination and Common Multiplexing, and Tandem Switched Transport Facility. The third-party access tandem provider may apply additional charges for switching and transport functions performed by that provider.

(M)(C)

With Direct Connection, Customer is responsible for ordering or providing dedicated facilities or reasonable and appropriate bandwidth to the Company's point of presence in the access tandem serving area. Where applicable, the Dedicated Trunk Port charge will be applied on an Individual Case Basis. If Customer prefers to connect via IP, the Common Trunk Port charge will apply. The application of access charges to Local Switching Access Service is illustrated in diagrams in Section 7.

(N)

(N)

5.2.3 Local Switching Access Service - Indirect Connection (Originating and Terminating)

Local Switching Access Service - Indirect Connection is an access service providing the Customer use of end office switching equipment for the origination or termination of the Customer's communications to the Company's End Users or End Users of a VoIP Provider Partner that provides the last-mile connection to the End User as well as transport to or from the Customer's tandem provider. Charges for Local Switching Access Service - Indirect Connection include the following rate elements: End Office Switching, Common Trunk Port, Tandem Switched Transport Termination and Common Multiplexing, and Tandem Switched Transport Facility. For originating 8YY calls, the Toll-Free 8YY Data Base Query charge will also apply. The third-party access tandem provider may apply additional charges for switching and transport functions performed by that provider. The application of access charges to Local Switching Access Service is illustrated in diagrams in Section 7.

(C)

(C)

5.2.4 Toll-Free 8YY Data Base Query

The Toll-Free Data Base Query Charge, will apply for each Toll-Free 8YY call query received at the Company's (or its provider's) toll-Free 8YY data base.

5.2.5 Toll-Free 8YY Switched Access Service

The Toll-Free 8YY Switched Access Service is an originating access service in which the Company delivers Toll Free calls to Customers. Rate elements apply as set forth in Section 5.4.5.

5.2.6 Optional Features

Other optional features may be available on an Individual Case Basis.

(M)

*Material previously located in this sheet has been moved to Sheet 43.
 Material found on this sheet was previously located on Sheet 41.*

(M)

Issued: June 30, 2021

Effective: July 1, 2021

By: Lisa Jill Freeman, Vice President & Regulatory Compliance Officer
 900 Main Campus Drive, Suite 100
 Raleigh, NC 27606

COMPETITIVE TELECOMMUNICATIONS ACCESS SERVICES PRICE LIST

SECTION 5- SWITCHED ACCESS RATES, (Cont'd.)

5.3 Billing of Access Minutes

When recording originating calls over FG Access with multi-frequency address signaling, usage measurement begins when the first wink supervisory signal is forwarded from the Customer's facilities. The measurement of originating call usage over FG Access ends when the originating FG Access entry switch receives disconnect supervision from either the originating End User's or other user's Local Switching Center – indicating the originating End User or other user has disconnected), or the Customer's facilities, whichever is recognized first by the entry switch.

(M)
|
|
|
|
(M)

For terminating calls over FG Access with multi-frequency address signaling, the measurement of access minutes begins when a seizure signal is received from the Carrier's trunk group at the Point of Presence within the LATA. The measurement of terminating call usage over FG Access ends when a disconnect signal is received, indicating that either the originating or terminating user has disconnected.

When recording originating calls over FG Access with SS7 signaling, usage measurement begins with the transmission of the initial address message by the switch for direct trunk groups and with the receipt of an exit message by the switch for tandem trunk groups. The measurement of originating FG Access usage ends when the entry switch receives or sends a release message, whichever occurs first.

For terminating calls over FG Access with SS7 signaling, the measurement of access minutes begins when the terminating recording switch receives the initial address message from the terminating End User or other user. On directly routed trunk groups or on tandem routed trunk groups, the Company switch receives the initial address message and sends the indication to the Customer in the form of an answer message. The measurement of terminating FG Access call usage ends when the entry switch receives or sends a release message, whichever occurs first.

Material found on this sheet was previously located on Sheet 42.

Issued: June 30, 2021

Effective: July 1, 2021

By: Lisa Jill Freeman, Vice President & Regulatory Compliance Officer
900 Main Campus Drive, Suite 100
Raleigh, NC 27606

COMPETITIVE TELECOMMUNICATIONS ACCESS SERVICES PRICE LIST

SECTION 5-SWITCHED ACCESS RATES, (Cont'd.)

5.4 Rates and Charges

5.4.1 AT&T Territory

	Originating	Terminating
Tandem-Switched Transport - Termination, per minute	*	*
Tandem-Switched Transport - Facility, per minute per mile	*	*
Access Tandem Switching, per minute	*	*
CMUX, per minute	*	*
CTP, per minute	*	*
End Office Switching, per minute	*	*

5.4.2 CenturyLink (formerly Embarq) Territory

	Originating	Terminating
Tandem-Switched Transport - Termination, per minute	*	*
Tandem-Switched Transport - Facility, per minute per mile	*	*
Access Tandem Switching, per minute	*	*
CMUX, per minute	*	*
CTP, per minute, all zones	*	*
End Office Switching, per minute, all zones	*	*

(C)

(C)

(M)

(M)

* Switched Access Services will be assessed applicable switched access usage charges at the rates set forth in the Company's Federal Access Tariff, FCC No. 1 posted at:
<https://apps.fcc.gov/etfs/public/lecTariffs.action?idLec=365>

Material previously located on this sheet has been moved to Sheet 44.0.1.

Issued: June 30, 2021

Effective: July 1, 2021

By: Lisa Jill Freeman, Vice President & Regulatory Compliance Officer
 900 Main Campus Drive, Suite 100
 Raleigh, NC 27606

COMPETITIVE TELECOMMUNICATIONS ACCESS SERVICES PRICE LIST

SECTION 5-SWITCHED ACCESS RATES, (Cont'd.)

5.4 Rates and Charges, (cont'd.)

5.4.3 Frontier (formerly Verizon) Territory

	Originating	Terminating
Tandem-Switched Transport - Termination, per minute	*	*
Tandem-Switched Transport - Facility, per minute per mile	*	*
Access Tandem Switching, per minute	*	*
CMUX, per minute	*	*
CTP, per minute, all zones	*	*
End Office Switching, per minute, all zones	*	*

5.4.4 Toll-Free 8YY Data Base Query

<u>Effective:</u>	<u>7/1/2021 – 6/30/2022</u>	<u>7/1/2022 – 6/30/2023</u>	<u>7/1/2023</u>	(C)
Per Query				
AT&T Areas	\$0.004000 (R)	\$0.002100 (R)	\$0.000200 (R)	
All Other Areas	\$0.004210	\$0.002205 (R)	\$0.000200 (R)	(C)

* Switched Access Services will be assessed applicable switched access usage charges at the rates set forth in the Company's Federal Access Tariff, FCC No. 1 posted at:
<https://apps.fcc.gov/etfs/public/lecTariffs.action?idLec=365>

Issued: June 30, 2021

Effective: July 1, 2021

By: Lisa Jill Freeman, Vice President & Regulatory Compliance Officer
900 Main Campus Drive, Suite 100
Raleigh, NC 27606

COMPETITIVE TELECOMMUNICATIONS ACCESS SERVICES PRICE LIST

SECTION 5-SWITCHED ACCESS RATES, (Cont'd.)

5.4 Rates and Charges

5.4.5 Toll Fee 8YY Switched Access Service

Originating from the Company's End Users: Local Switching Access Service – Direct Connection or Indirect Connection rates will apply, as appropriate.

Originating from parties that are not the Company's End Users: Tandem Switching Service rate will apply.

(N)

5.4.6 Switched Access Optional Features

All Optional Features are offered on an Individual Case Basis.

(M)

(M)

5.4.7 Miscellaneous Charges

(M)

Customer Requested Due Date Change ^{1 2}	\$50, per order
Customer Requested Expedite ²	\$250, per location, per order
Cancellation (after 3 business days from order placement) ²	Full NRCs + \$250, per order
Design Change, DSO/DS1 ²	\$150, per circuit
Design Change, DS3 and higher ²	\$300, per circuit
Administrative Processing ²	\$25, per order
Paper / Electronic Media Fee	\$15.00 per bill cycle
Returned Check Charge	\$35.00

(M)

(N)

(N)

Certain material now found on this sheet was previously found on Sheets 37 and 44.

¹ Company Due Date Change Policy - No due date change will be accepted fewer than five (5) days prior to the current due date. If a Customer request is received during that time period, the supplemental charge will apply; in addition, the billing will start on the current due date without exception.

² For services involving facilities leased from other telecommunications providers, Supplementary Charges will be priced on an Individual Case Basis, and will be based on a pass-through of all charges assessed by other providers, plus the Company's administrative costs.

COMPETITIVE TELECOMMUNICATIONS ACCESS SERVICES PRICE LIST

SECTION 6- CONTRACTS AND INDIVIDUAL CASE BASIS ARRANGEMENTS**6.1 Contracts**

The Company may provide any of the services offered under this tariff, or combinations of services, to Customers on a contractual basis. The terms and conditions of each contract offering are subject to the agreement of both the Customer and Company. Such contract offerings will be made available to similarly situated Customers in substantially similar circumstances. Rates in other sections of this tariff do not apply to Customers who agree to contract arrangements, with respect to services within the scope of the contract.

Services provided under contract are not eligible for any promotional offerings which maybe offered by the Company from time to time.

6.2 Individual Case Basis Arrangements

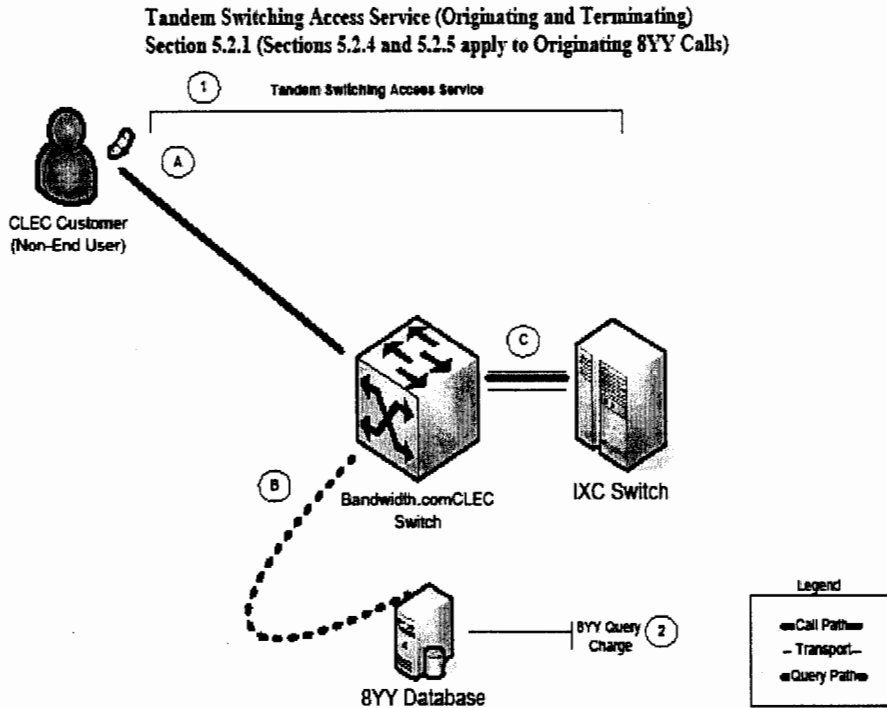
Arrangements will be developed on an individual case basis (ICB) in response to a bona fide special request from a Customer or prospective Customer to develop a competitive bid for a service. ICB rates will be offered to the Customer in writing and on a non-discriminatory basis.

Issued: May 27, 2009**Effective: MAY 28 2009****By:**

Lisa Jill Freeman
Vice President & Regulatory Compliance Officer
Venture Center III - 5th Floor
900 Main Campus Drive
Raleigh, North Carolina 27060

COMPETITIVE TELECOMMUNICATIONS ACCESS SERVICES PRICE LIST

SECTION 7 – CALL FLOW DIAGRAMS



Originating Call Flow:

- A. CLEC's Non-End User Customer delivers long distance call to CLEC switch
- B. If 8YY call, CLEC Switch looks up IXC that should receive the call
- C. Call is routed to IXC switch from CLEC switch

Originating Charges:

- CLEC charges IXC (1) Tandem Switching Access Service, which is comprised of a) tandem switching, b) tandem termination, and c) tandem facility mileage
- BYY Query Charge, as applicable
- Additional charges may apply depending upon whether the IXC connects directly to the CLEC or if call must be routed through the ILEC Access Tandem to IXC

Terminating Call Flow:

- C. IXC delivers terminating long distance call to CLEC switch
- A. Call is routed to CLEC's Non-End User Customer

Terminating Charges:

- CLEC charges IXC for (1) Tandem Switching Access Service, which is comprised of a) tandem switching, b) tandem termination, and c) tandem facility mileage.
- Additional charges may apply depending upon whether the IXC connects directly to CLEC or if call must be routed through an ILEC Access Tandem to CLEC

Confidential

Issued: August 25, 2010

Effective: August 26, 2010

Lisa Jill Freeman
Vice President & Regulatory Compliance Officer
Venture Center III - 5th Floor
900 Main Campus Drive
Raleigh, North Carolina 27060

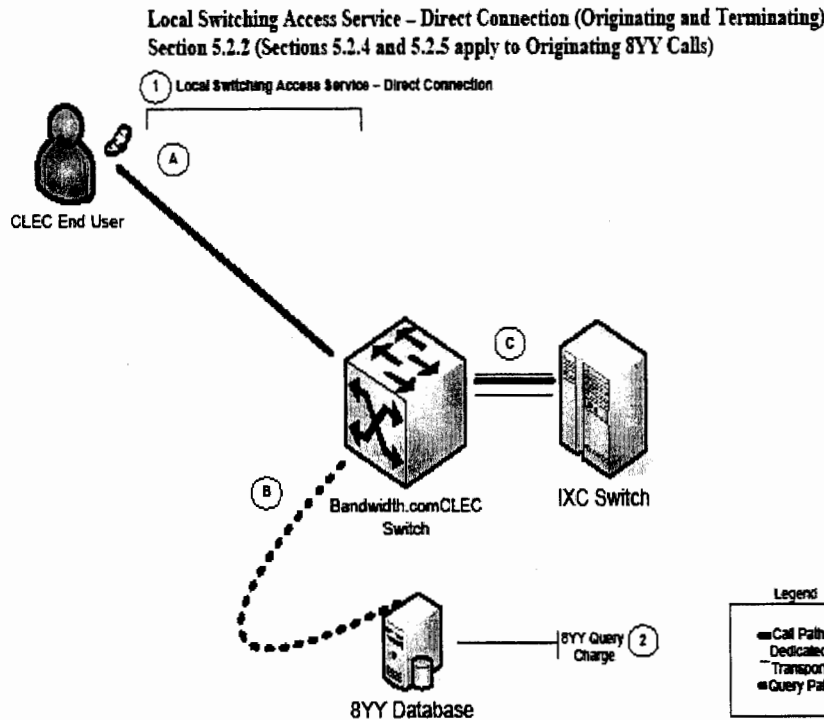
(N)

(N)

COMPETITIVE TELECOMMUNICATIONS ACCESS SERVICES PRICE LIST

SECTION 7 – CALL FLOW DIAGRAMS, (Cont'd.)

(N)



Originating Call Flow:

- A. CLEC's End User places a long distance call that is routed to CLEC switch
- B. If 8YY call, CLEC Switch looks up IXC that should receive the call
- C. Call is routed to IXC over dedicated transport

Originating Charges:

- CLEC charges IXC (1) Local Switching Access Service, which is comprised of a) end office switching, and b) dedicated trunk port charge, where applicable; and (2) 8YY Query Charge, as applicable
- Customer is responsible for providing or ordering DS3 facility to CLEC's point of presence in the access tandem serving area

Terminating Call Flow:

- C. IXC delivers terminating long distance call to CLEC over dedicated transport
- A. Call is routed to CLEC's End User

Terminating Charges:

- CLEC charges IXC (1) Local Switching Access Service, which is comprised of a) end office switching, and b) dedicated trunk port charge, where applicable
- Customer is responsible for providing or ordering DS3 facility to CLEC's point of presence in the access tandem serving area

Confidential

(N)

Issued: August 25, 2010

Effective: August 26, 2010

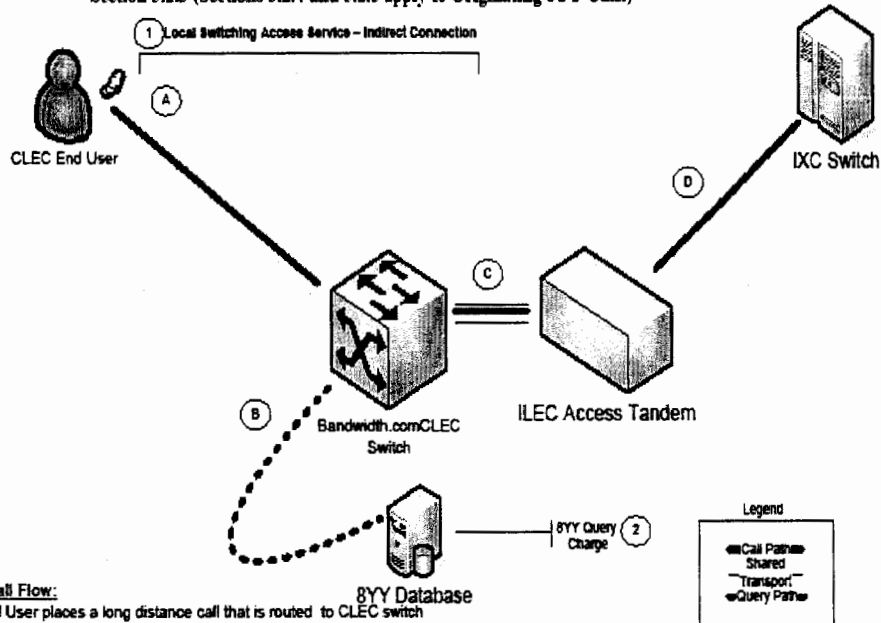
Lisa Jill Freeman
Vice President & Regulatory Compliance Officer
Venture Center III - 5th Floor
900 Main Campus Drive
Raleigh, North Carolina 27060

COMPETITIVE TELECOMMUNICATIONS ACCESS SERVICES PRICE LIST

SECTION 7 – CALL FLOW DIAGRAMS, (Cont'd.)

(N)

Local Switching Access Service – Indirect Connection (Originating and Terminating)
Section 5.2.3 (Sections 5.2.4 and 5.2.5 apply to Originating 8YY Calls)



Originating Call Flow:

- A. CLEC's End User places a long distance call that is routed to CLEC switch
- B. If 8YY call, CLEC Switch looks up IXC that should receive the call
- C. Call is routed to ILEC Access Tandem over shared transport
- D. ILEC routes call to IXC

Originating Charges:

- CLEC charges IXC (1) Local Switching Access Service – Indirect Connection, which is comprised of a) end office switching, b) tandem termination, and c) tandem facility mileage, and (2) 8YY Query Charge, as applicable
- Additional charges may apply per ILEC tariff for functions performed by ILEC

Terminating Call Flow:

- D. IXC delivers terminating long distance call to ILEC Access Tandem for routing to CLEC End User
- C. ILEC Access Tandem routes call over Shared Transport to CLEC switch
- A. Call is routed to CLEC End User

Terminating Charges:

- CLEC charges IXC (1) Local Switching Access Service – Indirect Connection, which is comprised of a) Tandem Termination, and c) tandem facility mileage
- Additional charges may apply per ILEC tariff for functions performed by ILEC

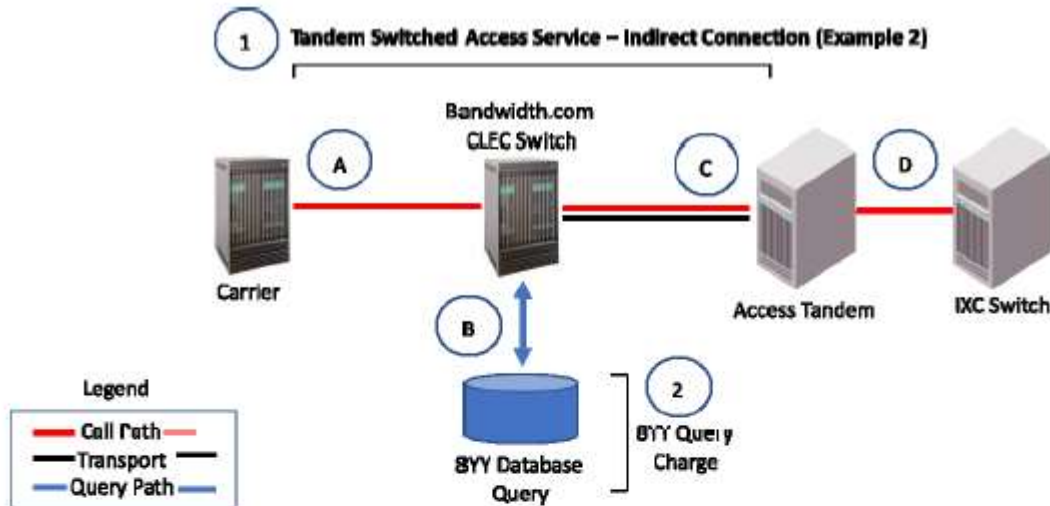
Confidential

(N)

Lisa Jill Freeman
Vice President & Regulatory Compliance Officer
Venture Center III - 5th Floor
900 Main Campus Drive
Raleigh, North Carolina 27060

COMPETITIVE TELECOMMUNICATIONS ACCESS SERVICES PRICE LIST

SECTION 7 – CALL FLOW DIAGRAMS, (Cont'd.)



Originating Call Flow:

- A. 3rd Party Carrier routes long distance call to Bandwidth.com CLEC switch.
- B. If 8YY call, Bandwidth.com CLEC looks up INC that should receive the call in 8YY Database.
- C. Call is routed from Bandwidth.com CLEC switch to Third-Party Access Tandem over shared transport.
- D. Third-Party Access Tandem provider routes call to IXC.

Originating Charges:

- Bandwidth.com CLEC charges INC for:
- (1) Tandem Switching Access Service – Indirect Connection, which is comprised of:
 - (a) Access Tandem switching;
 - (b) Tandem-Switched Transport Termination and Common Multiplexing;
 - (c) Tandem-Switched Transport – Facility;
 - (d) Common Trunk Port
 - (2) 8YY Query Charge, as applicable.
- Additional charges may be assessed by the third-party access tandem provider.

Terminating Call Flow:

- D. IXC delivers terminating long distance call to Third-Party Access Tandem.
- C. Third-Party Access Tandem provider routes call over shared transport to Bandwidth.com CLEC switch.
- A. Call is routed from Bandwidth.com CLEC switch to 3rd Party Carrier.

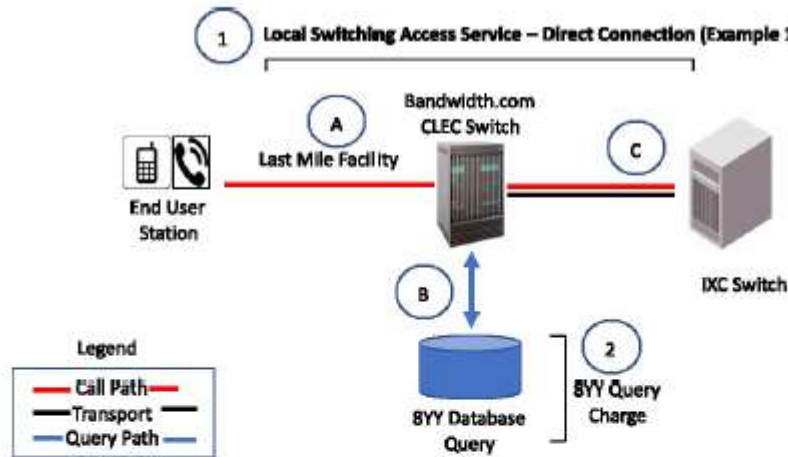
Terminating Charges:

- Bandwidth.com CLEC charges INC for:
- (1) Tandem Switching Access Service – Indirect Connection, which is comprised of:
 - (a) Access Tandem Switching
 - (b) Tandem-Switched Transport Termination and Common Multiplexing;
 - (c) Tandem-Switched Transport – Facility.
- Additional charges may be assessed by the third-party access tandem provider

COMPETITIVE TELECOMMUNICATIONS ACCESS SERVICES PRICE LIST

SECTION 7 – CALL FLOW DIAGRAMS, (Cont'd.)

Local Switching Access Service – Direct Connection
Section 5.2.2 (Sections 5.2.4 and 5.2.5 also apply to Originating 8YY Calls)



Originating Call Flow:

- A. End User places a long distance call that is routed to Bandwidth.com CLEC switch.
- B. If 8YY call, Bandwidth.com CLEC looks up IXC that should receive the call in 8YY Database.
- C. Call is routed from Bandwidth.com CLEC switch to IXC switch via dedicated transport.

Originating Charges:

- Bandwidth.com CLEC charges IXC for:
- (1) Local Switching Access Service – Direct Connection, which is comprised of:
 - (a) End Office Switching,
 - (b) Dedicated Trunk Port (ICB) or Common Trunk Port
 - (2) 8YY Query Charge, as applicable.

Terminating Call Flow:

- C. IXC delivers terminating long distance call to Bandwidth.com CLEC switch via dedicated transport
- A. Call is routed from Bandwidth.com CLEC switch to Bandwidth.com CLEC-End User.

Terminating Charges:

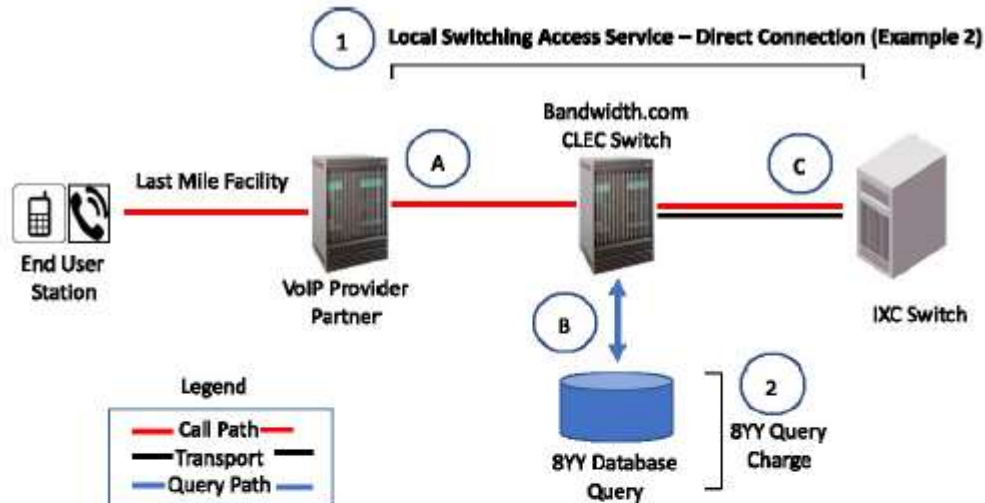
- CLEC charges IXC for:
- (1) Local Switching Access Service – Direct Connection, which is comprised of:
 - (a) End Office Switching;
 - (b) Dedicated Trunk Port (ICB) or Common Trunk Port;

(N)

(N)

COMPETITIVE TELECOMMUNICATIONS ACCESS SERVICES PRICE LIST

SECTION 7 – CALL FLOW DIAGRAMS, (Cont'd.)



Originating Call Flow:

- A. End User places a long distance call that is routed to Bandwidth.com CLEC switch.
- B. If 8YY call, Bandwidth.com CLEC looks up IXC that should receive the call in 8YY Database.
- C. Call is routed from Bandwidth.com CLEC switch to IXC switch via dedicated transport.

Originating Charges:

- Bandwidth.com CLEC charges IXC for:
- (1) Local Switching Access Service – Direct Connection, which is comprised of:
 - (a) End Office Switching.
 - (b) Dedicated Trunk Port (ICB) or Common Trunk Port.
 - (2) 8YY Query Charge, as applicable.

Terminating Call Flow:

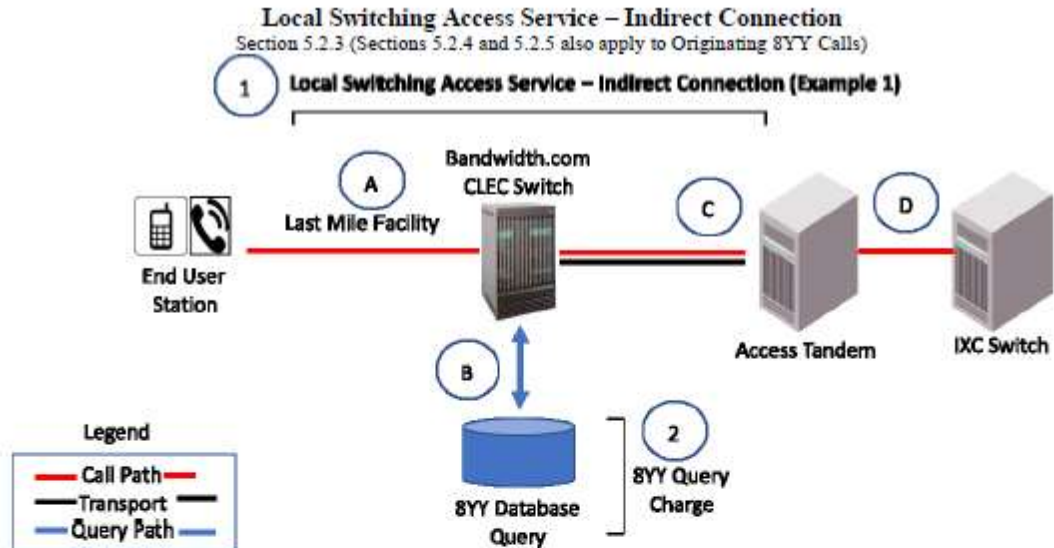
- C. IXC delivers terminating long distance call to Bandwidth.com CLEC switch via dedicated transport
- A. Call is routed from Bandwidth.com CLEC switch to VoIP Provider Partner

Terminating Charges:

- CLEC charges IXC for:
- (1) Local Switching Access Service – Direct Connection, which is comprised of:
 - (a) End Office Switching.
 - (b) Dedicated Trunk Port (ICB) or Common Trunk Port.

COMPETITIVE TELECOMMUNICATIONS ACCESS SERVICES PRICE LIST

SECTION 7 – CALL FLOW DIAGRAMS, (Cont'd.)



Originating Call Flow:

- A. End User places a long distance call that is routed to Bandwidth.com CLEC switch.
- B. If 8YY call, Bandwidth.com CLEC looks up IXC that should receive the call in 8YY Database.
- C. Call is routed from Bandwidth.com CLEC switch to Third-Party Access Tandem over shared transport.
- D. Third-Party Access Tandem provider routes call to IXC.

Originating Charges:

Bandwidth.com CLEC charges IXC for:

- (1) Local Switching Access Service – Indirect Connection, which is comprised of:
 - (a) End Office Switching;
 - (b) Common Trunk Port;
 - (c) Tandem-Switched Transport Termination and Common Multiplexing;
 - (d) Tandem-Switched Transport - Facility.
- (2) 8YY Query Charge, as applicable.

Additional charges may be assessed by the third-party access tandem provider.

Terminating Call Flow:

- D. IXC delivers terminating long distance call to Third-Party Access Tandem.
- C. Third-Party Access Tandem provider routes call over shared transport to Bandwidth.com CLEC switch.
- A. Call is routed from Bandwidth.com CLEC switch to Bandwidth.com CLEC End User.

Terminating Charges:

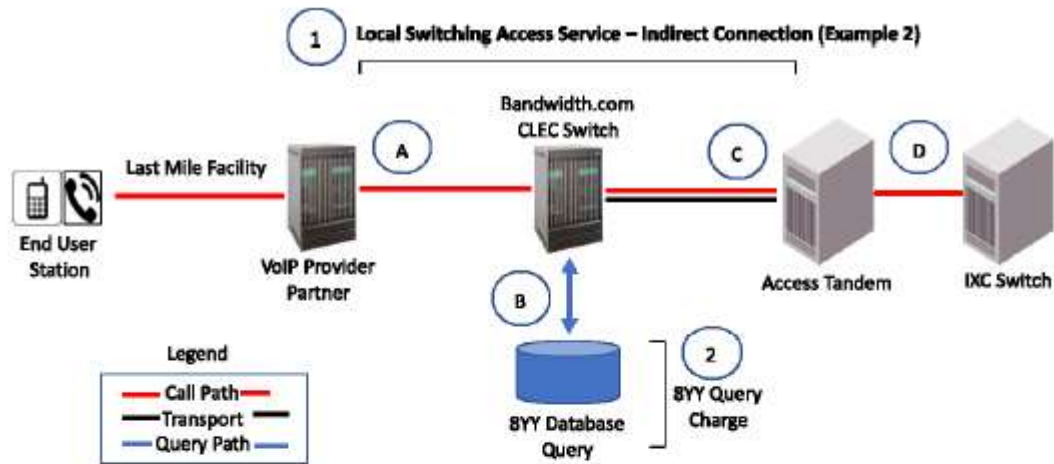
CLEC charges IXC for:

- (1) Local Switching Access Service – Indirect Connection, which is comprised of:
 - (a) End Office Switching;
 - (b) Common Trunk Port;
 - (c) Tandem-Switched Transport Termination and Common Multiplexing;
 - (d) Tandem-Switched Transport - Facility.

Additional charges may be assessed by the third-party access tandem provider.

COMPETITIVE TELECOMMUNICATIONS ACCESS SERVICES PRICE LIST

SECTION 7 – CALL FLOW DIAGRAMS, (Cont'd.)



Originating Call Flow:

- A. End User places a long distance call that is routed to Bandwidth.com CLEC switch.
- B. If 8YY call, Bandwidth.com CLEC looks up IXC that should receive the call in 8YY Database.
- C. Call is routed from Bandwidth.com CLEC switch to Third-Party Access Tandem over shared transport.
- D. Third-Party Access Tandem provider routes call to IXC.

Originating Charges:

- Bandwidth.com CLEC charges IXC for:
- (1) Local Switching Access Service – Indirect Connection, which is comprised of:
 - (a) End Office Switching.
 - (b) Common Trunk Port.
 - (c) Tandem-Switched Transport Termination and Common Multiplexing.
 - (d) Tandem-Switched Transport - Facility.
 - (2) 8YY Query Charge, as applicable.
- Additional charges may be assessed by the third-party access tandem provider.

Terminating Call Flow:

- D. IXC delivers terminating long distance call to Third-Party Access Tandem.
- C. Third-Party Access Tandem provider routes call over shared transport to Bandwidth.com CLEC switch.
- A. Call is routed from Bandwidth.com CLEC switch to VoIP Provider Partner.

Terminating Charges:

- CLEC charges IXC for:
- (1) Local Switching Access Service – Indirect Connection, which is comprised of:
 - (a) End Office Switching.
 - (b) Common Trunk Port.
 - (c) Tandem-Switched Transport Termination and Common Multiplexing.
 - (d) Tandem-Switched Transport - Facility.
- Additional charges may be assessed by the third-party access tandem provider.