



Embarq Corporation
EMBARQ.com
Mailstop: KSOPKJ0502
5454 W. 110th Street
Overland Park, KS 66211

September 15, 2006

Ms. Beth Salak
Director, Division of Competitive Markets and Enforcement
Attention: Tariff Section
Florida Public Service Commission
2540 Shumard Oak Boulevard
Tallahassee, Florida 32399-0850

RE: TL727

Dear Ms. Salak:

Attached for filing, please find the following revised pages for the Embarq Florida, Inc. General Exchange Tariff. This filing is submitted with a proposed effective date of September 30, 2006. The Company's tariffs are available on its website at www.embarq.com/tariffs.

Supplement Section A3 Second Revised Sheet 68

This filing is being submitted to reflect the decisions in Docket No. 060373-TL Order No. PSC-06-0667-PAA-TL issued August 7, 2006. The order sets forth the tariff filing requirements regarding realigning Embarq's Orange City and BellSouth's Deland exchange boundaries to transfer a portion of the Victoria Park Development from the Deland exchange to the Orange City exchange.

Commission consideration and timely approval of these pages are respectfully requested. If you have questions or need additional information regarding this filing, please call Nancy Schnitzer at 850-599-1276.

Sincerely,

Mary L. Matthews

cc: Nancy Schnitzer
Attachments
FL 06-68

Mary L. Matthews
TARIFF ANALYST II
Voice: (913) 345-7721
Fax: (913) 345-6756
Mary.L.Matthews@embarq.com

GENERAL EXCHANGE TARIFF

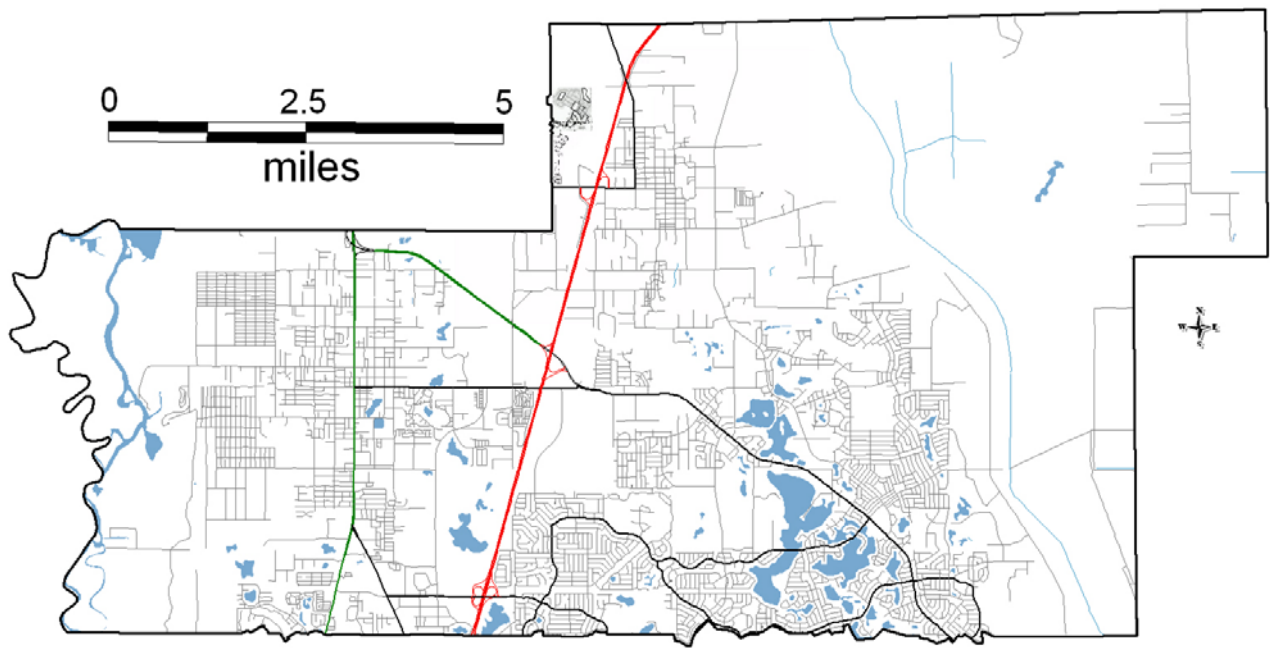
SPRINT- FLORIDA, INCORPORATED

**By: F. B. Poag
Directory**

**SUPPLEMENT SECTION A3
Second Revised Sheet 68
Cancelling First Revised Sheet 68
Effective: September 30, 2006**

EXCHANGE SERVICE AREA MAP

ORANGE CITY EXCHANGE



GENERAL EXCHANGE TARIFF

SPRINT- FLORIDA, INCORPORATED

SUPPLEMENT SECTION A3

Second First Revised Sheet 68

Cancelling First Revised Original Sheet 68

Effective: September 30, 2006 January 1, 1997

By: F. B. Poag
Directory

EXCHANGE SERVICE AREA MAP

ORANGE CITY EXCHANGE

