



Embarq Corporation
EMBARQ.com
Mailstop: KSOPKJ0502
5454 W. 110th Street
Overland Park, KS 66211

November 13, 2006

Ms. Beth Salak
Director, Division of Competitive Markets and Enforcement
Attention: Tariff Section
Florida Public Service Commission
2540 Shumard Oak Boulevard
Tallahassee, Florida 32399-0850

RE: **TL727**

Dear Ms. Salak:

Attached for filing, please find the following revised pages for the Embarq Florida, Inc. General Exchange Tariff. This filing is submitted with a proposed effective date of November 15, 2006. The Company's tariffs are available on its website at www.embarq.com/tariffs.

Supplement Section A3 Fifth Revised Sheet 17
Eleventh Revised Sheet 101

This filing is being submitted to request an exchange boundary transfer from the Clermont exchange to the Winter Garden exchange. This transfer involves the planned development known as Heritage Royal comprised of single-family living units. The present boundary bisects the development, rendering provision of service difficult. This request is sought to permit revisions to the exchange boundaries so that they will not divide the development, thereby rendering the boundaries more usable in the provision and administration of service. There are currently thirty-eight subscribers inside the Clermont exchange being served cross boundary from the Winter Garden exchange. There will be no changes to these customers' service. There are no other existing customers in the area to be transferred; therefore local service rates and calling plans will not be affected by the proposed changes.

Commission consideration and timely approval of these pages are respectfully requested. If you have questions or need additional information regarding this filing, please call Nancy Schnitzer at 850-599-1276.

Sincerely,

Mary L. Matthews

cc: Nancy Schnitzer
Attachments
FL 06-84

Mary L. Matthews
TARIFF ANALYST II
Voice: (913) 345-7721
Fax: (913) 345-6756
Mary.L.Matthews@embarq.com

GENERAL EXCHANGE TARIFF

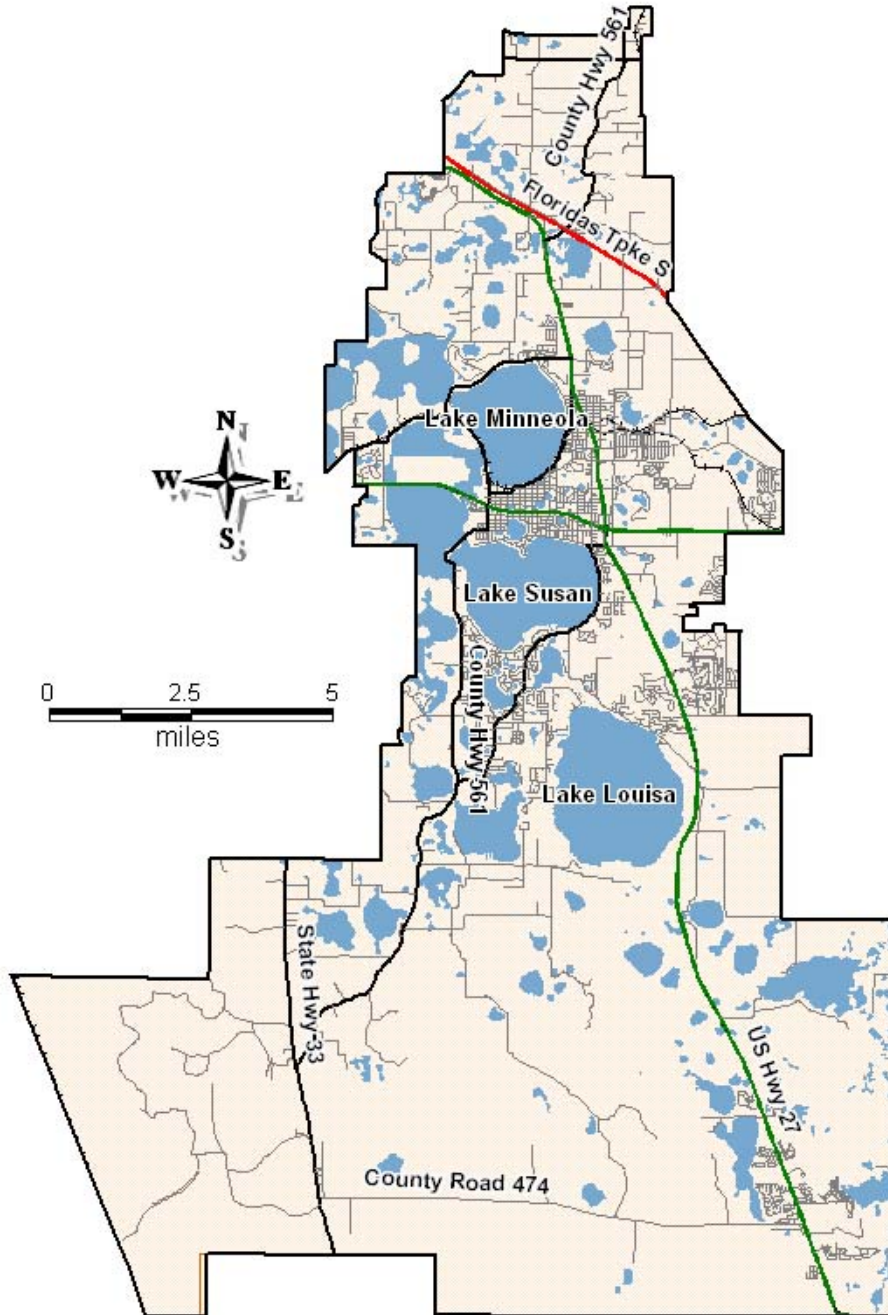
Embarq Florida, Inc.

SUPPLEMENT SECTION A3
Fifth Revised Sheet 17
Cancelling Fourth Revised Sheet 17
Effective: November 15, 2006

By: F. B. Poag
Director

EXCHANGE SERVICE AREA MAP

CLERMONT EXCHANGE



GENERAL EXCHANGE TARIFF

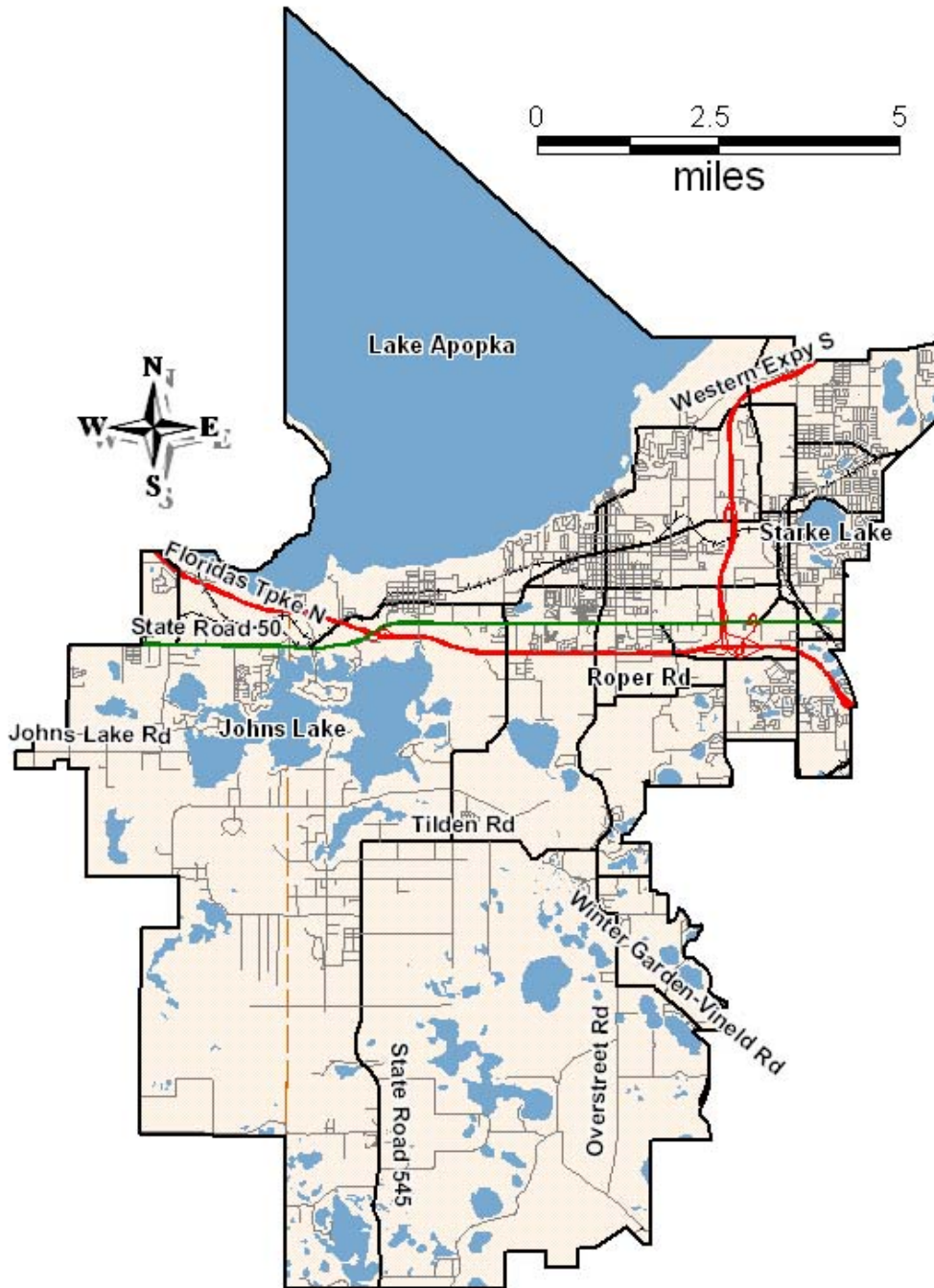
Embarq Florida, Inc.

SUPPLEMENT SECTION A3
Eleventh Revised Sheet 101
Cancelling Tenth Revised Sheet 101
Effective: November 15, 2006

By: F. B. Poag
Director

EXCHANGE SERVICE AREA MAP

WINTER GARDEN EXCHANGE



GENERAL EXCHANGE TARIFF

Embarq Florida, Inc.

SUPPLEMENT SECTION A3

Fifth ~~Fourth~~ Revised Sheet 17

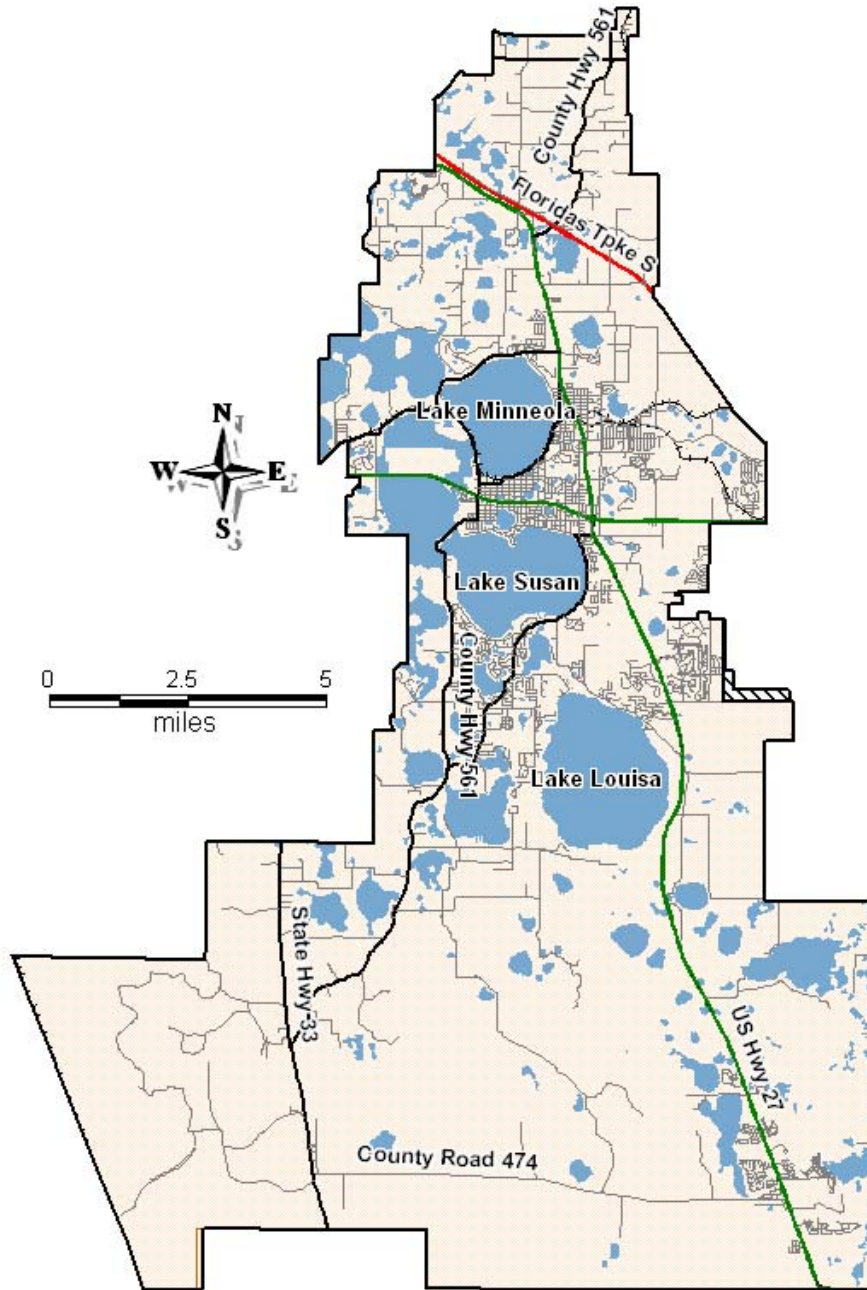
Cancelling ~~Fourth Third~~ Revised Sheet 17

Effective: November 15, 2006 ~~June 1, 2005~~

By: F. B. Poag
Director

EXCHANGE SERVICE AREA MAP

CLERMONT EXCHANGE



GENERAL EXCHANGE TARIFF

Embarq Florida, Inc.

SUPPLEMENT SECTION A3

~~Eleventh Tenth~~ Revised Sheet 101

Cancelling ~~Tenth Ninth~~ Revised Sheet 101

Effective: ~~November 15, 2006~~ June 1, 2005

By: F. B. Poag
Director

EXCHANGE SERVICE AREA MAP

WINTER GARDEN EXCHANGE

