



Embarq Corporation
EMBARQ.com
Mailstop: KSOPKJ0502
5454 W. 110th Street
Overland Park, KS 66211

January 28, 2008

Ms. Beth Salak
Director, Division of Competitive Markets and Enforcement
Attention: Tariff Section
Florida Public Service Commission
2540 Shumard Oak Boulevard
Tallahassee, Florida 32399-0850

RE: **TL727**

Dear Ms. Salak:

Attached for filing, please find the following revised pages for the Embarq Florida, Inc. General Exchange Tariff. This filing is submitted with a proposed effective date of January 30, 2008. The Company's tariffs are available on its website at www.embarq.com/tariffs.

Supplemental Section 3	Fifth Revised Sheet 7
	Eighth Revised Sheet 47
	Third Revised Sheet 95.2
	Fifth Revised Sheet 98

This filing is being submitted to make minor changes to the boundary maps between the exchanges of Belleview, Lady Lake, Weirsdale and Wildwood. The purpose of this filing is to make the exchange maps more precise. Given the more accurate mapping tools available today, Embarq is able to draw these map boundaries with more precision and more accuracy than was possible when the maps were originally drawn. No customers' rates or calling scopes will be affected by the proposed changes

Commission consideration and timely approval of these pages are respectfully requested. If you have questions or need additional information regarding this filing, please call Tamela Kelly at 850-599-1029.

Sincerely,

Mary L. Matthews

cc: Tamela Kelly
Sandy Khazraee
Attachments
FL 08-07

Mary L. Matthews
TARIFF ANALYST II
Voice: (913) 345-7721
Fax: (913) 345-6756
Mary.L.Matthews@embarq.com

GENERAL EXCHANGE TARIFF

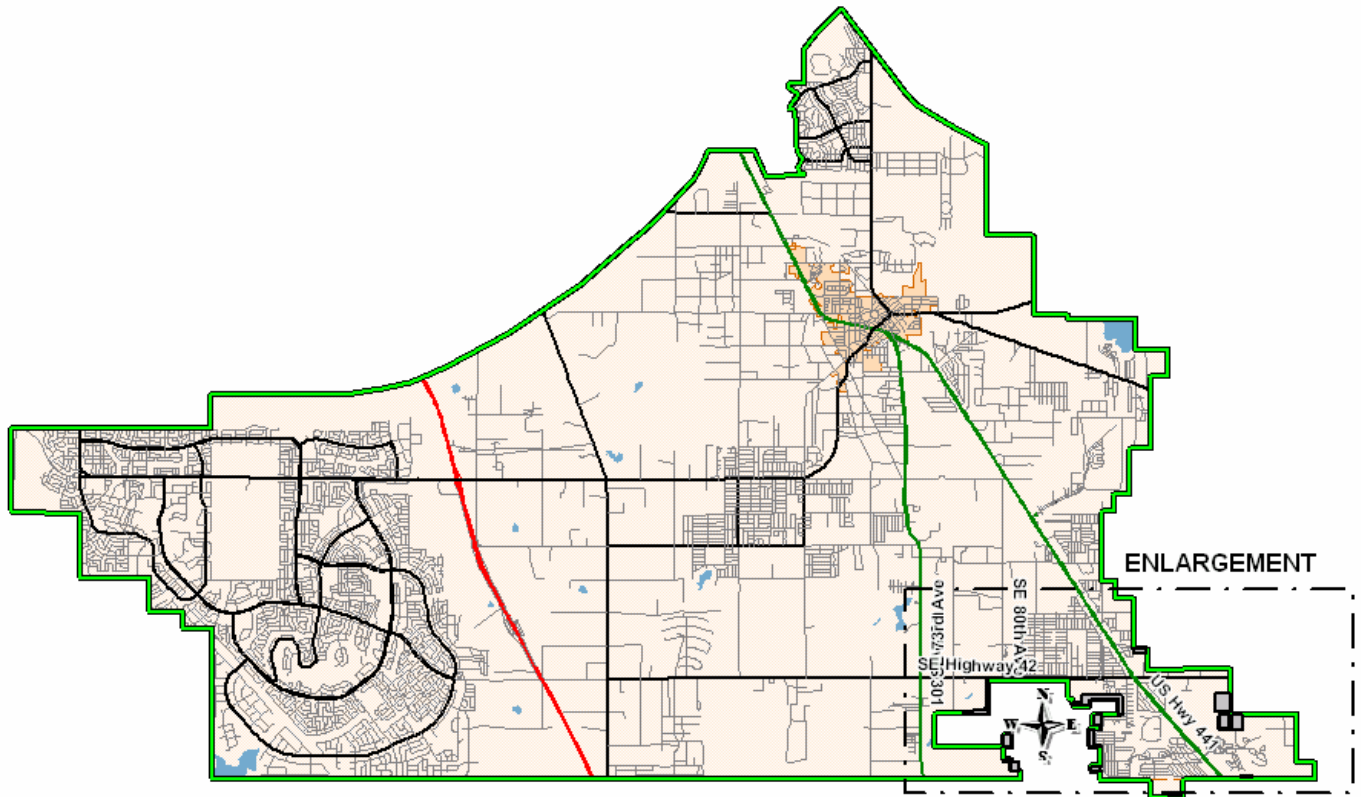
Embarq Florida, Inc.

By: F. B. Poag
Director

Supplement Section 3
Fourth Revised Sheet 7
Cancelling Third Revised Sheet 7
Effective: January 1, 2003

EXCHANGE SERVICE AREA MAP

BELLVIEW EXCHANGE



GENERAL EXCHANGE TARIFF

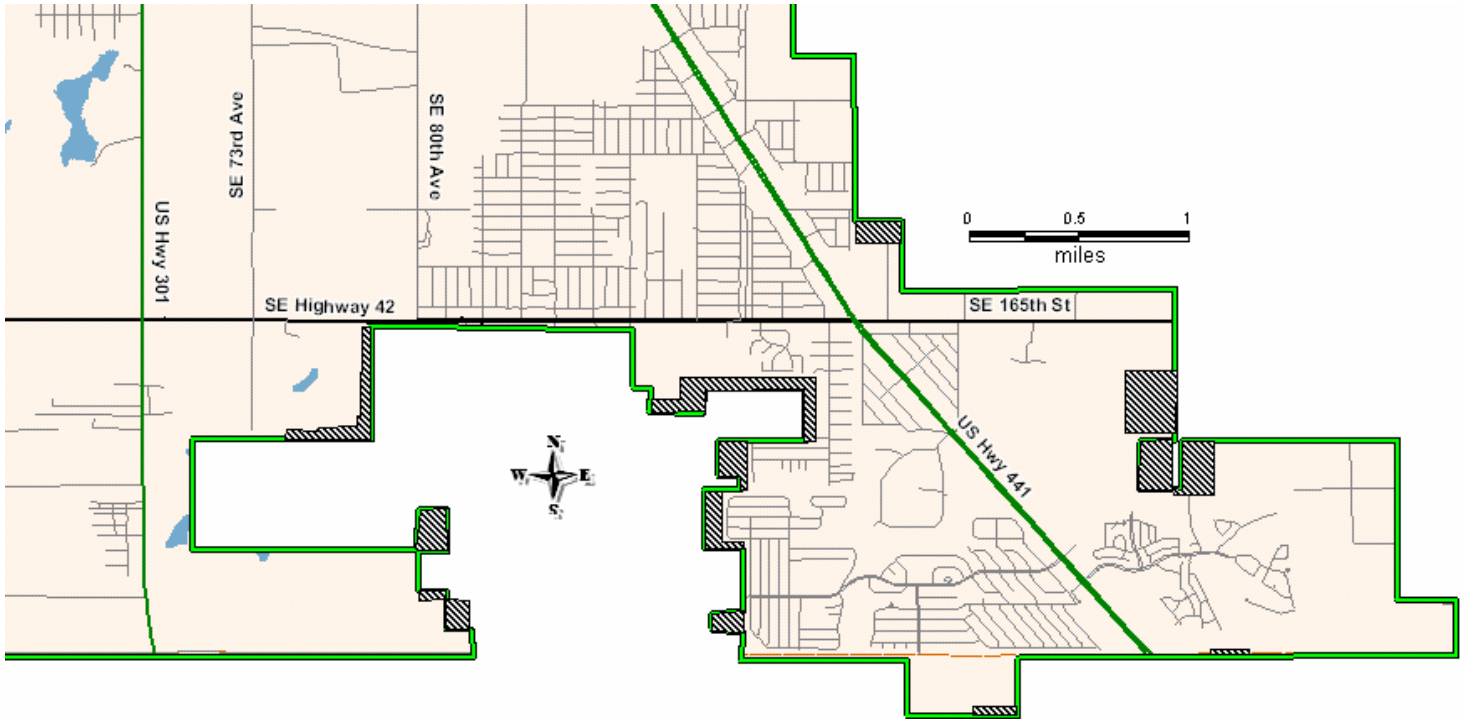
Embarq Florida, Inc.

By: F. B. Poag
Director

Supplement Section 3
~~Fifth~~ ~~Fourth~~ Revised Sheet 7
Cancelling ~~Fourth~~ ~~Third~~ Revised Sheet 7
Effective: ~~January 30, 2008~~ ~~January 1, 2003~~

EXCHANGE SERVICE AREA MAP

BELLVIEW EXCHANGE



GENERAL EXCHANGE TARIFF

Embarq Florida, Inc.

By: John M. Felz
Director

Supplement Section 3
Fifth Revised Sheet 7
Cancelling Fourth Revised Sheet 7
Effective: January 30, 2008

EXCHANGE SERVICE AREA MAP

BELLVIEW EXCHANGE



GENERAL EXCHANGE TARIFF

Embarq Florida, Inc.

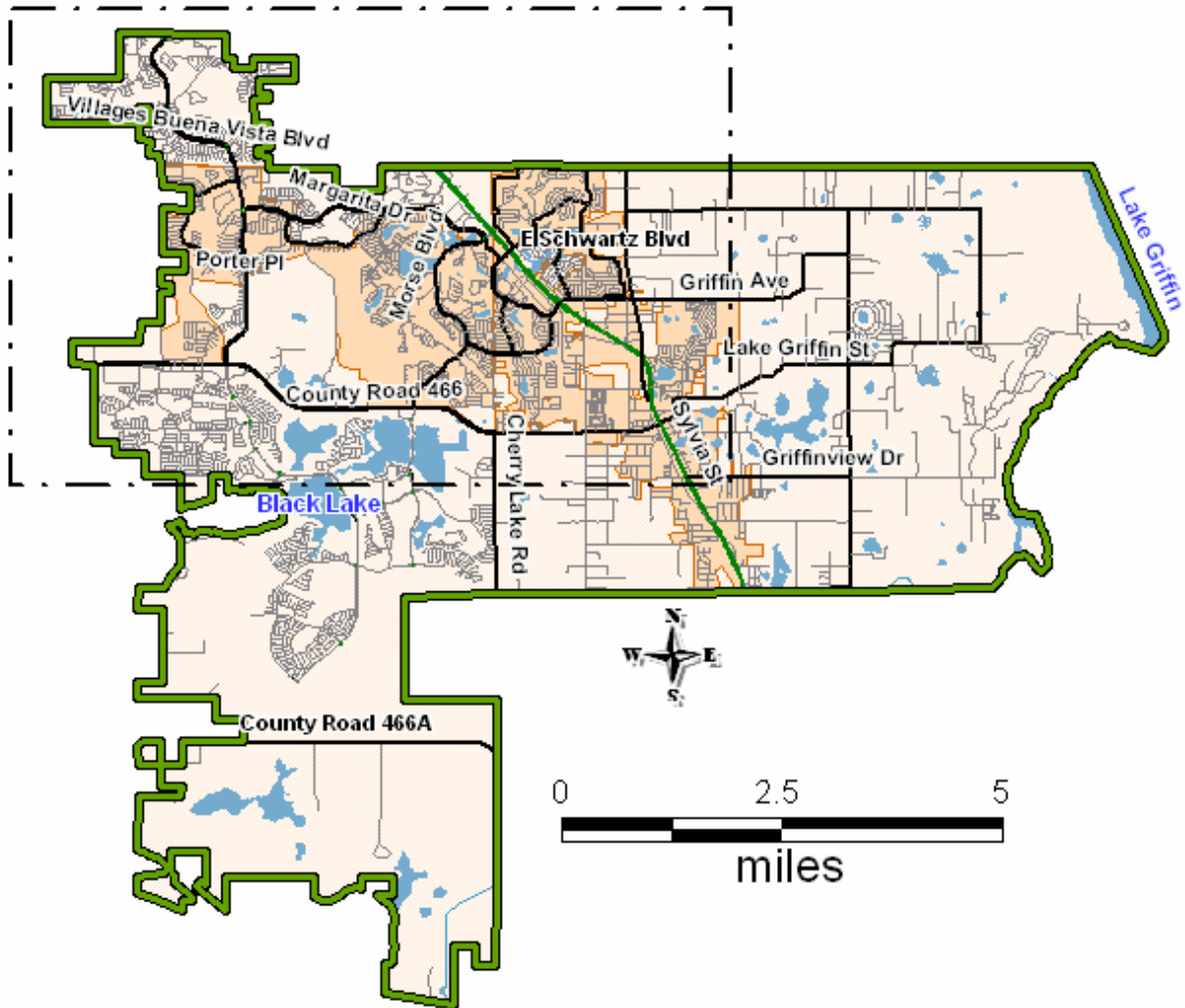
SUPPLEMENT SECTION A3
Seventh Revised Sheet 47
Cancelling Sixth Revised 47
Effective: September 8, 2006

By: F. B. Poag
Director

EXCHANGE SERVICE AREA MAP

LADY LAKE EXCHANGE

ENLARGEMENT



GENERAL EXCHANGE TARIFF

Embarq Florida, Inc.

SUPPLEMENT SECTION A3
Eighth ~~Seventh~~ Revised Sheet 47
Cancelling ~~Seventh Sixth~~ Revised 47

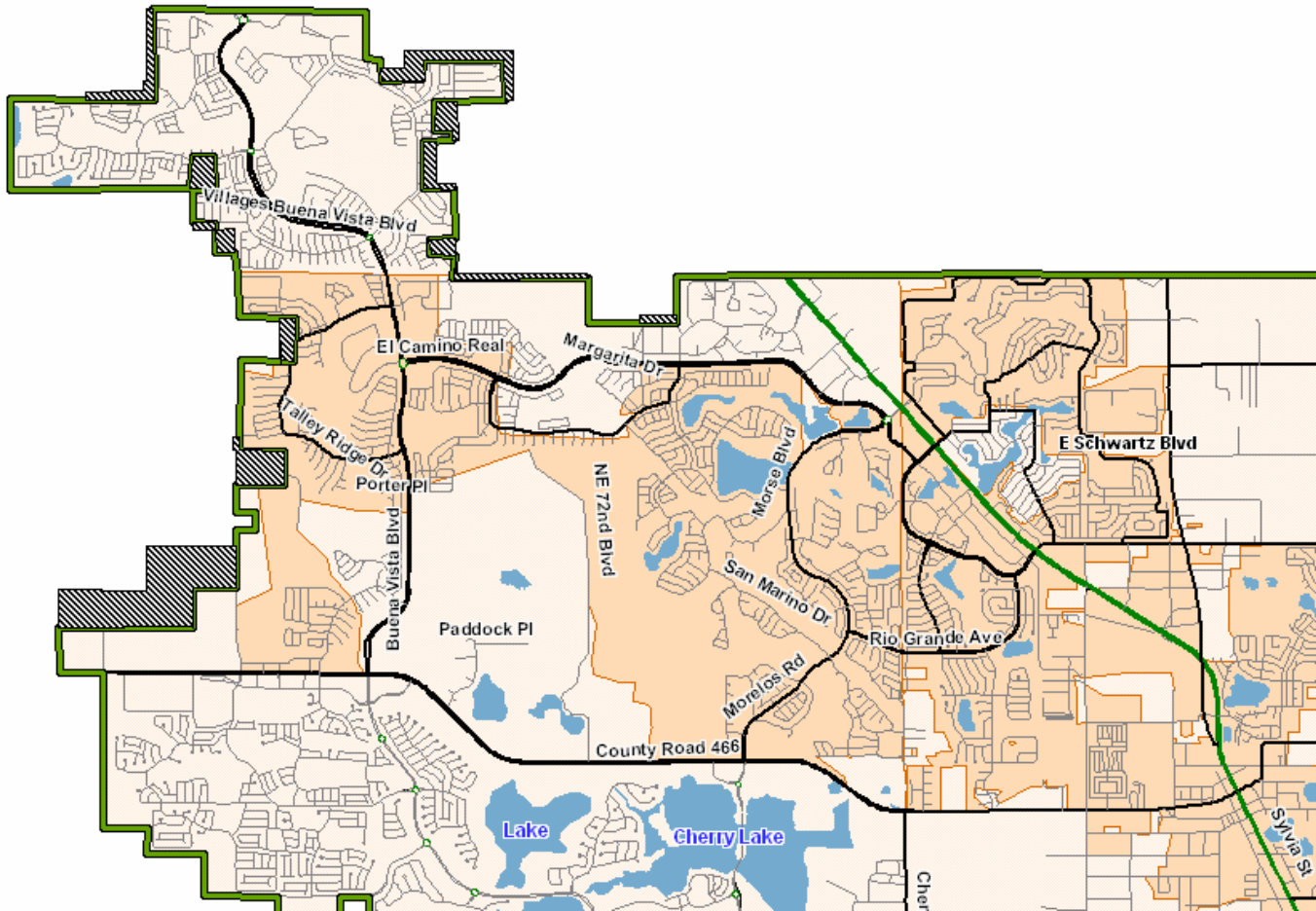
By: F. B. Poag

Effective: January 30, 2008 ~~September 8, 2006~~

Director

EXCHANGE SERVICE AREA MAP

LADY LAKE EXCHANGE



GENERAL EXCHANGE TARIFF

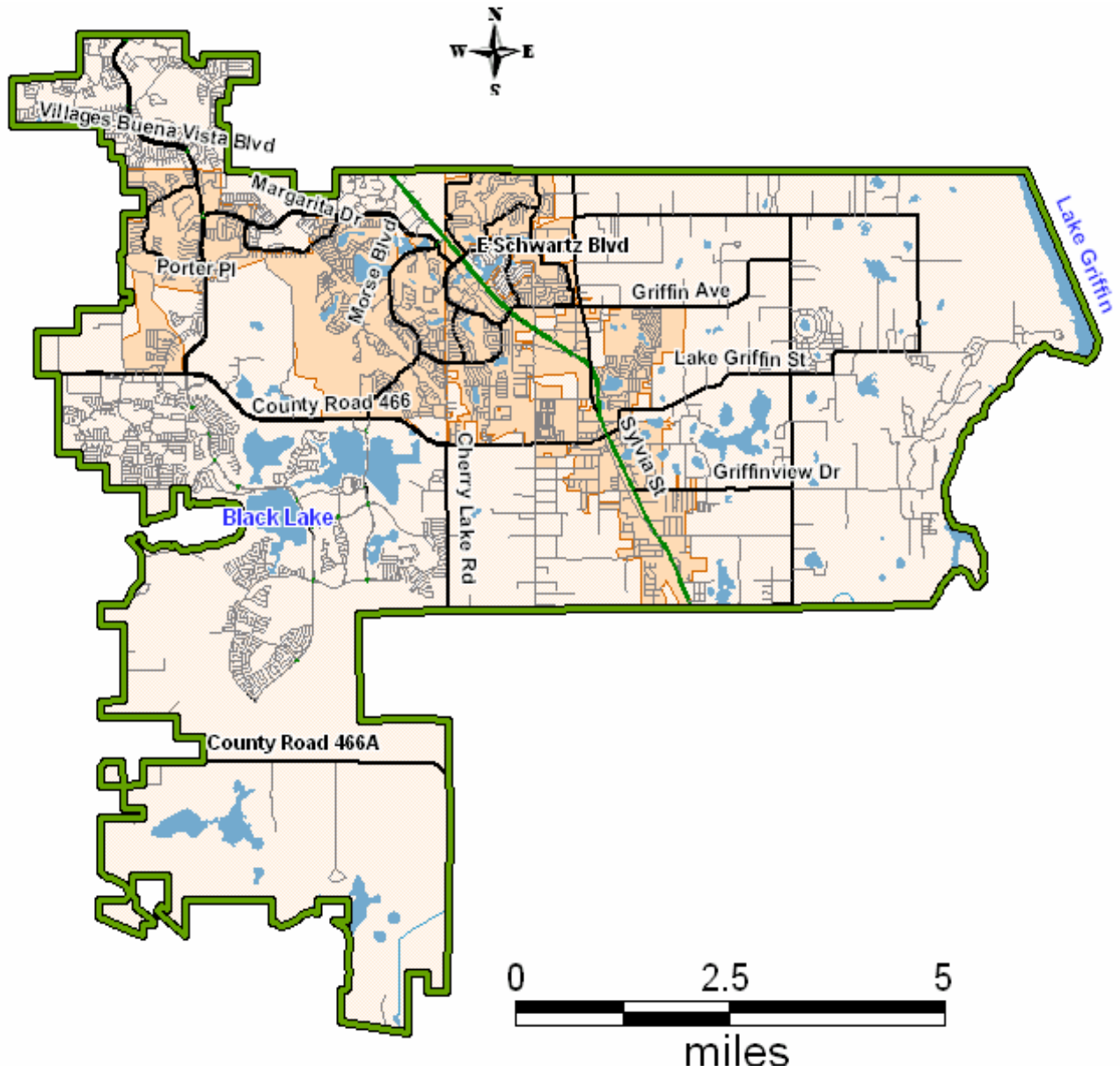
Embarq Florida, Inc.

SUPPLEMENT SECTION A3
Eighth Revised Sheet 47
Cancelling Seventh Revised 47
Effective: January 30, 2008

By: John M. Felz
Director

EXCHANGE SERVICE AREA MAP

LADY LAKE EXCHANGE



GENERAL EXCHANGE TARIFF

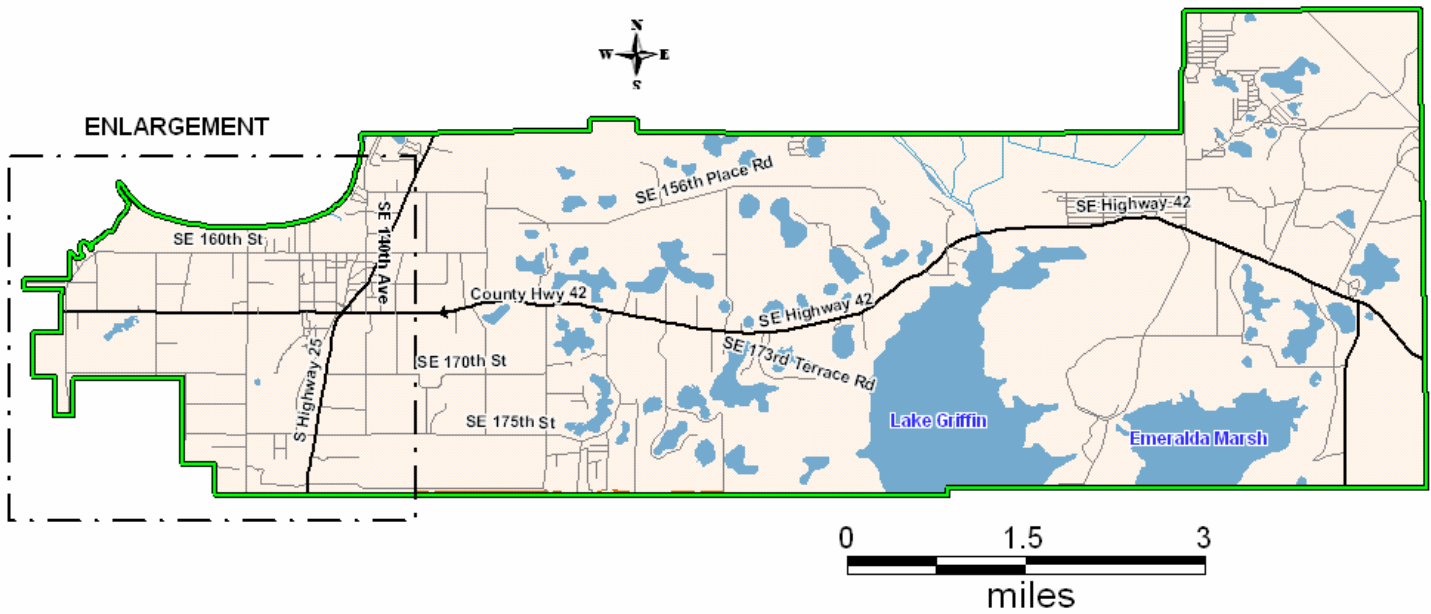
Embarq Florida, Inc.

By: F. B. Poag
Director

SUPPLEMENT SECTION 3
Second Revised Sheet 95.2
Cancelling First Revised Sheet 95.2
Effective: January 1, 2003

EXCHANGE SERVICE AREA MAP

WEIRSDALE EXCHANGE



GENERAL EXCHANGE TARIFF

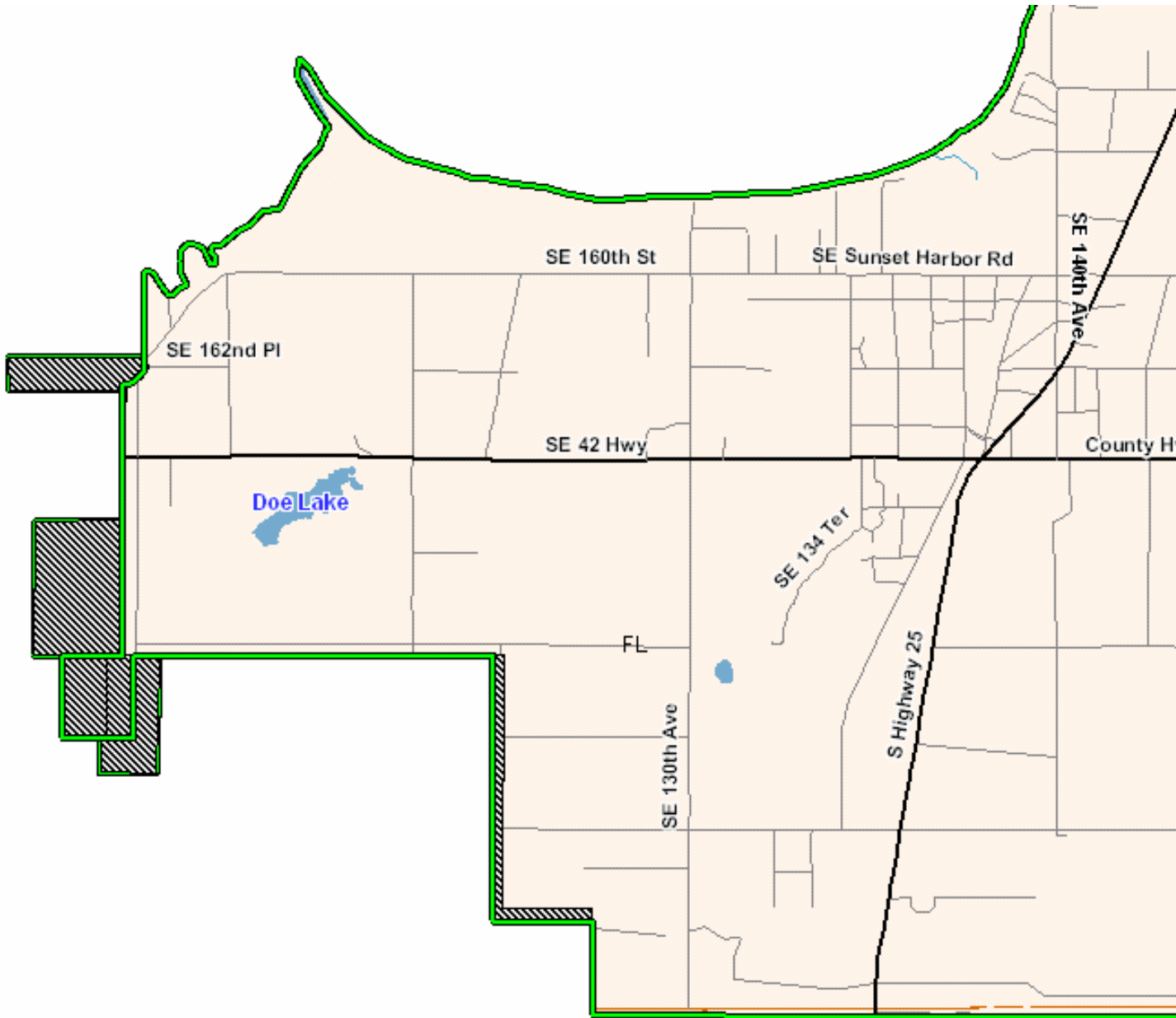
Embarq Florida, Inc.

By: F. B. Poag
Director

SUPPLEMENT SECTION 3
Third ~~Second~~ Revised Sheet 95.2
Cancelling ~~Second First~~ Revised Sheet 95.2
Effective: ~~January 1, 2003~~ January 30, 2008

EXCHANGE SERVICE AREA MAP

WEIRSDALE EXCHANGE



GENERAL EXCHANGE TARIFF

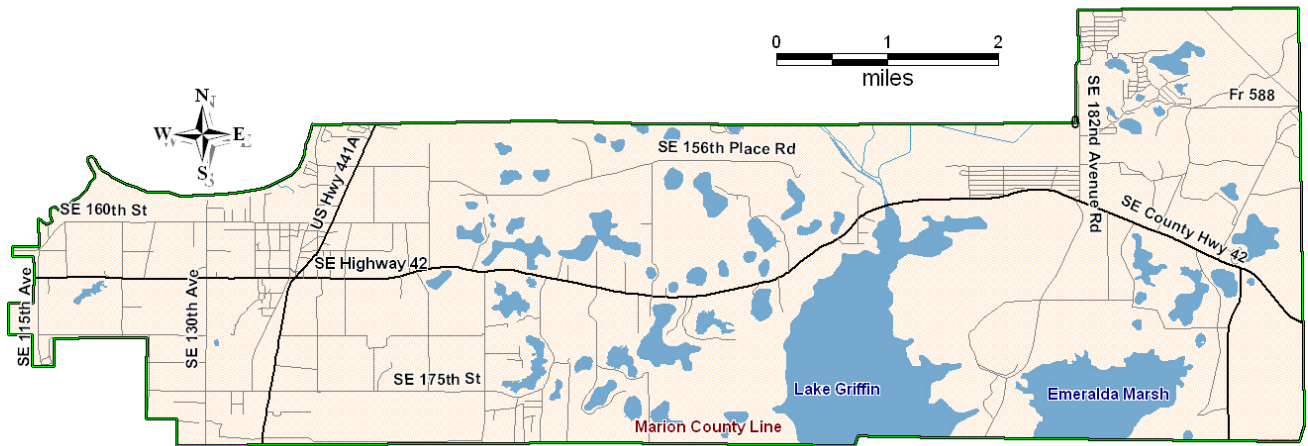
Embarq Florida, Inc.

SUPPLEMENT SECTION 3
Third Revised Sheet 95.2
Cancelling Second Revised 95.2
Effective: January 30, 2008

By: John M. Felz
Director

EXCHANGE SERVICE AREA MAP

WEIRSDALE EXCHANGE



GENERAL EXCHANGE TARIFF

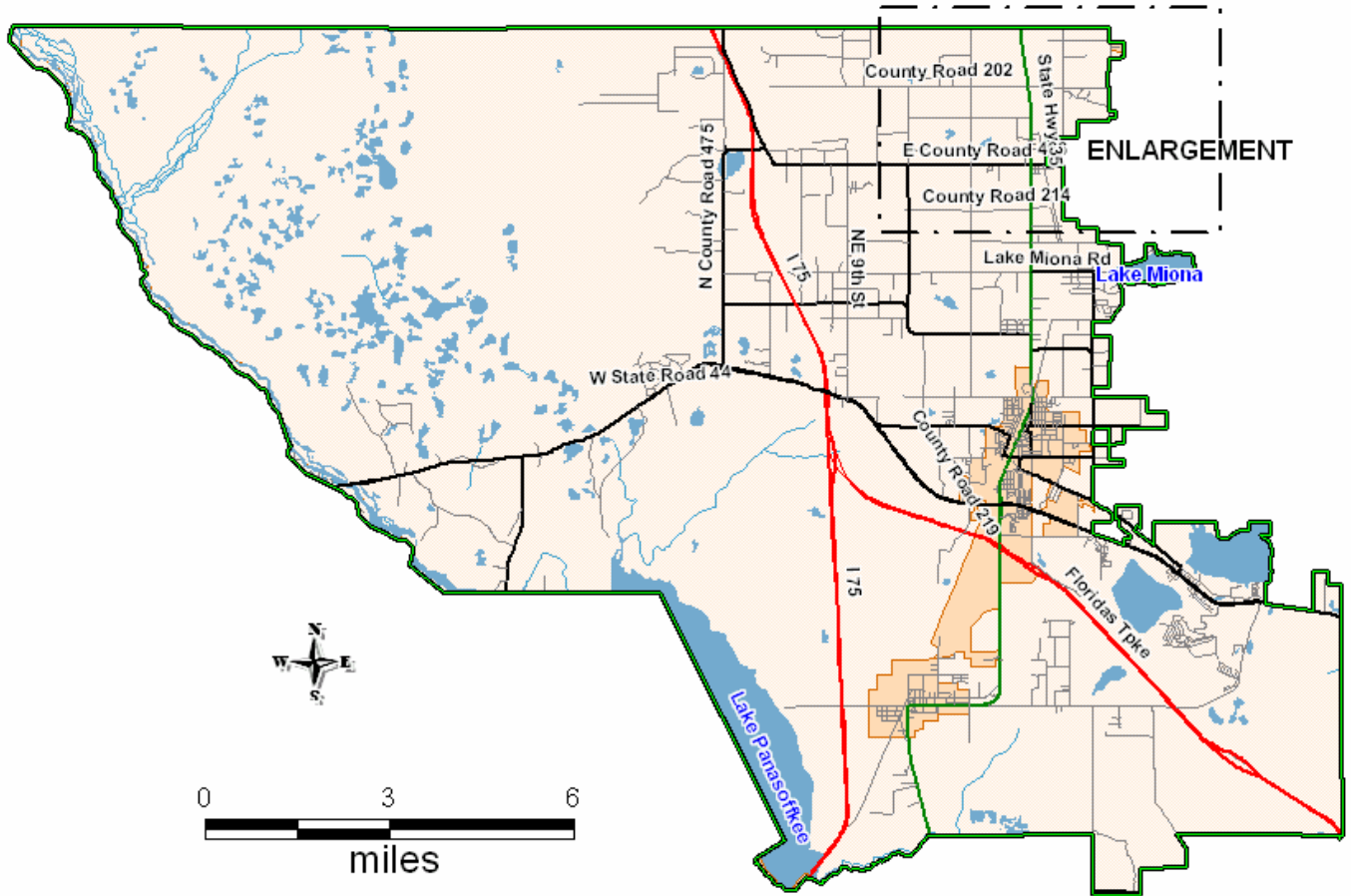
Embarq Florida, Inc.

By: F. B. Poag
Director

SUPPLEMENT SECTION 3
Fourth Revised Sheet 98
Cancelling Third Revised Sheet 98
Effective: September 8, 2006

EXCHANGE SERVICE AREA MAP

WILDWOOD EXCHANGE



GENERAL EXCHANGE TARIFF

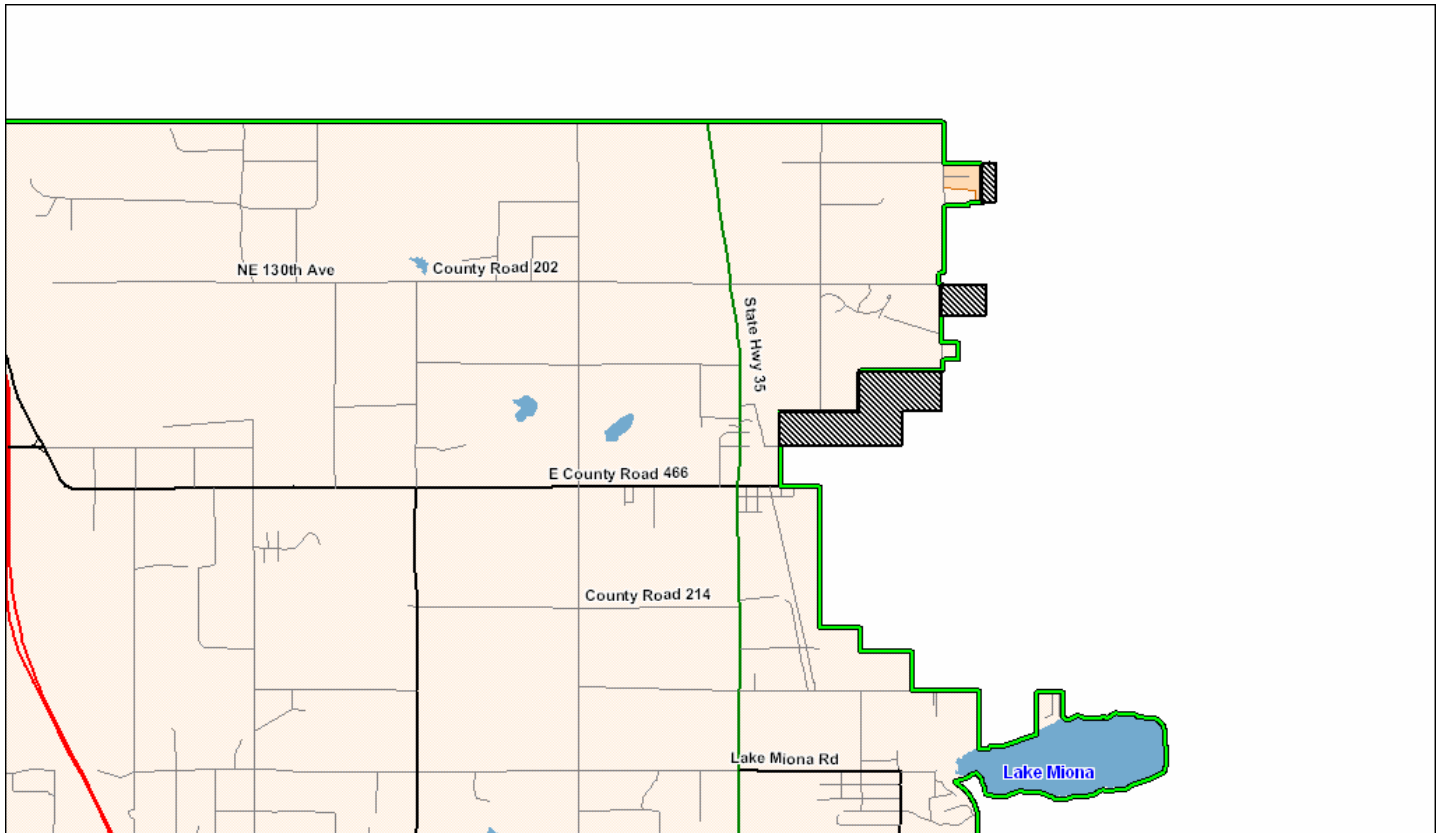
Embarq Florida, Inc.

By: F. B. Poag
Director

SUPPLEMENT SECTION 3
Fifth ~~Fourth~~ Revised Sheet 98
Cancelling ~~Fourth~~ ~~Third~~ Revised Sheet 98
Effective: January 30, 2008 ~~September 8, 2006~~

EXCHANGE SERVICE AREA MAP

WILDWOOD EXCHANGE



GENERAL EXCHANGE TARIFF

Embarq Florida, Inc.

SUPPLEMENT SECTION 3

Fifth Revised Sheet 98

By: John M. Felz
Director

Cancelling Fourth Revised Sheet 98
Effective: January 30, 2008

EXCHANGE SERVICE AREA MAP

WILDWOOD EXCHANGE

