

AUSLEY & McMULLEN

ATTORNEYS AND COUNSELORS AT LAW

227 SOUTH CALHOUN STREET
P.O. BOX 391 (ZIP 32302)
TALLAHASSEE, FLORIDA 32301
(904) 224-9115 FAX (904) 222-7660

**ORIGINAL
FILE COPY**

May 1, 1997

HAND DELIVERED

Ms. Blanca S. Bayo, Director
Division of Records and Reporting
Florida Public Service Commission
2540 Shumard Oak Boulevard
Tallahassee, FL 32399-0850

940517-EL

Re: Petition of Tampa Electric Company for Approval
of Charges for Underground Distribution Facilities

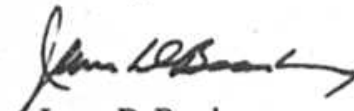
Dear Ms. Bayo:

Enclosed for filing in the above-styled matter are the original and fifteen (15) copies of Tampa Electric Company's Petition for approval of charges for underground distribution facilities.

Please acknowledge receipt and filing of the above by stamping the duplicate copy of this letter and returning same to this writer.

Thank you for your assistance in connection with this matter.

Sincerely,


James D. Beasley

ACK _____

AFA 1

APP _____

CAF _____

CMU JDB/pp

CTR Enclosures

EAG cc: Angela Llewellyn

LEG _____

LIN _____

OPC _____

RCH _____

SEC 1

WAS _____

OTH _____

DOCUMENT NUMBER-DATE

04374 MAY-26

FPSC-RECORDS/REPORTING

BEFORE THE FLORIDA PUBLIC SERVICE COMMISSION

In re: Petition of Tampa Electric)
Company for Approval of Charges for)
Underground Distribution Facilities.)
_____)

DOCKET NO. _____
FILED: May 1, 1997

PETITION OF
TAMPA ELECTRIC COMPANY

Tampa Electric Company ("Tampa Electric" or "the company"), by and through its undersigned attorneys, files this Petition for approval of charges for underground distribution facilities and respectively represents that:

1. Tampa Electric is a Florida corporation with its headquarters located at 702 N. Franklin Street in the City of Tampa, Florida. The company is an electric utility operating under the jurisdiction of this Commission. This petition is filed under Section 366.06(3), Florida Statutes, with respect to changing of electric utility rates and charges under the jurisdiction of the Commission.

2. The names and addresses of the persons authorized to receive notice and communications in respect to this petition are:

Lee L. Willis
James D. Beasley
Ausley & McMullen
Post Office Box 391
Tallahassee, Florida 32302

Angela Llewellyn
Regulatory Specialist
Tampa Electric Company
Post Office Box 111
Tampa, Florida 33601

3. Tampa Electric has made its annual review of the New Single-phase Service Laterals from Overhead Distribution System charge and Single-phase Service Laterals Converted from Existing Overhead Service Drops charge contained in its Fifth Revised Sheet No 5.515 and finds that on the basis of the Commission's practices and procedures, the proper charge for the New Single-phase Service Lateral from Overhead Distribution Systems should be \$2.93 per foot with an 8 ft credit for services 100 ft or less and a 67 ft credit for services longer than 100 ft. The charge is now \$2.90 per foot with a 6 ft

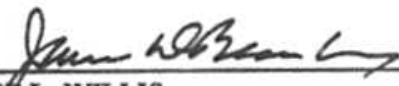
credit for services 100 ft or less and a 63 ft credit for services longer than 100 ft. In addition, the proper charge for a Single-phase Service Lateral Converted from Existing Overhead Service Drops should be a base charge of \$100.00 plus \$2.93 per foot with an 8 ft credit for services 100 ft or less and a base charge of \$315.00 plus \$2.93 per foot with a 67 ft credit for services longer than 100 ft. The conversion cost now is a base charge of \$96.00 plus \$2.90 per foot with a 6 ft credit for services 100 ft or less and a base charge of \$300.00 plus \$2.90 per foot with a 63 ft credit for services greater than 100 ft.

4. Attached hereto and made a part hereof is Sixth Revised Sheet No. 5.515 which incorporates the new proper service lateral charges in paragraphs 3.7.1.2. and 3.7.1.3. Tampa Electric is in the process of reformatting its tariff sheets. Given the font size change, modifications to Sheet No. 5.515 caused a portion of the unchanged content of that tariff sheet to carry over to Sheet No. 5.516. Therefore, we are including First Revised Sheet No. 5.516 for completeness and the company asks that it be approved as well.

WHEREFORE, Tampa Electric Company requests that this Commission consent to its above described Revised Tariff Sheets under the provisions of Section 366.03(3), Florida Statutes.

DATED this 1st day of May, 1997.

Respectfully submitted,



LEE L. WILLIS
JAMES D. BEASLEY of
Ausley & McMullen
Post Office Box 391
Tallahassee, Florida 32302
(904) 224-9115

ATTORNEYS FOR TAMPA ELECTRIC COMPANY

3.7 SCHEDULE OF STANDARD CHARGES AND NON-REFUNDABLE DEPOSITS FOR COST ESTIMATES FOR UNDERGROUND ELECTRIC DISTRIBUTION SYSTEMS

3.7.1 Standard Charges

The Standard Charges listed here are Contributions In Aid of Construction (CIAC) which are referenced by other sections of these rules and regulations.

3.7.1.1 Residential Subdivision

Low Density Subdivisions per service lateral or dwelling unit...	\$251 273.00
High Density Subdivisions per service lateral or dwelling unit...	\$195 192.00

3.7.1.2 New Single-phase Service Laterals from Overhead Distribution Systems

For 200' lateral or less per trench foot (w/68' of credit for service 100' or less and 6367' Of credit for services greater than 100').....	\$2.903
---	---------

3.7.1.3 Single-phase Service Laterals Converted from Existing Overhead Service Drops

For 100' lateral or less.....	\$96100.00
For 101'-200' lateral.....	\$300 315.00

For 200' lateral or less per trench foot (w/68' of credit for services 100' or less and 6367' of credit for services greater than 100').....	\$2.903
--	---------

3.7.1.4 New Commercial Three-phase Pad-mounted Transformers

<u>Transformer Size</u>	<u>CIAC</u>
75 KVA	\$1,000
150 KVA	1,000
225 KVA	1,250
300 KVA	1,500
500 KVA	1,750

TAMPA ELECTRIC COMPANY

3.7.2 Non-refundable Deposits for Estimates of CIAC

3.7.2.1 New Construction

Requests for construction of new underground systems, except for residential subdivisions covered under Section 3.4.2, will be accompanied by a non-refundable amount as follows:

Density Class	Deposit Amount
Urban Commercial or Residential.....	\$3,200 per mile*
Rural Commercial or Residential.....	\$1,800 per mile*

* Measured along centerline of roadways or proposed roadways

3.7.2.2 Conversion

Qualified applicants can request, upon payment of a non-refundable deposit as listed below, the conversion of overhead distribution facilities to underground in accordance with these Rules and Regulations for conversion areas of not less than one (1) city block in length along both sides of the main distribution system, or in the absence of city blocks, not less than five (5) contiguous building lots along both sides of the main distribution system, or in the absence of both, not the less than 600 pole-feet of the main distribution system, including all Customers served along both sides of the main distribution system, and so as to result in a decrease in the number of non-lighting poles in the system.

Requests for conversions, except for individual residential service covered under Section 3.4.3.3, will be accompanied by a non-refundable amount as follows:

Density Class	Deposit Amount
Urban Commercial or Residential.....	\$5,300 per mile*
Rural Commercial or Residential.....	\$3,100 per mile*
High or Low Density Subdivision.....	\$25 per lot

* As measured along the existing overhead primary and secondary distribution system.

3.7 SCHEDULE OF STANDARD CHARGES AND NON-REFUNDABLE DEPOSITS FOR COST ESTIMATES FOR UNDERGROUND ELECTRIC DISTRIBUTION SYSTEMS

3.7.1 Standard Charges

The Standard Charges listed here are Contributions In Aid of Construction (CIAC) which are referenced by other sections of these rules and regulations.

3.7.1.1 Residential Subdivision

Low Density Subdivisions per service lateral or dwelling unit...	\$273.00
High Density Subdivisions per service lateral or dwelling unit...	\$192.00

3.7.1.2 New Single-phase Service Laterals from Overhead Distribution Systems

For 200' lateral or less per trench foot (w/8' of credit for service 100' or less and 67' of credit for services greater than 100').....	\$2.93
--	--------

3.7.1.3 Single-phase Service Laterals Converted from Existing Overhead Service Drops

For 100' lateral or less.....	\$100.00
For 101'-200' lateral.....	\$315.00

For 200' lateral or less per trench foot (w/8' of credit for services 100' or less and 67' of credit for services greater than 100').....	\$2.93
---	--------

3.7.1.4 New Commercial Three-phase Pad-mounted Transformers

<u>Transformer Size</u>	<u>CIAC</u>
75 KVA	1,000
150 KVA	1,000
225 KVA	1,250
300 KVA	1,500
500 KVA	1,750

3.7.2 Non-refundable Deposits for Estimates of CIAC

3.7.2.1 New Construction

Requests for construction of new underground systems, except for residential subdivisions covered under Section 3.4.2, will be accompanied by a non-refundable amount as follows:

Density Class	Deposit Amount
Urban Commercial or Residential.....	\$3,200 per mile*
Rural Commercial or Residential.....	\$1,800 per mile*

* Measured along centerline of roadways or proposed roadways

3.7.2.2 Conversion

Qualified applicants can request, upon payment of a non-refundable deposit as listed below, the conversion of overhead distribution facilities to underground in accordance with these Rules and Regulations for conversion areas of not less than one (1) city block in length along both sides of the main distribution system, or in the absence of city blocks, not less than five (5) contiguous building lots along both sides of the main distribution system, or in the absence of both, not the less than 600 pole-feet of the main distribution system, including all Customers served along both sides of the main distribution system, and so as to result in a decrease in the number of non-lighting poles in the system.

Requests for conversions, except for individual residential service covered under Section 3.4.3.3, will be accompanied by a non-refundable amount as follows:

Density Class	Deposit Amount
Urban Commercial or Residential.....	\$5,300 per mile*
Rural Commercial or Residential.....	\$3,100 per mile*
High or Low Density Subdivision.....	\$25 per lot

* As measured along the existing overhead primary and secondary distribution system.

**1997 OVERHEAD AND UNDERGROUND
RESIDENTIAL DISTRIBUTION COSTS**

This report presents the details of estimated overhead and underground distribution costs to serve residential Customers in subdivisions. These estimates were made for the typical subdivisions presented in the Answer to Commission Order No. 6031-B filed jointly by Florida Power and Light Company, Florida Power Corporation, Florida Public Utilities Company, Gulf Power Company and Tampa Electric Company, utilizing the appropriate formats for supporting data presented in that Answer. The information contained in this report represents the updating of the data filed March 12, 1996 by Tampa Electric Company.

Included in this report are the total dollars charged in 1996 to each of the various operating and maintenance accounts specifically related to overhead and underground distribution and information related to joint trenching activity.

TABLE OF CONTENTS

<u>DESCRIPTION</u>	<u>Page</u>
Summary of Residential Distribution Cost Differentials	1
Summary of Low Density (Single Family Residential) Cost Differentials	2
- Overhead Material & Labor Summary	3
- Overhead Distribution Layout	4
- Underground Material & Labor Summary	5
- Underground Distribution Layout	6
Summary of High Density (Mobile Home/Townhouses) Cost Differentials	7
- Overhead Material & Labor Summary	8
- Overhead Distribution Layout	9
- Underground Material & Labor Summary	10
- Underground Distribution Layout	11
Summary of Distribution Operation and Maintenance Accounts for 1996	12
1996 Joint Trenching Underground Residential Distribution	13

**SUMMARY OF RESIDENTIAL DISTRIBUTION
COST DIFFERENTIALS**

I. ESTIMATED AVERAGE COST DIFFERENTIAL FOR LOW DENSITY (SINGLE FAMILY) RESIDENTIAL DISTRIBUTION

COST PER LOT - LOW DENSITY RESIDENTIAL			
Item	Overhead Cost	Underground Cost	Differential Cost
Labor	267.68	457.80	190.12
Material	366.35	449.55	83.20
Total	634.03	907.35	273.32

II. ESTIMATED AVERAGE COST DIFFERENTIAL FOR HIGH DENSITY (MOBILE HOMES - TOWNHOUSES) RESIDENTIAL DISTRIBUTION

COST PER LOT - HIGH DENSITY RESIDENTIAL			
Item	Overhead Cost	Underground Cost	Differential Cost
Labor	244.75	385.38	140.63
Material	298.15	349.51	51.36
Total	542.90	734.89	191.99

URD REPORT TO THE FLORIDA PUBLIC SERVICE COMMISSION

SUMMARY OF LOW DENSITY COST DIFFERENTIAL (Single-Family Residential)			
Item	Overhead Cost	Underground Cost	Differential Cost
Labor	267.68	457.80	190.12
Material	366.35	449.55	83.20
Total	634.03	907.35	273.32

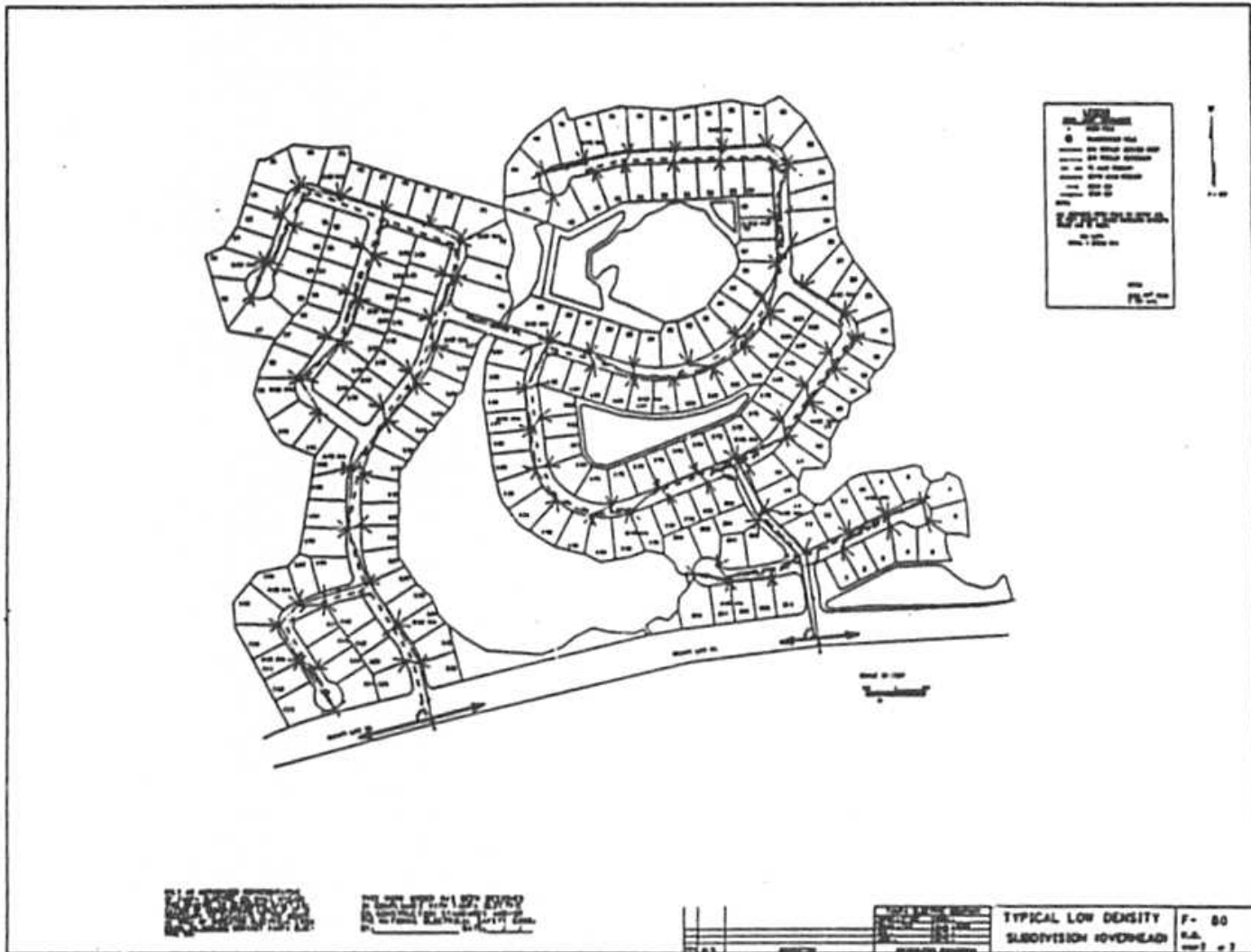
OVERHEAD MATERIAL & LABOR SUMMARY LOW DENSITY (COST PER LOT)			
Item	Material	Labor²	Total
Service	58.90	68.47	127.37
Primary	9.11	16.88	25.99
Secondary	57.72	27.79	85.51
Initial Tree Trim	---	---	---
Poles	70.87	71.29	142.16
Transformers	121.97	39.53	161.50
Sub-Total	318.57	223.96	542.53
Stores Handling ¹	47.78	---	47.78
Sub-Total	366.35	223.96	590.31
Engineering ³	---	43.72	43.72
Total	366.35	267.68	634.03

1 - 15% of all material

2 - Includes Administration, General & Transportation

3 - 0% of Material, 16% of Labor

LOW DENSITY - OVERHEAD DISTRIBUTION LAYOUT



●	POLE
○	TRANSFORMER
—	OVERHEAD LINE
—	UNDERGROUND LINE
—	PROPERTY LINE
—	ROAD
—	RAILROAD
—	WATER
—	OBSTACLE
—	UTILITY
—	ADDITIONAL
—	REVISION
—	DATE
—	BY
—	CHECKED
—	APPROVED



THE TAMPANIAN DISTRICT OFFICE
 1000 N. GORRISON ST. TAMPA, FL 33604
 TEL: 813-241-1111 FAX: 813-241-1112

NO.	DATE	BY	DESCRIPTION

TYPICAL LOW DENSITY SUBDIVISION OVERHEAD	F- 80 R.A. MAY 1 1997
---	-----------------------------

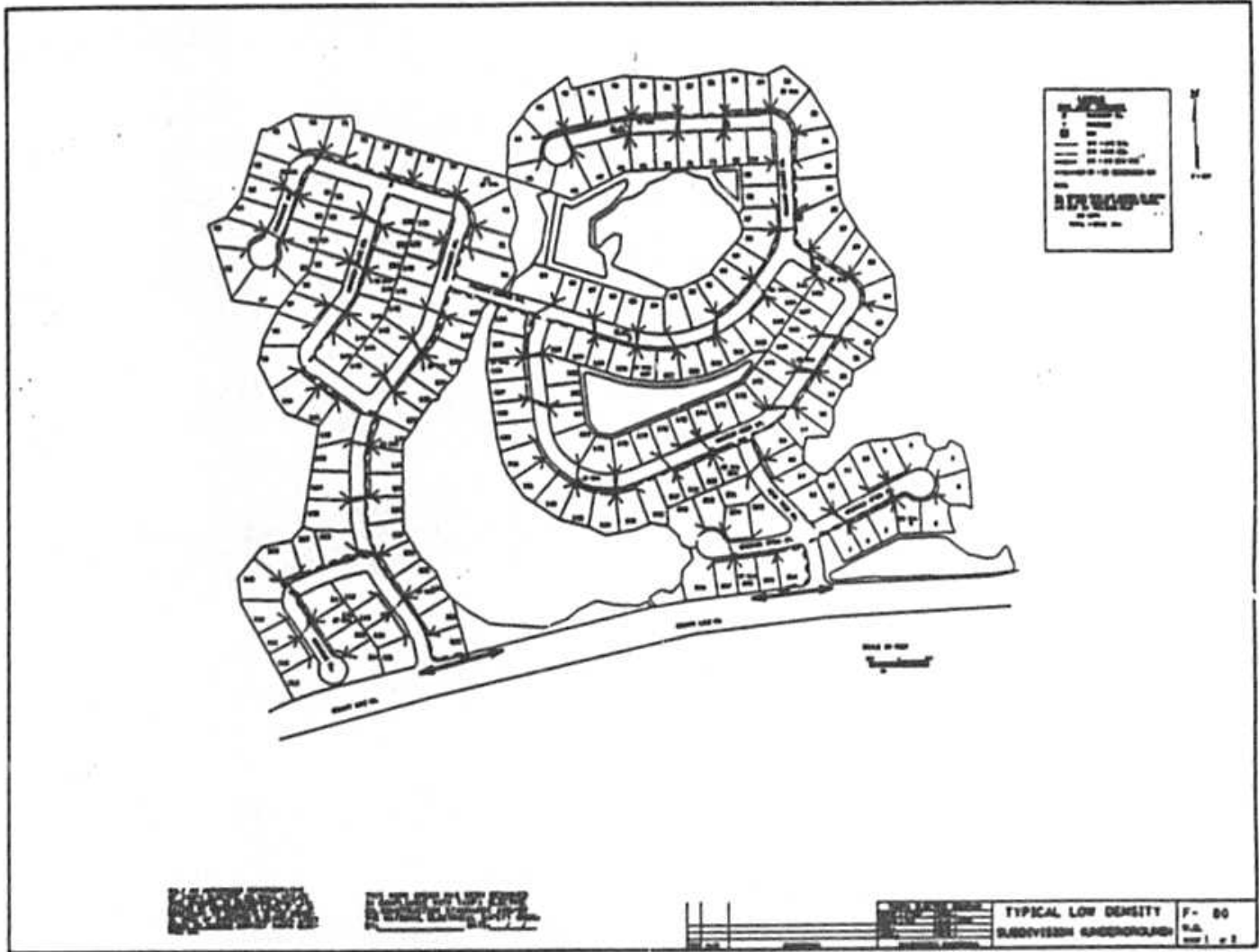
UNDERGROUND MATERIAL & LABOR SUMMARY LOW DENSITY (COST PER LOT)			
Item	Material	Labor ²	Total
Service	73.16	31.49	104.65
Primary	94.95	22.88	117.83
Secondary	103.27	44.00	147.27
Transformers	119.53	16.46	135.99
Trenching			
- Primary & Sec.	---	138.22	138.22
- Services		161.03	161.03
Sub-Total	390.91	414.08	804.99
Stores Handling ¹	58.64	---	58.64
Sub-Total	449.55	414.08	863.63
Engineering ³	---	43.72	43.72
Total	449.55	457.80	907.35

1 - 15% of all material

2 - Includes Administration, General & Transportation

3 - 0% of Material, 10% of Labor

LOW DENSITY - UNDERGROUND DISTRIBUTION LAYOUT



URD REPORT TO THE FLORIDA PUBLIC SERVICE COMMISSION

SUMMARY OF HIGH DENSITY COST DIFFERENTIAL MOBILE HOMES/TOWN HOMES (COST PER LOT)			
Item	Overhead Cost	Underground Cost	Differential Cost
Labor	244.75	385.38	140.63
Material	298.15	349.51	51.36
Total	542.90	734.89	191.99

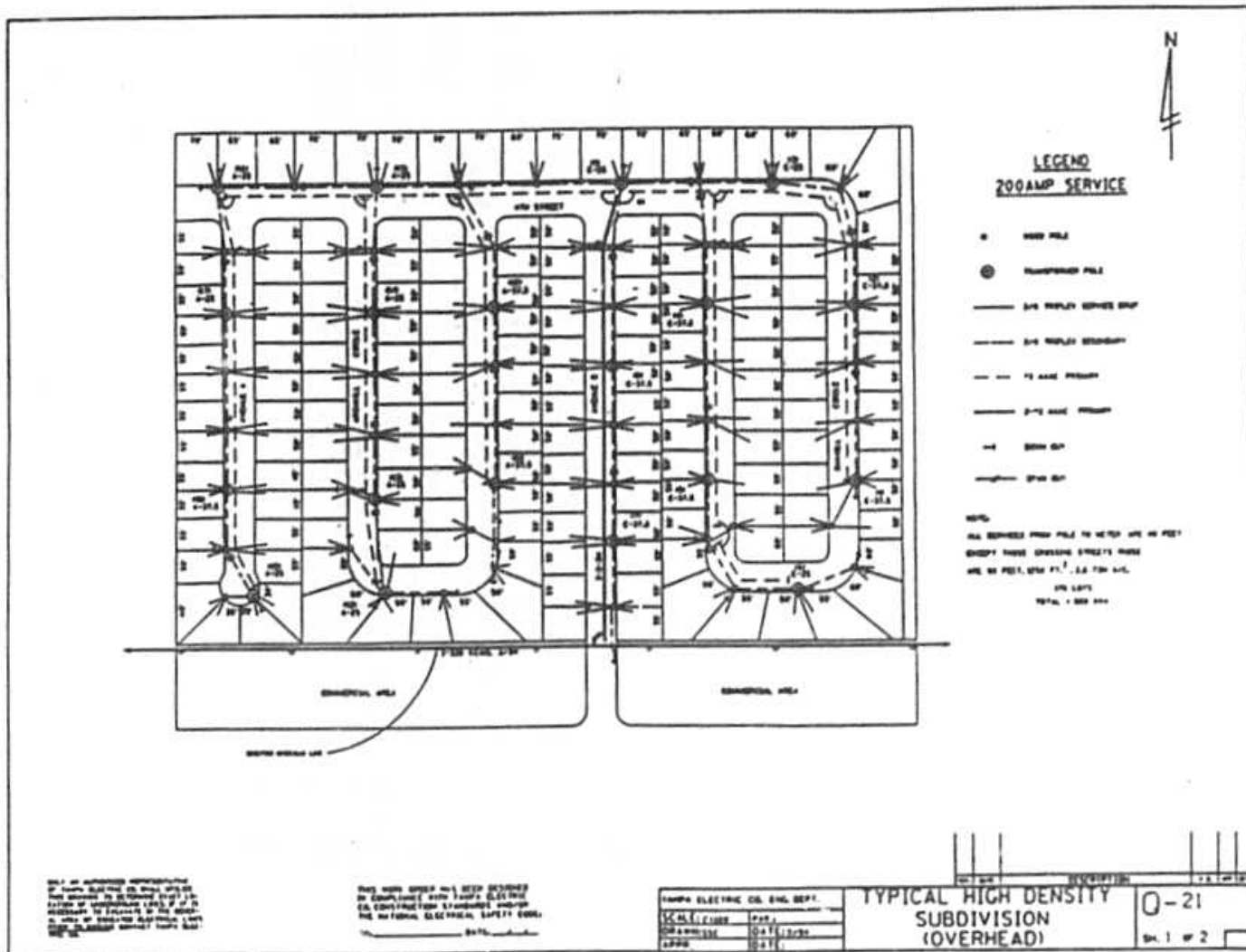
OVERHEAD MATERIAL & LABOR SUMMARY HIGH DENSITY (COST PER LOT)			
Item	Material	Labor²	Total
Service	49.57	64.01	113.58
Primary	6.90	16.39	23.29
Secondary	37.62	28.27	65.89
Initial Tree Trim	---	---	---
Poles	63.30	55.61	118.91
Transformers	101.87	36.75	138.62
Sub-Total	259.26	201.03	460.29
Stores Handling ¹	38.89	---	38.89
Sub-Total	298.15	201.03	499.18
Engineering ³	---	43.72	43.72
Total	298.15	244.75	542.90

1 - 15% of all material

2 - Includes Administration, General & Transportation

3 - 0% of Material, 18% of Labor

HIGH DENSITY - OVERHEAD DISTRIBUTION LAYOUT



THIS IS AN UNAUTHORIZED REPRESENTATION OF TAMPA ELECTRIC CO. WORK. ANY USE OF THIS DRAWING FOR ANY OTHER PURPOSE IS STRICTLY PROHIBITED. TAMPA ELECTRIC CO. ASSUMES NO LIABILITY FOR ANY DAMAGE OR LOSS OF PROFITS OR OTHER CONSEQUENCES ARISING FROM THE USE OF THIS DRAWING.

THIS WORK SHALL BE CONSIDERED TO BE IN COMPLIANCE WITH TAMPA ELECTRIC CO. CONSTRUCTION STANDARDS AND THE NATIONAL ELECTRICAL SAFETY CODE.

TAMPA ELECTRIC CO. ENL. DEPT.	
SCALE	1" = 30'
DATE	04/13/97
BY	...

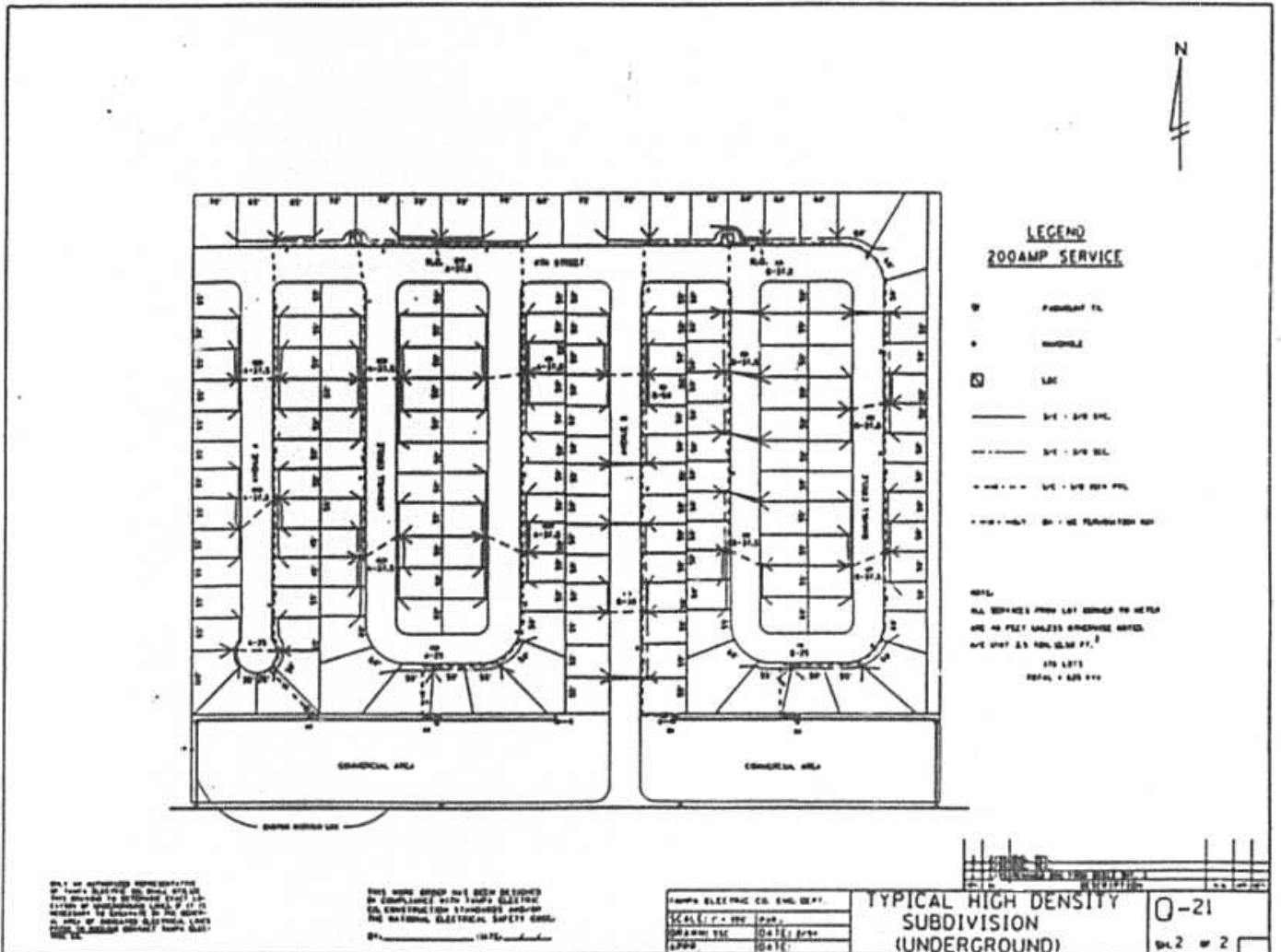
UNDERGROUND MATERIAL & LABOR SUMMARY HIGH DENSITY (COST PER LOT)			
Item	Material	Labor²	Total
Service	81.83	37.97	119.80
Primary	68.52	33.00	101.52
Secondary	25.27	14.64	39.91
Transformers	128.30	18.63	146.93
Trenching			
- Primary & Sec.	---	78.19	78.19
- Services		159.23	159.23
Sub-Total	303.92	341.66	645.58
Stores Handling ¹	45.59	---	45.59
Sub-Total	349.51	341.66	691.17
Engineering ³	---	43.72	43.72
Total	349.51	385.38	734.89

1 - 15% of all material

2 - Includes Administration, General & Transportation

3 - 0% of Material, 11% of Labor

HIGH DENSITY - UNDERGROUND DISTRIBUTION LAYOUT



1996 DISTRIBUTION OPERATION AND MAINTENANCE EXPENSE ACCOUNTS
OVERHEAD AND UNDERGROUND

<u>Account</u>	<u>Description</u>	<u>Total Dollars (\$)</u>
583	Operation Overhead Distribution Line	433,083
584	Operation Underground Distribution Line	322,817
593	Maintenance Overhead Distribution Line	7,858,418
594	Maintenance Underground Distribution Line	1,004,062
595	Maintenance Overhead Distribution Transformers	59,049
595	Maintenance Distribution Pad-Mounted Transformers	366,052

Tampa Electric Company

May 1, 1997

**1996 JOINT TRENCHING
UNDERGROUND RESIDENTIAL DISTRIBUTION**

No joint trenching was done by Tampa Electric Company during calendar year 1996.