

ORIGINAL
FILE COPY

MEMORANDUM

September 15, 1997

TO: DIVISION OF RECORDS AND REPORTING
FROM: DIVISION OF LEGAL SERVICES (GERVASI) *MS*
RE: DOCKET NO. **960867-WU** - APPLICATION FOR AMENDMENT OF
CERTIFICATE NO. 427-W TO ADD TERRITORY IN MARION COUNTY
BY WINDSTREAM UTILITIES COMPANY.

Please file the attached letters dated September 8, 1997 and
September 11, 1997, ~~on the correspondence side of~~ the above-
referenced docket. *in* *(KF)*

RG/dr

Attachment

cc: Division of Water and Wastewater (Redemann)

ACK _____
AFA _____
APP _____
CAF _____
CMU _____
CTR _____
EAG _____
LEG _____
LIN _____
CPC _____
P _____
W.S _____
YTH _____

DOCUMENT NUMBER-DATE

09516 SEP 18 97

FPSC-RECORDS/REPORTING

LAW OFFICES
ROSE, SUNDSTROM & BENTLEY, LLP

2548 BLAIRSTONE PINES DRIVE
TALLAHASSEE, FLORIDA 32301

(904) 877-8555

MAILING ADDRESS
POST OFFICE BOX 1567
TALLAHASSEE, FLORIDA 32302-1567
TELECOPIER (904) 898-4029

CHRIS H. BENTLEY, PA
F. MARSHALL DETERDING
BRIAN L. DOSTER
MARTIN S. FRIEDMAN, PA
JOHN R. JENKINS, PA
STEVEN T. MINDLIN, PA
ROBERT M. C. ROSE
DAREN L. SHIPPY
WILLIAM E. SUNDSTROM, PA
DIANE D. TREMOR, PA
JOHN L. WHARTON

September 8, 1997

VIA HAND DELIVERY



Rosanne Gervasi, Esquire
Division of Legal Services
Florida Public Service Commission
2540 Shumard Oak Boulevard
Tallahassee, Florida 32399

Re: Windstream Utilities Company; Docket No. 960867-WU
Application for Amendment to Certificate
Our File No. 26067.02

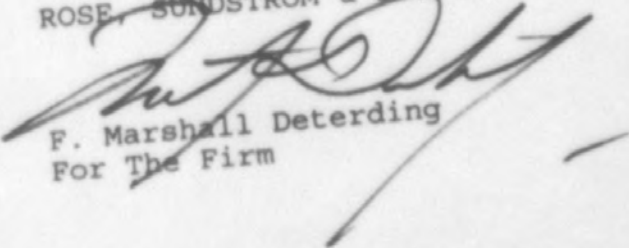
Dear Rosanne:

Attached in accordance with your request are legal descriptions and maps depicting the proposed territory area by parcel by metes and bounds. These correspond with the map which is also attached. When these are combined with the existing descriptions in the Utility's tariff, they should correspond to the total area agreed to for service with Marion County.

Should you have any further questions in this regard, please let me know.

Sincerely,

ROSE, SUNDSTROM & BENTLEY, LLP


F. Marshall Deterding
For The Firm

FMD/lts
Enclosures
cc: Richard Redemann, P.E.

**PROPOSED ADDITION TO SERVICE AREA AGREED TO BY
MARION COUNTY AND WINDSTREAM UTILITIES**

LEGAL DESCRIPTIONS:

#1

FROM THE SOUTH 1/4 CORNER OF SECTION 8, TOWNSHIP 16 SOUTH, RANGE 21 EAST, MARION COUNTY FLORIDA, AND THE POINT OF BEGINNING OF THE TRACT OF LAND HEREINAFTER DESCRIBED, RUN N 0°19'46" E ALONG THE WEST LINE OF THE S.E. 1/4 OF SAID SECTION 8 FOR A DISTANCE OF 859.77 FEET TO A POINT ON THE SOUTHEASTERLY RIGHT-OF-WAY LINE OF STATE ROAD 200, (100' R/W); THENCE RUN S 41°47'57" W ALONG SAID RIGHT-OF-WAY LINE FOR A DISTANCE OF 3803.85 FEET TO A POINT; THENCE RUN S 89°45'19" E ALONG THE NORTH LINE OF THE SOUTH 1/4 OF THE N.W. 1/4 OF SECTION 17, TOWNSHIP 16 SOUTH, RANGE 21 EAST, FOR A DISTANCE OF 2500.12 FEET TO A POINT; THENCE RUN N 0°52'26" E ALONG THE EAST LINE OF THE N.W. 1/4 OF SAID SECTION 17 FOR A DISTANCE OF 1986.87 FEET TO THE POINT OF BEGINNING.

AND

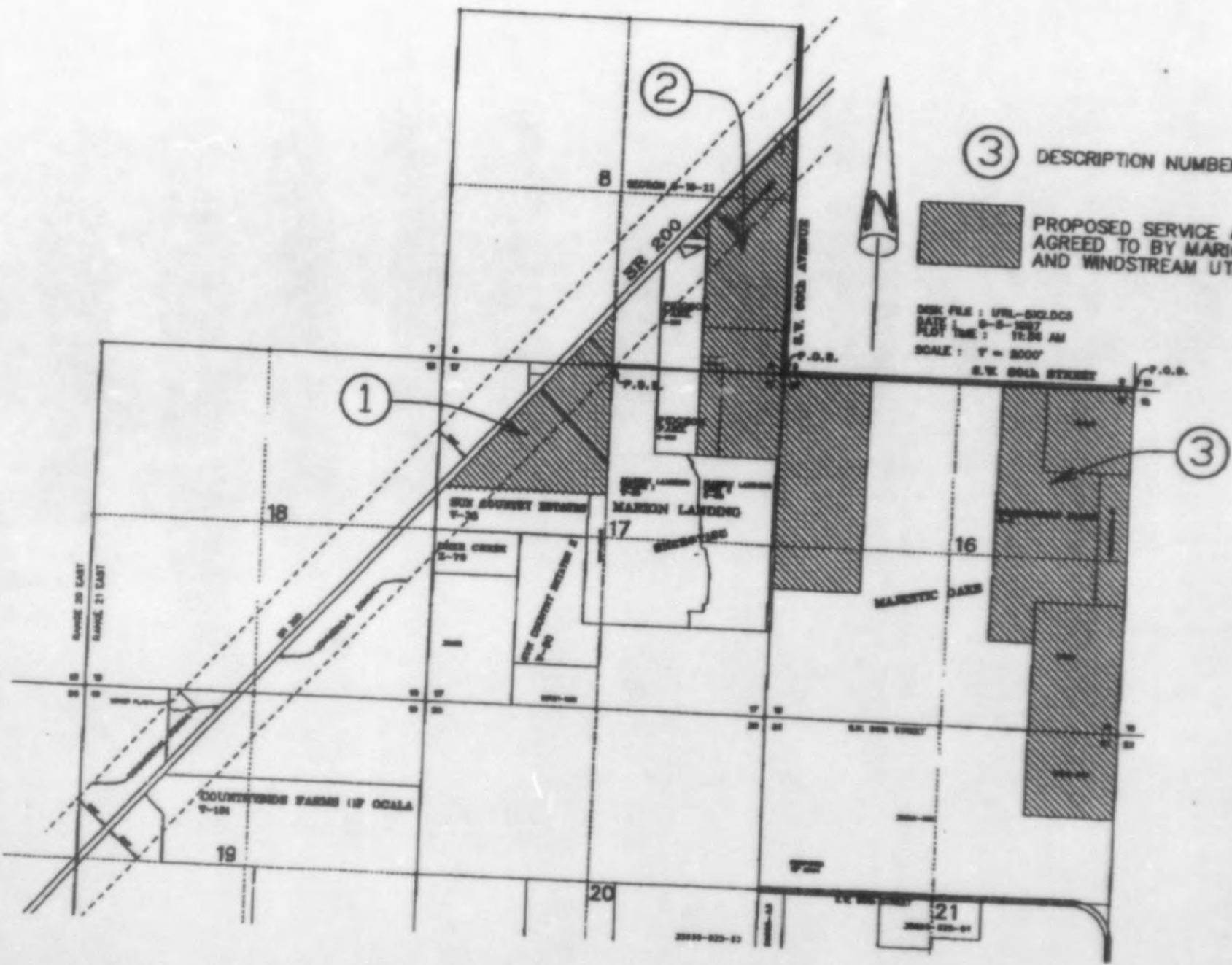
#2

FROM THE S.E. CORNER OF SECTION 8, TOWNSHIP 16 SOUTH, RANGE 21 EAST, MARION COUNTY FLORIDA, AND THE POINT OF BEGINNING OF THE TRACT OF LAND HEREINAFTER DESCRIBED, RUN N 0°12'01" E ALONG THE EAST LINE OF THE S.E. 1/4 OF SAID SECTION 8 FOR A DISTANCE OF 2666.18 FEET TO THE EAST 1/4 CORNER OF SAID SECTION 8; THENCE RUN N 0°11'53" E ALONG THE EAST LINE OF THE N.E. 1/4 OF SAID SECTION 8 FOR A DISTANCE OF 1270.49 FEET TO A POINT ON THE CENTERLINE OF STATE ROAD 200; THENCE RUN S 41°32'55" W ALONG SAID CENTERLINE FOR A DISTANCE OF 2589.34 FEET TO A POINT; THENCE RUN S 89°46'35" E FOR A DISTANCE OF 397.25 FEET TO A POINT; THENCE RUN S 0°23'25" W FOR A DISTANCE OF 665.62 FEET TO A POINT; THENCE RUN N 89°44'10" W FOR A DISTANCE OF 10 FEET TO A POINT; THENCE RUN S 0°23'25" W FOR A DISTANCE OF 1331.23 FEET TO A POINT; THENCE RUN S 0°28'47" W FOR A DISTANCE OF 1322.79 FEET TO A POINT; THENCE RUN N 89°55'07" E FOR A DISTANCE OF 1331.19 FEET TO A POINT; THENCE RUN S 0°25'52" W ALONG THE WEST LINE OF THE N.W. 1/4 OF SECTION 16, TOWNSHIP 16 SOUTH, RANGE 21 EAST, FOR A DISTANCE OF 1321.26 FEET TO THE WEST 1/4 CORNER OF SAID SECTION 16; THENCE RUN S 0°26'43" W FOR A DISTANCE OF 660.84 FEET TO A POINT; THENCE RUN S 89°47'48" E FOR A DISTANCE OF 1321.17 FEET; THENCE RUN N 0°27'01" E FOR A DISTANCE OF 661.54 FEET TO A POINT; THENCE RUN N 0°26'37" E FOR A DISTANCE OF 2644.80 FEET TO A POINT ON THE NORTH LINE OF THE N.W. 1/4 OF SAID SECTION 16; THENCE RUN N 89°57'48" W ALONG SAID NORTH LINE FOR A DISTANCE OF 1321.84 FEET TO THE POINT OF BEGINNING.

AND

(CONTINUED ON PAGE 2)

#3
FROM THE N.E. CORNER OF SECTION 16, TOWNSHIP 16 SOUTH, RANGE 21 EAST, MARION COUNTY, FLORIDA AND THE POINT OF BEGINNING OF THE TRACT OF LAND HEREINAFTER DESCRIBED, RUN N 89°57'53" W ALONG THE NORTH LINE OF THE N.E. 1/4 OF SAID SECTION 16 FOR A DISTANCE OF 1982.73 FEET TO A POINT; THENCE RUN S 0°27'46"W FOR A DISTANCE OF 3948.21 FEET TO A POINT; THENCE RUN S 89°31'28" E FOR A DISTANCE OF 660.61 FEET TO A POINT; THENCE RUN S 0°28'31" W FOR A DISTANCE OF 1350.81 FEET TO A POINT; THENCE RUN SOUTH FOR A DISTANCE OF 1320 FEET TO A POINT; THENCE RUN EAST FOR A DISTANCE OF 1320 FEET TO A POINT; THENCE RUN N 0°01'32" E ALONG THE EAST LINE OF SECTION 21, TOWNSHIP 16 SOUTH, RANGE 21 EAST, FOR A DISTANCE OF 1311.83 FEET TO THE N.W. CORNER OF SAID SECTION 21; THENCE RUN N 0°29'40"E ALONG THE EAST LINE OF THE S.E. 1/4 OF SAID SECTION 16 FOR A DISTANCE OF 2624.39 FEET TO THE EAST 1/4 CORNER OF SAID SECTION 16; THENCE RUN N 0°28'09" E ALONG THE EAST LINE OF THE N.E. 1/4 OF SAID SECTION 16 FOR A DISTANCE OF 2687.09 FEET TO THE POINT OF BEGINNING.



③ DESCRIPTION NUMBER



PROPOSED SERVICE AREA
AGREED TO BY MARION COUNTY
AND WINDSTREAM UTILITIES CO.

DISK FILE : UPL-SIGLCS
DATE : 8-5-1997
PLOT TIME : 11:26 AM
SCALE : 1" = 2000'



①

②

③

RANGE 20 EAST
RANGE 21 EAST

COURTNEY FARMS (1/2) OCALA
7-124

SEASIDE LANDING
7-78

MARION LANDING
7-79

MAGNETIC DATA

S.W. 80th STREET

S.W. 81st STREET

20

21

2000-825-87