

LANDERS & PARSONS, P.A.
ATTORNEYS AT LAW

DAVID S. DEE
DIANE K. KIESLING
JOSEPH W. LANDERS, JR.
JOHN T. LAVIA, III
FRED A. McCORMACK
PHILIP S. PARSONS
LESLIE J. PAUGH
ROBERT SCHEFFEL WRIGHT

VICTORIA J. TSCHINKEL
SENIOR CONSULTANT
(NOT A MEMBER OF THE FLORIDA BAR)

ORIGINAL

MAILING ADDRESS:
POST OFFICE BOX 271
TALLAHASSEE, FL 32302-0271

310 WEST COLLEGE AVENUE
TALLAHASSEE, FL 32301

TELEPHONE (850) 681-0311
TELECOPY (850) 224-5595
www.landersondparsons.com

April 13, 2001

BY HAND DELIVERY

RECEIVED-FPSC
01 APR 13 PM 3:05
RECORDS AND REPORTING

010000-PV

Blanca S. Bayo, Director
Division of Records and Reporting
Florida Public Service Commission
2540 Shumard Oak Boulevard
Tallahassee, Florida 32399-0850

Re: Oleander Power Project, Limited Partnership's Ten-Year Site Plan

Dear Ms. Bayo:

Pursuant to Commission Rule 25-22.071, Florida Administrative Code, enclosed are twenty-five copies of the Ten-Year Site Plan, 2001-2010, of Oleander Power Project, Limited Partnership.

I will appreciate your confirming receipt of this Ten-Year Site Plan by stamping the attached filing copy thereof and returning same to my attention.

As always, thanks to you and your Staff for your considerate and professional assistance. If you have any questions, please give me a call.

Cordially yours,

Robert Scheffel Wright

RECEIVED & FILED
Mar
FPSC-BUREAU OF RECORDS

APP
CAF
CMP
COM
CTR
ECR
LEG
OPC
PAI
RGO
SEC
SER
OTH

Enclosures

copy: Michael Haff (with one copy of enclosure)

DOCUMENT NUMBER-DATE

04593 APR 13 2001

FPSC-RECORDS/REPORTING

ORIGINAL

010000-PV



OLEANDER POWER PROJECT, LIMITED PARTNERSHIP

TEN-YEAR SITE PLAN, 2001-2010

April 2001

DOCUMENT NUMBER-DATE

04593 APR 13 2001

FPSC-RECORDS/REPORTING

**OLEANDER POWER PROJECT,
LIMITED PARTNERSHIP**

**TEN-YEAR SITE PLAN
FOR ELECTRICAL GENERATING FACILITY,
2001-2010**

Submitted to:

**STATE OF FLORIDA
PUBLIC SERVICE COMMISSION**

April 2001

DOCUMENT NUMBER-DATE
04593 APR 13 2001
FPSC-RECORDS REPORTING

TABLE OF CONTENTS

EXECUTIVE SUMMARY 1

Chapter 1 OLEANDER POWER PROJECT, LIMITED PARTNERSHIP. 4

Chapter 2 DESCRIPTION OF EXISTING FACILITIES 5

Chapter 3 FORECAST OF ELECTRIC POWER DEMAND AND ENERGY 6

Chapter 4 FORECASTING METHODS AND PROCEDURES 8

Chapter 5 FORECAST OF FACILITIES REQUIREMENTS 10

 The Oleander Power Project 11

 Directly Associated Transmission Facilities 11

 Fuel Supply Arrangements and Facilities 12

 Status of Permits 13

Chapter 6 ENVIRONMENTAL AND LAND USE INFORMATION 14

 Site Description 14

 Land and Environmental Features 15

 Water Supply 16

 Air Emissions 16

 Noise Emissions 17

LIST OF SCHEDULES

1	Existing Generating Facilities as of December 31, 2000	18
2.1	History and Forecast of Energy Consumption and Number of Customers by Customer Class	19
2.2	History and Forecast of Energy Consumption and Number of Customers by Customer Class	20
2.3	History and Forecast of Energy Consumption and Number of Customers by Customer Class	21
3.1	History and Forecast of Summer Peak Demand	22
3.2	History and Forecast of Winter Peak Demand	23
3.3	History and Forecast of Annual Net Energy for Load	24
4	Previous Year and 2-Year Forecast of Retail Peak Demand and Net Energy for Load by Month	25
5	Fuel Requirements	26
6.1	Energy Sources (Units)	27
6.2	Energy Sources (Percent)	28
7.1	Forecast of Capacity, Demand, and Scheduled Maintenance at Time of Summer Peak	29
7.2	Forecast of Capacity, Demand, and Scheduled Maintenance at Time of Winter Peak	30
8	Planned and Prospective Generating Facility Additions and Changes	31
9	Status Report and Specifications of Proposed Generating Facilities (Units 1-5)	32-36
10	Status Report and Specification of Proposed Directly Associated Transmission Lines	37

LIST OF FIGURES

Figure 1: Project One Line Diagram 38

Figure 2: Regional Transmission Map 39

Figure 3: Oleander Power Project Site Plan 40

Figure 4: Oleander Power Project Site Location and
Topographic Map 41

LIST OF TABLES

Table 1: Estimated Plant Performance and Emissions Data . . . 42

EXECUTIVE SUMMARY

Oleander Power Project, Limited Partnership ("Oleander"), pursuant to Section 186.801, Florida Statutes, and Rule 25-22.071, Florida Administrative Code, hereby submits its Ten-Year Site Plan for an Electrical Generating Facility, 2001-2010.

Oleander will own and operate the Oleander Power Project (the "Project"), an approximately 850 MW (average ambient conditions) natural gas-fired simple cycle combustion turbine generating facility that will be located in Brevard County, Florida. Expected to achieve commercial in-service status in June 2002, the Project will supply peaking capacity and energy for sale at wholesale to other utilities in Peninsular Florida.

The Project will include five advanced technology General Electric 7FA combustion turbine generators in simple cycle configuration. Each combustion turbine will be fueled by natural gas with low-sulfur distillate fuel oil as a back-up fuel. Each combustion turbine generator will have a heat rate (based upon the Lower Heating Values of the respective fuels) of 9,528 Btu per kWh when fueled by natural gas and 10,215 Btu per kWh when fueled by distillate fuel oil. The Project will satisfy all applicable environmental requirements. Most of the Project's process water will be reclaimed wastewater and stormwater supplied by the City of Cocoa. Any additional water requirements will also be supplied by

the City of Cocoa.

The Project is designed to serve the peak load requirements of Peninsular Florida. Oleander's current projections indicate that, at its fully built-out capacity, the Project will operate approximately 800 hours per year with projected generation of approximately 680,000 MWH per year, all of which will be sold at wholesale to other utilities.

The Project will be interconnected to the Peninsular Florida transmission grid at the Florida Power & Light Company ("FPL") Brevard Substation. Natural gas for the Project will be purchased from a variety of suppliers and delivered to the site by Florida Gas Transmission Company. Distillate fuel oil for the Project will be purchased from nearby suppliers and delivered to on-site storage facilities by truck.

The Project will be located on Townsend Road in Brevard County, north and east of the intersection of Interstate Highway 95 and State Road 520. The site consists of approximately 38 acres immediately adjacent to and south of the FPL Brevard Substation.

The Project's direct construction cost, including all engineering, procurement, and construction functions, is expected to be approximately \$200 million, reflecting a cost of approximately \$235 per kW of installed capacity at buildout. The cost of interconnection to the Peninsular Florida transmission

grid, payable by Oleander, will be determined by FPL pursuant to its transmission tariffs.

CHAPTER 1

OLEANDER POWER PROJECT, LIMITED PARTNERSHIP

Oleander Power Project, Limited Partnership will be the owner of, and will have operational responsibility for, the Oleander Power Project. Oleander Power Project, Limited Partnership is a Florida limited partnership and a wholly-owned indirect affiliate of Constellation Power, Inc., a Maryland corporation.

Oleander has received from the Federal Energy Regulatory Commission authorization to enter into negotiated arrangements for the sale of electric capacity and energy (i.e., market-based rate authority) pursuant to Section 201 of the Federal Power Act (16 USCA §824(b)(1)&(e)(1994)) and its certification as an Exempt Wholesale Generator pursuant to the Public Utility Holding Company Act of 1935 (15 USCA §§79 et seq.).

CHAPTER 2

DESCRIPTION OF EXISTING FACILITIES

Oleander has no existing electric generation or transmission facilities in Florida. (See Schedule 1.)

CHAPTER 3

FORECAST OF ELECTRIC POWER DEMAND AND ENERGY

Over the planning horizon covered in this Ten-Year Site Plan, the Oleander Power Project is projected to operate approximately 800 hours per year, with total generation of approximately 680,000 MWH per year, reflecting an estimated total capacity factor of 9.1 percent and an estimated load factor of 8.5 percent, based upon an annual peak demand of 910 MW, at the Project's full built-out capacity.

As noted elsewhere in this Ten-Year Site Plan, all of the Project's sales will be made at wholesale to other utilities. Thus, Schedules 2.1 and 2.2, which require data for retail power sales, are not applicable. Schedule 2.3 presents the forecasted number of wholesale customers and sales for resale. Schedules 3.1, 3.2, and 3.3 present forecasted summer peak demand, winter peak demand, and net energy for load for the Project. Because of the high demand for capacity during peak use periods and the Project's relatively low-cost position among all peaking plants available to serve Peninsular Florida, Oleander projects that the Project's sales at the times of the summer and winter peaks (both the system peak experienced by Oleander and the Peninsular Florida coincident system peak) will be at the Project's full rated output, i.e., 777 MW at the time of the summer peak and 910 MW at the time of the

winter peak.

Schedule 4 is not applicable to Oleander because it calls for retail sales and peak demand data.

Schedules 5, 6.1, and 6.2 present information regarding fuel requirements and energy sources for Oleander.

CHAPTER 4

FORECASTING METHODS AND PROCEDURES

Based upon studies performed by Oleander, Oleander is confident that demand for peaking capacity in Peninsular Florida will be strong during the life of the Project, so that the market price for peaking capacity will be high enough to cover fixed costs and provide a reasonable return on investment in the Project. These studies include projections of peak demands and energy requirements for Peninsular Florida and estimations of when the Oleander Project would be economically dispatched within the Peninsular Florida power supply grid. Oleander is also confident that, based upon an analysis of fuel prices and heat rates for existing and planned generation in Peninsular Florida, utilities purchasing Oleander's capacity will require the Project to run approximately 800 full load hours per year. Energy payments during those 800 hours will cover all the estimated variable costs for operating the Project.

Oleander's long-term planning approach is to construct the Oleander Power Project and to operate it as efficiently as possible, in order to be a long-term participant in the Peninsular Florida wholesale power market. Oleander generally assumes that other Peninsular Florida utilities will construct and acquire generation and transmission resources in accordance with their

stated plans. The analyses are based on appropriate assumptions regarding existing and future fuel costs, new generating capacity costs, and projected additions to and retirements from the Peninsular Florida generation and transmission systems. Oleander plans to operate the Project reliably and cost-effectively and to make mutually cost-effective sales at wholesale to other Peninsular Florida utilities.

CHAPTER 5

FORECAST OF FACILITIES REQUIREMENTS

Oleander Power Project, Limited Partnership anticipates making wholesale sales (sales for resale) to other electric utilities in Peninsular Florida. Oleander plans to construct the Project in order to deliver firm contract capacity and energy and to make other wholesale power sales to other Peninsular Florida electric utilities. As described above, Oleander needs the project to make its projected wholesale energy sales, at the Project's full built-out capacity, of approximately 680,000 MWH per year and to make peak capacity sales of approximately 777 MW (summer) and 910 MW (winter).

At present, the capacity of the Oleander Project's Units 1, 2, and 3 is committed to Seminole Electric Cooperative, Inc. ("Seminole") pursuant to a long-term firm power purchase agreement (the "PPA"). Pursuant to the PPA, the output of Units 1 and 2 is committed to Seminole from December 1, 2002 through December 2009, and the output of Unit 3 is committed to Seminole from May 1, 2003 through December 2009.

Schedules 7.1 and 7.2 present information regarding forecasts of capacity, demand, and scheduled maintenance at the time of summer and winter peaks. Because of its relatively low-cost position within the available peaking generation resources in Peninsular Florida, Oleander expects that in both summer and winter

peak conditions, all of the Project's capacity will be committed on a firm basis to other Peninsular Florida utilities, even if only on a day-ahead or hourly basis. Accordingly, Oleander projects that its firm summer and winter peak demands will in fact be the full rated output of the Project for each respective season. Oleander believes that this information will be representative of Oleander's peak demands both at the time that peak seasonal demands are imposed on Oleander and also at the time of the Peninsular Florida summer and winter coincident peaks. Schedule 8 presents information regarding planned and prospective generating facility additions and changes.

The Oleander Power Project

The Oleander Power Project will be a dual-fuel, simple cycle combustion turbine electrical power plant. The Project will consist of five GE 7FA Model 7431 advanced technology combustion turbine generators ("CTGs"). The total electrical output of the plant will be 850 MW at average temperature and humidity conditions. Additional information regarding the Project's characteristics and specifications is presented in Schedule 9.

Directly Associated Transmission Facilities

Oleander expects that there will be no new transmission lines directly associated with the Project. The Project is designed to be interconnected to the Peninsular Florida transmission grid via two 230 kV connections to FPL's Brevard Substation located on the

north boundary of the Project site. Figure 1 is an electrical one-line diagram for the Project, and Figure 2 is a regional transmission map for the Project. Additional information concerning transmission facilities is contained in Schedule 10.

Power Technologies Inc. of Schenectady, New York performed a proprietary load flow study for the Project. The study concluded that loads up to 1000 MW could be inserted into the FPL Brevard Substation with no line overloads and no transformer overloads. Generator step-up transformers were not included in the load flow study. The study used expected summer peak load for 1999 from the 1994/95 FCG data and 1996 SERC data. The study did not identify specific delivery points but only the insertion of the power into the system at the Brevard Substation.

Fuel Supply Arrangements and Facilities

Natural gas supply to the Project will be provided via a lateral pipeline consisting of approximately 1200 feet of twelve-inch pipe in order to connect the Project to the Florida Gas Transmission ("FGT") main line. Gas transportation will be provided through a combination of interruptible service directly from FGT and both firm and interruptible service on the FGT system purchased from others who own capacity on that system. Commodity gas will be purchased through a combination of short-term and long-term arrangements; some of these purchase arrangements may include transportation to the site.

Distillate fuel oil will be purchased from a nearby wholesaler and delivered by truck to the Project site. This backup fuel will be stored in an on-site storage facility sufficient to operate the Project for three days solely on distillate fuel oil.

Status of Permits

Oleander has received or entered into, as applicable, the following environmental and land use permits, approvals, and agreements necessary to construct and operate the Project.

- FAA Notice of Proposed Construction or Alteration
- FDEP Application to Operate/Construct Air Pollution Sources
- USACOE Dredge and Fill Nationwide Permit
- City of Cocoa Reclaimed/Stormwater Supply Contract
- City of Cocoa Potable Water Supply Contract
- City of Cocoa Annexation (Wastewater Service) Agreement
- FDEP Environmental Resource Permit
- Brevard County Concurrency Review
- FDEP General Permit for Wastewater Connection
- SJRWMD Secondary Water Use Agreement
- Brevard County Site Plan Approval

Oleander has applied for the following environmental and land use permits, approvals, and agreements necessary to construct and operate the Project and expects to receive them by the dates indicated.

- NPDES Notice of Intent (Notice to be submitted 48 hours prior to construction commencement)
- FDEP General Permit for Potable Water Connection (5/1/01)
- FDOT Special Road Use Permit (7 days prior to transport of overweight/overdimensional loads)

CHAPTER 6

ENVIRONMENTAL AND LAND USE INFORMATION

This chapter provides a brief description of the Project and discussions of land and environmental features of the site, water supply for the Project, and projected air and noise emissions from the Project.

Site Description

The Oleander Power Project will be located on a 38 acre tract near the City of Cocoa in central Brevard County. The site consists of approximately 38 acres situated northeast of the intersection of State Road 520 and Interstate Highway 95, as shown in Figure 3. Approximately 17 acres of the 38 acre parcel will actually be developed for the Project. The site is zoned for industrial use, and it is surrounded primarily by land of similar zoning. The majority of the surrounding land is undeveloped or used for commercial or industrial purposes. (See Figure 4.) Adjacent to the site is the FPL Brevard Substation, an industrial facility, and vacant land zoned as Planned Industrial Park or Light Industrial. Townsend Road runs along the south side of the Project site, and additional land south of Townsend Road will be set aside for a conservation easement. Also to the south is vacant land zoned Transient Tourist Commercial. There is a small industrial facility located to the southeast of the site. To the east lies vacant land zoned for light and heavy industrial use and additional

properties occupied by various types of industrial and commercial businesses fronting on Cox Road. The FPL Brevard Substation occupies property immediately to the north of the site and is zoned for light industrial use.

Land and Environmental Features

The 38 acre site presently comprises several different land uses and land covers, including pine flatwoods, which is the predominant vegetation community in the west-central portion of the site. The east-central portion of the site was occupied by two commercial businesses and maintained lawn. These businesses have vacated the land and the buildings were razed. Several existing FPL transmission lines occupy the westernmost portion of the site and the easternmost portion of the site is comprised of disturbed marsh that is proposed to be enhanced as a component of the development of the Project.

A drainage ditch will be impacted by the layout of the site. Enhancement of the easternmost marsh and preservation of several small marshes will mitigate the on-site impacts. No threatened or endangered species were observed during the listed species surveys of the site.

The nearest residential dwellings are located approximately 1,400 feet to the west of the site perimeter on the west side of Interstate 95, i.e., across Interstate 95 from the Project site. This area will be buffered by significant on-site setbacks and

landscape buffers. Existing and future development to the south and east of the site will be buffered from the proposed facility by significant on-site landscape buffers and wildlife habitat under conservation easements.

Water Supply

Most of the Project's water requirements will be supplied by reclaimed wastewater and stormwater provided by the City of Cocoa. The City of Cocoa will provide potable water and any additional water necessary if the reclaimed water supply is insufficient when facility operation is required. It is anticipated that potable water and reclaimed water pipelines will be constructed by Oleander and deeded to the City of Cocoa. Relatively small amounts of potable water will be used for domestic purposes, e.g., drinking, cleaning, and sanitation. The remainder of the Project's water supply will be used for NO_x control when firing oil and for other processes. The maximum daily water use when firing oil will be 950,000 gallons per day and the maximum daily water use when firing natural gas will be 122,000 gallons per day. On an annual average basis, the facility as planned will use no more than 210,000 gallons of water per day.

Air Emissions

The Project will use natural gas as its primary fuel. When natural gas is not available, the Project will use low-sulfur (0.05% sulfur) distillate fuel oil. When operating with natural

gas, the Project will use state-of-the-art dry low-nitrogen oxide (NO_x) combustion technology to control emissions of NO_x. When using distillate fuel oil, NO_x will be controlled by water injection. Low-sulfur distillate fuel oil will be used to control sulfur dioxide (SO₂) emissions when the Project is operating on fuel oil. Good combustion practices and clean fuels will minimize potential emissions of particulate matter, carbon monoxide, volatile organic compounds, and other potential pollutants such as trace metals. At its projected output level of 680,000 MWH per year, the Project is expected to have the emissions profile set forth in Table 1.

Noise Emissions

A noise impact analysis was performed in order to determine the effect the Project would have upon ambient conditions and its ability to meet applicable noise standards. Ambient noise levels at the site are relatively high due to vehicular traffic on Interstate 95 and State Road 520 and other nearby activities. The Project will cause slight increases in ambient noise levels at the property lines, but the levels will be well within EPA guidelines. By agreement with Brevard County, Oleander will limit noise levels at the Project site property lines to 65 dBA (L_{eq}).

Oleander Power Project, Limited Partnership
 Schedule 1
 Existing Generating Facilities
 As of December 31, 2000

(1)	(2)	(3)	(4)	(5)	(6)	(7)	(8)	(9)	(10)	(11)	(12)	(13)	(14)
<u>Plant Name</u>	<u>Unit No.</u>	<u>Location</u>	<u>Unit Type</u>	<u>Fuel Pri</u>	<u>Fuel Alt</u>	<u>Fuel Pri</u>	<u>Transport Alt</u>	<u>Alt. Fuel Days Use</u>	<u>Commercial In-Service Month/Year</u>	<u>Expected Retirement Month/Year</u>	<u>Gen. Max. Nameplate KW</u>	<u>Net Capability Summer MW</u>	<u>Winter MW</u>

None

Oleander Power Project, Limited Partnership
 Schedule 2.1
 History and Forecast of Energy Consumption and
 Number of Customers by Customer Class

(1)	(2)	(3)	(4)	(5)	(6)	(7)	(8)	(9)
<u>Year</u>	<u>Population</u>	<u>Members Per Household</u>	<u>GWH</u>	<u>Average No. of Customers</u>	<u>Average KWH Consumption Per Customer</u>	<u>GWH</u>	<u>Average Number of Customers</u>	<u>Average KWH Consumption Per Customer</u>
Rural and Residential					Commercial			

Not Applicable

Oleander Power Project, Limited Partnership
 Schedule 2.2
 History and Forecast of Energy Consumption and
 Number of Customers by Customer Class

(1)	(2)	(3)	(4)	(5)	(6)	(7)	(8)
<u>Year</u>	<u>GWH</u>	<u>Industrial Average Number of Customers</u>	<u>Average KWH Consumption Per Customer</u>	<u>Railroads and Railways GWH</u>	<u>Street & Highway Lighting GWH</u>	<u>Other Sales to Public Authorities GWH</u>	<u>Total Sales to Ultimate Consumers GWH</u>
Not Applicable							

Oleander Power Project, Limited Partnership
 Schedule 2.3
 History and Forecast of Energy Consumption and
 Number of Customers by Customer Class

(1)	(2)	(3)	(4)	(5)	(6)
<u>Year</u>	Sales For Resale <u>GWH</u>	Utility Use & Losses <u>GWH</u>	Net Energy For Load <u>GWH</u>	Wholesale Customers <u>(Average No.)</u>	Total Number Of <u>Customers</u>
2002	318		318	2	2
2003	544		544	2	2
2004	680		680	3	3
2005	680		680	4	4
2006	680		680	4	4
2007	680		680	4	4
2008	680		680	4	4
2009	680		680	4	4
2010	680		680	4	4

Oleander Power Project, Limited Partnership
 Schedule 3.1
 History and Forecast of Summer Peak Demand in MW

(1)	(2)	(3)	(4)	(5)	(6)	(7)	(8)	(9)	(10)
<u>Year</u>	<u>Total</u>	<u>Wholesale</u>	<u>Retail</u>	<u>Interruptible</u>	<u>Residential Load Management</u>	<u>Residential Conservation</u>	<u>Comm./Ind. Load Management</u>	<u>Comm./Ind. Conservation</u>	<u>Net Firm Demand</u>
2002	622	622	0						622
2003	622	622	0						622
2004	777	777	0						777
2005	777	777	0						777
2006	777	777	0						777
2007	777	777	0						777
2008	777	777	0						777
2009	777	777	0						777
2010	777	777	0						777

Oleander Power Project, Limited Partnership
 Schedule 3.2
 History and Forecast of Winter Peak Demand in MW

(1)	(2)	(3)	(4)	(5)	(6)	(7)	(8)	(9)	(10)
<u>Year</u>	<u>Total</u>	<u>Wholesale</u>	<u>Retail</u>	<u>Interruptible</u>	<u>Residential Load Management</u>	<u>Residential Conservation</u>	<u>Comm./Ind. Load Management</u>	<u>Comm./Ind. Conservation</u>	<u>Net Firm Demand</u>
2002/03	728	728	0						728
2003/04	728	728	0						728
2004/05	910	910	0						910
2005/06	910	910	0						910
2006/07	910	910	0						910
2007/08	910	910	0						910
2008/09	910	910	0						910
2009/10	910	910	0						910
2010/11	910	910	0						910

Oleander Power Project, Limited Partnership
 Schedule 3.3
 History and Forecast of Annual Net Energy for Load - GWH

(1)	(2)	(3)	(4)	(5)	(6)	(7)	(8)	(9)
<u>Year</u>	<u>Total</u>	<u>Residential Conservation</u>	<u>Comm./Ind. Conservation</u>	<u>Retail</u>	<u>Wholesale</u>	<u>Utility Use & Losses</u>	<u>Net Energy for Load</u>	<u>Load * Factor %</u>
2002	318				318		318	5.0
2003	544				544		544	8.5
2004	680				680		680	8.5
2005	680				680		680	8.5
2006	680				680		680	8.5
2007	680				680		680	8.5
2008	680				680		680	8.5
2009	680				680		680	8.5
2010	680				680		680	8.5

* Load factor calculations are based on projected annual peak demand of 182 MW per unit.

Oleander Power Project, Limited Partnership
 Schedule 4
 Previous Year and 2-Year Forecast of Retail Peak Demand
 and Net Energy For Load by Month

(1)	(2)	(3)	(4)	(5)	(6)	(7)
<u>Month</u>	<u>Actual</u>		<u>Forecast</u>		<u>Forecast</u>	
	<u>Peak Demand</u> <u>MW</u>	<u>NEL</u> <u>GWH</u>	<u>Peak Demand</u> <u>MW</u>	<u>NEL</u> <u>GWH</u>	<u>Peak Demand</u> <u>MW</u>	<u>NEL</u> <u>GWH</u>
January	Not Applicable					
February						
March						
April						
May						
June						
July						
August						
September						
October						
November						
December						

**Oleander Power Project, Limited Partnership
Schedule 5
Fuel Requirements**

(1)	(2)	(3)	(4)	(5)	(6)	(7)	(8)	(9)	(10)	(11)	(12)	(13)	(14)
<u>Fuel Requirements</u>			<u>Units</u>	<u>Actual</u> <u>2001</u>	<u>2002</u>	<u>2003</u>	<u>2004</u>	<u>2005</u>	<u>2006</u>	<u>2007</u>	<u>2008</u>	<u>2009</u>	<u>2010</u>
(1)	Nuclear		Trillion BTU										
(2)	Coal		1000 Ton										
(3)	Residual	Total	1000 BBL										
(4)		Steam	1000 BBL										
(5)		CC	1000 BBL										
(6)		CT	1000 BBL										
(7)		Diesel	1000 BBL										
(8)	Distillate	Total	1000 BBL	NA	146.4	250.4	313	313	313	313	313	313	313
(9)		Steam	1000 BBL										
(10)		CC	1000 BBL										
(11)		CT	1000 BBL	NA	146.4	250.4	313	313	313	313	313	313	313
(12)		Diesel	1000 BBL										
(13)	Natural Gas	Total	1000 MCF	NA	2,387	4,092	5,115	5,115	5,115	5,115	5,115	5,115	5,115
(14)		Steam	1000 MCF										
(15)		CC	1000 MCF										
(16)		CT	1000 MCF	NA	2,387	4,092	5,115	5,115	5,115	5,115	5,115	5,115	5,115
(17)	Other (Specify)		Trillion BTU										

Oleander Power Project, Limited Partnership
Schedule 6.1
Energy Sources (Units)

(1)	(2)	(3)	(4)	(5)	(6)	(7)	(8)	(9)	(10)	(11)	(12)	(13)	(14)
<u>Energy Sources</u>			<u>Units</u>	<u>Actual</u> <u>2001</u>	<u>2002</u>	<u>2003</u>	<u>2004</u>	<u>2005</u>	<u>2006</u>	<u>2007</u>	<u>2008</u>	<u>2009</u>	<u>2010</u>
(1)	Annual Firm Interchange		GWH										
(2)	Nuclear		GWH										
(3)	Residual	Total	GWH										
(4)		Steam	GWH										
(5)		CC	GWH										
(6)		CT	GWH										
(7)		Diesel	GWH										
(8)	Distillate	Total	GWH	NA	79	136	170	170	170	170	170	170	170
(9)		Steam	GWH										
(10)		CC	GWH										
(11)		CT	GWH	NA	79	136	170	170	170	170	170	170	170
(12)		Diesel	GWH										
(13)	Natural Gas	Total	GWH	NA	238	408	510	510	510	510	510	510	510
(14)		Steam	GWH										
(15)		CC	GWH										
(16)		CT	GWH	NA	238	408	510	510	510	510	510	510	510
(17)	Other (Specify)		GWH										
(18)	Net Energy for Load		GWH	NA	318	544	680	680	680	680	680	680	680

Oleander Power Project, Limited Partnership
Schedule 6.2
Energy Sources (Percent)

(1)	(2)	(3)	(4)	(5)	(6)	(7)	(8)	(9)	(10)	(11)	(12)	(13)	(14)
<u>Energy Sources</u>			<u>Units</u>	<u>Actual 2001</u>	<u>2002</u>	<u>2003</u>	<u>2004</u>	<u>2005</u>	<u>2006</u>	<u>2007</u>	<u>2008</u>	<u>2009</u>	<u>2010</u>
(1)	Annual Firm Interchange		%										
(2)	Nuclear		%										
(3)	Residual	Total	%										
(4)		Steam	%										
(5)		CC	%										
(6)		CT	%										
(7)		Diesel	%										
(8)	Distillate	Total	%	NA	24.9	25	25	25	25	25	25	25	25
(9)		Steam	%										
(10)		CC	%										
(11)		CT	%	NA	24.9	25	25	25	25	25	25	25	25
(12)		Diesel	%										
(13)	Natural Gas	Total	%	NA	75.1	75	75	75	75	75	75	75	75
(14)		Steam	%										
(15)		CC	%										
(16)		CT	%	NA	75.1	75	75	75	75	75	75	75	75
(17)	Other (Specify)		%										
(18)	Net Energy for Load		%	NA	100	100	100	100	100	100	100	100	100

**Oleander Power Project, Limited Partnership
Schedule 7.1**

Forecast of Capacity, Demand, and Scheduled Maintenance at Time of Summer Peak

(1)	(2)	(3)	(4)	(5)	(6)	(7)	(8)	(9)	(10)	(11)	(12)
Year	Total Installed Capacity MW	Firm Capacity Import MW	Firm Capacity Export MW	QF MW	Total Capacity Available MW	System Firm Summer Peak Demand MW	Reserve Margin before Maintenance MW	% of Peak	Scheduled Maintenance MW	Reserve Margin after Maintenance MW	% of Peak
2002	622	0	0	0	622	622	N/A (1)	N/A (1)	N/A (2)	N/A (1)	N/A (1)
2003	622	0	0	0	622	622	N/A (1)	N/A (1)	N/A (2)	N/A (1)	N/A (1)
2004	777	0	0	0	777	777	N/A (1)	N/A (1)	N/A (2)	N/A (1)	N/A (1)
2005	777	0	0	0	777	777	N/A (1)	N/A (1)	N/A (2)	N/A (1)	N/A (1)
2006	777	0	0	0	777	777	N/A (1)	N/A (1)	N/A (2)	N/A (1)	N/A (1)
2007	777	0	0	0	777	777	N/A (1)	N/A (1)	N/A (2)	N/A (1)	N/A (1)
2008	777	0	0	0	777	777	N/A (1)	N/A (1)	N/A (2)	N/A (1)	N/A (1)
2009	777	0	0	0	777	777	N/A (1)	N/A (1)	N/A (2)	N/A (1)	N/A (1)
2010	777	0	0	0	777	777	N/A (1)	N/A (1)	N/A (2)	N/A (1)	N/A (1)

Notes:

- (1) As a peaking plant, Oleander expects to deliver the full rated output of the Project's installed capacity at the time of summer peak.
- (2) Given the relatively low number of operating hours each year, Oleander plans to perform all scheduled maintenance outside of those hours.

**Oleander Power Project, Limited Partnership
Schedule 7.2**

Forecast of Capacity, Demand, and Scheduled Maintenance at Time of Winter Peak

(1)	(2)	(3)	(4)	(5)	(6)	(7)	(8)	(9)	(10)	(11)	(12)
Year	Total Installed Capacity MW	Firm Capacity Import MW	Firm Capacity Export MW	QF MW	Total Capacity Available MW	System Firm Winter Peak Demand MW	Reserve Margin before Maintenance MW % of Peak		Scheduled Maintenance MW	Reserve Margin after Maintenance MW % of Peak	
2002	728	0	0	0	728	728	N/A (1)	N/A (1)	N/A (2)	N/A (1)	N/A (1)
2003	728	0	0	0	728	728	N/A (1)	N/A (1)	N/A (2)	N/A (1)	N/A (1)
2004	910	0	0	0	910	910	N/A (1)	N/A (1)	N/A (2)	N/A (1)	N/A (1)
2005	910	0	0	0	910	910	N/A (1)	N/A (1)	N/A (2)	N/A (1)	N/A (1)
2006	910	0	0	0	910	910	N/A (1)	N/A (1)	N/A (2)	N/A (1)	N/A (1)
2007	910	0	0	0	910	910	N/A (1)	N/A (1)	N/A (2)	N/A (1)	N/A (1)
2008	910	0	0	0	910	910	N/A (1)	N/A (1)	N/A (2)	N/A (1)	N/A (1)
2009	910	0	0	0	910	910	N/A (1)	N/A (1)	N/A (2)	N/A (1)	N/A (1)
2010	910	0	0	0	910	910	N/A (1)	N/A (1)	N/A (2)	N/A (1)	N/A (1)

Notes:

- (1) As a peaking plant, Oleander expects to deliver the full rated output of the Project's installed capacity at the time of winter peak.
- (2) Given the relatively low number of operating hours each year, Oleander plans to perform all scheduled maintenance outside of those hours.

Oleander Power Project, Limited Partnership
 Schedule 8
 Planned and Prospective Generating Facility Additions and Changes

(1)	(2)	(3)	(4)	(5)	(6)	(7)	(8)	(9)	(10)	(11)	(12)	(13)	(14)	(15)
Plant Name	Unit	Location	Unit	Fuel		Fuel Transport		Const. Start Date	Commercial In-Service Mo/Yr	Expected Retirement Mo/Yr	Gen. Max. Nameplate KW	Net Capability		Status
	No.		Type	Pri	Alt	Pri	Alt					Summer MW	Winter MW	
Oleander	1	Brevard Co.	CT	NG	FO2	PL	TK	1/2001	6/2002	unknown	190,000	155	182	Planned
Oleander	2	Brevard Co.	CT	NG	FO2	PL	TK	1/2001	6/2002	unknown	190,000	155	182	Planned
Oleander	3	Brevard Co.	CT	NG	FO2	PL	TK	1/2001	6/2002	unknown	190,000	155	182	Planned
Oleander	4	Brevard Co.	CT	NG	FO2	PL	TK	1/2001	6/2002	unknown	190,000	155	182	Planned
Oleander	5	Brevard Co.	CT	NG	FO2	PL	TK	1/2003	6/2004	unknown	190,000	155	182	Planned

Oleander Power Project, Limited Partnership
Schedule 9
Status Report and Specifications of Proposed Generating Facilities

(1) Plant Name and Unit Number	Oleander Power Project #1
(2) Capacity	
a. Summer:	155 MW
b. Winter:	182 MW
(3) Technology Type:	Combustion Turbine Generator
(4) Anticipated Construction Timing	
a. Field construction start - date:	4/15/2001
b. Commercial in service - date:	6/2002
(5) Fuel	
a. Primary fuel:	Natural Gas
b. Alternate fuel:	Distillate Oil
(6) Air Pollution Control Strategy:	Dry Low-NOx Combustors, Low Sulfur Fuel, Natural Gas Fuel, Good Combustion Practices, Water Injection when firing oil.
(7) Cooling Method:	N/A
(8) Total Site Area:	38 acres
(9) Construction Status:	Planned
(10) Certification Status:	Not Applicable with Respect to the Power Plant Siting Act; permits have been issued by the FDEP.
(11) Status With Federal Agencies:	Oleander has obtained Market-Based Rate authority and Exempt Wholesale Generator Status from the Federal Energy Regulatory Commission.
(12) Projected Unit Performance Data	
Planned Outage Factor (POF):	3.0%
Forced Outage Factor (FOF):	0.2%
Equivalent Availability Factor (EAF):	96.8%
Estimated Capacity Factor (%):	8.5%
Average Net Operating Heat Rate (ANOR):	9,700 BTU/kWH (LHV) based on 9,528 BTU/kWH when fueled by natural gas 75% of running hours and 10,215 BTU/kWH when fueled by distillate fuel oil 25% of running hours (projected).
(13) Projected Unit Financial Data	
Book Life (Years):	30
Total Installed Cost (In-Service Year \$/kW):	N/A
Estimated Direct Construction Cost (\$/kW):	235/kW
AFUDC Amount (\$/kW):	N/A
Escalation (\$/kW):	N/A

Oleander Power Project, Limited Partnership
Schedule 9
Status Report and Specifications of Proposed Generating Facilities

(1) Plant Name and Unit Number	Oleander Power Project #2
(2) Capacity	
a. Summer:	155 MW
b. Winter:	182 MW
(3) Technology Type:	Combustion Turbine Generator
(4) Anticipated Construction Timing	
a. Field construction start - date:	4/15/2001
b. Commercial in service - date:	6/2002
(5) Fuel	
a. Primary fuel:	Natural Gas
b. Alternate fuel:	Distillate Oil
(6) Air Pollution Control Strategy:	Dry Low-NOx Combustors, Low Sulfur Fuel, Natural Gas Fuel, Good Combustion Practices, Water Injection when firing oil.
(7) Cooling Method:	N/A
(8) Total Site Area:	38 acres
(9) Construction Status:	Planned
(10) Certification Status:	Not Applicable with Respect to the Power Plant Siting Act; permits have been issued by the FDEP.
(11) Status With Federal Agencies:	Oleander has obtained Market-Based Rate authority and Exempt Wholesale Generator status from the Federal Energy Regulatory Commission.
(12) Projected Unit Performance Data	
Planned Outage Factor (POF):	3.0%
Forced Outage Factor (FOF):	0.2%
Equivalent Availability Factor (EAF):	96.8%
Estimated Capacity Factor (%):	8.5%
Average Net Operating Heat Rate (ANOR):	9,700 BTU/kWH (LHV) based on 9,528 BTU/kWH when fueled by natural gas 75% of running hours and 10,215 BTU/kWH when fueled by distillate fuel oil 25% of running hours (projected).
(13) Projected Unit Financial Data	
Book Life (Years):	30
Total Installed Cost (In-Service Year \$/kW):	N/A
Estimated Direct Construction Cost (\$/kW):	235/kW
AFUDC Amount (\$/kW):	N/A
Escalation (\$/kW):	N/A

Oleander Power Project, Limited Partnership
Schedule 9
Status Report and Specifications of Proposed Generating Facilities

(1) Plant Name and Unit Number	Oleander Power Project #3
(2) Capacity	
a. Summer:	155 MW
b. Winter:	182 MW
(3) Technology Type:	Combustion Turbine Generator
(4) Anticipated Construction Timing	
a. Field construction start - date:	4/15/2001
b. Commercial in service - date:	6/2002
(5) Fuel	
a. Primary fuel:	Natural Gas
b. Alternate fuel:	Distillate Oil
(6) Air Pollution Control Strategy:	Dry Low-NOx Combustors, Low Sulfur Fuel, Natural Gas Fuel, Good Combustion Practices, Water Injection when firing oil.
(7) Cooling Method:	N/A
(8) Total Site Area:	38 acres
(9) Construction Status:	Planned
(10) Certification Status:	Not Applicable with Respect to the Power Plant Siting Act; permits have been issued by the FDEP.
(11) Status With Federal Agencies:	Oleander has obtained Market-Based Rate authority and Exempt Wholesale Generator Status from the Authority and Exempt Wholesale Generator Status.
(12) Projected Unit Performance Data	
Planned Outage Factor (POF):	3.0%
Forced Outage Factor (FOF):	0.2%
Equivalent Availability Factor (EAF):	96.8%
Estimated Capacity Factor (%):	8.5%
Average Net Operating Heat Rate (ANOR):	9,700 BTU/kWH (LHV) based on 9,528 BTU/kWH when fueled by natural gas 75% of running hours and 10,215 BTU/kWH when fueled by distillate fuel oil 25% of running hours (projected).
(13) Projected Unit Financial Data	
Book Life (Years):	30
Total Installed Cost (In-Service Year \$/kW):	N/A
Estimated Direct Construction Cost (\$/kW):	235/kW
AFUDC Amount (\$/kW):	N/A
Escalation (\$/kW):	N/A

**Oleander Power Project, Limited Partnership
Schedule 9
Status Report and Specifications of Proposed Generating Facilities**

(1) Plant Name and Unit Number	Oleander Power Project #4
(2) Capacity	
a. Summer:	155 MW
b. Winter:	182 MW
(3) Technology Type:	Combustion Turbine Generator
(4) Anticipated Construction Timing	
a. Field construction start - date:	4/15/2001
b. Commercial in service - date:	6/2002
(5) Fuel	
a. Primary fuel:	Natural Gas
b. Alternate fuel:	Distillate Oil
(6) Air Pollution Control Strategy:	Dry Low-NOx Combustors, Low Sulfur Fuel, Natural Gas Fuel, Good Combustion Practices, Water Injection when firing oil.
(7) Cooling Method:	N/A
(8) Total Site Area:	38 acres
(9) Construction Status:	Planned
(10) Certification Status:	Not Applicable with Respect to the Power Plant Siting Act; permits have been issued by the FDEP.
(11) Status With Federal Agencies:	Oleander has obtained Market-Based Rate authority and Exempt Wholesale Generator Status from the Federal Energy Regulatory Commission.
(12) Projected Unit Performance Data	
Planned Outage Factor (POF):	3.0%
Forced Outage Factor (FOF):	0.2%
Equivalent Availability Factor (EAF):	96.8%
Estimated Capacity Factor (%):	8.5%
Average Net Operating Heat Rate (ANOR):	9,700 BTU/kWH (LHV) based on 9,528 BTU/kWH when fueled by natural gas 75% of running hours and 10,215 BTU/kWH when fueled by distillate fuel oil 25% of running hours (projected).
(13) Projected Unit Financial Data	
Book Life (Years):	30
Total Installed Cost (In-Service Year \$/kW):	N/A
Estimated Direct Construction Cost (\$/kW):	235/kW
AFUDC Amount (\$/kW):	N/A
Escalation (\$/kW):	N/A

**Oleander Power Project, Limited Partnership
Schedule 9
Status Report and Specifications of Proposed Generating Facilities**

(1) Plant Name and Unit Number	Oleander Power Project #5
(2) Capacity	
a. Summer:	155 MW
b. Winter:	182 MW
(3) Technology Type:	Combustion Turbine Generator
(4) Anticipated Construction Timing	
a. Field construction start - date:	1/2003
b. Commercial in service - date:	6/2004
(5) Fuel	
a. Primary fuel:	Natural Gas
b. Alternate fuel:	Distillate Oil
(6) Air Pollution Control Strategy:	Dry Low-NOx Combustors, Low Sulfur Fuel, Natural Gas Fuel, Good Combustion Practices, Water Injection when firing oil.
(7) Cooling Method:	N/A
(8) Total Site Area:	38 acres
(9) Construction Status:	Planned
(10) Certification Status:	Not Applicable with Respect to the Power Plant Siting Act; permits have been issued by the FDEP.
(11) Status With Federal Agencies:	Oleander has obtained Market-Based Rate authority and Exempt Wholesale Generator status from the Federal Energy Regulatory Commission.
(12) Projected Unit Performance Data	
Planned Outage Factor (POF):	3.0%
Forced Outage Factor (FOF):	0.2%
Equivalent Availability Factor (EAF):	96.8%
Estimated Capacity Factor (%):	8.5%
Average Net Operating Heat Rate (ANOR):	9,700 BTU/kWH (LHV) based on 9,528 BTU/kWH when fueled by natural gas 75% of running hours and 10,215 BTU/kWH when fueled by distillate fuel oil 25% of running hours (projected).
(13) Projected Unit Financial Data	
Book Life (Years):	30
Total Installed Cost (In-Service Year \$/kW):	N/A
Estimated Direct Construction Cost (\$/kW):	235/kW
AFUDC Amount (\$/kW):	N/A
Escalation (\$/kW):	N/A

Oleander Power Project, Limited Partnership
Schedule 10
Status Report and Specifications of Proposed Directly
Associated Transmission Lines

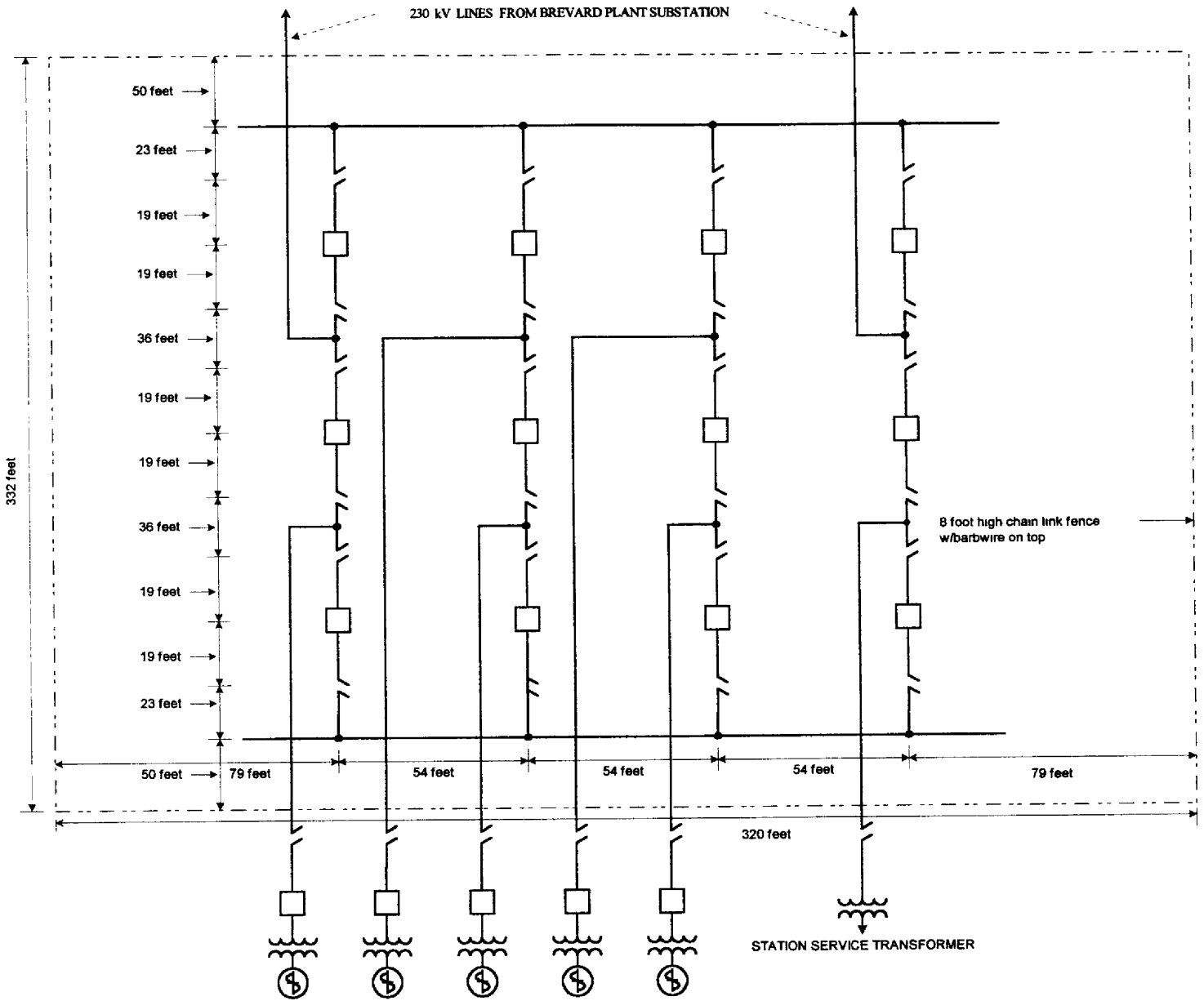
- (1) Point of Origin and Termination: Oleander Project Site / Brevard Substation
- (2) Number of Lines: See notes.
- (3) Right - of - Way: See notes.
- (4) Line Length: See notes.
- (5) Voltage: See notes.
- (6) Anticipated Construction Time: See notes.
- (7) Anticipated Capital Investment: See notes.
- (8) Substations: See notes.
- (9) Participation with Other Utilities: None

Notes:

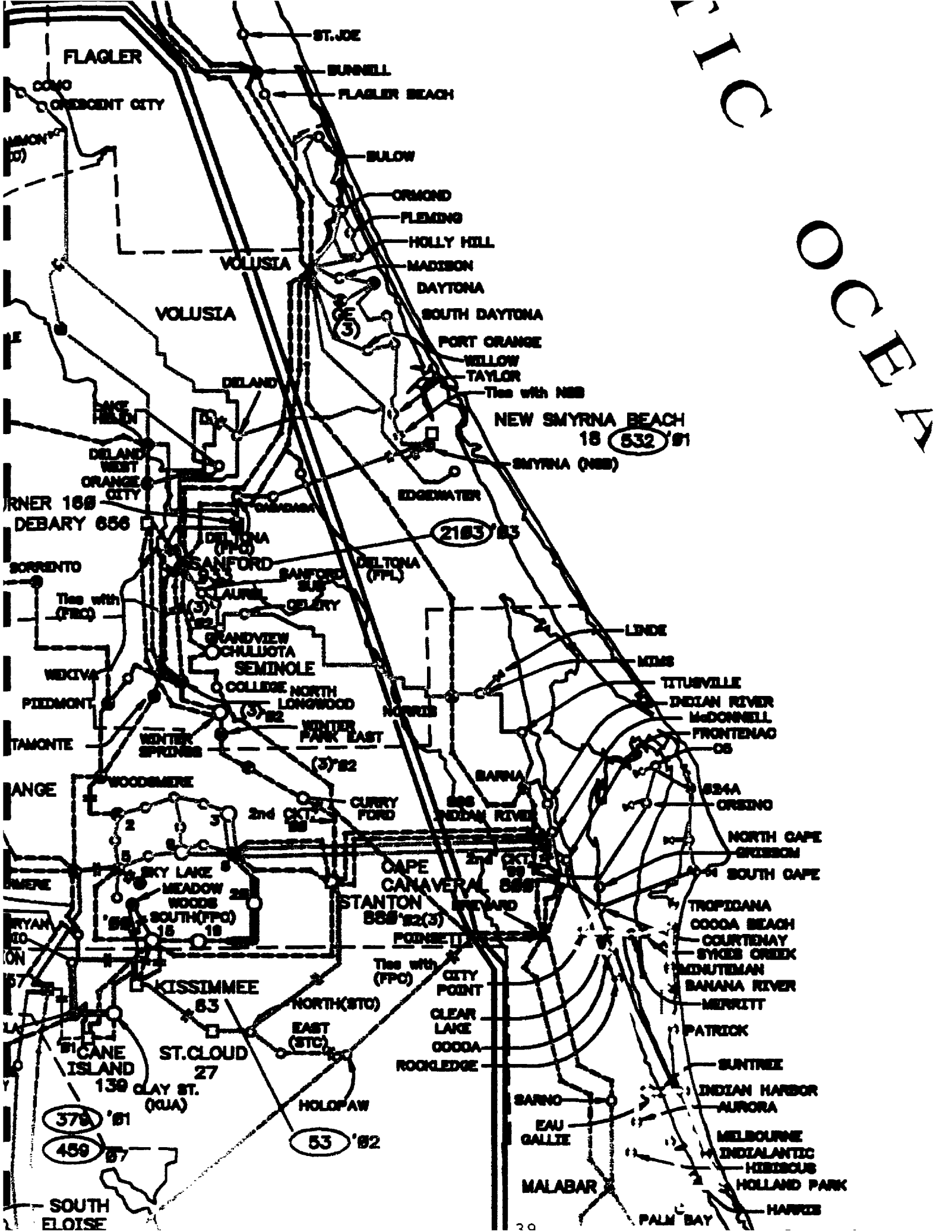
- (1) No additional transmission lines are required to connect the Oleander Power Project to the Peninsular Florida grid.
- (2) The actual interconnection will be made to FPL's Brevard Substation prior to the Project's in-service date, with the costs, which will be paid by Oleander, determined in accordance with FPL's transmission tariffs.

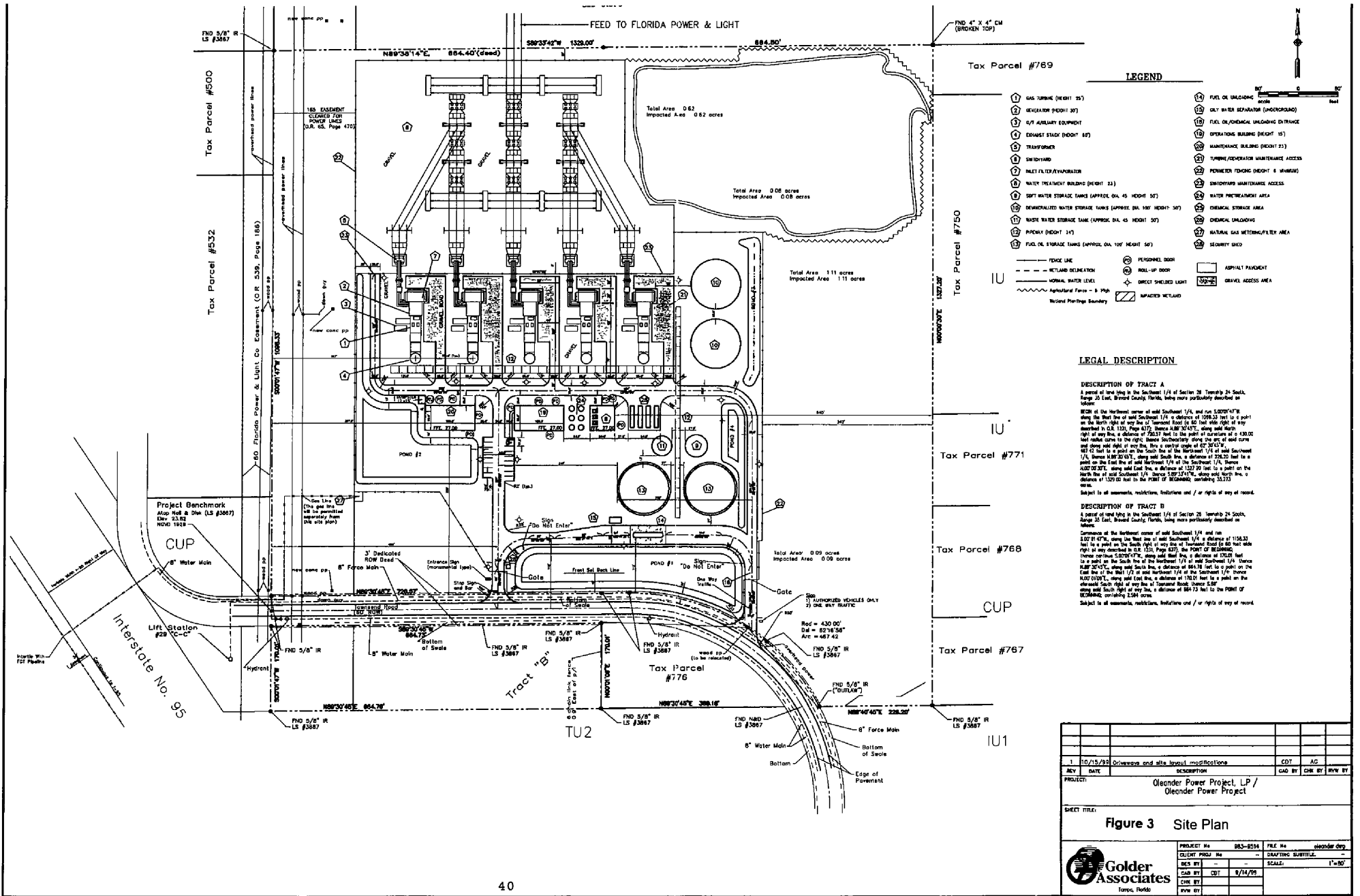
CONSTELLATION POWER DEVELOPMENT, INC.
OLEANDER POWER PROJECT

BREAKER AND A HALF BUS ARRANGEMENT



OFFICE





Tax Parcel #769

Tax Parcel #750

Tax Parcel #771

Tax Parcel #768

Tax Parcel #767

LEGEND

- 1 GAS TANKS (HEIGHT 10')
- 2 GENERATOR (HEIGHT 30')
- 3 5/8" AUXILIARY EQUIPMENT
- 4 DRAWST STAYS (HEIGHT 10')
- 5 TRANSFORMER
- 6 SWITCHYARD
- 7 FUEL FILTER/EXHAUSTOR
- 8 WATER TREATMENT BUILDING (HEIGHT 23')
- 9 DEIONIZED WATER STORAGE TANKS (APPROX. DIA. 45' HEIGHT 50')
- 10 WASTE WATER STORAGE TANK (APPROX. DIA. 45' HEIGHT 50')
- 11 PAVING (HEIGHT 14')
- 12 FUEL OIL STORAGE TANKS (APPROX. DIA. 100' HEIGHT 50')
- 13 FUEL OIL UNLOADING AREA
- 14 GUY WIRE REPAIR/REPLACE (UNDERGROUND)
- 15 FUEL OIL/DIESEL UNLOADING ENTRANCE
- 16 OPERATIONS BUILDING (HEIGHT 15')
- 17 MAINTENANCE BUILDING (HEIGHT 21')
- 18 TURNPIECE/OPERATOR MAINTENANCE ACCESS
- 19 POWERED TRUCKS (HEIGHT 6' MINIMUM)
- 20 SWITCHYARD MAINTENANCE ACCESS
- 21 WATER TREATMENT AREA
- 22 CHEMICAL STORAGE AREA
- 23 CHEMICAL UNLOADING
- 24 NATURAL GAS METERING/FILTER AREA
- 25 SECURITY SHED
- TRUCK LANE
- RETAIN WALL SECTION
- NORMAL WATER LEVEL
- Agricultural Fence - 6' High
- Impacted Wetland Boundary
- PERSONNEL DOOR
- ROLL-UP DOOR
- DIRECT SHIELDED LIGHT
- APRILY PAVEMENT
- GRAVEL ACCESS AREA
- IMPACTED WETLAND

LEGAL DESCRIPTION

DESCRIPTION OF TRACT A
 A parcel of one half in the Southeast 1/4 of Section 26 Township 24 South, Range 23 East, Broward County, Florida, being more particularly described as follows:
 BEGIN at the Northeast corner of said Southeast 1/4, and run S20°07'47" along the West line of said Southeast 1/4 a distance of 1298.25 feet to a point on the North right of way line of Turnward Road (to be 100 feet wide right of way line, a distance of 1213.12 feet to the point of curvature of a 128.00 foot radius curve to the right. thence S60°00'00" along the arc of said curve and along the right of way line, then a central angle of 87°30'00" to a point on the East line of said Southeast 1/4 of the Southeast 1/4, thence N42°02'37" along said East line, a distance of 1217.00 feet to a point on the North line of said Southeast 1/4, thence S20°07'47" along said North line, a distance of 1297.00 feet to the POINT OF BEGINNING, containing 33.73 acres.
 Subject to all easements, restrictions, conditions and / or rights of any of record.

DESCRIPTION OF TRACT B
 A parcel of one half in the Southeast 1/4 of Section 26 Township 24 South, Range 23 East, Broward County, Florida, being more particularly described as follows:
 Commence at the Northeast corner of said Southeast 1/4 and run S20°07'47" along the West line of said Southeast 1/4 a distance of 1158.32 feet to a point on the South right of way line of Turnward Road (to be 100 feet wide right of way line, a distance of 1073.19 feet to the POINT OF BEGINNING, thence various courses S20°07'47" along said West line, a distance of 170.00 feet to a point on the South line of the Southeast 1/4 of said Southeast 1/4, thence N42°02'37" along said South line, a distance of 864.78 feet to a point on the East line of the Southeast 1/4 of said Southeast 1/4 of the Southeast 1/4, thence N20°07'47" along said East line, a distance of 1161.01 feet to a point on the Southeast South right of way line of Turnward Road, thence S20°07'47" along said South right of way line, a distance of 864.73 feet to the POINT OF BEGINNING, containing 33.94 acres.
 Subject to all easements, restrictions, conditions and / or rights of any of record.

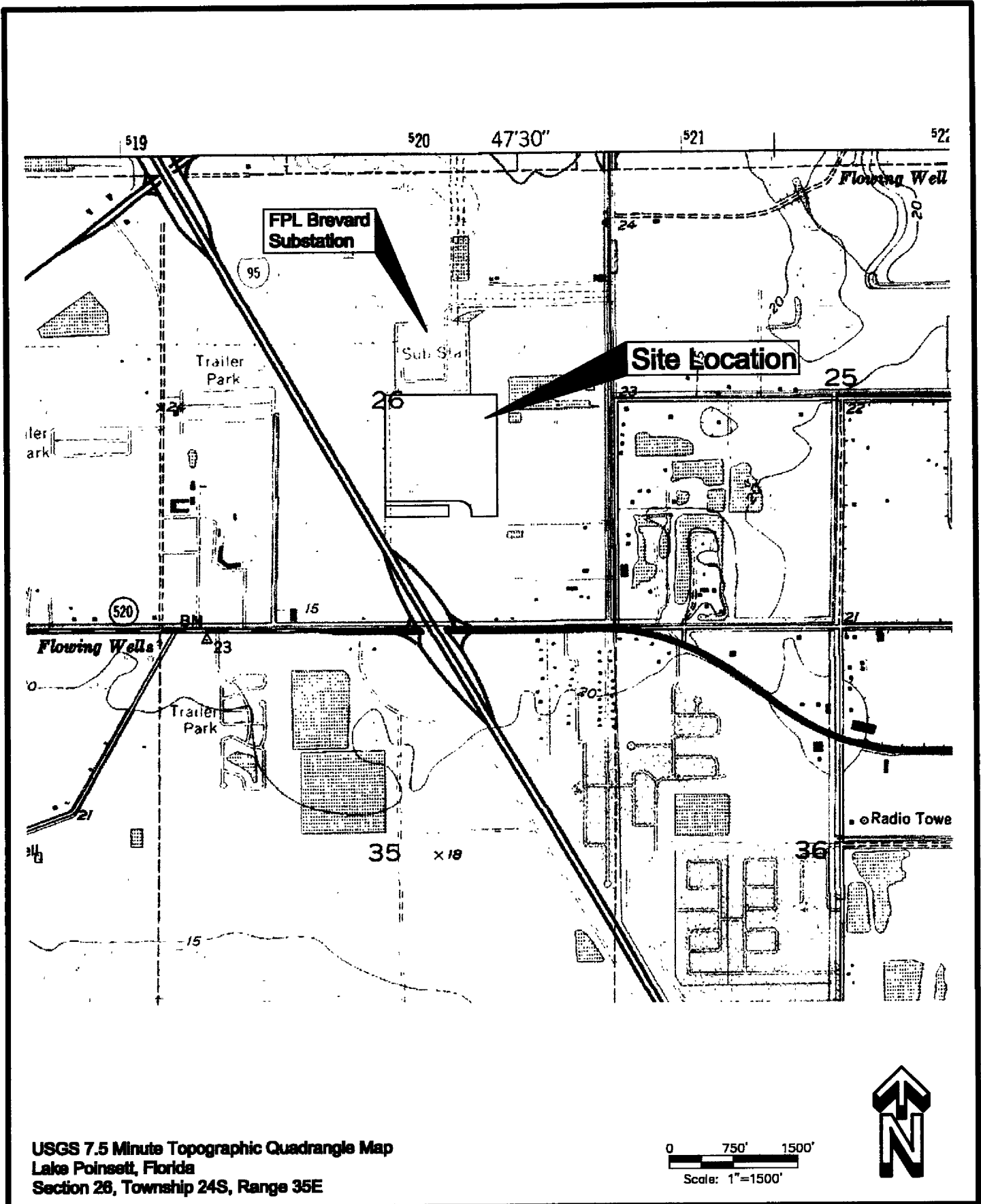
REV	DATE	DESCRIPTION	CDT	AG
1	10/15/93	Drawings and site layout modifications		

PROJECT: Oleander Power Project, LP / Oleander Power Project

SHEET TITLE: **Figure 3 Site Plan**

PROJECT No	083-0536	FILE No	oleander.dwg
CLIENT PROJ No	--	DRAFTING SUBTITLE	--
DRAWN BY	CDT	SCALE	1"=80'
CHECK BY	CDT	DATE	8/14/99
DATE			

Golden Associates
 Tampa, Florida



USGS 7.5 Minute Topographic Quadrangle Map
 Lake Point, Florida
 Section 26, Township 24S, Range 35E

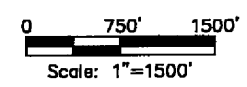


Figure 4

Tampa, Florida

**FAA Notice of Construction
 Site Location and Topographic Map**

Client / Project
Oleander Power Project, L.P.

CAD BY: CDT	SCALE: 1"=2000'
CHK BY: RAZ	DATE: 12/30/99
REV BY: -	FILE No.: usgs.dwg

Job No. 983-9514-0800
 FIGURE
1

Constellation- Oleander Power Project

Estimated Plant Performance and Emission Data
 5 Simple Cycle Combustion Turbines
 General Electric F Class Combustion Turbine Generators

NATURAL GAS-FIRING

Combustion turbine load (%)	100	100	100	75	75	75	50	50	50
Ambient temperature (oF)	32	59	95	32	59	95	32	59	95
Relative humidity (%)	80	60	45	80	60	45	80	60	45
Evaporative cooler status/ efficiency (%)	Off	On	On	Off	Off	Off	Off	Off	Off
Net plant power output (kW)	975.8	934.3	844.0	753.3	684.3	596.4	500.6	454.6	396.1
Net CT power output (kW)	195.2	186.9	168.8	150.7	136.9	119.3	100.1	90.9	79.2
Net plant heat rate, LHV basis (Btu/kWh)	9,121	9,214	9,489	9,942	10,266	10,738	11,185	11,624	12,323
Net plant heat rate, HHV basis (Btu/kWh)	10,124	10,228	10,533	10,539	10,882	11,382	12,415	12,903	13,679
Net CTG heat rate, LHV basis (Btu/kWh)	9,121	9,214	9,489	9,942	10,266	10,738	11,185	11,624	12,323
Net CTG heat rate, HHV basis (Btu/kWh)	10,124	10,228	10,533	10,539	10,882	11,382	12,415	12,903	13,679
CTG fuel flow (lb/h)- total for five CTGs	413,810	400,270	372,360	348,180	326,615	297,730	260,350	245,705	226,915
CTG heat input, LHV basis (mmBtu/h)- total for five CTGs	8,900	8,609	8,009	7,489	7,025	6,404	5,600	5,285	4,881
CTG exhaust gas flow (lb/h)- total for five CTGs	19,350,000	18,980,000	17,780,000	16,065,000	15,420,000	14,620,000	14,550,000	14,020,000	13,190,000
CTG exhaust gas composition (% by volume)									
Nitrogen &									
Argon	75.6	75.1	73.8	75.6	75.1	73.8	75.6	75.1	73.8
Oxygen	12.4	12.4	12.1	12.4	12.4	12.1	12.4	12.4	12.1
Carbon dioxide	3.9	3.8	3.7	3.9	3.8	3.7	3.9	3.8	3.7
Water	8.1	8.7	10.4	8.1	8.7	10.4	8.1	8.7	10.4
NOx as NO2 (lb/h)- total for five stacks based on ppmvd @ 15% O2	324 9	313 9	293 9	270 9	255 9	241 9	244 9	232 9	218 9
CO (lb/h)- total for five stacks based on ppmvd @ 15% O2	210 9.6	205 9.7	190 9.6	174 9.6	167 9.7	156 9.6	160 9.6	153 9.7	135 9.6
VOC as CH4 (lb/h)- total for five stacks based on ppmvd @ 15% O2	30.0 2.4	29.5 2.4	27.5 2.4	24.5 2.4	24.0 2.4	23.0 2.4	22.5 2.4	22.0 2.4	20.0 2.4
SO2 (lb/h)- total for five stacks	27.5	27.5	25.0	22.5	22.5	20.0	17.5	17.5	15.0
Particulates as PM10 (lb/h)- total for five stacks	45	45	45	45	45	45	45	45	45
CT exit gas velocity (ft/s) based on 22 ft diameter stack	113.9	112.5	107.6	98.4	95.5	91.4	82.1	80.1	77.3
CT exit gas temperature (oF)	1,109	1,115	1,138	1,173	1,186	1,190	1,043	1,059	1,087

42

Table 1

OIL-FIRING

Combustion turbine load (%)	100	100	100	75	75	75	50	50	50
Ambient temperature (oF)	32	59	95	32	59	95	32	59	95
Relative humidity (%)	80	60	45	80	60	45	80	60	45
Evaporative cooler status/ efficiency (%)	Off	On	On	Off	Off	Off	Off	Off	Off
Net plant power output (kW)	975.8	975.9	908.6	793.4	723.6	635.4	523.7	477.5	418.6
Net CT power output (kW)	195.2	195.2	181.7	158.7	144.7	127.1	104.7	95.5	83.7
Net plant heat rate, LHV basis (Btu/kWh)	9,875	9,831	10,005	10,541	10,880	11,388	11,905	12,368	13,088
Net plant heat rate, HHV basis (Btu/kWh)	10,468	10,421	9,954	11,173	11,533	12,071	12,619	13,110	13,873
Net CTG heat rate, LHV basis (Btu/kWh)	9,875	9,831	10,005	10,541	10,880	11,388	11,905	12,368	13,088
Net CTG heat rate, HHV basis (Btu/kWh)	10,468	10,421	9,954	11,173	11,533	12,071	12,619	13,110	13,873
CTG fuel flow (lb/h)- total for five CTGs	519,210	516,885	489,795	450,610	424,200	389,835	335,880	318,190	295,200
CTG heat input, LHV basis (mmBtu/h)- total for five CTGs	9,636	9,594	9,091	8,364	7,873	7,235	6,234	5,906	5,479
CTG exhaust gas flow (lb/h)- total for five CTGs	19,000,000	19,315,000	18,510,000	16,420,000	15,755,000	14,885,000	15,135,000	14,590,000	13,715,000
CTG exhaust gas composition (% by volume)									
Nitrogen &									
Argon	72.0	71.8	70.6	72.0	71.8	70.6	72.0	71.8	70.6
Oxygen	10.6	10.7	10.5	10.6	10.7	10.5	10.6	10.7	10.5
Carbon dioxide	5.7	5.6	5.5	5.5	5.6	5.5	5.7	5.6	5.5
Water	11.8	11.9	13.3	11.8	11.9	13.3	11.8	11.9	13.3
NOx as NO2 (lb/h)- total for five stacks	1,721	1,722	1,639	1,487	1,405	1,318	1,371	1,301	1,215
based on ppmvd @ 15% O2	42	42	42	42	42	42	42	42	42
CO (lb/h)- total for five stacks	330	335	319	286	274	257	264	254	232
based on ppmvd @ 15% O2	13.3	13.4	13.4	13.3	13.4	13.4	13.3	13.4	13.4
VOC as CH4 (lb/h)- total for five stacks	56.5	57.5	55	48.5	46.5	45.0	45.0	43.0	41.0
based on ppmvd @ 15% O2	4.0	4.0	4.0	4.0	4.0	4.0	4.0	4.0	4.0
SO2 (lb/h)- total for five stacks	519	517	490	451	424	390	336	318	295
Particulates as PM10 (lb/h)- total for five stacks	85.0	85.0	85.0	85.0	85.0	85.0	85.0	85.0	85.0
CT exit gas velocity (ft/s) based on 22 ft diameter stack	112.7	114.4	111.4	100.6	97.5	93.3	83.2	81.2	78.4
CT exit gas temperature (oF)	1,114	1,109	1,123	1,166	1,179	1,190	998	1,014	1,043