

Meredith Mays
Senior Regulatory Counsel

BellSouth Telecommunications, Inc.
150 South Monroe Street
Room 400
Tallahassee, Florida 32301
(404) 335-0750

August 17, 2005

Mrs. Blanca S. Bayó
Division of the Commission Clerk and
Administrative Services
Florida Public Service Commission
2540 Shumard Oak Boulevard
Tallahassee, FL 32399-0850

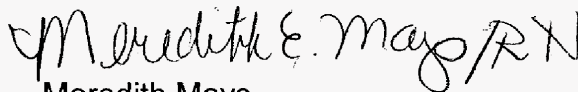
Re: Docket No. 041269-TP

Dear Ms. Bayó:

On August 16, 2005, BellSouth Telecommunications, Inc. (BellSouth") filed its Direct Testimony in the above referenced docket. BellSouth's letter dated August 16, 2005 states that David Wallis' testimony and exhibits were included and BellSouth served all parties and staff electronically and by overnight mail. However, the direct testimony and exhibits of David Wallis were inadvertently omitted from the original filing. Included with this letter are fifteen copies of the direct testimony and exhibits of David Wallis, which has been previously provided to all Parties of Record, and which has been previously filed in six other states. BellSouth requests the Commission to include Mr. Wallis' testimony and exhibits in this proceeding.

A copy of this letter is enclosed. Please mark it to indicate that the original was filed and return the copy to me. Copies have been served to the parties shown on the attached Certificate of Service.

Sincerely,


Meredith Mays

cc: All Parties of Record
Jerry Hendrix
R. Douglas Lackey
Nancy B. White

597918

DOCUMENT NUMBER-DATE

07977 AUG 17 05

FPSC-COMMISSION CLERK

**CERTIFICATE OF SERVICE
Docket No. 041269-TP**

I HEREBY CERTIFY that a true and correct copy of the foregoing was served via
Electronic Mail and FedEx this 17th day of August, 2005 to the following:

Adam Teitzman
Michael Barrett
Staff Counsels
Florida Public Service
Commission
Division of Legal Services
2540 Shumard Oak Boulevard
Tallahassee, FL 32399-0850
Tel. No. (850) 413-6199
ateitzma@psc.state.fl.us
mbarrett@psc.state.fl.us

Florida Cable Telecommunications
Assoc., Inc.
Michael A. Gross
246 E. 6th Avenue
Suite 100
Tallahassee, FL 32303
Tel. No. (850) 681-1990
Fax No. (850) 681-9676
mgross@fcta.com

Vicki Gordon Kaufman
Moyle Flanigan Katz Raymond
& Sheehan, PA
118 North Gadsden Street
Tallahassee, FL 32301
Tel. No. (850) 681-3828
Fax. No. (850) 681-8788
vkaufman@moylelaw.com
Atty. for FCCA/CompSouth

Norman H. Horton, Jr.
Meser, Caparello & Self, P.A.
215 South Monroe Street, Suite 701
P.O. Box 1876
Tallahassee, FL 32302-1876
Tel. No. (850) 222-0720
Fax No. (850) 224-4359
nhorton@lawfla.com
Represents NuVox/NewSouth/Xspedius

John Heitmann
Garret R. Hargrave
Kelley Drye & Warren, LLP
Suite 500
1200 19th Street, N.W.
Washington, D.C. 20036
jheitmann@kelleydrye.com
ghargrave@kelleydrye.com
Tel. No. (202) 887-1254
Represents NuVox/NewSouth/Xpedius

Kenneth A. Hoffman, Esq.
Martin P. McDonnell, Esq.
Rutledge, Ecenis, Purnell & Hoffman
P.O. Box 551
Tallahassee, FL 32302
Tel. No. (850) 681-6788
Fax. No. (850) 681-6515
Represents XO and US LEC
ken@reuphlaw.com
marty@reuphlaw.com

Dana Shaffer
XO Communications, Inc.
105 Molloy Street, Suite 300
Nashville, Tennessee 37201
Tel. No. (615) 777-7700
Fax. No. (615) 850-0343
dana.shaffer@xo.com

Wanda Montano
Terry Romine
US LEC Corp.
6801 Morrison Blvd.
Charlotte, N.C. 28211
Tel. No. (770) 319-1119
Fax. No. (770) 602-1119
wmontano@uslec.com

Tracy W. Hatch
Senior Attorney
AT&T
101 North Monroe Street
Suite 700
Tallahassee, FL 32301
Tel. No. (850) 425-6360
thatch@att.com

Sonia Daniels
Docket Manager
1230 Peachtree Street, N.E.
4th Floor
Atlanta, Georgia 30309
Tel. No. (404) 810-8488
sdaniels@att.com

Donna Canzano McNulty, Esq.
MCI
1203 Governors Square Blvd.
Suite 201
Tallahassee, FL 32301
Telephone: 850 219-1008
donna.mcnulty@mci.com

De O'Roark, Esq.
MCI
6 Concourse Parkway
Suite 600
Atlanta, GA 30328
de.oroark@mci.com

Floyd Self, Esq.
Messer, Caparello & Self, P.A.
Hand: 215 South Monroe Street
Suite 701
Tallahassee, FL 32301
Mail: P.O. Box 1876
Tallahassee, FL 32302-1876
fself@lawfla.com

Steven B. Chaiken
Supra Telecommunications and
Info. Systems, Inc.
General Counsel
2901 S.W. 149th Avenue
Suite 300
Miramar, FL 33027
Tel. No. (786) 455-4239
steve.chaiken@stis.com

Matthew Feil
FDN Communications
2301 Lucien Way
Suite 200
Maitland, FL 32751
Tel. No. (407) 835-0460
mfeil@mail.fdn.com

Nanette Edwards
ITC^DeltaCom Communications, Inc.
7037 Old Madison Pike
Suite 400
Huntsville, Alabama 35806
Tel. No.: (256) 382-3856
nedwards@itcdeltacom.com

Susan Masterton
Sprint Communications Company
Limited Partnership
P.O. Box 2214
Tallahassee, FL 32316-2214
Tel. No.: (850) 599-1560
Fax No.: (850) 878-0777
susan.masterton@mail.sprint.com

Alan C. Gold, Esq.
Gables One Tower
1320 South Dixie Highway
Suite 870
Coral Gables, FL 33146
Tel. No. (305) 667-0475
Fax. No. (305) 663-0799
agold@kcl.net

Raymond O. Manasco, Jr.
Gainesville Regional Utilities
Hand: 301 S.E. 4th Avenue
Gainesville, FL 32601
Mail: P.O. Box 147117
Station A-138
Gainesville, FL 32614-7117
Tel. No. (352) 393-1010
Fax. No. (352) 334-2277
manascoro@gru.com

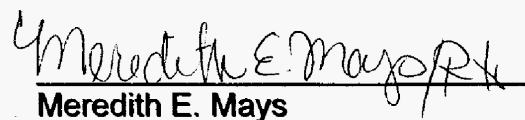
Jody Lamar Finklea
Associate General Counsel
Florida Municipal Power Agency
Hand: 2061-2 Delta Way
Tallahassee, FL 32303
Mail: P.O. Box 3029
Tallahassee, FL 32315-3209
Tel. No. (850) 297-2011
Fax. No. (850) 297-2014
jody.lamar.finklea@fmpa.com

Herb Bornack, CEO
Orlando Telephone Systems, Inc.
4558 S.W. 35th Street
Suite 100
Orlando, FL 32811
Tel. No. (407) 996-8900
Fax. No. (407) 996-8901

Adam Kupetsky
Regulatory Counsel
WiiTel Communications, LLC
One Technology Center (TC-15)
100 South Cincinnati
Tulsa, Oklahoma 74103
Tel. No. (918) 547-2764
Fax. No. (918) 547-9446
adam.kupetsky@wiiTel.com

Jonathan S. Marashlian, Esq.
The Helein Law Group, LLLP
8180 Greensboro Drive, Suite 700
McLean, VA 22102
Tel. No. (703) 714-1313
Fax. No. (703) 714-1330
jsm@thlglaw.com
Atty. for Azul Tel.

Charles (Gene) E. Watkins
Covad Communications Co.
1230 Peachtree Street, N.E.
Suite 1900
Atlanta, GA 30309
Tel. No. (404) 942-3492
qwatkins@covad.com


Meredith E. Mays

1 **BELLSOUTH TELECOMMUNICATIONS, INC.**
2 **DIRECT TESTIMONY OF DAVID WALLIS**
3 **BEFORE THE FLORIDA PUBLIC SERVICE COMMISSION**
4 **DOCKET NO. 041269-TP**
5 **AUGUST 16, 2005**

6
7 P. PLEASE STATE YOUR NAME, YOUR POSITION, AND YOUR BUSINESS
8 ADDRESS.

9
10 A. My name is David Wallis. I am employed by Deloitte Financial Advisory
11 Services LLP (“Deloitte FAS”) as Regional Telecom Practice Leader in Forensic
12 and Dispute Services. My business address is 191 Peachtree Street NE, Suite
13 1500, Atlanta, GA 30303.

14
15 Q. WHAT ARE YOUR CURRENT RESPONSIBILITIES?

16
17 A. I provide financial consulting services regarding litigation and other business
18 disputes. I also provide financial consulting services regarding
19 telecommunications regulatory matters. I am in charge of our firm’s Technology,
20 Media, and Telecommunications practices in the Southeast region for Forensic
21 and Dispute Services. I am a practice leader of the Atlanta Deloitte FAS practice.

22
23 Q. PLEASE SUMMARIZE YOUR BACKGROUND AND EXPERIENCE.

24
25 A. I received a Bachelor of Arts in Business Economics and a Bachelor of Arts in
26 Sociology from the University of California at Santa Barbara. I received a

1 Masters in Business Administration from Duke University. I am a Certified
2 Public Accountant. I have over fourteen years experience in financial consulting.
3 My primary focus is in the telecommunications industry, where I provide a wide
4 range of consulting services including carrier and intercarrier matters. I am a
5 member of the American Institute of Certified Public Accountants, the Georgia
6 Society of Certified Public Accountants, and the Association of Certified Fraud
7 Examiners.

8

9 Q. WHAT IS THE PURPOSE OF YOUR DIRECT TESTIMONY?

10 A. I introduce two reports. The first is dated April 14, 2005, and the second is dated
11 July 15, 2005. Both reports contain the conclusions of our review of the
12 mathematical calculation of business line counts that BellSouth performed. Our
13 April 14, 2005 report addresses the number of business lines as of December 31,
14 2003. Our July 15, 2005 report addresses the number of business lines as of
15 December 31, 2004. I understand that at the time of our initial report, 2004 line
16 data was not yet available; thus, we used 2003 for our initial report and 2004 data
17 once it become available for our second report. BellSouth witness Pamela A.
18 Tipton describes these business line count calculations and their underlying
19 methodology in her testimony.

20

21 Q. WHAT WERE THE RESULTS OF YOUR ENGAGEMENT?

22 A. Our conclusions are included within our reports, which are included as Exhibits
23 DW-1 and DW-2.

1 Q. DOES THIS CONCLUDE YOUR TESTIMONY?

2 A. Yes, it does.

3

4

5

6

7

8

9

10

11

12

13

14

15

16

17

18

19

20

21

22

23 593649

Mathematical Calculation of BellSouth Business Line Counts as of December 31, 2003

April 14, 2005

Deloitte

Table of Contents

Sections

Mathematical Calculation of BellSouth's Business Line Counts.....	1
Appendix 1 Source Data and Assumptions	5
Appendix 2 Results and Calculation Procedures	9
Appendix 3 Retail & Resale and Wholesale UNE and EEL Data Flows	13
Appendix 4 Data Gathering Process and Calculation	15
Appendix 5 Business Line Count Per Wire Center	18
Appendix 6 Glossary of Terms	70

Mathematical Calculation of BellSouth's Business Line Counts

Background

The Federal Communications Commission's ("FCC") Triennial Review Remand Order ("TRRO")¹ was issued in response to the decision of the United States Court of Appeals for the District of Columbia in March of 2004. One focus of the TRRO was to establish whether, and under what circumstances certain Unbundled Network Elements ("UNEs") should be "de-listed," and no longer made available to Competitive Local Exchange Carriers ("CLECs") under Section 251(c)(3) of the 1996 Telecommunications Act. Specifically, for the purpose of determining whether certain high capacity loops and dedicated transport would be "de-listed," the FCC determined that it would "de-list" these UNEs in certain wire centers meeting specific criteria.

For the purpose of identifying the central offices where high capacity loops would be "de-listed" the FCC established two categories of central offices. DS1 high capacity loops would not be available (or would be "de-listed") in wire centers having 60,000 or more business lines and four or more fiber-based collocators. DS3 high capacity loops would not be available (or would be "de-listed") in wire centers having at least 38,000 business lines and four or more fiber-based collocators.

For the purpose of identifying central offices where dedicated transport would be "de-listed," the FCC created three tiers of wire centers.

- Tier 1 Wire Centers: 4 or more fiber-based collocators, or 38,000 or more business lines.
- Tier 2 Wire Centers: 3 or more fiber-based collocators, or 24,000 or more business lines.
- Tier 3 Wire Centers: All wire centers not in Tier 1 or Tier 2

DS1 dedicated transport would not be available between Tier 1 wire centers, and DS3 dedicated transport would not be available between Tier 1 wire centers, between Tier 1 and 2 wire centers, or between Tier 2 wire centers.

Regarding the business line criteria related to the above-described standards, BellSouth engaged us to perform a mathematical calculation of business line counts as of December 31, 2003. Our calculations follow certain procedures and assumptions provided by BellSouth. For this report, we do not analyze or count the number of fiber-based collocators in BellSouth wire centers.

¹ The Triennial Review Remand Order (TRRO) is the Federal Communications (FCC's) Order on Remand in CC Docket Nos.01-338 and 04-313 (released February 4, 2005).

Scope, Objectives and Intended Use

Scope

We were retained to perform a mathematical calculation to count the number of business lines for each BellSouth wire center by utilizing and replicating existing methodologies, procedures, and data provided by BellSouth. These procedures entail obtaining data regarding the volume of business lines, including the number of high capacity lines. We then were to calculate mathematically the capacity for each element and to calculate the total number of business lines for each BellSouth wire center based upon this model, and as described in this report. We then were to obtain information related to BellSouth's procedures for calculating the 2003 wholesale UNE and EEL and retail-resale business line counts, as well as to request data files from BellSouth containing business line information as of December 31, 2003. Then, we were to calculate the number of business lines, utilizing BellSouth's methodologies and procedures.

Objectives

The objectives of the project were to:

- Obtain a high-level understanding of BellSouth's systems, data, reports and procedures used to calculate and report business line counts for FCC TRRO purposes;
- Obtain an understanding of the methodology utilized by BellSouth in calculating the business line counts;
- Perform a mathematical calculation to determine the number of business lines as of December 31, 2003 by applying BellSouth's methodology; and
- Summarize the calculated business lines for each wire center in the 9 BellSouth states.

We neither verified the accuracy and completeness of the source data obtained for the calculation of the business lines, nor the systems in which the business lines are captured (and the source data that was extracted). We did not validate BellSouth's methodology developed to calculate the business lines for FCC TRRO purposes. We obtained an understanding of BellSouth's methodologies, a set of its applicable data, and then replicated the mathematical calculation utilized by BellSouth to determine the number of business lines for BellSouth wire centers. We did not attempt to validate the definitions of "business lines" used by BellSouth.

Intended Use of Report

The intended use and purpose of this report is to provide BellSouth with the results of our analyses as described herein. It is our understanding that BellSouth will share these results with certain regulatory commissions and possibly other interested parties that have a direct business relationship with BellSouth and may have a specific and direct purpose to review our results.

We conducted our analysis based on procedures developed by BellSouth. The procedures performed did not constitute a review, a compilation, or an audit of BellSouth's financial statements or any part thereof, nor an examination of management's assertions concerning the effectiveness of BellSouth's internal control systems, or an examination of compliance with laws, regulations, or other matters. Accordingly, Deloitte & Touche does not express an opinion, or any other form of assurance, on BellSouth's financial statements or any part thereof, nor an opinion, or any other form of assurance, on the internal control systems or compliance with laws, regulations, or other matters.

Procedures

We performed the following procedures to replicate BellSouth's methodology in mathematically calculating the business lines as of December 31, 2003:

- Obtained a high-level understanding of the systems, reports and data sources containing business line information used for calculating and reporting business line counts for FCC TRRO purposes;
- Obtained an understanding of the data flow in which line information was processed and gathered to generate the source data that would be used in calculating and reporting business line counts for FCC TRRO purposes;
- Identified and interviewed individuals who were responsible for source data extraction to understand processes and procedures in place to extract the source data;
- Interviewed personnel who were responsible for calculating and reporting business line counts to understand the methodology used by BellSouth to calculate the number of business lines;
- Requested and obtained the source data containing information regarding BellSouth business lines as of December 31, 2003. The source data included the 2003 ARMIS 43-08 Strategic Management Analysis System ("SMAS") download² report containing business line information related to retail and resale, Management Reporting and Revenue Management System ("MAREVS") NAR and VUMXX list containing retail and resale business lines provisioned on high capacity loops; and MAREVS data extraction containing business line information related to business UNE-P, UNE-L and Enhanced Extend Loops ("EELs");
- Developed a computer-based application to replicate BellSouth's methodology of determining the number of business line counts for retail-resale and wholesale UNE and EEL utilizing the above indicated data;
- Summarized the calculated business line counts at a wire center level for the nine (9) BellSouth states.

A detailed description of the procedures and assumptions underlying our calculation are provided in Appendix 1. Source data and assumptions are provided in Appendix 2. Retail-resale and wholesale UNE and EEL data flow diagrams are provided in Appendix 3. Data gathering process and calculation procedures are provided in Appendix 4.

Results

We requested and obtained data files containing information regarding BellSouth retail-resale and wholesale UNE and EEL business lines as of December 31, 2003. We processed the data files and calculated the retail-resale³ and wholesale UNE and EEL business line count for each of the wire centers within the 9 BellSouth states based upon BellSouth's methodology. The total retail-resale business lines and the total wholesale UNE and EEL business lines for 1,583 wire centers in the BellSouth states as of December 31, 2003 were 6,498,773 and 2,796,301, respectively.

² Interim data from SMAS intended for the 2003 ARMIS 43-08 report.

³ Resale is an element of wholesale at BellSouth. In this report, retail and resale are grouped as 'retail-resale' or 'retail and resale' whereas wholesale is specific to 'wholesale UNE and EEL'.

The aggregated results of our calculation of BellSouth's business line count per state as of December 31, 2003 are illustrated in Appendix 2. Appendix 5 illustrates the total business line count per wire center for the 1,583 wire centers in BellSouth's 9 states.

Other

Our results are based upon the procedures performed to date. We reserve the right to supplement this document if additional information is made available. Deloitte & Touche was not engaged to review or assess the internal control structure or any specific internal controls of BellSouth, and any observations about internal controls contained herein were incidental to our work and should not be construed as a review or assessment of internal controls. We reserve the right to update, supplement, or revise our calculations if, and when, additional information or data becomes available for our review, as appropriate.

Appendix 1

Source Data and Assumptions

Understanding Source Data and Assumptions⁴

Obtain an understanding of the source information, systems and data needed for the business line count calculation.

A. Retail and Resale Business Line Count

1. 2003 ARMIS 43-08 SMAS download Retail and Resale Business Line Count – Source for Retail and Resale Business Line Counts
 - Understand how line count data was gathered.
 - Understand how line count data was categorized in retail business and resale business.
 - Understand the source systems for SMAS and how SMAS summarized data in preparation for ARMIS 43-08 reporting.
 - Understand the SMAS product series codes used to calculate total retail and resale business line counts as part of the ARMIS 43-08 report.

Assumptions:

- ARMIS 43-08 SMAS download data and its classification are complete and accurate.
- USOCs are accurately entered in the source systems (i.e., billing) to account for and identify a business line.
- FID⁵ is accurately populated in the source systems (i.e., billing) to classify the access line as retail or resale.

⁴ Assumptions indicated throughout this report are those of BellSouth.

⁵ Field Identification Description identifies a customer as residential, business, or carrier and provides market segmentation information.

- USOCs are accurately and completely identified and mapped to the appropriate series codes that are used to identify product groups.
 - Payphone lines are considered business lines.
 - Retail and resale lines are defined as having end-user charges on the lines.
 - SMAS data extraction for 2003 intended for the ARMIS 43-08 reporting ("ARMIS 43-08 SMAS download")⁶ was complete and accurate.
2. MAREVS – Source for Retail and Resale High Capacity Loop Adjustment for Business Line Count
- Understand how USOCs are identified for retail and resale business lines riding on high capacity loops (e.g., USOCs for MegaLink and LightGate NARs).
 - Understand how USOCs (e.g., VUMXX USOC list) are identified for high capacity loops on which retail and resale business lines are provisioned.

Assumptions:

- MegaLink and LightGate NARs are related to retail and resale business lines.
 - VUMXX USOCs represent the high capacity loops on which MegaLink and LightGate NARs are provisioned.
 - VUMXX USOCs are completely and accurately identified for retail and resale high capacity loops.
 - Data extraction of USOC counts for MegaLink and LightGate NARs and VUMXXs for 2003 was complete and accurate.
3. Understand the calculation of the retail and resale business line counts for FCC TRRO purposes

B. Wholesale UNE and EEL Business line Count

- MAREVS – Source for UNE-P, UNE-L and EEL Line Count.
- Understand the source systems from which MAREVS receives data.
- Understand how MAREVS summarizes and categorizes data into product codes that identify business UNE-P, DS1 and DS3 UNE-L, and DS1 and DS3 EEL.
- Understand line count DS0 equivalent adjustments for business DS1 UNE-L, DS3 UNE-L, DS1 EEL, and DS3 EEL.

Assumptions:

- USOCs for UNEs and EELs are different from the USOCs used to account for retail and resale business lines so that wholesale UNE and EEL services can be uniquely identified.
- USOCs are accurately entered in the source systems (i.e., billing) to account for and

⁶ Interim data provided by BellSouth for our calculations.

identify UNEs and EELs that are provisioned for business.

- ☐ USOCs are completely and accurately identified for business UNEs and EELs.
- ☐ UNE-Ls and EELs are considered to be a business class of service.
- ☐ Business UNE and EEL USOCs are accurately mapped to the appropriate product codes.
- ☐ Product codes are unique to business UNE-P, business DS1 UNE-L, business DS3 UNE-L, business DS1 EEL, and business DS3 EEL.
- ☐ MAREVS data extraction of product codes specific to identify business UNE-P, UNE-L and EEL for calculating the wholesale UNE and EEL business line counts as of December 31, 2003 was complete and accurate.

Our Business Line Count Calculation

Perform a calculation of the business line counts at the serving wire center for all BellSouth states as of December 31, 2003.

A. Obtain the following data as of 12/31/2003:

AMRIS 43-08 SMAS download as of 12/31/2003.

MAREVS extracts of the counts of USOCs for MegaLink and LightGate NARs, and VUMXX systems as of 12/31/2003.

MAREVS extracts of the counts of business UNE-P, DS1 & DS3 UNE-L, and DS1 & DS3 EEL as of 12/31/2003.

- ☐ A mapping list of aggregating business line counts from one wire center to another for summarization purposes.
- ☐ Understand and apply calculation adjustments and aggregation of line counts to wire centers based on the wire center map list provided above.
- ☐ A list of BellSouth wire centers for which business line counts are aggregated.

Assumption:

- ☐ The data requested above are the relevant data extracts from which to compile retail and resale and wholesale UNE and EEL business line counts for FCC TRRO purposes.
- ☐ Capacity adjustments for counting the total business line counts per wire center are appropriate for FCC TRRO purposes.
- ☐ The wire center-mapping list for aggregating and summarizing business line counts for each of the BellSouth wire centers is accurate and complete.
- ☐ The BellSouth wire center list is complete and accurate.

- B. Calculate the business line counts using the data from item A. above to sum the retail-resale and wholesale UNE and EEL business line counts at the serving wire center level for each of the BellSouth states.**

Appendix 2

Results and Calculation Procedures⁷

The table below illustrates our calculated number of Retail-Resale and Wholesale UNE and EEL Business Lines in 9 BellSouth states as of December 31, 2003 based upon BellSouth's methodology and procedures:

State	A Calculated Retail-Resale Business DS0 Equivalent Lines	B Calculated Wholesale UNE-P, UNE Loops, and EELs Business DS0 Equivalent Lines	A+B Calculated Total Business Lines
AL	485,702	172,259	657,961
FL	1,715,014	726,685	2,441,699
GA	1,249,239	583,893	1,833,132
KY	325,145	82,337	407,482
LA	625,574	280,712	906,286
MS	358,132	89,480	447,612
NC	736,114	305,060	1,041,174
SC	392,884	204,615	597,499
TN	610,969	351,260	962,229
Total	6,498,773	2,796,301	9,295,074

⁷ Detailed procedures conducted were per BellSouth instructions.

The following factors were provided by BellSouth and used to calculate the business lines. These are factors allowed per the TRRO for stating these high capacity lines on a DS0 basis (64 kbps equivalent).⁸

Retail-Resale	VUM14	VUM19	VUM24	VUM28	VUM38	VUM48	VUM57	VUM67	VUM96
Multiplier	144	192	24	288	384	48	576	672	96

	UNE-L		EEL		UNE-P
Wholesale	DS1	DS3	DS1	DS3	DS0
Multiplier	24	672	24	672	1

A. Wholesale Line Count Calculation for UNE-P, UNE-L and EEL:

Assumptions:

- All Wholesale UNE and EEL business line USOCs are identified and mapped to product codes accurately:
 - Business line UNE-P is assumed to be DS0 based
 - UNE-L can be DS0, DS1 or DS3
 - EEL can be either DS1 or DS3
- All UNE loops and EELs are considered to be a business class of service.
- A list of product codes used to identify wholesale UNE and EEL business lines include the following:
 - Product 606 = UNE DS1 Loop
 - Product 607 = UNE DS3 Loop
 - Product 659 = UNE DS1 EEL (Loop portion)
 - Product 660 = UNE DS3 EEL (Loop portion)
 - Product 601 = UNE UDL 4 Wire
 - Product 602 = UNE UVL 2 Wire Designed
 - Product 603 = UNE UVL 4 Wire Designed
 - Product 604 = UNE UDL 2 Wire ISDN

⁸ Per BellSouth.

- Product 609 = UNE UDL 2 Wire HDSL
- Product 610 = UNE UDL 2 Wire ADSL
- Product 611 = UNE UDL 4 Wire HDSL
- Product 618 = UNE UVL 2 Wire Non Designed
- Product 645 = UNE Non Loaded Copper Loop
- Product 684 = Unbundled Copper Loop Non Designed
- Product 679 = Unbundled DS1 Loop, Basic Rate ISDN 2-Wire DS1 Unbundled Loop
- Product 681 = Unbundled Exchange Ports
- Product 682 = Unbundled DS1 Loop, 4-Wire DS1 Digital Combination Loop
- Product 683 = Unbundled Combination Voice Loop, 2-Wire Direct Inward Dialing (DID)
- Product 689 = Unbundled Combination Voice Loop
- Product 693 = Unbundled Combination Voice Loop, SL2, FX/FCO 2-Wire Voice Grade Design Loop

Line Count Adjustments:

- No line count adjustment is needed for business UNE-P and DS0 UNE-L.
- Line count adjustment is needed for both UNE-L and EEL:
 - DS1 UNE-L = # of DS1 UNE-L extracted from MAREVS as of 12/31/2003 * 24
 - DS3 UNE-L = # of DS3 UNE-L extracted from MAREVS as of 12/31/2003 * 672
 - DS1 EEL = # of DS1 EEL extracted from MAREVS as of 12/31/2003 * 24
 - DS3 EEL = # of DS3 EEL extracted from MAREVS as of 12/31/2003 * 672

Calculation for Wholesale UNE and EEL Business Line Count at a wire center:

- Wholesale UNE and EEL Business Line Count @ Wire Center = # of Business UNE-P + # of DS0 UNE-L + # of DS1 UNE-L * 24 + # of DS3 UNE-L * 672 + # of DS1 EEL * 24 + # of DS3 EEL * 672

B. Retail and Resale Line Count Calculation:

Assumptions:

- 2003 ARMIS 43-08 SMAS download assumed correctly generated from SMAS.
- USOCs are correctly identified as business lines.
- Mapping of the USOCs to various series code categories for the purpose of reporting ARMIS 43-08 is accurate.

- Retail and resale are identified by whether there are end-user charges on the accounts.
- Business lines vs. residential lines are identified by specific USOCs and CLASS codes (e.g., business line USOC ends with "B").
- USOCs are the same for both retail and resale.
- Retail and resale single or multi-lines are all DS0 lines.
- In ARMIS 43-08 SMAS download, MegaLink and LightGate NARs are equivalent to one business line.

Adjustments:

- No DS0 equivalent adjustment is needed for retail and resale business line counts from the ARMIS 43-08 SMAS download.
- Retail and resale line count adjustment is performed to increase the line counts to the maximum line level of the high capacity loops, instead of the actual in-service business lines, for FCC TRRO reporting purposes, per BellSouth.

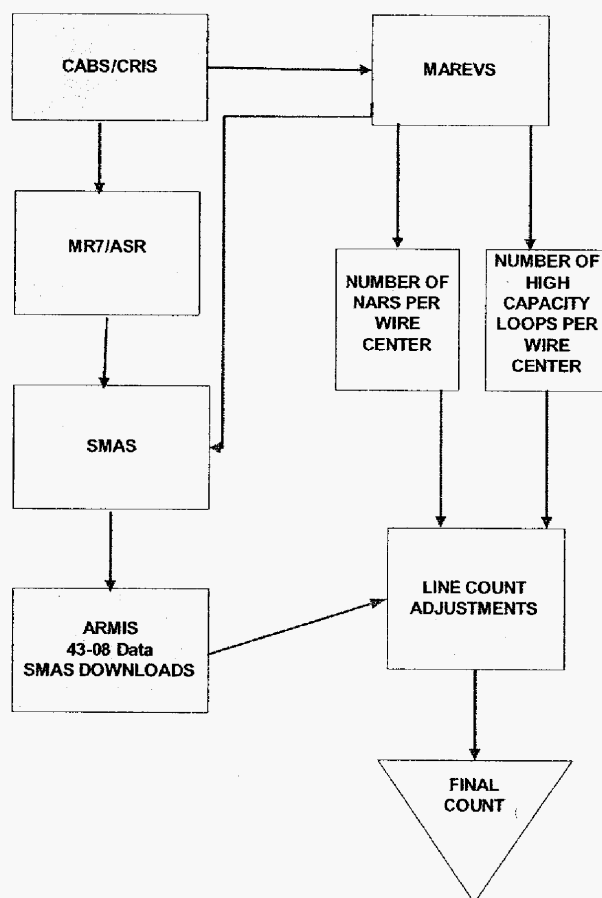
Calculation for retail and resale for business line count at a wire center:

- $\text{Line count @ Wire Center} = \text{Total Retail-Resale Business Lines From ARMIS 43-08 SMAS download} - \# \text{ of Retail-Resale MegaLink and LightGate NARs} + \# \text{ of VUMXX} * \text{VUMXX factors (multipliers)}$

Appendix 3

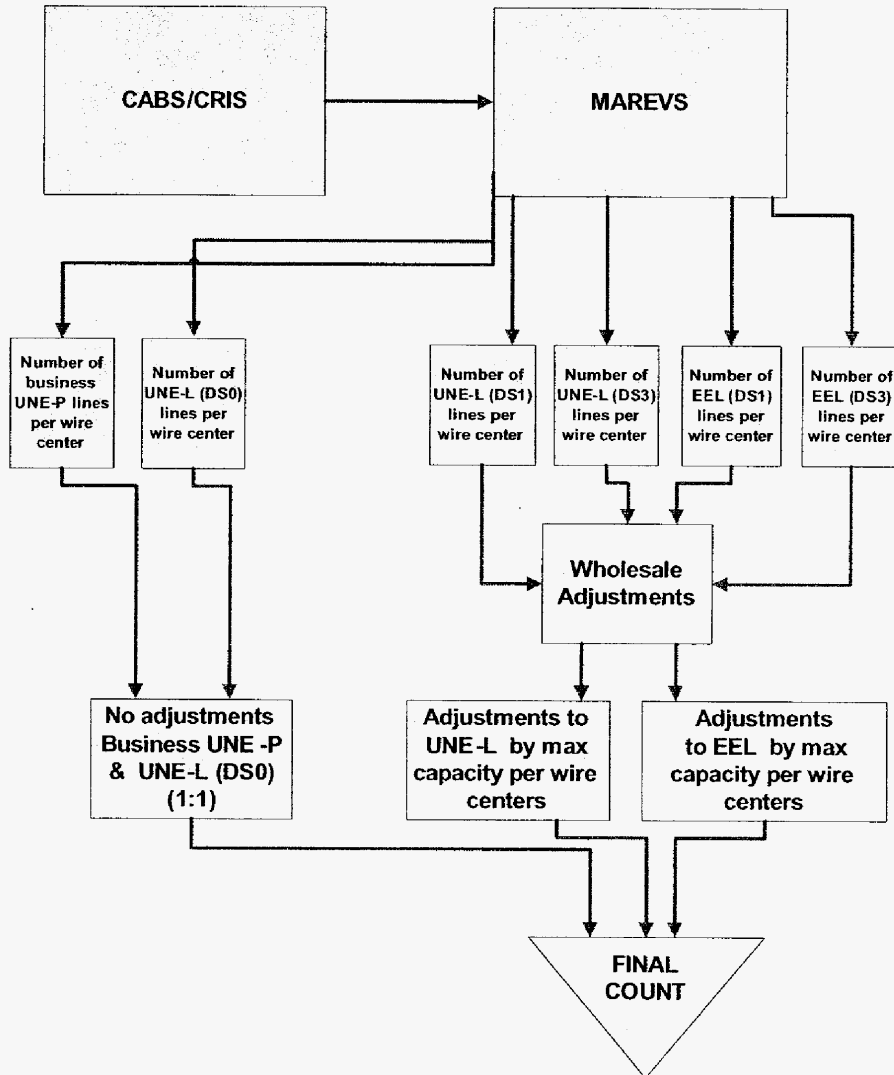
Retail & Resale and Wholesale UNE and EEL Data Flows⁹

Retail & Resale Business Line Data Flow



⁹ Data Flows as represented by BellSouth.

Wholesale UNE & EEL Business Line Data Flow



Appendix 4

Data Gathering Process and Calculation¹⁰

Retail-Resale Data Gathering Process

Retail-Resale Business Lines

Retail-resale business lines originate and are captured in Carrier Access Billing System ("CABS") and Customer Record Information System ("CRIS"). A set of unique retail-resale specific Universal Service Operating Codes ("USOCs") are used to identify the retail-resale lines from wholesale lines. Line class codes and field identification description ("FID") codes are used to define whether the line is business or residential, and retail or resale.

The retail-resale business line information is output to an electronic report interface MR7/ASR to be further fed into Strategic Management Analysis System ("SMAS"). The SMAS system is used mainly for management forecasting and regulatory reporting and filing, such as the ARMIS filing with the FCC.

ARMIS is a self-reporting on RBOC's operations including the company's infrastructure related to access lines. The infrastructure part of the report is referred to as ARMIS 43-08, which contains retail and resale business line count information. The ARMIS 43-08 is used as one of the data sources for calculating the retail-resale business lines for the FCC TRRO. Retail-resale USOCs are mapped and aggregated to series codes in which line and service information is reported in SMAS. The series code defines the type of product and market in which the product is offered.

The retail-resale business lines consist of single line business, multi-line business and payphone coin line business. For the purpose of counting the number of retail-resale business lines per the FCC TRRO, adjustments are performed by counting the maximum lines available at a high capacity loop identified by VUMXX even if not all the lines on the loop are in-service for end-user customers.

Appendix 2 provides a summary as to the conversion values or multipliers used for VUMXXs. Our understanding of the detail data flow for capturing and gathering the retail and resale business line information is illustrated in Appendix 3.

The following are the data extraction and line count calculation steps employed by BellSouth to accumulate and calculate retail-resale business line counts for FCC TRRO purposes:

- Data Source: ARMIS 43-08 SMAS download and MAREVS
Purpose: Data for Retail and Resale Business Line Count per wire center
- SMAS download is created from the MR7/ASR electronic reporting interface to aggregate in-service retail-resale lines by series code at the wire center level. MR7/ASR is an electronic report output from CABS and CRIS billing platforms.
- Records in the SMAS download are then re-formatted in Excel to be used for various reporting purposes (e.g., ARMIS).

¹⁰ As represented by BellSouth.

- Downloads of in-service line count data from MR7/ASR include the following fields: Transaction Code, Entity (CLLI), Category (INSV), Series (e.g., TALET), Series description (e.g., Total Resale Access Line) and quantity of active access line count.
- A list of USOCs identifying MegaLink and LightGate NARs and VUMXX product series is used to extract unit count information from MAREVS.
- The USOC counts for MegaLink and LightGate NARs are extracted from the in-service retail and resale access lines as of 12/31/2003. The VUMXX product series are the actual number of high capacity loop products in place for each of the wire centers as of 12/31/2003.
- Series codes out of SMAS are used to summarize the type of services at a wire center level, including Single Line Business, Multi-line Business, Business ISDN (basic and primary) and Coin Line Business.
- The total retail and resale business line count from the ARMIS 43-08 SMAS download, before adjusting for business lines riding high capacity loops other than ISDN per wire center, is a sum of the single and multi-line business lines, ISDN DS0 equivalent lines and coin lines.
- For counting the retail-resale business lines for FCC TRRO purposes, we now add to the totals from the bullet above, amounts for high capacity loops that are adjusted by the maximum line capacity of the high capacity loops at the wire center level. The calculation is to first add the maximum capacity line counts identified by VUMXX USOCs at the wire center to the result from the bullet above, and then to subtract the number of NARs (MegaLink and LightGate) to avoid double counting, as they are already included in the preliminary result. There were cases where the total count of NARs was more than the maximum line capacity of the high capacity loops identified by VUMXX USOCs at certain wire centers. In these cases, the adjustment would net to zero, per BellSouth. For example, if the total line count of MegaLink and LightGate NARs for a wire center is 146 and the number of VUMXXs adjusted for DS0 equivalent for the same wire center is 144, then the adjustment for counting the retail and resale business lines is zero for the wire center. Therefore, simply take the total retail-resale business line count with no adjustment.
- The retail and resale business lines are summarized at the wire center level. Line counts from certain wire centers are then further rolled up to their corresponding wire centers based on the wire center map list provided by BellSouth.

Wholesale Data Gathering Process

Wholesale UNE and EEL Business Lines

UNE and EEL are wholesale business lines. The service information regarding UNE and EEL is captured and uniquely identified by USOCs in CABS and CRIS. The USOCs for UNE and EEL are different from the USOCs used to identify business lines on the retail and resale side. These USOCs are universal and published on BellSouth's website.

The UNE and EEL business line information in CABS and CRIS feeds into the Management Accounting Reporting and Revenue Management System ("MAREVS") on a monthly basis. MAREVS is a system in which revenues and services (i.e., access line) are grouped and reported at a product level (i.e., DS1 UNE-L). MAREVS is a system that BellSouth uses to report its financial information. Business rules have been established in MAREVS to map a list of the UNE and EEL related USOCs to the appropriate product codes so that UNE and EEL can be further classified into UNE-P, DS0 UNE-L, DS1 UNE-L, DS3 UNE-L, DS1 EEL and DS3 EEL product groups. The product codes also differentiate products between business lines and residential lines based on the type of customers who subscribe to the products. All UNE loops and EELs are a business class of service, per BellSouth.

BellSouth extracts wholesale UNE and EEL business lines from MAREVS for calculating and reporting the business line counts for FCC TRRO purposes. The wholesale UNE and EEL business line information is extracted using the product codes that identify business UNE-P, UNE-L and EEL. According to BellSouth, further adjustments are performed for calculating the business line counts per FCC TRRO by converting the high capacity loop products DS1 UNE-L, DS3 UNE-L, DS1 EEL and DS3 EEL into single DS0 line equivalents.

Appendix 2 provides a summary as to the conversion values or multipliers used for each of the products as well as a list of the product codes specific to UNE and EEL loops. Our understanding of the detail data flow for capturing and gathering the wholesale UNE and EEL business line information is illustrated in Appendix 3.

The following are the data extraction and line count calculation steps employed by BellSouth to accumulate and calculate wholesale UNE and EEL business line counts for FCC TRRO purposes.

- Data Source: MAREVS
Purpose: Data for Wholesale UNE and EEL Business Line Count per wire center
- Product codes specific to business UNE-P, DS0 UNE-L, DS1 UNE-L, DS3 UNE-L, DS1 EEL and DS3 EEL are used to identify and extract the count of the product codes at the wire center level from MAREVS for all wire centers in the 9 BellSouth states as of 12/31/2003.
- DS0 equivalent adjustment is performed by applying the relevant DS0 factors to DS1 and DS3 products in calculating the business line counts for the purpose of FCC TRRO.
- The total wholesale UNE and EEL business line count adjusted for DS0 equivalent is the sum of business UNE-P, UNE-L and EEL.
- The wholesale UNE and EEL business lines are summarized at the wire center level. Per BellSouth, wholesale UNE and EEL line counts for certain wire centers (identified by BellSouth) are excluded from the total wholesale UNE and EEL lines because these wire centers are related to Independent Company Operations ("ICOs") interconnecting with BellSouth. Additionally, line counts for certain remote wire centers are excluded from the total wholesale UNE and EEL business line counts as there is no map to indicate for which BellSouth wire centers they should be aggregated. BellSouth also indicated that the number of lines for these wire centers had a minor impact on the total wholesale UNE and EEL line counts for the aggregate wire centers per BellSouth.

Appendix 5

Business Line Count Per Wire Center

Business Line Count per wire center for the 1,583 BellSouth wire centers.

State	Wire Center	Total Business Lines
AL	BRHMALMT	37,617
AL	MTGMALDA	29,864
AL	MTGMALMT	28,381
AL	HNVIALMT	25,715
AL	HNVIALRA	23,766
AL	BRHMALRC	19,523
AL	MOBLALAZ	19,159
AL	HNVIALUN	17,677
AL	DCTRALMT	16,635
AL	TSCLALMT	16,398
AL	BRHMALHW	16,238
AL	MOBLALOS	13,682
AL	BRHMALOX	12,298
AL	MOBLALSH	12,136
AL	HNVIALPW	11,753
AL	FLRNALMA	11,036
AL	ALBSALMA	10,650
AL	GDSALMT	9,961
AL	MOBLALSK	9,789
AL	ANTNALMT	9,709
AL	BRHMALVA	9,329
AL	BRHMALOM	9,133

Exhibit DW-1

State	Wire Center	Total Business Lines
AL	CLMNALMA	9,099
AL	BRHMALCH	8,573
AL	MTGMALNO	8,390
AL	BSMRALMA	8,355
AL	BRHMALFS	8,189
AL	AUBNALMA	7,975
AL	MDSNALNM	7,468
AL	SHFDALMT	7,067
AL	SELMALMT	6,772
AL	OPLKALMT	6,732
AL	BRHMALWL	6,150
AL	TSCALDH	6,086
AL	JSPRALMT	6,082
AL	ATHNALMA	6,042
AL	HNVIALLW	5,362
AL	MOBLALAP	5,323
AL	PHCYALMA	5,166
AL	MOBLALSF	4,920
AL	BRHMALEN	4,851
AL	ANTNALOX	4,489
AL	TLDGALMA	4,439
AL	FTPYALMA	4,178
AL	BRHMALCP	4,077
AL	TSCALNO	4,046
AL	FRHPALMA	4,030
AL	ALVLALMA	3,951
AL	BRHMALEL	3,948
AL	PRVLALMA	3,807
AL	GTVLALNM	3,760
AL	EUFLALMA	3,710
AL	BRHMALEW	3,707

Exhibit DW-1

State	Wire Center	Total Business Lines
AL	MOBLALPR	3,507
AL	BRHMALTA	3,376
AL	ALCYALMT	3,362
AL	MOBLALSA	3,270
AL	TROYALMA	3,142
AL	SYLCALMT	3,096
AL	HNVIALRW	3,088
AL	BSMRALHT	2,997
AL	BYMNALMA	2,866
AL	BRTOALMA	2,739
AL	WTMPALMA	2,719
AL	CLANALMA	2,667
AL	BOAZALMA	2,478
AL	DMPLALMA	2,388
AL	GDS DALRD	2,274
AL	RLVLALMA	2,232
AL	MNTVALNM	2,204
AL	TSKGALMA	2,183
AL	BRHMALWE	2,139
AL	HRTSALNM	2,042
AL	ANTNALLE	1,986
AL	MOBLALTH	1,962
AL	GRDLALNM	1,947
AL	BRHMALFO	1,824
AL	GDS DALHS	1,793
AL	CLMBALMA	1,743
AL	MOLTALNM	1,705
AL	MOBLALSE	1,547
AL	JCVLALMA	1,512
AL	PNSNALMA	1,502
AL	MTGMALMB	1,501

State	Wire Center	Total Business Lines
AL	MOBLALBF	1,497
AL	JCSNALNM	1,445
AL	ATTLALNM	1,432
AL	THVLALMA	1,185
AL	EVRGALMA	1,161
AL	CNVIALMA	1,154
AL	WRRRALNM	1,126
AL	HZGRALMA	1,067
AL	CALRALMA	1,032
AL	LVTNALLA	1,000
AL	DDVLALMA	979
AL	DORAALMA	967
AL	FMTNALMT	934
AL	CHBGALMA	892
AL	HNVLALNM	892
AL	GNBOALMA	869
AL	LFYTALRS	807
AL	PDMTALMA	774
AL	KLLNALMA	770
AL	GYVLALNM	752
AL	RDBAALMA	722
AL	EUTWALMA	716
AL	CHLSALMA	711
AL	BSMRALBU	703
AL	CRLDALMA	697
AL	MARNALNM	661
AL	CTRNALNM	587
AL	RRVLALMA	584
AL	CLMNALFA	573
AL	WBTNALNM	545
AL	YORKALMA	512

State	Wire Center	Total Business Lines
AL	CYTNALMA	487
AL	STSNALMA	485
AL	LNDNALMA	462
AL	GRLYALMA	449
AL	CLMNALJC	438
AL	MTVRALMA	419
AL	VNCNALMA	406
AL	PHCYALFM	383
AL	MPVLALMA	369
AL	MCINALMA	361
AL	BLFNALMA	338
AL	BRPTALMA	315
AL	CRHLALNM	311
AL	LGTNALMA	301
AL	CRDVALMA	295
AL	HNVLALBR	292
AL	ATHNALER	286
AL	FTDPALMA	283
AL	MNFDALMA	275
AL	OHTCALMA	267
AL	UNTWALNM	260
AL	TWCKALMA	245
AL	HRTSALPE	210
AL	PRSHALNM	207
AL	TLDGALRF	192
AL	GDWRALMA	189
AL	HRBOALOM	188
AL	HLVIALMA	165
AL	BSMRALBP	164
AL	LXTNALMA	134
AL	EUTWALBO	55

State	Wire Center	Total Business Lines
FL	MIAMFLPL	85,624
FL	MIAMFLGR	66,928
FL	ORLDFLMA	56,714
FL	FTLDFLMR	55,898
FL	GSVFLMA	55,785
FL	JCVLFLCL	44,283
FL	ORLDFLPC	42,881
FL	MIAMFLHL	41,600
FL	MIAMFLAE	41,135
FL	BCRTFLMA	39,196
FL	HLWDFLPE	35,950
FL	HLWDFLWH	34,778
FL	PRRNFLMA	34,328
FL	WPBHFLHH	33,886
FL	MLBRFLMA	33,701
FL	PMBHFLMA	32,853
FL	WPBHFLAN	32,491
FL	DYBHFLMA	31,718
FL	ORLDFLPH	30,592
FL	FTLDFLCY	30,448
FL	FTLDFLJA	29,883
FL	PNSCFLFP	29,682
FL	FTLDFLPL	29,532
FL	PNSCFLBL	29,236
FL	ORLDFLAP	27,898
FL	STRFLMA	27,167
FL	BCRTFLBT	25,822
FL	PMBHFLFE	25,321
FL	MIAMFLRR	24,699
FL	WPBHFLGR	24,534
FL	ORLDFLSA	24,120

State	Wire Center	Total Business Lines
FL	WPBHFLGA	24,048
FL	MIAMFLWM	23,775
FL	MIAMFLSO	23,358
FL	DRBHFLMA	23,300
FL	MIAMFLPB	23,024
FL	MIAMFLBR	23,018
FL	FTLDFLOA	22,809
FL	MIAMFLCA	22,635
FL	PMBHFLCS	22,612
FL	FTPRFLMA	22,530
FL	ORLDFLCL	22,092
FL	JCVLFLSJ	22,020
FL	FTLDFLCR	20,833
FL	JCVLFLBW	20,647
FL	HLWDFLMA	20,569
FL	WPBHFLRB	20,420
FL	SNFRFLMA	20,074
FL	PNCYFLMA	19,902
FL	MNDRFLLO	18,494
FL	VRBHFLMA	18,280
FL	COCOFLMA	17,826
FL	NDADFLGG	17,055
FL	EGLLFLBG	17,009
FL	BYBHFLMA	16,904
FL	JCVLFLSM	16,888
FL	WPBHFLRP	16,434
FL	DLBHFLMA	16,166
FL	NDADFLAC	15,876
FL	FTLDFLSU	15,600
FL	NDADFLBR	15,023
FL	KYWSFLMA	14,618

State	Wire Center	Total Business Lines
FL	NDADFLOL	14,443
FL	JPTRFLMA	14,420
FL	STAGFLMA	13,653
FL	MIAMFLAL	13,274
FL	FTLDFLWN	13,047
FL	JCVLFLNO	12,940
FL	JCVLFLAR	12,824
FL	WPBHFLLE	12,790
FL	DYBHFLQB	12,636
FL	DYBHFLPO	12,020
FL	MIAMFLBA	11,974
FL	LKCYFLMA	11,914
FL	MIAMFLOL	11,885
FL	JCBHFLMA	11,786
FL	JCVLFLRV	11,771
FL	LKMRFLHE	11,745
FL	HMSTFLHM	11,602
FL	MIAMFLME	11,093
FL	BCRTFLSA	11,090
FL	MIAMFLSH	10,970
FL	DELDFLMA	10,957
FL	MIAMFLFL	10,943
FL	JCVLFLJT	10,642
FL	JCVLFLWC	10,274
FL	MIAMFLAP	10,214
FL	TTVFLMA	10,109
FL	MIAMFLNS	9,977
FL	FTLDFLSG	9,612
FL	ORPKFLMA	9,603
FL	MIAMFLBC	9,365
FL	PNSCFLWA	9,341

State	Wire Center	Total Business Lines
FL	PMBHFLTA	9,209
FL	PTSFLMA	9,082
FL	MIAMFLNM	9,036
FL	MIAMFLIC	8,772
FL	PLTKFLMA	8,600
FL	DLBHFLKP	8,600
FL	COCOFLME	8,591
FL	HLWDFLHA	8,293
FL	MIAMFLWD	8,230
FL	CCBHFLMA	7,927
FL	NSBHFLMA	7,904
FL	PLCSFLMA	7,573
FL	BKVLFLJF	7,485
FL	WWSPFLSH	7,238
FL	JCVLFLLF	7,139
FL	PNVDFLMA	6,985
FL	JCVLFLOW	6,958
FL	GSVLFLNW	6,903
FL	OVIDFLCA	6,821
FL	PCBHFLNT	6,818
FL	FRBHFLFP	5,804
FL	MLTNFLRA	5,639
FL	PTSFLSO	5,358
FL	GLBRFLMC	5,306
FL	ORPKFLRW	5,246
FL	MNDRFLAV	4,976
FL	MIAMFLDB	4,910
FL	WWSPFLHI	4,417
FL	BLGLFLMA	3,986
FL	SBSTFLMA	3,934
FL	JCVLFLFC	3,907

State	Wire Center	Total Business Lines
FL	JCBHFLSP	3,846
FL	VRBHFLBE	3,817
FL	MRTHFLVE	3,737
FL	EGLLFLIH	3,620
FL	FTLDLFLAP	3,403
FL	HMSTFLNA	3,328
FL	MIAMFLKE	2,979
FL	JCVLFLIA	2,965
FL	CHPLFLJA	2,933
FL	GCSPFLCN	2,810
FL	HTISFLMA	2,645
FL	KYLRFLLS	2,381
FL	DYBHFLFN	2,336
FL	STAGFLSH	2,316
FL	DBRYFLDL	2,303
FL	KYLRFLMA	2,238
FL	STAGFLBS	2,225
FL	BNNLFLMA	2,218
FL	PACEFLPV	2,164
FL	DNLNFLWM	2,043
FL	HBSDFLMA	2,008
FL	HLNVFLMA	1,936
FL	LYHNFLOH	1,818
FL	PNSCFLHC	1,778
FL	MDBGFLPM	1,763
FL	DBRYFLMA	1,556
FL	ISLMFLMA	1,546
FL	TRENFLMA	1,517
FL	CFLDFLMA	1,503
FL	CNTMFLLE	1,370
FL	CSCYFLBA	1,323

State	Wire Center	Total Business Lines
FL	JCBHFLAB	1,305
FL	MNDRFLW	1,271
FL	PNSCFLPB	1,162
FL	YULEFLMA	1,131
FL	STAGFLWG	1,098
FL	FLBHFLMA	1,066
FL	BGPIFLMA	1,027
FL	EORNFLMA	971
FL	BRSNFLMA	958
FL	KYHGFLMA	954
FL	HAVNFLMA	802
FL	GCVLFLMA	747
FL	PAHKFLMA	730
FL	NWBYFLMA	697
FL	NKLRFLMA	638
FL	JAY-FLMA	624
FL	PRSNFLFD	619
FL	BLDWFLMA	587
FL	HWTHFLMA	558
FL	SGKYFLMA	538
FL	PNCYFLCA	528
FL	DYBHFLOS	505
FL	YNTWFLMA	406
FL	MICCFLLB	368
FL	CDKYFLMA	367
FL	DLSPFLMA	364
FL	CCBHFLAF	363
FL	OLTWFLLN	361
FL	HMSTFLEA	333
FL	YNFNFLMA	325
FL	ARCHFLMA	310

State	Wire Center	Total Business Lines
FL	MCNPFLMA	274
FL	FTGRFLMA	271
FL	SBSTFLFE	265
FL	SYHSFLCC	255
FL	VERNFLMA	246
FL	GENVFLMA	229
FL	WELKFLMA	229
FL	OKHLFLMA	225
FL	PMPKFLMA	213
FL	MXVLFLMA	185
FL	MNSNFLMA	86
GA	ATLNGACS	98,029
GA	MRTTGAMA	85,438
GA	NRCRGAMA	77,035
GA	ATLNGAPP	72,392
GA	ALPRGAMA	71,291
GA	ATLNGABU	57,200
GA	SMYRGAPF	49,017
GA	DNWDGAMA	48,741
GA	RSWLGAMA	38,964
GA	CLMBGAMT	36,029
GA	DLTHGAHS	35,743
GA	ATLNGAEP	33,586
GA	ATLNGASS	32,835
GA	ATLNGATH	31,824
GA	CHMBGAMA	30,788
GA	LRVGAOS	29,733
GA	ALBYGAMA	29,688
GA	ATHNGAMA	29,500
GA	SMYRGAMA	28,298
GA	TUKRGAMA	27,918

State	Wire Center	Total Business Lines
GA	SVNHGABS	26,960
GA	LLBNGAMA	25,919
GA	MACNGAMT	24,338
GA	AGSTGAMT	23,218
GA	GSVLGAMA	22,158
GA	CMNGGAMA	21,321
GA	WDSTGACR	21,206
GA	VLD SGAMA	21,115
GA	BUFRGABH	20,442
GA	ATLNGAWD	19,044
GA	MRTTGAEA	18,958
GA	SVNHGADE	18,299
GA	CNYRGAMA	16,958
GA	ROMEGATL	16,958
GA	ASTLGAMA	16,932
GA	ATLNGAFP	16,229
GA	BRWKGAMA	16,014
GA	AGSTGAU	14,534
GA	JNBOGAMA	13,983
GA	AGSTGATH	13,171
GA	ATLNGAIC	13,168
GA	SNLVGAMA	12,729
GA	DGVLGAMA	12,520
GA	MACNGAVN	12,015
GA	ATLNGAAD	11,971
GA	CRVLGAMA	11,481
GA	RVDLGAMA	11,301
GA	CRTNGAMA	11,153
GA	MCDNGAGS	10,951
GA	GRFNGAMA	10,837
GA	STBRGANH	10,654

State	Wire Center	Total Business Lines
GA	ATLNGAEL	10,645
GA	THVLGAMA	9,855
GA	CVTNGAMT	9,798
GA	CLMBGAMW	9,716
GA	PTCYGAMA	9,595
GA	AGSTGAFL	9,577
GA	NWNGGAMA	9,575
GA	SVNHGAGC	9,438
GA	TFTNGAMA	9,398
GA	FYVLGASG	9,291
GA	LGRNGAMA	9,277
GA	WRRBGAMA	8,959
GA	CLHNGAES	8,808
GA	ATLNGABH	8,455
GA	SVNHGAWB	8,377
GA	WYCRGAMA	8,338
GA	DBLNGAMA	8,018
GA	SNMTGALR	7,773
GA	PANLGAMA	7,602
GA	MRRWGAMA	7,496
GA	FRBNGAEB	7,199
GA	ATLNGAWE	6,986
GA	ACWOGAMA	6,336
GA	AMRCGAMA	6,180
GA	MACNGAGP	6,152
GA	ATLNGALA	5,831
GA	ATLNGAGR	5,796
GA	PWSPGAAS	5,260
GA	LTHNGAJS	5,152
GA	CLMBGABV	5,030
GA	DLLSGAES	5,019

State	Wire Center	Total Business Lines
GA	ATLNGACD	4,691
GA	BNBRGAMA	4,457
GA	VDALGAMA	4,232
GA	CORDGAMA	3,997
GA	ATLNGAHR	3,801
GA	LGVLGACS	3,796
GA	THSNGAMA	3,682
GA	SSISGAES	3,597
GA	JESPGAES	3,498
GA	SNVLGAES	3,272
GA	FTVYGAMA	3,263
GA	ETTNGAES	3,032
GA	EBTNGAMA	3,003
GA	VLRCGAES	2,782
GA	CDTWGAMA	2,700
GA	BXLYGAES	2,694
GA	SWBOGAES	2,525
GA	FRSYGAMA	2,519
GA	JCSNGAMA	2,419
GA	WYBOGAES	2,404
GA	ESMNGAES	2,389
GA	MDSNGAMA	2,359
GA	FLBRGAMA	2,175
GA	HMPNGAJW	2,018
GA	POLRGAMA	2,013
GA	BRVIGAMA	1,971
GA	WTVLGAES	1,917
GA	SYLVGAES	1,797
GA	CMLLGAMA	1,733
GA	GNBOGAES	1,613
GA	BRMNGAES	1,586

State	Wire Center	Total Business Lines
GA	HZLHGAMA	1,577
GA	CCHRGAMA	1,538
GA	SVNHGAWI	1,515
GA	LKPKGAMA	1,489
GA	CXTNGAMA	1,483
GA	RCKMGAES	1,479
GA	RYTNGAMA	1,308
GA	BLCSGAES	1,221
GA	PLHMGAMA	1,146
GA	LYNSGAMA	1,007
GA	LSVLGAMA	966
GA	SVNHGASI	947
GA	MNTIGAMA	940
GA	TLLPGAES	915
GA	AIVLGAMA	913
GA	WRNSGAMA	847
GA	PLMTGAMA	837
GA	SPRTGAMA	815
GA	CLQTGAES	800
GA	MLLNGAMA	782
GA	APNGGAES	759
GA	BGRTGAMA	756
GA	WGVGAES	755
GA	BWDNGAMA	741
GA	LSBGAMA	735
GA	PNMTGAMA	654
GA	ZBLNGAMA	653
GA	JKISGAMA	643
GA	SCCRGAMA	591
GA	WRTNGAMA	574
GA	BCHNGAES	558

State	Wire Center	Total Business Lines
GA	TBISGAMA	551
GA	HMTNGAMA	547
GA	HPHZGAES	527
GA	FKLNGAMA	527
GA	GNVLGAMA	488
GA	RPVLGAMA	443
GA	TMPLGAMA	442
GA	SENOGAMA	440
GA	HRLMGAMA	438
GA	CLMTGAMA	427
GA	HGVLGAMA	406
GA	CVSPGAMA	345
GA	ARTNGAES	330
GA	LMKNGAMA	325
GA	RTLGGAMA	323
GA	WDLYGAMA	320
GA	NWTNGAMA	295
GA	RCLDGAMA	279
GA	LULAGAMA	239
GA	SPRKGAMA	215
GA	WDBYGAES	213
GA	GBSNGAES	190
GA	LMCYGAMA	177
GA	CSSTGAMA	174
GA	BCTNGAMA	139
GA	GTVLGAMA	135
GA	LTVLGACS	123
GA	CNCRGAMA	119
GA	SRDSGAES	116
GA	JHCRGAES	99
GA	GAY-GAMA	98

State	Wire Center	Total Business Lines
GA	LERYGAMA	91
GA	KGTNGAMA	80
GA	SMVLGAMA	74
KY	LSVLKYAP	56,259
KY	LSVLKYWE	19,812
KY	BWLGKYMA	19,679
KY	LSVLKYBR	16,653
KY	OWBOKYMA	16,185
KY	FRFTKYMA	15,880
KY	LSVLKYSM	14,492
KY	PDCHKYMA	12,190
KY	LSVLKYOA	11,849
KY	LSVLKYBE	11,229
KY	LSVLKYSL	9,695
KY	LSVLKYJT	9,396
KY	LSVLKYAN	8,590
KY	HPVLKYMA	8,331
KY	LSVLKYTS	7,235
KY	RCMDKYMA	6,828
KY	PKVLKYMA	6,752
KY	DAVLKYMA	6,668
KY	CRBNKYMA	6,562
KY	WNCHKYMA	6,491
KY	HNSNKYMA	6,263
KY	MDVIKYMA	5,975
KY	LSVLKYVS	5,309
KY	LSVLKY26	5,177
KY	GRTWKYMA	4,762
KY	MRRYKYMA	4,641
KY	BRTWKYES	4,450
KY	LSVLKYSH	4,438

State	Wire Center	Total Business Lines
KY	SHVLKYMA	3,665
KY	MYFDKYMA	3,356
KY	OKGVKYES	3,208
KY	FRFTKYES	2,915
KY	MTSTKYMA	2,867
KY	PRBGKYES	2,582
KY	PNVLKYMA	2,515
KY	LGRNKYES	2,413
KY	LSVLKYCW	2,358
KY	FKLNKYMA	2,193
KY	LSVLKYFC	2,083
KY	MDBOKYMA	2,074
KY	GNVLKYMA	2,036
KY	RLVLKYMA	1,995
KY	HRLNKYMA	1,950
KY	PARSKYMA	1,868
KY	BNTNKYMA	1,662
KY	PDCHKYLO	1,650
KY	HDBGKYMA	1,612
KY	CYNTKYMA	1,560
KY	MYVLKYMA	1,472
KY	WHBGKYMA	1,458
KY	LRBGKYMA	1,438
KY	RSTRKYES	1,395
KY	CRTNKYMA	1,356
KY	PRTNKYES	1,287
KY	WLBGKYMA	1,250
KY	JCSNKYMA	1,221
KY	CNCYKYMA	1,197
KY	PIVLKYMA	1,153
KY	LSVLKYHA	1,131

State	Wire Center	Total Business Lines
KY	MGFDKYMA	1,095
KY	STFRKYMA	1,067
KY	FLTNKYMA	1,050
KY	CADZKYMA	1,019
KY	SNTNKYMA	1,007
KY	SPFDKYMA	995
KY	MGTWKYMA	968
KY	LOUSKYES	927
KY	EDVLKYMA	847
KY	BVDMKYMA	839
KY	EMNNKYES	800
KY	HRBGKYES	766
KY	BYVLKYMA	736
KY	MARNKYMA	734
KY	SWSNKYMA	723
KY	PDCHKYRL	694
KY	INEZKYMA	691
KY	HRFRKYMA	673
KY	TYVLKYMA	637
KY	ALLNKYMA	630
KY	EKTNKYMA	557
KY	PDCHKYIP	551
KY	VIRGKYMA	536
KY	OWTNKYMA	517
KY	MARTKYMA	515
KY	GBVLKYMA	488
KY	BDFRKYMA	478
KY	SSVLKYMA	461
KY	HWVLKYMA	437
KY	STONKYMA	426
KY	CRLSKYMA	412

Exhibit DW-1

State	Wire Center	Total Business Lines
KY	ELCYKYES	398
KY	CLHNKYMA	389
KY	DWSPKYES	380
KY	PRVDKYMA	365
KY	CLTNKYES	353
KY	HCMNKYMA	350
KY	FEBRKYMA	318
KY	STRGKYMA	317
KY	PKVLKYMT	309
KY	LBJTKYMA	272
KY	PMBRKYMA	272
KY	SEBRKYMA	269
KY	WRFDKYMA	269
KY	WYLDKYES	264
KY	FDCKKYES	256
KY	DIXNKYMA	255
KY	GTHRKYMA	239
KY	GHNTKYMA	236
KY	DRBOKYES	205
KY	AURRKYMA	204
KY	NEONKYES	200
KY	NWHNKYMA	195
KY	BLFDKYMA	194
KY	MCWLKYMA	188
KY	MCDNKYMA	173
KY	LVMRKYMA	171
KY	FDVLKYMA	168
KY	NRVLKYMA	168
KY	RBRDKYMA	165
KY	HANSKYMA	164
KY	CLAYKYMA	143

State	Wire Center	Total Business Lines
KY	SLPHKYMA	142
KY	CMBGKYMA	141
KY	JNCYKYMA	140
KY	WHVLKYMA	138
KY	BRGNKYMA	129
KY	BGDDKYMA	129
KY	CNTNKYMA	129
KY	WACOKYMA	125
KY	GRACKYMA	124
KY	SLVSKYMA	119
KY	MACEKYMA	112
KY	WSPNKYMA	108
KY	ERTNKYMA	107
KY	COTNKYMA	106
KY	ENSRKYMA	103
KY	FRDNKYMA	102
KY	HABTKYMA	101
KY	WDDYKYMA	99
KY	PRVLKYMA	98
KY	MLTNKYMA	95
KY	MRGPKYMA	95
KY	BNLYKYMA	93
KY	SLGHKYMA	93
KY	CLPTKYMA	92
KY	STNLKYMA	91
KY	STGRKYMA	90
KY	CYDNKYMA	89
KY	FORDKYMA	89
KY	WLCKKYES	89
KY	CRBOKYMA	88
KY	MLBGKYMA	86

State	Wire Center	Total Business Lines
KY	NEBOKYMA	85
KY	BRMNKYMA	81
KY	UTICKYMA	80
KY	CHPLKYMA	72
KY	HBVLKYMA	68
KY	SCRMKYMA	68
KY	ISLDKYMA	66
KY	WSBGKYMA	65
KY	BLSPKYMA	57
KY	SDVLKYMA	56
KY	PLRGKYMA	54
KY	SHGVKYMA	52
KY	EMNNKYPL	52
KY	PNTHKYMA	49
KY	WLVLYMA	48
KY	TRENYMA	45
KY	BWLGKYRV	41
KY	CNTWKYMA	38
KY	WNCHKYPV	36
KY	MTEDKYMA	34
KY	LFYTKYMA	34
KY	FNVLKYMA	34
KY	SRGHKYMA	32
KY	STCHKYMA	27
KY	KKVLKYMA	15
KY	PTRYKYMA	15
LA	NWORLAMA	73,613
LA	LFYTLAMA	43,394
LA	BTRGLAMA	38,652
LA	BTRGLAGW	38,405
LA	MONRLAMA	37,032

State	Wire Center	Total Business Lines
LA	NWORLAMT	31,530
LA	SHPTLAMA	31,012
LA	ALXNLAMA	22,958
LA	HOUMLAMA	21,477
LA	KNNRLABR	20,509
LA	LKCHLADT	19,524
LA	NWORLARV	19,253
LA	NWORLASW	19,033
LA	KNNRLAHN	17,738
LA	BTRGLAOH	16,669
LA	BTRGLASB	15,280
LA	LKCHLAUN	15,223
LA	SLIDLAMA	15,042
LA	SHPTLABS	14,689
LA	CVTNLAMA	14,384
LA	NWIBLAMA	13,233
LA	SHPTLASG	12,286
LA	LFYTLAVM	11,393
LA	BTRGLAWN	11,364
LA	SHPTLAHD	11,252
LA	HMNDLAMA	9,978
LA	NWORLASK	9,934
LA	RSTNLAMA	9,713
LA	NWORLAMC	9,423
LA	NWORLAMR	8,790
LA	NWORLAFR	7,890
LA	NWORLAAR	7,733
LA	NWORLABM	7,571
LA	NWORLASC	7,526
LA	BTRGLABK	7,384
LA	MNVLLAMA	7,020

State	Wire Center	Total Business Lines
LA	SHPTLAACL	6,929
LA	NWORLALK	6,692
LA	SHPTLAQB	6,563
LA	NWORLACM	6,550
LA	BTRGLASW	6,533
LA	BRSSLAMA	5,987
LA	NWORLAMU	5,897
LA	OPLSLATL	5,848
LA	BTRGLAIS	5,776
LA	MRCYLAIN	5,670
LA	DNSPLAMA	5,557
LA	NTCHLAMA	5,430
LA	THBDLAMA	5,386
LA	LEVLLAMA	4,804
LA	LKCHLAMW	4,536
LA	ABVLLAMA	4,228
LA	CRWYLAMA	4,042
LA	BGLSLAMA	3,827
LA	MINDLAMA	3,364
LA	NWORLACA	3,299
LA	LPLCLAMA	3,260
LA	MONRLADS	3,204
LA	BSTRLAMA	3,159
LA	PLQMLAMA	2,908
LA	DRDRLAMA	2,887
LA	FKTNLAMA	2,817
LA	ZCHRLAMA	2,664
LA	DNVLLAMA	2,654
LA	MONRLAWM	2,552
LA	SLPHLAMA	2,386
LA	EUNCLAMA	2,356

State	Wire Center	Total Business Lines
LA	JNGSLAMA	2,244
LA	ALXNLATG	2,071
LA	CRNCLAMA	1,927
LA	AMITLAMA	1,915
LA	MKVLLAMN	1,840
LA	WNFDLAMA	1,823
LA	NWORLAAV	1,748
LA	STGBLAMA	1,664
LA	LLNGLABU	1,638
LA	MANYLAMA	1,609
LA	BTRGLAHR	1,592
LA	LEVLLAFP	1,574
LA	WNBOLAMA	1,526
LA	TLLHLAMA	1,500
LA	NORCLAMN	1,480
LA	MNFDLAMA	1,452
LA	PNCHLAMA	1,386
LA	FKLNLAMA	1,362
LA	NWRDLAMA	1,348
LA	RYVLLAMA	1,316
LA	PASNLAMN	1,270
LA	MRCYLAAM	1,199
LA	JNBOLAMA	1,194
LA	OKDLLAMA	1,185
LA	TUNCLAMA	1,174
LA	SMVLLAMA	1,142
LA	SFVLLAMA	1,129
LA	FRVLLAMA	1,112
LA	HOMRLAMA	1,109
LA	RAYNLAMA	1,075
LA	YNVLLAMA	1,069

State	Wire Center	Total Business Lines
LA	FRDYLAMA	992
LA	CLMALAMA	981
LA	BUNKLAMA	971
LA	JCSNLAMA	960
LA	RCLDLAMA	957
LA	LTCHLAMA	951
LA	MDVILAMA	933
LA	LCPTLAMA	890
LA	VDALLAMA	875
LA	LLNGLAHV	866
LA	GRNGLAMA	864
LA	OKGVLAMA	863
LA	ARCDLAMA	850
LA	CSHTLAMA	850
LA	VENCLAMA	849
LA	NPVLLAMA	842
LA	HGTNLAMA	840
LA	LKCHLAMB	830
LA	CLTNLAMA	826
LA	DELHLAMA	757
LA	LKPRLAMA	697
LA	LCMBLAMA	681
LA	LVTNLAMA	674
LA	JNVLLAMA	670
LA	VNTNLAMA	666
LA	KTVLLAMA	658
LA	MTGTLAMA	627
LA	PRRVLAMA	609
LA	BTRGLABS	608
LA	JNRTLAMA	594
LA	GNWDLAMA	589

State	Wire Center	Total Business Lines
LA	KNWDLAMA	588
LA	STBRLAMA	576
LA	VCHRLAMA	559
LA	BLNCLAMA	532
LA	BURSLAMA	530
LA	ANGILAMA	518
LA	ALBYLAMA	508
LA	BNTNLAMA	480
LA	INDPLAMA	472
LA	BLDWLAMA	466
LA	DUSNLAMA	441
LA	STTNLAMA	426
LA	CLFXLAMA	416
LA	FLSMLAMA	414
LA	PRDSLAMA	396
LA	PTSLLAMA	392
LA	CNVNLAMA	390
LA	STJSLAMA	348
LA	HYVLLAMA	334
LA	LKARLAMA	333
LA	CNVLLAMA	327
LA	BOYCLAMA	317
LA	PRPRLAMA	313
LA	ERTHLAMA	311
LA	LFTTLAMA	299
LA	ZWLLLAMA	292
LA	SPFDLAMA	292
LA	WHCSLAMA	284
LA	LGPTLAMA	281
LA	OLCYLAMA	273
LA	PTBRLAMA	271

State	Wire Center	Total Business Lines
LA	LCMPLAMA	250
LA	ROGNLAMA	249
LA	GYDNLAMA	247
LA	CLHNLAMA	222
LA	JSBNLAMA	219
LA	WASHLAMA	212
LA	MRRGLAMA	209
LA	BERNLAMA	208
LA	KRSPLAMA	208
LA	DULCLAMA	208
LA	NWTNLAMA	191
LA	MEVLLAMA	179
LA	EDGRLAMA	173
LA	LRVLLAMA	173
LA	PLLCLAMA	173
LA	HRBGLAMA	172
LA	SWLKLAMA	156
LA	FLRNLAMA	156
LA	LBVLLAMA	151
LA	GBSNLAMA	150
LA	MKVLLAHM	147
LA	GBLDLAMN	143
LA	DBCHLAMA	134
LA	BUSHLAMA	133
LA	HGTNLAKN	133
LA	RBLNLAMA	132
LA	PNALLAMA	131
LA	ALXNLADV	129
LA	DRPGLAMA	127
LA	MYVLLAMA	125
LA	WTPRLAMA	119

State	Wire Center	Total Business Lines
LA	CHBYLAMA	113
LA	PINELAMA	111
LA	EPPSLAMA	107
LA	PLQMLACR	105
LA	MTGMLAMA	102
LA	MRGZLAMA	100
LA	LWTLAMA	100
LA	SCISLAMA	96
LA	NTCHLACR	94
LA	WKISLAMA	89
LA	STLNLAMA	89
LA	KTCHLAMA	87
LA	FRVLLADV	80
LA	GRCNLAMA	79
LA	YSCLLAMA	78
LA	CWVLLAMA	74
LA	MTRYLAMA	70
LA	BERNLASP	68
LA	CASTLAMA	65
LA	DYLNAMA	63
LA	HRNBLAMA	55
LA	LSBNLAMA	48
LA	LEVLLABF	47
LA	WLSNLAMA	45
LA	LOVLLAMA	45
LA	SALNLAMA	43
LA	CNVRLAMA	43
LA	GRTWLAMA	42
LA	ARCDLABW	41
LA	FTNCLAMA	38
LA	LKPRLAAL	38

State	Wire Center	Total Business Lines
LA	WNFDLACA	37
LA	LKCTLAMA	30
LA	MTHRLAMA	28
LA	LEVLLASN	21
LA	DLCXLAMA	12
MS	JCSNMSCP	38,331
MS	TUPLMSMA	18,709
MS	GLPTMSTS	17,978
MS	JCSNMSPC	16,368
MS	MRDNMSTL	15,956
MS	JCSNMSMB	15,480
MS	HTBGMSWE	15,075
MS	SKVLSMA	14,821
MS	CLMBMSMA	12,123
MS	JCSNMSRW	12,027
MS	HTBGMSMA	11,700
MS	VCBGMSMA	9,754
MS	BILXMSED	9,630
MS	LARLMSMA	9,524
MS	GNVLSMA	8,569
MS	BILXMSMA	7,541
MS	OXFRMSMA	7,371
MS	MDSNMSES	7,314
MS	PSCGMSMA	7,229
MS	NTCHMSMA	6,464
MS	JCSNMSBL	6,119
MS	GNWDMSMA	6,080
MS	JCSNMSCB	6,004
MS	CRNTMSMA	5,234
MS	BSLSMSMA	4,796
MS	BRHNMSMA	4,594

State	Wire Center	Total Business Lines
MS	OCSPMSGO	4,374
MS	MCCMMSMA	4,156
MS	GLPTMSLY	4,112
MS	PHLAMSMA	3,853
MS	BRNDMSES	3,730
MS	CNTNMSMA	3,722
MS	CSDLMSMA	3,600
MS	GRNDMSMA	3,525
MS	PCYNMSMA	3,443
MS	BTVLMSDS	3,412
MS	SOHNMSDC	3,284
MS	CLMAMSMA	3,260
MS	BILXMSDI	3,136
MS	CLEVMSMA	3,024
MS	TUNCMSMA	2,843
MS	HRNNMSDS	2,780
MS	NWALMSMA	2,563
MS	YZCYMSMA	2,431
MS	WSPNMSMA	2,364
MS	PNTTMSMA	2,251
MS	HLSPMSMA	2,241
MS	JCSNMSNR	2,152
MS	KSCSMSMA	2,107
MS	MSPNMSMA	2,000
MS	BNVLMSMA	1,966
MS	AMRYMSMA	1,897
MS	INDNMSMA	1,860
MS	PSCGMSGGA	1,856
MS	SNTBMSPS	1,827
MS	LSVLMSMA	1,764
MS	WYBOMSMA	1,699

State	Wire Center	Total Business Lines
MS	FORSMSMA	1,681
MS	RPLYMSMA	1,642
MS	LCDLMSMA	1,629
MS	CRTHMSMA	1,521
MS	MAGEMSMA	1,460
MS	WGNSMSMA	1,456
MS	TYTWMSMC	1,350
MS	ABRDMSES	1,338
MS	MNDNMSMA	1,184
MS	HSTNMSMA	1,167
MS	PSCHMSLT	1,164
MS	CLNSMSMA	1,144
MS	HZLHMSMA	1,115
MS	CRSPMSMA	1,065
MS	IUKAMSES	1,061
MS	QTMNMSMA	1,045
MS	WINOMSMA	1,014
MS	ELVLSMA	989
MS	PGSNMSMA	979
MS	PSCHMSMA	961
MS	ITBNMSMA	960
MS	PRVMSMA	947
MS	PPVLSMA	939
MS	NWTNMSMA	915
MS	VRNAMMSMA	906
MS	MNTIMSMA	897
MS	RYMNMSDS	844
MS	LELDMSMA	818
MS	LXTNMSMA	807
MS	BLZNMSMA	792
MS	MACNMSMA	789

State	Wire Center	Total Business Lines
MS	BLDWMSMF	730
MS	RLFKMSMA	718
MS	MRKSMSHW	711
MS	WTVYMSMA	710
MS	MGNLMSMA	707
MS	MNASMSMA	679
MS	MCCMMSSM	664
MS	EUPRMSFA	630
MS	CHTNMSMA	624
MS	MRTNMSMA	602
MS	SLTLMSSU	564
MS	WSSNMSMA	542
MS	OKLNMSMA	541
MS	WDVLMSMA	540
MS	BLMTMSMA	529
MS	FYTTMSMA	526
MS	TYVLSMA	525
MS	SRDSMSMA	516
MS	SCOBMSMA	494
MS	DKLBMSMA	482
MS	UNINMSDS	458
MS	DRNTMSMA	436
MS	FLORMSMA	430
MS	ASLDMSMA	426
MS	VNCLMSMA	416
MS	RCTNMSMA	403
MS	HODLMSMA	394
MS	LBRTMSMA	394
MS	LMTNMSSS	386
MS	DREWMSMA	379
MS	PLHTMSMA	372

State	Wire Center	Total Business Lines
MS	HDLBMSMA	364
MS	PLTNMSMA	362
MS	MSTFMSCU	349
MS	RLGHMSMA	348
MS	CAFBMSMA	346
MS	HRLYMSMA	346
MS	TRRYMSMA	325
MS	RLVMSMA	312
MS	CNVMSMA	304
MS	RSDLMSMA	300
MS	ENTRMSMA	297
MS	SHNNMSMA	288
MS	GLSTMSMA	286
MS	NTTNMSMA	285
MS	UTICMSDS	283
MS	HPVLMSSU	254
MS	CDWRMSMA	252
MS	SMNRMSMA	247
MS	MABNMSMA	243
MS	WLNTMSMA	242
MS	SMRLMSMA	228
MS	CRTNMSMA	225
MS	CFVMSMA	224
MS	HMTNMSSU	222
MS	BOTNMSMA	222
MS	PTCMMSSU	215
MS	SHLBMSDS	213
MS	TTWLMSMA	210
MS	MTOLMSMA	208
MS	COMOMSMA	207
MS	SNRYMSMA	200

Exhibit DW-1

State	Wire Center	Total Business Lines
MS	EDWRMSDS	194
MS	BEMTMSMA	186
MS	VADNMSMA	184
MS	MCCLMSMA	180
MS	CLDNMSMA	177
MS	TCHLMSMA	177
MS	WLGVMSSU	174
MS	SHAWMSES	172
MS	CRNSMSMA	172
MS	COVLMSSU	170
MS	PCKNMSMA	169
MS	MRHDMSMA	158
MS	INVRMSMA	156
MS	BNITMSMA	155
MS	BRVLMMSMA	153
MS	BKVLMSMU	152
MS	LAKEMSMA	149
MS	OKLDMSMA	145
MS	LULAMSMA	137
MS	OBDHMSMA	132
MS	GDMNMSMA	130
MS	INDPMSSU	129
MS	OSYKMSMA	127
MS	TMSBMSMA	125
MS	BNTNMSSU	124
MS	SHBTMSMA	123
MS	SHQLMSMA	115
MS	KLMCMSMA	108
MS	SRISMSMA	108
MS	BGCHMSSU	107
MS	BENTMSSU	103

State	Wire Center	Total Business Lines
MS	BUMTMSMA	102
MS	FRPNMSMA	96
MS	JNTWMSMA	94
MS	MIZEMSMA	88
MS	BRWDMSMA	79
MS	SNSDMSSU	77
MS	STRGMSSU	74
MS	WNRDMSSU	72
MS	SLCKMSMA	71
MS	BCTNMSMA	70
MS	LENAMSSU	62
MS	WESTMSMA	58
MS	ETHLMSMA	52
MS	NWTNMSHC	52
MS	CSVLMSSU	51
MS	ROXIMSMA	51
MS	DCHLMSMA	51
MS	MCLNMSMA	50
MS	LYVLMSMA	49
MS	CHNKMSSU	42
MS	SMDLMSSU	37
MS	DFFEMSMA	34
MS	PACEMSMA	25
MS	DNCNMSMA	24
MS	GNSNMSMA	23
NC	CHRLNCCA	86,443
NC	RLGHNCMO	75,613
NC	GNBONCEU	47,399
NC	CPHLNCRO	41,265
NC	WNSLNCFI	35,769
NC	GNBONCAS	33,689

State	Wire Center	Total Business Lines
NC	RLGHNCHO	28,172
NC	CARYNCCE	25,980
NC	RLGHNCGL	25,459
NC	CHRLNCBO	24,451
NC	WLMGNCWI	23,446
NC	AHVLNCOH	23,222
NC	WLMGNCFO	22,397
NC	GSTANCSO	17,752
NC	CHRLNCCR	16,777
NC	BURLNCDA	16,474
NC	CHRLNCTH	16,268
NC	CHRLNCDE	16,071
NC	WNSLNCVI	15,947
NC	RLGHNCSE	14,932
NC	CHRLNCCE	14,845
NC	CHRLNCUN	14,755
NC	CHRLNCER	14,741
NC	SSVLNCMA	13,641
NC	CHRLNCSE	13,061
NC	RLGHNCJO	12,781
NC	RLGHNCGA	12,630
NC	BOONNCKI	12,396
NC	SLBRNCMA	11,981
NC	DVSNNCPO	11,807
NC	CHRLNCRE	11,475
NC	GLBONCMA	11,183
NC	HNVLNCCH	10,798
NC	ARDNNCCE	10,749
NC	GNBONCAP	10,359
NC	LMTNNCMA	10,263
NC	CHRLNCLP	9,872

State	Wire Center	Total Business Lines
NC	SHLBCMA	8,566
NC	MGTNNCGR	8,317
NC	RLGHNCB	7,868
NC	NWTNNCMA	7,333
NC	GNBONCLA	6,862
NC	APEXNCCE	6,691
NC	LNTNNCMA	6,269
NC	LENRNCHA	6,055
NC	RDVLCMA	5,585
NC	WYVLCMA	5,548
NC	BURLNCEL	5,454
NC	HSVLCCE	5,292
NC	WNSLNCGL	5,246
NC	RTTNCCE	5,191
NC	WNSLNCLE	4,916
NC	RCHMNCMA	4,538
NC	WGVLCMA	4,514
NC	LRBGNCMA	4,464
NC	CHRLNCOD	4,429
NC	AHVLNCBI	4,399
NC	ENKANCMA	4,160
NC	GLBONCAD	3,542
NC	CARYNCWS	3,540
NC	GNBONCMC	3,381
NC	AHVLNCOT	3,286
NC	FRCYNCCE	2,827
NC	WNSLNCCL	2,789
NC	WNSLNCWH	2,742
NC	KGMTNCMA	2,571
NC	TYVLCMA	2,529
NC	SOPTNCCE	2,488

State	Wire Center	Total Business Lines
NC	RLGHNCDU	2,469
NC	MTHLNCMA	2,428
NC	LWLLNCMA	2,341
NC	KNDLNCCE	2,316
NC	PMBRNCCE	2,242
NC	CHRLNCMI	2,222
NC	DNVRNCMA	2,083
NC	BLMTNCCE	1,929
NC	LENRNCHU	1,928
NC	SPPNNCMA	1,879
NC	ZBLNCCE	1,722
NC	BCMTNCCE	1,719
NC	WLMGNCLE	1,672
NC	SELMNCMA	1,655
NC	MTOLNCCE	1,629
NC	NWLDNCCE	1,624
NC	BRGWNCMA	1,620
NC	HMLTNCMA	1,619
NC	SRFDNCCE	1,615
NC	CNTNNCMA	1,554
NC	GSTANCA	1,510
NC	GNBONCHO	1,492
NC	BURLNCHA	1,481
NC	WNDLNCPI	1,360
NC	CRBHNCCE	1,357
NC	CHVLNCCE	1,263
NC	SCHLNCMA	1,188
NC	CSHYNCMA	1,175
NC	LCSTNCMA	1,136
NC	HNVLNCMI	1,135
NC	GNBONCPG	1,116

State	Wire Center	Total Business Lines
NC	CLMTNCMA	1,076
NC	WNSLNCAR	1,008
NC	BLRKNCCCE	1,002
NC	MGVANCCE	997
NC	LNBHNCMA	975
NC	SCHLNCHA	920
NC	MADNNCCCE	877
NC	MGTNNCGL	877
NC	TRMNNCMA	873
NC	LKLRNCCE	843
NC	LTMRCNCCCE	807
NC	CLYDNCMA	783
NC	FAMTNCMA	729
NC	BSCYNCMA	690
NC	ACMENCMA	690
NC	CLEVNCMA	682
NC	STNLNCCE	668
NC	SWNNNCMA	601
NC	LWDLNCCE	594
NC	FRVWNCMA	530
NC	SXPHNCMA	527
NC	LNTNCVA	523
NC	GRVRNCMA	487
NC	SSVLNCJE	486
NC	HNVLNCCED	435
NC	LCSRNCMA	419
NC	WNSLNCWA	416
NC	RWLDNCMA	353
NC	ATSNNCMA	350
NC	MNTINCMA	299
NC	CRLNNCMA	289

State	Wire Center	Total Business Lines
NC	ELBONCMA	221
NC	STPNNCMA	216
NC	ARSNNCMA	213
NC	GTWDNCMA	207
NC	RFFNNCMA	187
NC	JULNNCMA	183
NC	GNHMNCMA	174
NC	RDVLNCSI	90
NC	MLTNNCMA	74
NC	GBSNNCMA	69
SC	CLMASCSN	47,593
SC	GNVLSCDT	45,581
SC	GNVLSCWR	30,818
SC	CHTNSCDT	25,757
SC	SPBGSCMA	22,707
SC	CHTNSCNO	22,271
SC	FLRNSCMA	21,946
SC	ARSNSCMA	21,669
SC	MNPLSCES	21,373
SC	CHTNSCDP	16,772
SC	CHTNSCWA	16,281
SC	CLMASCSW	15,475
SC	CLMASCSA	13,716
SC	CLMASCCH	13,387
SC	GRERSCMA	12,859
SC	SUVLSCMA	12,247
SC	AIKNSCMA	12,176
SC	CLSNSCMA	11,383
SC	ORBGSCMA	10,513
SC	SPBGSCWV	9,544
SC	CLMASCDF	8,188

State	Wire Center	Total Business Lines
SC	CHTNSCLB	7,883
SC	CLMASCAR	7,713
SC	SENCSCMA	7,702
SC	GNVLSCH	7,546
SC	GNVLSCCR	7,290
SC	GNVLSWE	7,190
SC	CLMASCUS	7,028
SC	GFNYSCMA	6,165
SC	ESLYSCMA	6,129
SC	CLMASCHE	5,785
SC	CMDNSCMA	4,935
SC	NAGSSCMA	4,641
SC	HTVLSMA	4,599
SC	CHTNSCJM	4,185
SC	YORKSCMA	3,643
SC	LYMNSCES	3,491
SC	NWBYSCMA	3,481
SC	UNINSCMA	3,441
SC	DRTNSCMA	3,356
SC	SPBGSCBS	3,268
SC	SBRKSCSK	3,112
SC	SPBGSCHW	3,049
SC	DLLNSCMA	2,657
SC	BEVLSMA	2,458
SC	GNVLSBE	2,410
SC	CHRWSCES	2,338
SC	MARNSCMA	2,318
SC	CLTNSCMA	2,277
SC	PCKNSCES	2,252
SC	BRWLSBE	2,080
SC	CMDNSCLG	2,002

State	Wire Center	Total Business Lines
SC	CHTNSCJN	1,971
SC	FNINSCES	1,954
SC	WLHLSCES	1,950
SC	CHAPSCCL	1,942
SC	TRRSSCMA	1,846
SC	BLRGSCMA	1,625
SC	WMTNSCPW	1,476
SC	SPBGSCCV	1,361
SC	MLNSSCWP	1,342
SC	WCLMSCMA	1,335
SC	BTBGSCMA	1,319
SC	STGRSCMA	1,191
SC	PNTNSCMA	1,182
SC	WMNSSCES	1,148
SC	LKWLSCRS	1,136
SC	BETNSCMA	1,088
SC	ISPLSCIS	1,071
SC	CLVRSCES	1,066
SC	CLMASCSC	1,003
SC	BMBRSCMA	976
SC	DNMKSCES	961
SC	BLBGSCMA	950
SC	EDFDSCMA	923
SC	BATHSCMA	876
SC	JHTNSCMA	847
SC	PDMTSCES	826
SC	ALDLSCMA	814
SC	CLMASCBQ	779
SC	MRTTSCMA	751
SC	EDBHSCMA	747
SC	LBRTSCMA	725

Exhibit DW-1

State	Wire Center	Total Business Lines
SC	GIVLSCMA	670
SC	TMVLSCMA	642
SC	HNPWSCMA	633
SC	GNVLSCWP	608
SC	ARSNSCAH	585
SC	PRSRSCMA	560
SC	CWPNSCMA	557
SC	BHISSCMA	550
SC	NWELSCMA	546
SC	CENTSCWS	510
SC	SXMLSCMA	489
SC	LATTSCLS	470
SC	TKNASCST	454
SC	EOVRSCMA	442
SC	SALMSCMA	373
SC	CLMASCPA	341
SC	ARSNSCTV	331
SC	BAVLSCMA	295
SC	FLBHSCMA	288
SC	JNVLSCMA	268
SC	PCLTSCMA	249
SC	FNVLSCMA	236
SC	SCHLSCES	204
SC	LKVWSCMA	197
SC	MCCLSCMA	193
SC	WHTMSCMA	187
SC	CLIOSCMA	154
SC	JONNSCES	137
SC	MARNSCBN	114
SC	SPFDSCMA	111
SC	HCGVSCMA	88

State	Wire Center	Total Business Lines
SC	SHRNSCMA	81
SC	BLNHSCMA	75
TN	NSVLTNMT	79,095
TN	MMPHTNOA	36,434
TN	KNVLTNMA	36,405
TN	MMPHTNBA	32,252
TN	MMPHTNEL	28,055
TN	NSVLTNBW	25,876
TN	CHTGTNNS	24,896
TN	MMPHTNGT	24,814
TN	NSVLTNST	24,693
TN	MMPHTNMA	23,144
TN	NSVLTNDO	22,928
TN	CHTGTNBR	22,838
TN	MMPHTNSL	21,494
TN	MRBOTNMA	20,537
TN	KNVLTNWH	20,503
TN	NSVLTNUN	19,857
TN	NSVLTNCH	18,017
TN	CLVLTNMA	15,842
TN	JCSNTNMA	14,413
TN	KNVLTNBE	14,367
TN	MAVLTNMA	14,066
TN	FKLNTNMA	14,002
TN	MMPHTNCT	13,449
TN	CHTGTNDT	13,331
TN	NSVLTNAP	13,008
TN	CLEVNTNMA	11,713
TN	JCSNTNNS	10,612
TN	SVVLTNMT	10,395
TN	MRTWTNMA	10,389

State	Wire Center	Total Business Lines
TN	MMPHTNMT	10,305
TN	LBNNTNMA	9,602
TN	CLMATNMA	9,539
TN	FKLNTNCC	8,677
TN	MMPHTNST	7,844
TN	NSVLTNIN	7,768
TN	OKRGTNMT	7,720
TN	CRVLTNMA	7,462
TN	NSVLTNMC	7,405
TN	HDVLTNMA	7,341
TN	KNVLTNFC	7,104
TN	GDVLTNMA	6,882
TN	GALLTNMA	6,624
TN	SMYRTNMA	6,023
TN	DYBGTNMA	6,003
TN	TLLHTNMA	5,953
TN	ATHNTNMA	5,900
TN	CHTGTNRB	5,742
TN	NSVLTNWM	5,723
TN	DKSNTNMT	5,611
TN	CHTGTNRO	5,218
TN	KNVLTNYH	4,919
TN	SHVLTNMA	4,595
TN	PARSTNMA	4,391
TN	SPFDTNMA	4,157
TN	LFLTNTNMA	4,023
TN	UNCYTNMA	3,896
TN	WNCHTNMA	3,660
TN	LRBGTNMA	3,354
TN	NSVLTNBV	3,267
TN	MMPHTNFR	3,228

State	Wire Center	Total Business Lines
TN	PLSKTNMA	3,198
TN	NWPTTNMT	3,135
TN	FYVLTNMA	3,036
TN	GTBGTNMT	3,001
TN	MNCHTNMA	2,965
TN	CVTNTNMT	2,931
TN	LXTNTNMA	2,922
TN	HMBLTNMA	2,897
TN	LNCYTNMA	2,871
TN	LWBGTNMA	2,863
TN	JFCYTNMA	2,861
TN	CHTGTNSE	2,659
TN	NSVLTNCD	2,537
TN	SVNHTNMT	2,333
TN	BWVLTNMA	2,285
TN	MMPHTNCK	2,251
TN	DYTNTNMA	2,188
TN	CLTNTNMA	2,067
TN	RRVLTNMA	1,977
TN	PTLDTNMA	1,928
TN	NSVLTNHH	1,891
TN	CHTGTNMV	1,878
TN	SOVLTNMT	1,874
TN	BLVRTNMA	1,853
TN	RPLYTNMA	1,844
TN	MDVITNMT	1,797
TN	LODNTNMA	1,738
TN	KGTNTNMT	1,716
TN	MSCTTNMT	1,612
TN	MMPHTNWW	1,609
TN	MILNTNMA	1,594

State	Wire Center	Total Business Lines
TN	SLMRTNMT	1,557
TN	CMDNTNMA	1,522
TN	ASCYTNMA	1,515
TN	SPHLTNMT	1,483
TN	HIMNTNMA	1,436
TN	SWTWTNMT	1,435
TN	NSVLTNWC	1,413
TN	WVRLTNMT	1,394
TN	TRTNTNMA	1,336
TN	HNTGTNMA	1,309
TN	GTWSTNSW	1,299
TN	WHHSTNMA	1,278
TN	HNSNTNMT	1,277
TN	MCKNTNMA	1,215
TN	DNRGTNMA	1,210
TN	CRHTNMA	1,129
TN	JSPRTNMT	1,104
TN	CNVLTNMA	1,082
TN	ARTNTNMT	1,078
TN	SDDSTNMA	1,073
TN	HHNWTNMA	1,039
TN	CRHLTNCB	1,039
TN	RKWDTNMA	1,029
TN	SPBGTNMA	994
TN	MYVLTNMA	987
TN	OLHCTNMA	926
TN	MMPHTNHP	913
TN	NSVLTNAA	881
TN	WHBLTNMT	878
TN	NSVLTNBH	861
TN	JLLCTNMA	844

State	Wire Center	Total Business Lines
TN	DOVRTNMT	841
TN	ETWHTNMT	829
TN	CHTGTNSM	827
TN	BLGPTNMA	827
TN	CLDGTNMA	823
TN	BNTNTNMT	758
TN	CHTGTNHT	736
TN	MNPLTNMA	731
TN	FRVWTNMT	701
TN	HTVLTNMA	682
TN	PSVWTNMT	622
TN	OLSPTNMA	614
TN	SPCYTNMT	595
TN	NWBRTNMA	572
TN	CHTNTNMT	566
TN	DCTRNTNMT	536
TN	SANGTNMT	528
TN	HLLSTNMT	512
TN	GNBRTNMA	497
TN	NRRSTNMA	481
TN	LKCYTNMA	481
TN	WRTRTNMT	470
TN	SNVLTNMA	452
TN	WHPITNMA	440
TN	TPVLTNMA	435
TN	CHRLTNMT	418
TN	FIVLTNMA	402
TN	LYLSTNMA	393
TN	TWNSTNMA	391
TN	WHVLTNMT	390
TN	BLLSTNMA	377

State	Wire Center	Total Business Lines
TN	SMTWTNMA	371
TN	LYBGTNMT	367
TN	TROYTNMT	355
TN	ACHLTNMT	327
TN	GRNBTNMA	323
TN	SRVLTNMA	316
TN	WHWLTNMA	312
TN	GNFDTNMT	297
TN	SEWNTNMW	295
TN	MDTNTNMA	281
TN	DYERTNMT	269
TN	MSCWTNMA	260
TN	MCWNTNMT	249
TN	GLSNTNMA	243
TN	CRPLTNMA	235
TN	GDJTTNMA	235
TN	HRFRTNMA	234
TN	WTTWTNMA	228
TN	HNNGTNMA	213
TN	EAVLTNMA	195
TN	MEDNTNMA	187
TN	CMCYTNMT	181
TN	RDGLTNMA	172
TN	BTSPTNMA	168
TN	HNLDTNMA	159
TN	KNTNTNMA	153
TN	TRINTNMA	151
TN	HRNBTNMT	148
TN	BGSNTNMA	148
TN	FLVLTNMA	144
TN	LYVLTNMA	141

State	Wire Center	Total Business Lines
TN	CNHMTNMA	125
TN	PTBGTNMA	117
TN	BLNCTNMT	88
TN	FRDNTNMA	86
TN	GBSNTNMT	62
TN	VNLRTNMA	61
TN	CULKTNMA	46
TN	WLPTTNMA	42
TN	SNTFTNMA	42
TN	PLMYTNMA	35
TN	HMPSTNMA	33

Appendix 6

Glossary of Terms

1. **Wire Center:** A wire center is the location of an incumbent LEC local switching facility containing one or more central offices. The wire center boundaries define the area in which all customers served by a given wire center are located.
2. **Business Line:** A business line is an incumbent LEC owned switched access line used to serve a business customer, whether by the incumbent LEC itself or by a competitive LEC that leases the line from the incumbent LEC. The number of business lines in a wire center shall equal the sum of all incumbent LEC business switched access lines, plus the sum of all UNE loops connected to that wire center, including UNE loops provisioned in combination with other unbundled elements. Among these requirements, business line tallies (1) shall include only those access lines connecting end-user customers with incumbent LEC end-offices for switched services, (2) shall not include non-switched special access lines, (3) shall account for ISDN and other digital access lines by counting each 64 kbps-equivalent as one line. For an example, a DS1 line corresponds to 24 64kbps-equivalents, and therefore to 24 "business lines."
3. **MAREVS:** BellSouth's main Management Reporting and Revenue Management System. MAREVS' primary input interface is the billing platforms of CRIS and CABS. The purpose of MAREVS is to identify all revenue related to products and to business units. Revenue data underlying the revenue journals and General Ledger revenues are assigned to products and business units using rules embedded in the MAREVS model. Statistical data, such as access lines, messages and minutes of use, representing volume of business drivers are assigned to products and business units. Income Statement revenues are based on booked revenue from MAREVS, but this system does not have customer or transaction detail. The result of MAREVS process is the assignment of the Company's revenue to regulated or non-regulated products.
4. **CRIS/CABS:** These are the main billing systems in use at BellSouth. CRIS is typically used as the billing system for wireless, payphone and resale. CABS, on the other hand, is the billing platform for IXC and CLEC. The primary input interface for these systems is the completed job order database. In addition, these two systems interface with MAREVS for revenue reporting.
5. **SMAS:** Strategic Marketing Analysis System (SMAS) is a marketing and forecasting system used by BellSouth to perform operational forecasting and budget analysis. CABS and CRIS billing platforms and MAREVS are the main input interface. SMAS output includes aggregate line count by state and wire centers.
6. **UNE:** Unbundled Network Element (UNE).
7. **DS1:** A digital local loop having a total digital signal speed of 1.544 megabits per second. A DS1 includes, but is not limited to, two-wire and four-wire copper loops capable of providing high-bit rate digital subscriber line services, including T1 services.
8. **DS3:** A digital local loop having a total digital signal speed of 44.736 megabits per second.
9. **EEL:** Enhanced Extended Link is a high capacity digital loop that allows CLECs to serve

customers without having to collocate in every central office. EELS are typically provisioned on DS1 and DS3 pipes.

10. DS0: A digital local loop having a total digital signal speed of 64 kilobits per second.
11. NAR: Network Access Register, is a centrex term describing a Central Office register which is required to complete a call involving access to the network outside the confines of that centrex Central Office.
12. MegaLink/LightGate: Defined in BellSouth USOC manual as type of NAR used to provide inward or outward channel service per line or trunk.
13. VUMXX: Volume Measured Usage is defined in BellSouth USOC manual as a type of NAR lines or trunk used in combination to provide exchange access service via MegaLink or LightGate.

Mathematical Calculation of BellSouth Business Line Counts For the Year 2004

July 15, 2005

Privileged & Confidential
Prepared at the Request of Counsel

Table of Contents

Sections

Mathematical Calculation of BellSouth's Business Line Counts.....	1
Appendix 1 Source Data and Assumptions	5
Appendix 2 Results and Calculation Procedures	8
Appendix 3 Retail & Resale and Wholesale UNE and EEL Data Flows	12
Appendix 4 Data Gathering Process and Calculation	14
Appendix 5 Business Line Count Per Wire Center	17
Appendix 6 Glossary of Terms	84

Mathematical Calculation of BellSouth's Business Line Counts

Background

The Federal Communications Commission's ("FCC") Triennial Review Remand Order ("TRRO")¹ was issued in response to the decision of the United States Court of Appeals for the District of Columbia in March of 2004. One focus of the TRRO was to establish whether, and under what circumstances certain Unbundled Network Elements ("UNEs") should be "de-listed," and no longer made available to Competitive Local Exchange Carriers ("CLECs") under Section 251(c)(3) of the 1996 Telecommunications Act. Specifically, for the purpose of determining whether certain high capacity loops and dedicated transport would be "de-listed," the FCC determined that it would "de-list" these UNEs in certain wire centers meeting specific criteria.

For the purpose of identifying the central offices where high capacity loops would be "de-listed" the FCC established two categories of central offices. DS1 high capacity loops would not be available (or would be "de-listed") in wire centers having 60,000 or more business lines and four or more fiber-based collocators. DS3 high capacity loops would not be available (or would be "de-listed") in wire centers having at least 38,000 business lines and four or more fiber-based collocators.

For the purpose of identifying central offices where dedicated transport would be "de-listed," the FCC created three tiers of wire centers.

- Tier 1 Wire Centers: 4 or more fiber-based collocators, or 38,000 or more business lines.
- Tier 2 Wire Centers: 3 or more fiber-based collocators, or 24,000 or more business lines.
- Tier 3 Wire Centers: All wire centers not in Tier 1 or Tier 2

DS1 dedicated transport would not be available between Tier 1 wire centers, and DS3 dedicated transport would not be available between Tier 1 wire centers, between Tier 1 and 2 wire centers, or between Tier 2 wire centers.

Regarding the business line criteria related to the above-described standards, BellSouth engaged us to perform a mathematical calculation of business line counts for the period January 1, 2004 through December 31, 2004. Our calculations follow certain procedures and assumptions provided by BellSouth. For this report, we do not analyze or count the number of fiber-based collocators in BellSouth wire centers.

¹ The Triennial Review Remand Order (TRRO) is the Federal Communications (FCC's) Order on Remand in CC Docket Nos.01-338 and 04-313 (released February 4, 2005).

Scope, Objectives and Intended Use

Scope

We were retained to perform a mathematical calculation to count the number of business lines for each BellSouth wire center by utilizing and replicating existing methodologies, procedures, and data provided by BellSouth. These procedures entail obtaining data regarding the volume of business lines, including the number of high capacity lines. We then were to calculate mathematically the capacity for each element and to calculate the total number of business lines for each BellSouth wire center based upon this model, and as described in this report. We then were to obtain information related to BellSouth's procedures for calculating the 2004 wholesale UNE and EEL and retail-resale business line counts, as well as to request data files from BellSouth containing business line information for the period January 1, 2004 through December 31, 2004. Then, we were to calculate the number of business lines, utilizing BellSouth's methodologies and procedures.

Objectives

The objectives of the project were to:

- Obtain a high-level understanding of BellSouth's systems, data, reports and procedures used to calculate and report business line counts for FCC TRRO purposes;
- Obtain an understanding of the methodology utilized by BellSouth in calculating the business line counts;
- Perform a mathematical calculation to determine the number of business lines for the period January 1, 2004 through December 31, 2004 by applying BellSouth's methodology; and
- Summarize the calculated business lines for each wire center in the 9 BellSouth states.

We neither verified the accuracy and completeness of the source data obtained for the calculation of the business lines, nor the systems in which the business lines are captured (and the source data that was extracted). We did not validate BellSouth's methodology developed to calculate the business lines for FCC TRRO purposes. We obtained an understanding of BellSouth's methodologies, a set of its applicable data, and then replicated the mathematical calculation utilized by BellSouth to determine the number of business lines for BellSouth wire centers. We did not attempt to validate the definitions of "business lines" used by BellSouth.

Intended Use of Report

The intended use and purpose of this report is to provide BellSouth with the results of our analyses as described herein. It is our understanding that BellSouth will share these results with certain regulatory commissions and possibly other interested parties that have a direct business relationship with BellSouth and may have a specific and direct purpose to review our results.

We conducted our analysis based on procedures developed by BellSouth. The procedures performed did not constitute a review, a compilation, or an audit of BellSouth's financial statements or any part thereof, nor an examination of management's assertions concerning the effectiveness of BellSouth's internal control systems, or an examination of compliance with laws, regulations, or other matters. Accordingly, Deloitte Financial Advisory Services LLP ("Deloitte FAS") and its affiliates do not express an opinion, or any other form of assurance, on BellSouth's financial statements or any part thereof, nor an opinion, or any other form of assurance, on the internal control systems or compliance with laws, regulations, or other matters.

Procedures

We performed the following procedures to replicate BellSouth's methodology in mathematically calculating the business lines for the period January 1, 2004 through December 31, 2004:

- Obtained a high-level understanding of the systems, reports and data sources containing business line information used for calculating and reporting business line counts for FCC TRRO purposes;
- Obtained an understanding of the data flow in which line information was processed and gathered to generate the source data that would be used in calculating and reporting business line counts for FCC TRRO purposes;
- Identified and interviewed individuals who were responsible for source data extraction to understand processes and procedures in place to extract the source data;
- Interviewed personnel who were responsible for calculating and reporting business line counts to understand the methodology used by BellSouth to calculate the number of business lines;
- Requested and obtained the source data containing information regarding BellSouth business lines for the period January 1, 2004 through December 31, 2004. The source data included the 2004 ARMIS 43-08 Strategic Management Analysis System ("SMAS") download² report containing business line information related to retail and resale, Management Reporting and Revenue Management System ("MAREVS") NAR and VUMXX list containing retail and resale business lines provisioned on high capacity loops; and MAREVS data extraction containing business line information related to business UNE-P, UNE-L and Enhanced Extend Loops ("EELs");
- Developed a computer-based application to replicate BellSouth's methodology of determining the number of business line counts for retail-resale and wholesale UNE and EEL utilizing the above indicated data;
- Summarized the calculated business line counts at a wire center level for the nine (9) BellSouth states.

A detailed description of the procedures and assumptions underlying our calculation are provided in Appendix 1. Source data and assumptions are provided in Appendix 2. Retail-resale and wholesale UNE and EEL data flow diagrams are provided in Appendix 3. Data gathering process and calculation procedures are provided in Appendix 4.

Results

We requested and obtained data files containing information regarding BellSouth retail-resale and wholesale UNE and EEL business lines for the period January 1, 2004 through December 31, 2004. We processed the data files and calculated the retail-resale³ and wholesale UNE and EEL business line count for each of the wire centers within the 9 BellSouth states based upon BellSouth's methodology. The total retail-resale business lines and the total wholesale UNE and EEL business lines for 1,583 wire

² Interim data from SMAS intended for the 2004 ARMIS 43-08 report.

³ Resale is an element of wholesale at BellSouth. In this report, retail and resale are grouped as 'retail-resale' or 'retail and resale' whereas wholesale is specific to 'wholesale UNE and EEL'.

centers in the BellSouth states for the period January 1, 2004 through December 31, 2004 were 6,258,028 and 3,259,819, respectively.

The aggregated results of our calculation of BellSouth's business line count per state for the period January 1, 2004 through December 31, 2004 are illustrated in Appendix 2. Appendix 5 illustrates the total business line count per wire center for the 1,583 wire centers in BellSouth's 9 states.

Other

Our results are based upon the procedures performed to date. We reserve the right to supplement this document if additional information is made available. Deloitte FAS and its affiliates were not engaged to review or assess the internal control structure or any specific internal controls of BellSouth, and any observations about internal controls contained herein were incidental to our work and should not be construed as a review or assessment of internal controls. We reserve the right to update, supplement, or revise our calculations if, and when, additional information or data becomes available for our review, as appropriate.

Appendix 1

Source Data and Assumptions

Understanding Source Data and Assumptions⁴

Obtain an understanding of the source information, systems and data needed for the business line count calculation.

A. Retail and Resale Business Line Count

1. 2004 ARMIS 43-08 SMAS download Retail and Resale Business Line Count – Source for Retail and Resale Business Line Counts
 - Understand how line count data was gathered.
 - Understand how line count data was categorized in retail business and resale business.
 - Understand the source systems for SMAS and how SMAS summarized data in preparation for ARMIS 43-08 reporting.
 - Understand the SMAS product series codes used to calculate total retail and resale business line counts as part of the ARMIS 43-08 report.

Assumptions:

- ARMIS 43-08 SMAS download data and its classification are complete and accurate.
- USOCs are accurately entered in the source systems (i.e., billing) to account for and identify a business line.
- FID⁵ is accurately populated in the source systems (i.e., billing) to classify the access line as retail or resale.

⁴ Assumptions indicated throughout this report are those of BellSouth.

⁵ Field Identification Description identifies a customer as residential, business, or carrier and provides market segmentation information.

- USOCs are accurately and completely identified and mapped to the appropriate series codes that are used to identify product groups.
 - Payphone lines are considered business lines.
 - Retail and resale lines are defined as having end-user charges on the lines.
 - SMAS data extraction for 2004 intended for the ARMIS 43-08 reporting ("ARMIS 43-08 SMAS download")⁶ was complete and accurate.
2. MAREVS – Source for Retail and Resale High Capacity Loop Adjustment for Business Line Count
- Understand how USOCs are identified for retail and resale business lines riding on high capacity loops (e.g., USOCs for MegaLink and LightGate NARs).
 - Understand how USOCs (e.g., VUMXX USOC list) are identified for high capacity loops on which retail and resale business lines are provisioned.

Assumptions:

- MegaLink and LightGate NARs are related to retail and resale business lines.
 - VUMXX USOCs represent the high capacity loops on which MegaLink and LightGate NARs are provisioned.
 - VUMXX USOCs are completely and accurately identified for retail and resale high capacity loops.
 - Data extraction of USOC counts for MegaLink and LightGate NARs and VUMXXs for 2004 was complete and accurate.
3. Understand the calculation of the retail and resale business line counts for FCC TRRO purposes

B. Wholesale UNE and EEL Business line Count

- MAREVS – Source for UNE-P, UNE-L and EEL Line Count.
- Understand the source systems from which MAREVS receives data.
- Understand how MAREVS summarizes and categorizes data into product codes that identify business UNE-P, DS1 and DS3 UNE-L, and DS1 and DS3 EEL.
- Understand line count DS0 equivalent adjustments for business DS1 UNE-L, DS3 UNE-L, DS1 EEL, and DS3 EEL.

Assumptions:

- USOCs for UNEs and EELs are different from the USOCs used to account for retail and resale business lines so that wholesale UNE and EEL services can be uniquely identified.
- USOCs are accurately entered in the source systems (i.e., billing) to account for and

⁶ Interim data provided by BellSouth for our calculations.

identify UNEs and EELs that are provisioned for business.

- USOCs are completely and accurately identified for business UNEs and EELs.
- UNE-Ls and EELs are considered to be a business class of service.
- Business UNE and EEL USOCs are accurately mapped to the appropriate product codes.
- Product codes are unique to business UNE-P, business DS1 UNE-L, business DS3 UNE-L, business DS1 EEL, and business DS3 EEL.
- MAREVS data extraction of product codes specific to identify business UNE-P, UNE-L and EEL for calculating the wholesale UNE and EEL business line counts for the period January 1, 2004 through December 31, 2004 was complete and accurate.

Our Business Line Count Calculation

Perform a calculation of the business line counts at the serving wire center for all BellSouth states for the period January 1, 2004 through December 31, 2004.

A. Obtain the following data for the period January 1, 2004 through December 31, 2004:

- ARMIS 43-08 SMAS download for the period January 1, 2004 through December 31, 2004.
- MAREVS extracts of the counts of USOCs for MegaLink and LightGate NARs, and VUMXX systems for the period January 1, 2004 through December 31, 2004.
- MAREVS extracts of the counts of business UNE-P, DS1 & DS3 UNE-L, and DS1 & DS3 EEL for the period January 1, 2004 through December 31, 2004.
- A mapping list of aggregating business line counts from one wire center to another for summarization purposes.
- Understand and apply calculation adjustments and aggregation of line counts to wire centers based on the wire center map list provided above.
- A list of BellSouth wire centers for which business line counts are aggregated.

Assumption:

- The data requested above are the relevant data extracts from which to compile retail and resale and wholesale UNE and EEL business line counts for FCC TRRO purposes.
- Capacity adjustments for counting the total business line counts per wire center are appropriate for FCC TRRO purposes.
- The wire center-mapping list for aggregating and summarizing business line counts for each of the BellSouth wire centers is accurate and complete.
- The BellSouth wire center list is complete and accurate.

B. Calculate the business line counts using the data from item A. above to sum the retail-resale and wholesale UNE and EEL business line counts at the serving wire center level for each of the BellSouth states.

Appendix 2

Results and Calculation Procedures⁷

The table below illustrates our calculated number of Retail-Resale and Wholesale UNE and EEL Business Lines in 9 BellSouth states for the period January 1, 2004 through December 31, 2004 based upon BellSouth's methodology and procedures:

	A	B	A+B
State	Calculated Retail-Resale Business DS0 Equivalent Lines	Calculated Wholesale UNE-P, UNE Loops, and EELs Business DS0 Equivalent Lines	Calculated Total Business Lines
AL	475,970	212,396	688,366
FL	1,676,750	824,297	2,501,047
GA	1,197,309	685,215	1,882,524
KY	303,712	104,122	407,834
LA	585,989	329,936	915,925
MS	349,406	107,855	457,261
NC	701,617	358,470	1,060,087
SC	381,201	234,932	616,133
TN	586,074	402,596	988,670
Total	6,258,028	3,259,819	9,517,847

⁷ Detailed procedures conducted were per BellSouth instructions.

The following factors were provided by BellSouth and used to calculate the business lines. These are factors allowed per the TRRO for stating these high capacity lines on a DS0 basis (64 kbps equivalent).⁸

Retail-Resale	VUM14	VUM19	VUM24	VUM28	VUM38	VUM48	VUM57	VUM67	VUM96
Multiplier	144	192	24	288	384	48	576	672	96

	UNE-L		EEL		UNE-P
Wholesale	DS1	DS3	DS1	DS3	DS0
Multiplier	24	672	24	672	1

A. Wholesale Line Count Calculation for UNE-P, UNE-L and EEL:

Assumptions:

- All Wholesale UNE and EEL business line USOCs are identified and mapped to product codes accurately:
 - Business line UNE-P is assumed to be DS0 based
 - UNE-L can be DS0, DS1 or DS3
 - EEL can be either DS1 or DS3
- All UNE loops and EELs are considered to be a business class of service.
- A list of product codes used to identify wholesale UNE and EEL business lines include the following:
 - Product 606 = UNE DS1 Loop
 - Product 607 = UNE DS3 Loop
 - Product 659 = UNE DS1 EEL (Loop portion)
 - Product 660 = UNE DS3 EEL (Loop portion)
 - Product 601 = UNE UDL 4 Wire
 - Product 602 = UNE UVL 2 Wire Designed
 - Product 603 = UNE UVL 4 Wire Designed
 - Product 604 = UNE UDL 2 Wire ISDN

⁸ Per BellSouth.

- Product 609 = UNE UDL 2 Wire HDSL
- Product 610 = UNE UDL 2 Wire ADSL
- Product 611 = UNE UDL 4 Wire HDSL
- Product 618 = UNE UVL 2 Wire Non Designed
- Product 645 = UNE Non Loaded Copper Loop
- Product 684 = Unbundled Copper Loop Non Designed
- Product 679 = Unbundled DS1 Loop, Basic Rate ISDN 2-Wire DS1 Unbundled Loop
- Product 681 = Unbundled Exchange Ports
- Product 682 = Unbundled DS1 Loop, 4-Wire DS1 Digital Combination Loop
- Product 683 = Unbundled Combination Voice Loop, 2-Wire Direct Inward Dialing (DID)
- Product 689 = Unbundled Combination Voice Loop
- Product 693 = Unbundled Combination Voice Loop, SL2, FX/FCO 2-Wire Voice Grade Design Loop

Line Count Adjustments:

- No line count adjustment is needed for business UNE-P and DS0 UNE-L.
- Line count adjustment is needed for both UNE-L and EEL:
 - DS1 UNE-L = # of DS1 UNE-L extracted from MAREVS * 24
 - DS3 UNE-L = # of DS3 UNE-L extracted from MAREVS * 672
 - DS1 EEL = # of DS1 EEL extracted from MAREVS * 24
 - DS3 EEL = # of DS3 EEL extracted from MAREVS * 672

Calculation for Wholesale UNE and EEL Business Line Count at a wire center:

- Wholesale UNE and EEL Business Line Count @ Wire Center = # of Business UNE-P + # of DS0 UNE-L + # of DS1 UNE-L * 24 + # of DS3 UNE-L * 672 + # of DS1 EEL * 24 + # of DS3 EEL * 672

B. Retail and Resale Line Count Calculation:

Assumptions:

- 2004 ARMIS 43-08 SMAS download assumed correctly generated from SMAS.
- USOCs are correctly identified as business lines.
- Mapping of the USOCs to various series code categories for the purpose of reporting ARMIS 43-08 is accurate.

- Retail and resale are identified by whether there are end-user charges on the accounts.
- Business lines vs. residential lines are identified by specific USOCs and CLASS codes (e.g., business line USOC ends with "B").
- USOCs are the same for both retail and resale.
- Retail and resale single or multi-lines are all DS0 lines.
- In ARMIS 43-08 SMAS download, MegaLink and LightGate NARs are equivalent to one business line.

Adjustments:

- No DS0 equivalent adjustment is needed for retail and resale business line counts from the ARMIS 43-08 SMAS download.
- Retail and resale line count adjustment is performed to increase the line counts to the maximum line level of the high capacity loops, instead of the actual in-service business lines, for FCC TRRO reporting purposes, per BellSouth.

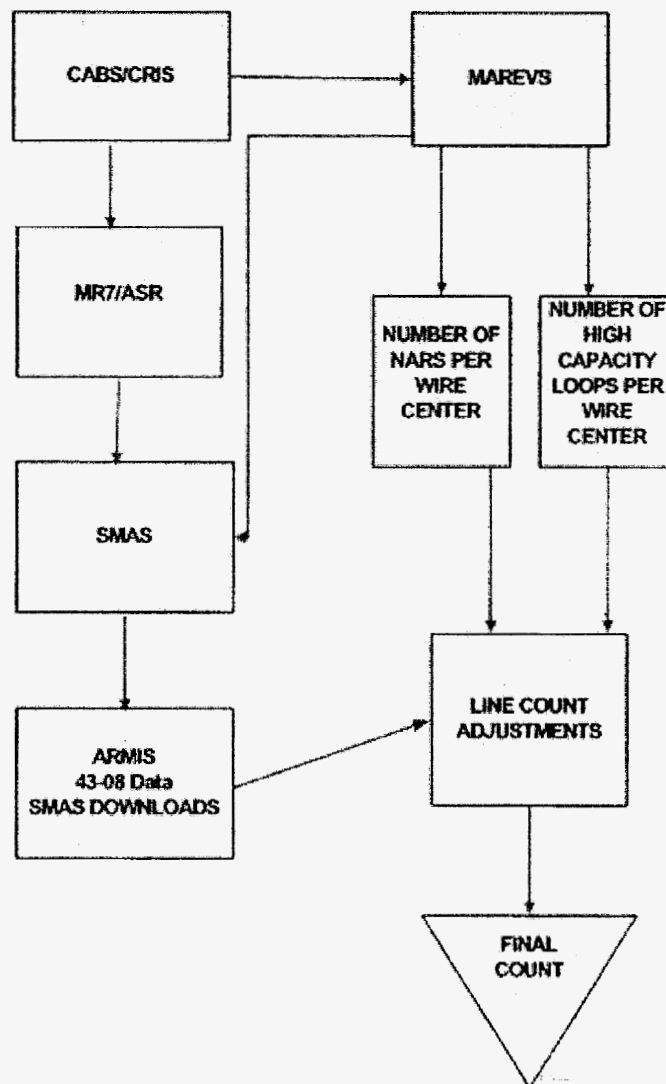
Calculation for retail and resale for business line count at a wire center:

- $\text{Line count @ Wire Center} = \text{Total Retail-Resale Business Lines From ARMIS 43-08 SMAS download} - \# \text{ of Retail-Resale MegaLink and LightGate NARs} + \# \text{ of VUMXX} * \text{VUMXX factors (multipliers)}$

Appendix 3

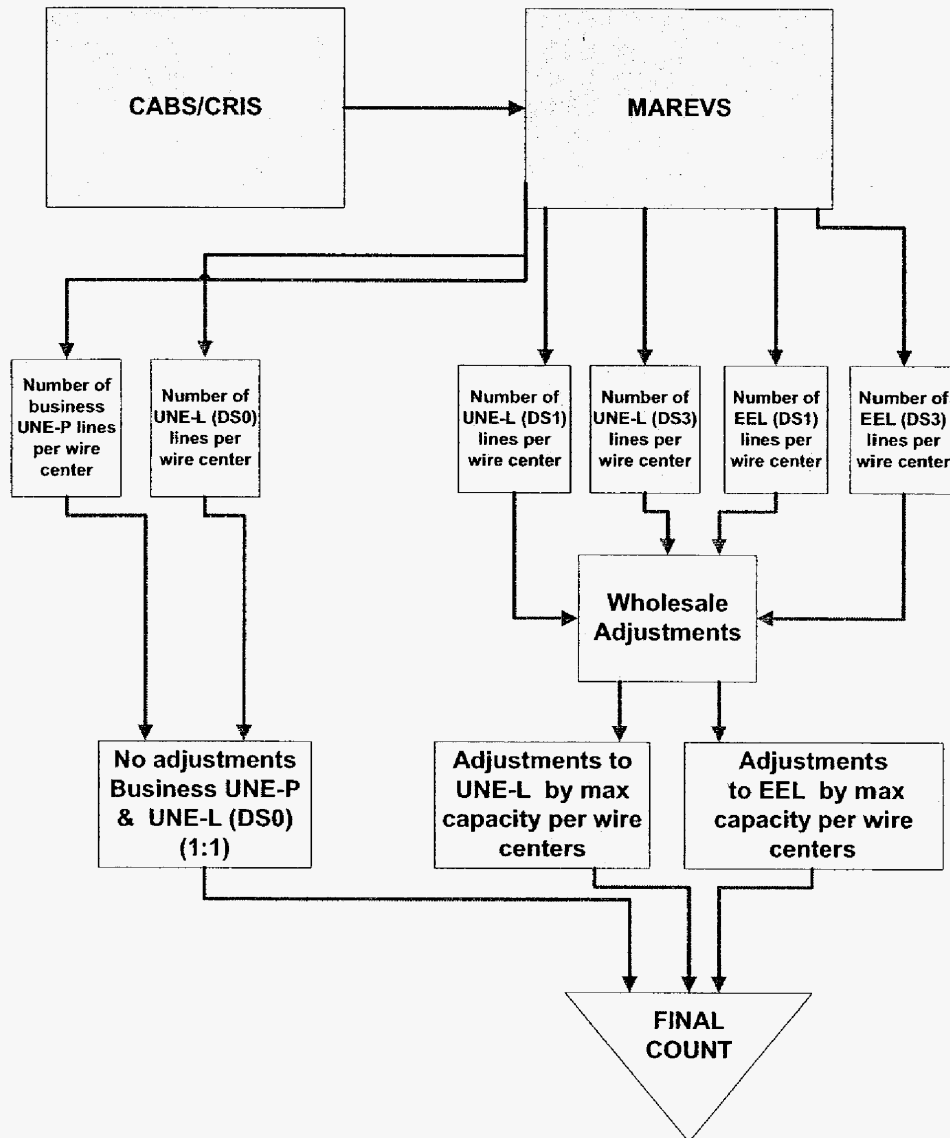
Retail & Resale and Wholesale UNE and EEL Data Flows⁹

Retail & Resale Business Line Data Flow



⁹ Data Flows as represented by BellSouth.

Wholesale UNE & EEL Business Line Data Flow



Appendix 4

Data Gathering Process and Calculation¹⁰

Retail-Resale Data Gathering Process

Retail-Resale Business Lines

Retail-resale business lines originate and are captured in Carrier Access Billing System ("CABS") and Customer Record Information System ("CRIS"). A set of unique retail-resale specific Universal Service Operating Codes ("USOCs") are used to identify the retail-resale lines from wholesale lines. Line class codes and field identification description ("FID") codes are used to define whether the line is business or residential, and retail or resale.

The retail-resale business line information is output to an electronic report interface MR7/ASR to be further fed into Strategic Management Analysis System ("SMAS"). The SMAS system is used mainly for management forecasting and regulatory reporting and filing, such as the ARMIS filing with the FCC.

ARMIS is a self-reporting on RBOC's operations including the company's infrastructure related to access lines. The infrastructure part of the report is referred to as ARMIS 43-08, which contains retail and resale business line count information. The ARMIS 43-08 is used as one of the data sources for calculating the retail-resale business lines for the FCC TRRO. Retail-resale USOCs are mapped and aggregated to series codes in which line and service information is reported in SMAS. The series code defines the type of product and market in which the product is offered.

The retail-resale business lines consist of single line business, multi-line business and payphone coin line business. For the purpose of counting the number of retail-resale business lines per the FCC TRRO, adjustments are performed by counting the maximum lines available at a high capacity loop identified by VUMXX even if not all the lines on the loop are in-service for end-user customers.

Appendix 2 provides a summary as to the conversion values or multipliers used for VUMXXs. Our understanding of the detail data flow for capturing and gathering the retail and resale business line information is illustrated in Appendix 3.

The following are the data extraction and line count calculation steps employed by BellSouth to accumulate and calculate retail-resale business line counts for FCC TRRO purposes:

- Data Source: ARMIS 43-08 SMAS download and MAREVS
Purpose: Data for Retail and Resale Business Line Count per wire center
- SMAS download is created from the MR7/ASR electronic reporting interface to aggregate in-service retail-resale lines by series code at the wire center level. MR7/ASR is an electronic report output from CABS and CRIS billing platforms.
- Records in the SMAS download are then re-formatted in Excel to be used for various reporting purposes (e.g., ARMIS).

¹⁰ As represented by BellSouth.

- Downloads of in-service line count data from MR7/ASR include the following fields: Transaction Code, Entity (CLLI), Category (INSV), Series (e.g., TALET), Series description (e.g., Total Resale Access Line) and quantity of active access line count.
- A list of USOCs identifying MegaLink and LightGate NARs and VUMXX product series is used to extract unit count information from MAREVS.
- The USOC counts for MegaLink and LightGate NARs are extracted from the in-service retail and resale access lines for the period January 1, 2004 through December 31, 2004. The VUMXX product series are the actual number of high capacity loop products in place for each of the wire centers for the period January 1, 2004 through December 31, 2004.
- Series codes out of SMAS are used to summarize the type of services at a wire center level, including Single Line Business, Multi-line Business, Business ISDN (basic and primary) and Coin Line Business.
- The total retail and resale business line count from the ARMIS 43-08 SMAS download, before adjusting for business lines riding high capacity loops other than ISDN per wire center, is a sum of the single and multi-line business lines, ISDN DS0 equivalent lines and coin lines.
- For counting the retail-resale business lines for FCC TRRO purposes, we now add to the totals from the bullet above, amounts for high capacity loops that are adjusted by the maximum line capacity of the high capacity loops at the wire center level. The calculation is to first add the maximum capacity line counts identified by VUMXX USOCs at the wire center to the result from the bullet above, and then to subtract the number of NARs (MegaLink and LightGate) to avoid double counting, as they are already included in the preliminary result. There were cases where the total count of NARs was more than the maximum line capacity of the high capacity loops identified by VUMXX USOCs at certain wire centers. In these cases, the adjustment would net to zero, per BellSouth. For example, if the total line count of MegaLink and LightGate NARs for a wire center is 146 and the number of VUMXXs adjusted for DS0 equivalent for the same wire center is 144, then the adjustment for counting the retail and resale business lines is zero for the wire center. Therefore, simply take the total retail-resale business line count with no adjustment.
- The retail and resale business lines are summarized at the wire center level. Line counts from certain wire centers are then further rolled up to their corresponding wire centers based on the wire center map list provided by BellSouth.

Wholesale Data Gathering Process

Wholesale UNE and EEL Business Lines

UNE and EEL are wholesale business lines. The service information regarding UNE and EEL is captured and uniquely identified by USOCs in CABS and CRIS. The USOCs for UNE and EEL are different from the USOCs used to identify business lines on the retail and resale side. These USOCs are universal and published on BellSouth's website.

The UNE and EEL business line information in CABS and CRIS feeds into the Management Accounting Reporting and Revenue Management System ("MAREVS") on a monthly basis. MAREVS is a system in which revenues and services (i.e., access line) are grouped and reported at a product level (i.e., DS1 UNE-L). MAREVS is a system that BellSouth uses to report its financial information. Business rules have been established in MAREVS to map a list of the UNE and EEL related USOCs to the appropriate product codes so that UNE and EEL can be further classified into UNE-P, DS0 UNE-L, DS1 UNE-L, DS3 UNE-L, DS1 EEL and DS3 EEL product groups. The product codes also differentiate products between business lines and residential lines based on the type of customers who subscribe to the products. All UNE loops

and EELs are a business class of service, per BellSouth.

BellSouth extracts wholesale UNE and EEL business lines from MAREVS for calculating and reporting the business line counts for FCC TRRO purposes. The wholesale UNE and EEL business line information is extracted using the product codes that identify business UNE-P, UNE-L and EEL. According to BellSouth, further adjustments are performed for calculating the business line counts per FCC TRRO by converting the high capacity loop products DS1 UNE-L, DS3 UNE-L, DS1 EEL and DS3 EEL into single DS0 line equivalents.

Appendix 2 provides a summary as to the conversion values or multipliers used for each of the products as well as a list of the product codes specific to UNE and EEL loops. Our understanding of the detail data flow for capturing and gathering the wholesale UNE and EEL business line information is illustrated in Appendix 3.

The following are the data extraction and line count calculation steps employed by BellSouth to accumulate and calculate wholesale UNE and EEL business line counts for FCC TRRO purposes.

- Data Source: MAREVS
Purpose: Data for Wholesale UNE and EEL Business Line Count per wire center
- Product codes specific to business UNE-P, DS0 UNE-L, DS1 UNE-L, DS3 UNE-L, DS1 EEL and DS3 EEL are used to identify and extract the count of the product codes at the wire center level from MAREVS for all wire centers in the 9 BellSouth states for the period January 1, 2004 through December 31, 2004.
- DS0 equivalent adjustment is performed by applying the relevant DS0 factors to DS1 and DS3 products in calculating the business line counts for the purpose of FCC TRRO.
- The total wholesale UNE and EEL business line count adjusted for DS0 equivalent is the sum of business UNE-P, UNE-L and EEL.
- The wholesale UNE and EEL business lines are summarized at the wire center level. Per BellSouth, wholesale UNE and EEL line counts for certain wire centers (identified by BellSouth) are excluded from the total wholesale UNE and EEL lines because these wire centers are related to Independent Company Operations ("ICOs") interconnecting with BellSouth. Additionally, line counts for certain remote wire centers are excluded from the total wholesale UNE and EEL business line counts as there is no map to indicate for which BellSouth wire centers they should be aggregated. BellSouth also indicated that the number of lines for these wire centers had a minor impact on the total wholesale UNE and EEL line counts for the aggregate wire centers per BellSouth.

Appendix 5

Business Line Count Per Wire Center

Business Line Count per wire center for the 1,583 BellSouth wire centers.

State	Wire Center	Total Business Lines
AL	BRHMALMT	39,078
AL	MTGMALDA	32,752
AL	MTGMALMT	27,528
AL	HNVALMT	26,690
AL	HNVALRA	23,616
AL	BRHMALRC	21,159
AL	MOBLALAZ	20,101
AL	HNVALUN	18,501
AL	BRHMALHW	17,485
AL	TSCLALMT	17,030
AL	DCTRALMT	16,878
AL	MOBLALOS	14,645
AL	BRHMALOX	13,367
AL	MOBLALSH	12,526
AL	HNVALPW	11,875
AL	ALBSALMA	11,819
AL	FLRNALMA	11,427

State	Wire Center	Total Business Lines
AL	BRHMALCH	11,382
AL	MOBLALSK	10,799
AL	BRHMALVA	10,546
AL	BRHMALOM	9,999
AL	GDSDALMT	9,697
AL	MTGMALNO	9,442
AL	CLMNALMA	9,205
AL	BSMRALMA	8,889
AL	BRHMALFS	8,666
AL	ANTNALMT	8,610
AL	AUBNALMA	8,086
AL	MDSNALNM	7,785
AL	SHFDALMT	7,658
AL	OPLKALMT	6,754
AL	SELMALMT	6,599
AL	TSCLALDH	6,495
AL	BRHMALWL	6,441
AL	MOBLALAP	6,104
AL	PHCYALMA	5,905
AL	ATHNALMA	5,875
AL	MOBLALSF	5,799
AL	JSPRALMT	5,788
AL	HNVIALLW	5,784
AL	BRHMALEN	5,089

State	Wire Center	Total Business Lines
AL	ANTNALOX	4,651
AL	TSCLALNO	4,585
AL	BRHMALEL	4,409
AL	BRHMALCP	4,288
AL	FRHPALMA	4,277
AL	TLDGALMA	4,148
AL	BRHMALEW	4,106
AL	PRVLALMA	4,075
AL	ALVLALMA	4,070
AL	FTPYALMA	4,042
AL	GTVLALNM	3,878
AL	EUFLALMA	3,824
AL	BRHMALTA	3,564
AL	MOBLALPR	3,515
AL	MOBLALSA	3,378
AL	HNVIALRW	3,341
AL	TROYALMA	3,279
AL	ALCYALMT	3,272
AL	BSMRALHT	3,224
AL	SYLCALMT	3,013
AL	WTMPALMA	2,871
AL	BYMNALMA	2,792
AL	CLANALMA	2,732
AL	BRTOALMA	2,653

State	Wire Center	Total Business Lines
AL	BOAZALMA	2,583
AL	DMPALMA	2,529
AL	GDSALRD	2,299
AL	RLVLALMA	2,276
AL	BRHMALWE	2,257
AL	MNTVALNM	2,229
AL	MOBLALTH	2,209
AL	TSKGALMA	2,197
AL	GRDLALNM	2,106
AL	HRTSALNM	2,095
AL	ANTNALLE	2,049
AL	BRHMALFO	1,943
AL	CLMBALMA	1,829
AL	GDSALHS	1,818
AL	MTGMALMB	1,805
AL	MOBLALBF	1,761
AL	MOBLALSE	1,716
AL	MOLTALNM	1,678
AL	JCVLALMA	1,543
AL	PNSNALMA	1,516
AL	JCSNALNM	1,507
AL	ATTLALNM	1,392
AL	WRRRALNM	1,261
AL	HZGRALMA	1,226

State	Wire Center	Total Business Lines
AL	THVLALMA	1,194
AL	EVRGALMA	1,175
AL	CALRALMA	1,174
AL	CNVIALMA	1,112
AL	DDVLALMA	996
AL	DORAALMA	994
AL	FMTNALMT	994
AL	LVTNALLA	994
AL	HNVLALNM	950
AL	CHBGALMA	917
AL	GNBOALMA	871
AL	CHLSALMA	807
AL	KLLNALMA	785
AL	PDMTALMA	775
AL	LFYTALRS	768
AL	GYVLALNM	748
AL	RDBAALMA	734
AL	EUTWALMA	721
AL	BSMRALBU	686
AL	MARNALNM	660
AL	RRVLALMA	610
AL	CLMNALFA	606
AL	CTRNALNM	583
AL	WBTNALNM	572

State	Wire Center	Total Business Lines
AL	YORKALMA	560
AL	GRLYALMA	497
AL	CYTNALMA	473
AL	PHCYALFM	462
AL	VNCNALMA	459
AL	LNDNALMA	458
AL	CLMNALJC	451
AL	STSNALMA	444
AL	CRLDALMA	433
AL	MTVRALMA	406
AL	MCINALMA	390
AL	BLFNALMA	363
AL	MPVLALMA	347
AL	HNVLALBR	334
AL	LGTNALMA	314
AL	BRPTALMA	312
AL	CRHLALNM	297
AL	CRDVALMA	292
AL	ATHNALER	285
AL	UNTWALNM	261
AL	OHTCALMA	255
AL	FTDPALMA	254
AL	TWCKALMA	250
AL	PRSHALNM	216

State	Wire Center	Total Business Lines
AL	TLDGALRF	213
AL	HRTSALPE	200
AL	GDWRALMA	194
AL	HLVIALMA	194
AL	HRBOALOM	180
AL	BSMRALBP	166
AL	LXTNALMA	134
AL	MNFDALMA	112
AL	EUTWALBO	49
FL	MIAMFLPL	86,923
FL	MIAMFLGR	68,580
FL	ORLDFLMA	57,966
FL	FTLDFLMR	55,881
FL	GSVLFLMA	55,681
FL	ORLDFLPC	45,792
FL	MIAMFLHL	43,021
FL	JCVLFLCL	42,452
FL	MIAMFLAE	41,912
FL	BCRTFLMA	40,746
FL	PRRNFLMA	37,969
FL	HLWDFLPE	37,415
FL	WPBHFLHH	36,053
FL	HLWDFLWH	34,022
FL	PMBHFLMA	33,993

State	Wire Center	Total Business Lines
FL	WPBHFLAN	33,521
FL	ORLDFLPH	33,148
FL	MLBRFLMA	32,547
FL	DYBHFLMA	32,282
FL	FTLDFLCY	31,487
FL	ORLDFLAP	31,234
FL	PNSCFLFP	30,863
FL	FTLDFLPL	29,469
FL	FTLDFLJA	29,209
FL	PNSCFLBL	28,685
FL	BCRTFLBT	26,601
FL	WPBHFLGR	26,527
FL	ORLDFLSA	26,126
FL	PMBHFLFE	25,909
FL	STRNFLMA	25,577
FL	WPBHFLGA	24,885
FL	MIAMFLRR	24,740
FL	DRBHFLMA	24,695
FL	MIAMFLBR	24,482
FL	MIAMFLPB	24,380
FL	JCVFLSJ	24,088
FL	MIAMFLSO	23,802
FL	PMBHFLCS	23,734
FL	MIAMFLWM	23,310

State	Wire Center	Total Business Lines
FL	FTLDFLOA	23,008
FL	MIAMFLCA	22,645
FL	FTPRFLMA	22,179
FL	JCVFLBW	21,517
FL	ORLDFLCL	20,828
FL	HLWDFLMA	20,753
FL	WPBHFLRB	20,393
FL	MNDRFLLO	20,180
FL	SNFRFLMA	20,140
FL	FTLDFLCR	19,873
FL	PNCYFLMA	19,330
FL	VRBHFLMA	18,758
FL	NDADFLGG	18,239
FL	COCOFLMA	18,097
FL	WPBHFLRP	18,014
FL	JCVFLSM	17,820
FL	BYBHFLMA	17,675
FL	DLBHFLMA	17,230
FL	EGLLFLBG	16,335
FL	FTLDFLSU	15,734
FL	JPTRFLMA	15,661
FL	NDADFLAC	15,636
FL	NDADFLBR	15,409
FL	NDADFLOL	15,046

State	Wire Center	Total Business Lines
FL	KYWSFLMA	14,583
FL	STAGFLMA	14,061
FL	LKMRFLHE	13,675
FL	WPBHFLLE	13,622
FL	JCVLFLNO	13,414
FL	FTLDFLWN	13,168
FL	JCVLFLAR	13,101
FL	DYBHFLOB	12,732
FL	JCVLFLRV	12,714
FL	MIAMFLAL	12,703
FL	DYBHFLOPO	12,514
FL	HMSTFLHM	12,505
FL	LKCYFLMA	12,442
FL	MIAMFLOL	12,004
FL	JCBHFLMA	11,901
FL	JCVLFLJT	11,720
FL	MIAMFLBA	11,560
FL	MIAMFLSH	11,422
FL	DELDFLMA	11,357
FL	MIAMFLFL	11,268
FL	BCRTFLSA	11,081
FL	MIAMFLME	10,987
FL	MIAMFLNS	10,825
FL	ORPKFLMA	10,460

State	Wire Center	Total Business Lines
FL	JCVLFLWC	10,432
FL	PMBHFLTA	10,221
FL	MIAMFLAP	10,085
FL	MIAMFLBC	9,970
FL	FTLDFLSG	9,912
FL	PTSLFLMA	9,631
FL	TTVLFLMA	9,620
FL	MIAMFLNM	9,197
FL	DLBHFLKP	9,175
FL	PNSCFLWA	9,163
FL	MIAMFLIC	8,937
FL	COCOFLME	8,372
FL	NSBHFLMA	8,308
FL	MIAMFLWD	8,128
FL	HLWDFLHA	8,086
FL	PLTKFLMA	7,939
FL	OVIDFLCA	7,848
FL	WWSPFLSH	7,640
FL	GSVLFLNW	7,389
FL	BKVLFLJF	7,381
FL	CCBHFLMA	7,366
FL	PNVDFLMA	7,351
FL	PLCSFLMA	7,301
FL	JCVLFLLF	7,270

State	Wire Center	Total Business Lines
FL	JCVLFLOW	7,179
FL	PCBHFLNT	6,667
FL	MLTNFLRA	5,896
FL	FRBHFLFP	5,682
FL	ORPKFLRW	5,634
FL	MNDRFLAV	5,365
FL	GLBRFLMC	5,206
FL	PTSLFLSO	5,178
FL	MIAMFLDB	4,982
FL	WWSNFLHI	4,413
FL	SBSTFLMA	4,227
FL	BLGLFLMA	4,034
FL	JCVLFLFC	3,914
FL	HMSTFLNA	3,737
FL	VRBHFLBE	3,652
FL	JCBHFLSP	3,646
FL	EGLLFLIH	3,571
FL	MRTHFLVE	3,527
FL	FTLDLFLAP	3,390
FL	MIAMFLKE	2,970
FL	JCVLFLIA	2,892
FL	GCSPFLCN	2,768
FL	DYBHFLFN	2,760
FL	HTISFLMA	2,613

State	Wire Center	Total Business Lines
FL	CHPLFLJA	2,589
FL	STAGFLBS	2,462
FL	STAGFLSH	2,397
FL	BNNFLMA	2,354
FL	DBRYFLDL	2,335
FL	PACEFLPV	2,301
FL	KYLRFLLS	2,294
FL	DNLNFLWM	2,245
FL	HBSDFLMA	2,135
FL	KYLRFLMA	2,132
FL	HLNVFLMA	1,952
FL	MDBGFLPM	1,924
FL	PNSCFLHC	1,787
FL	LYHNFLOH	1,748
FL	DBRYFLMA	1,584
FL	TRENFLMA	1,581
FL	JCBHFLAB	1,551
FL	CFLDFLMA	1,495
FL	ISLMFLMA	1,458
FL	MNDRFLLW	1,446
FL	CNTMFLE	1,430
FL	CSCYFLBA	1,345
FL	YULEFLMA	1,274
FL	STAGFLWG	1,224

State	Wire Center	Total Business Lines
FL	FLBHFLMA	1,111
FL	PNSCFLPB	1,085
FL	EORNFLMA	1,028
FL	BRSNFLMA	985
FL	BGPIFLMA	981
FL	KYHGFLMA	928
FL	HAVNFLMA	790
FL	GCVLFLMA	760
FL	NWBYFLMA	723
FL	PAHKFLMA	692
FL	NKLRFLMA	649
FL	PRSNFLFD	637
FL	JAY-FLMA	608
FL	BLDWFLMA	602
FL	SGKYFLMA	569
FL	DYBHFLOS	560
FL	HWTHFLMA	550
FL	PNCYFLCA	493
FL	YNTWFLMA	418
FL	MICCFLLB	391
FL	OLTWLLN	383
FL	DLSPFLMA	342
FL	YNFNFLMA	335
FL	CDKYFLMA	316

State	Wire Center	Total Business Lines
FL	CCBHFLAF	309
FL	MCNPFLMA	301
FL	ARCHFLMA	279
FL	HMSTFLEA	272
FL	SYHSFLCC	268
FL	FTGRFLMA	261
FL	SBSTFLFE	260
FL	VERNFLMA	260
FL	OKHLFLMA	239
FL	GENVFLMA	237
FL	PMPKFLMA	223
FL	WELKFLMA	222
FL	MXVLFLMA	195
FL	MNSNFLMA	91
GA	ATLNGACS	94,988
GA	MRTTGAMA	89,220
GA	NRCRGAMA	78,131
GA	ALPRGAMA	74,317
GA	ATLNGAPP	71,905
GA	ATLNGABU	57,064
GA	SMYRGAPF	52,246
GA	DNWDGAMA	47,862
GA	RSWLGAMA	41,390
GA	DLTHGAHS	39,907

State	Wire Center	Total Business Lines
GA	CLMBGAMT	36,081
GA	ATLNGAEP	34,260
GA	ATLNGASS	33,797
GA	ATLNGATH	33,131
GA	LRVLGAOS	32,076
GA	CHMBGAMA	30,860
GA	SMYRGAMA	29,316
GA	ALBYGAMA	29,095
GA	SVNHGABS	28,626
GA	ATHNGAMA	28,311
GA	LLBNGAMA	27,481
GA	TUKRGAMA	27,383
GA	CMNGGAMA	24,408
GA	MACNGAMT	24,148
GA	GSVLGAMA	23,840
GA	BUFRGABH	23,435
GA	AGSTGAMT	22,316
GA	WDSTGACR	21,504
GA	VLD SGAMA	20,823
GA	ATLNGAWD	20,758
GA	MRTTGAEA	18,793
GA	SVNHGADE	18,669
GA	ASTLGAMA	18,126
GA	CNYRGAMA	17,806

State	Wire Center	Total Business Lines
GA	ATLNGAFP	17,075
GA	ROMEGATL	16,047
GA	BRWKGAMA	15,487
GA	AGSTGAU	15,289
GA	JNBOGAMA	14,582
GA	SNLVGAMA	13,736
GA	DGVLGAMA	13,695
GA	ATLNGAIC	13,219
GA	AGSTGATH	12,768
GA	MCDNGAGS	12,663
GA	CRVLGAMA	12,427
GA	MACNGAVN	12,365
GA	RVDLGAMA	11,974
GA	ATLNGAAD	11,869
GA	GRFNGAMA	11,828
GA	STBRGANH	11,448
GA	CLMBGAMW	11,069
GA	ATLNGAEL	11,036
GA	PTCYGAMA	10,879
GA	CVTNGAMT	10,682
GA	WYCRGAMA	10,619
GA	FYVLGASG	10,329
GA	NWNINGAMA	10,131
GA	SVNHGAGC	9,926

State	Wire Center	Total Business Lines
GA	THVLGAMA	9,377
GA	AGSTGAFL	9,210
GA	TFTNGAMA	9,191
GA	LGRNGAMA	8,873
GA	ATLNGABH	8,831
GA	CRTNGAMA	8,658
GA	WRRBGAMA	8,507
GA	SVNHGAWB	8,362
GA	CLHNGAES	8,202
GA	SNMTGALR	8,197
GA	MRRWGAMA	7,858
GA	FRBNGAEB	7,783
GA	DBLNGAMA	7,665
GA	PANLGAMA	7,662
GA	ACWOGAMA	7,463
GA	ATLNGAWE	6,721
GA	AMRCGAMA	6,275
GA	MACNGAGP	6,258
GA	ATLNGALA	6,013
GA	ATLNGAGR	5,775
GA	PWSPGAAS	5,676
GA	LTHNGAJS	5,380
GA	DLLSGAES	5,360
GA	BNBRGAMA	4,801

State	Wire Center	Total Business Lines
GA	ATLNGACD	4,756
GA	CLMBGABV	4,742
GA	LGVLGACS	4,354
GA	VDALGAMA	4,261
GA	CORDGAMA	4,097
GA	ATLNGAHR	4,077
GA	JESPGAES	3,714
GA	SSISGAES	3,676
GA	THSNGAMA	3,519
GA	FTVYGAMA	3,244
GA	ETTNGAES	3,242
GA	BXLYGAES	3,194
GA	EBTNGAMA	3,177
GA	SNVLGAES	3,140
GA	VLRCGAES	2,848
GA	JCSNGAMA	2,674
GA	CDTWGAMA	2,665
GA	MDSNGAMA	2,581
GA	FLBRGAMA	2,578
GA	FRSYGAMA	2,560
GA	WYBOGAES	2,547
GA	POLRGAMA	2,546
GA	SWBOGAES	2,543
GA	ESMNGAES	2,436

State	Wire Center	Total Business Lines
GA	WTVLGAES	2,014
GA	BRVIGAMA	1,964
GA	SYLVGAES	1,791
GA	CMLLGAMA	1,731
GA	GNBOGAES	1,630
GA	HZLHGAMA	1,609
GA	BRMNGAES	1,572
GA	SVNHGAWI	1,564
GA	CXTNGAMA	1,505
GA	CCHRGAMA	1,481
GA	LKPKGAMA	1,462
GA	RCKMGAES	1,453
GA	BLCSGAES	1,315
GA	RYTNGAMA	1,236
GA	HMPNGAJW	1,218
GA	PLHMGAMA	1,141
GA	LYNSGAMA	1,035
GA	PLMTGAMA	1,024
GA	SVNHGASI	997
GA	LSVLGAMA	973
GA	MNTIGAMA	951
GA	AIVLGAMA	907
GA	BGRTGAMA	868
GA	TLLPGAES	859

State	Wire Center	Total Business Lines
GA	WRNSGAMA	844
GA	SPRTGAMA	816
GA	CLQTGAES	792
GA	APNGGAES	791
GA	WVVLGAES	763
GA	BWDNGAMA	759
GA	MLLNGAMA	754
GA	LSBGGAMA	748
GA	ZBLNGAMA	712
GA	SCCRGAMA	644
GA	PNMTGAMA	643
GA	JKISGAMA	590
GA	BCHNGAES	577
GA	WRTNGAMA	572
GA	HPHZGAES	566
GA	TBISGAMA	544
GA	HMTNGAMA	538
GA	FKLNGAMA	522
GA	SENOGAMA	511
GA	GNVLGAMA	478
GA	CLMTGAMA	453
GA	TMPLGAMA	444
GA	HRLMGAMA	438
GA	HGVLGAMA	401

State	Wire Center	Total Business Lines
GA	RPVLGAMA	352
GA	ARTNGAES	334
GA	RTLGGAMA	320
GA	WDLYGAMA	303
GA	NWTNGAHD	300
GA	LMKNGAMA	296
GA	CVSPGAMA	286
GA	RCLDGAMA	275
GA	LULAGAMA	250
GA	SPRKGAMA	211
GA	WDBYGAES	205
GA	GBSNGAES	189
GA	CSSTGAMA	183
GA	LMCYGAMA	154
GA	BCTNGAMA	150
GA	GTVLGAMA	139
GA	SRDSGAES	135
GA	LTVLGACS	130
GA	CNCRGAMA	129
GA	GAY-GAMA	117
GA	JHCRGAES	107
GA	KGTNGAMA	105
GA	LERYGAMA	88
GA	SMVLGAMA	81

State	Wire Center	Total Business Lines
KY	LSVLKYAP	49,159
KY	LSVLKYWE	20,756
KY	BWLGKYMA	20,717
KY	LSVLKYBR	16,989
KY	OWBOKYMA	16,304
KY	LSVLKYSM	14,813
KY	FRFTKYMA	14,341
KY	PDCHKYMA	12,334
KY	LSVLKYOAO	12,326
KY	LSVLKYBE	11,028
KY	LSVLKYJT	10,071
KY	LSVLKYSL	9,478
KY	LSVLKYAN	9,159
KY	HPVLKYMA	9,081
KY	LSVLKYTS	7,402
KY	HNSNKYMA	7,141
KY	RCMDKYMA	6,928
KY	MDVIKYMA	6,849
KY	PKVLKYMA	6,810
KY	CRBNKYMA	6,634
KY	WNCHKYMA	6,373
KY	DAVLKYMA	5,671
KY	LSVLKYVS	5,477
KY	LSVLKY26	5,403

State	Wire Center	Total Business Lines
KY	GRTWKYMA	4,856
KY	MRRYKYMA	4,546
KY	LSVLKYSH	4,463
KY	BRTWKYES	4,346
KY	SHVLKYMA	4,067
KY	MYFDKYMA	3,479
KY	PRBGKYES	3,242
KY	MTSTKYMA	2,859
KY	FRFTKYES	2,838
KY	OKGVKYES	2,612
KY	LSVLKYCW	2,595
KY	PDCHKYLO	2,510
KY	PNVLKYMA	2,458
KY	LGRNKYES	2,375
KY	MDBOKYMA	2,258
KY	FKLNKYMA	2,185
KY	LSVLKYFC	2,161
KY	GNVLKYMA	2,135
KY	RLVLKYMA	1,988
KY	HRLNKYMA	1,941
KY	PARSKYMA	1,923
KY	PIVLKYMA	1,777
KY	BNTNKYMA	1,651
KY	HDBGKYMA	1,623

State	Wire Center	Total Business Lines
KY	CYNTKYMA	1,558
KY	WHBGKYMA	1,525
KY	MYVLKYMA	1,513
KY	LRBGKYMA	1,480
KY	RSTRKYES	1,392
KY	CRTNKYMA	1,364
KY	WLBGKYMA	1,310
KY	PRTNKYES	1,284
KY	LSVLKYHA	1,263
KY	JCSNKYMA	1,258
KY	CNCYKYMA	1,181
KY	MGFDKYMA	1,097
KY	SNTNKYMA	1,082
KY	STFRKYMA	1,067
KY	FLTNKYMA	1,003
KY	CADZKYMA	994
KY	SPFDKYMA	974
KY	MGTWKYMA	959
KY	LOUSKYES	940
KY	BVDMKYMA	878
KY	EDVLKYMA	833
KY	EMNNKYES	778
KY	HRBGKYES	778
KY	BYVLKYMA	743

State	Wire Center	Total Business Lines
KY	MARNKYMA	726
KY	PDCHKYRL	696
KY	INEZKYMA	692
KY	HRFRKYMA	685
KY	SWSNKYMA	681
KY	TYVLKYMA	660
KY	PDCHKYIP	657
KY	ALLNKYMA	643
KY	EKTNKYMA	543
KY	VIRGKYMA	535
KY	MARTKYMA	525
KY	OWTNKYMA	511
KY	SSVLKYMA	506
KY	GBVLKYMA	474
KY	STONKYMA	447
KY	HWVLKYMA	443
KY	CRLSKYMA	411
KY	ELCYKYES	409
KY	CLH NKYMA	391
KY	DWSPKYES	370
KY	PRVDKYMA	365
KY	CLTNKYES	359
KY	HCMNKYMA	332
KY	SEBRKYMA	328

State	Wire Center	Total Business Lines
KY	WYLDKYES	321
KY	PKVLKYMT	313
KY	FEBRKYMA	311
KY	STRGKYMA	309
KY	BDFRKYMA	280
KY	LBJTKYMA	277
KY	FDCKKYES	262
KY	DIXNKYMA	255
KY	WRFDKYMA	253
KY	PMBRKYMA	247
KY	DRBOKYES	222
KY	GTHRKYMA	216
KY	GHNTKYMA	214
KY	BLFDKYMA	200
KY	MCWLKYMA	200
KY	NEONKYES	191
KY	NWHNKYMA	187
KY	NRVLKYMA	171
KY	HANSKYMA	168
KY	LVMRKYMA	168
KY	FDVLKYMA	158
KY	RBRDKYMA	158
KY	MCDNKYMA	153
KY	SLPHKYMA	153

State	Wire Center	Total Business Lines
KY	CMBGKYMA	149
KY	WACOKYMA	138
KY	CLAYKYMA	136
KY	BRGNKYMA	135
KY	JNCYKYMA	130
KY	WHVLKYMA	130
KY	CNTNKYMA	127
KY	MACEKYMA	115
KY	SLVSKYMA	114
KY	COTNKYMA	113
KY	WSPNKYMA	108
KY	HABTKYMA	107
KY	ERTNKYMA	103
KY	WDDYKYMA	102
KY	FRDNKYMA	99
KY	WLCKKYES	99
KY	CRBOKYMA	98
KY	STGRKYMA	97
KY	PRVLKYMA	96
KY	CYDNKYMA	95
KY	MRGPKYMA	95
KY	CLPTKYMA	94
KY	SLGHKYMA	93
KY	MLTNKYMA	92

State	Wire Center	Total Business Lines
KY	MLBGKYMA	88
KY	STNLKYMA	88
KY	ENSRKYMA	87
KY	FORDKYMA	86
KY	BNLYKYMA	85
KY	BRMNKYMA	85
KY	NEBOKYMA	81
KY	UTICKYMA	81
KY	AURRKYMA	77
KY	WSBGKYMA	76
KY	CHPLKYMA	72
KY	SCRMKYMA	69
KY	GRACKYMA	67
KY	SHGVKYMA	67
KY	HBVLKYMA	65
KY	BGDDKYMA	63
KY	ISLDKYMA	62
KY	PLRGKYMA	61
KY	EMNNKYPL	60
KY	BWLGKYRV	60
KY	BLSPKYMA	59
KY	SDVLKYMA	54
KY	TRENKYMA	50
KY	PNTHKYMA	46

State	Wire Center	Total Business Lines
KY	WLVLYMA	43
KY	CNTWKYMA	37
KY	FNVLYMA	34
KY	LFYTKYMA	34
KY	WNCHKYPV	34
KY	STCHKYMA	33
KY	MTEDKYMA	31
KY	SRGHKYMA	29
KY	KKVLYMA	22
KY	PTRYKYMA	21
LA	NWORLAMA	71,146
LA	LFYTLAMA	46,825
LA	BTRGLAGW	39,525
LA	BTRGLAMA	39,089
LA	MONRLAMA	37,785
LA	NWORLAMT	31,726
LA	SHPTLAMA	29,790
LA	HOUMLAMA	22,744
LA	ALXNLAMA	22,592
LA	LKCHLADT	20,494
LA	KNNRLABR	20,489
LA	NWORLASW	19,432
LA	KNNRLAHN	18,290
LA	NWORLARV	18,238

State	Wire Center	Total Business Lines
LA	BTRGLAOH	17,237
LA	BTRGLASB	15,829
LA	LKCHLAUN	15,631
LA	SLIDLAMA	15,498
LA	CVTNLAMA	15,328
LA	SHPTLABS	15,177
LA	NWIBLAMA	13,487
LA	LFYTLAVM	12,238
LA	SHPTLASG	12,110
LA	BTRGLAWN	12,090
LA	SHPTLAHD	11,759
LA	HMNDLAMA	10,229
LA	NWORLASK	9,886
LA	RSTNLAMA	9,691
LA	NWORLAMC	9,304
LA	NWORLAMR	9,006
LA	NWORLAAR	7,784
LA	MNVLLAMA	7,660
LA	BTRGLABK	7,613
LA	NWORLAFR	7,544
LA	NWORLABM	7,522
LA	NWORLASC	7,518
LA	SHPTLAQL	6,878
LA	SHPTLAQB	6,824

State	Wire Center	Total Business Lines
LA	BRSSLAMA	6,811
LA	BTRGLASW	6,628
LA	NWORLACM	6,560
LA	NWORLALK	6,559
LA	OPLSLATL	6,308
LA	BTRGLAIS	6,206
LA	DNSPLAMA	6,010
LA	THBDLAMA	5,642
LA	NTCHLAMA	4,982
LA	MRCYLAIN	4,812
LA	LKCHLAMW	4,701
LA	LEVLLAMA	4,414
LA	CRWYLAMA	4,132
LA	ABVLLAMA	3,718
LA	BGLSLAMA	3,477
LA	MINDLAMA	3,399
LA	NWORLAMU	3,390
LA	MONRLADS	3,370
LA	LPLCLAMA	3,343
LA	NWORLACA	3,233
LA	BSTRLAMA	3,030
LA	ZCHRLAMA	2,931
LA	PLQMLAMA	2,910
LA	DRDRLAMA	2,908

State	Wire Center	Total Business Lines
LA	FKTNLAMA	2,738
LA	MONRLAWM	2,689
LA	AMITLAMA	2,561
LA	SLPHLAMA	2,435
LA	EUNCLAMA	2,320
LA	DNVLLAMA	2,298
LA	JNGSLAMA	2,244
LA	ALXNLATG	2,058
LA	CRNCLAMA	2,002
LA	NWORLAAV	1,927
LA	MKVLLAMN	1,897
LA	LLNGLABU	1,711
LA	WNFDLAMA	1,711
LA	BTRGLAHR	1,709
LA	MANYLAMA	1,657
LA	WNBOLAMA	1,624
LA	STGBLAMA	1,622
LA	LEVLLAFP	1,510
LA	MNFDLAMA	1,452
LA	TLLHLAMA	1,421
LA	NWRDLAMA	1,394
LA	PNCHLAMA	1,369
LA	NORCLAMN	1,360
LA	FKLNLAMA	1,337

State	Wire Center	Total Business Lines
LA	RYVLLAMA	1,303
LA	JNBOLAMA	1,265
LA	PASNLAMN	1,254
LA	MRCYLAAM	1,213
LA	TUNCLAMA	1,195
LA	OKDLLAMA	1,161
LA	SMVLLAMA	1,158
LA	FRVLLAMA	1,129
LA	SFVLLAMA	1,112
LA	RAYNLAMA	1,072
LA	YNVLLAAK	1,060
LA	HOMRLAMA	1,057
LA	CLMALAMA	1,014
LA	MDVILAMA	988
LA	JCSNLAMA	982
LA	FRDYLAMA	981
LA	LTCHLAMA	945
LA	LKCHLAMB	940
LA	LCPTLAMA	932
LA	RCLDLAMA	919
LA	VDALLAMA	912
LA	CSHTLAMA	891
LA	OKGVLAMA	883
LA	ARCDLAMA	838

State	Wire Center	Total Business Lines
LA	HGTNLAMA	837
LA	BTRGLABS	835
LA	BUNKLAMA	825
LA	LLNGLAHV	816
LA	NPVLLAMA	811
LA	CLTNLAMA	808
LA	DELHLAMA	800
LA	GRNGLAMA	783
LA	VENCLAMA	748
LA	LKPRLAMA	719
LA	LCMBLAMA	714
LA	KTVLLAMA	712
LA	LVTNLAMA	712
LA	VNTNLAMA	698
LA	STBRLAMA	648
LA	JNVLLAMA	647
LA	KNWDLAMA	601
LA	GNWDLAMA	596
LA	PRRVLAMA	595
LA	BURSLAMA	593
LA	MTGTLAMA	592
LA	JNRTLAMA	577
LA	ALBYLAMA	561
LA	VCHRLAMA	526

State	Wire Center	Total Business Lines
LA	BLNCLAMA	523
LA	BNTNLAMA	506
LA	INDPLAMA	478
LA	PTSLAMA	473
LA	BLDWLAMA	457
LA	CLFXLAMA	426
LA	FLSMLAMA	426
LA	CNVNLAMA	425
LA	DUSNLAMA	422
LA	STTNLAMA	419
LA	PRDSLAMA	395
LA	STJSLAMA	346
LA	LKARLAMA	336
LA	HYVLLAMA	329
LA	BOYCLAMA	320
LA	CNVLLAMA	319
LA	ZWLLAMA	319
LA	PRPRLAMA	308
LA	SPFDLAMA	305
LA	ERTHLAMA	291
LA	WHCSLAMA	288
LA	LGPTLAMA	287
LA	PTBRLAMA	287
LA	OLCYLAMA	285

State	Wire Center	Total Business Lines
LA	LFTTLAMA	260
LA	ANGILAMA	259
LA	ROGNLAMA	255
LA	LCMPLAMA	249
LA	PLLCLAMA	245
LA	GYDNLAMA	233
LA	DULCLAMA	229
LA	WASHLAMA	220
LA	JSBNLAMA	213
LA	CLHNLAMA	211
LA	NWTNLAMA	208
LA	KRSPLAMA	204
LA	MRRGLAMA	201
LA	BERNLAMA	197
LA	MEVLLAMA	185
LA	EDGRLAMA	181
LA	GBSNLAMA	175
LA	HRBGLAMA	175
LA	LRVLLAMA	160
LA	FLRNLAMA	159
LA	MKVLLAHM	156
LA	RBLNLAMA	156
LA	SWLKLAMA	149
LA	LBVLLAMA	148

State	Wire Center	Total Business Lines
LA	PNALLAMA	147
LA	GBDLAMN	146
LA	DBCHLAMA	138
LA	HGTNLAKN	138
LA	ALXNLADV	135
LA	BUSHLAMA	132
LA	DRPGLAMA	125
LA	MYVLLAMA	123
LA	WTPRLAMA	123
LA	PINELAMA	115
LA	CHBYLAMA	113
LA	MTGMLAMA	112
LA	EPPSLAMA	106
LA	MRGZLAMA	103
LA	PLQMLACR	103
LA	SCISLAMA	102
LA	LWTLLAMA	100
LA	MTRYLAMA	97
LA	WKISLAMA	92
LA	NTCHLACR	91
LA	FRVLLADV	85
LA	KTCHLAMA	85
LA	STLNLAMA	79
LA	YSCLLAMA	75

State	Wire Center	Total Business Lines
LA	GRCNLAMA	73
LA	HRNBLAMA	73
LA	CWVLLAMA	70
LA	DYLNLAMA	65
LA	CASTLAMA	61
LA	LEVLLABF	57
LA	WLSNLAMA	53
LA	LSBNLAMA	52
LA	CNVRLAMA	48
LA	BERNLASP	45
LA	GRTWLAMA	45
LA	LOVLLAMA	44
LA	SALNLAMA	44
LA	ARCDLABW	41
LA	LKPRLAAL	41
LA	WNFDLACA	38
LA	FTNCLAMA	37
LA	LKCTLAMA	31
LA	MTHRLAMA	25
LA	LEVLLASN	23
LA	DLCXLAMA	10
MS	JCSNMSCP	40,109
MS	GLPTMSTS	19,492
MS	TUPLMSMA	18,173

State	Wire Center	Total Business Lines
MS	JCSNMSPC	17,299
MS	JCSNMSMB	16,051
MS	MRDNMSTL	15,519
MS	SKVLMSMA	14,601
MS	HTBGMSWE	13,018
MS	HTBGMSMA	12,829
MS	JCSNMSRW	12,461
MS	CLMBMSMA	12,055
MS	BILXMSED	10,677
MS	VCBGMSMA	10,215
MS	LARLMSMA	9,920
MS	MDSNMSES	8,151
MS	GNVLMSMA	7,713
MS	OXFRMSMA	7,451
MS	PSCGMSMA	7,251
MS	BILXMSMA	7,249
MS	JCSNMSBL	6,257
MS	JCSNMSCB	6,133
MS	NTCHMSMA	5,865
MS	GNWDMSMA	5,642
MS	CRNTMSMA	5,517
MS	BRHNMSMA	5,002
MS	BSLSMSMA	4,568
MS	OCSPMSGO	4,475

State	Wire Center	Total Business Lines
MS	MCCMSMA	4,444
MS	GLPTMSLY	4,418
MS	PHLAMSMA	4,384
MS	BRNDMSES	4,128
MS	GRNDMSMA	3,971
MS	PCYNMSMA	3,669
MS	CSDLMSMA	3,631
MS	CLEVMSMA	3,588
MS	CLMAMSMA	3,489
MS	CNTNMSMA	3,368
MS	SOHNMSDC	3,344
MS	BTVLMSDS	3,342
MS	BILXMSDI	3,228
MS	TUNCMSMA	2,886
MS	YZCYMSMA	2,512
MS	NWALMSMA	2,492
MS	PNTTMSMA	2,435
MS	JCSNMSNR	2,419
MS	WSPNMSMA	2,389
MS	HRNNMSDS	2,294
MS	HLSPMSMA	2,267
MS	AMRYMSMA	2,093
MS	RPLYMSMA	2,073
MS	BNVLMSMA	2,039

State	Wire Center	Total Business Lines
MS	KSCSMSMA	2,011
MS	MSPNMSMA	1,912
MS	INDNMSMA	1,909
MS	PSCGMSGGA	1,856
MS	SNTBMSPS	1,763
MS	ITBNMSMA	1,758
MS	WYBOMSMA	1,726
MS	LSVLMSMA	1,707
MS	FORSMSMA	1,683
MS	LCDLMSMA	1,677
MS	WGNSMSMA	1,496
MS	MAGEMSMA	1,407
MS	CRTHMSMA	1,403
MS	WTVYMSMA	1,369
MS	ABRDMSSES	1,341
MS	CLNSMSMA	1,246
MS	PSCHMSLT	1,236
MS	MNDNMSMA	1,200
MS	HSTNMSMA	1,149
MS	TYTWMSMC	1,147
MS	PRVSMSMA	1,117
MS	WINOMSMA	1,115
MS	IUKAMSES	1,087
MS	HZLHMSMA	1,086

State	Wire Center	Total Business Lines
MS	CRSPMSMA	1,058
MS	QTMNMSMA	1,050
MS	PPVLSMA	1,045
MS	ELVLSMA	1,010
MS	PGSNMSMA	975
MS	PSCHMSMA	951
MS	NWTNMSMA	926
MS	LXTNMSMA	885
MS	VRNAMSMA	879
MS	MACNMSMA	824
MS	MNTIMSMA	817
MS	BLZNMSMA	816
MS	RYMNMSDS	805
MS	LELDMSMA	755
MS	RLFKMSMA	734
MS	MRKSMSHW	718
MS	MGNLMSMA	709
MS	EUPRMSFA	675
MS	BLDWMSMF	669
MS	MCCMSSM	662
MS	SLTLMSSU	637
MS	CHTNMSMA	630
MS	MRTNMSMA	611
MS	TYVLSMA	559

State	Wire Center	Total Business Lines
MS	BLMTMSMA	543
MS	OKLNMSMA	543
MS	FYTTMSMA	540
MS	SCOBMSMA	538
MS	WSSNMSMA	504
MS	SRDSMSMA	503
MS	WDVLSMA	492
MS	DKLBMSMA	484
MS	ASLDMSMA	469
MS	RCTNMSMA	450
MS	FLORMSMA	449
MS	LMTNMSSS	440
MS	UNINMSDS	440
MS	PLTNMSMA	426
MS	MNASMSMA	421
MS	DRNTMSMA	413
MS	LBRTMSMA	409
MS	VNCLMSMA	400
MS	HDLBMSMA	396
MS	PLHTMSMA	365
MS	RLGHMSMA	364
MS	HODLMSMA	363
MS	MSTFMSCU	346
MS	HRLYMSMA	345

State	Wire Center	Total Business Lines
MS	TRRYMSMA	338
MS	RLVMSMA	318
MS	DREWMSMA	314
MS	WLNTMSMA	304
MS	CNVMSMA	303
MS	NTTNMSMA	301
MS	RSDLMSMA	298
MS	ENTRMSMA	289
MS	GLSTMSMA	289
MS	CDWRMSMA	282
MS	HPVLMSSU	280
MS	UTICMSDS	271
MS	SMRLMSMA	268
MS	CAFBMSMA	267
MS	SHNNMSMA	266
MS	MABNMSMA	254
MS	SNRYMSMA	248
MS	SMNRMSMA	241
MS	HMTNMSSU	230
MS	BOTNMSMA	226
MS	MTOLMSMA	223
MS	BEMTMSMA	222
MS	CFVMSMA	220
MS	SHLBMSDS	220

State	Wire Center	Total Business Lines
MS	CRTNMSMA	219
MS	COMOMSMA	217
MS	PTCMSSU	216
MS	TTWLMSMA	203
MS	TCHLMSMA	190
MS	EDWRMSDS	188
MS	CLDNMSMA	186
MS	PCKNMSMA	181
MS	VADNMSMA	176
MS	COVLMSSU	175
MS	CRNSMSMA	168
MS	SHAWMSES	168
MS	MCCLMSMA	165
MS	OKLDMSMA	162
MS	WLGVMSSU	162
MS	BKVLMSMA	156
MS	INVRMSMA	156
MS	BRVLMSMA	152
MS	LAKEMSMA	147
MS	MRHDMSMA	146
MS	LULAMSMA	145
MS	OSYKMSMA	144
MS	BUMTMSMA	137
MS	INDPMSSU	137

State	Wire Center	Total Business Lines
MS	OBDHMSMA	128
MS	SHBTMSMA	124
MS	GDMNMSMA	123
MS	SHQLMSMA	120
MS	BNTNMSSU	119
MS	TMSBMSMA	119
MS	BNITMSMA	114
MS	KLMCMSMA	109
MS	MIZEMSMA	109
MS	SRISMSMA	108
MS	BENTMSSU	105
MS	BGCHMSSU	103
MS	JNTWMSMA	86
MS	SNSDMSSU	81
MS	WNRDMSSU	75
MS	BCTNMSMA	72
MS	BRWDMMSMA	72
MS	FRPNMSMA	70
MS	MCLNMSMA	67
MS	SLCKMSMA	67
MS	STRGMSSU	66
MS	LENAMSSU	60
MS	NWTNMSHC	57
MS	CSVLMSSU	51

State	Wire Center	Total Business Lines
MS	ROXIMSMA	51
MS	WESTMSMA	49
MS	DCHLMSMA	48
MS	LYVLSMA	48
MS	SMDLMSSU	43
MS	ETHLMSMA	39
MS	CHNKSSU	38
MS	DNCNMSMA	35
MS	GNSNMSMA	35
MS	DFFEMSMA	31
MS	PACEMSMA	31
NC	CHRLNCCA	85,131
NC	RLGHNCMO	75,174
NC	GNBONCEU	48,789
NC	CPHLNCRO	41,802
NC	GNBONCAS	34,302
NC	WNSLNCFI	33,021
NC	RLGHNCHO	29,561
NC	CARYNCCE	27,888
NC	RLGHNCGL	26,809
NC	CHRLNCBO	24,980
NC	WLMGNCWI	24,794
NC	AHVLNCOH	23,449
NC	WLMGNCFO	21,712

State	Wire Center	Total Business Lines
NC	BURLNCDA	18,608
NC	GSTANCSO	18,239
NC	CHRLNCCR	18,124
NC	CHRLNCDE	17,354
NC	CHRLNCTH	16,835
NC	CHRLNCER	16,269
NC	WNSLNCVI	15,815
NC	RLGHNCSE	15,698
NC	CHRLNCCE	14,766
NC	CHRLNCUN	14,570
NC	SSVLNCMA	14,104
NC	RLGHNCGA	13,552
NC	CHRLNCSH	13,484
NC	DVSNNCPO	13,163
NC	RLGHNCJO	13,036
NC	BOONNCKI	12,100
NC	CHRLNCRE	11,507
NC	SLBRNCMA	11,462
NC	GLBONCMA	11,293
NC	HNVLNCCH	11,116
NC	ARDNNCCE	11,055
NC	GNBONCAP	10,412
NC	LMTNNCMA	10,149
NC	CHRLNCLP	9,811

State	Wire Center	Total Business Lines
NC	RLGHNCSE	8,557
NC	SHLBNCEA	8,196
NC	MGTNNCEG	7,906
NC	NWTNNCEA	7,662
NC	APEXNCEC	7,340
NC	GNBONCEA	7,170
NC	HSVLNCEC	5,608
NC	BURLNCEL	5,593
NC	RDVLNCEA	5,567
NC	WYVLNCEA	5,499
NC	LNTNNCEA	5,414
NC	LENRNCEA	5,264
NC	WNSLNCEG	5,241
NC	WGVLNCEA	5,085
NC	RTTNNCEC	5,044
NC	WNSLNCEC	4,897
NC	AHVLNCEB	4,634
NC	CHRLNCEC	4,470
NC	LRBGNCEA	4,327
NC	RCHMNCEA	4,231
NC	ENKANCEA	4,187
NC	CARYNCEW	3,754
NC	GLBONCEA	3,736
NC	AHVLNCEC	3,445

State	Wire Center	Total Business Lines
NC	GNBONCMC	3,434
NC	WNSLNCWH	3,244
NC	WNSLNCCL	2,846
NC	FRCYNCCE	2,803
NC	KNDLNCCE	2,702
NC	LWLLNCMA	2,631
NC	SOPTNCCE	2,594
NC	KGMTNCMA	2,569
NC	CHRLNCMI	2,468
NC	MTHLNCMA	2,453
NC	RLGHNCDU	2,340
NC	TYVLNCMA	2,329
NC	PMBRNCCE	2,297
NC	DNVRNCMA	2,166
NC	WLMGNCLE	1,994
NC	LENRNCHU	1,980
NC	BLMTNCCE	1,975
NC	SPPNCMA	1,950
NC	ZBLNCCE	1,848
NC	SRFDNCCE	1,705
NC	CNTNCMA	1,702
NC	BCMTNCCE	1,696
NC	NWLDNCCE	1,641
NC	BRGWNCMA	1,637

State	Wire Center	Total Business Lines
NC	SELMNCMA	1,633
NC	BURLNCHA	1,619
NC	GNBONCHO	1,619
NC	HMLTNCMA	1,528
NC	MTOLNCCE	1,527
NC	GSTANCA	1,510
NC	CRBHNCCE	1,466
NC	SCHLNCMA	1,396
NC	WNDLNCPI	1,385
NC	LCSTNCMA	1,277
NC	CHVLNCCE	1,265
NC	GNBONCPG	1,215
NC	HNVLNCMI	1,165
NC	CSHYNCMA	1,093
NC	MGVANCCE	1,071
NC	CLMTNCMA	1,049
NC	WNSLNCAR	1,016
NC	BLRKNCCCE	1,011
NC	SCHLNCHA	999
NC	LNBHNCMA	959
NC	MGTNNCGL	916
NC	MADNNCCE	885
NC	CLYDNCMA	879
NC	TRMNNCMA	879

State	Wire Center	Total Business Lines
NC	LKLRNCCE	839
NC	LTMRCCE	809
NC	FAMTNCMA	712
NC	BSCYNCMA	699
NC	CLEVNCMA	698
NC	ACMENCMA	680
NC	STNLNCCE	656
NC	SWNNCMA	594
NC	LWDLNCCE	569
NC	SXPHNCMA	541
NC	LNTNVCVA	540
NC	FRVWNCMA	536
NC	SSVLNCJE	531
NC	WNSLNCWA	460
NC	GRVRNCMA	456
NC	HNVLCED	440
NC	LCSRNCMA	422
NC	RWLDNCMA	342
NC	MNTINCMA	325
NC	CRLNNCMA	282
NC	ARSNNCMA	246
NC	ELBONCMA	234
NC	STPNNCMA	214
NC	JULNNCMA	185

State	Wire Center	Total Business Lines
NC	ATSNNCMA	183
NC	GTWDNCMA	182
NC	RFFNNCMA	181
NC	GNHMNCMA	175
NC	RDVLNCSI	81
NC	MLTNNCMA	75
NC	GBSNNCMA	73
SC	CLMASCSN	48,403
SC	GNVLSCDT	45,546
SC	GNVLSCLR	33,639
SC	CHTNSCDT	24,703
SC	CHTNSCNO	24,107
SC	MNPLSCES	24,061
SC	SPBGSCMA	22,796
SC	FLRNSCMA	21,513
SC	ARSNSCMA	20,950
SC	CHTNSCDP	17,527
SC	CHTNSCWA	17,022
SC	CLMASCSW	16,053
SC	CLMASCSA	13,939
SC	GRERSCMA	13,799
SC	CLMASCH	13,568
SC	SUVLSCMA	13,556
SC	AIKNSCMA	12,189

State	Wire Center	Total Business Lines
SC	CLSNSCMA	11,369
SC	ORBGSCMA	10,702
SC	SPBGSCWV	10,279
SC	CLMASCDF	8,751
SC	CLMASCAR	8,309
SC	CHTNSCLB	8,206
SC	SENCSCMA	7,655
SC	GNVLSCCR	7,597
SC	GNVLSCH	7,540
SC	GNVLSWE	7,470
SC	CLMASCSU	7,111
SC	ESLYSCMA	6,560
SC	GFNYSCMA	6,419
SC	CLMASCSE	5,994
SC	LYMNSCES	5,462
SC	CMDNSCMA	5,013
SC	NAGSSCMA	4,483
SC	HTVLSMA	4,434
SC	CHTNSCJM	4,282
SC	NWBYSMA	3,656
SC	SPBGSCBS	3,601
SC	UNINSCMA	3,487
SC	YORKSCMA	3,344
SC	DRTNSCMA	3,340

State	Wire Center	Total Business Lines
SC	SPBGSCHW	3,196
SC	SBRKSCSK	2,838
SC	DLLNSCMA	2,683
SC	GNVLSCE	2,500
SC	BEVLSMA	2,461
SC	CHRWSCES	2,420
SC	CLTNSCMA	2,354
SC	CHTNSCJN	2,305
SC	PCKNSCES	2,286
SC	BRWLSCE	2,282
SC	MARNSCMA	2,270
SC	FNINSCES	2,079
SC	CHAPSCCL	2,054
SC	CMDNSCLG	2,014
SC	WLHLSCE	1,985
SC	TRRSSCMA	1,975
SC	BLRGSCMA	1,708
SC	PNTNSCMA	1,571
SC	SPBGSCCV	1,514
SC	WMTNSCPW	1,512
SC	BTBGSCMA	1,337
SC	MLNSSCWP	1,319
SC	STGRSCMA	1,230
SC	WMNSSCES	1,217

Exhibit DW-2

State	Wire Center	Total Business Lines
SC	WCLMSCMA	1,176
SC	LKWLSCRS	1,148
SC	BETNSCMA	1,142
SC	ISPLSCIS	1,116
SC	CLVRSCES	1,090
SC	CLMASCSC	1,040
SC	BMBRSCMA	988
SC	EDFDSCMA	915
SC	PDMTSCES	902
SC	BATHSCMA	887
SC	LBRTSCMA	835
SC	JHTNSCMA	822
SC	ALDLSCMA	794
SC	EDBHSCMA	782
SC	MRTTSCMA	775
SC	BLBGSCMA	768
SC	GNVLSCWP	708
SC	GIVLSCMA	684
SC	CLMASCBQ	672
SC	HNPWSCMA	649
SC	CWPNSCMA	624
SC	DNMKSCES	624
SC	TMVLSCMA	611
SC	ARSNSCAH	603

State	Wire Center	Total Business Lines
SC	SXMLSCMA	572
SC	CENTSCWS	567
SC	NWELSCMA	552
SC	PRSRSCMA	521
SC	TKNASCST	516
SC	SALMSCMA	513
SC	LATTSCLS	454
SC	EOVRSCMA	445
SC	BHISSCMA	413
SC	ARSNSCTV	405
SC	BAVLSMA	341
SC	FLBHSCMA	339
SC	CLMASCPA	306
SC	JNVLSCMA	292
SC	FNVLSCMA	248
SC	PCLTSCMA	237
SC	SCHLSCES	206
SC	LKVWSCMA	188
SC	WHTMSCMA	185
SC	MCCLSCMA	182
SC	CLIOSCMA	157
SC	JONNSCES	124
SC	MARNSCBN	115
SC	SPFDSCMA	115

State	Wire Center	Total Business Lines
SC	HCGVSCMA	81
SC	SHRNSCMA	81
SC	BLNHSCMA	78
TN	NSVLTNMT	78,781
TN	KNVLTNMA	37,284
TN	MMPHTNOA	36,686
TN	MMPHTNBA	34,364
TN	MMPHTNEL	30,973
TN	NSVLTNBW	28,974
TN	MMPHTNGT	26,311
TN	NSVLTNDO	24,914
TN	NSVLTNST	24,911
TN	CHTGTNBR	24,314
TN	MMPHTNMA	23,520
TN	CHTGTNNS	23,166
TN	MMPHTNSL	22,432
TN	KNVLTNWH	21,613
TN	MRBOTNMA	21,045
TN	NSVLTNUN	19,987
TN	NSVLTNCH	18,674
TN	CLVLTNMA	16,182
TN	FKLNTNMA	14,652
TN	MAVLTNMA	14,633
TN	KNVLTNBE	14,601

State	Wire Center	Total Business Lines
TN	CHTGTNDT	14,182
TN	JCSNTNMA	13,916
TN	NSVLTNAP	13,084
TN	MMPHTNCT	12,838
TN	SVVLTNMT	11,599
TN	CLEVTNMA	11,525
TN	LBNNTNMA	10,408
TN	MMPHTNMT	10,289
TN	MRTWTNMA	10,173
TN	JCSNTNNS	9,973
TN	CLMATNMA	9,702
TN	OKRGTNMT	9,423
TN	FKLNTNCC	8,936
TN	HDVLTNMA	8,105
TN	NSVLTNIN	7,931
TN	CRVLTNMA	7,899
TN	MMPHTNST	7,888
TN	NSVLTNMC	7,607
TN	KNVLTNFC	7,378
TN	GDVLTNMA	7,088
TN	SMYRTNMA	6,672
TN	GALLTNMA	6,652
TN	DKSNTNMT	6,191
TN	CHTGTNRB	5,897

State	Wire Center	Total Business Lines
TN	NSVLTNWM	5,829
TN	ATHNTNMA	5,598
TN	CHTGTNRO	5,558
TN	TLLHTNMA	5,533
TN	DYBGTNMA	5,323
TN	KNVLTNYH	4,995
TN	PARSTNMA	4,618
TN	SHVLTNMA	4,467
TN	SPFDTNMA	4,219
TN	UNCYTNMA	3,664
TN	LFLTNTMA	3,412
TN	NWPTTNMT	3,403
TN	NSVLTNBV	3,379
TN	WNCHTNMA	3,355
TN	LRBGTNMA	3,340
TN	GTBGTNMT	3,307
TN	PLSKTNMA	3,229
TN	LNCYTNMA	3,179
TN	MMPHTNFR	3,178
TN	FVLTNMA	3,105
TN	MNCHTNMA	3,049
TN	LXTNTNMA	3,048
TN	CVTNTNMT	2,961
TN	LWBGTNMA	2,866

State	Wire Center	Total Business Lines
TN	NSVLTNCD	2,749
TN	CHTGTNSE	2,683
TN	SVNHTNMT	2,651
TN	JFCYTMA	2,649
TN	BWVLTNMA	2,320
TN	HMBLTNMA	2,319
TN	CLTNTNMA	2,238
TN	DYTNTNMA	2,226
TN	CHTGTNMV	2,166
TN	MMPHTNCK	2,158
TN	NSVLTNHH	2,096
TN	SOVLTNMT	1,997
TN	KGTNTNMT	1,985
TN	LODNTNMA	1,950
TN	PTLDTNMA	1,944
TN	RRVLTNMA	1,918
TN	MDVITNMT	1,915
TN	BLVRTNMA	1,912
TN	RPLYTNMA	1,876
TN	SPHLTNMT	1,824
TN	MSCTTNMT	1,786
TN	ASCYTMA	1,605
TN	MMPHTNWW	1,590
TN	HIMNTNMA	1,568

State	Wire Center	Total Business Lines
TN	SLMRTNMT	1,556
TN	NSVLTNWC	1,552
TN	CMDNTNMA	1,523
TN	MILNTNMA	1,464
TN	SWTWTNMT	1,463
TN	WHHSTNMA	1,422
TN	WVRLTNMT	1,375
TN	HNSNTNMT	1,367
TN	HNTGTNMA	1,321
TN	GTWSTNSW	1,284
TN	TRTNTNMA	1,269
TN	DNRGTNMA	1,248
TN	SDDSTNMA	1,241
TN	MCKNTNMA	1,216
TN	CRHTNMA	1,132
TN	JSPRTNMT	1,127
TN	ARTNTNMT	1,117
TN	MMPHTNHP	1,092
TN	CRHLTNCB	1,082
TN	CNVLTNMA	1,077
TN	RKWDTNMA	1,052
TN	MYVLTNMA	1,031
TN	HHNWTNMA	1,030
TN	OLHCTNMA	1,012

State	Wire Center	Total Business Lines
TN	SPBGTNMA	982
TN	CHTGTNSM	977
TN	NSVLTNAA	925
TN	WHBLTNMT	906
TN	DOVRTNMT	890
TN	NSVLTNBH	884
TN	BLGPTNMA	869
TN	JLLCTNMA	868
TN	ETWHTNMT	820
TN	MNPLTNMA	795
TN	FRVWTNMT	773
TN	BNTNTNMT	770
TN	CHTGTNHT	725
TN	CLDGTNMA	690
TN	HTVLTNMA	675
TN	PSVWTNMT	653
TN	SPCYTNMT	614
TN	OLSPTNMA	605
TN	SANGTNMT	581
TN	NWBRTNMA	573
TN	CHTNTNMT	555
TN	DCTRNTMT	524
TN	GNBRTNMA	507
TN	HLLSTNMT	506

State	Wire Center	Total Business Lines
TN	LYLSTNMA	484
TN	NRRSTNMA	481
TN	LKCYTNMA	466
TN	WHPITNMA	458
TN	SNVLTNMA	455
TN	TPVLTNMA	445
TN	WRTRTNMT	436
TN	TWNSTNMA	396
TN	CHRLTNMT	391
TN	WHVLTNMT	377
TN	BLLSTNMA	376
TN	LYBGTNMT	363
TN	TROYTNMT	351
TN	GRNBTNMA	335
TN	WHWLTNMA	322
TN	GNFDTNMT	315
TN	SEWNTNMW	314
TN	SRVLTNMA	295
TN	MDTNTNMA	286
TN	DYERTNMT	279
TN	MCWNTNMT	260
TN	MSCWTNMA	258
TN	GDJTTNMA	246
TN	CRPLTNMA	241

State	Wire Center	Total Business Lines
TN	HRFRTNMA	236
TN	SMTWTNMA	234
TN	GLSNTNMA	231
TN	WTTWTNMA	223
TN	CMCYTNMT	205
TN	MEDNTNMA	201
TN	EAVLTNMA	200
TN	HNNGTNMA	197
TN	BTSPTNMA	186
TN	FIVLTNMA	178
TN	RDGLTNMA	163
TN	BGSNTNMA	157
TN	TRINTNMA	156
TN	HNLDTNMA	155
TN	HRNBTNMT	149
TN	KNTNTNMA	146
TN	ACHLTNMT	144
TN	FLVLTNMA	136
TN	LYVLTNMA	127
TN	CNHMTNMA	126
TN	PTBGTNMA	122
TN	BLNCTNMT	88
TN	FRDNTNMA	87
TN	VNLRTNMA	69

State	Wire Center	Total Business Lines
TN	GBSNTNMT	65
TN	CULKTNMA	52
TN	PLMYTNMA	46
TN	SNTFTNMA	46
TN	WLPTTNMA	43
TN	HMPSTNMA	39

Appendix 6

Glossary of Terms

1. **Wire Center:** A wire center is the location of an incumbent LEC local switching facility containing one or more central offices. The wire center boundaries define the area in which all customers served by a given wire center are located.
2. **Business Line:** A business line is an incumbent LEC owned switched access line used to serve a business customer, whether by the incumbent LEC itself or by a competitive LEC that leases the line from the incumbent LEC. The number of business lines in a wire center shall equal the sum of all incumbent LEC business switched access lines, plus the sum of all UNE loops connected to that wire center, including UNE loops provisioned in combination with other unbundled elements. Among these requirements, business line tallies (1) shall include only those access lines connecting end-user customers with incumbent LEC end-offices for switched services, (2) shall not include non-switched special access lines, (3) shall account for ISDN and other digital access lines by counting each 64 kbps-equivalent as one line. For an example, a DS1 line corresponds to 24 64kbps-equivalents, and therefore to 24 "business lines."
3. **MAREVS:** BellSouth's main Management Reporting and Revenue Management System. MAREVS' primary input interface is the billing platforms of CRIS and CABS. The purpose of MAREVS is to identify all revenue related to products and to business units. Revenue data underlying the revenue journals and General Ledger revenues are assigned to products and business units using rules embedded in the MAREVS model. Statistical data, such as access lines, messages and minutes of use, representing volume of business drivers are assigned to products and business units. Income Statement revenues are based on booked revenue from MAREVS, but this system does not have customer or transaction detail. The result of MAREVS process is the assignment of the Company's revenue to regulated or non-regulated products.
4. **CRIS/CABS:** These are the main billing systems in use at BellSouth. CRIS is typically used as the billing system for wireless, payphone and resale. CABS, on the other hand, is the billing platform for IXC and CLEC. The primary input interface for these systems is the completed job order database. In addition, these two systems interface with MAREVS for revenue reporting.
5. **SMAS:** Strategic Marketing Analysis System (SMAS) is a marketing and forecasting system used by BellSouth to perform operational forecasting and budget analysis. CABS and CRIS billing platforms and MAREVS are the main input interface. SMAS output includes aggregate line count by state and wire centers.
6. **UNE:** Unbundled Network Element (UNE).
7. **DS1:** A digital local loop having a total digital signal speed of 1.544 megabits per second. A DS1 includes, but is not limited to, two-wire and four-wire copper loops capable of providing high-bit rate digital subscriber line services, including T1 services.
8. **DS3:** A digital local loop having a total digital signal speed of 44.736 megabits per second.
9. **EEL:** Enhanced Extended Link is a high capacity digital loop that allows CLECs to serve

customers without having to collocate in every central office. EELS are typically provisioned on DS1 and DS3 pipes.

10. DS0: A digital local loop having a total digital signal speed of 64 kilobits per second.
11. NAR: Network Access Register, is a centrex term describing a Central Office register which is required to complete a call involving access to the network outside the confines of that centrex Central Office.
12. MegaLink/LightGate: Defined in BellSouth USOC manual as type of NAR used to provide inward or outward channel service per line or trunk.
13. VUMXX: Volume Measured Usage is defined in BellSouth USOC manual as a type of NAR lines or trunk used in combination to provide exchange access service via MegaLink or LightGate.