

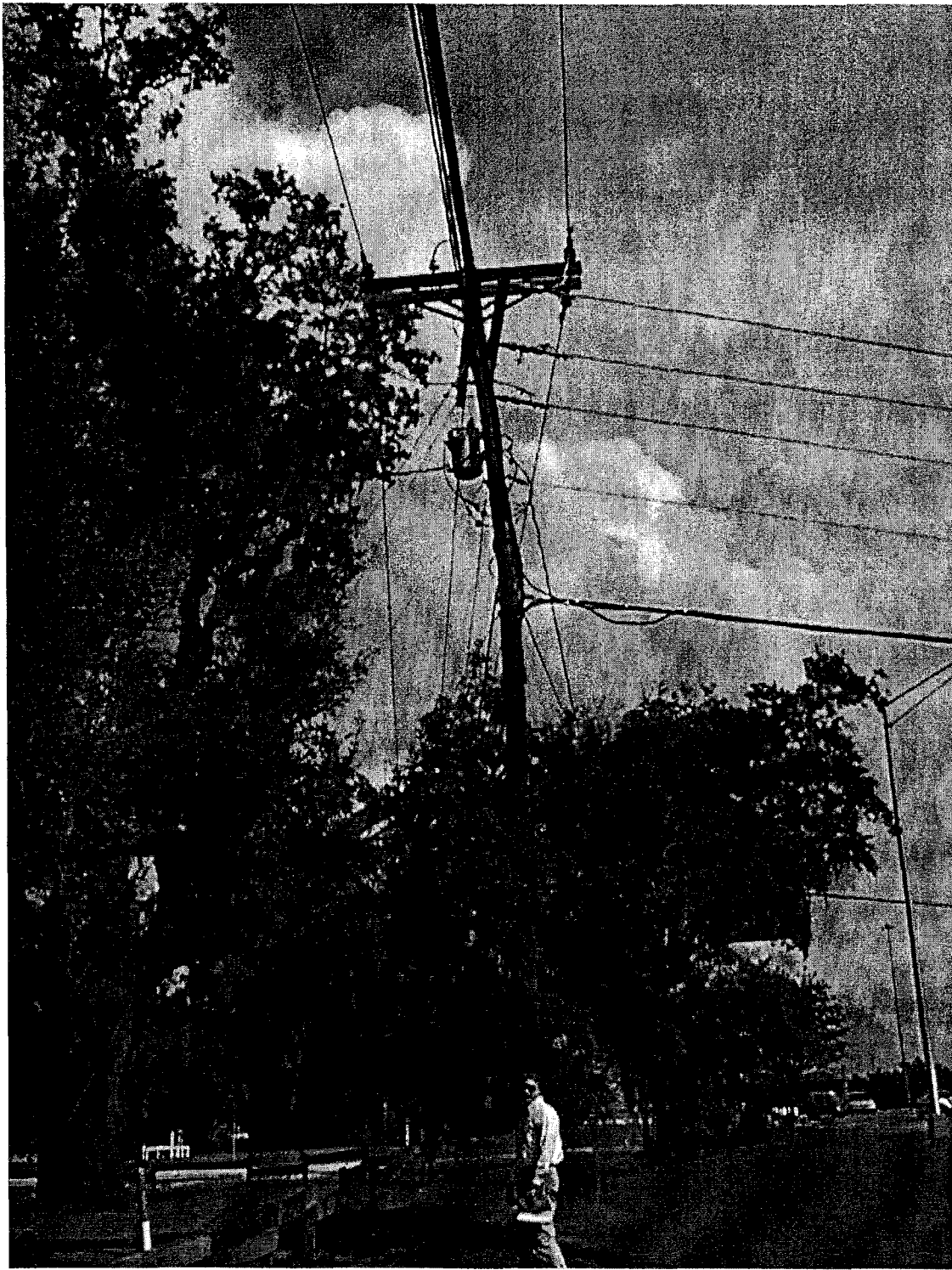
ORIGINAL

Appendix A

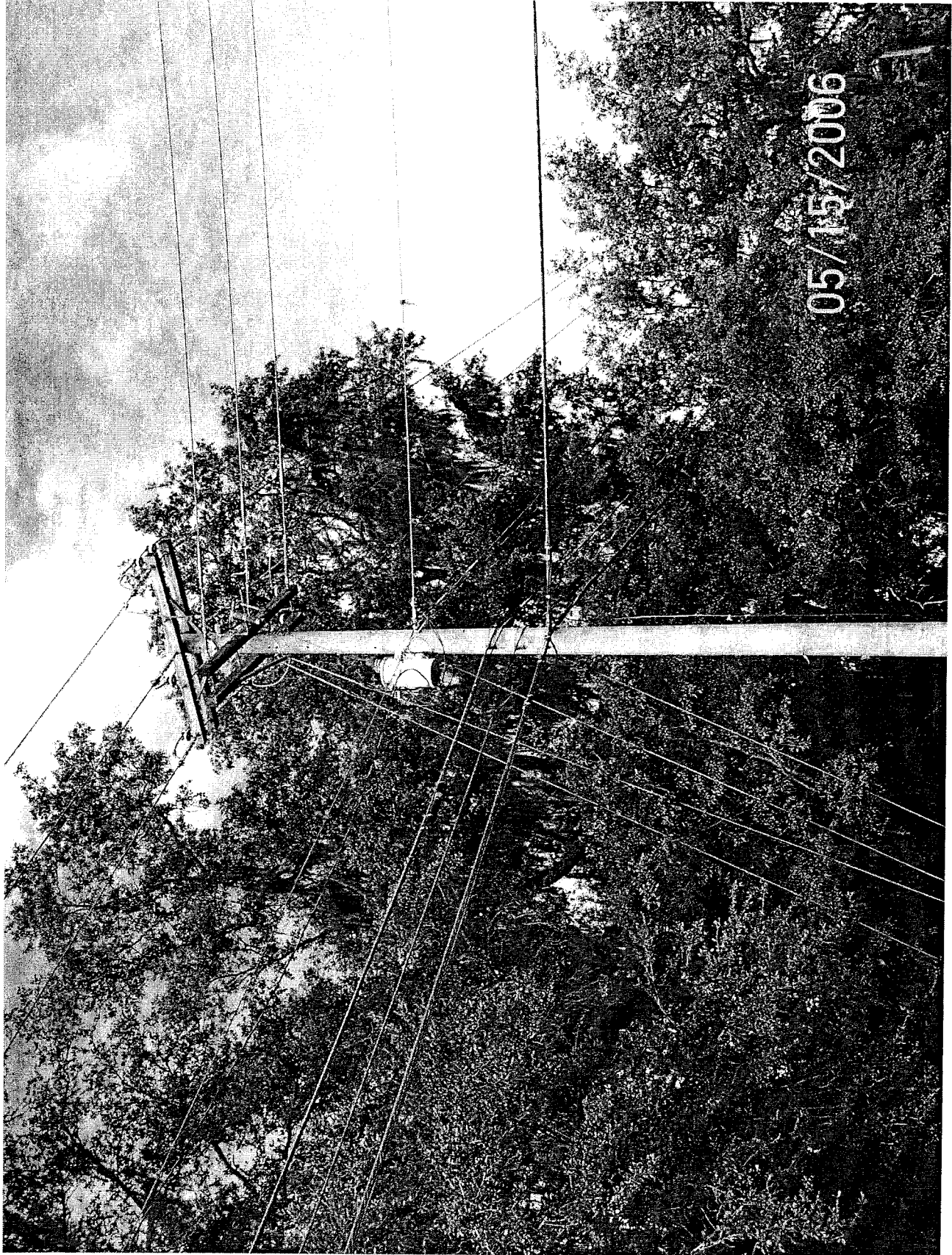
DOCUMENT NUMBER-DATE

04610 MAY 26 8

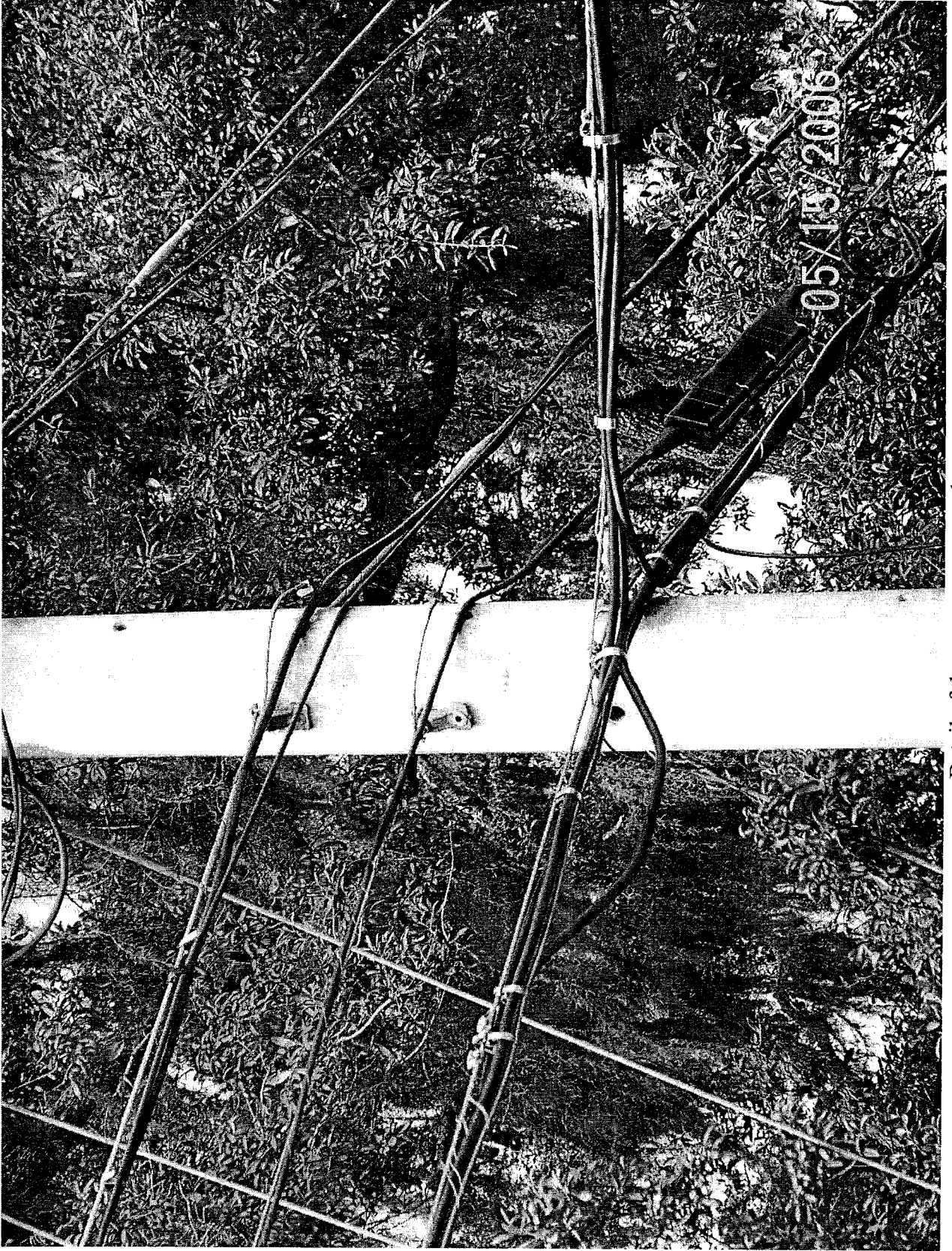
FPSC-COMMISSION CLERK



This is a pole found in the field while working on another project. It is obvious that the attachment is overloading the pole, but a loading analysis proved that a CATV company overloaded the pole by a) installing a 300 foot span of cable over 8 lanes of vehicle traffic with two additional over lashings of fiber, and b) the cable had inadequate guying to hold up the additional weight of the cable and caused the pole to split. The original pole was a 45ft class 4 wood pole.



A special order spun concrete pole was installed in order to correct the bent pole situation.



Detail of the spun concrete pole