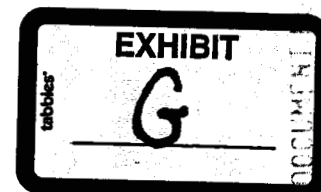


LEGAL DESCRIPTION

All of Sections 1, 2, 3, 10, 11, 12, 13, 14, and 15 in Township 34 South, Range 36 East, Okeechobee County, Florida, less and except the following described lands:

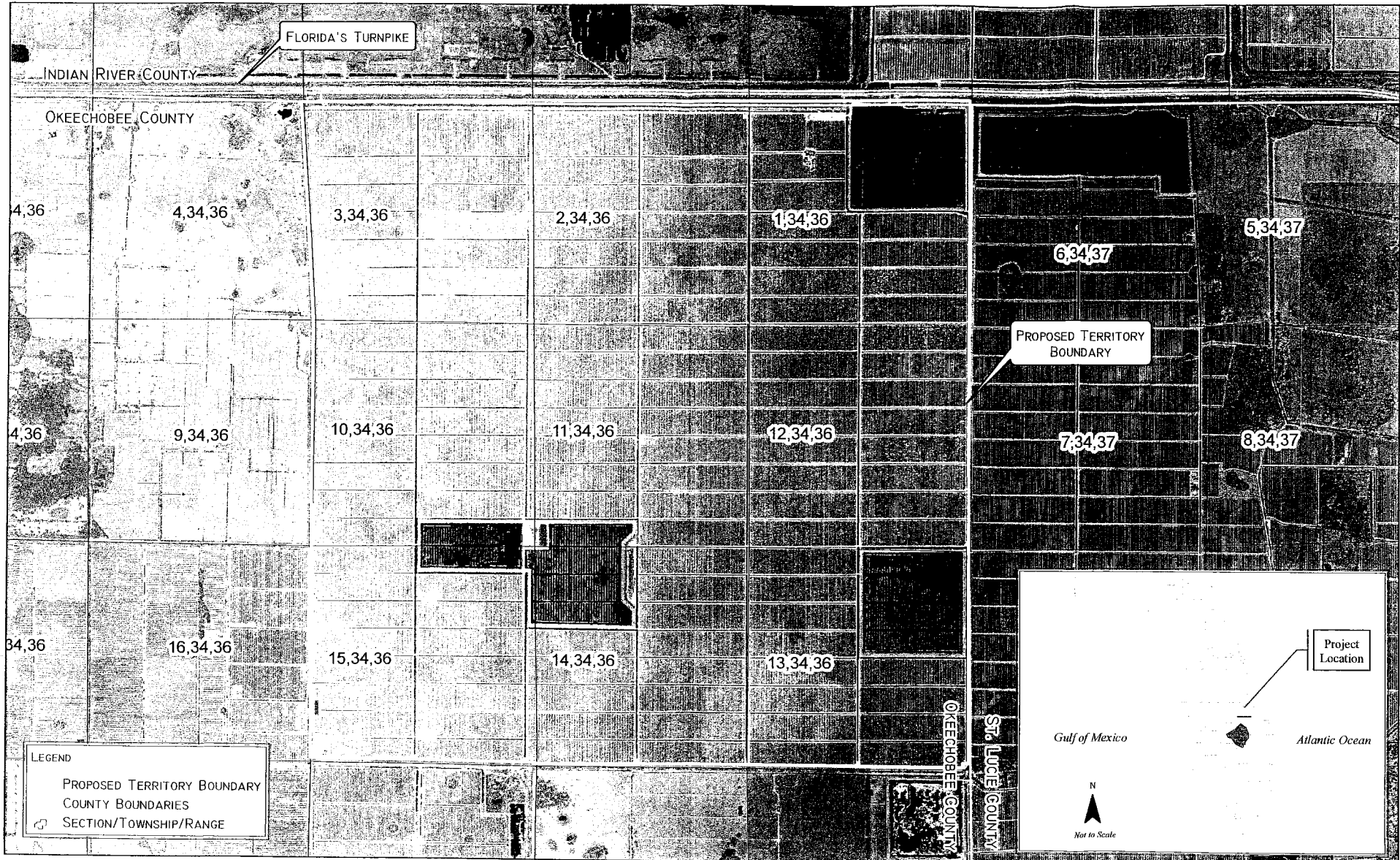
Beginning at a concrete monument marking the Southeast corner of said Section 13, run N89°26'05" W a distance of 5284 , 42' to an iron pipe marking the Southwest corner of said Section 13; thence run S89°42'28" W a distance of 5114.05' along the south line of Section 14 to an iron pipe at the S.W. corner thereof; thence run N89°31'14" W along the south line of Section 15 a distance of 5302.02' to a concrete monument marking the Southwest corner of said Section 15; thence run N 00°00'14" E along the West line of Section 15 a distance of 174.49'; thence run S 89°12'07"E along a fence line a distance of 5302.87' to a point which is 145' North of the Southwest corner of said Section 14; thence run S 00° 12'46" W a distance of 20.0'; thence run N 89°42'28" E along a line lying parallel to and 125' North of the South line of Section 14 a distance of 5113.88' to a point which is 125' North of the Southwest corner of Section 13; thence run S 89°26'05" E along a line parallel to and 125' North of the South line of Section 13 a distance of 5149.10' to a point which is 135' West and 125' North of the Southeast corner of Section 13; thence run N 00°00'22" W a distance of 100'; thence run S 89°26'05"E a distance of 135' to the East line of said Section 13; thence run S 00°00'22" E a distance of 225' to the point of beginning at the Southeast corner of Section 13, Township 34 South, Range 36 East, Okeechobee County, Florida.



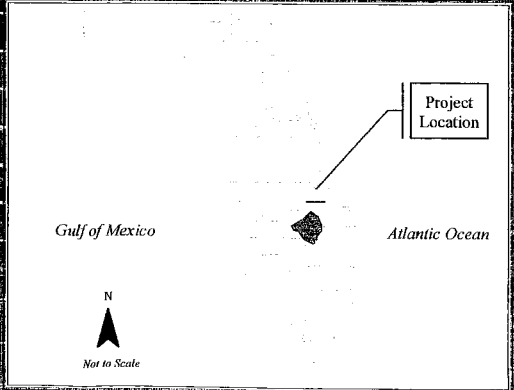
INDEX DATE
09359 OCT -98

FPSC-COMMISSION CLERK

JULY 7, 2006
P:\05-02A\GIS\THE GROVE UTILITY CO. PROPOSED TERRITORY_BOUNDARY_1.MXD



LEGEND
PROPOSED TERRITORY BOUNDARY
COUNTY BOUNDARIES
SECTION/TOWNSHIP/RANGE



*AERIALS: 2004 TRUE COLOR 1-METER RESOLUTION
SOURCE: LABINS



THE GROVE UTILITY CO.
EXHIBIT F: TERRITORIAL DESCRIPTION MAP

