

AUSLEY MCMULLEN

ATTORNEYS AND COUNSELORS AT LAW

123 SOUTH CALHOUN STREET
P.O. BOX 391 (ZIP 32302)
TALLAHASSEE, FLORIDA 32301
(850) 224-9115 FAX (850) 222-7560

FILED APR 01, 2015
DOCUMENT NO. 01783-15
FPSC - COMMISSION CLERK

April 1, 2015

VIA: ELECTRONIC FILING

Ms. Carlotta S. Stauffer
Commission Clerk
Florida Public Service Commission
2540 Shumard Oak Boulevard
Tallahassee, FL 32399-0850

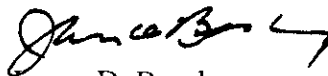
Re: Petition of Tampa Electric Company for Approval of Revised Underground Residential Distribution Tariff

Dear Ms. Stauffer:

Attached for filing in the above-styled matter is Tampa Electric Company's Petition for Approval of Revised Tariffs for Underground Residential Distribution.

Thank you for your assistance in connection with this matter.

Sincerely,


James D. Beasley

JDB/pp
Attachment

BEFORE THE FLORIDA PUBLIC SERVICE COMMISSION

In re: Petition of Tampa Electric Company)
for Approval of Revised Underground)
Residential Distribution Tariff.)
_____)

DOCKET NO. _____

FILED: April 1, 2015

**PETITION OF
TAMPA ELECTRIC COMPANY**

In accordance with Commission Rule 28-6078(2), F.A.C., Tampa Electric Company (“Tampa Electric” or “the company”) files this Petition for Approval of Revised Tariffs for Underground Residential Distribution. A listing of the revised tariff sheets is provided in Exhibit “A”. The revised tariff sheets containing updated Underground Residential Distribution (URD) charges reflecting the cost differential between overhead (OH) and underground (UG) distribution service are attached hereto in standard and legislative formats as Exhibits “B” and “C”, respectively. Form PSC/EAG 13, *Overhead/Underground Residential Differential Cost Data*, is provided in Exhibit “D”. In support thereof, the company says:

1. The name, address, telephone number and facsimile number of the petitioner are:

Tampa Electric Company
Post Office Box 111
Tampa, FL 33601
(813) 228-4111
(813) 228-1770 (fax)

2. Tampa Electric is an investor-owned public utility subject to the jurisdiction of the Commission under Chapter 366, Florida Statutes.

3. All notices, pleadings and correspondence required to be served on the Petitioner should be directed to:

James D. Beasley
J. Jeffry Wahlen
Ashley M. Daniels
Ausley & McMullen
Post Office Box 391

Paula Brown, Manager
Regulatory Coordination
Tampa Electric Company
Post Office Box 111
Tampa, FL 33602

Tallahassee, FL 32302
(850) 224-9115
(850) 222-7960 (fax)
jbeasley@ausley.com (email)
jwahlen@ausley.com (email)
adaniels@ausley.com (email)

(813) 228-1444
(813) 228-1770 (fax)
regdept@tecoenergy.com (email)

Background

3. Pursuant to Rule 25-6.078(2), F.A.C., Tampa Electric is required to file, on or before April 1st, updated URD tariffs and supporting data at least once every three years. Tampa Electric's current URD charges were approved in 2012. Tampa Electric's proposed URD charges reflect current labor and material costs from the previous twelve-month period and are prepared in accordance with the requirements of Rules 25-6.064, 25-6.078, and 25-6.115, F.A.C.

Proposed "Per Lot" Charges for Low Density and High Density Subdivisions

4. Tampa Electric's proposed differential charge for low density URD subdivisions is \$373.86 per lot, a 15.1% decrease from the current charge of \$440.31 per lot. The decrease in the proposed low density "per lot" charge is primarily attributable to OH costs increasing at a higher rate than UG costs and a 8.3 % decrease in the Net Present Value life-cycle operational costs ("NPV operational cost") of the UG system.

5. The company's proposed high density charge is \$47.64 per individually-metered lot, a decrease of 54.2% from the current charge of \$103.95 per lot. The decrease in the proposed low density "per lot" charge is primarily attributable to OH costs increasing at a higher rate than UG costs and a 6% decrease in the NPV operational costs of the UG system.

Proposed Charges for UG Services from OH Distribution Sources

6. For new single-phase UG services from OH distribution sources, the proposed Fixed Charge, representing fixed labor and material costs that are not impacted by the variable service length, has increased from \$43.51 to \$56.58 for 2/0 UG service laterals and from \$85.86

to \$95.75 for 4/0 UG service laterals. The increases in the Fixed Charges reflect lower NPV operational costs for OH services.

7. The proposed “Per Trench Foot” charges have decreased from \$10.55 to \$9.94 per foot for 2/0 cable and from \$10.84 to \$10.27 per foot for 4/0 cable. The decrease in “Per Trench Foot” charges is due to a reduction in contractor labor cost for machine trenching.

8. The proposed credit for avoiding a service pole has decreased from \$576.69 to \$534.28 as a result of the lower pole costs.

Proposed Charges for Conversion of Existing OH Services to UG

9. For converted single phase UG services, the proposed OH service removal charge has decreased from \$115.30 to \$111.45 for service cable only and has decreased from \$576.69 to \$508.66 when removal involves a service pole.

10. Tampa Electric is also proposing updated non-refundable deposit charges for binding estimates conversion of existing OH distribution facilities to UG.

11. Tampa Electric knows of no disputed issues of material fact relative to the tariff revisions proposed herein.

WHEREFORE, Tampa Electric requests that this Commission consent to the above described revised tariff sheets as set forth in Exhibit “B” under the provisions of Section 366.03(3), Florida Statutes.

Dated this 1st day of April, 2015.

Respectfully submitted,



JAMES D. BEASLEY
J. JEFFRY WAHLEN
ASHLEY M. DANIELS
Ausley & McMullen
Post Office Box 391
Tallahassee, FL 32302
(850) 224-9115

ATTORNEYS FOR TAMPA ELECTRIC COMPANY

EXHIBIT A

**PROPOSED REVISIONS TO TAMPA ELECTRIC COMPANY'S
UNDERGROUND RESIDENTIAL DISTRIBUTION TARIFF**

TARIFF SHEET NO.	REVISIONS/COMMENTS
5.510	Updated with proposed "per service lateral" charges for both low and high density URD subdivisions and the "fixed" and "per trench foot" charges for new UG service laterals from overhead distribution systems.
5.515	Updated with proposed removal, fixed, and "per trench foot" charges UG service laterals converted from existing overhead service drops and the credit applied to long UG service lateral for avoided service pole cost.
5.516	Updated the non-refundable deposit amounts for binding estimates based on actual CPI-U values from 2014.

EXHIBIT B



Continued from Sheet No. 5.500

3.6.5.1 Single Meter Commercial Service

Mobile Home Parks will be supplied single-meter commercial service only where park owner or operator supplies (furnishes) electrical service as a part of his rental and/or general service charge to tenants. Resale of electric energy through park owned meters will not be permitted (See 2.2.1)

3.6.5.2 Individual Company Metered Service

Mobile Home Parks will be supplied through company installed individual meters for individual tenants and other types of service required in park under the provisions required on 3.4.3 and 3.4.4 and the subparts appertaining thereto.

3.6.6 Miscellaneous Types of Electric Service

Certain other types of electric service are available from the company. Information on such services not specifically covered in this Tariff may be obtained at the nearest company office. Such special cases will be given individual consideration.

3.7 SCHEDULE OF STANDARD CHARGES AND NON-REFUNDABLE DEPOSITS FOR COST ESTIMATES FOR UNDERGROUND ELECTRIC DISTRIBUTION SYSTEMS

3.7.1 Standard Charges

The Standard Charges listed here are Contributions In Aid of Construction (CIAC) which are referenced by other sections of these rules and regulations.

3.7.1.1 Residential Subdivision

Low Density Subdivisions per service lateral or dwelling unit...	\$373.86
High Density Subdivisions per service lateral or dwelling unit...	\$47.64

3.7.1.2 New Single-phase UG Service Laterals from Overhead Distribution Systems

Fixed Charge for 2/0 service lateral	\$56.58
Fixed Charge for 4/0 service lateral	\$95.75
Per trench foot charge for 2/0 service lateral	\$9.94
Per trench foot charge for 4/0 service lateral	\$10.27
Credit for service pole if otherwise required for overhead service	\$534.28

Continued to Sheet No. 5.515



Continued from Sheet No. 5.510

3.7.1.3 Single-phase UG Service Laterals Converted from Existing Overhead Service Drops

Removal charge for overhead service with no service pole	\$111.45
Removal charge for overhead service with a service pole	\$508.66
Fixed Charge for 2/0 service lateral	\$56.58
Fixed Charge for 4/0 service lateral	\$95.75
Per trench foot charge for 2/0 service lateral	\$9.94
Per trench foot charge for 4/0 service lateral	\$10.27
Credit for service pole if otherwise required for overhead service	\$534.28

Continued to Sheet No. 5.516



Continued from Sheet No. 5.515

3.7.2 Non-refundable Deposits for Estimates of CIAC for Conversion of Existing Overhead Distribution Facilities to Underground Facilities

Qualified applicants can request, upon payment of a non-refundable deposit as listed below, the conversion of overhead distribution facilities to underground in accordance with these Rules and Regulations for conversion areas of not less than one (1) city block in length along both sides of the main distribution system, or in the absence of city blocks, not less than five (5) contiguous building lots along both sides of the main distribution system, or in the absence of both, not the less than 600 pole-feet of the main distribution system, including all customers served along both sides of the main distribution system, and so as to result in a decrease in the number of non-lighting poles in the system.

Requests for conversions, except for individual residential service covered under Section 3.4.3.3, will be accompanied by a non-refundable amount as follows:

Density Class	Deposit Amount
Urban Commercial or Residential.....	\$9,346 per mile*
Rural Commercial or Residential.....	\$5,466 per mile*
High or Low Density Subdivision.....	\$ 45 per lot

* As measured along the existing overhead primary and secondary distribution system.

EXHIBIT C



Continued from Sheet No. 5.500

3.6.5.1 Single Meter Commercial Service

Mobile Home Parks will be supplied single-meter commercial service only where park owner or operator supplies (furnishes) electrical service as a part of his rental and/or general service charge to tenants. Resale of electric energy through park owned meters will not be permitted (See 2.2.1)

3.6.5.2 Individual Company Metered Service

Mobile Home Parks will be supplied through company installed individual meters for individual tenants and other types of service required in park under the provisions required on 3.4.3 and 3.4.4 and the subparts appertaining thereto.

3.6.6 Miscellaneous Types of Electric Service

Certain other types of electric service are available from the company. Information on such services not specifically covered in this Tariff may be obtained at the nearest company office. Such special cases will be given individual consideration.

3.7 SCHEDULE OF STANDARD CHARGES AND NON-REFUNDABLE DEPOSITS FOR COST ESTIMATES FOR UNDERGROUND ELECTRIC DISTRIBUTION SYSTEMS

3.7.1 Standard Charges

The Standard Charges listed here are Contributions In Aid of Construction (CIAC) which are referenced by other sections of these rules and regulations.

3.7.1.1 Residential Subdivision

Low Density Subdivisions per service lateral or dwelling unit...	\$440.31 373.86
High Density Subdivisions per service lateral or dwelling unit...	\$103.95 47.64

3.7.1.2 New Single-phase UG Service Laterals from Overhead Distribution Systems

Fixed Charge for 2/0 service lateral	\$43.51 56.58
Fixed Charge for 4/0 service lateral	\$85.86 95.75
Per trench foot charge for 2/0 service lateral	\$10.55 9.94
Per trench foot charge for 4/0 service lateral	\$10.84 10.27
Credit for service pole if otherwise required for overhead service	\$576.69 534.28

Continued to Sheet No. 5.515



Continued from Sheet No. 5.510

3.7.1.3 Single-phase UG Service Laterals Converted from Existing Overhead Service Drops

Removal charge for overhead service with no service pole	\$ 145.30 <u>111.45</u>
Removal charge for overhead service with a service pole	\$ 376.86 <u>508.66</u>
Fixed Charge for 2/0 service lateral	\$ 43.51 <u>56.58</u>
Fixed Charge for 4/0 service lateral	\$ 85.86 <u>95.75</u>
Per trench foot charge for 2/0 service lateral	\$ 10.55 <u>9.94</u>
Per trench foot charge for 4/0 service lateral	\$ 10.84 <u>10.27</u>
Credit for service pole if otherwise required for overhead service	\$ 576.69 <u>534.28</u>

Continued to Sheet No. 5.516



Continued from Sheet No. 5.515

3.7.2 Non-refundable Deposits for Estimates of CIAC for Conversion of Existing Overhead Distribution Facilities to Underground Facilities

Qualified applicants can request, upon payment of a non-refundable deposit as listed below, the conversion of overhead distribution facilities to underground in accordance with these Rules and Regulations for conversion areas of not less than one (1) city block in length along both sides of the main distribution system, or in the absence of city blocks, not less than five (5) contiguous building lots along both sides of the main distribution system, or in the absence of both, not the less than 600 pole-feet of the main distribution system, including all customers served along both sides of the main distribution system, and so as to result in a decrease in the number of non-lighting poles in the system.

Requests for conversions, except for individual residential service covered under Section 3.4.3.3, will be accompanied by a non-refundable amount as follows:

Density Class	Deposit Amount
Urban Commercial or Residential.....	\$8,9529,346 per mile*
Rural Commercial or Residential.....	\$5,2365,466 per mile*
High or Low Density Subdivision.....	\$ <u>43-45</u> per lot

* As measured along the existing overhead primary and secondary distribution system.

EXHIBIT D

TABLE OF CONTENTS

<u>Form No.</u>	<u>Title</u>	<u>Page</u>
13.1	Overhead vs. Underground Summary Sheet Single Occupancy 210 Lot Subdivision	1
13.2	Cost Per Service Lateral Overhead Materials and Labor Single Occupancy 210 Lot Subdivision	2
13.3	Cost Per Service Lateral Underground Materials and Labor Single Occupancy 210 Lot Subdivision	3
13.4	Typical Single Occupancy 210 Lot Subdivision Layouts	4-5
13.5	Overhead vs. Underground Summary Sheet Single Occupancy 176 Lot Subdivision (Individually Metered)	6
13.6	Cost per Service Lateral Overhead Materials and Labor Single Occupancy 176 Lot Subdivision - Individually Metered	7
13.7	Cost per Service Lateral Underground Materials and Labor Single Occupancy 176 Lot Subdivision - Individually Metered	8
13.8	Overhead vs. Underground Summary Sheet Single Occupancy 176 Lot Subdivision - Multi-Unit Meter Centers	9
13.9	Cost per Dwelling Overhead Materials and Labor Single Occupancy 176 Lot Subdivision - Multi-Unit Meter Centers	10
13.10	Cost per Dwelling Underground Materials and Labor Single Occupancy 176 Lot Subdivision - Multi-Unit Meter Centers	11
13.11	Typical Single Occupancy 176 Lot Subdivision Layouts	12-13
13.12	Average Underground Feeder Costs	14
13.13	Actual Operating and Maintenance Distribution Expenses for Overhead and Underground	15
13.14	Joint Trenching with Other Utilities in Residential Subdivisions	16-17

OVERHEAD VS UNDERGROUND SUMMARY SHEET

Single Occupancy Low Density 210 Lot Subdivision
 Cost per Lot

ITEM	OVERHEAD	UNDERGROUND	DIFFERENTIAL
Labor	\$633.70	\$1,132.22	\$498.52
Material	\$635.56	\$994.66	\$359.10
TOTAL	\$1,269.26	\$2,126.88	\$857.62
NPV Operational Cost Including Storm Restoration and Lost Pole Attachment Revenue	\$1,390.20	\$906.44	-\$483.76
TOTAL Including NPV Operational Cost	\$2,659.46	\$3,033.32	\$373.86

COST PER SERVICE LATERAL OVERHEAD MATERIAL AND LABOR

Single Occupancy Low Density 210 Lot Subdivision
Cost per Lot

ITEM	MATERIAL	LABOR ¹	TOTAL
Service ²	\$80.17	\$135.88	\$216.05
Primary	\$11.00	\$33.11	\$44.11
Secondary	\$104.06	\$144.11	\$248.17
Initial Tree Trim	\$0.00	\$0.00	\$0.00
Poles	\$137.90	\$178.12	\$316.02
Transformers	\$181.99	\$76.82	\$258.81
Subtotal	\$515.12	\$568.04	\$1,083.16
Stores Handling ³	\$120.44	\$0.00	\$120.44
Subtotal	\$635.56	\$568.04	\$1,203.60
Engineering	\$0.00	\$65.66	\$65.66
TOTAL	\$635.56	\$633.70	\$1,269.26

¹ Includes Administration, General, Energy Delivery Supervision, & Transportation

² Includes Meter

³ 23.38% of all Material

COST PER SERVICE LATERAL UNDERGROUND MATERIAL AND LABOR

Single Occupancy Low Density 210 Lot Subdivision
Cost per Lot

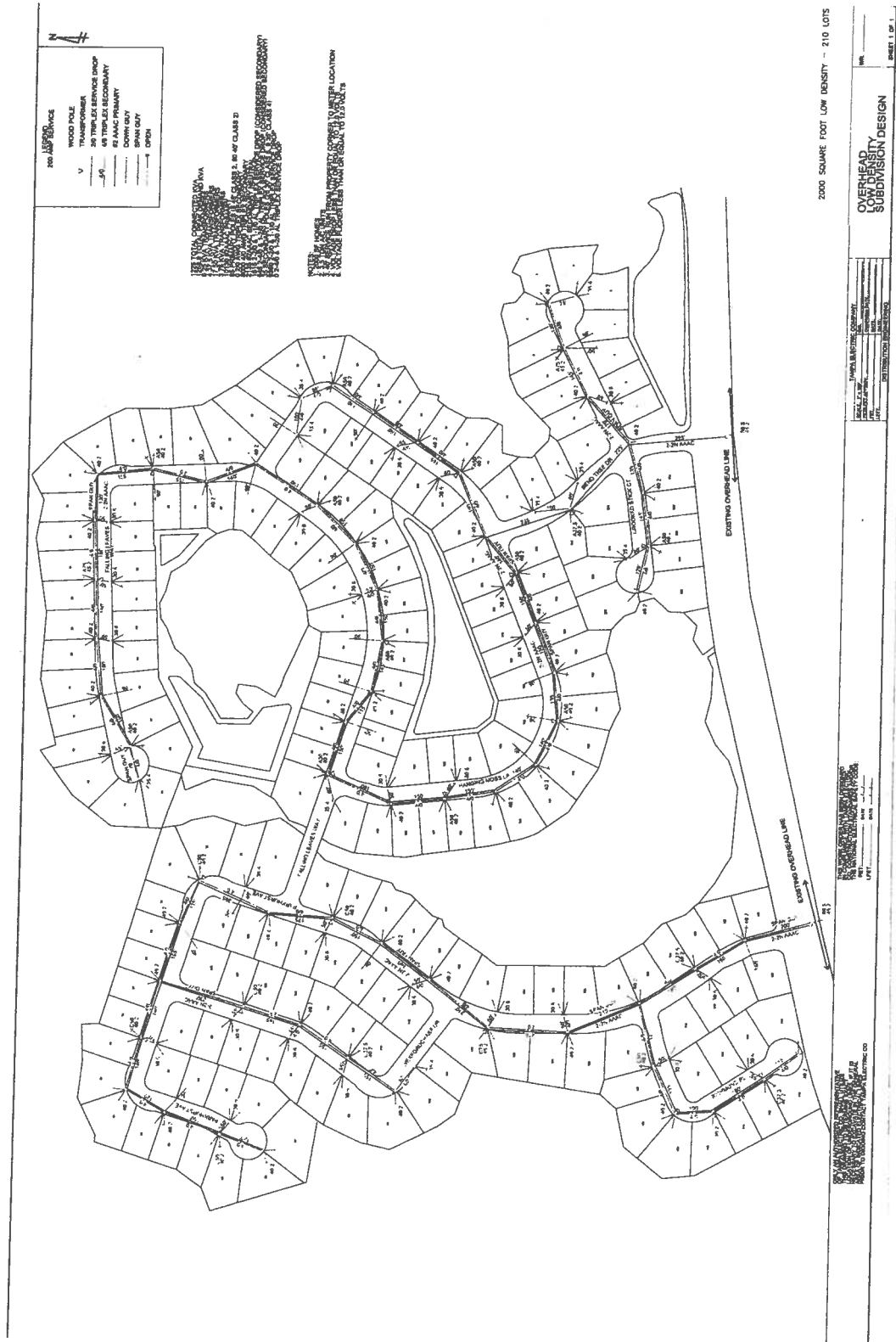
ITEM	MATERIAL	LABOR ¹	TOTAL
Service ²	\$207.46	\$166.69	\$374.15
Primary	\$227.22	\$68.88	\$296.10
Secondary	\$44.13	\$48.27	\$92.40
Transformers	\$327.37	\$76.04	\$403.41
Pri. and Sec. Trenching	\$0.00	\$365.51	\$365.51
Service Trenching	\$0.00	\$341.17	\$341.17
Subtotal	\$806.18	\$1,066.56	\$1,872.74
Stores Handling ³	\$188.48	\$0.00	\$188.48
Subtotal	\$994.66	\$1,066.56	\$2,061.22
Engineering	\$0.00	\$65.66	\$65.66
TOTAL	\$994.66	\$1,132.22	\$2,126.88

¹ Includes Administration, General, Energy Delivery Supervision, & Transportation

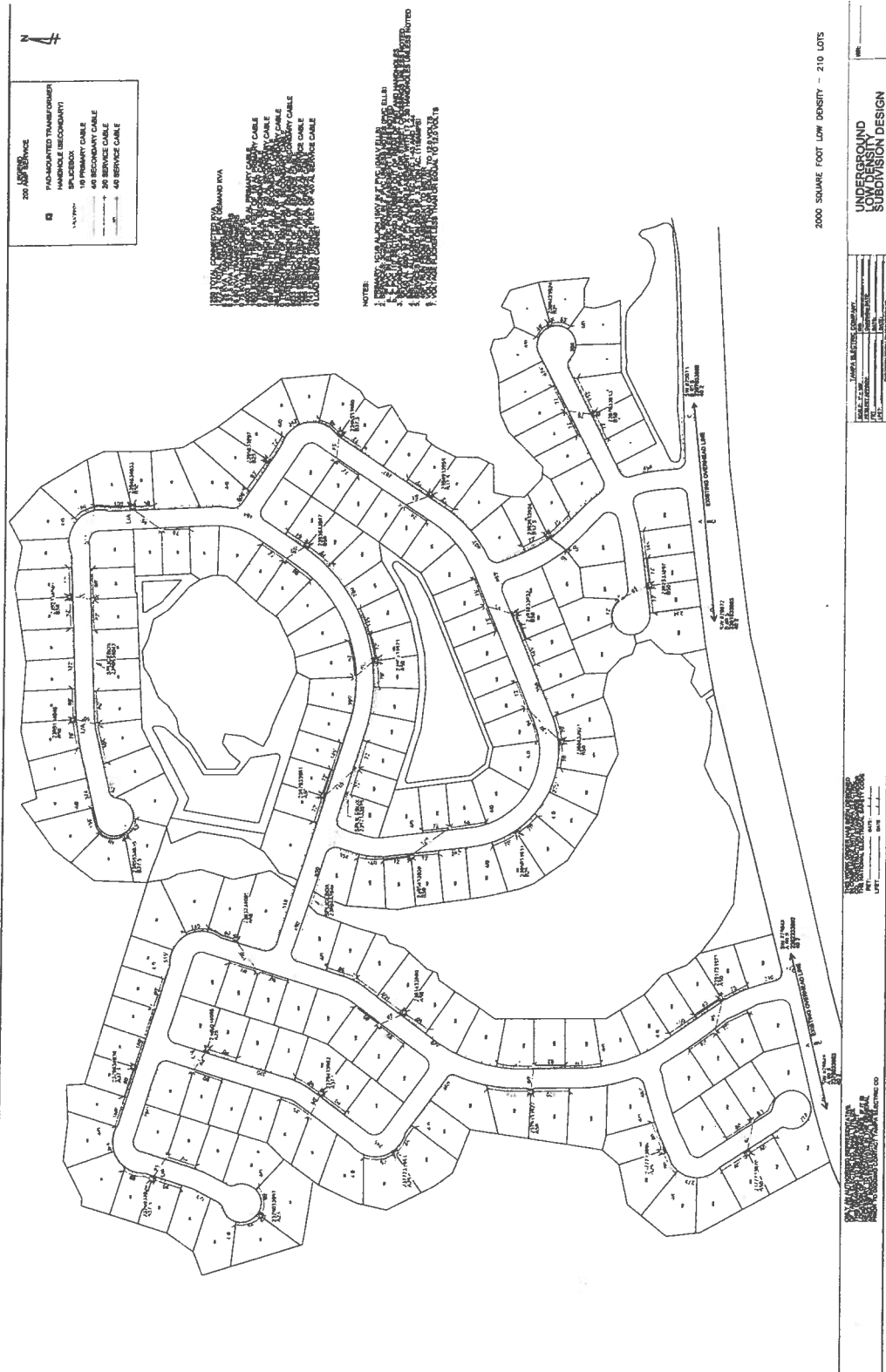
² Includes Meter

³ 23.38% of all Material

TYPICAL SINGLE OCCUPANCY LOW DENSITY 210 LOT SUBDIVISION LAYOUT
Overhead Design



TYPICAL SINGLE OCCUPANCY LOW DENSITY 210 LOT SUBDIVISION LAYOUT
Underground Design



OVERHEAD VS UNDERGROUND SUMMARY SHEET

Single Occupancy High Density 176 Lot Subdivision
 Individually Metered
 Cost per Lot

ITEM	OVERHEAD	UNDERGROUND	DIFFERENTIAL
Labor	\$500.75	\$938.21	\$437.46
Material	\$477.91	\$699.93	\$222.02
TOTAL	\$978.66	\$1,638.14	\$659.48
NPV Operational Cost Including Storm Restoration and Lost Pole Attachment Revenue	\$1,043.52	\$431.71	-\$611.81
TOTAL Including NPV Operational Cost	\$2,022.18	\$2,069.85	\$47.67

COST PER SERVICE LATERAL OVERHEAD MATERIAL AND LABOR

Single Occupancy High Density 176 Lot Subdivision
 Individually Metered
 Cost per Lot

ITEM	MATERIAL	LABOR ¹	TOTAL
Service ²	\$87.31	\$138.71	\$226.02
Primary	\$8.62	\$23.53	\$32.15
Secondary	\$52.72	\$94.56	\$147.28
Initial Tree Trim	\$0.00	\$0.00	\$0.00
Poles	\$92.04	\$122.25	\$214.29
Transformers	\$146.66	\$60.42	\$207.08
Subtotal	\$387.35	\$439.47	\$826.82
Stores Handling ³	\$90.56	\$0.00	\$90.56
Subtotal	\$477.91	\$439.47	\$917.38
Engineering	\$0.00	\$61.28	\$61.28
TOTAL	\$477.91	\$500.75	\$978.66

¹ Includes Administration, General, Energy Delivery Supervision, & Transportation

² Includes Meter

³ 23.38% of all Material

COST PER SERVICE LATERAL UNDERGROUND MATERIAL AND LABOR

Single Occupancy High Density 176 Lot Subdivision
 Individually Metered
 Cost per Lot

ITEM	MATERIAL	LABOR ¹	TOTAL
Service ²	\$176.51	\$174.70	\$351.21
Primary	\$105.27	\$49.08	\$154.35
Secondary	\$40.50	\$53.19	\$93.69
Transformers	\$245.02	\$60.10	\$305.12
Pri. and Sec. Trenching	\$0.00	\$198.63	\$198.63
Service Trenching	\$0.00	\$341.23	\$341.23
Subtotal	\$567.30	\$876.93	\$1,444.23
Stores Handling ³	\$132.63	\$0.00	\$132.63
Subtotal	\$699.93	\$876.93	\$1,576.86
Engineering	\$0.00	\$61.28	\$61.28
TOTAL	\$699.93	\$938.21	\$1,638.14

¹ Includes Administration, General, Energy Delivery Supervision, & Transportation

² Includes Meter

³ 23.38% of all Material

OVERHEAD VS UNDERGROUND SUMMARY SHEET

Single Occupancy High Density 176 Lot Subdivision
Multi-Unit Meter Centers
Cost per Lot

ITEM	OVERHEAD	UNDERGROUND	DIFFERENTIAL
Labor	NA	NA	NA
Material	NA	NA	NA
TOTAL	NA	NA	NA

Tampa Electric's URD policy does not include "per lot" charges for multi-unit meter centers. These installations are covered in Tariff Section 5 Subsection 3.4.4.

COST PER SERVICE LATERAL OVERHEAD MATERIAL AND LABOR

Single Occupancy High Density 176 Lot Subdivision
 Multi-Unit Meter Centers
 Cost per Lot

ITEM	MATERIAL	LABOR ¹	TOTAL
Service ²			\$0.00
Primary			\$0.00
Secondary			\$0.00
Initial Tree Trim			\$0.00
Poles			\$0.00
Transformers			\$0.00
Subtotal	\$0.00	\$0.00	\$0.00
Stores Handling ³			\$0.00
Subtotal	\$0.00	\$0.00	\$0.00
Engineering			\$0.00
TOTAL	\$0.00	\$0.00	\$0.00

¹ Includes Administration, General & Transportation

² Includes Meter

³ 25.25% of all Material

Tampa Electric's URD policy does not include "per lot" charges for multi-unit meter centers. These installations are covered in Tariff Section 5 Subsection 3.4.4.

COST PER SERVICE LATERAL UNDERGROUND MATERIAL AND LABOR

Single Occupancy High Density 176 Lot Subdivision
Multi-Unit Meter Centers
Cost per Lot

ITEM	MATERIAL	LABOR ¹	TOTAL
Service ²			\$0.00
Primary			\$0.00
Secondary			\$0.00
Transformers			\$0.00
Pri. and Sec. Trenching			\$0.00
Service Trenching			\$0.00
Subtotal	\$0.00	\$0.00	\$0.00
Stores Handling ³			\$0.00
Subtotal	\$0.00	\$0.00	\$0.00
Engineering			\$0.00
TOTAL	\$0.00	\$0.00	\$0.00

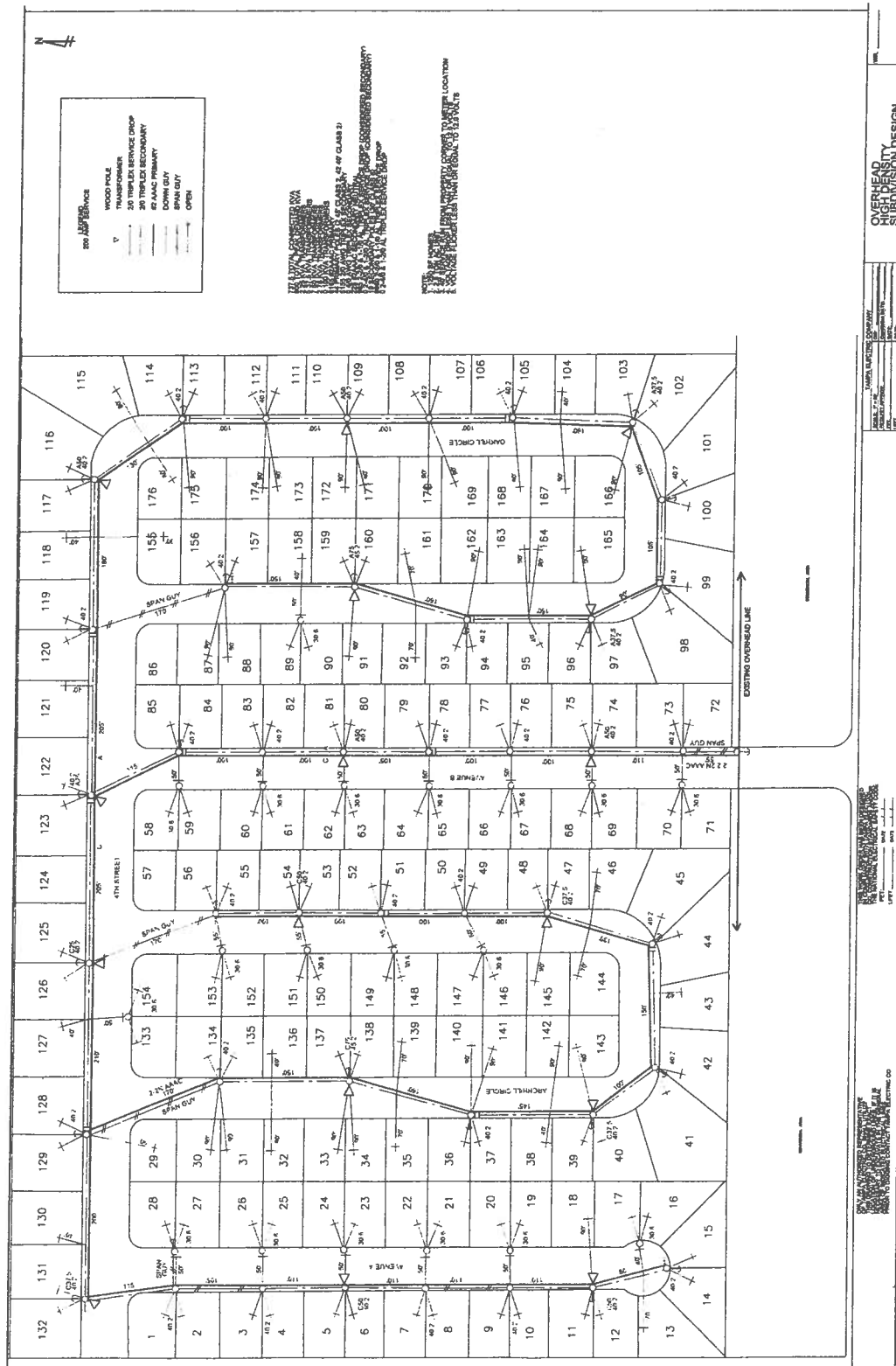
¹ Includes Administration, General & Transportation

² Includes Meter

³ 25.25% of all Material

Tampa Electric's URD policy does not include "per lot" charges for multi-unit meter centers. These installations are covered in Tariff Section 5 Subsection 3.4.4.

TYPICAL SINGLE OCCUPANCY HIGH DENSITY 176 LOT SUBDIVISION LAYOUT
Overhead Design - Individually Metered



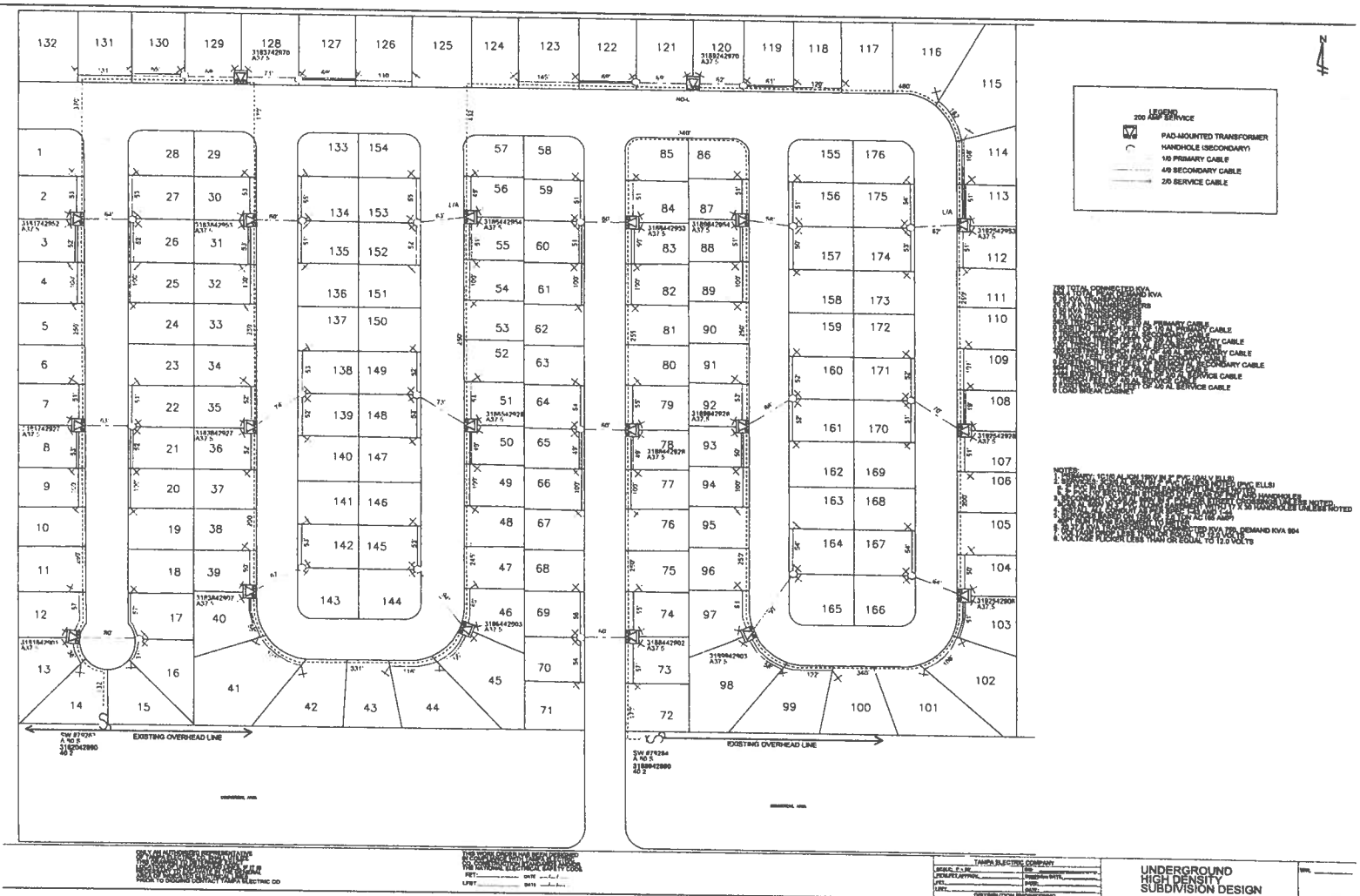
OVERHEAD HIGH DENSITY SUBDIVISION DESIGN

AMERICAN ELECTRIC COMPANY
1000 N. GORRISON ST.
TAMPA, FL 33604
TEL: 813.241.1000
WWW.AECOM.COM

PROJECT NO. 1504000000
DATE: 04/01/15
SCALE: AS SHOWN
DRAWN BY: J. L. ...
CHECKED BY: ...
APPROVED BY: ...

TYPICAL SINGLE OCCUPANCY HIGH DENSITY 176 LOT SUBDIVISION LAYOUT

Underground Design - Individually Metered



UNDERGROUND
HIGH DENSITY
SUBDIVISION DESIGN

AVERAGE UNDERGROUND FEEDER COSTS

Underground \$/Ft... _____	Overhead \$/Ft... _____	Difference \$/Ft... _____
With Favorable Trenching \$/Ft... _____		\$/Ft... _____
Additional Trenching Cost* (Difficult Trenching) \$/Ft... _____		\$/Ft... _____

* Difficult trenching charges include underground cost of cable-in-conduit and rock trench adder.

Note: Above costs reflect adjustment of \$ _____ for overhead estimates and \$ _____ for underground estimates.

Feeder cost are not included in Tampa Electric "per lot" charges. Feeder installation policy is addressed in Tampa Electric's Tariff Section 5 Subsection 3.4.1.1.

ACTUAL OPERATIONAL DISTRIBUTION EXPENSES IN 2014
For Overhead and Underground

	OVERHEAD	UNDERGROUND
Operational Expense - Distribution	\$64,205,674	\$22,001,962

JOINT TRENCHING WITH OTHER UTILITIES
In RESIDENTIAL DISTRIBUTION

2005 - 2014 ADDITIONS

<u>Date</u> <u>Closed</u>	<u>Location</u>	<u>Work</u> <u>Order</u> <u>Number</u>	<u>Footage</u>	<u>Total</u> <u>Amount</u> <u>Due From</u> <u>Other</u> <u>Utility</u>	<u>Total</u> <u>Amount</u> <u>Due To</u> <u>Other</u> <u>Utility</u>
------------------------------	-----------------	--	----------------	--	--

Tampa Electric did not engage in joint trenching during calendar year 2014.

JOINT TRENCHING WITH OTHER UTILITIES
In RESIDENTIAL DISTRIBUTION
(continued)

<u>Year</u>	<u>Footage Feet</u>	<u>Amount Due From Other Utility</u>	<u>Amount Due To Other Utility</u>
Total For 2005	0	\$0.00	\$0.00
Total For 2006	0	\$0.00	\$0.00
Total For 2007	0	\$0.00	\$0.00
Total For 2008	0	\$0.00	\$0.00
Total For 2009	0	\$0.00	\$0.00
Total For 2010	0	\$0.00	\$0.00
Total For 2011	0	\$0.00	\$0.00
Total For 2012	0	\$0.00	\$0.00
Total For 2013	0	\$0.00	\$0.00
Total For 2014	0	\$0.00	\$0.00
10-Year Total	0	\$0.00	\$0.00