

State of Florida



Public Service Commission

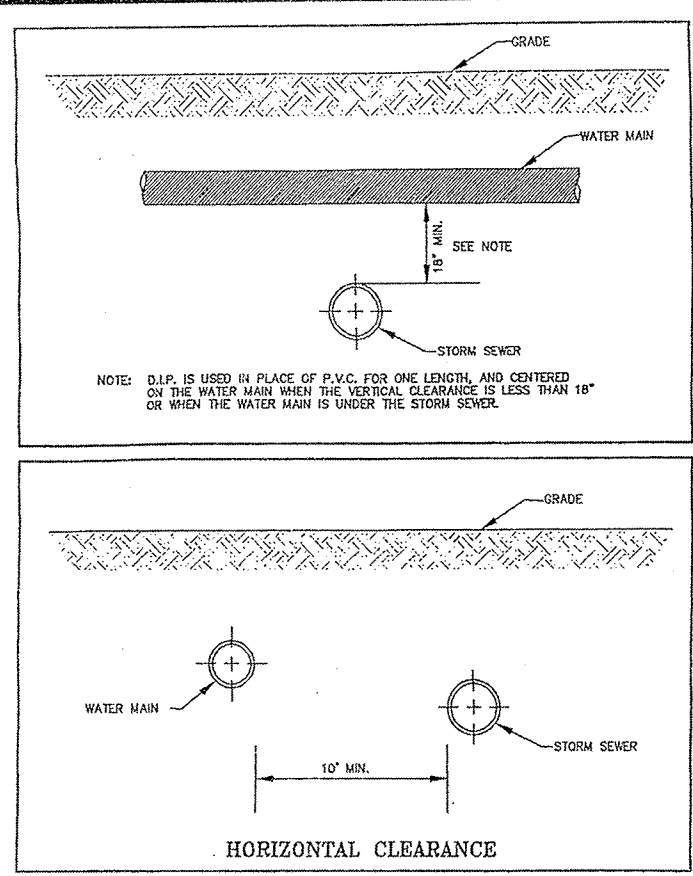
CAPITAL CIRCLE OFFICE CENTER • 2540 SHUMARD OAK BOULEVARD
TALLAHASSEE, FLORIDA 32399-0850

-M-E-M-O-R-A-N-D-U-M-

DATE: January 12, 2016
TO: Carlotta S. Stauffer, Commission Clerk, Office of Commission Clerk
FROM: Clayton Lewis, US Engineering Specialist, Division of Engineering *CKL*
RE: Docket No. 150224-WU-Application for staff-assisted rate case in Polk County by Pinecrest Utilities, LLC.

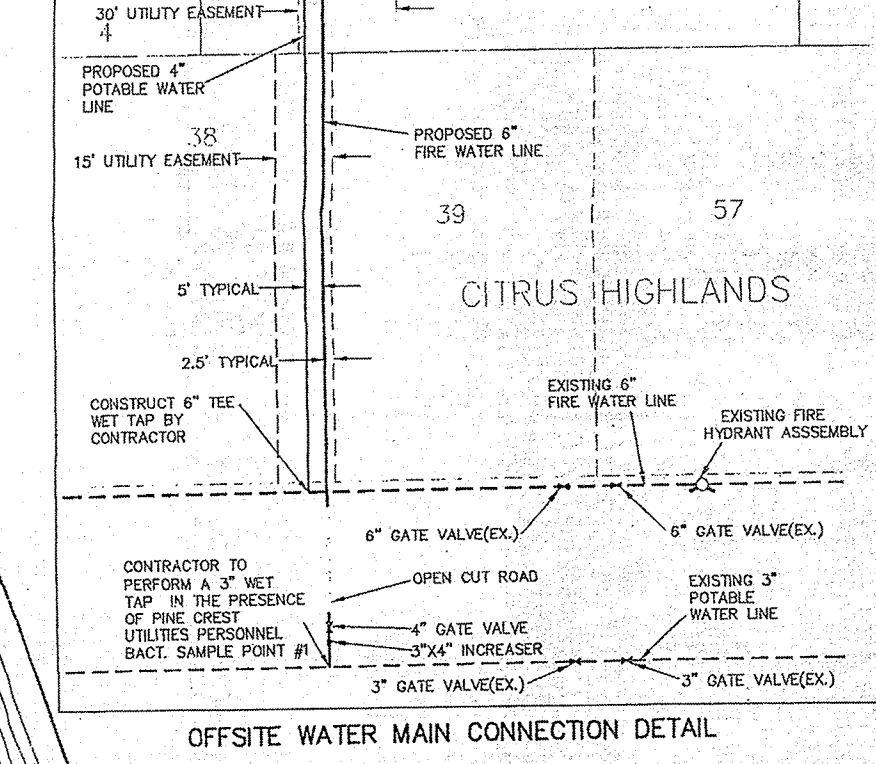
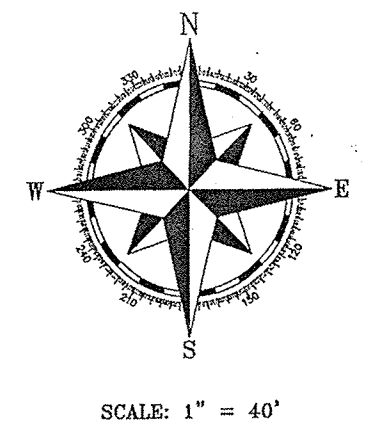
Please file the attached "Company's Response to Staff's First Data Request" MAP in the above mentioned Docket File.

Thank you.



LEGEND

LOT LINE	---
RIGHT OF WAY	---
BASEMENT BOUNDARY	---
P.V.C. WATER MAIN	---
SECTION OF G.P. WATER MAIN	---
GATE VALVE	○
BLOWOFF ASSEMBLY	○
CONTRACTOR	---
BOUNDARY	---
INLET WATER SERVICE	---
DOUBLE WATER SERVICE	---
FIRE HYDRANT ASSEMBLY	---



Wilson
ENGINEERING & ASSOCIATES, INC.
4000 WINDWARD PARK WOODLAND
DRIVE, WINTER HAVEN, FLORIDA 33884
PHONE: 889-7700 FAX: 889-7700

Doc No. 15024-WU - Pinecrest Utilities, LLC

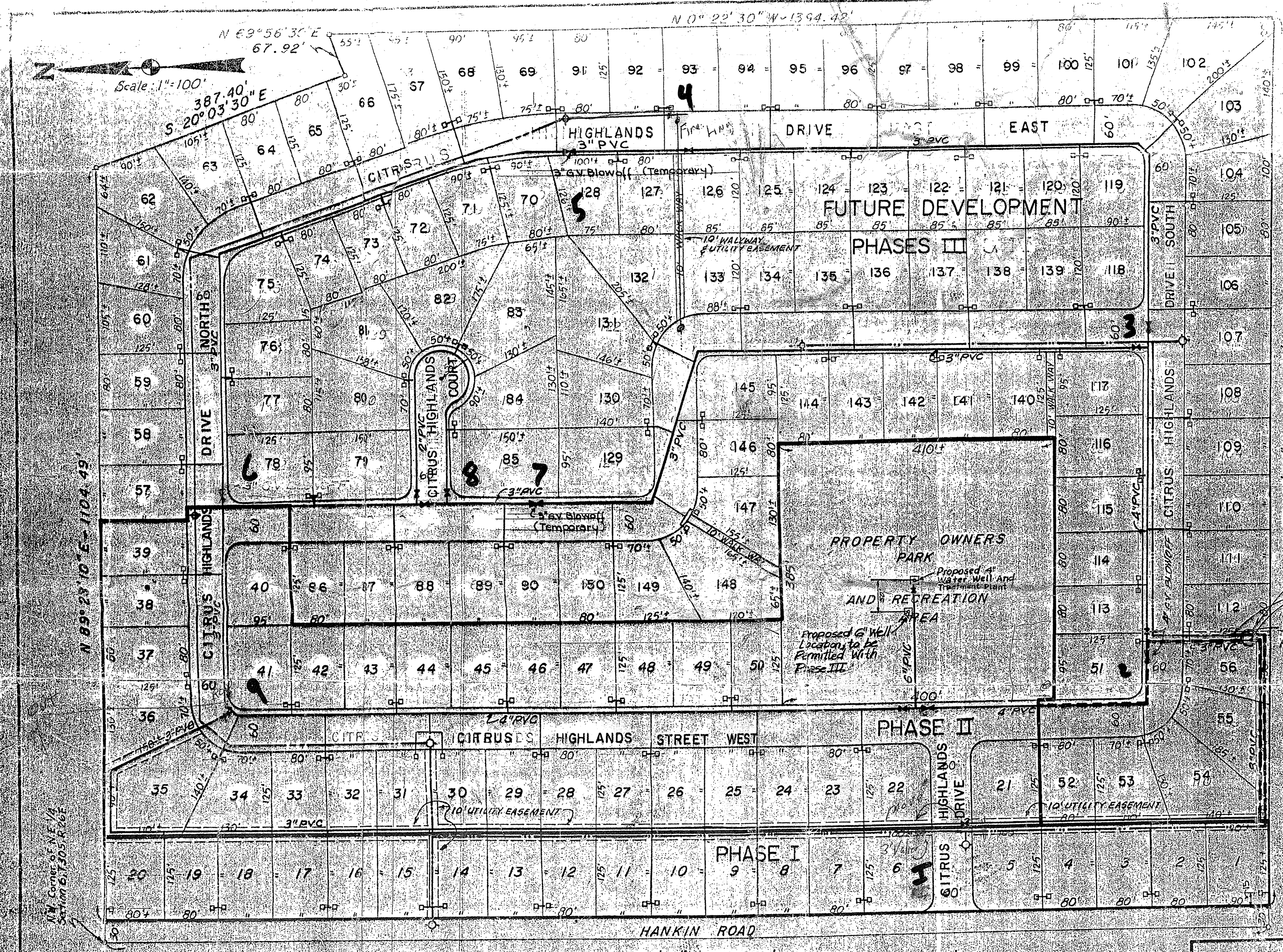
DATE: 11-08-01

STARR TERRACE

WATER PLAN



JOB NO.	00-140
SECTION	31
TOWNSHIP	29 S
RANGE	26 E
DATE	03-14-01
SHEET NO.	5
OF 9 SHEETS	



LEGEND

- POTABLE WATER
- 6" FIRE SYSTEM

Bench Mark 60" Nail in Power Pole Elev. 132.83

DESCRIPTION

The West 1/2 of U.S. Government Lot 2 in the NE 1/4 of Section 6, Township 30 South, Range 26 East, also described as the NW 1/4 of NE 1/4 of said Section 6, LESS AND EXCEPT that portion in parcel 2, as shown by Final Judgment dated 7/26/00, Case No. 2003-1073, recorded in Official Record Book 7511, Page 706, Public Records of Polk County, Florida.

- GENERAL NOTES:
1. 4" PVC AND GREATER SHALL MEET ASTM D-2241-75 M/S DR 26
 2. BALL AND SPIGOT TYPE JOINTS.
 3. PVC 3" AND LESS SHALL MEET ASTM D-2241 SCHEDULE 40
 4. POLYETHYLENE TO BE USED ONLY FOR SERVICE PIPING AND SHALL MEET ANNA C901-78, ASTM D-2151, PE 3406, CLASS 150
 5. VALVES AND FITTINGS SHALL BE OF THE MECHANICAL JOINT TYPE FOR 6" AND GREATER
 6. FIRE HYDRANTS SHALL MEET ANS (AWWA) C502-80 FOR TRAFFIC MODEL
 7. 6" FIRE SYSTEM SHALL NOT BE INTERCONNECTED WITH POTABLE WATER SYSTEM IT MAY HOWEVER BE LAID WITHIN THE SAME TRENCH.
 8. 18" INCHES SEPARATION SHALL BE MAINTAINED BETWEEN THE DIFFERENT WATER SYSTEMS WITH THE FIRE (WHITE) PVC BEING THE LOWER
 9. 12" EXISTING WELL TO BE USED ONLY FOR FIRE SERVICE PRESSURE SENSING, ON/OFF SWITCH TO BE INSTALLED
 10. TEMPORARY BLOWOFF VALVES SHALL BE INSTALLED AT DEAD END LOCATIONS
- Revised 4/15/87 - Change Lot Numbers X.M.C.
 Revised 10/16/86 - Change Lot Numbers X.M.C.
 Revised 1/4/88 - Change Fire System X.M.C.

HANKIN, VAUGHN, ET AL
Winter Haven, Florida

WATER DISTRIBUTION SYSTEM
of Proposed Citrus Highlands Subdivision
Section 6, Township 30 South, Range 26 East
Polk County, Florida

W. A. REED, JR. & ASSOCIATES
CIVIL ENGINEERING - SURVEYING
510 SOUTH CENTRAL AVENUE
BARRON, FLORIDA

SCALE: 1" = 200'

DATE: 3/21/85

DRAWN BY: G.R.

Drawn Number: 24751

Florida Registered Surveyor No. 131