


**LIMITED PHASE II
ENVIRONMENTAL SITE ASSESSMENT
CELIA SITE, CAMP ROAD
NORTHERN ESCAMBIA COUNTY, FLORIDA**

PREPARED FOR:
GULF POWER
Pensacola, Florida

PREPARED BY:
ECT
Environmental Consulting & Technology, Inc.

**1408 North Westshore Boulevard
Suite 115
Tampa, Florida 33607
(813) 289-9338
Facsimile: (813) 289-9388
www.ectinc.com**


Katy Kitanovski
Senior Associate Scientist


Darren L. Stowe, CFEA
Project Manager

**090213-0300
APRIL 2009**

TABLE OF CONTENTS

1. INTRODUCTION	1-1
1.1 PROJECT BACKGROUND INFORMATION	1-1
1.2 PURPOSE AND SCOPE	1-1
1.3 SITE LOCATION	1-2
1.4 SITE FEATURES	1-2
2. GROUNDWATER AND SURFACE WATER SAMPLING AND ANALYSIS	2-1
2.1 GROUNDWATER SAMPLING ACTIVITIES	2-1
2.2 SURFACE WATER SAMPLING ACTIVITIES	2-4
3. GROUNDWATER AND SURFACE WATER SAMPLING ANALYTICAL RESULTS	3-1
3.1 GROUNDWATER SAMPLING ANALYTICAL RESULTS	3-1
3.2 SURFACE WATER SAMPLING ANALYTICAL RESULTS	3-3
4. DISCUSSION	4-1
5. CONCLUSIONS AND RECOMMENDATIONS	5-1

APPENDICES

- A Groundwater Sampling Laboratory Analytical Report
- B Surface Water Sampling Laboratory Analytical Report

LIST OF TABLES

- 1 Groundwater Sampling Analytical Results
- 2 Groundwater Sampling Field Parameters
- 3 Surface Water Sampling Analytical Results

LIST OF FIGURES

- 1 Site Vicinity Map
- 2 Site Map
- 3 Groundwater Sampling Locations
- 4 Surface Water Sampling Locations

1. INTRODUCTION

1.1 PROJECT BACKGROUND INFORMATION

Environmental Consulting & Technology, Inc. (ECT) was retained to conduct a limited phase II environmental site assessment (ESA) of a property owned by RMS Timberlands, L.L.C. (RMS, “subject property” or “subject site”). The subject property is located along Camp Road in northern Escambia County, Florida, 32535. As described in ECT’s report *Phase I Environmental Site Assessment, Celia Site, Camp Road, Northern Escambia County, Florida* (dated March 2009), recognized environmental conditions (RECs) were identified associated with the northern adjacent, upgradient Camp Five Landfill and the northern adjacent, upgradient Escambia County Roads Department facility. The landfill has buried waste extending onto the northern portion of the subject site and has documented groundwater and surface water (Mitchell Creek and Camp Five Branch) impacts. The Escambia County Roads Department facility has a documented release of petroleum products, the extent of which is unknown. ECT recommended that surface water and groundwater samples be collected in the vicinity of Mitchell Creek, Camp Five Branch, and the northern portion of the subject property.

The objective of this limited phase II ESA is to investigate the presence or absence of impacts to groundwater and surface water due to the two identified northern adjacent facilities. This phase II ESA report is prepared for the use of and reliance by, Gulf Power Company (“Client”). The phase II ESA was conducted in accordance with generally accepted hydrogeologic and environmental practices.

1.2 PURPOSE AND SCOPE

The purpose of the limited phase II ESA is to investigate whether the land uses associated with the northern adjacent properties has resulted in surface water or groundwater impact to the subject property. The specific scope of services includes completion of the following tasks:

- Groundwater sample collection in the northern portion of the subject property, downgradient from the northern adjacent facilities, and in the vicinity of the proposed meteorological tower site;
- Documentation of field parameters, including dissolved oxygen (DO), oxygen-reduction potential (ORP), temperature, pH, conductivity, and turbidity, during groundwater sampling activities;
- Collection of surface water samples along Mitchell Creek and Camp Five Branch; and
- Preparation of a report describing the findings of the limited phase II ESA investigation.

The results of the limited phase II ESA investigation are provided in this report.

1.3 SITE LOCATION

The subject property is located along Camp Road in northern Escambia County, Florida. The subject property is approximately 1,640 acres in size and is located in Sections 19, 20, 28, 29, 30, and 32 of Township 5 north, Range 31 west. A site vicinity map is provided as Figure 1 and a site map is provided as Figure 2.

1.4 SITE FEATURES

The subject property is owned by RMS and consists of planted pines in various stages of growth. The topography of the subject property is highly variable. Mitchell Creek traverses the property from northwest to southeast. Numerous branches of Mitchell Creek, along with gullies and ravines, are located throughout the property. Cox Road defines portions of the southeastern boundary of the site and Camp Road traverses the northwestern portion of the site. Pine Barren Road is located along the western adjacent parcels and Old Bratt Road is located along the northern adjacent parcels. A petroleum pipeline underlies the southern portion of the subject site. Numerous unimproved, unpaved roadways are located throughout the subject property that provide access to

hunting stands and feed plots. No environmental concerns were identified associated with the past and current uses of the subject property as a result of the phase I ESA investigations.

2. GROUNDWATER AND SURFACE WATER SAMPLING AND ANALYSIS

Groundwater sample collection was performed in those areas that are most likely to detect potential impacts attributable to the RECs noted above and to identify whether or not a contaminant plume extends to an area north of the proposed meteorological tower. Surface water sample collection was conducted to identify the extent of impact from the adjacent landfill in the major streams in the area. The analytical parameters selected to evaluate surface water and groundwater conditions at the site are based on the known and likely constituents of concern associated with the adjacent RECs.

2.1 GROUNDWATER SAMPLING ACTIVITIES

On March 18-20, 2009, ECT utilized the services of Environmental and Geotechnical Specialists, Inc. (EGS) to use a direct push technology (DPT) drill rig to collect groundwater samples for laboratory analysis. Due to difficulties encountered in sample collection (discussed below), ECT remobilized to the subject site on April 7-9, 2009 to conduct monitoring well installation and additional groundwater sample collection. The monitoring well installation was performed using a hollow stem auger (HSA) drill rig operated by Universal Engineering Sciences (UES). Groundwater sample locations are depicted on Figure 3.

Sample locations GW-A through GW-J were identified as the initial sampling locations. Sample locations GW-K through GW-N were identified as contingent, to be sampled based on the field readings (specifically conductivity and ORP). If the field parameters indicated that any of the sample locations GW-E through GW-J were within the plume of documented impact from the northern adjacent Camp Five Landfill, then samples would be collected at the contingent locations GW-K through GW-N, to further assess the extent of the plume towards the proposed meteorological tower site. DPT work commenced on March 18, 2009 at groundwater sampling location GW-A. Groundwater was encountered at a depth of approximately 30 feet below land surface (ft-bls). A one-inch diameter

polyvinyl chloride (PVC) five-foot length screen point sampler was placed at a depth interval of 30-35 ft-bls for sample collection. Groundwater sample collection was attempted using ½-inch diameter polyethylene (PE) tubing, equipped with a check valve inserted onto the end. The tubing was lowered into the well screen sampler and then manually raised and lowered to create a gravity/pressure feed into the tube using the check (ball) valve. Fine silt was encountered at the site in the depth interval of the well screen. The silt clogged the check valve preventing sample collection. Subsequently, EGS ordered a bladder pump for delivery the following day, and continued to advance well screens at the additional locations. On March 19, 2009, EGS completed well screen point sampler advancement at all of the initially proposed locations GW-A through GW-J. Depth to groundwater at location GW-D, along Camp Road, was encountered at approximately 62 ft-bls, and the screen point sampler was advanced to approximately 68 ft-bls.

Sampling with the bladder pump commenced at location GW-E on March 19, 2009. Due to the amount of suspended silts in the groundwater and the bladder pump design, the sample flow rate was extremely slow and each location required approximately four hours to sample. Between March 19 and 20, three locations were sampled with the bladder pump (GW-B, GW-C, and GW-E). Due to the extremely slow pump rate, only one to two sets of field parameters were collected at these locations. Additionally, on March 20, two locations, GW-F and GW-J, were sampled using the tubing and check valve method. On March 20, sample collection at locations (GW-D and GW-G) was attempted using the tubing and check valve method, but only resulted in the collection of a small amount of silty mud. It was therefore determined that EGS would return the following week with an additional bladder pump as well as bailers to attempt to collect samples at the remaining locations. EGS returned to the site on March 24, 2009 and attempted to collect groundwater samples at the remaining locations. EGS was overseen by the Client's representatives. EGS was unsuccessful in collecting samples using either the bladder pumps or the bailers. EGS returned on the following day to remove all of the screen point samplers and grout the boreholes.

The analytical results from the first round of sampling (discussed below) detected groundwater impacts at the initial sampling locations. In addition, ORP readings were positive at all of the sampling locations and conductivity readings were elevated at locations GW-B, GW-C, and GW-E, indicating potential impact. Therefore, it was decided to conduct monitoring well installation activities at the four conditional sampling locations GW-K through GW-N, as well as location GW-D, along Camp Road. Monitoring well installation was conducted using a HSA drill rig, operated by UES and overseen by ECT personnel, on April 7-9, 2009. Monitoring wells were constructed using 2-inch diameter, flush-threaded Schedule 40 PVC riser, connected to 10 ft of 0.010-inch machine slotted screen. The annular space around the wells was filter packed with 30/45 graded silica sand to approximately two feet above the screened interval, sealed with approximately two feet of 30/65 graded silica fine sand, and completed with Portland fine cement grout. The wells were completed with two to three feet of aboveground stickup, and topped with locking, water-tight caps. Monitoring wells GW-D, GW-K, GW-L, GW-M, and GW-N were installed to total depths of 70, 37, 35, 42, and 58 ft-bls, respectively. Following installation, each well was developed for approximately ½-hour until the water ran relatively clear.

Groundwater sample collection from the temporary monitoring wells was conducted on April 8 and 9, 2009. Samples were collected using a Mega-Monsoon submersible pump and dedicated PE tubing. The wells were purged until a set of three consecutively consistent field readings were obtained as outlined in the Florida Department of Environmental Protection (FDEP) Standard Operating Procedures (DEP-SOP-001/01). The pump was decontaminated between wells using the procedures outlined in DEP-SOP-001/01.

Sample collection was successful at locations GW-B, GW-C, GW-D, GW-E, GW-F, GW-J, GW-K, GW-L, GW-M, and GW-N. After sample collection, the samples were

placed on ice and shipped to SunLabs, Inc. for analysis by the various analytical methods discussed below.

2.2 SURFACE WATER SAMPLING ACTIVITIES

Surface water sampling activities were conducted on March 20, 2009. Sampling was proposed at 12 locations located along Mitchell Creek, Camp Five Branch, and other tributaries, as depicted on Figure 4. Sample locations SW-1 and SW-8 were dry and, therefore, could not be sampled. Sample locations SW-4 and SW-12 were not sampled due to accessibility constraints.

Sample collection was successful at locations SW-2, SW-3, SW-5, SW-6, SW-7, SW-9, SW-10, and SW-11. After sample collection, the samples were placed on ice and shipped to SunLabs, Inc. for analysis for iron, total dissolved solids (TDS), biological oxygen demand (BOD), and chemical oxygen demand (COD).

3. GROUNDWATER AND SURFACE WATER SAMPLING ANALYTICAL RESULTS

The groundwater sampling analytical results are summarized in Table 1 and the complete laboratory analytical reports are provided as Appendix A. The groundwater sampling field parameters are summarized in Table 2. The surface water sampling analytical results are summarized in Table 3 and the complete laboratory analytical report is provided as Appendix B. The analytical results of the groundwater samples collected are compared to the applicable groundwater cleanup target levels (GCTLs) and natural attenuation default source concentrations (NADSCs), pursuant to Chapter 62-777 of the Florida Administrative Code (F.A.C.), Tables I and V, respectively. The analytical results of the surface water samples are compared to the applicable Surface Water Criteria, pursuant to Chapter 62-302.530, F.A.C. for Class III Waters and the Drinking Water Standards, pursuant to Chapter 63-550, F.A.C.

3.1 GROUNDWATER SAMPLING ANALYTICAL RESULTS

The groundwater sample collected from location GW-D was analyzed for volatile organic compounds (VOCs) by U. S. Environmental Protection Agency (EPA) method 8260, polynuclear aromatic hydrocarbon (PAHs) by EPA method 8270, total petroleum hydrocarbons (TPH) by the FL-PRO method, and for iron by EPA method 6010 in order to address the potential impacts from the documented release of petroleum products at the northern adjacent Escambia County Roads Department facility.

The groundwater samples collected from the remaining locations (GW-A, GW-B, and GW-C and GW-E through GW-N) were analyzed for the Resource Conservation and Recovery Act (RCRA) eight metals (arsenic, barium, cadmium, chromium, lead, mercury, selenium, and silver), iron, sodium, chlorides, nitrates, ammonia, TDS, total organic carbon (TOC), zinc, magnesium, and potassium. Sodium, chlorides, and nitrates were analyzed as “tracer” elements to assess the extent of groundwater contaminant plume

migration. Ammonia, TDS, TOC, zinc, magnesium, and potassium were analyzed due to the historic documented presence of these parameters in the existing monitoring wells used at and downgradient of the landfill. In addition, the groundwater sample collected from GW-C was analyzed for VOCs, PAHs, and TPH, to assess whether or not these constituents are present downgradient of the landfill.

The laboratory analytical results indicate that iron was detected at concentrations above the applicable GCTL at locations GW-B, GW-C, GW-D, GW-E, GW-F, GW-J, and GW-N. The concentration of iron exceeded the NADSC at locations GW-C, GW-D, GW-E (filtered only), GW-F, and GW-J (total only). The highest concentration of iron was detected at sampling location GW-F. Other exceedances are:

- Arsenic above the GCTL at location GW-F,
- Chromium above the GCTL at location GW-F,
- Mercury above the GCTL at location GW-F, and
- Nitrogen ammonia (as nitrogen) at location GW-J (no standard is established for this parameter; however, the observed concentration at GW-J was on average greater than 10 times the observed concentration in the other sampling locations).

Barium, chloride, nitrate-N, sodium, TDS, TOC, and zinc were detected in all of the samples collected (with several exceptions), at concentrations that were below the applicable GCTLs, with the highest concentrations generally observed at GW-F. Magnesium and Potassium were also detected in all of the samples collected, with the exception of Potassium at GW-M; however, no standards are established for these parameters. The remaining tested parameters were detected at concentrations below the laboratory's method detection limits (MDLs).

3.2 SURFACE WATER SAMPLING ANALYTICAL RESULTS

Surface water samples were analyzed for iron, TDS, BOD, and COD. The laboratory analytical results indicate that iron was detected above the applicable Class III surface water criteria in all of the sampling locations except locations SW-2 and SW-5. The concentrations of iron ranged from 680 micrograms per liter (ug/L) at location SW-5 to 2,900 ug/L at location SW-7. The highest BOD reading and the only location above the MDLs was at location SW-11. The TDS concentrations ranged from 60,000 ug/L at location SW-2 to 92,000 ug/L at locations SW-9 and SW-11. COD concentrations ranged from 8,130 ug/L at location SW-7 to 21,800 ug/L at location SW-3.

4. DISCUSSION

The scope of work conducted for this limited phase II ESA investigation was designed to evaluate the presence or absence of impacts to groundwater and surface water due to RECs associated with the northern adjacent facilities, as identified in ECT's March 2009 phase I ESA.

The groundwater analytical results indicate that sampling location GW-F is the most impacted, both in exhibiting the highest concentration of iron and in the additional parameters detected. This sampling location is in proximity to monitoring well MW-13 used by others to delineate the plume attributable to the landfill. The additional parameters arsenic, chromium, and mercury were not detected downgradient of location GW-F. A higher than anticipated concentration of iron was detected at location GW-J. Nitrogen ammonia was also detected at this location, at a concentration on average 10 times greater than that observed at other locations. It should be noted that the observed concentrations at GW-F and GW-J may be higher due to the check valve sampling method, resulting in higher amounts of suspended solids. The highest concentrations of iron were detected in the sampling locations closest to the landfill and downgradient of the Escambia County Roads Department facility. No petroleum constituents or other constituents likely attributable to the Escambia County Roads Department facility were detected downgradient of the facility.

The surface water analytical results indicate that location SW-2 is the least impacted. With the exception of location SW-3, the iron impacts are upstream of location SW-5, which is the confluence of Mitchell Creek and Camp Five Branch, consistent with the potential impact from the landfill. There is no ready explanation for the higher than expected concentration of iron and the highest concentration of COD at location SW-3.

5. CONCLUSIONS AND RECOMMENDATIONS

Groundwater concentrations above the applicable GCTL of iron were observed at ground water sampling locations GW-B, GW-C, GW-E, GW-F, and GW-J. It is possible that the ditch located on the northern portion of the subject property is partially acting as a hydrogeologic barrier, such that the contaminant concentrations around the ditch are higher than further downgradient resulting in slowed plume migration.

Based on the results of this limited phase II ESA investigation, it appears that groundwater impacts attributable to the documented contamination at the Camp Five Landfill are not present along the northwestern boundary of the proposed meteorological tower site. ECT recommends the installation of monitoring wells at some of the previous DPT locations to collect more representative (less turbid) samples, in order to verify the sample results. Additionally, ECT recommends obtaining permission from Escambia County to sample some of their existing monitoring wells in order to establish baseline conditions upgradient and downgradient of the landfill.

The results of the surface water sampling and analysis indicate that with the exception of location SW-3, the impacts likely attributable to the landfill are upstream of the confluence of Mitchell Creek and Camp Five Branch. ECT recommends collecting a confirmatory surface water sample at the SW-3 location, which could provide clearer evidence that the landfill is the source of the documented surface water impacts.

TABLES

Table 1 - Ground Water Sampling Analytical Summary

Sample		Date	Arsenic	Barium	Cadmium	Chloride	Chromium	Iron	Lead	Magnesium	Mercury	Nitrate-N	Nitrogen Ammonia (as N)	Potassium	Selenium	Silver	Sodium	Total Dissolved Solids	Total Organic Carbon	Zinc
Location																				
GCTLs			10	2,000	5	250,000	100	300	15	NS	2	10,000	NS	NS	50	100	160,000	500,000	NS	5,000
NADCs			100	20,000	50	2,500,000	1,000	3,000	150	NS	20	100,000	NS	NS	500	1,000	1,600,000	5,000,000	NS	50,000
GW-B	3/20/2009		< 4.8	22	< 0.6	5,600	< 3.5	360	< 4.4	580	< 0.2	940	6 I;S7	1,300	< 4.7	< 3.3	4,200	72,000 S7	916 I;S7	35 V
GW-B	3/19/2009							1,200 V												
GW-C	3/20/2009		< 4.8	35	< 0.6	8,300	< 3.5	6,600	< 4.4	1,500	< 0.2	2,500	223 S7	3,200	< 4.7	< 3.3	7,900	128,000 S7	1,140 I;S7	81 V
GW-C	3/20/2009							10,000 V												
GW-D	4/8/2009							10,000 V												
GW-E	3/19/2009		< 4.8	17	< 0.6	6,100	< 3.5	2,700	< 4.4	750	< 0.2	1,200	12 I;S7	1,400	< 4.7	< 3.3	4,000	64,000 S7	615 I;S7	26 V
GW-E	3/19/2009							3,300 V												
GW-F	3/20/2009		59	340	< 0.6	7,000	610	280,000	160	5,100	5.2	740	1,240 S7	8,100	< 4.7	< 3.3	4,600	92,000 S7	6,240 S7	330 V
GW-F	3/20/2009							4,000 V												
GW-F	3/20/2009		< 4.8	28	< 0.6	5,300	81	4,900	< 4.4	810	< 0.2	330	4,850 S7	1,300	< 4.7	< 3.3	3,000	64,000 S7	4,530 S7	230 V
GW-J	3/20/2009		< 4.8	15	< 0.6	1,750	< 3.5	190	< 4.4	400	< 0.2	501	< 5	320 I	< 4.7	< 3.3	1,100 V	8,000 I	< 270	< 2.9
GW-K	04/09/09			13				11												
GW-K	04/09/09		< 4.8	12	< 0.6	1,820	101	290	< 4.4	370	< 0.2	90	< 5	460 I	< 4.7	< 3.3	1,200 V	< 7,300	800 I	7 I
GW-L	04/09/09			10				12												
GW-L	04/09/09		< 4.8	14	< 0.6	3,200	51	76	< 4.4	390	< 0.2	301	< 5	< 180	< 4.7	< 3.3	1,600 V	16,000 I	3,000	6 I
GW-M	04/09/09			12				13												
GW-M	04/09/09		< 4.8	17	< 0.6	3,040	71	310	< 4.4	440	< 0.2	340	< 5	1,300	< 4.7	< 3.3	1,800 V	24,000 I	1,400	< 2.9
GW-N	04/09/09			15				40												
GW-N	04/09/09																			

Notes:

Analytes that were sampled for and undetected in all samples are not included on this table

I = The reported value is between the laboratory method detection limit and the laboratory practical quantitation limit.

S7 = This analysis performed by Benchmark EnviroAnalytical, Inc., Certification number E84167

V = Indicates that the analyte was detected in both the samples and the associated method blank

All units in micrograms per liter (ug/l)

GCTL = Groundwater Cleanup Target Level, as defined in Chapter 62-777, F.A.C., Table I

NADC = Natural Attenuation Default Concentration, as defined in Chapter 62-777, F.A.C., Table V

NS = No Standard

Bold = Value is above the GCTL, but below the NADC

Bold = Value is above both the GCTL and NADC

Bold = Value is >10 times higher than the NADC

Table 2 - Groundwater Sampling Field Parameters

Sample	Date	Time	pH (S.U.)	Temperature (°C)	Conductivity (µmhos/cm)	D.O. (mg/L)	Turbidity (NTU)	ORP (mV)	Color	Odor
GW-B	03/20/09	17:15	5.61	20.96	66	7.15	712	163.8	Cloudy	None
		17:25	3.75	11.23	91	9.32	6.59	269.8	Clear	None
GW-C	03/20/09	17:45	6.32	12.64	201	6.73	>1,100	51.6	Cloudy	None
GW-D	04/08/09	17:31	5.60	20.76	23	7.71	726	166.9	Cloudy	None
		17:33	5.39	20.99	22	7.49	757	180.1	Cloudy	None
		17:35	4.93	20.77	21	7.28	726	208.0	Cloudy	None
		17:37	5.00	20.65	22	6.89	667	206.0	Cloudy	None
		17:39	4.97	20.45	22	6.74	598	209.2	Cloudy	None
		17:41	4.96	20.56	22	6.68	471	210.5	Cloudy	None
GW-E	03/19/09	11:45	6.19	24.91	229	8.17	>1,100	138.5	Cloudy	None
		12:07	6.16	22.44	103	6.04	>1,100	108.1	Cloudy	None
		15:08	5.46	24.43	67	7.40	2.24	175.1	Clear	None
GW-K	04/09/09	14:20	5.27	20.94	18	8.85	14.7	165.5	Clear	None
		14:22	5.12	20.89	16	8.76	15.5	174.2	Clear	None
		14:24	5.08	20.83	16	8.75	17.3	174.3	Clear	None
GW-L	04/09/09	9:46	5.11	20.73	16	8.80	288	204.0	Cloudy	None
		9:48	5.09	20.73	15	7.81	162	205.0	Cloudy	None
		9:50	5.05	20.86	15	7.88	151	205.0	Clear	None
		9:52	5.11	21.02	15	7.89	115	206.0	Clear	None
		9:54	5.18	21.01	15	7.80	93.1	201.0	Clear	None
		9:56	5.24	21.30	15	7.51	89.7	198.0	Clear	None
		9:58	5.25	21.28	15	7.38	57.8	197.0	Clear	None
		10:00	5.24	21.17	15	7.25	43.1	198.0	Clear	None
		10:02	5.25	21.16	16	7.10	45.5	198.0	Clear	None
		10:04	5.02	21.35	15	7.85	66.3	208.0	Clear	None
		10:06	5.16	21.32	16	7.57	56.1	201.0	Clear	None
		10:08	5.17	21.52	16	7.40	45.9	201.2	Clear	None
		10:10	5.22	21.56	17	7.37	37.5	199.4	Clear	None
10:12	5.05	21.52	16	7.49	30.9	208.0	Clear	None		
10:14	5.19	21.39	16	7.33	24.9	200.0	Clear	None		
10:16	5.07	21.59	17	7.52	19.1	203.3	Clear	None		

Table 2 - Groundwater Sampling Field Parameters

Sample	Date	Time	pH (S.U.)	Temperature (°C)	Conductivity (µmhos/cm)	D.O. (mg/L)	Turbidity (NTU)	ORP (mV)	Color	Odor
GW-M	04/09/09	8:01	6.18	17.85	23	9.00	75.2	157.2	Cloudy	None
		8:03	5.79	18.65	20	8.16	67.8	159.0	Clear	None
		8:05	5.67	18.52	20	8.05	43.0	168.2	Clear	None
		8:07	5.59	18.60	21	7.51	28.5	172.0	Clear	None
		8:09	5.56	18.44	21	7.75	21.5	175.3	Clear	None
		8:11	5.49	18.39	21	7.81	17.4	175.5	Clear	None
		8:13	5.44	18.30	21	7.83	15.9	175.0	Clear	None
		GW-N	04/09/09	15:54	4.91	22.10	24	7.43	118	200.0
15:56	4.91			22.13	28	7.36	104	197.2	Clear	None
15:58	5.08			22.23	30	6.80	76.3	186.6	Clear	None
16:00	5.05			21.94	31	6.89	60.0	190.0	Clear	None
16:02	5.03			21.84	29	6.59	44.0	192.0	Clear	None
16:04	4.98			21.82	30	6.62	39.9	194.0	Clear	None
16:06	5.03			21.78	30	6.08	33.6	192.0	Clear	None
16:08	5.05			21.73	33	6.14	30.4	191.3	Clear	None
16:10	5.01	21.66	34	6.45	26.0	195.0	Clear	None		
16:12	5.05	21.63	31	6.57	23.0	191.0	Clear	None		
16:14	5.05	21.60	32	6.50	23.7	191.8	Clear	None		

Notes:

- S.U. = Standard Units
- oC = Degrees Centigrade
- µmhos/cm = Micromhos per Centimeter
- mg/L = Milligrams per Liter
- NTU = Nephelometric Turbidity Units
- mV = Millivolts

Source: SunLabs, 2009; ECT, 2009

Table 3 - Surface Water Sampling Analytical Summary

Sample ID	Date Collected	Biological Oxygen Demand	Chemical Oxygen Demand	Iron	Total Dissolved Solids
Class III Surface Water Criteria				1,000	500,000
SW-2	3/20/2009	< 500	12,700 I;S7	700	60,000 S7
SW-3	3/20/2009	< 500	21,800 I;S7	2,800	76,000 S7
SW-5	3/20/2009	< 500	17,900 I;S7	680	88,000 S7
SW-6	3/20/2009	< 500	10,100 I;S7	1,200	80,000 S7
SW-7	3/20/2009	< 500	8,180 I;S7	2,900	72,000 S7
SW-9	3/20/2009	< 500	8,830 I;S7	1,800	92,000 S7
SW-10	3/20/2009	< 500	10,100 I;S7	1,500	80,000 S7
SW-11	3/20/2009	1,100 I	20,500 I;S7	1,000	92,000 S7

Notes:

I = The reported value is between the laboratory method detection limit and the laboratory practical quantitation limit.

S7 = This analysis performed by Benchmark EnviroAnalytical, Inc., Certification number E84167

All units in micrograms per liter (ug/l)

Locations SW-1 & SW-8 were dry and therefore not sampled

Locations SW-4 & SW-12 were not sampled due to accessibility constraints

Iron Criteria obtained from Chapter 62-302.530, F.A.C. for Class III Surface Waters

TDS Criteria obtained from Chapter 63-550, F.A.C. for drinking water standards

Bold = Exceedance of Criteria

FIGURES

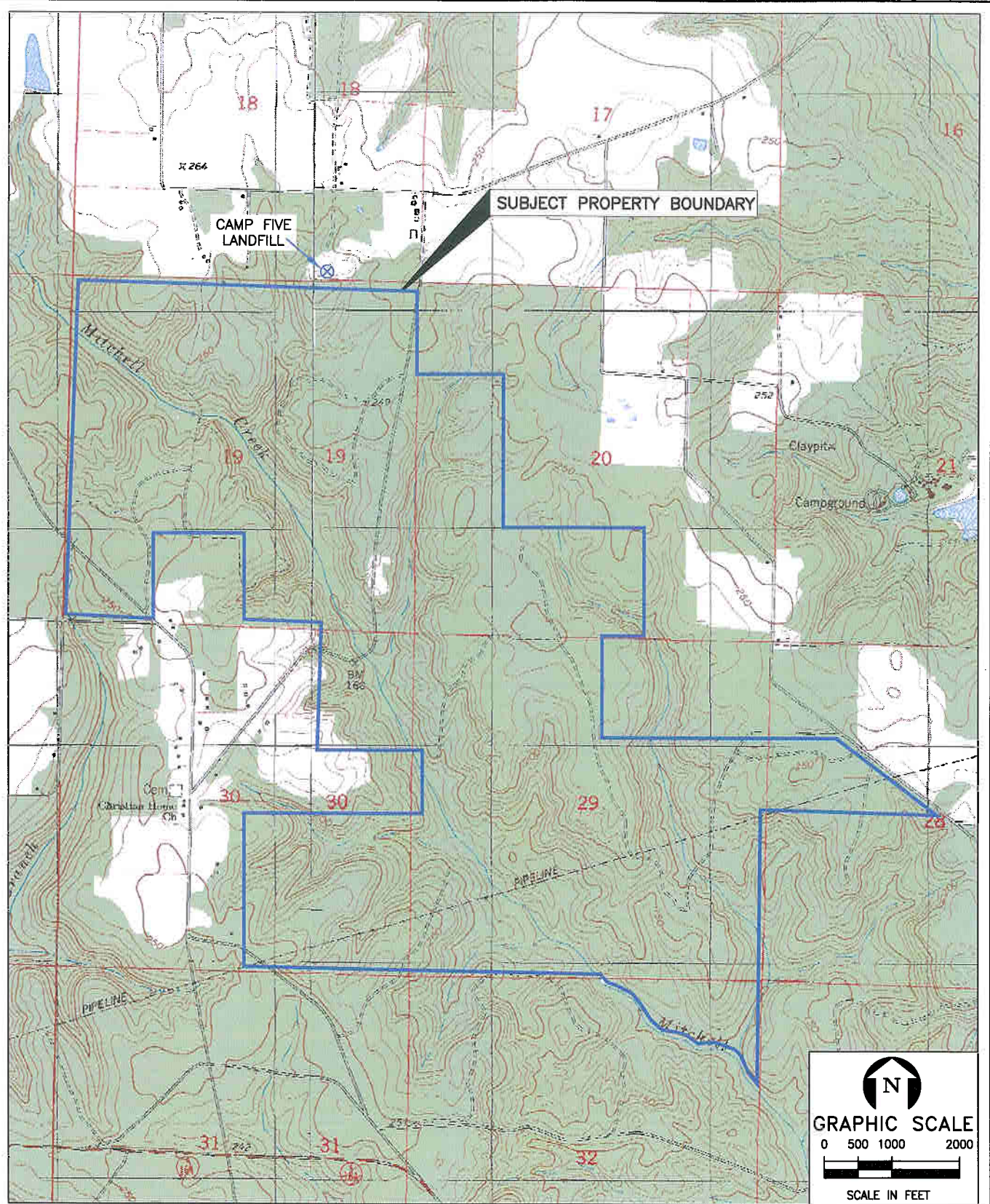


FIGURE 1.
SITE VICINITY MAP
CELIA SITE
ESCAMBIA COUNTY, FLORIDA

Source: ECT, 2009.

ECT
Environmental Consulting & Technology, Inc.

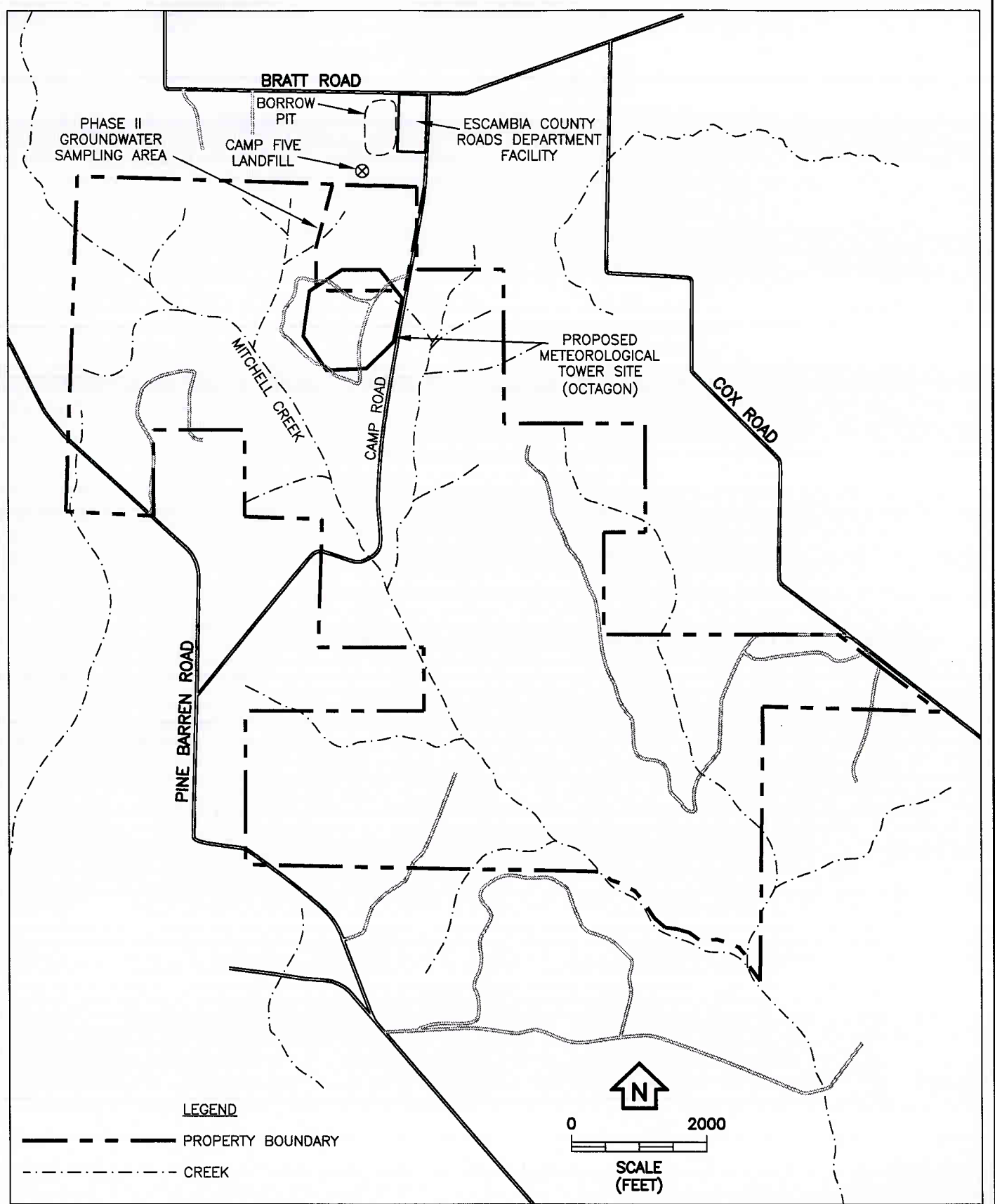


FIGURE 2.
SITE MAP
CELIA SITE
ESCAMBIA COUNTY, FLORIDA

Source: ECT, 2009.

ECT
Environmental Consulting & Technology, Inc.

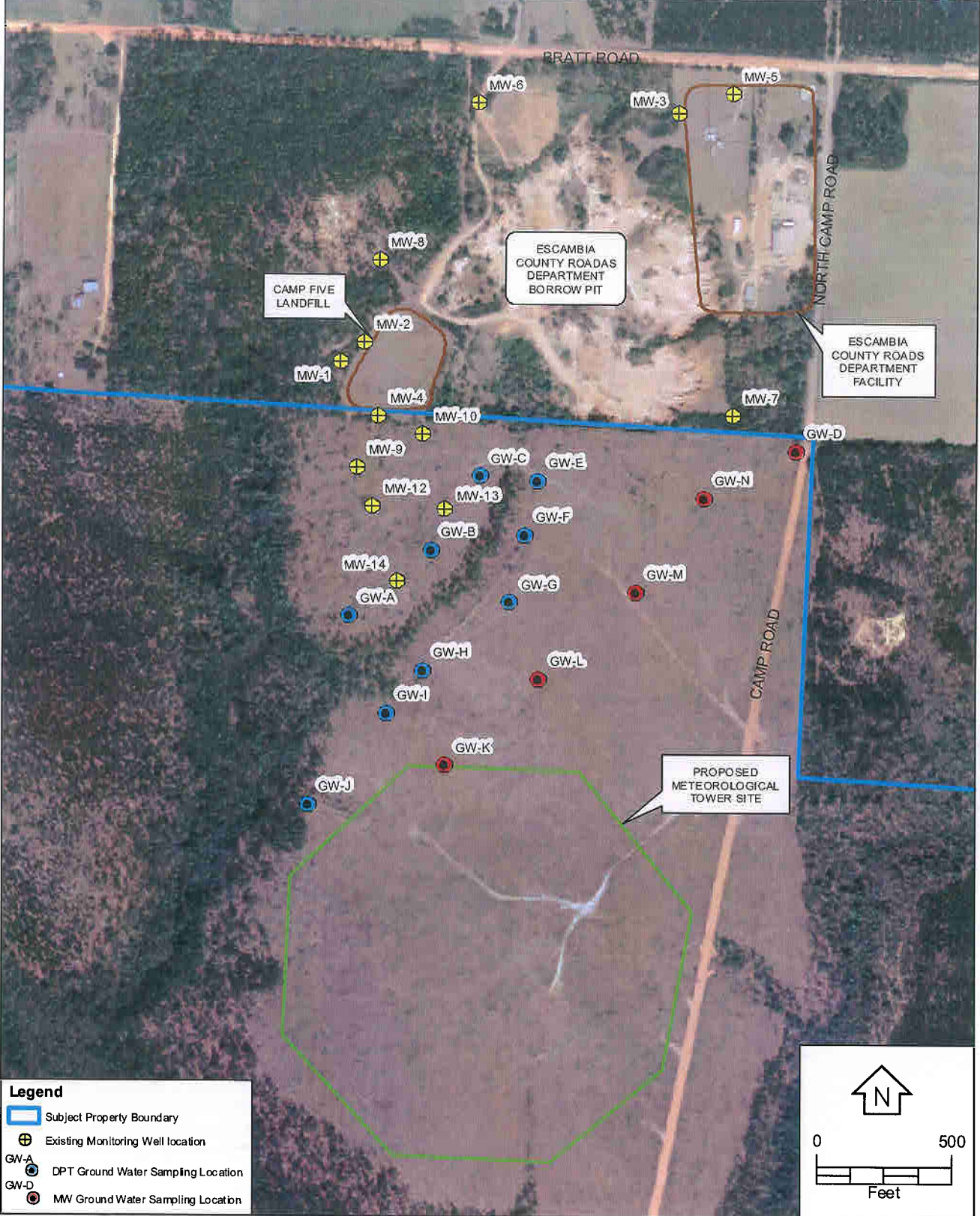


FIGURE 3.
GROUND WATER SAMPLING LOCATION MAP
CELIA SITE
ESCAMBIA COUNTY, FLORIDA

Sources: www.labins.org, Aerial Photograph, 2004; ECT, 2009.



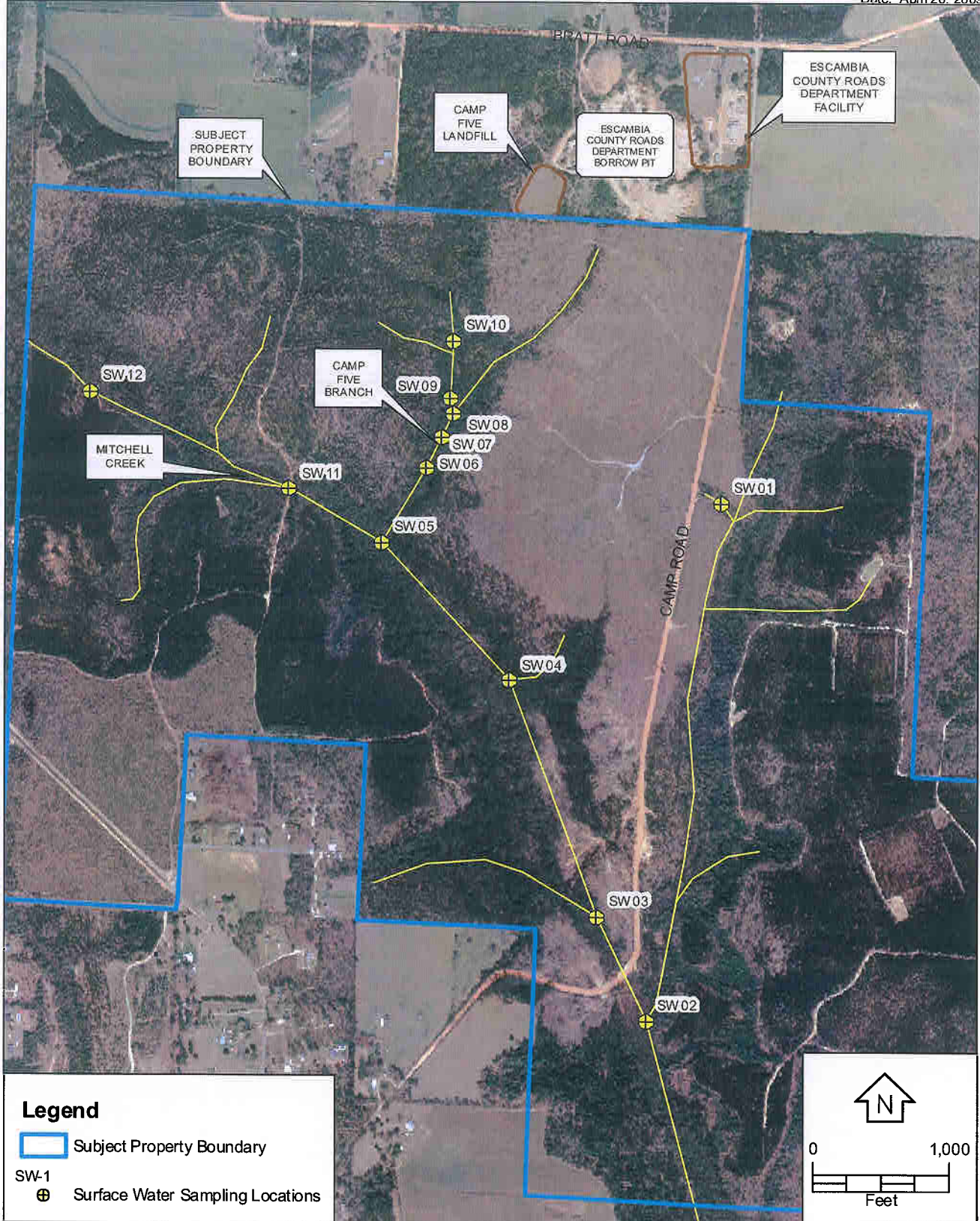
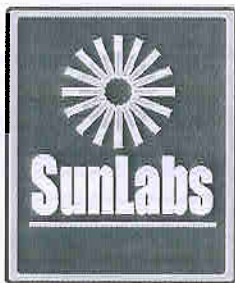


FIGURE 4.
SURFACE WATER SAMPLING LOCATION MAP
CELIA SITE
ESCAMBIA COUNTY, FLORIDA

Sources: www.labins.org, Aerial Photograph, 2004; ECT, 2009.



APPENDIX A
GROUNDWATER SAMPLING LABORATORY
ANALYTICAL REPORT



March 30, 2009

Katy Kitanovski
Environmental Consulting & Technology, Inc.
1408 N Westshore Blvd., Suite 115
Tampa, FL 33607

Re: SunLabs Project Number: **090323.02**
Client Project Description: **Celia Site**

Dear Ms. Kitanovski:

Enclosed is the report of laboratory analysis for the following samples:

<u>Sample Number</u>	<u>Sample Description</u>	<u>Date Collected</u>
82057	GW-E	03/19/2009
82058	GW-E Lab Filtered	03/19/2009
82059	GW-B	03/19/2009
82060	GW-B Lab Filtered	03/19/2009
82061	GW-B	03/20/2009
82062	GW-C	03/20/2009
82063	GW-C Lab Filtered	03/20/2009
82064	GW-F	03/20/2009
82065	GW-F Lab Filtered	03/20/2009
82066	GW-J	03/20/2009
82067	GW-J Lab Filtered	03/20/2009

Copies of the Chain(s)-of-Custody, if received, are attached to this report.

If you have any questions or comments concerning this report, please do not hesitate to contact us.

Michael W. Palmer
Vice President, Laboratory Operations

Enclosures

SunLabs, Inc.
5460 Beaumont Center Blvd., Suite 520
Tampa, FL 33634

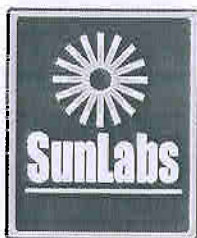
Cover Page 1 of 1

Unless Otherwise Noted and Where Applicable:

Phone: (813) 881-9401
Email: Info@SunLabsInc.com
Website: www.SunLabsInc.com

These samples were received at the proper temperature and were analyzed as received. The results herein relate only to the items tested or to the samples as received by the laboratory. This report shall not be reproduced except in full, without the written approval of the laboratory. Results for all solid matrices are reported on a dry weight basis. All samples will be disposed of within 45 days of the date of receipt of the samples. All samples in the body of the report are environmental samples. All results in the Quality Control (QC) section are labeled appropriately. All results meet the requirements of the NELAC standards. Footnotes are given at the end of the report. Uncertainty values are available upon request.

160186-OPC-POD-90-221



Report of Laboratory Analysis

SunLabs
Project Number
090323.02

Environmental Consulting &
Technology, Inc.

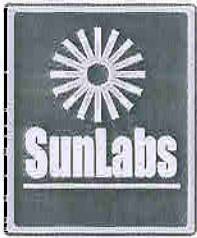
Project Description
Celia Site

March 30, 2009

SunLabs Sample Number **82057**
Sample Designation **GW-E**

Matrix Groundwater
Date Collected 03/19/2009 12:15
Date Received 03/20/2009 22:20

Parameters	Method	Units	Results	Dil Factor	MDL	RL	CAS Number	Date/Time Analyzed	Date/Time Prep
Anions by Ion Chromatography									
Date Analyzed			03/21/2009	1				03/21/09 15:21	03/21/09 12:30
Chloride	300.0	mg/L	6.1	1	0.045	0.18	16887-00-6	03/21/09 15:21	03/21/09 12:30
Nitrate-N	300.0	mg/L	1.2	1	0.014	0.056	14797-55-8	03/21/09 15:21	03/21/09 12:30
Metals by EPA Method 6010									
Date Digested	3010		3/24/2009						03/24/09 09:00
Date Analyzed			3/26/2009	1				03/26/09 17:57	
Arsenic	6010	mg/L	0.0048 U	1	0.0048	0.019	7440-38-2	03/24/09 19:04	03/24/09 09:00
Barium	6010	mg/L	0.017	1	0.001	0.004	7440-39-3	03/24/09 19:04	03/24/09 09:00
Cadmium	6010	mg/L	0.0006 U	1	0.0006	0.0024	7440-43-9	03/24/09 19:04	03/24/09 09:00
Chromium	6010	mg/L	0.0035 U	1	0.0035	0.014	7440-47-3	03/24/09 19:04	03/24/09 09:00
Iron	6010	mg/L	2.7	1	0.0023	0.0092	7439-89-6	03/25/09 11:59	03/24/09 09:00
Lead	6010	mg/L	0.0044 U	1	0.0044	0.018	7439-92-1	03/24/09 19:04	03/24/09 09:00
Magnesium	6010	mg/L	0.75	1	0.002	0.008	7439-95-4	03/26/09 17:00	03/24/09 09:00
Potassium	6010	mg/L	1.4	1	0.18	0.72	7440-09-7	03/26/09 17:57	03/24/09 09:00
Selenium	6010	mg/L	0.0047 U	1	0.0047	0.019	7782-49-2	03/24/09 19:04	03/24/09 09:00
Silver	6010	mg/L	0.0033 U	1	0.0033	0.013	7440-22-4	03/24/09 19:04	03/24/09 09:00
Sodium	6010	mg/L	4.0	1	0.011	0.044	7440-23-5	03/26/09 17:57	03/24/09 09:00
Zinc	6010	mg/L	0.026 V	1	0.0029	0.012	7440-66-6	03/24/09 19:04	03/24/09 09:00
Ammonia									
Nitrogen Ammonia (as N)	350.2	mg/L	0.012 I,S7	1	0.005	0.020		03/26/09 15:00	
Mercury									
Date Digested	7470		3/25/2009						03/25/09 10:00
Date Analyzed	7470		3/25/2009	1				03/25/09 17:35	
Mercury	7470	mg/L	0.0002 U	1	0.0002	0.0008	7439-97-6	03/25/09 17:35	03/25/09 10:00
Total Dissolved Solids									
Date Analyzed			3/24/2009 S7	1				03/24/09 16:00	
Total Dissolved Solids	SM2540C	mg/L	64 S7	1	7.3	29		03/24/09 16:00	
Total Organic Carbon									
Date Analyzed			3/24/2009 S7	1				03/24/09 15:00	
Total Organic Carbon	SM5310B	mg/L	0.615 I,S7	1	0.27	1.1		03/24/09 15:00	



Report of Laboratory Analysis

SunLabs
Project Number
090323.02

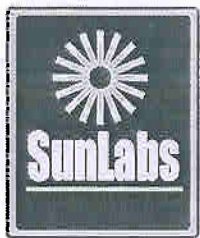
**Environmental Consulting &
Technology, Inc.**
Project Description
Celia Site

March 30, 2009

SunLabs Sample Number **82058**
Sample Designation **GW-E Lab Filtered**

Matrix Groundwater
Date Collected 03/19/2009 12:15
Date Received 03/20/2009 22:20

Parameters	Method	Units	Results	Dil Factor	MDL	RL	CAS Number	Date/Time Analyzed	Date/Time Prep
Iron									
Date Digested	3005		3/27/2009						03/27/09 11:15
Date Analyzed	6010		3/30/2009	1				03/30/09 16:07	
Iron	6010	mg/L	3.3 V	1	0.0024	0.0096	7439-89-6	03/30/09 16:07	03/27/09 11:15
Filter and Preserve									
Date Filtered			3/26/2009						03/26/09 12:00



Report of Laboratory Analysis

SunLabs
Project Number
090323.02

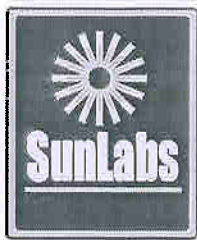
Environmental Consulting &
Technology, Inc.
Project Description
Celia Site

March 30, 2009

SunLabs Sample Number **82059**
Sample Designation **GW-B**

Matrix Groundwater
Date Collected 03/19/2009 17:15
Date Received 03/20/2009 22:20

Parameters	Method	Units	Results	Dil Factor	MDL	RL	CAS Number	Date/Time Analyzed	Date/Time Prep
Anions by Ion Chromatography									
Date Analyzed			03/21/2009	1				03/21/09 16:15	03/21/09 12:30
Chloride	300.0	mg/L	5.6	1	0.045	0.18	16887-00-6	03/21/09 16:15	03/21/09 12:30
Nitrate-N	300.0	mg/L	0.94	1	0.014	0.056	14797-55-8	03/21/09 16:15	03/21/09 12:30
Ammonia									
Nitrogen Ammonia (as N)	350.2	mg/L	0.006 IS7	1	0.005	0.02		03/26/09 15:00	



Report of Laboratory Analysis

SunLabs
Project Number
090323.02

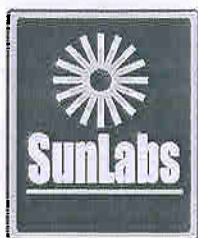
Environmental Consulting &
Technology, Inc.
Project Description
Celia Site

March 30, 2009

SunLabs Sample Number **82060**
Sample Designation **GW-B Lab Filtered**

Matrix Groundwater
Date Collected 03/19/2009 17:15
Date Received 03/20/2009 22:20

Parameters	Method	Units	Results	Dil Factor	MDL	RL	CAS Number	Date/Time Analyzed	Date/Time Prep
Iron									
Date Digested	3005		3/27/2009						03/27/09 11:15
Date Analyzed	6010		3/30/2009	1				03/30/09 16:09	
Iron	6010	mg/L	1.2 V	1	0.0024	0.0096	7439-89-6	03/30/09 16:09	03/27/09 11:15
Filter and Preserve									
Date Filtered			3/26/2009						03/26/09 12:00



Report of Laboratory Analysis

SunLabs
Project Number
090323.02

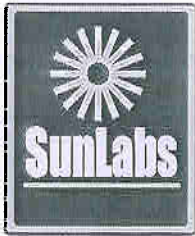
Environmental Consulting &
Technology, Inc.
Project Description
Celia Site

March 30, 2009

SunLabs Sample Number **82061**
Sample Designation **GW-B**

Matrix Groundwater
Date Collected 03/20/2009 07:25
Date Received 03/20/2009 22:20

Parameters	Method	Units	Results	Dil Factor	MDL	RL	CAS Number	Date/Time Analyzed	Date/Time Prep
Metals by EPA Method 6010									
Date Digested	3010		3/24/2009						03/24/09 09:00
Date Analyzed			3/26/2009	1				03/26/09 18:00	
Arsenic	6010	mg/L	0.0048 U	1	0.0048	0.019	7440-38-2	03/24/09 19:10	03/24/09 09:00
Barium	6010	mg/L	0.022	1	0.001	0.004	7440-39-3	03/24/09 19:10	03/24/09 09:00
Cadmium	6010	mg/L	0.0006 U	1	0.0006	0.0024	7440-43-9	03/24/09 19:10	03/24/09 09:00
Chromium	6010	mg/L	0.0035 U	1	0.0035	0.014	7440-47-3	03/24/09 19:10	03/24/09 09:00
Iron	6010	mg/L	0.36	1	0.0023	0.0092	7439-89-6	03/25/09 12:01	03/24/09 09:00
Lead	6010	mg/L	0.0044 U	1	0.0044	0.018	7439-92-1	03/24/09 19:10	03/24/09 09:00
Magnesium	6010	mg/L	0.58	1	0.002	0.008	7439-95-4	03/26/09 17:02	03/24/09 09:00
Potassium	6010	mg/L	1.3	1	0.18	0.72	7440-09-7	03/26/09 18:00	03/24/09 09:00
Selenium	6010	mg/L	0.0047 U	1	0.0047	0.019	7782-49-2	03/24/09 19:10	03/24/09 09:00
Silver	6010	mg/L	0.0033 U	1	0.0033	0.013	7440-22-4	03/24/09 19:10	03/24/09 09:00
Sodium	6010	mg/L	4.2	1	0.011	0.044	7440-23-5	03/26/09 18:00	03/24/09 09:00
Zinc	6010	mg/L	0.035 V	1	0.0029	0.012	7440-66-6	03/24/09 19:10	03/24/09 09:00
Mercury									
Date Digested	7470		3/25/2009						03/25/09 10:00
Date Analyzed	7470		3/25/2009	1				03/25/09 17:35	
Mercury	7470	mg/L	0.0002 U	1	0.0002	0.0008	7439-97-6	03/25/09 17:35	03/25/09 10:00
Total Dissolved Solids									
Date Analyzed			3/24/2009 S7	1				03/24/09 16:00	
Total Dissolved Solids	SM2540C	mg/L	72 S7	1	7.3	29		03/24/09 16:00	
Total Organic Carbon									
Date Analyzed			3/24/2009 S7	1				03/24/09 15:00	
Total Organic Carbon	SM5310B	mg/L	0.916 I,S7	1	0.27	1.1		03/24/09 15:00	



Report of Laboratory Analysis

SunLabs
Project Number
090323.02

Environmental Consulting &
Technology, Inc.
Project Description
Celia Site

March 30, 2009

SunLabs Sample Number **82062**
Sample Designation **GW-C**

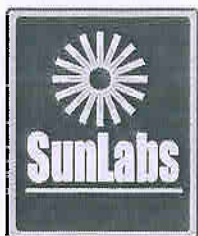
Matrix Groundwater
Date Collected 03/20/2009 07:45
Date Received 03/20/2009 22:20

Parameters	Method	Units	Results	Dil Factor	MDL	RL	CAS Number	Date/Time Analyzed	Date/Time Prep
Petroleum Range Organics by Method FLPRO									
Date Extracted			03/23/09						03/23/09 18:40
Date Analyzed			3/24/2009	1				03/24/09 19:50	
o-Terphenyl (27-117)	FLPRO	%	82	1	1	1	84-15-1	03/24/09 19:50	03/23/09 18:40
C-39 (D-103)	FLPRO	%	50	1	1	1		03/24/09 19:50	03/23/09 18:40
Petroleum Range Organics	FLPRO	ug/L	23 U	1	23	300	FL-ORGDE	03/24/09 19:50	03/23/09 18:40
Anions by Ion Chromatography									
Date Analyzed			03/21/2009	1				03/21/09 14:54	03/21/09 12:30
Chloride	300.0	mg/L	8.3	1	0.045	0.18	16887-00-6	03/21/09 14:54	03/21/09 12:30
Nitrate-N	300.0	mg/L	2.5	1	0.014	0.056	14797-55-8	03/21/09 14:54	03/21/09 12:30
Metals by EPA Method 6010									
Date Digested	3010		3/24/2009						03/24/09 09:00
Date Analyzed			3/26/2009	1				03/26/09 18:03	
Arsenic	6010	mg/L	0.0048 U	1	0.0048	0.019	7440-38-2	03/24/09 19:15	03/24/09 09:00
Barium	6010	mg/L	0.035	1	0.001	0.004	7440-39-3	03/24/09 19:15	03/24/09 09:00
Cadmium	6010	mg/L	0.0006 U	1	0.0006	0.0024	7440-43-9	03/24/09 19:15	03/24/09 09:00
Chromium	6010	mg/L	0.0035 U	1	0.0035	0.014	7440-47-3	03/24/09 19:15	03/24/09 09:00
Iron	6010	mg/L	6.6	2	0.0046	0.018	7439-89-6	03/25/09 12:48	03/24/09 09:00
Lead	6010	mg/L	0.0044 U	1	0.0044	0.018	7439-92-1	03/24/09 19:15	03/24/09 09:00
Magnesium	6010	mg/L	1.5	1	0.002	0.008	7439-95-4	03/26/09 17:04	03/24/09 09:00
Potassium	6010	mg/L	3.2	1	0.18	0.72	7440-09-7	03/26/09 18:03	03/24/09 09:00
Selenium	6010	mg/L	0.0047 U	1	0.0047	0.019	7782-49-2	03/24/09 19:15	03/24/09 09:00
Silver	6010	mg/L	0.0033 U	1	0.0033	0.013	7440-22-4	03/24/09 19:15	03/24/09 09:00
Sodium	6010	mg/L	7.9	1	0.011	0.044	7440-23-5	03/26/09 18:03	03/24/09 09:00
Zinc	6010	mg/L	0.081 V	1	0.0029	0.012	7440-66-6	03/24/09 19:15	03/24/09 09:00
Volatile Aromatics and Halocarbons									
Date Analyzed			03/26/09	1				03/26/09 17:21	
Surrogate (66-125)	8260	%	103	1				03/26/09 17:21	
Dichlorodifluoromethane	8260	ug/L	0.3 U	1	0.3	1.2	75-71-8	03/26/09 17:21	
Chloromethane	8260	ug/L	0.1 U	1	0.1	0.5	74-87-3	03/26/09 17:21	
Vinyl chloride	8260	ug/L	0.09 U	1	0.09	0.5	75-01-4	03/26/09 17:21	
Bromomethane	8260	ug/L	0.4 U	1	0.4	1.6	74-83-9	03/26/09 17:21	
Chloroethane	8260	ug/L	0.3 U	1	0.3	1.2	75-00-3	03/26/09 17:21	
Trichlorofluoromethane	8260	ug/L	0.2 U	1	0.2	0.8	75-69-4	03/26/09 17:21	
1,1-Dichloroethane	8260	ug/L	0.15 U	1	0.15	0.6	75-35-4	03/26/09 17:21	
Methylene chloride	8260	ug/L	1.7 U	1	1.7	6.8	75-09-2	03/26/09 17:21	
trans-1,2-Dichloroethane	8260	ug/L	0.2 U	1	0.2	0.8	156-60-5	03/26/09 17:21	
1,1-Dichloroethane	8260	ug/L	0.1 U	1	0.1	0.5	75-34-3	03/26/09 17:21	
cis-1,2-Dichloroethane	8260	ug/L	0.2 U	1	0.2	0.8	156-59-2	03/26/09 17:21	
Chloroform	8260	ug/L	0.1 U	1	0.1	0.5	67-66-3	03/26/09 17:21	
1,1,1-Trichloroethane	8260	ug/L	0.1 U	1	0.1	0.5	71-55-6	03/26/09 17:21	
Carbon tetrachloride	8260	ug/L	0.2 U	1	0.2	0.8	56-23-5	03/26/09 17:21	
1,2-Dichloroethane	8260	ug/L	0.2 U	1	0.2	0.8	107-06-2	03/26/09 17:21	
Trichloroethane	8260	ug/L	0.2 U	1	0.2	0.8	79-01-6	03/26/09 17:21	

SunLabs, Inc.
5460 Beaumont Center Blvd., Suite 520
Tampa, FL 33634

Laboratory ID Number - E84809

Phone: (813) 881-9401
Email: Info@SunLabsInc.com
Website: www.SunLabsInc.com



Report of Laboratory Analysis

SunLabs
Project Number
090323.02

Environmental Consulting &
Technology, Inc.
Project Description
Celia Site

March 30, 2009

SunLabs Sample Number **82062**
Sample Designation **GW-C**

Matrix Groundwater
Date Collected 03/20/2009 07:45
Date Received 03/20/2009 22:20

Parameters	Method	Units	Results	Dil Factor	MDL	RL	CAS Number	Date/Time Analyzed	Date/Time Prep
Volatile Aromatics and Halocarbons									
1,2-Dichloropropane	8260	ug/L	0.1 U	1	0.1	0.5	78-87-5	03/26/09 17:21	
Bromodichloromethane	8260	ug/L	0.1 U	1	0.1	0.5	75-27-4	03/26/09 17:21	
cis-1,3-Dichloropropene	8260	ug/L	0.2 U	1	0.2	0.8	10061-01-5	03/26/09 17:21	
trans-1,3-Dichloropropene	8260	ug/L	0.2 U	1	0.2	0.8	10061-02-6	03/26/09 17:21	
1,1,2-Trichloroethane	8260	ug/L	0.7 U	1	0.7	2.8	79-00-5	03/26/09 17:21	
Tetrachloroethene	8260	ug/L	0.25 U	1	0.25	1	127-18-4	03/26/09 17:21	
Dibromochloromethane	8260	ug/L	0.15 U	1	0.15	0.6	124-48-1	03/26/09 17:21	
Chlorobenzene	8260	ug/L	0.2 U	1	0.2	0.8	108-90-7	03/26/09 17:21	
Bromoform	8260	ug/L	0.3 U	1	0.3	1.2	75-25-2	03/26/09 17:21	
1,1,2,2-Tetrachloroethane	8260	ug/L	0.2 U	1	0.2	0.8	79-34-5	03/26/09 17:21	
1,3-Dichlorobenzene	8260	ug/L	0.3 U	1	0.3	1.2	541-73-1	03/26/09 17:21	
1,4-Dichlorobenzene	8260	ug/L	0.4 U	1	0.4	1.6	106-46-7	03/26/09 17:21	
1,2-Dichlorobenzene	8260	ug/L	0.2 U	1	0.2	0.8	95-50-1	03/26/09 17:21	
MTBE	8260	ug/L	0.05 U	1	0.05	0.5	1634-04-4	03/26/09 17:21	
Benzene	8260	ug/L	0.1 U	1	0.1	0.5	71-43-2	03/26/09 17:21	
Toluene	8260	ug/L	0.3 U	1	0.3	0.5	108-88-3	03/26/09 17:21	
Ethylbenzene	8260	ug/L	0.2 U	1	0.2	0.5	100-41-4	03/26/09 17:21	
Total Xylenes	8260	ug/L	0.4 U	1	0.4	1.6	1330-20-7	03/26/09 17:21	
Total VOA	8260	ug/L	0.1 U	1	0.1	0.9		03/26/09 17:21	

Polynuclear Aromatic Hydrocarbons by Method 8270

Date Extracted	3510		03/24/09					03/24/09 13:00	
Date Analyzed	8270		3/26/2009	1				03/26/09 06:11	
Surrogate (3-130)	8270	%	64	1				03/26/09 06:11	03/24/09 13:00
Acenaphthene	8270	ug/L	0.028 U	1	0.028	0.11	83-32-9	03/26/09 06:11	03/24/09 13:00
Acenaphthylene	8270	ug/L	0.022 U	1	0.022	0.09	208-96-8	03/26/09 06:11	03/24/09 13:00
Anthracene	8270	ug/L	0.02 U	1	0.02	0.08	120-12-7	03/26/09 06:11	03/24/09 13:00
Benzo(a)anthracene	8270	ug/L	0.011 U	1	0.011	0.044	56-55-3	03/26/09 06:11	03/24/09 13:00
Benzo(b)fluoranthene	8270	ug/L	0.007 U	1	0.007	0.028	205-99-2	03/26/09 06:11	03/24/09 13:00
Benzo(k)fluoranthene	8270	ug/L	0.017 U	1	0.017	0.068	207-08-9	03/26/09 06:11	03/24/09 13:00
Benzo(g,h,i)perylene	8270	ug/L	0.012 U	1	0.012	0.048	191-24-2	03/26/09 06:11	03/24/09 13:00
Benzo(a)pyrene	8270	ug/L	0.009 U	1	0.009	0.036	50-32-8	03/26/09 06:11	03/24/09 13:00
Chrysene	8270	ug/L	0.01 U	1	0.01	0.04	218-01-9	03/26/09 06:11	03/24/09 13:00
Dibenzo(a,h)anthracene	8270	ug/L	0.011 U	1	0.011	0.044	53-70-3	03/26/09 06:11	03/24/09 13:00
Fluoranthene	8270	ug/L	0.02 U	1	0.02	0.08	206-44-0	03/26/09 06:11	03/24/09 13:00
Fluorene	8270	ug/L	0.03 U	1	0.03	0.12	86-73-7	03/26/09 06:11	03/24/09 13:00
Indeno(1,2,3-cd)pyrene	8270	ug/L	0.011 U	1	0.011	0.044	193-39-5	03/26/09 06:11	03/24/09 13:00
1-Methylnaphthalene	8270	ug/L	0.028 U	1	0.028	0.11	90-12-0	03/26/09 06:11	03/24/09 13:00
2-Methylnaphthalene	8270	ug/L	0.025 U	1	0.025	0.1	91-57-6	03/26/09 06:11	03/24/09 13:00
Naphthalene	8270	ug/L	0.031 U	1	0.031	0.12	91-20-3	03/26/09 06:11	03/24/09 13:00
Phenanthrene	8270	ug/L	0.026 U	1	0.026	0.1	85-01-8	03/26/09 06:11	03/24/09 13:00
Pyrene	8270	ug/L	0.022 U	1	0.022	0.088	129-00-0	03/26/09 06:11	03/24/09 13:00

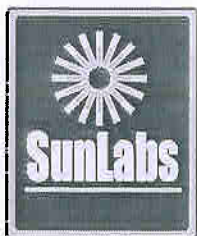
Ammonia

Nitrogen Ammonia (as N)	350.2	mg/L	0.223 S7	1	0.005	0.02		03/26/09 15:00	
-------------------------	-------	------	----------	---	-------	------	--	----------------	--

SunLabs, Inc.
5460 Beaumont Center Blvd., Suite 520
Tampa, FL 33634

Laboratory ID Number - E84809

Phone: (813) 881-9401
Email: Info@SunLabsInc.com
Website: www.SunLabsInc.com



Report of Laboratory Analysis

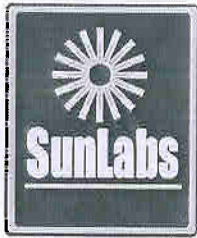
SunLabs Project Number	Environmental Consulting & Technology, Inc.
090323.02	Project Description
	Celia Site

March 30, 2009

SunLabs Sample Number **82062**
Sample Designation **GW-C**

Matrix Groundwater
Date Collected 03/20/2009 07:45
Date Received 03/20/2009 22:20

Parameters	Method	Units	Results	Dil Factor	MDL	RL	CAS Number	Date/Time Analyzed	Date/Time Prep
Mercury									
Date Digested	7470		3/25/2009						03/25/09 10:00
Date Analyzed	7470		3/25/2009	1				03/25/09 17:35	
Mercury	7470	mg/L	0.0002 U	1	0.0002	0.0008	7439-97-6	03/25/09 17:35	03/25/09 10:00
Total Dissolved Solids									
Date Analyzed			3/24/2009 S7	1				03/24/09 16:00	
Total Dissolved Solids	SM2540C	mg/L	128 S7	1	7.3	29		03/24/09 16:00	
Total Organic Carbon									
Date Analyzed			3/24/2009 S7	1				03/24/09 15:00	
Total Organic Carbon	SM5310B	mg/L	1.14 S7	1	0.27	1.1		03/24/09 15:00	



Report of Laboratory Analysis

SunLabs
Project Number
090323.02

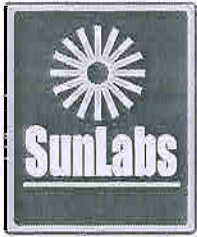
Environmental Consulting &
Technology, Inc.
Project Description
Celia Site

March 30, 2009

SunLabs Sample Number **82063**
Sample Designation **GW-C Lab Filtered**

Matrix Groundwater
Date Collected 03/20/2009 07:45
Date Received 03/20/2009 22:20

Parameters	Method	Units	Results	Dil Factor	MDL	RL	CAS Number	Date/Time Analyzed	Date/Time Prep
Iron									
Date Digested	3005		3/27/2009						03/27/09 11:15
Date Analyzed	6010		3/30/2009	1				03/30/09 16:29	
Iron	6010	mg/L	10 V	5	0.012	0.048	7439-89-6	03/30/09 16:29	03/27/09 11:15
Filter and Preserve									
Date Filtered			3/26/2009						03/26/09 12:00



Report of Laboratory Analysis

SunLabs
Project Number
090323.02

Environmental Consulting &
Technology, Inc.
Project Description
Celia Site

March 30, 2009

SunLabs Sample Number **82064**
Sample Designation **GW-F**

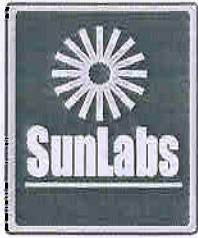
Matrix Groundwater
Date Collected 03/20/2009 12:55
Date Received 03/20/2009 22:20

Parameters	Method	Units	Results	Dil Factor	MDL	RL	CAS Number	Date/Time Analyzed	Date/Time Prep
Anions by Ion Chromatography									
Date Analyzed			03/21/2009	1				03/21/09 16:42	03/21/09 12:30
Chloride	300.0	mg/L	7.0	1	0.045	0.18	16887-00-6	03/21/09 16:42	03/21/09 12:30
Nitrate-N	300.0	mg/L	0.74	1	0.014	0.056	14797-55-8	03/21/09 16:42	03/21/09 12:30
Metals by EPA Method 6010									
Date Digested	3010		3/24/2009						03/24/09 09:00
Date Analyzed			3/26/2009	1				03/26/09 18:06	
Arsenic	6010	mg/L	0.059	1	0.0048	0.019	7440-38-2	03/24/09 19:21	03/24/09 09:00
Barium	6010	mg/L	0.34	1	0.001	0.004	7440-39-3	03/24/09 19:21	03/24/09 09:00
Cadmium	6010	mg/L	0.0006 U	1	0.0006	0.0024	7440-43-9	03/24/09 19:21	03/24/09 09:00
Chromium	6010	mg/L	0.61	1	0.0035	0.014	7440-47-3	03/24/09 19:21	03/24/09 09:00
Iron	6010	mg/L	280	100	0.23	0.92	7439-89-6	03/25/09 12:50	03/24/09 09:00
Lead	6010	mg/L	0.16	1	0.0044	0.018	7439-92-1	03/24/09 19:21	03/24/09 09:00
Magnesium	6010	mg/L	5.1	1	0.002	0.008	7439-95-4	03/26/09 17:06	03/24/09 09:00
Potassium	6010	mg/L	8.1	1	0.18	0.72	7440-09-7	03/26/09 18:06	03/24/09 09:00
Selenium	6010	mg/L	0.0047 U	1	0.0047	0.019	7782-49-2	03/24/09 19:21	03/24/09 09:00
Silver	6010	mg/L	0.0033 U	1	0.0033	0.013	7440-22-4	03/24/09 19:21	03/24/09 09:00
Sodium	6010	mg/L	4.6	1	0.011	0.044	7440-23-5	03/26/09 18:06	03/24/09 09:00
Zinc	6010	mg/L	0.33 V	1	0.0029	0.012	7440-66-6	03/24/09 19:21	03/24/09 09:00
Ammonia									
Nitrogen Ammonia (as N)	350.2	mg/L	1.24 S7	1	0.005	0.02		03/26/09 15:00	
Mercury									
Date Digested	7470		3/25/2009						03/25/09 10:00
Date Analyzed	7470		3/25/2009	1				03/25/09 17:35	
Mercury	7470	mg/L	0.0052	1	0.0002	0.0008	7439-97-6	03/25/09 17:35	03/25/09 10:00
Total Dissolved Solids									
Date Analyzed			3/24/2009 S7	1				03/24/09 16:00	
Total Dissolved Solids	SM2540C	mg/L	92 S7	1	7.3	29		03/24/09 16:00	
Total Organic Carbon									
Date Analyzed			3/24/2009 S7	1				03/24/09 15:00	
Total Organic Carbon	SM5310B	mg/L	6.24 S7	1	0.27	1.1		03/24/09 15:00	

SunLabs, Inc.
5460 Beaumont Center Blvd., Suite 520
Tampa, FL 33634

Laboratory ID Number - E84809

Phone: (813) 881-9401
Email: Info@SunLabsInc.com
Website: www.SunLabsInc.com



Report of Laboratory Analysis

SunLabs
Project Number
090323.02

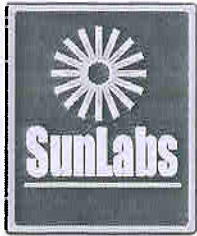
**Environmental Consulting &
Technology, Inc.**
Project Description
Celia Site

March 30, 2009

SunLabs Sample Number **82065**
Sample Designation **GW-F Lab Filtered**

Matrix Groundwater
Date Collected 03/20/2009 12:55
Date Received 03/20/2009 22:20

Parameters	Method	Units	Results	Dil Factor	MDL	RL	CAS Number	Date/Time Analyzed	Date/Time Prep
Iron									
Date Digested	3005		3/27/2009						03/27/09 11:15
Date Analyzed	6010		3/30/2009	1				03/30/09 16:14	
Iron	6010	mg/L	4.0 V	1	0.0024	0.0096	7439-89-6	03/30/09 16:14	03/27/09 11:15
Filter and Preserve									
Date Filtered			3/26/2009						03/26/09 12:00



Report of Laboratory Analysis

SunLabs Project Number	Environmental Consulting & Technology, Inc.
090323.02	Project Description
	Celia Site

March 30, 2009

SunLabs Sample Number **82066**
Sample Designation **GW-J**

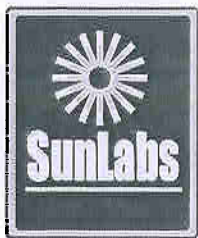
Matrix Groundwater
Date Collected 03/20/2009 13:00
Date Received 03/20/2009 22:20

Parameters	Method	Units	Results	Dil Factor	MDL	RL	CAS Number	Date/Time Analyzed	Date/Time Prep
Anions by Ion Chromatography									
Date Analyzed			03/21/2009	1				03/21/09 15:48	03/21/09 12:30
Chloride	300.0	mg/L	5.3	1	0.045	0.18	16887-00-6	03/21/09 15:48	03/21/09 12:30
Nitrate-N	300.0	mg/L	0.33	1	0.014	0.056	14797-55-8	03/21/09 15:48	03/21/09 12:30
Metals by EPA Method 6010									
Date Digested	3010		3/24/2009						03/24/09 09:00
Date Analyzed			3/26/2009	1				03/26/09 18:08	
Arsenic	6010	mg/L	0.0048 U	1	0.0048	0.019	7440-38-2	03/24/09 19:26	03/24/09 09:00
Barium	6010	mg/L	0.028	1	0.001	0.004	7440-39-3	03/24/09 19:26	03/24/09 09:00
Cadmium	6010	mg/L	0.0006 U	1	0.0006	0.0024	7440-43-9	03/24/09 19:26	03/24/09 09:00
Chromium	6010	mg/L	0.008 I	1	0.0035	0.014	7440-47-3	03/24/09 19:26	03/24/09 09:00
Iron	6010	mg/L	4.9	2	0.0046	0.018	7439-89-6	03/25/09 12:52	03/24/09 09:00
Lead	6010	mg/L	0.0044 U	1	0.0044	0.018	7439-92-1	03/24/09 19:26	03/24/09 09:00
Magnesium	6010	mg/L	0.81	1	0.002	0.008	7439-95-4	03/26/09 17:08	03/24/09 09:00
Potassium	6010	mg/L	1.3	1	0.18	0.72	7440-09-7	03/26/09 18:08	03/24/09 09:00
Selenium	6010	mg/L	0.0047 U	1	0.0047	0.019	7782-49-2	03/24/09 19:26	03/24/09 09:00
Silver	6010	mg/L	0.0033 U	1	0.0033	0.013	7440-22-4	03/24/09 19:26	03/24/09 09:00
Sodium	6010	mg/L	3.0	1	0.011	0.044	7440-23-5	03/26/09 18:08	03/24/09 09:00
Zinc	6010	mg/L	0.23 V	1	0.0029	0.012	7440-66-6	03/24/09 19:26	03/24/09 09:00
Ammonia									
Nitrogen Ammonia (as N)	350.2	mg/L	4.85 S7	1	0.005	0.02		03/26/09 15:00	
Mercury									
Date Digested	7470		3/25/2009						03/25/09 10:00
Date Analyzed	7470		3/25/2009	1				03/25/09 17:35	
Mercury	7470	mg/L	0.0002 U	1	0.0002	0.0008	7439-97-6	03/25/09 17:35	03/25/09 10:00
Total Dissolved Solids									
Date Analyzed			3/24/2009 S7	1				03/24/09 16:00	
Total Dissolved Solids	SM2540C	mg/L	64 S7	1	7.3	29		03/24/09 16:00	
Total Organic Carbon									
Date Analyzed			3/24/2009 S7	1				03/24/09 15:00	
Total Organic Carbon	SM5310B	mg/L	4.53 S7	1	0.27	1.1		03/24/09 15:00	

SunLabs, Inc.
5460 Beaumont Center Blvd., Suite 520
Tampa, FL 33634

Laboratory ID Number - E84809

Phone: (813) 881-9401
Email: Info@SunLabsInc.com
Website: www.SunLabsInc.com



Report of Laboratory Analysis

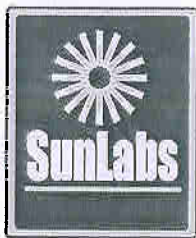
SunLabs Project Number	Environmental Consulting & Technology, Inc.
090323.02	Project Description
	Celia Site

March 30, 2009

SunLabs Sample Number **82067**
Sample Designation **GW-J Lab Filtered**

Matrix Groundwater
Date Collected 03/20/2009 13:00
Date Received 03/20/2009 22:20

Parameters	Method	Units	Results	Dil Factor	MDL	RL	CAS Number	Date/Time Analyzed	Date/Time Prep
Iron									
Date Digested	3005		3/27/2009						03/27/09 11:15
Date Analyzed	6010		3/30/2009	1				03/30/09 16:16	
Iron	6010	mg/L	1.3 V	1	0.0024	0.0096	7439-89-6	03/30/09 16:16	03/27/09 11:15
Filter and Preserve									
Date Filtered			3/26/2009						03/26/09 12:00



Report of Laboratory Analysis

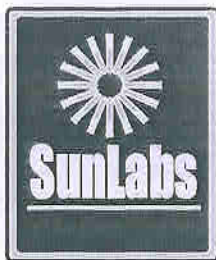
SunLabs Project Number
090323.02

Environmental Consulting & Technology, Inc.
Project Description
Celia Site

March 30, 2009

Footnotes

- * *SunLabs is not currently NELAC certified for this analyte.*
- I *The reported value is between the laboratory method detection limit and the laboratory practical quantitation limit.*
- I,S7
- LCS *Laboratory Control Sample*
- LCSD *Laboratory Control Sample Duplicate*
- MB *Method Blank*
- MS *Matrix Spike*
- MSD *Matrix Spike Duplicate*
- NA *Sample not analyzed at client's request.*
- RL *RL(reporting limit) = PQL(practical quantitation limit).*
- RPD *Relative Percent Difference*
- S7 *This analysis performed by Benchmark EnviroAnalytical, Inc., Certification number E84167.*
- U *Compound was analyzed for but not detected.*
- V *Indicates that the analyte was detected in both the sample and the associated method blank.*



Quality Control Data

Project Number	Environmental Consulting &
090323.02	Project Description
	Celia Site

March 30, 2009

Batch No: C8611

Test: Anions by Ion Chromatography

TestCode: 300.0

Associated Samples

82057, 82059, 82062, 82064, 82066

Compound	Blank	LCS Spike	LCS %Rec	LCS D %Rec	RPD %	---QC Limits---		MS Spike	MS %Rec	MS D %Rec	RPD %	---QC Limits---		Dup RPD	Qualifiers	
						RPD	LCS					RPD	MS			
Parent Sample Number																
Chloride	0.045 U	10.00	99	98	1	3	85-116	10.00	100	101	1	15	0-207			
Nitrate-N	0.014 U	5.00	99	99	0	10	80-122	5.00	98	100	2	11	42-152			

Batch No: C8624

Test: Petroleum Range Organics by Method FLPRO

TestCode: FIPro-w

Associated Samples

82062

Compound	Blank	LCS Spike	LCS %Rec	LCS D %Rec	RPD %	---QC Limits---		MS Spike	MS %Rec	MS D %Rec	RPD %	---QC Limits---		Dup RPD	Qualifiers	
						RPD	LCS					RPD	MS			
Parent Sample Number																
Date Extracted	1/23/2009 U															
Date Analyzed	1/24/2009 U															
o-Terphenyl (27-117)	76															
C-39 (D-103)	41															
Petroleum Range Organics	23 U	850	70	79	12	24	34-119	850	72	83	14	49	0-146			

Batch No: C8626

Test: Metals by EPA Method 6010

TestCode: 6010-L

Associated Samples

82057, 82061, 82062, 82064, 82066

Compound	Blank	LCS Spike	LCS %Rec	LCS D %Rec	RPD %	---QC Limits---		MS Spike	MS %Rec	MS D %Rec	RPD %	---QC Limits---		Dup RPD	Qualifiers	
						RPD	LCS					RPD	MS			
Parent Sample Number																
Aluminum	0.009 U	1000	99	104	5	9	87-115	1000	100	95	5	33	0-263			
Arsenic	0.0048 U	1000	99	103	4	8	88-112	1000	99	94	5	8	78-117			
Barium	0.001 U	1000	100	100	0	10	87-116	1000	98	93	5	11	70-120			
Cadmium	0.0006 U	1000	100	102	2	3	87-110	1000	97	91	6	10	73-116			
Chromium	0.0035 U	1000	102	102	0	10	91-112	1000	101	95	6*	4	70-122			
Iron	0.0023 U	1000	99	103	4	20	80-126	1000	102	97	5	55	0-289			
Lead	0.0044 U	1000	96	98	2	8	87-113	1000	98	91	7	10	64-118			
Magnesium	0.019	10.0	100	99	1	3	91-107	10.0	99	97	2	30	0-227			
Potassium	0.18 U	10.0	97	97	0	3	91-112	10.0	97	96	1	196	0-209			
Selenium	0.0047 U	1000	98	101	3	4	88-110	1000	97	91	6	6	81-114			
Silver	0.0033 U	1000	100	105	5	10	85-111	1000	98	95	3	6	74-114			
Sodium	0.011 U	10.0	104	104	0	6	89-114	10.0	100	100	0	14	72-125			
Zinc	0.027	1000	98	100	2	4	86-114	1000	96	90	6	8	75-116			

Batch No: C8642

Test: Polynuclear Aromatic Hydrocarbons by Method 8270

TestCode: 8270PAH-w

Associated Samples

82062

Compound	Blank	LCS Spike	LCS %Rec	LCS D %Rec	RPD %	---QC Limits---		MS Spike	MS %Rec	MS D %Rec	RPD %	---QC Limits---		Dup RPD	Qualifiers	
						RPD	LCS					RPD	MS			
Parent Sample Number																
Surrogate (3-130)	60															
Acenaphthene	0.028 U															
Acenaphthylene	0.022 U	1000	63	62	2	10	59-88	1000	52	48	8	82	35-98			
Anthracene	0.020 U															
Benzo(a)anthracene	0.011 U															
Benzo(b)fluoranthene	0.007 U															
Benzo(k)fluoranthene	0.017 U	1000	87	77	12	14	42-104	1000	79	59	29	72	31-104			
Benzo(g,h,i)perylene	0.012 U															

SunLabs, Inc.
5460 Beaumont Center Blvd., Suite 520
Tampa, FL 33634

Laboratory ID Number - E84809

Phone: (813) 881-9401
Email: Info@SunLabsInc.com
Website: www.SunLabsInc.com



Quality Control Data

Project Number
090323.02

Environmental Consulting & Technology, Inc.
Project Description
Celia Site

March 30, 2009

Batch No: **C8642**

Test: Polynuclear Aromatic Hydrocarbons by Method 8270

Associated Samples
82062

TestCode: 8270PAH-w

Compound	Blank	LCS Spike	LCS %Rec	LCSD %Rec	RPD %	---QC Limits---		MS Spike	MS %Rec	MSD %Rec	RPD %	---QC Limits---		Dup RPD	Qualifiers
						RPD	LCS					RPD	MS		
<i>Parent Sample Number</i>															
Benzo(a)pyrene	0.009 U	1000	81	67	19 *	18	39-110	1000	79	59	29	70	33-104		
Chrysene	0.010 U														
Dibenzo(a,h)anthracene	0.011 U														
Fluoranthene	0.020 U	1000	66	66	0	10	59-95	1000	59	51	15	89	38-108		
Fluorene	0.030 U	1000	73	73	0	9	56-91	1000	60	55	9	101	32-103		
Indeno(1,2,3-cd)pyrene	0.011 U														
1-Methylnaphthalene	0.028 U														
2-Methylnaphthalene	0.025 U														
Naphthalene	0.031 U	1000	58	51	13 *	0	50-110	1000	40 *	40 *	0	0	75-96		
Phenanthrene	0.026 U	1000	60	59	2	18	34-115	1000	53	46	14	98	35-105		
Pyrene	0.022 U	1000	64	63	2	16	59-107	1000	59	49	19	63	35-123		

Batch No: **C8646**

Test: Mercury

Associated Samples
82057, 82061, 82062, 82064, 82066

TestCode: Hg-L

Compound	Blank	LCS Spike	LCS %Rec	LCSD %Rec	RPD %	---QC Limits---		MS Spike	MS %Rec	MSD %Rec	RPD %	---QC Limits---		Dup RPD	Qualifiers
						RPD	LCS					RPD	MS		
<i>Parent Sample Number</i>															
Date Digested	1/25/2009 U														
Date Analyzed	1/25/2009 U														
Mercury	0.0002 U	5.0	85	87	2	11	81-118	5.0	88	85	3	17	67-126		

Batch No: **C8690**

Test: Metals by EPA Method 6010

Associated Samples
82058, 82060, 82063, 82065, 82067

TestCode: 6010-L

Compound	Blank	LCS Spike	LCS %Rec	LCSD %Rec	RPD %	---QC Limits---		MS Spike	MS %Rec	MSD %Rec	RPD %	---QC Limits---		Dup RPD	Qualifiers
						RPD	LCS					RPD	MS		
<i>Parent Sample Number</i>															
Arsenic	0.0048 U	1000	92	91	1	8	88-112	1000	94	94	0	8	78-117		
Barium	0.001 U	1000	94	92	2	10	87-116	1000	93	98	5	11	70-120		
Cadmium	0.0006 U	1000	89	89	0	3	87-110	1000	93	93	0	10	73-116		
Chromium	0.0035 U	1000	96	94	2	10	91-112	1000	97	100	3	4	70-122		
Iron	0.10	1000	114	112	2	20	80-126	1000	94	113	18	55	0-289		
Lead	0.0044 U	1000	89	90	1	8	87-113	1000	90	91	1	10	64-118		
Selenium	0.0047 U	1000	88	90	2	4	88-110	1000	93	94	1	6	81-114		
Silver	0.0033 U	1000	93	92	1	10	85-111	1000	93	93	0	6	74-114		

Batch No: **C8714**

Test: Volatile Organic Compounds (BTEX/MTBE)

Associated Samples
82062

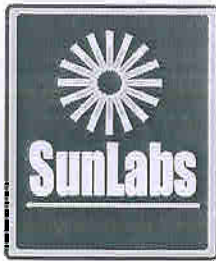
TestCode: BTEX-w

Compound	Blank	LCS Spike	LCS %Rec	LCSD %Rec	RPD %	---QC Limits---		MS Spike	MS %Rec	MSD %Rec	RPD %	---QC Limits---		Dup RPD	Qualifiers
						RPD	LCS					RPD	MS		
<i>Parent Sample Number</i>															
Surrogate (66-125)	103													82004	
MTBE	0.05 U														80
Benzene	0.10 U	10	114	119	4	13	63-135	10	114			46-131			7
Toluene	0.30 U	10	117	120	3	20	65-135	10	127 *			56-123			0
Ethylbenzene	0.20 U														0
Total Xylenes	0.40 U														0

SunLabs, Inc.
5460 Beaumont Center Blvd., Suite 520
Tampa, FL 33634

Laboratory ID Number - E84809

Phone: (813) 881-9401
Email: Info@SunLabsInc.com
Website: www.SunLabsInc.com



Quality Control Data

Project Number
090323.02

Environmental Consulting & Technology, Inc.
Project Description
Celia Site

March 30, 2009

Batch No: **C8714**

Test: Volatile Organic Compounds (BTEX/MTBE)

Associated Samples
82062

TestCode: BTEX-w

Compound	Blank	LCS Spike	LCS %Rec	LCSD %Rec	RPD %	---QC Limits---		MS Spike	MS %Rec	MSD %Rec	RPD %	---QC Limits---		Dup RPD	Qualifiers	
						RPD	LCS					RPD	MS			
Parent Sample Number														82005	82004	
Total VOA	0.5 U														0	

* indicates value is outside control limits for %Recovery or greater than acceptance criteria for RP

Footnotes

- MSA* *The results of the matrix spike are out of range due to a high amount of target analyte(s) in the original sample.*
- Q1* *The result for the spike(s) were not within acceptable control limits. However, the LCS data was within acceptable control limits. Therefore the poor spike results can be attributed to matrix.*
- U* *Compound was analyzed for but not detected.*

NO 21229

SunLabs, Inc. Chain of Custody

ECT

Client Name: Katy Kitanovski
Contact: Katy Kitanovski
Address: 1408 N. Westshore Sq 115
Tampa, FL 33607
Phone / Fax: 813-289-9338
E-Mail: kkitanovski@ectinc.com

SunLabs Project # 090323.02

Project Name: Celia Site
Project #: 090213-0300
PO #:
Alt Bill To:

SunLabs Sample #	Sample Description	Sample Date	Sample Time	# of Bottles	Analysis / Method Requested	Matrix	Preservative	Bottle Type
82051	GW - F	3/19/09	12:15	8	IC + NO ₃ + NH ₄ ⁺ + P	GW	IC	P
82059	GW - B	3/19/09	17:15	3	IC + NO ₃ + NH ₄ ⁺ + P	GW	IC	P
82061	GW - B	3/20/09	7:25	5	IC + NO ₃ + NH ₄ ⁺ + P	GW	IC	P
82062	GW - C	3/20/09	7:45	13	IC + NO ₃ + NH ₄ ⁺ + P	GW	IC	P
82064	GW - F	3/20/09	12:55	8	IC + NO ₃ + NH ₄ ⁺ + P	GW	IC	P
82066	GW - T	3/20/09	13:00	8	IC + NO ₃ + NH ₄ ⁺ + P	GW	IC	P

Due Date Requested: Standard

FDEP Pre-Approval site Current rates Old rates

Cash rates

Remarks / Comments:
Hold Filtered Metals, pending initial results

Sampler Signature / Date: [Signature] 3/18/09

Printed Name / Affiliation: Katy Kitanovski/ECT

Matrix Codes:
GV = Glass Vial
GA = Glass Amber
P = Plastic
S = Soil Jar

Preservative Codes:
H = Hydrochloric Acid + Ice
I = Ice only
N = Nitric Acid + Ice
S = Sulfuric Acid + Ice
VS = MeOH, OFW, + Ice
O = Other (Specify)

Internal Use Only:
Sample Condition Upon Receipt
Custody Seals present
Shipping Blis...
Sample Containers...
Samples within holding time?
Sufficient volume for all analyses?
Are vials head-space free?
Proper conditions and preservatives?

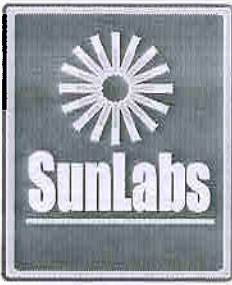
Temp: 47°C

Received on ice Y N / NA

Relinquished By:	Date:	Time:
<u>[Signature]</u>	3/18/09	
<u>[Signature]</u>	3/20/09	2200
<u>[Signature]</u>		
<u>[Signature]</u>		

SunLabs, Inc.
5460 Beaumont Center Blvd., Suite 520, Tampa, Florida 33634
Phone: 813-881-9401 / Fax: 813-354-4661
e-mail: info@SunLabsInc.com www.SunLabsInc.com

SUNLABS, INC. RESERVES THE RIGHT TO BILL FOR UNUSED UNRETURNED SAMPLES AND TO RETURN UNUSED SAMPLES.



April 16, 2009

Katy Kitanovski
Environmental Consulting & Technology, Inc.
1408 N Westshore Blvd., Suite 115
Tampa, FL 33607

Re: SunLabs Project Number: **090410.13**
Client Project Description: **Celia Site**

Dear Ms. Kitanovski:

Enclosed is the report of laboratory analysis for the following samples:

<u>Sample Number</u>	<u>Sample Description</u>	<u>Date Collected</u>
82966	GW-D	4/8/2009

Copies of the Chain(s)-of-Custody, if received, are attached to this report.

If you have any questions or comments concerning this report, please do not hesitate to contact us.

Sincerely,

Michael W. Palmer
Vice President, Laboratory Operations

Enclosures

SunLabs, Inc.
5460 Beaumont Center Blvd., Suite 520
Tampa, FL 33634

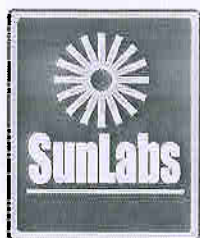
Cover Page 1 of 1

Unless Otherwise Noted and Where Applicable:

Phone: (813) 881-9401
Email: Info@SunLabsInc.com
Website: www.SunLabsInc.com

These samples were received at the proper temperature and were analyzed as received. The results herein relate only to the items tested or to the samples as received by the laboratory. This report shall not be reproduced except in full, without the written approval of the laboratory. Results for all solid matrices are reported on a dry weight basis. All samples will be disposed of within 45 days of the date of receipt of the samples. All samples in the body of the report are environmental samples. All results in the Quality Control (QC) section are labeled appropriately. All results meet the requirements of the NELAC standards. Footnotes are given at the end of the report. Uncertainty values are available upon request.

160186-OPC-POD-90-240



Report of Laboratory Analysis

SunLabs
Project Number
090410.13

Environmental Consulting &
Technology, Inc.
Project Description
Celia Site

April 16, 2009

SunLabs Sample Number **82966**
Sample Designation **GW-D**

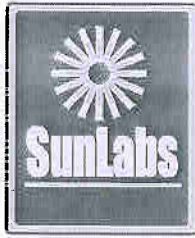
Matrix Groundwater
Date Collected 4/8/2009 17:45
Date Received 4/10/2009 15:03

Parameters	Method	Units	Results	Dil Factor	MDL	RL	CAS Number	Date/Time Analyzed	Date/Time Prep
Petroleum Range Organics by Method FLPRO									
Date Extracted			04/10/09						04/10/09 11:40
Date Analyzed			4/15/2009	1				04/15/09 12:56	
o-Terphenyl (27-117)	FLPRO	%	69	1	1	1	84-15-1	04/15/09 12:56	04/10/09 11:40
C-39 (D-103)	FLPRO	%	50	1	1	1		04/15/09 12:56	04/10/09 11:40
Petroleum Range Organics	FLPRO	ug/L	23 U	1	23	300	FL-ORGDE	04/15/09 12:56	04/10/09 11:40
Volatile Aromatics and Halocarbons									
Date Analyzed			04/13/09	1				04/13/09 22:40	
Surrogate (66-125)	8260	%	105	1				04/13/09 22:40	
Dichlorodifluoromethane	8260	ug/L	0.3 U	1	0.3	1.2	75-71-8	04/13/09 22:40	
Chloromethane	8260	ug/L	0.1 U	1	0.1	0.5	74-87-3	04/13/09 22:40	
Vinyl chloride	8260	ug/L	0.09 U	1	0.09	0.5	75-01-4	04/13/09 22:40	
Bromomethane	8260	ug/L	0.4 U	1	0.4	1.6	74-83-9	04/13/09 22:40	
Chloroethane	8260	ug/L	0.3 U	1	0.3	1.2	75-00-3	04/13/09 22:40	
Trichlorofluoromethane	8260	ug/L	0.2 U	1	0.2	0.8	75-69-4	04/13/09 22:40	
1,1-Dichloroethene	8260	ug/L	0.15 U	1	0.15	0.6	75-35-4	04/13/09 22:40	
Methylene chloride	8260	ug/L	1.7 U	1	1.7	6.8	75-09-2	04/13/09 22:40	
trans-1,2-Dichloroethene	8260	ug/L	0.2 U	1	0.2	0.8	156-60-5	04/13/09 22:40	
1,1-Dichloroethane	8260	ug/L	0.1 U	1	0.1	0.5	75-34-3	04/13/09 22:40	
cis-1,2-Dichloroethene	8260	ug/L	0.2 U	1	0.2	0.8	156-59-2	04/13/09 22:40	
Chloroform	8260	ug/L	0.1 U	1	0.1	0.5	67-66-3	04/13/09 22:40	
1,1,1-Trichloroethane	8260	ug/L	0.1 U	1	0.1	0.5	71-55-6	04/13/09 22:40	
Carbon tetrachloride	8260	ug/L	0.2 U	1	0.2	0.8	56-23-5	04/13/09 22:40	
1,2-Dichloroethane	8260	ug/L	0.2 U	1	0.2	0.8	107-06-2	04/13/09 22:40	
Trichloroethene	8260	ug/L	0.2 U	1	0.2	0.8	79-01-6	04/13/09 22:40	
1,2-Dichloropropane	8260	ug/L	0.1 U	1	0.1	0.5	78-87-5	04/13/09 22:40	
Bromodichloromethane	8260	ug/L	0.1 U	1	0.1	0.5	75-27-4	04/13/09 22:40	
cis-1,3-Dichloropropene	8260	ug/L	0.2 U	1	0.2	0.8	10061-01-5	04/13/09 22:40	
trans-1,3-Dichloropropene	8260	ug/L	0.2 U	1	0.2	0.8	10061-02-6	04/13/09 22:40	
1,1,2-Trichloroethane	8260	ug/L	0.7 U	1	0.7	2.8	79-00-5	04/13/09 22:40	
Tetrachloroethene	8260	ug/L	0.25 U	1	0.25	1	127-18-4	04/13/09 22:40	
Dibromochloromethane	8260	ug/L	0.15 U	1	0.15	0.6	124-48-1	04/13/09 22:40	
Chlorobenzene	8260	ug/L	0.2 U	1	0.2	0.8	108-90-7	04/13/09 22:40	
Bromoform	8260	ug/L	0.3 U	1	0.3	1.2	75-25-2	04/13/09 22:40	
1,1,2,2-Tetrachloroethane	8260	ug/L	0.2 U	1	0.2	0.8	79-34-5	04/13/09 22:40	
1,3-Dichlorobenzene	8260	ug/L	0.3 U	1	0.3	1.2	541-73-1	04/13/09 22:40	
1,4-Dichlorobenzene	8260	ug/L	0.4 U	1	0.4	1.6	106-46-7	04/13/09 22:40	
1,2-Dichlorobenzene	8260	ug/L	0.2 U	1	0.2	0.8	95-50-1	04/13/09 22:40	
MTBE	8260	ug/L	0.05 U	1	0.05	0.5	1634-04-4	04/13/09 22:40	
Benzene	8260	ug/L	0.1 U	1	0.1	0.5	71-43-2	04/13/09 22:40	
Toluene	8260	ug/L	0.3 U	1	0.3	0.5	108-88-3	04/13/09 22:40	
Ethylbenzene	8260	ug/L	0.2 U	1	0.2	0.5	100-41-4	04/13/09 22:40	
Total Xylenes	8260	ug/L	0.4 U	1	0.4	1.6	1330-20-7	04/13/09 22:40	
Total VOA	8260	ug/L	0.1 U	1	0.1	0.9		04/13/09 22:40	

SunLabs, Inc.
5460 Beaumont Center Blvd., Suite 520
Tampa, FL 33634

Laboratory ID Number - E84809

Phone: (813) 881-9401
Email: Info@SunLabsInc.com
Website: www.SunLabsInc.com



Report of Laboratory Analysis

SunLabs
Project Number
090410.13

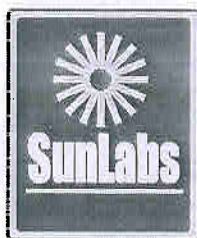
Environmental Consulting &
Technology, Inc.
Project Description
Celia Site

April 16, 2009

SunLabs Sample Number **82966**
Sample Designation **GW-D**

Matrix Groundwater
Date Collected 4/8/2009 17:45
Date Received 4/10/2009 15:03

Parameters	Method	Units	Results	Dil Factor	MDL	RL	CAS Number	Date/Time Analyzed	Date/Time Prep
Polynuclear Aromatic Hydrocarbons by Method 8270									
Date Extracted	3510		04/13/09						04/13/09 09:00
Date Analyzed	8270		4/13/2009	1				04/13/09 15:47	
Surrogate (3-130)	8270	%	73	1				04/13/09 15:47	04/13/09 09:00
Acenaphthene	8270	ug/L	0.028 U	1	0.028	0.11	83-32-9	04/13/09 15:47	04/13/09 09:00
Acenaphthylene	8270	ug/L	0.022 U	1	0.022	0.09	208-96-8	04/13/09 15:47	04/13/09 09:00
Anthracene	8270	ug/L	0.02 U	1	0.02	0.08	120-12-7	04/13/09 15:47	04/13/09 09:00
Benzo(a)anthracene	8270	ug/L	0.011 U	1	0.011	0.044	56-55-3	04/13/09 15:47	04/13/09 09:00
Benzo(b)fluoranthene	8270	ug/L	0.007 U	1	0.007	0.028	205-99-2	04/13/09 15:47	04/13/09 09:00
Benzo(k)fluoranthene	8270	ug/L	0.017 U	1	0.017	0.068	207-08-9	04/13/09 15:47	04/13/09 09:00
Benzo(g,h,i)perylene	8270	ug/L	0.012 U	1	0.012	0.048	191-24-2	04/13/09 15:47	04/13/09 09:00
Benzo(a)pyrene	8270	ug/L	0.009 U	1	0.009	0.036	50-32-8	04/13/09 15:47	04/13/09 09:00
Chrysene	8270	ug/L	0.01 U	1	0.01	0.04	218-01-9	04/13/09 15:47	04/13/09 09:00
Dibenzo(a,h)anthracene	8270	ug/L	0.011 U	1	0.011	0.044	53-70-3	04/13/09 15:47	04/13/09 09:00
Fluoranthene	8270	ug/L	0.02 U	1	0.02	0.08	206-44-0	04/13/09 15:47	04/13/09 09:00
Fluorene	8270	ug/L	0.03 U	1	0.03	0.12	86-73-7	04/13/09 15:47	04/13/09 09:00
Indeno(1,2,3-cd)pyrene	8270	ug/L	0.011 U	1	0.011	0.044	193-39-5	04/13/09 15:47	04/13/09 09:00
1-Methylnaphthalene	8270	ug/L	0.028 U	1	0.028	0.11	90-12-0	04/13/09 15:47	04/13/09 09:00
2-Methylnaphthalene	8270	ug/L	0.025 U	1	0.025	0.1	91-57-6	04/13/09 15:47	04/13/09 09:00
Naphthalene	8270	ug/L	0.031 U	1	0.031	0.12	91-20-3	04/13/09 15:47	04/13/09 09:00
Phenanthrene	8270	ug/L	0.026 U	1	0.026	0.1	85-01-8	04/13/09 15:47	04/13/09 09:00
Pyrene	8270	ug/L	0.022 U	1	0.022	0.088	129-00-0	04/13/09 15:47	04/13/09 09:00
Iron									
Date Digested	3005		4/13/2009						04/13/09 09:00
Date Analyzed	6010		4/14/2009	1				04/14/09 14:51	
Iron	6010	mg/L	10 V	5	0.012	0.048	7439-89-6	04/14/09 14:51	04/13/09 09:00



Report of Laboratory Analysis

SunLabs
Project Number

090410.13

Environmental Consulting &
Technology, Inc.

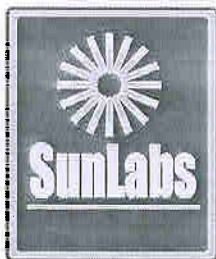
Project Description

Celia Site

April 16, 2009

Footnotes

- * *SunLabs is not currently NELAC certified for this analyte.*
- I *The reported value is between the laboratory method detection limit and the laboratory practical quantitation limit.*
- LCS *Laboratory Control Sample*
- LCSD *Laboratory Control Sample Duplicate*
- MB *Method Blank*
- MS *Matrix Spike*
- MSD *Matrix Spike Duplicate*
- NA *Sample not analyzed at client's request.*
- RL *RL(reporting limit) = PQL(practical quantitation limit).*
- RPD *Relative Percent Difference*
- U *Compound was analyzed for but not detected.*
- V *Indicates that the analyte was detected in both the sample and the associated method blank.*



Quality Control Data

Project Number	Environmental Consulting &
090410.13	Project Description
	Celia Site

April 16, 2009

Batch No: **C8842**

Test: Petroleum Range Organics by Method FLPRO

Associated Samples
82966

TestCode: FIPRO-w

Compound	Blank	LCS Spike	LCS %Rec	LCS %Rec	RPD %	---QC Limits--- RPD LCS	MS Spike	MS %Rec	MSD %Rec	RPD %	---QC Limits--- RPD MS	Dup RPD	Qualifiers
Parent Sample Number													
Date Extracted	1/10/2009 U												
Date Analyzed	1/15/2009 U												
o-Terphenyl (27-117)	66												
C-39 (D-103)	46												
Petroleum Range Organics	23 U	850	64	66	3	24 34-119	850	72	74	3	49 0-146		

Batch No: **C8846**

Test: Metals by EPA Method 6010

Associated Samples
82966

TestCode: 6010-L

Compound	Blank	LCS Spike	LCS %Rec	LCS %Rec	RPD %	---QC Limits--- RPD LCS	MS Spike	MS %Rec	MSD %Rec	RPD %	---QC Limits--- RPD MS	Dup RPD	Qualifiers
Parent Sample Number													
Arsenic	0.0048 U	1000	98	96	2	8 88-112	1000	99	100	1	8 78-117		
Iron	0.0030 U	1000	92	93	1	20 80-126	1000	93	97	4	55 0-289		
Lead	0.0044 U	1000	97	97	0	8 87-113	1000	97	101	4	10 64-118		

Batch No: **C8852**

Test: Polynuclear Aromatic Hydrocarbons by Method 8270

Associated Samples
82966

TestCode: 8270PAH-w

Compound	Blank	LCS Spike	LCS %Rec	LCS %Rec	RPD %	---QC Limits--- RPD LCS	MS Spike	MS %Rec	MSD %Rec	RPD %	---QC Limits--- RPD MS	Dup RPD	Qualifiers
Parent Sample Number													
Surrogate (3-130)	73												
Acenaphthene	0.028 U												
Acenaphthylene	0.022 U	1000	67	69	3	15 49-103	1000	60	66	10	12 27-107		
Anthracene	0.020 U												
Benzo(a)anthracene	0.011 U												
Benzo(b)fluoranthene	0.007 U												
Benzo(k)fluoranthene	0.017 U	1000	73	68	7	16 46-115	1000	66	61	8	28 35-104		
Benzo(g,h,i)perylene	0.012 U												
Benzo(e)pyrene	0.009 U	1000	73	64	13	20 40-111	1000	71	57	22	35 28-102		
Chrysene	0.010 U												
Dibenzo(a,h)anthracene	0.011 U												
Fluoranthene	0.020 U	1000	76	74	3	10 57-105	1000	67	77	14	15 33-118		
Fluorene	0.030 U	1000	70	69	1	16 56-96	1000	60	66	10*	9 42-101		
Indeno(1,2,3-cd)pyrene	0.011 U												
1-Methylnaphthalene	0.028 U												
2-Methylnaphthalene	0.025 U												
Naphthalene	0.031 U	1000	60	64	6	19 34-90	1000	54	57	5	20 0-175		
Phenanthrene	0.026 U	1000	74	72	3	12 52-103	1000	65	75	14	14 28-116		
Pyrene	0.022 U	1000	74	74	0	13 53-109	1000	66	76	14	18 38-104		

Batch No: **C8878**

Test: Volatile Organic Compounds By EPA Method 8260

Associated Samples
82966

TestCode: 8260-w

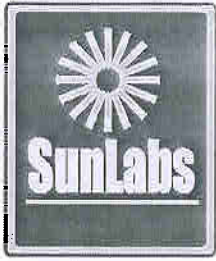
Compound	Blank	LCS Spike	LCS %Rec	LCS %Rec	RPD %	---QC Limits--- RPD LCS	MS Spike	MS %Rec	MSD %Rec	RPD %	---QC Limits--- RPD MS	Dup RPD	Qualifiers
Parent Sample Number													
Dibromofluoromethane (61-137)	98											82967 97	

SunLabs, Inc.
5460 Beaumont Center Blvd., Suite 520
Tampa, FL 33634

Laboratory ID Number - E84809

Page QC-1 of 3

Phone: (813) 881-9401
Email: Info@SunLabsInc.com
Website: www.SunLabsInc.com



Quality Control Data

Project Number
090410.13

Environmental Consulting &
Technology, Inc.
Project Description
Celia Site

April 16, 2009

Batch No: **C8878**

Test: Volatile Organic Compounds By EPA Method 8260

Associated Samples
82966

TestCode: 8260-w

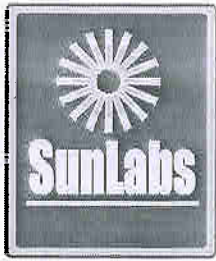
Compound	Blank	LCS Spike	LCS %Rec	LCSD %Rec	RPD %	---QC Limits--- RPD	LCS	MS Spike	MS %Rec	MSD %Rec	RPD %	---QC Limits--- RPD	MS	Dup RPD	Qualifiers
<i>Parent Sample Number</i>															
Toluene-d8 (69-128)	98													82967	
4-Bromofluorobenzene (66-125)	97													107	
Dichlorodifluoromethane	0.30 U													106	
Chloromethane	0.10 U													0	
Vinyl chloride	0.09 U													0	
Bromomethane	0.40 U													0	
Chloroethane	0.30 U													0	
Trichlorofluoromethane	0.20 U													0	
1,1-Dichloroethene	0.15 U	10	94	103	9	20	54-151	10	120				60-128	0	
Methylene Chloride	1.70 U													0	
trans-1,2-Dichloroethene	0.20 U													0	
1,1-Dichloroethane	0.10 U													0	
cis-1,2-Dichloroethene	0.20 U													0	
Bromochloromethane	0.20 U													0	
MTBE	0.05 U													0	
Chloroform	0.10 U													0	
1,1,1-Trichloroethane	0.10 U													0	
Carbon tetrachloride	0.20 U													0	
Benzene	0.10 U													0	
1,2-Dichloroethane	0.20 U													0	
Trichloroethene	0.20 U	10	101	104	3	19	54-145	10	117				56-129	0	
1,2-Dichloropropane	0.10 U													0	
Dibromomethane	0.10 U													0	
Bromodichloromethane	0.10 U													0	
cis-1,3-Dichloropropene	0.20 U													0	
Toluene	0.30 U													0	
trans-1,3-Dichloropropene	0.20 U													0	
1,1,2-Trichloroethane	0.70 U													0	
Tetrachloroethene	0.25 U													0	
1,3-Dichloropropane	0.10 U													0	
Dibromochloromethane	0.15 U													0	
Chlorobenzene	0.20 U	10	102	107	5	26	64-129	10	107				59-127	0	
Ethylbenzene	0.20 U													0	
Total Xylenes	0.40 U													0	
Styrene	0.10 U													0	
Bromoform	0.30 U													0	
1,1,2,2-Tetrachloroethane	0.20 U													0	
1,3-Dichlorobenzene	0.30 U													0	
1,4-Dichlorobenzene	0.40 U													0	
1,2-Dichlorobenzene	0.20 U													0	
Acetone	0.60 U													0	
Carbon disulfide	0.25 U													0	
2-Butanone	0.40 U													0	
Vinyl acetate	0.25 U													0	
4-Methyl-2-pentanone	0.20 U													0	
2-Hexanone	0.20 U													0	

SunLabs, Inc.
5460 Beaumont Center Blvd., Suite 520
Tampa, FL 33634

Laboratory ID Number - E84809

Page QC-2 of 3

Phone: (813) 881-9401
Email: Info@SunLabsInc.com
Website: www.SunLabsInc.com



Quality Control Data

Project Number	Environmental Consulting & Technology, Inc.
090410.13	Project Description
	Celia Site

April 16, 2009

* indicates value is outside control limits for %Recovery or greater than acceptance criteria for RPD

<i>Footnotes</i>

U

Compound was analyzed for but not detected.

N0 21231

SunLabs, Inc. Chain of Custody

Client Name: ECT

Contact: Kathy Kitanoovski

Address: _____

Phone / Fax: _____

E-Mail: Kitanoovski@ectinc.com

SunLabs Project # 090410.13

Project Name: Celia Site

Project #: 090213-0300

PO #: _____

Alt Bill To: _____

Due Date Requested: 4/11/09

FDEP Preapproval site

Current rates Old rates

Cash rates

Remarks / Comments: _____

SunLabs Sample #	Sample Description	Sample Date	Sample Time	# of Bottles	Analysis / Method Requested
82960	GN-D	4/8/09	17:45	8	FL-PRO DIX VOCs P
				2	
				2	
				3	
				1	

Sampler Signature / Date: [Signature] 4/8/09

Printed Name / Affiliation: Kathy Kitanoovski / ECT

SUNLABS, INC. RESERVES THE RIGHT TO BILL FOR UNUSED/ UNRETURNED SAMPLES AND TO RETURN UNUSED SAMPLES.

Bottle Type Codes:
 GV = Glass Vial
 GA = Glass Amber
 P = Plastic
 S = Soil Jar

Preservative Codes:
 H = Hydrochloric Acid + Ice
 I = Ice only
 N = Nitric Acid + Ice

Relinquished By: [Signature] Date: 3/13/09 Time: _____
 Relinquished To: _____ Date: _____ Time: _____

Matrix Codes:
 A = Air
 DW = Drinking Water
 GW = Ground Water
 SE = Sediment

Internal Use Only
 Storage Container Label Received?
 Custody Seals Present?
 Shipping Bills Attached?
 Sample Containers Intact?
 Samples within Holding Times?
 Sufficient Volume for all Analyses?
 Are Vials head-space free?
 Proper Containers and Preservatives?

Relinquished By: [Signature] Date: 4/10/09 Time: 1503
 Relinquished To: _____ Date: _____ Time: _____

SO = Soil
 SOL = Solid
 SW = Surface Water
 W = Water (Blanks)
 O = Other (Specify)

Y / N / NA
 Y / N / NA
 Y / N / NA
 Y / N / NA
 Y / N / NA
 Y / N / NA
 Y / N / NA

Relinquished By: _____ Date: _____ Time: _____
 Relinquished To: _____ Date: _____ Time: _____

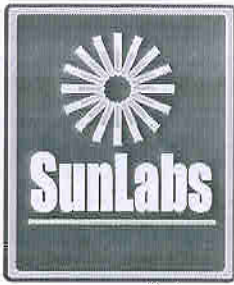
Temp: 14
 Received on Ice: Y / N / NA

Temp: 14
 Received on Ice: Y / N / NA

SunLabs, Inc.
 5460 Beaumont Center Blvd., Suite 520, Tampa, Florida 33634
 Phone: 813-881-9401 / Fax: 813-354-4861
 e-mail: info@SunLabsInc.com www.SunLabsInc.com

APPENDIX B

**SURFACE WATER SAMPLING LABORATORY
ANALYTICAL REPORT**



April 16, 2009

Katy Kitanovski
Environmental Consulting & Technology, Inc.
1408 N Westshore Blvd., Suite 115
Tampa, FL 33607

Re: SunLabs Project Number: **090410.12**
Client Project Description: **Celia Site**

Dear Ms. Kitanovski:

Enclosed is the report of laboratory analysis for the following samples:

Sample Number	Sample Description	Date Collected
82958	GW-K	4/9/2009
82959	GW-K Lab Filtered	4/9/2009
82960	GW-L	4/9/2009
82961	GW-L Lab Filtered	4/9/2009
82962	GW-M	4/9/2009
82963	GW-M Lab Filtered	4/9/2009
82964	GW-N	4/9/2009
82965	GW-N Lab Filtered	4/9/2009

Copies of the Chain(s)-of-Custody, if received, are attached to this report.

If you have any questions or comments concerning this report, please do not hesitate to contact us.

Sincerely,

Michael W. Palmer
Vice President, Laboratory Operations

Enclosures

SunLabs, Inc.
5460 Beaumont Center Blvd., Suite 520
Tampa, FL 33634

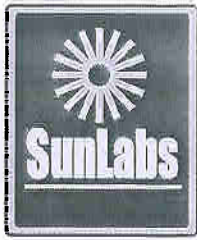
Cover Page 1 of 1

Unless Otherwise Noted and Where Applicable:

Phone: (813) 881-9401
Email: Info@SunLabsInc.com
Website: www.SunLabsInc.com

These samples were received at the proper temperature and were analyzed as received. The results herein relate only to the items tested or to the samples as received by the laboratory. This report shall not be reproduced except in full, without the written approval of the laboratory. Results for all solid matrices are reported on a dry weight basis. All samples will be disposed of within 45 days of the date of receipt of the samples. All samples in the body of the report are environmental samples. All results in the Quality Control (QC) section are labeled appropriately. All results meet the requirements of the NELAC standards. Footnotes are given at the end of the report. Uncertainty values are available upon request.

160186-OPC-POD-90-249



Report of Laboratory Analysis

SunLabs
Project Number
090410.12

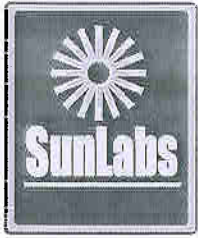
Environmental Consulting &
Technology, Inc.
Project Description
Celia Site

April 16, 2009

SunLabs Sample Number **82958**
Sample Designation **GW-K**

Matrix Groundwater
Date Collected 4/9/2009 14:30
Date Received 4/10/2009 15:03

Parameters	Method	Units	Results	Dil Factor	MDL	RL	CAS Number	Date/Time Analyzed	Date/Time Prep
Anions by Ion Chromatography									
Date Analyzed			04/10/09	1				04/10/09 19:36	04/10/09 15:45
Chloride	300.0	mg/L	1.75	1	0.045	0.18	16887-00-6	04/10/09 19:36	04/10/09 15:45
Nitrate-N	300.0	mg/L	0.05 I	1	0.014	0.056	14797-55-8	04/10/09 19:36	04/10/09 15:45
Metals by EPA Method 6010									
Date Digested	3010		4/14/2009						04/14/09 09:00
Date Analyzed			4/15/2009	1				04/15/09 13:18	
Arsenic	6010	mg/L	0.0048 U	1	0.0048	0.019	7440-38-2	04/14/09 18:01	04/14/09 09:00
Barium	6010	mg/L	0.015	1	0.001	0.004	7440-39-3	04/14/09 18:01	04/14/09 09:00
Cadmium	6010	mg/L	0.0006 U	1	0.0006	0.0024	7440-43-9	04/14/09 18:01	04/14/09 09:00
Chromium	6010	mg/L	0.0035 U	1	0.0035	0.014	7440-47-3	04/14/09 18:01	04/14/09 09:00
Iron	6010	mg/L	0.19	1	0.0023	0.0092	7439-89-6	04/15/09 13:18	04/14/09 09:00
Lead	6010	mg/L	0.0044 U	1	0.0044	0.018	7439-92-1	04/14/09 18:01	04/14/09 09:00
Magnesium	6010	mg/L	0.40 V	1	0.002	0.008	7439-95-4	04/15/09 11:22	04/14/09 09:00
Potassium	6010	mg/L	0.32 I	1	0.18	0.72	7440-09-7	04/15/09 12:26	04/14/09 09:00
Selenium	6010	mg/L	0.0047 U	1	0.0047	0.019	7782-49-2	04/14/09 18:01	04/14/09 09:00
Silver	6010	mg/L	0.0033 U	1	0.0033	0.013	7440-22-4	04/14/09 18:01	04/14/09 09:00
Sodium	6010	mg/L	1.1 V	1	0.011	0.044	7440-23-5	04/15/09 12:26	04/14/09 09:00
Zinc	6010	mg/L	0.0029 U	1	0.0029	0.012	7440-66-6	04/14/09 18:01	04/14/09 09:00
Ammonia									
Nitrogen Ammonia (as N)	350.2	mg/L	0.005 U	1	0.005	0.02		04/13/09 13:20	
Mercury									
Date Digested	7470		4/15/2009						04/15/09 09:30
Date Analyzed	7470		4/15/2009	1				04/15/09 14:54	
Mercury	7470	mg/L	0.0002 U	1	0.0002	0.0008	7439-97-6	04/15/09 14:54	04/15/09 09:30
Total Dissolved Solids									
Date Analyzed			4/15/2009 S7	1				04/15/09 08:00	
Total Dissolved Solids	SM2540C	mg/L	8.0 I	1	7.3	29		04/15/09 08:00	
Total Organic Carbon									
Date Analyzed			4/14/2009 S7	1				04/14/09 16:00	
Total Organic Carbon	SM5310B	mg/L	0.27 U	1	0.27	1.1		04/14/09 16:00	



Report of Laboratory Analysis

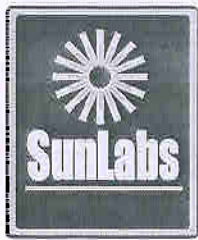
SunLabs Project Number	Environmental Consulting & Technology, Inc.
090410.12	Project Description
	Celia Site

April 16, 2009

SunLabs Sample Number **82959**
Sample Designation **GW-K Lab Filtered**

Matrix Groundwater
Date Collected 4/9/2009 14:30
Date Received 4/10/2009 15:03

Parameters	Method	Units	Results	Dil Factor	MDL	RL	CAS Number	Date/Time Analyzed	Date/Time Prep
<u>Metals by EPA Method 6010</u>									
Date Digested	3010		4/14/2009						04/14/09 09:00
Date Analyzed			4/15/2009	1				04/15/09 13:20	
Barium	6010	mg/L	0.013	1	0.001	0.004	7440-39-3	04/14/09 18:03	04/14/09 09:00
Iron	6010	mg/L	0.011	1	0.0023	0.0092	7439-89-6	04/15/09 13:20	04/14/09 09:00
<u>Filter and Preserve</u>									
Date Filtered			4/13/2009						04/13/09 12:00



Report of Laboratory Analysis

SunLabs Project Number	Environmental Consulting & Technology, Inc.
090410.12	Project Description
	Celia Site

April 16, 2009

SunLabs Sample Number **82960**
 Sample Designation **GW-L**

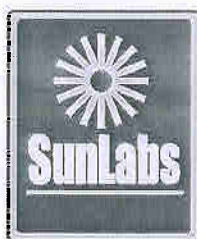
Matrix Groundwater
 Date Collected 4/9/2009 10:20
 Date Received 4/10/2009 15:03

Parameters	Method	Units	Results	Dil Factor	MDL	RL	CAS Number	Date/Time Analyzed	Date/Time Prep
Anions by Ion Chromatography									
Date Analyzed			04/10/09	1				04/10/09 20:03	04/10/09 15:45
Chloride	300.0	mg/L	1.82	1	0.045	0.18	16887-00-6	04/10/09 20:03	04/10/09 15:45
Nitrate-N	300.0	mg/L	0.09	1	0.014	0.056	14797-55-8	04/10/09 20:03	04/10/09 15:45
Metals by EPA Method 6010									
Date Digested	3010		4/14/2009						04/14/09 09:00
Date Analyzed			4/15/2009	1				04/15/09 13:22	
Arsenic	6010	mg/L	0.0048 U	1	0.0048	0.019	7440-38-2	04/14/09 18:09	04/14/09 09:00
Barium	6010	mg/L	0.012	1	0.001	0.004	7440-39-3	04/14/09 18:09	04/14/09 09:00
Cadmium	6010	mg/L	0.0006 U	1	0.0006	0.0024	7440-43-9	04/14/09 18:09	04/14/09 09:00
Chromium	6010	mg/L	0.010 I	1	0.0035	0.014	7440-47-3	04/14/09 18:09	04/14/09 09:00
Iron	6010	mg/L	0.29	1	0.0023	0.0092	7439-89-6	04/15/09 13:22	04/14/09 09:00
Lead	6010	mg/L	0.0044 U	1	0.0044	0.018	7439-92-1	04/14/09 18:09	04/14/09 09:00
Magnesium	6010	mg/L	0.37 V	1	0.002	0.008	7439-95-4	04/15/09 11:24	04/14/09 09:00
Potassium	6010	mg/L	0.46 I	1	0.18	0.72	7440-09-7	04/15/09 12:29	04/14/09 09:00
Selenium	6010	mg/L	0.0047 U	1	0.0047	0.019	7782-49-2	04/14/09 18:09	04/14/09 09:00
Silver	6010	mg/L	0.0033 U	1	0.0033	0.013	7440-22-4	04/14/09 18:09	04/14/09 09:00
Sodium	6010	mg/L	1.2 V	1	0.011	0.044	7440-23-5	04/15/09 12:29	04/14/09 09:00
Zinc	6010	mg/L	0.007 I	1	0.0029	0.012	7440-66-6	04/14/09 18:09	04/14/09 09:00
Ammonia									
Nitrogen Ammonia (as N)	350.2	mg/L	0.005 U	1	0.005	0.02		04/13/09 13:20	
Mercury									
Date Digested	7470		4/15/2009						04/15/09 09:30
Date Analyzed	7470		4/15/2009	1				04/15/09 14:54	
Mercury	7470	mg/L	0.0002 U	1	0.0002	0.0008	7439-97-6	04/15/09 14:54	04/15/09 09:30
Total Dissolved Solids									
Date Analyzed			4/15/2009 S7	1				04/15/09 08:00	
Total Dissolved Solids	SM2540C	mg/L	7.3 U	1	7.3	29		04/15/09 08:00	
Total Organic Carbon									
Date Analyzed			4/14/2009 S7	1				04/14/09 16:00	
Total Organic Carbon	SM5310B	mg/L	0.80 I	1	0.27	1.1		04/14/09 16:00	

SunLabs, Inc.
 5460 Beaumont Center Blvd., Suite 520
 Tampa, FL 33634

Laboratory ID Number - E84809

Phone: (813) 881-9401
 Email: Info@SunLabsInc.com
 Website: www.SunLabsInc.com



Report of Laboratory Analysis

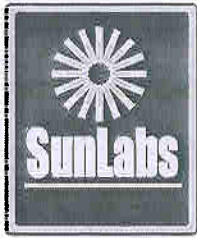
SunLabs Project Number	Environmental Consulting & Technology, Inc.
090410.12	Project Description
	Celia Site

April 16, 2009

SunLabs Sample Number **82961**
Sample Designation **GW-L Lab Filtered**

Matrix Groundwater
Date Collected 4/9/2009 10:20
Date Received 4/10/2009 15:03

Parameters	Method	Units	Results	Dil Factor	MDL	RL	CAS Number	Date/Time Analyzed	Date/Time Prep
Metals by EPA Method 6010									
Date Digested	3010		4/14/2009						04/14/09 09:00
Date Analyzed			4/15/2009	1				04/15/09 13:25	
Barium	6010	mg/L	0.010	1	0.001	0.004	7440-39-3	04/14/09 18:11	04/14/09 09:00
Iron	6010	mg/L	0.012	1	0.0023	0.0092	7439-89-6	04/15/09 13:25	04/14/09 09:00
Filter and Preserve									
Date Filtered			4/13/2009						04/13/09 12:00



Report of Laboratory Analysis

SunLabs Project Number
090410.12

Environmental Consulting & Technology, Inc.
Project Description
Celia Site

April 16, 2009

SunLabs Sample Number **82962**
 Sample Designation **GW-M**

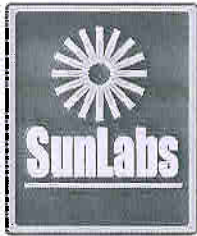
Matrix Groundwater
 Date Collected 4/9/2009 08:15
 Date Received 4/10/2009 15:03

Parameters	Method	Units	Results	Dil Factor	MDL	RL	CAS Number	Date/Time Analyzed	Date/Time Prep
Anions by Ion Chromatography									
Date Analyzed			04/10/09	1				04/10/09 21:50	04/10/09 15:45
Chloride	300.0	mg/L	3.2	1	0.045	0.18	16887-00-6	04/10/09 21:50	04/10/09 15:45
Nitrate-N	300.0	mg/L	0.03 I	1	0.014	0.056	14797-55-8	04/10/09 21:50	04/10/09 15:45
Metals by EPA Method 6010									
Date Digested	3010		4/14/2009						04/14/09 09:00
Date Analyzed			4/15/2009	1				04/15/09 13:27	
Arsenic	6010	mg/L	0.0048 U	1	0.0048	0.019	7440-38-2	04/14/09 18:16	04/14/09 09:00
Barium	6010	mg/L	0.014	1	0.001	0.004	7440-39-3	04/14/09 18:16	04/14/09 09:00
Cadmium	6010	mg/L	0.0006 U	1	0.0006	0.0024	7440-43-9	04/14/09 18:16	04/14/09 09:00
Chromium	6010	mg/L	0.005 I	1	0.0035	0.014	7440-47-3	04/14/09 18:16	04/14/09 09:00
Iron	6010	mg/L	0.076	1	0.0023	0.0092	7439-89-6	04/15/09 13:27	04/14/09 09:00
Lead	6010	mg/L	0.0044 U	1	0.0044	0.018	7439-92-1	04/14/09 18:16	04/14/09 09:00
Magnesium	6010	mg/L	0.39 V	1	0.002	0.008	7439-95-4	04/15/09 11:26	04/14/09 09:00
Potassium	6010	mg/L	0.18 U	1	0.18	0.72	7440-09-7	04/15/09 12:32	04/14/09 09:00
Selenium	6010	mg/L	0.0047 U	1	0.0047	0.019	7782-49-2	04/14/09 18:16	04/14/09 09:00
Silver	6010	mg/L	0.0033 U	1	0.0033	0.013	7440-22-4	04/14/09 18:16	04/14/09 09:00
Sodium	6010	mg/L	1.6 V	1	0.011	0.044	7440-23-5	04/15/09 12:32	04/14/09 09:00
Zinc	6010	mg/L	0.006 I	1	0.0029	0.012	7440-66-6	04/14/09 18:16	04/14/09 09:00
Ammonia									
Nitrogen Ammonia (as N)	350.2	mg/L	0.005 U	1	0.005	0.02		04/13/09 13:20	
Mercury									
Date Digested	7470		4/15/2009						04/15/09 09:30
Date Analyzed	7470		4/15/2009	1				04/15/09 14:54	
Mercury	7470	mg/L	0.0002 U	1	0.0002	0.0008	7439-97-6	04/15/09 14:54	04/15/09 09:30
Total Dissolved Solids									
Date Analyzed			4/15/2009 S7	1				04/15/09 08:00	
Total Dissolved Solids	SM2540C	mg/L	16 I	1	7.3	29		04/15/09 08:00	
Total Organic Carbon									
Date Analyzed			4/14/2009 S7	1				04/14/09 16:00	
Total Organic Carbon	SM5310B	mg/L	3.0	1	0.27	1.1		04/14/09 16:00	

SunLabs, Inc.
 5460 Beaumont Center Blvd., Suite 520
 Tampa, FL 33634

Laboratory ID Number - E84809

Phone: (813) 881-9401
 Email: Info@SunLabsInc.com
 Website: www.SunLabsInc.com



Report of Laboratory Analysis

SunLabs
Project Number
090410.12

Environmental Consulting &
Technology, Inc.

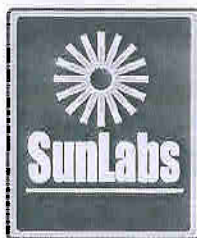
Project Description
Celia Site

April 16, 2009

SunLabs Sample Number **82963**
Sample Designation **GW-M Lab Filtered**

Matrix Groundwater
Date Collected 4/9/2009 08:15
Date Received 4/10/2009 15:03

Parameters	Method	Units	Results	Dil Factor	MDL	RL	CAS Number	Date/Time Analyzed	Date/Time Prep
Metals by EPA Method 6010									
Date Digested	3010		4/14/2009						04/14/09 09:00
Date Analyzed			4/15/2009	1				04/15/09 13:34	
Barium	6010	mg/L	0.012	1	0.001	0.004	7440-39-3	04/14/09 18:29	04/14/09 09:00
Iron	6010	mg/L	0.013	1	0.0023	0.0092	7439-89-6	04/15/09 13:34	04/14/09 09:00
Filter and Preserve									
Date Filtered			4/13/2009						04/13/09 12:00



Report of Laboratory Analysis

SunLabs Project Number	Environmental Consulting & Technology, Inc.
090410.12	Project Description
	Celia Site

April 16, 2009

SunLabs Sample Number **82964**
Sample Designation **GW-N**

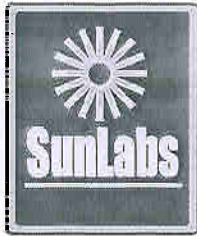
Matrix Groundwater
Date Collected 4/9/2009 16:25
Date Received 4/10/2009 15:03

Parameters	Method	Units	Results	Dil Factor	MDL	RL	CAS Number	Date/Time Analyzed	Date/Time Prep
Anions by Ion Chromatography									
Date Analyzed			04/10/09	1				04/10/09 22:17	04/10/09 15:45
Chloride	300.0	mg/L	3.04	1	0.045	0.18	16887-00-6	04/10/09 22:17	04/10/09 15:45
Nitrate-N	300.0	mg/L	0.34	1	0.014	0.056	14797-55-8	04/10/09 22:17	04/10/09 15:45
Metals by EPA Method 6010									
Date Digested	3010		4/14/2009						04/14/09 09:00
Date Analyzed			4/15/2009	1				04/15/09 13:37	
Arsenic	6010	mg/L	0.0048 U	1	0.0048	0.019	7440-38-2	04/14/09 18:35	04/14/09 09:00
Barium	6010	mg/L	0.017	1	0.001	0.004	7440-39-3	04/14/09 18:35	04/14/09 09:00
Cadmium	6010	mg/L	0.0006 U	1	0.0006	0.0024	7440-43-9	04/14/09 18:35	04/14/09 09:00
Chromium	6010	mg/L	0.007 I	1	0.0035	0.014	7440-47-3	04/14/09 18:35	04/14/09 09:00
Iron	6010	mg/L	0.31	1	0.0023	0.0092	7439-89-6	04/15/09 13:37	04/14/09 09:00
Lead	6010	mg/L	0.0044 U	1	0.0044	0.018	7439-92-1	04/14/09 18:35	04/14/09 09:00
Magnesium	6010	mg/L	0.44 V	1	0.002	0.008	7439-95-4	04/15/09 11:28	04/14/09 09:00
Potassium	6010	mg/L	1.3	1	0.18	0.72	7440-09-7	04/15/09 12:35	04/14/09 09:00
Selenium	6010	mg/L	0.0047 U	1	0.0047	0.019	7782-49-2	04/14/09 18:35	04/14/09 09:00
Silver	6010	mg/L	0.0033 U	1	0.0033	0.013	7440-22-4	04/14/09 18:35	04/14/09 09:00
Sodium	6010	mg/L	1.8 V	1	0.011	0.044	7440-23-5	04/15/09 12:35	04/14/09 09:00
Zinc	6010	mg/L	0.0029 U	1	0.0029	0.012	7440-66-6	04/14/09 18:35	04/14/09 09:00
Ammonia									
Nitrogen Ammonia (as N)	350.2	mg/L	0.005 U	1	0.005	0.02		04/13/09 13:20	
Mercury									
Date Digested	7470		4/15/2009						04/15/09 09:30
Date Analyzed	7470		4/15/2009	1				04/15/09 14:54	
Mercury	7470	mg/L	0.0002 U	1	0.0002	0.0008	7439-97-6	04/15/09 14:54	04/15/09 09:30
Total Dissolved Solids									
Date Analyzed			4/15/2009 S7	1				04/15/09 08:00	
Total Dissolved Solids	SM2540C	mg/L	24 I	1	7.3	29		04/15/09 08:00	
Total Organic Carbon									
Date Analyzed			4/14/2009 S7	1				04/14/09 16:00	
Total Organic Carbon	SM5310B	mg/L	1.4	1	0.27	1.1		04/14/09 16:00	

SunLabs, Inc.
5460 Beaumont Center Blvd., Suite 520
Tampa, FL 33634

Laboratory ID Number - E84809

Phone: (813) 881-9401
Email: info@SunLabsInc.com
Website: www.SunLabsInc.com



Report of Laboratory Analysis

SunLabs
Project Number
090410.12

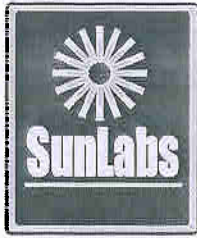
**Environmental Consulting &
Technology, Inc.**
Project Description
Celia Site

April 16, 2009

SunLabs Sample Number **82965**
Sample Designation **GW-N Lab Filtered**

Matrix Groundwater
Date Collected 4/9/2009 16:25
Date Received 4/10/2009 15:03

Parameters	Method	Units	Results	Dil Factor	MDL	RL	CAS Number	Date/Time Analyzed	Date/Time Prep
Metals by EPA Method 6010									
Date Digested	3010		4/14/2009						04/14/09 09:00
Date Analyzed			4/15/2009	1				04/15/09 13:39	
Barium	6010	mg/L	0.015	1	0.001	0.004	7440-39-3	04/14/09 18:37	04/14/09 09:00
Iron	6010	mg/L	0.040	1	0.0023	0.0092	7439-89-6	04/15/09 13:39	04/14/09 09:00
Filter and Preserve									
Date Filtered			4/13/2009						04/13/09 12:00



Report of Laboratory Analysis

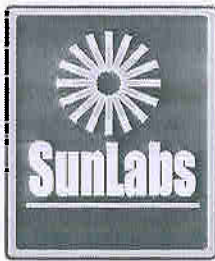
SunLabs
Project Number
090410.12

Environmental Consulting &
Technology, Inc.
Project Description
Celia Site

April 16, 2009

Footnotes

- ** SunLabs is not currently NELAC certified for this analyte.
- I* The reported value is between the laboratory method detection limit and the laboratory practical quantitation limit.
- LCS* Laboratory Control Sample
- LCSD* Laboratory Control Sample Duplicate
- MB* Method Blank
- MS* Matrix Spike
- MSD* Matrix Spike Duplicate
- NA* Sample not analyzed at client's request.
- RL* RL(reporting limit) = PQL(practical quantitation limit).
- RPD* Relative Percent Difference
- S7* This analysis performed by Benchmark EnviroAnalytical, Inc., Certification number E84167.
- U* Compound was analyzed for but not detected.
- V* Indicates that the analyte was detected in both the sample and the associated method blank.



Quality Control Data

Project Number	Environmental Consulting &
090410.12	Project Description
	Celia Site

April 16, 2009

Batch No: C8845

Test: Anions by Ion Chromatography

Associated Samples
82958, 82960, 82962, 82964

TestCode: 300.0

Compound	Blank	LCS Spike	LCS %Rec	LCS D %Rec	RPD %	---QC Limits---		MS Spike	MS %Rec	MS D %Rec	RPD %	---QC Limits---		Dup RPD	Qualifiers
						RPD	LCS					RPD	MS		
<i>Parent Sample Number</i>		<i>82958 82958</i>													
Chloride	0.045 U	10	96	95	1	3	85-116	10	87	89	2	15	0-207		
Nitrate-N	0.014 U	5	96	95	1	10	80-122	5	97	97	0	11	42-152		

Batch No: C8868

Test: Metals by EPA Method 6010

Associated Samples
82958, 82959, 82960, 82961, 82962, 82963, 82964, 82965

TestCode: 6010-L

Compound	Blank	LCS Spike	LCS %Rec	LCS D %Rec	RPD %	---QC Limits---		MS Spike	MS %Rec	MS D %Rec	RPD %	---QC Limits---		Dup RPD	Qualifiers
						RPD	LCS					RPD	MS		
<i>Parent Sample Number</i>		<i>82958 82958</i>													
Arsenic	0.0048 U	1000	95	96	1	8	88-112	1000	97	101	4	8	78-117		
Barium	0.001 U	1000	99	100	1	10	87-116	1000	94	105	11	11	70-120		
Cadmium	0.0006 U	1000	92	98	6*	3	87-110	1000	94	99	5	10	73-116		
Chromium	0.0035 U	1000	98	100	2	10	91-112	1000	98	102	4	4	70-122		
Iron	0.0023 U	1000	91	96	5	20	80-126	1000	92	94	2	55	0-289		
Lead	0.0044 U	1000	96	99	3	8	87-113	1000	97	99	2	10	64-118		
Magnesium	0.017	10.0	96	96	0	3	91-107	10.0	94	92	2	30	0-227		
Potassium	0.18 U	10.0	97	97	0	3	91-112	10.0	95	99	4	196	0-209		
Selenium	0.0047 U	1000	96	102	6*	4	88-110	1000	99	101	2	6	81-114		
Silver	0.0033 U	1000	99	102	3	10	85-111	1000	99	103	4	6	74-114		
Sodium	0.22	10.0	97	98	1	6	89-114	10.0	99	97	2	14	72-125		
Zinc	0.0029 U	1000	98	99	1	4	86-114	1000	100	101	1	8	75-116		

Batch No: C8890

Test: Mercury

Associated Samples
82958, 82960, 82962, 82964

TestCode: Hg-L

Compound	Blank	LCS Spike	LCS %Rec	LCS D %Rec	RPD %	---QC Limits---		MS Spike	MS %Rec	MS D %Rec	RPD %	---QC Limits---		Dup RPD	Qualifiers
						RPD	LCS					RPD	MS		
<i>Parent Sample Number</i>		<i>82958 82958</i>													
Date Digested	1/15/2009 U														
Date Analyzed	1/15/2009 U														
Mercury	0.0002 U	5.0	90	100	11	11	81-118	5.0	98	98	0	17	67-126		

* indicates value is outside control limits for %Recovery or greater than acceptance criteria for RPD

Footnotes

U Compound was analyzed for but not detected.

SunLabs, Inc. Chain of Custody

NO 19988

Client Name: **ECT**
 Contact: **Kathy Kitanosky**
 Address: _____
 Phone / Fax: _____
 E-Mail: **kitanosk@ectinc.com**

SunLabs Project # **090410.12**

Sample #	Sample Description	Sample Date	Sample Time	# of Bottles	Analysis / Method Requested
82958	GW-K	4/9/09	14:30	2	PCB, PAH, Ni, Cu, Pb, Cd, Cr, Mn, Zn, Fe, As, Se, Hg, K, Na, Cl, S, TDS, NH3, P, NO3-N, NO2-N, NH4-N, F, B, Br, I, Li, Rb, Cs, Sr, Ba, Zn, Cu, Ni, Pb, Cd, Cr, Mn, Fe, As, Se, Hg, K, Na, Cl, S, TDS, NH3, P, NO3-N, NO2-N, NH4-N, F, B, Br, I, Li, Rb, Cs, Sr, Ba
82960	GW-L	4/9/09	16:30	2	PCB, PAH, Ni, Cu, Pb, Cd, Cr, Mn, Zn, Fe, As, Se, Hg, K, Na, Cl, S, TDS, NH3, P, NO3-N, NO2-N, NH4-N, F, B, Br, I, Li, Rb, Cs, Sr, Ba
82962	GW-M	4/9/09	8:15	2	PCB, PAH, Ni, Cu, Pb, Cd, Cr, Mn, Zn, Fe, As, Se, Hg, K, Na, Cl, S, TDS, NH3, P, NO3-N, NO2-N, NH4-N, F, B, Br, I, Li, Rb, Cs, Sr, Ba
82964	GW-N	4/9/09	16:25	2	PCB, PAH, Ni, Cu, Pb, Cd, Cr, Mn, Zn, Fe, As, Se, Hg, K, Na, Cl, S, TDS, NH3, P, NO3-N, NO2-N, NH4-N, F, B, Br, I, Li, Rb, Cs, Sr, Ba

Project Name: **Celis Site**
 Project #: **090213-0300**
 PO #: _____
 Alt Bill To: _____

Due Date Requested: **7/4/10**
 FDEP Pre-Approval site
 Current rates Old rates
 Cash rates

Remarks / Comments:
 Run Filtered Fe & Ba
 Hold other Filtered
 Metals

Sample Signature / Date:	Printed Name / Affiliation:	Internal Use Only	Relinquished By:	Relinquished To:	Date:	Time:
<i>[Signature]</i> 4/9/09	Kathy Kitanosky/ECT	Sample Containers Used Recycled? _____ Custody Seals present? _____ Shipping Bins checked? _____ Sample containers intact? _____ Samples within holding times? _____ Sufficient volume for all analyses? _____ Are vials head-space free? _____ Proper conditions and preservation? _____	<i>[Signature]</i>	<i>[Signature]</i>	4/10/09	1503

Matrix Codes: SO = Soil, SOL = Solid, A = Air, SW = Surface Water, DW = Drinking Water, W = Water (Blanks), GW = Ground Water, O = Other (Specify)

Temp: **14**

Received on ice? Y N / NA

SUNLABS, INC. RESERVES THE RIGHT TO BILL FOR UNUSED/ UNRETURNED SAMPLES AND TO RETURN UNUSED SAMPLES.

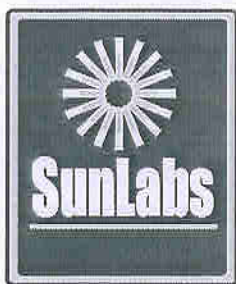
Relinquished By: *[Signature]* Date: 4/10/09 Time: 16:00

Relinquished To: *[Signature]* Date: _____ Time: _____

Relinquished By: _____ Date: _____ Time: _____

Relinquished To: _____ Date: _____ Time: _____

SunLabs, Inc.
 5460 Beaumont Center Blvd., Suite 520, Tampa, Florida 33634
 Phone: 813-881-9401 / Fax: 813-354-4661
 e-mail: info@SunLabsInc.com www.SunLabsInc.com



March 30, 2009

Katy Kitanovski
Environmental Consulting & Technology, Inc.
1408 N Westshore Blvd., Suite 115
Tampa, FL 33607

Re: SunLabs Project Number: **090320.09**
Client Project Description: **Celia Site**

Dear Ms. Kitanovski:

Enclosed is the report of laboratory analysis for the following samples:

Sample Number	Sample Description	Date Collected
82025	SW-2	3/20/2009
82026	SW-3	3/20/2009
82027	SW-9	3/20/2009
82028	SW-10	3/20/2009
82029	SW-7	3/20/2009
82030	SW-6	3/20/2009
82031	SW-5	3/20/2009
82032	SW-11	3/20/2009

BOD and COD were analyzed by Benchmark Enviroanalytical, Inc. NELAC# E84167.

Copies of the Chain(s)-of-Custody, if received, are attached to this report.

If you have any questions or comments concerning this report, please do not hesitate to contact us.

Sincerely,

Michael W. Palmer
Vice President, Laboratory Operations

Enclosures

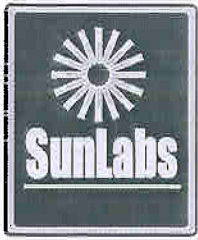
SunLabs, Inc.
5460 Beaumont Center Blvd., Suite 520
Tampa, FL 33634

Cover Page 1 of 1

Unless Otherwise Noted and Where Applicable:

Phone: (813) 881-9401
Email: Info@SunLabsInc.com
Website: www.SunLabsInc.com

These samples were received at the proper temperature and were analyzed as received. The results herein relate only to the items tested or to the samples as received by the laboratory. This report shall not be reproduced except in full, without the written approval of the laboratory. Results for all solid matrices are reported on a dry weight basis. All samples will be disposed of within 45 days of the date of receipt of the samples. All samples in the body of the report are environmental samples. All results in the Quality Control (QC) section are labeled appropriately. All results meet the requirements of the NELAC standards. Footnotes are given at the end of the report. Uncertainty values are available upon request.



Report of Laboratory Analysis

SunLabs Project Number	Environmental Consulting & Technology, Inc.
090320.09	Project Description
	Celia Site

March 30, 2009

SunLabs Sample Number **82025**
 Sample Designation **SW-2**

Matrix Surface Water
 Date Collected 3/20/2009 08:40
 Date Received 3/20/2009 22:20

Parameters	Method	Units	Results	Dil Factor	MDL	RL	CAS Number	Date/Time Analyzed	Date/Time Prep
BOD									
Biological Oxygen Demand	405.1	mg/L	0.5 U	1	0.5	2		03/21/09 10:30	
Chemical Oxygen Demand (COD)									
Chemical Oxygen Demand	410.4	mg/L	12.7 I,S7	1	7	28		03/26/09 09:35	
Iron									
Date Digested	3005		3/25/2009						03/25/09 09:00
Date Analyzed	6010		3/25/2009	1				03/25/09 15:33	
Iron	6010	mg/L	0.70	1	0.0024	0.0096	7439-89-6	03/25/09 15:33	03/25/09 09:00
Total Dissolved Solids									
Date Analyzed			3/26/2009 S7	1				03/24/09 16:00	
Total Dissolved Solids	SM2540C	mg/L	60 S7	1	7.3	29		03/24/09 16:00	



Report of Laboratory Analysis

SunLabs
Project Number
090320.09

Environmental Consulting &
Technology, Inc.

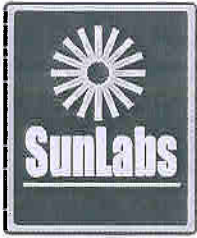
Project Description
Celia Site

March 30, 2009

SunLabs Sample Number **82026**
Sample Designation **SW-3**

Matrix Surface Water
Date Collected 3/20/2009 09:30
Date Received 3/20/2009 22:20

Parameters	Method	Units	Results	Dil Factor	MDL	RL	CAS Number	Date/Time Analyzed	Date/Time Prep
BOD									
Biological Oxygen Demand	405.1	mg/L	0.5 U	1	0.5	2		03/21/09 10:30	
Chemical Oxygen Demand (COD)									
Chemical Oxygen Demand	410.4	mg/L	21.8 I,S7	1	7	28		03/26/09 09:35	
Iron									
Date Digested	3005		3/25/2009						03/25/09 09:00
Date Analyzed	6010		3/25/2009	1				03/25/09 15:35	
Iron	6010	mg/L	2.8	1	0.0024	0.0096	7439-89-6	03/25/09 15:35	03/25/09 09:00
Total Dissolved Solids									
Date Analyzed			3/26/2009 S7	1				03/24/09 16:00	
Total Dissolved Solids	SM2540C	mg/L	76 S7	1	7.3	29		03/24/09 16:00	



Report of Laboratory Analysis

SunLabs
Project Number
090320.09

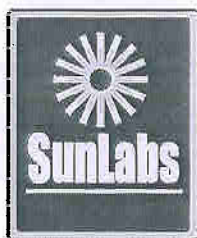
Environmental Consulting &
Technology, Inc.
Project Description
Celia Site

March 30, 2009

SunLabs Sample Number **82027**
Sample Designation **SW-9**

Matrix Surface Water
Date Collected 3/20/2009 10:24
Date Received 3/20/2009 22:20

Parameters	Method	Units	Results	Dil Factor	MDL	RL	CAS Number	Date/Time Analyzed	Date/Time Prep
<u>BOD</u>									
Biological Oxygen Demand	405.1	mg/L	0.5 U	1	0.5	2		03/21/09 10:30	
<u>Chemical Oxygen Demand (COD)</u>									
Chemical Oxygen Demand	410.4	mg/L	8.83 I,S7	1	7	28		03/26/09 09:35	
<u>Iron</u>									
Date Digested	3005		3/25/2009						03/25/09 09:00
Date Analyzed	6010		3/25/2009	1				03/25/09 15:42	
Iron	6010	mg/L	1.8	1	0.0024	0.0096	7439-89-6	03/25/09 15:42	03/25/09 09:00
<u>Total Dissolved Solids</u>									
Date Analyzed			3/26/2009 S7	1				03/24/09 16:00	
Total Dissolved Solids	SM2540C	mg/L	92 S7	1	7.3	29		03/24/09 16:00	



Report of Laboratory Analysis

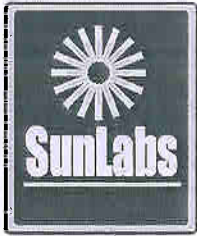
SunLabs Project Number	Environmental Consulting & Technology, Inc.
090320.09	Project Description
	Celia Site

March 30, 2009

SunLabs Sample Number **82028**
 Sample Designation **SW-10**

Matrix Surface Water
 Date Collected 3/20/2009 11:25
 Date Received 3/20/2009 22:20

Parameters	Method	Units	Results	Dil Factor	MDL	RL	CAS Number	Date/Time Analyzed	Date/Time Prep
<u>BOD</u>									
Biological Oxygen Demand	405.1	mg/L	0.5 U	1	0.5	2		03/21/09 10:30	
<u>Chemical Oxygen Demand (COD)</u>									
Chemical Oxygen Demand	410.4	mg/L	10.1 I,S7	1	7	28		03/26/09 09:35	
<u>Iron</u>									
Date Digested	3005		3/25/2009						03/25/09 09:00
Date Analyzed	6010		3/25/2009	1				03/25/09 15:44	
Iron	6010	mg/L	1.5	1	0.0024	0.0096	7439-89-6	03/25/09 15:44	03/25/09 09:00
<u>Total Dissolved Solids</u>									
Date Analyzed			3/26/2009 S7	1				03/24/09 16:00	
Total Dissolved Solids	SM2540C	mg/L	80 S7	1	7.3	29		03/24/09 16:00	



Report of Laboratory Analysis

SunLabs
Project Number
090320.09

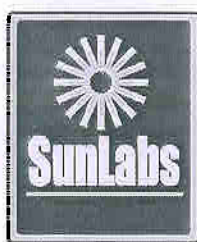
Environmental Consulting &
Technology, Inc.
Project Description
Celia Site

March 30, 2009

SunLabs Sample Number **82029**
Sample Designation **SW-7**

Matrix Surface Water
Date Collected 3/20/2009 12:10
Date Received 3/20/2009 22:20

Parameters	Method	Units	Results	Dil Factor	MDL	RL	CAS Number	Date/Time Analyzed	Date/Time Prep
BOD									
Biological Oxygen Demand	405.1	mg/L	0.5 U	1	0.5	2		03/21/09 10:30	
Chemical Oxygen Demand (COD)									
Chemical Oxygen Demand	410.4	mg/L	8.18 I,S7	1	7	28		03/26/09 09:35	
Iron									
Date Digested	3005		3/25/2009						03/25/09 09:00
Date Analyzed	6010		3/25/2009	1				03/25/09 15:47	
Iron	6010	mg/L	2.9	1	0.0024	0.0096	7439-89-6	03/25/09 15:47	03/25/09 09:00
Total Dissolved Solids									
Date Analyzed			3/24/2009 S7	1				03/24/09 16:00	
Total Dissolved Solids	SM2540C	mg/L	72 S7	1	7.3	29		03/24/09 16:00	



Report of Laboratory Analysis

SunLabs
Project Number
090320.09

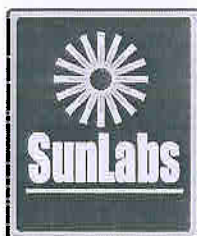
Environmental Consulting &
Technology, Inc.
Project Description
Celia Site

March 30, 2009

SunLabs Sample Number **82030**
Sample Designation **SW-6**

Matrix Surface Water
Date Collected 3/20/2009 13:11
Date Received 3/20/2009 22:20

Parameters	Method	Units	Results	Dil Factor	MDL	RL	CAS Number	Date/Time Analyzed	Date/Time Prep
<u>BOD</u>									
Biological Oxygen Demand	405.1	mg/L	0.5 U	1	0.5	2		03/21/09 10:30	
<u>Chemical Oxygen Demand (COD)</u>									
Chemical Oxygen Demand	410.4	mg/L	10.1 I,S7	1	7	28		03/26/09 09:35	
<u>Iron</u>									
Date Digested	3005		3/25/2009						03/25/09 09:00
Date Analyzed	6010		3/25/2009	1				03/25/09 15:49	
Iron	6010	mg/L	1.2	1	0.0024	0.0096	7439-89-6	03/25/09 15:49	03/25/09 09:00
<u>Total Dissolved Solids</u>									
Date Analyzed			3/24/2009 S7	1				03/24/09 16:00	
Total Dissolved Solids	SM2540C	mg/L	80 S7	1	7.3	29		03/24/09 16:00	



Report of Laboratory Analysis

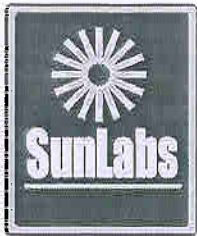
SunLabs Project Number	Environmental Consulting & Technology, Inc.
090320.09	Project Description
	Celia Site

March 30, 2009

SunLabs Sample Number **82031**
 Sample Designation **SW-5**

Matrix Surface Water
 Date Collected 3/20/2009 13:52
 Date Received 3/20/2009 22:20

Parameters	Method	Units	Results	Dil Factor	MDL	RL	CAS Number	Date/Time Analyzed	Date/Time Prep
BOD									
Biological Oxygen Demand	405.1	mg/L	0.5 U	1	0.5	2		03/21/09 10:30	
Chemical Oxygen Demand (COD)									
Chemical Oxygen Demand	410.4	mg/L	17.9 I,S7	1	7	28		03/26/09 09:35	
Iron									
Date Digested	3005		3/25/2009						03/25/09 09:00
Date Analyzed	6010		3/25/2009	1				03/25/09 15:52	
Iron	6010	mg/L	0.68	1	0.0024	0.0096	7439-89-6	03/25/09 15:52	03/25/09 09:00
Total Dissolved Solids									
Date Analyzed			3/24/2009 S7	1				03/24/09 16:00	
Total Dissolved Solids	SM2540C	mg/L	88 S7	1	7.3	29		03/24/09 16:00	



Report of Laboratory Analysis

SunLabs
Project Number
090320.09

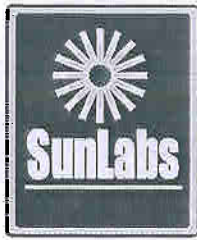
Environmental Consulting &
Technology, Inc.
Project Description
Celia Site

March 30, 2009

SunLabs Sample Number **82032**
Sample Designation **SW-11**

Matrix Surface Water
Date Collected 3/20/2009 15:16
Date Received 3/20/2009 22:20

Parameters	Method	Units	Results	Dil Factor	MDL	RL	CAS Number	Date/Time Analyzed	Date/Time Prep
BOD									
Biological Oxygen Demand	405.1	mg/L	1.10 I	1	0.5	2		03/21/09 10:30	
Chemical Oxygen Demand (COD)									
Chemical Oxygen Demand	410.4	mg/L	20.5 I,S7	1	7	28		03/26/09 09:35	
Iron									
Date Digested	3005		3/25/2009						03/25/09 09:00
Date Analyzed	6010		3/25/2009	1				03/25/09 15:54	
Iron	6010	mg/L	1.0	1	0.0024	0.0096	7439-89-6	03/25/09 15:54	03/25/09 09:00
Total Dissolved Solids									
Date Analyzed			3/24/2009 S7	1				03/24/09 16:00	
Total Dissolved Solids	SM2540C	mg/L	92 S7	1	7.3	29		03/24/09 16:00	



Report of Laboratory Analysis

SunLabs
Project Number

090320.09

Environmental Consulting &
Technology, Inc.

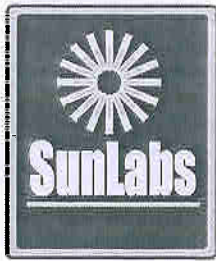
Project Description

Celia Site

March 30, 2009

Footnotes

- * *SunLabs is not currently NELAC certified for this analyte.*
- I *The reported value is between the laboratory method detection limit and the laboratory practical quantitation limit.*
- I,S7
- LCS *Laboratory Control Sample*
- LCSD *Laboratory Control Sample Duplicate*
- MB *Method Blank*
- MS *Matrix Spike*
- MSD *Matrix Spike Duplicate*
- NA *Sample not analyzed at client's request.*
- RL *RL(reporting limit) = PQL(practical quantitation limit).*
- RPD *Relative Percent Difference*
- S7 *This analysis performed by Benchmark EnviroAnalytical, Inc., Certification number E84167.*
- U *Compound was analyzed for but not detected.*
- V *Indicates that the analyte was detected in both the sample and the associated method blank.*



Quality Control Data

Project Number	Environmental Consulting &
090320.09	Project Description
	Celia Site

March 30, 2009

Batch No: **C8649**

Test: **Iron**

TestCode: **Fe-w**

Associated Samples

82025, 82026, 82027, 82028, 82029, 82030, 82031, 82032

Compound	Blank	LCS Spike	LCS %Rec	LCSD %Rec	RPD %	---QC Limits---		MS Spike	MS %Rec	MSD %Rec	RPD %	---QC Limits---		Dup RPD	Qualifiers
						RPD	LCS					RPD	MS		
Parent Sample Number															
Date Digested	3/25/2009 U												82025 82025		
Date Analyzed	3/25/2009 U														
Iron	0.0024 U	1000	99	98	1	5	80-116	1000	91	96	5*	0	75-117		

* indicates value is outside control limits for %Recovery or greater than acceptance criteria for RPD

Footnotes

U Compound was analyzed for but not detected.

SunLabs, Inc. Chain of Custody

NO 21232

Client Name: **PCT**

Contact: **Katya Kitanovska**
 Address: **1408 N. Westshore Blvd.**
Ste. 115 Tampa FL 33607
 Phone / Fax: **813-289-9838**
 E-Mail: **kkitanovska@pct.com**

Sunlabs Project # **090320.09**

Project Name: **Alia Ste**
 Project #: **090213-0300**

PO #: _____
 Alt Bill To: _____

Due Date Requested:

Standard TAX

FDEP Pre-Approval site

Current rates Old rates

Cash rates

Remarks / Comments:

Sunlabs Sample #	Sample Description	Sample Date	Sample Time	# of Bottles	Sunlabs Project # 090320.09			
					P	P	P	P
82035	SW-2	3/20/09	8:40	4	1	1	1	1
82026	SW-3		9:30	4	1	1	1	1
82031	SW-5		13:52	4	1	1	1	1
82030	SW-6		13:11	4	1	1	1	1
82029	SW-7		10:24	4	1	1	1	1
82037	SW-9		11:25	4	1	1	1	1
82028	SW-10		15:16	4	1	1	1	1
82032	SW-11			4	1	1	1	1

Sampler Signature / Date:

Printed Name / Affiliation:

[Signature]

Jesse Peria / PCT

SUNLABS, INC. RESERVES THE RIGHT TO BILL FOR UNUSED/ UNRETURNED SAMPLES, AND TO RETURN UNUSED SAMPLES.

Relinquished By:

Relinquished To:

Date:

Relinquished By:

Relinquished To:

Date:

Relinquished By:

Relinquished To:

Date:

Relinquished By:

Relinquished To:

Date:

Matrix Codes:
 SO = Soil
 SOL = Solid
 A = Air
 DW = Drinking Water
 SW = Surface Water
 GW = Ground Water
 W = Water (Blanks)
 SE = Reservoir
 Q = Other (Specify):

Preservative Codes:
 H = Hydrochloric Acid + Ice
 S = Sulfuric Acid + Ice
 I = Iodine
 VS = MeOH, OPW, + Ice
 N = Nitric Acid + Ice
 O = Other (Specify)

Matrix Codes:
 SO = Soil
 SOL = Solid
 A = Air
 DW = Drinking Water
 SW = Surface Water
 GW = Ground Water
 W = Water (Blanks)
 SE = Reservoir
 Q = Other (Specify):

Preservative Codes:
 H = Hydrochloric Acid + Ice
 S = Sulfuric Acid + Ice
 I = Iodine
 VS = MeOH, OPW, + Ice
 N = Nitric Acid + Ice
 O = Other (Specify)

Temp: **47.0**
 Received on: **3/20/09**

SunLabs, Inc.
 5460 Beaumont Center Blvd., Suite 520, Tampa, Florida 33634
 Phone: 813-881-9401 / Fax: 813-354-4661
 e-mail: info@SunLabsInc.com www.SunLabsInc.com