

WITNESS: CHARLES R. ROTE

GENERATING PERFORMANCE INCENTIVE FACTOR

JANUARY THROUGH DECEMBER, 2018

AUGUST 24, 2017

CRR-2
DOCKET NO. 20170001-EI
FPL Witness: Charles R. Rote
Exhibit No.: _____
Pages 1 - 34

EXHIBIT INDEX**FLORIDA POWER & LIGHT COMPANY****JANUARY THROUGH DECEMBER, 2018**

<u>EXHIBIT</u>	<u>PAGE NUMBER</u>	<u>TITLE</u>
CRR-2	7.201.001	Exhibit Index
	7.201.002	Projected System Generation
	7.201.003	Units Used to Determine GPIF
	7.201.004	GPIF Reward/Penalty Table (Estimated)
	7.201.005	GPIF Calculation of Maximum Allowed Incentive Dollars (Estimated)
	7.201.006 and 7.201.007	GPIF Target and Range Summary
	7.201.008	GPIF Projected Unit Heat Rate Equations
	7.201.009	Derivation of Weighting Factors
	7.201.010 - 7.201.021	Estimated Unit Performance Data
	7.201.022 - 7.201.033	Unit FOF and MOF vs Time Graphs
	7.201.034	Planned Outages Schedule (Estimated)

**Projected System Generation
January Through December, 2018**

Name	Capacity (MW)	Service Hours	Net Output MWH	NOF %	% of Total Output	Cumulative % of Total Output	Production Cost (\$000)
Port Everglades 5	1,237	8,640	9,415,915	88.1	8.0	8.0	183,311
Riviera 5	1,212	8,760	8,799,293	82.9	7.5	15.6	175,550
West County 2	1,212	8,328	8,719,165	86.4	7.4	23.0	176,651
Cape Canaveral 3	1,210	8,760	8,213,475	77.5	7.0	30.0	167,988
West County 1	1,212	7,800	7,903,873	83.6	6.7	36.8	163,001
West County 3	1,212	8,520	7,827,183	75.8	6.7	43.4	160,765
St. Lucie 1	981	8,016	7,707,490	98.0	6.6	50.0	50,213
Turkey Point 4	821	8,760	7,107,561	98.8	6.1	56.1	46,838
Ft. Myers 2	1,469	8,424	7,040,614	56.9	6.0	62.1	161,211
St. Lucie 2	840	7,992	6,641,821	98.9	5.7	67.8	47,223
Turkey Point 3	811	7,728	6,224,728	99.3	5.3	73.1	42,219
Martin 8	1,112	7,990	5,806,161	65.3	5.0	78.0	122,412
Manatee 3	1,133	6,854	5,374,528	69.2	4.6	82.6	115,025
Turkey Point 5	1,179	6,576	4,835,230	62.4	4.1	86.8	104,108
Sanford 5	969	4,614	2,676,115	59.9	2.3	89.0	63,063
Sanford 4	969	4,336	2,537,835	60.4	2.2	91.2	59,301
Scherer 4	625	7,200	2,471,816	54.9	2.1	93.3	65,159
Martin 3	463	4,884	1,337,880	59.2	1.1	94.5	30,938
Martin 4	463	4,338	1,259,908	62.7	1.1	95.5	29,509
Lauderdale 5	438	3,084	724,698	53.6	0.6	96.1	18,994
Lauderdale 4	438	2,918	701,709	54.9	0.6	96.7	18,530
St. Johns 2	127	8,760	518,844	46.6	0.4	97.2	18,293
St. Johns 1	127	8,760	510,912	45.9	0.4	97.6	18,021
Manatee 1	785	1,152	313,356	34.7	0.3	97.9	10,597
Horizon PV Solar	75	4,443	176,149	52.9	0.2	98.0	-
Wildflower PV Solar	75	4,443	175,621	52.7	0.1	98.2	-
Coral Farms PV Solar	75	4,443	175,092	52.5	0.1	98.3	-
Manatee PV Solar	75	4,475	172,469	51.4	0.1	98.5	-
Citrus PV Solar	75	4,475	172,469	51.4	0.1	98.6	-
Babcock PV Solar	75	4,475	172,469	51.4	0.1	98.8	-
Indian River PV Solar	75	4,444	171,108	51.3	0.1	98.9	-
Barefoot PV Solar	75	3,795	149,860	52.7	0.1	99.1	-
Hammock PV Solar	75	3,764	149,093	52.8	0.1	99.2	-
Loggerhead PV Solar	75	3,795	146,831	51.6	0.1	99.3	-
Blue Cypress PV Solar	75	3,795	145,815	51.2	0.1	99.4	-
Lauderdale 6 CT A	211	520	100,665	91.7	0.1	99.5	3,199
Lauderdale 6 CT B	211	516	100,192	92.0	0.1	99.6	3,171
Martin 1	799	316	96,664	38.3	0.1	99.7	3,674
Martin 2	779	324	96,146	38.1	0.1	99.8	3,487
Manatee 2	785	192	61,624	40.9	0.1	99.8	2,683
Ft. Myers 3D	211	292	53,176	86.3	0.0	99.9	1,939
DeSoto PV Solar	25	4,168	51,973	49.9	0.0	99.9	-
Ft. Myers 3C	211	292	50,995	82.8	0.0	100.0	1,870
Space Coast PV Solar	10	3,895	17,652	45.3	0.0	100.0	-
Ft. Myers 3B	172	80	13,295	96.6	0.0	100.0	451
Ft. Myers 3A	172	76	12,706	97.2	0.0	100.0	432
Lauderdale 6 CT C	211	16	1,847	54.7	0.0	100.0	278
Lauderdale 6 CT D	211	8	1,102	65.3	0.0	100.0	160
Lauderdale 6 CT E	211	8	988	58.5	0.0	100.0	151
Total	26,089		117,136,111		100.0		2,070,412

**UNITS TO BE USED TO DETERMINE THE
GENERATING PERFORMANCE INCENTIVE FACTOR**

**FLORIDA POWER & LIGHT COMPANY
JANUARY THROUGH DECEMBER, 2018**

Cape Canaveral 3

Ft. Myers 2

Manatee 3

Martin 8

Riviera 5

St. Lucie 1

St. Lucie 2

Turkey Point 3

Turkey Point 4

West County 1

West County 2

West County 3

GENERATING PERFORMANCE INCENTIVE FACTOR

REWARD/PENALTY TABLE (ESTIMATED)

FLORIDA POWER & LIGHT COMPANY
JANUARY THROUGH DECEMBER, 2018

Generating Performance Incentive Points (GPIF)	Fuel Savings/(Loss) (\$000)	Generating Performance Incentive Factor (\$000)
+ 10	45,647	22,824
+ 9	41,082	20,541
+ 8	36,518	18,259
+ 7	31,953	15,976
+ 6	27,388	13,694
+ 5	22,824	11,412
+ 4	18,259	9,129
+ 3	13,694	6,847
+ 2	9,129	4,565
+ 1	4,565	2,282
0	0	0
- 1	(4,565)	(2,282)
- 2	(9,129)	(4,565)
- 3	(13,694)	(6,847)
- 4	(18,259)	(9,129)
- 5	(22,824)	(11,412)
- 6	(27,388)	(13,694)
- 7	(31,953)	(15,976)
- 8	(36,518)	(18,259)
- 9	(41,082)	(20,541)
- 10	(45,647)	(22,824)

GENERATING PERFORMANCE INCENTIVE FACTOR

CALCULATION OF MAXIMUM ALLOWED INCENTIVE DOLLARS (ESTIMATED)

FLORIDA POWER & LIGHT COMPANY
PERIOD OF: JANUARY THROUGH DECEMBER, 2018

LINE 1	BEGINNING OF PERIOD BALANCE OF COMMON EQUITY		\$	17,830,798,474	
	END OF MONTH BALANCE OF COMMON EQUITY				
LINE 2	MONTH OF JANUARY	2018	\$	18,036,129,465	
LINE 3	MONTH OF FEBRUARY	2018	\$	18,175,963,035	
LINE 4	MONTH OF MARCH	2018	\$	18,034,796,155	
LINE 5	MONTH OF APRIL	2018	\$	18,170,229,493	
LINE 6	MONTH OF MAY	2018	\$	18,383,799,961	
LINE 7	MONTH OF JUNE	2018	\$	18,602,875,995	
LINE 8	MONTH OF JULY	2018	\$	18,833,316,325	
LINE 9	MONTH OF AUGUST	2018	\$	18,839,656,819	
LINE 10	MONTH OF SEPTEMBER	2018	\$	18,989,464,753	
LINE 11	MONTH OF OCTOBER	2018	\$	19,151,794,195	
LINE 12	MONTH OF NOVEMBER	2018	\$	19,326,745,457	
LINE 13	MONTH OF DECEMBER	2018	\$	19,467,035,415	
LINE 14	AVERAGE COMMON EQUITY FOR THE PERIOD (SUMMATION OF LINE 1 THROUGH LINE 13 DIVIDED BY 13)		\$	18,603,277,349	
LINE 15	25 BASIS POINTS			0.0025	
LINE 16	REVENUE EXPANSION FACTOR			61.3808%	
LINE 17	MAXIMUM ALLOWED INCENTIVE DOLLARS (LINE 14 TIMES LINE 15 DIVIDED BY LINE 16)		\$	75,769,937	
LINE 18	JURISDICTIONAL SALES			109,175,949,036	KWH
LINE 19	TOTAL SALES			115,327,366,333	KWH
LINE 20	JURISDICTIONAL SEPARATION FACTOR (LINE 18 DIVIDED BY LINE 19)			94.67%	
LINE 21	MAXIMUM ALLOWED JURISDICTIONAL INCENTIVE DOLLARS (LINE 17 TIMES LINE 20)		\$	71,731,399	
LINE 22	INCENTIVE CAP (50 PERCENT OF PROJECTED FUEL SAVINGS AT 10 GPIF-POINT LEVEL FROM SHEET NO. 3.515)		\$	22,823,500	
LINE 23	MAXIMUM ALLOWED GPIF REWARD (AT 10 GPIF-POINT LEVEL) (THE LESSER OF LINE 21 AND LINE 22)		\$	22,823,500	

Note: Line 22 and 23 are as approved by Commission order PSC-13-0665-FOF-EI dated 12/18/13 effective 1/1/14.

GPIF TARGET AND RANGE SUMMARY

FLORIDA POWER & LIGHT COMPANY
PERIOD OF: JANUARY THROUGH DECEMBER, 2018

<u>Plant / Unit</u>	<u>Weighting Factor (%)</u>	<u>EAF Target (%)</u>	<u>EAF Range</u>		<u>Max. Fuel Savings (\$000's)</u>	<u>Max. Fuel Loss (\$000's)</u>
			<u>Max. (%)</u>	<u>Min. (%)</u>		
Cape Canaveral 3	3.01	86.4	89.4	83.4	1,373	-1,373
Manatee 3	1.13	92.9	94.9	90.9	517	-517
Ft. Myers 2	1.27	85.9	88.4	83.4	578	-578
Martin 8	1.44	80.5	83.0	78.0	657	-657
Riviera 5	2.96	85.4	87.9	82.9	1,351	-1,351
St. Lucie 1	8.58	85.0	88.0	82.0	3,916	-3,916
St. Lucie 2	7.10	85.1	88.1	82.1	3,241	-3,241
Turkey Point 3	6.83	82.1	85.1	79.1	3,119	-3,119
Turkey Point 4	7.88	93.6	96.6	90.6	3,597	-3,597
West County 1	2.84	79.1	82.1	76.1	1,297	-1,297
West County 2	2.74	89.3	91.8	86.8	1,252	-1,252
West County 3	2.36	80.4	82.9	77.9	1,075	-1,075
	48.14				21,973	-21,973

**GENERATING PERFORMANCE INCENTIVE FACTOR
PROJECTED UNIT HEAT RATE EQUATIONS
FLORIDA POWER & LIGHT COMPANY
PERIOD OF: JANUARY THROUGH DECEMBER, 2018**

<u>Plant/Unit</u>	<u>ANOHR</u>	<u>NOF</u>	<u>MW</u>	<u>ANOHR Equation</u>		<u>Bounds</u>	<u>First</u>	<u>Last</u>	<u>Exclusions</u>
				<u>a coef.</u>	<u>b coef.</u>				
Cape Canaveral 3	6,637	77.5	1210	6714	-1.00	107	07-14	06-17	Jan-00
Manatee 3	6,939	69.2	1133	7152	-3.08	179	07-14	06-17	3/17-6/17
Ft. Myers 2	7,240	56.9	1469	7293	-0.93	116	07-14	06-17	3/17
Martin 8	7,006	65.3	1112	7221	-3.30	157	07-14	06-17	2/15, 2/16, 2/17-3/17
Riviera 5	6,601	82.9	1212	7074	-5.71	78	07-14	06-17	7-10/14, 4-5/15, 11/15, 1-2/16, 6-8/16, 11/16, 4-6/17
St. Lucie 1	10,441	98.0	981	13902	-35.32	104	07-14	06-17	4/15, 8/16, 10/16
St. Lucie 2	10,303	98.9	840	13774	-35.10	82	07-14	06-17	10/15, 3/17
Turkey Point 3	11,044	99.3	811	15873	-48.63	191	07-14	06-17	7-10/14, 11/15, 4/17
Turkey Point 4	10,970	98.8	821	16342	-54.37	207	07-14	06-17	9-10/14, 4/16
West County 1	6,974	83.6	1212	7556	-6.96	130	07-14	06-17	10-12/14, 11/15, 1/17, 4/17
West County 2	6,885	86.4	1212	7284	-4.62	107	07-14	06-17	12/14, 10-11/15
West County 3	6,974	75.8	1212	7361	-5.10	104	07-14	06-17	12/14, 5/16, 8/16

DERIVATION OF WEIGHTING FACTORS

FLORIDA POWER & LIGHT COMPANY
PERIOD OF: JANUARY THROUGH DECEMBER, 2018

PRODUCTION COSTING SIMULATION
FUEL COST (\$000)

Unit	Performance Indicator	At Target (1)	At Maximum Improvement (2)	Savings (3)	Factor (% Of Savings)
Cape Canaveral 3	EAF	2,070,412	2,069,039	1,373	3.01
Cape Canaveral 3	ANOHR	2,070,412	2,067,704	2,708	5.93
Manatee 3	EAF	2,070,412	2,069,895	517	1.13
Manatee 3	ANOHR	2,070,412	2,067,445	2,967	6.50
Ft. Myers 2	EAF	2,070,412	2,069,834	578	1.27
Ft. Myers 2	ANOHR	2,070,412	2,067,829	2,583	5.66
Martin 8	EAF	2,070,412	2,069,755	657	1.44
Martin 8	ANOHR	2,070,412	2,067,669	2,743	6.01
Riviera 5	EAF	2,070,412	2,069,061	1,351	2.96
Riviera 5	ANOHR	2,070,412	2,068,338	2,074	4.54
St. Lucie 1	EAF	2,070,412	2,066,496	3,916	8.58
St. Lucie 1	ANOHR	2,070,412	2,069,931	481	1.06
St. Lucie 2	EAF	2,070,412	2,067,171	3,241	7.10
St. Lucie 2	ANOHR	2,070,412	2,070,055	357	0.78
Turkey Point 3	EAF	2,070,412	2,067,293	3,119	6.83
Turkey Point 3	ANOHR	2,070,412	2,069,694	718	1.57
Turkey Point 4	EAF	2,070,412	2,066,815	3,597	7.88
Turkey Point 4	ANOHR	2,070,412	2,069,549	863	1.89
West County 1	EAF	2,070,412	2,069,115	1,297	2.84
West County 1	ANOHR	2,070,412	2,067,374	3,038	6.66
West County 2	EAF	2,070,412	2,069,160	1,252	2.74
West County 2	ANOHR	2,070,412	2,067,667	2,745	6.01
West County 3	EAF	2,070,412	2,069,337	1,075	2.36
West County 3	ANOHR	2,070,412	2,068,015	2,397	5.25
TOTAL				45,647	100.00

(1) FUEL ADJUSTMENT - ALL UNITS PERFORMANCE AT TARGET

(2) ALL OTHER UNITS PERFORMANCE AT TARGET

(3) EXPRESSED IN REPLACEMENT ENERGY COSTS.

ESTIMATED UNIT PERFORMANCE DATA

FLORIDA POWER & LIGHT

PERIOD OF: JANUARY THROUGH DECEMBER, 2018

Cape Canaveral 3	Jan '18	Feb '18	Mar '18	Apr '18	May '18	Jun '18
1 EAF (%)	90.1	90.1	90.1	90.1	88.1	62.1
2 EPOF (%)	0.0	0.0	0.0	0.0	2.2	31.1
3 EUOF (%)	9.9	9.9	9.9	9.9	9.7	6.8
4 EUOR (%)	9.9	9.9	9.9	9.9	9.7	6.8
5 PH	744	672	744	720	744	720
6 SH	744	672	744	720	744	720
7 RSH	0	0	0	0	0	0
8 UH	0	0	0	0	0	0
9 POH	0	0	0	0	0	0
10 FOH & EFOH	15	14	15	15	15	10
11 MOH & EMOH	58	53	58	56	57	39
12 Oper Mbtu	4,459,476	4,125,371	4,936,534	4,746,894	4,477,687	3,171,136
13 Net Gen (MWH)	671,709	621,478	744,463	715,756	674,452	476,218
14 ANOHR (Btu/KWH)	6,639	6,638	6,631	6,632	6,639	6,659
15 NOF (%)	74.6	76.4	82.7	82.2	74.9	54.7
16 NSC (MW)	1,210	1,210	1,210	1,210	1,210	1,210
17 ANOHR Equation	-1 x NOF + 6714					

Cape Canaveral 3	Jul '18	Aug '18	Sep '18	Oct '18	Nov '18	Dec '18	Total
1 EAF (%)	90.1	90.1	90.1	90.1	90.1	90.1	86.4
2 EPOF (%)	0.0	0.0	0.0	0.0	0.0	0.0	2.7
3 EUOF (%)	9.9	9.9	9.9	9.9	9.9	9.9	10.9
4 EUOR (%)	9.9	9.9	9.9	9.9	9.9	9.9	9.6
5 PH	744	744	720	744	720	744	8,760
6 SH	744	744	720	744	720	744	8,760
7 RSH	0	0	0	0	0	0	0
8 UH	0	0	0	0	0	0	0
9 POH	0	0	0	0	0	0	0
10 FOH & EFOH	15	15	15	15	15	15	175
11 MOH & EMOH	58	58	56	58	56	58	666
12 Oper Mbtu	4,366,391	4,916,613	5,104,545	5,180,028	4,533,005	4,484,200	54,512,834
13 Net Gen (MWH)	657,490	741,347	770,381	781,655	683,093	675,433	8,213,475
14 ANOHR (Btu/KWH)	6,641	6,632	6,626	6,627	6,636	6,639	6,637
15 NOF (%)	73.0	82.3	88.4	86.8	78.4	75.0	77.5
16 NSC (MW)	1,210	1,210	1,210	1,210	1,210	1,210	1,210
17 ANOHR Equation	-1 x NOF + 6714						

ESTIMATED UNIT PERFORMANCE DATA

FLORIDA POWER & LIGHT

PERIOD OF: JANUARY THROUGH DECEMBER, 2018

Ft. Myers 2	Jan '18	Feb '18	Mar '18	Apr '18	May '18	Jun '18
1 EAF (%)	94.3	47.1	94.3	94.3	94.3	94.3
2 EPOF (%)	0.0	50.0	0.0	0.0	0.0	0.0
3 EUOF (%)	5.7	2.9	5.7	5.7	5.7	5.7
4 EUOR (%)	5.7	5.7	5.7	5.7	5.7	5.7
5 PH	744	672	744	720	744	720
6 SH	744	336	744	720	744	720
7 RSH	0	0	0	0	0	0
8 UH	0	336	0	0	0	0
9 POH	0	336	0	0	0	0
10 FOH & EFOH	16	7	16	16	16	16
11 MOH & EMOH	26	12	26	25	26	25
12 Oper Mbtu	4,026,609	1,855,401	4,927,107	4,352,797	4,616,325	4,501,508
13 Net Gen (MWH)	555,701	256,094	681,010	601,215	637,702	621,927
14 ANOHR (Btu/KWH)	7,246	7,245	7,235	7,240	7,239	7,238
15 NOF (%)	50.8	51.9	62.3	56.8	58.3	58.8
16 NSC (MW)	1,469	1,469	1,469	1,469	1,469	1,469
17 ANOHR Equation	-0.93 x NOF + 7293					

Ft. Myers 2	Jul '18	Aug '18	Sep '18	Oct '18	Nov '18	Dec '18	Total
1 EAF (%)	94.3	94.3	94.3	93.8	66.0	66.4	85.9
2 EPOF (%)	0.0	0.0	0.0	0.5	30.0	29.6	8.9
3 EUOF (%)	5.7	5.7	5.7	5.7	4.0	4.0	5.2
4 EUOR (%)	5.7	5.7	5.7	5.7	4.0	4.0	5.4
5 PH	744	744	720	744	720	744	8,760
6 SH	744	744	720	744	720	744	8,424
7 RSH	0	0	0	0	0	0	0
8 UH	0	0	0	0	0	0	336
9 POH	0	0	0	0	0	0	336
10 FOH & EFOH	16	16	16	16	11	11	175
11 MOH & EMOH	26	26	25	26	18	18	280
12 Oper Mbtu	4,683,804	4,638,722	4,567,502	4,832,548	4,044,470	3,926,106	50,974,045
13 Net Gen (MWH)	647,113	640,796	631,132	667,848	558,320	541,756	7,040,614
14 ANOHR (Btu/KWH)	7,238	7,239	7,237	7,236	7,244	7,247	7,240
15 NOF (%)	59.2	58.6	59.7	61.1	52.8	49.6	56.9
16 NSC (MW)	1,469	1,469	1,469	1,469	1,469	1,469	1,469
17 ANOHR Equation	-0.93 x NOF + 7293						

ESTIMATED UNIT PERFORMANCE DATA

FLORIDA POWER & LIGHT

PERIOD OF: JANUARY THROUGH DECEMBER, 2018

Manatee 3	Jan '18	Feb '18	Mar '18	Apr '18	May '18	Jun '18
1 EAF (%)	95.7	95.7	63.2	95.7	95.7	95.7
2 EPOF (%)	0.0	0.0	33.9	0.0	0.0	0.0
3 EUOF (%)	4.3	4.3	2.9	4.3	4.3	4.3
4 EUOR (%)	9.6	6.4	5.6	5.4	6.0	4.3
5 PH	744	672	744	720	744	720
6 SH	336	456	378	578	540	720
7 RSH	408	216	198	142	204	0
8 UH	0	0	168	0	0	0
9 POH	0	0	168	0	0	0
10 FOH & EFOH	15	14	10	15	15	15
11 MOH & EMOH	17	15	11	16	17	16
12 Oper Mbtu	1,697,841	2,634,623	1,975,998	3,272,090	3,017,734	3,717,437
13 Net Gen (MWH)	244,118	380,451	284,439	472,163	435,271	534,883
14 ANOHR (Btu/KWH)	6,955	6,925	6,947	6,930	6,933	6,950
15 NOF (%)	64.1	73.6	66.4	72.1	71.1	65.6
16 NSC (MW)	1,133	1,133	1,133	1,133	1,133	1,133
17 ANOHR Equation	-3.08 x NOF + 7152					

Manatee 3	Jul '18	Aug '18	Sep '18	Oct '18	Nov '18	Dec '18	Total
1 EAF (%)	95.7	95.7	95.7	95.7	95.7	95.7	92.9
2 EPOF (%)	0.0	0.0	0.0	0.0	0.0	0.0	2.9
3 EUOF (%)	4.3	4.3	4.3	4.3	4.3	4.3	4.2
4 EUOR (%)	4.3	4.3	4.3	5.4	5.4	6.9	5.4
5 PH	744	744	720	744	720	744	8,760
6 SH	744	744	720	592	578	468	6,854
7 RSH	0	0	0	152	142	276	1738
8 UH	0	0	0	0	0	0	168
9 POH	0	0	0	0	0	0	168
10 FOH & EFOH	15	15	15	15	15	15	175
11 MOH & EMOH	17	17	16	17	16	17	193
12 Oper Mbtu	3,762,190	3,724,590	3,816,096	3,507,255	3,505,128	2,656,066	37,293,850
13 Net Gen (MWH)	541,011	535,450	549,553	506,902	506,961	383,326	5,374,528
14 ANOHR (Btu/KWH)	6,954	6,956	6,944	6,919	6,914	6,929	6,939
15 NOF (%)	64.2	63.5	67.4	75.6	77.4	72.3	69.2
16 NSC (MW)	1,133	1,133	1,133	1,133	1,133	1,133	1,133
17 ANOHR Equation	-3.08 x NOF + 7152						

ESTIMATED UNIT PERFORMANCE DATA

FLORIDA POWER & LIGHT

PERIOD OF: JANUARY THROUGH DECEMBER, 2018

Martin 8	Jan '18	Feb '18	Mar '18	Apr '18	May '18	Jun '18
1 EAF (%)	91.2	69.5	91.9	92.6	92.6	92.6
2 EPOF (%)	1.6	25.0	0.8	0.0	0.0	0.0
3 EUOF (%)	7.2	5.5	7.3	7.4	7.4	7.4
4 EUOR (%)	7.2	5.5	7.3	7.4	7.4	7.4
5 PH	744	672	744	720	744	720
6 SH	744	672	744	720	744	720
7 RSH	0	0	0	0	0	0
8 UH	0	0	0	0	0	0
9 POH	0	0	0	0	0	0
10 FOH & EFOH	17	12	17	17	17	17
11 MOH & EMOH	37	26	37	36	38	36
12 Oper Mbtu	3,470,102	3,194,339	4,418,353	3,884,783	3,922,903	3,788,248
13 Net Gen (MWH)	494,035	455,034	634,092	555,604	560,655	541,333
14 ANOHR (Btu/KWH)	7,024	7,020	6,968	6,992	6,997	6,998
15 NOF (%)	59.7	60.9	76.6	69.4	67.8	67.6
16 NSC (MW)	1,112	1,112	1,112	1,112	1,112	1,112
17 ANOHR Equation	-3.3 x NOF + 7221					

Martin 8	Jul '18	Aug '18	Sep '18	Oct '18	Nov '18	Dec '18	Total
1 EAF (%)	92.6	92.6	92.6	69.5	21.6	65.0	80.5
2 EPOF (%)	0.0	0.0	0.0	25.0	76.7	29.8	13.1
3 EUOF (%)	7.4	7.4	7.4	5.5	1.7	5.2	6.4
4 EUOR (%)	7.4	7.4	7.4	5.5	17.7	6.2	7.0
5 PH	744	744	720	744	720	744	8,760
6 SH	744	744	720	744	70	624	7,990
7 RSH	0	0	0	0	266	0	266
8 UH	0	0	0	0	384	120	504
9 POH	0	0	0	0	384	120	504
10 FOH & EFOH	17	17	17	13	4	12	175
11 MOH & EMOH	38	38	36	28	9	26	385
12 Oper Mbtu	3,858,454	3,804,489	3,847,287	3,284,930	305,216	2,885,529	40,677,964
13 Net Gen (MWH)	551,129	543,188	550,084	466,941	43,373	410,693	5,806,161
14 ANOHR (Btu/KWH)	7,001	7,004	6,994	7,035	7,037	7,026	7,006
15 NOF (%)	66.6	65.7	68.7	56.4	55.7	59.2	65.3
16 NSC (MW)	1,112	1,112	1,112	1,112	1,112	1,112	1,112
17 ANOHR Equation	-3.3 x NOF + 7221						

ESTIMATED UNIT PERFORMANCE DATA

FLORIDA POWER & LIGHT

PERIOD OF: JANUARY THROUGH DECEMBER, 2018

	Riviera 5	Jan '18	Feb '18	Mar '18	Apr '18	May '18	Jun '18
1	EAF (%)	93.4	93.4	93.4	93.4	93.4	93.4
2	EPOF (%)	0.0	0.0	0.0	0.0	0.0	0.0
3	EUOF (%)	6.6	6.6	6.6	6.6	6.6	6.6
4	EUOR (%)	6.6	6.6	6.6	6.6	6.6	6.6
5	PH	744	672	744	720	744	720
6	SH	744	672	744	720	744	720
7	RSH	0	0	0	0	0	0
8	UH	0	0	0	0	0	0
9	POH	0	0	0	0	0	0
10	FOH & EFOH	16	15	16	16	16	16
11	MOH & EMOH	33	29	33	32	33	32
12	Oper Mbtu	5,379,726	4,476,895	5,283,364	5,116,848	5,486,417	5,419,770
13	Net Gen (MWH)	820,831	678,523	804,900	779,532	838,517	829,853
14	ANOHR (Btu/KWH)	6,554	6,598	6,564	6,564	6,543	6,531
15	NOF (%)	91.0	83.3	89.3	89.3	93.0	95.1
16	NSC (MW)	1,212	1,212	1,212	1,212	1,212	1,212
17	ANOHR Equation	-5.71 x NOF + 7074					

	Riviera 5	Jul '18	Aug '18	Sep '18	Oct '18	Nov '18	Dec '18	Total
1	EAF (%)	93.4	93.4	76.8	64.3	62.3	74.4	85.4
2	EPOF (%)	0.0	0.0	17.8	31.2	33.3	20.4	8.6
3	EUOF (%)	6.6	6.6	5.4	4.5	4.4	5.2	6
4	EUOR (%)	6.6	6.6	5.4	4.5	4.4	5.2	6.0
5	PH	744	744	720	744	720	744	8,760
6	SH	744	744	720	744	720	744	8,760
7	RSH	0	0	0	0	0	0	0
8	UH	0	0	0	0	0	0	0
9	POH	0	0	0	0	0	0	0
10	FOH & EFOH	16	16	13	11	11	13	175
11	MOH & EMOH	33	33	26	22	21	26	350
12	Oper Mbtu	5,419,536	5,662,173	4,557,100	3,903,336	3,286,132	3,986,758	58,084,133
13	Net Gen (MWH)	827,410	867,899	687,968	582,153	486,402	595,305	8,799,293
14	ANOHR (Btu/KWH)	6,550	6,524	6,624	6,705	6,756	6,697	6,601
15	NOF (%)	91.8	96.3	78.8	64.6	55.7	66.0	82.9
16	NSC (MW)	1,212	1,212	1,212	1,212	1,212	1,212	1,212
17	ANOHR Equation	-5.71 x NOF + 7074						

ESTIMATED UNIT PERFORMANCE DATA

FLORIDA POWER & LIGHT

PERIOD OF: JANUARY THROUGH DECEMBER, 2018

St. Lucie 1	Jan '18	Feb '18	Mar '18	Apr '18	May '18	Jun '18
1 EAF (%)	92.6	92.6	32.9	61.8	92.6	92.6
2 EPOF (%)	0.0	0.0	64.5	33.3	0.0	0.0
3 EUOF (%)	7.4	7.4	2.6	4.9	7.4	7.4
4 EUOR (%)	7.4	7.4	7.4	7.8	7.4	7.4
5 PH	744	672	744	720	744	720
6 SH	744	672	264	456	744	720
7 RSH	0	0	0	24	0	0
8 UH	0	0	480	240	0	0
9 POH	0	0	480	240	0	0
10 FOH & EFOH	29	26	10	19	29	28
11 MOH & EMOH	26	23	9	17	26	25
12 Oper Mbtu	7,537,026	6,807,643	2,674,427	4,550,126	7,423,896	7,184,413
13 Net Gen (MWH)	725,342	655,148	257,379	434,504	708,928	686,059
14 ANOHR (Btu/KWH)	10,391	10,391	10,391	10,472	10,472	10,472
15 NOF (%)	99.4	99.4	99.4	97.1	97.1	97.1
16 NSC (MW)	981	981	981	981	981	981
17 ANOHR Equation	-35.32 x NOF + 13902					

St. Lucie 1	Jul '18	Aug '18	Sep '18	Oct '18	Nov '18	Dec '18	Total
1 EAF (%)	92.6	92.6	92.6	92.6	92.6	92.6	85.0
2 EPOF (%)	0.0	0.0	0.0	0.0	0.0	0.0	8.2
3 EUOF (%)	7.4	7.4	7.4	7.4	7.4	7.4	6.8
4 EUOR (%)	7.4	7.4	7.4	7.4	7.4	7.4	7.4
5 PH	744	744	720	744	720	744	8,760
6 SH	744	744	720	744	720	744	8,016
7 RSH	0	0	0	0	0	0	24
8 UH	0	0	0	0	0	0	720
9 POH	0	0	0	0	0	0	720
10 FOH & EFOH	29	29	28	29	28	29	315
11 MOH & EMOH	26	26	25	26	25	26	280
12 Oper Mbtu	7,423,896	7,423,896	7,184,413	7,423,896	7,293,898	7,537,026	80,473,903
13 Net Gen (MWH)	708,928	708,928	686,059	708,928	701,944	725,342	7,707,490
14 ANOHR (Btu/KWH)	10,472	10,472	10,472	10,472	10,391	10,391	10,441
15 NOF (%)	97.1	97.1	97.1	97.1	99.4	99.4	98.0
16 NSC (MW)	981	981	981	981	981	981	981
17 ANOHR Equation	-35.32 x NOF + 13902						

ESTIMATED UNIT PERFORMANCE DATA

FLORIDA POWER & LIGHT

PERIOD OF: JANUARY THROUGH DECEMBER, 2018

St. Lucie 2	Jan '18	Feb '18	Mar '18	Apr '18	May '18	Jun '18
1 EAF (%)	93.0	93.0	93.0	93.0	93.0	93.0
2 EPOF (%)	0.0	0.0	0.0	0.0	0.0	0.0
3 EUOF (%)	7.0	7.0	7.0	7.0	7.0	7.0
4 EUOR (%)	7.0	7.0	7.0	7.0	7.0	7.0
5 PH	744	672	744	720	744	720
6 SH	744	672	744	720	744	720
7 RSH	0	0	0	0	0	0
8 UH	0	0	0	0	0	0
9 POH	0	0	0	0	0	0
10 FOH & EFOH	26	23	26	25	26	25
11 MOH & EMOH	26	23	26	25	26	25
12 Oper Mbtu	6,424,508	5,802,783	6,424,508	6,119,081	6,323,054	6,119,081
13 Net Gen (MWH)	626,354	565,739	626,354	591,902	611,632	591,902
14 ANOHR (Btu/KWH)	10,257	10,257	10,257	10,338	10,338	10,338
15 NOF (%)	100.2	100.2	100.2	97.9	97.9	97.9
16 NSC (MW)	840	840	840	840	840	840
17 ANOHR Equation	-35.1 x NOF + 13774					

St. Lucie 2	Jul '18	Aug '18	Sep '18	Oct '18	Nov '18	Dec '18	Total
1 EAF (%)	93.0	78.0	12.4	93.0	93.0	93.0	85.1
2 EPOF (%)	0.0	16.1	86.7	0.0	0.0	0.0	8.5
3 EUOF (%)	7.0	5.9	0.9	7.0	7.0	7.0	6.4
4 EUOR (%)	7.0	7.0	9.3	7.0	7.0	7.0	7.0
5 PH	744	744	720	744	720	744	8,760
6 SH	744	624	72	744	720	744	7,992
7 RSH	0	0	24	0	0	0	24
8 UH	0	120	624	0	0	0	744
9 POH	0	120	624	0	0	0	744
10 FOH & EFOH	26	22	3	26	25	26	280
11 MOH & EMOH	26	22	3	26	25	26	280
12 Oper Mbtu	6,323,054	5,303,207	611,910	6,323,054	6,217,269	6,424,508	68,430,682
13 Net Gen (MWH)	611,632	512,982	59,190	611,632	606,149	626,354	6,641,821
14 ANOHR (Btu/KWH)	10,338	10,338	10,338	10,338	10,257	10,257	10,303
15 NOF (%)	97.9	97.9	97.9	97.9	100.2	100.2	98.9
16 NSC (MW)	840	840	840	840	840	840	840
17 ANOHR Equation	-35.1 x NOF + 13774						

ESTIMATED UNIT PERFORMANCE DATA

FLORIDA POWER & LIGHT

PERIOD OF: JANUARY THROUGH DECEMBER, 2018

Turkey Point 3		Jan '18	Feb '18	Mar '18	Apr '18	May '18	Jun '18
1	EAF (%)	92.8	92.8	92.8	92.8	92.8	92.8
2	EPOF (%)	0.0	0.0	0.0	0.0	0.0	0.0
3	EUOF (%)	7.2	7.2	7.2	7.2	7.2	7.2
4	EUOR (%)	7.2	7.2	7.2	7.2	7.2	7.2
5	PH	744	672	744	720	744	720
6	SH	744	672	744	720	744	720
7	RSH	0	0	0	0	0	0
8	UH	0	0	0	0	0	0
9	POH	0	0	0	0	0	0
10	FOH & EFOH	27	24	27	26	27	26
11	MOH & EMOH	27	24	27	26	27	26
12	Oper Mbtu	6,674,028	6,028,153	6,674,028	6,337,693	6,548,944	6,337,693
13	Net Gen (MWH)	608,611	549,713	608,611	569,322	588,299	569,322
14	ANOHR (Btu/KWH)	10,966	10,966	10,966	11,132	11,132	11,132
15	NOF (%)	100.9	100.9	100.9	97.5	97.5	97.5
16	NSC (MW)	811	811	811	811	811	811
17	ANOHR Equation	-48.63 x NOF + 15873					

Turkey Point 3		Jul '18	Aug '18	Sep '18	Oct '18	Nov '18	Dec '18	Total
1	EAF (%)	92.8	92.8	92.8	0.0	58.7	92.8	82.1
2	EPOF (%)	0.0	0.0	0.0	100.0	36.7	0.0	11.5
3	EUOF (%)	7.2	7.2	7.2	0.0	4.6	7.2	6.4
4	EUOR (%)	7.2	7.2	7.2	0.0	7.6	7.2	7.2
5	PH	744	744	720	744	720	744	8,760
6	SH	744	744	720	0	432	744	7,728
7	RSH	0	0	0	0	24	0	24
8	UH	0	0	0	744	264	0	1,008
9	POH	0	0	0	744	264	0	1,008
10	FOH & EFOH	27	27	26	0	16	27	280
11	MOH & EMOH	27	27	26	0	16	27	280
12	Oper Mbtu	6,548,944	6,548,944	6,337,693	0	3,925,649	6,760,841	68,745,896
13	Net Gen (MWH)	588,299	588,299	569,322	0	361,811	623,119	6,224,728
14	ANOHR (Btu/KWH)	11,132	11,132	11,132	0	10,850	10,850	11,044
15	NOF (%)	97.5	97.5	97.5	0.0	103.3	103.3	99.3
16	NSC (MW)	811	811	811	811	811	811	811
17	ANOHR Equation	-48.63 x NOF + 15873						

ESTIMATED UNIT PERFORMANCE DATA

FLORIDA POWER & LIGHT

PERIOD OF: JANUARY THROUGH DECEMBER, 2018

Turkey Point 4	Jan '18	Feb '18	Mar '18	Apr '18	May '18	Jun '18
1 EAF (%)	93.6	93.6	93.6	93.6	93.6	93.6
2 EPOF (%)	0.0	0.0	0.0	0.0	0.0	0.0
3 EUOF (%)	6.4	6.4	6.4	6.4	6.4	6.4
4 EUOR (%)	6.4	6.4	6.4	6.4	6.4	6.4
5 PH	744	672	744	720	744	720
6 SH	744	672	744	720	744	720
7 RSH	0	0	0	0	0	0
8 UH	0	0	0	0	0	0
9 POH	0	0	0	0	0	0
10 FOH & EFOH	24	22	24	23	24	23
11 MOH & EMOH	24	22	24	23	24	23
12 Oper Mbtu	6,684,716	6,037,814	6,684,716	6,363,392	6,575,501	6,363,392
13 Net Gen (MWH)	615,139	555,610	615,139	576,342	595,553	576,342
14 ANOHR (Btu/KWH)	10,867	10,867	10,867	11,041	11,041	11,041
15 NOF (%)	100.7	100.7	100.7	97.5	97.5	97.5
16 NSC (MW)	821	821	821	821	821	821
17 ANOHR Equation	-54.37 x NOF + 16342					

Turkey Point 4	Jul '18	Aug '18	Sep '18	Oct '18	Nov '18	Dec '18	Total
1 EAF (%)	93.6	93.6	93.6	93.6	93.6	93.6	93.6
2 EPOF (%)	0.0	0.0	0.0	0.0	0.0	0.0	0.0
3 EUOF (%)	6.4	6.4	6.4	6.4	6.4	6.4	6.4
4 EUOR (%)	6.4	6.4	6.4	6.4	6.4	6.4	6.4
5 PH	744	744	720	744	720	744	8,760
6 SH	744	744	720	744	720	744	8,760
7 RSH	0	0	0	0	0	0	0
8 UH	0	0	0	0	0	0	0
9 POH	0	0	0	0	0	0	0
10 FOH & EFOH	24	24	23	24	23	24	280
11 MOH & EMOH	24	24	23	24	23	24	280
12 Oper Mbtu	6,575,501	6,575,501	6,363,392	6,575,501	6,469,082	6,684,716	77,969,944
13 Net Gen (MWH)	595,553	595,553	576,342	595,553	595,296	615,139	7,107,561
14 ANOHR (Btu/KWH)	11,041	11,041	11,041	11,041	10,867	10,867	10,970
15 NOF (%)	97.5	97.5	97.5	97.5	100.7	100.7	98.8
16 NSC (MW)	821	821	821	821	821	821	821
17 ANOHR Equation	-54.37 x NOF + 16342						

ESTIMATED UNIT PERFORMANCE DATA

FLORIDA POWER & LIGHT

PERIOD OF: JANUARY THROUGH DECEMBER, 2018

West County 1	Jan '18	Feb '18	Mar '18	Apr '18	May '18	Jun '18
1 EAF (%)	90.3	90.3	90.3	90.3	48.6	87.3
2 EPOF (%)	0.0	0.0	0.0	0.0	46.2	3.3
3 EUOF (%)	9.7	9.7	9.7	9.7	5.2	9.4
4 EUOR (%)	9.7	9.7	9.7	9.7	7.7	9.4
5 PH	744	672	744	720	744	720
6 SH	744	672	744	720	504	720
7 RSH	0	0	0	0	0	0
8 UH	0	0	0	0	240	0
9 POH	0	0	0	0	240	0
10 FOH & EFOH	17	15	17	16	9	16
11 MOH & EMOH	55	50	55	53	30	52
12 Oper Mbtu	5,293,367	4,837,121	5,713,099	5,407,279	2,793,188	4,577,174
13 Net Gen (MWH)	759,450	694,789	825,831	779,821	392,964	650,444
14 ANOHR (Btu/KWH)	6,970	6,962	6,918	6,934	7,108	7,037
15 NOF (%)	84.2	85.3	91.6	89.4	64.3	74.5
16 NSC (MW)	1,212	1,212	1,212	1,212	1,212	1,212
17 ANOHR Equation	-6.96 x NOF + 7556					

West County 1	Jul '18	Aug '18	Sep '18	Oct '18	Nov '18	Dec '18	Total
1 EAF (%)	90.3	90.3	90.3	90.3	42.2	49.5	79.1
2 EPOF (%)	0.0	0.0	0.0	0.0	53.3	45.2	12.4
3 EUOF (%)	9.7	9.7	9.7	9.7	4.5	5.3	8.5
4 EUOR (%)	9.7	9.7	9.7	9.7	9.7	9.7	9.5
5 PH	744	744	720	744	720	744	8,760
6 SH	744	744	720	744	336	408	7,800
7 RSH	0	0	0	0	0	0	0
8 UH	0	0	0	0	384	336	960
9 POH	0	0	0	0	384	336	960
10 FOH & EFOH	17	17	16	17	8	9	175
11 MOH & EMOH	55	55	53	55	25	30	569
12 Oper Mbtu	4,781,846	4,889,125	4,819,121	5,611,254	2,857,288	3,481,232	55,121,610
13 Net Gen (MWH)	680,109	696,655	687,660	809,588	417,610	508,952	7,903,873
14 ANOHR (Btu/KWH)	7,031	7,018	7,008	6,931	6,842	6,840	6,974
15 NOF (%)	75.4	77.3	78.8	89.8	102.6	102.9	83.6
16 NSC (MW)	1,212	1,212	1,212	1,212	1,212	1,212	1,212
17 ANOHR Equation	-6.96 x NOF + 7556						

ESTIMATED UNIT PERFORMANCE DATA

FLORIDA POWER & LIGHT

PERIOD OF: JANUARY THROUGH DECEMBER, 2018

West County 2	Jan '18	Feb '18	Mar '18	Apr '18	May '18	Jun '18
1 EAF (%)	94.4	57.3	68.0	94.4	94.4	94.4
2 EPOF (%)	0.0	39.3	28.0	0.0	0.0	0.0
3 EUOF (%)	5.6	3.4	4.0	5.6	5.6	5.6
4 EUOR (%)	5.6	5.3	5.4	5.6	5.6	5.6
5 PH	744	672	744	720	744	720
6 SH	744	432	552	720	744	720
7 RSH	0	0	0	0	0	0
8 UH	0	240	192	0	0	0
9 POH	0	240	192	0	0	0
10 FOH & EFOH	16	9	11	15	16	15
11 MOH & EMOH	26	14	19	25	26	25
12 Oper Mbtu	5,208,290	2,919,745	3,933,604	5,349,371	5,386,815	5,241,966
13 Net Gen (MWH)	755,153	422,478	570,915	778,430	782,626	761,803
14 ANOHR (Btu/KWH)	6,897	6,911	6,890	6,872	6,883	6,881
15 NOF (%)	83.7	80.7	85.3	89.2	86.8	87.3
16 NSC (MW)	1,212	1,212	1,212	1,212	1,212	1,212
17 ANOHR Equation	-4.62 x NOF + 7284					

West County 2	Jul '18	Aug '18	Sep '18	Oct '18	Nov '18	Dec '18	Total
1 EAF (%)	94.4	94.4	94.4	94.4	94.4	94.4	89.3
2 EPOF (%)	0.0	0.0	0.0	0.0	0.0	0.0	5.4
3 EUOF (%)	5.6	5.6	5.6	5.6	5.6	5.6	5.3
4 EUOR (%)	5.6	5.6	5.6	5.6	5.6	5.6	5.6
5 PH	744	744	720	744	720	744	8,760
6 SH	744	744	720	744	720	744	8,328
7 RSH	0	0	0	0	0	0	0
8 UH	0	0	0	0	0	0	432
9 POH	0	0	0	0	0	0	432
10 FOH & EFOH	16	16	15	16	15	16	175
11 MOH & EMOH	26	26	25	26	25	26	289
12 Oper Mbtu	5,291,479	5,348,398	5,381,092	5,624,018	5,209,674	5,131,911	60,031,451
13 Net Gen (MWH)	767,994	776,706	783,388	819,350	756,890	743,432	8,719,165
14 ANOHR (Btu/KWH)	6,890	6,886	6,869	6,864	6,883	6,903	6,885
15 NOF (%)	85.2	86.1	89.8	90.9	86.7	82.4	86.4
16 NSC (MW)	1,212	1,212	1,212	1,212	1,212	1,212	1,212
17 ANOHR Equation	-4.62 x NOF + 7284						

ESTIMATED UNIT PERFORMANCE DATA

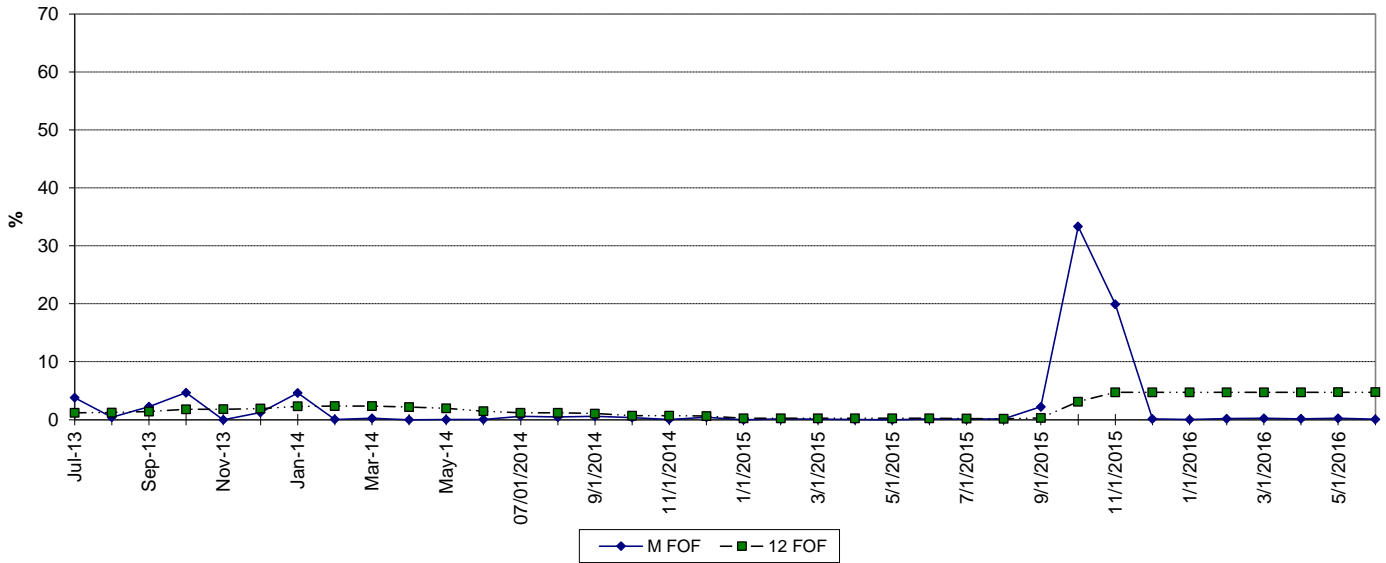
FLORIDA POWER & LIGHT

PERIOD OF: JANUARY THROUGH DECEMBER, 2018

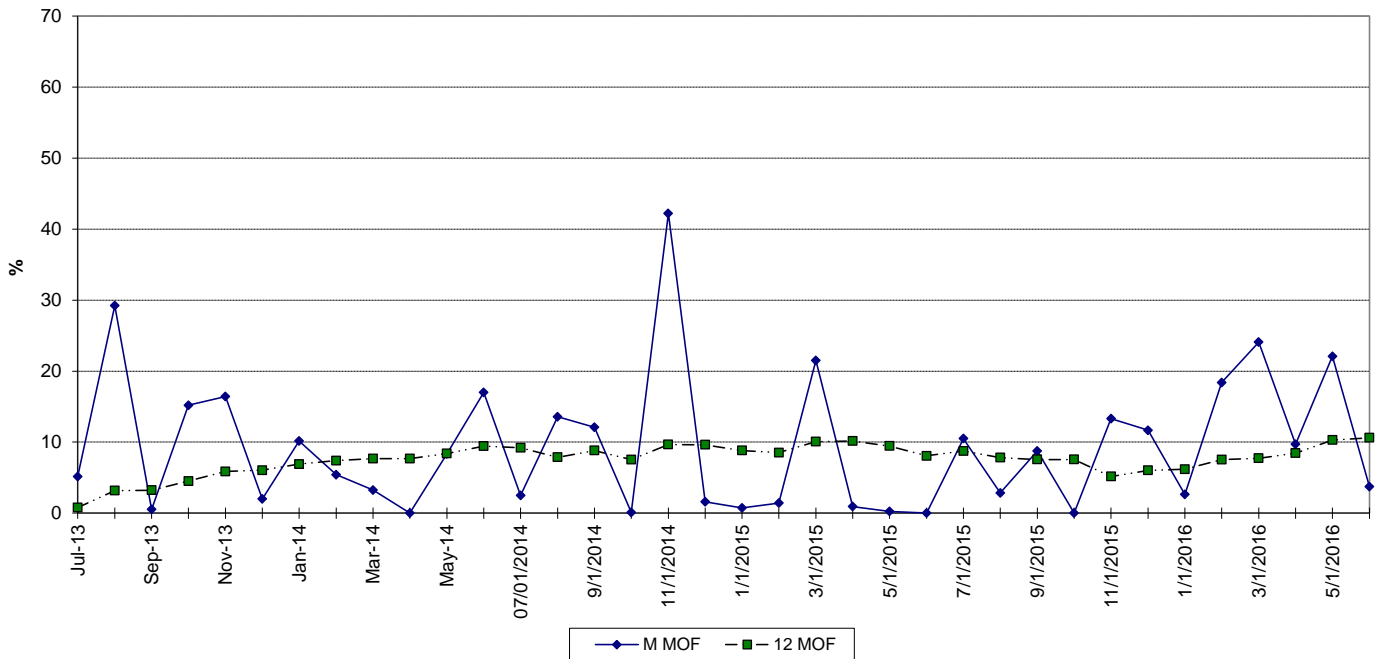
West County 3	Jan '18	Feb '18	Mar '18	Apr '18	May '18	Jun '18
1 EAF (%)	91.8	91.8	77.0	61.2	83.9	64.2
2 EPOF (%)	0.0	0.0	16.1	33.3	8.6	30.0
3 EUOF (%)	8.2	8.2	6.9	5.5	7.5	5.8
4 EUOR (%)	8.2	8.2	6.9	5.5	7.5	5.8
5 PH	744	672	744	720	744	720
6 SH	744	672	744	720	744	720
7 RSH	0	0	0	0	0	0
8 UH	0	0	0	0	0	0
9 POH	0	0	0	0	0	0
10 FOH & EFOH	17	15	14	11	16	12
11 MOH & EMOH	44	40	37	28	40	30
12 Oper Mbtu	5,183,606	4,682,623	4,589,648	3,670,466	4,432,444	3,690,097
13 Net Gen (MWH)	747,025	674,924	656,602	520,117	632,935	522,973
14 ANOHR (Btu/KWH)	6,939	6,938	6,990	7,057	7,003	7,056
15 NOF (%)	82.8	82.9	72.8	59.6	70.2	59.9
16 NSC (MW)	1,212	1,212	1,212	1,212	1,212	1,212
17 ANOHR Equation	-5.1 x NOF + 7361					

West County 3	Jul '18	Aug '18	Sep '18	Oct '18	Nov '18	Dec '18	Total
1 EAF (%)	66.1	91.8	91.8	91.8	91.8	62.1	80.4
2 EPOF (%)	28.0	0.0	0.0	0.0	0.0	32.3	12.4
3 EUOF (%)	5.9	8.2	8.2	8.2	8.2	5.6	7.2
4 EUOR (%)	5.9	8.2	8.2	8.2	8.2	8.2	7.4
5 PH	744	744	720	744	720	744	8,760
6 SH	744	744	720	744	720	504	8,520
7 RSH	0	0	0	0	0	0	0
8 UH	0	0	0	0	0	240	240
9 POH	0	0	0	0	0	240	240
10 FOH & EFOH	12	17	16	17	16	12	175
11 MOH & EMOH	32	44	43	44	43	30	456
12 Oper Mbtu	3,779,855	4,867,931	5,356,774	5,604,385	5,280,467	3,387,572	54,586,774
13 Net Gen (MWH)	535,542	698,813	775,445	812,112	763,625	487,070	7,827,183
14 ANOHR (Btu/KWH)	7,058	6,966	6,908	6,901	6,915	6,955	6,974
15 NOF (%)	59.4	77.5	88.9	90.1	87.5	79.7	75.8
16 NSC (MW)	1,212	1,212	1,212	1,212	1,212	1,212	1,212
17 ANOHR Equation	-5.1 x NOF + 7361						

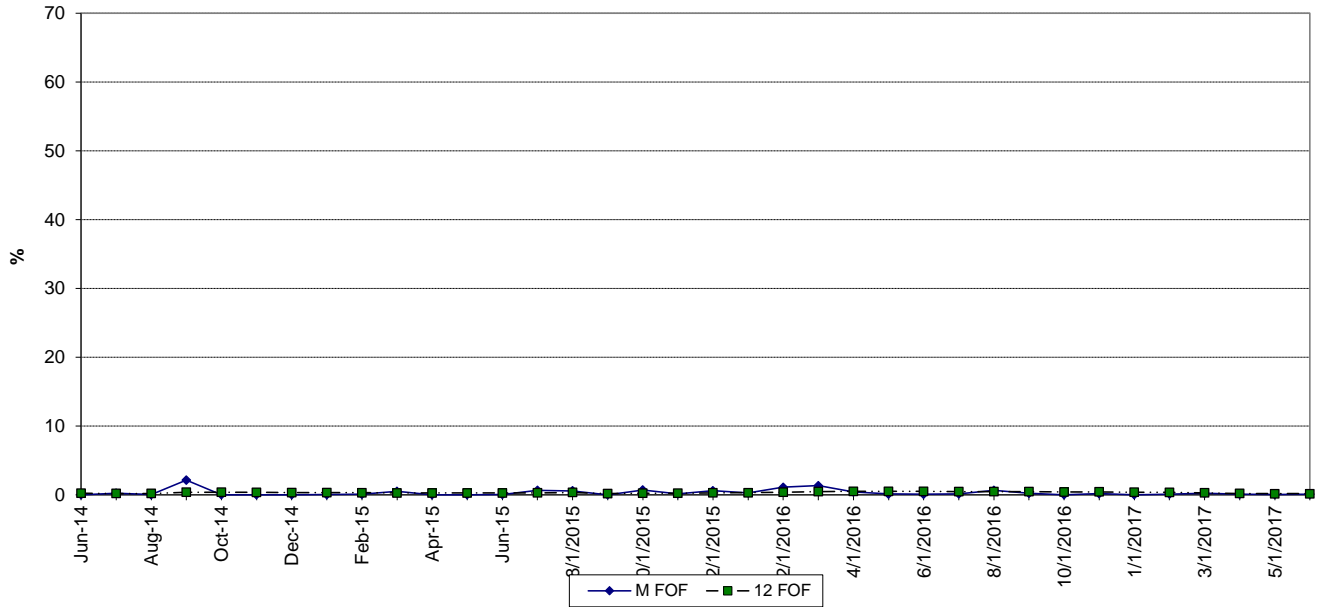
CAPE CANAVERAL 3 FORCED OUTAGE FACTOR



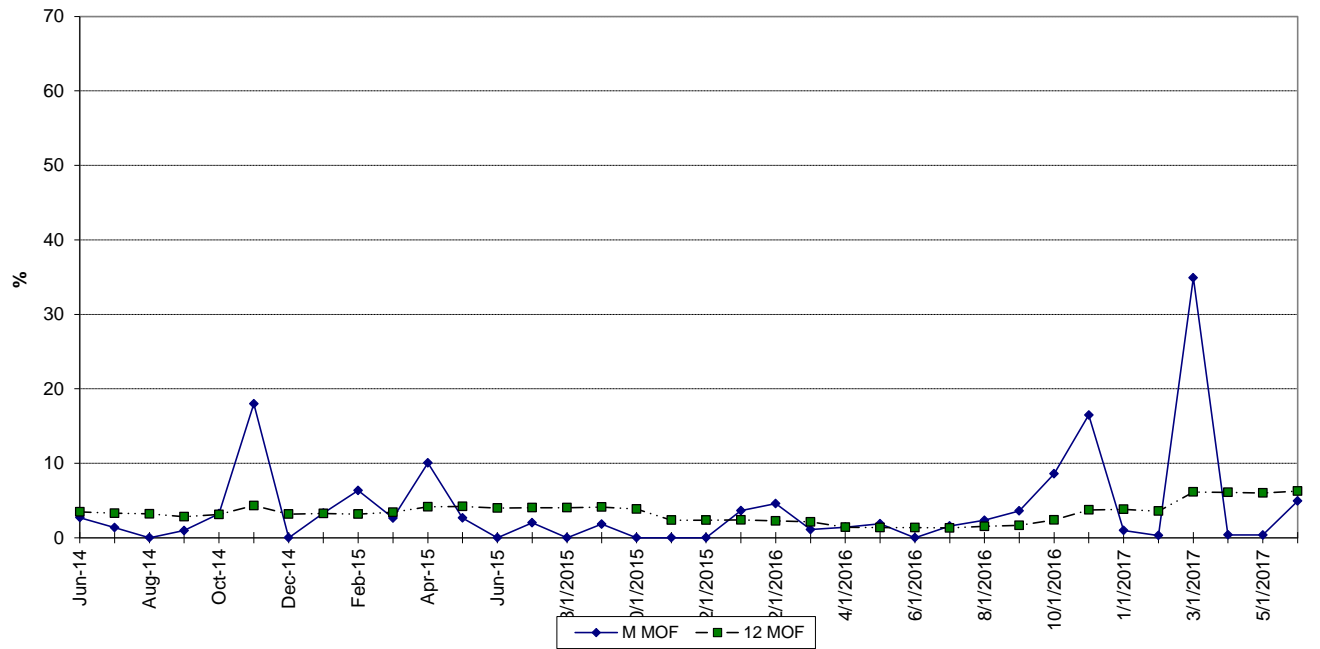
MAINTENANCE OUTAGE FACTOR



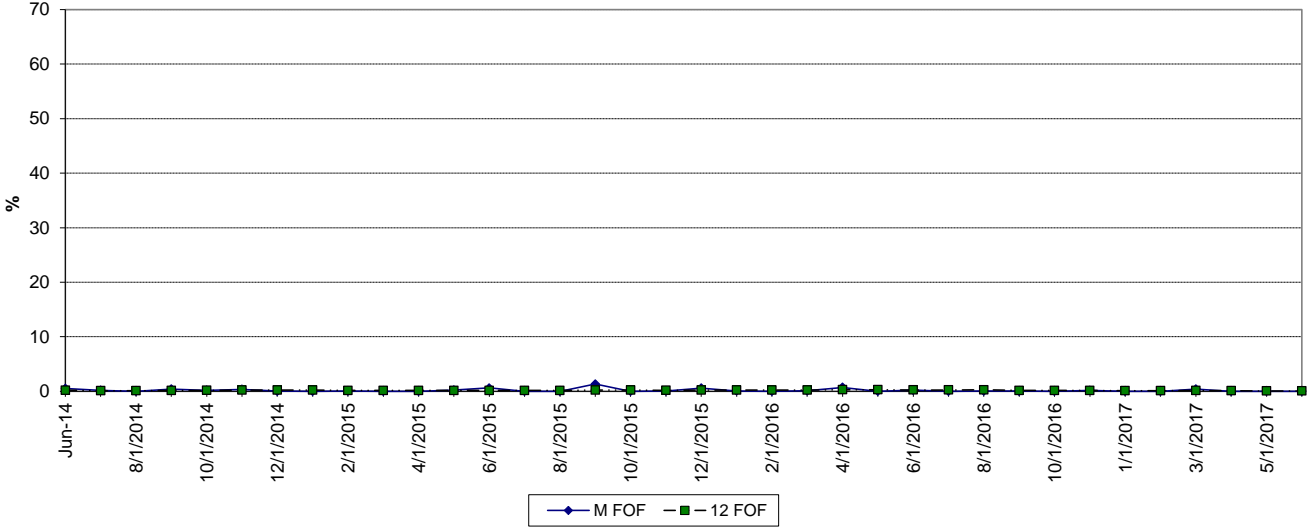
FT. MYERS 2 FORCED OUTAGE FACTOR



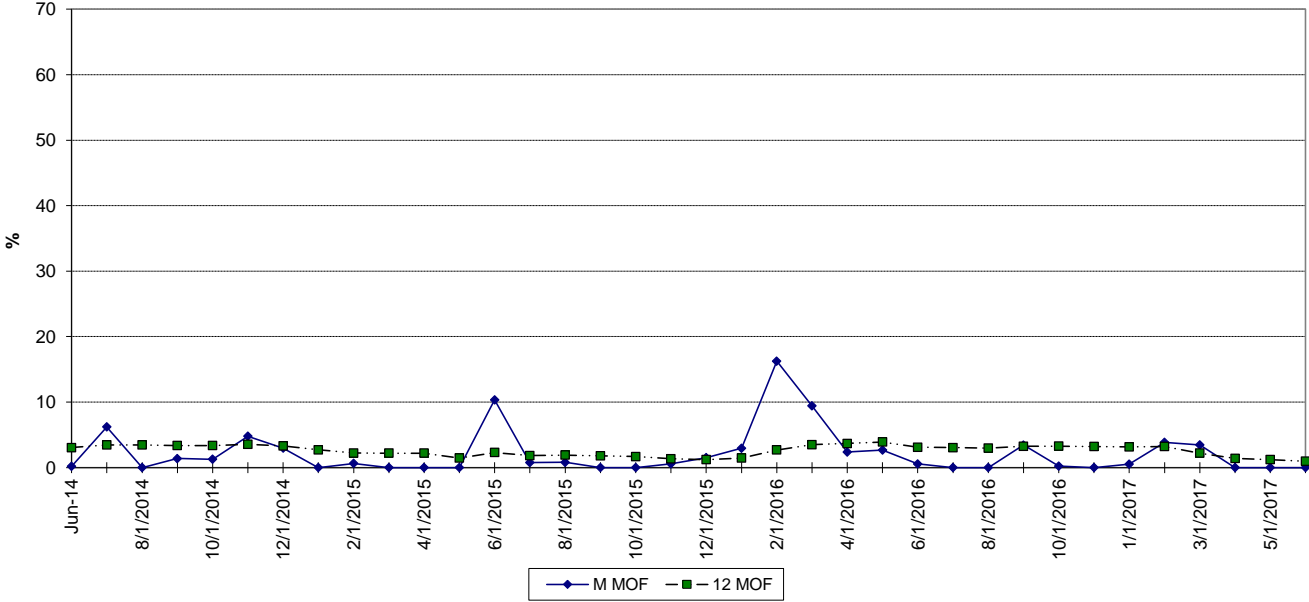
MAINTENANCE OUTAGE FACTOR



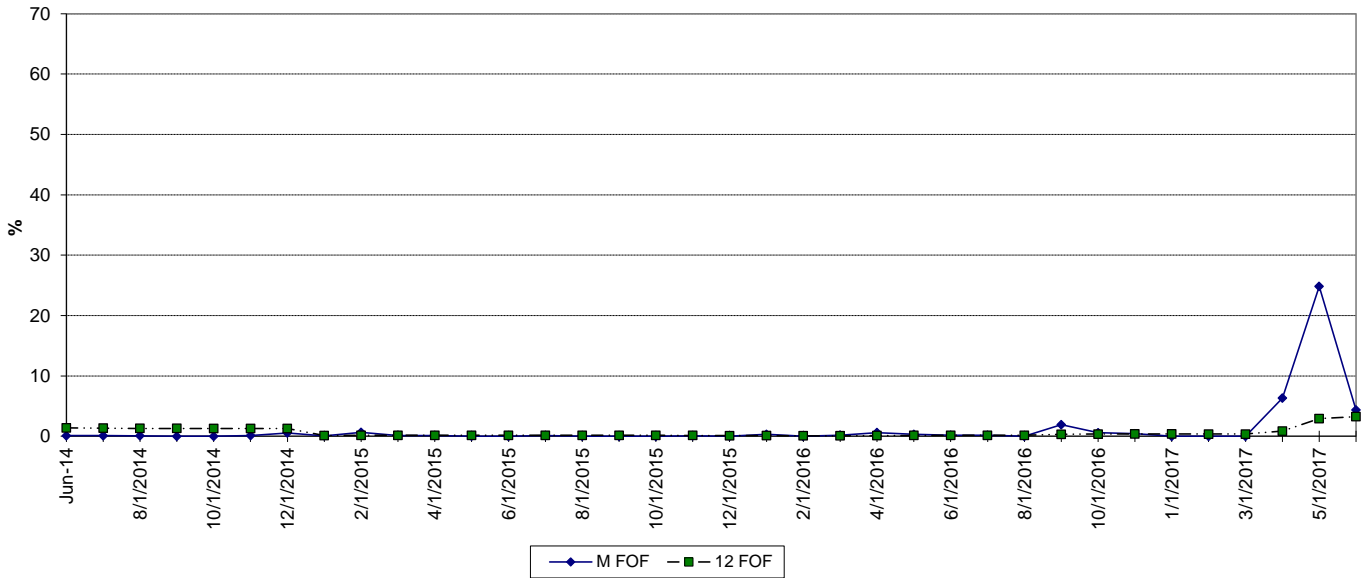
MANATEE 3 FORCED OUTAGE FACTOR



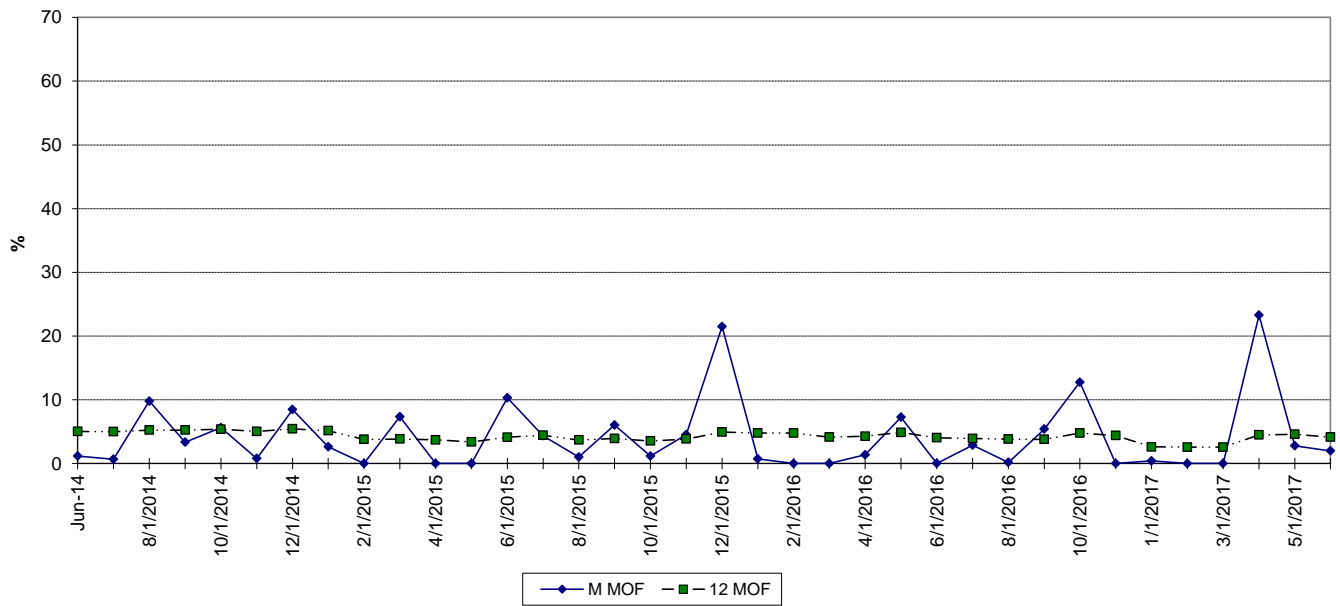
MAINTENANCE OUTAGE FACTOR



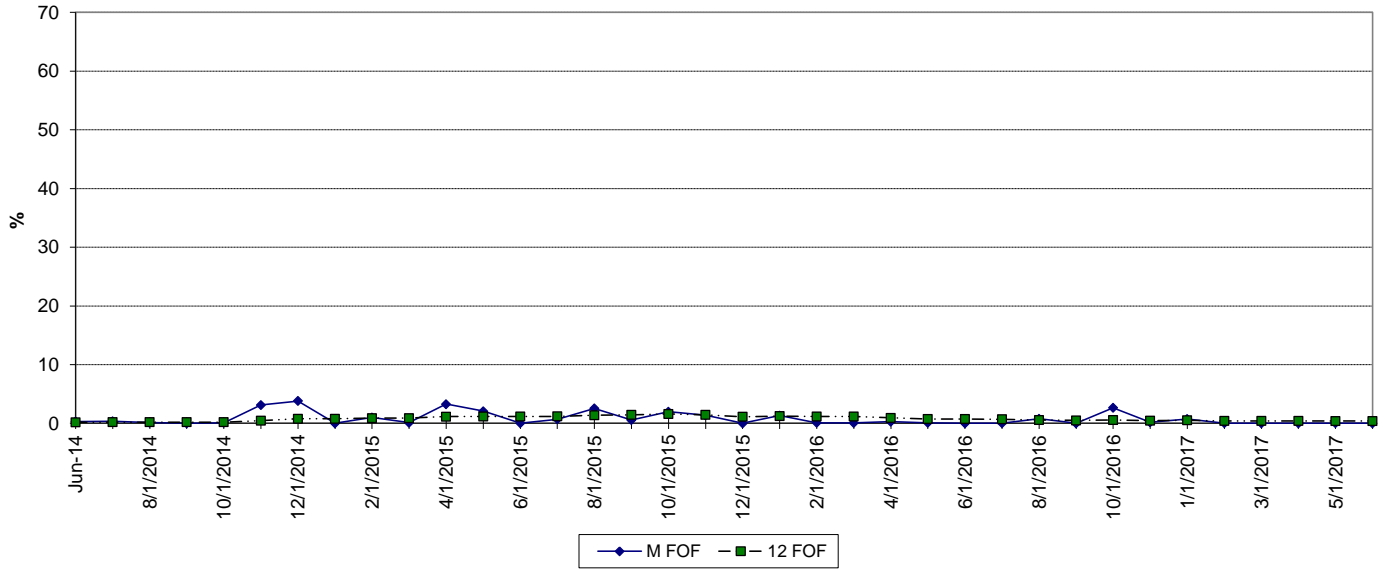
MARTIN 8 FORCED OUTAGE FACTOR



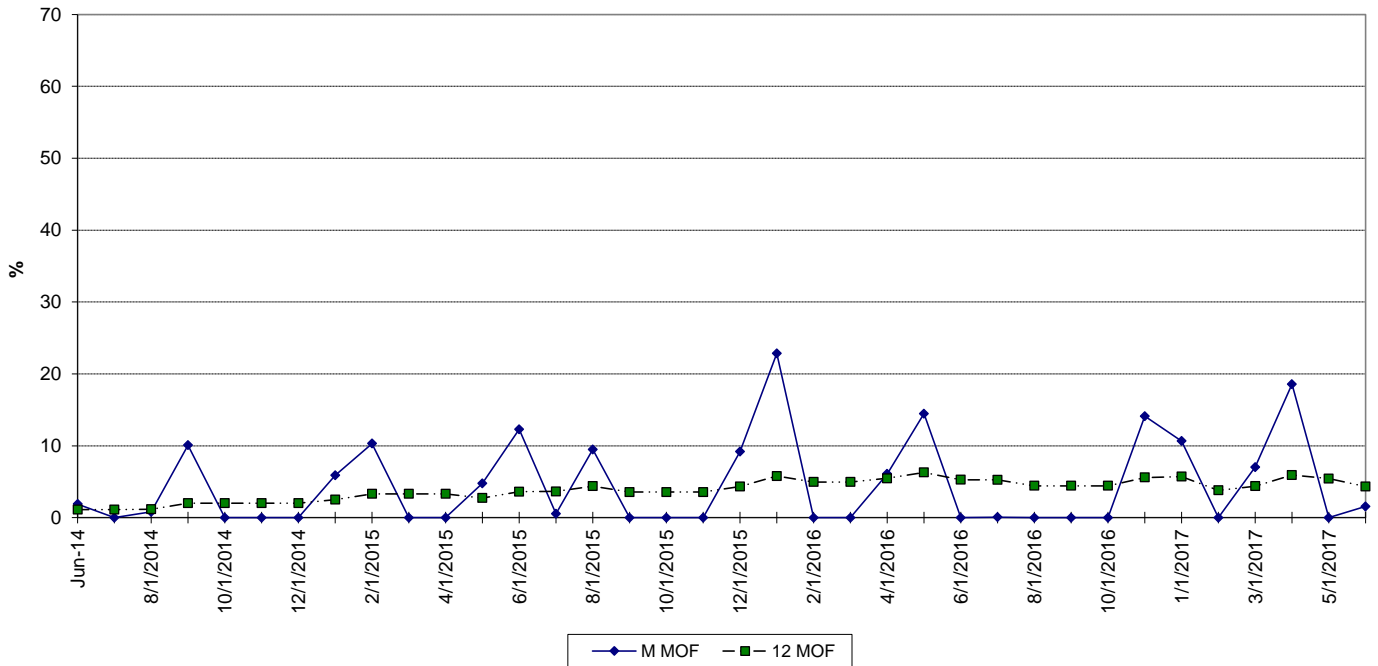
MAINTENANCE OUTAGE FACTOR



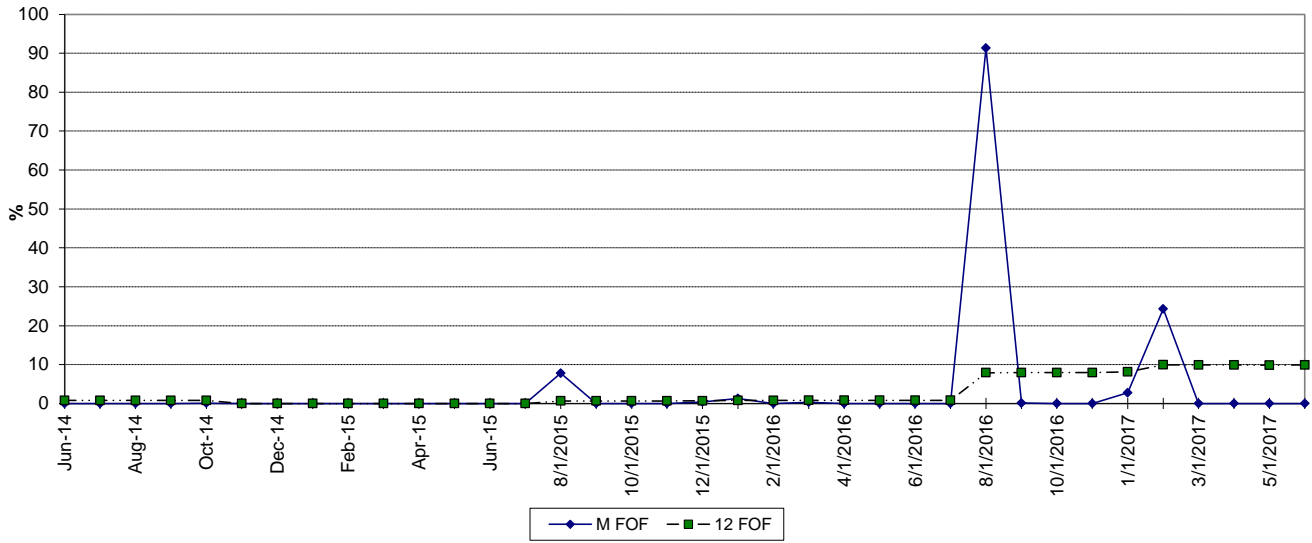
RIVIERA 5 FORCED OUTAGE FACTOR



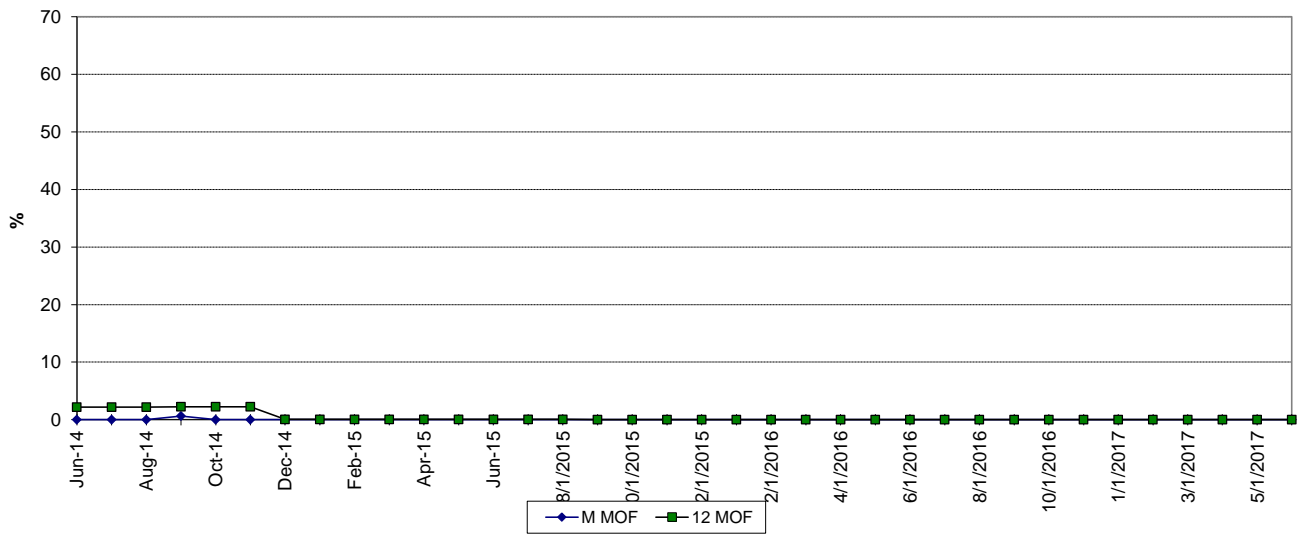
MAINTENANCE OUTAGE FACTOR



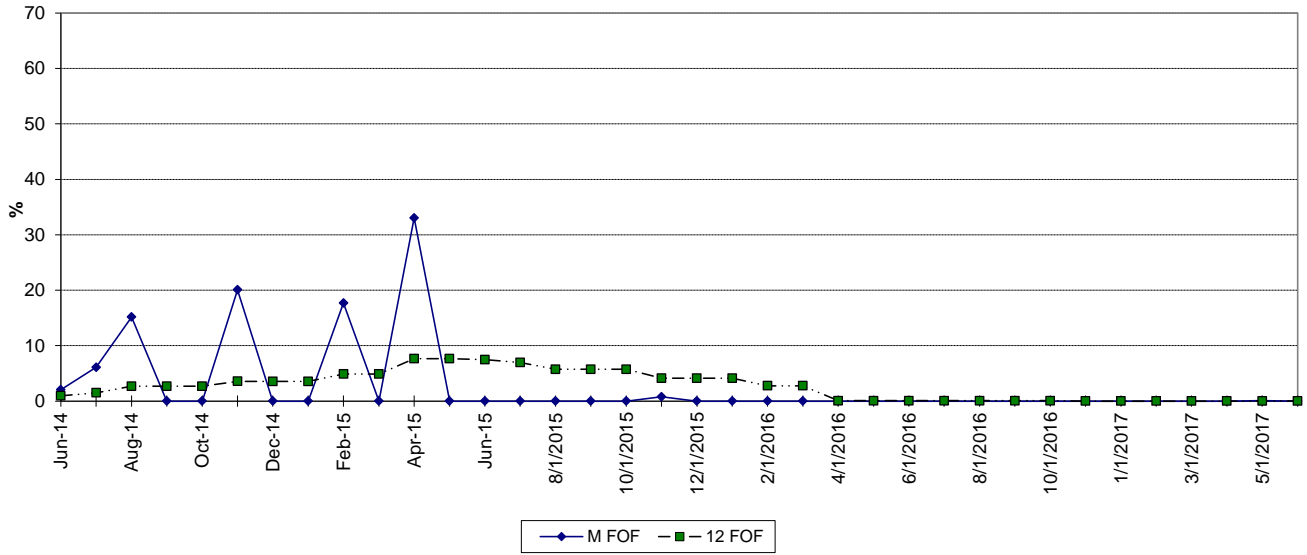
ST. LUCIE 1 FORCED OUTAGE FACTOR



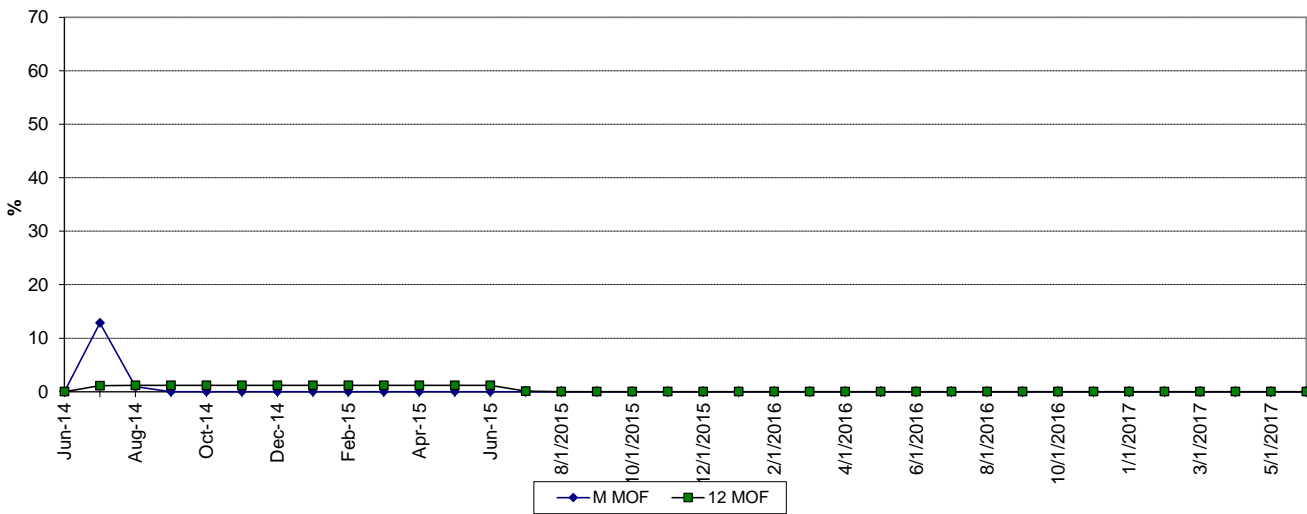
MAINTENANCE OUTAGE FACTOR



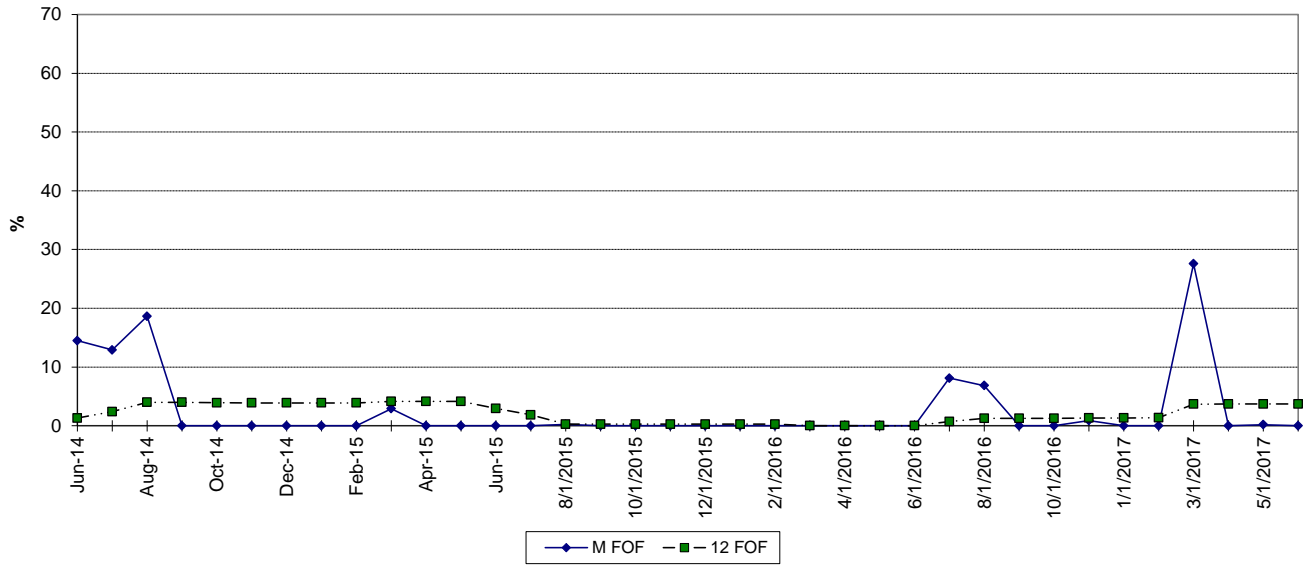
ST. LUCIE 2 FORCED OUTAGE FACTOR



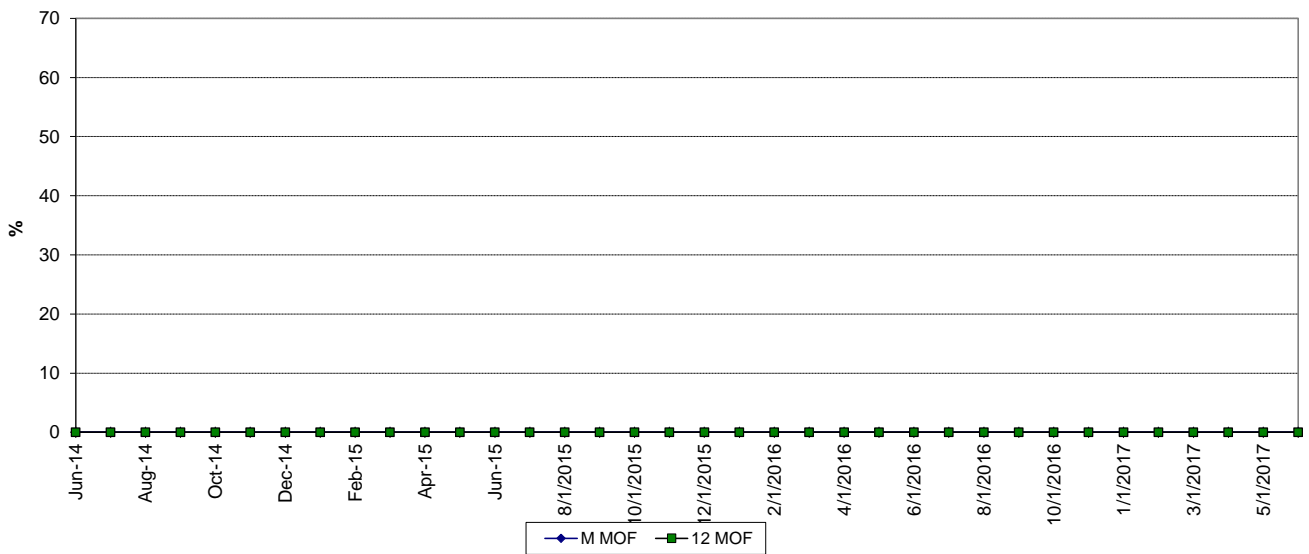
MAINTENANCE OUTAGE FACTOR



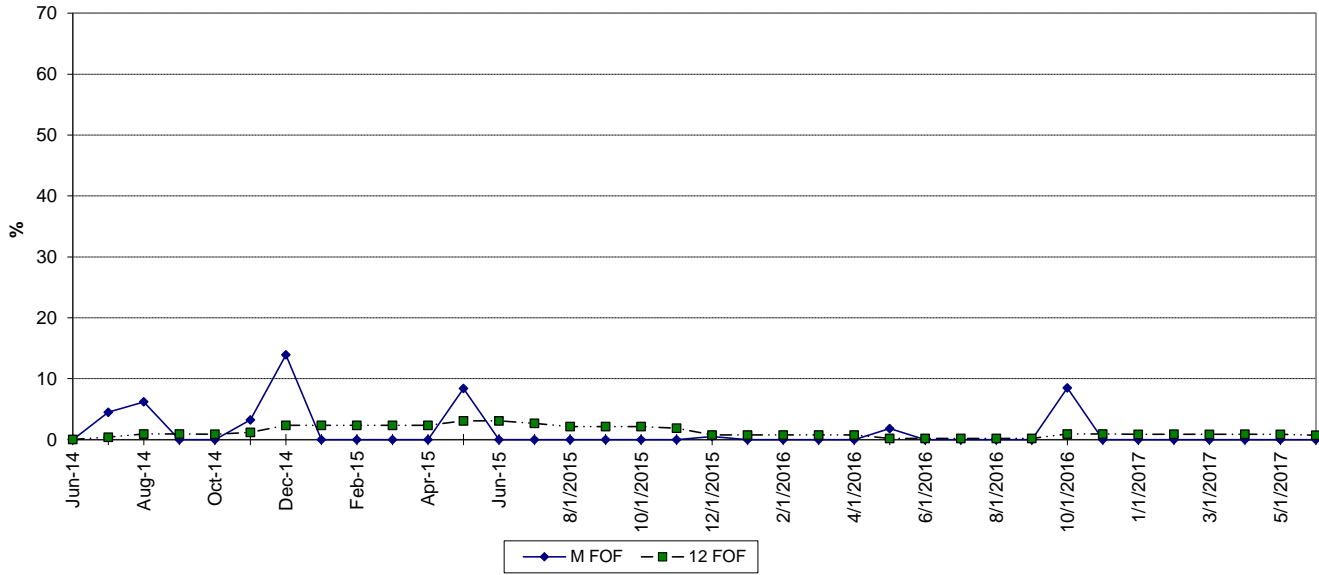
TURKEY POINT 3 FORCED OUTAGE FACTOR



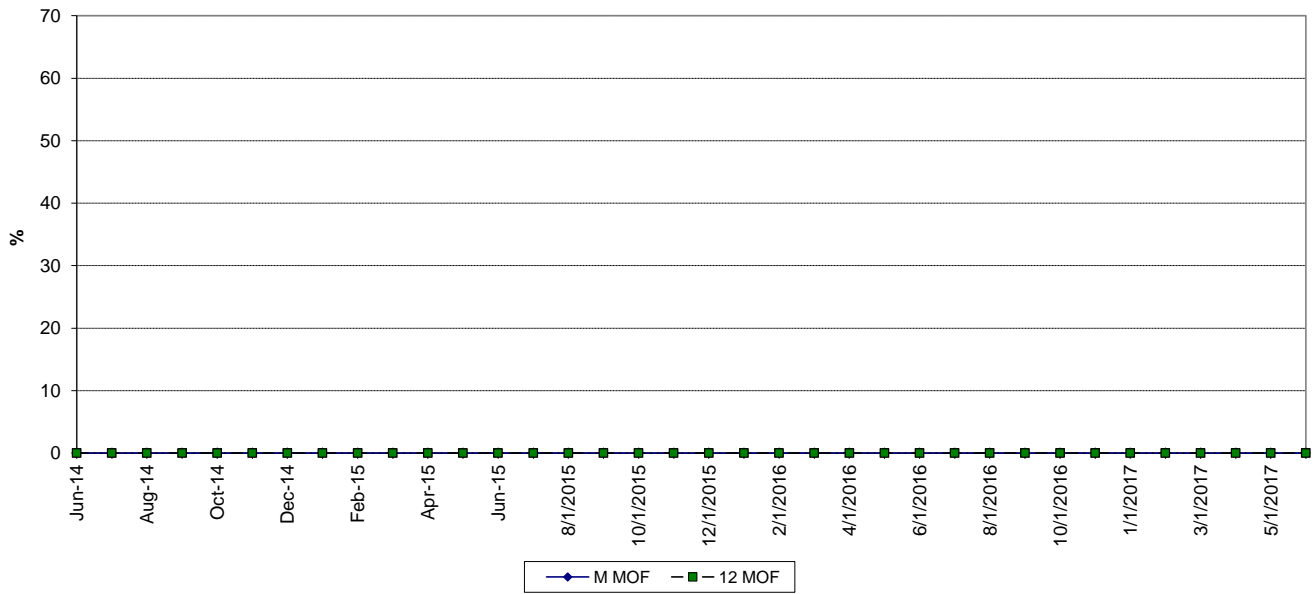
MAINTENANCE OUTAGE FACTOR



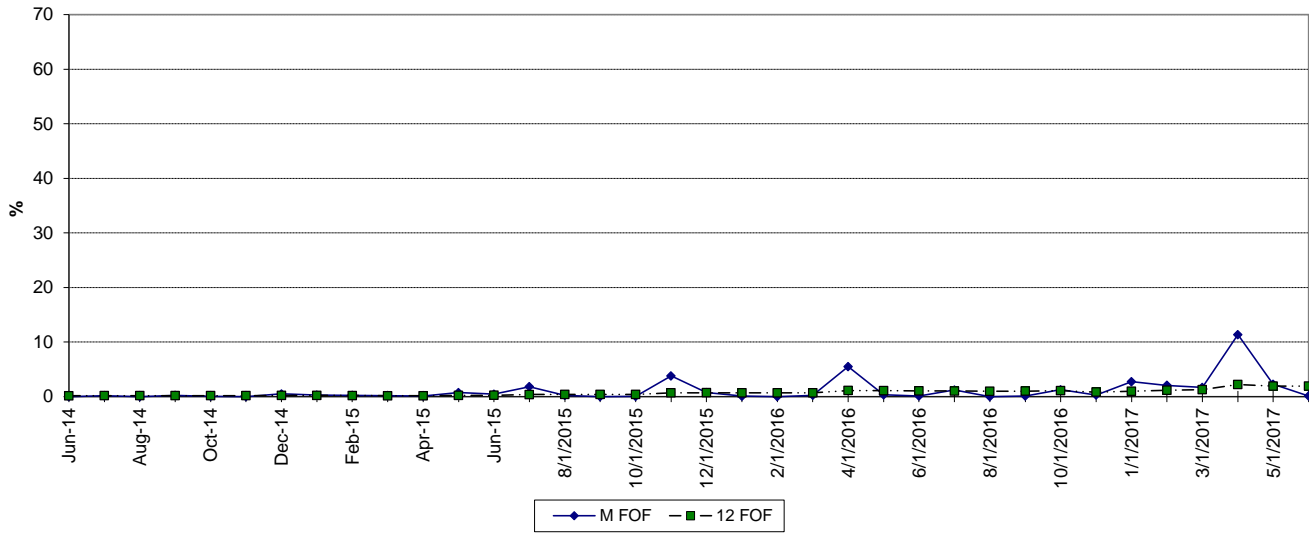
TURKEY POINT 4 FORCED OUTAGE FACTOR



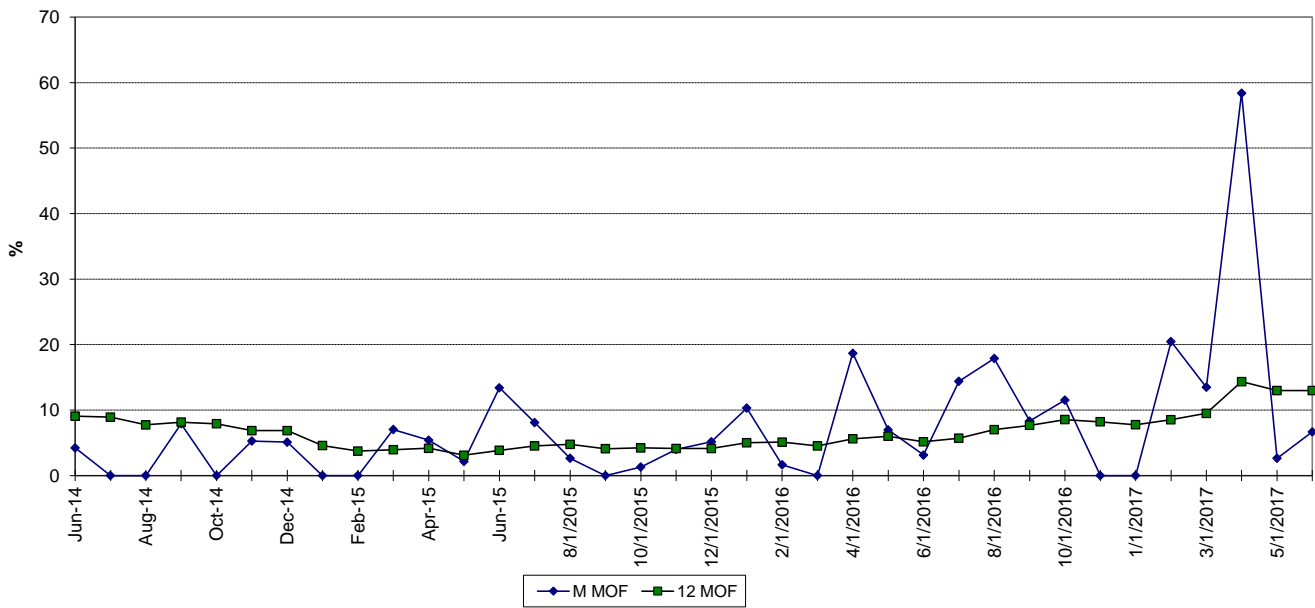
MAINTENANCE OUTAGE FACTOR



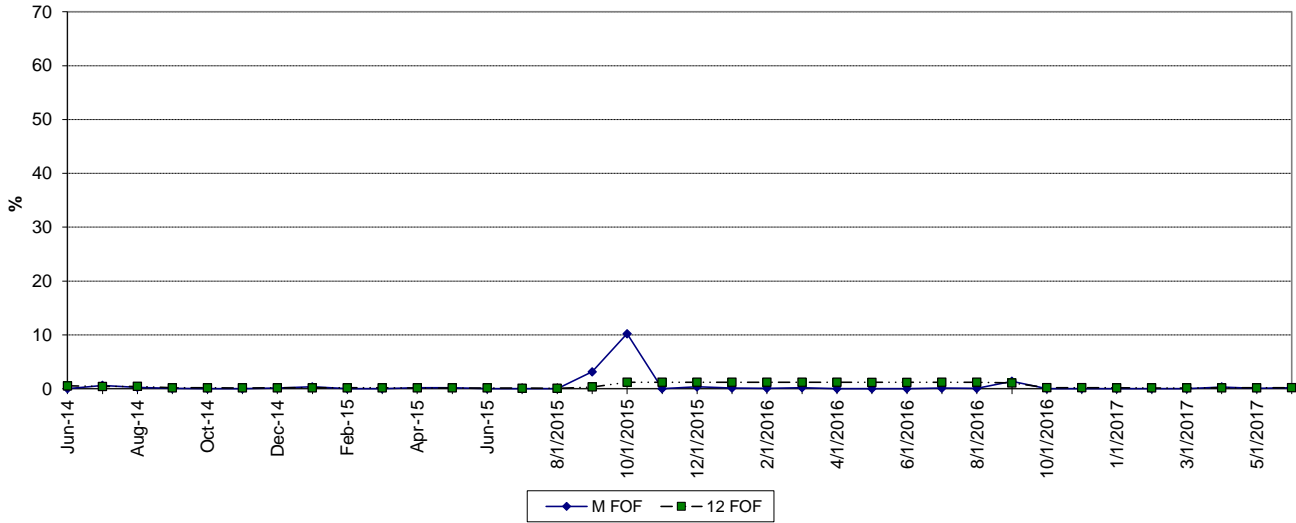
WEST COUNTY 1 FORCED OUTAGE FACTOR



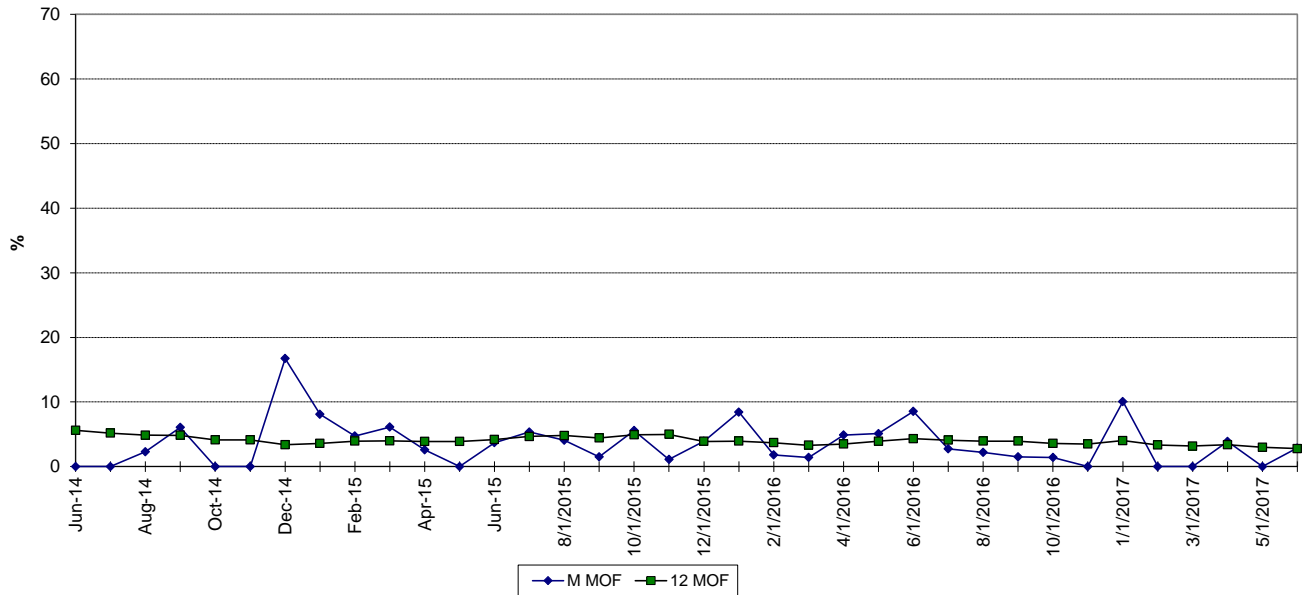
MAINTENANCE OUTAGE FACTOR



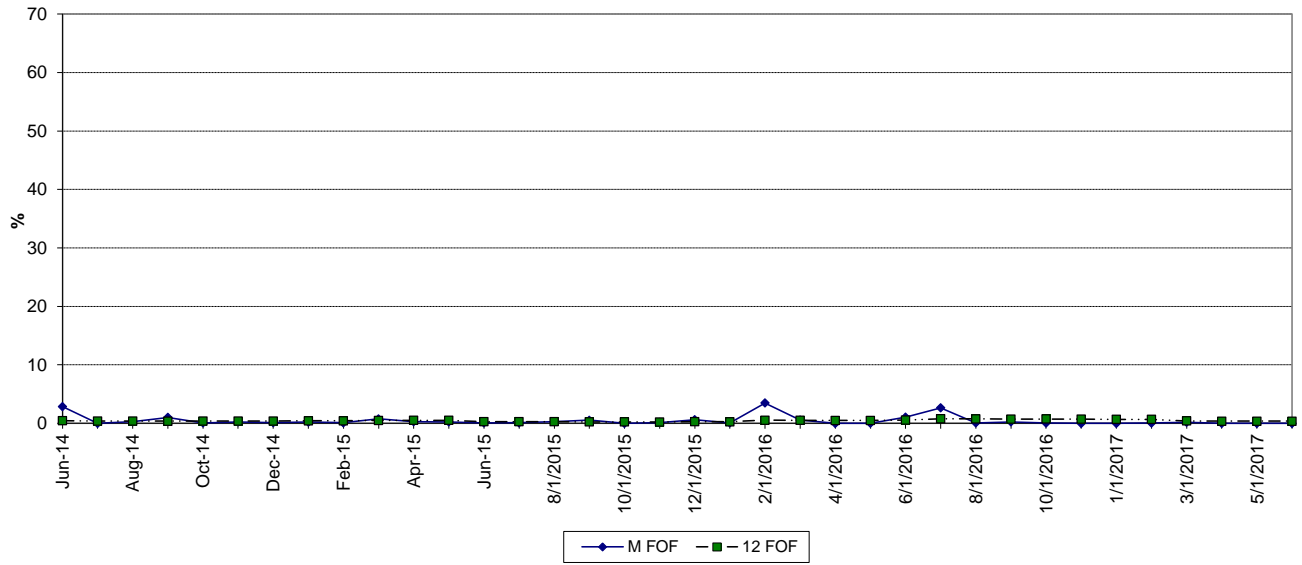
WEST COUNTY 2 FORCED OUTAGE FACTOR



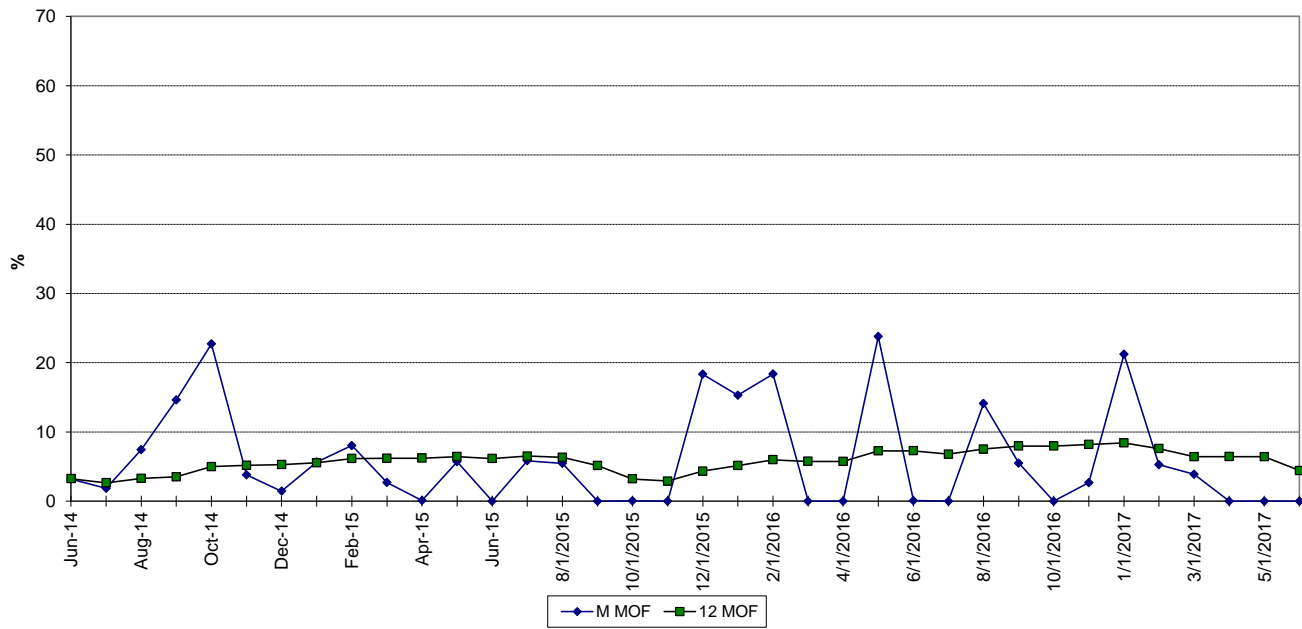
MAINTENANCE OUTAGE FACTOR



WEST COUNTY 3 FORCED OUTAGE FACTOR



MAINTENANCE OUTAGE FACTOR



PLANNED OUTAGE SCHEDULE (ESTIMATED)

FLORIDA POWER & LIGHT COMPANY

PERIOD OF: JANUARY THROUGH DECEMBER, 2018

PLANT/UNIT	PLAN OUTAGE		REASON FOR OUTAGE	LR MW*	
Cape Canaveral 3	05/30/2018	-	06/08/2018	CT 31 HRSG INSPECTION - 33% CURT	403
Cape Canaveral 3	06/09/2018	-	06/18/2018	CT 32 HRSG INSPECTION- 33% CURT	403
Cape Canaveral 3	06/19/2018	-	06/28/2018	CT 33 HRSG INSPECTION - 33% CURT	403
Ft. Myers 2	02/15/2018	-	02/28/2018	ST2 BALANCE OF PLANT INSP. - 100% CURT	1,664
Ft. Myers 2	02/15/2018	-	02/21/2018	CT B-C HRSG INSP.	1,664
Ft. Myers 2	02/22/2018	-	02/28/2018	CT A-D HRSG INSP.	1,664
Ft. Myers 2	10/31/2018	-	12/24/2018	CT F HRSG INSP. - 17% CURT	245
Ft. Myers 2	11/07/2018	-	12/31/2018	CT E HRSG INSP. - 17% CURT	278
Manatee 3	03/03/2018	-	03/09/2018	BALANCE OF PLANT INSP., CT A-B HRSG INSP. - 100% CURT	1,275
Manatee 3	03/10/2018	-	03/16/2018	CT C HRSG INSP. - 25% CURT	319
Manatee 3	03/17/2018	-	03/23/2018	CT D HRSG INSP. - 25% CURT	319
Martin 8	01/30/2018	-	02/15/2018	CT A HRSG INSP., CT B HRSG INSP. / GEN MINOR - 25% CURT	622
Martin 8	02/16/2018	-	03/01/2018	CT C HRSG INSP., CT D HRSG INSP. - 25% CURT	622
Martin 8	10/13/2018	-	12/10/2018	CT C MAJOR / RTR - 25% CURT	278
Martin 8	10/20/2018	-	12/17/2018	CT D MAJOR / RTR - 25% CURT	278
Martin 8	11/15/2018	-	12/05/2018	STEAM CHECK VALVE MAINT. - 100% CURT	1,266
Riviera 5	09/15/2018	-	10/29/2018	CT 53 MAJOR / HRSG INSPECTION - 33% CURT	404
Riviera 5	11/01/2018	-	12/19/2018	CT 52 MAJOR / HRSG INSPECTION - 33% CURT	404
St. Lucie 1	03/12/2018	-	04/11/2018	REFUELING	1,003
St. Lucie 2	08/27/2018	-	09/27/2018	REFUELING	840
Turkey Point 3	10/01/2018	-	11/12/2018	REFUELING	811
Turkey Point 4		NONE			
West County 1	05/09/2018	-	06/03/2018	CT C HOT GAS PATH / HRSG INSP. / RELIABILITY - 33% CURT	404
West County 1	05/19/2018	-	05/28/2018	BALANCE OF PLANT - 100% CURT	1,212
West County 1	11/15/2018	-	12/14/2018	CT A&B HOT GAS PATH / HRSG INSP. / RELIABILITY - 100% CURT	1,224
West County 2	02/16/2018	-	03/05/2018	CT A HRSG INSP. / RELIABILITY - 33% CURT	408
West County 2	02/19/2018	-	03/08/2018	CT B HRSG INSP. / RELIABILITY - 100% CURT	1,224
West County 2	02/21/2018	-	03/10/2018	CT C HRSG INSP. / RELIABILITY - 33% CURT	408
West County 2	02/21/2018	-	03/05/2018	BALANCE OF PLANT - 100% CURT	1,224
West County 3	03/17/2018	-	05/08/2018	CT A HRSG INSP. / RELIABILITY - 33% CURT	408
West County 3	06/04/2018	-	07/26/2018	CT C HRSG INSP. / RELIABILITY - 33% CURT	404
West County 3	12/01/2018	-	12/10/2018	BALANCE OF PLANT - 100% CURT	1,224

*Approximate load reduction MW are based on the unit's estimated MW rating at the start of the outage period