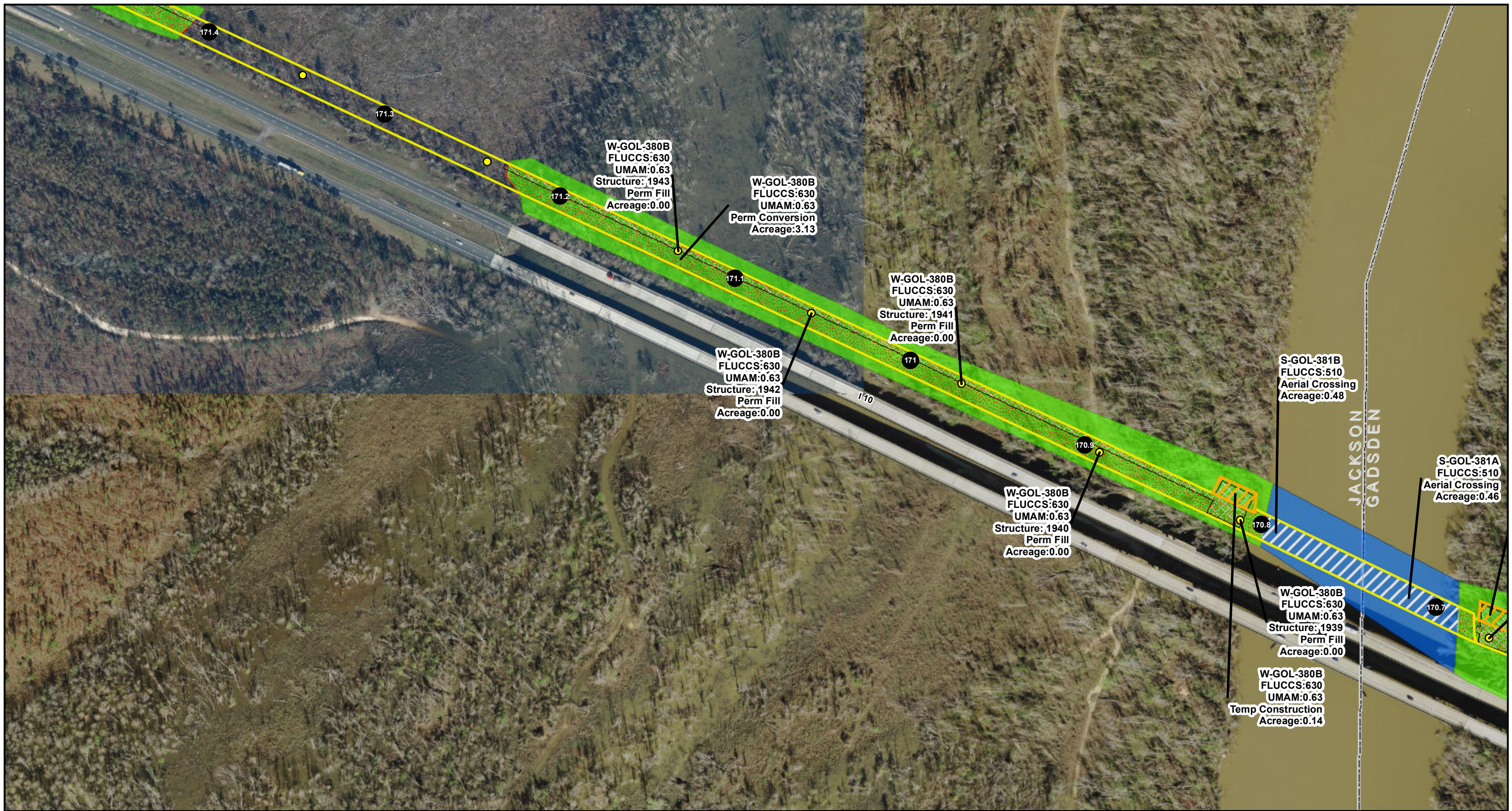


# **Revised Figure 5**

## **Impacts Map Jackson County**



**LEGEND**

● Mile Post	▨ Aerial Crossing	■ Wetland
● Structures	▨ Perm Conversion	■ Stream
▭ Project Boundary	▨ Perm Fill	
▭ Access Area	▨ Temp Construction	
	▨ Temp Matting	



**REVISED FIGURE 5  
WETLAND IMPACTS MAP**

SHEET 292 of 297 COUNTY: JACKSON  
 SCALE: 1 in = 250 feet FILE NAME: NFRC\_WetlandsJDv3\_Impacts\_ja  
 DRAWN BY: mseibel DATE: 3/18/2020 2:05:29 PM

NOTE: Acreage values of 0.00 are less than 0.01 acre. Refer to TABLE 8.

Sources: FDOT, 2018; ECT, 2019, E&E, 2019; Golder, 2019; ESRI, 2018

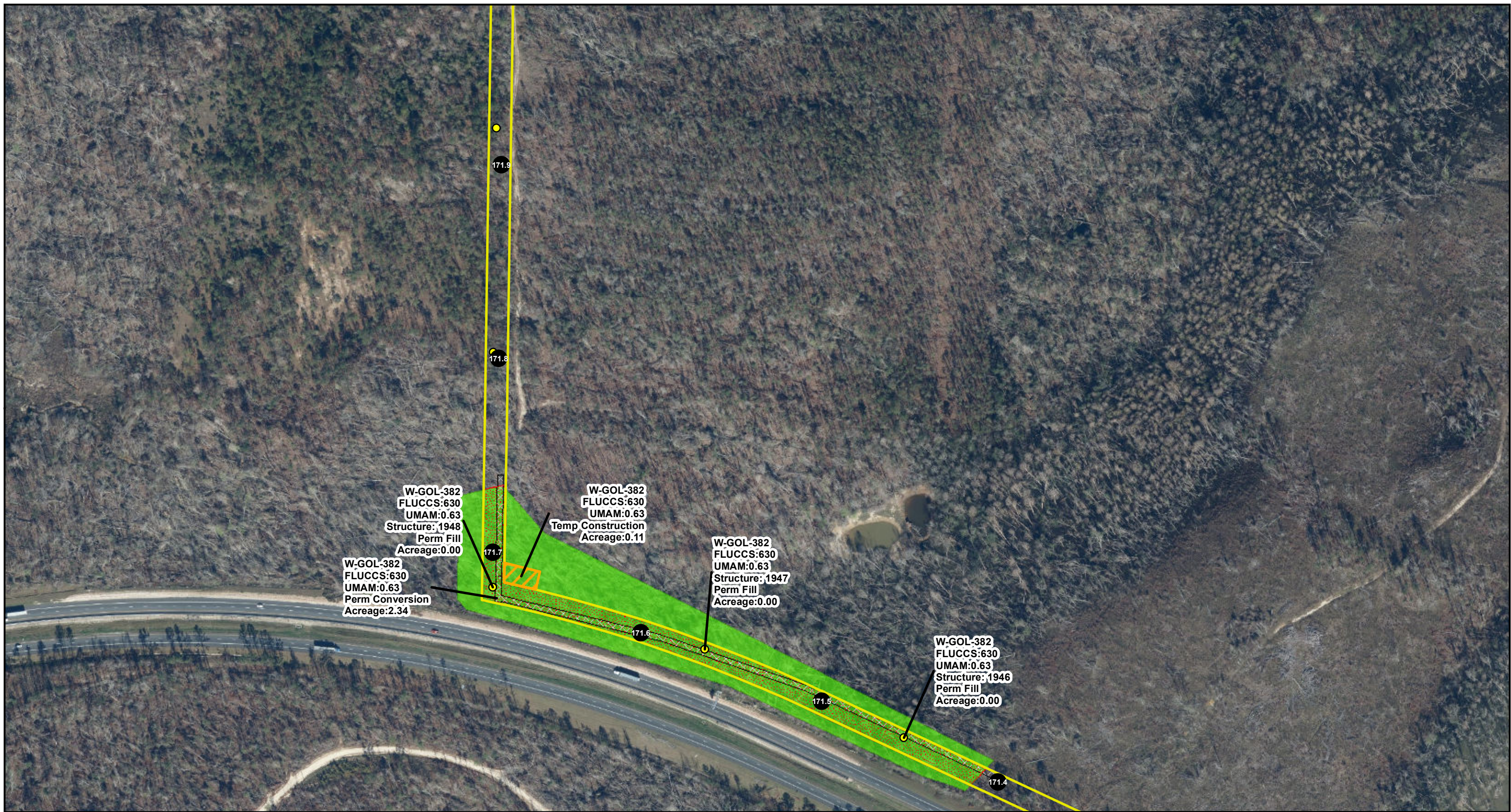
NORTH FLORIDA RESILIENCY CONNECTION

0 125 250  
Feet

FPL 035931  
20210015-EI

N

NAD 1983 StatePlane Florida North FIPS 0903 Feet



**LEGEND**

- Mile Post
- Structures
- ▭ Project Boundary
- ▭ Access Area
- ▨ Perm Conversion
- ▨ Perm Fill
- ▨ Temp Construction
- ▨ Temp Matting
- Wetland



**REVISED FIGURE 5  
WETLAND IMPACTS MAP**

SHEET 293 of 297 COUNTY: JACKSON  
 SCALE: 1 in = 250 feet FILE NAME: NFRC\_WetlandsJDv3\_Impacts\_ja  
 DRAWN BY: mseibel DATE: 3/18/2020 2:05:29 PM

NOTE: Acreage values of 0.00 are less than 0.01 acre. Refer to TABLE 8.

Sources: FDOT, 2018; ECT, 2019, E&E, 2019; Golder, 2019; ESRI, 2018

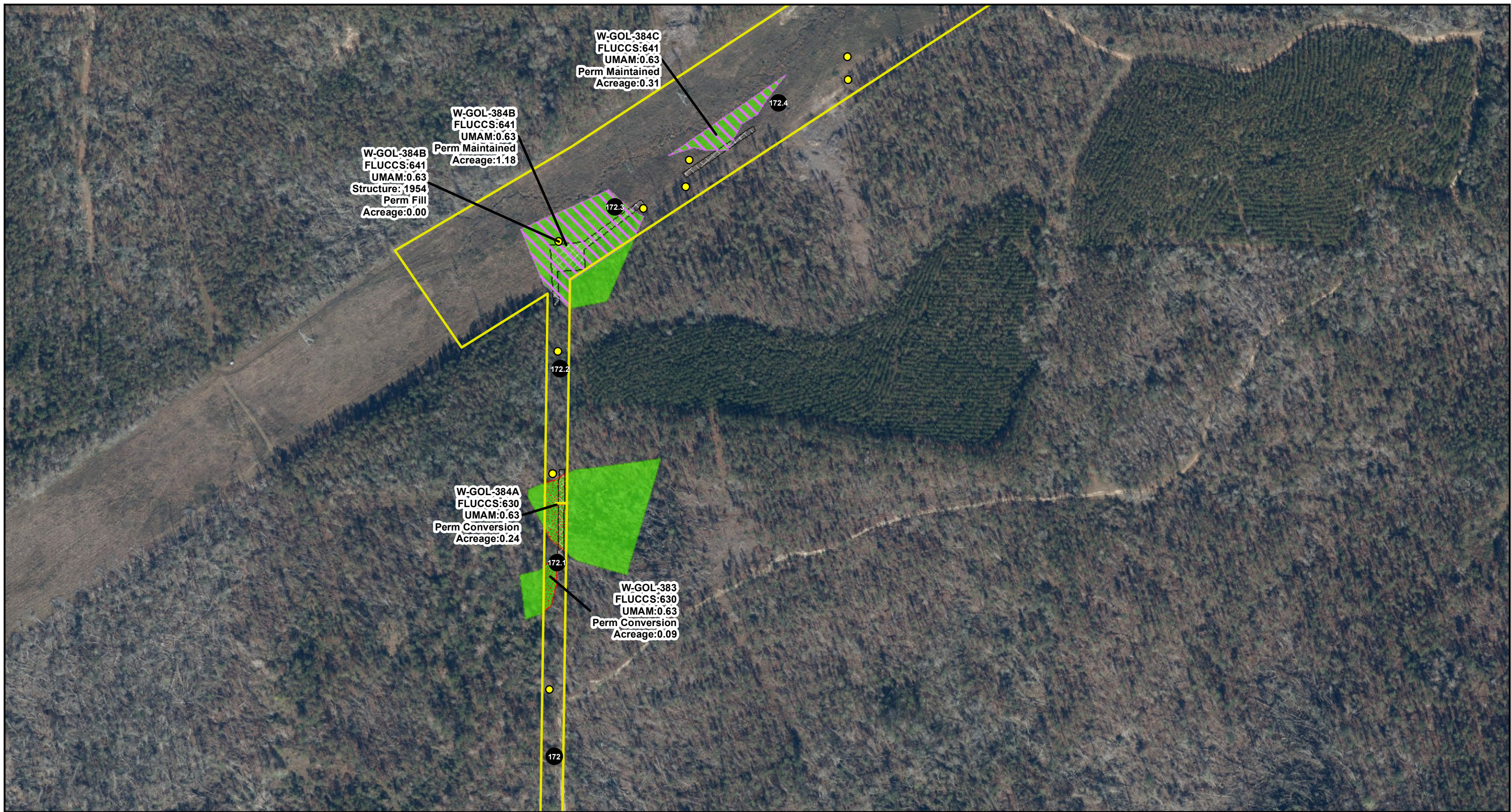
NORTH FLORIDA RESILIENCY CONNECTION

Feet

N

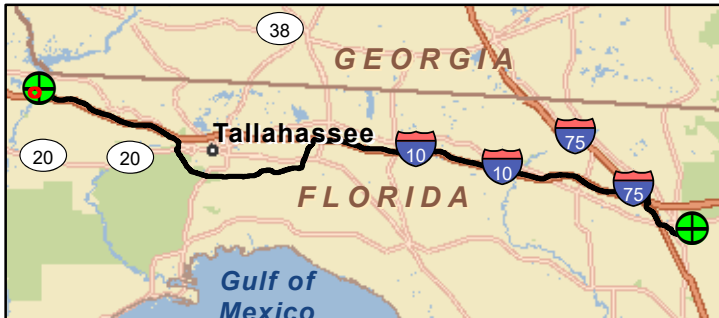
FPL 035932  
20210015-EI

NAD 1983 StatePlane Florida North FIPS 0903 Feet



**LEGEND**

● Mile Post	▨ Perm Conversion	■ Wetland
● Structures	▨ Perm Fill	
▭ Project Boundary	▨ Perm Maintained	
	▨ Temp Matting	



**REVISED FIGURE 5  
WETLAND IMPACTS MAP**

SHEET 294 of 297 COUNTY: JACKSON  
 SCALE: 1 in = 250 feet FILE NAME: NFRC\_WetlandsJDv3\_Impacts\_ja  
 DRAWN BY: mseibel DATE: 3/18/2020 2:05:29 PM

NOTE: Acreage values of 0.00 are less than 0.01 acre. Refer to TABLE 8.

Sources: FDOT, 2018; ECT, 2019, E&E, 2019; Golder, 2019; ESRI, 2018

NORTH FLORIDA RESILIENCY CONNECTION

0 125 250  
Feet

N

FPL 035933  
20210015-EI

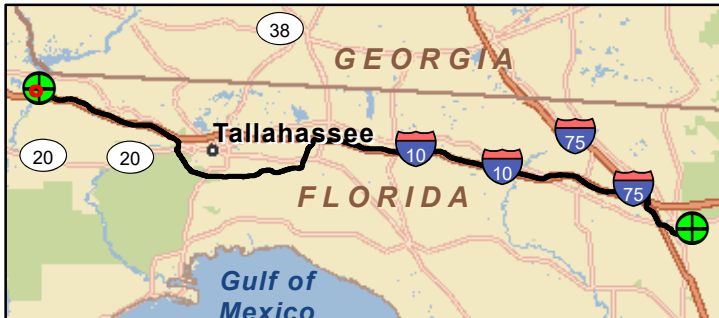
NAD 1983 StatePlane Florida North FIPS 0903 Feet



W-GOL-386  
 FLUCCS:641  
 UMAM:0.67  
 Perm Maintained  
 Acreage:0.29

W-GOL-385  
 FLUCCS:641  
 UMAM:0.67  
 Perm Maintained  
 Acreage:1.62

- LEGEND**
- Mile Post
  - Structures
  - ▭ Project Boundary
  - ▨ Perm Maintained
  - ▨ Temp Matting
  - Wetland



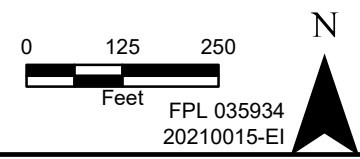
**REVISED FIGURE 5  
 WETLAND IMPACTS MAP**

SHEET 295 of 297 COUNTY: JACKSON  
 SCALE: 1 in = 250 feet FILE NAME: NFRC\_WetlandsJDv3\_Impacts\_ja  
 DRAWN BY: mseibel DATE: 3/18/2020 2:05:29 PM

NOTE: Acreage values of 0.00 are less than 0.01 acre. Refer to TABLE 8.

Sources: FDOT, 2018; ECT, 2019, E&E, 2019; Golder, 2019; ESRI, 2018

**NORTH FLORIDA RESILIENCY CONNECTION**

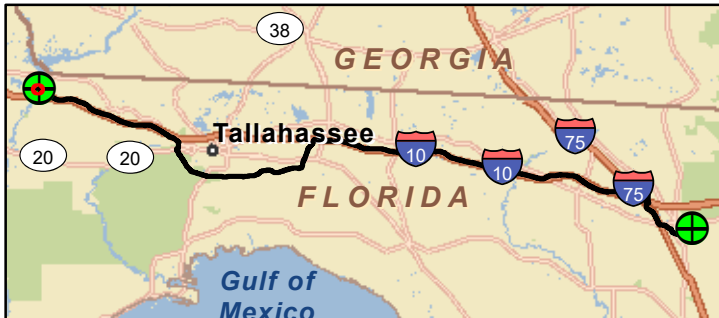


FPL 035934  
 20210015-EI

NAD 1983 StatePlane Florida North FIPS 0903 Feet



- LEGEND**
- Mile Post
  - Structures
  - ▭ Project Boundary
  - ▨ Perm Maintained
  - ▨ Temp Matting
  - ▭ Wetland




**REVISED FIGURE 5  
WETLAND IMPACTS MAP**

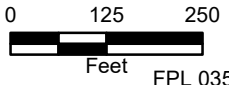
SHEET 296 of 297 COUNTY: JACKSON  
 SCALE: 1 in = 250 feet FILE NAME: NFRC\_WetlandsJDv3\_Impacts\_ja  
 DRAWN BY: mseibel DATE: 3/18/2020 2:05:29 PM

NOTE: Acreage values of 0.00 are less than 0.01 acre. Refer to TABLE 8.


Sources: FDOT, 2018; ECT, 2019, E&E, 2019; Golder, 2019; ESRI, 2018

NORTH FLORIDA RESILIENCY CONNECTION





0 125 250  
Feet



N

FPL 035935  
20210015-EI

NAD 1983 StatePlane Florida North FIPS 0903 Feet



- LEGEND**
- Mile Post
  - Structures
  - Guy Anchor
  - ▭ Project Boundary
  - ▨ Perm Maintained
  - ▨ Temp Matting
  - Wetland




**REVISED FIGURE 5  
WETLAND IMPACTS MAP**


SHEET 297 of 297      COUNTY: JACKSON  
 SCALE: 1 in = 250 feet      FILE NAME: NFRC\_WetlandsJDv3\_Impacts\_ja  
 DRAWN BY: mseibel      DATE: 3/18/2020 2:05:29 PM

NOTE: Acreage values of 0.00 are less than 0.01 acre. Refer to TABLE 8.


Sources: FDOT, 2018; ECT, 2019, E&E, 2019; Golder, 2019; ESRI, 2018

NORTH FLORIDA RESILIENCY CONNECTION





0    125    250  
Feet



N

FPL 035936  
20210015-EI

NAD 1983 StatePlane Florida North FIPS 0903 Feet