



**LEGEND**

**NFRC Project Features**

- Project Boundary
- Access Area
- Wetland
- Ditch

**Geotechnical ERP Features**

- Bore in Wetland
- Soils
- GeoTech Access

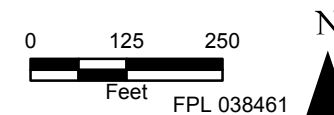


**FIGURE 5  
GEOTECH SOILS MAP**

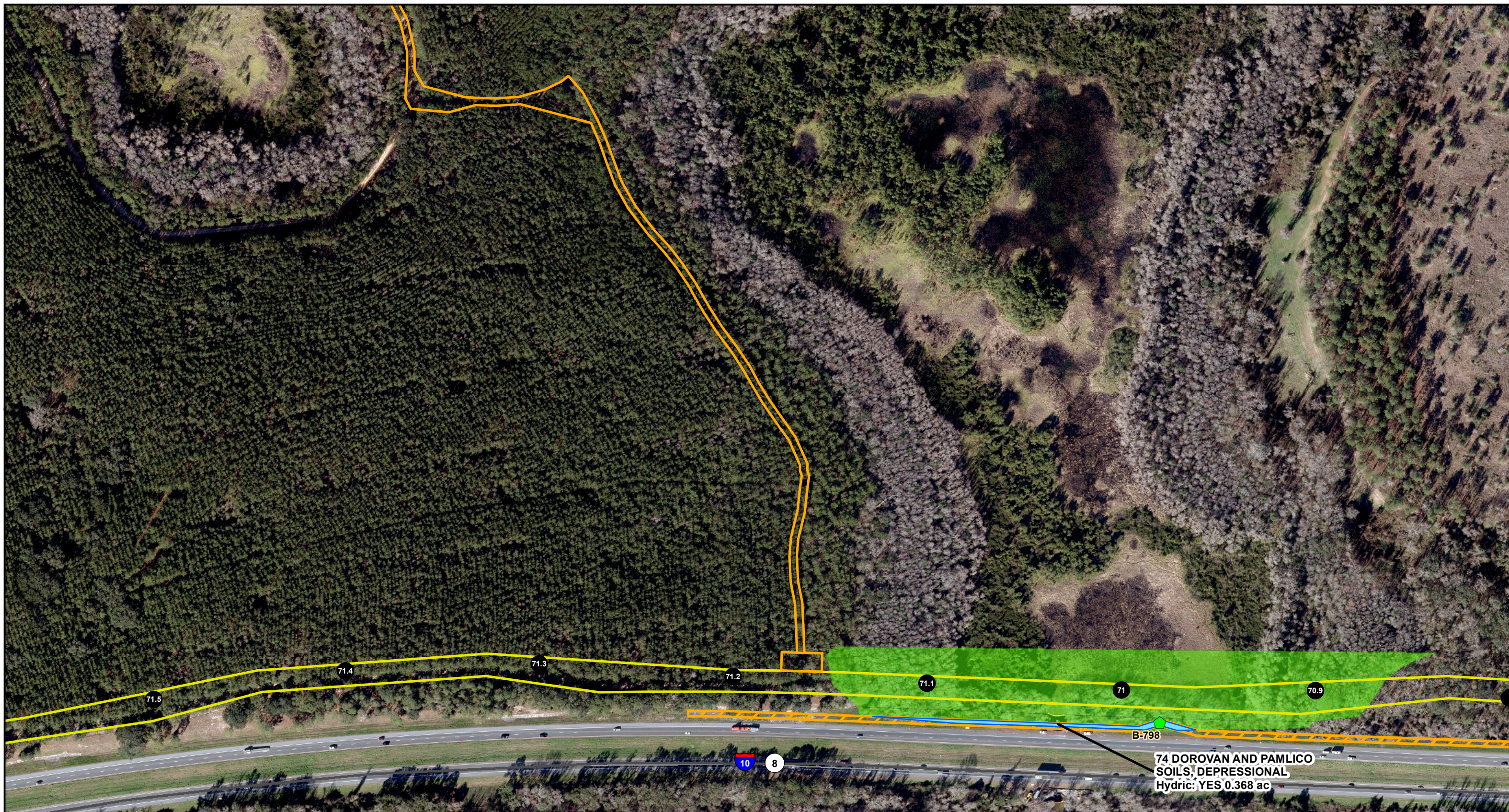
SHEET 1 of 10 COUNTY: MADISON  
 SCALE: 1 in = 250 feet FILE NAME: NFRC\_GeoTechSoilsMA  
 DRAWN BY: unash DATE: 6/23/2020 4:06:36 PM

NOTE: Acreage values of 0 are less than 0.001 acre.  
 Sources: USDA, 2019; FDOT, 2016, 2019; ECT, 2019; ESRI, 2018

**NORTH FLORIDA RESILIENCY CONNECTION**



FPL 038461  
20210015-EI



- LEGEND**
- NFRC Project Features**
- Project Boundary
  - Access Area
  - Wetland

- Geotechnical ERP Features**
- Bore in Wetland
  - Hydric Soils
  - GeoTech Access




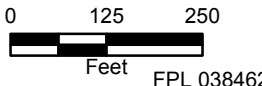
**FIGURE 5  
GEOTECH SOILS MAP**

SHEET 2 of 10 COUNTY: MADISON  
 SCALE: 1 in = 250 feet FILE NAME: NFRC\_GeoTechSoilsMA  
 DRAWN BY: unash DATE: 6/23/2020 4:06:36 PM


NOTE: Acreage values of 0 are less than 0.001 acre.  
 Sources: USDA, 2019; FDOT, 2016, 2019; ECT, 2019; ESRI, 2018

NORTH FLORIDA RESILIENCY CONNECTION

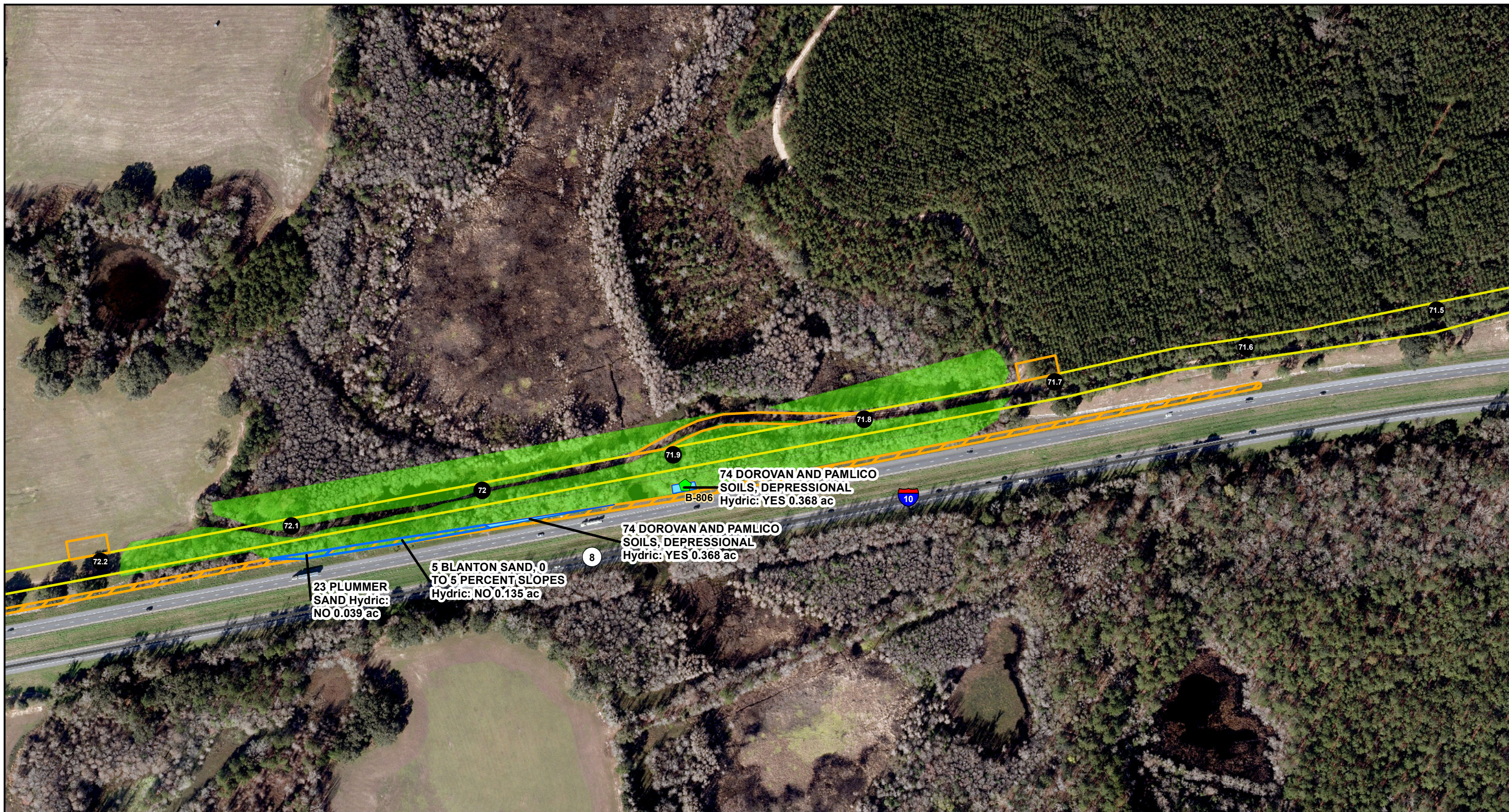




FPL 038462  
20210015-EI



NAD 1983 StatePlane Florida North FIPS 0903 Feet



- LEGEND**
- NFRC Project Features**
- Project Boundary
  - Access Area
  - Wetland

- Geotechnical ERP Features**
- ◆ Bore in Wetland
  - Soils
  - Hydric Soils
  - GeoTech Access




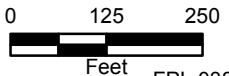
**FIGURE 5  
GEOTECH SOILS MAP**

SHEET 3 of 10 COUNTY: MADISON  
 SCALE: 1 in = 250 feet FILE NAME: NFRC\_GeoTechSoilsMA  
 DRAWN BY: unash DATE: 6/23/2020 4:06:36 PM


NOTE: Acreage values of 0 are less than 0.001 acre.  
 Sources: USDA, 2019; FDOT, 2016, 2019; ECT, 2019; ESRI, 2018

NORTH FLORIDA RESILIENCY CONNECTION





0 125 250  
Feet



N

FPL 038463  
20210015-EI

NAD 1983 StatePlane Florida North FIPS 0903 Feet



**LEGEND**

**NFRC Project Features**

- Project Boundary
- Access Area
- Wetland
- Ditch

**Geotechnical ERP Features**

- Bore in Wetland
- Soils
- Hydric Soils
- GeoTech Access

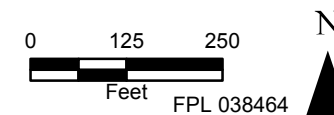


**FIGURE 5  
GEOTECH SOILS MAP**

SHEET 4 of 10 COUNTY: MADISON  
 SCALE: 1 in = 250 feet FILE NAME: NFRC\_GeoTechSoilsMA  
 DRAWN BY: unash DATE: 6/23/2020 4:06:36 PM

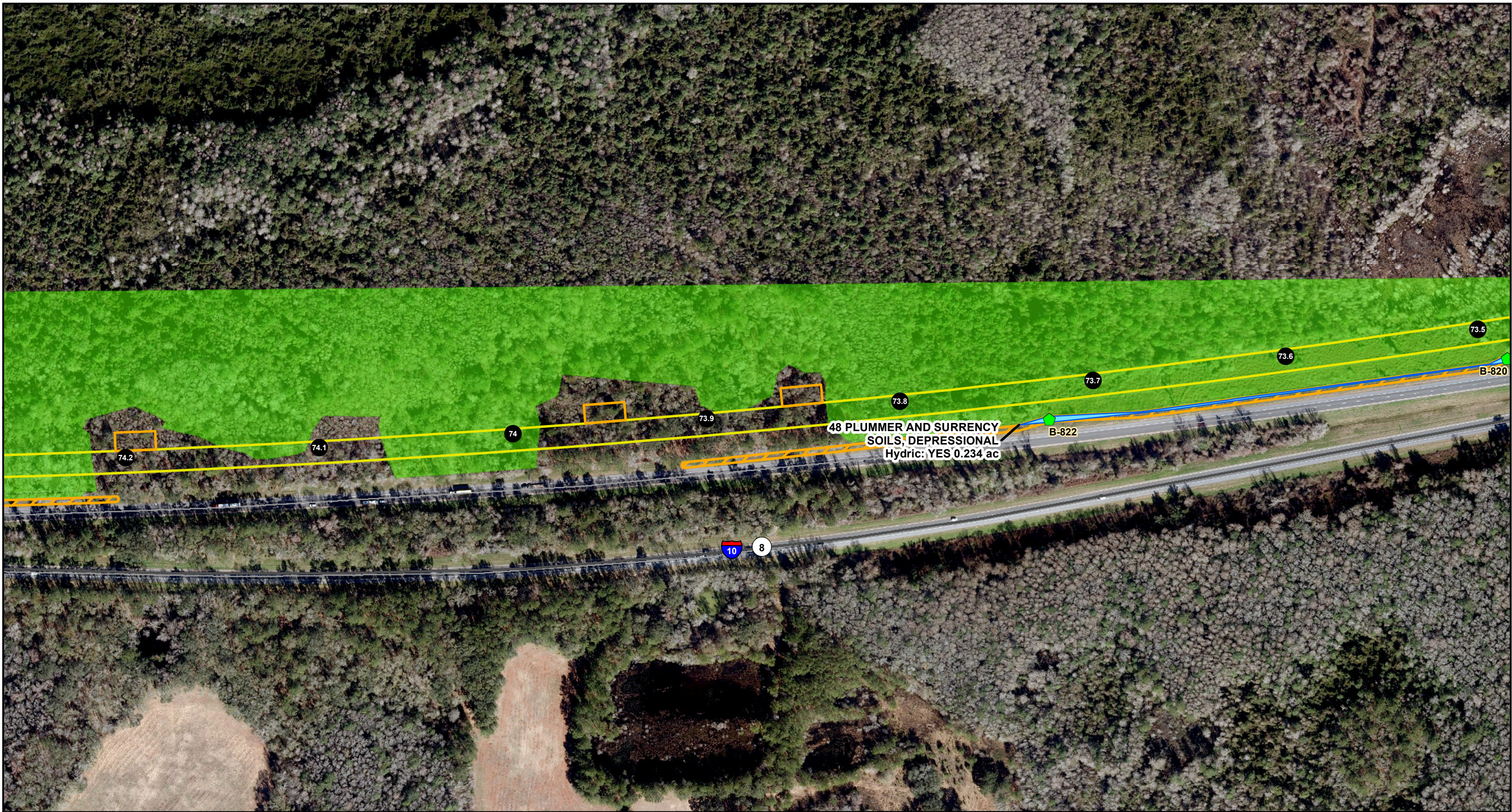
NOTE: Acreage values of 0 are less than 0.001 acre.  
 Sources: USDA, 2019; FDOT, 2016, 2019; ECT, 2019; ESRI, 2018

**NORTH FLORIDA RESILIENCY CONNECTION**



FPL 038464  
20210015-EI

NAD 1983 StatePlane Florida North FIPS 0903 Feet



**LEGEND**

**NFRC Project Features**

- Project Boundary
- Access Area
- Wetland

**Geotechnical ERP Features**

- Bore in Wetland
- Hydric Soils
- GeoTech Access



**FIGURE 5  
GEOTECH SOILS MAP**

SHEET 5 of 10 COUNTY: MADISON  
 SCALE: 1 in = 250 feet FILE NAME: NFRC\_GeoTechSoilsMA  
 DRAWN BY: unash DATE: 6/23/2020 4:06:36 PM

NOTE: Acreage values of 0 are less than 0.001 acre.  
 Sources: USDA, 2019; FDOT, 2016, 2019; ECT, 2019; ESRI, 2018

**NORTH FLORIDA RESILIENCY CONNECTION**





LEGEND	
<b>NFRC Project Features</b>	<b>Geotechnical ERP Features</b>
Project Boundary	Bore in Wetland
Access Area	Hydric Soils
Wetland	GeoTech Access



**FIGURE 5  
GEOTECH SOILS MAP**

SHEET 6 of 10      COUNTY: MADISON  
 SCALE: 1 in = 250 feet      FILE NAME: NFRC\_GeoTechSoilsMA  
 DRAWN BY: unash      DATE: 6/23/2020 4:06:36 PM

NOTE: Acreage values of 0 are less than 0.001 acre.  
 Sources: USDA, 2019; FDOT, 2016, 2019; ECT, 2019; ESRI, 2018

NORTH FLORIDA RESILIENCY CONNECTION

0    125    250  
Feet

N

FPL 038466  
20210015-EI

NAD 1983 StatePlane Florida North FIPS 0903 Feet



**LEGEND**

**NFRC Project Features**

- Project Boundary
- Wetland

**Geotechnical ERP Features**

- Bore in Wetland
- Hydric Soils
- GeoTech Access



**FIGURE 5  
GEOTECH SOILS MAP**

SHEET 7 of 10 COUNTY: MADISON  
 SCALE: 1 in = 250 feet FILE NAME: NFRC\_GeoTechSoilsMA  
 DRAWN BY: unash DATE: 6/23/2020 4:06:36 PM

NOTE: Acreage values of 0 are less than 0.001 acre.  
 Sources: USDA, 2019; FDOT, 2016, 2019; ECT, 2019; ESRI, 2018

**NORTH FLORIDA RESILIENCY CONNECTION**



FPL 038467  
20210015-EI



**LEGEND**

**NFRC Project Features**

- Project Boundary
- Access Area
- Wetland

**Geotechnical ERP Features**

- Bore in Wetland
- Soils
- Hydric Soils
- GeoTech Access

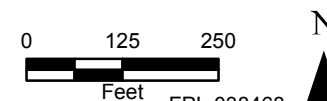


**FIGURE 5  
GEOTECH SOILS MAP**

SHEET 8 of 10 COUNTY: MADISON  
 SCALE: 1 in = 250 feet FILE NAME: NFRC\_GeoTechSoilsMA  
 DRAWN BY: unash DATE: 6/23/2020 4:06:36 PM

NOTE: Acreage values of 0 are less than 0.001 acre.  
 Sources: USDA, 2019; FDOT, 2016, 2019; ECT, 2019; ESRI, 2018

**NORTH FLORIDA RESILIENCY CONNECTION**



FPL 038468  
20210015-EI

NAD 1983 StatePlane Florida North FIPS 0903 Feet





**LEGEND**

**NFRC Project Features**

- Project Boundary
- Access Area
- Wetland

**Geotechnical ERP Features**

- Bore in Wetland
- Soils
- GeoTech Access

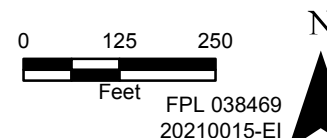


**FIGURE 5  
GEOTECH SOILS MAP**

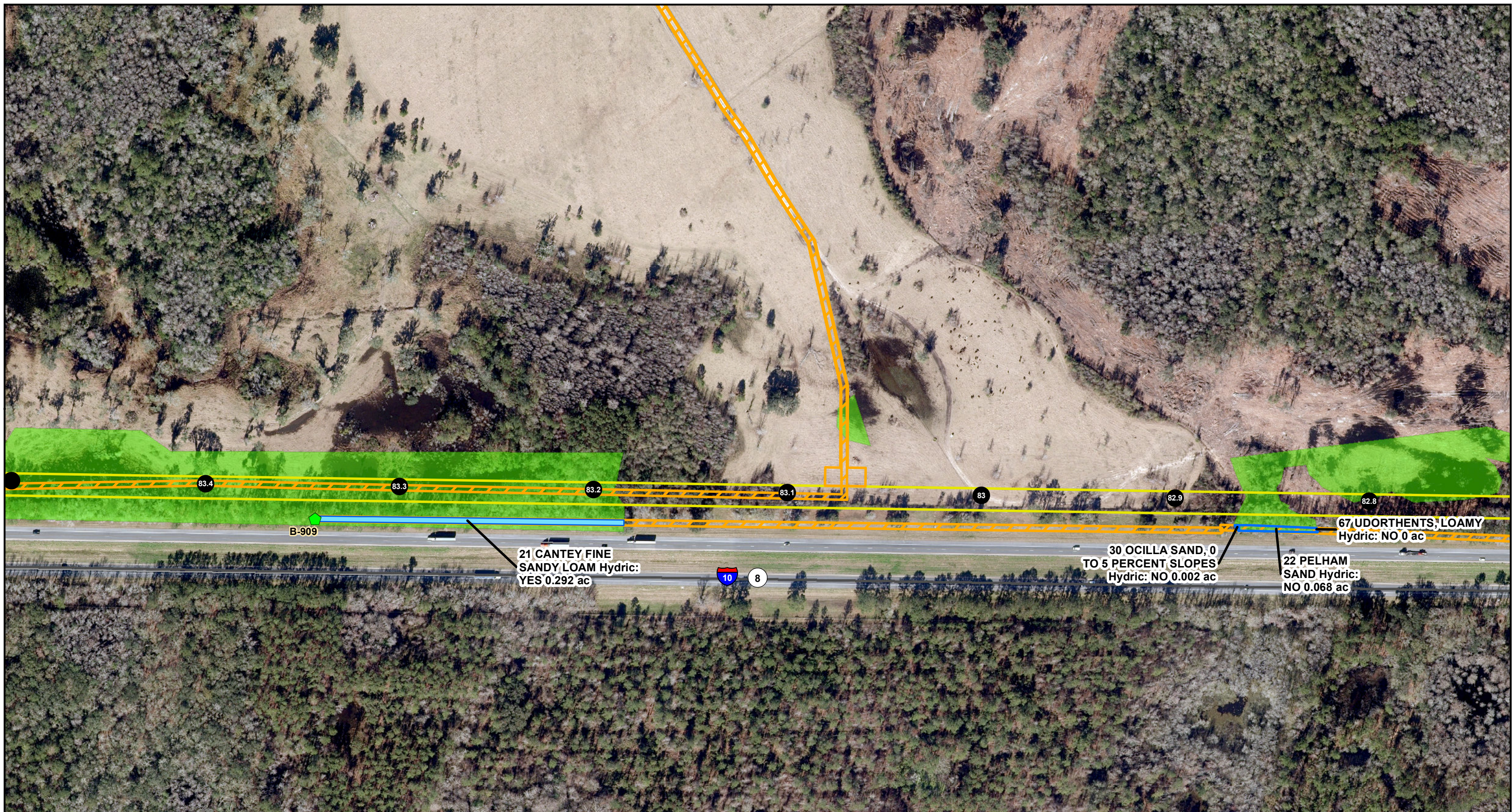
SHEET 9 of 10 COUNTY: MADISON  
 SCALE: 1 in = 250 feet FILE NAME: NFRC\_GeoTechSoilsMA  
 DRAWN BY: unash DATE: 6/23/2020 4:06:36 PM

NOTE: Acreage values of 0 are less than 0.001 acre.  
 Sources: USDA, 2019; FDOT, 2016, 2019; ECT, 2019; ESRI, 2018

**NORTH FLORIDA RESILIENCY CONNECTION**



FPL 038469  
20210015-EI



**LEGEND**

**NFRC Project Features**

- Project Boundary
- Access Area
- Wetland

**Geotechnical ERP Features**

- Bore in Wetland
- Soils
- Hydric Soils
- GeoTech Access

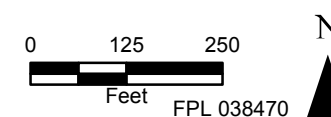


**FIGURE 5  
GEOTECH SOILS MAP**

SHEET 10 of 10 COUNTY: MADISON  
 SCALE: 1 in = 250 feet FILE NAME: NFRC\_GeoTechSoilsMA  
 DRAWN BY: unash DATE: 6/23/2020 4:06:36 PM

NOTE: Acreage values of 0 are less than 0.001 acre.  
 Sources: USDA, 2019; FDOT, 2016, 2019; ECT, 2019; ESRI, 2018

**NORTH FLORIDA RESILIENCY CONNECTION**



FPL 038470  
20210015-EI

NAD 1983 StatePlane Florida North FIPS 0903 Feet