

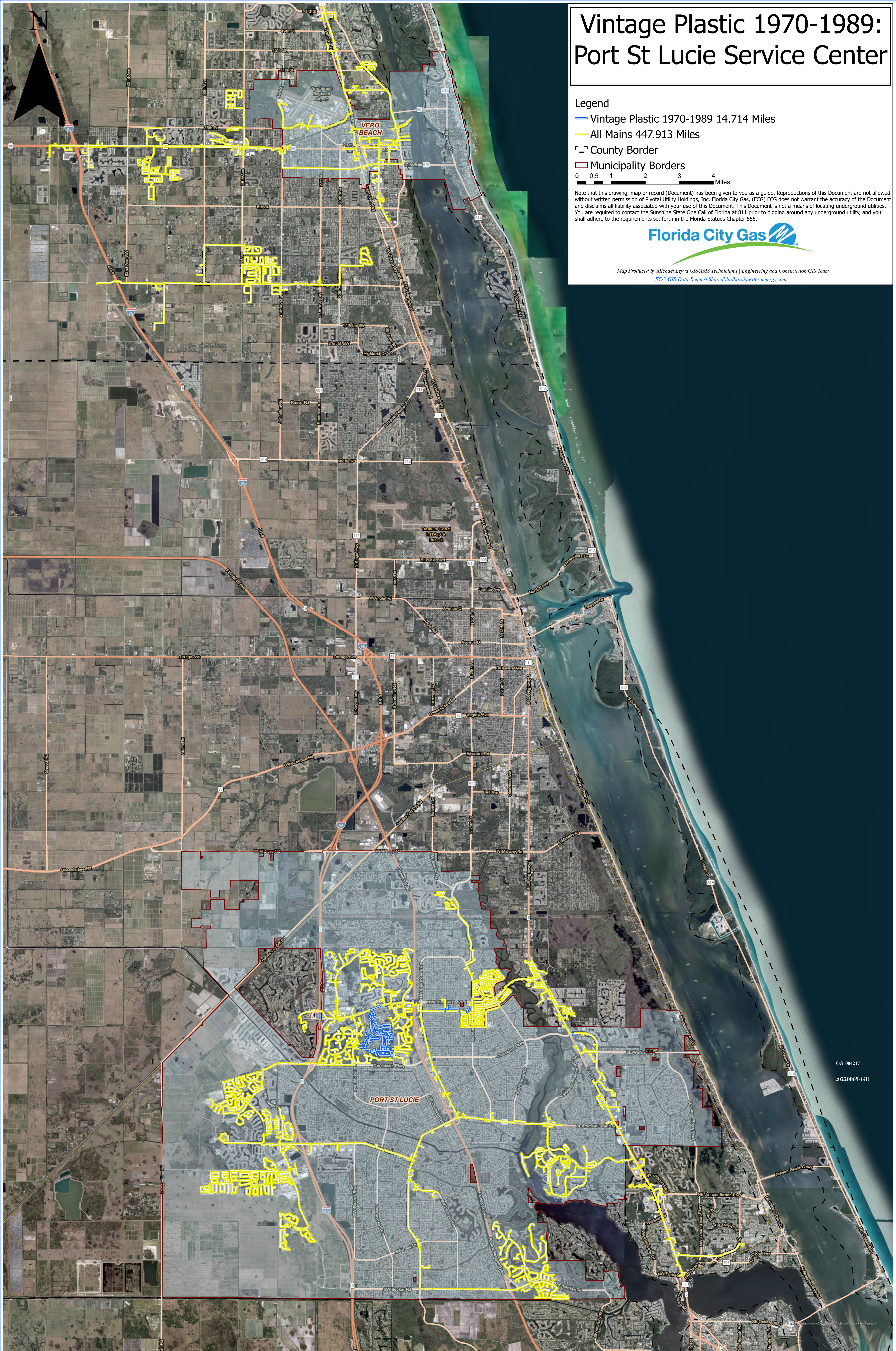
# Vintage Plastic 1970-1989: Port St Lucie Service Center

- Legend
- Vintage Plastic 1970-1989 14.714 Miles
  - All Mains 447.913 Miles
  - County Border
  - Municipality Borders
- 0 0.5 1 2 3 4 Miles

Note that this drawing, map or record (Document) has been given to you as a guide. Reproductions of this Document are not allowed without written permission of Pivotal Utility Holdings, Inc. Florida City Gas, (FCG) FCG does not warrant the accuracy of the Document and disclaims all liability associated with your use of this Document. This Document is not a means of locating underground utilities. You are required to contact the Sunshine State One Call of Florida at 811 prior to digging around any underground utility, and you shall adhere to the requirements set forth in the Florida Statutes Chapter 556.



Map Produced by Michael Leyva GIS/AMS Technician I | Engineering and Construction GIS Team  
[FCG-GIS-Data-Request.SharedMailbox@nexteraenergy.com](mailto:FCG-GIS-Data-Request.SharedMailbox@nexteraenergy.com)



CG 004217  
20220069-GU