

81 01 MAY 31 AM 11:09

**ANNUAL REPORT OF  
NATURAL GAS UTILITIES**

ECONOMIC REGULATION

COMMUNICATIONS  
REGULATION  
COMMISSION

CHESAPEAKE UTILITIES CORPORATION

WINTER HAVEN, FLORIDA

**TO THE  
FLORIDA PUBLIC SERVICE COMMISSION  
FOR THE  
YEAR ENDED DECEMBER 31, 2000**

Officer or other person to whom correspondence should be addressed concerning this report:

Name	James A. Williams	Title	Finance Manager
Address	P.O. Box 960	City	Winter Haven State FL
Telephone No.	863-299-2883		PSC/AFA 20 ( /97)

**Report of Independent Certified Public Accountants**

To the Board of Directors  
The Florida Division of Chesapeake Utilities Corporation

Our regular examinations of the financial statements of the Florida Division of Chesapeake Utilities Corporation, (a wholly owned subsidiary of Chesapeake Utilities Corporation) are conducted for the purpose of including such financial statements in the consolidated accounts of its parent company, which are included in an annual report to shareholders and on which we have reported separately for the years ended December 31, 2000 and 1999 under date of February 13, 2001. In connection with our examination of the financial statements of the Florida Division of Chesapeake Utilities for the years then ended, we have also reviewed the Comparative Balance Sheet, Statement of Income, and Notes to Financial Statements for the years then ended and the Statement of Retained Earnings and Statement of Cash Flows for the year ended December 31, 2000, included in the accompanying Annual Report of Natural Gas Utilities as filed with the Florida Public Service Commission, for conformity in all material respects with the requirements of the Federal Energy Regulatory Commission as set forth in its applicable Uniform System of Accounts and published accounting releases. Our review for this purpose included such tests of the accounting records and such other auditing procedures as we considered necessary in the circumstances.

We conducted our audits in accordance with auditing standards generally accepted in the United States of America. Those standards require that we plan and perform the audit to obtain reasonable assurance about whether the financial statements are free of material misstatement. An audit includes examining, on a test basis, evidence supporting the amounts and disclosures in the financial statements. An audit also includes assessing the accounting principles used and significant estimates made by management, as well as evaluating the overall financial statement presentation. We believe that our audits provide a reasonable basis for our opinion.

As discussed in Note 1, these financial statements were prepared in accordance with the accounting requirements of the Federal Energy Regulatory Commission as set forth in its applicable Uniform System of Accounts and published accounting releases, which is a comprehensive basis of accounting other than generally accepted accounting principles.

In our opinion, the financial statements referred to above present fairly, in all material respects, the financial position of the Florida Division of Chesapeake Utilities Corporation as of December 31, 2000 and 1999, the results of its operations and its cash flows for the year ended December 31, 2000, and net income for the year ended December 31, 1999, in accordance with the accounting requirements of the Federal Energy Regulatory Commission as set forth in its applicable Uniform System of Accounts and published accounting releases.



This report is intended solely for the information and use of the board of directors and management of the Florida Division of Chesapeake Utilities Corporation and for filing with the Florida Public Service Commission and should not be used for any other purpose.

*PriceWaterhouseCoopers LLP*

February 13, 2001

# ANNUAL REPORT OF NATURAL GAS UTILITIES

## IDENTIFICATION

01 Exact Legal Name of Respondent Chesapeake Utilities Corporation-Florida Division	02 Year of Report December 31, 2000
03 Previous Name and Date of Change (if name changed during year)	
04 Address of Principal Office at End of Year (Street, City, State, Zip Code) 1015 6th St. NW., Winter Haven, Florida 33881	
05 Name of Contact Person James A. Williams	06 Title of Contact Person Finance Manager
07 Address of Contact Person (Street, City, State, Zip Code) 1015 6th St. NW., Winter Haven, Florida 33881	
08 Telephone of Contact Person, Including Area Code 863-299-2883	09 Date of Report (Mo, Da, Yr) May 31, 2001

## ATTESTATION

I certify that I am the responsible accounting officer of

### Chesapeake Utilities Corporation

that I have examined the following report; that to the best of my knowledge, information, and belief, all statements of fact contained in the said report are true and the said report is a correct statement of the business and affairs of the above-named respondent in respect to each and every matter set forth therein during the period from January 1, 2000 to December 31, 2000, inclusive.

I also certify that all affiliated transfer prices and affiliated cost allocations were determined consistent with the methods reported to this Commission on the appropriate forms included in this report.

I am aware that Section 837.06, Florida Statutes, provides:

Whoever knowingly makes a false statement in writing with the intent to mislead a public servant in the performance of his official duty shall be guilty of a misdemeanor of the second degree, punishable as provided in S. 775.082 and S. 775.083.

5/29/01

Date

Michael P. McMasters

Signature

Michael P. McMasters

Name

Vice President, Treasurer & Chief Financial Officer

Title

**TABLE OF CONTENTS**

Title of Schedule (a)	Page No. (b)	Title of Schedule (a)	Page No. (b)
<b>GENERAL CORPORATE INFORMATION AND FINANCIAL STATEMENTS</b>		<b>INCOME ACCOUNT SUPPORTING SCHEDULES</b>	
General Information	3	Gas Operating Revenues	46-47
Control Over Respondent	4	Residential and Commercial Space Heating Customers	48
Corporations Controlled By Respondent	5	Interruptible, Off Peak, and Firm Sales to Distribution	48
Officers	6	System Industrial Customers	48
Directors	7	Gas Operation and Maintenance Expenses	49-51
Security Holders and Voting Powers	8	Number of Gas Department Employees	51
Important Changes During the Year	9	Gas Purchases	52
Comparative Balance Sheet	10-11	Gas Used in Utility Operations - Credit	53
Statement of Income for the Year	12-14	Other Gas Supply Expenses	54
Statement of Retained Earnings for the Year	15-16	Miscellaneous General Expenses - Gas	54
Statement of Cash Flows	17-18	Depreciation, Depletion, and Amortization of Gas Plant	55
Notes to Financial Statements	19	Particulars Concerning Certain Income Deduction and Interest Charges Accounts	56
		Regulatory Commission Expenses	57-58
<b>BALANCE SHEET SUPPORTING SCHEDULES</b>		Distribution of Salaries and Wages	59
<b>(Assets And Other Debits)</b>		Charges for Outside Prof. and Other Consultative Services	60
Summary of Utility Plant and Accum. Prov. for Depreciation, Amortization, and Depletion	20-21		
Gas Plant in Service	22-24		
Accumulated Depreciation & Amortization	25-27		
Construction Work in Progress - Gas	28		
Construction Overheads - Gas	29		
Construction Overhead Procedure	30		
Accum. Prov. for Depreciation of Gas Utility Plant	31		
Prepayments	32		
Extraordinary Property Losses	32		
Unrecovered Plant and Regulatory Study Costs	32	<b>REGULATORY ASSESSMENT FEE</b>	
Other Regulatory Assets	33		
Miscellaneous Deferred Debits	34	Reconciliation of Gross Operating Revenues -	
Accum. Deferred Income Taxes	35	Annual Report versus Regulatory Assessment Fee Return	61
<b>(Liabilities and Other Credits)</b>			
Capital Stock Subscribed, Capital Stock Liability for Conversion Premium on Capital Stock, and Securities Issued or Assumed and Securities Refunded or Retired During the Year	36		
Long-Term Debt	37	<b>DIVERSIFICATION ACTIVITY</b>	
Unamortized Debt Exp., Premium and Discount on Long-Term Debt	38	Corporate Structure	62
Unamortized Loss and Gain on Reacquired Debt	39	New or Amended Contracts with Affiliated Companies	63
Reconciliation of Reported Net Income with Taxable Income for Federal Income Taxes	40	Individual Affiliated Transactions in Excess of \$25,000	64
Taxes Accrued, Prepaid and Charged During Year	41	Summary of Affiliated Transfers and Cost Allocations	65
Accumulated Deferred Investment Tax Credits	42	Assets or Rights Purchased from or Sold to Affiliates	66
Miscellaneous Current and Accrued Liabilities	43	Employee Transfers	67
Other Deferred Credits	43		
Accumulated Deferred Income Taxes	44		
Other Regulatory Liabilities	45		

Name of Respondent Chesapeake Utilities Corporation	For the Year Ended Dec. 31, 2000
<b>GENERAL INFORMATION</b>	
<p>1. Provide name and title of officer having custody of the general corporate books of account and address of office where the general corporate books are kept, and address of office where any other corporate books of account are kept, if different from that where the general corporate books are kept.</p> <p style="margin-left: 40px;">Michael P. McMasters-Vice President, Treasurer &amp; Chief Financial Officer 1015 6th St NW, Winter Haven, Florida 33881 1514 S. Alexander Street, Plant City, Florida 33566 909 Silver Lake Blvd., Dover, Delaware 19901</p>	
<p>2. Provide the name of the State under the laws of which respondent is incorporated, and date of incorporation. If incorporated under a special law, give reference to such law. If not incorporated, state that fact and give the type of organization and the date organized.</p> <p style="margin-left: 40px;">State of Delaware-1947</p>	
<p>3. If at any time during the year the property of respondent was held by a receiver or trustee, give (a) name of receiver or trustee, (b) date such receiver or trustee took possession, (c) the authority by which the receivership or trusteeship was created, and (d) date when possession by receiver or trustee ceased.</p> <p style="margin-left: 40px;">N/A</p>	
<p>4. State the type of utility and nonutility services furnished by respondent during the year in each State in which the respondent operated.</p> <p style="margin-left: 40px;">Class B</p>	
<p>5. Have you engaged as the principal accountant to audit your financial statements an accountant who is not the principal accountant for your previous year's certified financial statements?</p> <p style="margin-left: 40px;">No</p>	

Name of Respondent  
Chesapeake Utilities Corporation

For the Year Ended

Dec. 31, 2000

CONTROL OVER RESPONDENT

1. If any corporation, business trust, or similar organization or combination of such organizations jointly held control over the respondent at end of year, state name of controlling corporation or organization, manner in which control was held, and extent of control. If control was in a holding company organization, show the chain of ownership or control to the main parent company or organization. If control was held by a trustee (s), state name of

trustee (s), name of beneficiary or beneficiaries for whom trust was maintained, and purpose of the trust.  
2. If the above required information is available from the SEC 10K Report Form filing, a specific reference to the report form (i.e. year and company title) may be listed provided the fiscal years for both the 10-K report and this report are compatible.

N/A

**CORPORATIONS CONTROLLED BY RESPONDENT**

- |  |  |
|--|--|
| <p>1. Report below the names of all corporations, business trusts, and similar organizations, controlled directly or indirectly by respondent at any time during the year. If control ceased prior to end of year, give particulars (details) in a footnote.</p> <p>2. If control was by other means than a direct holding of voting rights, state in a footnote the manner in which control was held, naming any intermediaries involved.</p> | <p>3. If control was held jointly with one or more other interests, state the fact in a footnote and name the other interests.</p> <p>4. If the above required information is available from the SEC 10-K Report Form filing, a specific reference to the report form (i.e. year and company title) may be listed in column (a) provided the fiscal years for both the 10-K report and this report are compatible.</p> |
|--|--|

**DEFINITIONS**

- |   |  |
|---|--|
| <p>1. See the Uniform System of Accounts for a definition of control.</p> <p>2. Direct control is that which is exercised without interposition of an intermediary.</p> <p>3. Indirect control is that which is exercised by the interposition of an intermediary which exercises direct control.</p> <p>4. Joint control is that in which neither interest can effectively</p> | <p>control or direct action without the consent of the other, as where the voting control is equally divided between two holders, or each party holds a veto power over the other. Joint control may exist by mutual agreement or understanding between two or more parties who together have control within the meaning of the definition of control in the Uniform System of Accounts, regardless of the relative voting rights of each party.</p> |
|---|--|

Name of Company Controlled (a)	Kind of Business (b)	Percent Voting Stock Owned (c)	Footnote Ref. (d)
<p>The Florida Division of Chesapeake Utilities Corporation does not control any other organizations, business trusts, or corporations. However, our parent company, Chesapeake Utilities does directly or indirectly control other subsidiaries. These organizations are listed in Chesapeake's Form 10-K.</p>			



OFFICERS

1. Report below the name, title and salary for each executive officer whose salary is \$50,000 or more. An "executive officer" of a respondent includes its president, secretary treasurer, and vice president in charge of a principal business unit, division or function (such as sales, administration or finance), and any other person who performs similar policymaking functions.

any position, show name and total remuneration of the previous incumbent, and date the change in incumbency was made.

3. Utilities which are required to file the same data with the Securities and Exchange Commission, may substitute a copy of item 4 of Regulation S-K (identified as this page). The substituted page(s) should be the same size as this page.

2. If a change was made during the year in the incumbent of

Line No.	Title (a)	Name of Officer (b)	Salary for Year (c)
1	Chairman	Ralph J. Adkins	\$0
2	President, CEO	John R. Schirkaitis	\$26,577
3	Vice-President, Treasurer, and CFO	Michael P. McMasters	\$21,634
5	Vice-President of Natural Gas	Steven C. Thompson	\$30,594
7	Vice-President, Asst. Treasurer, Asst. Secretary	William C. Boyles	\$12,737
8	Assistant Secretary	James R. Lowe	\$71,353
9			
10			
11			
12	Note: The salaries above represent only that portion allocated to the Florida Division.		
13			
14			
15			
16			
17			
18			
19			
20			
21			
22			
23			
24			
25			
26			
27			
28			
29			
30			
31			
32			
33			
34			
35			
36			
37			
38			
39			
40			
41			
42			
43			
44			
45			
46			
47			
48			
49			
50			
51			

Name of Respondent Chesapeake Utilities Corporation		For the Year Ended Dec. 31, 2000	
DIRECTORS			
1. Report below the information called for concerning each director of the respondent who held office at any time during the year. Include in column (a) abbreviated titles of the directors who are officers of the respondent.		2. Designate members of the Executive Committee by an asterisk and the Chairman of the Executive Committee by a double asterisk.	
Name (and Title) of Director (a)	Principal Business Address (b)	No. of Directors Meetings During Yr. (c)	Fees During Year (d)
Ralph J. Adkins, Chairman of Board	909 Silver Lake Blvd, Dover Delaware 19901	8	officer
John R. Schinkaitis, President, CEO	909 Silver Lake Blvd, Dover Delaware 19901	8	officer
John W. Jardine, Jr., Director	909 Silver Lake Blvd, Dover Delaware 19901	11	\$3,863.30
Jeremiah P. Shea, Director	909 Silver Lake Blvd, Dover Delaware 19901	13	\$4,133.30
Robert F. Rider, Director	909 Silver Lake Blvd, Dover Delaware 19901	10	\$3,907.19
William G. Warden III, Director	909 Silver Lake Blvd, Dover Delaware 19901	11	\$3,863.30
Rudolph M. Peins, Jr., Director	909 Silver Lake Blvd, Dover Delaware 19901	14	\$4,447.19
Walter J. Coleman, Director	909 Silver Lake Blvd, Dover Delaware 19901	12	\$3,953.30
Richard Bernstein, Director	909 Silver Lake Blvd, Dover Delaware 19901	12	\$4,447.19
Calvert A. Morgan, Jr., Director	909 Silver Lake Blvd, Dover Delaware 19901	6	\$3,233.30
Note: The fees above represent only that portion allocated to the Florida Division.			

SECURITY HOLDERS AND VOTING POWERS

1. Give the names and addresses of the 10 security holders of the respondents who, at the date of the latest closing of the stock book or compilation of the list of stockholders of the respondent, prior to the end of the year, had the highest voting powers in the respondent, and state the number of votes which each would have had the right to cast on that date if a meeting were in order. If any such holder held in trust, give in a footnote the known particulars of the trust (whether voting trust, etc.) duration of the trust, and principal holders of beneficiary interests in the trust. If the stock book was not closed or a list of stockholders was not compiled within one year prior to the end of the year, or if since the previous compilation of a list of stockholders, some other class of security has become vested with voting rights, then show such 10 security holders as of the close of the year. Arrange the names of the security holders in the order of voting power, commencing with the highest. Show in column (a) the titles of officers and directors included in such list of 10 security holders.

2. If any security other than stock carries voting rights, explain in a supplemental statement of circumstances whereby such security became vested with voting rights and

give other important particulars (details) concerning the voting rights of such security. State whether voting rights are actual or contingent: if contingent, describe the contingency.

3. If any class or issue of security has any special privileges in the election of directors, trustees or managers, or in the determination of corporate action by any method, explain briefly in a footnote.

4. Furnish particulars (details) concerning any options, warrants, or rights outstanding at the end of the year for others to purchase securities of the respondent or any securities or other assets owned by the respondent, including prices, expiration dates, and other material information relating to exercise of the options, warrants, or rights. Specify the amount of such securities or assets so entitled to be purchased by any officer, director, associated company, or any of the ten largest security holders. This instruction is inapplicable to convertible securities or to any securities substantially all of which are outstanding in the hands of the general public where the options, warrants or rights were issued on a prorata basis.

1. Give date of the latest closing of the stock book prior to the end year, and state the purpose of such closing:	2. State the total number of votes cast at the latest general meeting prior to the end of year for the election of directors of the respondents and number of such votes cast by proxy.  Total: By Proxy:	3. Give the date and place of such meeting:
--	--	---

VOTING SECURITIES  
Number of votes as of (date):

Line No.	Name (Title) and Address of Security Holder (a)	Total Votes (b)	Common Stock (c)	Preferred Stock (d)	Other (e)
4	TOTAL votes of all voting securities				
5	TOTAL number of security holders				
6	TOTAL votes of security holders listed below				
7					
8					
9	Shareholder information may be obtained through:				
10					
11	William C. Boyles, V.P. of Administrative Services, Corporate Secretary				
12	909 Silver Lake Boulevard				
13	Dover, Delaware 19901				
14					
15					
16					
17					
18					
19					
20					
21					
22					
23					
24					
25					
26					
27					
28					
29					
30					
31					
32					
33					

IMPORTANT CHANGES DURING THE YEAR

Give particulars (details) concerning the matters indicated below. Make the statements explicit and precise, and number them in accordance with the inquires. Each inquiry should be answered. Enter "none" "not applicable," or "NA" where applicable. If information which answers an inquiry is given elsewhere in the report, make a reference to the schedule in which it appears.

1. Changes in and important information to franchise rights: Describe the actual consideration given therefore and state from whom the franchise rights were acquired. If acquired without the payment of consideration, state that fact.
2. Acquisition of ownership in other companies by reorganization, merger, or consolidation with other companies: Give name of companies involved, particulars concerning the transactions, name of the Commission authorizing the transaction, and reference to Commission authorization.
3. Purchase or sale of an operating unit or system: Give brief description of the property, and of the transactions relating thereto, and reference to Commission authorization, if any was required. Give date journal entries called for by the Uniform System of Accounts were submitted to the Commission.
4. Important leaseholds (other than leaseholds for natural gas lands) that have been acquired or given, assigned or surrendered: Give effective dates, lengths of terms, names of parties, rents, and other conditions. State name of Commission authorizing lease and give reference to such authorization.
5. Important extension or reduction of transmission or distribution system: State territory added or relinquished and date operations began or ceased give reference to Commission authorization, if any was required. State also the approximate number of customers added or lost and approximate annual revenues of each class of service. Each natural gas company must also state major new continuing sources of gas made available to it from purchases,

development, purchase contract or otherwise, giving location and approximate total gas volumes available, period of contracts, and other parties to any such arrangements etc.

6. Obligations incurred or assumed by respondent as guarantor for the performance by another of any agreement or obligation, including ordinary commercial paper maturing on demand or not later than one year after date of issue: State on behalf of whom the obligation was assumed and amount of the obligation. Give reference to Commission authorization if any was required.

7. Changes in articles of incorporation or amendments to charter: Explain the nature and purpose of such changes or amendments.

8. State the estimated annual effect and nature of any important wage scale changes during the year.

9. State briefly the status of any materially important legal proceedings pending at the end of the year, and the results of any such proceedings culminated during the year.

10. State briefly the status of any materially important transactions of the respondent not disclosed elsewhere in this report in which an officer, director, security holder reported on page 8, voting trustee, associated company or known associate of any of these persons was a party or in which any such person had a material interest.

11. Estimate increase or decrease in annual revenues due to important rate changes: State effective rate and approximate amount of increase or decrease from each revenue classification. State the number of customers affected.

12. If the important changes during the year relating to the respondent company appearing in the annual report to stockholders are applicable in every respect and furnish the data required by instruction 1 to 11 above, such notes may be attached to this page.

1-12      None

Name of Respondent		For the Year Ended		
Chesapeake Utilities Corporation		Dec. 31, 2000		
COMPARATIVE BALANCE SHEET (ASSETS AND OTHER DEBITS)				
Line No.	Title of Account (a)	Ref. Page No. (b)	Balance at Beginning of Year (c)	Balance at End of Year (d)
1	UTILITY PLANT			
2	Utility Plant (101-106, 114)	20-21	\$27,115,527	\$31,684,117
3	Construction Work in Progress (107)	20-21	1,822,064	3,686,306
4	TOTAL Utility Plant (Enter Total of lines 2 and 3)		28,937,591	35,370,423
5	(Less) Accum. Prov. for Depr. Amort. Depl. (108, 111, 115)	20-21	(9,286,262)	(10,203,516)
6	Net Utility Plant (Enter Total of line 4 less 5)		19,651,329	25,166,907
7	Utility Plant Adjustments (116)	19		
8	Gas Stored (117.1, 117.2, 117.3, 117.4)	-	-	
9	OTHER PROPERTY AND INVESTMENTS			
10	Nonutility Property (121)	-		
11	(Less) Accum. Prov. for Depr. and Amort. (122)	-		
12	Investments in Associated Companies (123)	-		
13	Investment in Subsidiary Companies (123.1)	-		
14	Other Investments (124)	-		
15	Special Funds (125-128)	-		
16	TOTAL Other Property and Investments (Total of lines 10 through 15)			
17	CURRENT AND ACCRUED ASSETS			
18	Cash (131)	-	461,146	44,463
19	Special Deposits (132-134)	-		
20	Working Funds (135)	-	1,125	1,125
21	Temporary Cash Investments (136)	-		
22	Notes Receivable (141)	-		
23	Customer Accounts Receivable (142)	-	3,360,236	3,388,830
24	Other Accounts Receivable (143)	-		
25	(Less) Accum. Prov. for Uncollectible Acct.-Credit (144)	-	(33,950)	(42,808)
26	Notes Receivable from Associated Companies (145)	-		
27	Accounts Receivable from Assoc. Companies (146)	-	(6,812,965)	(11,861,613)
28	Fuel Stock (151)	-		
29	Fuel Stock Expense Undistributed (152)	-		
30	Residuals (Elec) and Extracted Products (Gas) (153)	-		
31	Plant Material and Operating Supplies (154)	-	379,394	439,770
32	Merchandise (155)	-		
33	Other Material and Supplies (156)	-		
34	Stores Expenses Undistributed (163)	-		
35	Gas Stored Undgrd. & Liq. Nat. Gas Stored (164.1-164.3)	-		
36	Prepayments (165)	32	160,386	85,001
37	Advances for Gas (166-167)	-		
38	Interest and Dividends Receivable (171)	-		
39	Rents Receivable (172)	-		
40	Accrued Utility Revenues (173)	-		
41	Miscellaneous Current and Accrued Assets (174)	-		
42	TOTAL Current and Accrued Assets (Enter Total of lines 18 through 41)		(2,484,628)	(7,945,232)
43	DEFERRED DEBITS			
44	Unamortized Debt Expense (181)	-		
45	Extraordinary Property Losses (182.1)	32		
46	Unrecovered Plant and Regulatory Study Costs (182.2)	32		
47	Other Regulatory Assets (182.3)	33		
48	Prelim. Survey and Investigation Charges (Gas) (183.1, 183.2)	-		
49	Clearing Accounts (184)	-	33,789	
50	Temporary Facilities (185)	-		
51	Miscellaneous Deferred Debits (186)	34	217,335	1,059,535
52	Def. Losses from Disposition of Utility Plant. (187)	-		
53	Research, Devel. and Demonstration Expend. (188)	-		
54	Unamortized Loss on Reacquired Debt (189)	-		
55	Accumulated Deferred Income Taxes (190)	35	86,637	(647,578)
56	Unrecovered Purchased Gas Costs (191)	-	(51,144)	2,235,150
57	TOTAL Deferred Debits (Enter Total of lines 44 through 56)		286,617	2,647,107
58	TOTAL Assets and other Debits (Enter Total of lines 6, 7, 8, 16, 42, 57)		\$17,453,317	\$19,868,782

COMPARATIVE BALANCE SHEET (LIABILITIES AND OTHER CREDITS)

Line No.	Title of Account (a)	Ref. Page No. (b)	Balance at Beginning of Year (c)	Balance at End of Year (d)
1	<b>PROPRIETARY CAPITAL</b>			
2	Common Stock (201, 202, 203, 205, 206, 207)	-		
3	Preferred Stock Issued (204)	-		
4	Other Paid-In Capital (208-211) & Accounts 212, 213, 214	-		
5	Retained Earnings (215, 215.1, 216)	15-16	11,809,982	12,257,045
6	Unappropriated Undistributed Subsidiary Earnings (216.1)	15-16	-	
7	(Less) Reacquired Capital Stock (217)	-		
8	<b>TOTAL Proprietary Capital (Enter Total of lines 2 through 7)</b>		<b>11,809,982</b>	<b>12,257,045</b>
9	<b>LONG-TERM DEBT</b>			
10	Bonds (221)	37		
11	(Less) Reacquired Bonds (222)	37		
12	Advances from Associated Companies (223)	37		
13	Other Long-Term Debt (224)	37		
14	Unamortized Premium on Long-Term Debt (225)	38		
15	(Less) Unamortized Discount on Long-Term Debt-Dr. (226)	38		
16	<b>TOTAL Long-Term Debt (Enter Total of lines 10 through 15)</b>			
17	<b>OTHER NONCURRENT LIABILITIES</b>			
18	Obligations Under Capital Leases - Noncurrent (227)	-		
19	Accumulated Provision for Property Insurance (228.1)	-		
20	Accumulated Provision for Injuries and Damages (228.2)	-		
21	Accumulated Provision for Pensions and Benefits (228.3)	-		
22	Accumulated Miscellaneous Operating Provisions (228.4)	-		
23	Accumulated Provision for Rate Refunds (229)	-		
24	<b>TOTAL Other Noncurrent Liabilities (Enter Total of lines 18 through 23)</b>			
25	<b>CURRENT AND ACCRUED LIABILITIES</b>			
26	Notes Payable (231)	-		
27	Accounts Payable (232)	-	1,664,198	3,504,277
28	Notes Payable to Associated Companies (233)	-		
29	Accounts Payable to Associated Companies (234)	-		
30	Customer Deposits (235)	-	638,642	622,116
31	Taxes Accrued (236)	41	224,521	(299,886)
32	Interest Accrued (237)	-	4	29
33	Dividends Declared (238)	-		
34	Matured Long-Term Debt (239)	-		
35	Matured Interest (240)	-		
36	Tax Collections Payable (241)	-	98,244	103,290
37	Miscellaneous Current and Accrued Liabilities (242)	43	143,622	313,520
38	Obligations Under Capital Leases-Current (243)	-		
39				
40	<b>TOTAL Current and Accrued Liabilities (Enter Total of lines 26 through 39)</b>		<b>\$2,769,231</b>	<b>\$4,243,346</b>
41	<b>DEFERRED CREDITS</b>			
42	Customer Advances for Construction (252)	-	390,328	404,122
43	Other Deferred Credits (253)	43	719,196	148,585
44	Other Regulatory Liabilities (254)	45		635,000
45	Accumulated Deferred Investment Tax Credits (255)	42	328,003	308,480
46	Deferred Gains from Disposition of Utility Plant (256)	-		
47	Unamortized Gain on Reacquired Debt (257)	39		
48	Accumulated Deferred Income Taxes (281-283)	44	1,436,577	1,872,204
49	<b>TOTAL Deferred Credits (Enter Total of lines 42 through 48)</b>		<b>2,874,104</b>	<b>3,368,391</b>
50				
51	<b>TOTAL Liabilities and Other Credits (Enter Total of lines 8, 16, 24, 40 and 49)</b>		<b>\$17,453,317</b>	<b>\$19,868,782</b>
52				

STATEMENT OF INCOME

1. Report amounts for Accounts 412 and 413, Revenue and Expenses from Utility Plant Leased to Others, in another utility column (i,k,m,o) in a similar manner to a utility department. Spread the amount (s) over lines 01 through 24 as appropriate. Include these amounts in columns (c) and (d) totals.
2. Report amounts in Account 414, Other Utility Operating Income, in the same manner as Accounts 412 and 413 above.
3. Report data for lines 7,9,10 for Natural Gas companies using accounts 404.1, 404.2, 404.3, 407.1 and 407.2.
4. Use page 19 for important notes regarding the statement of income or any account thereof.
5. Give concise explanations on page 19 concerning

unsettled rate proceedings where a contingency exists such that refunds of a material amount may need to be made to the utility's customers or which may result in a material refund to the utility with respect to power or gas purchases. State for each year affected the gross revenues or costs to which the contingency relates and the tax effects together with an explanation of the major factors which affect the rights of the utility to retain such revenues or recover amounts paid with respect to power and gas purchases.

6. Give concise explanations on page 19 concerning significant amounts of any refunds made or received during the year resulting from settlement of any rate proceeding affecting

Line No.	Account (a)	Ref. Page No. (b)	Total Current Year (c)	Total Previous Year (d)
1	UTILITY OPERATING INCOME			
2	Operating Revenues (400)	46-47	\$20,576,236	\$17,293,932
3	Operating Expenses			
4	Operation Expenses (401)	49-51	16,316,195	13,134,943
5	Maintenance Expenses (402)	49-51	249,956	329,296
6	Depreciation Expense (403)	25-27	1,051,294	932,191
7	Amort. & Depl. of Utility Plant (404-405)	25-27	172,500	172,500
8	Amort. of Utility Plant Acq. Adj. (406)	25-27	31,131	33,961
9	Amort. of Property Losses, Unrecovered Plant and Regulatory Study Costs (407.1)	-		
10	Amort. of Conversion Expenses (407.2)	-		
11	Regulatory Debits (407.3)	-		
12	(Less) Regulatory Credits (407.4)	-		
13	Taxes Other Than Income Taxes (408.1)	41	1,288,643	1,157,615
14	Income Taxes - Federal (409.1)	41	(555,021)	301,087
15	- Other (409.1)	41	(95,008)	51,575
16	Provision for Deferred Inc. Taxes (410.1)	35, 44	1,188,911	168,478
17	(Less) Provision for Deferred Income Taxes - Cr.(411.1)	35, 44	(231,717)	(145,542)
18	Investment Tax Credit Adj. - Net (411.4)	42		
19	(Less) Gains from Disp. of Utility Plant (411.6)	-		
20	Losses from Disp. of Utility Plant (411.7)	-		
21	(Less) Gains from Disposition of Allowances (411.8)	-		
22	Losses from Disposition of Allowances (411.9)	-		
23	TOTAL Utility Operating Expenses (Total of lines 4 -22)		19,416,885	16,136,104
24	Net Utility Operating Income (Total of line 2 less 23) (Carry forward to page 14, line 25)		1,159,352	1,157,828

STATEMENT OF INCOME (Continued)

revenues received or costs incurred for power or gas purchases, and a summary of the adjustments made to balance sheet, income, and expense accounts.

7. If any notes appearing in the report to stockholders are applicable to this Statement of Income, such notes may be attached at page 19.

8. Enter on page 19 a concise explanation of only those changes in accounting methods made during the year which had an effect on net income, including the basis of

allocations and apportionments from those used in the preceding year. Also give the approximate dollar effect of such changes.

9. Explain in a footnote if the previous year's figures are different from that reported in prior reports.

10. If the columns are insufficient for reporting additional utility departments, supply the appropriate account titles, lines 2 to 22, and report the information in the blank space on page 19 or in a supplemental statement.

ELECTRIC UTILITY		GAS UTILITY		OTHER UTILITY - WATER		Line No.
Current Year (e)	Previous Year (f)	Current Year (g)	Previous Year (h)	Current Year (i)	Previous Year (j)	
		\$20,576,236	\$17,293,932			1
						2
						3
		16,316,195	13,134,943			4
		249,956	329,296			5
		1,051,294	932,191			6
		172,500	172,500			7
		31,131	33,961			8
						9
						10
						11
						12
		1,288,643	1,157,615			13
		(630,505)	372,185			14
		(19,523)	(19,523)			15
		1,188,911	168,478			16
		(231,717)	(145,542)			17
						18
						19
						20
						21
						22
		19,416,885	16,136,104			23
						24
		1,159,351	1,157,828			



STATEMENT OF INCOME (Continued)

Line No.	Account (a)	Ref. Page No. (b)	TOTAL	
			Current Year (c)	Previous Year (d)
25	Net Utility Operating Income (Carried forward from page 12)		\$1,159,351	\$1,157,826
26	Other Income and Deductions			
27	Other Income			
28	Nonutility Operating Income			
29	Revenues From Merchandising, Jobbing and Contract Work (415)	-		
	(Less) Costs and Exp. of Merchandising, Job & Contract Work (416)	-		
31	Revenues From Nonutility Operations (417)	-		
32	(Less) Expenses of Nonutility Operations (417.1)	-		
33	Nonoperating Rental Income (418)	-		
34	Equity in Earnings of Subsidiary Companies (418.1)	15-16		
35	Interest and Dividend Income (419)	-	13,771	20,209
36	Allowance for Other Funds Used During Construction (419.1)	-		
37	Miscellaneous Nonoperating Income (421)	-		
38	Gain on Disposition of Property (421.1)	-		
39	TOTAL Other Income (Enter Total of lines 29 through 38)		13,771	20,209
40	Other Income Deductions			
41	Loss on Disposition of Property (421.2)	-		
42	Miscellaneous Amortization (425)	60		
43	Miscellaneous Income Deductions (426.1-426.5)	56		
44	TOTAL Other Income Deductions (Total of lines 41 through 43)			
45	Taxes Applic. to Other Income and Deductions			
46	Taxes Other Than Income Taxes (408.2)	41		
47	Income Taxes - Federal (409.2)	41	(4,425)	(6,493)
48	Income Taxes - Other (409.2)	41	(757)	(1,111)
49	Provision for Deferred Income Taxes (410.2)	35, 44		
50	(Less) Provision for Deferred Income Taxes - Cr. (411.2)	35, 44		
51	Investment Tax Credit Adj.- Net (411.5)	-		
52	(Less) Investment Tax Credits (420)	-	19,523	19,523
53	TOTAL Taxes on Other Inc. and Ded. (Enter Total of 46 through 52)		14,341	11,919
54	Net Other Income and Deductions (Enter Total of lines 39,44,53)		28,112	32,128
55	Interest Charges			
56	Interest on Long-Term Debt (427)	-	403,781	433,426
57	Amortization of Debt Disc. and Expense (428)	-	17,068	18,300
58	Amortization of Loss on Reacquired Debt (428.1)	-		
59	(Less) Amort. of Premium on Debt - Credit (429)	38		
60	(Less) Amortization of Gain on Reacquired Debt - Credit (429.1)	-		
61	Interest on Debt to Assoc. Companies (430)	60		
62	Other Interest Expense (431)	56	319,552	144,702
63	(Less) Allow. for Borrowed Funds Used During Const. - Cr. (432)	-		
64	Net Interest Charges (Total of lines 56 through 63)		740,401	596,428
65	Income Before Extraordinary Items (Enter Total of lines 25, 54 and 64)		447,062	593,526
66	Extraordinary Items			
67	Extraordinary Income (434)	-		
68	(Less) Extraordinary Deductions (435)	-		
69	Net Extraordinary Items (Enter Total of line 67 less line 68)			
70	Income Taxes - Federal and Other (409.3)	41		
71	Extraordinary Items After Taxes (Enter Total of line 69 less line 70)			
72	Net Income (Enter Total of lines 65 and 71)		\$447,062	\$593,526

STATEMENT OF RETAINED EARNINGS

1. Report all changes in appropriate retained earnings, unappropriated retained earnings, and unappropriated undistributed subsidiary earnings for the year.  
 2. Each credit and debit during the year should be identified as to the retained earnings account in which recorded (Accounts 433, 436-439 inclusive). Show the contra primary account affected in column (b).  
 3. State the purpose and amount for each reservation or appropriation of retained earnings.  
 4. List first Account 439, Adjustments to Retained Earnings, reflecting adjustments to the opening balance of retained earnings. Follow by credit, then debit items, in that order.

5. Show dividends for each class and series of capital stock.  
 6. Show separately the state and federal income tax effect of items shown in account 439, Adjustments to Retained Earnings.  
 7. Explain in a footnote the basis for determining the amount reserved or appropriated. If such reservations or appropriation is to be recurrent, state the number and annual amounts to be reserved or appropriated as well as the totals eventually to be accumulated.  
 8. If any notes appearing in the report to stockholders are applicable to this statement attach them at page 19.

Line No.	Item (a)	Contra Primary Account Affected (b)	Amount (c)
	<b>UNAPPROPRIATED RETAINED EARNINGS (Account 216)</b>		
1	Balance - Beginning of Year		\$11,809,982
2	Changes (Identify by prescribed retained earnings accounts)		
3	Adjustments to Retained Earnings (Account 439):		
4	Credit:		
5	Credit:		
6	Credit:		
7	Credit:		
8	Credit:		
9	TOTAL Credits to Retained Earnings (Account 439) (Enter Total of lines 4 through 8)		
10	Debit:		
11	Debit:		
12	Debit:		
13	Debit:		
14	Debit:		
15	TOTAL Debits to Retained Earnings (Account 439) (Enter Total of lines 10 through 14)		
16	Balance Transferred from Income (Account 433 less Account 418.1)		447,063
17	Appropriations of Retained Earnings (Account 436)		
18			
19			
20			
21	TOTAL Appropriations of Retained Earnings (Account 436)		
22	(Enter Total of lines 18 through 20)		
23	Dividends Declared - Preferred Stock (Account 437)		
24			
25			
26			
27			
28	TOTAL Dividends Declared - Preferred Stock (Account 437)		
29	(Enter Total of lines 24 through 27)		
30	Dividends Declared - Common Stock (Account 438)		
31			
32			
33			
34			
35	TOTAL Dividends Declared - Common Stock (Account 438)		
36	(Enter Total of lines 31 through 34)		
37	Transfers from Acct. 216.1, Unappropriated Undistributed Subsidiary Earnings		
38	Balance - End of Year (Enter Total of lines 01, 09, 15, 16, 22, 29, 36 and 37)		\$12,257,045

Name of Respondent Chesapeake Utilities Corporation		For the Year Ended Dec. 31, 2000
STATEMENT OF RETAINED EARNINGS (Continued)		
Line No.	Item (a)	Amount (b)
	<p align="center">APPROPRIATED RETAINED EARNINGS (Account 215)</p> <p>State balance and purpose of each appropriated retained earnings amount at end of year and give accounting entries for any applications of appropriated retained earnings during the year.</p>	
39		
40		
41		
42		
43		
44		
45	TOTAL Appropriated Retained Earnings (Account 215)	
	<p>APPROPRIATED RETAINED EARNINGS - Amortization , Reserve, Federal (Account 215.1)</p> <p>State below the total amount set aside through appropriations of retained earnings, as of the end of the year, in compliance with the provisions of Federally granted hydroelectric project licenses held by the respondent. If any reductions or changes other than the normal annual credits hereto have been made during the year, explain such items in a footnote.</p>	
46	TOTAL Appropriated Retained Earnings - Amortization Reserve, Federal (Account 215.1)	
47	TOTAL Appropriated Retained Earnings (Accounts 215, 215.1)(Enter Total of lines 45 & 46)	
48	TOTAL Retained Earnings (Account 215, 215.1, 216)(Enter Total of lines 38 and 47)	\$12,257,045
	UNAPPROPRIATED UNDISTRIBUTED SUBSIDIARY EARNINGS (Account 216.1)	
49	Balance - Beginning of Year (Debit or Credit)	
50	Equity in Earnings for Year (Credit) (Account 418.1)	
51	(Less) Dividends Received (Debit)	
52	Other Changes (Explain)	
53	Balance - End of year	\$12,257,045

STATEMENT OF CASH FLOWS

1. If the notes to the cash flow statement in the respondent's annual stockholders report are applicable to this statement, such notes should be attached to page 19. Information about noncash investing and financing activities should be provided on page 19. Provide also on page 19 a reconciliation between "Cash and Cash Equivalents at end of Year" with related amounts on the balance sheet.

3. Operating Activities - Other: include gains and losses pertaining to operating activities only. Gains and losses pertaining to investing and financing activities should be reported in those activities. Show on page 19 the amounts of interest paid (net of amounts capitalized) and income taxes paid.

2. Under "Other" specify significant amounts and group others.

Line No.	DESCRIPTION (See Instructions for Explanation of Codes) (a)	Amounts (b)
1	Net Cash Flow From Operating Activities:	
2	Net Income (Line 72(c) on page 14)	\$447,062
3	Non-Cash Charges (Credits) to Income:	
4	Depreciation and Depletion	1,150,482
5	Amortization of (Specify) Acquis. Adjustment, Environmental, Reserve Deficits	203,631
6		
7		
8	Deferred Income Taxes (Net)	1,169,845
9	Investment Tax Credit Adjustments (Net)	(19,523)
10	Net (Increase) Decreases in Receivables	(19,736)
11	Net (Increase) Decreases in Inventory	(60,376)
12	Net (Increase) Decreases in Allowances Inventory	
13	Net (Decrease) Increase in Payables and Accrued Expenses	1,283,262
14	Net (Increase) Decreases in Other Regulatory Assets	(733,026)
15	Net (Decrease) Increase in Other Regulatory Liabilities	269,036
16	(Less) Allowance for Other Funds Used During Construction	
17	(Less) Undistributed Earnings from Subsidiary Companies	
18	Other: Prepayments	
19	Misc Debits/Credits	
20	Purchased Gas Adjustment	(2,286,295)
21	Net Cash Provided by (Used in) Operating Activities (Total of lines 2 through 20)	1,404,362
22		
23	Cash Flows from Investment Activities:	
24	Construction and Acquisition of Plant( including land):	
25	Gross Additions to Utility Plant	(6,869,691)
26	Gross Additions to Common Utility Plant	
27	Gross Additions to Environmental Costs	
28	(Less) Allowance for Other Funds Used During Construction	
29	Other: CWIP, RWIP, Adjustments	
30	Reserve for Refund Applied to Environmental	
31		
32		
33	Cash Outflows for Plant (Total of lines 24 through 32)	(6,869,691)
34		
35	Acquisition of Other Noncurrent Assets (d)	
36	Proceeds from Disposal of Noncurrent Assets (d) Salvage less cost of removal	
37	Investment in and Advances to Assoc. and Subsidiary Companies	
38	Contributions and Advances from Assoc. and Subsidiary Companies	5,048,648
39	Disposition of Investments in (and Advances to)	
40	Associated and Subsidiary Companies	
41	Purchases of Investment Securities (a)	
42	Proceeds from Sales of Investment Securities (a)	

STATEMENT OF CASH FLOWS (Continued)

4. Investing Activities

5. Codes used:

Include at other (line 31) net cash outflows to acquire other companies. Provide a reconciliation of assets acquired with liabilities assumed on page 19.

Do not include on this statement the dollar amount of leases capitalized per USofA General instruction 20; instead provide a reconciliation of the dollar amount of leases capitalized with the plant cost on page 19.

- (a) Net proceeds or payments
- (b) Bonds, debentures and other long-term debt.
- (c) Include commercial paper
- (d) Identify separately such items as investments, fixed assets, intangibles, etc.

6. Enter on page 19 clarifications and explanations.

Line No.	DESCRIPTION (See Instruction No. 5 for Explanation of Codes) (a)	Amounts (b)
46	Loans Made or Purchased	
47	Collections on Loans	
48		
49	Net (Increase) Decrease in Receivables	
50	Net (Increase) Decrease in Inventory	
51	Net (Increase) Decrease in	
52	Allowances Held for Speculation	
53	Net Increase (Decrease) in Payables and Accrued Expenses	
54	Other:	
55		
56	Net Cash Provided by (Used in) Investing Activities	
57	(Total of lines 33 through 55)	(1,821,043)
58		
59	Cash Flows From Financing Activities:	
60	Proceeds from Issuance of:	
61	Long-Term Debt (b)	
62	Preferred Stock	
63	Common Stock	
64	Other	
65		
66	Net Increase in Short-term Debt (c)	
67	Other:	
68		
69		
70	Cash provided by Outside Sources (Total of lines 61 through 69)	-
71		
72	Payments of Retirement of:	
73	Long-Term Debt (b)	
74	Preferred Stock	
75	Common Stock	
76	Other:	
77		
78	Net Decrease in Short-Term Debt (c)	
79		
80	Dividends on Preferred Stock	
81	Dividends on Common Stock	
82	Net Cash Provided by (Used in) Financing Activities	
83	(Total of lines 70 through 81)	-
84		
85	Net Increase (Decrease) in Cash and Cash Equivalents	
86	(Total of lines 21, 57, and 83)	(416,681)
87		
88	Cash and Cash Equivalents at Beginning of Year	462,271
89		
90	Cash and Cash Equivalents at End of Year	\$45,590

NOTES TO THE FINANCIAL STATEMENTS ON A CONSOLIDATED BASIS

1. Use the space below for important notes regarding the Balance Sheet, Statement of Income for the year, Statement of Retained Earnings for the year, and Statement of Changes in Financial Position, or any account thereof. Classify the notes according to each basic statement, providing a subheading for each statement except where a note is applicable to more than one statement.

2. Furnish particulars (details) as to any significant contingent assets or liabilities existing at end of year, including a brief explanation of any action initiated by the Internal Revenue Service involving possible assessment of additional income taxes of material amount, or of a claim for refund of income taxes of a material amount initiated by the utility. Give also a brief explanation of any dividends in arrears on cumulative preferred stock.

3. For Account 116, Utility Plant Adjustments, explain the origin of such amount, debits and credits during the year, and

plan of disposition contemplated, giving references to Commission orders or other authorizations respecting classification of amounts as plant adjustments and requirements as to disposition thereof.

4. Where Accounts 189, Unamortized Loss on Reacquired Debt, and 257, Unamortized Gain on Reacquired Debt, are not used, give an explanation, providing the rate treatment given these items. See General Instruction 17 of the Uniform System of Accounts.

5. Give a concise explanation of any retained earnings restrictions and state the amount of retained earnings affected by such restrictions.

6. If the notes to financial statements relating to the respondent company appearing in the annual report to the stockholders are applicable and furnish the data required by instructions above and on pages 12-18, such notes may be attached hereto.

**1. Summary of Accounting Policies:**

**Business** - The Florida Division of Chesapeake Utilities Corporation (the Company) is engaged in the distribution of natural gas. The Company serves residential, commercial, and industrial customers in Polk, Osceola, Citrus and Hillsborough, Holmes, Jackson, Quincy, Gilchrist, and Union counties. In 2000, approximately 49% of gas revenues were derived from industrial sales. Commercial sales contributed 30% of gas revenues, and the residential class the remaining 21%.

**Basis of Accounting** - The Company maintains its accounts in accordance with recognized policies prescribed or permitted by the Florida Public Service Commission (FPSC) and the Federal Energy Regulatory Commission, which policies conform with generally accepted accounting principles in all material respects.

**Basis of Presentation** - The financial statements were prepared in accordance with the requirements of the Federal Energy Regulatory Commission (FERC). Accordingly, the statements of retained earnings and cash flows for the prior year have been omitted and the current portion of long-term debt was \$36,400,902 and \$33,776,909 in 1999 at December 31, 2000 and 1999, respectively.

**Property, Plant and Equipment and Depreciation** - Utility property is stated at original cost reduced by contributions-in-aid-of-construction. The cost of new property and expenditures for major renewals and betterments are capitalized. The cost of current repairs and minor replacements are charged to operating expense. Upon retirement or disposition, the recorded cost of depreciable plant and the costs of removal, net of salvage, are charged to accumulated depreciation. Maintenance and repairs expenditures are charged to operating expense.

For financial reporting purposes, depreciation expense is computed using straight-line rates applied to the average investment in depreciable property accounts. Annual depreciation provisions, expressed as a percent of average depreciable plant in service, were approximately 4.0% and 4.0% in 2000 and 1999, respectively.

**Investment Tax Credits** - The Company's policy is to defer investment tax credits and amortize them over the composite life of the assets.

**Revenues** - The Company accrues base revenues for services rendered but unbilled at month end to provide a closer matching of revenues and expenses.

**Deferred Charges** - The unamortized discount and expense of issuing bonds is amortized over the lives of related issues. Rate case expenses are deferred and amortized over three years as approved by the FPSC.

**Deferred Gas Costs** - The Company has a purchased gas adjustment clause which provides for the adjustment of rates charged to customers as gas costs fluctuate. These amounts are collected or refunded through adjustments to rates during subsequent annual periods.

**Inventories** - Inventories are stated at the lower of cost or market determined by an average cost method.

**Certain Risks and Uncertainties** - The financial statements are prepared in conformity with generally accepted accounting principles that require management to make estimates in measuring assets and liabilities and related revenue and expenses.

## NOTES TO THE FINANCIAL STATEMENTS ON A CONSOLIDATED BASIS

Accounting Standards Issued - the Financial Accounting Standards Board issued SFAS No. 133 regarding the reporting of comprehensive income in the full set of financial statements. The Company will adopt the requirements of the standard in its financial statements in the first quarter of 2001. The effect of the adoption of the standard pertains primarily to SFAS No. 115 regarding held for sale investments, and does not have material impact on the Company's financial statements.

2. **Regulatory Affairs:**

The Florida Public Service Commission (FPSC) approved on November 7th 2000 new rates and a new tariff for the Florida Division. Implementation of these new rates and changes to the Company's transportation program as approved in this rate docket continues. Interim rates went into effect on August 10th, 2000 with the final rates going into effect for all meter readings on or after December 7th 2000. A revised transportation program that allows all non-residential customers regardless of size to transport becomes effective in March 2001. Customers under 100,000 therms must join a pool operated by a certified gas marketing company. A pool must have a minimum of 10 customers and 100,000 therms per year. Pools may begin transporting in April 2001. Currently any individual customer over 100,000 therms per year may transport.

The Florida Division filed a petition to permit recovery of natural gas costs incurred in 2000 by sales customers that switch to transportation in 2001. In order to prevent these unrecovered purchased gas costs from being charged exclusively to future residential and non-residential sales customers, the Florida Division filed the petition in December 2000, to implement a transitional Transportation Cost Recovery mechanism providing for a surcharge to be applied to any non-residential customer moving from sales service to transportation service during 2001. The Company proposed a per therm charge of \$0.11682. The FPSC approved this cost recovery mechanism in February 2001.

The Florida Public Service Commission approved a special contract petition with a large citrus processing facility near Arcadia in DeSoto County, Florida. The agreement is for the construction of a 4" steel natural gas main extending from Florida Gas Transmission's new Phase IV pipeline in DeSoto County approximately eight miles to the citrus processing plant. The term of the contract is for 10 years with a fixed annual transportation charge. The pipeline is expected to be in service in the fall of 2001.

3. **Related Party Transactions:**

Certain expenses and other income items are incurred as a result of transactions with affiliates. At December 31, 2000 and 1999 the Company had a liability of approximately \$11,861,000 and \$6,813,000, respectively, due Chesapeake Utilities Corporation and affiliates for these transactions. During 2000 and 1999 Chesapeake Utilities Corporation charged the Company \$721,625 and \$1,671,403 for payroll related expenses and \$791,626 and \$937,820 for general corporation services, respectively.

Interest expense allocated through intercompany transactions in 2000 and 1999 was \$701,603 and \$556,361, respectively. The remaining interest expense for 2000 and 1999 of \$38,798 and \$40,066 respectively, was the result of direct interest charges for the division.

NOTES TO THE FINANCIAL STATEMENTS ON A CONSOLIDATED BASIS

4. **Income Taxes:**

The components of income tax expense are.

	<u>2000</u>	<u>1999</u>
Current federal	(\$541,271)	\$311,283
Current state	(94,251)	53,285
Deferred	957,194	18,634
Investment tax credit adjustments, net	<u>(19,523)</u>	<u>(19,523)</u>
Total income tax expense	<u>\$302,149</u>	<u>\$363,679</u>

Deferred tax expense results from timing differences in the recognition of expenses for tax and financial statement purposes. Deferred taxes relate primarily to timing differences created by depreciation and deferred revenue.

Total income tax expense differs from the amount computed by applying the federal income tax rate to pretax book income for the following reasons:

	<u>2000</u>	<u>1999</u>
Federal income tax expense at statutory rates	\$254,141	\$318,579
State income taxes, net of Federal Income Tax Benefit	25,959	34,013
Investment Tax Credit Amortization	(19,523)	(19,523)
Amortization of acquisition adjustment	11,715	12,780
Other	<u>49,214</u>	<u>17,830</u>
Total income tax expense	<u>\$321,506</u>	<u>\$363,679</u>
Income taxes paid	<u>\$205,865</u>	<u>\$229,658</u>

5. **Commitments and Contingencies:**

**Environmental:**

The Company is currently conducting investigations of a site in Winter Haven, Florida, where the Company's predecessors manufactured coal gas earlier this century.

A Contamination Assessment Report ("CAR") was submitted to FDEP on July 11, 1990. The CAR contained the results of additional investigations of conditions at the property. These investigations confirmed limited soil and groundwater impacts to the property. By letter dated March 26, 1991, FDEP directed the Company to conduct additional investigations on-site to fully delineate the vertical and horizontal extent of soil and groundwater impacts.

Additional contamination assessment activities were conducted at the site in late 1992 and early 1993. On March 25, 1993, a Contamination Assessment Report Addendum ("CAR Addendum") was delivered to FDEP. The CAR Addendum concluded that soil and groundwater impacts have been adequately delineated as a result of the additional field work. The FDEP approved the CAR and CAR Addendum in April, 1994. The Company is planning to conduct a pilot study to evaluate the feasibility of utilizing air sparge combined with soil vapor extraction as a permanent remedial option for groundwater impacts on site. The cost of the pilot study is estimated to be approximately \$25,000. Prior to implementing the pilot study, on May 10, 1996 the Company submitted to FDEP a pilot study work plan covering the proposed activities. On October 15, 1997, the Company submitted a revised pilot study work plan in response to FDEP's comments. The Company is currently awaiting FDEP's comments thereon, it is not possible to determine whether remedial action will be required by FDEP and, if so, the costs of such remediation.

The Company has spent approximately \$781,000 as of December 31, 2000, on these investigations and expects to recover these expenses, as well as any future expenses, through base rates. These costs have been accounted for as charges to accumulated depreciation. The Company requested and received from the FPSC approval to amortize through base rates \$359,659 of clean-up and removal costs incurred as of December 31, 1986. As of December 31, 1992, these costs were fully amortized. In January 1993, the Company received approval to recover through base rates approximately \$217,000 in additional costs related to the former manufactured gas plant. In a separate docket before the FPSC, the Company received approval to apply a refund of 1991 overearnings



NOTES TO THE FINANCIAL STATEMENTS ON A CONSOLIDATED BASIS

of approximately \$118,000 against the balance of unamortized environmental charges incurred as of December 31, 1992 up to the \$217,000 level previously authorized by the FPSC. As a result, the authorized environmental charges were fully amortized as of May, 1994. On February 6, 1995, in a separate docket before the FPSC, the Company received approval to resume its annual accrual to the reserve in the amount of \$71,114. On January 21, 1997 the Company received approval to apply a refund of 1994 and 1995 overearnings of approximately \$292,000 to its reserve for future environmental clean up costs. As of December 31, 1997, the Company has reserved approximately \$505,000 to offset future environmental charges. The Company filed a remedial action plan ("RAP") with the Florida Department of the Environment. The RAP included an estimate of \$635,000 to complete the remediation procedures for a portion of the site. Accordingly in December 2000, the Company accrued \$635,000, and an associated regulatory asset. Once the FDEP approves the RAP, the Company will commence with the remediation procedures per the RAP.

**FERC Order No. 636:**

The Company is served by one direct natural gas pipeline, Florida Gas Transmission ("FGT"). In connection with the issuance of Order No. 636 ("Order") by the FERC in April 1992, pipelines will incur four types of transition costs in implementing the unbundled service requirement of the Order: (1) gas supply realignment costs (the costs of renegotiating existing gas supply contracts with producers); (2) unrecovered purchased gas adjustment ("PGA") costs (gas costs remaining in the pipelines' PGA account at the time they cease the merchant function); (3) stranded costs (unrecovered costs of assets that cannot be assigned to customers of unbundled services); and (4) new facilities costs (costs of new facilities required to physically implement the Order.

FGT has incurred transition costs in the form of gas supply realignment costs and FERC has approved recovery of prudently incurred costs from FGT's customers, such as the Company, through a demand charge beginning November 1, 1993 and extending for five years. The Company estimated that its portion of the transition costs on December 31, 1996 was \$943,000. During 1997, FGT fully recovered its gas supply realignment costs, and ceased recovery of this cost through its demand charge. As a result, the Company reduced its liability and corresponding regulatory asset for transition costs to zero in April 1997.

**6. Pension Plan:**

The Company participates in Chesapeake Utilities Corporation's (CUC) defined benefit pension plan covering substantially all employees. Benefits under the plan are based on each participant's years of service and highest average compensation. The Company's funding policy provides that payments to the trustee shall be equal to the minimum funding requirements of the Employee Retirement Income Security Act of 1974.

In December 1998, the Company restructured the employee benefit plans to be competitive with employers in similar industries. Chesapeake offered current participants of the defined benefit plan the option to remain in the current plan or receive a one-time payout and enroll in an enhanced retirement savings plan. Chesapeake closed the defined benefit plan to new participants, effective December 31, 1998. Based on the election options selected by the employees, the Company reduced their accrued pension liability to \$1,283,088. Based on the change in the accrued liability, the Company was able to record a curtailment gains of \$1,224,298 in 1998. The net pension expense allocated to the Company for 2000 and 1999 was \$5,616 and \$6,069, respectively.

NOTES TO THE FINANCIAL STATEMENTS ON A CONSOLIDATED BASIS

	2000	1999
<b>Change in benefit obligation:</b>		
Benefit obligation at beginning of year	\$8,241,995	\$12,187,885
Service cost	354,031	400,921
Interest cost	605,185	688,198
Effect of curtailment	0	(16,369)
Change in discount rate	0	(896,201)
Actuarial (gain)/loss	8,153	263,562
Benefits paid	(382,830)	(4,386,001)
Benefit obligation at end of year	<u>8,826,534</u>	<u>8,241,995</u>
<b>Change in plan assets:</b>		
Fair value of plan assets at beginning of year	10,185,394	14,585,169
Actual return on plan assets	1,068,566	(13,774)
Employer contribution	0	0
Benefits paid	(382,830)	(4,386,001)
Fair value of plan assets at end of year	<u>10,871,130</u>	<u>10,185,394</u>
<b>Funded status</b>		
Unrecognized transition obligation	2,044,596	1,943,399
Unrecognized prior service cost	(81,163)	(96,267)
Unrecognized net gain	(57,754)	(62,453)
Accrued pension cost	<u>(3,015,953)</u>	<u>(2,956,318)</u>
	<u>(\$1,110,274)</u>	<u>(\$1,171,639)</u>

Assumptions.

Discount rate	7.50%	7.50%
Rate of compensation increase	4.75%	4.75%
Expected return on plan assets	8.50%	8.50%

Net periodic pension cost for the defined pension benefit plan for 2000 and 1999 include the following components.

	2000	1999
<b>Components of net periodic pension cost:</b>		
Service cost	\$354,031	\$400,921
Interest cost	605,185	688,198
Expected return on assets	(859,245)	(1,046,254)
Amortization of	0	0
Transition assets	(15,104)	(15,104)
Prior service cost	(4,699)	(4,699)
Actuarial gain	(141,533)	(118,142)
Net periodic pension cost	<u>(61,365)</u>	<u>(95,080)</u>
Curtailment gain	0	0
Amounts capitalized as construction costs	0	0
Total pension cost accruals	<u>(\$61,365)</u>	<u>(\$95,080)</u>

**Retirement Savings Plan**

The Company sponsors a Retirement Savings Plan, a 401(k) plan, that provides participants a mechanism for making contributions for retirement savings. Each participant may make pre-tax contributions up to 15% of eligible base compensation subject to IRS limitations. Based on each participant's years of service, the Company makes a contribution matching 60% or 100% of each participant's pre-tax contributions, not to exceed 6% of the participant's eligible compensation for the plan year. The Company's portion of the contributions totaled \$128,968 and \$146,881 for the years ended December 31, 2000 and 1999, respectively.

**Enhanced Retirement Saving Plan**

Effective January 1, 1999, the Company began offering an enhanced 401(k) plan to all new employees, as well as existing employees that elected to no longer participate in the defined benefit plan. The Company makes a matching contribution of each employee's pre-tax contribution of up to 6% of the eligible compensation for the year. The match is between 100% and 200% based on a combination of the employee's age and years of service. The first 100% of the funds is matched with Chesapeake common stock. The remaining match is invested in the Company's 401(k) plan according to each employee's election options.

Effective January 1, 1999 the Company offers a non-qualified supplemental employee retirement savings plan open to Company executives over a specific income threshold. Each participant received a cash only matching contribution percentage equivalent of their 401(k) match level. All contributions and matched funds earn interest income monthly. This Plan is not funded externally.

The Company's contributions to the 401(k) plans totaled \$1,231,000, and \$1,066,000 and \$495,000 for the years ended December 31, 2000, 1999 and 1998, respectively. As of December 31, 2000, there are 32,055 shares reserved to fund future contribution to the Retirement Savings Plan.

NOTES TO THE FINANCIAL STATEMENTS ON A CONSOLIDATED BASIS

7. **Other Postretirement Benefits:**

The Company participates in CUC's defined benefit postretirement health care and life insurance plan which covers substantially all natural gas and corporate employees. In the first quarter of 1994, the Company increased the amount that future retirees would be required to contribute to participate in the Company's health care program. The Florida Division's 2000 and 1999 costs under SFAS No. 106, were \$2,575 and \$3,479, respectively.

The health care inflation rate for 2000 and 1999 is assumed to be 9.0% and 8.5%, respectively. This rate is projected to gradually decrease to an ultimate rate of 5% by the year 2007. A one percentage point increase in the health care inflation rate from the assumed rate would increase the accumulated postretirement benefit obligation by approximately \$84,511 on a consolidated basis as of January 1, 2001, and would increase the aggregate of the service cost and interest cost components of net periodic other postretirement benefit cost for 2001 by approximately \$6,846.

The Florida Public Service Commission has allowed rate recovery for the accrual treatment of SFAS No. 106 costs in rate case decisions rendered for other utilities operating in their jurisdiction. However, the FPSC has indicated that they will continue to review the treatment of SFAS No. 106 costs for ratemaking purposes on a case by case basis and, if it's deemed appropriate, they could rule differently in the future. Given the favorable precedent allowed by the FPSC, the Company does not expect the standard's adoption to have a material effect on results of operations.

Net periodic post-retirement costs for 2000 and 1999 include the following components:

For the Years Ended December 31,

Components of net periodic post-retirement cost:

	2000	1999
Service cost	\$1,803	\$3,322
Interest cost	57,584	55,023
Amortization of Transition obligation	27,859	27,859
Actuarial loss	0	3,130
Net periodic post-retirement cost	<u>87,246</u>	<u>89,334</u>
Amounts capitalized as construction costs	0	0
Amounts amortized (deferred)	<u>25,028</u>	<u>25,254</u>
Total post-retirement cost accruals	<u>\$112,274</u>	<u>\$114,588</u>

The following schedule sets forth the funded status of the post-retirement health care and life insurance plan:

At December 31,	2000	1999
Change in benefit obligation:		
Benefit obligation at beginning of year	\$788,532	\$887,060
Retirees	23,708	(19,169)
Fully- eligible active employees	48,992	(59,211)
Other active	(28,697)	(20,148)
Benefit obligation at end of year	<u>\$832,535</u>	<u>\$788,532</u>
Funded status	(832,535)	(788,532)
Unrecognized transition obligation	161,577	189,436
Unrecognized net loss	61,543	23,329
Accrued post-retirement cost	<u>(\$609,415)</u>	<u>(\$575,767)</u>
ASSUMPTION		
Discount rate	7.50%	7.50%

Name of Respondent  
Chesapeake Utilities Corporation

For the Year Ended

Dec. 31, 2000

SUMMARY OF UTILITY PLANT AND ACCUMULATED PROVISIONS  
FOR DEPRECIATION, AMORTIZATION AND DEPLETION

Line No.	Item (a)	Total (b)	Electric (c)
1	UTILITY PLANT		
2	In Service		
3	101 Plant in Service (Classified)	31,051,286	
4	101.1 Property Under Capital Leases		
5	102 Plant Purchased or Sold		
6	106 Completed Construction not Classified		
7	103 Experimental Plant Unclassified		
8	104 Leased to Others		
9	105 Held for Future Use		
10	114 Acquisition Adjustments	632,831	
11	TOTAL Utility Plant (Enter Total of lines 3 through 10 )	31,684,117	
12	107 Construction Work in Progress	3,686,306	
13	Accum. Prov. for Depr., Amort., & Depl.(Includes RWIP)	(10,203,516)	
14	Net Utility Plant (Enter total of lines 11 plus 12 less line 13)	25,166,907	
15	DETAIL OF ACCUMULATED PROVISIONS FOR DEPRECIATION, AMORTIZATION AND DEPLETION		
16	In Service:		
17	108 Depreciation(Includes RWIP)	9,543,455	
18	111 Amort. and Depl. of Producing Nat. Gas Land & Land Rights		
19	111 Amort. of Underground Storage Land and Land Rights		
20	119 Amort. of Other Utility Plant	27,274	
21	TOTAL in Service (Enter Total of lines 17 through 20)	9,570,729	
22	Leased to Others		
23	108 Depreciation		
24	111 Amortization and Depletion		
25	TOTAL Leased to Others (Enter Total of lines 23 and 24)		
26	Held for Future Use		
27	108 Depreciation		
28	111 Amortization		
29	TOTAL Held for Future Use (Enter. Tot. of lines 27 and 28)		
30	111 Abandonment of Leases (Natural Gas)		
31	115 Amort. of Plant Acquisition Adjustment	632,787	
32	TOTAL Acc. Provisions (Should agree with line 14 above) (Enter Total of lines 21, 25, 29, 30, and 31)	10,203,516	

SUMMARY OF UTILITY PLANT AND ACCUMULATED PROVISIONS  
FOR DEPRECIATION, AMORTIZATION AND DEPLETION (Continued)

Gas (d)	Water (e)	Other (Specify) (f)	Other (Specify) (g)	Common (h)	Line No.
					1
					2
31,051,286					3
					4
					5
					6
					7
					8
					9
632,831					10
31,684,117					11
3,686,306					12
(10,203,516)					13
					14
25,166,907					15
					16
					17
9,543,455					18
					19
					20
27,274					21
9,570,729					22
					23
					24
					25
					26
					27
					28
					29
					30
					31
632,787					32
					33
10,203,516					

# Annual Status Report Analysis of Plant in Service Accounts

Company: Chesapeake Utilities Corporation  
For the Year Ended December 31, 2000

Acct. Account		Depr. Rate	Beginning Balance*	Additions	Retirements	Reclass.	CIAC	Adjustments & Transfers	Ending Balance*
No.	Description								
374	Land-Distribution		28,635	113	0	0	0	0	28,748
389	Land-General Land-Other		98,285	0	0	0	0	0	98,285
<b>Amortizable General Plant Assets:</b>									
301	Organization	3.00%	23,328	0	0	0	0	0	23,328
302	Franchise and Consent	3.00%	14,124	8	0	0	0	0	14,132
303	Misc Intangible Plant	10.00%	1,002,616	0	0	0	0	0	1,002,616
<b>Subtotal</b>			<b>1,166,988</b>	<b>121</b>	<b>0</b>	<b>0</b>	<b>0</b>	<b>0</b>	<b>1,167,109</b>
<b>Depreciable Assets: This schedule should identify each account/subaccount for which a separate depreciation rate has been approved by the FPSC.</b>									
375	Structures and Improvements	3.00%	233,057						233,057
376	Mains (Steel)	3.20%	10,444,399	177,443	(97,089)				10,524,753
376	Mains (Plastic)	3.50%	4,000,203	3,488,443	(3,275)				7,485,371
378	M&R Equipment-General	3.60%	574,618	20,787					595,405
379	M&R Equipment-City	3.50%	1,120,690	86,532					1,207,223
379	M&R Equipment-City (CIAC)	3.50%	(27,105)		(14,110)				(27,105)
380	Dist Plant - Services (Steel)	5.10%	952,440						938,330
380	Dist Plant - Services (CIAC)	5.50%	(129,648)		(15,761)				(129,648)
380	Dist Plant - Services (Plastic)	5.50%	2,185,932	421,924	(15,761)				2,592,094
381	Meters	4.50%	1,053,519	86,173					1,139,691
382	Meter Installations	5.50%	672,495	54,535	(9,158)				717,871
383	Regulators	3.60%	716,768	85,275	(3,052)				798,991
384	Regulator Installations	3.20%	0						0
385	M&R Equipment-Industrial	4.00%	1,403,361	59,298	(236,670)				1,225,989
385	M&R Equipment-Indus CIAC	4.00%	(147,019)						(147,019)
387	Other Equipment	16.80%	269,950	34,130					304,080
390	Structures and Improvements	2.30%	334,386	30,960					365,346
391.1	Data processing Equipment	14.30%	130,420	10,680					141,101
931.2	Office Furniture	5.80%	84,451						84,451
391.3	Office Equipment	9.40%	78,645	5,767					84,412
391.4	Vax System Equipment	16.70%	50,151						50,151
392.3	Transportation Equipment	2.90%	119,139						119,139
393	Stores Equipment	4.00%	0						0
394	Tools and Work Equipment	5.30%	77,215						77,215
396	Power Operated Equipment	7.80%	291,934	96,763					388,697
397	Communication Equipment	6.80%	60,111	72,561					132,671
398	Misc. Equipment	7.40%	48,083						48,083
392.1	Transportation Equip.	14.20%	717,514	216,316					933,830
<b>Subtotal</b>			<b>25,315,709</b>	<b>4,947,584</b>	<b>(379,116)</b>	<b>0</b>	<b>0</b>	<b>0</b>	<b>29,884,178</b>



# Annual Status Report Analysis of Plant in Service Accounts

Company: Chesapeake Utilities Corporation  
For the Year Ended December 31, 2000

Acct. No.	Account Description	Depr. Rate	Beginning Balance*	Additions	Retirements	Reclass.	CIAC	Adjustments & Transfers	Ending Balance*
(Continued)									
Capital Recovery Schedules:									
Total Account 101*									
<b>Amortizable Assets:</b>									
	1141 Acquisition Adjustment	6.66%	627,288						627,288
	114 Acquisition Adjustment-Old	N/A	5,543						5,543
	1143 Acquisition Adjustment-Inc. Tax	N/A	0						0
	<b>Subtotal</b>		632,831	0	0	0		1	632,831
<b>Total Utility Plant</b>			27,115,528	4,947,705	(379,116)	0		0	31,684,117

Note: \* The total beginning and ending balances must agree to acct. 101, Plant in Service, Line 3, Page 20.



# Annual Status Report Analysis of Entries in Accumulated Depreciation & Amortization

Company: Chesapeake Utilities Corporation  
For the Year Ended December 31, 2000

Acct. Account	Beginning	Accruals	Reclass.	Retirements	Gross Salvage	Cost of Removal	Adjustments	Transfers	Ending Balance*
<b>Amortizable General Plant Assets:</b>									
301 Organization	(20,795)	(700)							(21,495)
302 Franchise and Consent	(5,356)	(424)							(5,780)
303 Misc Intangible Plant	(405,224)	(100,262)							(505,486)
	0	0							0
	0	0							0
<b>Acquisitions</b>									
115 Cost of Acquisition	(596,113)	(31,131)							(627,244)
114 Cost of Acquisition-old	(5,543)	0							(5,543)
1152 Inc. Tax on Acquis Adjustment	0	0							0
<b>Subtotal</b>	(1,033,031)	(132,516)	0	0	0	0	0	0	(1,165,548)
<b>This schedule should identify each account/subaccount for which a separate depreciation rate has been approved by the FPSC.</b>									
375 Structures and Improvements	(44,700)	(6,992)							(51,692)
376 Mains (Steel)	(4,116,283)	(348,806)		97,089	4,405				(4,363,995)
376 Mains (Plastic)	(574,620)	(171,460)		3,275	152				(742,853)
378 M&R Equipment-General	(88,939)	(21,047)							(109,985)
379 M&R Equipment-City	(208,940)	(39,527)							(248,467)
379 M&R Equipment-City (CIAC)	0	0							0
380 Dist Plant Services (Steel)	(456,007)	(55,113)		14,110	47,368				(449,642)
380 Dist Plant - Services (CIAC)	35,201	6,218							41,420
380 Dist Plant-Services (Plastic)	(331,444)	(119,683)		15,761					(435,366)
381 Meters	(424,795)	(48,403)							(473,198)
382 Meter Installations	(147,327)	(24,104)		9,158				(575)	(162,273)
383 Regulators	(202,800)	(26,472)		3,052					(226,220)
384 Regulator Installations	0	0							0
385 M&R Equipment-Industrial	(268,305)	(56,619)		236,670					(88,255)
385 M&R Equipment-Indus CIAC	22,433	5,881							28,313
387 Other Equipment	(111,054)	(47,313)							(158,366)
390 Structures and Improvements	(84,603)	(7,958)							(92,561)
391.1 Data processing Equipment	(47,413)	(19,308)							(66,721)
391.2 Office Furniture	(34,091)	(4,886)							(39,076)
391.3 Office Equipment	(28,517)	(7,273)							(35,791)
391.4 Vax System Equipment	(21,389)	(6,375)							(27,765)
392.3 Transportation Equipment	(101,767)	(3,455)							(105,222)
393 Stores Equipment	0	0							0
394 Tools and Work Equipment	(25,857)	(4,092)							(29,950)
396 Power Operated Equipment	(125,252)	(25,601)							(150,854)
397 Communication Equipment	(40,374)	(10,548)							(50,922)
398 Misc. Equipment	(13,124)	(3,558)							(16,682)
392.1 Transportation Equip. Autos	(308,551)	(101,887)							(410,438)
<b>Subtotal</b>	(7,748,519)	(1,150,482)	0	379,116	51,925	0	0	(575)	(8,468,536)



# Annual Status Report Analysis of Entries in Accumulated Depreciation & Amortization

Company: Chesapeake Utilities Corporation

For the Year Ended December 31, 2000

Page 3 of 3

Acct. No.	Account Description	Beginning Balance*	Accruals	Reclass.	Retirements	Gross Salvage	Cost of Removal	Adjustments	Transfers	Ending Balance*
(Continued)										
Capital Recovery Schedules: This schedule should identify each approved capital recovery schedule.										
111-375	Accum Amort Structures & Imp	0	0							0
111-397	Accum Amort Comm Equipment	0	0							0
362	Gas Holders	(504,711)	(71,114)				16,184		0	(559,641)
<b>Subtotal</b>		(504,711)	(71,114)	0	0	0	16,184	0	0	(559,641)
List any other items necessary to reconcile the total depreciation and amortization accrual amount to Acct. 403, Depreciation Expense, shown on page 12.										
374	Land and Land Rights	0								0
389	Land and Land Rights	0								0
<b>Subtotal</b>		0	0	0	0	0	0	0	0	0
<b>Grand Total</b>		(9,286,261)	(1,354,113)	0	379,116	0	68,109	0	(575)	(10,193,725)

Note: \* The grand total of beginning and ending balances must agree to Line 17, Page 20.

**CONSTRUCTION WORK IN PROGRESS-GAS (Account 107)**

- |  |  |
|--|--|
| <p>1. Report below descriptions and balances at end of year of projects in process of construction (107).</p> <p>2. Show items relating to "research, development, and demonstration" projects last, under a caption Research, Development, and Demonstration (see Account 107 of the Uniform System of Accounts).</p> | <p>3. Minor projects (less than \$500,000) may be grouped.</p> |
|--|--|

Line No.	Description of Project (a)	Construction Work in Progress-Gas (Account 107) (b)	Estimated Additional Cost of Project (c)
1	Miscellaneous	\$3,686,306	\$531,883
2	Peace River		\$633,335
3	Applachee		\$695,384
4	Holmes		\$633,488
5	Standard Sands		\$722,462
6	Citrus County - Phase II		\$469,754
7			
9			
10			
11			
12			
13			
14			
15			
16			
17			
18			
19			
20			
21			
22			
23			
24			
34			
35			
36			
37			
38			
39			
40			
41	<b>TOTAL</b>	<b>\$3,686,306</b>	<b>\$3,686,306</b>

Name of Respondent  
Chesapeake Utilities Corporation

For the Year Ended

Dec. 31, 2000

CONSTRUCTION OVERHEADS-GAS

1. List in column (a) the kinds of overheads according to the titles used by the respondent. Charges for outside professional services for engineering fees and management or supervision fees capitalized should be shown as separate items.  
2. On page 30 furnish information concerning construction overheads.  
3. A respondent should not report "none" to this page if no overhead apportionments are made, but rather should explain on page 30 the accounting procedures employed

and the amounts of engineering, supervision, and administrative costs, etc. which are directly charged to construction.  
4. Enter on this page engineering, supervision, administrative,, and allowance for funds used during construction, etc. which are first assigned to a blanket work order and then prorated to construction jobs.

Line No.	Description of Overhead (a)	Total Amount Charged for the Year (b)	Total Cost of Construction to Which Overheads Were Charged (Exclusive of Overhead Charges) (c)
1	Administrative and General	-	
2	Transportation	-	
3			
4			
5			
6			
7			
8			
9			
10			
11			
12			
13			
14			
15			
16			
17			
18			
19			
20			
21			
22			
23			
24			
25			
26			
27			
28			
29			
30			
31			
32			
33			
34			
35			
36			
37			
38	TOTAL	-	

Name of Respondent  
Chesapeake Utilities Corporation

For the Year Ended

Dec. 31, 2000

GENERAL DESCRIPTION OF CONSTRUCTION OVERHEAD PROCEDURE

1. For each construction overhead explain: (a) the nature and extent of work, etc., the overhead charges are intended to cover, (b) the general procedure for determining the amount capitalized, (c) the method of distribution to construction jobs, (d) whether different rates are applied to different types of construction, (e) basis of differentiation in rates for different types of construction, and (f) whether the overhead is directly or indirectly assigned.

Total payroll charged to construction x (Total payroll taxes+Net employee benefits+Workers Comp) =  
Total Payroll

Overhead amount charged to construction (recorded by individual work order)



**PREPAYMENTS (Account 165)**

1. Report below the particulars (details) on each prepayment.

Line No.	Nature of Prepayment (a)	Balance at End of Year (In Dollars) (b)
1	Prepaid Insurance	-
2	Prepaid Rents	83337
3	Prepaid Taxes (page 41)	1,663
4	Prepaid Interest	
5	Gas Prepayments	
6	Miscellaneous Prepayments: Prepaid Postage	-
7	<b>TOTAL</b>	<b>\$85,000</b>

**EXTRAORDINARY PROPERTY LOSSES (Account 182.1)**

Line No.	Description of Extraordinary Loss [Include in the description the date of loss, the date of Commission authorization to use Account 182.1 and period of amortization (mo, yr, to mo, yr).] (a)	Total Amount of Loss (b)	Losses Recognized During Year (c)	WRITTEN OFF DURING YEAR		Balance at End of Year (f)
				Account Charged (d)	Amount (e)	
1	N/A					
2						
3						
4						
5						
6						
7						
8						
9	<b>TOTAL</b>					

**UNRECOVERED PLANT AND REGULATORY STUDY COSTS (182.2)**

Line No.	Description of Unrecovered Plant and Regulatory Study Costs [Include in the description of costs, the date of Commission authorization to use Account 182.2 and period of amortization (mo, yr, to mo, yr).] (a)	Total Amount of Charges (b)	Costs Recognized During Year (c)	WRITTEN OFF DURING YEAR		Balance at End of Year (f)
				Account Charged (d)	Amount (e)	
10	N/A					
11						
12						
13						
14						
15						
16						
17						
18						
19						
20						
21	<b>TOTAL</b>					



Name of Respondent  
Chesapeake Utilities Corporation

For the Year Ended

Dec. 31, 2000

OTHER REGULATORY ASSETS (Account 182.3)

1. Reporting below the particulars (details) called for concerning other regulatory assets which are created through the ratemaking actions of regulatory agencies (and not includible in other amounts).

2. For regulatory assets being amortized, show period of amortization in column (a).

3. Minor items (amounts less than \$25,000) may be grouped by classes.

Line No.	Description and Purpose of Other Regulatory Assets (a)	Balance Beginning of Year (b)	Debits (c)	Credits		Balance End of Year (f)
				Account Charged (d)	Amounts (e)	
1						
2						
3						
4						
5						
6						
7						
8						
9						
10						
11						
12						
13						
14						
15						
16						
17						
18						
19						
20						
21						
22						
23						
24						
25						
26						
27						
28						
29						
30						
31						
32						
33						
34						
35						
36						
37						
38						
39						
40						
41						
42						
43	TOTAL					

MISCELLANEOUS DEFERRED DEBITS (Account 186)

1. Report below the particulars (details) called for concerning miscellaneous deferred debits.  
 2. For any deferred debit being amortized, show period of amortization in column (a).  
 3. Minor items (amounts less than \$25,000) may be grouped by classes.

Line No.	Description of Miscellaneous Deferred Debit (a)	Balance at Beginning of Year (b)	Debits (c)	Account Charged (d)	Credit Amount (e)	Balance End of Year (f)
1	Conservation	\$106,182	\$380,891	400	\$461,254	\$25,819
2	FASB 109 Reg Asset Depr.	\$88,004	34,389	282,283	10,404	\$111,989
3	Deferred Development Exp	\$9,523	1,667	253-4	2,465	\$8,725
4	Cashier Over/Under	-	188	903	188	-
5	Deffered Rate Case	\$13,626	482,690		225,180	\$271,136
6	Environmental Regulatory	-	635,000			\$635,000
7						
8						
9						
10						
11						
12						
13						
14						
15						
16						
17						
18						
19						
20						
21						
22						
23						
24						
25						
26						
27						
28						
29						
30						
31						
32						
33						
34						
35						
36						
37						
38						
39						
40						
41						
42						
43						
44						
45						
46						
47	Misc. Work in Progress					
48	Deferred Regulatory Comm. Expenses					
49	(See Pages 61 - 62)					
50	TOTAL	\$217,335				\$1,052,668

ACCUMULATED DEFERRED INCOME TAXES (Account 190)

1. Report the information called for below concerning the respondent's  
 accounting for deferred income taxes.  
 2. At Other (Specify), include deferrals relating to other income and deductions.  
 3. If more space is needed, use separate pages as required.  
 4. In the space provided below, identify by amount and classification, significant items for which deferred taxes are being provided. Indicate insignificant amounts listed under Other.

Line No.	Account Subdivisions (a)	Balance at Beginning of Year (b)	CHANGES DURING YEAR				ADJUSTMENTS				Balance at End of Year (k)	
			Amounts Debited to Acct. 410.1 (c)	Amounts Credited to Acct. 411.1 (d)	Amounts Debited to Acct. 410.2 (e)	Amounts Credited to Acct. 411.2 (f)	Acct. Amount (g)	No. (h)	Acct. Amount (i)	No. (j)		
1	ELECTRIC											
2												
3												
4												
5	TOTAL Electric (Lines 2 - 4)											
6	GAS											
7	Self Insurance	73,466	-									73,466
8	Conservation	(40,959)	30,999									(9,960)
9	Purchased Gas Adjustment	19,729	(881,938)									(862,209)
10	Unbilled Revenue	59,140	114,798									173,938
11	Bad Debts	3,187	8,503									11,690
12	Capitalized Interest/Overhead	180,321	29,158									199,135
13	Pensions	101,922										101,922
14	OPRB	26,912	755									27,667
15	Bonuses	-	-									-
16	Depreciation	(67,215)	(188,804)									(256,019)
17	Mark to Market	(23,051)	10,507									(12,544)
18	Deferred Rate Case	4,902	(99,566)									(94,664)
19	Other											
20	TOTAL Gas (Lines 7 - 19)	\$338,354	194,720		(1,180,652)							(\$647,578)
21	Other (Specify)											
22	TOTAL (Account 190) (Enter Total of lines 5,20 & 21)	\$338,354	\$194,720		(\$1,180,652)							(\$647,578)

NOTES

Name of Respondent  
Chesapeake Utilities Corporation

For the Year Ended

Dec. 31, 2000

SECURITIES ISSUED OR ASSUMED AND  
SECURITIES REFUNDED OR RETIRED DURING THE YEAR

1. Furnish a supplemental statement giving a brief description of security financing and refinancing transactions during the year and the accounting for the securities, discounts, premiums, expenses, and related gains or losses. Identify as to Commission authorization numbers and dates.

2. Furnish particulars (details) showing fully the accounting for the total principal amount, par value, or stated value of each class and series of security issued, assumed, retired, or refunded and the accounting for premiums, discounts, expenses, and gains or losses relating to the securities. Set forth the facts of the accounting clearly with regard to redemption premiums, unamortized discounts, expenses, and gains or losses relating to securities retired or refunded, including the accounting for such amounts carried in the respondent's accounts at the date of the refunding or refinancing transactions with respect to securities previously refunded or retired.

3. Included in the identification of each class and series of security, as appropriate, the interest or dividend rate,

nominal date of issuance, maturity date, aggregate principal amount, par value or stated value, and number of shares. Give also the issuance of redemption price and name of the of the principal underwriting firm through which the security transactions were consummated.

4. Where the accounting for amounts relating to securities refunded or retired is other than that specified in General Instruction 17 of the Uniform System of Accounts, give references to the Commission authorization for the different accounting and state the accounting method.

5. For securities assumed, give the name of the company for which the liability on the securities was assumed as well as particulars (details) of the transactions whereby the respondent undertook to pay obligations of another company. If any unamortized discount, premiums, expenses, and gains or losses were taken over onto the respondent's books, furnish details of these amounts with amounts relating to refunded securities clearly earmarked.

N/A

LONG-TERM DEBT (Accounts 221, 222, 223, and 224)

1. Report by balance sheet Account the particulars (details) concerning long-term debt included in Accounts 221, Bonds, 222, Reacquired Bonds, 223, Advances from Associated Companies, and 224, Other Long-Term Debt. If information to meet the stock exchange reporting requirement outlined in column (a) is available from the SEC 10-K Report Form Filing, a specific reference to the report form (i.e. year and company title) may be reported in column (a) provided the fiscal years for both the 10-K report and this report are compatible.
2. For bonds assumed by the respondent, include in column (a) the name of the issuing company as well as a description of the bonds.
3. For advances from Associated Companies, report separately advances on notes and advances on open accounts. Designate demand notes as such. Include in column (a) names of associated companies from which advances were received.
4. For receiver's certificates, show in column (a) the name of the court and date of court order under which such certificates were issued.
5. In a supplemental statement, give explanatory particulars (details) for Accounts 223 and 224 of net changes

- during the year. With respect to long-term advances, show for each company: (a) principal advanced during year, (b) interest added to principal amount, and (c) principal repaid during year. Give Commission authorization numbers and dates.
6. If the respondent has pledged any of its long-term debt securities, give particulars (details) in a footnote, including name of the pledgee and purpose of the pledge.
  7. If the respondent has any long-term securities which have been nominally issued and are nominally outstanding at end of year, describe such securities in a footnote.
  8. If interest expense was incurred during the year on any obligations retired or reacquired before end of year, include such interest in column (f). Explain in a footnote any difference between the total of column (f) and the total of Account 427, Interest on Long-Term Debt and Account 430, Interest on Debt to Associated Companies.
  9. Give particulars (details) concerning any long-term debt authorized by a regulatory Commission but not yet issued.

Line No.	Class and Series of Obligation and Name of Stock Exchange (a)	Nominal Date of Issue (b)	Date of Maturity (c)	Original Amount Issued (d)	INTEREST FOR YEAR		Total Amount Outstanding (g)
					Rate (in %) (e)	Amount (f)	
1							
2	1st Mortgage Bond Series "G"	12/15/85	01/01/98				-
3	1st Mortgage Bond Series "I"	12/29/89	12/15/04		9.37	212,512	2,268,000
4	Convertible Debentures	02/15/89	03/01/14		8.25	286,358	3,471,000
5	Senior Note	01/15/93	02/01/08		7.97	557,900	7,000,000
6	Senior Note 2	10/01/95	10/01/10		6.91	565,364	8,181,818
7	Senior Note 3	12/15/97	01/01/12		6.85	685,000	10,000,000
8	Senior Note 4	12/15/01	01/01/15		7.83	1,566,000	20,000,000
9	Skipjack Inc.	09/10/86	02/01/98		12.00	-	-
10							
11	Allocation to Florida Division	403,781					
12	Allocation to Other Jurisdictions	3,469,352					
13							
14	Total Chesapeake Utilities Corp.	3,873,133					
15							
16							
17							
18							
19							
20							
21							
22							
23							
24							
25							
26							
27							
28	TOTAL					3,873,133	50,920,818

Name of Respondent  
Chesapeake Utilities Corporation

For the Year Ended

Dec. 31, 2000

UNAMORTIZED DEBT EXPENSE, PREMIUM AND DISCOUNT ON LONG-TERM DEBT (Accounts 181, 225, 226)

1. Report under separate subheadings for Unamortized Debt Expense, Unamortized Premium on Long-Term Debt and Unamortized Discount on Long-Term Debt, particulars (details) of expense, premium or discount applicable to each class and series of long-term debt.

2. Show premium amounts by enclosing the figures in parentheses.

3. In column (b) show the principal amount of bonds or other long-term debt originally issued.

4. In column (c) show the expense, premium or discount with respect to the amount of bonds or other long-term debt originally issued.

5. Furnish in a footnote particulars (details) regarding the treatment of unamortized debt expense, premium or discount associated with issues redeemed during the year. Also, give in a footnote the date of the Commission's authorization of treatment other than as specified by the Uniform System of Accounts.

6. Identify separately indisposed amounts applicable to issues which were redeemed in prior years.

7. Explain any debits and credits other than amortization debited to Account 428, Amortization of Debt Discount and Expense, or credited to Account 429, Amortization of Premium on Debt - Credit.

Line No.	Designation of Long-Term Debt (a)	Principal Amount of Debt issued (b)	Total Expense Premium or Discount (c)	Amortization Period		Balance at Beginning of Year (f)	Debits (Credits) During Year (g)	Balance at End of Year (h)
				Date From (d)	Date To (e)			
1	N/A							
2								
3								
4								
5								
6								
7								
8								
9								
10								
11								
12								
13								
14								
15								
16								
17								
18								
19								
20								
21								
22								
23								
24								
25								
26								
27								
28								
29								
30								
31								
32								
33								
34								
35								
36								
37								
38								
39								
40								
41								
42								
43								
44								
45								
46								

**UNAMORTIZED LOSS AND GAIN ON REACQUIRED DEBT (Accounts 189, 257)**

1. Report under separate subheadings for Unamortized Loss and Unamortized Gain on Recquired Debt, particulars (details) of gain and loss, including maturity date, on reacquisition applicable to each class and series of long-term debt. If gain or loss resulted from a refunding transaction, include also the maturity date of the new issue.  
 2. In column (c) show the principal amount of bonds or other long-term debt reacquired.  
 3. In column (d) show the net gain or net loss realized on each debt reacquisition as computed in accordance with

General Instruction 17 of the Uniform Systems of Accounts.  
 4. Show loss amounts by enclosing the figures in parentheses.  
 5. Explain in a footnote any debits and credits other than amortization debited to Account 428.1, Amortization of Loss on Recquired Debt, or credited to Account 429.1, Amortization of Gain on Recquired Debit-Credit.

Line No.	Designation of Long-Term Debt (a)	Date Reacquired (b)	Principal of Debt Reacquired (c)	Net Gain or Net Loss (d)	Balance at Beginning of Year (e)	Balance at End of Year (f)
1	N/A					
2						
3						
4						
5						
6						
7						
8						
9						
10						
11						
12						
13						
14						
15						
16						
17						
18						
19						
20						
21						
22						
23						
24						
25						
26						
27						
28						
29						
30						
31						
32						
33						
34						
35						
36						
37						
38						
39						
40						
41						
42						
43						
44						
45						
46						

RECONCILIATION OF REPORTED NET INCOME WITH TAXABLE INCOME  
FOR FEDERAL INCOME TAXES

1. Report the reconciliation of reported net income for the year with taxable income used in computing Federal income tax accruals and show computation of such tax accruals. Include in the reconciliation, as far as practicable, the same detail as furnished on Schedule M1 of the tax return for the year. Submit a reconciliation even though there is no taxable income for the year. Indicate clearly the nature of each reconciling amount.

2. If the utility is a member of a group which files a consolidated Federal tax return, reconcile reported net income with taxable net income as if a separate return were to be filed, indicating, however, intercompany amounts to be eliminated in such a consolidated return. State names of group members, tax assigned to each group member, and basis of allocation, assignment, or sharing of the consolidated tax among the group members.

Line No.	Particulars (Details) (a)	Amount (b)
1	Net Income for the Year (Page 14)	\$447,062
2	Reconciling Items for the Year	
3		
4	Taxable Income Not Reported on Books	
5	Add Back Federal Taxes	1,096,057
6	Add Back ITC Amortization and Deferred Tax Expense	(985,528)
7	Deductions Recorded on Books Not Deducted for Return	
8		3,124,062
9		
10		
11		
12		
13	Income Recorded on Books Not Included in Return	
14		
15		
16		
17		
18		
19		
20		
21	Deductions on Return Not Charged Against Book Income	
22		(549,462)
23		
24		
25		
26	Tax True Up	(599)
27		
28		
29		
30	Federal Tax Net Income	\$3,131,592
31	Show Computation of Tax	
32	Federal Taxable Income	\$3,131,592
33	x Tax Rate	x.35
34		-----
35	Current Federal Income Tax	\$1,096,057
36		=====
37		



TAXES ACCRUED, PREPAID AND CHARGED DURING YEAR

Name of Taxing Authority	Federal Income	State Income	Real Property	Tangible Personal Property	Intangible Personal Property	FICA, SUTA, FUTA	Gross Receipts	Regulatory Assessment Fees	Environmental, Excise	Sales and Other	Total
1 TAXES (ACCRUED)/PREPAID BEG. OF YEAR	152,811	22,203	0	0	0	880	34,645	38,818	(145)	19,715	224,520
2 Taxes Charged During Year	(550,596)	(94,251)	0	330,000	0	0	0	0	0	0	(644,847)
3 Accrued State and Federal Income Tax											0
4 State Sales Tax							422,293				422,293
5 State Utility Tax								100,278			100,278
6 State Regulatory Tax									203		203
7 Payroll Tax											0
8 Property Tax				330,000							330,000
9 Occupational Tax											0
10 Other and Excise Tax											0
11											0
12 TOTAL TAXES CHARGED DURING YEAR (Lines 3-11)	(550,596)	(94,251)	0	330,000	0	0	422,293	100,278	203	0	207,927
13 Taxes Paid During Year	247,370	(45,000)									202,370
14 Accrued State and Federal Income Tax											(247,303)
15 State Sales Tax							(409,314)				(409,314)
16 State Utility Tax								(89,698)			(89,698)
17 State Regulatory Tax						(880)					(880)
18 Payroll Tax				(334,838)							(334,838)
19 Property Tax											0
20 Occupational Tax											0
21 Other and Excise Tax									(82)		(82)
22											0
23 TOTAL TAXES PAID DURING YEAR (Lines 14-22)	247,370	(45,000)	0	(334,838)	0	(880)	(409,314)	(89,698)	(82)	(247,303)	(879,745)
24 Adjustments (list)											0
25 Sales Tax Accrued										245,097	245,097
26 Other	(152,811)	(22,203)		33,316		0				0	(141,698)
27 TOTAL ADJUSTMENTS (Lines 24-26)	(152,811)	(22,203)	0	33,316	0	0	0	(394)	0	245,097	103,005
28 TAXES (ACCRUED)/PREPAID END OF YEAR (Lines 1+12-23+27)	(303,226)	(139,251)	0	28,478	0	(0)	47,624	49,004	(24)	17,509	(299,886)

DISTRIBUTION OF TAXES CHARGED

	Federal Income	State Income	Real Property	Tangible Personal Property	Intangible Personal Property	FICA, SUTA, FUTA	Gross Receipts	Regulatory Assessment Fees	Environmental, Excise	Other	Total
29											
30 Electric (Account 408.1, 409.1)											
31 Gas (Account 408.1, 409.1)	555,021	95,008	0	306,338		138,216	422,293	99,415	72		1,616,363
32 Other Utility Departments (408.1, 409.1)											
33 Other Income and Deductions (408.2, 409.2)											
34 Extraordinary Items (Account 409.3)											
35 Other Utility Operating Income (408.1, 409.1)											
36 Adjust. to Retained Earnings (Account 439)											
37 CWIP (Account 207)											
38 Other (list) 408-Franchise (1)											
39 4265-Non-Operating Income Tax	4,425	757	0							286,152	286,152
40 Income Tax True-Up		0								0	0
41 Misc. Adjustments								(576)			(576)
42 TOTAL (Should equal Lines 12+/-Line 27, if applicable)	559,446	95,765	0	306,338	0	138,216	422,293	98,839	72	286,152	1,907,121

(1) liability acct is 241, not 236, and is not shown above

Name of Respondent  
Chesapeake Utilities Corporation

For the Year Ended

Dec. 31, 2000

**ACCUMULATED DEFERRED INVESTMENT TAX CREDITS (Account 255)**

Report below the information applicable to Account 255. Where appropriate, segregate the balances and transactions by utility and nonutility operations. Explain by footnote any correction adjustment to the account balance shown in column (g). Include in column (i) the average period over which the tax credits are amortized.

Line No.	Account Subdivisions (a)	Balance at Beginning of Year (b)	Deferred for Year		Adjustments (g)	Balance at End Year (h)	Average Period of Allocation to Income (i)
			Acct. No. (c)	Amount (d)			
			Allocations to Current Year's Income				
			Acct. No. (e)	Amount (f)			
1	Gas Utility						
2	3%						
3	4%						
4	7%						
5	10%	(328,003)	420	19,523		(308,480)	
6							
7							
8	TOTAL	(328,003)		19,523		(308,480)	
9	Other List separately and show 3%, 4%, 7%, 10% and TOTAL						

**Notes**

1. Use this space to explain any adjustments made in this period.
2. Use this space to list by year generated and by amount any ITCs that have not been utilized and have not expired by the end of the period.

10  
11  
12  
13  
14  
15  
16  
17  
18  
19  
20  
21  
22

MISCELLANEOUS CURRENT AND ACCRUED LIABILITIES (Account 242)

1. Describe and report the amount of other current and accrued liabilities at the end of year.

2. Minor items (less than \$50,000) may be grouped under appropriate title.

Line No.	Item (a)	Balance at End of Year (b)
1	Accrued Audit Fees	-
2	Accrued Flex Rate Liability	100,087
3	Accrued Legal	-
4	Accrued Bonuses	31,633
5	Accrued Payroll	-
6	Accrued Other Expenses	8,555
7		
8		
9		
10		
11		
12		
13		
14		
15		
16		
17		
18	TOTAL	\$140,275

OTHER DEFERRED CREDITS (Account 253)

1. Report below the particulars (details) called for concerning other deferred credits.

amortization.

2. For any deferred credit being amortized, show the period of

3. Minor Items (less than \$25,000) may be grouped by classes.

Line No.	Description of Other Deferred Credit (a)	Balance Beginning of Year (b)	DEBITS		Credits (e)	Balance at End of Year (f)
			Contra Account (c)	Amount (d)		
1	109 Reg Liab. Depr	60,473	282,283	7,149	-	53,324
2	109 Reg Liab ITC	215,906	283-255	215,906	-	-
3	Accrued 636 TCR Liab.	-	1865-4	-	-	-
4	Accrued Pension	-	92607	-	-	-
5	Accrued OPRB	69,765	926015	467	2,425	71,723
6	Unearned Interest Income	199,808	419	165,320	-	34,488
7	Accrued Benefits	-	92609	-	-	-
8	Other Deferred	-		113,400	102,450	(10,950)
9						
10						
11						
12						
13						
14						
15						
16						
17						
18						
19						
20						
21	TOTAL	\$545,952		\$502,242	\$104,875	\$148,585

ACCUMULATED DEFERRED INCOME TAXES (Accounts 281, 282, 283)

Line No.	Description	Balance at Beginning of Year	Changes During Year				Adjustments		Balance at End of Year
			Amounts Debited to Account 410.1	Amounts Credited to Account 411.1	Amounts Debited to Account 410.2	Amounts Credited to Account 411.2	Debits Account No.	Credits Account No.	
1	ACCOUNT 281 - ACCELERATED AMORTIZATION PROPERTY								
3	Electric								
4	Gas								
5	Other								
6									
7	TOTAL ACCOUNT 281 (Lines 3 thru 6)								
9	ACCOUNT 282 - OTHER PROPERTY								
10	Electric								
11	Gas Depreciation Related	(1,436,577)	231,717			var	520,567	var	0
12	Other								
13									
14	TOTAL ACCOUNT 282 (Lines 10 thru 13)	(1,436,577)	231,717			var	520,567	var	0
15	ACCOUNT 283 - OTHER								
17	Electric								
18	Gas								
19	Other								
20									
21	TOTAL ACCOUNT 283 - OTHER (Lines 17 thru 20)								
22									
23	ELECTRIC								
24	Federal Income Tax								
25	State Income Tax								
26									
27	TOTAL ELECTRIC (Lines 24 thru 26)								
28									
29	GAS								
30	Federal Income Tax	(1,274,857)	81,101	(416,119)			(30,847)		0
31	State Income Tax	(161,720)	12,744	(65,390)			(18,116)		0
32									
33	TOTAL GAS (Lines 30 thru 32)	(1,436,577)	93,845	(481,509)			(48,963)		0
34									
35	OTHER								
36	Federal Income Tax								
37	State Income Tax								
38									
39	TOTAL OTHER (Lines 36 thru 38)								
40									
41	TOTAL (Total of lines 7, 14, 21 and Lines 27, 33, 39)	(1,436,577)	93,845	(481,509)			(48,963)		0
42									

NOTES

OTHER REGULATORY LIABILITIES (Account 254)

1. Reporting below the particulars (details) called for concerning other regulatory liabilities which are created through the ratemaking actions of regulatory agencies (and not includable in other amounts).  
2. For regulatory liabilities being amortized, show period of amortization in column (a).

3. Minor items (5% of the Balance at End of Year for Account 254 or amounts less than \$50,000, whichever is less) may be grouped by classes.

Line No.	Description and Purpose of Other Regulatory Liabilities (a)	Balance Beginning of Year (b)	Debits		Credits (d)	Balance End of Year (e)
			Contra Account (b)	Amount (c)		
1						
2	Environmental regulatory liability	0				635,000
3						
4						
5						
6						
7						
8						
9						
10						
11						
12						
13						
14						
15						
16						
17						
18						
19						
20						
21						
22						
23						
24						
25						
26						
27						
28						
29						
30						
31						
32						
33						
34						
35						
36						
37						
38						
39						
40						
41	TOTAL					

**GAS OPERATING REVENUES (Account 400)**

1. Report below natural gas operating revenues for each prescribed account in total.
2. Natural gas means either natural gas unrixed or any mixture of natural and manufactured gas.
3. Report number of customers, columns (f) and (g), on the basis of meters, except that where separate meter readings are added for billing purposes, one customer should be counted for each group of meters added. The average number of customers means the average of twelve figures at the close of each month.
4. Report quantities of natural gas sold in therms (14.73 psia at 60 F).
5. Report gas service revenues and therms sold by rate schedule.

Line No.	Title of Account (a)	OPERATING REVENUES	
		Amount for Year (b)	Amount for Previous Year (c)
1	<b>GAS SERVICE REVENUES</b>		
2	<b>FIRM SALES SERVICE</b>		
3	480 Residential		
4	481 Commercial	3,189,932	2,666,861
5	481 Industrial	4,748,629	4,053,900
6	481	3,057,703	2,987,601
7	481		
8	481		
9	<b>INTERRUPTIBLE SALES SERVICE</b>		
10	481 Industrial Interruptible		
11	481	3,634,847	2,888,677
12	<b>FIRM TRANSPORTATION SERVICE</b>		
13	489 Firm Transportation		
14	489 LVCTS	3,643,391	2,038,316
15	489	559,632	674,699
16	<b>INTERRUPTIBLE TRANSPORTATION SERVICE</b>		
17	489 Interruptible Transportation		
18	489 Public Authority Transportation	259,306	184,020
19	482 Other Sales to Public Authorities	38,758	31,342
20	484 Flex Rate - Refund/Surplus	-	-
21	TOTAL Sales to Ultimate Consumers	84,200	58,973
22	483 Sales for Resale	19,216,398	15,584,389
23	Off-System Sales	652,897	884,656
24	TOTAL Nat. Gas Service Revenues	19,869,295	16,469,045
25	TOTAL Gas Service Revenues	19,869,295	16,469,045
26	<b>OTHER OPERATING REVENUES</b>		
27	485 Intracompany Transfers		
28	487 Forfeited Discounts		
29	488 Misc. Service Revenues		
30	489 Rev. from Trans. of Gas of Others (not included in above rate schedules)	612,965	809,887
31	493 Rent from Gas Property		
32	494 Interdepartmental Rents		
33	495 Other Gas Revenues		
34	Initial Connection		
35	Reconnect for Cause		
36	Collection in lieu of disconnect		
37	Returned Check		
38	Other Unbilled and Other		
39	495.1 Overrecoveries Purchased Gas	93,976	14,999
40	TOTAL Other Operating Revenues	706,941	824,886
41	TOTAL Gas Operating Revenues	20,576,236	17,293,931
42	(Less) 496 Provision for Rate Refunds	-	-
43	TOTAL Gas Operating Revenues Net of Provision for Refunds	20,576,236	17,293,931
44	Sales for Resale		
45	Other Sales to Public Authority		
46	Interdepartmental Sales		
47	TOTAL	\$20,576,236	\$17,293,931

GAS OPERATING REVENUES (ACCOUNT400) (Continued)

6. If increases or decreases from previous year (columns (c),(e), and (g)), are not derived from previously reported figures, explain any inconsistencies in a footnote.  
7. See page 9, Important Changes During Year, for important new territory added and important rate increases or decreases.

THERMS OF NATURAL GAS SOLD		AVG. NO. OF NAT. GAS CUSTOMERS PER MO.		Line No.
Quantity for Year (d)	Quantity for Previous Year (e)	Number for Year	Number for Previous Year (g)	
				1
				2
2,375,137	2,109,072	9,056	8,745	3
6,154,096	6,154,239	834	825	4
4,952,377	6,074,056	21	23	5
				6
				7
				8
				9
7,337,908	8,770,946	9	12	10
				11
				12
44,607,081	34,523,810	26	22	13
47,741,070	55,442,440	3	3	14
				15
				16
4,594,640	4,280,196	4	2	17
-	-			18
-	-			19
				20
117,762,309	117,354,759			21
1,105,290	2,071,570	1	1	22
118,867,599	119,426,329	9,954	9,633	23
				24
				25
				26
				27
				28
				29
				30
				31
				32
				33
				34
				35
				36
				37
				38
				39
				40
				41
				42
				43
				44
				45
				46
				47
				48

NOTES

The transportation customers are already included as customers in the sales category.





Name of Respondent		For the Year Ended	
Chesapeake Utilities Corporation		Dec. 31, 2000	
GAS OPERATION AND MAINTENANCE EXPENSES			
If the amount for previous year is not derived from previously reported figures, explain in footnotes.			
Line No.	Account	Amount for Current Year	Amount for Previous Year
1	1. PRODUCTION EXPENSES		
2	A. Manufactured Gas Production		
3	B. TOTAL Natural Gas Prod. and Gathering (Enter Total of Accts. 750 - 769)		
4	C. TOTAL Products Extraction (Enter Total of Accounts 770 through 791)		
5	D. TOTAL Exploration and Development (Enter Total of Accts. 795 through 798)		
6	E. Other Gas Supply Expenses		
7	Operation		
8	800 Natural Gas Well Head Purchases		
9	800.1 Natural Gas Well Head Purchases, Intracompany Transfers		
10	801 Natural Gas Field Line Purchases		
11	802 Natural Gas Gasoline Plant Outlet Purchases		
12	803 Natural Gas Transmission Line Purchases		
13	804 Natural Gas City Gate Purchases - Total Purchases	14,708,171	9,006,210
14	804.1 Liquefied Natural Gas Purchases		
15	805 Other Gas Purchases		
16	(Less) 805.1 Purchased Gas Cost Adjustments	(2,286,295)	144,886
17	TOTAL Purchased Gas (Enter Total of Lines 8 to 16)	12,421,876	9,151,096
18	806 Exchange Gas		
19	Purchased Gas Expenses		
20	807.1 Well Expenses--Purchased Gas		
21	807.2 Operation of Purchased Gas Measuring Stations		
22	807.3 Maintenance of Purchased Gas Measuring Stations		
23	807.4 Purchased Gas Calculations Expenses		
24	807.5 Other Purchased Gas Expenses		
25	TOTAL Purchased Gas Expenses (Enter Total of lines 20 through 24)		
26	808.1 Gas Withdrawn from Storage--Debit		
27	(Less) 808.2 Gas Delivered to Storage--Credit		
28	809.1 Withdrawals of Liquefied Natural Gas for Processing--Debit		
29	(Less) 809.2 Deliveries of Natural Gas for Processing--Credit		
30	Gas Used in Utility Operations--Credit		
31	810 Gas Used for Compressor Station Fuel--Credit		
32	811 Gas Used for Products Extraction--Credit		
33	812 Gas Used for Other Utility Operations--Credit	1,364	(871)
34	TOTAL Gas Used in Utility Operations--Credit (Lines 31 through 33)	1,364	(871)
35	813 Other Gas Supply Expenses		
36	TOTAL Other Gas Supp. Exp. (Total of Lines 17,18,25,26 through 29,34,35)	12,423,240	9,150,225
37	TOTAL Production Expenses (Enter Total of Lines 2,3,4,5 and 36)	12,423,240	9,150,225
38	2. NATURAL GAS STORAGE, TERMINALING AND PROCESSING EXPENSES		
39	A. TOTAL Underground Storage Expenses (Total of Accounts 814 through 837)		
40	B. TOTAL Other Storage Expenses (Enter Total of Accounts 840 through 843.9)		
41	C. TOTAL Liquefied Nat Gas Terminaling & Processing Expenses (Enter Total of Accounts 844.1 through 847.8)		
42	TOTAL Natural Gas Storage (Enter Total of lines 39, 40, and 41)		
43	3. TRANSMISSION EXPENSES		
44	TOTAL Transmission Expenses (Enter Total of Accounts 850 through 867)		
45			
46			

Name of Respondent		For the Year Ended	
Chesapeake Utilities Corporation		Dec. 31, 2000	
GAS OPERATION AND MAINTENANCE EXPENSES (Continued)			
Line No.	Account	Amount for Current Year	Amount for Previous Year
47	4. DISTRIBUTION EXPENSES		
48	Operation		
49	870 Operation Supervision and Engineering	220,265	150,517
50	871 Distribution Load Dispatching	13,693	85,898
51	872 Compressor Station Labor and Expenses		
52	873 Compressor Station Fuel and Power		
53	874 Mains and Services Expenses	207,302	198,107
54	875 Measuring and Regulating Station Expenses--General	1,903	
55	876 Measuring and Regulating Station Expenses--Industrial	37,999	
56	877 Measuring and Regulating Station Expenses--City Gate Check Sta.	9,297	22,363
57	878 Meter and House Regulator Expenses	217,372	294,719
58	879 Customer Installations Expenses	191,896	372,266
59	880 Other Expenses	83,814	78,262
60	881 Rents	99,996	30,447
61	TOTAL Operation (Enter Total of lines 49 through 60)	1,083,538	1,232,579
62	Maintenance		
63	885 Maintenance Supervision and Engineering		
64	886 Maintenance of Structures and Improvements	-	-
65	887 Maintenance of Mains	111,128	98,330
66	888 Maintenance of Compressor Station Equipment		
67	889 Maintenance of Meas. and Reg. Sta. Equip.--General	21,122	12,217
68	890 Maintenance of Meas. and Reg. Sta. Equip.--Industrial	47,551	56,213
69	891 Maintenance of Meas. and Reg. Sta. Equip.--City Gate Check Sta.	21,182	20,388
70	892 Maintenance of Services	20,364	32,484
71	893 Maintenance of Meters and House Regulators	(3,871)	69,264
72	894 Maintenance of Other Equipment	30,244	18,296
73	TOTAL Maintenance (Enter Total of Lines 63 through 72)	247,720	307,192
74	TOTAL Distribution Expenses (Enter Total of Lines 61 and 73)	1,331,257	1,539,771
75	5. CUSTOMER ACCOUNTS EXPENSES		
76	Operation		
77	901 Supervision	31,917	85,227
78	902 Meter Reading Expenses	63,478	90,591
79	903 Customer Records and Collection Expenses	386,428	344,215
80	904 Uncollectible Accounts	30,237	25,250
81	905 Miscellaneous Customer Accounts Expenses	-	-
82	TOTAL Customer Accounts Expenses (Enter Total of Lines 77 through 81)	512,060	545,283
83	6. CUSTOMER SERVICE AND INFORMATIONAL EXPENSES		
84	Operation		
85	907 Supervision	-	-
86	908 Customer Assistance Expenses	2,356	-
87	909 Informational and Instructional Expenses	-	27,877
88	910 Miscellaneous Customer Service and Informational Expenses	-	-
89	TOTAL Customer Service and Informational Expenses (Enter Total of Lines 85 through 88)	2,356	27,877
90	7. SALES EXPENSES		
91	Operation		
92	911 Supervision		
93	912 Demonstrating and Selling Expenses	472,398	337,341
94	913 Advertising Expenses	28,589	18,330
95	916 Miscellaneous Sales Expenses	-	2,817
96	9094 Community Affairs	-	-
97	TOTAL Sales Expenses (Enter Total of lines 92 through 95)	500,988	358,488

GAS OPERATION AND MAINTENANCE EXPENSES (Continued)

Line No.	Account	Amount for Current Year	Amount for Previous Year
98	<b>8. ADMINISTRATIVE AND GENERAL EXPENSES</b>		
99	Operation		
100	920 Administrative and General Salaries	685,750	556,690
101	921 Office Supplies and Expenses	337,620	310,590
102	(Less) (922) Administrative Expenses Transferred--Cr.	-	(58,809)
103	923 Outside Services Employed	85,550	333,974
104	924 Property Insurance	3,973	10,674
105	925 Injuries and Damages	146,808	141,286
106	926 Employee Pensions and Benefits	406,067	392,630
107	927 Franchise Requirements	-	-
108	928 Regulatory Commission Expenses	423	3,120
109	(Less) (929) Duplicate Charges--Cr.	-	-
110	930.1 General Advertising Expenses	23,859	-
111	930.2 Miscellaneous General Expenses	57,682	76,173
112	931 Rents	46,282	54,163
113	<b>TOTAL Operation (Enter Total of lines 100 through 112)</b>	<b>1,794,014</b>	<b>1,820,491</b>
114	Maintenance		
115	935 Maintenance of General Plant	2,236	22,104
116	<b>TOTAL Administrative and General Exp. (Total of lines 113 and 115)</b>	<b>1,796,251</b>	<b>1,842,595</b>
117	<b>TOTAL Gas O. and M. Exp. (Lines 37, 42, 44, 74, 82, 89, 96, and 116)</b>	<b>16,566,152</b>	<b>13,464,239</b>
118			
119			
120			
121			
122			
123			
124			
125			
126			
127			
128			
129			
130	<b>NUMBER OF GAS DEPARTMENT EMPLOYEES</b>		
131			
132	1. The data on number of employees should be reported for payroll period ending nearest to October 31,		
133	or any payroll period ending 60 days before or after October 31.		
134	2. If the respondent's payroll for the reporting period includes any special construction personnel,		
135	include such employees on line 3, and show the number of such special construction employees in a footnote.		
136	3. The number of employees assignable to the gas department from joint functions of combination utilities		
137	may be determined by estimate, on the basis of employee equivalents. Show the estimated number of		
138	equivalent employees attributed to the gas department from joint functions.		
139			
140	1. Payroll Period Ended (Date)	December 31, 2000	
141	2. Total Regular Full-Time Employees	60	
142	3. Total Part-Time and Temporary Employees	-	
143	4. Total Employees	60	
144			
145			
146			
147			

GAS PURCHASES (Accounts 800, 800.1, 801, 802, 803, 804, 804.1, 805, 805.1)

1. Provide totals for the following accounts:

- 800 Natural Gas Well Head Purchases
- 800.1 Natural Gas Well Head Purchases, Intra-company Transfers
- 801 Natural Gas Field Line Purchases
- 802 Natural Gas Gasoline Plant Outlet Purchases
- 803 Natural Gas Transmission Line Purchases
- 804 Natural Gas City Gate Purchases
- 804.1 Liquefied Natural Gas Purchases
- 805 Other Gas Purchases
- 805.1 Purchase Gas Cost Adjustments

The totals shown in columns (b) and (c) should agree with the books of account. Reconcile any differences in a footnote.

2. State in column (b) the volume of purchased gas as finally measured for the purpose of determining the amount payable for the gas. Include current year receipts of makeup gas that was paid for in prior years.

3. State in column (c) the dollar amount (omit cents) paid and previously paid for the volumes of gas shown in column (b).

4. State in column (d) the average cost per Therm to the nearest hundredth of a cent. (Average means column (c) divided by column (b) multiplied by 100.)

Line No.	Account Title (a)	Gas Purchased-Therms (14.73 psia 60 F) (b)	Cost of Gas (In dollars) (c)	Average Cost Per Therm (To nearest .01 of a cent) (d)
	Producer/Marketer			
1	800 - Natural Gas Well Head Purchases	20,819,518	\$14,221,224	\$0.6831
2	800.1 - Natural Gas Well Head Purchases, Intra-company Transfers			
3	801 - Natural Gas Field Line Purchases			
4	802 - Natural Gas Gasoline Plant Outlet Purchases			
5	803 - Natural Gas Transmission Line Purchases			
6	804 - Natural Gas City Gate Purchases			
7	804.1 - Liquefied Natural Gas Purchases			
8	805 - Other Gas Purchases			
9	805.1 - Purchased Gas Cost Adjustments	-	(2,286,295)	
10	TOTAL (Enter Total of lines 1 through 9)	20,819,518	\$11,934,929	\$0.5733

NOTES TO GAS PURCHASES

GAS USED IN UTILITY OPERATIONS - CREDIT (Accounts 810, 811, 812)

1. Report below particulars (details) of credits during the year to Accounts 810, 811 and 812 which offset charges to operating expenses or other accounts for the cost of gas from the respondent's own supply.  
2. Natural gas means either natural gas unmixed, or any mixture of natural and manufactured gas.  
3. If the reported Therms for any use is an estimated quantity, state such fact in a footnote.

4. If any natural gas was used by the respondent for which a change was not made to the appropriate operating expense or other account, list separately in column (c) the Therms of gas used, omitting entries in columns (d) and (e).  
5. Report pressure base of measurement of gas volumes at 14.73 psia at 60 degrees F.

Line No.	Purpose for Which Gas Was Used (a)	Account Charged (b)	Therms of Gas Used (c)	Natural Gas		Manufactured Gas	
				Amount of Credit (d)	Amount per Therm (In cents) (e)	Therms of Gas Used (f)	Amount of Credit (g)
1	810 Gas used for Compressor Station Fuel -- Cr.						
2	811 Gas used for Products Extraction -- Cr.						
3	Gas Shrinkage and Other Usage in Respondent's Own Proc.						
4	Gas Shrinkage, Etc. for Respondent's Gas Processed by Others						
5	812 Gas used for Other Util. Oprs-- Cr. (Report separately for each principal uses. Group minor uses)						
6	Heating and Cooling	92115	660	\$699	\$1.0586		
7	Vehicles	1841	728	\$665	\$0.9135		
8							
9							
10							
11							
12							
13							
14							
15							
16							
17							
18							
19							
20	TOTAL		1,388	\$1,364	\$0.9825		

Name of Respondent  
Chesapeake Utilities Corporation

For the Year Ended

Dec. 31, 2000

**OTHER GAS SUPPLY EXPENSES (Account 813)**

Report other gas supply expenses by descriptive titles which clearly indicate the nature of such expenses. Show maintenance expenses separately. Indicate the functional classification and purpose of property to which any expenses relate.

Line No.	Description (a)	Amount (in dollars) (b)
1		
2	N /A	
3		
4		
5		
6		
7		
8		
9		
10		
11		
12		
13		
14	TOTAL	

**MISCELLANEOUS GENERAL EXPENSES (Account 930.2) (Gas)**

Line No.	Description (a)	Amount (b)
1	Industry Association Dues	
2	Experimental and General Research Expenses: (a) Gas Research Institute (GRI) (b) Other	
3	Publishing and distributing information and reports to stockholders; trustee, registrar, and transfer agent fees and expenses, and other expenses of servicing outstanding securities of the Respondent	\$57,682
4	Other expenses (items of \$5,000 or more must be listed separately in this column showing the (1) purpose, (2) recipient and (3) amount of such items. Amounts of less than \$5,000 may be grouped by classes if the number of items so grouped is shown)	
5		
6		
7		
8		
9		
10		
11		
12		
13		
14		
15		
16		
17		
18		
19	TOTAL	\$57,682

DEPRECIATION, DEPLETION, AND AMORTIZATION OF GAS PLANT (Accounts 403,404.1,404.2,404.3,405)  
(Except Amortization of Acquisition Adjustments)

1. Report in Section A the amounts of depreciation expense, depletion and amortization for the accounts indicated and classified according to the plant functional groups shown.

A. Summary of Depreciation, Depletion, and Amortization Charges

Line No.	Functional Classification (a)	Depreciation Expense (Account 403) (b)	Amortization & Depletion of Prod. Nat. Gas Land & Land Rights (Account 404.1) (c)	Amortization of Under-ground Storage Land & Land Rights (Account (404.2)) (d)	Amortization of Other Limited-term Gas Plant (Account 404.3) (e)	Amortization of Other Gas Plant (Account 405) (f)	Total (b to f) (g)
1	Intangible Plant					101,386	101,386
2	Production plant, manufactured gas						
3	Production and gathering plant, nat. gas						
4	Products extraction plant						
5	Underground gas storage plant						
6	Other storage plant						
7	Base load LNG term. & proces. plant						
8	Transmission Plant						
9	Distribution Plant	853,406				71,114	924,520
10	General Plant	157,889				-	157,889
11	Common Plant-Gas						
12							
13							
14							
15							
16							
17							
18							
19							
20							
21							
22							
23							
24							
25							
26							
27							
28							
29							
30							
31							
32							
33							
34							
35							
36							
37	TOTAL	\$1,011,294				\$172,500	\$1,183,794

**PARTICULARS CONCERNING CERTAIN INCOME DEDUCTIONS AND INTEREST CHARGES ACCOUNTS**

Report the information specified below, in the order given for the respective income deduction and interest charges accounts. Provide a subheading for each account and total for the account. Additional columns may be added if deemed appropriate with respect to any account.

- (a) Miscellaneous Amortization (Account 425) - Describe the nature of items included in this account, the contra account charged, the total of amortization charged for the year, and the period of amortization.
- (b) Miscellaneous Income Deductions - Report the nature, payee, and amount of other income deductions for the year as required by Accounts 426.1, Donations; 426.2 Life Insurance; 426.3 Penalties; 426.4, Expenditures for Certain Civic, Political and Related Activities; and 426.5, Other Deductions, of the Uniform System of Accounts. Amounts of less than \$25,000 may be grouped by classes within the above accounts.
- (c) Interest on Debt to Associated Companies (Account 430) - For each associated company to which interest on debt was incurred during the year, indicate the amount and interest rate respectively for (a) advances on notes, (b) advances on open account, (c) notes payable, (d) accounts payable, and (e) other debt, and total interest. Explain the nature of other debt on which interest was incurred during the year.
- (d) Other Interest Expense (Account 431) - Report particulars (Details) including the amount and interest rate for each other interest charges incurred during the year.

Line No.	Item (a)	Amount (b)
1	Other deductions - 426-5	\$5,182
2	Other interest charges-431,4311,4312,4315	\$319,551
3		
4		
5		
6		
7		
8		
9		
10		
11		
12		
13		
14		
15		
16		
17		
18		
19		
20		
21		
22		
23		
24		
25		
26		
27		



DISTRIBUTION OF SALARIES AND WAGES

Report below the distribution of total salaries and wages for the year. Segregate amounts originally charged to clearing accounts to Utility Departments, Construction, Plant Removals, and Other Accounts, and enter such amounts in the appropriate lines and columns provided. In determining this segregation of salaries and wages originally charged to clearing accounts, a method of approximation giving substantially correct results may be used.

Line No.	Classification (a)	Direct Payroll Distribution (b)	Allocation of Payroll Charged for Clearing Accounts (c)	Total (d)
1	<b>Electric</b>			
2	TOTAL Operation and Maintenance - Electric			
3	<b>Gas</b>			
4	Operation			
5	Production - Manufd. Gas & Nat. Gas (inc. Expl. and Dev.); Other Gas Supply; Storage, LNG, Termn. & Proces.			
6	Transmission			
7	Distribution	605,246		
8	Customer Accounts	267,544		
9	Customer Service and Informational	-		
10	Sales	245,046		
11	Administrative and General	466,116		
12	TOTAL Operation (Enter Total of lines 5 through 11)	1,583,952		
13	Maintenance			
14	Production - Manufd. Gas & Nat. Gas (inc. Expl. and Dev.); Other Gas Supply; Storage, LNG, Termn. & Proces.			
15	Transmission			
16	Distribution	148,935		
17	Administrative and General	-		
18	TOTAL Maintenance (Enter Total of lines 14 through 17)	148,935		
19	TOTAL Operation and Maintenance	1,732,887		
20	Production - Manufd. Gas & Nat. Gas (inc. Expl. and Dev.); Other Gas Supply; Storage, LNG, Termn. & Proces.			
21	Transmission (Enter Total of lines 6 and 15)	-		
22	Distribution (Enter Total of lines 7 and 16)	754,181		
23	Customer Accounts (Transcribe from line 8)	267,544		
24	Customer Service and Informational (Transcribe from line 9)	-		
25	Sales (Transcribe from line 10)	245,046		
26	Administrative and General (Enter Total of lines 11 and 17)	466,116		
27	TOTAL Operation and Maint. (Total of lines 20 through 26)	1,732,887		
28	<b>Other Utility Departments</b>			
29	Operation and Maintenance			
30	TOTAL All Utility Dept. (Total of lines 2, 27, and 29)			
31	<b>Utility Plant</b>			
32	Construction (By Utility Departments)			
33	Electric Plant			
34	Gas Plant	-		
35	Other			
36	TOTAL Construction (Enter Total of lines 33 through 35)	-		
37	Plant Removal (By Utility Department)			
38	Electric Plant			
39	Gas Plant	-		
40	Other			
41	TOTAL Plant Removal (Enter Total of lines 38 through 40)	-		
42				
43	Other Accounts (Specify):			
44	Vehicle Expense	-		
45		-		
46				
47				
48				
49				
50				
51				
52				
53	TOTAL Other Accounts	-		
54	TOTAL SALARIES AND WAGES	1,732,887		

REGULATORY COMMISSION EXPENSES (Account 928)

1. Report particulars (details) of regulatory commission expenses incurred during the current year (or incurred in previous years if being amortized) relating to formal cases before a regulatory body, or cases in which such a body was a party.

2. In columns (b) and (c), indicate whether the expenses were assessed by a regulatory body or were otherwise incurred by the utility.

Line No.	Description (Furnish name of regulatory commission or body, the docket or case number, and a description of the case.) (a)	Assessed by Regulatory Commission (b)	Expenses of Utility (c)	Total Expenses to Date (d)	Deferred in Account 186 at Beginning of Year (e)
1	Florida Public Service Commission	-	\$423	\$423	-
2					
3					
4					
5					
6					
7					
8					
9					
10					
11					
12					
13					
14					
15					
16					
17					
18					
19					
20					
21					
22					
23					
24					
25					
26					
27					
28					
29					
30					
31					
32					
33					
34					
35					
36					
37					
38					
39					
40	TOTAL	-	\$423	\$423	-

REGULATORY COMMISSION EXPENSES (Account 928) (Continued)

3. Show in column (k) any expenses incurred in prior years which are being amortized. List in column (a) the period of amortization.

4. The totals of columns (e), (i), (k), and (l) must agree with the totals shown at the bottom of page 34

for Account 186.

5. List in column (f), (g) and (h) expenses incurred during year which were charged currently to income, plant, or other accounts.

6. Minor items (less than \$25,000) may be grouped.

EXPENSES INCURRED DURING YEAR			AMORTIZED DURING YEAR				Line No.
CHARGED CURRENTLY TO			Deferred to Account 186 (i)	Contra Account (j)	Amount (k)	Deferred in Account 186 End of Year (l)	
Department (f)	Account No. (g)	Amount (h)					
Legal	928	\$423	-		-	-	1
							2
			-		-	-	3
							4
							5
							6
							7
							8
							9
							10
							11
							12
							13
							14
							15
							16
							17
							18
							19
							20
							21
							22
							23
							24
							25
							26
							27
							28
							29
							30
							31
							32
							33
							34
							35
							36
							37
							38
							39
		\$423	-		-	-	40

CHARGES FOR OUTSIDE PROFESSIONAL AND OTHER CONSULTATIVE SERVICES

1. Report the information specified below for all charges made during the year included in any account (including plant accounts) for outside consultative and other professional services. (These services include rate, management, construction, engineering, research, financial, valuation, legal, accounting, purchasing, advertising, labor relations, and public relations, rendered the respondent under written or oral arrangement, for which aggregate payments were made during the year to any corporation, partnership, organization of any kind, or individual [other than for services as an employee or for payments made for medical and related services] amounting to more than \$25,000, including payments for legislative services, except those which should be reported in Account 426.4 Expenditures for Certain

Civic, Political and Related Activities.

(a) Name and address of person or organization rendering services,

(b) description of services received during year and project or case to which services relate,

(c) basis of charges,

(d) total charges for the year, detailing utility department and account charged.

2. For any services which are of a continuing nature, give the date and term of contract and date of Commission authorization, if contract received Commission approval.

3. Designate with an asterisk associated companies.

1	Description (a)	Amount (b)
2	Legal	\$14,031
3	Accounting and Audit	\$32,102
4	Other	\$39,417
5		
6		
7		
8		
9		
10		
11		
12		
13		
14		
15		
16		
17		
18		
19		
20		
21		
22		
23		
24		
25		
26		
27		
28		
29		
30		
31		
32		
33		
34		
35		
36		
37	Total	\$85,550

**Reconciliation of Gross Operating Revenues  
Annual Report versus Regulatory Assessment Fee Return**

Company: **Chesapeake Utilities Corporation**

For the Year Ended December 31, 2000

For the current year, reconcile the gross operating revenues as reported on Page 46 of this report with the gross operating revenues as reported on the utility's regulatory assessment fee return. Explain and justify any differences between the reported gross operating revenues in column (f).

Line No.	(a) Description	(b) Gross Operating Revenues per Page 46	(c) Interstate and Sales for Resale Adjustments	(d) Adjusted Interstate Gross Operating Revenues	(e) Intrastate Gross Operating Revenues per RAF Return	(f) Difference (d) - (e)
1	Total Sales to Ultimate Customers (480-482, 484)	14,670,769	321,774 (1)	14,992,543	14,992,543	-
2	Sales for Resale (483) Off System Sales	652,897	(652,897)	-	-	-
3	Total Natural Gas Service Revenues	15,323,666	(331,123)	14,992,543	14,992,543	-
4	Total Other Operating Revenues (485-495)	5,252,570	(189,677) (2)	5,062,893	5,062,893	-
5	Total Gas Operating Revenues	20,576,236	(520,800)	20,055,436	20,055,436	-
6	Provision for Rate Refunds (496)	-	-	-	-	-
7	Other (Specify)					
8						
9						
10	<b>Total Gross Operating Revenues</b>	<b>\$20,576,236</b>	<b>(\$520,800)</b>	<b>\$20,055,436</b>	<b>\$20,055,436</b>	<b>-</b>

Notes:

1) Add Transportation Overburn	84,200
Add flex surplus	(70,012)
Deduct flex refunds	307,586
Add conservation revenue	-
Deduct flex on public authority	-
Total adjustment	<u>321,774</u>
2) Add conservation rev on transp.	98,613
Adjust net unbilled revenue to gross	(162,502)
Add Misc	-
Deduct Public Authority Transp.	(58,889)
Deduct Service Revenue	(66,899)
Total adjustment	<u>(189,677)</u>

3) The company booked a final unbilled revenue calculation after the tax return was filed. The adjustment will be reflected in the next return.

**CORPORATE STRUCTURE**

**Company: Chesapeake Utilities Corporation**

**For the Year Ended December 31, 2000**

---

Provide an updated organizational chart showing all affiliated companies, partnerships, etc.

---

Effective  
Date

---

**See Attached**

**NEW OR AMENDED CONTRACTS WITH AFFILIATED COMPANIES**

**COMPANY: Chesapeake Utilities Corporation**

**For the Year Ended December 31, 2000**

Provide a synopsis of each new or amended contract, agreement, or arrangement with affiliated companies for the purchase, lease, or sale of land, goods, or services (excluding tariffed items). The synopsis shall include, at a minimum, the terms, price, quantity, amount, and duration of the contracts.

Name of Affiliated Company (a)	Synopsis of Contract (b)
N/A	

**INDIVIDUAL AFFILIATED TRANSACTIONS IN EXCESS OF \$25,000**

**Company: Chesapeake Utilities Corporation**

**For the Year Ended December 31, 2000**

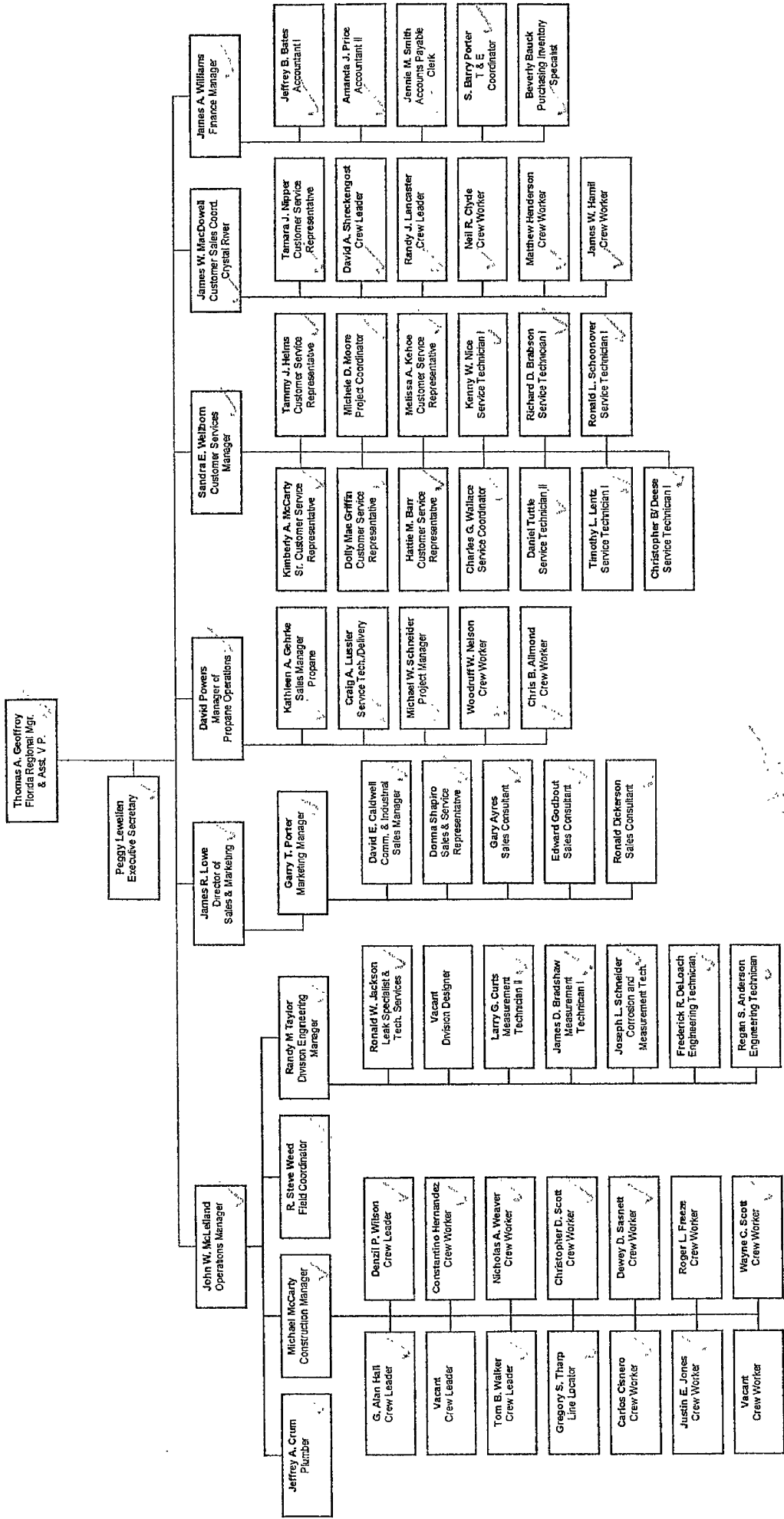
Provide information regarding individual affiliated transactions in excess of \$25,000. Recurring monthly affiliated transactions which exceed \$25,000 per month should be reported annually in the aggregate. However, each land or property sales transaction even though similar sales recur, should be reported as a "non-recurring" item for the period in which it occurs.

Name of Affiliate (a)	Description of Transaction (b)	Dollar Amount (c)
	<p align="center"><b>See Page 65.</b></p>	



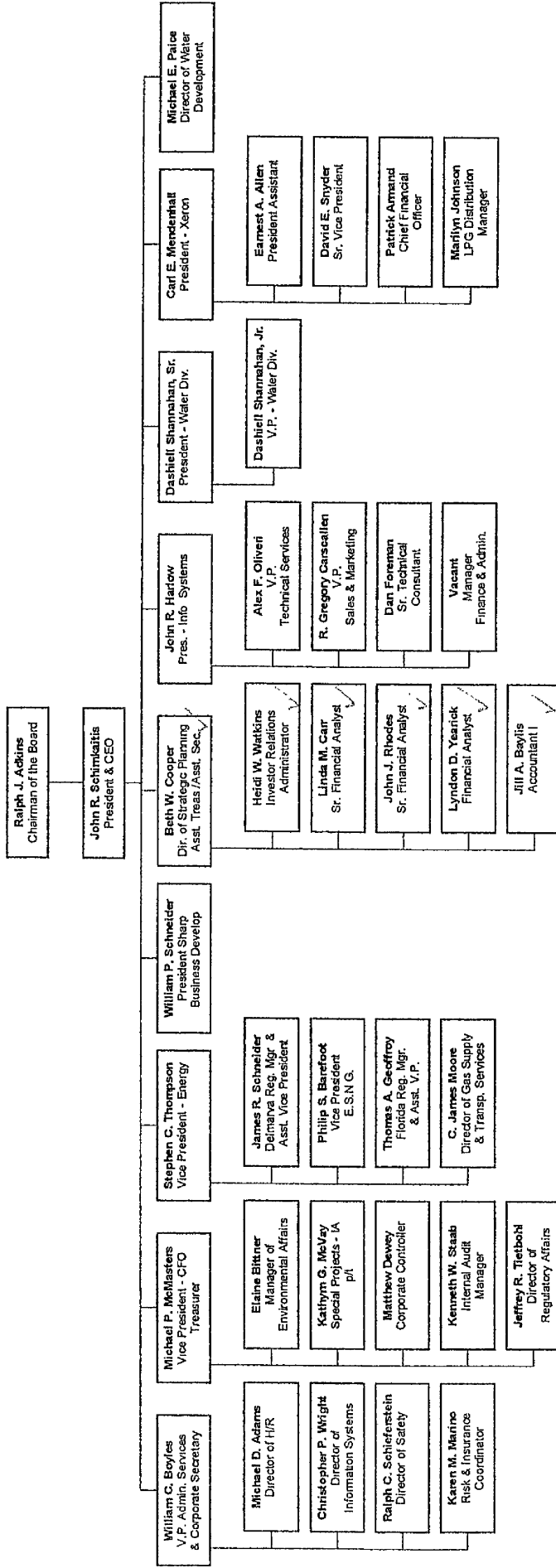
# CHESAPEAKE UTILITIES CORPORATION

## Florida Energy



# CHESAPEAKE UTILITIES CORPORATION

## Corporate Management



**SUMMARY OF AFFILIATED TRANSFERS AND COST ALLOCATIONS**

**Company: Chesapeake Utilities Corporation**

**For the Year Ended December 31, 2000**

Grouped by affiliate, list each contract, agreement, or other business transaction exceeding a cumulative amount of \$300 in any one year, entered into between the Respondent and an affiliated business or financial organization, firm, or partnership identifying parties, amounts, dates, and product, asset, or service involved.

- (a) Enter name of affiliate.
- (b) Give description of type of service, or name the product involved.
- (c) Enter contract or agreement effective dates.
- (d) Enter the letter "p" if the service or product is a purchased by the Respondent: "s" if the service or product is sold by the Respondent.
- (e) Enter utility account number in which charges are recorded.
- (f) Enter total amount paid, received, or accrued during the year for each type of service or product listed in column (c). Do not net amounts when services are both received and provided.

Name of Affiliate (a)	Type of Service and/or Name of Product (b)	Relevant Contract or Agreement and Effective Date (c)	Total Charge for Year		
			"p" or "s" (d)	Account Number (e)	Dollar Amount (f)
Chesapeake Utilities Corp	Payroll	Fiscal year 2000	p	various	\$721,625
Chesapeake Utilities Corp	Accounts Payable	Fiscal year 2000	p	various	\$11,970,388
Chesapeake Utilities Corp	Payroll Tax Transfer	Fiscal year 2000	p	various	\$243,439
Chesapeake Utilities Corp	General Corp. Services	Fiscal year 2000	p	various	\$791,626
Chesapeake Utilities Corp	Cash Transactions	Fiscal year 2000	s	various	\$12,909,256
Chesapeake Utilities Corp	Gas Supply	Fiscal year 2000	s	various	\$344,995
Chesapeake Utilities Corp	Gas Supply Payroll/Exp	Fiscal year 2000	s	various	\$33,523
Chesapeake Utilities Corp	Income Tax	Fiscal year 2000	s	various	\$107,811
Delaware	Accounts Payable	Fiscal year 2000	p	various	\$125,269

**ASSETS OR RIGHTS PURCHASED FROM OR SOLD TO AFFILIATES**

**Company: Chesapeake Utilities Corporation**

**For the Year Ended December 31, 2000**

Provide a summary of affiliated transactions involving asset transfers or the right to use assets.

Name of Affiliate	Description of Asset or Right	Cost/Orig. Cost	Accumulated Depreciation	Net Book Value	Fair Market Value	Purchase Price	Title Passed Yes/No
Purchases from Affiliates:		\$	\$	\$	\$	\$	
N/A							
<b>Total</b>							
Sales to Affiliates:		\$	\$	\$	\$	Sales Price	
<b>None</b>							
<b>Total</b>						\$	

**EMPLOYEE TRANSFERS**

**Company: Chesapeake Utilities Corporation**

**For the Year Ended December 31, 2000**

List employees earning more than \$30,000 annually transferred to/from the utility to/from an affiliate company.

Company Transferred From	Company Transferred To	Old Job Assignment	New Job Assignment	Transfer Permanent or Temporary and Duration
<p align="center"><b>None</b></p>				

## INDEX

Accumulated provision for depreciation and amortization	
of gas utility plant .....	31
utility plant (summary) .....	20-21
Advances	
from associated companies .....	37
Amortization	
miscellaneous .....	56
of other gas plant in service .....	55
and depletion of production natural gas land and land rights .....	55
Associated companies	
advances from .....	37
control over respondent .....	4
corporations controlled by respondent .....	5
interest on debt to .....	37
service contracts charges .....	60
Bonds .....	37
Changes	
important during the year .....	9
Construction	
overhead, gas .....	29
overhead procedures, general description of .....	30
work in progress - gas .....	28
work in progress - other utility departments .....	20-21
Contracts, service charges .....	60
Control	
corporations controlled by respondent .....	5
over respondent .....	4
security holders and voting powers .....	8
Current and accrued	
liabilities, miscellaneous .....	43
Deferred	
credits, other .....	43
debits, miscellaneous .....	34
Depreciation	
gas plant .....	55
gas plant in service .....	31
Directors .....	7
Earnings, retained .....	15-16
Expenses, gas operation and maintenance .....	49-51
gas operation and maintenance, summary .....	49-51
Extraordinary property losses .....	32
Gas	
purchases, natural and other .....	52
used in utility operations, credit .....	53
plant in service .....	22-27
General description of construction overhead procedures .....	30
Important changes during year .....	9
Income	
deductions - details .....	37-38, 56
from utility plant leased to others .....	56
statement of, for year .....	12-14
Interest	
charges, other .....	56
on debt to associated companies .....	56
on long-term debt, advances, etc. ....	37
Interruptible, off-peak and firm sales-industrial .....	48

INDEX

Investment tax credits generated and utilized .....	11-14, 42
Investments .....	10
Legal proceedings during year .....	9
Long-term debt .....	37
assumed during year .....	36
reacquired .....	36
retained during year .....	36

## INDEX

Management and engineering contracts .....	60
Miscellaneous general expense .....	54
Notes	
payable, advances from associated companies .....	37
to balance sheet .....	19
to financial statements .....	19
to statement of income for the year .....	19
Number of Customers .....	48
Number of Employees .....	51
Officers and officers' salaries .....	6
Operating	
expenses - gas .....	49-51
revenues - gas .....	46-47
Other	
other supplies expense .....	54
regulatory assets .....	33
regulatory liabilities .....	45
Overhead, construction - gas .....	29
Plant - gas	
accumulated provision for depreciation .....	31
construction work in progress .....	28
in service .....	20
Plant - utility	
and accumulated provisions (summary) .....	20-21
Prepaid taxes .....	41
Prepayments .....	32
Professional services, charges for .....	60
Property losses, extraordinary .....	32
Purchased gas .....	52
Reconciliation of reported net income with taxable income from	
federal income taxes .....	40
Regulatory commission expenses .....	57-58
Revenues, gas operating .....	46-47
Salaries and wages, distribution of .....	59
Sales	
natural gas - interruptible, off-peak and firm .....	48
natural gas - space heating, residential and commercial .....	48
Securities	
holders and voting powers .....	8
issued or assumed during year .....	36
refunded or retired during year .....	36
registered on a national exchange .....	37
Service contract charges .....	60
Space heating customers, residential and commercial .....	48
Taxes	
accrued and prepaid .....	41
charged during the year .....	41
deferred ITCs .....	42
on income, deferred - accumulated .....	35,44
reconciliation of net income for .....	40
Unamortized	
debt discount and expense .....	38
loss and gain on reacquired debt .....	39
premium on debt .....	38



Unrecovered plant and regulatory study costs .....	32
--	----

Index 2