

**SEBRING GAS SYSTEM, INC.  
SEBRING, FLORIDA  
ANNUAL REPORT OF NATURAL GAS UTILITIES  
FORM PSC/AFA 20  
DECEMBER 31, 2023**



# Brimmer, Burek & Keelan, LLP

## Certified Public Accountants

5601 Mariner Street, Suite 200 • Tampa, Florida 33609  
bbkm.com • (813) 282-3400 • Fax (813) 287-8369

### INDEPENDENT ACCOUNTANTS' COMPILATION REPORT

To the Board of Directors  
Sebring Gas System, Inc.  
Sebring, Florida

Management is responsible for the accompanying financial statements of Sebring Gas System, Inc., which comprise the balance sheets as of December 31, 2023 and 2022, and the related statements of income and retained earnings for the years then ended, included in the accompanying prescribed form in accordance with accounting principles generally accepted in the United States of America. We have performed a compilation engagement in accordance with Statements on Standards for Accounting and Review Services promulgated by the Accounting and Review Services Committee of the AICPA. We did not audit or review the financial statements nor were we required to perform any procedures to verify the accuracy or completeness of the information provided by management. Accordingly, we do not express an opinion, a conclusion, nor provide any form of assurance on these financial statements.

The financial statements are presented in accordance with the requirements of the Florida Public Service Commission, are not intended to be a presentation in accordance with accounting principles generally accepted in the United States. Management has elected to omit substantially all of the disclosures required by accounting principles generally accepted in the United States of America. If the omitted disclosures were included in the financial statements, they might influence the user's conclusions about the Company's financial position, results of operations, and cash flows. Accordingly, the financial statements are not designed for those who are not informed about such matters.

BRIMMER, BUREK & KEELAN LLP

*Brimmer, Burek & Keelan LLP*

Certified Public Accountants

May 31, 2024

Donald T. Keyes, CPA  
Kara K. Keyes, CPA  
Heather R. Kovalsky, CPA  
Susan W. Evans, CPA  
Cong C. Nguyen, CPA  
Terry R. Kuhn, CPA  
Frank D. Lagor, CPA - Retired



Members of:  
Center for Audit Quality

American Institute of  
Certified Public Accountants

Florida Institute of Certified  
Public Accountants

**ANNUAL REPORT OF  
NATURAL GAS UTILITIES**

**SEBRING GAS SYSTEM, INC.**

(EXACT NAME OF RESPONDENT)

**Sebring, Florida**

(ADDRESS OF RESPONDENT)

TO THE

FLORIDA PUBLIC SERVICE COMMISSION

FOR THE

YEAR ENDED      December 31, 2023

Officer or other person to whom correspondence should be addressed concerning this report:

Name: Jerry H. Melendy, Jr.

Title: President

Address: 3515 U.S. Highway 27 South

City: Sebring

State: Florida

Telephone No.: (863)385-0194

PSC/ECR 020-G (10/03)

**INSTRUCTIONS FOR FILING THE  
ANNUAL REPORT OF NATURAL GAS UTILITIES**

**GENERAL INSTRUCTIONS**

- I. Prepare this report in conformity with the Uniform System of Accounts (18 CFR 201) (U.S. of A.). Interpret all accounting words and phrases in accordance with the U.S. of A.
- II. Enter in whole numbers (dollars or Mcf) only, except where otherwise noted. (Enter cents for averages and figures per unit where cents are important.) The truncating of cents is allowed except on the four basic financial statements where rounding to dollars is required. The amounts shown on all supporting pages must agree with the amounts entered on the statements that they support. When applying thresholds to determine significance for reporting purposes, use for balance sheet accounts the balances at the end of the current reporting year, and use for statement of income accounts the current year's amounts.
- III. Complete each question fully and accurately, even if it has been answered in a previous annual report. Enter the word "None" where it truly and completely states the fact.
- IV. For any page that is not applicable to the respondent, enter the words "Not Applicable" on the particular page.
- V. Provide a supplemental statement further explaining accounts or pages as necessary. Attach the supplemental statement to the page being supplemented on 8 1/2 by 11 inch paper. Provide the appropriate identification information on the supplemental page, including the title of the page and the page number. Do not change the page numbers.
- VI. Do not make references to reports of previous years or to other reports in lieu of required entries, except as specifically authorized.
- VII. Wherever schedule pages refer to figures from a previous year, the figures reported must be based upon those shown by the annual report of the previous year, or an appropriate explanation given as to why different figures were used.
- VIII. Report all gas volumes on a pressure base of 14.73 psia and a temperature base of 60° F.

**DEFINITIONS**

- I. Btu per cubic foot - The total heating value expressed in Btu, produced by the combustion, at constant pressure, of the amount of the gas which would occupy a volume of 1 cubic foot at a temperature of 60° F if saturated with water vapor and under a pressure equivalent to that of 30 inches of mercury at 32° F, and under standard gravitational force (980.665 cm per sec. <sup>2</sup>) with air of the same temperature and pressure as the gas, when the products of combustion are cooled to the initial temperature of gas and air when the water formed by combustion is condensed to the liquid state. (Sometimes called gross heating value or total heating value.)
- II. Respondent - The person, corporation, licensee, agency, authority, or other legal entity or instrumentality in whose behalf the report is made.

# ANNUAL REPORT OF NATURAL GAS UTILITIES

## IDENTIFICATION

01 Exact Legal Name of Respondent <b>Sebring Gas System, Inc.</b>	02 Year of Report <b>12/31/2023</b>
03 Previous Name and Date of Change (if name changed during year) <b>N/A</b>	
04 Address of Principal Office at End of Year (Street, City, State, Zip Code) <b>3515 U.S. Highway 27 South, Sebring, Florida 33870-5452</b>	
05 Name of Contact Person <b>Jerry H. Melendy, Jr.</b>	06 Title of Contact Person <b>President</b>
07 Address of Contact Person (Street, City, State, Zip Code) <b>3515 U. S. Highway 27 South, Sebring, Florida 33870-5452</b>	
08 Telephone of Contact Person, Including Area Code <b>(863)385-0194</b>	09 Date of Report (Mo, Da, Yr) <b>May 31, 2024</b>

## ATTESTATION

I certify that I am the responsible accounting officer of

**Sebring Gas System, Inc.**

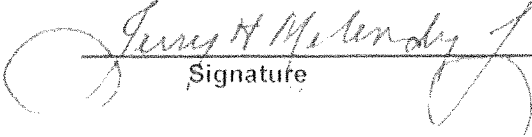
that I have examined the following report; that to the best of my knowledge, information, and belief, all statements of fact contained in the said report are true and the said report is a correct statement of the business and affairs of the above-named respondent in respect to each and every matter set forth therein during the period from January 1, 2023 to December 31, 2023, inclusive.

I also certify that all affiliated transfer prices and affiliated cost allocations were determined consistent with the methods reported to this Commission on the appropriate forms included in this report.

I am aware that Section 837.06, Florida Statutes, provides:

Whoever knowingly makes a false statement in writing with the intent to mislead a public servant in the performance of his official duty shall be guilty of a misdemeanor of the second degree, punishable as provided in S. 775.082 and S. 775.083.

5/31/2024  
Date

  
Signature

Jerry H. Melendy, Jr.  
Name

President  
Title

December 31, 2023

## TABLE OF CONTENTS

Title of Schedule (a)	Page No. (b)	Title of Schedule (a)	Page No. (b)
<b>GENERAL CORPORATE INFORMATION AND FINANCIAL STATEMENTS</b>		<b>INCOME ACCOUNT SUPPORTING SCHEDULES</b>	
Control Over Respondent	3	Gas Operating Revenues	26
Corporations Controlled By Respondent	3	Gas Operation and Maintenance Expenses	27
Officers	4	Number of Gas Department Employees	29
Directors	4	Gas Purchases	30
Security Holders and Voting Powers	5	Gas Used in Utility Operations - Credit	30
Important Changes During the Year	5	Regulatory Commission Expenses	31
Comparative Balance Sheet	6-7	Miscellaneous General Expenses - Gas	31
Statement of Income	8-9	Distribution of Salaries and Wages	32
Statement of Retained Earnings	10	Charges for Outside Prof. and Other Consultative Services	33
Notes to Financial Statements	11	Particulars Concerning Certain Income Deduction and Interest Charges Accounts	33
<b>BALANCE SHEET SUPPORTING SCHEDULES</b>		<b>REGULATORY ASSESSMENT FEE</b>	
<b>(Assets And Other Debits)</b>		Reconciliation of Gross Operating Revenues - Annual Report versus Regulatory Assessment Fee Return	34
Summary of Utility Plant and Accum. Prov. for Depreciation, Amortization, and Depletion	12	<b>DIVERSIFICATION ACTIVITY</b>	
Gas Plant in Service	13 -14	Corporate Structure	35
Accumulated Depreciation & Amortization	15 -16	Summary of Affiliated Transfers and Cost Allocations	36
Construction Work in Progress - Gas	17	New or Amended Contracts with Affiliated Companies	37
Construction Overheads - Gas	17	Individual Affiliated Transactions in Excess of \$25,000	37
Prepayments	18	Assets or Rights Purchased from or Sold to Affiliates	38
Extraordinary Property Losses	18	Employee Transfers	38
Unrecovered Plant and Regulatory Study Costs	18		
Other Regulatory Assets	19		
Miscellaneous Deferred Debits	19		
<b>(Liabilities and Other Credits)</b>			
Securities Issued and Securities Refunded or Retired During the Year	20		
Unamortized Loss and Gain on Reacquired Debt	20		
Long-Term Debt	21		
Unamortized Debt Exp., Premium and Discount on Long-Term Debt	21		
Miscellaneous Current and Accrued Liabilities	22		
Other Deferred Credits	22		
Other Regulatory Liabilities	22		
Taxes Other Than Income Taxes	23		
Accumulated Deferred Investment Tax Credits	23		
Accumulated Deferred Income Taxes	24		
Reconciliation of Reported Net Income with Taxable Income for Federal Income Taxes	25		

**CONTROL OVER RESPONDENT**

1. If any corporation, business trust, or similar organization or combination of such organizations jointly held control over the respondent at end of year, state name of controlling corporation or organization, manner in which control was held, and extent of control. If control was in a holding company organization, show the chain of ownership or control to the main parent company or organization. If control was held by a trustee(s), state name of trustee(s).

2. If the above required information is available from the SEC 10K Report Form filing, a specific reference to the report form (i.e. year and company title) may be listed provided the fiscal years for both the 10-K report and this report are compatible.

Not Applicable

**CORPORATIONS CONTROLLED BY RESPONDENT**

1. Report below the names of all corporations, business trusts, and similar organizations, controlled directly or indirectly by respondent at any time during the year. If control ceased prior to end of year, give particulars (details) in a footnote.

2. If control was by other means than a direct holding of voting rights, state in a footnote the manner in which control was held, naming any intermediaries involved.

3. If control was held jointly with one or more other interests, state the fact in a footnote and name the other interests.

4. If the above required information is available from the SEC 10-K Report Form filing, a specific reference to the report form (i.e. year and company title) may be listed in column (a) provided the fiscal years for both the 10-K report and this report are compatible.

**DEFINITIONS**

1. See the Uniform System of Accounts for a definition of control.

2. Direct control is that which is exercised without interposition of an intermediary.

3. Indirect control is that which is exercised by the interposition of an intermediary which exercises direct control.

4. Joint control is that in which neither interest can effectively control or direct action without the consent of the other, as where the voting control is equally divided between two holders, or each party holds a veto power over the other. Joint control may exist by mutual agreement or understanding between two or more parties who together have control within the meaning of the definition of control in the Uniform System of Accounts, regardless of the relative voting rights of each party.

Name of Company Controlled (a)	Kind of Business (b)	Percent Voting Stock Owned (c)	Footnote Ref. (d)
Not Applicable			

December 31, 2023

**OFFICERS**

1. Report below the name, title and salary for each executive officer whose salary is \$50,000 or more. An "executive officer" of a respondent includes its president, secretary, treasurer, and vice president in charge of a principal business unit, division or function (such as sales, administration or finance), and any other person who performs similar policymaking functions.

2. If a change was made during the year in the incumbent of any position, show name and total remuneration of the previous incumbent, and date the change in incumbency was made.

Title (a)	Name of Officer (b)	Salary for Year (c)

**DIRECTORS**

1. Report below the information called for concerning each director of the respondent who held office at any time during the year. Include in column (a) abbreviated titles of the directors who are officers of the respondent.

2. Designate members of the Executive Committee by an asterisk and the Chairman of the Executive Committee by a double asterisk.

Name (and Title) of Director (a)	Principal Business Address (b)	No. of Directors Meetings During Yr. (c)	Fees During Year (d)
Jerry H. Melendy, Jr., President	3515 U.S. Highway 27 South, Sebring, FL	1	-
Russell A Melendy, Vice President	3515 U.S. Highway 27 South, Sebring, FL	1	-
Matthew J. Melendy, Director	152 Gulfstream Dr, Tequesta, FL	1	-



**SECURITY HOLDERS AND VOTING POWERS**

1. Give the names and addresses of the 10 security holders of the respondents who, at the date of the latest closing of the stock book or compilation of the list of stockholders of the respondent, prior to the end of the year, had the highest voting powers in the respondent, and state the number of votes which each would have had the right to cast on that date if a meeting were in order. If any such holder held in trust, give in a footnote the known particulars of the trust (whether voting trust, etc.) duration of the trust, and principal holders of beneficiary interests in the trust. If the stock book was not closed or a list of stockholders was not compiled within one year prior to the end of the year, or if since the previous compilation of a list of stockholders, some other class of security has become vested with voting rights, then show such 10 security holders as of the close of the year. Arrange the names of the security holders in the order of voting power, commencing with the highest. Show in column (a) the titles of officers and directors included in such list of 10 security holders.

2. If any security other than stock carries voting rights, explain in a supplemental statement of circumstances whereby such security became

vested with voting rights and give others important particulars (details) concerning the voting rights of such security. State whether voting rights are actual or contingent if contingent, describe the contingency.

3. If any class or issue of security has any special privileges in the election of directors, trustees or managers, or in the determination of corporate action by any method, explain briefly in a footnote.

4. Furnish particulars (details) concerning any options, warrants, or rights outstanding at the end of the year for others to purchase securities of the respondent or any securities or other assets owned by the respondent, including prices, expiration dates, and other material information relating to exercise of the options, warrants, or rights. Specify the amount of such securities or assets so entitled to be purchased by any officer, director, associated company, or any of the ten largest security holders.

Name (Title) and Address of Security Holder (a)	VOTING SECURITIES			
	Number of votes as of (date):			
	Total Votes (b)	Common Stock (c)	Preferred Stock (d)	Other (e)
TOTAL votes of all voting securities	180	180	0	0
TOTAL number of security holders	4	4	0	0
TOTAL votes of security holders listed below	180	180		
J. H. Melendy, Jr. (President), Sebring, Florida	176	176		
M.J. Melendy, Tequesta, Florida	2	2		
R.M. Melendy (V.P.), Zolfo Springs, Florida	2	2		

**IMPORTANT CHANGES DURING THE YEAR**

Give particulars (details) concerning the matters indicated below. Make the statements explicit and precise, and number them in accordance with the inquires. Each inquiry should be answered. Enter "none" "not applicable," or "NA" where applicable. If information which answers an inquiry is given elsewhere in the report, make a reference to the schedule in which it appears.

1. Acquisition of ownership in other companies by reorganization, merger, or consolidation with other companies: Give name of companies involved, particulars concerning the transactions.

2. Purchase or sale of an operating unit or system: Give brief description of the property, and of the transactions relating thereto, and reference to Commission authorization, if any was required.

3. Important extension or reduction of transmission or distribution system: State territory added or relinquished and date operations began or ceased also the approximate number of customers added or lost and approximate annual revenues of each class of service.

4. State briefly the status of any materially important legal proceedings pending at the end of the year, and the results of any such proceedings culminated during the year.

5. State briefly the status of any materially important transactions of the respondent not disclosed elsewhere in this report in which an officer, director, security holder, voting trustee, associated company or known associate of any of these persons was a party or in which any such person had a material interest.

- 1 not applicable
- 2 not applicable
- 3 none
- 4 none
- 5 none

December 31, 2023

## COMPARATIVE BALANCE SHEET (ASSETS AND OTHER DEBITS)

Line No.	Title of Account (a)	Ref. Page No. (b)	Balance at Beginning of Year (c)	Balance at End of Year (d)
1	UTILITY PLANT			
2	Utility Plant (101-106, 114) (Page 24)	12	\$ 7,604,581	\$ 8,055,390
3	Construction Work in Progress (107)	12	34,317	34,317
4	TOTAL Utility Plant (Enter Total of lines 2 and 3)		7,638,898	8,089,707
5	(Less) Accum. Prov. for Depr. Amort. Depl. (108, 111, 115) ) (Page 27)	12	3,558,170	3,776,223
6	Net Utility Plant (Enter Total of line 4 less 5)		4,080,728	4,313,484
7	Utility Plant Adjustments (116)	11		
8	Gas Stored (117.1, 117.2, 117.3, 117.4)	-		
9	OTHER PROPERTY AND INVESTMENTS			
10	Nonutility Property (121)	-	-	-
11	(Less) Accum. Prov. for Depr. and Amort. (122)	-	-	-
12	Investments in Associated Companies (123)	-	-	-
13	Investment in Subsidiary Companies (123.1)	-	-	-
14	Other Investments (124)	-	-	-
15	Special Funds (125-128)	-	-	-
16	TOTAL Other Property and Investments (Total of lines 10 through 15)		-	-
17	CURRENT AND ACCRUED ASSETS			
18	Cash (131)	-	75,655	26,062
19	Special Deposits (132-134)	-	-	-
20	Working Funds (135)	-	-	-
21	Temporary Cash Investments (136)	-	-	-
22	Notes Receivable (141)	-	-	-
23	Customer Accounts Receivable (142)	-	342,417	217,942
24	Other Accounts Receivable (143)	-	-	-
25	(Less) Accum. Prov. for Uncollectible Acct.-Credit (144)	-	-	-
26	Notes Receivable from Associated Companies (145)	-	-	-
27	Accounts Receivable from Assoc. Companies (146)	-	-	-
28	Fuel Stock (151)	-	-	-
29	Fuel Stock Expense Undistributed (152)	-	-	-
30	Residuals (Elec) and Extracted Products (Gas) (153)	-	-	-
31	Plant Material and Operating Supplies (154)	-	267,969	249,570
32	Merchandise (155)	-	-	-
33	Other Material and Supplies (156)	-	-	-
34	Stores Expenses Undistributed (163)	-	-	-
35	Gas Stored Undgrd. & Liq. Nat. Gas Stored (164.1-164.3)	-	-	-
36	Prepayments (165)	18	-	-
37	Advances for Gas (166-167)	-	-	-
38	Interest and Dividends Receivable (171)	-	-	-
39	Rents Receivable (172)	-	-	-
40	Accrued Utility Revenues (173)	-	-	-
41	Miscellaneous Current and Accrued Assets (174)	-	-	-
42	TOTAL Current and Accrued Assets (Enter Total of lines 18 through 41)		686,041	493,574
43	DEFERRED DEBITS			
44	Unamortized Debt Expense (181)	-	-	-
45	Extraordinary Property Losses (182.1)	18	-	-
46	Unrecovered Plant and Regulatory Study Costs (182.2)	18	-	-
47	Other Regulatory Assets (182.3)	18	-	-
48	Prelim. Survey and Investigation Charges (Gas) (183.1, 183.2)	-	-	-
49	Clearing Accounts (184)	-	-	-
50	Temporary Facilities (185)	-	-	-
51	Miscellaneous Deferred Debits (186)	19	148,295	148,295
52	Def. Losses from Disposition of Utility Plant. (187)	-	-	-
53	Research, Devel. and Demonstration Expend. (188)	-	-	-
54	Unamortized Loss on Reacquired Debt (189)	20	-	-
55	Accumulated Deferred Income Taxes (190)	24	-	-
56	Unrecovered Purchased Gas Costs (191)	-	-	-
57	TOTAL Deferred Debits (Enter Total of lines 44 through 56)		148,295	148,295
58	TOTAL Assets and other Debits (Enter Total of lines 6, 7, 8, 16, 42, 57)		\$ 4,915,064	\$ 4,955,353

Please read accountants' compilation report.

## COMPARATIVE BALANCE SHEET (LIABILITIES AND OTHER CREDITS)

Line No.	Title of Account (a)	Ref. Page No. (b)	Balance at Beginning of Year (c)	Balance at End of Year (d)
1	PROPRIETARY CAPITAL			
2	Common Stock (201, 202, 203, 205, 206, 207)	-	\$ 1,800	1,800
3	Preferred Stock Issued (204)	-	-	-
4	Other Paid-In Capital (208-211) & Accounts 212, 213, 214	-	654,880	562,519
5	Retained Earnings (215, 215.1, 216)	10	2,110,053	2,322,393
6	Unappropriated Undistributed Subsidiary Earnings (216.1)	10	-	-
7	(Less) Reacquired Capital Stock (217)	-	-	-
8	TOTAL Proprietary Capital (Enter Total of lines 2 through 7)		2,766,733	2,886,712
9	LONG-TERM DEBT			
10	Bonds (221)	21	-	-
11	(Less) Reacquired Bonds (222)	21	-	-
12	Advances from Associated Companies (223)	21	-	-
13	Other Long-Term Debt (224)	21	1,136,641	1,137,887
14	Unamortized Premium on Long-Term Debt (225)	21	-	-
15	(Less) Unamortized Discount on Long-Term Debt-Dr. (226)	21	-	-
16	TOTAL Long-Term Debt (Enter Total of lines 10 through 15)		1,136,641	1,137,887
17	OTHER NONCURRENT LIABILITIES			
18	Obligations Under Capital Leases - Noncurrent (227)	-	-	-
19	Accumulated Provision for Property Insurance (228.1)	-	-	-
20	Accumulated Provision for Injuries and Damages (228.2)	-	-	-
21	Accumulated Provision for Pensions and Benefits (228.3)	-	-	-
22	Accumulated Miscellaneous Operating Provisions (228.4)	-	-	-
23	Accumulated Provision for Rate Refunds (229)	-	-	-
24	TOTAL Other Noncurrent Liabilities (Enter Total of lines 18 through 23)		-	-
25	CURRENT AND ACCRUED LIABILITIES			
26	Notes Payable (231)	-	150,000	150,000
27	Accounts Payable (232)	-	230,478	94,864
28	Notes Payable to Associated Companies (233)	-	-	-
29	Accounts Payable to Associated Companies (234)	-	-	-
30	Customer Deposits (235)	-	201,219	202,409
31	Taxes Accrued (236)	-	22,989	37,978
32	Interest Accrued (237)	-	5,678	5,780
33	Dividends Declared (238)	-	-	-
34	Matured Long-Term Debt (239)	-	-	-
35	Matured Interest (240)	-	-	-
36	Tax Collections Payable (241)	-	1,055	623
37	Miscellaneous Current and Accrued Liabilities (242)	22	-	-
38	Obligations Under Capital Leases-Current (243)	-	-	-
39				
40	TOTAL Current and Accrued Liabilities (Enter Total of lines 26 through 39)		611,419	491,654
41	DEFERRED CREDITS			
42	Customer Advances for Construction (252)	-	30,516	42,849
43	Other Deferred Credits (253)	22	(7,368)	(5,756)
44	Other Regulatory Liabilities (254)	22	-	-
45	Accumulated Deferred Investment Tax Credits (255)	23	-	-
46	Deferred Gains from Disposition of Utility Plant (256)	-	-	-
47	Unamortized Gain on Reacquired Debt (257)	20	-	-
48	Accumulated Deferred Income Taxes (281-283)	24	377,123	402,007
49	TOTAL Deferred Credits (Enter Total of lines 42 through 48)		400,271	439,100
50				
51	TOTAL Liabilities and Other Credits (Enter Total of lines 8, 16, 24,			
52	40 and 49)		\$ 4,915,064	\$ 4,955,353

Please read accountants' compilation report.

December 31, 2023

## STATEMENT OF INCOME

1. Report amounts for Accounts 412 and 413, Revenue and Expenses from Utility Plant Leased to Others, in another utility column (i,k,m,o) in a similar manner to a utility department.

Spread the amount (s) over lines 01 through 24 as appropriate. Include these amounts in columns (c) and (d) totals.

2. Report amounts in Account 414, Other Utility Operating Income, in the same manner as Accounts 412 and 413 above.

3. Report data for lines 7,9,10 for Natural Gas companies using accounts 404.1, 404.2, 404.3, 407.1 and 407.2.

4. Use page 19 for important notes regarding the statement of income or any account thereof.

5. Give concise explanations on page 19 concerning

unsettled rate proceedings where a contingency exists such that refunds of a material amount may need to be made to the utility's customers or which may result in a material refund to the utility with respect to power or gas purchases. State for each year affected the gross revenues or costs to which the contingency relates and the tax effects together with an explanation of the major factors which affect the rights of the utility to retain such revenues or recover amounts paid with respect to power and gas purchases.

6. Give concise explanations on page 19 concerning significant amounts of any refunds made or received during the year resulting from settlement of any rate proceeding affecting

Line No.	Account (a)	Ref. Page No. (b)	Total Current Year (c)	Total Previous Year (d)
1	UTILITY OPERATING INCOME			
2	Operating Revenues (400)	26	\$ 1,359,239	\$ 1,389,241
3	Operating Expenses			
4	Operation Expenses	27-29	585,971	615,366
5	Maintenance Expenses (402)	27-29	89,010	79,587
6	Depreciation Expense (403)	15-16	253,339	243,750
7	Amort. & Depl. of Utility Plant (404-405)	-	0	4,800
8	Amort. of Utility Plant Acq. Adj. (406)	-	-	-
9	Amort. of Property Losses, Unrecovered Plant and Regulatory Study Costs (407.1)	-	-	-
10	Amort. of Conversion Expenses (407.2)	-	-	-
11	Regulatory Debits (407.3)	-	-	-
12	(Less) Regulatory Credits (407.4)	-	-	-
13	Taxes Other Than Income Taxes (408.1)	23	42,832	37,711
14	Income Taxes - Federal (409.1)	-	61,770	58,902
15	Income Taxes - Other (409.1)	-	17,412	16,325
16	Provision for Deferred Inc. Taxes (410.1)	24	24,884	19,968
17	(Less) Provision for Deferred Income Taxes - Cr.(411.1)	23	-	-
18	Investment Tax Credit Adj. - Net (411.4)	-	-	-
19	(Less) Gains from Disp. of Utility Plant (411.6)	-	-	-
20	Losses from Disp. of Utility Plant (411.7)	-	-	-
21	(Less) Gains from Disposition of Allowances (411.8)	-	-	-
22	Losses from Disposition of Allowances (411.9)	-	-	-
23	TOTAL Utility Operating Expenses (Total of lines 4 -22)		1,075,218	1,076,409
24	Net Utility Operating Income (Total of line 2 less 23) (Carry forward to page 14, line 25)		\$ 284,021	\$ 312,832

Please read accountants' compilation report.

December 31, 2023

## STATEMENT OF INCOME (Continued)

Line No.	Account (a)	Ref. Page No. (b)	TOTAL	
			Current Year (c)	Previous Year (d)
25	Net Utility Operating Income (Carried forward from page 12)		\$ 284,021	\$ 312,832
26	Other Income and Deductions			
27	Other Income			
28	Nonutility Operating Income			
29	Revenues From Merchandising, Jobbing and Contract Work (415)	-	128,458	82,382
30	(Less) Costs and Exp. of Merchandising, Job & Contract Work (416)	-	(89,242)	(74,420)
31	Revenues From Nonutility Operations (417)	-	-	-
32	(Less) Expenses of Nonutility Operations (417.1)	-	-	-
33	Nonoperating Rental Income (418)	-	-	-
34	Equity in Earnings of Subsidiary Companies (418.1)	10	-	-
35	Interest and Dividend Income (419)	-	-	-
36	Allowance for Other Funds Used During Construction (419.1)	-	-	-
37	Miscellaneous Nonoperating Income (421)	-	325	393
38	Gain on Disposition of Property (421.1)	-	5,000	5,675
			-	-
39	TOTAL Other Income (Enter Total of lines 29 through 38)		44,541	14,030
40	Other Income Deductions			
41	Loss on Disposition of Property (421.2)	-	-	-
42	Miscellaneous Amortization (425)	33	-	-
43	Miscellaneous Income Deductions (426.1-426.5)	33	-	-
			-	-
44	TOTAL Other Income Deductions (Total of lines 41 through 43)		-	-
45	Taxes Applic. to Other Income and Deductions			
46	Taxes Other Than Income Taxes (408.2)	-	-	-
47	Income Taxes - Federal (409.2)	-	-	-
48	Income Taxes - Other (409.2)	-	-	-
49	Provision for Deferred Income Taxes (410.2)	24	-	-
50	(Less) Provision for Deferred Income Taxes - Cr. (411.2)	24	-	-
51	Investment Tax Credit Adj.- Net (411.5)	-	-	-
52	(Less) Investment Tax Credits (420)	-	-	-
			-	-
53	TOTAL Taxes on Other Inc. and Ded. (Enter Total of 46 through 52)		-	-
54	Net Other Income and Deductions (Enter Total of lines 39,44,53)		44,541	14,030
55	Interest Charges			
56	Interest on Long-Term Debt (427)	21	(102,713)	(79,570)
57	Amortization of Debt Disc. and Expense (428)	21	-	-
58	Amortization of Loss on Recquired Debt (428.1)	-	-	-
59	(Less) Amort. of Premium on Debt - Credit (429)	21	-	-
60	(Less) Amortization of Gain on Recquired Debt - Credit (429.1)	-	-	-
61	Interest on Debt to Assoc. Companies (430)	33	(7,639)	-
62	Other Interest Expense (431)	33	(5,862)	(5,789)
63	(Less) Allow. for Borrowed Funds Used During Const. - Cr. (432)	-	-	-
			-	-
64	Net Interest Charges (Total of lines 56 through 63)		(116,214)	(85,359)
65	Income Before Extraordinary Items (Enter Total of lines 25, 54 and 64)		212,348	241,503
66	Extraordinary Items			
67	Extraordinary Income (434)	-	-	-
68	(Less) Extraordinary Deductions (435)	-	-	-
69	Net Extraordinary Items (Enter Total of line 67 less line 68)		-	-
70	Income Taxes - Federal and Other (409.3)	-	-	-
71	Extraordinary Items After Taxes (Enter Total of line 69 less line 70)		-	-
			-	-
72	Net Income (Enter Total of lines 65 and 71)		\$212,348	\$241,503

Please read accountants' compilation report.

December 31, 2023

**STATEMENT OF RETAINED EARNINGS**

1. Report all changes in appropriated retained earnings, and unappropriated retained earnings for the year.

2. Each credit and debit during the year should be identified as to the retained earnings account in which recorded (Accounts 433, 436-439 inclusive). Show the contra primary account affected in column (b).

3. State the purpose and amount for each reservation or appropriation of retained earnings.

4. List first Account 439, Adjustments to Retained Earnings, reflecting adjustments to the opening balance of retained earnings. Follow by credit, then debit items, in that order.

5. Show dividends for each class and series of capital stock.

6. Show separately the state and federal income tax effect of items shown in account 439, Adjustments to Retained Earnings.

7. Explain in a footnote the basis for determining the amount reserved or appropriated. If such reservations or appropriation is to be recurrent, state the number and annual amounts to be reserved or appropriated as well as the totals eventually to be accumulated.

8. If any notes appearing in the report to stockholders are applicable to this statement attach them at page 11.

Line No.	Item (a)	Contra Primary Account Affected (b)	Amount (c)
<b>UNAPPROPRIATED RETAINED EARNINGS (Account 216)</b>			
1	Balance - Beginning of Year		\$ 2,110,041
2	Changes (Identify by prescribed retained earnings accounts)		
3	Adjustments to Retained Earnings (Account 439):		
4	Credit: Prior Year adjustment - adjustments for deferred tax from 2017 and prior		-
5			
6	TOTAL Credits to Retained Earnings (Account 439) (Total of lines 4 and 5)		-
7	Debit: Prior Year adjustment - retained earnings adjustments		-
8	Debit: Prior Year adjustment - retained earnings adjustments		-
9	TOTAL Debits to Retained Earnings (Account 439) (Total of lines 7 and 8)		-
10	Balance Transferred from Income (Account 433 less Account 418.1)		\$212,352
11	Appropriations of Retained Earnings (Account 436) TOTAL		-
12	Dividends Declared - Preferred Stock (Account 437) TOTAL		-
13	Dividends Declared - Common Stock (Account 438) TOTAL		-
14	Transfers from Acct. 216.1, Unappropriated Undistributed Subsidiary Earnings		-
15	FAS 133 Other Comprehensive Income		-
16	Balance - End of Year (Total of lines 01, 6, 9, 10, 11, 12, 13, 14 and 15)		2,322,393
<b>APPROPRIATED RETAINED EARNINGS (Account 215)</b>			
	State balance and purpose of each appropriated retained earnings amount at end of year and give accounting entries for any applications of appropriated retained earnings during the year.		
17			
18			
19			
20			
21			
22			
23	TOTAL Appropriated Retained Earnings (Account 215)		-
	TOTAL Retained Earnings (Account 215 and 216) (Total of lines 16 and 23)		2,322,393

NOTES TO THE FINANCIAL STATEMENTS ON A CONSOLIDATED BASIS

1. Use the space below for important notes regarding the Balance Sheet, Statement of Income for the year, Statement of Retained Earnings for the year, and Statement of Changes in Financial Position, or any account thereof. Classify the notes according to each basic statement, providing a subheading for each statement except where a note is applicable to more than one statement.

2. Furnish particulars (details) as to any significant contingent assets or liabilities existing at end of year, including a brief explanation of any action initiated by the Internal Revenue Service involving possible assessment of additional income taxes of material amount, or of a claim for refund of income taxes of a material amount initiated by the utility. Give also a brief explanation of any dividends in arrears on cumulative preferred stock.

3. For Account 116, Utility Plant Adjustments, explain the origin of such amount, debits and credits during the year, and

plan of disposition contemplated, giving references to Commission orders or other authorizations respecting classification of amounts as plant adjustments and requirements as to disposition thereof.

4. Where Accounts 189, Unamortized Loss on Reacquired Debt, and 257, Unamortized Gain on Reacquired Debt, are not used, give an explanation, providing the rate treatment given these items. See General Instruction 17 of the Uniform System of Accounts.

5. Give a concise explanation of any retained earnings restrictions and state the amount of retained earnings affected by such restrictions.

6. If the notes to financial statements relating to the respondent company appearing in the annual report to the stockholders are applicable and furnish the data required by instructions above and on pages 8-10, such notes may be attached hereto.

**Management has elected to omit substantially all of disclosures required by generally accepted accounting principles. If the omitted disclosures were included in the financial statements, they might influence the user's conclusions. about the company's financial position, results of operations, and cash flows. Accordingly, these financial statements are not designed for those who are not informed about such matters.**

December 31, 2023

SUMMARY OF UTILITY PLANT AND ACCUMULATED PROVISIONS  
FOR DEPRECIATION, AMORTIZATION AND DEPLETION

Line No.	Item (a)	Total (b)	Gas (c)
1	UTILITY PLANT		
2	In Service		
3	101 Plant in Service (Classified)	8,055,390	8,055,390
4	101.1 Property Under Capital Leases	-	-
5	102 Plant Purchased or Sold	-	-
6	106 Completed Construction not Classified	-	-
7	103 Experimental Plant Unclassified	-	-
8	104 Leased to Others	-	-
9	105 Held for Future Use	-	-
10	114 Acquisition Adjustments	-	-
11	TOTAL Utility Plant (Enter Total of lines 3 through 10 )	8,055,390	8,055,390
12	107 Construction Work in Progress	34,317	34,317
13	Accum. Prov. for Depr., Amort., & Depl.	3,776,223	3,776,223
14	Net Utility Plant (Enter total of lines 11 plus 12 less line 13)	4,313,484	4,313,484
15	DETAIL OF ACCUMULATED PROVISIONS FOR DEPRECIATION, AMORTIZATION AND DEPLETION		
16	In Service		
17	108 Depreciation	3,648,821	3,648,821
18	111 Amort. and Depl. of Producing Nat. Gas Land & Land Rights	-	-
19	111 Amort. of Underground Storage Land and Land Rights	-	-
20	119 Amort. of Other Utility Plant	127,402	127,402
21	TOTAL in Service (Enter Total of lines 17 through 20)	3,776,223	3,776,223
22	Leased to Others		
23	108 Depreciation	-	-
24	111 Amortization and Depletion	-	-
25	TOTAL Leased to Others (Enter Total of lines 23 and 24)	-	-
26	Held for Future Use		
27	108 Depreciation	-	-
28	111 Amortization	-	-
29	TOTAL Held for Future Use (Enter. Tot. of lines 27 and 28)	-	-
30	111 Abandonment of Leases (Natural Gas)	-	-
31	115 Amort. of Plant Acquisition Adjustment	-	-
32	TOTAL Acc. Provisions (Should agree with line 13 above) (Enter Total of lines 21, 25, 29, 30, and 31)	\$ 3,776,223	3,776,223



**Annual Depreciation Status Report  
Analysis of Plant in Service Accounts**

Company: Sebring Gas System, Inc.

For the Year Ended December 31, 2023

Page 1 of 2

Acct. No.	Account Description	Depr. Rate	Beginning Balance*	Additions	Retirements	Reclass.	Adjustments	Transfers	Ending Balance*
374	Land and Land Rights		\$ 22,625	0					\$ 22,625
<b>Amortizable General Plant Assets:</b>									
301	Organization Costs	0.035	127,409	0					127,409

Depreciable Assets: This schedule should identify each account/subaccount for which a separate depreciation rate has been approved by the FPSC.									
			\$	\$	\$		\$	\$	\$
376	Mains - Steel	0.024	186,927	-	-		-	-	186,927
376	Mains - Plastic	0.030	3,146,012	343,114	(784)		-	-	3,488,342
378	M&R Station Equipment - General	0.030	22,737	-	-		-	-	22,737
379	M&R Station Equipment - Gate	0.032	1,241,653	9,641	-		-	-	1,251,294
380	Services - Steel	0.027	347,273	-	(3,222)		-	-	344,051
380	Services - Plastic	0.033	1,204,052	96,689	(5,094)		-	-	1,295,647
381	Meters	0.040	383,806	17,648	-		-	-	401,454
382	Meter Installations	0.031	247,724	11,931	-		-	-	259,655
383	Regulators	0.033	54,354	3,093	-		-	-	57,447
384	Regulator Installations	0.029	86,706	2,561	-		-	-	89,267
386	Customer Conversion Cost	0.040	35,310	-	-		-	-	35,310
387	Other Equipment	0.041	23,209	7	-		-	-	23,216
390	Leasehold Improvements	0.025	13,278	-	-		-	-	13,278
391	Office Furniture	0.040	3,033	-	-		-	-	3,033
391	Office Equipment	0.003	33,424	-	-		-	-	33,424
392	Transportation Equip - Light Trucks	0.080	279,518	-	(26,186)		-	-	253,332
394	Tools/Shop/Garage Equipment	0.065	43,042	1,236	-		-	-	44,278
396	Power Operated Equipment	0.020	30,902	-	-		-	-	30,902
397	Communication Equipment	0.054	67,587	175	-		-	-	67,762

## Annual Depreciation Status Report Analysis of Plant in Service Accounts

Company: Sebring Gas System, Inc.

For the Year Ended: December 31, 2023

Page 2 of 23

Acct. No.	Account Description (Continued)	Depr. Rate	Beginning Balance*	Additions	Retirements	Reclass.	Adjustments	Transfers	Ending Balance*
Capital Recovery Schedules:									
			7,600,581	486,095	(35,286)	-	-	-	8,051,390
	<b>Total Account 101*</b>		7,600,581	486,095	(35,286)	-	-	-	8,051,390
	<b>Amortizable Assets:</b>								
	302 Intangible Plant CPR		4,000		-				4,000
	118 Other Utility Plant								
	Other								
	<b>Total Utility Plant</b>		\$ 7,604,581	\$ 486,095	\$ (35,286)	\$ -	\$ -	\$ -	\$ 8,055,390

Note: \* The total beginning and ending balances must agree to acct. 101, Plant in Service, Line 3, Page 12.

**Annual Depreciation Status Report**  
**Analysis of Entries in Accumulated Depreciation & Amortization**

Company: Sebring Gas System, Inc.

For the Year Ended December 31, 2023

Page 1 of 2

Acct. No.	Account Description	Beginning Balance*	Accruals	Reclass.	Retirements	Gross Salvage	Cost of Removal	Rounding and Adjustments	Transfers	Ending Balance*
	<b>Amortizable General Plant Assets:</b>									
301	Organization Costs	\$ 127,402	\$ -					\$ -		\$ 127,402
<p>This schedule should identify each account/subaccount for which a separate depreciation rate has been approved by the FPSC.</p>										
376	Mains - Steel	\$ 194,692	\$ 4,486	\$ -	\$ -	\$ -	\$ -	\$ -		\$ 199,178
376	Mains - Plastic	1,214,325	98,616	-	(784)	-	-	-		1,312,157
378	M&R Station Equipment -General	12,392	682	-	-	-	-	-		13,074
379	M&R Station Equipment - Gate	406,437	43,019	-	(3,222)	-	-	-		446,234
380	Services - Steel	337,924	11,245	-	(5,094)	-	-	-		344,075
380	Services - Plastic	485,643	36,303	-	-	-	-	-		521,946
381	Meters	252,150	15,611	-	-	-	-	-		267,761
382	Meter Installations	85,890	7,851	-	-	-	-	-		93,741
383	Regulators	33,132	1,861	-	-	-	-	-		34,993
384	Regulator Installations	51,374	2,546	-	-	-	-	-		53,920
386	Customer Conversion Cost	27,549	1,412	-	-	-	-	-		28,961
387	Other Equipment	12,939	952	-	-	-	-	-		13,891
390	Leasehold Improvements	4,628	332	-	-	-	-	-		4,960
391	Office Furniture	1,149	124	-	-	-	-	-		1,273
391	Office Equipment	33,280	100	-	-	-	-	-		33,380
392	Transportation Equip - Light Trucks	209,541	21,051	-	(26,186)	-	-	-		204,406
392	Trans. Equipment - Other Vehicles	-	-	-	-	-	-	-		-
394	Tools/Shop/Garage Equipment	20,505	2,875	-	-	-	-	-		23,380
396	Power Operated Equipment	28,924	618	-	-	-	-	-		29,542
397	Communication Equipment	18,294	3,655	-	-	-	-	-		21,949
399	Prior period adjustment	-	-	-	-	-	-	-		-
	<b>Total</b>	<b>3,430,768</b>	<b>253,339</b>	<b>0</b>	<b>(35,286)</b>	<b>0</b>	<b>0</b>	<b>0</b>	<b>0</b>	<b>3,648,821</b>

## Annual Status Report

### Analysis of Entries in Accumulated Depreciation & Amortization

Company: Sebring Gas System, Inc.

For the Year Ended: December 31, 2023

Page 2 of 2

Acct. No.	Account Description	Beginning Balance*	Accruals	Reclass.	Retirements	Gross Salvage	Cost of Removal	Adjustments	Transfers	Ending Balance*
(Continued)										
Capital Recovery Schedules:										
This schedule should identify each approved capital recovery schedule.										
Subtotal										
List any other items necessary to reconcile the total depreciation and amortization accrual amount to Acct. 403, Depreciation Expense, shown on page 8.										
Subtotal										
Grand Total										
		\$ 3,558,170	\$ 253,339	\$ -	\$ (35,286)	\$ -	\$ -	\$ -	\$ -	\$ 3,776,223

Note: \* The grand total of beginning and ending balances must agree to Line 17, Page 12.

Sebring Gas System, Inc.		For the Year Ended	
		December 31, 2023	
CONSTRUCTION WORK IN PROGRESS-GAS (Account 107)			
1. Report below descriptions and balances at end of year of projects in process of construction (107).		Development, and Demonstration (see Account 107 of the Uniform System of Accounts).	
2. Show items relating to "research, development, and demonstration" projects last, under a caption Research,		3. Minor projects (less than \$500,000) may be grouped.	
Line No.	Description of Project (a)	Construction Work in Progress-Gas (Account 107) (b)	Estimated Additional Cost of Project (c)
1	Construction Work in Progress (sum of minor projects)	\$ 34,317	\$ 250,000
2			
3			
4			
5			
6			
7			
8			
9			
10			
11			
12			
13			
14			
15	<b>TOTAL</b>	<b>\$ 34,317</b>	<b>\$ 250,000</b>

CONSTRUCTION OVERHEADS-GAS			
1. List in column (a) the kinds of overheads according to the titles used by the respondent. Charges for outside professional services for engineering fees and management or supervision fees capitalized should be shown as separate items.		and the amounts of engineering, supervision, and administrative costs, etc. which are directly charged to construction.	
2. A respondent should not report "none" to this page if no overhead apportionments are made, but rather should explain the accounting procedures employed		3. Enter on this page engineering, supervision, administrative, and allowance for funds used during construction, etc. which are first assigned to a blanket work order and then prorated to construction jobs.	
Line No.	Description of Overhead (a)	Total Amount Charged for the Year (b)	Total Cost of Construction to Which Overheads Were Charged (Exclusive of Overhead Charges) (c)
1	Labor allocation	\$ 39,168	\$ 446,927
2			
3			
4			
5			
6			
7			
8			
9			
10			
11			
12	<b>TOTAL</b>	<b>\$ 39,168</b>	<b>\$ 446,927</b>

**PREPAYMENTS (Account 165)**

1. Report below the particulars (details) on each prepayment.  
**Not Applicable**

Line No.	Nature of Prepayment (a)	Balance at End of Year (In Dollars) (b)
1	Prepaid Insurance	\$ -
2	Prepaid Rents	-
3	Prepaid Taxes (page 41)	-
4	Prepaid Interest	-
5	Gas Prepayments	-
6	Miscellaneous Prepayments: Advertising	-
7	<b>TOTAL</b>	<b>\$ -</b>

**EXTRAORDINARY PROPERTY LOSSES (Account 182.1)**

Line No.	Description of Extraordinary Loss [Include in the description the date of loss, the date of Commission authorization to use Account 182.1 and period of amortization (mo, yr, to mo, yr).] (a)	Total Amount of Loss (b)	Losses Recognized During Year (c)	WRITTEN OFF DURING YEAR		Balance at End of Year (f)
				Account Charged (d)	Amount (e)	
1	<b>Not Applicable</b>					
2						
3						
4						
5						
6						
7						
8						
9	<b>TOTAL</b>	-	-		-	-

**UNRECOVERED PLANT AND REGULATORY STUDY COSTS (182.2)**

Line No.	Description of Unrecovered Plant and Regulatory Study Costs [Include in the description of costs, the date of Commission authorization to use Account 182.2 and period of amortization (mo, yr, to mo, yr).] (a)	Total Amount of Charges (b)	Costs Recognized During Year (c)	WRITTEN OFF DURING YEAR		Balance at End of Year (f)
				Account Charged (d)	Amount (e)	
10	<b>Not Applicable</b>					
11						
12						
13						
14						
15						
16						
17						
18						
19						
20						
21	<b>TOTAL</b>	-	-		-	-

**OTHER REGULATORY ASSETS (Account 182.3)**

1. Reporting below the particulars (details) called for concerning other regulatory assets which are created through the ratemaking actions of regulatory agencies (and not includible in other amounts).  
 2. For regulatory assets being amortized, show period of amortization in column (a).  
 3. Minor items (amounts less than \$25,000) may be grouped by classes.

Line No.	Description and Purpose of Other Regulatory Assets (a)	Balance Beginning of Year (b)	Debits (c)	Credits		Balance End of Year (f)
				Account Charged (d)	Amounts (e)	
1	not applicable					
2						
3						
4						
5						
6						
7						
8						
9						
10						
11						
12						
13						
14						
15						
16						
17	<b>TOTAL</b>	\$ -	\$ -		\$ -	\$ -

**MISCELLANEOUS DEFERRED DEBITS (Account 186)**

1. Report below the particulars (details) called for concerning miscellaneous deferred debits.  
 2. For any deferred debit being amortized, show period of amortization in column (a).  
 3. Minor items (amounts less than \$25,000) may be grouped by classes.

Line No.	Description of Miscellaneous Deferred Debit (a)	Balance Beginning of Year (b)	Debits (c)	Account Charged (d)	Amount (e)	Balance End of Year (f)
1	not applicable					
2						
3						
4						
5						
6						
7						
8						
9						
10						
11						
12						
13						
14						
15						
16						
17	Misc. Work in Progress					
18	Deferred Regulatory Comm. Expenses					
19	<b>TOTAL</b>	\$ -				\$ -

**SECURITIES ISSUED AND  
SECURITIES REFUNDED OR RETIRED DURING THE YEAR**

- |  |  |
|--|--|
| <p>1. Furnish a supplemental statement giving a brief description of security financing and refinancing transactions during the year and the accounting for the securities, discounts, premiums, expenses, and related gains or losses.</p> <p>2. Furnish particulars (details) showing fully the accounting for the total principal amount, par value, or stated value of each class and series of security issued, retired, or refunded and the accounting for premiums, discounts, expenses, and gains or losses relating to the securities. Set forth the facts of the accounting clearly with regard to redemption premiums, unamortized discounts, expenses, and gains or losses relating to securities retired or refunded.</p> | <p>and gains or losses relating to securities retired or refunded.</p> <p>3. Included in the identification of each class and series of security, as appropriate, the interest or dividend rate, nominal date of issuance, maturity date, aggregate principal amount, par value or stated value, and number of shares.</p> <p>4. Where the accounting for amounts relating to securities refunded or retired is other than that specified in General Instruction 17 of the Uniform System of Accounts, give references to the Commission authorization for the different accounting and state the accounting method.</p> |
|--|--|

Not Applicable

**UNAMORTIZED LOSS AND GAIN ON REACQUIRED DEBT (Accounts 189, 257)**

- |  |   |
|--|---|
| <p>1. Report under separate subheadings for Unamortized Loss and Unamortized Gain on Reacquired Debt, particulars (details) of gain and loss, including maturity date, on reacquisition applicable to each class and series of long-term debt. If gain or loss resulted from a refunding transaction, include also the maturity date of the new issue.</p> <p>2. In column (c) show the principal amount of bonds or other long-term debt reacquired.</p> <p>3. In column (d) show the net gain or net loss realized on each debt reacquisition as computed in accordance with</p> | <p>General Instruction 17 of the Uniform Systems of Accounts</p> <p>4. Show loss amounts by enclosing the figures in parentheses.</p> <p>5. Explain in a footnote any debits and credits other than amortization debited to Account 428.1, Amortization of Loss on Reacquired Debt, or credited to Account 429.1, Amortization of Gain on Reacquired Debt-Credit.</p> |
|--|---|

Line No.	Designation of Long-Term Debt (a)	Date Reacquired (b)	Principal of Debt Reacquired (c)	Net Gain or Net Loss (d)	Balance at Beginning of Year (e)	Balance at End of Year (f)
1	Not Applicable					
2						
3						
4						
5						
6						
7						
8						
9						
10						
11						
12						
13						



**LONG-TERM DEBT (Accounts 221, 222, 223, and 224)**

1. Report by balance sheet Account the particulars (details) concerning long-term debt included in Accounts 221, Bonds, 222, Reacquired Bonds, 223, Advances from Associated Companies, and 224, Other Long-Term Debt. If information to meet the stock exchange reporting requirement outlined in column (a) is available from the SEC 10-K Report Form Filing, a specific reference to the report form (i.e., year and company title) may be reported in column (a) provided the fiscal years for both the 10-K report and this report are compatible.

2. For advances from Associated Companies, report separately advances on notes and advances on open accounts. Designate demand notes as such. Include in column (a) names of associated companies from which advances were received.

3. If the respondent has any long-term securities which have been nominally issued and are nominally outstanding at end of year, describe such securities in a footnote.

4. If interest expense was incurred during the year on any obligations retired or reacquired before end of year, include such interest in column (f). Explain in a footnote any difference between the total of column (f) and the total of Account 427, Interest on Long-Term Debt and Account 430, Interest on Debt to Associated Companies.

Line No.	Class and Series of Obligation (a)	Nominal Date of Issue (b)	Date of Maturity (c)	Original Amount Issued (d)	Interest for Year		Total Amount Outstanding (g)
					Rate (in %) (e)	Amount (f)	
1							
2	Promissory note	7/18/2013	7/18/2023	\$ 2,250,000	8.00%	\$ 71,352	798,500
3	Promissory note	8/15/2016	8/18/2024	\$ 650,000	9.00%	\$ 30,736	489,387
4							
5							
6							
7							
8							
9							
10							
11							
12							
13							
14							
15							
16							
17							
18							
19							
20	TOTAL			\$ 2,900,000		\$ 102,088	\$ 1,287,887

**UNAMORTIZED DEBT EXPENSE, PREMIUM AND DISCOUNT ON LONG-TERM DEBT (Accounts 181, 225, 226)**

1. Report under separate subheadings for Unamortized Debt Expense, Unamortized Premium on Long-Term Debt and Unamortized Discount on Long-Term Debt, particulars (details) of expense, premium or discount applicable to each class and series of long-term debt.

2. Show premium amounts by enclosing the figures in parentheses.

3. In column (b) show the principal amount of bonds or other long-term debt originally issued.

4. In column (c) show the expense, premium or discount with respect to the amount of bonds or other long-term debt originally issued.

5. Furnish in a footnote particulars (details) regarding the treatment of unamortized debt expense, premium or discount associated with issues redeemed during the year.

6. Identify separately indisposed amounts applicable to issues which were redeemed in prior years.

7. Explain any debits and credits other than amortization debited to Account 428, Amortization of Debt Discount and Expense, or credited to Account 429, Amortization of Premium on Debt - Credit.

Line No.	Designation of Long-Term Debt (a)	Principal Amount of Debt issued (b)	Total Expense Premium or Discount (c)	Amortization Period		Balance at beginning of Year (f)	Debits (Credits) During Year (g)	Balance at End of Year (h)
				Date From (d)	Date To (e)			
1	Not Applicable							
2								
3								
4								
5								
6								
7								
8								
9								
10								
11								
12								
13								
14								
15								
16								
17								
18								

Sebring Gas System, Inc.		For the Year Ended
		December 31, 2023
<b>MISCELLANEOUS CURRENT AND ACCRUED LIABILITIES (Account 242)</b>		
1. Describe and report the amount of other current and accrued liabilities at the end of year.		2. Minor items (less than \$50,000) may be grouped under appropriate title.
Line No.	Item	Balance at End of Year
1	Not Applicable	
2		
3		
4		
5		
6		
7		
8		
9		
10		
11		
12		
13	<b>TOTAL</b>	<b>\$ -</b>

<b>OTHER DEFERRED CREDITS (Account 253)</b>						
1. Report below the particulars (details) called for concerning other deferred credits.						
2. For any deferred credit being amortized, show the period of amortization.						
3. Minor Items (less than \$25,000) may be grouped by classes.						
Line No.	Description of Other Deferred Credit (a)	Balance Beginning of Year (b)	DEBITS		Credits (e)	Balance End of Year (f)
			Contra Account (c)	Amount (d)		
1	Conservation	(7,368)	186	\$ 21,065	\$ 22,677	\$ (5,756)
2						
3						
4						
5						
6						
7						
8						
9						
10						
11						
12						
13	<b>TOTAL</b>	<b>\$ (7,368)</b>		<b>\$ 21,065</b>	<b>\$ 22,677</b>	<b>\$ (5,756)</b>

<b>OTHER REGULATORY LIABILITIES (Account 254)</b>						
1. Reporting below the particulars (details) called for concerning other regulatory liabilities which are created through the ratemaking actions of regulatory agencies (and not includable in other amounts).				2. For regulatory liabilities being amortized, show period of amortization in column (a).		
3. Minor items (5% of the Balance at End of Year for Account 254 or amounts less than \$50,000, whichever is less) may be grouped by classes.						
Line No.	Description and Purpose of Other Regulatory Liabilities (a)	Balance Beginning of Year (b)	Debits		Credits (d)	Balance End of Year (e)
			Contra Account (b)	Amount (c)		
1	Not Applicable					
2						
3						
4						
5						
6						
7						
8						
9						
10						
11						
12						
13	<b>TOTAL</b>	<b>\$ -</b>		<b>\$ -</b>	<b>\$ -</b>	<b>\$ -</b>

**TAXES OTHER THAN INCOME TAXES (Account 408.1)**

Line No.	Name of Taxing Authority	Real Property	Tangible Personal Property	Intangible Personal Property	FICA, SUTA, FUTA	Gross Receipts	Regulatory Assessment Fees	Environmental, Excise	Franchise	Other*	Total
1	U.S. Government					6,139					6,139
2	State of Florida										33,361
3	Highland County Property Appraiser		33,361								33,361
4	Public Service Commission						281				281
5	Various Occupational licenses									3,051	3,051
6											
7											
8											
9											
10											
11											
12											
13											
14											
15	Less: Charged to Construction										
16	TOTAL Taxes Charged During Year (Lines 1-15) to Account 408.1	\$ -	\$ 33,361	\$ -	\$ -	\$ 6,139	\$ 281	\$ -	\$ -	\$ 3,051	\$ 42,832

Note: \*List separately each item in excess of \$500.

**ACCUMULATED DEFERRED INVESTMENT TAX CREDITS (Account 255)**

Report below the information applicable to Account 255. Where appropriate, segregate the balances and transactions by utility and nonutility operations. Explain by footnote any correction adjustment to the account balance shown in column (f).

Line No.	Account Subdivisions (a)	Balance Beginning of Year (b)	Amount Deferred for Year (c)	Allocations to Current Year's Income		Adjustments (f)	Balance End of Year of (g)	Average Period of Allocation to Income (h)
				Acct. No. (d)	Amount (e)			
1	Gas Utility							
2	3%							
3	4%							
4	7%							
5	10%							
6								
7								
8								
9								
10	TOTAL	Not Applicable						

Notes

**ACCUMULATED DEFERRED INCOME TAXES (Account 190)**

1. At Other (Specify), include deferrals relating to other income and deductions.  
2. In the space provided below, identify by amount and classification, significant items for which deferred taxes are being provided.

Line No.	Description	Balance at Beginning of Year	Changes During Year				Adjustments				Balance at End of Year	
			Amounts Debited to Account 410.1	Amounts Credited to Account 411.1	Amounts Debited to Account 410.2	Amounts Credited to Account 411.2	Debits Account No.	Amount	Credits Account No.	Amount		
1	GAS											
2	Not Applicable											
3												
4												
5												
6												
7												
8												
9												
10												
11	TOTAL Gas (Lines 2 - 10)	\$ -	\$ -	\$ -	\$ -	\$ -	\$ -	\$ -	\$ -	\$ -	\$ -	\$ -
12	Other (Specify)											
13	TOTAL (Account 190) (Total of lines 11 and 12)	\$ -	\$ -	\$ -	\$ -	\$ -	\$ -	\$ -	\$ -	\$ -	\$ -	\$ -

Notes

**ACCUMULATED DEFERRED INCOME TAXES (Accounts 281, 282, 283)**

Line No.	Description	Balance at Beginning of Year	Changes During Year				Adjustments				Balance at End of Year	
			Amounts Debited to Account 410.1	Amounts Credited to Account 411.1	Amounts Debited to Account 410.2	Amounts Credited to Account 411.2	Debits Account No.	Amount	Credits Account No.	Amount		
1	Account 281 - Accelerated Amortization Property											
2	Electric											
3	Gas											
4	Other											
5	TOTAL Account 281 (Lines 2 thru 4)	\$ -	\$ -	\$ -	\$ -	\$ -	\$ -	\$ -	\$ -	\$ -	\$ -	\$ -
6	Account 282 - Other Property											
7	Electric	377,121		24,883								402,004
8	Gas											
9	Other											
10	TOTAL Account 282 (Lines 7 thru 9)	377,121	-	24,883	-	-	-	-	-	-	-	402,004
11	Account 283 - Other											
12	Electric											
13	Gas											
14	Other											
15	TOTAL Account 283 - Other (Lines 12 thru 14)	-	-	-	-	-	-	-	-	-	-	-
16	GAS											
17	Federal Income Tax											
18	State Income Tax											
19												
20	TOTAL Gas (Lines 17 thru 19)	-	-	-	-	-	-	-	-	-	-	-
21	OTHER											
22	Federal Income Tax											
23	State Income Tax											
24	TOTAL Other (Lines 22 and 23)	-	-	-	-	-	-	-	-	-	-	-
25	TOTAL (Total of lines 5, 10 and 15)	377,121	-	24,883	-	-	-	-	-	-	-	402,004

Notes

**RECONCILIATION OF REPORTED NET INCOME WITH TAXABLE INCOME  
FOR FEDERAL INCOME TAXES**

1. Report the reconciliation of reported net income for the year with taxable income used in computing Federal income tax accruals and show computation of such tax accruals. Include in the reconciliation, as far as practicable, the same detail as furnished on Schedule M-1 of the tax return for the year. Submit a reconciliation even though there is no taxable income for the year. Indicate clearly the nature of each reconciling amount.

2. If the utility is a member of a group which files a consolidated Federal tax return, reconcile reported net income with taxable net income as if a separate return were to be filed, indicating, however, intercompany amounts to be eliminated in such a consolidated return. State names of group members, tax assigned to each group member, and basis of allocation, assignment, or sharing of the consolidated tax among the group members.

Line No.	Particulars (Details) (a)	Amount (b)
1	Net Income for the Year (Page 14)	\$212,348
2	Reconciling Items for the Year	
3		
4	Taxable Income Not Reported on Books	
5	Prior year adjustment due to error	-
6		
7	Deductions Recorded on Books Not Deducted for Return	
8	Federal income taxes	81,639
9	Depreciation expense	37,193
10	Penalties	-
11	Amortization expense	-
12		
13	Income Recorded on Books Not Included in Return	
14		
15		
16		
17		
18		
19		
20		
21	Deductions on Return Not Charged Against Book Income	
22	Depreciation expense	
23	Other M1 adjustments	-
24		
25		
26		
27		
28		
29		
30	Federal Tax Net Income (loss)	\$331,180
31	Show Computation of Tax:	
32	Federal Tax Net Income (loss)	331,180
	Net Operating Loss Carryforward	-
	Income Tax Expense	\$ -

**GAS OPERATING REVENUES (Account 400)**

1. Report below natural gas operating revenues for each prescribed account in total.
2. Report number of customers, columns (f) and (g), on the basis of meters, except that where separate meter readings are added for billing purposes, one customer should be counted for each group of meters added. The average number of customers means the average of twelve figures at the close of each month.
3. Report quantities of natural gas sold in therms (14.73 psia at 60 F).
4. Report gas service revenues and therms sold by rate schedule.
5. If increases or decreases from previous year (columns (c),(e), and (g)), are not derived from previously reported figures, explain any inconsistencies in a footnote.

Line No.	Title of Account (a)	Operating Revenues		Therms of Natural Gas Sold		Avg. No. of Natural Gas Customers Per Mo.	
		Amount for Year (b)	Amount for Previous Year (c)	Current Year (d)	Previous Year (e)	Current Year (f)	Previous Year (g)
1	<b>Gas Service Revenues</b>						
2	<b>Firm Sales Service</b>						
3	480	-	-				
4	481	-	-				
5	481						
6	481						
7	481						
8	481						
9	<b>Interruptible Sales Service</b>						
10	481	-	-				
11	481						
12	<b>Firm Transportation Service</b>						
13	489	\$ 1,302,926	\$ 1,310,145	1,388,619	1,462,522	770	758
14	489						
15	489						
16	<b>Interruptible Transportation Serv.</b>						
17	489						
18	489						
19	482 Other Sales to Public Authorities	-	-				
20	484 Flex Rate - Refund						
21	TOTAL Sales to Ultimate Consumers	1,302,926	1,310,145	1,388,619	1,462,522	770	758
22	483 Sales for Resale	-	-				
23	Off-System Sales						
24	TOTAL Nat. Gas Service Revenues	1,302,926	1,310,145				
25	TOTAL Gas Service Revenues	1,302,926	1,310,145				
26	<b>Other Operating Revenues</b>						
27	485 Intracompany Transfers	-	-				
28	487 Forfeited Discounts	-	-				
29	488 Misc. Service Revenues	23,246	18,960				
30	489 Rev. from Trans. of Gas of Others						
31	not included in above rate schedules)	-	-				
32	493 Rent from Gas Property	-	-				
33	494 Interdepartmental Rents	-	-				
34	495 Other Gas Revenues						
35	Initial Connection	-	-				
36	Reconnect for Cause	-	-				
37	Collection in lieu of disconnect	-	-				
38	Returned Check	-	-				
39	Other	-	-				
40	495.1 Overrecoveries Purchased Gas	33,067	60,136				
41	TOTAL Other Operating Revenues	56,313	79,096				
42	TOTAL Gas Operating Revenues	1,359,239	1,389,241				
43	(Less) 496 Provision for Rate Refunds	-	-				
44	TOTAL Gas Operating Revenues Net of Provision for Refunds	1,359,239	1,389,241				
45	Sales for Resale						
46	Other Sales to Public Authority						
47	Interdepartmental Sales						
48	TOTAL	1,359,239	1,389,241				

Notes  
As of May 31, 2004, the Company no longer sold Firm Sales Service. After May 31, 2004, the company is considered a transportation service.H23

## GAS OPERATION AND MAINTENANCE EXPENSES

If the amount for previous year is not derived from previously reported figures, explain in footnotes.

Line No.	Account	Amount for Current Year	Amount for Previous Year
1	1. PRODUCTION EXPENSES		
2	A. Manufactured Gas Production	\$ -	\$ -
3	B. TOTAL Natural Gas Prod. and Gathering (Enter Total of Accts. 750 - 769)	-	-
4	C. TOTAL Products Extraction (Enter Total of Accounts 770 through 791)	-	-
5	D. TOTAL Exploration and Development (Enter Total of Accts. 795 through 798)	-	-
6	E. Other Gas Supply Expenses		
7	Operation		
8	800 Natural Gas Well Head Purchases		
9	800.1 Natural Gas Well Head Purchases, Intracompany Transfers		
10	801 Natural Gas Field Line Purchases		
11	802 Natural Gas Gasoline Plant Outlet Purchases		
12	803 Natural Gas Transmission Line Purchases		
13	804 Natural Gas City Gate Purchases	-	-
14	804.1 Liquefied Natural Gas Purchases		
15	805 Other Gas Purchases		
16	(Less) 805.1 Purchased Gas Cost Adjustments	-	-
17	TOTAL Purchased Gas (Enter Total of Lines 8 to 16)	-	-
18	806 Exchange Gas	-	-
19	Purchased Gas Expenses		
20	807.1 Well Expenses--Purchased Gas		
21	807.2 Operation of Purchased Gas Measuring Stations		
22	807.3 Maintenance of Purchased Gas Measuring Stations		
23	807.4 Purchased Gas Calculations Expenses		
24	807.5 Other Purchased Gas Expenses		
25	TOTAL Purchased Gas Expenses (Enter Total of lines 20 through 24)	-	-
26	808.1 Gas Withdrawn from Storage--Debit	-	-
27	(Less) 808.2 Gas Delivered to Storage--Credit	-	-
28	809.1 Withdrawals of Liquefied Natural Gas for Processing--Debit	-	-
29	(Less) 809.2 Deliveries of Natural Gas for Processing--Credit	-	-
30	Gas Used in Utility Operations--Credit		
31	810 Gas Used for Compressor Station Fuel--Credit		
32	811 Gas Used for Products Extraction--Credit		
33	812 Gas Used for Other Utility Operations--Credit		
34	TOTAL Gas Used in Utility Operations--Credit (Lines 31 through 33)	-	-
35	813 Other Gas Supply Expenses		
36	TOTAL Other Gas Supp. Exp. (Total of Lines 17,18,25,26 through 29,34,35)	-	-
37	TOTAL Production Expenses (Enter Total of Lines 2,3,4,5 and 36)	-	-
38	2. NATURAL GAS STORAGE, TERMINALING AND PROCESSING EXPENSES		
39	A. TOTAL Underground Storage Expenses (Total of Accounts 814 through 837)	-	-
40	B. TOTAL Other Storage Expenses (Enter Total of Accounts 840 through 843.9)	-	-
41	C. TOTAL Liquefied Nat Gas Terminaling & Processing Expenses (Enter Total of Accounts 844.1 through 847.8)	-	-
42	TOTAL Natural Gas Storage (Enter Total of lines 39, 40, and 41)	-	-
43	3. TRANSMISSION EXPENSES		
44	TOTAL Transmission Expenses (Enter Total of Accounts 850 through 867)	-	-
45			
46			

December 31, 2023

## GAS OPERATION AND MAINTENANCE EXPENSES (Continued)

Line No.	Account	Amount for Current Year	Amount for Previous Year
47	4. DISTRIBUTION EXPENSES		
48	Operation		
49	870 Operation Supervision and Engineering	\$ 28,678	\$ 29,259
50	871 Distribution Load Dispatching	-	-
51	872 Compressor Station Labor and Expenses	-	-
52	873 Compressor Station Fuel and Power	-	-
53	874 Mains and Services Expenses	34,814	34,613
54	875 Measuring and Regulating Station Expenses--General	-	-
55	876 Measuring and Regulating Station Expenses--Industrial	-	-
56	877 Measuring and Regulating Station Expenses--City Gate Check Sta.	-	-
57	878 Meter and House Regulator Expenses	14,347	14,742
58	879 Customer Installations Expenses	79	4,086
59	880 Other Expenses	13,448	21,396
60	881 Rents	-	-
61	TOTAL Operation (Enter Total of lines 49 through 60)	91,366	104,096
62	Maintenance		
63	885 Maintenance Supervision and Engineering	8,286	5,269
64	886 Maintenance of Structures and Improvements	-	-
65	887 Maintenance of Mains	12,569	6,900
66	888 Maintenance of Compressor Station Equipment	-	-
67	889 Maintenance of Meas. And Reg Sta. Equip --General	-	-
68	890 Maintenance of Meas. and Reg. Sta. Equip.--Industrial	-	-
69	891 Maintenance of Meas. and Reg. Sta. Equip.--City Gate Check Sta.	16,075	24,084
70	892 Maintenance of Services	10,307	9,833
71	893 Maintenance of Meters and House Regulators	10,873	6,108
72	894 Maintenance of Other Equipment	5,011	2,025
73	TOTAL Maintenance (Enter Total of Lines 63 through 72)	63,121	54,219
74	TOTAL Distribution Expenses (Enter Total of Lines 61 and 73)	154,487	158,315
75	5. CUSTOMER ACCOUNTS EXPENSES		
76	Operation		
77	901 Supervision	-	-
78	902 Meter Reading Expenses	7,864	5,346
79	903 Customer Records and Collection Expenses	9,024	5,845
80	904 Uncollectible Accounts	378	425
81	905 Miscellaneous Customer Accounts Expenses	-	-
82	TOTAL Customer Accounts Expenses (Enter Total of Lines 77 through 81)	17,266	11,616
83	6. CUSTOMER SERVICE AND INFORMATIONAL EXPENSES		
84	Operation		
85	907 Supervision	-	-
86	908 Customer Assistance Expenses	47,652	49,054
87	909 Informational and Instructional Expenses	-	-
88	910 Miscellaneous Customer Service and Informational Expenses	-	4,202
89	TOTAL Customer Service and Informational Expenses (Enter Total of Lines 85 through 88)	47,652	53,256
90	7. SALES EXPENSES		
91	Operation		
92	911 Supervision	-	-
93	912 Demonstrating and Selling Expenses	-	37
94	913 Advertising Expenses	-	-
95	916 Miscellaneous Sales Expenses	-	-
96	TOTAL Sales Expenses (Enter Total of lines 92 through 95)	-	37
97			



**GAS OPERATION AND MAINTENANCE EXPENSES (Continued)**

Line No.	Account	Amount for Current Year	Amount for Previous Year
98	<b>8. ADMINISTRATIVE AND GENERAL EXPENSES</b>		
99	Operation		
100	920 Administrative and General Salaries	\$ 215,988	\$ 218,520
101	921 Office Supplies and Expenses	44,240	39,210
102	(Less) (922) Administrative Expenses Transferred--Cr.	(115,118)	(105,617)
103	923 Outside Services Employed	48,463	32,786
104	924 Auto Insurance	119,226	121,192
105	925 Property Insurance	60,190	81,881
106	926 Employee Pensions and Benefits	40,346	41,993
107	927 Franchise Requirements	-	-
108	928 Regulatory Commission Expenses	-	-
109	(Less) (929) Duplicate Charges--Cr.	-	-
110	930.1 General Advertising Expenses	-	-
111	930.2 Miscellaneous General Expenses	227	265
112	931 Rents	16,125	16,125
113	TOTAL Operation (Enter Total of lines 100 through 112)	429,687	446,355
114	Maintenance		
115	935 Maintenance of General Plant	25,889	25,368
116	TOTAL Administrative and General Exp. (Total of lines 113 and 115)	455,576	471,723
117	TOTAL Gas O. and M. Exp. (Lines 37, 42, 44, 74, 82, 89, 96 and 116)	<u>\$ 674,981</u>	<u>\$ 694,947</u>
118			
119			
120			
121			
122			
123			
124			
125			
126			
127			
128			
129			
130	<b>NUMBER OF GAS DEPARTMENT EMPLOYEES</b>		
131			
132	1. The data on number of employees should be reported for payroll period ending nearest to October 31,		
133	or any payroll period ending 60 days before or after October 31.		
134	2. If the respondent's payroll for the reporting period includes any special construction personnel,		
135	include such employees on line 3, and show the number of such special construction employees in a footnote.		
136	3. The number of employees assignable to the gas department from joint functions of combination utilities		
137	may be determined by estimate, on the basis of employee equivalents. Show the estimated number of		
138	equivalent employees attributed to the gas department from joint functions.		
139			
140	1. Payroll Period Ended (Date)		11/1/23
141	2. Total Regular Full-Time Employees		7
142	3. Total Part-Time and Temporary Employees		1
143	4. Total Employees		8
144			
145			
146			
147			

**GAS PURCHASES (Accounts 800, 800.1, 801, 802, 803, 804, 804.1, 805, 805.1)**

- |   |   |
|---|---|
| <p>1. Provide totals for the following accounts:</p> <p>800 - Natural Gas Well Head Purchases</p> <p>800.1- Natural Gas Well Head Purchases<br/>Intracompany Transfers</p> <p>801 - Natural Gas Field Line Purchases</p> <p>802 - Natural Gas Gasoline Plant Outlet Purchases</p> <p>803 - Natural Gas Transmission Line Purchases</p> <p>804 - Natural Gas City Gate Purchases</p> <p>804.1- Liquefied Natural Gas Purchases</p> <p>805 - Other Gas Purchases</p> <p>805.1- Purchases Gas Cost Adjustments</p> | <p>The totals shown in columns (b) and (c) should agree with the books of account. Reconcile any differences in a footnote.</p> <p>2. State in column (b) the volume of purchased gas as finally measured for the purpose of determining the amount payable for the gas. Include current year receipts of makeup gas that was paid for in prior years.</p> <p>3. State in column (c) the dollar amount (omit cents) paid and previously paid for the volumes of gas shown in column (b).</p> <p>4. State in column (d) the average cost per Therm to the nearest hundredth of a cent. (Average means column (c) divided by column (b) multiplied by 100.)</p> |
|---|---|

Line No.	Account Title (a)	Gas Purchased- Therms (14.73 psia 60 F) (b)	Cost of Gas (In dollars) (c)	Average Cost Per Therm (To nearest .01 of a cent) (d)
1	800 - Natural Gas Well Head Purchases			
2	800.1 - Natural Gas Well Head Purchases, Intracompany Transfers			
3	801 - Natural Gas Field Line Purchases			
4	802 - Natural Gas Gasoline Plant Outlet Purchases			
5	803 - Natural Gas Transmission Line Purchases			
6	804 - Natural Gas City Gate Purchases			
7	804.1 - Liquefied Natural Gas Purchases			
8	805 - Other Gas Purchases			
9	805.1 - Purchased Gas Cost Adjustments			
10	TOTAL (Total of lines 1 through 9)	\$ -	\$ -	\$ -

**Notes to Gas Purchases**

As of May 2004, the Company became a transportation company.  
The Company did not purchase any natural gas during 2015

**GAS USED IN UTILITY OPERATIONS - CREDIT (Accounts 812)**

- |   |   |
|---|---|
| <p>1. Report below particulars (details) of credits during the year to Accounts 810, 811 and 812 which offset charges to operating expenses or other accounts for the cost of gas from the respondent's own supply.</p> <p>2. Natural gas means either natural gas unmixed, or any mixture of natural and manufactured gas.</p> <p>3. If the reported Therms for any use is an estimated quantity, state such fact in a footnote.</p> | <p>4. If any natural gas was used by the respondent for which a change was not made to the appropriate operating expense or other account, list separately in column (c) the Therms of gas used, omitting entries in columns (d) and (e).</p> <p>5. Report pressure base of measurement of gas volumes at 14.73 psia at 60 degrees F.</p> |
|---|---|

Line No.	Purpose for Which Gas Was Used (a)	Account Charged (b)	Therms of Gas Used (c)	Natural Gas
				Amount of Credit (d)
1	812 Gas used for Other Utility Operations Credit (Report separately for each principal uses. Group minor uses.)			
2				
3				
4				
5				
6				
7	TOTAL	\$ -	\$ -	\$ -

**REGULATORY COMMISSION EXPENSES (Account 928)**

1. Report particulars (details) of regulatory commission expenses incurred during the current year (or incurred in previous years if being amortized) relating to formal cases before a regulatory body, or cases in which such a body was a party.  
 2. Show in column (h) any expenses incurred in prior years which are being amortized. List in column (a) the period of amortization.  
 3. The totals of columns (c), (f), (h), and (i) must agree with the totals shown at the bottom of page 19 for Account 186  
 4. List in Column (d) and (e) expenses incurred during year which were charged currently to income, plant, or other accounts.  
 5. Minor items (less than \$25,000) may be grouped.

Line No.	Description (Name of regulatory commission, the docket number, and a description of the case.) (a)	Total Expenses to Date (b)	Deferred in Account 186 Beginning of Year (c)	Expenses Incurred During Year		Amortized During Year		Deferred in Account 186 End of Year (i)
				Charged Currently to	Deferred to	Contra	Amount	
				Account No. (d)	Account 186 (f)	Account (g)	Amount (h)	
1	Florida Public Service Commission Docket # 20190083-GU Rate Case	\$ 98,622	\$ 148,295		\$ 98,622		\$ -	\$ 148,295
2								
3								
4								
5								
6								
7								
8								
9								
10								
11								
12								
13								
14								
15	<b>TOTAL</b>		\$ 148,295		\$ -	\$ 98,622	\$ -	\$ 148,295

**MISCELLANEOUS GENERAL EXPENSES (Account 930.2) (Gas)**

Line No.	Description (a)	Amount (b)
1	Industry Association Dues	
2	Experimental and General Research Expenses: (a) Gas Research Institute (GRI) (b) Other	
3	Publishing and distributing information and reports to stockholders; trustee, registrar, and transfer agent fees and expenses, and other expenses of servicing outstanding securities of the Respondent.	
4	Other expenses (items of \$5,000 or more must be listed separately in this column showing the (1) purpose, (2) recipient and (3) amount of such items. Amounts of less than \$5,000 may be grouped by classes if the number of items so grouped is shown.)	
5		
6		
7		
8		
9		
10		
11		
12		
13		
14		
15		
16		
17		
18		
19		
20	<b>TOTAL</b>	\$ -

DISTRIBUTION OF SALARIES AND WAGES

Report below the distribution of total salaries and wages for the year. Segregate amounts originally charged to clearing accounts to Utility Departments, Construction, Plant Removals, and Other Accounts, and enter such amounts in the appropriate lines and columns provided. In determining this segregation of salaries and wages originally charged to clearing accounts, a method of approximation giving substantially correct results may be used.

Line No.	Classification (a)	Direct Payroll Distribution (b)	Allocation of Payroll Charged for Clearing Accounts (c)	Total (d)
1	<b>Electric</b>			
2	TOTAL Operation and Maintenance - Electric	\$ -	\$ -	\$ -
3	<b>Gas</b>			
4	Operation			
5	Production - Manuftd. Gas & Nat. Gas (inc. Expl. and Dev.); Other Gas Supply; Storage, LNG, Termn. & Process.			
6	Transmission			
7	Distribution	74,406		
8	Customer Accounts	9,427		
9	Customer Service and Informational	-		
10	Sales			
11	Administrative and General	250,753		
12	TOTAL Operation (Enter Total of lines 5 through 11)	334,586		
13	Maintenance			
14	Production - Manuftd. Gas & Nat. Gas (inc. Expl. and Dev.); Other Gas Supply; Storage, LNG, Termn. & Proces.			
15	Transmission			
16	Distribution	38,900		
17	Administrative and General			
18	TOTAL Maintenance (Enter Total of lines 14 through 17)	38,900		
19	Total Operation and Maintenance			
20	Production - Manuftd. Gas & Nat. Gas (inc. Expl. and Dev.); Other Gas Supply; Storage, LNG, Termn. & Proces.			
21	Transmission (Enter Total of lines 6 and 15)	-		
22	Distribution (Enter Total of lines 7 and 16)	113,306		
23	Customer Accounts (Transcribe from line 8)	9,427		
24	Customer Service and Informational (Transcribe from line 9)	-		
25	Sales (Transcribe from line 10)			
26	Administrative and General (Enter Total of lines 11 and 17)	250,753		
27	TOTAL Operation and Maint. (Total of lines 20 through 26)	373,486	39,168	412,654
28	<b>Other Utility Departments</b>			
29	Operation and Maintenance			
30	TOTAL All Utility Dept. (Total of lines 2, 27, and 29)	373,486	39,168	412,654
31	<b>Utility Plant</b>			
32	Construction (By Utility Departments)			
33	Electric Plant			
34	Gas Plant	46,363	(39,168)	7,195
35	Other			
36	TOTAL Construction (Enter Total of lines 33 through 35)	46,363	(39,168)	7,195
37	Plant Removal (By Utility Department)			
38	Electric Plant			
39	Gas Plant			
40	Other			
41	TOTAL Plant Removal (Enter Total of lines 38 through 40)	-	-	-
42				
43	Other Accounts (Specify):			
44	Conservation Payroll	\$12,483		\$12,483
45	Miscellaneous Payroll	\$54,393		\$54,393
46				
47				
48				
49				
50				
51				
52				
53	TOTAL Other Accounts	\$66,876	-	66,876
54	TOTAL SALARIES AND WAGES	\$ 486,725	\$ -	\$ 486,725

**CHARGES FOR OUTSIDE PROFESSIONAL AND OTHER CONSULTATIVE SERVICES**

1. Report the information specified below for all charges made during the year included in any account (including plant accounts) for outside consultative and other professional services. (These services include rate, management, construction, engineering, research, financial, valuation, legal, accounting, purchasing, advertising, labor relations, and public relations, rendered the respondent under written or oral arrangement, for which aggregate payments were made during the year to any corporation, partnership, organization of any kind, or individual [other than for services as an employee or for payments made for medical and related services] amounting to more than \$25,000, including

payments for legislative services, except those which should be reported in Account 426.4 - Expenditures for Certain Civic, Political and Related Activities.

- (a) Name of person or organization rendering services,
- (b) description of services received,
- (c) basis of charges,
- (d) total charges for the year, detailing account charged.

2. For any services which are of a continuing nature, give the date and term of contract.

3. Designate with an asterisk associated companies.

	Description	Amount
1	Outside services	\$ 19,550
2	Legal services	1,125
3	Payroll services	3,330
4	Public awareness program	24,458
5		
6		
7		
8		
9		
10		
11		
12		
13		
14		
15		
16		
17		
18		
19		
20		
21		
22		\$ 48,463

**PARTICULARS CONCERNING CERTAIN INCOME DEDUCTIONS AND INTEREST CHARGES ACCOUNTS**

Report the information specified below, in the order given for the respective income deduction and interest charges accounts. Provide a subheading for each account and total for the account. Additional columns may be added if deemed appropriate with respect to any account.

(a) Miscellaneous Amortization (Account 425) - Describe the nature of items included in this account, the contra account charges, the total of amortization charged for the year, and the period of amortization.

(b) Miscellaneous Income Deductions - Report the nature, payee, and amount of other income deductions for the year as required by Accounts 426.1, Donations; 426.2 Life Insurance; 426.3 Penalties; 426.4, Expenditures for Certain Civic, Political and Related Activities; and 426.5, Other Deductions, of the Uniform System of Accounts. Amounts of less than \$25,000 may be grouped by classes within the above accounts.

(c) Other Interest Expense (Account 431) - Report particulars (Details) including the amount and interest rate for each other interest charges incurred during the year.

	Item	Amount
1		
2	<u>(c) Other Interest Expense</u>	
3	Interest on Customer Deposits (431)	\$ 5,862
4		
5	Interest is accrued monthly and credited annually on customer deposits.	
6	Residential deposits yield 2.00%	
7	Commercial deposits yield 3.00%	
8		
9		
10		
11		
12		
13		
14		
15		
16		

**Reconciliation of Gross Operating Revenues  
Annual Report versus Regulatory Assessment Fee Return**

**Compan Sebring Gas System, Inc.**

**For the Year Ended December 31, 2023**

For the current year, reconcile the gross operating revenues as reported on Page 26 of this report with the gross operating revenues as reported on the utility's regulatory assessment fee return. Explain and justify any differences between the reported gross operating revenues in column (f).

(a) Line No.	(b) Description	(c) Gross Operating Revenues per Page 26	(d) Interstate and Sales for Resale Adjustments	(e) Adjusted Intrastate Gross Operating Revenues	(f) Intrastate Gross Operating Revenues per RAF Return	(g) Difference (d) - (e)
1	Total Sales to Ultimate Customers (480-482, 484)	\$ 1,302,926		\$ 1,302,926	\$ 1,302,926	\$ -
2	Sales for Resale (483)					
3	Total Natural Gas Service Revenues	1,302,926	-	1,302,926	1,302,926	\$ -
4	Total Other Operating Revenues (485-495)	56,313		56,313	\$56,313	-
5	Total Gas Operating Revenues	1,359,239	-	1,359,239	1,359,239	(0)
6	Provision for Rate Refunds (496)					
7	Other (Specify)					
8						
9						
10	<b>Total Gross Operating Revenues</b>	<b>\$ 1,359,239</b>	<b>\$ -</b>	<b>\$ 1,359,239</b>	<b>\$ 1,359,239</b>	<b>\$ (0)</b>

**Notes: Differences are due to ECCR revenues not required to be included in the regulatory assessment fee returns**

**Reports filed**

July 1 thru December 31  
January 1 thru June 30

\$ 620,092  
682,834

Total sales to ultimate customers

1,302,926

Total Other Operating Revenues (488 and 495) Jan thru Jun  
Total Other Operating Revenues (488 and 495) Jul thru Dec

30,150  
26,163

\$ 1,359,239

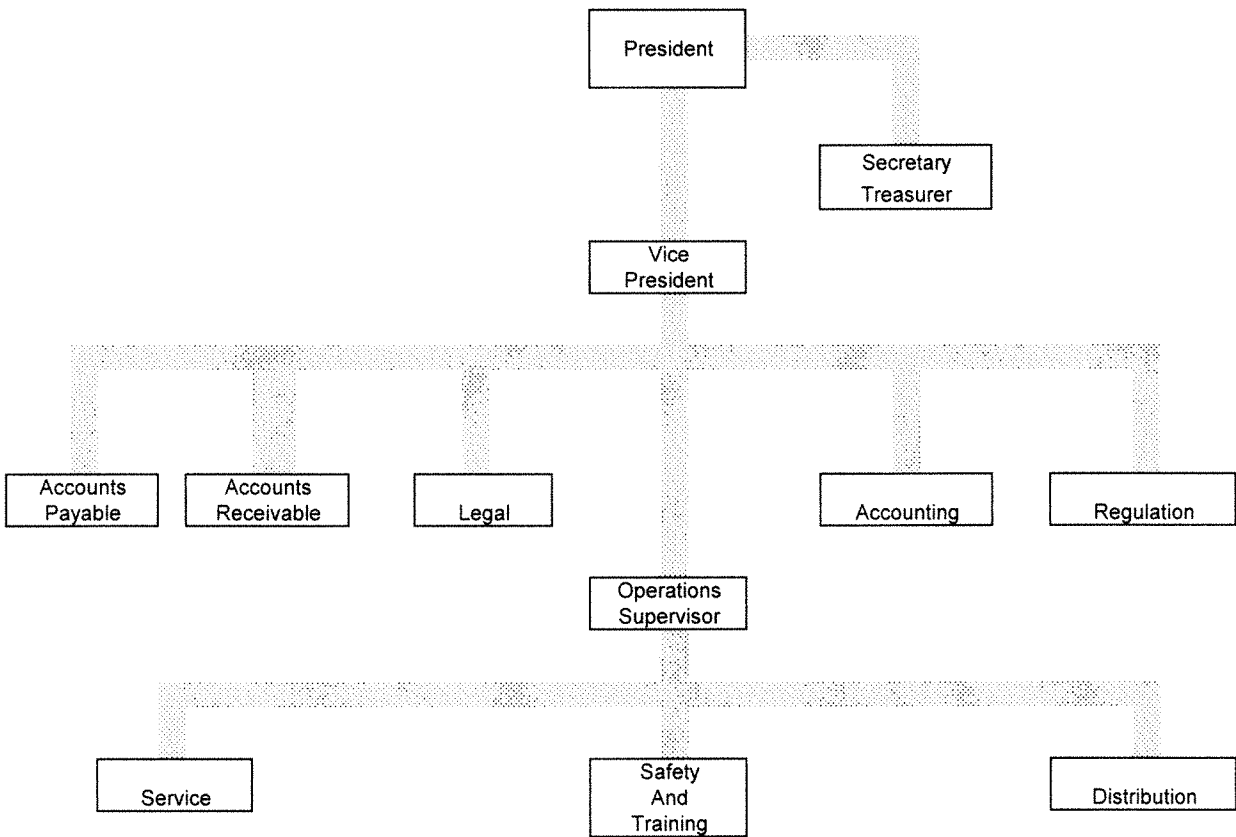
# CORPORATE STRUCTURE

Company: Sebring Gas System, Inc.

For the Year Ended December 31, 2023

Provide an updated organizational chart showing all affiliated companies, partnerships, etc.

Effective Date: December 31, 1996



PERIOD: December 31, 2023

**SUMMARY OF AFFILIATED TRANSFERS AND COST ALLOCATIONS**

Grouped by affiliate, list each contract, agreement, or other business transaction exceeding a cumulative amount of \$300 in any one year, entered into between the Respondent and an affiliated business or financial organization, firm, or partnership identifying parties, amounts, dates, and product, asset, or service involved.

- (a) Enter name of affiliate.
- (b) Give description of type of service, or name the product involved.
- (c) Enter contract or agreement effective dates.
- (d) Enter the letter "p" if the service or product is purchased by the Respondent: "s" if the service or product is sold by the Respondent.
- (e) Enter utility account number in which charges are recorded.
- (f) Enter total amount paid, received, or accrued during the year for each type of service or product listed in column (c). Do not net amounts when services are both received and provided.

Name of Affiliate (a)	Type of Service and/or Name of Product (b)	Relevant Contract or Agreement and Effective Date (c)	Total Charge for Year		
			"p" or "s" (d)	Account Number (e)	Dollar Amount (f)
Coker Fuel, Inc.	Printing charges	N/A	p	921.03	645
Coker Fuel, Inc.	Credit Card Charges	N/A	p	921.00	7,980
Coker Fuel, Inc.	Cost of goods sold	N/A	p	416.01	58
<b>Total</b>					\$ 8,683



**NEW OR AMENDED CONTRACTS WITH AFFILIATED COMPANIES**

Provide a synopsis of each new or amended contract, agreement, or arrangement with affiliated companies for the purchase, lease, or sale of land, goods, or services (excluding tariffed items). The synopsis shall include, at a minimum, the terms, price, quantity, amount, and duration of the contracts.

Name of Affiliate	Synopsis of Contract
None	

**INDIVIDUAL AFFILIATED TRANSACTIONS IN EXCESS OF \$25,000**

Provide information regarding individual affiliated transactions in excess of \$25,000. Recurring monthly affiliated transactions which exceed \$25,000 per month should be reported annually in the aggregate. However, each land or property sales transaction even though similar sales recur, should be reported as a "non-recurring" item for the period in which it occurs.

Name of Affiliate	Description of Transaction	Dollar Amount
None		

**ASSETS OR RIGHTS PURCHASED FROM OR SOLD TO AFFILIATES**

Provide a summary of affiliated transactions involving asset transfers or the right to use assets.

Name of Affiliate	Description of Asset or Right	Cost/Orig. Cost	Accumulated Depreciation	Net Book Value	Fair Market Value	Purchase Price	Title Passed Yes/No
Purchases from Affiliates:		\$	\$	\$	\$	\$	
						0	
<b>Total</b>							
Sales to Affiliates:		\$	\$	\$	\$	Sales Price	
<b>Total</b>							0

**EMPLOYEE TRANSFERS**

List employees earning more than \$50,000 annually transferred to/from the utility to/from an affiliate company.

Company Transferred From	Company Transferred To	Old Job Assignment	New Job Assignment	Transfer Permanent or Temporary and Duration