

Check appropriate box:

Original signed form

Conformed copy

RECEIVED  
FLORIDA PUBLIC SERVICE  
COMMISSION

Form Approved  
OMB No. 1902-0028  
(Expires 8/31/93)

92 JUL 30 PM 3:00

AUDITING &  
FINANCIAL ANALYSIS DIV

**OFFICIAL COPY**  
**AUDITING AND FINANCIAL ANALYSIS**  
**DIVISION, FPSC**



# FERC FORM NO. 2: ANNUAL REPORT OF MAJOR NATURAL GAS COMPANIES

This report is mandatory under the Natural Gas Act, Sections 10(e) and 16, and 18 CFR 260.1. Failure to report may result in criminal fines, civil penalties and other sanctions as provided by law. The Federal Energy Regulatory Commission does not consider this report to be of a confidential nature.

Exact Legal Name of Respondent (Company)

Sebring Gas System, Inc.

Year of Report

Dec. 31, 19<sup>91</sup>

**OFFICIAL COPY**  
**AUDITING AND FINANCIAL ANALYSIS**  
**DIVISION, FPSC**

RECEIVED  
FLORIDA PUBLIC SERVICE  
COMMISSION

92 JUL 30 PM 3:00

AUDITING &  
FINANCIAL ANALYSIS DIV

TO: **TIMOTHY J. DEVLIN, DIRECTOR**  
**DIVISION OF AUDITING AND FINANCIAL ANALYSIS**  
**FLORIDA PUBLIC SERVICE COMMISSION**  
**101 EAST GAINES STREET**  
**TALLAHASSEE, FLORIDA 32399-0850**

We represent to the best of our knowledge and belief that our annual report for the year ended December 31, 1991, as filed pursuant to Commission rule, is in substantial compliance with the following except as noted in the report or as separately explained herein:

1. Uniform system of accounts prescribed by the Commission.
2. Applicable rules and orders of the Commission.
3. Commission approved guidelines for inter/intra company allocations, if any.
4. Any communications from regulatory agencies concerning noncompliance with or deficiencies in financial reporting practices.
5. Reporting requirements for related party transactions and related accounts receivable or payable, including sales, purchases, loans, transfers, leasing arrangements and guarantees.

We are aware that Section 837.06, Florida Statutes provides:

Whoever knowingly makes a false statement in writing with the intent to mislead a public servant in the performance of his official duty shall be guilty of a misdemeanor of the second degree, punishable as provided in s. 775.082, s. 775.083, or s. 775.084.

*Jerry H. Melendy, Sr.*

Jerry H. Melendy, Sr., President  
(Name and Title of Chief Executive Officer) (Signature)

7-27-92  
(Date)

Jerry H. Melendy, Jr., Vice President  
(Name and Title of Chief Financial Officer) (Signature)

7/28/92  
(Date)

# EXECUTIVE SUMMARY

SUPPLEMENT TO ANNUAL REPORT

OF

Sebring Gas System, Inc.

Company Name

FOR THE YEAR

1991



## TABLE OF CONTENTS

	<u>Page</u>
<b>PART I Telephone Numbers</b>	<b>2</b>
A. Corporate	
B. Officers	
C. Directors	
<b>PART II Company Profile</b>	<b>3</b>
A. Brief Company History	
B. Operating Territory	
C. Major Goals and Objectives	
D. Major Operating Divisions and Functions	
E. Affiliates and Relationships	
F. Current and Projected Growth Patterns	
<b>PART III Corporate Records</b>	<b>5</b>
A. Location	
B. Description	
C. List Audit Groups Reviewing Records and Operations	
<b>PART IV Parent/Affiliate Organizational Charts</b>	<b>6</b>
<b>PART V Liaison Personnel Directory</b>	<b>7</b>
A. List	
B. Organizational Chart	



**PART I - TELEPHONE NUMBERS**

**A. Company's Universal Telephone Number:** ( 813 ) 385-0194

**B. Direct Telephone Number for Officer(s)**

Officer(s) Name	Title	Telephone Number
1. Jerry H. Melendy, Sr.	President	(813)385-0194
2. Jerry H. Melendy, Jr.	Vice President	(813)385-0194
3. Kathryn C. Melendy	Secretary-Treasurer	(813)385-0194
4.		
5.		
6.		
7.		
8.		
9.		
10.		

**C. Direct Telephone Number for Director(s)**

Director(s) Name	Title/Employer	Telephone Number
1. Jerry H. Melendy, Sr.	President	(813) 385-0194
2. Jerry H. Melendy, Jr.	Vice President	(813) 385-0194
3. Kathryn C. Melendy	Secretary Treasurer	(813) 385-0194
4.		
5.		
6.		
7.		
8.		
9.		
10.		

## PART II - COMPANY PROFILE

(Provide Brief Narrative)

### A. Brief Company History

Sebring Gas System, Inc., a Florida corporation  
Established January 1, 1992 as part of a tax-free spin-off from existing company,  
Coker Fuel, Inc., a Florida corporation. Coker owned and operated a propane gas  
underground system in Sebring, Florida. The ownership of Sebring Gas System, Inc.  
will be the same as the ownership of Coker Fuel, Inc.

### B. Operating Territory

The operating territory of Sebring Gas System, Inc. is the City of Sebring, Florida  
and its environs.  
The territory includes approximately 1,000 residential and 60 small commercial  
customers.

### C. Major Goals and Objectives

The major goals of Sebring Gas System, Inc. are to complete the conversion of the  
underground distribution system and its customers from propane gas to natural gas,  
then extend the system as the demand for natural gas increases.

## PART II - COMPANY PROFILE (continued)

(Provide Brief Narrative)

### D. Major Operating Divisions and Functions

The major Operating Divisions and their functions are:

**Officers:**

Oversee the operation and make plans and establish goals for the company.  
Secure financing and consultation for the operation and growth of the company.

Report to the regulating authorities concerning utility regulations, legal and financial questions.

**Operations:**

Conduct the day to day operation of the mainline system in areas relating to construction, training and safety.

Report to the officers the necessary information needed to add the growth and operation of the company.

### E. Affiliates and Relationships

**Affiliates:**

Jerry H. Melendy, Sr., the President, owns the office building, warehouse and radio tower which the company uses in its day to day operations.

### F. Current and Projected Growth Patterns

**Current and Projected Growth Patterns**

The company anticipates a steady growth for the next four years. As of December 31, 1991, the effective date of this report, the company was in the process of converting it's system from propane gas to natural gas. As a result accurate projections of growth are in the process of being developed. The area of service, Sebring and its environs, has the highest electric rates in the state of Florida, and the probability of increased growth over the next four years is high.

The growth is anticipated in the future along a corridor bordered by U.S. Highway 27, which includes a new shopping mall which is expected to bring growth, both in the commercial area and the residential area.



## PART III - CORPORATE RECORDS

### A. Location

Corporate records are located at the office of Sebring Gas System, Inc., which is located at:

3515 U.S. Hwy 27, South  
Sebring, Florida 33870-5452

### B. Description

The corporate records are maintained using the uniform system of accounts as prescribed by the Florida Public Service Commission.

The records maintained are:

Payroll  
Accounts Payable  
Billing information  
Accounts Receivable  
Regulatory Records.

### C. List Audit Groups Reviewing Records and Operations

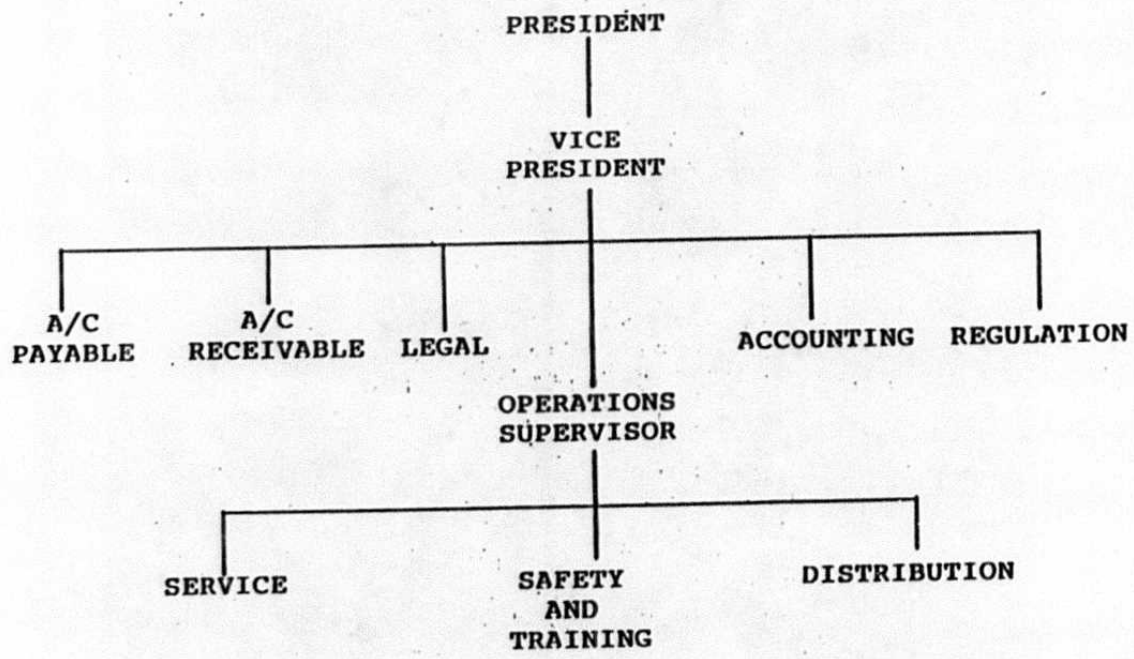
The audit group reviewing the corporate records is the Certified Public Accounting firm of:

Ryals, Brimmer, Burek & Keelan  
5601 Mariner Street, Suite 200  
Tampa, Fl 33609

**PART IV - PARENT/AFFILIATE ORGANIZATIONAL CHART**

Current as of: January 1, 1992  
(Date)

**SEBRING GAS SYTEM  
CHART OF ORGANIZATION**



PART V - LIAISON PERSONNEL DIRECTORY (4)

A. List

Name of Company Representative (1)	Title or Position	Organizational Unit (3) Title (Dept/Div/Etc)	Name of Immediate Supervisor	Area(s) of Responsibility
Norman Smith  Barry Asmus Regulated Industry Consultants, Inc.  Howard Enlow Ryals, Brimmer, Burek & Keelan, CPAs  John W. Burton Burton & Burton, P.A.	Operations Supervisor		Jerry H. Melendy, Jr.	Operations  Consultant  C.P.A.  Attorney

- (1) Also list appropriate legal counsels and others who may not be on the general payroll.
- (2) Please provide individual telephone numbers, if the person cannot be reached through the Company's operator.
- (3) Please provide appropriate organizational charts for all persons listed within the Company.
- (4) Defined as personal visits or telephone calls as a result of routine recurring interface, rate cases, or audits.



## Analysis of Diversification Activity

### Changes in Corporate Structure

Provide any changes in corporate structure including partnerships, minority interests, and joint ventures and an updated organizational chart.

Line No.	Effective Date (a)	Description of Change (b)
1		
2		
3		N/A
4		
5		
6		
7		
8		
9		
10		
11		
12		
13		
14		
15		
16		
17		
18		
19		
20		
21		
22		
23		
24		
25		
26		
27		
28		
29		
30		
31		
32		
33		
34		
35		
36		
37		
38		
39		
40		

## Analysis of Diversification Activity

### Summary of Affiliated Cost Allocation

Grouped by affiliate, list each contract, agreement, or other business transaction exceeding a cumulative amount of \$300 in any one year, entered into between the Respondent and an affiliated business or financial organization, firm, or partnership identifying parties, amounts, dates, and product, asset, or service involved.

**Column**

- a) Enter name of affiliate.
- b) Give description of type of service, or name the product involved.
- c) Enter contract or agreement effective dates.
- d) Enter the letter "p" if the service or product is a purchase by the Respondent; "s" if the service or product is sold by the Respondent.
- e) Enter total amount paid, received, or accrued during the year for each type of service or product listed in column (c).  
Do not net amounts when services are both received and provided.

Line No.	Name of Affiliate (a)	Type of Service and/or Name of Product (b)	Relevant Contract or Agreement and Effective Date (c)	Total Charge For Year	
				"P" or "S" (d)	Dollar Amount (e)
1					
2	J. H. Melendy, Sr.	Office Lease	Lease Agreement	P	\$6,420.00
3	J. H. Melendy, Sr.	Commercial Warehouse	Lease Agreement	P	3,852.00
4					
5					
6					
7					
8					
9					
10					
11					
12					
13					
14					
15					
16					
17					
18					
19					
20					
21					
22					
23					
24					
25					

## Analysis of Diversification Activity

### Summary of Affiliated Cost Allocation

Grouped by affiliate, list each contract, agreement, or other business transaction exceeding a cumulative amount of \$300 in any one year, entered into between the Respondent and an affiliated business or financial organization, firm, or partnership identifying parties, amounts, dates, and product, asset, or service (including human resources earning in excess of \$30,000) involved.

**Column**

- a) Enter name of affiliate.
- b) Give description of type of service, or name the product involved.
- c) Enter contract or agreement effective dates.
- d) Enter the letter "t" if the service or product is a purchase by the Respondent: "f" if the service or product is sold by the Respondent.
- e) Enter total amount paid, received, or accrued during the year for each type of service or product listed in column (c). Do not net amounts when services are both received and provided.

Line No.	Name of Affiliate (a)	Type of Service and/or Name of Product (b)	Relevant Contract or Agreement and Effective Date (c)	Total Charge For Year	
				"T" or "F" (d)	Dollar Amount (e)
1	N/A				
2					
3					
4					
5					
6					
7					
8					
9					
10					
11					
12					
13					
14					
15					
16					
17					
18					
19					
20					
21					
22					
23					
24					
25					



**Analysis of Diversification Activity**

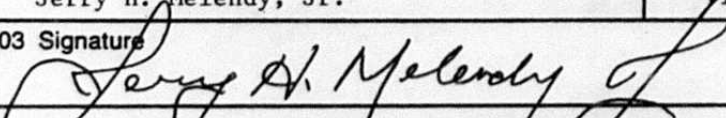
**Transfer of Real Assets or Rights**

Provide a summary of affiliated transactions involving asset transfers or the rights to use assets. Provide:

- An indication that title has passed and the names of the purchasing and selling parties.
- A description of the asset or right transferred.
- A description of the financial or other considerations associated with the transfer.

Line No.	Names of Purchasing and Selling Parties (a)	Has Title Passed (Yes/No) (b)	Description of Asset or Right Transferred (c)	Financial or Other Considerations Associated with Transfer (d)
1				
2				
3	Sebring Gas System, Inc			
4	Coker Fuel, Inc.	Yes	Propane gas mainline originally owned by Coker Fuel, Inc. to be transferred to Sebring Gas System, Inc. effective January 1, 1992.	
5				
6				
7				
8				
9				
10				
11				
12				
13				
14				
15				
16				
17				
18				
19				
20				
21				
22				
23				
24				
25				
26				
27				
28				
29				
31				
32				
33				
34				
35				

**FERC FORM NO. 2:  
ANNUAL REPORT OF MAJOR NATURAL GAS COMPANIES**

IDENTIFICATION		
01 Exact Legal Name of Respondent Sebring Gas System, Inc.		02 Year of Report Dec. 31, 19 <u>91</u>
03 Previous Name and Date of Change (If name changed during year)		
04 Address of Principal Office at End of Year (Street, City, State, Zip Code) 3515 U.S. Highway 27 South, Sebring, FL 33870-5452		
05 Name of Contact Person Jerry H. Melendy, Jr.	06 Title of Contact Person Vice President	
07 Address of Contact Person (Street, City, State, Zip Code) 3515 U.S. Highway 27 South, Sebring, FL 33870-5452		
08 Telephone of Contact Person, Including Area Code (813) 385-0194	09 This Report Is (1) <input checked="" type="checkbox"/> An Original (2) <input type="checkbox"/> A Resubmission	10 Date of Report (Mo, Da, Yr)
ATTESTATION		
The undersigned officer certifies that he/she has examined the accompanying report; that to the best of his/her knowledge, information, and belief, all statements of fact contained in the accompanying report are true and the accompanying report is a correct statement of the business and affairs of the above named respondent in respect to each and every matter set forth therein during the period from and including January 1 to and including December 31 of the year of the report.		
01 Name Jerry H. Melendy, Jr.	02 Title Vice President	
03 Signature 	04 Date Signed, (Mo, Day, Yr) 7/28/92	
Title 18, U.S.C. 1001 makes it a crime for any person knowingly and willingly to make to any Agency or Department of the United States any false, fictitious or fraudulent statements as to any matter within its jurisdiction.		

Name of Respondent Sebring Gas System, Inc.	This Report Is: (1) <input checked="" type="checkbox"/> An Original (2) <input type="checkbox"/> A Resubmission	Date of Report (Mo, Da, Yr)	Year of Report Dec. 31, 19 <u>91</u>
<b>LIST OF SCHEDULES (Natural Gas Company)</b>			
Enter in column (d) the terms "none," "not applicable," or "NA," as appropriate, where no information or amounts have been reported		for certain pages. Omit pages where the responses are "none," "not applicable," or "NA."	
Title of Schedule (a)	Reference Page No. (b)	Date Revised (c)	Remarks (d)
<b>GENERAL CORPORATE INFORMATION AND FINANCIAL STATEMENTS</b>			
General Information .....	101	Ed. 12-87	
Control Over Respondent .....	102	Ed. 12-87	N/A
Corporations Controlled by Respondent .....	103	Ed. 12-87	N/A
Officers .....	104	Ed. 12-87	
Directors .....	105	Ed. 12-88	
Security Holders and Voting Powers .....	106-107	Ed. 12-87	N/A
Important Changes During the Year .....	108-109	Ed. 12-87	N/A
Comparative Balance Sheet .....	110-113	Ed. 12-89	
Statement of Income for the Year .....	114-117	Ed. 12-89	N/A
Statement of Retained Earnings for the Year .....	118-119	Ed. 12-88	N/A
Statement of Cash Flows .....	120-121	Ed. 12-89	N/A
Notes to Financial Statements .....	122-123	Ed. 12-88	N/A
<b>BALANCE SHEET SUPPORTING SCHEDULES (Assets and Other Debits)</b>			
Summary of Utility Plant and Accumulated Provisions for Depreciation, Amortization, and Depletion .....	200-201	Ed. 12-89	
Gas Plant in Service .....	204-209	Ed. 12-89	
Gas Plant Leased to Others .....	213	Ed. 12-88	N/A
Gas Plant Held for Future Use .....	214	Ed. 12-89	N/A
Production Properties Held for Future Use .....	215	Ed. 12-89	N/A
Construction Work in Progress—Gas .....	216	Ed. 12-87	N/A
Construction Overheads—Gas .....	217	Ed. 12-87	N/A
General Description of Construction Overhead Procedure .....	218	Ed. 12-88	N/A
Accumulated Provision for Depreciation of Gas Utility Plant .....	219	Ed. 12-87	
Gas Stored .....	220	Ed. 12-87	N/A
Nonutility Property .....	221	Ed. 12-88	N/A
Accumulated Provision for Depreciation and Amortization of Nonutility Property .....	221	Ed. 12-87	N/A
Investments .....	222-223	Ed. 12-86	N/A
Investments in Subsidiary Companies .....	224-225	Ed. 12-89	N/A
Gas Prepayments Under Purchase Agreements .....	226-227	Ed. 12-88	N/A
Advances for Gas Prior to Initial Deliveries or Commission Certification Prepayments .....	229	Ed. 12-87	N/A
Extraordinary Property Losses .....	230	Ed. 12-88	N/A
Unrecovered Plant and Regulatory Study Costs .....	230	Ed. 12-88	N/A
Preliminary Survey and Investigation Charges .....	231	Ed. 12-88	N/A
Miscellaneous Deferred Debits .....	233	Ed. 12-89	N/A
Accumulated Deferred Income Taxes (Account 190) .....	234-235	Ed. 12-89	N/A
<b>BALANCE SHEET SUPPORTING SCHEDULES (Liabilities and Other Credits)</b>			
Capital Stock .....	250-251	Ed. 12-89	N/A
Capital Stock Subscribed, Capital Stock Liability for Conversion Premium on Capital Stock, and Installments Received on Capital Stock ..	252	Ed. 12-86	



Name of Respondent Sebring Gas System, Inc.	This Report Is: (1) <input checked="" type="checkbox"/> An Original (2) <input type="checkbox"/> A Resubmission	Date of Report (Mo, Da, Yr)	Year of Report Dec. 31, 19 91
--	---	--------------------------------	----------------------------------

**LIST OF SCHEDULES (Natural Gas Company) (Continued)**

Title of Schedule (a)	Reference Page No. (b)	Date Revised (c)	Remarks (d)
<b>BALANCE SHEET SUPPORTING SCHEDULES (Liabilities and Other Credits) (Continued)</b>			
Other Paid-in Capital .....	253	Ed. 12-86	N/A
Discount on Capital Stock .....	254	Ed. 12-86	N/A
Capital Stock Expense .....	254	Ed. 12-86	N/A
Securities Issued or Assumed and Securities Refunded or Retired During the Year .....	255	Ed. 12-86	N/A
Long-Term Debt .....	256-257	Ed. 12-89	N/A
Unamortized Debt Exp., Premium and Discount on Long-Term Debt ...	258-259	Ed. 12-88	N/A
Unamortized Loss and Gain on Reacquired Debt .....	260	Ed. 12-86	N/A
Reconciliation of Reported Net Income with Taxable Income for Federal Income Taxes .....	261	Ed. 12-88	N/A
Taxes Accrued, Prepaid and Charged During Year .....	262-263	Ed. 12-88	N/A
Investment Tax Credits Generated and Utilized .....	264-265	Ed. 12-88	N/A
Accumulated Deferred Investment Tax Credits .....	266-267	Ed. 12-89	N/A
Miscellaneous Current and Accrued Liabilities .....	268	Ed. 12-86	N/A
Other Deferred Credits .....	269	Ed. 12-88	N/A
Undelivered Gas Obligations Under Sales Agreements .....	270-271	Ed. 12-89	N/A
Accumulated Deferred Income Taxes—Accelerated Amortization Property .	272-273	Ed. 12-89	N/A
Accumulated Deferred Income Taxes—Other Property .....	274-275	Ed. 12-89	N/A
Accumulated Deferred Income Taxes—Other .....	276-277	Ed. 12-89	N/A
<b>INCOME ACCOUNT SUPPORTING SCHEDULES</b>			
Gas Operating Revenues .....	300-301	Ed. 12-89	N/A
Distribution Type Sales by States .....	302-303	Ed. 12-88	N/A
Residential and Commercial Space Heating Customers Interruptible, Off Peak, and Firm Sales to Distribution System Industrial Customers .....	305	Ed. 12-88	N/A
Field and Main Line Industrial Sales of Natural Gas .....	306-309	Ed. 12-89	N/A
Sales for Resale—Natural Gas .....	310-311	Ed. 12-88	N/A
Revenue from Transportation of Gas of Others—Natural Gas .....	312-313	Rev. 12-88	N/A
Sales of Products Extracted from Natural Gas .....	315	Ed. 12-86	N/A
Revenues from Natural Gas Processed by Others .....	315	Ed. 12-86	N/A
Gas Operation and Maintenance Expenses .....	320-325	Ed. 12-89	N/A
Number of Gas Department Employees .....	325	Ed. 12-88	N/A
Exploration and Development Expenses .....	326	Ed. 12-87	N/A
Abandoned Leases .....	326	Ed. 12-87	N/A
Gas Purchases .....	327	Ed. 12-89	N/A
Exchange Gas Transactions .....	328-330	Rev. 12-88	N/A
Gas Used in Utility Operations—Credit .....	331	Ed. 12-88	N/A
Transmission and Compression of Gas by Others .....	332-333	Ed. 12-86	N/A
Other Gas Supply Expenses .....	334	Ed. 12-87	N/A
Miscellaneous General Expenses—Gas .....	335	Ed. 12-86	N/A
Depreciation, Depletion, and Amortization of Gas Plant .....	336-338	Ed. 12-88	N/A
Income from Utility Plant Leased to Others .....	339	Ed. 12-86	N/A
Particulars Concerning Certain Income Deduction and Interest Charges Accounts .....	340	Ed. 12-86	N/A

Name of Respondent Sebring Gas System, Inc.	This Report Is: (1) <input checked="" type="checkbox"/> An Original (2) <input type="checkbox"/> A Resubmission	Date of Report (Mo, Da, Yr)	Year of Report Dec. 31, 19_91
--	---	--------------------------------	----------------------------------

**GENERAL INFORMATION**

1. Provide name and title of officer having custody of the general corporate books of account and address of office where the general corporate books are kept, and address of office where any other corporate books of account are kept, if different from that where the general corporate books are kept.

Jerry H. Melendy, Jr., Vice President  
3515 U.S. Highway 27 South, Sebring, FL 33870-5452

2. Provide the name of the State under the laws of which respondent is incorporated, and date of incorporation. If incorporated under a special law, give reference to such law. If not incorporated, state that fact and give the type of organization and the date organized.

Florida, December 24, 1991

3. If at any time during the year the property of respondent was held by a receiver or trustee, give (a) name of receiver or trustee, (b) date such receiver or trustee took possession, (c) the authority by which the receivership or trusteeship was created, and (d) date when possession by receiver or trustee ceased.

N/A

4. State the classes of utility and other services furnished by respondent during the year in each State in which the respondent operated.

Natural Gas Utility

5. Have you engaged as the principal accountant to audit your financial statements an accountant who is not the principal accountant for your previous year's certified financial statements?

- (1)  Yes... Enter the date when such independent accountant was initially engaged: \_\_\_\_\_  
(2)  No

Name of Respondent Sebring Gas System, Inc.	This Report Is: (1) <input checked="" type="checkbox"/> An Original (2) <input type="checkbox"/> A Resubmission	Date of Report (Mo, Da, Yr)	Year of Report Dec. 31, 19_91
--	---	--------------------------------	----------------------------------

**LIST OF SCHEDULES (Natural Gas Company) Continued**

Title of Schedule (a)	Reference Page No. (b)	Date Revised (c)	Remarks (d)
<b>COMMON SECTION</b>			
Regulatory Commission Expenses .....	350-351	Ed. 12-89	N/A
Research, Development and Demonstration Activities .....	352-353	Ed. 12-89	N/A
Distribution of Salaries and Wages .....	354-355	Ed. 12-88	N/A
Charges for Outside Professional and Other Consultative Services .....	357	Ed. 12-87	N/A
<b>GAS PLANT STATISTICAL DATA</b>			
Natural Gas Reserves and Land Acreage .....	500-501	Ed. 12-89	N/A
Changes in Estimated Natural Gas Reserves .....	503	Ed. 12-88	N/A
Changes in Est. Hydrocarbon Reserves and Costs, and Net Realizable Value .....	504-505	Ed. 12-88	N/A
Natural Gas Production and Gathering Statistics .....	506	Ed. 12-88	N/A
Products Extraction Operations—Natural Gas .....	507	Ed. 12-88	N/A
Compressor Stations .....	508-509	Ed. 12-86	N/A
Gas and Oil Wells .....	510	Ed. 12-87	N/A
Field and Storage Lines .....	511	Ed. 12-87	N/A
Gas Storage Projects .....	512-513	Ed. 12-91	N/A
Transmission Lines .....	514	Ed. 12-87	N/A
Liquefied Petroleum Gas Operations .....	516-517	Ed. 12-86	N/A
Transmission System Peak Deliveries .....	518	Ed. 12-88	N/A
Auxiliary Peaking Facilities .....	519	Ed. 12-86	N/A
Gas Account—Natural Gas .....	520-521	Ed. 12-91	N/A
System Map .....	522	Ed. 12-86	N/A
Footnote Data .....	551		
Stockholders' Reports (check appropriate box) .....	—		
<input type="checkbox"/> Four copies will be submitted. <input checked="" type="checkbox"/> No annual report to stockholders is prepared.			



Name of Respondent Sebring Gas System, Inc.	This Report Is: (1) <input checked="" type="checkbox"/> An Original (2) <input type="checkbox"/> A Resubmission	Date of Report (Mo, Da, Yr)	Year of Report Dec. 31, 19_91
--	---	--------------------------------	----------------------------------

**COMPARATIVE BALANCE SHEET (LIABILITIES AND OTHER CREDITS)**

Line No.	Title of Account (a)	Ref. Page No. (b)	Balance at Beginning of Year (c)	Balance at End of Year (d)
1	<b>PROPRIETARY CAPITAL</b>			
2	Common Stock Issued (201)	250-251		1,800
3	Preferred Stock Issued (204)	250-251		
4	Capital Stock Subscribed (202, 205)	252		
5	Stock Liability for Conversion (203, 206)	252		
6	Premium on Capital Stock (207)	252		
7	Other Paid-In Capital (208-211)	253		
8	Installments Received on Capital Stock (212)	252		
9	(Less) Discount on Capital Stock (213)	254		
10	(Less) Capital Stock Expense (214)	254		
11	Retained Earnings (215, 215.1, 216)	118-119		
12	Unappropriated Undistributed Subsidiary Earnings (216.1)	118-119		
13	(Less) Reacquired Capital Stock (217)	250-251		
14	<b>TOTAL Proprietary Capital (Enter Total of lines 2 thru 13)</b>	—		1,800
15	<b>LONG-TERM DEBT</b>			
16	Bonds (221)	256-257		
17	(Less) Reacquired Bonds (222)	256-257		
18	Advances from Associated Companies (223)	256-257		
19	Other Long-Term Debt (224)	256-257		
20	Unamortized Premium on Long-Term Debt (225)	258-259		
21	(Less) Unamortized Discount on Long-Term Debt-Dr. (226)	258-259		
22	<b>TOTAL Long-Term Debt (Enter Total of lines 16 thru 21)</b>	—		
23	<b>OTHER NONCURRENT LIABILITIES</b>			
24	Obligations Under Capital Leases - Noncurrent (227)	—		
25	Accumulated Provision for Property Insurance (228.1)	—		
26	Accumulated Provision for Injuries and Damages (228.2)	—		
27	Accumulated Provision for Pensions and Benefits (228.3)	—		
28	Accumulated Miscellaneous Operating Provisions (228.4)	—		
29	Accumulated Provision for Rate Refunds (229)	—		
30	<b>TOTAL Other Noncurrent Liabilities (Enter Total of lines 24 thru 29)</b>	—		
31	<b>CURRENT AND ACCRUED LIABILITIES</b>			
32	Notes Payable (231)	—		
33	Accounts Payable (232)	—		
34	Notes Payable to Associated Companies (233)	—		423,622
35	Accounts Payable to Associated Companies (234)	—		60,474
36	Customer Deposits (235)	—		
37	Taxes Accrued (236)	262-263		
38	Interest Accrued (237)	—		
39	Dividends Declared (238)	—		
40	Matured Long-Term Debt (239)	—		
41	Matured Interest (240)	—		
42	Tax Collections Payable (241)	—		
43	Miscellaneous Current and Accrued Liabilities (242)	268		
44	Obligations Under Capital Leases-Current (243)	—		
45	<b>TOTAL Current and Accrued Liabilities (Enter Total of lines 32 thru 44)</b>			484,096

Name of Respondent Sebring Gas System, Inc.		This Report Is: (1) <input checked="" type="checkbox"/> An Original (2) <input type="checkbox"/> A Resubmission		Date of Report (Mo, Da, Yr)	Year of Report Dec. 31, 19 <u>91</u>
<b>COMPARATIVE BALANCE SHEET (ASSETS AND OTHER DEBITS)</b>					
Line No.	Title of Account (a)	Ref. Page No. (b)	Balance at Beginning of Year (c)	Balance at End of Year (d)	
52	DEFERRED DEBITS				
53	Unamortized Debt Expense (181)	—			
54	Extraordinary Property Losses (182.1)	230			
55	Unrecovered Plant and Regulatory Study Costs (182.2)	230			
56	Prelim. Survey and Investigation Charges (Electric) (183)	—			
57	Prelim. Sur. and Invest. Charges (Gas) (183.1, 183.2)	231			
58	Clearing Accounts (184)	—			
59	Temporary Facilities (185)	—			
60	Miscellaneous Deferred Debits (186)	233			
61	Def. Losses from Disposition of Utility Plt. (187)	—			
62	Research, Devel. and Demonstration Expend. (188)	352-353			
63	Unamortized Loss on Reacquired Debt (189)	—			
64	Accumulated Deferred Income Taxes (190)	234-235			
65	Unrecovered Purchased Gas Costs (191)	—			
66	TOTAL Deferred Debits (Enter Total of lines 53 thru 65)				
67	TOTAL Assets and other Debits (Enter Total of lines 10, 11, 12, 21, 51, and 66)			485,896	

Name of Respondent		This Report Is:	Date of Report (Mo, Da, Yr)	Year of Report
Sebring Gas System, Inc.		(1) <input checked="" type="checkbox"/> An Original (2) <input type="checkbox"/> A Resubmission		Dec. 31, 19 91
COMPARATIVE BALANCE SHEET (ASSETS AND OTHER DEBITS)				
Line No.	Title of Account (a)	Ref. Page No. (b)	Balance at Beginning of Year (c)	Balance at End of Year (d)
1	UTILITY PLANT			
2	Utility Plant (101-106, 114)	200-201		1,150,780
3	Construction Work in Progress (107)	200-201		
4	TOTAL Utility Plant (Enter Total of lines 2 and 3)			1,150,780
5	(Less) Accum. Prov. for Depr. Amort. Depl. (108, 111, 115)	200-201		670,683
6	Net Utility Plant (Enter Total of line 4 less 5)	—		480,097
7	Nuclear Fuel (120.1-120.4, 120.6)	—		
8	(Less) Accum. Prov. for Amort. of Nucl. Fuel Assemblies (120.5)	—		
9	Net Nuclear Fuel (Enter Total of line 7 less 8)	—		
10	Net Utility Plant (Enter Total of lines 6 and 9)	—		480,097
11	Utility Plant Adjustments (116)	122-123		
12	Gas Stored Underground-Noncurrent (117)	220		
13	OTHER PROPERTY AND INVESTMENTS			
14	Nonutility Property (121)	221		
15	(Less) Accum. Prov. for Depr. and Amort. (122)	221		
16	Investments in Associated Companies (123)	222-223		
17	Investments in Subsidiary Companies (123.1)	224-225		
18	(For Cost of Account 123.1, See Footnote Page 224, line 42)	—		
19	Other Investments (124)	222-223, 229		
20	Special Funds (125-128)	—		
21	TOTAL Other Property and Investments (Total of lines 14 thru 20)	—		
22	CURRENT AND ACCRUED ASSETS			
23	Cash (131)	—		
24	Special Deposits (132-134)	—		
25	Working Funds (135)	—		3,811
26	Temporary Cash Investments (136)	222-223		
27	Notes Receivable (141)	—		
28	Customer Accounts Receivable (142)	—		
29	Other Accounts Receivable (143)	—		
30	(Less) Accum. Prov. for Uncollectible Acct.-Credit (144)	—		
31	Notes Receivable from Associated Companies (145)	—		
32	Accounts Receivable from Assoc. Companies (146)	—		
33	Fuel Stock (151)	—		
34	Fuel Stock Expenses Undistributed (152)	—		
35	Residuals (Elec) and Extracted Products (Gas) (153)	—		
36	Plant Materials and Operating Supplies (154)	—		
37	Merchandise (155)	—		
38	Other Materials and Supplies (156)	—		
39	Nuclear Materials Held for Sale (157)	—		
40	Stores Expense Undistributed (163)	—		
41	Gas Stored Underground — Current (164.1)	220		
42	Liquefied Natural Gas Stored (164.2)	220		
43	Liquefied Natural Gas Held for Processing (164.3)	220		
44	Prepayments (165)	230		1,988
45	Advances for Gas Explor., Devel. and Prod. (166)	229		
46	Other Advances for Gas (167)	229		
47	Interest and Dividends Receivable (171)	—		
48	Rents Receivable (172)	—		
49	Accrued Utility Revenues (173)	—		
50	Miscellaneous Current and Accrued Assets (174)	—		
51	TOTAL Current and Accrued Assets (Enter Total of lines 23 thru 50)			5,799



Name of Respondent Sebring Gas System, Inc.	This Report Is: (1) <input checked="" type="checkbox"/> An Original (2) <input type="checkbox"/> A Resubmission	Date of Report (Mo, Da, Yr)	Year of Report Dec. 31, 19 <u>91</u>
--	---	--------------------------------	---

**DIRECTORS**

1. Report below the information called for concerning each director of the respondent who held office at any time during the year. Include in column (a), abbreviated titles of the directors who are officers of the respondent.

2. Designate members of the Executive Committee by an asterisk and the Chairman of the Executive Committee by a double asterisk.

Name (and Title) of Director (a)	Principal Business Address (b)	No. of Directors Meetings During Yr. (c)	Fees During Year (d)
Jerry H. Melendy, Sr., Pres. Jerry H. Melendy, Jr., V.P. Kathryn C. Melendy, Sec-Treas	231 W. Main St., Wauchula, Fl 3515 US Hwy 27 South, Sebring, Fl 231 W. Main St., Wauchula, Fl		

Name of Respondent Sebring Gas System, Inc.	This Report Is: (1) <input checked="" type="checkbox"/> An Original (2) <input type="checkbox"/> A Resubmission	Date of Report (Mo, Da, Yr)	Year of Report Dec. 31, 1991
--	---	--------------------------------	---------------------------------

**OFFICERS**

1. Report below the name, title and salary for each executive officer whose salary is \$50,000 or more. An "executive officer" of a respondent includes its president, secretary, treasurer, and vice president in charge of a principal business unit, division or function (such as sales, administration or finance), and any other person who performs similar policy-making functions.

2. If a change was made during the year in the incumbent of any position, show name and total remuneration of the previous incumbent, and date the change in incumbency was made.

3. Utilities which are required to file the same data with the Securities and Exchange Commission, may substitute a copy of item 4 of Regulation S-K (identified as this page). The substituted page(s) should be the same size as this page.

Line No.	Title (a)	Name of Officer (b)	Salary for Year (c)
1			
2	President	Jerry H. Melendy, Sr.	-0-
3	Vice President	Jerry H. Melendy, Jr.	\$ 14,549.00
4	Secretary-Treasurer	Kathryn C. Melendy	-0-
5			
6			
7			
8			
9			
10			
11			
12			
13			
14			
15			
16			
17			
18			
19			
20			
21			
22			
23			
24			
25			
26			
27			
28			
29			
30			
31			
32			
33			
34			
35			
36			
37			
38			
39			
40			
41			
42			
43			
44			

<b>Name of Respondent</b> Sebring Gas System, Inc.	<b>This Report Is:</b> (1) <input checked="" type="checkbox"/> An Original (2) <input type="checkbox"/> A Resubmission	<b>Date of Report</b> <i>(Mo, Da, Yr)</i>	<b>Year of Report</b> Dec. 31, 19 <sup>91</sup>
---	--	--	--

**SYSTEM MAPS**

1. Furnish 5 copies of a system map (one with each filed copy of this report) of the facilities operated by the respondent for the production, gathering, transportation, and sale of natural gas. New maps need not be furnished if no important change has occurred in the facilities operated by the respondent since the date of the maps furnished with a previous year's annual report. If, however, maps are not furnished for this reason, reference should be made in the space below to the year's annual report with which the maps were furnished.

2. Indicate the following information on the maps:

- (a) Transmission lines—colored in red, if they are not otherwise clearly indicated.
- (b) Principal pipeline arteries of gathering systems.
- (c) Sizes of pipe in principal pipelines shown on map.
- (d) Normal directions of gas flow—indicated by arrows.
- (e) Location of natural gas fields or pools in which the respondent produces or purchases natural gas.

- (f) Locations of compressor stations, products extraction plants, stabilization plants, important purification plants, underground storage areas, recycling areas, etc.
- (g) Important main line interconnections with other natural gas companies, indicating in each case whether gas is received or delivered and name of connecting company.
- (h) Principal communities in which respondent renders local distribution service.

3. In addition, show on each map: graphic scale to which map is drawn; date as of which the map represents the facts it purports to show; a legend giving all symbols and abbreviations used; designations of facilities leased to or from another company, giving name of such other company.

4. Maps not larger than 24 inches square are desired. If necessary, however, submit larger maps to show essential information. Fold the maps to a size not larger than this report. Bind the maps to the report.



Name of Respondent Sebring Gas System, Inc.	This Report Is: (1) <input checked="" type="checkbox"/> An Original (2) <input type="checkbox"/> A Resubmission	Date of Report (Mo, Da, Yr)	Year of Report Dec. 31, 19 <u>91</u>
--	---	--------------------------------	---

**CAPITAL STOCK (Accounts 201 and 204) (Continued)**

3. Give particulars (details) concerning shares of any class and series of stock authorized to be issued by a regulatory commission which have not yet been issued.  
4. The identification of each class of preferred stock should show the dividend rate and whether the dividends are cumulative or noncumulative.

5. State in a footnote if any capital stock which has been nominally issued is nominally outstanding at end of year.  
6. Give particulars (details) in column (a) of any nominally issued capital stock, reacquired stock, or stock in sinking and other funds which is pledged, stating name of pledgee and purpose of pledge.

OUTSTANDING PER BALANCE SHEET (Total amount outstanding without reduction for amounts held by respondent.)		HELD BY RESPONDENT				Line No.
		AS REACQUIRED STOCK (Account 217)		IN SINKING AND OTHER FUNDS		
Shares (e)	Amount (f)	Shares (g)	Cost (h)	Shares (i)	Amount (j)	
180	1,800					1
						2
						3
						4
						5
						6
						7
						8
						9
						10
						11
						12
						13
						14
						15
						16
						17
						18
						19
						20
						21
						22
						23
						24
						25
						26
						27
						28
						29
						30
						31
						32
						33
						34
						35
						36
						37
						38
						39
						40
						41
						42

Name of Respondent Sebring Gas System, Inc.	This Report Is: (1) <input checked="" type="checkbox"/> An Original (2) <input type="checkbox"/> A Resubmission	Date of Report (Mo, Da, Yr)	Year of Report Dec. 31, 19_91
--	---	--------------------------------	----------------------------------

CAPITAL STOCK (Accounts 201 and 204)

1. Report below the particulars (details) called for concerning common and preferred stock at end of year, distinguishing separate series of any general class. Show separate totals for common and preferred stock. If information to meet the stock exchange reporting requirement outlined in column (a) is available from the SEC 10-K Report Form filing, a specific reference to the report form (i.e. year

and company title) may be reported in column (a) provided the fiscal years for both the 10-K report and this report are compatible.

2. Entries in column (b) should represent the number of shares authorized by the articles of incorporation as amended to end of year.

Line No.	Class and Series of Stock and Name of Stock Exchange  (a)	Number of Shares Authorized by Charter  (b)	Par or Stated Value Per Share  (c)	Call Price at End of Year  (d)
1				
2	Common	180	\$ 10	
3				
4				
5				
6				
7				
8				
9				
10				
11				
12				
13				
14				
15				
16				
17				
18				
19				
20				
21				
22				
23				
24				
25				
26				
27				
28				
29				
30				
31				
32				
33				
34				
35				
36				
37				
38				
39				
40				
41				
42				

Name of Respondent Sebring Gas System, Inc.	This Report Is: (1) <input checked="" type="checkbox"/> An Original (2) <input type="checkbox"/> A Resubmission	Date of Report (Mo, Da, Yr)	Year of Report Dec. 31, 19 91
--	---	--------------------------------	----------------------------------

**PREPAYMENTS (Account 165)**

1. Report below the particulars (details) on each prepayment.      2. Report all payments for undelivered gas on line 5 and complete pages 226 to 227 showing particulars (details) for gas prepayments.

Line No.	Nature of Prepayment (a)	Balance at End of Year (In Dollars) (b)
1	Prepaid Insurance	
2	Prepaid Rents	
3	Prepaid Taxes (pages 262-263)	
4	Prepaid Interest	
5	Gas Prepayments (pages 226-227)	
6	Miscellaneous Prepayments:	1,988
7	<b>TOTAL</b>	<b>1,988</b>

**EXTRAORDINARY PROPERTY LOSSES (Account 182.1)**

Line No.	Description of Extraordinary Loss [Include in the description the date of loss, the date of Commission authorization to use Account 182.1 and period of amortization (mo, yr, to mo, yr).] (a)	Total Amount of Loss (b)	Losses Recognized During Year (c)	WRITTEN OFF DURING YEAR		Balance at End of Year (f)
				Account Charged (d)	Amount (e)	
1						
2						
3						
4						
5						
6						
7						
8						
9	<b>TOTAL</b>					

**UNRECOVERED PLANT AND REGULATORY STUDY COSTS (182.2)**

Line No.	Description of Unrecovered Plant and Regulatory Study Costs [Include in the description of costs, the date of Commission authorization to use Account 182.2, and period of amortization (mo, yr, to mo, yr).] (a)	Total Amount of Charges (b)	Costs Recognized During Year (c)	WRITTEN OFF DURING YEAR		Balance at End of Year (f)
				Account Charged (d)	Amount (e)	
10						
11						
12						
13						
14						
15						
16						
17						
18						
19						
20						
21						
22						
23						
24						
25						
26						
27						
28						
29						
30	<b>TOTAL</b>					



Name of Respondent Sebring Gas System, Inc.		This Report Is: (1) <input checked="" type="checkbox"/> An Original (2) <input type="checkbox"/> A Resubmission		Date of Report (Mo, Da, Yr)	Year of Report Dec. 31, 1991
<b>ACCUMULATED PROVISION FOR DEPRECIATION OF GAS UTILITY PLANT (Account 108)</b>					
<p>1. Explain in a footnote any important adjustments during year.</p> <p>2. Explain in a footnote any difference between the amount for book cost of plant retired, line 11, column (c), and that reported for gas plant in service, pages 204-209, column (d), excluding retirements of non-depreciable property.</p> <p>3. The provisions of Account 108 in the Uniform System of Accounts require that retirements of depreciable plant be recorded when such plant is removed from service. If</p>			<p>the respondent has a significant amount of plant retired at year end which has not been recorded and/or classified to the various reserve functional classifications, make preliminary closing entries to tentatively functionalize the book cost of the plant retired. In addition, include all costs included in retirement work in progress at year end in the appropriate functional classifications.</p> <p>4. Show separately interest credits under a sinking fund or similar method of depreciation accounting.</p>		
<b>Section A. Balances and Changes During Year</b>					
Line No.	Item (a)	Total (c + d + e) (b)	Gas Plant in Service (c)	Gas Plant Held for Future Use (d)	Gas Plant Leased to Others (e)
1	Balance Beginning of Year				
2	Depreciation Provisions for Year, Charged to				
3	(403) Depreciation Expense				
4	(413) Exp. of Gas Plt. Leas. to Others				
5	Transportation Expenses— Clearing				
6	Other Clearing Accounts				
7	Other Accounts (Specify):				
8					
9	TOTAL Deprec. Prov. for Year (Enter Total of lines 3 thru 8)				
10	Net Charges for Plant Retired:				
11	Book Cost of Plant Retired				
12	Cost of Removal				
13	Salvage (Credit)				
14	TOTAL Net Chrgs. for Plant Ret. (Enter Total of lines 11 thru 13)				
15	Other Debit or Cr. Items (Describe): From Coker Fuel	670,683	670,683		
16					
17	Balance End of Year (Enter Total of lines 1, 9, 14, 15, and 16)	670,683	670,683		
<b>Section B. Balances at End of Year According to Functional Classifications</b>					
18	Production—Manufactured Gas				
19	Prod. and Gathering—Natural Gas				
20	Products Extraction—Natural Gas				
21	Underground Gas Storage				
22	Other Storage Plant				
23	Base Load LNG Term. and Proc. Plt.				
24	Transmission				
25	Distribution	670,683	670,683		
26	General				
27	TOTAL (Enter Total of lines 18 thru 26)	670,683	670,683		

Name of Respondent		This Report Is:		Date of Report	Year of Report
Sebring Gas System, Inc.		(1) <input checked="" type="checkbox"/> An Original (2) <input type="checkbox"/> A Resubmission		(Mo, Da, Yr)	Dec. 31, 1991
GAS PLANT IN SERVICE (Accounts 101, 102, 103, and 106) (Continued)					
Retirements (d)	Adjustments (e)	Transfers (f)	Balance at End of Year (g)		Line No.
					88
			5,300	374	89
				375	90
			412,534	376	91
				377	92
			10,627	378	93
			54,077	379	94
			421,148	380	95
			66,087	381	96
			31,867	382	97
			11,720	383	98
			33,838	384	99
				385	100
				386	101
			3,313	387	102
			1,050,511		103
					104
				389	105
				390	106
			482	391	107
			19,217	392	108
				393	109
			1,544	394	110
				395	111
			1,444	396	112
				397	113
				398	114
			22,687		115
				399	116
			22,687		117
			1,073,198		118
					119
					120
					121
			1,073,198		122

Name of Respondent Sebring Gas System, Inc.		This Report Is: (1) <input checked="" type="checkbox"/> An Original (2) <input type="checkbox"/> A Resubmission	Date of Report (Mo, Da, Yr)	Year of Report Dec. 31, 19 <u>91</u>
<b>GAS PLANT IN SERVICE (Accounts 101, 102, 103, and 106) (Continued)</b>				
Line No.	Account (a)	Balance at Beginning of Year (b)	Additions (c)	
88	<b>5. Distribution Plant</b>			
89	374 Land and Land Rights		5,300	
90	375 Structures and Improvements			
91	376 Mains		412,534	
92	377 Compressor Station Equipment			
93	378 Meas. and Reg. Sta. Equip.—General		10,627	
94	379 Meas. and Reg. Sta. Equip.—City Gate		54,077	
95	380 Services		421,148	
96	381 Meters		66,087	
97	382 Meter Installations		31,867	
98	383 House Regulators		11,720	
99	384 House Reg. Installations		33,838	
100	385 Industrial Meas. and Reg. Sta. Equipment			
101	386 Other Prop. on Customers' Premises			
102	397 Other Equipment		3,313	
103	<b>TOTAL Distribution Plant</b>		1,050,511	
104	<b>6. General Plant</b>			
105	389 Land and Land Rights			
106	390 Structures and Improvements			
107	391 Office Furniture and Equipment		482	
108	392 Transportation Equipment		19,217	
109	393 Stores Equipment			
110	394 Tools, Shop, and Garage Equipment		1,544	
111	395 Laboratory Equipment			
112	396 Power Operated Equipment		1,444	
113	397 Communication Equipment			
114	398 Miscellaneous Equipment			
115	Subtotal		22,687	
116	399 Other Tangible Property			
117	<b>TOTAL General Plant</b>		22,687	
118	<b>TOTAL (Accounts 101 and 106)</b>		1,073,198	
119	Gas Plant Purchased (See Instr. 8)			
120	(Less) Gas Plant Sold (See Instr. 8)			
121	Experimental Gas Plant Unclassified			
122	<b>TOTAL Gas Plant in Service</b>		1,073,198	



Name of Respondent Sebring Gas System, Inc.	This Report Is: (1) <input checked="" type="checkbox"/> An Original (2) <input type="checkbox"/> A Resubmission	Date of Report (Mo, Da, Yr)	Year of Report Dec. 31, 19 <u>91</u>
--	---	--------------------------------	---

**GAS PLANT IN SERVICE (Accounts 101, 102, 103, and 106)**

- Report below the original cost of gas plant in service according to the prescribed accounts.
- In addition to Account 101, *Gas Plant in Service (Classified)*, this page and the next include Account 102, *Gas Plant Purchased or Sold*; Account 103, *Experimental Gas Plant Unclassified*; and Account 106, *Completed Construction Not Classified—Gas*.
- Include in column (c) or (d), as appropriate, corrections of additions and retirements for the current or preceding year.
- Enclose in parentheses credit adjustments of plant accounts to indicate the negative effect of such accounts.
- Classify Account 106 according to prescribed accounts, on an estimated basis if necessary, and include the

entries in column (c). Also to be included in column (c) are entries for reversals of tentative distributions of prior year reported in column (b). Likewise, if the respondent has a significant amount of plant retirements which have not been classified to primary accounts at the end of the year, include in column (d) a tentative distribution of such retirements, on an estimated basis, with appropriate contra entry to the account for accumulated depreciation provision. Include also in column (d) reversals of tentative distributions or prior year of unclassified retirements. Attach supplemental statement showing the account distributions of these tentative classifications in columns (c) and (d).

Line No.	Account (a)	Balance at Beginning of Year (b)	Additions (c)
1	1. Intangible Plant		
2	301 Organization		77,582
3	302 Franchises and Consents		
4	303 Miscellaneous Intangible Plant		
5	TOTAL Intangible Plant		77,582
6	2. Production Plant		
7	Natural Gas Production and Gathering Plant		
8	325.1 Producing Lands		
9	325.2 Producing Leaseholds		
10	325.3 Gas Rights		
11	325.4 Rights-of-Way		
12	325.5 Other Land and Land Rights		
13	326 Gas Well Structures		
14	327 Field Compressor Station Structures		
15	328 Field Meas. and Reg. Sta. Structures		
16	329 Other Structures		
17	330 Producing Gas Wells—Well Construction		
18	331 Producing Gas Wells—Well Equipment		
19	332 Field Lines		
20	333 Field Compressor Station Equipment		
21	334 Field Meas. and Reg. Sta. Equipment		
22	335 Drilling and Cleaning Equipment		
23	336 Purification Equipment		
24	337 Other Equipment		
25	338 Unsuccessful Exploration & Devel. Costs		
26	TOTAL Production and Gathering Plant		
27	Products Extraction Plant		
28	340 Land and Land Rights		
29	341 Structures and Improvements		
30	342 Extraction and Refining Equipment		
31	343 Pipe Lines		
32	344 Extracted Products Storage Equipment		
33	345 Compressor Equipment		
34	346 Gas Meas. and Reg. Equipment		
35	347 Other Equipment		
36	TOTAL Products Extraction Plant		
37	TOTAL Nat. Gas Production Plant		
38	Mfd. Gas Prod. Plant (Submit Suppl. Statement)		
39	TOTAL Production Plant		

Name of Respondent Sebring Gas System, Inc.		This Report Is: (1) <input checked="" type="checkbox"/> An Original (2) <input type="checkbox"/> A Resubmission		Date of Report (Mo, Da, Yr)	Year of Report Dec. 31, 1991
<b>SUMMARY OF UTILITY PLANT AND ACCUMULATED PROVISIONS FOR DEPRECIATION, AMORTIZATION AND DEPLETION (Continued)</b>					
Gas (d)	Other (Specify) (e)	Other (Specify) (f)	Other (Specify) (g)	Common (h)	Line No.
					1
					2
1,150,780					3
					4
					5
					6
					7
1,150,780					8
					9
					10
					11
					12
1,150,780					13
670,683					14
480,097					15
					16
					17
670,683					18
					19
					20
					21
670,683					22
					23
					24
					25
					26
					27
					28
					29
					30
					31
					32
670,683					33

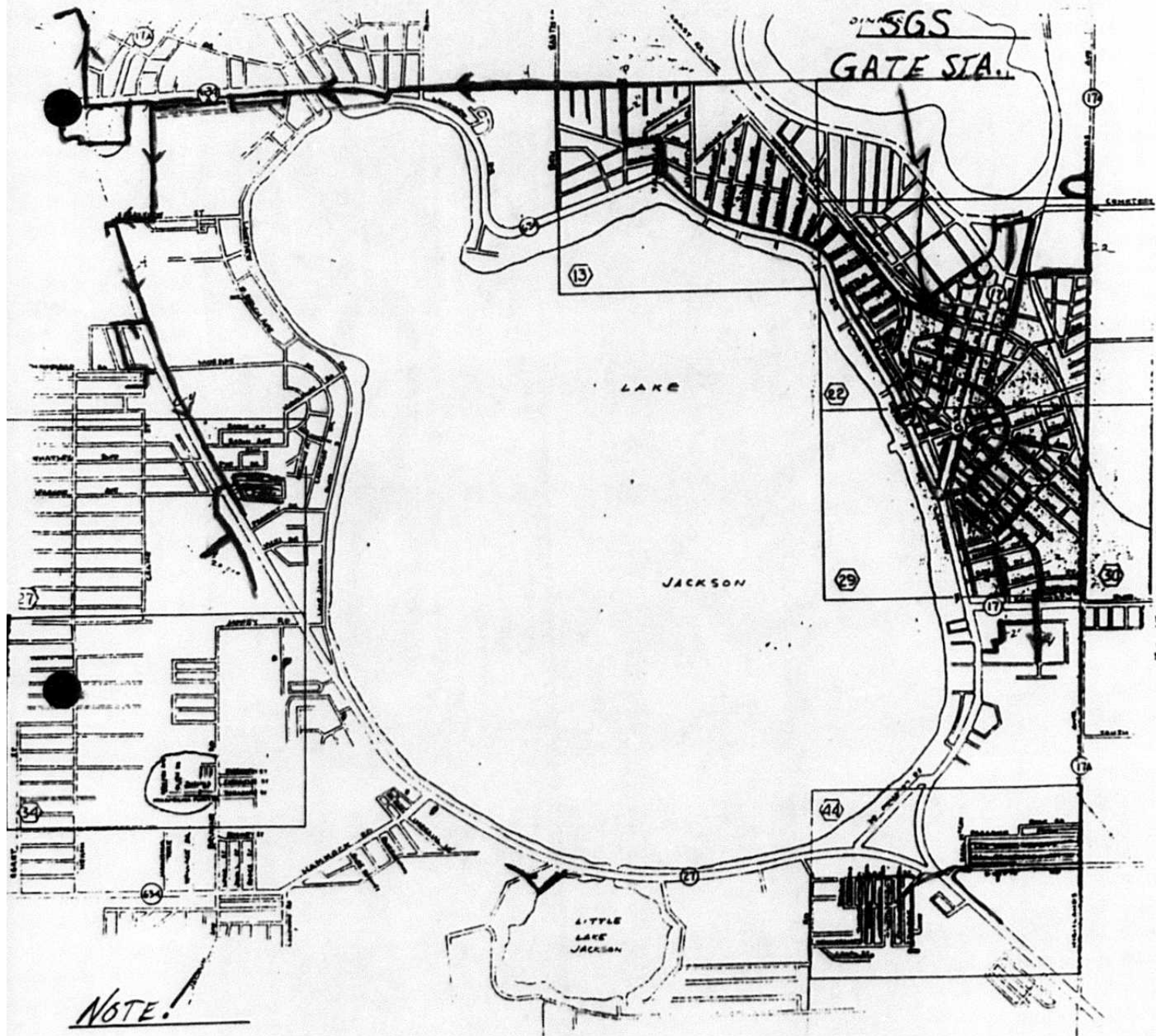
Name of Respondent Sebring Gas System, Inc.		This Report Is: (1) <input checked="" type="checkbox"/> An Original (2) <input type="checkbox"/> A Resubmission	Date of Report (Mo, Da, Yr)	Year of Report Dec. 31, 1991
<b>SUMMARY OF UTILITY PLANT AND ACCUMULATED PROVISIONS FOR DEPRECIATION, AMORTIZATION AND DEPLETION</b>				
Line No.	Item (a)	Total (b)	Electric (c)	
1	<b>UTILITY PLANT</b>			
2	In Service			
3	Plant in Service (Classified)	1,150,780		
4	Property Under Capital Leases			
5	Plant Purchased or Sold			
6	Completed Construction not Classified			
7	Experimental Plant Unclassified			
8	<b>TOTAL (Enter Total of lines 3 thru 7)</b>	<b>1,150,780</b>		
9	Leased to Others			
10	Held for Future Use			
11	Construction Work in Progress			
12	Acquisition Adjustments			
13	<b>TOTAL Utility Plant (Enter Total of lines 8 thru 12)</b>	<b>1,150,780</b>		
14	Accum. Prov. for Depr., Amort., & Depl.	670,683		
15	<b>Net Utility Plant (Enter Total of line 13 less 14)</b>	<b>480,097</b>		
<b>DETAIL OF ACCUMULATED PROVISIONS FOR DEPRECIATION, AMORTIZATION AND DEPLETION</b>				
16	<b>DETAIL OF ACCUMULATED PROVISIONS FOR DEPRECIATION, AMORTIZATION AND DEPLETION</b>			
17	In Service:			
18	Depreciation	670,683		
19	Amort. and Depl. of Producing Natural Gas Land and Land Rights			
20	Amort. of Underground Storage Land and Land Rights			
21	Amort. of Other Utility Plant			
22	<b>TOTAL In Service (Enter Total of lines 18 thru 21)</b>	<b>670,683</b>		
23	Leased to Others			
24	Depreciation			
25	Amortization and Depletion			
26	<b>TOTAL Leased to Others (Enter Total of lines 24 and 25)</b>			
27	Held for Future Use			
28	Depreciation			
29	Amortization			
30	<b>TOTAL Held for Future Use (Enter Total of lines 28 and 29)</b>			
31	Abandonment of Leases (Natural Gas)			
32	Amort. of Plant Acquisition Adj.			
33	<b>TOTAL Accumulated Provisions (Should agree with line 14 above) (Enter Total of lines 22, 26, 30, 31, and 32)</b>	<b>670,683</b>		



Name of Respondent Sebring Gas System, Inc.	This Report Is: (1) <input checked="" type="checkbox"/> An Original (2) <input type="checkbox"/> A Resubmission	Date of Report (Mo, Da, Yr)	Year of Report Dec. 31, 19 <u>91</u>
--	---	--------------------------------	---

**COMPARATIVE BALANCE SHEET (LIABILITIES AND OTHER CREDITS) (Continued)**

Line No.	Title of Account (a)	Ref. Page No. (b)	Balance at Beginning of Year (c)	Balance at End of Year (d)
46	<b>DEFERRED CREDITS</b>			
47	Customer Advances for Construction (252)			
48	Accumulated Deferred Investment Tax Credits (255)	266-267		
49	Deferred Gains from Disposition of Utility Plant (256)			
50	Other Deferred Credits (253)	269		
51	Unamortized Gain on Reacquired Debt (257)	260		
52	Accumulated Deferred Income Taxes (281-283)	272-277		
53	<b>TOTAL Deferred Credits (Enter Total of lines 47 thru 52)</b>			
54				
55				
56				
57				
58				
59				
60				
61				
62				
63				
64				
65				
66				
67	<b>TOTAL Liabilities and Other Credits (Enter Total of lines 14, 22, 30, 45 and 53)</b>			485,896



DINWIDDIE  
SGS  
GATE STA.

LAKE

JACKSON

LITTLE LAKE JACKSON

NOTE!

RED - GAS LINE (DISTRIBUTION)

FLOW -  scale 1 inch = .5 miles

**INDEX**

	<u>Page No.</u>
Abandoned leases .....	326
Accrued and prepaid taxes .....	262—263
Accumulated Deferred Investment Tax Credits .....	266—267
Accumulated provision for depreciation and amortization of nonutility property .....	221
of gas utility plant .....	219
utility plant (summary) .....	200—201
Acreage, natural gas land .....	500—501
Advances	
for gas .....	229
from associated companies .....	256—257
to associated companies .....	222—223
Amortization	
miscellaneous .....	340
of nonutility property .....	221
of other gas plant in service .....	336—338
and depletion of production natural gas land and land rights .....	336—338
Associated companies	
advances from .....	256—257
advances to .....	222—223
control over respondent .....	102
corporations controlled by respondent .....	103
interest on debt to .....	256—257
investment in .....	222—223
service contracts charges .....	357
Attestation .....	1
Balance sheet, comparative .....	110—113
Bonds .....	256—257
Capital stock .....	250—251
discount .....	254
expense .....	254
installments received .....	252
liability for conversion .....	252
premiums .....	252
reacquired .....	250—251
subscribed .....	252
Cash flows, statement of .....	120-121
Changes	
important during the year .....	108—109
in estimated natural gas reserves .....	503
Compressor stations .....	508—509
Construction	
overhead, gas .....	217
overhead procedures, general description of .....	218
work in progress—gas .....	216
work in progress—other utility departments .....	200—201
Contracts, service charges .....	357
Control	
corporations controlled by respondent .....	103
over respondent .....	102
security holders and voting powers .....	106—107
Current and accrued	
liabilities, miscellaneous .....	268
Deferred	
credits, other .....	269
debits, miscellaneous .....	233
income taxes, accumulated .....	234—235
regulatory expenses .....	272—277
regulatory expenses .....	350—351
Demonstration and development, research .....	352—353



INDEX

	<u>Page No.</u>
Depletion	
amortization and depreciation of gas plant .....	336—338
and amortization of producing natural gas land and land rights .....	336—338
Depreciation	
gas plant .....	336—338
gas plant in service .....	219
Directors .....	105
Discount on capital stock .....	254
Distribution Type Sales by States .....	302-303
Dividend appropriations .....	118—119
Earnings, retained .....	118—119
Exchange gas transactions .....	328—329
Expenses, gas operation and maintenance .....	320—325
gas operation and maintenance, summary .....	325
Exploration and development expenses .....	326
Extraction operations, products, natural gas .....	507
Extraordinary property losses .....	230
Field lines .....	511
Footnote Data .....	551
Gas account — natural .....	520—521
Gas	
advances .....	229
exchanged, natural .....	328—330
production and gathering statistics, natural .....	506
purchases, natural and other .....	327
reserves, land acreage, natural gas .....	500—501
stored underground .....	220
used in utility operations, credit .....	331
plant in service .....	204—209
General description of construction overhead procedures .....	218
General information .....	101
Important changes during year .....	108—109
Income	
deductions — details .....	256—259,340
from utility plant leased to others .....	340
statement of, for year .....	114—117
Installments received on capital stock .....	252
Interest	
charges, other .....	340
on debt to associated companies .....	340
on long-term debt, advances, etc. ....	256—257
received from investment, advances, etc. ....	222—223
Interruptible, off-peak and firm sales-industrial .....	305
Investment tax credits generated and utilized .....	264—265
Investments	
in associated companies .....	222—223
nonutility property .....	221
other .....	222—223
subsidiary companies .....	224—225
securities disposed of during year .....	222—223
temporary cash .....	222—223
Legal proceedings during year .....	108—109
Liquefied petroleum gas operation .....	516—517
Long-term debt .....	256—257
assumed during year .....	255
retained during year .....	255
Management and engineering contracts .....	357
Map, system .....	522
Miscellaneous general expense .....	335

**INDEX**

	<u>Page No.</u>
Nonutility property .....	221
Notes	
payable, advances from associated companies .....	256—257
to balance sheet .....	122—123
to financial statements .....	122—123
to statement of income for the year .....	122—123
Officers and officers' salaries .....	104
Oil and gas wells, number of .....	510
Operating	
expenses — gas .....	320—325
revenues — gas .....	300—301
Other	
donations received from stockholders .....	253
gains on resale or cancellation of reacquired capital stock .....	253
miscellaneous paid-in-capital .....	253
other supplies expense .....	334
paid-in capital .....	253
reduction in par or stated value of capital stock .....	253
Overhead, construction — gas .....	217
Peak deliveries, transmission system, Mcf .....	518
Peaking facilities, auxiliary .....	519
Plant — gas	
accumulated provision for depreciation .....	219
construction work in progress .....	216
held for future use .....	214
in service .....	204—209
leased to others .....	213
Plant — utility	
and accumulated provisions (summary) .....	200—201
leased to others, income from .....	339
Pollution control facilities, accumulated	
deferred income taxes .....	272—273
Preliminary survey and investigation charges .....	231
Premium on capital stock .....	252
Prepaid gas purchases under purchase agreements .....	226—227
Prepaid taxes .....	262—263
Prepayments .....	230
Production	
and gathering system expenses, plant and expenses .....	506
properties held for future use .....	215
statistic, natural gas .....	506
Products extraction operations, natural gas .....	507
Professional services, charges for .....	357
Property losses, extraordinary .....	230
Purchased gas .....	327
Reacquired	
capital stock .....	250—251
long-term debt .....	256—257
Receivers' certificate .....	256—257
Reconciliation of reported net income with taxable income from federal income taxes .....	261
Regulatory commission expenses .....	350—351
Regulatory commission expenses — deferred .....	223
Rent from lease of utility plant .....	339
Research, development and demonstration activities .....	352—353
Reserves	
changes in estimated hydrocarbon .....	504—505
natural gas land acreage .....	500—501



INDEX

	<u>Page No.</u>
Retained earnings	
statement of .....	118—119
appropriated .....	118—119
unappropriated .....	118—119
Revenues	
from natural gas processed by others .....	315
from transportation of gas of others .....	312—313
gas operating .....	300—301
Salaries and wages, distribution of .....	354—355
Sales	
gasoline — extracted from natural gas .....	315
natural gas — distribution type sales by states .....	302—303
natural gas — for resale .....	310—311
natural gas — industrial, main line .....	306—309
natural gas — interruptible, off-peak and firm .....	305
natural gas *- space heating, residential and commercial .....	305
products extracted from natural gas .....	315
Securities	
disposed of during year .....	222—223
holders and voting powers .....	106—107
investment in associated companies .....	222—223
investment, others .....	222—223
investment, temporary cash .....	222—223
issued or assumed during year .....	255
refunded or retired during year .....	255
registered on a national exchange .....	250—251, 256—257
Service contract charges .....	357
Space heating customers, residential and commercial .....	304
Statement of cash flows .....	120—121
Stock liability for conversion .....	252
Storage lines, natural gas .....	511
Storage of natural gas, underground .....	512—513
System map .....	522
Taxes	
accrued and prepaid .....	262—263
charged during the year .....	262—263
on income, deferred — accumulated .....	222—223, 234—235
reconciliation of net income for .....	272—277
reconciliation of net income for .....	261
Temporary cash investments .....	222—223
Transmission	
and compression of gas by others .....	332—333
lines .....	514
system peak deliveries .....	518
Transportation of gas of others — revenues .....	312—313
Unamortized	
debt discount and expense .....	258—259
loss and gain on reacquired debt .....	260
premium on debt .....	258—259
Undelivered gas obligations under sales agreements .....	270—271
Underground	
storage of natural gas, expense, operating data, plant .....	512—513
gas, stored .....	220
Unrecovered plant and regulatory study costs .....	230
Wells, gas and oil, number of .....	510