

CLASS "A" OR "B"
WATER AND/OR WASTEWATER UTILITIES
(Gross Revenue of More Than \$200,000 Each)

ANNUAL REPORT

OF

SU291-03-AR
Mr. Patrick C. Flynn
Mid-County Services, Inc.
% Utilities, Inc. of Florida
200 Weathersfield Avenue
Altamonte Springs, FL 32714-4027

081-S
Certificate Number(s)

Submitted To The

STATE OF FLORIDA

PUBLIC SERVICE COMMISSION

FOR THE

YEAR ENDED

31-Dec-03

OFFICIAL COPY
COMMISSION OF
REGULATIONS AND SERVICES
ELECTRICITY AND GAS

04 APR 29 PM 12:09
ELECTRICITY REGULATION
REGISTRATION SERVICE

TABLE OF CONTENTS

SCHEDULE	PAGE	SCHEDULE	PAGE
EXECUTIVE SUMMARY			
Certification	E-1	Business Contracts with Officers, Directors and Affiliates	E-7
General Information	E-2	Affiliation of Officers & Directors	E-8
Directory of Personnel Who Contact the FPSC	E-3	Businesses which are a Byproduct, Coproduct or Joint Product Result of Providing Service	E-9
Company Profile	E-4	Business Transactions with Related Parties. Part I and II	E-10
Parent / Affiliate Organization Chart	E-5		
Compensation of Officers & Directors	E-6		
FINANCIAL SECTION			
Comparative Balance Sheet - Assets and Other Debits	F-1	Unamortized Debt Discount / Expense / Premium	F-13
Comparative Balance Sheet - Equity Capital and Liabilities	F-2	Extraordinary Property Losses	F-13
Comparative Operating Statement	F-3	Miscellaneous Deferred Debits	F-14
Schedule of Year End Rate Base	F-4	Capital Stock	F-15
Schedule of Year End Capital Structure	F-5	Bonds	F-15
Capital Structure Adjustments	F-6	Statement of Retained Earnings	F-16
Utility Plant	F-7	Advances from Associated Companies	F-17
Utility Plant Acquisition Adjustments	F-7	Long Term Debt	F-17
Accumulated Depreciation	F-8	Notes Payable	F-18
Accumulated Amortization	F-8	Accounts Payable to Associated Companies	F-18
Regulatory Commission Expense - Amortization of Rate Case Expense	F-9	Accrued Interest and Expense	F-19
Nonutility Property	F-9	Misc. Current & Accrued Liabilities	F-20
Special Deposits	F-9	Advances for Construction	F-21
Investments and Special Funds	F-10	Other Deferred Credits	F-21
Accounts and Notes Receivable - Net	F-11	Contributions In Aid of Construction	F-22
Accounts Receivable from Associated Companies	F-12	Accumulated Amortization of CIAC	F-23
Notes Receivable from Associated Companies	F-12	Reconciliation of Reported Net Income with Taxable Income for Federal Income Taxes	F-23
Miscellaneous Current & Accrued Assets	F-12		

TABLE OF CONTENTS

SCHEDULE	PAGE	SCHEDULE	PAGE
WATER OPERATION SECTION			
Listing of Water System Groups	W-1	CIAC Additions / Amortization	W-8
Schedule of Year End Water Rate Base	W-2	Water Operating Revenue	W-9
Water Operating Statement	W-3	Water Utility Expense Accounts	W-10
Water Utility Plant Accounts	W-4	Pumping and Purchased Water Statistics, Source Supply	W-11
Basis for Water Depreciation Charges	W-5	Water Treatment Plant Information	W-12
Analysis of Entries in Water Depreciation Reserve	W-6	Calculation of ERC's	W-13
Contributions In Aid of Construction	W-7	Other Water System Information	W-14
WASTEWATER OPERATION SECTION			
Listing of Wastewater System Groups	S-1	Contributions In Aid of Construction	S-7
Schedule of Year End Wastewater Rate Base	S-2	CIAC Additions / Amortization	S-8
Wastewater Operating Statement	S-3	Wastewater Utility Expense Accounts	S-9
Wastewater Utility Plant Accounts	S-4	Wastewater Operating Revenue	S-10
Analysis of Entries in Wastewater Depreciation Reserve	S-5	Calculation of ERC's	S-11
Basis for Wastewater Depreciation Charges	S-6	Wastewater Treatment Plant Information	S-12
		Other Wastewater System Information	S-13

EXECUTIVE SUMMARY

CERTIFICATION OF ANNUAL REPORT

I HEREBY CERTIFY, to the best of my knowledge and belief:

YES NO

1. The utility is in substantial compliance with the Uniform System of Accounts prescribed by the Florida Public Service Commission.

YES NO

2. The utility is in substantial compliance with all applicable rules and orders of the Florida Public Service Commission.

YES NO

3. There have been no communications from regulatory agencies concerning noncompliance with, or deficiencies in, financial reporting practices that could have a material effect on the the financial statement of the utility.

YES NO


4. The annual report fairly represents the financial condition and results of operations of the respondent for the period presented and other information and statements presented in the the report as to the business affairs of the respondent are true, correct and complete for the period for which it represents.

Items Certified

1. 2. 3. 4.

(Signature of Chief Executive Officer of the utility) *

1. 2. 3. 4.



(Signature of Chief Financial Officer of the utility) *

* Each of the four items must be certified YES or NO. Each item need not be certified by both officers. The items being certified by the officer should be indicated in the appropriate area to the left of the signature.

NOTICE:

Section 837.06, Florida Statutes, provides that any person who knowingly makes a false statement in writing with the intent to mislead a public servant in the performance of his duty shall be guilty of a misdemeanor of the second degree.

ANNUAL REPORT OF

YEAR OF REPORT
31-Dec-03

MID COUNTY SERVICES INC
(Exact Name of Utility)

County: **Pinellas County**

List below the exact mailing address of the utility for which normal correspondence should be sent:

2335 SANDERS ROAD
NORTHBROOK IL 60062

Telephone: **847-498-6440**

E Mail Address: **NONE**

WEB Site: **NONE**

Sunshine State One-Call of Florida, Inc. Member Number **MCS486**

Name and address of person to whom correspondence concerning this report should be addressed:

JOHN S HAYNES
2335 SANDERS ROAD
NORTHBROOK IL 60062

Telephone: **847-498-6440**

List below the address of where the utility's books and records are located:

2335 SANDERS ROAD
NORTHBROOK IL 60062

Telephone: **847-498-6440**

List below any groups auditing or reviewing the records and operations:

PRICEWATERHOUSECOOPERS

Date of original organization of the utility: **08/19/68**

Check the appropriate business entity of the utility as filed with the Internal Revenue Service

Individual Partnership Sub S Corporation 1120 Corporation

List below every corporation or person owning or holding directly or indirectly 5% or more of the voting securities of the utility:

	Name	Percent Ownership
1.	UTILITIES INC	100%
2.		
3.		
4.		
5.		
6.		
7.		
8.		
9.		
10.		

**DIRECTORY OF PERSONNEL WHO CONTACT
THE FLORIDA PUBLIC SERVICE COMMISSION**

NAME OF COMPANY REPRESENTATIVE (1)	TITLE OR POSITION (2)	ORGANIZATIONAL UNIT TITLE (3)	USUAL PURPOSE FOR CONTACT WITH FPSC
LAWRENCE N SCHUMACHER	PRES/SEC/CFO		FINANCIAL
PRICEWATERHOUSECOOPERS	AUDITORS	PRICEWATERHOUSECOOPERS	AUDITS

(1) Also list appropriate legal counsel, accountants and others who may not be on general payroll.
 (2) Provide individual telephone numbers if the person is not normally reached at the company.
 (3) Name of company employed by if not on general payroll.

COMPANY PROFILE

Provide a brief narrative company profile which covers the following areas:

- A. Brief company history.
- B. Public services rendered.
- C. Major goals and objectives.
- D. Major operating divisions and functions.
- E. Current and projected growth patterns.
- F. Major transactions having a material effect on operations.

A.	The utility was formed in 1968 to provide sewer service to a small subdivision in Pinellas County. When purchased the Company serves approximately 5,500 customers
B.	The Utility supplies sewer services.
C.	Provide adequate sewerage and disposal services and earn a fair return
D.	Sewer division only
E.	Approximately 100 customers per year until build out.
F.	There have been no major transaction during the year.

PARENT / AFFILIATE ORGANIZATION CHART

Current as of 12/31/2003

Complete below an organizational chart that show all parents, subsidiaries and affiliates of the utility.
The chart must also show the relationship between the utility and affiliates listed on E-7, E-10(a) and E-10(b).

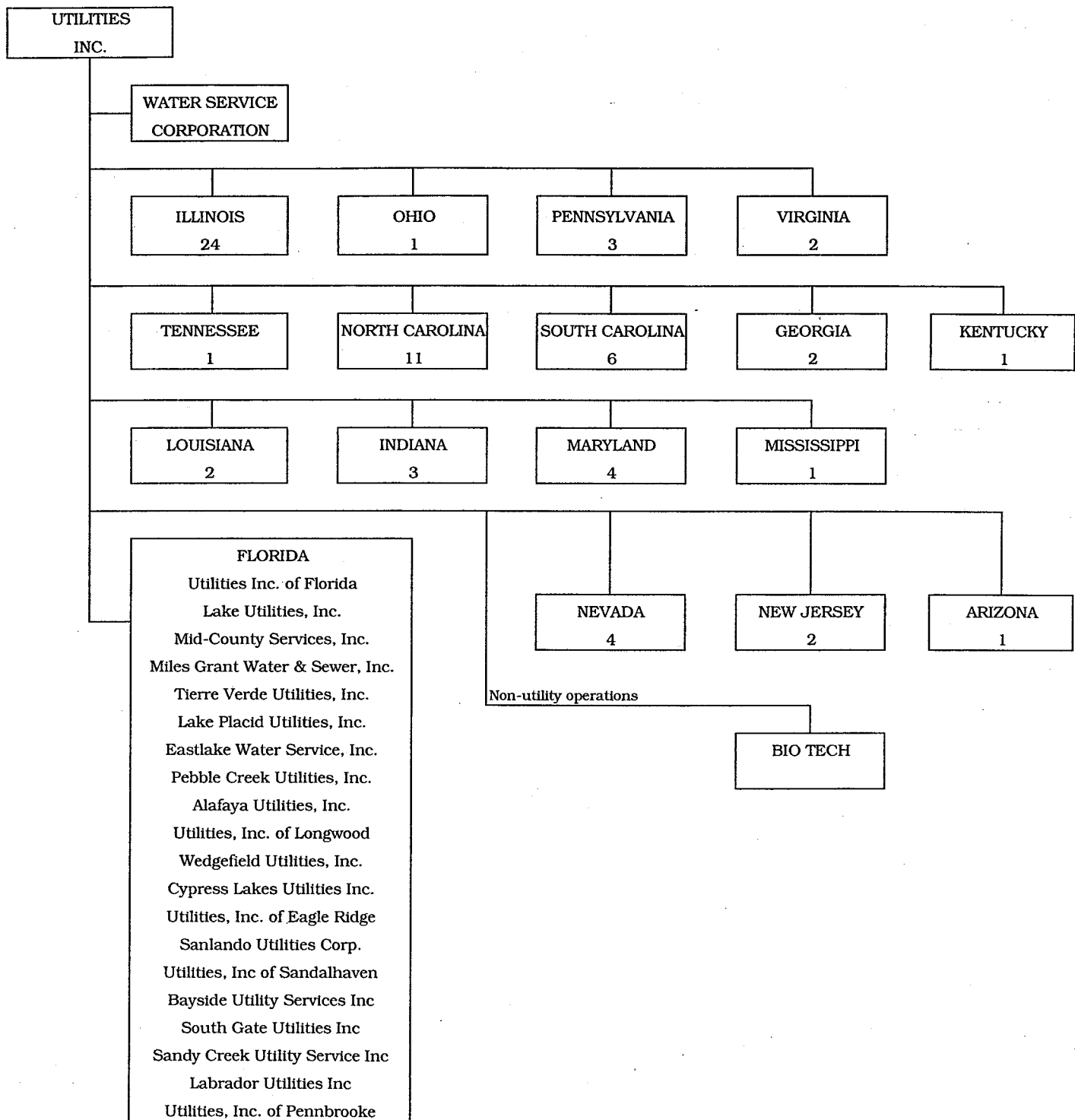
UTILITIES, INC. -- PARENT COMPANY

WATER SERVICE CORP. -- SERVICE COMPANY SUPPLYING MOST SERVICES REQUIRED BY UTILITY.

UTILITIES INC. of FLORIDA -- provides office personnel and administrative staff.

SEE ATTACHED

Parent And Affiliate Organizational Chart



UTILITIES, INC. - Parent Company

WATER SERVICE CORP. - Service organization providing administrative and other service functions for the utility.

NOTE: Within each state except Florida is the number of companies owned.

COMPENSATION OF OFFICERS

For each officer, list the time spent on respondent as an officer compared to time spent on total business activities and the compensation received as an officer from the respondent.			
NAME (a)	TITLE (b)	% OF TIME SPENT AS OFFICER OF THE UTILITY (c)	OFFICERS' COMPENSATION (d)
JAMES L CAMAREN	CEO		\$ NONE
LAWRENCE N SCHUMACHER	PRES/SEC/CFO		NONE

COMPENSATION OF DIRECTORS

For each director, list the number of director meetings attended by each director and the compensation received as a director from the respondent.			
NAME (a)	TITLE (b)	NUMBER OF DIRECTORS' MEETINGS ATTENDED (c)	DIRECTORS' COMPENSATION (d)
JAMES L CAMAREN	CEO	1	\$ NONE
LAWRENCE N SCHUMACHER	PRES/SEC/CFO	1	NONE

BUSINESS CONTRACTS WITH OFFICERS, DIRECTORS AND AFFILIATES

<p>List all contracts, agreements, or other business arrangements* entered into during the calendar year (other than compensation related to position with Respondents) between the Respondent and officer and director listed on page E-6. In addition, provide the same information with respect to professional services for each firm, partnership, or organization with which the officer or director is affiliated.</p>				
NAME OF OFFICER, DIRECTOR OR AFFILIATE (a)	IDENTIFICATION OF SERVICE OR PRODUCT (b)	AMOUNT (c)	NAME AND ADDRESS OF AFFILIATED ENTITY (d)	
<p>NO BUSINESS CONTRACTS, AGREEMENTS OR OTHER ARRANGEMENTS WERE ENTERED INTO DURING THE CURRENT YEAR BY THE OFFICERS LISTED ON PAGE E6, THE DIRECTORS OR AFFILIATES.</p>		\$		

* Business Agreement, for this schedule, shall mean any oral or written business deal which binds the concerned parties for products or services during the reporting year or future years. Although the Respondent and/or other companies will benefit from the arrangement, the officer or director is, however, acting on his behalf or for the benefit of other companies or persons.

AFFILIATION OF OFFICERS AND DIRECTORS

For each of the officials listed on page E-6, list the principle occupation or business affiliations or connections with any other business or financial organizations, firms, or partnerships. For purposes of this part, an official will be considered to have an affiliation with any business or financial organization, firm or partnership in which he is an officer, director, trustee, partner, or a person exercising similar functions.

NAME (a)	PRINCIPLE OCCUPATION OR BUSINESS AFFILIATION (b)	AFFILIATION OR CONNECTION (c)	NAME AND ADDRESS OF AFFILIATION OR CONNECTION (d)
JAMES L CAMAREN UTILITIES INC & SUBSIDIARIES	CHARIMAN & CEO	DIRECTOR/OFFICER	NORTHBROOK IL
LAWARENCE N SCHUMACHER UTILITIES INC & SUBSIDIARIES	PRESIDENT	DIRECTOR/OFFICER	NORTHBROOK IL

BUSINESSES WHICH ARE A BY-PRODUCT, COPRODUCT OR JOINT-PRODUCT
RESULT OF PROVIDING WATER OR WASTEWATER SERVICE

Complete the following for any business which is conducted as a byproduct, coproduct, or joint product as a result of providing water and / or wastewater service. This would include any business which requires the use of utility land and facilities. Examples of these types of businesses would be orange groves, nurseries, tree farms, fertilizer manufacturing, etc. This would not include any business for which the assets are properly included in Account 121 - Nonutility Property along with the associated revenue and expenses segregated out as nonutility also.

BUSINESS OR SERVICE CONDUCTED (a)	ASSETS		REVENUES		EXPENSES	
	BOOK COST OF ASSETS (b)	ACCOUNT NUMBER (c)	REVENUES GENERATED (d)	ACCOUNT NUMBER (e)	EXPENSES INCURRED (f)	ACCOUNT NUMBER (g)
NO BUSINESS WHICH ARE	\$		\$		\$	
A BYPRODUCT, COPRODUCT OR JOINT PRODUCT RESULTING FROM PROVIDING WATER AND/OR SEWER SERVICE.						

BUSINESS TRANSACTIONS WITH RELATED PARTIES

List each contract, agreement, or other business transaction exceeding a cumulative amount of \$500 in any one year, entered into between the Respondent and a business or financial organization, firm, or partnership named on pages E-2 and E-6, identifying the parties, amounts, dates and product, and asset, or service involved.

Part I. Specific Instructions: Services and Products Received or Provided

- 1. Enter in this part all transactions involving services and products received or provided.
- 2. Below are some types of transactions to include:
 - management, legal and accounting services
 - computer services
 - engineering & construction services
 - repairing and servicing of equipment
 - material and supplies furnished
 - leasing of structures, land, and equipment
 - rental transactions
 - sale, purchase or transfer of various products

NAME OF COMPANY OR RELATED PARTY (a)	DESCRIPTION SERVICE AND/OR NAME OF PRODUCT (b)	CONTRACT OR AGREEMENT EFFECTIVE DATES (c)	ANNUAL CHARGES (Purchased (S)old) (d)	AMOUNT (e)
WATER SERVICE CORP	Operators Salaries & Benefits	Continous	Purchase	208,578
	Insurance	Continous	Purchase	18,160
	Computer Operations	Continous	Purchase	2,804
	Supplies & Postage	Continous	Purchase	4,137
	Outside Services	Continous	Purchase	5,521
	Management Services	Continous	Purchase	50,472

UTILITY NAME: MID COUNTY SERVICES INC

BUSINESS TRANSACTIONS WITH RELATED PARTIES (Cont'd)

Part II. Specific Instructions: Sale, Purchase and Transfer of Assets

1. Enter in this part all transactions relating to the purchase, sale, or transfer of assets.
 3. The columnar instructions follow:
 - (a) Enter name of related party or company.
 - (b) Describe briefly the type of assets purchased, sold or transferred.
 - (c) Enter the total received or paid. Indicate purchase with "P" and sale with "S".
 - (d) Enter the net book value for each item reported.
 - (e) Enter the net profit or loss for each item reported. (column (c) - column (d))
 - (f) Enter the fair market value for each item reported. In space below or in a supplemental schedule, describe the basis used to calculate fair market value.

2. Below are examples of some types of transactions to include:
 - purchase, sale or transfer of equipment
 - purchase, sale or transfer of land and structures
 - purchase, sale or transfer of securities
 - noncash transfers of assets
 - noncash dividends other than stock dividends
 - write-off of bad debts or loans

NAME OF COMPANY OR RELATED PARTY (a)	DESCRIPTION OF ITEMS (b)	SALE OR PURCHASE PRICE (c)	NET BOOK VALUE (d)	GAIN OR LOSS (e)	FAIR MARKET VALUE (f)
		\$ _____	\$ _____	\$ _____	\$ _____
NO ASSETS WERE SOLD, PURCHASED OR TRANSFERRED WITH A RELATED PARTY DURING THE FISCAL YEAR ENDED 31-Dec-03		_____	_____	_____	_____
		_____	_____	_____	_____
		_____	_____	_____	_____
		_____	_____	_____	_____
		_____	_____	_____	_____
		_____	_____	_____	_____
		_____	_____	_____	_____
		_____	_____	_____	_____
		_____	_____	_____	_____
		_____	_____	_____	_____
		_____	_____	_____	_____
		_____	_____	_____	_____
		_____	_____	_____	_____
		_____	_____	_____	_____
		_____	_____	_____	_____
		_____	_____	_____	_____
		_____	_____	_____	_____
		_____	_____	_____	_____
		_____	_____	_____	_____
		_____	_____	_____	_____

**FINANCIAL
SECTION**

**COMPARATIVE BALANCE SHEET
ASSETS AND OTHER DEBITS**

ACCT. NO. (a)	ACCOUNT NAME (b)	REF. PAGE (c)	PREVIOUS YEAR (d)	CURRENT YEAR (e)
UTILITY PLANT				
101-106	Utility Plant	F-7	\$ 5,407,320	\$ 5,617,989
108-110	Less: Accumulated Depreciation and Amortization	F-8	1,535,533	1,582,088
Net Plant			\$ 3,871,787	\$ 4,035,901
114-115	Utility Plant Acquisition adjustment (Net)	F-7	-	-
116 *	Other Utility Plant Adjustments			
Total Net Utility Plant			\$ 3,871,787	\$ 4,035,901
OTHER PROPERTY AND INVESTMENTS				
121	Nonutility Property	F-9	-	-
122	Less: Accumulated Depreciation and Amortization			
Net Nonutility Property			-	-
123	Investment In Associated Companies	F-10		
124	Utility Investments	F-10		
125	Other Investments	F-10		
126-127	Special Funds	F-10		
Total Other Property & Investments			-	-
CURRENT AND ACCRUED ASSETS				
131	Cash		-	-
132	Special Deposits	F-9	-	-
133	Other Special Deposits	F-9		
134	Working Funds			
135	Temporary Cash Investments			
141-144	Accounts and Notes Receivable, Less Accumulated Provision for Uncollectible Accounts	F-11	14,617	2,592
145	Accounts Receivable from Associated Companies	F-12		
146	Notes Receivable from Associated Companies	F-12	-	-
151-153	Material and Supplies			
161	Stores Expense			
162	Prepayments		5,625	-
171	Accrued Interest and Dividends Receivable		-	
172 *	Rents Receivable			
173 *	Accrued Utility Revenues			
174	Misc. Current and Accrued Assets	F-12	-	-
Total Current and Accrued Assets			\$ 20,242	\$ 2,592

* Not Applicable for Class B Utilities

**COMPARATIVE BALANCE SHEET
ASSETS AND OTHER DEBITS**

ACCT. NO. (a)	ACCOUNT NAME (b)	REF. PAGE (c)	PREVIOUS YEAR (d)	CURRENT YEAR (e)
	DEFERRED DEBITS			
181	Unamortized Debt Discount & Expense	F-13	\$ _____	\$ _____
182	Extraordinary Property Losses	F-13	_____	_____
183	Preliminary Survey & Investigation Charges		_____	_____
184	Clearing Accounts		_____	_____
185 *	Temporary Facilities		_____	_____
186	Misc. Deferred Debits	F-14	42,969	31,694
187 *	Research & Development Expenditures		_____	_____
190	Accumulated Deferred Income Taxes		184,239	176,776
			_____	_____
	Total Deferred Debits		\$ <u>227,208</u>	\$ <u>208,470</u>
	TOTAL ASSETS AND OTHER DEBITS		\$ <u>4,119,237</u>	\$ <u>4,246,963</u>

* Not Applicable for Class B Utilities

NOTES TO THE BALANCE SHEET

The space below is provided for important notes regarding the balance sheet.

**COMPARATIVE BALANCE SHEET
EQUITY CAPITAL AND LIABILITIES**

ACCT. NO. (a)	ACCOUNT NAME (b)	REF. PAGE (c)	PREVIOUS YEAR (d)	CURRENT YEAR (e)
EQUITY CAPITAL				
201	Common Stock Issued	F-15	\$ 500	\$ 500
204	Preferred Stock Issued	F-15		
202,205 *	Capital Stock Subscribed			
203,206 *	Capital Stock Liability for Conversion			
207 *	Premium on Capital Stock			
209 *	Reduction in Par or Stated Value of Capital Stock			
210 *	Gain on Resale or Cancellation of Reacquired Capital Stock			
211	Other Paid - In Capital		3,366,477	3,505,058
212	Discount On Capital Stock			
213	Capital Stock Expense			
214-215	Retained Earnings	F-16	(789,493)	(924,144)
216	Reacquired Capital Stock			
218	Proprietary Capital (Proprietorship and Partnership Only)			
Total Equity Capital			\$ 2,577,484	\$ 2,581,414
LONG TERM DEBT				
221	Bonds	F-15		
222 *	Reacquired Bonds			
223	Advances from Associated Companies	F-17		
224	Other Long Term Debt	F-17	-	-
Total Long Term Debt			\$ -	\$ -
CURRENT AND ACCRUED LIABILITIES				
231	Accounts Payable		7,642	48,231
232	Notes Payable	F-18		
233	Accounts Payable to Associated Companies	F-18	(252,469)	(180,842)
234	Notes Payable to Associated Companies	F-18		
235	Customer Deposits		-	-
236	Accrued Taxes	W/S-3	40,000	37,500
237	Accrued Interest	F-19	-	-
238	Accrued Dividends			
239	Matured Long Term Debt			
240	Matured Interest			
241	Miscellaneous Current & Accrued Liabilities	F-20		
Total Current & Accrued Liabilities			\$ (204,827)	\$ (95,111)

* Not Applicable for Class B Utilities

UTILITY NAME: MID COUNTY SERVICES INC

YEAR OF REPORT 31-Dec-03

**COMPARATIVE BALANCE SHEET
EQUITY CAPITAL AND LIABILITIES**

ACCT. NO. (a)	ACCOUNT NAME (b)	REF. PAGE (c)	PREVIOUS YEAR (d)	CURRENT YEAR (e)
DEFERRED CREDITS				
251	Unamortized Premium On Debt	F-13	\$ _____	\$ _____
252	Advances For Construction	F-20	_____	_____
253	Other Deferred Credits	F-21	_____	_____
255	Accumulated Deferred Investment Tax Credits		-	-
Total Deferred Credits			\$ _____	\$ _____
OPERATING RESERVES				
261	Property Insurance Reserve		\$ _____	\$ _____
262	Injuries & Damages Reserve		_____	_____
263	Pensions and Benefits Reserve		_____	_____
265	Miscellaneous Operating Reserves		_____	_____
Total Operating Reserves			\$ _____	\$ _____
CONTRIBUTIONS IN AID OF CONSTRUCTION				
271	Contributions in Aid of Construction	F-22	\$ 2,825,700	\$ 2,859,196
272	Accumulated Amortization of Contributions in Aid of Construction	F-22	1,215,863	1,292,966
Total Net C.I.A.C.			\$ <u>1,609,837</u>	\$ <u>1,566,230</u>
ACCUMULATED DEFERRED INCOME TAXES				
281	Accumulated Deferred Income Taxes - Accelerated Depreciation		\$ 121,058	\$ 182,252
282	Accumulated Deferred Income Taxes - Liberalized Depreciation		_____	_____
283	Accumulated Deferred Income Taxes - Other		15,685	12,178
Total Accumulated Deferred Income Tax			\$ <u>136,743</u>	\$ <u>194,430</u>
TOTAL EQUITY CAPITAL AND LIABILITIES			\$ <u>4,119,237</u>	\$ <u>4,246,963</u>

COMPARATIVE OPERATING STATEMENT

ACCT. NO. (a)	ACCOUNT NAME (b)	REF. PAGE (c)	PREVIOUS YEAR (d)	CURRENT YEAR * (e)
UTILITY OPERATING INCOME				
400	Operating Revenues	F-3(b)	\$ 1,052,667	\$ 1,078,089
469, 530	Less: Guaranteed Revenue and AFPI	F-3(b)		
Net Operating Revenues			\$ 1,052,667	\$ 1,078,089
401	Operating Expenses	F-3(b)	\$ 890,029	\$ 1,012,475
403	Depreciation Expense:	F-3(b)	\$ 157,417	\$ 165,202
	Less: Amortization of CIAC	F-22	(74,488)	(77,102)
Net Depreciation Expense			\$ 82,929	\$ 88,100
406	Amortization of Utility Plant Acquisition Adjustment	F-3(b)	-	-
407	Amortization Expense (Other than CIAC)	F-3(b)	148	147
408	Taxes Other Than Income	W/S-3	78,848	78,398
409	Current Income Taxes	W/S-3	(12,820)	(97,066)
410.10	Deferred Federal Income Taxes	W/S-3	(7,437)	28,403
410.11	Deferred State Income Taxes	W/S-3	(2,714)	470
411.10	Provision for Deferred Income Taxes - Credit	W/S-3		-
412.10	Investment Tax Credits Deferred to Future Periods	W/S-3		-
412.11	Investment Tax Credits Restored to Operating Income	W/S-3	-	
Utility Operating Expenses			\$ 1,028,983	\$ 1,110,927
Net Utility Operating Income			\$ 23,684	\$ (32,838)
469, 530	Add Back: Guaranteed Revenue and AFPI	F-3(b)		
413	Income From Utility Plant Leased to Others			
414	Gains (losses) From Disposition of Utility Property			
420	Allowance for Funds Used During Construction		1,146	568
Total Utility Operating Income [Enter here and on Page F-3(c)]			\$ 24,830	\$ (32,270)

* For each account, Column e should agree with Cloumns f, g and h on F-3(b)

COMPARATIVE OPERATING STATEMENT (Cont'd)

WATER SCHEDULE W-3 * (f)	WASTEWATER SCHEDULE S-3 * (g)	OTHER THAN REPORTING SYSTEMS (h)
\$ -	\$ 1,078,089	\$ -
\$ -	\$ 1,078,089	\$ -
\$ -	\$ 1,012,475	\$ -
-	165,202	-
-	(77,102)	-
\$ -	\$ 88,100	\$ -
-	-	-
-	147	-
-	78,398	-
-	(97,066)	-
-	28,403	-
-	470	-
-	-	-
-	-	-
-	-	-
\$ -	\$ 1,110,927	\$ -
\$ -	\$ (32,838)	\$ -
-	-	-
-	-	-
-	-	-
-	568	-
\$ -	\$ (32,270)	\$ -

* Total of Schedules W-3 / S-3 for all rate groups.

COMPARATIVE OPERATING STATEMENT (Cont'd)

ACCT. NO. (a)	ACCOUNT NAME (b)	REF. PAGE (c)	PREVIOUS YEAR (d)	CURRENT YEAR (e)
Total Utility Operating Income [from page F-3(a)]			\$ 24,830	\$ (32,270)
OTHER INCOME AND DEDUCTIONS				
415	Revenues-Merchandising, Jobbing, and Contract Deductions		\$	\$
416	Costs & Expenses of Merchandising Jobbing, and Contract Work		_____	_____
419	Interest and Dividend Income		351	315
421	Nonutility Income		-	-
426	Miscellaneous Nonutility Expenses		-	-
Total Other Income and Deductions			\$ 351	\$ 315
TAXES APPLICABLE TO OTHER INCOME				
408.20	Taxes Other Than Income		\$	\$
409.20	Income Taxes		_____	_____
410.20	Provision for Deferred Income Taxes		_____	_____
411.20	Provision for Deferred Income Taxes - Credit		_____	_____
412.20	Investment Tax Credits - Net		_____	_____
412.30	Investment Tax Credits Restored to Operating Income		_____	_____
Total Taxes Applicable To Other Income			\$ -	\$ -
INTEREST EXPENSE				
427	Interest Expense	F-19	\$ 70,983	\$ 102,696
428	Amortization of Debt Discount & Expense	F-13	_____	_____
429	Amortization of Premium on Debt	F-13	_____	_____
Total Interest Expense			\$ 70,983	\$ 102,696
EXTRAORDINARY ITEMS				
433	Extraordinary Income		\$	\$
434	Extraordinary Deductions		_____	_____
409.30	Income Taxes, Extraordinary Items		_____	_____
Total Extraordinary Items			\$ -	\$ -
NET INCOME			\$ (45,802)	\$ (134,651)

Explain Extraordinary Income:

NONE

SCHEDULE OF YEAR END RATE BASE

ACCT. NO. (a)	ACCOUNT NAME (b)	REF. PAGE (c)	WATER UTILITY (d)	WASTEWATER UTILITY (e)
101	Utility Plant In Service	F-7	\$ -	\$ 5,607,510
	Less:			
	Nonused and Useful Plant (1)			-
108	Accumulated Depreciation	F-8	-	1,580,112
110	Accumulated Amortization	F-8	-	1,976
271	Contributions In Aid of Construction	F-22	-	2,859,196
252	Advances for Construction	F-20		-
Subtotal			\$ -	\$ 1,166,226
272	Add: Accumulated Amortization of Contributions in Aid of Construction	F-22	-	1,292,966
Subtotal			\$ -	\$ 2,459,192
114	Plus or Minus: Acquisition Adjustments (2)	F-7		-
115	Accumulated Amortization of Acquisition Adjustments (2)	F-7		-
	Working Capital Allowance (3)			126,559
	Other (Specify):			-
				-
				-
RATE BASE			\$ <u> </u>	\$ <u>2,585,751</u>
NET UTILITY OPERATING INCOME			\$ <u> </u>	\$ <u>(32,838)</u>
ACHIEVED RATE OF RETURN (Operating Income / Rate Base)			<u> </u>	<u>-1.27%</u>

NOTES :

- (1) Estimate based on the methodology used in the last rate proceeding.
- (2) Include only those Acquisition Adjustments that have been approved by the Commission.
- (3) Calculation consistent with last rate proceeding.
In absence of a rate proceeding, Class A utilities will use the Balance Sheet Method and Class B Utilities will use the One-eighth Operating and Maintenance Expense Method.

**SCHEDULE OF CURRENT COST OF CAPITAL
CONSISTENT WITH THE METHODOLOGY USED IN THE LAST RATE PROCEEDING (1)**

CLASS OF CAPITAL (a)	DOLLAR AMOUNT (2) (b)	PERCENTAGE OF CAPITAL (c)	ACTUAL COST RATES (3) (d)	WEIGHTED COST (c x d) (e)
Common Equity	\$ 1,074,381	41.55%	10.16%	4.22%
Preferred Stock	-	0.00%	0.00%	0.00%
Long Term Debt	1,493,716	57.77%	7.31%	4.23%
Customer Deposits	-	0.00%	0.00%	0.00%
Tax Credits - Zero Cost	-	0.00%	0.00%	0.00%
Tax Credits - Weighted Cost	-	0.00%	0.00%	0.00%
Deferred Income Taxes	17,654	0.68%	0.00%	0.00%
Other (Explain) Short Term Debt	-	0.00%	0.00%	0.00%
Total	\$ 2,585,751	100.00%		8.45%

(1) If the utility's capital structure is not used, explain which capital structure is used.

(2) Should equal amounts on Schedule F-6, Column (g).

(3) Mid-point of the last authorized Return On Equity or current leverage formula if none has been established.

Must be calculated using the same methodology used in the last rate proceeding using current annual report year end amounts and cost rates.

APPROVED RETURN ON EQUITY

Current Commission Return on Equity:	<u>10.16%</u>
Commission order approving Return on Equity:	<u>PSC-98-0524-FOF-SU</u>

APPROVED AFUDC RATE

COMPLETION ONLY REQUIRED IF AFUDC WAS CHARGED DURING YEAR

Current Commission Approved AFUDC rate:	<u>9.03%</u>
Commission order approving AFUDC rate:	<u>PSC-04-0262-PAA-WS</u>

If any utility capitalized any charge in lieu of AFUDC (such as interest only), state the basis of the charge, an explanation as to why AFUDC was not charged and the percentage capitalized.

MID-COUNTY SERVICES INC

UTILITY NAME:

SCHEDULE OF CAPITAL STRUCTURE ADJUSTMENTS
CONSISTENT WITH THE METHODOLOGY USED IN THE LAST RATE PROCEEDING

CLASS OF CAPITAL (a)	PER BOOK BALANCE (b)	NON-UTILITY ADJUSTMENTS (c)	NON-JURISDICTIONAL ADJUSTMENTS (d)	OTHER (1) ADJUSTMENTS SPECIFIC (e)	OTHER (1) ADJUSTMENTS PRO RATA (f)	CAPITAL STRUCTURE (g)
Common Equity	\$ 82,943,449	\$ 0	\$ 0	\$ 0	\$ (81,869,068)	\$ 1,074,381
Preferred Stock	-	0	0	0		-
Long Term Debt	115,316,615	0	0	0	(113,822,899)	1,493,716
Customer Deposits	-	0	0	0		-
Tax Credits - Zero Cost	-	0	0	0		-
Tax Credits - Weighted Cost	-	0	0	0		-
Deferred Inc. Taxes	17,654	0	0	0		17,654
Other (Explain) Short Term Debt	-	0	0	0		-
Total	\$ 198,277,718	\$ 0	\$ 0	\$ 0	\$ (195,691,967)	\$ 2,585,751

(1) Explain below all adjustments made in Columns (e) and (f):

NOT APPLICABLE

UTILITY NAME: **MID COUNTY SERVICES INC**

YEAR OF REPORT
31-Dec-03

**UTILITY PLANT
ACCOUNTS 101 - 106**

ACCT. (a)	DESCRIPTION (b)	WATER (c)	WASTEWATER (d)	OTHER THAN REPORTING SYSTEMS (e)	TOTAL (f)
101	Plant Accounts: Utility Plant In Service	\$ -	\$ 5,607,510	\$ -	\$ 5,607,510
102	Utility Plant Leased to Other				-
103	Property Held for Future Use				-
104	Utility Plant Purchased or Sold				-
105	Construction Work in Progress	-	10,479		10,479
106	Completed Construction Not Classified				-
	Total Utility Plant	\$ -	\$ 5,617,989	\$ -	\$ 5,617,989

**UTILITY PLANT ACQUISITION ADJUSTMENTS
ACCOUNTS 114 AND 115**

Report each acquisition adjustment and related accumulated amortization separately.
For any acquisition adjustments approved by the Commission, include the Order Number.

ACCT. (a)	DESCRIPTION (b)	WATER (c)	WASTEWATER (d)	OTHER THAN REPORTING SYSTEMS (e)	TOTAL (f)
114	Acquisition Adjustment NONE	\$ -	\$ -	\$ -	\$ -
					-
					-
					-
					-
	Total Plant Acquisition Adjustments	\$ -	\$ -	\$ -	\$ -
115	Accumulated Amortization Accruals charged during year	\$ -	\$ -	\$ -	\$ -
					-
					-
					-
	Total Accumulated Amortization	\$ -	\$ -	\$ -	\$ -
	Net Acquisition Adjustments	\$ -	\$ -	\$ -	\$ -

ACCUMULATED DEPRECIATION (ACCT. 108) AND AMORTIZATION (ACCT. 110)

DESCRIPTION (a)	WATER (b)	WASTEWATER (c)	OTHER THAN REPORTING SYSTEMS (d)	TOTAL (e)
ACCUMULATED DEPRECIATION				
Account 108				
Balance first of year	\$ -	\$ 1,533,704	\$ -	\$ 1,533,704
Credit during year:				
Accruals charged to:				
Account 108.1 (1)	\$ -	\$ 165,202	\$ -	\$ 165,202
Account 108.2 (2)	-	-	-	-
Account 108.3 (2)	-	-	-	-
Other Accounts (specify):	-	(3,473)	-	(3,473)
Salvage	-	-	-	-
Other Credits (Specify):	-	-	-	-
Total Credits	\$ -	\$ 161,729	\$ -	\$ 161,729
Debits during year:				
Book cost of plant retired	-	115,321	-	115,321
Cost of Removal	-	-	-	-
Other Debits (specify):	-	-	-	-
Total Debits	\$ -	\$ 115,321	\$ -	\$ 115,321
Balance end of year	\$ -	\$ 1,580,112	\$ -	\$ 1,580,112
ACCUMULATED AMORTIZATION				
Account 110				
Balance first of year	\$ -	\$ 1,829	\$ -	\$ 1,829
Credit during year:				
Accruals charged to:				
Account 110.2 (2)	\$ -	\$ 147	\$ -	\$ 147
Other Accounts (specify):	-	-	-	-
Total credits	\$ -	\$ 147	\$ -	\$ 147
Debits during year:				
Book cost of plant retired	-	-	-	-
Other debits (specify):	-	-	-	-
Total Debits	\$ -	\$ -	\$ -	\$ -
Balance end of year	\$ -	\$ 1,976	\$ -	\$ 1,976

- (1) Account 108 for Class B utilities.
- (2) Not applicable for Class B utilities.
- (3) Account 110 for Class B utilities.

UTILITY NAME: MID COUNTY SERVICES INC

YEAR OF REPORT 31-Dec-03

**REGULATORY COMMISSION EXPENSE
AMORTIZATION OF RATE CASE EXPENSE (ACCOUNTS 666 AND 766)**

DESCRIPTION OF CASE (DOCKET NO.) (a)	EXPENSE INCURRED DURING YEAR (b)	CHARGED OFF DURING YEAR	
		ACCT. (d)	AMOUNT (e)
NONE	\$ _____	_____	\$ _____
_____	_____	_____	_____
_____	_____	_____	_____
Total	\$ _____	_____	\$ _____

NONUTILITY PROPERTY (ACCOUNT 121)

Report separately each item of property with a book cost of \$25,000 or more included in Account 121.

Other Items may be grouped by classes of property.

DESCRIPTION (a)	BEGINNING YEAR (b)	ADDITIONS (c)	REDUCTIONS (d)	ENDING YEAR BALANCE (e)
NONE	\$ _____	\$ _____	\$ _____	\$ _____
_____	_____	_____	_____	_____
_____	_____	_____	_____	_____
_____	_____	_____	_____	_____
Total Nonutility Property	\$ _____	\$ _____	\$ _____	\$ _____

SPECIAL DEPOSITS (ACCOUNTS 132 AND 133)

Report hereunder all special deposits carried in Accounts 132 and 133.

DESCRIPTION OF SPECIAL DEPOSITS (a)	YEAR END BOOK COST (b)
SPECIAL DEPOSITS (Account 132): Electric Deposit (NONE)	\$ _____
_____	_____
_____	_____
Total Special Deposits	\$ _____
OTHER SPECIAL DEPOSITS (Account 133): NONE	\$ _____
_____	_____
_____	_____
Total Other Special Deposits	\$ _____

UTILITY NAME: MID COUNTY SERVICES INC

YEAR OF REPORT 31-Dec-03

INVESTMENTS AND SPECIAL FUNDS
ACCOUNTS 123 - 127

Report hereunder all investments and special funds carried in Accounts 123 through 127.

DESCRIPTION OF SECURITY OR SPECIAL FUND (a)	FACE OR PAR VALUE (b)	YEAR END BOOK COST (c)
INVESTMENT IN ASSOCIATED COMPANIES (Account 123): <u>NONE</u> <hr/> <hr/> <hr/> <hr/> <hr/> <hr/>	\$ _____ _____ _____ _____ _____ _____	\$ _____ _____ _____ _____ _____ _____
Total Investment in Associated Companies		\$ _____
UTILITY INVESTMENTS (Account 124): <u>NONE</u> <hr/> <hr/> <hr/> <hr/> <hr/> <hr/>	\$ _____ _____ _____ _____ _____ _____	\$ _____ _____ _____ _____ _____ _____
Total Utility Investment		\$ _____
OTHER INVESTMENTS (Account 125): <u>NONE</u> <hr/> <hr/> <hr/> <hr/> <hr/> <hr/>	\$ _____ _____ _____ _____ _____ _____	\$ _____ _____ _____ _____ _____ _____
Total Other Investment		\$ _____
SPECIAL FUNDS (Class A Utilities: Accounts 126 and 127; Class B Utilities: Account 127): <u>NONE</u> <hr/> <hr/> <hr/> <hr/> <hr/> <hr/>	_____ _____ _____ _____ _____ _____	\$ _____ _____ _____ _____ _____ _____
Total Special Funds		\$ _____

ACCOUNTS AND NOTES RECEIVABLE - NET
ACCOUNTS 141 - 144

Report hereunder all accounts and notes receivable included in Accounts 141, 142, and 144. Amounts included in
 Amounts included in Accounts 142 and 144 should be listed individually.

DESCRIPTION (a)	TOTAL (b)
CUSTOMER ACCOUNTS RECEIVABLE (Account 141):	
Water	\$ -
Wastewater	2,592
Other	
Total Customer Accounts Receivable	\$ 2,592
OTHER ACCOUNTS RECEIVABLE (Account 142):	
_____	\$ _____
_____	_____
_____	_____
Total Other Accounts Receivable	\$ -
NOTES RECEIVABLE (Account 144):	
_____	\$ _____
_____	_____
_____	_____
Total Notes Receivable	\$ -
Total Accounts and Notes Receivable	\$ 2,592
ACCUMULATED PROVISION FOR UNCOLLECTIBLE ACCOUNTS (Account 143)	
Balance first of year	\$ -
Add: Provision for uncollectibles for current year	\$ _____
Collection of accounts previously written off	_____
Utility Accounts	_____
Others	_____
_____	_____
Total Additions	\$ -
Deduct accounts written off during year:	
Utility Accounts	_____
Others	_____
_____	_____
Total accounts written off	\$ -
Balance end of year	\$ -
TOTAL ACCOUNTS AND NOTES RECEIVABLE - NET	\$ 2,592

UTILITY NAME: MID COUNTY SERVICES INC

YEAR OF REPORT 31-Dec-03

ACCOUNTS RECEIVABLE FROM ASSOCIATED COMPANIES

ACCOUNT 145

Report each account receivable from associated companies separately.

DESCRIPTION (a)	TOTAL (b)
NONE	\$ _____
_____	_____
_____	_____
_____	_____
_____	_____
_____	_____
_____	_____
_____	_____
_____	_____
_____	_____
Total	\$ _____

NOTES RECEIVABLE FROM ASSOCIATED COMPANIES

ACCOUNT 146

Report each note receivable from associated companies separately.

DESCRIPTION (a)	INTEREST RATE (b)	TOTAL (c)
NONE	_____ %	\$ _____
_____	_____ %	_____
_____	_____ %	_____
_____	_____ %	_____
_____	_____ %	_____
_____	_____ %	_____
_____	_____ %	_____
_____	_____ %	_____
_____	_____ %	_____
_____	_____ %	_____
Total		\$ _____

MISCELLANEOUS CURRENT AND ACCRUED ASSETS

ACCOUNT 174

DESCRIPTION - Provide itemized listing (a)	BALANCE END OF YEAR (b)
NONE	\$ _____
_____	_____
_____	_____
_____	_____
Total Miscellaneous Current and Accrued Liabilities	\$ _____

**UNAMORTIZED DEBT DISCOUNT AND EXPENSE AND PREMIUM ON DEBT
ACCOUNTS 181 AND 251**

Report the net discount and expense or premium separately for each security issue.

DESCRIPTION (a)	AMOUNT WRITTEN OFF DURING YEAR (b)	YEAR END BALANCE (c)
UNAMORTIZED DEBT DISCOUNT AND EXPENSE (Account 181): NONE	\$ _____	\$ _____
_____	_____	_____
_____	_____	_____
_____	_____	_____
Total Unamortized Debt Discount and Expense	\$ _____	\$ _____
UNAMORTIZED PREMIUM ON DEBT (Account 251):	\$ _____	\$ _____
_____	_____	_____
_____	_____	_____
_____	_____	_____
Total Unamortized Premium on Debt	\$ _____	\$ _____

**EXTRAORDINARY PROPERTY LOSSES
ACCOUNT 182**

Report each item separately.

DESCRIPTION (a)	TOTAL (b)
NONE	\$ _____
_____	_____
_____	_____
Total Extraordinary Property Losses	\$ _____

UTILITY NAME: MID COUNTY SERVICES INC

YEAR OF REPORT
31-Dec-03

MISCELLANEOUS DEFERRED DEBITS
ACCOUNT 186

DESCRIPTION - Provide itemized listing (a)	AMOUNT WRITTEN OFF DURING YEAR (b)	YEAR END BALANCE (c)
DEFERRED RATE CASE EXPENSE (Class A Utilities: Account 186.1) <u>RATE CASE</u> _____ _____ _____	\$ _____ - _____ _____ _____	\$ _____ 14,155 _____ _____ _____
Total Deferred Rate Case Expense	\$ _____ -	\$ _____ 14,155
OTHER DEFERRED DEBITS (Class A Utilities: Account 186.2): <u>OTHER DEFERRED MAINTENANCE</u> _____ _____ _____ _____ _____ _____	\$ _____ - _____ _____ _____ _____ _____	\$ _____ 17,539 _____ _____ _____ _____ _____
Total Other Deferred Debits	\$ _____ -	\$ _____ 17,539
REGULATORY ASSETS (Class A Utilities: Account. 186.3): <u>NONE</u> _____ _____ _____ _____ _____	\$ _____ - _____ _____ _____ _____	\$ _____ - _____ _____ _____ _____
Total Regulatory Assets	\$ _____ -	\$ _____ -
TOTAL MISCELLANEOUS DEFERRED DEBITS	\$ _____ -	\$ _____ 31,694

UTILITY NAME: MID COUNTY SERVICES INC

YEAR OF REPORT 31-Dec-03

**CAPITAL STOCK
ACCOUNTS 201 AND 204***

DESCRIPTION (a)	RATE (b)	TOTAL (c)
COMMON STOCK		
Par or stated value per share	_____ %	\$ _____ 0.25
Shares authorized		_____ -
Shares issued and outstanding		_____ 2,000
Total par value of stock issued	_____ %	\$ _____ 500
Dividends declared per share for year	_____ %	\$ _____ -
PREFERRED STOCK		
Par or stated value per share	_____ %	\$ _____ -
Shares authorized		_____ -
Shares issued and outstanding		_____ -
Total par value of stock issued	_____ %	\$ _____ -
Dividends declared per share for year	_____ %	\$ _____ -

* Account 204 not applicable for Class B utilities.

**BONDS
ACCOUNT 221**

DESCRIPTION OF OBLIGATION (INCLUDING DATE OF ISSUE AND DATE OF MATURITY) (a)	INTEREST		PRINCIPAL AMOUNT PER BALANCE SHEET (d)
	ANNUAL RATE (b)	FIXED OR VARIABLE * (c)	
NONE	_____ %	_____	\$ _____
_____	_____ %	_____	_____
_____	_____ %	_____	_____
_____	_____ %	_____	_____
_____	_____ %	_____	_____
_____	_____ %	_____	_____
_____	_____ %	_____	_____
_____	_____ %	_____	_____
_____	_____ %	_____	_____
Total			\$ _____

* For variable rate obligations, provide the basis for the rate. (i.e.. prime + 2%, etc.)

STATEMENT OF RETAINED EARNINGS

1. Dividends should be shown for each class and series of capital stock. Show amounts as dividends per share.
2. Show separately the state and federal income tax effect of items shown in Account No. 439.

ACCT. NO. (a)	DESCRIPTION (b)	AMOUNTS (c)
215	Unappropriated Retained Earnings: Balance Beginning of Year	\$ (789,493)
439	Changes to Account: Adjustments to Retained Earnings (requires Commission approval prior to use): Credits: _____	\$ _____
	Total Credits:	\$ _____
	Debits: _____	\$ _____
	Total Debits:	\$ _____
435	Balance Transferred from Income	\$ (134,651)
436	Appropriations of Retained Earnings: _____	_____
	Total Appropriations of Retained Earnings	\$ _____
437	Dividends Declared: Preferred Stock Dividends Declared _____	_____
438	Common Stock Dividends Declared _____	_____
	Total Dividends Declared	\$ _____
215	Year end Balance	\$ _____
214	Appropriated Retained Earnings (state balance and purpose of each appropriated amount at year end): _____	_____
214	Total Appropriated Retained Earnings	\$ _____
Total Retained Earnings		\$ <u>(924,144)</u>
Notes to Statement of Retained Earnings:		

UTILITY NAME: MID COUNTY SERVICES INC

YEAR OF REPORT
31-Dec-03

**ADVANCES FROM ASSOCIATED COMPANIES
ACCOUNT 223**

Report each advance separately.

DESCRIPTION (a)	TOTAL (b)
NONE	\$ -
Total	\$ -

**OTHER LONG-TERM DEBT
ACCOUNT 224**

DESCRIPTION OF OBLIGATION (INCLUDING DATE OF ISSUE AND DATE OF MATURITY) (a)	INTEREST		PRINCIPAL AMOUNT PER BALANCE SHEET (d)
	ANNUAL RATE (b)	FIXED OR VARIABLE * (c)	
NONE	0.00%	NONE	\$ -
Total			\$ -

* For variable rate obligations, provide the basis for the rate. (i.e.. prime + 2%, etc.)

UTILITY NAME: MID COUNTY SERVICES INC

YEAR OF REPORT
31-Dec-03

**NOTES PAYABLE
 ACCOUNTS 232 AND 234**

DESCRIPTION OF OBLIGATION (INCLUDING DATE OF ISSUE AND DATE OF MATURITY) (a)	INTEREST		PRINCIPAL AMOUNT PER BALANCE SHEET (d)
	ANNUAL RATE (b)	FIXED OR VARIABLE * (c)	
NOTES PAYABLE (Account 232): NONE	%		\$ _____
_____	%		_____
_____	%		_____
_____	%		_____
_____	%		_____
_____	%		_____
_____	%		_____
_____	%		_____
_____	%		_____
_____	%		_____
Total Account 232			\$ _____
NOTES PAYABLE TO ASSOC. COMPANIES (Account 234): NONE	%		\$ _____
_____	%		_____
_____	%		_____
_____	%		_____
_____	%		_____
_____	%		_____
_____	%		_____
_____	%		_____
_____	%		_____
_____	%		_____
Total Account 234			\$ _____

* For variable rate obligations, provide the basis for the rate. (i.e.. prime + 2%, etc.)

**ACCOUNTS PAYABLE TO ASSOCIATED COMPANIES
 ACCOUNT 233**

Report each account payable separately.

Report each account payable separately. (a)	TOTAL (b)
WATER SERVICE CORPORATION	\$ 180,842
_____	_____
_____	_____
_____	_____
_____	_____
_____	_____
_____	_____
Total	\$ 180,842

UTILITY NAME: MID COUNTY SERVICES INC

ACCRUED INTEREST AND EXPENSE
ACCOUNTS 237 AND 427

DESCRIPTION OF DEBIT (a)	BALANCE BEGINNING OF YEAR (b)	INTEREST ACCRUED DURING YEAR		INTEREST PAID DURING YEAR (e)	BALANCE END OF YEAR (f)
		ACCT. DEBIT (c)	AMOUNT (d)		
ACCOUNT NO. 237.1 - Accrued Interest on Long Term Debt	\$ _____		\$ _____	\$ _____	\$ _____
UTILITIES INC INTERCOMPANY INTEREST	-		102,696	102,696	-
Total Account 237.1	\$ _____		\$ 102,696	\$ 102,696	\$ _____
ACCOUNT NO. 237.2 - Accrued Interest on Other Liabilities	\$ _____		\$ _____	\$ _____	\$ _____
Customer Deposits	-	427	-	-	-
MISC ITEMS					
Total Account 237.2	\$ _____		\$ _____	\$ _____	\$ _____
Total Account 237 (1)	\$ _____		\$ 102,696	\$ 102,696	\$ _____
INTEREST EXPENSED:					
Total accrual Account 237		237	\$ 102,696		
Less Capitalized Interest Portion of AFUDC:			-		
Net Interest Expensed to Account No. 427 (2)			\$ 102,696		

(1) Must agree to F-2 (a), Beginning and
Ending Balance of Accrued Interest.

(2) Must agree to F-3 (c), Current
Year Interest Expense

UTILITY NAME: MID COUNTY SERVICES INC

MISCELLANEOUS CURRENT AND ACCRUED LIABILITIES
ACCOUNT 241

DESCRIPTION - Provide itemized listing (a)	BALANCE END OF YEAR (b)
NONE	\$ _____
Total Miscellaneous Current and Accrued Liabilities	\$ _____

ADVANCES FOR CONSTRUCTION
ACCOUNT 252

NAME OF PAYOR * (a)	BALANCE BEGINNING OF YEAR (b)	DEBITS		CREDITS (e)	BALANCE END OF YEAR (f)
		ACCT. DEBIT (c)	AMOUNT (d)		
NONE	\$ _____		\$ _____	\$ _____	\$ _____
Total	\$ _____		\$ _____	\$ _____	\$ _____

* Report advances separately by reporting group, designating water or wastewater in column (a).

UTILITY NAME: MID COUNTY SERVICES INC

YEAR OF REPORT 31-Dec-03

**OTHER DEFERRED CREDITS
ACCOUNT 253**

DESCRIPTION - Provide itemized listing (a)	AMOUNT WRITTEN OFF DURING YEAR (b)	YEAR END BALANCE (c)
REGULATORY LIABILITIES (Class A Utilities: Account 253.1):		
NONE	\$ _____	\$ _____
_____	_____	_____
_____	_____	_____
_____	_____	_____
Total Regulatory Liabilities	\$ _____	\$ _____
OTHER DEFERRED LIABILITIES (Class A Utilities: Account 253.2):		
_____	\$ _____	\$ _____
_____	_____	_____
_____	_____	_____
_____	_____	_____
_____	_____	_____
_____	_____	_____
_____	_____	_____
Total Other Deferred Liabilities	\$ _____	\$ _____
TOTAL OTHER DEFERRED CREDITS	\$ _____	\$ _____

**CONTRIBUTIONS IN AID OF CONSTRUCTION
ACCOUNT 271**

DESCRIPTION (a)	WATER (W-7) (b)	WASTEWATER (S-7) (c)	W & WW OTHER THAN SYSTEM REPORTING (d)	TOTAL (e)
Balance first of year	\$ <u> -</u>	\$ <u> 2,825,700</u>	\$ <u> -</u>	\$ <u> 2,825,700</u>
Add credits during year:	\$ <u> -</u>	\$ <u> 33,496</u>	\$ <u> -</u>	\$ <u> 33,496</u>
Less debit charged during the year	\$ <u> -</u>	\$ <u> -</u>	\$ <u> -</u>	\$ <u> -</u>
Total Contribution In Aid of Construction	\$ <u> -</u>	\$ <u> 2,859,196</u>	\$ <u> -</u>	\$ <u> 2,859,196</u>

**ACCUMULATED AMORTIZATION OF CONTRIBUTIONS IN AID OF CONSTRUCTION
ACCOUNT 272**

DESCRIPTION (a)	WATER (W-8(a)) (b)	WASTEWATER (S-8(a)) (c)	W & WW OTHER THAN SYSTEM REPORTING (d)	TOTAL (e)
Balance first of year	\$ <u> -</u>	\$ <u> 1,215,864</u>	\$ <u> -</u>	\$ <u> 1,215,864</u>
Debits during the year:	\$ <u> -</u>	\$ <u> 77,102</u>	\$ <u> -</u>	\$ <u> 77,102</u>
Credits during the year	\$ <u> -</u>	\$ <u> -</u>	\$ <u> -</u>	\$ <u> -</u>
Total Accumulated Amortization of Contributions In Aid of Construction	\$ <u> -</u>	\$ <u> 1,292,966</u>	\$ <u> -</u>	\$ <u> 1,292,966</u>

UTILITY NAME: MID COUNTY SERVICES INC

YEAR OF REPORT 31-Dec-03

**RECONCILIATION OF REPORTED NET INCOME WITH TAXABLE
INCOME FOR FEDERAL INCOME TAXES (UTILITY OPERATIONS)**

- The reconciliation should include the same detail as furnished on Schedule M-1 of the federal tax return for the year. The reconciliation shall be submitted even though there is no taxable income for the year. Descriptions should clearly indicate the nature of each reconciling amount and show the computations of all tax accruals.
- If the utility is a member of a group which files a consolidated federal tax return, reconcile reported net income with taxable net income as if a separate return were to be filed, indicating intercompany amounts to be eliminated in such consolidated return. State names of group members, tax assigned to each group member, and basis of allocation, assignments or sharing of the consolidated tax among the group members.

DESCRIPTION (a)	REF. NO. (b)	AMOUNT (c)
Net income for the year	F-3(c)	\$ (134,651)
Reconciling items for the year:		
Taxable income not reported on books:		
Tap Fees		11,114
_____		_____
_____		_____
Deductions recorded on books not deducted for return:		
Net Change - Deferred Maintenance		(7,622)
Net Change - Rate Case		18,896
Excess Tax Depreciation over Book Depreciation		(105,337)
Current FIT		(97,066)
Deferred FIT		28,403
Deferred SIT		470
Amortization Adj PSC-03-1308		1,212
Income recorded on books not included in return:		
Interest During Construction		(568)
_____		_____
_____		_____
Deduction on return not charged against book income:		
Organization Exp		(340)
_____		_____
_____		_____
_____		_____
Federal tax net income		\$ (285,489)

Computation of tax :

(285,489)
34%
(97,066)

WATER OPERATING SECTION

Note: This utility is a wastewater only service; therefore, Pages W-1 through W-14 have been omitted from this report.

**WASTEWATER
OPERATION
SECTION**

UTILITY NAME:

MID COUNTY SERVICES INC

YEAR OF REPORT
31-Dec-03

WASTEWATER LISTING OF SYSTEM GROUPS

List below the name of each reporting system and its certificate number. Those systems which have been consolidated under the same tariff should be assigned a group number. Each individual system which has not been consolidated should be assigned its own group number.

The wastewater financial schedules (S-2 through S-10) should be filed for the group in total.

The wastewater engineering schedules (S-11 and S-12) must be filed for each system in the group.

All of the following wastewater pages (S-2 through S-12) should be completed for each group and arranged by group number.

SYSTEM NAME / COUNTY	CERTIFICATE NUMBER	GROUP NUMBER
<u>MID COUNTY / PINELLAS</u>	081S	
<hr/>	<hr/>	<hr/>
<hr/>	<hr/>	<hr/>
<hr/>	<hr/>	<hr/>
<hr/>	<hr/>	<hr/>
<hr/>	<hr/>	<hr/>
<hr/>	<hr/>	<hr/>
<hr/>	<hr/>	<hr/>
<hr/>	<hr/>	<hr/>
<hr/>	<hr/>	<hr/>
<hr/>	<hr/>	<hr/>
<hr/>	<hr/>	<hr/>
<hr/>	<hr/>	<hr/>
<hr/>	<hr/>	<hr/>
<hr/>	<hr/>	<hr/>
<hr/>	<hr/>	<hr/>
<hr/>	<hr/>	<hr/>
<hr/>	<hr/>	<hr/>
<hr/>	<hr/>	<hr/>
<hr/>	<hr/>	<hr/>
<hr/>	<hr/>	<hr/>
<hr/>	<hr/>	<hr/>
<hr/>	<hr/>	<hr/>
<hr/>	<hr/>	<hr/>
<hr/>	<hr/>	<hr/>
<hr/>	<hr/>	<hr/>

UTILITY NAME: MID COUNTY SERVICES INC

YEAR OF REPORT 31-Dec-03

SYSTEM NAME / COUNTY : Pinellas County

SCHEDULE OF YEAR END WASTEWATER RATE BASE

ACCT. NO. (a)	ACCOUNT NAME (b)	REFERENCE PAGE (c)	WASTEWATER UTILITY (d)
101	Utility Plant In Service	S-4A	\$ 5,607,510
	Less:		
	Nonused and Useful Plant (1)		
108	Accumulated Depreciation	S-6B	1,580,112
110	Accumulated Amortization	F-8	1,976
271	Contributions In Aid of Construction	S-7	2,859,196
252	Advances for Construction	F-20	-
Subtotal			\$ 1,166,226
	Add:		
272	Accumulated Amortization of Contributions in Aid of Construction	S-8A	\$ 1,292,966
Subtotal			\$ 2,459,192
	Plus or Minus:		
114	Acquisition Adjustments (2)	F-7	-
115	Accumulated Amortization of Acquisition Adjustments (2)	F-7	-
	Working Capital Allowance (3)		126,559
	Other (Specify):		
WASTEWATER RATE BASE			\$ 2,585,751
WASTEWATER OPERATING INCOME		S-3	\$ (32,838)
ACHIEVED RATE OF RETURN (Wastewater Operating Income / Wastewater Rate Base)			<u>-1.27%</u>

NOTES : (1) Estimate based on the methodology used in the last rate proceeding.

(2) Include only those Acquisition Adjustments that have been approved by the Commission.

(3) Calculation consistent with last rate proceeding.
 In absence of a rate proceeding, Class A utilities will use the Balance Sheet Method and Class B Utilities will use the One-eighth Operating and Maintenance Expense Method.

UTILITY NAME: MID COUNTY SERVICES INC

YEAR OF REPORT 31-Dec-03

SYSTEM NAME / COUNTY : Pinellas County

WASTEWATER OPERATING STATEMENT

ACCT. NO. (a)	ACCOUNT NAME (b)	REFERENCE PAGE (c)	WASTEWATER UTILITY (d)
	UTILITY OPERATING INCOME		
400	Operating Revenues	S-9A	\$ 1,078,089
530	Less: Guaranteed Revenue (and AFPI)	S-9A	
	Net Operating Revenues		\$ 1,078,089
401	Operating Expenses	S-10A	\$ 1,012,475
403	Depreciation Expense	S-6A	165,202
	Less: Amortization of CIAC	S-8A	(77,102)
	Net Depreciation Expense		\$ 88,100
406	Amortization of Utility Plant Acquisition Adjustment	F-7	-
407	Amortization Expense (Other than CIAC)	F-8	147
408.10	Taxes Other Than Income Utility Regulatory Assessment Fee		47,521
408.11	Property Taxes		13,866
408.12	Payroll Taxes		17,011
408.13	Other Taxes and Licenses		-
408	Total Taxes Other Than Income		\$ 78,398
409.1	Income Taxes		(97,066)
410.10	Deferred Federal Income Taxes		28,403
410.11	Deferred State Income Taxes		470
411.10	Provision for Deferred Income Taxes - Credit		
412.10	Investment Tax Credits Deferred to Future Periods		
412.11	Investment Tax Credits Restored to Operating Income		
	Utility Operating Expenses		\$ 1,110,927
	Utility Operating Income		\$ (32,838)
530	Add Back: Guaranteed Revenue (and AFPI)	S-9A	
413	Income From Utility Plant Leased to Others		
414	Gains (losses) From Disposition of Utility Property		
420	Allowance for Funds Used During Construction		568
	Total Utility Operating Income		\$ (32,270)

YEAR OF REPORT
31-Dec-03

UTILITY NAME: MID COUNTY SERVICES INC

SYSTEM NAME / COUNTY : Pinellas County

WASTEWATER UTILITY PLANT ACCOUNTS

ACCT. NO. (a)	ACCOUNT NAME (b)	PREVIOUS YEAR (c)	ADDITIONS (d)	RETIREMENTS (e)	CURRENT YEAR (f)
351	Organization	\$ 5,913	\$ -	\$ -	\$ 5,913
352	Franchises	-	-	-	-
353	Land and Land Rights	21,006	-	-	21,006
354	Structures and Improvements	231,602	87,369	27,431	291,540
355	Power Generation Equipment	-	-	-	-
360	Collection Sewers - Force	401,297	10,661	5,679	406,279
361	Collection Sewers - Gravity	1,598,063	193,015	71,365	1,719,713
362	Special Collecting Structures	-	-	-	-
363	Services to Customers	-	-	-	-
364	Flow Measuring Devices	-	-	-	-
365	Flow Measuring Installations	-	-	-	-
366	Reuse Services	-	-	-	-
367	Reuse Meters and Meter Installations	-	-	-	-
370	Receiving Wells	-	-	-	-
371	Pumping Equipment	-	-	-	-
374	Reuse Distribution Reservoirs	-	-	-	-
375	Reuse Transmission and Distribution System	-	-	-	-
380	Treatment and Disposal Equipment	2,987,315	49,478	10,422	3,026,371
381	Plant Sewers	-	-	-	-
382	Outfall Sewer Lines	-	-	-	-
389	Other Plant Miscellaneous Equipment	-	-	-	-
390	Office Furniture and Equipment	31,340	-	-	31,340
391	Transportation Equipment	63,085	-	-	63,085
392	Stores Equipment	-	-	-	-
393	Tools, Shop and Garage Equipment	23,026	1,151	424	23,753
394	Laboratory Equipment	11,735	1,304	-	13,039
395	Power Operated Equipment	-	-	-	-
396	Communication Equipment	553	-	-	553
397	Miscellaneous Equipment	-	-	-	-
398	Other Tangible Plant	3,576	1,342	-	4,918
Total Wastewater Plant		\$ 5,378,511	\$ 344,320	\$ 115,321	\$ 5,607,510

NOTE: Any adjustments made to reclassify property from one account to another must be footnoted.

*Note: The (d) column is recording allocation of UIF

S-4(a)

GROUP _____

UTILITY NAME: MID COUNTY SERVICES INC

SYSTEM NAME / COUNTY : Pinellas County

WASTEWATER UTILITY PLANT MATRIX

ACCT. NO.	ACCOUNT NAME	.1 INTANGIBLE PLANT (g)	.2 COLLECTION PLANT (h)	.3 SYSTEM PUMPING PLANT (i)	.4 TREATMENT AND DISPOSAL (j)	.5 RECLAIMED WASTEWATER TREATMENT PLANT (i)	.6 RECLAIMED WASTEWATER DISTRIBUTION PLANT (j)	.7 GENERAL PLANT (k)
351	Organization	\$ 5,913						
352	Franchises	-						
353	Land and Land Rights		21,006					
354	Structures and Improvements		291,540					
355	Power Generation Equipment		-					
360	Collection Sewers - Force		406,279					
361	Collection Sewers - Gravity		1,719,713					
362	Special Collecting Structures		-					
363	Services to Customers		-					
364	Flow Measuring Devices		-					
365	Flow Measuring Installations		-					
366	Reuse Services		-					
367	Reuse Meters and Meter Installations		-					
370	Receiving Wells							
371	Pumping Equipment							
374	Reuse Distribution Reservoirs							
375	Reuse Transmission and Distribution System				3,026,371			
380	Treatment and Disposal Equipment							
381	Plant Sewers							
382	Outfall Sewer Lines							
389	Other Plant Miscellaneous Equipment							31,340
390	Office Furniture and Equipment							63,085
391	Transportation Equipment							23,753
392	Stores Equipment							13,039
393	Tools, Shop and Garage Equipment							-
394	Laboratory Equipment							553
395	Power Operated Equipment							-
396	Communication Equipment							-
397	Miscellaneous Equipment							4,918
398	Other Tangible Plant							
	Total Wastewater Plant	\$ 5,913	\$ 2,438,538	\$ -	\$ 3,026,371	\$ -	\$ -	\$ 136,688

NOTE: Any adjustments made to reclassify property from one account to another must be footnoted.

UTILITY NAME: MID COUNTY SERVICES INC

YEAR OF REPORT 31-Dec-03

SYSTEM NAME / COUNTY : Pinellas County

BASIS FOR WASTEWATER DEPRECIATION CHARGES

ACCT. NO. (a)	ACCOUNT NAME (b)	AVERAGE SERVICE LIFE IN YEARS (c)	AVERAGE NET SALVAGE IN PERCENT (d)	DEPRECIATION RATE APPLIED IN PERCENT (100% - D) / C (e)
354	Structures and Improvements			3.13%
355	Power Generation Equipment			
360	Collection Sewers - Force			3.33%
361	Collection Sewers - Gravity			2.22%
362	Special Collecting Structures			
363	Services to Customers			
364	Flow Measuring Devices			
365	Flow Measuring Installations			
366	Reuse Services			
367	Reuse Meters and Meter Installations			
370	Receiving Wells			
371	Pumping Equipment			
375	Reuse Transmission and Distribution System			
380	Treatment and Disposal Equipment			5.56%
381	Plant Sewers			
382	Outfall Sewer Lines			
389	Other Plant Miscellaneous Equipment			
390	Office Furniture and Equipment			6.67%
391	Transportation Equipment			16.67%
392	Stores Equipment			
393	Tools, Shop and Garage Equipment			6.25%
394	Laboratory Equipment			6.67%
395	Power Operated Equipment			
396	Communication Equipment			10.00%
397	Miscellaneous Equipment			
398	Other Tangible Plant			10.00%
Wastewater Plant Composite Depreciation Rate *				

* If depreciation rates prescribed by this Commission are on a total composite basis, entries should be made on this line only.

YEAR OF REPORT
31-Dec-03

UTILITY NAME: MID COUNTY SERVICES INC

SYSTEM NAME / COUNTY: Pinellas County

ANALYSIS OF ENTRIES IN WASTEWATER ACCUMULATED DEPRECIATION

ACCT. NO. (a)	ACCOUNT NAME (b)	BALANCE AT BEGINNING OF YEAR (c)	ACCRUALS (d)	OTHER CREDITS * (e)	TOTAL CREDITS (d+e) (f)
354	Structures and Improvements	\$ 13,535	\$ 12,474	\$ (2,725)	\$ 9,749
355	Power Generation Equipment				
360	Collection Sewers - Force	88,899	12,542	-	12,542
361	Collection Sewers - Gravity	452,018	36,805	-	36,805
362	Special Collecting Structures	-			
363	Services to Customers	-			
364	Flow Measuring Devices				
365	Flow Measuring Installations				
366	Reuse Services				
367	Reuse Meters and Meter Installations				
370	Receiving Wells				
371	Pumping Equipment				
375	Reuse Transmission and Distribution System				
380	Treatment and Disposal Equipment	929,170	85,694	-	85,694
381	Plant Sewers				
382	Outfall Sewer Lines				
389	Other Plant Miscellaneous Equipment				
390	Office Furniture and Equipment	3,800	887	-	887
391	Transportation Equipment	31,853	13,022	-	13,022
392	Stores Equipment				
393	Tools, Shop and Garage Equipment	8,157	1,462	-	1,462
394	Laboratory Equipment	2,477	799	-	799
395	Power Operated Equipment				
396	Communication Equipment	387	56	-	56
397	Miscellaneous Equipment				
398	Other Tangible Plant	3,408	1,461	(748)	713
Total Depreciable Wastewater Plant in Service		\$ 1,533,704	\$ 165,202	\$ (3,473)	\$ 161,729

* Specify nature of transaction.
Use () to denote reversal entries.
*Note: The "other credits" (e) is recording allocation of UJF and adjustments to the acquisition entry.
S-6(a)
GROUP _____

UTILITY NAME: MID COUNTY SERVICES INC

SYSTEM NAME / COUNTY: Pinellas County

ANALYSIS OF ENTRIES IN WASTEWATER ACCUMULATED DEPRECIATION

ACCT. NO.	ACCOUNT NAME	PLANT RETIRED (g)	SALVAGE AND INSURANCE (h)	COST OF REMOVAL AND OTHER CHARGES (i)	TOTAL CHARGES (g-h+i) (j)	BALANCE AT END OF YEAR (c+f-j) (k)
(a)	(b)	(g)	(h)	(i)	(j)	(k)
354	Structures and Improvements	\$ 27,431	\$	\$	\$ 27,431	\$ (4,147)
355	Power Generation Equipment	-			-	
360	Collection Sewers - Force	5,679			5,679	95,762
361	Collection Sewers - Gravity	71,365			71,365	417,458
362	Special Collecting Structures	-			-	-
363	Services to Customers	-			-	-
364	Flow Measuring Devices	-			-	-
365	Flow Measuring Installations	-			-	-
366	Reuse Services	-			-	-
367	Reuse Meters and Meter Installations	-			-	-
370	Receiving Wells	-			-	-
371	Pumping Equipment	-			-	-
375	Reuse Transmission and Distribution System	-			-	-
380	Treatment and Disposal Equipment	10,422			10,422	1,004,442
381	Plant Sewers	-			-	-
382	Outfall Sewer Lines	-			-	-
389	Other Plant Miscellaneous Equipment	-			-	-
390	Office Furniture and Equipment	-			-	4,687
391	Transportation Equipment	-			-	44,875
392	Stores Equipment	-			-	-
393	Tools, Shop and Garage Equipment	424			424	9,195
394	Laboratory Equipment	-			-	3,276
395	Power Operated Equipment	-			-	-
396	Communication Equipment	-			-	443
397	Miscellaneous Equipment	-			-	-
398	Other Tangible Plant	-			-	4,121
Total Depreciable Wastewater Plant in Service						\$ 1,580,112

* Specify nature of transaction.
Use () to denote reversal entries.

UTILITY NAME: MID COUNTY SERVICES INC

YEAR OF REPORT
31-Dec-03

SYSTEM NAME / COUNTY : Pinellas County

**CONTRIBUTIONS IN AID OF CONSTRUCTION
ACCOUNT 271**

DESCRIPTION (a)	REFERENCE (b)	WASTEWATER (c)
Balance first of year		\$ <u>2,825,700</u>
Add credits during year:		
Contributions received from Capacity, Main Extension and Customer Connection Charges	S-8A	\$ <u>11,114</u>
Contributions received from Developer or Contractor Agreements in cash or property	S-8B	<u>22,380</u>
Total Credits		\$ <u>33,494</u>
Less debits charged during the year (All debits charged during the year must be explained below)		\$ <u>(2)</u>
Total Contributions In Aid of Construction		\$ <u>2,859,196</u>

Explain all debits charged to Account 271 during the year below:

Rounding

UTILITY NAME: MID COUNTY SERVICES INC

YEAR OF REPORT 31-Dec-03

SYSTEM NAME / COUNTY : Pinellas County

WASTEWATER CIAC SCHEDULE "A"

ADDITIONS TO CONTRIBUTIONS IN AID OF CONSTRUCTION RECEIVED FROM CAPACITY,
 MAIN EXTENSION AND CUSTOMER CONNECTION CHARGES RECEIVED DURING THE YEAR

DESCRIPTION OF CHARGE (a)	NUMBER OF CONNECTIONS (b)	CHARGE PER CONNECTION (c)	AMOUNT (d)
SEWER CONNECTIONS FEES	6	\$ 1,235	\$ 7,410
SEWER CONNECTIONS FEES	1	\$ 3,704	\$ 3,704
_____	_____	\$ _____	\$ -
_____	_____	\$ _____	\$ -
_____	_____	\$ _____	\$ -
_____	_____	\$ _____	\$ -
_____	_____	\$ _____	\$ -
_____	_____	\$ _____	\$ -
Total Credits			\$ <u>11,114</u>

**ACCUMULATED AMORTIZATION OF WASTEWATER
 CONTRIBUTIONS IN AID OF CONSTRUCTION**

DESCRIPTION (a)	WASTEWATER (b)
Balance first of year	\$ 1,215,864
Debits during the year:	
Accruals charged to Account 272	\$ 77,102
Other debits (specify):	_____
_____	_____
Total debits	\$ 77,102
Credits during the year (specify):	\$ _____
_____	_____
Total credits	\$ -
Balance end of year	\$ <u>1,292,966</u>

UTILITY NAME: MID COUNTY SERVICES INC

YEAR OF REPORT
31-Dec-03

SYSTEM NAME / COUNTY : Pinellas County

WASTEWATER CIAC SCHEDULE "B"
ADDITIONS TO CONTRIBUTIONS IN AID OF CONSTRUCTION
RECEIVED FROM ALL DEVELOPERS OR CONTRACTORS AGREEMENTS
WHICH CASH OR PROPERTY WAS RECEIVED DURING THE YEAR

DESCRIPTION (a)	INDICATE CASH OR PROPERTY (b)	AMOUNT (c)
Mid County CIAC		\$ 22,380
Total Credits		\$ 22,380

Reconciliation of Revenue to
Regulatory Assessment Fee Revenue
Wastewater Operations

UTILITY NAME: MID COUNTY SERVICES INC

YEAR OF REPORT 31-Dec-03

(A)	(B)	(C)	(D)
Accounts	Gross Wastewater Revenues per Sch S-9	Gross Wastewater Revenues per RAF Return	Difference (B)-(C)
Gross Revenues:			-
Total Flat-Rate Revenues			-
Total Measured Revenues	1,078,089	1,078,089	-
Revenues from Public Authorities			-
Revenues from Other Systems			-
Interdepartmental Revenues			-
Total Other Wastewater Revenues			-
Reclaimed Water Sales			-
Total Wastewater Operating Revenue	1,078,089	1,078,089	-
Less: Expense for Purchased Wastewater from FPSC Regulated Utility			-
Net Wastewater Operating Revenues	1,078,089	1,078,089	-

UTILITY NAME: MID COUNTY SERVICES INC

YEAR OF REPORT 31-Dec-03

SYSTEM NAME / COUNTY : Pinellas County

WASTEWATER OPERATING REVENUE

ACCT. NO. (a)	DESCRIPTION (b)	BEGINNING YEAR NO. CUSTOMERS * (c)	YEAR END NUMBER OF CUSTOMERS * (d)	AMOUNTS (e)
WASTEWATER SALES				
521.1	Flat Rate Revenues: Residential Revenues	3,306	3,324	\$ 1,077,984
521.2	Commercial Revenues	_____	_____	_____
521.3	Industrial Revenues	_____	_____	_____
521.4	Revenues From Public Authorities	_____	_____	_____
521.5	Multiple Family Dwelling Revenues	_____	_____	_____
521.6	Other Revenues	_____	_____	_____
521	Total Flat Rate Revenues	3,306	3,324	\$ 1,077,984
522.1	Measured Revenues: Residential Revenues	_____	_____	_____
522.2	Commercial Revenues	_____	_____	_____
522.3	Industrial Revenues	_____	_____	_____
522.4	Revenues From Public Authorities	_____	_____	_____
522.5	Multiple Family Dwelling Revenues	_____	_____	_____
522	Total Measured Revenues	_____	_____	\$ _____
523	Revenues From Public Authorities	_____	_____	_____
524	Revenues From Other Systems	_____	_____	_____
525	Interdepartmental Revenues	_____	_____	_____
Total Wastewater Sales		3,306	3,324	\$ 1,077,984
OTHER WASTEWATER REVENUES				
530	Guaranteed Revenues	_____	_____	\$ _____
531	Sale of Sludge	_____	_____	_____
532	Forfeited Discounts	_____	_____	_____
534	Rents From Wastewater Property	_____	_____	_____
535	Interdepartmental Rents	_____	_____	_____
536	Other Wastewater Revenues (Including Allowance for Funds Prudently Invested or AFPI)	_____	_____	105
Total Other Wastewater Revenues				\$ 105

* Customer is defined by Rule 25-30.210(1), Florida Administrative Code.

UTILITY NAME: MID COUNTY SERVICES INC

YEAR OF REPORT 31-Dec-03

SYSTEM NAME / COUNTY : Pinellas County

WASTEWATER OPERATING REVENUE

ACCT. NO. (a)	DESCRIPTION (b)	BEGINNING YEAR NO. CUSTOMERS * (c)	YEAR END NUMBER OF CUSTOMERS * (d)	AMOUNTS (e)
RECLAIMED WATER SALES				
	Flat Rate Reuse Revenues:			
540.1	Residential Reuse Revenues	_____	_____	\$ _____
540.2	Commercial Reuse Revenues	_____	_____	_____
540.3	Industrial Reuse Revenues	_____	_____	_____
540.4	Reuse Revenues From Public Authorities	_____	_____	_____
540.5	Other Revenues	_____	_____	_____
540	Total Flat Rate Reuse Revenues	_____	_____	\$ _____
	Measured Reuse Revenues:			
541.1	Residential Reuse Revenues	_____	_____	_____
541.2	Commercial Reuse Revenues	_____	_____	_____
541.3	Industrial Reuse Revenues	_____	_____	_____
541.4	Reuse Revenues From Public Authorities	_____	_____	_____
541	Total Measured Reuse Revenues	_____	_____	\$ _____
544	Reuse Revenues From Other Systems			
Total Reclaimed Water Sales				\$ _____
Total Wastewater Operating Revenues				\$ <u>1,078,089</u>

* Customer is defined by Rule 25-30.210(1), Florida Administrative Code.

UTILITY NAME: MID-COUNTY SERVICES INC
SYSTEM NAME / COUNTY Pinellas County

WASTEWATER UTILITY EXPENSE ACCOUNT MATRIX

ACCT. NO.	ACCOUNT NAME (b)	CURRENT YEAR (c)	.1 COLLECTION EXPENSES- OPERATIONS (d)	.2 COLLECTION EXPENSES- MAINTENANCE (e)	.3 PUMPING EXPENSES - OPERATIONS (f)	.4 PUMPING EXPENSES - MAINTENANCE (g)	.5 TREATMENT & DISPOSAL EXPENSES - OPERATIONS (h)	.6 TREATMENT & DISPOSAL EXPENSES - MAINTENANCE (i)
701	Salaries and Wages - Employees	\$ 194,646	\$ 5,839	\$ 23,358	\$ 38,929	\$ 9,732	\$ 93,430	\$ 23,358
703	Salaries and Wages - Officers, Directors and Majority Stockholders							
704	Employee Pensions and Benefits	39,489	1,185	2,764	4,739	1,974	11,847	4,738
710	Purchased Sewage Treatment	-						
711	Sludge Removal Expense	331,910						
715	Purchased Power	121,208			30,302		90,906	
716	Fuel for Power Purchased							
718	Chemicals	95,147					95,147	
720	Materials and Supplies	128,042	5,122	20,487	30,730	7,683	51,217	12,803
731	Contractual Services-Engineering	-						
732	Contractual Services - Accounting	2,653						
733	Contractual Services - Legal	1,116						
734	Contractual Services - Mgt. Fees	-						
735	Contractual Services - Testing							
736	Contractual Services - Other	11,308						
741	Rental of Building/Real Property							
742	Rental of Equipment							
750	Transportation Expenses	10,877						
756	Insurance - Vehicle		326	1,305	2,175	544	5,221	1,306
757	Insurance - General Liability							
758	Insurance - Workman's Comp.							
759	Insurance - Other	18,160						
760	Advertising Expense							
766	Regulatory Commission Expenses							
	- Amortization of Rate Case Expense	33,052						
767	Regulatory Commission Exp.-Other							
770	Bad Debt Expense	84						
775	Miscellaneous Expenses	24,783						
Total Wastewater Utility Expenses		\$ 1,012,475	\$ 12,472	\$ 47,914	\$ 106,875	\$ 19,933	\$ 679,678	\$ 42,205

YEAR OF REPORT
31-Dec-03

UTILITY NAME: MID COUNTY SERVICES INC

SYSTEM NAME / COUNTY : Pinellas County

WASTEWATER UTILITY EXPENSE ACCOUNT MATRIX

ACCT. NO.	ACCOUNT NAME	.7 CUSTOMER ACCOUNTS EXPENSE (j)	.8 ADMIN. & GENERAL EXPENSES (k)	.9 RECLAIMED WATER TREATMENT EXPENSES- OPERATIONS (l)	.10 RECLAIMED WATER TREATMENT EXPENSES- MAINTENANCE (m)	.11 RECLAIMED WATER DISTRIBUTION EXPENSES- OPERATIONS (n)	.12 RECLAIMED WATER DISTRIBUTION EXPENSES- MAINTENANCE (o)
701	Salaries and Wages - Employees						
703	Salaries and Wages - Officers, Directors and Majority Stockholders						
704	Employee Pensions and Benefits	12,242					
710	Purchased Sewage Treatment						
711	Sludge Removal Expense						
715	Purchased Power						
716	Fuel for Power Purchased						
718	Chemicals						
720	Materials and Supplies						
731	Contractual Services-Engineering		0				
732	Contractual Services - Accounting		2,653				
733	Contractual Services - Legal		1,116				
734	Contractual Services - Mgt. Fees		0				
735	Contractual Services - Testing		0				
736	Contractual Services - Other	5,654	5,654				
741	Rental of Building/Real Property						
742	Rental of Equipment						
750	Transportation Expenses						
756	Insurance - Vehicle						
757	Insurance - General Liability						
758	Insurance - Workman's Comp.						
759	Insurance - Other		18,160				
760	Advertising Expense						
766	Regulatory Commission Expenses - Amortization of Rate Case Expense		33,052				
767	Regulatory Commission Exp.-Other	84					
770	Bad Debt Expense	12,392	12,391				
775	Miscellaneous Expenses						
Total Wastewater Utility Expenses		\$ 30,372	\$ 73,026	\$ -	\$ -	\$ -	\$ -

S-10(b)
GROUP

UTILITY NAME:

MID COUNTY SERVICES, INC.

YEAR OF REPORT 31-Dec-03

SYSTEM NAME / COUNTY :

MID COUNTY / PINELLAS

CALCULATION OF THE WASTEWATER SYSTEM METER EQUIVALENTS

WATER METER SIZE (a)	TYPE OF WATER METER (b)	EQUIVALENT FACTOR (c)	NUMBER OF WATER METERS (d)	TOTAL NUMBER OF METER EQUIVALENTS (c x d) (e)
All Residential		1.0	1,897	1,897
5/8"	Displacement	1.0		
3/4"	Displacement	1.5		
1"	Displacement	2.5	68	170.0
1 1/2"	Displacement or Turbine	5.0	37	185
2"	Displacement, Compound or Turbine	8.0	35	280
3"	Displacement	15.0	1	15
3"	Compound	16.0		
3"	Turbine	17.5		
4"	Displacement or Compound	25.0		
4"	Turbine	30.0		
6"	Displacement or Compound	50.0	6	300
6"	Turbine	62.5		
8"	Compound	80.0		
8"	Turbine	90.0		
10"	Compound	115.0		
10"	Turbine	145.0		
12"	Turbine	215.0		
Total Wastewater System Meter Equivalents				<u>2,847.0</u>

CALCULATION OF THE WASTEWATER SYSTEM EQUIVALENT RESIDENTIAL CONNECTIONS

Provide a calculation used to determine the value of one wastewater equivalent residential connection (ERC).

Use one of the following methods:

(a) If actual flow data are available from the preceding 12 months, divide the total annual single family residence (SFR) gallons sold by the average number of single family residence customers for the same period and divide the result by 365 days.

(b) If no historical flow data are available, use:

$$ERC = (\text{Total SFR gallons treated (Omit 000)} / 365 \text{ days} / 280 \text{ gallons per day})$$

For wastewater only utilities:

Subtract all general use and other non residential customer gallons from the total gallons treated.

Divide the remainder (SFR customers) by 365 days to reveal single family residence customer gallons per day.

NOTE: Total gallons treated includes both treated and purchased treatment.

ERC Calculation:

$$289.8/365/280 = 2816$$

One (1) ERC = 2816 gallons AADF

UTILITY NAME: MID COUNTY SERVICES, INC.

YEAR OF REPORT 31-Dec-03

SYSTEM NAME / COUNTY : MID COUNTY / PINELLAS

WASTEWATER TREATMENT PLANT INFORMATION

Provide a separate sheet for each wastewater treatment facility

Permitted Capacity	<u>.900 mgd</u>		
Basis of Permit Capacity (1)	<u>AADF</u>		
Manufacturer	<u>Marolf</u>		
Type (2)	<u>Ext. Aeration</u>		
Hydraulic Capacity	<u>1.100 mgd</u>		
Average Daily Flow	<u>0.794</u> mgd		
Total Gallons of Wastewater Treated	<u>289.800</u> mg		
Method of Effluent Disposal	<u>Curlew Creek</u>		

- (1) Basis of permitted capacity as stated on the Florida DEP WWTP Operating Permit (i.e. average annual daily flow, etc.)
- (2) Contact stabilization, advanced treatment, etc.

UTILITY NAME: MID COUNTY SERVICES, INC.

YEAR OF REPORT
31-Dec-03

SYSTEM NAME / COUNTY : MID COUNTY / PINELLAS

OTHER WASTEWATER SYSTEM INFORMATION

Furnish information below for each system. A separate page should be supplied where necessary.

1. Present number of ERCs* now being served 2816
2. Maximum number of ERCs* which can be served 3214
3. Present system connection capacity (in ERCs*) using existing lines 3214
4. Future connection capacity (in ERCs*) upon service area buildout 3214
5. Estimated annual increase in ERCs* 30
6. Describe any plans and estimated completion dates for any enlargements or improvements of this system
Realign damaged sewer main in Brookfield S/D-10/31/04; Relocate force main on Curlew Road-12/31/04; Replace splitter box on south plant-12/31/04; Blower replacement North plant-7/31/04; Silk Oak lift station improvements-6/30/04; Paint WWTP-11/30/04; O'Keefe lift station electrical rehab-9/30/04; Sewer main spot repair on Wilshire Blvd.-7/30/04
7. If the utility uses reuse as a means of effluent disposal, attach a list of the reuse end users and the amount of reuse provided to each, if known. None
8. If the utility does not engage in reuse, has a reuse feasibility study been completed? Yes
If so, when? 1998
9. Has the utility been required by the DEP or water management district to implement reuse? No
If so, what are the utility's plans to comply with this requirement? Possible coordination of a reuse system will be discussed with nearby utilities and SWFWMD staff.
10. When did the company last file a capacity analysis report with the DEP? 1998
11. If the present system does not meet the requirements of DEP rules:
 - a. Attach a description of the plant upgrade necessary to meet the DEP rules.
 - b. Have these plans been approved by DEP? N/A
 - c. When will construction begin? N/A
 - d. Attach plans for funding the required upgrading.
 - e. Is this system under any Consent Order with DEP? No
12. Department of Environmental Protection ID # FL0034789

* An ERC is determined based on the calculation on S-11.