

CLASS "A" OR "B"

WATER and/or WASTEWATER UTILITIES

(Gross Revenue of More Than \$200,000 Each)

ANNUAL REPORT

OF

K. W. Resort Utilities Corp.

Exact Legal Name of Respondent

168-S

Certificate Numbers

Submitted To The

STATE OF FLORIDA



RECEIVED

MAR 17 2000

Florida Public Service Commission
Division of Water and Wastewater

PUBLIC SERVICE COMMISSION

FOR THE

YEAR ENDED DECEMBER 31, 1999

OFFICIAL COPY

DIVISION OF

WATER AND WASTEWATER

Do Not Remove from this Office

Cronin, Jackson, Nixon & Wilson

CERTIFIED PUBLIC ACCOUNTANTS, P.A.

JAMES L. CARLSTEDT, C.P.A.
CHRISTINE R. CHRISTIAN, C.P.A.
JOHN H. CRONIN, JR., C.P.A.
ERIC M. DOAN, C.P.A.
ROBERT H. JACKSON, C.P.A.
ROBERT C. NIXON, C.P.A.
HOLLY M. TOWNER, C.P.A.
JOHN A. VANTREASE, C.P.A.
JAMES L. WILSON, C.P.A.

2560 GULF-TO-BAY BOULEVARD
SUITE 200
CLEARWATER, FLORIDA 33765-4419
(727) 791-4020
FACSIMILE
(727) 797-3602
e-Mail
cjinw@worldnet.att.net

March 9, 2000

Officers and Directors
K. W. Resort Utilities Corp.

We have compiled the 1999 Annual Report of K. W. Resort Utilities Corp. in the accompanying prescribed form, in accordance with Statements on Standards for Accounting and Review Services issued by the American Institute of Certified Public Accountants.

Our compilation was limited to presenting, in the form prescribed by the Florida Public Service Commission, information that is the representation of the management of K. W. Resort Utilities Corp. We have not audited or reviewed the report referred to above and, accordingly, do not express an opinion or any form of assurance on it.

This report is presented in accordance with the requirements of the Florida Public Service Commission, which differ from generally accepted accounting principles. Accordingly, this report is not designed for those who are not informed about such differences.

Cronin, Jackson, Nixon & Wilson

CRONIN, JACKSON, NIXON & WILSON

General Instructions

1. Prepare this report in conformity with the 1984 National Association of Regulatory Utility Commissioners Uniform System of Accounts for Water and/or Wastewater Utilities (USOA).
2. Interpret all accounting words and phrases in accordance with the USOA.
3. Complete each question fully and accurately, even if it has been answered in a previous annual report. Enter the word "None" where it truly and completely states the fact.
4. For any question, section, or page which is not applicable to the respondent enter the words "Not Applicable". Do not omit any pages.
5. Where dates are called for, the month and day should be stated as well as the year.
6. All schedules should be rounded to the nearest dollar unless otherwise specifically indicated.
7. Complete this report by means which will create a permanent record, such as by typewriter.
8. If there is not enough room on any schedule, an additional page or pages may be added provided the format of the added schedule matches the format of the schedule of the page with not enough room. Such a schedule should reference the appropriate schedules, state the name of the utility, and state the year of the report.
9. If it is necessary or desirable to insert additional statements for the purpose of further explanation of schedules, such statement should be made at the bottom of the page or an additional page inserted. Any additional pages should state the name of the utility, the year of the report, and reference the appropriate schedule.
10. Water and wastewater system pages should be grouped together by system and all pages in the water and wastewater sections should be numbered consecutively at the bottom of the page where noted. For example, if the water system pages total 50 pages, they should be grouped by system and numbered from 1 to 50.
11. Financial information for multiple systems charging rates which are covered under the same tariff should be reported as one system. However, the engineering data must be reported by individual system.
12. For water and wastewater utilities with more than one system, one (1) copy of workpapers showing the consolidation of systems for the operating sections, should be filed with the annual report.
13. The report should be filled out in quadruplicate and the original and two copies returned by March 31 of the year following the date of the report. The report should be returned to:

**Florida Public Service Commission
Division of Water and Wastewater
2540 Shumard Oak Boulevard
Tallahassee, Florida 32399-0873**

The fourth copy should be retained by the utility

TABLE OF CONTENTS

SCHEDULE	PAGE	SCHEDULE	PAGE
EXECUTIVE SUMMARY			
Certification	E-1	Business Contracts With Officers, Directors and Affiliates	E-7
General Information	E-2	Affiliation of Officers and Directors	E-8
Directory of Personnel Who Contact the FPSC	E-3	Businesses Which Are A Byproduct, Coproduct or Joint Product of Providing Service	E-9
Company Profile	E-4	Business Transactions With Related Parties - Part I and II	E-10
Parent/Affiliate Organization Chart	E-5		
Compensation of Officers & Directors	E-6		
FINANCIAL SECTION			
Comparative Balance Sheet - Assets and Other Debits	F-1	Unamortized Debt Discount / Expense / Premium	F-13
Comparative Balance Sheet - Equity Capital and Liabilities	F-2	Extraordinary Property Losses	F-13
Comparative Operating Statement	F-3	Miscellaneous Deferred Debits	F-14
Schedule of Year End Rate Base	F-4	Capital Stock	F-15
Schedule of Year End Capital Structure	F-5	Bonds	F-15
Capital Structure Adjustments	F-6	Statement of Retained Earnings	F-16
Utility Plant	F-7	Advances From Associated Companies	F-17
Utility Plant Acquisition Adjustments	F-7	Long Term Debt	F-17
Accumulated Depreciation	F-8	Notes Payable	F-18
Accumulated Amortization	F-8	Accounts Payable to Associated Companies	F-18
Regulatory Commission Expense - Amortization of Rate Case Expense	F-9	Accrued Interest and Expense	F-19
Nonutility Property	F-9	Misc. Current and Accrued Liabilities	F-20
Special Deposits	F-9	Advances for Construction	F-21
Investments and Special Funds	F-10	Other Deferred Credits	F-21
Accounts and Notes Receivable - Net	F-11	Contributions In Aid Of Construction	F-22
Accounts Receivable From Associated Companies	F-12	Accum. Amortization of C.I.A.C.	F-23
Notes Receivable From Associated Companies	F-12	Reconciliation of Reported Net Income with Taxable Income For Federal Income Taxes	F-23
Miscellaneous Current and Accrued Assets	F-12		

TABLE OF CONTENTS

SCHEDULE	PAGE	SCHEDULE	PAGE
WATER OPERATION SECTION			
Listing of Water System Groups	W-1	CIAC Additions / Amortization	W-8
Schedule of Year End Water Rate Base	W-2	Water Operating Revenue	W-9
Water Operating Statement	W-3	Water Utility Expense Accounts	W-10
Water Utility Plant Accounts	W-4	Pumping and Purchased Water,	
Basis for Water Depreciation Charges	W-5	Source Supply	W-11
Analysis of Entries in Water Depreciation		Water Treatment Plant Information	W-12
Reserve	W-6	Calculation of ERC's	W-13
Contributions in Aid of Construction	W-7	Other Water System Information	W-14
WASTEWATER OPERATION SECTION			
Listing of Wastewater System Groups	S-1	Contributions in Aid of Construction	S-7
Schedule of Year End Wastewater Rate Base	S-2	CIAC Additions / Amortization	S-8
Wastewater Operating Statement	S-3	Wastewater Operating Revenue	S-9
Wastewater Utility Plant Accounts	S-4	Wastewater Utility Expense Accounts	S-10
Basis for Wastewater Depreciation Charges	S-5	Wastewater Treatment Plant Information	S-11
Analysis of Entries in Wastewater Depreciation		Calculation of ERC's	S-12
Reserve	S-6	Other Wastewater System Information	S-13

EXECUTIVE

SUMMARY

CERTIFICATION OF ANNUAL REPORT

YEAR OF REPORT
December 31, 1999

UTILITY NAME: K. W. Resort Utilities Corp.

I HEREBY CERTIFY, to the best of my knowledge and belief.

- | | | |
|--------------|-----------|--|
| YES
(X) | NO
() | 1. The utility is in substantial compliance with the Uniform System of Accounts prescribed by the Florida Public Service Commission. |
| YES
(X) | NO
() | 2. The utility is in substantial compliance with all applicable rules and orders of the Florida Public Service Commission. |
| YES
(X) | NO
() | 3. There have been no communications from regulatory agencies concerning noncompliance with, or deficiencies in, financial reporting practices that could have a material effect on the financial statement of the utility. |
| YES
(X) | NO
() | 4. The annual report fairly represents the financial condition and results of operations of the respondent for the period presented and other information and statements presented in the report as to the business affairs of the respondent are true, correct and complete for the period for which it represents. |

Items Certified

1. (X)	2. (X)	3. (X)	4. (X)
-------------	-------------	-------------	-------------

Wm Smith President
(signature of the chief executive officer of the utility)

1. ()	2. ()	3. ()	4. ()
-----------	-----------	-----------	-----------

N/A
(signature of the chief financial officer of the utility)

* Each of the four items must be certified YES or NO. Each item need not be certified by both officers. The items being certified by the officer should be indicated in the appropriate area to the left of the signature.

NOTICE: Section 837.06, Florida Statutes, provides that any person who knowingly makes a false statement in writing with the intent to mislead a public servant in the performance of his duty shall be guilty of a misdemeanor of the second degree.

ANNUAL REPORT OF

YEAR OF REPORT
December 31, 1999

K W Resort Utilities Corp.
(Exact Name of Utility)

County Monroe

List below the exact mailing address of the utility for which normal correspondence should be sent

KW Resort Utilities Corp.
Key West Golf Club
6450 College Road
Key West, Florida 33040
Telephone: (305) 296-3826

e-Mail Address N/A

WEB Site N/A

Sunshine State One-Call of Florida, Inc. Member Number N/A

Name and address of person to whom correspondence concerning this report should be addressed

Robert C. Nixon, CPA
Cronin, Jackson, Nixon & Wilson, CPA's, PA
2560 Gulf-to-Bay Blvd, Suite 200
Clearwater, Florida 34625
Telephone: (727) 791-4020

List below the address of where the utility's books and records are located

KW Resort Utilities Corp.
6630 Front Street
Key West, Florida 33045
Telephone: (305) 294-9578

List below any groups auditing or reviewing the records and operations:

Cronin, Jackson, Nixon and Wilson, CPA's

Date of original organization of the utility: 01/01/1972

Check the appropriate business entity of the utility as filed with the Internal Revenue Service

Individual Partnership Sub S Corporation 1120 Corporation

List below every corporation or person owning or holding directly or indirectly 5 percent or more of the voting securities of the utility:

	Name	Percent Ownership
1.	WS Utility, Inc.	100 %
2.		%
3.		%
4.		%
5.		%
6.		%
7.		%
8.		%
9.		%
10.		%

UTILITY NAME: K. W. Resort Utilities Corp.

YEAR OF REPORT
December 31, 1999

DIRECTORY OF PERSONNEL WHO CONTACT THE FLORIDA PUBLIC SERVICE COMMISSION

NAME OF COMPANY REPRESENTATIVE (1)	TITLE OR POSITION (2)	ORGANIZATIONAL UNIT TITLE (3)	USUAL PURPOSE FOR CONTACT WITH FPSC
Joe Davis	Manager	Davis Water Analysis	Manager of utility operation
Robert C. Nixon (727) 791-4020	CPA	Cronin Jackson, Nixon & Wilson, CPA's, PA	Regulatory and accounting matters
William L. Smith, Jr. (312) 939-0100	Owner	President	All utility matters

- (1) Also list appropriate legal counsel, accountants and others who may not be on general payroll.
- (2) Provide individual telephone numbers if the person is not normally reached at the company.
- (3) Name of company employed by if not on general payroll.

COMPANY PROFILE

Provide a brief narrative company profile which covers the following areas:

- A. Brief company history.**
- B. Public services rendered.**
- C. Major goals and objectives.**
- D. Major operating divisions and functions.**
- E. Current and projected growth patterns.**
- F. Major transactions having a material effect on operations.**

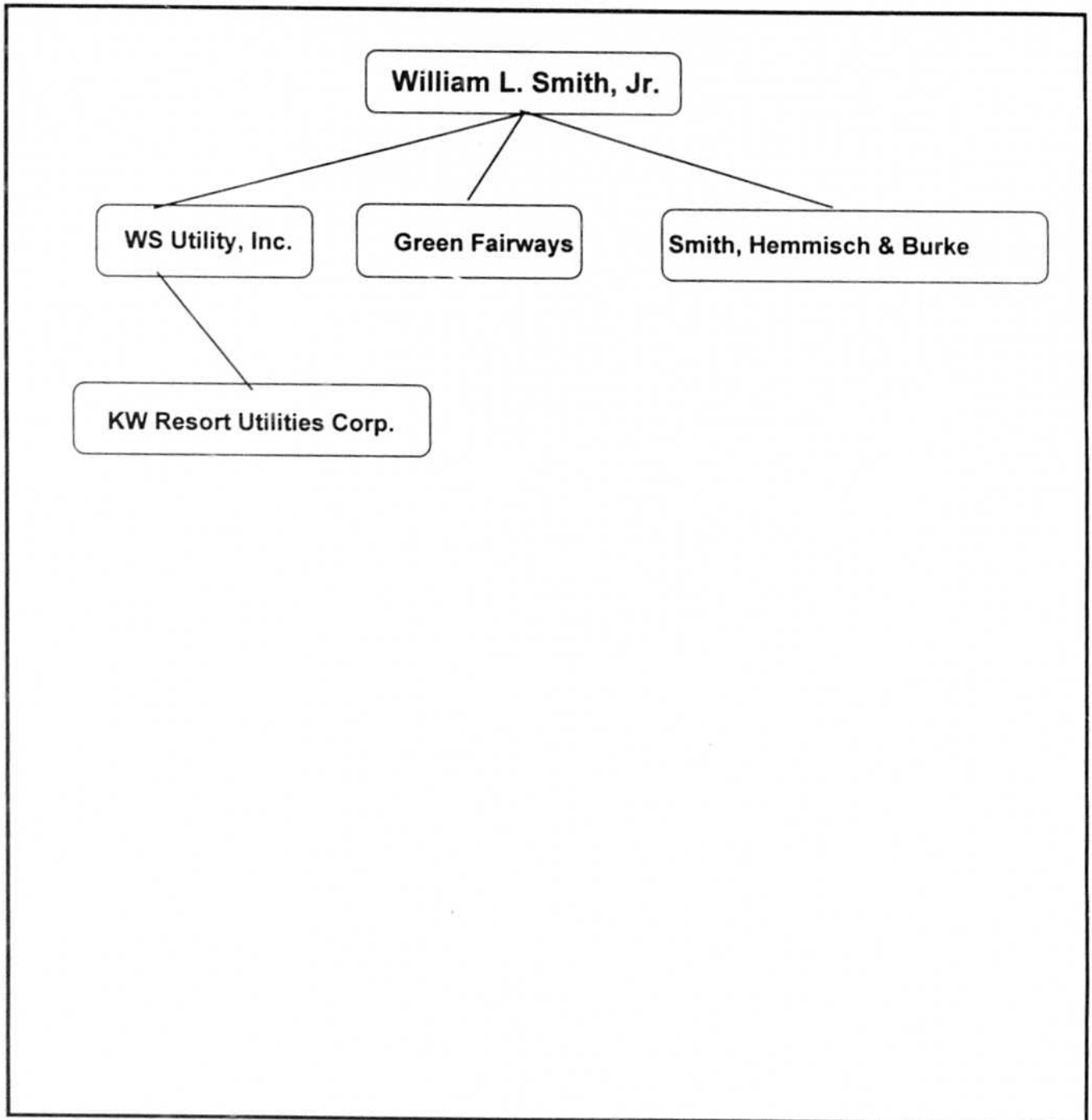
- A. K W Resort Utilities Corp. was formed for the purpose of taking possession of a sewage treatment facility located on Stock Island, Florida from a trustee of the Court. Possession was taken on January 1, 1985. The Stock of the Utility was sold to WS Utility, Inc. August 13, 1998
- B. K W Resort Utilities Corporation provides Wastewater treatment services to the residential area of Stock Island, Florida, in the immediate vicinity of the treatment plant
- C. K W Resort Utilities Corp.'s goal is to provide a fair return on investment to its stockholders while providing quality wastewater treatment service to its customers
- D. The Utility provides wastewater treatment services only
- E. Growth is expected of approximately 100 ERC's per year through buildout
- F. The Stock of the Utility was transferred to WS Utility, Inc. by KW Resort Holdings Corp.

UTILITY NAME: K. W. Rescrt Utilities Corp.

YEAR OF REPORT
December 31, 1999

PARENT / AFFILIATE ORGANIZATION CHART
Current as of 12/31/99

Complete below an organizational chart that shows all parents and subsidiaries of the utility. The chart must also show the relationship between the utility and the affiliates listed on E-7, E-10(a) and E-10(b).



UTILITY NAME: K. W. Resort Utilities Corp.

YEAR OF REPORT December 31, 1999
--

COMPENSATION OF OFFICERS

For each officer, list the time spent on respondent as an officer compared to time spent on total business activities and the compensation received as an officer from the respondent			
NAME (a)	TITLE (b)	% OF TIME SPENT AS OFFICER OF UTILITY (c)	OFFICERS COMPENSATION (d)
William L. Smith, Jr.	President	30	% \$ None
			% \$
			% \$
			% \$
			% \$
			% \$
			% \$
			% \$

COMPENSATION OF DIRECTORS

For each director, list the number of director meetings attended by each director and the compensation received as an director from the respondent			
NAME (a)	TITLE (b)	NUMBER OF DIRECTORS MEETINGS ATTENDED (c)	DIRECTORS COMPENSATION (d)
William L. Smith, Jr	President	1	\$ None
			\$
			\$
			\$
			\$
			\$
			\$
			\$

UTILITY NAME: K. W. Resort Utilities Corp

YEAR OF REPORT
December 31, 1999

BUSINESS CONTRACTS WITH OFFICERS, DIRECTORS AND AFFILIATES

List all contracts, agreements, and other business arrangements* entered into during the calendar year (other than compensation related to position with Respondents) between the Respondent and officer and director listed on Page E-6. In addition, provide the same information with respect to professional services for each firm, partnership, or organization with which the officer or director is affiliated.

NAME OF OFFICER, DIRECTOR OR AFFILIATE (a)	IDENTIFICATION OF SERVICE OR PRODUCT (b)	AMOUNT (c)	NAME AND ADDRESS OF AFFILIATED ENTITY (d)
None		\$	

* Business Agreement, for this schedule, shall mean any oral or written business deal which binds the concerned parties for products or services during the reporting year or future years. Although the Respondent and/or other companies will benefit from the arrangement, the officer or director is, however, acting on his behalf or for the benefit of other companies or persons.

UTILITY NAME: K. W. Resort Utilities Corp.

YEAR OF REPORT December 31, 1999
--

AFFILIATION OF OFFICERS AND DIRECTORS

For each of the officials listed on page E-6, list the principal occupation or business affiliation and all affiliations or connections with any other business or financial organizations, firms, or partnerships. For purposes of this part, an official will be considered to have an affiliation with any business or financial organization, firm or partnership in which he is an officer, director, trustee, partner, or a person exercising similar functions.

NAME (a)	PRINCIPAL OCCUPATION OR BUSINESS AFFILIATION (b)	AFFILIATION OR CONNECTION (c)	NAME AND ADDRESS OF AFFILIATION OR CONNECTION (d)
William L. Smith, Jr.	President	WS Utility, Inc	11 East Adams Street Suite 1400 Chicago, IL 60603
	President	Green Fairways	11 East Adams Street Suite 1400 Chicago, IL 60603
	Attorney	Smith, Hemmisch & Burke	11 East Adams Street Suite 1400 Chicago, IL 60603

UTILITY NAME: K. W. Resort Utilities Corp.

YEAR OF REPORT December 31, 1999
--

BUSINESSES WHICH ARE A BYPRODUCT, COPRODUCT OR JOINT PRODUCT RESULT OF PROVIDING WATER OR SEWER SERVICE

Complete the following for any business which is conducted as a byproduct, coproduct or joint product as a result of providing water and/or sewer service. This would include any business which requires the use of utility land and facilities. Examples of these types of businesses would be orange groves, nurseries, tree farms, fertilizer manufacturing, etc. This would not include any business for which the assets are properly included in Account 121 - Nonutility Property along with the associated revenues and expenses segregated out as nonutility also.

BUSINESS OR SERVICE CONDUCTED (a)	ASSETS		REVENUES		EXPENSES	
	BOOK COST OF ASSETS (b)	ACCT. NO. (c)	REVENUES GENERATED (d)	ACCT. NO. (e)	EXPENSES INCURRED (f)	ACCT. NO. (g)
None	\$		\$		\$	

UTILITY NAME: K. W. Resort Utilities Corp.

YEAR OF REPORT December 31, 1999
--

BUSINESS TRANSACTIONS WITH RELATED PARTIES

List each contract, agreement, or other business transaction exceeding a cumulative amount of \$500 in any one year, entered into between the Respondent and a business or financial organization, firm, or partnership named on pages E-2 and E-6 identifying the parties, amounts, dates and product, asset, or service involved.

Part I. Specific Instructions: Services and Products Received or Provided

1. Enter in this part all transactions involving services and products received or provided.
2. Below are some types of transactions to include:

<ul style="list-style-type: none"> - management, legal and accounting services - computer services - engineering & construction services - repairing and servicing of equipment 	<ul style="list-style-type: none"> - material and supplies furnished - leasing of structures, land and equipment - rental transactions - sale, purchase or transfer of various products
---	---

NAME OF COMPANY OR RELATED PARTY (a)	DESCRIPTION SERVICE AND/OR NAME OF PRODUCT (b)	CONTRACT OR AGREEMENT EFFECTIVE DATES (c)	ANNUAL CHARGES	
			(P)urchased or (S)old (d)	AMOUNT (e)
Green Fairways	Management	8/17/98 - Open	P	\$ 60,000

BUSINESS TRANSACTIONS WITH RELATED PARTIES

Part II. Specific Instructions: Sale, Purchase and Transfer of Assets

- | | |
|--|--|
| <p>1. Enter in this part all transactions relating to the purchase, sale or transfer of assets.</p> <p>2. Below are examples of some types of transactions to include:</p> <ul style="list-style-type: none"> - purchase, sale or transfer of equipment. - purchase, sale or transfer of land and structures. - purchase, sale or transfer of securities. - noncash transfers of assets. - noncash dividends other than stock dividends. - writeoff of bad debts or loans. | <p>3. The columnar instructions follow</p> <ul style="list-style-type: none"> (a) Enter name of related party or company. (b) Describe briefly the type of assets purchased, sold or transferred. (c) Enter the total received or paid. Indicate purchase with "P" and sale with "S". (d) Enter the net book value for each item reported. (e) Enter the net profit or loss for each item (column (c) - column (d)). (f) Enter the fair market value for each item reported. In space below or in a supplemental schedule, describe the basis used to calculate fair market value. |
|--|--|

NAME OF COMPANY OR RELATED PARTY (a)	DESCRIPTION OF ITEMS (b)	SALE OR PURCHASE PRICE (c)	NET BOOK VALUE (d)	GAIN OR LOSS (e)	FAIR MARKET VALUE (f)
None		\$	\$	\$	\$

FINANCIAL

SECTION

COMPARATIVE BALANCE SHEET - ASSETS AND OTHER DEBITS

ACCT. NO. (a)	ACCOUNT NAME (b)	REF. PAGE (c)	CURRENT YEAR (d)	PREVIOUS YEAR (e)
UTILITY PLANT				
101-106	Utility Plant	F-7	\$ 3,676,456	\$ 3,528,046
108-110	Less: Accumulated Depreciation and Amortization	F-8	1,450,229	1,365,755
Net Plant			2,226,227	2,162,291
114-115	Utility Plant Acquisition Adjustments (Net)	F-7		
116*	Other Plant Adjustments (specify)			
Total Net Utility Plant			2,226,227	2,162,291
OTHER PROPERTY AND INVESTMENTS				
121	Nonutility Property	F-9		
122	Less: Accumulated Depreciation and Amortization			
Net Nonutility Property				
123	Investment in Associated Companies	F-10		
124	Utility Investments	F-10	350,000	
125	Other Investments	F-10		
126-127	Special Funds	F-10		
Total Other Property and Investments			350,000	
CURRENT AND ACCRUED ASSETS				
131	Cash		55,032	200,994
132	Special Deposits	F-9		
133	Other Special Deposits	F-9		
134	Working Funds			
135	Temporary Cash Investments			
141-144	Accounts and Notes Receivable, Less Accumulated Provision for Uncollectable Accounts	F-11	66,125	44,281
145	Accounts Receivable from Associated Companies	F-12	80,660	20,165
146	Notes Receivable from Associated Companies	F-12		
151-153	Materials and Supplies			
161	Stores Expense			
162	Prepayments		4,402	5,056
171	Accrued Interest and Dividends Receivable			
172*	Rents Receivable			
173*	Accrued Utility Revenues			
174	Misc. Current and Accrued Assets	F-12	4,771	4,771
Total Current and Accrued Assets			210,990	275,267

* Not Applicable for Class B Utilities

UTILITY NAME: K W Resort Utilities Corp.

YEAR OF REPORT December 31, 1999

COMPARATIVE BALANCE SHEET - ASSETS AND OTHER DEBITS

ACCT. NO. (a)	ACCOUNT NAME (b)	REF. PAGE (c)	CURRENT YEAR (d)	PREVIOUS YEAR (e)
	DEFERRED DEBITS			
181	Unamortized Debt Discount & Expense	F-13		
182	Extraordinary Property Losses	F-13		
183	Preliminary Survey and Investigation Charges			
184	Clearing Accounts			
185*	Temporary Facilities			
186	Misc. Deferred Debits	F-14		
187*	Research & Development Expenditures			
190	Accumulated Deferred Income Taxes			
	Total Deferred Debits			
	TOTAL ASSETS AND OTHER DEBITS		\$ 2,787,217	\$ 2,437,558

* Not Applicable for Class B Utilities

NOTES TO THE BALANCE SHEET

The space below is provided for important notes regarding the balance sheet.

COMPARATIVE BALANCE SHEET - EQUITY CAPITAL AND LIABILITIES

ACCT. NO. (a)	ACCOUNT NAME (b)	REF. PAGE (c)	CURRENT YEAR (d)	PREVIOUS YEAR (e)
EQUITY CAPITAL				
201	Common Stock Issued	F-15	\$ 1,000	\$ 1,000
204	Preferred Stock Issued	F-15		
202,205*	Capital Stock Subscribed			
203,206*	Capital Stock Liability for Conversion			
207*	Premium on Capital Stock			
209*	Reduction in Par or Stated Value of Capital Stock			
210*	Gain on Resale or Cancellation of Reacquired Capital Stock			
211	Other Paid-in Capital			
212	Discount on Capital Stock			
213	Capital Stock Expense			
214-215	Retained Earnings	F-16	1,391,993	1,372,074
216	Reacquired Capital Stock			
218	Proprietary Capital (Proprietorship and Partnership Only)			
Total Equity Capital			1,392,993	1,373,074
LONG TERM DEBT				
221	Bonds	F-15		
222*	Reacquire Bonds			
223	Advances from Associated Companies	F-17		
224	Other Long Term Debt	F-17		
Total Long Term Debt				
CURRENT AND ACCRUED LIABILITIES				
231	Accounts Payable		16,437	1,184
232	Notes Payable	F-18		
233	Accounts Payable to Associated Co.	F-18	1,817	20,200
234	Notes Payable to Associated Co.	F-18		
235	Customer Deposits		30,281	32,828
236	Accrued Taxes	W/S-3	19,657	18,543
237	Accrued Interest	F-19		
238	Accrued Dividends			
239	Matured Long Term Debt			
240	Matured Interest			
241	Miscellaneous Current and Accrued Liabilities	F-20	31,028	29,451
Total Current and Accrued Liabilities			99,220	102,206

* Not Applicable for Class B Utilities

COMPARATIVE BALANCE SHEET - EQUITY CAPITAL AND LIABILITIES

ACCT. NO. (a)	ACCOUNT NAME (b)	REF. PAGE (c)	CURRENT YEAR (d)	PREVIOUS YEAR (e)
DEFERRED CREDITS				
251	Unamortized Premium on Debt	F-13		
252	Advances for Construction	F-20		
253	Other Deferred Credits (Contributed Taxes)	F-21		
255	Accumulated Deferred Investment Tax Credits			
Total Deferred Credits				
OPERATING RESERVES				
261	Property Insurance Reserve			
262	Injuries and Damages Reserve			
263	Pensions and Benefits Reserve			
265	Miscellaneous Operating Reserves			
Total Operating Reserves				
CONTRIBUTIONS IN AID OF CONSTRUCTION				
271	Contributions in Aid of Construction	F-22	1,404,852	1,025,762
272	Accumulated Amortization of Contributions in Aid of Construction	F-22	109,848	63,484
Total Net C.I.A.C.			1,295,004	962,278
ACCUMULATED DEFERRED INCOME TAXES				
281	Accumulated Deferred Income Taxes - Accelerated Depreciation			
282	Accumulated Deferred Income Taxes - Liberalized Depreciation			
283	Accumulated Deferred Income Taxes - Other			
Total Accum. Deferred Income Taxes				
TOTAL EQUITY CAPITAL AND LIABILITIES			\$ 2,787,217	\$ 2,437,558

COMPARATIVE OPERATING STATEMENT

ACCT. NO. (a)	ACCOUNT NAME (b)	REF. PAGE (d)	PREVIOUS YEAR (c)	CURRENT YEAR * (e)
UTILITY OPERATING INCOME				
400	Operating Revenues	F-3(b)	\$ 419,468	\$ 436,823
469.530	Less: Guaranteed Revenue and AFPI	F-3(b)		
Net Operating Revenues			419,468	436,823
401	Operating Expenses	F-3(b)	353,472	379,112
403	Depreciation Expense	F-3(b)	96,511	84,474
	Less: Amortization of CIAC	F-22	(31,265)	(46,364)
Net Depreciation Expense			65,246	38,110
406	Amortization of Utility Plant Acquisition Adjustment	F-3(b)		
407	Amortization Expense (Other than CIAC)	F-3(b)		
408	Taxes Other Than Income	W/S-3	24,608	25,686
409	Current Income Taxes	W/S-3		
410.10	Deferred Federal Income Taxes	W/S-3		
410.11	Deferred State Income Taxes	W/S-3		
411.10	Provision for Deferred Income Taxes - Credit	W/S-3		
412.10	Investment Tax Credits Deferred to Future Periods	W/S-3		
412.11	Investment Tax Credits Restored to Operating Income	W/S-3		
Utility Operating Expenses			443,326	442,908
Net Utility Operating Income			(23,858)	(6,085)
469/530	Add Back: Guaranteed Revenue and AFPI	F-3(b)		
413	Income From Utility Plant Leased to Others			
414	Gains (Losses) From Disposition of Utility Property			
420	Allowance for Funds Used During Construction			
Total Utility Operating Income [Enter here and on Page F-3(c)]			(23,858)	(6,085)

* For each account, column e should agree with columns f, g + h on F-3(b)

COMPARATIVE OPERATING STATEMENT (Cont'd)

WATER SCHEDULE W-3* (f)	SEWER SCHEDULE S-3* (g)	OTHER THAN REPORTING SYSTEMS (h)
N/A	\$ 436,823	N/A
-	436,823	-
	379,112	
	84,474 (46,364)	
-	38,110	-
	25,686	
	442,908	
N/A	(6,085)	
N/A	(6,085)	N/A

* Total of Schedules W-3/S-3 for all rate groups

COMPARATIVE OPERATING STATEMENT (Cont'd)

ACCT. NO. (a)	ACCOUNT NAME (b)	REF. PAGE (d)	PREVIOUS YEAR (c)	CURRENT YEAR (e)
Total Utility Operating Income [from Page F-3(a)]			\$ (23,858)	\$ (6,085)
OTHER INCOME AND DEDUCTIONS				
415	Revenues From Merchandising, Jobbing and Contract Deductions			24,800
416	Costs and Expenses of Merchandising, Jobbing and Contract Work			(11,678)
419	Interest and Dividend Income			4,937
421	Miscellaneous Nonutility Revenue		3,200	8,801
426	Miscellaneous Nonutility Expenses			
Total Other Income and Deductions			3,200	26,860
TAXES APPLICABLE TO OTHER INCOME				
408 20	Taxes Other Than Income			
409 20	Income Taxes			
410 20	Provision for Deferred Income Taxes			
411 20	Provision for Deferred Income Taxes - Credit			
412 20	Investment Tax Credits - Net			
412 30	Investment Tax Credits Restored to Operating Income			
Total Taxes Applicable to Other Income				
INTEREST EXPENSE				
427	Interest Expense	F-19		856
428	Amortization of Debt Discount & Expense	F-13		
429	Amortization of Premium on Debt	F-13		
Total Interest Expense				856
EXTRAORDINARY ITEMS				
433	Extraordinary Income			
434	Extraordinary Deductions			
409 30	Income Taxes, Extraordinary Items			
Total Extraordinary Items				
NET INCOME			\$ (20,658)	\$ 19,919

Explain Extraordinary Income:

SCHEDULE OF YEAR END RATE BASE

ACCT. NO. (a)	ACCOUNT NAME (b)	REF. PAGE (c)	WATER UTILITY (d)	WASTEWATER UTILITY (e)
101	Utility Plant In Service	F-7	N/A	\$ 3,676,456
	Less:			
	Nonused and Useful Plant (1)			
108.1	Accumulated Depreciation	F-8		1,450,229
110.1	Accumulated Amortization	F-8		
271	Contributions in Aid of Construction	F-22		1,404,852
252	Advances for Construction	F-20		
Subtotal				821,375
272	Add Accumulated Amortization of Contributions in Aid of Construction	F-22		109,848
Subtotal				931,223
114	Plus or Minus: Acquisition Adjustments (2)	F-7		
115	Accumulated Amortization of Acquisition Adjustments (2)	F-7		
	Working Capital Allowance (3)			47,389
	Other (Specify): _____ _____ _____			
RATE BASE			\$ -	\$ 978,612
NET UTILITY OPERATING INCOME			\$ -	\$ (6,085)
ACHIEVED RATE OF RETURN (Operating Income / Rate Base)			- - %	- - %

NOTES:

- (1) Estimated if not known.
 - (2) Include only those Acquisition Adjustments that have been approved by the Commission.
 - (3) Calculation consistent with last rate proceeding.
- In absence of a rate proceeding, Class A utilities will use the Balance Sheet Method and Class B Utilities will use the One-eighth Operating and Maintenance Method.

**SCHEDULE OF CURRENT COST OF CAPITAL
CONSISTENT WITH THE METHODOLOGY USED IN THE LAST RATE PROCEEDING**

CLASS OF CAPITAL (a)	DOLLAR AMOUNT (1) (b)	PERCENTAGE OF CAPITAL (c)	ACTUAL COST RATES (d)	WEIGHTED COST [c x d] (e)
Common Equity	\$ 1,383,141	97.77 %	13.500 %	13.20 %
Preferred Stock		%	- %	%
Long Term Debt		%	- %	%
Customer Deposits	31,555	2.23 %	6.000 %	0.1338 %
Tax Credits - Zero Cost		%	- %	%
Tax Credits - Weighted Cost		%	- %	%
Deferred Income Taxes		%	- %	%
Other (Explain)		%	- %	%
Notes Payable - Assoc Co		%	- %	%
Total	\$ 1,414,695	100.00 %		13.33 %

(1) Should equal amounts on Schedule F-6, Column (g).

(2) Mid-point of the last authorized Return On Equity or current leverage formula if none has been established

Must be calculated using the same methodology used in the last rate proceeding using current annual report year end amounts and cost rates

APPROVED RETURN ON EQUITY

Current Commission Return on Equity:	<u>13.50</u> %
Commission order approving Return on Equity:	<u>11.033</u>

APPROVED AFUDC RATE

COMPLETION ONLY REQUIRED IF AFUDC WAS CHARGED DURING THE YEAR

Current Commission approved AFUDC rate:	<u>None</u> %
Commission order approving AFUDC rate:	<u> </u>

If any utility capitalized any charge in lieu of AFUDC (such as interest only), state the basis of the charge, an explanation as to why AFUDC was not charged and the percentage capitalized.

SCHEDULE "B"

SCHEDULE OF CAPITAL STRUCTURE ADJUSTMENTS

CLASS OF CAPITAL (a)	SIMPLE AVERAGE PER BOOK BALANCE (b)	NON-UTILITY ADJUSTMENTS (c)	NON-JURIS. ADJUSTMENTS (d)	OTHER (1) ADJUSTMENTS (e)	CAPITAL STRUCTURE USED FOR AFUDC CALCULATION (f)
Common Equity	\$ 1,383,141	\$ -	\$ -	\$ -	\$ 1,383,141
Preferred Stock	-				
Long Term Debt					
Customer Deposits	31,555				31,555
Tax Credits - Zero Cost					
Tax Credits - Weighted Cost					
Deferred Income Taxes					
Other (Explain):					
Notes Payable - Assoc Co					
Total	<u>\$ 1,414,695</u>	<u>\$ -</u>	<u>\$ -</u>	<u>\$ -</u>	<u>\$ 1,414,695</u>

(1) Explain below all adjustments made in Columns (e) and (f)

**UTILITY PLANT
ACCOUNTS 101 - 106**

ACCT. NO. (a)	DESCRIPTION (b)	WATER (c)	SEWER (d)	OTHER THAN REPORTING SYSTEMS (e)	TOTAL (f)
101	Plant Accounts Utility Plant In Service	N/A	\$ 3,676,456	N/A	\$ 3,676,456
102	Utility Plant Leased to Others				
103	Property Held for Future Use				
104	Utility Plant Purchased or Sold				
105	Construction Work in Progress				
106	Completed Construction Not Classified				
Total Utility Plant		N/A	\$ 3,676,456	N/A	\$ 3,676,456

**UTILITY PLANT ACQUISITION ADJUSTMENTS
ACCOUNTS 114 AND 115**

Report each acquisition adjustment and related accumulated amortization separately. For any acquisition adjustment approved by the Commission, include the Order Number.

ACCT. NO. (a)	DESCRIPTION (b)	WATER (c)	SEWER (d)	OTHER THAN REPORTING SYSTEMS (e)	TOTAL (f)
114	Acquisition Adjustment N/A	\$ -	\$ -	\$ -	\$ -
Total Plant Acquisition Adjustment		\$ -	\$ -	\$ -	\$ -
115	Accumulated Amortization N/A	\$ -	\$ -	\$ -	\$ -
Total Accumulated Amortization		\$ -	\$ -	\$ -	\$ -
Total Acquisition Adjustments		\$ -	\$ -	\$ -	\$ -

ACCUMULATED DEPRECIATION (ACCT. 108) AND AMORTIZATION (ACCT. 110)

DESCRIPTION (a)	WATER (b)	SEWER (c)	OTHER THAN REPORTING SYSTEMS (d)	TOTAL (e)
ACCUMULATED DEPRECIATION Account 108				
Balance first of year	N/A	\$ 1,365,755	N/A	\$ 1,365,755
Credits during year:				
Accruals charged:				
to Account 108.1 (1)		84,474		84,474
to Account 108.2 (2)				
to Account 108.3 (2)				
Other Accounts (Specify)				
_____ Salvage				
Other Credits (specify)				
_____ _____				
Total credits		84,474		84,474
Debits during year:				
Book cost of plant retired	-	-		
Cost of removal				
Other debits (specify)				
_____ _____				
Total debits				
Balance end of year	N/A	\$ 1,450,229	N/A	\$ 1,450,229

ACCUMULATED AMORTIZATION Account 110				
Balance first of year N/A	N/A	N/A	N/A	N/A
Credits during year:				
Accruals charged:				
to Account 110.2 (2)				
Other Accounts (specify):				
_____ _____				
Total credits				
Debits during year:				
Book cost of plant retired				
Other debits (specify)				
_____ _____				
Total debits				
Balance end of year	N/A	N/A	N/A	N/A

- (1) Account 108 for Class B utilities.
- (2) Not applicable for Class B utilities.
- (3) Account 110 for Class B utilities.

**REGULATORY COMMISSION EXPENSE
AMORTIZATION OF RATE CASE EXPENSE (ACCTS. 666 AND 766)**

DESCRIPTION OF CASE (DOCKET NO.) (a)	EXPENSE INCURRED DURING YEAR (b)	CHARGED OFF DURING YEAR	
		ACCT. (c)	AMOUNT (d)
None	\$ _____ -		\$ _____ -
Total	\$ _____ -		\$ _____ -

NONUTILITY PROPERTY (ACCOUNT 121)

Report separately each item of property with a book cost of \$25,000 or more included in Account 121
Other items may be grouped by classes of property

DESCRIPTION (a)	BEGINNING YEAR (b)	ADDITIONS (c)	REDUCTIONS (d)	ENDING YEAR BALANCE (e)
None	\$ _____ -	\$ _____ -	\$ _____ -	\$ _____ -
Total Nonutility Property	\$ _____ -	\$ _____ -	\$ _____ -	\$ _____ -

SPECIAL DEPOSITS (ACCOUNTS 132 AND 133)

Report hereunder all special deposits carried in Accounts 132 and 133

DESCRIPTION OF SPECIAL DEPOSITS (a)	YEAR END BOOK COST (b)
SPECIAL DEPOSITS (Account 132): None	\$ _____ -
Total Special Deposits	\$ _____ -
OTHER SPECIAL DEPOSITS (Account 133): None	\$ _____ -
Total Other Special Deposits	\$ _____ -

UTILITY NAME: K. W. Resort Utilities Corp.

YEAR OF REPORT
December 31, 1999

**INVESTMENTS AND SPECIAL FUNDS
ACCOUNTS 123-127**

Report hereunder all investments and special funds carried in Accounts 123 through 127

DESCRIPTION OF SECURITY OR SPECIAL FUND (a)	FACE OR PAR VALUE (b)	YEAR END BOOK COST (c)
INVESTMENT IN ASSOCIATED COMPANIES (ACCT. 123): N/A	\$ -	\$ -
Total Investment In Associated Companies		\$ -
UTILITY INVESTMENTS (ACCT. 124): Certificate of Deposit - N/A	\$ 350,000	\$ 350,000
Total Utility Investments		\$ 350,000
OTHER INVESTMENTS (ACCT. 125): N/A	\$ -	\$ -
Total Other Investments		\$ -
SPECIAL FUNDS (ACCTS 126 & 127) N/A	\$ -	\$ -
Total Special Funds		\$ -

ACCOUNTS AND NOTES RECEIVABLE - NET

ACCOUNTS 141 - 144

Report hereunder all accounts and notes receivable included in Accounts 141, 142 and 144. Amounts included in Accounts 142 and 144 should be listed individually.

DESCRIPTION (a)	TOTAL (b)
CUSTOMER ACCOUNTS RECEIVABLE (Account 141):	
Combined Water & Wastewater	\$ -
Wastewater	76,125
Other	
Total Customer Accounts Receivable	\$ 76,125
OTHER ACCOUNTS RECEIVABLE (Acct. 142):	
_____	\$ -

Total Other Accounts Receivable	
NOTES RECEIVABLE (Acct. 144):	
_____	\$ -

Total Notes Receivable	
Total Accounts and Notes Receivable	76,125
ACCUMULATED PROVISION FOR UNCOLLECTABLE ACCOUNTS (Account 143):	
Balance First of Year	\$ (10,000)
Add: Provision for uncollectables for current year	
Collections of accounts previously written off	
Utility accounts	
Others	
Total Additions	
Deduct accounts written off during year:	
Utility accounts	
Others	
Total accounts written off	
Balance end of year	(10,000)
Total Accounts and Notes Receivable - Net	\$ 66,125

**ACCOUNTS RECEIVABLE FROM ASSOCIATED COMPANIES
ACCOUNT 145**

Report each account receivable from associated companies separately

DESCRIPTION (a)	TOTAL (b)
Due from parent - WS Utility, Inc.	\$ 80,660
Total	\$ <u>80,660</u>

**NOTES RECEIVABLE FROM ASSOCIATED COMPANIES
ACCOUNT 146**

Report each note receivable from associated companies separately

DESCRIPTION (a)	INTEREST RATE (b)	TOTAL (c)
None		\$ -
Total		\$ <u>-</u>

**MISCELLANEOUS CURRENT AND ACCRUED ASSETS
ACCOUNT 174**

DESCRIPTION - Provide itemized listing (a)	TOTAL (c)
Utility deposits (Water and electric)	\$ 4,771
Total	\$ <u>4,771</u>

UTILITY NAME: K. W. Resort Utilities Corp.

YEAR OF REPORT December 31, 1999
--

UNAMORTIZED DEBT DISCOUNT AND EXPENSE AND PREMIUM ON DEBT
 Report the net discount and expense or premium separately for each security issue.

DESCRIPTION (a)	AMOUNT WRITTEN OFF DURING YEAR (b)	YEAR END BALANCE (c)
UNAMORTIZED DEBT DISCOUNT AND EXPENSE (Account 181):		
N/A	\$ -	\$ -
_____	_____	_____
_____	_____	_____
_____	_____	_____
Total Unamortized Debt Discount and Expense	_____	_____
UNAMORTIZED PREMIUM ON DEBT (Account 251):		
N/A	\$ -	\$ -
_____	_____	_____
_____	_____	_____
_____	_____	_____
Total Unamortized Premium on Debt	\$ -	\$ -

EXTRAORDINARY PROPERTY LOSSES
ACCOUNT 182

Report each item separately.

DESCRIPTION (a)	TOTAL (b)
EXTRAORDINARY PROPERTY LOSSES (Acct. 182):	
N/A	\$ -
_____	_____
_____	_____
_____	_____
Total Extraordinary Property Losses	\$ -

UTILITY NAME: K. W. Resort Utilities Corp.

YEAR OF REPORT
December 31, 1999

**MISCELLANEOUS DEFERRED DEBITS
ACCOUNT 186**

DESCRIPTION - Provide itemized listing (a)	AMOUNT WRITTEN OFF DURING YEAR (b)	YEAR END BALANCE (c)
DEFERRED RATE CASE EXPENSE (Class A Utilities: Account 186.1): None	\$ -	\$ -
Total Deferred Rate Case Expense	\$ -	\$ -
OTHER DEFERRED DEBITS (Class A Utilities: Account 186.2): None	\$ -	\$ -
Total Other Deferred Debits	NONE	NONE
REGULATORY ASSETS (Class A Utilities: Account 186.3): None	\$ -	\$ -
Total Regulatory Assets	\$ -	\$ -
TOTAL MISCELLANEOUS DEFERRED DEBITS	<u>NONE</u>	<u>NONE</u>

**CAPITAL STOCK
ACCOUNTS 201 AND 204***

DESCRIPTION (a)	RATE (b)	TOTAL (d)
COMMON STOCK		
Par or stated value per share	\$ 1.00	\$ 1.00
Shares authorized		1,000
Shares issued and outstanding		1,000
Total par value of stock issued	\$ -	\$ 1,000
Dividends declared per share for year	None	None
PREFERRED STOCK		
Par or stated value per share	\$ -	\$ -
Shares authorized		
Shares issued and outstanding		
Total par value of stock issued		
Dividends declared per share for year	None	None

* Account 204 not applicable for Class B utilities

**BONDS
ACCOUNT 221**

DESCRIPTION OF OBLIGATION (INCLUDING DATE OF ISSUE AND DATE OF MATURITY) (a)	INTEREST		PRINCIPAL AMOUNT PER BALANCE SHEET (d)
	ANNUAL RATE (b)	FIXED OR VARIABLE* (c)	
N/A	%		\$ -
	%		
	%		
	%		
	%		
	%		
	%		
	%		
	%		
	%		
	%		
	%		
	%		
	%		
	%		
Total			\$ -

* For variable rate obligations, provide the basis for the rate. (i.e., Prime + 2%, etc)

STATEMENT OF RETAINED EARNINGS

1. Dividends should be shown for each class and series of capital stock. Show amounts as dividends per share.
2. Show separately the state and federal income tax effect of items shown in Account No. 439.

ACCT. NO. (a)	DESCRIPTION (b)	AMOUNTS (c)
215	Unappropriated Retained Earnings: Balance beginning of year	\$ 1,372,074
439	Changes to account: Adjustments to Retained Earnings (requires Commission approval prior to use) Credits: _____ _____	_____ _____
	Total Credits	_____
	Debits: _____ _____	_____ _____
	Total Debits	_____
435	Balance transferred from Income	19,919
436	Appropriations of Retained Earnings: _____ _____	_____ _____
	Total appropriations of Retained Earnings	_____
437	Dividends declared: Preferred stock dividends declared _____	_____
438	Common stock dividends declared _____	_____
	Total Dividends Declared	_____
	Year end Balance	1,391,993
214	Appropriated Retained Earnings (state balance and purpose of each appropriated amount at year end) _____ _____ _____	_____ _____ _____
214	Total Appropriated Retained Earnings	_____
	Total Retained Earnings	\$ 1,391,993

Notes to Statement of Retained Earnings:

UTILITY NAME: K. W. Resort Utilities Corp.

YEAR OF REPORT
December 31, 1999

**ADVANCES FROM ASSOCIATED COMPANIES
ACCOUNT 223**

Report each advance separately.

DESCRIPTION (a)	TOTAL (b)
N/A	\$ -
_____	_____
_____	_____
_____	_____
_____	_____
_____	_____
_____	_____
_____	_____
Total	\$ _____

**OTHER LONG TERM DEBT
ACCOUNT 224**

DESCRIPTION OF OBLIGATION (INCLUDING DATE OF ISSUE AND DATE OF MATURITY) (a)	INTEREST		PRINCIPAL AMOUNT PER BALANCE SHEET (d)
	ANNUAL RATE (b)	FIXED OR VARIABLE* (c)	
_____	_____ %	_____	\$ -
_____	_____ %	_____	_____
_____	_____ %	_____	_____
_____	_____ %	_____	_____
_____	_____ %	_____	_____
_____	_____ %	_____	_____
_____	_____ %	_____	_____
_____	_____ %	_____	_____
_____	_____ %	_____	_____
_____	_____ %	_____	_____
_____	_____ %	_____	_____
_____	_____ %	_____	_____
_____	_____ %	_____	_____
_____	_____ %	_____	_____
Total			NONE

* For variable rate obligations, provide the basis for the rate. (i.e., Prime + 2%, etc)

NOTES PAYABLE (ACCTS. 232 AND 234)

DESCRIPTION OF OBLIGATION (INCLUDING DATE OF ISSUE AND DATE OF MATURITY) (a)	INTEREST		PRINCIPAL AMOUNT PER BALANCE SHEET (d)
	ANNUAL RATE (b)	FIXED OR VARIABLE* (c)	
NOTES PAYABLE (Account 232):			
N/A			\$ -
Total Account 232			\$ -
NOTES PAYABLE TO ASSOC. COMPANIES (Account 234):			
N/A			\$ -
Total Account 234			

* For variable rate obligations, provide the basis for the rate. (i.e., Prime +2%, etc)

**ACCOUNTS PAYABLE TO ASSOCIATED COMPANIES
ACCOUNT 233**

Report each account payable separately.

DESCRIPTION (a)	TOTAL (b)
Key West Golf Club	\$ 1,817
Total	\$ 1,817

**ACCRUED INTEREST AND EXPENSE
ACCOUNTS 237 AND 427**

DESCRIPTION OF DEBT (a)	BALANCE BEGINNING OF YEAR (b)	INTEREST ACCRUED DURING YEAR		INTEREST PAID DURING YEAR (e)	BALANCE END OF YEAR (f)
		ACCT. DEBIT (c)	AMOUNT (d)		
ACCOUNT NO. 237.1 - Accrued Interest on Long Term Debt					
	\$ -		\$ -	\$ -	\$ -
	-				
Total Account No. 237.1	-				-
ACCOUNT NO. 237.2 - Accrued Interest in Other Liabilities					
Customer Deposits	-	427	856	856	-
Total Account 237.2	-		856	856	
Total Account 237 (1)	\$ -		\$ 856	\$ 856	\$ -
INTEREST EXPENSED:					
Total accrual Account 237		237	\$ 856		
Less Capitalized Interest Portion of AFUDC:					
None					
Net Interest Expensed to Account No. 427 (2)			\$ 856		

MISCELLANEOUS CURRENT AND ACCRUED LIABILITIES
ACCOUNT 241

DESCRIPTION (a)	BALANCE END OF YEAR (b)
Prepaid revenue	\$ 31,028
Total Miscellaneous Current and Accrued Liabilities	\$ 31,028

ADVANCES FOR CONSTRUCTION
ACCOUNT 252

NAME OF PAYOR * (a)	BALANCE BEGINNING OF YEAR (b)	ACCT.		CREDITS (e)	BALANCE END OF YEAR (f)
		DEBIT (c)	AMOUNT (d)		
None	\$ -		\$ -	\$ -	\$ -
Total	\$ -		\$ -	\$ -	\$ -

* Report advances separately by reporting group, designating water or wastewater in column (a)

**OTHER DEFERRED CREDITS
ACCOUNT 253**

DESCRIPTION - Provide itemized listing (a)	AMOUNT WRITTEN OFF DURING YEAR (b)	YEAR END BALANCE (c)
<p>REGULATORY LIABILITIES (Class A Utilities: Account 253.1)</p> <p>N/A</p> <hr/> <hr/> <hr/> <hr/> <hr/> <hr/> <hr/> <hr/> <hr/> <hr/>	<p>\$ -</p> <hr/> <hr/> <hr/> <hr/> <hr/> <hr/> <hr/> <hr/> <hr/> <hr/>	<p>\$ -</p> <hr/> <hr/> <hr/> <hr/> <hr/> <hr/> <hr/> <hr/> <hr/> <hr/>
<p>Total Regulatory Liabilities</p>	<p><u>\$ -</u></p>	<p><u>\$ -</u></p>
<p>OTHER DEFERRED LIABILITIES (Class A Utilities: Account 253.2)</p> <p>N/A</p> <hr/> <hr/> <hr/> <hr/> <hr/> <hr/> <hr/> <hr/> <hr/> <hr/>	<p>\$ -</p> <hr/> <hr/> <hr/> <hr/> <hr/> <hr/> <hr/> <hr/> <hr/> <hr/>	<p>\$ -</p> <hr/> <hr/> <hr/> <hr/> <hr/> <hr/> <hr/> <hr/> <hr/> <hr/>
<p>Total Deferred Liabilities</p>	<p><u>\$ -</u></p>	<p><u>\$ -</u></p>
<p>TOTAL OTHER DEFERRED CREDITS</p>	<p><u>\$ -</u></p>	<p><u>\$ -</u></p>

CONTRIBUTIONS IN AID OF CONSTRUCTION
ACCOUNT 271

DESCRIPTION (a)	WATER (b)	SEWER (c)	W & WW OTHER THAN SYSTEM REPORTING (d)	TOTAL (e)
Balance first of year	N/A	\$ 1,025,762	N/A	\$ 1,025,762
Add credits during year:	-	379,090		379,090
Less debits charged during	-	-		-
Total Contributions In Aid of Construction	\$ -	\$ 1,404,852	\$ -	\$ 1,404,852

ACCUMULATED AMORTIZATION OF CONTRIBUTIONS IN AID OF CONSTRUCTION
ACCOUNT 272

DESCRIPTION (a)	WATER (b)	SEWER (c)	W & WW OTHER THAN SYSTEM REPORTING (d)	TOTAL (e)
Balance first of year	N/A	\$ 63,484	N/A	\$ 63,484
Debits during year:		46,364		46,364
Credits during year (specify):				
Total Accumulated Amortization of Contributions In Aid of Construction		\$ 109,848		\$ 109,848

UTILITY NAME: K. W. Resort Utilities Corp.

**RECONCILIATION OF REPORTED NET INCOME WITH TAXABLE INCOME FOR FEDERAL INCOME TAXES
(UTILITY OPERATIONS)**

1. The reconciliation should include the same detail as furnished on schedule M-1 of the federal income tax return for the year. The reconciliation shall be submitted even though there is no taxable income for the year. Descriptions should clearly indicate the nature of each reconciling amount and show the computation of all tax accruals.

2. If the utility is a member of a group which files a consolidated federal tax return, reconcile reported net income with taxable net income as if a separate return were to be filed, indicating intercompany amounts to be eliminated in such consolidated return. State names of group members, tax assigned to each group member, and basis of allocation, assignment, or sharing of the consolidated tax among group members.

DESCRIPTION (a)	REFERENCE (b)	AMOUNT (c)
Net income for the year	F-3 (c)	\$ _____ -
Reconciling items for the year:		
Taxable income not reported on the books:		
_____	_____	_____
_____	_____	_____
_____	_____	_____
Deductions recorded on books not deducted for return:		
_____	_____	_____
_____	_____	_____
_____	_____	_____
Income recorded on books not included in return:		
_____	_____	_____
_____	_____	_____
_____	_____	_____
Deduction on return not charged against book income:		
_____	_____	_____
_____	_____	_____
_____	_____	_____
Federal tax net income		\$ _____ -
Computation of tax: The Company is a Subchapter 'S' corporation; therefore, there is no tax at the Corporate level		

WATER OPERATION SECTION

K.W. Resort Utilities Corp. is a wastewater only system, therefore, all water section Pages have been omitted.

**WASTEWATER
OPERATION
SECTION**

SCHEDULE OF YEAR END WASTEWATER RATE BASE

ACCT. NO. (a)	ACCOUNT NAME (b)	REF. PAGE (c)	WASTEWATER UTILITY (d)
101	Utility Plant In Service	S-4(b)	\$ 3,676,456
	Less:		
	Nonused and Useful Plant (1)		
108.1	Accumulated Depreciation	S-6(b)	1,450,229
110.1	Accumulated Amortization		
271	Contributions in Aid of Construction	S-7	1,404,852
252	Advances for Construction	F-20	
	Subtotal		821,375
272	Add: Accumulated Amortization of Contributions in Aid of Construction	S-8(a)	109,848
	Subtotal		931,223
	Plus or Minus:		
114	Acquisition Adjustments (2)	F-7	
115	Accumulated Amortization of Acquisition Adjustments (2)	F-7	
	Working Capital Allowance (3)		47,389
	Other (Specify):		
	WASTEWATER RATE BASE		\$ 978,612
	UTILITY OPERATING INCOME	S-3	\$ (6,085)
ACHIEVED RATE OF RETURN (Wastewater Operating Income/Wastewater Rate Base)			-- %

- NOTES: (1) Class A calculate consistent with last rate proceeding. Class B estimated if not known.
 (2) Include only those Acquisition Adjustments that have been approved by the Commission.
 (3) Calculation consistent with last rate proceeding.
 In absence of a rate proceeding, Class A utilities will use the Balance Sheet Method and Class B Utilities will use the One-eighth Operating and Maintenance Expense Method.

WASTEWATER OPERATING STATEMENT

ACCT. NO. (a)	ACCOUNT NAME (b)	REF. PAGE (c)	WASTEWATER UTILITY (d)
400	UTILITY OPERATING INCOME Operating Revenues	S-9	\$ 436,823
530	Less: Guaranteed Revenue and AFPI	S-9	
	Net Operating Revenues		436,823
401	Operating Expenses	S-10(a)	379,112
403	Depreciation Expense	S-6(a)	84,474
	Less: Amortization of CIAC	S-8(a)	(46,364)
	Net Depreciation Expense		38,110
406	Amortization of Utility Plant Acquisition Adjustment	F-7	
407	Amortization Expense (Other than CIAC)	F-8	
408.10	Taxes Other Than Income Utility Regulatory Assessment Fee		19,657
408.11	Property Taxes		5,757
408.12	Payroll Taxes		
408.13	Other Taxes & Licenses		272
408	Total Taxes Other Than Income		25,686
409.1	Income Taxes	F-16	
410.10	Deferred Federal Income Taxes		
410.11	Deferred State Income Taxes		
411.10	Provision for Deferred Income Taxes - Credit		
412.10	Investment Tax Credits Deferred to Future Periods		
412.11	Investment Tax Credits Restored to Operating Income		
	Utility Operating Expenses		442,908
	Utility Operating Income (Loss)		(6,085)
469	Add Back: Guaranteed Revenue (and AFPI)		
413	Income From Utility Plant Leased to Others		
414	Gains (Losses) From Disposition of Utility Property		
420	Allowance for Funds Used During Construction		
	Total Utility Operating Income (Loss)		\$ (6,085)

UTILITY NAME: K. W. Resort Utilities Corp.

SYSTEM NAME / COUNTY: Stock Island/Monroe County

YEAR OF REPORT
December 31, 1999

WASTEWATER UTILITY PLANT ACCOUNTS

ACCT. NO. (a)	ACCOUNT NAME (b)	PREVIOUS YEAR (c)	ADDITIONS (d)	RETIREMENTS (e)	CURRENT YEAR (f)
351	Organization		\$ -		
352	Franchises		125,364		125,364
353	Land and Land Rights	222,745			222,745
354	Structure and Improvements	82,956			82,956
355	Power Generation Equipment	0			
360	Collection Sewers - Force	1,080,116			1,080,116
361	Collection Sewers - Gravity	266,898			266,898
362	Special Collecting Structures				
363	Services to Customers				
364	Flow Measuring Devices				
365	Flow Measuring Installations				
366	Reuse Services				
367	Reuse Meters and Meter Installations				
370	Receiving Wells				
371	Pumping Equipment	206,022			206,022
374	Reuse Distribution Reservoirs				
375	Reuse Transmission and Distribution System				
380	Treatment & Disposal Equipment	1,615,198			1,615,198
381	Plant Sewers				
382	Outfall Sewer Lines				
389	Other Plant / Miscellaneous Equipment	44,203			44,203
390	Office Furniture & Equipment	2,478			2,478
391	Transportation Equipment	6,295			6,295
392	Stores Equipment				
393	Tools, Shop and Garage Equipment	1,135			1,135
394	Laboratory Equipment				
395	Power Operated Equipment		23,046		23,046
396	Communication Equipment				
397	Miscellaneous Equipment				
398	Other Tangible Plant				
	Total Wastewater Plant	\$ 3,528,046	\$ 148,410	\$ -	\$ 3,676,456

NOTE: Any adjustments made to reclassify property from one account to another must be footnoted.

UTILITY NAME: K. W. Resort Utilities Corp.

SYSTEM NAME / COUNTY: Stock Island/Monroe County

YEAR OF REPORT
December 31, 1999

WASTEWATER UTILITY PLANT MATRIX

ACCT. NO. (a)	ACCOUNT NAME (b)	.1 INTANGIBLE PLANT (g)	.2 COLLECTION PLANT (h)	.3 SYSTEM PUMPING PLANT (i)	.4 TREATMENT AND DISPOSAL PLANT (j)	.5 RECLAIMED WASTEWATER TREATMENT PLANT (k)	.6 RECLAIMED WASTEWATER DISTRIBUTION PLANT (l)	.7 GENERAL PLANT (m)
351	Organization							
352	Franchises	125,364						
353	Land and Land Rights				222,745			
354	Structure and Improvements				82,956			
355	Power Generation Equipment							
360	Collection Sewers - Force		1,080,116					
361	Collection Sewers - Gravity		266,898					
362	Special Collecting Structures							
363	Services to Customers							
364	Flow Measuring Devices							
365	Flow Measuring Installations							
366	Reuse Services							
367	Reuse Meters and Meter Installations							
370	Receiving Wells							
371	Pumping Equipment			206,022				
374	Reuse Distribution Reservoirs							
375	Reuse Transmission and Distribution System				1,615,198			
380	Treatment & Disposal Equipment							
381	Plant Sewers							
382	Outfall Sewer Lines							
389	Other Plant / Miscellaneous Equipment				44,203			
390	Office Furniture & Equipment							2,478
391	Transportation Equipment							6,295
392	Stores Equipment							1,135
393	Tools, Shop and Garage Equipment							
394	Laboratory Equipment							
395	Power Operated Equipment							
396	Communication Equipment							
397	Miscellaneous Equipment							
398	Other Tangible Plant							
	Total Wastewater Plant	\$ 125,364	\$ 1,347,014	\$ 206,022	\$ 1,965,102	\$ -	\$ -	\$ 32,954

NOTE: Any adjustments made to reclassify property from one account to another must be footnoted.

BASIS FOR WASTEWATER DEPRECIATION CHARGES

ACCT. NO. (a)	ACCOUNT NAME (b)	AVERAGE SERVICE LIFE IN YEARS (c)	AVERAGE NET SALVAGE IN PERCENT (d)	DEPRECIATION RATE APPLIED IN PERCENT (100% - d) / c (e)
351	Organization		%	%
352	Franchises	40	%	2 50 %
354	Structure and Improvements	30	%	3 33 %
355	Power Generation Equipment		%	%
360	Collection Sewers - Force	30	%	3 33 %
361	Collection Sewers - Gravity	30	%	3 33 %
362	Special Collecting Structures		%	%
363	Services to Customers		%	%
364	Flow Measuring Devices		%	%
365	Flow Measuring Installations		%	%
366	Reuse Services		%	%
367	Reuse Meters and Meter Installations		%	%
370	Receiving Wells		%	%
371	Pumping Equipment	10	%	10 00 %
374	Reuse Distribution Reservoirs		%	%
375	Reuse Transmission and Distribution System		%	%
380	Treatment & Disposal Equipment	30	%	3 33 %
381	Plant Sewers		%	%
382	Outfall Sewer Lines		%	%
389	Other Plant / Miscellaneous Equipment	10	%	10 00 %
390	Office Furniture & Equipment	10	%	10 00 %
391	Transportation Equipment	10	%	10 00 %
392	Stores Equipment		%	%
393	Tools, Shop and Garage Equipment	10	%	10 00 %
394	Laboratory Equipment		%	%
395	Power Operated Equipment	12	%	8 33 %
396	Communication Equipment		%	%
397	Miscellaneous Equipment		%	%
398	Other Tangible Plant		%	%
Wastewater Plant Composite Depreciation Rate *			%	%

* If depreciation rates prescribed by this Commission are on a total composite basis, entries should be made on this line only.

UTILITY NAME: K. W. Resort Utilities Corp.

SYSTEM NAME / COUNTY: Stock Island/Monroe County

YEAR OF REPORT
December 31, 1999.

ANALYSIS OF ENTRIES IN WATER ACCUMULATED DEPRECIATION

ACCT. NO. (a)	ACCOUNT NAME (b)	BALANCE AT BEGINNING OF YEAR (c)	ACCRUALS (d)	OTHER CREDITS * (e)	TOTAL CREDITS (d + e) (f)
351	Organization	\$ -	\$ -	\$ -	\$ -
352	Franchises		1,567		1,567
354	Structure and Improvements	37,109	2,765		2,765
355	Power Generation Equipment				
360	Collection Sewers - Force	331,497	36,004		36,004
361	Collection Sewers - Gravity	77,892	8,676		8,996
362	Special Collecting Structures				
363	Services to Customers				
364	Flow Measuring Devices				
365	Flow Measuring Installations				
366	Reuse Services				
367	Reuse Meters and Meter Installations				
370	Receiving Wells				
371	Pumping Equipment	206,022	-		
374	Reuse Distribution Reservoirs	659,124	34,602		34,602
375	Reuse Transmission and Distribution System				
380	Treatment & Disposal Equipment				
381	Plant Sewers				
382	Outfall Sewer Lines				
389	Other Plant / Miscellaneous Equipment	44,203	-		
390	Office Furniture & Equipment	2,478	-		
391	Transportation Equipment	6,295	-		
392	Stores Equipment				
393	Tools, Shop and Garage Equipment	1,135	-		
394	Laboratory Equipment				
395	Power Operated Equipment		640		640
396	Communication Equipment				
397	Miscellaneous Equipment				
398	Other Tangible Plant				
Total Depreciable Wastewater Plant in Service		\$ 1,365,755	\$ 84,474	\$ -	\$ 84,474

* Specify nature of transaction

Use () to denote reversal entries

UTILITY NAME K. W. Resort Utilities Corp.

SYSTEM NAME / COUNTY: Stock Island/Monroe County

YEAR OF REPORT
December 31, 1999

ANALYSIS OF ENTRIES IN WATER ACCUMULATED DEPRECIATION (CONT'D)

ACCT. NO. (a)	ACCOUNT NAME (b)	PLANT RETIRED (g)	SALVAGE AND INSURANCE (h)	COST OF REMOVAL AND OTHER CHARGES (i)	TOTAL CHARGES (g-h+i) (j)	BALANCE AT END OF YEAR (c+f-k) (k)
351	Organization	\$	\$	\$	\$	1,567
352	Franchises					39,874
354	Structure and Improvements					
355	Power Generation Equipment					
360	Collection Sewers - Force					367,501
361	Collection Sewers - Gravity					86,788
362	Special Collecting Structures					
363	Services to Customers					
364	Flow Measuring Devices					
365	Flow Measuring Installations					
366	Reuse Services					
367	Reuse Meters and Meter Installations					
370	Receiving Wells					
371	Pumping Equipment					206,022
374	Reuse Distribution Reservoirs					693,726
375	Reuse Transmission and Distribution System					
380	Treatment & Disposal Equipment					
381	Plant Sewers					
382	Outfall Sewer Lines					
389	Other Plant / Miscellaneous Equipment					44,203
390	Office Furniture & Equipment					2,478
391	Transportation Equipment					6,295
392	Stores Equipment					
393	Tools, Shop and Garage Equipment					1,135
394	Laboratory Equipment					
395	Power Operated Equipment					640
396	Communication Equipment					
397	Miscellaneous Equipment					
398	Other Tangible Plant					
Total Depreciable Wastewater Plant in Service		\$	\$	\$	\$	\$ 1,450,229

UTILITY NAME: K. W. Resort Utilities Corp.
 SYSTEM NAME / COUNTY: Stock Island/Monroe County

YEAR OF REPORT
December 31, 1999

**CONTRIBUTIONS IN AID OF CONSTRUCTION
 ACCOUNT 271**

DESCRIPTION (a)	REFERENCE (b)	WASTEWATER (b)
Balance First of Year		\$ 1,025,762
Add credits during year:		
Contributions Received From Capacity, Capacity, Main Extension and Customer Connection Charges	S-8(a)	76,950
Contributions received from Developer or Contractor Agreements in cash or property	S-8(b)	302,140
Total Credits		379,090
Less debits charged during the year (All debits charged during the year must be explained below)		
Total Contributions In Aid of Construction		\$ 1,404,852

If any prepaid CIAC has been collected, provide a supporting schedule showing how the amount is determined

Explain all Debits charged to Account 271 during the year below:

UTILITY NAME: K. W. Resort Utilities Corp.
 SYSTEM NAME / COUNTY: Stock Island/Monroe County

YEAR OF REPORT December 31, 1999

WASTEWATER CIAC SCHEDULE "A"
**ADDITIONS TO CONTRIBUTIONS IN AID OF CONSTRUCTION RECEIVED FROM CAPACITY, MAIN
 EXTENSION AND CUSTOMER CONNECTION CHARGES RECEIVED DURING THE YEAR**

DESCRIPTION OF CHARGE (a)	NUMBER OF CONNECTIONS (b)	CHARGE PER CONNECTION (c)	AMOUNT (d)
Residential Connection fees	38	\$ 2,025	\$ 76,950
Total Credits			\$ 76,950

**ACCUMULATED AMORTIZATION OF CONTRIBUTIONS IN AID OF CONSTRUCTION
 ACCOUNT 272**

DESCRIPTION (a)	WASTEWATER (b)
Balance first of year	\$ 63,484
Debits during year:	
Accruals charged to Account	46,364
Other Debits (specify):	
Total debits	46,364
Credits during year (specify):	
Total credits	
Balance end of year	\$ 109,848

UTILITY NAME: K. W. Resort Utilities Corp.
 SYSTEM NAME / COUNTY: Stock Island/Monroe County

YEAR OF REPORT
 December 31, 1999

WASTEWATER CIAC SCHEDULE "B"
 ADDITIONS TO CONTRIBUTION IN AID OF CONSTRUCTION RECEIVED FROM ALL DEVELOPERS OR CONTRACTORS AGREEMENTS FROM WHICH CASH OR PROPERTY WAS RECEIVED DURING THE YEAR

DESCRIPTION (a)	INDICATE "CASH" OR "PROPERTY" (b)	WASTEWATER (c)
Safe Harbor Marina	Cash	\$ 43,051
Old Road Partners	Cash	5,154
Sunset Ventures	Cash	253,935
Total Credits		\$ 302,140

WASTEWATER OPERATING REVENUE

ACCT. NO. (a)	DESCRIPTION (b)	BEGINNING YEAR NO. CUSTOMERS * (c)	YEAR END NUMBER CUSTOMERS (d)	AMOUNTS (e)
WASTEWATER SALES				
Flat Rate Revenues:				
521.1	Residential Revenues	791	807	\$ 329,943
521.2	Commercial Revenues			
521.3	Industrial Revenues			
521.4	Revenues From Public Authorities			
521.5	Multiple Family Revenues	39	39	16,065
521.6	Other Revenues			
521	Total Flat Rate Revenues	830	846	346,008
Measured Revenues:				
522.1	Residential Revenues			
522.2	Commercial Revenues	15	16	58,812
522.3	Industrial Revenues			
522.4	Revenues From Public Authorities			
522.5	Multiple Family Dwelling Revenues (Units)			
522	Total Measured Revenues	15	16	58,812
523	Revenues From Public Authorities			
524	Revenues From Other Systems			
525	Interdepartmental Revenues			
	Total Wastewater Sales	845	862	\$ 404,820
OTHER WASTEWATER REVENUES				
530	Guaranteed Revenues			\$ -
531	Sale Of Sludge			
532	Forfeited Discounts			
534	Rents From Wastewater Property			
535	Interdepartmental Rents			
536	Other Wastewater Revenues (Including Allowance for Funds Prudently Invested or AFPI)			6,343
	Total Other Wastewater Revenues			\$ 6,343

* Customer is defined by Rule 25-30.210(1), Florida Administrative Code.

WASTEWATER OPERATING REVENUE

ACCT. NO. (a)	DESCRIPTION (b)	BEGINNING YEAR NO. CUSTOMERS * (c)	YEAR END NUMBER CUSTOMERS (d)	AMOUNTS (e)
RECLAIMED WATER SALES				
Flat Rate Reuse Revenues:				
540.1	Residential Reuse Revenues			\$
540.2	Commercial Reuse Revenues			
540.3	Industrial Reuse Revenues			
540.4	Reuse Revenues From Public Authorities			
540.5	Other Reuse Revenues			
540	Total Flat Rate Reuse Revenues			
Measured Reuse Revenues:				
541.1	Residential Reuse Revenues			
541.2	Commercial Reuse Revenues	1	1	25,660
541.3	Industrial Reuse Revenues			
541.4	Reuse Revenues From Public Authorities			
541	Total Measured Reuse Revenues	1	1	25,660
544	Reuse Revenues From Other Systems			
Total Reclaimed Water Sales				25,660
Total Wastewater Operating Revenues				\$ 436,823

* Customer is defined by Rule 25-30.210(1), Florida Administrative Code.

UTILITY NAME: K. W. Resort Utilities Corp
 SYSTEM NAME / COUNTY: Stock Island/Monroe County

YEAR OF REPORT:
 December 31, 1999

WASTEWATER UTILITY EXPENSE ACCOUNTS

ACCT. NO. (a)	ACCOUNT NAME (b)	CURRENT YEAR (c)	.1 COLLECTION EXPENSES - OPERATIONS (d)	.2 SOURCE OF SUPPLY AND EXPENSES - MAINTENANCE (e)	.3 PUMPING EXPENSES - OPERATIONS (f)	.4 PUMPING EXPENSES - MAINTENANCE (g)	.5 TREATMENT & DISPOSAL EXPENSES - OPERATIONS (h)	.6 TREATMENT & DISPOSAL EXPENSES - MAINTENANCE (i)
701	Salaries and Wages - Employees	\$	\$	\$	\$	\$	\$	\$
703	Salaries and Wages - Officers, Directors and Majority Stockholders							
704	Employee Pensions and Benefits							
710	Purchased Sewage Treatment	6,710					6,710	
711	Sludge Removal Expense	74,180			5,449		67,566	
715	Purchased Power							
716	Fuel for Power Purchased							
718	Chemicals	6,012					6,012	
720	Materials and Supplies	4,212						1,987
731	Contractual Services - Engineering	695						
732	Contractual Services - Accounting	37,555						
733	Contractual Services - Legal	2,292						
734	Contractual Services - Mgt. Fees	144,829					84,829	
735	Contractual Services - Testing	60,926		18,533		37,525		3,804
736	Contractual Services - Other							
741	Rental of Building/Real Property							
742	Rental of Equipment	44					44	
750	Transportation Expense							
756	Insurance - Vehicle							
757	Insurance - General Liability	8,200						
758	Insurance - Workmens Comp.							
759	Insurance - Other							
760	Advertising Expense							
766	Regulatory Commission Expenses - Amortization of Rate Case Expense							
767	Regulatory Commission Exp -Other							
770	Bad Debt Expense	259						
775	Miscellaneous Expenses	33,198	2,490				3,793	
	Total Wastewater Utility Expenses	\$ 379,112	\$ 2,490	\$ 18,533	\$ 5,449	\$ 37,525	\$ 168,954	\$ 5,791

UTILITY NAME: K. W. Resort Utilities Corp
SYSTEM NAME / COUNTY: Stock Island/Monroe County

WASTEWATER UTILITY EXPENSE ACCOUNTS

ACCT. NO. (a)	ACCOUNT NAME (b)	.7 CUSTOMER ACCOUNTS EXPENSE (j)	.8 ADMIN. & GENERAL EXPENSES (k)	.9 RECLAIMED WATER TREATMENT EXPENSES - OPERATIONS (l)	.10 RECLAIMED WATER TREATMENT EXPENSES - MAINTENANCE (m)	.11 RECLAIMED WATER DISTRIBUTION EXPENSES - OPERATIONS (n)	.12 RECLAIMED WATER DISTRIBUTION EXPENSES - MAINTENANCE (o)
701	Salaries and Wages - Employees	\$ -	\$ -	\$ -	\$ -	\$ -	\$ -
703	Salaries and Wages - Officers, Directors and Majority Stockholders						
704	Employee Pensions and Benefits						
710	Purchased Sewage Treatment						
711	Sludge Removal Expense		1,165				
715	Purchased Power						
716	Fuel for Power Purchased						
718	Chemicals		2,225				
720	Materials and Supplies		695				
731	Contractual Services - Engineering		37,555				
732	Contractual Services - Accounting		2,292				
733	Contractual Services - Legal		60,000				
734	Contractual Services - Mgt. Fees		1,064				
735	Contractual Services - Testing						
736	Contractual Services - Other						
741	Rental of Building/Real Property						
742	Rental of Equipment						
750	Transportation Expense						
756	Insurance - Vehicle						
757	Insurance - General Liability		8,200				
758	Insurance - Workmen's Comp						
759	Insurance - Other						
760	Advertising Expense						
766	Regulatory Commission Expenses - Amortization of Rate Case Expense						
767	Regulatory Commission Exp -Other						
770	Bad Debt Expense	259	26,915				
775	Miscellaneous Expenses						
	Total Wastewater Utility Expenses	\$ 259	\$ 140,111	\$ -	\$ -	\$ -	\$ -

UTILITY NAME: K. W. Resort Utilities Corp.
 SYSTEM NAME / COUNTY: Stock Island/Monroe County

YEAR OF REPORT
 December 31, 1999

CALCULON OF THE WASTEWATER SYSTEMS EQUIVALENT RESIDENTIAL UNITS

METER SIZE (a)	TYPE OF METER (b)	EQUIVALENT FACTOR (c)	NUMBER OF METERS (d)	TOTAL NUMBER OF METER EQUIVALENTS (c x d) (e)
All Residential		1.0	807	807
5/8"	Displacement	1.0	9	9
3/4"	Displacement	1.5		
1"	Displacement	2.5	3	8
1 1/2"	Displacement or Turbine	5.0		
2"	Displacement, Compound or Turbine	8.0	3	24
3"	Displacement	15.0		
3"	Compound	16.0		
3"	Turbine	17.5		
4"	Displacement or Compound	25.0	1	25
4"	Turbine	30.0		
6"	Displacement or Compound	50.0		
6"	Turbine	62.5		
8"	Compound	80.0		
8"	Turbine	90.0		
10"	Compound	115.0		
10"	Turbine	145.0		
12"	Turbine	215.0		
Total Wastewastewater System Meter Equivalents				873

CALCULATION OF THE WASTEWATER SYSTEM EQUIVALENT RESIDENTIAL CONNECTIONS

Provide a calculation used to determine the value of one wastewater equivalent residential connection (ERC).

Use one of the following methods:

- (a) If actual flow data are available from the preceding 12 months, divide the total annual single family residence (SFR) gallons sold by the average number of single family residence customers for the same period and divide the result by 365 days.

- (b) If no historical flow data are available, use:

$$ERC = (\text{Total SFR gallons sold (Omit 000)} / 365 \text{ days} / 280 \text{ gallons per day})$$

For wastewater only utilities:

Subtract all general use and other non-residential customer gallons from the total gallons treated.

Divide the remainder (SFR customers) by 365 days to reveal single family residence customer gallons per day

NOTE: Total gallons treated includes both treated and purchased treatment

ERC Calculation:	(<u>83,643,000</u>	/ 365 days) / 280 gpd =	<u>818</u>
		(total gallons treated)		

UTILITY NAME: K W Resort Utilities Corp.
 SYSTEM NAME / COUNTY: Stock Island/Monroe

YEAR OF REPORT
December 31, 1999

WASTEWATER TREATMENT PLANT INFORMATION
 Provide a separate sheet for each wastewater treatment facility

Permitted Capacity	499,000		
Basis of Permit Capacity (1)	3 Month Average		
Manufacturer	Davco Defrance		
Type (2)	Extended Aeration		
Hydraulic Capacity	499,000		
Average Daily Flow	229,159		
Total Gallons of Wastewater Treated	83,643,000		
Method of Effluent Disposal	Golf Course Reuse		

- (1) Basis of permitted capacity as stated on the Florida DEP WWTP Operating Permit (i.e. average annual daily flow, etc)
- (2) Contact stabilization, advanced treatment, etc.

UTILITY NAME: K. W. Resort Utilities Corp.
SYSTEM NAME / COUNTY: Stock Island/Monroe County

YEAR OF REPORT
December 31, 1999

OTHER WASTEWATER SYSTEM INFORMATION

Furnish information below for each system. A separate pageshould be supplied where necessary.

1. Present ERC's * that system can efficiently serve. 818

2. Maximum number of ERC's * which can be served. 2,400

3. Present system connection capacity (in ERC's *) using existing lines. 900

4. Future system connection capacity (in ERC's *) upon service area buildout. 1500 - Dependent on extending lines to septic tank areas on Stock Island

5. Estimated annual increase in ERC's 15 - 20 in area where there are existing lines

8. Describe any plans and estimated completion dates for any enlargements or improvements of this system. Company is exploring feasibility of extending lines to serve 1,500 ERC's presently on septic tanks. If project proceeds, estimated completion date is by the end of 2002.

7. If the utility uses reuse as a means of effluent disposal, attach a list of the reuse end users and the amount of reuse provided to each, if known. Key West Golf Club is only user: ~~20,528,000~~ gallons 65,841,000

8. If the utility does not engage in reuse, has a reuse feasibility study been completed? N/A
If so, when? _____

9. Has the utility been required by the DEP or water management district to implement reuse? N/A
If so, what are the utility's plans to comply with the DEP? _____

10. When did the company last file a capacity analysis report with the DEP? None

11. If the present system does not meet the requirements of DEP rules:
a. Attach a description of the plant upgrade necessary to meet the DEP rules. _____
b. Have these plans been approved by DEP? _____
c. When will construction begin? _____
d. Attach plans for funding the required upgrading. _____
e. Is this system under any Consent Order othe DEP? _____

11. Department of Environmental Protection ID # AA014951-258748

* An ERC is determined based on the calculation on the bottom of Page S-11