

CLASS "A" OR "B"

OFFICIAL COPY
Public Service Commission
Do Not Remove from this Office.

WATER AND/OR WASTEWATER UTILITIES
(Gross Revenue of More Than \$200,000 Each)

ANNUAL REPORT

OF

SU682-08-AR

TIERRA VERDE UTILITIES INC

Exact Legal Name of Respondent

058-S

Certificate Number(s)

Submitted To The

STATE OF FLORIDA

FOR THE

YEAR ENDED

31-Dec-08

Form PSC/WAW 3 (Rev. 12/99)

RECEIVED
FLORIDA PUBLIC SERVICE
COMMISSION
09 MAY -6 AM 10:00
COMMISSION OF
ECONOMIC REGULATION

GENERAL INSTRUCTIONS

1. Prepare this report in conformity with the 1996 National Association of Regulatory Utility Commissioners Uniform System of Accounts for Water and/or Wastewater Utilities (USOA).
2. Interpret all accounting words and phrases in accordance with the USOA.
3. Complete each question fully and accurately, even if it has been answered in a previous annual report. Enter the word "None" where it truly and completely states the fact.
4. For any question, section, or page which is not applicable to the respondent, enter the words "Not Applicable". Do not omit any pages.
5. Where dates are called for, the month and day should be stated as well as the year.
6. All schedules requiring dollar entries should be rounded to the nearest dollar unless otherwise specifically indicated.
7. Complete this report by means which result in a permanent record, such as by computer or typewriter.
8. If there is not enough room on any schedule, an additional page or pages may be added; provided the format of the added schedule matches the format of the schedule with not enough room. Such a schedule should reference the appropriate schedules, state the name of the utility, and state the year of the report.
9. If it is necessary or desirable to insert additional statements for the purpose of further explanation of schedules, such statement should be made at the bottom of the page or an additional page inserted. Any additional pages should state the name of the utility, the year of the report, and reference the appropriate schedule.
10. For water and wastewater utilities with more than one rate group and/or system, water and wastewater pages should be completed for each rate group and/or system group. These pages should be grouped together and tabbed by rate group and/or system.
11. All other water and wastewater operations not regulated by the Commission and other regulated industries should be reported as "Other than Reporting Systems".
12. Financial information for multiple systems charging rates which are covered under the same tariff should be reported as one system. However, the engineering data must be reported by individual system.
13. For water and wastewater utilities with more than one system, one (1) copy of workpapers showing the consolidation of systems for the operating sections, should be filed with the annual report.
14. The report should be filled out in quadruplicate and the original and two copies returned by March 31, of the year following the date of the report. The report should be returned to:

**Florida Public Service Commission
Division of Water and Wastewater
2540 Shumard Oak Boulevard
Tallahassee, Florida 32399-0873**

The fourth copy should be retained by the utility.

TABLE OF CONTENTS

SCHEDULE	PAGE	SCHEDULE	PAGE
EXECUTIVE SUMMARY			
Certification	E-1	Business Contracts with Officers, Directors and Affiliates	E-7
General Information	E-2	Affiliation of Officers & Directors	E-8
Directory of Personnel Who Contact the FPSC	E-3	Businesses which are a Byproduct, Coproduct or Joint Product Result of Providing Service	E-9
Company Profile	E-4	Business Transactions with Related Parties. Part I and II	E-10
Parent / Affiliate Organization Chart	E-5		
Compensation of Officers & Directors	E-6		
FINANCIAL SECTION			
Comparative Balance Sheet - Assets and Other Debits	F-1	Unamortized Debt Discount / Expense / Premium	F-13
Comparative Balance Sheet - Equity Capital and Liabilities	F-2	Extraordinary Property Losses	F-13
Comparative Operating Statement	F-3	Miscellaneous Deferred Debits	F-14
Schedule of Year End Rate Base	F-4	Capital Stock	F-15
Schedule of Year End Capital Structure	F-5	Bonds	F-15
Capital Structure Adjustments	F-6	Statement of Retained Earnings	F-16
Utility Plant	F-7	Advances from Associated Companies	F-17
Utility Plant Acquisition Adjustments	F-7	Long Term Debt	F-17
Accumulated Depreciation	F-8	Notes Payable	F-18
Accumulated Amortization	F-8	Accounts Payable to Associated Companies	F-18
Regulatory Commission Expense - Amortization of Rate Case Expense	F-9	Accrued Interest and Expense	F-19
Nonutility Property	F-9	Misc. Current & Accrued Liabilities	F-20
Special Deposits	F-9	Advances for Construction	F-21
Investments and Special Funds	F-10	Other Deferred Credits	F-21
Accounts and Notes Receivable - Net	F-11	Contributions In Aid of Construction	F-22
Accounts Receivable from Associated Companies	F-12	Accumulated Amortization of CIAC	F-23
Notes Receivable from Associated Companies	F-12	Reconciliation of Reported Net Income with Taxable Income for Federal Income Taxes	F-23
Miscellaneous Current & Accrued Assets	F-12		

TABLE OF CONTENTS

SCHEDULE	PAGE	SCHEDULE	PAGE
WATER OPERATION SECTION			
Listing of Water System Groups	W-1	CIAC Additions / Amortization	W-8
Schedule of Year End Water Rate Base	W-2	Water Operating Revenue	W-9
Water Operating Statement	W-3	Water Utility Expense Accounts	W-10
Water Utility Plant Accounts	W-4	Pumping and Purchased Water Statistics, Source Supply	W-11
Basis for Water Depreciation Charges	W-5	Water Treatment Plant Information	W-12
Analysis of Entries in Water Depreciation Reserve	W-6	Calculation of ERC's	W-13
Contributions In Aid of Construction	W-7	Other Water System Information	W-14
WASTEWATER OPERATION SECTION			
Listing of Wastewater System Groups	S-1	Contributions In Aid of Construction	S-7
Schedule of Year End Wastewater Rate Base	S-2	CIAC Additions / Amortization	S-8
Wastewater Operating Statement	S-3	Wastewater Utility Expense Accounts	S-9
Wastewater Utility Plant Accounts	S-4	Wastewater Operating Revenue	S-10
Analysis of Entries in Wastewater Depreciation Reserve	S-5	Calculation of ERC's	S-11
Basis for Wastewater Depreciation Charges	S-6	Wastewater Treatment Plant Information	S-12
		Other Wastewater System Information	S-13

EXECUTIVE SUMMARY

CERTIFICATION OF ANNUAL REPORT

I HEREBY CERTIFY, to the best of my knowledge and belief:

- | | | |
|--|--------------------------------|--|
| YES
<input checked="" type="checkbox"/> | NO
<input type="checkbox"/> | 1. The utility is in substantial compliance with the Uniform System of Accounts prescribed by the Florida Public Service Commission. |
| YES
<input checked="" type="checkbox"/> | NO
<input type="checkbox"/> | 2. The utility is in substantial compliance with all applicable rules and orders of the Florida Public Service Commission. |
| YES
<input checked="" type="checkbox"/> | NO
<input type="checkbox"/> | 3. There have been no communications from regulatory agencies concerning noncompliance with, or deficiencies in, financial reporting practices that could have a material effect on the financial statement of the utility. |
| YES
<input checked="" type="checkbox"/> | NO
<input type="checkbox"/> | 4. The annual report fairly represents the financial condition and results of operations of the respondent for the period presented and other information and statements presented in the report as to the business affairs of the respondent are true, correct and complete for the period for which it represents. |

Items Certified			
1.	2.	3.	4.

1.	2.	3.	4.
X	X	X	X

 (Signature of Chief Executive Officer of the utility) *

Steve L. Lutz

 (Signature of Chief Financial Officer of the utility) *

* Each of the four items must be certified YES or NO. Each item need not be certified by both officers. The items being certified by the officer should be indicated in the appropriate area to the left of the signature.

NOTICE: Section 837.06, Florida Statutes, provides that any person who knowingly makes a false statement in writing with the intent to mislead a public servant in the performance of his duty shall be guilty of a misdemeanor of the second degree.

ANNUAL REPORT OF

YEAR OF REPORT

31-Dec-08

TIERRA VERDE UTILITIES INC

County: TIERRA VERDE / PINELLAS

(Exact Name of Utility)

List below the exact mailing address of the utility for which normal correspondence should be sent:

2335 SANDERS ROAD
NORTHBROOK IL 60062

Telephone: 847-498-6440

E Mail Address: NONE

WEB Site: NONE

Sunshine State One-Call of Florida, Inc. Member Number TVU484

Name and address of person to whom correspondence concerning this report should be addressed:

WILLIAM SCHERER
2335 SANDERS ROAD
NORTHBROOK IL 60062

Telephone: 847-498-6440

List below the address of where the utility's books and records are located:

2335 SANDERS ROAD
NORTHBROOK IL 60062

Telephone: 847-498-6440

List below any groups auditing or reviewing the records and operations:

PRICEWATERHOUSECOOPERS

Date of original organization of the utility: 03/01/77

Check the appropriate business entity of the utility as filed with the Internal Revenue Service

Individual Partnership Sub S Corporation 1120 Corporation
[] [] [] [X]

List below every corporation or person owning or holding directly or indirectly 5% or more of the voting securities of the utility:

Table with 2 columns: Name, Percent Ownership. Row 1: UTILITIES INC, 100%

UTILITY NAME: TIERRA VERDE UTILITIES INC

YEAR OF REPORT
31-Dec-08

**DIRECTORY OF PERSONNEL WHO CONTACT
THE FLORIDA PUBLIC SERVICE COMMISSION**

NAME OF COMPANY REPRESENTATIVE (1)	TITLE OR POSITION (2)	ORGANIZATIONAL UNIT TITLE (3)	USUAL PURPOSE FOR CONTACT WITH FPSC
LISA SPARROW	CHIEF OPERATING OFFICER		OPERATIONS
JOHN HOY	CHIEF REGULATORY OFFICER		REGULATORY
RICK DURHAM	REGIONAL VP		OPERATIONS
PATRICK FLYNN	REGIONAL DIRECTOR		OPERATIONS
STEVEN LUBERTOZZI	CHIEF FINANCIAL OFFICER		FINANCIAL

- (1) Also list appropriate legal counsel, accountants and others who may not be on general payroll.
- (2) Provide individual telephone numbers if the person is not normally reached at the company.
- (3) Name of company employed by if not on general payroll.

COMPANY PROFILE

Provide a brief narrative company profile which covers the following areas:

- A. Brief company history.
- B. Public services rendered.
- C. Major goals and objectives.
- D. Major operating divisions and functions.
- E. Current and projected growth patterns.
- F. Major transactions having a material effect on operations.

A.	During 1992, 100% of the stock to this company was acquired by Utilities, Inc. The Company provides sewer service to approximately 1700 Customers.
B.	The Company supplies sewer services only.
C.	Provide adequate sewerage and disposal services and earn a fair return
D.	Sewer division only
E.	Anticipated growth of approximately ten (10) new taps per year.

PARENT / AFFILIATE ORGANIZATION CHART

Current as of 12/31/2008

Complete below an organizational chart that show all parents, subsidiaries and affiliates of the utility.
The chart must also show the relationship between the utility and affiliates listed on E-7, E-10(a) and E-10(b).

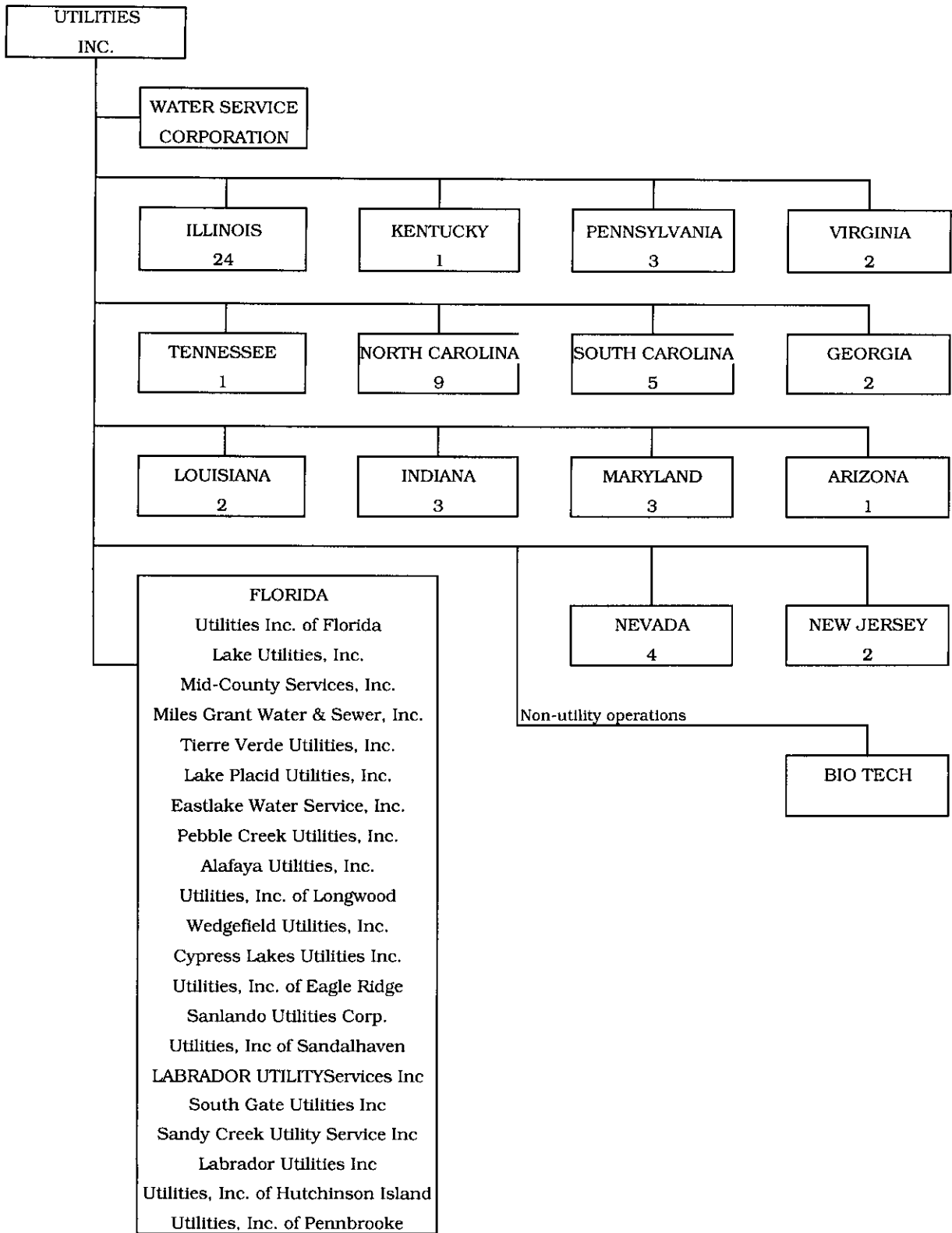
UTILITIES, INC. -- PARENT COMPANY

WATER SERVICE CORP. -- SERVICE COMPANY SUPPLYING MOST SERVICES REQUIRED BY UTILITY.

UTILITIES INC. of FLORIDA -- provides office personnel and administrative staff.

SEE ATTACHED

Parent And Affiliate Organizational Chart



UTILITIES, INC. - Parent Company

WATER SERVICE CORP. - Service organization providing administrative and other service functions for the utility.

NOTE: Within each state except Florida is the number of companies owned.

COMPENSATION OF OFFICERS

For each officer, list the time spent on respondent as an officer compared to time spent on total business activities and the compensation received as an officer from the respondent.			
NAME (a)	TITLE (b)	% OF TIME SPENT AS OFFICER OF THE UTILITY (c)	OFFICERS' COMPENSATION (d)
LAWRENCE N SCHUMACHER	CEO & PRESIDENT	N/A	\$ NONE
LISA A SPARROW	VP OPERATIONS	N/A	NONE
JOHN HOY	VP REGULATORY	N/A	NONE
STEVEN M LUBERTOZZI	VP & TREASURER	N/A	NONE
JOHN R STOVER	VP & SECRETARY	N/A	NONE
RICK DURHAM	REGIONAL VP	N/A	NONE

COMPENSATION OF DIRECTORS

For each director, list the number of director meetings attended by each director and the compensation received as a director from the respondent.			
NAME (a)	TITLE (b)	NUMBER OF DIRECTORS' MEETINGS ATTENDED (c)	DIRECTORS' COMPENSATION (d)
JOHN M STOKES	DIRECTOR	1	\$ NONE
LAWRENCE N SCHUMACHER	DIRECTOR	1	NONE

BUSINESS CONTRACTS WITH OFFICERS, DIRECTORS AND AFFILIATES

List all contracts, agreements, or other business arrangements* entered into during the calendar year (other than compensation related to position with Respondents) between the Respondent and officer and director listed on page E-6. In addition, provide the same information with respect to professional services for each firm, partnership, or organization with which the officer or director is affiliated.

NAME OF OFFICER, DIRECTOR OR AFFILIATE <small>(a)</small>	IDENTIFICATION OF SERVICE OR PRODUCT <small>(b)</small>	AMOUNT <small>(c)</small>	NAME AND ADDRESS OF AFFILIATED ENTITY <small>(d)</small>
NO BUSINESS CONTRACTS, AGREEMENTS OR OTHER ARRANGEMENTS WERE ENTERED INTO DURING THE CURRENT YEAR BY THE OFFICERS LISTED ON PAGE E6, THE DIRECTORS OR AFFILIATES.		\$ _____	

* Business Agreement, for this schedule, shall mean any oral or written business deal which binds the concerned parties for products or services during the reporting year or future years. Although the Respondent and/or other companies will benefit from the arrangement, the officer or director is, however, acting on his behalf or for the benefit of other companies or persons.

AFFILIATION OF OFFICERS AND DIRECTORS

For each of the officials listed on page E-6, list the principle occupation or business affiliations or connections with any other business or financial organizations, firms, or partnerships. For purposes of this part, an official will be considered to have an affiliation with any business or financial organization, firm or partnership in which he is an officer, director, trustee, partner, or a person exercising similar functions.

NAME (a)	PRINCIPLE OCCUPATION OR BUSINESS AFFILIATION (b)	AFFILIATION OR CONNECTION (c)	NAME AND ADDRESS OF AFFILIATION OR CONNECTION (d)
JOHN M STOKES	DIRECTOR	DIRECTOR	UTILITIES INC & SUBSIDIARIES NORTHBROOK IL
LAWRENCE N SCHUMACHER	PRESIDENT & CEO	DIRECTOR/OFFICER	UTILITIES INC & SUBSIDIARIES NORTHBROOK IL
LISA A SPARROW	VP OPERATIONS	OFFICER	UTILITIES INC & SUBSIDIARIES NORTHBROOK IL
JOHN HOY	VP REGULATORY	OFFICER	UTILITIES INC & SUBSIDIARIES NORTHBROOK IL
STEVEN M LUBERTOZZI	VP & TREASURER	OFFICER	UTILITIES INC & SUBSIDIARIES NORTHBROOK IL
JOHN R STOVER	VP & SECRETARY	OFFICER	UTILITIES INC & SUBSIDIARIES NORTHBROOK IL
RICK DURHAM	REGIONAL VP	OFFICER	UTILITIES INC & SUBSIDIARIES ALTAMONTE SPRINGS, FL

YEAR OF REPORT
31-Dec-08

UTILITY NAME: TIERRA VERDE UTILITIES INC

**BUSINESSES WHICH ARE A BY-PRODUCT, COPRODUCT OR JOINT-PRODUCT
RESULT OF PROVIDING WATER OR WASTEWATER SERVICE**

Complete the following for any business which is conducted as a byproduct, coproduct, or joint product as a result of providing water and / or wastewater service. This would include any business which requires the use of utility land and facilities. Examples of these types of businesses would be orange groves, nurseries, tree farms, fertilizer manufacturing, etc. This would not include any business for which the assets are properly included in Account 121 - Nonutility Property along with the associated revenue and expenses segregated out as nonutility also.

BUSINESS OR SERVICE CONDUCTED (a)	ASSETS		REVENUES		EXPENSES	
	BOOK COST OF ASSETS (b)	ACCOUNT NUMBER (c)	REVENUES GENERATED (d)	ACCOUNT NUMBER (e)	EXPENSES INCURRED (f)	ACCOUNT NUMBER (g)
\$ NO BUSINESS			\$			
WHICH ARE						
A BYPRODUCT,						
COPRODUCT						
OR JOINT						
PRODUCT						
RESULTING						
FROM						
PROVIDING						
WATER						
AND/OR						
SEWER						
SERVICE.						

BUSINESS TRANSACTIONS WITH RELATED PARTIES

List each contract, agreement, or other business transaction exceeding a cumulative amount of \$500 in any on year, entered into between the Respondent and a business or financial organization, firm, or partnership named on pages E-2 and E-6, identifying the parties, amounts, dates and product, and asset, or service involved.

Part I. Specific Instructions: Services and Products Received or Provided

1. Enter in this part all transactions involving services and products received or provided.

2. Below are some types of transactions to include:

-management, legal and accounting services -computer services -engineering & construction services -repairing and servicing of equipment	-material and supplies furnished -leasing of structures, land, and equipment -rental transactions -sale, purchase or transfer of various products
---	--

NAME OF COMPANY OR RELATED PARTY (a)	DESCRIPTION SERVICE AND/OR NAME OF PRODUCT (b)	CONTRACT OR AGREEMENT EFFECTIVE DATES (c)	ANNUAL CHARGES (P)urchased (S)old (d)	AMOUNT (e)
WATER SERVICE CORP/ FLORIDA REGIONAL	Operators/Admin/Officers Salaries & Benefit	Continuous	Purchase	17,390
	Materials & Supplies	Continuous	Purchase	2,185
	Contractual Services	Continuous	Purchase	1,285
	Transportation Expenses	Continuous	Purchase	2,876
	Insurance	Continuous	Purchase	2,996
	Advertising	Continuous	Purchase	6
	Regulatory Expenses	Continuous	Purchase	245
	Bad Debt Expense	Continuous	Purchase	85
	Miscellaneous	Continuous	Purchase	104,895

BUSINESS TRANSACTIONS WITH RELATED PARTIES (Cont'd)

Part II. Specific Instructions: Sale, Purchase and Transfer of Assets

1. Enter in this part all transactions relating to the purchase, sale, or transfer of assets.

3. The columnar instructions follow:

- (a) Enter name of related party or company.
- (b) Describe briefly the type of assets purchased, sold or transferred.
- (c) Enter the total received or paid. Indicate purchase with "P" and sale with "S".
- (d) Enter the net book value for each item reported.
- (e) Enter the net profit or loss for each item reported. (column (c) - column (d))
- (f) Enter the fair market value for each item reported. In space below or in a supplemental schedule, describe the basis used to calculate fair market value.

NAME OF COMPANY OR RELATED PARTY (a)	DESCRIPTION OF ITEMS (b)	SALE OR PURCHASE PRICE (c)	NET BOOK VALUE (d)	GAIN OR LOSS (e)	FAIR MARKET VALUE (f)
NO ASSETS WERE SOLD, PURCHASED OR		\$	\$	\$	\$
TRANSFERRED WITH					
A RELATED PARTY					
DURING THE FISCAL					
YEAR END 31-Dec-08					

FINANCIAL SECTION

**COMPARATIVE BALANCE SHEET
ASSETS AND OTHER DEBITS**

ACCT. NO. (a)	ACCOUNT NAME (b)	REF. PAGE (c)	PREVIOUS YEAR (d)	CURRENT YEAR (e)
UTILITY PLANT				
101-106	Utility Plant	F-7	\$ 4,157,408	\$ 4,374,001
108-110	Less: Accumulated Depreciation and Amortization	F-8	2,230,040	2,423,916
Net Plant			\$ 1,927,368	\$ 1,950,085
114-115	Utility Plant Acquisition adjustment (Net)	F-7	269,960	269,960
116 *	Other Utility Plant Adjustments			
Total Net Utility Plant			\$ 2,197,328	\$ 2,220,045
OTHER PROPERTY AND INVESTMENTS				
121	Nonutility Property	F-9	\$ -	\$ -
122	Less: Accumulated Depreciation and Amortization			-
Net Nonutility Property			\$ -	\$ -
123	Investment In Associated Companies	F-10		-
124	Utility Investments	F-10		-
125	Other Investments	F-10		-
126-127	Special Funds	F-10		-
Total Other Property & Investments			\$ -	\$ -
CURRENT AND ACCRUED ASSETS				
131	Cash		\$ -	\$ -
132	Special Deposits	F-9	-	-
133	Other Special Deposits	F-9		-
134	Working Funds			-
135	Temporary Cash Investments			-
141-144	Accounts and Notes Receivable, Less Accumulated Provision for Uncollectible Accounts	F-11	1,278	104,185
145	Accounts Receivable from Associated Companies	F-12	(65,398)	(140,004)
146	Notes Receivable from Associated Companies	F-12	-	-
151-153	Material and Supplies			-
161	Stores Expense			-
162	Prepayments		-	-
171	Accrued Interest and Dividends Receivable			-
172 *	Rents Receivable			-
173 *	Accrued Utility Revenues			-
174	Misc. Current and Accrued Assets	F-12	-	-
Total Current and Accrued Assets			\$ (64,120)	\$ (35,819)

* Not Applicable for Class B Utilities

UTILITY NAME: TIERRA VERDE UTILITIES INC

YEAR OF REPORT 31-Dec-08

COMPARATIVE BALANCE SHEET
ASSETS AND OTHER DEBITS

ACCT. NO. (a)	ACCOUNT NAME (b)	REF. PAGE (c)	PREVIOUS YEAR (d)	CURRENT YEAR (e)
DEFERRED DEBITS				
181	Unamortized Debt Discount & Expense	F-13	\$ _____	\$ _____ -
182	Extraordinary Property Losses	F-13	_____	_____ -
183	Preliminary Survey & Investigation Charges		_____	_____ -
184	Clearing Accounts		_____	_____ -
185 *	Temporary Facilities		_____	_____ -
186	Misc. Deferred Debits	F-14	128,314	141,584
187 *	Research & Development Expenditures		_____	_____ -
190	Accumulated Deferred Income Taxes		39,909	_____ -
Total Deferred Debits			\$ 168,223	\$ 141,584
TOTAL ASSETS AND OTHER DEBITS			\$ 2,301,431	\$ 2,325,811

* Not Applicable for Class B Utilities

NOTES TO THE BALANCE SHEET

The space below is provided for important notes regarding the balance sheet.

COMPARATIVE BALANCE SHEET
EQUITY CAPITAL AND LIABILITIES

ACCT. NO. (a)	ACCOUNT NAME (b)	REF. PAGE (c)	PREVIOUS YEAR (d)	CURRENT YEAR (e)
EQUITY CAPITAL				
201	Common Stock Issued	F-15	\$ 1,000	\$ 1,000
204	Preferred Stock Issued	F-15		-
202, 205 *	Capital Stock Subscribed			-
203, 206 *	Capital Stock Liability for Conversion			-
207 *	Premium on Capital Stock			-
209 *	Reduction in Par or Stated Value of Capital Stock			-
210 *	Gain on Resale or Cancellation of Reacquired Capital Stock			-
211	Other Paid - In Capital		1,570,044	1,744,175
212	Discount On Capital Stock			-
213	Capital Stock Expense			-
214-215	Retained Earnings	F-16	(133,936)	(57,677)
216	Reacquired Capital Stock			-
218	Proprietary Capital (Proprietorship and Partnership Only)			-
Total Equity Capital			\$ 1,437,108	\$ 1,687,498
LONG TERM DEBT				
221	Bonds	F-15		-
222 *	Reacquired Bonds			-
223	Advances from Associated Companies	F-17		(479,868)
224	Other Long Term Debt	F-17	-	-
Total Long Term Debt			\$ -	\$ (479,868)
CURRENT AND ACCRUED LIABILITIES				
231	Accounts Payable		243,971	43,634
232	Notes Payable	F-18		-
233	Accounts Payable to Associated Companies	F-18	62,060	541,928
234	Notes Payable to Associated Companies	F-18		-
235	Customer Deposits		-	-
236	Accrued Taxes		15,979	21,895
237	Accrued Interest	F-19	-	-
238	Accrued Dividends			-
239	Matured Long Term Debt			-
240	Matured Interest			-
241	Miscellaneous Current & Accrued Liabilities	F-20		-
Total Current & Accrued Liabilities			\$ 322,010	\$ 607,457

* Not Applicable for Class B Utilities

UTILITY NAME: TIERRA VERDE UTILITIES INC

YEAR OF REPORT 31-Dec-08

**COMPARATIVE BALANCE SHEET
EQUITY CAPITAL AND LIABILITIES**

ACCT. NO. (a)	ACCOUNT NAME (b)	REF. PAGE (c)	PREVIOUS YEAR (d)	CURRENT YEAR (e)
DEFERRED CREDITS				
251	Unamortized Premium On Debt	F-13	\$ _____	\$ _____
252	Advances For Construction	F-20	_____	_____
253	Other Deferred Credits	F-21	_____	_____
255	Accumulated Deferred Investment Tax Credits		-	-
Total Deferred Credits			\$ _____	\$ _____
OPERATING RESERVES				
261	Property Insurance Reserve		\$ _____	\$ _____
262	Injuries & Damages Reserve		_____	_____
263	Pensions and Benefits Reserve		_____	_____
265	Miscellaneous Operating Reserves		_____	_____
Total Operating Reserves			\$ _____	\$ _____
CONTRIBUTIONS IN AID OF CONSTRUCTION				
271	Contributions in Aid of Construction	F-22	\$ 1,688,812	\$ 1,739,677
272	Accumulated Amortization of Contributions in Aid of Construction	F-22	1,298,702	1,343,309
Total Net C.I.A.C.			\$ 390,110	\$ 396,369
ACCUMULATED DEFERRED INCOME TAXES				
281	Accumulated Deferred Income Taxes - Accelerated Depreciation		\$ 114,434	\$ 116,604
282	Accumulated Deferred Income Taxes - Liberalized Depreciation		_____	-
283	Accumulated Deferred Income Taxes - Other		37,769	(2,248)
Total Accumulated Deferred Income Tax			\$ 152,203	\$ 114,356
TOTAL EQUITY CAPITAL AND LIABILITIES			\$ 2,301,431	\$ 2,325,811

COMPARATIVE OPERATING STATEMENT

ACCT. NO. (a)	ACCOUNT NAME (b)	REF. PAGE (c)	PREVIOUS YEAR (d)	CURRENT YEAR * (e)
UTILITY OPERATING INCOME				
400	Operating Revenues	F-3(b)	\$ 690,922	\$ 789,841
469, 530	Less: Guaranteed Revenue and AFPI	F-3(b)		
Net Operating Revenues			\$ 690,922	\$ 789,841
401	Operating Expenses	F-3(b)	\$ 645,323	\$ 467,571
403	Depreciation Expense:	F-3(b)	\$ 123,843	\$ 124,853
	Less: Amortization of CIAC	F-22	(109,749)	(44,606)
Net Depreciation Expense			\$ 14,094	\$ 80,246
406	Amortization of Utility Plant Acquisition Adjustment	F-3(b)	-	-
407	Amortization Expense (Other than CIAC)	F-3(b)	86	-
408	Taxes Other Than Income	W/S-3	35,338	33,013
409	Current Income Taxes	W/S-3	(37,054)	45,001
410.10	Deferred Federal Income Taxes	W/S-3	(5,752)	981
410.11	Deferred State Income Taxes	W/S-3	(985)	169
411.10	Provision for Deferred Income Taxes - Credit	W/S-3	-	-
412.10	Investment Tax Credits Deferred to Future Periods	W/S-3	-	-
412.11	Investment Tax Credits Restored to Operating Income	W/S-3	-	-
Utility Operating Expenses			\$ 651,050	\$ 626,981
Net Utility Operating Income			\$ 39,872	\$ 162,861
469, 530	Add Back: Guaranteed Revenue and AFPI	F-3(b)		-
413	Income From Utility Plant Leased to Others			-
414	Gains (losses) From Disposition of Utility Property			54
420	Allowance for Funds Used During Construction		(3)	(356)
Total Utility Operating Income [Enter here and on Page F-3(c)]			\$ 39,869	\$ 162,559

* For each account. Column e should agree with Cloum f, g and h on F-3(b)

COMPARATIVE OPERATING STATEMENT (Cont'd)

WATER SCHEDULE W-3 * (f)	WASTEWATER SCHEDULE S-3 * (g)	OTHER THAN REPORTING SYSTEMS (h)
\$ -	\$ 789,841	\$ -
\$ -	\$ 789,841	\$ -
\$ -	\$ 467,571	\$ -
-	124,853	-
-	(44,606)	-
\$ -	\$ 80,246	\$ -
-	-	-
-	-	-
-	33,013	-
-	45,001	-
-	981	-
-	169	-
-	-	-
-	-	-
-	-	-
\$ -	\$ 626,981	\$ -
\$ -	\$ 162,861	\$ -
-	-	-
-	-	-
-	54	-
-	(356)	-
\$ -	\$ 162,559	\$ -

* Total of Schedules W-3 / S-3 for all rate groups.

COMPARATIVE OPERATING STATEMENT (Cont'd)

ACCT. NO. (a)	ACCOUNT NAME (b)	REF. PAGE (c)	PREVIOUS YEAR (d)	CURRENT YEAR (e)
Total Utility Operating Income [from page F-3(a)]			\$ 39,869	\$ 162,559
OTHER INCOME AND DEDUCTIONS				
415	Revenues-Merchandising, Jobbing, and Contract Deductions		\$ -	\$ -
416	Costs & Expenses of Merchandising Jobbing, and Contract Work		-	-
419	Interest and Dividend Income		125	-
421	Nonutility Income		-	-
426	Miscellaneous Nonutility Expenses		-	-
Total Other Income and Deductions			\$ 125	\$ -
TAXES APPLICABLE TO OTHER INCOME				
408.2	Taxes Other Than Income		\$ -	\$ -
409.2	Income Taxes		-	-
410.2	Provision for Deferred Income Taxes		-	-
411.2	Provision for Deferred Income Taxes - Credit		-	-
412.2	Investment Tax Credits - Net		-	-
412.3	Investment Tax Credits Restored to Operating Income		-	-
Total Taxes Applicable To Other Income			\$ -	\$ -
INTEREST EXPENSE				
427	Interest Expense	F-19	\$ 57,982	\$ 86,299
428	Amortization of Debt Discount & Expense	F-13	-	-
429	Amortization of Premium on Debt	F-13	-	-
Total Interest Expense			\$ 57,982	\$ 86,299
EXTRAORDINARY ITEMS				
433	Extraordinary Income		\$ -	\$ -
434	Extraordinary Deductions		-	-
409.3	Income Taxes, Extraordinary Items		-	-
Total Extraordinary Items			\$ -	\$ -
NET INCOME			\$ (17,988)	\$ 76,260

Explain Extraordinary Income:
 NONE

SCHEDULE OF YEAR END RATE BASE

ACCT. NO. (a)	ACCOUNT NAME (b)	REF. PAGE (c)	WATER UTILITY (d)	WASTEWATER UTILITY (e)
101	Utility Plant In Service	F-7	\$ -	\$ 4,374,001
	Less:			
	Nonused and Useful Plant (1)			
108	Accumulated Depreciation	F-8	-	2,423,916
110	Accumulated Amortization	F-8	-	-
271	Contributions In Aid of Construction	F-22	-	1,739,677
252	Advances for Construction	F-20	-	-
Subtotal			\$ -	\$ 209,577
272	Add: Accumulated Amortization of Contributions in Aid of Construction	F-22	-	1,343,309
Subtotal			\$ -	\$ 1,552,886
	Plus or Minus:			
114	Acquisition Adjustments (2)	F-7	-	351,207
115	Accumulated Amortization of Acquisition Adjustments (2)	F-7	-	(81,247)
	Working Capital Allowance (3)		-	58,446
	Other (Specify):			

RATE BASE			\$ -	\$ 2,043,787
NET UTILITY OPERATING INCOME			\$ -	\$ 162,861
ACHIEVED RATE OF RETURN (Operating Income / Rate Base)				<u>7.97%</u>

NOTES :

- (1) Estimate based on the methodology used in the last rate proceeding.
- (2) Include only those Acquisition Adjustments that have been approved by the Commission.
- (3) Calculation consistent with last rate proceeding.
In absence of a rate proceeding, Class A utilities will use the Balance Sheet Method and Class B Utilities will use the One-eighth Operating and Maintenance Expense Method.

**SCHEDULE OF CURRENT COST OF CAPITAL
CONSISTENT WITH THE METHODOLOGY USED IN THE LAST RATE PROCEEDING (1)**

CLASS OF CAPITAL (a)	DOLLAR AMOUNT (2) (b)	PERCENTAGE OF CAPITAL (c)	ACTUAL COST RATES (3) (d)	WEIGHTED COST (c x d) (e)
Common Equity	\$ 785,144	38.43%	11.45%	4.40%
Preferred Stock	-	0.00%	0.00%	0.00%
Long Term Debt	895,960	43.85%	6.60%	2.90%
Short Term Debt	247,758	12.13%	3.75%	0.45%
Customer Deposits	-	0.00%	0.00%	0.00%
Tax Credits - Zero Cost	-	0.00%	0.00%	0.00%
Tax Credits - Weighted Cost	-	0.00%	0.00%	0.00%
Deferred Income Taxes	114,356	5.60%	0.00%	0.00%
Other (Explain) Short Term Debt	-	0.00%	0.00%	0.00%
Total	\$ <u>2,043,217</u>	<u>100.00%</u>		<u>7.75%</u>

1 If the utility's capital structure is not used, explain which capital structure is used.

2 Should equal amounts on Schedule F-6, Column (g).

3 Mid-point of the last authorized Return On Equity or current leverage formula if none has been established.

Must be calculated using the same methodology used in the last rate proceeding using current annual report year end amounts and cost rates.

APPROVED RETURN ON EQUITY

Current Commission Return on Equity:	<u>11.45%</u>
Commission order approving Return on Equity:	<u>PSC-07-0082-PAA-SU</u>

APPROVED AFUDC RATE

COMPLETION ONLY REQUIRED IF AFUDC WAS CHARGED DURING YEAR

Current Commission Approved AFUDC rate:	<u>9.03%</u>
Commission order approving AFUDC rate:	<u>PSC-04-0262-PAA-WS</u>

If any utility capitalized any charge in lieu of AFUDC (such as interest only), state the basis of the charge, an explanation as to why AFUDC was not charged and the percentage capitalized.

UTILITY NAME:

TIERRA VERDE UTILITIES INC

YEAR OF REPORT
31-Dec-08

**SCHEDULE OF CAPITAL STRUCTURE ADJUSTMENTS
CONSISTENT WITH THE METHODOLOGY USED IN THE LAST RATE PROCEEDING**

CLASS OF CAPITAL (a)	PER BOOK BALANCE (b)	NON-UTILITY ADJUSTMENTS (c)	NON-JURISDICTIONAL ADJUSTMENTS (d)	OTHER (1) ADJUSTMENTS SPECIFIC (e)	OTHER (1) ADJUSTMENTS PRO RATA (f)	CAPITAL STRUCTURE (g)
Common Equity	\$ 157,737,014	\$			\$ (156,951,870)	\$ 785,144
Preferred Stock	-					-
Long Term Debt	180,000,000				(179,104,040)	895,960
Short Term Debt	49,775,000				(49,527,242)	247,758
Customer Deposits	-					-
Tax Credits - Zero Cost	-					-
Tax Credits - Weighted Cost	-					-
Deferred Inc. Taxes	114,356					114,356
Other (Explain) Short Term Debt	-					-
Total	\$ 387,626,370	\$			\$ (385,583,152)	\$ 2,043,217

(1) Explain below all adjustments made in Columns (e) and (f):

NOT APPLICABLE

UTILITY NAME: **TIERRA VERDE UTILITIES INC**

YEAR OF REPORT
31-Dec-08

**UTILITY PLANT
ACCOUNTS 101 - 106**

ACCT. (a)	DESCRIPTION (b)	WATER (c)	WASTEWATER (d)	OTHER THAN REPORTING SYSTEMS (e)	TOTAL (f)
101	Plant Accounts: Utility Plant In Service	\$ -	\$ 4,373,170	\$ -	\$ 4,373,170
102	Utility Plant Leased to Other				-
103	Property Held for Future Use	-	-		-
104	Utility Plant Purchased or Sold				-
105	Construction Work in Progress	-	831		831
106	Completed Construction Not Classified				-
	Total Utility Plant	\$ -	\$ 4,374,001	\$ -	\$ 4,374,001

**UTILITY PLANT ACQUISITION ADJUSTMENTS
ACCOUNTS 114 AND 115**

Report each acquisition adjustment and related accumulated amortization separately.
For any acquisition adjustments approved by the Commission, include the Order Number.

ACCT. (a)	DESCRIPTION (b)	WATER (c)	WASTEWATER (d)	OTHER THAN REPORTING SYSTEMS (e)	TOTAL (f)
114	Acquisition Adjustment	\$ -	351,207		351,207
	Total Plant Acquisition Adjustments	\$ -	\$ 351,207	\$ -	\$ 351,207
115	Beginning Bal	\$ -	\$ (81,247)	\$ -	\$ (81,247)
	Accumulated Amortization Accruals charged during year	-	-		
	Total Accumulated Amortization	\$ -	\$ (81,247)	\$ -	\$ (81,247)
	Net Acquisition Adjustments	\$ -	\$ 269,960	\$ -	\$ 269,960

ACCUMULATED DEPRECIATION (ACCT. 108) AND AMORTIZATION (ACCT. 110)

DESCRIPTION (a)	WATER (b)	WASTEWATER (c)	OTHER THAN REPORTING SYSTEMS (d)	TOTAL (e)
ACCUMULATED DEPRECIATION				
Account 108				
Balance first of year	\$ -	2,230,040		2,230,040
Credit during year:				
Accruals charged to:				
Account 108.1 (1)	\$ -	\$ 124,853	\$ -	\$ 124,853
Account 108.2 (2)	-	-	-	-
Account 108.3 (2)	-	-	-	-
Other Accounts (specify):	-	69,023	-	69,023
Salvage	-	-	-	-
Other Credits (Specify):	-	-	-	-
Total Credits	\$ -	\$ 193,876	\$ -	\$ 193,876
Debits during year:				
Book cost of plant retired	-	-	-	-
Cost of Removal	-	-	-	-
Other Debits (specify):	-	-	-	-
Acting adjustments mandated by FPSC	-	-	-	-
Total Debits	\$ -	\$ -	\$ -	\$ -
Balance end of year	\$ -	\$ 2,423,916	\$ -	\$ 2,423,916
ACCUMULATED AMORTIZATION				
Account 110				
Balance first of year	\$ -			
Credit during year:				
Accruals charged to:				
Account 110.2 (2)	\$ -	\$ -	\$ -	\$ -
Other Accounts (specify):	-	-	-	-
Total credits	\$ -	\$ -	\$ -	\$ -
Debits during year:				
Book cost of plant retired	-	-	-	-
Other debits (specify):	-	-	-	-
Total Debits	\$ -	\$ -	\$ -	\$ -
Balance end of year	\$ -	\$ -	\$ -	\$ -

- 1 Account 108 for Class B utilities.
- 2 Not applicable for Class B utilities.
- 3 Account 110 for Class B utilities.

UTILITY NAME: TIERRA VERDE UTILITIES INC

YEAR OF REPORT 31-Dec-08

**REGULATORY COMMISSION EXPENSE
AMORTIZATION OF RATE CASE EXPENSE (ACCOUNTS 666 AND 766)**

DESCRIPTION OF CASE (DOCKET NO.) (a)	EXPENSE INCURRED DURING YEAR (b)	CHARGED OFF DURING YEAR	
		ACCT. (d)	AMOUNT (e)
RATE CASE	\$ _____	_____	\$ 42,769
	_____	_____	_____
	_____	_____	_____
Total	\$ _____	_____	\$ 42,769

NONUTILITY PROPERTY (ACCOUNT 121)

Report separately each item of property with a book cost of \$25,000 or more included in Account 121.

Other Items may be grouped by classes of property.

DESCRIPTION (a)	BEGINNING YEAR (b)	ADDITIONS (c)	REDUCTIONS (d)	ENDING YEAR BALANCE (e)
NONE	\$ _____	\$ _____	\$ _____	\$ -
	_____	_____	_____	_____
	_____	_____	_____	_____
	_____	_____	_____	_____
Total Nonutility Property	\$ _____	\$ _____	\$ _____	\$ -

SPECIAL DEPOSITS (ACCOUNTS 132 AND 133)

Report hereunder all special deposits carried in Accounts 132 and 133.

DESCRIPTION OF SPECIAL DEPOSITS (a)	YEAR END BOOK COST (b)
SPECIAL DEPOSITS (Account 132): Electric Deposit	\$ -

Total Special Deposits	\$ -
OTHER SPECIAL DEPOSITS (Account 133): NONE	\$ -

Total Other Special Deposits	\$ -

**INVESTMENTS AND SPECIAL FUNDS
ACCOUNTS 123 - 127**

Report hereunder all investments and special funds carried in Accounts 123 through 127.

DESCRIPTION OF SECURITY OR SPECIAL FUND (a)	FACE OR PAR VALUE (b)	YEAR END BOOK COST (c)
INVESTMENT IN ASSOCIATED COMPANIES (Account 123): NONE <hr/> <hr/> <hr/> <hr/> <hr/>	\$ _____ _____ _____ _____ _____	\$ _____ - _____ _____ _____ _____
Total Investment in Associated Companies		\$ _____ -
UTILITY INVESTMENTS (Account 124): NONE <hr/> <hr/> <hr/> <hr/> <hr/>	\$ _____ _____ _____ _____ _____	\$ _____ - _____ _____ _____ _____
Total Utility Investment		\$ _____ -
OTHER INVESTMENTS (Account 125): NONE <hr/> <hr/> <hr/> <hr/> <hr/>	\$ _____ _____ _____ _____ _____	\$ _____ - _____ _____ _____ _____
Total Other Investment		\$ _____ -
SPECIAL FUNDS (Class A Utilities: Accounts 126 and 127; Class B Utilities: Account 127): NONE <hr/> <hr/> <hr/> <hr/> <hr/>	\$ _____ _____ _____ _____ _____	\$ _____ - _____ _____ _____ _____
Total Special Funds		\$ _____ -

ACCOUNTS AND NOTES RECEIVABLE - NET
ACCOUNTS 141 - 144

Report hereunder all accounts and notes receivable included in Accounts 141, 142, and 144. Amounts included in
Amounts included in Accounts 142 and 144 should be listed individually.

DESCRIPTION (a)		TOTAL (b)
CUSTOMER ACCOUNTS RECEIVABLE (Account 141):		
Water	\$ -	
Wastewater	104,185	
Other		
Total Customer Accounts Receivable		\$ 104,185
OTHER ACCOUNTS RECEIVABLE (Account 142):		
	\$	
Total Other Accounts Receivable		\$ -
NOTES RECEIVABLE (Account 144):		
	\$	
Total Notes Receivable		\$ -
Total Accounts and Notes Receivable		\$ 104,185
ACCUMULATED PROVISION FOR UNCOLLECTIBLE ACCOUNTS (Account 143)		
Balance first of year	\$ -	
Provision for uncollectibles for current year	\$	
Collection of accounts previously written off		
Utility Accounts		
Others		
Total Additions	\$ -	
Deduct accounts written off during year:		
Utility Accounts		
Others		
Total accounts written off	\$ -	
Balance end of year		\$ -
TOTAL ACCOUNTS AND NOTES RECEIVABLE - NET		\$ 104,185

UTILITY NAME: TIERRA VERDE UTILITIES INC

YEAR OF REPORT 31-Dec-08

ACCOUNTS RECEIVABLE FROM ASSOCIATED COMPANIES
ACCOUNT 145

Report each account receivable from associated companies separately.

DESCRIPTION (a)	TOTAL (b)
Water Service Corp.	\$ (140,004)
Total	\$ <u>(140,004)</u>

NOTES RECEIVABLE FROM ASSOCIATED COMPANIES
ACCOUNT 146

Report each note receivable from associated companies separately.

DESCRIPTION (a)	INTEREST RATE (b)	TOTAL (c)
NONE	%	\$ -
	%	
	%	
	%	
	%	
	%	
	%	
	%	
Total		\$ <u>-</u>

MISCELLANEOUS CURRENT AND ACCRUED ASSETS
ACCOUNT 174

DESCRIPTION - Provide itemized listing (a)	BALANCE END OF YEAR (b)
NONE	\$ -
Total Miscellaneous Current and Accrued Assets	\$ <u>-</u>

UTILITY NAME: TIERRA VERDE UTILITIES INC

YEAR OF REPORT 31-Dec-08

**UNAMORTIZED DEBT DISCOUNT AND EXPENSE AND PREMIUM ON DEBT
ACCOUNTS 181 AND 251**

Report the net discount and expense or premium separately for each security issue.

DESCRIPTION (a)	AMOUNT WRITTEN OFF DURING YEAR (b)	YEAR END BALANCE (c)
UNAMORTIZED DEBT DISCOUNT AND EXPENSE (Account 181): NONE	\$ _____	\$ _____ -
_____	_____	_____
_____	_____	_____
_____	_____	_____
Total Unamortized Debt Discount and Expense	\$ _____	\$ _____ -
UNAMORTIZED PREMIUM ON DEBT (Account 251):	\$ _____	\$ _____ -
_____	_____	_____
_____	_____	_____
_____	_____	_____
Total Unamortized Premium on Debt	\$ _____	\$ _____ -

**EXTRAORDINARY PROPERTY LOSSES
ACCOUNT 182**

Report each item separately.

DESCRIPTION (a)	TOTAL (b)
NONE	\$ _____ -
_____	_____
_____	_____
Total Extraordinary Property Losses	\$ _____ -

**MISCELLANEOUS DEFERRED DEBITS
ACCOUNT 186**

DESCRIPTION - Provide itemized listing (a)	AMOUNT WRITTEN OFF DURING YEAR (b)	YEAR END BALANCE (c)
DEFERRED RATE CASE EXPENSE (Class A Utilities: Account 186.1)		
RATE CASE	\$ 42,769	\$ 127,177
Total Deferred Rate Case Expense	\$ <u>42,769</u>	\$ <u>127,177</u>
OTHER DEFERRED DEBITS (Class A Utilities: Account 186.2):		
OTHER DEFERRED MAINTENANCE (NONE)	\$ 15,535	\$ 14,408
Total Other Deferred Debits	\$ <u>15,535</u>	\$ <u>14,408</u>
REGULATORY ASSETS (Class A Utilities: Account. 186.3):		
NONE	\$ -	\$ -
Total Regulatory Assets	\$ <u>-</u>	\$ <u>-</u>
TOTAL MISCELLANEOUS DEFERRED DEBITS	\$ <u>58,304</u>	\$ <u>141,584</u>

UTILITY NAME:

TIERRA VERDE UTILITIES INC

<p>YEAR OF REPORT 31-Dec-08</p>
--

**CAPITAL STOCK
ACCOUNTS 201 AND 204***

DESCRIPTION (a)	RATE (b)	TOTAL (c)
COMMON STOCK		
Par or stated value per share		1
Shares authorized		0
Shares issued and outstanding		0
Total par value of stock issued		\$1,000
Dividends declared per share for year		0
REFERRED STOCK		
Par or stated value per share		0
Shares authorized		0
Shares issued and outstanding		0
Total par value of stock issued		\$0
Dividends declared per share for year		0

* Account 204 not applicable for Class B utilities.

**BONDS
ACCOUNT 221**

DESCRIPTION OF OBLIGATION (INCLUDING DATE OF ISSUE AND DATE OF MATURITY) (a)	INTEREST		PRINCIPAL AMOUNT PER BALANCE SHEET (d)
	ANNUAL RATE (b)	FIXED OR VARIABLE * (c)	
NONE	%		\$ -
	%		
	%		
	%		
	%		
	%		
	%		
	%		
	%		
	%		
Total			\$ -

* For variable rate obligations, provide the basis for the rate. (i.e.. prime + 2%, etc.)

STATEMENT OF RETAINED EARNINGS

- 1 Dividends should be shown for each class and series of capital stock. Show amounts as dividends per share.
- 2 Show separately the state and federal income tax effect of items shown in Account No. 439.

ACCT. NO. (a)	DESCRIPTION (b)	AMOUNTS (c)
215	Unappropriated Retained Earnings: Balance Beginning of Year	\$ (133,937)
439	Changes to Account: Adjustments to Retained Earnings (requires Commission approval prior to use): Credits: _____	\$ _____ _____
	Total Credits:	\$ -
	Debits: _____	\$ _____ _____
	Total Debits:	\$ _____
435	Balance Transferred from Income {income/(loss)}	\$ 76,260
436	Appropriations of Retained Earnings: _____ _____	_____ _____
	Total Appropriations of Retained Earnings	\$ _____
437	Dividends Declared: Preferred Stock Dividends Declared _____	_____ _____
438	Common Stock Dividends Declared _____	_____ _____
	Total Dividends Declared	\$ _____
215	Year end Balance	\$ _____
214	Appropriated Retained Earnings (state balance and purpose of each appropriated amount at year end): _____ _____ _____	_____ _____ _____
214	Total Appropriated Retained Earnings	\$ _____
Total Retained Earnings		\$ <u>(57,677)</u>
Notes to Statement of Retained Earnings:		

**ADVANCES FROM ASSOCIATED COMPANIES
ACCOUNT 223**

Report each advance separately.

DESCRIPTION (a)	TOTAL (b)
WATER SERVICE CORPORATION	\$ (479,868)
Total	\$ <u>(479,868)</u>

**OTHER LONG-TERM DEBT
ACCOUNT 224**

DESCRIPTION OF OBLIGATION INCLUDING DATE OF ISSUE AND DATE OF MATURITY (a)	INTEREST		PRINCIPAL AMOUNT PER BALANCE SHEET (d)
	ANNUAL RATE (b)	FIXED OR VARIABLE * (c)	
NONE	%		\$ -
	%		
	%		
	%		
	%		
	%		
	%		
	%		
	%		
	%		
	%		
	%		
	%		
	%		
	%		
	%		
	%		
	%		
	%		
	%		
	%		
Total			\$ <u>-</u>

* For variable rate obligations, provide the basis for the rate. (i.e.. prime + 2%, etc.)

**NOTES PAYABLE
ACCOUNTS 232 AND 234**

DESCRIPTION OF OBLIGATION (INCLUDING DATE OF ISSUE AND DATE OF MATURITY) (a)	INTEREST		PRINCIPAL AMOUNT PER BALANCE SHEET (d)
	ANNUAL RATE (b)	FIXED OR VARIABLE * (c)	
NOTES PAYABLE (Account 232): NONE	_____ %		\$ _____ -
_____	_____ %		_____
_____	_____ %		_____
_____	_____ %		_____
_____	_____ %		_____
_____	_____ %		_____
_____	_____ %		_____
_____	_____ %		_____
Total Account 232			\$ _____ -
NOTES PAYABLE TO ASSOC. COMPANIES (Account 234): NONE	_____ %		\$ _____ -
_____	_____ %		_____
_____	_____ %		_____
_____	_____ %		_____
_____	_____ %		_____
_____	_____ %		_____
_____	_____ %		_____
_____	_____ %		_____
Total Account 234			\$ _____ -

* For variable rate obligations, provide the basis for the rate. (i.e., prime + 2%, etc.)

**ACCOUNTS PAYABLE TO ASSOCIATED COMPANIES
ACCOUNT 233**

Report each account payable separately.

DESCRIPTION (a)	TOTAL (b)
WATER SERVICE CORPORATION	\$ 541,928
_____	_____
_____	_____
_____	_____
_____	_____
_____	_____
Total	\$ 541,928

UTILITY NAME: TIERRA VERDE UTILITIES INC

**ACCRUED INTEREST AND EXPENSE
ACCOUNTS 237 AND 427**

DESCRIPTION OF DEBIT (a)	BALANCE BEGINNING OF YEAR (b)	INTEREST ACCRUED DURING YEAR		INTEREST PAID DURING YEAR (e)	BALANCE END OF YEAR (f)
		ACCT. DEBIT (c)	AMOUNT (d)		
ACCOUNT NO. 237.1 - Accrued Interest on Long Term Debt	\$ _____	_____	_____	\$ _____	_____
UTILITIES INC INTERCOMPANY INTEREST	_____	_____	86,608	86,608	-
Total Account 237.1	\$ _____	_____	86,608	\$ 86,608	\$ _____
ACCOUNT NO. 237.2 - Accrued Interest on Other Liabilities	\$ _____	_____	_____	\$ _____	_____
Customer Deposits	_____	_____	_____	_____	_____
MISC ITEMS	_____	_____	_____	_____	_____
Total Account 237.2	\$ _____	_____	_____	\$ _____	\$ _____
Total Account 237 (1)	\$ _____	_____	86,608	\$ 86,608	\$ _____
INTEREST EXPENSED:					
Total accrual Account 237			\$ 86,608		
Short Term Interest Expense			(308)		
Net Interest Expensed to Account No. 427 (2)			\$ 86,299		

(1) Must agree to F-2 (a), Beginning and Ending Balance of Accrued Interest.
(2) Must agree to F-3 (c), Current Year Interest Expense

UTILITY NAME: TIERRA VERDE UTILITIES INC

**MISCELLANEOUS CURRENT AND ACCRUED LIABILITIES
ACCOUNT 241**

DESCRIPTION - Provide itemized listing (a)	BALANCE END OF YEAR (b)
NONE	\$ -
Total Miscellaneous Current and Accrued Liabilities	\$ -

**ADVANCES FOR CONSTRUCTION
ACCOUNT 252**

NAME OF PAYOR * (a)	BALANCE BEGINNING OF YEAR (b)	DEBITS		CREDITS (e)	BALANCE END OF YEAR (f)
		ACCT. DEBIT (c)	AMOUNT (d)		
NONE	\$ -		\$ -		\$ -
Total	\$ -		\$ -		\$ -

* Report advances separately by reporting group, designating water or wastewater in column (a).

**OTHER DEFERRED CREDITS
ACCOUNT 253**

DESCRIPTION - Provide itemized listing (a)	AMOUNT WRITTEN OFF DURING YEAR (b)	YEAR END BALANCE (c)
REGULATORY LIABILITIES (Class A Utilities: Account 253.1):		
NONE	\$ _____	\$ _____ -
_____	_____	_____
_____	_____	_____
_____	_____	_____
Total Regulatory Liabilities	\$ _____	\$ _____ -
OTHER DEFERRED LIABILITIES (Class A Utilities: Account 253.2):		
_____	\$ _____	\$ _____ -
_____	_____	_____
_____	_____	_____
_____	_____	_____
_____	_____	_____
_____	_____	_____
_____	_____	_____
Total Other Deferred Liabilities	\$ _____	\$ _____ -
TOTAL OTHER DEFERRED CREDITS	\$ _____	\$ _____ -

**CONTRIBUTIONS IN AID OF CONSTRUCTION
ACCOUNT 271**

DESCRIPTION (a)	WATER (W-7) (b)	WASTEWATER (S-7) (c)	W & WW OTHER THAN SYSTEM REPORTING (d)	TOTAL (e)
Balance first of year	\$ _____	\$ <u>1,688,812</u>	\$ _____ -	\$ <u>1,688,812</u>
Add credits during year:	\$ _____ -	\$ <u>50,865</u>	\$ _____ -	\$ <u>50,865</u>
Less debit charged during the year	\$ _____ -	\$ _____ -	\$ _____ -	\$ _____ -
Total Contribution In Aid of Construction	\$ _____ -	\$ <u>1,739,677</u>	\$ _____ -	\$ <u>1,739,677</u>

**ACCUMULATED AMORTIZATION OF CONTRIBUTIONS IN AID OF CONSTRUCTION
ACCOUNT 272**

DESCRIPTION (a)	WATER (W-8(a)) (b)	WASTEWATER (S-8(a)) (c)	W & WW OTHER THAN SYSTEM REPORTING (d)	TOTAL (e)
Balance first of year	\$ _____	\$ <u>1,298,702</u>	\$ _____ -	\$ <u>1,298,702</u>
Debits during the year:	\$ _____ -	\$ <u>44,607</u>	\$ _____ -	\$ <u>44,607</u>
Credits during the year	\$ _____ -	\$ _____ -	\$ _____ -	\$ _____ -
Total Accumulated Amortization of Contributions In Aid of Construction	\$ _____ -	\$ <u>1,343,309</u>	\$ _____ -	\$ <u>1,343,309</u>

UTILITY NAME:

TIERRA VERDE UTILITIES INC

YEAR OF REPORT 31-Dec-08

RECONCILIATION OF REPORTED NET INCOME WITH TAXABLE INCOME FOR FEDERAL INCOME TAXES (UTILITY OPERATIONS)

- 1 The reconciliation should include the same detail as furnished on Schedule M-1 of the federal tax return for the year. The reconciliation shall be submitted even though there is no taxable income for the year. Descriptions should clearly indicate the nature of each reconciling amount and show the computations of all tax accruals.
- 2 If the utility is a member of a group which files a consolidated federal tax return, reconcile reported net income with taxable net income as if a separate return were to be filed, indicating intercompany amounts to be eliminated in such consolidated return. State names of group members, tax assigned to each group member, and basis of allocation, assignments or sharing of the consolidated tax among the group members.

DESCRIPTION (a)	REF. NO. (b)	AMOUNT (c)
Net income for the year	F-3(c)	\$ 76,260
Reconciling items for the year:		
Taxable income not reported on books:		
Tap Fees		50,865
Deductions recorded on books not deducted for return:		
Amortization ITC		
Excess Tax Depreciation over Book Depreciation		(19,110)
Tap in Fees		
CIA Property		
Int During Construction		
Def. Maint. CY additions		(705)
Def. Maint. CY amortization		15,290
Def. Rate Case CY additions		(91,482)
Def. Rate Case CY amortization		42,769
Organization Exp-Amort		(686)
Bad Debts CY		
Current FIT (725)		38,424
Deferred FIT (731)		981
Deferred SIT (732)		169
Current SIT		
Income recorded on books not included in return:		
Interest During Construction		0
SIT provision		
Deduction on return not charged against book income:		
Meals		236
Federal tax net income		\$ 113,011
Computation of tax :		
	113,011	
	34%	
	38,424	

**WATER
OPERATION
SECTION**

UTILITY NAME:

TIERRA VERDE UTILITIES INC

YEAR OF REPORT
31-Dec-08

WATER LISTING OF SYSTEM GROUPS

List below the name of each reporting system and its certificate number. Those systems which have been consolidated under the same tariff should be assigned a group number. Each individual system which has not been consolidated should be assigned its own group number.
The water financial schedules (W-2 through W-10) should be filed for the group in total.
The water engineering schedules (W-11 through W-15) must be filed for each system in the group.
All of the following water pages (W-2 through W-15) should be completed for each group and arranged by group number.

SYSTEM NAME / COUNTY	CERTIFICATE NUMBER	GROUP NUMBER
NONE		

UTILITY NAME: TIERRA VERDE UTILITIES INC

YEAR OF REPORT 31-Dec-08

SYSTEM NAME / COUNTY : TIERRA VERDE / PINELLAS

SCHEDULE OF YEAR END WATER RATE BASE

ACCT. NO. (a)	ACCOUNT NAME (b)	REFERENCE PAGE (c)	WATER UTILITY (d)
101	Utility Plant In Service	W-4(b)	\$ -
	Less:		
	Nonused and Useful Plant (1)		
108	Accumulated Depreciation	W-6(b)	-
110	Accumulated Amortization	F-8	-
271	Contributions In Aid of Construction	W-7	-
252	Advances for Construction	F-20	-
Subtotal			\$ -
272	Add: Accumulated Amortization of Contributions in Aid of Construction	W-8(a)	\$ -
Subtotal			\$ -
114	Plus or Minus: Acquisition Adjustments (2)	F-7	-
115	Accumulated Amortization of Acquisition Adjustments (2)	F-7	-
	Working Capital Allowance (3)		-
	Other (Specify):		
WATER RATE BASE			\$ -
WATER OPERATING INCOME		W-3	\$ -
RN (Water Operating Income / Water Rate Base)			<u>#DIV/0!</u>

- NOTES (1) Estimate based on the methodology used in the last rate proceeding.
- (2) Include only those Acquisition Adjustments that have been approved by the Commission.
- (3) Calculation consistent with last rate proceeding.
 In absence of a rate proceeding, Class A utilities will use the Balance Sheet Method and Class B Utilities will use the One-eighth Operating and Maintenance Expense Method.

UTILITY NAME: TIERRA VERDE UTILITIES INC

YEAR OF REPORT
31-Dec-08

SYSTEM NAME / COUNTY : TIERRA VERDE / PINELLAS

WATER OPERATING STATEMENT

ACCT. NO. (a)	ACCOUNT NAME (b)	REFERENCE PAGE (c)	CURRENT YEAR (d)
	UTILITY OPERATING INCOME		
400	Operating Revenues	W-9	\$ -
469	Less: Guaranteed Revenue and AFPI	W-9	-
	Net Operating Revenues		\$ -
401	Operating Expenses	W-10(a)	\$ -
403	Depreciation Expense	W-6(a)	-
	Less: Amortization of CIAC	W-8(a)	-
	Net Depreciation Expense		\$ -
406	Amortization of Utility Plant Acquisition Adjustment	F-7	-
407	Amortization Expense (Other than CIAC)	F-8	-
408.1	Taxes Other Than Income Utility Regulatory Assessment Fee		-
408.11	Property Taxes		-
408.12	Payroll Taxes		-
408.13	Other Taxes and Licenses		-
408	Total Taxes Other Than Income		\$ -
409.1	Income Taxes		-
410.1	Deferred Federal Income Taxes		-
410.11	Deferred State Income Taxes		-
411.1	Deferred Income Taxes - Credit		-
412.1	Investment Tax Credits Deferred to Future Periods		-
412.11	Investment Tax Credits Amortized		-
	Utility Operating Expenses		\$ -
	Utility Operating Income		\$ -
469	Add Back: Guaranteed Revenue (and AFPI)	W-9	\$ -
413	Income From Utility Plant Leased to Others		-
414	Gains (losses) From Disposition of Utility Property		-
420	Allowance for Funds Used During Construction		-
	Total Utility Operating Income		\$ -

YEAR OF REPORT
31-Dec-08

UTILITY NAME: TIERRA VERDE UTILITIES INC

SYSTEM NAME / COUNTY : TIERRA VERDE / PINELLAS

WATER UTILITY PLANT ACCOUNTS

ACCT. NO. (a)	ACCOUNT NAME (b)	PREVIOUS YEAR (c)	ADDITIONS (d)	RETIREMENTS (e)	CURRENT YEAR (f)
301	Organization	\$		\$	
302	Franchises				
303	Land and Land Rights				
304	Structures and Improvements				
305	Collecting and Impounding Reservoirs				
306	Lake, River and Other Intakes				
307	Wells and Springs				
308	Infiltration Galleries and Tunnels				
309	Supply Mains				
310	Power Generation Equipment				
311	Pumping Equipment				
320	Water Treatment Equipment				
330	Distribution Reservoirs and Standpipes				
331	Transmission and Distribution Mains				
333	Services				
334	Meters and Meter Installations				
335	Hydrants				
336	Backflow Prevention Devices				
339	Other Plant Miscellaneous Equipment				
340	Office Furniture and Equipment				
341	Transportation Equipment				
342	Stores Equipment				
343	Tools, Shop and Garage Equipment				
344	Laboratory Equipment				
345	Power Operated Equipment				
346	Communication Equipment				
347	Miscellaneous Equipment				
348	Other Tangible Plant				
	TOTAL WATER PLANT	\$	\$	\$	\$

NOTE: Any adjustments made to reclassify property from one account to another must be footnoted.

W-4(a)
GROUP _____

UTILITY NAME: TIERRA VERDE UTILITIES INC

SYSTEM NAME / COUNTY : TIERRA VERDE / PINELLAS

WATER UTILITY PLANT MATRIX

ACCT. NO.	ACCOUNT NAME	CURRENT YEAR	.1 INTANGIBLE PLANT	.2 SOURCE OF SUPPLY AND PUMPING PLANT	.3 WATER TREATMENT PLANT	.4 TRANSMISSION AND DISTRIBUTION PLANT	.5 GENERAL PLANT
(a)	(b)	(c)	(d)	(e)	(f)	(g)	(h)
301	Organization	\$ -	\$ -	\$ -	\$ -	\$ -	\$ -
302	Franchises	-	-	-	-	-	-
303	Land and Land Rights	-	-	-	-	-	-
304	Structures and Improvements	-	-	-	-	-	-
305	Collecting and Impounding Reservoirs	-	-	-	-	-	-
306	Lake, River and Other Intakes	-	-	-	-	-	-
307	Wells and Springs	-	-	-	-	-	-
308	Infiltration Galleries and Tunnels	-	-	-	-	-	-
309	Supply Mains	-	-	-	-	-	-
310	Power Generation Equipment	-	-	-	-	-	-
311	Pumping Equipment	-	-	-	-	-	-
320	Water Treatment Equipment	-	-	-	-	-	-
330	Distribution Reservoirs and Standpipes	-	-	-	-	-	-
331	Transmission and Distribution Mains	-	-	-	-	-	-
333	Services	-	-	-	-	-	-
334	Meters and Meter Installations	-	-	-	-	-	-
335	Hydrants	-	-	-	-	-	-
336	Backflow Prevention Devices	-	-	-	-	-	-
339	Other Plant Miscellaneous Equipment	-	-	-	-	-	-
340	Office Furniture and Equipment	-	-	-	-	-	-
341	Transportation Equipment	-	-	-	-	-	-
342	Stores Equipment	-	-	-	-	-	-
343	Tools, Shop and Garage Equipment	-	-	-	-	-	-
344	Laboratory Equipment	-	-	-	-	-	-
345	Power Operated Equipment	-	-	-	-	-	-
346	Communication Equipment	-	-	-	-	-	-
347	Miscellaneous Equipment	-	-	-	-	-	-
348	Other Tangible Plant	-	-	-	-	-	-
TOTAL WATER PLANT		\$ -	\$ -	\$ -	\$ -	\$ -	\$ -

UTILITY NAME: TIERRA VERDE UTILITIES INC

YEAR OF REPORT 31-Dec-08

SYSTEM NAME / COUNTY : TIERRA VERDE / PINELLAS

BASIS FOR WATER DEPRECIATION CHARGES

ACCT. NO. (a)	ACCOUNT NAME (b)	AVERAGE SERVICE LIFE IN YEARS (c)	AVERAGE NET SALVAGE IN PERCENT (d)	DEPRECIATION RATE APPLIED IN PERCENT (100% - d) / c (e)
301	Organization	40		2.50%
302	Franchises	40		2.50%
304	Structures and Improvements	32		3.13%
304	Structures and Improvements - General	40		2.50%
305	Collecting and Impounding Reservoirs	50		2.00%
306	Lake, River and Other Intakes	40		2.50%
307	Wells and Springs	30		3.33%
308	Infiltration Galleries and Tunnels	40		2.50%
309	Supply Mains	35		2.86%
310	Power Generation Equipment	20		5.00%
311	Pumping Equipment	20		5.00%
320	Water Treatment Equipment	22		4.55%
330	Distribution Reservoirs and Standpipes	37		2.70%
331	Transmission and Distribution Mains	43		2.33%
333	Services	40		2.50%
334	Meters and Meter Installations	20		5.00%
335	Hydrants	45		2.22%
336	Backflow Prevention Devices	15		6.67%
339	Other Plant Miscellaneous Equipment	25		4.00%
340	Office Furniture and Equipment	15		6.67%
340	Office Furniture and Equipment - Computers	6		16.67%
341	Transportation Equipment	6		16.67%
342	Stores Equipment	18		5.56%
343	Tools, Shop and Garage Equipment	16		6.25%
344	Laboratory Equipment	15		6.67%
345	Power Operated Equipment	12		8.33%
346	Communication Equipment	10		10.00%
347	Miscellaneous Equipment	15		6.67%
348	Other Tangible Plant	10		10.00%
Water Plant Composite Depreciation Rate *				

* If depreciation rates prescribed by this Commission are on a total composite basis, entries should be made on this line only.

YEAR OF REPORT
31-Dec-08

UTILITY NAME: TIERRA VERDE UTILITIES INC

SYSTEM NAME / COUNTY: TIERRA VERDE / PINELLAS

ANALYSIS OF ENTRIES IN WATER ACCUMULATED DEPRECIATION

ACCT. NO. (a)	ACCOUNT NAME (b)	BALANCE AT BEGINNING OF YEAR (c)	ACCRUALS (d)	OTHER CREDITS* (e)	TOTAL CREDITS (d + e) (f)
301	Organization	\$	-	\$	-
302	Franchises		-		-
304	Structures and Improvements		-		-
305	Collecting and Impounding Reservoirs		-		-
306	Lake, River and Other Intakes		-		-
307	Wells and Springs		-		-
308	Infiltration Galleries and Tunnels		-		-
309	Supply Mains		-		-
310	Power Generation Equipment		-		-
311	Pumping Equipment		-		-
320	Water Treatment Equipment		-		-
330	Distribution Reservoirs and Standpipes		-		-
331	Transmission and Distribution Mains		-		-
333	Services		-		-
334	Meters and Meter Installations		-		-
335	Hydrants		-		-
336	Backflow Prevention Devices		-		-
339	Other Plant Miscellaneous Equipment		-		-
340	Office Furniture and Equipment		-		-
341	Transportation Equipment		-		-
342	Stores Equipment		-		-
343	Tools, Shop and Garage Equipment		-		-
344	Laboratory Equipment		-		-
345	Power Operated Equipment		-		-
346	Communication Equipment		-		-
347	Miscellaneous Equipment		-		-
348	Other Tangible Plant		-		-
TOTAL WATER ACCUMULATED DEPRECIATION		\$	-	\$	-

* Specify nature of transaction
Use () to denote reversal entries.

OTHER CREDITS column (E) * are due to allocation of UJF plant
W-6(a)
GROUP _____

YEAR OF REPORT
31-Dec-08

UTILITY NAME: TIERRA VERDE UTILITIES INC

SYSTEM NAME / COUNTY: TIERRA VERDE / PINELLAS

ANALYSIS OF ENTRIES IN WATER ACCUMULATED DEPRECIATION (CONT'D)

ACCT. NO.	ACCOUNT NAME (b)	PLANT RETIRED (g)	SALVAGE AND INSURANCE (h)	COST OF REMOVAL AND OTHER CHARGES (i)	TOTAL CHARGES (g-h+i) (j)	BALANCE AT END OF YEAR (c+f-j) (k)
301	Organization	\$ -	\$ -	\$ -	\$ -	\$ -
302	Franchises	-	-	-	-	-
304	Structures and Improvements	-	-	-	-	-
305	Collecting and Impounding Reservoirs	-	-	-	-	-
306	Lake, River and Other Intakes	-	-	-	-	-
307	Wells and Springs	-	-	-	-	-
308	Infiltration Galleries and Tunnels	-	-	-	-	-
309	Supply Mains	-	-	-	-	-
310	Power Generation Equipment	-	-	-	-	-
311	Pumping Equipment	-	-	-	-	-
320	Water Treatment Equipment	-	-	-	-	-
330	Distribution Reservoirs and Standpipes	-	-	-	-	-
331	Transmission and Distribution Mains	-	-	-	-	-
333	Services	-	-	-	-	-
334	Meters and Meter Installations	-	-	-	-	-
335	Hydrants	-	-	-	-	-
336	Backflow Prevention Devices	-	-	-	-	-
339	Other Plant Miscellaneous Equipment	-	-	-	-	-
340	Office Furniture and Equipment	-	-	-	-	-
341	Transportation Equipment	-	-	-	-	-
342	Stores Equipment	-	-	-	-	-
343	Tools, Shop and Garage Equipment	-	-	-	-	-
344	Laboratory Equipment	-	-	-	-	-
345	Power Operated Equipment	-	-	-	-	-
346	Communication Equipment	-	-	-	-	-
347	Miscellaneous Equipment	-	-	-	-	-
348	Other Tangible Plant	-	-	-	-	-
TOTAL WATER ACCUMULATED DEPRECIATION		\$ -	\$ -	\$ -	\$ -	\$ -

W-6(b)
GROUP _____

UTILITY NAME: TIERRA VERDE UTILITIES INC

YEAR OF REPORT
31-Dec-08

SYSTEM NAME / COUNTY : TIERRA VERDE / PINELLAS

CONTRIBUTIONS IN AID OF CONSTRUCTION
ACCOUNT 271

DESCRIPTION (a)	REFERENCE (b)	WATER (c)
Balance first of year		\$ _____ -
Add credits during year: Contributions received from Capacity, Main Extension and Customer Connection Charges	W-8(a)	\$ _____ -
Contributions received from Developer or Contractor Agreements in cash or property	W-8(b)	_____ -
Total Credits		\$ _____ -
Less debits charged during the year (All debits charged during the year must be explained below)		\$ _____ -
Total Contributions In Aid of Construction		\$ _____ -

If any prepaid CIAC has been collected, provide a supporting schedule showing how the amount is determined.

Explain all debits charged to Account 271 during the year below:

UTILITY NAME: TIERRA VERDE UTILITIES INC

YEAR OF REPORT 31-Dec-08

SYSTEM NAME / COUNTY : TIERRA VERDE / PINELLAS

WATER CIAC SCHEDULE "A"

ADDITIONS TO CONTRIBUTIONS IN AID OF CONSTRUCTION RECEIVED FROM CAPACITY,
 MAIN EXTENSION AND CUSTOMER CONNECTION CHARGES RECEIVED DURING THE YEAR

DESCRIPTION OF CHARGE (a)	NUMBER OF CONNECTIONS (b)	CHARGE PER CONNECTION (c)	AMOUNT (d)
WATER CONNECTIONS FEES		\$ _____	\$ _____ -
_____	_____	_____	_____
_____	_____	_____	_____
_____	_____	_____	_____
_____	_____	_____	_____
_____	_____	_____	_____
_____	_____	_____	_____
_____	_____	_____	_____
Total Credits			\$ _____ -

ACCUMULATED AMORTIZATION OF WATER CONTRIBUTIONS IN AID OF CONSTRUCTION

DESCRIPTION (a)	WATER (b)
Balance first of year	\$ _____
Debits during the year:	
Accruals charged to Account 272	\$ _____ -
Other debits (specify) :	
_____	_____
_____	_____
Total debits	\$ _____ -
Credits during the year (specify) :	
_____	\$ _____ -
_____	_____
Total credits	\$ _____ -
Balance end of year	\$ _____ -

UTILITY NAME: TIERRA VERDE UTILITIES INC

YEAR OF REPORT
31-Dec-08

SYSTEM NAME / COUNTY : TIERRA VERDE / PINELLAS

WATER CIAC SCHEDULE "B"
ADDITIONS TO CONTRIBUTIONS IN AID OF CONSTRUCTION
RECEIVED FROM ALL DEVELOPERS OR CONTRACTORS AGREEMENTS
WHICH CASH OR PROPERTY WAS RECEIVED DURING THE YEAR

DESCRIPTION (a)	INDICATE CASH OR PROPERTY (b)	AMOUNT (c)
NONE		\$ _____
_____	_____	_____
_____	_____	_____
_____	_____	_____
_____	_____	_____
_____	_____	_____
_____	_____	_____
_____	_____	_____
_____	_____	_____
_____	_____	_____
_____	_____	_____
_____	_____	_____
_____	_____	_____
_____	_____	_____
_____	_____	_____
_____	_____	_____
_____	_____	_____
_____	_____	_____
_____	_____	_____
Total Credits		\$ _____ 0

UTILITY NAME: TIERRA VERDE UTILITIES INC

YEAR OF REPORT 31-Dec-08

SYSTEM NAME / COUNTY : TIERRA VERDE / PINELLAS

WATER OPERATING REVENUE

ACCT. NO. (a)	DESCRIPTION (b)	BEGINNING YEAR NO. CUSTOMERS * (c)	YEAR END NUMBER OF CUSTOMERS (d)	AMOUNT (e)
460	Water Sales: Unmetered Water Revenue			\$ -
461.1	Metered Water Revenue: Sales to Residential Customers			-
461.2	Sales to Commercial Customers			-
461.3	Sales to Industrial Customers			-
461.4	Sales to Public Authorities			-
461.5	Sales Multiple Family Dwellings			-
461.6	Other Revenues			-
Total Metered Sales		-	-	\$ -
462.1	Fire Protection Revenue: Public Fire Protection			-
462.2	Private Fire Protection			-
Total Fire Protection Revenue				\$ -
464	Other Sales To Public Authorities			-
465	Sales To Irrigation Customers			-
466	Sales For Resale			-
467	Interdepartmental Sales			-
Total Water Sales		-	-	\$ -
469	Other Water Revenues: Guaranteed Revenues (Including Allowance for Funds Prudently Invested or AFPI)			\$ -
470	Forfeited Discounts			-
471	Miscellaneous Service Revenues			-
472	Rents From Water Property			-
473	Interdepartmental Rents			-
474	Other Water Revenues			-
Total Other Water Revenues				\$ -
Total Water Operating Revenues				\$ -

* Customer is defined by Rule 25-30.210(1), Florida Administrative Code.
 Accruals are recorded in account 461.1.



UTILITY NAME: TIERRA VERDE UTILITIES INC

YEAR OF REPORT
31-Dec-08

SYSTEM NAME / COUNTY : TIERRA VERDE / PINELLAS

WATER UTILITY EXPENSE ACCOUNTS

ACCT. NO. (a)	ACCOUNT NAME (b)	CURRENT YEAR (c)	.1 SOURCE OF SUPPLY AND EXPENSES - OPERATIONS (d)	.2 SOURCE OF SUPPLY AND EXPENSES - MAINTENANCE (e)
601	Salaries and Wages - Employees	\$ -	\$ -	\$ -
603	Salaries and Wages - Officers, Directors and Majority Stockholders	-	-	-
604	Employee Pensions and Benefits	-	#DIV/0!	#DIV/0!
610	Purchased Water	-	-	-
615	Purchased Power	-	-	-
616	Fuel for Power Purchased	-	-	-
618	Chemicals	-	-	-
620	Materials and Supplies	-	-	-
631	Contractual Services-Engineering	-	-	-
632	Contractual Services - Accounting	-	-	-
633	Contractual Services - Legal	-	-	-
634	Contractual Services - Mgt. Fees	-	-	-
635	Contractual Services - Testing	-	-	-
636	Contractual Services - Other	-	-	-
641	Rental of Building/Real Property	-	-	-
642	Rental of Equipment	-	-	-
650	Transportation Expenses	-	-	-
656	Insurance - Vehicle	-	-	-
657	Insurance - General Liability	-	-	-
658	Insurance - Workman's Comp.	-	-	-
659	Insurance - Other	-	-	-
660	Advertising Expense	-	-	-
666	Regulatory Commission Expenses - Amortization of Rate Case Expense	-	-	-
667	Regulatory Commission Exp.-Other	-	-	-
668	Water Resource Conservation Exp.	-	-	-
670	Bad Debt Expense	-	-	-
675	Miscellaneous Expenses	-	-	-
Total Water Utility Expenses		\$ -	\$ #DIV/0!	\$ #DIV/0!



W-10(a)
GROUP _____

UTILITY NAME:

TIERRA VERDE UTILITIES INC

YEAR OF REPORT 31-Dec-08

SYSTEM NAME / COUNTY :

TIERRA VERDE / PINELLAS

NONE

PUMPING AND PURCHASED WATER STATISTICS

MONTH (a)	WATER PURCHASED FOR RESALE (Omit 000's) (b)	FINISHED WATER PUMPED FROM WELLS (Omit 000's) (c)	WATER USED FOR LINE FLUSHING, FIGHTING FIRES, ETC. (d)	TOTAL WATER PUMPED AND PURCHASED (Omit 000's) [(b)+(c)-(d)] (e)	WATER SOLD TO CUSTOMERS (Omit 000's) (f)
January					
February					
March					
April					
May					
June					
July					
August					
September					
October					
November					
December					
Total for Year					

If water is purchased for resale, indicate the following:

Vendor _____

Point of delivery _____

If water is sold to other water utilities for redistribution, list names of such utilities below:

for each source of supply:	CAPACITY OF WELL	GALLONS PER DAY FROM SOURCE	TYPE OF SOURCE
_____	_____	_____	_____
_____	_____	_____	_____
_____	_____	_____	_____
_____	_____	_____	_____
_____	_____	_____	_____

UTILITY NAME: TIERRA VERDE UTILITIES INC

YEAR OF REPORT
31-Dec-08

SYSTEM NAME / COUNTY : TIERRA VERDE / PINELLAS

NONE

WATER TREATMENT PLANT INFORMATION

Provide a separate sheet for each water treatment facility

Permitted Capacity of Plant (GPD): _____	
Location of measurement of capacity (i.e. Wellhead, Storage Tank): _____	
Type of treatment (reverse osmosis, (sedimentation, chemical, aerated, etc.): _____	
LIME TREATMENT	
Unit rating (i.e., GPM, pounds per gallon): _____	Manufacturer: _____
FILTRATION	
Type and size of area: _____	
Pressure (in square feet): _____	Manufacturer: _____
Gravity (in GPM/square feet): _____	Manufacturer: _____

W-12

GROUP _____

SYSTEM _____

UTILITY NAME:

TIERRA VERDE UTILITIES INC

YEAR OF REPORT
31-Dec-08

SYSTEM NAME / COUNTY :

TIERRA VERDE / PINELLAS

NONE

CALCULATION OF THE WATER SYSTEM METER EQUIVALENTS

METER SIZE (a)	TYPE OF METER (b)	EQUIVALENT FACTOR (c)	NUMBER OF METERS (d)	TOTAL NUMBER OF METER EQUIVALENTS (c x d) (e)
All Residential		1.0		
5/8"	Displacement	1.0		
3/4"	Displacement	1.5		
1"	Displacement	2.5		
1 1/2"	Displacement or Turbine	5.0		
2"	Displacement, Compound or Turbine	8.0		
3"	Displacement	15.0		
3"	Compound	16.0		
3"	Turbine	17.5		
4"	Displacement or Compound	25.0		
4"	Turbine	30.0		
6"	Displacement or Compound	50.0		
6"	Turbine	62.5		
8"	Compound	80.0		
8"	Turbine	90.0		
10"	Compound	115.0		
10"	Turbine	145.0		
12"	Turbine	215.0		
Total Water System Meter Equivalents				

CALCULATION OF THE WATER SYSTEM EQUIVALENT RESIDENTIAL CONNECTIONS

Provide a calculation used to determine the value of one water equivalent residential connection (ERC).

Use one of the following methods:

- (a) If actual flow data are available from the preceding 12 months, divide the total annual single family residence (SFR) gallons sold by the average number of single family residence customers for the same period and divide the result by 365 days.
- (b) If no historical flow data are available, use:

$$ERC = (\text{Total SFR gallons sold (Omit 000)} / 365 \text{ days} / 350 \text{ gallons per day})$$

ERC Calculation:

UTILITY NAME: TIERRA VERDE UTILITIES INC

YEAR OF REPORT
31-Dec-08

SYSTEM NAME / COUNTY TIERRA VERDE / PINELLAS

NONE

OTHER WATER SYSTEM INFORMATION

Furnish information below for each system. A separate page should be supplied where necessary.

1. Present ERC's * the system can efficiently serve. _____
2. Maximum number of ERCs * which can be served. _____
3. Present system connection capacity (in ERCs *) using existing lines. _____
4. Future connection capacity (in ERCs *) upon service area buildout. _____
5. Estimated annual increase in ERCs *. _____
6. Is the utility required to have fire flow capacity? _____
If so, how much capacity is required? _____
7. Attach a description of the fire fighting facilities.
8. Describe any plans and estimated completion dates for any enlargements or improvements of this system. _____

9. When did the company last file a capacity analysis report with the DEP? _____
10. If the present system does not meet the requirements of DEP rules:
 - a. Attach a description of the plant upgrade necessary to meet the DEP rules.
 - b. Have these plans been approved by DEP? _____
 - c. When will construction begin? _____
 - d. Attach plans for funding the required upgrading.
 - e. Is this system under any Consent Order with DEP? _____
11. Department of Environmental Protection ID # _____
12. Water Management District Consumptive Use Permit # _____
 - a. Is the system in compliance with the requirements of the CUP? _____
 - b. If not, what are the utility's plans to gain compliance? _____

* An ERC is determined based on the calculation on the bottom of Page W-13.

**WASTEWATER
OPERATION
SECTION**

UTILITY NAME:

TIERRA VERDE UTILITIES INC

YEAR OF REPORT
31-Dec-08

WASTEWATER LISTING OF SYSTEM GROUPS

List below the name of each reporting system and its certificate number. Those systems which have been consolidated under the same tariff should be assigned a group number. Each individual system which has not been consolidated should be assigned its own group number.
The wastewater financial schedules (S-2 through S-10) should be filed for the group in total.
The wastewater engineering schedules (S-11 and S-12) must be filed for each system in the group.
All of the following wastewater pages (S-2 through S-12) should be completed for each group and arranged by group number.

SYSTEM NAME / COUNTY	CERTIFICATE NUMBER	GROUP NUMBER
<u>TIERRA VERDE / PINELLAS</u>	<u>232S</u>	<u> </u>
<u> </u>	<u> </u>	<u> </u>
<u> </u>	<u> </u>	<u> </u>
<u> </u>	<u> </u>	<u> </u>
<u> </u>	<u> </u>	<u> </u>
<u> </u>	<u> </u>	<u> </u>
<u> </u>	<u> </u>	<u> </u>
<u> </u>	<u> </u>	<u> </u>
<u> </u>	<u> </u>	<u> </u>
<u> </u>	<u> </u>	<u> </u>
<u> </u>	<u> </u>	<u> </u>
<u> </u>	<u> </u>	<u> </u>
<u> </u>	<u> </u>	<u> </u>
<u> </u>	<u> </u>	<u> </u>
<u> </u>	<u> </u>	<u> </u>
<u> </u>	<u> </u>	<u> </u>
<u> </u>	<u> </u>	<u> </u>
<u> </u>	<u> </u>	<u> </u>
<u> </u>	<u> </u>	<u> </u>
<u> </u>	<u> </u>	<u> </u>
<u> </u>	<u> </u>	<u> </u>

UTILITY NAME: TIERRA VERDE UTILITIES INC

YEAR OF REPORT 31-Dec-08

SYSTEM NAME / COUNTY : TIERRA VERDE / PINELLAS

SCHEDULE OF YEAR END WASTEWATER RATE BASE

ACCT. NO. (a)	ACCOUNT NAME (b)	REFERENCE PAGE (c)	WASTEWATER UTILITY (d)
101	Utility Plant In Service	S-4A	\$ 4,373,170
	Less:		
	Nonused and Useful Plant (1)		
108	Accumulated Depreciation	S-6B	2,423,916
110	Accumulated Amortization	F-8	-
271	Contributions In Aid of Construction	S-7	1,739,677
252	Advances for Construction	F-20	
Subtotal			\$ 209,577
272	Add: Accumulated Amortization of Contributions in Aid of Construction	S-8A	\$ 1,343,309
Subtotal			\$ 1,552,886
	Plus or Minus:		
114	Acquisition Adjustments (2)	F-7	351,207
115	Accumulated Amortization of Acquisition Adjustments (2)	F-7	81,247
	Working Capital Allowance (3)		58,446
	Other (Specify):		-
WASTEWATER RATE BASE			\$ 2,043,787
WASTEWATER OPERATING INCOME		S-3	\$ 162,861
ACHIEVED RATE OF RETURN (Wastewater Operating Income / Wastewater Rate Base)			<u>7.97%</u>

NOTES (1) Estimate based on the methodology used in the last rate proceeding.

(2) Include only those Acquisition Adjustments that have been approved by the Commission.

(3) Calculation consistent with last rate proceeding.

In absence of a rate proceeding, Class A utilities will use the Balance Sheet Method and Class B Utilities will use the One-eighth Operating and Maintenance Expense Method.

UTILITY NAME: TIERRA VERDE UTILITIES INC

YEAR OF REPORT 31-Dec-08

SYSTEM NAME / COUNTY : TIERRA VERDE / PINELLAS

WASTEWATER OPERATING STATEMENT

ACCT. NO. (a)	ACCOUNT NAME (b)	REFERENCE PAGE (c)	WASTEWATER UTILITY (d)
	UTILITY OPERATING INCOME		
400	Operating Revenues	S-9A	\$ 789,841
530	Less: Guaranteed Revenue (and AFPI)	S-9A	-
	Net Operating Revenues		\$ 789,841
401	Operating Expenses	S-10A	\$ 467,571
403	Depreciation Expense	S-6A	124,853
	Less: Amortization of CIAC	S-8A	(44,606)
	Net Depreciation Expense		\$ 80,246
406	Amortization of Utility Plant Acquisition Adjustment	F-7	-
407	Amortization Expense (Other than CIAC)	F-8	-
408.1	Taxes Other Than Income Utility Regulatory Assessment Fee		150
408.11	Property Taxes		(4,130)
408.12	Payroll Taxes		2,736
408.13	Other Taxes and Licenses		34,257
408	Total Taxes Other Than Income		\$ 33,013
409.1	Income Taxes		45,001
410.1	Deferred Federal Income Taxes		981
410.11	Deferred State Income Taxes		169
411.1	Provision for Deferred Income Taxes - Credit		-
412.1	Investment Tax Credits Deferred to Future Periods		-
412.11	Investment Tax Credits Restored to Operating Income		-
	Utility Operating Expenses		\$ 626,981
	Utility Operating Income		\$ 162,861
530	Add Back: Guaranteed Revenue (and AFPI)	S-9A	\$ -
413	Income From Utility Plant Leased to Others		-
414	Gains (losses) From Disposition of Utility Property		54
420	Allowance for Funds Used During Construction		(356)
	Total Utility Operating Income		\$ 162,559

YEAR OF REPORT
31-Dec-08

UTILITY NAME: TIERRA VERDE UTILITIES INC

SYSTEM NAME / COUNTY: TIERRA VERDE / PINELLAS

WASTEWATER UTILITY PLANT ACCOUNTS

ACCT. NO. (a)	ACCOUNT NAME (b)	PREVIOUS YEAR (c)	ADDITIONS (d)	RETIREMENTS (e)	CURRENT YEAR (f)
351	Organization	\$ 0	\$ 0	\$	0
352	Franchises	3,430	0		3,430
353	Land and Land Rights	467	203		670
354	Structures and Improvements	2,364,471	196,276		2,560,747
355	Power Generation Equipment		0		0
360	Collection Sewers - Force	84,464	589		85,053
361	Collection Sewers - Gravity	1,197,586	(122,977)		1,074,609
361	Manholes	0	133,967		133,967
362	Special Collecting Structures	0	0		0
363	Services to Customers	177,588	(589)		176,999
364	Flow Measuring Devices		0		0
365	Flow Measuring Installations		0		0
366	Reuse Services		0		0
367	Reuse Meters and Meter Installations		0		0
370	Receiving Wells		0		0
371	Pumping Equipment	0	12,229		12,229
374	Reuse Distribution Reservoirs		0		0
375	Reuse Transmission and Distribution System		339		339
380	Treatment and Disposal Equipment	2,144	9,672		11,816
381	Plant Sewers		0		0
382	Outfall Sewer Lines	0	0		0
389	Other Plant Miscellaneous Equipment	23,660	0		23,660
390	Office Furniture and Equipment	7,039	205,226		212,265
391	Transportation Equipment	49,031	12,586		61,617
392	Stores Equipment	0	0		0
393	Tools, Shop and Garage Equipment	264	7,516		7,780
394	Laboratory Equipment	0	0		0
395	Power Operated Equipment	0	0		0
396	Communication Equipment	2,326	2,663		4,989
397	Miscellaneous Equipment		3,000		3,000
398	Other Tangible Plant	11,493	(11,493)		0
Total Wastewater Plant		\$ 3,923,963	\$ 449,207	\$ 0	\$ 4,373,170

NOTE: Any adjustments made to reclassify property from one account to another must be footnoted.

YEAR OF REPORT
31-Dec-08

UTILITY NAME: TIERRA VERDE UTILITIES INC
SYSTEM NAME / COUNTY: TIERRA VERDE / PINELLAS

WASTEWATER UTILITY PLANT MATRIX

ACCT. NO.	ACCOUNT NAME	.1 INTANGIBLE PLANT (g)	.2 COLLECTION PLANT (h)	.3 SYSTEM PUMPING PLANT (i)	.4 TREATMENT AND DISPOSAL (j)	.5 RECLAIMED WASTEWATER TREATMENT PLANT (i)	.6 RECLAIMED WASTEWATER DISTRIBUTION PLANT (i)	.7 GENERAL PLANT (k)
351	Organization	\$ 3,430						
352	Franchises							
353	Land and Land Rights		670					
354	Structures and Improvements		1,575,733	917,761				67,253
355	Power Generation Equipment							
360	Collection Sewers - Force		85,053					
361	Collection Sewers - Gravity		1,074,609					
361	Manholes		133,967					
362	Special Collecting Structures							
363	Services to Customers		176,999					
364	Flow Measuring Devices							
365	Flow Measuring Installations							
366	Reuse Services							
367	Reuse Meters and Meter Installations							
370	Receiving Wells							
371	Pumping Equipment			12,229				
374	Reuse Distribution Reservoirs							
375	Reuse Transmission and Distribution System			339				
380	Treatment and Disposal Equipment				11,816			
381	Plant Sewers							
382	Outfall Sewer Lines							
389	Other Plant Miscellaneous Equipment				23,660			212,265
390	Office Furniture and Equipment							61,617
391	Transportation Equipment							
392	Stores Equipment							
393	Tools, Shop and Garage Equipment							7,780
394	Laboratory Equipment							
395	Power Operated Equipment							
396	Communication Equipment							4,989
397	Miscellaneous Equipment							3,000
398	Other Tangible Plant							
	Total Wastewater Plant	\$ 3,430	\$ 3,047,031	\$ 930,329	\$ 35,476	\$ -	\$ -	\$ 356,903

NOTE: Any adjustments made to reclassify property from one account to another must be footnoted.

UTILITY NAME: TIERRA VERDE UTILITIES INC

YEAR OF REPORT 31-Dec-08

SYSTEM NAME / COUNTY : TIERRA VERDE / PINELLAS

BASIS FOR WASTEWATER DEPRECIATION CHARGES

ACCT. NO. (a)	ACCOUNT NAME (b)	AVERAGE SERVICE LIFE IN YEARS (c)	AVERAGE NET SALVAGE IN PERCENT (d)	DEPRECIATION RATE APPLIED IN PERCENT (100% - d) / c (e)
301	Organization			
302	Franchises			
354	Structures and Improvements			3.13%
354	Structures and Improvements - General			
355	Power Generation Equipment			
360	Collection Sewers - Force			3.33%
361	Collection Sewers - Gravity			2.22%
361	Manholes			
362	Special Collecting Structures			
363	Services to Customers			2.62%
364	Flow Measuring Devices			
365	Flow Measuring Installations			
366	Reuse Services			
367	Reuse Meters and Meter Installations			
370	Receiving Wells			2.86%
371	Pumping Equipment			4.00%
375	Reuse Transmission and Distribution System			
380	Treatment and Disposal Equipment			
381	Plant Sewers			2.86%
382	Outfall Sewer Lines			3.33%
389	Other Plant Miscellaneous Equipment			
390	Office Furniture and Equipment			
390	Office Furniture and Equipment - Computers			
391	Transportation Equipment			
392	Stores Equipment			
393	Tools, Shop and Garage Equipment			6.25%
394	Laboratory Equipment			6.67%
395	Power Operated Equipment			3.33%
396	Communication Equipment			10.00%
397	Miscellaneous Equipment			
398	Other Tangible Plant			
Wastewater Plant Composite Depreciation Rate *				2.84%

* If depreciation rates prescribed by this Commission are on a total composite basis, entries should be made on this line only.

YEAR OF REPORT
31-Dec-08

UTILITY NAME: TIERRA VERDE UTILITIES INC

SYSTEM NAME / COUNTY : TIERRA VERDE / PINELLAS

ANALYSIS OF ENTRIES IN WASTEWATER ACCUMULATED DEPRECIATION

NO.	ACCT. ACCOUNT NAME (b)	BALANCE AT BEGINNING OF YEAR (c)	ACCRUALS (d)	OTHER CREDITS * (e)	TOTAL CREDITS (d + e) (f)
301	Organization	\$ (123,586)	\$ -	\$ -	\$ -
302	Franchises	2,972	86	-	86
354	Structures and Improvements	1,631,224	80,918	-	80,918
355	Power Generation Equipment	-	-	-	-
360	Collection Sewers - Force	14,131	2,835	-	2,835
361	Collection Sewers - Gravity	568,370	26,638	-	26,638
362	Special Collecting Structures	-	-	-	-
363	Services to Customers	78,785	5,900	-	5,900
364	Flow Measuring Devices	-	-	-	-
365	Flow Measuring Installations	-	-	-	-
366	Reuse Services	-	-	-	-
367	Reuse Meters and Meter Installations	-	-	-	-
370	Receiving Wells	1,284	61	-	61
371	Pumping Equipment	-	108	-	108
375	Reuse Transmission and Distribution System	-	2	-	2
380	Treatment and Disposal Equipment	-	156	-	156
381	Plant Sewers	-	-	-	-
382	Outfall Sewer Lines	-	-	-	-
389	Other Plant Miscellaneous Equipment	-	-	-	-
390	Office Furniture and Equipment	12,221	45	12,848	12,893
391	Transportation Equipment	33,099	1,607	18,273	19,880
392	Stores Equipment	-	-	-	-
393	Tools, Shop and Garage Equipment	124	17	3,849	3,865
394	Laboratory Equipment	-	-	-	-
395	Power Operated Equipment	-	-	-	-
396	Communication Equipment	2,386	55	808	863
397	Miscellaneous Equipment	9,030	6,424	33,246	39,670
398	Other Tangible Plant	-	-	-	-
Total Depreciable Wastewater Plant in Service		\$ 2,230,040	\$ 124,853	\$ 69,023	\$ 193,876

* Specify nature of transaction.
Use () to denote reversal entries.

OTHER CREDITS column (E) * are due to allocation of UIF plant

YEAR OF REPORT
31-Dec-08

UTILITY NAME: TIERRA VERDE UTILITIES INC

SYSTEM NAME / COUNTY : TIERRA VERDE / PINELLAS

ANALYSIS OF ENTRIES IN WASTEWATER ACCUMULATED DEPRECIATION

ACCT. NO.	ACCOUNT NAME (b)	PLANT RETIRED (g)	SALVAGE AND INSURANCE (h)	COST OF REMOVAL AND OTHER CHARGES (i)	TOTAL CHARGES (g-h+i) (j)	BALANCE AT END OF YEAR (c+f-j) (k)
301	Organization	\$ -	\$ -	\$ -	\$ -	(123,586)
302	Franchises	-	-	-	-	3,058
354	Structures and Improvements	-	-	-	-	1,712,142
355	Power Generation Equipment	-	-	-	-	-
360	Collection Sewers - Force	-	-	-	-	16,966
361	Collection Sewers - Gravity	-	-	-	-	595,008
362	Special Collecting Structures	-	-	-	-	-
363	Services to Customers	-	-	-	-	84,685
364	Flow Measuring Devices	-	-	-	-	-
365	Flow Measuring Installations	-	-	-	-	-
366	Reuse Services	-	-	-	-	-
367	Reuse Meters and Meter Installations	-	-	-	-	-
370	Receiving Wells	-	-	-	-	1,345
371	Pumping Equipment	-	-	-	-	108
375	Reuse Transmission and Distribution System	-	-	-	-	-
380	Treatment and Disposal Equipment	-	-	-	-	2
381	Plant Sewers	-	-	-	-	156
382	Outfall Sewer Lines	-	-	-	-	-
389	Other Plant Miscellaneous Equipment	-	-	-	-	-
390	Office Furniture and Equipment	-	-	-	-	25,114
391	Transportation Equipment	-	-	-	-	52,979
392	Stores Equipment	-	-	-	-	-
393	Tools, Shop and Garage Equipment	-	-	-	-	3,989
394	Laboratory Equipment	-	-	-	-	-
395	Power Operated Equipment	-	-	-	-	-
396	Communication Equipment	-	-	-	-	3,249
397	Miscellaneous Equipment	-	-	-	-	48,700
398	Other Tangible Plant	-	-	-	-	-
Total Depreciable Wastewater Plant in Service						\$ 2,423,916

* Specify nature of transaction.
Use () to denote reversal entries.

UTILITY NAME: TIERRA VERDE UTILITIES INC

YEAR OF REPORT 31-Dec-08

SYSTEM NAME / COUNTY : TIERRA VERDE / PINELLAS

**CONTRIBUTIONS IN AID OF CONSTRUCTION
ACCOUNT 271**

DESCRIPTION (a)	REFERENCE (b)	WASTEWATER (c)
Balance first of year		\$ <u>1,688,812</u>
Add credits during year:		
Contributions received from Capacity, Main Extension and Customer Connection Charges	S-8A	\$ <u>50,865</u>
Contributions received from Developer or Contractor Agreements in cash or property	S-8B	<u>-</u>
Total Credits		\$ <u>50,865</u>
Less debits charged during the year (All debits charged during the year must be explained below)		\$ _____
Total Contributions In Aid of Construction		\$ <u>1,739,677</u>

Explain all debits charged to Account 271 during the year below:

UTILITY NAME: TIERRA VERDE UTILITIES INC

YEAR OF REPORT
31-Dec-08

SYSTEM NAME / COUNTY : TIERRA VERDE / PINELLAS

WASTEWATER CIAC SCHEDULE "A"

ADDITIONS TO CONTRIBUTIONS IN AID OF CONSTRUCTION RECEIVED FROM CAPACITY,
MAIN EXTENSION AND CUSTOMER CONNECTION CHARGES RECEIVED DURING THE YEAR

DESCRIPTION OF CHARGE (a)	NUMBER OF CONNECTIONS (b)	CHARGE PER CONNECTION (c)	AMOUNT (d)
<u>SEWER CONNECTIONS FEES (NONE)</u>		\$	\$ 50,865.0
Total Credits			\$ <u>50,865.0</u>

ACCUMULATED AMORTIZATION OF WASTEWATER CONTRIBUTIONS IN AID OF CONSTRUCTION

DESCRIPTION (a)	WASTEWATER (b)
Balance first of year	\$ 1,298,703
Debits during the year:	
Accruals charged to Account 272	\$ 44,606
Other debits (specify) :	
_____	_____
_____	_____
Total debits	\$ 44,606
Credits during the year (specify) :	
_____	\$ _____
_____	_____
Total credits	\$ -
Balance end of year	\$ <u>1,343,309</u>

UTILITY NAME: TIERRA VERDE UTILITIES INC

YEAR OF REPORT
31-Dec-08

SYSTEM NAME / COUNTY : TIERRA VERDE / PINELLAS

WASTEWATER CIAC SCHEDULE "B"
ADDITIONS TO CONTRIBUTIONS IN AID OF CONSTRUCTION
RECEIVED FROM ALL DEVELOPERS OR CONTRACTORS AGREEMENTS
WHICH CASH OR PROPERTY WAS RECEIVED DURING THE YEAR

DESCRIPTION (a)	INDICATE CASH OR PROPERTY (b)	AMOUNT (c)
NONE		\$ 0
Total Credits		\$ 0

UTILITY NAME: TIERRA VERDE UTILITIES INC

YEAR OF REPORT 31-Dec-08

SYSTEM NAME / COUNTY : TIERRA VERDE / PINELLAS

WASTEWATER OPERATING REVENUE

ACCT. NO. (a)	DESCRIPTION (b)	BEGINNING YEAR NO. CUSTOMERS * (c)	YEAR END NUMBER OF CUSTOMERS * (d)	AMOUNTS (e)
WASTEWATER SALES				
	Flat Rate Revenues:			
521.1	Residential Revenues	2,412	2,412	\$ 789,391
521.2	Commercial Revenues			-
521.3	Industrial Revenues			-
521.4	Revenues From Public Authorities			-
521.5	Multiple Family Dwelling Revenues			-
521.6	Other Revenues			-
521	Total Flat Rate Revenues	2,412	2,412	\$ 789,391
	Measured Revenues:			
522.1	Residential Revenues			-
522.2	Commercial Revenues			-
522.3	Industrial Revenues			-
522.4	Revenues From Public Authorities			-
522.5	Multiple Family Dwelling Revenues			-
522	Total Measured Revenues			\$ -
523	Revenues From Public Authorities			-
524	Revenues From Other Systems			-
525	Interdepartmental Revenues			-
Total Wastewater Sales		2,412	2,412	\$ 789,391
OTHER WASTEWATER REVENUES				
530	Guaranteed Revenues			\$ -
531	Sale of Sludge			-
532	Forfeited Discounts			-
534	Rents From Wastewater Property			-
535	Interdepartmental Rents			-
536	Other Wastewater Revenues (Including Allowance for Funds Prudently Invested or AFPI)			450
Total Other Wastewater Revenues				\$ 450

* Customer is defined by Rule 25-30.210(1), Florida Administrative Code.
521.1 includes accruals

UTILITY NAME: TIERRA VERDE UTILITIES INC

YEAR OF REPORT 31-Dec-08

SYSTEM NAME / COUNTY TIERRA VERDE / PINELLAS

WASTEWATER OPERATING REVENUE

ACCT. NO. (a)	DESCRIPTION (b)	BEGINNING YEAR NO. CUSTOMERS * (c)	YEAR END NUMBER OF CUSTOMERS * (d)	AMOUNTS (e)
RECLAIMED WATER SALES				
540.1	Flat Rate Reuse Revenues: Residential Reuse Revenues	_____	_____	\$ _____ -
540.2	Commercial Reuse Revenues	_____	_____	_____ -
540.3	Industrial Reuse Revenues	_____	_____	_____ -
540.4	Reuse Revenues From Public Authorities	_____	_____	_____ -
540.5	Other Revenues	_____	_____	_____ -
540	Total Flat Rate Reuse Revenues	_____	_____	\$ _____ -
541.1	Measured Reuse Revenues: Residential Reuse Revenues	_____	_____	_____ -
541.2	Commercial Reuse Revenues	_____	_____	_____ -
541.3	Industrial Reuse Revenues	_____	_____	_____ -
541.4	Reuse Revenues From Public Authorities	_____	_____	_____ -
541	Total Measured Reuse Revenues	_____	_____	\$ _____ -
544	Reuse Revenues From Other Systems	_____	_____	_____ -
Total Reclaimed Water Sales				\$ _____ -
Total Wastewater Operating Revenues				\$ <u>789,841</u>

* Customer is defined by Rule 25-30.210(1), Florida Administrative Code.

YEAR OF REPORT
31-Dec-08

UTILITY NAME: TIERRA VERDE UTILITIES INC

SYSTEM NAME / COUNTY: TIERRA VERDE / PINELLAS

WASTEWATER UTILITY EXPENSE ACCOUNT MATRIX

ACCT. NO.	ACCOUNT NAME	CURRENT YEAR	.1	.2	.3	.4	.5	.6
(a)	(b)	(c)	COLLECTION EXPENSES- OPERATIONS (d)	COLLECTION EXPENSES- MAINTENANCE (e)	PUMPING EXPENSES - OPERATIONS (f)	PUMPING EXPENSES - MAINTENANCE (g)	TREATMENT & DISPOSAL EXPENSES - OPERATIONS (h)	TREATMENT & DISPOSAL EXPENSES - MAINTENANCE (i)
			\$(606)	\$(606)	\$(606)	\$(606)	\$(606)	\$(606)
701	Salaries and Wages - Employees	7,037	-	-	-	-	-	-
703	Salaries and Wages - Officers, Directors and Majority Stockholders	2,579	-	-	-	-	-	-
704	Employee Pensions and Benefits	9,582	(604)	(604)	(604)	(604)	(604)	(604)
710	Purchased Sewage Treatment	349,546	-	-	-	-	349,546	-
711	Sludge Removal Expense	13,174	-	-	-	-	13,174	-
715	Purchased Power	4,871	1,624	1,624	1,624	1,624	1,624	-
716	Fuel for Power Purchased	-	-	-	-	-	-	-
718	Chemicals	1	0	0	0	0	0	0
720	Materials and Supplies	1,987	248	248	248	248	248	248
731	Contractual Services-Engineering	0	-	-	-	-	-	-
732	Contractual Services - Accounting	281	-	-	-	-	-	-
733	Contractual Services - Legal	331	-	-	-	-	-	-
734	Contractual Services - Mgt. Fees	-	-	-	-	-	-	-
735	Contractual Services - Testing	-	-	-	-	-	-	-
736	Contractual Services - Other	950	119	119	119	119	119	119
741	Rental of Building/Real Property	-	-	-	-	-	-	-
742	Rental of Equipment	-	-	-	-	-	-	-
750	Transportation Expenses	2,876	360	360	360	360	360	360
756	Insurance - Vehicle	-	-	-	-	-	-	-
757	Insurance - General Liability	-	-	-	-	-	-	-
758	Insurance - Workman's Comp.	14	2	2	2	2	2	2
759	Insurance - Other	2,718	340	340	340	340	340	340
760	Advertising Expense	6	-	-	-	-	-	-
766	Regulatory Commission Expenses - Amortization of Rate Case Expense	42,769	-	-	-	-	-	-
767	Regulatory Commission Exp.-Other	-	-	-	-	-	-	-
770	Bad Debt Expense	85	-	-	-	-	-	-
775	Miscellaneous Expenses	28,764	3,595	3,595	3,595	3,595	3,595	3,595
Total Wastewater Utility Expenses		467,571	5,077	3,453	5,077	3,453	367,797	3,453

S-10(a)
GROUP

UTILITY NAME: TIERRA VERDE UTILITIES INC

SYSTEM NAME / COUNTY: TIERRA VERDE / PINELLAS

WASTEWATER UTILITY EXPENSE ACCOUNT MATRIX

ACCT. NO.	ACCOUNT NAME (b)	.7 CUSTOMER ACCOUNTS EXPENSE (j)	.8 ADMIN. & GENERAL EXPENSES (k)	.9 RECLAIMED WATER TREATMENT EXPENSES- OPERATIONS (l)	.10 RECLAIMED WATER TREATMENT EXPENSES- MAINTENANCE (m)	.11 RECLAIMED WATER DISTRIBUTION EXPENSES- OPERATIONS (n)	.12 RECLAIMED WATER DISTRIBUTION EXPENSES- MAINTENANCE (o)
701	Salaries and Wages - Employees	\$ 3,374	\$ 7,301	\$ -	\$ -	\$ -	\$ -
703	Salaries and Wages - Officers, Directors and Majority Stockholders	-	2,579	-	-	-	-
704	Employee Pensions and Benefits	3,362	9,846	-	-	-	-
710	Purchased Sewage Treatment	-	-	-	-	-	-
711	Sludge Removal Expense	-	-	-	-	-	-
715	Purchased Power	-	-	-	-	-	-
716	Fuel for Power Purchased	-	-	-	-	-	-
718	Chemicals	-	-	-	-	-	-
720	Materials and Supplies	248	248	-	-	-	-
731	Contractual Services-Engineering	-	0	-	-	-	-
732	Contractual Services - Accounting	-	281	-	-	-	-
733	Contractual Services - Legal	-	331	-	-	-	-
734	Contractual Services - Mgt. Fees	-	-	-	-	-	-
735	Contractual Services - Testing	-	-	-	-	-	-
736	Contractual Services - Other	119	119	-	-	-	-
741	Rental of Building/Real Property	-	-	-	-	-	-
742	Rental of Equipment	-	-	-	-	-	-
750	Transportation Expenses	360	360	-	-	-	-
756	Insurance - Vehicle	-	-	-	-	-	-
757	Insurance - General Liability	-	-	-	-	-	-
758	Insurance - Workman's Comp.	2	2	-	-	-	-
759	Insurance - Other	340	340	-	-	-	-
760	Advertising Expense	-	6	-	-	-	-
766	Regulatory Commission Expenses - Amortization of Rate Case Expense	-	42,769	-	-	-	-
767	Regulatory Commission Exp.-Other	-	-	-	-	-	-
770	Bad Debt Expense	85	-	-	-	-	-
775	Miscellaneous Expenses	3,595	3,595	-	-	-	-
Total Wastewater Utility Expenses		\$ 11,485	\$ 67,776	\$ -	\$ -	\$ -	\$ -

UTILITY NAME:

TIERRA VERDE UTILITIES INC

YEAR OF REPORT 31-Dec-08

SYSTEM NAME / COUNTY :

TIERRA VERDE / PINELLAS

CALCULATION OF THE WASTEWATER SYSTEM METER EQUIVALENTS

WATER METER SIZE (a)	TYPE OF WATER METER (b)	EQUIVALENT FACTOR (c)	NUMBER OF WATER METERS (d)	TOTAL NUMBER OF METER EQUIVALENTS (c x d) (e)
All Residential	**	1.0	921	921
5/8"	Displacement	1.0	10	10
3/4"	Displacement	1.5		
1"	Displacement	2.5	20	50
1 1/2"	Displacement or Turbine	5.0	24	120
2"	Displacement, Compound or Turbine	8.0	35	280
3"	Displacement	15.0		
3"	Compound	16.0		
3"	Turbine	17.5		
4"	Displacement or Compound	25.0	1	25
4"	Turbine	30.0		
6"	Displacement or Compound	50.0	3	150
6"	Turbine	62.5		
8"	Compound	80.0		
8"	Turbine	90.0		
10"	Compound	115.0		
10"	Turbine	145.0		
12"	Turbine	215.0		
Total Wastewater System Meter Equivalents				1,556

CALCULATION OF THE WASTEWATER SYSTEM EQUIVALENT RESIDENTIAL CONNECTIONS

Provide a calculation used to determine the value of one wastewater equivalent residential connection (ERC).

Use one of the following methods:

(a) If actual flow data are available from the preceding 12 months, divide the total annual single family residence (SFR) gallons sold by the average number of single family residence customers for the same period and divide the result by 365 days.

(b) If no historical flow data are available, use:

$$ERC = (\text{Total SFR gallons treated (Omit 000)} / 365 \text{ days} / 280 \text{ gallons per day})$$

For wastewater only utilities:

Subtract all general use and other non residential customer gallons from the total gallons treated.

Divide the remainder (SFR customers) by 365 days to reveal single family residence customer gallons per day

NOTE: Total gallons treated includes both treated and purchased treatment.

ERC Calculation:

$$175.449/365/280=1.717 \text{ ERC's}$$

UTILITY NAME: TIERRA VERDE UTILITIES INC

YEAR OF REPORT
31-Dec-08

SYSTEM NAME / COUNTY : TIERRA VERDE / PINELLAS

WASTEWATER TREATMENT PLANT INFORMATION
Provide a separate sheet for each wastewater treatment facility

Permitted Capacity	All sewage pumped to City of St. Petersburg	_____	_____
Basis of Permit Capacity (1)	N/A	_____	_____
Manufacturer	N/A	_____	_____
Type (2)	N/A	_____	_____
Hydraulic Capacity	N/A	_____	_____
Average Daily Flow	0.480 mgd	_____	_____
Total Gallons of Wastewater Treated	175,449 mg	_____	_____
Method of Effluent Disposal	N/A	_____	_____

- (1) Basis of permitted capacity as stated on the Florida DEP WWTP Operating Permit (i.e. average annual daily flow, etc.)
- (2) Contact stabilization, advanced treatment, etc.

UTILITY NAME: TIERRA VERDE UTILITIES INC

YEAR OF REPORT
31-Dec-08

SYSTEM NAME / COUNTY TIERRA VERDE / PINELLAS

OTHER WASTEWATER SYSTEM INFORMATION

Furnish information below for each system. A separate page should be supplied where necessary.

1. Present number of ERCs* now being served _____ 1391 _____

2. Maximum number of ERCs* which can be served _____ 1560 _____

3. Present system connection capacity (in ERCs*) using existing lines _____ 1560 _____

4. Future connection capacity (in ERCs*) upon service area buildout _____ 1800 _____

5. Estimated annual increase in ERCs* _____ 0-5 _____

6. Describe any plans and estimated completion dates for any enlargements or improvements of this system

7. If the utility uses reuse as a means of effluent disposal, attach a list of the reuse end users and the amount of reuse provided to each, if known.

8. If the utility does not engage in reuse, has a reuse feasibility study been completed? _____ NA _____

If so, when? _____

9. Has the utility been required by the DEP or water management district to implement reuse? _____ NA _____

If so, what are the utility's plans to comply with this requirement? _____ NA _____

10. When did the company last file a capacity analysis report with the DEP? _____ 2007 _____

11. If the present system does not meet the requirements of DEP rules:

a. Attach a description of the plant upgrade necessary to meet the DEP rules.

b. Have these plans been approved by DEP? _____ N/A _____

c. When will construction begin? _____ N/A _____

d. Attach plans for funding the required upgrading.

e. Is this system under any Consent Order with DEP? _____ N/A _____

12. Department of Environmental Protection ID # _____ NA _____

* An ERC is determined based on the calculation on S-11.

Reconciliation of Revenue to
Regulatory Assessment Fee Revenue
Wastewater Operations

YEAR OF REPORT 31-Dec-08

UTILITY NAME: **TIERRA VERDE UTILITIES INC**

	(A)	(B)	(C)	(D)
Accounts			Gross Wastewater Revenues per RAF Return	Difference (B)-(C)
	Gross Wastewater Revenues per Sch S-9			
Gross Revenues:				
Total Flat-Rate Revenues		789,391		789,391
Total Measured Revenues		-		0
Revenues from Public Authorities		-		
Revenues from Other Systems		-		
Interdepartmental Revenues		-		
Total Other Wastewater Revenues		450		450
Reclaimed Water Sales				
Total Wastewater Operating Revenue		789,841	-	789,841
Less: Expense for Purchased Wastewater from FPSC Regulated Utility				
Net Wastewater Operating Revenues		789,841	-	789,841