

CLASS "A" OR "B"

**OFFICIAL COPY**  
Public Service Commission  
Do Not Remove From This Office

WATER AND/OR WASTEWATER UTILITIES  
(Gross Revenue of More Than \$200,000 Each)

**ANNUAL REPORT**

OF

SU682-09-AR

**TIERRA VERDE UTILITIES INC**

---

Exact Legal Name of Respondent

**058-S**

Certificate Number(s)

Submitted To The

STATE OF FLORIDA

FOR THE

YEAR ENDED

**31-Dec-09**

Form PSC/WAW 3 (Rev. 12/99)

REGULATORY SERVICES

10 MAY -5 AM 7:25

REGULATORY SERVICES

## GENERAL INSTRUCTIONS

1. Prepare this report in conformity with the 1996 National Association of Regulatory Utility Commissioners Uniform System of Accounts for Water and/or Wastewater Utilities (USOA).
2. Interpret all accounting words and phrases in accordance with the USOA.
3. Complete each question fully and accurately, even if it has been answered in a previous annual report. Enter the word "None" where it truly and completely states the fact.
4. For any question, section, or page which is not applicable to the respondent, enter the words "Not Applicable". Do not omit any pages.
5. Where dates are called for, the month and day should be stated as well as the year.
6. All schedules requiring dollar entries should be rounded to the nearest dollar unless otherwise specifically indicated.
7. Complete this report by means which result in a permanent record, such as by computer or typewriter.
8. If there is not enough room on any schedule, an additional page or pages may be added; provided the format of the added schedule matches the format of the schedule with not enough room. Such a schedule should reference the appropriate schedules, state the name of the utility, and state the year of the report.
9. If it is necessary or desirable to insert additional statements for the purpose of further explanation of schedules, such statement should be made at the bottom of the page or an additional page inserted. Any additional pages should state the name of the utility, the year of the report, and reference the appropriate schedule.
10. For water and wastewater utilities with more than one rate group and/or system, water and wastewater pages should be completed for each rate group and/or system group. These pages should be grouped together and tabbed by rate group and/or system.
11. All other water and wastewater operations not regulated by the Commission and other regulated industries should be reported as "Other than Reporting Systems".
12. Financial information for multiple systems charging rates which are covered under the same tariff should be reported as one system. However, the engineering data must be reported by individual system.
13. For water and wastewater utilities with more than one system, one (1) copy of workpapers showing the consolidation of systems for the operating sections, should be filed with the annual report.
14. The report should be filled out in quadruplicate and the original and two copies returned by March 31, of the year following the date of the report. The report should be returned to:

**Florida Public Service Commission  
Division of Water and Wastewater  
2540 Shumard Oak Boulevard  
Tallahassee, Florida 32399-0873**

The fourth copy should be retained by the utility.

**TABLE OF CONTENTS**

SCHEDULE	PAGE	SCHEDULE	PAGE
<b>EXECUTIVE SUMMARY</b>			
Certification	E-1	Business Contracts with Officers, Directors and Affiliates	E-7
General Information	E-2	Affiliation of Officers & Directors	E-8
Directory of Personnel Who Contact the FPSC	E-3	Businesses which are a Byproduct, Coproduct or Joint Product Result of Providing Service	E-9
Company Profile	E-4	Business Transactions with Related Parties. Part I and II	E-10
Parent / Affiliate Organization Chart	E-5		
Compensation of Officers & Directors	E-6		
<b>FINANCIAL SECTION</b>			
Comparative Balance Sheet - Assets and Other Debits	F-1	Unamortized Debt Discount / Expense / Premium	F-13
Comparative Balance Sheet - Equity Capital and Liabilities	F-2	Extraordinary Property Losses	F-13
Comparative Operating Statement	F-3	Miscellaneous Deferred Debits	F-14
Schedule of Year End Rate Base	F-4	Capital Stock	F-15
Schedule of Year End Capital Structure	F-5	Bonds	F-15
Capital Structure Adjustments	F-6	Statement of Retained Earnings	F-16
Utility Plant	F-7	Advances from Associated Companies	F-17
Utility Plant Acquisition Adjustments	F-7	Long Term Debt	F-17
Accumulated Depreciation	F-8	Notes Payable	F-18
Accumulated Amortization	F-8	Accounts Payable to Associated Companies	F-18
Regulatory Commission Expense - Amortization of Rate Case Expense	F-9	Accrued Interest and Expense	F-19
Nonutility Property	F-9	Misc. Current & Accrued Liabilities	F-20
Special Deposits	F-9	Advances for Construction	F-21
Investments and Special Funds	F-10	Other Deferred Credits	F-21
Accounts and Notes Receivable - Net	F-11	Contributions In Aid of Construction	F-22
Accounts Receivable from Associated Companies	F-12	Accumulated Amortization of CIAC	F-23
Notes Receivable from Associated Companies	F-12	Reconciliation of Reported Net Income with Taxable Income for Federal Income Taxes	F-23
Miscellaneous Current & Accrued Assets	F-12		

**TABLE OF CONTENTS**

<b>SCHEDULE</b>	<b>PAGE</b>	<b>SCHEDULE</b>	<b>PAGE</b>
<b>WATER OPERATION SECTION</b>			
Listing of Water System Groups	W-1	CIAC Additions / Amortization	W-8
Schedule of Year End Water Rate Base	W-2	Water Operating Revenue	W-9
Water Operating Statement	W-3	Water Utility Expense Accounts	W-10
Water Utility Plant Accounts	W-4	Pumping and Purchased Water Statistics, Source Supply	W-11
Basis for Water Depreciation Charges	W-5	Water Treatment Plant Information	W-12
Analysis of Entries in Water Depreciation Reserve	W-6	Calculation of ERC's	W-13
Contributions In Aid of Construction	W-7	Other Water System Information	W-14
<b>WASTEWATER OPERATION SECTION</b>			
Listing of Wastewater System Groups	S-1	Contributions In Aid of Construction	S-7
Schedule of Year End Wastewater Rate Base	S-2	CIAC Additions / Amortization	S-8
Wastewater Operating Statement	S-3	Wastewater Utility Expense Accounts	S-9
Wastewater Utility Plant Accounts	S-4	Wastewater Operating Revenue	S-10
Analysis of Entries in Wastewater Depreciat Reserve	S-5	Calculation of ERC's	S-11
Basis for Wastewater Depreciation Charges	S-6	Wastewater Treatment Plant Information	S-12
		Other Wastewater System Information	S-13

# **EXECUTIVE SUMMARY**

**CERTIFICATION OF ANNUAL REPORT**

I HEREBY CERTIFY, to the best of my knowledge and belief:

YES NO

1. The utility is in substantial compliance with the Uniform System of Accounts prescribed by the Florida Public Service Commission.

YES NO

2. The utility is in substantial compliance with all applicable rules and orders of the Florida Public Service Commission.

YES NO

3. There have been no communications from regulatory agencies concerning noncompliance with, or deficiencies in, financial reporting practices that could have a material effect on the financial statement of the utility.

YES NO

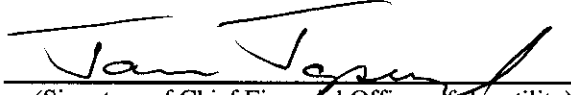
4. The annual report fairly represents the financial condition and results of operations of the respondent for the period presented and other information and statements presented in the report as to the business affairs of the respondent are true, correct and complete for the period for which it represents.

Items Certified

1. 2. 3. 4.

\_\_\_\_\_  
(Signature of Chief Executive Officer of the utility) \*

1. 2. 3. 4.

  
\_\_\_\_\_  
(Signature of Chief Financial Officer of the utility) \*

\* Each of the four items must be certified YES or NO. Each item need not be certified by both officers. The items being certified by the officer should be indicated in the appropriate area to the left of the signature.

**NOTICE:** Section 837.06, Florida Statutes, provides that any person who knowingly makes a false statement in writing with the intent to mislead a public servant in the performance of his duty shall be guilty of a misdemeanor of the second degree.

ANNUAL REPORT OF

YEAR OF REPORT  
31-Dec-09

**TIERRA VERDE UTILITIES INC**  
(Exact Name of Utility)

County: **TIERRA VERDE / PINELLAS**

List below the exact mailing address of the utility for which normal correspondence should be sent:

2335 SANDERS ROAD  
NORTHBROOK IL 60062

Telephone: 847-498-6440

E Mail Address: NONE

WEB Site: NONE

Sunshine State One-Call of Florida, Inc. Member Number **TVU484**

Name and address of person to whom correspondence concerning this report should be addressed:

JOHN HAYNES  
2335 SANDERS ROAD  
NORTHBROOK IL 60062

Telephone: 847-498-6440

List below the address of where the utility's books and records are located:

2335 SANDERS ROAD  
NORTHBROOK IL 60062

Telephone: 847-498-6440

List below any groups auditing or reviewing the records and operations:

PRICEWATERHOUSECOOPERS

Date of original organization of the utility: **03/01/77**

Check the appropriate business entity of the utility as filed with the Internal Revenue Service

Individual  Partnership  Sub S Corporation  1120 Corporation

List below every corporation or person owning or holding directly or indirectly 5% or more of the voting securities of the utility:

	Name	Percent Ownership
1.	UTILITIES INC	100%
2.		
3.		
4.		
5.		
6.		
7.		
8.		





**COMPANY PROFILE**

Provide a brief narrative company profile which covers the following areas:

- A. Brief company history.
- B. Public services rendered.
- C. Major goals and objectives.
- D. Major operating divisions and functions.
- E. Current and projected growth patterns.
- F. Major transactions having a material effect on operations.

A.	During 1992, 100% of the stock to this company was acquired by Utilities, Inc. The Company provides sewer service to approximately 1700 Customers.
B.	The Company supplies sewer services only.
C.	Provide adequate sewerage and disposal services and earn a fair return
D.	Sewer division only
E.	Anticipated growth of approximately ten (10) new taps per year.

PARENT / AFFILIATE ORGANIZATION CHART

Current as of                      12/31/2009

Complete below an organizational chart that show all parents, subsidiaries and affiliates of the utility.  
The chart must also show the relationship between the utility and affiliates listed on E-7, E-10(a) and E-10(b).

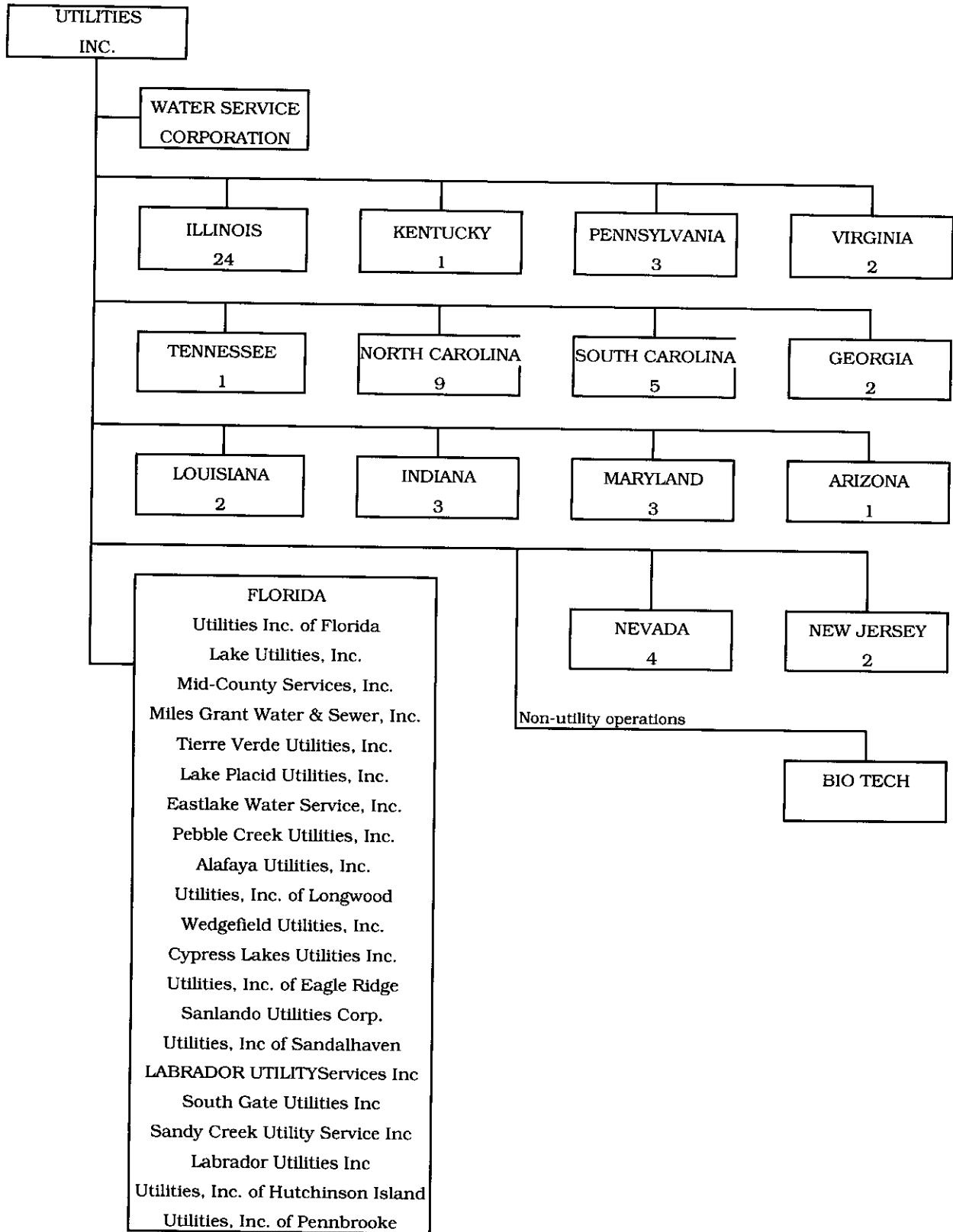
UTILITIES, INC. -- PARENT COMPANY

WATER SERVICE CORP. -- SERVICE COMPANY SUPPLYING MOST SERVICES REQUIRED BY UTILITY.

UTILITIES INC. of FLORIDA -- provides office personnel and administrative staff.

SEE ATTACHED

## Parent And Affiliate Organizational Chart



UTILITIES, INC. - Parent Company

WATER SERVICE CORP. - Service organization providing administrative and other service functions for the utility.

NOTE: Within each state except Florida is the number of companies owned.

**COMPENSATION OF OFFICERS**

For each officer, list the time spent on respondent as an officer compared to time spent on total business activities and the compensation received as an officer from the respondent.			
NAME (a)	TITLE (b)	% OF TIME SPENT AS OFFICER OF THE UTILITY (c)	OFFICERS' COMPENSATION (d)
LISA A SPARROW	PRESIDENT	N/A	\$ NONE
JOHN HOY	VP OPERATIONS	N/A	NONE
JIM JAPCZYK	VP & TREASURER	N/A	NONE
JOHN R STOVER	VP & SECRETARY	N/A	NONE
RICK DURHAM	REGIONAL VP	N/A	NONE

**COMPENSATION OF DIRECTORS**

For each director, list the number of director meetings attended by each director and the compensation received as a director from the respondent.			
NAME (a)	TITLE (b)	NUMBER OF DIRECTORS' MEETINGS ATTENDED (c)	DIRECTORS' COMPENSATION (d)
LISA A SPARROW	DIRECTOR	1	\$ NONE
JOHN R STOVER	DIRECTOR	1	NONE

**BUSINESS CONTRACTS WITH OFFICERS, DIRECTORS AND AFFILIATES**

<p>List all contracts, agreements, or other business arrangements* entered into during the calendar year (other than compensation related to position with Respondents) between the Respondent and officer and director listed on page E-6. In addition, provide the same information with respect to professional services for each firm, partnership, or organization with which the officer or director is affiliated.</p>				
<b>NAME OF OFFICER, DIRECTOR OR AFFILIATE</b> (a)	<b>IDENTIFICATION OF SERVICE OR PRODUCT</b> (b)	<b>AMOUNT</b> (c)	<b>NAME AND ADDRESS OF AFFILIATED ENTITY</b> (d)	
NO BUSINESS CONTRACTS, AGREEMENTS OR OTHER ARRANGEMENTS WERE ENTERED INTO DURING THE CURRENT YEAR BY THE OFFICERS LISTED ON PAGE E6, THE DIRECTORS OR AFFILIATES.		\$		

\* Business Agreement, for this schedule, shall mean any oral or written business deal which binds the concerned parties for products or services during the reporting year or future years. Although the Respondent and/or other companies will benefit from the arrangement, the officer or director is, however, acting on his behalf or for the benefit of other companies or persons.

**AFFILIATION OF OFFICERS AND DIRECTORS**

For each of the officials listed on page E-6, list the principle occupation or business affiliations or connections with any other business or financial organizations, firms, or partnerships. For purposes of this part, an official will be considered to have an affiliation with any business or financial organization, firm or partnership in which he is an officer, director, trustee, partner, or a person exercising similar functions.

NAME (a)	PRINCIPLE OCCUPATION OR BUSINESS AFFILIATION (b)	AFFILIATION OR CONNECTION (c)	NAME AND ADDRESS OF AFFILIATION OR CONNECTION (d)
LISA A SPARROW	PRESIDENT & CEO	DIRECTOR/OFFICER	UTILITIES INC & SUBSIDIARIES NORTHBROOK IL
JOHN HOY	VP OPERATIONS	OFFICER	UTILITIES INC & SUBSIDIARIES NORTHBROOK IL
JIM JAPCZYK	VP & TREASURER	OFFICER	UTILITIES INC & SUBSIDIARIES NORTHBROOK IL
JOHN R STOVER	VP & SECRETARY	OFFICER	UTILITIES INC & SUBSIDIARIES NORTHBROOK IL
RICK DURHAM	REGIONAL VP	OFFICER	UTILITIES INC & SUBSIDIARIES ALTAMONTE SPRINGS, FL

**BUSINESSES WHICH ARE A BY-PRODUCT, COPRODUCT OR JOINT-PRODUCT  
RESULT OF PROVIDING WATER OR WASTEWATER SERVICE**

Complete the following for any business which is conducted as a byproduct, coproduct, or joint product as a result of providing water and / or wastewater service. This would include any business which requires the use of utility land and facilities. Examples of these types of businesses would be orange groves, nurseries, tree farms, fertilizer manufacturing, etc. This would not include any business for which the assets are properly included in Account 121 - Nonutility Property along with the associated revenue and expenses segregated out as nonutility also.

BUSINESS OR SERVICE CONDUCTED (a)	ASSETS			REVENUES		EXPENSES	
	BOOK COST OF ASSETS (b)	ACCOUNT NUMBER (c)	REVENUES GENERATED (d)	ACCOUNT NUMBER (e)	EXPENSES INCURRED (f)	ACCOUNT NUMBER (g)	
NO BUSINESS WHICH ARE	\$		\$		\$		
A BYPRODUCT, COPRODUCT OR JOINT PRODUCT RESULTING FROM PROVIDING WATER AND/OR SEWER SERVICE.							

**BUSINESS TRANSACTIONS WITH RELATED PARTIES**

List each contract, agreement, or other business transaction exceeding a cumulative amount of \$500 in any on year, entered into between the Respondent and a business or financial organization, firm, or partnership named on pages E-2 and E-6, identifying the parties, amounts, dates and product, and asset, or service involved.

Part I. Specific Instructions: Services and Products Received or Provided

1. Enter in this part all transactions involving services and products received or provided.

2. Below are some types of transactions to include:

- management, legal and accounting services
- computer services
- engineering & construction services
- repairing and servicing of equipment

- material and supplies furnished
- leasing of structures, land, and equipment
- rental transactions
- sale, purchase or transfer of various products

NAME OF COMPANY OR RELATED PARTY (a)	DESCRIPTION SERVICE AND/OR NAME OF PRODUCT (b)	CONTRACT OR AGREEMENT EFFECTIVE DATES (c)	ANNUAL CHARGES (P)urchased (S)old (d)	AMOUNT (e)
WATER SERVICE CORP/ FLORIDA REGIONAL	Operators/Admin/Officers Salaries & Benefit	Continuous	Purchase	81,911
	Materials & Supplies	Continuous	Purchase	8,205
	Contractual Services	Continuous	Purchase	5,780
	Transportation Expenses	Continuous	Purchase	9,931
	Insurance	Continuous	Purchase	16,306
	Advertising	Continuous	Purchase	
	Regulatory Expenses	Continuous	Purchase	417
	Bad Debt Expense	Continuous	Purchase	91
	Miscellaneous	Continuous	Purchase	30,625





**FINANCIAL  
SECTION**

---

UTILITY NAME: **TIERRA VERDE UTILITIES INC**

**COMPARATIVE BALANCE SHEET  
ASSETS AND OTHER DEBITS**

ACCT. NO. (a)	ACCOUNT NAME (b)	REF. PAGE (c)	PREVIOUS YEAR (d)	CURRENT YEAR (e)
<b>UTILITY PLANT</b>				
101-106	Utility Plant	F-7	\$ 4,374,001	\$ 4,446,905
108-110	Less: Accumulated Depreciation and Amortization	F-8	2,423,916	2,505,924
Net Plant			\$ 1,562,333	\$ 1,940,981
114-115	Utility Plant Acquisition adjustment (Net)	F-7	269,960	269,960
116 *	Other Utility Plant Adjustments			
Total Net Utility Plant			\$ 2,220,045	\$ 2,210,941
<b>OTHER PROPERTY AND INVESTMENTS</b>				
121	Nonutility Property	F-9	\$ -	\$ -
122	Less: Accumulated Depreciation and Amortization		-	-
Net Nonutility Property			\$ -	\$ -
123	Investment In Associated Companies	F-10	-	-
124	Utility Investments	F-10	-	-
125	Other Investments	F-10	-	-
126-127	Special Funds	F-10	-	-
Total Other Property & Investments			\$ -	\$ -
<b>CURRENT AND ACCRUED ASSETS</b>				
131	Cash		\$ -	\$ -
132	Special Deposits	F-9	-	-
133	Other Special Deposits	F-9	-	-
134	Working Funds		-	-
135	Temporary Cash Investments		-	-
141-144	Accounts and Notes Receivable, Less Accumulated Provision for Uncollectible Accounts	F-11	104,185	140,230
145	Accounts Receivable from Associated Companies	F-12	(140,004)	89,724
146	Notes Receivable from Associated Companies	F-12	-	-
151-153	Material and Supplies		-	1,860
161	Stores Expense		-	-
162	Prepayments		-	-
171	Accrued Interest and Dividends Receivable		-	-
172 *	Rents Receivable		-	-
173 *	Accrued Utility Revenues		-	-
174	Misc. Current and Accrued Assets	F-12	-	-
Total Current and Accrued Assets			\$ (35,819)	\$ 231,814

\* Not Applicable for Class B Utilities

UTILITY NAME: TIERRA VERDE UTILITIES INC

**COMPARATIVE BALANCE SHEET**  
**ASSETS AND OTHER DEBITS**

ACCT. NO. (a)	ACCOUNT NAME (b)	REF. PAGE (c)	PREVIOUS YEAR (d)	CURRENT YEAR (e)
	<b>DEFERRED DEBITS</b>			
181	Unamortized Debt Discount & Expense	F-13	\$ _____	\$ _____ -
182	Extraordinary Property Losses	F-13	_____	_____ -
183	Preliminary Survey & Investigation Charges		_____	_____ -
184	Clearing Accounts		_____	_____ -
185 *	Temporary Facilities		_____	_____ -
186	Misc. Deferred Debits	F-14	141,584	117,688
187 *	Research & Development Expenditures		-	-
190	Accumulated Deferred Income Taxes		-	-
Total Deferred Debits			\$ 141,584	\$ 117,688
<b>TOTAL ASSETS AND OTHER DEBITS</b>			\$ <u>2,325,811</u>	\$ <u>2,560,443</u>

\* Not Applicable for Class B Utilities

**NOTES TO THE BALANCE SHEET**

The space below is provided for important notes regarding the balance sheet.

UTILITY NAME: TIERRA VERDE UTILITIES INC

**COMPARATIVE BALANCE SHEET  
EQUITY CAPITAL AND LIABILITIES**

ACCT. NO. (a)	ACCOUNT NAME (b)	REF. PAGE (c)	PREVIOUS YEAR (d)	CURRENT YEAR (e)
<b>EQUITY CAPITAL</b>				
201	Common Stock Issued	F-15	\$ 1,000	\$ 1,000
204	Preferred Stock Issued	F-15	-	-
202, 205 *	Capital Stock Subscribed		-	-
203, 206 *	Capital Stock Liability for Conversion		-	-
207 *	Premium on Capital Stock		-	-
209 *	Reduction in Par or Stated Value of Capital Stock		-	-
210 *	Gain on Resale or Cancellation of Reacquired Capital Stock		-	-
211	Other Paid - In Capital		1,744,175	1,845,562
212	Discount On Capital Stock		-	-
213	Capital Stock Expense		-	-
214-215	Retained Earnings	F-16	(57,677)	(31,387)
216	Reacquired Capital Stock		-	-
218	Proprietary Capital (Proprietorship and Partnership Only)		-	-
<b>Total Equity Capital</b>			<b>\$ 1,687,498</b>	<b>\$ 1,815,175</b>
<b>LONG TERM DEBT</b>				
221	Bonds	F-15	-	-
222 *	Reacquired Bonds		-	-
223	Advances from Associated Companies	F-17	(479,868)	(479,868)
224	Other Long Term Debt	F-17	-	-
<b>Total Long Term Debt</b>			<b>\$ (479,868)</b>	<b>\$ (479,868)</b>
<b>CURRENT AND ACCRUED LIABILITIES</b>				
231	Accounts Payable		43,634	35,774
232	Notes Payable	F-18	-	-
233	Accounts Payable to Associated Companies	F-18	541,928	541,928
234	Notes Payable to Associated Companies	F-18	-	-
235	Customer Deposits		-	-
236	Accrued Taxes		21,895	31,637
237	Accrued Interest	F-19	-	-
238	Accrued Dividends		-	-
239	Matured Long Term Debt		-	-
240	Matured Interest		-	-
241	Miscellaneous Current & Accrued Liabilities	F-20	-	-
<b>Total Current &amp; Accrued Liabilities</b>			<b>\$ 607,457</b>	<b>\$ 609,339</b>

\* Not Applicable for Class B Utilities

UTILITY NAME: TIERRA VERDE UTILITIES INC

**COMPARATIVE BALANCE SHEET  
EQUITY CAPITAL AND LIABILITIES**

ACCT. NO. (a)	ACCOUNT NAME (b)	REF. PAGE (c)	PREVIOUS YEAR (d)	CURRENT YEAR (e)
<b>DEFERRED CREDITS</b>				
251	Unamortized Premium On Debt	F-13	\$ _____	\$ _____
252	Advances For Construction	F-20	_____	_____
253	Other Deferred Credits	F-21	_____	_____
255	Accumulated Deferred Investment Tax Credits		-	-
Total Deferred Credits			\$ _____	\$ _____
<b>OPERATING RESERVES</b>				
261	Property Insurance Reserve		\$ _____	\$ _____
262	Injuries & Damages Reserve		_____	_____
263	Pensions and Benefits Reserve		_____	_____
265	Miscellaneous Operating Reserves		_____	_____
Total Operating Reserves			\$ _____	\$ _____
<b>CONTRIBUTIONS IN AID OF CONSTRUCTION</b>				
271	Contributions in Aid of Construction	F-22	\$ 1,739,677	\$ 1,790,992
272	Accumulated Amortization of Contributions in Aid of Construction	F-22	1,343,309	1,295,146
Total Net C.I.A.C.			\$ 396,369	\$ 495,846
<b>ACCUMULATED DEFERRED INCOME TAXES</b>				
281	Accumulated Deferred Income Taxes - Accelerated Depreciation		\$ 116,604	\$ 131,533
282	Accumulated Deferred Income Taxes - Liberalized Depreciation		-	-
283	Accumulated Deferred Income Taxes - Other		(2,248)	(11,586)
Total Accumulated Deferred Income Tax			\$ 114,356	\$ 119,947
<b>TOTAL EQUITY CAPITAL AND LIABILITIES</b>			\$ 2,325,811	\$ 2,560,439

UTILITY NAME: **TIERRA VERDE UTILITIES INC**

**COMPARATIVE OPERATING STATEMENT**

ACCT. NO. (a)	ACCOUNT NAME (b)	REF. PAGE (c)	PREVIOUS YEAR (d)	CURRENT YEAR * (e)
	<b>UTILITY OPERATING INCOME</b>			
400	Operating Revenues	F-3(b)	\$ 789,841	\$ 904,523
469, 530	Less: Guaranteed Revenue and AFPI	F-3(b)		
	Net Operating Revenues		\$ 789,841	\$ 904,523
401	Operating Expenses	F-3(b)	\$ 467,571	\$ 607,712
403	Depreciation Expense:	F-3(b)	\$ 124,853	\$ 66,540
	Less: Amortization of CIAC	F-22	(44,606)	51,846
	Net Depreciation Expense		\$ 80,246	\$ 118,386
406	Amortization of Utility Plant Acquisition Adjustment	F-3(b)	-	-
407	Amortization Expense (Other than CIAC)	F-3(b)	-	-
408	Taxes Other Than Income	W/S-3	33,013	57,778
409	Current Income Taxes	W/S-3	45,001	24,236
410.10	Deferred Federal Income Taxes	W/S-3	981	4,489
410.11	Deferred State Income Taxes	W/S-3	169	769
411.10	Provision for Deferred Income Taxes - Credit	W/S-3	-	-
412.10	Investment Tax Credits Deferred to Future Periods	W/S-3	-	-
412.11	Investment Tax Credits Restored to Operating Income	W/S-3	-	-
	Utility Operating Expenses		\$ 626,981	\$ 813,370
	Net Utility Operating Income		\$ 162,861	\$ 91,153
469, 530	Add Back: Guaranteed Revenue and AFPI	F-3(b)	-	-
413	Income From Utility Plant Leased to Others		-	-
414	Gains (losses) From Disposition of Utility Property		54	58
420	Allowance for Funds Used During Construction		(356)	-
	Total Utility Operating Income [Enter here and on Page F-3(c)]		\$ 162,559	\$ 91,211

\* For each account, Column e should agree with Cloum f, g and h on F-3(b)

**COMPARATIVE OPERATING STATEMENT (Cont'd)**

WATER SCHEDULE W-3 * (f)	WASTEWATER SCHEDULE S-3 * (g)	OTHER THAN REPORTING SYSTEMS (h)
\$ -	\$ 904,523	\$ -
\$ -	\$ 904,523	\$ -
\$ -	\$ 607,712	\$ -
-	66,540	-
-	51,846	-
\$ -	\$ 118,386	\$ -
-	-	-
-	-	-
-	57,778	-
-	24,236	-
-	4,489	-
-	769	-
-	-	-
-	-	-
-	-	-
-	-	-
\$ -	\$ 813,370	\$ -
\$ -	\$ 91,153	\$ -
-	-	-
-	-	-
-	58	-
-	-	-
\$ -	\$ 91,211	\$ -

\* Total of Schedules W-3 / S-3 for all rate groups.



UTILITY NAME: TIERRA VERDE UTILITIES INC

**COMPARATIVE OPERATING STATEMENT (Cont'd)**

ACCT. NO. (a)	ACCOUNT NAME (b)	REF. PAGE (c)	PREVIOUS YEAR (d)	CURRENT YEAR (e)
Total Utility Operating Income [from page F-3(a)]			\$ 162,559	\$ 91,211
<b>OTHER INCOME AND DEDUCTIONS</b>				
415	Revenues-Merchandising, Jobbing, and Contract Deductions		\$ -	\$ -
416	Costs & Expenses of Merchandising Jobbing, and Contract Work		-	-
419	Interest and Dividend Income		-	-
421	Nonutility Income		-	-
426	Miscellaneous Nonutility Expenses		-	-
Total Other Income and Deductions			\$ -	\$ -
<b>TAXES APPLICABLE TO OTHER INCOME</b>				
408.2	Taxes Other Than Income		\$ -	\$ -
409.2	Income Taxes		-	-
410.2	Provision for Deferred Income Taxes		-	-
411.2	Provision for Deferred Income Taxes - Credit		-	-
412.2	Investment Tax Credits - Net		-	-
412.3	Investment Tax Credits Restored to Operating Income		-	-
Total Taxes Applicable To Other Income			\$ -	\$ -
<b>INTEREST EXPENSE</b>				
427	Interest Expense	F-19	\$ 86,299	\$ 64,921
428	Amortization of Debt Discount & Expense	F-13	-	-
429	Amortization of Premium on Debt	F-13	-	-
Total Interest Expense			\$ 86,299	\$ 64,921
<b>EXTRAORDINARY ITEMS</b>				
433	Extraordinary Income		\$ -	\$ -
434	Extraordinary Deductions		-	-
409.3	Income Taxes, Extraordinary Items		-	-
Total Extraordinary Items			\$ -	\$ -
<b>NET INCOME</b>			<u>\$ 76,260</u>	<u>\$ 26,290</u>

Explain Extraordinary Income:

NONE

---



---



---



---

UTILITY NAME: TIERRA VERDE UTILITIES INC

**SCHEDULE OF YEAR END RATE BASE**

ACCT. NO. (a)	ACCOUNT NAME (b)	REF. PAGE (c)	WATER UTILITY (d)	WASTEWATER UTILITY (e)
101	Utility Plant In Service	F-7	\$ -	\$ 4,446,905
	Less:			
	Nonused and Useful Plant (1)		-	2,505,924
108	Accumulated Depreciation	F-8	-	-
110	Accumulated Amortization	F-8	-	1,790,992
271	Contributions In Aid of Construction	F-22	-	-
252	Advances for Construction	F-20	-	-
Subtotal			\$ -	\$ 149,988
	Add:			
272	Accumulated Amortization of Contributions in Aid of Construction	F-22	-	1,295,146
Subtotal			\$ -	\$ 1,445,134
	Plus or Minus:			
114	Acquisition Adjustments (2)	F-7	-	351,207
115	Accumulated Amortization of Acquisition Adjustments (2)	F-7	-	(81,247)
	Working Capital Allowance (3)		-	75,964
	Other (Specify):			
	_____			
	_____			
	_____			
<b>RATE BASE</b>			\$ -	\$ 1,953,552
<b>NET UTILITY OPERATING INCOME</b>			\$ -	\$ 91,153
<b>ACHIEVED RATE OF RETURN (Operating Income / Rate Base)</b>				<u>4.67%</u>

**NOTES :**

- (1) Estimate based on the methodology used in the last rate proceeding.
- (2) Include only those Acquisition Adjustments that have been approved by the Commission.
- (3) Calculation consistent with last rate proceeding.  
In absence of a rate proceeding, Class A utilities will use the Balance Sheet Method and Class B Utilities will use the One-eighth Operating and Maintenance Expense Method.

UTILITY NAME: TIERRA VERDE UTILITIES INC

**SCHEDULE OF CURRENT COST OF CAPITAL  
CONSISTENT WITH THE METHODOLOGY USED IN THE LAST RATE PROCEEDING (1)**

CLASS OF CAPITAL (a)	DOLLAR AMOUNT (2) (b)	PERCENTAGE OF CAPITAL (c)	ACTUAL COST RATES (3) (d)	WEIGHTED COST (c x d) (e)
Common Equity	\$ 746,139	38.21%	11.45%	4.37%
Preferred Stock	-	0.00%	0.00%	0.00%
Long Term Debt	851,449	43.60%	6.60%	2.88%
Short Term Debt	235,449	12.06%	3.75%	0.45%
Customer Deposits	-	0.00%	0.00%	0.00%
Tax Credits - Zero Cost	-	0.00%	0.00%	0.00%
Tax Credits - Weighted Cost	-	0.00%	0.00%	0.00%
Deferred Income Taxes	119,947	6.14%	0.00%	0.00%
Other (Explain) Short Term Debt	-	0.00%	0.00%	0.00%
<b>Total</b>	<b>\$ 1,952,985</b>	<b>100.00%</b>		<b>7.70%</b>

1 If the utility's capital structure is not used, explain which capital structure is used.

\_\_\_\_\_

\_\_\_\_\_

2 Should equal amounts on Schedule F-6, Column (g).

3 Mid-point of the last authorized Return On Equity or current leverage formula if none has been established.

Must be calculated using the same methodology used in the last rate proceeding using current annual report year end amounts and cost rates.

**APPROVED RETURN ON EQUITY**

Current Commission Return on Equity:	<u>11.45%</u>
Commission order approving Return on Equity:	<u>PSC-07-0082-PAA-SU</u>

**APPROVED AFUDC RATE**

COMPLETION ONLY REQUIRED IF AFUDC WAS CHARGED DURING YEAR

Current Commission Approved AFUDC rate:	<u>9.03%</u>
Commission order approving AFUDC rate:	<u>PSC-04-0262-PAA-WS</u>

If any utility capitalized any charge in lieu of AFUDC (such as interest only), state the basis of the charge, an explanation as to why AFUDC was not charged and the percentage capitalized.

UTILITY NAME: TIERRA VERDE UTILITIES INC

SCHEDULE OF CAPITAL STRUCTURE ADJUSTMENTS  
CONSISTENT WITH THE METHODOLOGY USED IN THE LAST RATE PROCEEDING

CLASS OF CAPITAL (a)	PER BOOK BALANCE (b)	NON-UTILITY ADJUSTMENTS (c)	NON-JURISDICTIONAL ADJUSTMENTS (d)	OTHER (1) ADJUSTMENTS SPECIFIC (e)	OTHER (1) ADJUSTMENTS PRO RATA (f)	CAPITAL STRUCTURE (g)
Common Equity	\$ 157,737,014				\$ (156,990,875)	746,139
Preferred Stock	-				(179,148,551)	851,449
Long Term Debt	180,000,000				(49,539,551)	235,449
Short Term Debt	49,775,000					-
Customer Deposits	-					-
Tax Credits - Zero Cost	-					-
Tax Credits - Weighted Cost	119,947					119,947
Deferred Inc. Taxes	-					-
Other (Explain) Short Term Debt	-					-
Total	\$ 387,631,961	\$			\$ (385,678,976)	\$ 1,952,985

(1) Explain below all adjustments made in Columns (e) and (f):

NOT APPLICABLE

UTILITY NAME: **TIERRA VERDE UTILITIES INC**

**UTILITY PLANT  
ACCOUNTS 101 - 106**

ACCT. (a)	DESCRIPTION (b)	WATER (c)	WASTEWATER (d)	OTHER THAN REPORTING SYSTEMS (e)	TOTAL (f)
101	Plant Accounts: Utility Plant In Service	\$ -	\$ 4,446,904	\$ -	\$ 4,446,904
102	Utility Plant Leased to Other	-	-	-	-
103	Property Held for Future Use	-	-	-	-
104	Utility Plant Purchased or Sold	-	-	-	-
105	Construction Work in Progress	-	1	-	1
106	Completed Construction Not Classified	-	-	-	-
	<b>Total Utility Plant</b>	\$ -	\$ 4,446,905	\$ -	\$ 4,446,905

**UTILITY PLANT ACQUISITION ADJUSTMENTS  
ACCOUNTS 114 AND 115**

Report each acquisition adjustment and related accumulated amortization separately.  
For any acquisition adjustments approved by the Commission, include the Order Number.

ACCT. (a)	DESCRIPTION (b)	WATER (c)	WASTEWATER (d)	OTHER THAN REPORTING SYSTEMS (e)	TOTAL (f)
114	Acquisition Adjustment	\$ -	351,207	-	351,207
		-	-	-	-
		-	-	-	-
	<b>Total Plant Acquisition Adjustments</b>	\$ -	\$ 351,207	\$ -	\$ 351,207
115	Beginning Bal	\$ -	\$ (81,247)	\$ -	\$ (81,247)
	Accumulated Amortization	-	-	-	-
	Accruals charged during year	-	-	-	-
		-	-	-	-
	<b>Total Accumulated Amortization</b>	\$ -	\$ (81,247)	\$ -	\$ (81,247)
	<b>Net Acquisition Adjustments</b>	\$ -	\$ 269,960	\$ -	\$ 269,960

UTILITY NAME: **TIERRA VERDE UTILITIES INC**

**ACCUMULATED DEPRECIATION ( ACCT. 108 ) AND AMORTIZATION (ACCT. 110)**

DESCRIPTION (a)	WATER (b)	WASTEWATER (c)	OTHER THAN REPORTING SYSTEMS (d)	TOTAL (e)
<b>ACCUMULATED DEPRECIATION</b>				
Account 108				2,423,916
Balance first of year	\$ -	2,423,916		
Credit during year:				
Accruals charged to:				\$ 66,540
Account 108.1 (1)	\$ -	\$ 66,540	\$ -	-
Account 108.2 (2)				-
Account 108.3 (2)				-
Other Accounts (specify):	-	15,468		15,468
Salvage				-
Other Credits (Specify):				-
<b>Total Credits</b>	\$ -	\$ 82,008	\$ -	\$ 82,008
Debits during year:				
Book cost of plant retired	-	-		-
Cost of Removal				-
Other Debits (specify):				-
Accting adjustments mandated by FPSC				-
<b>Total Debits</b>	\$ -	\$ -	\$ -	\$ -
<b>Balance end of year</b>	\$ -	\$ 2,505,924	\$ -	\$ 2,505,924
<b>ACCUMULATED AMORTIZATION</b>				
Account 110				
Balance first of year	\$ -			
Credit during year:				
Accruals charged to:				\$ -
Account 110.2 (2)	\$ -	\$ -	\$ -	-
Other Accounts (specify):				-
<b>Total credits</b>	\$ -	\$ -	\$ -	\$ -
Debits during year:				
Book cost of plant retired				-
Other debits (specify):				-
<b>Total Debits</b>	\$ -	\$ -	\$ -	\$ -
<b>Balance end of year</b>	\$ -	\$ -	\$ -	\$ -

- 1 Account 108 for Class B utilities.
- 2 Not applicable for Class B utilities.
- 3 Account 110 for Class B utilities.

UTILITY NAME: TIERRA VERDE UTILITIES INC

**REGULATORY COMMISSION EXPENSE  
AMORTIZATION OF RATE CASE EXPENSE (ACCOUNTS 666 AND 766)**

DESCRIPTION OF CASE (DOCKET NO.) (a)	EXPENSE INCURRED DURING YEAR (b)	CHARGED OFF DURING YEAR	
		ACCT. (d)	AMOUNT (e)
RATE CASE	\$ _____	_____	\$ 40,677
	_____	_____	_____
Total	\$ _____	_____	\$ 40,677

**NONUTILITY PROPERTY (ACCOUNT 121)**

Report separately each item of property with a book cost of \$25,000 or more included in Account 121.  
Other Items may be grouped by classes of property.

DESCRIPTION (a)	BEGINNING YEAR (b)	ADDITIONS (c)	REDUCTIONS (d)	ENDING YEAR BALANCE (e)
NONE	\$ _____	\$ _____	\$ _____	\$ _____
	_____	_____	_____	_____
	_____	_____	_____	_____
Total Nonutility Property	\$ _____	\$ _____	\$ _____	\$ _____

**SPECIAL DEPOSITS ( ACCOUNTS 132 AND 133)**

Report hereunder all special deposits carried in Accounts 132 and 133.

DESCRIPTION OF SPECIAL DEPOSITS (a)	YEAR END BOOK COST (b)
SPECIAL DEPOSITS (Account 132): Electric Deposit	\$ _____
	_____
Total Special Deposits	\$ _____
OTHER SPECIAL DEPOSITS (Account 133): NONE	\$ _____
	_____
Total Other Special Deposits	\$ _____

UTILITY NAME: TIERRA VERDE UTILITIES INC

**INVESTMENTS AND SPECIAL FUNDS**  
**ACCOUNTS 123 - 127**

Report hereunder all investments and special funds carried in Accounts 123 through 127.

DESCRIPTION OF SECURITY OR SPECIAL FUND (a)	FACE OR PAR VALUE (b)	YEAR END BOOK COST (c)
INVESTMENT IN ASSOCIATED COMPANIES (Account 123): NONE	\$ _____	\$ _____ -
Total Investment in Associated Companies		\$ _____ -
UTILITY INVESTMENTS (Account 124): NONE	\$ _____	\$ _____ -
Total Utility Investment		\$ _____ -
OTHER INVESTMENTS (Account 125): NONE	\$ _____	\$ _____ -
Total Other Investment		\$ _____ -
SPECIAL FUNDS (Class A Utilities: Accounts 126 and 127; Class B Utilities: Account 127): NONE		\$ _____ -
Total Special Funds		\$ _____ -



UTILITY NAME: TIERRA VERDE UTILITIES INC

**ACCOUNTS AND NOTES RECEIVABLE - NET**  
**ACCOUNTS 141 - 144**

Report hereunder all accounts and notes receivable included in Accounts 141, 142, and 144. Amounts included in Amounts included in Accounts 142 and 144 should be listed individually.

DESCRIPTION (a)		TOTAL (b)
CUSTOMER ACCOUNTS RECEIVABLE (Account 141):		
Water	\$ -	
Wastewater	140,230	
Other		
Total Customer Accounts Receivable		\$ 140,230
OTHER ACCOUNTS RECEIVABLE ( Account 142):		
	\$	
Total Other Accounts Receivable		\$ -
NOTES RECEIVABLE (Account 144):		
	\$	
Total Notes Receivable		\$ -
Total Accounts and Notes Receivable		\$ 140,230
ACCUMULATED PROVISION FOR UNCOLLECTIBLE ACCOUNTS ( Account 143 )		
Balance first of year	\$ -	
Provision for uncollectibles for current year	\$	
Collection of accounts previously written off		
Utility Accounts		
Others		
Total Additions		\$ -
Deduct accounts written off during year:		
Utility Accounts		
Others		
Total accounts written off		\$ -
Balance end of year		\$ -
<b>TOTAL ACCOUNTS AND NOTES RECEIVABLE - NET</b>		<b>\$ 140,230</b>

UTILITY NAME: TIERRA VERDE UTILITIES INC

**ACCOUNTS RECEIVABLE FROM ASSOCIATED COMPANIES  
ACCOUNT 145**

Report each account receivable from associated companies separately.

DESCRIPTION (a)	TOTAL (b)
Water Service Corp.	\$ 89,724
Total	\$ 89,724

**NOTES RECEIVABLE FROM ASSOCIATED COMPANIES  
ACCOUNT 146**

Report each note receivable from associated companies separately.

DESCRIPTION (a)	INTEREST RATE (b)	TOTAL (c)
NONE	%	\$ -
	%	
	%	
	%	
	%	
	%	
	%	
Total		\$ -

**MISCELLANEOUS CURRENT AND ACCRUED ASSETS  
ACCOUNT 174**

DESCRIPTION - Provide itemized listing (a)	BALANCE END OF YEAR (b)
NONE	\$ -
Total Miscellaneous Current and Accrued Assets	\$ -

UTILITY NAME: TIERRA VERDE UTILITIES INC

**UNAMORTIZED DEBT DISCOUNT AND EXPENSE AND PREMIUM ON DEBT  
ACCOUNTS 181 AND 251**

Report the net discount and expense or premium separately for each security issue.

DESCRIPTION (a)	AMOUNT WRITTEN OFF DURING YEAR (b)	YEAR END BALANCE (c)
UNAMORTIZED DEBT DISCOUNT AND EXPENSE (Account 181): NONE	\$ _____	\$ _____ -
_____	_____	_____
_____	_____	_____
_____	_____	_____
Total Unamortized Debt Discount and Expense	\$ _____	\$ _____ -
UNAMORTIZED PREMIUM ON DEBT (Account 251):	\$ _____	\$ _____ -
_____	_____	_____
_____	_____	_____
_____	_____	_____
Total Unamortized Premium on Debt	\$ _____	\$ _____ -

**EXTRAORDINARY PROPERTY LOSSES  
ACCOUNT 182**

Report each item separately.

DESCRIPTION (a)	TOTAL (b)
NONE	\$ _____ -
_____	_____
_____	_____
Total Extraordinary Property Losses	\$ _____ -

**MISCELLANEOUS DEFERRED DEBITS  
ACCOUNT 186**

DESCRIPTION - Provide itemized listing (a)	AMOUNT WRITTEN OFF DURING YEAR (b)	YEAR END BALANCE (c)
DEFERRED RATE CASE EXPENSE (Class A Utilities: Account 186.1)		
<u>RATE CASE</u>	\$ 40,677	\$ 117,688
_____	_____	_____
_____	_____	_____
_____	_____	_____
Total Deferred Rate Case Expense	\$ <u>40,677</u>	\$ <u>117,688</u>
OTHER DEFERRED DEBITS (Class A Utilities: Account 186.2):		
<u>OTHER DEFERRED MAINTENANCE (NONE)</u>	\$ 14,726	\$ -
_____	_____	_____
_____	_____	_____
_____	_____	_____
_____	_____	_____
_____	_____	_____
Total Other Deferred Debits	\$ <u>14,726</u>	\$ <u>-</u>
REGULATORY ASSETS (Class A Utilities: Account. 186.3):		
<u>NONE</u>	\$ -	\$ -
_____	_____	_____
_____	_____	_____
_____	_____	_____
_____	_____	_____
_____	_____	_____
Total Regulatory Assets	\$ <u>-</u>	\$ <u>-</u>
<b>TOTAL MISCELLANEOUS DEFERRED DEBITS</b>	\$ <u>55,403</u>	\$ <u>117,688</u>

UTILITY NAME:

TIERRA VERDE UTILITIES INC

<p><b>YEAR OF REPORT</b> 31-Dec-09</p>
--

**CAPITAL STOCK  
ACCOUNTS 201 AND 204\***

DESCRIPTION (a)	RATE (b)	TOTAL (c)
<b>COMMON STOCK</b>		
Par or stated value per share		1
Shares authorized		0
Shares issued and outstanding		0
Total par value of stock issued		\$1,000
Dividends declared per share for year		0
<b>REFERRED STOCK</b>		
Par or stated value per share		0
Shares authorized		0
Shares issued and outstanding		0
Total par value of stock issued		\$0
Dividends declared per share for year		0

\* Account 204 not applicable for Class B utilities.

**BONDS  
ACCOUNT 221**

DESCRIPTION OF OBLIGATION (INCLUDING DATE OF ISSUE AND DATE OF MATURITY) (a)	INTEREST		PRINCIPAL AMOUNT PER BALANCE SHEET (d)
	ANNUAL RATE (b)	FIXED OR VARIABLE * (c)	
NONE	%		\$ -
	%		
	%		
	%		
	%		
	%		
	%		
	%		
	%		
	%		
Total			\$ -

\* For variable rate obligations, provide the basis for the rate. (i.e.. prime + 2%, etc.)

**STATEMENT OF RETAINED EARNINGS**

- 1 Dividends should be shown for each class and series of capital stock. Show amounts as dividends per share.
- 2 Show separately the state and federal income tax effect of items shown in Account No. 439.

ACCT. NO. (a)	DESCRIPTION (b)	AMOUNTS (c)
215	Unappropriated Retained Earnings: Balance Beginning of Year	\$ (57,677)
439	Changes to Account: Adjustments to Retained Earnings ( requires Commission approval prior to use): Credits: _____	\$ _____ _____
	Total Credits:	\$ -
	Debits: _____	\$ _____ _____
	Total Debits:	\$ _____
435	Balance Transferred from Income {income/(loss)}	\$ 26,290
436	Appropriations of Retained Earnings: _____	_____
	Total Appropriations of Retained Earnings	\$ _____
437	Dividends Declared: Preferred Stock Dividends Declared _____	_____
438	Common Stock Dividends Declared _____	_____
	Total Dividends Declared	\$ _____
215	Year end Balance	\$ _____
214	Appropriated Retained Earnings (state balance and purpose of each appropriated amount at year end): _____	_____
214	Total Appropriated Retained Earnings	\$ _____
Total Retained Earnings		\$ <u>(31,387)</u>
Notes to Statement of Retained Earnings:		

UTILITY NAME: TIERRA VERDE UTILITIES INC

<b>YEAR OF REPORT</b> 31-Dec-09
------------------------------------

**ADVANCES FROM ASSOCIATED COMPANIES**

**ACCOUNT 223**

Report each advance separately.

DESCRIPTION (a)	TOTAL (b)
WATER SERVICE CORPORATION	\$ (479,868)
Total	\$ (479,868)

**OTHER LONG-TERM DEBT**

**ACCOUNT 224**

DESCRIPTION OF OBLIGATION INCLUDING DATE OF ISSUE AND DATE OF MATURITY (a)	INTEREST		PRINCIPAL AMOUNT PER BALANCE SHEET (d)
	ANNUAL RATE (b)	FIXED OR VARIABLE * (c)	
NONE	%		\$ -
	%		
	%		
	%		
	%		
	%		
	%		
	%		
	%		
	%		
	%		
	%		
	%		
	%		
	%		
	%		
	%		
	%		
	%		
	%		
	%		
Total			\$ -

\* For variable rate obligations, provide the basis for the rate. (i.e.. prime + 2%, etc.)

**NOTES PAYABLE  
ACCOUNTS 232 AND 234**

DESCRIPTION OF OBLIGATION (INCLUDING DATE OF ISSUE AND DATE OF MATURITY) (a)	INTEREST		PRINCIPAL AMOUNT PER BALANCE SHEET (d)
	ANNUAL RATE (b)	FIXED OR VARIABLE * (c)	
NOTES PAYABLE ( Account 232): NONE			\$ -
	%		
	%		
	%		
	%		
	%		
	%		
	%		
	%		
<b>Total Account 232</b>			\$ -
NOTES PAYABLE TO ASSOC. COMPANIES (Account 234): NONE			\$ -
	%		
	%		
	%		
	%		
	%		
	%		
	%		
	%		
<b>Total Account 234</b>			\$ -

\* For variable rate obligations, provide the basis for the rate. (i.e.. prime + 2%, etc.)

**ACCOUNTS PAYABLE TO ASSOCIATED COMPANIES  
ACCOUNT 233**

Report each account payable separately.

DESCRIPTION (a)	TOTAL (b)
WATER SERVICE CORPORATION	\$ 541,928
<b>Total</b>	\$ 541,928



**UTILITY NAME: TIERRA VERDE UTILITIES INC**

**ACCRUED INTEREST AND EXPENSE  
ACCOUNTS 237 AND 427**

DESCRIPTION OF DEBIT (a)	BALANCE BEGINNING OF YEAR (b)	INTEREST DURING YEAR		INTEREST PAID DURING YEAR (e)	BALANCE END OF YEAR (f)
		ACCT. DEBIT (c)	AMOUNT (d)		
ACCOUNT NO. 237.1 - Accrued Interest on Long Term Debt	\$ _____		\$ _____	\$ _____	\$ _____
UTILITIES INC INTERCOMPANY INTEREST	_____		64,984	64,984	-
Total Account 237.1	\$ _____		\$ 64,984	\$ 64,984	\$ _____
ACCOUNT NO. 237.2 - Accrued Interest on Other Liabilities	\$ _____		\$ _____	\$ _____	\$ _____
Customer Deposits	_____				
MISC ITEMS	_____				
Total Account 237.2	\$ _____		\$ _____	\$ _____	\$ _____
Total Account 237 (1)	\$ _____		\$ 64,984	\$ 64,984	\$ _____
<b>INTEREST EXPENSED:</b>					
Total accrual Account 237			\$ 64,984		
Short Term Interest Expense			(63)		
Net Interest Expensed to Account No. 427 (2)			\$ 64,921		

(1) Must agree to F-2 (a), Beginning and Ending Balance of Accrued Interest.  
(2) Must agree to F-3 (c), Current Year Interest Expense

UTILITY NAME: TIERRA VERDE UTILITIES INC

YEAR OF REPORT  
31-Dec-09

MISCELLANEOUS CURRENT AND ACCRUED LIABILITIES  
ACCOUNT 241

DESCRIPTION - Provide itemized listing (a)	BALANCE END OF YEAR (b)
NONE _____ _____ _____ _____	\$ _____ _____ _____ _____
Total Miscellaneous Current and Accrued Liabilities	\$ _____

ADVANCES FOR CONSTRUCTION  
ACCOUNT 252

NAME OF PAYOR * (a)	BALANCE BEGINNING OF YEAR (b)	DEBITS		CREDITS (e)	BALANCE END OF YEAR (f)
		ACCT. DEBIT (c)	AMOUNT (d)		
NONE _____ _____ _____ _____ _____ _____ _____	\$ _____ _____ _____ _____ _____ _____ _____		\$ _____ _____ _____ _____ _____ _____ _____		\$ _____ _____ _____ _____ _____ _____ _____
Total	\$ _____		\$ _____		\$ _____

\* Report advances separately by reporting group, designating water or wastewater in column (a).

**OTHER DEFERRED CREDITS  
ACCOUNT 253**

DESCRIPTION - Provide itemized listing (a)	AMOUNT WRITTEN OFF DURING YEAR (b)	YEAR END BALANCE (c)
REGULATORY LIABILITIES (Class A Utilities: Account 253.1):		
NONE	\$ _____	\$ _____ -
_____	_____	_____
_____	_____	_____
_____	_____	_____
<b>Total Regulatory Liabilities</b>	\$ <u>_____</u>	\$ <u>_____ -</u>
OTHER DEFERRED LIABILITIES (Class A Utilities: Account 253.2):		
_____	\$ _____	\$ _____ -
_____	_____	_____
_____	_____	_____
_____	_____	_____
_____	_____	_____
_____	_____	_____
<b>Total Other Deferred Liabilities</b>	\$ <u>_____</u>	\$ <u>_____ -</u>
<b>TOTAL OTHER DEFERRED CREDITS</b>	\$ <u>_____</u>	\$ <u>_____ -</u>

**CONTRIBUTIONS IN AID OF CONSTRUCTION  
ACCOUNT 271**

<b>DESCRIPTION (a)</b>	<b>WATER (W-7) (b)</b>	<b>WASTEWATER (S-7) (c)</b>	<b>W &amp; WW OTHER THAN SYSTEM REPORTING (d)</b>	<b>TOTAL (e)</b>
Balance first of year	\$ _____	\$ <u>1,739,677</u>	\$ _____ -	\$ <u>1,739,677</u>
Add credits during year:	\$ _____ -	\$ <u>51,315</u>	\$ _____ -	\$ <u>51,315</u>
Less debit charged during the year	\$ _____ -	\$ _____ -	\$ _____ -	\$ _____ -
Total Contribution In Aid of Construction	\$ _____ -	\$ <u>1,790,992</u>	\$ _____ -	\$ <u>1,790,992</u>

**ACCUMULATED AMORTIZATION OF CONTRIBUTIONS IN AID OF CONSTRUCTION  
ACCOUNT 272**

<b>DESCRIPTION (a)</b>	<b>WATER (W-8(a)) (b)</b>	<b>WASTEWATER (S-8(a)) (c)</b>	<b>W &amp; WW OTHER THAN SYSTEM REPORTING (d)</b>	<b>TOTAL (e)</b>
Balance first of year	\$ _____	\$ <u>1,343,309</u>	\$ _____ -	\$ <u>1,343,309</u>
Debits during the year:	\$ _____ -	\$ <u>(48,163)</u>	\$ _____ -	\$ <u>(48,163)</u>
Credits during the year	\$ _____ -	\$ _____ -	\$ _____ -	\$ _____ -
Total Accumulated Amortization of Contributions In Aid of Construction	\$ _____ -	\$ <u>1,295,146</u>	\$ _____ -	\$ <u>1,295,146</u>

UTILITY NAME:

**TIERRA VERDE UTILITIES INC**

**YEAR OF REPORT**  
**31-Dec-09**

**RECONCILIATION OF REPORTED NET INCOME WITH TAXABLE INCOME FOR FEDERAL INCOME TAXES (UTILITY OPERATIONS)**

- 1 The reconciliation should include the same detail as furnished on Schedule M-1 of the federal tax return for the year. The reconciliation shall be submitted even though there is no taxable income for the year. Descriptions should clearly indicate the nature of each reconciling amount and show the computations of all tax accruals.
- 2 If the utility is a member of a group which files a consolidated federal tax return, reconcile reported net income with taxable net income as if a separate return were to be filed, indicating intercompany amounts to be eliminated in such consolidated return. State names of group members, tax assigned to each group member, and basis of allocation, assignments or sharing of the consolidated tax among the group members.

DESCRIPTION (a)	REF. NO. (b)	AMOUNT (c)
Net income for the year	F-3(c)	\$ 26,290
Reconciling items for the year:		
Taxable income not reported on books:		
Tap Fees		
Deductions recorded on books not deducted for return:		
Amortization ITC		
Excess Tax Depreciation over Book Depreciation		(38,790)
Tap in Fees		0
CIA Property		
Int During Construction		0
Def. Maint. CY additions		391
Def. Maint. CY amortization		14,475
Def. Rate Case CY additions		(29,659)
Def. Rate Case CY amortization		40,294
Organization Exp-Amort		(686)
Bad Debts CY		0
Current FIT (725)		20,694
Deferred FIT (731)		4,489
Deferred SIT (732)		769
Current SIT		3,542
Income recorded on books not included in return:		
Interest During Construction		0
Transportaion Depr Exp		19,055
Deduction on return not charged against book income:		
Meals		0
Federal tax net income		\$ 60,864

Computation of tax :		
	60,864	
	34%	
	20,694	

# **WATER OPERATING SECTION**

**Note:** This utility is a wastewater only service; therefore, Pages W-1 through W-14 have been omitted from this report.

**WASTEWATER  
OPERATION  
SECTION**

UTILITY NAME:

TIERRA VERDE UTILITIES INC

YEAR OF REPORT

31-Dec-09

**WASTEWATER LISTING OF SYSTEM GROUPS**

List below the name of each reporting system and its certificate number. Those systems which have been consolidated under the same tariff should be assigned a group number. Each individual system which has not been consolidated should be assigned its own group number.

The wastewater financial schedules (S-2 through S-10) should be filed for the group in total.

The wastewater engineering schedules (S-11 and S-12) must be filed for each system in the group.

All of the following wastewater pages (S-2 through S-12) should be completed for each group and arranged by group number.

SYSTEM NAME / COUNTY	CERTIFICATE NUMBER	GROUP NUMBER
<u>TIERRA VERDE / PINELLAS</u>	<u>232S</u>	
_____	_____	_____
_____	_____	_____
_____	_____	_____
_____	_____	_____
_____	_____	_____
_____	_____	_____
_____	_____	_____
_____	_____	_____
_____	_____	_____
_____	_____	_____
_____	_____	_____
_____	_____	_____
_____	_____	_____
_____	_____	_____
_____	_____	_____
_____	_____	_____
_____	_____	_____
_____	_____	_____
_____	_____	_____
_____	_____	_____
_____	_____	_____
_____	_____	_____
_____	_____	_____



UTILITY NAME: TIERRA VERDE UTILITIES INC

<b>YEAR OF REPORT</b> <b>31-Dec-09</b>
---

SYSTEM NAME / COUNTY : TIERRA VERDE / PINELLAS

**SCHEDULE OF YEAR END WASTEWATER RATE BASE**

ACCT. NO. (a)	ACCOUNT NAME (b)	REFERENCE PAGE (c)	WASTEWATER UTILITY (d)
101	Utility Plant In Service	S-4A	\$ 4,446,904
	Less:		
	Nonused and Useful Plant (1)		
108	Accumulated Depreciation	S-6B	2,505,924
110	Accumulated Amortization	F-8	-
271	Contributions In Aid of Construction	S-7	1,790,992
252	Advances for Construction	F-20	
Subtotal			\$ 149,988
	Add:		
272	Accumulated Amortization of Contributions in Aid of Construction	S-8A	\$ 1,295,146
Subtotal			\$ 1,445,134
	Plus or Minus:		
114	Acquisition Adjustments (2)	F-7	351,207
115	Accumulated Amortization of Acquisition Adjustments (2)	F-7	81,247
	Working Capital Allowance (3)		75,964
	Other (Specify):		-
WASTEWATER RATE BASE			\$ 1,953,552
WASTEWATER OPERATING INCOME		S-3	\$ 91,153
ACHIEVED RATE OF RETURN (Wastewater Operating Income / Wastewater Rate Base)			<u>4.67%</u>

NOTES (1) Estimate based on the methodology used in the last rate proceeding.

(2) Include only those Acquisition Adjustments that have been approved by the Commission.

(3) Calculation consistent with last rate proceeding.  
 In absence of a rate proceeding, Class A utilities will use the Balance Sheet Method and  
 Class B Utilities will use the One-eighth Operating and Maintenance Expense Method.

UTILITY NAME: TIERRA VERDE UTILITIES INC

<b>YEAR OF REPORT</b> <b>31-Dec-09</b>
---

SYSTEM NAME / COUNTY : TIERRA VERDE / PINELLAS

**WASTEWATER OPERATING STATEMENT**

ACCT. NO. (a)	ACCOUNT NAME (b)	REFERENCE PAGE (c)	WASTEWATER UTILITY (d)
	UTILITY OPERATING INCOME		
400	Operating Revenues	S-9A	\$ 904,523
530	Less: Guaranteed Revenue (and AFPI)	S-9A	-
	Net Operating Revenues		\$ 904,523
401	Operating Expenses	S-10A	\$ 607,712
403	Depreciation Expense	S-6A	66,540
	Less: Amortization of CIAC	S-8A	51,846
	Net Depreciation Expense		\$ 118,386
406	Amortization of Utility Plant Acquisition Adjustment	F-7	-
407	Amortization Expense (Other than CIAC)	F-8	-
408.1	Taxes Other Than Income Utility Regulatory Assessment Fee		43
408.11	Property Taxes		6,658
408.12	Payroll Taxes		11,652
408.13	Other Taxes and Licenses		39,425
408	Total Taxes Other Than Income		\$ 57,778
409.1	Income Taxes		24,236
410.1	Deferred Federal Income Taxes		4,489
410.11	Deferred State Income Taxes		769
411.1	Provision for Deferred Income Taxes - Credit		-
412.1	Investment Tax Credits Deferred to Future Periods		-
412.11	Investment Tax Credits Restored to Operating Income		-
	Utility Operating Expenses		\$ 813,370
	Utility Operating Income		\$ 91,153
530	Add Back: Guaranteed Revenue (and AFPI)	S-9A	\$ -
413	Income From Utility Plant Leased to Others		-
414	Gains (losses) From Disposition of Utility Property		58
420	Allowance for Funds Used During Construction		-
	Total Utility Operating Income		\$ 91,211

UTILITY NAME: TIERRA VERDE UTILITIES INC

SYSTEM NAME / COUNTY : TIERRA VERDE / PINELLAS

WASTEWATER UTILITY PLANT ACCOUNTS

ACCT. NO. (a)	ACCOUNT NAME (b)	PREVIOUS YEAR (c)	ADDITIONS (d)	RETIREMENTS (e)	CURRENT YEAR (f)
351	Organization	\$ 0	\$ 0	\$	\$ 0
352	Franchises	3,430	59		3,489
353	Land and Land Rights	670	45		715
354	Structures and Improvements	2,560,747	6,287		2,567,034
355	Power Generation Equipment	0	0		0
360	Collection Sewers - Force	85,053	283		85,336
361	Collection Sewers - Gravity	1,074,609	8,519		1,083,129
361	Manholes	133,967	1,062		135,029
362	Special Collecting Structures	0	0		0
363	Services to Customers	176,999	589		177,588
364	Flow Measuring Devices	0	0		0
365	Flow Measuring Installations	0	0		0
366	Reuse Services	0	0		0
367	Reuse Meters and Meter Installations	0	0		0
370	Receiving Wells	0	0		0
371	Pumping Equipment	12,229	2,726		14,955
374	Reuse Distribution Reservoirs	0	0		0
375	Reuse Transmission and Distribution System	339	(0)		339
380	Treatment and Disposal Equipment	11,816	4,100		15,916
381	Plant Sewers	0	0		0
382	Outfall Sewer Lines	0	0		0
389	Other Plant Miscellaneous Equipment	23,660	0		23,660
390	Office Furniture and Equipment	212,265	20,427		232,692
391	Transportation Equipment	61,617	26,099		87,716
392	Stores Equipment	0	0		0
393	Tools, Shop and Garage Equipment	7,780	1,202		8,981
394	Laboratory Equipment	0	0		0
395	Power Operated Equipment	0	0		0
396	Communication Equipment	4,989	2,125		7,115
397	Miscellaneous Equipment	3,000	210		3,210
398	Other Tangible Plant	0	0		0
Total Wastewater Plant		\$ 4,373,170	\$ 73,734	\$ 0	\$ 4,446,904

NOTE: Any adjustments made to reclassify property from one account to another must be footnoted.

YEAR OF REPORT  
31-Dec-09

UTILITY NAME: TIERRA VERDE UTILITIES INC  
SYSTEM NAME / COUNTY: TIERRA VERDE / PINELLAS

WASTEWATER UTILITY PLANT MATRIX

ACCT. NO.	ACCOUNT NAME	.1 INTANGIBLE PLANT (g)	.2 COLLECTION PLANT (h)	.3 SYSTEM PUMPING PLANT (i)	.4 TREATMENT AND DISPOSAL (j)	.5 RECLAIMED WASTEWATER TREATMENT PLANT (k)	.6 RECLAIMED WASTEWATER DISTRIBUTION PLANT (l)	.7 GENERAL PLANT (m)
351	Organization	\$ 3,489						
352	Franchises		715					
353	Land and Land Rights		1,575,733	917,761				73,540
354	Structures and Improvements							
355	Power Generation Equipment							
360	Collection Sewers - Force		85,336					
361	Collection Sewers - Gravity		1,083,129					
361	Manholes		135,029					
362	Special Collecting Structures							
363	Services to Customers		177,588					
364	Flow Measuring Devices							
365	Flow Measuring Installations							
366	Reuse Services							
367	Reuse Meters and Meter Installations							
370	Receiving Wells							
371	Pumping Equipment			14,955				
374	Reuse Distribution Reservoirs							
375	Reuse Transmission and Distribution System			339				
380	Treatment and Disposal Equipment				15,916			
381	Plant Sewers							
382	Outfall Sewer Lines							
389	Other Plant Miscellaneous Equipment				23,660			232,692
390	Office Furniture and Equipment							87,716
391	Transportation Equipment							
392	Stores Equipment							
393	Tools, Shop and Garage Equipment							
394	Laboratory Equipment							
395	Power Operated Equipment							
396	Communication Equipment							
397	Miscellaneous Equipment							7,115
398	Other Tangible Plant							3,210
	Total Wastewater Plant	\$ 3,489	\$ 3,057,530	\$ 933,055	\$ 39,576	\$ -	\$ -	\$ 413,254

NOTE: Any adjustments made to reclassify property from one account to another must be footnoted.

S-4(b)  
GROUP \_\_\_\_\_

UTILITY NAME: TIERRA VERDE UTILITIES INC

<b>YEAR OF REPORT</b> <b>31-Dec-09</b>
---

SYSTEM NAME / COUNTY : TIERRA VERDE / PINELLAS

**BASIS FOR WASTEWATER DEPRECIATION CHARGES**

ACCT. NO. (a)	ACCOUNT NAME (b)	AVERAGE SERVICE LIFE IN YEARS (c)	AVERAGE NET SALVAGE IN PERCENT (d)	DEPRECIATION RATE APPLIED IN PERCENT (100% - d) / c (e)
301	Organization			
302	Franchises			
354	Structures and Improvements			3.13%
354	Structures and Improvements - General			
355	Power Generation Equipment			
360	Collection Sewers - Force			3.33%
361	Collection Sewers - Gravity			2.22%
361	Manholes			
362	Special Collecting Structures			
363	Services to Customers			2.62%
364	Flow Measuring Devices			
365	Flow Measuring Installations			
366	Reuse Services			
367	Reuse Meters and Meter Installations			
370	Receiving Wells			2.86%
371	Pumping Equipment			4.00%
375	Reuse Transmission and Distribution System			
380	Treatment and Disposal Equipment			
381	Plant Sewers			2.86%
382	Outfall Sewer Lines			3.33%
389	Other Plant Miscellaneous Equipment			
390	Office Furniture and Equipment			
390	Office Furniture and Equipment - Computers			
391	Transportation Equipment			
392	Stores Equipment			
393	Tools, Shop and Garage Equipment			6.25%
394	Laboratory Equipment			6.67%
395	Power Operated Equipment			3.33%
396	Communication Equipment			10.00%
397	Miscellaneous Equipment			
398	Other Tangible Plant			
Wastewater Plant Composite Depreciation Rate *				2.84%

\* If depreciation rates prescribed by this Commission are on a total composite basis, entries should be made on this line only.

UTILITY NAME: TIERRA VERDE UTILITIES INC  
SYSTEM NAME / COUNTY : TIERRA VERDE / PINELLAS

ANALYSIS OF ENTRIES IN WASTEWATER ACCUMULATED DEPRECIATION

NO. (a)	ACCT. ACCOUNT NAME (b)	BALANCE AT BEGINNING OF YEAR (c)	ACCRUALS (d)	OTHER CREDITS * (e)	TOTAL CREDITS (d + e) (f)
301	Organization	\$ (123,586)	-	\$ 123,586	\$ 123,586
302	Franchises	3,058	86		86
354	Structures and Improvements	1,712,142	89,115	(187,160)	(98,045)
355	Power Generation Equipment	-	-	-	-
360	Collection Sewers - Force	16,966	2,503	15,520	18,023
361	Collection Sewers - Gravity	595,008	13,635	(78,937)	(65,302)
362	Special Collecting Structures	-	-	-	-
363	Services to Customers	84,685	5,210	(17,705)	(12,495)
364	Flow Measuring Devices	-	-	-	-
365	Flow Measuring Installations	-	-	-	-
366	Reuse Services	-	-	-	-
367	Reuse Meters and Meter Installations	-	-	-	-
370	Receiving Wells	1,345	109		109
371	Pumping Equipment	108	664		664
375	Reuse Transmission and Distribution System	-	-	-	-
380	Treatment and Disposal Equipment	2	8		8
381	Plant Sewers	156	419		419
382	Outfall Sewer Lines	-	-	-	-
389	Other Plant Miscellaneous Equipment	-	219		219
390	Office Furniture and Equipment	25,114	41	4,291	4,332
391	Transportation Equipment	52,979	10,429	1,718	12,147
392	Stores Equipment	-	-	-	-
393	Tools, Shop and Garage Equipment	3,989	18	1,091	1,109
394	Laboratory Equipment	-	-	-	-
395	Power Operated Equipment	-	-	-	-
396	Communication Equipment	3,249	51	1,366	1,417
397	Miscellaneous Equipment	48,700	22,878	6,817	29,695
398	Other Tangible Plant	-	(78,845)	144,881	66,036
Total Depreciable Wastewater Plant in Service		\$ 2,423,916	\$ 66,540	\$ 15,468	\$ 82,008

\* Specify nature of transaction.  
Use ( ) to denote reversal entries.

UTILITY NAME: TIERRA VERDE UTILITIES INC

SYSTEM NAME / COUNTY : TIERRA VERDE / PINELLAS

ANALYSIS OF ENTRIES IN WASTEWATER ACCUMULATED DEPRECIATION

ACCT. NO.	ACCOUNT NAME (b)	PLANT RETIRED (g)	SALVAGE AND INSURANCE (h)	COST OF REMOVAL AND OTHER CHARGES (i)	TOTAL CHARGES (g-h+i) (j)	BALANCE AT END OF YEAR (c+f-j) (k)
301	Organization	\$ -	\$ -	\$ -	\$ -	\$ -
302	Franchises	-	-	-	-	3,144
354	Structures and Improvements	-	-	-	-	1,614,097
355	Power Generation Equipment	-	-	-	-	-
360	Collection Sewers - Force	-	-	-	-	34,989
361	Collection Sewers - Gravity	-	-	-	-	529,706
362	Special Collecting Structures	-	-	-	-	-
363	Services to Customers	-	-	-	-	72,190
364	Flow Measuring Devices	-	-	-	-	-
365	Flow Measuring Installations	-	-	-	-	-
366	Reuse Services	-	-	-	-	-
367	Reuse Meters and Meter Installations	-	-	-	-	-
370	Receiving Wells	-	-	-	-	1,454
371	Pumping Equipment	-	-	-	-	772
375	Reuse Transmission and Distribution System	-	-	-	-	-
380	Treatment and Disposal Equipment	-	-	-	-	10
381	Plant Sewers	-	-	-	-	575
382	Outfall Sewer Lines	-	-	-	-	-
389	Other Plant Miscellaneous Equipment	-	-	-	-	219
390	Office Furniture and Equipment	-	-	-	-	29,446
391	Transportation Equipment	-	-	-	-	65,126
392	Stores Equipment	-	-	-	-	-
393	Tools, Shop and Garage Equipment	-	-	-	-	5,098
394	Laboratory Equipment	-	-	-	-	-
395	Power Operated Equipment	-	-	-	-	-
396	Communication Equipment	-	-	-	-	4,666
397	Miscellaneous Equipment	-	-	-	-	78,395
398	Other Tangible Plant	-	-	-	-	66,036
Total Depreciable Wastewater Plant in Service						\$ 2,505,924

\* Specify nature of transaction.  
Use ( ) to denote reversal entries.





UTILITY NAME: TIERRA VERDE UTILITIES INC

**YEAR OF REPORT**  
31-Dec-09

SYSTEM NAME / COUNTY : TIERRA VERDE / PINELLAS

**WASTEWATER CIAC SCHEDULE "A"**

ADDITIONS TO CONTRIBUTIONS IN AID OF CONSTRUCTION RECEIVED FROM CAPACITY,  
MAIN EXTENSION AND CUSTOMER CONNECTION CHARGES RECEIVED DURING THE YEAR

DESCRIPTION OF CHARGE (a)	NUMBER OF CONNECTIONS (b)	CHARGE PER CONNECTION (c)	AMOUNT (d)
<u>SEWER CONNECTIONS FEES (NONE)</u>	_____	\$ _____	\$ _____
_____	_____	_____	_____
_____	_____	_____	_____
_____	_____	_____	_____
_____	_____	_____	_____
_____	_____	_____	_____
_____	_____	_____	_____
Total Credits			\$ _____ -

**ACCUMULATED AMORTIZATION OF WASTEWATER CONTRIBUTIONS IN AID OF CONSTRUCTION**

DESCRIPTION (a)	WASTEWATER (b)
Balance first of year	\$ <u>1,343,309</u>
Debits during the year:	
Accruals charged to Account 272	\$ <u>(51,846)</u>
Other debits (specify) :	_____
_____	_____
Total debits	\$ <u>(51,846)</u>
Credits during the year (specify) :	
_____	\$ _____
_____	_____
Total credits	\$ _____ -
Balance end of year	\$ <u><u>1,295,146</u></u>

UTILITY NAME: TIERRA VERDE UTILITIES INC

<b>YEAR OF REPORT</b> <b>31-Dec-09</b>
---

SYSTEM NAME / COUNTY : TIERRA VERDE / PINELLAS

**WASTEWATER CIAC SCHEDULE "B"**  
 ADDITIONS TO CONTRIBUTIONS IN AID OF CONSTRUCTION  
 RECEIVED FROM ALL DEVELOPERS OR CONTRACTORS AGREEMENTS  
 WHICH CASH OR PROPERTY WAS RECEIVED DURING THE YEAR

DESCRIPTION (a)	INDICATE CASH OR PROPERTY (b)	AMOUNT (c)
<u>CIAC-STRUCT/IMPRV PUMP PLT LS</u>	<u>        </u>	\$ <u>(311,984)</u>
<u>CIAC-STRUCT/IMPRV GEN PLT</u>	<u>        </u>	<u>380,865</u>
<u>CIAC-SEWER FORCE MAIN/SRVC LINES</u>	<u>        </u>	<u>64,355</u>
<u>CIAC-SEWER GRAVITY MAIN/MANHLES</u>	<u>        </u>	<u>(66,634)</u>
<u>CIAC-TREAT/DISP EQUIP LAGOON</u>	<u>        </u>	<u>(1,822)</u>
<u>CIAC-SEWER-TAP</u>	<u>        </u>	<u>(63,866)</u>
<u>CIAC-SWR PLT MOD FEE</u>	<u>        </u>	<u>50,400</u>
<u>  </u>	<u>        </u>	
<u>  </u>	<u>        </u>	
<u>  </u>	<u>        </u>	
<u>  </u>	<u>        </u>	
<u>  </u>	<u>        </u>	
<u>  </u>	<u>        </u>	
<u>  </u>	<u>        </u>	
<u>  </u>	<u>        </u>	
<u>  </u>	<u>        </u>	
<u>  </u>	<u>        </u>	
<u>  </u>	<u>        </u>	
<b>Total Credits</b>		\$ <u>51,314</u>

UTILITY NAME: TIERRA VERDE UTILITIES INC

<b>YEAR OF REPORT</b> 31-Dec-09
------------------------------------

SYSTEM NAME / COUNTY : TIERRA VERDE / PINELLAS

**WASTEWATER OPERATING REVENUE**

ACCT. NO. (a)	DESCRIPTION (b)	BEGINNING YEAR NO. CUSTOMERS * (c)	YEAR END NUMBER OF CUSTOMERS * (d)	AMOUNTS (e)
<b>WASTEWATER SALES</b>				
	Flat Rate Revenues:			
521.1	Residential Revenues	2,412	1,014	\$ 904,523
521.2	Commercial Revenues			-
521.3	Industrial Revenues			-
521.4	Revenues From Public Authorities			-
521.5	Multiple Family Dwelling Revenues			-
521.6	Other Revenues			-
521	Total Flat Rate Revenues	2,412	1,014	\$ 904,523
	Measured Revenues:			
522.1	Residential Revenues			-
522.2	Commercial Revenues			-
522.3	Industrial Revenues			-
522.4	Revenues From Public Authorities			-
522.5	Multiple Family Dwelling Revenues			-
522	Total Measured Revenues			\$ -
523	Revenues From Public Authorities			-
524	Revenues From Other Systems			-
525	Interdepartmental Revenues			-
	Total Wastewater Sales	2,412	1,014	\$ 904,523
<b>OTHER WASTEWATER REVENUES</b>				
530	Guaranteed Revenues			\$ -
531	Sale of Sludge			-
532	Forfeited Discounts			-
534	Rents From Wastewater Property			-
535	Interdepartmental Rents			-
536	Other Wastewater Revenues (Including Allowance for Funds Prudently Invested or AFPI)			-
	Total Other Wastewater Revenues			\$ -

\* Customer is defined by Rule 25-30.210(1), Florida Administrative Code.  
521.1 includes accruals

UTILITY NAME: TIERRA VERDE UTILITIES INC

<b>YEAR OF REPORT</b> <b>31-Dec-09</b>
---

SYSTEM NAME / COUNTY TIERRA VERDE / PINELLAS

**WASTEWATER OPERATING REVENUE**

ACCT. NO. (a)	DESCRIPTION (b)	BEGINNING YEAR NO. CUSTOMERS * (c)	YEAR END NUMBER OF CUSTOMERS * (d)	AMOUNTS (e)
<b>RECLAIMED WATER SALES</b>				
540.1	Flat Rate Reuse Revenues: Residential Reuse Revenues	_____	_____	\$ _____ -
540.2	Commercial Reuse Revenues	_____	_____	_____ -
540.3	Industrial Reuse Revenues	_____	_____	_____ -
540.4	Reuse Revenues From Public Authorities	_____	_____	_____ -
540.5	Other Revenues	_____	_____	_____ -
540	Total Flat Rate Reuse Revenues	_____	_____	\$ _____ -
541.1	Measured Reuse Revenues: Residential Reuse Revenues	_____	_____	_____ -
541.2	Commercial Reuse Revenues	_____	_____	_____ -
541.3	Industrial Reuse Revenues	_____	_____	_____ -
541.4	Reuse Revenues From Public Authorities	_____	_____	_____ -
541	Total Measured Reuse Revenues	_____	_____	\$ _____ -
544	Reuse Revenues From Other Systems	_____	_____	_____ -
Total Reclaimed Water Sales				\$ _____ -
Total Wastewater Operating Revenues				\$ <u>904,523</u>

\* Customer is defined by Rule 25-30.210(1), Florida Administrative Code.

UTILITY NAME: **TERRA VERDE UTILITIES INC**  
 YEAR OF REPORT  
 31-Dec-09

SYSTEM NAME / COUNTY : **TERRA VERDE / PINELLAS**

WASTEWATER UTILITY EXPENSE ACCOUNT MATRIX

ACCT. NO.	ACCOUNT NAME (b)	CURRENT YEAR (c)	1. COLLECTION EXPENSES- OPERATIONS (d)	2. COLLECTION EXPENSES- MAINTENANCE (e)	3. PUMPING EXPENSES- OPERATIONS (f)	4. PUMPING EXPENSES- MAINTENANCE (g)	5. TREATMENT & DISPOSAL EXPENSES- OPERATIONS (h)	6. TREATMENT & DISPOSAL EXPENSES- MAINTENANCE (i)
(a)	(b)	(c)	(d)	(e)	(f)	(g)	(h)	(i)
701	Salaries and Wages - Employees	\$ 21,996	\$ (1,103)	\$ (1,103)	\$ (1,103)	\$ (1,103)	\$ (1,103)	\$ (1,103)
703	Salaries and Wages - Officers, Directors and Majority Stockholders	14,165	-	-	-	-	-	-
704	Employee Pensions and Benefits	37,313	(1,138)	(1,138)	(1,138)	(1,138)	(1,138)	(1,138)
710	Purchased Sewage Treatment	389,369					389,369	
711	Sludge Removal Expense	9,884					9,884	
715	Purchased Power	5,042	1,681		1,681		1,681	
716	Fuel for Power Purchased	-	-	-	-	-	-	-
718	Chemicals	(1,860)	(310)	(310)	(310)	(310)	(310)	(310)
720	Materials and Supplies	9,808	1,226	1,226	1,226	1,226	1,226	1,226
731	Contractual Services-Engineering	(11)	-	-	-	-	-	-
732	Contractual Services- Accounting	2,292	-	-	-	-	-	-
733	Contractual Services - Legal	561	-	-	-	-	-	-
734	Contractual Services - Mgt. Fees	-	-	-	-	-	-	-
735	Contractual Services - Testing	4	1	1	1	1	1	1
736	Contractual Services - Other	4,821	603	603	603	603	603	603
741	Rental of Building/Real Property	-	-	-	-	-	-	-
742	Rental of Equipment	-	-	-	-	-	-	-
750	Transportation Expenses	9,930	1,241	1,241	1,241	1,241	1,241	1,241
756	Insurance - Vehicle	-	-	-	-	-	-	-
757	Insurance - General Liability	-	-	-	-	-	-	-
758	Insurance - Workman's Comp.	-	-	-	-	-	-	-
759	Insurance - Other	16,306	2,038	2,038	2,038	2,038	2,038	2,038
760	Advertising Expense	41	-	-	-	-	-	-
766	Regulatory Commission Expenses	40,677	-	-	-	-	-	-
767	- Amortization of Rate Case Expense	211	-	-	-	-	-	-
770	Regulatory Commission Exp.-Other	91	-	-	-	-	-	-
775	Bad Debt Expense	47,072	5,884	5,884	5,884	5,884	5,884	5,884
775	Miscellaneous Expenses							
Total Wastewater Utility Expenses		\$ 607,712	\$ 10,123	\$ 8,443	\$ 10,123	\$ 8,443	\$ 409,376	\$ 8,443

S-10(a)  
 GROUP \_\_\_\_\_

UTILITY NAME: TIERRA VERDE UTILITIES INC

SYSTEM NAME / COUNTY : TIERRA VERDE / PINELLAS

WASTEWATER UTILITY EXPENSE ACCOUNT MATRIX

ACCT. NO.	ACCOUNT NAME	.7 CUSTOMER ACCOUNTS EXPENSE (j)	.8 ADMIN. & GENERAL EXPENSES (k)	.9 RECLAIMED WATER TREATMENT EXPENSES- OPERATIONS (l)	.10 RECLAIMED WATER TREATMENT EXPENSES- MAINTENANCE (m)	.11 RECLAIMED WATER DISTRIBUTION EXPENSES- OPERATIONS (n)	.12 RECLAIMED WATER DISTRIBUTION EXPENSES- MAINTENANCE (o)
701	Salaries and Wages - Employees	\$ 1,237	\$ 27,374	\$ -	\$ -	\$ -	\$ -
703	Salaries and Wages - Officers, Directors and Majority Stockholders	-	14,165	-	-	-	-
704	Employee Pensions and Benefits	1,276	42,862	-	-	-	-
710	Purchased Sewage Treatment	-	-	-	-	-	-
711	Sludge Removal Expense	-	-	-	-	-	-
715	Purchased Power	-	-	-	-	-	-
716	Fuel for Power Purchased	-	-	-	-	-	-
718	Chemicals	-	-	-	-	-	-
720	Materials and Supplies	1,226	1,226	-	-	-	-
731	Contractual Services-Engineering	-	(11)	-	-	-	-
732	Contractual Services - Accounting	-	2,292	-	-	-	-
733	Contractual Services - Legal	-	561	-	-	-	-
734	Contractual Services - Mgt. Fees	-	-	-	-	-	-
735	Contractual Services - Testing	1	-	-	-	-	-
736	Contractual Services - Other	603	603	-	-	-	-
741	Rental of Building/Real Property	-	-	-	-	-	-
742	Rental of Equipment	-	-	-	-	-	-
750	Transportation Expenses	1,241	1,241	-	-	-	-
756	Insurance - Vehicle	-	-	-	-	-	-
757	Insurance - General Liability	-	-	-	-	-	-
758	Insurance - Workman's Comp.	-	-	-	-	-	-
759	Insurance - Other	2,038	2,038	-	-	-	-
760	Advertising Expense	41	41	-	-	-	-
766	Regulatory Commission Expenses - Amortization of Rate Case Expense	-	40,677	-	-	-	-
767	Regulatory Commission Exp.-Other	-	211	-	-	-	-
770	Bad Debt Expense	91	-	-	-	-	-
775	Miscellaneous Expenses	5,884	5,884	-	-	-	-
Total Wastewater Utility Expenses		\$ 13,597	\$ 139,165	\$ -	\$ -	\$ -	\$ -

UTILITY NAME:

TIERRA VERDE UTILITIES INC

<b>YEAR OF REPORT</b> 31-Dec-08
------------------------------------

SYSTEM NAME / COUNTY :

TIERRA VERDE / PINELLAS

**CALCULATION OF THE WASTEWATER SYSTEM METER EQUIVALENTS**

WATER METER SIZE (a)	TYPE OF WATER METER (b)	EQUIVALENT FACTOR (c)	NUMBER OF WATER METERS (d)	TOTAL NUMBER OF METER EQUIVALENTS (c x d) (e)
All Residential	**	1.0	921	921
5/8"	Displacement	1.0	10	10
3/4"	Displacement	1.5		
1"	Displacement	2.5	20	50
1 1/2"	Displacement or Turbine	5.0	24	120
2"	Displacement, Compound or Turbine	8.0	35	280
3"	Displacement	15.0		
3"	Compound	16.0		
3"	Turbine	17.5		
4"	Displacement or Compound	25.0	1	25
4"	Turbine	30.0		
6"	Displacement or Compound	50.0	3	150
6"	Turbine	62.5		
8"	Compound	80.0		
8"	Turbine	90.0		
10"	Compound	115.0		
10"	Turbine	145.0		
12"	Turbine	215.0		
Total Wastewater System Meter Equivalents				1,556

**CALCULATION OF THE WASTEWATER SYSTEM EQUIVALENT RESIDENTIAL CONNECTIONS**

Provide a calculation used to determine the value of one wastewater equivalent residential connection (ERC).

Use one of the following methods:

(a) If actual flow data are available from the preceding 12 months, divide the total annual single family residence (SFR) gallons sold by the average number of single family residence customers for the same period and divide the result by 365 days.

(b) If no historical flow data are available, use:

$$ERC = ( \text{Total SFR gallons treated (Omit 000)} / 365 \text{ days} / 280 \text{ gallons per day} )$$

For wastewater only utilities:

Subtract all general use and other non residential customer gallons from the total gallons treated.

Divide the remainder (SFR customers) by 365 days to reveal single family residence customer gallons per day.

**NOTE:** Total gallons treated includes both treated and purchased treatment.

ERC Calculation:  $175.449/365/280=1,717 \text{ ERC's}$
---

UTILITY NAME: TIERRA VERDE UTILITIES INC

<b>YEAR OF REPORT</b> 31-Dec-08
------------------------------------

SYSTEM NAME / COUNTY : TIERRA VERDE / PINELLAS

**WASTEWATER TREATMENT PLANT INFORMATION**

Provide a separate sheet for each wastewater treatment facility

Permitted Capacity	All sewage pumped to City of St. Petersburg		
Basis of Permit Capacity (1)	N/A		
Manufacturer	N/A		
Type (2)	N/A		
Hydraulic Capacity	N/A		
Average Daily Flow	0.440 mgd		
Total Gallons of Wastewater Treated	160.455mg		
Method of Effluent Disposal	N/A		

(1) Basis of permitted capacity as stated on the Florida DEP WWTP Operating Permit  
(i.e. average annual daily flow, etc.)

(2) Contact stabilization, advanced treatment, etc.

S-12

GROUP \_\_\_\_\_

SYSTEM \_\_\_\_\_



UTILITY NAME: TIERRA VERDE UTILITIES INC

YEAR OF REPORT  
31-Dec-08

SYSTEM NAME / COUNTY TIERRA VERDE / PINELLAS

**OTHER WASTEWATER SYSTEM INFORMATION**

Furnish information below for each system. A separate page should be supplied where necessary.

1. Present number of ERCs\* now being served \_\_\_\_\_ 1391 \_\_\_\_\_

2. Maximum number of ERCs\* which can be served \_\_\_\_\_ 1560 \_\_\_\_\_

3. Present system connection capacity (in ERCs\*) using existing lines \_\_\_\_\_ 1560 \_\_\_\_\_

4. Future connection capacity (in ERCs\*) upon service area buildout \_\_\_\_\_ 1800 \_\_\_\_\_

5. Estimated annual increase in ERCs\* \_\_\_\_\_ 0-5 \_\_\_\_\_

6. Describe any plans and estimated completion dates for any enlargements or improvements of this system  
\_\_\_\_\_  
\_\_\_\_\_

7. If the utility uses reuse as a means of effluent disposal, attach a list of the reuse end users and the amount of reuse provided to each, if known.

8. If the utility does not engage in reuse, has a reuse feasibility study been completed? \_\_\_\_\_ NA \_\_\_\_\_

If so, when? \_\_\_\_\_

9. Has the utility been required by the DEP or water management district to implement reuse? \_\_\_\_\_ NA \_\_\_\_\_

If so, what are the utility's plans to comply with this requirement? \_\_\_\_\_ NA \_\_\_\_\_  
\_\_\_\_\_  
\_\_\_\_\_

10. When did the company last file a capacity analysis report with the DEP? \_\_\_\_\_ 2007 \_\_\_\_\_

11. If the present system does not meet the requirements of DEP rules:

a. Attach a description of the plant upgrade necessary to meet the DEP rules.

b. Have these plans been approved by DEP? \_\_\_\_\_ N/A \_\_\_\_\_

c. When will construction begin? \_\_\_\_\_ N/A \_\_\_\_\_

d. Attach plans for funding the required upgrading.

e. Is this system under any Consent Order with DEP? \_\_\_\_\_ N/A \_\_\_\_\_

12. Department of Environmental Protection ID # \_\_\_\_\_ NA \_\_\_\_\_

\* An ERC is determined based on the calculation on S-11.

S-13

GROUP \_\_\_\_\_

SYSTEM Tierra Verde

Reconciliation of Revenue to  
Regulatory Assessment Fee Revenue  
Wastewater Operations

YEAR OF REPORT 31-Dec-09
-----------------------------

UTILITY NAME: TIERRA VERDE UTILITIES INC

(A)	(B)	(C)	(D)
Accounts	Gross Wastewater Revenues per Sch S-9	Gross Wastewater Revenues per RAF Return	Difference (B)-(C)
Gross Revenues:			
Total Flat-Rate Revenues	904,523	904,523	0
Total Measured Revenues	-		0
Revenues from Public Authorities	-		
Revenues from Other Systems	-		
Interdepartmental Revenues	-		
Total Other Wastewater Revenues	-		0
Reclaimed Water Sales			
Total Wastewater Operating Revenue	904,523	904,523	0
Less: Expense for Purchased Wastewater from FPSC Regulated Utility			
Net Wastewater Operating Revenues	904,523	904,523	0