

CLASS "A" OR "B"

OFFICIAL COPY
Public Service Commission
Do Not Remove from this Office

WATER AND/OR WASTEWATER UTILITIES
(Gross Revenue of More Than \$200,000 Each)

ANNUAL REPORT

OF

SU749-11-AR

UTILITIES INC OF EAGLE RIDGE

Exact Legal Name of Respondent

369-S

Certificate Number(s)

Submitted To The

STATE OF FLORIDA

12 MAY -1 PM 1:38
PUBLIC SERVICE
REGULATION

PUBLIC SERVICE COMMISSION

FOR THE

YEAR ENDED

31-Dec-11

GENERAL INSTRUCTIONS

1. Prepare this report in conformity with the 1996 National Association of Regulatory Utility Commissioners Uniform System of Accounts for Water and/or Wastewater Utilities (USOA).
2. Interpret all accounting words and phrases in accordance with the USOA.
3. Complete each question fully and accurately, even if it has been answered in a previous annual report. Enter the word "None" where it truly and completely states the fact.
4. For any question, section, or page which is not applicable to the respondent, enter the words "Not Applicable". Do not omit any pages.
5. Where dates are called for, the month and day should be stated as well as the year.
6. All schedules requiring dollar entries should be rounded to the nearest dollar unless otherwise specifically indicated.
7. Complete this report by means which result in a permanent record, such as by computer or typewriter.
8. If there is not enough room on any schedule, an additional page or pages may be added; provided the format of the added schedule matches the format of the schedule with not enough room. Such a schedule should reference the appropriate schedules, state the name of the utility, and state the year of the report.
9. If it is necessary or desirable to insert additional statements for the purpose of further explanation of schedules, such statement should be made at the bottom of the page or an additional page inserted. Any additional pages should state the name of the utility, the year of the report, and reference the appropriate schedule.
10. For water and wastewater utilities with more than one rate group and/or system, water and wastewater pages should be completed for each rate group and/or system group. These pages should be grouped together and tabbed by rate group and/or system.
11. All other water and wastewater operations not regulated by the Commission and other regulated industries should be reported as "Other than Reporting Systems".
12. Financial information for multiple systems charging rates which are covered under the same tariff should be reported as one system. However, the engineering data must be reported by individual system.
13. For water and wastewater utilities with more than one system, one (1) copy of workpapers showing the consolidation of systems for the operating sections, should be filed with the annual report.
14. The report should be filled out in quadruplicate and the original and two copies returned by March 31, of the year following the date of the report. The report should be returned to:

**Florida Public Service Commission
Division of Water and Wastewater
2540 Shumard Oak Boulevard
Tallahassee, Florida 32399-0873**

The fourth copy should be retained by the utility.

TABLE OF CONTENTS

SCHEDULE	PAGE	SCHEDULE	PAGE
EXECUTIVE SUMMARY			
Certification	E-1	Business Contracts with Officers, Directors and Affiliates	E-7
General Information	E-2	Affiliation of Officers & Directors	E-8
Directory of Personnel Who Contact the FPSC	E-3	Businesses which are a Byproduct, Coproduct or Joint Product Result of Providing Service	E-9
Company Profile	E-4	Business Transactions with Related Parties. Part I and II	E-10
Parent / Affiliate Organization Chart	E-5		
Compensation of Officers & Directors	E-6		
FINANCIAL SECTION			
Comparative Balance Sheet - Assets and Other Debits	F-1	Unamortized Debt Discount / Expense / Premium	F-13
Comparative Balance Sheet - Equity Capital and Liabilities	F-2	Extraordinary Property Losses	F-13
Comparative Operating Statement	F-3	Miscellaneous Deferred Debits	F-14
Schedule of Year End Rate Base	F-4	Capital Stock	F-15
Schedule of Year End Capital Structure	F-5	Bonds	F-15
Capital Structure Adjustments	F-6	Statement of Retained Earnings	F-16
Utility Plant	F-7	Advances from Associated Companies	F-17
Utility Plant Acquisition Adjustments	F-7	Long Term Debt	F-17
Accumulated Depreciation	F-8	Notes Payable	F-18
Accumulated Amortization	F-8	Accounts Payable to Associated Companies	F-18
Regulatory Commission Expense - Amortization of Rate Case Expense	F-9	Accrued Interest and Expense	F-19
Nonutility Property	F-9	Misc. Current & Accrued Liabilities	F-20
Special Deposits	F-9	Advances for Construction	F-21
Investments and Special Funds	F-10	Other Deferred Credits	F-21
Accounts and Notes Receivable - Net	F-11	Contributions In Aid of Construction	F-22
Accounts Receivable from Associated Companies	F-12	Accumulated Amortization of CIAC	F-23
Notes Receivable from Associated Companies	F-12	Reconciliation of Reported Net Income with Taxable Income for Federal Income Taxes	F-23
Miscellaneous Current & Accrued Assets	F-12		

TABLE OF CONTENTS

SCHEDULE	PAGE	SCHEDULE	PAGE
WATER OPERATION SECTION			
Listing of Water System Groups	W-1	CIAC Additions / Amortization	W-8
Schedule of Year End Water Rate Base	W-2	Water Operating Revenue	W-9
Water Operating Statement	W-3	Water Utility Expense Accounts	W-10
Water Utility Plant Accounts	W-4	Pumping and Purchased Water Statistics, Source Supply	W-11
Basis for Water Depreciation Charges	W-5	Water Treatment Plant Information	W-12
Analysis of Entries in Water Depreciation Reserve	W-6	Calculation of ERC's	W-13
Contributions In Aid of Construction	W-7	Other Water System Information	W-14
WASTEWATER OPERATION SECTION			
Listing of Wastewater System Groups	S-1	Contributions In Aid of Construction	S-7
Schedule of Year End Wastewater Rate Base	S-2	CIAC Additions / Amortization	S-8
Wastewater Operating Statement	S-3	Wastewater Utility Expense Accounts	S-9
Wastewater Utility Plant Accounts	S-4	Wastewater Operating Revenue	S-10
Basis for Wastewater Depreciation Charges	S-5	Calculation of ERC's	S-11
Analysis of Entries in Wastewater Depreciat Reserve	S-6	Wastewater Treatment Plant Information	S-12
		Other Wastewater System Information	S-13

EXECUTIVE SUMMARY

CERTIFICATION OF ANNUAL REPORT


I HEREBY CERTIFY, to the best of my knowledge and belief:

- | | | |
|--|--------------------------------|--|
| YES
<input checked="" type="checkbox"/> | NO
<input type="checkbox"/> | 1. The utility is in substantial compliance with the Uniform System of Accounts prescribed by the Florida Public Service Commission. |
| YES
<input checked="" type="checkbox"/> | NO
<input type="checkbox"/> | 2. The utility is in substantial compliance with all applicable rules and orders of the Florida Public Service Commission. |
| YES
<input checked="" type="checkbox"/> | NO
<input type="checkbox"/> | 3. There have been no communications from regulatory agencies concerning noncompliance with, or deficiencies in, financial reporting practices that could have a material effect on the financial statement of the utility. |
| YES
<input checked="" type="checkbox"/> | NO
<input type="checkbox"/> | 4. The annual report fairly represents the financial condition and results of operations of the respondent for the period presented and other information and statements presented in the report as to the business affairs of the respondent are true, correct and complete for the period for which it represents. |

Items Certified			
1.	2.	3.	4.

(Signature of Chief Executive Officer of the utility) *

1.	2.	3.	4.
X	X	X	X



(Signature of Chief Financial Officer of the utility) *

* Each of the four items must be certified YES or NO. Each item need not be certified by both officers. The items being certified by the officer should be indicated in the appropriate area to the left of the signature.

NOTICE: Section 837.06, Florida Statutes, provides that any person who knowingly makes a false statement in writing with the intent to mislead a public servant in the performance of his duty shall be guilty of a misdemeanor of the second degree.

ANNUAL REPORT OF

YEAR OF REPORT
31-Dec-11

UTILITIES INC OF EAGLE RIDGE
(Exact Name of Utility)

County: **Lee County**

List below the exact mailing address of the utility for which normal correspondence should be sent:

2335 SANDERS ROAD
NORTHBROOK IL 60062

Telephone: 847-498-6440

E Mail Address: NONE

WEB Site: NONE

Sunshine State One-Call of Florida, Inc. Member Number **UER828**

Name and address of person to whom correspondence concerning this report should be addressed:

JUSTIN KERSEY
2335 SANDERS ROAD
NORTHBROOK IL 60062

Telephone: 847-498-6440

List below the address of where the utility's books and records are located:

2335 SANDERS ROAD
NORTHBROOK IL 60062

Telephone: 847-498-6440

List below any groups auditing or reviewing the records and operations:

PRICEWATERHOUSECOOPERS

Date of original organization of the utility: **06/20/95**

Check the appropriate business entity of the utility as filed with the Internal Revenue Service

Individual Partnership Sub S Corporation 1120 Corporation

List below every corporation or person owning or holding directly or indirectly 5% or more of the voting securities of the utility:

	Name	Percent Ownership
1.	UTILITIES INC	100%
2.		
3.		
4.		
5.		
6.		
7.		
8.		

UTILITY NAME: UTILITIES INC OF EAGLE RIDGE

<p>YEAR OF REPORT 31-Dec-11</p>
--

**DIRECTORY OF PERSONNEL WHO CONTACT
THE FLORIDA PUBLIC SERVICE COMMISSION**

NAME OF COMPANY REPRESENTATIVE (1)	TITLE OR POSITION (2)	ORGANIZATIONAL UNIT TITLE (3)	USUAL PURPOSE FOR CONTACT WITH FPSC
LISA A. SPARROW	PRESIDENT & CEO		OPERATIONS
JIM JAPCZYK	VICE PRESIDENT & CFO		FINANCIAL
JOHN HOY	VICE PRESIDENT & COO		OPERATIONS
STEVE LUBERTOZZI	EXEC DIRECTOR OF REGULATORY ACCOUNTING		RATE CASE
RICK DURHAM	REGIONAL VICE PRESIDENT		OPERATIONS
PATRICK FLYNN	REGIONAL DIRECTOR		OPERATIONS

(1) Also list appropriate legal counsel, accountants and others who may not be on general payroll.
(2) Provide individual telephone numbers if the person is not normally reached at the company.
(3) Name of company employed by if not on general payroll.

COMPANY PROFILE

Provide a brief narrative company profile which covers the following areas:

- A. Brief company history.
- B. Public services rendered.
- C. Major goals and objectives.
- D. Major operating divisions and functions.
- E. Current and projected growth patterns.
- F. Major transactions having a material effect on operations.

- | |
|---|
| <ul style="list-style-type: none">A. 100% of the stock to this company was acquired by Utilities, Inc. The Company Provides sewer service.B. The Company supplies sewer services only.C. Provide adequate sewerage and disposal services and earn a fair return.D. Sewer division only.E. Anticipated growthF. The stock of this company was purchased by Utilities, Inc. Improvements have been and are still being made to the system. |
|---|

UTILITY NAME: UTILITIES INC OF EAGLE RIDGE

PARENT / AFFILIATE ORGANIZATION CHART

Current as of 12/31/2011

Complete below an organizational chart that show all parents, subsidiaries and affiliates of the utility.
The chart must also show the relationship between the utility and affiliates listed on E-7, E-10(a) and E-10(b).

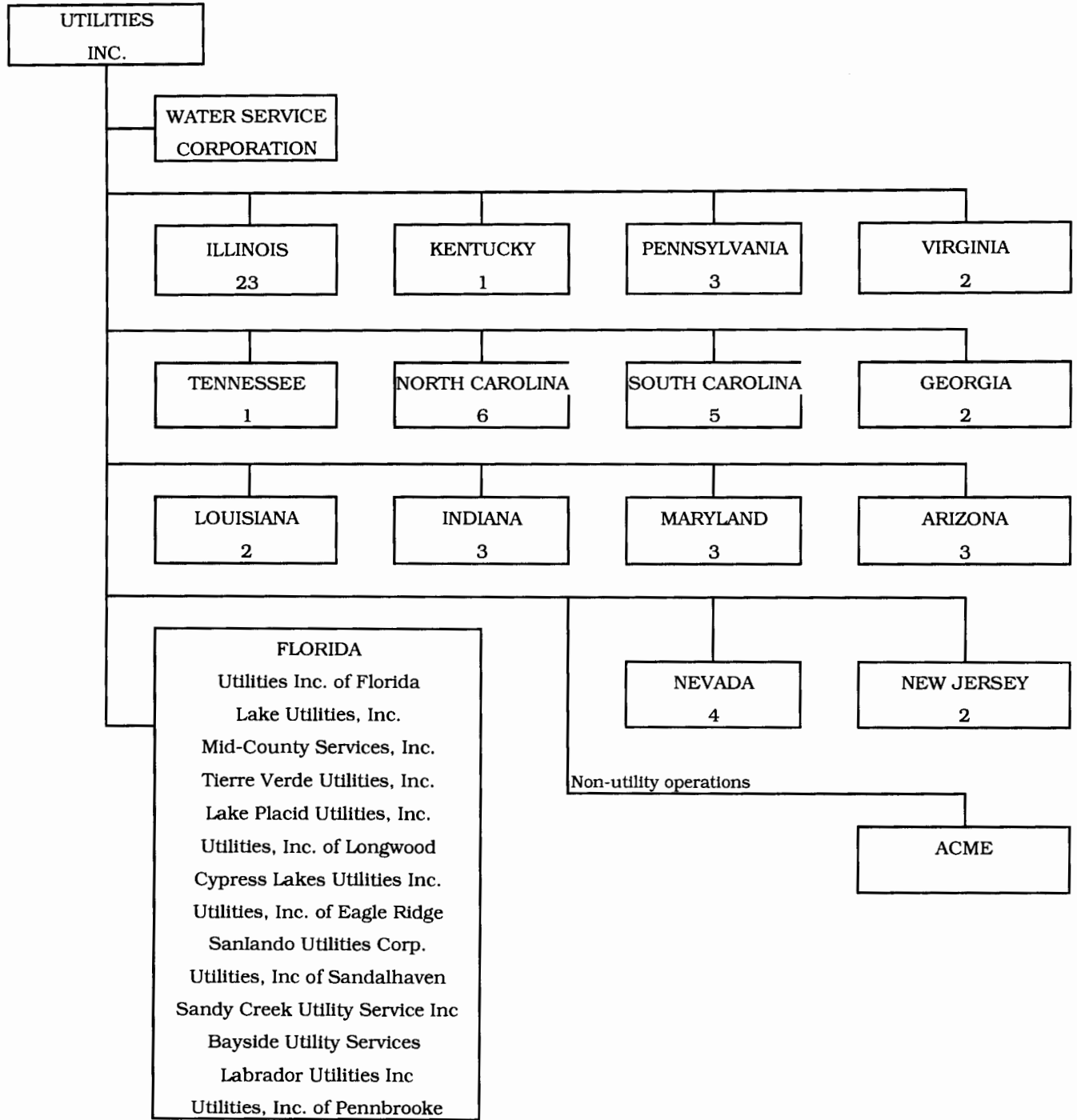
UTILITIES, INC. -- PARENT COMPANY

WATER SERVICE CORP. -- SERVICE COMPANY SUPPLYING MOST SERVICES REQUIRED BY UTILITY.

UTILITIES INC. of FLORIDA -- provides office personnel and administrative staff.

SEE ATTACHED

Parent And Affiliate Organizational Chart



UTILITIES, INC. - Parent Company

WATER SERVICE CORP. - Service organization providing administrative and other service functions for the utility.

NOTE: Within each state except Florida is the number of companies owned.

COMPENSATION OF OFFICERS

For each officer, list the time spent on respondent as an officer compared to time spent on total business activities and the compensation received as an officer from the respondent.			
NAME (a)	TITLE (b)	% OF TIME SPENT AS OFFICER OF THE UTILITY (c)	OFFICERS' COMPENSATION (d)
LISA A. SPARROW	PRESIDENT & CEO	N/A	\$ N/A
JIM JAPCZYK	VICE PRESIDENT & CFO	N/A	N/A
JOHN STOVER	VICE PRESIDENT, GENERAL COUNSEL & SECRET.	N/A	N/A
JOHN HOY	VICE PRESIDENT & COO	N/A	N/A
DON SUDDUTH	VICE PRESIDENT -- CUSTOMER SERVICE	N/A	N/A

COMPENSATION OF DIRECTORS

For each director, list the number of director meetings attended by each director and the compensation received as a director from the respondent.			
NAME (a)	TITLE (b)	NUMBER OF DIRECTORS' MEETINGS ATTENDED (c)	DIRECTORS' COMPENSATION (d)
LISA A. SPARROW	PRESIDENT & CEO	0	\$ N/A
JOHN STOVER	VICE PRESIDENT, GENERAL COUNSEL & SECRET.	0	N/A

BUSINESS CONTRACTS WITH OFFICERS, DIRECTORS AND AFFILIATES

List all contracts, agreements, or other business arrangements* entered into during the calendar year (other than compensation related to position with Respondents) between the Respondent and officer and director listed on page E-6. In addition, provide the same information with respect to professional services for each firm, partnership, or organization with which the officer or director is affiliated.

NAME OF OFFICER, DIRECTOR OR AFFILIATE (a)	IDENTIFICATION OF SERVICE OR PRODUCT (b)	AMOUNT (c)	NAME AND ADDRESS OF AFFILIATED ENTITY (d)
NO BUSINESS CONTRACTS, AGREEMENTS OR OTHER ARRANGEMENTS WERE ENTERED INTO DURING THE CURRENT YEAR BY THE OFFICERS LISTED ON PAGE E6, THE DIRECTORS OR AFFILIATES.		\$	

* Business Agreement, for this schedule, shall mean any oral or written business deal which binds the concerned parties for products or services during the reporting year or future years. Although the Respondent and/or other companies will benefit from the arrangement, the officer or director is, however, acting on his behalf or for the benefit of other companies or persons.

UTILITY NAME: UTILITIES INC OF EAGLE RIDGE

AFFILIATION OF OFFICERS AND DIRECTORS

For each of the officials listed on page E-6, list the principle occupation or business affiliations or connections with any other business or financial organizations, firms, or partnerships. For purposes of this part, an official will be considered to have an affiliation with any business or financial organization, firm or partnership in which he is an officer, director, trustee, partner, or a person exercising similar functions.

NAME (a)	PRINCIPLE OCCUPATION OR BUSINESS AFFILIATION (b)	AFFILIATION OR CONNECTION (c)	NAME AND ADDRESS OF AFFILIATION OR CONNECTION (d)
LISA A. SPARROW	PRESIDENT & CEO	DIRECTOR/OFFICER	UTILITIES INC & SUBSIDIARIES NORTHBROOK IL
JIM JAPCZYK	VICE PRESIDENT & CFO	OFFICER	UTILITIES INC & SUBSIDIARIES NORTHBROOK IL
JOHN STOVER	VICE PRESIDENT, GENERAL COUNSEL & SECRET.	DIRECTOR/OFFICER	UTILITIES INC & SUBSIDIARIES NORTHBROOK IL
JOHN HOY	VICE PRESIDENT & COO	OFFICER	UTILITIES INC & SUBSIDIARIES NORTHBROOK IL
DON SUDDUTH	VICE PRESIDENT -- CUSTOMER SERVICE	OFFICER	UTILITIES INC & SUBSIDIARIES NORTHBROOK IL

UTILITY NAME: UTILITIES INC OF EAGLE RIDGE

YEAR OF REPORT

31-Dec-11

**BUSINESSES WHICH ARE A BY-PRODUCT, COPRODUCT OR JOINT-PRODUCT
RESULT OF PROVIDING WATER OR WASTEWATER SERVICE**

Complete the following for any business which is conducted as a byproduct, coproduct, or joint product as a result of providing water and / or wastewater service. This would include any business which requires the use of utility land and facilities. Examples of these types of businesses would be orange groves, nurseries, tree farms, fertilizer manufacturing, etc. This would not include any business for which the assets are properly included in Account 121 - Nonutility Property along with the associated revenue and expenses segregated out as nonutility also.

BUSINESS OR SERVICE CONDUCTED (a)	ASSETS		REVENUES		EXPENSES	
	BOOK COST OF ASSETS (b)	ACCOUNT NUMBER (c)	REVENUES GENERATED (d)	ACCOUNT NUMBER (e)	EXPENSES INCURRED (f)	ACCOUNT NUMBER (g)
NO BUSINESS WHICH ARE A BYPRODUCT, COPRODUCT OR JOINT PRODUCT RESULTING FROM PROVIDING WATER AND/OR SEWER SERVICE.	\$ _____	_____	\$ _____	_____	\$ _____	_____

BUSINESS TRANSACTIONS WITH RELATED PARTIES

List each contract, agreement, or other business transaction exceeding a cumulative amount of \$500 in any on year, entered into between the Respondent and a business or financial organization, firm, or partnership named on pages E-2 and E-6, identifying the parties, amounts, dates and product, and asset, or service involved.

Part I. Specific Instructions: Services and Products Received or Provided

1. Enter in this part all transactions involving services and products received or provided.

2. Below are some types of transactions to include:

- | | |
|--|---|
| -management, legal and accounting services | -material and supplies furnished |
| -computer services | -leasing of structures, land, and equipment |
| -engineering & construction services | -rental transactions |
| -repairing and servicing of equipment | -sale, purchase or transfer of various products |

NAME OF COMPANY OR RELATED PARTY (a)	DESCRIPTION SERVICE AND/OR NAME OF PRODUCT (b)	CONTRACT OR AGREEMENT EFFECTIVE DATES (c)	ANNUAL CHARGES (P)urchased (S)old (d)	AMOUNT (e)
WATER SERVICE CORP/ FLORIDA REGIONAL	Operators/Admin/Officers Salaries & Benefits	Continuous	Purchase	83,746
	Materials & Supplies	Continuous	Purchase	28,138
	Contractual Services	Continuous	Purchase	24,036
	Transportation Expenses	Continuous	Purchase	17,694
	Insurance	Continuous	Purchase	21,034
	Regulatory Expenses	Continuous	Purchase	673
	Miscellaneous	Continuous	Purchase	25,912

UTILITY NAME: UTILITIES INC OF EAGLE RIDGE

YEAR OF REPORT 31-Dec-11

BUSINESS TRANSACTIONS WITH RELATED PARTIES (Cont'd)

Part II. Specific Instructions: Sale, Purchase and Transfer of Assets

- | | |
|--|--|
| <p>1. Enter in this part all transactions relating to the purchase, sale, or transfer of assets.</p> <p>2. Below are examples of some types of transactions to include:</p> <ul style="list-style-type: none"> -purchase, sale or transfer of equipment -purchase, sale or transfer of land and structures -purchase, sale or transfer of securities -noncash transfers of assets -noncash dividends other than stock dividends -write-off of bad debts or loans | <p>3. The columnar instructions follow:</p> <ul style="list-style-type: none"> (a) Enter name of related party or company. (b) Describe briefly the type of assets purchased, sold or transferred. (c) Enter the total received or paid. Indicate purchase with "P" and sale with "S". (d) Enter the net book value for each item reported. (e) Enter the net profit or loss for each item reported. (column (c) - column (d)) (f) Enter the fair market value for each item reported. In space below or in a supplemental schedule, describe the basis used to calculate fair market value. |
|--|--|

NAME OF COMPANY OR RELATED PARTY (a)	DESCRIPTION OF ITEMS (b)	SALE OR PURCHASE PRICE (c)	NET BOOK VALUE (d)	GAIN OR LOSS (e)	FAIR MARKET VALUE (f)
		\$ _____	\$ _____	\$ _____	\$ _____
NO ASSETS WERE SOLD, PURCHASED OR TRANSFERRED WITH A RELATED PARTY DURING THE FISCAL YEAR END 31-Dec-11		_____	_____	_____	_____
		_____	_____	_____	_____
		_____	_____	_____	_____
		_____	_____	_____	_____
		_____	_____	_____	_____
		_____	_____	_____	_____
		_____	_____	_____	_____
		_____	_____	_____	_____
		_____	_____	_____	_____

**FINANCIAL
SECTION**

**COMPARATIVE BALANCE SHEET
ASSETS AND OTHER DEBITS**

ACCT. NO. (a)	ACCOUNT NAME (b)	REF. PAGE (c)	PREVIOUS YEAR (d)	CURRENT YEAR (e)
UTILITY PLANT				
101-106	Utility Plant	F-7	\$ 7,031,837	\$ 7,110,720
108-110	Less: Accumulated Depreciation and Amortization	F-8	3,289,620	3,532,953
Net Plant			\$ 3,742,217	\$ 3,577,768
114-115	Utility Plant Acquisition adjustment (Net)	F-7	266,765	266,765
116 *	Other Utility Plant Adjustments			
Total Net Utility Plant			\$ 4,008,982	\$ 3,844,533
OTHER PROPERTY AND INVESTMENTS				
121	Nonutility Property	F-9	\$ -	\$ -
122	Less: Accumulated Depreciation and Amortization		-	-
Net Nonutility Property			\$	\$
123	Investment In Associated Companies	F-10	-	-
124	Utility Investments	F-10	-	-
125	Other Investments	F-10	-	-
126-127	Special Funds	F-10	-	-
Total Other Property & Investments			\$ -	\$ -
CURRENT AND ACCRUED ASSETS				
131	Cash		\$ -	\$ -
132	Special Deposits	F-9	10,857	10,857
133	Other Special Deposits	F-9	-	-
134	Working Funds		-	-
135	Temporary Cash Investments		-	-
141-144	Accounts and Notes Receivable, Less Accumulated Provision for Uncollectible Accounts	F-11	117,915	129,973
145	Accounts Receivable from Associated Companies	F-12	(355,379)	(350,947)
146	Notes Receivable from Associated Companies	F-12	-	-
151-153	Material and Supplies		1,867	735
161	Stores Expense		-	-
162	Prepayments		-	-
171	Accrued Interest and Dividends Receivable		-	-
172 *	Rents Receivable		-	-
173 *	Accrued Utility Revenues		-	-
174	Misc. Current and Accrued Assets	F-12	-	-
Total Current and Accrued Assets			\$ (224,740)	\$ (209,382)

* Not Applicable for Class B Utilities

COMPARATIVE BALANCE SHEET
ASSETS AND OTHER DEBITS

ACCT. NO. (a)	ACCOUNT NAME (b)	REF. PAGE (c)	PREVIOUS YEAR (d)	CURRENT YEAR (e)
DEFERRED DEBITS				
181	Unamortized Debt Discount & Expense	F-13	\$ -	\$ -
182	Extraordinary Property Losses	F-13	-	-
183	Preliminary Survey & Investigation Charges		-	-
184	Clearing Accounts		-	-
185 *	Temporary Facilities		-	-
186	Misc. Deferred Debits	F-14	47,606	155,599
187 *	Research & Development Expenditures		-	-
190	Accumulated Deferred Income Taxes		-	-
Total Deferred Debits			\$ 47,606	\$ 155,599
TOTAL ASSETS AND OTHER DEBITS			\$ 3,831,848	\$ 3,790,749

* Not Applicable for Class B Utilities

NOTES TO THE BALANCE SHEET

The space below is provided for important notes regarding the balance sheet.

**COMPARATIVE BALANCE SHEET
EQUITY CAPITAL AND LIABILITIES**

ACCT. NO. (a)	ACCOUNT NAME (b)	REF. PAGE (c)	PREVIOUS YEAR (d)	CURRENT YEAR (e)
EQUITY CAPITAL				
201	Common Stock Issued	F-15	\$ 1,000	\$ 1,000
204	Preferred Stock Issued	F-15	-	-
202, 205 *	Capital Stock Subscribed		-	-
203, 206 *	Capital Stock Liability for Conversion		-	-
207 *	Premium on Capital Stock		-	-
209 *	Reduction in Par or Stated Value of Capital Stock		-	-
210 *	Gain on Resale or Cancellation of Reacquired Capital Stock		-	-
211	Other Paid - In Capital		2,601,260	2,601,260
212	Discount On Capital Stock		-	-
213	Capital Stock Expense		-	-
214-215	Retained Earnings	F-16	(766,528)	(753,586)
216	Reacquired Capital Stock		-	-
218	Proprietary Capital (Proprietorship and Partnership Only)		-	-
Total Equity Capital			\$ 1,835,733	\$ 1,848,675
LONG TERM DEBT				
221	Bonds	F-15	-	-
222 *	Reacquired Bonds		-	-
223	Advances from Associated Companies	F-17	1,255,152	1,255,152
224	Other Long Term Debt	F-17	-	-
Total Long Term Debt			\$ 1,255,152	\$ 1,255,152
CURRENT AND ACCRUED LIABILITIES				
231	Accounts Payable		39,366	18,698
232	Notes Payable	F-18	-	-
233	Accounts Payable to Associated Companies	F-18	(998,569)	(998,569)
234	Notes Payable to Associated Companies	F-18	-	-
235	Customer Deposits		28,985	31,517
236	Accrued Taxes		21,999	24,260
237	Accrued Interest	F-19	6,349	8,127
238	Accrued Dividends		-	-
239	Matured Long Term Debt		-	-
240	Matured Interest		-	-
241	Miscellaneous Current & Accrued Liabilities	F-20	-	-
Total Current & Accrued Liabilities			\$ (901,869)	\$ (915,967)

* Not Applicable for Class B Utilities

**COMPARATIVE BALANCE SHEET
EQUITY CAPITAL AND LIABILITIES**

ACCT. NO. (a)	ACCOUNT NAME (b)	REF. PAGE (c)	PREVIOUS YEAR (d)	CURRENT YEAR (e)
DEFERRED CREDITS				
251	Unamortized Premium On Debt	F-13	\$ -	\$ -
252	Advances For Construction	F-20	-	-
253	Other Deferred Credits	F-21	-	-
255	Accumulated Deferred Investment Tax Credits		-	-
Total Deferred Credits			\$ -	\$ -
OPERATING RESERVES				
261	Property Insurance Reserve		\$ -	\$ -
262	Injuries & Damages Reserve		-	-
263	Pensions and Benefits Reserve		-	-
265	Miscellaneous Operating Reserves		-	-
Total Operating Reserves			\$ -	\$ -
CONTRIBUTIONS IN AID OF CONSTRUCTION				
271	Contributions in Aid of Construction	F-22	\$ 3,809,952	\$ 3,809,952
272	Accumulated Amortization of Contributions in Aid of Construction	F-22	2,413,849	2,531,476
Total Net C.I.A.C.			\$ 1,396,102	\$ 1,278,476
ACCUMULATED DEFERRED INCOME TAXES				
281	Accumulated Deferred Income Taxes - Accelerated Depreciation		\$ 161,652	\$ 182,893
282	Accumulated Deferred Income Taxes - Liberalized Depreciation		-	-
283	Accumulated Deferred Income Taxes - Other		85,078	141,520
Total Accumulated Deferred Income Tax			\$ 246,730	\$ 324,413
TOTAL EQUITY CAPITAL AND LIABILITIES			\$ 3,831,848	\$ 3,790,749

COMPARATIVE OPERATING STATEMENT

ACCT. NO. (a)	ACCOUNT NAME (b)	REF. PAGE (c)	PREVIOUS YEAR (d)	CURRENT YEAR * (e)
UTILITY OPERATING INCOME				
400	Operating Revenues	F-3(b)	\$ 990,978	\$ 1,041,148
469, 530	Less: Guaranteed Revenue and AFPI	F-3(b)		
			\$ 990,978	\$ 1,041,148
401	Operating Expenses	F-3(b)	\$ 683,187	\$ 605,486
403	Depreciation Expense:	F-3(b)	\$ 282,886	\$ 292,468
	Less: Amortization of CIAC	F-22	(117,626)	(117,626)
			\$ 165,259	\$ 174,842
406	Amortization of Utility Plant Acquisition Adjustment	F-3(b)	-	-
407	Amortization Expense (Other than CIAC)	F-3(b)	-	-
408	Taxes Other Than Income	W/S-3	67,378	70,261
409	Current Income Taxes	W/S-3	(7,699)	-
410.1	Deferred Federal Income Taxes	W/S-3	12,408	68,739
410.1	Deferred State Income Taxes	W/S-3	2,125	8,393
411.1	Provision for Deferred Income Taxes - Credit	W/S-3	-	-
412.1	Investment Tax Credits Deferred to Future Periods	W/S-3	-	-
412.1	Investment Tax Credits Restored to Operating Income	W/S-3	-	-
			\$ 922,658	\$ 927,722
			\$ 68,319	\$ 113,427
469, 530	Add Back: Guaranteed Revenue and AFPI	F-3(b)	-	-
413	Income From Utility Plant Leased to Others		-	-
414	Gains (losses) From Disposition of Utility Property		487	609
420	Allowance for Funds Used During Construction		-	1
Total Utility Operating Income [Enter here and on Page F-3(c)]			\$ <u>68,806</u>	\$ <u>114,036</u>

* For each account, Column e should agree with Cloum f, g and h on F-3(b)

COMPARATIVE OPERATING STATEMENT (Cont'd)

WATER SCHEDULE W-3 * (f)	WASTEWATER SCHEDULE S-3 * (g)	OTHER THAN REPORTING SYSTEMS (h)
\$ -	\$ 1,041,148	\$ -
\$ -	\$ 1,041,148	\$ -
\$ -	\$ 605,486	\$ -
-	292,468	-
-	(117,626)	-
\$ -	\$ 174,842	\$ -
-	-	-
-	-	-
-	70,261	-
-	-	-
-	68,739	-
-	8,393	-
-	-	-
-	-	-
-	-	-
\$ -	\$ 927,722	\$ -
\$ -	\$ 113,427	\$ -
-	-	-
-	-	-
-	609	-
-	1	-
\$ -	\$ 114,036	\$ -

* Total of Schedules W-3 / S-3 for all rate groups.

COMPARATIVE OPERATING STATEMENT (Cont'd)

ACCT. NO. (a)	ACCOUNT NAME (b)	REF. PAGE (c)	PREVIOUS YEAR (d)	CURRENT YEAR (e)
Total Utility Operating Income [from page F-3(a)]			\$ 68,806	\$ 114,036
OTHER INCOME AND DEDUCTIONS				
415	Revenues-Merchandising, Jobbing, and Contract Deductions		\$ -	\$ -
416	Costs & Expenses of Merchandising Jobbing, and Contract Work		-	-
419	Interest and Dividend Income		-	-
421	Nonutility Income		-	-
426	Miscellaneous Nonutility Expenses		-	-
Total Other Income and Deductions			\$ -	\$ -
TAXES APPLICABLE TO OTHER INCOME				
408.2	Taxes Other Than Income		\$ -	\$ -
409.2	Income Taxes		-	-
410.2	Provision for Deferred Income Taxes		-	-
411.2	Provision for Deferred Income Taxes - Credit		-	-
412.2	Investment Tax Credits - Net		-	-
412.3	Investment Tax Credits Restored to Operating Income		-	-
Total Taxes Applicable To Other Income			\$ -	\$ -
INTEREST EXPENSE				
427	Interest Expense	F-19	\$ 106,999	\$ 101,094
428	Amortization of Debt Discount & Expense	F-13	-	-
429	Amortization of Premium on Debt	F-13	-	-
Total Interest Expense			\$ 106,999	\$ 101,094
EXTRAORDINARY ITEMS				
433	Extraordinary Income		\$ -	\$ -
434	Extraordinary Deductions		-	-
409.3	Income Taxes, Extraordinary Items		-	-
Total Extraordinary Items			\$ -	\$ -
NET INCOME			\$ (38,193)	\$ 12,942

Explain Extraordinary Income:

NONE

UTILITY NAME: UTILITIES INC OF EAGLE RIDGE

YEAR OF REPORT 31-Dec-11

SCHEDULE OF YEAR END RATE BASE

ACCT. NO. (a)	ACCOUNT NAME (b)	REF. PAGE (c)	WATER UTILITY (d)	WASTEWATER UTILITY (e)
101	Utility Plant In Service	F-7	\$ -	\$ 7,110,720
	Less:			
	Nonused and Useful Plant (1)			
108	Accumulated Depreciation	F-8	-	3,532,953
110	Accumulated Amortization	F-8	-	-
271	Contributions In Aid of Construction	F-22	-	3,809,952
252	Advances for Construction	F-20	-	-
Subtotal			\$ -	\$ (232,184)
	Add:			
272	Accumulated Amortization of Contributions in Aid of Construction	F-22	-	2,531,476
Subtotal			\$ -	\$ 2,299,292
	Plus or Minus:			
114	Acquisition Adjustments (2)	F-7	-	-
115	Accumulated Amortization of Acquisition Adjustments (2)	F-7	-	-
	Working Capital Allowance (3)		-	75,686
	Other (Specify):			

RATE BASE			\$ -	\$ 2,374,978
NET UTILITY OPERATING INCOME			\$ -	\$ 113,427
ACHIEVED RATE OF RETURN (Operating Income / Rate Base)			0.00%	4.78%

NOTES :

- (1) Estimate based on the methodology used in the last rate proceeding.
- (2) Include only those Acquisition Adjustments that have been approved by the Commission.
- (3) Calculation consistent with last rate proceeding.
In absence of a rate proceeding, Class A utilities will use the Balance Sheet Method and Class B Utilities will use the One-eighth Operating and Maintenance Expense Method.

**SCHEDULE OF CURRENT COST OF CAPITAL
CONSISTENT WITH THE METHODOLOGY USED IN THE LAST RATE PROCEEDING (1)**

CLASS OF CAPITAL (a)	DOLLAR AMOUNT (2) (b)	PERCENTAGE OF CAPITAL (c)	ACTUAL COST RATES (3) (d)	WEIGHTED COST (c x d) (e)
Common Equity	\$ 1,003,459	42.29%	11.21%	4.74%
Preferred Stock	-	0.00%	0.00%	0.00%
Long Term Debt	1,013,584	42.71%	6.71%	2.87%
Short Term Debt	-	0.00%	0.00%	0.00%
Customer Deposits	31,517	1.33%	6.00%	0.08%
Tax Credits - Zero Cost	-	0.00%	0.00%	0.00%
Tax Credits - Weighted Cost	-	0.00%	0.00%	0.00%
Deferred Income Taxes	324,413	13.67%	0.00%	0.00%
Other (Explain) Short Term Debt	-	0.00%	0.00%	0.00%
Total	\$ 2,372,973	100.00%		7.69%

1 If the utility's capital structure is not used, explain which capital structure is used.

2 Should equal amounts on Schedule F-6, Column (g).

3 Mid-point of the last authorized Return On Equity or current leverage formula if none has been established.

Must be calculated using the same methodology used in the last rate proceeding using current annual report year end amounts and cost rates.

APPROVED RETURN ON EQUITY

Current Commission Return on Equity:	<u>11.21%</u>
Commission order approving Return on Equity:	<u>PSC-04-1107-PAA-SU</u>

APPROVED AFUDC RATE

COMPLETION ONLY REQUIRED IF AFUDC WAS CHARGED DURING YEAR

Current Commission Approved AFUDC rate:	<u>9.03%</u>
Commission order approving AFUDC rate:	<u>PSC-04-0262-PAA-WS</u>

If any utility capitalized any charge in lieu of AFUDC (such as interest only), state the basis of the charge, an explanation as to why AFUDC was not charged and the percentage capitalized.

UTILITY NAME:

UTILITIES INC OF EAGLE RIDGE

YEAR OF REPORT 31-Dec-11

**SCHEDULE OF CAPITAL STRUCTURE ADJUSTMENTS
CONSISTENT WITH THE METHODOLOGY USED IN THE LAST RATE PROCEEDING**

CLASS OF CAPITAL (a)	PER BOOK BALANCE (b)	NON-UTILITY ADJUSTMENTS (c)	NON-JURISDICTIONAL ADJUSTMENTS (d)	OTHER (1) ADJUSTMENTS SPECIFIC (e)	OTHER (1) ADJUSTMENTS PRO RATA (f)	STRUCTURE (g)
Common Equity	\$ 178,201,903	\$ _____	_____	_____	\$ (177,198,444)	\$ 1,003,459
Preferred Stock	-	_____	_____	_____	_____	-
Long Term Debt	180,000,000	_____	_____	_____	(178,986,416)	1,013,584
Short Term Debt	-	_____	_____	_____	-	-
Customer Deposits	31,517	_____	_____	_____	_____	31,517
Tax Credits - Zero Cost	-	_____	_____	_____	_____	-
Tax Credits - Weighted Cost	-	_____	_____	_____	_____	-
Deferred Inc. Taxes	324,413	_____	_____	_____	_____	324,413
Other (Explain) Short Term Debt	-	_____	_____	_____	-	-
Total	\$ 358,557,833	\$ _____	_____	_____	\$ (356,184,860)	\$ 2,372,973

(1) Explain below all adjustments made in Columns (e) and (f):

NOT APPLICABLE

UTILITY NAME: UTILITIES INC OF EAGLE RIDGE

YEAR OF REPORT
31-Dec-11

**UTILITY PLANT
ACCOUNTS 101 - 106**

ACCT. (a)	DESCRIPTION (b)	WATER (c)	WASTEWATER (d)	OTHER THAN REPORTING SYSTEMS (e)	TOTAL (f)
101	Plant Accounts: Utility Plant In Service	\$ -	\$ 7,110,720	\$	\$ 7,110,720
102	Utility Plant Leased to Other				-
103	Property Held for Future Use	-	-		-
104	Utility Plant Purchased or Sold				-
105	Construction Work in Progress	-	-		-
106	Completed Construction Not Classified				-
	Total Utility Plant	\$ -	\$ 7,110,720	\$ -	\$ 7,110,720

**UTILITY PLANT ACQUISITION ADJUSTMENTS
ACCOUNTS 114 AND 115**

Report each acquisition adjustment and related accumulated amortization separately.
For any acquisition adjustments approved by the Commission, include the Order Number.

ACCT. (a)	DESCRIPTION (b)	WATER (c)	WASTEWATER (d)	OTHER THAN REPORTING SYSTEMS (e)	TOTAL (f)
114	Acquisition Adjustment	\$ -	310,957		310,957
	Total Plant Acquisition Adjustments	\$ -	\$ 310,957	\$ -	\$ 310,957
115	Beginning Bal	\$	\$ (44,192)	\$	\$ (44,192)
	Accumulated Amortization				
	Accruals charged during year	-	-		
	Total Accumulated Amortization	\$ -	\$ (44,192)	\$ -	\$ (44,192)
	Net Acquisition Adjustments	\$ -	\$ 266,765	\$ -	\$ 266,765

UTILITY NAME: UTILITIES INC OF EAGLE RIDGE

YEAR OF REPORT 31-Dec-11

ACCUMULATED DEPRECIATION (ACCT. 108) AND AMORTIZATION (ACCT. 110)

DESCRIPTION (a)	WATER (b)	WASTEWATER (c)	OTHER THAN REPORTING SYSTEMS (d)	TOTAL (e)
ACCUMULATED DEPRECIATION				
Account 108				
Balance first of year	\$ -	3,289,620		3,289,620
Credit during year:				
Accruals charged to:				
Account 108.1 (1)	\$ -	\$ 292,468	\$ -	\$ 292,468
Account 108.2 (2)	-	-	-	-
Account 108.3 (2)	-	-	-	-
Other Accounts (specify):	-	(4,941)	-	(4,941)
Salvage	-	-	-	-
Other Credits (Specify):	-	-	-	-
Total Credits	\$ -	\$ 287,527	\$ -	\$ 287,527
Debits during year:				
Book cost of plant retired	-	44,195	-	44,195
Cost of Removal	-	-	-	-
Other Debits (specify):	-	-	-	-
Acting adjustments mandated by FPSC	-	-	-	-
Total Debits	\$ -	\$ 44,195	\$ -	\$ 44,195
Balance end of year	\$ -	\$ 3,532,953	\$ -	\$ 3,532,953
ACCUMULATED AMORTIZATION				
Account 110				
Balance first of year	\$ -			
Credit during year:				
Accruals charged to:				
Account 110.2 (2)	\$ -	-	-	-
Other Accounts (specify):	-	-	-	-
Total credits	\$ -	\$ -	\$ -	\$ -
Debits during year:				
Book cost of plant retired	-	-	-	-
Other debits (specify):	-	-	-	-
Total Debits	\$ -	\$ -	\$ -	\$ -
Balance end of year	\$ -	\$ -	\$ -	\$ -

- 1 Account 108 for Class B utilities.
- 2 Not applicable for Class B utilities.
- 3 Account 110 for Class B utilities.

UTILITY NAME: UTILITIES INC OF EAGLE RIDGE

YEAR OF REPORT 31-Dec-11

**REGULATORY COMMISSION EXPENSE
AMORTIZATION OF RATE CASE EXPENSE (ACCOUNTS 666 AND 766)**

DESCRIPTION OF CASE (DOCKET NO.) (a)	EXPENSE INCURRED DURING YEAR (b)	CHARGED OFF DURING YEAR	
		ACCT. (d)	AMOUNT (e)
030445-SU	\$ _____	_____	\$ 20,517
_____	_____	_____	_____
_____	_____	_____	_____
Total	\$ _____	_____	\$ 20,517

NONUTILITY PROPERTY (ACCOUNT 121)

Report separately each item of property with a book cost of \$25,000 or more included in Account 121.
Other Items may be grouped by classes of property.

DESCRIPTION (a)	BEGINNING YEAR (b)	ADDITIONS (c)	REDUCTIONS (d)	ENDING YEAR BALANCE (e)
NONE	\$ _____	\$ _____	\$ _____	\$ -
_____	_____	_____	_____	_____
_____	_____	_____	_____	_____
_____	_____	_____	_____	_____
Total Nonutility Property	\$ _____	\$ _____	\$ _____	\$ -

SPECIAL DEPOSITS (ACCOUNTS 132 AND 133)

Report hereunder all special deposits carried in Accounts 132 and 133.

DESCRIPTION OF SPECIAL DEPOSITS (a)	YEAR END BOOK COST (b)
SPECIAL DEPOSITS (Account 132): Electric Deposit	\$ 10,857
_____	_____
_____	_____
Total Special Deposits	\$ 10,857
OTHER SPECIAL DEPOSITS (Account 133): NONE	\$ -
_____	_____
_____	_____
Total Other Special Deposits	\$ -

UTILITY NAME: UTILITIES INC OF EAGLE RIDGE

YEAR OF REPORT 31-Dec-11

INVESTMENTS AND SPECIAL FUNDS
ACCOUNTS 123 - 127

Report hereunder all investments and special funds carried in Accounts 123 through 127.

DESCRIPTION OF SECURITY OR SPECIAL FUND (a)	FACE OR PAR VALUE (b)	YEAR END BOOK COST (c)
INVESTMENT IN ASSOCIATED COMPANIES (Account 123): NONE <hr/> <hr/> <hr/> <hr/> <hr/> <hr/>	\$ _____ _____ _____ _____ _____ _____	\$ _____ - _____ _____ _____ _____ _____
Total Investment in Associated Companies		\$ <u>_____ -</u>
UTILITY INVESTMENTS (Account 124): NONE <hr/> <hr/> <hr/> <hr/> <hr/> <hr/>	\$ _____ _____ _____ _____ _____ _____	\$ _____ - _____ _____ _____ _____ _____
Total Utility Investment		\$ <u>_____ -</u>
OTHER INVESTMENTS (Account 125): NONE <hr/> <hr/> <hr/> <hr/> <hr/> <hr/>	\$ _____ _____ _____ _____ _____ _____	\$ _____ - _____ _____ _____ _____ _____
Total Other Investment		\$ <u>_____ -</u>
SPECIAL FUNDS (Class A Utilities: Accounts 126 and 127; Class B Utilities: Account 127): NONE <hr/> <hr/> <hr/> <hr/> <hr/> <hr/>	_____ _____ _____ _____ _____ _____	\$ _____ - _____ _____ _____ _____ _____
Total Special Funds		\$ <u>_____ -</u>

UTILITY NAME: UTILITIES INC OF EAGLE RIDGE

YEAR OF REPORT 31-Dec-11

ACCOUNTS AND NOTES RECEIVABLE - NET
ACCOUNTS 141 - 144

Report hereunder all accounts and notes receivable included in Accounts 141, 142, and 144. Amounts included in
Amounts included in Accounts 142 and 144 should be listed individually.

DESCRIPTION (a)	TOTAL (b)
CUSTOMER ACCOUNTS RECEIVABLE (Account 141):	
Water	\$ -
Wastewater	133,226
Other	_____
Total Customer Accounts Receivable	\$ 133,226
OTHER ACCOUNTS RECEIVABLE (Account 142):	
_____	\$ _____
_____	_____
_____	_____
Total Other Accounts Receivable	\$ -
NOTES RECEIVABLE (Account 144):	
_____	\$ _____
_____	_____
_____	_____
Total Notes Receivable	\$ -
Total Accounts and Notes Receivable	\$ 133,226
ACCUMULATED PROVISION FOR UNCOLLECTIBLE ACCOUNTS (Account 143)	
Balance first of year	\$ (3,032)
Provision for uncollectibles for current year	\$ (221)
Collection of accounts previously written off	_____
Utility Accounts	_____
Others	_____
_____	_____
Total Additions	\$ (221)
Deduct accounts written off during year:	
Utility Accounts	_____
Others	_____
_____	_____
Total accounts written off	\$ _____
Balance end of year	\$ (3,253)
TOTAL ACCOUNTS AND NOTES RECEIVABLE - NET	\$ 129,973

UTILITY NAME: UTILITIES INC OF EAGLE RIDGE

YEAR OF REPORT 31-Dec-11

ACCOUNTS RECEIVABLE FROM ASSOCIATED COMPANIES
ACCOUNT 145

Report each account receivable from associated companies separately.

DESCRIPTION (a)	TOTAL (b)
Water Service Corp.	\$ (350,947)
Total	\$ <u>(350,947)</u>

NOTES RECEIVABLE FROM ASSOCIATED COMPANIES
ACCOUNT 146

Report each note receivable from associated companies separately.

DESCRIPTION (a)	INTEREST RATE (b)	TOTAL (c)
NONE	%	\$ -
	%	
	%	
	%	
	%	
	%	
	%	
	%	
	%	
	%	
Total		\$ <u>-</u>

MISCELLANEOUS CURRENT AND ACCRUED ASSETS
ACCOUNT 174

DESCRIPTION - Provide itemized listing (a)	BALANCE END OF YEAR (b)
NONE	\$ -
Total Miscellaneous Current and Accrued Assets	\$ <u>-</u>

UTILITY NAME: UTILITIES INC OF EAGLE RIDGE

**UNAMORTIZED DEBT DISCOUNT AND EXPENSE AND PREMIUM ON DEBT
ACCOUNTS 181 AND 251**

Report the net discount and expense or premium separately for each security issue.

DESCRIPTION (a)	AMOUNT WRITTEN OFF DURING YEAR (b)	YEAR END BALANCE (c)
UNAMORTIZED DEBT DISCOUNT AND EXPENSE (Account 181): NONE	\$ _____	\$ _____ -
_____	_____	_____
_____	_____	_____
_____	_____	_____
Total Unamortized Debt Discount and Expense	\$ _____	\$ _____ -
UNAMORTIZED PREMIUM ON DEBT (Account 251):	\$ _____	\$ _____ -
_____	_____	_____
_____	_____	_____
_____	_____	_____
Total Unamortized Premium on Debt	\$ _____	\$ _____ -

**EXTRAORDINARY PROPERTY LOSSES
ACCOUNT 182**

Report each item separately.

DESCRIPTION (a)	TOTAL (b)
NONE	\$ _____ -
_____	_____
_____	_____
Total Extraordinary Property Losses	\$ _____ -

**MISCELLANEOUS DEFERRED DEBITS
ACCOUNT 186**

DESCRIPTION - Provide itemized listing (a)	AMOUNT WRITTEN OFF DURING YEAR (b)	YEAR END BALANCE (c)
DEFERRED RATE CASE EXPENSE (Class A Utilities: Account 186.1)		
<u>RATE CASE</u>	\$ 20,517	\$ 155,604
_____	_____	_____
_____	_____	_____
_____	_____	_____
Total Deferred Rate Case Expense	\$ <u>20,517</u>	\$ <u>155,604</u>
OTHER DEFERRED DEBITS (Class A Utilities: Account 186.2):		
<u>OTHER DEFERRED MAINTENANCE (NONE)</u>	\$ -	\$ (6)
_____	_____	_____
_____	_____	_____
_____	_____	_____
_____	_____	_____
_____	_____	_____
Total Other Deferred Debits	\$ <u>-</u>	\$ <u>(6)</u>
REGULATORY ASSETS (Class A Utilities: Account. 186.3):		
<u>NONE</u>	\$ -	\$ -
_____	_____	_____
_____	_____	_____
_____	_____	_____
_____	_____	_____
_____	_____	_____
Total Regulatory Assets	\$ <u>-</u>	\$ <u>-</u>
TOTAL MISCELLANEOUS DEFERRED DEBITS	\$ <u>20,517</u>	\$ <u>155,599</u>

UTILITY NAME:

UTILITIES INC OF EAGLE RIDGE

YEAR OF REPORT 31-Dec-11

**CAPITAL STOCK
ACCOUNTS 201 AND 204***

DESCRIPTION (a)	RATE (b)	TOTAL (c)
COMMON STOCK		
Par or stated value per share	_____	1
Shares authorized	_____	0
Shares issued and outstanding	_____	0
Total par value of stock issued	_____	\$1,000
Dividends declared per share for year	_____	0
REFERRED STOCK		
Par or stated value per share	_____	0
Shares authorized	_____	0
Shares issued and outstanding	_____	0
Total par value of stock issued	_____	\$0
Dividends declared per share for year	_____	0

* Account 204 not applicable for Class B utilities.

**BONDS
ACCOUNT 221**

DESCRIPTION OF OBLIGATION (INCLUDING DATE OF ISSUE AND DATE OF MATURITY) (a)	INTEREST		PRINCIPAL AMOUNT PER BALANCE SHEET (d)
	ANNUAL RATE (b)	FIXED OR VARIABLE * (c)	
NONE	%	_____	\$ _____
_____	%	_____	_____
_____	%	_____	_____
_____	%	_____	_____
_____	%	_____	_____
_____	%	_____	_____
_____	%	_____	_____
_____	%	_____	_____
_____	%	_____	_____
_____	%	_____	_____
Total			\$ _____

* For variable rate obligations, provide the basis for the rate. (i.e.. prime + 2%, etc.)

UTILITY NAME: UTILITIES INC OF EAGLE RIDGE

STATEMENT OF RETAINED EARNINGS

- 1 Dividends should be shown for each class and series of capital stock. Show amounts as dividends per share.
- 2 Show separately the state and federal income tax effect of items shown in Account No. 439.

ACCT. NO. (a)	DESCRIPTION (b)	AMOUNTS (c)
215	Unappropriated Retained Earnings: Balance Beginning of Year	\$ (766,528)
439	Changes to Account: Adjustments to Retained Earnings (requires Commission approval prior to use): Credits: _____	\$ _____
	Total Credits:	\$ -
	Debits: _____	\$ _____
	Total Debits:	\$ -
435	Balance Transferred from Income {income/(loss)}	\$ 12,942
436	Appropriations of Retained Earnings: _____	_____
	Total Appropriations of Retained Earnings	\$ _____
437	Dividends Declared: Preferred Stock Dividends Declared _____	_____
438	Common Stock Dividends Declared _____	_____
	Total Dividends Declared	\$ _____
215	Year end Balance	\$ _____
214	Appropriated Retained Earnings (state balance and purpose of each appropriated amount at year end): _____	_____
214	Total Appropriated Retained Earnings	\$ _____
	Total Retained Earnings	\$ <u>(753,586)</u>
Notes to Statement of Retained Earnings:		

UTILITY NAME: UTILITIES INC OF EAGLE RIDGE

YEAR OF REPORT 31-Dec-11

**ADVANCES FROM ASSOCIATED COMPANIES
ACCOUNT 223**

Report each advance separately.

DESCRIPTION (a)	TOTAL (b)
WATER SERVICE CORPORATION	\$ 1,255,152
Total	\$ <u>1,255,152</u>

**OTHER LONG-TERM DEBT
ACCOUNT 224**

DESCRIPTION OF OBLIGATION INCLUDING DATE OF ISSUE AND DATE OF MATURITY (a)	INTEREST		PRINCIPAL AMOUNT PER BALANCE SHEET (d)
	ANNUAL RATE (b)	FIXED OR VARIABLE * (c)	
NONE	%		\$ -
	%		
	%		
	%		
	%		
	%		
	%		
	%		
	%		
	%		
	%		
	%		
	%		
	%		
	%		
	%		
	%		
	%		
	%		
	%		
Total			\$ <u>-</u>

* For variable rate obligations, provide the basis for the rate. (i.e.. prime + 2%, etc.)

UTILITY NAME: UTILITIES INC OF EAGLE RIDGE

YEAR OF REPORT 31-Dec-11

**NOTES PAYABLE
ACCOUNTS 232 AND 234**

DESCRIPTION OF OBLIGATION (INCLUDING DATE OF ISSUE AND DATE OF MATURITY) (a)	INTEREST		PRINCIPAL AMOUNT PER BALANCE SHEET (d)
	ANNUAL RATE (b)	FIXED OR VARIABLE * (c)	
NOTES PAYABLE (Account 232): NONE	%		\$ -
	%		
	%		
	%		
	%		
	%		
	%		
	%		
	%		
	%		
Total Account 232			\$ -
NOTES PAYABLE TO ASSOC. COMPANIES (Account 234): NONE	%		\$ -
	%		
	%		
	%		
	%		
	%		
	%		
	%		
	%		
	%		
Total Account 234			\$ -

* For variable rate obligations, provide the basis for the rate. (i.e.. prime + 2%, etc.)

**ACCOUNTS PAYABLE TO ASSOCIATED COMPANIES
ACCOUNT 233**

Report each account payable separately.

DESCRIPTION (a)	TOTAL (b)
WATER SERVICE CORPORATION	\$ (998,569)
Total	\$ (998,569)

UTILITY NAME: UTILITIES INC OF EAGLE RIDGE

YEAR OF REPORT
31-Dec-11

**ACCRUED INTEREST AND EXPENSE
ACCOUNTS 237 AND 427**

DESCRIPTION OF DEBIT (a)	BALANCE BEGINNING OF YEAR (b)	INTEREST ACCRUED DURING YEAR		INTEREST PAID DURING YEAR (e)	BALANCE END OF YEAR (f)
		ACCT. DEBIT (c)	AMOUNT (d)		
ACCOUNT NO. 237.1 - Accrued Interest on Long Term Debt	\$ _____		\$ _____	\$ _____	\$ _____
UTILITIES INC INTERCOMPANY INTEREST	_____		99,522	99,522	-
Total Account 237.1	\$ <u> -</u>		\$ <u> 99,522</u>	\$ <u> 99,522</u>	\$ <u> -</u>
ACCOUNT NO. 237.2 - Accrued Interest on Other Liabilities					
Customer Deposits	\$ 6,349		\$ 1,821	\$ (205)	\$ 8,127
MISC ITEMS	_____		(249)	_____	-
Total Account 237.2	\$ <u> 6,349</u>		\$ <u> 1,573</u>	\$ <u> (205)</u>	\$ <u> 8,127</u>
Total Account 237 (1)	\$ <u> 6,349</u>		\$ <u>101,094</u>	\$ <u> 99,317</u>	\$ <u> 8,127</u>
INTEREST EXPENSED:					
Total accrual Account 237			\$ 101,094		
_____			_____		
_____			_____		
_____			_____		
Net Interest Expensed to Account No. 427 (2)			\$ <u> 101,094</u>		

(1) Must agree to F-2 (a), Beginning and Ending Balance of Accrued Interest.

(2) Must agree to F-3 (c), Current Year Interest Expense

UTILITY NAME: UTILITIES INC OF EAGLE RIDGE

YEAR OF REPORT 31-Dec-11

**MISCELLANEOUS CURRENT AND ACCRUED LIABILITIES
ACCOUNT 241**

DESCRIPTION - Provide itemized listing (a)	BALANCE END OF YEAR (b)
NONE	\$ -
_____	_____
_____	_____
_____	_____
Total Miscellaneous Current and Accrued Liabilities	\$ -

**ADVANCES FOR CONSTRUCTION
ACCOUNT 252**

NAME OF PAYOR * (a)	BALANCE BEGINNING OF YEAR (b)	DEBITS		CREDITS (e)	BALANCE END OF YEAR (f)
		ACCT. DEBIT (c)	AMOUNT (d)		
NONE	\$ -		\$ -	\$ -	\$ -
_____	_____	_____	_____	_____	_____
_____	_____	_____	_____	_____	_____
_____	_____	_____	_____	_____	_____
_____	_____	_____	_____	_____	_____
_____	_____	_____	_____	_____	_____
_____	_____	_____	_____	_____	_____
Total	\$ -		\$ -	\$ -	\$ -

* Report advances separately by reporting group, designating water or wastewater in column (a).

UTILITY NAME: UTILITIES INC OF EAGLE RIDGE

**OTHER DEFERRED CREDITS
ACCOUNT 253**

DESCRIPTION - Provide itemized listing (a)	AMOUNT WRITTEN OFF DURING YEAR (b)	YEAR END BALANCE (c)
REGULATORY LIABILITIES (Class A Utilities: Account 253.1):		
NONE	\$ _____	\$ _____ -
_____	_____	_____
_____	_____	_____
_____	_____	_____
Total Regulatory Liabilities	\$ _____	\$ _____ -
OTHER DEFERRED LIABILITIES (Class A Utilities: Account 253.2):		
_____	\$ _____	\$ _____ -
_____	_____	_____
_____	_____	_____
_____	_____	_____
_____	_____	_____
_____	_____	_____
_____	_____	_____
Total Other Deferred Liabilities	\$ _____	\$ _____ -
TOTAL OTHER DEFERRED CREDITS	\$ _____	\$ _____ -

UTILITY NAME: UTILITIES INC OF EAGLE RIDGE

**CONTRIBUTIONS IN AID OF CONSTRUCTION
ACCOUNT 271**

DESCRIPTION (a)	WATER (W-7) (b)	WASTEWATER (S-7) (c)	W & WW OTHER THAN SYSTEM REPORTING (d)	TOTAL (e)
Balance first of year	\$ _____	\$ <u>3,809,952</u>	\$ _____ -	\$ <u>3,809,952</u>
Add credits during year:	\$ _____ -	\$ _____ -	\$ _____ -	\$ _____ -
Less debit charged during the year	\$ _____ -	\$ _____ -	\$ _____ -	\$ _____ -
Total Contribution In Aid of Construction	\$ _____ -	\$ <u>3,809,952</u>	\$ _____ -	\$ <u>3,809,952</u>

**ACCUMULATED AMORTIZATION OF CONTRIBUTIONS IN AID OF CONSTRUCTION
ACCOUNT 272**

DESCRIPTION (a)	WATER (W-8(a)) (b)	WASTEWATER (S-8(a)) (c)	W & WW OTHER THAN SYSTEM REPORTING (d)	TOTAL (e)
Balance first of year	\$ _____	\$ <u>2,413,849</u>	\$ _____ -	\$ <u>2,413,849</u>
Debits during the year:	\$ _____ -	\$ <u>117,626</u>	\$ _____ -	\$ <u>117,626</u>
Credits during the year	\$ _____ -	\$ _____	\$ _____ -	\$ _____ -
Total Accumulated Amortization of Contributions In Aid of Construction	\$ _____ -	\$ <u>2,531,476</u>	\$ _____ -	\$ <u>2,531,476</u>

UTILITY NAME:

UTILITIES INC OF EAGLE RIDGE

YEAR OF REPORT 31-Dec-11

**RECONCILIATION OF REPORTED NET INCOME WITH TAXABLE
INCOME FOR FEDERAL INCOME TAXES (UTILITY OPERATIONS)**

- 1 The reconciliation should include the same detail as furnished on Schedule M-1 of the federal tax return for the year. The reconciliation shall be submitted even though there is no taxable income for the year. Descriptions should clearly indicate the nature of each reconciling amount and show the computations of all tax accruals.
- 2 If the utility is a member of a group which files a consolidated federal tax return, reconcile reported net income with taxable net income as if a separate return were to be filed, indicating intercompany amounts to be eliminated in such consolidated return. State names of group members, tax assigned to each group member, and basis of allocation, assignments or sharing of the consolidated tax among the group members.

DESCRIPTION (a)	REF. NO. (b)	AMOUNT (c)
Net income for the year	F-3(c)	\$ 12,942
Reconciling items for the year:		
Taxable income not reported on books:		
GOS adj		(1,231)
Income adj		80,240
Adj		(15,324)
Deductions recorded on books not deducted for return:		
Amortization ITC		
Excess Tax Depreciation over Book Depreciation		(3,776)
Tap in Fees		
CIA Property		
Int During Construction		
Def. Maint. CY additions		
Def. Maint. CY amortization		
Def. Rate Case CY additions		(128,514)
Def. Rate Case CY amortization		20,517
Organization Exp-Amort		(42,690)
Bad Debts CY		221
Current FIT (725)		0
Deferred FIT (731)		68,739
Deferred SIT (732)		8,393
Income recorded on books not included in return:		
Interest During Construction		
Misc.		
Deduction on return not charged against book income:		
Meals		482
Federal tax net income		\$ (0)
Computation of tax :		
	(0)	
	<u>34%</u>	
	(0)	

WATER OPERATING SECTION

Note: This utility is a wastewater only service; therefore, Pages W-1 through W-14 have been omitted from this report.

**WASTEWATER
OPERATION
SECTION**

UTILITY NAME:

UTILITIES INC OF EAGLE RIDGE

YEAR OF REPORT

31-Dec-11

SYSTEM NAME / COUNTY : Lee County

SCHEDULE OF YEAR END WASTEWATER RATE BASE

ACCT. NO. (a)	ACCOUNT NAME (b)	REFERENCE PAGE (c)	WASTEWATER UTILITY (d)
101	Utility Plant In Service	S-4A	\$ 7,110,720
	Less:		
	Nonused and Useful Plant (1)		
108	Accumulated Depreciation	S-6B	3,532,953
110	Accumulated Amortization	F-8	-
271	Contributions In Aid of Construction	S-7	3,809,952
252	Advances for Construction	F-20	
Subtotal			\$ (232,184)
	Add:		
272	Accumulated Amortization of Contributions in Aid of Construction	S-8A	\$ 2,531,476
Subtotal			\$ 2,299,292
	Plus or Minus:		
114	Acquisition Adjustments (2)	F-7	
115	Accumulated Amortization of Acquisition Adjustments (2)	F-7	
	Working Capital Allowance (3)		75,686
	Other (Specify):		-
WASTEWATER RATE BASE			\$ 2,374,978
WASTEWATER OPERATING INCOME		S-3	\$ 113,427
ACHIEVED RATE OF RETURN (Wastewater Operating Income / Wastewater Rate Base)			<u>4.78%</u>

NOTES(1) Estimate based on the methodology used in the last rate proceeding.

(2) Include only those Acquisition Adjustments that have been approved by the Commission.

(3) Calculation consistent with last rate proceeding.

In absence of a rate proceeding, Class A utilities will use the Balance Sheet Method and Class B Utilities will use the One-eighth Operating and Maintenance Expense Method.

UTILITY NAME:

UTILITIES INC OF EAGLE RIDGE

YEAR OF REPORT 31-Dec-11

SYSTEM NAME / COUNTY :

Lee County

WASTEWATER OPERATING STATEMENT

ACCT. NO. (a)	ACCOUNT NAME (b)	REFERENCE PAGE (c)	WASTEWATER UTILITY (d)
	UTILITY OPERATING INCOME		
400	Operating Revenues	S-9A	\$ 1,041,148
530	Less: Guaranteed Revenue (and AFPI)	S-9A	-
	Net Operating Revenues		\$ 1,041,148
401	Operating Expenses	S-10A	\$ 605,486
403	Depreciation Expense	S-6A	292,468
	Less: Amortization of CIAC	S-8A	(117,626)
	Net Depreciation Expense		\$ 174,842
406	Amortization of Utility Plant Acquisition Adjustment	F-7	-
407	Amortization Expense (Other than CIAC)	F-8	-
408.1	Taxes Other Than Income Utility Regulatory Assessment Fee		-
408.11	Property Taxes		6,511
408.12	Payroll Taxes		16,593
408.13	Other Taxes and Licenses		47,157
408	Total Taxes Other Than Income		\$ 70,261
409.1	Income Taxes		-
410.1	Deferred Federal Income Taxes		68,739
410.11	Deferred State Income Taxes		8,393
411.1	Provision for Deferred Income Taxes - Credit		-
412.1	Investment Tax Credits Deferred to Future Periods		-
412.11	Investment Tax Credits Restored to Operating Income		-
	Utility Operating Expenses		\$ 927,722
	Utility Operating Income		\$ 113,427
530	Add Back: Guaranteed Revenue (and AFPI)	S-9A	\$ -
413	Income From Utility Plant Leased to Others		-
414	Gains (losses) From Disposition of Utility Property		609
420	Allowance for Funds Used During Construction		1
	Total Utility Operating Income		\$ 114,036

UTILITY NAME: UTILITIES INC OF EAGLE RIDGE

YEAR OF REPORT
31-Dec-11

SYSTEM NAME / COUNTY : Lee County

WASTEWATER UTILITY PLANT ACCOUNTS

ACCT. NO. (a)	ACCOUNT NAME (b)	PREVIOUS YEAR (c)	ADDITIONS (d)	RETIREMENTS (e)	CURRENT YEAR (f)
351	Organization	\$ 16,958	\$ -	\$ -	\$ 16,958
352	Franchises	1,662	0		1,662
353	Land and Land Rights	51,865	8		51,873
354	Structures and Improvements	3,231,601	36,286	34,824	3,233,063
355	Power Generation Equipment	5,400	-		5,400
360	Collection Sewers - Force	117,326	774	1,344	116,756
361	Collection Sewers - Gravity	1,402,521	-		1,402,521
361	Manholes	21,678	-		21,678
362	Special Collecting Structures	-	460		460
363	Services to Customers	159,283	(774)		158,509
364	Flow Measuring Devices	16,122	1,639		17,762
365	Flow Measuring Installations	-	-		-
366	Reuse Services	-	-		-
367	Reuse Meters and Meter Installations	-	-		-
370	Receiving Wells	-	-		-
371	Pumping Equipment	58,297	36,727	1,392	93,632
374	Reuse Distribution Reservoirs	-	-		-
375	Reuse Transmission and Distribution System	63,287	27		63,314
380	Treatment and Disposal Equipment	1,186,275	22,932	5,205	1,204,002
381	Plant Sewers	159,859	1,604		161,463
382	Outfall Sewer Lines	16,375	-		16,375
389	Other Plant Miscellaneous Equipment	31,476	837		32,313
390	Office Furniture and Equipment	287,049	5,042		292,091
391	Transportation Equipment	111,674	13,956		125,630
392	Stores Equipment	-	-		-
393	Tools, Shop and Garage Equipment	76,210	173		76,383
394	Laboratory Equipment	11,463	3,359	1,430	13,392
395	Power Operated Equipment	-	-		-
396	Communication Equipment	5,456	28		5,484
397	Miscellaneous Equipment	-	-		-
398	Other Tangible Plant	-	-		-
Total Wastewater Plant		\$ 7,031,837	\$ 123,078	\$ 44,195	\$ 7,110,720

NOTE: Any adjustments made to reclassify property from one account to another must be footnoted.

UTILITY NAME: UTILITIES INC OF EAGLE RIDGE

SYSTEM NAME / COUNTY : Lee County

WASTEWATER UTILITY PLANT MATRIX

ACCT. NO. (a)	ACCOUNT NAME (b)	.1	.2	.3	.4	.5	.6	.7
		INTANGIBLE PLANT (g)	COLLECTION PLANT (h)	SYSTEM PUMPING PLANT (i)	TREATMENT AND DISPOSAL (j)	RECLAIMED WASTEWATER TREATMENT PLANT (i)	RECLAIMED WASTEWATER DISTRIBUTION PLANT (j)	GENERAL PLANT (k)
351	Organization	\$ 16,958						
352	Franchises							
353	Land and Land Rights		51,873	-	-	-	-	-
354	Structures and Improvements		6,094	340,330	2,774,527	-	14,827	97,285
355	Power Generation Equipment		5,400					
360	Collection Sewers - Force		116,756					
361	Collection Sewers - Gravity		1,402,521					
361	Manholes		21,678					
362	Special Collecting Structures		460					
363	Services to Customers		158,509					
364	Flow Measuring Devices		17,762					
365	Flow Measuring Installations		-					
366	Reuse Services		-					
367	Reuse Meters and Meter Installations							
370	Receiving Wells			-				
371	Pumping Equipment			93,632				
374	Reuse Distribution Reservoirs			-				
375	Reuse Transmission and Distribution System			63,314				
380	Treatment and Disposal Equipment				1,201,268	2,734		
381	Plant Sewers				-	161,463		
382	Outfall Sewer Lines				16,375			
389	Other Plant Miscellaneous Equipment		2,916	3,234	26,163			
390	Office Furniture and Equipment							292,091
391	Transportation Equipment							125,630
392	Stores Equipment							-
393	Tools, Shop and Garage Equipment							76,383
394	Laboratory Equipment							13,392
395	Power Operated Equipment							-
396	Communication Equipment							5,484
397	Miscellaneous Equipment							-
398	Other Tangible Plant							-
Total Wastewater Plant		\$ 18,620	\$ 1,783,968	\$ 500,510	\$ 4,018,332	\$ 164,197	\$ 14,827	\$ 610,266

NOTE: Any adjustments made to reclassify property from one account to another must be footnoted.

UTILITY NAME: UTILITIES INC OF EAGLE RIDGE

SYSTEM NAME / COUNTY : Lee County

BASIS FOR WASTEWATER DEPRECIATION CHARGES

ACCT. NO. (a)	ACCOUNT NAME (b)	AVERAGE SERVICE LIFE IN YEARS (c)	AVERAGE NET SALVAGE IN PERCENT (d)	DEPRECIATION RATE APPLIED IN PERCENT (100% - d) / c (e)
351	Organization			
352	Franchises	40		2.50%
354	Structures and Improvements	32		3.13%
355	Power Generation Equipment	20		5.00%
360	Collection Sewers - Force	30		3.33%
361	Collection Sewers - Gravity	45		2.22%
362	Special Collecting Structures	40		2.50%
363	Services to Customers	38		2.63%
364	Flow Measuring Devices	5		20.00%
365	Flow Measuring Installations	38		2.63%
366	Reuse Services	40		2.50%
367	Reuse Meters and Meter Installations	20		5.00%
370	Receiving Wells	30		3.33%
371	Pumping Equipment	18		5.56%
375	Reuse Transmission and Distribution System	43		2.33%
380	Treatment and Disposal Equipment	18		5.56%
381	Plant Sewers	35		2.86%
382	Outfall Sewer Lines	30		3.33%
389	Other Plant Miscellaneous Equipment	10		10.00%
390	Office Furniture and Equipment	40		2.50%
391	Transportation Equipment	5		20.00%
392	Stores Equipment	18		5.56%
393	Tools, Shop and Garage Equipment	16		6.25%
394	Laboratory Equipment	15		6.67%
395	Power Operated Equipment	12		8.33%
396	Communication Equipment	10		10.00%
397	Miscellaneous Equipment	15		6.67%
398	Other Tangible Plant	10		10.00%
Wastewater Plant Composite Depreciation Rate *				

* If depreciation rates prescribed by this Commission are on a total composite basis, entries should be made on this line only.

UTILITY NAME: UTILITIES INC OF EAGLE RIDGE

YEAR OF REPORT
31-Dec-11

SYSTEM NAME / COUNTY : Lee County

ANALYSIS OF ENTRIES IN WASTEWATER ACCUMULATED DEPRECIATION

NO. (a)	ACCT. ACCOUNT NAME (b)	BALANCE AT BEGINNING OF YEAR (c)	ACCRUALS (d)	OTHER CREDITS * (e)	TOTAL CREDITS (d + e) (f)
301	Organization	\$ (2,150)	\$ 861	\$ -	\$ 861
302	Franchises	13,725	6,099	2	6,101
354	Structures and Improvements	2,078,227	101,920	1,416	103,336
355	Power Generation Equipment	434	270	-	270
360	Collection Sewers - Force	95,011	5,483	774	6,257
361	Collection Sewers - Gravity	634,329	31,785	-	31,785
362	Special Collecting Structures	-	3	-	3
363	Services to Customers	128,988	7,444	(774)	6,670
364	Flow Measuring Devices	(2,421)	3,441	-	3,441
365	Flow Measuring Installations	-	-	-	-
366	Reuse Services	-	-	-	-
367	Reuse Meters and Meter Installations	-	-	-	-
370	Receiving Wells	-	-	-	-
371	Pumping Equipment	4,994	4,118	(0)	4,117
375	Reuse Transmission and Distribution System	5,558	1,510	-	1,510
380	Treatment and Disposal Equipment	12,440	79,687	(0)	79,686
381	Plant Sewers	5,439	4,605	-	4,605
382	Outfall Sewer Lines	5,184	546	-	546
389	Other Plant Miscellaneous Equipment	3,431	1,769	-	1,769
390	Office Furniture and Equipment	138,393	28,599	1,845	30,445
391	Transportation Equipment	93,587	9,070	(9,091)	(21)
392	Stores Equipment	-	-	-	-
393	Tools, Shop and Garage Equipment	66,167	4,058	554	4,612
394	Laboratory Equipment	7,245	849	(0)	849
395	Power Operated Equipment	-	-	-	-
396	Communication Equipment	277	-	333	333
397	Miscellaneous Equipment	-	-	-	-
398	Other Tangible Plant	763	352	-	352
Total Depreciable Wastewater Plant in Service		\$ 3,289,620	\$ 292,468	\$ (4,941)	\$ 287,527

* Specify nature of transaction.
Use () to denote reversal entries.

OTHER CREDITS column (E) * are due to allocation of UIF plant

UTILITY NAME: UTILITIES INC OF EAGLE RIDGE

YEAR OF REPORT
31-Dec-11

SYSTEM NAME / COUNTY : Lee County

ANALYSIS OF ENTRIES IN WASTEWATER ACCUMULATED DEPRECIATION

ACCT. NO.	ACCOUNT NAME	PLANT RETIRED	SALVAGE AND INSURANCE	COST OF REMOVAL AND OTHER CHARGES	TOTAL CHARGES (g-h+i)	BALANCE AT END OF YEAR (c+f-j)
(a)	(b)	(g)	(h)	(i)	(j)	(k)
301	Organization	\$ -	\$ -	\$ -	\$ -	\$ (1,289)
302	Franchises	-	-	-	-	19,825
354	Structures and Improvements	34,824	-	-	34,824	2,146,739
355	Power Generation Equipment	-	-	-	-	704
360	Collection Sewers - Force	1,344	-	-	1,344	99,924
361	Collection Sewers - Gravity	-	-	-	-	666,114
362	Special Collecting Structures	-	-	-	-	3
363	Services to Customers	-	-	-	-	135,658
364	Flow Measuring Devices	-	-	-	-	1,020
365	Flow Measuring Installations	-	-	-	-	-
366	Reuse Services	-	-	-	-	-
367	Reuse Meters and Meter Installations	-	-	-	-	-
370	Receiving Wells	-	-	-	-	-
371	Pumping Equipment	1,392	-	-	1,392	7,719
375	Reuse Transmission and Distribution System	-	-	-	-	7,068
380	Treatment and Disposal Equipment	5,205	-	-	5,205	86,921
381	Plant Sewers	-	-	-	-	10,043
382	Outfall Sewer Lines	-	-	-	-	5,729
389	Other Plant Miscellaneous Equipment	-	-	-	-	5,200
390	Office Furniture and Equipment	-	-	-	-	168,838
391	Transportation Equipment	-	-	-	-	93,566
392	Stores Equipment	-	-	-	-	-
393	Tools, Shop and Garage Equipment	-	-	-	-	70,779
394	Laboratory Equipment	1,430	-	-	1,430	6,663
395	Power Operated Equipment	-	-	-	-	-
396	Communication Equipment	-	-	-	-	610
397	Miscellaneous Equipment	-	-	-	-	-
398	Other Tangible Plant	-	-	-	-	1,116
Total Depreciable Wastewater Plant in Service		\$ 44,195	\$ -	\$ -	\$ 44,195	\$ 3,532,953

* Specify nature of transaction.
Use () to denote reversal entries.

UTILITY NAME: UTILITIES INC OF EAGLE RIDGE

SYSTEM NAME / COUNTY : Lee County

WASTEWATER CIAC SCHEDULE "A"

ADDITIONS TO CONTRIBUTIONS IN AID OF CONSTRUCTION RECEIVED FROM CAPACITY,
MAIN EXTENSION AND CUSTOMER CONNECTION CHARGES RECEIVED DURING THE YEAR

DESCRIPTION OF CHARGE (a)	NUMBER OF CONNECTIONS (b)	CHARGE PER CONNECTION (c)	AMOUNT (d)
<u>SEWER CONNECTIONS FEES (NONE)</u>	_____	\$ _____	\$ _____
_____	_____	_____	_____
_____	_____	_____	_____
_____	_____	_____	_____
_____	_____	_____	_____
_____	_____	_____	_____
_____	_____	_____	_____
_____	_____	_____	_____
Total Credits			\$ _____ -

ACCUMULATED AMORTIZATION OF WASTEWATER CONTRIBUTIONS IN AID OF CONSTRUCTION

DESCRIPTION (a)	WASTEWATER (b)
Balance first of year	\$ <u>2,413,849</u>
Debits during the year:	
Accruals charged to Account 272	\$ <u>117,626</u>
Other debits (specify) :	_____
_____	_____
_____	_____
Total debits	\$ <u>117,626</u>
Credits during the year (specify) :	
_____	\$ _____
_____	_____
Total credits	\$ _____ -
Balance end of year	\$ <u><u>2,531,476</u></u>

UTILITY NAME:

UTILITIES INC OF EAGLE RIDGE

YEAR OF REPORT

31-Dec-11

SYSTEM NAME / COUNTY : Lee County

WASTEWATER OPERATING REVENUE

ACCT. NO. (a)	DESCRIPTION (b)	BEGINNING YEAR NO. CUSTOMERS * (c)	YEAR END NUMBER OF CUSTOMERS * (d)	AMOUNTS (e)
WASTEWATER SALES				
Flat Rate Revenues:				
521.1	Residential Revenues	2,494	2,511	\$ 272,230
521.2	Commercial Revenues			-
521.3	Industrial Revenues			-
521.4	Revenues From Public Authorities			-
521.5	Multiple Family Dwelling Revenues			-
521.6	Other Revenues			-
521	Total Flat Rate Revenues	2,494	2,511	\$ 272,230
Measured Revenues:				
522.1	Residential Revenues			646,353
522.2	Commercial Revenues			120,678
522.3	Industrial Revenues			-
522.4	Revenues From Public Authorities			-
522.5	Multiple Family Dwelling Revenues			-
522	Total Measured Revenues			\$ 767,031
523	Revenues From Public Authorities			-
524	Revenues From Other Systems			-
525	Interdepartmental Revenues			-
Total Wastewater Sales		2,494	2,511	\$ 1,039,261
OTHER WASTEWATER REVENUES				
530	Guaranteed Revenues			\$ -
531	Sale of Sludge			-
532	Forfeited Discounts			-
534	Rents From Wastewater Property			-
535	Interdepartmental Rents			-
536	Other Wastewater Revenues (Including Allowance for Funds Prudently Invested or AFPI)			1,887
Total Other Wastewater Revenues				\$ 1,887

* Customer is defined by Rule 25-30.210(1), Florida Administrative Code.
521.1 includes accruals

UTILITY NAME:

UTILITIES INC OF EAGLE RIDGE

<p>YEAR OF REPORT 31-Dec-11</p>
--

SYSTEM NAME / COUNTY Lee County

WASTEWATER OPERATING REVENUE

ACCT. NO. (a)	DESCRIPTION (b)	BEGINNING YEAR NO. CUSTOMERS * (c)	YEAR END NUMBER OF CUSTOMERS * (d)	AMOUNTS (e)
RECLAIMED WATER SALES				
540.1	Flat Rate Reuse Revenues: Residential Reuse Revenues	_____	_____	\$ _____ -
540.2	Commercial Reuse Revenues	_____	_____	_____ -
540.3	Industrial Reuse Revenues	_____	_____	_____ -
540.4	Reuse Revenues From Public Authorities	_____	_____	_____ -
540.5	Other Revenues	_____	_____	_____ -
540	Total Flat Rate Reuse Revenues	_____	_____	\$ _____ -
541.1	Measured Reuse Revenues: Residential Reuse Revenues	_____	_____	_____ -
541.2	Commercial Reuse Revenues	_____	_____	_____ -
541.3	Industrial Reuse Revenues	_____	_____	_____ -
541.4	Reuse Revenues From Public Authorities	_____	_____	_____ -
541	Total Measured Reuse Revenues	_____	_____	\$ _____ -
544	Reuse Revenues From Other Systems	_____	_____	_____ -
Total Reclaimed Water Sales				\$ _____ -
Total Wastewater Operating Revenues				\$ <u>1,041,148</u>

* Customer is defined by Rule 25-30.210(1), Florida Administrative Code.

UTILITY NAME: UTILITIES INC OF EAGLE RIDGE

SYSTEM NAME / COUNTY : Lee County

WASTEWATER UTILITY EXPENSE ACCOUNT MATRIX

ACCT. NO.	ACCOUNT NAME	CURRENT YEAR	.1 COLLECTION EXPENSES- OPERATIONS	.2 COLLECTION EXPENSES- MAINTENANCE	.3 PUMPING EXPENSES - OPERATIONS	.4 PUMPING EXPENSES - MAINTENANCE	.5 TREATMENT & DISPOSAL EXPENSES - OPERATIONS	.6 TREATMENT & DISPOSAL EXPENSES - MAINTENANCE
(a)	(b)	(c)	(d)	(e)	(f)	(g)	(h)	(i)
701	Salaries and Wages - Employees	\$ 172,472	\$ 20,501	\$ 20,501	\$ 20,501	\$ 20,501	\$ 20,501	\$ 20,501
703	Salaries and Wages - Officers, Directors and Majority Stockholders	20,195	-	-	-	-	-	-
704	Employee Pensions and Benefits	42,146	4,485	4,485	4,485	4,485	4,485	4,485
710	Purchased Sewage Treatment	3,260	-	-	-	-	3,260	-
711	Sludge Removal Expense	50,300	-	-	-	-	50,300	-
715	Purchased Power	60,600	20,200	-	20,200	-	20,200	-
716	Fuel for Power Purchased	-	-	-	-	-	-	-
718	Chemicals	39,530	6,588	6,588	6,588	6,588	6,588	6,588
720	Materials and Supplies	47,876	5,985	5,985	5,985	5,985	5,985	5,985
731	Contractual Services-Engineering	2,000	-	-	-	-	-	-
732	Contractual Services - Accounting	3,566	-	-	-	-	-	-
733	Contractual Services - Legal	818	-	-	-	-	-	-
734	Contractual Services - Mgt. Fees	-	-	-	-	-	-	-
735	Contractual Services - Testing	-	-	-	-	-	-	-
736	Contractual Services - Other	33,295	4,162	4,162	4,162	4,162	4,162	4,162
741	Rental of Building/Real Property	277	-	-	-	-	-	-
742	Rental of Equipment	19	19	-	-	-	-	-
750	Transportation Expenses	16,628	2,078	2,078	2,078	2,078	2,078	2,078
756	Insurance - Vehicle	-	-	-	-	-	-	-
757	Insurance - General Liability	-	-	-	-	-	-	-
758	Insurance - Workman's Comp.	-	-	-	-	-	-	-
759	Insurance - Other	21,034	2,629	2,629	2,629	2,629	2,629	2,629
760	Advertising Expense	1,117	-	-	-	-	-	-
766	Regulatory Commission Expenses - Amortization of Rate Case Expense	20,517	-	-	-	-	-	-
767	Regulatory Commission Exp.-Other	1,482	-	-	-	-	-	-
770	Bad Debt Expense	1,453	-	-	-	-	-	-
775	Miscellaneous Expenses	66,900	8,363	8,363	8,363	8,363	8,363	8,363
Total Wastewater Utility Expenses		\$ 605,486	\$ 75,010	\$ 54,791	\$ 74,991	\$ 54,791	\$ 128,552	\$ 54,791

CHECK

CHECK 2

(0)

S-10(a)
GROUP _____

UTILITY NAME: UTILITIES INC OF EAGLE RIDGE

YEAR OF REPORT
31-Dec-11

SYSTEM NAME / COUNTY : Lee County

WASTEWATER UTILITY EXPENSE ACCOUNT MATRIX

ACCT. NO.	ACCOUNT NAME	.7 CUSTOMER ACCOUNTS EXPENSE	.8 ADMIN. & GENERAL EXPENSES	.9 RECLAIMED WATER TREATMENT EXPENSES- OPERATIONS	.10 RECLAIMED WATER TREATMENT EXPENSES- MAINTENANCE	.11 RECLAIMED WATER DISTRIBUTION EXPENSES- OPERATIONS	.12 RECLAIMED WATER DISTRIBUTION EXPENSES- MAINTENANCE
(a)	(b)	(j)	(k)	(l)	(m)	(n)	(o)
701	Salaries and Wages - Employees	\$ 11,437	\$ 38,028	\$ -	\$ -	\$ -	\$ -
703	Salaries and Wages - Officers, Directors and Majority Stockholders	-	20,195	-	-	-	-
704	Employee Pensions and Benefits	2,502	12,736	-	-	-	-
710	Purchased Sewage Treatment						
711	Sludge Removal Expense						
715	Purchased Power	-	-	-	-	-	-
716	Fuel for Power Purchased	-	-	-	-	-	-
718	Chemicals						
720	Materials and Supplies	5,985	5,985	-	-	-	-
731	Contractual Services-Engineering	-	2,000	-	-	-	-
732	Contractual Services - Accounting	-	3,566	-	-	-	-
733	Contractual Services - Legal	-	818	-	-	-	-
734	Contractual Services - Mgt. Fees	-	-	-	-	-	-
735	Contractual Services - Testing	-	-	-	-	-	-
736	Contractual Services - Other	4,162	4,162	-	-	-	-
741	Rental of Building/Real Property	-	277	-	-	-	-
742	Rental of Equipment	-	-	-	-	-	-
750	Transportation Expenses	2,078	2,078	-	-	-	-
756	Insurance - Vehicle	-	-	-	-	-	-
757	Insurance - General Liability	-	-	-	-	-	-
758	Insurance - Workman's Comp.	-	-	-	-	-	-
759	Insurance - Other	2,629	2,629	-	-	-	-
760	Advertising Expense		1,117				
766	Regulatory Commission Expenses - Amortization of Rate Case Expense		20,517				
767	Regulatory Commission Exp.-Other	-	1,482	-	-	-	-
770	Bad Debt Expense	1,453					
775	Miscellaneous Expenses	8,363	8,363	-	-	-	-
Total Wastewater Utility Expenses		\$ 38,608	\$ 123,952	\$ -	\$ -	\$ -	\$ -

UTILITY NAME: UTILITIES INC OF EAGLE RIDGE

SYSTEM NAME / COUNTY : EAGLE RIDGE / LEE

CALCULATION OF THE WASTEWATER SYSTEM METER EQUIVALENTS

WATER METER SIZE (a)	TYPE OF WATER METER (b)	EQUIVALENT FACTOR (c)	NUMBER OF WATER METERS (d)	TOTAL NUMBER OF METER EQUIVALENTS (c x d) (e)
All Residential		1.0	771	771
5/8"	Displacement	1.0	11	11
3/4"	Displacement	1.5		0
1"	Displacement	2.5	16	40
1 1/2"	Displacement or Turbine	5.0	36	180
2"	Displacement, Compound or Turbine	8.0	28	224
3"	Displacement	15.0	1	15
3"	Compound	16.0		0
3"	Turbine	17.5		0
4"	Displacement or Compound	25.0		0
4"	Turbine	30.0		0
6"	Displacement or Compound	50.0		0
6"	Turbine	62.5		0
8"	Compound	80.0		0
8"	Turbine	90.0		0
10"	Compound	115.0		0
10"	Turbine	145.0		0
12"	Turbine	215.0		0
Total Wastewater System Meter Equivalents				<u>1,241</u>

CALCULATION OF THE WASTEWATER SYSTEM EQUIVALENT RESIDENTIAL CONNECTIONS

Provide a calculation used to determine the value of one wastewater equivalent residential connection (ERC).

Use one of the following methods:

(a) If actual flow data are available from the preceding 12 months, divide the total annual single family residence (SFR) gallons sold by the average number of single family residence customers for the same period and divide the result by 365 days.

(b) If no historical flow data are available, use:

$$ERC = (\text{Total SFR gallons treated (Omit 000)} / 365 \text{ days} / 280 \text{ gallons per day})$$

For wastewater only utilities:

Subtract all general use and other non residential customer gallons from the total gallons treated.

Divide the remainder (SFR customers) by 365 days to reveal single family residence customer gallons per day.

NOTE: Total gallons treated includes both treated and purchased treatment.

ERC Calculation:

$$87.424/365/280=855 \text{ ERC's}$$

UTILITY NAME:

UTILITIES INC OF EAGLE RIDGE

YEAR OF REPORT
31-Dec-11

SYSTEM NAME / COUNTY :

CROSS CREEK/LEE

CALCULATION OF THE WASTEWATER SYSTEM METER EQUIVALENTS

WATER METER SIZE (a)	TYPE OF WATER METER (b)	EQUIVALENT FACTOR (c)	NUMBER OF WATER METERS (d)	TOTAL NUMBER OF METER EQUIVALENTS (c x d) (e)
All Residential	Master account	1.0		908
5/8"	Displacement	1.0		
3/4"	Displacement	1.5		
1"	Displacement	2.5		
1 1/2"	Displacement or Turbine	5.0		
2"	Displacement, Compound or Turbine	8.0		
3"	Displacement	15.0		
3"	Compound	16.0		
3"	Turbine	17.5		
4"	Displacement or Compound	25.0		
4"	Turbine	30.0		
6"	Displacement or Compound	50.0		
6"	Turbine	62.5		
8"	Compound	80.0		
8"	Turbine	90.0		
10"	Compound	115.0		
10"	Turbine	145.0		
12"	Turbine	215.0		
Total Wastewater System Meter Equivalents				<u>908</u>

CALCULATION OF THE WASTEWATER SYSTEM EQUIVALENT RESIDENTIAL CONNECTIONS

Provide a calculation used to determine the value of one wastewater equivalent residential connection (ERC).

Use one of the following methods:

(a) If actual flow data are available from the preceding 12 months, divide the total annual single family residence (SFR) gallons sold by the average number of single family residence customers for the same period and divide the result by 365 days.

(b) If no historical flow data are available, use:

$$ERC = (\text{Total SFR gallons treated (Omit 000)} / 365 \text{ days} / 280 \text{ gallons per day})$$

For wastewater only utilities:

Subtract all general use and other non residential customer gallons from the total gallons treated.

Divide the remainder (SFR customers) by 365 days to reveal single family residence customer gallons per

NOTE: Total gallons treated includes both treated and purchased treatment.

ERC Calculation:

$$41.969/365/280=411 \text{ ERC's}$$

S-11

GROUP _____

SYSTEM _____

UTILITY NAME: UTILITIES INC OF EAGLE RIDGE

YEAR OF REPORT 31-Dec-11

SYSTEM NAME / COUNTY EAGLE RIDGE / LEE

WASTEWATER TREATMENT PLANT INFORMATION

Provide a separate sheet for each wastewater treatment facility

Permitted Capacity	<u>0.318 mgd</u>	<u> </u>	<u> </u>
Basis of Permit Capacity (1)	<u>TMADF</u>	<u> </u>	<u> </u>
Manufacturer	<u>Davco</u>	<u> </u>	<u> </u>
Type (2)	<u>Ext Aeration</u>	<u> </u>	<u> </u>
Hydraulic Capacity	<u>0.318 mgd</u>	<u> </u>	<u> </u>
Average Daily Flow	<u>0.240 mgd</u>	<u> </u>	<u> </u>
Total Gallons of Wastewater Treated	<u>87.424 mg</u>	<u> </u>	<u> </u>
Method of Effluent Disposal	<u>Golf Course Irrigation</u>	<u> </u>	<u> </u>

(1) Basis of permitted capacity as stated on the Florida DEP WWTP Operating Permit (i.e. average annual daily flow, etc.)

(2) Contact stabilization, advanced treatment, etc.

UTILITY NAME: UTILITIES INC OF EAGLE RIDGE

YEAR OF REPORT
31-Dec-11

SYSTEM NAME / COUNTY CROSS CREEK/LEE

WASTEWATER TREATMENT PLANT INFORMATION

Provide a separate sheet for each wastewater treatment facility

Permitted Capacity	<u>0.249 mgd</u>	<u> </u>	<u> </u>
Basis of Permit Capacity (1)	<u>MMADF</u>	<u> </u>	<u> </u>
Manufacturer	<u>Marolf</u>	<u> </u>	<u> </u>
Type (2)	<u>Extended Aeration</u>	<u> </u>	<u> </u>
Hydraulic Capacity	<u>0.249 mgd</u>	<u> </u>	<u> </u>
Average Daily Flow	<u>0.115 mgd</u>	<u> </u>	<u> </u>
Total Gallons of Wastewater Treated	<u>41.969 mg</u>	<u> </u>	<u> </u>
Method of Effluent Disposal	<u>Golf Course Irrigation</u>	<u> </u>	<u> </u>

(1) Basis of permitted capacity as stated on the Florida DEP WWTP Operating Permit
(i.e. average annual daily flow, etc.)

(2) Contact stabilization, advanced treatment, etc.

UTILITY NAME: UTILITIES INC OF EAGLE RIDGE

YEAR OF REPORT
31-Dec-11

SYSTEM NAME / COUNTY EAGLE RIDGE / LEE

OTHER WASTEWATER SYSTEM INFORMATION

Furnish information below for each system. A separate page should be supplied where necessary.

1. Present number of ERCs* now being served 1241
2. Maximum number of ERCs* which can be served 1582
3. Present system connection capacity (in ERCs*) using existing lines 1582
4. Future connection capacity (in ERCs*) upon service area buildout 1582
5. Estimated annual increase in ERCs* 0
6. Describe any plans and estimated completion dates for any enlargements or improvements of this system

7. If the utility uses reuse as a means of effluent disposal, attach a list of the reuse end users and the amount of reuse provided to each, if known. Eagle Ridge Golf and Country Club - 0.240 mgd
8. If the utility does not engage in reuse, has a reuse feasibility study been completed? N/A

If so, when? _____
9. Has the utility been required by the DEP or water management district to implement reuse? _____

If so, what are the utility's plans to comply with this requirement? _____

10. When did the company last file a capacity analysis report with the DEP? 2008
11. If the present system does not meet the requirements of DEP rules:
 - a. Attach a description of the plant upgrade necessary to meet the DEP rules.
 - b. Have these plans been approved by DEP? N/A
 - c. When will construction begin? N/A
 - d. Attach plans for funding the required upgrading.
 - e. Is this system under any Consent Order with DEP? No
12. Department of Environmental Protection ID # FLA 014498

* An ERC is determined based on the calculation on S-11.

S-13
GROUP _____
SYSTEM Eagle Ridge

UTILITY NAME: UTILITIES INC OF EAGLE RIDGE

YEAR OF REPORT
31-Dec-11

SYSTEM NAME / COUNTY CROSS CREEK/LEE

OTHER WASTEWATER SYSTEM INFORMATION

Furnish information below for each system. A separate page should be supplied where necessary.

1. Present number of ERCs* now being served 908

2. Maximum number of ERCs* which can be served 908

3. Present system connection capacity (in ERCs*) using existing lines 908

4. Future connection capacity (in ERCs*) upon service area buildout 908

5. Estimated annual increase in ERCs* 0

6. Describe any plans and estimated completion dates for any enlargements or improvements of this system

7. If the utility uses reuse as a means of effluent disposal, attach a list of the reuse end users and the amount of reuse provided to each, if known. Cross Creek Golf Course- 0.115 mgd

8. If the utility does not engage in reuse, has a reuse feasibility study been completed? N/A

If so, when? _____

9. Has the utility been required by the DEP or water management district to implement reuse? No

If so, what are the utility's plans to comply with this requirement? _____

10. When did the company last file a capacity analysis report with the DEP? 2008

11. If the present system does not meet the requirements of DEP rules:

a. Attach a description of the plant upgrade necessary to meet the DEP rules.

b. Have these plans been approved by DEP? N/A

c. When will construction begin? N/A

d. Attach plans for funding the required upgrading.

e. Is this system under any Consent Order with DEP? No

12. Department of Environmental Protection ID # FLA 014505

* An ERC is determined based on the calculation on S-11.

Reconciliation of Revenue to
Regulatory Assessment Fee Revenue
Wastewater Operations

YEAR OF REPORT 31-Dec-11

UTILITY NAME:

UTILITIES INC OF EAGLE RIDGE

	(A)	(B)	(C)	(D)
Accounts		Gross Wastewater Revenues per Sch S-9	Gross Wastewater Revenues per RAF Return	Difference (B)-(C)
Gross Revenues:				
Total Flat-Rate Revenues		272,230	1,041,148	(768,918)
Total Measured Revenues		767,031		767,031
Revenues from Public Authorities		-		
Revenues from Other Systems		-		
Interdepartmental Revenues		-		
Total Other Wastewater Revenues		1,887		1,887
Reclaimed Water Sales				
Total Wastewater Operating Revenue		1,041,148	1,041,148	0
Less: Expense for Purchased Wastewater from FPSC Regulated Utility				
Net Wastewater Operating Revenues		1,041,148	1,041,148	0

Explanatory note for 2011 Florida Annual Reports:

This company has reported "Year End Number of Customers" using yearend active ERC calculations. An ERC is a ratio assigned to a customer or class of customers based on meter size, with one ERC being the standard connection for a single family residence.

Please note: These ERC counts are input in place of customer count because these counts are the basis for all allocation methods.

*Below are Active ERC counts by sub:

County	SUB	W	WW
Lee	Eagle Ridge		1,603
Lee	Cross Creek		908