

# CLASS "B"

## WATER and/or SEWER UTILITIES

(Gross Revenue of \$150,000 or More but Less Than \$750,000 Each)

# ANNUAL REPORT

OF

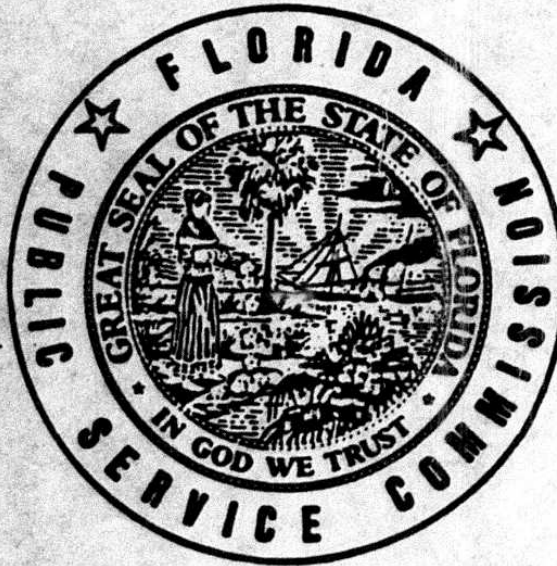
RECEIVED

WS128 WS 51  
JASMINE LAKES SERVICE, INC.  
10602 DEVCO DRIVE  
PORT RICHEY, FL 34668-2826

MAY 02 1990

Fla. Public Service Commission  
Division of Water and Sewer

110-W 083-S  
Certificate Number(s)



OFFICIAL COPY  
DIVISION OF  
WATER AND SEWER  
Do Not Remove from this Office

FOR THE  
YEAR ENDED DECEMBER 31, 19 89

## General Instructions

1. Prepare this report in conformity with the 1984 National Association of Regulatory Utility Commissioners Uniform System of Accounts for Water and/or Sewer Utilities.
2. Interpret all accounting words and phrases in accordance with the USOA.
3. Complete each question fully and accurately, even if it has been answered in a previous annual report. Enter the word "None" where it truly and completely states the fact.
4. For any question, section, or page which is not applicable to the respondent enter the words "Not Applicable". Do not omit any pages.
5. Where dates are called for, the month and day should be stated as well as the year.
6. All schedules requiring dollar entries should be rounded to the nearest dollar unless otherwise specifically indicated.
7. Complete this report by means which result in a permanent record, such as by typewriter.
8. If there is not enough room on any schedule, an additional page or pages may be added provided the format of the added schedule matches the format of the schedule with not enough room. Such a schedule should reference the appropriate schedules, state the name of the utility, and state the year of the report.
9. If it is necessary or desirable to insert additional statements for the purpose of further explanation of schedules, such statement should be made at the bottom of the page or an additional page inserted. Any additional pages should state the name of the utility, the year of the report, and reference the appropriate schedule.
10. The report should be filled out in quadruplicate and the original and two copies returned by March 31 of the year following the date of the report. The report should be returned to:

Florida Public Service Commission  
Division of Water and Sewer  
101 East Gaines Street  
Tallahassee, Florida 32399-0873

TABLE OF CONTENTS

Schedule	Page	Schedule	Page
<b>Executive Summary</b>			
Certification	E-1	Directors and Affiliates	E-7
General Information	E-2	Affiliation of Officers & Directors	E-8
Directory of Personnel Who Contact The Fla. Public Service Commission	E-3	Businesses Which Are A Byproduct, Coproduct or Joint Product Result of Providing Service	E-9
Company Profile	E-4	Business Transactions With Related Parties - Part I and II	E-10
Parent/Affiliate Organization Chart	E-5	Composite of Statistics	E-11
Compensation of Officers & Directors	E-6		
Business Contracts With Officers,			
<b>Financial Section</b>			
Comparative Balance Sheet - Assets and Other Debits	F-1	Companies	F-13
Comparative Balance Sheet - Equity Capital and Liabilities	F-2	Capital Stock	F-14
Comparative Operating Statement	F-3	Long Term Debt	F-14
Schedule of Year End Rate Base	F-4	Statement of Retained Earnings	F-15
Utility Plant	F-5	Bonds	F-16
Utility Plant Acquisition Adjustments	F-5	Advances from Associated Companies	F-16
Accumulated Depreciation	F-6	Accrued Taxes	F-17
Accumulated Amortization	F-6	Accrued Interest	F-18
Nonutility Property	F-7	Regulatory Commission Expense - Amortization of Rate Case Expense	F-18
Special Deposits	F-7	Misc. Current & Accrued Liabilities	F-19
Investments and Special Funds	F-8	Advances For Construction	F-19
Accounts and Notes Receivable - Net	F-9	Contributions In Aid Of Construction	F-20
Accounts Receivable from Associated Companies	F-10	Additions to CIAC Received from Capacity, Main Extension and Customer Connection Charges	F-21
Notes Receivable from Associated Companies	F-10	Accum. Amortization of C.I.A.C. Additions to CIAC Received from All Developers or Contractors	F-21
Prepayments	F-11	Agreements	F-22
Miscellaneous Deferred Debits	F-11	Reconciliation of Reported Net Income With Taxable Income For	
Unamortized Debt Discount and Expense and Premium on Debt	F-12	Federal Income Taxes	F-23
Extraordinary Property Losses	F-12	AFUDC Calculation	F-24
Notes Payable	F-13	AFUDC Capital Structure Adjustments	F-25
Accounts Payable to Associated			
<b>Water Operation Section</b>			
Water Utility Plant Accounts	W-1	Statistics	W-6
Water Utility Expense Accounts	W-2	Water Treatment Plant, Mains, Services and Meters	W-7
Water Operating Revenue	W-3	Wells and Well Pumps, Reservoirs, and High Service Pumping	W-8
Basis for Water Depreciation Charges	W-4	Other Water System Information	W-9
Analysis of Entries in Water Depreciation Reserve	W-5	Calculation of ERC's	W-10
Pumping and Purchased Water			
<b>Sewer Operation Section</b>			
Sewer Utility Plant Accounts	S-1	Pumping Equipment and Service Connections	S-6
Sewer Utility Expense Accounts	S-2	Collecting and Force Mains	S-7
Sewer Operating Revenue	S-3	Other Sewer System Information	S-8
Basis for Sewer Depreciation Charges	S-4	Calculation of ERC's	S-9
Analysis of Entries in Sewer Depreciation Reserve	S-5		

10

10/10/2020 10:10:10

# EXECUTIVE SUMMARY

10/10/2020 10:10:10

10/10/2020 10:10:10

10/10/2020 10:10:10

10/10/2020 10:10:10

CERTIFICATION OF ANNUAL REPORT

UTILITY NAME: JASMINE LAKES SERVICE, INC.

YEAR OF REPORT  
DECEMBER 31, 1989

I HEREBY CERTIFY, to the best of my knowledge and belief:

YES NO

(X) ( ) 1. The utility is in substantial compliance with the Uniform System of Accounts prescribed by the Florida Public Service Commission.

YES NO

(X) ( ) 2. The utility is in substantial compliance with all applicable rules and orders of the Florida Public Service Commission.

YES NO

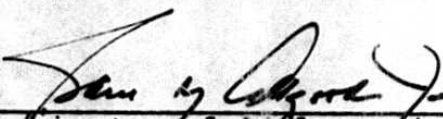
(X) ( ) 3. There have been no communications from regulatory agencies concerning noncompliance with, or deficiencies in, financial reporting practices that could have a material effect on the financial statement of the utility.

YES NO

(X) ( ) 4. The annual report fairly represents the financial condition and results of operations of the respondent for the period presented and other information and statements presented in the report as to the business affairs of the respondent are true, correct and complete for the period for which it represents.

Items Certified

1. 2. 3. 4.  
(X) (X) (X) (X)

  
\_\_\_\_\_  
(signature of chief executive officer of the utility) \*

1. 2. 3. 4.  
( ) ( ) ( ) ( )

\_\_\_\_\_  
(signature of chief financial officer of the utility) \*

\* Each of the four items must be certified YES or NO. Each item need not be certified by both officers. The items being certified by the officer should be indicated in the appropriate area to the left of the signature.

NOTICE: Section 837.06, Florida Statutes, provides that any person who knowingly makes a false statement in writing with the intent to mislead a public servant in the performance of his duty shall be guilty of a misdemeanor of the second degree.

ANNUAL REPORT OF

JASMINE LAKES SERVICE, INC.  
(Exact Name of Utility)

County: PASCO

List below the exact mailing address of the utility for which normal correspondence should be sent:

10602 DEVCO DRIVE  
PORT RICHEY, FL 34668

Telephone: (813) 868-2323

Name and address of person to whom correspondence concerning this report should be addressed:

SAM Y. ALGOOD, JR.  
10602 DEVCO DRIVE  
PORT RICHEY, FL 34668

Telephone: (813) 868-2323

List below the address of where the utility's books and records are located:

10602 DEVCO DRIVE  
PORT RICHEY, FL 34668

Telephone: (813) 868-2323

List below any groups auditing or reviewing the records and operations:

None

Date of original organization of the utility: 3 / / 60

Check the appropriate business entity of the utility as filed with the Internal Revenue Service:

Individual  Partnership  Sub S Corporation  1120 Corporation

List below every corporation or person owning or holding directly or indirectly 5 percent or more of the voting securities of the utility:

Name	Percent Ownership
1. SAM Y. ALGOOD JR + ALGOOD PROPERTIES, INC	33 %
2. ORIN S. YARBROUGH, MABEL R. YARBROUGH + JASMIN PROPERTIES, INC	11 %
3. TRANTER CONSTRUCTION CO. INC	10 %
4. JEFFREY S. TRANTER	10 %
5. LOIS E. FALANY	5 %
6. JOHN D. LAW PARTNERSHIP	5 %
7.	%
8.	%
9.	%
10.	%

UTILITY NAME: Jasmin Lakes Services, Inc

YEAR OF REPORT  
DECEMBER 31, 1989

DIRECTORY OF PERSONNEL WHO CONTACT THE FLORIDA PUBLIC SERVICE COMMISSION

NAME OF COMPANY REPRESENTATIVE (1)(2)	TITLE OR POSITION	ORGANIZATIONAL UNIT TITLE (3)	USUAL PURPOSE FOR CONTACT WITH FPSC
SAMY. ALGOOD, JR. 813-842-3180	PRES.		
ORIN S. YARBROUGH	SEC. TREAS.		
VERNIS WRAY		WRAY ENTERPRISES, INC	UTILITY OPERATIONS
G. FRANK PARKER, JR. 813-842-3180		STONG, PARKER & ASSOCIATES, CPAs	ACCOUNTING

- (1) Also list appropriate legal counsel, accountants and others who may not be on general payroll.
- (2) Provide individual telephone numbers if the person is not normally reached at the company.
- (3) Name of company employed by if not on general payroll.

UTILITY NAME: JASMINE LAKES SERVICE, INC.

YEAR OF REPORT  
DECEMBER 31, 1989

COMPANY PROFILE

Provide a brief narrative company profile which covers the following areas:

- A. Brief company history.
- B. Public services rendered.
- C. Major goals and objectives.
- D. Major operating divisions and functions.
- E. Current and projected growth patterns.
- F. Major transactions having a material effect on operations.

JASMINE LAKES SERVICE, INC. WAS FORMED IN 1960 TO SERVICE AN AREA KNOWN AS JASMINE LAKES WITH WATER AND SEWER SERVICE. CURRENTLY WATER IS PURCHASED FROM FRISCO COUNTY AND DISTRIBUTED THROUGH THE UTILITIES LINES, THE UTILITIES WELL SERVE AS A BACK UP FOR THE PURCHASED WATER. THE UTILITY CONTRACTS ITS OPERATING AND MAINTENANCE FUNCTIONS TO WRAY ENTERPRISES, INC. THE BILLING PROCESS IS HANDLED BY THE UTILITIES PERSONNEL AT ITS OFFICE IN THE SERVICE AREA. THE MAJOR GOALS OF THE UTILITY ARE TO CONTINUE PROVIDING A QUALITY SERVICE WITHIN ITS SERVICE AREA. AS THE SYSTEM HAS AGED, MAINTENANCE AND NOT GROWTH HAS BEEN THE GREATEST CONCERN OF MANAGEMENT. DURING THIS YEAR THE WASTE WATER TREATMENT PLANT WAS EXPANDED FROM 238,000 GALLONS TO 368,500 GALLONS, A NEW GROUND WATER MONITORING WELL WAS PLACED IN SERVICE, THE PERCOLATION WAS INCREASED, THE CLARIFIER WAS EXPANDED AND A BOOSTER PUMP WAS INSTALLED TO USE POND EFFLUENT FOR WWTP OPERATIONS INSTEAD OF POTABLE WATER. THE UTILITY HAS CONTRACTED TO SELL ITS ASSETS TO JIM DABNER, INC OR ITS ASSIGNS. THIS SALE SHOULD TAKE PLACE DURING MAY 1990.

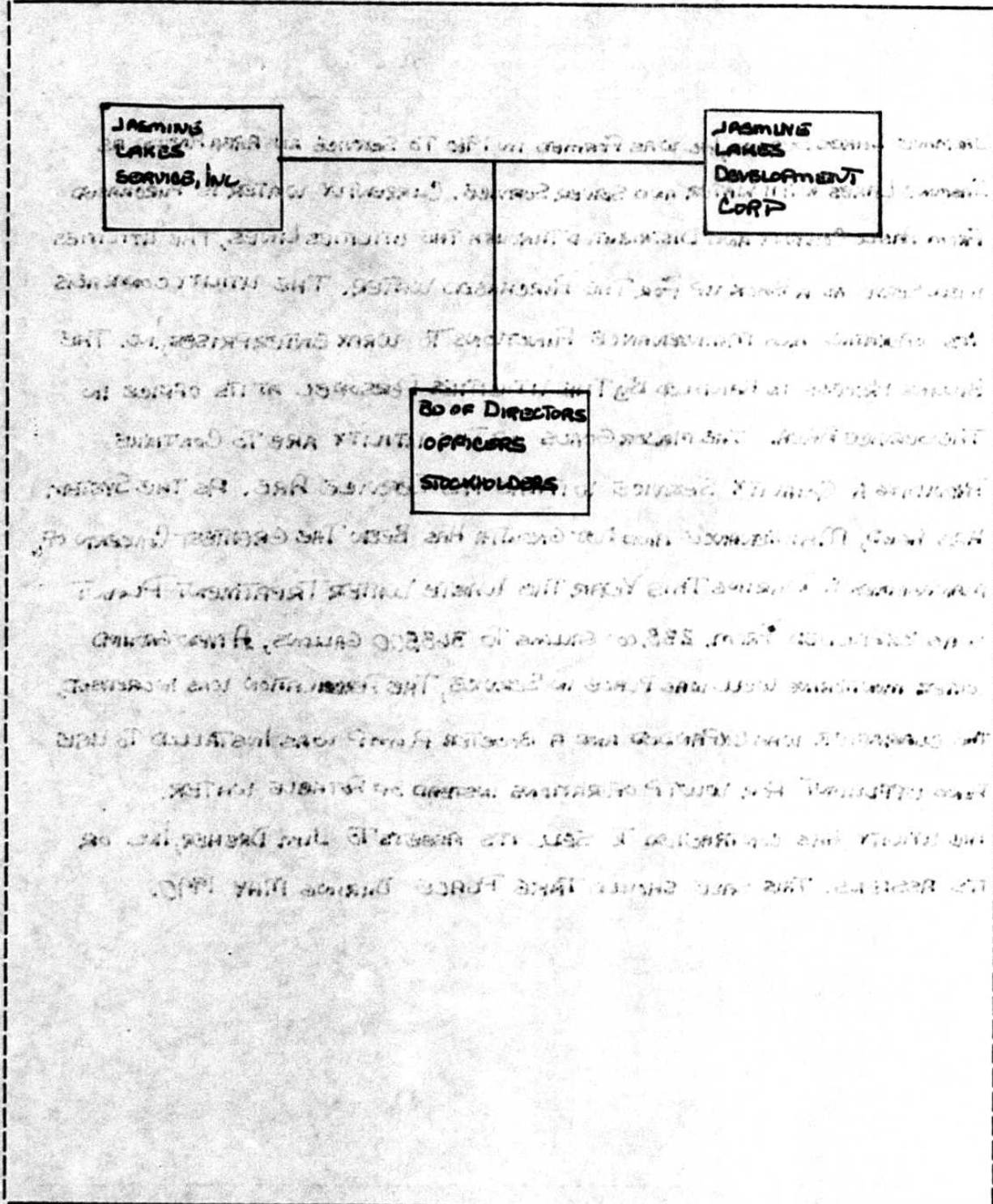


UTILITY NAME: JASMIN LAKES SERVICES, INC.

YEAR OF REPORT  
DECEMBER 31, 1989

PARENT / AFFILIATE ORGANIZATION CHART  
Current as of 12/31/89

Complete below an organizational chart that shows all parents and subsidiaries of the utility. The chart must also show the relationship between the utility and the affiliates listed on E-7, E-10(a) and E-10(b).



UTILITY NAME: JASMINE LAKES SERVICE, INC

YEAR OF REPORT  
DECEMBER 31, 1989

COMPENSATION OF OFFICERS

For each officer, list the time spent on respondent as an officer compared to time spent on total business activities and the compensation received as an officer from the respondent.

NAME (a)	TITLE (b)	% OF TIME SPENT AS OFFICER OF UTILITY (c)	OFFICERS COMPENSATION (d)
SAM Y. ALGOOD JR	PRESIDENT	15	\$ 21,259.
ORIN S. YARBROUGH	SEC. TREAS.	10	\$ 9,103
			\$
			\$
			\$
			\$
			\$

COMPENSATION OF DIRECTORS

For each director, list the number of director meetings attended by each director and the compensation received as a director from the respondent.

NAME (a)	TITLE (b)	NUMBER OF DIRECTORS MEETINGS ATTENDED (c)	DIRECTORS COMPENSATION (d)
SAM Y. ALGOOD JR	PRESIDENT-DIRECTOR	26	\$ 5880.
ORIN S. YARBROUGH	SEC. TREAS - DIRECTOR	26	\$ 5380.
			\$
			\$
			\$
			\$
			\$

\*\* COMPLETION OF SCHEDULE ONLY REQUIRED IF AFUDC WAS CHARGED DURING YEAR \*\*

UTILITY NAME: JASMINE LAKES SERVICE, INC

YEAR OF REPORT  
DECEMBER 31, 1989

N/A

SCHEDULE "B"

SCHEDULE OF CAPITAL STRUCTURE ADJUSTMENTS

CLASS OF CAPITAL (a)	PER BOOK BALANCE (b)	NON-UTILITY ADJUSTMENTS (c)	NON-JURIS. ADJUSTMENTS (d)	OTHER (1) ADJUSTMENTS (e)	CAPITAL STRUCTURE USED FOR AFUDC CALCULATION (f)
Common Equity	\$	\$	\$	\$	\$
Preferred Stock					
Long Term Debt					
Customer Deposits					
Tax Credits - Zero Cos					
Tax Credits - Weighted Cost of Capital					
Deferred Income Taxes					
Other (Explain)					
<b>Total</b>	\$	\$	\$	\$	\$

(1) Explain below all adjustments made in Column (e):

WATER EXPENSE ACCOUNT MATRIX

.3 WATER TREATMENT EXPENSES - OPERATIONS (f)	.4 WATER TREATMENT EXPENSES - MAINTENANCE (g)	.5 TRANSMISSION & DISTRIBUTION EXPENSES - OPERATIONS (h)	.6 TRANSMISSION & DISTRIBUTION EXPENSES - MAINTENANCE (i)	.7 CUSTOMER ACCOUNTS EXPENSE (j)	.8 ADMINISTRATIVE & GENERAL EXPENSES (k)
\$	\$	\$	\$	\$ 15171	\$ 1486
				989	14422
XXXXXXXXXXXXXXXXXX	XXXXXXXXXXXXXXXXXX	XXXXXXXXXXXXXXXXXX	XXXXXXXXXXXXXXXXXX	XXXXXXXXXXXXXXXXXX	XXXXXXXXXXXXXXXXXX
					110
					404
				4231	303
					2371
					3779
2278	2278	2278	2278	2811	
	76		9867		
					1924
					680
					20.
				186	21
XXXXXXXXXXXXXXXXXX	XXXXXXXXXXXXXXXXXX	XXXXXXXXXXXXXXXXXX	XXXXXXXXXXXXXXXXXX	XXXXXXXXXXXXXXXXXX	XXXXXXXXXXXXXXXXXX
XXXXXXXXXXXXXXXXXX	XXXXXXXXXXXXXXXXXX	XXXXXXXXXXXXXXXXXX	XXXXXXXXXXXXXXXXXX	XXXXXXXXXXXXXXXXXX	XXXXXXXXXXXXXXXXXX
XXXXXXXXXXXXXXXXXX	XXXXXXXXXXXXXXXXXX	XXXXXXXXXXXXXXXXXX	XXXXXXXXXXXXXXXXXX	XXXXXXXXXXXXXXXXXX	XXXXXXXXXXXXXXXXXX
XXXXXXXXXXXXXXXXXX	XXXXXXXXXXXXXXXXXX	XXXXXXXXXXXXXXXXXX	XXXXXXXXXXXXXXXXXX	XXXXXXXXXXXXXXXXXX	XXXXXXXXXXXXXXXXXX
XXXXXXXXXXXXXXXXXX	XXXXXXXXXXXXXXXXXX	XXXXXXXXXXXXXXXXXX	XXXXXXXXXXXXXXXXXX	XXXXXXXXXXXXXXXXXX	XXXXXXXXXXXXXXXXXX
XXXXXXXXXXXXXXXXXX	XXXXXXXXXXXXXXXXXX	XXXXXXXXXXXXXXXXXX	XXXXXXXXXXXXXXXXXX	XXXXXXXXXXXXXXXXXX	XXXXXXXXXXXXXXXXXX
					6251
\$ 2278	\$ 2354	\$ 2278	\$ 12145	\$ 23388	\$ 31971

UTILITY NAME: JASMINE LAKES SERVICE, INC.

YEAR OF REPORT  
DECEMBER 31, 1989

WATER OPERATING REVENUE

ACCT. NO. (a)	DESCRIPTION (b)	BEGINNING YEAR NO. CUSTOMERS (c)	YEAR END NUMBER CUSTOMERS (d)	AMOUNTS (e)
	Operating Revenues:			
460	Unmetered Water Revenue			\$
	Metered Water Revenue:			
461.1	Metered Sales to Residential Customers	1529	1529	\$ 312,738
461.2	Metered Sales to Commercial Customers	32	32	23,740
461.3	Metered Sales to Industrial Customers			
461.4	Metered Sales to Public Authorities			
461.5	Metered Sales to Multiple Family Dwellings	1	1	14,475
	Total Metered Sales			\$ 348,953
	Fire Protection Revenue:			
462.1	Public Fire Protection			\$
462.2	Private Fire Protection			
	Total Fire Protection Revenue			\$
464	Other Sales To Public Authorities			\$
465	Sales To Irrigation Customers			
466	Sales For Resale			
467	Interdepartmental Sales			
	Totals			\$
	Other Water Revenues:			
469	Guaranteed Revenues			\$
470	Forfeited Discounts			
471	Miscellaneous Service Revenues			
472	Rents From Water Property			
473	Interdepartmental Rents			
474	Other Water Revenues			
	Total Other Water Revenues			\$
	Total Water Operating Revenues			\$ 348,953

ANALYSIS OF ENTRIES IN WATER ACCUMULATED DEPRECIATION (Cont'd)

PLANT RETIRED (g)	ASSOCIATED SALVAGE AND INSURANCE (h)	ASSOCIATED COST OF REMOVAL (i)	OTHER CHARGES (j)	TOTAL CHARGES (g-h+i+j) (k)	BALANCE AT END OF YEAR (c+f-k) (l)
\$	\$	\$	\$	\$	\$
					21236
					50139
					7550
					5086
					50623
					86309
1995				1995	12390
					37812
					2215
4634				4634	-
1161				1161	-
\$ 7790	\$	\$	\$	\$ 7790	\$ 273360

UTILITY NAME: JASMINE LAKES SERVICE, INC

YEAR OF REPORT  
DECEMBER 31, 1989

SYSTEM NAME: \_\_\_\_\_

PUMPING AND PURCHASED WATER STATISTICS

MONTH (a)	WATER PURCHASED FOR RESALE (Omit 000's) (b)	FINISHED WATER PUMPED FROM WELLS (Omit 000's) (c)	WATER USED FOR LINE FLUSHING, FIGHTING FIRES, ETC. (d)	TOTAL WATER PUMPED AND PURCHASED (Omit 000's) [(b)+(c)-(d)] (e)	WATER SOLD TO CUSTOMERS (Omit 000's) (f)
January	5423				6679
February	7607				8706
March	1873				2972
April	10042				10739
May	11855				11037
June	8220				8330
July	6320				6034
August	8221				7595
September	6495				7450
October	8051				8580
November	8880				8291
December	8744				7289
Total for year	<u>101607</u>				<u>103748</u>

If water is purchased for resale, indicate the following:

Vendor PALM COUNTY

Point of delivery 1. S. CAKILL & N. CAKILL 2. CORNER OF PINEAPPLE & HOLLY

If water is sold to other water utilities for redistribution, list names of such utilities below:

\_\_\_\_\_  
 \_\_\_\_\_  
 \_\_\_\_\_  
 \_\_\_\_\_

UTILITY NAME: Jasmine Lakes Service, Inc.

YEAR OF REPORT  
DECEMBER 31, 1999

BASIS FOR WATER DEPRECIATION CHARGES

ACCT. NO. (a)	ACCOUNT NAME (b)	AVERAGE SERVICE LIFE IN YEARS (c)	AVERAGE NET SALVAGE IN PERCENT (d)	DEPRECIATION RATE APPLIED IN PERCENT (100% - d)/ c (e)
304	Structures and Improvements			
305	Collecting and Impounding Reservoirs			
306	Lake, River and Other Intakes			
307	Wells and Springs	40		2.5
308	Infiltration Galleries and Tunnels			
309	Supply Mains	40		2.5
310	Power Generation Equipment			
311	Pumping Equipment	40		2.5
320	Water Treatment Equipment	40		2.5
330	Distribution Reservoirs and Standpipes	40		2.5
331	Transmission and Distribution Mains	40		2.5
333	Services	40		2.5
334	Meters and Meter Installations	40		2.5
335	Hydrants			
339	Other Plant and Miscellaneous Equipment			
340	Office Furniture and Equip.	10		10
341	Transportation Equipment	10		10
342	Stores Equipment			
343	Tools, Shop and Garage Equip.	10		10
344	Laboratory Equipment			
345	Power Operated Equipment			
346	Communication Equipment			
347	Miscellaneous Equipment			
348	Other Tangible Plant			
	Water Plant Composite Depreciation Rate *			

\* If depreciation rates prescribed by this Commission are on a total composite basis, entries should be made on this line only.



UTILITY NAME: Jasmine Lakes Service, Inc

YEAR OF REPORT  
DECEMBER 31, 1989

ANALYSIS OF ENTRIES IN WATER ACCUMULATED DEPRECIATION

ACCT. NO. (a)	ACCOUNT NAME (b)	BALANCE AT BEGINNING OF YEAR (c)	ACCRUALS (d)	OTHER CREDITS * (e)	TOTAL CREDITS (d+e) (f)
304	Structures and Improvements	\$ -	\$ -	\$ -	\$ -
305	Collecting and Impounding Reservoirs	-	-	-	-
306	Lake, River and Other Intakes	-	-	-	-
307	Wells and Springs	19962	1274	-	1274
308	Infiltration Galleries and Tunnels	-	-	-	-
309	Supply Mains	4732	3027	-	3027
310	Power Generation Equipment	-	-	-	-
311	Pumping Equipment	3097	453	-	453
320	Water Treatment Equipment	4781	305	-	305
330	Distribution Reservoirs and Standpipes	47587	3036	-	3036
331	Transmission and Distribution Mains	81133	5176	-	5176
333	Services	14647	743	-	743
334	Meters and Meter Installations	38222	1419	-	1419
335	Hydrants	-	-	-	-
339	Other Plant and Miscellaneous Equipment	-	-	-	-
340	Office Furniture and Equip.	2122	93	-	93
341	Transportation Equipment	4634	-	-	-
342	Stores Equipment	-	-	-	-
343	Tools, Shop and Garage Equip.	1002	159	-	159
344	Laboratory Equipment	-	-	-	-
345	Power Operated Equipment	-	-	-	-
346	Communication Equipment	-	-	-	-
347	Miscellaneous Equipment	-	-	-	-
348	Other Tangible Plant	-	-	-	-
Total Depreciable Water Plant In Service		\$ 265485	\$ 15665	\$ -	\$ 15665

\* Specify nature of transaction.  
Use ( ) to denote reversal entries.

UTILITY NAME: JASMINE LAKES SERVICE, INC.

YEAR OF REPORT  
DECEMBER 31, 1989

UTILITY SYSTEM: \_\_\_\_\_

SOURCE OF SUPPLY

List for each source of supply: PASCO COUNTY

Gals. per day of source	-----	-----	-----
Type of source	-----	-----	-----

WATER TREATMENT FACILITIES

List for each water treatment facility:

Type	<u>CHLORINATION</u>	-----	-----
Make	-----	-----	-----
Gals. per day capacity	<u>WELL CAPACITY</u>	-----	-----
Method of measurement	<u>FLOW METER</u>	-----	-----

OTHER WATER SYSTEM INFORMATION

Furnish information below for each system not physically connected with another facility. A separate page should be supplied where necessary.

1. Present ERC's \* that system can efficiently serve. 1000
2. Estimated annual increase in ERC's \* . 190
3. List fire fighting facilities and capacities. 25 FIRE HYDRANTS 6"
4. List percent of certificated area where service connections are installed (total for each county). 65%
5. What is the current need for system upgrading and/or expansion? NONE
6. What are plans for future system upgrading and/or expansion? NONE
7. Have questions 6 and 7 been discussed with an engineer (if so, state name and address)? N/A
8. Have questions 6 and 7 been discussed with appropriate state sanitary engineering office? N/A

\* ERC = (Total Gallons Sold / 365 days) / 350 Gallons Per Day

UTILITY NAME: JASMINE LAKES SERVICE, Inc.

YEAR OF REPORT  
DECEMBER 31, 1989

UTILITY SYSTEM: \_\_\_\_\_

CALCULATION OF THE WATER SYSTEMS EQUIVALENT RESIDENTIAL UNITS

METER SIZE (a)	TYPE OF METER (b)	EQUIVALENT FACTOR (c)	NUMBER OF METERS (d)	TOTAL NUMBER OF METER EQUIVALENTS (c x d) (e)
5/8"	Displacement	1.0	1495	1495
3/4"	Displacement	1.5		
1"	Displacement	2.5	67	168
1 1/2"	Displacement or Turbine	5.0		
2"	Displacement, Compound or Turbine	8.0		
3"	Displacement	15.0		
3"	Compound	16.0		
3"	Turbine	17.5		
4"	Displacement or Compound	25.0		
4"	Turbine	30.0		
6"	Displacement or Compound	50.0		
6"	Turbine	62.5		
8"	Compound	80.0		
8"	Turbine	90.0		
10"	Compound	115.0		
10"	Turbine	145.0		
12"	Turbine	215.0		
Total Water System Meter Equivalents				1463

CALCULATION OF THE WATER SYSTEMS EQUIVALENT RESIDENTIAL CONNECTIONS

$$\left( \frac{102748000}{\text{(total gallons sold)}} \right) / 365 \text{ days} / 350 \text{ gpd} = \underline{812}$$

UTILITY NAME: JASMINE LAKES SERVICE, INC.

YEAR OF REPORT  
DECEMBER 31, 1989

UTILITY SYSTEM: \_\_\_\_\_

WATER TREATMENT PLANT INFORMATION

Type of treatment (reverse osmosis, etc.): \_\_\_\_\_  
 Methods used (sedimentation, chemical, aerated, etc.): \_\_\_\_\_

LIME TREATMENT

Unit rating (GPM): N/A Manufacturer: \_\_\_\_\_

FILTRATION

Type and area:  Pressure  $\leftarrow \rightarrow$  Square Feet: \_\_\_\_\_

Gravity  $\leftarrow \rightarrow$  GPM/Square Feet: \_\_\_\_\_

MAINS

TYPE OF PIPE (Galvanized, Cast Iron, PVC, Etc.)	DIAMETER OF PIPE (in inches)	MAINS, BEGINNING OF YEAR (in feet)	ADDITIONS	RETIREMENTS	MAINS END OF YEAR (in feet)
PVC	1	5840			5840
PVC	2	12930			12930
PVC	2.25	9310			9310
PVC	2.50	8400			8400
PVC	3	1800			1800
PVC	4	11250			11250
PVC	6	3005			3005
PVC	8	607			607
PVC	12	1000			1000
Total feet of mains		84622			84622

SERVICES AND METERS

METERS IN SERVICE	METERS BEGINNING OF YEAR	ADDITIONS	RETIREMENTS	METERS END OF YEAR
5/8" - 3/4"	1509			1509
1"	53			53
2"				
3"				
4"				
6"				
8"				
Other (Specify): _____				
Total meters in service	1562			1562
Total meters in stock	10			10
Number of services in use	1562			1562

UTILITY NAME: JASMINE LAKES SERVICE, INC.

YEAR OF REPORT  
DECEMBER 31, 1989

BUSINESS CONTRACTS WITH OFFICERS, DIRECTORS AND AFFILIATES

List all contracts, agreements, or other business arrangements\* entered into during the calendar year (other than compensation related to position with Respondents) between the Respondent and officer and director listed on page E-6. In addition, provide the same information with respect to professional services for each firm, partnership, or organization with which the officer or director is affiliated.

NAME OF OFFICER, DIRECTOR OR AFFILIATE (a)	IDENTIFICATION OF SERVICE OR PRODUCT (b)	AMOUNT (c)	NAME AND ADDRESS OF AFFILIATED ENTITY (d)
<p>SAM Y. ALGOOD, JR. PRES. SVP. JASMINE LAKES DEV. CORP.</p>	<p>LEGAL RENT</p>	<p>\$ 8070. 3498.</p>	<p>ALGOOD-MISEMER 5445 NE BRASKA NEW PORT RICHEY, FL 34652 JASMINE LAKES DEV. CORP. 10602 DEVOLO DR. PORT RICHEY, FL 34668</p>

\*Business Agreement, for this schedule, shall mean any oral or written business deal which binds the concerned parties for products or services during the reporting year or future years. Although the Respondent and/or other companies will benefit from the arrangement, the officer or director is, however, acting on his behalf or for the benefit of other companies or persons.

UTILITY NAME: JASMINE LAKES SERVICE, INC  
 SYSTEM NAME: \_\_\_\_\_

YEAR OF REPORT  
 DECEMBER 31, 1989

WELLS AND WELL PUMPS

(a)	(b)		(c)		(d)		(e)
Year Constructed	1960	1964	1966	1968	1972	1972	1976
Types of Well Construction and Casing	DRILLED 1802	DRILLED 1802	DRILLED 1802	DRILLED 1802	DRILLED 1802	DRILLED 1802	DRILLED 1802
Depth of Wells	345'	520'	150'	200'	186'	225'	202'
Diameters of Wells	12"	5"	4"	6"	8"	8"	8"
Pump - GPM	200	100	100	350	400	240	250
Motor - HP							
Yields of Wells in GPD							
Auxiliary Power	GAS	GAS	GAS	GAS	GAS	GAS	GAS

RESERVOIRS

(a)	(b)	(c)	(d)	(e)
Description (steel, concrete or pneumatic)	PNEUMATIC TANK + COVERED MASONRY			
Capacity of Tank	500,000			
Ground or Elevated	GROUND			

HIGH SERVICE PUMPING

MOTORS (a)	(b)	(c)	(d)	(e)
Manufacturer	PERLUS	WELLS-ELEC		
Type	CUBIC	VARIOUS		
Rated Horsepower	50			
<b>PUMPS</b>				
Manufacturer	PERLUS	PERLUS		
Type	HORIZONTAL	TURBINE		
Capacity in GPM	800	VARIOUS		
Average Number Of Hours Operated Per Day	5			
Auxiliary Power	GAS	GAS		

SEWER  
OPERATION  
SECTION

000.

0100  
0200

0300  
0400

0500

0600

0700

0800

0900

1000

1100

1200

1300

1400

UTILITY NAME: JASMINE LAKES SERVICE, INC.

YEAR OF REPORT  
DECEMBER 31, 1989

SEWER UTILITY PLANT ACCOUNTS

ACCT. NO. (a)	ACCOUNT NAME (b)	PREVIOUS YEAR (c)	ADDITIONS (d)	RETIREMENTS (e)
351	Organization	\$	\$	\$
352	Franchises			
353	Land and Land Rights	5802		
354	Structures and Improvements	11078		
360	Collection Sewers - Force	25490		
361	Collection Sewers - Gravity			
362	Special Collecting Structures			
363	Services to Customers			
364	Flow Measuring Devices			
365	Flow Measuring Installations			
370	Receiving Wells			
371	Pumping Equipment	93978	2215	1550
380	Treatment and Disposal Equip.	116458	122870	
381	Plant Sewers			
382	Outfall Sewer Lines			
389	Other Plant and Miscellaneous Equipment	35274		
390	Office Furniture and Equip.	1520	1587	
391	Transportation Equipment	5553		5553
392	Stores Equipment			
393	Tools, Shop and Garage Equip.	1958		1958
394	Laboratory Equipment			
395	Power Operated Equipment			
396	Communication Equipment			
397	Miscellaneous Equipment			
398	Other Tangible Plant			
	Total Sewer Plant	\$ 526602	\$ 126672	\$ 9061

NOTE: Any adjustments made to reclassify property from one account to another must be footnoted.



SEWER UTILITY PLANT MATRIX

CURRENT YEAR (f)	.1 INTANGIBLE PLANT (g)	.2 COLLECTION PLANT (h)	.3 SYSTEM PUMPING PLANT (i)	.4 TREATMENT AND DISPOSAL PLANT (j)	.5 GENERAL PLANT (k)
\$	\$	\$XXXXXXXXXXXXX	\$XXXXXXXXXXXXX	\$XXXXXXXXXXXXX	\$XXXXXXXXXXXXX
5802	XXXXXXXXXXXXX	XXXXXXXXXXXXX	XXXXXXXXXXXXX	5802	XXXXXXXXXXXXX
11078	XXXXXXXXXXXXX	XXXXXXXXXXXXX	XXXXXXXXXXXXX	11078	XXXXXXXXXXXXX
254981	XXXXXXXXXXXXX	254981	XXXXXXXXXXXXX	XXXXXXXXXXXXX	XXXXXXXXXXXXX
	XXXXXXXXXXXXX	XXXXXXXXXXXXX	XXXXXXXXXXXXX	XXXXXXXXXXXXX	XXXXXXXXXXXXX
	XXXXXXXXXXXXX	XXXXXXXXXXXXX	XXXXXXXXXXXXX	XXXXXXXXXXXXX	XXXXXXXXXXXXX
	XXXXXXXXXXXXX	XXXXXXXXXXXXX	XXXXXXXXXXXXX	XXXXXXXXXXXXX	XXXXXXXXXXXXX
	XXXXXXXXXXXXX	XXXXXXXXXXXXX	XXXXXXXXXXXXX	XXXXXXXXXXXXX	XXXXXXXXXXXXX
	XXXXXXXXXXXXX	XXXXXXXXXXXXX	XXXXXXXXXXXXX	XXXXXXXXXXXXX	XXXXXXXXXXXXX
94643	XXXXXXXXXXXXX	XXXXXXXXXXXXX	94643	XXXXXXXXXXXXX	XXXXXXXXXXXXX
239328	XXXXXXXXXXXXX	XXXXXXXXXXXXX	XXXXXXXXXXXXX	239328	XXXXXXXXXXXXX
	XXXXXXXXXXXXX	XXXXXXXXXXXXX	XXXXXXXXXXXXX	XXXXXXXXXXXXX	XXXXXXXXXXXXX
	XXXXXXXXXXXXX	XXXXXXXXXXXXX	XXXXXXXXXXXXX	XXXXXXXXXXXXX	XXXXXXXXXXXXX
35274	XXXXXXXXXXXXX	XXXXXXXXXXXXX	XXXXXXXXXXXXX	35274	XXXXXXXXXXXXX
3107	XXXXXXXXXXXXX	XXXXXXXXXXXXX	XXXXXXXXXXXXX	XXXXXXXXXXXXX	3107
	XXXXXXXXXXXXX	XXXXXXXXXXXXX	XXXXXXXXXXXXX	XXXXXXXXXXXXX	XXXXXXXXXXXXX
	XXXXXXXXXXXXX	XXXXXXXXXXXXX	XXXXXXXXXXXXX	XXXXXXXXXXXXX	XXXXXXXXXXXXX
	XXXXXXXXXXXXX	XXXXXXXXXXXXX	XXXXXXXXXXXXX	XXXXXXXXXXXXX	XXXXXXXXXXXXX
	XXXXXXXXXXXXX	XXXXXXXXXXXXX	XXXXXXXXXXXXX	XXXXXXXXXXXXX	XXXXXXXXXXXXX
	XXXXXXXXXXXXX	XXXXXXXXXXXXX	XXXXXXXXXXXXX	XXXXXXXXXXXXX	XXXXXXXXXXXXX
	XXXXXXXXXXXXX	XXXXXXXXXXXXX	XXXXXXXXXXXXX	XXXXXXXXXXXXX	XXXXXXXXXXXXX
	XXXXXXXXXXXXX	XXXXXXXXXXXXX	XXXXXXXXXXXXX	XXXXXXXXXXXXX	XXXXXXXXXXXXX
	XXXXXXXXXXXXX	XXXXXXXXXXXXX	XXXXXXXXXXXXX	XXXXXXXXXXXXX	XXXXXXXXXXXXX
\$ 644213	\$	\$ 254981	\$ 94643	\$ 291482	\$ 3107

S-1(b)

3049 1283 3083

UTILITY NAME: JASMINE LAKES SERVICE, INC.

YEAR OF REPORT  
DECEMBER 31, 1999

SEWER UTILITY EXPENSE ACCOUNTS

ACCT. NO. (a)	ACCOUNT NAME (b)	CURRENT YEAR (c)	.1 COLLECTION EXPENSES - OPERATIONS (d)	.2 COLLECTION EXPENSES - MAINTENANCE (e)
701	Salaries and Wages - Employees	\$ 10,727		
703	Salaries and Wages - Officers, Directors and Majority Stockholders	14,422		
704	Employee Pensions and Benefits	69		
710	Purchased Sewage Treatment		XXXXXXXXXXXXXXXXXX	XXXXXXXXXXXXXXXXXX
711	Sludge Removal Expense	10,400	XXXXXXXXXXXXXXXXXX	XXXXXXXXXXXXXXXXXX
715	Purchased Power	18,862	5,790	XXXXXXXXXXXXXXXXXX
716	Fuel for Power Purchased			XXXXXXXXXXXXXXXXXX
718	Chemicals			
720	Materials and Supplies	10,156		
731	Contractual Services - Eng.	150		
732	Contractual Services - Acct.	2405		
733	Contractual Services - Legal			
734	Contractual Services - Management Fees	13,602	2,267	2,267
735	Contractual Services - Other	2,7304		7201
741	Rental of Building/Real Property	1,224		
742	Rental of Equipment			
750	Transportation Expenses	433		
756	Insurance - Vehicle			
757	Insurance - General Liability	13		
758	Insurance - Workman's Compensation	131		
759	Insurance - Other			
760	Advertising Expense		XXXXXXXXXXXXXXXXXX	XXXXXXXXXXXXXXXXXX
766	Regulatory Commission Expenses - Amortization of Rate Case Expense		XXXXXXXXXXXXXXXXXX	XXXXXXXXXXXXXXXXXX
767	Regulatory Commission Expenses - Other		XXXXXXXXXXXXXXXXXX	XXXXXXXXXXXXXXXXXX
770	Bad Debt Expense		XXXXXXXXXXXXXXXXXX	XXXXXXXXXXXXXXXXXX
775	Miscellaneous Expenses	3978		
	Total Sewer Utility Expenses	\$ 115,865	\$ 8,057	\$ 9,460

SEWER EXPENSE ACCOUNT MATRIX

.3 PUMPING EXPENSES - OPERATIONS (f)	.4 PUMPING EXPENSES - MAINTENANCE (g)	.5 TREATMENT & DISPOSAL EXPENSES - OPERATIONS (h)	.6 TREATMENT & DISPOSAL EXPENSES - MAINTENANCE (i)	.7 CUSTOMER ACCOUNTS EXPENSE (j)	.8 ADMINISTRATIVE & GENERAL EXPENSES (k)
\$ 2007	\$ 82	\$ 534	\$	\$ 9654	\$ 1073
-----	-----	-----	-----	-----	-----
XXXXXXXXXXXXXXXXX	XXXXXXXXXXXXXXXXX		XXXXXXXXXXXXXXXXX	629	14422
XXXXXXXXXXXXXXXXX	XXXXXXXXXXXXXXXXX	10400	XXXXXXXXXXXXXXXXX	XXXXXXXXXXXXXXXXX	70
		12815	XXXXXXXXXXXXXXXXX	XXXXXXXXXXXXXXXXX	257
			XXXXXXXXXXXXXXXXX		-----
		7271		XXXXXXXXXXXXXXXXX	193
				2692	1509
					2405
2267	2267	2267	2267		
480	8639	272	8812		
-----	-----	-----	-----	-----	-----
					1224
					433
					13
				118	13
XXXXXXXXXXXXXXXXX	XXXXXXXXXXXXXXXXX	XXXXXXXXXXXXXXXXX	XXXXXXXXXXXXXXXXX	XXXXXXXXXXXXXXXXX	-----
XXXXXXXXXXXXXXXXX	XXXXXXXXXXXXXXXXX	XXXXXXXXXXXXXXXXX	XXXXXXXXXXXXXXXXX	XXXXXXXXXXXXXXXXX	-----
XXXXXXXXXXXXXXXXX	XXXXXXXXXXXXXXXXX	XXXXXXXXXXXXXXXXX	XXXXXXXXXXXXXXXXX	XXXXXXXXXXXXXXXXX	-----
XXXXXXXXXXXXXXXXX	XXXXXXXXXXXXXXXXX	XXXXXXXXXXXXXXXXX	XXXXXXXXXXXXXXXXX	XXXXXXXXXXXXXXXXX	-----
XXXXXXXXXXXXXXXXX	XXXXXXXXXXXXXXXXX	XXXXXXXXXXXXXXXXX	XXXXXXXXXXXXXXXXX	XXXXXXXXXXXXXXXXX	-----
					3978
					-----
\$ 2747	\$ 10906	\$ 34925	\$ 11079	\$ 13093	\$ 25590

UTILITY NAME: JASMINE LAKES SERVICE, INC

YEAR OF REPORT  
DECEMBER 31, 1989

SEWER OPERATING REVENUE

ACCT. NO. (a)	DESCRIPTION (b)	BEGINNING YEAR NO. CUSTOMERS (c)	YEAR END NUMBER CUSTOMERS (d)	AMOUNTS (e)
	Operating Revenues:			
	Flat Rate Revenues:			
521.1	Residential Revenues	1486	1486	\$ 109940
521.2	Commercial Revenues	69	69	7000
521.3	Industrial Revenues			
521.4	Revenues From Public Authorities			
521.5	Multiple Family Dwelling Revenues			
521.6	Other Revenues			
	Total Flat Rate Revenues	1555	1555	\$ 116940
	Measured Revenues:			
522.1	Residential Revenues			\$
522.2	Commercial Revenues			
522.3	Industrial Revenues			
522.4	Revenues From Public Authorities			
522.5	Multiple Family Dwelling Revenues			
	Total Measured Revenues			\$
523	Revenues From Public Authorities			\$
524	Revenues From Other Systems			
525	Interdepartmental Revenues			
	Totals			\$
	Other Sewer Revenues:			
530	Guaranteed Revenue			\$
531	Sale Of Sludge			
532	Forfeited Discounts			
534	Rents From Sewer Property			
535	Interdepartmental Rents			
536	Other Sewer Revenues			
	Total Other Sewer Revenues			\$
	Total Sewer Operating Revenues			\$ 116940

UTILITY NAME: JASMINE LAKES SERVICE, Inc

YEAR OF REPORT  
DECEMBER 31, 1989

BASIS FOR SEWER DEPRECIATION CHARGES

ACCT. NO. (a)	ACCOUNT NAME (b)	AVERAGE SERVICE LIFE IN YEARS (c)	AVERAGE NET SALVAGE IN PERCENT (d)	DEPRECIATION RATE APPLIED IN PERCENT (100% - d) / c (e)
354	Structures and Improvements			
360	Collection Sewers - Force	40		2.5
361	Collection Sewers - Gravity	40		2.5
362	Special Collecting Structures			
363	Services to Customers			
364	Flow Measuring Devices			
365	Flow Measuring Installations			
370	Receiving Wells			
371	Pumping Equipment			
380	Treatment and Disposal Equip.	40		2.5
381	Plant Sewers	40		2.5
382	Outfall Sewer Lines			
389	Other Plant and Miscellaneous Equipment			
390	Office Furniture and Equip.	40		2.5
391	Transportation Equipment	10		10
392	Stores Equipment	10		10
393	Tools, Shop and Garage Equip.	10		10
394	Laboratory Equipment			
395	Power Operated Equipment			
396	Communication Equipment			
397	Miscellaneous Equipment			
398	Other Tangible Plant			
	Sewer Plant Composite Depreciation Rate *			

\* If depreciation rates prescribed by this Commission are on a total composite basis, entries should be made on this line only.

UTILITY NAME: JASMINE LAKES SERVICE, INC

YEAR OF REPORT  
DECEMBER 31, 1989

ANALYSIS OF ENTRIES IN SEWER ACCUMULATED DEPRECIATION

ACCT. NO. (a)	ACCOUNT NAME (b)	BALANCE AT BEGINNING OF YEAR (c)	ACCRUALS (d)	OTHER CREDITS * (e)	TOTAL CREDITS (d+e) (f)
354	Structures and Improvements	\$ 323	\$ 277	\$	\$ 277
360	Collection Sewers - Force	124546	6375		6375
361	Collection Sewers - Gravity				
362	Special Collecting Structures				
363	Services to Customers				
364	Flow Measuring Devices				
365	Flow Measuring Installations				
370	Receiving Wells				
371	Pumping Equipment	22515	2372		2372
380	Treatment and Disposal Equip.	44920	2162		2162
381	Plant Sewers				
382	Outfall Sewer Lines				
389	Other Plant and Miscellaneous Equipment	14558	882		882
390	Office Furniture and Equip.	1406	93		93
391	Transportation Equipment	5553			
392	Stores Equipment				
393	Tools, Shop and Garage Equip.	1950			
394	Laboratory Equipment				
395	Power Operated Equipment				
396	Communication Equipment				
397	Miscellaneous Equipment				
398	Other Tangible Plant				
	Total Depreciable Sewer Plant In Service	\$ 205789	\$ 13173	\$	\$ 13173

\* Specify nature of transaction.  
Use ( ) to denote reversal entries.

1/2 2000 2000 2000

ANALYSIS OF ENTRIES IN SEWER ACCUMULATED DEPRECIATION (Cont'd)

PLANT RETIRED (g)	ASSOCIATED SALVAGE AND INSURANCE (h)	ASSOCIATED COST OF REMOVAL (i)	OTHER CHARGES (j)	TOTAL CHARGES (g+h+i+j) (k)	BALANCE AT END OF YEAR (c+f-k) (l)
\$	\$	\$	\$	\$	\$ 600
					11092
837				837	34056 48098
5553				5553	15440 1499
1958				1958	-
<u>\$ 8348</u>	<u>\$</u>	<u>\$</u>	<u>\$</u>	<u>\$ 8348</u>	<u>\$ 210614</u>

UTILITY NAME: JASMINE LAKES SERVICE, INC.

YEAR OF REPORT DECEMBER 31, 1989
-------------------------------------

COMPOSITE STATISTICS FOR ALL  
PRIVATELY OWNED WATER AND SEWER UTILITIES UNDER AGENCY JURISDICTION

DESCRIPTION (a)	WATER (b)	SEWER (c)
<b>PLANT (Intrastate Only)(000's Omitted):</b>		
Plant in Service	\$ 621778	\$ 644213
Construction Work In Progress	-----	-----
Plant Acquisition Adjustment	-----	-----
Plant Held For Future Use	-----	-----
Materials and Supplies	-----	-----
Less:		
Accumulated Depreciation and Accumulated Amortization	273360	210614
Contributions In Aid Of Construction	116084	109167
Net Book Cost	\$ -----	\$ -----
<b>REVENUES AND EXPENSES (Intrastate Only)(000's Omitted):</b>		
Operating Revenues	\$ 348953	\$ 116940
Depreciation and Amortization Expense	\$ 10834	\$ 917
Income Tax Expense	-----	-----
Taxes Other Than Income	18809	13798
Other Operating Expenses	315824	115865
Total Operating Expenses	\$ 345467	\$ 138780
Net Operating Income	\$ 3486	\$ (21840)
Other Income	\$ -----	\$ -----
Other Income Deductions	1700	713
Net Income	\$ 1786	\$ (22553)
<b>CUSTOMERS (Intrastate Only):</b>		
Residential - Yearly Average	1529	1486
Commercial - Yearly Average	32	69
Industrial - Yearly Average	-----	-----
Others - Yearly Average	1	-----
Total	1562	1555
<b>OTHER STATISTICS (Intrastate Only):</b>		
Average Annual Residential Use Per 1,000 Gallons	57	52
Average Annual Residential Cost Per 1,000 Gallons	\$ 3.32	\$ 1.49
Average Residential Monthly Bill	\$ 16.93	\$ 6.16
Gross Plant Investment Per Customer	\$ 398.	\$ 414.



UTILITY NAME: JASMINE LAKES SERVICE, INC

YEAR OF REPORT  
DECEMBER 31, 1989

UTILITY SYSTEM: \_\_\_\_\_

PUMPING EQUIPMENT

	<u>1</u>	<u>3</u>	<u>4</u>	<u>5</u>	<u>6</u>	<u>7</u>
Lift station number						
Make or type and nameplate data of pump	<u>COMMON</u> <u>RUEP</u>	<u>HYDRO</u>	<u>HYDRO</u>	<u>GMU</u>	<u>GMU</u>	<u>GMU</u>
Year installed	<u>1960</u>	<u>1971</u>	<u>1971</u>	<u>1973</u>	<u>1977</u>	<u>1977</u>
Rated capacity	<u>200</u>	<u>150</u>	<u>175</u>	<u>375</u>	<u>150</u>	<u>150</u>
Size	<u>4"</u>	<u>4"</u>	<u>4"</u>	<u>6"</u>	<u>4"</u>	<u>3"</u>
Power:						
Electric	<u>EL</u>	<u>EL</u>	<u>EL</u>	<u>EL</u>	<u>EL</u>	<u>EL</u>
Mechanical						
Nameplate data of motor						

Lift station number						
Make or type and nameplate data of pump						
Year installed						
Rated capacity						
Size						
Power:						
Electric						
Mechanical						
Nameplate data of motor						

SERVICE CONNECTIONS

Size (inches)	<u>4"</u>					
Type (FVC, VCP, etc.)	<u>VCP</u>					
Average length	<u>VARIOUS</u>					
Number of active service connections	<u>1565</u>					
Beginning of year	<u>1565</u>					
Added during year						
Retired during year						
End of year	<u>1565</u>					
Give full particulars concerning inactive connections						

UTILITY NAME: JASMINE LAKES SERVICE, INC.

YEAR OF REPORT  
DECEMBER 31, 1989

UTILITY SYSTEM: \_\_\_\_\_

COLLECTING MAINS

COLLECTING MAINS:						
Size (inches)	6"	8"	10"			
Type of main	VCP	VCP	VCP			
Length of main (nearest foot):						
Beginning of year	1921	6578	3330			
Added during year						
Retired during year						
End of year	1921	6578	3330			
MANHOLES:						
Size						
Type						
Number:						
Beginning of year						
Added during year						
Retired during year						
End of year						

FORCE MAINS

FORCE MAINS:						
Size (inches)	4"	6"	8"			
Type of main	CJ	PVC	AC			
Length of main (nearest foot):						
Beginning of year	2512	3187	5202			
Added during year						
Retired during year						
End of year	2512	3187	5202			

UTILITY NAME: Jasmine Lakes Service, Inc.

YEAR OF REPORT  
DECEMBER 31, 1989

SYSTEM NAME: \_\_\_\_\_

TREATMENT PLANT

Manufacturer	<u>MAGOLF</u>		
Type	<u>EXTENDED AIR</u>		
"Steel" or "Concrete"			
Total Capacity	<u>260500</u>		
Average Daily Flow	<u>254000</u>		
Effluent Disposal	<u>DDA</u>		
Total Gallons of Sewage Treated			

MASTER LIFT STATION PUMPS

Manufacturer	<u>GENERAL</u>	<u>HYDRA-MATE</u>	<u>HYDRA-MATE</u>	<u>EMU</u>	<u>GENERAL</u>	<u>BARNES</u>
Capacity	<u>200</u>	<u>150</u>	<u>175</u>	<u>275</u>	<u>150</u>	<u>50</u>
Motor : Mfr.	<u>US MOTORS</u>	<u>US MOTORS</u>	<u>US MOTORS</u>	<u>US MOTORS</u>	<u>US MOTORS</u>	<u>US MOTORS</u>
Horsepower	<u>2.5</u>	<u>2.5</u>	<u>2</u>	<u>1.5</u>	<u>2.5</u>	<u>2</u>
Power (Electric or Mechanical)	<u>EL</u>	<u>EL</u>	<u>EL</u>	<u>EL</u>	<u>EL</u>	<u>EL</u>

OTHER SEWER SYSTEM INFORMATION

- Maximum number of ERC's \* which can be served. 2400
- Estimated annual increase in ERC's \*. 170
- List permit numbers required by Chapter 17-4, Rules of the Department of Environmental Regulation (DER) for systems in operation. D.C. 51-1412 08
- State any plans and estimated completion dates for any enlargements of this system. NEW REGULATION POND, GRAVITY WATER MAIN PONDING WELL, CURB & FINISH, BASELINE PUMP TAKE OFF POINT FOR WWTPL OPERATION - COMPLETE 12-89
- If present systems do not meet the requirements of Chapter 17-4, Rules of the DER, submit the following:
  - Evaluation of the present plant or plants in regard to meeting the DER's rules.
  - Plans for funding and construction of the required upgrading.
  - Have these plans been coordinated with the DER? \_\_\_\_\_
  - Do they concur? \_\_\_\_\_
  - When will construction begin? \_\_\_\_\_
- In what percent of your certificated area have service connections been installed? 65 %

\* ERC = (Total Gallons Treated / 365 days) / 275 Gallons Per Day  
 Note: Total Gallons Treated includes both sewage treated and purchased sewage treatment

UTILITY NAME: JASMINE LAKES SERVICE, INC

YEAR OF REPORT  
DECEMBER 31, 1989

UTILITY SYSTEM: \_\_\_\_\_

CALCULATION OF THE SEWER SYSTEMS EQUIVALENT RESIDENTIAL UNITS

METER SIZE * (a)	TYPE OF METER * (b)	EQUIVALENT FACTOR (c)	NUMBER OF METERS (d)	TOTAL NUMBER OF METER EQUIVALENTS (c x d) (e)
5/8"	Displacement	1.0	<u>1496</u>	<u>1496</u>
3/4"	Displacement	1.5		
1"	Displacement	2.5	<u>59</u>	<u>148</u>
1 1/2"	Displacement or Turbine	5.0		
2"	Displacement, Compound or Turbine	8.0		
3"	Displacement	15.0		
3"	Compound	16.0		
3"	Turbine	17.5		
4"	Displacement or Compound	25.0		
4"	Turbine	30.0		
6"	Displacement or Compound	50.0		
6"	Turbine	62.5		
8"	Compound	80.0		
8"	Turbine	90.0		
10"	Compound	115.0		
10"	Turbine	145.0		
12"	Turbine	215.0		
Total Sewer System Meter Equivalents				<u>1644</u>

CALCULATION OF THE SEWER SYSTEMS EQUIVALENT RESIDENTIAL CONNECTIONS

$$\left( \frac{92916.000}{\text{(total gallons treated)}} \right) / 365 \text{ days} / 275 \text{ gpd} = \underline{926}$$

WATER UTILITY PLANT MATRIX

CURRENT YEAR (f)	.1 INTANGIBLE PLANT (g)	.2 SOURCE OF SUPPLY AND PUMPING PLANT (h)	.3 WATER TREATMENT PLANT (i)	.4 TRANSMISSION AND DISTRIBUTION PLANT (j)	.5 GENERAL PLANT (k)
\$	\$	\$XXXXXXXXXXXXXXXXXX	\$XXXXXXXXXXXXXXXXXX	\$XXXXXXXXXXXXXXXXXX	\$XXXXXXXXXXXXXXXXXX
2570	XXXXXXXXXXXXXXXXXX	2570	XXXXXXXXXXXXXXXXXX	XXXXXXXXXXXXXXXXXX	XXXXXXXXXXXXXXXXXX
50944	XXXXXXXXXXXXXXXXXX	50944	XXXXXXXXXXXXXXXXXX	XXXXXXXXXXXXXXXXXX	XXXXXXXXXXXXXXXXXX
120272	XXXXXXXXXXXXXXXXXX	120272	XXXXXXXXXXXXXXXXXX	XXXXXXXXXXXXXXXXXX	XXXXXXXXXXXXXXXXXX
18100	XXXXXXXXXXXXXXXXXX	18100	XXXXXXXXXXXXXXXXXX	XXXXXXXXXXXXXXXXXX	XXXXXXXXXXXXXXXXXX
12200	XXXXXXXXXXXXXXXXXX	XXXXXXXXXXXXXXXXXX	12200	XXXXXXXXXXXXXXXXXX	XXXXXXXXXXXXXXXXXX
121423	XXXXXXXXXXXXXXXXXX	XXXXXXXXXXXXXXXXXX	XXXXXXXXXXXXXXXXXX	121423	XXXXXXXXXXXXXXXXXX
207031	XXXXXXXXXXXXXXXXXX	XXXXXXXXXXXXXXXXXX	XXXXXXXXXXXXXXXXXX	207031	XXXXXXXXXXXXXXXXXX
29726	XXXXXXXXXXXXXXXXXX	XXXXXXXXXXXXXXXXXX	XXXXXXXXXXXXXXXXXX	29726	XXXXXXXXXXXXXXXXXX
55689	XXXXXXXXXXXXXXXXXX	XXXXXXXXXXXXXXXXXX	XXXXXXXXXXXXXXXXXX	55689	XXXXXXXXXXXXXXXXXX
3823	XXXXXXXXXXXXXXXXXX	XXXXXXXXXXXXXXXXXX	XXXXXXXXXXXXXXXXXX	XXXXXXXXXXXXXXXXXX	3823
	XXXXXXXXXXXXXXXXXX	XXXXXXXXXXXXXXXXXX	XXXXXXXXXXXXXXXXXX	XXXXXXXXXXXXXXXXXX	
	XXXXXXXXXXXXXXXXXX	XXXXXXXXXXXXXXXXXX	XXXXXXXXXXXXXXXXXX	XXXXXXXXXXXXXXXXXX	
	XXXXXXXXXXXXXXXXXX	XXXXXXXXXXXXXXXXXX	XXXXXXXXXXXXXXXXXX	XXXXXXXXXXXXXXXXXX	
	XXXXXXXXXXXXXXXXXX	XXXXXXXXXXXXXXXXXX	XXXXXXXXXXXXXXXXXX	XXXXXXXXXXXXXXXXXX	
	XXXXXXXXXXXXXXXXXX	XXXXXXXXXXXXXXXXXX	XXXXXXXXXXXXXXXXXX	XXXXXXXXXXXXXXXXXX	
	XXXXXXXXXXXXXXXXXX	XXXXXXXXXXXXXXXXXX	XXXXXXXXXXXXXXXXXX	XXXXXXXXXXXXXXXXXX	
	XXXXXXXXXXXXXXXXXX	XXXXXXXXXXXXXXXXXX	XXXXXXXXXXXXXXXXXX	XXXXXXXXXXXXXXXXXX	
	XXXXXXXXXXXXXXXXXX	XXXXXXXXXXXXXXXXXX	XXXXXXXXXXXXXXXXXX	XXXXXXXXXXXXXXXXXX	
\$ 621778	\$	\$ 191886	\$ 12200	\$ 413869	\$ 3823

UTILITY NAME: JASMINE LAKES SERVICE, INC

YEAR OF REPORT  
DECEMBER 31, 1989

WATER UTILITY EXPENSE ACCOUNTS

ACCT. NO. (a)	ACCOUNT NAME (b)	CURRENT YEAR (c)	.1 SOURCE OF SUPPLY AND EXPENSES - OPERATIONS (d)	.2 SOURCE OF SUPPLY AND EXPENSES - MAINTENANCE (e)
601	Salaries and Wages - Employees	\$ 16857		
603	Salaries and Wages - Officers, Directors and Majority Stockholders	14422		
604	Employee Pensions and Benefits	1092		
610	Purchased Water	233974	233974	XXXXXXXXXXXXXXXX
615	Purchased Power	728	324	XXXXXXXXXXXXXXXX
616	Fuel for Power Purchased			XXXXXXXXXXXXXXXX
618	Chemicals			
620	Materials and Supplies	4534		
631	Contractual Services - Eng.			
632	Contractual Services - Acct.	2371		
633	Contractual Services - Legal	1779		
634	Contractual Services - Management Fees	13668	2278	2278
635	Contractual Services - Other	15310	1220	1336
641	Rental of Building/Real Property	1924		
642	Rental of Equipment			
650	Transportation Expenses	680		
656	Insurance - Vehicle			
657	Insurance - General Liability	20.		
658	Insurance - Workman's Compensation	207.		
659	Insurance - Other			
660	Advertising Expense		XXXXXXXXXXXXXXXX	XXXXXXXXXXXXXXXX
666	Regulatory Commission Expenses - Amortization of Rate Case Expense		XXXXXXXXXXXXXXXX	XXXXXXXXXXXXXXXX
667	Regulatory Commission Expenses - Other		XXXXXXXXXXXXXXXX	XXXXXXXXXXXXXXXX
670	Bad Debt Expense		XXXXXXXXXXXXXXXX	XXXXXXXXXXXXXXXX
675	Miscellaneous Expenses	6251.		
	Total Water Utility Expenses	\$ 315824	\$ 237796	\$ 3614

UTILITY NAME: JASMINE LAKES SERVICE, INC.

YEAR OF REPORT  
DECEMBER 31, 1989

AFFILIATION OF OFFICERS AND DIRECTORS

For each of the officials listed on page E-6, list the principle occupation or business affiliation and all affiliations or connections with any other business or financial organizations, firms, or partnerships. For purposes of this part, an official will be considered to have an affiliation with any business or financial organization, firm or partnership in which he is an officer, director, trustee, partner, or a person exercising similar functions.

NAME (a)	PRINCIPLE OCCUPATION OR BUSINESS AFFILIATION (b)	AFFILIATION OR CONNECTION (c)	NAME AND ADDRESS OF AFFILIATION OR CONNECTION (d)
SAM V. ALWOOD JR	ALWOOD PROPERTIES, INC.	33 % STOCKHOLDER IN JASMINE LAKES SERVICE INC./JASMINE LAKES DEV. CORP.	10602 Devco DR FORT RICHEY, FL 34668
ORIN S. YARBROUGH	JASMIN PROPERTIES, INC.	11 % STOCKHOLDER IN JASMINE LAKES SERVICE INC./JASMINE LAKES DEV. CORP.	10602 Devco DR FORT RICHEY, FL

UTILITY NAME: JASMINE LAKES SERVICE, INC

YEAR OF REPORT  
DECEMBER 31, 1989

BUSINESSES WHICH ARE A BYPRODUCT, COPRODUCT OR JOINT PRODUCT RESULT OF PROVIDING WATER OR SEWER SERVICE

Complete the following for any business which is conducted as a byproduct, coproduct or joint product as a result of providing water and/or sewer service. This would include any business which requires the use of utility land and facilities. Examples of these types of businesses would be orange groves, nurseries, tree farms, fertilizer manufacturing, etc. This would not include any business for which the assets are properly included in Account 121 - Nonutility Property along with the associated revenues and expenses segregated out as nonutility also.

BUSINESS OR SERVICE CONDUCTED (a)	ASSETS		REVENUES		EXPENSES	
	BOOK COST OF ASSETS (b)	ACCT. NO. (c)	REVENUES GENERATED (d)	ACCT. NO. (e)	EXPENSES INCURRED (f)	ACCT. NO. (g)
NONE	\$		\$		\$	



UTILITY NAME: JASMINE LAKES SERVICE, INC

YEAR OF REPORT  
DECEMBER 31, 1999

BUSINESS TRANSACTIONS WITH RELATED PARTIES

List each contract, agreement, or other business transaction exceeding a cumulative amount of \$500 in any one year, entered into between the Respondent and a business or financial organization, firm, or partnership named on pages E-2 and E-6 identifying the parties, amounts, dates and product, asset, or service involved.

Part I. Specific Instructions: Services and Products Received or Provided

1. Enter in this part all transactions involving services and products received or provided.
2. Below are some types of transactions to include:
  - management, legal and accounting services
  - material and supplies furnished
  - computer services
  - leasing of structures, land and equipment
  - engineering & construction services
  - rental transactions
  - repairing and servicing of equipment
  - sale, purchase or transfer of various products

NAME OF COMPANY OR RELATED PARTY (a)	DESCRIPTION SERVICE AND/OR NAME OF PRODUCT (b)	CONTRACT OR AGREEMENT EFFECTIVE DATES (c)	ANNUAL CHARGES	
			(P)urchased/ or (S)old (d)	/AMOUNT (e)
JASMINE LAKES DEV. CORP	RENT	1977-OPEN	P	\$ 3498.
ALLEGOD + MISNER	LEGAL	960-OPEN	P	8070

BUSINESS TRANSACTIONS WITH RELATED PARTIES (Cont'd)

Part II. Specific Instructions: Sale, Purchase and Transfer of Assets

1. Enter in this part all transactions relating to the purchase, sale or transfer of assets.
2. Below are examples of some types of transactions to include:
  - purchase, sale or transfer of equipment.
  - purchase, sale or transfer of land and structures.
  - purchase, sale or transfer of securities.
  - noncash transfers of assets.
  - noncash dividends other than stock dividends.
  - writeoff of bad debts or loans.
3. The columnar instructions follow:
  - (a) Enter name of related party or company.
  - (b) Describe briefly the type of assets purchased, sold or transferred.
  - (c) Enter the total received or paid. Indicate purchase with "p" and sale with "s".
  - (d) Enter the net book value for each item reported.
  - (e) Enter the net profit or loss for each item (column (c) - column (d)).
  - (f) Enter the fair market value for each item reported. In space below or in a supplemental schedule, describe the basis used to calculate fair market value.

NAME OF COMPANY OR RELATED PARTY (a)	DESCRIPTION OF ITEMS (b)	SALE OR PURCHASE PRICE (c)	NET BOOK VALUE (d)	GAIN OR LOSS (e)	FAIR MARKET VALUE (f)
None		\$	\$	\$	\$

1911

# FINANCIAL SECTION

RECEIPTS

EXPENSES

RECEIPTS

EXPENSES

RECEIPTS

EXPENSES

RECEIPTS

EXPENSES

RECEIPTS

EXPENSES

UTILITY NAME: JASMINE LAKES SERVICE, INC

YEAR OF REPORT  
DECEMBER 31, 1989

COMPARATIVE BALANCE SHEET - ASSETS AND OTHER DEBITS

ACCT. NO. (a)	ACCOUNT NAME (b)	REF. PAGE (c)	CURRENT YEAR (d)	PREVIOUS YEAR (e)
UTILITY PLANT				
101-105	Utility Plant	F-5	\$ 1265991	\$ 651003
108-110	Less: Accumulated Depreciation and Amortization	F-6	483974	471,274
	Net Plant		\$ 782017	\$ 679729
114-115	Utility Plant Acquisition Adjustments (Net)	F-5		
	Other Plant Adj. (Specify)			
	Total Net Utility Plant		\$ 782017	\$ 679729
OTHER PROPERTY AND INVESTMENTS				
121	Nonutility Property	F-7	\$	\$
122	Less: Accumulated Depreciation and Amortization			
	Net Nonutility Property		\$	\$
123	Investment In Associated Companies	F-8		
124	Utility Investments	F-8		
125	Other Investments	F-8		
127	Other Special Funds	F-8		
	Total Other Property & Investments		\$	\$
CURRENT AND ACCRUED ASSETS				
131	Cash		\$ 20574	\$ 136405
132	Special Deposits	F-7		
134	Working Funds			
135	Temporary Cash Investments			
141-144	Accounts and Notes Receivable, Less Accumulated Provision for Uncollectible Accounts	F-9	17,189	17,254
145	Accounts Receivable from Associated Companies	F-10		
146	Notes Receivable from Associated Companies	F-10		
151	Material and Supplies			
162	Prepayments	F-11		
171	Accrued Interest and Dividends Receivable			
174	Misc. Current and Accrued Assets			
	Total Current and Accrued Assets		\$ 37,763	\$ 153659

UTILITY NAME: JASMINE LAKES SERVICE, INC

YEAR OF REPORT  
DECEMBER 31, 1989

COMPARATIVE BALANCE SHEET - ASSETS AND OTHER DEBITS

ACCT. NO. (a)	ACCOUNT NAME (b)	REF. PAGE (c)	CURRENT YEAR (d)	PREVIOUS YEAR (e)
DEFERRED DEBITS				
181	Unamortized Debt Discount & Expense	F-12	\$	\$
182	Extraordinary Property Losses	F-12	-----	-----
186	Misc. Deferred Debits	F-11	-----	-----
190	Accumulated Deferred Income Taxes		-----	-----
	Total Deferred Debits		\$	\$
	TOTAL ASSETS AND OTHER DEBITS		\$ <u>819780</u>	\$ <u>833,388</u>

NOTES TO THE BALANCE SHEET

The space below is provided for important notes regarding the balance sheet.

UTILITY NAME: Jasmine Lakes Service, Inc.

YEAR OF REPORT  
DECEMBER 31, 1981

COMPARATIVE BALANCE SHEET -- EQUITY CAPITAL AND LIABILITIES

ACCT. NO. (a)	ACCOUNT NAME (b)	REF. PAGE (c)	CURRENT YEAR (d)	PREVIOUS YEAR (e)
<b>EQUITY CAPITAL</b>				
201	Common Stock Issued	F-14	\$ 3000	\$ 3000
204	Preferred Stock Issued	F-14		
211	Other Paid-In Capital		33880	33880
212	Discount on Capital Stock			
213	Capital Stock Expense			
214-215	Retained Earnings	F-15	253082	246362
216	Reacquired Capital Stock			
218	Proprietary Capital (Proprietorship and Partnership Only)			
	<b>Total Equity Capital</b>		\$ 289962	\$ 283242
<b>LONG TERM DEBT</b>				
221	Bonds	F-16	\$	\$
223	Advances from Associated Companies	F-16	262325	287159
224	Other Long Term Debt	F-14		
	<b>Total Long Term Debt</b>		\$ 262325	\$ 287159
<b>CURRENT AND ACCRUED LIABILITIES</b>				
231	Accounts Payable		\$ 36659	\$ 23033
232	Notes Payable	F-13		
233	Accounts Payable to Associated Co.	F-13		
234	Notes Payable to Associated Co.	F-13		
235	Customer Deposits			
236	Accrued Taxes	F-17	5583	5816
237	Accrued Interest	F-18		
238	Accrued Dividends			
239	Matured Long Term Debt			
240	Matured Interest			
241	Miscellaneous Current and Accrued Liabilities	F-19		
	<b>Total Current and Accrued Liabilities</b>		\$ 42242	\$ 28849

UTILITY NAME: JASMINE LAKES SERVICE, Inc

 YEAR OF REPORT  
 DECEMBER 31, 1989

## COMPARATIVE BALANCE SHEET - EQUITY CAPITAL AND LIABILITIES

ACCT. NO. (a)	ACCOUNT NAME (b)	REF. PAGE (c)	CURRENT YEAR (d)	PREVIOUS YEAR (e)
DEFERRED CREDITS				
251	Unamortized Premium on Debt	F-12	\$	\$
252	Advances for Construction	F-19		
253	Other Deferred Credits			
255	Accumulated Deferred Investment Tax Credits			
	Total Deferred Credits		\$	\$
OPERATING RESERVES				
261	Property Insurance Reserve		\$	\$
262	Injuries and Damages Reserve			
263	Pensions and Benefits Reserve			
265	Miscellaneous Operating Reserves			
	Total Operating Reserves		\$	\$
CONTRIBUTIONS IN AID OF CONSTRUCTION				
271	Contributions In Aid of Construction	F-20	\$ 355,476	\$ 355,476
272	Accumulated Amortization of Contributions In Aid of Construction	F-21	130,225	121,328
	Total Net C.I.A.C.		\$ 225,251	\$ 234,148
ACCUMULATED DEFERRED INCOME TAXES				
281	Accumulated Deferred Income Taxes - Accelerated Depreciation		\$	\$
282	Accumulated Deferred Income Taxes - Liberalized Depreciation			
283	Accumulated Deferred Income Taxes - Other			
	Total Accum. Deferred Income Taxes		\$	\$
	TOTAL EQUITY CAPITAL AND LIABILITIES		\$ 819,780	\$ 833,388

UTILITY NAME: JASMINO LAKES SERVICE, INC.

YEAR OF REPORT  
DECEMBER 31, 1989

COMPARATIVE OPERATING STATEMENT

ACCT. NO. (a)	ACCOUNT NAME (b)	PREVIOUS YEAR (c)	REF. PAGE (d)	CURRENT YEAR (e)
	UTILITY OPERATING INCOME			
400	Operating Revenues	\$ 467,392	F-3(b)	\$ 465,893.
401	Operating Expenses	\$ 439,409	F-3(b)	\$ 431,689
403	Depreciation Expense	19,760	F-6	19,951
406	Amortization of Utility Plant Acquisition Adjustment			
407	Amortization Expense			
408.1	Taxes Other Than Income	32,387	F-17	32,607
409.1	Income Taxes		F-17	
410.10	Deferred Income Taxes			
411.10	Provision for Deferred Income Taxes - Credit			
412.10	Investment Tax Credits Deferred to Future Periods			
412.11	Investment Tax Credits Restored to Operating Income			
	Utility Operating Expenses	\$ 491,450.		\$ 484,247
	Utility Operating Income	\$ (24,058)		\$ (18,354)
413	Income From Utility Plant Leased to Others			
414	Gains (Losses) From Disposition of Utility Property	1260		(2413)
	Total Utility Operating Income [Enter here and on Page F-3(c)]	\$ (22,798)		\$ (20,767)

F-3(a)

538,828

581,118



COMPARATIVE OPERATING STATEMENT (Cont'd)

REF. PAGE (f)	WATER (g)	REF. PAGE (h)	SEWER (i)	OTHER (j)
W-3	\$ 348,953	S-3	\$ 116,940	\$
W-2	\$ 315,024	S-2	\$ 115,045	\$
F-6	1,0834	F-6	9,117	
F-6		F-6		
F-17	18009	F-17	13798	
F-17		F-17		
	\$ 345467		\$ 138780	\$
	\$ 3486		\$ <21840>	\$
	<1700>		<713>	
	\$ 1786		\$ <22553>	\$

F-3(b)

UTILITY NAME: JASMINING LAKES SERVICE, INC

YEAR OF REPORT  
DECEMBER 31, 1989

COMPARATIVE OPERATING STATEMENT (Cont'd)

ACCT. NO. (a)	ACCOUNT NAME (b)	PREVIOUS YEAR (c)	REF. PAGE (d)	CURRENT YEAR (e)
	Total Utility Operating Income [From Page F-3(a)]	\$ (22,798)		\$ (20,767)
	OTHER INCOME AND DEDUCTIONS			
415	Revenues From Merchandising, Jobbing and Contract Deductions			
416	Costs and Expenses of Merchandising, Jobbing and Contract Work			
419	Interest and Dividend Income	7,304		6,094
420	Allowance for Funds Used During Construction			
421	Nonutility Income	10,723		17,920
426	Miscellaneous Nonutility Expenses			
	Total Other Income and Deductions	\$ 18,027		\$ 24,814
	TAXES APPLICABLE TO OTHER INCOME			
408.20	Taxes Other Than Income	\$ 568	F-17	\$ 421
409.20	Income Taxes		F-17	
410.20	Provision for Deferred Income Taxes			
411.20	Provision for Deferred Income Taxes - Credit			
412.20	Investment Tax Credits - Net			
412.30	Investment Tax Credits Restored to Operating Income			
	Total Taxes Applicable To Other Income	\$ 568		\$ 421
	INTEREST EXPENSE			
427	Interest Expense		F-18	
428	Amortization of Debt Discount & Expense		F-12	
429	Amortization of Premium on Debt		F-12	
	Total Interest Expense	\$		\$
	EXTRAORDINARY ITEMS			
433	Extraordinary Income	\$		\$
434	Extraordinary Deductions			
409.30	Income Taxes, Extraordinary Items			
	Total Extraordinary Items	\$		\$
	NET INCOME	\$ (5,339)		\$ 3,626

UTILITY NAME: JASMINE LAKES SERVICE, INC

YEAR OF REPORT  
DECEMBER 31, 1989

SCHEDULE OF YEAR END RATE BASE

ACCT. NO. (a)	ACCOUNT NAME (b)	REF. PAGE (c)	WATER UTILITY (d)	SEWER UTILITY (e)
101	Utility Plant In Service	F-5	\$ 621778	\$ 644213
	Less:			
108	Nonused and Useful Plant (1) Accumulated Depreciation	F-6	273360	210614
110	Accumulated Amortization	F-6		
271	Contributions In Aid of Construction	F-20	193231	162245
252	Advances for Construction	F-19		
	Subtotal		\$ 155187	\$ 271354
	Additions:			
272	Accumulated Amortization of Contributions In Aid of Construction	F-21	77147	53078
	Subtotal		\$ 232334	\$ 324432
	Plus or Minus:			
114	Acquisition Adjustments (2)	F-5		
115	Accumulated Amortization of Acquisition Adjustments (2)	F-5		
	Working Capital Allowance (3)		39478	14483
	Other (Specify):			
	RATE BASE		\$ 271012.	\$ 338915.
	UTILITY OPERATING INCOME		\$ 1786	\$ <22553>
	ACHIEVED RATE OF RETURN		00.66%	<6.65%>

NOTES :

- (1) Estimated if not known.
- (2) Include only those Acquisition Adjustments that have been approved by the Commission.
- (3) Calculate using the Balance Sheet Method, beginning-year end average.  $\frac{1}{2} o+m$

UTILITY NAME: JASMINE LAKES SERVICE, Inc

YEAR OF REPORT  
DECEMBER 31, 1989

UTILITY PLANT (ACCTS. 101 - 106)

ACCT. NO. (a)	DESCRIPTION (b)	WATER (c)	SEWER (d)	OTHER THAN REPORTING SYSTEMS (e)	TOTAL (f)
	Plant Accounts:				
101	Utility Plant In Service	\$ 621770	\$ 644213	\$	\$ 1265991
102	Utility Plant Leased to Others				
103	Property Held for Future Use				
104	Utility Plant Purchased or Sold				
105	Construction Work In Progress				
	Total Utility Plant	\$ 621770	\$ 644213	\$	\$ 1265991

UTILITY PLANT ACQUISITION ADJUSTMENTS (ACCTS. 114 - 115)

Report each acquisition adjustment and related accumulated amortization separately. For any acquisition adjustment approved by the Commission, include the Order Number.

DESCRIPTION (a)	WATER (b)	SEWER (c)	OTHER THAN REPORTING SYSTEMS (d)	TOTAL (e)
ACQUISITION ADJUSTMENTS (114):				
	\$	\$	\$	\$
Total Plant Acquisition Adjs.	\$	\$	\$	\$
ACCUMULATED AMORTIZATION (115):				
	\$	\$	\$	\$
Total Accumulated Amortization	\$	\$	\$	\$
Net Acquisition Adjustments	\$	\$	\$	\$ None

28

# WATER OPERATION SECTION

1962

1963

1964

1965

1966

1967

1968

1969

1970

1971

1972

1973

1974

1975

1976

1977

1978

1979

UTILITY NAME: JASMINE LAKES SERVICE, INC

YEAR OF REPORT  
DECEMBER 31, 1989

WATER UTILITY PLANT ACCOUNTS

ACCT. NO. (a)	ACCOUNT NAME (b)	PREVIOUS YEAR (c)	ADDITIONS (d)	RETIREMENTS (e)
301	Organization	\$	\$	\$
302	Franchises			
303	Land and Land Rights	2570.		
304	Structures and Improvements			
305	Collecting and Impounding Reservoirs			
306	Lake, River and Other Intakes			
307	Wells and Springs	50944.		
308	Infiltration Galleries and Tunnels			
309	Supply Mains	120272.		
310	Power Generation Equipment			
311	Pumping Equipment	18100		
320	Water Treatment Equipment	12200.		
330	Distribution Reservoirs and Standpipes	121423		
331	Transmission and Distribution Mains	207031		
333	Services	29726		
334	Meters and Meter Installations	54105	5279	3695
335	Hydrants			
339	Other Plant and Miscellaneous Equipment			
340	Office Furniture and Equip.	2226	1507.	
341	Transportation Equipment	4634		4634
342	Stores Equipment			
343	Tools, Shop and Garage Equip.	1161		1161
344	Laboratory Equipment			
345	Power Operated Equipment			
346	Communication Equipment			
347	Miscellaneous Equipment			
348	Other Tangible Plant			
	Total Water Plant	\$ 624402.	\$ 6866	\$ 9490

NOTE: Any adjustments made to reclassify property from one account to another must be footnoted.

UTILITY NAME: JASMINE LAKE SERVICE, INC

YEAR OF REPORT  
DECEMBER 31, 1989

ACCUMULATED DEPRECIATION (ACCT. 108)

DESCRIPTION (a)	WATER (b)	SEWER (c)	OTHER THAN REPORTING SYSTEMS (d)	TOTAL (e)
Balance first of year	\$ 265485	\$ 205789	\$	\$ 471274
Credit during year:				
Accruals charged to Account 108	\$ 15665	\$ 13173	\$	\$ 28838
Accruals charged other accounts (specify)				
-----				
Salvage				
Other credits (specify)				
-----				
Total credits	\$ 15665	\$ 13173	\$	\$ 28838
Debits during year:				
Book cost of plant retired	\$ 7790	\$ 8348	\$	\$ 16138
Cost of removal				
Other debits (specify)				
-----				
Total debits	\$ 7790	\$ 8348	\$	\$ 16138
Balance end of year	\$ 273360	\$ 210614	\$	\$ 483974

ACCUMULATED AMORTIZATION (ACCT. 110)

DESCRIPTION (a)	WATER (b)	SEWER (c)	OTHER THAN REPORTING SYSTEMS (d)	TOTAL (e)
Balance first of year	\$	\$	\$	\$
Credit during year:				
Accruals charged to Account 110	\$	\$	\$	\$
Other credits (specify)				
-----				
Total credits	\$	\$	\$	\$
Debits during year:				
Book cost of plant retired	\$	\$	\$	\$
Other debits (specify)				
-----				
Total debits	\$	\$	\$	\$
Balance end of year	\$	\$	\$	\$ NONE

UTILITY NAME: JASMINE LAKES SERVICE, INC.

YEAR OF REPORT  
DECEMBER 31, 1989

NONUTILITY PROPERTY (ACCT. 121)

Report separately each item of property with a book cost of \$25,000 or more included in Account 121. Other items may be grouped by classes of property.

DESCRIPTION (a)	BEGINNING YEAR BALANCE (b)	ADDITIONS (c)	REDUCTIONS (d)	ENDING YEAR BALANCE (e)
	\$	\$	\$	\$
Total Nonutility Property	\$	\$	\$	\$ <u>NONE</u>

SPECIAL DEPOSITS (ACCT. 132)

Report hereunder all special deposits carried in Accounts 132.

DESCRIPTION OF SPECIAL DEPOSITS (a)	YEAR END BOOK COST (b)
SPECIAL DEPOSITS (ACCT. 132):	
	\$
Total Special Deposits	\$ <u>NONE</u>



UTILITY NAME JASMINE LAKES SERVICE, INC

YEAR OF REPORT  
DECEMBER 31, 1989

INVESTMENTS AND SPECIAL FUNDS (ACCTS. 123 - 127)

Report hereunder all investments and special funds carried in Accounts 123 thru 127.

DESCRIPTION OF SECURITY OR SPECIAL FUND (a)	FACE OR PAR VALUE (b)	YEAR END BOOK COST (c)
INVESTMENT IN ASSOCIATED COMPANIES (ACCT. 123)		
_____	\$ _____	\$ _____
_____	\$ _____	\$ _____
_____	\$ _____	\$ _____
_____	\$ _____	\$ _____
Total Investment In Associated	\$ _____	\$ <u>NONE</u>
_____		
UTILITY INVESTMENTS (ACCT. 124):		
_____	\$ _____	\$ _____
_____	\$ _____	\$ _____
_____	\$ _____	\$ _____
_____	\$ _____	\$ _____
Total Utility Investments	\$ _____	\$ <u>NONE</u>
_____		
OTHER INVESTMENTS (ACCT. 125):		
_____	\$ _____	\$ _____
_____	\$ _____	\$ _____
_____	\$ _____	\$ _____
_____	\$ _____	\$ _____
Total Other Investments	\$ _____	\$ <u>NONE</u>
_____		
SPECIAL FUNDS (ACCT. 127):		
_____	\$ _____	\$ _____
_____	\$ _____	\$ _____
_____	\$ _____	\$ _____
Total Special Funds	\$ _____	\$ <u>NONE</u>

UTILITY NAME JASMINE LAMBS SERVICE, INC

YEAR OF REPORT  
DECEMBER 31, 1989

ACCOUNTS AND NOTES RECEIVABLE - NET (ACCTS. 141 - 144)

Report hereunder all accounts and notes receivable included in Accounts 141, 142 and 144. Amounts included in Accounts 142 and 144 should be listed individually.

DESCRIPTION (a)	TOTAL (b)
<b>ACCOUNTS RECEIVABLE:</b>	
Customer Accounts Receivable (Acct. 141):	
Water -----	\$ 8544
Sewer -----	2880
Other -----	5765
Total Customer Accounts Receivable -----	\$ 17189
<b>OTHER ACCOUNTS RECEIVABLE (Acct. 142):</b>	
-----	\$ -----
-----	-----
Total Other Accounts Receivable -----	-----
<b>NOTES RECEIVABLE (Acct. 144):</b>	
-----	\$ -----
-----	-----
Total Notes Receivable -----	-----
Total Accounts and Notes Receivable -----	\$ -----
<b>ACCUMULATED PROVISION FOR UNCOLLECTIBLE ACCOUNTS (Acct. 143)</b>	
Balance first of year -----	\$ -----
Add: Provision for uncollectibles for current year -----	\$ -----
Collections of accounts previously written off -----	-----
Utility accounts -----	-----
Others -----	-----
Total Additions -----	\$ -----
Deduct accounts written off during year:	
Utility Accounts -----	\$ -----
Other -----	-----
Total accounts written off -----	\$ -----
Balance end of year -----	\$ -----
Total Accounts and Notes Receivable - Net -----	\$ <u>17189</u>

UTILITY NAME: JASMINE LAKES SERVICE, INC

YEAR OF REPORT  
DECEMBER 31, 1999

ACCOUNTS RECEIVABLE FROM ASSOCIATED COMPANIES (ACCT. 145)

Report each account receivable from associated companies separately.

DESCRIPTION (a)	TOTAL (b)
	\$
Total	\$ <u>NONE</u>

NOTES RECEIVABLE FROM ASSOCIATED COMPANIES (ACCT. 146)

Report each note receivable from associated companies separately.

DESCRIPTION (a)	INTEREST RATE (b)	TOTAL (c)
	\$	
	\$	
	\$	
	\$	
	\$	
	\$	
	\$	
	\$	
	\$	
	\$	
Total	\$	<u>NONE</u>

UTILITY NAME JASMINE LAKES SERVICE, INC

YEAR OF REPORT  
DECEMBER 31, 1989

PREPAYMENTS (ACCT. 162)

DESCRIPTION (a)	TOTAL (b)
Prepaid Insurance	\$
Prepaid Rents	
Prepaid Interest	
Prepaid Taxes	
Other Prepayments (Specify):	
Total Prepayments	\$ <u>NONE</u>

MISCELLANEOUS DEFERRED DEBITS (ACCT. 186)

DESCRIPTION (a)	TOTAL (b)
MISCELLANEOUS DEFERRED DEBITS (Acct. 186):	
Deferred Rate Case Expense (Acct. 186.1)	\$
Other Deferred Debits (Acct. 186.2)	
Total Miscellaneous Deferred Debits	\$ <u>NONE</u>

UTILITY NAME JASMINE LAKES SERVICE, INC

YEAR OF REPORT  
DECEMBER 31, 1989

UNAMORTIZED DEBT DISCOUNT AND EXPENSE AND PREMIUM ON DEBT (ACCTS. 181 and 251)

Report the net discount and expense or premium separately for each security issue.

DESCRIPTION (a)	AMOUNT WRITTEN OFF DURING YEAR (b)	YEAR END BALANCE (c)
UNAMORTIZED DEBT DISCOUNT AND EXPENSE (Acct. 181):  _____ _____	\$ _____ _____	\$ _____ _____
Total Unamortized Debt Discount and Expense _____	\$ <u>NONE</u>	\$ <u>NONE</u>
UNAMORTIZED PREMIUM ON DEBT (Acct. 251):  _____ _____	\$ _____ _____	\$ _____ _____
Total Unamortized Premium on Debt _____	\$ <u>NONE</u>	\$ <u>NONE</u>

EXTRAORDINARY PROPERTY LOSSES (ACCT. 182)

Report each item separately.

DESCRIPTION (a)	TOTAL (b)
EXTRAORDINARY PROPERTY LOSSES (Acct. 182):  _____ _____	\$ _____ _____
Total Extraordinary Property Losses _____	\$ <u>NONE</u>

UTILITY NAME: JASMINE LAKES SERVICE, INC

YEAR OF REPORT  
DECEMBER 31, 1989

NOTES PAYABLE (ACCTS. 232 and 234)

DESCRIPTION (a)	NOMINAL DATE OF ISSUE (b)	DATE OF MATURITY (c)	INTEREST		PRINCIPAL AMOUNT PER BALANCE SHEET (f)
			RATE (d)	FREQUENCY OF PAYMENT (e)	
ACCOUNT 232 - NOTES PAYABLE:					
	---	---	\$		\$
	---	---	\$		
	---	---	\$		
	---	---	\$		
Total Account 232					\$ <u>NONE</u>
ACCOUNT 234 - NOTES PAYABLE TO ASSOCIATED COMPANIES:					
	---	---	\$		\$
	---	---	\$		
	---	---	\$		
	---	---	\$		
Total Account 234					\$ <u>NONE</u>

ACCOUNTS PAYABLE TO ASSOCIATED COMPANIES (ACCT. 233)

Report each account payable separately.

DESCRIPTION (a)	TOTAL (b)
	\$
Total	\$ <u>NONE</u>

UTILITY NAME: JASMINE LAKES SERVICE, INC

YEAR OF REPORT:  
DECEMBER 31, 1989

CAPITAL STOCK (ACCTS. 201 and 204)

DESCRIPTION (a)	COMMON STOCK (b)	PREFERRED STOCK (c)
Par or stated value per share _____	\$ 1	\$ _____
Shares authorized _____	<u>3000</u>	_____
Shares issued and outstanding _____	<u>3000</u>	_____
Total par value of stock issued _____	\$ <u>3000</u>	\$ _____
Dividends declared per share for year _____	\$ _____	\$ _____

LONG TERM DEBT (ACCT. 224)

DESCRIPTION OF OBLIGATION (INCLUDING NOMINAL DATE OF ISSUE AND DATE OF MATURITY) (a)	INTEREST		PRINCIPAL AMOUNT PER BALANCE SHEET (d)
	RATE (b)	FREQUENCY OF PAYMENT (c)	
	\$		\$ _____
	\$		_____
	\$		_____
	\$		_____
	\$		_____
	\$		_____
	\$		_____
	\$		_____
	\$		_____
	\$		_____
	\$		_____
	\$		_____
	\$		_____
	\$		_____
	\$		_____
	\$		_____
	\$		_____
	\$		_____
	\$		_____
<b>Total</b> _____			\$ <u>NONE</u>

UTILITY NAME: JASMINE LAKES SERVICE, INC.

YEAR OF REPORT  
DECEMBER 31, 1989

STATEMENT OF RETAINED EARNINGS

1. Dividends should be shown for each class and series of capital stock. Show amounts of dividends per share.
2. Show separately the state and federal income tax effect of items shown in Account No. 439.

ACCT. NO. (a)	DESCRIPTION (b)	AMOUNTS (c)
215	Unappropriated Retained Earnings:	
	Balance beginning of year	\$ 246362
	Changes to account:	
439	Adjustments to Retained Earnings (requires Commission approval prior to use):	
	Credits: <del>PIPELINE ENGINEERING COST WHICH WAS EXPANDED, AND SHOULD HAVE BEEN CAPITALIZED</del>	\$ 3094
	Total Credits	\$ 3094
	Debits:	\$
	Total Debits	\$
435	Balance Transferred from Income	\$ 3626.
436	Appropriations of Retained Earnings:	\$
	Total Appropriations of Retained Earnings	\$
	Dividends Declared:	
437	Preferred Stock Dividends Declared	\$
438	Common Stock Dividends Declared	\$
	Total Dividends Declared	\$
	Balance end of year	\$ 253082.
214	Appropriated Retained Earnings (state balance and purpose of each appropriated amount at year end):	\$
	Total Appropriated Retained Earnings	\$
	Total Retained Earnings	\$ 253082

Notes to Statement of Retained Earnings:



UTILITY NAME: JASMINE LAKES SERVICE, INC

YEAR OF REPORT DECEMBER 31, 19 <u>89</u>
---

BONDS (ACCT. 221)

DESCRIPTION OF OBLIGATION (INCLUDING NOMINAL DATE OF ISSUE AND DATE OF MATURITY) (a)	INTEREST		PRINCIPAL AMOUNT PER BALANCE SHEET (d)
	RATE (b)	FREQUENCY OF PAYMENT (c)	
Total	-----		\$ <u>NONE</u>

ADVANCES FROM ASSOCIATED COMPANIES (ACCT. 223)

Report each advance seperately.

DESCRIPTION (a)	TOTAL (b)
<u>JASMINE LAKES DEVELOPMENT CORP.</u>	\$ <u>262,325</u>
Total	\$ <u>262,325</u>

UTILITY NAME: JASMINE LAKES SERVICE, INC.

YEAR OF REPORT  
DECEMBER 31, 1989

ACCRUED TAXES (ACCT. 236)

ACCT. NO. (a)	DESCRIPTION (b)	WATER (c)	SEWER (d)	OTHER (e)	TOTAL (f)
	Balance First of Year	\$ 4353	\$ 1458	\$ 5	\$ 5816
408.10	Accruals Charged:				
	Utility Regulatory				
408.11	Assessment Fees	\$ 8724	\$ 2924	\$	\$ 11648
408.12	Property Taxes	7383	8656		16039
408.13	Payroll Taxes	2408	1925	356	4689
409.10	Other Taxes & Licenses	294	293	65	652
409.11	Federal Income Taxes				
410.10	State Income Taxes				
410.11	Taxes Applicable To Other Income (Accts. 408.2, 409.2, 409.3, 410.2)				
	Total Taxes Accrued	\$ 18809	\$ 13798	\$ 421	\$ 23028
	Taxes Paid During Year:				
408.10	Utility Regulatory				
	Assessment Fees	8884	2941		11825
408.11	Property Taxes	7383	8656	600	16039
408.12	Payroll Taxes	2439	1945	321	4745
408.13	Other Taxes & Licenses	294	293	65	652
409.10	Federal Income Taxes				
409.11	State Income Taxes				
	Taxes Applicable To Other Income (Accts. 408.2, 409.2, 409.3, 410.2)				
	Total Taxes Paid	\$ 19000	\$ 13835	\$ 426	\$ 33261
	Balance End of Year	\$ 4162	\$ 1421	\$ -0-	\$ 5583

UTILITY NAME: Jacobs LAKES SERVICE, Inc

YEAR OF REPORT  
DECEMBER 31, 1989

ACCRUED INTEREST (ACCT. 237)

DESCRIPTION OF DEBT (a)	BALANCE BEGINNING OF YEAR (b)	INTEREST ACCRUED DURING YEAR		INTEREST PAID DURING YEAR (e)	BALANCE END OF YEAR (f)
		ACCT. DEBIT (c)	AMOUNT (d)		
ACCOUNT NO. 237.1 - ACCRUED INTEREST ON LONG TERM DEBT:	\$ -----		\$ -----	\$ -----	\$ -----
	\$ -----		\$ -----	\$ -----	\$ -----
	\$ -----		\$ -----	\$ -----	\$ -----
	\$ -----		\$ -----	\$ -----	\$ -----
Total Account No. 237.1	\$ -----		\$ -----	\$ -----	\$ -----
ACCOUNT NO. 237.2 - ACCRUED INTEREST ON OTHER LIABILITIES:	\$ -----		\$ -----	\$ -----	\$ -----
	\$ -----		\$ -----	\$ -----	\$ -----
	\$ -----		\$ -----	\$ -----	\$ -----
	\$ -----		\$ -----	\$ -----	\$ -----
Total Account No. 237.2	\$ -----		\$ -----	\$ -----	\$ -----
Total Account No. 237	\$ -----		\$ -----	\$ -----	\$ <u>None</u>

REGULATORY COMMISSION EXPENSE - AMORTIZATION  
OF RATE CASE EXPENSE (ACCTS. 666 and 766)

DESCRIPTION OF CASE (DOCKET NO.) (a)	EXPENSE INCURRED DURING YEAR (b)	AMOUNT TRANSFERRED TO ACCT. NO. 186.1 (c)	CHARGED OFF DURING YEAR	
			ACCT. (d)	AMOUNT (e)
	\$ -----	\$ -----		\$ -----
	\$ -----	\$ -----		\$ -----
	\$ -----	\$ -----		\$ -----
	\$ -----	\$ -----		\$ -----
	\$ -----	\$ -----		\$ -----
	\$ -----	\$ -----		\$ -----
	\$ -----	\$ -----		\$ -----
Total	\$ <u>None</u>	\$ -----		\$ <u>None</u>



UTILITY NAME: JASMINE LAKES SERVICE, INC.

YEAR OF REPORT  
DECEMBER 31, 1989

CONTRIBUTIONS IN AID OF CONSTRUCTION (ACCT. 271)

DESCRIPTION (a)	WATER (b)	SEWER (c)	W & S OTHER THAN SYSTEM REPORTING (d)	TOTAL (e)
Balance first of year	\$ 193231	\$ 162245	\$	\$ 355476
Add credits during year:				
Contributions received from Capacity, Main Extension and Customer Connection Charges (Schedule "A")	\$	\$	\$	\$
Contributions received from Developer or Contractor Agreements in cash or property (Schedule "B")				
Total Credits	\$	\$	\$	\$
Less debits charged during the year (All debits charged during the year must be explained below)	\$	\$	\$	\$
Total Contributions In Aid of Construction	\$ 193231	\$ 162245	\$	\$ 355476

Explain all debits charged to Account 271 below:

---



---



---



---



---



---



---



---



---



---

UTILITY NAME: JASMINE LAKES SERVICE, INC

YEAR OF REPORT  
DECEMBER 31, 1989

SCHEDULE "A"

ADDITIONS TO CONTRIBUTIONS IN AID OF CONSTRUCTION RECEIVED FROM CAPACITY, MAIN EXTENSION AND CUSTOMER CONNECTION CHARGES RECEIVED DURING THE YEAR

DESCRIPTION OF CHARGES (a)	NUMBER OF CONNECTIONS (b)	CHARGE PER CONNECTION (c)	WATER (d)	SEWER (e)
Total Credits			\$ <u>NONE</u>	\$ <u>NONE</u>

ACCUMULATED AMORTIZATION OF CONTRIBUTIONS IN AID OF CONSTRUCTION (ACCT. 272)

DESCRIPTION (a)	WATER (b)	SEWER (c)	W & S OTHER THAN SYSTEM REPORTING (d)	TOTAL (e)
Balance first of year	\$ <u>72316</u>	\$ <u>49022</u>	\$	\$ <u>121338</u>
Dedits during year:				
Accruals charged to Account 272	\$ <u>4831</u>	\$ <u>4056</u>	\$	\$ <u>8887</u>
Other debits (specify):				
Total debits	\$ <u>4831</u>	\$ <u>4056</u>	\$	\$ <u>8887</u>
Credits during year (specify):				
Total Credits	\$	\$	\$	\$
Balance end of year	\$ <u>77147</u>	\$ <u>53078</u>		\$ <u>130225</u>



UTILITY NAME: JASMINE LAKES SERVICE, INC.

YEAR OF REPORT  
DECEMBER 31, 1989

RECONCILIATION OF REPORTED NET INCOME WITH TAXABLE INCOME FOR FEDERAL INCOME TAXES  
(UTILITY OPERATIONS)

1. The reconciliation should include the same detail as furnished on Schedule M-1 of the federal tax return for the year. The reconciliation shall be submitted even though there is no taxable income for the year. Descriptions should clearly indicate the nature of each reconciling amount and show the computation of all tax accruals.

2. If the utility is a member of a group which files a consolidated federal tax return, reconcile reported net income with taxable net income as if a separate return were to be filed, indicating intercompany amounts to be eliminated in such consolidated return. State names of group members, tax assigned to each group member, and basis of allocation, assignment, or sharing of the consolidated tax among the group members.

DESCRIPTION (a)	REF. (b)	AMOUNT (c)
Net income for the year		\$ 3626
Reconciling items for the year:		
Taxable income not reported on books:		
<u>SECTION 481 ADJUSTMENT</u>		592
_____		_____
_____		_____
_____		_____
Deductions recorded on books not deducted for return:		
<u>DEPRECIATION</u>		1777
<u>OTHER ACCRUED EXPENSES</u>		130
_____		_____
_____		_____
Income recorded on books not included in return:		
_____		_____
_____		_____
_____		_____
Deduction on return not charged against book income:		
_____		_____
_____		_____
_____		_____
_____		_____
Federal tax net income		\$ 1311
Computation of tax:		
_____		_____
_____		_____
_____		_____
_____		_____



\*\* COMPLETION OF SCHEDULE ONLY REQUIRED IF AFUDC WAS CHARGED DURING YEAR \*\*

UTILITY NAME: JASMINE LAKES SERVICE, INC.

YEAR OF REPORT  
DECEMBER 31, 1989

N/A

SCHEDULE "A"

SCHEDULE OF COST OF CAPITAL USED FOR AFUDC CALCULATION (2)

CLASS OF CAPITAL (a)	DOLLAR AMOUNT (1) (b)	PERCENTAGE OF CAPITAL (c)	ACTUAL COST RATES (d)	WEIGHTED COST [c x d] (e)
Common Equity	\$	%	%	%
Preferred Stock		%	%	%
Long Term Debt		%	%	%
Customer Deposits		%	%	%
Tax Credits - Zero Cost		%	0.00 %	%
Tax Credits - Weighted Cost		%	%	%
Deferred Income Taxes		%	%	%
Other (Explain)		%	%	%
Total	\$	100.00 %		%

- (1) Should equal amounts on Schedule B, Column (f), Page F-25.
- (2) Must be calculated using the same methodology used to calculate AFUDC rate approved by the Commission.

APPROVED AFUDC RATE

Current Commission approved AFUDC rate:	_____ %
Commission order approving AFUDC rate:	_____

\*\* COMPLETION OF SCHEDULE ONLY REQUIRED IF AFUDC WAS CHARGED DURING YEAR \*\*

UTILITY NAME: JASMINE LAKES SERVICE, INC

YEAR OF REPORT  
DECEMBER 31, 1989

N/A

SCHEDULE "B"

SCHEDULE OF CAPITAL STRUCTURE ADJUSTMENTS

CLASS OF CAPITAL (a)	PER BOOK BALANCE (b)	NON-UTILITY ADJUSTMENTS (c)	NON-JURIS. ADJUSTMENTS (d)	OTHER (1) ADJUSTMENTS (e)	CAPITAL STRUCTURE USED FOR AFUDC CALCULATION (f)
Common Equity	\$	\$	\$	\$	\$
Preferred Stock					
Long Term Debt					
Customer Deposits					
Tax Credits - Zero Cos					
Tax Credits - Weighted Cost of Capital					
Deferred Income Taxes					
Other (Explain)					
<b>Total</b>	\$	\$	\$	\$	\$

(1) Explain below all adjustments made in Column (e):