

CLASS "B"

WATER and/or SEWER UTILITIES

(Gross Revenue of \$150,000 or More but Less Than \$750,000 Each)

ANNUAL REPORT

OF

RECEIVED

MAY 31 1991

Fla. Public Service Commission
Division of Water and Sewer

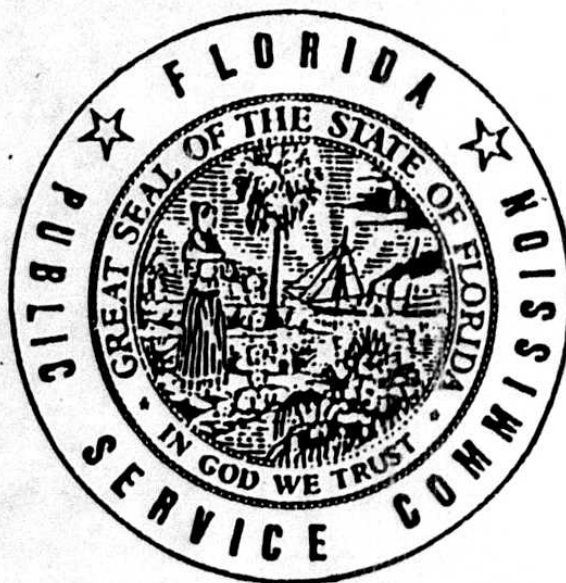
JASMINE LAKES UTILITIES CORP.

Exact Legal Name of Respondent

110-W 083-S

Certificate Number(s)

OFFICIAL COPY
DIVISION OF
WATER AND SEWER
Do Not Remove from this Office



FOR THE
YEAR ENDED DECEMBER 31, 19 90

BAILLIE & BAILLIE

CERTIFIED PUBLIC ACCOUNTANTS
5405 MILE STRETCH
HOLIDAY, FLORIDA 34680
(813) 937-6850

J. S. BAILLIE, JR., C.P.A.

J. S. BAILLIE, C.P.A.

May 30, 1991

Board of Directors
Jasmine Lakes Utilities Corp.
Holiday, Florida

We have compiled the comparative Balance Sheet as of December 31, 1989 and 1990 of Jasmine Lakes Utilities Corp. and the related detail schedules and the Statement of Income and related detail schedules for the year ended December 31, 1990, included in the accompanying prescribed form in accordance with standards established by the American Institute of Certified Public Accountants.

Our compilation was limited to presenting in the form prescribed by the Florida Public Service Commission information that is the representation of the management of the company. We have not audited or reviewed the financial statements referred to above and, accordingly, do not express an opinion or any other form of assurance on them.

These financial statements including related disclosures are presented in accordance with the requirements of the Florida Public Service Commission, which differ from generally accepted accounting principles. Accordingly, these financial statements are not designed for those who are not informed about such differences.

Respectfully submitted,



Baillie & Baillie
Certified Public Accountants

General Instructions

1. Prepare this report in conformity with the 1984 National Association of Regulatory Utility Commissioners Uniform System of Accounts for Water and/or Sewer Utilities.
2. Interpret all accounting words and phrases in accordance with the USOA.
3. Complete each question fully and accurately, even if it has been answered in a previous annual report. Enter the word "None" where it truly and completely states the fact.
4. For any question, section, or page which is not applicable to the respondent enter the words "Not Applicable". Do not omit any pages.
5. Where dates are called for, the month and day should be stated as well as the year.
6. All schedules requiring dollar entries should be rounded to the nearest dollar unless otherwise specifically indicated.
7. Complete this report by means which result in a permanent record, such as by typewriter.
8. If there is not enough room on any schedule, an additional page or pages may be added provided the format of the added schedule matches the format of the schedule with not enough room. Such a schedule should reference the appropriate schedules, state the name of the utility, and state the year of the report.
9. If it is necessary or desirable to insert additional statements for the purpose of further explanation of schedules, such statement should be made at the bottom of the page or an additional page inserted. Any additional pages should state the name of the utility, the year of the report, and reference the appropriate schedule.
10. The report should be filled out in quadruplicate and the original and two copies returned by March 31 of the year following the date of the report. The report should be returned to:

Florida Public Service Commission
Division of Water and Sewer
101 East Gaines Street
Tallahassee, Florida 32399-0873

Schedule	Page	Schedule	Page
Executive Summary			
Certification	E-1	Directors and Affiliates	E-7
General Information	E-2	Affiliation of Officers & Directors	E-8
Directory of Personnel Who Contact The Fla. Public Service Commission	E-3	Businesses Which Are A Byproduct, Coproduct or Joint Product Result of Providing Service	E-9
Company Profile	E-4	Business Transactions With Related Parties - Part I and II	E-10
Parent/Affiliate Organization Chart	E-5	Composite of Statistics	E-11
Compensation of Officers & Directors	E-6		
Business Contracts With Officers,			
Financial Section			
Comparative Balance Sheet - Assets and Other Debits	F-1	Companies'	F-13
Comparative Balance Sheet - Equity Capital and Liabilities	F-2	Capital Stock	F-14
Comparative Operating Statement	F-3	Long Term Debt	F-14
Schedule of Year End Rate Base	F-4	Statement of Retained Earnings	F-15
Utility Plant	F-5	Bonds	F-16
Utility Plant Acquisition Adjustments	F-5	Advances from Associated Companies	F-16
Accumulated Depreciation	F-6	Accrued Taxes	F-17
Accumulated Amortization	F-6	Accrued Interest	F-18
Nonutility Property	F-7	Regulatory Commission Expense - Amortization of Rate Case Expense	F-18
Special Deposits	F-7	Misc. Current & Accrued Liabilities	F-19
Investments and Special Funds	F-8	Advances For Construction	F-19
Accounts and Notes Receivable - Net	F-9	Contributions In Aid Of Construction	F-20
Accounts Receivable from Associated Companies	F-10	Additions to CIAC Received from Capacity, Main Extension and Customer Connection Charges	F-21
Notes Receivable from Associated Companies	F-10	Accum. Amortization of C.I.A.C.	F-21
Prepayments	F-11	Additions to CIAC Received from All Developers or Contractors	F-22
Miscellaneous Deferred Debits	F-11	Agreements	F-22
Unamortized Debt Discount and Expense and Premium on Debt	F-12	Reconciliation of Reported Net Income With Taxable Income For	F-23
Extraordinary Property Losses	F-12	Federal Income Taxes	F-23
Notes Payable	F-13	AFUDC Calculation	F-24
Accounts Payable to Associated		AFUDC Capital Structure Adjustments	F-25
Water Operation Section			
Water Utility Plant Accounts	W-1	Statistics	W-6
Water Utility Expense Accounts	W-2	Water Treatment Plant, Mains, Services and Meters	W-7
Water Operating Revenue	W-3	Wells and Well Pumps, Reservoirs, and High Service Pumping	W-8
Basis for Water Depreciation Charges	W-4	Other Water System Information	W-9
Analysis of Entries in Water Depreciation Reserve	W-5	Calculation of ERC's	W-10
Pumping and Purchased Water			
Sewer Operation Section			
Sewer Utility Plant Accounts	S-1	Pumping Equipment and Service Connections	S-6
Sewer Utility Expense Accounts	S-2	Collecting and Force Mains	S-7
Sewer Operating Revenue	S-3	Other Sewer System Information	S-8
Basis for Sewer Depreciation Charges	S-4	Calculation of ERC's	S-9
Analysis of Entries in Sewer Depreciation Reserve	S-5		

**EXECUTIVE
SUMMARY**

CERTIFICATION OF ANNUAL REPORT

7/1/90 - 12/31/90

YEAR OF REPORT
DECEMBER 31, 1990


UTILITY NAME: JASMINE LAKES UTILITIES CORP.

I HEREBY CERTIFY, to the best of my knowledge and belief:

- YES NO
(X) () 1. The utility is in substantial compliance with the Uniform System of Accounts prescribed by the Florida Public Service Commission.
- YES NO
(X) () 2. The utility is in substantial compliance with all applicable rules and orders of the Florida Public Service Commission.
- YES NO
(X) () 3. There have been no communications from regulatory agencies concerning noncompliance with, or deficiencies in, financial reporting practices that could have a material effect on the financial statement of the utility.
- YES NO
(X) () 4. The annual report fairly represents the financial condition and results of operations of the respondent for the period presented and other information and statements presented in the report as to the business affairs of the respondent are true, correct and complete for the period for which it represents.


Items Certified

1.	2.	3.	4.
(X)	(X)	(X)	(X)



 (signature of chief executive officer of the utility) *

1.	2.	3.	4.
(X)	(X)	(X)	(X)



 (signature of chief financial officer of the utility) *

* Each of the four items must be certified YES or NO. Each item need not be certified by both officers. The items being certified by the officer should be indicated in the appropriate area to the left of the signature.

NOTICE: Section 837.06, Florida Statutes, provides that any person who knowingly makes a false statement in writing with the intent to mislead a public servant in the performance of his duty shall be guilty of a misdemeanor of the second degree.

ANNUAL REPORT OF

JASMINE LAKES UTILITIES CORP. County: PASCO
 (Exact Name of Utility)

List below the exact mailing address of the utility for which normal correspondence should be sent:

1518 U.S. Hwy 19 Suite C
Holiday, Fl. 34691
 Telephone: (813) 848-0275

Name and address of person to whom correspondence concerning this report should be addressed:

James Dreher
1518 U.S. Hwy. 19 Suite C
Holiday, Fl. 34691
 Telephone: (813) 848-0275

List below the address of where the utility's books and records are located:

James Dreher
1518 U.S. Hwy. 19 Suite C
Holiday, Fl. 34691
 Telephone: (813) 848-0275

List below any groups auditing or reviewing the records and operations:

Baillie & Baillie CPA (See Accountants' Compilation Report Attached)

Date of original organization of the utility: 3 / 26 / 90

Check the appropriate business entity of the utility as filed with the Internal Revenue Service:

Individual Partnership Sub S Corporation 1120 Corporation

List below every corporation or person owning or holding directly or indirectly 5 percent or more of the voting securities of the utility:

	Name	Percent Ownership
1.	James Dreher	80 %
2.	Robert L. Dreher	20 %
3.		%
4.		%
5.		%
6.		%
7.		%
8.		%
9.		%
10.		%

UTILITY NAME: JASMINE LAKES UTILITIES CORP.

DIRECTORY OF PERSONNEL WHO CONTACT THE FLORIDA PUBLIC SERVICE COMMISSION

NAME OF COMPANY REPRESENTATIVE (1)(2)	TITLE OR POSITION	ORGANIZATIONAL UNIT TITLE (3)	USUAL PURPOSE FOR CONTACT WITH FPSC
James Dreher	President		General
Robert L. Dreher	Sec./Treas.		General
Lewis Homer, III	Attorney		Legal Information
Jack Baillie 813-937-6650	Accountant	Baillie & Baillie Certified Public Accountants	Financial Information

- (1) Also list appropriate legal counsel, accountants and others who may not be on general payroll.
- (2) Provide individual telephone numbers if the person is not normally reached at the company.
- (3) Name of company employed by if not on general payroll.

7/1/90 - 12/31/90

UTILITY NAME: JASMINE LAKES UTILITIES CORP

YEAR OF REPORT
DECEMBER 31, 1990

COMPANY PROFILE

Provide a brief narrative company profile which covers the following areas:

- A. Brief company history.
- B. Public services rendered.
- C. Major goals and objectives.
- D. Major operating divisions and functions.
- E. Current and projected growth patterns.
- F. Major transactions having a material effect on operations.

The company acquired the utility from Jasmine Lakes Services, Inc. on 7/1/90. Please refer to Florida Public Service Commission Docket #900291-WS.

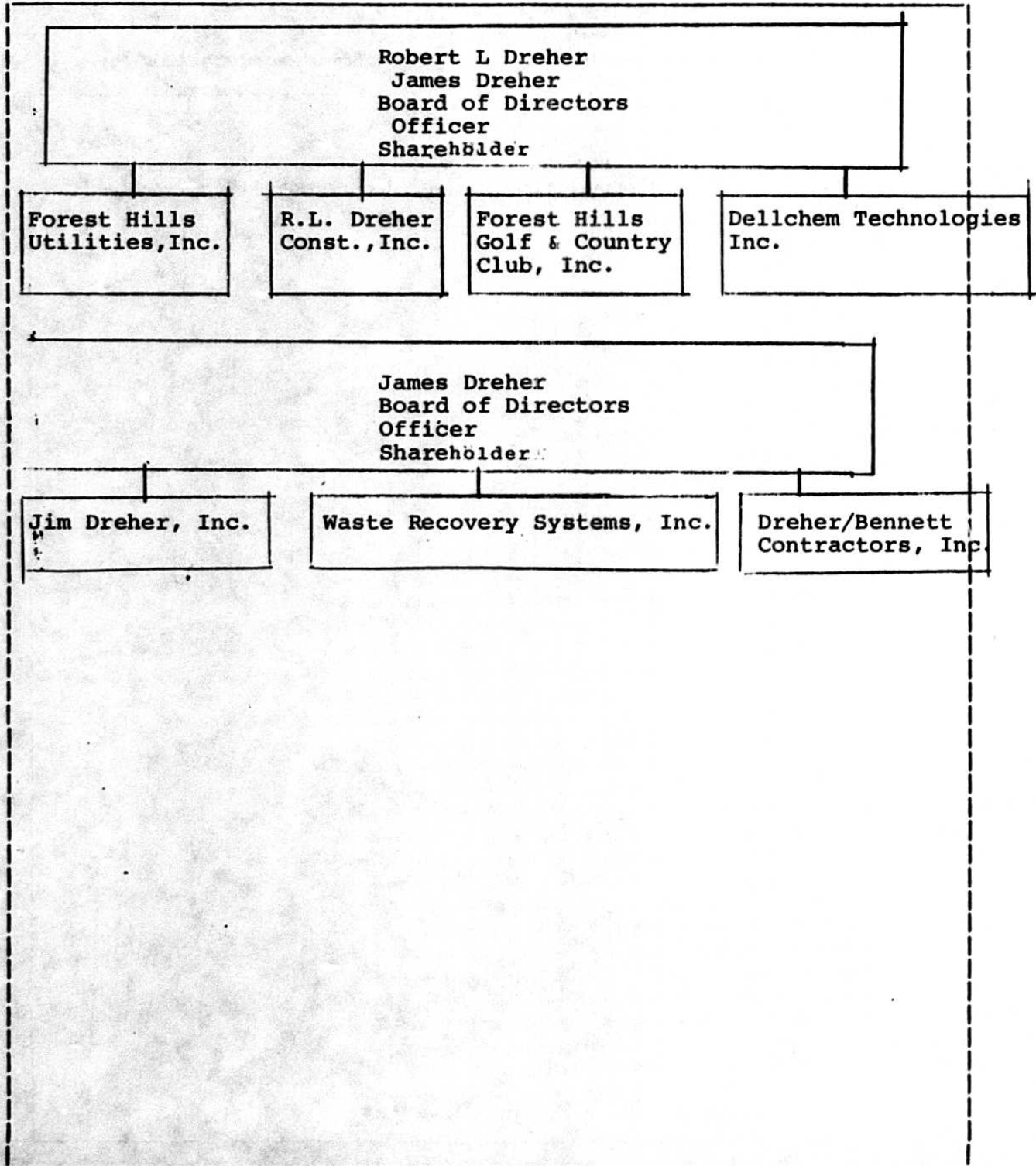
7/1/90 - 12/31/90

YEAR OF REPORT
DECEMBER 31, 1990

UTILITY NAME: JASMINE LAKES UTILITIES CORP.

PARENT / AFFILIATE ORGANIZATION CHART
Current as of 12/31/90

Complete below an organizational chart that shows all parents and subsidiaries of the utility. The chart must also show the relationship between the utility and the affiliates listed on E-7, E-10(a) and E-10(b).



7/1/90 - 12/31/90

UTILITY NAME: JASMINE LAKES UTILITIES

YEAR OF REPORT DECEMBER 31, 19 <u>90</u>

COMPENSATION OF OFFICERS

For each officer, list the time spent on respondent as an officer compared to time spent on total business activities and the compensation received as an officer from the respondent.

NAME (a)	TITLE (b)	% OF TIME SPENT AS OFFICER OF UTILITY (c)	OFFICERS COMPENSATION (d)
James Dreher	President	75	\$ 36,400.00
Robert L. Dreher	Sec./Treas.	10	\$ 6,000.00
			\$
			\$
			\$
			\$
			\$
			\$

COMPENSATION OF DIRECTORS

For each director, list the number of director meetings attended by each director and the compensation received as a director from the respondent.

NAME (a)	TITLE (b)	NUMBER OF DIRECTORS MEETINGS ATTENDED (c)	DIRECTORS COMPENSATION (d)
James Dreher	President	12	\$ 1,300.00
Robert L. Dreher	Sec./Treas.	12	\$ 1,300.00
			\$
			\$
			\$
			\$
			\$
			\$

7/1/90 - 12/31/90

YEAR OF REPORT
DECEMBER 31, 1990UTILITY NAME: JASMINE LAKES UTILITIES CORP

BUSINESS CONTRACTS WITH OFFICERS, DIRECTORS AND AFFILIATES

List all contracts, agreements, or other business arrangements* entered into during the calendar year (other than compensation related to position with Respondents) between the Respondent and officer and director listed on page E-6. In addition, provide the same information with respect to professional services for each firm, partnership, or organization with which the officer or director is affiliated.

NAME OF OFFICER, DIRECTOR OR AFFILIATE (a)	IDENTIFICATION OF SERVICE OR PRODUCT (b)	AMOUNT (c)	NAME AND ADDRESS OF AFFILIATED ENTITY (d)
James Dreher	Office Equip- ment	\$ 16,800.00	Jim Dreher, Inc. 1518 US Hwy 19 Suite C Holiday, Fl., 34691
Robert L. Dreher	Sludge de-watering Equipment	\$250,000.00	R.L. Dreher Const., Inc. 1518 US Hwy 19 Holiday, Fl. 34691
Robert L. Dreher	Sale of Tractor	\$5,200.00	R.L. Dreher Const., Inc. 1518 US Hwy 19 Holiday, Fl. 34691
Robert L. Dreher	Polymer Sales	\$270.30	Delchem Technologies 1518 US Hwy 19 Holiday, Fl. 34691
Robert L. Dreher	Office & Equip- rental	\$5,700.00	R.L. Dreher Const., Inc. 1518 U.S. Hwy. 19 Holiday, Fl. 34691

*Business Agreement, for this schedule, shall mean any oral or written business deal which binds the concerned parties for products or services during the reporting year or future years. Although the Respondent and/or other companies will benefit from the arrangement, the officer or director is, however, acting on his behalf or for the benefit of other companies or persons.

UTILITY NAME: JASMINE LAKES UTILITIES CORP

7/1/90 - 12/31/90

YEAR OF REPORT
DECEMBER 31, 19 90

AFFILIATION OF OFFICERS AND DIRECTORS

For each of the officials listed on page E-6, list the principle occupation or business affiliation and all affiliations or connections with any other business or financial organizations, firms, or partnerships. For purposes of this part, an official will be considered to have an affiliation with any business or financial organization, firm or partnership in which he is an officer, director, trustee, partner, or a person exercising similar functions.

NAME (a)	PRINCIPLE OCCUPATION OR BUSINESS AFFILIATION (b)	AFFILIATION OR CONNECTION (c)	NAME AND ADDRESS OF AFFILIATION OR CONNECTION (d)
James Dreher	Holding Co.	officer/ director	Jim Dreher, Inc.
	Construction	officer/ director	Dreher/Bennett Const. Inc.
	Trash Hauling	officer/ director	Waste Recovery Systems
	Water & Sewer Utility	officer/ director	Forest Hills Utility, Inc.
Robert L. Dreher	Chemical Sales	officer/ director	Dellchem Technologies
	Construction	officer/ director	R.L. Dreher Const., Inc.
	Water & Sewer Utility	officer/ director	Forest Hills Utility
	Golf Course	officer/ director	Forest Hills Golf & Country Club
	Chemical Sales	officer/ director	Dellchem Technologies

UTILITY NAME: JASMINE LAKES UTILITIES

YEAR OF REPORT
DECEMBER 31, 19 90

BUSINESSES WHICH ARE A BYPRODUCT, COPRODUCT OR JOINT PRODUCT RESULT OF PROVIDING WATER OR SEWER SERVICE

Complete the following for any business which is conducted as a byproduct, coproduct or joint product as a result of providing water and/or sewer service. This would include any business which requires the use of utility land and facilities. Examples of these types of businesses would be orange groves, nurseries, tree farms, fertilizer manufacturing, etc. This would not include any business for which the assets are properly included in Account 121 - Nonutility Property along with the associated revenues and expenses segregated out as nonutility also.

BUSINESS OR SERVICE CONDUCTED (a)	ASSETS		REVENUES		EXPENSES	
	BOOK COST OF ASSETS (b)	ACCT. NO. (c)	REVENUES GENERATED (d)	ACCT. NO. (e)	EXPENSES INCURRED (f)	ACCT. NO. (g)
NONE	\$		\$		\$	

UTILITY NAME: JASMINE LAKES UTILITIES CORP.YEAR OF REPORT
DECEMBER 31, 19 90

BUSINESS TRANSACTIONS WITH RELATED PARTIES

List each contract, agreement, or other business transaction exceeding a cumulative amount of \$500 in any one year, entered into between the Respondent and a business or financial organization, firm, or partnership named on pages E-2 and E-6 identifying the parties, amounts, dates and product, asset, or service involved.

Part I. Specific Instructions: Services and Products Received or Provided

1. Enter in this part all transactions involving services and products received or provided.
2. Below are some types of transactions to include:
 - management, legal and accounting services
 - computer services
 - engineering & construction services
 - repairing and servicing of equipment
 - material and supplies furnished
 - leasing of structures, land and equipment
 - rental transactions
 - sale, purchase or transfer of various products

NAME OF COMPANY OR RELATED PARTY (a)	DESCRIPTION SERVICE AND/OR NAME OF PRODUCT (b)	CONTRACT OR AGREEMENT EFFECTIVE DATES (c)	ANNUAL CHARGES	
			(P)urchased/ or (S)old (d)	/AMOUNT (e)
R.L. Dreher Const., Inc.	Rapid Drain purchase	Contract 7-1-90	P	\$ 250,000.00
Jim Dreher, Inc.	Truck & Office Equipment purchase	Contract 7-1-90	P	\$ 16,800.00
R.L. Dreher Const., Inc.	Tractor purchase	7-1-90	P	\$ 5,200.00
R.L. Dreher Const., Inc.	Office & Equipt. rental	7-1-90	P	\$ 5,700.00

BUSINESS TRANSACTIONS WITH RELATED PARTIES (Cont'd)

Part II. Specific Instructions: Sale, Purchase and Transfer of Assets

1. Enter in this part all transactions relating to the purchase, sale or transfer of assets.
2. Below are examples of some types of transactions to include:
 - purchase, sale or transfer of equipment.
 - purchase, sale or transfer of land and structures.
 - purchase, sale or transfer of securities.
 - noncash transfers of assets.
 - noncash dividends other than stock dividends.
 - writeoff of bad debts or loans.

3. The columnar instructions follow:
 - (a) Enter name of related party or company.
 - (b) Describe briefly the type of assets purchased, sold or transferred.
 - (c) Enter the total received or paid. Indicate purchase with "p" and sale with "s".
 - (d) Enter the net book value for each item reported.
 - (e) Enter the net profit or loss for each item (column (c) - column (d)).
 - (f) Enter the fair market value for each item reported. In space below or in a supplemental schedule, describe the basis used to calculate fair market value.

NAME OF COMPANY OR RELATED PARTY (a)	DESCRIPTION OF ITEMS (b)	SALE OR PURCHASE PRICE (c)	NET BOOK VALUE (d)	GAIN OR LOSS (e)	FAIR MARKET VALUE (f)
R.L. Dreher Const., Inc.	Rapid Drain	\$ 250,000.00	\$ 250,000.	\$(30,000.)	\$ 280,000.00
Jim Dreher, Inc.	Truck & Office Equipt Purchase	\$16,800.00	6,800.	10,000.	\$16,800.00
R.L. Dreher Const., Inc.	Tractor Purchase	\$5,200.00	0	5,200.	\$ 5,200.00

UTILITY NAME: Jasmine Lakes Utilities Corp.

7/1/90 - 12/31/90

YEAR OF REPORT
DECEMBER 31, 1990

COMPOSITE STATISTICS FOR ALL
PRIVATELY OWNED WATER AND SEWER UTILITIES UNDER AGENCY JURISDICTION

DESCRIPTION (a)	WATER (b)	SEWER (c)
PLANT (Intrastate Only)(000's Omitted):		
Plant in Service	\$ 593,800	\$ 915,429
Construction Work In Progress	-----	-----
Plant Acquisition Adjustment	-----	-----
Plant Held For Future Use	-----	-----
Materials and Supplies	-----	-----
Less:		
Accumulated Depreciation and Accumulated Amortization	229,939	203,384
Contributions In Aid Of Construction	112,461	106,125
Net Book Cost	\$ 251,400	\$ 605,920
REVENUES AND EXPENSES (Intrastate Only)(000's Omitted):		
Operating Revenues	\$ 174,904	\$ 59,847
Depreciation and Amortization Expense	\$ 5,236	\$ 7,954
Income Tax Expense	-----	-----
Taxes Other Than Income	13,184	10,002
Other Operating Expenses	199,500	105,192
Total Operating Expenses	\$ 217,920	\$ 123,148
Net Operating Income (Loss)	\$ (43,016)	\$ (63,301)
Other Income	\$ -----	\$ -----
Other Income Deductions	7,671	11,039
Net Income	\$ (50,687)	\$ (74,340)
CUSTOMERS (Intrastate Only):		
Residential - Yearly Average	1,528	1,516
Commercial - Yearly Average	32	32
Industrial - Yearly Average	0	0
Others - Yearly Average	2	0
Total	1,562	1,548
OTHER STATISTICS (Intrastate Only):		
Average Annual Residential Use Per 1,000 Gallons	31	51
Average Annual Residential Cost Per 1,000 Gallons	\$ 3.62	\$ 0.76
Average Residential Monthly Bill	\$ 18.66	\$ 6.44
Gross Plant Investment Per Customer	\$ 380.15	\$ 591.36

**FINANCIAL
SECTION**

UTILITY NAME: Jasmine Lakes Utilities Corp.

7/1/90 - 12/31/90

YEAR OF REPORT
DECEMBER 31, 1990

COMPARATIVE BALANCE SHEET - ASSETS AND OTHER DEBITS

ACCT. NO. (a)	ACCOUNT NAME (b)	REF. PAGE (c)	CURRENT YEAR (d)	PREVIOUS YEAR * (e)
UTILITY PLANT				
101-105	Utility Plant	F-5	\$ 1,509,229	\$
108-110	Less: Accumulated Depreciation and Amortization	F-6	433,323	
	Net Plant		\$ 1,075,906	\$
114-115	Utility Plant Acquisition	F-5		
	Adjustments (Net)			
	Other Plant Adj. (Specify)			
	Total Net Utility Plant		\$ 1,075,906	\$
OTHER PROPERTY AND INVESTMENTS				
121	Nonutility Property	F-7	\$ 10,000	\$
122	Less: Accumulated Depreciation and Amortization			
	Net Nonutility Property		\$ 10,000	\$
123	Investment In Associated Companies	F-8		
124	Utility Investments	F-8		
125	Other Investments	F-8		
127	Other Special Funds	F-8		
	Total Other Property & Investments		\$	\$
CURRENT AND ACCRUED ASSETS				
131	Cash		\$ 8,480	\$
132	Special Deposits	F-7		
134	Working Funds			
135	Temporary Cash Investments			
141-144	Accounts and Notes Receivable, Less Accumulated Provision for Uncollectible Accounts	F-9	55,021	
145	Accounts Receivable from Associated Companies	F-10	200	
146	Notes Receivable from Associated Companies	F-10		
151	Material and Supplies			
162	Prepayments	F-11	500	
171	Accrued Interest and Dividends Receivable			
174	Misc. Current and Accrued Assets			
	Total Current and Accrued Assets		\$ 64,201	\$

UTILITY NAME: Jasmine Lakes Utilities Corp.

YEAR OF REPORT DECEMBER 31, 19 <u>90</u>

COMPARATIVE BALANCE SHEET - ASSETS AND OTHER DEBITS

ACCT. NO. (a)	ACCOUNT NAME (b)	REF. PAGE (c)	CURRENT YEAR (d)	PREVIOUS YEAR (e)
DEFERRED DEBITS				
181	Unamortized Debt Discount & Expense	F-12	\$ 1,513	\$
182	Extraordinary Property Losses	F-12		
186	Misc. Deferred Debits	F-11		
190	Accumulated Deferred Income Taxes			
	Total Deferred Debits		\$ 1,513	\$
	TOTAL ASSETS AND OTHER DEBITS		\$ 1,151,620	\$ NONE

NOTES TO THE BALANCE SHEET

The space below is provided for important notes regarding the balance sheet.

- * This is the initial Annual Report of Jasmine Lakes Utilities Corp. and as such prior year information does not exist. PSC Docket #900291-WS dated 10/4/90 established the rate base for the new utility. The rate base was formerly owned by Jasmine Lakes Services, Inc. (An unrelated company).

UTILITY NAME: Jasmine Lakes Utilities Corp.

7/1/90 - 12/31/90
 YEAR OF REPORT
 DECEMBER 31, 1990

COMPARATIVE BALANCE SHEET - EQUITY CAPITAL AND LIABILITIES

ACCT. NO. (a)	ACCOUNT NAME (b)	REF. PAGE (c)	CURRENT YEAR (d)	PREVIOUS YEAR * (e)
EQUITY CAPITAL				
201	Common Stock Issued	F-14	\$ 10,000	\$
204	Preferred Stock Issued	F-14		
211	Other Paid-In Capital		240,000	
212	Discount on Capital Stock			
213	Capital Stock Expense			
214-215	Retained Earnings	F-15	(120,980)	
216	Reacquired Capital Stock			
218	Proprietary Capital (Proprietorship and Partnership Only)		129,020	
	Total Equity Capital		\$ 129,020	\$
LONG TERM DEBT				
221	Bonds	F-16	\$	\$
223	Advances from Associated Companies	F-16		
224	Other Long Term Debt	F-14	394,871	
	Total Long Term Debt		\$ 394,871	\$
CURRENT AND ACCRUED LIABILITIES				
231	Accounts Payable		\$ 161,235	\$
232	Notes Payable	F-13		
233	Accounts Payable to Associated Co.	F-13	21,500	
234	Notes Payable to Associated Co.	F-13	100,000	
235	Customer Deposits		20,267	
236	Accrued Taxes	F-17	35,933	
237	Accrued Interest	F-18		
238	Accrued Dividends			
239	Matured Long Term Debt		52,116	
240	Matured Interest			
241	Miscellaneous Current and Accrued Liabilities	F-19		
	Total Current and Accrued Liabilities		\$ 391,051	\$

UTILITY NAME: Jasmine Lakes Utilities Corp.

7/1/90 - 12/31/90

YEAR OF REPORT
DECEMBER 31, 1990

COMPARATIVE BALANCE SHEET - EQUITY CAPITAL AND LIABILITIES

ACCT. NO. (a)	ACCOUNT NAME (b)	REF. PAGE (c)	CURRENT YEAR (d)	PREVIOUS YEAR * (e)
DEFERRED CREDITS				
251	Unamortized Premium on Debt	F-12	\$	\$
252	Advances for Construction	F-19		
253	Other Deferred Credits		18,092	
255	Accumulated Deferred Investment Tax Credits			
	Total Deferred Credits		\$ 18,092	\$
OPERATING RESERVES				
261	Property Insurance Reserve		\$	\$
262	Injuries and Damages Reserve			
263	Pensions and Benefits Reserve			
265	Miscellaneous Operating Reserves			
	Total Operating Reserves		\$	\$
CONTRIBUTIONS IN AID OF CONSTRUCTION				
271	Contributions In Aid of Construction	F-20	\$ 355,476	\$
272	Accumulated Amortization of Contributions In Aid of Construction	F-21	136,890	
	Total Net C.I.A.C.		\$ 218,586	\$
ACCUMULATED DEFERRED INCOME TAXES				
281	Accumulated Deferred Income Taxes - Accelerated Depreciation		\$	\$
282	Accumulated Deferred Income Taxes - Liberalized Depreciation			
283	Accumulated Deferred Income Taxes - Other			
	Total Accum. Deferred Income Taxes		\$	\$
	TOTAL EQUITY CAPITAL AND LIABILITIES		\$ 1,151,620	\$ NONE

7/1/90 - 12/31/90

YEAR OF REPORT DECEMBER 31, 19 <u>90</u>

UTILITY NAME: Jasmine Lakes Utilities Corp.

COMPARATIVE OPERATING STATEMENT

ACCT. NO. (a)	ACCOUNT NAME (b)	PREVIOUS YEAR (c)	REF. PAGE (d)	CURRENT YEAR (e)
	UTILITY OPERATING INCOME			
400	Operating Revenues -----	\$ NONE	F-3(b)	\$ 234,751
401	Operating Expenses -----	\$	F-3(b)	\$ 304,692
403	Depreciation Expense -----		F-6	13,190
406	Amortization of Utility Plant Acquisition Adjustment -----			
407	Amortization Expense -----			
408.1	Taxes Other Than Income -----		F-17	23,186
409.1	Income Taxes -----		F-17	
410.10	Deferred Income Taxes -----			
411.10	Provision for Deferred Income Taxes - Credit -----			
412.10	Investment Tax Credits Deferred to Future Periods -----			
412.11	Investment Tax Credits Restored to Operating Income -----			
	Utility Operating Expenses -----	\$		\$ 341,068
	Utility Operating Income (Loss) -----	\$		\$ (106,317)
413	Income From Utility Plant Leased to Others -----			
414	Gains (Losses) From Disposition of Utility Property -----			
	Total Utility Operating Income [Enter here and on Page F-3(c)] (Loss) -----	\$ NONE		\$ (106,317)

F-3(a)

COMPARATIVE OPERATING STATEMENT (Cont'd)

REF. PAGE (f)	WATER (g)	REF. PAGE (h)	SEWER (i)	OTHER (j)
W-3	\$ 174,904	S-3	\$ 59,847	\$ 0
W-2	\$ 199,500	S-2	\$ 105,192	
F-6	5,236	F-6	7,954	
F-6		F-6		
F-17	13,184	F-17	10,002	
F-17		F-17		
	\$ 217,920		\$ 123,148	\$
	\$ (43,016)		\$ (63,301)	\$
	\$ (43,016)		\$ (63,301)	\$ 0

F-3(b)

7/1/90 - 12/31/90

YEAR OF REPORT DECEMBER 31, 1990

UTILITY NAME: Jasmine Lakes Utilities Corp.

COMPARATIVE OPERATING STATEMENT (Cont'd)

ACCT. NO. (a)	ACCOUNT NAME (b)	PREVIOUS YEAR (c)	REF. PAGE (d)	CURRENT YEAR (e)
	Total Utility Operating Income [From Page F-3(a)] _____ (Loss) _____	\$ NONE		\$ (106,317)
	OTHER INCOME AND DEDUCTIONS			
415	Revenues From Merchandising, Jobbing and Contract Deductions _____	\$ _____		\$ _____
416	Costs and Expenses of Merchandising, Jobbing and Contract Work _____	_____		_____
419	Interest and Dividend Income _____	_____		_____
420	Allowance for Funds Used During Construction _____	_____		_____
421	Nonutility Income _____	_____		4,047
426	Miscellaneous Nonutility Expenses _____	_____		_____
	Total Other Income and Deductions _____	\$ _____		\$ 4,047
	TAXES APPLICABLE TO OTHER INCOME			
408.20	Taxes Other Than Income _____	\$ _____	F-17	\$ _____
409.20	Income Taxes _____	_____	F-17	_____
410.20	Provision for Deferred Income Taxes _____	_____		_____
411.20	Provision for Deferred Income Taxes - Credit _____	_____		_____
412.20	Investment Tax Credits - Net _____	_____		_____
412.30	Investment Tax Credits Restored to Operating Income _____	_____		_____
	Total Taxes Applicable To Other Income _____	\$ _____		\$ 0
	INTEREST EXPENSE			
427	Interest Expense _____	\$ _____	F-18	\$ 18,700
428	Amortization of Debt Discount & Expense _____	_____	F-12	10
429	Amortization of Premium on Debt _____	_____	F-12	_____
	Total Interest Expense _____	\$ _____		\$ 18,710
	EXTRAORDINARY ITEMS			
433	Extraordinary Income _____	\$ _____		\$ _____
434	Extraordinary Deductions _____	_____		_____
409.30	Income Taxes, Extraordinary Items _____	_____		_____
	Total Extraordinary Items _____	\$ _____		\$ _____
	NET INCOME _____ (Loss) _____	\$ NONE		\$ (120,980)

UTILITY NAME: Jasmine Lakes Utilities Corp.

YEAR OF REPORT DECEMBER 31, 19 <u>90</u>

SCHEDULE OF YEAR END RATE BASE

ACCT. NO. (a)	ACCOUNT NAME (b)	REF. PAGE (c)	WATER UTILITY (d)	SEWER UTILITY (e)
101	Utility Plant In Service	F-5	\$ 593,800	\$ 915,429
	Less:			
	Nonused and Useful Plant (1)			
108	Accumulated Depreciation	F-6	229,939	203,384
110	Accumulated Amortization	F-6		
271	Contributions In Aid of Construction	F-20	193,231	162,245
252	Advances for Construction	F-19		
	Subtotal		\$ 170,630	\$ 549,800
	Additions:			
272	Accumulated Amortization of Contributions In Aid of Construction	F-21	80,770	56,120
	Subtotal		\$ 251,400	\$ 605,920
	Plus or Minus:			
114	Acquisition Adjustments (2)	F-5		
115	Accumulated Amortization of Acquisition Adjustments (2)	F-5		
	Working Capital Allowance (3)		32,100	32,100
	Other (Specify):			
	RATE BASE		\$ 283,500	\$ 638,020
	UTILITY OPERATING INCOME		\$ (43,016)	\$ (63,301)
	ACHIEVED RATE OF RETURN		0.00%	0.00%

NOTES :

- (1) Estimated if not known.
- (2) Include only those Acquisition Adjustments that have been approved by the Commission.
- (3) Calculate using the Balance Sheet Method, beginning-year end average.

UTILITY NAME: Jasmine Lakes Utilities Corp.

7/1/90 - 12/31/90

YEAR OF REPORT
DECEMBER 31, 1990

UTILITY PLANT (ACCTS. 101 - 106)

ACCT. NO. (a)	DESCRIPTION (b)	WATER (c)	SEWER (d)	OTHER THAN REPORTING SYSTEMS (e)	TOTAL (f)
	Plant Accounts:				
101	Utility Plant In Service	\$ 593,800	\$ 915,429	\$ 0	\$ 1,509,229
102	Utility Plant Leased to Others				
103	Property Held for Future Use				
104	Utility Plant Purchased or Sold				
105	Construction Work In Progress				
	Total Utility Plant	\$ 593,800	\$ 915,429	\$ 0	\$ 1,509,229

UTILITY PLANT ACQUISITION ADJUSTMENTS (ACCTS. 114 - 115)

Report each acquisition adjustment and related accumulated amortization separately. For any acquisition adjustment approved by the Commission, include the Order Number.

DESCRIPTION (a)	WATER (b)	SEWER (c)	OTHER THAN REPORTING SYSTEMS (d)	TOTAL (e)
ACQUISITION ADJUSTMENTS (114):				
	\$	\$	\$	\$
Total Plant Acquisition Adjs.	\$ 0	\$ 0	\$ 0	\$ 0
ACCUMULATED AMORTIZATION (115):				
	\$	\$	\$	\$
Total Accumulated Amortization	\$ 0	\$ 0	\$ 0	\$ 0
Net Acquisition Adjustments	\$ 0	\$ 0	\$ 0	\$ 0

UTILITY NAME: Jasmine Lakes Utilities Corp.

7/1/90 - 12/31/90

YEAR OF REPORT
DECEMBER 31, 1990

ACCUMULATED DEPRECIATION (ACCT. 108)

DESCRIPTION (a)	WATER (b)	SEWER (c)	OTHER THAN REPORTING SYSTEMS (d)	TOTAL (e)
Balance first of year	\$ 222,288	\$ 193,402	\$ 0	\$ 415,690
Credit during year:				
Accruals charged to Account 108	\$ 7,651	\$ 9,982	\$	\$ 17,633
Accruals charged other accounts (specify)				

Salvage				
Other credits (specify)				

Total credits	\$ 7,651	\$ 9,982	\$ 0	\$ 17,633
Debits during year:				
Book cost of plant retired	\$	\$	\$	\$
Cost of removal				
Other debits (specify)				

Total debits	\$ 0	\$ 0	\$ 0	\$ 0
Balance end of year	\$ 229,939	\$ 203,384	\$ 0	\$ 433,323

ACCUMULATED AMORTIZATION (ACCT. 110)

DESCRIPTION (a)	WATER (b)	SEWER (c)	OTHER THAN REPORTING SYSTEMS (d)	TOTAL (e)
Balance first of year	\$ 0	\$ 0	\$ 0	\$ 0
Credit during year:				
Accruals charged to Account 110	\$	\$	\$	\$
Other credits (specify)				

Total credits	\$	\$	\$	\$
Debits during year:				
Book cost of plant retired	\$	\$	\$	\$
Other debits (specify)				

Total debits	\$	\$	\$	\$
Balance end of year	\$ 0	\$ 0	\$ 0	\$ 0

UTILITY NAME: Jasmine Lakes Utilities Corp.

7/1/90 - 12/31/90

YEAR OF REPORT DECEMBER 31, 19 <u>90</u>

NONUTILITY PROPERTY (ACCT. 121)

Report separately each item of property with a book cost of \$25,000 or more included in Account 121. Other items may be grouped by classes of property.

DESCRIPTION (a)	BEGINNING YEAR BALANCE (b)	ADDITIONS (c)	REDUCTIONS (d)	ENDING YEAR BALANCE (e)
Cost of Garbage Contract	\$ -	\$ 10,000	\$ -	\$ 10,000
	-	-	-	-
	-	-	-	-
	-	-	-	-
	-	-	-	-
	-	-	-	-
	-	-	-	-
	-	-	-	-
	-	-	-	-
	-	-	-	-
	-	-	-	-
	-	-	-	-
Total Nonutility Property	\$ -	\$ 10,000	\$ -	\$ 10,000

SPECIAL DEPOSITS (ACCT. 132)

Report hereunder all special deposits carried in Accounts 132.

DESCRIPTION OF SPECIAL DEPOSITS (a)	YEAR END BOOK COST (b)
SPECIAL DEPOSITS (ACCT. 132):	\$ -
	-
	-
	-
	-
Total Special Deposits	\$ NONE

7/1/90 - 12/31/90

YEAR OF REPORT
DECEMBER 31, 1990

UTILITY NAME Jasmine Lakes Utilities Corp.

INVESTMENTS AND SPECIAL FUNDS (ACCTS. 123 - 127)

Report hereunder all investments and special funds carried in Accounts 123 thru 127.

DESCRIPTION OF SECURITY OR SPECIAL FUND (a)	FACE OR PAR VALUE (b)	YEAR END BOOK COST (c)
INVESTMENT IN ASSOCIATED COMPANIES (ACCT. 123)		
_____	\$ - - - - -	\$ - - - - -
_____	\$ - - - - -	\$ - - - - -
_____	\$ - - - - -	\$ - - - - -
_____	\$ - - - - -	\$ - - - - -
Total Investment In Associated		\$ <u>NONE</u>
UTILITY INVESTMENTS (ACCT. 124):		
_____	\$ - - - - -	\$ - - - - -
_____	\$ - - - - -	\$ - - - - -
_____	\$ - - - - -	\$ - - - - -
_____	\$ - - - - -	\$ - - - - -
Total Utility Investments		\$ <u>NONE</u>
OTHER INVESTMENTS (ACCT. 125):		
_____	\$ - - - - -	\$ - - - - -
_____	\$ - - - - -	\$ - - - - -
_____	\$ - - - - -	\$ - - - - -
_____	\$ - - - - -	\$ - - - - -
Total Other Investments		\$ <u>NONE</u>
SPECIAL FUNDS (ACCT. 127):		
_____		\$ - - - - -
_____		\$ - - - - -
_____		\$ - - - - -
Total Special Funds		\$ <u>NONE</u>

UTILITY NAME Jasmine Lakes Utilities Corp.YEAR OF REPORT
DECEMBER 31, 1990

ACCOUNTS AND NOTES RECEIVABLE - NET (ACCTS. 141 - 144)

Report hereunder all accounts and notes receivable included in Accounts 141, 142 and 144. Amounts included in Accounts 142 and 144 should be listed individually.

DESCRIPTION (a)	TOTAL (b)
ACCOUNTS RECEIVABLE:	
Customer Accounts Receivable (Acct. 141):	
Water -----	\$ 38,124
Sewer -----	11,843
Other -----	5,054
Total Customer Accounts Receivable -----	\$ 55,021
OTHER ACCOUNTS RECEIVABLE (Acct. 142):	
-----	\$ -----
-----	-----
Total Other Accounts Receivable -----	0
NOTES RECEIVABLE (Acct. 144):	
-----	\$ -----
-----	-----
Total Notes Receivable -----	0
Total Accounts and Notes Receivable -----	\$ 55,021
ACCUMULATED PROVISION FOR UNCOLLECTIBLE ACCOUNTS (Acct. 143)	
Balance first of year -----	\$ -----
Add: Provision for uncollectibles for current year -----	\$ -----
Collections of accounts previously written off -----	-----
Utility accounts -----	-----
Others -----	-----
Total Additions -----	\$ -----
Deduct accounts written off during year:	
Utility Accounts -----	\$ -----
Other -----	-----
Total accounts written off -----	\$ -----
Balance end of year -----	\$ 0
Total Accounts and Notes Receivable - Net -----	\$ <u>55,021</u>

UTILITY NAME: Jasmine Lakes Utilities Corp.

7/1/90 - 12/31/90
 YEAR OF REPORT
 DECEMBER 31, 1990

ACCOUNTS RECEIVABLE FROM ASSOCIATED COMPANIES (ACCT. 145)

Report each account receivable from associated companies separately.	
DESCRIPTION (a)	TOTAL (b)
Waste Recovery Systems	\$ 200
Total	\$ <u>200</u>

NOTES RECEIVABLE FROM ASSOCIATED COMPANIES (ACCT. 146)

Report each note receivable from associated companies separately.		
DESCRIPTION (a)	INTEREST RATE (b)	TOTAL (c)
		\$
Total		\$ <u>NONE</u>

7/1/90 - 12/31/90

YEAR OF REPORT
DECEMBER 31, 19 90

UTILITY NAME Jasmine Lakes Utilities Corp.

PREPAYMENTS (ACCT. 162)

DESCRIPTION (a)	TOTAL (b)
Prepaid Insurance	\$
Prepaid Rents / Utilities	500
Prepaid Interest	
Prepaid Taxes	
Other Prepayments (Specify):	
Total Prepayments	\$ 500

MISCELLANEOUS DEFERRED DEBITS (ACCT. 186)

DESCRIPTION (a)	TOTAL (b)
MISCELLANEOUS DEFERRED DEBITS (Acct. 186):	
Deferred Rate Case Expense (Acct. 186.1)	\$
Other Deferred Debits (Acct. 186.2)	
Total Miscellaneous Deferred Debits	\$ NONE

UTILITY NAME Jasmine Lakes Utilities Corp.

7/1/90 - 12/31/90
YEAR OF REPORT
DECEMBER 31, 19 90

UNAMORTIZED DEBT DISCOUNT AND EXPENSE AND PREMIUM ON DEBT (ACCTS. 181 and 251)

Report the net discount and expense or premium separately for each security issue.

DESCRIPTION (a)	AMOUNT WRITTEN OFF DURING YEAR (b)	YEAR END BALANCE (c)
UNAMORTIZED DEBT DISCOUNT AND EXPENSE (Acct. 181):		
Costs of note to Jasmine Lakes Services, Inc.	\$ 10	\$ 1,513
_____	-----	-----
_____	-----	-----
Total Unamortized Debt Discount and Expense _____	\$ 10	\$ 1,513
UNAMORTIZED PREMIUM ON DEBT (Acct. 251):		
_____	\$ -----	\$ -----
_____	-----	-----
_____	-----	-----
Total Unamortized Premium on Debt _____	\$ NONE	\$ NONE

EXTRAORDINARY PROPERTY LOSSES (ACCT. 182)

Report each item separately.

DESCRIPTION (a)	TOTAL (b)
EXTRAORDINARY PROPERTY LOSSES (Acct. 182):	
_____	\$ -----
_____	-----
_____	-----
Total Extraordinary Property Losses _____	\$ NONE

UTILITY NAME: Jasmine Lakes Utilities Corp.

7/1/90 - 12/31/90
YEAR OF REPORT
DECEMBER 31, 1990

NOTES PAYABLE (ACCTS. 232 and 234)

DESCRIPTION (a)	NOMINAL DATE OF ISSUE (b)	DATE OF MATURITY (c)	INTEREST		PRINCIPAL AMOUNT PER BALANCE SHEET (f)
			RATE (d)	FREQUENCY OF PAYMENT (e)	
ACCOUNT 232 - NOTES PAYABLE:					
			\$		\$
			\$		
			\$		
			\$		
Total Account 232					\$ NONE
ACCOUNT 234 - NOTES PAYABLE TO ASSOCIATED COMPANIES:					
James M. Dreher	7/1/90	Open	10	Open	\$ 100,000
			\$		
			\$		
			\$		
Total Account 234					\$ 100,000

ACCOUNTS PAYABLE TO ASSOCIATED COMPANIES (ACCT. 233)

Report each account payable separately.

DESCRIPTION (a)	TOTAL (b)
Jim Dreher, Inc.	\$ 10,300
R. L. Dreher Construction, Inc.	11,200
Total	\$ 21,500

UTILITY NAME: Jasmine Lakes Utilities Corp.

7/1/90 - 12/31/90
 YEAR OF REPORT
 DECEMBER 31, 1990

CAPITAL STOCK (ACCTS. 201 and 204)

DESCRIPTION (a)	COMMON STOCK (b)	PREFERRED STOCK (c)
Par or stated value per share	\$ 1	\$ NONE
Shares authorized	10,000	
Shares issued and outstanding	10,000	
Total par value of stock issued	\$ 10,000	\$
Dividends declared per share for year	\$ 0	\$

LONG TERM DEBT (ACCT. 224)

DESCRIPTION OF OBLIGATION (INCLUDING NOMINAL DATE OF ISSUE AND DATE OF MATURITY) (a)	INTEREST		PRINCIPAL AMOUNT PER BALANCE SHEET (d)
	RATE (b)	FREQUENCY OF PAYMENT (c)	
Jasmine Lakes Services, Inc.	10 %	Monthly	\$ 446,987
Less current portion (included in Acct. #239)			(52,116)
Original note 7/1/90 repaid monthly including interest, due in full 7/1/2000			
Total			\$ 394,871

UTILITY NAME: Jasmine Lakes Utilities Corp.

7/1/90 - 12/31/90

YEAR OF REPORT
DECEMBER 31, 1990

STATEMENT OF RETAINED EARNINGS

1. Dividends should be shown for each class and series of capital stock.
Show amounts of dividends per share.
2. Show separately the state and federal income tax effect of items shown in Account No. 439.

ACCT. NO. (a)	DESCRIPTION (b)	AMOUNTS (c)
215	Unappropriated Retained Earnings:	
	Balance beginning of year	\$ 0
439	Changes to account:	
	Adjustments to Retained Earnings (requires Commission approval prior to use):	
	Credits:	\$
	-----	-----
	Total Credits	\$
	Debits:	\$
	-----	-----
	Total Debits	\$
435	Balance Transferred from Income (Loss)	\$ (120,980)
436	Appropriations of Retained Earnings:	\$
	-----	-----
	Total Appropriations of Retained Earnings	\$
	Dividends Declared:	
437	Preferred Stock Dividends Declared	\$
	-----	-----
438	Common Stock Dividends Declared	\$
	-----	-----
	Total Dividends Declared	\$
	Balance end of year	\$ (120,980)
214	Appropriated Retained Earnings (state balance and purpose of each appropriated amount at year end):	\$
	-----	-----
	-----	-----
	Total Appropriated Retained Earnings	\$
	Total Retained Earnings (Deficit)	\$ (120,980)

Notes to Statement of Retained Earnings:

UTILITY NAME: Jasmine Lakes Utilities Corp.

7/1/90 - 12/31/90
YEAR OF REPORT
DECEMBER 31, 1990

BONDS (ACCT. 221)

DESCRIPTION OF OBLIGATION (INCLUDING NOMINAL DATE OF ISSUE AND DATE OF MATURITY) (a)	INTEREST		PRINCIPAL AMOUNT PER BALANCE SHEET (d)
	RATE (b)	FREQUENCY OF PAYMENT (c)	
	\$		\$
	\$		-----
	\$		-----
	\$		-----
	\$		-----
	\$		-----
	\$		-----
	\$		-----
	\$		-----
	\$		-----
Total	-----		\$ <u>NONE</u>

ADVANCES FROM ASSOCIATED COMPANIES (ACCT. 223)

Report each advance separately.

DESCRIPTION (a)	TOTAL (b)
	\$

Total	\$ <u>NONE</u>

UTILITY NAME: Jasmine Lakes Utilities Corp.

7/1/90 - 12/31/90
 YEAR OF REPORT
 DECEMBER 31, 1990

ACCRUED TAXES (ACCT. 236)

ACCT. NO. (a)	DESCRIPTION (b)	WATER (c)	SEWER (d)	OTHER (e)	TOTAL (f)
	Balance First of Year	\$ 0	\$ 0	\$ 0	\$ 0
408.10	Accruals Charged:				
408.11	Utility Regulatory Assessment Fees	\$ 7,871	\$ 2,693	\$ 0	\$ 10,564
408.12	Property Taxes	5,368	9,603	0	15,031
408.13	Payroll Taxes	5,169	5,169	0	10,338
409.10	Other Taxes & Licenses				
409.11	Federal Income Taxes				
410.10	State Income Taxes				
410.11	Taxes Applicable To Other Income (Accts. 408.2, 409.2, 409.3, 410.2)				
	Total Taxes Accrued	\$ 18,408	\$ 17,525	\$ 0	\$ 35,933
408.10	Taxes Paid During Year:				
408.11	Utility Regulatory Assessment Fees				
408.12	Property Taxes				
408.13	Payroll Taxes				
408.13	Other Taxes & Licenses				
409.10	Federal Income Taxes				
409.11	State Income Taxes				
	Taxes Applicable To Other Income (Accts. 408.2, 409.2, 409.3, 410.2)				
	Total Taxes Paid	\$ 0	\$ 0	\$ 0	\$ 0
	Balance End of Year	\$ 18,408	\$ 17,525	\$ 0	\$ 35,933

ACCRUED TAXES (ACCT. 236)

ACCT. NO. (a)	DESCRIPTION (b)	WATER (c)	SEWER (d)	OTHER (e)	TOTAL (f)
	Liability Assumed As Of Acquisition Date Balance First of Year	\$ 5,224 0	\$ 7,523 0	\$ 0	\$ 12,747 0
408.10	Accruals Charged:				
	Utility Regulatory				
408.11	Assessment Fees	\$ 7,871	\$ 2,693	\$ 0	\$ 10,564
408.12	Property Taxes	5,368	9,663	0	15,031
408.13	Payroll Taxes	5,169	5,169	0	10,338
409.10	Other Taxes & Licenses				
409.11	Federal Income Taxes				
410.10	State Income Taxes				
410.11	Taxes Applicable TO (3) Other Income (Accts. 408.2, 409.2, 409.3, 410.2)	Tax Credits Purchased At Closing \$ (5,224)	Tax Credits Purchased At Closing \$ (7,523)		Tax Credits Purchased AT Closing \$ (12,747)
	Total Taxes Accrued (1)	\$ 13,184	\$ 10,002	\$	\$ 23,186
	Taxes Paid During Year:				
408.10	Utility Regulatory				
	Assessment Fees				
408.11	Property Taxes	\$	\$	\$	\$
408.12	Payroll Taxes				
408.13	Other Taxes & Licenses				
409.10	Federal Income Taxes				
409.11	State Income Taxes				
	Taxes Applicable To Other Income (Accts. 408.2, 409.2, 409.3, 410.2)				
	Total Taxes Paid	\$	\$	\$	\$
	Balance End of Year (2)	\$ 18,408	\$ 17,525	\$	\$ 35,933

- (1) Agrees with F-3(a) and F-3(b) amounts, Acct. 408.1
- (2) Agrees with F-2(a), Acct. 236
- (3) Prorated Taxes (Credits) assumed at closing by purchaser, not expense of this company, and offsetting expense accrued from property taxes actually accrued and payable.

UTILITY NAME: Jasmine Lakes Utilities Corp.

7/1/90 - 12/31/90

YEAR OF REPORT
DECEMBER 31, 1990

ACCRUED INTEREST (ACCT. 237)

DESCRIPTION OF DEBT (a)	BALANCE BEGINNING OF YEAR (b)	INTEREST ACCRUED DURING YEAR		INTEREST PAID DURING YEAR (e)	BALANCE END OF YEAR (f)
		ACCT. DEBIT (c)	AMOUNT (d)		
ACCOUNT NO. 237.1 - ACCRUED INTEREST ON LONG TERM DEBT:					
Jasmine Lakes Services, Inc.	\$ 0	427	\$ 7,667	\$ 7,667	\$
Jasmine Lakes Services, Inc.	0	427	11,033	11,033	
Total Account No. 237.1	\$ 0		\$ 18,700	\$ 18,700	\$ 0
ACCOUNT NO. 237.2 - ACCRUED INTEREST ON OTHER LIABILITIES:					
	\$		\$	\$	\$
Total Account No. 237.2	\$ 0		\$ 0	\$ 0	\$ 0
Total Account No. 237	\$ 0		\$ 18,700	\$ 18,700	\$ 0

REGULATORY COMMISSION EXPENSE - AMORTIZATION
OF RATE CASE EXPENSE (ACCTS. 666 and 766)

DESCRIPTION OF CASE (DOCKET NO.) (a)	EXPENSE INCURRED DURING YEAR (b)	AMOUNT TRANSFERRED TO ACCT. NO. 186.1 (c)	CHARGED OFF DURING YEAR	
			ACCT. (d)	AMOUNT (e)
	\$	\$		\$
Total	\$ NONE	\$ NONE		\$ NONE

UTILITY NAME: Jasmine Lakes Utilities Corp.

7/1/90 - 12/31/90

YEAR OF REPORT DECEMBER 31, 19 <u>90</u>

CONTRIBUTIONS IN AID OF CONSTRUCTION (ACCT. 271)

DESCRIPTION (a)	WATER (b)	SEWER (c)	W & S OTHER THAN SYSTEM REPORTING (d)	TOTAL (e)
Balance first of year	\$ 193,231	\$ 162,245	\$ 0	\$ 355,476
Add credits during year:				
Contributions received from Capacity, Main Extension and Customer Connection Charges (Schedule "A")	\$ -----	\$ -----	\$ -----	\$ -----
Contributions received from Developer or Contractor Agreements in cash or property (Schedule "B")				
Total Credits	\$ 0	\$ 0	\$ 0	\$ 0
Less debits charged during the year (All debits charged during the year must be explained below)	\$ 0	\$ 0	\$ 0	\$ 0
Total Contributions In Aid of Construction	\$ <u>193,231</u>	\$ <u>162,245</u>	\$ <u>0</u>	\$ <u>355,476</u>

Explain all debits charged to Account 271 below:

(NONE)

UTILITY NAME: Jasmine Lakes Utilities Corp.

7/1/90 - 12/31/90

YEAR OF REPORT
DECEMBER 31, 1990

SCHEDULE "A"

ADDITIONS TO CONTRIBUTIONS IN AID OF CONSTRUCTION RECEIVED FROM CAPACITY, MAIN
EXTENSION AND CUSTOMER CONNECTION CHARGES RECEIVED DURING THE YEAR

DESCRIPTION OF CHARGES (a)	NUMBER OF CONNECTIONS (b)	CHARGE PER CONNECTION (c)	WATER (d)	SEWER (e)
		\$	\$	\$
Total Credits			\$ NONE	\$ NONE

ACCUMULATED AMORTIZATION OF CONTRIBUTIONS IN AID OF CONSTRUCTION (ACCT. 272)

DESCRIPTION (a)	WATER (b)	SEWER (c)	W & S OTHER THAN SYSTEM REPORTING (d)	TOTAL (e)
Balance first of year	\$ 78,355	\$ 54,092	\$ 0	\$ 132,447
Dedits during year:				
Accruals charged to Account 272	\$ 2,415	\$ 2,028	\$	\$ 4,443
Other debits (specify):				
Total debits	\$ 2,415	\$ 2,028	\$ 0	\$ 4,443
Credits during year (specify):				
Total Credits	\$ 0	\$ 0	\$ 0	\$ 0
Balance end of year	\$ 80,770	\$ 56,120	0	136,890

UTILITY NAME: Jasmine Lakes Utilities Corp.

7/1/90 - 12/31/90
 YEAR OF REPORT
 DECEMBER 31, 1990

RECONCILIATION OF REPORTED NET INCOME WITH TAXABLE INCOME FOR FEDERAL INCOME TAXES
 (UTILITY OPERATIONS)

1. The reconciliation should include the same detail as furnished on Schedule M-1 of the federal tax return for the year. The reconciliation shall be submitted even though there is no taxable income for the year. Descriptions should clearly indicate the nature of each reconciling amount and show the computation of all tax accruals.
2. If the utility is a member of a group which files a consolidated federal tax return, reconcile reported net income with taxable net income as if a separate return were to be filed, indicating intercompany amounts to be eliminated in such consolidated return. State names of group members, tax assigned to each group member, and basis of allocation, assignment, or sharing of the consolidated tax among the group members.

DESCRIPTION (a)	REF. (b)	AMOUNT (c)
Net income for the year _____ (Loss)		\$ (120,980)
Reconciling items for the year:		
Taxable income not reported on books:		
_____		-----
_____		-----
_____		-----
_____		-----
Deductions recorded on books not deducted for return:		
_____		-----
_____		-----
_____		-----
Income recorded on books not included in return:		
_____		-----
_____		-----
_____		-----
Deduction on return not charged against book income:		
_____		-----
_____		-----
_____		-----
Federal tax net income _____ (Loss)		\$ (120,980)
Computation of tax:		NONE -----

UTILITY NAME: Jasmine Lakes Utilities Corp.

7/1/90 - 12/31/90 YEAR OF REPORT DECEMBER 31, 19 <u>90</u>
--

N/A

SCHEDULE "A"

SCHEDULE OF COST OF CAPITAL USED FOR AFUDC CALCULATION (2)

CLASS OF CAPITAL (a)	DOLLAR AMOUNT (1) (b)	PERCENTAGE OF CAPITAL (c)	ACTUAL COST RATES (d)	WEIGHTED COST [c x d] (e)
Common Equity	\$	%	%	%
Preferred Stock		%	%	%
Long Term Debt		%	%	%
Customer Deposits		%	%	%
Tax Credits - Zero Cost		%	0.00 %	%
Tax Credits - Weighted Cost		%	%	%
Deferred Income Taxes		%	%	%
Other (Explain)		%	%	%
Total	\$	100.00 %		%

- (1) Should equal amounts on Schedule B, Column (f), Page F-25.
- (2) Must be calculated using the same methodology used to calculate AFUDC rate approved by the Commission.

APPROVED AFUDC RATE

Current Commission approved AFUDC rate:	_____ %
Commission order approving AFUDC rate:	_____

UTILITY NAME: Jasmine Lakes Utilities Corp.

7/1/90 - 12/31/90 YEAR OF REPORT DECEMBER 31, 1990
--

N/A

SCHEDULE "B"

SCHEDULE OF CAPITAL STRUCTURE ADJUSTMENTS

CLASS OF CAPITAL (a)	PER BOOK BALANCE (b)	NON-UTILITY ADJUSTMENTS (c)	NON-JURIS. ADJUSTMENTS (d)	OTHER (1) ADJUSTMENTS (e)	CAPITAL STRUCTURE USED FOR AFUDC CALCULATION (f)
Common Equity	\$	\$	\$	\$	\$
Preferred Stock					
Long Term Debt					
Customer Deposits					
Tax Credits - Zero Cos					
Tax Credits - Weighted Cost of Capital					
Deferred Income Taxes					
Other (Explain)					
Total	\$	\$	\$	\$	\$

(1) Explain below all adjustments made in Column (e):

**WATER
OPERATION
SECTION**

UTILITY NAME: Jasmine Lakes Utilities Corp.

7/1/90 - 12/31/90
YEAR OF REPORT
DECEMBER 31, 1990

WATER UTILITY PLANT ACCOUNTS

ACCT. NO. (a)	ACCOUNT NAME (b)	7/1/90* PREVIOUS YEAR (c)	ADDITIONS (d)	RETIREMENTS (e)
301	Organization	\$	\$ 13,672	\$
302	Franchises			
303	Land and Land Rights	2,570		
304	Structures and Improvements		1,577	
305	Collecting and Impounding Reservoirs			
306	Lake, River and Other Intakes			
307	Wells and Springs	50,944		
308	Infiltration Galleries and Tunnels			
309	Supply Mains	120,272		
310	Power Generation Equipment			
311	Pumping Equipment	18,100		
320	Water Treatment Equipment	12,200	877	
330	Distribution Reservoirs and Standpipes	121,423		
331	Transmission and Distribution Mains	152,384		
333	Services	29,726		
334	Meters and Meter Installations	55,689	2,143	
335	Hydrants			
339	Other Plant and Miscellaneous Equipment			
340	Office Furniture and Equip.	3,823	3,400	
341	Transportation Equipment		5,000	
342	Stores Equipment			
343	Tools, Shop and Garage Equip.			
344	Laboratory Equipment			
345	Power Operated Equipment			
346	Communication Equipment			
347	Miscellaneous Equipment			
348	Other Tangible Plant			
	Total Water Plant	\$ 567,131	\$ 26,669	\$ 0

NOTE: Any adjustments made to reclassify property from one account to another must be footnoted.

W-1(a)

* Per PSC approval - Docket #900291-WS 10/4/90 as transferred by purchase from Jasmine Lakes Services, Inc.

UTILITY NAME: Jasmine Lakes Utilities Corp.

7/1/90 - 12/31/90

YEAR OF REPORT
DECEMBER 31, 1990

WATER UTILITY EXPENSE ACCOUNTS

ACCT. NO. (a)	ACCOUNT NAME (b)	CURRENT YEAR (c)	.1 SOURCE OF SUPPLY AND EXPENSES - OPERATIONS (d)	.2 SOURCE OF SUPPLY AND EXPENSES - MAINTENANCE (e)
601	Salaries and Wages - Employees	\$ 3,076	\$	\$
603	Salaries and Wages - Officers, Directors and Majority Stockholders	30,885		
604	Employee Pensions and Benefits	4,920		
610	Purchased Water	110,567	110,567	XXXXXXXXXXXXXXXX
615	Purchased Power	706	495	XXXXXXXXXXXXXXXX
616	Fuel for Power Purchased			XXXXXXXXXXXXXXXX
618	Chemicals	236		
620	Materials and Supplies	1,530		218
631	Contractual Services - Eng.			
632	Contractual Services - Acct.	3,250		
633	Contractual Services - Legal	4,887		
634	Contractual Services - Management Fees	10,225	3,100	
635	Contractual Services - Other	18,197	260	353
641	Rental of Building/Real & Property	3,213	1,413	
642	Rental of Equipment			
650	Transportation Expenses	300		
656	Insurance - Vehicle	141		
657	Insurance - General Liability			
658	Insurance - Workman's Compensation			
659	Insurance - Other	745	XXXXXXXXXXXXXXXX	XXXXXXXXXXXXXXXX
660	Advertising Expense	759	XXXXXXXXXXXXXXXX	XXXXXXXXXXXXXXXX
666	Regulatory Commission Expenses - Amortization of Rate Case Expense		XXXXXXXXXXXXXXXX	XXXXXXXXXXXXXXXX
667	Regulatory Commission Expenses - Other		XXXXXXXXXXXXXXXX	XXXXXXXXXXXXXXXX
670	Bad Debt Expense		XXXXXXXXXXXXXXXX	XXXXXXXXXXXXXXXX
675	Miscellaneous Expenses	5,863		
	Total Water Utility Expenses	\$ 199,500	\$ 115,835	\$ 571

WATER EXPENSE ACCOUNT MATRIX

.3 WATER TREATMENT EXPENSES - OPERATIONS (f)	.4 WATER TREATMENT EXPENSES - MAINTENANCE (g)	.5 TRANSMISSION & DISTRIBUTION EXPENSES - OPERATIONS (h)	.6 TRANSMISSION & DISTRIBUTION EXPENSES - MAINTENANCE (i)	.7 CUSTOMER ACCOUNTS EXPENSE (j)	.8 ADMINISTRATIVE & GENERAL EXPENSES (k)
\$	\$	\$	\$	\$ 3,076	\$
					30,885
					4,920
XXXXXXXXXXXXXXXXXX	XXXXXXXXXXXXXXXXXX	XXXXXXXXXXXXXXXXXX	XXXXXXXXXXXXXXXXXX	XXXXXXXXXXXXXXXXXX	XXXXXXXXXXXXXXXXXX
211	XXXXXXXXXXXXXXXXXX		XXXXXXXXXXXXXXXXXX		
	XXXXXXXXXXXXXXXXXX		XXXXXXXXXXXXXXXXXX		
236				XXXXXXXXXXXXXXXXXX	XXXXXXXXXXXXXXXXXX
	720		592		
					3,250
					4,887
	600	3,813		2,712	
	7,191	453	9,201		739
					1,300
					300
					141
					745
XXXXXXXXXXXXXXXXXX	XXXXXXXXXXXXXXXXXX	XXXXXXXXXXXXXXXXXX	XXXXXXXXXXXXXXXXXX	XXXXXXXXXXXXXXXXXX	759
XXXXXXXXXXXXXXXXXX	XXXXXXXXXXXXXXXXXX	XXXXXXXXXXXXXXXXXX	XXXXXXXXXXXXXXXXXX	XXXXXXXXXXXXXXXXXX	
XXXXXXXXXXXXXXXXXX	XXXXXXXXXXXXXXXXXX	XXXXXXXXXXXXXXXXXX	XXXXXXXXXXXXXXXXXX	XXXXXXXXXXXXXXXXXX	
XXXXXXXXXXXXXXXXXX	XXXXXXXXXXXXXXXXXX	XXXXXXXXXXXXXXXXXX	XXXXXXXXXXXXXXXXXX	XXXXXXXXXXXXXXXXXX	
XXXXXXXXXXXXXXXXXX	XXXXXXXXXXXXXXXXXX	XXXXXXXXXXXXXXXXXX	XXXXXXXXXXXXXXXXXX		XXXXXXXXXXXXXXXXXX
				551	5,312
\$ 447	\$ 8,511	\$ 4,266	\$ 9,793	\$ 6,339	\$ 53,738

UTILITY NAME: Jasmine Lakes Utilities Corp.

7/1/90 - 12/31/90

YEAR OF REPORT
DECEMBER 31, 1990

WATER OPERATING REVENUE

ACCT. NO. (a)	DESCRIPTION (b)	BEGINNING YEAR NO. CUSTOMERS (c) *	YEAR END NUMBER CUSTOMERS (d)	AMOUNTS (e)
	Operating Revenues:			
460	Unmetered Water Revenue			\$
	Metered Water Revenue:			
461.1	Metered Sales to Residential Customers	1,528	1,528	\$ 172,228
461.2	Metered Sales to Commercial Customers	32	32	1,535
461.3	Metered Sales to Industrial Customers			
461.4	Metered Sales to Public Authorities			
461.5	Metered Sales to Multiple Family Dwellings	1	1	993
	Total Metered Sales	1,561	1,561	\$ 174,756
	Fire Protection Revenue:			
462.1	Public Fire Protection			\$
462.2	Private Fire Protection	1	1	148
	Total Fire Protection Revenue	1	1	\$ 148
464	Other Sales To Public Authorities			\$
465	Sales To Irrigation Customers			
466	Sales For Resale			
467	Interdepartmental Sales			
	Totals	1,562	1,562	\$ 174,904
	Other Water Revenues:			
469	Guaranteed Revenues			\$
470	Forfeited Discounts			
471	Miscellaneous Service Revenues			
472	Rents From Water Property			
473	Interdepartmental Rents			
474	Other Water Revenues			
	Total Other Water Revenues			\$
	Total Water Operating Revenues			\$ 174,904

UTILITY NAME: Jasmine Lakes Utilities Corp.

7/1/90 - 12/31/90
 YEAR OF REPORT
 DECEMBER 31, 19 90

BASIS FOR WATER DEPRECIATION CHARGES

ACCT. NO. (a)	ACCOUNT NAME (b)	AVERAGE SERVICE LIFE IN YEARS (c)	AVERAGE NET SALVAGE IN PERCENT (d)	DEPRECIATION RATE APPLIED IN PERCENT (100% - d) / c (e)
301	Organization	40	0	2.5
304	Structures and Improvements	40	0	2.5
305	Collecting and Impounding Reservoirs			
306	Lake, River and Other Intakes			
307	Wells and Springs	40	0	2.5
308	Infiltration Galleries and Tunnels			
309	Supply Mains	40	0	2.5
310	Power Generation Equipment			
311	Pumping Equipment	40	0	2.5
320	Water Treatment Equipment	40	0	2.5
330	Distribution Reservoirs and Standpipes	40	0	2.5
331	Transmission and Distribution Mains	40	0	2.5
333	Services	40	0	2.5
334	Meters and Meter Installations	40	0	2.5
335	Hydrants			
339	Other Plant and Miscellaneous Equipment			
340	Office Furniture and Equip.	10	0	10
341	Transportation Equipment	5	0	20
342	Stores Equipment			
343	Tools, Shop and Garage Equip.			
344	Laboratory Equipment			
345	Power Operated Equipment			
346	Communication Equipment			
347	Miscellaneous Equipment			
348	Other Tangible Plant			
	Water Plant Composite Depreciation Rate *			

* If depreciation rates prescribed by this Commission are on a total composite basis, entries should be made on this line only.

UTILITY NAME: Jasmine Lakes Utilities Corp.

7/1/90 - 12/31/90
 YEAR OF REPORT
 DECEMBER 31, 19 90

ANALYSIS OF ENTRIES IN WATER ACCUMULATED DEPRECIATION

ACCT. NO. (a)	ACCOUNT NAME (b)	7/1/90* BALANCE AT BEGINNING OF YEAR (c)	ACCRUALS (d)	OTHER CREDITS * (e)	TOTAL CREDITS (d+e) (f)
301	Organization		85		85
304	Structures and Improvements	\$	\$ 10	\$	\$ 10
305	Collecting and Impounding Reservoirs				
306	Lake, River and Other Intakes				
307	Wells and Springs	21,236	637		637
308	Infiltration Galleries and Tunnels				
309	Supply Mains	50,139	1,503		1,503
310	Power Generation Equipment				
311	Pumping Equipment	7,550	226		226
320	Water Treatment Equipment	5,086	159		159
330	Distribution Reservoirs and Standpipes	50,623	1,518		1,518
331	Transmission and Distribution Mains	35,237	1,905		1,905
333	Services	12,390	372		372
334	Meters and Meter Installations	37,812	710		710
335	Hydrants				
339	Other Plant and Miscellaneous Equipment				
340	Office Furniture and Equip.	2,215	276		276
341	Transportation Equipment		250		250
342	Stores Equipment				
343	Tools, Shop and Garage Equip.				
344	Laboratory Equipment				
345	Power Operated Equipment				
346	Communication Equipment				
347	Miscellaneous Equipment				
348	Other Tangible Plant				
	Total Depreciable Water Plant In Service	\$ 222,288	\$ 7,651	\$ 0	\$ 7,651

* Specify nature of transaction.
 Use () to denote reversal entries.

W-5(a)

* Per PSC approval - Docket #900291WS 10/4/90 as transferred by purchase from Jasmine Lakes Services, Inc.

ANALYSIS OF ENTRIES IN WATER ACCUMULATED DEPRECIATION (Cont'd)

PLANT RETIRED (g)	ASSOCIATED SALVAGE AND INSURANCE (h)	ASSOCIATED COST OF REMOVAL (i)	OTHER CHARGES (j)	TOTAL CHARGES (g-h+i+j) (k)	BALANCE AT END OF YEAR (c+f-k) (l)
\$	\$	\$	\$	\$	85
-	-	-	-	-	10
-	-	-	-	-	-
-	-	-	-	-	21,873
-	-	-	-	-	-
-	-	-	-	-	51,642
-	-	-	-	-	-
-	-	-	-	-	7,776
-	-	-	-	-	5,245
-	-	-	-	-	-
-	-	-	-	-	52,141
-	-	-	-	-	-
-	-	-	-	-	37,142
-	-	-	-	-	12,762
-	-	-	-	-	38,522
-	-	-	-	-	-
-	-	-	-	-	2,491
-	-	-	-	-	250
-	-	-	-	-	-
-	-	-	-	-	-
-	-	-	-	-	-
-	-	-	-	-	-
-	-	-	-	-	-
-	-	-	-	-	-
-	-	-	-	-	-
-	-	-	-	-	-
-	-	-	-	-	-
-	-	-	-	-	-
-	-	-	-	-	-
\$ 0	\$ 0	\$ 0	\$ 0	\$ 0	\$ 229,939

UTILITY NAME: Jasmine Lakes Utilities Corp.

YEAR OF REPORT DECEMBER 31, 19 <u>90</u>

SYSTEM NAME: Jasmine Lakes

PUMPING AND PURCHASED WATER STATISTICS

MONTH (a)	WATER PURCHASED FOR RESALE (Omit 000's) (b)	FINISHED WATER PUMPED FROM WELLS (Omit 000's) (c)	WATER USED FOR LINE FLUSHING, FIGHTING FIRES, ETC. (d)	TOTAL WATER PUMPED AND PURCHASED (Omit 000's) [(b)+(c)-(d)] (e)	WATER SOLD TO CUSTOMERS (Omit 000's) (f)
January	-----	-----	-----	-----	-----
February	-----	-----	-----	-----	-----
March	-----	-----	-----	-----	-----
April	-----	-----	-----	-----	-----
May	-----	-----	-----	-----	-----
June	-----	-----	-----	-----	-----
July	7912	0	199	7713	7173
August	9207	0	0	9207	7945
September	4887	1569	130	6326	8389
October	7452	1744	40	9156	8448
November	6105	1835	0	7940	8737
December	9520	2085	278	11327	7659
Total for year	45083	7233	647	51669	48351

If water is purchased for resale, indicate the following:

Vendor Pasco County Utilities Dept.

Point of delivery 4" meter - Laburnum and 8" Meter - Pineapple.

If water is sold to other water utilities for redistribution, list names of such utilities below:

N/A

UTILITY NAME: Jasmine Lakes Utilities Corp.

YEAR OF REPORT
DECEMBER 31, 1990

UTILITY SYSTEM: Jasmine Lakes

WATER TREATMENT PLANT INFORMATION

Type of treatment (reverse osmosis, etc.): _____

Methods used (sedimentation, chemical, aerated, etc.): Chemical Chlorination

LIME TREATMENT

Unit rating (GPM): N/A Manufacturer: _____

FILTRATION

Type and area: Pressure → Square Feet: _____

Gravity → GPM/Square Feet: _____

MAINS

TYPE OF PIPE (Galvanized, Cast Iron, PVC, Etc.)	DIAMETER OF PIPE (in inches)	MAINS BEGINNING OF YEAR (in feet)	ADDITIONS	RETIREMENTS	MAINS END OF YEAR (in feet)
PVC	1	3840			3840
PVC	2	12930			12930
PVC	225	9310			9310
PVC	250	8400			8400
PVC	3	1800			1800
PVC	4	11250			11250
PVC	6	30005			30005
PVC	8	6087			6087
PVC	12	1000			1000
Total feet of mains		84622			84622

SERVICES AND METERS

METERS IN SERVICE	METERS BEGINNING OF YEAR	ADDITIONS	RETIREMENTS	METERS END OF YEAR
5/8" - 3/4"	1509			1509
1"	53			53
2"				
3"				
4"				
6"				
8"				
Other (Specify): _____				
Total meters in service	1562			1562
Total meters in stock	10			10
Number of services in use	1562			1562

UTILITY NAME: Jasmine Lakes Utilities Corp.

YEAR OF REPORT
DECEMBER 31, 1990

SYSTEM NAME: Jasmine Lakes

WELLS AND WELL PUMPS

(a)	(b)	(c)	(d)	(e)
Year Constructed	1972	1976		
Types of Well Construction and Casing	Drilled Iron	Drilled Iron		
Depth of Wells	275'	200'		
Diameters of Wells	8"	8"		
Pump - GPM	240	250		
Motor - HP				
Yields of Wells in GPD				
Auxiliary Power				

RESERVOIRS

(a)	(b)	(c)	(d)	(e)
Description (steel, concrete or pneumatic)	Pneumatic	Concrete		
Capacity of Tank	15000	550 000		
Ground or Elevated	Ground	Ground		

HIGH SERVICE PUMPING

MOTORS (a)	(b)	(c)	(d)	(e)
Manufacturer	Peerless			
Type	Electric			
Rated Horsepower	50			
PUMPS				
Manufacturer	Peerless			
Type	Horizontal			
Capacity in GPM	800			
Average Number Of Hours Operated Per Day	5			
Auxiliary Power	Gas			

UTILITY NAME: Jasmine Lakes Utilities Corp.

YEAR OF REPORT DECEMBER 31, 1990

UTILITY SYSTEM: Jasmine Lakes

SOURCE OF SUPPLY

List for each source of supply:			
Gals. per day of source	332,000	65,000	
Type of source	Pasco County Utly	Wells	

WATER TREATMENT FACILITIES

List for each water treatment facility:			
Type	Chlorination		
Make			
Gals. per day capacity	65,000		
Method of measurement	Flow Meters		

OTHER WATER SYSTEM INFORMATION

Furnish information below for each system not physically connected with another facility. A separate page should be supplied where necessary.

- Present ERC's * that system can efficiently serve. 1000
- Estimated annual increase in ERC's * . 0%
- List fire fighting facilities and capacities. 30 Fire Hydrants
- List percent of certificated area where service connections are installed (total for each county). 100%
- What is the current need for system upgrading and/or expansion?
- What are plans for future system upgrading and/or expansion? Interconnect with the City of Port Richey
Install pressure valve
- Have questions 6 and 7 been discussed with an engineer (if so, state name and address)? No
- Have questions 6 and 7 been discussed with appropriate state sanitary engineering office? No

* ERC = (Total Gallons Sold / 365 days) / 350 Gallons Per Day

UTILITY NAME: Jasmine Lakes Utilities Corp.

YEAR OF REPORT
DECEMBER 31, 19 90

UTILITY SYSTEM: Jasmine Lakes

CALCULATION OF THE WATER SYSTEMS EQUIVALENT RESIDENTIAL UNITS

METER SIZE (a)	TYPE OF METER (b)	EQUIVALENT FACTOR (c)	NUMBER OF METERS (d)	TOTAL NUMBER OF METER EQUIVALENTS (c x d) (e)
5/8"	Displacement	1.0	1548	1548
3/4"	Displacement	1.5		
1"	Displacement	2.5	4	10
1 1/2"	Displacement or Turbine	5.0	2	10
2"	Displacement, Compound or Turbine	8.0	5	40
3"	Displacement	15.0		
3"	Compound	16.0		
3"	Turbine	17.5		
4"	Displacement or Compound	25.0	1	25
4"	Turbine	30.0		
6"	Displacement or Compound	50.0		
6"	Turbine	62.5		
8"	Compound	80.0		
8"	Turbine	90.0		
10"	Compound	115.0		
10"	Turbine	145.0		
12"	Turbine	215.0		
Total Water System Meter Equivalents				1,633

CALCULATION OF THE WATER SYSTEMS EQUIVALENT RESIDENTIAL CONNECTIONS

$$\left(\frac{48,351,000}{\text{(total gallons sold)}} / 365 \text{ days} \right) / 350 \text{ gpd} = 378$$

**SEWER
OPERATION
SECTION**

UTILITY NAME: Jasmine Lakes Utilities Corp.

7/1/90 - 12/31/90
YEAR OF REPORT
DECEMBER 31, 1990

SEWER UTILITY PLANT ACCOUNTS

ACCT. NO. (a)	ACCOUNT NAME (b)	PREVIOUS YEAR (c)	ADDITIONS (d)	RETIREMENTS (e)
351	Organization	\$	\$ 13,672	\$
352	Franchises			
353	Land and Land Rights	5,802		
354	Structures and Improvements	11,078	4,576	
360	Collection Sewers - Force	254,981		
361	Collection Sewers - Gravity			
362	Special Collecting Structures			
363	Services to Customers			
364	Flow Measuring Devices			
365	Flow Measuring Installations			
370	Receiving Wells			
371	Pumping Equipment	94,643		
380	Treatment and Disposal Equip.	224,795	258,861	
381	Plant Sewers			
382	Outfall Sewer Lines			
389	Other Plant and Miscellaneous Equipment	35,274	240	
390	Office Furniture and Equip.	3,107	3,400	
391	Transportation Equipment		5,000	
392	Stores Equipment			
393	Tools, Shop and Garage Equip.			
394	Laboratory Equipment			
395	Power Operated Equipment			
396	Communication Equipment			
397	Miscellaneous Equipment			
398	Other Tangible Plant			
	Total Sewer Plant	\$ 629,680	\$ 285,749	\$ 0

NOTE: Any adjustments made to reclassify property from one account to another must be footnoted.

S-1(a)

* Per PSC approval Docket #900291WS 10/4/90 as transferred by purchase from Jasmine Lakes Services, Inc.

SEWER UTILITY PLANT MATRIX

CURRENT YEAR (f)	.1 INTANGIBLE PLANT (g)	.2 COLLECTION PLANT (h)	.3 SYSTEM PUMPING PLANT (i)	.4 TREATMENT AND DISPOSAL PLANT (j)	.5 GENERAL PLANT (k)
\$ 13,672	\$ 13,672	XXXXXXXXXXXXXX	XXXXXXXXXXXXXX	XXXXXXXXXXXXXX	XXXXXXXXXXXXXX
5,802	XXXXXXXXXXXXXX	XXXXXXXXXXXXXX	XXXXXXXXXXXXXX	5,802	XXXXXXXXXXXXXX
15,654	XXXXXXXXXXXXXX	XXXXXXXXXXXXXX	XXXXXXXXXXXXXX	15,654	XXXXXXXXXXXXXX
254,981	XXXXXXXXXXXXXX	254,981	XXXXXXXXXXXXXX	XXXXXXXXXXXXXX	XXXXXXXXXXXXXX
-----	XXXXXXXXXXXXXX	-----	XXXXXXXXXXXXXX	XXXXXXXXXXXXXX	XXXXXXXXXXXXXX
-----	XXXXXXXXXXXXXX	-----	XXXXXXXXXXXXXX	XXXXXXXXXXXXXX	XXXXXXXXXXXXXX
-----	XXXXXXXXXXXXXX	-----	XXXXXXXXXXXXXX	XXXXXXXXXXXXXX	XXXXXXXXXXXXXX
-----	XXXXXXXXXXXXXX	-----	XXXXXXXXXXXXXX	XXXXXXXXXXXXXX	XXXXXXXXXXXXXX
-----	XXXXXXXXXXXXXX	-----	XXXXXXXXXXXXXX	XXXXXXXXXXXXXX	XXXXXXXXXXXXXX
-----	XXXXXXXXXXXXXX	-----	XXXXXXXXXXXXXX	XXXXXXXXXXXXXX	XXXXXXXXXXXXXX
-----	XXXXXXXXXXXXXX	-----	XXXXXXXXXXXXXX	XXXXXXXXXXXXXX	XXXXXXXXXXXXXX
94,643	XXXXXXXXXXXXXX	XXXXXXXXXXXXXX	94,643	XXXXXXXXXXXXXX	XXXXXXXXXXXXXX
483,656	XXXXXXXXXXXXXX	XXXXXXXXXXXXXX	XXXXXXXXXXXXXX	483,656	XXXXXXXXXXXXXX
-----	XXXXXXXXXXXXXX	XXXXXXXXXXXXXX	XXXXXXXXXXXXXX	-----	XXXXXXXXXXXXXX
-----	XXXXXXXXXXXXXX	XXXXXXXXXXXXXX	XXXXXXXXXXXXXX	-----	XXXXXXXXXXXXXX
-----	XXXXXXXXXXXXXX	XXXXXXXXXXXXXX	XXXXXXXXXXXXXX	-----	XXXXXXXXXXXXXX
35,514	XXXXXXXXXXXXXX	XXXXXXXXXXXXXX	XXXXXXXXXXXXXX	35,514	XXXXXXXXXXXXXX
6,507	XXXXXXXXXXXXXX	XXXXXXXXXXXXXX	XXXXXXXXXXXXXX	XXXXXXXXXXXXXX	6,507
5,000	XXXXXXXXXXXXXX	XXXXXXXXXXXXXX	XXXXXXXXXXXXXX	XXXXXXXXXXXXXX	5,000
-----	XXXXXXXXXXXXXX	XXXXXXXXXXXXXX	XXXXXXXXXXXXXX	XXXXXXXXXXXXXX	-----
-----	XXXXXXXXXXXXXX	XXXXXXXXXXXXXX	XXXXXXXXXXXXXX	XXXXXXXXXXXXXX	-----
-----	XXXXXXXXXXXXXX	XXXXXXXXXXXXXX	XXXXXXXXXXXXXX	XXXXXXXXXXXXXX	-----
-----	XXXXXXXXXXXXXX	XXXXXXXXXXXXXX	XXXXXXXXXXXXXX	XXXXXXXXXXXXXX	-----
-----	XXXXXXXXXXXXXX	XXXXXXXXXXXXXX	XXXXXXXXXXXXXX	XXXXXXXXXXXXXX	-----
-----	XXXXXXXXXXXXXX	XXXXXXXXXXXXXX	XXXXXXXXXXXXXX	XXXXXXXXXXXXXX	-----
-----	XXXXXXXXXXXXXX	XXXXXXXXXXXXXX	XXXXXXXXXXXXXX	XXXXXXXXXXXXXX	-----
-----	XXXXXXXXXXXXXX	XXXXXXXXXXXXXX	XXXXXXXXXXXXXX	XXXXXXXXXXXXXX	-----
-----	XXXXXXXXXXXXXX	XXXXXXXXXXXXXX	XXXXXXXXXXXXXX	XXXXXXXXXXXXXX	-----
\$ 915,429	\$ 13,672	\$ 254,981	\$ 94,643	\$ 540,626	\$ 11,507

7/1/90 - 12/31/90

UTILITY NAME: Jasmine Lakes Utilities Corp.

YEAR OF REPORT DECEMBER 31, 1990

SEWER UTILITY EXPENSE ACCOUNTS

ACCT. NO. (a)	ACCOUNT NAME (b)	CURRENT YEAR (c)	.1 COLLECTION EXPENSES - OPERATIONS (d)	.2 COLLECTION EXPENSES - MAINTENANCE (e)
701	Salaries and Wages - Employees	\$ 3,076	\$	\$
703	Salaries and Wages - Officers, Directors and Majority Stockholders	30,885		
704	Employee Pensions and Benefits	4,920		
710	Purchased Sewage Treatment		XXXXXXXXXXXXXXXX	XXXXXXXXXXXXXXXX
711	Sludge Removal Expense	8,523	XXXXXXXXXXXXXXXX	XXXXXXXXXXXXXXXX
715	Purchased Power	10,070		XXXXXXXXXXXXXXXX
716	Fuel for Power Purchased			XXXXXXXXXXXXXXXX
718	Chemicals	1,797		
720	Materials and Supplies	1,305		
731	Contractual Services - Eng.	1,247		
732	Contractual Services - Acct.	3,250		
733	Contractual Services - Legal	4,887		
734	Contractual Services - Management Fees	12,835	1,000	
735	Contractual Services - Other	11,350		85
741	Rental of Building/Real Property	3,212	1,412	
742	Rental of Equipment	158		
750	Transportation Expenses	1,060		
756	Insurance - Vehicle	142		
757	Insurance - General Liability			
758	Insurance - Workman's Compensation			
759	Insurance - Other	745		
760	Advertising Expense		XXXXXXXXXXXXXXXX	XXXXXXXXXXXXXXXX
766	Regulatory Commission Expenses - Amortization of Rate Case Expense		XXXXXXXXXXXXXXXX	XXXXXXXXXXXXXXXX
767	Regulatory Commission Expenses - Other		XXXXXXXXXXXXXXXX	XXXXXXXXXXXXXXXX
770	Bad Debt Expense		XXXXXXXXXXXXXXXX	XXXXXXXXXXXXXXXX
775	Miscellaneous Expenses	5,730		
	Total Sewer Utility Expenses	\$ 105,192	\$ 2,412	\$ 85

SEWER EXPENSE ACCOUNT MATRIX

.3 PUMPING EXPENSES - OPERATIONS (f)	.4 PUMPING EXPENSES - MAINTENANCE (g)	.5 TREATMENT & DISPOSAL EXPENSES - OPERATIONS (h)	.6 TREATMENT & DISPOSAL EXPENSES - MAINTENANCE (i)	.7 CUSTOMER ACCOUNTS EXPENSE (j)	.8 ADMINISTRATIVE & GENERAL EXPENSES (k)
\$	\$	\$	\$	\$ 3,076	\$
					30,885
					4,920
XXXXXXXXXXXXXXXX	XXXXXXXXXXXXXXXX		XXXXXXXXXXXXXXXX	XXXXXXXXXXXXXXXX	XXXXXXXXXXXXXXXX
XXXXXXXXXXXXXXXX	XXXXXXXXXXXXXXXX	8,523	XXXXXXXXXXXXXXXX	XXXXXXXXXXXXXXXX	XXXXXXXXXXXXXXXX
2,231	XXXXXXXXXXXXXXXX	7,839	XXXXXXXXXXXXXXXX		
	XXXXXXXXXXXXXXXX		XXXXXXXXXXXXXXXX		
		1,797		XXXXXXXXXXXXXXXX	XXXXXXXXXXXXXXXX
			1,305		
		1,247			
					3,250
					4,887
1,680		10,155			
	3,716	1,570	3,955		2,024
					1,800
			158		
					1,060
					142
XXXXXXXXXXXXXXXX	XXXXXXXXXXXXXXXX	XXXXXXXXXXXXXXXX	XXXXXXXXXXXXXXXX	XXXXXXXXXXXXXXXX	745
XXXXXXXXXXXXXXXX	XXXXXXXXXXXXXXXX	XXXXXXXXXXXXXXXX	XXXXXXXXXXXXXXXX	XXXXXXXXXXXXXXXX	
XXXXXXXXXXXXXXXX	XXXXXXXXXXXXXXXX	XXXXXXXXXXXXXXXX	XXXXXXXXXXXXXXXX	XXXXXXXXXXXXXXXX	
XXXXXXXXXXXXXXXX	XXXXXXXXXXXXXXXX	XXXXXXXXXXXXXXXX	XXXXXXXXXXXXXXXX	XXXXXXXXXXXXXXXX	
XXXXXXXXXXXXXXXX	XXXXXXXXXXXXXXXX	XXXXXXXXXXXXXXXX	XXXXXXXXXXXXXXXX		XXXXXXXXXXXXXXXX
				550	5,180
\$ 3,911	\$ 3,716	\$ 31,131	\$ 5,418	\$ 3,626	\$ 54,893

UTILITY NAME: Jasmine Lakes Utilities Corp.

7/1/90 - 12/31/90
 YEAR OF REPORT
 DECEMBER 31, 1990

SEWER OPERATING REVENUE

ACCT. NO. (a)	DESCRIPTION (b)	BEGINNING YEAR NO. CUSTOMERS (c) *	YEAR END NUMBER CUSTOMERS (d)	AMOUNTS (e)
	Operating Revenues:			
	Flat Rate Revenues:			
521.1	Residential Revenues			\$
521.2	Commercial Revenues			
521.3	Industrial Revenues			
521.4	Revenues From Public Authorities			
521.5	Multiple Family Dwelling Revenues			
521.6	Other Revenues			
	Total Flat Rate Revenues			\$
	Measured Revenues:			
522.1	Residential Revenues	1,516	1,516	\$ 59,321
522.2	Commercial Revenues	32	32	526
522.3	Industrial Revenues			
522.4	Revenues From Public Authorities			
522.5	Multiple Family Dwelling Revenues			
	Total Measured Revenues	1,548	1,548	\$ 59,847
523	Revenues From Public Authorities			\$
524	Revenues From Other Systems			
525	Interdepartmental Revenues			
	Totals			\$
	Other Sewer Revenues:			
530	Guaranteed Revenue			\$
531	Sale Of Sludge			
532	Forfeited Discounts			
534	Rents From Sewer Property			
535	Interdepartmental Rents			
536	Other Sewer Revenues			
	Total Other Sewer Revenues			\$
	Total Sewer Operating Revenues			\$ 59,847

* 7/1/90

UTILITY NAME: Jasmine Lakes Utilities Corp.

7/1/90 - 12/31/90
 YEAR OF REPORT
 DECEMBER 31, 1990

BASIS FOR SEWER DEPRECIATION CHARGES

ACCT. NO. (a)	ACCOUNT NAME (b)	AVERAGE SERVICE LIFE IN YEARS (c)	AVERAGE NET SALVAGE IN PERCENT (d)	DEPRECIATION RATE APPLIED IN PERCENT (100% - d) / c (e)
351	Organization	40	0	2.5
354	Structures and Improvements	40	0	2.5
360	Collection Sewers - Force	40	0	2.5
361	Collection Sewers - Gravity			
362	Special Collecting Structures			
363	Services to Customers			
364	Flow Measuring Devices			
365	Flow Measuring Installations			
370	Receiving Wells			
371	Pumping Equipment	40	0	2.5
380	Treatment and Disposal Equip.	40	0	2.5
381	Plant Sewers			
382	Outfall Sewer Lines			
389	Other Plant and Miscellaneous Equipment	40	0	2.5
390	Office Furniture and Equip.	10	0	10
391	Transportation Equipment	5	0	20
392	Stores Equipment			
393	Tools, Shop and Garage Equip.			
394	Laboratory Equipment			
395	Power Operated Equipment			
396	Communication Equipment			
397	Miscellaneous Equipment			
398	Other Tangible Plant			
	Sewer Plant Composite Depreciation Rate *			

* If depreciation rates prescribed by this Commission are on a total composite basis, entries should be made on this line only.

UTILITY NAME: Jasmine Lakes Utilities Corp.

7/1/90 - 12/31/90

YEAR OF REPORT DECEMBER 31, 1990

ANALYSIS OF ENTRIES IN SEWER ACCUMULATED DEPRECIATION

ACCT. NO. (a)	ACCOUNT NAME (b)	7/1/90* BALANCE AT BEGINNING OF YEAR (c)	ACCRUALS (d)	OTHER CREDITS * (e)	TOTAL CREDITS (d+e) (f)
351	Organization		85		85
354	Structures and Improvements	\$ 600	\$ 167	\$	\$ 167
360	Collection Sewers - Force	110,921	3,187		3,187
361	Collection Sewers - Gravity				
362	Special Collecting Structures				
363	Services to Customers				
364	Flow Measuring Devices				
365	Flow Measuring Installations				
370	Receiving Wells				
371	Pumping Equipment	34,056	1,183		1,183
380	Treatment and Disposal Equip.	30,886	4,428		4,428
381	Plant Sewers				
382	Outfall Sewer Lines				
389	Other Plant and Miscellaneous Equipment	15,440	442		442
390	Office Furniture and Equip.	1,499	240		240
391	Transportation Equipment		250		250
392	Stores Equipment				
393	Tools, Shop and Garage Equip.				
394	Laboratory Equipment				
395	Power Operated Equipment				
396	Communication Equipment				
397	Miscellaneous Equipment				
398	Other Tangible Plant				
	Total Depreciable Sewer Plant In Service	\$ 193,402	\$ 9,982	\$ 0	\$ 9,982

* Specify nature of transaction.
Use () to denote reversal entries.

S-5(a)

* Per PSC approval Docket #900291WS 10/4/90 as transferred by purchase from Jasmine Lakes Services, Inc.

ANALYSIS OF ENTRIES IN SEWER ACCUMULATED DEPRECIATION (Cont'd)

PLANT RETIRED (g)	ASSOCIATED SALVAGE AND INSURANCE (h)	ASSOCIATED COST OF REMOVAL (i)	OTHER CHARGES (j)	TOTAL CHARGES (g-h+i+j) (k)	BALANCE AT END OF YEAR (c+f-k) (l)
					85
\$	\$	\$	\$	\$	\$ 767
-----	-----	-----	-----	-----	<u>114,108</u>
-----	-----	-----	-----	-----	-----
-----	-----	-----	-----	-----	-----
-----	-----	-----	-----	-----	<u>35,239</u>
-----	-----	-----	-----	-----	<u>35,314</u>
-----	-----	-----	-----	-----	-----
-----	-----	-----	-----	-----	-----
-----	-----	-----	-----	-----	<u>15,882</u>
-----	-----	-----	-----	-----	<u>1,739</u>
-----	-----	-----	-----	-----	<u>250</u>
-----	-----	-----	-----	-----	-----
-----	-----	-----	-----	-----	-----
-----	-----	-----	-----	-----	-----
-----	-----	-----	-----	-----	-----
-----	-----	-----	-----	-----	-----
-----	-----	-----	-----	-----	-----
\$	\$	\$	\$	\$	\$
<u>0</u>	<u>0</u>	<u>0</u>	<u>0</u>	<u>0</u>	<u>203,384</u>

UTILITY NAME: Jasmine Lakes Utilities Corp.

7/1/90 - 12/31/90
 YEAR OF REPORT
 DECEMBER 31, 1990

UTILITY SYSTEM: Jasmine Lakes

PUMPING EQUIPMENT

	1	2	3	4	5	6
Lift station number	1	2	3	4	5	6
Make or type and nameplate data of pump	Meyers		Hydro	Hydro	EMU	Barnes
Year installed	1990		1971	1971	1973	1977
Rated capacity	200		150	175	375	150
Size	4"		4"	4"	6"	4"
Power:						
Electric	E1		E1	E1	E1	E1
Mechanical						
Nameplate data of motor						

	7					
Lift station number	7					
Make or type and nameplate data of pump	Barnes					
Year installed	1977					
Rated capacity	150					
Size	3"					
Power:						
Electric	E1					
Mechanical						
Nameplate data of motor						

SERVICE CONNECTIONS

	4"					
Size (inches)	4"					
Type (PVC, VCP, etc.)	VCP					
Average length	Various					
Number of active service connections	1548					
Beginning of year	1548					
Added during year	0					
Retired during year	0					
End of year	1548					
Give full particulars concerning inactive connections						

UTILITY NAME: Jasmine Lakes Utilities Corp.

UTILITY SYSTEM: Jasmine Lakes

7/1/90 - 12/31/90
 YEAR OF REPORT
 DECEMBER 31, 1990

COLLECTING MAINS

COLLECTING MAINS:						
Size (inches)	6"	8"	10"			
Type of main	VCP	VCP	VCP			
Length of main (nearest foot):						
Beginning of year	1901	66,578	3,330			
Added during year						
Retired during year						
End of year	1901	66,578	3,330			
MANHOLES:						
Size						
Type	Brick Concrete					
Number:						
Beginning of year	357					
Added during year	0					
Retired during year	0					
End of year	357					

FORCE MAINS

FORCE MAINS:						
Size (inches)	4"	6"	8"			
Type of main	CI	PVC	AC			
Length of main (nearest foot):						
Beginning of year	2513	3187	5200			
Added during year						
Retired during year						
End of year	2513	3187	5200			

7/1/90 - 12/31/90

UTILITY NAME: Jasmine Lakes Utilities Corp.

YEAR OF REPORT DECEMBER 31, 19 <u>90</u>

SYSTEM NAME: Jasmine Lakes

TREATMENT PLANT

Manufacturer	Marolf		
Type	Extended Air		
"Steel" or "Concrete"	Concrete		
Total Capacity	368,500 gpd		
Average Daily Flow	214,500		
Effluent Disposal	Percolation Pond		
Total Gallons of Sewage Treated	78,292,000		

MASTER LIFT STATION PUMPS

Manufacturer	Meyers	Hydromatic	Hydromatic	EMU	Gould	Barnes
Capacity	200	150	150	375	150	150
Motor : Mfr.	U.S. Motor	U.S. Motor	U.S. Motor	U.S. Motor	U.S. Motor	U.S. Motor
Horsepower	7.5	2.5	7	1.5	2.5	2
Power (Electric or Mechanical)	E1	E1	E1	E1	E1	E1

OTHER SEWER SYSTEM INFORMATION

1. Maximum number of ERC's * which can be served. 778
2. Estimated annual increase in ERC's *. 0
3. List permit numbers required by Chapter 17-4, Rules of the Department of Environmental Regulation (DER) for systems in operation. D.C.51-174478
4. State any plans and estimated completion dates for any enlargements of this system. None
5. If present systems do not meet the requirements of Chapter 17-4, Rules of the DER, submit the following:
 - a. Evaluation of the present plant or plants in regard to meeting the DER's rules.
 - b. Plans for funding and construction of the required upgrading.
 - c. Have these plans been coordinated with the DER? _____
 - d. Do they concur? _____
 - e. When will construction begin? _____
6. In what percent of your certificated area have service connections been installed? 100 %

* ERC = (Total Gallons Treated / 365 days) / 275 Gallons Per Day

Note: Total Gallons Treated includes both sewage treated and purchased sewage treatment

7/1/90 - 12/31/90

UTILITY NAME: Jasmine Lakes Utilities Corp.YEAR OF REPORT
DECEMBER 31, 1990UTILITY SYSTEM: Jasmine Lakes

CALCULATION OF THE SEWER SYSTEMS EQUIVALENT RESIDENTIAL UNITS

METER SIZE * (a)	TYPE OF METER * (b)	EQUIVALENT FACTOR (c)	NUMBER OF METERS (d)	TOTAL NUMBER OF METER EQUIVALENTS (c x d) (e)
5/8"	Displacement	1.0	1541	1541
3/4"	Displacement	1.5	---	---
1"	Displacement	2.5	2	5
1 1/2"	Displacement or Turbine	5.0	1	5
2"	Displacement, Compound or Turbine	8.0	4	32
3"	Displacement	15.0	---	---
3"	Compound	16.0	---	---
3"	Turbine	17.5	---	---
4"	Displacement or Compound	25.0	---	---
4"	Turbine	30.0	---	---
6"	Displacement or Compound	50.0	---	---
6"	Turbine	62.5	---	---
8"	Compound	80.0	---	---
8"	Turbine	90.0	---	---
10"	Compound	115.0	---	---
10"	Turbine	145.0	---	---
12"	Turbine	215.0	---	---
Total Sewer System Meter Equivalents				1583

CALCULATION OF THE SEWER SYSTEMS EQUIVALENT RESIDENTIAL CONNECTIONS

$$\left(\frac{78,292,000}{\text{(total gallons treated)}} / 365 \text{ days} \right) / 275 \text{ gpd} = 780.$$