

CLASS "A" OR "B"

WATER AND/OR WASTEWATER UTILITIES  
(Gross Revenue of More Than \$200,000 Each)

ORIGINAL COPY

DO NOT REMOVE FROM THE OFFICE

ANNUAL REPORT

OF

WS397-03-AR  
Mr. Patrick C. Flynn  
Sanlando Utilities Corporation  
200 Weathersfield Avenue  
Altamonte Springs, FL 32714-4027

247W 189S

Certificate Number(s)

Submitted To The

STATE OF FLORIDA

RECEIVED  
FLORIDA PUBLIC SERVICE  
COMMISSION  
04 MAY -4 AM 10:23  
DIVISION OF  
ECONOMIC REGULATION

PUBLIC SERVICE COMMISSION

FOR THE

YEAR ENDED

31-Dec-03

## TABLE OF CONTENTS

| SCHEDULE  | PAGE | SCHEDULE   | PAGE |
|---|------|--|------|
| <b>EXECUTIVE SUMMARY</b>  |      |  |      |
| Certification   | E-1  | Business Contracts with Officers, Directors and Affiliates                               | E-7  |
| General Information   | E-2  | Affiliation of Officers & Directors  | E-8  |
| Directory of Personnel Who Contact the FPSC                       | E-3  | Businesses which are a Byproduct, Coproduct or Joint Product Result of Providing Service | E-9  |
| Company Profile   | E-4  | Business Transactions with Related Parties. Part I and II                                | E-10 |
| Parent / Affiliate Organization Chart                             | E-5  |  |      |
| Compensation of Officers & Directors                              | E-6  |  |      |
| <b>FINANCIAL SECTION</b>  |      |  |      |
| Comparative Balance Sheet - Assets and Other Debits               | F-1  | Unamortized Debt Discount / Expense / Premium  | F-13 |
| Comparative Balance Sheet - Equity Capital and Liabilities        | F-2  | Extraordinary Property Losses  | F-13 |
| Comparative Operating Statement                                   | F-3  | Miscellaneous Deferred Debits  | F-14 |
| Schedule of Year End Rate Base                                    | F-4  | Capital Stock  | F-15 |
| Schedule of Year End Capital Structure                            | F-5  | Bonds  | F-15 |
| Capital Structure Adjustments                                     | F-6  | Statement of Retained Earnings   | F-16 |
| Utility Plant   | F-7  | Advances from Associated Companies   | F-17 |
| Utility Plant Acquisition Adjustments                             | F-7  | Long Term Debt   | F-17 |
| Accumulated Depreciation  | F-8  | Notes Payable  | F-18 |
| Accumulated Amortization  | F-8  | Accounts Payable to Associated Companies   | F-18 |
| Regulatory Commission Expense - Amortization of Rate Case Expense | F-9  | Accrued Interest and Expense   | F-19 |
| Nonutility Property   | F-9  | Misc. Current & Accrued Liabilities  | F-20 |
| Special Deposits  | F-9  | Advances for Construction  | F-21 |
| Investments and Special Funds                                     | F-10 | Other Deferred Credits   | F-21 |
| Accounts and Notes Receivable - Net                               | F-11 | Contributions In Aid of Construction   | F-22 |
| Accounts Receivable from Associated Companies                     | F-12 | Accumulated Amortization of CIAC   | F-23 |
| Notes Receivable from Associated Companies                        | F-12 | Reconciliation of Reported Net Income with Taxable Income for Federal Income Taxes       | F-23 |
| Miscellaneous Current & Accrued Assets                            | F-12 |  |      |

**TABLE OF CONTENTS**

| SCHEDULE   | PAGE | SCHEDULE   | PAGE |
|--|------|--|------|
| <b>WATER OPERATION SECTION</b>                           |      |  |      |
| Listing of Water System Groups                           | W-1  | CIAC Additions / Amortization                            | W-8  |
| Schedule of Year End Water Rate Base                     | W-2  | Water Operating Revenue                                  | W-9  |
| Water Operating Statement                                | W-3  | Water Utility Expense Accounts                           | W-10 |
| Water Utility Plant Accounts                             | W-4  | Pumping and Purchased Water Statistics,<br>Source Supply | W-11 |
| Basis for Water Depreciation Charges                     | W-5  | Water Treatment Plant Information                        | W-12 |
| Analysis of Entries in Water Depreciation<br>Reserve     | W-6  | Calculation of ERC's                                     | W-13 |
| Contributions In Aid of Construction                     | W-7  | Other Water System Information                           | W-14 |
| <b>WASTEWATER OPERATION SECTION</b>                      |      |  |      |
| Listing of Wastewater System Groups                      | S-1  | Contributions In Aid of Construction                     | S-7  |
| Schedule of Year End Wastewater Rate Base                | S-2  | CIAC Additions / Amortization                            | S-8  |
| Wastewater Operating Statement                           | S-3  | Wastewater Utility Expense Accounts                      | S-9  |
| Wastewater Utility Plant Accounts                        | S-4  | Wastewater Operating Revenue                             | S-10 |
| Analysis of Entries in Wastewater Depreciatio<br>Reserve | S-5  | Calculation of ERC's                                     | S-11 |
| Basis for Wastewater Depreciation Charges                | S-6  | Wastewater Treatment Plant Information                   | S-12 |
|  |      | Other Wastewater System Information                      | S-13 |

# **EXECUTIVE SUMMARY**

**CERTIFICATION OF ANNUAL REPORT**

I HEREBY CERTIFY, to the best of my knowledge and belief:


- YES NO  
  1. The utility is in substantial compliance with the Uniform System of Accounts prescribed by the Florida Public Service Commission.
- YES NO  
  2. The utility is in substantial compliance with all applicable rules and orders of the Florida Public Service Commission.
- YES NO  
  3. There have been no communications from regulatory agencies concerning noncompliance with, or deficiencies in, financial reporting practices that could have a material effect on the the financial statement of the utility.
- YES NO  
  4. The annual report fairly represents the financial condition and results of operations of the respondent for the period presented and other information and statements presented in the the report as to the business affairs of the respondent are true, correct and complete for the period for which it represents.

Items Certified

| 1. | 2. | 3. | 4. |
|----|----|----|----|
|    |    |    |    |

\_\_\_\_\_  
(Signature of Chief Executive Officer of the utility) \*

| 1. | 2. | 3. | 4. |
|----|----|----|----|
| ✓  | ✓  | ✓  | ✓  |

  
\_\_\_\_\_  
(Signature of Chief Financial Officer of the utility) \*

\* Each of the four items must be certified YES or NO. Each item need not be certified by both officers. The items being certified by the officer should be indicated in the appropriate area to the left of the signature.

**NOTICE:** Section 837.06, Florida Statutes, provides that any person who knowingly makes a false statement in writing with the intent to mislead a public servant in the performance of his duty shall be guilty of a misdemeanor of the second degree.

ANNUAL REPORT OF

YEAR OF REPORT  
31-Dec-03

**SANLANDO UTILITIES CORPORATION**

County: **Seminole County**

(Exact Name of Utility)

List below the exact mailing address of the utility for which normal correspondence should be sent:

**2335 SANDERS ROAD**  
**NORTHBROOK IL 60062**

Telephone: **847-498-6440**

E Mail Address: **NONE**

WEB Site: **NONE**

Sunshine State One-Call of Florida, Inc. Member Number **UIF755**

Name and address of person to whom correspondence concerning this report should be addressed:

**JOHN S HAYNES**  
**2335 SANDERS ROAD**  
**NORTHBROOK IL 60062**

Telephone: **847-498-6440**

List below the address of where the utility's books and records are located:

**2335 SANDERS ROAD**  
**NORTHBROOK IL 60062**

Telephone: **847-498-6440**

List below any groups auditing or reviewing the records and operations:

**PRICEWATERHOUSECOOPERS**

Date of original organization of the utility: **1969**

Check the appropriate business entity of the utility as filed with the Internal Revenue Service

Individual  Partnership  Sub S Corporation  1120 Corporation

List below every corporation or person owning or holding directly or indirectly 5% or more of the voting securities of the utility:

|     | Name                 | Percent Ownership |
|-----|----------------------|-------------------|
| 1.  | <b>UTILITIES INC</b> | <b>100%</b>       |
| 2.  |                      |                   |
| 3.  |                      |                   |
| 4.  |                      |                   |
| 5.  |                      |                   |
| 6.  |                      |                   |
| 7.  |                      |                   |
| 8.  |                      |                   |
| 9.  |                      |                   |
| 10. |                      |                   |

**DIRECTORY OF PERSONNEL WHO CONTACT  
THE FLORIDA PUBLIC SERVICE COMMISSION**

| <b>NAME OF COMPANY REPRESENTATIVE<br/>(1)</b> | <b>TITLE OR POSITION<br/>(2)</b> | <b>ORGANIZATIONAL UNIT TITLE<br/>(3)</b> | <b>USUAL PURPOSE FOR CONTACT WITH FPSC</b> |
|---|----------------------------------|--|--|
| LAWRENCE N SCHUMACHER                         | PRES/SEC/CFO                     |  | FINANCIAL                                  |
| PRICEWATERHOUSECOOPERS                        | AUDITORS                         | PRICEWATERHOUSECOOPERS                   | AUDITS                                     |
|   |                                  |  |  |
|   |                                  |  |  |
|   |                                  |  |  |
|   |                                  |  |  |
|   |                                  |  |  |
|   |                                  |  |  |
|   |                                  |  |  |
|   |                                  |  |  |
|   |                                  |  |  |
|   |                                  |  |  |
|   |                                  |  |  |
|   |                                  |  |  |
|   |                                  |  |  |
|   |                                  |  |  |
|   |                                  |  |  |
|   |                                  |  |  |
|   |                                  |  |  |
|   |                                  |  |  |
|   |                                  |  |  |
|   |                                  |  |  |
|   |                                  |  |  |
|   |                                  |  |  |
|   |                                  |  |  |
|   |                                  |  |  |
|   |                                  |  |  |

- (1) Also list appropriate legal counsel, accountants and others who may not be on general payroll.
- (2) Provide individual telephone numbers if the person is not normally reached at the company.
- (3) Name of company employed by if not on general payroll.

**COMPANY PROFILE**

Provide a brief narrative company profile which covers the following areas:

- A. Brief company history.
- B. Public services rendered.
- C. Major goals and objectives.
- D. Major operating divisions and functions.
- E. Current and projected growth patterns.
- F. Major transactions having a material effect on operations.

- A. Formed in 1969, Sanlando Utilities Corporation was acquired by Utilities Inc. in July of 1998.
- B. Sanlando Utilities Corporation performs water and wastewater services
- C. Maintain a high quality of service and earn a fair return.
- D. Only one subdivision is served
- E. We expect modest growth currently with anticipated higher growth in the future
- F. The system was purchased in 1998 and is currently being brought up to Utilities Inc. standards of quality.



PARENT / AFFILIATE ORGANIZATION CHART

Current as of 12/31/2003

Complete below an organizational chart that show all parents, subsidiaries and affiliates of the utility.  
The chart must also show the relationship between the utility and affiliates listed on E-7, E-10(a) and E-10(b).

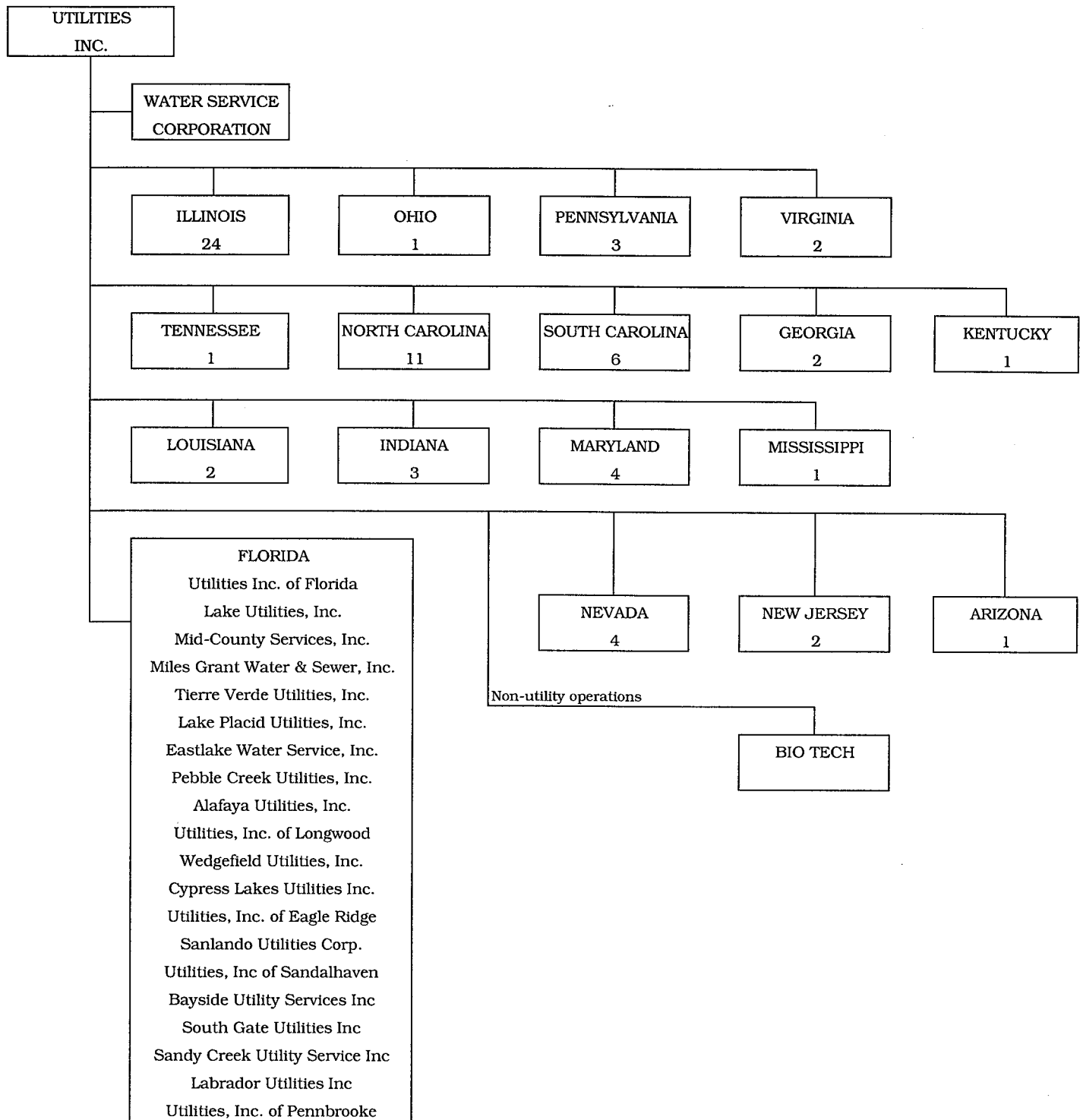
UTILITIES, INC. -- PARENT COMPANY

WATER SERVICE CORP. -- SERVICE COMPANY SUPPLYING MOST  
SERVICES REQUIRED BY UTILITY.

UTILITIES INC. of FLORIDA -- provides office personnel and administrative  
staff.

SEE ATTACHED

## Parent And Affiliate Organizational Chart



UTILITIES, INC. - Parent Company

WATER SERVICE CORP. - Service organization providing administrative and other service functions for the utility.

NOTE: Within each state except Florida is the number of companies owned.

**COMPENSATION OF OFFICERS**

| For each officer, list the time spent on respondent as an officer compared to time spent on total business activities and the compensation received as an officer from the respondent. |              |  |                               |
|--|--------------|--|-------------------------------|
| NAME<br>(a)  | TITLE<br>(b) | % OF TIME SPENT AS OFFICER OF THE UTILITY<br>(c) | OFFICERS' COMPENSATION<br>(d) |
| JAMES L CAMAREN  | CEO          |  | \$ NONE                       |
| LAWRENCE N SCHUMACHER  | PRES/SEC/CFO |  | NONE                          |
|  |              |  |                               |
|  |              |  |                               |
|  |              |  |                               |
|  |              |  |                               |
|  |              |  |                               |
|  |              |  |                               |
|  |              |  |                               |

**COMPENSATION OF DIRECTORS**

| For each director, list the number of director meetings attended by each director and the compensation received as a director from the respondent. |              |   |                                |
|--|--------------|---|--------------------------------|
| NAME<br>(a)  | TITLE<br>(b) | NUMBER OF DIRECTORS' MEETINGS ATTENDED<br>(c) | DIRECTORS' COMPENSATION<br>(d) |
| JAMES L CAMAREN  | CEO          | 1   | \$ NONE                        |
| LAWRENCE N SCHUMACHER  | PRES/SEC/CFO | 1   | NONE                           |
|  |              |   |                                |
|  |              |   |                                |
|  |              |   |                                |
|  |              |   |                                |
|  |              |   |                                |
|  |              |   |                                |
|  |              |   |                                |

**BUSINESS CONTRACTS WITH OFFICERS, DIRECTORS AND AFFILIATES**

| List all contracts, agreements, or other business arrangements* entered into during the calendar year (other than compensation related to position with Respondents) between the Respondent and officer and director listed on page E-6. In addition, provide the same information with respect to professional services for each firm, partnership, or organization with which the officer or director is affiliated. |   |               |  |
|--|---|---------------|--|
| NAME OF OFFICER, DIRECTOR OR AFFILIATE<br>(a)  | IDENTIFICATION OF SERVICE OR PRODUCT<br>(b) | AMOUNT<br>(c) | NAME AND ADDRESS OF AFFILIATED ENTITY<br>(d) |
| NO BUSINESS CONTRACTS, AGREEMENTS OR OTHER ARRANGEMENTS WERE ENTERED INTO DURING THE CURRENT YEAR BY THE OFFICERS LISTED ON PAGE E6, THE DIRECTORS OR AFFILIATES.  |   | \$            |  |
|  |   |               |  |
|  |   |               |  |
|  |   |               |  |
|  |   |               |  |
|  |   |               |  |
|  |   |               |  |
|  |   |               |  |
|  |   |               |  |
|  |   |               |  |
|  |   |               |  |
|  |   |               |  |
|  |   |               |  |
|  |   |               |  |
|  |   |               |  |
|  |   |               |  |

\* Business Agreement, for this schedule, shall mean any oral or written business deal which binds the concerned parties for products or services during the reporting year or future years. Although the Respondent and/or other companies will benefit from the arrangement, the officer or director is, however, acting on his behalf or for the benefit of other companies or persons.

**AFFILIATION OF OFFICERS AND DIRECTORS**

For each of the officials listed on page E-6, list the principle occupation or business affiliations or connections with any other business or financial organizations, firms, or partnerships. For purposes of this part, an official will be considered to have an affiliation with any business or financial organization, firm or partnership in which he is an officer, director, trustee, partner, or a person exercising similar functions.

| NAME<br>(a)  | PRINCIPLE<br>OCCUPATION<br>OR BUSINESS<br>AFFILIATION<br>(b) | AFFILIATION OR<br>CONNECTION<br>(c) | NAME AND ADDRESS<br>OF AFFILIATION OR<br>CONNECTION<br>(d) |
|--|--|-------------------------------------|--|
| JAMES L CAMAREN<br>UTILITIES INC & SUBSIDIARIES        | CHARIMAN & CEO   | DIRECTOR/OFFICER                    | NORTHBROOK IL  |
|  |  |                                     |  |
| LAWARENCE N SCHUMACHER<br>UTILITIES INC & SUBSIDIARIES | PRESIDENT  | DIRECTOR/OFFICER                    | NORTHBROOK IL  |
|  |  |                                     |  |
|  |  |                                     |  |
|  |  |                                     |  |
|  |  |                                     |  |
|  |  |                                     |  |
|  |  |                                     |  |
|  |  |                                     |  |
|  |  |                                     |  |
|  |  |                                     |  |
|  |  |                                     |  |
|  |  |                                     |  |
|  |  |                                     |  |
|  |  |                                     |  |
|  |  |                                     |  |
|  |  |                                     |  |
|  |  |                                     |  |
|  |  |                                     |  |
|  |  |                                     |  |
|  |  |                                     |  |
|  |  |                                     |  |

**UTILITY NAME: SANLANDO UTILITIES CORPORATION**

**BUSINESSES WHICH ARE A BY-PRODUCT, COPRODUCT OR JOINT-PRODUCT  
RESULT OF PROVIDING WATER OR WASTEWATER SERVICE**

| BUSINESS OR SERVICE CONDUCTED (a)  | ASSETS                  |                    | REVENUES               |                    | EXPENSES              |                    |
|--|-------------------------|--------------------|------------------------|--------------------|-----------------------|--------------------|
|  | BOOK COST OF ASSETS (b) | ACCOUNT NUMBER (c) | REVENUES GENERATED (d) | ACCOUNT NUMBER (e) | EXPENSES INCURRED (f) | ACCOUNT NUMBER (g) |
| NO BUSINESS WHICH ARE A BYPRODUCT, COPRODUCT OR JOINT PRODUCT RESULTING FROM PROVIDING WATER AND/OR SEWER SERVICE. | \$                      |                    | \$                     |                    |                       |                    |
|  |                         |                    |                        |                    |                       |                    |
|  |                         |                    |                        |                    |                       |                    |
|  |                         |                    |                        |                    |                       |                    |
|  |                         |                    |                        |                    |                       |                    |
|  |                         |                    |                        |                    |                       |                    |
|  |                         |                    |                        |                    |                       |                    |
|  |                         |                    |                        |                    |                       |                    |
|  |                         |                    |                        |                    |                       |                    |
|  |                         |                    |                        |                    |                       |                    |
|  |                         |                    |                        |                    |                       |                    |
|  |                         |                    |                        |                    |                       |                    |
|  |                         |                    |                        |                    |                       |                    |
|  |                         |                    |                        |                    |                       |                    |
|  |                         |                    |                        |                    |                       |                    |
|  |                         |                    |                        |                    |                       |                    |
|  |                         |                    |                        |                    |                       |                    |
|  |                         |                    |                        |                    |                       |                    |
|  |                         |                    |                        |                    |                       |                    |
|  |                         |                    |                        |                    |                       |                    |
|  |                         |                    |                        |                    |                       |                    |
|  |                         |                    |                        |                    |                       |                    |
|  |                         |                    |                        |                    |                       |                    |

Complete the following for any business which is conducted as a byproduct, coproduct, or joint product as a result of providing water and / or wastewater service. This would include any business which requires the use of utility land and facilities. Examples of these types of businesses would be orange groves, nurseries, tree farms, fertilizer manufacturing, etc. This would not include any business for which the assets are properly included in Account 121 - Nonutility Property along with the associated revenue and expenses segregated out as nonutility also.



UTILITY NAME: SANLANDO UTILITIES CORPORATION

**BUSINESS TRANSACTIONS WITH RELATED PARTIES (Cont'd)**

**Part II. Specific Instructions: Sale, Purchase and Transfer of Assets**

1. Enter in this part all transactions relating to the purchase, sale, or transfer of assets.
2. Below are examples of some types of transactions to include:
  - purchase, sale or transfer of equipment
  - purchase, sale or transfer of land and structures
  - purchase, sale or transfer of securities
  - noncash transfers of assets
  - noncash dividends other than stock dividends
  - write-off of bad debts or loans
3. The columnar instructions follow:
  - (a) Enter name of related party or company.
  - (b) Describe briefly the type of assets purchased, sold or transferred.
  - (c) Enter the total received or paid. Indicate purchase with "P" and sale with "S".
  - (d) Enter the net book value for each item reported.
  - (e) Enter the net profit or loss for each item reported. (column (c) - column (d))
  - (f) Enter the fair market value for each item reported. In space below or in a supplemental schedule, describe the basis used to calculate fair market value.

| NAME OF COMPANY OR RELATED PARTY (a)  | DESCRIPTION OF ITEMS (b) | SALE OR PURCHASE PRICE (c) | NET BOOK VALUE (d) | GAIN OR LOSS (e) | FAIR MARKET VALUE (f) |
|---|--------------------------|----------------------------|--------------------|------------------|-----------------------|
|   |                          | \$ _____                   | \$ _____           | \$ _____         | \$ _____              |
| NO ASSETS WERE SOLD, PURCHASED OR TRANSFERRED WITH A RELATED PARTY DURING THE FISCAL YEAR ENDED 31-Dec-03 |                          | _____                      | _____              | _____            | _____                 |
| _____   | _____                    | _____                      | _____              | _____            | _____                 |
| _____   | _____                    | _____                      | _____              | _____            | _____                 |
| _____   | _____                    | _____                      | _____              | _____            | _____                 |
| _____   | _____                    | _____                      | _____              | _____            | _____                 |
| _____   | _____                    | _____                      | _____              | _____            | _____                 |
| _____   | _____                    | _____                      | _____              | _____            | _____                 |
| _____   | _____                    | _____                      | _____              | _____            | _____                 |
| _____   | _____                    | _____                      | _____              | _____            | _____                 |



**FINANCIAL  
SECTION**

**COMPARATIVE BALANCE SHEET  
ASSETS AND OTHER DEBITS**

| ACCT.<br>NO.<br>(a)                   | ACCOUNT NAME<br>(b)  | REF.<br>PAGE<br>(c) | PREVIOUS<br>YEAR<br>(d) | CURRENT<br>YEAR<br>(e) |
|---------------------------------------|--|---------------------|-------------------------|------------------------|
| <b>UTILITY PLANT</b>                  |  |                     |                         |                        |
| 101-106                               | Utility Plant  | F-7                 | \$ 35,734,035           | \$ 36,438,710          |
| 108-110                               | Less: Accumulated Depreciation and Amortization                                      | F-8                 | 16,514,673              | 17,483,626             |
| Net Plant                             |  |                     | \$ 19,219,362           | \$ 18,955,084          |
| 114-115                               | Utility Plant Acquisition adjustment (Net)   | F-7                 | -                       | -                      |
| 116 *                                 | Other Utility Plant Adjustments  |                     |                         |                        |
| Total Net Utility Plant               |  |                     | \$ 19,219,362           | \$ 18,955,084          |
| <b>OTHER PROPERTY AND INVESTMENTS</b> |  |                     |                         |                        |
| 121                                   | Nonutility Property  | F-9                 | \$                      | \$                     |
| 122                                   | Less: Accumulated Depreciation and Amortization                                      |                     |                         |                        |
| Net Nonutility Property               |  |                     | \$                      | \$                     |
| 123                                   | Investment In Associated Companies   | F-10                |                         |                        |
| 124                                   | Utility Investments  | F-10                |                         |                        |
| 125                                   | Other Investments  | F-10                |                         |                        |
| 126-127                               | Special Funds  | F-10                |                         |                        |
| Total Other Property & Investments    |  |                     | \$                      | \$                     |
| <b>CURRENT AND ACCRUED ASSETS</b>     |  |                     |                         |                        |
| 131                                   | Cash   |                     | \$ -                    | \$ -                   |
| 132                                   | Special Deposits   | F-9                 | -                       | -                      |
| 133                                   | Other Special Deposits   | F-9                 |                         |                        |
| 134                                   | Working Funds  |                     |                         |                        |
| 135                                   | Temporary Cash Investments   |                     |                         |                        |
| 141-144                               | Accounts and Notes Receivable, Less Accumulated Provision for Uncollectible Accounts | F-11                | 619,786                 | 611,529                |
| 145                                   | Accounts Receivable from Associated Companies  | F-12                |                         |                        |
| 146                                   | Notes Receivable from Associated Companies   | F-12                | -                       | -                      |
| 151-153                               | Material and Supplies  |                     |                         |                        |
| 161                                   | Stores Expense   |                     |                         |                        |
| 162                                   | Prepayments  |                     | -                       | -                      |
| 171                                   | Accrued Interest and Dividends Receivable  |                     | -                       |                        |
| 172 *                                 | Rents Receivable   |                     |                         |                        |
| 173 *                                 | Accrued Utility Revenues   |                     |                         |                        |
| 174                                   | Misc. Current and Accrued Assets   | F-12                | -                       | -                      |
| Total Current and Accrued Assets      |  |                     | \$ 619,786              | \$ 611,529             |

\* Not Applicable for Class B Utilities

**COMPARATIVE BALANCE SHEET**  
**ASSETS AND OTHER DEBITS**

| ACCT.<br>NO.<br>(a) | ACCOUNT NAME<br>(b)                        | REF.<br>PAGE<br>(c) | PREVIOUS<br>YEAR<br>(d) | CURRENT<br>YEAR<br>(e) |
|---------------------|--|---------------------|-------------------------|------------------------|
|                     | DEFERRED DEBITS                            |                     |                         |                        |
| 181                 | Unamortized Debt Discount & Expense        | F-13                | \$ _____                | \$ _____               |
| 182                 | Extraordinary Property Losses              | F-13                | _____                   | _____                  |
| 183                 | Preliminary Survey & Investigation Charges |                     | _____                   | _____                  |
| 184                 | Clearing Accounts                          |                     | _____                   | _____                  |
| 185 *               | Temporary Facilities                       |                     | _____                   | _____                  |
| 186                 | Misc. Deferred Debits                      | F-14                | 73,757                  | 55,016                 |
| 187 *               | Research & Development Expenditures        |                     | _____                   | _____                  |
| 190                 | Accumulated Deferred Income Taxes          |                     | 103,379                 | 106,697                |
|                     |  |                     | _____                   | _____                  |
|                     | Total Deferred Debits                      |                     | \$ 177,136              | \$ 161,713             |
|                     | TOTAL ASSETS AND OTHER DEBITS              |                     | \$ 20,016,284           | \$ 19,728,326          |

\* Not Applicable for Class B Utilities

**NOTES TO THE BALANCE SHEET**

The space below is provided for important notes regarding the balance sheet.

**COMPARATIVE BALANCE SHEET  
EQUITY CAPITAL AND LIABILITIES**

| ACCT.<br>NO.<br>(a)                    | ACCOUNT NAME<br>(b)   | REF.<br>PAGE<br>(c) | PREVIOUS<br>YEAR<br>(d) | CURRENT<br>YEAR<br>(e) |
|--|---|---------------------|-------------------------|------------------------|
| <b>EQUITY CAPITAL</b>                  |   |                     |                         |                        |
| 201                                    | Common Stock Issued   | F-15                | \$ 3,575                | \$ 3,575               |
| 204                                    | Preferred Stock Issued  | F-15                |                         |                        |
| 202,205 *                              | Capital Stock Subscribed                                      |                     |                         |                        |
| 203,206 *                              | Capital Stock Liability for Conversion                        |                     |                         |                        |
| 207 *                                  | Premium on Capital Stock                                      |                     |                         |                        |
| 209 *                                  | Reduction in Par or Stated Value of Capital Stock             |                     |                         |                        |
| 210 *                                  | Gain on Resale or Cancellation of Reacquired<br>Capital Stock |                     |                         |                        |
| 211                                    | Other Paid - In Capital                                       |                     | 7,852,000               | 8,003,414              |
| 212                                    | Discount On Capital Stock                                     |                     |                         |                        |
| 213                                    | Capital Stock Expense   |                     |                         |                        |
| 214-215                                | Retained Earnings   | F-16                | 3,491,044               | 3,670,280              |
| 216                                    | Reacquired Capital Stock                                      |                     |                         |                        |
| 218                                    | Proprietary Capital<br>(Proprietorship and Partnership Only)  |                     |                         |                        |
| Total Equity Capital                   |   |                     | \$ 11,346,619           | \$ 11,677,269          |
| <b>LONG TERM DEBT</b>                  |   |                     |                         |                        |
| 221                                    | Bonds   | F-15                |                         |                        |
| 222 *                                  | Reacquired Bonds  |                     |                         |                        |
| 223                                    | Advances from Associated Companies                            | F-17                |                         |                        |
| 224                                    | Other Long Term Debt  | F-17                |                         |                        |
| Total Long Term Debt                   |   |                     | \$ -                    | \$ -                   |
| <b>CURRENT AND ACCRUED LIABILITIES</b> |   |                     |                         |                        |
| 231                                    | Accounts Payable  |                     | 23,383                  | 93,542                 |
| 232                                    | Notes Payable   | F-18                |                         |                        |
| 233                                    | Accounts Payable to Associated Companies                      | F-18                | (663,471)               | (759,057)              |
| 234                                    | Notes Payable to Associated Companies                         | F-18                |                         |                        |
| 235                                    | Customer Deposits   |                     | 106,785                 | 116,717                |
| 236                                    | Accrued Taxes   | W/S-3               | 221,778                 | 218,367                |
| 237                                    | Accrued Interest  | F-19                | (5,158)                 | (4,894)                |
| 238                                    | Accrued Dividends   |                     |                         |                        |
| 239                                    | Matured Long Term Debt  |                     |                         |                        |
| 240                                    | Matured Interest  |                     |                         |                        |
| 241                                    | Miscellaneous Current & Accrued Liabilities                   | F-20                |                         |                        |
| Total Current & Accrued Liabilities    |   |                     | \$ (316,683)            | \$ (335,325)           |

\* Not Applicable for Class B Utilities

**COMPARATIVE BALANCE SHEET  
EQUITY CAPITAL AND LIABILITIES**

| ACCT. NO.<br>(a)                            | ACCOUNT NAME<br>(b)  | REF. PAGE<br>(c) | PREVIOUS YEAR<br>(d)  | CURRENT YEAR<br>(e)   |
|---|--|------------------|-----------------------|-----------------------|
| <b>DEFERRED CREDITS</b>                     |  |                  |                       |                       |
| 251   | Unamortized Premium On Debt                                      | F-13             | \$ _____              | \$ _____              |
| 252   | Advances For Construction  | F-20             | _____                 | _____                 |
| 253   | Other Deferred Credits   | F-21             | _____                 | _____                 |
| 255   | Accumulated Deferred Investment Tax Credits                      |                  | -                     | -                     |
| Total Deferred Credits                      |  |                  | \$ <u>          -</u> | \$ <u>          -</u> |
| <b>OPERATING RESERVES</b>                   |  |                  |                       |                       |
| 261   | Property Insurance Reserve                                       |                  | \$ _____              | \$ _____              |
| 262   | Injuries & Damages Reserve                                       |                  | _____                 | _____                 |
| 263   | Pensions and Benefits Reserve                                    |                  | _____                 | _____                 |
| 265   | Miscellaneous Operating Reserves                                 |                  | _____                 | _____                 |
| Total Operating Reserves                    |  |                  | \$ <u>          -</u> | \$ <u>          -</u> |
| <b>CONTRIBUTIONS IN AID OF CONSTRUCTION</b> |  |                  |                       |                       |
| 271   | Contributions in Aid of Construction                             | F-22             | \$ 22,612,966         | \$ 22,669,639         |
| 272   | Accumulated Amortization of Contributions in Aid of Construction | F-22             | 13,718,651            | 14,344,733            |
| Total Net C.I.A.C.                          |  |                  | \$ <u>8,894,315</u>   | \$ <u>8,324,906</u>   |
| <b>ACCUMULATED DEFERRED INCOME TAXES</b>    |  |                  |                       |                       |
| 281   | Accumulated Deferred Income Taxes - Accelerated Depreciation     |                  | \$ 68,265             | \$ 43,701             |
| 282   | Accumulated Deferred Income Taxes - Liberalized Depreciation     |                  | _____                 | _____                 |
| 283   | Accumulated Deferred Income Taxes - Other                        |                  | 23,768                | 17,775                |
| Total Accumulated Deferred Income Tax       |  |                  | \$ <u>92,033</u>      | \$ <u>61,476</u>      |
| <b>TOTAL EQUITY CAPITAL AND LIABILITIES</b> |  |                  | \$ <u>20,016,284</u>  | \$ <u>19,728,326</u>  |

**COMPARATIVE OPERATING STATEMENT**

| ACCT.<br>NO.<br>(a)  | ACCOUNT NAME<br>(b)                                  | REF.<br>PAGE<br>(c) | PREVIOUS<br>YEAR<br>(d) | CURRENT<br>YEAR *<br>(e) |
|--|--|---------------------|-------------------------|--------------------------|
| <b>UTILITY OPERATING INCOME</b>                                |  |                     |                         |                          |
| 400  | Operating Revenues                                   | F-3(b)              | \$ 4,814,576            | \$ 4,801,410             |
| 469, 530   | Less: Guaranteed Revenue and AFPI                    | F-3(b)              |                         |                          |
| Net Operating Revenues   |  |                     | \$ 4,814,576            | \$ 4,801,410             |
| 401  | Operating Expenses                                   | F-3(b)              | \$ 3,304,191            | \$ 3,251,541             |
| 403  | Depreciation Expense:                                | F-3(b)              | \$ 1,060,203            | \$ 1,084,410             |
|  | Less: Amortization of CIAC                           | F-22                | (652,069)               | (626,082)                |
| Net Depreciation Expense                                       |  |                     | \$ 408,134              | \$ 458,328               |
| 406  | Amortization of Utility Plant Acquisition Adjustment | F-3(b)              | -                       | -                        |
| 407  | Amortization Expense (Other than CIAC)               | F-3(b)              | 7,232                   | 7,232                    |
| 408  | Taxes Other Than Income                              | W/S-3               | 314,959                 | 314,773                  |
| 409  | Current Income Taxes                                 | W/S-3               | 179,503                 | 63,200                   |
| 410.10   | Deferred Federal Income Taxes                        | W/S-3               | (2,222)                 | 44,871                   |
| 410.11   | Deferred State Income Taxes                          | W/S-3               | (456)                   | (1,597)                  |
| 411.10   | Provision for Deferred Income Taxes - Credit         | W/S-3               | -                       | -                        |
| 412.10   | Investment Tax Credits Deferred to Future Periods    | W/S-3               | -                       | -                        |
| 412.11   | Investment Tax Credits Restored to Operating Income  | W/S-3               | -                       | -                        |
| Utility Operating Expenses                                     |  |                     | \$ 4,211,341            | \$ 4,138,348             |
| Net Utility Operating Income                                   |  |                     | \$ 603,235              | \$ 663,062               |
| 469, 530   | Add Back: Guaranteed Revenue and AFPI                | F-3(b)              |                         |                          |
| 413  | Income From Utility Plant Leased to Others           |                     |                         |                          |
| 414  | Gains (losses) From Disposition of Utility Property  |                     |                         |                          |
| 420  | Allowance for Funds Used During Construction         |                     | -                       | 3,810                    |
| Total Utility Operating Income [Enter here and on Page F-3(c)] |  |                     | \$ 603,235              | \$ 666,872               |

\* For each account, Column e should agree with Cloumns f, g and h on F-3(b)

**COMPARATIVE OPERATING STATEMENT (Cont'd)**

| <b>WATER<br/>SCHEDULE W-3 *<br/>(f)</b>   | <b>WASTEWATER<br/>SCHEDULE S-3 *<br/>(g)</b>   | <b>OTHER THAN<br/>REPORTING<br/>SYSTEMS<br/>(h)</b>  |
|---|--|--|
| \$ <u>1,776,724</u>   | \$ <u>3,024,686</u>  | \$ <u>-</u>  |
| \$ <u>1,776,724</u>   | \$ <u>3,024,686</u>  | \$ <u>-</u>  |
| \$ 1,348,828  | \$ 1,902,713   | \$ -   |
| <u>483,674</u><br><u>(323,544)</u>  | <u>600,737</u><br><u>(302,538)</u>   | <u>-</u>   |
| \$ <u>160,130</u>   | \$ <u>298,199</u>  | \$ <u>-</u>  |
| <u>-</u><br><u>5,027</u><br><u>131,694</u><br><u>525</u><br><u>372</u><br><u>(13)</u><br><u>-</u><br><u>-</u><br><u>-</u> | <u>-</u><br><u>2,205</u><br><u>183,079</u><br><u>62,675</u><br><u>44,499</u><br><u>(1,584)</u><br><u>-</u><br><u>-</u><br><u>-</u> | <u>-</u><br><u>-</u><br><u>-</u><br><u>-</u><br><u>-</u><br><u>-</u><br><u>-</u><br><u>-</u><br><u>-</u> |
| \$ <u>1,646,563</u>   | \$ <u>2,491,786</u>  | \$ <u>-</u>  |
| \$ <u>130,162</u>   | \$ <u>532,901</u>  | \$ <u>-</u>  |
| <u>-</u><br><u>-</u><br><u>-</u><br><u>2,151</u>  | <u>-</u><br><u>-</u><br><u>-</u><br><u>1,659</u>   | <u>-</u><br><u>-</u><br><u>-</u><br><u>-</u>   |
| \$ <u><u>132,313</u></u>  | \$ <u><u>534,560</u></u>   | \$ <u><u>-</u></u>   |

\* Total of Schedules W-3 / S-3 for all rate groups.

**COMPARATIVE OPERATING STATEMENT (Cont'd)**

| ACCT.<br>NO.<br>(a)                               | ACCOUNT NAME<br>(b)  | REF.<br>PAGE<br>(c) | PREVIOUS<br>YEAR<br>(d) | CURRENT<br>YEAR<br>(e) |
|---|--|---------------------|-------------------------|------------------------|
| Total Utility Operating Income [from page F-3(a)] |  |                     | \$ 603,235              | \$ 666,872             |
| <b>OTHER INCOME AND DEDUCTIONS</b>                |  |                     |                         |                        |
| 415   | Revenues-Merchandising, Jobbing, and Contract Deductions     |                     | \$ _____                | \$ _____               |
| 416   | Costs & Expenses of Merchandising Jobbing, and Contract Work |                     | _____                   | _____                  |
| 419   | Interest and Dividend Income                                 |                     | (3,583)                 | (4,663)                |
| 421   | Nonutility Income  |                     | _____                   | _____                  |
| 426   | Miscellaneous Nonutility Expenses                            |                     | -                       | -                      |
| Total Other Income and Deductions                 |  |                     | \$ (3,583)              | \$ (4,663)             |
| <b>TAXES APPLICABLE TO OTHER INCOME</b>           |  |                     |                         |                        |
| 408.20  | Taxes Other Than Income                                      |                     | \$ _____                | \$ _____               |
| 409.20  | Income Taxes   |                     | _____                   | _____                  |
| 410.20  | Provision for Deferred Income Taxes                          |                     | _____                   | _____                  |
| 411.20  | Provision for Deferred Income Taxes - Credit                 |                     | _____                   | _____                  |
| 412.20  | Investment Tax Credits - Net                                 |                     | _____                   | _____                  |
| 412.30  | Investment Tax Credits Restored to Operating Income          |                     | _____                   | _____                  |
| Total Taxes Applicable To Other Income            |  |                     | \$ -                    | \$ -                   |
| <b>INTEREST EXPENSE</b>                           |  |                     |                         |                        |
| 427   | Interest Expense   | F-19                | \$ 320,258              | \$ 482,973             |
| 428   | Amortization of Debt Discount & Expense                      | F-13                | _____                   | _____                  |
| 429   | Amortization of Premium on Debt                              | F-13                | _____                   | _____                  |
| Total Interest Expense                            |  |                     | \$ 320,258              | \$ 482,973             |
| <b>EXTRAORDINARY ITEMS</b>                        |  |                     |                         |                        |
| 433   | Extraordinary Income   |                     | \$ _____                | \$ _____               |
| 434   | Extraordinary Deductions                                     |                     | _____                   | _____                  |
| 409.30  | Income Taxes, Extraordinary Items                            |                     | _____                   | _____                  |
| Total Extraordinary Items                         |  |                     | \$ -                    | \$ -                   |
| NET INCOME  |  |                     | \$ 279,394              | \$ 179,236             |

Explain Extraordinary Income:

NONE

---



---



---



---



---



**SCHEDULE OF YEAR END RATE BASE**

| ACCT.<br>NO.<br>(a)   | ACCOUNT NAME<br>(b)   | REF.<br>PAGE<br>(c) | WATER<br>UTILITY<br>(d)    | WASTEWATER<br>UTILITY<br>(e) |
|---|---|---------------------|----------------------------|------------------------------|
| 101   | Utility Plant In Service  | F-7                 | \$ 14,880,765              | \$ 21,505,758                |
|   | Less:   |                     |                            |                              |
|   | Nonused and Useful Plant (1)  |                     |                            |                              |
| 108   | Accumulated Depreciation  | F-8                 | <u>7,695,007</u>           | <u>9,754,599</u>             |
| 110   | Accumulated Amortization  | F-8                 | <u>22,843</u>              | <u>11,178</u>                |
| 271   | Contributions In Aid of Construction                                | F-22                | <u>11,075,918</u>          | <u>11,593,721</u>            |
| 252   | Advances for Construction   | F-20                |                            |                              |
| Subtotal  |   |                     | \$ <u>(3,913,003)</u>      | \$ <u>146,261</u>            |
|   | Add:  |                     |                            |                              |
| 272   | Accumulated Amortization of<br>Contributions in Aid of Construction | F-22                | 6,645,731                  | 7,699,002                    |
| Subtotal  |   |                     | \$ <u>2,732,729</u>        | \$ <u>7,845,263</u>          |
|   | Plus or Minus:  |                     |                            |                              |
| 114   | Acquisition Adjustments (2)   | F-7                 | <u>-</u>                   | <u>-</u>                     |
| 115   | Accumulated Amortization of<br>Acquisition Adjustments (2)          | F-7                 | <u>-</u>                   | <u>-</u>                     |
|   | Working Capital Allowance (3)                                       |                     | <u>168,604</u>             | <u>237,839</u>               |
|   | Other (Specify):  |                     |                            |                              |
|   | Work In Process   |                     | <u>36,314</u>              | <u>15,873</u>                |
|   | _____   |                     |                            |                              |
|   | _____   |                     |                            |                              |
| <b>RATE BASE</b>  |   |                     | \$ <u><u>2,937,646</u></u> | \$ <u><u>8,098,975</u></u>   |
| <b>NET UTILITY OPERATING INCOME</b>                           |   |                     | \$ <u><u>130,162</u></u>   | \$ <u><u>532,901</u></u>     |
| <b>ACHIEVED RATE OF RETURN (Operating Income / Rate Base)</b> |   |                     | <u><u>4.43%</u></u>        | <u><u>6.58%</u></u>          |

**NOTES :**

- (1) Estimate based on the methodology used in the last rate proceeding.
- (2) Include only those Acquisition Adjustments that have been approved by the Commission.
- (3) Calculation consistent with last rate proceeding.  
In absence of a rate proceeding, Class A utilities will use the Balance Sheet Method and Class B Utilities will use the One-eighth Operating and Maintenance Expense Method.

**SCHEDULE OF CURRENT COST OF CAPITAL  
CONSISTENT WITH THE METHODOLOGY USED IN THE LAST RATE PROCEEDING (1)**

| CLASS OF CAPITAL<br>(a)         | DOLLAR<br>AMOUNT (2)<br>(b) | PERCENTAGE<br>OF CAPITAL<br>(c) | ACTUAL<br>COST RATES (3)<br>(d) | WEIGHTED<br>COST<br>(c x d)<br>(e) |
|---------------------------------|-----------------------------|---------------------------------|---------------------------------|------------------------------------|
| Common Equity                   | \$ 4,587,335                | 41.56%                          | 9.81%                           | 4.08%                              |
| Preferred Stock                 | -                           | 0.00%                           | 0.00%                           | 0.00%                              |
| Long Term Debt                  | 6,377,790                   | 57.79%                          | 7.31%                           | 4.23%                              |
| Customer Deposits               | 116,717                     | 1.06%                           | 6.00%                           | 0.06%                              |
| Tax Credits - Zero Cost         | -                           | 0.00%                           | 0.00%                           | 0.00%                              |
| Tax Credits - Weighted Cost     | -                           | 0.00%                           | 0.00%                           | 0.00%                              |
| Deferred Income Taxes           | (45,221)                    | -0.41%                          | 0.00%                           | 0.00%                              |
| Other (Explain) Short Term Debt | -                           | 0.00%                           | 0.00%                           | 0.00%                              |
| <b>Total</b>                    | <b>\$ 11,036,621</b>        | <b>100.00%</b>                  |                                 | <b>8.37%</b>                       |

(1) If the utility's capital structure is not used, explain which capital structure is used.

\_\_\_\_\_

\_\_\_\_\_

(2) Should equal amounts on Schedule F-6, Column (g).

(3) Mid-point of the last authorized Return On Equity or current leverage formula if none has been established.

Must be calculated using the same methodology used in the last rate proceeding using current annual report year end amounts and cost rates.

**APPROVED RETURN ON EQUITY**

|  |                       |
|--|-----------------------|
| Current Commission Return on Equity:         | <u>9.81%</u>          |
| Commission order approving Return on Equity: | <u>PSC-00-2097-AS</u> |

**APPROVED AFUDC RATE**

COMPLETION ONLY REQUIRED IF AFUDC WAS CHARGED DURING YEAR

|   |                           |
|---|---------------------------|
| Current Commission Approved AFUDC rate: | <u>9.03%</u>              |
| Commission order approving AFUDC rate:  | <u>PSC-04-0262-PAA-WS</u> |

If any utility capitalized any charge in lieu of AFUDC (such as interest only), state the basis of the charge, an explanation as to why AFUDC was not charged and the percentage capitalized.

SANLANDO UTILITIES CORPORATION

UTILITY NAME:

SCHEDULE OF CAPITAL STRUCTURE ADJUSTMENTS  
CONSISTENT WITH THE METHODOLOGY USED IN THE LAST RATE PROCEEDING

| CLASS OF CAPITAL (a)        | PER BOOK BALANCE (b) | NON-UTILITY ADJUSTMENTS (c) | NON-JURISDICTIONAL ADJUSTMENTS (d) | OTHER (1) ADJUSTMENTS SPECIFIC (e) | OTHER (1) ADJUSTMENTS PRO RATA (f) | CAPITAL STRUCTURE (g) |
|-----------------------------|----------------------|-----------------------------|------------------------------------|------------------------------------|------------------------------------|-----------------------|
| Common Equity               | \$ 82,943,449        | \$ 0                        | \$ 0                               | \$ 0                               | \$ (78,356,114)                    | \$ 4,587,335          |
| Preferred Stock             |                      | 0                           | 0                                  | 0                                  |                                    | -                     |
| Long Term Debt              | 115,316,615          | 0                           | 0                                  | 0                                  | (108,938,825)                      | 6,377,790             |
| Customer Deposits           | 116,717              | 0                           | 0                                  | 0                                  |                                    | 116,717               |
| Tax Credits - Zero Cost     | -                    | 0                           | 0                                  | 0                                  |                                    | -                     |
| Tax Credits - Weighted Cost | -                    | 0                           | 0                                  | 0                                  |                                    | -                     |
| Deferred Inc. Taxes         | (45,221)             | 0                           | 0                                  | 0                                  |                                    | (45,221)              |
| Other (Explain)             | -                    | 0                           | 0                                  | 0                                  |                                    | -                     |
| Total                       | \$ 198,331,560       | \$ 0                        | \$ 0                               | \$ 0                               | \$ (187,294,939)                   | \$ 11,036,621         |

(1) Explain below all adjustments made in Columns (e) and (f):

NOT APPLICABLE

**UTILITY PLANT  
ACCOUNTS 101 - 106**

| ACCT.<br>(a) | DESCRIPTION<br>(b)                          | WATER<br>(c)  | WASTEWATER<br>(d) | OTHER THAN<br>REPORTING<br>SYSTEMS<br>(e) | TOTAL<br>(f)  |
|--------------|---|---------------|-------------------|---|---------------|
| 101          | Plant Accounts:<br>Utility Plant In Service | \$ 15,184,821 | \$ 21,201,702     | \$ _____                                  | \$ 36,386,523 |
| 102          | Utility Plant Leased to<br>Other            | _____         | _____             | _____                                     | -             |
| 103          | Property Held for Future<br>Use             | _____         | _____             | _____                                     | -             |
| 104          | Utility Plant Purchased<br>or Sold          | _____         | _____             | _____                                     | -             |
| 105          | Construction Work in<br>Progress            | 36,314        | 15,873            | _____                                     | 52,187        |
| 106          | Completed Construction<br>Not Classified    | _____         | _____             | _____                                     | -             |
|              | Total Utility Plant                         | \$ 15,221,135 | \$ 21,217,575     | \$ -                                      | \$ 36,438,710 |

**UTILITY PLANT ACQUISITION ADJUSTMENTS  
ACCOUNTS 114 AND 115**

Report each acquisition adjustment and related accumulated amortization separately.  
For any acquisition adjustments approved by the Commission, include the Order Number.

| ACCT.<br>(a)                        | DESCRIPTION<br>(b)                                       | WATER<br>(c) | WASTEWATER<br>(d) | OTHER THAN<br>REPORTING<br>SYSTEMS<br>(e) | TOTAL<br>(f) |
|-------------------------------------|--|--------------|-------------------|---|--------------|
| 114                                 | Acquisition Adjustment<br><b>NONE</b>                    | \$ -         | \$ -              | \$ -                                      | \$ -         |
|                                     |  | _____        | _____             | _____                                     | -            |
|                                     |  | _____        | _____             | _____                                     | -            |
|                                     |  | _____        | _____             | _____                                     | -            |
| Total Plant Acquisition Adjustments |  | \$ -         | \$ -              | \$ -                                      | \$ -         |
| 115                                 | Accumulated Amortization<br>Accruals charged during year | \$ -         | \$ -              | \$ _____                                  | \$ -         |
|                                     |  | _____        | _____             | _____                                     | -            |
|                                     |  | _____        | _____             | _____                                     | -            |
|                                     |  | _____        | _____             | _____                                     | -            |
| Total Accumulated Amortization      |  | \$ -         | \$ -              | \$ -                                      | \$ -         |
| Net Acquisition Adjustments         |  | \$ -         | \$ -              | \$ -                                      | \$ -         |

**ACCUMULATED DEPRECIATION ( ACCT. 108 ) AND AMORTIZATION (ACCT. 110)**

| <b>DESCRIPTION<br/>(a)</b>      | <b>WATER<br/>(b)</b> | <b>WASTEWATER<br/>(c)</b> | <b>OTHER THAN<br/>REPORTING<br/>SYSTEMS<br/>(d)</b> | <b>TOTAL<br/>(e)</b> |
|---------------------------------|----------------------|---------------------------|---|----------------------|
| <b>ACCUMULATED DEPRECIATION</b> |                      |                           |   |                      |
| Account 108                     |                      |                           |   |                      |
| Balance first of year           | \$ 7,283,793         | \$ 9,204,091              | \$ -  | \$ 16,487,884        |
| Credit during year:             |                      |                           |   |                      |
| Accruals charged to:            |                      |                           |   |                      |
| Account 108.1 (1)               | \$ 483,674           | \$ 600,737                | \$ -  | \$ 1,084,410         |
| Account 108.2 (2)               |                      |                           |   | -                    |
| Account 108.3 (2)               |                      |                           |   | -                    |
| Other Accounts (specify):       |                      |                           |   |                      |
| UIF alloc                       | (26,468)             | (8,043)                   |   | (34,511)             |
| Salvage                         |                      |                           |   | -                    |
| Other Credits (Specify):        |                      |                           |   | -                    |
| <b>Total Credits</b>            | \$ 457,206           | \$ 592,694                | \$ -  | \$ 1,049,899         |
| Debits during year:             |                      |                           |   |                      |
| Book cost of plant retired      | 45,992               | 42,186                    |   | 88,178               |
| Cost of Removal                 |                      |                           |   | -                    |
| Other Debits (specify):         |                      |                           |   | -                    |
| <b>Total Debits</b>             | \$ 45,992            | \$ 42,186                 | \$ -  | \$ 88,178            |
| <b>Balance end of year</b>      | \$ <u>7,695,007</u>  | \$ <u>9,754,599</u>       | \$ <u>-</u>   | \$ <u>17,449,605</u> |
| <b>ACCUMULATED AMORTIZATION</b> |                      |                           |   |                      |
| Account 110                     |                      |                           |   |                      |
| Balance first of year           | \$ 17,816            | \$ 8,973                  | \$ -  | \$ 26,789            |
| Credit during year:             |                      |                           |   |                      |
| Accruals charged to:            |                      |                           |   |                      |
| Account 110.2 (2)               | \$ 5,027             | \$ 2,205                  | \$ -  | \$ 7,232             |
| Other Accounts (specify):       |                      |                           |   | -                    |
| <b>Total credits</b>            | \$ 5,027             | \$ 2,205                  | \$ -  | \$ 7,232             |
| Debits during year:             |                      |                           |   |                      |
| Book cost of plant retired      |                      |                           |   | -                    |
| Other debits (specify):         |                      |                           |   | -                    |
| <b>Total Debits</b>             | \$ -                 | \$ -                      | \$ -  | \$ -                 |
| <b>Balance end of year</b>      | \$ <u>22,843</u>     | \$ <u>11,178</u>          | \$ <u>-</u>   | \$ <u>34,021</u>     |

- (1) Account 108 for Class B utilities.
- (2) Not applicable for Class B utilities.
- (3) Account 110 for Class B utilities.

UTILITY NAME: **SANLANDO UTILITIES CORPORATION**

**YEAR OF REPORT**  
31-Dec-03

**REGULATORY COMMISSION EXPENSE  
AMORTIZATION OF RATE CASE EXPENSE (ACCOUNTS 666 AND 766)**

| DESCRIPTION OF CASE<br>(DOCKET NO.)<br>(a) | EXPENSE<br>INCURRED<br>DURING YEAR<br>(b) | CHARGED OFF<br>DURING YEAR |               |
|--|---|----------------------------|---------------|
|  |   | ACCT.<br>(d)               | AMOUNT<br>(e) |
| NONE                                       | \$ _____                                  | _____                      | \$ _____      |
| _____                                      | _____                                     | _____                      | _____         |
| _____                                      | _____                                     | _____                      | _____         |
| Total                                      | \$ _____                                  | _____                      | \$ _____      |

**NONUTILITY PROPERTY (ACCOUNT 121)**

Report separately each item of property with a book cost of \$25,000 or more included in Account 121.  
Other Items may be grouped by classes of property.

| DESCRIPTION<br>(a)        | BEGINNING<br>YEAR<br>(b) | ADDITIONS<br>(c) | REDUCTIONS<br>(d) | ENDING YEAR<br>BALANCE<br>(e) |
|---------------------------|--------------------------|------------------|-------------------|-------------------------------|
| NONE                      | \$ _____                 | \$ _____         | \$ _____          | \$ _____                      |
| _____                     | _____                    | _____            | _____             | _____                         |
| _____                     | _____                    | _____            | _____             | _____                         |
| _____                     | _____                    | _____            | _____             | _____                         |
| Total Nonutility Property | \$ _____                 | \$ _____         | \$ _____          | \$ _____                      |

**SPECIAL DEPOSITS (ACCOUNTS 132 AND 133)**

Report hereunder all special deposits carried in Accounts 132 and 133.

| DESCRIPTION OF SPECIAL DEPOSITS<br>(a)        | YEAR END<br>BOOK COST<br>(b) |
|---|------------------------------|
| SPECIAL DEPOSITS (Account 132):<br>NONE       | \$ _____                     |
| _____   | _____                        |
| _____   | _____                        |
| Total Special Deposits                        | \$ _____                     |
| OTHER SPECIAL DEPOSITS (Account 133):<br>NONE | \$ _____                     |
| _____   | _____                        |
| _____   | _____                        |
| Total Other Special Deposits                  | \$ _____                     |

**INVESTMENTS AND SPECIAL FUNDS  
ACCOUNTS 123 - 127**

Report hereunder all investments and special funds carried in Accounts 123 through 127.

| DESCRIPTION OF SECURITY OR SPECIAL FUND<br>(a)  | FACE OR<br>PAR VALUE<br>(b)                           | YEAR END<br>BOOK COST<br>(c)                          |
|---|---|---|
| INVESTMENT IN ASSOCIATED COMPANIES (Account 123):<br>NONE<br><hr/> <hr/> <hr/> <hr/> <hr/> <hr/>  | \$ _____<br>_____<br>_____<br>_____<br>_____<br>_____ | \$ _____<br>_____<br>_____<br>_____<br>_____<br>_____ |
| Total Investment in Associated Companies  |   | \$ _____  |
| UTILITY INVESTMENTS (Account 124):<br>NONE<br><hr/> <hr/> <hr/> <hr/> <hr/> <hr/>   | \$ _____<br>_____<br>_____<br>_____<br>_____<br>_____ | \$ _____<br>_____<br>_____<br>_____<br>_____<br>_____ |
| Total Utility Investment  |   | \$ _____  |
| OTHER INVESTMENTS (Account 125):<br>NONE<br><hr/> <hr/> <hr/> <hr/> <hr/> <hr/>   | \$ _____<br>_____<br>_____<br>_____<br>_____<br>_____ | \$ _____<br>_____<br>_____<br>_____<br>_____<br>_____ |
| Total Other Investment  |   | \$ _____  |
| SPECIAL FUNDS (Class A Utilities: Accounts 126 and 127; Class B Utilities: Account 127):<br>NONE<br><hr/> <hr/> <hr/> <hr/> <hr/> <hr/> | _____<br>_____<br>_____<br>_____<br>_____<br>_____    | \$ _____<br>_____<br>_____<br>_____<br>_____<br>_____ |
| Total Special Funds   |   | \$ _____  |

**ACCOUNTS AND NOTES RECEIVABLE - NET**  
**ACCOUNTS 141 - 144**

Report hereunder all accounts and notes receivable included in Accounts 141, 142, and 144. Amounts included in  
Amounts included in Accounts 142 and 144 should be listed individually.

| DESCRIPTION<br>(a)   | TOTAL<br>(b)      |
|--|-------------------|
| CUSTOMER ACCOUNTS RECEIVABLE (Account 141):                      |                   |
| Water  | \$ 338,787        |
| Wastewater   | 272,742           |
| Other  | _____             |
| Total Customer Accounts Receivable                               | \$ 611,529        |
| OTHER ACCOUNTS RECEIVABLE ( Account 142):                        |                   |
| _____  | \$ _____          |
| _____  | _____             |
| _____  | _____             |
| Total Other Accounts Receivable                                  | \$ -              |
| NOTES RECEIVABLE (Account 144):                                  |                   |
| _____  | \$ _____          |
| _____  | _____             |
| _____  | _____             |
| Total Notes Receivable   | \$ -              |
| Total Accounts and Notes Receivable                              | \$ 611,529        |
| ACCUMULATED PROVISION FOR UNCOLLECTIBLE ACCOUNTS ( Account 143 ) |                   |
| Balance first of year  | \$ -              |
| Add: Provision for uncollectibles for current year               | \$ _____          |
| Collection of accounts previously written off                    | _____             |
| Utility Accounts   | _____             |
| Others   | _____             |
| _____  | _____             |
| Total Additions  | \$ -              |
| Deduct accounts written off during year:                         |                   |
| Utility Accounts   | _____             |
| Others   | _____             |
| _____  | _____             |
| Total accounts written off                                       | \$ -              |
| Balance end of year  | \$ _____          |
| <b>TOTAL ACCOUNTS AND NOTES RECEIVABLE - NET</b>                 | <b>\$ 611,529</b> |



UTILITY NAME: SANLANDO UTILITIES CORPORATION

**YEAR OF REPORT**  
31-Dec-03

**ACCOUNTS RECEIVABLE FROM ASSOCIATED COMPANIES**  
**ACCOUNT 145**

Report each account receivable from associated companies separately.

| DESCRIPTION<br>(a) | TOTAL<br>(b) |
|--------------------|--------------|
| NONE               | \$ _____     |
| _____              | _____        |
| _____              | _____        |
| _____              | _____        |
| _____              | _____        |
| _____              | _____        |
| _____              | _____        |
| _____              | _____        |
| _____              | _____        |
| _____              | _____        |
| Total              | \$ _____     |

**NOTES RECEIVABLE FROM ASSOCIATED COMPANIES**  
**ACCOUNT 146**

Report each note receivable from associated companies separately.

| DESCRIPTION<br>(a) | INTEREST<br>RATE<br>(b) | TOTAL<br>(c) |
|--------------------|-------------------------|--------------|
| NONE               | _____ %                 | \$ _____     |
| _____              | _____ %                 | _____        |
| _____              | _____ %                 | _____        |
| _____              | _____ %                 | _____        |
| _____              | _____ %                 | _____        |
| _____              | _____ %                 | _____        |
| _____              | _____ %                 | _____        |
| _____              | _____ %                 | _____        |
| _____              | _____ %                 | _____        |
| _____              | _____ %                 | _____        |
| Total              |                         | \$ _____     |

**MISCELLANEOUS CURRENT AND ACCRUED ASSETS**  
**ACCOUNT 174**

| DESCRIPTION - Provide itemized listing<br>(a)       | BALANCE END<br>OF YEAR<br>(b) |
|---|-------------------------------|
| NONE  | \$ _____                      |
| _____   | _____                         |
| _____   | _____                         |
| _____   | _____                         |
| Total Miscellaneous Current and Accrued Liabilities | \$ _____                      |

UTILITY NAME: SANLANDO UTILITIES CORPORATION

|                                    |
|------------------------------------|
| <b>YEAR OF REPORT</b><br>31-Dec-03 |
|------------------------------------|

**UNAMORTIZED DEBT DISCOUNT AND EXPENSE AND PREMIUM ON DEBT  
ACCOUNTS 181 AND 251**

Report the net discount and expense or premium separately for each security issue.

| DESCRIPTION<br>(a)  | AMOUNT<br>WRITTEN OFF<br>DURING YEAR<br>(b) | YEAR END<br>BALANCE<br>(c) |
|---|---|----------------------------|
| UNAMORTIZED DEBT DISCOUNT AND EXPENSE (Account 181):<br><b>NONE</b> | \$ _____                                    | \$ _____                   |
| _____   | _____                                       | _____                      |
| _____   | _____                                       | _____                      |
| _____   | _____                                       | _____                      |
| Total Unamortized Debt Discount and Expense                         | \$ _____                                    | \$ _____                   |
| UNAMORTIZED PREMIUM ON DEBT (Account 251):                          | \$ _____                                    | \$ _____                   |
| _____   | _____                                       | _____                      |
| _____   | _____                                       | _____                      |
| _____   | _____                                       | _____                      |
| Total Unamortized Premium on Debt                                   | \$ _____                                    | \$ _____                   |

**EXTRAORDINARY PROPERTY LOSSES  
ACCOUNT 182**

Report each item separately.

| DESCRIPTION<br>(a)                  | TOTAL<br>(b) |
|-------------------------------------|--------------|
| <b>NONE</b>                         | \$ _____     |
| _____                               | _____        |
| _____                               | _____        |
| Total Extraordinary Property Losses | \$ _____     |

**MISCELLANEOUS DEFERRED DEBITS  
ACCOUNT 186**

| DESCRIPTION - Provide itemized listing<br>(a)                 | AMOUNT<br>WRITTEN OFF<br>DURING YEAR<br>(b) | YEAR END<br>BALANCE<br>(c) |
|---|---|----------------------------|
| DEFERRED RATE CASE EXPENSE (Class A Utilities: Account 186.1) |   |                            |
| <b>RATE CASE - (NONE)</b>                                     | \$ -  | \$ -                       |
| _____   | _____                                       | _____                      |
| _____   | _____                                       | _____                      |
| _____   | _____                                       | _____                      |
| _____   | _____                                       | _____                      |
| Total Deferred Rate Case Expense                              | \$ -  | \$ -                       |
| OTHER DEFERRED DEBITS (Class A Utilities: Account 186.2):     |   |                            |
| <b>OTHER DEFERRED MAINTENANCE</b>                             | \$ -  | \$ 55,016                  |
| _____   | _____                                       | _____                      |
| _____   | _____                                       | _____                      |
| _____   | _____                                       | _____                      |
| _____   | _____                                       | _____                      |
| _____   | _____                                       | _____                      |
| _____   | _____                                       | _____                      |
| _____   | _____                                       | _____                      |
| Total Other Deferred Debits                                   | \$ -  | \$ 55,016                  |
| REGULATORY ASSETS (Class A Utilities: Account. 186.3):        |   |                            |
| <b>NONE</b>   | \$ -  | \$ -                       |
| _____   | _____                                       | _____                      |
| _____   | _____                                       | _____                      |
| _____   | _____                                       | _____                      |
| _____   | _____                                       | _____                      |
| _____   | _____                                       | _____                      |
| _____   | _____                                       | _____                      |
| _____   | _____                                       | _____                      |
| Total Regulatory Assets                                       | \$ -  | \$ -                       |
| <b>TOTAL MISCELLANEOUS DEFERRED DEBITS</b>                    | \$ -  | \$ 55,016                  |

UTILITY NAME: SANLANDO UTILITIES CORPORATION

|                                    |
|------------------------------------|
| <b>YEAR OF REPORT</b><br>31-Dec-03 |
|------------------------------------|

**CAPITAL STOCK  
ACCOUNTS 201 AND 204\***

| DESCRIPTION<br>(a)                    | RATE<br>(b) | TOTAL<br>(c)   |
|---------------------------------------|-------------|----------------|
| <b>COMMON STOCK</b>                   |             |                |
| Par or stated value per share         | _____ %     | \$ _____ 10    |
| Shares authorized                     |             | _____ -        |
| Shares issued and outstanding         |             | _____ -        |
| Total par value of stock issued       | _____ %     | \$ _____ 3,575 |
| Dividends declared per share for year | _____ %     | \$ _____ -     |
| <b>PREFERRED STOCK</b>                |             |                |
| Par or stated value per share         | _____ %     | \$ _____ -     |
| Shares authorized                     |             | _____ -        |
| Shares issued and outstanding         |             | _____ -        |
| Total par value of stock issued       | _____ %     | \$ _____ -     |
| Dividends declared per share for year | _____ %     | \$ _____ -     |

\* Account 204 not applicable for Class B utilities.

**BONDS  
ACCOUNT 221**

| DESCRIPTION OF OBLIGATION<br>(INCLUDING DATE OF ISSUE AND DATE OF MATURITY)<br>(a) | INTEREST              |                               | PRINCIPAL<br>AMOUNT PER<br>BALANCE SHEET<br>(d) |
|--|-----------------------|-------------------------------|---|
|  | ANNUAL<br>RATE<br>(b) | FIXED OR<br>VARIABLE *<br>(c) |   |
| NONE   | _____ %               | _____                         | \$ _____  |
|  | _____ %               | _____                         | _____   |
|  | _____ %               | _____                         | _____   |
|  | _____ %               | _____                         | _____   |
|  | _____ %               | _____                         | _____   |
|  | _____ %               | _____                         | _____   |
|  | _____ %               | _____                         | _____   |
|  | _____ %               | _____                         | _____   |
|  | _____ %               | _____                         | _____   |
|  | _____ %               | _____                         | _____   |
| Total  |                       |                               | \$ _____  |

\* For variable rate obligations, provide the basis for the rate. (i.e.. prime + 2%, etc.)

**STATEMENT OF RETAINED EARNINGS**

1. Dividends should be shown for each class and series of capital stock. Show amounts as dividends per share.
2. Show separately the state and federal income tax effect of items shown in Account No. 439.

| ACCT.<br>NO.<br>(a)                      | DESCRIPTION<br>(b)   | AMOUNTS<br>(c)      |
|--|--|---------------------|
| 215                                      | Unappropriated Retained Earnings:<br>Balance Beginning of Year   | \$ 3,491,044        |
| 439                                      | Changes to Account:<br>Adjustments to Retained Earnings ( requires Commission approval prior to use):<br>Credits:<br>_____ | \$ _____            |
|  | Total Credits:   | \$ _____            |
|  | Debits:<br>_____   | \$ _____            |
|  | Total Debits:  | \$ _____            |
| 435                                      | Balance Transferred from Income  | \$ 179,236          |
| 436                                      | Appropriations of Retained Earnings:<br>_____  | _____               |
|  | Total Appropriations of Retained Earnings  | \$ _____            |
| 437                                      | Dividends Declared:<br>Preferred Stock Dividends Declared _____  | _____               |
| 438                                      | Common Stock Dividends Declared _____  | _____               |
|  | Total Dividends Declared   | \$ _____            |
| 215                                      | Year end Balance   | \$ _____            |
| 214                                      | Appropriated Retained Earnings (state balance and<br>purpose of each appropriated amount at year end):<br>_____            | _____               |
| 214                                      | Total Appropriated Retained Earnings   | \$ _____            |
| Total Retained Earnings                  |  | \$ <u>3,670,280</u> |
| Notes to Statement of Retained Earnings: |  |                     |

UTILITY NAME: SANLANDO UTILITIES CORPORATION

|                                    |
|------------------------------------|
| <b>YEAR OF REPORT</b><br>31-Dec-03 |
|------------------------------------|

**ADVANCES FROM ASSOCIATED COMPANIES  
ACCOUNT 223**

Report each advance separately.

| DESCRIPTION<br>(a) | TOTAL<br>(b) |
|--------------------|--------------|
| NONE               | \$ -         |
|                    |              |
|                    |              |
|                    |              |
|                    |              |
|                    |              |
|                    |              |
|                    |              |
|                    |              |
|                    |              |
|                    |              |
| Total              | \$ -         |

**OTHER LONG-TERM DEBT  
ACCOUNT 224**

| DESCRIPTION OF OBLIGATION<br>(INCLUDING DATE OF ISSUE AND DATE OF MATURITY)<br>(a) | INTEREST              |                               | PRINCIPAL<br>AMOUNT PER<br>BALANCE SHEET<br>(d) |
|--|-----------------------|-------------------------------|---|
|  | ANNUAL<br>RATE<br>(b) | FIXED OR<br>VARIABLE *<br>(c) |   |
| NONE   | %                     |                               | \$ -  |
|  | %                     |                               |   |
|  | %                     |                               |   |
|  | %                     |                               |   |
|  | %                     |                               |   |
|  | %                     |                               |   |
|  | %                     |                               |   |
|  | %                     |                               |   |
|  | %                     |                               |   |
|  | %                     |                               |   |
|  | %                     |                               |   |
|  | %                     |                               |   |
|  | %                     |                               |   |
|  | %                     |                               |   |
|  | %                     |                               |   |
|  | %                     |                               |   |
|  | %                     |                               |   |
|  | %                     |                               |   |
|  | %                     |                               |   |
|  | %                     |                               |   |
| Total  |                       |                               | \$ -  |

\* For variable rate obligations, provide the basis for the rate. (i.e.. prime + 2%, etc.)

UTILITY NAME: SANLANDO UTILITIES CORPORATION

|   |
|---|
| <b>YEAR OF REPORT</b><br><b>31-Dec-03</b> |
|---|

**NOTES PAYABLE  
ACCOUNTS 232 AND 234**

| DESCRIPTION OF OBLIGATION<br>(INCLUDING DATE OF ISSUE AND DATE OF MATURITY)<br>(a) | INTEREST              |                               | PRINCIPAL<br>AMOUNT PER<br>BALANCE SHEET<br>(d) |
|--|-----------------------|-------------------------------|---|
|  | ANNUAL<br>RATE<br>(b) | FIXED OR<br>VARIABLE *<br>(c) |   |
| NOTES PAYABLE ( Account 232):<br><u>NONE</u>                                       | %                     |                               | \$ _____  |
| _____  | %                     |                               | _____   |
| _____  | %                     |                               | _____   |
| _____  | %                     |                               | _____   |
| _____  | %                     |                               | _____   |
| _____  | %                     |                               | _____   |
| _____  | %                     |                               | _____   |
| _____  | %                     |                               | _____   |
| _____  | %                     |                               | _____   |
| _____  | %                     |                               | _____   |
| Total Account 232  |                       |                               | \$ _____  |
| NOTES PAYABLE TO ASSOC. COMPANIES (Account 234):<br><u>NONE</u>                    | %                     |                               | \$ _____  |
| _____  | %                     |                               | _____   |
| _____  | %                     |                               | _____   |
| _____  | %                     |                               | _____   |
| _____  | %                     |                               | _____   |
| _____  | %                     |                               | _____   |
| _____  | %                     |                               | _____   |
| _____  | %                     |                               | _____   |
| _____  | %                     |                               | _____   |
| Total Account 234  |                       |                               | \$ _____  |

\* For variable rate obligations, provide the basis for the rate. (i.e.. prime + 2%, etc.)

**ACCOUNTS PAYABLE TO ASSOCIATED COMPANIES  
ACCOUNT 233**

Report each account payable separately.

| DESCRIPTION<br>(a)               | TOTAL<br>(b)      |
|----------------------------------|-------------------|
| <u>WATER SERVICE CORPORATION</u> | \$ <u>759,057</u> |
| _____                            | _____             |
| _____                            | _____             |
| _____                            | _____             |
| _____                            | _____             |
| _____                            | _____             |
| _____                            | _____             |
| Total                            | \$ <u>759,057</u> |

UTILITY NAME: SANLANDO UTILITIES CORPORATION

ACCRUED INTEREST AND EXPENSE  
ACCOUNTS 237 AND 427

| DESCRIPTION<br>OF DEBIT<br>(a)                            | BALANCE<br>BEGINNING<br>OF YEAR<br>(b) | INTEREST ACCRUED<br>DURING YEAR |               | INTEREST<br>PAID DURING<br>YEAR<br>(e) | BALANCE END<br>OF YEAR<br>(f) |
|---|--|---------------------------------|---------------|--|-------------------------------|
|   |  | ACCT.<br>DEBIT<br>(c)           | AMOUNT<br>(d) |  |                               |
| ACCOUNT NO. 237.1 - Accrued Interest on Long Term Debt    | \$ _____                               |                                 | \$ _____      | \$ _____                               | \$ _____                      |
| UTILITIES INC INTERCOMPANY INTEREST                       | -                                      |                                 | 482,973       | 482,973                                | -                             |
| Total Account 237.1                                       | \$ _____                               |                                 | \$ 482,973    | \$ 482,973                             | \$ _____                      |
| ACCOUNT NO. 237.2 - Accrued Interest on Other Liabilities |  |                                 |               |  |                               |
| Customer Deposits   | \$ 5,158                               | 427                             |               |  | -                             |
| MISC ITEMS  |  |                                 | (264)         |  | 4,894                         |
| Total Account 237.2                                       | \$ 5,158                               |                                 | \$ (264)      | \$ _____                               | \$ 4,894                      |
| Total Account 237 (1)                                     | \$ 5,158                               |                                 | \$ 482,709    | \$ 482,973                             | \$ 4,894                      |
| INTEREST EXPENSED:  |  |                                 |               |  |                               |
| Total accrual Account 237                                 |  | 237                             | \$ 482,973    |  |                               |
| Less Capitalized Interest Portion of AFUDC:               |  |                                 | -             |  |                               |
| Net Interest Expensed to Account No. 427 (2)              |  |                                 | \$ 482,973    |  |                               |

(1) Must agree to F-2 (a), Beginning and  
Ending Balance of Accrued Interest.

(2) Must agree to F-3 (c), Current  
Year Interest Expense



**UTILITY NAME: SANLANDO UTILITIES CORPORATION**

**MISCELLANEOUS CURRENT AND ACCRUED LIABILITIES**  
**ACCOUNT 241**

| DESCRIPTION - Provide itemized listing<br>(a)       | BALANCE END<br>OF YEAR<br>(b) |
|---|-------------------------------|
| NONE  | \$ _____                      |
| Total Miscellaneous Current and Accrued Liabilities | \$ _____                      |

**ADVANCES FOR CONSTRUCTION**  
**ACCOUNT 252**

| NAME OF PAYOR *<br>(a) | BALANCE<br>BEGINNING<br>OF YEAR<br>(b) | DEBITS                |               | CREDITS<br>(e) | BALANCE END<br>OF YEAR<br>(f) |
|------------------------|--|-----------------------|---------------|----------------|-------------------------------|
|                        |  | ACCT.<br>DEBIT<br>(c) | AMOUNT<br>(d) |                |                               |
| NONE                   | \$ _____                               |                       | \$ _____      | \$ _____       | \$ _____                      |
| Total                  | \$ _____                               |                       | \$ _____      | \$ _____       | \$ _____                      |

\* Report advances separately by reporting group, designating water or wastewater in column (a).

UTILITY NAME: SANLANDO UTILITIES CORPORATION

|                                    |
|------------------------------------|
| <b>YEAR OF REPORT</b><br>31-Dec-03 |
|------------------------------------|

**OTHER DEFERRED CREDITS  
ACCOUNT 253**

| DESCRIPTION - Provide itemized listing<br>(a)   | AMOUNT<br>WRITTEN OFF<br>DURING YEAR<br>(b)                    | YEAR END<br>BALANCE<br>(c)                                     |
|---|--|--|
| REGULATORY LIABILITIES (Class A Utilities: Account 253.1):<br><br><b>NONE</b><br><hr/> <hr/> <hr/> <hr/>              | \$ _____<br>_____<br>_____<br>_____                            | \$ _____<br>_____<br>_____<br>_____                            |
| Total Regulatory Liabilities  | \$ _____   | \$ _____   |
| OTHER DEFERRED LIABILITIES (Class A Utilities: Account 253.2):<br><br><hr/> <hr/> <hr/> <hr/> <hr/> <hr/> <hr/> <hr/> | \$ _____<br>_____<br>_____<br>_____<br>_____<br>_____<br>_____ | \$ _____<br>_____<br>_____<br>_____<br>_____<br>_____<br>_____ |
| Total Other Deferred Liabilities  | \$ _____   | \$ _____   |
| <b>TOTAL OTHER DEFERRED CREDITS</b>   | \$ _____   | \$ _____   |

**CONTRIBUTIONS IN AID OF CONSTRUCTION  
ACCOUNT 271**

| <b>DESCRIPTION<br/>(a)</b>                | <b>WATER<br/>(W-7)<br/>(b)</b> | <b>WASTEWATER<br/>(S-7)<br/>(c)</b> | <b>W &amp; WW OTHER<br/>THAN SYSTEM<br/>REPORTING<br/>(d)</b> | <b>TOTAL<br/>(e)</b> |
|---|--------------------------------|-------------------------------------|---|----------------------|
| Balance first of year                     | \$ <u>11,019,846</u>           | \$ <u>11,593,120</u>                | \$ <u>-</u>   | \$ <u>22,612,966</u> |
| Add credits during year:                  | \$ <u>56,072</u>               | \$ <u>601</u>                       | \$ <u>-</u>   | \$ <u>56,673</u>     |
| Less debit charged during the year        | \$ <u>-</u>                    | \$ <u>-</u>                         | \$ <u>-</u>   | \$ <u>-</u>          |
| Total Contribution In Aid of Construction | \$ <u>11,075,918</u>           | \$ <u>11,593,721</u>                | \$ <u>-</u>   | \$ <u>22,669,639</u> |

**ACCUMULATED AMORTIZATION OF CONTRIBUTIONS IN AID OF CONSTRUCTION  
ACCOUNT 272**

| <b>DESCRIPTION<br/>(a)</b>   | <b>WATER<br/>(W-8(a))<br/>(b)</b> | <b>WASTEWATER<br/>(S-8(a))<br/>(c)</b> | <b>W &amp; WW OTHER<br/>THAN SYSTEM<br/>REPORTING<br/>(d)</b> | <b>TOTAL<br/>(e)</b> |
|--|-----------------------------------|--|---|----------------------|
| Balance first of year  | \$ <u>6,322,187</u>               | \$ <u>7,396,464</u>                    | \$ <u>-</u>   | \$ <u>13,718,651</u> |
| Debits during the year:  | \$ <u>323,544</u>                 | \$ <u>302,538</u>                      | \$ <u>-</u>   | \$ <u>626,082</u>    |
| Credits during the year  | \$ <u>-</u>                       | \$ <u>-</u>                            | \$ <u>-</u>   | \$ <u>-</u>          |
| Total Accumulated Amortization of Contributions In Aid of Construction | \$ <u>6,645,731</u>               | \$ <u>7,699,002</u>                    | \$ <u>-</u>   | \$ <u>14,344,733</u> |

**RECONCILIATION OF REPORTED NET INCOME WITH TAXABLE INCOME FOR FEDERAL INCOME TAXES (UTILITY OPERATIONS)**

1. The reconciliation should include the same detail as furnished on Schedule M-1 of the federal tax return for the year. The reconciliation shall be submitted even though there is no taxable income for the year. Descriptions should clearly indicate the nature of each reconciling amount and show the computations of all tax accruals.
2. If the utility is a member of a group which files a consolidated federal tax return, reconcile reported net income with taxable net income as if a separate return were to be filed, indicating intercompany amounts to be eliminated in such consolidated return. State names of group members, tax assigned to each group member, and basis of allocation, assignments or sharing of the consolidated tax among the group members.

| DESCRIPTION<br>(a)                                    | REF. NO.<br>(b) | AMOUNT<br>(c) |
|---|-----------------|---------------|
| Net income for the year                               | F-3(c)          | \$ 179,236    |
| Reconciling items for the year:                       |                 |               |
| Taxable income not reported on books:                 |                 |               |
| Tap Fees  |                 | 11,629        |
|   |                 |               |
|   |                 |               |
| Deductions recorded on books not deducted for return: |                 |               |
| Net Change - Deferred Maintenance                     |                 | 18,741        |
| Net Change - Rate Case                                |                 | -             |
| Excess Tax Depreciation over Book Depreciation        |                 | (159,358)     |
| Current FIT   |                 | 51,656        |
| Deferred FIT  |                 | 44,871        |
| Deferred SIT  |                 | (1,597)       |
| Amortization Adj PSC-03-1308                          |                 | 10,648        |
| Income recorded on books not included in return:      |                 |               |
| Interest During Construction                          |                 | (3,810)       |
|   |                 | -             |
|   |                 |               |
| Deduction on return not charged against book income:  |                 |               |
| Organization Exp                                      |                 | (86)          |
|   |                 | -             |
|   |                 | -             |
|   |                 |               |
| Federal tax net income                                |                 | \$ 151,930    |

|                      |         |  |
|----------------------|---------|--|
| Computation of tax : | 151,930 |  |
|                      | 34%     |  |
|                      | 51,656  |  |

**WATER  
OPERATION  
SECTION**



UTILITY NAME: SANLANDO UTILITIES CORPORATION

|                                    |
|------------------------------------|
| <b>YEAR OF REPORT</b><br>31-Dec-03 |
|------------------------------------|

SYSTEM NAME / COUNTY : Seminole County

**SCHEDULE OF YEAR END WATER RATE BASE**

| ACCT. NO.<br>(a)                               | ACCOUNT NAME<br>(b)   | REFERENCE PAGE<br>(c) | WATER UTILITY<br>(d) |
|--|---|-----------------------|----------------------|
| 101  | Utility Plant In Service  | W-4(b)                | \$ 14,880,765        |
|  | Less:   |                       |                      |
|  | Nonused and Useful Plant (1)  |                       |                      |
| 108  | Accumulated Depreciation  | W-6(b)                | 7,695,007            |
| 110  | Accumulated Amortization  | F-8                   | 22,843               |
| 271  | Contributions In Aid of Construction  | W-7                   | 11,075,918           |
| 252  | Advances for Construction   | F-20                  | -                    |
| Subtotal                                       |   |                       | \$ (3,913,003)       |
| 272  | Add:<br>Accumulated Amortization of<br>Contributions in Aid of Construction | W-8(a)                | \$ 6,645,731         |
| Subtotal                                       |   |                       | \$ 2,732,729         |
| 114  | Plus or Minus:<br>Acquisition Adjustments (2)                               | F-7                   | -                    |
| 115  | Accumulated Amortization of Acquisition Adjustments (2)                     | F-7                   | -                    |
|  | Working Capital Allowance (3)   |                       | 168,604              |
|  | Other (Specify):  |                       |                      |
|  | Work In Process   |                       | 36,314               |
| WATER RATE BASE                                |   |                       | \$ 2,937,646         |
| WATER OPERATING INCOME                         |   | W-3                   | \$ 130,162           |
| WRN (Water Operating Income / Water Rate Base) |   |                       | <u>4.43%</u>         |

NOTES : (1) Estimate based on the methodology used in the last rate proceeding.

(2) Include only those Acquisition Adjustments that have been approved by the Commission.

(3) Calculation consistent with last rate proceeding.

In absence of a rate proceeding, Class A utilities will use the Balance Sheet Method and Class B Utilities will use the One-eighth Operating and Maintenance Expense Method.

UTILITY NAME:

SANLANDO UTILITIES CORPORATION

|   |
|---|
| <b>YEAR OF REPORT</b><br><b>31-Dec-03</b> |
|---|

SYSTEM NAME / COUNTY : Seminole County

**WATER OPERATING STATEMENT**

| ACCT. NO. (a) | ACCOUNT NAME (b)   | REFERENCE PAGE (c) | CURRENT YEAR (d) |
|---------------|--|--------------------|------------------|
|               | UTILITY OPERATING INCOME                                     |                    |                  |
| 400           | Operating Revenues   | W-9                | \$ 1,776,724     |
| 469           | Less: Guaranteed Revenue and AFPI                            | W-9                |                  |
|               | Net Operating Revenues                                       |                    | \$ _____         |
| 401           | Operating Expenses   | W-10(a)            | \$ 1,348,828     |
| 403           | Depreciation Expense   | W-6(a)             | 483,674          |
|               | Less: Amortization of CIAC                                   | W-8(a)             | (323,544)        |
|               | Net Depreciation Expense                                     |                    | \$ 160,130       |
| 406           | Amortization of Utility Plant Acquisition Adjustment         | F-7                | -                |
| 407           | Amortization Expense (Other than CIAC)                       | F-8                | 5,027            |
| 408.10        | Taxes Other Than Income<br>Utility Regulatory Assessment Fee |                    | 80,238           |
| 408.11        | Property Taxes   |                    | 8,548            |
| 408.12        | Payroll Taxes  |                    | 42,908           |
| 408.13        | Other Taxes and Licenses                                     |                    | -                |
| 408           | Total Taxes Other Than Income                                |                    | \$ 131,694       |
| 409.1         | Income Taxes   |                    | 525              |
| 410.10        | Deferred Federal Income Taxes                                |                    | 372              |
| 410.11        | Deferred State Income Taxes                                  |                    | (13)             |
| 411.10        | Provision for Deferred Income Taxes - Credit                 |                    | -                |
| 412.10        | Investment Tax Credits Deferred to Future Periods            |                    |                  |
| 412.11        | Investment Tax Credits Restored to Operating Income          |                    |                  |
|               | Utility Operating Expenses                                   |                    | \$ 1,646,563     |
|               | Utility Operating Income                                     |                    | \$ 130,162       |
| 469           | Add Back:<br>Guaranteed Revenue (and AFPI)                   | W-9                | \$ _____         |
| 413           | Income From Utility Plant Leased to Others                   |                    | _____            |
| 414           | Gains (losses) From Disposition of Utility Property          |                    | _____            |
| 420           | Allowance for Funds Used During Construction                 |                    | 2,151            |
|               | Total Utility Operating Income                               |                    | \$ 132,313       |



YEAR OF REPORT  
31-Dec-03

UTILITY NAME: SANLANDO UTILITIES CORPORATION

SYSTEM NAME / COUNTY Seminole County

WATER UTILITY PLANT ACCOUNTS

| ACCT. NO. (a)     | ACCOUNT NAME (b)                       | PREVIOUS YEAR (c) | ADDITIONS (d) | RETIREMENTS (e) | CURRENT YEAR (f) |
|-------------------|--|-------------------|---------------|-----------------|------------------|
| 301               | Organization                           | \$ -              | \$ -          | \$ -            | \$ -             |
| 302               | Franchises                             | 199,495           | 1,472         |                 | 200,967          |
| 303               | Land and Land Rights                   | 123,772           | -             |                 | 123,772          |
| 304               | Structures and Improvements            | 294,387           | 63,348        | 4,695           | 353,040          |
| 305               | Collecting and Impounding Reservoirs   | -                 | -             |                 | -                |
| 306               | Lake, River and Other Intakes          | -                 | -             |                 | -                |
| 307               | Wells and Springs                      | 643,049           | 10,429        | 7,003           | 646,475          |
| 308               | Infiltration Galleries and Tunnels     | -                 | -             |                 | -                |
| 309               | Supply Mains                           | -                 | -             |                 | -                |
| 310               | Power Generation Equipment             | -                 | -             |                 | -                |
| 311               | Pumping Equipment                      | 1,161,418         | 43,173        | 20,877          | 1,183,714        |
| 320               | Water Treatment Equipment              | 309,584           | 19,572        | 1,249           | 327,907          |
| 330               | Distribution Reservoirs and Standpipes | 1,004,395         | 22,365        | 854             | 1,025,906        |
| 331               | Transmission and Distribution Mains    | 6,877,917         | 91,431        | 4,873           | 6,964,475        |
| 333               | Services                               | 1,101,489         | 45,699        | 4,202           | 1,142,986        |
| 334               | Meters and Meter Installations         | 1,115,602         | 42,566        |                 | 1,158,168        |
| 335               | Hydrants                               | 651,297           | 5,279         |                 | 656,576          |
| 336               | Backflow Prevention Devices            | -                 | -             |                 | -                |
| 339               | Other Plant Miscellaneous Equipment    | -                 | -             |                 | -                |
| 340               | Office Furniture and Equipment         | 68,657            | 553           |                 | 69,210           |
| 341               | Transportation Equipment               | 310,265           | (6,209)       | -               | 304,056          |
| 342               | Stores Equipment                       | -                 | -             |                 | -                |
| 343               | Tools, Shop and Garage Equipment       | 170,133           | 40,248        |                 | 210,381          |
| 344               | Laboratory Equipment                   | 7,397             | 6,456         | 2,239           | 11,614           |
| 345               | Power Operated Equipment               | -                 | -             |                 | -                |
| 346               | Communication Equipment                | 71,341            | -             |                 | 71,341           |
| 347               | Miscellaneous Equipment                | -                 | -             |                 | -                |
| 348               | Other Tangible Plant                   | 434,063           | (3,886)       |                 | 430,177          |
| TOTAL WATER PLANT |  | \$ 14,544,261     | \$ 382,496    | \$ 45,992       | \$ 14,880,765    |

NOTE: Any adjustments made to reclassify property from one account to another must be footnoted.

W-4(a)  
GROUP \_\_\_\_\_

UTILITY NAME: SANLANDO UTILITIES CORPORATION

SYSTEM NAME / COUNTY Seminole County

WATER UTILITY PLANT MATRIX

| ACCT. NO.                | ACCOUNT NAME (b)                       | CURRENT YEAR (c)     | .1 INTANGIBLE PLANT (d) | .2 SOURCE OF SUPPLY AND PUMPING PLANT (e) | .3 WATER TREATMENT PLANT (f) | .4 TRANSMISSION AND DISTRIBUTION PLANT (g) | .5 GENERAL PLANT (h) |
|--------------------------|--|----------------------|-------------------------|---|------------------------------|--|----------------------|
| 301                      | Organization                           | \$ -                 | \$ -                    | \$ -                                      | \$ -                         | \$ -                                       | \$ -                 |
| 302                      | Franchises                             | 200,967              | 200,967                 | -   | -                            | -  | -                    |
| 303                      | Land and Land Rights                   | 123,772              | -                       | 123,772                                   | -                            | -  | -                    |
| 304                      | Structures and Improvements            | 353,040              | -                       | 353,040                                   | -                            | -  | -                    |
| 305                      | Collecting and Impounding Reservoirs   | -                    | -                       | -   | -                            | -  | -                    |
| 306                      | Lake, River and Other Intakes          | -                    | -                       | -   | -                            | -  | -                    |
| 307                      | Wells and Springs                      | 646,475              | -                       | 646,475                                   | -                            | -  | -                    |
| 308                      | Infiltration Galleries and Tunnels     | -                    | -                       | -   | -                            | -  | -                    |
| 309                      | Supply Mains                           | -                    | -                       | -   | -                            | -  | -                    |
| 310                      | Power Generation Equipment             | -                    | -                       | -   | -                            | -  | -                    |
| 311                      | Pumping Equipment                      | 1,183,714            | -                       | 1,183,714                                 | 327,907                      | -  | -                    |
| 320                      | Water Treatment Equipment              | 327,907              | -                       | -   | 327,907                      | -  | -                    |
| 330                      | Distribution Reservoirs and Standpipes | 1,025,906            | -                       | -   | -                            | 1,025,906                                  | -                    |
| 331                      | Transmission and Distribution Mains    | 6,964,475            | -                       | -   | -                            | 6,964,475                                  | -                    |
| 333                      | Services                               | 1,142,986            | -                       | -   | -                            | 1,142,986                                  | -                    |
| 334                      | Meters and Meter Installations         | 1,158,168            | -                       | -   | -                            | 1,158,168                                  | -                    |
| 335                      | Hydrants                               | 656,576              | -                       | -   | -                            | 656,576                                    | -                    |
| 336                      | Backflow Prevention Devices            | -                    | -                       | -   | -                            | -  | -                    |
| 339                      | Other Plant Miscellaneous Equipment    | -                    | -                       | -   | -                            | -  | -                    |
| 340                      | Office Furniture and Equipment         | 69,210               | -                       | -   | -                            | -  | 69,210               |
| 341                      | Transportation Equipment               | 304,056              | -                       | -   | -                            | -  | 304,056              |
| 342                      | Stores Equipment                       | -                    | -                       | -   | -                            | -  | -                    |
| 343                      | Tools, Shop and Garage Equipment       | 210,381              | -                       | -   | -                            | -  | 210,381              |
| 344                      | Laboratory Equipment                   | 11,614               | -                       | -   | -                            | -  | 11,614               |
| 345                      | Power Operated Equipment               | -                    | -                       | -   | -                            | -  | -                    |
| 346                      | Communication Equipment                | 71,341               | -                       | -   | -                            | -  | 71,341               |
| 347                      | Miscellaneous Equipment                | -                    | -                       | -   | -                            | -  | -                    |
| 348                      | Other Tangible Plant                   | 430,177              | -                       | -   | -                            | -  | 430,177              |
| <b>TOTAL WATER PLANT</b> |  | <b>\$ 14,880,765</b> | <b>\$ 200,967</b>       | <b>\$ 2,307,001</b>                       | <b>\$ 327,907</b>            | <b>\$ 10,948,111</b>                       | <b>\$ 1,096,779</b>  |

UTILITY NAME: SANLANDO UTILITIES CORPORATION

|                             |
|-----------------------------|
| YEAR OF REPORT<br>31-Dec-03 |
|-----------------------------|

SYSTEM NAME / COUNTY : Seminole County

**BASIS FOR WATER DEPRECIATION CHARGES**

| ACCT. NO.<br>(a)                          | ACCOUNT NAME<br>(b)                    | AVERAGE SERVICE LIFE IN YEARS<br>(c) | AVERAGE NET SALVAGE IN PERCENT<br>(d) | DEPRECIATION RATE APPLIED IN PERCENT (100% - d) / c<br>(e) |
|---|--|--------------------------------------|---------------------------------------|--|
| 304                                       | Structures and Improvements            |                                      |                                       | 3.03%  |
| 305                                       | Collecting and Impounding Reservoirs   |                                      |                                       |  |
| 306                                       | Lake, River and Other Intakes          |                                      |                                       |  |
| 307                                       | Wells and Springs                      |                                      |                                       | 3.33%  |
| 308                                       | Infiltration Galleries and Tunnels     |                                      |                                       |  |
| 309                                       | Supply Mains                           |                                      |                                       |  |
| 310                                       | Power Generation Equipment             |                                      |                                       |  |
| 311                                       | Pumping Equipment                      |                                      |                                       | 5.00%  |
| 320                                       | Water Treatment Equipment              |                                      |                                       | 4.55%  |
| 330                                       | Distribution Reservoirs and Standpipes |                                      |                                       | 2.70%  |
| 331                                       | Transmission and Distribution Mains    |                                      |                                       | 2.33%  |
| 333                                       | Services                               |                                      |                                       | 2.50%  |
| 334                                       | Meters and Meter Installations         |                                      |                                       | 5.00%  |
| 335                                       | Hydrants                               |                                      |                                       | 2.22%  |
| 336                                       | Backflow Prevention Devices            |                                      |                                       |  |
| 339                                       | Other Plant Miscellaneous Equipment    |                                      |                                       |  |
| 340                                       | Office Furniture and Equipment         |                                      |                                       | 6.67%  |
| 341                                       | Transportation Equipment               |                                      |                                       | 16.67%   |
| 342                                       | Stores Equipment                       |                                      |                                       |  |
| 343                                       | Tools, Shop and Garage Equipment       |                                      |                                       | 6.25%  |
| 344                                       | Laboratory Equipment                   |                                      |                                       | 6.67%  |
| 345                                       | Power Operated Equipment               |                                      |                                       |  |
| 346                                       | Communication Equipment                |                                      |                                       | 10.00%   |
| 347                                       | Miscellaneous Equipment                |                                      |                                       |  |
| 348                                       | Other Tangible Plant                   |                                      |                                       | 10.00%   |
| Water Plant Composite Depreciation Rate * |  |                                      |                                       |  |

\* If depreciation rates prescribed by this Commission are on a total composite basis, entries should be made on this line only.

YEAR OF REPORT  
31-Dec-03

UTILITY NAME: SANLANDO UTILITIES CORPORATION

SYSTEM NAME / COUNTY : Seminole County

ANALYSIS OF ENTRIES IN WATER ACCUMULATED DEPRECIATION

| ACCT. NO. (a)                        | ACCOUNT NAME (b)                       | BALANCE AT BEGINNING OF YEAR (c) | ACCRUALS (d) | OTHER CREDITS * (e) | TOTAL CREDITS (d + e) (f) |
|--------------------------------------|--|----------------------------------|--------------|---------------------|---------------------------|
| 304                                  | Structures and Improvements            | \$ 161,172                       | \$ 9,084     | \$ -                | \$ 9,084                  |
| 305                                  | Collecting and Impounding Reservoirs   |                                  |              |                     |                           |
| 306                                  | Lake, River and Other Intakes          |                                  |              |                     |                           |
| 307                                  | Wells and Springs                      | 379,984                          | 21,606       |                     | 21,606                    |
| 308                                  | Infiltration Galleries and Tunnels     |                                  |              |                     |                           |
| 309                                  | Supply Mains                           |                                  |              |                     |                           |
| 310                                  | Power Generation Equipment             |                                  |              |                     |                           |
| 311                                  | Pumping Equipment                      | 962,521                          | 59,877       |                     | 59,877                    |
| 320                                  | Water Treatment Equipment              | 124,565                          | 14,338       |                     | 14,338                    |
| 330                                  | Distribution Reservoirs and Standpipes | 526,767                          | 27,865       |                     | 27,865                    |
| 331                                  | Transmission and Distribution Mains    | 2,905,553                        | 156,874      |                     | 156,874                   |
| 333                                  | Services                               | 511,526                          | 27,960       |                     | 27,960                    |
| 334                                  | Meters and Meter Installations         | 992,605                          | 56,568       |                     | 56,568                    |
| 335                                  | Hydrants                               | 290,350                          | 14,864       |                     | 14,864                    |
| 336                                  | Backflow Prevention Devices            |                                  |              |                     |                           |
| 339                                  | Other Plant Miscellaneous Equipment    |                                  |              |                     |                           |
| 340                                  | Office Furniture and Equipment         | 18,195                           | 12,066       | (7,457)             | 4,609                     |
| 341                                  | Transportation Equipment               | 222,591                          | 38,655       | (8,043)             | 30,612                    |
| 342                                  | Stores Equipment                       |                                  |              |                     |                           |
| 343                                  | Tools, Shop and Garage Equipment       | 28,846                           | 14,167       | (2,556)             | 11,611                    |
| 344                                  | Laboratory Equipment                   | 15,297                           | 562          | 8,783               | 9,345                     |
| 345                                  | Power Operated Equipment               |                                  |              |                     |                           |
| 346                                  | Communication Equipment                | 3,820                            | 8,986        | (10,713)            | (1,727)                   |
| 347                                  | Miscellaneous Equipment                |                                  |              |                     |                           |
| 348                                  | Other Tangible Plant                   | 140,001                          | 20,202       | (6,482)             | 13,720                    |
| TOTAL WATER ACCUMULATED DEPRECIATION |  | \$ 7,283,793                     | \$ 483,674   | \$ (26,468)         | \$ 457,206                |

\* Specify nature of transaction  
Use ( ) to denote reversal entries.

OTHER CREDITS column (E) \* are due to allocation of UJF plant & acquisition entry  
W-6(a)  
GROUP \_\_\_\_\_

**YEAR OF REPORT**  
31-Dec-03

**UTILITY NAME:** SANLANDO UTILITIES CORPORATION

**SYSTEM NAME / COUNTY:** Seminole County

**ANALYSIS OF ENTRIES IN WATER ACCUMULATED DEPRECIATION (CONT'D)**

| ACCT. NO.                                   | ACCOUNT NAME (b)                       | PLANT RETIRED (g) | SALVAGE AND INSURANCE (h) | COST OF REMOVAL AND OTHER CHARGES (i) | TOTAL CHARGES (g-h+i) (j) | BALANCE AT END OF YEAR (c+f-k) (l) |
|---|--|-------------------|---------------------------|---------------------------------------|---------------------------|------------------------------------|
| 304   | Structures and Improvements            | \$ 4,695          | \$                        | \$                                    | \$ 4,695                  | \$ 165,561                         |
| 305   | Collecting and Impounding Reservoirs   | -                 |                           |                                       | -                         |                                    |
| 306   | Lake, River and Other Intakes          | -                 |                           |                                       | -                         |                                    |
| 307   | Wells and Springs                      | 7,003             |                           |                                       | 7,003                     | 394,587                            |
| 308   | Infiltration Galleries and Tunnels     | -                 |                           |                                       | -                         |                                    |
| 309   | Supply Mains                           | -                 |                           |                                       | -                         |                                    |
| 310   | Power Generation Equipment             | -                 |                           |                                       | -                         |                                    |
| 311   | Pumping Equipment                      | 20,877            |                           |                                       | 20,877                    | 1,001,521                          |
| 320   | Water Treatment Equipment              | 1,249             |                           |                                       | 1,249                     | 137,654                            |
| 330   | Distribution Reservoirs and Standpipes | 854               |                           |                                       | 854                       | 553,778                            |
| 331   | Transmission and Distribution Mains    | 4,873             |                           |                                       | 4,873                     | 3,037,534                          |
| 333   | Services                               | 4,202             |                           |                                       | 4,202                     | 535,284                            |
| 334   | Meters and Meter Installations         | -                 |                           |                                       | -                         | 1,049,173                          |
| 335   | Hydrants                               | -                 |                           |                                       | -                         | 305,214                            |
| 336   | Backflow Prevention Devices            | -                 |                           |                                       | -                         |                                    |
| 339   | Other Plant Miscellaneous Equipment    | -                 |                           |                                       | -                         |                                    |
| 340   | Office Furniture and Equipment         | -                 |                           |                                       | -                         | 22,804                             |
| 341   | Transportation Equipment               | -                 |                           |                                       | -                         | 253,203                            |
| 342   | Stores Equipment                       | -                 |                           |                                       | -                         |                                    |
| 343   | Tools, Shop and Garage Equipment       | -                 |                           |                                       | -                         | 40,457                             |
| 344   | Laboratory Equipment                   | 2,239             |                           |                                       | 2,239                     | 22,403                             |
| 345   | Power Operated Equipment               | -                 |                           |                                       | -                         |                                    |
| 346   | Communication Equipment                | -                 |                           |                                       | -                         | 2,093                              |
| 347   | Miscellaneous Equipment                | -                 |                           |                                       | -                         |                                    |
| 348   | Other Tangible Plant                   | -                 |                           |                                       | -                         | 153,721                            |
| <b>TOTAL WATER ACCUMULATED DEPRECIATION</b> |  | <b>\$ 45,992</b>  | <b>\$ -</b>               | <b>\$ -</b>                           | <b>\$ 45,992</b>          | <b>\$ 7,695,007</b>                |

W-6(b)  
GROUP \_\_\_\_\_

UTILITY NAME: SANLANDO UTILITIES CORPORATION

**YEAR OF REPORT**  
31-Dec-03

SYSTEM NAME / COUNTY : Seminole County

**CONTRIBUTIONS IN AID OF CONSTRUCTION  
ACCOUNT 271**

| DESCRIPTION<br>(a)  | REFERENCE<br>(b) | WATER<br>(c)         |
|---|------------------|----------------------|
| Balance first of year   |                  | \$ <u>11,019,846</u> |
| Add credits during year:  |                  |                      |
| Contributions received from Capacity,<br>Main Extension and Customer Connection Charges             | W-8(a)           | \$ <u>11,027</u>     |
| Contributions received from Developer or<br>Contractor Agreements in cash or property               | W-8(b)           | <u>45,045</u>        |
| Total Credits   |                  | \$ <u>56,072</u>     |
| Less debits charged during the year<br>(All debits charged during the year must be explained below) |                  | \$ <u>-</u>          |
| Total Contributions In Aid of Construction  |                  | \$ <u>11,075,918</u> |

If any prepaid CIAC has been collected, provide a supporting schedule showing how the amount is determined.

Explain all debits charged to Account 271 during the year below:

---

---

---

---

---

---

---

---

---

---

---

---

---

---

---

---

---

---

---

---

---

---

---

---







Reconciliation of Revenue to  
Regulatory Assessment Fee Revenue  
Water Operations

UTILITY NAME: SANLANDO UTILITIES CORPORATION

|                             |
|-----------------------------|
| YEAR OF REPORT<br>31-Dec-03 |
|-----------------------------|

| (A)  | (B)                                 | (C)                                    | (D)                   |
|--|-------------------------------------|--|-----------------------|
| Accounts   | Gross Water<br>Revenues per Sch W-9 | Gross Water<br>Revenues per RAF Return | Difference<br>(B)-(C) |
| Gross Revenues:  |                                     |  | -                     |
| Unmetered Water Revenues   |                                     |  | -                     |
| Total Metered Sales  | 1,776,724                           | 1,776,724                              | -                     |
| Total Fire Protection Revenue                                    |                                     |  | -                     |
| Other Sales to Public Authorities                                |                                     |  | -                     |
| Sales to Irrigation Customers                                    |                                     |  | -                     |
| Sales for Resale   |                                     |  | -                     |
| Interdepartmental Sales  |                                     |  | -                     |
| Total Other Water Revenue  |                                     |  | -                     |
| Total Water Operating Revenue                                    | 1,776,724                           | 1,776,724                              | -                     |
| Less: Expense for Purchased Water<br>from FPSC Regulated Utility |                                     |  | -                     |
| Net Water Operating Revenues                                     | 1,776,724                           | 1,776,724                              | -                     |

UTILITY NAME: SANLANDO UTILITIES CORPORATION

|   |
|---|
| <b>YEAR OF REPORT</b><br><b>31-Dec-03</b> |
|---|

SYSTEM NAME / COUNTY : Seminole County

**WATER OPERATING REVENUE**

| ACCT. NO. (a)                  | DESCRIPTION (b)   | BEGINNING YEAR NO. CUSTOMERS * (c) | YEAR END NUMBER OF CUSTOMERS (d) | AMOUNT (e)   |
|--------------------------------|---|------------------------------------|----------------------------------|--------------|
| 460                            | Water Sales:<br>Unmetered Water Revenue   |                                    |                                  | \$           |
| 461.1                          | Metered Water Revenue:<br>Sales to Residential Customers  | 13,036                             | 10,070                           | 1,586,026    |
| 461.2                          | Sales to Commercial Customers   |                                    |                                  | 179,330      |
| 461.3                          | Sales to Industrial Customers   |                                    |                                  |              |
| 461.4                          | Sales to Public Authorities   |                                    |                                  |              |
| 461.5                          | Sales Multiple Family Dwellings   |                                    |                                  |              |
| Total Metered Sales            |   | 13,036                             | 10,070                           | \$ 1,765,356 |
| 462.1                          | Fire Protection Revenue:<br>Public Fire Protection  |                                    |                                  |              |
| 462.2                          | Private Fire Protection   |                                    |                                  |              |
| Total Fire Protection Revenue  |   |                                    |                                  | \$           |
| 464                            | Other Sales To Public Authorities   |                                    |                                  |              |
| 465                            | Sales To Irrigation Customers   |                                    |                                  |              |
| 466                            | Sales For Resale  |                                    |                                  |              |
| 467                            | Interdepartmental Sales   |                                    |                                  |              |
| Total Water Sales              |   | 13,036                             | 10,070                           | \$ 1,765,356 |
| 469                            | Other Water Revenues:<br>Guaranteed Revenues (Including Allowance for Funds Prudently Invested or AFPI) |                                    |                                  | \$           |
| 470                            | Forfeited Discounts   |                                    |                                  |              |
| 471                            | Miscellaneous Service Revenues  |                                    |                                  | 11,368       |
| 472                            | Rents From Water Property   |                                    |                                  |              |
| 473                            | Interdepartmental Rents   |                                    |                                  |              |
| 474                            | Other Water Revenues  |                                    |                                  |              |
| Total Other Water Revenues     |   |                                    |                                  | \$ 11,368    |
| Total Water Operating Revenues |   |                                    |                                  | \$ 1,776,724 |

\* Customer is defined by Rule 25-30.210(1), Florida Administrative Code.

UTILITY NAME: SANLANDO UTILITIES CORPORATION

|   |
|---|
| <b>YEAR OF REPORT</b><br><b>31-Dec-03</b> |
|---|

SYSTEM NAME / COUNTY : Seminole County

**WATER UTILITY EXPENSE ACCOUNTS**

| ACCT. NO.<br>(a)             | ACCOUNT NAME<br>(b)  | CURRENT YEAR<br>(c) | .1<br>SOURCE OF SUPPLY AND EXPENSES - OPERATIONS<br>(d) | .2<br>SOURCE OF SUPPLY AND EXPENSES - MAINTENANCE<br>(e) |
|------------------------------|--|---------------------|---|--|
| 601                          | Salaries and Wages - Employees                                     | \$ 400,506          | \$ 88,111   | \$ 24,030  |
| 603                          | Salaries and Wages - Officers, Directors and Majority Stockholders |                     |   |  |
| 604                          | Employee Pensions and Benefits                                     | 135,707             | 29,856  | 8,142  |
| 610                          | Purchased Water  |                     |   |  |
| 615                          | Purchased Power  | 322,199             |   |  |
| 616                          | Fuel for Power Purchased   |                     |   |  |
| 618                          | Chemicals  | 80,087              | 80,087  |  |
| 620                          | Materials and Supplies   | 153,553             | 61,421  | 15,355   |
| 631                          | Contractual Services-Engineering                                   |                     |   |  |
| 632                          | Contractual Services - Accounting                                  | 11,900              |   |  |
| 633                          | Contractual Services - Legal                                       | 14,377              |   |  |
| 634                          | Contractual Services - Mgt. Fees                                   |                     |   |  |
| 635                          | Contractual Services - Testing                                     |                     |   |  |
| 636                          | Contractual Services - Other                                       | 17,862              |   |  |
| 641                          | Rental of Building/Real Property                                   |                     |   |  |
| 642                          | Rental of Equipment  |                     |   |  |
| 650                          | Transportation Expenses  | 53,103              | 11,683  | 3,186  |
| 656                          | Insurance - Vehicle  |                     |   |  |
| 657                          | Insurance - General Liability                                      |                     |   |  |
| 658                          | Insurance - Workman's Comp.  |                     |   |  |
| 659                          | Insurance - Other  | 46,274              | 10,180  | 2,776  |
| 660                          | Advertising Expense  |                     |   |  |
| 666                          | Regulatory Commission Expenses - Amortization of Rate Case Expense | 259                 |   |  |
| 667                          | Regulatory Commission Exp.-Other                                   |                     |   |  |
| 668                          | Water Resource Conservation Exp.                                   |                     |   |  |
| 670                          | Bad Debt Expense   | 2,287               |   |  |
| 675                          | Miscellaneous Expenses   | 110,714             |   |  |
| Total Water Utility Expenses |  | \$ 1,348,828        | \$ 281,338  | \$ 53,489  |

UTILITY NAME:

SANLANDO UTILITIES CORPORATION

|                                    |
|------------------------------------|
| <b>YEAR OF REPORT</b><br>31-Dec-03 |
|------------------------------------|

SYSTEM NAME / COUNTY :

Seminole County

| WATER EXPENSE ACCOUNT MATRIX                                |  |   |  |  |  |
|---|--|---|--|--|--|
| .3<br>WATER<br>TREATMENT<br>EXPENSES -<br>OPERATIONS<br>(f) | .4<br>WATER<br>TREATMENT<br>EXPENSES -<br>MAINTENANCE<br>(g) | .5<br>TRANSMISSION<br>& DISTRIBUTION<br>EXPENSES -<br>OPERATIONS<br>(h) | .6<br>TRANSMISSION<br>& DISTRIBUTION<br>EXPENSES -<br>MAINTENANCE<br>(i) | .7<br>CUSTOMER<br>ACCOUNTS<br>EXPENSE<br>(j) | .8<br>ADMIN. &<br>GENERAL<br>EXPENSES<br>(k) |
| \$ 88,111   | \$ 24,030  | \$ 140,177  | \$ 36,047  | \$   | \$   |
| 29,856  | 8,142  | 47,497  | 12,214   |  |  |
| 322,199   |  |   |  |  |  |
|   |  | 64,492  | 12,285   |  | 11,900                                       |
|   |  | 0   |  |  | 14,377                                       |
|   |  |   |  | 8,931  | 8,931  |
| 11,683  | 3,186  | 18,586  | 4,779  |  |  |
| 10,180  | 2,776  | 16,196  | 4,166  |  | 259  |
|   |  |   |  | 2,287  |  |
|   |  |   |  | 55,357                                       | 55,356                                       |
| \$ 462,029  | \$ 38,134  | \$ 286,948  | \$ 69,491  | \$ 66,575                                    | \$ 90,823                                    |

UTILITY NAME: SANLANDO UTILITIES CORPORATION

|                             |
|-----------------------------|
| YEAR OF REPORT<br>31-Dec-03 |
|-----------------------------|

SYSTEM NAME / COUNTY : SANLANDO/SEMINOLE  
COMBINED

**PUMPING AND PURCHASED WATER STATISTICS**

| MONTH<br>(a)   | WATER PURCHASED FOR RESALE<br>( Omit 000's )<br>(b) | FINISHED WATER PUMPED FROM WELLS<br>( Omit 000's )<br>(c) | WATER USED FOR LINE FLUSHING, FIGHTING FIRES, ETC.<br>(d) | TOTAL WATER PUMPED AND PURCHASED<br>( Omit 000's )<br>[ (b)+(c)-(d) ]<br>(e) | *WATER SOLD TO CUSTOMERS<br>( Omit 000's )<br>(f) |
|----------------|---|---|---|--|---|
| January        |   | 213.398   | 2.198   | 211.200  | 196.059   |
| February       |   | 193.255   | 2.234   | 191.021  | 193.162   |
| March          |   | 194.324   | 3.462   | 190.862  | 175.988   |
| April          |   | 270.558   | 3.381   | 267.177  | 182.524   |
| May            |   | 293.812   | 1.816   | 291.996  | 262.354   |
| June           |   | 250.056   | 2.272   | 247.784  | 235.233   |
| July           |   | 265.048   | 1.747   | 263.301  | 202.827   |
| August         |   | 197.518   | 1.621   | 195.897  | 193.664   |
| September      |   | 233.214   | 1.630   | 231.584  | 158.506   |
| October        |   | 239.956   | 2.528   | 237.428  | 215.494   |
| November       |   | 222.264   | 1.741   | 220.523  | 216.242   |
| December       |   | 230.853   | 1.696   | 229.157  | 206.665   |
| Total for Year |   | 2,804.256   | 26.326  | 2,777.930  | 2,438.718   |

\*Reflects final accounts, adjustments, etc. for billing period 1/1/03-1/5/04

If water is purchased for resale, indicate the following:

Vendor Orange County Public Utilities  
 Point of delivery Finished water through a meter into our distribution system at Canter Club Drive in Seminole County.

If water is sold to other water utilities for redistribution, list names of such utilities below:

N/A  
 \_\_\_\_\_  
 \_\_\_\_\_  
 \_\_\_\_\_

| List for each source of supply: | CAPACITY OF WELL | GALLONS PER DAY FROM SOURCE | TYPE OF SOURCE |
|---------------------------------|------------------|-----------------------------|----------------|
| _____                           | _____            | _____                       | _____          |
| _____                           | _____            | _____                       | _____          |
| _____                           | _____            | _____                       | _____          |
| _____                           | _____            | _____                       | _____          |

UTILITY NAME: SANLANDO UTILITIES CORPORATION

|                                    |
|------------------------------------|
| <b>YEAR OF REPORT</b><br>31-Dec-03 |
|------------------------------------|

SYSTEM NAME / COUNTY : SANLANDO/SEMINOLE  
DES PINAR

**PUMPING AND PURCHASED WATER STATISTICS**

| MONTH<br>(a)   | WATER PURCHASED FOR RESALE<br>( Omit 000's )<br>(b) | FINISHED WATER PUMPED FROM WELLS<br>( Omit 000's )<br>(c) | WATER USED FOR LINE FLUSHING, FIGHTING FIRES, ETC.<br>(d) | TOTAL WATER PUMPED AND PURCHASED<br>( Omit 000's )<br>[ (b)+(c)-(d) ]<br>(e) | *WATER SOLD TO CUSTOMERS<br>( Omit 000's )<br>(f) |
|----------------|---|---|---|--|---|
| January        |   | 77.624  |   |  |   |
| February       |   | 71.179  |   |  |   |
| March          |   | 68.448  |   |  |   |
| April          |   | 104.983   |   |  |   |
| May            |   | 109.035   |   |  |   |
| June           |   | 114.170   |   |  |   |
| July           |   | 126.559   |   |  |   |
| August         |   | 79.864  |   |  |   |
| September      |   | 84.134  |   |  |   |
| October        |   | 76.168  |   |  |   |
| November       |   | 70.392  |   |  |   |
| December       |   | 77.695  |   |  |   |
| Total for Year |   | 1060.251  |   |  |   |

If water is purchased for resale, indicate the following:

Vendor \_\_\_\_\_  
 Point of delivery \_\_\_\_\_

If water is sold to other water utilities for redistribution, list names of such utilities below:

N/A  
 \_\_\_\_\_  
 \_\_\_\_\_  
 \_\_\_\_\_

| List for each source of supply: | CAPACITY OF WELL | GALLONS PER DAY FROM SOURCE | TYPE OF SOURCE |
|---------------------------------|------------------|-----------------------------|----------------|
| Well #1                         | 390 gpm          | 561,600                     | Ground Water   |
| Well #1A                        | 2125 gpm         | 3,060,000                   | Ground Water   |
| Well #2                         | 1683 gpm         | 2,424,000                   | Ground Water   |
| Well #2A                        | 1475 gpm         | 2,124,000                   | Ground Water   |
| Well #2B                        |                  | N/A                         | Ground Water   |

UTILITY NAME: SANLANDO UTILITIES CORPORATION

|                             |
|-----------------------------|
| YEAR OF REPORT<br>31-Dec-03 |
|-----------------------------|

SYSTEM NAME / COUNTY : SANLANDO/SEMINOLE  
KNOLLWOOD

**PUMPING AND PURCHASED WATER STATISTICS**

| MONTH<br>(a)   | WATER PURCHASED FOR RESALE<br>( Omit 000's )<br>(b) | FINISHED WATER PUMPED FROM WELLS<br>( Omit 000's )<br>(c) | WATER USED FOR LINE FLUSHING, FIGHTING FIRES, ETC.<br>(d) | TOTAL WATER PUMPED AND PURCHASED<br>( Omit 000's )<br>[ (b)+(c)-(d) ]<br>(e) | WATER SOLD TO CUSTOMERS<br>( Omit 000's )<br>(f) |
|----------------|---|---|---|--|--|
| January        |   | 1.670   |   |  |  |
| February       |   | 1.840   |   |  |  |
| March          |   | 0.838   |   |  |  |
| April          |   | 0.000   |   |  |  |
| May            |   | 7.434   |   |  |  |
| June           |   | 3.123   |   |  |  |
| July           |   | 2.825   |   |  |  |
| August         |   | 0.431   |   |  |  |
| September      |   | 2.322   |   |  |  |
| October        |   | 1.155   |   |  |  |
| November       |   | 0.859   |   |  |  |
| December       |   | 0.819   |   |  |  |
| Total for Year |   | 23.316  |   |  |  |

If water is purchased for resale, indicate the following:

Vendor \_\_\_\_\_  
Point of delivery \_\_\_\_\_

If water is sold to other water utilities for redistribution, list names of such utilities below:

N/A  
\_\_\_\_\_  
\_\_\_\_\_  
\_\_\_\_\_

| List for each source of supply: | CAPACITY OF WELL | GALLONS PER DAY FROM SOURCE | TYPE OF SOURCE |
|---------------------------------|------------------|-----------------------------|----------------|
| Well #3                         | 310 gpm          | 446,400                     | Ground Water   |
| Well #4                         | 784 gpm          | 1,129,000                   | Ground Water   |
| _____                           | _____            | _____                       | _____          |
| _____                           | _____            | _____                       | _____          |
| _____                           | _____            | _____                       | _____          |

UTILITY NAME:

SANLANDO UTILITIES CORPORATION

|                                    |
|------------------------------------|
| <b>YEAR OF REPORT</b><br>31-Dec-03 |
|------------------------------------|

SYSTEM NAME / COUNTY : SANLANDO/SEMINOLE

WEKIVA HUNT CLUB

**PUMPING AND PURCHASED WATER STATISTICS**

| MONTH<br>(a)   | WATER PURCHASED FOR RESALE<br>( Omit 000's )<br>(b) | FINISHED WATER PUMPED FROM WELLS<br>( Omit 000's )<br>(c) | WATER USED FOR LINE FLUSHING, FIGHTING FIRES, ETC.<br>(d) | TOTAL WATER PUMPED AND PURCHASED<br>( Omit 000's )<br>[ (b)+(c)-(d) ]<br>(e) | WATER SOLD TO CUSTOMERS<br>( Omit 000's )<br>(f) |
|----------------|---|---|---|--|--|
| January        |   | 134.104   |   |  |  |
| February       |   | 120.236   |   |  |  |
| March          |   | 125.038   |   |  |  |
| April          |   | 165.575   |   |  |  |
| May            |   | 177.343   |   |  |  |
| June           |   | 132.763   |   |  |  |
| July           |   | 135.664   |   |  |  |
| August         |   | 117.223   |   |  |  |
| September      |   | 146.758   |   |  |  |
| October        |   | 162.633   |   |  |  |
| November       |   | 151.013   |   |  |  |
| December       |   | 152.339   |   |  |  |
| Total for Year |   | 1720.689  |   |  |  |

If water is purchased for resale, indicate the following:

Vendor \_\_\_\_\_

Point of delivery \_\_\_\_\_

If water is sold to other water utilities for redistribution, list names of such utilities below:

N/A  
\_\_\_\_\_  
\_\_\_\_\_  
\_\_\_\_\_

| List for each source of supply: | CAPACITY OF WELL | GALLONS PER DAY FROM SOURCE | TYPE OF SOURCE |
|---------------------------------|------------------|-----------------------------|----------------|
| Well #5                         | 1,077 gpm        | 1,551,000                   | Ground Water   |
| Well #6                         | 1,270 gpm        | 1,829,000                   | Ground Water   |
| Well #7                         | 1,780 gpm        | 2,563,000                   | Ground Water   |
| Well #8                         | 4,600 gpm        | 6,624,000                   | Ground Water   |
| Well #9                         | 2,550 gpm        | 2,880,000                   | Ground Water   |

W-11 Wekiva Hunt Club  
GROUP \_\_\_\_\_  
SYSTEM Sanlando



UTILITY NAME: SANLANDO UTILITIES CORPORATION

YEAR OF REPORT  
31-Dec-03

SYSTEM NAME / COUNTY : SANLANDO/SEMINOLE  
DES PINAR

**WATER TREATMENT PLANT INFORMATION**  
Provide a separate sheet for each water treatment facility

|  |  |
|--|--|
| <b>Permitted Capacity of Plant (GPD):</b>  | <u>5.364 mgd</u>                                 |
| <b>Location of measurement of capacity<br/>(i.e. Wellhead, Storage Tank):</b>            | <u>Storage Tanks &amp; High Service Pumps</u>    |
| <b>Type of treatment (reverse osmosis,<br/>(sedimentation, chemical, aerated, etc.):</b> | <u>Aeration, Chlorination, Corrosion Control</u> |
| <b>LIME TREATMENT</b>  |  |
| Unit rating (i.e., GPM, pounds<br>per gallon): <u>N/A</u>                                | Manufacturer: <u>N/A</u>                         |
| <b>FILTRATION</b>  |  |
| Type and size of area:   |  |
| Pressure (in square feet): <u>N/A</u>  | Manufacturer: <u>N/A</u>                         |
| Gravity (in GPM/square feet): <u>N/A</u>   | Manufacturer: <u>N/A</u>                         |

UTILITY NAME: SANLANDO UTILITIES CORPORATION

YEAR OF REPORT  
31-Dec-03

SYSTEM NAME / COUNTY : SANLANDO/SEMINOLE  
KNOLLWOOD

**WATER TREATMENT PLANT INFORMATION**  
Provide a separate sheet for each water treatment facility

|   |  |
|---|--|
| <b>Permitted Capacity of Plant (GPD):</b>   | <u>.576 mgd</u>                                  |
| <b>Location of measurement of capacity<br/>(i.e. Wellhead, Storage Tank):</b>           | <u>Hydropneumatic Tank</u>                       |
| <b>Type of treatment (reverse osmosis,<br/>sedimentation, chemical, aerated, etc.):</b> | <u>Aeration, Chlorination, Corrosion Control</u> |
| <b>LIME TREATMENT</b>   |  |
| Unit rating (i.e., GPM, pounds<br>per gallon): <u>N/A</u>                               | Manufacturer: <u>N/A</u>                         |
| <b>FILTRATION</b>   |  |
| Type and size of area:  |  |
| Pressure (in square feet): <u>N/A</u>   | Manufacturer: <u>N/A</u>                         |
| Gravity (in GPM/square feet): <u>N/A</u>  | Manufacturer: <u>N/A</u>                         |

UTILITY NAME: SANLANDO UTILITIES CORPORATION

YEAR OF REPORT  
31-Dec-03

SYSTEM NAME / COUNTY : SANLANDO/SEMINOLE  
WEKIVA HUNT CLUB

**WATER TREATMENT PLANT INFORMATION**  
Provide a separate sheet for each water treatment facility

|   |  |
|---|--|
| <b>Permitted Capacity of Plant (GPD):</b>   | <u>8.928 mgd</u>                                 |
| <b>Location of measurement of capacity<br/>(i.e. Wellhead, Storage Tank):</b>           | <u>High Service Pumps</u>                        |
| <b>Type of treatment (reverse osmosis,<br/>sedimentation, chemical, aerated, etc.):</b> | <u>Aeration, Chlorination, Corrosion Control</u> |
| <b>LIME TREATMENT</b>   |  |
| Unit rating (i.e., GPM, pounds<br>per gallon): <u>N/A</u>                               | Manufacturer: <u>N/A</u>                         |
| <b>FILTRATION</b>   |  |
| Type and size of area:  |  |
| Pressure (in square feet): <u>N/A</u>   | Manufacturer: <u>N/A</u>                         |
| Gravity (in GPM/square feet): <u>N/A</u>  | Manufacturer: <u>N/A</u>                         |

UTILITY NAME: SANLANDO UTILITIES CORPORATION

SYSTEM NAME / COUNTY : SANLANDO/SEMINOLE

**CALCULATION OF THE WATER SYSTEM METER EQUIVALENTS**

| METER SIZE (a)                       | TYPE OF METER (b)                 | EQUIVALENT FACTOR (c) | NUMBER OF METERS (d) | TOTAL NUMBER OF METER EQUIVALENTS (c x d) (e) |
|--------------------------------------|-----------------------------------|-----------------------|----------------------|---|
| All Residential                      |                                   | 1.0                   | 9,285                | 9,285   |
| 5/8"                                 | Displacement                      | 1.0                   |                      |   |
| 3/4"                                 | Displacement                      | 1.5                   |                      |   |
| 1"                                   | Displacement                      | 2.5                   |                      |   |
| 1 1/2"                               | Displacement or Turbine           | 5.0                   | 148                  | 740   |
| 2"                                   | Displacement, Compound or Turbine | 8.0                   | 131                  | 1,048   |
| 3"                                   | Displacement                      | 15.0                  |                      |   |
| 3"                                   | Compound                          | 16.0                  |                      |   |
| 3"                                   | Turbine                           | 17.5                  | 21                   | 368   |
| 4"                                   | Displacement or Compound          | 25.0                  | 5                    | 125   |
| 4"                                   | Turbine                           | 30.0                  |                      |   |
| 6"                                   | Displacement or Compound          | 50.0                  | 4                    | 200   |
| 6"                                   | Turbine                           | 62.5                  |                      |   |
| 8"                                   | Compound                          | 80.0                  | 1                    | 80  |
| 8"                                   | Turbine                           | 90.0                  |                      |   |
| 10"                                  | Compound                          | 115.0                 |                      |   |
| 10"                                  | Turbine                           | 145.0                 |                      |   |
| 12"                                  | Turbine                           | 215.0                 |                      |   |
| Total Water System Meter Equivalents |                                   |                       |                      | <u>2560.5</u>                                 |

**CALCULATION OF THE WATER SYSTEM EQUIVALENT RESIDENTIAL CONNECTIONS**

Provide a calculation used to determine the value of one water equivalent residential connection (ERC).

Use one of the following methods:

- (a) If actual flow data are available from the preceding 12 months, divide the total annual single family residence (SFR) gallons sold by the average number of single family residence customers for the same period and divide the result by 365 days.
- (b) If no historical flow data are available, use:  

$$ERC = ( \text{Total SFR gallons sold (Omit 000)} / 365 \text{ days} / 350 \text{ gallons per day} )$$

|                       |                                   |
|-----------------------|-----------------------------------|
| ERC Calculation:      |                                   |
| $2187.650/9285/365 =$ | $646 \text{ gpd} = 1 \text{ ERC}$ |

UTILITY NAME: SANLANDO UTILITIES CORPORATION

YEAR OF REPORT  
31-Dec-03

SYSTEM NAME / COUNTY : SANLANDO/SEMINOLE

**OTHER WATER SYSTEM INFORMATION**

Furnish information below for each system. A separate page should be supplied where necessary.

1. Present ERC's \* the system can efficiently serve. 21,240

2. Maximum number of ERCs \* which can be served. 21,240

3. Present system connection capacity (in ERCs \*) using existing lines. 21,240

4. Future connection capacity (in ERCs \*) upon service area buildout. 21,240

5. Estimated annual increase in ERCs \*. 34

6. Is the utility required to have fire flow capacity? Yes  
If so, how much capacity is required? Varies by type of use

7. Attach a description of the fire fighting facilities. Hydrants and private fire services are capable of providing required fire flow.

8. Describe any plans and estimated completion dates for any enlargements or improvements of this system. None

9. When did the company last file a capacity analysis report with the DEP? \_\_\_\_\_

10. If the present system does not meet the requirements of DEP rules:

- a. Attach a description of the plant upgrade necessary to meet the DEP rules.
- b. Have these plans been approved by DEP? N/A
- c. When will construction begin? N/A
- d. Attach plans for funding the required upgrading.
- e. Is this system under any Consent Order with DEP? No

11. Department of Environmental Protection ID # 3591121

12. Water Management District Consumptive Use Permit # 2-117-0006AUR2

- a. Is the system in compliance with the requirements of the CUP? Yes
- b. If not, what are the utility's plans to gain compliance? N/A

\* An ERC is determined based on the calculation on the bottom of Page W-13.

**WASTEWATER  
OPERATION  
SECTION**



UTILITY NAME: SANLANDO UTILITIES CORPORATION

|   |
|---|
| <b>YEAR OF REPORT</b><br><b>31-Dec-03</b> |
|---|

SYSTEM NAME / COUNTY : Seminole County

**SCHEDULE OF YEAR END WASTEWATER RATE BASE**

| ACCT.<br>NO.<br>(a)   | ACCOUNT NAME<br>(b)   | REFERENCE<br>PAGE<br>(c) | WASTEWATER<br>UTILITY<br>(d) |
|---|---|--------------------------|------------------------------|
| 101   | Utility Plant In Service  | S-4A                     | \$ 21,505,758                |
|   | Less:   |                          |                              |
|   | Nonused and Useful Plant (1)  |                          |                              |
| 108   | Accumulated Depreciation  | S-6B                     | <u>9,754,599</u>             |
| 110   | Accumulated Amortization  | F-8                      | <u>11,178</u>                |
| 271   | Contributions In Aid of Construction                                | S-7                      | <u>11,593,721</u>            |
| 252   | Advances for Construction   | F-20                     | <u>-</u>                     |
| Subtotal  |   |                          | \$ <u>146,261</u>            |
|   | Add:  |                          |                              |
| 272   | Accumulated Amortization of<br>Contributions in Aid of Construction | S-8A                     | \$ <u>7,699,002</u>          |
| Subtotal  |   |                          | \$ <u>7,845,263</u>          |
|   | Plus or Minus:  |                          |                              |
| 114   | Acquisition Adjustments (2)   | F-7                      | <u>-</u>                     |
| 115   | Accumulated Amortization of Acquisition Adjustments (2)             | F-7                      | <u>-</u>                     |
|   | Working Capital Allowance (3)                                       |                          | <u>237,839</u>               |
|   | Other (Specify):  |                          |                              |
|   | Work In Process   |                          | <u>15,873</u>                |
| <b>WASTEWATER RATE BASE</b>   |   |                          | \$ <u>8,098,975</u>          |
| <b>WASTEWATER OPERATING INCOME</b>  |   | S-3                      | \$ <u>532,901</u>            |
| <b>ACHIEVED RATE OF RETURN (Wastewater Operating Income / Wastewater Rate Base)</b> |   |                          | <u><u>6.58%</u></u>          |

NOTES : (1) Estimate based on the methodology used in the last rate proceeding.

(2) Include only those Acquisition Adjustments that have been approved by the Commission.

(3) Calculation consistent with last rate proceeding.

In absence of a rate proceeding, Class A utilities will use the Balance Sheet Method and Class B Utilities will use the One-eighth Operating and Maintenance Expense Method.



UTILITY NAME: SANLANDO UTILITIES CORPORATION

|   |
|---|
| <b>YEAR OF REPORT</b><br><b>31-Dec-03</b> |
|---|

SYSTEM NAME / COUNTY : Seminole County

**WASTEWATER OPERATING STATEMENT**

| ACCT.<br>NO.<br>(a)            | ACCOUNT NAME<br>(b)  | REFERENCE<br>PAGE<br>(c) | WASTEWATER<br>UTILITY<br>(d) |
|--------------------------------|--|--------------------------|------------------------------|
| 400                            | UTILITY OPERATING INCOME<br>Operating Revenues               | S-9A                     | \$ 3,024,686                 |
| 530                            | Less: Guaranteed Revenue (and AFPI)                          | S-9A                     |                              |
| Net Operating Revenues         |  |                          | \$ 3,024,686                 |
| 401                            | Operating Expenses   | S-10A                    | \$ 1,902,713                 |
| 403                            | Depreciation Expense   | S-6A                     | 600,737                      |
|                                | Less: Amortization of CIAC                                   | S-8A                     | (302,538)                    |
| Net Depreciation Expense       |  |                          | \$ 298,199                   |
| 406                            | Amortization of Utility Plant Acquisition Adjustment         | F-7                      | -                            |
| 407                            | Amortization Expense (Other than CIAC)                       | F-8                      | 2,205                        |
| 408.10                         | Taxes Other Than Income<br>Utility Regulatory Assessment Fee |                          | 136,620                      |
| 408.11                         | Property Taxes   |                          | 11,915                       |
| 408.12                         | Payroll Taxes  |                          | 34,544                       |
| 408.13                         | Other Taxes and Licenses                                     |                          | -                            |
| 408                            | Total Taxes Other Than Income                                |                          | \$ 183,079                   |
| 409.1                          | Income Taxes   |                          | 62,675                       |
| 410.10                         | Deferred Federal Income Taxes                                |                          | 44,499                       |
| 410.11                         | Deferred State Income Taxes                                  |                          | (1,584)                      |
| 411.10                         | Provision for Deferred Income Taxes - Credit                 |                          | -                            |
| 412.10                         | Investment Tax Credits Deferred to Future Periods            |                          |                              |
| 412.11                         | Investment Tax Credits Restored to Operating Income          |                          |                              |
| Utility Operating Expenses     |  |                          | \$ 2,491,786                 |
| Utility Operating Income       |  |                          | \$ 532,901                   |
| 530                            | Add Back:<br>Guaranteed Revenue (and AFPI)                   | S-9A                     | \$                           |
| 413                            | Income From Utility Plant Leased to Others                   |                          |                              |
| 414                            | Gains (losses) From Disposition of Utility Property          |                          |                              |
| 420                            | Allowance for Funds Used During Construction                 |                          | 1,659                        |
| Total Utility Operating Income |  |                          | \$ 534,560                   |

UTILITY NAME: SANLANDO UTILITIES CORPORATION

SYSTEM NAME / COUNTY Seminole County

WASTEWATER UTILITY PLANT ACCOUNTS

| ACCT. NO. (a)          | ACCOUNT NAME (b)                           | PREVIOUS YEAR (c) | ADDITIONS (d) | RETIREMENTS (e) | CURRENT YEAR (f) |
|------------------------|--|-------------------|---------------|-----------------|------------------|
| 351                    | Organization                               | \$ 429            | \$ -          | \$ -            | \$ 429           |
| 352                    | Franchises                                 | 87,919            | -             | -               | 87,919           |
| 353                    | Land and Land Rights                       | 202,552           | -             | -               | 202,552          |
| 354                    | Structures and Improvements                | 1,940,330         | 125,858       | 15,437          | 2,050,751        |
| 355                    | Power Generation Equipment                 | -                 | -             | -               | -                |
| 360                    | Collection Sewers - Force                  | 152,532           | 22,321        | 8,179           | 166,674          |
| 361                    | Collection Sewers - Gravity                | 6,835,990         | (421,493)     | 6,444           | 6,408,053        |
| 362                    | Special Collecting Structures              | -                 | -             | -               | -                |
| 363                    | Services to Customers                      | -                 | -             | -               | -                |
| 364                    | Flow Measuring Devices                     | -                 | -             | -               | -                |
| 365                    | Flow Measuring Installations               | -                 | -             | -               | -                |
| 366                    | Reuse Services                             | 756               | -             | -               | 756              |
| 367                    | Reuse Meters and Meter Installations       | -                 | 2,172         | -               | 2,172            |
| 370                    | Receiving Wells                            | -                 | -             | -               | -                |
| 371                    | Pumping Equipment                          | -                 | -             | -               | -                |
| 374                    | Reuse Distribution Reservoirs              | -                 | -             | -               | -                |
| 375                    | Reuse Transmission and Distribution System | 6,646,782         | 35,169        | -               | 6,681,951        |
| 380                    | Treatment and Disposal Equipment           | 4,577,903         | 156,613       | 12,126          | 4,722,390        |
| 381                    | Plant Sewers                               | -                 | -             | -               | -                |
| 382                    | Outfall Sewer Lines                        | 644,005           | -             | -               | 644,005          |
| 389                    | Other Plant Miscellaneous Equipment        | -                 | -             | -               | -                |
| 390                    | Office Furniture and Equipment             | 57,290            | 533           | -               | 57,823           |
| 391                    | Transportation Equipment                   | 310,265           | (6,209)       | -               | 304,056          |
| 392                    | Stores Equipment                           | -                 | -             | -               | -                |
| 393                    | Tools, Shop and Garage Equipment           | 77,486            | 1,720         | -               | 79,206           |
| 394                    | Laboratory Equipment                       | -                 | -             | -               | -                |
| 395                    | Power Operated Equipment                   | -                 | -             | -               | -                |
| 396                    | Communication Equipment                    | 97,021            | -             | -               | 97,021           |
| 397                    | Miscellaneous Equipment                    | -                 | -             | -               | -                |
| 398                    | Other Tangible Plant                       | -                 | -             | -               | -                |
| Total Wastewater Plant |  | \$ 21,631,260     | \$ (83,316)   | \$ 42,186       | \$ 21,505,758    |

NOTE: Any adjustments made to reclassify property from one account to another must be footnoted.

UTILITY NAME: SANLANDO UTILITIES CORPORATION

SYSTEM NAME / COUNTY : Seminole County

WASTEWATER UTILITY PLANT MATRIX

| ACCT. NO. | ACCOUNT NAME                               | .1<br>INTANGIBLE PLANT (g) | .2<br>COLLECTION PLANT (h) | .3<br>SYSTEM PUMPING PLANT (i) | .4<br>TREATMENT AND DISPOSAL (j) | .5<br>RECLAIMED WASTEWATER TREATMENT PLANT (i) | .6<br>RECLAIMED WASTEWATER DISTRIBUTION PLANT (i) | .7<br>GENERAL PLANT (k) |
|-----------|--|----------------------------|----------------------------|--------------------------------|----------------------------------|--|---|-------------------------|
| 351       | Organization                               | \$ 429                     |                            |                                |                                  |  |   |                         |
| 352       | Franchises                                 | 87,919                     |                            |                                |                                  |  |   |                         |
| 353       | Land and Land Rights                       |                            | 202,552                    |                                |                                  |  |   |                         |
| 354       | Structures and Improvements                |                            | 2,050,751                  |                                |                                  |  |   |                         |
| 355       | Power Generation Equipment                 |                            | -                          |                                |                                  |  |   |                         |
| 360       | Collection Sewers - Force                  |                            | 166,674                    |                                |                                  |  |   |                         |
| 361       | Collection Sewers - Gravity                |                            | 6,408,053                  |                                |                                  |  |   |                         |
| 362       | Special Collecting Structures              |                            | -                          |                                |                                  |  |   |                         |
| 363       | Services to Customers                      |                            | -                          |                                |                                  |  |   |                         |
| 364       | Flow Measuring Devices                     |                            | -                          |                                |                                  |  |   |                         |
| 365       | Flow Measuring Installations               |                            | -                          |                                |                                  |  |   |                         |
| 366       | Reuse Services                             |                            | 756                        |                                |                                  |  |   |                         |
| 367       | Reuse Meters and Meter Installations       |                            | 2,172                      |                                |                                  |  |   |                         |
| 370       | Receiving Wells                            |                            |                            |                                |                                  |  |   |                         |
| 371       | Pumping Equipment                          |                            |                            |                                |                                  |  |   |                         |
| 374       | Reuse Distribution Reservoirs              |                            |                            |                                |                                  |  |   |                         |
| 375       | Reuse Transmission and Distribution System |                            |                            |                                |                                  |  |   |                         |
| 380       | Treatment and Disposal Equipment           |                            |                            |                                | 4,722,390                        |  | 6,681,951   |                         |
| 381       | Plant Sewers                               |                            |                            |                                | -                                |  |   |                         |
| 382       | Outfall Sewer Lines                        |                            |                            |                                | 644,005                          |  |   |                         |
| 389       | Other Plant Miscellaneous Equipment        |                            |                            |                                |                                  |  |   | 57,823                  |
| 390       | Office Furniture and Equipment             |                            |                            |                                |                                  |  |   | 304,056                 |
| 391       | Transportation Equipment                   |                            |                            |                                |                                  |  |   | -                       |
| 392       | Stores Equipment                           |                            |                            |                                |                                  |  |   | 79,206                  |
| 393       | Tools, Shop and Garage Equipment           |                            |                            |                                |                                  |  |   | -                       |
| 394       | Laboratory Equipment                       |                            |                            |                                |                                  |  |   | -                       |
| 395       | Power Operated Equipment                   |                            |                            |                                |                                  |  |   | -                       |
| 396       | Communication Equipment                    |                            |                            |                                |                                  |  |   | 97,021                  |
| 397       | Miscellaneous Equipment                    |                            |                            |                                |                                  |  |   | -                       |
| 398       | Other Tangible Plant                       |                            |                            |                                |                                  |  |   |                         |
|           | Total Wastewater Plant                     | \$ 88,348                  | \$ 8,850,958               | \$ -                           | \$ 5,366,395                     | \$ -   | \$ 6,681,951                                      | \$ 538,106              |

NOTE: Any adjustments made to reclassify property from one account to another must be footnoted.

UTILITY NAME: SANLANDO UTILITIES CORPORATION

|   |
|---|
| <b>YEAR OF REPORT</b><br><b>31-Dec-03</b> |
|---|

SYSTEM NAME / COUNTY : Seminole County

**BASIS FOR WASTEWATER DEPRECIATION CHARGES**

| ACCT.<br>NO.<br>(a)                            | ACCOUNT NAME<br>(b)                           | AVERAGE<br>SERVICE LIFE<br>IN YEARS<br>(c) | AVERAGE NET<br>SALVAGE IN<br>PERCENT<br>(d) | DEPRECIATION<br>RATE APPLIED<br>IN PERCENT<br>(100% - D) / C<br>(e) |
|--|---|--|---|---|
| 354  | Structures and Improvements                   |  |   | 3.13%   |
| 355  | Power Generation Equipment                    |  |   |   |
| 360  | Collection Sewers - Force                     |  |   | 3.33%   |
| 361  | Collection Sewers - Gravity                   |  |   | 2.22%   |
| 362  | Special Collecting Structures                 |  |   |   |
| 363  | Services to Customers                         |  |   |   |
| 364  | Flow Measuring Devices                        |  |   |   |
| 365  | Flow Measuring Installations                  |  |   |   |
| 366  | Reuse Services                                |  |   | 2.00%   |
| 367  | Reuse Meters and Meter Installations          |  |   | 2.00%   |
| 370  | Receiving Wells                               |  |   |   |
| 371  | Pumping Equipment                             |  |   |   |
| 375  | Reuse Transmission and<br>Distribution System |  |   | 2.00%   |
| 380  | Treatment and Disposal Equipment              |  |   | 5.56%   |
| 381  | Plant Sewers                                  |  |   |   |
| 382  | Outfall Sewer Lines                           |  |   | 2.86%   |
| 389  | Other Plant Miscellaneous Equipment           |  |   |   |
| 390  | Office Furniture and Equipment                |  |   | 6.67%   |
| 391  | Transportation Equipment                      |  |   | 16.67%  |
| 392  | Stores Equipment                              |  |   |   |
| 393  | Tools, Shop and Garage Equipment              |  |   | 6.25%   |
| 394  | Laboratory Equipment                          |  |   |   |
| 395  | Power Operated Equipment                      |  |   |   |
| 396  | Communication Equipment                       |  |   | 10.00%  |
| 397  | Miscellaneous Equipment                       |  |   |   |
| 398  | Other Tangible Plant                          |  |   |   |
| Wastewater Plant Composite Depreciation Rate * |   | =====                                      | =====                                       | =====   |

\* If depreciation rates prescribed by this Commission are on a total composite basis, entries should be made on this line only.

YEAR OF REPORT  
31-Dec-03

UTILITY NAME: SANLANDO UTILITIES CORPORATION

SYSTEM NAME / COUNTY : Seminole County

ANALYSIS OF ENTRIES IN WASTEWATER ACCUMULATED DEPRECIATION

| ACCT. NO.<br>(a)                              | ACCOUNT NAME<br>(b)                        | BALANCE AT BEGINNING OF YEAR<br>(c) | ACCRUALS<br>(d) | OTHER CREDITS *<br>(e) | TOTAL CREDITS (d + e)<br>(f) |
|---|--|-------------------------------------|-----------------|------------------------|------------------------------|
| 354   | Structures and Improvements                | \$ 1,433,180                        | \$ 76,591       | -                      | \$ 76,591                    |
| 355   | Power Generation Equipment                 |                                     |                 | -                      | -                            |
| 360   | Collection Sewers - Force                  | 12,710                              | 4,715           | -                      | 4,715                        |
| 361   | Collection Sewers - Gravity                | 3,554,176                           | 152,235         | -                      | 152,235                      |
| 362   | Special Collecting Structures              |                                     |                 | -                      | -                            |
| 363   | Services to Customers                      |                                     |                 | -                      | -                            |
| 364   | Flow Measuring Devices                     |                                     |                 | -                      | -                            |
| 365   | Flow Measuring Installations               |                                     |                 | -                      | -                            |
| 366   | Reuse Services                             | -                                   | 19              | -                      | 19                           |
| 367   | Reuse Meters and Meter Installations       | -                                   | 26              | -                      | 26                           |
| 370   | Receiving Wells                            |                                     |                 | -                      | -                            |
| 371   | Pumping Equipment                          |                                     |                 | -                      | -                            |
| 375   | Reuse Transmission and Distribution System | 130,451                             | 155,226         | -                      | 155,226                      |
| 380   | Treatment and Disposal Equipment           | 3,116,297                           | 133,420         | -                      | 133,420                      |
| 381   | Plant Sewers                               |                                     |                 | -                      | -                            |
| 382   | Outfall Sewer Lines                        | 470,132                             | 21,484          | -                      | 21,484                       |
| 389   | Other Plant Miscellaneous Equipment        |                                     |                 | -                      | -                            |
| 390   | Office Furniture and Equipment             | 106,182                             | 3,822           | -                      | 3,822                        |
| 391   | Transportation Equipment                   | 222,591                             | 38,655          | (8,043)                | 30,612                       |
| 392   | Stores Equipment                           |                                     |                 | -                      | -                            |
| 393   | Tools, Shop and Garage Equipment           | 106,686                             | 4,846           | -                      | 4,846                        |
| 394   | Laboratory Equipment                       |                                     |                 | -                      | -                            |
| 395   | Power Operated Equipment                   |                                     |                 | -                      | -                            |
| 396   | Communication Equipment                    | 51,686                              | 9,698           | -                      | 9,698                        |
| 397   | Miscellaneous Equipment                    |                                     |                 | -                      | -                            |
| 398   | Other Tangible Plant                       |                                     |                 | -                      | -                            |
| Total Depreciable Wastewater Plant in Service |  | \$ 9,204,091                        | \$ 600,737      | \$ (8,043)             | \$ 592,694                   |

\* Specify nature of transaction. Use ( ) to denote reversal entries.

OTHER CREDITS column (E) \* are due to allocation of UJF plant

S-6(a)  
GROUP \_\_\_\_\_

YEAR OF REPORT  
31-Dec-03

UTILITY NAME: SANLANDO UTILITIES CORPORATION

SYSTEM NAME / COUNTY : Seminole County

ANALYSIS OF ENTRIES IN WASTEWATER ACCUMULATED DEPRECIATION

| ACCT. NO.                                     | ACCOUNT NAME                               | PLANT RETIRED (g) | SALVAGE AND INSURANCE (h) | COST OF REMOVAL AND OTHER CHARGES (i) | TOTAL CHARGES (g-h+i) (j) | BALANCE AT END OF YEAR (c+f-j) (k) |
|---|--|-------------------|---------------------------|---------------------------------------|---------------------------|------------------------------------|
| (a)   | (b)  |                   |                           |                                       |                           |                                    |
| 354   | Structures and Improvements                | \$ 15,437         | \$                        | \$                                    | \$ 15,437                 | \$ 1,494,334                       |
| 355   | Power Generation Equipment                 | -                 |                           |                                       | -                         |                                    |
| 360   | Collection Sewers - Force                  | 8,179             |                           |                                       | 8,179                     | 9,246                              |
| 361   | Collection Sewers - Gravity                | 6,444             |                           |                                       | 6,444                     | 3,699,967                          |
| 362   | Special Collecting Structures              | -                 |                           |                                       | -                         | -                                  |
| 363   | Services to Customers                      | -                 |                           |                                       | -                         | -                                  |
| 364   | Flow Measuring Devices                     | -                 |                           |                                       | -                         |                                    |
| 365   | Flow Measuring Installations               | -                 |                           |                                       | -                         |                                    |
| 366   | Reuse Services                             | -                 |                           |                                       | -                         | 19                                 |
| 367   | Reuse Meters and Meter Installations       | -                 |                           |                                       | -                         | 26                                 |
| 370   | Receiving Wells                            | -                 |                           |                                       | -                         | -                                  |
| 371   | Pumping Equipment                          | -                 |                           |                                       | -                         |                                    |
| 375   | Reuse Transmission and Distribution System | -                 |                           |                                       | -                         |                                    |
| 380   | Treatment and Disposal Equipment           | 12,126            |                           |                                       | 12,126                    | 285,677                            |
| 381   | Plant Sewers                               | -                 |                           |                                       | -                         | 3,237,591                          |
| 382   | Outfall Sewer Lines                        | -                 |                           |                                       | -                         | 491,616                            |
| 389   | Other Plant Miscellaneous Equipment        | -                 |                           |                                       | -                         | -                                  |
| 390   | Office Furniture and Equipment             | -                 |                           |                                       | -                         | 110,004                            |
| 391   | Transportation Equipment                   | -                 |                           |                                       | -                         | 253,203                            |
| 392   | Stores Equipment                           | -                 |                           |                                       | -                         |                                    |
| 393   | Tools, Shop and Garage Equipment           | -                 |                           |                                       | -                         | 111,532                            |
| 394   | Laboratory Equipment                       | -                 |                           |                                       | -                         | -                                  |
| 395   | Power Operated Equipment                   | -                 |                           |                                       | -                         | -                                  |
| 396   | Communication Equipment                    | -                 |                           |                                       | -                         | 61,384                             |
| 397   | Miscellaneous Equipment                    | -                 |                           |                                       | -                         |                                    |
| 398   | Other Tangible Plant                       | -                 |                           |                                       | -                         | -                                  |
| Total Depreciable Wastewater Plant in Service |  | \$ 42,186         | \$ -                      | \$ -                                  | \$ 42,186                 | \$ 9,754,599                       |

\* Specify nature of transaction.  
Use ( ) to denote reversal entries.

S-6(b)  
GROUP \_\_\_\_\_



UTILITY NAME: SANLANDO UTILITIES CORPORATION

YEAR OF REPORT  
31-Dec-03

SYSTEM NAME / COUNTY : Seminole County

**WASTEWATER CIAC SCHEDULE "A"**

ADDITIONS TO CONTRIBUTIONS IN AID OF CONSTRUCTION RECEIVED FROM CAPACITY,  
MAIN EXTENSION AND CUSTOMER CONNECTION CHARGES RECEIVED DURING THE YEAR

| DESCRIPTION OF CHARGE<br>(a) | NUMBER OF CONNECTIONS<br>(b) | CHARGE PER CONNECTION<br>(c) | AMOUNT<br>(d) |
|------------------------------|------------------------------|------------------------------|---------------|
| SEWER CONNECTIONS FEES       | 1                            | \$ 225                       | \$ 225        |
| SEWER CONNECTIONS FEES       | 1                            | 376                          | 376           |
| _____                        | _____                        | _____                        | _____         |
| _____                        | _____                        | _____                        | _____         |
| _____                        | _____                        | _____                        | _____         |
| _____                        | _____                        | _____                        | _____         |
| _____                        | _____                        | _____                        | _____         |
| _____                        | _____                        | _____                        | _____         |
| Total Credits                |                              |                              | \$ <u>601</u> |

**ACCUMULATED AMORTIZATION OF WASTEWATER  
CONTRIBUTIONS IN AID OF CONSTRUCTION**

| DESCRIPTION<br>(a)                  | WASTEWATER<br>(b)   |
|-------------------------------------|---------------------|
| Balance first of year               | \$ 7,396,464        |
| Debits during the year:             |                     |
| Accruals charged to Account 272     | \$ 302,538          |
| Other debits (specify) :            | _____               |
| _____                               | _____               |
| Total debits                        | \$ 302,538          |
| Credits during the year (specify) : | \$ _____            |
| _____                               | _____               |
| Total credits                       | \$ -                |
| Balance end of year                 | \$ <u>7,699,002</u> |





Reconciliation of Revenue to  
Regulatory Assessment Fee Revenue  
Wastewater Operations

**UTILITY NAME:** SANLANDO UTILITIES CORPORATION

|                       |
|-----------------------|
| <b>YEAR OF REPORT</b> |
| 31-Dec-03             |

| (A)   | (B)                                      | (C)   | (D)                   |
|---|--|---|-----------------------|
| Accounts  | Gross Wastewater<br>Revenues per Sch S-9 | Gross Wastewater<br>Revenues per RAF Return | Difference<br>(B)-(C) |
| Gross Revenues:   |  |   | -                     |
| Total Flat-Rate Revenues  |  |   | -                     |
| Total Measured Revenues   | 3,024,686                                | 3,024,686                                   | -                     |
| Revenues from Public Authorities                                      |  |   | -                     |
| Revenues from Other Systems   |  |   | -                     |
| Interdepartmental Revenues  |  |   | -                     |
| Total Other Wastewater Revenues                                       |  |   | -                     |
| Reclaimed Water Sales   |  |   | -                     |
| Total Wastewater Operating Revenue                                    | 3,024,686                                | 3,024,686                                   | -                     |
| Less: Expense for Purchased Wastewater<br>from FPSC Regulated Utility |  |   | -                     |
| Net Wastewater Operating Revenues                                     | 3,024,686                                | 3,024,686                                   | -                     |

UTILITY NAME: SANLANDO UTILITIES CORPORATION

|                             |
|-----------------------------|
| YEAR OF REPORT<br>31-Dec-03 |
|-----------------------------|

SYSTEM NAME / COUNTY : Seminole County

**WASTEWATER OPERATING REVENUE**

| ACCT.<br>NO.<br>(a)              | DESCRIPTION<br>(b)  | BEGINNING<br>YEAR NO.<br>CUSTOMERS *<br>(c) | YEAR END<br>NUMBER OF<br>CUSTOMERS *<br>(d) | AMOUNTS<br>(e) |
|----------------------------------|---|---|---|----------------|
| <b>WASTEWATER SALES</b>          |   |   |   |                |
|                                  | Flat Rate Revenues:   |   |   |                |
| 521.1                            | Residential Revenues  | 11,174                                      | 8,107                                       | \$ 2,763,555   |
| 521.2                            | Commercial Revenues   |   |   | 241,775        |
| 521.3                            | Industrial Revenues   |   |   |                |
| 521.4                            | Revenues From Public Authorities  |   |   |                |
| 521.5                            | Multiple Family Dwelling Revenues   |   |   |                |
| 521.6                            | Other Revenues  |   |   |                |
| 521                              | Total Flat Rate Revenues  | 11,174                                      | 8,107                                       | \$ 3,005,330   |
|                                  | Measured Revenues:  |   |   |                |
| 522.1                            | Residential Revenues  |   |   |                |
| 522.2                            | Commercial Revenues   |   |   |                |
| 522.3                            | Industrial Revenues   |   |   |                |
| 522.4                            | Revenues From Public Authorities  |   |   |                |
| 522.5                            | Multiple Family Dwelling Revenues   |   |   |                |
| 522                              | Total Measured Revenues   |   |   | \$             |
| 523                              | Revenues From Public Authorities  |   |   |                |
| 524                              | Revenues From Other Systems   |   |   |                |
| 525                              | Interdepartmental Revenues  |   |   |                |
| Total Wastewater Sales           |   | 11,174                                      | 8,107                                       | \$ 3,005,330   |
| <b>OTHER WASTEWATER REVENUES</b> |   |   |   |                |
| 530                              | Guaranteed Revenues   |   |   | \$             |
| 531                              | Sale of Sludge  |   |   |                |
| 532                              | Forfeited Discounts   |   |   |                |
| 534                              | Rents From Wastewater Property  |   |   |                |
| 535                              | Interdepartmental Rents   |   |   |                |
| 536                              | Other Wastewater Revenues<br>(Including Allowance for Funds Prudently Invested or AFPI) |   |   | 19,356         |
| Total Other Wastewater Revenues  |   |   |   | \$ 19,356      |

\* Customer is defined by Rule 25-30.210(1), Florida Administrative Code.

UTILITY NAME: SANLANDO UTILITIES CORPORATION

|   |
|---|
| <b>YEAR OF REPORT</b><br><b>31-Dec-03</b> |
|---|

SYSTEM NAME / COUNTY : Seminole County

**WASTEWATER OPERATING REVENUE**

| ACCT.<br>NO.<br>(a)                 | DESCRIPTION<br>(b)                        | BEGINNING<br>YEAR NO.<br>CUSTOMERS *<br>(c) | YEAR END<br>NUMBER OF<br>CUSTOMERS *<br>(d) | AMOUNTS<br>(e)      |
|-------------------------------------|---|---|---|---------------------|
| RECLAIMED WATER SALES               |   |   |   |                     |
|                                     | Flat Rate Reuse Revenues:                 |   |   |                     |
| 540.1                               | Residential Reuse Revenues                | _____                                       | _____                                       | \$ _____            |
| 540.2                               | Commercial Reuse Revenues                 | _____                                       | _____                                       | _____               |
| 540.3                               | Industrial Reuse Revenues                 | _____                                       | _____                                       | _____               |
| 540.4                               | Reuse Revenues From<br>Public Authorities | _____                                       | _____                                       | _____               |
| 540.5                               | Other Revenues                            | _____                                       | _____                                       | _____               |
| 540                                 | Total Flat Rate Reuse Revenues            | _____                                       | _____                                       | \$ _____            |
|                                     | Measured Reuse Revenues:                  |   |   |                     |
| 541.1                               | Residential Reuse Revenues                | _____                                       | _____                                       | _____               |
| 541.2                               | Commercial Reuse Revenues                 | _____                                       | _____                                       | _____               |
| 541.3                               | Industrial Reuse Revenues                 | _____                                       | _____                                       | _____               |
| 541.4                               | Reuse Revenues From<br>Public Authorities | _____                                       | _____                                       | _____               |
| 541                                 | Total Measured Reuse Revenues             | _____                                       | _____                                       | \$ _____            |
| 544                                 | Reuse Revenues From Other Systems         |   |   |                     |
| Total Reclaimed Water Sales         |   |   |   | \$ _____            |
| Total Wastewater Operating Revenues |   |   |   | \$ <u>3,024,686</u> |

\* Customer is defined by Rule 25-30.210(1), Florida Administrative Code.

YEAR OF REPORT  
31-Dec-03

UTILITY NAME: SANLANDO UTILITIES CORPORATION

SYSTEM NAME / COUNTY Seminole County

WASTEWATER UTILITY EXPENSE ACCOUNT MATRIX

| ACCT. NO.                         | ACCOUNT NAME (b)   | CURRENT YEAR (c) | .1<br>COLLECTION EXPENSES- OPERATIONS (d) | .2<br>COLLECTION EXPENSES- MAINTENANCE (e) | .3<br>PUMPING EXPENSES - OPERATIONS (f) | .4<br>PUMPING EXPENSES - MAINTENANCE (g) | .5<br>TREATMENT & DISPOSAL EXPENSES - OPERATIONS (h) | .6<br>TREATMENT & DISPOSAL EXPENSES - MAINTENANCE (i) |
|-----------------------------------|--|------------------|---|--|---|--|--|---|
| 701                               | Salaries and Wages - Employees                                     | \$ 613,178       | \$ 18,395                                 | \$ 73,581                                  | \$ 122,636                              | \$ 30,659                                | \$ 294,325   | \$ 73,582   |
| 703                               | Salaries and Wages - Officers, Directors and Majority Stockholders |                  |   |  |   |  |  |   |
| 704                               | Employee Pensions and Benefits                                     | 109,251          | 3,278                                     | 7,648                                      | 13,110                                  | 5,463                                    | 32,775   | 13,107  |
| 710                               | Purchased Sewage Treatment   | -                |   |  |   |  |  |   |
| 711                               | Sludge Removal Expense   | 129,821          |   |  |   |  | 129,821  |   |
| 715                               | Purchased Power  | 368,471          |   |  | 92,118                                  |  | 276,353  |   |
| 716                               | Fuel for Power Purchased   |                  |   |  |   |  |  |   |
| 718                               | Chemicals  | 224,807          |   |  |   |  | 224,807  |   |
| 720                               | Materials and Supplies   | 206,878          | 8,275                                     | 33,100                                     | 49,651                                  | 12,413                                   | 82,751   | 20,688  |
| 731                               | Contractual Services-Engineering                                   | -                |   |  |   |  |  |   |
| 732                               | Contractual Services - Accounting                                  | 9,580            |   |  |   |  |  |   |
| 733                               | Contractual Services - Legal                                       | 11,574           |   |  |   |  |  |   |
| 734                               | Contractual Services - Mgt. Fees                                   | -                |   |  |   |  |  |   |
| 735                               | Contractual Services - Testing                                     |                  |   |  |   |  |  |   |
| 736                               | Contractual Services - Other                                       | 14,377           |   |  |   |  |  |   |
| 741                               | Rental of Building/Real Property                                   |                  |   |  |   |  |  |   |
| 742                               | Rental of Equipment  |                  |   |  |   |  |  |   |
| 750                               | Transportation Expenses  | 42,751           | 1,283                                     | 5,130                                      | 8,550                                   | 2,138                                    | 20,520   | 5,130   |
| 756                               | Insurance - Vehicle  |                  |   |  |   |  |  |   |
| 757                               | Insurance - General Liability                                      |                  |   |  |   |  |  |   |
| 758                               | Insurance - Workman's Comp.  |                  |   |  |   |  |  |   |
| 759                               | Insurance - Other  | 78,790           |   |  |   |  |  |   |
| 760                               | Advertising Expense  |                  |   |  |   |  |  |   |
| 766                               | Regulatory Commission Expenses - Amortization of Rate Case Expense | 209              |   |  |   |  |  |   |
| 767                               | Regulatory Commission Exp -Other                                   | 3,893            |   |  |   |  |  |   |
| 770                               | Bad Debt Expense   | 89,133           |   |  |   |  |  |   |
| 775                               | Miscellaneous Expenses   |                  |   |  |   |  |  |   |
| Total Wastewater Utility Expenses |  | \$ 1,902,713     | \$ 31,231                                 | \$ 119,459                                 | \$ 286,065                              | \$ 50,673                                | \$ 1,061,352   | \$ 112,507  |

S-10(a)  
GROUP \_\_\_\_\_

UTILITY NAME: SANLANDO UTILITIES CORPORATION

SYSTEM NAME / COUNTY : Seminole County

WASTEWATER UTILITY EXPENSE ACCOUNT MATRIX

| ACCT. NO.                         | ACCOUNT NAME (b)   | .7<br>CUSTOMER ACCOUNTS EXPENSE (j) | .8<br>ADMIN. & GENERAL EXPENSES (k) | .9<br>RECLAIMED WATER TREATMENT EXPENSES- OPERATIONS (l) | .10<br>RECLAIMED WATER TREATMENT EXPENSES- MAINTENANCE (m) | .11<br>RECLAIMED WATER DISTRIBUTION EXPENSES- OPERATIONS (n) | .12<br>RECLAIMED WATER DISTRIBUTION EXPENSES- MAINTENANCE (o) |
|-----------------------------------|--|-------------------------------------|-------------------------------------|--|--|--|---|
| 701                               | Salaries and Wages - Employees                                     | \$                                  |                                     |  |  |  |   |
| 703                               | Salaries and Wages - Officers, Directors and Majority Stockholders |                                     |                                     |  |  |  |   |
| 704                               | Employee Pensions and Benefits                                     | 33,870                              |                                     |  |  |  |   |
| 710                               | Purchased Sewage Treatment   |                                     |                                     |  |  |  |   |
| 711                               | Sludge Removal Expense   |                                     |                                     |  |  |  |   |
| 715                               | Purchased Power  |                                     |                                     |  |  |  |   |
| 716                               | Fuel for Power Purchased   |                                     |                                     |  |  |  |   |
| 718                               | Chemicals  |                                     |                                     |  |  |  |   |
| 720                               | Materials and Supplies   |                                     |                                     |  |  |  |   |
| 731                               | Contractual Services-Engineering                                   |                                     | 0                                   |  |  |  |   |
| 732                               | Contractual Services - Accounting                                  |                                     | 9,580                               |  |  |  |   |
| 733                               | Contractual Services - Legal                                       |                                     | 11,574                              |  |  |  |   |
| 734                               | Contractual Services - Mgt. Fees                                   |                                     | 0                                   |  |  |  |   |
| 735                               | Contractual Services - Testing                                     |                                     | 0                                   |  |  |  |   |
| 736                               | Contractual Services - Other                                       | 7,189                               | 7,188                               |  |  |  |   |
| 741                               | Rental of Building/Real Property                                   |                                     |                                     |  |  |  |   |
| 742                               | Rental of Equipment  |                                     |                                     |  |  |  |   |
| 750                               | Transportation Expenses  |                                     |                                     |  |  |  |   |
| 756                               | Insurance - Vehicle  |                                     |                                     |  |  |  |   |
| 757                               | Insurance - General Liability                                      |                                     |                                     |  |  |  |   |
| 758                               | Insurance - Workman's Comp.  |                                     |                                     |  |  |  |   |
| 759                               | Insurance - Other  |                                     | 78,790                              |  |  |  |   |
| 760                               | Advertising Expense  |                                     |                                     |  |  |  |   |
| 766                               | Regulatory Commission Expenses - Amortization of Rate Case Expense |                                     | 209                                 |  |  |  |   |
| 767                               | Regulatory Commission Exp.-Other                                   |                                     |                                     |  |  |  |   |
| 770                               | Bad Debt Expense   | 3,893                               |                                     |  |  |  |   |
| 775                               | Miscellaneous Expenses   | 44,567                              | 44,566                              |  |  |  |   |
| Total Wastewater Utility Expenses |  | \$ 89,519                           | \$ 151,907                          | \$ -   | \$ -   | \$ -   | \$ -  |

UTILITY NAME:

SANLANDO UTILITIES CORPORATION

|                                    |
|------------------------------------|
| <b>YEAR OF REPORT</b><br>31-Dec-03 |
|------------------------------------|

SYSTEM NAME / COUNTY :

SANLANDO / SEMINOLE

**CALCULATION OF THE WASTEWATER SYSTEM METER EQUIVALENTS**

| WATER METER SIZE<br>(a)                   | TYPE OF WATER METER<br>(b)        | EQUIVALENT FACTOR<br>(c) | NUMBER OF WATER METERS<br>(d) | TOTAL NUMBER OF METER EQUIVALENTS<br>(c x d)<br>(e) |
|---|-----------------------------------|--------------------------|-------------------------------|---|
| All Residential                           |                                   | 1.0                      | 9,285                         | 9,285   |
| 5/8"                                      | Displacement                      | 1.0                      |                               |   |
| 3/4"                                      | Displacement                      | 1.5                      |                               |   |
| 1"  | Displacement                      | 2.5                      |                               |   |
| 1 1/2"                                    | Displacement or Turbine           | 5.0                      | 90                            | 450   |
| 2"  | Displacement, Compound or Turbine | 8.0                      | 96                            | 768   |
| 3"  | Displacement                      | 15.0                     |                               |   |
| 3"  | Compound                          | 16.0                     |                               |   |
| 3"  | Turbine                           | 17.5                     | 19                            | 332.5   |
| 4"  | Displacement or Compound          | 25.0                     | 5                             | 125   |
| 4"  | Turbine                           | 30.0                     |                               |   |
| 6"  | Displacement or Compound          | 50.0                     | 2                             | 100   |
| 6"  | Turbine                           | 62.5                     |                               |   |
| 8"  | Compound                          | 80.0                     | 1                             | 80  |
| 8"  | Turbine                           | 90.0                     |                               |   |
| 10"                                       | Compound                          | 115.0                    |                               |   |
| 10"                                       | Turbine                           | 145.0                    |                               |   |
| 12"                                       | Turbine                           | 215.0                    |                               |   |
| Total Wastewater System Meter Equivalents |                                   |                          |                               | <u>1,856</u>  |

**CALCULATION OF THE WASTEWATER SYSTEM EQUIVALENT RESIDENTIAL CONNECTIONS**

Provide a calculation used to determine the value of one wastewater equivalent residential connection (ERC).

Use one of the following methods:

(a) If actual flow data are available from the preceding 12 months, divide the total annual single family residence (SFR) gallons sold by the average number of single family residence customers for the same period and divide the result by 365 days.

(b) If no historical flow data are available, use:

$$ERC = ( \text{Total SFR gallons treated (Omit 000)} / 365 \text{ days} / 280 \text{ gallons per day} )$$

For wastewater only utilities:

Subtract all general use and other non residential customer gallons from the total gallons treated.

Divide the remainder (SFR customers) by 365 days to reveal single family residence customer gallons per day.

**NOTE:** Total gallons treated includes both treated and purchased treatment.

|                                      |                                |
|--------------------------------------|--------------------------------|
| ERC Calculation:                     |                                |
| $972,916/365/9235 = 287 \text{ gpd}$ | One (1) ERC = 287 gallons AADF |

UTILITY NAME: SANLANDO UTILITIES CORPORATION

|   |
|---|
| <b>YEAR OF REPORT</b><br><b>31-Dec-03</b> |
|---|

SYSTEM NAME / COUNTY : SANLANDO / SEMINOLE  
WEKIVA HUNT CLUB

**WASTEWATER TREATMENT PLANT INFORMATION**  
 Provide a separate sheet for each wastewater treatment facility

|                                     |                                    |  |  |
|-------------------------------------|------------------------------------|--|--|
| Permitted Capacity                  | <u>2.9 mgd</u>                     |  |  |
| Basis of Permit Capacity (1)        | <u>AADF</u>                        |  |  |
| Manufacturer                        | <u>Sanitaire</u>                   |  |  |
| Type (2)                            | <u>Ext. Aeration</u>               |  |  |
| Hydraulic Capacity                  | <u>2.900 mgd</u>                   |  |  |
| Average Daily Flow                  | <u>2.325</u>                       |  |  |
| Total Gallons of Wastewater Treated | <u>848.564</u>                     |  |  |
| Method of Effluent Disposal         | <u>Surface<br/>Water Discharge</u> |  |  |

- (1) Basis of permitted capacity as stated on the Florida DEP WWTP Operating Permit (i.e. average annual daily flow, etc.)
- (2) Contact stabilization, advanced treatment, etc.



UTILITY NAME: SANLANDO UTILITIES CORPORATION

YEAR OF REPORT  
31-Dec-03

SYSTEM NAME / COUNTY : SANLANDO / SEMINOLE  
WOODLANDS

**WASTEWATER TREATMENT PLANT INFORMATION**

Provide a separate sheet for each wastewater treatment facility

|                                     |  |  |  |
|-------------------------------------|--|--|--|
| Permitted Capacity                  | <u>.500 mgd</u>                        |  |  |
| Basis of Permit Capacity (1)        | <u>AADF</u>                            |  |  |
| Manufacturer                        | <u>Sanitaire</u>                       |  |  |
| Type (2)                            | <u>Ext. Aeration</u>                   |  |  |
| Hydraulic Capacity                  | <u>.500 mgd</u>                        |  |  |
| Average Daily Flow                  | <u>0.341</u>                           |  |  |
| Total Gallons of Wastewater Treated | <u>124.352</u>                         |  |  |
| Method of Effluent Disposal         | <u>Perc Ponds<br/>&amp; Spray Irrg</u> |  |  |

- (1) Basis of permitted capacity as stated on the Florida DEP WWTP Operating Permit (i.e. average annual daily flow, etc.)
- (2) Contact stabilization, advanced treatment, etc.

UTILITY NAME: SANLANDO UTILITIES CORPORATION

YEAR OF REPORT  
31-Dec-03

SYSTEM NAME / COUNTY : SANLANDO / SEMINOLE

**OTHER WASTEWATER SYSTEM INFORMATION**

Furnish information below for each system. A separate page should be supplied where necessary.

1. Present number of ERCs\* now being served 9,268

2. Maximum number of ERCs\* which can be served 12,143

3. Present system connection capacity (in ERCs\*) using existing lines 12,143

4. Future connection capacity (in ERCs\*) upon service area buildout 12,143

5. Estimated annual increase in ERCs\* 34

6. Describe any plans and estimated completion dates for any enlargements or improvements of this system  
N/A

7. If the utility uses reuse as a means of effluent disposal, attach a list of the reuse end users and the amount of reuse provided to each, if known. N/A

8. If the utility does not engage in reuse, has a reuse feasibility study been completed? Yes

If so, when? \_\_\_\_\_

9. Has the utility been required by the DEP or water management district to implement reuse? Yes

If so, what are the utility's plans to comply with this requirement? Construct public access reuse system at Wekiva WWTF by 2002.

10. When did the company last file a capacity analysis report with the DEP? 1995 - Wekiva Hunt Club and 1998 Woodlands Des Pinar

11. If the present system does not meet the requirements of DEP rules:

a. Attach a description of the plant upgrade necessary to meet the DEP rules.

b. Have these plans been approved by DEP? N/A

c. When will construction begin? N/A

d. Attach plans for funding the required upgrading.

e. Is this system under any Consent Order with DEP? No

12. Department of Environmental Protection ID # FLA0036251 (Wekiva Hunt Club) and FLA011080 (Woodlands)

\* An ERC is determined based on the calculation on S-11.