

CLASS "B"

WATER and/or SEWER UTILITIES

(Gross Revenue of \$150,000 or More but Less Than \$750,000 Each)

ANNUAL REPORT

OF

Jasmine Lakes Utilities Corp.

110-W/083-S

Certificate Number(s)



RECEIVED

APR 30 1999

Florida Public Service Commission
Division of Water and Wastewater

OFFICIAL COPY

DIVISION OF

WATER AND SEWER

Do Not Remove from this Office

FOR THE

YEAR ENDED DECEMBER 31, 1998

Form PSC/WAS 5 (Rev. 12/22/86)

RECEIVED

Cronin, Jackson, Nixon & Wilson
CERTIFIED PUBLIC ACCOUNTANTS, P.A.

JAMES L. CARLSTEDT, C.P.A.
JOHN H. CRONIN, JR., C.P.A.
ERIC M. DOAN, C.P.A.
ROBERT H. JACKSON, C.P.A.
ELIZABETH A. MAY, C.P.A.
BRENDA W. McBARRON, C.P.A.
ROBERT C. NIXON, C.P.A.
HOLLY M. TOWNER, C.P.A.
JOHN A. VANTREASE, C.P.A.
JAMES L. WILSON, C.P.A.

2560 GULF-TO-BAY BOULEVARD
SUITE 200
CLEARWATER, FLORIDA 33765-4419
(727) 791-4020
FACSIMILE
(727) 797-3602
e-Mail
cjniw@worldnet.att.net

April 29, 1999

Officers and Directors
Jasmine Lakes Utilities Corp.

We have compiled the 1998 Annual Report of Jasmine Lakes Utilities Corp. in the accompanying prescribed form, in accordance with Statements on Standards for Accounting and Review Services issued by the American Institute of Certified Public Accountants.

Our compilation was limited to presenting, in the form prescribed by the Florida Public Service Commission, information that is the representation of the management of Jasmine Lakes Utilities Corp. We have not audited or reviewed the report referred to above and, accordingly, do not express an opinion or any form of assurance on it.

This report is presented in accordance with the requirements of the Florida Public Service Commission, which differ from generally accepted accounting principles. Accordingly, this report is not designed for those who are not informed about such differences.

Cronin, Jackson, Nixon & Wilson
CRONIN, JACKSON, NIXON & WILSON

TABLE OF CONTENTS

Schedule	Page	Schedule	Page
Executive Summary			
Certification	E-1	Directors and Affiliates	E-7
General Information	E-2	Affiliation of Officers and Directors	E-8
Directory of Personnel Who Contact the Fla. Public Service Commission	E-3	Businesses Which Are A Byproduct, Coproduct or Joint Product of Providing Service	E-9
Company Profile	E-4	Business Transactions With Related Parties - Part I and II	E-10
Parent/Affiliate Organization Chart	E-5	Composite of Statistics	E-11
Compensation of Officers & Directors	E-6		
Business Contracts With Officers,			
Financial Section			
Comparative Balance Sheet - Assets And Other Debits	F-1	Companies	F-13
Comparative Balance Sheet - Equity Capital and Liabilities	F-2	Capital Stock	F-14
Comparative Operating Statement	F-3	Long Term Debt	F-14
Schedule of Year End Rate Base	F-4	Statement of Retained Earnings	F-15
Utility Plant	F-5	Bonds	F-16
Utility Plant Acquisition Adjustments	F-5	Advances From Associated Companies	F-16
Accumulated Depreciation	F-6	Accrued Taxes	F-17
Accumulated Amortization	F-6	Accrued Interest	F-18
Nonutility Property	F-7	Regulatory Commission Expense - Amortization of Rate Case Expense	F-18
Special Deposits	F-7	Misc. Current and Accrued Liabilities	F-19
Investments and Special Funds	F-8	Advances for Construction	F-19
Accounts and Notes Receivable - Net	F-9	Contributions In Aid Of Construction	F-20
Accounts Receivable From Associated Companies	F-10	Additions to CIAC Received from Capacity, Main Extension and Customer Connection Charges	F-21
Notes Receivable From Associated Co.	F-10	Accum. Amortization of C.I.A.C.	F-21
Prepayments	F-11	Additions to CIAC Received from All Developers or Contractors	F-22
Miscellaneous Deferred Debits	F-11	Agreements	F-22
Unamortized Debt Discount and Expense and Premium on Debt	F-12	Reconciliation of Reported Net Income With Taxable Income For	F-23
Extraordinary Property Losses	F-13	Federal Income Taxes	F-23
Notes Payable	F-13	AFUDC Calculation	F-24
Accounts Payable to Associated	F-13	AFUDC Capital Structure Adjustments	F-25
Water Operation Section			
Water Utility Plant Accounts	W-1	Statistics	W-6
Water Utility Expense Accounts	W-2	Water Treatment Plant, Mains, Services and Meters	W-7
Water Operating Revenue	W-3	Wells and Well Pumps, Reservoirs, and High Service Pumping	W-8
Basis for Water Depreciation Charges	W-4	Other Water System Information	W-9
Analysis of Entries in Water Depreciation Reserve	W-5	Calculation of ERC's	W-10
Pumping and Purchased Water			
Sewer Operation Section			
Sewer Utility Plant Accounts	S-1	Pumping Equipment and Service Connections	S-6
Sewer Utility Expense Accounts	S-2	Collecting and Force Mains	S-7
Sewer Operating Revenue	S-3	Other Sewer System Information	S-8
Basis for Sewer Depreciation Charges	S-4	Calculation of ERC's	S-9
Analysis of Entries in Sewer Depreciation Reserve	S-5		

EXECUTIVE SUMMARY

CERTIFICATION OF ANNUAL REPORT

UTILITY NAME: Jasmine Lakes Utilities Corp.

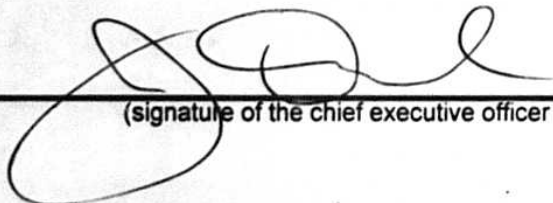
YEAR OF REPORT
December 31, 1998

I HEREBY CERTIFY, to the best of my knowledge and belief:

- | | | |
|------------|-----------|--|
| YES
(X) | NO
() | 1. The utility is in substantial compliance with the Uniform System of Accounts prescribed by the Florida Public Service Commission. |
| YES
(X) | NO
() | 2. The utility is in substantial compliance with all applicable rules and orders of the Florida Public Service Commission. |
| YES
(X) | NO
() | 3. There have been no communications from regulatory agencies concerning noncompliance with, or deficiencies in, financial reporting practices that could have a material effect on the financial statement of the utility. |
| YES
(X) | NO
() | 4. The annual report fairly represents the financial condition and results of operations of the respondent for the period presented and other information and statements presented in the report as to the business affairs of the respondent are true, correct and complete for the period for which it represents. |

Items Certified

1. 2. 3. 4.
(X) (X) (X) (X)



(signature of the chief executive officer of the utility)

1. 2. 3. 4.
() () () ()

N/A

(signature of the chief financial officer of the utility)

* Each of the four items must be certified YES or NO. Each item need not be certified by both officers. The items being certified by the officer should be indicated in the appropriate area to the left of the signature.

NOTICE: Section 837.06, Florida Statutes, provides that any person who knowingly makes a false statement in writing with the intent to mislead a public servant in the performance of his duty shall be guilty of a misdemeanor of the second degree.

ANNUAL REPORT OF

Jasmine Lakes Utilities Corp.

(Exact Name of Utility)

County: Pasco

List below the exact mailing address of the utility for which normal correspondence should be sent:

1817 U. S. Highway 19
Holiday, Florida 34691

Telephone: (727) 938-9150

Name and address of person to whom correspondence concerning this report should be addressed:

Robert C. Nixon, CPA
Cronin, Jackson, Nixon and Wilson, CPA's
2560 Gulf-to-Bay Blvd, Suite 200
Clearwater, Florida 34625

Telephone: (727) 791-4020

List below the address of where the utility's books and records are located:

1817 U. S. Highway 19
Holiday, Florida 34691

Telephone: (727) 938-9150

List below any groups auditing or reviewing the records and operations:

Cronin, Jackson, Nixon and Wilson, CPA's

Date of original organization of the utility:

03 / 26 / 90

Check the appropriate business entity of the utility as filed with the Internal Revenue Service:

Individual

Partnership

Sub S Corporation

1120 Corporation

List below every corporation or person owning or holding directly or indirectly 5 percent or more of the voting securities of the utility:

	Name	Percent Ownership	%
1.	James Dreher	100	%
2.			%
3.			%
4.			%
5.			%
6.			%
7.			%
8.			%
9.			%
10.			%

UTILITY NAME: Jasmine Lakes Utilities Corp.

YEAR OF REPORT December 31, 1998
--

DIRECTORY OF PERSONNEL WHO CONTACT THE FLORIDA PUBLIC SERVICE COMMISSION

NAME OF COMPANY REPRESENTATIVE (1)(2)	TITLE OR POSITION	ORGANIZATIONAL UNIT TITLE (3)	USUAL PURPOSE FOR CONTACT WITH FPSC
James Dreher	President	Jasmine Lakes Utilities Corp.	General matters
Robert C. Nixon	CPA	Cronin, Jackson, Nixon & Wilson	Accounting and rate matters
F. Marshall Deterding	Attorney	Rose, Sundstrom & Bentley	Legal matters

- (1) Also list appropriate legal counsel, accountants and others who may not be on general payroll.
- (2) Provide individual telephone numbers if the person is not normally reached at the company.
- (3) Name of company employed by if not on general payroll.

UTILITY NAME: Jasmine Lakes Utilities Corp.

COMPANY PROFILE

Provide a brief narrative company profile which covers the following areas:

- A. Brief company history.
- B. Public services rendered.
- C. Major goals and objectives.
- D. Major operating divisions and functions.
- E. Current and projected growth patterns.
- F. Major transactions having a material effect on operations.

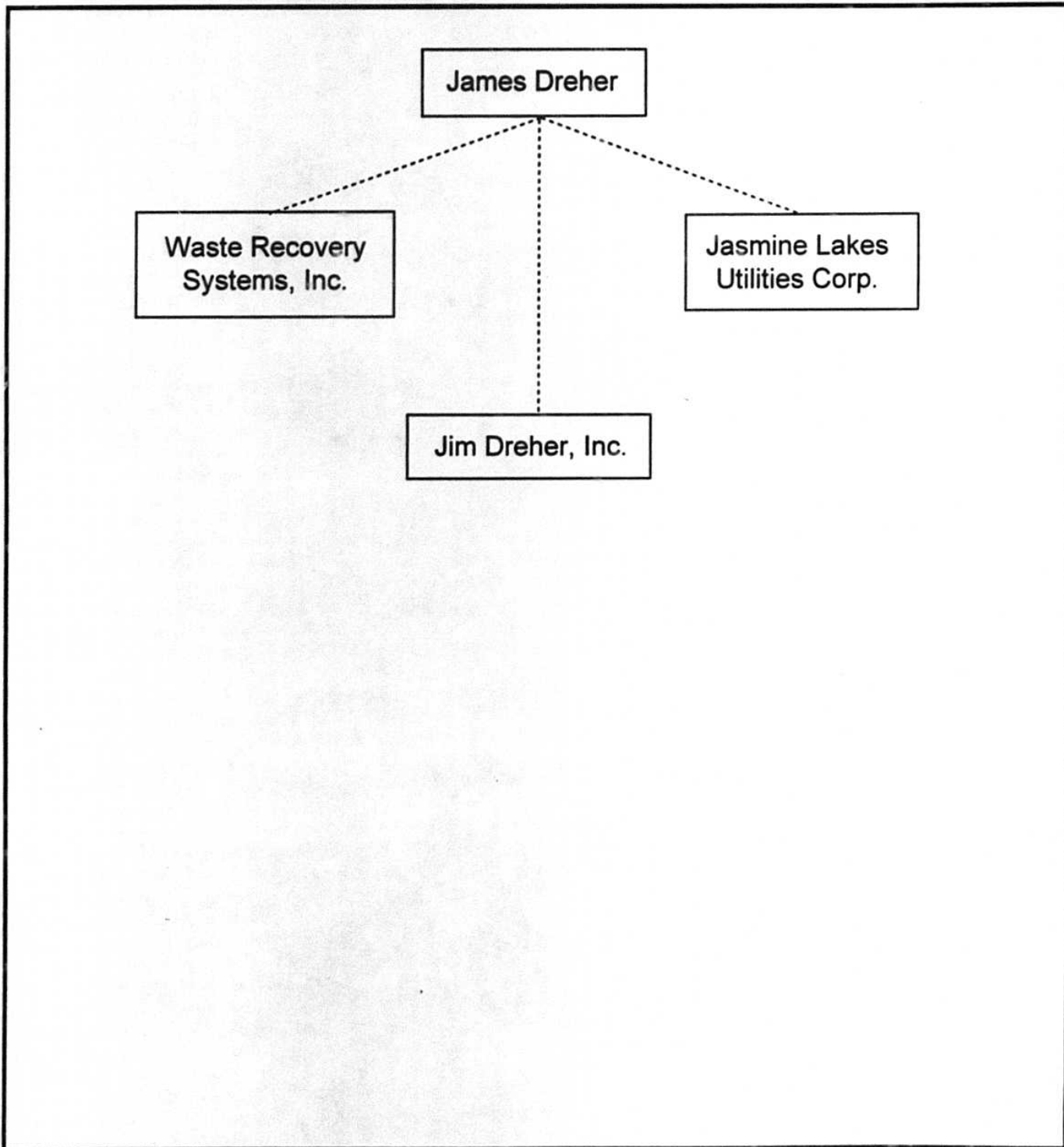
- (A) The Company acquired the utility from Jasmine Lakes Services, Incorporated on July 1, 1990. Please refer to Florida Public Service Commission Docket No. 900291-WS.
- (B) The Company provides water and sewer services.
- (C) The Utilities goals continue to be the providing of quality water and sewer service and earning a fair rate of return on the investment in plant in service.
- (D) Water and sewer services as well as garbage collection and street lighting.
- (E) The Utility is currently built out and no further expansion or development is projected.
- (F) Late in 1998 an agreement was executed to transfer 100% ownership of stock from Jim Dreher to Aquasource, Inc. Both parties expect approval for the water and wastewater certificate transfers from the Florida Public Service Commission in early 1999.

UTILITY NAME: Jasmine Lakes Utilities Corp.

YEAR OF REPORT
December 31, 1998

PARENT / AFFILIATE ORGANIZATION CHART
Current as of 12/31/98

Complete below an organizational chart that shows all parents and subsidiaries of the utility. The chart must also show the relationship between the utility and the affiliates listed on E-7, E-10(a) and E-10(b).



UTILITY NAME: Jasmine Lakes Utilities Corp.

YEAR OF REPORT December 31, 1998
--

COMPENSATION OF OFFICERS

For each officer, list the time spent on respondent as an officer compared to time spent on total business activities and the compensation received as an officer from the respondent.

NAME (a)	TITLE (b)	% OF TIME SPENT AS OFFICER OF UTILITY (c)	OFFICERS COMPENSATION (d)
James Dreher	President	68 % % % % % % % % %	\$ 64,000 \$ \$ \$ \$ \$ \$ \$ \$

COMPENSATION OF DIRECTORS

For each director, list the number of director meetings attended by each director and the compensation received as a director from the respondent.

NAME (a)	TITLE (b)	NUMBER OF DIRECTORS MEETINGS ATTENDED (c)	DIRECTORS COMPENSATION (d)
James Dreher	President	26	\$ None \$ \$ \$ \$ \$ \$ \$ \$

UTILITY NAME: Jasmine Lakes Utilities Corp.

YEAR OF REPORT
December 31, 1998

BUSINESS CONTRACTS WITH OFFICERS, DIRECTORS AND AFFILIATES

List all contracts, agreements, or other business arrangements* entered into during the calendar year (other than compensation related to position with Respondents) between the Respondent and officer and director listed on page E-6. In addition, provide the same information with respect to professional services for each firm, partnership, or organization with which the officer or director is affiliated.

NAME OF OFFICER, DIRECTOR OR AFFILIATE (a)	IDENTIFICATION OF SERVICE OR PRODUCT (b)	AMOUNT (c)	NAME AND ADDRESS OF AFFILIATED ENTITY (d)
None			

* Business Agreement, for this schedule, shall mean any oral or written business deal which binds the concerned parties for products or services during the reporting year or future years. Although the Respondent and/or other companies will benefit from the arrangement, the officer or director is, however, acting on his behalf or for the benefit of other companies or persons.

UTILITY NAME: Jasmine Lakes Utilities Corp.

YEAR OF REPORT
December 31, 1998

AFFILIATION OF OFFICERS AND DIRECTORS

For each of the officials listed on page E-6, list the principle occupation or business affiliation and all affiliations or connections with any other business or financial organizations, firms, or partnerships. For purposes of this part, an official will be considered to have an affiliation with any business or financial organization, firm or partnership in which he is an officer, director, trustee, partner, or a person exercising similar functions.

NAME (a)	PRINCIPLE OCCUPATION OR BUSINESS AFFILIATION (b)	AFFILIATION OR CONNECTION (c)	NAME AND ADDRESS OF AFFILIATION OR CONNECTION (d)
James Dreher	Trash Hauling	Officer/Director	Waste Recovery Systems, Inc. 1817 U.S. Highway 19 Holiday, Florida 34691
James Dreher	Executive/ Stockholder	Officer/Director	Jim Dreher, Inc. 1817 U.S. Highway 19 Holiday, Florida 34691
James Dreher	Water/Wastewater Utility	Officer/Director	Jasmine Lakes Utilities, Inc 1817 U.S. Highway 19 Holiday, Florida 34691

UTILITY NAME: Jasmine Lakes Utilities Corp.

YEAR OF REPORT December 31, 1998
--

BUSINESSES WHICH ARE A BYPRODUCT, COPRODUCT OR JOINT PRODUCT RESULT OF PROVIDING WATER OR SEWER SERVICE

Complete the following for any business which is conducted as a byproduct, coproduct or joint product as a result of providing water and/or sewer service. This would include any business which requires the use of utility land and facilities. Examples of these types of businesses would be orange groves, nurseries, tree farms, fertilizer manufacturing, etc. This would not include any business for which the assets are properly included in Account 121 - Nonutility Property along with the associated revenues and expenses segregated out as nonutility also.

BUSINESS OR SERVICE CONDUCTED (a)	ASSETS		REVENUES		EXPENSES	
	BOOK COST OF ASSETS (b)	ACCT. NO. (c)	REVENUES GENERATED (d)	ACCT. NO. (e)	EXPENSES INCURRED (f)	ACCT. NO. (g)
None	\$		\$		\$	

UTILITY NAME: Jasmine Lakes Utilities Corp.

YEAR OF REPORT December 31, 1998
--

BUSINESS TRANSACTIONS WITH RELATED PARTIES

List each contract, agreement, or other business transaction exceeding a cumulative amount of \$500 in any one year, entered into between the Respondent and a business or financial organization, firm, or partnership named on pages E-2 and E-6 identifying the parties, amounts, dates and product, asset, or service involved.

Part I. Specific Instructions: Services and Products Received or Provided

1. Enter in this part all transactions involving services and products received or provided.
2. Below are some types of transactions to include:

<ul style="list-style-type: none"> - management, legal and accounting services - computer services - engineering & construction services - repairing and servicing of equipment 	<ul style="list-style-type: none"> - material and supplies furnished - leasing of structures, land and equipment - rental transactions - sale, purchase or transfer of various products
---	---

NAME OF COMPANY OR RELATED PARTY (a)	DESCRIPTION SERVICE AND/OR NAME OF PRODUCT (b)	CONTRACT OR AGREEMENT EFFECTIVE DATES (c)	ANNUAL CHARGES	
			(P)urchased or (S)old (d)	AMOUNT (e)
None				

BUSINESS TRANSACTIONS WITH RELATED PARTIES (Cont'd)

Part II. Specific Instructions: Sale, Purchase and Transfer of Assets

1. Enter in this part all transactions relating to the purchase, sale or transfer of assets.
2. Below are examples of some types of transactions to include:
 - purchase, sale or transfer of equipment.
 - purchase, sale or transfer of land and structures.
 - purchase, sale or transfer of securities.
 - noncash transfers of assets.
 - noncash dividends other than stock dividends.
 - writeoff of bad debts or loans.
3. The columnar instructions follow:
 - (a) Enter name of related party or company.
 - (b) Describe briefly the type of assets purchased, sold or transferred.
 - (c) Enter the total received or paid. Indicate purchase with "P" and sale with "S".
 - (d) Enter the net book value for each item reported.
 - (e) Enter the net profit or loss for each item (column (c) - column (d)).
 - (f) Enter the fair market value for each item reported. In space below or in a supplemental schedule, describe the basis used to calculate fair market value.

NAME OF COMPANY OR RELATED PARTY (a)	DESCRIPTION OF ITEMS (b)	SALE OR PURCHASE PRICE (c)	NET BOOK VALUE (d)	GAIN OR LOSS (e)	FAIR MARKET VALUE (f)
None		\$	\$	\$	\$

UTILITY NAME: Jasmine Lakes Utilities Corp.

YEAR OF REPORT
December 31, 1998

**COMPOSITE STATISTICS FOR ALL
PRIVATELY OWNED WATER AND SEWER UTILITIES UNDER AGENCY JURISDICTION**

DESCRIPTION (a)	WATER (b)	SEWER (c)
PLANT (Intrastate Only)(000's Omitted):		
Plant in Service _____	\$ 835	\$ 1,166
Construction Work In Progress _____		
Plant Acquisition Adjustment _____	(7)	(11)
Plant Held For Future Use _____		
Materials and Supplies _____		
Less:		
Accumulated Depreciation and Accumulated Amortization _____	395	535
Contributions In Aid Of Construction (Net) _____	71	64
Net Book Cost _____	\$ 362	\$ 556
REVENUES AND EXPENSES (Intrastate Only)(000's Omitted):		
Operating Revenues _____	\$ 447	\$ 349
Depreciation and Amortization Expense _____	\$ 22	\$ 44
Income Tax Expense _____		
Taxes Other Than Income _____	34	29
Other Operating Expenses _____	351	216
Total Operating Expenses _____	\$ 407	\$ 289
Net Operating Income _____	\$ 40	\$ 60
Other Income _____	\$ 26	\$ 28
Other Income Deductions _____	19	18
Net Income _____	\$ 47	\$ 70
CUSTOMERS (Intrastate Only):		
Residential - Yearly Average _____	1,539	1,535
Commercial - Yearly Average _____	39	34
Industrial - Yearly Average _____		
Others - Yearly Average _____	2	
Total _____	1,580	1,569
OTHER STATISTICS (Intrastate Only):		
Average Annual Residential Use Per 1,000 Gallons _____	57	34
Average Annual Residential Cost Per 1,000 Gallons _____	\$ 4.48	\$ 5.45
Average Residential Monthly Bill _____	\$ 21.90	\$ 17.80
Gross Plant Investment Per Customer _____	\$ 528	\$ 743

FINANCIAL

SECTION

UTILITY NAME: Jasmine Lakes Utilities Corp.

YEAR OF REPORT
December 31, 1998

COMPARATIVE BALANCE SHEET - ASSETS AND OTHER DEBITS

ACCT. NO. (a)	ACCOUNT NAME (b)	REF. PAGE (c)	CURRENT YEAR (d)	PREVIOUS YEAR (e)
UTILITY PLANT				
101-105	Utility Plant	F-5	\$ 2,001,686	\$ 1,904,156
108-110	Less: Accumulated Depreciation and Amortization	F-6	(930,012)	(848,488)
	Net Plant		1,071,674	1,055,668
114-115	Utility Plant Acquisition Adjustments (Net)	F-5	(14,249)	(14,702)
	Other Plant Adjustments (specify)			
	Total Net Utility Plant		1,057,425	1,040,966
OTHER PROPERTY AND INVESTMENTS				
121	Nonutility Property	F-7		
122	Less: Accumulated Depreciation and Amortization			
	Net Nonutility Property			
123	Investment in Associated Companies	F-8		
124	Utility Investments	F-8		
125	Other Investments	F-8		
127	Special Funds	F-8		
	Total Other Property and Investments			
CURRENT AND ACCRUED ASSETS				
131	Cash		5,350	73,003
132	Special Deposits	F-7		
134	Working Funds			
135	Temporary Cash Investments			
141-144	Accounts and Notes Receivable, Less Accumulated Provision for Uncollectable Accounts	F-9	96,838	268,190
145	Accounts Receivable from Associated Companies	F-10		
146	Notes Receivable from Associated Companies	F-10		
151	Materials and Supplies			
162	Prepayments	F-11		
171	Accrued Interest and Dividends Receivable			
174	Misc. Current and Accrued Assets		5,979	500
	Total Current and Accrued Assets		108,167	341,693

UTILITY NAME: Jasmine Lakes Utilities Corp.

YEAR OF REPORT
December 31, 1998

COMPARATIVE BALANCE SHEET - ASSETS AND OTHER DEBITS

ACCT. NO. (a)	ACCOUNT NAME (b)	REF. PAGE (c)	CURRENT YEAR (d)	PREVIOUS YEAR (e)
	DEFERRED DEBITS			
181	Unamortized Debt Discount & Expense _____	F-12		
	Extraordinary Property Losses _____	F-12		
186	Misc. Deferred Debits _____	F-11	131,955	175,940
190	Accumulated Deferred Income Taxes _____			
	Total Deferred Debits _____		131,955	175,940
	TOTAL ASSETS AND OTHER DEBITS _____		\$ 1,297,547	\$ 1,558,599

NOTES TO THE BALANCE SHEET

The space below is provided for important notes regarding the balance sheet.

UTILITY NAME: Jasmine Lakes Utilities Corp.

COMPARATIVE BALANCE SHEET - EQUITY CAPITAL AND LIABILITIES

ACCT. NO. (a)	ACCOUNT NAME (b)	REF. PAGE (c)	CURRENT YEAR (d)	PREVIOUS YEAR (e)
EQUITY CAPITAL				
201	Common Stock Issued _____	F-14	10,000	\$ 10,000
204	Preferred Stock Issued _____	F-14		
211	Other Paid-in Capital _____		824,875	638,987
212	Discount on Capital Stock _____			
213	Capital Stock Expense _____			
214-215	Retained Earnings _____	F-15	172,149	55,211
216	Reacquired Capital Stock _____			
218	Proprietary Capital (Proprietorship and Partnership Only) _____			
	Total Equity Capital _____		1,007,024	704,198
LONG TERM DEBT				
221	Bonds _____	F-16		
223	Advances from Associated Companies _____	F-16		
224	Other Long Term Debt _____	F-14		
	Total Long Term Debt _____			
CURRENT AND ACCRUED LIABILITIES				
231	Accounts Payable _____		80,405	609,033
232	Notes Payable _____	F-13		
233	Accounts Payable to Associated Co. _____	F-13		
234	Notes Payable to Associated Co. _____	F-13		19,388
235	Customer Deposits _____		33,546	35,831
236	Accrued Taxes _____	F-17	39,718	40,147
237	Accrued Interest _____	F-18	2,241	
238	Accrued Dividends _____			
239	Matured Long Term Debt _____			
240	Matured Interest _____			
241	Miscellaneous Current and Accrued Liabilities _____	F-19		
	Total Current and Accrued Liabilities _____		155,910	704,399

UTILITY NAME: Jasmine Lakes Utilities Corp.

COMPARATIVE BALANCE SHEET EQUITY CAPITAL AND LIABILITIES

ACCT. NO. (a)	ACCOUNT NAME (b)	REF. PAGE (c)	CURRENT YEAR (d)	PREVIOUS YEAR (e)
DEFERRED CREDITS				
251	Unamortized Premium on Debt _____	F-12		\$ _____
252	Advances for Construction _____	F-19		_____
253	Other Deferred Credits _____			_____
255	Accumulated Deferred Investment Tax Credits _____			_____
	Total Deferred Credits _____			_____
OPERATING RESERVES				
261	Property Insurance Reserve _____			_____
262	Injuries and Damages Reserve _____			_____
263	Pensions and Benefits Reserve _____			_____
265	Miscellaneous Operating Reserves _____			_____
	Total Operating Reserves _____			_____
CONTRIBUTIONS IN AID OF CONSTRUCTION				
271	Contributions in Aid of Construction _____	F-20	361,470	361,470
272	Accumulated Amortization of Contributions in Aid of Construction _____	F-21	(226,857)	(211,468)
	Total Net C.I.A.C. _____		134,613	150,002
ACCUMULATED DEFERRED INCOME TAXES				
281	Accumulated Deferred Income Taxes - Accelerated Depreciation _____			_____
282	Accumulated Deferred Income Taxes - Liberalized Depreciation _____			_____
283	Accumulated Deferred Income Taxes - Other _____			_____
	Total Accum. Deferred Income Taxes _____			_____
	TOTAL EQUITY CAPITAL AND LIABILITIES _____		\$ <u>1,297,547</u>	\$ <u>1,558,599</u>

UTILITY NAME: Jasmine Lakes Utilities Corp.

COMPARATIVE OPERATING INCOME

ACCT. NO. (a)	ACCOUNT NAME (b)	PREVIOUS YEAR (c)	REF. PAGE (d)	CURRENT YEAR (e)
	UTILITY OPERATING INCOME			
400	Operating Revenues _____	\$ 806,855	F-3(b)	\$ 796,178
401	Operating Expenses _____	592,817	F-3(b)	567,504
403	Depreciation Expense _____	58,853	F-6	66,135
406	Amortization of Utility Plant Acquisition Adjustment _____	(452)		(452)
407	Amortization Expense _____			
408.1	Taxes Other Than Income _____	58,937	F-17	62,485
409.1	Income Taxes _____		F-17	
410.10	Deferred Federal Income Taxes _____			
411.10	Provision for Deferred Income Taxes - Credit _____			
412.10	Investment Tax Credits Deferred to Future Periods _____			
412.11	Investment Tax Credits Restored to Operating Income _____			
	Utility Operating Expenses _____	710,155		695,672
	Utility Operating Income _____	96,700		100,506
413	Income From Utility Plant Leased To Others _____			
414	Gains (Losses) From Disposition of Utility Property _____			
	Total Utility Operating Income [Enter here and on Page F-3(c)] _____	96,700		100,506

UTILITY NAME: Jasmine Lakes Utilities Corp.

YEAR OF REPORT
December 31, 1998

COMPARATIVE OF OPERATING INCOME (Cont'd)

ACCT. NO. (a)	ACCOUNT NAME (b)	PREVIOUS YEAR (c)	REF. PAGE (d)	CURRENT YEAR (e)
	Total Utility Operating Income [From Page F-3(a)]	96,700		100,506
	OTHER INCOME AND DEDUCTIONS			
415	Revenues From Merchandising, Jobbing and Contract Deductions	904		
416	Costs and Expenses of Merchandising, Jobbing and Contract Work			
419	Interest and Dividend Income	3,089		80
420	Allowance for Funds Used During Construction			
421	Nonutility Income	105,614		53,001
426	Miscellaneous Nonutility Expenses	(40,742)		(34,075)
	Total Other Income and Deductions	68,865		19,006
	TAXES APPLICABLE TO OTHER INCOME			
408.20	Taxes Other Than Income		F-17	
409.20	Income Taxes		F-17	
410.20	Provision for Deferred Income Taxes			
411.20	Provision for Deferred Income Taxes - Credit			
412.20	Investment Tax Credits - Net			
412.30	Investment Tax Credits Restored to Operating Income			
	Total Taxes Applicable to Other Income			
	INTEREST EXPENSE			
427	Interest Expense	27,876	F-18	2,574
428	Amortization of Debt Discount & Expense	603	F-12	
429	Amortization of Premium on Debt		F-12	
	Total Interest Expense	28,479		2,574
	EXTRAORDINARY ITEMS			
433	Extraordinary Income			
434	Extraordinary Deductions			
409.30	Income Taxes, Extraordinary Items			
	Total Extraordinary Items			
	NET INCOME	\$ 137,086		\$ 116,938

UTILITY NAME: Jasmine Lakes Utilities Corp.

YEAR OF REPORT
December 31, 1998

SCHEDULE OF YEAR END RATE BASE

ACCT. NO. (a)	ACCOUNT NAME (b)	REF. PAGE (c)	WATER UTILITY (d)	SEWER UTILITY (e)
101	Utility Plant In Service _____	F-5	\$ 835,470	\$ 1,166,216
	Less:			
	Nonused and Useful Plant (1) _____			
108.1	Accumulated Depreciation _____	F-6	394,921	535,091
110.1	Accumulated Amortization _____	F-6		
271	Contributions in Aid of Construction _____	F-20	199,156	162,314
252	Advances for Construction _____	F-19		
	Subtotal _____		241,393	468,811
	Additions:			
272	Accumulated Amortization of Contributions in Aid of Construction _____	F-21	128,464	98,393
	Subtotal _____		369,857	567,204
	Plus or Minus:			
114	Acquisition Adjustments (2) _____	F-5	(6,619)	(11,473)
115	Accumulated Amortization of Acquisition Adjustments (2) _____	F-5	1,405	2,438
	Working Capital Allowance (3) _____		43,871	27,067
	Other (Specify): _____			

	RATE BASE _____		\$ 408,514	\$ 585,236
	UTILITY OPERATING INCOME _____		\$ 40,725	\$ 59,781
	ACHIEVED RATE OF RETURN _____		9.97 %	10.21 %

NOTES:

- (1) Estimated if not known.
- (2) Include only those Acquisition Adjustments that have been approved by the Commission.
- (3) Calculated using the 1/8th of O & M method.

UTILITY NAME: Jasmine Lakes Utilities Corp.

UTILITY PLANT (ACCTS. 101 - 106)

ACCT. NO. (a)	DESCRIPTION (b)	WATER (c)	SEWER (d)	OTHER THAN REPORTING SYSTEMS (e)	TOTAL (f)
	Plant Accounts				
101	Utility Plant In Service	\$ 835,470	\$ 1,166,216	\$ N/A	\$ 2,001,686
102	Utility Plant Leased to Others				
103	Property Held for Future Use				
104	Utility Plant Purchased or Sold				
105	Construction Work in Progress				
	Total Utility Plant	\$ 835,470	\$ 1,166,216	\$	\$ 2,001,686

UTILITY PLANT ACQUISITION ADJUSTMENTS (ACCTS. 114 - 115)

Report each acquisition adjustment and related accumulated amortization separately. For any acquisition adjustment approved by the Commission, include the Order Number.

DESCRIPTION (a)	WATER (b)	SEWER (c)	OTHER THAN REPORTING SYSTEMS (d)	TOTAL (e)
ACQUISITION ADJUSTMENTS (114):				
Per Rate Order No. PSC-93-1675-FOF-WS	\$ (6,619)	\$ (11,473)	\$ N/A	\$ (18,092)
Total Plant Acquisition Adjs.	(6,619)	(11,473)		(18,092)
ACCUMULATED AMORTIZATION (115):				
	1,405	2,438		3,843
Total Accumulated Amortization	1,405	2,438		3,843
Net Acquisition Adjustments	\$ (5,214)	\$ (9,035)	\$ N/A	\$ (14,249)

UTILITY NAME: Jasmine Lakes Utilities Corp.

YEAR OF REPORT
December 31, 1998

ACCUMULATED DEPRECIATION (ACCT. 108)

DESCRIPTION (a)	WATER (b)	SEWER (c)	OTHER THAN REPORTING SYSTEMS (d)	TOTAL (e)
Balance first of year	\$ 365,490	\$ 482,998	\$ N/A	\$ 848,488
Credits during year:				
Accruals charged:				
to Account 108	29,431	52,093		81,524
Accruals charged other accounts (specify)				
Salvage				
Other Credits (specify)				
Total credits	29,431	52,093		81,524
Debits during year:				
Book cost of plant retired				
Cost of removal				
Other debits (specify)				
Total debits				
Balance end of year	\$ 394,921	\$ 535,091	\$ N/A	\$ 930,012

ACCUMULATED AMORTIZATION (ACCT. 110)

DESCRIPTION (a)	WATER (b)	SEWER (c)	OTHER THAN REPORTING SYSTEMS (d)	TOTAL (e)
Balance first of year	\$ N/A	\$	\$	\$
Credits during year:				
Accruals charged:				
to Account 110				
Accruals charged other accounts (specify)				
Total credits				
Debits during year:				
Book cost of plant retired				
Other debits (specify)				
Total debits				
Balance end of year	\$	\$	\$	\$

UTILITY NAME: Jasmine Lakes Utilities Corp.

YEAR OF REPORT
December 31, 1998

ACCOUNTS AND NOTES RECEIVABLE - NET (ACCTS. 141 - 144)

Report hereunder all accounts and notes receivable included in Accounts 141, 142 and 144. Amounts included in Accounts 142 and 144 should be listed individually.

DESCRIPTION (a)	TOTAL (b)
ACCOUNTS RECEIVABLE:	
Customer Accounts Receivable (Acct. 141):	
Water (Combined) _____	\$ 96,838
Sewer _____	
Other _____	
Total Customer Accounts Receivable _____	96,838
OTHER ACCOUNTS RECEIVABLE (Acct. 142):	
_____	\$ _____

Total Other Accounts Receivable _____	
NOTES RECEIVABLE (Acct. 144):	
_____	\$ _____

Total Notes Receivable _____	
Total Accounts and Notes Receivable _____	96,838
ACCUMULATED PROVISION FOR UNCOLLECTABLE ACCOUNTS (Acct. 143):	
Balance First of Year _____ N/A _____	\$ _____
Add: Provision for uncollectables for current year _____	
Collections of accounts previously written off _____	
Utility accounts _____	
Others _____	
Total Additions _____	
Deduct accounts written off during year:	
Utility accounts _____	
Others _____	
Total accounts written off _____	
Balance end of year _____	
Total Accounts and Notes Receivable - Net _____	\$ 96,838

UTILITY NAME: Jasmine Lakes Utilities Corp.

YEAR OF REPORT
December 31, 1998

ACCOUNTS RECEIVABLE FROM ASSOCIATED COMPANIES (ACCT. 145)

Report each account receivable from associated companies separately.

DESCRIPTION (a)	TOTAL (b)
N/A	\$ _____
_____	_____
_____	_____
_____	_____
_____	_____
_____	_____
_____	_____
_____	_____
_____	_____
Total _____	\$ NONE

NOTES RECEIVABLE FROM ASSOCIATED COMPANIES (ACCT. 146)

Report each note receivable from associated companies separately.

DESCRIPTION (a)	INTEREST RATE (b)	TOTAL (c)
N/A		\$ _____
_____	_____	_____
_____	_____	_____
_____	_____	_____
_____	_____	_____
_____	_____	_____
_____	_____	_____
_____	_____	_____
Total _____		\$ _____

UTILITY NAME: Jasmine Lakes Utilities Corp.

YEAR OF REPORT December 31, 1998
--

PREPAYMENTS (ACCT. 162)

DESCRIPTION (a)	TOTAL (b)
Prepaid Insurance _____ N/A _____	\$ _____
Prepaid Rents _____	_____
Prepaid Interest _____	_____
Prepaid Taxes _____	_____
Other Prepayments (Specify): _____	_____
_____	_____
Total Prepayments _____	\$ _____

MISCELLANEOUS DEFERRED DEBITS (ACCT. 186):

DESCRIPTION (a)	TOTAL (b)
MISCELLANEOUS DEFERRED DEBITS (Acct. 186):	
Deferred Rate Case Expense (Acct. 186.1) _____	\$ _____
Other Deferred Debits (Acct 186.2)	
Deferred legal and accounting - water rate reduction _____	131,955
Total Miscellaneous Deferred Debits _____	\$ 131,955

UTILITY NAME: Jasmine Lakes Utilities Corp.

YEAR OF REPORT
December 31, 1998

UNAMORTIZED DEBT DISCOUNT AND EXPENSE AND PREMIUM ON DEBT (ACCTS. 181 AND 251)

Report the net discount and expense or premium separately for each security issue.

DESCRIPTION (a)	AMOUNT WRITTEN OFF DURING YEAR (b)	YEAR END BALANCE (c)
UNAMORTIZED DEBT DISCOUNT AND EXPENSE (Acct. 181):		
N/A	\$ _____	\$ _____
_____	_____	_____
_____	_____	_____
_____	_____	_____
Total Unamortized Debt Discount and Expense _____	\$ NONE	\$ _____
UNAMORTIZED PREMIUM ON DEBT (Acct. 251):		
N/A	\$ _____	\$ _____
_____	_____	_____
_____	_____	_____
_____	_____	_____
Total Unamortized Premium on Debt _____	\$ _____	\$ _____

EXTRAORDINARY PROPERTY LOSSES (ACCT. 182)

Report each item separately.

DESCRIPTION (a)	TOTAL (b)
EXTRAORDINARY PROPERTY LOSSES (Acct. 182):	
N/A	\$ _____
_____	_____
_____	_____
_____	_____
Total Extraordinary Property Losses _____	\$ _____

UTILITY NAME: Jasmine Lakes Utilities Corp.

YEAR OF REPORT
December 31, 1998

NOTES PAYABLE (ACCTS. 232 AND 234)

DESCRIPTION (a)	NOMINAL DATE OF ISSUE (b)	DATE OF MATURITY (c)	INTEREST		PRINCIPAL AMOUNT PER BALANCE SHEET (f)
			RATE (d)	FREQUENCY OF PAYMENT (e)	
ACCOUNT 232 - NOTES PAYABLE:					
N/A			%		\$
			%		
			%		
			%		
Total Account 232					\$ NONE
ACCOUNT 234 - NOTES PAYABLE TO ASSOCIATED COMPANIES:					
N/A			%		\$
			%		
			%		
			%		
Total Account 234					\$

ACCOUNTS PAYABLE TO ASSOCIATED COMPANIES (ACCT. 233)

Report each account payable separately.

DESCRIPTION (a)	TOTAL (b)
	\$
Total	\$ NONE

UTILITY NAME: Jasmine Lakes Utilities Corp.

YEAR OF REPORT
December 31, 1998

STATEMENT OF RETAINED EARNINGS

1. Dividends should be shown for each class and series of capital stock.
Show amounts of dividends per share.
2. Show separately the state and federal income tax effect of items shown in Account No. 439.

ACCT. NO. (a)	DESCRIPTION (b)	AMOUNTS (c)
215	Unappropriated Retained Earnings:	
	Balance beginning of year _____	\$ 55,211
	Changes to account:	
439	Adjustments to Retained Earnings (requires Commission approval prior to use):	
	Credits:	

	Total Credits _____	
	Debits:	

	Total Debits _____	
435	Balance transferred from Income _____	116,938
436	Appropriations of Retained Earnings:	

	Total appropriations of Retained Earnings _____	
	Dividends declared:	
437	Preferred stock dividends declared	
438	Common stock dividends declared	

	Total Dividends Declared _____	
	Balance end of year _____	172,149
214	Appropriated Retained Earnings (state balance and purpose of each appropriated amount at year end):	

	Total Appropriated Retained Earnings _____	
	Total Retained Earnings _____	\$ 172,149

Notes to Statement of Retained Earnings:

UTILITY NAME: Jasmine Lakes Utilities Corp.

YEAR OF REPORT
December 31, 1998

ACCRUED TAXES (ACCT. 236)

ACCT. NO. (a)	DESCRIPTION (b)	WATER (c)	SEWER (d)	OTHER (e)	TOTAL (f)
	Balance First of Year _____	\$ 22,467	\$ 17,680	\$ N/A	\$ 40,147
	Accruals Charged:				
408.10	Utility Regulatory Assessment Fees _____	20,130	15,698		35,828
408.11	Property Taxes _____	7,749	8,733		16,482
408.12	Payroll Taxes _____	4,753	3,164		7,917
408.13	Other Taxes & Licenses _____	1,350	908		2,258
409.10	Federal Income Taxes _____				
409.11	State Income Taxes _____				
	Taxes Applicable to Other Income (Accts. 408.2, 409.2, 409.3, 410.2) _____				
	Total Taxes Accrued _____	33,982	28,503		62,485
	Taxes Paid During Year:				
408.10	Utility Regulatory Assessment Fees _____	20,181	16,127		36,308
408.11	Property Taxes _____	7,749	8,733		16,482
408.12	Payroll Taxes _____	4,703	3,163		7,866
408.13	Other Taxes & Licenses _____	1,350	908		2,258
409.10	Federal Income Taxes _____				
409.11	State Income Taxes _____				
	Taxes Applicable to Other Income (Accts. 408.2, 409.2, 409.3, 410.2) _____				
	Total Taxes Paid _____	33,983	28,931		62,914
	Balance End of Year _____	\$ 22,466	\$ 17,252	\$ N/A	\$ 39,718

UTILITY NAME: Jasmine Lakes Utilities Corp.

ACCRUED INTEREST (ACCT. 237)

DESCRIPTION OF DEBT (a)	BALANCE BEGINNING OF YEAR (b)	INTEREST ACCRUED DURING YEAR		INTEREST PAID DURING YEAR (e)	BALANCE END OF YEAR (f)
		ACCT. DEBIT (c)	AMOUNT (d)		
ACCOUNT NO. 237.1 - ACCRUED INTEREST ON LONG TERM DEBT: N/A	\$ _____	_____	\$ _____	\$ _____	\$ _____
_____	_____	_____	_____	_____	_____
_____	_____	_____	_____	_____	_____
_____	_____	_____	_____	_____	_____
Total Account No. 237.1	None	_____	_____	_____	None
ACCOUNT NO. 237.2 - ACCRUED INTEREST ON OTHER LIABILITIES:					
Customer Refunds		427	26	26	
Misc. - Other Interest		427	2,548	307	2,241
_____		_____	_____	_____	_____
_____		_____	_____	_____	_____
Total Account 237.2	None	_____	2,574	333	2,241
Total Account 237	\$ None	_____	\$ 2,574	\$ 333	\$ 2,241

**REGULATORY COMMISSION EXPENSE - AMORTIZATION
OF RATE CASE EXPENSE (ACCTS. 666 and 766)**

DESCRIPTION OF CASE (DOCKET NO.) (a)	EXPENSE INCURRED DURING YEAR (b)	AMOUNT TRANSFERRED TO ACCT. NO. 186.1 (c)	CHARGED OFF DURING YEAR	
			ACCT. (d)	AMOUNT (e)
N/A	\$ _____	\$ _____	_____	\$ _____
_____	_____	_____	_____	_____
_____	_____	_____	_____	_____
_____	_____	_____	_____	_____
_____	_____	_____	_____	_____
Total	\$ _____	\$ _____	_____	\$ _____

UTILITY NAME: Jasmine Lakes Utilities Corp.

YEAR OF REPORT
December 31, 1998

SCHEDULE "A"
ADDITIONS TO CONTRIBUTIONS IN AID OF CONSTRUCTION RECEIVED FROM CAPACITY, MAIN EXTENSION AND CUSTOMER CONNECTION CHARGES RECEIVED DURING THE YEAR

DESCRIPTION OF CHARGE (a)	NUMBER OF CONNECTIONS (b)	CHARGE PER CONNECTION (c)	WATER (d)	SEWER (e)
None		\$	\$	\$
Total Credits _____		\$	\$	\$

ACCUMULATED AMORTIZATION OF CONTRIBUTIONS IN AID OF CONSTRUCTION (ACCT. 272)

DESCRIPTION (a)	WATER (b)	SEWER (c)	W & S OTHER THAN SYSTEM REPORTING (d)	TOTAL (e)
Balance first of year _____	\$ 120,847	\$ 90,621	\$ N/A	\$ 211,468
Debits during year:				
Accruals charged to Account				
272 _____	7,617	7,772		15,389
Other debits (specify):				

Total debits _____	7,617	7,772		15,389
Credits during year (specify):				

Total Credits _____				
Balance end of year _____	\$ 128,464	\$ 98,393	\$ N/A	\$ 226,857

UTILITY NAME: Jasmine Lakes Utilities Corp.

**RECONCILIATION OF REPORTED NET INCOME WITH TAXABLE INCOME FOR FEDERAL INCOME TAXES
(UTILITY OPERATIONS)**

1. The reconciliation should include the same detail as furnished on schedule M-1 of the federal income tax return for the year. The reconciliation shall be submitted even though there is no taxable income for the year. Descriptions should clearly indicate the nature of each reconciling amount and show the computation of all tax accruals.

2. If the utility is a member of a group which files a consolidated federal tax return, reconcile reported net income with taxable net income as if a separate return were to be filed, indicating intercompany amounts to be eliminated in such consolidated return. State names of group members, tax assigned to each group member, and basis of allocation, assignment, or sharing of the consolidated tax among group members.

DESCRIPTION (a)	REFERENCE (b)	AMOUNT (c)
Net income for the year _____	Note (1)	\$ _____
Reconciling items for the year:		
Taxable income not reported on the books:		

Deductions recorded on books not deducted for return:		

Income recorded on books not deducted for return:		

Deduction on return not charged against book income:		

Federal tax net income _____		\$ _____
Computation of tax: Note (1):		
<p>The Utility is a Subchapter 'S' Corporation for income tax purposes; therefore, this schedule is not applicable;</p>		

**** COMPLETION OF SCHEDULE ONLY REQUIRED IF AFUDC WAS CHARGED DURING YEAR ****

UTILITY NAME: Jasmine Lakes Utilities Corp.

YEAR OF REPORT December 31, 1998
--

SCHEDULE "A"

SCHEDULE OF COST OF CAPITAL USED FOR AFUDC CALCULATION (2)

CLASS OF CAPITAL (a)	DOLLAR AMOUNT (1) (b)	PERCENTAGE OF CAPITAL (c)	ACTUAL COST RATES (d)	WEIGHTED COST [c x d] (e)
Common Equity	\$ N/A	%	%	%
Preferred Stock		%	%	%
Long Term Debt		%	%	%
Customer Deposits		%	%	%
Tax Credits - Zero Cost		%	%	%
Tax Credits - Weighted Cost		%	%	%
Deferred Income Taxes		%	%	%
Other (Explain)		%	%	%
	_____	_____	_____	_____
Total	\$ <u>N/A</u>	<u>%</u>		<u>%</u>

- (1) Should equal amounts on Schedule B, Column (f), page F-25.
- (2) Must be calculated using the same methodology used to calculate AFUDC rate approved by the Commission.

APPROVED AFUDC RATE

Current Commission approved AFUDC rate: _____ % Commission order approving AFUDC rate: _____

**** COMPLETION OF SCHEDULE ONLY REQUIRED IF AFUDC WAS CHARGED DURING YEAR ****

UTILITY NAME: Jasmine Lakes Utilities Corp.

YEAR OF REPORT December 31, 1998
--

SCHEDULE "B"

SCHEDULE OF CAPITAL STRUCTURE ADJUSTMENTS

CLASS OF CAPITAL (a)	PER BOOK BALANCE (b)	NON-UTILITY ADJUSTMENTS (c)	NON-JURIS. ADJUSTMENTS (d)	OTHER (1) ADJUSTMENTS (e)	CAPITAL STRUCTURE USED FOR AFUDC CALCULATION (f)
Common Equity	\$ N/A	\$	\$	\$	\$
Preferred Stock					
Long Term Debt					
Customer Deposits					
Tax Credits - Zero Cost					
Tax Credits - Weighted Cost					
Deferred Income Taxes					
Other (Explain)					
Total	\$ N/A	\$	\$	\$	\$

(1) Explain below all adjustments made in Column (e):

WATER

OPERATION

SECTION

UTILITY NAME: Jasmine Lakes Utilities Corp.

YEAR OF REPORT
December 31, 1998

WATER UTILITY PLANT ACCOUNTS

ACCT. NO. (a)	ACCOUNT NAME (b)	PREVIOUS YEAR (c)	ADDITIONS (d)	RETIREMENTS (e)
301	Organization	\$ 13,883	\$	\$
302	Franchises			
303	Land and Land Rights	2,570		
304	Structure and Improvements	7,344		
305	Collecting and Impounding Reservoirs			
306	Lake, River and Other Intakes			
307	Wells and Springs	64,395	42,613	
308	Infiltration Galleries and Tunnels			
309	Supply Mains	25,261	2,527	
310	Power Generation Equipment			
311	Pumping Equipment	33,988		
320	Water Treatment Equipment	44,982		
330	Distribution Reservoirs and Standpipes	139,616		
331	Transmission and Distribution Mains	289,605		
333	Services	29,958		
334	Meters and Meter Installations	84,237	4,816	
335	Hydrants	23,960		
339	Other Plant and Miscellaneous Equipment	1,269		
340	Office Furniture and Equipment	8,448		
341	Transportation Equipment	10,950		
342	Stores Equipment			
343	Tools, Shop and Garage Equipment	1,951		
344	Laboratory Equipment			
345	Power Operated Equipment	2,393		
346	Communication Equipment			
347	Miscellaneous Equipment	434		
348	Other Tangible Plant	270		
	Total Water Plant	\$ 785,514	\$ 49,956	\$

NOTE: Any adjustments made to reclassify property from one account to another must be footnoted.

WATER UTILITY PLANT MATRIX

CURRENT YEAR (f)	.1 INTANGIBLE PLANT (g)	.2 SOURCE OF SUPPLY AND PUMPING PLANT (h)	.3 WATER TREATMENT PLANT (i)	.4 TRANSMISSION AND DISTRIBUTION PLANT (j)	.5 GENERAL PLANT (k)
\$ 13,883	\$ 13,883				
2,570		\$ 2,570	\$	\$	\$
7,344		7,344			
107,008		107,008			
27,788		27,788			
33,988		33,988			
44,982			44,982		
139,616				139,616	
289,605				289,605	
29,958				29,958	
89,053				89,053	
23,960				23,960	
1,269				1,269	
8,448					8,448
10,950					10,950
1,951					1,951
2,393					2,393
434					434
270					270
\$ 835,470	\$ 13,883	\$ 178,698	\$ 44,982	\$ 573,461	\$ 24,446

UTILITY NAME: Jasmine Lakes Utilities Corp.

WATER UTILITY EXPENSE ACCOUNTS

WATER EXPENSE ACCOUNT MATRIX

ACCT. NO. (a)	ACCOUNT NAME (b)	CURRENT YEAR (c)	.1 SOURCE OF SUPPLY AND EXPENSES - OPERATIONS (d)	.2 SOURCE OF SUPPLY AND EXPENSES - MAINTENANCE (e)
601	Salaries and Wages - Employees	\$ 7,194	\$	\$
603	Salaries and Wages - Officers, Directors and Majority Stockholders	38,400		
604	Employee Pensions and Benefits	8,684		
610	Purchased Water	20,027	20,027	
615	Purchased Power	7,315	2,788	
616	Fuel for Power Purchased			
618	Chemicals	2,017		
620	Materials and Supplies	3,301		180
631	Contractual Services - Engineering			
632	Contractual Services - Accounting	9,866		
633	Contractual Services - Legal	4,525		
634	Contractual Services - Management Fees			
635	Contractual Services - Other	180,691	5,674	138
641	Rental of Building/Real Property	5,971	5,971	
642	Rental of Equipment	1,818		
650	Transportation Expense	4,086		
656	Insurance - Vehicle	626		
657	Insurance - General Liability	2,375		
658	Insurance - Workmens Compensation	903		
659	Insurance - Other	1,608		
660	Advertising Expense			
666	Regulatory Commission Expenses - Amortization of Rate Case Expense			
667	Regulatory Commission Expenses Other			
670	Bad Debt Expense	1,928		
675	Miscellaneous Expenses	49,635	6,598	4,816
	Total Water Utility Expenses	\$ 350,970	\$ 41,058	\$ 5,134

WATER EXPENSE ACCOUNT MATRIX

.3 WATER TREATMENT EXPENSES - OPERATIONS (f)	.4 WATER TREATMENT EXPENSES - MAINTENANCE (g)	.5 TRANSMISSION & DISTRIBUTION EXPENSES - OPERATIONS (h)	.6 TRANSMISSION & DISTRIBUTION EXPENSES - MAINTENANCE (i)	.7 CUSTOMER ACCOUNTS EXPENSE (j)	.8 ADMINISTRATIVE & GENERAL EXPENSES (k)
\$	\$	\$	\$	\$	\$ 7,194
					38,400
					8,684
4,527					
2,017					
	1,718		1,273		130
					9,866
					4,525
1,843	6,484	939	23,564		142,049
			1,332		486
			139		3,947
					626
					2,375
					903
					1,608
				1,928	
10,996		8,797	7,477	4,494	6,457
\$ 19,383	\$ 8,202	\$ 9,736	\$ 33,785	\$ 6,422	\$ 227,250

UTILITY NAME: Jasmine Lakes Utilities Corp.

WATER OPERATING REVENUE

ACCT. NO. (a)	DESCRIPTION (b)	BEGINNING YE. & NO. CUSTOMERS (c)	YEAR END NUMBER CUSTOMERS (d)	AMOUNTS (e)
	Operating Revenues:			
460	Unmetered Water Revenue -----			\$ -----
	Metered Water Revenue:			
461.1	Metered Sales to Residential Customers -----	1,539	1,539	404,511
461.2	Metered Sales to Commercial Customers -----	39	39	24,928
461.3	Metered Sales to Construction Customers -----			
461.4	Metered Sales to Public Authorities -----			
461.5	Metered Sales to Multiple Family Dwellings -----	2	2	9,402
	Total Metered Sales -----	1,580	1,580	438,841
	Fire Protection Revenue:			
462.1	Public Fire Protection -----			
462.2	Private Fire Protection -----	2	2	3,495
	Total Fire Protection Revenue -----	2	2	3,495
464	Other Sales to Public Authorities -----			
465	Sales to Irrigation Customers -----			
466	Sales for Resale -----			
467	Interdepartmental Sales -----			
	Totals -----	1,582	1,582	442,336
	Other Water Revenues:			
469	Guarenteed Revenues -----			
470	Forfeited Discounts -----			
471	Miscellaneous Service Revenues -----			4,990
472	Rents From Water Property -----			
473	Interdepartmental Rents -----			
474	Other Water Revenues -----			
	Total Other Water Revenues -----			4,990
	Total Water Operating Revenues -----			\$ 447,326

UTILITY NAME: Jasmine Lakes Utilities Corp.

YEAR OF REPORT
December 31, 1998

BASIS FOR WATER DEPRECIATION CHARGES

ACCT. NO. (a)	ACCOUNT NAME (b)	AVERAGE SERVICE LIFE IN YEARS (c)	AVERAGE NET SALVAGE IN PERCENT (d)	DEPRECIATION RATE APPLIED IN PERCENT (100% - d) / c (f)
301	Organization -----	40	%	2.50 %
302	Franchises -----		%	%
304	Structure and Improvements -----	30	%	3.33 %
305	Collecting and Impounding Reservoirs -----		%	%
306	Lake, River and Other Intakes -----		%	%
307	Wells and Springs -----	30	%	3.33 %
308	Infiltration Galleries and Tunnels -----		%	%
309	Supply Mains -----	35	%	2.86 %
310	Power Generation Equipment -----		%	%
311	Pumping Equipment -----	20	%	5.00 %
320	Water Treatment Equipment -----	10	%	10.00 %
330	Distribution Reservoirs and Standpipes -----	35	%	2.86 %
331	Transmission and Distribution Mains -----	34	%	2.94 %
333	Services -----	40	%	2.50 %
334	Meters and Meter Installations -----	20	%	5.00 %
335	Hydrants -----	45	%	2.22 %
339	Other Plant and Miscellaneous Equipment (Fire Mains) -----	25	%	4.00 %
340	Office Furniture and Equipment -----	15	%	6.67 %
341	Transportation Equipment -----	6	%	16.67 %
342	Stores Equipment -----		%	%
343	Tools, Shop and Garage Equipment -----	16	%	6.25 %
344	Laboratory Equipment -----		%	%
345	Power Operated Equipment -----	12	%	8.33 %
346	Communication Equipment -----		%	%
347	Miscellaneous Equipment -----	15	%	6.67 %
348	Other Tangible Plant -----	10	%	10.00 %
	Water Plant Composite Depreciation Rate *		%	%

* If depreciation rates prescribed by this Commission are on a total composite basis, entries should be made on this line only.

UTILITY NAME: Jasmine Lakes Utilities Corp.

YEAR OF REPORT
December 31, 1998

ANALYSIS OF ENTRIES IN WATER ACCUMULATED DEPRECIATION

ACCT. NO. (a)	ACCOUNT NAME (b)	BALANCE AT BEGINNING OF YEAR (c)	ACCRUALS (d)	OTHER CREDITS * (e)	TOTAL CREDITS (d + e) (f)
301	Organization _____	\$ 2,511	\$ 348	\$	\$ 348
302	Franchises _____				
304	Structure and Improvements _____	741	244		244
305	Collecting and Impounding Reservoirs _____				
306	Lake, River and Other Intakes _____				
307	Wells and Springs _____	33,220	2,772		2,772
308	Infiltration Galleries and Tunnels _____				
309	Supply Mains _____	14,421	759		759
310	Power Generation Equipment _____				
311	Pumping Equipment _____	14,998	1,699		1,699
320	Water Treatment Equipment _____	15,408	4,498		4,498
330	Distribution Reservoirs and Standpipes _____	75,965	3,993		3,993
331	Transmission and Distribution Mains _____	131,901	8,515		8,515
333	Services _____	17,939	749		749
334	Meters and Meter Installations _____	38,128	4,333		4,333
335	Hydrants _____	361	532		532
339	Other Plant and Miscellaneous Equipment _____	138	50		50
340	Office Furniture and Equipment _____	6,668	563		563
341	Transportation Equipment _____	10,950			0
342	Stores Equipment _____				
343	Tools, Shop and Garage Equipment _____	613	122		122
344	Laboratory Equipment _____				
345	Power Operated Equipment _____	1,115	198		198
346	Communication Equipment _____				
347	Miscellaneous Equipment _____	197	29		29
348	Other Tangible Plant _____	216	27		27
	Total Depreciable Water Plant In Service _____	\$ 365,490	\$ 29,431	\$	\$ 29,431

Note(1): Remove prior period over accrual

* Specify nature of transaction.
Use () to denote reversal entries.

ANALYSIS OF ENTRIES IN WATER ACCUMULATED DEPRECIATION (Cont'd)

PLANT RETIRED (g)	ASSOCIATED SALVAGE AND INSURANCE (h)	ASSOCIATED COST OF REMOVAL (i)	OTHER CHARGES (j)	TOTAL CHARGES (g-h+i+j) (k)	BALANCE AT END OF YEAR (c+f-k) (l)
\$ _____	\$ _____	\$ _____	\$ _____	\$ _____	\$ 2,859
_____	_____	_____	_____	_____	985
_____	_____	_____	_____	_____	35,992
_____	_____	_____	_____	_____	15,180
_____	_____	_____	_____	_____	16,697
_____	_____	_____	_____	_____	19,906
_____	_____	_____	_____	_____	79,958
_____	_____	_____	_____	_____	140,416
_____	_____	_____	_____	_____	18,688
_____	_____	_____	_____	_____	42,461
_____	_____	_____	_____	_____	893
_____	_____	_____	_____	_____	188
_____	_____	_____	_____	_____	7,231
_____	_____	_____	_____	_____	10,950
_____	_____	_____	_____	_____	735
_____	_____	_____	_____	_____	1,313
_____	_____	_____	_____	_____	226
_____	_____	_____	_____	_____	243
\$ _____	\$ _____	\$ _____	\$ _____	\$ _____	\$ 394,921

UTILITY NAME: Jasmine Lakes Utilities Corp.
 SYSTEM NAME: _____

YEAR OF REPORT
December 31, 1998

PUMPING AND PURCHASED WATER STATISTICS

MONTH (a)	WATER PURCHASED FOR RESALE (Omit 000's) (b)	FINISHED WATER PUMPED FROM WELLS (Omit 000's) (c)	WATER USED FOR LINE FLUSHING, FIGHTING FIRES, ETC. (d)	TOTAL WATER PUMPED AND PURCHASED (Omit 000's) [(b)+(c)-(d)] (e)	WATER SOLD TO CUSTOMERS (Omit 000's) (f)
January	6,194	3,216		9,410	6,399
February	5,292	3,224		8,516	6,503
March	4,993	2,511		7,504	6,275
April	4,681	2,518		7,199	8,263
May	5,131	2,570		7,701	8,681
June	4,375	1,773		6,148	8,435
July	5,438	2,557		7,995	7,646
August	4,533	2,582		7,115	7,703
September	4,034	2,449		6,483	7,647
October	4,184	2,554		6,738	7,375
November	5,119	3,950		9,069	8,182
December	5,119	3,855		8,974	7,617
Total for year	59,093	33,759		92,852	90,726

If water is purchased for resale, indicate the following:

Vendor Pasco County Utilities Department
 Point of delivery _____

If Water is sold to other water utilities for redistribution, list names of such utilities below:

N/A

UTILITY NAME: Jasmine Lakes Utilities Corp.
SYSTEM NAME: _____

WATER TREATMENT PLANT INFORMATION

Type of treatment (reverse osmosis, etc.): Aeration/chlorination
Methods used (sedimentation, chemical, aerated, etc.): Chemical chlorination

LIME TREATMENT

Unit rating (GPM): N/A Manufacturer: _____

FILTRATION

Type and area: Pressure - Square Feet: _____
 Gravity - GPM/Square Feet: _____

MAINS

TYPE OF PIPE (Galvanized, Cast Iron, PVC, Etc.)	DIAMETER OF PIPE (in inches)	MAINS BEGINNING OF YEAR (in feet)	ADDITIONS	RETIREMENTS	MAINS END OF YEAR (in feet)
PVC	1"	3,840			3,840
PVC	2"	12,930			12,930
PVC	2.25"	9,310			9,310
PVC	2.50"	8,400			8,400
PVC	3"	1,800			1,800
PVC	4"	11,250			11,250
PVC	6"	30,005			30,005
PVC	8"	6,087			6,087
PVC	12"	1,000			1,000
Total feet of mains		84,622			84,622

SERVICES AND METERS

METERS IN SERVICE	METERS BEGINNING OF YEAR	ADDITIONS	RETIREMENTS	METERS END OF YEAR
5/8" - 3/4"	1,563			1,563
1"	7			7
1 1/2"	4			4
2"	4			4
3"	2			2
4"				
6"				
8"				
Other (Specify): _____				
Total meters in service	1,580			1,580
Total meters in stock	10	10	10	10
Number of services in use	1,580			1,580

UTILITY NAME: Jasmine Lakes Utilities Corp.
SYSTEM NAME: _____

WELLS AND WELL PUMPS

(a)	(b)	(c)	(d)	(e)
Year Constructed _____	1972	1972		
Types of Well Construction and Casing _____	Drilled Iron	Drilled Iron		
Depth of Wells _____	225'	186'		
Diameters of Wells _____	8"	8"		
Pump - GPM _____	250	358		
Motor - HP _____	5 HP	15 HP		
Yields of Wells in GPD _____	Unknown	Unknown		
Auxiliary Power _____				

RESERVOIRS

(a)	(b)	(c)	(d)	(e)
Description (steel, concrete, or pneumatic) _____	Pneumatic	Concrete		
Capacity of Tank _____	15,000	550,000		
Ground of Elevated _____	Ground	Ground		

HIGH SERVICE PUMPING

MOTORS (a)	(b)	(c)	(d)	(e)
Manufacturer _____	Peerless	Peerless		
Type _____	Electric	Electric		
Rated Horsepower _____	50	50		
PUMPS				
Manufacturer _____	Peerless	Peerless		
Type _____	Horizontal	Horizontal		
Capacity in GPM _____	800	800		
Average Number of Hours Operated Per Day _____	24	24		
Auxiliary Power _____	Propane	Propane		

UTILITY NAME: Jasmine Lakes Utilities Corp.
SYSTEM NAME: Same

SOURCE OF SUPPLY

List for each source of supply:

Gallons per day of source _____ Type of source _____	<u>Pasco County Utility</u>	<u>Wells</u>	
---	-----------------------------	--------------	--

Note: See note on Page W-6 regarding purchased water

WATER TREATMENT FACILITIES

List for each water treatment facility:

Type _____ Make _____ Gallons per day capacity _____ Method of measurement _____	<u>Chlorination</u> <u>Unknown</u> <u>500,000</u> <u>Flow meters</u>		
---	---	--	--

OTHER WATER SYSTEM INFORMATION

Furnish information below for each system not physically connected with another facility. A separate page should be supplied where necessary.

- Present ERC's * that system can efficiently serve. 710
- Estimated annual increase in ERC's * . None - service area is built out
- List fire fighting facilities and capacities. 30 fire hydrants
- List percent of certificate area where service connection are installed (total for each county). 100 %
- What is the current need for system upgrading and/or expansion? None
- What are plans for future upgrading and/or expansion? None
- Have questions 6 and 7 been discussed with an engineer (if so, state name and address)? No
- Have questions 6 and 7 been discussed with appropriate state sanitary engineering office? No

* ERC = (Total Gallons Sold / 365 Days) / 350 Gallons Per Day

UTILITY NAME: Jasmine Lakes Utilities Corp.
 SYSTEM NAME: Same

YEAR OF REPORT
December 31, 1998

CALCULATION OF THE WATER SYSTEMS EQUIVALENT RESIDENTIAL UNITS

METER SIZE (a)	TYPE OF METER (b)	EQUIVALENT FACTOR (c)	NUMBER OF METERS (d)	TOTAL NUMBER OF METER EQUIVALENTS (c x d) (e)
5/8"	Displacement	1.0	1,563	1,563
3/4"	Displacement	1.5		
1"	Displacement	2.5	7	18
1 1/2"	Displacement or Turbine	5.0	4	20
2"	Displacement, Compound or Turbine	8.0	4	32
3"	Displacement	15.0	2	30
3"	Compound	16.0		
3"	Turbine	17.5		
4"	Displacement or Compound	25.0		
4"	Turbine	30.0		
6"	Displacement or Compound	50.0		
6"	Turbine	62.5		
8"	Compound	80.0		
8"	Turbine	90.0		
10"	Compound	115.0		
10"	Turbine	145.0		
12"	Turbine	215.0		
Total Water System Meter Equivalents -----				<u>1,663</u>

CALCULATION OF THE WATER SYSTEMS EQUIVALENT RESIDENTIAL CONNECTIONS

$$\left(\frac{90,726,000}{\text{(total gallons sold)}} \right) / 365 \text{ days} / 350 \text{ gpd} = 710$$

**SEWER
OPERATION
SECTION**

UTILITY NAME: Jasmine Lakes Utilities Corp.

YEAR OF REPORT
December 31, 1998

SEWER UTILITY PLANT ACCOUNTS

ACCT. NO. (a)	ACCOUNT NAME (b)	PREVIOUS YEAR (c)	ADDITIONS (d)	RETIREMENTS (e)
351	Organization _____	\$ 14,072	\$ _____	\$ _____
352	Franchises _____	_____	_____	_____
353	Land and Land Rights _____	5,802	_____	_____
354	Structure and Improvements _____	17,917	_____	_____
360	Collection Sewers - Force _____	258,451	3,687	_____
361	Collection Sewers - Gravity _____	_____	_____	_____
362	Special Collecting Structures _____	_____	_____	_____
363	Services to Customers _____	_____	_____	_____
364	Flow Measuring Devices _____	_____	_____	_____
365	Flow Measuring Installations _____	_____	_____	_____
370	Receiving Wells _____	_____	_____	_____
371	Pumping Equipment _____	163,413	9,443	_____
380	Treatment and Disposal Equipment _____	594,130	27,705	_____
381	Plant Sewers _____	_____	_____	_____
382	Outfall Sewer Lines _____	168	_____	_____
389	Other Plant and Miscellaneous Equipment _____	40,070	6,739	_____
390	Office Furniture and Equipment _____	6,697	_____	_____
391	Transportation Equipment _____	6,050	_____	_____
392	Stores Equipment _____	_____	_____	_____
393	Tools, Shop and Garage Equipment _____	78	_____	_____
394	Laboratory Equipment _____	_____	_____	_____
395	Power Operated Equipment _____	_____	_____	_____
396	Communication Equipment _____	_____	_____	_____
397	Miscellaneous Equipment _____	_____	_____	_____
398	Other Tangible Plant _____	11,794	_____	_____
	Total Sewer Plant _____	\$ 1,118,642	\$ 47,574	\$ _____

NOTE: Any adjustments made to reclassify property from one account to another must be footnoted.

SEWER UTILITY PLANT MATRIX

	.1	.2	.3	.4	.5
CURRENT YEAR (f)	INTANGIBLE PLANT (g)	COLLECTION PLANT (h)	SYSTEM PUMPING PLANT (i)	TREATMENT AND DISPOSAL PLANT (j)	GENERAL PLANT (k)
\$ 14,072	\$ 14,072				
5,802		\$ 5,802	\$	\$	\$
17,917		632		17,285	
262,138		262,138			
172,856			172,856		
621,835				621,835	
168				168	
46,809				46,809	
6,697					6,697
6,050					6,050
78					78
11,794					11,794
\$ 1,166,216	\$ 14,072	\$ 268,572	\$ 172,856	\$ 686,097	\$ 24,619

UTILITY NAME: Jasmine Lakes Utilities Corp.

SEWER UTILITY EXPENSE ACCOUNTS

ACCT. NO. (a)	ACCOUNT NAME (b)	CURRENT YEAR (c)	.1	.2
			COLLECTION EXPENSES - OPERATIONS (d)	COLLECTION EXPENSES - MAINTENANCE (e)
701	Salaries and Wages - Employees	\$ 5,588	\$	\$
703	Salaries and Wages - Officers, Directors and Majority Stockholders	25,600		
704	Employee Pensions and Benefits	5,789		
710	Purchased Sewage Treatment			
711	Sludge Removal Expense	24,710		
715	Purchased Power	20,854		
716	Fuel for Power Purchased			
718	Chemicals	6,762		
720	Materials and Supplies	8,336		636
731	Contractual Services - Engineering			
732	Contractual Services - Accounting	8,352		
733	Contractual Services - Legal	2,499		
734	Contractual Services - Management Fees			
735	Contractual Services - Other	95,775		10,927
741	Rental of Building/Real Property			
742	Rental of Equipment	1,011		
750	Transportation Expense	2,505		
756	Insurance - Vehicle	415		
757	Insurance - General Liability	1,809		
758	Insurance - Workmens Compensation	390		
759	Insurance - Other	1,072		
760	Advertising Expense			
766	Regulatory Commission Expenses - Amortization of Rate Case Expense			
767	Regulatory Commission Expenses Other			
770	Bad Debt Expense	2,411		
775	Miscellaneous Expenses	2,656		
	Total Sewer Utility Expenses	\$ 216,534	\$	\$ 11,563

SEWER EXPENSE ACCOUNT MATRIX

.3 PUMPING EXPENSES - OPERATIONS (f)	.4 PUMPING EXPENSES - MAINTENANCE (g)	.5 TREATMENT & DISPOSAL EXPENSES - OPERATIONS (h)	.6 & DISPOSAL EXPENSES - MAINTENANCE (i)	.7 TREATMENT CUSTOMER ACCOUNTS EXPENSE (j)	.8 ADMINISTRATIVE & GENERAL EXPENSES (k)
\$ _____	\$ _____	\$ _____	\$ _____	\$ _____	\$ 5,588
					25,600
					5,789
		24,710			
5,380		15,474			
		6,762			
	226	632	6,842		
					8,352
					2,499
	16,584	10,730	16,083		41,451
			731		280
			92		2,413
					415
					1,809
					390
					1,072
				2,411	
				2,495	161
\$ 5,380	\$ 16,810	\$ 58,308	\$ 23,748	\$ 4,906	\$ 95,819

UTILITY NAME: Jasmine Lakes Utilities Corp.

SEWER OPERATING REVENUE

ACCT. NO. (a)	DESCRIPTION (b)	BEGINNING YEAR NO. CUSTOMERS (c)	YEAR END NUMBER CUSTOMERS (d)	AMOUNTS (e)
	Operating Revenues:			
	Flat Rate Revenues:			
521.1	Residential Revenues _____			\$ _____
521.2	Commercial Revenues _____			_____
521.3	Industrial Revenues _____			_____
521.4	Revenues From Public Authorities _____			_____
521.5	Multiple Family Dwelling Revenues _____			_____
521.6	Other Revenues _____			_____
	Total Flat Rate Revenues _____			_____
	Measured Revenues:			
522.1	Residential Revenues _____	1,535	1,535	327,963
522.2	Commercial Revenues _____	34	34	20,889
522.3	Industrial Revenues _____			_____
522.4	Revenues From Public Authorities _____			_____
522.5	Multiple Family Dwelling Revenues _____			_____
	Total Measured Revenues _____	1,569	1,569	348,852
523	Revenues From Public Authorities _____			_____
524	Revenues From Other Systems _____			_____
525	Interdepartmental Revenues _____			_____
	Totals _____	1,569	1,569	348,852
	Other Sewer Revenues:			
530	Guarenteed Revenues _____			_____
531	Sale of Sludge _____			_____
532	Forfeited Discounts _____			_____
534	Rents From Sewer Property _____			_____
535	Interdepartmental Rents _____			_____
536	Other Sewer Revenues _____			_____
	Total Other Sewer Revenues _____			_____
	Total Sewer Operating Revenues _____			\$ 348,852

UTILITY NAME: Jasmine Lakes Utilities Corp.

BASIS FOR SEWER DEPRECIATION CHARGES

ACCT. NO. (a)	ACCOUNT NAME (b)	AVERAGE SERVICE LIFE IN YEARS (c)	AVERAGE NET SALVAGE IN PERCENT (d)	DEPRECIATION RATE APPLIED IN PERCENT (100% - d) / c (f)
351	Organization	40	%	2.50 %
352	Franchises		%	%
354	Structure and Improvements	30	%	3.33 %
360	Collection Sewers - Force	30	%	3.33 %
361	Collection Sewers - Gravity		%	%
362	Special Collecting Structures		%	%
363	Services to Customers		%	%
364	Flow Measuring Devices		%	%
365	Flow Measuring Installations		%	%
370	Receiving Wells		%	%
371	Pumping Equipment	30	%	3.33 %
380	Treatment and Disposal Equipment	18	%	5.56 %
381	Plant Sewers		%	%
382	Outfall Sewer Lines	30	%	3.33 %
389	Other Plant and Miscellaneous Equipment	18	%	5.56 %
390	Office Furniture and Equipment	15	%	6.67 %
391	Transportation Equipment	6	%	16.67 %
392	Stores Equipment		%	%
393	Tools, Shop and Garage Equipment	10	%	10.00 %
394	Laboratory Equipment		%	%
395	Power Operated Equipment		%	%
396	Communication Equipment		%	%
397	Miscellaneous Equipment		%	%
398	Other Tangible Plant	10	%	10.00 %
	Sewer Plant Composite Depreciation Rate		%	%

* If depreciation rates prescribed by this Commission are on a total composite basis, entries should be made on this line only.

UTILITY NAME: Jasmine Lakes Utilities Corp.

YEAR OF REPORT
December 31, 1998

ANALYSIS OF ENTRIES IN SEWER ACCUMULATED DEPRECIATION

ACCT. NO. (a)	ACCOUNT NAME (b)	BALANCE AT BEGINNING OF YEAR (c)	ACCRUALS (d)	OTHER CREDITS * (e)	TOTAL CREDITS (d + e) (f)
351	Organization	\$ 2,543	\$ 352	\$	\$ 352
352	Franchises				
354	Structure and Improvements	4,452	596		596
360	Collection Sewers - Force	169,641	8,668		8,668
361	Collection Sewers - Gravity				
362	Special Collecting Structures				
363	Services to Customers				
364	Flow Measuring Devices				
365	Flow Measuring Installations				
370	Receiving Wells				
371	Pumping Equipment	58,071	5,040		5,040
380	Treatment and Disposal Equipment	210,643	33,385		33,385
381	Plant Sewers				
382	Outfall Sewer Lines	14	6		6
389	Other Plant and Miscellaneous Equipment	23,712	2,415		2,415
390	Office Furniture and Equipment	5,255	447		447
391	Transportation Equipment	6,050			0
392	Stores Equipment				
393	Tools, Shop and Garage Equipment	17	5		5
394	Laboratory Equipment				
395	Power Operated Equipment				
396	Communication Equipment				
397	Miscellaneous Equipment				
398	Other Tangible Plant	2,600	1,179		1,179
	Total Depreciable Sewer Plant in Service	\$ 482,998	\$ 52,093	\$	\$ 52,093

Note (1): Remove prior period over - accrual

- * Specify nature of transaction.
Use () to denote reversal entries.

UTILITY NAME: Jasmine Lakes Utilities Corp.
 SYSTEM NAME: Same

YEAR OF REPORT
December 31, 1998

PUMPING EQUIPMENT

	1	2	3	4	5	6
Lift station number _____						
Make or type and nameplate data of pump _____	Myers	N/A	Hydro	Hydro	EMU	Barnes
Year installed _____	1990		1971	1971	1973	1991
Rated capacity_ (GPM) _____	200		150	175	375	150
Size _____	4"		4"	4"	6"	4"
Power:						
Electric _____	X		X	X	X	X
Mechanical _____						
Nameplate data of motor _____	Unknown		Unknown	Unknown	Unknown	Unknown

	7					
Lift station number _____						
Make or type and nameplate data of pump _____	Barnes					
Year installed _____	1991					
Rated capacity_ (GPM) _____	150					
Size _____	3"					
Power:						
Electric _____	X					
Mechanical _____						
Nameplate data of motor _____	Unknown					

SERVICE CONNECTIONS

Size (inches) _____	4"					
Type (PVC, VCP, etc) _____	VCP					
Average length _____	Various					
Number of active service connections _____	1,569					
Beginning of year _____	1,569					
Added during year _____						
Retired during year _____						
End of year _____	1,569					
Give full particulars concerning inactive connections _____	None					

UTILITY NAME: Jasmine Lakes Utilities Corp.
SYSTEM NAME: Same

COLLECTING MAINS

COLLECTING MAINS:						
Size (inches) _____	6"	8"	10"	_____	_____	_____
Type of main _____	VCP	VCP	VCP	_____	_____	_____
Length of main (nearest foot):						
Beginning of year _____	1,901	66,578	3,330	_____	_____	_____
Added during year _____	_____	_____	_____	_____	_____	_____
Retired during year _____	_____	_____	_____	_____	_____	_____
End of year _____	1,901	66,578	3,330	_____	_____	_____
MANHOLES:						
Size (inches) _____	_____	_____	_____	_____	_____	_____
Type _____	_____	_____	_____	_____	_____	_____
Number:						
Beginning of year _____	357	_____	_____	_____	_____	_____
Added during year _____	_____	_____	_____	_____	_____	_____
Retired during year _____	_____	_____	_____	_____	_____	_____
End of year _____	357	_____	_____	_____	_____	_____

FORCE MAINS

FORCE MAINS:						
Size (inches) _____	4"	6"	8"	_____	_____	_____
Type of main _____	CL	PVC	AC	_____	_____	_____
Length of main (nearest foot):						
Beginning of year _____	2,513	3,187	5,200	_____	_____	_____
Added during year _____	_____	_____	_____	_____	_____	_____
Retired during year _____	_____	_____	_____	_____	_____	_____
End of year _____	2,513	3,187	5,200	_____	_____	_____

YEAR OF REPORT
December 31, 1998

UTILITY NAME: Jasmine Lakes Utilities Corp.
SYSTEM NAME: Same

TREATMENT PLANT

Manufacturer _____	<u>Marolf</u>		
Type _____	<u>Extended Air</u>		
"Steel" or "Concrete" _____	<u>Concrete</u>		
Total Capacity _____	<u>368,500 GPD</u>		
Average Daily Flow _____	<u>145,315</u>		
Effluent Disposal _____	<u>Evaporation Ponds</u>		
Total Gallons of Sewage Treated _____	<u>53,040,000</u>		

MASTER LIFT STATION PUMPS

Manufacturer _____	<u>Myers</u>	<u>Hydromatic</u>	<u>Hydromatic</u>	<u>EMU</u>	<u>Gould</u>	<u>Barnes</u>
Ca (GPM) _____	<u>200</u>	<u>150</u>	<u>150</u>	<u>375</u>	<u>150</u>	<u>150</u>
Motor: Mfr. _____	<u>US Motor</u>	<u>US Motor</u>	<u>US Motor</u>	<u>US Motor</u>	<u>US Motor</u>	<u>US Motor</u>
Horsepower _____	<u>7.5</u>	<u>2.5</u>	<u>7</u>	<u>1.5</u>	<u>2.5</u>	<u>2</u>
Power (Electric or Mechanical) _____	<u>Electric</u>	<u>Electric</u>	<u>Electric</u>	<u>Electric</u>	<u>Electric</u>	<u>Electric</u>

OTHER SEWER SYSTEM INFORMATION

Furnish information below for each system not physically connected with another facility. A separate page should be supplied where necessary.

- Maximum number of ERC's * which can be served. 528
- Estimated annual increase in ERC's * . None - service area is built out
- List permit numbers required by Chapter 14-17, Rules of the Department of Environmental Regulation (DER) for systems in operation. DC51-174478
- State any plans and estimated completion dates for any enlargements of this system. None
- If the present systems do not meet the requirements of Chapter 17-4, Rules of the DER, submit the following:
 - Evaluation of the present plant or plants in regard to meeting the DER's rules.
 - Plans for funding and construction of the required upgrading.
 - Have these plans been coordinated with the DER? N/A
 - Do they concur?
 - When will construction begin?
- In what percent of your certificated area have service connections been installed? 100 %

* ERC = (Total Gallons Treated / 365 Days) / 275 Gallons Per Day

Note: Total Gallons Treated includes both sewage treated and purchased sewage treatment.

UTILITY NAME: Jasmine Lakes Utilities Corp.
 SYSTEM NAME: Same

YEAR OF REPORT
 December 31, 1998

CALCULON OF THE SEWER SYSTEMS EQUIVALENT RESIDENTIAL UNITS

METER SIZE (a)	TYPE OF METER (b)	EQUIVALENT FACTOR (c)	NUMBER OF METERS (d)	TOTAL NUMBER OF METER EQUIVALENTS (c x d) (e)
5/8"	Displacement	1.0	1,557	1,557
3/4"	Displacement	1.5		
1"	Displacement	2.5	7	18
1 1/2"	Displacement or Turbine	5.0	2	10
2"	Displacement, Compound or Turbine	8.0	3	24
3"	Displacement	15.0		
3"	Compound	16.0		
3"	Turbine	17.5		
4"	Displacement or Compound	25.0		
4"	Turbine	30.0		
6"	Displacement or Compound	50.0		
6"	Turbine	62.5		
8"	Compound	80.0		
8"	Turbine	90.0		
10"	Compound	115.0		
10"	Turbine	145.0		
12"	Turbine	215.0		
Total SEWER System Meter Equivalents -----				1,609

CALCULATION OF THE SEWER SYSTEMS EQUIVALENT RESIDENTIAL CONNECTIONS

$$\left(\frac{53,040,000}{\text{(total gallons treated)}} \right) / 365 \text{ days} / 275 \text{ gpd} = \underline{528}$$