

ORIGINAL COPY
DIVISION OF
WATER AND SEWER
Do Not Remove from this Office
CLASS A OR B

WATER and/or WASTEWATER UTILITIES
(Gross Revenue of More Than \$200,000 Each)

ANNUAL REPORT

OF

WS793-01-AR

IHC Realty Partnership, L.P.

Exact Legal Name of Respondent

336- W / 291- S

Certificate Number(s)

Submitted To The

STATE OF FLORIDA



PUBLIC SERVICE COMMISSION

FOR THE

YEAR ENDED DECEMBER 31, 2001

REGULATORY REGULATION
02 SEP 16 11:11:02
STATE OF FLORIDA

RECEIVED

SEP 16 2002

Florida Public Service Commission
Division of Water and Wastewater

Cronin, Jackson, Nixon & Wilson
CERTIFIED PUBLIC ACCOUNTANTS, P.A.

JAMES L. CARLSTEDT, C.P.A.
CHRISTINE R. CHRISTIAN, C.P.A.
JOHN H. CRONIN, JR., C.P.A.
ROBERT H. JACKSON, C.P.A.
ROBERT C. NIXON, C.P.A.
JEANETTE SUNG, C.P.A.
HOLLY M. TOWNER, C.P.A.
REBECCA G. VOITLEIN, C.P.A.
JAMES L. WILSON, C.P.A.

2560 GULF-TO-BAY BOULEVARD
SUITE 200
CLEARWATER, FLORIDA 33765-4419
(727) 791-4020
FACSIMILE
(727) 797-3602
e-Mail
cpas@cjnw.net

September 12, 2002

Officers and Directors
IHC Realty Partnership, L.P.

We have compiled the 2001 Annual Report of IHC Realty Partnership, L.P. in the accompanying prescribed form, in accordance with Statements on Standards for Accounting and Review Services issued by the American Institute of Certified Public Accountants.

Our compilation was limited to presenting, in the form prescribed by the Florida Public Service Commission, information that is the representation of the management of IHC Realty Partnership, L.P.. We have not audited or reviewed the report referred to above and, accordingly, do not express an opinion or any form of assurance on it.

This report is presented in accordance with the requirements of the Florida Public Service Commission, which differ from generally accepted accounting principles. Accordingly, this report is not designed for those who are not informed about such differences.

Cronin, Jackson, Nixon & Wilson
CRONIN, JACKSON, NIXON & WILSON

**Reconciliation of Revenue to
Regulatory Assessment Fee Revenue
Water Operations**

Company: IHC Realty Partnership, L.P.

For the Year Ended December 31, 2001

(a)	(b)	(c)	(d)
Accounts	Gross Water Revenues per Sch. F-3	Gross Water Revenues per RAF Return	Difference (b) - (c)
Gross Revenue:			
Residential	\$ 6,755	\$ 6,755	\$ -
Commercial	373,588	373,588	-
Industrial	-	-	-
Multiple Family	-	-	-
Guaranteed Revenues	-	-	-
Other	-	-	-
Total Water Operating Revenue	\$ 380,343	\$ 380,343	\$ -
LESS: Expense for Purchased Water from FPSC-Regulated Utility	-	-	-
Net Water Operating Revenues	\$ 380,343	\$ 380,343	\$ -

Explanations:

Instructions:

For the current year, reconcile the gross water revenues reported on Schedule F-3 with the gross water revenues reported on the company's regulatory assessment fee return. Explain any differences reported in column (d).

**Reconciliation of Revenue to
Regulatory Assessment Fee Revenue
Wastewater Operations**

Company: IHC Realty Partnership, L.P.

For the Year Ended December 31, 2001

(a)	(b)	(c)	(d)
Accounts	Gross Wastewater Revenues per Sch. F-3	Gross Wastewater Revenues per RAF Return	Difference (b) - (c)
Gross Revenue:			
Residential	\$ 7,521	\$ 7,521	\$ -
Commercial	304,916	304,916	-
Industrial	-	-	-
Multiple Family	-	-	-
Guaranteed Revenues	-	-	-
Other	-	-	-
Total Wastewater Operating Revenue	\$ 312,437	\$ 312,437	\$ -
LESS: Expense for Purchased Wastewater from FPSC-Regulated Utility	-	-	-
Net Wastewater Operating Revenues	\$ 312,437	\$ 312,437	\$ -

Explanations:

Instructions:

For the current year, reconcile the gross water revenues reported on Schedule F-3 with the gross water revenues reported on the company's regulatory assessment fee return. Explain any differences reported in column (d).

General Instructions

1. Prepare this report in conformity with the 1984 National Association of Regulatory Utility Commissioners Uniform System of Accounts for Water and/or Wastewater Utilities (USOA).
2. Interpret all accounting words and phrases in accordance with the USOA.
3. Complete each question fully and accurately, even if it has been answered in a previous annual report. Enter the word "None" where it truly and completely states the fact.
4. For any question, section, or page which is not applicable to the respondent enter the words "Not Applicable". Do not omit any pages.
5. Where dates are called for, the month and day should be stated as well as the year.
6. All schedules should be rounded to the nearest dollar unless otherwise specifically indicated.
7. Complete this report by means which will create a permanent record, such as by typewriter.
8. If there is not enough room on any schedule, an additional page or pages may be added provided the format of the added schedule matches the format of the schedule of the page with not enough room. Such a schedule should reference the appropriate schedules, state the name of the utility, and state the year of the report.
9. If it is necessary or desirable to insert additional statements for the purpose of further explanation of schedules, such statement should be made at the bottom of the page or an additional page inserted. Any additional pages should state the name of the utility, the year of the report, and reference the appropriate schedule.
10. Water and wastewater system pages should be grouped together by system and all pages in the water and wastewater sections should be numbered consecutively at the bottom of the page where noted. For example, if the water system pages total 50 pages, they should be grouped by system and numbered from 1 to 50.
11. Financial information for multiple systems charging rates which are covered under the same tariff should be reported as one system. However, the engineering data must be reported by individual system.
12. For water and wastewater utilities with more than one system, one (1) copy of workpapers showing the consolidation of systems for the operating sections, should be filed with the annual report.
13. The report should be filled out in quadruplicate and the original and two copies returned by March 31 of the year following the date of the report. The report should be returned to:

**Florida Public Service Commission
Division of Water and Wastewater
2540 Shumard Oak Boulevard
Tallahassee, Florida 32399-0873**

The fourth copy should be retained by the utility

TABLE OF CONTENTS

SCHEDULE	PAGE	SCHEDULE	PAGE
EXECUTIVE SUMMARY			
Certification	E-1	Business Contracts With Officers, Directors and Affiliates	E-7
General Information	E-2	Affiliation of Officers and Directors	E-8
Directory of Personnel Who Contact the FPSC	E-3	Businesses Which Are A Byproduct, Coproduct or Joint Product of Providing Service	E-9
Company Profile	E-4	Business Transactions With Related Parties - Part I and II	E-10
Parent/Affiliate Organization Chart	E-5		
Compensation of Officers & Directors	E-6		
FINANCIAL SECTION			
Comparative Balance Sheet - Assets and Other Debits	F-1	Unamortized Debt Discount / Expense / Premium	F-13
Comparative Balance Sheet - Equity Capital and Liabilities	F-2	Extraordinary Property Losses	F-13
Comparative Operating Statement	F-3	Miscellaneous Deferred Debits	F-14
Schedule of Year End Rate Base	F-4	Capital Stock	F-15
Schedule of Year End Capital Structure	F-5	Bonds	F-15
Capital Structure Adjustments	F-6	Statement of Retained Earnings	F-16
Utility Plant	F-7	Advances From Associated Companies	F-17
Utility Plant Acquisition Adjustments	F-7	Long Term Debt	F-17
Accumulated Depreciation	F-8	Notes Payable	F-18
Accumulated Amortization	F-8	Accounts Payable to Associated Companies	F-18
Regulatory Commission Expense - Amortization of Rate Case Expense	F-9	Accrued Interest and Expense	F-19
Nonutility Property	F-9	Misc. Current and Accrued Liabilities	F-20
Special Deposits	F-9	Advances for Construction	F-21
Investments and Special Funds	F-10	Other Deferred Credits	F-21
Accounts and Notes Receivable - Net	F-11	Contributions In Aid Of Construction	F-22
Accounts Receivable From Associated Companies	F-12	Accum. Amortization of C.I.A.C.	F-23
Notes Receivable From Associated Companies	F-12	Reconciliation of Reported Net Income with Taxable Income For Federal Income Taxes	F-23
Miscellaneous Current and Accrued Assets	F-12		

TABLE OF CONTENTS

SCHEDULE	PAGE	SCHEDULE	PAGE
WATER OPERATION SECTION			
Listing of Water System Groups	W-1	CIAC Additions / Amortization	W-8
Schedule of Year End Water Rate Base	W-2	Water Operating Revenue	W-9
Water Operating Statement	W-3	Water Utility Expense Accounts	W-10
Water Utility Plant Accounts	W-4	Pumping and Purchased Water, Source Supply	W-11
Basis for Water Depreciation Charges	W-5	Water Treatment Plant Information	W-12
Analysis of Entries in Water Depreciation Reserve	W-6	Calculation of ERC's	W-13
Contributions in Aid of Construction	W-7	Other Water System Information	W-14
WASTEWATER OPERATION SECTION			
Listing of Wastewater System Groups	S-1	Contributions in Aid of Construction	S-7
Schedule of Year End Wastewater Rate Base	S-2	CIAC Additions / Amortization	S-8
Wastewater Operating Statement	S-3	Wastewater Operating Revenue	S-9
Wastewater Utility Plant Accounts	S-4	Wastewater Utility Expense Accounts	S-10
Basis for Wastewater Depreciation Charges	S-5	Wastewater Treatment Plant Information	S-11
Analysis of Entries in Wastewater Depreciation Reserve	S-6	Calculation of ERC's	S-12
		Other Wastewater System Information	S-13

EXECUTIVE

SUMMARY

CERTIFICATION OF ANNUAL REPORT

YEAR OF REPORT December 31, 2001

UTILITY NAME: IHC Realty Partnership, L.P.

I HEREBY CERTIFY, to the best of my knowledge and belief:

YES	NO	
(X)	()	1. The utility is in substantial compliance with the Uniform System of Accounts prescribed by the Florida Public Service Commission.

YES	NO	
(X)	()	2. The utility is in substantial compliance with all applicable rules and orders of the Florida Public Service Commission.

YES	NO	
(X)	()	3. There have been no communications from regulatory agencies concerning noncompliance with, or deficiencies in, financial reporting practices that could have a material effect on the financial statement of the utility.

YES	NO	
(X)	()	4. The annual report fairly represents the financial condition and results of operations of the respondent for the period presented and other information and statements presented in the report as to the business affairs of the respondent are true, correct and complete for the period for which it represents.

Items Certified

1.	2.	3.	4.
(X)	(X)	(X)	(X)



 (signature of the chief executive officer of the utility) *

1.	2.	3.	4.
()	()	()	()

 N/A
 (signature of the chief financial officer of the utility) *

* Each of the four items must be certified YES or NO. Each item need not be certified by both officers. The items being certified by the officer should be indicated in the appropriate area to the left of the signature.

NOTICE: Section 837.06, Florida Statutes, provides that any person who knowingly makes a false statement in writing with the intent to mislead a public servant in the performance of his duty shall be guilty of a misdemeanor of the second degree.

UTILITY NAME: IHC Realty Partnership, L.P.

YEAR OF REPORT December 31, 2001
--

DIRECTORY OF PERSONNEL WHO CONTACT THE FLORIDA PUBLIC SERVICE COMMISSION

NAME OF COMPANY REPRESENTATIVE (1)	TITLE OR POSITION (2)	ORGANIZATIONAL UNIT TITLE (3)	USUAL PURPOSE FOR CONTACT WITH FPSC
Frederick J. Kleisner	President	IHC Realty Partnership, L.P.	Rate hearings and operations
John R. Morse	Vice-President/ Treasurer	IHC Realty Partnership, L.P.	Rate hearings and operations
Timothy Digby	Property & Operations General Manager	IHC Realty Partnership, L.P. (Indian River Plantation)	Rate hearings and operations
Terri Barnett	Director of Finance & Accounting	IHC Realty Partnership, L.P.	Utility accounting
Robert Nixon	CPA	Cronin, Jackson, Nixon & Wilson, CPA's, P.A.	Various regulatory matters
D. Bruce May (850 - 224 - 7000)	Attorneys	Holland & Knight	Various company legal matters

- (1) Also list appropriate legal counsel, accountants and others who may not be on general payroll.
- (2) Provide individual telephone numbers if the person is not normally reached at the company.
- (3) Name of company employed by if not on general payroll.

UTILITY NAME: IHC Realty Partnership, L.P.

COMPANY PROFILE

Provide a brief narrative company profile which covers the following areas:

- A. Brief company history.**
- B. Public services rendered.**
- C. Major goals and objectives.**
- D. Major operating divisions and functions.**
- E. Current and projected growth patterns.**
- F. Major transactions having a material effect on operations.**

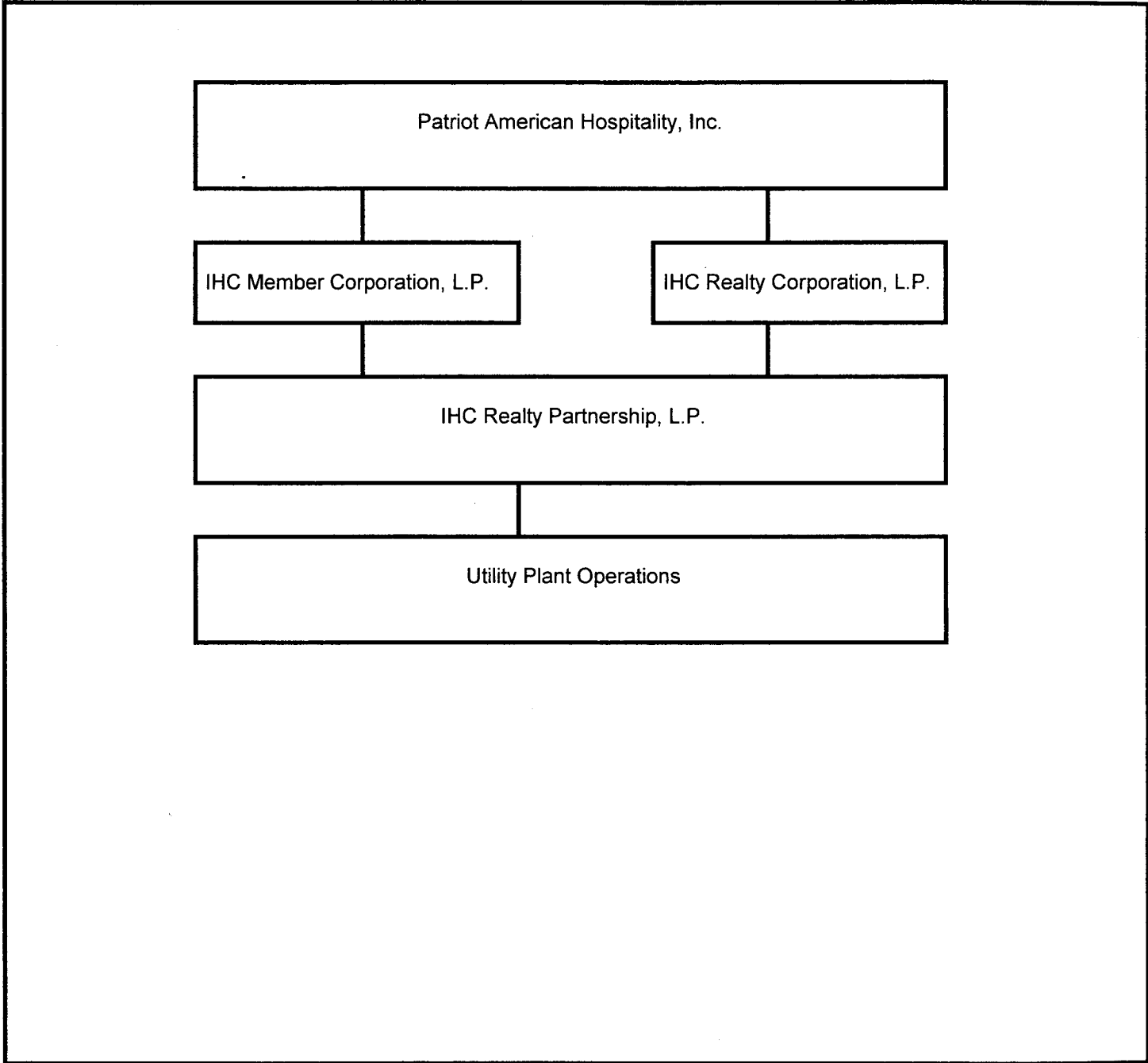
- (A) Utility operations began in September, 1976, under the name Indian River Plantation Company d/b/a Plantation Utilities. The purpose of the Company was to provide water and sewer utility service to the Indian River Plantation Resort Development.
- On December 31, 1985, Indian River Plantation Company was purchased by the Radnor/Plantation Corporation. The water and sewer operations were operated under the name, Radnor/Plantation Corporation d/b/a Plantation Utilities.
- In 1997 the Company, including the utility, was sold to IHC Realty Partnership, L.P. which is operating all resort facilities and the utility. As of mid 1999, the Company was granted a certificate transfer by the Florida Public Service Commission.
- (B) The utility provides water and sewer service only.
- (C) To provide quality service and a fair rate of return to the partnership.
- (D) Water and sewer utilities, resort, marina, hotel and real estate development.
- (E) One more connection will be added to reach build-out.
- (F) None.

UTILITY NAME: IHC Realty Partnership, L.P.

YEAR OF REPORT
December 31, 2001

PARENT / AFFILIATE ORGANIZATION CHART
Current as of 12/31/01

Complete below an organizational chart that shows all parents and subsidiaries of the utility. The chart must also show the relationship between the utility and the affiliates listed on E-7, E-10(a) and E-10(b).



UTILITY NAME: IHC Realty Partnership, L.P.

YEAR OF REPORT December 31, 2001
--

COMPENSATION OF OFFICERS

For each officer, list the time spent on respondent as an officer compared to time spent on total business activities and the compensation received as an officer from the respondent.			
NAME (a)	TITLE (b)	% OF TIME SPENT AS OFFICER OF UTILITY (c)	OFFICERS COMPENSATION (d)
Frederick J. Kleisner	President	2 %	\$ None
John R. Morse	Vice-President/ Treasurer	2 %	\$ None

COMPENSATION OF DIRECTORS

For each director, list the number of director meetings attended by each director and the compensation received as an director from the respondent.			
NAME (a)	TITLE (b)	NUMBER OF DIRECTORS MEETINGS ATTENDED (c)	DIRECTORS COMPENSATION (d)
N/A			

UTILITY NAME: IHC Realty Partnership, L.P.

YEAR OF REPORT
December 31, 2001

BUSINESS CONTRACTS WITH OFFICERS, DIRECTORS AND AFFILIATES

List all contracts, agreements, and other business arrangements* entered into during the calendar year (other than compensation related to position with Respondents) between the Respondent and officer and director listed on Page E-6. In addition, provide the same information with respect to professional services for each firm, partnership, or organization with which the officer or director is affiliated.

NAME OF OFFICER, DIRECTOR OR AFFILIATE (a)	IDENTIFICATION OF SERVICE OR PRODUCT (b)	AMOUNT (c)	NAME AND ADDRESS OF AFFILIATED ENTITY (d)
None			

* Business Agreement, for this schedule, shall mean any oral or written business deal which binds the concerned parties for products or services during the reporting year or future years. Although the Respondent and/or other companies will benefit from the arrangement, the officer or director is, however, acting on his behalf or for the benefit of other companies or persons.

UTILITY NAME: IHC Realty Partnership, L.P.

YEAR OF REPORT
December 31, 2001

AFFILIATION OF OFFICERS AND DIRECTORS

For each of the officials listed on page E-6, list the principal occupation or business affiliation and all affiliations or connections with any other business or financial organizations, firms, or partnerships. For purposes of this part, an official will be considered to have an affiliation with any business or financial organization, firm or partnership in which he is an officer, director, trustee, partner, or a person exercising similar functions.

NAME (a)	PRINCIPAL OCCUPATION OR BUSINESS AFFILIATION (b)	AFFILIATION OR CONNECTION (c)	NAME AND ADDRESS OF AFFILIATION OR CONNECTION(1) (d)
N/A			

UTILITY NAME: IHC Realty Partnership, L.P.

YEAR OF REPORT December 31, 2001
--

BUSINESSES WHICH ARE A BYPRODUCT, COPRODUCT OR JOINT PRODUCT RESULT OF PROVIDING WATER OR SEWER SERVICE

Complete the following for any business which is conducted as a byproduct, coproduct or joint product as a result of providing water and/or sewer service. This would include any business which requires the use of utility land and facilities. Examples of these types of businesses would be orange groves, nurseries, tree farms, fertilizer manufacturing, etc. This would not include any business for which the assets are properly included in Account 121 - Nonutility Property along with the associated revenues and expenses segregated out as nonutility also.

BUSINESS OR SERVICE CONDUCTED (a)	ASSETS		REVENUES		EXPENSES	
	BOOK COST OF ASSETS (b)	ACCT. NO. (c)	REVENUES GENERATED (d)	ACCT. NO. (e)	EXPENSES INCURRED (f)	ACCT. NO. (g)
None	\$		\$		\$	

UTILITY NAME: IHC Realty Partnership, L.P.

YEAR OF REPORT December 31, 2001
--

BUSINESS TRANSACTIONS WITH RELATED PARTIES

List each contract, agreement, or other business transaction exceeding a cumulative amount of \$500 in any one year, entered into between the Respondent and a business or financial organization, firm, or partnership named on pages E-2 and E-6 identifying the parties, amounts, dates and product, asset, or service involved.

Part I. Specific Instructions: Services and Products Received or Provided

1. Enter in this part all transactions involving services and products received or provided.
2. Below are some types of transactions to include:

<ul style="list-style-type: none"> - management, legal and accounting services - computer services - engineering & construction services - repairing and servicing of equipment 	<ul style="list-style-type: none"> - material and supplies furnished - leasing of structures, land and equipment - rental transactions - sale, purchase or transfer of various products
---	---

NAME OF COMPANY OR RELATED PARTY (a)	DESCRIPTION SERVICE AND/OR NAME OF PRODUCT (b)	CONTRACT OR AGREEMENT EFFECTIVE DATES (c)	ANNUAL CHARGES	
			(P)urchased or (S)old (d)	AMOUNT (e)
IHC Realty Partnership, L.P.	Operations management, accounting, tax services & administrative overhead costs	1/99	P	\$ 60,000

UTILITY NAME: IHC Realty Partnership, L.P.

YEAR OF REPORT December 31, 2001
--

BUSINESS TRANSACTIONS WITH RELATED PARTIES

Part II. Specific Instructions: Sale, Purchase and Transfer of Assets

1. Enter in this part all transactions relating to the purchase, sale or transfer of assets.

2. Below are examples of some types of transactions to include:

- purchase, sale or transfer of equipment.
- purchase, sale or transfer of land and structures.
- purchase, sale or transfer of securities.
- noncash transfers of assets.
- noncash dividends other than stock dividends.
- writeoff of bad debts or loans.

3. The columnar instructions follow:

- (a) Enter name of related party or company.
- (b) Describe briefly the type of assets purchased, sold or transferred.
- (c) Enter the total received or paid. Indicate purchase with "P" and sale with "S".
- (d) Enter the net book value for each item reported.
- (e) Enter the net profit or loss for each item (column (c) - column (d)).
- (f) Enter the fair market value for each item reported. In space below or in a supplemental schedule, describe the basis used to calculate fair market value.

NAME OF COMPANY OR RELATED PARTY (a)	DESCRIPTION OF ITEMS (b)	SALE OR PURCHASE PRICE (c)	NET BOOK VALUE (d)	GAIN OR LOSS (e)	FAIR MARKET VALUE (f)
None		\$	\$	\$	\$

FINANCIAL

SECTION

UTILITY NAME: IHC Realty Partnership, L.P.

YEAR OF REPORT
December 31, 2001

COMPARATIVE BALANCE SHEET - ASSETS AND OTHER DEBITS

ACCT. NO. (a)	ACCOUNT NAME (b)	REF. PAGE (c)	CURRENT YEAR (d)	PREVIOUS YEAR (e)
101-106	Utility Plant	F-7	\$ 3,255,438	\$ 3,255,438
108-110	Less: Accumulated Depreciation and Amortization	F-8	(1,448,030)	(1,338,906)
Net Plant			1,807,408	1,916,532
114-115	Utility Plant Acquisition Adjustments (Net)	F-7		
116*	Other Plant Adjustments (specify)			
Total Net Utility Plant			1,807,408	1,916,532
OTHER PROPERTY AND INVESTMENTS				
121	Nonutility Property	F-9	72,961	72,961
122	Less: Accumulated Depreciation and Amortization		29,687	26,038
Net Nonutility Property			43,274	46,923
123	Investment in Associated Companies	F-10		
124	Utility Investments	F-10		
125	Other Investments	F-10		
126-127	Special Funds	F-10		
Total Other Property and Investments			43,274	46,923
CURRENT AND ACCRUED ASSETS				
131	Cash		382,887	269,033
132	Special Deposits	F-9		
133	Other Special Deposits	F-9		
134	Working Funds			
135	Temporary Cash Investments			
141-144	Accounts and Notes Receivable, Less Accumulated Provision for Uncollectable Accounts	F-11	167,938	90,035
145	Accounts Receivable from Associated Companies	F-12	8,064	8,064
146	Notes Receivable from Associated Companies	F-12		
151-153	Materials and Supplies			
161	Stores Expense			
162	Prepayments			
171	Accrued Interest and Dividends Receivable			
172*	Rents Receivable			
173*	Accrued Utility Revenues			
174	Misc. Current and Accrued Assets	F-12	9,334	9,332
Total Current and Accrued Assets			568,223	376,464

* Not Applicable for Class B Utilities

UTILITY NAME: IHC Realty Partnership, L.P.

YEAR OF REPORT December 31, 2001

COMPARATIVE BALANCE SHEET - ASSETS AND OTHER DEBITS

ACCT. NO. (a)	ACCOUNT NAME (b)	REF. PAGE (c)	CURRENT YEAR (d)	PREVIOUS YEAR (e)
	DEFERRED DEBITS			
181	Unamortized Debt Discount & Expense	F-13		
182	Extraordinary Property Losses	F-13		
183	Preliminary Survey and Investigation Charges			
184	Clearing Accounts			
185*	Temporary Facilities			
186	Misc. Deferred Debits	F-14		
187*	Research & Development Expenditures			
190	Accumulated Deferred Income Taxes			
	Total Deferred Debits			
	TOTAL ASSETS AND OTHER DEBITS		\$ 2,418,905	\$ 2,339,919

* Not Applicable for Class B Utilities

NOTES TO THE BALANCE SHEET

The space below is provided for important notes regarding the balance sheet.

UTILITY NAME: IHC Realty Partnership, L.P.

YEAR OF REPORT
December 31, 2001

COMPARATIVE BALANCE SHEET - EQUITY CAPITAL AND LIABILITIES

ACCT. NO. (a)	ACCOUNT NAME (b)	REF. PAGE (c)	CURRENT YEAR (d)	PREVIOUS YEAR (e)
EQUITY CAPITAL				
201	Common Stock Issued	F-15	\$ -	\$ -
204	Preferred Stock Issued	F-15		
202,205*	Capital Stock Subscribed			
203,206*	Capital Stock Liability for Conversion			
207*	Premium on Capital Stock			
209*	Reduction in Par or Stated Value of Capital Stock			
210*	Gain on Resale or Cancellation of Reacquired Capital Stock			
211	Other Paid-in Capital			
212	Discount on Capital Stock			
213	Capital Stock Expense			
214-215	Retained Earnings	F-16		
216	Reacquired Capital Stock			
218	Proprietary Capital (Proprietorship and Partnership Only)		1,703,485	1,655,086
Total Equity Capital			1,703,485	1,655,086
LONG TERM DEBT				
221	Bonds	F-15		
222*	Reacquire Bonds			
223	Advances from Associated Companies	F-17		
224	Other Long Term Debt	F-17		
Total Long Term Debt				
CURRENT AND ACCRUED LIABILITIES				
231	Accounts Payable		59,237	34,486
232	Notes Payable	F-18		
233	Accounts Payable to Associated Co.	F-18	201,664	175,685
234	Notes Payable to Associated Co.	F-18		
235	Customer Deposits			
236	Accrued Taxes		31,175	31,541
237	Accrued Interest	F-19		
238	Accrued Dividends			
239	Matured Long Term Debt			
240	Matured Interest			
241	Miscellaneous Current and Accrued Liabilities	F-20		
Total Current and Accrued Liabilities			292,076	241,712

* Not Applicable for Class B Utilities

UTILITY NAME: IHC Realty Partnership, L.P.

YEAR OF REPORT December 31, 2001

COMPARATIVE BALANCE SHEET - EQUITY CAPITAL AND LIABILITIES

ACCT. NO. (a)	ACCOUNT NAME (b)	REF. PAGE (c)	CURRENT YEAR (d)	PREVIOUS YEAR (e)
DEFERRED CREDITS				
251	Unamortized Premium on Debt	F-13		
252	Advances for Construction	F-20		
253	Other Deferred Credits (Contributed Taxes)	F-21		
255	Accumulated Deferred Investment Tax Credits			
Total Deferred Credits				
OPERATING RESERVES				
261	Property Insurance Reserve			
262	Injuries and Damages Reserve			
263	Pensions and Benefits Reserve			
265	Miscellaneous Operating Reserves			
Total Operating Reserves				
CONTRIBUTIONS IN AID OF CONSTRUCTION				
271	Contributions in Aid of Construction	F-22	594,731	594,731
272	Accumulated Amortization of Contributions in Aid of Construction	F-22	171,387	151,610
Total Net C.I.A.C.			423,344	443,121
ACCUMULATED DEFERRED INCOME TAXES				
281	Accumulated Deferred Income Taxes - Accelerated Depreciation			
282	Accumulated Deferred Income Taxes - Liberalized Depreciation			
283	Accumulated Deferred Income Taxes - Other			
Total Accum. Deferred Income Taxes				
TOTAL EQUITY CAPITAL AND LIABILITIES			\$ 2,418,905	\$ 2,339,919

UTILITY NAME: IHC Realty Partnership, L.P.

YEAR OF REPORT December 31, 2001

COMPARATIVE OPERATING STATEMENT

ACCT. NO. (a)	ACCOUNT NAME (b)	REF. PAGE (d)	PREVIOUS YEAR (c)	CURRENT YEAR * (e)
UTILITY OPERATING INCOME				
400	Operating Revenues	F-3(b)	\$ 700,908	\$ 692,780
469.530	Less: Guarenteed Revenue and AFPI	F-3(b)		
Net Operating Revenues			700,908	692,780
401	Operating Expenses	F-3(b)	456,615	519,504
403	Depreciation Expense	F-3(b)	109,523	109,124
	Less: Amortization of CIAC	F-22	(19,779)	(19,777)
Net Depreciation Expense			89,744	89,347
406	Amortization of Utility Plant Acquisition Adjustment	F-3(b)		
407	Amortization Expense (Other than CIAC) (Plant Abandonment)	F-3(b)		
408	Taxes Other Than Income	W/S-3	72,928	65,212
409	Current Income Taxes	W/S-3		
410.10	Deferred Federal Income Taxes	W/S-3		
410.11	Deferred State Income Taxes	W/S-3		
411.10	Provision for Deferred Income Taxes - Credit	W/S-3		
412.10	Investment Tax Credits Deferred to Future Periods	W/S-3		
412.11	Investment Tax Credits Restored to Operating Income	W/S-3		
Utility Operating Expenses			619,287	674,063
Net Utility Operating Income			81,621	18,717
469/530	Add Back: Guarenteed Revenue and AFPI	F-3(b)		
413	Income From Utility Plant Leased to Others			
414	Gains (Losses) From Disposition of Utility Property			
420	Allowance for Funds Used During Construction			
Total Utility Operating Income [Enter here and on Page F-3(c)]			81,621	18,717

* For each account, column e should agree with columns f, g + h on F-3(b)

COMPARATIVE OPERATING STATEMENT (Cont'd)

WATER SCHEDULE W-3* (f)	SEWER SCHEDULE S-3* (g)	OTHER THAN REPORTING SYSTEMS (h)
\$ 380,343	\$ 312,437	N/A
380,343	312,437	-
269,542	249,962	
55,219	53,905	
(4,481)	(15,296)	
50,738	38,609	-
35,679	29,533	
355,959	318,104	
24,384	(5,667)	
\$ 24,384	\$ (5,667)	N/A

* Total of Schedules W-3/S-3 for all rate groups

COMPARATIVE OPERATING STATEMENT (Cont'd)

ACCT. NO. (a)	ACCOUNT NAME (b)	REF. PAGE (d)	PREVIOUS YEAR (c)	CURRENT YEAR (e)
Total Utility Operating Income [from Page F-3(a)]			\$ 81,621	\$ 18,717
OTHER INCOME AND DEDUCTIONS				
415	Revenues From Merchandising, Jobbing and Contract Deductions			
416	Costs and Expenses of Merchandising, Jobbing and Contract Work			
419	Interest and Dividend Income			98
421	Miscellaneous Nonutility Revenue		44,026	33,675
426	Miscellaneous Nonutility Expenses		(3,228)	(3,649)
Total Other Income and Deductions			40,798	30,124
TAXES APPLICABLE TO OTHER INCOME				
408.20	Taxes Other Than Income			442
409.20	Income Taxes			
410.20	Provision for Deferred Income Taxes			
411.20	Provision for Deferred Income Taxes - Credit			
412.20	Investment Tax Credits - Net			
412.30	Investment Tax Credits Restored to Operating Income			
Total Taxes Applicable to Other Income				442
INTEREST EXPENSE				
427	Interest Expense	F-19		
428	Amortization of Debt Discount & Expense	F-13		
429	Amortization of Premium on Debt	F-13		
Total Interest Expense				
EXTRAORDINARY ITEMS				
433	Extraordinary Income			
434	Extraordinary Deductions			
409.30	Income Taxes, Extraordinary Items			
Total Extraordinary Items				
NET INCOME			122,419	48,399

Explain Extraordinary Income:

SCHEDULE OF YEAR END RATE BASE

ACCT. NO. (a)	ACCOUNT NAME (b)	REF. PAGE (c)	WATER UTILITY (d)	WASTEWATER UTILITY (e)
101	Utility Plant In Service	F-7	\$ 1,753,601	\$ 1,501,837
	Less:			
	Nonused and Useful Plant (1)			
108.1	Accumulated Depreciation	F-8	719,811	728,219
110.1	Accumulated Amortization	F-8		
271	Contributions in Aid of Construction	F-22	187,549	407,182
252	Advances for Construction	F-20		
Subtotal			<u>846,241</u>	<u>366,436</u>
	Add:			
272	Accumulated Amortization of Contributions in Aid of Construction	F-22	35,538	135,849
Subtotal			<u>881,779</u>	<u>502,285</u>
	Plus or Minus:			
114	Acquisition Adjustments (2)	F-7		
115	Accumulated Amortization of Acquisition Adjustments (2)	F-7		
	Working Capital Allowance (3)		33,693	31,245
	Other (Specify):			

RATE BASE			<u>\$ 915,472</u>	<u>\$ 533,530</u>
NET UTILITY OPERATING INCOME			<u>\$ 24,384</u>	<u>\$ (5,667)</u>
ACHIEVED RATE OF RETURN (Operating Income / Rate Base)			<u>2.66 %</u>	<u>- - %</u>

NOTES:

- (1) Estimated if not known.
 - (2) Include only those Acquisition Adjustments that have been approved by the Commission.
 - (3) Calculation consistent with last rate proceeding.
- In absence of a rate proceeding, Class A utilities will use the Balance Sheet Method and Class B Utilities will use the One-eighth Operating and Maintenance Method.

**SCHEDULE OF CURRENT COST OF CAPITAL
CONSISTENT WITH THE METHODOLOGY USED IN THE LAST RATE PROCEEDING**

CLASS OF CAPITAL (a)	DOLLAR AMOUNT (1) (b)	PERCENTAGE OF CAPITAL (c)	ACTUAL COST RATES (d)	WEIGHTED COST [c x d] (e)
Common Equity (3)	\$ 1,703,485	100.00 %	10.00 %	10.00 %
Preferred Stock		%	-	%
Long Term Debt		%	-	%
Customer Deposits		%	6.00 %	%
Tax Credits - Zero Cost		%	-	%
Tax Credits - Weighted Cost		%	-	%
Deferred Income Taxes		%	-	%
Other (Explain)		%	-	%
		%	%	%
Total	\$ <u>1,703,485</u>	<u>100.00 %</u>		<u>10.00 %</u>

- (1) Should equal amounts on Schedule F-6, Column (g).
- (2) Mid-point of the last authorized Return On Equity or current leverage formula if none has been established.
- (3) Partnership capital

Must be calculated using the same methodology used in the last rate proceeding using current annual report year end amounts and cost rates

APPROVED RETURN ON EQUITY

Current Commission Return on Equity:(4)	<u>9.68 %</u>
Commission order approving Return on Equity:	<u>Order No. 21415</u>

Note (4): Order no. 21415 established capital structure return based on 100% debt.

APPROVED AFUDC RATE

COMPLETION ONLY REQUIRED IF AFUDC WAS CHARGED DURING THE YEAR

Current Commission approved AFUDC rate:	<u>None %</u>
Commission order approving AFUDC rate:	<u>N/A</u>

If any utility capitalized any charge in lieu of AFUDC (such as interest only), state the basis of the charge, an explanation as to why AFUDC was not charged and the percentage capitalized.

UTILITY NAME: IHC Realty Partnership, L.P.

YEAR OF REPORT December 31, 2001

**UTILITY PLANT
ACCOUNTS 101 - 106**

ACCT. NO. (a)	DESCRIPTION	WATER (c)	SEWER (d)	OTHER THAN REPORTING SYSTEMS (e)	TOTAL (f)
101	Plant Accounts Utility Plant In Service	\$ 1,753,601	\$ 1,501,837	N/A	\$ 3,255,438
102	Utility Plant Leased to Others				
103	Property Held for Future Use				
104	Utility Plant Purchased or Sold				
105	Construction Work in Progress				
106	Completed Construction Not Classified				
Total Utility Plant		\$ 1,753,601	\$ 1,501,837	N/A	\$ 3,255,438

**UTILITY PLANT ACQUISITION ADJUSTMENTS
ACCOUNTS 114 AND 115**

ACCT. NO. (a)	DESCRIPTION (b)	WATER (c)	SEWER (d)	OTHER THAN REPORTING SYSTEMS (e)	TOTAL (f)
Report each acquisition adjustment and related accumulated amortization separately. For any acquisition adjustment approved by the Commission, include the Order Number.					
114	Acquisition Adjustment N/A	\$ -	\$ -	\$ -	\$ -
Total Plant Acquisition Adjustment		\$ -	\$ -	\$ -	\$ -
115	Accumulated Amortization N/A	\$ -	\$ -	\$ -	\$ -
Total Accumulated Amortization		\$ -	\$ -	\$ -	\$ -
Total Acquisition Adjustments		\$ -	\$ -	\$ -	\$ -

ACCUMULATED DEPRECIATION (ACCT. 108) AND AMORTIZATION (ACCT. 110)

DESCRIPTION (a)	WATER (b)	SEWER (c)	OTHER THAN REPORTING SYSTEMS (d)	TOTAL (e)
ACCUMULATED DEPRECIATION Account 108				
Balance first of year	\$ 664,592	\$ 674,314	N/A	\$ 1,338,906
Credits during year:				
Accruals charged:				
to Account 108.1 (1)	55,219	53,905		109,124
to Account 108.2 (2)				
to Account 108.3 (2)				
Other Accounts (Specify)				

Salvage				
Other Credits (specify):				

Total credits	55,219	53,905		109,124
Debits during year:				
Book cost of plant retired		-		
Cost of removal				
Other debits (specify)				

Total debits				
Balance end of year	\$ 719,811	\$ 728,219	N/A	\$ 1,448,030

ACCUMULATED AMORTIZATION Account 110				
Balance first of year N/A	N/A	N/A	N/A	N/A
Credits during year:				
Accruals charged:				
to Account 110.2 (2)				
Other Accounts (specify):				

Total credits				
Debits during year:				
Book cost of plant retired				
Other debits (specify)				

Total debits				
Balance end of year	N/A	N/A	N/A	N/A

- (1) Account 108 for Class B utilities.
- (2) Not applicable for Class B utilities.
- (3) Account 110 for Class B utilities.

UTILITY NAME: IHC Realty Partnership, L.P.

YEAR OF REPORT December 31, 2001
--

**REGULATORY COMMISSION EXPENSE
AMORTIZATION OF RATE CASE EXPENSE (ACCTS. 666 AND 766)**

DESCRIPTION OF CASE (DOCKET NO.) (a)	EXPENSE INCURRED DURING YEAR (b)	CHARGED OFF DURING YEAR	
		ACCT. (c)	AMOUNT (d)
N/A	\$ -	-	\$ -
Total	\$ -		\$ -

NONUTILITY PROPERTY (ACCOUNT 121)

Report separately each item of property with a book cost of \$25,000 or more included in Account 121.
Other items may be grouped by classes of property.

DESCRIPTION (a)	BEGINNING YEAR (b)	ADDITIONS (c)	REDUCTIONS (d)	ENDING YEAR BALANCE (e)
Non-utility - Irrigation well pump	\$ 72,090	\$ -	\$ -	\$ 72,090
Non-utility - Sewer	871			871
Total Nonutility Property	\$ 72,961	\$ -	\$ -	\$ 72,961

SPECIAL DEPOSITS (ACCOUNTS 132 AND 133)

Report hereunder all special deposits carried in Accounts 132 and 133

DESCRIPTION OF SPECIAL DEPOSITS (a)	YEAR END BOOK COST (b)
SPECIAL DEPOSITS (Account 132): N/A	\$ -
Total Special Deposits	\$ -
OTHER SPECIAL DEPOSITS (Account 133): N/A	\$ -
Total Other Special Deposits	\$ -

UTILITY NAME: IHC Realty Partnership, L.P.

YEAR OF REPORT December 31, 2001
--

**INVESTMENTS AND SPECIAL FUNDS
ACCOUNTS 123-127**

Report hereunder all investments and special funds carried in Accounts 123 through 127.

DESCRIPTION OF SECURITY OR SPECIAL FUND (a)	FACE OR PAR VALUE (b)	YEAR END BOOK COST (c)
INVESTMENT IN ASSOCIATED COMPANIES (ACCT. 123): N/A	\$ -	\$ -
Total Investment In Associated Companies		\$ -
UTILITY INVESTMENTS (ACCT. 124): N/A	\$ -	\$ -
Total Utility Investments		\$ -
OTHER INVESTMENTS (ACCT. 125): N/A	\$ -	\$ -
Total Other Investments		\$ -
SPECIAL FUNDS (ACCTS. 126 & 127) N/A	\$ -	\$ -
Total Special Funds		\$ -

UTILITY NAME: IHC Realty Partnership, L.P.

YEAR OF REPORT
December 31, 2001

ACCOUNTS AND NOTES RECEIVABLE - NET

ACCOUNTS 141 - 144

Report hereunder all accounts and notes receivable included in Accounts 141, 142 and 144. Amounts included in Accounts 142 and 144 should be listed individually.

DESCRIPTION (a)		TOTAL (b)
CUSTOMER ACCOUNTS RECEIVABLE (Account 141):		
Combined Water & Sewer	\$ 167,938	
_____	_____	
_____	_____	
Total Customer Accounts Receivable		\$ 167,938
OTHER ACCOUNTS RECEIVABLE (Acct. 142):		
_____	\$ -	
_____	_____	
Total Other Accounts Receivable		
NOTES RECEIVABLE (Acct. 144):		
_____	\$ -	
_____	_____	
Total Notes Receivable		
Total Accounts and Notes Receivable		167,938
ACCUMULATED PROVISION FOR UNCOLLECTABLE ACCOUNTS (Account 143):		
Balance First of Year	\$ -	
Add: Provision for uncollectables for current year	N/A	
Collections of accounts previously written off	_____	
Utility accounts	_____	
Others	_____	
_____	_____	
Total Additions		
Deduct accounts written off during year:		
Utility accounts	_____	
Others	_____	
_____	_____	
Total accounts written off		
Balance end of year		
Total Accounts and Notes Receivable - Net		\$ 167,938

UTILITY NAME: IHC Realty Partnership, L.P.

YEAR OF REPORT December 31, 2001

**ACCOUNTS RECEIVABLE FROM ASSOCIATED COMPANIES
ACCOUNT 145**

Report each account receivable from associated companies separately.

DESCRIPTION (a)	TOTAL (b)
A/R - Related Company	\$ 8,064
Total	\$ 8,064

**NOTES RECEIVABLE FROM ASSOCIATED COMPANIES
ACCOUNT 146**

Report each note receivable from associated companies separately.

DESCRIPTION (a)	INTEREST RATE (b)	TOTAL (c)
N/A		\$ -
Total		\$ -

**MISCELLANEOUS CURRENT AND ACCRUED ASSETS
ACCOUNT 174**

DESCRIPTION - Provide itemized listing (a)	TOTAL (c)
Utility deposits	\$ 9,334
Total	\$ 9,334

UTILITY NAME: IHC Realty Partnership, L.P.

YEAR OF REPORT December 31, 2001

UNAMORTIZED DEBT DISCOUNT AND EXPENSE AND PREMIUM ON DEBT
 Report the net discount and expense or premium separately for each security issue.

DESCRIPTION (a)	AMOUNT WRITTEN OFF DURING YEAR (b)	YEAR END BALANCE (c)
UNAMORTIZED DEBT DISCOUNT AND EXPENSE (Account 181):		
N/A	\$ -	\$ -
Total Unamortized Debt Discount and Expense		
UNAMORTIZED PREMIUM ON DEBT (Account 251):		
N/A	\$ -	\$ -
Total Unamortized Premium on Debt	\$ -	\$ -

EXTRAORDINARY PROPERTY LOSSES
ACCOUNT 182

Report each item separately.

DESCRIPTION (a)	TOTAL (b)
EXTRAORDINARY PROPERTY LOSSES (Acct. 182):	
N/A	\$ -
Total Extraordinary Property Losses	\$ -

UTILITY NAME: IHC Realty Partnership, L.P.

YEAR OF REPORT
December 31, 2001

**CAPITAL STOCK
ACCOUNTS 201 AND 204***

DESCRIPTION (a)	RATE (b)	TOTAL (d)
COMMON STOCK		
Par or stated value per share	N/A	N/A
Shares authorized	N/A	N/A
Shares issued and outstanding		
Total par value of stock issued		\$ -
Dividends declared per share for year	None	None
PREFERRED STOCK		
Par or stated value per share	N/A	N/A
Shares authorized	N/A	N/A
Shares issued and outstanding		
Total par value of stock issued		
Dividends declared per share for year	None	None

* Account 204 not applicable for Class B utilities

**BONDS
ACCOUNT 221**

DESCRIPTION OF OBLIGATION (INCLUDING DATE OF ISSUE AND DATE OF MATURITY) (a)	INTEREST		PRINCIPAL AMOUNT PER BALANCE SHEET (d)
	ANNUAL RATE (b)	FIXED OR VARIABLE* (c)	
N/A			\$ -
Total			\$ -

* For variable rate obligations, provide the basis for the rate. (I.e.. Prime + 2%, etc)

UTILITY NAME: IHC Realty Partnership, L.P.

YEAR OF REPORT December 31, 2001

STATEMENT OF RETAINED EARNINGS

- Dividends should be shown for each class and series of capital stock. Show amounts as dividends per share.
- Show separately the state and federal income tax effect of items shown in Account No. 439.

ACCT. NO. (a)	DESCRIPTION (b)	AMOUNTS (c)
215	Unappropriated Retained Earnings: Balance beginning of year	N/A
439	Changes to account: Adjustments to Retained Earnings (requires Commission approval prior to use): Credits: _____	_____
	Total Credits	_____
	Debits: _____	_____
	Total Debits	_____
435	Balance transferred from Income	_____
436	Appropriations of Retained Earnings: _____	_____
	Total appropriations of Retained Earnings	_____
437	Dividends declared: Preferred stock dividends declared _____	_____
438	Common stock dividends declared _____	_____
	Total Dividends Declared	_____
	Year end Balance	-
214	Appropriated Retained Earnings (state balance and purpose of each appropriated amount at year end): _____	_____
214	Total Appropriated Retained Earnings	_____
	Total Retained Earnings	N/A

Notes to Statement of Retained Earnings:

Note: The Company is a partnership; therefore, this schedule is not applicable.

UTILITY NAME: IHC Realty Partnership, L.P.

YEAR OF REPORT December 31, 2001
--

NOTES PAYABLE (ACCTS. 232 AND 234)

DESCRIPTION OF OBLIGATION (INCLUDING DATE OF ISSUE AND DATE OF MATURITY) (a)	INTEREST		PRINCIPAL AMOUNT PER BALANCE SHEET (d)
	ANNUAL RATE (b)	FIXED OR VARIABLE* (c)	
NOTES PAYABLE (Account 232):			
N/A	%		\$ -
_____	%		
_____	%		
_____	%		
_____	%		
_____	%		
_____	%		
Total Account 232			\$ -
NOTES PAYABLE TO ASSOC. COMPANIES (Account 234):			
N/A			

Total Account 234			

* For variable rate obligations, provide the basis for the rate. (i.e.. Prime +2%, etc)

**ACCOUNTS PAYABLE TO ASSOCIATED COMPANIES
ACCOUNT 233**

Report each account payable separately.

DESCRIPTION (a)	TOTAL (b)
IHC Realty Partnership, L. P. - Parent Corporation (management & accounting services)	\$ 201,664

Total	\$ 201,664

UTILITY NAME: IHC Realty Partnership, L.P.

YEAR OF REPORT
December 31, 2001

**ACCRUED INTEREST AND EXPENSE
ACCOUNTS 237 AND 427**

DESCRIPTION OF DEBT (a)	BALANCE BEGINNING OF YEAR (b)	INTEREST ACCRUED DURING YEAR		INTEREST PAID DURING YEAR (e)	BALANCE END OF YEAR (f)
		ACCT. DEBIT (c)	AMOUNT (d)		
ACCOUNT NO. 237.1 - Accrued Interest on Long Term Debt					
N/A		427.0			\$ -
	-				
Total Account No. 237.1	-				-
ACCOUNT NO. 237.2 - Accrued Interest in Other Liabilities					
N/A	-				-
Total Account 237.2	-				
Total Account 237 (1)	\$ -				\$ -
INTEREST EXPENSED:					
Total accrual Account 237		237			
Less Capitalized Interest Portion of AFUDC:					
None					
Net Interest Expensed to Account No. 427 (2)			\$ -		

UTILITY NAME: IHC Realty Partnership, L.P.

YEAR OF REPORT
December 31, 2001

**OTHER DEFERRED CREDITS
ACCOUNT 253**

DESCRIPTION - Provide itemized listing (a)	AMOUNT WRITTEN OFF DURING YEAR (b)	YEAR END BALANCE (c)
REGULATORY LIABILITIES (Class A Utilities: Account 253.1)		
N/A		-
Total Regulatory Liabilities	\$ -	\$ -
OTHER DEFERRED LIABILITIES (Class A Utilities: Account 253.2)		
N/A	\$ -	\$ -
Total Deferred Liabilities	\$ -	\$ -
TOTAL OTHER DEFERRED CREDITS	\$ -	\$ -

UTILITY NAME: IHC Realty Partnership, L.P.

YEAR OF REPORT
December 31, 2001

**CONTRIBUTIONS IN AID OF CONSTRUCTION
ACCOUNT 271**

DESCRIPTION (a)	WATER (b)	SEWER (c)	W & WW OTHER THAN SYSTEM REPORTING (d)	TOTAL (e)
Balance first of year	\$ 187,549	\$ 407,182	N/A	\$ 594,731
Add credits during year:	-	-		-
Less debits charged during	-	-		-
Total Contributions In Aid of Construction	\$ 187,549	\$ 407,182	\$ -	\$ 594,731

**ACCUMULATED AMORTIZATION OF CONTRIBUTIONS IN AID OF CONSTRUCTION
ACCOUNT 272**

DESCRIPTION (a)	WATER (b)	SEWER (c)	W & WW OTHER THAN SYSTEM REPORTING (d)	TOTAL (e)
Balance first of year	\$ 31,057	\$ 120,553	N/A	\$ 151,610
Debits during year:	4,481	15,296		19,777
Credits during year (specify):				
Total Accumulated Amortization of Contributions In Aid of Construction	\$ 35,538	\$ 135,849		\$ 171,387

UTILITY NAME: IHC Realty Partnership, L.P.

**RECONCILIATION OF REPORTED NET INCOME WITH TAXABLE INCOME FOR FEDERAL INCOME TAXES
 (UTILITY OPERATIONS)**

1. The reconciliation should include the same detail as furnished on schedule M-1 of the federal income tax return for the year. The reconciliation shall be submitted even though there is no taxable income for the year. Descriptions should clearly indicate the nature of each reconciling amount and show the computation of all tax accruals.

2. If the utility is a member of a group which files a consolidated federal tax return, reconcile reported net income with taxable net income as if a separate return were to be filed, indicating intercompany amounts to be eliminated in such consolidated return. State names of group members, tax assigned to each group member, and basis of allocation, assignment, or sharing of the consolidated tax among group members.

DESCRIPTION (a)	REFERENCE (b)	AMOUNT (c)
Net income for the year	_____	N/A
Reconciling items for the year:		
Taxable income not reported on the books:		
_____	_____	_____
_____	_____	_____
_____	_____	_____
_____	_____	_____
Deductions recorded on books not deducted for return:		
_____	_____	_____
_____	_____	_____
_____	_____	_____
_____	_____	_____
Income recorded on books not included in return:		
_____	_____	_____
_____	_____	_____
_____	_____	_____
_____	_____	_____
Deduction on return not charged against book income:		
_____	_____	_____
_____	_____	_____
_____	_____	_____
_____	_____	_____
Federal tax net income	_____	N/A
Computation of tax:		
The utility is an operating division of IHC Realty Partnership L.P. ; therefore, this schedule is not applicable.		

**WATER
OPERATING
SECTION**

UTILITY NAME: IHC Realty Partnership, L.P.
 SYSTEM NAME / COUNTY: Same/Martin

YEAR OF REPORT
December 31, 2001

SCHEDULE OF YEAR END WATER RATE BASE

ACCT. NO. (a)	ACCOUNT NAME (b)	REF. PAGE (c)	WATER UTILITY (d)
101	Utility Plant In Service	W-4(b)	\$ 1,753,601
	Less:		
	Nonused and Useful Plant (1)		
108.1	Accumulated Depreciation	W-6(b)	719,811
110.1	Accumulated Amortization		
271	Contributions in Aid of Construction	W-7	187,549
252	Advances for Construction	F-20	
	Subtotal		846,241
	Add:		
272	Accumulated Amortization of Contributions in Aid of Construction	W-8(a)	35,538
	Subtotal		881,779
	Plus or Minus:		
114	Acquisition Adjustments (2)	F-7	
115	Accumulated Amortization of Acquisition Adjustments (2)	F-7	
	Working Capital Allowance (3)		33,693
	Other (Specify):		
	WATER RATE BASE		\$ 915,472
	UTILITY OPERATING INCOME	W-3	\$ 24,384
ACHIEVED RATE OF RETURN (Water Operating Income/Water Rate Base)			2.66 %

- NOTES: (1) Class A calculate consistent with last rate proceeding. Class B estimated if not known.
- (2) Include only those Acquisition Adjustments that have been approved by the Commission.
- (3) Calculation consistent with last rate proceeding.
 In absence of a rate proceeding, Class A utilities will use the Balance Sheet Method and Class B Utilities will use the One-eighth Operating and Maintenance Expense Method.

UTILITY NAME: IHC Realty Partnership, L.P.
 SYSTEM NAME / COUNTY: Same/Martin

YEAR OF REPORT
 December 31, 2001

WATER OPERATING STATEMENT

ACCT. NO. (a)	ACCOUNT NAME (b)	REF. PAGE (c)	WATER UTILITY (d)
400	UTILITY OPERATING INCOME Operating Revenues	W-9	\$ 380,343
469	Less: Guarenteed Revenue and AFPI	W-9	
	Net Operating Revenues		380,343
401	Operating Expenses	W-10(a)	269,542
403	Depreciation Expense	W-6(a)	55,219
	Less: Amortization of CIAC	W-8(a)	(4,481)
	Net Depreciation Expense		50,738
406	Amortization of Utility Plant Acquisition Adjustment	F-7	
407	Amortization Expense (Other than CIAC)	F-8	
408.10	Taxes Other Than Income Utility Regulatory Assessment Fee		17,115
408.11	Property Taxes		12,365
408.12	Payroll Taxes		6,199
408.13	Other Taxes & Licenses		
408	Total Taxes Other Than Income		35,679
409.1	Income Taxes	F-16	
410.10	Deferred Federal Income Taxes		
410.11	Deferred State Income Taxes		
411.10	Provision for Deferred Income Taxes - Credit		
412.10	Investment Tax Credits Deferred to Future Periods		
412.11	Investment Tax Credits Restored to Operating Income		
	Utility Operating Expenses		355,959
	Utility Operating Income		24,384
469	Add Back: Guarenteed Revenue (and AFPI)	W-9	-
413	Income From Utility Plant Leased to Others		
414	Gains (Losses) From Disposition of Utility Property		
420	Allowance for Funds Used During Construction		
	Total Utility Operating Income		\$ 24,384

UTILITY NAME: IHC Realty Partnership, L.P.
 SYSTEM NAME / COUNTY: Same/Martin

YEAR OF REPORT
 December 31, 2001

WATER UTILITY PLANT ACCOUNTS

ACCT. NO. (a)	ACCOUNT NAME (b)	PREVIOUS YEAR (c)	ADDITIONS (d)	RETIREMENTS (e)	CURRENT YEAR (f)
301	Organization	\$ 22,646	\$ -	\$ -	\$ 22,646
302	Franchises				
303	Land and Land Rights	164,510			164,510
304	Structure and Improvements	539,054			539,054
305	Collecting and Impounding Reservoirs				
306	Lake, River and Other Intakes				
307	Wells and Springs	42,590			42,590
308	Infiltration Galleries and Tunnels				
309	Supply Mains				
310	Power Generation Equipment				
311	Pumping Equipment	69,353			69,353
320	Water Treatment Equipment	381,383			381,383
330	Distribution Reservoirs and Standpipes	94,797			94,797
331	Transmission and Distribution Mains	231,765			231,765
333	Services	49,326			49,326
334	Meters and Meter Installations	44,852			44,852
335	Hydrants	7,800			7,800
339	Other Plant / Miscellaneous Equipment	95,476			95,476
340	Office Furniture and Equipment	5,431			5,431
341	Transportation Equipment	938			938
342	Stores Equipment				
343	Tools, Shop and Garage Equipment	184			184
344	Laboratory Equipment	984			984
345	Power Operated Equipment	420			420
346	Communication Equipment				
347	Miscellaneous Equipment	1,495			1,495
348	Other Tangible Plant	597			597
TOTAL WATER PLANT		\$ 1,753,601			\$ 1,753,601

NOTE: Any adjustments made to reclassify property from one account to another must be footnoted.

W-4(a)
 GROUP 1

UTILITY NAME: IHC Realty Partnership, L.P.
 SYSTEM NAME / COUNTY: Same/Martin

YEAR OF REPORT
 December 31, 2001

WATER UTILITY PLANT MATRIX

ACCT. NO.	ACCOUNT NAME (b)	CURRENT YEAR (c)	.1 INTANGIBLE PLANT (d)	.2 SOURCE OF SUPPLY AND PUMPING PLANT (e)	.3 WATER TREATMENT PLANT (f)	.4 TRANSMISSION AND DISTRIBUTION PLANT (g)	.5 GENERAL PLANT (h)
301	Organization	\$ 22,646	\$ 22,646				
302	Franchises						
303	Land and Land Rights	164,510			\$ 164,510		\$ -
304	Structure and Improvements	539,054			539,054		
305	Collecting and Impounding Reservoirs						
306	Lake, River and Other Intakes						
307	Wells and Springs	42,590		42,590			
308	Infiltration Galleries and Tunnels						
309	Supply Mains						
310	Power Generation Equipment						
311	Pumping Equipment	69,353		69,353			
320	Water Treatment Equipment	381,383			381,383		
330	Distribution Reservoirs and Standpipes	94,797				94,797	
331	Transmission and Distribution Mains	231,765				231,765	
333	Services	49,326				49,326	
334	Meters and Meter Installations	44,852				44,852	
335	Hydrants	7,800				7,800	
339	Other Plant / Miscellaneous Equipment	95,476				95,476	
340	Office Furniture and Equipment	5,431					5,431
341	Transportation Equipment	938					938
342	Stores Equipment						
343	Tools, Shop and Garage Equipment	184					184
344	Laboratory Equipment	984					984
345	Power Operated Equipment	420					420
346	Communication Equipment						
347	Miscellaneous Equipment	1,495					1,495
348	Other Tangible Plant	597					597
	TOTAL WATER PLANT	\$ 1,753,601	\$ 22,646	\$ 111,943	\$ 1,084,947	\$ 524,016	\$ 10,049

W-4(b)
 GROUP 1

UTILITY NAME: IHC Realty Partnership, L.P.
 SYSTEM NAME / COUNTY: Same/Martin

YEAR OF REPORT
December 31, 2001

BASIS FOR WATER DEPRECIATION CHARGES

ACCT. NO. (a)	ACCOUNT NAME (b)	AVERAGE SERVICE LIFE IN YEARS (c)	AVERAGE NET SALVAGE IN PERCENT (d)	DEPRECIATION RATE APPLIED IN PERCENT (100% - d) / c (e)
301	Organization	40	%	2.50 %
302	Franchises		%	%
304	Structure and Improvements	33	%	3.03 %
305	Collecting and Impounding Reservoirs		%	%
306	Lake, River and Other Intakes		%	%
307	Wells and Springs	30	%	3.33 %
308	Infiltration Galleries and Tunnels		%	%
309	Supply Mains		%	%
310	Power Generation Equipment		%	%
311	Pumping Equipment	20	%	5.00 %
320	Water Treatment Equipment	22	%	4.55 %
330	Distribution Reservoirs and Standpipes	37	%	2.70 %
331	Transmission and Distribution Mains	43	%	2.33 %
333	Services	40	%	2.50 %
334	Meters and Meter Installations	20	%	5.00 %
335	Hydrants	45	%	2.22 %
339	Other Plant / Miscellaneous Equipment	25	%	4.00 %
340	Office Furniture and Equipment	15	%	6.67 %
341	Transportation Equipment	6	%	16.67 %
342	Stores Equipment		%	%
343	Tools, Shop and Garage Equipment	16	%	6.25 %
344	Laboratory Equipment	15	%	6.67 %
345	Power Operated Equipment	9	%	11.11 %
346	Communication Equipment		%	%
347	Miscellaneous Equipment	15	%	6.67 %
348	Other Tangible Plant	15	%	6.67 %
Water Plant Composite Depreciation Rate *			%	%

* If depreciation rates prescribed by this Commission are on a total composite basis, entries should be made on this line only.

UTILITY NAME: IHC Realty Partnership, L.P.
 SYSTEM NAME / COUNTY: Same/Martin

YEAR OF REPORT
 December 31, 2001

ANALYSIS OF ENTRIES IN WATER ACCUMULATED DEPRECIATION

ACCT. NO.	ACCOUNT NAME (b)	BALANCE AT BEGINNING OF YEAR (c)	ACCRUALS (d)	OTHER CREDITS * (e)	TOTAL CREDITS (d + e) (f)
301	Organization	\$ 2,067	\$ 566	\$ -	\$ 566
302	Franchises				
304	Structure and Improvements	194,317	16,335		16,335
305	Collecting and Impounding Reservoirs				
306	Lake, River and Other Intakes				
307	Wells and Springs	13,328	1,420		1,420
308	Infiltration Galleries and Tunnels				
309	Supply Mains				
310	Power Generation Equipment				
311	Pumping Equipment	51,043	3,468		3,468
320	Water Treatment Equipment	201,910	17,336		17,336
330	Distribution Reservoirs and Standpipes	53,851	2,562		2,562
331	Transmission and Distribution	60,407	5,390		5,390
333	Services	7,468	1,233		1,233
334	Meters and Meter Installations	24,134	2,243		2,243
335	Hydrants	2,075	173		173
339	Other Plant / Miscellaneous Equipment	45,627	3,819		3,819
340	Office Furniture and Equipment	4,780	465		465
341	Transportation Equipment	858	80		80
342	Stores Equipment				
343	Tools, Shop and Garage Equipment	184	0		0
344	Laboratory Equipment	291	66		66
345	Power Operated Equipment	420	0		0
346	Communication Equipment				
347	Miscellaneous Equipment	1,472	23		23
348	Other Tangible Plant	360	40		40
TOTAL WATER ACCUMULATED DEPRECIATION		\$ 664,592	\$ 55,219	\$ -	\$ 55,219

* Specify nature of transaction.
 Use () to denote reversal entries.

W-6(a)
 GROUP 1

UTILITY NAME: IHC Realty Partnership, L.P.
 SYSTEM NAME / COUNTY: Same/Martin

YEAR OF REPORT
 December 31, 2001

ANALYSIS OF ENTRIES IN WATER ACCUMULATED DEPRECIATION (CONT'D)

ACCT. NO. (a)	ACCOUNT NAME (b)	PLANT RETIRED (g)	SALVAGE AND INSURANCE (h)	COST OF REMOVAL AND OTHER CHARGES (i)	TOTAL CHARGES (g-h+i+j)	BALANCE AT END OF YEAR (c+f-k) (k)
301	Organization	\$ -	\$ -	\$ -	\$ -	2,633
302	Franchises					
304	Structure and Improvements					210,652
305	Collecting and Impounding Reservoirs					
306	Lake, River and Other Intakes					
307	Wells and Springs					14,748
308	Infiltration Galleries and Tunnels					
309	Supply Mains					
310	Power Generation Equipment					54,511
311	Pumping Equipment					219,246
320	Water Treatment Equipment					56,413
330	Distribution Reservoirs and Standpipes					65,797
331	Transmission and Distribution					8,701
333	Services					26,377
334	Meters and Meter Installations					2,248
335	Hydrants					49,446
339	Other Plant / Miscellaneous Equipment					5,245
340	Office Furniture and Equipment					938
341	Transportation Equipment					
342	Stores Equipment					
343	Tools, Shop and Garage Equipment					184
344	Laboratory Equipment					357
345	Power Operated Equipment					420
346	Communication Equipment					
347	Miscellaneous Equipment					1,495
348	Other Tangible Plant					400
TOTAL WATER ACCUMULATED DEPRECIATION		\$ -	\$ -	\$ -	\$ -	719,811

W-6(b)
 GROUP 1

UTILITY NAME: IHC Realty Partnership, L.P.
 SYSTEM NAME / COUNTY: Same/Martin

YEAR OF REPORT
 December 31, 2001

WATER OPERATING REVENUE

ACCT. NO. (a)	DESCRIPTION (b)	BEGINNING YEAR NO. CUSTOMERS * (c)	YEAR END NUMBER CUSTOMERS (d)	AMOUNTS (e)
460	Water Sales: Unmetered Water Revenue			
	Metered Water Revenue:			
461.1	Metered Sales to Residential Customers	33	33	\$ 6,755
461.2	Metered Sales to Commercial Customers	101	101	373,588
461.3	Metered Sales to Industrial Customers			
461.4	Metered Sales to Public Authorities			
461.5	Metered Sales to Multiple Family Dwellings			
	Total Metered Sales	134	134	380,343
462.1	Fire Protection Revenue: Public Fire Protection			
462.2	Private Fire Protection			
	Total Fire Protection Revenue			
464	Other Sales to Public Authorities			
465	Sales to Irrigation Customers			
466	Sales for Resale			
467	Interdepartmental Sales			
	Total Water Sales	134	134	380,343
469	Other Water Revenues: Guaranteed Revenues			
470	Forfeited Discounts			
471	Miscellaneous Service Revenues			
472	Rents From Water Property			
473	Interdepartmental Rents			
474	Other Water Revenues			
	Total Other Water Revenues			
	Total Water Operating Revenues			\$ 380,343

* Customer is defined by Rule 25-30.210(1), Florida Administrative Code

WATER UTILITY EXPENSE ACCOUNTS

ACCT. NO. (a)	ACCOUNT NAME (b)	CURRENT YEAR (c)	SOURCE OF SUPPLY AND EXPENSES - OPERATIONS (d)	SOURCE OF SUPPLY AND EXPENSES - MAINTENANCE (e)
601	Salaries and Wages - Employees	\$ 82,299	\$ -	\$ -
603	Salaries and Wages - Officers, Directors and Majority Stockholders			
604	Employee Pensions and Benefits	22,746		
610	Purchased Water			
615	Purchased Power	49,189		
616	Fuel for Power Purchased			
618	Chemicals	9,963		
620	Materials and Supplies	10,745		
631	Contractual Services - Engineering			
632	Contractual Services - Accounting			
633	Contractual Services - Legal	2,761		
634	Contractual Services - Mgt. Fees	30,000		
635	Contractual Services - Testing	1,319		
636	Contractual Services - Other	58,561		
641	Rental of Building/Real Property			
642	Rental of Equipment	1,959		
650	Transportation Expense			
656	Insurance - Vehicle			
657	Insurance - General Liability			
658	Insurance - Workmens Comp.			
659	Insurance - Other			
660	Advertising Expense			
666	Regulatory Commission Expenses - Amortization of Rate Case Expense			
667	Regulatory Commission Exp.-Other			
670	Bad Debt Expense			
675	Miscellaneous Expenses			
	Total Water Utility Expenses	\$ 269,542		

UTILITY NAME: IHC Realty Partnership, L.P.
 SYSTEM NAME / COUNTY: Same/Martin

YEAR OF REPORT
December 31, 2001

PUMPING AND PURCHASED WATER STATISTICS

MONTH (a)	WATER PURCHASED FOR RESALE (Omit 000's) (b)	FINISHED WATER PUMPED FROM WELLS (Omit 000's) (c)	WATER USED FOR LINE FLUSHING, FIGHTING FIRES, ETC. (d)	TOTAL WATER PUMPED AND PURCHASED (Omit 000's) [(b)+(c)-(d)] (e)	WATER SOLD TO CUSTOMERS (Omit 000's) (f)
January		5,646		5,646	5,988
February		6,238		6,238	6,845
March		7,042	800	6,242	5,210
April		6,298		6,298	5,910
May		4,578	900	3,678	3,059
June		4,311		4,311	3,840
July		4,487	800	3,687	3,447
August		4,066		4,066	3,097
September		3,090	800	2,290	2,095
October		3,867		3,867	3,592
November		4,216	800	3,416	3,056
December		4,694		4,694	4,171
Total for year	N/A	58,533	4,100	54,433	50,310

If water is purchased for resale, indicate the following:

Vendor N/A

Point of delivery N/A

If Water is sold to other water utilities for redistribution, list names of such utilities below:

N/A

List for each source of supply:	CAPACITY OF WELL	GALLONS PER DAY FROM SOURCE	TYPE OF SOURCE
# 1	420 g.p.m.	420 g.p.m.	Well
# 2	420 g.p.m.	420 g.p.m.	Well

UTILITY NAME: IHC Realty Partnership, L.P.
 SYSTEM NAME / COUNTY: Same/Martin

YEAR OF REPORT
December 31, 2001

CALCULON OF THE WATER SYSTEMS EQUIVALENT RESIDENTIAL UNITS

METER SIZE (a)	TYPE OF METER (b)	EQUIVALENT FACTOR (c)	NUMBER OF METERS (d)	TOTAL NUMBER OF METER EQUIVALENTS (c x d) (e)
All Residential		1.0	33	33
5/8"	Displacement	1.0	28	28
3/4"	Displacement	1.5		
1"	Displacement	2.5	15	38
1 1/2"	Displacement or Turbine	5.0	22	110
2"	Displacement, Compound or Turbine	8.0	23	184
3"	Displacement	15.0		
3"	Compound	16.0	8	128
3"	Turbine	17.5		
4"	Displacement or Compound	25.0	5	125
4"	Turbine	30.0		
6"	Displacement or Compound	50.0		
6"	Turbine	62.5		
8"	Compound	80.0		
8"	Turbine	90.0		
10"	Compound	115.0		
10"	Turbine	145.0		
12"	Turbine	215.0		
Total Water System Meter Equivalents				646

CALCULATION OF THE WATER SYSTEM EQUIVALENT RESIDENTIAL CONNECTIONS

Provide a calculation used to determine the value of one water equivalent residential connection (ERC).

Use one of the following methods:

- (a) If actual flow data are available from the preceding 12 months, divide the total annual single family residence (SFR) gallons sold by the average number of single family residence customers for the same period and divide the result by 365 days.
- (b) If no historical flow data are available, use:
 $ERC = (\text{Total SFR gallons sold (Omit 000)} / 365 \text{ days} / 350 \text{ gallons per day})$

ERC Calculation:
ERC = 50,310 gallons, divided by
350 gallons per day
_____ 365 days
_____ 394 ERC's

OTHER WATER SYSTEM INFORMATION

Furnish information below for each system. A separate pageshould be supplied where necessary.

1. Present ERC's * that system can efficiently serve.	<u>646</u>
2. Maximum number of ERC's * which can be served.	<u>646</u>
3. Present system connection capacity (in ERC's *) using existing lines.	<u>646</u>
4. Future system connection capacity (in ERC's *) upon service area buildout.	<u>646</u>
5. Estimated annual increase in ERC's *.	<u>None - 1 connection until build-out</u>
6. Is the utility required to have fire flow capacity? If so, how much capacity is required?	<u>Yes</u> <u>3 high service pumps @ 250 g.p.m. & 1 high service pump @ 1,500 g.p.m.</u>
7. Attach a description of the fire fighting facilities.	<u>Hydrants</u>
8. Describe any plans and estimated completion dates for any enlargements or improvements of this syste	<u>None</u>
9. When did the company last file a capacity analysis report with the DEP?	<u>N/A</u>
10. If the present system does not meet the requirements of DEP rules:	<u>N/A</u>
a. Attach a description of the plant upgrade necessary to meet the DEP rules.	<u>N/A</u>
b. Have these plans been approved by DEP?	<u>N/A</u>
c. When will construction begin	<u>N/A</u>
d. Attach plans for funding the required upgrading.	
e. Is this system under any Consent Order othe DEP?	<u>No</u>
11. Department of Environmental Protection ID #	<u>PWS - ID No. 4431692</u>
12. Water Management District Consumptive Use Permit #	<u>43 - 00328 - W</u>
a. Is the system in compliance with the requirements of the CUP?	<u>Yes</u>
b. If not, what are the utility's plans to gain compliance?	<u>N/A</u>

* An ERC is determined bsd on the calculation on the bottom of Page W-13

**WASTEWATER
OPERATING
SECTION**

UTILITY NAME: IHC Realty Partnership, L.P.
 SYSTEM NAME / COUNTY: Same/Martin

YEAR OF REPORT
December 31, 2001

SCHEDULE OF YEAR END WASTEWATER RATE BASE

ACCT. NO. (a)	ACCOUNT NAME (b)	REF. PAGE (c)	WASTEWATER UTILITY (d)
101	Utility Plant In Service	S-4(b)	\$ 1,501,837
	Less:		
	Nonused and Useful Plant (1)		
108.1	Accumulated Depreciation	S-6(b)	728,219
110.1	Accumulated Amortization		
271	Contributions in Aid of Construction	S-7	407,182
252	Advances for Construction	F-20	
	Subtotal		366,436
	Add:		
272	Accumulated Amortization of Contributions in Aid of Construction	S-8(a)	135,849
	Subtotal		502,285
	Plus or Minus:		
114	Acquisition Adjustments (2)	F-7	
115	Accumulated Amortization of Acquisition Adjustments (2)	F-7	
	Working Capital Allowance (3)		31,245
	Other (Specify):		
	WASTEWATER RATE BASE		\$ 533,530
	UTILITY OPERATING INCOME	S-3	\$ (5,667)
	ACHIEVED RATE OF RETURN (Wastewater Operating Income/Wastewater Rate Base)		-- %

- NOTES: (1) Class A calculate consistent with last rate proceeding. Class B estimated if not known.
- (2) Include only those Acquisition Adjustments that have been approved by the Commission.
- (3) Calculation consistent with last rate proceeding.
 In absence of a rate proceeding, Class A utilities will use the Balance Sheet Method and Class B Utilities will use the One-eighth Operating and Maintenance Expense Method.

UTILITY NAME: IHC Realty Partnership, L.P.
 SYSTEM NAME / COUNTY: Same/Martin

YEAR OF REPORT
December 31, 2001

WASTEWATER OPERATING STATEMENT

ACCT. NO. (a)	ACCOUNT NAME (b)	REF. PAGE (c)	WASTEWATER UTILITY (d)
400	UTILITY OPERATING INCOME Operating Revenues	S-9	\$ 312,437
530	Less: Guarenteed Revenue and AFPI	S-9	
	Net Operating Revenues		312,437
401	Operating Expenses	S-10(a)	249,962
403	Depreciation Expense	S-6(a)	53,905
	Less: Amortization of CIAC	S-8(a)	(15,296)
	Net Depreciation Expense		38,609
406	Amortization of Utility Plant Acquisition Adjustment	F-7	
407	Amortization Expense (Other than CIAC) (Loss on plant abandonment)	F-8	
408.10	Taxes Other Than Income Utility Regulatory Assessment Fee		14,060
408.11	Property Taxes		9,274
408.12	Payroll Taxes		6,199
408.13	Other Taxes & Licenses		
408	Total Taxes Other Than Income		29,533
409.1	Income Taxes	F-16	
410.10	Deferred Federal Income Taxes		
410.11	Deferred State Income Taxes		
411.10	Provision for Deferred Income Taxes - Credit		
412.10	Investment Tax Credits Deferred to Future Periods		
412.11	Investment Tax Credits Restored to Operating Income		
	Utility Operating Expenses		318,104
	Utility Operating Income (Loss)		(5,667)
469	Add Back: Guarenteed Revenue (and AFPI)		
413	Income From Utility Plant Leased to Others		
414	Gains (Losses) From Disposition of Utility Property		
420	Allowance for Funds Used During Construction		
	Total Utility Operating Income (Loss)		\$ (5,667)

UTILITY NAME: IHC Realty Partnership, L.P.
 SYSTEM NAME / COUNTY: Same/Martin

YEAR OF REPORT
 December 31, 2001

WASTEWATER UTILITY PLANT ACCOUNTS

ACCT. NO. (a)	ACCOUNT NAME (b)	PREVIOUS YEAR (c)	ADDITIONS (d)	RETIREMENTS (e)	CURRENT YEAR (f)
351	Organization	\$ 22,645	\$ -	\$ -	\$ 22,645
352	Franchises				
353	Land and Land Rights	165,091			165,091
354	Structure and Improvements	476,974			476,974
355	Power Generation Equipment	0			
360	Collection Sewers - Force	91,434			91,434
361	Collection Sewers - Gravity	149,052			149,052
362	Special Collecting Structures				
363	Services to Customers	8,203			8,203
364	Flow Measuring Devices	3,066			3,066
365	Flow Measuring Installations				
366	Reuse Services				
367	Reuse Meters and Meter Installations				
370	Receiving Wells				
371	Pumping Equipment	28,119			28,119
374	Reuse Distribution Reservoirs				
375	Reuse Transmission and Distribution System				
380	Treatment & Disposal Equipment	341,134			341,134
381	Plant Sewers	33,318			33,318
382	Outfall Sewer Lines				
389	Other Plant / Miscellaneous Equipment	173,200			173,200
390	Office Furniture & Equipment	3,695			3,695
391	Transportation Equipment	938			938
392	Stores Equipment				
393	Tools, Shop and Garage Equipment	1,066			1,066
394	Laboratory Equipment	3,769			3,769
395	Power Operated Equipment				
396	Communication Equipment				
397	Miscellaneous Equipment	133			133
398	Other Tangible Plant				
	Total Wastewater Plant	\$ 1,501,837	\$ -	\$ -	\$ 1,501,837

NOTE: Any adjustments made to reclassify property from one account to another must be footnoted.

S-4(a)
 GROUP 1

UTILITY NAME: IHC Realty Partnership, L.P.
 SYSTEM NAME / COUNTY: Same/Martin

YEAR OF REPORT
 December 31, 2001

WASTEWATER UTILITY PLANT MATRIX

ACCT. NO. (a)	ACCOUNT NAME (b)	.1 INTANGIBLE PLANT (g)	.2 COLLECTION PLANT (h)	.3 SYSTEM PUMPING PLANT (i)	.4 TREATMENT AND DISPOSAL PLANT (j)	.5 RECLAIMED WASTEWATER TREATMENT PLANT (k)	.6 RECLAIMED WASTEWATER DISTRIBUTION PLANT (l)	.7 GENERAL PLANT (m)
351	Organization	\$ 22,645						
352	Franchises							
353	Land and Land Rights				\$ 165,091			
354	Structure and Improvements				476,974			
355	Power Generation Equipment							
360	Collection Sewers - Force		91,434					
361	Collection Sewers - Gravity		149,052					
362	Special Collecting Structures							
363	Services to Customers		8,203					
364	Flow Measuring Devices		3,066					
365	Flow Measuring Installations							
366	Reuse Services							
367	Reuse Meters and Meter Installations							
370	Receiving Wells							
371	Pumping Equipment			28,119				
374	Reuse Distribution Reservoirs							
375	Reuse Transmission and Distribution System							
380	Treatment & Disposal Equipment				341,134			
381	Plant Sewers				33,318			
382	Outfall Sewer Lines							
389	Other Plant / Miscellaneous Equipment				173,200			3,695
390	Office Furniture & Equipment							938
391	Transportation Equipment							
392	Stores Equipment							
393	Tools, Shop and Garage Equipment							1,066
394	Laboratory Equipment							3,769
395	Power Operated Equipment							
396	Communication Equipment							
397	Miscellaneous Equipment							133
398	Other Tangible Plant							
	Total Wastewater Plant	\$ 22,645	\$ 251,755	\$ 28,119	\$ 1,189,717	\$ -	\$ -	\$ 9,601

NOTE: Any adjustments made to reclassify property from one account to another must be footnoted.

S-4(b)
 GROUP 1

BASIS FOR WASTEWATER DEPRECIATION CHARGES

ACCT. NO. (a)	ACCOUNT NAME (b)	AVERAGE SERVICE LIFE IN YEARS (c)	AVERAGE NET SALVAGE IN PERCENT (d)	DEPRECIATION RATE APPLIED IN PERCENT (100% - d) / c (e)
351	Organization	40	%	2.50 %
352	Franchises		%	%
354	Structure and Improvements	32	%	3.13 %
355	Power Generation Equipment		%	%
360	Collection Sewers - Force	30	%	3.33 %
361	Collection Sewers - Gravity	45	%	2.22 %
362	Special Collecting Structures		%	%
363	Services to Customers	38	%	2.63 %
364	Flow Measuring Devices	5	%	20.00 %
365	Flow Measuring Installations		%	%
366	Reuse Services		%	%
367	Reuse Meters and Meter Installations		%	%
370	Receiving Wells		%	%
371	Pumping Equipment	18	%	5.56 %
374	Reuse Distribution Reservoirs		%	%
375	Reuse Transmission and Distribution System		%	%
380	Treatment & Disposal Equipment	18	%	5.56 %
381	Plant Sewers	35	%	2.86 %
382	Outfall Sewer Lines		%	%
389	Other Plant / Miscellaneous Equipment	18	%	5.56 %
390	Office Furniture & Equipment	15	%	6.67 %
391	Transportation Equipment	6	%	16.67 %
392	Stores Equipment		%	%
393	Tools, Shop and Garage Equipment	16	%	6.25 %
394	Laboratory Equipment	15	%	6.67 %
395	Power Operated Equipment		%	%
396	Communication Equipment		%	%
397	Miscellaneous Equipment	15	%	6.67 %
398	Other Tangible Plant		%	%
Wastewater Plant Composite Depreciation Rate *			%	%

* If depreciation rates prescribed by this Commission are on a total composite basis, entries should be made on this line only.

UTILITY NAME: IHC Realty Partnership, L.P.
 SYSTEM NAME / COUNTY: Same/Martin

YEAR OF REPORT
 December 31, 2001

ANALYSIS OF ENTRIES IN SEWER ACCUMULATED DEPRECIATION

ACCT. NO. (a)	ACCOUNT NAME (b)	BALANCE AT BEGINNING OF YEAR (c)	ACCRUALS (d)	OTHER CREDITS * (e)(1)	TOTAL CREDITS (d + e) (f)
351	Organization	\$ 2,208	\$ 566	\$ -	\$ 566
352	Franchises				
354	Structure and Improvements	185,766	14,905		14,905
355	Power Generation Equipment				
360	Collection Sewers - Force	46,231	3,048		3,048
361	Collection Sewers - Gravity	44,334	3,312		3,312
362	Special Collecting Structures				
363	Services to Customers	1,337	216		216
364	Flow Measuring Devices	3,066	-		
365	Flow Measuring Installations				
366	Reuse Services				
367	Reuse Meters and Meter Installations				
370	Receiving Wells				
371	Pumping Equipment	9,619	1,562		1,562
374	Reuse Distribution Reservoirs				
375	Reuse Transmission and Distribution System				
380	Treatment & Disposal Equipment	281,516	18,952		18,952
381	Plant Sewers	10,380	952		952
382	Outfall Sewer Lines				
389	Other Plant / Miscellaneous Equipment	83,049	9,622		9,622
390	Office Furniture & Equipment	2,266	363	271	634
391	Transportation Equipment	1,129	80	(271)	(191)
392	Stores Equipment				
393	Tools, Shop and Garage Equipment	687	67		67
394	Laboratory Equipment	2,619	251		251
395	Power Operated Equipment				
396	Communication Equipment				
397	Miscellaneous Equipment	107	9		9
398	Other Tangible Plant				
	Total Depreciable Wastewater Plant in Service	\$ 674,314	\$ 53,905	\$ -	\$ 53,905

* Specify nature of transaction.

Use () to denote reversal entries.

Note (1): Reiclass to proper NARUC account.

S-6(a)
 GROUP 1

UTILITY NAME: IHC Realty Partnership, L.P.
 SYSTEM NAME / COUNTY: Same/Martin

YEAR OF REPORT
 December 31, 2001

ANALYSIS OF ENTRIES IN SEWER ACCUMULATED DEPRECIATION (CONT'D)

ACCT. NO. (a)	ACCOUNT NAME (b)	PLANT RETIRED (g)	SALVAGE AND INSURANCE (h)	COST OF REMOVAL AND OTHER CHARGES (i)	TOTAL CHARGES (g-h+i)	BALANCE AT END OF YEAR (c+f-k)
351	Organization	\$ -	\$ -	\$ -	\$ -	2,774
352	Franchises					
354	Structure and Improvements					200,671
355	Power Generation Equipment					
360	Collection Sewers - Force					49,279
361	Collection Sewers - Gravity					47,646
362	Special Collecting Structures					
363	Services to Customers					1,553
364	Flow Measuring Devices					3,066
365	Flow Measuring Installations					
366	Reuse Services					
367	Reuse Meters and Meter Installations					
370	Receiving Wells					
371	Pumping Equipment					11,181
374	Reuse Distribution Reservoirs					
375	Reuse Transmission and Distribution System					
380	Treatment & Disposal Equipment					300,468
381	Plant Sewers					11,332
382	Outfall Sewer Lines					
389	Other Plant / Miscellaneous Equipment					92,671
390	Office Furniture & Equipment					2,900
391	Transportation Equipment					938
392	Stores Equipment					
393	Tools, Shop and Garage Equipment					754
394	Laboratory Equipment					
395	Power Operated Equipment					2,870
396	Communication Equipment					
397	Miscellaneous Equipment					116
398	Other Tangible Plant					
Total Depreciable Wastewater Plant in Service						\$ 728,219

S-6(a)
 GROUP 1

UTILITY NAME: IHC Realty Partnership, L.P.
 SYSTEM NAME / COUNTY: Same/Martin

YEAR OF REPORT
 December 31, 2001

WASTEWATER CIAC SCHEDULE "A"
**ADDITIONS TO CONTRIBUTIONS IN AID OF CONSTRUCTION RECEIVED FROM CAPACITY, MAIN
 EXTENSION AND CUSTOMER CONNECTION CHARGES RECEIVED DURING THE YEAR**

DESCRIPTION OF CHARGE (a)	NUMBER OF CONNECTIONS (b)	CHARGE PER CONNECTION (c)	AMOUNT (d)
N/A			\$ -
Total Credits			N/A

**ACCUMULATED AMORTIZATION OF CONTRIBUTIONS IN AID OF CONSTRUCTION
 ACCOUNT 272**

DESCRIPTION (a)	WASTEWATER (b)
Balance first of year	\$ 120,553
Debits during year:	
Accruals charged to Account	15,296
Other Debits (specify):	
Total debits	15,296
Credits during year (specify):	
Total credits	
Balance end of year	\$ 135,849

UTILITY NAME: IHC Realty Partnership, L.P.
 SYSTEM NAME / COUNTY: Same/Martin

YEAR OF REPORT
December 31, 2001

WASTEWATER OPERATING REVENUE

ACCT. NO. (a)	DESCRIPTION (b)	BEGINNING YEAR NO. CUSTOMERS * (c)	YEAR END NUMBER CUSTOMERS (d)	AMOUNTS (e)
WASTEWATER SALES				
Flat Rate Revenues:				
521.1	Residential Revenues			\$ -
521.2	Commercial Revenues			
521.3	Industrial Revenues			
521.4	Revenues From Public Authorities			
521.6	Other Revenues			
521	Total Flat Rate Revenues			-
Measured Revenues:				
522.1	Residential Revenues	33	33	\$ 7,521
522.2	Commercial Revenues	82	82	304,916
522.3	Industrial Revenues			
522.4	Revenues From Public Authorities			
522.5	Multiple Family Dwelling Revenues (Units)			
522	Total Measured Revenues	115	115	312,437
523	Revenues From Public Authorities			
524	Revenues From Other Systems			
525	Interdepartmental Revenues			
	Total Wastewater Sales	115	115	\$ 312,437
OTHER WASTEWATER REVENUES				
530	Guaranteed Revenues			\$ -
531	Sale Of Sludge			
532	Forfeited Discounts			
534	Rents From Wastewater Property			
535	Interdepartmental Rents			
536	Other Wastewater Revenues (Including Allowance for Funds Prudently Invested or AFPI)			
	Total Other Wastewater Revenues			\$ -

* Customer is defined by Rule 25-30.210(1), Florida Administrative Code.

UTILITY NAME: IHC Realty Partnership, L.P.
 SYSTEM NAME / COUNTY: Same/Martin

YEAR OF REPORT
December 31, 2001

WASTEWATER OPERATING REVENUE

ACCT. NO. (a)	DESCRIPTION (b)	BEGINNING YEAR NO. CUSTOMERS * (c)	YEAR END NUMBER CUSTOMERS (d)	AMOUNTS (e)
RECLAIMED WATER SALES				
	Flat Rate Reuse Revenues:			
540.1	Residential Reuse Revenues			\$ -
540.2	Commercial Reuse Revenues			
540.3	Industrial Reuse Revenues			
540.4	Reuse Revenues From Public Authorities			
540.5	Other Reuse Revenues			
540	Total Flat Rate Reuse Revenues			
	Measured Reuse Revenues:			
541.1	Residential Reuse Revenues			
541.2	Commercial Reuse Revenues			
541.3	Industrial Reuse Revenues			
541.4	Reuse Revenues From Public Authorities			
541	Total Measured Reuse Revenues			
544	Reuse Revenues From Other Systems			
Total Reclaimed Water Sales				
Total Wastewater Operating Revenues				\$ 312,437

* Customer is defined by Rule 25-30.210(1), Florida Administrative Code.

WASTEWATER UTILITY EXPENSE ACCOUNTS

ACCT. NO. (a)	ACCOUNT NAME (b)	CURRENT YEAR (c)	.1 COLLECTION EXPENSES - OPERATIONS (d)	.2 SOURCE OF SUPPLY AND EXPENSES - MAINTENANCE (e)	.3 PUMPING EXPENSES - OPERATIONS (f)	.4 PUMPING EXPENSES - MAINTENANCE (g)	.5 TREATMENT & DISPOSAL EXPENSES - OPERATIONS (h)	.6 TREATMENT & DISPOSAL EXPENSES - MAINTENANCE (i)
701	Salaries and Wages - Employees	\$ 82,300	\$ -	\$ -	\$ -	\$ -	\$ 75,800	\$ -
703	Salaries and Wages - Officers, Directors and Majority Stockholders							
704	Employee Pensions and Benefits	22,745					20,926	
710	Purchased Sewage Treatment	5,400					5,400	
711	Sludge Removal Expense	18,221			18,221			
715	Purchased Power							
716	Fuel for Power Purchased							
718	Chemicals	6,174					6,174	
720	Materials and Supplies	5,701					5,701	
731	Contractual Services - Engineering							
732	Contractual Services - Accounting							
733	Contractual Services - Legal							
734	Contractual Services - Mgt. Fees	30,000						
735	Contractual Services - Testing	7,005					7,005	
736	Contractual Services - Other	72,416					23,148	47,481
741	Rental of Building/Real Property							
742	Rental of Equipment							
750	Transportation Expense							
756	Insurance - Vehicle							
757	Insurance - General Liability							
758	Insurance - Workmens Comp.							
759	Insurance - Other							
760	Advertising Expense							
766	Regulatory Commission Expenses - Amortization of Rate Case Expense							
767	Regulatory Commission Exp.-Other							
770	Bad Debt Expense							
775	Miscellaneous Expenses							
	Total Wastewater Utility Expenses	\$ 249,962	\$ -	\$ -	\$ 18,221	\$ -	\$ 144,154	\$ 47,481

S-10(a)
 GROUP 1

WASTEWATER UTILITY EXPENSE ACCOUNTS

ACCT. NO. (a)	ACCOUNT NAME (b)	.7 CUSTOMER ACCOUNTS EXPENSE (j)	.8 ADMIN. & GENERAL EXPENSES (k)	.9 RECLAIMED WATER TREATMENT EXPENSES - OPERATIONS (l)	.10 RECLAIMED WATER TREATMENT EXPENSES - MAINTENANCE (m)	.11 RECLAIMED WATER DISTRIBUTION EXPENSES - OPERATIONS (n)	.12 RECLAIMED WATER DISTRIBUTION EXPENSES - MAINTENANCE (o)
701	Salaries and Wages - Employees	\$ -	\$ 6,500	\$ -	\$ -	\$ -	\$ -
703	Salaries and Wages - Officers, Directors and Majority Stockholders						
704	Employee Pensions and Benefits		1,819				
710	Purchased Sewage Treatment						
711	Sludge Removal Expense						
715	Purchased Power						
716	Fuel for Power Purchased						
718	Chemicals						
720	Materials and Supplies						
731	Contractual Services - Engineering						
732	Contractual Services - Accounting						
733	Contractual Services - Legal						
734	Contractual Services - Mgt. Fees		30,000				
735	Contractual Services - Testing						
736	Contractual Services - Other	232	1,555				
741	Rental of Building/Real Property						
742	Rental of Equipment						
750	Transportation Expense						
756	Insurance - Vehicle						
757	Insurance - General Liability						
758	Insurance - Workmens Comp.						
759	Insurance - Other						
760	Advertising Expense						
766	Regulatory Commission Expenses - Amortization of Rate Case Expense						
767	Regulatory Commission Exp.-Other						
770	Bad Debt Expense						
775	Miscellaneous Expenses						
	Total Wastewater Utility Expenses	\$ 232	\$ 39,874	\$ -	\$ -	\$ -	\$ -

S-10(b)
 GROUP 1

UTILITY NAME: IHC Realty Partnership, L.P.
 SYSTEM NAME / COUNTY: Same/Martin

YEAR OF REPORT
 December 31, 2001

CALCULATON OF THE WASTEWATER SYSTEMS EQUIVALENT RESIDENTIAL UNITS

METER SIZE (a)	TYPE OF METER (b)	EQUIVALENT FACTOR (c)	NUMBER OF METERS (d)	TOTAL NUMBER OF METER EQUIVALENTS (c x d) (e)
All Residential		1.0	33	33
5/8"	Displacement	1.0	11	11
3/4"	Displacement	1.5		
1"	Displacement	2.5	15	38
1 1/2"	Displacement or Turbine	5.0	22	110
2"	Displacement, Compound or Turbine	8.0	21	168
3"	Displacement	15.0		
3"	Compound	16.0	8	128
3"	Turbine	17.5		
4"	Displacement or Compound	25.0		
4"	Turbine	30.0	5	150
6"	Displacement or Compound	50.0		
6"	Turbine	62.5		
8"	Compound	80.0		
8"	Turbine	90.0		
10"	Compound	115.0		
10"	Turbine	145.0		
12"	Turbine	215.0		
Total Wastewater System Meter Equivalents				638

CALCULATION OF THE WASTEWATER SYSTEM EQUIVALENT RESIDENTIAL CONNECTIONS

Provide a calculation used to determine the value of one wastewater equivalent residential connection (ERC).

Use one of the following methods:

- (a) If actual flow data are available from the preceding 12 months, divide the total annual single family residence (SFR) gallons sold by the average number of single family residence customers for the same period and divide the result by 365 days.
- (b) If no historical flow data are available, use:
 $ERC = (\text{Total SFR gallons sold (Omit 000)} / 365 \text{ days} / 280 \text{ gallons per day})$

For wastewater only utilities:

Subtract all general use and other non-residential customer gallons from the total gallons treated.

Divide the remainder (SFR customers) by 365 days to reveal single family residence customer gallons per day.

NOTE: Total gallons treated includes both treated and purchased treatment

ERC Calculation:	$\left(\frac{57,894,000}{\text{(total gallons treated)}} / 365 \text{ days} \right) / 280 \text{ gpd} =$	566
------------------	---	-----

UTILITY NAME: IHC Realty Partnership, L.P.
 SYSTEM NAME / COUNTY: Same/Martin

YEAR OF REPORT
December 31, 2001

WASTEWATER TREATMENT PLANT INFORMATION
 Provide a separate sheet for each wastewater treatment facility

Permitted Capacity	.300 M.G.D.		
Basis of Permit Capacity (1)	Average Annual Daily Flow		
Manufacturer	Marolf		
Type (2)	Tertiary with Filters		
Hydraulic Capacity	.300 M.G.D.		
Average Daily Flow	158.6 M.G.D.		
Total Gallons of Wastewater Treated	57,894 M.G.D..		
Method of Effluent Disposal	Evaporation & Spray Irrigation		

- (1) Basis of permitted capacity as stated on the Florida DEP WWTP Operating Permit (i.e. average annual daily flow, etc)
- (2) Contact stabilization, advanced treatment, etc.

UTILITY NAME: IHC Realty Partnership, L.P.
SYSTEM NAME / COUNTY: Same/Martin

YEAR OF REPORT
December 31, 2001

OTHER WASTEWATER SYSTEM INFORMATION

Furnish information below for each system. A separate pageshould be supplied where necessary.

1. Present ERC's * that system can efficiently serve. 638

2. Maximum number of ERC's * which can be served. 638

3. Present system connection capacity (in ERC's *) using existing lines. 638

4. Future system connection capacity (in ERC's *) upon service area buildout. 638

5. Estimated annual increase in ERC's None - 1 remaining connection until build-out

8. Describe any plans and estimated completion dates for any enlargements or improvements of this system.
None

7. If the utility uses reuse as a means of effluent disposal, attach a list of the reuse end users and the amount of reuse provided to each, if known. Reuse to "Plantation" golf courses

8. If the utility does not engage in reuse, has a reuse feasibility study been completed? N/A
If so, when? N/A

9. Has the utility been required by the DEP or water management district to implement reuse? N/A
If so, what are the utility's plans to comply with the DE N/A

10. When did the company last file a capacity analysis report with the DEP? N/A

11. If the present system does not meet the requirements of DEP rules: N/A
a. Attach a description of the plant upgrade necessary to meet the DEP rules.
b. Have these plans been approved by DEP? N/A
c. When will construction begin? N/A
d. Attach plans for funding the required upgrading. N/A
e. Is this system under any Consent Order othe DEF N/A

11. Department of Environmental Protection ID # FLA013792-001

* An ERC is determined based on the calculation on the bottom of Page S-11