

OFFICIAL COPY
Public Service Commission
Do Not Remove from this Office

CLASS "A" OR "B"

WATER AND/OR WASTEWATER UTILITIES
(Gross Revenue of More Than \$200,000 Each)

ANNUAL REPORT

OF

WS800-05-AR

CYPRESS LAKES UTILITIES INC

Exact Legal Name of Respondent

592W 509S

Certificate Number(s)

Submitted To The

STATE OF FLORIDA

PUBLIC SERVICE COMMISSION

FOR THE

YEAR ENDED

31-Dec-05

RECEIVED
PUBLIC SERVICE
COMMISSION
03 FEB -3 PM 12:48
ECONOMIC REGULATION

TABLE OF CONTENTS

SCHEDULE	PAGE	SCHEDULE	PAGE
EXECUTIVE SUMMARY			
Certification	E-1	Business Contracts with Officers, Directors and Affiliates	E-7
General Information	E-2	Affiliation of Officers & Directors	E-8
Directory of Personnel Who Contact the FPSC	E-3	Businesses which are a Byproduct, Coproduct or Joint Product Result of Providing Service	E-9
Company Profile	E-4	Business Transactions with Related Parties. Part I and II	E-10
Parent / Affiliate Organization Chart	E-5		
Compensation of Officers & Directors	E-6		
FINANCIAL SECTION			
Comparative Balance Sheet - Assets and Other Debits	F-1	Unamortized Debt Discount / Expense / Premium	F-13
Comparative Balance Sheet - Equity Capital and Liabilities	F-2	Extraordinary Property Losses	F-13
Comparative Operating Statement	F-3	Miscellaneous Deferred Debits	F-14
Schedule of Year End Rate Base	F-4	Capital Stock	F-15
Schedule of Year End Capital Structure	F-5	Bonds	F-15
Capital Structure Adjustments	F-6	Statement of Retained Earnings	F-16
Utility Plant	F-7	Advances from Associated Companies	F-17
Utility Plant Acquisition Adjustments	F-7	Long Term Debt	F-17
Accumulated Depreciation	F-8	Notes Payable	F-18
Accumulated Amortization	F-8	Accounts Payable to Associated Companies	F-18
Regulatory Commission Expense - Amortization of Rate Case Expense	F-9	Accrued Interest and Expense	F-19
Nonutility Property	F-9	Misc. Current & Accrued Liabilities	F-20
Special Deposits	F-9	Advances for Construction	F-21
Investments and Special Funds	F-10	Other Deferred Credits	F-21
Accounts and Notes Receivable - Net	F-11	Contributions In Aid of Construction	F-22
Accounts Receivable from Associated Companies	F-12	Accumulated Amortization of CIAC	F-23
Notes Receivable from Associated Companies	F-12	Reconciliation of Reported Net Income with Taxable Income for Federal Income Taxes	F-23
Miscellaneous Current & Accrued Assets	F-12		

TABLE OF CONTENTS

SCHEDULE	PAGE	SCHEDULE	PAGE
WATER OPERATION SECTION			
Listing of Water System Groups	W-1	CIAC Additions / Amortization	W-8
Schedule of Year End Water Rate Base	W-2	Water Operating Revenue	W-9
Water Operating Statement	W-3	Water Utility Expense Accounts	W-10
Water Utility Plant Accounts	W-4	Pumping and Purchased Water Statistics, Source Supply	W-11
Basis for Water Depreciation Charges	W-5	Water Treatment Plant Information	W-12
Analysis of Entries in Water Depreciation Reserve	W-6	Calculation of ERC's	W-13
Contributions In Aid of Construction	W-7	Other Water System Information	W-14
WASTEWATER OPERATION SECTION			
Listing of Wastewater System Groups	S-1	Contributions In Aid of Construction	S-7
Schedule of Year End Wastewater Rate Base	S-2	CIAC Additions / Amortization	S-8
Wastewater Operating Statement	S-3	Wastewater Utility Expense Accounts	S-9
Wastewater Utility Plant Accounts	S-4	Wastewater Operating Revenue	S-10
Analysis of Entries in Wastewater Depreciation Reserve	S-5	Calculation of ERC's	S-11
Basis for Wastewater Depreciation Charges	S-6	Wastewater Treatment Plant Information	S-12
		Other Wastewater System Information	S-13

EXECUTIVE SUMMARY

CERTIFICATION OF ANNUAL REPORT

I HEREBY CERTIFY, to the best of my knowledge and belief:

YES NO
 1. The utility is in substantial compliance with the Uniform System of Accounts prescribed by the Florida Public Service Commission.

YES NO
 2. The utility is in substantial compliance with all applicable rules and orders of the Florida Public Service Commission.


YES NO
 3. There have been no communications from regulatory agencies concerning noncompliance with, or deficiencies in, financial reporting practices that could have a material effect on the the financial statement of the utility.

YES NO
 4. The annual report fairly represents the financial condition and results of operations of the respondent for the period presented and other information and statements presented in the the report as to the business affairs of the respondent are true, correct and complete for the period for which it represents.

Items Certified			
1.	2.	3.	4.
<input type="checkbox"/>	<input type="checkbox"/>	<input type="checkbox"/>	<input type="checkbox"/>

(Signature of Chief Executive Officer of the utility) *

1.	2.	3.	4.
<input checked="" type="checkbox"/>	<input checked="" type="checkbox"/>	<input checked="" type="checkbox"/>	<input checked="" type="checkbox"/>



(Signature of Chief Financial Officer of the utility) *

* Each of the four items must be certified YES or NO. Each item need not be certified by both officers. The items being certified by the officer should be indicated in the appropriate area to the left of the signature.

NOTICE: Section 837.06, Florida Statutes, provides that any person who knowingly makes a false statement in writing with the intent to mislead a public servant in the performance of his duty shall be guilty of a misdemeanor of the second degree.

ANNUAL REPORT OF

YEAR OF REPORT
31-Dec-05

CYPRESS LAKES UTILITIES INC
(Exact Name of Utility)

County: **Polk County**

List below the exact mailing address of the utility for which normal correspondence should be sent:

2335 SANDERS ROAD
NORTHBROOK IL 60062

Telephone: **847-498-6440**

E Mail Address: **NONE**

WEB Site: **NONE**

Sunshine State One-Call of Florida, Inc. Member Number **CLU879**

Name and address of person to whom correspondence concerning this report should be addressed:

JOHN S HAYNES
2335 SANDERS ROAD
NORTHBROOK IL 60062

Telephone: **847-498-6440**

List below the address of where the utility's books and records are located:

2335 SANDERS ROAD
NORTHBROOK IL 60062

Telephone: **847-498-6440**

List below any groups auditing or reviewing the records and operations:

PRICEWATERHOUSECOOPERS

Date of original organization of the utility: **1996**

Check the appropriate business entity of the utility as filed with the Internal Revenue Service

Individual Partnership Sub S Corporation 1120 Corporation

List below every corporation or person owning or holding directly or indirectly 5% or more of the voting securities of the utility:

	Name	Percent Ownership
1.	UTILITIES INC	100%
2.		
3.		
4.		
5.		
6.		
7.		
8.		
9.		
10.		

**DIRECTORY OF PERSONNEL WHO CONTACT
THE FLORIDA PUBLIC SERVICE COMMISSION**

NAME OF COMPANY REPRESENTATIVE (1)	TITLE OR POSITION (2)	ORGANIZATIONAL UNIT TITLE (3)	USUAL PURPOSE FOR CONTACT WITH FPSC
LAWRENCE N SCHUMACHER	PRES/SEC/CFO		FINANCIAL
LISA CROSSETT	VP OPERATIONS		OPERATIONS
STEVE LUBERTOZZI	DIRECTOR OF REGULATORY		RATE CASE
PATRICK FLYNN	REGIONAL DIRECTOR		OPERATIONS

(1) Also list appropriate legal counsel, accountants and others who may not be on general payroll.
 (2) Provide individual telephone numbers if the person is not normally reached at the company.
 (3) Name of company employed by if not on general payroll.

COMPANY PROFILE

Provide a brief narrative company profile which covers the following areas:

- A. Brief company history.
- B. Public services rendered.
- C. Major goals and objectives.
- D. Major operating divisions and functions.
- E. Current and projected growth patterns.
- F. Major transactions having a material effect on operations.

A.	Formed in 1996, Cypress Lakes Utilities, Inc. was acquired by Utilities Inc.
B.	Cypress Lakes Utilities, Inc. performs water and wastewater services
C.	Maintain a high quality of service and earn a fair return.
D.	Only one subdivision is served
E.	We expect modest growth currently with anticipated higher growth in the future
F.	The system was purchased in 1998 and is currently being brought up to Utilities Inc. standards of quality.

PARENT / AFFILIATE ORGANIZATION CHART

Current as of 12/31/2005

Complete below an organizational chart that show all parents, subsidiaries and affiliates of the utility.
The chart must also show the relationship between the utility and affiliates listed on E-7, E-10(a) and E-10(b).

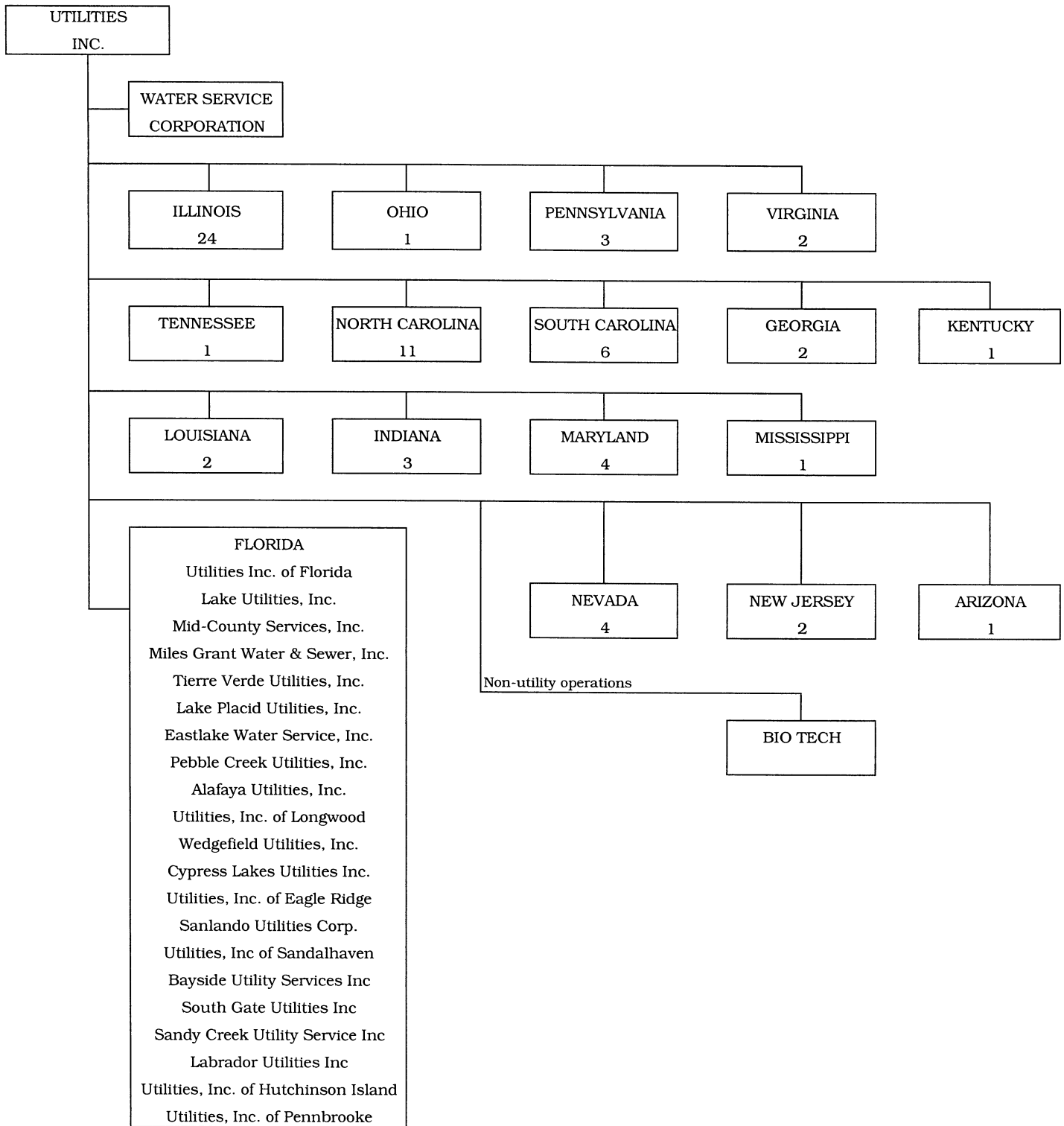
UTILITIES, INC. -- PARENT COMPANY

WATER SERVICE CORP. -- SERVICE COMPANY SUPPLYING MOST
SERVICES REQUIRED BY UTILITY.

UTILITIES INC. of FLORIDA -- provides office personnel and administrative
staff.

SEE ATTACHED

Parent And Affiliate Organizational Chart



UTILITIES, INC. - Parent Company

WATER SERVICE CORP. - Service organization providing administrative and other service functions for the utility.

COMPENSATION OF OFFICERS

For each officer, list the time spent on respondent as an officer compared to time spent on total business activities and the compensation received as an officer from the respondent.			
NAME (a)	TITLE (b)	% OF TIME SPENT AS OFFICER OF THE UTILITY (c)	OFFICERS' COMPENSATION (d)
JAMES L CAMAREN	CEO		\$ NONE
LAWRENCE N SCHUMACHER	PRES/SEC/CFO		NONE
LISA CROSSETT	VP		NONE

COMPENSATION OF DIRECTORS

For each director, list the number of director meetings attended by each director and the compensation received as a director from the respondent.			
NAME (a)	TITLE (b)	NUMBER OF DIRECTORS' MEETINGS ATTENDED (c)	DIRECTORS' COMPENSATION (d)
JAMES L CAMAREN	CEO	1	\$ NONE
LAWRENCE N SCHUMACHER	PRES/SEC/CFO	1	NONE

BUSINESS CONTRACTS WITH OFFICERS, DIRECTORS AND AFFILIATES

List all contracts, agreements, or other business arrangements* entered into during the calendar year (other than compensation related to position with Respondents) between the Respondent and officer and director listed on page E-6. In addition, provide the same information with respect to professional services for each firm, partnership, or organization with which the officer or director is affiliated.

NAME OF OFFICER, DIRECTOR OR AFFILIATE (a)	IDENTIFICATION OF SERVICE OR PRODUCT (b)	AMOUNT (c)	NAME AND ADDRESS OF AFFILIATED ENTITY (d)	
NO BUSINESS CONTRACTS, AGREEMENTS OR OTHER ARRANGEMENTS WERE ENTERED INTO DURING THE CURRENT YEAR BY THE OFFICERS LISTED ON PAGE E6, THE DIRECTORS OR AFFILIATES.		\$ _____		

* Business Agreement, for this schedule, shall mean any oral or written business deal which binds the concerned parties for products or services during the reporting year or future years. Although the Respondent and/or other companies will benefit from the arrangement, the officer or director is, however, acting on his behalf or for the benefit of other companies or persons.

AFFILIATION OF OFFICERS AND DIRECTORS

For each of the officials listed on page E-6, list the principle occupation or business affiliations or connections with any other business or financial organizations, firms, or partnerships. For purposes of this part, an official will be considered to have an affiliation with any business or financial organization, firm or partnership in which he is an officer, director, trustee, partner, or a person exercising similar functions.

NAME (a)	PRINCIPLE OCCUPATION OR BUSINESS AFFILIATION (b)	AFFILIATION OR CONNECTION (c)	NAME AND ADDRESS OF AFFILIATION OR CONNECTION (d)
JAMES L CAMAREN UTILITIES INC & SUBSIDIARIES	CHARIMAN & CEO	DIRECTOR/OFFICER	NORTHBROOK IL
LAWARENCE N SCHUMACHER UTILITIES INC & SUBSIDIARIES	PRESIDENT	DIRECTOR/OFFICER	NORTHBROOK IL

UTILITY NAME: CYPRESS LAKES UTILITIES INC

**YEAR OF REPORT
31-Dec-05**

**BUSINESSES WHICH ARE A BY-PRODUCT, COPRODUCT OR JOINT-PRODUCT
RESULT OF PROVIDING WATER OR WASTEWATER SERVICE**

Complete the following for any business which is conducted as a byproduct, coproduct, or joint product as a result of providing water and / or wastewater service. This would include any business which requires the use of utility land and facilities. Examples of these types of businesses would be orange groves, nurseries, tree farms, fertilizer manufacturing, etc. This would not include any business for which the assets are properly included in Account 121 - Nonutility Property along with the associated revenue and expenses segregated out as nonutility also.

BUSINESS OR SERVICE CONDUCTED (a)	ASSETS		REVENUES		EXPENSES	
	BOOK COST OF ASSETS (b)	ACCOUNT NUMBER (c)	REVENUES GENERATED (d)	ACCOUNT NUMBER (e)	EXPENSES INCURRED (f)	ACCOUNT NUMBER (g)
NO BUSINESS WHICH ARE	\$		\$		\$	
A BYPRODUCT, COPRODUCT OR JOINT PRODUCT RESULTING FROM PROVIDING WATER AND/OR SEWER SERVICE.						

BUSINESS TRANSACTIONS WITH RELATED PARTIES

List each contract, agreement, or other business transaction exceeding a cumulative amount of \$500 in any on year, entered into between the Respondent and a business or financial organization, firm, or partnership named on pages E-2 and E-6, identifying the parties, amounts, dates and product, and asset, or service involved.

Part I. Specific Instructions: Services and Products Received or Provided

1. Enter in this part all transactions involving services and products received or provided.

2. Below are some types of transactions to include:

- | | |
|--|---|
| -management, legal and accounting services | -material and supplies furnished |
| -computer services | -leasing of structures, land, and equipment |
| -engineering & construction services | -rental transactions |
| -repairing and servicing of equipment | -sale, purchase or transfer of various products |

NAME OF COMPANY OR RELATED PARTY (a)	DESCRIPTION SERVICE AND/OR NAME OF PRODUCT (b)	CONTRACT OR AGREEMENT EFFECTIVE DATES (c)	ANNUAL CHARGES (P)urchased (S)old (d)	AMOUNT (e)
WATER SERVICE CORP	Operators Salaries & Benefits	Continuous	Purchase	151,645
	Insurance	Continuous	Purchase	13,407
	Computer Operations	Continuous	Purchase	1,119
	Supplies & Postage	Continuous	Purchase	540
	Outside Services	Continuous	Purchase	488
	Management Services	Continuous	Purchase	10,264

BUSINESS TRANSACTIONS WITH RELATED PARTIES (Cont'd)

Part II. Specific Instructions: Sale, Purchase and Transfer of Assets

1. Enter in this part all transactions relating to the purchase, sale, or transfer of assets.
 3. The columnar instructions follow:
 - (a) Enter name of related party or company.
 - (b) Describe briefly the type of assets purchased, sold or transferred.
 - (c) Enter the total received or paid. Indicate purchase with "P" and sale with "S".
 - (d) Enter the net book value for each item reported.
 - (e) Enter the net profit or loss for each item reported. (column (c) - column (d))
 - (f) Enter the fair market value for each item reported. In space below or in a supplemental schedule, describe the basis used to calculate fair market value.
2. Below are examples of some types of transactions to include:
 - purchase, sale or transfer of equipment
 - purchase, sale or transfer of land and structures
 - purchase, sale or transfer of securities
 - noncash transfers of assets
 - noncash dividends other than stock dividends
 - write-off of bad debts or loans

NAME OF COMPANY OR RELATED PARTY (a)	DESCRIPTION OF ITEMS (b)	SALE OR PURCHASE PRICE (c)	NET BOOK VALUE (d)	GAIN OR LOSS (e)	FAIR MARKET VALUE (f)
NO ASSETS WERE SOLD, PURCHASED OR		\$ _____	\$ _____	\$ _____	_____
TRANSFERRED WITH		_____	_____	_____	_____
A RELATED PARTY		_____	_____	_____	_____
DURING THE FISCAL		_____	_____	_____	_____
YEAR ENDED 31-Dec-05		_____	_____	_____	_____
_____		_____	_____	_____	_____
_____		_____	_____	_____	_____
_____		_____	_____	_____	_____
_____		_____	_____	_____	_____
_____		_____	_____	_____	_____
_____		_____	_____	_____	_____
_____		_____	_____	_____	_____

FINANCIAL SECTION

**COMPARATIVE BALANCE SHEET
ASSETS AND OTHER DEBITS**

ACCT. NO. (a)	ACCOUNT NAME (b)	REF. PAGE (c)	PREVIOUS YEAR (d)	CURRENT YEAR (e)
UTILITY PLANT				
101-106	Utility Plant	F-7	\$ 4,074,563	\$ 3,938,054
108-110	Less: Accumulated Depreciation and Amortization	F-8	1,179,730	1,202,066
Net Plant			\$ 2,894,833	\$ 2,735,988
114-115	Utility Plant Acquisition adjustment (Net)	F-7	-	-
116 *	Other Utility Plant Adjustments			
Total Net Utility Plant			\$ 2,894,833	\$ 2,735,988
OTHER PROPERTY AND INVESTMENTS				
121	Nonutility Property	F-9	\$ _____	\$ _____
122	Less: Accumulated Depreciation and Amortization			
Net Nonutility Property			\$ _____	\$ _____
123	Investment In Associated Companies	F-10	_____	_____
124	Utility Investments	F-10	_____	_____
125	Other Investments	F-10	_____	_____
126-127	Special Funds	F-10	_____	_____
Total Other Property & Investments			\$ _____	\$ _____
CURRENT AND ACCRUED ASSETS				
131	Cash		\$ (33)	\$ 15
132	Special Deposits	F-9	4,000	4,000
133	Other Special Deposits	F-9	_____	_____
134	Working Funds		_____	_____
135	Temporary Cash Investments		_____	_____
141-144	Accounts and Notes Receivable, Less Accumulated Provision for Uncollectible Accounts	F-11	76,537	78,070
145	Accounts Receivable from Associated Companies	F-12	_____	_____
146	Notes Receivable from Associated Companies	F-12	-	-
151-153	Material and Supplies		_____	_____
161	Stores Expense		_____	_____
162	Prepayments		-	-
171	Accrued Interest and Dividends Receivable		-	-
172 *	Rents Receivable		_____	_____
173 *	Accrued Utility Revenues		_____	_____
174	Misc. Current and Accrued Assets	F-12	-	-
Total Current and Accrued Assets			\$ 80,504	\$ 82,085

* Not Applicable for Class B Utilities

**COMPARATIVE BALANCE SHEET
 ASSETS AND OTHER DEBITS**

ACCT. NO. (a)	ACCOUNT NAME (b)	REF. PAGE (c)	PREVIOUS YEAR (d)	CURRENT YEAR (e)
	DEFERRED DEBITS			
181	Unamortized Debt Discount & Expense	F-13	\$ _____	\$ _____
182	Extraordinary Property Losses	F-13	_____	_____
183	Preliminary Survey & Investigation Charges		_____	_____
184	Clearing Accounts		_____	_____
185 *	Temporary Facilities		_____	_____
186	Misc. Deferred Debits	F-14	50,370	31,886
187 *	Research & Development Expenditures		_____	_____
190	Accumulated Deferred Income Taxes		8,305	9,419
			_____	_____
	Total Deferred Debits		\$ 58,675	\$ 41,305
	TOTAL ASSETS AND OTHER DEBITS		\$ 3,034,012	\$ 2,859,378

* Not Applicable for Class B Utilities

NOTES TO THE BALANCE SHEET

The space below is provided for important notes regarding the balance sheet.

**COMPARATIVE BALANCE SHEET
EQUITY CAPITAL AND LIABILITIES**

ACCT. NO. (a)	ACCOUNT NAME (b)	REF. PAGE (c)	PREVIOUS YEAR (d)	CURRENT YEAR (e)
EQUITY CAPITAL				
201	Common Stock Issued	F-15	\$ 1,000	\$ 1,000
204	Preferred Stock Issued	F-15		
202,205 *	Capital Stock Subscribed			
203,206 *	Capital Stock Liability for Conversion			
207 *	Premium on Capital Stock			
209 *	Reduction in Par or Stated Value of Capital Stock			
210 *	Gain on Resale or Cancellation of Reacquired Capital Stock			
211	Other Paid - In Capital		1,584,059	1,610,043
212	Discount On Capital Stock			
213	Capital Stock Expense			
214-215	Retained Earnings	F-16	(123,630)	(228,142)
216	Reacquired Capital Stock			
218	Proprietary Capital (Proprietorship and Partnership Only)			
Total Equity Capital			\$ 1,461,429	\$ 1,382,901
LONG TERM DEBT				
221	Bonds	F-15		
222 *	Reacquired Bonds			
223	Advances from Associated Companies	F-17		
224	Other Long Term Debt	F-17		
Total Long Term Debt			\$ -	\$ -
CURRENT AND ACCRUED LIABILITIES				
231	Accounts Payable		1,380	4,527
232	Notes Payable	F-18		
233	Accounts Payable to Associated Companies	F-18	716,435	657,556
234	Notes Payable to Associated Companies	F-18		
235	Customer Deposits		10,500	13,800
236	Accrued Taxes	W/S-3	11,789	17,028
237	Accrued Interest	F-19	405	485
238	Accrued Dividends			
239	Matured Long Term Debt			
240	Matured Interest			
241	Miscellaneous Current & Accrued Liabilities	F-20		
Total Current & Accrued Liabilities			\$ 740,509	\$ 693,396

* Not Applicable for Class B Utilities

**COMPARATIVE BALANCE SHEET
EQUITY CAPITAL AND LIABILITIES**

ACCT. NO. (a)	ACCOUNT NAME (b)	REF. PAGE (c)	PREVIOUS YEAR (d)	CURRENT YEAR (e)
DEFERRED CREDITS				
251	Unamortized Premium On Debt	F-13	\$ _____	\$ _____
252	Advances For Construction	F-20	_____	_____
253	Other Deferred Credits	F-21	_____	_____
255	Accumulated Deferred Investment Tax Credits		-	-
Total Deferred Credits			\$ <u> -</u>	\$ <u> -</u>
OPERATING RESERVES				
261	Property Insurance Reserve		\$ _____	\$ _____
262	Injuries & Damages Reserve		_____	_____
263	Pensions and Benefits Reserve		_____	_____
265	Miscellaneous Operating Reserves		_____	_____
Total Operating Reserves			\$ <u> -</u>	\$ <u> -</u>
CONTRIBUTIONS IN AID OF CONSTRUCTION				
271	Contributions in Aid of Construction	F-22	\$ <u> 977,595</u>	\$ <u> 1,003,571</u>
272	Accumulated Amortization of Contributions in Aid of Construction	F-22	184,229	244,095
Total Net C.I.A.C.			\$ <u> 793,366</u>	\$ <u> 759,476</u>
ACCUMULATED DEFERRED INCOME TAXES				
281	Accumulated Deferred Income Taxes - Accelerated Depreciation		\$ <u> 3,827</u>	\$ <u> (5,420)</u>
282	Accumulated Deferred Income Taxes - Liberalized Depreciation		_____	_____
283	Accumulated Deferred Income Taxes - Other		34,881	29,025
Total Accumulated Deferred Income Tax			\$ <u> 38,708</u>	\$ <u> 23,605</u>
TOTAL EQUITY CAPITAL AND LIABILITIES			\$ <u> 3,034,012</u>	\$ <u> 2,859,378</u>

COMPARATIVE OPERATING STATEMENT

ACCT. NO. (a)	ACCOUNT NAME (b)	REF. PAGE (c)	PREVIOUS YEAR (d)	CURRENT YEAR * (e)
UTILITY OPERATING INCOME				
400	Operating Revenues	F-3(b)	\$ 591,902	\$ 599,082
469, 530	Less: Guaranteed Revenue and AFPI	F-3(b)		
Net Operating Revenues			\$ 591,902	\$ 599,082
401	Operating Expenses	F-3(b)	\$ 349,892	\$ 395,131
403	Depreciation Expense:	F-3(b)	\$ 128,287	\$ 124,223
	Less: Amortization of CIAC	F-22	(28,106)	(31,374)
Net Depreciation Expense			\$ 100,181	\$ 92,849
406	Amortization of Utility Plant Acquisition Adjustment	F-3(b)	-	-
407	Amortization Expense (Other than CIAC)	F-3(b)	2,816	87
408	Taxes Other Than Income	W/S-3	61,831	55,573
409	Current Income Taxes	W/S-3	4,214	206
410.10	Deferred Federal Income Taxes	W/S-3	(1,290)	(13,780)
410.11	Deferred State Income Taxes	W/S-3	(1,364)	(2,371)
411.10	Provision for Deferred Income Taxes - Credit	W/S-3	-	-
412.10	Investment Tax Credits Deferred to Future Periods	W/S-3	-	-
412.11	Investment Tax Credits Restored to Operating Income	W/S-3	-	-
Utility Operating Expenses			\$ 516,280	\$ 527,695
Net Utility Operating Income			\$ 75,622	\$ 71,387
469, 530	Add Back: Guaranteed Revenue and AFPI	F-3(b)		
413	Income From Utility Plant Leased to Others			
414	Gains (losses) From Disposition of Utility Property			
420	Allowance for Funds Used During Construction		20	192
Total Utility Operating Income [Enter here and on Page F-3(c)]			\$ 75,642	\$ 71,579

* For each account, Column e should agree with Columns f, g and h on F-3(b)

COMPARATIVE OPERATING STATEMENT (Cont'd)

WATER SCHEDULE W-3 * (f)	WASTEWATER SCHEDULE S-3 * (g)	OTHER THAN REPORTING SYSTEMS (h)
\$ 245,865	\$ 353,217	\$ -
\$ 245,865	\$ 353,217	\$ -
\$ 134,677	\$ 260,454	\$ -
56,892 <u>(9,023)</u>	67,331 <u>(22,351)</u>	-
\$ 47,869	\$ 44,980	\$ -
-	-	-
-	87	-
22,994	32,579	-
(94)	300	-
6,299	(20,079)	-
1,084	(3,455)	-
-	-	-
-	-	-
-	-	-
\$ 212,829	\$ 314,866	\$ -
\$ 33,036	\$ 38,351	\$ -
-	-	-
-	-	-
-	-	-
66	126	-
\$ 33,102	\$ 38,477	\$ -

* Total of Schedules W-3 / S-3 for all rate groups.

COMPARATIVE OPERATING STATEMENT (Cont'd)

ACCT. NO. (a)	ACCOUNT NAME (b)	REF. PAGE (c)	PREVIOUS YEAR (d)	CURRENT YEAR (e)
Total Utility Operating Income [from page F-3(a)]			\$ <u>75,642</u>	\$ <u>71,579</u>
415	OTHER INCOME AND DEDUCTIONS Revenues-Merchandising, Jobbing, and Contract Deductions		\$ _____	\$ _____
416	Costs & Expenses of Merchandising Jobbing, and Contract Work		_____	_____
419	Interest and Dividend Income		<u>(2,414)</u>	<u>245</u>
421	Nonutility Income		_____	_____
426	Miscellaneous Nonutility Expenses		-	-
Total Other Income and Deductions			\$ <u>(2,414)</u>	\$ <u>245</u>
408.20	TAXES APPLICABLE TO OTHER INCOME Taxes Other Than Income		\$ _____	\$ _____
409.20	Income Taxes		_____	_____
410.20	Provision for Deferred Income Taxes		_____	_____
411.20	Provision for Deferred Income Taxes - Credit		_____	_____
412.20	Investment Tax Credits - Net		_____	_____
412.30	Investment Tax Credits Restored to Operating Income		_____	_____
Total Taxes Applicable To Other Income			\$ <u>-</u>	\$ <u>-</u>
427	INTEREST EXPENSE Interest Expense	F-19	\$ <u>77,796</u>	\$ <u>80,031</u>
428	Amortization of Debt Discount & Expense	F-13	_____	_____
429	Amortization of Premium on Debt	F-13	_____	_____
Total Interest Expense			\$ <u>77,796</u>	\$ <u>80,031</u>
433	EXTRAORDINARY ITEMS Extraordinary Income		\$ _____	\$ _____
434	Extraordinary Deductions		_____	_____
409.30	Income Taxes, Extraordinary Items		_____	_____
Total Extraordinary Items			\$ <u>-</u>	\$ <u>-</u>
NET INCOME			\$ <u>(4,568)</u>	\$ <u>(8,207)</u>

Explain Extraordinary Income:
NONE

SCHEDULE OF YEAR END RATE BASE

ACCT. NO. (a)	ACCOUNT NAME (b)	REF. PAGE (c)	WATER UTILITY (d)	WASTEWATER UTILITY (e)
101	Utility Plant In Service	F-7	\$ 1,400,108	\$ 2,337,942
	Less:			
	Nonused and Useful Plant (1)			
108	Accumulated Depreciation	F-8	456,790	744,889
110	Accumulated Amortization	F-8	41	346
271	Contributions In Aid of Construction	F-22	292,537	711,034
252	Advances for Construction	F-20		
Subtotal			\$ 650,740	\$ 881,673
272	Add: Accumulated Amortization of Contributions in Aid of Construction	F-22	77,208	166,887
Subtotal			\$ 727,948	\$ 1,048,560
114	Plus or Minus: Acquisition Adjustments (2)	F-7	-	-
115	Accumulated Amortization of Acquisition Adjustments (2)	F-7	-	-
	Working Capital Allowance (3)		16,835	32,557
	Other (Specify): _____ _____ _____		_____ _____ _____	_____ _____ _____
RATE BASE			\$ 744,783	\$ 1,081,117
NET UTILITY OPERATING INCOME			\$ 33,036	\$ 38,351
ACHIEVED RATE OF RETURN (Operating Income / Rate Base)			4.44%	3.55%

NOTES :

- (1) Estimate based on the methodology used in the last rate proceeding.
- (2) Include only those Acquisition Adjustments that have been approved by the Commission.
- (3) Calculation consistent with last rate proceeding.
In absence of a rate proceeding, Class A utilities will use the Balance Sheet Method and Class B Utilities will use the One-eighth Operating and Maintenance Expense Method.

**SCHEDULE OF CURRENT COST OF CAPITAL
CONSISTENT WITH THE METHODOLOGY USED IN THE LAST RATE PROCEEDING (1)**

CLASS OF CAPITAL (a)	DOLLAR AMOUNT (2) (b)	PERCENTAGE OF CAPITAL (c)	ACTUAL COST RATES (3) (d)	WEIGHTED COST (c x d) (e)
Common Equity	\$ 768,534	42.09%	10.93%	4.60%
Preferred Stock	-	0.00%	0.00%	0.00%
Long Term Debt	1,029,380	56.38%	6.81%	3.84%
Customer Deposits	13,800	0.76%	6.00%	0.05%
Tax Credits - Zero Cost	-	0.00%	0.00%	0.00%
Tax Credits - Weighted Cost	-	0.00%	0.00%	0.00%
Deferred Income Taxes	14,186	0.78%	0.00%	0.00%
Other (Explain) Short Term Debt	-	0.00%	0.00%	0.00%
Total	\$ <u>1,825,899</u>	<u>100.00%</u>		<u>8.49%</u>

(1) If the utility's capital structure is not used, explain which capital structure is used.

(2) Should equal amounts on Schedule F-6, Column (g).

(3) Mid-point of the last authorized Return On Equity or current leverage formula if none has been established.

Must be calculated using the same methodology used in the last rate proceeding using current annual report year end amounts and cost rates.

APPROVED RETURN ON EQUITY

Current Commission Return on Equity:	<u>10.93%</u>
Commission order approving Return on Equity:	<u>PSC-03-0647-PAA-WS</u>

APPROVED AFUDC RATE

COMPLETION ONLY REQUIRED IF AFUDC WAS CHARGED DURING YEAR

Current Commission Approved AFUDC rate:	<u>9.03%</u>
Commission order approving AFUDC rate:	<u>PSC-04-0262-PAA-WS</u>

If any utility capitalized any charge in lieu of AFUDC (such as interest only), state the basis of the charge, an explanation as to why AFUDC was not charged and the percentage capitalized.

UTILITY NAME: CYPRESS LAKES UTILITIES INC

SCHEDULE OF CAPITAL STRUCTURE ADJUSTMENTS
CONSISTENT WITH THE METHODOLOGY USED IN THE LAST RATE PROCEEDING

CLASS OF CAPITAL (a)	PER BOOK BALANCE (b)	NON-UTILITY ADJUSTMENTS (c)	NON-JURISDICTIONAL ADJUSTMENTS (d)	OTHER (1) ADJUSTMENTS SPECIFIC (e)	OTHER (1) ADJUSTMENTS PRO RATA (f)	CAPITAL STRUCTURE (g)
Common Equity	\$ 92,611,247	\$ 0	\$ 0	\$ 0	\$ (75,546,842)	\$ 768,534
Preferred Stock		0	0	0		-
Long Term Debt	124,044,203	0	0	0	(68,716,308)	1,029,380
Customer Deposits	13,800	0	0	0		13,800
Tax Credits - Zero Cost	-	0	0	0		-
Tax Credits - Weighted Cost	-	0	0	0		-
Deferred Inc. Taxes	14,186	0	0	0		14,186
Other (Explain)	-	0	0	0		-
Total	\$ 216,683,436	\$ 0	\$ 0	\$ 0	\$ (144,263,150)	\$ 1,825,899

(1) Explain below all adjustments made in Columns (e) and (f):

NOT APPLICABLE

**UTILITY PLANT
ACCOUNTS 101 - 106**

ACCT. (a)	DESCRIPTION (b)	WATER (c)	WASTEWATER (d)	OTHER THAN REPORTING SYSTEMS (e)	TOTAL (f)
101	Plant Accounts: Utility Plant In Service	\$ 1,400,108	\$ 2,337,942	\$ _____	\$ 3,738,050
102	Utility Plant Leased to Other	_____	_____	_____	-
103	Property Held for Future Use	_____	_____	_____	-
104	Utility Plant Purchased or Sold	_____	_____	_____	-
105	Construction Work in Progress	-	200,004	_____	200,004
106	Completed Construction Not Classified	_____	_____	_____	-
	Total Utility Plant	\$ 1,400,108	\$ 2,537,946	\$ -	\$ 3,938,054

**UTILITY PLANT ACQUISITION ADJUSTMENTS
ACCOUNTS 114 AND 115**

Report each acquisition adjustment and related accumulated amortization separately.
For any acquisition adjustments approved by the Commission, include the Order Number.

ACCT. (a)	DESCRIPTION (b)	WATER (c)	WASTEWATER (d)	OTHER THAN REPORTING SYSTEMS (e)	TOTAL (f)
114	Acquisition Adjustment	\$ -	\$ -	\$ -	\$ -
	NONE	_____	_____	_____	-
		-	-	_____	-
		_____	_____	_____	-
	Total Plant Acquisition Adjustments	\$ -	\$ -	\$ -	\$ -
115	Accumulated Amortization Accruals charged during year	\$ -	\$ -	\$ _____	\$ -
		_____	_____	_____	-
		_____	_____	_____	-
		_____	_____	_____	-
	Total Accumulated Amortization	\$ -	\$ -	\$ -	\$ -
	Net Acquisition Adjustments	\$ -	\$ -	\$ -	\$ -

ACCUMULATED DEPRECIATION (ACCT. 108) AND AMORTIZATION (ACCT. 110)

DESCRIPTION (a)	WATER (b)	WASTEWATER (c)	OTHER THAN REPORTING SYSTEMS (d)	TOTAL (e)
ACCUMULATED DEPRECIATION				
Account 108				
Balance first of year	\$ 427,984	\$ 735,292	\$ -	\$ 1,163,276
Credit during year:				
Accruals charged to:				
Account 108.1 (1)	\$ 56,892	\$ 67,331	\$ -	\$ 124,223
Account 108.2 (2)	-	-	-	-
Account 108.3 (2)	-	-	-	-
Other Accounts (specify):	-	-	-	-
alloc from parent company uif	(4,751)	(41,944)	-	(46,695)
Salvage	-	-	-	-
Other Credits (Specify):	-	-	-	-
Total Credits	\$ 52,141	\$ 25,387	\$ -	\$ 77,528
Debits during year:				
Book cost of plant retired	23,335	15,790	-	39,125
Cost of Removal	-	-	-	-
Other Debits (specify):	-	-	-	-
Total Debits	\$ 23,335	\$ 15,790	\$ -	\$ 39,125
Balance end of year	<u>\$ 456,790</u>	<u>\$ 744,889</u>	<u>\$ -</u>	<u>\$ 1,201,679</u>
ACCUMULATED AMORTIZATION				
Account 110				
Balance first of year	\$ 11,959	\$ 4,495	\$ -	\$ 16,454
Credit during year:				
Accruals charged to:				
Account 110.2 (2)	\$ -	\$ 87	\$ -	\$ 87
Other Accounts (specify):	-	-	-	-
Total credits	\$ -	\$ 87	\$ -	\$ 87
Debits during year:				
Book cost of plant retired	-	-	-	-
Other debits (specify):	-	-	-	-
Acting adjustments mandated by FPSC	11,918	4,236	-	16,154
Total Debits	\$ 11,918	\$ 4,236	\$ -	\$ 16,154
Balance end of year	<u>\$ 41</u>	<u>\$ 346</u>	<u>\$ -</u>	<u>\$ 387</u>

- (1) Account 108 for Class B utilities.
- (2) Not applicable for Class B utilities.
- (3) Account 110 for Class B utilities.

UTILITY NAME: CYPRESS LAKES UTILITIES INC

YEAR OF REPORT 31-Dec-05

**REGULATORY COMMISSION EXPENSE
AMORTIZATION OF RATE CASE EXPENSE (ACCOUNTS 666 AND 766)**

DESCRIPTION OF CASE (DOCKET NO.) (a)	EXPENSE INCURRED DURING YEAR (b)	CHARGED OFF DURING YEAR	
		ACCT. (d)	AMOUNT (e)
NONE	\$ _____	_____	\$ _____
_____	_____	_____	_____
_____	_____	_____	_____
Total	\$ _____	_____	\$ _____

NONUTILITY PROPERTY (ACCOUNT 121)

Report separately each item of property with a book cost of \$25,000 or more included in Account 121.

Other Items may be grouped by classes of property.

DESCRIPTION (a)	BEGINNING YEAR (b)	ADDITIONS (c)	REDUCTIONS (d)	ENDING YEAR BALANCE (e)
NONE	\$ _____	\$ _____	\$ _____	\$ _____
_____	_____	_____	_____	_____
_____	_____	_____	_____	_____
Total Nonutility Property	\$ _____	\$ _____	\$ _____	\$ _____

SPECIAL DEPOSITS (ACCOUNTS 132 AND 133)

Report hereunder all special deposits carried in Accounts 132 and 133.

DESCRIPTION OF SPECIAL DEPOSITS (a)	YEAR END BOOK COST (b)
SPECIAL DEPOSITS (Account 132): City of Lakeland Deposit	\$ 4,000
_____	_____
_____	_____
Total Special Deposits	\$ 4,000
OTHER SPECIAL DEPOSITS (Account 133): NONE	\$ _____
_____	_____
_____	_____
Total Other Special Deposits	\$ -

**INVESTMENTS AND SPECIAL FUNDS
ACCOUNTS 123 - 127**

Report hereunder all investments and special funds carried in Accounts 123 through 127.

DESCRIPTION OF SECURITY OR SPECIAL FUND (a)	FACE OR PAR VALUE (b)	YEAR END BOOK COST (c)
INVESTMENT IN ASSOCIATED COMPANIES (Account 123): NONE <hr/> <hr/> <hr/> <hr/> <hr/> <hr/>	\$ _____ _____ _____ _____ _____ _____	\$ _____ _____ _____ _____ _____ _____
Total Investment in Associated Companies		\$ _____
UTILITY INVESTMENTS (Account 124): NONE <hr/> <hr/> <hr/> <hr/> <hr/> <hr/>	\$ _____ _____ _____ _____ _____ _____	\$ _____ _____ _____ _____ _____ _____
Total Utility Investment		\$ _____
OTHER INVESTMENTS (Account 125): NONE <hr/> <hr/> <hr/> <hr/> <hr/> <hr/>	\$ _____ _____ _____ _____ _____ _____	\$ _____ _____ _____ _____ _____ _____
Total Other Investment		\$ _____
SPECIAL FUNDS (Class A Utilities: Accounts 126 and 127; Class B Utilities: Account 127): NONE <hr/> <hr/> <hr/> <hr/> <hr/> <hr/>	_____ _____ _____ _____ _____ _____	\$ _____ _____ _____ _____ _____ _____
Total Special Funds		\$ _____

ACCOUNTS AND NOTES RECEIVABLE - NET
ACCOUNTS 141 - 144

Report hereunder all accounts and notes receivable included in Accounts 141, 142, and 144. Amounts included in
Amounts included in Accounts 142 and 144 should be listed individually.

DESCRIPTION (a)	TOTAL (b)
CUSTOMER ACCOUNTS RECEIVABLE (Account 141):	
Water	\$ 39,597
Wastewater	38,473
Other	_____
Total Customer Accounts Receivable	\$ 78,070
OTHER ACCOUNTS RECEIVABLE (Account 142):	
_____	\$ _____
_____	_____
_____	_____
Total Other Accounts Receivable	\$ -
NOTES RECEIVABLE (Account 144):	
_____	\$ _____
_____	_____
_____	_____
Total Notes Receivable	\$ -
Total Accounts and Notes Receivable	\$ 78,070
ACCUMULATED PROVISION FOR UNCOLLECTIBLE ACCOUNTS (Account 143)	
Balance first of year	\$ -
Add: Provision for uncollectibles for current year	\$ _____
Collection of accounts previously written off	_____
Utility Accounts	_____
Others	_____
_____	_____
_____	_____
Total Additions	\$ -
Deduct accounts written off during year:	
Utility Accounts	_____
Others	_____
_____	_____
_____	_____
Total accounts written off	\$ -
Balance end of year	\$ _____
TOTAL ACCOUNTS AND NOTES RECEIVABLE - NET	\$ <u>78,070</u>

UTILITY NAME: CYPRESS LAKES UTILITIES INC

YEAR OF REPORT 31-Dec-05

ACCOUNTS RECEIVABLE FROM ASSOCIATED COMPANIES
ACCOUNT 145

Report each account receivable from associated companies separately.

DESCRIPTION (a)	TOTAL (b)
NONE	\$ _____
_____	_____
_____	_____
_____	_____
_____	_____
_____	_____
_____	_____
_____	_____
_____	_____
_____	_____
Total	\$ _____

NOTES RECEIVABLE FROM ASSOCIATED COMPANIES
ACCOUNT 146

Report each note receivable from associated companies separately.

DESCRIPTION (a)	INTEREST RATE (b)	TOTAL (c)
NONE	_____ %	\$ _____
_____	_____ %	_____
_____	_____ %	_____
_____	_____ %	_____
_____	_____ %	_____
_____	_____ %	_____
_____	_____ %	_____
_____	_____ %	_____
_____	_____ %	_____
_____	_____ %	_____
Total		\$ _____

MISCELLANEOUS CURRENT AND ACCRUED ASSETS
ACCOUNT 174

DESCRIPTION - Provide itemized listing (a)	BALANCE END OF YEAR (b)
NONE	\$ _____
_____	_____
_____	_____
_____	_____
Total Miscellaneous Current and Accrued Liabilities	\$ _____

UTILITY NAME: CYPRESS LAKES UTILITIES INC

YEAR OF REPORT 31-Dec-05

**UNAMORTIZED DEBT DISCOUNT AND EXPENSE AND PREMIUM ON DEBT
ACCOUNTS 181 AND 251**

Report the net discount and expense or premium separately for each security issue.

DESCRIPTION (a)	AMOUNT WRITTEN OFF DURING YEAR (b)	YEAR END BALANCE (c)
UNAMORTIZED DEBT DISCOUNT AND EXPENSE (Account 181): NONE	\$ _____	\$ _____
_____	_____	_____
_____	_____	_____
_____	_____	_____
Total Unamortized Debt Discount and Expense	\$ _____	\$ _____
UNAMORTIZED PREMIUM ON DEBT (Account 251):	\$ _____	\$ _____
_____	_____	_____
_____	_____	_____
_____	_____	_____
Total Unamortized Premium on Debt	\$ _____	\$ _____

**EXTRAORDINARY PROPERTY LOSSES
ACCOUNT 182**

Report each item separately.

DESCRIPTION (a)	TOTAL (b)
NONE	\$ _____
_____	_____
_____	_____
Total Extraordinary Property Losses	\$ _____

**MISCELLANEOUS DEFERRED DEBITS
ACCOUNT 186**

DESCRIPTION - Provide itemized listing (a)	AMOUNT WRITTEN OFF DURING YEAR (b)	YEAR END BALANCE (c)
DEFERRED RATE CASE EXPENSE (Class A Utilities: Account 186.1)		
<u>RATE CASE</u>	\$ -	\$ 30,870
_____	_____	_____
_____	_____	_____
_____	_____	_____
_____	_____	_____
Total Deferred Rate Case Expense	\$ -	\$ 30,870
OTHER DEFERRED DEBITS (Class A Utilities: Account 186.2):		
<u>OTHER DEFERRED MAINTENANCE</u>	\$ -	\$ 1,016
_____	_____	_____
_____	_____	_____
_____	_____	_____
_____	_____	_____
_____	_____	_____
_____	_____	_____
_____	_____	_____
_____	_____	_____
Total Other Deferred Debits	\$ -	\$ 1,016
REGULATORY ASSETS (Class A Utilities: Account. 186.3):		
<u>NONE</u>	\$ -	\$ -
_____	_____	_____
_____	_____	_____
_____	_____	_____
_____	_____	_____
_____	_____	_____
_____	_____	_____
_____	_____	_____
Total Regulatory Assets	\$ -	\$ -
TOTAL MISCELLANEOUS DEFERRED DEBITS	\$ -	\$ 31,886

**CAPITAL STOCK
ACCOUNTS 201 AND 204***

DESCRIPTION (a)	RATE (b)	TOTAL (c)
COMMON STOCK		
Par or stated value per share	_____ %	\$ _____ 1
Shares authorized		_____ -
Shares issued and outstanding		_____ 1,000
Total par value of stock issued	_____ %	\$ _____ 1,000
Dividends declared per share for year	_____ %	\$ _____ -
PREFERRED STOCK		
Par or stated value per share	_____ %	\$ _____ -
Shares authorized		_____ -
Shares issued and outstanding		_____ -
Total par value of stock issued	_____ %	\$ _____ -
Dividends declared per share for year	_____ %	\$ _____ -

* Account 204 not applicable for Class B utilities.

**BONDS
ACCOUNT 221**

DESCRIPTION OF OBLIGATION (INCLUDING DATE OF ISSUE AND DATE OF MATURITY) (a)	INTEREST		PRINCIPAL AMOUNT PER BALANCE SHEET (d)
	ANNUAL RATE (b)	FIXED OR VARIABLE * (c)	
NONE	_____ %	_____	\$ _____
_____	_____ %	_____	_____
_____	_____ %	_____	_____
_____	_____ %	_____	_____
_____	_____ %	_____	_____
_____	_____ %	_____	_____
_____	_____ %	_____	_____
_____	_____ %	_____	_____
_____	_____ %	_____	_____
_____	_____ %	_____	_____
Total			\$ _____

* For variable rate obligations, provide the basis for the rate. (i.e.. prime + 2%, etc.)

STATEMENT OF RETAINED EARNINGS

1. Dividends should be shown for each class and series of capital stock. Show amounts as dividends per share.
2. Show separately the state and federal income tax effect of items shown in Account No. 439.

ACCT. NO. (a)	DESCRIPTION (b)	AMOUNTS (c)
215	Unappropriated Retained Earnings: Balance Beginning of Year	\$ (123,630)
439	Changes to Account: Adjustments to Retained Earnings (requires Commission approval prior to use): Credits: <u>Accting adjustments mandated by FPSC</u>	\$ _____ <u>(96,305)</u>
	Total Credits:	\$ (96,305)
	Debits: _____	\$ _____
	Total Debits:	\$ _____
435	Balance Transferred from Income	\$ (8,207)
436	Appropriations of Retained Earnings: _____	_____
	Total Appropriations of Retained Earnings	\$ _____
437	Dividends Declared: Preferred Stock Dividends Declared _____	_____
438	Common Stock Dividends Declared _____	_____
	Total Dividends Declared	\$ _____
215	Year end Balance	\$ _____
214	Appropriated Retained Earnings (state balance and purpose of each appropriated amount at year end): _____	_____
	Total Appropriated Retained Earnings	\$ _____
Total Retained Earnings		\$ <u>(228,142)</u>
Notes to Statement of Retained Earnings:		

UTILITY NAME: CYPRESS LAKES UTILITIES INC

YEAR OF REPORT 31-Dec-05

**ADVANCES FROM ASSOCIATED COMPANIES
ACCOUNT 223**

Report each advance separately.

DESCRIPTION (a)	TOTAL (b)
NONE	\$ -
Total	\$ -

**OTHER LONG-TERM DEBT
ACCOUNT 224**

DESCRIPTION OF OBLIGATION (INCLUDING DATE OF ISSUE AND DATE OF MATURITY) (a)	INTEREST		PRINCIPAL AMOUNT PER BALANCE SHEET (d)
	ANNUAL RATE (b)	FIXED OR VARIABLE * (c)	
NONE	%		\$
	%		
	%		
	%		
	%		
	%		
	%		
	%		
	%		
	%		
	%		
	%		
	%		
	%		
	%		
	%		
	%		
	%		
	%		
	%		
	%		
	%		
Total			\$

* For variable rate obligations, provide the basis for the rate. (i.e.. prime + 2%, etc.)

UTILITY NAME: CYPRESS LAKES UTILITIES INC

YEAR OF REPORT 31-Dec-05

**NOTES PAYABLE
ACCOUNTS 232 AND 234**

DESCRIPTION OF OBLIGATION (INCLUDING DATE OF ISSUE AND DATE OF MATURITY) (a)	INTEREST		PRINCIPAL AMOUNT PER BALANCE SHEET (d)
	ANNUAL RATE (b)	FIXED OR VARIABLE * (c)	
NOTES PAYABLE (Account 232): NONE			\$ _____
_____	_____ %	_____	_____
_____	_____ %	_____	_____
_____	_____ %	_____	_____
_____	_____ %	_____	_____
_____	_____ %	_____	_____
_____	_____ %	_____	_____
_____	_____ %	_____	_____
_____	_____ %	_____	_____
_____	_____ %	_____	_____
Total Account 232			\$ _____
NOTES PAYABLE TO ASSOC. COMPANIES (Account 234): NONE			\$ _____
_____	_____ %	_____	_____
_____	_____ %	_____	_____
_____	_____ %	_____	_____
_____	_____ %	_____	_____
_____	_____ %	_____	_____
_____	_____ %	_____	_____
_____	_____ %	_____	_____
_____	_____ %	_____	_____
_____	_____ %	_____	_____
Total Account 234			\$ _____

* For variable rate obligations, provide the basis for the rate. (i.e.. prime + 2%, etc.)

**ACCOUNTS PAYABLE TO ASSOCIATED COMPANIES
ACCOUNT 233**

Report each account payable separately.

DESCRIPTION (a)	TOTAL (b)
WATER SERVICE CORPORATION	\$ (657,556)
_____	_____
_____	_____
_____	_____
_____	_____
_____	_____
_____	_____
Total	\$ (657,556)

UTILITY NAME: CYPRESS LAKES UTILITIES INC

**ACCRUED INTEREST AND EXPENSE
ACCOUNTS 237 AND 427**

DESCRIPTION OF DEBIT (a)	BALANCE BEGINNING OF YEAR (b)	INTEREST ACCRUED DURING YEAR		INTEREST PAID DURING YEAR (e)	BALANCE END OF YEAR (f)
		ACCT. DEBIT (c)	AMOUNT (d)		
ACCOUNT NO. 237.1 - Accrued Interest on Long Term Debt	\$ _____		\$ _____	\$ _____	\$ _____
UTILITIES INC INTERCOMPANY INTEREST	_____		80,031	80,031	_____
	_____		_____	_____	_____
	_____		_____	_____	_____
Total Account 237.1	\$ _____		\$ 80,031	\$ 80,031	\$ _____
ACCOUNT NO. 237.2 - Accrued Interest on Other Liabilities	\$ _____			\$ _____	\$ _____
Customer Deposits	_____	427		_____	_____
MISC ITEMS	(405)		(80)	_____	(485)
	_____		_____	_____	_____
Total Account 237.2	\$ _____		\$ (80)	\$ _____	\$ (485)
Total Account 237 (1)	\$ _____		\$ 79,951	\$ 80,031	\$ (485)
INTEREST EXPENSED:					
Total accrual Account 237		237	80,031		
Less Capitalized Interest Portion of AFUDC:			-		

Net Interest Expensed to Account No. 427 (2)			\$ 80,031		

(1) Must agree to F-2 (a), Beginning and Ending Balance of Accrued Interest.
(2) Must agree to F-3 (c), Current Year Interest Expense

MISCELLANEOUS CURRENT AND ACCRUED LIABILITIES
ACCOUNT 241

DESCRIPTION - Provide itemized listing (a)	BALANCE END OF YEAR (b)
NONE _____ _____ _____ _____	\$ _____ _____ _____ _____
Total Miscellaneous Current and Accrued Liabilities	\$ _____ _____

ADVANCES FOR CONSTRUCTION
ACCOUNT 252

NAME OF PAYOR * (a)	BALANCE BEGINNING OF YEAR (b)	DEBITS		CREDITS (e)	BALANCE END OF YEAR (f)
		ACCT. DEBIT (c)	AMOUNT (d)		
NONE _____ _____ _____ _____ _____ _____ _____ _____ _____ _____	\$ _____ _____ _____ _____ _____ _____ _____ _____ _____ _____		\$ _____ _____ _____ _____ _____ _____ _____ _____ _____ _____	\$ _____ _____ _____ _____ _____ _____ _____ _____ _____ _____	\$ _____ _____ _____ _____ _____ _____ _____ _____ _____ _____
Total	\$ _____ _____		\$ _____ _____	\$ _____ _____	\$ _____ _____

* Report advances separately by reporting group, designating water or wastewater in column (a).

UTILITY NAME: CYPRESS LAKES UTILITIES INC

YEAR OF REPORT 31-Dec-05

**OTHER DEFERRED CREDITS
ACCOUNT 253**

DESCRIPTION - Provide itemized listing (a)	AMOUNT WRITTEN OFF DURING YEAR (b)	YEAR END BALANCE (c)
REGULATORY LIABILITIES (Class A Utilities: Account 253.1): NONE _____ _____ _____ _____	\$ _____ _____ _____ _____	\$ _____ _____ _____ _____
Total Regulatory Liabilities	\$ _____	\$ _____
OTHER DEFERRED LIABILITIES (Class A Utilities: Account 253.2): _____ _____ _____ _____ _____ _____ _____	\$ _____ _____ _____ _____ _____ _____ _____	\$ _____ _____ _____ _____ _____ _____ _____
Total Other Deferred Liabilities	\$ _____	\$ _____
TOTAL OTHER DEFERRED CREDITS	\$ _____	\$ _____

**CONTRIBUTIONS IN AID OF CONSTRUCTION
ACCOUNT 271**

DESCRIPTION (a)	WATER (W-7) (b)	WASTEWATER (S-7) (c)	W & WW OTHER THAN SYSTEM REPORTING (d)	TOTAL (e)
Balance first of year	\$ <u>266,561</u>	\$ <u>711,034</u>	\$ <u>-</u>	\$ <u>977,595</u>
Add credits during year:	\$ <u>25,976</u>	\$ <u>-</u>	\$ <u>-</u>	\$ <u>25,976</u>
Less debit charged during the year	\$ <u>-</u>	\$ <u>-</u>	\$ <u>-</u>	\$ <u>-</u>
Total Contribution In Aid of Construction	\$ <u><u>292,537</u></u>	\$ <u><u>711,034</u></u>	\$ <u><u>-</u></u>	\$ <u><u>1,003,571</u></u>

**ACCUMULATED AMORTIZATION OF CONTRIBUTIONS IN AID OF CONSTRUCTION
ACCOUNT 272**

DESCRIPTION (a)	WATER (W-8(a)) (b)	WASTEWATER (S-8(a)) (c)	W & WW OTHER THAN SYSTEM REPORTING (d)	TOTAL (e)
Balance first of year	\$ <u>55,963</u>	\$ <u>128,266</u>	\$ <u>-</u>	\$ <u>184,229</u>
Debits during the year:	\$ <u>21,245</u>	\$ <u>38,621</u>	\$ <u>-</u>	\$ <u>59,866</u>
Credits during the year	\$ <u>-</u>	\$ <u>-</u>	\$ <u>-</u>	\$ <u>-</u>
Total Accumulated Amortization of Contributions In Aid of Construction	\$ <u><u>77,208</u></u>	\$ <u><u>166,887</u></u>	\$ <u><u>-</u></u>	\$ <u><u>244,095</u></u>

RECONCILIATION OF REPORTED NET INCOME WITH TAXABLE INCOME FOR FEDERAL INCOME TAXES (UTILITY OPERATIONS)

- The reconciliation should include the same detail as furnished on Schedule M-1 of the federal tax return for the year. The reconciliation shall be submitted even though there is no taxable income for the year. Descriptions should clearly indicate the nature of each reconciling amount and show the computations of all tax accruals.
- If the utility is a member of a group which files a consolidated federal tax return, reconcile reported net income with taxable net income as if a separate return were to be filed, indicating intercompany amounts to be eliminated in such consolidated return. State names of group members, tax assigned to each group member, and basis of allocation, assignments or sharing of the consolidated tax among the group members.

DESCRIPTION (a)	REF. NO. (b)	AMOUNT (c)
Net income for the year	F-3(c)	\$ (8,207)
Reconciling items for the year:		
Taxable income not reported on books:		
_____		_____
_____		_____
_____		_____
Deductions recorded on books not deducted for return:		
Net Change - Deferred Maintenance		612
Net Change - Rate Case		17,614
Excess Tax Depreciation over Book Depreciation		24,868
Current FIT		176
Deferred FIT		(13,780)
Deferred SIT		(2,371)
Income recorded on books not included in return:		
Interest During Construction		(192)
_____		_____
_____		_____
Deduction on return not charged against book income:		
Accting adjustments mandated by FPSC		(18,202)
_____		_____
_____		_____
_____		_____
Federal tax net income		\$ <u>518</u>

Computation of tax :	518 <u>34%</u> 176
----------------------	--------------------------

**WATER
OPERATION
SECTION**

UTILITY NAME: CYPRESS LAKES UTILITIES INC

YEAR OF REPORT 31-Dec-05

SYSTEM NAME / COUNTY : Polk County

SCHEDULE OF YEAR END WATER RATE BASE

ACCT. NO. (a)	ACCOUNT NAME (b)	REFERENCE PAGE (c)	WATER UTILITY (d)
101	Utility Plant In Service	W-4(b)	\$ 1,400,108
	Less:		
	Nonused and Useful Plant (1)		
108	Accumulated Depreciation	W-6(b)	456,790
110	Accumulated Amortization	F-8	41
271	Contributions In Aid of Construction	W-7	292,537
252	Advances for Construction	F-20	-
Subtotal			\$ 650,740
272	Add: Accumulated Amortization of Contributions in Aid of Construction	W-8(a)	\$ 77,208
Subtotal			\$ 727,948
114	Plus or Minus: Acquisition Adjustments (2)	F-7	-
115	Accumulated Amortization of Acquisition Adjustments (2)	F-7	-
	Working Capital Allowance (3)		16,835
	Other (Specify):		
WATER RATE BASE			\$ 744,783
WATER OPERATING INCOME		W-3	\$ 33,036
TRN (Water Operating Income / Water Rate Base)			4.44%

NOTES : (1) Estimate based on the methodology used in the last rate proceeding.

(2) Include only those Acquisition Adjustments that have been approved by the Commission.

(3) Calculation consistent with last rate proceeding.

In absence of a rate proceeding, Class A utilities will use the Balance Sheet Method and Class B Utilities will use the One-eighth Operating and Maintenance Expense Method.

UTILITY NAME: CYPRESS LAKES UTILITIES INC

YEAR OF REPORT 31-Dec-05

SYSTEM NAME / COUNTY : Polk County

WATER OPERATING STATEMENT

ACCT. NO. (a)	ACCOUNT NAME (b)	REFERENCE PAGE (c)	CURRENT YEAR (d)
	UTILITY OPERATING INCOME		
400	Operating Revenues	W-9	\$ 245,865
469	Less: Guaranteed Revenue and AFPI	W-9	
	Net Operating Revenues		\$ _____
401	Operating Expenses	W-10(a)	\$ 134,677
403	Depreciation Expense	W-6(a)	56,892
	Less: Amortization of CIAC	W-8(a)	(9,023)
	Net Depreciation Expense		\$ 47,869
406	Amortization of Utility Plant Acquisition Adjustment	F-7	-
407	Amortization Expense (Other than CIAC)	F-8	-
408.10	Taxes Other Than Income Utility Regulatory Assessment Fee		10,928
408.11	Property Taxes		6,219
408.12	Payroll Taxes		5,847
408.13	Other Taxes and Licenses		-
408	Total Taxes Other Than Income		\$ 22,994
409.1	Income Taxes		(94)
410.10	Deferred Federal Income Taxes		6,299
410.11	Deferred State Income Taxes		1,084
411.10	Provision for Deferred Income Taxes - Credit		-
412.10	Investment Tax Credits Deferred to Future Periods		-
412.11	Investment Tax Credits Restored to Operating Income		-
	Utility Operating Expenses		\$ 212,829
	Utility Operating Income		\$ 33,036
469	Add Back: Guaranteed Revenue (and AFPI)	W-9	\$ _____
413	Income From Utility Plant Leased to Others		_____
414	Gains (losses) From Disposition of Utility Property		_____
420	Allowance for Funds Used During Construction		66
	Total Utility Operating Income		\$ 33,102

UTILITY NAME: CYPRESS LAKES UTILITIES INC

SYSTEM NAME / COUNTY Polk County

WATER UTILITY PLANT ACCOUNTS

ACCT. NO. (a)	ACCOUNT NAME (b)	PREVIOUS YEAR (c)	ADDITIONS (d)	RETIREMENTS (e)	CURRENT YEAR (f)
301	Organization	\$ 46,507	\$ (46,507)	\$ -	\$ -
302	Franchises	34,044	(34,044)	-	-
303	Land and Land Rights	509	-	-	509
304	Structures and Improvements	66,925	-	-	66,925
305	Collecting and Impounding Reservoirs	-	-	-	-
306	Lake, River and Other Intakes	-	-	-	-
307	Wells and Springs	58,409	86	-	58,495
308	Infiltration Galleries and Tunnels	-	-	-	-
309	Supply Mains	-	-	-	-
310	Power Generation Equipment	-	-	-	-
311	Pumping Equipment	160,430	5,505	1,483	164,452
320	Water Treatment Equipment	14,058	464	-	14,522
330	Distribution Reservoirs and Standpipes	84,061	134	-	84,195
331	Transmission and Distribution Mains	454,103	5,925	2,309	457,719
333	Services	224,407	8,234	-	232,641
334	Meters and Meter Installations	134,265	4,825	2,187	136,903
335	Hydrants	71,349	9,121	-	80,470
336	Backflow Prevention Devices	-	-	-	-
339	Other Plant Miscellaneous Equipment	-	-	-	-
340	Office Furniture and Equipment	932	-	-	932
341	Transportation Equipment	54,793	-	17,356	37,437
342	Stores Equipment	-	-	-	-
343	Tools, Shop and Garage Equipment	30,829	(5,022)	-	25,807
344	Laboratory Equipment	6,088	(303)	-	5,785
345	Power Operated Equipment	-	-	-	-
346	Communication Equipment	-	-	-	-
347	Miscellaneous Equipment	-	-	-	-
348	Other Tangible Plant	34,517	(1,201)	-	33,316
TOTAL WATER PLANT		\$ 1,476,226	\$ (52,783)	\$ 23,335	\$ 1,400,108

NOTE: Any adjustments made to reclassify property from one account to another must be footnoted. Accounting adjustments mandated by FPSC

UTILITY NAME: CYPRESS LAKES UTILITIES INC

SYSTEM NAME / COUNTY Polk County

WATER UTILITY PLANT MATRIX

ACCT. NO.	ACCOUNT NAME (b)	CURRENT YEAR (c)	.1 INTANGIBLE PLANT (d)	.2 SOURCE OF SUPPLY AND PUMPING PLANT (e)	.3 WATER TREATMENT PLANT (f)	.4 TRANSMISSION AND DISTRIBUTION PLANT (g)	.5 GENERAL PLANT (h)
301	Organization	\$ -	\$ -	\$ -	\$ -	\$ -	\$ -
302	Franchises	-	-	-	-	-	-
303	Land and Land Rights	509	-	509	-	-	-
304	Structures and Improvements	66,925	-	66,925	-	-	-
305	Collecting and Impounding Reservoirs	-	-	-	-	-	-
306	Lake, River and Other Intakes	-	-	-	-	-	-
307	Wells and Springs	58,495	-	58,495	-	-	-
308	Infiltration Galleries and Tunnels	-	-	-	-	-	-
309	Supply Mains	-	-	-	-	-	-
310	Power Generation Equipment	-	-	-	-	-	-
311	Pumping Equipment	164,452	-	164,452	14,522	-	-
320	Water Treatment Equipment	14,522	-	-	14,522	84,195	-
330	Distribution Reservoirs and Standpipes	84,195	-	-	-	457,719	-
331	Transmission and Distribution Mains	457,719	-	-	-	232,641	-
333	Services	232,641	-	-	-	136,903	-
334	Meters and Meter Installations	136,903	-	-	-	80,470	-
335	Hydrants	80,470	-	-	-	-	-
336	Backflow Prevention Devices	-	-	-	-	-	-
339	Other Plant Miscellaneous Equipment	-	-	-	-	-	-
340	Office Furniture and Equipment	932	-	-	-	-	932
341	Transportation Equipment	37,437	-	-	-	-	37,437
342	Stores Equipment	-	-	-	-	-	-
343	Tools, Shop and Garage Equipment	25,807	-	-	-	-	25,807
344	Laboratory Equipment	5,785	-	-	-	-	5,785
345	Power Operated Equipment	-	-	-	-	-	-
346	Communication Equipment	-	-	-	-	-	-
347	Miscellaneous Equipment	-	-	-	-	-	-
348	Other Tangible Plant	33,316	-	-	-	-	33,316
TOTAL WATER PLANT		\$ 1,400,108	\$ -	\$ 290,381	\$ 14,522	\$ 991,928	\$ 103,277

W-4(b)
GROUP _____

UTILITY NAME: CYPRESS LAKES UTILITIES INC

YEAR OF REPORT 31-Dec-05

SYSTEM NAME / COUNTY : Polk County

BASIS FOR WATER DEPRECIATION CHARGES

ACCT. NO. (a)	ACCOUNT NAME (b)	AVERAGE SERVICE LIFE IN YEARS (c)	AVERAGE NET SALVAGE IN PERCENT (d)	DEPRECIATION RATE APPLIED IN PERCENT (100% - d) / c (e)
304	Structures and Improvements			3.03%
305	Collecting and Impounding Reservoirs			
306	Lake, River and Other Intakes			
307	Wells and Springs			3.33%
308	Infiltration Galleries and Tunnels			
309	Supply Mains			
310	Power Generation Equipment			
311	Pumping Equipment			5.00%
320	Water Treatment Equipment			4.55%
330	Distribution Reservoirs and Standpipes			2.70%
331	Transmission and Distribution Mains			2.33%
333	Services			2.50%
334	Meters and Meter Installations			5.00%
335	Hydrants			2.22%
336	Backflow Prevention Devices			
339	Other Plant Miscellaneous Equipment			
340	Office Furniture and Equipment			6.67%
341	Transportation Equipment			16.67%
342	Stores Equipment			
343	Tools, Shop and Garage Equipment			6.25%
344	Laboratory Equipment			6.67%
345	Power Operated Equipment			
346	Communication Equipment			
347	Miscellaneous Equipment			
348	Other Tangible Plant			10.00%
Water Plant Composite Depreciation Rate *				

* If depreciation rates prescribed by this Commission are on a total composite basis, entries should be made on this line only.

YEAR OF REPORT
31-Dec-05

UTILITY NAME: CYPRESS LAKES UTILITIES INC

SYSTEM NAME / COUNTY : Polk County

ANALYSIS OF ENTRIES IN WATER ACCUMULATED DEPRECIATION					
ACCT. NO. (a)	ACCOUNT NAME (b)	BALANCE AT BEGINNING OF YEAR (c)	ACCRUALS (d)	OTHER CREDITS * (e)	TOTAL CREDITS (d + e) (f)
304	Structures and Improvements	\$ 28,739	\$ 2,095	-	\$ 2,095
305	Collecting and Impounding Reservoirs			-	-
306	Lake, River and Other Intakes			-	-
307	Wells and Springs	24,218	1,945	-	1,945
308	Infiltration Galleries and Tunnels			-	-
309	Supply Mains			-	-
310	Power Generation Equipment			-	-
311	Pumping Equipment	69,812	7,982	(110)	7,872
320	Water Treatment Equipment	5,267	639	-	639
330	Distribution Reservoirs and Standpipes	20,721	2,270	-	2,270
331	Transmission and Distribution Mains	126,316	10,581	-	10,581
333	Services	52,673	5,625	-	5,625
334	Meters and Meter Installations	36,331	6,712	-	6,712
335	Hydrants	19,608	1,685	-	1,685
336	Backflow Prevention Devices			-	-
339	Other Plant Miscellaneous Equipment			-	-
340	Office Furniture and Equipment			-	-
341	Transportation Equipment	-	-	-	-
342	Stores Equipment	24,843	11,981	-	11,981
343	Tools, Shop and Garage Equipment			-	-
344	Laboratory Equipment	7,671	1,839	(2,089)	(250)
345	Power Operated Equipment	1,963	390	(94)	296
346	Communication Equipment			-	-
347	Miscellaneous Equipment			-	-
348	Other Tangible Plant	9,822	3,148	(2,458)	690
TOTAL WATER ACCUMULATED DEPRECIATION		\$ 427,984	\$ 56,892	\$ (4,751)	\$ 52,141

Acting adjustments mandated by FPSC
OTHER CREDITS column (E) * are due to allocation of UIF plant

* Specify nature of transaction
Use () to denote reversal entries.

W-6(a)
GROUP _____

YEAR OF REPORT
31-Dec-05

UTILITY NAME: CYPRESS LAKES UTILITIES INC

SYSTEM NAME / COUNTY : Polk County

ANALYSIS OF ENTRIES IN WATER ACCUMULATED DEPRECIATION (CONT'D)

ACCT. NO.	ACCOUNT NAME (b)	PLANT RETIRED (g)	SALVAGE AND INSURANCE (h)	COST OF REMOVAL AND OTHER CHARGES (i)	TOTAL CHARGES (g-h+i) (j)	BALANCE AT END OF YEAR (c-f+k) (l)
304	Structures and Improvements	\$ -	\$ -	\$ -	\$ -	\$ 30,834
305	Collecting and Impounding Reservoirs	-	-	-	-	-
306	Lake, River and Other Intakes	-	-	-	-	-
307	Wells and Springs	-	-	-	-	26,163
308	Infiltration Galleries and Tunnels	-	-	-	-	-
309	Supply Mains	-	-	-	-	-
310	Power Generation Equipment	-	-	-	-	-
311	Pumping Equipment	1,483	-	-	1,483	76,201
320	Water Treatment Equipment	-	-	-	-	5,906
330	Distribution Reservoirs and Standpipes	-	-	-	-	22,991
331	Transmission and Distribution Mains	2,309	-	-	2,309	134,588
333	Services	-	-	-	-	58,298
334	Meters and Meter Installations	2,187	-	-	2,187	40,856
335	Hydrants	-	-	-	-	21,293
336	Backflow Prevention Devices	-	-	-	-	-
339	Other Plant Miscellaneous Equipment	-	-	-	-	-
340	Office Furniture and Equipment	-	-	-	-	-
341	Transportation Equipment	17,356	-	-	17,356	19,468
342	Stores Equipment	-	-	-	-	-
343	Tools, Shop and Garage Equipment	-	-	-	-	7,421
344	Laboratory Equipment	-	-	-	-	2,259
345	Power Operated Equipment	-	-	-	-	-
346	Communication Equipment	-	-	-	-	-
347	Miscellaneous Equipment	-	-	-	-	-
348	Other Tangible Plant	-	-	-	-	10,512
TOTAL WATER ACCUMULATED DEPRECIATION		\$ 23,335	\$ -	\$ -	\$ 23,335	\$ 456,790

W-6(b)
GROUP _____

UTILITY NAME: CYPRESS LAKES UTILITIES INC

YEAR OF REPORT
31-Dec-05

SYSTEM NAME / COUNTY : Polk County

CONTRIBUTIONS IN AID OF CONSTRUCTION
ACCOUNT 271

DESCRIPTION (a)	REFERENCE (b)	WATER (c)
Balance first of year		\$ 266,561
Add credits during year:		
Contributions received from Capacity, Main Extension and Customer Connection Charges	W-8(a)	\$ 7,875
Contributions received from Developer or Contractor Agreements in cash or property	W-8(b)	_____
Total Credits		\$ 7,875
Less debits charged during the year (All debits charged during the year must be explained Accounting adjustments mandated by FPSC)		\$ (18,101)
Total Contributions In Aid of Construction		\$ 292,537

If any prepaid CIAC has been collected, provide a supporting schedule showing how the amount is determined.

Explain all debits charged to Account 271 during the year below:

UTILITY NAME: CYPRESS LAKES UTILITIES INC

YEAR OF REPORT 31-Dec-05

SYSTEM NAME / COUNTY : Polk County

WATER CIAC SCHEDULE "A"

ADDITIONS TO CONTRIBUTIONS IN AID OF CONSTRUCTION RECEIVED FROM CAPACITY,
 MAIN EXTENSION AND CUSTOMER CONNECTION CHARGES RECEIVED DURING THE YEAR

DESCRIPTION OF CHARGE (a)	NUMBER OF CONNECTIONS (b)	CHARGE PER CONNECTION (c)	AMOUNT (d)
WATER CONNECTIONS FEES	63	\$ 125	\$ 7,875
_____	_____	_____	-
_____	_____	_____	-
_____	_____	_____	-
_____	_____	_____	-
_____	_____	_____	-
_____	_____	_____	-
_____	_____	_____	-
Total Credits			\$ <u>7,875</u>

ACCUMULATED AMORTIZATION OF WATER CONTRIBUTIONS IN AID OF CONSTRUCTION

DESCRIPTION (a)	WATER (b)
Balance first of year	\$ 55,963
Debits during the year:	
Accruals charged to Account 272	\$ 9,023
Other debits (specify):	_____
_____	_____
Total debits	\$ 9,023
Credits during the year (specify):	
Acting adjustments mandated by FPSC	\$ (12,222)
Total credits	\$ (12,222)
Balance end of year	\$ <u>77,208</u>

UTILITY NAME: CYPRESS LAKES UTILITIES INC

YEAR OF REPORT
31-Dec-05

SYSTEM NAME / COUNTY : Polk County

WATER CIAC SCHEDULE "B"
ADDITIONS TO CONTRIBUTIONS IN AID OF CONSTRUCTION
RECEIVED FROM ALL DEVELOPERS OR CONTRACTORS AGREEMENTS
WHICH CASH OR PROPERTY WAS RECEIVED DURING THE YEAR

DESCRIPTION (a)	INDICATE CASH OR PROPERTY (b)	AMOUNT (c)
NONE		\$ -
Total Credits		\$ -

Reconciliation of Revenue to
Regulatory Assessment Fee Revenue
Water Operations

UTILITY NAME: CYPRESS LAKES UTILITIES INC

YEAR OF REPORT 31-Dec-05

(A)	(B)	(C)	(D)
Accounts	Gross Water Revenues per Sch W-9	Gross Water Revenues per RAF Return	Difference (B)-(C)
Gross Revenues:			-
Unmetered Water Revenues			-
Total Metered Sales	245,865	245,865	-
Total Fire Protection Revenue			-
Other Sales to Public Authorities			-
Sales to Irrigation Customers			-
Sales for Resale			-
Interdepartmental Sales			-
Total Other Water Revenue			-
Total Water Operating Revenue	245,865	245,865	-
Less: Expense for Purchased Water from FPSC Regulated Utility			-
Net Water Operating Revenues	245,865	245,865	-

UTILITY NAME: CYPRESS LAKES UTILITIES INC

YEAR OF REPORT 31-Dec-05

SYSTEM NAME / COUNTY : Polk County

WATER OPERATING REVENUE

ACCT. NO. (a)	DESCRIPTION (b)	BEGINNING YEAR NO. CUSTOMERS * (c)	YEAR END NUMBER OF CUSTOMERS (d)	AMOUNT (e)
460	Water Sales: Unmetered Water Revenue			\$
461.1	Metered Water Revenue: Sales to Residential Customers	1,267	1,330	243,848
461.2	Sales to Commercial Customers			
461.3	Sales to Industrial Customers			
461.4	Sales to Public Authorities			
461.5	Sales Multiple Family Dwellings			
Total Metered Sales		1,267	1,330	\$ 243,848
462.1	Fire Protection Revenue: Public Fire Protection			
462.2	Private Fire Protection			
Total Fire Protection Revenue				\$
464	Other Sales To Public Authorities			
465	Sales To Irrigation Customers			
466	Sales For Resale			
467	Interdepartmental Sales			
Total Water Sales		1,267	1,330	\$ 243,848
469	Other Water Revenues: Guaranteed Revenues (Including Allowance for Funds Prudently Invested or AFPI)			\$
470	Forfeited Discounts			
471	Miscellaneous Service Revenues			2,017
472	Rents From Water Property			
473	Interdepartmental Rents			
474	Other Water Revenues			
Total Other Water Revenues				\$ 2,017
Total Water Operating Revenues				\$ 245,865

* Customer is defined by Rule 25-30.210(1), Florida Administrative Code.

UTILITY NAME: CYPRESS LAKES UTILITIES INC

YEAR OF REPORT 31-Dec-05

SYSTEM NAME / COUNTY : Polk County

WATER UTILITY EXPENSE ACCOUNTS

ACCT. NO. (a)	ACCOUNT NAME (b)	CURRENT YEAR (c)	.1 SOURCE OF SUPPLY AND EXPENSES - OPERATIONS (d)	.2 SOURCE OF SUPPLY AND EXPENSES - MAINTENANCE (e)
601	Salaries and Wages - Employees	\$ 63,860	\$ 14,049	\$ 3,832
603	Salaries and Wages - Officers, Directors and Majority Stockholders			
604	Employee Pensions and Benefits	13,054	2,872	783
610	Purchased Water			
615	Purchased Power	9,956		
616	Fuel for Power Purchased			
618	Chemicals	4,060	4,060	
620	Materials and Supplies	7,427	2,971	743
631	Contractual Services-Engineering			
632	Contractual Services - Accounting	2,045		
633	Contractual Services - Legal	-		
634	Contractual Services - Mgt. Fees			
635	Contractual Services - Testing			
636	Contractual Services - Other	-		
641	Rental of Building/Real Property			
642	Rental of Equipment			
650	Transportation Expenses	5,425	1,194	326
656	Insurance - Vehicle			
657	Insurance - General Liability			
658	Insurance - Workman's Comp.			
659	Insurance - Other	4,766	1,049	286
660	Advertising Expense			
666	Regulatory Commission Expenses - Amortization of Rate Case Expense	9,599		
667	Regulatory Commission Exp.-Other			
668	Water Resource Conservation Exp.			
670	Bad Debt Expense	370		
675	Miscellaneous Expenses	14,115		
Total Water Utility Expenses		\$ 134,677	\$ 26,195	\$ 5,970

UTILITY NAME:

CYPRESS LAKES UTILITIES INC

YEAR OF REPORT 31-Dec-05

SYSTEM NAME / COUNTY :

Polk County

WATER EXPENSE ACCOUNT MATRIX					
.3 WATER TREATMENT EXPENSES - OPERATIONS (f)	.4 WATER TREATMENT EXPENSES - MAINTENANCE (g)	.5 TRANSMISSION & DISTRIBUTION EXPENSES - OPERATIONS (h)	.6 TRANSMISSION & DISTRIBUTION EXPENSES - MAINTENANCE (i)	.7 CUSTOMER ACCOUNTS EXPENSE (j)	.8 ADMIN. & GENERAL EXPENSES (k)
\$ 14,049	\$ 3,832	\$ 22,351	\$ 5,747	\$	\$
2,872	783	4,569	1,175		
9,956					
		3,119	594		
		0			2,045
					0
				0	0
1,194	326	1,899	486		
1,049	286	1,668	428		
					9,599
				370	
				7,058	7,057
\$ 29,120	\$ 5,227	\$ 33,606	\$ 8,430	\$ 7,428	\$ 18,701

UTILITY NAME: CYPRESS LAKES UTILITIES, INC.

YEAR OF REPORT 31-Dec-05

SYSTEM NAME / COUNTY : CYPRESS LAKES / POLK

PUMPING AND PURCHASED WATER STATISTICS

MONTH (a)	WATER PURCHASED FOR RESALE (Omit 000's) (b)	FINISHED WATER PUMPED FROM WELLS (Omit 000's) (c)	WATER USED FOR LINE FLUSHING, FIGHTING FIRES, ETC. (d)	TOTAL WATER PUMPED AND PURCHASED (Omit 000's) [(b)+(c)-(d)] (e)	*WATER SOLD TO CUSTOMERS (Omit 000's) (f)
January		6.143	0.008	6.135	4.509
February		6.297	0.009	6.288	4.820
March		6.427	0.001	6.426	5.344
April		6.340	0.004	6.336	5.984
May		5.369	0.039	5.330	5.593
June		3.959	0.026	3.933	4.509
July		4.143	0.516	3.627	3.508
August		4.494	0.107	4.387	3.042
September		5.753	0.131	5.622	4.134
October		6.016	1.271	4.745	4.061
November		5.922	0.262	5.660	3.846
December		5.415	0.221	5.194	4.994
Total for Year		66.278	2.595	63.683	54.344

*Reflects final accounts, adjustments, etc. per year end summary

If water is purchased for resale, indicate the following:

Vendor None

Point of delivery _____

If water is sold to other water utilities for redistribution, list names of such utilities below:

None

List for each source of supply:	CAPACITY OF WELL	GALLONS PER DAY FROM SOURCE	TYPE OF SOURCE
Well #1	730 gpm	1,051,000	Well
Well #2	770 gpm	1,109,000	Well
_____	_____	_____	_____
_____	_____	_____	_____
_____	_____	_____	_____

UTILITY NAME: CYPRESS LAKES UTILITIES, INC.

YEAR OF REPORT
31-Dec-05

SYSTEM NAME / COUNTY : CYPRESS LAKES / POLK

WATER TREATMENT PLANT INFORMATION

Provide a separate sheet for each water treatment facility

Permitted Capacity of Plant (GPD):	<u>448,200</u>
Location of measurement of capacity (i.e. Wellhead, Storage Tank):	<u>Storage Tank</u>
Type of treatment (reverse osmosis, sedimentation, chemical, aerated, etc.):	<u>Chlorination</u>
LIME TREATMENT	
Unit rating (i.e., GPM, pounds per gallon): <u>N/A</u>	Manufacturer: <u>N/A</u>
FILTRATION	
Type and size of area:	
Pressure (in square feet): <u>N/A</u>	Manufacturer: <u>N/A</u>
Gravity (in GPM/square feet): <u>N/A</u>	Manufacturer: <u>N/A</u>

UTILITY NAME:

CYPRESS LAKES UTILITIES, INC.

YEAR OF REPORT 31-Dec-05

SYSTEM NAME / COUNTY :

CYPRESS LAKES / POLK

CALCULATION OF THE WATER SYSTEM METER EQUIVALENTS

METER SIZE (a)	TYPE OF METER (b)	EQUIVALENT FACTOR (c)	NUMBER OF METERS (d)	TOTAL NUMBER OF METER EQUIVALENTS (c x d) (e)
All Residential		1.0	1,287	1,287
5/8"	Displacement	1.0	20	20
3/4"	Displacement	1.5		
1"	Displacement	2.5	15	37.5
1 1/2"	Displacement or Turbine	5.0	4	20
2"	Displacement, Compound or Turbine	8.0	4	32
3"	Displacement	15.0		
3"	Compound	16.0		
3"	Turbine	17.5		
4"	Displacement or Compound	25.0		
4"	Turbine	30.0		
6"	Displacement or Compound	50.0		
6"	Turbine	62.5		
8"	Compound	80.0		
8"	Turbine	90.0		
10"	Compound	115.0		
10"	Turbine	145.0		
12"	Turbine	215.0		
Total Water System Meter Equivalents				<u>1,396.5</u>

CALCULATION OF THE WATER SYSTEM EQUIVALENT RESIDENTIAL CONNECTIONS

Provide a calculation used to determine the value of one water equivalent residential connection (ERC).

Use one of the following methods:

- (a) If actual flow data are available from the preceding 12 months, divide the total annual single family residence (SFR) gallons sold by the average number of single family residence customers for the same period and divide the result by 365 days.
- (b) If no historical flow data are available, use:
 $ERC = (\text{Total SFR gallons sold (Omit 000)} / 365 \text{ days} / 350 \text{ gallons per day})$

ERC Calculation:

$$49.066/1287/365 = 104 \text{ gpd} = 1 \text{ ERC}$$

UTILITY NAME: CYPRESS LAKES UTILITIES, INC.

YEAR OF REPORT
31-Dec-05

SYSTEM NAME / COUNTY : CYPRESS LAKES / POLK

OTHER WATER SYSTEM INFORMATION

Furnish information below for each system. A separate page should be supplied where necessary.

1. Present ERC's * the system can efficiently serve. 1,266
2. Maximum number of ERCs * which can be served. 1,550
3. Present system connection capacity (in ERCs *) using existing lines. 1,550
4. Future connection capacity (in ERCs *) upon service area buildout. 1,550
5. Estimated annual increase in ERCs *. 50
6. Is the utility required to have fire flow capacity? Yes
If so, how much capacity is required? 500 gpm residential / 1000 gpm commercial
7. Attach a description of the fire fighting facilities. Two (2) 10,000 gallon hydropneumatic storage tanks, 65 hydrants and water production facilities.
8. Describe any plans and estimated completion dates for any enlargements or improvements of this system.
Phase 8 - 3 hydrants added
Phase 10 - 5 hydrants added
Phase 11 - 3 hydrants added
9. When did the company last file a capacity analysis report with the DEP? 1993
10. If the present system does not meet the requirements of DEP rules:
 - a. Attach a description of the plant upgrade necessary to meet the DEP rules.
 - b. Have these plans been approved by DEP? N/A
 - c. When will construction begin? N/A
 - d. Attach plans for funding the required upgrading.
 - e. Is this system under any Consent Order with DEP? No
11. Department of Environmental Protection ID # 6535055
12. Water Management District Consumptive Use Permit # 2011531.001
 - a. Is the system in compliance with the requirements of the CUP? Yes
 - b. If not, what are the utility's plans to gain compliance? _____

* An ERC is determined based on the calculation on the bottom of Page W-13.

**WASTEWATER
OPERATION
SECTION**

UTILITY NAME:

CYPRESS LAKES UTILITIES INC

YEAR OF REPORT
31-Dec-05

WASTEWATER LISTING OF SYSTEM GROUPS

List below the name of each reporting system and its certificate number. Those systems which have been consolidated under the same tariff should be assigned a group number. Each individual system which has not been consolidated should be assigned its own group number.

The wastewater financial schedules (S-2 through S-10) should be filed for the group in total.

The wastewater engineering schedules (S-11 and S-12) must be filed for each system in the group.

All of the following wastewater pages (S-2 through S-12) should be completed for each group and arranged by group number.

SYSTEM NAME / COUNTY	CERTIFICATE NUMBER	GROUP NUMBER
CYPRESS LAKES / POLK	592W 509S	
_____	_____	_____
_____	_____	_____
_____	_____	_____
_____	_____	_____
_____	_____	_____
_____	_____	_____
_____	_____	_____
_____	_____	_____
_____	_____	_____
_____	_____	_____
_____	_____	_____
_____	_____	_____
_____	_____	_____
_____	_____	_____
_____	_____	_____
_____	_____	_____
_____	_____	_____
_____	_____	_____
_____	_____	_____
_____	_____	_____
_____	_____	_____
_____	_____	_____
_____	_____	_____
_____	_____	_____

UTILITY NAME: CYPRESS LAKES UTILITIES INC

YEAR OF REPORT 31-Dec-05

SYSTEM NAME / COUNTY : Polk County

SCHEDULE OF YEAR END WASTEWATER RATE BASE

ACCT. NO. (a)	ACCOUNT NAME (b)	REFERENCE PAGE (c)	WASTEWATER UTILITY (d)
101	Utility Plant In Service	S-4A	\$ 2,337,942
	Less:		
	Nonused and Useful Plant (1)		
108	Accumulated Depreciation	S-6B	744,889
110	Accumulated Amortization	F-8	346
271	Contributions In Aid of Construction	S-7	711,034
252	Advances for Construction	F-20	-
Subtotal			\$ 881,673
	Add:		
272	Accumulated Amortization of Contributions in Aid of Construction	S-8A	\$ 166,887
Subtotal			\$ 1,048,560
	Plus or Minus:		
114	Acquisition Adjustments (2)	F-7	-
115	Accumulated Amortization of Acquisition Adjustments (2)	F-7	-
	Working Capital Allowance (3)		32,557
	Other (Specify):		
WASTEWATER RATE BASE			\$ 1,081,117
WASTEWATER OPERATING INCOME		S-3	\$ 38,351
ACHIEVED RATE OF RETURN (Wastewater Operating Income / Wastewater Rate Base)			<u>3.55%</u>

NOTES : (1) Estimate based on the methodology used in the last rate proceeding.

(2) Include only those Acquisition Adjustments that have been approved by the Commission.

(3) Calculation consistent with last rate proceeding.

In absence of a rate proceeding, Class A utilities will use the Balance Sheet Method and Class B Utilities will use the One-eighth Operating and Maintenance Expense Method.

UTILITY NAME: CYPRESS LAKES UTILITIES INC

YEAR OF REPORT 31-Dec-05

SYSTEM NAME / COUNTY : Polk County

WASTEWATER OPERATING STATEMENT

ACCT. NO. (a)	ACCOUNT NAME (b)	REFERENCE PAGE (c)	WASTEWATER UTILITY (d)
	UTILITY OPERATING INCOME		
400	Operating Revenues	S-9A	\$ 353,217
530	Less: Guaranteed Revenue (and AFPI)	S-9A	
	Net Operating Revenues		\$ 353,217
401	Operating Expenses	S-10A	\$ 260,454
403	Depreciation Expense	S-6A	67,331
	Less: Amortization of CIAC	S-8A	(22,351)
	Net Depreciation Expense		\$ 44,980
406	Amortization of Utility Plant Acquisition Adjustment	F-7	-
407	Amortization Expense (Other than CIAC)	F-8	87
408.10	Taxes Other Than Income Utility Regulatory Assessment Fee		15,700
408.11	Property Taxes		11,198
408.12	Payroll Taxes		5,681
408.13	Other Taxes and Licenses		-
408	Total Taxes Other Than Income		\$ 32,579
409.1	Income Taxes		300
410.10	Deferred Federal Income Taxes		(20,079)
410.11	Deferred State Income Taxes		(3,455)
411.10	Provision for Deferred Income Taxes - Credit		-
412.10	Investment Tax Credits Deferred to Future Periods		
412.11	Investment Tax Credits Restored to Operating Income		
	Utility Operating Expenses		\$ 314,866
	Utility Operating Income		\$ 38,351
530	Add Back: Guaranteed Revenue (and AFPI)	S-9A	
413	Income From Utility Plant Leased to Others		
414	Gains (losses) From Disposition of Utility Property		
420	Allowance for Funds Used During Construction		126
	Total Utility Operating Income		\$ 38,477

UTILITY NAME: CYPRESS LAKES UTILITIES INC

SYSTEM NAME / COUNTY Polk County

WASTEWATER UTILITY PLANT ACCOUNTS

ACCT. NO. (a)	ACCOUNT NAME (b)	PREVIOUS YEAR (c)	ADDITIONS (d)	RETIREMENTS (e)	CURRENT YEAR (f)
351	Organization	\$ 10,115	\$ (10,115)		\$ -
352	Franchises	18,206	(18,206)		-
353	Land and Land Rights	-	2,610		2,610
354	Structures and Improvements	87,430	1,038,913		1,126,343
355	Power Generation Equipment		-		344,006
360	Collection Sewers - Force	340,883	3,123		908,770
361	Collection Sewers - Gravity	905,584	3,186		-
362	Special Collecting Structures	-	-		-
363	Services to Customers	-	-		-
364	Flow Measuring Devices	-	-		-
365	Flow Measuring Installations	-	-		-
366	Reuse Services	-	-		-
367	Reuse Meters and Meter Installations	-	-		-
370	Receiving Wells	-	-		-
371	Pumping Equipment	-	-		-
374	Reuse Distribution Reservoirs	-	-		-
375	Reuse Transmission and Distribution System	-	-		-
380	Treatment and Disposal Equipment	1,217,045	(1,264,264)	15,790	(63,009)
381	Plant Sewers	-	-		-
382	Outfall Sewer Lines	-	-		-
389	Other Plant Miscellaneous Equipment	-	-		-
390	Office Furniture and Equipment	311	-		311
391	Transportation Equipment	-	-		-
392	Stores Equipment	-	-		-
393	Tools, Shop and Garage Equipment	3,814	5,316		9,130
394	Laboratory Equipment	6,906	-		6,906
395	Power Operated Equipment	-	-		-
396	Communication Equipment	2,875	-		2,875
397	Miscellaneous Equipment	-	-		-
398	Other Tangible Plant	-	-		-
Total Wastewater Plant		\$ 2,593,169	\$ (239,437)	\$ 15,790	\$ 2,337,942

NOTE: Any adjustments made to reclassify property from one account to another must be footnoted.
Acting adjustments mandated by FPSC

UTILITY NAME: CYPRESS LAKES UTILITIES INC

SYSTEM NAME / COUNTY : Polk County

WASTEWATER UTILITY PLANT MATRIX

ACCT. NO.	ACCOUNT NAME	.1 INTANGIBLE PLANT (g)	.2 COLLECTION PLANT (h)	.3 SYSTEM PUMPING PLANT (i)	.4 TREATMENT AND DISPOSAL (j)	.5 RECLAIMED WASTEWATER TREATMENT PLANT (i)	.6 RECLAIMED WASTEWATER DISTRIBUTION PLANT (i)	.7 GENERAL PLANT (k)
351	Organization	\$ -	\$ -	\$ -	\$ -	\$ -	\$ -	\$ -
352	Franchises	-	-	-	-	-	-	-
353	Land and Land Rights	2,610	2,610	-	-	-	-	-
354	Structures and Improvements	1,126,343	1,126,343	-	-	-	-	-
355	Power Generation Equipment	-	-	-	-	-	-	-
360	Collection Sewers - Force	344,006	344,006	-	-	-	-	-
361	Collection Sewers - Gravity	908,770	908,770	-	-	-	-	-
362	Special Collecting Structures	-	-	-	-	-	-	-
363	Services to Customers	-	-	-	-	-	-	-
364	Flow Measuring Devices	-	-	-	-	-	-	-
365	Flow Measuring Installations	-	-	-	-	-	-	-
366	Reuse Services	-	-	-	-	-	-	-
367	Reuse Meters and Meter Installations	-	-	-	-	-	-	-
370	Receiving Wells	-	-	-	-	-	-	-
371	Pumping Equipment	-	-	-	-	-	-	-
374	Reuse Distribution Reservoirs	-	-	-	-	-	-	-
375	Reuse Transmission and Distribution System	-	-	-	-	-	-	-
380	Treatment and Disposal Equipment	-	-	-	(63,009)	-	-	-
381	Plant Sewers	-	-	-	-	-	-	-
382	Outfall Sewer Lines	-	-	-	-	-	-	-
389	Other Plant Miscellaneous Equipment	-	-	-	-	-	-	311
390	Office Furniture and Equipment	-	-	-	-	-	-	-
391	Transportation Equipment	-	-	-	-	-	-	-
392	Stores Equipment	-	-	-	-	-	-	-
393	Tools, Shop and Garage Equipment	-	-	-	-	-	-	-
394	Laboratory Equipment	-	-	-	-	-	-	9,130
395	Power Operated Equipment	-	-	-	-	-	-	6,906
396	Communication Equipment	-	-	-	-	-	-	-
397	Miscellaneous Equipment	-	-	-	-	-	-	2,875
398	Other Tangible Plant	-	-	-	-	-	-	-
	Total Wastewater Plant	\$ -	\$ 2,381,729	\$ -	\$ (63,009)	\$ -	\$ -	\$ 19,222

NOTE: Any adjustments made to reclassify property from one account to another must be footnoted.

UTILITY NAME: CYPRESS LAKES UTILITIES INC

YEAR OF REPORT 31-Dec-05

SYSTEM NAME / COUNTY : Polk County

BASIS FOR WASTEWATER DEPRECIATION CHARGES

ACCT. NO. (a)	ACCOUNT NAME (b)	AVERAGE SERVICE LIFE IN YEARS (c)	AVERAGE NET SALVAGE IN PERCENT (d)	DEPRECIATION RATE APPLIED IN PERCENT (100% - D) / C (e)
354	Structures and Improvements			3.13%
355	Power Generation Equipment			
360	Collection Sewers - Force			3.33%
361	Collection Sewers - Gravity			2.22%
362	Special Collecting Structures			
363	Services to Customers			
364	Flow Measuring Devices			
365	Flow Measuring Installations			
366	Reuse Services			
367	Reuse Meters and Meter Installations			
370	Receiving Wells			
371	Pumping Equipment			
375	Reuse Transmission and Distribution System			
380	Treatment and Disposal Equipment			
381	Plant Sewers			
382	Outfall Sewer Lines			
389	Other Plant Miscellaneous Equipment			
390	Office Furniture and Equipment			6.67%
391	Transportation Equipment			
392	Stores Equipment			
393	Tools, Shop and Garage Equipment			6.25%
394	Laboratory Equipment			6.67%
395	Power Operated Equipment			
396	Communication Equipment			10.00%
397	Miscellaneous Equipment			
398	Other Tangible Plant			
Wastewater Plant Composite Depreciation Rate *				

* If depreciation rates prescribed by this Commission are on a total composite basis, entries should be made on this line only.

UTILITY NAME: CYPRESS LAKES UTILITIES INC

SYSTEM NAME / COUNTY: Polk County

ANALYSIS OF ENTRIES IN WASTEWATER ACCUMULATED DEPRECIATION

ACCT. NO. (a)	ACCOUNT NAME (b)	BALANCE AT BEGINNING OF YEAR (c)	ACCRUALS (d)	OTHER CREDITS * (e)	TOTAL CREDITS (d + e) (f)
354	Structures and Improvements	\$ 58,520	\$ 2,954	\$ 264,132	\$ 267,086
355	Power Generation Equipment			-	-
360	Collection Sewers - Force	67,385	5,960	-	5,960
361	Collection Sewers - Gravity	157,550	13,260	175	13,435
362	Special Collecting Structures	-	-	-	-
363	Services to Customers	40,288	5,391	-	5,391
364	Flow Measuring Devices			-	-
365	Flow Measuring Installations			-	-
366	Reuse Services			-	-
367	Reuse Meters and Meter Installations			-	-
370	Receiving Wells			-	-
371	Pumping Equipment			-	-
375	Reuse Transmission and Distribution System			-	-
380	Treatment and Disposal Equipment	281,651	28,159	(307,647)	(279,488)
381	Plant Sewers			-	-
382	Outfall Sewer Lines			-	-
389	Other Plant Miscellaneous Equipment	123,471	10,266	-	10,266
390	Office Furniture and Equipment			-	-
391	Transportation Equipment			-	-
392	Stores Equipment			-	-
393	Tools, Shop and Garage Equipment	2,818	592	1,396	1,988
394	Laboratory Equipment	1,741	461	-	461
395	Power Operated Equipment			-	-
396	Communication Equipment	1,868	288	-	288
397	Miscellaneous Equipment			-	-
398	Other Tangible Plant			-	-
Total Depreciable Wastewater Plant in Service		\$ 735,292	\$ 67,331	\$ (41,944)	\$ 25,387

Accounting adjustments mandated by FPSC

* Specify nature of transaction.
Use () to denote reversal entries.

UTILITY NAME: CYPRESS LAKES UTILITIES INC

SYSTEM NAME / COUNTY : Polk County

ANALYSIS OF ENTRIES IN WASTEWATER ACCUMULATED DEPRECIATION

ACCT. NO.	ACCOUNT NAME	PLANT RETIRED	SALVAGE AND INSURANCE	COST OF REMOVAL AND OTHER CHARGES	TOTAL CHARGES	BALANCE AT END OF YEAR
(a)	(b)	(g)	(h)	(i)	(j)	(c+f-j) (k)
354	Structures and Improvements	\$ -	\$ -	\$ -	\$ -	\$ 325,606
355	Power Generation Equipment	-	-	-	-	73,345
360	Collection Sewers - Force	-	-	-	-	170,985
361	Collection Sewers - Gravity	-	-	-	-	-
362	Special Collecting Structures	-	-	-	-	45,679
363	Services to Customers	-	-	-	-	-
364	Flow Measuring Devices	-	-	-	-	-
365	Flow Measuring Installations	-	-	-	-	-
366	Reuse Services	-	-	-	-	-
367	Reuse Meters and Meter Installations	-	-	-	-	-
370	Receiving Wells	-	-	-	-	-
371	Pumping Equipment	-	-	-	-	-
375	Reuse Transmission and Distribution System	-	-	-	-	-
380	Treatment and Disposal Equipment	15,790	-	-	15,790	(13,627)
381	Plant Sewers	-	-	-	-	-
382	Outfall Sewer Lines	-	-	-	-	-
389	Other Plant Miscellaneous Equipment	-	-	-	-	133,737
390	Office Furniture and Equipment	-	-	-	-	-
391	Transportation Equipment	-	-	-	-	-
392	Stores Equipment	-	-	-	-	-
393	Tools, Shop and Garage Equipment	-	-	-	-	4,806
394	Laboratory Equipment	-	-	-	-	2,202
395	Power Operated Equipment	-	-	-	-	-
396	Communication Equipment	-	-	-	-	2,156
397	Miscellaneous Equipment	-	-	-	-	-
398	Other Tangible Plant	-	-	-	-	-
Total Depreciable Wastewater Plant in Service		\$ 15,790	\$ -	\$ -	\$ 15,790	\$ 744,889

* Specify nature of transaction.
Use () to denote reversal entries.

UTILITY NAME: CYPRESS LAKES UTILITIES INC

YEAR OF REPORT 31-Dec-05

SYSTEM NAME / COUNTY : Polk County

**CONTRIBUTIONS IN AID OF CONSTRUCTION
ACCOUNT 271**

DESCRIPTION (a)	REFERENCE (b)	WASTEWATER (c)
Balance first of year		\$ <u>711,034</u>
Add credits during year:		
Contributions received from Capacity, Main Extension and Customer Connection Charges	S-8A	\$ <u>-</u>
Contributions received from Developer or Contractor Agreements in cash or property	S-8B	<u>-</u>
Total Credits		\$ <u>-</u>
Less debits charged during the year (All debits charged during the year must be explained below)		\$ <u> </u>
Total Contributions In Aid of Construction		\$ <u>711,034</u>

Explain all debits charged to Account 271 during the year below:

UTILITY NAME: CYPRESS LAKES UTILITIES INC

YEAR OF REPORT 31-Dec-05

SYSTEM NAME / COUNTY : Polk County

WASTEWATER CIAC SCHEDULE "A"

ADDITIONS TO CONTRIBUTIONS IN AID OF CONSTRUCTION RECEIVED FROM CAPACITY,
 MAIN EXTENSION AND CUSTOMER CONNECTION CHARGES RECEIVED DURING THE YEAR

DESCRIPTION OF CHARGE (a)	NUMBER OF CONNECTIONS (b)	CHARGE PER CONNECTION (c)	AMOUNT (d)
<u>SEWER CONNECTIONS FEES (NONE)</u>	-	\$ -	\$ -
_____	_____	_____	-
_____	_____	_____	-
_____	_____	_____	-
_____	_____	_____	-
_____	_____	_____	-
_____	_____	_____	-
_____	_____	_____	-
Total Credits			\$ <u> -</u>

ACCUMULATED AMORTIZATION OF WASTEWATER CONTRIBUTIONS IN AID OF CONSTRUCTION

DESCRIPTION (a)	WASTEWATER (b)
Balance first of year	\$ 128,266
Debits during the year:	
Accruals charged to Account 272	\$ 22,351
Other debits (specify) :	
_____	_____
_____	_____
Total debits	\$ 22,351
Credits during the year (specify) :	
Acting adjustments mandated by FPSC	\$ (16,270)
Total credits	\$ (16,270)
Balance end of year	\$ <u>166,887</u>

UTILITY NAME: CYPRESS LAKES UTILITIES INC

YEAR OF REPORT 31-Dec-05

SYSTEM NAME / COUNTY : Polk County

WASTEWATER CIAC SCHEDULE "B"
 ADDITIONS TO CONTRIBUTIONS IN AID OF CONSTRUCTION
 RECEIVED FROM ALL DEVELOPERS OR CONTRACTORS AGREEMENTS
 WHICH CASH OR PROPERTY WAS RECEIVED DURING THE YEAR

DESCRIPTION (a)	INDICATE CASH OR PROPERTY (b)	AMOUNT (c)
NONE		\$ -
Total Credits		\$ -

Reconciliation of Revenue to
Regulatory Assessment Fee Revenue
Wastewater Operations

UTILITY NAME: CYPRESS LAKES UTILITIES INC

YEAR OF REPORT
31-Dec-05

(A)	(B)	(C)	(D)
Accounts	Gross Wastewater Revenues per Sch S-9	Gross Wastewater Revenues per RAF Return	Difference (B)-(C)
Gross Revenues:			-
Total Flat-Rate Revenues			-
Total Measured Revenues	353,217	353,217	-
Revenues from Public Authorities			-
Revenues from Other Systems			-
Interdepartmental Revenues			-
Total Other Wastewater Revenues			-
Reclaimed Water Sales			-
Total Wastewater Operating Revenue	353,217	353,217	-
Less: Expense for Purchased Wastewater from FPSC Regulated Utility			-
Net Wastewater Operating Revenues	353,217	353,217	-

UTILITY NAME: CYPRESS LAKES UTILITIES INC

YEAR OF REPORT 31-Dec-05

SYSTEM NAME / COUNTY : Polk County

WASTEWATER OPERATING REVENUE

ACCT. NO. (a)	DESCRIPTION (b)	BEGINNING YEAR NO. CUSTOMERS * (c)	YEAR END NUMBER OF CUSTOMERS * (d)	AMOUNTS (e)
WASTEWATER SALES				
	Flat Rate Revenues:			
521.1	Residential Revenues	1,230	1,292	\$ 350,319
521.2	Commercial Revenues			
521.3	Industrial Revenues			
521.4	Revenues From Public Authorities			
521.5	Multiple Family Dwelling Revenues			
521.6	Other Revenues			
521	Total Flat Rate Revenues	1,230	1,292	\$ 350,319
	Measured Revenues:			
522.1	Residential Revenues			
522.2	Commercial Revenues			
522.3	Industrial Revenues			
522.4	Revenues From Public Authorities			
522.5	Multiple Family Dwelling Revenues			
522	Total Measured Revenues			\$
523	Revenues From Public Authorities			
524	Revenues From Other Systems			
525	Interdepartmental Revenues			
Total Wastewater Sales		<u>1,230</u>	<u>1,292</u>	\$ <u>350,319</u>
OTHER WASTEWATER REVENUES				
530	Guaranteed Revenues			\$
531	Sale of Sludge			
532	Forfeited Discounts			
534	Rents From Wastewater Property			
535	Interdepartmental Rents			
536	Other Wastewater Revenues (Including Allowance for Funds Prudently Invested or AFPI)			2,898
Total Other Wastewater Revenues				\$ <u>2,898</u>

* Customer is defined by Rule 25-30.210(1), Florida Administrative Code.

UTILITY NAME: CYPRESS LAKES UTILITIES INC

YEAR OF REPORT 31-Dec-05

SYSTEM NAME / COUNTY : Polk County

WASTEWATER OPERATING REVENUE

ACCT. NO. (a)	DESCRIPTION (b)	BEGINNING YEAR NO. CUSTOMERS * (c)	YEAR END NUMBER OF CUSTOMERS * (d)	AMOUNTS (e)
RECLAIMED WATER SALES				
	Flat Rate Reuse Revenues:			
540.1	Residential Reuse Revenues	_____	_____	\$ _____
540.2	Commercial Reuse Revenues	_____	_____	_____
540.3	Industrial Reuse Revenues	_____	_____	_____
540.4	Reuse Revenues From Public Authorities	_____	_____	_____
540.5	Other Revenues	_____	_____	_____
540	Total Flat Rate Reuse Revenues	_____	_____	\$ _____
	Measured Reuse Revenues:			
541.1	Residential Reuse Revenues	_____	_____	_____
541.2	Commercial Reuse Revenues	_____	_____	_____
541.3	Industrial Reuse Revenues	_____	_____	_____
541.4	Reuse Revenues From Public Authorities	_____	_____	_____
541	Total Measured Reuse Revenues	_____	_____	\$ _____
544	Reuse Revenues From Other Systems			
Total Reclaimed Water Sales				\$ _____
Total Wastewater Operating Revenues				\$ <u>353,217</u>

* Customer is defined by Rule 25-30.210(1), Florida Administrative Code.

UTILITY NAME: CYPRESS LAKES UTILITIES INC

SYSTEM NAME / COUNTY Polk County

WASTEWATER UTILITY EXPENSE ACCOUNT MATRIX

ACCT. NO. (a)	ACCOUNT NAME (b)	CURRENT YEAR (c)	.1 COLLECTION EXPENSES- OPERATIONS (d)	.2 COLLECTION EXPENSES- MAINTENANCE (e)	.3 PUMPING EXPENSES - OPERATIONS (f)	.4 PUMPING EXPENSES - MAINTENANCE (g)	.5 TREATMENT & DISPOSAL EXPENSES - OPERATIONS (h)	.6 TREATMENT & DISPOSAL EXPENSES - MAINTENANCE (i)
701	Salaries and Wages - Employees	\$ 62,048	\$ 1,861	\$ 7,446	\$ 12,410	\$ 3,102	\$ 29,783	\$ 7,446
703	Salaries and Wages - Officers, Directors and Majority Stockholders							
704	Employee Pensions and Benefits	12,683	380	888	1,522	634	3,805	1,524
710	Purchased Sewage Treatment							
711	Sludge Removal Expense	57,500						
715	Purchased Power	45,700			11,425			
716	Fuel for Power Purchased							
718	Chemicals	7,359						
720	Materials and Supplies	35,692	1,428	5,711	8,566	2,142	7,359	3,568
731	Contractual Services-Engineering	-						
732	Contractual Services - Accounting	1,987						
733	Contractual Services - Legal	-						
734	Contractual Services - Mgt. Fees	-						
735	Contractual Services - Testing							
736	Contractual Services - Other	-						
741	Rental of Building/Real Property							
742	Rental of Equipment							
750	Transportation Expenses	5,271	158	633	1,054	264	2,530	632
756	Insurance - Vehicle							
757	Insurance - General Liability							
758	Insurance - Workman's Comp.							
759	Insurance - Other	8,641						
760	Advertising Expense							
766	Regulatory Commission Expenses							
767	- Amortization of Rate Case Expense	9,327						
767	Regulatory Commission Exp.-Other							
770	Bad Debt Expense	532						
775	Miscellaneous Expenses	13,714						
Total Wastewater Utility Expenses		\$ 260,454	\$ 3,827	\$ 14,678	\$ 34,977	\$ 6,142	\$ 149,529	\$ 13,170

UTILITY NAME: CYPRESS LAKES UTILITIES INC

SYSTEM NAME / COUNTY : Polk County

WASTEWATER UTILITY EXPENSE ACCOUNT MATRIX

ACCT. NO.	ACCOUNT NAME	.7 CUSTOMER ACCOUNTS EXPENSE (j)	.8 ADMIN. & GENERAL EXPENSES (k)	.9 RECLAIMED WATER TREATMENT EXPENSES- OPERATIONS (l)	.10 RECLAIMED WATER TREATMENT EXPENSES- MAINTENANCE (m)	.11 RECLAIMED WATER DISTRIBUTION EXPENSES- OPERATIONS (n)	.12 RECLAIMED WATER DISTRIBUTION EXPENSES- MAINTENANCE (o)
701	Salaries and Wages - Employees	\$	\$	\$	\$	\$	\$
703	Salaries and Wages - Officers, Directors and Majority Stockholders						
704	Employee Pensions and Benefits	3,930					
710	Purchased Sewage Treatment						
711	Sludge Removal Expense						
715	Purchased Power						
716	Fuel for Power Purchased						
718	Chemicals						
720	Materials and Supplies						
731	Contractual Services-Engineering		0				
732	Contractual Services - Accounting		1,987				
733	Contractual Services - Legal		0				
734	Contractual Services - Mgt. Fees		0				
735	Contractual Services - Testing		0				
736	Contractual Services - Other	0	0				
741	Rental of Building/Real Property						
742	Rental of Equipment						
750	Transportation Expenses						
756	Insurance - Vehicle						
757	Insurance - General Liability						
758	Insurance - Workman's Comp.						
759	Insurance - Other		8,641				
760	Advertising Expense						
766	Regulatory Commission Expenses - Amortization of Rate Case Expense		9,327				
767	Regulatory Commission Exp.-Other						
770	Bad Debt Expense	532					
775	Miscellaneous Expenses	6,857	6,857				
Total Wastewater Utility Expenses		\$ 11,319	\$ 26,812	\$ -	\$ -	\$ -	\$ -

UTILITY NAME:

CYPRESS LAKES UTILITIES, INC.

YEAR OF REPORT 31-Dec-05

SYSTEM NAME / COUNTY :

CYPRESS LAKES / POLK

CALCULATION OF THE WASTEWATER SYSTEM METER EQUIVALENTS

WATER METER SIZE (a)	TYPE OF WATER METER (b)	EQUIVALENT FACTOR (c)	NUMBER OF WATER METERS (d)	TOTAL NUMBER OF METER EQUIVALENTS (c x d) (e)
All Residential		1.0	1,287	1,287
5/8"	Displacement	1.0	2	2
3/4"	Displacement	1.5		
1"	Displacement	2.5	1	2.5
1 1/2"	Displacement or Turbine	5.0	2	10
2"	Displacement, Compound or Turbine	8.0		
3"	Displacement	15.0		
3"	Compound	16.0		
3"	Turbine	17.5		
4"	Displacement or Compound	25.0		
4"	Turbine	30.0		
6"	Displacement or Compound	50.0		
6"	Turbine	62.5		
8"	Compound	80.0		
8"	Turbine	90.0		
10"	Compound	115.0		
10"	Turbine	145.0		
12"	Turbine	215.0		
Total Wastewater System Meter Equivalents				1,301.5

CALCULATION OF THE WASTEWATER SYSTEM EQUIVALENT RESIDENTIAL CONNECTIONS

Provide a calculation used to determine the value of one wastewater equivalent residential connection (ERC).

Use one of the following methods:

(a) If actual flow data are available from the preceding 12 months, divide the total annual single family residence (SFR) gallons sold by the average number of single family residence customers for the same period and divide the result by 365 days.

(b) If no historical flow data are available, use:

$$ERC = (\text{Total SFR gallons treated (Omit 000)} / 365 \text{ days} / 280 \text{ gallons per day})$$

For wastewater only utilities:

Subtract all general use and other non residential customer gallons from the total gallons treated.

Divide the remainder (SFR customers) by 365 days to reveal single family residence customer gallons per day.

NOTE: Total gallons treated includes both treated and purchased treatment.

ERC Calculation:

$$39.253/1287/365 = 84 \quad \text{One (1) ERC} = 84 \text{ gallons AADF}$$

UTILITY NAME: CYPRESS LAKES UTILITIES, INC.

YEAR OF REPORT 31-Dec-05

SYSTEM NAME / COUNTY : CYPRESS LAKES / POLK

WASTEWATER TREATMENT PLANT INFORMATION

Provide a separate sheet for each wastewater treatment facility

Permitted Capacity	<u>0.175 mgd</u>	_____	_____
Basis of Permit Capacity (1)	<u>TMADF</u>	_____	_____
Manufacturer	<u>Poured In Place</u>	_____	_____
Type (2)	<u>Ext. Aeration</u>	_____	_____
Hydraulic Capacity	<u>0.175 mgd</u>	_____	_____
Average Daily Flow	<u>0.121</u> mgd	_____	_____
Total Gallons of Wastewater Treated	<u>44.283</u> mgd	_____	_____
Method of Effluent Disposal	<u>Golf Course Irrigation</u>	_____	_____

(1) Basis of permitted capacity as stated on the Florida DEP WWTP Operating Permit (i.e. average annual daily flow, etc.)

(2) Contact stabilization, advanced treatment, etc.

UTILITY NAME: CYPRESS LAKES UTILITIES, INC.

YEAR OF REPORT
31-Dec-05

SYSTEM NAME / COUNTY : CYPRESS LAKES / POLK

OTHER WASTEWATER SYSTEM INFORMATION

Furnish information below for each system. A separate page should be supplied where necessary.

1. Present number of ERCs* now being served 1,230
2. Maximum number of ERCs* which can be served 1,550
3. Present system connection capacity (in ERCs*) using existing lines 1,550
4. Future connection capacity (in ERCs*) upon service area buildout 1,550
5. Estimated annual increase in ERCs* 50
6. Describe any plans and estimated completion dates for any enlargements or improvements of this system
2005 - Initiate design of WWTP improvements
7. If the utility uses reuse as a means of effluent disposal, attach a list of the reuse end users and the amount of reuse provided to each, if known. Cypress Lakes Golf Course - 0.118 mgd
8. If the utility does not engage in reuse, has a reuse feasibility study been completed? N/A
If so, when? N/A
9. Has the utility been required by the DEP or water management district to implement reuse? No
If so, what are the utility's plans to comply with this requirement? _____
10. When did the company last file a capacity analysis report with the DEP? 2003
11. If the present system does not meet the requirements of DEP rules:
 - a. Attach a description of the plant upgrade necessary to meet the DEP rules.
 - b. Have these plans been approved by DEP? _____
 - c. When will construction begin? _____
 - d. Attach plans for funding the required upgrading.
 - e. Is this system under any Consent Order with DEP? _____
12. Department of Environmental Protection ID # FLA 013123

* An ERC is determined based on the calculation on S-11.