

OFFICIAL COPY  
CLASS "A" OR "B"  
DIVISION OF

WATER AND/OR WASTEWATER UTILITIES  
(Gross Revenue of More Than \$200,000 Each)  
**Do Not Remove from this Office**

# ANNUAL REPORT

OF

WS818-01-AR  
Bayside Utility Services, Inc.

---

469W 358S

Certificate Number(s)

Submitted To The

STATE OF FLORIDA

02 MAY -1 11:10:51  
COMMUNITY DEVELOPMENT  
OPERATIONS DIVISION

PUBLIC SERVICE COMMISSION

FOR THE

YEAR ENDED

31-Dec-01

## GENERAL INSTRUCTIONS

1. Prepare this report in conformity with the 1996 National Association of Regulatory Utility Commissioners Uniform System of Accounts for Water and/or Wastewater Utilities (USOA).
2. Interpret all accounting words and phrases in accordance with the USOA.
3. Complete each question fully and accurately, even if it has been answered in a previous annual report. Enter the word "None" where it truly and completely states the fact.
4. For any question, section, or page which is not applicable to the respondent, enter the words "Not Applicable". Do not omit any pages.
5. Where dates are called for, the month and day should be stated as well as the year.
6. All schedules requiring dollar entries should be rounded to the nearest dollar unless otherwise specifically indicated.
7. Complete this report by means which result in a permanent record, such as by computer or typewriter.
8. If there is not enough room on any schedule, an additional page or pages may be added; provided the format of the added schedule matches the format of the schedule with not enough room. Such a schedule should reference the appropriate schedules, state the name of the utility, and state the year of the report.
9. If it is necessary or desirable to insert additional statements for the purpose of further explanation of schedules, such statement should be made at the bottom of the page or an additional page inserted. Any additional pages should state the name of the utility, the year of the report, and reference the appropriate schedule.
10. For water and wastewater utilities with more than one rate group and/or system, water and wastewater pages should be completed for each rate group and/or system group. These pages should be grouped together and tabbed by rate group and/or system.
11. All other water and wastewater operations not regulated by the Commission and other regulated industries should be reported as "Other than Reporting Systems".
12. Financial information for multiple systems charging rates which are covered under the same tariff should be reported as one system. However, the engineering data must be reported by individual system.
13. For water and wastewater utilities with more than one system, one (1) copy of workpapers showing the consolidation of systems for the operating sections, should be filed with the annual report.
14. The report should be filled out in quadruplicate and the original and two copies returned by March 31, of the year following the date of the report. The report should be returned to:

**Florida Public Service Commission  
Division of Water and Wastewater  
2540 Shumard Oak Boulevard  
Tallahassee, Florida 32399-0873**

The fourth copy should be retained by the utility.

## TABLE OF CONTENTS

SCHEDULE	PAGE	SCHEDULE	PAGE
<b>EXECUTIVE SUMMARY</b>			
Certification	E-1	Business Contracts with Officers, Directors and Affiliates	E-7
General Information	E-2	Affiliation of Officers & Directors	E-8
Directory of Personnel Who Contact the FPSC	E-3	Businesses which are a Byproduct, Coproduct or Joint Product Result of Providing Service	E-9
Company Profile	E-4	Business Transactions with Related Parties. Part I and II	E-10
Parent / Affiliate Organization Chart	E-5		
Compensation of Officers & Directors	E-6		
<b>FINANCIAL SECTION</b>			
Comparative Balance Sheet - Assets and Other Debits	F-1	Unamortized Debt Discount / Expense / Premium	F-13
Comparative Balance Sheet - Equity Capital and Liabilities	F-2	Extraordinary Property Losses	F-13
Comparative Operating Statement	F-3	Miscellaneous Deferred Debits	F-14
Schedule of Year End Rate Base	F-4	Capital Stock	F-15
Schedule of Year End Capital Structure	F-5	Bonds	F-15
Capital Structure Adjustments	F-6	Statement of Retained Earnings	F-16
Utility Plant	F-7	Advances from Associated Companies	F-17
Utility Plant Acquisition Adjustments	F-7	Long Term Debt	F-17
Accumulated Depreciation	F-8	Notes Payable	F-18
Accumulated Amortization	F-8	Accounts Payable to Associated Companies	F-18
Regulatory Commission Expense - Amortization of Rate Case Expense	F-9	Accrued Interest and Expense	F-19
Nonutility Property	F-9	Misc. Current & Accrued Liabilities	F-20
Special Deposits	F-9	Advances for Construction	F-21
Investments and Special Funds	F-10	Other Deferred Credits	F-21
Accounts and Notes Receivable - Net	F-11	Contributions In Aid of Construction	F-22
Accounts Receivable from Associated Companies	F-12	Accumulated Amortization of CIAC	F-23
Notes Receivable from Associated Companies	F-12	Reconciliation of Reported Net Income with Taxable Income for Federal Income Taxes	F-23
Miscellaneous Current & Accrued Assets	F-12		

**TABLE OF CONTENTS**

<b>SCHEDULE</b>	<b>PAGE</b>	<b>SCHEDULE</b>	<b>PAGE</b>
<b>WATER OPERATION SECTION</b>			
Listing of Water System Groups	W-1	CIAC Additions / Amortization	W-8
Schedule of Year End Water Rate Base	W-2	Water Operating Revenue	W-9
Water Operating Statement	W-3	Water Utility Expense Accounts	W-10
Water Utility Plant Accounts	W-4	Pumping and Purchased Water Statistics, Source Supply	W-11
Basis for Water Depreciation Charges	W-5	Water Treatment Plant Information	W-12
Analysis of Entries in Water Depreciation Reserve	W-6	Calculation of ERC's	W-13
Contributions In Aid of Construction	W-7	Other Water System Information	W-14
<b>WASTEWATER OPERATION SECTION</b>			
Listing of Wastewater System Groups	S-1	Contributions In Aid of Construction	S-7
Schedule of Year End Wastewater Rate Base	S-2	CIAC Additions / Amortization	S-8
Wastewater Operating Statement	S-3	Wastewater Utility Expense Accounts	S-9
Wastewater Utility Plant Accounts	S-4	Wastewater Operating Revenue	S-10
Analysis of Entries in Wastewater Depreciation Reserve	S-5	Calculation of ERC's	S-11
Basis for Wastewater Depreciation Charges	S-6	Wastewater Treatment Plant Information	S-12
		Other Wastewater System Information	S-13

**EXECUTIVE  
SUMMARY**

**CERTIFICATION OF ANNUAL REPORT**

I HEREBY CERTIFY, to the best of my knowledge and belief:

YES      NO  
        1.    The utility is in substantial compliance with the Uniform System of Accounts prescribed by the Florida Public Service Commission.

YES      NO  
        2.    The utility is in substantial compliance with all applicable rules and orders of the Florida Public Service Commission.

YES      NO  
        3.    There have been no communications from regulatory agencies concerning noncompliance with, or deficiencies in, financial reporting practices that could have a material effect on the the financial statement of the utility.

YES      NO  
        4.    The annual report fairly represents the financial condition and results of operations of the respondent for the period presented and other information and statements presented in the the report as to the business affairs of the respondent are true, correct and complete for the period for which it represents.

Items Certified

1.    2.    3.    4.  
        

\_\_\_\_\_  
(Signature of Chief Executive Officer of the utility) \*

1.    2.    3.    4.  
        

  
\_\_\_\_\_  
(Signature of Chief Financial Officer of the utility) \*

\* Each of the four items must be certified YES or NO. Each item need not be certified by both officers. The items being certified by the officer should be indicated in the appropriate area to the left of the signature.

**NOTICE:** Section 837.06, Florida Statutes, provides that any person who knowingly makes a false statement in writing with the intent to mislead a public servant in the performance of his duty shall be guilty of a misdemeanor of the second degree.

ANNUAL REPORT OF

YEAR OF REPORT  
31-Dec-01

**BAYSIDE UTILITY SERVICES INC**

County: **Bay County**

(Exact Name of Utility)

List below the exact mailing address of the utility for which normal correspondence should be sent:

**2335 SANDERS ROAD**

**NORTHBROOK IL 60062**

Telephone: **847-498-6440**

E Mail Address: **NONE**

WEB Site: **NONE**

Sunshine State One-Call of Florida, Inc. Member Number **BUS947**

Name and address of person to whom correspondence concerning this report should be addressed:

**JOHN S HAYNES**

**2335 SANDERS ROAD**

**NORTHBROOK IL 60062**

Telephone: **847-498-6440**

List below the address of where the utility's books and records are located:

**2335 SANDERS ROAD**

**NORTHBROOK IL 60062**

Telephone: **847-498-6440**

List below any groups auditing or reviewing the records and operations:

**ARTHUR ANDERSEN LLP**

Date of original organization of the utility: \_\_\_\_\_

Check the appropriate business entity of the utility as filed with the Internal Revenue Service

Individual  Partnership  Sub S Corporation  1120 Corporation

List below every corporation or person owning or holding directly or indirectly 5% or more of the voting securities of the utility:

	Name	Percent Ownership
1.	<b>UTILITIES INC</b>	<b>100%</b>
2.	_____	_____
3.	_____	_____
4.	_____	_____
5.	_____	_____
6.	_____	_____
7.	_____	_____
8.	_____	_____
9.	_____	_____
10.	_____	_____





**COMPANY PROFILE**

Provide a brief narrative company profile which covers the following areas:

- A. Brief company history.
- B. Public services rendered.
- C. Major goals and objectives.
- D. Major operating divisions and functions.
- E. Current and projected growth patterns.
- F. Major transactions having a material effect on operations.

A.	Acquired in 1999 Bayside Utility Service was acquired by Utilities Inc.
B.	Bayside Utility Service performs water and wastewater services
C.	Maintain a high quality of service and earn a fair return.
D.	Only one subdivision is served
E.	We expect modest growth currently with anticipated higher growth in the future
F.	The system was purchased in 1999 and is currently being brought up to Utilities Inc. standards of quality.

**PARENT / AFFILIATE ORGANIZATION CHART**

**Current as of** 12/31/2001

Complete below an organizational chart that show all parents, subsidiaries and affiliates of the utility.  
The chart must also show the relationship between the utility and affiliates listed on E-7, E-10(a) and E-10(b).

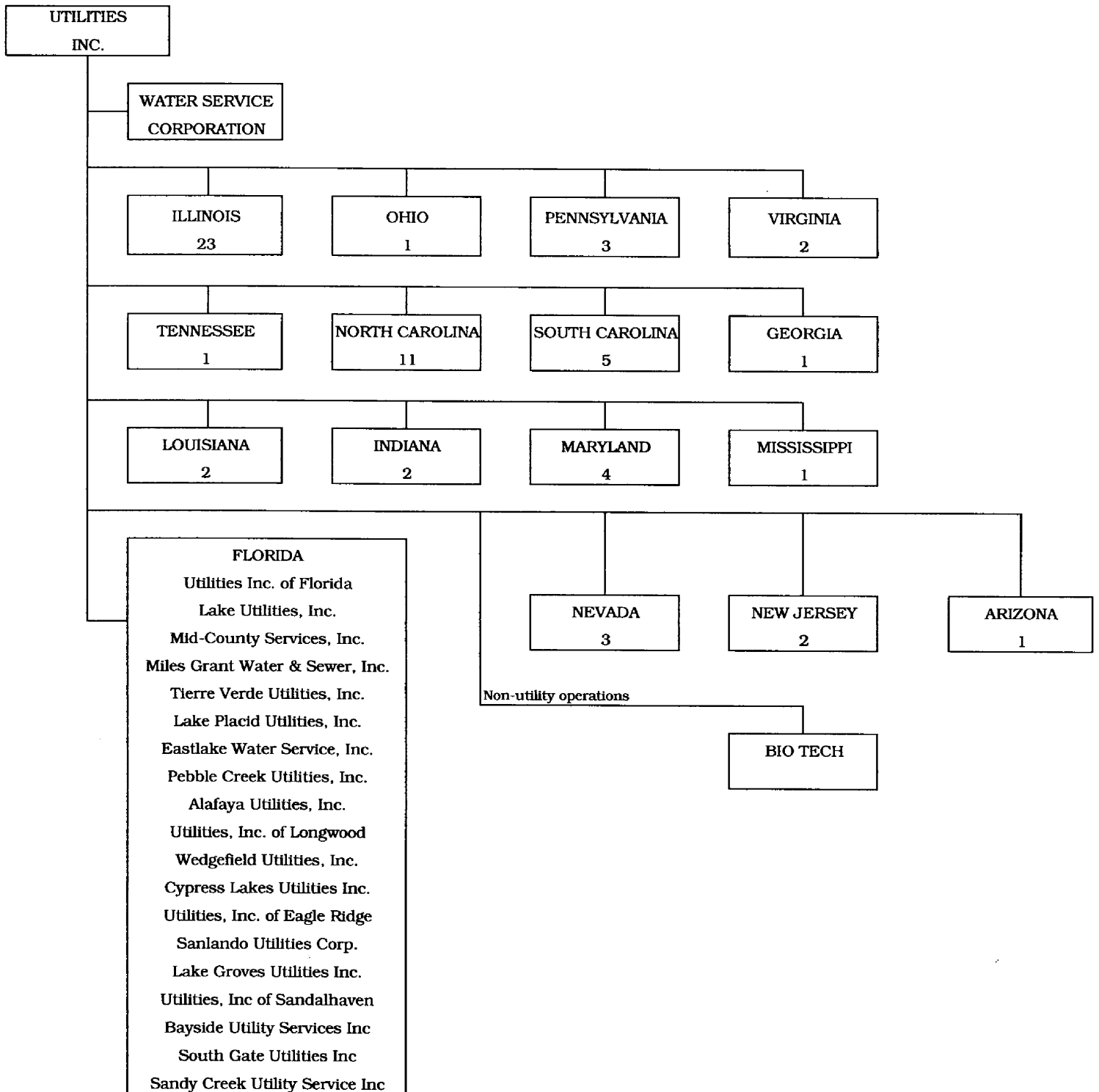
UTILITIES, INC. -- PARENT COMPANY

WATER SERVICE CORP. -- SERVICE COMPANY SUPPLYING MOST  
SERVICES REQUIRED BY UTILITY.

UTILITIES INC. of FLORIDA -- provides office personnel and administrative  
staff.

SEE ATTACHED

**Parent And Affiliate Organizational Chart**



UTILITIES, INC. - Parent Company

WATER SERVICE CORP. - Service organization providing administrative and other service functions for the utility.

**COMPENSATION OF OFFICERS**

For each officer, list the time spent on respondent as an officer compared to time spent on total business activities and the compensation received as an officer from the respondent.			
NAME (a)	TITLE (b)	% OF TIME SPENT AS OFFICER OF THE UTILITY (c)	OFFICERS' COMPENSATION (d)
JAMES L CAMAREN	CEO		\$ NONE
LAWRENCE N SCHUMACHER	PRES/SEC/CFO		NONE

**COMPENSATION OF DIRECTORS**

For each director, list the number of director meetings attended by each director and the compensation received as a director from the respondent.			
NAME (a)	TITLE (b)	NUMBER OF DIRECTORS' MEETINGS ATTENDED (c)	DIRECTORS' COMPENSATION (d)
			\$ NONE

**BUSINESS CONTRACTS WITH OFFICERS, DIRECTORS AND AFFILIATES**

List all contracts, agreements, or other business arrangements\* entered into during the calendar year (other than compensation related to position with Respondents) between the Respondent and officer and director listed on page E-6. In addition, provide the same information with respect to professional services for each firm, partnership, or organization with which the officer or director is affiliated.

NAME OF OFFICER, DIRECTOR OR AFFILIATE (a)	IDENTIFICATION OF SERVICE OR PRODUCT (b)	AMOUNT (c)	NAME AND ADDRESS OF AFFILIATED ENTITY (d)	
<b>NO BUSINESS CONTRACTS, AGREEMENTS OR OTHER ARRANGEMENTS WERE ENTERED INTO DURING THE CURRENT YEAR BY THE OFFICERS LISTED ON PAGE E6, THE DIRECTORS OR AFFILIATES.</b>		\$		

\* Business Agreement, for this schedule, shall mean any oral or written business deal which binds the concerned parties for products or services during the reporting year or future years. Although the Respondent and/or other companies will benefit from the arrangement, the officer or director is, however, acting on his behalf or for the benefit of other companies or persons.

**AFFILIATION OF OFFICERS AND DIRECTORS**

For each of the officials listed on page E-6, list the principle occupation or business affiliations or connections with any other business or financial organizations, firms, or partnerships. For purposes of this part, an official will be considered to have an affiliation with any business or financial organization, firm or partnership in which he is an officer, director, trustee, partner, or a person exercising similar functions.

NAME (a)	PRINCIPLE OCCUPATION OR BUSINESS AFFILIATION (b)	AFFILIATION OR CONNECTION (c)	NAME AND ADDRESS OF AFFILIATION OR CONNECTION (d)
<b>THE OFFICIALS LISTED ON PAGE E6 HAVE NO OTHER PRINCIPLE OCCUPATION OR BUSINESS AFFILIATION OR CONNECTIONS WITH ANY OTHER BUSINESS OR FINANCIAL ORGANIZATIONS, FIRMS, OR PARTNERSHIPS DURING THE REPORTED YEAR.</b>			

**BUSINESSES WHICH ARE A BY-PRODUCT, COPRODUCT OR JOINT-PRODUCT  
RESULT OF PROVIDING WATER OR WASTEWATER SERVICE**

BUSINESS OR SERVICE CONDUCTED (a)	ASSETS		REVENUES		EXPENSES	
	BOOK COST OF ASSETS (b)	ACCOUNT NUMBER (c)	REVENUES GENERATED (d)	ACCOUNT NUMBER (e)	EXPENSES INCURRED (f)	ACCOUNT NUMBER (g)
NO BUSINESS WHICH ARE	\$		\$			
A BY-PRODUCT, COPRODUCT OR JOINT PRODUCT RESULTING FROM PROVIDING WATER AND/OR SEWER SERVICE.						

Complete the following for any business which is conducted as a byproduct, coproduct, or joint product as a result of providing water and / or wastewater service. This would include any business which requires the use of utility land and facilities. Examples of these types of businesses would be orange groves, nurseries, tree farms, fertilizer manufacturing, etc. This would not include any business for which the assets are properly included in Account 121 - Nonutility Property along with the associated revenue and expenses segregated out as nonutility also.

**BUSINESS TRANSACTIONS WITH RELATED PARTIES**

List each contract, agreement, or other business transaction exceeding a cumulative amount of \$500 in any on year, entered into between the Respondent and a business or financial organization, firm, or partnership named on pages E-2 and E-6, identifying the parties, amounts, dates and product, and asset, or service involved.

Part I. Specific Instructions: Services and Products Received or Provided

1. Enter in this part all transactions involving services and products received or provided.

2. Below are some types of transactions to include:

- |  |   |
|--|---|
| -management, legal and accounting services | -material and supplies furnished                |
| -computer services                         | -leasing of structures, land, and equipment     |
| -engineering & construction services       | -rental transactions                            |
| -repairing and servicing of equipment      | -sale, purchase or transfer of various products |

NAME OF COMPANY OR RELATED PARTY (a)	DESCRIPTION SERVICE AND/OR NAME OF PRODUCT (b)	CONTRACT OR AGREEMENT EFFECTIVE DATES (c)	ANNUAL CHARGES (P)urchased (S)old (d)	AMOUNT (e)
<b>WATER SERVICE CORP</b>	Operators Salaries & Benefits	Continuous	Purchase	20,781
	Insurance	Continuous	Purchase	1,880
	Computer Operations	Continuous	Purchase	412
	Supplies & Postage	Continuous	Purchase	1,579
	Outside Services	Continuous	Purchase	800
	Management Services	Continuous	Purchase	4,514



**UTILITY NAME: BAYSIDE UTILITY SERVICES INC**

**BUSINESS TRANSACTIONS WITH RELATED PARTIES (Cont'd)**

**Part II. Specific Instructions: Sale, Purchase and Transfer of Assets**

1. Enter in this part all transactions relating to the purchase, sale, or transfer of assets.

3. The columnar instructions follow:

2. Below are examples of some types of transactions to include:
- purchase, sale or transfer of equipment
  - purchase, sale or transfer of land and structures
  - purchase, sale or transfer of securities
  - noncash transfers of assets
  - noncash dividends other than stock dividends
  - write-off of bad debts or loans

(a) Enter name of related party or company.

(b) Describe briefly the type of assets purchased, sold or transferred.

(c) Enter the total received or paid. Indicate purchase with "P" and sale with "S".

(d) Enter the net book value for each item reported.

(e) Enter the net profit or loss for each item reported. (column (c) - column (d))

(f) Enter the fair market value for each item reported. In space below or in a supplemental schedule, describe the basis used to calculate fair market value.

NAME OF COMPANY OR RELATED PARTY (a)	DESCRIPTION OF ITEMS (b)	SALE OR PURCHASE PRICE (c)	NET BOOK VALUE (d)	GAIN OR LOSS (e)	FAIR MARKET VALUE (f)
		\$ _____	\$ _____	\$ _____	\$ _____
NO ASSETS WERE SOLD, PURCHASED OR TRANSFERRED WITH A RELATED PARTY DURING THE FISCAL YEAR ENDED 31-Dec-01		_____	_____	_____	_____
		_____	_____	_____	_____
		_____	_____	_____	_____
		_____	_____	_____	_____
		_____	_____	_____	_____
		_____	_____	_____	_____
		_____	_____	_____	_____
		_____	_____	_____	_____
		_____	_____	_____	_____

# **FINANCIAL SECTION**

**COMPARATIVE BALANCE SHEET**  
**ASSETS AND OTHER DEBITS**

ACCT. NO. (a)	ACCOUNT NAME (b)	REF. PAGE (c)	PREVIOUS YEAR (d)	CURRENT YEAR (e)
<b>UTILITY PLANT</b>				
101-106	Utility Plant	F-7	\$ 587,735	\$ 604,975
108-110	Less: Accumulated Depreciation and Amortization	F-8	262,293	261,503
Net Plant			\$ 325,442	\$ 343,472
114-115	Utility Plant Acquisition adjustment (Net)	F-7	(78,308)	(76,043)
116 *	Other Utility Plant Adjustments			
Total Net Utility Plant			\$ 247,134	\$ 267,429
<b>OTHER PROPERTY AND INVESTMENTS</b>				
121	Nonutility Property	F-9	\$ _____	\$ _____
122	Less: Accumulated Depreciation and Amortization			
Net Nonutility Property			\$ _____	\$ _____
123	Investment In Associated Companies	F-10		
124	Utility Investments	F-10		
125	Other Investments	F-10		
126-127	Special Funds	F-10		
Total Other Property & Investments			\$ _____	\$ _____
<b>CURRENT AND ACCRUED ASSETS</b>				
131	Cash		\$ _____	\$ _____
132	Special Deposits	F-9	150	150
133	Other Special Deposits	F-9		
134	Working Funds			
135	Temporary Cash Investments			
141-144	Accounts and Notes Receivable, Less Accumulated Provision for Uncollectible Accounts	F-11	26,008	28,038
145	Accounts Receivable from Associated Companies	F-12		
146	Notes Receivable from Associated Companies	F-12		-
151-153	Material and Supplies			
161	Stores Expense			
162	Prepayments			-
171	Accrued Interest and Dividends Receivable			
172 *	Rents Receivable			
173 *	Accrued Utility Revenues			
174	Misc. Current and Accrued Assets	F-12		-
Total Current and Accrued Assets			\$ 26,158	\$ 28,188

\* Not Applicable for Class B Utilities

**COMPARATIVE BALANCE SHEET  
ASSETS AND OTHER DEBITS**

ACCT. NO. (a)	ACCOUNT NAME (b)	REF. PAGE (c)	PREVIOUS YEAR (d)	CURRENT YEAR (e)
	<b>DEFERRED DEBITS</b>			
181	Unamortized Debt Discount & Expense	F-13	\$ _____	\$ _____
182	Extraordinary Property Losses	F-13	_____	_____
183	Preliminary Survey & Investigation Charges		_____	_____
184	Clearing Accounts		_____	_____
185 *	Temporary Facilities		_____	_____
186	Misc. Deferred Debits	F-14	_____	-
187 *	Research & Development Expenditures		_____	_____
190	Accumulated Deferred Income Taxes		_____	-
			_____	_____
	Total Deferred Debits		\$ _____ -	\$ _____ -
	<b>TOTAL ASSETS AND OTHER DEBITS</b>		\$ <u>273,292</u>	\$ <u>295,617</u>

\* Not Applicable for Class B Utilities

**NOTES TO THE BALANCE SHEET**

The space below is provided for important notes regarding the balance sheet.

**COMPARATIVE BALANCE SHEET**  
**EQUITY CAPITAL AND LIABILITIES**

ACCT. NO. (a)	ACCOUNT NAME (b)	REF. PAGE (c)	PREVIOUS YEAR (d)	CURRENT YEAR (e)
<b>EQUITY CAPITAL</b>				
201	Common Stock Issued	F-15	\$ 1,000	\$ 1,000
204	Preferred Stock Issued	F-15		
202,205 *	Capital Stock Subscribed			
203,206 *	Capital Stock Liability for Conversion			
207 *	Premium on Capital Stock			
209 *	Reduction in Par or Stated Value of Capital Stock			
210 *	Gain on Resale or Cancellation of Reacquired Capital Stock			
211	Other Paid - In Capital		189,000	203,666
212	Discount On Capital Stock			
213	Capital Stock Expense			
214-215	Retained Earnings	F-16	(13,176)	(21,695)
216	Reacquired Capital Stock			
218	Proprietary Capital (Proprietorship and Partnership Only)			
Total Equity Capital			\$ 176,824	\$ 182,971
<b>LONG TERM DEBT</b>				
221	Bonds	F-15		
222 *	Reacquired Bonds			
223	Advances from Associated Companies	F-17		
224	Other Long Term Debt	F-17		
Total Long Term Debt			\$ -	\$ -
<b>CURRENT AND ACCRUED LIABILITIES</b>				
231	Accounts Payable		14,000	9,000
232	Notes Payable	F-18		
233	Accounts Payable to Associated Companies	F-18	58,918	82,342
234	Notes Payable to Associated Companies	F-18		
235	Customer Deposits		6,464	7,819
236	Accrued Taxes	W/S-3	(5,000)	(5,000)
237	Accrued Interest	F-19	(157)	(225)
238	Accrued Dividends			
239	Matured Long Term Debt			
240	Matured Interest			
241	Miscellaneous Current & Accrued Liabilities	F-20		
Total Current & Accrued Liabilities			\$ 74,225	\$ 93,936

\* Not Applicable for Class B Utilities

**COMPARATIVE BALANCE SHEET  
EQUITY CAPITAL AND LIABILITIES**

ACCT. NO. (a)	ACCOUNT NAME (b)	REF. PAGE (c)	PREVIOUS YEAR (d)	CURRENT YEAR (e)
<b>DEFERRED CREDITS</b>				
251	Unamortized Premium On Debt	F-13	\$ _____	\$ _____
252	Advances For Construction	F-20	_____	_____
253	Other Deferred Credits	F-21	_____	_____
255	Accumulated Deferred Investment Tax Credits		-	-
Total Deferred Credits			\$ <u>      -      </u>	\$ <u>      -      </u>
<b>OPERATING RESERVES</b>				
261	Property Insurance Reserve		\$ _____	\$ _____
262	Injuries & Damages Reserve		_____	_____
263	Pensions and Benefits Reserve		_____	_____
265	Miscellaneous Operating Reserves		_____	_____
Total Operating Reserves			\$ <u>      -      </u>	\$ <u>      -      </u>
<b>CONTRIBUTIONS IN AID OF CONSTRUCTION</b>				
271	Contributions in Aid of Construction	F-22	\$ 52,911	\$ 52,911
272	Accumulated Amortization of Contributions in Aid of Construction	F-22	38,232	39,748
Total Net C.I.A.C.			\$ <u>      14,679      </u>	\$ <u>      13,163      </u>
<b>ACCUMULATED DEFERRED INCOME TAXES</b>				
281	Accumulated Deferred Income Taxes - Accelerated Depreciation		\$ 4,001	\$ (103)
282	Accumulated Deferred Income Taxes - Liberalized Depreciation		_____	_____
283	Accumulated Deferred Income Taxes - Other		3,563	5,650
Total Accumulated Deferred Income Tax			\$ <u>      7,564      </u>	\$ <u>      5,547      </u>
<b>TOTAL EQUITY CAPITAL AND LIABILITIES</b>			\$ <u>      273,292      </u>	\$ <u>      295,617      </u>

**COMPARATIVE OPERATING STATEMENT**

ACCT. NO. (a)	ACCOUNT NAME (b)	REF. PAGE (c)	PREVIOUS YEAR (d)	CURRENT YEAR * (e)
<b>UTILITY OPERATING INCOME</b>				
400	Operating Revenues	F-3(b)	\$ 150,565	\$ 152,211
469, 530	Less: Guaranteed Revenue and AFPI	F-3(b)		
Net Operating Revenues			\$ 150,565	\$ 152,211
401	Operating Expenses	F-3(b)	\$ 132,078	\$ 131,626
403	Depreciation Expense:	F-3(b)	\$ 16,094	\$ 16,152
	Less: Amortization of CIAC	F-22	(1,517)	(1,516)
Net Depreciation Expense			\$ 14,577	\$ 14,636
406	Amortization of Utility Plant Acquisition Adjustment	F-3(b)	(2,264)	(2,265)
407	Amortization Expense (Other than CIAC)	F-3(b)	1,261	1,262
408	Taxes Other Than Income	W/S-3	4,454	9,325
409	Current Income Taxes	W/S-3	(7,259)	(5,329)
410.10	Deferred Federal Income Taxes	W/S-3	3,414	806
410.11	Deferred State Income Taxes	W/S-3	-	-
411.10	Provision for Deferred Income Taxes - Credit	W/S-3	-	-
412.10	Investment Tax Credits Deferred to Future Periods	W/S-3	-	-
412.11	Investment Tax Credits Restored to Operating Income	W/S-3	-	-
Utility Operating Expenses			\$ 146,261	\$ 150,061
Net Utility Operating Income			\$ 4,304	\$ 2,150
469, 530	Add Back: Guaranteed Revenue and AFPI	F-3(b)		
413	Income From Utility Plant Leased to Others			
414	Gains (losses) From Disposition of Utility Property			
420	Allowance for Funds Used During Construction			260
Total Utility Operating Income [Enter here and on Page F-3(c)]			\$ 4,304	\$ 2,410

\* For each account, Column e should agree with Columns f, g and h on F-3(b)

**COMPARATIVE OPERATING STATEMENT (Cont'd)**

WATER SCHEDULE W-3 * (f)	WASTEWATER SCHEDULE S-3 * (g)	OTHER THAN REPORTING SYSTEMS (h)
\$ 63,078	\$ 89,133	\$ -
\$ 63,078	\$ 89,133	\$ -
\$ 63,905	\$ 67,721	\$ -
6,599	9,553	-
(1,516)	-	-
\$ 5,083	\$ 9,553	\$ -
(527)	(1,738)	-
748	514	-
4,024	5,301	-
(6,387)	1,058	-
966	(160)	-
-	-	-
-	-	-
-	-	-
-	-	-
\$ 67,812	\$ 82,249	\$ -
\$ (4,734)	\$ 6,884	\$ -
-	-	-
-	-	-
-	-	-
-	260	-
\$ (4,734)	\$ 7,144	\$ -

\* Total of Schedules W-3 / S-3 for all rate groups.



**COMPARATIVE OPERATING STATEMENT (Cont'd)**

ACCT. NO. (a)	ACCOUNT NAME (b)	REF. PAGE (c)	PREVIOUS YEAR (d)	CURRENT YEAR (e)
Total Utility Operating Income [from page F-3(a)]			\$ 4,304	\$ 2,410
<b>OTHER INCOME AND DEDUCTIONS</b>				
415	Revenues-Merchandising, Jobbing, and Contract Deductions		\$ _____	\$ _____
416	Costs & Expenses of Merchandising Jobbing, and Contract Work		_____	_____
419	Interest and Dividend Income		(60)	(238)
421	Nonutility Income		_____	_____
426	Miscellaneous Nonutility Expenses		-	-
Total Other Income and Deductions			\$ (60)	\$ (238)
<b>TAXES APPLICABLE TO OTHER INCOME</b>				
408.20	Taxes Other Than Income		\$ _____	\$ _____
409.20	Income Taxes		_____	_____
410.20	Provision for Deferred Income Taxes		_____	_____
411.20	Provision for Deferred Income Taxes - Credit		_____	_____
412.20	Investment Tax Credits - Net		_____	_____
412.30	Investment Tax Credits Restored to Operating Income		_____	_____
Total Taxes Applicable To Other Income			\$ -	\$ -
<b>INTEREST EXPENSE</b>				
427	Interest Expense	F-19	\$ 11,706	\$ 10,691
428	Amortization of Debt Discount & Expense	F-13	_____	_____
429	Amortization of Premium on Debt	F-13	_____	_____
Total Interest Expense			\$ 11,706	\$ 10,691
<b>EXTRAORDINARY ITEMS</b>				
433	Extraordinary Income		\$ _____	\$ _____
434	Extraordinary Deductions		_____	_____
409.30	Income Taxes, Extraordinary Items		_____	_____
Total Extraordinary Items			\$ -	\$ -
<b>NET INCOME</b>			<u>\$ (7,462)</u>	<u>\$ (8,519)</u>

Explain Extraordinary Income:

NONE

---



---



---



---

**SCHEDULE OF YEAR END RATE BASE**

ACCT. NO. (a)	ACCOUNT NAME (b)	REF. PAGE (c)	WATER UTILITY (d)	WASTEWATER UTILITY (e)
101	Utility Plant In Service	F-7	\$ 227,574	\$ 377,401
	Less:			
	Nonused and Useful Plant (1)			
108	Accumulated Depreciation	F-8	108,351	150,442
110	Accumulated Amortization	F-8	1,584	1,126
271	Contributions In Aid of Construction	F-22	52,911	-
252	Advances for Construction	F-20		
Subtotal			\$ 64,728	\$ 225,833
	Add:			
272	Accumulated Amortization of Contributions in Aid of Construction	F-22	39,748	-
Subtotal			\$ 104,476	\$ 225,833
	Plus or Minus:			
114	Acquisition Adjustments (2)	F-7	-	-
115	Accumulated Amortization of Acquisition Adjustments (2)	F-7	-	-
	Working Capital Allowance (3)		7,988	8,465
	Other (Specify):			
	_____			
	_____			
	_____			
<b>RATE BASE</b>			<b>\$ 112,464</b>	<b>\$ 234,298</b>
<b>NET UTILITY OPERATING INCOME</b>			<b>\$ (4,734)</b>	<b>\$ 6,884</b>
<b>ACHIEVED RATE OF RETURN (Operating Income / Rate Base)</b>			<b>-4.21%</b>	<b>2.94%</b>

**NOTES :**

- (1) Estimate based on the methodology used in the last rate proceeding.
- (2) Include only those Acquisition Adjustments that have been approved by the Commission.
- (3) Calculation consistent with last rate proceeding.  
In absence of a rate proceeding, Class A utilities will use the Balance Sheet Method and Class B Utilities will use the One-eighth Operating and Maintenance Expense Method.

**SCHEDULE OF CURRENT COST OF CAPITAL  
CONSISTENT WITH THE METHODOLOGY USED IN THE LAST RATE PROCEEDING (1)**

<b>CLASS OF CAPITAL (a)</b>	<b>DOLLAR AMOUNT (2) (b)</b>	<b>PERCENTAGE OF CAPITAL (c)</b>	<b>ACTUAL COST RATES (3) (d)</b>	<b>WEIGHTED COST (c x d) (e)</b>
Common Equity	\$ 150,028	43.27%	10.46%	4.53%
Preferred Stock	-	0.00%	0.00%	0.00%
Long Term Debt	136,692	39.42%	8.52%	3.36%
Customer Deposits	7,819	2.25%	6.00%	0.14%
Tax Credits - Zero Cost	-	0.00%	0.00%	0.00%
Tax Credits - Weighted Cost	-	0.00%	0.00%	0.00%
Deferred Income Taxes	5,547	1.60%	0.00%	0.00%
Other (Explain) Short Term Debt	46,675	13.46%	1.92%	0.26%
<b>Total</b>	<b>\$ 346,762</b>	<b>100.00%</b>		<b>8.29%</b>

(1) If the utility's capital structure is not used, explain which capital structure is used.

\_\_\_\_\_

(2) Should equal amounts on Schedule F-6, Column (g).

(3) Mid-point of the last authorized Return On Equity or current leverage formula if none has been established.

Must be calculated using the same methodology used in the last rate proceeding using current annual report year end amounts and cost rates.

**APPROVED RETURN ON EQUITY**

Current Commission Return on Equity:	<u>10.46%</u>
Commission order approving Return on Equity:	<u>Docket No. 971401-WS</u>

**APPROVED AFUDC RATE**

COMPLETION ONLY REQUIRED IF AFUDC WAS CHARGED DURING YEAR

Current Commission Approved AFUDC rate:	<u>N/A</u>
Commission order approving AFUDC rate:	<u>N/A</u>

If any utility capitalized any charge in lieu of AFUDC (such as interest only), state the basis of the charge, an explanation as to why AFUDC was not charged and the percentage capitalized.

UTILITY NAME: **BAYSIDE UTILITY SERVICES INC**

SCHEDULE OF CAPITAL STRUCTURE ADJUSTMENTS  
CONSISTENT WITH THE METHODOLOGY USED IN THE LAST RATE PROCEEDING

CLASS OF CAPITAL (a)	PER BOOK BALANCE (b)	NON-UTILITY ADJUSTMENTS (c)	NON-JURISDICTIONAL ADJUSTMENTS (d)	OTHER (1) ADJUSTMENTS SPECIFIC (e)	OTHER (1) ADJUSTMENTS PRO RATA (f)	CAPITAL STRUCTURE (g)
Common Equity	\$ 76,392,765	\$ 0	\$ 0	\$ 0	\$ (76,242,737)	\$ 150,028
Preferred Stock		0	0	0		-
Long Term Debt	70,000,000	0	0	0	(69,863,308)	136,692
Customer Deposits	7,819	0	0	0		7,819
Tax Credits - Zero Cost	-	0	0	0		-
Tax Credits - Weighted Cost	-	0	0	0		-
Deferred Inc. Taxes	5,547	0	0	0		5,547
Other (Explain) Short Term Debt	23,649,000	0	0	0	(23,602,325)	46,675
<b>Total</b>	<b>\$ 170,055,131</b>	<b>\$ 0</b>	<b>\$ 0</b>	<b>\$ 0</b>	<b>\$ (169,708,370)</b>	<b>\$ 346,761</b>

(1) Explain below all adjustments made in Columns (e) and (f):

NOT APPLICABLE

UTILITY NAME: **BAYSIDE UTILITY SERVICES INC**

**YEAR OF REPORT**  
31-Dec-01

**UTILITY PLANT  
ACCOUNTS 101 - 106**

ACCT. (a)	DESCRIPTION (b)	WATER (c)	WASTEWATER (d)	OTHER THAN REPORTING SYSTEMS (e)	TOTAL (f)
101	Plant Accounts: Utility Plant In Service	\$ 227,574	\$ 377,401	\$	\$ 604,975
102	Utility Plant Leased to Other				-
103	Property Held for Future Use				-
104	Utility Plant Purchased or Sold				-
105	Construction Work in Progress	-	-		-
106	Completed Construction Not Classified				-
	<b>Total Utility Plant</b>	<b>\$ 227,574</b>	<b>\$ 377,401</b>	<b>\$ -</b>	<b>\$ 604,975</b>

**UTILITY PLANT ACQUISITION ADJUSTMENTS  
ACCOUNTS 114 AND 115**

Report each acquisition adjustment and related accumulated amortization separately.  
For any acquisition adjustments approved by the Commission, include the Order Number.

ACCT. (a)	DESCRIPTION (b)	WATER (c)	WASTEWATER (d)	OTHER THAN REPORTING SYSTEMS (e)	TOTAL (f)
114	Acquisition Adjustment	\$ (17,837)	\$ (60,471)	\$ -	\$ (78,308)
		-	-		-
					-
					-
	<b>Total Plant Acquisition Adjustments</b>	<b>\$ (17,837)</b>	<b>\$ (60,471)</b>	<b>\$ -</b>	<b>\$ (78,308)</b>
115	Accumulated Amortization Accruals charged during year	\$ 527	\$ 1,738	\$	\$ 2,265
					-
					-
					-
	<b>Total Accumulated Amortization</b>	<b>\$ 527</b>	<b>\$ 1,738</b>	<b>\$ -</b>	<b>\$ 2,265</b>
	<b>Net Acquisition Adjustments</b>	<b>\$ (17,310)</b>	<b>\$ (58,733)</b>	<b>\$ -</b>	<b>\$ (76,043)</b>

**ACCUMULATED DEPRECIATION ( ACCT. 108 ) AND AMORTIZATION (ACCT. 110)**

DESCRIPTION (a)	WATER (b)	WASTEWATER (c)	OTHER THAN REPORTING SYSTEMS (d)	TOTAL (e)
<b>ACCUMULATED DEPRECIATION</b>				
Account 108				
Balance first of year	\$ 118,724	\$ 142,121	\$ -	\$ 260,845
Credit during year:				
Accruals charged to:				
Account 108.1 (1)	\$ 6,599	\$ 9,553	\$ -	\$ 16,152
Account 108.2 (2)	-	-	-	-
Account 108.3 (2)	-	-	-	-
Other Accounts (specify):	(1,353)	-	-	(1,353)
Salvage	-	-	-	-
Other Credits (Specify):	-	-	-	-
Total Credits	\$ 5,246	\$ 9,553	\$ -	\$ 14,799
Debits during year:				
Book cost of plant retired	15,619	1,232	-	16,851
Cost of Removal	-	-	-	-
Other Debits (specify):	-	-	-	-
Total Debits	\$ 15,619	\$ 1,232	\$ -	\$ 16,851
Balance end of year	\$ 108,351	\$ 150,442	\$ -	\$ 258,793
<b>ACCUMULATED AMORTIZATION</b>				
Account 110				
Balance first of year	\$ 836	\$ 612	\$ -	\$ 1,448
Credit during year:				
Accruals charged to:				
Account 110.2 (2)	\$ 748	\$ 514	\$ -	\$ 1,262
Other Accounts (specify):	-	-	-	-
Total credits	\$ 748	\$ 514	\$ -	\$ 1,262
Debits during year:				
Book cost of plant retired	-	-	-	-
Other debits (specify):	-	-	-	-
Total Debits	\$ -	\$ -	\$ -	\$ -
Balance end of year	\$ 1,584	\$ 1,126	\$ -	\$ 2,710

- (1) Account 108 for Class B utilities.
- (2) Not applicable for Class B utilities.
- (3) Account 110 for Class B utilities.

UTILITY NAME: **BAYSIDE UTILITY SERVICES INC**

<b>YEAR OF REPORT</b> 31-Dec-01
------------------------------------

**REGULATORY COMMISSION EXPENSE  
AMORTIZATION OF RATE CASE EXPENSE (ACCOUNTS 666 AND 766)**

DESCRIPTION OF CASE (DOCKET NO.) (a)	EXPENSE INCURRED DURING YEAR (b)	CHARGED OFF DURING YEAR	
		ACCT. (d)	AMOUNT (e)
NONE	\$ _____	_____	\$ _____
_____	_____	_____	_____
_____	_____	_____	_____
Total	\$ _____	_____	\$ _____

**NONUTILITY PROPERTY (ACCOUNT 121)**

Report separately each item of property with a book cost of \$25,000 or more included in Account 121.

Other Items may be grouped by classes of property.

DESCRIPTION (a)	BEGINNING YEAR (b)	ADDITIONS (c)	REDUCTIONS (d)	ENDING YEAR BALANCE (e)
NONE	\$ _____	\$ _____	\$ _____	\$ _____
_____	_____	_____	_____	_____
_____	_____	_____	_____	_____
_____	_____	_____	_____	_____
Total Nonutility Property	\$ _____	\$ _____	\$ _____	\$ _____

**SPECIAL DEPOSITS ( ACCOUNTS 132 AND 133)**

Report hereunder all special deposits carried in Accounts 132 and 133.

DESCRIPTION OF SPECIAL DEPOSITS (a)	YEAR END BOOK COST (b)
SPECIAL DEPOSITS (Account 132): <b>Gulf Power Deposit</b>	\$ _____ 150
_____	_____
_____	_____
Total Special Deposits	\$ _____ 150
OTHER SPECIAL DEPOSITS (Account 133): <b>NONE</b>	\$ _____
_____	_____
_____	_____
Total Other Special Deposits	\$ _____ -

UTILITY NAME: **BAYSIDE UTILITY SERVICES INC**

<b>YEAR OF REPORT</b> <b>31-Dec-01</b>
---

**INVESTMENTS AND SPECIAL FUNDS**  
**ACCOUNTS 123 - 127**

Report hereunder all investments and special funds carried in Accounts 123 through 127.

DESCRIPTION OF SECURITY OR SPECIAL FUND (a)	FACE OR PAR VALUE (b)	YEAR END BOOK COST (c)
<b>INVESTMENT IN ASSOCIATED COMPANIES (Account 123):</b> <b>NONE</b> <hr/> <hr/> <hr/> <hr/> <hr/> <hr/>	\$ _____ _____ _____ _____ _____ _____	\$ _____ _____ _____ _____ _____ _____
<b>Total Investment in Associated Companies</b>		\$ _____
<b>UTILITY INVESTMENTS (Account 124):</b> <b>NONE</b> <hr/> <hr/> <hr/> <hr/> <hr/> <hr/>	\$ _____ _____ _____ _____ _____ _____	\$ _____ _____ _____ _____ _____ _____
<b>Total Utility Investment</b>		\$ _____
<b>OTHER INVESTMENTS (Account 125):</b> <b>NONE</b> <hr/> <hr/> <hr/> <hr/> <hr/> <hr/>	\$ _____ _____ _____ _____ _____ _____	\$ _____ _____ _____ _____ _____ _____
<b>Total Other Investment</b>		\$ _____
<b>SPECIAL FUNDS (Class A Utilities: Accounts 126 and 127; Class B Utilities: Account 127):</b> <b>NONE</b> <hr/> <hr/> <hr/> <hr/> <hr/> <hr/>	_____ _____ _____ _____ _____ _____	\$ _____ _____ _____ _____ _____ _____
<b>Total Special Funds</b>		\$ _____



UTILITY NAME: **BAYSIDE UTILITY SERVICES INC**

<b>YEAR OF REPORT</b> <b>31-Dec-01</b>
---

**ACCOUNTS AND NOTES RECEIVABLE - NET**  
**ACCOUNTS 141 - 144**

Report hereunder all accounts and notes receivable included in Accounts 141, 142, and 144. Amounts included in  
Amounts included in Accounts 142 and 144 should be listed individually.

DESCRIPTION (a)	TOTAL (b)
CUSTOMER ACCOUNTS RECEIVABLE (Account 141):	
Water	\$ 14,019
Wastewater	14,019
Other	
Total Customer Accounts Receivable	\$ 28,038
OTHER ACCOUNTS RECEIVABLE ( Account 142):	
_____	\$ _____
_____	_____
_____	_____
Total Other Accounts Receivable	\$ -
NOTES RECEIVABLE (Account 144 ):	
_____	\$ _____
_____	_____
_____	_____
Total Notes Receivable	\$ -
Total Accounts and Notes Receivable	\$ 28,038
ACCUMULATED PROVISION FOR UNCOLLECTIBLE ACCOUNTS ( Account 143 )	
Balance first of year	\$ -
Add: Provision for uncollectibles for current year	\$ _____
Collection of accounts previously written off	_____
Utility Accounts	_____
Others	_____
_____	_____
Total Additions	\$ -
Deduct accounts written off during year:	
Utility Accounts	_____
Others	_____
_____	_____
Total accounts written off	\$ -
Balance end of year	\$ _____
<b>TOTAL ACCOUNTS AND NOTES RECEIVABLE - NET</b>	<b>\$ 28,038</b>

UTILITY NAME: BAYSIDE UTILITY SERVICES INC

<b>YEAR OF REPORT</b> 31-Dec-01
------------------------------------

**ACCOUNTS RECEIVABLE FROM ASSOCIATED COMPANIES  
ACCOUNT 145**

Report each account receivable from associated companies separately.

DESCRIPTION (a)	TOTAL (b)
NONE	\$ _____
_____	_____
_____	_____
_____	_____
_____	_____
_____	_____
_____	_____
_____	_____
_____	_____
_____	_____
Total	\$ _____

**NOTES RECEIVABLE FROM ASSOCIATED COMPANIES  
ACCOUNT 146**

Report each note receivable from associated companies separately.

DESCRIPTION (a)	INTEREST RATE (b)	TOTAL (c)
NONE	_____ %	\$ _____
_____	_____ %	_____
_____	_____ %	_____
_____	_____ %	_____
_____	_____ %	_____
_____	_____ %	_____
_____	_____ %	_____
_____	_____ %	_____
_____	_____ %	_____
Total		\$ _____

**MISCELLANEOUS CURRENT AND ACCRUED ASSETS  
ACCOUNT 174**

DESCRIPTION - Provide itemized listing (a)	BALANCE END OF YEAR (b)
NONE	\$ _____
_____	_____
_____	_____
_____	_____
Total Miscellaneous Current and Accrued Liabilities	\$ _____

UTILITY NAME: BAYSIDE UTILITY SERVICES INC

<b>YEAR OF REPORT</b> 31-Dec-01
------------------------------------

**UNAMORTIZED DEBT DISCOUNT AND EXPENSE AND PREMIUM ON DEBT  
ACCOUNTS 181 AND 251**

Report the net discount and expense or premium separately for each security issue.

DESCRIPTION (a)	AMOUNT WRITTEN OFF DURING YEAR (b)	YEAR END BALANCE (c)
UNAMORTIZED DEBT DISCOUNT AND EXPENSE (Account 181): NONE	\$ _____	\$ _____
_____	_____	_____
_____	_____	_____
_____	_____	_____
Total Unamortized Debt Discount and Expense	\$ _____	\$ _____
UNAMORTIZED PREMIUM ON DEBT (Account 251):	\$ _____	\$ _____
_____	_____	_____
_____	_____	_____
_____	_____	_____
Total Unamortized Premium on Debt	\$ _____	\$ _____

**EXTRAORDINARY PROPERTY LOSSES  
ACCOUNT 182**

Report each item separately.

DESCRIPTION (a)	TOTAL (b)
NONE	\$ _____
_____	_____
_____	_____
Total Extraordinary Property Losses	\$ _____

UTILITY NAME: **BAYSIDE UTILITY SERVICES INC**

<b>YEAR OF REPORT</b> <b>31-Dec-01</b>
---

**MISCELLANEOUS DEFERRED DEBITS  
ACCOUNT 186**

DESCRIPTION - Provide itemized listing (a)	AMOUNT WRITTEN OFF DURING YEAR (b)	YEAR END BALANCE (c)
DEFERRED RATE CASE EXPENSE (Class A Utilities: Account 186.1)		
RATE CASE	\$ -	\$ -
Total Deferred Rate Case Expense	\$ -	\$ -
OTHER DEFERRED DEBITS (Class A Utilities: Account 186.2):		
OTHER DEFERRED MAINTENANCE	\$ -	\$ -
Total Other Deferred Debits	\$ -	\$ -
REGULATORY ASSETS (Class A Utilities: Account. 186.3):		
NONE	\$ -	\$ -
Total Regulatory Assets	\$ -	\$ -
<b>TOTAL MISCELLANEOUS DEFERRED DEBITS</b>	<b>\$ -</b>	<b>\$ -</b>

UTILITY NAME: BAYSIDE UTILITY SERVICES INC

<b>YEAR OF REPORT</b> <b>31-Dec-01</b>
---

**CAPITAL STOCK  
ACCOUNTS 201 AND 204\***

DESCRIPTION (a)	RATE (b)	TOTAL (c)
<b>COMMON STOCK</b>		
Par or stated value per share	_____ %	\$ _____ 1
Shares authorized		_____ -
Shares issued and outstanding		_____ -
Total par value of stock issued	_____ %	\$ _____ 1,000
Dividends declared per share for year	_____ %	\$ _____ -
<b>PREFERRED STOCK</b>		
Par or stated value per share	_____ %	\$ _____ -
Shares authorized		_____ -
Shares issued and outstanding		_____ -
Total par value of stock issued	_____ %	\$ _____ -
Dividends declared per share for year	_____ %	\$ _____ -

\* Account 204 not applicable for Class B utilities.

**BONDS  
ACCOUNT 221**

DESCRIPTION OF OBLIGATION (INCLUDING DATE OF ISSUE AND DATE OF MATURITY) (a)	INTEREST		PRINCIPAL AMOUNT PER BALANCE SHEET (d)
	ANNUAL RATE (b)	FIXED OR VARIABLE * (c)	
NONE	_____ %	_____	\$ _____
_____	_____ %	_____	_____
_____	_____ %	_____	_____
_____	_____ %	_____	_____
_____	_____ %	_____	_____
_____	_____ %	_____	_____
_____	_____ %	_____	_____
_____	_____ %	_____	_____
_____	_____ %	_____	_____
_____	_____ %	_____	_____
Total			\$ _____

\* For variable rate obligations, provide the basis for the rate. (i.e.. prime + 2%, etc.)

**STATEMENT OF RETAINED EARNINGS**

1. Dividends should be shown for each class and series of capital stock. Show amounts as dividends per share.
2. Show separately the state and federal income tax effect of items shown in Account No. 439.

ACCT. NO. (a)	DESCRIPTION (b)	AMOUNTS (c)
215	Unappropriated Retained Earnings: Balance Beginning of Year	\$ (13,176)
439	Changes to Account: Adjustments to Retained Earnings ( requires Commission approval prior to use): Credits: _____	\$ _____ _____
	Total Credits:	\$ _____
	Debits: _____	\$ _____ _____
	Total Debits:	\$ _____
435	Balance Transferred from Income	\$ (8,519)
436	Appropriations of Retained Earnings: _____	_____ _____
	Total Appropriations of Retained Earnings	\$ _____
437	Dividends Declared: Preferred Stock Dividends Declared _____	_____ _____
438	Common Stock Dividends Declared _____	_____ _____
	Total Dividends Declared	\$ _____
215	Year end Balance	\$ _____
214	Appropriated Retained Earnings (state balance and purpose of each appropriated amount at year end): _____ _____	_____ _____ _____
214	Total Appropriated Retained Earnings	\$ _____
Total Retained Earnings		\$ <u>(21,695)</u>
Notes to Statement of Retained Earnings:		

UTILITY NAME: **BAYSIDE UTILITY SERVICES INC**

<b>YEAR OF REPORT</b> <b>31-Dec-01</b>
---

**ADVANCES FROM ASSOCIATED COMPANIES**  
**ACCOUNT 223**

Report each advance separately.

DESCRIPTION (a)	TOTAL (b)
NONE	\$ -
Total	\$ -

**OTHER LONG-TERM DEBT**  
**ACCOUNT 224**

DESCRIPTION OF OBLIGATION (INCLUDING DATE OF ISSUE AND DATE OF MATURITY) (a)	INTEREST		PRINCIPAL AMOUNT PER BALANCE SHEET (d)
	ANNUAL RATE (b)	FIXED OR VARIABLE * (c)	
NONE	%		\$
	%		
	%		
	%		
	%		
	%		
	%		
	%		
	%		
	%		
	%		
	%		
	%		
	%		
	%		
	%		
	%		
	%		
	%		
	%		
	%		
	%		
	%		
Total			\$

\* For variable rate obligations, provide the basis for the rate. (i.e.. prime + 2%, etc.)

UTILITY NAME: **BAYSIDE UTILITY SERVICES INC**

**YEAR OF REPORT**  
31-Dec-01

**NOTES PAYABLE  
ACCOUNTS 232 AND 234**

DESCRIPTION OF OBLIGATION (INCLUDING DATE OF ISSUE AND DATE OF MATURITY) (a)	INTEREST		PRINCIPAL AMOUNT PER BALANCE SHEET (d)
	ANNUAL RATE (b)	FIXED OR VARIABLE * (c)	
NOTES PAYABLE ( Account 232): NONE			\$ _____
_____	_____ %	_____	_____
_____	_____ %	_____	_____
_____	_____ %	_____	_____
_____	_____ %	_____	_____
_____	_____ %	_____	_____
_____	_____ %	_____	_____
_____	_____ %	_____	_____
_____	_____ %	_____	_____
_____	_____ %	_____	_____
Total Account 232			\$ _____
NOTES PAYABLE TO ASSOC. COMPANIES (Account 234): NONE			\$ _____
_____	_____ %	_____	_____
_____	_____ %	_____	_____
_____	_____ %	_____	_____
_____	_____ %	_____	_____
_____	_____ %	_____	_____
_____	_____ %	_____	_____
_____	_____ %	_____	_____
_____	_____ %	_____	_____
_____	_____ %	_____	_____
Total Account 234			\$ _____

\* For variable rate obligations, provide the basis for the rate. (i.e.. prime + 2%, etc.)

**ACCOUNTS PAYABLE TO ASSOCIATED COMPANIES  
ACCOUNT 233**

Report each account payable separately.

DESCRIPTION (a)	TOTAL (b)
WATER SERVICE CORPORATION	\$ (82,342)
_____	_____
_____	_____
_____	_____
_____	_____
_____	_____
_____	_____
Total	\$ (82,342)



**UTILITY NAME: BAYSIDE UTILITY SERVICES INC**

**ACCRUED INTEREST AND EXPENSE  
ACCOUNTS 237 AND 427**

DESCRIPTION OF DEBIT (a)	BALANCE BEGINNING OF YEAR (b)	INTEREST ACCRUED DURING YEAR		INTEREST PAID DURING YEAR (e)	BALANCE END OF YEAR (f)
		ACCT. DEBIT (c)	AMOUNT (d)		
ACCOUNT NO. 237.1 - Accrued Interest on Long Term Debt	\$ _____		\$ _____	\$ _____	\$ _____
UTILITIES INC INTERCOMPANY INTEREST	_____		10,691	10,691	_____
	_____		_____	_____	_____
	_____		_____	_____	_____
Total Account 237.1	\$ _____		\$ 10,691	\$ 10,691	\$ _____
ACCOUNT NO. 237.2 - Accrued Interest on Other Liabilities					
Customer Deposits	\$ _____	427	_____	_____	_____
MISC ITEMS	157		68	_____	225
	_____		_____	_____	_____
	_____		_____	_____	_____
Total Account 237.2	\$ _____		\$ 68	\$ _____	\$ 225
Total Account 237 (1)	\$ _____		\$ 10,759	\$ 10,691	\$ _____
INTEREST EXPENSED:					
Total accrual Account 237		237	10,691		
Less Capitalized Interest Portion of AFUDC:			-		
			_____		
			_____		
Net Interest Expensed to Account No. 427 (2)			\$ 10,691		\$ 225

(1) Must agree to F-2 (a), Beginning and Ending Balance of Accrued Interest.

(2) Must agree to F-3 (c), Current Year Interest Expense

MISCELLANEOUS CURRENT AND ACCRUED LIABILITIES  
ACCOUNT 241

DESCRIPTION - Provide itemized listing (a)	BALANCE END OF YEAR (b)
NONE	\$ _____
_____	_____
_____	_____
Total Miscellaneous Current and Accrued Liabilities	\$ _____

ADVANCES FOR CONSTRUCTION  
ACCOUNT 252

NAME OF PAYOR * (a)	BALANCE BEGINNING OF YEAR (b)	DEBITS		CREDITS (e)	BALANCE END OF YEAR (f)
		ACCT. DEBIT (c)	AMOUNT (d)		
NONE	\$ _____	_____	_____	\$ _____	_____
_____	_____	_____	_____	_____	_____
_____	_____	_____	_____	_____	_____
_____	_____	_____	_____	_____	_____
Total	\$ _____	_____	_____	\$ _____	\$ _____

\* Report advances separately by reporting group, designating water or wastewater in column (a).

UTILITY NAME: BAYSIDE UTILITY SERVICES INC

<b>YEAR OF REPORT</b> <b>31-Dec-01</b>
---

**OTHER DEFERRED CREDITS  
ACCOUNT 253**

DESCRIPTION - Provide itemized listing (a)	AMOUNT WRITTEN OFF DURING YEAR (b)	YEAR END BALANCE (c)
REGULATORY LIABILITIES (Class A Utilities: Account 253.1):  <u>NONE</u> <hr/> <hr/> <hr/>	\$ _____ _____ _____ _____	\$ _____ _____ _____ _____
<b>Total Regulatory Liabilities</b>	\$ <u>_____</u>	\$ <u>_____</u>
OTHER DEFERRED LIABILITIES (Class A Utilities: Account 253.2):  <hr/> <hr/> <hr/> <hr/> <hr/> <hr/> <hr/>	\$ _____ _____ _____ _____ _____ _____ _____	\$ _____ _____ _____ _____ _____ _____ _____
<b>Total Other Deferred Liabilities</b>	\$ <u>_____</u>	\$ <u>_____</u>
<b>TOTAL OTHER DEFERRED CREDITS</b>	\$ <u>_____</u>	\$ <u>_____</u>

UTILITY NAME: BAYSIDE UTILITY SERVICES INC

<b>YEAR OF REPORT</b> <b>31-Dec-01</b>
---

**CONTRIBUTIONS IN AID OF CONSTRUCTION  
ACCOUNT 271**

DESCRIPTION (a)	WATER (W-7) (b)	WASTEWATER (S-7) (c)	W & WW OTHER THAN SYSTEM REPORTING (d)	TOTAL (e)
Balance first of year	\$ <u>52,911</u>	\$ <u>-</u>	\$ <u>-</u>	\$ <u>52,911</u>
Add credits during year:	\$ <u>-</u>	\$ <u>-</u>	\$ <u>-</u>	\$ <u>-</u>
Less debit charged during the year	\$ <u>-</u>	\$ <u>-</u>	\$ <u>-</u>	\$ <u>-</u>
Total Contribution In Aid of Construction	\$ <u><u>52,911</u></u>	\$ <u><u>-</u></u>	\$ <u><u>-</u></u>	\$ <u><u>52,911</u></u>

**ACCUMULATED AMORTIZATION OF CONTRIBUTIONS IN AID OF CONSTRUCTION  
ACCOUNT 272**

DESCRIPTION (a)	WATER (W-8(a)) (b)	WASTEWATER (S-8(a)) (c)	W & WW OTHER THAN SYSTEM REPORTING (d)	TOTAL (e)
Balance first of year	\$ <u>38,232</u>	\$ <u>-</u>	\$ <u>-</u>	\$ <u>38,232</u>
Debits during the year:	\$ <u>1,516</u>	\$ <u>-</u>	\$ <u>-</u>	\$ <u>1,516</u>
Credits during the year	\$ <u>-</u>	\$ <u>-</u>	\$ <u>-</u>	\$ <u>-</u>
Total Accumulated Amortization of Contributions In Aid of Construction	\$ <u><u>39,748</u></u>	\$ <u><u>-</u></u>	\$ <u><u>-</u></u>	\$ <u><u>39,748</u></u>

UTILITY NAME: **BAYSIDE UTILITY SERVICES INC**

<b>YEAR OF REPORT</b> <b>31-Dec-01</b>
---

**RECONCILIATION OF REPORTED NET INCOME WITH TAXABLE  
INCOME FOR FEDERAL INCOME TAXES (UTILITY OPERATIONS)**

- The reconciliation should include the same detail as furnished on Schedule M-1 of the federal tax return for the year. The reconciliation shall be submitted even though there is no taxable income for the year. Descriptions should clearly indicate the nature of each reconciling amount and show the computations of all tax accruals.
- If the utility is a member of a group which files a consolidated federal tax return, reconcile reported net income with taxable net income as if a separate return were to be filed, indicating intercompany amounts to be eliminated in such consolidated return. State names of group members, tax assigned to each group member, and basis of allocation, assignments or sharing of the consolidated tax among the group members.

DESCRIPTION (a)	REF. NO. (b)	AMOUNT (c)
Net income for the year	F-3(c)	\$ (8,519)
Reconciling items for the year:		
Taxable income not reported on books:		
Tap Fees		_____
_____		_____
_____		_____
Deductions recorded on books not deducted for return:		
_____		_____
Excess Tax Depreciation over Book Depreciation		3,768
Current FIT		(5,329)
Deferred FIT		806
Deferred SIT		-
Income recorded on books not included in return:		
Interest During Construction		(260)
_____		_____
Deduction on return not charged against book income:		
Organization Exp		(6,139)
_____		-
_____		_____
_____		_____
Federal tax net income		\$ <u>(15,673)</u>
Computation of tax :		
	(15,673)	
	34%	
	(5,329)	

**WATER  
OPERATION  
SECTION**



UTILITY NAME: BAYSIDE UTILITY SERVICES INC

<b>YEAR OF REPORT</b> <b>31-Dec-01</b>
---

SYSTEM NAME / COUNTY : Bay County

**SCHEDULE OF YEAR END WATER RATE BASE**

ACCT. NO. (a)	ACCOUNT NAME (b)	REFERENCE PAGE (c)	WATER UTILITY (d)
101	Utility Plant In Service	W-4(b)	\$ 227,574
	Less:		
	Nonused and Useful Plant (1)		
108	Accumulated Depreciation	W-6(b)	108,351
110	Accumulated Amortization	F-8	1,584
271	Contributions In Aid of Construction	W-7	52,911
252	Advances for Construction	F-20	-
Subtotal			\$ 64,728
272	Add: Accumulated Amortization of Contributions in Aid of Construction	W-8(a)	\$ 39,748
Subtotal			\$ 104,476
114	Plus or Minus: Acquisition Adjustments (2)	F-7	-
115	Accumulated Amortization of Acquisition Adjustments (2)	F-7	-
	Working Capital Allowance (3)		7,988
	Other (Specify):		
WATER RATE BASE			\$ 112,464
WATER OPERATING INCOME		W-3	\$ (4,734)
ORN (Water Operating Income / Water Rate Base)			<u>-4.21%</u>

NOTES : (1) Estimate based on the methodology used in the last rate proceeding.

(2) Include only those Acquisition Adjustments that have been approved by the Commission.

(3) Calculation consistent with last rate proceeding.

In absence of a rate proceeding, Class A utilities will use the Balance Sheet Method and Class B Utilities will use the One-eighth Operating and Maintenance Expense Method.



UTILITY NAME: **BAYSIDE UTILITY SERVICES INC**

<b>YEAR OF REPORT</b> <b>31-Dec-01</b>
---

SYSTEM NAME / COUNTY : Bay County

**WATER OPERATING STATEMENT**

ACCT. NO. (a)	ACCOUNT NAME (b)	REFERENCE PAGE (c)	CURRENT YEAR (d)
	UTILITY OPERATING INCOME		
400	Operating Revenues	W-9	\$ 63,078
469	Less: Guaranteed Revenue and AFPI	W-9	
	Net Operating Revenues		\$ _____
401	Operating Expenses	W-10(a)	\$ 63,905
403	Depreciation Expense	W-6(a)	6,599
	Less: Amortization of CIAC	W-8(a)	(1,516)
	Net Depreciation Expense		\$ 5,083
406	Amortization of Utility Plant Acquisition Adjustment	F-7	(527)
407	Amortization Expense (Other than CIAC)	F-8	748
408.10	Taxes Other Than Income Utility Regulatory Assessment Fee		3,009
408.11	Property Taxes		53
408.12	Payroll Taxes		962
408.13	Other Taxes and Licenses		-
408	Total Taxes Other Than Income		\$ 4,024
409.1	Income Taxes		(6,387)
410.10	Deferred Federal Income Taxes		966
410.11	Deferred State Income Taxes		-
411.10	Provision for Deferred Income Taxes - Credit		-
412.10	Investment Tax Credits Deferred to Future Periods		
412.11	Investment Tax Credits Restored to Operating Income		
	Utility Operating Expenses		\$ 67,812
	Utility Operating Income		\$ (4,734)
469	Add Back: Guaranteed Revenue (and AFPI)	W-9	\$ _____
413	Income From Utility Plant Leased to Others		_____
414	Gains (losses) From Disposition of Utility Property		_____
420	Allowance for Funds Used During Construction		-
	Total Utility Operating Income		\$ (4,734)

YEAR OF REPORT  
31-Dec-01

UTILITY NAME: BAYSIDE UTILITY SERVICES INC

SYSTEM NAME / COUNTY: Bay County

WATER UTILITY PLANT ACCOUNTS

ACCT. NO. (a)	ACCOUNT NAME (b)	PREVIOUS YEAR (c)	ADDITIONS (d)	RETIREMENTS (e)	CURRENT YEAR (f)
301	Organization	\$ 21,194	\$ -	\$ -	\$ 21,194
302	Franchises	-	-	-	-
303	Land and Land Rights	8,489	9,033	-	17,522
304	Structures and Improvements	900	-	-	900
305	Collecting and Impounding Reservoirs	-	-	-	-
306	Lake, River and Other Intakes	-	-	-	-
307	Wells and Springs	-	-	-	-
308	Infiltration Galleries and Tunnels	-	-	-	-
309	Supply Mains	-	-	-	-
310	Power Generation Equipment	-	-	-	-
311	Pumping Equipment	211	-	-	211
320	Water Treatment Equipment	-	-	-	-
330	Distribution Reservoirs and Standpipes	-	-	-	-
331	Transmission and Distribution Mains	110,974	2,079	1,463	111,590
333	Services	26,066	2,831	232	28,665
334	Meters and Meter Installations	34,144	-	-	34,144
335	Hydrants	1,828	-	-	1,828
336	Backflow Prevention Devices	-	-	-	-
339	Other Plant Miscellaneous Equipment	-	-	-	-
340	Office Furniture and Equipment	2,776	-	-	2,776
341	Transportation Equipment	13,924	-	13,924	-
342	Stores Equipment	-	-	-	-
343	Tools, Shop and Garage Equipment	-	-	-	-
344	Laboratory Equipment	-	-	-	-
345	Power Operated Equipment	-	-	-	-
346	Communication Equipment	-	-	-	-
347	Miscellaneous Equipment	-	-	-	-
348	Other Tangible Plant	6,848	1,896	-	8,744
TOTAL WATER PLANT		\$ 227,354	\$ 15,839	\$ 15,619	\$ 227,574

NOTE: Any adjustments made to reclassify property from one account to another must be footnoted.

W-4(a)  
GROUP \_\_\_\_\_

UTILITY NAME: BAYSIDE UTILITY SERVICES INC

SYSTEM NAME / COUNTY Bay County

WATER UTILITY PLANT MATRIX

ACCT. NO.	ACCOUNT NAME (b)	CURRENT YEAR (c)	.1 INTANGIBLE PLANT (d)	.2 SOURCE OF SUPPLY AND PUMPING PLANT (e)	.3 WATER TREATMENT PLANT (f)	.4 TRANSMISSION AND DISTRIBUTION PLANT (g)	.5 GENERAL PLANT (h)
(a)		\$	\$	\$	\$	\$	\$
301	Organization	21,194	21,194				
302	Franchises	-	-				
303	Land and Land Rights	17,522		17,522			
304	Structures and Improvements	900		900			
305	Collecting and Impounding Reservoirs	-					
306	Lake, River and Other Intakes	-					
307	Wells and Springs	-					
308	Infiltration Galleries and Tunnels	-					
309	Supply Mains	-					
310	Power Generation Equipment	-					
311	Pumping Equipment	211		211			
320	Water Treatment Equipment	-					
330	Distribution Reservoirs and Standpipes	-					
331	Transmission and Distribution Mains	111,590				111,590	
333	Services	28,665				28,665	
334	Meters and Meter Installations	34,144				34,144	
335	Hydrants	1,828				1,828	
336	Backflow Prevention Devices	-					
339	Other Plant Miscellaneous Equipment	-					
340	Office Furniture and Equipment	2,776					2,776
341	Transportation Equipment	-					
342	Stores Equipment	-					
343	Tools, Shop and Garage Equipment	-					
344	Laboratory Equipment	-					
345	Power Operated Equipment	-					
346	Communication Equipment	-					
347	Miscellaneous Equipment	-					
348	Other Tangible Plant	8,744					8,744
TOTAL WATER PLANT		\$ 227,574	\$ 21,194	\$ 18,633	\$ -	\$ 176,227	\$ 11,520

W-4(b)  
GROUP

UTILITY NAME: BAYSIDE UTILITY SERVICES INC

<b>YEAR OF REPORT</b> <b>31-Dec-01</b>
---

SYSTEM NAME / COUNTY : Bay County

**BASIS FOR WATER DEPRECIATION CHARGES**

ACCT. NO. (a)	ACCOUNT NAME (b)	AVERAGE SERVICE LIFE IN YEARS (c)	AVERAGE NET SALVAGE IN PERCENT (d)	DEPRECIATION RATE APPLIED IN PERCENT (100% - d) / c (e)
304	Structures and Improvements			3.03%
305	Collecting and Impounding Reservoirs			
306	Lake, River and Other Intakes			
307	Wells and Springs			
308	Infiltration Galleries and Tunnels			
309	Supply Mains			
310	Power Generation Equipment			
311	Pumping Equipment			5.00%
320	Water Treatment Equipment			
330	Distribution Reservoirs and Standpipes			
331	Transmission and Distribution Mains			2.33%
333	Services			2.50%
334	Meters and Meter Installations			5.00%
335	Hydrants			2.22%
336	Backflow Prevention Devices			
339	Other Plant Miscellaneous Equipment			
340	Office Furniture and Equipment			
341	Transportation Equipment			
342	Stores Equipment			
343	Tools, Shop and Garage Equipment			
344	Laboratory Equipment			
345	Power Operated Equipment			
346	Communication Equipment			
347	Miscellaneous Equipment			
348	Other Tangible Plant			
Water Plant Composite Depreciation Rate *				

\* If depreciation rates prescribed by this Commission are on a total composite basis, entries should be made on this line only.

YEAR OF REPORT  
31-Dec-01

UTILITY NAME: BAYSIDE UTILITY SERVICES INC

SYSTEM NAME / COUNTY / Bay County

ANALYSIS OF ENTRIES IN WATER ACCUMULATED DEPRECIATION

ACCT. NO. (a)	ACCOUNT NAME (b)	BALANCE AT BEGINNING OF YEAR (c)	ACCRUALS (d)	OTHER CREDITS * (e)	TOTAL CREDITS (d + e) (f)
304	Structures and Improvements	\$ 27	\$ 27	\$ -	\$ 27
305	Collecting and Impounding Reservoirs				
306	Lake, River and Other Intakes				
307	Wells and Springs				
308	Infiltration Galleries and Tunnels				
309	Supply Mains				
310	Power Generation Equipment				
311	Pumping Equipment	113	10		10
320	Water Treatment Equipment				
330	Distribution Reservoirs and Standpipes				
331	Transmission and Distribution Mains	61,595	2,536		2,536
333	Services	16,304	657		657
334	Meters and Meter Installations	20,848	1,721		1,721
335	Hydrants	1,355	41		41
336	Backflow Prevention Devices				
339	Other Plant Miscellaneous Equipment				
340	Office Furniture and Equipment	2,735	380	(194)	186
341	Transportation Equipment	13,924			
342	Stores Equipment				
343	Tools, Shop and Garage Equipment		64	(64)	
344	Laboratory Equipment				
345	Power Operated Equipment				
346	Communication Equipment		47	(47)	
347	Miscellaneous Equipment				
348	Other Tangible Plant	1,823	1,116	(1,048)	68
TOTAL WATER ACCUMULATED DEPRECIATION		\$ 118,724	\$ 6,599	\$ (1,353)	\$ 5,246

\* Specify nature of transaction  
Use ( ) to denote reversal entries.

OTHER CREDITS column (E) \* are due to allocation of UJF plant & acquisition entry

YEAR OF REPORT  
31-Dec-01

UTILITY NAME: **BAYSIDE UTILITY SERVICES INC**

SYSTEM NAME / COUNTY: Bay County

ANALYSIS OF ENTRIES IN WATER ACCUMULATED DEPRECIATION (CONT'D)

ACCT. NO.	ACCOUNT NAME	PLANT RETIRED (e)	SALVAGE AND INSURANCE (h)	COST OF REMOVAL AND OTHER CHARGES (i)	TOTAL CHARGES (g-h+i) (j)	BALANCE AT END OF YEAR (c+f-k) (l)
(a)	(b)	\$	\$	\$	\$	\$
304	Structures and Improvements	-			-	54
305	Collecting and Impounding Reservoirs	-			-	
306	Lake, River and Other Intakes	-			-	
307	Wells and Springs	-			-	
308	Infiltration Galleries and Tunnels	-			-	
309	Supply Mains	-			-	
310	Power Generation Equipment	-			-	
311	Pumping Equipment	-			-	123
320	Water Treatment Equipment	-			-	
330	Distribution Reservoirs and Standpipes	-			-	
331	Transmission and Distribution Mains	1,463			1,463	62,668
333	Services	232			232	16,729
334	Meters and Meter Installations	-			-	22,569
335	Hydrants	-			-	1,396
336	Backflow Prevention Devices	-			-	
339	Other Plant Miscellaneous Equipment	-			-	
340	Office Furniture and Equipment	-			-	2,921
341	Transportation Equipment	13,924			13,924	
342	Stores Equipment	-			-	
343	Tools, Shop and Garage Equipment	-			-	
344	Laboratory Equipment	-			-	
345	Power Operated Equipment	-			-	
346	Communication Equipment	-			-	
347	Miscellaneous Equipment	-			-	
348	Other Tangible Plant	-			-	1,891
TOTAL WATER ACCUMULATED DEPRECIATION		\$ 15,619	\$ -	\$ -	\$ 15,619	\$ 108,351

W-6(b)  
GROUP \_\_\_\_\_



UTILITY NAME: BAYSIDE UTILITY SERVICES INC

<b>YEAR OF REPORT</b> <b>31-Dec-01</b>
---

SYSTEM NAME / COUNTY : Bay County

**WATER CIAC SCHEDULE "A"**  
**ADDITIONS TO CONTRIBUTIONS IN AID OF CONSTRUCTION RECEIVED FROM CAPACITY,  
 MAIN EXTENSION AND CUSTOMER CONNECTION CHARGES RECEIVED DURING THE YEAR**

DESCRIPTION OF CHARGE (a)	NUMBER OF CONNECTIONS (b)	CHARGE PER CONNECTION (c)	AMOUNT (d)
<u>WATER CONNECTIONS FEES (NONE)</u>	-	\$ -	\$ -
_____	_____	_____	-
_____	_____	_____	-
_____	_____	_____	-
_____	_____	_____	-
_____	_____	_____	-
_____	_____	_____	-
_____	_____	_____	-
<b>Total Credits</b>			\$ <u>-</u>

**ACCUMULATED AMORTIZATION OF WATER  
 CONTRIBUTIONS IN AID OF CONSTRUCTION**

DESCRIPTION (a)	WATER (b)
Balance first of year	\$ 38,232
Debits during the year:	
Accruals charged to Account 272	\$ 1,516
Other debits (specify):	-
_____	_____
_____	_____
<b>Total debits</b>	\$ 1,516
Credits during the year (specify):	
_____	\$ _____
_____	\$ _____
<b>Total credits</b>	\$ -
<b>Balance end of year</b>	\$ <u>39,748</u>





Reconciliation of Revenue to  
Regulatory Assessment Fee Revenue  
Water Operations

UTILITY NAME: **BAYSIDE UTILITY SERVICES INC**

YEAR OF REPORT 31-Dec-01
-----------------------------

(A)	(B)	(C)	(D)
Accounts	Gross Water Revenues per Sch W-9	Gross Water Revenues per RAF Return	Difference (B)-(C)
Gross Revenues:			-
Unmetered Water Revenues			-
Total Metered Sales	63,078	63,078	-
Total Fire Protection Revenue			-
Other Sales to Public Authorities			-
Sales to Irrigation Customers			-
Sales for Resale			-
Interdepartmental Sales			-
Total Other Water Revenue			-
Total Water Operating Revenue	63,078	63,078	-
Less: Expense for Purchased Water from FPSC Regulated Utility			-
Net Water Operating Revenues	63,078	63,078	-

UTILITY NAME: BAYSIDE UTILITY SERVICES INC

<b>YEAR OF REPORT</b> <b>31-Dec-01</b>
---

SYSTEM NAME / COUNTY : Bay County

**WATER OPERATING REVENUE**

ACCT. NO. (a)	DESCRIPTION (b)	BEGINNING YEAR NO. CUSTOMERS * (c)	YEAR END NUMBER OF CUSTOMERS (d)	AMOUNT (e)
460	Water Sales: Unmetered Water Revenue			\$
461.1	Metered Water Revenue: Sales to Residential Customers	287	287	62,085
461.2	Sales to Commercial Customers			
461.3	Sales to Industrial Customers			
461.4	Sales to Public Authorities			
461.5	Sales Multiple Family Dwellings			
Total Metered Sales		287	287	\$ 62,085
462.1	Fire Protection Revenue: Public Fire Protection			
462.2	Private Fire Protection			
Total Fire Protection Revenue				\$
464	Other Sales To Public Authorities			
465	Sales To Irrigation Customers			
466	Sales For Resale			
467	Interdepartmental Sales			
Total Water Sales		287	287	\$ 62,085
469	Other Water Revenues: Guaranteed Revenues (Including Allowance for Funds Prudently Invested or AFPI)			\$
470	Forfeited Discounts			
471	Miscellaneous Service Revenues			993
472	Rents From Water Property			
473	Interdepartmental Rents			
474	Other Water Revenues			
Total Other Water Revenues				\$ 993
Total Water Operating Revenues				\$ 63,078

\* Customer is defined by Rule 25-30.210(1), Florida Administrative Code.

UTILITY NAME: **BAYSIDE UTILITY SERVICES INC**

<b>YEAR OF REPORT</b> <b>31-Dec-01</b>
---

SYSTEM NAME / COUNTY : Bay County

**WATER UTILITY EXPENSE ACCOUNTS**

ACCT. NO. (a)	ACCOUNT NAME (b)	CURRENT YEAR (c)	.1 SOURCE OF SUPPLY AND EXPENSES - OPERATIONS (d)	.2 SOURCE OF SUPPLY AND EXPENSES - MAINTENANCE (e)
601	Salaries and Wages - Employees	\$ 9,132	\$ 2,009	\$ 548
603	Salaries and Wages - Officers, Directors and Majority Stockholders			
604	Employee Pensions and Benefits	1,425	314	86
610	Purchased Water	40,865	40,865	
615	Purchased Power	-		
616	Fuel for Power Purchased			
618	Chemicals	-	-	
620	Materials and Supplies	5,679	2,272	568
631	Contractual Services-Engineering			
632	Contractual Services - Accounting	220		
633	Contractual Services - Legal	736		
634	Contractual Services - Mgt. Fees			
635	Contractual Services - Testing			
636	Contractual Services - Other	313		
641	Rental of Building/Real Property			
642	Rental of Equipment			
650	Transportation Expenses	707	156	42
656	Insurance - Vehicle			
657	Insurance - General Liability			
658	Insurance - Workman's Comp.			
659	Insurance - Other	779	171	47
660	Advertising Expense			
666	Regulatory Commission Expenses - Amortization of Rate Case Expense	-		
667	Regulatory Commission Exp.-Other			
668	Water Resource Conservation Exp.			
670	Bad Debt Expense	1,668		
675	Miscellaneous Expenses	2,381		
<b>Total Water Utility Expenses</b>		<b>\$ 63,905</b>	<b>\$ 45,787</b>	<b>\$ 1,291</b>

UTILITY NAME:

BAYSIDE UTILITY SERVICES INC

YEAR OF REPORT  
31-Dec-01

SYSTEM NAME / COUNTY :

Bay County

WATER EXPENSE ACCOUNT MATRIX					
.3 WATER TREATMENT EXPENSES - OPERATIONS (f)	.4 WATER TREATMENT EXPENSES - MAINTENANCE (g)	.5 TRANSMISSION & DISTRIBUTION EXPENSES - OPERATIONS (h)	.6 TRANSMISSION & DISTRIBUTION EXPENSES - MAINTENANCE (i)	.7 CUSTOMER ACCOUNTS EXPENSE (j)	.8 ADMIN. & GENERAL EXPENSES (k)
\$ 2,009	\$ 548	\$ 3,196	\$ 822	\$	\$
314	86	499	126		
0					
		2,385	454		220
		0			736
				157	156
156	42	247	64		
171	47	273	70		
				1,668	0
				1,191	1,190
\$ 2,650	\$ 723	\$ 6,600	\$ 1,536	\$ 3,016	\$ 2,302

UTILITY NAME: BAYSIDE UTILITY SERVICES, INC.

YEAR OF REPORT 31-Dec-01
-----------------------------

SYSTEM NAME / COUNTY : BAYSIDE / BAY

**PUMPING AND PURCHASED WATER STATISTICS**

MONTH (a)	WATER PURCHASED FOR RESALE ( Omit 000's ) (b)	FINISHED WATER PUMPED FROM WELLS ( Omit 000's ) (c)	WATER USED FOR LINE FLUSHING, FIGHTING FIRES, ETC. (d)	TOTAL WATER PUMPED AND PURCHASED ( Omit 000's ) [ (b)+(c)-(d) ] (e)	WATER SOLD TO CUSTOMERS ( Omit 000's ) (f)
January	0.658				0.410
February					0.931
March	1.702				0.788
April					0.904
May	1.938				1.067
June					1.190
July	2.670				1.111
August					1.089
September	2.322				1.162
October					1.062
November	2.243				1.077
December	1.562				1.288
Total for Year	<u>13.095</u>	<u>0.000</u>	<u>0.000</u>	<u>13.095</u>	<u>12.079</u>

If water is purchased for resale, indicate the following:  
 Vendor City of Panama City Beach  
 Point of delivery Wildwood Road

If water is sold to other water utilities for redistribution, list names of such utilities below:  
None

List for each source of supply:	CAPACITY OF WELL	GALLONS PER DAY FROM SOURCE	TYPE OF SOURCE
<u>City of Panama City Beach</u>			

UTILITY NAME: BAYSIDE UTILITY SERVICES, INC.

YEAR OF REPORT  
31-Dec-01

SYSTEM NAME / COUNTY : BAYSIDE / BAY

**WATER TREATMENT PLANT INFORMATION**  
Provide a separate sheet for each water treatment facility

Permitted Capacity of Plant (GPD):	<u>N/A - City of Panama Beach</u>	
Location of measurement of capacity (i.e. Wellhead, Storage Tank):	_____	
Type of treatment (reverse osmosis, sedimentation, chemical, aerated, etc.):	_____	
<b>LIME TREATMENT</b>		
Unit rating (i.e., GPM, pounds per gallon): <u>N/A</u>	Manufacturer:	<u>N/A</u>
<b>FILTRATION</b>		
Type and size of area:		
Pressure (in square feet): <u>N/A</u>	Manufacturer:	<u>N/A</u>
Gravity (in GPM/square feet): <u>N/A</u>	Manufacturer:	<u>N/A</u>

UTILITY NAME:

BAYSIDE UTILITY SERVICES, INC.

<b>YEAR OF REPORT</b> 31-Dec-01
------------------------------------

SYSTEM NAME / COUNTY :

BAYSIDE / BAY

**CALCULATION OF THE WATER SYSTEM METER EQUIVALENTS**

METER SIZE (a)	TYPE OF METER (b)	EQUIVALENT FACTOR (c)	NUMBER OF METERS (d)	TOTAL NUMBER OF METER EQUIVALENTS (c x d) (e)
All Residential		1.0		
5/8"	Displacement	1.0	287	287
3/4"	Displacement	1.5		
1"	Displacement	2.5		
1 1/2"	Displacement or Turbine	5.0		
2"	Displacement, Compound or Turbine	8.0		
3"	Displacement	15.0		
3"	Compound	16.0		
3"	Turbine	17.5		
4"	Displacement or Compound	25.0		
4"	Turbine	30.0		
6"	Displacement or Compound	50.0		
6"	Turbine	62.5		
8"	Compound	80.0		
8"	Turbine	90.0		
10"	Compound	115.0		
10"	Turbine	145.0		
12"	Turbine	215.0		
Total Water System Meter Equivalents				<u>287</u>

**CALCULATION OF THE WATER SYSTEM EQUIVALENT RESIDENTIAL CONNECTIONS**

Provide a calculation used to determine the value of one water equivalent residential connection (ERC).

Use one of the following methods:

- (a) If actual flow data are available from the preceding 12 months, divide the total annual single family residence (SFR) gallons sold by the average number of single family residence customers for the same period and divide the result by 365 days.
- (b) If no historical flow data are available, use:  
 $ERC = ( \text{Total SFR gallons sold (Omit 000)} / 365 \text{ days} / 350 \text{ gallons per day} )$

ERC Calculation:

$$12.079 / 365 \text{ days} / 350 \text{ gpd} = 95$$



UTILITY NAME: BAYSIDE UTILITY SERVICES, INC.

YEAR OF REPORT  
31-Dec-01

SYSTEM NAME / COUNTY : BAYSIDE / BAY

**OTHER WATER SYSTEM INFORMATION**

Furnish information below for each system. A separate page should be supplied where necessary.

1. Present ERC's \* the system can efficiently serve. Water supplied by City of Panama City Beach
2. Maximum number of ERCs \* which can be served. \_\_\_\_\_
3. Present system connection capacity (in ERCs \*) using existing lines. \_\_\_\_\_
4. Future connection capacity (in ERCs \*) upon service area buildout. \_\_\_\_\_
5. Estimated annual increase in ERCs \*. \_\_\_\_\_
6. Is the utility required to have fire flow capacity? \_\_\_\_\_  
If so, how much capacity is required? \_\_\_\_\_
7. Attach a description of the fire fighting facilities. Seven (7) hydrants on six (6) inch mains.
8. Describe any plans and estimated completion dates for any enlargements or improvements of this system.  
None
9. When did the company last file a capacity analysis report with the DEP? Not known
10. If the present system does not meet the requirements of DEP rules:
  - a. Attach a description of the plant upgrade necessary to meet the DEP rules.
  - b. Have these plans been approved by DEP? N/A
  - c. When will construction begin? N/A
  - d. Attach plans for funding the required upgrading.
  - e. Is this system under any Consent Order with DEP? No
11. Department of Environmental Protection ID # 1034016
12. Water Management District Consumptive Use Permit # None
  - a. Is the system in compliance with the requirements of the CUP? \_\_\_\_\_
  - b. If not, what are the utility's plans to gain compliance? N/A, no plant

\* An ERC is determined based on the calculation on the bottom of Page W-13.

**WASTEWATER  
OPERATION  
SECTION**



UTILITY NAME: BAYSIDE UTILITY SERVICES INC

<b>YEAR OF REPORT</b> <b>31-Dec-01</b>
---

SYSTEM NAME / COUNTY : Bay County

**SCHEDULE OF YEAR END WASTEWATER RATE BASE**

ACCT. NO. (a)	ACCOUNT NAME (b)	REFERENCE PAGE (c)	WASTEWATER UTILITY (d)
101	Utility Plant In Service	S-4A	\$ 377,401
	Less:		
	Nonused and Useful Plant (1)		
108	Accumulated Depreciation	S-6B	150,442
110	Accumulated Amortization	F-8	1,126
271	Contributions In Aid of Construction	S-7	-
252	Advances for Construction	F-20	-
Subtotal			\$ 225,833
272	Add: Accumulated Amortization of Contributions in Aid of Construction	S-8A	\$ -
Subtotal			\$ 225,833
114	Plus or Minus: Acquisition Adjustments (2)	F-7	-
115	Accumulated Amortization of Acquisition Adjustments (2)	F-7	-
	Working Capital Allowance (3)		8,465
	Other (Specify):		
<b>WASTEWATER RATE BASE</b>			\$ <u>234,298</u>
<b>WASTEWATER OPERATING INCOME</b>		S-3	\$ <u>6,884</u>
<b>ACHIEVED RATE OF RETURN (Wastewater Operating Income / Wastewater Rate Base)</b>			<u>2.94%</u>

NOTES : (1) Estimate based on the methodology used in the last rate proceeding.

(2) Include only those Acquisition Adjustments that have been approved by the Commission.

(3) Calculation consistent with last rate proceeding.

In absence of a rate proceeding, Class A utilities will use the Balance Sheet Method and Class B Utilities will use the One-eighth Operating and Maintenance Expense Method.

UTILITY NAME: **BAYSIDE UTILITY SERVICES INC**

<b>YEAR OF REPORT</b> <b>31-Dec-01</b>
---

SYSTEM NAME / COUNTY : Bay County

**WASTEWATER OPERATING STATEMENT**

ACCT. NO. (a)	ACCOUNT NAME (b)	REFERENCE PAGE (c)	WASTEWATER UTILITY (d)
	UTILITY OPERATING INCOME		
400	Operating Revenues	S-9A	\$ 89,133
530	Less: Guaranteed Revenue (and AFPI)	S-9A	
	Net Operating Revenues		\$ 89,133
401	Operating Expenses	S-10A	\$ 67,721
403	Depreciation Expense	S-6A	9,553
	Less: Amortization of CIAC	S-8A	-
	Net Depreciation Expense		\$ 9,553
406	Amortization of Utility Plant Acquisition Adjustment	F-7	(1,738)
407	Amortization Expense (Other than CIAC)	F-8	514
408.10	Taxes Other Than Income Utility Regulatory Assessment Fee		4,252
408.11	Property Taxes		88
408.12	Payroll Taxes		961
408.13	Other Taxes and Licenses		-
408	Total Taxes Other Than Income		\$ 5,301
409.1	Income Taxes		1,058
410.10	Deferred Federal Income Taxes		(160)
410.11	Deferred State Income Taxes		-
411.10	Provision for Deferred Income Taxes - Credit		-
412.10	Investment Tax Credits Deferred to Future Periods		
412.11	Investment Tax Credits Restored to Operating Income		
	Utility Operating Expenses		\$ 82,249
	Utility Operating Income		\$ 6,884
530	Add Back: Guaranteed Revenue (and AFPI)	S-9A	\$
413	Income From Utility Plant Leased to Others		
414	Gains (losses) From Disposition of Utility Property		
420	Allowance for Funds Used During Construction		260
	Total Utility Operating Income		\$ 7,144

UTILITY NAME: BAYSIDE UTILITY SERVICES INC

SYSTEM NAME / COUNTY: Bay County

WASTEWATER UTILITY PLANT ACCOUNTS

ACCT. NO. (a)	ACCOUNT NAME (b)	PREVIOUS YEAR (c)	ADDITIONS (d)	RETIREMENTS (e)	CURRENT YEAR (f)
351	Organization	\$ 9,500	-	\$ -	\$ 9,500
352	Franchises	9,298	-	-	9,298
353	Land and Land Rights	-	-	-	-
354	Structures and Improvements	12,200	-	-	12,200
355	Power Generation Equipment	-	-	-	-
360	Collection Sewers - Force	51,141	2,139	1,232	52,048
361	Collection Sewers - Gravity	75,484	51	-	75,535
362	Special Collecting Structures	-	-	-	-
363	Services to Customers	-	-	-	-
364	Flow Measuring Devices	-	-	-	-
365	Flow Measuring Installations	-	-	-	-
366	Reuse Services	-	-	-	-
367	Reuse Meters and Meter Installations	-	-	-	-
370	Receiving Wells	-	-	-	-
371	Pumping Equipment	-	-	-	-
374	Reuse Distribution Reservoirs	-	-	-	-
375	Reuse Transmission and Distribution System	-	-	-	-
380	Treatment and Disposal Equipment	-	-	-	-
381	Plant Sewers	202,758	16,062	-	218,820
382	Outfall Sewer Lines	-	-	-	-
389	Other Plant Miscellaneous Equipment	-	-	-	-
390	Office Furniture and Equipment	-	-	-	-
391	Transportation Equipment	-	-	-	-
392	Stores Equipment	-	-	-	-
393	Tools, Shop and Garage Equipment	-	-	-	-
394	Laboratory Equipment	-	-	-	-
395	Power Operated Equipment	-	-	-	-
396	Communication Equipment	-	-	-	-
397	Miscellaneous Equipment	-	-	-	-
398	Other Tangible Plant	-	-	-	-
Total Wastewater Plant		\$ 360,381	\$ 18,252	\$ 1,232	\$ 377,401

NOTE: Any adjustments made to reclassify property from one account to another must be footnoted.

UTILITY NAME: **BAYSIDE UTILITY SERVICES INC**  
SYSTEM NAME / COUNTY : **Bay County**

WASTEWATER UTILITY PLANT MATRIX

ACCT. NO.	ACCOUNT NAME	.1 INTANGIBLE PLANT (g)	.2 COLLECTION PLANT (h)	.3 SYSTEM PUMPING PLANT (i)	.4 TREATMENT AND DISPOSAL (j)	.5 RECLAIMED WASTEWATER TREATMENT PLANT (i)	.6 RECLAIMED WASTEWATER DISTRIBUTION PLANT (j)	.7 GENERAL PLANT (k)
351	Organization	\$ 9,500						
352	Franchises	9,298						
353	Land and Land Rights							
354	Structures and Improvements		12,200					
355	Power Generation Equipment							
360	Collection Sewers - Force		52,048					
361	Collection Sewers - Gravity		75,535					
362	Special Collecting Structures							
363	Services to Customers							
364	Flow Measuring Devices							
365	Flow Measuring Installations							
366	Reuse Services							
367	Reuse Meters and Meter Installations							
370	Receiving Wells							
371	Pumping Equipment							
374	Reuse Distribution Reservoirs							
375	Reuse Transmission and Distribution System							
380	Treatment and Disposal Equipment							
381	Plant Sewers				218,820			
382	Outfall Sewer Lines							
389	Other Plant Miscellaneous Equipment							
390	Office Furniture and Equipment							
391	Transportation Equipment							
392	Stores Equipment							
393	Tools, Shop and Garage Equipment							
394	Laboratory Equipment							
395	Power Operated Equipment							
396	Communication Equipment							
397	Miscellaneous Equipment							
398	Other Tangible Plant							
	Total Wastewater Plant	\$ 18,798	\$ 139,783	\$ -	\$ 218,820	\$ -	\$ -	\$ -

NOTE: Any adjustments made to reclassify property from one account to another must be footnoted.

UTILITY NAME: BAYSIDE UTILITY SERVICES INC

<b>YEAR OF REPORT</b> 31-Dec-01
------------------------------------

SYSTEM NAME / COUNTY : Bay County

**BASIS FOR WASTEWATER DEPRECIATION CHARGES**

ACCT. NO. (a)	ACCOUNT NAME (b)	AVERAGE SERVICE LIFE IN YEARS (c)	AVERAGE NET SALVAGE IN PERCENT (d)	DEPRECIATION RATE APPLIED IN PERCENT (100% - D) / C (e)
354	Structures and Improvements			3.13%
355	Power Generation Equipment			
360	Collection Sewers - Force			3.33%
361	Collection Sewers - Gravity			2.22%
362	Special Collecting Structures			
363	Services to Customers			
364	Flow Measuring Devices			
365	Flow Measuring Installations			
366	Reuse Services			
367	Reuse Meters and Meter Installations			
370	Receiving Wells			
371	Pumping Equipment			
375	Reuse Transmission and Distribution System			
380	Treatment and Disposal Equipment			
381	Plant Sewers			2.86%
382	Outfall Sewer Lines			
389	Other Plant Miscellaneous Equipment			
390	Office Furniture and Equipment			
391	Transportation Equipment			
392	Stores Equipment			
393	Tools, Shop and Garage Equipment			
394	Laboratory Equipment			
395	Power Operated Equipment			
396	Communication Equipment			
397	Miscellaneous Equipment			
398	Other Tangible Plant			
Wastewater Plant Composite Depreciation Rate *				

\* If depreciation rates prescribed by this Commission are on a total composite basis, entries should be made on this line only.



UTILITY NAME: BAYSIDE UTILITY SERVICES INC

SYSTEM NAME / COUNTY: Bay County

ANALYSIS OF ENTRIES IN WASTEWATER ACCUMULATED DEPRECIATION

ACCT. NO.	ACCOUNT NAME (b)	BALANCE AT BEGINNING OF YEAR (c)	ACCRUALS (d)	OTHER CREDITS * (e)	TOTAL CREDITS (d + e) (f)
354	Structures and Improvements	\$ 834	\$ 382	-	\$ 382
355	Power Generation Equipment				
360	Collection Sewers - Force	28,422	1,706	-	1,706
361	Collection Sewers - Gravity	48,808	1,675	-	1,675
362	Special Collecting Structures				
363	Services to Customers				
364	Flow Measuring Devices				
365	Flow Measuring Installations				
366	Reuse Services				
367	Reuse Meters and Meter Installations				
370	Receiving Wells				
371	Pumping Equipment				
375	Reuse Transmission and Distribution System				
380	Treatment and Disposal Equipment				
381	Plant Sewers	64,057	5,790	-	5,790
382	Outfall Sewer Lines				
389	Other Plant Miscellaneous Equipment				
390	Office Furniture and Equipment				
391	Transportation Equipment				
392	Stores Equipment				
393	Tools, Shop and Garage Equipment				
394	Laboratory Equipment				
395	Power Operated Equipment				
396	Communication Equipment				
397	Miscellaneous Equipment				
398	Other Tangible Plant				
Total Depreciable Wastewater Plant in Service		\$ 142,121	\$ 9,553	\$ -	\$ 9,553

\* Specify nature of transaction. OTHER CREDITS column (E) \* are due to allocation of UIF plant

Use ( ) to denote reversal entries.

UTILITY NAME: **BAYSIDE UTILITY SERVICES INC**

SYSTEM NAME / COUNTY : Bay County

ANALYSIS OF ENTRIES IN WASTEWATER ACCUMULATED DEPRECIATION

ACCT. NO. (a)	ACCOUNT NAME (b)	PLANT RETIRED (g)	SALVAGE AND INSURANCE (h)	COST OF REMOVAL AND OTHER CHARGES (i)	TOTAL CHARGES (g-h+i) (j)	BALANCE AT END OF YEAR (c+f-j) (k)
354	Structures and Improvements	\$ -	\$ -	\$ -	\$ -	\$ 1,216
355	Power Generation Equipment	-	-	-	-	-
360	Collection Sewers - Force	1,232	-	-	1,232	28,896
361	Collection Sewers - Gravity	-	-	-	-	50,483
362	Special Collecting Structures	-	-	-	-	-
363	Services to Customers	-	-	-	-	-
364	Flow Measuring Devices	-	-	-	-	-
365	Flow Measuring Installations	-	-	-	-	-
366	Reuse Services	-	-	-	-	-
367	Reuse Meters and Meter Installations	-	-	-	-	-
370	Receiving Wells	-	-	-	-	-
371	Pumping Equipment	-	-	-	-	-
375	Reuse Transmission and Distribution System	-	-	-	-	-
380	Treatment and Disposal Equipment	-	-	-	-	-
381	Plant Sewers	-	-	-	-	69,847
382	Outfall Sewer Lines	-	-	-	-	-
389	Other Plant Miscellaneous Equipment	-	-	-	-	-
390	Office Furniture and Equipment	-	-	-	-	-
391	Transportation Equipment	-	-	-	-	-
392	Stores Equipment	-	-	-	-	-
393	Tools, Shop and Garage Equipment	-	-	-	-	-
394	Laboratory Equipment	-	-	-	-	-
395	Power Operated Equipment	-	-	-	-	-
396	Communication Equipment	-	-	-	-	-
397	Miscellaneous Equipment	-	-	-	-	-
398	Other Tangible Plant	-	-	-	-	-
Total Depreciable Wastewater Plant in Service		\$ 1,232	\$ -	\$ -	\$ 1,232	\$ 150,442

\* Specify nature of transaction.  
Use ( ) to denote reversal entries.

UTILITY NAME: BAYSIDE UTILITY SERVICES INC

<b>YEAR OF REPORT</b> <b>31-Dec-01</b>
---

SYSTEM NAME / COUNTY : Bay County

**CONTRIBUTIONS IN AID OF CONSTRUCTION  
ACCOUNT 271**

DESCRIPTION (a)	REFERENCE (b)	WASTEWATER (c)
Balance first of year          NONE		\$ _____ -
Add credits during year:		
Contributions received from Capacity, Main Extension and Customer Connection Charges	S-8A	\$ _____ -
Contributions received from Developer or Contractor Agreements in cash or property	S-8B	_____ -
<b>Total Credits</b>		\$ _____ -
Less debits charged during the year (All debits charged during the year must be explained below)		\$ _____
<b>Total Contributions In Aid of Construction</b>		\$ _____ -

Explain all debits charged to Account 271 during the year below:

---

---

---

---

---

---

---

---

---

---

---

---

---

---

---

---

---

---

---

---

---

---

---

---

---

UTILITY NAME: BAYSIDE UTILITY SERVICES INC

<b>YEAR OF REPORT</b> <b>31-Dec-01</b>
---

SYSTEM NAME / COUNTY : Bay County

**WASTEWATER CIAC SCHEDULE "A"**  
**ADDITIONS TO CONTRIBUTIONS IN AID OF CONSTRUCTION RECEIVED FROM CAPACITY,  
 MAIN EXTENSION AND CUSTOMER CONNECTION CHARGES RECEIVED DURING THE YEAR**

DESCRIPTION OF CHARGE (a)	NUMBER OF CONNECTIONS (b)	CHARGE PER CONNECTION (c)	AMOUNT (d)
<u>SEWER CONNECTIONS FEES (NONE)</u>	_____	\$ _____	\$ _____ -
_____	_____	_____	_____ -
_____	_____	_____	_____ -
_____	_____	_____	_____ -
_____	_____	_____	_____ -
_____	_____	_____	_____ -
_____	_____	_____	_____ -
<b>Total Credits</b>			\$ _____ -

**ACCUMULATED AMORTIZATION OF WASTEWATER  
 CONTRIBUTIONS IN AID OF CONSTRUCTION**

DESCRIPTION (a)	WASTEWATER (b)
NONE	
Balance first of year	\$ _____ -
Debits during the year:	
Accruals charged to Account 272	\$ _____ -
Other debits (specify) :	_____
_____	_____
_____	_____
Total debits	\$ _____ -
Credits during the year (specify) :	
_____	\$ _____
_____	_____
Total credits	\$ _____ -
Balance end of year	\$ _____ -

UTILITY NAME: **BAYSIDE UTILITY SERVICES INC**

**YEAR OF REPORT**  
**31-Dec-01**

SYSTEM NAME / COUNTY : Bay County

**WASTEWATER CIAC SCHEDULE "B"**  
ADDITIONS TO CONTRIBUTIONS IN AID OF CONSTRUCTION  
RECEIVED FROM ALL DEVELOPERS OR CONTRACTORS AGREEMENTS  
WHICH CASH OR PROPERTY WAS RECEIVED DURING THE YEAR

<b>DESCRIPTION</b> (a)	<b>INDICATE CASH OR PROPERTY</b> (b)	<b>AMOUNT</b> (c)
NONE		\$ -
Total Credits		\$ -

Reconciliation of Revenue to  
Regulatory Assessment Fee Revenue  
Wastewater Operations

**UTILITY NAME:** BAYSIDE UTILITY SERVICES INC

YEAR OF REPORT 31-Dec-01
-----------------------------

(A)	(B)	(C)	(D)
Accounts	Gross Wastewater Revenues per Sch S-9	Gross Wastewater Revenues per RAF Return	Difference (B)-(C)
Gross Revenues:			-
Total Flat-Rate Revenues			-
Total Measured Revenues	89,133	89,133	-
Revenues from Public Authorities			-
Revenues from Other Systems			-
Interdepartmental Revenues			-
Total Other Wastewater Revenues			-
Reclaimed Water Sales			-
Total Wastewater Operating Revenue	89,133	89,133	-
Less: Expense for Purchased Wastewater from FPSC Regulated Utility			-
Net Wastewater Operating Revenues	89,133	89,133	-

UTILITY NAME: BAYSIDE UTILITY SERVICES INC

<b>YEAR OF REPORT</b> <b>31-Dec-01</b>
---

SYSTEM NAME / COUNTY : Bay County

**WASTEWATER OPERATING REVENUE**

ACCT. NO. (a)	DESCRIPTION (b)	BEGINNING YEAR NO. CUSTOMERS * (c)	YEAR END NUMBER OF CUSTOMERS * (d)	AMOUNTS (e)
<b>WASTEWATER SALES</b>				
	Flat Rate Revenues:			
521.1	Residential Revenues	287	287	\$ 87,728
521.2	Commercial Revenues			
521.3	Industrial Revenues			
521.4	Revenues From Public Authorities			
521.5	Multiple Family Dwelling Revenues			
521.6	Other Revenues			
521	<b>Total Flat Rate Revenues</b>	<b>287</b>	<b>287</b>	<b>\$ 87,728</b>
	Measured Revenues:			
522.1	Residential Revenues			
522.2	Commercial Revenues			
522.3	Industrial Revenues			
522.4	Revenues From Public Authorities			
522.5	Multiple Family Dwelling Revenues			
522	<b>Total Measured Revenues</b>			<b>\$</b>
523	Revenues From Public Authorities			
524	Revenues From Other Systems			
525	Interdepartmental Revenues			
<b>Total Wastewater Sales</b>		<b>287</b>	<b>287</b>	<b>\$ 87,728</b>
<b>OTHER WASTEWATER REVENUES</b>				
530	Guaranteed Revenues			\$
531	Sale of Sludge			
532	Forfeited Discounts			
534	Rents From Wastewater Property			
535	Interdepartmental Rents			
536	Other Wastewater Revenues (Including Allowance for Funds Prudently Invested or AFPI)			1,405
<b>Total Other Wastewater Revenues</b>				<b>\$ 1,405</b>

\* Customer is defined by Rule 25-30.210(1), Florida Administrative Code.

UTILITY NAME: BAYSIDE UTILITY SERVICES INC

<b>YEAR OF REPORT</b> <b>31-Dec-01</b>
---

SYSTEM NAME / COUNTY : Bay County

**WASTEWATER OPERATING REVENUE**

ACCT. NO. (a)	DESCRIPTION (b)	BEGINNING YEAR NO. CUSTOMERS * (c)	YEAR END NUMBER OF CUSTOMERS * (d)	AMOUNTS (e)
<b>RECLAIMED WATER SALES</b>				
540.1	Flat Rate Reuse Revenues: Residential Reuse Revenues	_____	_____	\$ _____
540.2	Commercial Reuse Revenues	_____	_____	_____
540.3	Industrial Reuse Revenues	_____	_____	_____
540.4	Reuse Revenues From Public Authorities	_____	_____	_____
540.5	Other Revenues	_____	_____	_____
540	Total Flat Rate Reuse Revenues	_____	_____	\$ _____
541.1	Measured Reuse Revenues: Residential Reuse Revenues	_____	_____	_____
541.2	Commercial Reuse Revenues	_____	_____	_____
541.3	Industrial Reuse Revenues	_____	_____	_____
541.4	Reuse Revenues From Public Authorities	_____	_____	_____
541	Total Measured Reuse Revenues	_____	_____	\$ _____
544	Reuse Revenues From Other Systems	_____	_____	_____
Total Reclaimed Water Sales				\$ _____
Total Wastewater Operating Revenues				\$ <u>89,133</u>

\* Customer is defined by Rule 25-30.210(1), Florida Administrative Code.



YEAR OF REPORT  
31-Dec-01

UTILITY NAME: BAYSIDE UTILITY SERVICES INC

SYSTEM NAME / COUNTY : Bay County

WASTEWATER UTILITY EXPENSE ACCOUNT MATRIX

ACCT. NO.	ACCOUNT NAME (b)	CURRENT YEAR (c)	.1 COLLECTION EXPENSES- OPERATIONS (d)	.2 COLLECTION EXPENSES- MAINTENANCE (e)	.3 PUMPING EXPENSES - OPERATIONS (f)	.4 PUMPING EXPENSES - MAINTENANCE (g)	.5 TREATMENT & DISPOSAL EXPENSES - OPERATIONS (h)	.6 TREATMENT & DISPOSAL EXPENSES - MAINTENANCE (i)
701	Salaries and Wages - Employees	\$ 8,799	\$ 264	\$ 1,056	\$ 1,760	\$ 440	\$ 4,224	\$ 1,055
703	Salaries and Wages - Officers, Directors and Majority Stockholders							
704	Employee Pensions and Benefits	1,425	43	100	171	71	428	168
710	Purchased Sewage Treatment	33,482					33,482	
711	Sludge Removal Expense	6,130					6,130	
715	Purchased Power	1,297			324		973	
716	Fuel for Power Purchased							
718	Chemicals							
720	Materials and Supplies	8,291	332	1,327	1,990	497	3,316	829,00
731	Contractual Services-Engineering							
732	Contractual Services - Accounting	218						
733	Contractual Services - Legal	736						
734	Contractual Services - Mgt. Fees							
735	Contractual Services - Testing							
736	Contractual Services - Other	309						
741	Rental of Building/Real Property							
742	Rental of Equipment							
750	Transportation Expenses							
756	Insurance - Vehicle							
757	Insurance - General Liability							
758	Insurance - Workman's Comp.							
759	Insurance - Other	1,101						
760	Advertising Expense							
766	Regulatory Commission Expenses							
	- Amortization of Rate Case Expense							
767	Regulatory Commission Exp.-Other							
770	Bad Debt Expense	2,358						
775	Miscellaneous Expenses	3,575						
	Total Wastewater Utility Expenses	\$ 67,721	\$ 639	\$ 2,483	\$ 4,245	\$ 1,008	\$ 48,553	\$ 2,052

S-10(a)  
GROUP \_\_\_\_\_

UTILITY NAME: BAYSIDE UTILITY SERVICES INC

SYSTEM NAME / COUNTY: Bay County

WASTEWATER UTILITY EXPENSE ACCOUNT MATRIX

ACCT. NO.	ACCOUNT NAME (b)	.7 CUSTOMER ACCOUNTS EXPENSE (j)	.8 ADMIN. & GENERAL EXPENSES (k)	.9 RECLAIMED WATER TREATMENT EXPENSES- OPERATIONS (l)	.10 RECLAIMED WATER TREATMENT EXPENSES- MAINTENANCE (m)	.11 RECLAIMED WATER DISTRIBUTION OPERATIONS EXPENSES- (n)	.12 RECLAIMED WATER DISTRIBUTION EXPENSES- MAINTENANCE (o)
701	Salaries and Wages - Employees						
703	Salaries and Wages - Officers, Directors and Majority Stockholders						
704	Employee Pensions and Benefits	444					
710	Purchased Sewage Treatment						
711	Sludge Removal Expense						
715	Purchased Power						
716	Fuel for Power Purchased						
718	Chemicals						
720	Materials and Supplies						
731	Contractual Services-Engineering		0				
732	Contractual Services - Accounting		218				
733	Contractual Services - Legal		736				
734	Contractual Services - Mgt. Fees		0				
735	Contractual Services - Testing		0				
736	Contractual Services - Other	155					
741	Rental of Building/Real Property						
742	Rental of Equipment						
750	Transportation Expenses						
756	Insurance - Vehicle						
757	Insurance - General Liability						
758	Insurance - Workman's Comp.						
759	Insurance - Other		1,101				
760	Advertising Expense						
766	Regulatory Commission Expenses - Amortization of Rate Case Expense		0				
767	Regulatory Commission Exp.-Other						
770	Bad Debt Expense	2,358					
775	Miscellaneous Expenses	1,788	1,787				
Total Wastewater Utility Expenses		\$ 4,745	\$ 3,996	\$ -	\$ -	\$ -	\$ -

UTILITY NAME: BAYSIDE UTILITY SERVICES, INC.

<b>YEAR OF REPORT</b> <b>31-Dec-01</b>
---

SYSTEM NAME / COUNTY : BAYSIDE / BAY

**CALCULATION OF THE WASTEWATER SYSTEM METER EQUIVALENTS**

WATER METER SIZE (a)	TYPE OF WATER METER (b)	EQUIVALENT FACTOR (c)	NUMBER OF WATER METERS (d)	TOTAL NUMBER OF METER EQUIVALENTS (c x d) (e)
All Residential		1.0		
5/8"	Displacement	1.0	287	287
3/4"	Displacement	1.5		
1"	Displacement	2.5		
1 1/2"	Displacement or Turbine	5.0		
2"	Displacement, Compound or Turbine	8.0		
3"	Displacement	15.0		
3"	Compound	16.0		
3"	Turbine	17.5		
4"	Displacement or Compound	25.0		
4"	Turbine	30.0		
6"	Displacement or Compound	50.0		
6"	Turbine	62.5		
8"	Compound	80.0		
8"	Turbine	90.0		
10"	Compound	115.0		
10"	Turbine	145.0		
12"	Turbine	215.0		
Total Wastewater System Meter Equivalents				<u>287</u>

**CALCULATION OF THE WASTEWATER SYSTEM EQUIVALENT RESIDENTIAL CONNECTIONS**

Provide a calculation used to determine the value of one wastewater equivalent residential connection (ERC).  
 Use one of the following methods:

- (a) If actual flow data are available from the preceding 12 months, divide the total annual single family residence (SFR) gallons sold by the average number of single family residence customers for the same period and divide the result by 365 days.
- (b) If no historical flow data are available, use:

$$ERC = ( \text{Total SFR gallons treated (Omit 000)} / 365 \text{ days} / 280 \text{ gallons per day} )$$

For wastewater only utilities:

Subtract all general use and other non residential customer gallons from the total gallons treated.  
 Divide the remainder (SFR customers) by 365 days to reveal single family residence customer gallons per day.

**NOTE:** Total gallons treated includes both treated and purchased treatment.

ERC Calculation:
------------------

UTILITY NAME: BAYSIDE UTILITY SERVICES, INC.

<b>YEAR OF REPORT</b> <b>31-Dec-01</b>
---

SYSTEM NAME / COUNTY : BAYSIDE / BAY

**WASTEWATER TREATMENT PLANT INFORMATION**  
 Provide a separate sheet for each wastewater treatment facility

Permitted Capacity	Sewage treated by City of Panama City Beach		
Basis of Permit Capacity (1)			
Manufacturer			
Type (2)			
Hydraulic Capacity			
Average Daily Flow			
Total Gallons of Wastewater Treated			
Method of Effluent Disposal			

(1) Basis of permitted capacity as stated on the Florida DEP WWTP Operating Permit (i.e. average annual daily flow, etc.)

(2) Contact stabilization, advanced treatment, etc.

UTILITY NAME: BAYSIDE UTILITY SERVICES, INC.

YEAR OF REPORT  
31-Dec-01

SYSTEM NAME / COUNTY : BAYSIDE / BAY

**OTHER WASTEWATER SYSTEM INFORMATION**

Furnish information below for each system. A separate page should be supplied where necessary.

1. Present number of ERCs\* now being served 287
2. Maximum number of ERCs\* which can be served \_\_\_\_\_
3. Present system connection capacity (in ERCs\*) using existing lines \_\_\_\_\_
4. Future connection capacity (in ERCs\*) upon service area buildout \_\_\_\_\_
5. Estimated annual increase in ERCs\* \_\_\_\_\_
6. Describe any plans and estimated completion dates for any enlargements or improvements of this system  
2002 - Install 2nd submersible pump at L/S #2. Make repairs to 6-8 manholes in middle section.  
\_\_\_\_\_  
\_\_\_\_\_
7. If the utility uses reuse as a means of effluent disposal, attach a list of the reuse end users and the amount of reuse provided to each, if known.
8. If the utility does not engage in reuse, has a reuse feasibility study been completed? No  
If so, when? \_\_\_\_\_
9. Has the utility been required by the DEP or water management district to implement reuse? No  
If so, what are the utility's plans to comply with this requirement? \_\_\_\_\_  
\_\_\_\_\_  
\_\_\_\_\_
10. When did the company last file a capacity analysis report with the DEP? \_\_\_\_\_
11. If the present system does not meet the requirements of DEP rules:
  - a. Attach a description of the plant upgrade necessary to meet the DEP rules.
  - b. Have these plans been approved by DEP? \_\_\_\_\_
  - c. When will construction begin? \_\_\_\_\_
  - d. Attach plans for funding the required upgrading.
  - e. Is this system under any Consent Order with DEP? No
12. Department of Environmental Protection ID # N/A, no plant

\* An ERC is determined based on the calculation on S-11.