

CLASS "A" OR "B"

OFFICIAL COPY
Public Service Commission
Do Not Remove from this Office

WATER AND/OR WASTEWATER UTILITIES
(Gross Revenue of More Than \$200,000 Each)

ANNUAL REPORT

OF

WS872-06-AR

UTILITIES, INC. OF HUTCHINSON ISLAND

Exact Legal Name of Respondent

872W 872S

Certificate Number(s)

Submitted To The

STATE OF FLORIDA

PUBLIC SERVICE COMMISSION

FOR THE

YEAR ENDED

31-Dec-06

TABLE OF CONTENTS

SCHEDULE	PAGE	SCHEDULE	PAGE
EXECUTIVE SUMMARY			
Certification	E-1	Business Contracts with Officers, Directors and Affiliates	E-7
General Information	E-2	Affiliation of Officers & Directors	E-8
Directory of Personnel Who Contact the FPSC	E-3	Businesses which are a Byproduct, Coproduct or Joint Product Result of Providing Service	E-9
Company Profile	E-4	Business Transactions with Related Parties. Part I and II	E-10
Parent / Affiliate Organization Chart	E-5		
Compensation of Officers & Directors	E-6		
FINANCIAL SECTION			
Comparative Balance Sheet - Assets and Other Debits	F-1	Unamortized Debt Discount / Expense / Premium	F-13
Comparative Balance Sheet - Equity Capital and Liabilities	F-2	Extraordinary Property Losses	F-13
Comparative Operating Statement	F-3	Miscellaneous Deferred Debits	F-14
Schedule of Year End Rate Base	F-4	Capital Stock	F-15
Schedule of Year End Capital Structure	F-5	Bonds	F-15
Capital Structure Adjustments	F-6	Statement of Retained Earnings	F-16
Utility Plant	F-7	Advances from Associated Companies	F-17
Utility Plant Acquisition Adjustments	F-7	Long Term Debt	F-17
Accumulated Depreciation	F-8	Notes Payable	F-18
Accumulated Amortization	F-8	Accounts Payable to Associated Companies	F-18
Regulatory Commission Expense - Amortization of Rate Case Expense	F-9	Accrued Interest and Expense	F-19
Nonutility Property	F-9	Misc. Current & Accrued Liabilities	F-20
Special Deposits	F-9	Advances for Construction	F-21
Investments and Special Funds	F-10	Other Deferred Credits	F-21
Accounts and Notes Receivable - Net	F-11	Contributions In Aid of Construction	F-22
Accounts Receivable from Associated Companies	F-12	Accumulated Amortization of CIAC	F-23
Notes Receivable from Associated Companies	F-12	Reconciliation of Reported Net Income with Taxable Income for Federal Income Taxes	F-23
Miscellaneous Current & Accrued Assets	F-12		

TABLE OF CONTENTS

SCHEDULE	PAGE	SCHEDULE	PAGE
WATER OPERATION SECTION			
Listing of Water System Groups	W-1	CIAC Additions / Amortization	W-8
Schedule of Year End Water Rate Base	W-2	Water Operating Revenue	W-9
Water Operating Statement	W-3	Water Utility Expense Accounts	W-10
Water Utility Plant Accounts	W-4	Pumping and Purchased Water Statistics, Source Supply	W-11
Basis for Water Depreciation Charges	W-5	Water Treatment Plant Information	W-12
Analysis of Entries in Water Depreciation Reserve	W-6	Calculation of ERC's	W-13
Contributions In Aid of Construction	W-7	Other Water System Information	W-14
WASTEWATER OPERATION SECTION			
Listing of Wastewater System Groups	S-1	Contributions In Aid of Construction	S-7
Schedule of Year End Wastewater Rate Base	S-2	CIAC Additions / Amortization	S-8
Wastewater Operating Statement	S-3	Wastewater Utility Expense Accounts	S-9
Wastewater Utility Plant Accounts	S-4	Wastewater Operating Revenue	S-10
Analysis of Entries in Wastewater Depreciation Reserve	S-5	Calculation of ERC's	S-11
Basis for Wastewater Depreciation Charges	S-6	Wastewater Treatment Plant Information	S-12
		Other Wastewater System Information	S-13

EXECUTIVE SUMMARY

CERTIFICATION OF ANNUAL REPORT

I HEREBY CERTIFY, to the best of my knowledge and belief:

YES NO
 1. The utility is in substantial compliance with the Uniform System of Accounts prescribed by the Florida Public Service Commission.

YES NO
 2. The utility is in substantial compliance with all applicable rules and orders of the Florida Public Service Commission.

YES NO
 3. There have been no communications from regulatory agencies concerning noncompliance with, or deficiencies in, financial reporting practices that could have a material effect on the the financial statement of the utility.

YES NO
 4. The annual report fairly represents the financial condition and results of operations of the respondent for the period presented and other information and statements presented in the the report as to the business affairs of the respondent are true, correct and complete for the period for which it represents.

Items Certified			
1.	2.	3.	4.
<input type="checkbox"/>	<input type="checkbox"/>	<input type="checkbox"/>	<input type="checkbox"/>

(Signature of Chief Executive Officer of the utility) *

1.	2.	3.	4.
---------------	---------------	---------------	---------------



(Signature of Chief Financial Officer of the utility) *

* Each of the four items must be certified YES or NO. Each item need not be certified by both officers. The items being certified by the officer should be indicated in the appropriate area to the left of the signature.

NOTICE: Section 837.06, Florida Statutes, provides that any person who knowingly makes a false statement in writing with the intent to mislead a public servant in the performance of his duty shall be guilty of a misdemeanor of the second degree.

ANNUAL REPORT OF

YEAR OF REPORT 31-Dec-06

UTILITIES, INC. OF HUTCHINSON ISLAND

 (Exact Name of Utility)

County: **Martin County**

List below the exact mailing address of the utility for which normal correspondence should be sent:

2335 SANDERS ROAD

NORTHBROOK IL 60062

Telephone: **847-498-6440**

E Mail Address: **NONE**

WEB Site: **NONE**

Sunshine State One-Call of Florida, Inc. Member Number **UIF1416**

Name and address of person to whom correspondence concerning this report should be addressed:

CHRISTINE KIM

2335 SANDERS ROAD

NORTHBROOK IL 60062

Telephone: **847-498-6440**

List below the address of where the utility's books and records are located:

2335 SANDERS ROAD

NORTHBROOK IL 60062

Telephone: **847-498-6440**

List below any groups auditing or reviewing the records and operations:

PRICEWATERHOUSECOOPERS

Date of original organization of the utility: **09/20/76**

Check the appropriate business entity of the utility as filed with the Internal Revenue Service

Individual Partnership Sub S Corporation 1120 Corporation

List below every corporation or person owning or holding directly or indirectly 5% or more of the voting securities of the utility:

	Name	Percent Ownership
1.	UTILITIES INC	100%
2.	_____	_____
3.	_____	_____
4.	_____	_____
5.	_____	_____
6.	_____	_____
7.	_____	_____
8.	_____	_____
9.	_____	_____
10.	_____	_____

DIRECTORY OF PERSONNEL WHO CONTACT
THE FLORIDA PUBLIC SERVICE COMMISSION

NAME OF COMPANY REPRESENTATIVE (1)	TITLE OR POSITION (2)	ORGANIZATIONAL UNIT TITLE (3)	USUAL PURPOSE FOR CONTACT WITH FPSC
LISA CROSSETT	CHIEF OPERATING OFFICER		OPERATIONS
STEVE LUBERTOZZI	CHIEF REGULATORY OFFICER		RATE CASE
JOHN HOY	REGIONAL VP		OPERATIONS
PATRICK FLYNN	REGIONAL DIRECTOR		OPERATIONS
CHRISTINE KIM	MANAGER, CORPORATE ACCOUNTING		FINANCIAL

(1) Also list appropriate legal counsel, accountants and others who may not be on general payroll.
(2) Provide individual telephone numbers if the person is not normally reached at the company.
(3) Name of company employed by if not on general payroll.

COMPANY PROFILE

Provide a brief narrative company profile which covers the following areas:

- A. Brief company history.
- B. Public services rendered.
- C. Major goals and objectives.
- D. Major operating divisions and functions.
- E. Current and projected growth patterns.
- F. Major transactions having a material effect on operations.

A.	Acquired by Utilities Inc. in 2004
B.	The Utility supplies water and sewer services.
C.	Maintain a high quality of service.
D.	There is only subdivisions that are serviced.
E.	There has been modest growth and we expect this pattern to continue as long as economic conditons hold.
F.	There have been no major transaction during the year.

PARENT / AFFILIATE ORGANIZATION CHART

Current as of 12/31/2006

Complete below an organizational chart that show all parents, subsidiaries and affiliates of the utility.
The chart must also show the relationship between the utility and affiliates listed on E-7, E-10(a) and E-10(b).

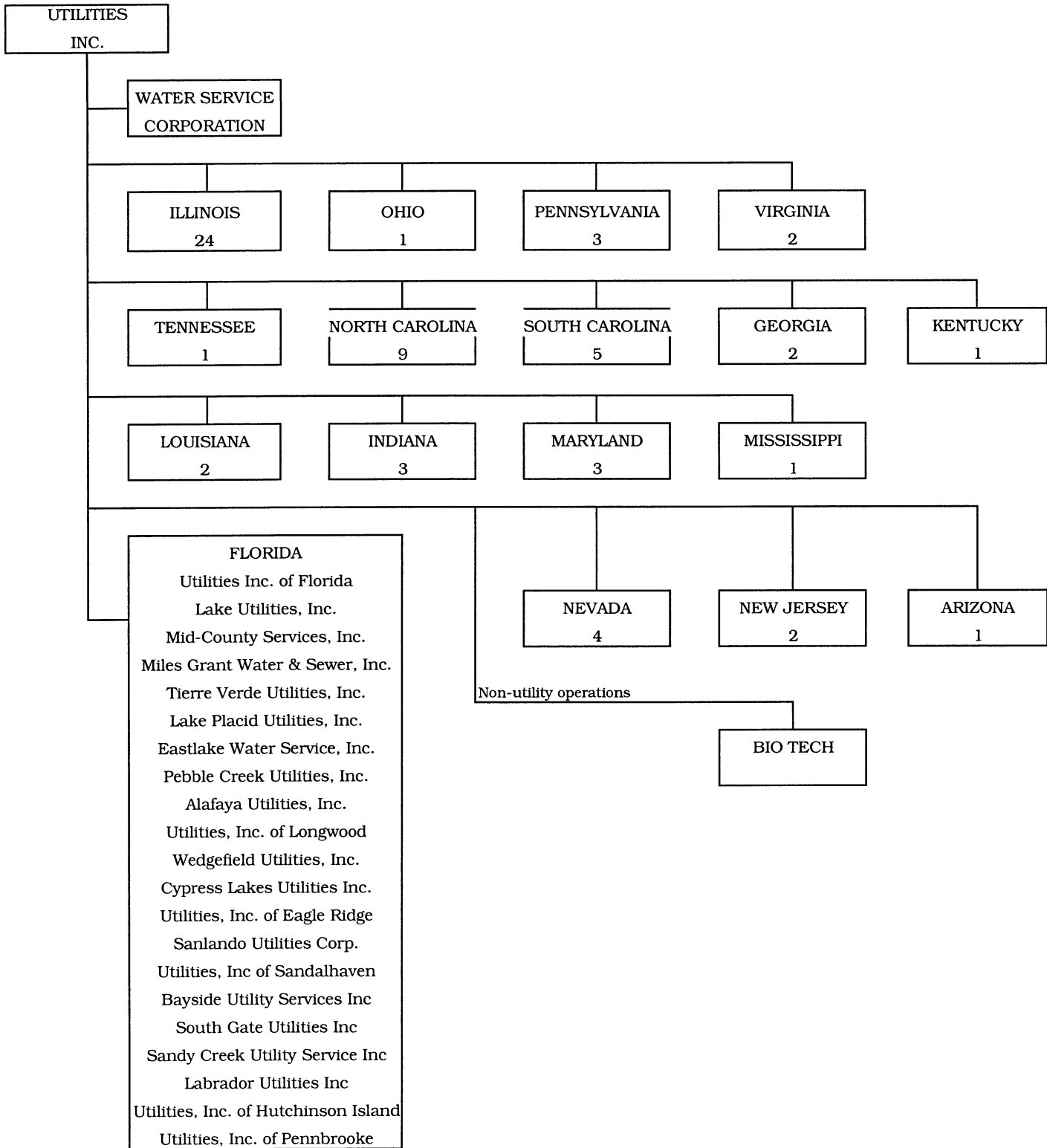
UTILITIES, INC. -- PARENT COMPANY

WATER SERVICE CORP. -- SERVICE COMPANY SUPPLYING MOST
SERVICES REQUIRED BY UTILITY.

UTILITIES INC. of FLORIDA -- provides office personnel and administrative
staff.

SEE ATTACHED

Parent And Affiliate Organizational Chart



UTILITIES, INC. - Parent Company

WATER SERVICE CORP. - Service organization providing administrative and other service functions for the utility.

NOTE: Within each state except Florida is the number of companies owned.

COMPENSATION OF OFFICERS

<p>For each officer, list the time spent on respondent as an officer compared to time spent on total business activities and the compensation received as an officer from the respondent.</p>			
<p>NAME (a)</p>	<p>TITLE (b)</p>	<p>% OF TIME SPENT AS OFFICER OF THE UTILITY (c)</p>	<p>OFFICERS' COMPENSATION (d)</p>
LAWRENCE N SCHUMACHER	CEO & PRESIDENT		\$ NONE
LISA A CROSSETT	VP OPERATIONS		NONE
STEVEN M LUBERTOZZI	VP REGULATORY		NONE
DANIEL J DELGADO	VP & TREASURER		NONE
JOHN R STOVER	VP & SECRETARY		NONE
JOHN HOY	REGIONAL VP		NONE

COMPENSATION OF DIRECTORS

<p>For each director, list the number of director meetings attended by each director and the compensation received as a director from the respondent.</p>			
<p>NAME (a)</p>	<p>TITLE (b)</p>	<p>NUMBER OF DIRECTORS' MEETINGS ATTENDED (c)</p>	<p>DIRECTORS' COMPENSATION (d)</p>
JOHN M STOKES	DIRECTOR	1	\$ NONE
LAWRENCE N SCHUMACHER	DIRECTOR	1	NONE

BUSINESS CONTRACTS WITH OFFICERS, DIRECTORS AND AFFILIATES

List all contracts, agreements, or other business arrangements* entered into during the calendar year (other than compensation related to position with Respondents) between the Respondent and officer and director listed on page E-6. In addition, provide the same information with respect to professional services for each firm, partnership, or organization with which the officer or director is affiliated.

NAME OF OFFICER, DIRECTOR OR AFFILIATE (a)	IDENTIFICATION OF SERVICE OR PRODUCT (b)	AMOUNT (c)	NAME AND ADDRESS OF AFFILIATED ENTITY (d)	
NO BUSINESS CONTRACTS, AGREEMENTS OR OTHER ARRANGEMENTS WERE ENTERED INTO DURING THE CURRENT YEAR BY THE OFFICERS LISTED ON PAGE E6, THE DIRECTORS OR AFFILIATES.		\$		

* Business Agreement, for this schedule, shall mean any oral or written business deal which binds the concerned parties for products or services during the reporting year or future years. Although the Respondent and/or other companies will benefit from the arrangement, the officer or director is, however, acting on his behalf or for the benefit of other companies or persons.

AFFILIATION OF OFFICERS AND DIRECTORS

For each of the officials listed on page E-6, list the principle occupation or business affiliations or connections with any other business or financial organizations, firms, or partnerships. For purposes of this part, an official will be considered to have an affiliation with any business or financial organization, firm or partnership in which he is an officer, director, trustee, partner, or a person exercising similar functions.

NAME (a)	PRINCIPLE OCCUPATION OR BUSINESS AFFILIATION (b)	AFFILIATION OR CONNECTION (c)	NAME AND ADDRESS OF AFFILIATION OR CONNECTION (d)
JOHN M STOKES	CEO	DIRECTOR/OFFICER	UTILITIES INC & SUBSIDIARIES NORTHBROOK IL
LAWRENCE N SCHUMACHER	PRESIDENT	DIRECTOR/OFFICER	UTILITIES INC & SUBSIDIARIES NORTHBROOK IL
LISA A CROSSETT	VP OPERATIONS	OFFICER	UTILITIES INC & SUBSIDIARIES NORTHBROOK IL
STEVEN M LUBERTOZZI	VP REGULATORY	OFFICER	UTILITIES INC & SUBSIDIARIES NORTHBROOK IL
DANIEL J DELGADO	VP & TREASURER	OFFICER	UTILITIES INC & SUBSIDIARIES NORTHBROOK IL
JOHN R STOVER	VP & SECRETARY	OFFICER	UTILITIES INC & SUBSIDIARIES NORTHBROOK IL

UTILITY NAME: UTILITIES, INC. OF HUTCHINSON ISLAND

**BUSINESSES WHICH ARE A BY-PRODUCT, COPRODUCT OR JOINT-PRODUCT
RESULT OF PROVIDING WATER OR WASTEWATER SERVICE**

Complete the following for any business which is conducted as a byproduct, coproduct, or joint product as a result of providing water and / or wastewater service. This would include any business which requires the use of utility land and facilities. Examples of these types of businesses would be orange groves, nurseries, tree farms, fertilizer manufacturing, etc. This would not include any business for which the assets are properly included in Account 121 - Nonutility Property along with the associated revenue and expenses segregated out as nonutility also.

	ASSETS		REVENUES		EXPENSES	
	BOOK COST OF ASSETS (b)	ACCOUNT NUMBER (c)	REVENUES GENERATED (d)	ACCOUNT NUMBER (e)	EXPENSES INCURRED (f)	ACCOUNT NUMBER (g)
NO BUSINESS WHICH ARE	\$		\$			
A BYPRODUCT, COPRODUCT						
OR JOINT PRODUCT RESULTING FROM PROVIDING WATER AND/OR SEWER SERVICE.						

BUSINESS TRANSACTIONS WITH RELATED PARTIES

List each contract, agreement, or other business transaction exceeding a cumulative amount of \$500 in any on year, entered into between the Respondent and a business or financial organization, firm, or partnership named on pages E-2 and E-6, identifying the parties, amounts, dates and product, and asset, or service involved.

Part I. Specific Instructions: Services and Products Received or Provided

1. Enter in this part all transactions involving services and products received or provided.

2. Below are some types of transactions to include:

-management, legal and accounting services

-computer services

-engineering & construction services

-repairing and servicing of equipment

-material and supplies furnished

-leasing of structures, land, and equipment

-rental transactions

-sale, purchase or transfer of various products

NAME OF COMPANY OR RELATED PARTY (a)	DESCRIPTION SERVICE AND/OR NAME OF PRODUCT (b)	CONTRACT OR AGREEMENT EFFECTIVE DATES (c)	ANNUAL CHARGES (Purchased (S)old) (d)	AMOUNT (e)
WATER SERVICE CORP	Operators Salaries & Benefits	Continuous	Purchase	15,920
	Insurance	Continuous	Purchase	3,625
	Computer Operations	Continuous	Purchase	508
	Supplies & Postage	Continuous	Purchase	2,053
	Outside Services	Continuous	Purchase	2,958
	Management Services	Continuous	Purchase	1,465

UTILITY NAME: UTILITIES, INC. OF HUTCHINSON ISLAND

BUSINESS TRANSACTIONS WITH RELATED PARTIES (Cont'd)

Part II. Specific Instructions: Sale, Purchase and Transfer of Assets

1. Enter in this part all transactions relating to the purchase, sale, or transfer of assets.
 3. The columnar instructions follow:
 - (a) Enter name of related party or company.
 - (b) Describe briefly the type of assets purchased, sold or transferred.
 - (c) Enter the total received or paid. Indicate purchase with "P" and sale with "S".
 - (d) Enter the net book value for each item reported.
 - (e) Enter the net profit or loss for each item reported. (column (c) - column (d))
 - (f) Enter the fair market value for each item reported. In space below or in a supplemental schedule, describe the basis used to calculate fair market value.

2. Below are examples of some types of transactions to include:
 - purchase, sale or transfer of equipment
 - purchase, sale or transfer of land and structures
 - purchase, sale or transfer of securities
 - noncash transfers of assets
 - noncash dividends other than stock dividends
 - write-off of bad debts or loans

NAME OF COMPANY OR RELATED PARTY (a)	DESCRIPTION OF ITEMS (b)	SALE OR PURCHASE PRICE (c)	NET BOOK VALUE (d)	GAIN OR LOSS (e)	FAIR MARKET VALUE (f)
		\$	\$	\$	\$
NO ASSETS WERE SOLD, PURCHASED OR TRANSFERRED WITH A RELATED PARTY DURING THE FISCAL YEAR ENDEL 31-Dec-06					

FINANCIAL SECTION

**COMPARATIVE BALANCE SHEET
ASSETS AND OTHER DEBITS**

ACCT. NO. (a)	ACCOUNT NAME (b)	REF. PAGE (c)	PREVIOUS YEAR (d)	CURRENT YEAR (e)
UTILITY PLANT				
101-106	Utility Plant	F-7	\$ 3,394,817	\$ 3,585,861
108-110	Less: Accumulated Depreciation and Amortization	F-8	1,522,616	1,578,812
Net Plant			\$ 1,872,201	\$ 2,007,049
114-115	Utility Plant Acquisition adjustment (Net)	F-7	465,759	465,759
116 *	Other Utility Plant Adjustments			
Total Net Utility Plant			\$ 2,337,960	\$ 2,472,808
OTHER PROPERTY AND INVESTMENTS				
121	Nonutility Property	F-9	\$ _____	\$ _____
122	Less: Accumulated Depreciation and Amortization			
Net Nonutility Property			\$ _____	\$ _____
123	Investment In Associated Companies	F-10	_____	_____
124	Utility Investments	F-10	_____	_____
125	Other Investments	F-10	_____	_____
126-127	Special Funds	F-10	_____	_____
Total Other Property & Investments			\$ _____	\$ _____
CURRENT AND ACCRUED ASSETS				
131	Cash		\$ 1,899	\$ -
132	Special Deposits	F-9	11,955	11,955
133	Other Special Deposits	F-9	_____	_____
134	Working Funds		_____	_____
135	Temporary Cash Investments		_____	_____
141-144	Accounts and Notes Receivable, Less Accumulated Provision for Uncollectible Accounts	F-11	64,218	52,638
145	Accounts Receivable from Associated Companies	F-12	_____	_____
146	Notes Receivable from Associated Companies	F-12	-	-
151-153	Material and Supplies		_____	_____
161	Stores Expense		_____	_____
162	Prepayments		-	1,899
171	Accrued Interest and Dividends Receivable		-	_____
172 *	Rents Receivable		_____	_____
173 *	Accrued Utility Revenues		_____	_____
174	Misc. Current and Accrued Assets	F-12	-	-
Total Current and Accrued Assets			\$ 78,072	\$ 66,492

* Not Applicable for Class B Utilities

**COMPARATIVE BALANCE SHEET
ASSETS AND OTHER DEBITS**

ACCT. NO. (a)	ACCOUNT NAME (b)	REF. PAGE (c)	PREVIOUS YEAR (d)	CURRENT YEAR (e)
DEFERRED DEBITS				
181	Unamortized Debt Discount & Expense	F-13	\$ _____	\$ _____
182	Extraordinary Property Losses	F-13	_____	_____
183	Preliminary Survey & Investigation Charges		_____	_____
184	Clearing Accounts		_____	_____
185 *	Temporary Facilities		_____	_____
186	Misc. Deferred Debits	F-14	23,721	11,969
187 *	Research & Development Expenditures		_____	_____
190	Accumulated Deferred Income Taxes		-	-
Total Deferred Debits			\$ 23,721	\$ 11,969
TOTAL ASSETS AND OTHER DEBITS			\$ <u>2,439,753</u>	\$ <u>2,551,269</u>

* Not Applicable for Class B Utilities

NOTES TO THE BALANCE SHEET

The space below is provided for important notes regarding the balance sheet.

**COMPARATIVE BALANCE SHEET
EQUITY CAPITAL AND LIABILITIES**

ACCT. NO. (a)	ACCOUNT NAME (b)	REF. PAGE (c)	PREVIOUS YEAR (d)	CURRENT YEAR (e)
EQUITY CAPITAL				
201	Common Stock Issued	F-15	\$ 1,000	\$ 1,000
204	Preferred Stock Issued	F-15		
202,205 *	Capital Stock Subscribed			
203,206 *	Capital Stock Liability for Conversion			
207 *	Premium on Capital Stock			
209 *	Reduction in Par or Stated Value of Capital Stock			
210 *	Gain on Resale or Cancellation of Reacquired Capital Stock			
211	Other Paid - In Capital		1,919,996	1,980,882
212	Discount On Capital Stock			
213	Capital Stock Expense			
214-215	Retained Earnings	F-16	8,682	32,197
216	Reacquired Capital Stock			
218	Proprietary Capital (Proprietorship and Partnership Only)			
Total Equity Capital			\$ 1,929,678	\$ 2,014,079
LONG TERM DEBT				
221	Bonds	F-15		
222 *	Reacquired Bonds			
223	Advances from Associated Companies	F-17		
224	Other Long Term Debt	F-17		
Total Long Term Debt			\$ -	\$ -
CURRENT AND ACCRUED LIABILITIES				
231	Accounts Payable		2,238	7,483
232	Notes Payable	F-18		
233	Accounts Payable to Associated Companies	F-18	104,077	166,540
234	Notes Payable to Associated Companies	F-18		
235	Customer Deposits		-	-
236	Accrued Taxes	W/S-3	20,042	4,155
237	Accrued Interest	F-19	-	-
238	Accrued Dividends			
239	Matured Long Term Debt			
240	Matured Interest			
241	Miscellaneous Current & Accrued Liabilities	F-20		
Total Current & Accrued Liabilities			\$ 126,357	\$ 178,178

* Not Applicable for Class B Utilities

**COMPARATIVE BALANCE SHEET
EQUITY CAPITAL AND LIABILITIES**

ACCT. NO. (a)	ACCOUNT NAME (b)	REF. PAGE (c)	PREVIOUS YEAR (d)	CURRENT YEAR (e)
DEFERRED CREDITS				
251	Unamortized Premium On Debt	F-13	\$ _____	\$ _____
252	Advances For Construction	F-20	_____	_____
253	Other Deferred Credits	F-21	_____	_____
255	Accumulated Deferred Investment Tax Credits		-	-
Total Deferred Credits			\$ _____	\$ _____
OPERATING RESERVES				
261	Property Insurance Reserve		\$ _____	\$ _____
262	Injuries & Damages Reserve		_____	_____
263	Pensions and Benefits Reserve		_____	_____
265	Miscellaneous Operating Reserves		_____	_____
Total Operating Reserves			\$ _____	\$ _____
CONTRIBUTIONS IN AID OF CONSTRUCTION				
271	Contributions in Aid of Construction	F-22	\$ 594,730	\$ 594,730
272	Accumulated Amortization of Contributions in Aid of Construction	F-22	270,222	289,194
Total Net C.I.A.C.			\$ _____	\$ _____
ACCUMULATED DEFERRED INCOME TAXES				
281	Accumulated Deferred Income Taxes - Accelerated Depreciation		\$ 40,114	\$ 30,670
282	Accumulated Deferred Income Taxes - Liberalized Depreciation		_____	_____
283	Accumulated Deferred Income Taxes - Other		19,096	22,806
Total Accumulated Deferred Income Tax			\$ _____	\$ _____
TOTAL EQUITY CAPITAL AND LIABILITIES			\$ _____	\$ _____

COMPARATIVE OPERATING STATEMENT

ACCT. NO. (a)	ACCOUNT NAME (b)	REF. PAGE (c)	PREVIOUS YEAR (d)	CURRENT YEAR * (e)
UTILITY OPERATING INCOME				
400	Operating Revenues	F-3(b)	\$ 575,103	\$ 585,943
469, 530	Less: Guaranteed Revenue and AFPI	F-3(b)		
Net Operating Revenues			\$ 575,103	\$ 585,943
401	Operating Expenses	F-3(b)	\$ 261,366	\$ 323,843
403	Depreciation Expense:	F-3(b)	\$ 122,903	\$ 130,285
	Less: Amortization of CIAC	F-22	(20,021)	(18,972)
Net Depreciation Expense			\$ 102,882	\$ 111,313
406	Amortization of Utility Plant Acquisition Adjustment	F-3(b)	-	-
407	Amortization Expense (Other than CIAC)	F-3(b)	827	-
408	Taxes Other Than Income	W/S-3	43,264	33,578
409	Current Income Taxes	W/S-3	34,795	12,119
410.10	Deferred Federal Income Taxes	W/S-3	(631)	(4,853)
410.11	Deferred State Income Taxes	W/S-3	(110)	(881)
411.10	Provision for Deferred Income Taxes - Credit	W/S-3	-	(8)
412.10	Investment Tax Credits Deferred to Future Periods	W/S-3	-	-
412.11	Investment Tax Credits Restored to Operating Income	W/S-3	-	-
Utility Operating Expenses			\$ 442,393	\$ 475,111
Net Utility Operating Income			\$ 132,710	\$ 110,832
469, 530	Add Back: Guaranteed Revenue and AFPI	F-3(b)		
413	Income From Utility Plant Leased to Others			
414	Gains (losses) From Disposition of Utility Property			
420	Allowance for Funds Used During Construction		143	1,395
Total Utility Operating Income [Enter here and on Page F-3(c)]			\$ 132,853	\$ 112,227

COMPARATIVE OPERATING STATEMENT (Cont'd)

WATER SCHEDULE W-3 * (f)	WASTEWATER SCHEDULE S-3 * (g)	OTHER THAN REPORTING SYSTEMS (h)
\$ <u>320,114</u>	\$ <u>265,829</u>	\$ <u>-</u>
\$ <u>320,114</u>	\$ <u>265,829</u>	\$ <u>-</u>
\$ <u>99,557</u>	\$ <u>224,286</u>	\$ <u>-</u>
<u>68,456</u> <u>(6,124)</u>	<u>61,829</u> <u>(12,848)</u>	<u>-</u>
\$ <u>62,332</u>	\$ <u>48,981</u>	\$ <u>-</u>
<u>-</u>	<u>-</u>	<u>-</u>
<u>-</u>	<u>-</u>	<u>-</u>
<u>18,343</u>	<u>15,235</u>	<u>-</u>
<u>32,600</u>	<u>(20,481)</u>	<u>-</u>
<u>(13,055)</u>	<u>8,202</u>	<u>-</u>
<u>(2,370)</u>	<u>1,489</u>	<u>-</u>
<u>(22)</u>	<u>14</u>	<u>-</u>
<u>-</u>	<u>-</u>	<u>-</u>
<u>-</u>	<u>-</u>	<u>-</u>
\$ <u>197,385</u>	\$ <u>277,726</u>	\$ <u>-</u>
\$ <u>122,729</u>	\$ <u>(11,897)</u>	\$ <u>-</u>
<u>-</u>	<u>-</u>	<u>-</u>
<u>-</u>	<u>-</u>	<u>-</u>
<u>-</u>	<u>-</u>	<u>-</u>
<u>-</u>	<u>1,395</u>	<u>-</u>
\$ <u><u>122,729</u></u>	\$ <u><u>(10,502)</u></u>	\$ <u><u>-</u></u>

* Total of Schedules W-3 / S-3 for all rate groups.

COMPARATIVE OPERATING STATEMENT (Cont'd)

ACCT. NO. (a)	ACCOUNT NAME (b)	REF. PAGE (c)	PREVIOUS YEAR (d)	CURRENT YEAR (e)
Total Utility Operating Income [from page F-3(a)]			\$ <u>132,853</u>	\$ <u>112,227</u>
OTHER INCOME AND DEDUCTIONS				
415	Revenues-Merchandising, Jobbing, and Contract Deductions		\$ _____	\$ _____
416	Costs & Expenses of Merchandising Jobbing, and Contract Work		_____	_____
419	Interest and Dividend Income		<u>652</u>	<u>32</u>
421	Nonutility Income		_____	_____
426	Miscellaneous Nonutility Expenses		-	-
Total Other Income and Deductions			\$ <u>652</u>	\$ <u>32</u>
TAXES APPLICABLE TO OTHER INCOME				
408.20	Taxes Other Than Income		\$ _____	\$ _____
409.20	Income Taxes		_____	_____
410.20	Provision for Deferred Income Taxes		_____	_____
411.20	Provision for Deferred Income Taxes - Credit		_____	_____
412.20	Investment Tax Credits - Net		_____	_____
412.30	Investment Tax Credits Restored to Operating Income		_____	_____
Total Taxes Applicable To Other Income			\$ <u>-</u>	\$ <u>-</u>
INTEREST EXPENSE				
427	Interest Expense	F-19	\$ <u>76,096</u>	\$ <u>88,744</u>
428	Amortization of Debt Discount & Expense	F-13	_____	_____
429	Amortization of Premium on Debt	F-13	_____	_____
Total Interest Expense			\$ <u>76,096</u>	\$ <u>88,744</u>
EXTRAORDINARY ITEMS				
433	Extraordinary Income		\$ _____	\$ _____
434	Extraordinary Deductions		_____	_____
409.30	Income Taxes, Extraordinary Items		_____	_____
Total Extraordinary Items			\$ <u>-</u>	\$ <u>-</u>
NET INCOME			\$ <u><u>57,409</u></u>	\$ <u><u>23,515</u></u>

Explain Extraordinary Income:

NONE

SCHEDULE OF YEAR END RATE BASE

ACCT. NO. (a)	ACCOUNT NAME (b)	REF. PAGE (c)	WATER UTILITY (d)	WASTEWATER UTILITY (e)
101	Utility Plant In Service	F-7	\$ 1,946,975	\$ 1,613,898
	Less:			
	Nonused and Useful Plant (1)			
108	Accumulated Depreciation	F-8	661,820	908,559
110	Accumulated Amortization	F-8	4,053	4,380
271	Contributions In Aid of Construction	F-22	187,548	407,182
252	Advances for Construction	F-20		
Subtotal			\$ 1,093,554	\$ 293,777
	Add:			
272	Accumulated Amortization of Contributions in Aid of Construction	F-22	47,083	242,111
Subtotal			\$ 1,140,637	\$ 535,888
	Plus or Minus:			
114	Acquisition Adjustments (2)	F-7	-	-
115	Accumulated Amortization of Acquisition Adjustments (2)	F-7	-	-
	Working Capital Allowance (3)		12,445	28,036
	Other (Specify):			
	_____		_____	_____
	_____		_____	_____
	_____		_____	_____
RATE BASE			\$ 1,153,082	\$ 563,924
NET UTILITY OPERATING INCOME			\$ 122,729	\$ (11,897)
ACHIEVED RATE OF RETURN (Operating Income / Rate Base)			10.64%	-2.11%

NOTES :

- (1) Estimate based on the methodology used in the last rate proceeding.
- (2) Include only those Acquisition Adjustments that have been approved by the Commission.
- (3) Calculation consistent with last rate proceeding.
In absence of a rate proceeding, Class A utilities will use the Balance Sheet Method and Class B Utilities will use the One-eighth Operating and Maintenance Expense Method.

**SCHEDULE OF CURRENT COST OF CAPITAL
CONSISTENT WITH THE METHODOLOGY USED IN THE LAST RATE PROCEEDING (1)**

CLASS OF CAPITAL (a)	DOLLAR AMOUNT (2) (b)	PERCENTAGE OF CAPITAL (c)	ACTUAL COST RATES (3) (d)	WEIGHTED COST (c x d) (e)
Common Equity	\$ 668,170	38.91%	11.65%	4.53%
Preferred Stock	-	0.00%	0.00%	0.00%
Long Term Debt	995,360	57.97%	6.81%	3.95%
Customer Deposits	-	0.00%	6.00%	0.00%
Tax Credits - Zero Cost	-	0.00%	0.00%	0.00%
Tax Credits - Weighted Cost	-	0.00%	0.00%	0.00%
Deferred Income Taxes	53,476	3.11%	0.00%	0.00%
Other (Explain) Short Term Debt	-	0.00%	0.00%	0.00%
Total	\$ 1,717,005	100.00%		8.48%

(1) If the utility's capital structure is not used, explain which capital structure is used.

(2) Should equal amounts on Schedule F-6, Column (g).

(3) Mid-point of the last authorized Return On Equity or current leverage formula if none has been established

Must be calculated using the same methodology used in the last rate proceeding using current annual report year end amounts and cost rates.

APPROVED RETURN ON EQUITY

Current Commission Return on Equity:	<u>11.65%</u>
Commission order approving Return on Equity:	<u>LEVERAGE FORMULA</u>

APPROVED AFUDC RATE

COMPLETION ONLY REQUIRED IF AFUDC WAS CHARGED DURING YEAR

Current Commission Approved AFUDC rate:	<u>9.03%</u>
Commission order approving AFUDC rate:	<u>PSC-04-0262-PAA-WS</u>

If any utility capitalized any charge in lieu of AFUDC (such as interest only), state the basis of the charge, an explanation as to why AFUDC was not charged and the percentage capitalized.

UTILITY NAME: UTILITIES, INC. OF HUTCHINSON ISLAND

SCHEDULE OF CAPITAL STRUCTURE ADJUSTMENTS
CONSISTENT WITH THE METHODOLOGY USED IN THE LAST RATE PROCEEDING

CLASS OF CAPITAL (a)	PER BOOK BALANCE (b)	NON-UTILITY ADJUSTMENTS (c)	NON-JURISDICTIONAL ADJUSTMENTS (d)	OTHER (1) ADJUSTMENTS SPECIFIC (e)	OTHER (1) ADJUSTMENTS PRO RATA (f)	CAPITAL STRUCTURE (g)
Common Equity	\$ 120,831,226	\$ 0	\$ 0	\$ 0	\$ (120,163,056)	\$ 668,170
Preferred Stock		0	0	0		-
Long Term Debt	180,000,000	0	0	0	(179,004,640)	995,360
Customer Deposits	-	0	0	0		-
Tax Credits - Zero Cost	-	0	0	0		-
Tax Credits - Weighted Cost	-	0	0	0		-
Deferred Inc. Taxes	53,476	0	0	0		53,476
Other (Explain)	-	0	0	0		-
Total	\$ 300,884,702	\$ 0	\$ 0	\$ 0	\$ (299,167,697)	\$ 1,717,005
(1) Explain below all adjustments made in Columns (e) and (f):						
NOT APPLICABLE						

**UTILITY PLANT
ACCOUNTS 101 - 106**

ACCT. (a)	DESCRIPTION (b)	WATER (c)	WASTEWATER (d)	OTHER THAN REPORTING SYSTEMS (e)	TOTAL (f)
101	Plant Accounts: Utility Plant In Service	\$ 1,946,975	\$ 1,613,898	\$ _____	\$ 3,560,873
102	Utility Plant Leased to Other	_____	_____	_____	-
103	Property Held for Future Use	_____	_____	_____	-
104	Utility Plant Purchased or Sold	_____	_____	_____	-
105	Construction Work in Progress	-	24,988	_____	24,988
106	Completed Construction Not Classified	_____	_____	_____	-
	Total Utility Plant	\$ 1,946,975	\$ 1,638,886	\$ -	\$ 3,585,861

**UTILITY PLANT ACQUISITION ADJUSTMENTS
ACCOUNTS 114 AND 115**

Report each acquisition adjustment and related accumulated amortization separately.
For any acquisition adjustments approved by the Commission, include the Order Number.

ACCT. (a)	DESCRIPTION (b)	WATER (c)	WASTEWATER (d)	OTHER THAN REPORTING SYSTEMS (e)	TOTAL (f)
114	Acquisition Adjustment	\$ 465,759	\$ -	\$ -	\$ 465,759
		_____	_____	_____	-
		_____	_____	_____	-
		_____	_____	_____	-
		_____	_____	_____	-
	Total Plant Acquisition Adjustments	\$ 465,759	\$ -	\$ -	\$ 465,759
115	Accumulated Amortization Accruals charged during year	\$ -	\$ -	\$ _____	\$ -
		_____	_____	_____	-
		_____	_____	_____	-
		_____	_____	_____	-
	Total Accumulated Amortization	\$ -	\$ -	\$ -	\$ -
	Net Acquisition Adjustments	\$ 465,759	\$ -	\$ -	\$ 465,759

ACCUMULATED DEPRECIATION (ACCT. 108) AND AMORTIZATION (ACCT. 110)

DESCRIPTION (a)	WATER (b)	WASTEWATER (c)	OTHER THAN REPORTING SYSTEMS (d)	TOTAL (e)
ACCUMULATED DEPRECIATION				
Account 108				
Balance first of year	\$ 649,330	\$ 864,853	\$	\$ 1,514,183
Credit during year:				
Accruals charged to:				
Account 108.1 (1)	\$ 68,456	\$ 61,829	\$	\$ 130,285
Account 108.2 (2)	-	-	-	-
Account 108.3 (2)	-	-	-	-
Other Accounts (specify):	(8,565)	32	-	(8,533)
Salvage	-	-	-	-
Other Credits (Specify):	-	-	-	-
Total Credits	\$ 59,891	\$ 61,861	\$ -	\$ 121,752
Debits during year:				
Book cost of plant retired	47,401	18,155	-	65,556
Cost of Removal	-	-	-	-
Other Debits (specify):	-	-	-	-
Total Debits	\$ 47,401	\$ 18,155	\$ -	\$ 65,556
Balance end of year	\$ <u>661,820</u>	\$ <u>908,559</u>	\$ <u>-</u>	\$ <u>1,570,379</u>
ACCUMULATED AMORTIZATION				
Account 110				
Balance first of year	\$ 4,053	4,380	\$	\$ 8,433
Credit during year:				
Accruals charged to:				
Account 110.2 (2)	\$ -	\$ -	\$	\$ -
Other Accounts (specify):	-	-	-	-
Total credits	\$ -	\$ -	\$ -	\$ -
Debits during year:				
Book cost of plant retired	-	-	-	-
Other debits (specify):	-	-	-	-
Total Debits	\$ -	\$ -	\$ -	\$ -
Balance end of year	\$ <u>4,053</u>	\$ <u>4,380</u>	\$ <u>-</u>	\$ <u>8,433</u>

- (1) Account 108 for Class B utilities.
- (2) Not applicable for Class B utilities.
- (3) Account 110 for Class B utilities.

UTILITY NAME: UTILITIES, INC. OF HUTCHINSON ISLAND

YEAR OF REPORT 31-Dec-06

**REGULATORY COMMISSION EXPENSE
AMORTIZATION OF RATE CASE EXPENSE (ACCOUNTS 666 AND 766)**

DESCRIPTION OF CASE (DOCKET NO.) (a)	EXPENSE INCURRED DURING YEAR (b)	CHARGED OFF DURING YEAR	
		ACCT. (d)	AMOUNT (e)
NONE	\$ _____	_____	\$ _____
_____	_____	_____	_____
_____	_____	_____	_____
Total	\$ _____	_____	\$ _____

NONUTILITY PROPERTY (ACCOUNT 121)

Report separately each item of property with a book cost of \$25,000 or more included in Account 121.
Other Items may be grouped by classes of property.

DESCRIPTION (a)	BEGINNING YEAR (b)	ADDITIONS (c)	REDUCTIONS (d)	ENDING YEAR BALANCE (e)
NONE	\$ _____	\$ _____	\$ _____	\$ _____
_____	_____	_____	_____	_____
_____	_____	_____	_____	_____
Total Nonutility Property	\$ _____	\$ _____	\$ _____	\$ _____

SPECIAL DEPOSITS (ACCOUNTS 132 AND 133)

Report hereunder all special deposits carried in Accounts 132 and 133.

DESCRIPTION OF SPECIAL DEPOSITS (a)	YEAR END BOOK COST (b)
SPECIAL DEPOSITS (Account 132): ELECTRIC DEPOSIT Florida Power and Light	\$ 11,955
_____	_____
Total Special Deposits	\$ 11,955
OTHER SPECIAL DEPOSITS (Account 133): NONE	\$ _____
_____	_____
Total Other Special Deposits	\$ -

INVESTMENTS AND SPECIAL FUNDS
ACCOUNTS 123 - 127

Report hereunder all investments and special funds carried in Accounts 123 through 127.

DESCRIPTION OF SECURITY OR SPECIAL FUND (a)	FACE OR PAR VALUE (b)	YEAR END BOOK COST (c)
INVESTMENT IN ASSOCIATED COMPANIES (Account 123): NONE	\$ _____	\$ _____
_____	_____	_____
_____	_____	_____
_____	_____	_____
_____	_____	_____
_____	_____	_____
Total Investment in Associated Companies		\$ _____
UTILITY INVESTMENTS (Account 124): NONE	\$ _____	\$ _____
_____	_____	_____
_____	_____	_____
_____	_____	_____
_____	_____	_____
_____	_____	_____
Total Utility Investment		\$ _____
OTHER INVESTMENTS (Account 125): NONE	\$ _____	\$ _____
_____	_____	_____
_____	_____	_____
_____	_____	_____
_____	_____	_____
_____	_____	_____
Total Other Investment		\$ _____
SPECIAL FUNDS (Class A Utilities: Accounts 126 and 127; Class B Utilities: Account 127): NONE		\$ _____
_____		_____
_____		_____
_____		_____
_____		_____
_____		_____
Total Special Funds		\$ _____

ACCOUNTS AND NOTES RECEIVABLE - NET
ACCOUNTS 141 - 144

Report hereunder all accounts and notes receivable included in Accounts 141, 142, and 144. Amounts included in Amounts included in Accounts 142 and 144 should be listed individually.

DESCRIPTION (a)		TOTAL (b)
CUSTOMER ACCOUNTS RECEIVABLE (Account 141):		
Water	\$ 35,346	
Wastewater	17,292	
Other		
Total Customer Accounts Receivable		\$ 52,638
OTHER ACCOUNTS RECEIVABLE (Account 142):		
_____	\$ _____	

Total Other Accounts Receivable		\$ -
NOTES RECEIVABLE (Account 144):		
_____	\$ _____	

Total Notes Receivable		\$ -
Total Accounts and Notes Receivable		\$ 52,638
ACCUMULATED PROVISION FOR UNCOLLECTIBLE ACCOUNTS (Account 143)		
Balance first of year	\$ -	
Add: Provision for uncollectibles for current year	\$ _____	
Collection of accounts previously written off		
Utility Accounts		
Others		

Total Additions		\$ -
Deduct accounts written off during year:		
Utility Accounts		
Others		

Total accounts written off		\$ -
Balance end of year		\$ -
TOTAL ACCOUNTS AND NOTES RECEIVABLE - NET		\$ <u>52,638</u>

ACCOUNTS RECEIVABLE FROM ASSOCIATED COMPANIES
ACCOUNT 145

Report each account receivable from associated companies separately.

DESCRIPTION (a)	TOTAL (b)
NONE	\$ _____
_____	_____
_____	_____
_____	_____
_____	_____
_____	_____
_____	_____
_____	_____
_____	_____
_____	_____
Total	\$ _____

NOTES RECEIVABLE FROM ASSOCIATED COMPANIES
ACCOUNT 146

Report each note receivable from associated companies separately.

DESCRIPTION (a)	INTEREST RATE (b)	TOTAL (c)
NONE	%	\$ _____
_____	%	_____
_____	%	_____
_____	%	_____
_____	%	_____
_____	%	_____
_____	%	_____
_____	%	_____
_____	%	_____
Total		\$ _____

MISCELLANEOUS CURRENT AND ACCRUED ASSETS
ACCOUNT 174

DESCRIPTION - Provide itemized listing (a)	BALANCE END OF YEAR (b)
NONE	\$ _____
_____	_____
_____	_____
_____	_____
Total Miscellaneous Current and Accrued Liabilities	\$ _____

UTILITY NAME: UTILITIES, INC. OF HUTCHINSON ISLAND

YEAR OF REPORT 31-Dec-06

**UNAMORTIZED DEBT DISCOUNT AND EXPENSE AND PREMIUM ON DEBT
ACCOUNTS 181 AND 251**

Report the net discount and expense or premium separately for each security issue.

DESCRIPTION (a)	AMOUNT WRITTEN OFF DURING YEAR (b)	YEAR END BALANCE (c)
UNAMORTIZED DEBT DISCOUNT AND EXPENSE (Account 181): NONE	\$ _____	\$ _____
_____	_____	_____
_____	_____	_____
_____	_____	_____
Total Unamortized Debt Discount and Expense	\$ _____	\$ _____
UNAMORTIZED PREMIUM ON DEBT (Account 251):	\$ _____	\$ _____
_____	_____	_____
_____	_____	_____
_____	_____	_____
Total Unamortized Premium on Debt	\$ _____	\$ _____

**EXTRAORDINARY PROPERTY LOSSES
ACCOUNT 182**

Report each item separately.

DESCRIPTION (a)	TOTAL (b)
NONE	\$ _____
_____	_____
_____	_____
Total Extraordinary Property Losses	\$ _____

**MISCELLANEOUS DEFERRED DEBITS
ACCOUNT 186**

DESCRIPTION - Provide itemized listing (a)	AMOUNT WRITTEN OFF DURING YEAR (b)	YEAR END BALANCE (c)
DEFERRED RATE CASE EXPENSE (Class A Utilities: Account 186.1)		
RATE CASE (NONE)	\$ -	\$ 836
_____	_____	_____
_____	_____	_____
_____	_____	_____
_____	_____	_____
Total Deferred Rate Case Expense	\$ -	\$ 836
OTHER DEFERRED DEBITS (Class A Utilities: Account 186.2):		
OTHER DEFERRED MAINTENANCE	\$ -	\$ 11,133
_____	_____	_____
_____	_____	_____
_____	_____	_____
_____	_____	_____
_____	_____	_____
_____	_____	_____
_____	_____	_____
Total Other Deferred Debits	\$ -	\$ 11,133
REGULATORY ASSETS (Class A Utilities: Account. 186.3):		
NONE	\$ -	\$ -
_____	_____	_____
_____	_____	_____
_____	_____	_____
_____	_____	_____
_____	_____	_____
Total Regulatory Assets	\$ -	\$ -
TOTAL MISCELLANEOUS DEFERRED DEBITS	\$ -	\$ 11,969

**CAPITAL STOCK
ACCOUNTS 201 AND 204***

DESCRIPTION (a)	RATE (b)	TOTAL (c)
COMMON STOCK		
Par or stated value per share	_____ %	\$ _____ 1
Shares authorized		_____ -
Shares issued and outstanding		_____ 1,000
Total par value of stock issued	_____ %	\$ _____ 1,000
Dividends declared per share for year	_____ %	\$ _____ -
PREFERRED STOCK		
Par or stated value per share	_____ %	\$ _____ -
Shares authorized		_____ -
Shares issued and outstanding		_____ -
Total par value of stock issued	_____ %	\$ _____ -
Dividends declared per share for year	_____ %	\$ _____ -

* Account 204 not applicable for Class B utilities.

**BONDS
ACCOUNT 221**

DESCRIPTION OF OBLIGATION (INCLUDING DATE OF ISSUE AND DATE OF MATURITY) (a)	INTEREST		PRINCIPAL AMOUNT PER BALANCE SHEET (d)
	ANNUAL RATE (b)	FIXED OR VARIABLE * (c)	
NONE	_____ %	_____	\$ _____
_____	_____ %	_____	_____
_____	_____ %	_____	_____
_____	_____ %	_____	_____
_____	_____ %	_____	_____
_____	_____ %	_____	_____
_____	_____ %	_____	_____
_____	_____ %	_____	_____
_____	_____ %	_____	_____
_____	_____ %	_____	_____
Total			\$ _____

* For variable rate obligations, provide the basis for the rate. (i.e.. prime + 2%, etc.)

STATEMENT OF RETAINED EARNINGS

1. Dividends should be shown for each class and series of capital stock. Show amounts as dividends per share.
2. Show separately the state and federal income tax effect of items shown in Account No. 439.

ACCT. NO. (a)	DESCRIPTION (b)	AMOUNTS (c)
215	Unappropriated Retained Earnings: Balance Beginning of Year	\$ 8,682
439	Changes to Account: Adjustments to Retained Earnings (requires Commission approval prior to use): Credits: _____	\$ _____

	Total Credits:	\$ -
	Debits: _____	\$ _____

	Total Debits:	\$ _____
435	Balance Transferred from Income	\$ 23,515
436	Appropriations of Retained Earnings: _____	_____

	Total Appropriations of Retained Earnings	\$ _____
437	Dividends Declared: Preferred Stock Dividends Declared _____	_____
438	Common Stock Dividends Declared _____	_____

	Total Dividends Declared	\$ _____
215	Year end Balance	\$ _____
214	Appropriated Retained Earnings (state balance and purpose of each appropriated amount at year end): _____	_____

214	Total Appropriated Retained Earnings	\$ _____
Total Retained Earnings		\$ <u>32,197</u>
Notes to Statement of Retained Earnings:		

UTILITY NAME: UTILITIES, INC. OF HUTCHINSON ISLAND

YEAR OF REPORT 31-Dec-06

**ADVANCES FROM ASSOCIATED COMPANIES
ACCOUNT 223**

Report each advance separately.

DESCRIPTION (a)	TOTAL (b)
NONE	\$ -
Total	\$ <u> -</u>

**OTHER LONG-TERM DEBT
ACCOUNT 224**

DESCRIPTION OF OBLIGATION INCLUDING DATE OF ISSUE AND DATE OF MATURITY (a)	INTEREST		PRINCIPAL AMOUNT PER BALANCE SHEET (d)
	ANNUAL RATE (b)	FIXED OR VARIABLE * (c)	
NONE	%		\$
	%		
	%		
	%		
	%		
	%		
	%		
	%		
	%		
	%		
	%		
	%		
	%		
	%		
	%		
	%		
	%		
	%		
	%		
	%		
	%		
	%		
	%		
Total			\$ <u> -</u>

* For variable rate obligations, provide the basis for the rate. (i.e.. prime + 2%, etc.)

UTILITY NAME: UTILITIES, INC. OF HUTCHINSON ISLAND

YEAR OF REPORT 31-Dec-06

**NOTES PAYABLE
ACCOUNTS 232 AND 234**

DESCRIPTION OF OBLIGATION INCLUDING DATE OF ISSUE AND DATE OF MATURITY (a)	INTEREST		PRINCIPAL AMOUNT PER BALANCE SHEET (d)
	ANNUAL RATE (b)	FIXED OR VARIABLE * (c)	
NOTES PAYABLE (Account 232): NONE			\$ _____
_____	_____ %	_____	_____
_____	_____ %	_____	_____
_____	_____ %	_____	_____
_____	_____ %	_____	_____
_____	_____ %	_____	_____
_____	_____ %	_____	_____
_____	_____ %	_____	_____
_____	_____ %	_____	_____
_____	_____ %	_____	_____
Total Account 232			\$ _____
NOTES PAYABLE TO ASSOC. COMPANIES (Account 234): NONE			\$ _____
_____	_____ %	_____	_____
_____	_____ %	_____	_____
_____	_____ %	_____	_____
_____	_____ %	_____	_____
_____	_____ %	_____	_____
_____	_____ %	_____	_____
_____	_____ %	_____	_____
_____	_____ %	_____	_____
Total Account 234			\$ _____

* For variable rate obligations, provide the basis for the rate. (i.e.. prime + 2%, etc.)

**ACCOUNTS PAYABLE TO ASSOCIATED COMPANIES
ACCOUNT 233**

Report each account payable separately.

DESCRIPTION (a)	TOTAL (b)
WATER SERVICE CORPORATION	\$ (166,540)
_____	_____
_____	_____
_____	_____
_____	_____
_____	_____
_____	_____
Total	\$ (166,540)

NONE

UTILITY NAMI UTILITIES, INC. OF HUTCHINSON ISLAND

ACCRUED INTEREST AND EXPENSE
ACCOUNTS 237 AND 427

DESCRIPTION OF DEBIT (a)	BALANCE BEGINNING OF YEAR (b)	INTEREST ACCRUED DURING YEAR		INTEREST PAID DURING YEAR (e)	BALANCE END OF YEAR (f)
		ACCT. DEBIT (c)	AMOUNT (d)		
ACCOUNT NO. 237.1 - Accrued Interest on Long Term Debt	\$ _____		\$ _____	\$ _____	\$ _____
UTILITIES INC INTERCOMPANY INTEREST	-		88,744	88,744	-
Total Account 237.1	\$ _____		\$ 88,744	\$ 88,744	\$ _____
ACCOUNT NO. 237.2 - Accrued Interest on Other Liabilities	\$ _____		\$ _____	\$ _____	\$ _____
Customer Deposits	-	427	-	-	-
MISC ITEMS					
Total Account 237.2	\$ _____		\$ _____	\$ _____	\$ _____
Total Account 237 (1)	\$ _____		\$ 88,744	\$ 88,744	\$ _____
INTEREST EXPENSED:					
Total accrual Account 237		237	\$ 88,744		
Less Capitalized Interest Portion of AFUDC:			-		
Net Interest Expensed to Account No. 427 (2)			\$ 88,744		

(1) Must agree to F-2 (a), Beginning and
Ending Balance of Accrued Interest.
(2) Must agree to F-3 (c), Current
Year Interest Expense

UTILITY NAMI UTILITIES, INC. OF HUTCHINSON ISLAND

**YEAR OF REPORT
31-Dec-06**

**MISCELLANEOUS CURRENT AND ACCRUED LIABILITIES
ACCOUNT 241**

DESCRIPTION - Provide itemized listing (a)	BALANCE END OF YEAR (b)
NONE _____ _____ _____ _____	\$ _____ _____ _____ _____
Total Miscellaneous Current and Accrued Liabilities	\$ _____

**ADVANCES FOR CONSTRUCTION
ACCOUNT 252**

NAME OF PAYOR * (a)	BALANCE BEGINNING OF YEAR (b)	DEBITS		CREDITS (e)	BALANCE END OF YEAR (f)
		ACCT. DEBIT (c)	AMOUNT (d)		
NONE _____ _____ _____ _____ _____ _____ _____	\$ _____ _____ _____ _____ _____ _____ _____	_____	\$ _____ _____ _____ _____ _____ _____ _____	_____	\$ _____ _____ _____ _____ _____ _____ _____
Total	\$ _____	_____	\$ _____	_____	\$ _____

* Report advances separately by reporting group, designating water or wastewater in column (a).

UTILITY NAME: UTILITIES, INC. OF HUTCHINSON ISLAND

YEAR OF REPORT 31-Dec-06

**OTHER DEFERRED CREDITS
ACCOUNT 253**

DESCRIPTION - Provide itemized listing (a)	AMOUNT WRITTEN OFF DURING YEAR (b)	YEAR END BALANCE (c)
REGULATORY LIABILITIES (Class A Utilities: Account 253.1):		
NONE	\$ _____	\$ _____
_____	_____	_____
_____	_____	_____
_____	_____	_____
Total Regulatory Liabilities	\$ <u>_____</u>	\$ <u>_____</u>
OTHER DEFERRED LIABILITIES (Class A Utilities: Account 253.2):		
NONE	\$ _____	\$ _____
_____	_____	_____
_____	_____	_____
_____	_____	_____
_____	_____	_____
_____	_____	_____
_____	_____	_____
Total Other Deferred Liabilities	\$ <u>_____</u>	\$ <u>_____</u>
TOTAL OTHER DEFERRED CREDITS	\$ <u>_____</u>	\$ <u>_____</u>

**CONTRIBUTIONS IN AID OF CONSTRUCTION
ACCOUNT 271**

DESCRIPTION (a)	WATER (W-7) (b)	WASTEWATER (S-7) (c)	W & WW OTHER THAN SYSTEM REPORTING (d)	TOTAL (e)
Balance first of year	\$ <u>187,548</u>	\$ <u>407,182</u>	\$ -	\$ <u>594,730</u>
Add credits during year:	\$ -	\$ -	\$ -	\$ -
Less debit charged during the year	\$ -	\$ -	\$ -	\$ -
Total Contribution In Aid of Construction	\$ <u>187,548</u>	\$ <u>407,182</u>	\$ -	\$ <u>594,730</u>

**ACCUMULATED AMORTIZATION OF CONTRIBUTIONS IN AID OF CONSTRUCTION
ACCOUNT 272**

DESCRIPTION (a)	WATER (W-8(a)) (b)	WASTEWATER (S-8(a)) (c)	W & WW OTHER THAN SYSTEM REPORTING (d)	TOTAL (e)
Balance first of year	\$ <u>40,959</u>	\$ <u>229,263</u>	\$ -	\$ <u>270,222</u>
Debits during the year: Acq entry	\$ <u>6,124</u> -	\$ <u>12,848</u> -	\$ -	\$ <u>18,972</u> -
Credits during the year	\$ -	\$ -	\$ -	\$ -
Total Accumulated Amortization of Contributions In Aid of Construction	\$ <u>47,083</u>	\$ <u>242,111</u>	\$ -	\$ <u>289,194</u>

**RECONCILIATION OF REPORTED NET INCOME WITH TAXABLE
INCOME FOR FEDERAL INCOME TAXES (UTILITY OPERATIONS)**

- The reconciliation should include the same detail as furnished on Schedule M-1 of the federal tax return for the year. The reconciliation shall be submitted even though there is no taxable income for the year. Descriptions should clearly indicate the nature of each reconciling amount and show the computations of all tax accruals.
- If the utility is a member of a group which files a consolidated federal tax return, reconcile reported net income with taxable net income as if a separate return were to be filed, indicating intercompany amounts to be eliminated in such consolidated return. State names of group members, tax assigned to each group member, and basis of allocation, assignments or sharing of the consolidated tax among the group members.

DESCRIPTION (a)	REF. NO. (b)	AMOUNT (c)
Net income for the year	F-3(c)	\$ 23,515
Reconciling items for the year:		
Taxable income not reported on books:		
_____		-

Deductions recorded on books not deducted for return:		
Net Change - Deferred Maintenance		12,588
Net Change - Rate Case		(836)
Excess Tax Depreciation over Book Depreciation		17,279
Current FIT		12,909
Deferred FIT		(4,853)
Deferred SIT		(881)
Income recorded on books not included in return:		
Interest During Construction		(1,395)

Deduction on return not charged against book income:		
Organization Exp		(17,358)
Other miscellaneous		(3,000)

Federal tax net income		\$ 37,968

Computation of tax :	37,968	
	34%	
	12,909	

**WATER
OPERATION
SECTION**

UTILITY NAME:

UTILITIES, INC. OF HUTCHINSON ISLAND

YEAR OF REPORT
31-Dec-06

WATER LISTING OF SYSTEM GROUPS

List below the name of each reporting system and its certificate number. Those systems which have been consolidated under the same tariff should be assigned a group number. Each individual system which has not been consolidated should be assigned its own group number.

The water financial schedules (W-2 through W-10) should be filed for the group in total.

The water engineering schedules (W-11 through W-15) must be filed for each system in the group.

All of the following water pages (W-2 through W-15) should be completed for each group and arranged by group number.

SYSTEM NAME / COUNTY	CERTIFICATE NUMBER	GROUP NUMBER
HUTCHINSON/MARTIN	872 W	

UTILITY NAME: UTILITIES, INC. OF HUTCHINSON ISLAND

YEAR OF REPORT 31-Dec-06

SYSTEM NAME / COUNTY Martin County

SCHEDULE OF YEAR END WATER RATE BASE

ACCT. NO. (a)	ACCOUNT NAME (b)	REFERENCE PAGE (c)	WATER UTILITY (d)
101	Utility Plant In Service	W-4(b)	\$ 1,946,975
	Less:		
	Nonused and Useful Plant (1)		
108	Accumulated Depreciation	W-6(b)	661,820
110	Accumulated Amortization	F-8	4,053
271	Contributions In Aid of Construction	W-7	187,548
252	Advances for Construction	F-20	-
Subtotal			\$ 1,093,554
272	Add: Accumulated Amortization of Contributions in Aid of Construction	W-8(a)	\$ 47,083
Subtotal			\$ 1,140,637
	Plus or Minus:		
114	Acquisition Adjustments (2)	F-7	-
115	Accumulated Amortization of Acquisition Adjustments (2)	F-7	-
	Working Capital Allowance (3)		12,445
	Other (Specify):		
WATER RATE BASE			\$ 1,153,082
WATER OPERATING INCOME		W-3	\$ 122,729
RN (Water Operating Income / Water Rate Base)			10.64%

NOTES (1) Estimate based on the methodology used in the last rate proceeding.

(2) Include only those Acquisition Adjustments that have been approved by the Commission.

(3) Calculation consistent with last rate proceeding.

In absence of a rate proceeding, Class A utilities will use the Balance Sheet Method and Class B Utilities will use the One-eighth Operating and Maintenance Expense Method.

UTILITY NAME: UTILITIES, INC. OF HUTCHINSON ISLAND

YEAR OF REPORT 31-Dec-06

SYSTEM NAME / COUNTY Martin County

WATER OPERATING STATEMENT

ACCT. NO. (a)	ACCOUNT NAME (b)	REFERENCE PAGE (c)	CURRENT YEAR (d)
	UTILITY OPERATING INCOME		
400	Operating Revenues	W-9	\$ 320,114
469	Less: Guaranteed Revenue and AFPI	W-9	
	Net Operating Revenues		\$ _____
401	Operating Expenses	W-10(a)	\$ 99,557
403	Depreciation Expense	W-6(a)	68,456
	Less: Amortization of CIAC	W-8(a)	(6,124)
	Net Depreciation Expense		\$ 62,332
406	Amortization of Utility Plant Acquisition Adjustment	F-7	-
407	Amortization Expense (Other than CIAC)	F-8	-
408.10	Taxes Other Than Income Utility Regulatory Assessment Fee		10,257
408.11	Property Taxes		6,452
408.12	Payroll Taxes		1,634
408.13	Other Taxes and Licenses		-
408	Total Taxes Other Than Income		\$ 18,343
409.1	Income Taxes		32,600
410.10	Deferred Federal Income Taxes		(13,055)
410.11	Deferred State Income Taxes		(2,370)
411.10	Provision for Deferred Income Taxes - Credit		(22)
412.10	Investment Tax Credits Deferred to Future Periods		
412.11	Investment Tax Credits Restored to Operating Income		
	Utility Operating Expenses		\$ 197,385
	Utility Operating Income		\$ 122,729
469	Add Back: Guaranteed Revenue (and AFPI)	W-9	\$ _____
413	Income From Utility Plant Leased to Others		_____
414	Gains (losses) From Disposition of Utility Property		_____
420	Allowance for Funds Used During Construction		-
	Total Utility Operating Income		\$ 122,729

UTILITY NAME: UTILITIES, INC. OF HUTCHINSON ISLAND

SYSTEM NAME / COUNTY: Martin County

WATER UTILITY PLANT ACCOUNTS

ACCT. NO. (a)	ACCOUNT NAME (b)	PREVIOUS YEAR (c)	ADDITIONS (d)	RETIREMENTS (e)	CURRENT YEAR (f)
301	Organization	\$ 21,521	\$ 1		\$ 21,522
302	Franchises	-	-		-
303	Land and Land Rights	162,868	-		162,868
304	Structures and Improvements	521,012	8,436		529,448
305	Collecting and Impounding Reservoirs	-	-		-
306	Lake, River and Other Intakes	-	-		-
307	Wells and Springs	27,251	303		27,554
308	Infiltration Galleries and Tunnels	-	-		-
309	Supply Mains	-	-		-
310	Power Generation Equipment	-	-		-
311	Pumping Equipment	84,514	8,258	940	91,832
320	Water Treatment Equipment	391,312	1,709	353	392,668
330	Distribution Reservoirs and Standpipes	90,080	44,446	33,071	101,455
331	Transmission and Distribution Mains	236,035	20,084	7,349	248,770
333	Services	59,480	5,675	3,175	61,980
334	Meters and Meter Installations	51,729	73,959	2,177	123,511
335	Hydrants	12,436	-		12,436
336	Backflow Prevention Devices	-	-		-
339	Other Plant Miscellaneous Equipment	-	-		-
340	Office Furniture and Equipment	13,314	210		13,524
341	Transportation Equipment	60,339	(18,788)		41,551
342	Stores Equipment	-	-		-
343	Tools, Shop and Garage Equipment	105,928	554		106,482
344	Laboratory Equipment	2,280	475	336	2,419
345	Power Operated Equipment	-	-		-
346	Communication Equipment	-	-		-
347	Miscellaneous Equipment	-	-		-
348	Other Tangible Plant	9,339	(384)		8,955
TOTAL WATER PLANT		\$ 1,849,438	\$ 144,938	\$ 47,401	\$ 1,946,975

NOTE: Any adjustments made to reclassify property from one account to another must be footnoted.

UTILITY NAME: UTILITIES, INC. OF HUTCHINSON ISLAND

SYSTEM NAME / COUNTY Martin County

WATER UTILITY PLANT MATRIX

ACCT. NO.	ACCOUNT NAME (b)	CURRENT YEAR (c)	.1 INTANGIBLE PLANT (d)	.2 SOURCE OF SUPPLY AND PUMPING PLANT (e)	.3 WATER TREATMENT PLANT (f)	.4 TRANSMISSION AND DISTRIBUTION PLANT (g)	.5 GENERAL PLANT (h)
301	Organization	\$ 21,522	\$ 21,522	\$ -	\$ -	\$ -	\$ -
302	Franchises	-	-	-	-	-	-
303	Land and Land Rights	162,868	-	162,868	-	-	-
304	Structures and Improvements	529,448	-	529,448	-	-	-
305	Collecting and Impounding Reservoirs	-	-	-	-	-	-
306	Lake, River and Other Intakes	-	-	-	-	-	-
307	Wells and Springs	27,554	-	27,554	-	-	-
308	Infiltration Galleries and Tunnels	-	-	-	-	-	-
309	Supply Mains	-	-	-	-	-	-
310	Power Generation Equipment	-	-	-	-	-	-
311	Pumping Equipment	91,832	-	91,832	-	-	-
320	Water Treatment Equipment	392,668	-	-	392,668	-	-
330	Distribution Reservoirs and Standpipes	101,455	-	-	101,455	-	-
331	Transmission and Distribution Mains	248,770	-	-	248,770	-	-
333	Services	61,980	-	-	61,980	-	-
334	Meters and Meter Installations	123,511	-	-	123,511	-	-
335	Hydrants	12,436	-	-	12,436	-	-
336	Backflow Prevention Devices	-	-	-	-	-	-
339	Other Plant Miscellaneous Equipment	-	-	-	-	-	-
340	Office Furniture and Equipment	13,524	-	-	-	-	13,524
341	Transportation Equipment	41,551	-	-	-	-	41,551
342	Stores Equipment	-	-	-	-	-	-
343	Tools, Shop and Garage Equipment	106,482	-	-	-	-	106,482
344	Laboratory Equipment	2,419	-	-	-	-	2,419
345	Power Operated Equipment	-	-	-	-	-	-
346	Communication Equipment	-	-	-	-	-	-
347	Miscellaneous Equipment	-	-	-	-	-	-
348	Other Tangible Plant	8,955	-	-	-	-	8,955
TOTAL WATER PLANT		\$ 1,946,975	\$ 21,522	\$ 811,702	\$ 392,668	\$ 548,152	\$ 172,931

UTILITY NAME: UTILITIES, INC. OF HUTCHINSON ISLAND

YEAR OF REPORT 31-Dec-06

SYSTEM NAME / COUNTY Martin County

BASIS FOR WATER DEPRECIATION CHARGES

ACCT. NO. (a)	ACCOUNT NAME (b)	AVERAGE SERVICE LIFE IN YEARS (c)	AVERAGE NET SALVAGE IN PERCENT (d)	DEPRECIATION RATE APPLIED IN PERCENT (100% - d) / c (e)
304	Structures and Improvements			3.03%
305	Collecting and Impounding Reservoirs			
306	Lake, River and Other Intakes			
307	Wells and Springs			3.33%
308	Infiltration Galleries and Tunnels			
309	Supply Mains			
310	Power Generation Equipment			
311	Pumping Equipment			5.00%
320	Water Treatment Equipment			4.55%
330	Distribution Reservoirs and Standpipes			2.70%
331	Transmission and Distribution Mains			2.33%
333	Services			2.50%
334	Meters and Meter Installations			5.00%
335	Hydrants			2.22%
336	Backflow Prevention Devices			
339	Other Plant Miscellaneous Equipment			
340	Office Furniture and Equipment			6.67%
341	Transportation Equipment			16.67%
342	Stores Equipment			
343	Tools, Shop and Garage Equipment			6.25%
344	Laboratory Equipment			6.67%
345	Power Operated Equipment			
346	Communication Equipment			
347	Miscellaneous Equipment			
348	Other Tangible Plant			10.00%
Water Plant Composite Depreciation Rate *				

* If depreciation rates prescribed by this Commission are on a total composite basis, entries should be made on this line only.

YEAR OF REPORT
31-Dec-06

UTILITY NAME: UTILITIES, INC. OF HUTCHINSON ISLAND

SYSTEM NAME / COUNTY: Martin County

ANALYSIS OF ENTRIES IN WATER ACCUMULATED DEPRECIATION

ACCT. NO. (a)	ACCOUNT NAME (b)	BALANCE AT BEGINNING OF YEAR (c)	ACCRUALS (d)	OTHER CREDITS * (e)	TOTAL CREDITS (d + e) (f)
304	Structures and Improvements	\$ 203,604	\$ 16,345	\$ (2,104)	\$ 14,241
305	Collecting and Impounding Reservoirs				
306	Lake, River and Other Intakes				
307	Wells and Springs	(1,664)	912		912
308	Infiltration Galleries and Tunnels				
309	Supply Mains				
310	Power Generation Equipment				
311	Pumping Equipment	32,761	4,409		4,409
320	Water Treatment Equipment	170,815	17,813		17,813
330	Distribution Reservoirs and Standpipes	45,509	2,520	1	2,521
331	Transmission and Distribution Mains	77,750	5,616		5,616
333	Services	9,772	1,520	1	1,521
334	Meters and Meter Installations	19,371	3,536		3,536
335	Hydrants	64	276		276
336	Backflow Prevention Devices				
339	Other Plant Miscellaneous Equipment				
340	Office Furniture and Equipment	(1,391)	410	2,173	2,583
341	Transportation Equipment	37,230	7,580	(7,928)	(348)
342	Stores Equipment				
343	Tools, Shop and Garage Equipment	52,063	6,700	(63)	6,637
344	Laboratory Equipment	499	157	(1)	156
345	Power Operated Equipment				
346	Communication Equipment		31	(31)	
347	Miscellaneous Equipment				
348	Other Tangible Plant	2,947	631	(613)	18
TOTAL WATER ACCUMULATED DEPRECIATION		\$ 649,330	\$ 68,456	\$ (8,565)	\$ 59,891

* Specify nature of transaction
Use () to denote reversal entries.

OTHER CREDITS column (E) * are due to allocation of UJF plant

W-6(a)
GROUP _____

UTILITY NAME: UTILITIES, INC. OF HUTCHINSON ISLAND

SYSTEM NAME / COUNTY Martin County

ANALYSIS OF ENTRIES IN WATER ACCUMULATED DEPRECIATION (CONT'D)

ACCT. NO.	ACCOUNT NAME (b)	PLANT RETIRED (g)	SALVAGE AND INSURANCE (h)	COST OF REMOVAL AND OTHER CHARGES (i)	TOTAL CHARGES (g-h+i) (j)	BALANCE AT END OF YEAR (c+f-k) (l)
304	Structures and Improvements	\$ -	\$ -	\$ -	\$ -	\$ 217,845
305	Collecting and Impounding Reservoirs	-	-	-	-	-
306	Lake, River and Other Intakes	-	-	-	-	-
307	Wells and Springs	-	-	-	-	(752)
308	Infiltration Galleries and Tunnels	-	-	-	-	-
309	Supply Mains	-	-	-	-	-
310	Power Generation Equipment	-	-	-	-	-
311	Pumping Equipment	940	-	-	940	36,230
320	Water Treatment Equipment	353	-	-	353	188,275
330	Distribution Reservoirs and Standpipes	33,071	-	-	33,071	14,959
331	Transmission and Distribution Mains	7,349	-	-	7,349	76,017
333	Services	3,175	-	-	3,175	8,118
334	Meters and Meter Installations	2,177	-	-	2,177	20,730
335	Hydrants	-	-	-	-	340
336	Backflow Prevention Devices	-	-	-	-	-
339	Other Plant Miscellaneous Equipment	-	-	-	-	-
340	Office Furniture and Equipment	-	-	-	-	1,192
341	Transportation Equipment	-	-	-	-	36,882
342	Stores Equipment	-	-	-	-	-
343	Tools, Shop and Garage Equipment	-	-	-	-	58,700
344	Laboratory Equipment	336	-	-	336	319
345	Power Operated Equipment	-	-	-	-	-
346	Communication Equipment	-	-	-	-	-
347	Miscellaneous Equipment	-	-	-	-	-
348	Other Tangible Plant	-	-	-	-	2,965
TOTAL WATER ACCUMULATED DEPRECIATION		\$ 47,401	\$ -	\$ -	\$ 47,401	\$ 661,820

UTILITY NAME: UTILITIES, INC. OF HUTCHINSON ISLAND

YEAR OF REPORT
31-Dec-06

SYSTEM NAME / COUNTY Martin County

CONTRIBUTIONS IN AID OF CONSTRUCTION
ACCOUNT 271

DESCRIPTION (a)	REFERENCE (b)	WATER (c)
Balance first of year		\$ <u>187,548</u>
Add credits during year: Contributions received from Capacity, Main Extension and Customer Connection Charges	W-8(a)	\$ <u>-</u>
Contributions received from Developer or Contractor Agreements in cash or property	W-8(b)	<u>-</u>
Total Credits		\$ <u>-</u>
Less debits charged during the year (All debits charged during the year must be explained below)		\$ <u> </u>
Total Contributions In Aid of Construction		\$ <u>187,548</u>

If any prepaid CIAC has been collected, provide a supporting schedule showing how the amount is determine

Explain all debits charged to Account 271 during the year below:

UTILITY NAME: UTILITIES, INC. OF HUTCHINSON ISLAND

YEAR OF REPORT 31-Dec-06

SYSTEM NAME / COUNTY Martin County

WATER CIAC SCHEDULE "A"

ADDITIONS TO CONTRIBUTIONS IN AID OF CONSTRUCTION RECEIVED FROM CAPACITY, MAIN EXTENSION AND CUSTOMER CONNECTION CHARGES RECEIVED DURING THE YEAR

DESCRIPTION OF CHARGE (a)	NUMBER OF CONNECTIONS (b)	CHARGE PER CONNECTION (c)	AMOUNT (d)
WATER CONNECTIONS FEES (NONE)	-	\$ -	\$ -
_____	_____	_____	_____
_____	-	_____	-
_____	_____	_____	_____
_____	_____	_____	_____
_____	_____	_____	_____
_____	_____	_____	_____
_____	_____	_____	_____
Total Credits			\$ <u>0</u>

ACCUMULATED AMORTIZATION OF WATER CONTRIBUTIONS IN AID OF CONSTRUCTION

DESCRIPTION (a)	WATER (b)
Balance first of year	\$ <u>40,959</u>
Debits during the year:	
Accruals charged to Account 272	\$ <u>6,124</u>
Other debits (specify) : _____ _____ _____	_____ _____ _____
Total debits	\$ <u>6,124</u>
Credits during the year (specify) : _____ _____	\$ _____ _____
Total credits	\$ <u>-</u>
Balance end of year	\$ <u><u>47,083</u></u>

UTILITY NAME: UTILITIES, INC. OF HUTCHINSON ISLAND

YEAR OF REPORT
31-Dec-06

SYSTEM NAME / COUNTY Martin County

WATER CIAC SCHEDULE "B"
ADDITIONS TO CONTRIBUTIONS IN AID OF CONSTRUCTION
RECEIVED FROM ALL DEVELOPERS OR CONTRACTORS AGREEMENTS
WHICH CASH OR PROPERTY WAS RECEIVED DURING THE YEAR

DESCRIPTION (a)	INDICATE CASH OR PROPERTY (b)	AMOUNT (c)
NONE		\$ _____
_____	_____	_____
_____	_____	_____
_____	_____	_____
_____	_____	_____
_____	_____	_____
_____	_____	_____
_____	_____	_____
_____	_____	_____
_____	_____	_____
_____	_____	_____
_____	_____	_____
_____	_____	_____
_____	_____	_____
_____	_____	_____
_____	_____	_____
_____	_____	_____
_____	_____	_____
_____	_____	_____
_____	_____	_____
_____	_____	_____
_____	_____	_____
Total Credits		\$ _____ -

UTILITY NAME: UTILITIES, INC. OF HUTCHINSON ISLAND

YEAR OF REPORT 31-Dec-06

SYSTEM NAME / COUNTY Martin County

WATER OPERATING REVENUE

ACCT. NO. (a)	DESCRIPTION (b)	BEGINNING YEAR NO. CUSTOMERS * (c)	YEAR END NUMBER OF CUSTOMERS (d)	AMOUNT (e)
460	Water Sales: Unmetered Water Revenue			\$
461.1	Metered Water Revenue: Sales to Residential Customers	128	372	320,092
461.2	Sales to Commercial Customers			
461.3	Sales to Industrial Customers			
461.4	Sales to Public Authorities			
461.5	Sales Multiple Family Dwellings			
Total Metered Sales		128	372	\$ 320,092
462.1	Fire Protection Revenue: Public Fire Protection			
462.2	Private Fire Protection			
Total Fire Protection Revenue				\$
464	Other Sales To Public Authorities			
465	Sales To Irrigation Customers			
466	Sales For Resale			
467	Interdepartmental Sales			
Total Water Sales		128	372	\$ 320,092
469	Other Water Revenues: Guaranteed Revenues (Including Allowance for Funds Prudently Invested or AFP)			\$
470	Forfeited Discounts			
471	Miscellaneous Service Revenues			22
472	Rents From Water Property			
473	Interdepartmental Rents			
474	Other Water Revenues			
Total Other Water Revenues				\$ 22
Total Water Operating Revenues				\$ 320,114

* Customer is defined by Rule 25-30.210(1), Florida Administrative Code.

Reconciliation of Revenue to
Regulatory Assessment Fee Revenue
Water Operations

UTILITY NAME: HUTCHINSON ISLAND UTILITIES, INC.

YEAR OF REPORT 31-Dec-06

(A)	(B)	(C)	(D)
Accounts	Gross Water Revenues per Sch W-9	Gross Water Revenues per RAF Return	Difference (B)-(C)
Gross Revenues:			-
Unmetered Water Revenues			-
Total Metered Sales	320,114	320,114	-
Total Fire Protection Revenue			-
Other Sales to Public Authorities			-
Sales to Irrigation Customers			-
Sales for Resale			-
Interdepartmental Sales			-
Total Other Water Revenue			-
Total Water Operating Revenue	320,114	320,114	-
Less: Expense for Purchased Water from FPSC Regulated Utility			-
Net Water Operating Revenues	320,114	320,114	-

UTILITY NAME:

UTILITIES, INC. OF HUTCHINSON ISLAND

YEAR OF REPORT 31-Dec-06

SYSTEM NAME / COUNTY Martin County

WATER UTILITY EXPENSE ACCOUNTS

ACCT. NO. (a)	ACCOUNT NAME (b)	CURRENT YEAR (c)	.1 SOURCE OF SUPPLY AND EXPENSES - OPERATIONS (d)	.2 SOURCE OF SUPPLY AND EXPENSES - MAINTENANCE (e)
601	Salaries and Wages - Employees	\$ 16,721	\$ 3,679	\$ 1,003
603	Salaries and Wages - Officers, Directors and Majority Stockholders			
604	Employee Pensions and Benefits	3,406	749	204
610	Purchased Water			
615	Purchased Power	-		
616	Fuel for Power Purchased			
618	Chemicals	27,875	27,875	
620	Materials and Supplies	34,444	13,778	3,444
631	Contractual Services-Engineering			
632	Contractual Services - Accounting	1,289		
633	Contractual Services - Legal	15		
634	Contractual Services - Mgt. Fees			
635	Contractual Services - Testing			
636	Contractual Services - Other	519		
641	Rental of Building/Real Property			
642	Rental of Equipment			
650	Transportation Expenses	7,396	1,627	444
656	Insurance - Vehicle			
657	Insurance - General Liability			
658	Insurance - Workman's Comp.			
659	Insurance - Other	1,980	436	119
660	Advertising Expense			
666	Regulatory Commission Expenses - Amortization of Rate Case Expense	608		
667	Regulatory Commission Exp.-Other			
668	Water Resource Conservation Exp.			
670	Bad Debt Expense	22		
675	Miscellaneous Expenses	5,282		
Total Water Utility Expenses		\$ 99,557	\$ 48,144	\$ 5,214

UTILITY NAME: UTILITIES, INC. OF HUTCHINSON ISLAND

SYSTEM NAME / COUNTY : Martin County

WATER EXPENSE ACCOUNT MATRIX					
.3 WATER TREATMENT EXPENSES - OPERATIONS (f)	.4 WATER TREATMENT EXPENSES - MAINTENANCE (g)	.5 TRANSMISSION & DISTRIBUTION EXPENSES - OPERATIONS (h)	.6 TRANSMISSION & DISTRIBUTION EXPENSES - MAINTENANCE (i)	.7 CUSTOMER ACCOUNTS EXPENSE (j)	.8 ADMIN. & GENERAL EXPENSES (k)
\$ 3,679	\$ 1,003	\$ 5,852	\$ 1,505	\$	\$
749	204	1,192	308		
0					
		14,466	2,756		1,289
		0			15
				260	259
1,627	444	2,589	665		
436	119	693	177		
					608
				22	
				2,641	2,641
\$ 6,491	\$ 1,770	\$ 24,792	\$ 5,411	\$ 2,923	\$ 4,812

UTILITY NAME:

UTILITIES, INC. OF HUTCHINSON ISLAND

YEAR OF REPORT 31-Dec-06

SYSTEM NAME / COUNTY HUTCHINSON ISLAND/MARTIN

PUMPING AND PURCHASED WATER STATISTICS

MONTH (a)	WATER PURCHASED FOR RESALE (Omit 000's) (b)	FINISHED WATER PUMPED FROM WELLS (Omit 000's) (c)	WATER USED FOR LINE FLUSHING, FIGHTING FIRES, ETC. (d)	TOTAL WATER PUMPED AND PURCHASED (Omit 000's) [(b)+(c)-(d)] (e)	WATER SOLD TO CUSTOMERS (Omit 000's) (f)
January		7.747	0.003	7.744	4.052
February		7.741	0.035	7.706	3.750
March		8.691	0.042	8.649	4.985
April		5.589	0.006	5.583	5.072
May		5.340	0.007	5.334	4.152
June		3.396	0.042	3.354	3.320
July		3.423	0.040	3.383	3.341
August		2.931	0.000	2.931	2.674
September		2.415	0.000	2.415	2.247
October		2.871	0.000	2.871	3.079
November		3.810	0.000	3.810	3.326
December		3.920	0.012	3.908	2.883
Total for Year		57.874	0.187	57.688	42.881

If water is purchased for resale, indicate the following:
 Vendor NONE
 Point of delivery NONE

If water is sold to other water utilities for redistribution, list names of such utilities below:
NONE

each source of supply:	CAPACITY OF WELL	GALLONS PER DAY FROM SOURCE	TYPE OF SOURCE
Well # 1	420gpm	604,800	Well
Well #2	420gpm	604,800	Well
_____	_____	_____	_____
_____	_____	_____	_____
_____	_____	_____	_____

UTILITY NAME: UTILITIES, INC. OF HUTCHINSON ISLAND

YEAR OF REPORT
31-Dec-06

SYSTEM NAME / COUNTY HUTCHINSON ISLAND/MARTIN

WATER TREATMENT PLANT INFORMATION
Provide a separate sheet for each water treatment facility

Permitted Capacity of Plant (GPD):	<u>0.400 mgd</u>
Location of measurement of capacity (i.e. Wellhead, Storage Tank):	<u>Storage Tank</u>
Type of treatment (reverse osmosis, (sedimentation, chemical, aerated, etc.):	<u>Reverse Osmosis, pH adjustment, corrosion control, disinfection</u>
LIME TREATMENT	
Unit rating (i.e., GPM, pounds per gallon): <u>N/A</u>	Manufacturer: <u>N/A</u>
FILTRATION	
Type and size of area:	
Pressure (in square feet): <u>N/A</u>	Manufacturer: <u>N/A</u>
Gravity (in GPM/square feet) <u>N/A</u>	Manufacturer: <u>N/A</u>

UTILITY NAME:

UTILITIES, INC. OF HUTCHINSON ISLAND

YEAR OF REPORT 31-Dec-06

SYSTEM NAME / COUNTY :

HUTCHINSON ISLAND/MARTIN

CALCULATION OF THE WATER SYSTEM METER EQUIVALENTS

METER SIZE (a)	TYPE OF METER (b)	EQUIVALENT FACTOR (c)	NUMBER OF METERS (d)	TOTAL NUMBER OF METER EQUIVALENTS (c x d) (e)
All Residential		1.0		
5/8"	Displacement	1.0	32	32
3/4"	Displacement	1.5	0	0
1"	Displacement	2.5	0	0
1 1/2"	Displacement or Turbine	5.0	0	0
2"	Displacement, Compound or Turbine	8.0	0	0
3"	Displacement	15.0	0	0
3"	Compound	16.0	0	0
3"	Turbine	17.5	0	0
4"	Displacement or Compound	25.0	0	0
4"	Turbine	30.0	0	0
6"	Displacement or Compound	50.0	0	0
6"	Turbine	62.5	0	0
8"	Compound	80.0	0	0
8"	Turbine	90.0	0	0
10"	Compound	115.0	0	0
10"	Turbine	145.0	0	0
12"	Turbine	215.0	0	0
Total Water System Meter Equivalents				<u>32</u>

CALCULATION OF THE WATER SYSTEM EQUIVALENT RESIDENTIAL CONNECTIONS

Provide a calculation used to determine the value of one water equivalent residential connection (ERC).

Use one of the following methods:

- (a) If actual flow data are available from the preceding 12 months, divide the total annual single family residence (SFR) gallons sold by the average number of single family residence customers for the same period and divide the result by 365 days.
- (b) If no historical flow data are available, use:
 $ERC = (\text{Total SFR gallons sold (Omit 000)} / 365 \text{ days} / 350 \text{ gallons per day})$

ERC Calculation:

UTILITY NAME: UTILITIES, INC. OF HUTCHINSON ISLAND

SYSTEM NAME / COUNTY HUTCHINSON ISLAND/MARTIN

OTHER WATER SYSTEM INFORMATION

Furnish information below for each system. A separate page should be supplied where necessary.

1. Present ERC's * the system can efficiently serve. 1400
2. Maximum number of ERCs * which can be served. 1400
3. Present system connection capacity (in ERCs *) using existing lines. 1400
4. Future connection capacity (in ERCs *) upon service area buildout. 1400
5. Estimated annual increase in ERCs *. 0
6. Is the utility required to have fire flow capacity? Yes
If so, how much capacity is required? 500 gpm
7. Attach a description of the fire fighting facilities. 0.300 MG GST; 1,500-gpm fire pump, hydrants throughout service area.
8. Describe any plans and estimated completion dates for any enlargements or improvements of this system. 2006 Completed comprehensive meter survey and replacement program.
9. When did the company last file a capacity analysis report with the DEP? N/A
10. If the present system does not meet the requirements of DEP rules:
 - a. Attach a description of the plant upgrade necessary to meet the DEP rules.
 - b. Have these plans been approved by DEP? _____
 - c. When will construction begin? _____
 - d. Attach plans for funding the required upgrading.
 - e. Is this system under any Consent Order with DEP? No
11. Department of Environmental Protection ID PWS ID No. 4331692
12. Water Management District Consumptive Use Permit # 43-00328-W
 - a. Is the system in compliance with the requirements of the CUP? Yes
 - b. If not, what are the utility's plans to gain compliance? _____

* An ERC is determined based on the calculation on the bottom of Page W-13.

**WASTEWATER
OPERATION
SECTION**

UTILITY NAME: UTILITIES, INC. OF HUTCHINSON ISLAND

YEAR OF REPORT 31-Dec-06

SYSTEM NAME / COUNTY : Martin County

SCHEDULE OF YEAR END WASTEWATER RATE BASE

ACCT. NO. (a)	ACCOUNT NAME (b)	REFERENCE PAGE (c)	WASTEWATER UTILITY (d)
101	Utility Plant In Service	S-4A	\$ 1,613,898
	Less:		
	Nonused and Useful Plant (1)		
108	Accumulated Depreciation	S-6B	908,559
110	Accumulated Amortization	F-8	4,380
271	Contributions In Aid of Construction	S-7	407,182
252	Advances for Construction	F-20	-
Subtotal			\$ 293,777
	Add:		
272	Accumulated Amortization of Contributions in Aid of Construction	S-8A	\$ 242,111
Subtotal			\$ 535,888
	Plus or Minus:		
114	Acquisition Adjustments (2)	F-7	-
115	Accumulated Amortization of Acquisition Adjustments (2)	F-7	-
	Working Capital Allowance (3)		28,036
	Other (Specify):		
WASTEWATER RATE BASE			\$ 563,924
WASTEWATER OPERATING INCOME		S-3	\$ (11,897)
ACHIEVED RATE OF RETURN (Wastewater Operating Income / Wastewater Rate Base)			<u>-2.11%</u>

NOTES : (1) Estimate based on the methodology used in the last rate proceeding.

(2) Include only those Acquisition Adjustments that have been approved by the Commission.

(3) Calculation consistent with last rate proceeding.

In absence of a rate proceeding, Class A utilities will use the Balance Sheet Method and Class B Utilities will use the One-eighth Operating and Maintenance Expense Method.

UTILITY NAME: UTILITIES, INC. OF HUTCHINSON ISLAND

YEAR OF REPORT 31-Dec-06

SYSTEM NAME / COUNTY Martin County

WASTEWATER OPERATING STATEMENT

ACCT. NO. (a)	ACCOUNT NAME (b)	REFERENCE PAGE (c)	WASTEWATER UTILITY (d)
	UTILITY OPERATING INCOME		
400	Operating Revenues	S-9A	\$ 265,829
530	Less: Guaranteed Revenue (and AFPI)	S-9A	
	Net Operating Revenues		\$ 265,829
401	Operating Expenses	S-10A	\$ 224,286
403	Depreciation Expense	S-6A	61,829
	Less: Amortization of CIAC	S-8A	(12,848)
	Net Depreciation Expense		\$ 48,981
406	Amortization of Utility Plant Acquisition Adjustment	F-7	-
407	Amortization Expense (Other than CIAC)	F-8	-
408.10	Taxes Other Than Income Utility Regulatory Assessment Fee		8,520
408.11	Property Taxes		5,359
408.12	Payroll Taxes		1,356
408.13	Other Taxes and Licenses		-
408	Total Taxes Other Than Income		\$ 15,235
409.1	Income Taxes		(20,481)
410.10	Deferred Federal Income Taxes		8,202
410.11	Deferred State Income Taxes		1,489
411.10	Provision for Deferred Income Taxes - Credit		14
412.10	Investment Tax Credits Deferred to Future Periods		
412.11	Investment Tax Credits Restored to Operating Income		
	Utility Operating Expenses		\$ 277,726
	Utility Operating Income		\$ (11,897)
530	Add Back: Guaranteed Revenue (and AFPI)	S-9A	\$
413	Income From Utility Plant Leased to Others		
414	Gains (losses) From Disposition of Utility Property		
420	Allowance for Funds Used During Construction		1,395
	Total Utility Operating Income		\$ (10,502)

UTILITY NAME: UTILITIES, INC. OF HUTCHINSON ISLAND

SYSTEM NAME / COUNTY Martin County

WASTEWATER UTILITY PLANT ACCOUNTS

ACCT. NO. (a)	ACCOUNT NAME (b)	PREVIOUS YEAR (c)	ADDITIONS (d)	RETIREMENTS (e)	CURRENT YEAR (f)
351	Organization	\$ 11,607	\$ -	\$ -	\$ 11,607
352	Franchises	-	-	-	-
353	Land and Land Rights	165,091	-	-	165,091
354	Structures and Improvements	779,979	5,713	3,325	782,367
355	Power Generation Equipment	-	-	-	-
360	Collection Sewers - Force	98,933	56	-	98,989
361	Collection Sewers - Gravity	148,971	348	-	149,319
362	Special Collecting Structures	-	-	-	-
363	Services to Customers	-	-	-	-
364	Flow Measuring Devices	-	-	-	-
365	Flow Measuring Installations	-	-	-	-
366	Reuse Services	-	-	-	-
367	Reuse Meters and Meter Installations	-	-	-	-
370	Receiving Wells	-	-	-	-
371	Pumping Equipment	-	-	-	-
374	Reuse Distribution Reservoirs	-	-	-	-
375	Reuse Transmission and Distribution System	-	5,358	-	5,358
380	Treatment and Disposal Equipment	161,129	59	-	59
381	Plant Sewers	-	75,215	14,830	221,514
382	Outfall Sewer Lines	-	-	-	-
389	Other Plant Miscellaneous Equipment	-	-	-	-
390	Office Furniture and Equipment	3,341	-	-	3,341
391	Transportation Equipment	-	-	-	-
392	Stores Equipment	-	-	-	-
393	Tools, Shop and Garage Equipment	171,838	-	-	171,838
394	Laboratory Equipment	4,415	-	-	4,415
395	Power Operated Equipment	-	-	-	-
396	Communication Equipment	-	-	-	-
397	Miscellaneous Equipment	-	-	-	-
398	Other Tangible Plant	-	-	-	-
Total Wastewater Plant		\$ 1,545,304	\$ 86,749	\$ 18,155	\$ 1,613,898

NOTE: Any adjustments made to reclassify property from one account to another must be footnoted.

UTILITY NAME: UTILITIES, INC. OF HUTCHINSON ISLAND

SYSTEM NAME / COUNTY Martin County

WASTEWATER UTILITY PLANT MATRIX

ACCT. NO.	ACCOUNT NAME	.1 INTANGIBLE PLANT (g)	.2 COLLECTION PLANT (h)	.3 SYSTEM PUMPING PLANT (i)	.4 TREATMENT AND DISPOSAL (j)	.5 RECLAIMED WASTEWATER TREATMENT PLANT (i)	.6 RECLAIMED WASTEWATER DISTRIBUTION PLANT (j)	.7 GENERAL PLANT (k)
351	Organization	\$ 11,607						
352	Franchises							
353	Land and Land Rights		165,091					
354	Structures and Improvements		782,367					
355	Power Generation Equipment		-					
360	Collection Sewers - Force		98,989					
361	Collection Sewers - Gravity		149,319					
362	Special Collecting Structures		-					
363	Services to Customers		-					
364	Flow Measuring Devices		-					
365	Flow Measuring Installations		-					
366	Reuse Services		-					
367	Reuse Meters and Meter Installations		-					
370	Receiving Wells							
371	Pumping Equipment							
374	Reuse Distribution Reservoirs			5,358				
375	Reuse Transmission and Distribution System				221,514		59	
380	Treatment and Disposal Equipment							
381	Plant Sewers							
382	Outfall Sewer Lines							
389	Other Plant Miscellaneous Equipment							
390	Office Furniture and Equipment							3,341
391	Transportation Equipment							
392	Stores Equipment							
393	Tools, Shop and Garage Equipment							
394	Laboratory Equipment							171,838
395	Power Operated Equipment							4,415
396	Communication Equipment							
397	Miscellaneous Equipment							
398	Other Tangible Plant							
	Total Wastewater Plant	\$ 11,607	\$ 1,195,766	\$ 5,358	\$ 221,514	\$ -	\$ 59	\$ 179,594

NOTE: Any adjustments made to reclassify property from one account to another must be footnoted.

UTILITY NAME:

UTILITIES, INC. OF HUTCHINSON ISLAND

<p>YEAR OF REPORT 31-Dec-06</p>
--

SYSTEM NAME / COUNTY : Martin County

BASIS FOR WASTEWATER DEPRECIATION CHARGES

ACCT. NO. (a)	ACCOUNT NAME (b)	AVERAGE SERVICE LIFE IN YEARS (c)	AVERAGE NET SALVAGE IN PERCENT (d)	DEPRECIATION RATE APPLIED IN PERCENT (100% - D) / C (e)
354	Structures and Improvements			3.13%
355	Power Generation Equipment			
360	Collection Sewers - Force			3.33%
361	Collection Sewers - Gravity			2.22%
362	Special Collecting Structures			
363	Services to Customers			
364	Flow Measuring Devices			
365	Flow Measuring Installations			
366	Reuse Services			
367	Reuse Meters and Meter Installations			
370	Receiving Wells			
371	Pumping Equipment			
375	Reuse Transmission and Distribution System			0.02
380	Treatment and Disposal Equipment			5.56%
381	Plant Sewers			
382	Outfall Sewer Lines			
389	Other Plant Miscellaneous Equipment			
390	Office Furniture and Equipment			6.67%
391	Transportation Equipment			
392	Stores Equipment			
393	Tools, Shop and Garage Equipment			6.25%
394	Laboratory Equipment			6.67%
395	Power Operated Equipment			
396	Communication Equipment			
397	Miscellaneous Equipment			
398	Other Tangible Plant			
Wastewater Plant Composite Depreciation Rate *				

* If depreciation rates prescribed by this Commission are on a total composite basis, entries should be made on this line only.

UTILITY NAME: UTILITIES, INC. OF HUTCHINSON ISLAND

SYSTEM NAME / COUNTY : Martin County

ANALYSIS OF ENTRIES IN WASTEWATER ACCUMULATED DEPRECIATION

ACCT. NO. (a)	ACCOUNT NAME (b)	BALANCE AT BEGINNING OF YEAR (c)	ACCRUALS (d)	OTHER CREDITS * (e)	TOTAL CREDITS (d + e) (f)
354	Structures and Improvements	\$ 514,685	\$ 36,527	\$ 1	\$ 36,528
355	Power Generation Equipment				
360	Collection Sewers - Force	62,926	3,297		3,297
361	Collection Sewers - Gravity	59,972	3,310	31	3,341
362	Special Collecting Structures				
363	Services to Customers				
364	Flow Measuring Devices				
365	Flow Measuring Installations				
366	Reuse Services				
367	Reuse Meters and Meter Installations				
370	Receiving Wells				
371	Pumping Equipment				
375	Reuse Transmission and Distribution System		146		146
380	Treatment and Disposal Equipment	116,192	7,310		7,310
381	Plant Sewers				
382	Outfall Sewer Lines				
389	Other Plant Miscellaneous Equipment				
390	Office Furniture and Equipment	2,637	223		223
391	Transportation Equipment				
392	Stores Equipment				
393	Tools, Shop and Garage Equipment	106,182	10,740		10,740
394	Laboratory Equipment	2,259	276		276
395	Power Operated Equipment				
396	Communication Equipment				
397	Miscellaneous Equipment				
398	Other Tangible Plant				
Total Depreciable Wastewater Plant in Service		\$ 864,853	\$ 61,829	\$ 32	\$ 61,861

* Specify nature of transaction.
Use () to denote reversal entries.

UTILITY NAME: UTILITIES, INC. OF HUTCHINSON ISLAND

SYSTEM NAME / COUNTY : Martin County

ANALYSIS OF ENTRIES IN WASTEWATER ACCUMULATED DEPRECIATION

ACCT. NO. (a)	ACCOUNT NAME (b)	PLANT RETIRED (g)	SALVAGE AND INSURANCE (h)	COST OF REMOVAL AND OTHER CHARGES (i)	TOTAL CHARGES (g-h+i) (j)	BALANCE AT END OF YEAR (c+f-j) (k)
354	Structures and Improvements	\$ 3,325	\$	\$	\$ 3,325	\$ 547,888
355	Power Generation Equipment	-			-	
360	Collection Sewers - Force	-			-	66,223
361	Collection Sewers - Gravity	-			-	63,313
362	Special Collecting Structures	-			-	-
363	Services to Customers	-			-	-
364	Flow Measuring Devices	-			-	
365	Flow Measuring Installations	-			-	
366	Reuse Services	-			-	
367	Reuse Meters and Meter Installations	-			-	
370	Receiving Wells	-			-	
371	Pumping Equipment	-			-	
375	Reuse Transmission and Distribution System	-			-	
380	Treatment and Disposal Equipment	14,830			14,830	108,672
381	Plant Sewers	-			-	-
382	Outfall Sewer Lines	-			-	-
389	Other Plant Miscellaneous Equipment	-			-	-
390	Office Furniture and Equipment	-			-	2,860
391	Transportation Equipment	-			-	
392	Stores Equipment	-			-	
393	Tools, Shop and Garage Equipment	-			-	116,922
394	Laboratory Equipment	-			-	2,535
395	Power Operated Equipment	-			-	
396	Communication Equipment	-			-	
397	Miscellaneous Equipment	-			-	
398	Other Tangible Plant	-			-	
Total Depreciable Wastewater Plant in Service		\$ 18,155	\$ -	\$ -	\$ 18,155	\$ 908,559

* Specify nature of transaction.
Use () to denote reversal entries.

UTILITY NAME: UTILITIES, INC. OF HUTCHINSON ISLAND

YEAR OF REPORT 31-Dec-06

SYSTEM NAME / COUNTY Martin County

**CONTRIBUTIONS IN AID OF CONSTRUCTION
ACCOUNT 271**

DESCRIPTION (a)	REFERENCE (b)	WASTEWATER (c)
Balance first of year		\$ <u>407,182</u>
Add credits during year:		
Contributions received from Capacity, Main Extension and Customer Connection Charges	S-8A	\$ <u>-</u>
Contributions received from Developer or Contractor Agreements in cash or property	S-8B	<u>-</u>
Total Credits		\$ <u>-</u>
Less debits charged during the year (All debits charged during the year must be explained below)		\$ <u> </u>
Total Contributions In Aid of Construction		\$ <u>407,182</u>

Explain all debits charged to Account 271 during the year below:

UTILITY NAME:

UTILITIES, INC. OF HUTCHINSON ISLAND

YEAR OF REPORT 31-Dec-06

SYSTEM NAME / COUNTY Martin County

WASTEWATER CIAC SCHEDULE "A"

ADDITIONS TO CONTRIBUTIONS IN AID OF CONSTRUCTION RECEIVED FROM CAPACITY,
MAIN EXTENSION AND CUSTOMER CONNECTION CHARGES RECEIVED DURING THE YEAR

DESCRIPTION OF CHARGE (a)	NUMBER OF CONNECTIONS (b)	CHARGE PER CONNECTION (c)	AMOUNT (d)
SEWER CONNECTIONS FEES (NONE)	-	\$ -	\$ -
_____	_____	_____	_____
_____	_____	_____	_____
_____	_____	_____	_____
_____	_____	_____	_____
_____	_____	_____	_____
_____	_____	_____	_____
_____	_____	_____	_____
Total Credits			\$ -

ACCUMULATED AMORTIZATION OF WASTEWATER CONTRIBUTIONS IN AID OF CONSTRUCTION

DESCRIPTION (a)	WASTEWATER (b)
Balance first of year	\$ 229,263
Debits during the year:	
Accruals charged to Account 272	\$ 12,848
Other debits (specify) :	
_____	_____
_____	_____
Total debits	\$ 12,848
Credits during the year (specify) :	
_____	\$ _____
_____	_____
Total credits	\$ -
Balance end of year	\$ 242,111

UTILITY NAME: UTILITIES, INC. OF HUTCHINSON ISLAND

YEAR OF REPORT
31-Dec-06

SYSTEM NAME / COUNTY Martin County

WASTEWATER CIAC SCHEDULE "B"
ADDITIONS TO CONTRIBUTIONS IN AID OF CONSTRUCTION
RECEIVED FROM ALL DEVELOPERS OR CONTRACTORS AGREEMENTS
WHICH CASH OR PROPERTY WAS RECEIVED DURING THE YEAR

DESCRIPTION (a)	INDICATE CASH OR PROPERTY (b)	AMOUNT (c)
<u>NONE</u>		\$ _____
_____	_____	_____
_____	_____	_____
_____	_____	_____
_____	_____	_____
_____	_____	_____
_____	_____	_____
_____	_____	_____
_____	_____	_____
_____	_____	_____
_____	_____	_____
_____	_____	_____
_____	_____	_____
_____	_____	_____
_____	_____	_____
_____	_____	_____
_____	_____	_____
_____	_____	_____
_____	_____	_____
Total Credits		\$ _____ -

Reconciliation of Revenue to
Regulatory Assessment Fee Revenue
Wastewater Operations

UTILITY NAME: UTILITIES, INC. OF HUTCHINSON ISLAND

YEAR OF REPORT 31-Dec-06

(A)	(B)	(C)	(D)
Accounts	Gross Wastewater Revenues per Sch S-9	Gross Wastewater Revenues per RAF Return	Difference (B)-(C)
Gross Revenues:			-
Total Flat-Rate Revenues			-
Total Measured Revenues	265,829	265,829	-
Revenues from Public Authorities			-
Revenues from Other Systems			-
Interdepartmental Revenues			-
Total Other Wastewater Revenues			-
Reclaimed Water Sales			-
Total Wastewater Operating Revenue	265,829	265,829	-
Less: Expense for Purchased Wastewater from FPSC Regulated Utility			-
Net Wastewater Operating Revenues	265,829	265,829	-

UTILITY NAME: UTILITIES, INC. OF HUTCHINSON ISLAND

YEAR OF REPORT
31-Dec-06

SYSTEM NAME / COUNTY Martin County

WASTEWATER OPERATING REVENUE

ACCT. NO. (a)	DESCRIPTION (b)	BEGINNING YEAR NO. CUSTOMERS * (c)	YEAR END NUMBER OF CUSTOMERS * (d)	AMOUNTS (e)
WASTEWATER SALES				
Flat Rate Revenues:				
521.1	Residential Revenues	113	182	\$ 265,811
521.2	Commercial Revenues	_____	_____	_____
521.3	Industrial Revenues	_____	_____	_____
521.4	Revenues From Public Authorities	_____	_____	_____
521.5	Multiple Family Dwelling Revenues	_____	_____	_____
521.6	Other Revenues	_____	_____	_____
521	Total Flat Rate Revenues	113	182	\$ 265,811
Measured Revenues:				
522.1	Residential Revenues	_____	_____	_____
522.2	Commercial Revenues	_____	_____	_____
522.3	Industrial Revenues	_____	_____	_____
522.4	Revenues From Public Authorities	_____	_____	_____
522.5	Multiple Family Dwelling Revenues	_____	_____	_____
522	Total Measured Revenues	_____	_____	\$ _____
523	Revenues From Public Authorities	_____	_____	_____
524	Revenues From Other Systems	_____	_____	_____
525	Interdepartmental Revenues	_____	_____	_____
Total Wastewater Sales		<u>113</u>	<u>182</u>	<u>\$ 265,811</u>
OTHER WASTEWATER REVENUES				
530	Guaranteed Revenues			\$ _____
531	Sale of Sludge			_____
532	Forfeited Discounts			_____
534	Rents From Wastewater Property			_____
535	Interdepartmental Rents			_____
536	Other Wastewater Revenues (Including Allowance for Funds Prudently Invested or AFPI)			18
Total Other Wastewater Revenues				\$ 18

* Customer is defined by Rule 25-30.210(1), Florida Administrative Code.

UTILITY NAME: UTILITIES, INC. OF HUTCHINSON ISLAND

YEAR OF REPORT 31-Dec-06

SYSTEM NAME / COUNTY Martin County

WASTEWATER OPERATING REVENUE

ACCT. NO. (a)	DESCRIPTION (b)	BEGINNING YEAR NO. CUSTOMERS * (c)	YEAR END NUMBER OF CUSTOMERS * (d)	AMOUNTS (e)
RECLAIMED WATER SALES				
540.1	Flat Rate Reuse Revenues: Residential Reuse Revenues	_____	_____	\$ _____
540.2	Commercial Reuse Revenues	_____	_____	_____
540.3	Industrial Reuse Revenues	_____	_____	_____
540.4	Reuse Revenues From Public Authorities	_____	_____	_____
540.5	Other Revenues	_____	_____	_____
540	Total Flat Rate Reuse Revenues	_____	_____	\$ _____
541.1	Measured Reuse Revenues: Residential Reuse Revenues	_____	_____	_____
541.2	Commercial Reuse Revenues	_____	_____	_____
541.3	Industrial Reuse Revenues	_____	_____	_____
541.4	Reuse Revenues From Public Authorities	_____	_____	_____
541	Total Measured Reuse Revenues	_____	_____	\$ _____
544	Reuse Revenues From Other Systems			
Total Reclaimed Water Sales				\$ _____
Total Wastewater Operating Revenues				\$ <u>265,829</u>

* Customer is defined by Rule 25-30.210(1), Florida Administrative Code.

UTILITY NAME: UTILITIES, INC. OF HUTCHINSON ISLAND

SYSTEM NAME / COUNTY Martin County

WASTEWATER UTILITY EXPENSE ACCOUNT MATRIX

ACCT. NO.	ACCOUNT NAME	CURRENT YEAR	.1	.2	.3	.4	.5	.6
(a)	(b)	(c)	COLLECTION EXPENSES - OPERATIONS (d)	COLLECTION EXPENSES - MAINTENANCE (e)	PUMPING EXPENSES - OPERATIONS (f)	PUMPING EXPENSES - MAINTENANCE (g)	TREATMENT & DISPOSAL EXPENSES - OPERATIONS (h)	TREATMENT & DISPOSAL EXPENSES - MAINTENANCE (i)
701	Salaries and Wages - Employees	\$ (7,036)	\$ (211)	\$ (844)	\$ (1,407)	\$ (352)	\$ (3,377)	\$ (845)
703	Salaries and Wages - Officers, Directors and Majority Stockholders		85	198	339	141	849	340
704	Employee Pensions and Benefits	2,829						
710	Purchased Sewage Treatment							
711	Sludge Removal Expense	58,850						
715	Purchased Power	102,755			25,689			
716	Fuel for Power Purchased							
718	Chemicals	23,150						
720	Materials and Supplies	29,733	1,189	4,757	7,136	1,784	23,150	2,974
731	Contractual Services - Engineering							
732	Contractual Services - Accounting	1,071						
733	Contractual Services - Legal	12						
734	Contractual Services - Mgt. Fees							
735	Contractual Services - Testing							
736	Contractual Services - Other	430						
741	Rental of Building/Real Property							
742	Rental of Equipment							
750	Transportation Expenses	6,142	184	737	1,228	307	2,948	738
756	Insurance - Vehicle							
757	Insurance - General Liability							
758	Insurance - Workman's Comp.							
759	Insurance - Other	1,645						
760	Advertising Expense							
766	Regulatory Commission Expenses - Amortization of Rate Case Expense	298						
767	Regulatory Commission Exp. - Other							
770	Bad Debt Expense	19						
775	Miscellaneous Expenses	4,388						
	Total Wastewater Utility Expenses	\$ 224,286	\$ 1,247	\$ 4,848	\$ 32,985	\$ 1,880	\$ 171,379	\$ 3,207

UTILITY NAME: UTILITIES, INC. OF HUTCHINSON ISLAND

SYSTEM NAME / COUNTY : Martin County

WASTEWATER UTILITY EXPENSE ACCOUNT MATRIX

ACCT. NO.	ACCOUNT NAME	.7 CUSTOMER ACCOUNTS EXPENSE (j)	.8 ADMIN. & GENERAL EXPENSES (k)	.9 RECLAIMED WATER TREATMENT EXPENSES- OPERATIONS (l)	.10 RECLAIMED WATER TREATMENT EXPENSES- MAINTENANCE (m)	.11 RECLAIMED WATER DISTRIBUTION EXPENSES- OPERATIONS (n)	.12 RECLAIMED WATER DISTRIBUTION EXPENSES- MAINTENANCE (o)
701	Salaries and Wages - Employees	\$	\$	\$	\$	\$	\$
703	Salaries and Wages - Officers, Directors and Majority Stockholders						
704	Employee Pensions and Benefits	877					
710	Purchased Sewage Treatment						
711	Sludge Removal Expense						
715	Purchased Power						
716	Fuel for Power Purchased						
718	Chemicals						
720	Materials and Supplies						
731	Contractual Services-Engineering		0				
732	Contractual Services - Accounting		1,071				
733	Contractual Services - Legal		12				
734	Contractual Services - Mgt. Fees		0				
735	Contractual Services - Testing		0				
736	Contractual Services - Other	215					
741	Rental of Building/Real Property						
742	Rental of Equipment						
750	Transportation Expenses						
756	Insurance - Vehicle						
757	Insurance - General Liability						
758	Insurance - Workman's Comp.						
759	Insurance - Other		1,645				
760	Advertising Expense						
766	Regulatory Commission Expenses - Amortization of Rate Case Expense		298				
767	Regulatory Commission Exp.-Other						
770	Bad Debt Expense	19					
775	Miscellaneous Expenses	2,194					
Total Wastewater Utility Expenses		\$ 3,305	\$ 5,435	\$ -	\$ -	\$ -	\$ -

UTILITY NAME:

UTILITIES, INC. OF HUTCHINSON ISLAND

YEAR OF REPORT 31-Dec-06

SYSTEM NAME / COUNTY :

HUTCHINSON ISLAND/MARTIN

CALCULATION OF THE WASTEWATER SYSTEM METER EQUIVALENTS

WATER METER SIZE (a)	TYPE OF WATER METER (b)	EQUIVALENT FACTOR (c)	NUMBER OF WATER METERS (d)	TOTAL NUMBER OF METER EQUIVALENTS (c x d) (e)
All Residential		1.0		
5/8"	Displacement	1.0	32	32
3/4"	Displacement	1.5		
1"	Displacement	2.5		
1 1/2"	Displacement or Turbine	5.0		
2"	Displacement, Compound or Turbine	8.0		
3"	Displacement	15.0		
3"	Compound	16.0		
3"	Turbine	17.5		
4"	Displacement or Compound	25.0		
4"	Turbine	30.0		
6"	Displacement or Compound	50.0		
6"	Turbine	62.5		
8"	Compound	80.0		
8"	Turbine	90.0		
10"	Compound	115.0		
10"	Turbine	145.0		
12"	Turbine	215.0		
Total Wastewater System Meter Equivalents				32

CALCULATION OF THE WASTEWATER SYSTEM EQUIVALENT RESIDENTIAL CONNECTIONS

Provide a calculation used to determine the value of one wastewater equivalent residential connection (ERC).

Use one of the following methods:

(a) If actual flow data are available from the preceding 12 months, divide the total annual single family residence (SFR) gallons sold by the average number of single family residence customers for the same period and divide the result by 365 days.

(b) If no historical flow data are available, use:

$$ERC = (\text{Total SFR gallons treated (Omit 000)} / 365 \text{ days} / 280 \text{ gallons per day})$$

For wastewater only utilities:

Subtract all general use and other non residential customer gallons from the total gallons treated.

Divide the remainder (SFR customers) by 365 days to reveal single family residence customer gallons pe

NOTE: Total gallons treated includes both treated and purchased treatment.

ERC Calculation:

UTILITY NAME: UTILITIES, INC. OF HUTCHINSON ISLAND

YEAR OF REPORT 31-Dec-06

SYSTEM NAME / COUNTY HUTCHINSON ISLAND/MARTIN

WASTEWATER TREATMENT PLANT INFORMATION

Provide a separate sheet for each wastewater treatment facility

Permitted Capacity	<u>0.300 mgd</u>	_____	_____
Basis of Permit Capacity (1)	<u>AADF</u>	_____	_____
Manufacturer	<u>Marolf Contact Stabilization</u>	_____	_____
Type (2)	_____	_____	_____
Hydraulic Capacity	<u>0.300 mgd</u>	_____	_____
Average Daily Flow	<u>0.132 mgd</u>	_____	_____
Total Gallons of Wastewater Treated	<u>47.561 mgd</u>	_____	_____
Method of Effluent Disposal	<u>Reuse on the Golf Course</u>	_____	_____

(1) Basis of permitted capacity as stated on the Florida DEP WWTP Operating Permit (i.e. average annual daily flow, etc.)

(2) Contact stabilization, advanced treatment, etc.

UTILITY NAME: UTILITIES, INC. OF HUTCHINSON ISLAND

YEAR OF REPORT
31-Dec-06

SYSTEM NAME / COUNTY HUTCHINSON ISLAND/MARTIN

OTHER WASTEWATER SYSTEM INFORMATION

Furnish information below for each system. A separate page should be supplied where necessary.

1. Present number of ERCs* now being served 1400
2. Maximum number of ERCs* which can be served 1400
3. Present system connection capacity (in ERCs*) using existing lines 1400
4. Future connection capacity (in ERCs*) upon service area buildout 1400
5. Estimated annual increase in ERCs* 0
6. Describe any plans and estimated completion dates for any enlargements or improvements of this system
2006- Convert disinfection system to liquid chlorine
2007 - Replace process blower enclosure, materials storage shed
7. If the utility uses reuse as a means of effluent disposal, attach a list of the reuse end users and the amount of re provided to each, if known. Indian River Plantation GC
8. If the utility does not engage in reuse, has a reuse feasibility study been c N/A
If so, when? N/A
9. Has the utility been required by the DEP or water management district to implement reuse? No
If so, what are the utility's plans to comply with this requirement? N/A
10. When did the company last file a capacity analysis report with the DEP? 2002
11. If the present system does not meet the requirements of DEP rules:
 - a. Attach a description of the plant upgrade necessary to meet the DEP rules.
 - b. Have these plans been approved by DEP? _____
 - c. When will construction begin? _____
 - d. Attach plans for funding the required upgrading.
 - e. Is this system under any Consent Order with DEP? No
12. Department of Environmental Protection ID # FLA 013792

* An ERC is determined based on the calculation on S-11.