

CLASS "A" OR "B"

WATER AND/OR WASTEWATER UTILITIES
(Gross Revenue of More Than \$200,000 Each)

OFFICIAL COPY
Public Service Commiss
Do Not Remove from this (

ANNUAL REPORT

WS641-04-AR WU553-04-AR
Lake Utility Services, Inc.
200 Weathersfield Avenue
Altamonte Springs, FL 32714-4027

496W 534W 465S
Certificate Number(s)

Submitted To The

STATE OF FLORIDA

09/17/2004 11:19 AM
09/17/2004 11:19 AM

PUBLIC SERVICE COMMISSION

FOR THE

YEAR ENDED

31-Dec-04

TABLE OF CONTENTS

SCHEDULE	PAGE	SCHEDULE	PAGE
EXECUTIVE SUMMARY			
Certification	E-1	Business Contracts with Officers, Directors and Affiliates	E-7
General Information	E-2	Affiliation of Officers & Directors	E-8
Directory of Personnel Who Contact the FPSC	E-3	Businesses which are a Byproduct, Coproduct or Joint Product Result of Providing Service	E-9
Company Profile	E-4	Business Transactions with Related Parties. Part I and II	E-10
Parent / Affiliate Organization Chart	E-5		
Compensation of Officers & Directors	E-6		
FINANCIAL SECTION			
Comparative Balance Sheet - Assets and Other Debits	F-1	Unamortized Debt Discount / Expense / Premium	F-13
Comparative Balance Sheet - Equity Capital and Liabilities	F-2	Extraordinary Property Losses	F-13
Comparative Operating Statement	F-3	Miscellaneous Deferred Debits	F-14
Schedule of Year End Rate Base	F-4	Capital Stock	F-15
Schedule of Year End Capital Structure	F-5	Bonds	F-15
Capital Structure Adjustments	F-6	Statement of Retained Earnings	F-16
Utility Plant	F-7	Advances from Associated Companies	F-17
Utility Plant Acquisition Adjustments	F-7	Long Term Debt	F-17
Accumulated Depreciation	F-8	Notes Payable	F-18
Accumulated Amortization	F-8	Accounts Payable to Associated Companies	F-18
Regulatory Commission Expense - Amortization of Rate Case Expense	F-9	Accrued Interest and Expense	F-19
Nonutility Property	F-9	Misc. Current & Accrued Liabilities	F-20
Special Deposits	F-9	Advances for Construction	F-21
Investments and Special Funds	F-10	Other Deferred Credits	F-21
Accounts and Notes Receivable - Net	F-11	Contributions In Aid of Construction	F-22
Accounts Receivable from Associated Companies	F-12	Accumulated Amortization of CIAC	F-23
Notes Receivable from Associated Companies	F-12	Reconciliation of Reported Net Income with Taxable Income for Federal Income Taxes	F-23
Miscellaneous Current & Accrued Assets	F-12		

TABLE OF CONTENTS

SCHEDULE	PAGE	SCHEDULE	PAGE
WATER OPERATION SECTION			
Listing of Water System Groups	W-1	CIAC Additions / Amortization	W-8
Schedule of Year End Water Rate Base	W-2	Water Operating Revenue	W-9
Water Operating Statement	W-3	Water Utility Expense Accounts	W-10
Water Utility Plant Accounts	W-4	Pumping and Purchased Water Statistics, Source Supply	W-11
Basis for Water Depreciation Charges	W-5	Water Treatment Plant Information	W-12
Analysis of Entries in Water Depreciation Reserve	W-6	Calculation of ERC's	W-13
Contributions In Aid of Construction	W-7	Other Water System Information	W-14
WASTEWATER OPERATION SECTION			
Listing of Wastewater System Groups	S-1	Contributions In Aid of Construction	S-7
Schedule of Year End Wastewater Rate Base	S-2	CIAC Additions / Amortization	S-8
Wastewater Operating Statement	S-3	Wastewater Utility Expense Accounts	S-9
Wastewater Utility Plant Accounts	S-4	Wastewater Operating Revenue	S-10
Analysis of Entries in Wastewater Depreciation Reserve	S-5	Calculation of ERC's	S-11
Basis for Wastewater Depreciation Charges	S-6	Wastewater Treatment Plant Information	S-12
		Other Wastewater System Information	S-13

EXECUTIVE SUMMARY

CERTIFICATION OF ANNUAL REPORT

I HEREBY CERTIFY, to the best of my knowledge and belief:


- YES NO
 1. The utility is in substantial compliance with the Uniform System of Accounts prescribed by the Florida Public Service Commission.
- YES NO
 2. The utility is in substantial compliance with all applicable rules and orders of the Florida Public Service Commission.
- YES NO
 3. There have been no communications from regulatory agencies concerning noncompliance with, or deficiencies in, financial reporting practices that could have a material effect on the the financial statement of the utility.
- YES NO
 4. The annual report fairly represents the financial condition and results of operations of the respondent for the period presented and other information and statements presented in the the report as to the business affairs of the respondent are true, correct and complete for the period for which it represents.

Items Certified

1.	2.	3.	4.

(Signature of Chief Executive Officer of the utility) *

1.	2.	3.	4.
X	X	X	X



(Signature of Chief Financial Officer of the utility) *

* Each of the four items must be certified YES or NO. Each item need not be certified by both officers. The items being certified by the officer should be indicated in the appropriate area to the left of the signature.

NOTICE: Section 837.06, Florida Statutes, provides that any person who knowingly makes a false statement in writing with the intent to mislead a public servant in the performance of his duty shall be guilty of a misdemeanor of the second degree.

ANNUAL REPORT OF

YEAR OF REPORT
31-Dec-04

LAKE UTILITY SERVICES INC

County: **Lake County**

(Exact Name of Utility)

List below the exact mailing address of the utility for which normal correspondence should be sent:

2335 SANDERS ROAD
NORTHBROOK IL 60062

Telephone: **847-498-6440**

E Mail Address: **NONE**

WEB Site: **NONE**

Sunshine State One-Call of Florida, Inc. Member Number **LGU506**

Name and address of person to whom correspondence concerning this report should be addressed:

JOHN S HAYNES
2335 SANDERS ROAD
NORTHBROOK IL 60062

Telephone: **847-498-6440**

List below the address of where the utility's books and records are located:

2335 SANDERS ROAD
NORTHBROOK IL 60062

Telephone: **847-498-6440**

List below any groups auditing or reviewing the records and operations:

Pricewaterhousecoopers LLC

Date of original organization of the utility: **1969**

Check the appropriate business entity of the utility as filed with the Internal Revenue Service

Individual Partnership Sub S Corporation 1120 Corporation

List below every corporation or person owning or holding directly or indirectly 5% or more of the voting securities of the utility:

	Name	Percent Ownership
1.	UTILITIES INC	100%
2.		
3.		
4.		
5.		
6.		
7.		
8.		
9.		
10.		

**DIRECTORY OF PERSONNEL WHO CONTACT
THE FLORIDA PUBLIC SERVICE COMMISSION**

NAME OF COMPANY REPRESENTATIVE (1)	TITLE OR POSITION (2)	ORGANIZATIONAL UNIT TITLE (3)	USUAL PURPOSE FOR CONTACT WITH FPSC
LAWRENCE N SCHUMACHER	PRES/SEC/CFO		FINANCIAL
LISA CROSSETT	VP OPERATIONS		OPERATIONS
STEVE LUBERTOZZI	DIRECTOR OF REGULATORY		RATE CASE
PATRICK FLYNN	REGIONAL DIRECTOR		OPERATIONS

- (1) Also list appropriate legal counsel, accountants and others who may not be on general payroll.
- (2) Provide individual telephone numbers if the person is not normally reached at the company.
- (3) Name of company employed by if not on general payroll.

COMPANY PROFILE

Provide a brief narrative company profile which covers the following areas:

- A. Brief company history.
- B. Public services rendered.
- C. Major goals and objectives.
- D. Major operating divisions and functions.
- E. Current and projected growth patterns.
- F. Major transactions having a material effect on operations.

A.	Lake Utility Services Inc. is a subsidiary of Utilities Inc.
B.	Lake Utility Services Inc. performs water and wastewater services
C.	Maintain a high quality of service and earn a fair return.
D.	Subdivision is served
E.	Several of the subdivision are experiencing growth currently and are expected to continue to experience growth for the upcoming year.
F.	Merge of Lake Utility Services Inc and Lake Groves Utilities Inc

PARENT / AFFILIATE ORGANIZATION CHART

Current as of 12/31/2004

Complete below an organizational chart that show all parents, subsidiaries and affiliates of the utility.
The chart must also show the relationship between the utility and affiliates listed on E-7, E-10(a) and E-10(b).

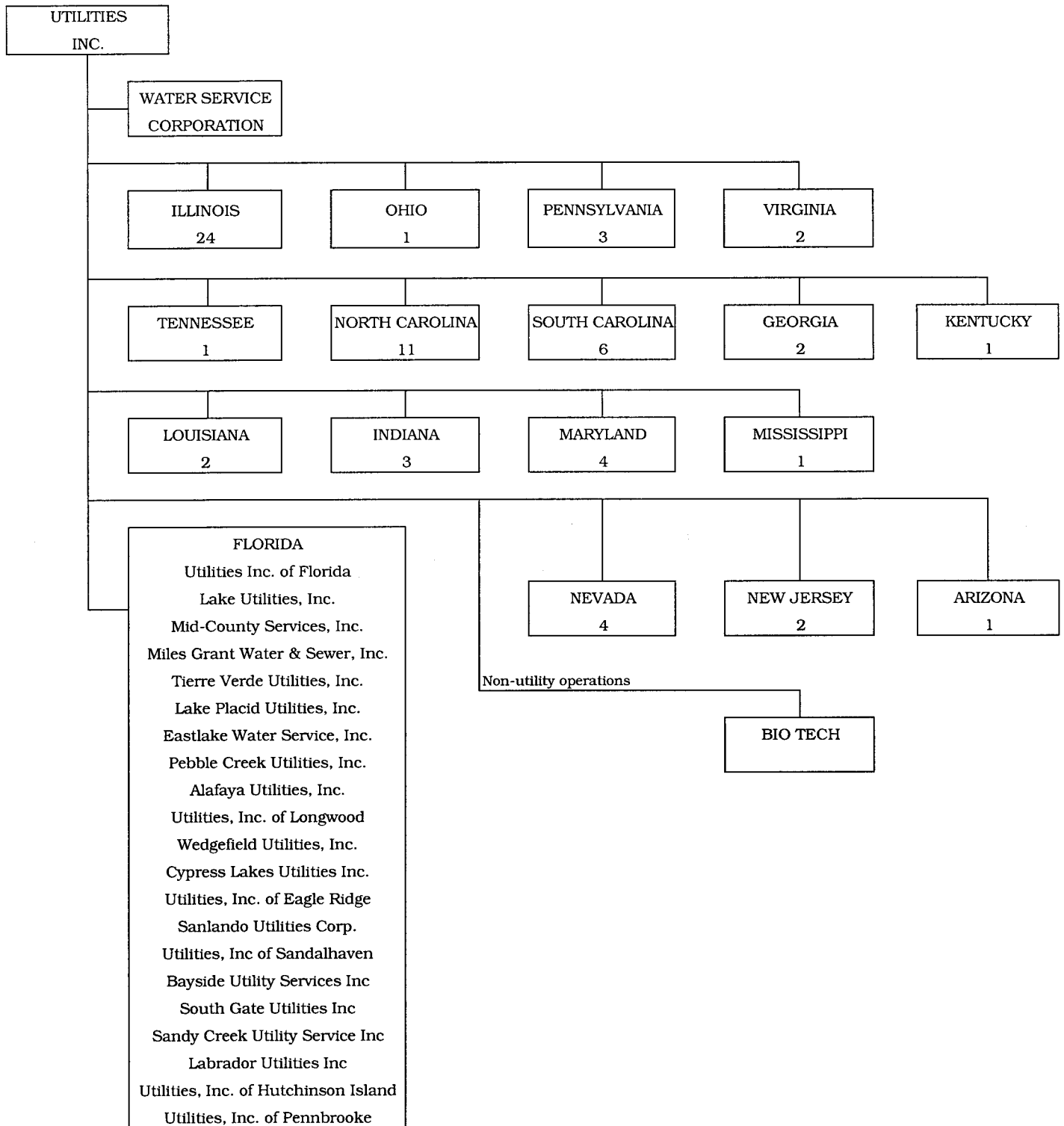
UTILITIES, INC. -- PARENT COMPANY

WATER SERVICE CORP. -- SERVICE COMPANY SUPPLYING MOST
SERVICES REQUIRED BY UTILITY.

UTILITIES INC. of FLORIDA -- provides office personnel and administrative
staff.

SEE ATTACHED

Parent And Affiliate Organizational Chart



UTILITIES, INC. - Parent Company

WATER SERVICE CORP. - Service organization providing administrative and other service functions for the utility.

NOTE: Within each state except Florida is the number of companies owned.

COMPENSATION OF OFFICERS

For each officer, list the time spent on respondent as an officer compared to time spent on total business activities and the compensation received as an officer from the respondent.			
NAME (a)	TITLE (b)	% OF TIME SPENT AS OFFICER OF THE UTILITY (c)	OFFICERS' COMPENSATION (d)
JAMES L CAMAREN	CEO	_____	\$ <u>NONE</u>
LAWRENCE N SCHUMACHER	PRES/SEC/CFO	_____	<u>NONE</u>
LISA CROSSETT	VP	_____	<u>NONE</u>
		_____	_____
		_____	_____
		_____	_____
		_____	_____
		_____	_____
		_____	_____

COMPENSATION OF DIRECTORS

For each director, list the number of director meetings attended by each director and the compensation received as a director from the respondent.			
NAME (a)	TITLE (b)	NUMBER OF DIRECTORS' MEETINGS ATTENDED (c)	DIRECTORS' COMPENSATION (d)
JAMES L CAMAREN	CEO	1	\$ <u>NONE</u>
LAWRENCE N SCHUMACHER	PRES/SEC/CFO	1	<u>NONE</u>
		_____	_____
		_____	_____
		_____	_____
		_____	_____
		_____	_____
		_____	_____
		_____	_____

BUSINESS CONTRACTS WITH OFFICERS, DIRECTORS AND AFFILIATES

List all contracts, agreements, or other business arrangements* entered into during the calendar year (other than compensation related to position with Respondents) between the Respondent and officer and director listed on page E-6. In addition, provide the same information with respect to professional services for each firm, partnership, or organization with which the officer or director is affiliated.

NAME OF OFFICER, DIRECTOR OR AFFILIATE (a)	IDENTIFICATION OF SERVICE OR PRODUCT (b)	AMOUNT (c)	NAME AND ADDRESS OF AFFILIATED ENTITY (d)
NO BUSINESS CONTRACTS, AGREEMENTS OR OTHER ARRANGEMENTS WERE ENTERED INTO DURING THE CURRENT YEAR BY THE OFFICERS LISTED ON PAGE E6, THE DIRECTORS OR AFFILIATES.		\$ _____	

* Business Agreement, for this schedule, shall mean any oral or written business deal which binds the concerned parties for products or services during the reporting year or future years. Although the Respondent and/or other companies will benefit from the arrangement, the officer or director is, however, acting on his behalf or for the benefit of other companies or persons.

AFFILIATION OF OFFICERS AND DIRECTORS

For each of the officials listed on page E-6, list the principle occupation or business affiliations or connections with any other business or financial organizations, firms, or partnerships. For purposes of this part, an official will be considered to have an affiliation with any business or financial organization, firm or partnership in which he is an officer, director, trustee, partner, or a person exercising similar functions.

NAME (a)	PRINCIPLE OCCUPATION OR BUSINESS AFFILIATION (b)	AFFILIATION OR CONNECTION (c)	NAME AND ADDRESS OF AFFILIATION OR CONNECTION (d)
THE OFFICIALS LISTED ON PAGE E6 HAVE NO OTHER PRINCIPLE OCCUPATION OR BUSINESS AFFILIATION OR CONNECTIONS WITH ANY OTHER BUSINESS OR FINANCIAL ORGANIZATIONS, FIRMS, OR PARTNERSHIPS DURING THE REPORTED YEAR.			

YEAR OF REPORT
31-Dec-04

UTILITY NAME: LAKE UTILITY SERVICES INC

**BUSINESSES WHICH ARE A BY-PRODUCT, COPRODUCT OR JOINT-PRODUCT
RESULT OF PROVIDING WATER OR WASTEWATER SERVICE**

	ASSETS		REVENUES		EXPENSES	
	BOOK COST OF ASSETS (b)	ACCOUNT NUMBER (c)	REVENUES GENERATED (d)	ACCOUNT NUMBER (e)	EXPENSES INCURRED (f)	ACCOUNT NUMBER (g)
BUSINESS OR SERVICE CONDUCTED (a)						
NO BUSINESS WHICH ARE A BYPRODUCT, COPRODUCT OR JOINT PRODUCT RESULTING FROM PROVIDING WATER AND/OR SEWER SERVICE.	\$ _____		\$ _____			

Complete the following for any business which is conducted as a byproduct, coproduct, or joint product as a result of providing water and / or wastewater service. This would include any business which requires the use of utility land and facilities. Examples of these types of businesses would be orange groves, nurseries, tree farms, fertilizer manufacturing, etc. This would not include any business for which the assets are properly included in Account 121 - Nonutility Property along with the associated revenue and expenses segregated out as nonutility also.

BUSINESS TRANSACTIONS WITH RELATED PARTIES

List each contract, agreement, or other business transaction exceeding a cumulative amount of \$500 in any on year, entered into between the Respondent and a business or financial organization, firm, or partnership named on pages E-2 and E-6, identifying the parties, amounts, dates and product, and asset, or service involved.

Part I. Specific Instructions: Services and Products Received or Provided

- 1. Enter in this part all transactions involving services and products received or provided.
- 2. Below are some types of transactions to include:
 - management, legal and accounting services
 - computer services
 - engineering & construction services
 - repairing and servicing of equipment
 - material and supplies furnished
 - leasing of structures, land, and equipment
 - rental transactions
 - sale, purchase or transfer of various products

NAME OF COMPANY OR RELATED PARTY (a)	DESCRIPTION SERVICE AND/OR NAME OF PRODUCT (b)	CONTRACT OR AGREEMENT EFFECTIVE DATES (c)	ANNUAL CHARGES (Purchased (S)old (d)	AMOUNT (e)
WATER SERVICE CORP	Operators Salaries & Benefits	Continuous	Purchase	411,104
	Insurance	Continuous	Purchase	47,124
	Computer Operations	Continuous	Purchase	10,149
	Supplies & Postage	Continuous	Purchase	29,665
	Outside Services	Continuous	Purchase	13,576
	Management Services	Continuous	Purchase	114,679

UTILITY NAME: LAKE UTILITY SERVICES INC

BUSINESS TRANSACTIONS WITH RELATED PARTIES (Cont'd)

Part II. Specific Instructions: Sale, Purchase and Transfer of Assets

1. Enter in this part all transactions relating to the purchase, sale, or transfer of assets.
2. Below are examples of some types of transactions to include:
 - purchase, sale or transfer of equipment
 - purchase, sale or transfer of land and structures
 - purchase, sale or transfer of securities
 - noncash transfers of assets
 - noncash dividends other than stock dividends
 - write-off of bad debts or loans
3. The columnar instructions follow:
 - (a) Enter name of related party or company.
 - (b) Describe briefly the type of assets purchased, sold or transferred.
 - (c) Enter the total received or paid. Indicate purchase with "P" and sale with "S".
 - (d) Enter the net book value for each item reported.
 - (e) Enter the net profit or loss for each item reported. (column (c) - column (d))
 - (f) Enter the fair market value for each item reported. In space below or in a supplemental schedule, describe the basis used to calculate fair market value.

NAME OF COMPANY OR RELATED PARTY (a)	DESCRIPTION OF ITEMS (b)	SALE OR PURCHASE PRICE (c)	NET BOOK VALUE (d)	GAIN OR LOSS (e)	FAIR MARKET VALUE (f)
NO ASSETS WERE SOLD, PURCHASED OR		\$ _____	\$ _____	\$ _____	\$ _____
TRANSFERRED WITH		_____	_____	_____	_____
A RELATED PARTY		_____	_____	_____	_____
DURING THE FISCAL		_____	_____	_____	_____
YEAR ENDED 31-Dec-04		_____	_____	_____	_____
		_____	_____	_____	_____
		_____	_____	_____	_____
		_____	_____	_____	_____

FINANCIAL SECTION

**COMPARATIVE BALANCE SHEET
ASSETS AND OTHER DEBITS**

ACCT. NO. (a)	ACCOUNT NAME (b)	REF. PAGE (c)	PREVIOUS YEAR (d)	CURRENT YEAR (e)
UTILITY PLANT				
101-106	Utility Plant	F-7	\$ 23,177,136	\$ 27,210,121
108-110	Less: Accumulated Depreciation and Amortization	F-8	2,423,189	3,072,527
Net Plant			\$ 20,753,947	\$ 24,137,594
114-115	Utility Plant Acquisition adjustment (Net)	F-7	-	-
116 *	Other Utility Plant Adjustments			
Total Net Utility Plant			\$ 20,753,947	\$ 24,137,594
OTHER PROPERTY AND INVESTMENTS				
121	Nonutility Property	F-9	\$ _____	\$ _____
122	Less: Accumulated Depreciation and Amortization			
Net Nonutility Property			\$ _____	\$ _____
123	Investment In Associated Companies	F-10	_____	_____
124	Utility Investments	F-10	_____	_____
125	Other Investments	F-10	_____	_____
126-127	Special Funds	F-10	_____	_____
Total Other Property & Investments			\$ _____	\$ _____
CURRENT AND ACCRUED ASSETS				
131	Cash		\$ -	\$ -
132	Special Deposits	F-9	3,890	5,560
133	Other Special Deposits	F-9	_____	_____
134	Working Funds		_____	_____
135	Temporary Cash Investments		_____	_____
141-144	Accounts and Notes Receivable, Less Accumulated Provision for Uncollectible Accounts	F-11	367,683	401,177
145	Accounts Receivable from Associated Companies	F-12	3,669,671	5,254,179
146	Notes Receivable from Associated Companies	F-12	-	-
151-153	Material and Supplies		_____	_____
161	Stores Expense		_____	_____
162	Prepayments		-	-
171	Accrued Interest and Dividends Receivable		-	-
172 *	Rents Receivable		_____	_____
173 *	Accrued Utility Revenues		_____	_____
174	Misc. Current and Accrued Assets	F-12	-	-
Total Current and Accrued Assets			\$ 4,041,244	\$ 5,660,916

* Not Applicable for Class B Utilities

**COMPARATIVE BALANCE SHEET
ASSETS AND OTHER DEBITS**

ACCT. NO. (a)	ACCOUNT NAME (b)	REF. PAGE (c)	PREVIOUS YEAR (d)	CURRENT YEAR (e)
DEFERRED DEBITS				
181	Unamortized Debt Discount & Expense	F-13	\$ _____	\$ _____
182	Extraordinary Property Losses	F-13	_____	_____
183	Preliminary Survey & Investigation Charges		_____	_____
184	Clearing Accounts		_____	_____
185 *	Temporary Facilities		_____	_____
186	Misc. Deferred Debits	F-14	21,872	11,491
187 *	Research & Development Expenditures		_____	_____
190	Accumulated Deferred Income Taxes		722,493	1,118,771
Total Deferred Debits			\$ 744,365	\$ 1,130,262
TOTAL ASSETS AND OTHER DEBITS			\$ 25,539,556	\$ 30,928,772

* Not Applicable for Class B Utilities

NOTES TO THE BALANCE SHEET

The space below is provided for important notes regarding the balance sheet.

**COMPARATIVE BALANCE SHEET
EQUITY CAPITAL AND LIABILITIES**

ACCT. NO. (a)	ACCOUNT NAME (b)	REF. PAGE (c)	PREVIOUS YEAR (d)	CURRENT YEAR (e)
EQUITY CAPITAL				
201	Common Stock Issued	F-15	\$ 300	\$ 300
204	Preferred Stock Issued	F-15		
202,205 *	Capital Stock Subscribed			
203,206 *	Capital Stock Liability for Conversion			
207 *	Premium on Capital Stock			
209 *	Reduction in Par or Stated Value of Capital Stock			
210 *	Gain on Resale or Cancellation of Reacquired Capital Stock			
211	Other Paid - In Capital		11,054,435	11,859,635
212	Discount On Capital Stock			
213	Capital Stock Expense			
214-215	Retained Earnings	F-16	1,632,603	2,035,649
216	Reacquired Capital Stock			
218	Proprietary Capital (Proprietorship and Partnership Only)			
Total Equity Capital			\$ 12,687,338	\$ 13,895,584
LONG TERM DEBT				
221	Bonds	F-15		
222 *	Reacquired Bonds			
223	Advances from Associated Companies	F-17		
224	Other Long Term Debt	F-17		
Total Long Term Debt			\$ -	\$ -
CURRENT AND ACCRUED LIABILITIES				
231	Accounts Payable		175,773	155,477
232	Notes Payable	F-18	-	
233	Accounts Payable to Associated Companies	F-18	-	-
234	Notes Payable to Associated Companies	F-18		
235	Customer Deposits		179,095	232,295
236	Accrued Taxes	W/S-3	19,538	61,081
237	Accrued Interest	F-19	(16,212)	(9,978)
238	Accrued Dividends			
239	Matured Long Term Debt			
240	Matured Interest			
241	Miscellaneous Current & Accrued Liabilities	F-20		
Total Current & Accrued Liabilities			\$ 358,194	\$ 438,875

* Not Applicable for Class B Utilities

**COMPARATIVE BALANCE SHEET
EQUITY CAPITAL AND LIABILITIES**

ACCT. NO. (a)	ACCOUNT NAME (b)	REF. PAGE (c)	PREVIOUS YEAR (d)	CURRENT YEAR (e)
DEFERRED CREDITS				
251	Unamortized Premium On Debt	F-13	\$ _____	\$ _____
252	Advances For Construction	F-20	38,400	38,400
253	Other Deferred Credits	F-21	_____	_____
255	Accumulated Deferred Investment Tax Credits		23,374	30,383
Total Deferred Credits			\$ <u>61,774</u>	\$ <u>68,783</u>
OPERATING RESERVES				
261	Property Insurance Reserve		\$ _____	\$ _____
262	Injuries & Damages Reserve		_____	_____
263	Pensions and Benefits Reserve		_____	_____
265	Miscellaneous Operating Reserves		_____	_____
Total Operating Reserves			\$ <u>-</u>	\$ <u>-</u>
CONTRIBUTIONS IN AID OF CONSTRUCTION				
271	Contributions in Aid of Construction	F-22	\$ 13,034,126	\$ 17,044,466
272	Accumulated Amortization of Contributions in Aid of Construction	F-22	1,634,981	2,008,678
Total Net C.I.A.C.			\$ <u>11,399,145</u>	\$ <u>15,035,788</u>
ACCUMULATED DEFERRED INCOME TAXES				
281	Accumulated Deferred Income Taxes - Accelerated Depreciation		\$ 984,593	\$ 1,443,879
282	Accumulated Deferred Income Taxes - Liberalized Depreciation		_____	_____
283	Accumulated Deferred Income Taxes - Other		48,512	45,863
Total Accumulated Deferred Income Tax			\$ <u>1,033,105</u>	\$ <u>1,489,742</u>
TOTAL EQUITY CAPITAL AND LIABILITIES			\$ <u>25,539,556</u>	\$ <u>30,928,772</u>

COMPARATIVE OPERATING STATEMENT

ACCT. NO. (a)	ACCOUNT NAME (b)	REF. PAGE (c)	PREVIOUS YEAR (d)	CURRENT YEAR * (e)
UTILITY OPERATING INCOME				
400	Operating Revenues	F-3(b)	\$ 2,341,429	\$ 2,766,039
469, 530	Less: Guaranteed Revenue and AFPI	F-3(b)	-	-
Net Operating Revenues			\$ 2,341,429	\$ 2,766,039
401	Operating Expenses	F-3(b)	\$ 1,028,587	\$ 1,135,547
403	Depreciation Expense:	F-3(b)	\$ 512,930	\$ 676,161
	Less: Amortization of CIAC	F-22	(307,665)	(373,699)
Net Depreciation Expense			\$ 205,265	\$ 302,462
406	Amortization of Utility Plant Acquisition Adjustment	F-3(b)	-	-
407	Amortization Expense (Other than CIAC)	F-3(b)	3,465	3,694
408	Taxes Other Than Income	W/S-3	371,199	405,532
409	Current Income Taxes	W/S-3	(33,073)	400,925
410.10	Deferred Federal Income Taxes	W/S-3	183,924	(130,242)
410.11	Deferred State Income Taxes	W/S-3	(52,965)	(58,558)
411.10	Provision for Deferred Income Taxes - Credit	W/S-3	-	-
412.10	Investment Tax Credits Deferred to Future Periods	W/S-3	-	-
412.11	Investment Tax Credits Restored to Operating Income	W/S-3	-	-
Utility Operating Expenses			\$ 1,706,402	\$ 2,059,360
Net Utility Operating Income			\$ 635,027	\$ 706,679
469, 530	Add Back: Guaranteed Revenue and AFPI	F-3(b)	-	-
413	Income From Utility Plant Leased to Others		-	-
414	Gains (losses) From Disposition of Utility Property		-	-
420	Allowance for Funds Used During Construction		78,522	52,196
Total Utility Operating Income [Enter here and on Page F-3(c)]			\$ 713,549	\$ 758,875

* For each account, Column e should agree with Columns f, g and h on F-3(b)

COMPARATIVE OPERATING STATEMENT (Cont'd)

WATER SCHEDULE W-3 * (f)	WASTEWATER SCHEDULE S-3 * (g)	OTHER THAN REPORTING SYSTEMS (h)
\$ 2,075,793	\$ 690,246	\$ -
-		
\$ 2,075,793	\$ 690,246	\$ -
\$ 875,393	\$ 260,154	\$ -
475,924	200,237	-
(259,089)	(114,610)	
\$ 216,835	\$ 85,627	\$ -
-	-	-
3,425	269	-
339,588	65,944	-
292,554	108,371	-
(95,038)	(35,204)	-
(42,730)	(15,828)	-
-	-	-
-	-	-
-	-	-
\$ 1,590,027	\$ 469,333	\$ -
\$ 485,766	\$ 220,913	\$ -
-	-	-
-	-	-
-	-	-
51,160	1,036	-
\$ 536,926	\$ 221,949	\$ -

* Total of Schedules W-3 / S-3 for all rate groups.

COMPARATIVE OPERATING STATEMENT (Cont'd)

ACCT. NO. (a)	ACCOUNT NAME (b)	REF. PAGE (c)	PREVIOUS YEAR (d)	CURRENT YEAR (e)
Total Utility Operating Income [from page F-3(a)]			\$ 713,549	\$ 758,875
OTHER INCOME AND DEDUCTIONS				
415	Revenues-Merchandising, Jobbing, and Contract Deductions		\$	\$
416	Costs & Expenses of Merchandising Jobbing, and Contract Work			
419	Interest and Dividend Income		(8,963)	(9,648)
421	Nonutility Income			
426	Miscellaneous Nonutility Expenses		-	-
Total Other Income and Deductions			\$ (8,963)	\$ (9,648)
TAXES APPLICABLE TO OTHER INCOME				
408.20	Taxes Other Than Income		\$	\$
409.20	Income Taxes			
410.20	Provision for Deferred Income Taxes			
411.20	Provision for Deferred Income Taxes - Credit			
412.20	Investment Tax Credits - Net			
412.30	Investment Tax Credits Restored to Operating Income			
Total Taxes Applicable To Other Income			\$ -	\$ -
INTEREST EXPENSE				
427	Interest Expense	F-19	\$ 371,068	\$ 346,181
428	Amortization of Debt Discount & Expense	F-13		
429	Amortization of Premium on Debt	F-13		
Total Interest Expense			\$ 371,068	\$ 346,181
EXTRAORDINARY ITEMS				
433	Extraordinary Income		\$	\$
434	Extraordinary Deductions			
409.30	Income Taxes, Extraordinary Items			
Total Extraordinary Items			\$ -	\$ -
NET INCOME			\$ 333,518	\$ 403,046

Explain Extraordinary Income:

NONE

UTILITY NAME: LAKE UTILITY SERVICES INC

<p>YEAR OF REPORT 31-Dec-04</p>
--

SCHEDULE OF YEAR END RATE BASE

ACCT. NO. (a)	ACCOUNT NAME (b)	REF. PAGE (c)	WATER UTILITY (d)	WASTEWATER UTILITY (e)
101	Utility Plant In Service	F-7	\$ 18,718,424	\$ 8,326,819
	Less:			
	Nonused and Useful Plant (1)			
108	Accumulated Depreciation	F-8	<u>2,030,755</u>	<u>1,000,653</u>
110	Accumulated Amortization	F-8	<u>39,527</u>	<u>1,592</u>
271	Contributions In Aid of Construction	F-22	<u>12,086,940</u>	<u>4,957,526</u>
252	Advances for Construction	F-20	<u>38,400</u>	
Subtotal			\$ <u>4,522,802</u>	\$ <u>2,328,648</u>
272	Add:			
	Accumulated Amortization of Contributions in Aid of Construction	F-22	1,480,447	528,231
Subtotal			\$ <u>6,003,249</u>	\$ <u>2,856,879</u>
114	Plus or Minus:			
	Acquisition Adjustments (2)	F-7	<u>-</u>	<u>-</u>
115	Accumulated Amortization of Acquisition Adjustments (2)	F-7	<u>-</u>	<u>-</u>
	Working Capital Allowance (3)		<u>109,424</u>	<u>32,519</u>
	Other (Specify):		<u>-</u>	<u>-</u>
			<u>-</u>	<u>-</u>
			<u>-</u>	<u>-</u>
RATE BASE			\$ <u>6,112,673</u>	\$ <u>2,889,398</u>
NET UTILITY OPERATING INCOME			\$ <u>485,766</u>	\$ <u>220,913</u>
ACHIEVED RATE OF RETURN (Operating Income / Rate Base)			<u>7.95%</u>	<u>7.65%</u>

NOTES :

- (1) Estimate based on the methodology used in the last rate proceeding.
- (2) Include only those Acquisition Adjustments that have been approved by the Commission.
- (3) Calculation consistent with last rate proceeding.
In absence of a rate proceeding, Class A utilities will use the Balance Sheet Method and Class B Utilities will use the One-eighth Operating and Maintenance Expense Method.

**SCHEDULE OF CURRENT COST OF CAPITAL
CONSISTENT WITH THE METHODOLOGY USED IN THE LAST RATE PROCEEDING (1)**

CLASS OF CAPITAL (a)	DOLLAR AMOUNT (2) (b)	PERCENTAGE OF CAPITAL (c)	ACTUAL COST RATES (3) (d)	WEIGHTED COST (c x d) (e)
Common Equity	\$ 3,762,527	41.04%	11.30%	4.64%
Preferred Stock	-	0.00%	0.00%	0.00%
Long Term Debt	4,770,773	52.04%	7.28%	3.79%
Customer Deposits	232,295	2.53%	6.00%	0.15%
Tax Credits - Zero Cost	-	0.00%	0.00%	0.00%
Tax Credits - Weighted Cost	30,383	0.00%	0.00%	0.00%
Deferred Income Taxes	370,971	4.05%	0.00%	0.00%
Other (Explain) Short Term Debt	-	0.00%	0.00%	0.00%
Total	\$ 9,166,949	100.00%		8.58%

(1) If the utility's capital structure is not used, explain which capital structure is used.

(2) Should equal amounts on Schedule F-6, Column (g).

(3) Mid-point of the last authorized Return On Equity or current leverage formula if none has been established.

Must be calculated using the same methodology used in the last rate proceeding using current annual report year end amounts and cost rates.

APPROVED RETURN ON EQUITY

Current Commission Return on Equity:	<u>11.30%</u>
Commission order approving Return on Equity:	<u>2004 leverage formula</u>

APPROVED AFUDC RATE

COMPLETION ONLY REQUIRED IF AFUDC WAS CHARGED DURING YEAR

Current Commission Approved AFUDC rate:	<u>9.03%</u>
Commission order approving AFUDC rate:	<u>PSC-04-0262-PAA-WS</u>

If any utility capitalized any charge in lieu of AFUDC (such as interest only), state the basis of the charge, an explanation as to why AFUDC was not charged and the percentage capitalized.

UTILITY NAME: LAKE UTILITY SERVICES INC

SCHEDULE OF CAPITAL STRUCTURE ADJUSTMENTS
CONSISTENT WITH THE METHODOLOGY USED IN THE LAST RATE PROCEEDING

CLASS OF CAPITAL (a)	PER BOOK BALANCE (b)	NON-UTILITY ADJUSTMENTS (c)	NON-JURISDICTIONAL ADJUSTMENTS (d)	OTHER (1) ADJUSTMENTS SPECIFIC (e)	OTHER (1) ADJUSTMENTS PRO RATA (f)	CAPITAL STRUCTURE (g)
Common Equity	\$ 88,963,597	\$ 0	\$ 0	\$ 0	\$ (85,201,070)	\$ 3,762,527
Preferred Stock		0	0	0		-
Long Term Debt	112,803,215	0	0	0	(108,032,442)	4,770,773
Customer Deposits	232,295	0	0	0		232,295
Tax Credits - Zero Cost	-	0	0	0		-
Tax Credits - Weighted Cost	30,383	0	0	0		30,383
Deferred Inc. Taxes	370,971	0	0	0		370,971
Other (Explain)	-	0	0	0	-	-
Total	\$ 202,400,461	\$ 0	\$ 0	\$ 0	\$ (193,233,512)	\$ 9,166,949

(1) Explain below all adjustments made in Columns (e) and (f):

NOT APPLICABLE

UTILITY PLANT
ACCOUNTS 101 - 106

ACCT. (a)	DESCRIPTION (b)	WATER (c)	WASTEWATER (d)	OTHER THAN REPORTING SYSTEMS (e)	TOTAL (f)
101	Plant Accounts: Utility Plant In Service	\$ 18,718,424	\$ 8,326,819	\$ _____	\$ 27,045,243
102	Utility Plant Leased to Other	_____	_____	_____	-
103	Property Held for Future Use	_____	_____	_____	-
104	Utility Plant Purchased or Sold	_____	_____	_____	-
105	Construction Work in Progress	152,849	12,029	_____	164,878
106	Completed Construction Not Classified	_____	_____	_____	_____
	Total Utility Plant	\$ 18,871,273	\$ 8,338,848	\$ -	\$ 27,210,121

UTILITY PLANT ACQUISITION ADJUSTMENTS
ACCOUNTS 114 AND 115

Report each acquisition adjustment and related accumulated amortization separately.
For any acquisition adjustments approved by the Commission, include the Order Number.

ACCT. (a)	DESCRIPTION (b)	WATER (c)	WASTEWATER (d)	OTHER THAN REPORTING SYSTEMS (e)	TOTAL (f)
114	Acquisition Adjustment	\$ -	\$ -	\$ -	\$ -
	NONE	_____	_____	_____	-
		_____	_____	_____	-
		_____	_____	_____	-
		_____	_____	_____	-
	Total Plant Acquisition Adjustments	\$ -	\$ -	\$ -	\$ -
115	Accumulated Amortization Accruals charged during year	\$ -	\$ -	\$ -	\$ -
		_____	_____	_____	-
		_____	_____	_____	-
		_____	_____	_____	-
	Total Accumulated Amortization	\$ -	\$ -	\$ -	\$ -
	Net Acquisition Adjustments	\$ -	\$ -	\$ -	\$ -

ACCUMULATED DEPRECIATION (ACCT. 108) AND AMORTIZATION (ACCT. 110)

DESCRIPTION (a)	WATER (b)	WASTEWATER (c)	OTHER THAN REPORTING SYSTEMS (d)	TOTAL (e)
ACCUMULATED DEPRECIATION				
Account 108				
Balance first of year	\$ 1,585,348	\$ 800,416	\$	\$ 2,385,764
Credit during year:				
Accruals charged to:				
Account 108.1 (1)	\$ 475,924	\$ 200,237	\$	\$ 676,161
Account 108.2 (2)				-
Account 108.3 (2)				-
Other Accounts (specify):	(11,838)	-		(11,838)
Salvage				-
Other Credits (Specify):				-
Total Credits	\$ 464,086	\$ 200,237	\$ -	\$ 664,323
Debits during year:				
Book cost of plant retired	18,679	-		18,679
Cost of Removal				-
Other Debits (specify):				-
Total Debits	\$ 18,679	\$ -	\$ -	\$ 18,679
Balance end of year	\$ <u>2,030,755</u>	\$ <u>1,000,653</u>	\$ <u>-</u>	\$ <u>3,031,408</u>
ACCUMULATED AMORTIZATION				
Account 110				
Balance first of year	\$ 36,102	\$ 1,323	\$	\$ 37,425
Credit during year:				
Accruals charged to:				
Account 110.2 (2)	\$ 3,425	\$ 269	\$	\$ 3,694
Other Accounts (specify):	-	-		-
Total credits	\$ 3,425	\$ 269	\$ -	\$ 3,694
Debits during year:				
Book cost of plant retired				-
Other debits (specify):				-
Total Debits	\$ -	\$ -	\$ -	\$ -
Balance end of year	\$ <u>39,527</u>	\$ <u>1,592</u>	\$ <u>-</u>	\$ <u>41,119</u>

- (1) Account 108 for Class B utilities.
- (2) Not applicable for Class B utilities.
- (3) Account 110 for Class B utilities.

UTILITY NAME: LAKE UTILITY SERVICES INC

YEAR OF REPORT 31-Dec-04

**REGULATORY COMMISSION EXPENSE
AMORTIZATION OF RATE CASE EXPENSE (ACCOUNTS 666 AND 766)**

DESCRIPTION OF CASE (DOCKET NO.) (a)	EXPENSE INCURRED DURING YEAR (b)	CHARGED OFF DURING YEAR	
		ACCT. (d)	AMOUNT (e)
NONE	\$ _____	_____	\$ _____
_____	_____	_____	_____
_____	_____	_____	_____
Total	\$ _____	_____	\$ _____

NONUTILITY PROPERTY (ACCOUNT 121)

Report separately each item of property with a book cost of \$25,000 or more included in Account 121.
Other Items may be grouped by classes of property.

DESCRIPTION (a)	BEGINNING YEAR (b)	ADDITIONS (c)	REDUCTIONS (d)	ENDING YEAR BALANCE (e)
NONE	\$ _____	\$ _____	\$ _____	\$ _____
_____	_____	_____	_____	_____
_____	_____	_____	_____	_____
_____	_____	_____	_____	_____
Total Nonutility Property	\$ _____	\$ _____	\$ _____	\$ _____

SPECIAL DEPOSITS (ACCOUNTS 132 AND 133)

Report hereunder all special deposits carried in Accounts 132 and 133.

DESCRIPTION OF SPECIAL DEPOSITS (a)	YEAR END BOOK COST (b)
SPECIAL DEPOSITS (Account 132): <u>Electric</u>	\$ 5,560
_____	_____
_____	_____
Total Special Deposits	\$ 5,560
OTHER SPECIAL DEPOSITS (Account 133): <u>NONE</u>	\$ _____
_____	_____
_____	_____
Total Other Special Deposits	\$ -

INVESTMENTS AND SPECIAL FUNDS
ACCOUNTS 123 - 127

Report hereunder all investments and special funds carried in Accounts 123 through 127.

DESCRIPTION OF SECURITY OR SPECIAL FUND (a)	FACE OR PAR VALUE (b)	YEAR END BOOK COST (c)
INVESTMENT IN ASSOCIATED COMPANIES (Account 123): NONE <hr/> <hr/> <hr/> <hr/> <hr/> <hr/>	\$ _____ _____ _____ _____ _____ _____	\$ _____ _____ _____ _____ _____ _____
Total Investment in Associated Companies		\$ _____
UTILITY INVESTMENTS (Account 124): NONE <hr/> <hr/> <hr/> <hr/> <hr/> <hr/>	\$ _____ _____ _____ _____ _____ _____	\$ _____ _____ _____ _____ _____ _____
Total Utility Investment		\$ _____
OTHER INVESTMENTS (Account 125): NONE <hr/> <hr/> <hr/> <hr/> <hr/> <hr/>	\$ _____ _____ _____ _____ _____ _____	\$ _____ _____ _____ _____ _____ _____
Total Other Investment		\$ _____
SPECIAL FUNDS (Class A Utilities: Accounts 126 and 127; Class B Utilities: Account 127): NONE <hr/> <hr/> <hr/> <hr/> <hr/> <hr/>	_____ _____ _____ _____ _____ _____	\$ _____ _____ _____ _____ _____ _____
Total Special Funds		\$ _____

ACCOUNTS AND NOTES RECEIVABLE - NET
ACCOUNTS 141 - 144

Report hereunder all accounts and notes receivable included in Accounts 141, 142, and 144. Amounts included in
Amounts included in Accounts 142 and 144 should be listed individually.

DESCRIPTION (a)	TOTAL (b)
CUSTOMER ACCOUNTS RECEIVABLE (Account 141):	
Water	\$ 299,278
Wastewater	101,899
Other	
Total Customer Accounts Receivable	\$ 401,177
OTHER ACCOUNTS RECEIVABLE (Account 142):	
_____	\$ _____
_____	_____
_____	_____
Total Other Accounts Receivable	\$ -
NOTES RECEIVABLE (Account 144):	
_____	\$ _____
_____	_____
_____	_____
Total Notes Receivable	\$ -
Total Accounts and Notes Receivable	\$ 401,177
ACCUMULATED PROVISION FOR UNCOLLECTIBLE ACCOUNTS (Account 143)	
Balance first of year	\$ -
Add: Provision for uncollectibles for current year	\$ _____
Collection of accounts previously written off	_____
Utility Accounts	_____
Others	_____
_____	_____
_____	_____
Total Additions	\$ -
Deduct accounts written off during year:	
Utility Accounts	_____
Others	_____
_____	_____
_____	_____
Total accounts written off	\$ -
Balance end of year	\$ -
TOTAL ACCOUNTS AND NOTES RECEIVABLE - NET	\$ 401,177

UTILITY NAME: LAKE UTILITY SERVICES INC

YEAR OF REPORT 31-Dec-04

ACCOUNTS RECEIVABLE FROM ASSOCIATED COMPANIES
ACCOUNT 145

Report each account receivable from associated companies separately.

DESCRIPTION (a)	TOTAL (b)
<u>WATER SERVICE CORPORATION</u>	\$ <u>5,254,179</u>
_____	_____
_____	_____
_____	_____
_____	_____
_____	_____
_____	_____
_____	_____
_____	_____
_____	_____
_____	_____
Total	\$ <u><u>5,254,179</u></u>

NOTES RECEIVABLE FROM ASSOCIATED COMPANIES
ACCOUNT 146

Report each note receivable from associated companies separately.

DESCRIPTION (a)	INTEREST RATE (b)	TOTAL (c)
<u>NONE</u>	_____ %	\$ _____
_____	_____ %	_____
_____	_____ %	_____
_____	_____ %	_____
_____	_____ %	_____
_____	_____ %	_____
_____	_____ %	_____
_____	_____ %	_____
_____	_____ %	_____
Total		\$ <u>_____</u>

MISCELLANEOUS CURRENT AND ACCRUED ASSETS
ACCOUNT 174

DESCRIPTION - Provide itemized listing (a)	BALANCE END OF YEAR (b)
<u>NONE</u>	\$ _____
_____	_____
_____	_____
_____	_____
Total Miscellaneous Current and Accrued Liabilities	\$ <u>_____</u>

**UNAMORTIZED DEBT DISCOUNT AND EXPENSE AND PREMIUM ON DEBT
ACCOUNTS 181 AND 251**

Report the net discount and expense or premium separately for each security issue.

DESCRIPTION (a)	AMOUNT WRITTEN OFF DURING YEAR (b)	YEAR END BALANCE (c)
UNAMORTIZED DEBT DISCOUNT AND EXPENSE (Account 181): NONE	\$ _____	\$ _____
_____	_____	_____
_____	_____	_____
_____	_____	_____
Total Unamortized Debt Discount and Expense	\$ _____	\$ _____
UNAMORTIZED PREMIUM ON DEBT (Account 251):	\$ _____	\$ _____
_____	_____	_____
_____	_____	_____
_____	_____	_____
Total Unamortized Premium on Debt	\$ _____	\$ _____

**EXTRAORDINARY PROPERTY LOSSES
ACCOUNT 182**

Report each item separately.

DESCRIPTION (a)	TOTAL (b)
NONE	\$ _____
_____	_____
_____	_____
Total Extraordinary Property Losses	\$ _____

**MISCELLANEOUS DEFERRED DEBITS
ACCOUNT 186**

DESCRIPTION - Provide itemized listing (a)	AMOUNT WRITTEN OFF DURING YEAR (b)	YEAR END BALANCE (c)
DEFERRED RATE CASE EXPENSE (Class A Utilities: Account 186.1)		
<u> RATE CASE (None)</u>	\$ <u> -</u>	\$ <u> -</u>
_____	_____	_____
_____	_____	_____
_____	_____	_____
Total Deferred Rate Case Expense	\$ <u> -</u>	\$ <u> -</u>
OTHER DEFERRED DEBITS (Class A Utilities: Account 186.2):		
<u> OTHER DEFERRED MAINTENANCE</u>	\$ <u> -</u>	\$ <u> 11,491</u>
_____	_____	_____
_____	_____	_____
_____	_____	_____
_____	_____	_____
_____	_____	_____
_____	_____	_____
Total Other Deferred Debits	\$ <u> -</u>	\$ <u> 11,491</u>
REGULATORY ASSETS (Class A Utilities: Account. 186.3):		
<u> NONE</u>	\$ <u> -</u>	\$ <u> -</u>
_____	_____	_____
_____	_____	_____
_____	_____	_____
_____	_____	_____
_____	_____	_____
Total Regulatory Assets	\$ <u> -</u>	\$ <u> -</u>
TOTAL MISCELLANEOUS DEFERRED DEBITS	\$ <u> -</u>	\$ <u> 11,491</u>

CAPITAL STOCK
ACCOUNTS 201 AND 204*

DESCRIPTION (a)	RATE (b)	TOTAL (c)
COMMON STOCK		
Par or stated value per share	_____ %	\$ _____ 3
Shares authorized		_____ 100
Shares issued and outstanding		_____ 100
Total par value of stock issued	_____ %	\$ _____ 300
Dividends declared per share for year	_____ %	\$ _____ -
PREFERRED STOCK		
Par or stated value per share	_____ %	\$ _____ -
Shares authorized		_____ -
Shares issued and outstanding		_____ -
Total par value of stock issued	_____ %	\$ _____ -
Dividends declared per share for year	_____ %	\$ _____ -

* Account 204 not applicable for Class B utilities.

BONDS
ACCOUNT 221

DESCRIPTION OF OBLIGATION (INCLUDING DATE OF ISSUE AND DATE OF MATURITY) (a)	INTEREST		PRINCIPAL AMOUNT PER BALANCE SHEET (d)
	ANNUAL RATE (b)	FIXED OR VARIABLE * (c)	
NONE	_____ %	_____	\$ _____
_____	_____ %	_____	_____
_____	_____ %	_____	_____
_____	_____ %	_____	_____
_____	_____ %	_____	_____
_____	_____ %	_____	_____
_____	_____ %	_____	_____
_____	_____ %	_____	_____
_____	_____ %	_____	_____
Total			\$ _____

* For variable rate obligations, provide the basis for the rate. (i.e., prime + 2%, etc.)

STATEMENT OF RETAINED EARNINGS

1. Dividends should be shown for each class and series of capital stock. Show amounts as dividends per share.
2. Show separately the state and federal income tax effect of items shown in Account No. 439.

ACCT. NO. (a)	DESCRIPTION (b)	AMOUNTS (c)
215	Unappropriated Retained Earnings: Balance Beginning of Year	\$ 1,632,603
439	Changes to Account: Adjustments to Retained Earnings (requires Commission approval prior to use): Credits: _____	\$ _____
	Total Credits:	\$ _____
	Debits: _____	\$ _____
	Total Debits:	\$ _____
435	Balance Transferred from Income	\$ 403,046
436	Appropriations of Retained Earnings: _____	_____
	Total Appropriations of Retained Earnings	\$ _____
437	Dividends Declared: Preferred Stock Dividends Declared _____	_____
438	Common Stock Dividends Declared _____	_____
	Total Dividends Declared	\$ _____
215	Year end Balance	\$ _____
214	Appropriated Retained Earnings (state balance and purpose of each appropriated amount at year end): _____	_____
214	Total Appropriated Retained Earnings	\$ _____
Total Retained Earnings		\$ <u>2,035,649</u>
Notes to Statement of Retained Earnings:		

UTILITY NAME: LAKE UTILITY SERVICES INC

YEAR OF REPORT 31-Dec-04

**ADVANCES FROM ASSOCIATED COMPANIES
ACCOUNT 223**

Report each advance separately.

DESCRIPTION (a)	TOTAL (b)
NONE	\$ -
Total	\$ -

**OTHER LONG-TERM DEBT
ACCOUNT 224**

DESCRIPTION OF OBLIGATION (INCLUDING DATE OF ISSUE AND DATE OF MATURITY) (a)	INTEREST		PRINCIPAL AMOUNT PER BALANCE SHEET (d)
	ANNUAL RATE (b)	FIXED OR VARIABLE * (c)	
NONE	%		\$ -
	%		
	%		
	%		
	%		
	%		
	%		
	%		
	%		
	%		
	%		
	%		
	%		
	%		
	%		
	%		
	%		
	%		
	%		
	%		
	%		
	%		
Total			\$ -

* For variable rate obligations, provide the basis for the rate. (i.e.. prime + 2%, etc.)

UTILITY NAME: LAKE UTILITY SERVICES INC

YEAR OF REPORT 31-Dec-04

**NOTES PAYABLE
ACCOUNTS 232 AND 234**

DESCRIPTION OF OBLIGATION (INCLUDING DATE OF ISSUE AND DATE OF MATURITY) (a)	INTEREST		PRINCIPAL AMOUNT PER BALANCE SHEET (d)
	ANNUAL RATE (b)	FIXED OR VARIABLE * (c)	
NOTES PAYABLE (Account 232): NONE	_____ %		\$ _____
_____	_____ %		_____
_____	_____ %		_____
_____	_____ %		_____
_____	_____ %		_____
_____	_____ %		_____
_____	_____ %		_____
_____	_____ %		_____
_____	_____ %		_____
_____	_____ %		_____
Total Account 232			\$ _____
NOTES PAYABLE TO ASSOC. COMPANIES (Account 234): NONE	_____ %		\$ _____
_____	_____ %		_____
_____	_____ %		_____
_____	_____ %		_____
_____	_____ %		_____
_____	_____ %		_____
_____	_____ %		_____
_____	_____ %		_____
_____	_____ %		_____
Total Account 234			\$ _____

* For variable rate obligations, provide the basis for the rate. (i.e.. prime + 2%, etc.)

**ACCOUNTS PAYABLE TO ASSOCIATED COMPANIES
ACCOUNT 233**

Report each account payable separately.

DESCRIPTION (a)	TOTAL (b)
WATER SERVICE CORPORATION (NONE)	\$ -
_____	_____
_____	_____
_____	_____
_____	_____
_____	_____
_____	_____
Total	\$ _____

ACCRUED INTEREST AND EXPENSE
ACCOUNTS 237 AND 427

DESCRIPTION OF DEBIT (a)	BALANCE BEGINNING OF YEAR (b)	INTEREST ACCRUED DURING YEAR		INTEREST PAID DURING YEAR (e)	BALANCE END OF YEAR (f)
		ACCT. DEBIT (c)	AMOUNT (d)		
ACCOUNT NO. 237.1 - Accrued Interest on Long Term Debt	\$ _____		\$ _____	\$ _____	\$ _____
UTILITIES INC INTERCOMPANY INTEREST	-		346,181	346,181	-
Total Account 237.1	\$ _____		\$ 346,181	\$ 346,181	\$ _____
ACCOUNT NO. 237.2 - Accrued Interest on Other Liabilities					
Customer Deposits	\$ 16,212	427	(6,234)	\$ _____	\$ 9,978
MISC ITEMS					
Total Account 237.2	\$ 16,212		\$ (6,234)	\$ _____	\$ 9,978
Total Account 237 (1)	\$ 16,212		\$ 339,947	\$ 346,181	\$ 9,978
INTEREST EXPENSED:					
Total accrual Account 237		237	\$ 346,181		
Less Capitalized Interest Portion of AFUDC:			-		
Net Interest Expensed to Account No. 427 (2)			\$ 346,181		

(1) Must agree to F-2 (a), Beginning and Ending Balance of Accrued Interest.

(2) Must agree to F-3 (c), Current Year Interest Expense

UTILITY NAME: LAKE UTILITY SERVICES INC

MISCELLANEOUS CURRENT AND ACCRUED LIABILITIES
ACCOUNT 241

DESCRIPTION - Provide itemized listing (a)	BALANCE END OF YEAR (b)
NONE	\$ _____
Total Miscellaneous Current and Accrued Liabilities	\$ _____

ADVANCES FOR CONSTRUCTION
ACCOUNT 252

NAME OF PAYOR * (a)	BALANCE BEGINNING OF YEAR (b)	DEBITS		CREDITS (e)	BALANCE END OF YEAR (f)
		ACCT. DEBIT (c)	AMOUNT (d)		
Siena Home Corp	\$ 38,400			\$ _____	\$ 38,400
Total	\$ _____			\$ _____	\$ 38,400

* Report advances separately by reporting group, designating water or wastewater in column (a).

UTILITY NAME: LAKE UTILITY SERVICES INC

YEAR OF REPORT 31-Dec-04

**OTHER DEFERRED CREDITS
ACCOUNT 253**

DESCRIPTION - Provide itemized listing (a)	AMOUNT WRITTEN OFF DURING YEAR (b)	YEAR END BALANCE (c)
REGULATORY LIABILITIES (Class A Utilities: Account 253.1): NONE	\$ _____	\$ _____
_____	_____	_____
_____	_____	_____
_____	_____	_____
Total Regulatory Liabilities	\$ _____	\$ _____
OTHER DEFERRED LIABILITIES (Class A Utilities: Account 253.2): _____	\$ _____	\$ _____
_____	_____	_____
_____	_____	_____
_____	_____	_____
_____	_____	_____
_____	_____	_____
_____	_____	_____
Total Other Deferred Liabilities	\$ _____	\$ _____
TOTAL OTHER DEFERRED CREDITS	\$ _____	\$ _____

**CONTRIBUTIONS IN AID OF CONSTRUCTION
ACCOUNT 271**

DESCRIPTION (a)	WATER (W-7) (b)	WASTEWATER (S-7) (c)	W & WW OTHER THAN SYSTEM REPORTING (d)	TOTAL (e)
Balance first of year	\$ <u>9,798,825</u>	\$ <u>3,235,301</u>	\$ <u>-</u>	\$ <u>13,034,126</u>
Add credits during year:	\$ <u>2,288,115</u>	\$ <u>1,722,225</u>	\$ <u>-</u>	\$ <u>4,010,340</u>
Less debit charged during the year	\$ <u>-</u>	\$ <u>-</u>	\$ <u>-</u>	\$ <u>-</u>
Total Contribution In Aid of Construction	\$ <u><u>12,086,940</u></u>	\$ <u><u>4,957,526</u></u>	\$ <u><u>-</u></u>	\$ <u><u>17,044,466</u></u>

**ACCUMULATED AMORTIZATION OF CONTRIBUTIONS IN AID OF CONSTRUCTION
ACCOUNT 272**

DESCRIPTION (a)	WATER (W-8(a)) (b)	WASTEWATER (S-8(a)) (c)	W & WW OTHER THAN SYSTEM REPORTING (d)	TOTAL (e)
Balance first of year	\$ <u>1,221,358</u>	\$ <u>413,621</u>	\$ <u>-</u>	\$ <u>1,634,979</u>
Debits during the year:	\$ <u>259,089</u>	\$ <u>114,610</u>	\$ <u>-</u>	\$ <u>373,699</u>
Credits during the year	\$ <u>-</u>	\$ <u>-</u>	\$ <u>-</u>	\$ <u>-</u>
Total Accumulated Amortization of Contributions In Aid of Construction	\$ <u><u>1,480,447</u></u>	\$ <u><u>528,231</u></u>	\$ <u><u>-</u></u>	\$ <u><u>2,008,678</u></u>

UTILITY NAME: **LAKE UTILITY SERVICES INC**

YEAR OF REPORT 31-Dec-04

**RECONCILIATION OF REPORTED NET INCOME WITH TAXABLE
INCOME FOR FEDERAL INCOME TAXES (UTILITY OPERATIONS)**

1. The reconciliation should include the same detail as furnished on Schedule M-1 of the federal tax return for the year. The reconciliation shall be submitted even though there is no taxable income for the year. Descriptions should clearly indicate the nature of each reconciling amount and show the computations of all tax accruals.
2. If the utility is a member of a group which files a consolidated federal tax return, reconcile reported net income with taxable net income as if a separate return were to be filed, indicating intercompany amounts to be eliminated in such consolidated return. State names of group members, tax assigned to each group member, and basis of allocation, assignments or sharing of the consolidated tax among the group members.

DESCRIPTION (a)	REF. NO. (b)	AMOUNT (c)
Net income for the year	F-3(c)	\$ <u>403,046</u>
Reconciling items for the year:		
Taxable income not reported on books:		
Tap Fees		1,132,673
Deductions recorded on books not deducted for return:		
Net Change - Deferred Maintenance		9,630
		-
Excess Tax Depreciation over Book Depreciation		(637,296)
Current FIT		341,996
Deferred FIT		(130,242)
Deferred SIT		(58,558)
Income recorded on books not included in return:		
Interest During Construction		(52,196)
Deduction on return not charged against book income:		
Organization Exp		(3,183)
Federal tax net income		\$ <u><u>1,005,870</u></u>

Computation of tax :

1,005,870
34%
341,996

**WATER
OPERATION
SECTION**

UTILITY NAME:

LAKE UTILITY SERVICES INC

YEAR OF REPORT
31-Dec-04

WATER LISTING OF SYSTEM GROUPS

List below the name of each reporting system and its certificate number. Those systems which have been consolidated under the same tariff should be assigned a group number. Each individual system which has not been consolidated should be assigned its own group number.

The water financial schedules (W-2 through W-10) should be filed for the group in total.

The water engineering schedules (W-11 through W-15) must be filed for each system in the group.

All of the following water pages (W-2 through W-15) should be completed for each group and arranged by group number.

SYSTEM NAME / COUNTY	CERTIFICATE NUMBER	GROUP NUMBER
LAKE GROVES / LAKE	534W	
AMBER HILL/LAKE	496W	
CLERMONT I/LAKE	496W	
CLERMONT II/LAKE	496W	
CRESCENT BAY/LAKE	496W	
CRESCENT WEST/LAKE	496W	
HIGHLAND POINT/LAKE	496W	
LAKE CRESCENT HILLS/LAKE	496W	
LAKE RIDGE CLUB/LAKE	496W	
ORANGES/LAKE	496W	
PRESTON COVE/LAKE	496W	
SOUTH CLERMONT (EDB)/LAKE	496W	
VISTAS/LAKE	496W	
LAKE SAUNDERS/LAKE	496 W	
FOUR LAKES/LAKE	496 W	

UTILITY NAME: LAKE UTILITY SERVICES INC

SYSTEM NAME / COUNTY : Lake County

SCHEDULE OF YEAR END WATER RATE BASE

ACCT. NO. (a)	ACCOUNT NAME (b)	REFERENCE PAGE (c)	WATER UTILITY (d)
101	Utility Plant In Service	W-4(b)	\$ 18,718,424
	Less:		
	Nonused and Useful Plant (1)		
108	Accumulated Depreciation	W-6(b)	2,030,755
110	Accumulated Amortization	F-8	39,527
271	Contributions In Aid of Construction	W-7	12,086,940
252	Advances for Construction	F-20	38,400
Subtotal			\$ 4,522,802
272	Add: Accumulated Amortization of Contributions in Aid of Construction	W-8(a)	\$ 1,480,447
Subtotal			\$ 6,003,249
114	Plus or Minus: Acquisition Adjustments (2)	F-7	-
115	Accumulated Amortization of Acquisition Adjustments (2)	F-7	-
	Working Capital Allowance (3)		109,424
	Other (Specify):		
WATER RATE BASE			\$ 6,112,673
WATER OPERATING INCOME		W-3	\$ 485,766
RN (Water Operating Income / Water Rate Base)			<u>7.95%</u>

NOTES (1) Estimate based on the methodology used in the last rate proceeding.

(2) Include only those Acquisition Adjustments that have been approved by the Commission.

(3) Calculation consistent with last rate proceeding.

In absence of a rate proceeding, Class A utilities will use the Balance Sheet Method and Class B Utilities will use the One-eighth Operating and Maintenance Expense Method.

UTILITY NAME: LAKE UTILITY SERVICES INC

YEAR OF REPORT 31-Dec-04

SYSTEM NAME / COUNTY : Lake County

WATER OPERATING STATEMENT

ACCT. NO. (a)	ACCOUNT NAME (b)	REFERENCE PAGE (c)	CURRENT YEAR (d)
	UTILITY OPERATING INCOME		
400	Operating Revenues	W-9	\$ 2,075,793
469	Less: Guaranteed Revenue and AFPI	W-9	-
	Net Operating Revenues		\$ 2,075,793
401	Operating Expenses	W-10(a)	\$ 875,393
403	Depreciation Expense	W-6(a)	475,924
	Less: Amortization of CIAC	W-8(a)	(259,089)
	Net Depreciation Expense		\$ 216,835
406	Amortization of Utility Plant Acquisition Adjustment	F-7	-
407	Amortization Expense (Other than CIAC)	F-8	3,425
408.10	Taxes Other Than Income Utility Regulatory Assessment Fee		101,623
408.11	Property Taxes		211,505
408.12	Payroll Taxes		26,460
408.13	Other Taxes and Licenses		-
408	Total Taxes Other Than Income		\$ 339,588
409.1	Income Taxes		292,554
410.10	Deferred Federal Income Taxes		(95,038)
410.11	Deferred State Income Taxes		(42,730)
411.10	Provision for Deferred Income Taxes - Credit		-
412.10	Investment Tax Credits Deferred to Future Periods		-
412.11	Investment Tax Credits Restored to Operating Income		-
	Utility Operating Expenses		\$ 1,590,027
	Utility Operating Income		\$ 485,766
469	Add Back: Guaranteed Revenue (and AFPI)	W-9	\$ -
413	Income From Utility Plant Leased to Others		-
414	Gains (losses) From Disposition of Utility Property		-
420	Allowance for Funds Used During Construction		51,160
	Total Utility Operating Income		\$ 536,926

UTILITY NAME: LAKE UTILITY SERVICES INC

SYSTEM NAME / COUNTY : Lake County

WATER UTILITY PLANT ACCOUNTS

ACCT. NO. (a)	ACCOUNT NAME (b)	PREVIOUS YEAR (c)	ADDITIONS (d)	RETIREMENTS (e)	CURRENT YEAR (f)
301	Organization	\$ 124,579	-	-	\$ 124,579
302	Franchises	-	-	-	-
303	Land and Land Rights	449,880	9,875	-	459,755
304	Structures and Improvements	1,028,779	20,394	-	1,049,173
305	Collecting and Impounding Reservoirs	-	-	-	-
306	Lake, River and Other Intakes	-	-	-	-
307	Wells and Springs	895,031	327,626	-	1,222,657
308	Infiltration Galleries and Tunnels	-	-	-	-
309	Supply Mains	-	-	-	-
310	Power Generation Equipment	-	-	-	-
311	Pumping Equipment	1,706,299	28,671	4,346	1,730,624
320	Water Treatment Equipment	175,225	75,088	332	249,981
330	Distribution Reservoirs and Standpipes	1,501,553	80,624	1,220	1,580,957
331	Transmission and Distribution Mains	8,261,364	1,378,347	4,166	9,635,545
333	Services	1,127,995	302,681	3,182	1,427,494
334	Meters and Meter Installations	246,598	52,042	-	298,640
335	Hydrants	365,405	142,257	-	507,662
336	Backflow Prevention Devices	-	-	-	-
339	Other Plant Miscellaneous Equipment	-	-	-	-
340	Office Furniture and Equipment	23,893	-	-	23,893
341	Transportation Equipment	131,142	57,383	5,433	183,092
342	Stores Equipment	-	-	-	-
343	Tools, Shop and Garage Equipment	47,142	13,897	-	61,039
344	Laboratory Equipment	7,275	3,413	-	10,688
345	Power Operated Equipment	-	-	-	-
346	Communication Equipment	3,013	-	-	3,013
347	Miscellaneous Equipment	-	-	-	-
348	Other Tangible Plant	136,277	13,355	-	149,632
TOTAL WATER PLANT		\$ 16,231,450	\$ 2,505,653	\$ 18,679	\$ 18,718,424

NOTE: Any adjustments made to reclassify property from one account to another must be footnoted.

W-4(a)

GROUP

UTILITY NAME: LAKE UTILITY SERVICES INC

SYSTEM NAME / COUNTY Lake County

WATER UTILITY PLANT MATRIX

ACCT. NO.	ACCOUNT NAME (b)	CURRENT YEAR (c)	.1 INTANGIBLE PLANT (d)	.2 SOURCE OF SUPPLY AND PUMPING PLANT (e)	.3 WATER TREATMENT PLANT (f)	.4 TRANSMISSION AND DISTRIBUTION PLANT (g)	.5 GENERAL PLANT (h)
301	Organization	\$ 124,579	\$ 124,579				
302	Franchises	-	-				
303	Land and Land Rights	459,755		459,755			
304	Structures and Improvements	1,049,173		1,049,173			
305	Collecting and Impounding Reservoirs	-					
306	Lake, River and Other Intakes	-					
307	Wells and Springs	1,222,657		1,222,657			
308	Infiltration Galleries and Tunnels	-					
309	Supply Mains	-					
310	Power Generation Equipment	-					
311	Pumping Equipment	1,730,624		1,730,624			
320	Water Treatment Equipment	249,981			249,981		
330	Distribution Reservoirs and Standpipes	1,580,957				1,580,957	
331	Transmission and Distribution Mains	9,635,545				9,635,545	
333	Services	1,427,494				1,427,494	
334	Meters and Meter Installations	298,640				298,640	
335	Hydrants	507,662				507,662	
336	Backflow Prevention Devices	-					
339	Other Plant Miscellaneous Equipment	-					
340	Office Furniture and Equipment	23,893					23,893
341	Transportation Equipment	183,092					183,092
342	Stores Equipment	-					
343	Tools, Shop and Garage Equipment	61,039					61,039
344	Laboratory Equipment	10,688					10,688
345	Power Operated Equipment	-					
346	Communication Equipment	3,013					3,013
347	Miscellaneous Equipment	-					
348	Other Tangible Plant	149,632					149,632
	TOTAL WATER PLANT	\$ 18,718,424	\$ 124,579	\$ 4,462,209	\$ 249,981	\$ 13,450,298	\$ 431,357

UTILITY NAME: LAKE UTILITY SERVICES INC

YEAR OF REPORT 31-Dec-04

SYSTEM NAME / COUNTY : Lake County

BASIS FOR WATER DEPRECIATION CHARGES

ACCT. NO. (a)	ACCOUNT NAME (b)	AVERAGE SERVICE LIFE IN YEARS (c)	AVERAGE NET SALVAGE IN PERCENT (d)	DEPRECIATION RATE APPLIED IN PERCENT (100% - d) / c (e)
304	Structures and Improvements			3.03%
305	Collecting and Impounding Reservoirs			
306	Lake, River and Other Intakes			
307	Wells and Springs			3.33%
308	Infiltration Galleries and Tunnels			
309	Supply Mains			
310	Power Generation Equipment			
311	Pumping Equipment			5.00%
320	Water Treatment Equipment			4.55%
330	Distribution Reservoirs and Standpipes			2.70%
331	Transmission and Distribution Mains			2.33%
333	Services			2.50%
334	Meters and Meter Installations			5.00%
335	Hydrants			2.22%
336	Backflow Prevention Devices			
339	Other Plant Miscellaneous Equipment			
340	Office Furniture and Equipment			
341	Transportation Equipment			
342	Stores Equipment			
343	Tools, Shop and Garage Equipment			6.25%
344	Laboratory Equipment			6.67%
345	Power Operated Equipment			
346	Communication Equipment			10.00%
347	Miscellaneous Equipment			
348	Other Tangible Plant			
Water Plant Composite Depreciation Rate *				

* If depreciation rates prescribed by this Commission are on a total composite basis, entries should be made on this line only.

YEAR OF REPORT
31-Dec-04

UTILITY NAME: LAKE UTILITY SERVICES INC

SYSTEM NAME / COUNTY : Lake County

ANALYSIS OF ENTRIES IN WATER ACCUMULATED DEPRECIATION					
ACCT. NO. (a)	ACCOUNT NAME (b)	BALANCE AT BEGINNING OF YEAR (c)	ACCRUALS (d)	OTHER CREDITS * (e)	TOTAL CREDITS (d + e) (f)
304	Structures and Improvements	\$ 103,159	\$ 31,959	-	\$ 31,959
305	Collecting and Impounding Reservoirs			-	-
306	Lake, River and Other Intakes			-	-
307	Wells and Springs	184,353	29,857	-	29,857
308	Infiltration Galleries and Tunnels			-	-
309	Supply Mains			-	-
310	Power Generation Equipment			-	-
311	Pumping Equipment	24,887	22,383	-	22,383
320	Water Treatment Equipment	46,835	9,289	-	9,289
330	Distribution Reservoirs and Standpipes	110,937	75,052	-	75,052
331	Transmission and Distribution Mains	781,142	199,412	-	199,412
333	Services	129,214	30,453	-	30,453
334	Meters and Meter Installations	59,102	12,661	-	12,661
335	Hydrants	23,461	9,225	-	9,225
336	Backflow Prevention Devices			-	-
339	Other Plant Miscellaneous Equipment			-	-
340	Office Furniture and Equipment	1,579	3,710	(3,160)	550
341	Transportation Equipment	72,720	34,387	-	34,387
342	Stores Equipment			-	-
343	Tools, Shop and Garage Equipment	10,157	4,474	(1,288)	3,186
344	Laboratory Equipment	2,434	568	(267)	301
345	Power Operated Equipment			-	-
346	Communication Equipment	(1,244)	1,173	(630)	543
347	Miscellaneous Equipment			-	-
348	Other Tangible Plant	36,612	11,321	(6,493)	4,828
TOTAL WATER ACCUMULATED DEPRECIATION		\$ 1,585,348	\$ 475,924	\$ (11,838)	\$ 464,086

* Specify nature of transaction
Use () to denote reversal entries.

OTHER CREDITS column (E) * are due to allocation of parent company plant

W-6(a)
GROUP _____

YEAR OF REPORT
31-Dec-04

UTILITY NAME: LAKE UTILITY SERVICES INC

SYSTEM NAME / COUNTY : Lake County

ANALYSIS OF ENTRIES IN WATER ACCUMULATED DEPRECIATION (CONT'D)

ACCT. NO.	ACCOUNT NAME	PLANT RETIRED (g)	SALVAGE AND INSURANCE (h)	COST OF REMOVAL AND OTHER CHARGES (i)	TOTAL CHARGES (g-h+i) (j)	BALANCE AT END OF YEAR (c+f-k) (l)
304	Structures and Improvements	\$ -	\$ -	\$ -	\$ -	\$ 135,118
305	Collecting and Impounding Reservoirs	-	-	-	-	-
306	Lake, River and Other Intakes	-	-	-	-	-
307	Wells and Springs	-	-	-	-	214,210
308	Infiltration Galleries and Tunnels	-	-	-	-	-
309	Supply Mains	-	-	-	-	-
310	Power Generation Equipment	-	-	-	-	-
311	Pumping Equipment	4,346	-	-	4,346	42,924
320	Water Treatment Equipment	332	-	-	332	55,792
330	Distribution Reservoirs and Standpipes	1,220	-	-	1,220	184,769
331	Transmission and Distribution Mains	4,166	-	-	4,166	976,388
333	Services	3,182	-	-	3,182	156,485
334	Meters and Meter Installations	-	-	-	-	71,763
335	Hydrants	-	-	-	-	32,686
336	Backflow Prevention Devices	-	-	-	-	-
339	Other Plant Miscellaneous Equipment	-	-	-	-	-
340	Office Furniture and Equipment	-	-	-	-	2,129
341	Transportation Equipment	5,433	-	-	5,433	101,674
342	Stores Equipment	-	-	-	-	-
343	Tools, Shop and Garage Equipment	-	-	-	-	13,343
344	Laboratory Equipment	-	-	-	-	2,735
345	Power Operated Equipment	-	-	-	-	-
346	Communication Equipment	-	-	-	-	(701)
347	Miscellaneous Equipment	-	-	-	-	-
348	Other Tangible Plant	-	-	-	-	41,440
TOTAL WATER ACCUMULATED DEPRECIATION		\$ 18,679	\$ -	\$ -	\$ 18,679	\$ 2,030,755

W-6(b)
GROUP

UTILITY NAME: LAKE UTILITY SERVICES INC

YEAR OF REPORT
31-Dec-04

SYSTEM NAME / COUNTY : Lake County

**CONTRIBUTIONS IN AID OF CONSTRUCTION
ACCOUNT 271**

DESCRIPTION (a)	REFERENCE (b)	WATER (c)
Balance first of year		\$ <u>9,798,825</u>
Add credits during year:		
Contributions received from Capacity, Main Extension and Customer Connection Charges	W-8(a)	\$ <u>973,647</u>
Contributions received from Developer or Contractor Agreements in cash or property	W-8(b)	<u>1,314,475</u>
Total Credits		\$ <u>2,288,122</u>
Less debits charged during the year (All debits charged during the year must be explained below)		\$ <u>7</u>
Total Contributions In Aid of Construction		\$ <u>12,086,940</u>

If any prepaid CIAC has been collected, provide a supporting schedule showing how the amount is determined.

Explain all debits charged to Account 271 during the year below:

Adjustment rounding

UTILITY NAME: LAKE UTILITY SERVICES INC

YEAR OF REPORT 31-Dec-04

SYSTEM NAME / COUNTY : Lake County

WATER CIAC SCHEDULE "A"

ADDITIONS TO CONTRIBUTIONS IN AID OF CONSTRUCTION RECEIVED FROM CAPACITY,
 MAIN EXTENSION AND CUSTOMER CONNECTION CHARGES RECEIVED DURING THE YEAR

DESCRIPTION OF CHARGE (a)	NUMBER OF CONNECTIONS (b)	CHARGE PER CONNECTION (c)	AMOUNT (d)
WATER CONNECTIONS FEES	417	\$ 67	\$ 27,939
WATER CONNECTIONS FEES	304	707	214,928
WATER CONNECTIONS FEES	1,109	540	598,860
WATER CONNECTIONS FEES	876	150	131,400
WATER CONNECTIONS FEES	1	270	270
WATER CONNECTIONS FEES	1	250	250
WATER CONNECTIONS FEES			-
WATER CONNECTIONS FEES			-
Total Credits			\$ <u>973,647</u>

**ACCUMULATED AMORTIZATION OF WATER
 CONTRIBUTIONS IN AID OF CONSTRUCTION**

DESCRIPTION (a)	WATER (b)
Balance first of year	\$ 1,221,358
Debits during the year:	
Accruals charged to Account 272	\$ 259,089
Other debits (specify) :	
_____	_____
_____	_____
Total debits	\$ 259,089
Credits during the year (specify) :	
_____	\$ _____
_____	_____
Total credits	\$ -
Balance end of year	\$ <u>1,480,447</u>

UTILITY NAME: LAKE UTILITY SERVICES INC

YEAR OF REPORT
31-Dec-04

SYSTEM NAME / COUNTY : Lake County

WATER CIAC SCHEDULE "B"
ADDITIONS TO CONTRIBUTIONS IN AID OF CONSTRUCTION
RECEIVED FROM ALL DEVELOPERS OR CONTRACTORS AGREEMENTS
WHICH CASH OR PROPERTY WAS RECEIVED DURING THE YEAR

DESCRIPTION (a)	INDICATE CASH OR PROPERTY (b)	AMOUNT (c)
Weston Hills III Ph B		\$ 107,050
Trdds Landing		332,785
Orangetree Ph 4		137,848
Mission Pk Ph 3		40,642
Tradds Landing Ph 2		112,915
Orangetree Ph 5		74,159
Vista Pines		48,250
Spring Valley Ph 7		26,758
Shores Lk Clair		30,500
Regal Ridge		41,700
Martins Landing		25,536
Legends Ph V		56,380
Legends Bridgestone		73,142
Celebration Praise Ph 1		121,317
Bent Tree Ph 2		85,493
Total Credits		\$ 1,314,475

Reconciliation of Revenue to
Regulatory Assessment Fee Revenue
Water Operations

UTILITY NAME: LAKE UTILITY SERVICES INC

YEAR OF REPORT 31-Dec-04

(A)	(B)	(C)	(D)
Accounts	Gross Water Revenues per Sch W-9	Gross Water Revenues per RAF Return	Difference (B)-(C)
Gross Revenues:			-
Unmetered Water Revenues			-
Total Metered Sales	2,075,793	2,075,793	-
Total Fire Protection Revenue			-
Other Sales to Public Authorities			-
Sales to Irrigation Customers			-
Sales for Resale			-
Interdepartmental Sales			-
Total Other Water Revenue			-
Total Water Operating Revenue	2,075,793	2,075,793	-
Less: Expense for Purchased Water from FPSC Regulated Utility			-
Net Water Operating Revenues	2,075,793	2,075,793	-

UTILITY NAME: LAKE UTILITY SERVICES INC

YEAR OF REPORT 31-Dec-04

SYSTEM NAME / COUNTY : Lake County

WATER OPERATING REVENUE

ACCT. NO. (a)	DESCRIPTION (b)	BEGINNING YEAR NO. CUSTOMERS * (c)	YEAR END NUMBER OF CUSTOMERS (d)	AMOUNT (e)
460	Water Sales: Unmetered Water Revenue			\$
461.1	Metered Water Revenue: Sales to Residential Customers	6,779	7,365	2,031,911
461.2	Sales to Commercial Customers			
461.3	Sales to Industrial Customers			
461.4	Sales to Public Authorities			
461.5	Sales Multiple Family Dwellings			
Total Metered Sales		6,779	7,365	\$ 2,031,911
462.1	Fire Protection Revenue: Public Fire Protection			
462.2	Private Fire Protection			
Total Fire Protection Revenue				\$
464	Other Sales To Public Authorities			
465	Sales To Irrigation Customers			
466	Sales For Resale			
467	Interdepartmental Sales			
Total Water Sales		6,779	7,365	\$ 2,031,911
469	Other Water Revenues: Guaranteed Revenues (Including Allowance for Funds Prudently Invested or AFPI)			\$
470	Forfeited Discounts			
471	Miscellaneous Service Revenues			43,882
472	Rents From Water Property			
473	Interdepartmental Rents			
474	Other Water Revenues			
Total Other Water Revenues				\$ 43,882
Total Water Operating Revenues				\$ 2,075,793

* Customer is defined by Rule 25-30.210(1), Florida Administrative Code.

UTILITY NAME: LAKE UTILITY SERVICES INC

YEAR OF REPORT 31-Dec-04

SYSTEM NAME / COUNTY : Lake County

WATER UTILITY EXPENSE ACCOUNTS

ACCT. NO. (a)	ACCOUNT NAME (b)	CURRENT YEAR (c)	.1 SOURCE OF SUPPLY AND EXPENSES - OPERATIONS (d)	.2 SOURCE OF SUPPLY AND EXPENSES - MAINTENANCE (e)
601	Salaries and Wages - Employees	\$ 246,311	\$ 54,188	\$ 14,779
603	Salaries and Wages - Officers, Directors and Majority Stockholders			
604	Employee Pensions and Benefits	96,163	21,156	5,770
610	Purchased Water			
615	Purchased Power	176,547		
616	Fuel for Power Purchased			
618	Chemicals	26,205	26,205	
620	Materials and Supplies	122,196	48,878	12,220
631	Contractual Services-Engineering			
632	Contractual Services - Accounting	7,188		
633	Contractual Services - Legal	3,257		
634	Contractual Services - Mgt. Fees			
635	Contractual Services - Testing			
636	Contractual Services - Other	8,578		
641	Rental of Building/Real Property			
642	Rental of Equipment			
650	Transportation Expenses	34,425	7,574	2,066
656	Insurance - Vehicle			
657	Insurance - General Liability			
658	Insurance - Workman's Comp.			
659	Insurance - Other	35,367	7,781	2,122
660	Advertising Expense			
666	Regulatory Commission Expenses - Amortization of Rate Case Expense	-		
667	Regulatory Commission Exp.-Other			
668	Water Resource Conservation Exp.			
670	Bad Debt Expense	7,344		
675	Miscellaneous Expenses	111,812		
Total Water Utility Expenses		\$ 875,393	\$ 165,782	\$ 36,957

UTILITY NAME:

LAKE UTILITY SERVICES INC

YEAR OF REPORT 31-Dec-04

SYSTEM NAME / COUNTY :

Lake County

WATER EXPENSE ACCOUNT MATRIX					
.3 WATER TREATMENT EXPENSES - OPERATIONS (f)	.4 WATER TREATMENT EXPENSES - MAINTENANCE (g)	.5 TRANSMISSION & DISTRIBUTION EXPENSES - OPERATIONS (h)	.6 TRANSMISSION & DISTRIBUTION EXPENSES - MAINTENANCE (i)	.7 CUSTOMER ACCOUNTS EXPENSE (j)	.8 ADMIN. & GENERAL EXPENSES (k)
\$ <u>54,188</u>	\$ <u>14,779</u>	\$ <u>86,209</u>	\$ <u>22,168</u>	\$ _____	\$ _____
<u>21,156</u>	<u>5,770</u>	<u>33,657</u>	<u>8,654</u>	_____	_____
<u>176,547</u>	_____	_____	_____	_____	_____
_____	_____	_____	_____	_____	_____
_____	_____	<u>51,322</u>	<u>9,776</u>	_____	_____
_____	_____	<u>0</u>	_____	_____	<u>7,188</u>
_____	_____	_____	_____	_____	<u>3,257</u>
_____	_____	_____	_____	_____	_____
_____	_____	_____	_____	<u>4,289</u>	<u>4,289</u>
<u>7,574</u>	<u>2,066</u>	<u>12,049</u>	<u>3,096</u>	_____	_____
_____	_____	_____	_____	_____	_____
<u>7,781</u>	<u>2,122</u>	<u>12,378</u>	<u>3,183</u>	_____	_____
_____	_____	_____	_____	_____	_____
_____	_____	_____	_____	_____	<u>0</u>
_____	_____	_____	_____	_____	_____
_____	_____	_____	_____	<u>7,344</u>	_____
_____	_____	_____	_____	<u>55,906</u>	<u>55,906</u>
\$ <u>267,246</u>	\$ <u>24,737</u>	\$ <u>195,615</u>	\$ <u>46,877</u>	\$ <u>67,539</u>	\$ <u>70,640</u>

UTILITY NAME: LAKE UTILITY SERVICES, INC.

YEAR OF REPORT 31-Dec-04

SYSTEM NAME / COUNTY : LAKE UTILITY SERVICES, INC. INTERCONNECTED SYSTEMS
COMBINED

PUMPING AND PURCHASED WATER STATISTICS

MONTH (a)	WATER PURCHASED FOR RESALE (Omit 000's) (b)	FINISHED WATER PUMPED FROM WELLS (Omit 000's) (c)	WATER USED FOR LINE FLUSHING, FIGHTING FIRES, ETC. (d)	TOTAL WATER PUMPED AND PURCHASED (Omit 000's) [(b)+(c)-(d)] (e)	*WATER SOLD TO CUSTOMERS (Omit 000's) (f)
January		118.213	0.035	118.178	178.366
February		105.012	0.270	104.742	63.344
March		144.573	0.034	144.539	116.128
April		175.609	0.034	175.575	101.001
May		197.826	0.009	197.817	160.242
June		142.936	0.006	142.930	147.263
July		154.786	0.009	154.777	218.162
August		114.649	0.014	114.635	73.166
September		102.604	0.079	102.525	122.494
October		155.933	0.020	155.913	95.398
November		165.041	0.176	164.865	128.067
December		148.708	0.093	148.615	130.187
Total for Year		1725.890	0.779	1725.111	1533.818

*Reflects final accounts, adjustments, etc. end of year billing summary
 If water is purchased for resale, indicate the following:
 Vendor None
 Point of delivery _____
 If water is sold to other water utilities for redistribution, list names of such utilities below:
 NOTE: Above figures include Amber Hill, Clermont I, Clermont II, Crescent Bay, Crescent West, Highland Point, Lake Crescent Hills, Lake Groves Lake Ridge Club, Oranges, Preston Cove, South Clermont, and the Vistas plants.
 Above systems are all interconnected and all are owned by Lake Utility Services, Inc.
 Four Lakes and Lake Saunders are not interconnected with the above systems.

List for each source of supply:	CAPACITY OF WELL	GALLONS PER DAY FROM SOURCE	TYPE OF SOURCE
Well #1 (Amber Hill)	550 gpm	792,000	Upper Floridan Aquifer
Well #1 (Clermont I)	60 gpm	86,000	Upper Floridan Aquifer
Well #2 (Clermont I)	110 gpm	158,000	Upper Floridan Aquifer
Well #1 (Clermont II)	44 gpm	63,000	Upper Floridan Aquifer
CONTINUED ON NEXT PAGE			

List for each source of supply:	CAPACITY OF WELL	GALLONS PER DAY FROM SOURCE	TYPE OF SOURCE
Well #2 (Clermont II)	55 gpm	79,000	Upper Floridan Aquifer
Well #1 (Crescent Bay)	700 gpm	1,008,000	Upper Floridan Aquifer
Well #1 (Crescent West)	700 gpm	864,000	Upper Floridan Aquifer
Well #1 (Highland Point)	750 gpm	864,000	Upper Floridan Aquifer
Well #1 (Lake Crescent Hills)	700 gpm	864,000	Upper Floridan Aquifer
Well #1 (Lake Ridge Club)	550 gpm	936,000	Upper Floridan Aquifer
Well #1 (Oranges)	550 gpm	792,000	Upper Floridan Aquifer
Well #1 (Vistas)	700 gpm	1,440,000	Upper Floridan Aquifer
Well #2 (Vistas)	700 gpm	1,080,000	Upper Floridan Aquifer
Well #1 (Lake Groves)	2000 gpm	1,152,000	Upper Floridan Aquifer
Well #2 (Lake Groves)	2400 gpm	2,160,000	Upper Floridan Aquifer
* Well #1 (Lake Saunders)	300 gpm	432,000	Upper Floridan Aquifer
* Well #2 (Lake Saunders)	300 gpm	432,000	Upper Floridan Aquifer
* Well #1 (Four Lakes)	105 gpm	151,200	Upper Floridan Aquifer
* Well #2 (Four Lakes)	105 gpm	151,200	Upper Floridan Aquifer
Well #3 (Vistas)	625 gpm	900,000	Upper Floridan Aquifer

* Four Lakes and Lake Saunders not interconnected with other systems

UTILITY NAME: LAKE UTILITY SERVICES, INC.

YEAR OF REPORT 31-Dec-04

SYSTEM NAME / COUNTY : LAKE UTILITY SERVICES, INC. INTERCONNECTED SYSTEMS
FOUR LAKES

PUMPING AND PURCHASED WATER STATISTICS

MONTH (a)	WATER PURCHASED FOR RESALE (Omit 000's) (b)	FINISHED WATER PUMPED FROM WELLS (Omit 000's) (c)	WATER USED FOR LINE FLUSHING, FIGHTING FIRES, ETC. (d)	TOTAL WATER PUMPED AND PURCHASED (Omit 000's) [(b)+(c)-(d)] (e)	*WATER SOLD TO CUSTOMERS (Omit 000's) (f)
January		0.817	0.000	0.817	0.000
February		0.723	0.000	0.723	1.522
March		0.989	0.001	0.988	0.023
April		1.161	0.001	1.160	1.651
May		1.458	0.000	1.458	0.000
June		0.968	0.000	0.968	2.363
July		0.963	0.001	0.962	0.000
August		0.978	0.140	0.838	1.384
September		0.551	0.001	0.550	0.001
October		0.788	0.000	0.788	1.055
November		0.899	0.008	0.891	0.000
December		0.747	0.015	0.732	1.389
Total for Year		11.042	0.167	10.875	9.388

*Reflects final accounts, adjustments, etc. for billing period 12/24/03-12/22/04

If water is purchased for resale, indicate the following:

Vendor None
 Point of delivery _____

If water is sold to other water utilities for redistribution, list names of such utilities below:

List for each source of supply:	CAPACITY OF WELL	GALLONS PER DAY FROM SOURCE	TYPE OF SOURCE
_____	_____	_____	_____
_____	_____	_____	_____
_____	_____	_____	_____
_____	_____	_____	_____

UTILITY NAME: LAKE UTILITY SERVICES, INC.

YEAR OF REPORT 31-Dec-04

SYSTEM NAME / COUNTY : LAKE UTILITY SERVICES, INC. INTERCONNECTED SYSTEMS
LAKE SAUNDERS

PUMPING AND PURCHASED WATER STATISTICS

MONTH (a)	WATER PURCHASED FOR RESALE (Omit 000's) (b)	FINISHED WATER PUMPED FROM WELLS (Omit 000's) (c)	WATER USED FOR LINE FLUSHING, FIGHTING FIRES, ETC. (d)	TOTAL WATER PUMPED AND PURCHASED (Omit 000's) [(b)+(c)-(d)] (e)	*WATER SOLD TO CUSTOMERS (Omit 000's) (f)
January		0.420	0.062	0.358	0.000
February		0.344	0.000	0.344	0.657
March		0.479	0.006	0.473	0.000
April		0.374	0.000	0.374	0.583
May		0.490	0.000	0.490	0.004
June		0.444	0.000	0.444	0.879
July		0.398	0.001	0.397	0.010
August		0.333	0.001	0.332	0.569
September		0.347	0.000	0.347	0.000
October		0.313	0.010	0.303	0.541
November		0.287	0.010	0.277	0.000
December		0.294	0.000	0.294	0.467
Total for Year		4.523	0.090	4.433	3.710

***Reflects final accounts, adjustments, etc. for billing period 12/24/03-12/22/04**
 If water is purchased for resale, indicate the following:
 Vendor None
 Point of delivery _____

 If water is sold to other water utilities for redistribution, list names of such utilities below:

List for each source of supply:	CAPACITY OF WELL	GALLONS PER DAY FROM SOURCE	TYPE OF SOURCE
_____	_____	_____	_____
_____	_____	_____	_____
_____	_____	_____	_____
_____	_____	_____	_____

UTILITY NAME: LAKE UTILITY SERVICES, INC.

YEAR OF REPORT
31-Dec-04

SYSTEM NAME / COUNTY : LAKE UTILITY SERVICES, INC. INTERCONNECTED SYSTEMS
AMBER HILL

WATER TREATMENT PLANT INFORMATION
Provide a separate sheet for each water treatment facility

Permitted Capacity of Plant (GPD):	<u>468,000</u>
Location of measurement of capacity (i.e. Wellhead, Storage Tank):	<u>Wellhead</u>
Type of treatment (reverse osmosis, (sedimentation, chemical, aerated, etc.):	<u>Chlorination</u>
LIME TREATMENT	
Unit rating (i.e., GPM, pounds per gallon): <u>N/A</u>	Manufacturer: <u>N/A</u>
FILTRATION	
Type and size of area:	
Pressure (in square feet): <u>N/A</u>	Manufacturer: <u>NA</u>
Gravity (in GPM/square feet): <u>N/A</u>	Manufacturer: <u>N/A</u>

UTILITY NAME: LAKE UTILITY SERVICES, INC.

YEAR OF REPORT
31-Dec-04

SYSTEM NAME / COUNTY : LAKE UTILITY SERVICES, INC. INTERCONNECTED SYSTEMS
CLERMONT I

WATER TREATMENT PLANT INFORMATION
Provide a separate sheet for each water treatment facility

Permitted Capacity of Plant (GPD):	<u>0.115 mgd</u>
Location of measurement of capacity (i.e. Wellhead, Storage Tank):	<u>Wellhead</u>
Type of treatment (reverse osmosis, (sedimentation, chemical, aerated, etc.):	<u>Chlorination</u>
LIME TREATMENT	
Unit rating (i.e., GPM, pounds per gallon): <u>N/A</u>	Manufacturer: <u>N/A</u>
FILTRATION	
Type and size of area:	
Pressure (in square feet): <u>N/A</u>	Manufacturer: <u>N/A</u>
Gravity (in GPM/square feet): <u>N/A</u>	Manufacturer: <u>N/A</u>

UTILITY NAME: LAKE UTILITY SERVICES, INC.

YEAR OF REPORT
31-Dec-04

SYSTEM NAME / COUNTY : LAKE UTILITY SERVICES, INC. INTERCONNECTED SYSTEMS
CLERMONT II

WATER TREATMENT PLANT INFORMATION
Provide a separate sheet for each water treatment facility

Permitted Capacity of Plant (GPD):	<u>0.071 mgd</u>
Location of measurement of capacity (i.e. Wellhead, Storage Tank):	<u>Wellhead</u>
Type of treatment (reverse osmosis, (sedimentation, chemical, aerated, etc.):	<u>Chlorination</u>
LIME TREATMENT	
Unit rating (i.e., GPM, pounds per gallon): <u>N/A</u>	Manufacturer: <u>N/A</u>
FILTRATION	
Type and size of area:	
Pressure (in square feet): <u>N/A</u>	Manufacturer: <u>N/A</u>
Gravity (in GPM/square feet): <u>N/A</u>	Manufacturer: <u>N/A</u>

UTILITY NAME: LAKE UTILITY SERVICES, INC.

YEAR OF REPORT
31-Dec-04

SYSTEM NAME / COUNTY : LAKE UTILITY SERVICES, INC. INTERCONNECTED SYSTEMS
CRESCENT BAY

WATER TREATMENT PLANT INFORMATION
Provide a separate sheet for each water treatment facility

Permitted Capacity of Plant (GPD):	<u>0.396 mgd</u>
Location of measurement of capacity (i.e. Wellhead, Storage Tank):	<u>Wellhead</u>
Type of treatment (reverse osmosis, (sedimentation, chemical, aerated, etc.):	<u>Chlorination</u>
LIME TREATMENT	
Unit rating (i.e., GPM, pounds per gallon): <u>N/A</u>	Manufacturer: <u>N/A</u>
FILTRATION	
Type and size of area:	
Pressure (in square feet): <u>N/A</u>	Manufacturer: <u>N/A</u>
Gravity (in GPM/square feet): <u>N/A</u>	Manufacturer: <u>N/A</u>

UTILITY NAME: LAKE UTILITY SERVICES, INC.

YEAR OF REPORT
31-Dec-04

SYSTEM NAME / COUNTY : LAKE UTILITY SERVICES, INC. INTERCONNECTED SYSTEMS
CRESCENT WEST

WATER TREATMENT PLANT INFORMATION

Provide a separate sheet for each water treatment facility

Permitted Capacity of Plant (GPD):	<u>0.432 mgd</u>
Location of measurement of capacity (i.e. Wellhead, Storage Tank):	<u>Wellhead</u>
Type of treatment (reverse osmosis, (sedimentation, chemical, aerated, etc.):	<u>Chlorination</u>
LIME TREATMENT	
Unit rating (i.e., GPM, pounds per gallon): <u>N/A</u>	Manufacturer: <u>N/A</u>
FILTRATION	
Type and size of area:	
Pressure (in square feet): <u>N/A</u>	Manufacturer: <u>N/A</u>
Gravity (in GPM/square feet): <u>N/A</u>	Manufacturer: <u>N/A</u>

UTILITY NAME: LAKE UTILITY SERVICES, INC.

YEAR OF REPORT
31-Dec-04

SYSTEM NAME / COUNTY : LAKE UTILITY SERVICES, INC. INTERCONNECTED SYSTEMS
HIGHLAND POINT

WATER TREATMENT PLANT INFORMATION
Provide a separate sheet for each water treatment facility

Permitted Capacity of Plant (GPD):	<u>0.240 mgd</u>
Location of measurement of capacity (i.e. Wellhead, Storage Tank):	<u>Wellhead</u>
Type of treatment (reverse osmosis, (sedimentation, chemical, aerated, etc.):	<u>Chlorination</u>
LIME TREATMENT	
Unit rating (i.e., GPM, pounds per gallon): <u>N/A</u>	Manufacturer: <u>N/A</u>
FILTRATION	
Type and size of area:	
Pressure (in square feet): <u>N/A</u>	Manufacturer: <u>N/A</u>
Gravity (in GPM/square feet): <u>N/A</u>	Manufacturer: <u>N/A</u>

UTILITY NAME: LAKE UTILITY SERVICES, INC.

YEAR OF REPORT
31-Dec-04

SYSTEM NAME / COUNTY : LAKE UTILITY SERVICES, INC. INTERCONNECTED SYSTEMS
LAKE CRESCENT HILLS

WATER TREATMENT PLANT INFORMATION
Provide a separate sheet for each water treatment facility

Permitted Capacity of Plant (GPD):	<u>0.432 mgd</u>
Location of measurement of capacity (i.e. Wellhead, Storage Tank):	<u>Wellhead</u>
Type of treatment (reverse osmosis, sedimentation, chemical, aerated, etc.):	<u>Chlorination</u>
LIME TREATMENT	
Unit rating (i.e., GPM, pounds per gallon): <u>N/A</u>	Manufacturer: <u>N/A</u>
FILTRATION	
Type and size of area:	
Pressure (in square feet): <u>N/A</u>	Manufacturer: <u>N/A</u>
Gravity (in GPM/square feet): <u>N/A</u>	Manufacturer: <u>N/A</u>

UTILITY NAME: LAKE UTILITY SERVICES, INC.

YEAR OF REPORT
31-Dec-04

SYSTEM NAME / COUNTY : LAKE UTILITY SERVICES, INC. INTERCONNECTED SYSTEMS
LAKE RIDGE CLUB

WATER TREATMENT PLANT INFORMATION

Provide a separate sheet for each water treatment facility

Permitted Capacity of Plant (GPD):	<u>0.396 mgd</u>
Location of measurement of capacity (i.e. Wellhead, Storage Tank):	<u>Wellhead</u>
Type of treatment (reverse osmosis, (sedimentation, chemical, aerated, etc.):	<u>Chlorination</u>
LIME TREATMENT	
Unit rating (i.e., GPM, pounds per gallon): <u>N/A</u>	Manufacturer: <u>N/A</u>
FILTRATION	
Type and size of area:	
Pressure (in square feet): <u>N/A</u>	Manufacturer: <u>N/A</u>
Gravity (in GPM/square feet): <u>N/A</u>	Manufacturer: <u>N/A</u>

UTILITY NAME: LAKE UTILITY SERVICES, INC.

YEAR OF REPORT
31-Dec-04

SYSTEM NAME / COUNTY : LAKE UTILITY SERVICES, INC. INTERCONNECTED SYSTEMS
ORANGES

WATER TREATMENT PLANT INFORMATION
Provide a separate sheet for each water treatment facility

Permitted Capacity of Plant (GPD):	<u>0.396 mgd</u>
Location of measurement of capacity (i.e. Wellhead, Storage Tank):	<u>Wellhead</u>
Type of treatment (reverse osmosis, (sedimentation, chemical, aerated, etc.):	<u>Chlorination</u>
LIME TREATMENT	
Unit rating (i.e., GPM, pounds per gallon): <u>N/A</u>	Manufacturer: <u>N/A</u>
FILTRATION	
Type and size of area:	
Pressure (in square feet): <u>N/A</u>	Manufacturer: <u>N/A</u>
Gravity (in GPM/square feet): <u>N/A</u>	Manufacturer: <u>N/A</u>

UTILITY NAME: LAKE UTILITY SERVICES, INC.

YEAR OF REPORT
31-Dec-04

SYSTEM NAME / COUNTY : LAKE UTILITY SERVICES, INC. INTERCONNECTED SYSTEMS
VISTAS

WATER TREATMENT PLANT INFORMATION
Provide a separate sheet for each water treatment facility

Permitted Capacity of Plant (GPD):	<u>0.822 mgd</u>
Location of measurement of capacity (i.e. Wellhead, Storage Tank):	<u>Point of Entry</u>
Type of treatment (reverse osmosis, (sedimentation, chemical, aerated, etc.):	<u>Chlorination</u>
LIME TREATMENT	
Unit rating (i.e., GPM, pounds per gallon): <u>N/A</u>	Manufacturer: <u>N/A</u>
FILTRATION	
Type and size of area:	
Pressure (in square feet): <u>N/A</u>	Manufacturer: <u>N/A</u>
Gravity (in GPM/square feet): <u>N/A</u>	Manufacturer: <u>N/A</u>

#REF!

W-12 Vistas
GROUP _____
SYSTEM LUSI Combined

UTILITY NAME: LAKE UTILITY SERVICES, INC.

YEAR OF REPORT
31-Dec-04

SYSTEM NAME / COUNTY : FOUR LAKES / LAKE

WATER TREATMENT PLANT INFORMATION

Provide a separate sheet for each water treatment facility

Permitted Capacity of Plant (GPD):	<u>0.088 mgd</u>
Location of measurement of capacity (i.e. Wellhead, Storage Tank):	<u>Wellhead</u>
Type of treatment (reverse osmosis, sedimentation, chemical, aerated, etc.):	<u>Chlorination</u>
LIME TREATMENT	
Unit rating (i.e., GPM, pounds per gallon): <u>N/A</u>	Manufacturer: <u>N/A</u>
FILTRATION	
Type and size of area:	
Pressure (in square feet): <u>N/A</u>	Manufacturer: <u>N/A</u>
Gravity (in GPM/square feet): <u>N/A</u>	Manufacturer: <u>N/A</u>

UTILITY NAME: LAKE UTILITY SERVICES, INC.

YEAR OF REPORT
31-Dec-04

SYSTEM NAME / COUNTY : LAKE SAUNDERS/LAKE

WATER TREATMENT PLANT INFORMATION
Provide a separate sheet for each water treatment facility

Permitted Capacity of Plant (GPD):	<u>0.432 mgd</u>
Location of measurement of capacity (i.e. Wellhead, Storage Tank):	<u>Wellhead</u>
Type of treatment (reverse osmosis, sedimentation, chemical, aerated, etc.):	<u>Chlorination</u>
LIME TREATMENT	
Unit rating (i.e., GPM, pounds per gallon): <u>N/A</u>	Manufacturer: <u>N/A</u>
FILTRATION	
Type and size of area:	
Pressure (in square feet): <u>N/A</u>	Manufacturer: <u>N/A</u>
Gravity (in GPM/square feet): <u>N/A</u>	Manufacturer: <u>N/A</u>

UTILITY NAME: LAKE GROVES UTILITIES, INC.

YEAR OF REPORT
31-Dec-04

SYSTEM NAME / COUNTY : LAKE GROVES / LAKE

WATER TREATMENT PLANT INFORMATION
Provide a separate sheet for each water treatment facility

Permitted Capacity of Plant (GPD):	<u>6.264 mgd</u>
Location of measurement of capacity (i.e. Wellhead, Storage Tank):	<u>Point of Entry</u>
Type of treatment (reverse osmosis, sedimentation, chemical, aerated, etc.):	<u>Chlorination</u>
LIME TREATMENT	
Unit rating (i.e., GPM, pounds per gallon): <u>N/A</u>	Manufacturer: <u>N/A</u>
FILTRATION	
Type and size of area:	
Pressure (in square feet): <u>N/A</u>	Manufacturer: <u>N/A</u>
Gravity (in GPM/square feet): <u>N/A</u>	Manufacturer: <u>N/A</u>

UTILITY NAME:

LAKE UTILITY SERVICES, INC.

<p>YEAR OF REPORT 31-Dec-04</p>

SYSTEM NAME / COUNTY :

LAKE UTILITY SERVICES, INC. INTERCONNECTED SYSTEMS
COMBINED

CALCULATION OF THE WATER SYSTEM METER EQUIVALENTS

METER SIZE (a)	TYPE OF METER (b)	EQUIVALENT FACTOR (c)	NUMBER OF METERS (d)	TOTAL NUMBER OF METER EQUIVALENTS (c x d) (e)
All Residential		1.0	7,147	7,147
5/8"	Displacement	1.0	48	48
3/4"	Displacement	1.5		
1"	Displacement	2.5	28	70.0
1 1/2"	Displacement or Turbine	5.0	13	65
2"	Displacement, Compound or Turbine	8.0	18	144
3"	Displacement	15.0	1	15
3"	Compound	16.0		
3"	Turbine	17.5		
4"	Displacement or Compound	25.0	2	50
4"	Turbine	30.0		
6"	Displacement or Compound	50.0		
6"	Turbine	62.5		
8"	Compound	80.0		
8"	Turbine	90.0		
10"	Compound	115.0		
10"	Turbine	145.0		
12"	Turbine	215.0		
Total Water System Meter Equivalents				<u>7,539.0</u>

CALCULATION OF THE WATER SYSTEM EQUIVALENT RESIDENTIAL CONNECTIONS

Provide a calculation used to determine the value of one water equivalent residential connection (ERC).

Use one of the following methods:

- (a) If actual flow data are available from the preceding 12 months, divide the total annual single family residence (SFR) gallons sold by the average number of single family residence customers for the same period and divide the result by 365 days.
- (b) If no historical flow data are available, use:

$$ERC = (\text{Total SFR gallons sold (Omit 000)} / 365 \text{ days} / 350 \text{ gallons per day})$$

ERC Calculation:

$$1476.178/7147/366 = 564 \text{ gpd} = 1 \text{ ERC}$$

UTILITY NAME:

LAKE UTILITY SERVICES, INC.

YEAR OF REPORT 31-Dec-04

SYSTEM NAME / COUNTY :

FOUR LAKES / LAKE

CALCULATION OF THE WATER SYSTEM METER EQUIVALENTS

METER SIZE (a)	TYPE OF METER (b)	EQUIVALENT FACTOR (c)	NUMBER OF METERS (d)	TOTAL NUMBER OF METER EQUIVALENTS (c x d) (e)
All Residential		1.0	64	64
5/8"	Displacement	1.0		
3/4"	Displacement	1.5		
1"	Displacement	2.5		
1 1/2"	Displacement or Turbine	5.0		
2"	Displacement, Compound or Turbine	8.0		
3"	Displacement	15.0		
3"	Compound	16.0		
3"	Turbine	17.5		
4"	Displacement or Compound	25.0		
4"	Turbine	30.0		
6"	Displacement or Compound	50.0		
6"	Turbine	62.5		
8"	Compound	80.0		
8"	Turbine	90.0		
10"	Compound	115.0		
10"	Turbine	145.0		
12"	Turbine	215.0		
Total Water System Meter Equivalents				<u>64</u>

CALCULATION OF THE WATER SYSTEM EQUIVALENT RESIDENTIAL CONNECTIONS

Provide a calculation used to determine the value of one water equivalent residential connection (ERC).

Use one of the following methods:

- (a) If actual flow data are available from the preceding 12 months, divide the total annual single family residence (SFR) gallons sold by the average number of single family residence customers for the same period and divide the result by 365 days.
- (b) If no historical flow data are available, use:
 $ERC = (\text{Total SFR gallons sold (Omit 000)} / 365 \text{ days} / 350 \text{ gallons per day})$

ERC Calculation: $9.388/64/366 = 401 \text{ gpd} = 1 \text{ ERC}$
--

UTILITY NAME: LAKE UTILITY SERVICES, INC.

SYSTEM NAME / COUNTY : LAKE SAUNDERS / LAKE

CALCULATION OF THE WATER SYSTEM METER EQUIVALENTS

METER SIZE (a)	TYPE OF METER (b)	EQUIVALENT FACTOR (c)	NUMBER OF METERS (d)	TOTAL NUMBER OF METER EQUIVALENTS (c x d) (e)
All Residential		1.0	44	44
5/8"	Displacement	1.0		
3/4"	Displacement	1.5		
1"	Displacement	2.5		
1 1/2"	Displacement or Turbine	5.0		
2"	Displacement, Compound or Turbine	8.0		
3"	Displacement	15.0		
3"	Compound	16.0		
3"	Turbine	17.5		
4"	Displacement or Compound	25.0		
4"	Turbine	30.0		
6"	Displacement or Compound	50.0		
6"	Turbine	62.5		
8"	Compound	80.0		
8"	Turbine	90.0		
10"	Compound	115.0		
10"	Turbine	145.0		
12"	Turbine	215.0		
Total Water System Meter Equivalents				<u>44</u>

CALCULATION OF THE WATER SYSTEM EQUIVALENT RESIDENTIAL CONNECTIONS

Provide a calculation used to determine the value of one water equivalent residential connection (ERC).

Use one of the following methods:

- (a) If actual flow data are available from the preceding 12 months, divide the total annual single family residence (SFR) gallons sold by the average number of single family residence customers for the same period and divide the result by 365 days.
- (b) If no historical flow data are available, use:
 $ERC = (\text{Total SFR gallons sold (Omit 000)} / 365 \text{ days} / 350 \text{ gallons per day})$

ERC Calculation:

$$3.709/44/366 = 230 \text{ gpd} = 1 \text{ ERC}$$

UTILITY NAME: LAKE UTILITY SERVICES, INC.

YEAR OF REPORT
31-Dec-04

SYSTEM NAME / COUNTY : FOUR LAKES/LAKE

OTHER WATER SYSTEM INFORMATION

Furnish information below for each system. A separate page should be supplied where necessary.

1. Present ERC's * the system can efficiently serve. 63

2. Maximum number of ERCs * which can be served. 125

3. Present system connection capacity (in ERCs *) using existing lines. 125

4. Future connection capacity (in ERCs *) upon service area buildout. 125

5. Estimated annual increase in ERCs *. 0 - 5

6. Is the utility required to have fire flow capacity? No
If so, how much capacity is required? _____

7. Attach a description of the fire fighting facilities. N/A

8. Describe any plans and estimated completion dates for any enlargements or improvements of this system. N/A

9. When did the company last file a capacity analysis report with the DEP? N/A

10. If the present system does not meet the requirements of DEP rules:

- a. Attach a description of the plant upgrade necessary to meet the DEP rules.
- b. Have these plans been approved by DEP? N/A
- c. When will construction begin? N/A
- d. Attach plans for funding the required upgrading.
- e. Is this system under any Consent Order with DEP? No

11. Department of Environmental Protection ID # 3354647

12. Water Management District Consumptive Use Permit # N/A

- a. Is the system in compliance with the requirements of the CUP? Yes
- b. If not, what are the utility's plans to gain compliance? _____

* An ERC is determined based on the calculation on the bottom of Page W-13.

UTILITY NAME: LAKE UTILITY SERVICES, INC.

YEAR OF REPORT
31-Dec-04

SYSTEM NAME / COUNTY : LAKE SAUNDERS/LAKE

OTHER WATER SYSTEM INFORMATION

Furnish information below for each system. A separate page should be supplied where necessary.

1. Present ERC's * the system can efficiently serve. 617
2. Maximum number of ERCs * which can be served. 617
3. Present system connection capacity (in ERCs *) using existing lines. 617
4. Future connection capacity (in ERCs *) upon service area buildout. N/A - Built out at 100 units
5. Estimated annual increase in ERCs *. 0 - 5
6. Is the utility required to have fire flow capacity? Yes
If so, how much capacity is required? 500 gpm
7. Attach a description of the fire fighting facilities. Hydrants
8. Describe any plans and estimated completion dates for any enlargements or improvements of this system. None
9. When did the company last file a capacity analysis report with the DEP? N/A
10. If the present system does not meet the requirements of DEP rules:
 - a. Attach a description of the plant upgrade necessary to meet the DEP rules.
 - b. Have these plans been approved by DEP? N/A
 - c. When will construction begin? N/A
 - d. Attach plans for funding the required upgrading.
 - e. Is this system under any Consent Order with DEP? No
11. Department of Environmental Protection ID # 3354695
12. Water Management District Consumptive Use Permit # 50094
 - a. Is the system in compliance with the requirements of the CUP? Yes
 - b. If not, what are the utility's plans to gain compliance? _____

* An ERC is determined based on the calculation on the bottom of Page W-13.

UTILITY NAME: LAKE UTILITY SERVICES, INC.

YEAR OF REPORT
31-Dec-04

SYSTEM NAME / COUNTY : LAKE UTILITY SERVICES, INC. INTERCONNECTED SYSTEMS
COMBINED
OTHER WATER SYSTEM INFORMATION

Furnish information below for each system. A separate page should be supplied where necessary.

1. Present ERC's * the system can efficiently serve. 7130
2. Maximum number of ERCs * which can be served. 10790
3. Present system connection capacity (in ERCs *) using existing lines. 8270
4. Future connection capacity (in ERCs *) upon service area buildout. N/A - Interconnected system
5. Estimated annual increase in ERCs *. 507
6. Is the utility required to have fire flow capacity? Yes
If so, how much capacity is required? 500 - 1500 gpm
7. Attach a description of the fire fighting facilities. Hydrants throughout service area. All systems are interconnected.
8. Describe any plans and estimated completion dates for any enlargements or improvements of this system. 2005-CR 561 WTP; Construct Lk Groves Well #3; Replace Lk Groves Well Pump #2; Replace Lk Crescent Hill generator. 2004-Converted to sodium hypochlorite; Constructed Vistas Well #3 and new water main 2005-Clermont I&II - replace water main and services
9. When did the company last file a capacity analysis report with the DEP? N/A
10. If the present system does not meet the requirements of DEP rules:
 - a. Attach a description of the plant upgrade necessary to meet the DEP rules.
 - b. Have these plans been approved by DEP? N/A
 - c. When will construction begin? N/A
 - d. Attach plans for funding the required upgrading.
 - e. Is this system under any Consent Order with DEP? No
11. Department of Environmental Protection ID # See Attached
12. Water Management District Consumptive Use Permit # See Attached
 - a. Is the system in compliance with the requirements of the CUP? No
 - b. If not, what are the utility's plans to gain compliance? Lakes Groves has already submitted to the St. John's River Water Management District for renewal

* An ERC is determined based on the calculation on the bottom of Page W-13.

11. Department of Environmental Protection ID #:

<u>System</u>	<u>PWS ID #</u>
Amber Hill	3354648
Clermont I	3351582
Clermont II	3350153
Crescent Bay	3354686
Crescent West	3354690
Highland Point	3354652
Lake Crescent Hills	3354883
Lake Ridge Club	3354884
Oranges	3354685
Vistas	3354773
Lake Groves	3354881

12. Water Management District Consumptive Use Permit #

<u>System</u>	<u>CUP ID #</u>
Amber Hill	2559
Clermont I	2559
Clermont II	2601
Crescent Bay	2769
Crescent West	2769
Highland Point	2769
Lake Crescent Hills	2769
Lake Ridge Club	2559
Oranges	2700
Vistas	2700
Lake Groves	2879

**WASTEWATER
OPERATION
SECTION**

UTILITY NAME: LAKE UTILITY SERVICES INC

YEAR OF REPORT
31-Dec-04

WASTEWATER LISTING OF SYSTEM GROUPS

List below the name of each reporting system and its certificate number. Those systems which have been consolidated under the same tariff should be assigned a group number. Each individual system which has not been consolidated should be assigned its own group number.

The wastewater financial schedules (S-2 through S-10) should be filed for the group in total.

The wastewater engineering schedules (S-11 and S-12) must be filed for each system in the group.

All of the following wastewater pages (S-2 through S-12) should be completed for each group and arranged by group number.

SYSTEM NAME / COUNTY	CERTIFICATE NUMBER	GROUP NUMBER
<u>LAKE GROVES / LAKE</u>	<u>465S</u>	<u></u>
<u></u>	<u></u>	<u></u>
<u></u>	<u></u>	<u></u>
<u></u>	<u></u>	<u></u>
<u></u>	<u></u>	<u></u>
<u></u>	<u></u>	<u></u>
<u></u>	<u></u>	<u></u>
<u></u>	<u></u>	<u></u>
<u></u>	<u></u>	<u></u>
<u></u>	<u></u>	<u></u>
<u></u>	<u></u>	<u></u>
<u></u>	<u></u>	<u></u>
<u></u>	<u></u>	<u></u>
<u></u>	<u></u>	<u></u>
<u></u>	<u></u>	<u></u>
<u></u>	<u></u>	<u></u>
<u></u>	<u></u>	<u></u>
<u></u>	<u></u>	<u></u>
<u></u>	<u></u>	<u></u>
<u></u>	<u></u>	<u></u>
<u></u>	<u></u>	<u></u>
<u></u>	<u></u>	<u></u>

REVISED 5/12/05

YEAR OF REPORT 31-Dec-04

UTILITY NAME: LAKE UTILITY SERVICES INC

SYSTEM NAME / COUNTY : Lake County

SCHEDULE OF YEAR END WASTEWATER RATE BASE

ACCT. NO. (a)	ACCOUNT NAME (b)	REFERENCE PAGE (c)	WASTEWATER UTILITY (d)
101	Utility Plant In Service	S-4A	\$ 8,326,819
	Less:		
	Nonused and Useful Plant (1)		
108	Accumulated Depreciation	S-6B	1,000,653
110	Accumulated Amortization	F-8	1,592
271	Contributions In Aid of Construction	S-7	4,957,526
252	Advances for Construction	F-20	38,400
Subtotal			\$ 2,328,648
	Add:		
272	Accumulated Amortization of Contributions in Aid of Construction	S-8A	\$ 528,231
Subtotal			\$ 2,856,879
	Plus or Minus:		
114	Acquisition Adjustments (2)	F-7	-
115	Accumulated Amortization of Acquisition Adjustments (2)	F-7	-
	Working Capital Allowance (3)		32,519
	Other (Specify):		
WASTEWATER RATE BASE			\$ 2,889,398
WASTEWATER OPERATING INCOME		S-3	\$ 220,913
ACHIEVED RATE OF RETURN (Wastewater Operating Income / Wastewater Rate Base)			7.65%

NOTES : (1) Estimate based on the methodology used in the last rate proceeding.

(2) Include only those Acquisition Adjustments that have been approved by the Commission.

(3) Calculation consistent with last rate proceeding.

In absence of a rate proceeding, Class A utilities will use the Balance Sheet Method and Class B Utilities will use the One-eighth Operating and Maintenance Expense Method.

UTILITY NAME: LAKE UTILITY SERVICES INC

YEAR OF REPORT 31-Dec-04

SYSTEM NAME / COUNTY : Lake County

WASTEWATER OPERATING STATEMENT

ACCT. NO. (a)	ACCOUNT NAME (b)	REFERENCE PAGE (c)	WASTEWATER UTILITY (d)
	UTILITY OPERATING INCOME		
400	Operating Revenues	S-9A	\$ 690,246
530	Less: Guaranteed Revenue (and AFPI)	S-9A	
	Net Operating Revenues		\$ 690,246
401	Operating Expenses	S-10A	\$ 260,154
403	Depreciation Expense	S-6A	200,237
	Less: Amortization of CIAC	S-8A	(114,610)
	Net Depreciation Expense		\$ 85,627
406	Amortization of Utility Plant Acquisition Adjustment	F-7	-
407	Amortization Expense (Other than CIAC)	F-8	269
408.10	Taxes Other Than Income Utility Regulatory Assessment Fee		33,648
408.11	Property Taxes		23,500
408.12	Payroll Taxes		8,796
408.13	Other Taxes and Licenses		-
408	Total Taxes Other Than Income		\$ 65,944
409.1	Income Taxes		108,371
410.10	Deferred Federal Income Taxes		(35,204)
410.11	Deferred State Income Taxes		(15,828)
411.10	Provision for Deferred Income Taxes - Credit		-
412.10	Investment Tax Credits Deferred to Future Periods		
412.11	Investment Tax Credits Restored to Operating Income		
	Utility Operating Expenses		\$ 469,333
	Utility Operating Income		\$ 220,913
530	Add Back: Guaranteed Revenue (and AFPI)	S-9A	\$
413	Income From Utility Plant Leased to Others		
414	Gains (losses) From Disposition of Utility Property		
420	Allowance for Funds Used During Construction		1,036
	Total Utility Operating Income		\$ 221,949

UTILITY NAME: LAKE UTILITY SERVICES INC

SYSTEM NAME / COUNTY Lake County

WASTEWATER UTILITY PLANT ACCOUNTS

ACCT. NO. (a)	ACCOUNT NAME (b)	PREVIOUS YEAR (c)	ADDITIONS (d)	RETIREMENTS (e)	CURRENT YEAR (f)
351	Organization	\$ 8,967	-	-	\$ 8,967
352	Franchises	1,813	-	-	1,813
353	Land and Land Rights	468,355	-	-	468,355
354	Structures and Improvements	233,661	-	-	233,661
355	Power Generation Equipment	-	-	-	-
360	Collection Sewers - Force	559,795	47,230	-	607,025
361	Collection Sewers - Gravity	1,453,486	768,560	-	2,222,046
362	Special Collecting Structures	-	-	-	-
363	Services to Customers	-	-	-	-
364	Flow Measuring Devices	-	-	-	-
365	Flow Measuring Installations	-	-	-	-
366	Reuse Services	-	-	-	-
367	Reuse Meters and Meter Installations	-	-	-	-
370	Receiving Wells	-	-	-	-
371	Pumping Equipment	835,984	648,539	-	1,484,523
374	Reuse Distribution Reservoirs	-	-	-	-
375	Reuse Transmission and Distribution System	-	-	-	-
380	Treatment and Disposal Equipment	-	-	-	-
381	Plant Sewers	3,098,643	181,726	-	3,280,369
382	Outfall Sewer Lines	16,718	-	-	16,718
389	Other Plant Miscellaneous Equipment	-	-	-	-
390	Office Furniture and Equipment	-	-	-	-
391	Transportation Equipment	-	-	-	-
392	Stores Equipment	-	-	-	-
393	Tools, Shop and Garage Equipment	2,576	766	-	3,342
394	Laboratory Equipment	-	-	-	-
395	Power Operated Equipment	-	-	-	-
396	Communication Equipment	-	-	-	-
397	Miscellaneous Equipment	-	-	-	-
398	Other Tangible Plant	-	-	-	-
Total Wastewater Plant		\$ 6,679,998	\$ 1,646,821	\$ -	\$ 8,326,819

NOTE: Any adjustments made to reclassify property from one account to another must be footnoted.

UTILITY NAME: LAKE UTILITY SERVICES INC
SYSTEM NAME / COUNTY : Lake County

WASTEWATER UTILITY PLANT MATRIX

ACCT. NO.	ACCOUNT NAME	.1 INTANGIBLE PLANT (g)	.2 COLLECTION PLANT (h)	.3 SYSTEM PUMPING PLANT (i)	.4 TREATMENT AND DISPOSAL (j)	.5 RECLAIMED WASTEWATER TREATMENT PLANT (i)	.6 RECLAIMED WASTEWATER DISTRIBUTION PLANT (j)	.7 GENERAL PLANT (k)
351	Organization	\$ 8,967						
352	Franchises	1,813						
353	Land and Land Rights		468,355					
354	Structures and Improvements		233,661					
355	Power Generation Equipment		-					
360	Collection Sewers - Force		607,025					
361	Collection Sewers - Gravity		2,222,046					
362	Special Collecting Structures		-					
363	Services to Customers		-					
364	Flow Measuring Devices		-					
365	Flow Measuring Installations		-					
366	Reuse Services		-					
367	Reuse Meters and Meter Installations		-					
370	Receiving Wells							
371	Pumping Equipment			1,484,523				
374	Reuse Distribution Reservoirs							
375	Reuse Transmission and Distribution System							
380	Treatment and Disposal Equipment							
381	Plant Sewers				3,280,369			
382	Outfall Sewer Lines				16,718			
389	Other Plant Miscellaneous Equipment							
390	Office Furniture and Equipment							
391	Transportation Equipment							
392	Stores Equipment							
393	Tools, Shop and Garage Equipment							
394	Laboratory Equipment							
395	Power Operated Equipment							
396	Communication Equipment							
397	Miscellaneous Equipment							
398	Other Tangible Plant							
	Total Wastewater Plant	\$ 10,780	\$ 3,531,087	\$ 1,484,523	\$ 3,297,087	\$ -	\$ -	\$ 3,342

NOTE: Any adjustments made to reclassify property from one account to another must be footnoted.

UTILITY NAME: LAKE UTILITY SERVICES INC

YEAR OF REPORT 31-Dec-04

SYSTEM NAME / COUNTY : Lake County

BASIS FOR WASTEWATER DEPRECIATION CHARGES

ACCT. NO. (a)	ACCOUNT NAME (b)	AVERAGE SERVICE LIFE IN YEARS (c)	AVERAGE NET SALVAGE IN PERCENT (d)	DEPRECIATION RATE APPLIED IN PERCENT (100% - D) / C (e)
354	Structures and Improvements			3.13%
355	Power Generation Equipment			
360	Collection Sewers - Force			3.33%
361	Collection Sewers - Gravity			2.22%
362	Special Collecting Structures			
363	Services to Customers			2.63%
364	Flow Measuring Devices			
365	Flow Measuring Installations			
366	Reuse Services			
367	Reuse Meters and Meter Installations			
370	Receiving Wells			
371	Pumping Equipment			4.00%
375	Reuse Transmission and Distribution System			
380	Treatment and Disposal Equipment			
381	Plant Sewers			2.86%
382	Outfall Sewer Lines			3.33%
389	Other Plant Miscellaneous Equipment			
390	Office Furniture and Equipment			
391	Transportation Equipment			
392	Stores Equipment			
393	Tools, Shop and Garage Equipment			6.25%
394	Laboratory Equipment			
395	Power Operated Equipment			
396	Communication Equipment			
397	Miscellaneous Equipment			
398	Other Tangible Plant			
Wastewater Plant Composite Depreciation Rate *				

* If depreciation rates prescribed by this Commission are on a total composite basis, entries should be made on this line only.

UTILITY NAME: LAKE UTILITY SERVICES INC

SYSTEM NAME / COUNTY : Lake County

ANALYSIS OF ENTRIES IN WASTEWATER ACCUMULATED DEPRECIATION

ACCT. NO.	ACCOUNT NAME	BALANCE AT BEGINNING OF YEAR	ACCRUALS	OTHER CREDITS *	TOTAL CREDITS (d+e)
(a)	(b)	(c)	(d)	(e)	(f)
354	Structures and Improvements	\$ 76,379	\$ 7,318	\$ -	\$ 7,318
355	Power Generation Equipment				
360	Collection Sewers - Force	126,970	19,445	-	19,445
361	Collection Sewers - Gravity	200,870	40,003	-	40,003
362	Special Collecting Structures	-	-	-	-
363	Services to Customers	7,141	5,527	-	5,527
364	Flow Measuring Devices				
365	Flow Measuring Installations				
366	Reuse Services				
367	Reuse Meters and Meter Installations				
370	Receiving Wells				
371	Pumping Equipment	124,219	42,344	-	42,344
375	Reuse Transmission and Distribution System				
380	Treatment and Disposal Equipment				
381	Plant Sewers	257,365	84,879	-	84,879
382	Outfall Sewer Lines	5,929	557	-	557
389	Other Plant Miscellaneous Equipment				
390	Office Furniture and Equipment	192	38	-	38
391	Transportation Equipment				
392	Stores Equipment				
393	Tools, Shop and Garage Equipment	1,351	126	-	126
394	Laboratory Equipment				
395	Power Operated Equipment				
396	Communication Equipment				
397	Miscellaneous Equipment				
398	Other Tangible Plant				
Total Depreciable Wastewater Plant in Service		\$ 800,416	\$ 200,237	\$ -	\$ 200,237

* Specify nature of transaction. Use () to denote reversal entries.

OTHER CREDITS column (E) * are due to allocation of parent company plant

YEAR OF REPORT
31-Dec-04

UTILITY NAME: LAKE UTILITY SERVICES INC

SYSTEM NAME / COUNTY : Lake County

ANALYSIS OF ENTRIES IN WASTEWATER ACCUMULATED DEPRECIATION

ACCT. NO.	ACCOUNT NAME	PLANT RETIRED (g)	SALVAGE AND INSURANCE (h)	COST OF REMOVAL AND OTHER CHARGES (i)	TOTAL CHARGES (g-h+i) (j)	BALANCE AT END OF YEAR (c+f-j) (k)
(a)	(b)	(g)	(h)	(i)	(j)	(k)
354	Structures and Improvements	\$ -	\$ -	\$ -	\$ -	\$ 83,697
355	Power Generation Equipment	-	-	-	-	-
360	Collection Sewers - Force	-	-	-	-	146,415
361	Collection Sewers - Gravity	-	-	-	-	240,873
362	Special Collecting Structures	-	-	-	-	-
363	Services to Customers	-	-	-	-	12,668
364	Flow Measuring Devices	-	-	-	-	-
365	Flow Measuring Installations	-	-	-	-	-
366	Reuse Services	-	-	-	-	-
367	Reuse Meters and Meter Installations	-	-	-	-	-
370	Receiving Wells	-	-	-	-	-
371	Pumping Equipment	-	-	-	-	166,563
375	Reuse Transmission and Distribution System	-	-	-	-	-
380	Treatment and Disposal Equipment	-	-	-	-	-
381	Plant Sewers	-	-	-	-	342,244
382	Outfall Sewer Lines	-	-	-	-	6,486
389	Other Plant Miscellaneous Equipment	-	-	-	-	-
390	Office Furniture and Equipment	-	-	-	-	230
391	Transportation Equipment	-	-	-	-	-
392	Stores Equipment	-	-	-	-	-
393	Tools, Shop and Garage Equipment	-	-	-	-	1,477
394	Laboratory Equipment	-	-	-	-	-
395	Power Operated Equipment	-	-	-	-	-
396	Communication Equipment	-	-	-	-	-
397	Miscellaneous Equipment	-	-	-	-	-
398	Other Tangible Plant	-	-	-	-	-
Total Depreciable Wastewater Plant in Service						\$ 1,000,653

* Specify nature of transaction.
Use () to denote reversal entries.

S-6(b)
GROUP _____

UTILITY NAME: LAKE UTILITY SERVICES INC

YEAR OF REPORT 31-Dec-04

SYSTEM NAME / COUNTY : Lake County

CONTRIBUTIONS IN AID OF CONSTRUCTION
ACCOUNT 271

DESCRIPTION (a)	REFERENCE (b)	WASTEWATER (c)
Balance first of year		\$ <u>3,235,301</u>
Add credits during year:		
Contributions received from Capacity, Main Extension and Customer Connection Charges	S-8A	\$ <u>159,030</u>
Contributions received from Developer or Contractor Agreements in cash or property	S-8B	<u>1,563,195</u>
Total Credits		\$ <u>1,722,225</u>
Less debits charged during the year (All debits charged during the year must be explained below)		\$ _____
Total Contributions In Aid of Construction		\$ <u>4,957,526</u>

Explain all debits charged to Account 271 during the year below:

UTILITY NAME: LAKE UTILITY SERVICES INC

YEAR OF REPORT 31-Dec-04

SYSTEM NAME / COUNTY : Lake County

WASTEWATER CIAC SCHEDULE "A"
 ADDITIONS TO CONTRIBUTIONS IN AID OF CONSTRUCTION RECEIVED FROM CAPACITY,
 MAIN EXTENSION AND CUSTOMER CONNECTION CHARGES RECEIVED DURING THE YEAR

DESCRIPTION OF CHARGE (a)	NUMBER OF CONNECTIONS (b)	CHARGE PER CONNECTION (c)	AMOUNT (d)
SEWER CONNECTIONS FEES	285	\$ 558	\$ 159,030
_____	-	_____	-
_____	_____	_____	-
_____	_____	_____	-
_____	_____	_____	_____
_____	_____	_____	_____
_____	_____	_____	_____
Total Credits			\$ <u>159,030</u>

ACCUMULATED AMORTIZATION OF WASTEWATER CONTRIBUTIONS IN AID OF CONSTRUCTION

DESCRIPTION (a)	WASTEWATER (b)
Balance first of year	\$ 413,621
Debits during the year:	
Accruals charged to Account 272	\$ 114,610
Other debits (specify) :	_____
_____	_____
_____	_____
Total debits	\$ 114,610
Credits during the year (specify) :	
_____	\$ _____
_____	_____
Total credits	\$ -
Balance end of year	\$ <u>528,231</u>

UTILITY NAME: LAKE UTILITY SERVICES INC

YEAR OF REPORT
31-Dec-04

SYSTEM NAME / COUNTY : Lake County

WASTEWATER CIAC SCHEDULE "B"
ADDITIONS TO CONTRIBUTIONS IN AID OF CONSTRUCTION
RECEIVED FROM ALL DEVELOPERS OR CONTRACTORS AGREEMENTS
WHICH CASH OR PROPERTY WAS RECEIVED DURING THE YEAR

DESCRIPTION (a)	INDICATE CASH OR PROPERTY (b)	AMOUNT (c)
Weston Hills III Ph B		\$ 81,217
Trdds Landing		968,804
Orangetree Ph 4		180,018
Mission Pk Ph 3		67,549
Tradds Landing Ph 2		225,105
Orangetree Ph 5		40,502
Total Credits		\$ 1,563,195

Reconciliation of Revenue to
Regulatory Assessment Fee Revenue
Wastewater Operations

UTILITY NAME: LAKE UTILITY SERVICES INC

YEAR OF REPORT
31-Dec-04

(A)	(B)	(C)	(D)
Accounts	Gross Wastewater Revenues per Sch S-9	Gross Wastewater Revenues per RAF Return	Difference (B)-(C)
Gross Revenues:			-
Total Flat-Rate Revenues			-
Total Measured Revenues	690,246	690,246	-
Revenues from Public Authorities			-
Revenues from Other Systems			-
Interdepartmental Revenues			-
Total Other Wastewater Revenues			-
Reclaimed Water Sales			-
Total Wastewater Operating Revenue	690,246	690,246	-
Less: Expense for Purchased Wastewater from FPSC Regulated Utility			-
Net Wastewater Operating Revenues	690,246	690,246	-

UTILITY NAME: LAKE UTILITY SERVICES INC

YEAR OF REPORT
31-Dec-04

SYSTEM NAME / COUNTY : Lake County

WASTEWATER OPERATING REVENUE

ACCT. NO. (a)	DESCRIPTION (b)	BEGINNING YEAR NO. CUSTOMERS * (c)	YEAR END NUMBER OF CUSTOMERS * (d)	AMOUNTS (e)
WASTEWATER SALES				
521.1	Flat Rate Revenues: Residential Revenues	2,321	2,507	\$ 675,656
521.2	Commercial Revenues			
521.3	Industrial Revenues			
521.4	Revenues From Public Authorities			
521.5	Multiple Family Dwelling Revenues			
521.6	Other Revenues			
521	Total Flat Rate Revenues	2,321	2,507	\$ 675,656
522.1	Measured Revenues: Residential Revenues			
522.2	Commercial Revenues			
522.3	Industrial Revenues			
522.4	Revenues From Public Authorities			
522.5	Multiple Family Dwelling Revenues			
522	Total Measured Revenues			\$
523	Revenues From Public Authorities			
524	Revenues From Other Systems			
525	Interdepartmental Revenues			
Total Wastewater Sales		2,321	2,507	\$ 675,656
OTHER WASTEWATER REVENUES				
530	Guaranteed Revenues			\$
531	Sale of Sludge			
532	Forfeited Discounts			
534	Rents From Wastewater Property			
535	Interdepartmental Rents			
536	Other Wastewater Revenues (Including Allowance for Funds Prudently Invested or AFPI)			14,590
Total Other Wastewater Revenues				\$ 14,590

* Customer is defined by Rule 25-30.210(1), Florida Administrative Code.

UTILITY NAME: LAKE UTILITY SERVICES INC

YEAR OF REPORT 31-Dec-04

SYSTEM NAME / COUNTY : Lake County

WASTEWATER OPERATING REVENUE

ACCT. NO. (a)	DESCRIPTION (b)	BEGINNING YEAR NO. CUSTOMERS * (c)	YEAR END NUMBER OF CUSTOMERS * (d)	AMOUNTS (e)
RECLAIMED WATER SALES				
540.1	Flat Rate Reuse Revenues: Residential Reuse Revenues	_____	_____	\$ _____
540.2	Commercial Reuse Revenues	_____	_____	_____
540.3	Industrial Reuse Revenues	_____	_____	_____
540.4	Reuse Revenues From Public Authorities	_____	_____	_____
540.5	Other Revenues	_____	_____	_____
540	Total Flat Rate Reuse Revenues	_____	_____	\$ _____
541.1	Measured Reuse Revenues: Residential Reuse Revenues	_____	_____	_____
541.2	Commercial Reuse Revenues	_____	_____	_____
541.3	Industrial Reuse Revenues	_____	_____	_____
541.4	Reuse Revenues From Public Authorities	_____	_____	_____
541	Total Measured Reuse Revenues	_____	_____	\$ _____
544	Reuse Revenues From Other Systems	_____	_____	_____
Total Reclaimed Water Sales				\$ _____
Total Wastewater Operating Revenues				\$ <u>690,246</u>

* Customer is defined by Rule 25-30.210(1), Florida Administrative Code.

UTILITY NAME: LAKE UTILITY SERVICES INC

SYSTEM NAME / COUNTY Lake County

WASTEWATER UTILITY EXPENSE ACCOUNT MATRIX

ACCT. NO.	ACCOUNT NAME (b)	CURRENT YEAR (c)	.1 COLLECTION EXPENSES- OPERATIONS (d)	.2 COLLECTION EXPENSES- MAINTENANCE (e)	.3 PUMPING EXPENSES - OPERATIONS (f)	.4 PUMPING EXPENSES - MAINTENANCE (g)	.5 TREATMENT & DISPOSAL EXPENSES - OPERATIONS (h)	.6 TREATMENT & DISPOSAL EXPENSES - MAINTENANCE (i)
701	Salaries and Wages - Employees	\$ 57,945	\$ 1,738	\$ 6,953	\$ 11,589	\$ 2,897	\$ 27,814	\$ 6,954
703	Salaries and Wages - Officers, Directors and Majority Stockholders							
704	Employee Pensions and Benefits	10,685	321	748	1,282	534	3,206	1,282
710	Purchased Sewage Treatment							
711	Sludge Removal Expense	58,495						
715	Purchased Power	15,042			3,761			
716	Fuel for Power Purchased							
718	Chemicals	8,712						
720	Materials and Supplies	40,136	1,605	6,422	9,633	2,408	8,712	4,014
731	Contractual Services-Engineering	-						
732	Contractual Services - Accounting	2,390						
733	Contractual Services - Legal	1,083						
734	Contractual Services - Mgt. Fees	-						
735	Contractual Services - Testing							
736	Contractual Services - Other	2,852						
741	Rental of Building/Real Property							
742	Rental of Equipment							
750	Transportation Expenses	11,445						
756	Insurance - Vehicle		343	1,373	2,289	572	5,494	1,374
757	Insurance - General Liability							
758	Insurance - Workman's Comp.							
759	Insurance - Other	11,757						
760	Advertising Expense							
766	Regulatory Commission Expenses - Amortization of Rate Case Expense	-						
767	Regulatory Commission Exp.-Other							
770	Bad Debt Expense	2,442						
775	Miscellaneous Expenses	37,170						
Total Wastewater Utility Expenses		\$ 260,154	\$ 4,007	\$ 15,496	\$ 28,554	\$ 6,411	\$ 131,056	\$ 13,624

UTILITY NAME: LAKE UTILITY SERVICES INC

SYSTEM NAME / COUNTY : Lake County

WASTEWATER UTILITY EXPENSE ACCOUNT MATRIX

ACCT. NO.	ACCOUNT NAME	.7 CUSTOMER ACCOUNTS EXPENSE (j)	.8 ADMIN. & GENERAL EXPENSES (k)	.9 RECLAIMED WATER TREATMENT EXPENSES- OPERATIONS (l)	.10 RECLAIMED WATER TREATMENT EXPENSES- MAINTENANCE (m)	.11 RECLAIMED WATER DISTRIBUTION EXPENSES- OPERATIONS (n)	.12 RECLAIMED WATER DISTRIBUTION EXPENSES- MAINTENANCE (o)
701	Salaries and Wages - Employees						
703	Salaries and Wages - Officers, Directors and Majority Stockholders						
704	Employee Pensions and Benefits	3,312					
710	Purchased Sewage Treatment						
711	Sludge Removal Expense						
715	Purchased Power						
716	Fuel for Power Purchased						
718	Chemicals						
720	Materials and Supplies						
731	Contractual Services-Engineering		0				
732	Contractual Services - Accounting		2,390				
733	Contractual Services - Legal		1,083				
734	Contractual Services - Mgt. Fees		0				
735	Contractual Services - Testing		0				
736	Contractual Services - Other	1,425	1,427				
741	Rental of Building/Real Property						
742	Rental of Equipment						
750	Transportation Expenses						
756	Insurance - Vehicle						
757	Insurance - General Liability						
758	Insurance - Workman's Comp.						
759	Insurance - Other		11,757				
760	Advertising Expense						
766	Regulatory Commission Expenses - Amortization of Rate Case Expense		0				
767	Regulatory Commission Exp.-Other						
770	Bad Debt Expense	2,442					
775	Miscellaneous Expenses	18,585	18,585				
Total Wastewater Utility Expenses		\$ 25,764	\$ 35,242	\$ -	\$ -	\$ -	\$ -

UTILITY NAME:

LAKE UTILITY SERVICES, INC.

YEAR OF REPORT 31-Dec-04

SYSTEM NAME / COUNTY :

LAKE UTILITY SERVICES, INC. INTERCONNECTED SYSTEMS

CALCULATION OF THE WASTEWATER SYSTEM METER EQUIVALENTS

WATER METER SIZE (a)	TYPE OF WATER METER (b)	EQUIVALENT FACTOR (c)	NUMBER OF WATER METERS (d)	TOTAL NUMBER OF METER EQUIVALENTS (c x d) (e)
All Residential		1.0	2,499	2,499
5/8"	Displacement	1.0		0.00
3/4"	Displacement	1.5		
1"	Displacement	2.5	6	15.00
1 1/2"	Displacement or Turbine	5.0	2	10.00
2"	Displacement, Compound or Turbine	8.0		
3"	Displacement	15.0		
3"	Compound	16.0		
3"	Turbine	17.5		
4"	Displacement or Compound	25.0	1	25.00
4"	Turbine	30.0		
6"	Displacement or Compound	50.0		
6"	Turbine	62.5		
8"	Compound	80.0		
8"	Turbine	90.0		
10"	Compound	115.0		
10"	Turbine	145.0		
12"	Turbine	215.0		
Total Wastewater System Meter Equivalents				<u>2,549</u>

CALCULATION OF THE WASTEWATER SYSTEM EQUIVALENT RESIDENTIAL CONNECTIONS

Provide a calculation used to determine the value of one wastewater equivalent residential connection (ERC).

Use one of the following methods:

(a) If actual flow data are available from the preceding 12 months, divide the total annual single family residence (SFR) gallons sold by the average number of single family residence customers for the same period and divide the result by 365 days.

(b) If no historical flow data are available, use:

$$ERC = (\text{Total SFR gallons treated (Omit 000)} / 365 \text{ days} / 280 \text{ gallons per day})$$

For wastewater only utilities:

Subtract all general use and other non residential customer gallons from the total gallons treated.

Divide the remainder (SFR customers) by 365 days to reveal single family residence customer gallons per day.

NOTE: Total gallons treated includes both treated and purchased treatment.

ERC Calculation:

$$119.831/366/2499 = 131$$

One (1) ERC = 131 gallons AADF

UTILITY NAME: LAKE UTILITY SERVICES, INC.

YEAR OF REPORT 31-Dec-04

SYSTEM NAME / COUNTY : LAKE UTILITY SERVICES, INC. INTERCONNECTED SYSTEMS

WASTEWATER TREATMENT PLANT INFORMATION

Provide a separate sheet for each wastewater treatment facility

Permitted Capacity	<u>0.325 mgd</u>	<u> </u>	<u> </u>
Basis of Permit Capacity (1)	<u>AADF</u>	<u> </u>	<u> </u>
Manufacturer	<u>DAVCO</u>	<u> </u>	<u> </u>
Type (2)	<u>Ext. Aeration</u>	<u> </u>	<u> </u>
Hydraulic Capacity	<u>0.500 mgd</u>	<u> </u>	<u> </u>
Average Daily Flow	<u>0.328</u> mgd	<u> </u>	<u> </u>
Total Gallons of Wastewater Treated	<u>119.831</u> mg	<u> </u>	<u> </u>
Method of Effluent Disposal	<u>Perc Ponds</u>	<u> </u>	<u> </u>

(1) Basis of permitted capacity as stated on the Florida DEP WWTP Operating Permit (i.e. average annual daily flow, etc.)

(2) Contact stabilization, advanced treatment, etc.

UTILITY NAME: LAKE UTILITY SERVICES, INC.

YEAR OF REPORT
31-Dec-04

SYSTEM NAME / COUNTY : LAKE UTILITY SERVICES, INC. INTERCONNECTED SYSTEMS

OTHER WASTEWATER SYSTEM INFORMATION

Furnish information below for each system. A separate page should be supplied where necessary.

1. Present number of ERCs* now being served 1314

2. Maximum number of ERCs* which can be served 1785

3. Present system connection capacity (in ERCs*) using existing lines

4. Future connection capacity (in ERCs*) upon service area buildout N/A

5. Estimated annual increase in ERCs* 78

6. Describe any plans and estimated completion dates for any enlargements or improvements of this system
2005 - Replace pumps at L/S #2

7. If the utility uses reuse as a means of effluent disposal, attach a list of the reuse end users and the amount of reuse provided to each, if known. N/A

8. If the utility does not engage in reuse, has a reuse feasibility study been completed? Yes

If so, when? 1999

9. Has the utility been required by the DEP or water management district to implement reuse? No

If so, what are the utility's plans to comply with this requirement?

10. When did the company last file a capacity analysis report with the DEP? 1999

11. If the present system does not meet the requirements of DEP rules:

a. Attach a description of the plant upgrade necessary to meet the DEP rules.

b. Have these plans been approved by DEP? N/A

c. When will construction begin? N/A

d. Attach a description of the plant upgrade necessary to meet the DEP rules.

e. Is this system under any Consent Order with DEP? N/A

12. Department of Environmental Protection ID # FLA010630

* An ERC is determined based on the calculation on S-11.