

CLASS "A" OR "B"

ORIGINAL COPY  
Public Service Commission  
Do Not Remove from this Office

WATER AND/OR WASTEWATER UTILITIES  
(Gross Revenue of More Than \$200,000 Each)

ANNUAL REPORT

OF

WS641-05-AR

**LAKE UTILITY SERVICES INC**

Exact Legal Name of Respondent

**496W 534W 465S**

Certificate Number(s)

Submitted To The

STATE OF FLORIDA

RECEIVED  
PUBLIC SERVICE  
COMMISSION  
03 APR -3 PM 12:10  
DEPARTMENT OF  
ECONOMIC REGULATION

PUBLIC SERVICE COMMISSION

FOR THE

YEAR ENDED

**31-Dec-05**

## TABLE OF CONTENTS

SCHEDULE	PAGE	SCHEDULE	PAGE
<b>EXECUTIVE SUMMARY</b>			
Certification	E-1	Business Contracts with Officers, Directors and Affiliates	E-7
General Information	E-2	Affiliation of Officers & Directors	E-8
Directory of Personnel Who Contact the FPSC	E-3	Businesses which are a Byproduct, Coproduct or Joint Product Result of Providing Service	E-9
Company Profile	E-4	Business Transactions with Related Parties. Part I and II	E-10
Parent / Affiliate Organization Chart	E-5		
Compensation of Officers & Directors	E-6		
<b>FINANCIAL SECTION</b>			
Comparative Balance Sheet - Assets and Other Debits	F-1	Unamortized Debt Discount / Expense / Premium	F-13
Comparative Balance Sheet - Equity Capital and Liabilities	F-2	Extraordinary Property Losses	F-13
Comparative Operating Statement	F-3	Miscellaneous Deferred Debits	F-14
Schedule of Year End Rate Base	F-4	Capital Stock	F-15
Schedule of Year End Capital Structure	F-5	Bonds	F-15
Capital Structure Adjustments	F-6	Statement of Retained Earnings	F-16
Utility Plant	F-7	Advances from Associated Companies	F-17
Utility Plant Acquisition Adjustments	F-7	Long Term Debt	F-17
Accumulated Depreciation	F-8	Notes Payable	F-18
Accumulated Amortization	F-8	Accounts Payable to Associated Companies	F-18
Regulatory Commission Expense - Amortization of Rate Case Expense	F-9	Accrued Interest and Expense	F-19
Nonutility Property	F-9	Misc. Current & Accrued Liabilities	F-20
Special Deposits	F-9	Advances for Construction	F-21
Investments and Special Funds	F-10	Other Deferred Credits	F-21
Accounts and Notes Receivable - Net	F-11	Contributions In Aid of Construction	F-22
Accounts Receivable from Associated Companies	F-12	Accumulated Amortization of CIAC	F-23
Notes Receivable from Associated Companies	F-12	Reconciliation of Reported Net Income with Taxable Income for Federal Income Taxes	F-23
Miscellaneous Current & Accrued Assets	F-12		

## TABLE OF CONTENTS

SCHEDULE	PAGE	SCHEDULE	PAGE
<b>WATER OPERATION SECTION</b>			
Listing of Water System Groups	W-1	CIAC Additions / Amortization	W-8
Schedule of Year End Water Rate Base	W-2	Water Operating Revenue	W-9
Water Operating Statement	W-3	Water Utility Expense Accounts	W-10
Water Utility Plant Accounts	W-4	Pumping and Purchased Water Statistics, Source Supply	W-11
Basis for Water Depreciation Charges	W-5	Water Treatment Plant Information	W-12
Analysis of Entries in Water Depreciation Reserve	W-6	Calculation of ERC's	W-13
Contributions In Aid of Construction	W-7	Other Water System Information	W-14
<b>WASTEWATER OPERATION SECTION</b>			
Listing of Wastewater System Groups	S-1	Contributions In Aid of Construction	S-7
Schedule of Year End Wastewater Rate Base	S-2	CIAC Additions / Amortization	S-8
Wastewater Operating Statement	S-3	Wastewater Utility Expense Accounts	S-9
Wastewater Utility Plant Accounts	S-4	Wastewater Operating Revenue	S-10
Analysis of Entries in Wastewater Depreciation Reserve	S-5	Calculation of ERC's	S-11
Basis for Wastewater Depreciation Charges	S-6	Wastewater Treatment Plant Information	S-12
		Other Wastewater System Information	S-13

# **EXECUTIVE SUMMARY**

**CERTIFICATION OF ANNUAL REPORT**

I HEREBY CERTIFY, to the best of my knowledge and belief:

YES  NO

1. The utility is in substantial compliance with the Uniform System of Accounts prescribed by the Florida Public Service Commission.

YES  NO

2. The utility is in substantial compliance with all applicable rules and orders of the Florida Public Service Commission.

YES  NO

3. There have been no communications from regulatory agencies concerning noncompliance with, or deficiencies in, financial reporting practices that could have a material effect on the financial statement of the utility.

YES  NO


4. The annual report fairly represents the financial condition and results of operations of the respondent for the period presented and other information and statements presented in the the report as to the business affairs of the respondent are true, correct and complete for the period for which it represents.

Items Certified

1. 2. 3. 4.

\_\_\_\_\_  
(Signature of Chief Executive Officer of the utility) \*

1. 2. 3. 4.

  
\_\_\_\_\_  
(Signature of Chief Financial Officer of the utility) \*

\* Each of the four items must be certified YES or NO. Each item need not be certified by both officers. The items being certified by the officer should be indicated in the appropriate area to the left of the signature.

**NOTICE:** Section 837.06, Florida Statutes, provides that any person who knowingly makes a false statement in writing with the intent to mislead a public servant in the performance of his duty shall be guilty of a misdemeanor of the second degree.

ANNUAL REPORT OF

YEAR OF REPORT  
31-Dec-05

LAKE UTILITY SERVICES INC  
(Exact Name of Utility)

County: Lake County

List below the exact mailing address of the utility for which normal correspondence should be sent:

2335 SANDERS ROAD  
NORTHBROOK IL 60062

Telephone: 847-498-6440

E Mail Address: NONE

WEB Site: NONE

Sunshine State One-Call of Florida, Inc. Member Number LGU506

Name and address of person to whom correspondence concerning this report should be addressed:

JOHN S HAYNES  
2335 SANDERS ROAD  
NORTHBROOK IL 60062

Telephone: 847-498-6440

List below the address of where the utility's books and records are located:

2335 SANDERS ROAD  
NORTHBROOK IL 60062

Telephone: 847-498-6440

List below any groups auditing or reviewing the records and operations:

Pricewaterhousecoopers LLC

Date of original organization of the utility: 1969

Check the appropriate business entity of the utility as filed with the Internal Revenue Service

Individual  Partnership  Sub S Corporation  1120 Corporation

List below every corporation or person owning or holding directly or indirectly 5% or more of the voting securities of the utility:

	Name	Percent Ownership
1.	<u>UTILITIES INC</u>	<u>100%</u>
2.	<u></u>	<u></u>
3.	<u></u>	<u></u>
4.	<u></u>	<u></u>
5.	<u></u>	<u></u>
6.	<u></u>	<u></u>
7.	<u></u>	<u></u>
8.	<u></u>	<u></u>
9.	<u></u>	<u></u>
10.	<u></u>	<u></u>

**DIRECTORY OF PERSONNEL WHO CONTACT  
THE FLORIDA PUBLIC SERVICE COMMISSION**

<b>NAME OF COMPANY REPRESENTATIVE (1)</b>	<b>TITLE OR POSITION (2)</b>	<b>ORGANIZATIONAL UNIT TITLE (3)</b>	<b>USUAL PURPOSE FOR CONTACT WITH FPSC</b>
LAWRENCE N SCHUMACHER	PRES/SEC/CFO		FINANCIAL
LISA CROSSETT	VP OPERATIONS		OPERATIONS
STEVE LUBERTOZZI	DIRECTOR OF REGULATORY		RATE CASE
PATRICK FLYNN	REGIONAL DIRECTOR		OPERATIONS

- (1) Also list appropriate legal counsel, accountants and others who may not be on general payroll.
- (2) Provide individual telephone numbers if the person is not normally reached at the company.
- (3) Name of company employed by if not on general payroll.

**COMPANY PROFILE**

Provide a brief narrative company profile which covers the following areas:

- A. Brief company history.
- B. Public services rendered.
- C. Major goals and objectives.
- D. Major operating divisions and functions.
- E. Current and projected growth patterns.
- F. Major transactions having a material effect on operations.

A.	Lake Utility Services Inc. is a subsidiary of Utilities Inc.
B.	Lake Utility Services Inc. performs water and wastewater services
C.	Maintain a high quality of service and earn a fair return.
D.	Subdivision is served
E.	Several of the subdivision are experiencing growth currently and are expected to continue to experience growth for the upcoming year.
F.	Merge of Lake Utility Services Inc and Lake Groves Utilities Inc



PARENT / AFFILIATE ORGANIZATION CHART

Current as of 12/31/2005

Complete below an organizational chart that show all parents, subsidiaries and affiliates of the utility.  
The chart must also show the relationship between the utility and affiliates listed on E-7, E-10(a) and E-10(b).

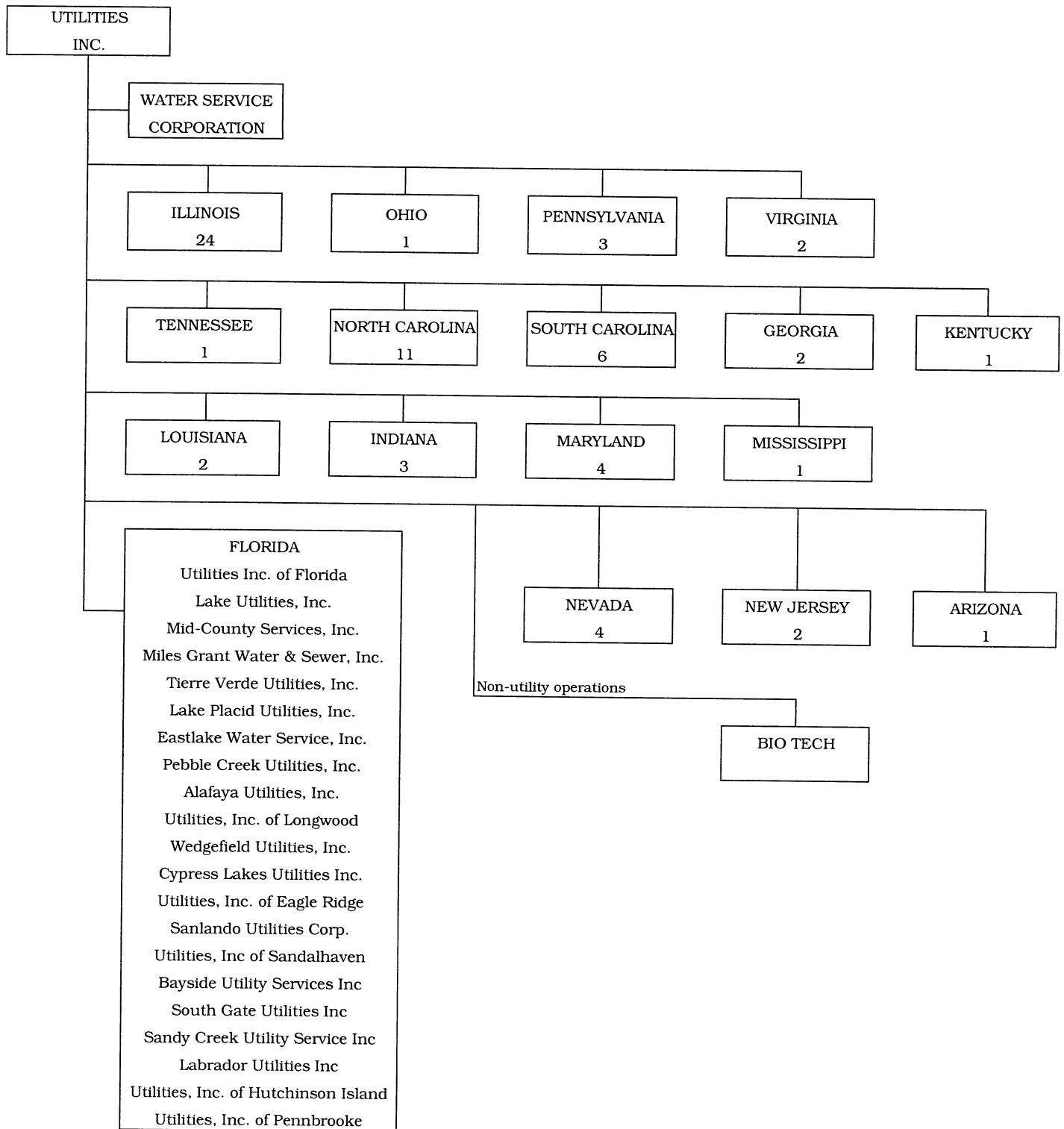
UTILITIES, INC. -- PARENT COMPANY

WATER SERVICE CORP. -- SERVICE COMPANY SUPPLYING MOST  
SERVICES REQUIRED BY UTILITY.

UTILITIES INC. of FLORIDA -- provides office personnel and administrative  
staff.

SEE ATTACHED

## Parent And Affiliate Organizational Chart



UTILITIES, INC. - Parent Company

WATER SERVICE CORP. - Service organization providing administrative and other service functions for the utility.

NOTE: Within each state except Florida is the number of companies owned.

**COMPENSATION OF OFFICERS**

For each officer, list the time spent on respondent as an officer compared to time spent on total business activities and the compensation received as an officer from the respondent.			
NAME (a)	TITLE (b)	% OF TIME SPENT AS OFFICER OF THE UTILITY (c)	OFFICERS' COMPENSATION (d)
JAMES L CAMAREN	CEO		\$ NONE
LAWRENCE N SCHUMACHER	PRES/SEC/CFO		NONE
LISA CROSSETT	VP		NONE

**COMPENSATION OF DIRECTORS**

For each director, list the number of director meetings attended by each director and the compensation received as a director from the respondent.			
NAME (a)	TITLE (b)	NUMBER OF DIRECTORS' MEETINGS ATTENDED (c)	DIRECTORS' COMPENSATION (d)
JAMES L CAMAREN	CEO	1	\$ NONE
LAWRENCE N SCHUMACHER	PRES/SEC/CFO	1	NONE

**BUSINESS CONTRACTS WITH OFFICERS, DIRECTORS AND AFFILIATES**

List all contracts, agreements, or other business arrangements* entered into during the calendar year (other than compensation related to position with Respondents) between the Respondent and officer and director listed on page E-6. In addition, provide the same information with respect to professional services for each firm, partnership, or organization with which the officer or director is affiliated.				
NAME OF OFFICER, DIRECTOR OR AFFILIATE (a)	IDENTIFICATION OF SERVICE OR PRODUCT (b)	AMOUNT (c)	NAME AND ADDRESS OF AFFILIATED ENTITY (d)	
<b>NO BUSINESS CONTRACTS, AGREEMENTS OR OTHER ARRANGEMENTS WERE ENTERED INTO DURING THE CURRENT YEAR BY THE OFFICERS LISTED ON PAGE E6, THE DIRECTORS OR AFFILIATES.</b>		\$		

\* Business Agreement, for this schedule, shall mean any oral or written business deal which binds the concerned parties for products or services during the reporting year or future years. Although the Respondent and/or other companies will benefit from the arrangement, the officer or director is, however, acting on his behalf or for the benefit of other companies or persons.

**AFFILIATION OF OFFICERS AND DIRECTORS**

For each of the officials listed on page E-6, list the principle occupation or business affiliations or connections with any other business or financial organizations, firms, or partnerships. For purposes of this part, an official will be considered to have an affiliation with any business or financial organization, firm or partnership in which he is an officer, director, trustee, partner, or a person exercising similar functions.

NAME (a)	PRINCIPLE OCCUPATION OR BUSINESS AFFILIATION (b)	AFFILIATION OR CONNECTION (c)	NAME AND ADDRESS OF AFFILIATION OR CONNECTION (d)
<b>THE OFFICIALS LISTED                      ON PAGE E6 HAVE NO                      OTHER PRINCIPLE                      OCCUPATION OR BUSINESS                      AFFILIATION OR                      CONNECTIONS WITH ANY                      OTHER BUSINESS OR                      FINANCIAL                      ORGANIZATIONS, FIRMS,                      OR PARTNERSHIPS                      DURING THE REPORTED                      YEAR.</b>			

**BUSINESSES WHICH ARE A BY-PRODUCT, COPRODUCT OR JOINT-PRODUCT  
RESULT OF PROVIDING WATER OR WASTEWATER SERVICE**

Complete the following for any business which is conducted as a byproduct, coproduct, or joint product as a result of providing water and / or wastewater service. This would include any business which requires the use of utility land and facilities. Examples of these types of businesses would be orange groves, nurseries, tree farms, fertilizer manufacturing, etc. This would not include any business for which the assets are properly included in Account 121 - Nonutility Property along with the associated revenue and expenses segregated out as nonutility also.

BUSINESS OR SERVICE CONDUCTED (a)	ASSETS		REVENUES		EXPENSES	
	BOOK COST OF ASSETS (b)	ACCOUNT NUMBER (c)	REVENUES GENERATED (d)	ACCOUNT NUMBER (e)	EXPENSES INCURRED (f)	ACCOUNT NUMBER (g)
NO BUSINESS WHICH ARE	\$		\$		\$	
A BYPRODUCT, COPRODUCT OR JOINT PRODUCT RESULTING FROM PROVIDING WATER AND/OR SEWER SERVICE.						

**BUSINESS TRANSACTIONS WITH RELATED PARTIES**

List each contract, agreement, or other business transaction exceeding a cumulative amount of \$500 in any on year, entered into between the Respondent and a business or financial organization, firm, or partnership named on pages E-2 and E-6, identifying the parties, amounts, dates and product, and asset, or service involved.

Part I. Specific Instructions: Services and Products Received or Provided

**1. Enter in this part all transactions involving services and products received or provided.**

**2. Below are some types of transactions to include:**

- management, legal and accounting services
- computer services
- engineering & construction services
- repairing and servicing of equipment

- material and supplies furnished
- leasing of structures, land, and equipment
- rental transactions
- sale, purchase or transfer of various products

NAME OF COMPANY OR RELATED PARTY (a)	DESCRIPTION SERVICE AND/OR NAME OF PRODUCT (b)	CONTRACT OR AGREEMENT EFFECTIVE DATES (c)	ANNUAL CHARGES (P)urchased (S)old (d)	AMOUNT (e)
WATER SERVICE CORP	Operators Salaries & Benefits	Continuous	Purchase	493,316
	Insurance	Continuous	Purchase	47,809
	Computer Operations	Continuous	Purchase	24,719
	Supplies & Postage	Continuous	Purchase	28,634
	Outside Services	Continuous	Purchase	2,844
	Management Services	Continuous	Purchase	59,026

**UTILITY NAME:** LAKE UTILITY SERVICES INC

**BUSINESS TRANSACTIONS WITH RELATED PARTIES (Cont'd)**

**Part II. Specific Instructions: Sale, Purchase and Transfer of Assets**

1. Enter in this part all transactions relating to the purchase, sale, or transfer of assets.
  3. The columnar instructions follow:
    - (a) Enter name of related party or company.
    - (b) Describe briefly the type of assets purchased, sold or transferred.
    - (c) Enter the total received or paid. Indicate purchase with "P" and sale with "S".
    - (d) Enter the net book value for each item reported.
    - (e) Enter the net profit or loss for each item reported. (column (c) - column (d))
    - (f) Enter the fair market value for each item reported. In space below or in a supplemental schedule, describe the basis used to calculate fair market value.
2. Below are examples of some types of transactions to include:
  - purchase, sale or transfer of equipment
  - purchase, sale or transfer of land and structures
  - purchase, sale or transfer of securities
  - noncash transfers of assets
  - noncash dividends other than stock dividends
  - write-off of bad debts or loans

NAME OF COMPANY OR RELATED PARTY (a)	DESCRIPTION OF ITEMS (b)	SALE OR PURCHASE PRICE (c)	NET BOOK VALUE (d)	GAIN OR LOSS (e)	FAIR MARKET VALUE (f)
		\$ _____	\$ _____	\$ _____	\$ _____
NO ASSETS WERE SOLD, PURCHASED OR		_____	_____	_____	_____
TRANSFERRED WITH A RELATED PARTY		_____	_____	_____	_____
DURING THE FISCAL YEAR ENDED 31-Dec-05		_____	_____	_____	_____
		_____	_____	_____	_____
		_____	_____	_____	_____
		_____	_____	_____	_____
		_____	_____	_____	_____
		_____	_____	_____	_____
		_____	_____	_____	_____
		_____	_____	_____	_____
		_____	_____	_____	_____
		_____	_____	_____	_____
		_____	_____	_____	_____
		_____	_____	_____	_____



# **FINANCIAL SECTION**

**COMPARATIVE BALANCE SHEET  
ASSETS AND OTHER DEBITS**

ACCT. NO. (a)	ACCOUNT NAME (b)	REF. PAGE (c)	PREVIOUS YEAR (d)	CURRENT YEAR (e)
<b>UTILITY PLANT</b>				
101-106	Utility Plant	F-7	\$ 27,210,121	\$ 32,303,600
108-110	Less: Accumulated Depreciation and Amortization	F-8	3,072,527	3,935,633
Net Plant			\$ 24,137,594	\$ 28,367,967
114-115	Utility Plant Acquisition adjustment (Net)	F-7	-	-
116 *	Other Utility Plant Adjustments			
Total Net Utility Plant			\$ 24,137,594	\$ 28,367,967
<b>OTHER PROPERTY AND INVESTMENTS</b>				
121	Nonutility Property	F-9	\$ _____	\$ _____
122	Less: Accumulated Depreciation and Amortization			
Net Nonutility Property			\$ _____	\$ _____
123	Investment In Associated Companies	F-10	_____	_____
124	Utility Investments	F-10	_____	_____
125	Other Investments	F-10	_____	_____
126-127	Special Funds	F-10	_____	_____
Total Other Property & Investments			\$ _____	\$ _____
<b>CURRENT AND ACCRUED ASSETS</b>				
131	Cash		\$ _____	\$ _____
132	Special Deposits	F-9	5,560	18,260
133	Other Special Deposits	F-9	_____	_____
134	Working Funds		_____	_____
135	Temporary Cash Investments		_____	_____
141-144	Accounts and Notes Receivable, Less Accumulated Provision for Uncollectible Accounts	F-11	401,177	456,821
145	Accounts Receivable from Associated Companies	F-12	5,254,179	4,396,918
146	Notes Receivable from Associated Companies	F-12	-	-
151-153	Material and Supplies		_____	_____
161	Stores Expense		_____	_____
162	Prepayments		-	-
171	Accrued Interest and Dividends Receivable		-	-
172 *	Rents Receivable		_____	_____
173 *	Accrued Utility Revenues		_____	_____
174	Misc. Current and Accrued Assets	F-12	-	-
Total Current and Accrued Assets			\$ 5,660,916	\$ 4,871,999

\* Not Applicable for Class B Utilities

**COMPARATIVE BALANCE SHEET  
ASSETS AND OTHER DEBITS**

ACCT. NO. (a)	ACCOUNT NAME (b)	REF. PAGE (c)	PREVIOUS YEAR (d)	CURRENT YEAR (e)
DEFERRED DEBITS				
181	Unamortized Debt Discount & Expense	F-13	\$ _____	\$ _____
182	Extraordinary Property Losses	F-13	_____	_____
183	Preliminary Survey & Investigation Charges		_____	_____
184	Clearing Accounts		_____	_____
185 *	Temporary Facilities		_____	_____
186	Misc. Deferred Debits	F-14	11,491	9,236
187 *	Research & Development Expenditures		_____	_____
190	Accumulated Deferred Income Taxes		1,118,771	1,458,540
Total Deferred Debits			\$ 1,130,262	\$ 1,467,776
TOTAL ASSETS AND OTHER DEBITS			\$ 30,928,772	\$ 34,707,742

\* Not Applicable for Class B Utilities

**NOTES TO THE BALANCE SHEET**

The space below is provided for important notes regarding the balance sheet.

**COMPARATIVE BALANCE SHEET  
EQUITY CAPITAL AND LIABILITIES**

ACCT. NO. (a)	ACCOUNT NAME (b)	REF. PAGE (c)	PREVIOUS YEAR (d)	CURRENT YEAR (e)
<b>EQUITY CAPITAL</b>				
201	Common Stock Issued	F-15	\$ 300	\$ 300
204	Preferred Stock Issued	F-15		
202,205 *	Capital Stock Subscribed			
203,206 *	Capital Stock Liability for Conversion			
207 *	Premium on Capital Stock			
209 *	Reduction in Par or Stated Value of Capital Stock			
210 *	Gain on Resale or Cancellation of Reacquired Capital Stock			
211	Other Paid - In Capital		11,859,635	12,366,359
212	Discount On Capital Stock			
213	Capital Stock Expense			
214-215	Retained Earnings	F-16	2,035,649	2,631,483
216	Reacquired Capital Stock			
218	Proprietary Capital (Proprietorship and Partnership Only)			
Total Equity Capital			\$ 13,895,584	\$ 14,998,142
<b>LONG TERM DEBT</b>				
221	Bonds	F-15		
222 *	Reacquired Bonds			
223	Advances from Associated Companies	F-17		
224	Other Long Term Debt	F-17		
Total Long Term Debt			\$ -	\$ -
<b>CURRENT AND ACCRUED LIABILITIES</b>				
231	Accounts Payable		155,477	317,886
232	Notes Payable	F-18	-	-
233	Accounts Payable to Associated Companies	F-18	-	-
234	Notes Payable to Associated Companies	F-18		
235	Customer Deposits		232,295	270,975
236	Accrued Taxes	W/S-3	61,081	182,874
237	Accrued Interest	F-19	(9,978)	(8,865)
238	Accrued Dividends			
239	Matured Long Term Debt			
240	Matured Interest			
241	Miscellaneous Current & Accrued Liabilities	F-20		
Total Current & Accrued Liabilities			\$ 438,875	\$ 762,870

\* Not Applicable for Class B Utilities

**COMPARATIVE BALANCE SHEET  
EQUITY CAPITAL AND LIABILITIES**

ACCT. NO. (a)	ACCOUNT NAME (b)	REF. PAGE (c)	PREVIOUS YEAR (d)	CURRENT YEAR (e)
<b>DEFERRED CREDITS</b>				
251	Unamortized Premium On Debt	F-13	\$ _____	\$ _____
252	Advances For Construction	F-20	38,400	38,400
253	Other Deferred Credits	F-21	_____	_____
255	Accumulated Deferred Investment Tax Credits		30,383	35,152
Total Deferred Credits			\$ <u>68,783</u>	\$ <u>73,552</u>
<b>OPERATING RESERVES</b>				
261	Property Insurance Reserve		\$ _____	\$ _____
262	Injuries & Damages Reserve		_____	_____
263	Pensions and Benefits Reserve		_____	_____
265	Miscellaneous Operating Reserves		_____	_____
Total Operating Reserves			\$ <u>-</u>	\$ <u>-</u>
<b>CONTRIBUTIONS IN AID OF CONSTRUCTION</b>				
271	Contributions in Aid of Construction	F-22	\$ <u>17,044,466</u>	\$ <u>19,965,147</u>
272	Accumulated Amortization of Contributions in Aid of Construction	F-22	2,008,678	2,636,809
Total Net C.I.A.C.			\$ <u>15,035,788</u>	\$ <u>17,328,338</u>
<b>ACCUMULATED DEFERRED INCOME TAXES</b>				
281	Accumulated Deferred Income Taxes - Accelerated Depreciation		\$ <u>1,443,879</u>	\$ <u>1,500,971</u>
282	Accumulated Deferred Income Taxes - Liberalized Depreciation		_____	_____
283	Accumulated Deferred Income Taxes - Other		45,863	43,869
Total Accumulated Deferred Income Tax			\$ <u>1,489,742</u>	\$ <u>1,544,840</u>
<b>TOTAL EQUITY CAPITAL AND LIABILITIES</b>			\$ <u>30,928,772</u>	\$ <u>34,707,742</u>

**COMPARATIVE OPERATING STATEMENT**

ACCT. NO. (a)	ACCOUNT NAME (b)	REF. PAGE (c)	PREVIOUS YEAR (d)	CURRENT YEAR * (e)
<b>UTILITY OPERATING INCOME</b>				
400	Operating Revenues	F-3(b)	\$ 2,766,039	\$ 3,251,332
469, 530	Less: Guaranteed Revenue and AFPI	F-3(b)	-	-
Net Operating Revenues			\$ 2,766,039	\$ 3,251,332
401	Operating Expenses	F-3(b)	\$ 1,135,547	\$ 1,441,802
403	Depreciation Expense:	F-3(b)	\$ 676,161	\$ 730,911
	Less: Amortization of CIAC	F-22	(373,699)	(446,930)
Net Depreciation Expense			\$ 302,462	\$ 283,981
406	Amortization of Utility Plant Acquisition Adjustment	F-3(b)	-	-
407	Amortization Expense (Other than CIAC)	F-3(b)	3,694	3,821
408	Taxes Other Than Income	W/S-3	405,532	420,383
409	Current Income Taxes	W/S-3	400,925	1,035,604
410.10	Deferred Federal Income Taxes	W/S-3	(130,242)	(242,709)
410.11	Deferred State Income Taxes	W/S-3	(58,558)	(41,598)
411.10	Provision for Deferred Income Taxes - Credit	W/S-3	-	-
412.10	Investment Tax Credits Deferred to Future Periods	W/S-3	-	-
412.11	Investment Tax Credits Restored to Operating Income	W/S-3	-	-
Utility Operating Expenses			\$ 2,059,360	\$ 2,901,284
Net Utility Operating Income			\$ 706,679	\$ 350,048
469, 530	Add Back: Guaranteed Revenue and AFPI	F-3(b)	-	-
413	Income From Utility Plant Leased to Others		-	-
414	Gains (losses) From Disposition of Utility Property		-	-
420	Allowance for Funds Used During Construction		52,196	92,802
Total Utility Operating Income [Enter here and on Page F-3(c)]			\$ 758,875	\$ 442,850

\* For each account, Column e should agree with Columns f, g and h on F-3(b)

**COMPARATIVE OPERATING STATEMENT (Cont'd)**

WATER SCHEDULE W-3 * (f)	WASTEWATER SCHEDULE S-3 * (g)	OTHER THAN REPORTING SYSTEMS (h)
\$ 2,446,861 -	\$ 804,471	\$ -
\$ 2,446,861	\$ 804,471	\$ -
\$ 990,950	\$ 450,852	\$ -
549,433 <u>(300,463)</u>	181,478 <u>(146,467)</u>	-
\$ 248,970	\$ 35,011	\$ -
- 3,552 350,146 795,759 <u>(186,498)</u> <u>(31,964)</u> - - -	- 269 70,237 239,845 <u>(56,211)</u> <u>(9,634)</u> - - -	- - - - - - - - -
\$ 2,170,915	\$ 730,369	\$ -
\$ 275,946	\$ 74,102	\$ -
- - - <u>92,802</u>	- - - -	- - - -
\$ <u>368,748</u>	\$ <u>74,102</u>	\$ -

\* Total of Schedules W-3 / S-3 for all rate groups.

COMPARATIVE OPERATING STATEMENT (Cont'd)

ACCT. NO. (a)	ACCOUNT NAME (b)	REF. PAGE (c)	PREVIOUS YEAR (d)	CURRENT YEAR (e)
Total Utility Operating Income [from page F-3(a)]			\$ 758,875	\$ 442,850
OTHER INCOME AND DEDUCTIONS				
415	Revenues-Merchandising, Jobbing, and Contract Deductions		\$ _____	\$ _____
416	Costs & Expenses of Merchandising Jobbing, and Contract Work		_____	_____
419	Interest and Dividend Income		(9,648)	1,369,616
421	Nonutility Income		_____	_____
426	Miscellaneous Nonutility Expenses		-	-
Total Other Income and Deductions			\$ (9,648)	\$ 1,369,616
TAXES APPLICABLE TO OTHER INCOME				
408.20	Taxes Other Than Income		\$ _____	\$ _____
409.20	Income Taxes		_____	_____
410.20	Provision for Deferred Income Taxes		_____	_____
411.20	Provision for Deferred Income Taxes - Credit		_____	_____
412.20	Investment Tax Credits - Net		_____	_____
412.30	Investment Tax Credits Restored to Operating Income		_____	_____
Total Taxes Applicable To Other Income			\$ -	\$ -
INTEREST EXPENSE				
427	Interest Expense	F-19	\$ 346,181	\$ 356,409
428	Amortization of Debt Discount & Expense	F-13	_____	_____
429	Amortization of Premium on Debt	F-13	_____	_____
Total Interest Expense			\$ 346,181	\$ 356,409
EXTRAORDINARY ITEMS				
433	Extraordinary Income		\$ _____	\$ _____
434	Extraordinary Deductions		_____	_____
409.30	Income Taxes, Extraordinary Items		_____	_____
Total Extraordinary Items			\$ -	\$ -
NET INCOME			\$ 403,046	\$ 1,456,057

Explain Extraordinary Income:  
NONE

---



---



---



---



---



Revised 6/08/06

UTILITY NAME: LAKE UTILITY SERVICES INC

YEAR OF REPORT 31-Dec-05
-----------------------------

SCHEDULE OF YEAR END RATE BASE

ACCT. NO. (a)	ACCOUNT NAME (b)	REF. PAGE (c)	WATER UTILITY (d)	WASTEWATER UTILITY (e)
101	Utility Plant In Service	F-7	\$ 19,953,344	\$ 9,237,915
	Less: Nonused and Useful Plant (1)			
108	Accumulated Depreciation	F-8	2,431,114	1,487,674
110	Accumulated Amortization	F-8	15,459	1,386
271	Contributions In Aid of Construction	F-22	13,803,866	6,161,281
252	Advances for Construction	F-20	38,400	38,400
Subtotal			\$ 3,664,505	\$ 1,549,174
272	Add: Accumulated Amortization of Contributions in Aid of Construction	F-22	1,881,724	755,085
Subtotal			\$ 5,546,229	\$ 2,304,259
114	Plus or Minus: Acquisition Adjustments (2)	F-7	-	-
115	Accumulated Amortization of Acquisition Adjustments (2)	F-7	-	-
	Working Capital Allowance (3)		123,869	56,357
	Other (Specify): _____ _____ _____		-	-
RATE BASE			\$ 5,670,098	\$ 2,360,616
NET UTILITY OPERATING INCOME			\$ 275,946	\$ 74,102
ACHIEVED RATE OF RETURN (Operating Income / Rate Base)			4.87%	3.14%

NOTES :

- (1) Estimate based on the methodology used in the last rate proceeding.
- (2) Include only those Acquisition Adjustments that have been approved by the Commission.
- (3) Calculation consistent with last rate proceeding.  
In absence of a rate proceeding, Class A utilities will use the Balance Sheet Method and Class B Utilities will use the One-eighth Operating and Maintenance Expense Method.

**SCHEDULE OF CURRENT COST OF CAPITAL  
CONSISTENT WITH THE METHODOLOGY USED IN THE LAST RATE PROCEEDING (1)**

<b>CLASS OF CAPITAL (a)</b>	<b>DOLLAR AMOUNT (2) (b)</b>	<b>PERCENTAGE OF CAPITAL (c)</b>	<b>ACTUAL COST RATES (3) (d)</b>	<b>WEIGHTED COST (c x d) (e)</b>
Common Equity	\$ 3,265,052	40.66%	11.70%	4.76%
Preferred Stock	-	0.00%	0.00%	0.00%
Long Term Debt	4,373,235	54.46%	6.81%	3.71%
Customer Deposits	270,975	3.37%	6.00%	0.20%
Tax Credits - Zero Cost	-	0.00%	0.00%	0.00%
Tax Credits - Weighted Cost	35,152	0.00%	0.00%	0.00%
Deferred Income Taxes	86,300	1.07%	0.00%	0.00%
Other (Explain) Short Term Debt	-	0.00%	0.00%	0.00%
<b>Total</b>	\$ <u>8,030,713</u>	<u>100.00%</u>		<u>8.67%</u>

(1) If the utility's capital structure is not used, explain which capital structure is used.

\_\_\_\_\_

\_\_\_\_\_

(2) Should equal amounts on Schedule F-6, Column (g).

(3) Mid-point of the last authorized Return On Equity or current leverage formula if none has been established.

Must be calculated using the same methodology used in the last rate proceeding using current annual report year end amounts and cost rates.

**APPROVED RETURN ON EQUITY**

Current Commission Return on Equity:	<u>11.70%</u>
Commission order approving Return on Equity:	<u>2004 leverage formula</u>

**APPROVED AFUDC RATE**

COMPLETION ONLY REQUIRED IF AFUDC WAS CHARGED DURING YEAR

Current Commission Approved AFUDC rate:	<u>9.03%</u>
Commission order approving AFUDC rate:	<u>PSC-04-0262-PAA-WS</u>

If any utility capitalized any charge in lieu of AFUDC (such as interest only), state the basis of the charge, an explanation as to why AFUDC was not charged and the percentage capitalized.

UTILITY NAME:

LAKE UTILITY SERVICES INC

YEAR OF REPORT  
31-Dec-05

**SCHEDULE OF CAPITAL STRUCTURE ADJUSTMENTS  
CONSISTENT WITH THE METHODOLOGY USED IN THE LAST RATE PROCEEDING**

CLASS OF CAPITAL (a)	PER BOOK BALANCE (b)	NON-UTILITY ADJUSTMENTS (c)	NON-JURISDICTIONAL ADJUSTMENTS (d)	OTHER (1) ADJUSTMENTS SPECIFIC (e)	OTHER (1) ADJUSTMENTS PRO RATA (f)	CAPITAL STRUCTURE (g)
Common Equity	\$ 92,611,247	\$ 0	\$ 0	\$ 0	\$ (89,346,195)	\$ 3,265,052
Preferred Stock		0	0	0		-
Long Term Debt	124,044,203	0	0	0	(119,670,968)	4,373,235
Customer Deposits	270,975	0	0	0		270,975
Tax Credits - Zero Cost	-	0	0	0		-
Tax Credits - Weighted Cost	35,152	0	0	0		35,152
Deferred Inc. Taxes	86,300	0	0	0		86,300
Other (Explain)	-	0	0	0		-
<b>Total</b>	<b>\$ 217,047,877</b>	<b>\$ 0</b>	<b>\$ 0</b>	<b>\$ 0</b>	<b>\$ (209,017,164)</b>	<b>\$ 8,030,713</b>

(1) Explain below all adjustments made in Columns (e) and (f):

**NOT APPLICABLE**

**UTILITY PLANT  
ACCOUNTS 101 - 106**

ACCT. (a)	DESCRIPTION (b)	WATER (c)	WASTEWATER (d)	OTHER THAN REPORTING SYSTEMS (e)	TOTAL (f)
101	Plant Accounts: Utility Plant In Service	\$ 19,953,344	\$ 9,237,915	\$ _____	\$ 29,191,259
102	Utility Plant Leased to Other	_____	_____	_____	-
103	Property Held for Future Use	_____	_____	_____	-
104	Utility Plant Purchased or Sold	_____	_____	_____	-
105	Construction Work in Progress	3,112,341	-	_____	3,112,341
106	Completed Construction Not Classified	_____	_____	_____	_____
	Total Utility Plant	\$ 23,065,685	\$ 9,237,915	\$ -	\$ 32,303,600

**UTILITY PLANT ACQUISITION ADJUSTMENTS  
ACCOUNTS 114 AND 115**

Report each acquisition adjustment and related accumulated amortization separately.  
For any acquisition adjustments approved by the Commission, include the Order Number.

ACCT. (a)	DESCRIPTION (b)	WATER (c)	WASTEWATER (d)	OTHER THAN REPORTING SYSTEMS (e)	TOTAL (f)
114	Acquisition Adjustment	\$ -	\$ -	\$ -	\$ -
	NONE	_____	_____	_____	-
		_____	_____	_____	-
		_____	_____	_____	-
		_____	_____	_____	-
	Total Plant Acquisition Adjustments	\$ -	\$ -	\$ -	\$ -
115	Accumulated Amortization Accruals charged during year	\$ -	\$ -	\$ _____	\$ -
		_____	_____	_____	-
		_____	_____	_____	-
		_____	_____	_____	-
	Total Accumulated Amortization	\$ -	\$ -	\$ -	\$ -
	Net Acquisition Adjustments	\$ -	\$ -	\$ -	\$ -

ACCUMULATED DEPRECIATION ( ACCT. 108 ) AND AMORTIZATION (ACCT. 110)

DESCRIPTION (a)	WATER (b)	WASTEWATER (c)	OTHER THAN REPORTING SYSTEMS (d)	TOTAL (e)
<b>ACCUMULATED DEPRECIATION</b>				
Account 108				
Balance first of year	\$ 2,030,755	\$ 1,000,653	\$	\$ 3,031,408
Credit during year:				
Accruals charged to:				
Account 108.1 (1)	\$ 549,433	\$ 181,478	\$	\$ 730,911
Account 108.2 (2)				-
Account 108.3 (2)				-
Other Accounts (specify):				-
(62,031)		313,528		251,497
Salvage				-
Other Credits (Specify):				-
<b>Total Credits</b>	\$ 487,402	\$ 495,006	\$ -	\$ 982,408
Debits during year:				
Book cost of plant retired	87,043	7,985		95,028
Cost of Removal				-
Other Debits (specify):				-
<b>Total Debits</b>	\$ 87,043	\$ 7,985	\$ -	\$ 95,028
Balance end of year	\$ <u>2,431,114</u>	\$ <u>1,487,674</u>	\$ -	\$ <u>3,918,788</u>
<b>ACCUMULATED AMORTIZATION</b>				
Account 110				
Balance first of year	\$ 39,527	\$ 1,592	\$	\$ 41,119
Credit during year:				
Accruals charged to:				
Account 110.2 (2)	\$ 3,552	\$ 269	\$	\$ 3,821
Other Accounts (specify):	-			-
-		-		-
<b>Total credits</b>	\$ 3,552	\$ 269	\$ -	\$ 3,821
Debits during year:				
Book cost of plant retired				-
Other debits (specify):				
Acting adjustments mandated by FPSC	27,620	475		28,095
<b>Total Debits</b>	\$ 27,620	\$ 475	\$ -	\$ 28,095
Balance end of year	\$ <u>15,459</u>	\$ <u>1,386</u>	\$ -	\$ <u>16,845</u>

- (1) Account 108 for Class B utilities.
- (2) Not applicable for Class B utilities.
- (3) Account 110 for Class B utilities.

UTILITY NAME: LAKE UTILITY SERVICES INC

<b>YEAR OF REPORT</b> <b>31-Dec-05</b>
---

**REGULATORY COMMISSION EXPENSE  
AMORTIZATION OF RATE CASE EXPENSE (ACCOUNTS 666 AND 766)**

DESCRIPTION OF CASE (DOCKET NO.) (a)	EXPENSE INCURRED DURING YEAR (b)	CHARGED OFF DURING YEAR	
		ACCT. (d)	AMOUNT (e)
NONE	\$ _____	_____	\$ _____
_____	_____	_____	_____
_____	_____	_____	_____
Total	\$ _____	_____	\$ _____

**NONUTILITY PROPERTY (ACCOUNT 121)**

Report separately each item of property with a book cost of \$25,000 or more included in Account 121.

Other Items may be grouped by classes of property.

DESCRIPTION (a)	BEGINNING YEAR (b)	ADDITIONS (c)	REDUCTIONS (d)	ENDING YEAR BALANCE (e)
NONE	\$ _____	\$ _____	\$ _____	\$ _____
_____	_____	_____	_____	_____
_____	_____	_____	_____	_____
_____	_____	_____	_____	_____
Total Nonutility Property	\$ _____	\$ _____	\$ _____	\$ _____

**SPECIAL DEPOSITS ( ACCOUNTS 132 AND 133)**

Report hereunder all special deposits carried in Accounts 132 and 133.

DESCRIPTION OF SPECIAL DEPOSITS (a)	YEAR END BOOK COST (b)
SPECIAL DEPOSITS (Account 132): <u>Electric</u>	\$ 18,260
_____	_____
_____	_____
Total Special Deposits	\$ 18,260
OTHER SPECIAL DEPOSITS (Account 133): <u>NONE</u>	\$ _____
_____	_____
_____	_____
Total Other Special Deposits	\$ -

**INVESTMENTS AND SPECIAL FUNDS  
ACCOUNTS 123 - 127**

Report hereunder all investments and special funds carried in Accounts 123 through 127.

DESCRIPTION OF SECURITY OR SPECIAL FUND (a)	FACE OR PAR VALUE (b)	YEAR END BOOK COST (c)
INVESTMENT IN ASSOCIATED COMPANIES (Account 123): NONE	\$ _____	\$ _____
_____	_____	_____
_____	_____	_____
_____	_____	_____
_____	_____	_____
_____	_____	_____
Total Investment in Associated Companies		\$ _____
UTILITY INVESTMENTS (Account 124): NONE	\$ _____	\$ _____
_____	_____	_____
_____	_____	_____
_____	_____	_____
_____	_____	_____
_____	_____	_____
Total Utility Investment		\$ _____
OTHER INVESTMENTS (Account 125): NONE	\$ _____	\$ _____
_____	_____	_____
_____	_____	_____
_____	_____	_____
_____	_____	_____
_____	_____	_____
Total Other Investment		\$ _____
SPECIAL FUNDS (Class A Utilities: Accounts 126 and 127; Class B Utilities: Account 127): NONE		\$ _____
_____		_____
_____		_____
_____		_____
_____		_____
_____		_____
Total Special Funds		\$ _____

**ACCOUNTS AND NOTES RECEIVABLE - NET**  
**ACCOUNTS 141 - 144**

Report hereunder all accounts and notes receivable included in Accounts 141, 142, and 144. Amounts included in  
Amounts included in Accounts 142 and 144 should be listed individually.

DESCRIPTION (a)		TOTAL (b)
CUSTOMER ACCOUNTS RECEIVABLE (Account 141):		
Water	\$ 340,149	
Wastewater	116,672	
Other		
Total Customer Accounts Receivable		\$ 456,821
OTHER ACCOUNTS RECEIVABLE ( Account 142):		
_____	\$ _____	
_____	_____	
_____	_____	
Total Other Accounts Receivable		\$ -
NOTES RECEIVABLE (Account 144):		
_____	\$ _____	
_____	_____	
_____	_____	
Total Notes Receivable		\$ -
Total Accounts and Notes Receivable		\$ 456,821
ACCUMULATED PROVISION FOR UNCOLLECTIBLE ACCOUNTS ( Account 143 )		
Balance first of year	\$ -	
Add: Provision for uncollectibles for current year	\$ _____	
Collection of accounts previously written off	_____	
Utility Accounts	_____	
Others	_____	
_____	_____	
_____	_____	
Total Additions	\$ -	
Deduct accounts written off during year:		
Utility Accounts	_____	
Others	_____	
_____	_____	
_____	_____	
Total accounts written off	\$ -	
Balance end of year		\$ _____
TOTAL ACCOUNTS AND NOTES RECEIVABLE - NET		\$ 456,821



**ACCOUNTS RECEIVABLE FROM ASSOCIATED COMPANIES  
ACCOUNT 145**

Report each account receivable from associated companies separately.

DESCRIPTION (a)	TOTAL (b)
<u>WATER SERVICE CORPORATION</u>	\$ <u>4,396,918</u>
_____	_____
_____	_____
_____	_____
_____	_____
_____	_____
_____	_____
_____	_____
_____	_____
_____	_____
Total	\$ <u><u>4,396,918</u></u>

**NOTES RECEIVABLE FROM ASSOCIATED COMPANIES  
ACCOUNT 146**

Report each note receivable from associated companies separately.

DESCRIPTION (a)	INTEREST RATE (b)	TOTAL (c)
<u>NONE</u>	_____ %	\$ _____
_____	_____ %	_____
_____	_____ %	_____
_____	_____ %	_____
_____	_____ %	_____
_____	_____ %	_____
_____	_____ %	_____
_____	_____ %	_____
_____	_____ %	_____
Total		\$ _____

**MISCELLANEOUS CURRENT AND ACCRUED ASSETS  
ACCOUNT 174**

DESCRIPTION - Provide itemized listing (a)	BALANCE END OF YEAR (b)
<u>NONE</u>	\$ _____
_____	_____
_____	_____
_____	_____
Total Miscellaneous Current and Accrued Liabilities	\$ _____

UTILITY NAME: LAKE UTILITY SERVICES INC

<b>YEAR OF REPORT</b> 31-Dec-05
------------------------------------

**UNAMORTIZED DEBT DISCOUNT AND EXPENSE AND PREMIUM ON DEBT  
ACCOUNTS 181 AND 251**

Report the net discount and expense or premium separately for each security issue.

DESCRIPTION (a)	AMOUNT WRITTEN OFF DURING YEAR (b)	YEAR END BALANCE (c)
UNAMORTIZED DEBT DISCOUNT AND EXPENSE (Account 181): <u>NONE</u>	\$ _____	\$ _____
_____	_____	_____
_____	_____	_____
_____	_____	_____
Total Unamortized Debt Discount and Expense	\$ _____	\$ _____
UNAMORTIZED PREMIUM ON DEBT (Account 251):	\$ _____	\$ _____
_____	_____	_____
_____	_____	_____
_____	_____	_____
Total Unamortized Premium on Debt	\$ _____	\$ _____

**EXTRAORDINARY PROPERTY LOSSES  
ACCOUNT 182**

Report each item separately.

DESCRIPTION (a)	TOTAL (b)
<u>NONE</u>	\$ _____
_____	_____
_____	_____
Total Extraordinary Property Losses	\$ _____

**MISCELLANEOUS DEFERRED DEBITS  
ACCOUNT 186**

DESCRIPTION - Provide itemized listing (a)	AMOUNT WRITTEN OFF DURING YEAR (b)	YEAR END BALANCE (c)
DEFERRED RATE CASE EXPENSE (Class A Utilities: Account 186.1)		
<u>RATE CASE (None)</u>	\$ <u>          -</u>	\$ <u>          -</u>
_____	_____	_____
_____	_____	_____
_____	_____	_____
Total Deferred Rate Case Expense	\$ <u>          -</u>	\$ <u>          -</u>
OTHER DEFERRED DEBITS (Class A Utilities: Account 186.2):		
<u>OTHER DEFERRED MAINTENANCE</u>	\$ <u>          -</u>	\$ <u>      9,236</u>
_____	_____	_____
_____	_____	_____
_____	_____	_____
_____	_____	_____
_____	_____	_____
_____	_____	_____
Total Other Deferred Debits	\$ <u>          -</u>	\$ <u>      9,236</u>
REGULATORY ASSETS (Class A Utilities: Account. 186.3):		
<u>NONE</u>	\$ <u>          -</u>	\$ <u>          -</u>
_____	_____	_____
_____	_____	_____
_____	_____	_____
_____	_____	_____
_____	_____	_____
_____	_____	_____
Total Regulatory Assets	\$ <u>          -</u>	\$ <u>          -</u>
<b>TOTAL MISCELLANEOUS DEFERRED DEBITS</b>	\$ <u>          -</u>	\$ <u>      9,236</u>

**CAPITAL STOCK  
ACCOUNTS 201 AND 204\***

DESCRIPTION (a)	RATE (b)	TOTAL (c)
<b>COMMON STOCK</b>		
Par or stated value per share	_____ %	\$ _____ 3
Shares authorized		_____ 100
Shares issued and outstanding		_____ 100
Total par value of stock issued	_____ %	\$ _____ 300
Dividends declared per share for year	_____ %	\$ _____ -
<b>PREFERRED STOCK</b>		
Par or stated value per share	_____ %	\$ _____ -
Shares authorized		_____ -
Shares issued and outstanding		_____ -
Total par value of stock issued	_____ %	\$ _____ -
Dividends declared per share for year	_____ %	\$ _____ -

\* Account 204 not applicable for Class B utilities.

**BONDS  
ACCOUNT 221**

DESCRIPTION OF OBLIGATION (INCLUDING DATE OF ISSUE AND DATE OF MATURITY) (a)	INTEREST		PRINCIPAL AMOUNT PER BALANCE SHEET (d)
	ANNUAL RATE (b)	FIXED OR VARIABLE * (c)	
NONE	_____ %	_____	\$ _____
_____	_____ %	_____	_____
_____	_____ %	_____	_____
_____	_____ %	_____	_____
_____	_____ %	_____	_____
_____	_____ %	_____	_____
_____	_____ %	_____	_____
_____	_____ %	_____	_____
_____	_____ %	_____	_____
_____	_____ %	_____	_____
Total			\$ _____

\* For variable rate obligations, provide the basis for the rate. (i.e.. prime + 2%, etc.)

STATEMENT OF RETAINED EARNINGS

1. Dividends should be shown for each class and series of capital stock. Show amounts as dividends per share.
2. Show separately the state and federal income tax effect of items shown in Account No. 439.

ACCT. NO. (a)	DESCRIPTION (b)	AMOUNTS (c)
215	Unappropriated Retained Earnings: Balance Beginning of Year	\$ 2,035,649
439	Changes to Account: Adjustments to Retained Earnings ( requires Commission approval prior to use): Credits: <u>Accting adjustments mandated by FPSC</u>	\$ _____ <u>(860,223)</u>
	Total Credits:	\$ (860,223)
	Debits: _____	\$ _____
	Total Debits:	\$ _____
435	Balance Transferred from Income	\$ 1,456,057
436	Appropriations of Retained Earnings: _____ _____	_____ _____
	Total Appropriations of Retained Earnings	\$ _____
437	Dividends Declared: Preferred Stock Dividends Declared _____	_____
438	Common Stock Dividends Declared _____	_____
	Total Dividends Declared	\$ _____
215	Year end Balance	\$ _____
214	Appropriated Retained Earnings (state balance and purpose of each appropriated amount at year end): _____ _____ _____	_____ _____ _____
214	Total Appropriated Retained Earnings	\$ _____
Total Retained Earnings		\$ <u>2,631,483</u>
Notes to Statement of Retained Earnings:		

**ADVANCES FROM ASSOCIATED COMPANIES  
ACCOUNT 223**

Report each advance separately.

DESCRIPTION (a)	TOTAL (b)
NONE	\$ -
Total	\$ -

**OTHER LONG-TERM DEBT  
ACCOUNT 224**

DESCRIPTION OF OBLIGATION (INCLUDING DATE OF ISSUE AND DATE OF MATURITY) (a)	INTEREST		PRINCIPAL AMOUNT PER BALANCE SHEET (d)
	ANNUAL RATE (b)	FIXED OR VARIABLE * (c)	
NONE	%		\$ -
	%		
	%		
	%		
	%		
	%		
	%		
	%		
	%		
	%		
	%		
	%		
	%		
	%		
	%		
	%		
	%		
	%		
	%		
	%		
	%		
	%		
	%		
Total			\$ -

\* For variable rate obligations, provide the basis for the rate. (i.e.. prime + 2%, etc.)

**NOTES PAYABLE  
ACCOUNTS 232 AND 234**

DESCRIPTION OF OBLIGATION (INCLUDING DATE OF ISSUE AND DATE OF MATURITY) (a)	INTEREST		PRINCIPAL AMOUNT PER BALANCE SHEET (d)
	ANNUAL RATE (b)	FIXED OR VARIABLE * (c)	
NOTES PAYABLE ( Account 232): NONE			\$ _____
_____	_____ %	_____	_____
_____	_____ %	_____	_____
_____	_____ %	_____	_____
_____	_____ %	_____	_____
_____	_____ %	_____	_____
_____	_____ %	_____	_____
_____	_____ %	_____	_____
_____	_____ %	_____	_____
_____	_____ %	_____	_____
Total Account 232			\$ _____
NOTES PAYABLE TO ASSOC. COMPANIES (Account 234): NONE			\$ _____
_____	_____ %	_____	_____
_____	_____ %	_____	_____
_____	_____ %	_____	_____
_____	_____ %	_____	_____
_____	_____ %	_____	_____
_____	_____ %	_____	_____
_____	_____ %	_____	_____
_____	_____ %	_____	_____
_____	_____ %	_____	_____
Total Account 234			\$ _____

\* For variable rate obligations, provide the basis for the rate. (i.e.. prime + 2%, etc.)

**ACCOUNTS PAYABLE TO ASSOCIATED COMPANIES  
ACCOUNT 233**

Report each account payable separately.

DESCRIPTION (a)	TOTAL (b)
WATER SERVICE CORPORATION (NONE)	\$ _____ -
_____	_____
_____	_____
_____	_____
_____	_____
_____	_____
_____	_____
_____	_____
_____	_____
_____	_____
Total	\$ _____ -

ACCRUED INTEREST AND EXPENSE  
ACCOUNTS 237 AND 427

DESCRIPTION OF DEBIT (a)	BALANCE BEGINNING OF YEAR (b)	INTEREST ACCRUED DURING YEAR		INTEREST PAID DURING YEAR (e)	BALANCE END OF YEAR (f)
		ACCT. DEBIT (c)	AMOUNT (d)		
ACCOUNT NO. 237.1 - Accrued Interest on Long Term Debt	\$ _____		\$ _____	\$ _____	\$ _____
UTILITIES INC INTERCOMPANY INTEREST	-		356,409	356,409	-
Total Account 237.1	\$ _____		\$ 356,409	\$ 356,409	\$ _____
ACCOUNT NO. 237.2 - Accrued Interest on Other Liabilities	\$ _____		\$ _____	\$ _____	\$ _____
Customer Deposits	9,978	427	(1,113)		8,865
MISC ITEMS					
Total Account 237.2	\$ 9,978		\$ (1,113)	\$ -	\$ 8,865
Total Account 237 (1)	\$ 9,978		\$ 355,296	\$ 356,409	\$ 8,865
INTEREST EXPENSED:					
Total accrual Account 237		237	\$ 356,409		
Less Capitalized Interest Portion of AFUDC:			-		
Net Interest Expensed to Account No. 427 (2)			\$ 356,409		

(1) Must agree to F-2 (a), Beginning and  
Ending Balance of Accrued Interest.

(2) Must agree to F-3 (c), Current  
Year Interest Expense



YEAR OF REPORT  
31-Dec-05

UTILITY NAME: LAKE UTILITY SERVICES INC

MISCELLANEOUS CURRENT AND ACCRUED LIABILITIES  
ACCOUNT 241

DESCRIPTION - Provide itemized listing (a)	BALANCE END OF YEAR (b)
NONE _____ _____ _____ _____	\$ _____ _____ _____ _____
Total Miscellaneous Current and Accrued Liabilities	\$ _____

ADVANCES FOR CONSTRUCTION  
ACCOUNT 252

NAME OF PAYOR * (a)	BALANCE BEGINNING OF YEAR (b)	DEBITS		CREDITS (e)	BALANCE END OF YEAR (f)
		ACCT. DEBIT (c)	AMOUNT (d)		
Siena Home Corp _____ _____ _____ _____ _____ _____ _____ _____	\$ 38,400 _____ _____ _____ _____ _____ _____ _____		\$ _____ _____ _____ _____ _____ _____ _____	\$ _____ _____ _____ _____ _____ _____ _____	\$ 38,400 _____ _____ _____ _____ _____ _____
Total	\$ _____		\$ _____	\$ _____	\$ 38,400

\* Report advances separately by reporting group, designating water or wastewater in column (a).

UTILITY NAME: LAKE UTILITY SERVICES INC

<b>YEAR OF REPORT</b> 31-Dec-05
------------------------------------

**OTHER DEFERRED CREDITS  
ACCOUNT 253**

DESCRIPTION - Provide itemized listing (a)	AMOUNT WRITTEN OFF DURING YEAR (b)	YEAR END BALANCE (c)
REGULATORY LIABILITIES (Class A Utilities: Account 253.1):  <u>NONE</u> <hr/> <hr/> <hr/> <hr/>	\$ _____ _____ _____ _____	\$ _____ _____ _____ _____
Total Regulatory Liabilities	\$ _____	\$ _____
OTHER DEFERRED LIABILITIES (Class A Utilities: Account 253.2):  <hr/> <hr/> <hr/> <hr/> <hr/> <hr/> <hr/> <hr/>	\$ _____ _____ _____ _____ _____ _____ _____	\$ _____ _____ _____ _____ _____ _____ _____
Total Other Deferred Liabilities	\$ _____	\$ _____
<b>TOTAL OTHER DEFERRED CREDITS</b>	\$ _____	\$ _____

**CONTRIBUTIONS IN AID OF CONSTRUCTION  
ACCOUNT 271**

DESCRIPTION (a)	WATER (W-7) (b)	WASTEWATER (S-7) (c)	W & WW OTHER THAN SYSTEM REPORTING (d)	TOTAL (e)
Balance first of year	\$ <u>12,086,940</u>	\$ <u>4,957,526</u>	\$ <u>-</u>	\$ <u>17,044,466</u>
Add credits during year:	\$ <u>1,716,926</u>	\$ <u>1,203,755</u>	\$ <u>-</u>	\$ <u>2,920,681</u>
Less debit charged during the year	\$ <u>-</u>	\$ <u>-</u>	\$ <u>-</u>	\$ <u>-</u>
Total Contribution In Aid of Construction	\$ <u><u>13,803,866</u></u>	\$ <u><u>6,161,281</u></u>	\$ <u><u>-</u></u>	\$ <u><u>19,965,147</u></u>

**ACCUMULATED AMORTIZATION OF CONTRIBUTIONS IN AID OF CONSTRUCTION  
ACCOUNT 272**

DESCRIPTION (a)	WATER (W-8(a)) (b)	WASTEWATER (S-8(a)) (c)	W & WW OTHER THAN SYSTEM REPORTING (d)	TOTAL (e)
Balance first of year	\$ <u>1,480,447</u>	\$ <u>528,231</u>	\$ <u>-</u>	\$ <u>2,008,678</u>
Debits during the year:	\$ <u>401,277</u>	\$ <u>226,854</u>	\$ <u>-</u>	\$ <u>628,131</u>
Credits during the year	\$ <u>-</u>	\$ <u>-</u>	\$ <u>-</u>	\$ <u>-</u>
Total Accumulated Amortization of Contributions In Aid of Construction	\$ <u><u>1,881,724</u></u>	\$ <u><u>755,085</u></u>	\$ <u><u>-</u></u>	\$ <u><u>2,636,809</u></u>

**RECONCILIATION OF REPORTED NET INCOME WITH TAXABLE  
INCOME FOR FEDERAL INCOME TAXES (UTILITY OPERATIONS)**

1. The reconciliation should include the same detail as furnished on Schedule M-1 of the federal tax return for the year. The reconciliation shall be submitted even though there is no taxable income for the year. Descriptions should clearly indicate the nature of each reconciling amount and show the computations of all tax accruals.
2. If the utility is a member of a group which files a consolidated federal tax return, reconcile reported net income with taxable net income as if a separate return were to be filed, indicating intercompany amounts to be eliminated in such consolidated return. State names of group members, tax assigned to each group member, and basis of allocation, assignments or sharing of the consolidated tax among the group members.

DESCRIPTION (a)	REF. NO. (b)	AMOUNT (c)
Net income for the year	F-3(c)	\$ 1,456,057
Reconciling items for the year:		
Taxable income not reported on books:		
Tap Fees		1,025,735
Deductions recorded on books not deducted for return:		
Net Change - Deferred Maintenance		8,710
		-
Excess Tax Depreciation over Book Depreciation		(275,414)
Current FIT		921,811
Deferred FIT		(242,709)
Deferred SIT		(41,598)
Income recorded on books not included in return:		
Interest During Construction		(92,802)
Deduction on return not charged against book income:		
Organization Exp		(2,504)
Acting adjustments mandated by FPSC		(46,077)
Federal tax net income		\$ <u>2,711,209</u>

Computation of tax :

2,711,209  
34%  
921,811

**WATER  
OPERATION  
SECTION**

**WATER LISTING OF SYSTEM GROUPS**

List below the name of each reporting system and its certificate number. Those systems which have been consolidated under the same tariff should be assigned a group number. Each individual system which has not been consolidated should be assigned its own group number.

The water financial schedules (W-2 through W-10) should be filed for the group in total.

The water engineering schedules (W-11 through W-15) must be filed for each system in the group.

All of the following water pages (W-2 through W-15) should be completed for each group and arranged by group number.

<b>SYSTEM NAME / COUNTY</b>	<b>CERTIFICATE NUMBER</b>	<b>GROUP NUMBER</b>
LAKE GROVES / LAKE	534W	
AMBER HILL/LAKE	496W	
CLERMONT I/LAKE	496W	
CLERMONT II/LAKE	496W	
CRESCENT BAY/LAKE	496W	
CRESCENT WEST/LAKE	496W	
HIGHLAND POINT/LAKE	496W	
LAKE CRESCENT HILLS/LAKE	496W	
LAKE RIDGE CLUB/LAKE	496W	
ORANGES/LAKE	496W	
PRESTON COVE/LAKE	496W	
SOUTH CLERMONT (EDB)/LAKE	496W	
VISTAS/LAKE	496W	
LAKE SAUNDERS/LAKE	496 W	
FOUR LAKES/LAKE	496 W	

UTILITY NAME: LAKE UTILITY SERVICES INC

<b>YEAR OF REPORT</b> <b>31-Dec-05</b>
---

SYSTEM NAME / COUNTY : Lake County

**SCHEDULE OF YEAR END WATER RATE BASE**

ACCT. NO. (a)	ACCOUNT NAME (b)	REFERENCE PAGE (c)	WATER UTILITY (d)
101	Utility Plant In Service	W-4(b)	\$ 19,953,344
	Less:		
	Nonused and Useful Plant (1)		
108	Accumulated Depreciation	W-6(b)	2,431,114
110	Accumulated Amortization	F-8	15,459
271	Contributions In Aid of Construction	W-7	13,803,866
252	Advances for Construction	F-20	38,400
Subtotal			\$ 3,664,505
272	Add: Accumulated Amortization of Contributions in Aid of Construction	W-8(a)	\$ 1,881,724
Subtotal			\$ 5,546,229
	Plus or Minus:		
114	Acquisition Adjustments (2)	F-7	-
115	Accumulated Amortization of Acquisition Adjustments (2)	F-7	-
	Working Capital Allowance (3)		123,869
	Other (Specify):		
WATER RATE BASE			\$ 5,670,098
WATER OPERATING INCOME		W-3	\$ 275,946
TRN (Water Operating Income / Water Rate Base)			<u>4.87%</u>

NOTES : (1) Estimate based on the methodology used in the last rate proceeding.

(2) Include only those Acquisition Adjustments that have been approved by the Commission.

(3) Calculation consistent with last rate proceeding.

In absence of a rate proceeding, Class A utilities will use the Balance Sheet Method and Class B Utilities will use the One-eighth Operating and Maintenance Expense Method.

UTILITY NAME: LAKE UTILITY SERVICES INC

<b>YEAR OF REPORT</b> <b>31-Dec-05</b>
---

SYSTEM NAME / COUNTY : Lake County

**WATER OPERATING STATEMENT**

ACCT. NO. (a)	ACCOUNT NAME (b)	REFERENCE PAGE (c)	CURRENT YEAR (d)
	UTILITY OPERATING INCOME		
400	Operating Revenues	W-9	\$ 2,446,861
469	Less: Guaranteed Revenue and AFPI	W-9	-
	Net Operating Revenues		\$ 2,446,861
401	Operating Expenses	W-10(a)	\$ 990,950
403	Depreciation Expense	W-6(a)	549,433
	Less: Amortization of CIAC	W-8(a)	(300,463)
	Net Depreciation Expense		\$ 248,970
406	Amortization of Utility Plant Acquisition Adjustment	F-7	-
407	Amortization Expense (Other than CIAC)	F-8	3,552
408.10	Taxes Other Than Income		
	Utility Regulatory Assessment Fee		115,346
408.11	Property Taxes		206,026
408.12	Payroll Taxes		28,774
408.13	Other Taxes and Licenses		-
408	Total Taxes Other Than Income		\$ 350,146
409.1	Income Taxes		795,759
410.10	Deferred Federal Income Taxes		(186,498)
410.11	Deferred State Income Taxes		(31,964)
411.10	Provision for Deferred Income Taxes - Credit		-
412.10	Investment Tax Credits Deferred to Future Periods		
412.11	Investment Tax Credits Restored to Operating Income		
	Utility Operating Expenses		\$ 2,170,915
	Utility Operating Income		\$ 275,946
	Add Back:		
469	Guaranteed Revenue (and AFPI)	W-9	\$ -
413	Income From Utility Plant Leased to Others		
414	Gains (losses) From Disposition of Utility Property		
420	Allowance for Funds Used During Construction		92,802
	Total Utility Operating Income		\$ 368,748



UTILITY NAME: LAKE UTILITY SERVICES INC

SYSTEM NAME / COUNTY : Lake County

WATER UTILITY PLANT ACCOUNTS

ACCT. NO. (a)	ACCOUNT NAME (b)	PREVIOUS YEAR (c)	ADDITIONS (d)	RETIREMENTS (e)	CURRENT YEAR (f)
301	Organization	\$ 124,579	\$ (97,371)	\$	\$ 27,208
302	Franchises	-	-	-	-
303	Land and Land Rights	459,755	(322,209)	-	137,546
304	Structures and Improvements	1,049,173	743	8,087	1,041,829
305	Collecting and Impounding Reservoirs	-	-	-	-
306	Lake, River and Other Intakes	-	-	-	-
307	Wells and Springs	1,222,657	147,505	-	1,370,162
308	Infiltration Galleries and Tunnels	-	-	-	-
309	Supply Mains	-	-	-	-
310	Power Generation Equipment	-	-	-	-
311	Pumping Equipment	1,730,624	(49,195)	21,913	1,659,516
320	Water Treatment Equipment	249,981	26,744	376	276,349
330	Distribution Reservoirs and Standpipes	1,580,957	104,066	6,600	1,678,423
331	Transmission and Distribution Mains	9,635,545	1,153,130	50,067	10,738,608
333	Services	1,427,494	176,110	-	1,603,604
334	Meters and Meter Installations	298,640	34,059	-	332,699
335	Hydrants	507,662	102,502	-	610,164
336	Backflow Prevention Devices	-	-	-	-
339	Other Plant Miscellaneous Equipment	-	-	-	-
340	Office Furniture and Equipment	23,893	-	-	23,893
341	Transportation Equipment	183,092	19,025	-	202,117
342	Stores Equipment	-	-	-	-
343	Tools, Shop and Garage Equipment	61,039	8,341	-	69,380
344	Laboratory Equipment	10,688	-	-	10,688
345	Power Operated Equipment	-	-	-	-
346	Communication Equipment	3,013	(5,044)	-	(2,031)
347	Miscellaneous Equipment	-	-	-	-
348	Other Tangible Plant	149,632	23,557	-	173,189
TOTAL WATER PLANT		\$ 18,718,424	\$ 1,321,963	\$ 87,043	\$ 19,953,344

Accounting adjustments mandated by FPSC  
NOTE: Any adjustments made to reclassify property from one account to another must be footnoted.

UTILITY NAME: LAKE UTILITY SERVICES INC

SYSTEM NAME / COUNTY Lake County

WATER UTILITY PLANT MATRIX

ACCT. NO.	ACCOUNT NAME	CURRENT YEAR	.1 INTANGIBLE PLANT	.2 SOURCE OF SUPPLY AND PUMPING PLANT	.3 WATER TREATMENT PLANT	.4 TRANSMISSION AND DISTRIBUTION PLANT	.5 GENERAL PLANT
(a)	(b)	(c)	(d)	(e)	(f)	(g)	(h)
301	Organization	\$ 27,208	\$ 27,208				\$
302	Franchises	-	-				
303	Land and Land Rights	137,546		137,546			
304	Structures and Improvements	1,041,829		1,041,829			
305	Collecting and Impounding Reservoirs	-		-			
306	Lake, River and Other Intakes	-		-			
307	Wells and Springs	1,370,162		1,370,162			
308	Infiltration Galleries and Tunnels	-		-			
309	Supply Mains	-		-			
310	Power Generation Equipment	-		-			
311	Pumping Equipment	1,659,516		1,659,516			
320	Water Treatment Equipment	276,349			276,349		
330	Distribution Reservoirs and Standpipes	1,678,423				1,678,423	
331	Transmission and Distribution Mains	10,738,608				10,738,608	
333	Services	1,603,604				1,603,604	
334	Meters and Meter Installations	332,699				332,699	
335	Hydrants	610,164				610,164	
336	Backflow Prevention Devices	-				-	
339	Other Plant Miscellaneous Equipment	-				-	
340	Office Furniture and Equipment	23,893					23,893
341	Transportation Equipment	202,117					202,117
342	Stores Equipment	-					-
343	Tools, Shop and Garage Equipment	69,380					69,380
344	Laboratory Equipment	10,688					10,688
345	Power Operated Equipment	-					-
346	Communication Equipment	(2,031)					(2,031)
347	Miscellaneous Equipment	-					-
348	Other Tangible Plant	173,189					173,189
	TOTAL WATER PLANT	\$ 19,953,344	\$ 27,208	\$ 4,209,053	\$ 276,349	\$ 14,963,498	\$ 477,236

UTILITY NAME: LAKE UTILITY SERVICES INC

<b>YEAR OF REPORT</b> <b>31-Dec-05</b>
---

SYSTEM NAME / COUNTY : Lake County

**BASIS FOR WATER DEPRECIATION CHARGES**

ACCT. NO. (a)	ACCOUNT NAME (b)	AVERAGE SERVICE LIFE IN YEARS (c)	AVERAGE NET SALVAGE IN PERCENT (d)	DEPRECIATION RATE APPLIED IN PERCENT (100% - d) / c (e)
304	Structures and Improvements			3.03%
305	Collecting and Impounding Reservoirs			
306	Lake, River and Other Intakes			
307	Wells and Springs			3.33%
308	Infiltration Galleries and Tunnels			
309	Supply Mains			
310	Power Generation Equipment			
311	Pumping Equipment			5.00%
320	Water Treatment Equipment			4.55%
330	Distribution Reservoirs and Standpipes			2.70%
331	Transmission and Distribution Mains			2.33%
333	Services			2.50%
334	Meters and Meter Installations			5.00%
335	Hydrants			2.22%
336	Backflow Prevention Devices			
339	Other Plant Miscellaneous Equipment			
340	Office Furniture and Equipment			
341	Transportation Equipment			
342	Stores Equipment			
343	Tools, Shop and Garage Equipment			6.25%
344	Laboratory Equipment			6.67%
345	Power Operated Equipment			
346	Communication Equipment			
347	Miscellaneous Equipment			
348	Other Tangible Plant			
Water Plant Composite Depreciation Rate *				

\* If depreciation rates prescribed by this Commission are on a total composite basis, entries should be made on this line only.

YEAR OF REPORT  
31-Dec-05

UTILITY NAME: LAKE UTILITY SERVICES INC

SYSTEM NAME / COUNTY : Lake County

ANALYSIS OF ENTRIES IN WATER ACCUMULATED DEPRECIATION

ACCT. NO. (a)	ACCOUNT NAME (b)	BALANCE AT BEGINNING OF YEAR (c)	ACCRUALS (d)	OTHER CREDITS * (e)	TOTAL CREDITS (d + e) (f)
304	Structures and Improvements	\$ 135,118	\$ 33,069	\$ 2,289	\$ 35,358
305	Collecting and Impounding Reservoirs				
306	Lake, River and Other Intakes				
307	Wells and Springs	214,210	41,007	(34,536)	6,471
308	Infiltration Galleries and Tunnels				
309	Supply Mains				
310	Power Generation Equipment				
311	Pumping Equipment	42,924	23,770	(21,893)	1,877
320	Water Treatment Equipment	55,792	11,439	20,425	31,864
330	Distribution Reservoirs and Standpipes	184,769	77,308	(3,939)	73,369
331	Transmission and Distribution Mains	976,388	225,930	(8,077)	217,853
333	Services	156,485	36,046	5,796	41,842
334	Meters and Meter Installations	71,763	15,036	1,321	16,357
335	Hydrants	32,686	11,315	7,210	18,525
336	Backflow Prevention Devices				
339	Other Plant Miscellaneous Equipment				
340	Office Furniture and Equipment	2,129	5,107	(5,132)	(25)
341	Transportation Equipment	101,674	36,372		36,372
342	Stores Equipment				
343	Tools, Shop and Garage Equipment	13,343	5,271	(6,067)	(796)
344	Laboratory Equipment	2,735	736	(3,115)	(2,379)
345	Power Operated Equipment				
346	Communication Equipment	(701)	1,227	(2,507)	(1,280)
347	Miscellaneous Equipment				
348	Other Tangible Plant	41,440	25,800	(13,806)	11,994
TOTAL WATER ACCUMULATED DEPRECIATION		\$ 2,030,755	\$ 549,433	\$ (62,031)	\$ 487,402

Acting adjustments mandated by FPSC

OTHER CREDITS column (E) \* are due to allocation of parent company plant

\* Specify nature of transaction  
Use ( ) to denote reversal entries.

W-6(a)

GROUP \_\_\_\_\_

**YEAR OF REPORT**  
31-Dec-05

**UTILITY NAME:** LAKE UTILITY SERVICES INC

**SYSTEM NAME / COUNTY :** Lake County

**ANALYSIS OF ENTRIES IN WATER ACCUMULATED DEPRECIATION (CONT'D)**

ACCT. NO. (a)	ACCOUNT NAME (b)	PLANT RETIRED (g)	SALVAGE AND INSURANCE (h)	COST OF REMOVAL AND OTHER CHARGES (i)	TOTAL CHARGES (g-h+i) (j)	BALANCE AT END OF YEAR (c+f-k) (l)
304	Structures and Improvements	\$ 8,087	\$	\$	\$ 8,087	\$ 162,389
305	Collecting and Impounding Reservoirs	-			-	
306	Lake, River and Other Intakes	-			-	
307	Wells and Springs	-			-	220,681
308	Infiltration Galleries and Tunnels	-			-	
309	Supply Mains	-			-	
310	Power Generation Equipment	-			-	
311	Pumping Equipment	21,913			21,913	22,888
320	Water Treatment Equipment	376			376	87,280
330	Distribution Reservoirs and Standpipes	6,600			6,600	251,538
331	Transmission and Distribution Mains	50,067			50,067	1,144,174
333	Services	-			-	198,327
334	Meters and Meter Installations	-			-	88,120
335	Hydrants	-			-	51,211
336	Backflow Prevention Devices	-			-	
339	Other Plant Miscellaneous Equipment	-			-	
340	Office Furniture and Equipment	-			-	2,104
341	Transportation Equipment	-			-	138,046
342	Stores Equipment	-			-	
343	Tools, Shop and Garage Equipment	-			-	12,547
344	Laboratory Equipment	-			-	356
345	Power Operated Equipment	-			-	
346	Communication Equipment	-			-	(1,981)
347	Miscellaneous Equipment	-			-	
348	Other Tangible Plant	-			-	53,434
<b>TOTAL WATER ACCUMULATED DEPRECIATION</b>		<b>\$ 87,043</b>	<b>\$ -</b>	<b>\$ -</b>	<b>\$ 87,043</b>	<b>\$ 2,431,114</b>

W-6(b)  
GROUP \_\_\_\_\_

UTILITY NAME: LAKE UTILITY SERVICES INC

<b>YEAR OF REPORT</b> <b>31-Dec-05</b>
---

SYSTEM NAME / COUNTY : Lake County

**CONTRIBUTIONS IN AID OF CONSTRUCTION  
ACCOUNT 271**

DESCRIPTION (a)	REFERENCE (b)	WATER (c)
Balance first of year		\$ <u>12,086,940</u>
Add credits during year:		
Contributions received from Capacity, Main Extension and Customer Connection Charges	W-8(a)	\$ <u>713,122</u>
Contributions received from Developer or Contractor Agreements in cash or property	W-8(b)	<u>871,419</u>
Total Credits		\$ <u>1,584,541</u>
Less debits charged during the year (All debits charged during the year must be explained Accounting adjustments mandated by FPSC)		\$ <u>(132,385)</u>
Total Contributions In Aid of Construction		\$ <u>13,803,866</u>

If any prepaid CIAC has been collected, provide a supporting schedule showing how the amount is determined.

Explain all debits charged to Account 271 during the year below:

Adjustment rounding

---



---



---



---



---



---



---



---



---



---



---



---



---



---



---



---



---



---



---



---



---



---

UTILITY NAME: LAKE UTILITY SERVICES INC

<b>YEAR OF REPORT</b> 31-Dec-05
------------------------------------

SYSTEM NAME / COUNTY : Lake County

**WATER CIAC SCHEDULE "A"**

ADDITIONS TO CONTRIBUTIONS IN AID OF CONSTRUCTION RECEIVED FROM CAPACITY,  
 MAIN EXTENSION AND CUSTOMER CONNECTION CHARGES RECEIVED DURING THE YEAR

DESCRIPTION OF CHARGE (a)	NUMBER OF CONNECTIONS (b)	CHARGE PER CONNECTION (c)	AMOUNT (d)
WATER CONNECTIONS FEES	248	\$ 67	\$ 16,616
WATER CONNECTIONS FEES	515	707	364,105
WATER CONNECTIONS FEES	482	540	260,280
WATER CONNECTIONS FEES	379	150	56,850
WATER CONNECTIONS FEES	1	575	575
WATER CONNECTIONS FEES	1	14,596	14,596
WATER CONNECTIONS FEES	1	100	100
			-
Total Credits			\$ <u>713,122</u>

**ACCUMULATED AMORTIZATION OF WATER CONTRIBUTIONS IN AID OF CONSTRUCTION**

DESCRIPTION (a)	WATER (b)
Balance first of year	\$ 1,480,447
Debits during the year:	
Accruals charged to Account 272	\$ 300,463
Other debits (specify) :	
_____	_____
_____	_____
Total debits	\$ 300,463
Credits during the year (specify) :	
_____	\$ _____
Acting adjustments mandated by FPSC	(100,814)
Total credits	\$ (100,814)
Balance end of year	\$ <u>1,881,724</u>

UTILITY NAME: LAKE UTILITY SERVICES INC

<b>YEAR OF REPORT</b> 31-Dec-05
------------------------------------

SYSTEM NAME / COUNTY : Lake County

**WATER CIAC SCHEDULE "B"**  
 ADDITIONS TO CONTRIBUTIONS IN AID OF CONSTRUCTION  
 RECEIVED FROM ALL DEVELOPERS OR CONTRACTORS AGREEMENTS  
 WHICH CASH OR PROPERTY WAS RECEIVED DURING THE YEAR

DESCRIPTION (a)	INDICATE CASH OR PROPERTY (b)	AMOUNT (c)
Spring Valley Ph 8		\$ 47,755
Kohl Dept Store		103,771
Tradds Landing Ph 1 & 2		372,121
Overlook Lk Louisa		144,886
Timber Ln Ph 1		202,886
Total Credits		\$ 871,419



Reconciliation of Revenue to  
Regulatory Assessment Fee Revenue  
Water Operations

UTILITY NAME: LAKE UTILITY SERVICES INC

YEAR OF REPORT 31-Dec-05
-----------------------------

(A)	(B)	(C)	(D)
Accounts	Gross Water Revenues per Sch W-9	Gross Water Revenues per RAF Return	Difference (B)-(C)
Gross Revenues:			-
Unmetered Water Revenues			-
Total Metered Sales	2,446,861	2,446,861	-
Total Fire Protection Revenue			-
Other Sales to Public Authorities			-
Sales to Irrigation Customers			-
Sales for Resale			-
Interdepartmental Sales			-
Total Other Water Revenue			-
Total Water Operating Revenue	2,446,861	2,446,861	-
Less: Expense for Purchased Water from FPSC Regulated Utility			-
Net Water Operating Revenues	2,446,861	2,446,861	-

UTILITY NAME: LAKE UTILITY SERVICES INC

<b>YEAR OF REPORT</b> <b>31-Dec-05</b>
---

SYSTEM NAME / COUNTY : Lake County

**WATER OPERATING REVENUE**

ACCT. NO. (a)	DESCRIPTION (b)	BEGINNING YEAR NO. CUSTOMERS * (c)	YEAR END NUMBER OF CUSTOMERS (d)	AMOUNT (e)
460	Water Sales: Unmetered Water Revenue			\$
461.1	Metered Water Revenue: Sales to Residential Customers	7,365	8,009	2,392,360
461.2	Sales to Commercial Customers			
461.3	Sales to Industrial Customers			
461.4	Sales to Public Authorities			
461.5	Sales Multiple Family Dwellings			
Total Metered Sales		7,365	8,009	\$ 2,392,360
462.1	Fire Protection Revenue: Public Fire Protection			
462.2	Private Fire Protection			
Total Fire Protection Revenue				\$
464	Other Sales To Public Authorities			
465	Sales To Irrigation Customers			
466	Sales For Resale			
467	Interdepartmental Sales			
Total Water Sales		7,365	8,009	\$ 2,392,360
469	Other Water Revenues: Guaranteed Revenues (Including Allowance for Funds Prudently Invested or AFPI)			\$
470	Forfeited Discounts			
471	Miscellaneous Service Revenues			54,501
472	Rents From Water Property			
473	Interdepartmental Rents			
474	Other Water Revenues			
Total Other Water Revenues				\$ 54,501
Total Water Operating Revenues				\$ 2,446,861

\* Customer is defined by Rule 25-30.210(1), Florida Administrative Code.

UTILITY NAME: LAKE UTILITY SERVICES INC

<b>YEAR OF REPORT</b> <b>31-Dec-05</b>
---

SYSTEM NAME / COUNTY : Lake County

WATER UTILITY EXPENSE ACCOUNTS				
ACCT. NO.	ACCOUNT NAME	CURRENT YEAR	.1 SOURCE OF SUPPLY AND EXPENSES - OPERATIONS	.2 SOURCE OF SUPPLY AND EXPENSES - MAINTENANCE
(a)	(b)	(c)	(d)	(e)
601	Salaries and Wages - Employees	\$ 304,608	\$ 67,014	\$ 18,276
603	Salaries and Wages - Officers, Directors and Majority Stockholders			
604	Employee Pensions and Benefits	96,823	21,301	5,809
610	Purchased Water			
615	Purchased Power	201,283		
616	Fuel for Power Purchased			
618	Chemicals	51,175	51,175	
620	Materials and Supplies	117,546	47,018	11,755
631	Contractual Services-Engineering			
632	Contractual Services - Accounting	8,801		
633	Contractual Services - Legal	1,652		
634	Contractual Services - Mgt. Fees			
635	Contractual Services - Testing			
636	Contractual Services - Other	8,977		
641	Rental of Building/Real Property			
642	Rental of Equipment			
650	Transportation Expenses	52,136	11,470	3,128
656	Insurance - Vehicle			
657	Insurance - General Liability			
658	Insurance - Workman's Comp.			
659	Insurance - Other	35,981	7,916	2,159
660	Advertising Expense			
666	Regulatory Commission Expenses - Amortization of Rate Case Expense	-		
667	Regulatory Commission Exp.-Other			
668	Water Resource Conservation Exp.			
670	Bad Debt Expense	6,113		
675	Miscellaneous Expenses	105,855		
Total Water Utility Expenses		\$ 990,950	\$ 205,894	\$ 41,127

UTILITY NAME:

LAKE UTILITY SERVICES INC

<b>YEAR OF REPORT</b> 31-Dec-05
------------------------------------

SYSTEM NAME / COUNTY :

Lake County

WATER EXPENSE ACCOUNT MATRIX					
.3 WATER TREATMENT EXPENSES - OPERATIONS (f)	.4 WATER TREATMENT EXPENSES - MAINTENANCE (g)	.5 TRANSMISSION & DISTRIBUTION EXPENSES - OPERATIONS (h)	.6 TRANSMISSION & DISTRIBUTION EXPENSES - MAINTENANCE (i)	.7 CUSTOMER ACCOUNTS EXPENSE (j)	.8 ADMIN. & GENERAL EXPENSES (k)
\$ 67,014	\$ 18,276	\$ 106,613	\$ 27,415	\$	\$
21,301	5,809	33,888	8,715		
201,283					
		49,369	9,404		8,801
		0			1,652
				4,489	4,488
11,470	3,128	18,248	4,692		
7,916	2,159	12,593	3,238		
				6,113	0
				52,928	52,927
\$ 308,984	\$ 29,372	\$ 220,711	\$ 53,464	\$ 63,530	\$ 67,868

UTILITY NAME: LAKE UTILITY SERVICES, INC.

<b>YEAR OF REPORT</b> 31-Dec-05
------------------------------------

SYSTEM NAME / COUNTY : LAKE UTILITY SERVICES, INC. INTERCONNECTED SYSTEMS  
COMBINED

**PUMPING AND PURCHASED WATER STATISTICS**

MONTH (a)	WATER PURCHASED FOR RESALE ( Omit 000's ) (b)	FINISHED WATER PUMPED FROM WELLS ( Omit 000's ) (c)	WATER USED FOR LINE FLUSHING, FIGHTING FIRES, ETC. (d)	TOTAL WATER PUMPED AND PURCHASED ( Omit 000's ) [ (b)+(c)-(d) ] (e)	*WATER SOLD TO CUSTOMERS ( Omit 000's ) (f)
January		148.561	0.405	148.156	154.140
February		151.071	0.061	151.010	118.627
March		142.064	0.076	141.988	136.572
April		192.028	0.248	191.780	128.590
May		188.831	0.143	188.688	160.788
June		136.856	0.106	136.750	144.989
July		161.415	0.091	161.324	196.696
August		169.334	0.207	169.127	74.112
September		171.756	0.134	171.622	147.246
October		166.997	0.099	166.898	154.238
November		167.111	0.118	166.993	154.798
December		146.204	0.555	145.649	147.981
Total for Year		1942.228	2.243	1939.985	1718.777

\*Reflects final accounts, adjustments, etc. end of year billing summary

If water is purchased for resale, indicate the following:

Vendor None

Point of delivery \_\_\_\_\_

If water is sold to other water utilities for redistribution, list names of such utilities below:

NOTE: Above figures include Amber Hill, Clermont I, Clermont II, Crescent Bay, Crescent West, Highland

Point, Lake Crescent Hills, Lake Groves Lake Ridge Club, Oranges, Preston Cove, South Clermont, and the Vistas plants.

Above systems are all interconnected and all are owned by Lake Utility Services, Inc.

Four Lakes and Lake Saunders are not interconnected with the above systems.

List for each source of supply:	CAPACITY OF WELL	GALLONS PER DAY FROM SOURCE	TYPE OF SOURCE
Well #1 (Amber Hill)	550 gpm	792,000	Upper Floridan Aquifer
Well #1 (Clermont I)	60 gpm	86,000	Upper Floridan Aquifer
Well #2 (Clermont I)	110 gpm	158,000	Upper Floridan Aquifer
Well #1 (Clermont II)	44 gpm	63,000	Upper Floridan Aquifer
CONTINUED ON NEXT PAGE			

List for each source of supply:	CAPACITY OF WELL	GALLONS PER DAY FROM SOURCE	TYPE OF SOURCE
Well #2 (Clermont II)	55 gpm	79,000	Upper Floridan Aquifer
Well #1 (Crescent Bay)	700 gpm	1,008,000	Upper Floridan Aquifer
Well #1 (Crescent West)	700 gpm	864,000	Upper Floridan Aquifer
Well #1 (Highland Point)	750 gpm	864,000	Upper Floridan Aquifer
Well #1 (Lake Crescent Hills)	700 gpm	864,000	Upper Floridan Aquifer
Well #1 (Lake Ridge Club)	550 gpm	936,000	Upper Floridan Aquifer
Well #1 (Oranges)	550 gpm	792,000	Upper Floridan Aquifer
Well #1 (Vistas)	700 gpm	1,440,000	Upper Floridan Aquifer
Well #2 (Vistas)	700 gpm	1,080,000	Upper Floridan Aquifer
Well #1 (Lake Groves)	2000 gpm	1,152,000	Upper Floridan Aquifer
Well #2 (Lake Groves)	2400 gpm	2,160,000	Upper Floridan Aquifer
* Well #1 (Lake Saunders)	300 gpm	432,000	Upper Floridan Aquifer
* Well #2 (Lake Saunders)	300 gpm	432,000	Upper Floridan Aquifer
* Well #1 (Four Lakes)	105 gpm	151,200	Upper Floridan Aquifer
* Well #2 (Four Lakes)	105 gpm	151,200	Upper Floridan Aquifer
Well #3 (Vistas)	625 gpm	900,000	Upper Floridan Aquifer

\* Four Lakes and Lake Saunders not interconnected with other systems

UTILITY NAME: LAKE UTILITY SERVICES, INC.

<b>YEAR OF REPORT</b> <b>31-Dec-05</b>
---

SYSTEM NAME / COUNTY : LAKE UTILITY SERVICES, INC. INTERCONNECTED SYSTEMS  
FOUR LAKES

**PUMPING AND PURCHASED WATER STATISTICS**

MONTH (a)	WATER PURCHASED FOR RESALE ( Omit 000's ) (b)	FINISHED WATER PUMPED FROM WELLS ( Omit 000's ) (c)	WATER USED FOR LINE FLUSHING, FIGHTING FIRES, ETC. (d)	TOTAL WATER PUMPED AND PURCHASED ( Omit 000's ) [ (b)+(c)-(d) ] (e)	*WATER SOLD TO CUSTOMERS ( Omit 000's ) (f)
January		0.812	0.001	0.811	0.000
February		0.781	0.001	0.780	1.340
March		0.786	0.001	0.785	0.000
April		1.044	0.001	1.043	1.325
May		1.010	0.001	1.009	0.000
June		0.674	0.001	0.673	1.931
July		0.697	0.003	0.694	0.000
August		0.672	0.009	0.663	0.997
September		0.796	0.000	0.796	0.014
October		0.742	0.003	0.739	1.319
November		0.787	0.000	0.787	0.000
December		0.699	0.000	0.699	1.251
Total for Year		9.500	0.021	9.479	8.177

\*Reflects final accounts, adjustments, etc. per end of year billing summary.

If water is purchased for resale, indicate the following:

Vendor None

Point of delivery \_\_\_\_\_

If water is sold to other water utilities for redistribution, list names of such utilities below:

\_\_\_\_\_  
 \_\_\_\_\_  
 \_\_\_\_\_  
 \_\_\_\_\_

List for each source of supply:	CAPACITY OF WELL	GALLONS PER DAY FROM SOURCE	TYPE OF SOURCE
_____	_____	_____	_____
_____	_____	_____	_____
_____	_____	_____	_____
_____	_____	_____	_____

UTILITY NAME: LAKE UTILITY SERVICES, INC.

<b>YEAR OF REPORT</b> <b>31-Dec-05</b>
---

SYSTEM NAME / COUNTY : LAKE UTILITY SERVICES, INC. INTERCONNECTED SYSTEMS  
LAKE SAUNDERS

**PUMPING AND PURCHASED WATER STATISTICS**

MONTH (a)	WATER PURCHASED FOR RESALE ( Omit 000's ) (b)	FINISHED WATER PUMPED FROM WELLS ( Omit 000's ) (c)	WATER USED FOR LINE FLUSHING, FIGHTING FIRES, ETC. (d)	TOTAL WATER PUMPED AND PURCHASED ( Omit 000's ) [ (b)+(c)-(d) ] (e)	*WATER SOLD TO CUSTOMERS ( Omit 000's ) (f)
January		0.271	0.001	0.270	0.000
February		0.269	0.001	0.268	0.404
March		0.288	0.007	0.281	0.000
April		0.314	0.000	0.314	0.463
May		0.467	0.115	0.352	0.009
June		0.328	0.090	0.238	0.591
July		0.421	0.110	0.311	0.000
August		0.321	0.069	0.252	0.492
September		0.329	0.004	0.325	0.007
October		0.332	0.000	0.332	0.540
November		0.348	0.010	0.338	0.000
December		0.427	0.092	0.335	0.403
Total for Year		4.115	0.499	3.616	2.909

\*Reflects final accounts, adjustments, etc. per end of year billing summary.

If water is purchased for resale, indicate the following:

Vendor None

Point of delivery \_\_\_\_\_

If water is sold to other water utilities for redistribution, list names of such utilities below:

\_\_\_\_\_  
 \_\_\_\_\_  
 \_\_\_\_\_  
 \_\_\_\_\_

List for each source of supply:	CAPACITY OF WELL	GALLONS PER DAY FROM SOURCE	TYPE OF SOURCE
_____	_____	_____	_____
_____	_____	_____	_____
_____	_____	_____	_____
_____	_____	_____	_____
_____	_____	_____	_____



UTILITY NAME: LAKE UTILITY SERVICES, INC.

**YEAR OF REPORT**  
**31-Dec-05**

SYSTEM NAME / COUNTY : LAKE UTILITY SERVICES, INC. INTERCONNECTED SYSTEMS  
AMBER HILL

**WATER TREATMENT PLANT INFORMATION**  
Provide a separate sheet for each water treatment facility

<b>Permitted Capacity of Plant (GPD):</b>	<u>468,000</u>
<b>Location of measurement of capacity (i.e. Wellhead, Storage Tank):</b>	<u>Wellhead</u>
<b>Type of treatment (reverse osmosis, (sedimentation, chemical, aerated, etc.):</b>	<u>Chlorination</u>
<b>LIME TREATMENT</b>	
Unit rating (i.e., GPM, pounds per gallon): <u>N/A</u>	Manufacturer: <u>N/A</u>
<b>FILTRATION</b>	
Type and size of area:	
Pressure (in square feet): <u>N/A</u>	Manufacturer: <u>NA</u>
Gravity (in GPM/square feet): <u>N/A</u>	Manufacturer: <u>N/A</u>

UTILITY NAME: LAKE UTILITY SERVICES, INC.

YEAR OF REPORT 31-Dec-05
-----------------------------

SYSTEM NAME / COUNTY : LAKE UTILITY SERVICES, INC. INTERCONNECTED SYSTEMS  
CLERMONT I

**WATER TREATMENT PLANT INFORMATION**  
Provide a separate sheet for each water treatment facility

<b>Permitted Capacity of Plant (GPD):</b>	<u>0.115 mgd</u>
<b>Location of measurement of capacity (i.e. Wellhead, Storage Tank):</b>	<u>Wellhead</u>
<b>Type of treatment (reverse osmosis, sedimentation, chemical, aerated, etc.):</b>	<u>Chlorination</u>
<b>LIME TREATMENT</b>	
Unit rating (i.e., GPM, pounds per gallon): <u>N/A</u>	Manufacturer: <u>N/A</u>
<b>FILTRATION</b>	
Type and size of area:	
Pressure (in square feet): <u>N/A</u>	Manufacturer: <u>N/A</u>
Gravity (in GPM/square feet): <u>N/A</u>	Manufacturer: <u>N/A</u>

UTILITY NAME: LAKE UTILITY SERVICES, INC.

YEAR OF REPORT 31-Dec-05
-----------------------------

SYSTEM NAME / COUNTY : LAKE UTILITY SERVICES, INC. INTERCONNECTED SYSTEMS  
CLERMONT II

**WATER TREATMENT PLANT INFORMATION**  
Provide a separate sheet for each water treatment facility

<b>Permitted Capacity of Plant (GPD):</b>	<u>0.071 mgd</u>
<b>Location of measurement of capacity (i.e. Wellhead, Storage Tank):</b>	<u>Wellhead</u>
<b>Type of treatment (reverse osmosis, sedimentation, chemical, aerated, etc.):</b>	<u>Chlorination</u>
<b>LIME TREATMENT</b>	
Unit rating (i.e., GPM, pounds per gallon): <u>N/A</u>	Manufacturer: <u>N/A</u>
<b>FILTRATION</b>	
Type and size of area:	
Pressure (in square feet): <u>N/A</u>	Manufacturer: <u>N/A</u>
Gravity (in GPM/square feet): <u>N/A</u>	Manufacturer: <u>N/A</u>

UTILITY NAME: LAKE UTILITY SERVICES, INC.

**YEAR OF REPORT**  
**31-Dec-05**

SYSTEM NAME / COUNTY : LAKE UTILITY SERVICES, INC. INTERCONNECTED SYSTEMS  
CRESCENT BAY

**WATER TREATMENT PLANT INFORMATION**  
Provide a separate sheet for each water treatment facility

<b>Permitted Capacity of Plant (GPD):</b>	<u>0.396 mgd</u>
<b>Location of measurement of capacity (i.e. Wellhead, Storage Tank):</b>	<u>Wellhead</u>
<b>Type of treatment (reverse osmosis, sedimentation, chemical, aerated, etc.):</b>	<u>Chlorination</u>
<b>LIME TREATMENT</b>	
Unit rating (i.e., GPM, pounds per gallon): <u>N/A</u>	Manufacturer: <u>N/A</u>
<b>FILTRATION</b>	
Type and size of area:	
Pressure (in square feet): <u>N/A</u>	Manufacturer: <u>N/A</u>
Gravity (in GPM/square feet): <u>N/A</u>	Manufacturer: <u>N/A</u>

UTILITY NAME: LAKE UTILITY SERVICES, INC.

YEAR OF REPORT  
31-Dec-05

SYSTEM NAME / COUNTY : LAKE UTILITY SERVICES, INC. INTERCONNECTED SYSTEMS  
CRESCENT WEST

**WATER TREATMENT PLANT INFORMATION**  
Provide a separate sheet for each water treatment facility

<b>Permitted Capacity of Plant (GPD):</b>	<u>0.432 mgd</u>
<b>Location of measurement of capacity (i.e. Wellhead, Storage Tank):</b>	<u>Wellhead</u>
<b>Type of treatment (reverse osmosis, sedimentation, chemical, aerated, etc.):</b>	<u>Chlorination</u>
<b>LIME TREATMENT</b>	
Unit rating (i.e., GPM, pounds per gallon): <u>N/A</u>	Manufacturer: <u>N/A</u>
<b>FILTRATION</b>	
Type and size of area:	
Pressure (in square feet): <u>N/A</u>	Manufacturer: <u>N/A</u>
Gravity (in GPM/square feet): <u>N/A</u>	Manufacturer: <u>N/A</u>

UTILITY NAME: LAKE UTILITY SERVICES, INC.

YEAR OF REPORT  
31-Dec-05

SYSTEM NAME / COUNTY : LAKE UTILITY SERVICES, INC. INTERCONNECTED SYSTEMS  
HIGHLAND POINT

**WATER TREATMENT PLANT INFORMATION**  
Provide a separate sheet for each water treatment facility

<b>Permitted Capacity of Plant (GPD):</b>	<u>0.240 mgd</u>
<b>Location of measurement of capacity (i.e. Wellhead, Storage Tank):</b>	<u>Wellhead</u>
<b>Type of treatment (reverse osmosis, sedimentation, chemical, aerated, etc.):</b>	<u>Chlorination</u>
<b>LIME TREATMENT</b>	
Unit rating (i.e., GPM, pounds per gallon): <u>N/A</u>	Manufacturer: <u>N/A</u>
<b>FILTRATION</b>	
Type and size of area:	
Pressure (in square feet): <u>N/A</u>	Manufacturer: <u>N/A</u>
Gravity (in GPM/square feet): <u>N/A</u>	Manufacturer: <u>N/A</u>

UTILITY NAME: LAKE UTILITY SERVICES, INC.

<b>YEAR OF REPORT</b> 31-Dec-05
------------------------------------

SYSTEM NAME / COUNTY : LAKE UTILITY SERVICES, INC. INTERCONNECTED SYSTEMS  
LAKE CRESCENT HILLS

**WATER TREATMENT PLANT INFORMATION**

Provide a separate sheet for each water treatment facility

<b>Permitted Capacity of Plant (GPD):</b>	<u>0.432 mgd</u>
<b>Location of measurement of capacity (i.e. Wellhead, Storage Tank):</b>	<u>Wellhead</u>
<b>Type of treatment (reverse osmosis, (sedimentation, chemical, aerated, etc.):</b>	<u>Chlorination</u>
<b>LIME TREATMENT</b>	
Unit rating (i.e., GPM, pounds per gallon): <u>N/A</u>	Manufacturer: <u>N/A</u>
<b>FILTRATION</b>	
Type and size of area:	
Pressure (in square feet): <u>N/A</u>	Manufacturer: <u>N/A</u>
Gravity (in GPM/square feet): <u>N/A</u>	Manufacturer: <u>N/A</u>

UTILITY NAME: LAKE UTILITY SERVICES, INC.

YEAR OF REPORT 31-Dec-05
-----------------------------

SYSTEM NAME / COUNTY : LAKE UTILITY SERVICES, INC. INTERCONNECTED SYSTEMS  
LAKE RIDGE CLUB

**WATER TREATMENT PLANT INFORMATION**  
Provide a separate sheet for each water treatment facility

<b>Permitted Capacity of Plant (GPD):</b>	<u>0.396 mgd</u>
<b>Location of measurement of capacity (i.e. Wellhead, Storage Tank):</b>	<u>Wellhead</u>
<b>Type of treatment (reverse osmosis, sedimentation, chemical, aerated, etc.):</b>	<u>Chlorination</u>
<b>LIME TREATMENT</b>	
Unit rating (i.e., GPM, pounds per gallon): <u>N/A</u>	Manufacturer: <u>N/A</u>
<b>FILTRATION</b>	
Type and size of area:	
Pressure (in square feet): <u>N/A</u>	Manufacturer: <u>N/A</u>
Gravity (in GPM/square feet): <u>N/A</u>	Manufacturer: <u>N/A</u>



UTILITY NAME: LAKE UTILITY SERVICES, INC.

YEAR OF REPORT  
31-Dec-05

SYSTEM NAME / COUNTY : LAKE UTILITY SERVICES, INC. INTERCONNECTED SYSTEMS  
ORANGES

**WATER TREATMENT PLANT INFORMATION**  
Provide a separate sheet for each water treatment facility

<b>Permitted Capacity of Plant (GPD):</b>	<u>0.396 mgd</u>
<b>Location of measurement of capacity (i.e. Wellhead, Storage Tank):</b>	<u>Wellhead</u>
<b>Type of treatment (reverse osmosis, sedimentation, chemical, aerated, etc.):</b>	<u>Chlorination</u>
<b>LIME TREATMENT</b>	
Unit rating (i.e., GPM, pounds per gallon): <u>N/A</u>	Manufacturer: <u>N/A</u>
<b>FILTRATION</b>	
Type and size of area:	
Pressure (in square feet): <u>N/A</u>	Manufacturer: <u>N/A</u>
Gravity (in GPM/square feet): <u>N/A</u>	Manufacturer: <u>N/A</u>

UTILITY NAME: LAKE UTILITY SERVICES, INC.

YEAR OF REPORT 31-Dec-05
-----------------------------

SYSTEM NAME / COUNTY : LAKE UTILITY SERVICES, INC. INTERCONNECTED SYSTEMS  
VISTAS

**WATER TREATMENT PLANT INFORMATION**  
Provide a separate sheet for each water treatment facility

<b>Permitted Capacity of Plant (GPD):</b>	<u>0.822 mgd</u>
<b>Location of measurement of capacity (i.e. Wellhead, Storage Tank):</b>	<u>Point of Entry</u>
<b>Type of treatment (reverse osmosis, sedimentation, chemical, aerated, etc.):</b>	<u>Chlorination</u>
<b>LIME TREATMENT</b>	
Unit rating (i.e., GPM, pounds per gallon): <u>N/A</u>	Manufacturer: <u>N/A</u>
<b>FILTRATION</b>	
Type and size of area:	
Pressure (in square feet): <u>N/A</u>	Manufacturer: <u>N/A</u>
Gravity (in GPM/square feet): <u>N/A</u>	Manufacturer: <u>N/A</u>

#REF!

W-12 Vistas  
GROUP \_\_\_\_\_  
SYSTEM LUSI Combined

UTILITY NAME: LAKE UTILITY SERVICES, INC.

YEAR OF REPORT  
31-Dec-05

SYSTEM NAME / COUNTY : FOURLAKES / LAKE

**WATER TREATMENT PLANT INFORMATION**

Provide a separate sheet for each water treatment facility

<b>Permitted Capacity of Plant (GPD):</b>	<u>0.088 mgd</u>
<b>Location of measurement of capacity (i.e. Wellhead, Storage Tank):</b>	<u>Wellhead</u>
<b>Type of treatment (reverse osmosis, sedimentation, chemical, aerated, etc.):</b>	<u>Chlorination</u>
<b>LIME TREATMENT</b>	
Unit rating (i.e., GPM, pounds per gallon): <u>N/A</u>	Manufacturer: <u>N/A</u>
<b>FILTRATION</b>	
Type and size of area:	
Pressure (in square feet): <u>N/A</u>	Manufacturer: <u>N/A</u>
Gravity (in GPM/square feet): <u>N/A</u>	Manufacturer: <u>N/A</u>

UTILITY NAME: LAKE UTILITY SERVICES, INC.

YEAR OF REPORT 31-Dec-05
-----------------------------

SYSTEM NAME / COUNTY : LAKE SAUNDERS/LAKE

**WATER TREATMENT PLANT INFORMATION**

Provide a separate sheet for each water treatment facility

<b>Permitted Capacity of Plant (GPD):</b>	<u>0.432 mgd</u>
<b>Location of measurement of capacity (i.e. Wellhead, Storage Tank):</b>	<u>Wellhead</u>
<b>Type of treatment (reverse osmosis, sedimentation, chemical, aerated, etc.):</b>	<u>Chlorination</u>
<b>LIME TREATMENT</b>	
Unit rating (i.e., GPM, pounds per gallon): <u>N/A</u>	Manufacturer: <u>N/A</u>
<b>FILTRATION</b>	
Type and size of area:	
Pressure (in square feet): <u>N/A</u>	Manufacturer: <u>N/A</u>
Gravity (in GPM/square feet): <u>N/A</u>	Manufacturer: <u>N/A</u>

UTILITY NAME: LAKE GROVES UTILITIES, INC.

**YEAR OF REPORT**  
**31-Dec-05**

SYSTEM NAME / COUNTY : LAKE GROVES / LAKE

**WATER TREATMENT PLANT INFORMATION**

Provide a separate sheet for each water treatment facility

<b>Permitted Capacity of Plant (GPD):</b>	<u>6.264 mgd</u>
<b>Location of measurement of capacity (i.e. Wellhead, Storage Tank):</b>	<u>Point of Entry</u>
<b>Type of treatment (reverse osmosis, sedimentation, chemical, aerated, etc.):</b>	<u>Chlorination</u>
<b>LIME TREATMENT</b>	
Unit rating (i.e., GPM, pounds per gallon): <u>N/A</u>	Manufacturer: <u>N/A</u>
<b>FILTRATION</b>	
Type and size of area:	
Pressure (in square feet): <u>N/A</u>	Manufacturer: <u>N/A</u>
Gravity (in GPM/square feet): <u>N/A</u>	Manufacturer: <u>N/A</u>

UTILITY NAME:

LAKE UTILITY SERVICES, INC.

<b>YEAR OF REPORT</b> <b>31-Dec-05</b>
---

SYSTEM NAME / COUNTY :

LAKE UTILITY SERVICES, INC. INTERCONNECTED SYSTEMS  
COMBINED

**CALCULATION OF THE WATER SYSTEM METER EQUIVALENTS**

METER SIZE (a)	TYPE OF METER (b)	EQUIVALENT FACTOR (c)	NUMBER OF METERS (d)	TOTAL NUMBER OF METER EQUIVALENTS (c x d) (e)
All Residential		1.0	7,740	7,740
5/8"	Displacement	1.0	76	76
3/4"	Displacement	1.5		
1"	Displacement	2.5	50	125.0
1 1/2"	Displacement or Turbine	5.0	13	65
2"	Displacement, Compound or Turbine	8.0	25	200
3"	Displacement	15.0	2	30
3"	Compound	16.0		
3"	Turbine	17.5		
4"	Displacement or Compound	25.0	2	50
4"	Turbine	30.0		
6"	Displacement or Compound	50.0		
6"	Turbine	62.5		
8"	Compound	80.0		
8"	Turbine	90.0		
10"	Compound	115.0		
10"	Turbine	145.0		
12"	Turbine	215.0		
Total Water System Meter Equivalents				<u>8,286.0</u>

**CALCULATION OF THE WATER SYSTEM EQUIVALENT RESIDENTIAL CONNECTIONS**

Provide a calculation used to determine the value of one water equivalent residential connection (ERC).

Use one of the following methods:

- (a) If actual flow data are available from the preceding 12 months, divide the total annual single family residence (SFR) gallons sold by the average number of single family residence customers for the same period and divide the result by 365 days.
- (b) If no historical flow data are available, use:  
 $ERC = ( \text{Total SFR gallons sold (Omit 000)} / 365 \text{ days} / 350 \text{ gallons per day} )$

<p>ERC Calculation:</p> $1669.310/7740/365 = 591 \text{ gpd} = 1 \text{ ERC}$
--

UTILITY NAME: LAKE UTILITY SERVICES, INC.

SYSTEM NAME / COUNTY : FOUR LAKES / LAKE

**CALCULATION OF THE WATER SYSTEM METER EQUIVALENTS**

METER SIZE (a)	TYPE OF METER (b)	EQUIVALENT FACTOR (c)	NUMBER OF METERS (d)	TOTAL NUMBER OF METER EQUIVALENTS (c x d) (e)
All Residential		1.0	65	65
5/8"	Displacement	1.0		
3/4"	Displacement	1.5		
1"	Displacement	2.5		
1 1/2"	Displacement or Turbine	5.0		
2"	Displacement, Compound or Turbine	8.0		
3"	Displacement	15.0		
3"	Compound	16.0		
3"	Turbine	17.5		
4"	Displacement or Compound	25.0		
4"	Turbine	30.0		
6"	Displacement or Compound	50.0		
6"	Turbine	62.5		
8"	Compound	80.0		
8"	Turbine	90.0		
10"	Compound	115.0		
10"	Turbine	145.0		
12"	Turbine	215.0		
Total Water System Meter Equivalents				<u>65</u>

**CALCULATION OF THE WATER SYSTEM EQUIVALENT RESIDENTIAL CONNECTIONS**

Provide a calculation used to determine the value of one water equivalent residential connection (ERC).

Use one of the following methods:

- (a) If actual flow data are available from the preceding 12 months, divide the total annual single family residence (SFR) gallons sold by the average number of single family residence customers for the same period and divide the result by 365 days.
- (b) If no historical flow data are available, use:  
 $ERC = ( \text{Total SFR gallons sold (Omit 000)} / 365 \text{ days} / 350 \text{ gallons per day} )$

ERC Calculation:

$$8.176/65/365 = 345 \text{ gpd} = 1 \text{ ERC}$$

UTILITY NAME:

LAKE UTILITY SERVICES, INC.

<b>YEAR OF REPORT</b> 31-Dec-05
------------------------------------

SYSTEM NAME / COUNTY :

LAKE SAUNDERS / LAKE

**CALCULATION OF THE WATER SYSTEM METER EQUIVALENTS**

METER SIZE (a)	TYPE OF METER (b)	EQUIVALENT FACTOR (c)	NUMBER OF METERS (d)	TOTAL NUMBER OF METER EQUIVALENTS (c x d) (e)
All Residential		1.0	44	44
5/8"	Displacement	1.0		
3/4"	Displacement	1.5		
1"	Displacement	2.5		
1 1/2"	Displacement or Turbine	5.0		
2"	Displacement, Compound or Turbine	8.0		
3"	Displacement	15.0		
3"	Compound	16.0		
3"	Turbine	17.5		
4"	Displacement or Compound	25.0		
4"	Turbine	30.0		
6"	Displacement or Compound	50.0		
6"	Turbine	62.5		
8"	Compound	80.0		
8"	Turbine	90.0		
10"	Compound	115.0		
10"	Turbine	145.0		
12"	Turbine	215.0		
Total Water System Meter Equivalents				44

**CALCULATION OF THE WATER SYSTEM EQUIVALENT RESIDENTIAL CONNECTIONS**

Provide a calculation used to determine the value of one water equivalent residential connection (ERC).

Use one of the following methods:

- (a) If actual flow data are available from the preceding 12 months, divide the total annual single family residence (SFR) gallons sold by the average number of single family residence customers for the same period and divide the result by 365 days.
- (b) If no historical flow data are available, use:  
 $ERC = ( \text{Total SFR gallons sold (Omit 000)} / 365 \text{ days} / 350 \text{ gallons per day} )$

ERC Calculation:

$$2.909/44/365 = 181 \text{ gpd} = 1 \text{ ERC}$$



UTILITY NAME: LAKE UTILITY SERVICES, INC.

SYSTEM NAME / COUNTY : FOUR LAKES/LAKE

**OTHER WATER SYSTEM INFORMATION**

Furnish information below for each system. A separate page should be supplied where necessary.

1. Present ERC's \* the system can efficiently serve. 63
2. Maximum number of ERCs \* which can be served. 125
3. Present system connection capacity (in ERCs \*) using existing lines. 125
4. Future connection capacity (in ERCs \*) upon service area buildout. 125
5. Estimated annual increase in ERCs \*. 0
6. Is the utility required to have fire flow capacity? No  
If so, how much capacity is required? \_\_\_\_\_
7. Attach a description of the fire fighting facilities. N/A
8. Describe any plans and estimated completion dates for any enlargements or improvements of this system. N/A  
\_\_\_\_\_  
\_\_\_\_\_
9. When did the company last file a capacity analysis report with the DEP? N/A
10. If the present system does not meet the requirements of DEP rules:
  - a. Attach a description of the plant upgrade necessary to meet the DEP rules.
  - b. Have these plans been approved by DEP? N/A
  - c. When will construction begin? N/A
  - d. Attach plans for funding the required upgrading.
  - e. Is this system under any Consent Order with DEP? No
11. Department of Environmental Protection ID # 3354647
12. Water Management District Consumptive Use Permit # N/A
  - a. Is the system in compliance with the requirements of the CUP? Yes
  - b. If not, what are the utility's plans to gain compliance? \_\_\_\_\_  
\_\_\_\_\_  
\_\_\_\_\_

\* An ERC is determined based on the calculation on the bottom of Page W-13.

UTILITY NAME: LAKE UTILITY SERVICES, INC.

YEAR OF REPORT  
31-Dec-05

SYSTEM NAME / COUNTY : LAKE SAUNDERS/LAKE

**OTHER WATER SYSTEM INFORMATION**

Furnish information below for each system. A separate page should be supplied where necessary.

1. Present ERC's \* the system can efficiently serve. 617

2. Maximum number of ERCs \* which can be served. 617

3. Present system connection capacity (in ERCs \*) using existing lines. 617

4. Future connection capacity (in ERCs \*) upon service area buildout. N/A - Built out at 100 units

5. Estimated annual increase in ERCs \*. 0

6. Is the utility required to have fire flow capacity? Yes  
If so, how much capacity is required? 500 gpm

7. Attach a description of the fire fighting facilities. 3 Hydrants

8. Describe any plans and estimated completion dates for any enlargements or improvements of this system. None

9. When did the company last file a capacity analysis report with the DEP? N/A

10. If the present system does not meet the requirements of DEP rules:

a. Attach a description of the plant upgrade necessary to meet the DEP rules.

b. Have these plans been approved by DEP? N/A

c. When will construction begin? N/A

d. Attach plans for funding the required upgrading.

e. Is this system under any Consent Order with DEP? No

11. Department of Environmental Protection ID # 3354695

12. Water Management District Consumptive Use Permit # 50094

a. Is the system in compliance with the requirements of the CUP? Yes

b. If not, what are the utility's plans to gain compliance? \_\_\_\_\_

\* An ERC is determined based on the calculation on the bottom of Page W-13.

UTILITY NAME: LAKE UTILITY SERVICES, INC.

YEAR OF REPORT  
31-Dec-05

SYSTEM NAME / COUNTY : LAKE UTILITY SERVICES, INC. INTERCONNECTED SYSTEMS  
COMBINED

OTHER WATER SYSTEM INFORMATION

Furnish information below for each system. A separate page should be supplied where necessary.

1. Present ERC's \* the system can efficiently serve. 7130

2. Maximum number of ERCs \* which can be served. 10790

3. Present system connection capacity (in ERCs \*) using existing lines. 8270

4. Future connection capacity (in ERCs \*) upon service area buildout. N/A - Interconnected system

5. Estimated annual increase in ERCs \*. 507

6. Is the utility required to have fire flow capacity? Yes  
If so, how much capacity is required? 500 - 1500 gpm

7. Attach a description of the fire fighting facilities. Hydrants throughout service area. All systems are interconnected.

8. Describe any plans and estimated completion dates for any enlargements or improvements of this system. 2005-CR 561 WTP; Construct Lk Groves Well #3; Replace Lk Groves Well Pump #2; Replace Lk Crescent Hills generator. Expanded service area

9. When did the company last file a capacity analysis report with the DEP? N/A

10. If the present system does not meet the requirements of DEP rules:

a. Attach a description of the plant upgrade necessary to meet the DEP rules.

b. Have these plans been approved by DEP? N/A

c. When will construction begin? N/A

d. Attach plans for funding the required upgrading.

e. Is this system under any Consent Order with DEP? No

11. Department of Environmental Protection ID # See Attached

12. Water Management District Consumptive Use Permit # See Attached

a. Is the system in compliance with the requirements of the CUP? No

b. If not, what are the utility's plans to gain compliance? Lakes Groves has already submitted to the St. John's River Water Management District for renewal

\* An ERC is determined based on the calculation on the bottom of Page W-13.

11. Department of Environmental Protection ID #:

<u>System</u>	<u>PWS ID #</u>	
LUSI NORTH	3354883	
LUSI SOUTH	3354881	Two PWS ID #s after consolidation effective 2/06.

12. Water Management District Consumptive Use Permit #

<u>System</u>	<u>CUP ID #</u>
LUSI	2-069-2700
Lake Groves	2-069-2879

**WASTEWATER  
OPERATION  
SECTION**

UTILITY NAME:

LAKE UTILITY SERVICES INC

YEAR OF REPORT  
31-Dec-05

WASTEWATER LISTING OF SYSTEM GROUPS

List below the name of each reporting system and its certificate number. Those systems which have been consolidated under the same tariff should be assigned a group number. Each individual system which has not been consolidated should be assigned its own group number.

The wastewater financial schedules (S-2 through S-10) should be filed for the group in total.

The wastewater engineering schedules (S-11 and S-12) must be filed for each system in the group.

All of the following wastewater pages (S-2 through S-12) should be completed for each group and arranged by group number.

SYSTEM NAME / COUNTY	CERTIFICATE NUMBER	GROUP NUMBER
LAKE GROVES / LAKE	465S	

UTILITY NAME: LAKE UTILITY SERVICES INC

<b>YEAR OF REPORT</b> <b>31-Dec-05</b>
---

SYSTEM NAME / COUNTY : Lake County

**SCHEDULE OF YEAR END WASTEWATER RATE BASE**

ACCT. NO. (a)	ACCOUNT NAME (b)	REFERENCE PAGE (c)	WASTEWATER UTILITY (d)
101	Utility Plant In Service	S-4A	\$ 9,237,915
	Less:		
	Nonused and Useful Plant (1)		
108	Accumulated Depreciation	S-6B	<u>1,487,674</u>
110	Accumulated Amortization	F-8	<u>1,386</u>
271	Contributions In Aid of Construction	S-7	<u>6,161,281</u>
252	Advances for Construction	F-20	<u>38,400</u>
Subtotal			\$ <u>1,549,174</u>
	Add:		
272	Accumulated Amortization of Contributions in Aid of Construction	S-8A	\$ <u>755,085</u>
Subtotal			\$ <u>2,304,259</u>
	Plus or Minus:		
114	Acquisition Adjustments (2)	F-7	<u>-</u>
115	Accumulated Amortization of Acquisition Adjustments (2)	F-7	<u>-</u>
	Working Capital Allowance (3)		<u>56,357</u>
	Other (Specify):		
WASTEWATER RATE BASE			\$ <u>2,360,616</u>
WASTEWATER OPERATING INCOME		S-3	\$ <u>74,102</u>
ACHIEVED RATE OF RETURN (Wastewater Operating Income / Wastewater Rate Base)			<u><u>3.14%</u></u>

NOTES : (1) Estimate based on the methodology used in the last rate proceeding.

(2) Include only those Acquisition Adjustments that have been approved by the Commission.

(3) Calculation consistent with last rate proceeding.

In absence of a rate proceeding, Class A utilities will use the Balance Sheet Method and Class B Utilities will use the One-eighth Operating and Maintenance Expense Method.

UTILITY NAME: LAKE UTILITY SERVICES INC

<b>YEAR OF REPORT</b> <b>31-Dec-05</b>
---

SYSTEM NAME / COUNTY : Lake County

**WASTEWATER OPERATING STATEMENT**

ACCT. NO. (a)	ACCOUNT NAME (b)	REFERENCE PAGE (c)	WASTEWATER UTILITY (d)
	UTILITY OPERATING INCOME		
400	Operating Revenues	S-9A	\$ 804,471
530	Less: Guaranteed Revenue (and AFPI)	S-9A	
	Net Operating Revenues		\$ 804,471
401	Operating Expenses	S-10A	\$ 450,852
403	Depreciation Expense	S-6A	181,478
	Less: Amortization of CIAC	S-8A	(146,467)
	Net Depreciation Expense		\$ 35,011
406	Amortization of Utility Plant Acquisition Adjustment	F-7	-
407	Amortization Expense (Other than CIAC)	F-8	269
408.10	Taxes Other Than Income Utility Regulatory Assessment Fee		37,887
408.11	Property Taxes		22,891
408.12	Payroll Taxes		9,459
408.13	Other Taxes and Licenses		-
408	Total Taxes Other Than Income		\$ 70,237
409.1	Income Taxes		239,845
410.10	Deferred Federal Income Taxes		(56,211)
410.11	Deferred State Income Taxes		(9,634)
411.10	Provision for Deferred Income Taxes - Credit		-
412.10	Investment Tax Credits Deferred to Future Periods		
412.11	Investment Tax Credits Restored to Operating Income		
	Utility Operating Expenses		\$ 730,369
	Utility Operating Income		\$ 74,102
530	Add Back: Guaranteed Revenue (and AFPI)	S-9A	\$
413	Income From Utility Plant Leased to Others		
414	Gains (losses) From Disposition of Utility Property		
420	Allowance for Funds Used During Construction		-
	Total Utility Operating Income		\$ 74,102



UTILITY NAME: LAKE UTILITY SERVICES INC

SYSTEM NAME / COUNTY Lake County

WASTEWATER UTILITY PLANT ACCOUNTS

ACCT. NO. (a)	ACCOUNT NAME (b)	PREVIOUS YEAR (c)	ADDITIONS (d)	RETIREMENTS (e)	CURRENT YEAR (f)
351	Organization	\$ 8,967	\$ -	\$ -	\$ 8,967
352	Franchises	1,813	(1,813)	-	-
353	Land and Land Rights	468,355	370,497	-	838,852
354	Structures and Improvements	233,661	2,421,801	-	2,655,462
355	Power Generation Equipment	-	-	-	-
360	Collection Sewers - Force	607,025	47,231	-	654,256
361	Collection Sewers - Gravity	2,222,046	(298,658)	-	1,923,388
362	Special Collecting Structures	-	105,514	-	105,514
363	Services to Customers	-	-	-	-
364	Flow Measuring Devices	-	-	-	-
365	Flow Measuring Installations	-	-	-	-
366	Reuse Services	-	468,816	-	468,816
367	Reuse Meters and Meter Installations	-	372	-	372
370	Receiving Wells	-	-	-	-
371	Pumping Equipment	1,484,523	346,555	-	1,831,078
374	Reuse Distribution Reservoirs	-	-	-	-
375	Reuse Transmission and Distribution System	-	-	-	-
380	Treatment and Disposal Equipment	-	-	-	-
381	Plant Sewers	3,280,369	(2,527,253)	7,985	745,131
382	Outfall Sewer Lines	16,718	(16,718)	-	-
389	Other Plant Miscellaneous Equipment	-	-	-	-
390	Office Furniture and Equipment	-	-	-	-
391	Transportation Equipment	-	-	-	-
392	Stores Equipment	-	-	-	-
393	Tools, Shop and Garage Equipment	3,342	2,737	-	6,079
394	Laboratory Equipment	-	-	-	-
395	Power Operated Equipment	-	-	-	-
396	Communication Equipment	-	-	-	-
397	Miscellaneous Equipment	-	-	-	-
398	Other Tangible Plant	-	-	-	-
Total Wastewater Plant		\$ 8,326,819	\$ 919,081	\$ 7,985	\$ 9,237,915

NOTE: Any adjustments made to reclassify property from one account to another must be footnoted. Accounting adjustments mandated by FPSC

UTILITY NAME: LAKE UTILITY SERVICES INC

SYSTEM NAME / COUNTY : Lake County

WASTEWATER UTILITY PLANT MATRIX

ACCT. NO.	ACCOUNT NAME	.1 INTANGIBLE PLANT (g)	.2 COLLECTION PLANT (h)	.3 SYSTEM PUMPING PLANT (i)	.4 TREATMENT AND DISPOSAL (j)	.5 RECLAIMED WASTEWATER TREATMENT PLANT (i)	.6 RECLAIMED WASTEWATER DISTRIBUTION PLANT (j)	.7 GENERAL PLANT (k)
351	Organization	\$ 8,967						
352	Franchises	-						
353	Land and Land Rights		838,852					
354	Structures and Improvements		2,655,462					
355	Power Generation Equipment		-					
360	Collection Sewers - Force		654,256					
361	Collection Sewers - Gravity		1,923,388					
362	Special Collecting Structures		105,514					
363	Services to Customers		-					
364	Flow Measuring Devices		-					
365	Flow Measuring Installations		-					
366	Reuse Services		468,816					
367	Reuse Meters and Meter Installations		372					
370	Receiving Wells							
371	Pumping Equipment			1,831,078				
374	Reuse Distribution Reservoirs							
375	Reuse Transmission and Distribution System							
380	Treatment and Disposal Equipment							
381	Plant Sewers				745,131			
382	Outfall Sewer Lines				-			
389	Other Plant Miscellaneous Equipment				-			
390	Office Furniture and Equipment							
391	Transportation Equipment							
392	Stores Equipment							
393	Tools, Shop and Garage Equipment							
394	Laboratory Equipment							
395	Power Operated Equipment							
396	Communication Equipment							
397	Miscellaneous Equipment							
398	Other Tangible Plant							
	Total Wastewater Plant	\$ 8,967	\$ 6,646,660	\$ 1,831,078	\$ 745,131	\$ -	\$ -	\$ 6,079

NOTE: Any adjustments made to reclassify property from one account to another must be footnoted.

S-4(b)  
GROUP \_\_\_\_\_

UTILITY NAME: LAKE UTILITY SERVICES INC

<b>YEAR OF REPORT</b> <b>31-Dec-05</b>
---

SYSTEM NAME / COUNTY : Lake County

**BASIS FOR WASTEWATER DEPRECIATION CHARGES**

ACCT. NO. (a)	ACCOUNT NAME (b)	AVERAGE SERVICE LIFE IN YEARS (c)	AVERAGE NET SALVAGE IN PERCENT (d)	DEPRECIATION RATE APPLIED IN PERCENT (100% - D) / C (e)
354	Structures and Improvements			3.13%
355	Power Generation Equipment			
360	Collection Sewers - Force			3.33%
361	Collection Sewers - Gravity			2.22%
362	Special Collecting Structures			2.00%
363	Services to Customers			2.63%
364	Flow Measuring Devices			
365	Flow Measuring Installations			
366	Reuse Services			2.00%
367	Reuse Meters and Meter Installations			2.00%
370	Receiving Wells			
371	Pumping Equipment			4.00%
375	Reuse Transmission and Distribution System			
380	Treatment and Disposal Equipment			
381	Plant Sewers			2.86%
382	Outfall Sewer Lines			3.33%
389	Other Plant Miscellaneous Equipment			
390	Office Furniture and Equipment			
391	Transportation Equipment			
392	Stores Equipment			
393	Tools, Shop and Garage Equipment			6.25%
394	Laboratory Equipment			
395	Power Operated Equipment			
396	Communication Equipment			
397	Miscellaneous Equipment			
398	Other Tangible Plant			
Wastewater Plant Composite Depreciation Rate *		=====	=====	=====

\* If depreciation rates prescribed by this Commission are on a total composite basis, entries should be made on this line only.

UTILITY NAME: LAKE UTILITY SERVICES INC

SYSTEM NAME / COUNTY : Lake County

ANALYSIS OF ENTRIES IN WASTEWATER ACCUMULATED DEPRECIATION

ACCT. NO. (a)	ACCOUNT NAME (b)	BALANCE AT BEGINNING OF YEAR (c)	ACCRUALS (d)	OTHER CREDITS * (e)	TOTAL CREDITS (d + e) (f)
354	Structures and Improvements	\$ 83,697	\$ 7,318	\$ 362,031	\$ 369,349
355	Power Generation Equipment			-	-
360	Collection Sewers - Force	146,415	20,214	-	20,214
361	Collection Sewers - Gravity	240,873	32,582	-	32,582
362	Special Collecting Structures	-	3,018	6,267	9,285
363	Services to Customers	12,668	9,631	(2,262)	7,369
364	Flow Measuring Devices			-	-
365	Flow Measuring Installations			-	-
366	Reuse Services		17,631	-	17,631
367	Reuse Meters and Meter Installations			-	-
370	Receiving Wells			-	-
371	Pumping Equipment	166,563	49,634	-	49,634
375	Reuse Transmission and Distribution System			-	-
380	Treatment and Disposal Equipment			-	-
381	Plant Sewers	342,244	101,829	(366,307)	(264,478)
382	Outfall Sewer Lines	6,486	557	(7,041)	(6,484)
389	Other Plant Miscellaneous Equipment			-	-
390	Office Furniture and Equipment	230	39	-	39
391	Transportation Equipment			-	-
392	Stores Equipment			-	-
393	Tools, Shop and Garage Equipment	1,477	193	-	193
394	Laboratory Equipment			-	-
395	Power Operated Equipment			-	-
396	Communication Equipment			-	-
397	Miscellaneous Equipment			-	-
398	Other Tangible Plant		(61,168)	320,840	259,672
Total Depreciable Wastewater Plant in Service		\$ 1,000,653	\$ 181,478	\$ 313,528	\$ 495,006

Accounting adjustments mandated by FPSC

OTHER CREDITS column (E) \* are due to allocation of parent company plant

\* Specify nature of transaction.  
Use ( ) to denote reversal entries.

UTILITY NAME: LAKE UTILITY SERVICES INC

SYSTEM NAME / COUNTY : Lake County

ANALYSIS OF ENTRIES IN WASTEWATER ACCUMULATED DEPRECIATION

ACCT. NO.	ACCOUNT NAME	PLANT RETIRED (g)	SALVAGE AND INSURANCE (h)	COST OF REMOVAL AND OTHER CHARGES (i)	TOTAL CHARGES (g-h+i)	BALANCE AT END OF YEAR (c+f-j) (k)
354	Structures and Improvements	\$ -	\$ -	\$ -	\$ -	\$ 453,046
355	Power Generation Equipment	-	-	-	-	166,629
360	Collection Sewers - Force	-	-	-	-	273,455
361	Collection Sewers - Gravity	-	-	-	-	9,285
362	Special Collecting Structures	-	-	-	-	20,037
363	Services to Customers	-	-	-	-	-
364	Flow Measuring Devices	-	-	-	-	-
365	Flow Measuring Installations	-	-	-	-	-
366	Reuse Services	-	-	-	-	17,631
367	Reuse Meters and Meter Installations	-	-	-	-	-
370	Receiving Wells	-	-	-	-	216,197
371	Pumping Equipment	-	-	-	-	-
375	Reuse Transmission and Distribution System	-	-	-	-	-
380	Treatment and Disposal Equipment	-	-	-	-	-
381	Plant Sewers	7,985	-	-	7,985	69,781
382	Outfall Sewer Lines	-	-	-	-	2
389	Other Plant Miscellaneous Equipment	-	-	-	-	-
390	Office Furniture and Equipment	-	-	-	-	269
391	Transportation Equipment	-	-	-	-	-
392	Stores Equipment	-	-	-	-	-
393	Tools, Shop and Garage Equipment	-	-	-	-	1,670
394	Laboratory Equipment	-	-	-	-	-
395	Power Operated Equipment	-	-	-	-	-
396	Communication Equipment	-	-	-	-	-
397	Miscellaneous Equipment	-	-	-	-	-
398	Other Tangible Plant	-	-	-	-	259,672
Total Depreciable Wastewater Plant in Service						\$ 1,487,674

\* Specify nature of transaction.  
Use ( ) to denote reversal entries.

UTILITY NAME: LAKE UTILITY SERVICES INC

<b>YEAR OF REPORT</b> 31-Dec-05
------------------------------------

SYSTEM NAME / COUNTY : Lake County

**CONTRIBUTIONS IN AID OF CONSTRUCTION  
ACCOUNT 271**

DESCRIPTION (a)	REFERENCE (b)	WASTEWATER (c)
Balance first of year		\$ <u>4,957,526</u>
Add credits during year:		
Contributions received from Capacity, Main Extension and Customer Connection Charges	S-8A	\$ <u>287,370</u>
Contributions received from Developer or Contractor Agreements in cash or property	S-8B	<u>727,710</u>
Total Credits		\$ <u>1,015,080</u>
Less debits charged during the year (All debits charged during the year must be explained below)      Accting adjustments mandated by FPSC		\$ <u>(188,675)</u>
Total Contributions In Aid of Construction		\$ <u>6,161,281</u>

Explain all debits charged to Account 271 during the year below:

---

---

---

---

---

---

---

---

---

---

---

---

---

---

---

---

---

---

---

---

---

---

---

---

---

UTILITY NAME: LAKE UTILITY SERVICES INC

<b>YEAR OF REPORT</b> 31-Dec-05
------------------------------------

SYSTEM NAME / COUNTY : Lake County

**WASTEWATER CIAC SCHEDULE "A"**

ADDITIONS TO CONTRIBUTIONS IN AID OF CONSTRUCTION RECEIVED FROM CAPACITY,  
MAIN EXTENSION AND CUSTOMER CONNECTION CHARGES RECEIVED DURING THE YEAR

DESCRIPTION OF CHARGE (a)	NUMBER OF CONNECTIONS (b)	CHARGE PER CONNECTION (c)	AMOUNT (d)
<u>SEWER CONNECTIONS FEES</u>	<u>515</u>	\$ <u>558</u>	\$ <u>287,370</u>
_____	<u>-</u>	_____	<u>-</u>
_____	_____	_____	<u>-</u>
_____	_____	_____	<u>-</u>
_____	_____	_____	_____
_____	_____	_____	_____
_____	_____	_____	_____
<b>Total Credits</b>			\$ <u><u>287,370</u></u>

**ACCUMULATED AMORTIZATION OF WASTEWATER CONTRIBUTIONS IN AID OF CONSTRUCTION**

DESCRIPTION (a)	WASTEWATER (b)
Balance first of year	\$ <u>528,231</u>
Debits during the year:	
<u>Accruals charged to Account 272</u>	\$ <u>146,467</u>
<u>Other debits (specify) :</u>	_____
_____	_____
<b>Total debits</b>	\$ <u>146,467</u>
Credits during the year (specify) :	
<u>Acting adjustments mandated by FPSC</u>	\$ <u>(80,387)</u>
<b>Total credits</b>	\$ <u>(80,387)</u>
Balance end of year	\$ <u><u>755,085</u></u>

UTILITY NAME: LAKE UTILITY SERVICES INC

<b>YEAR OF REPORT</b> 31-Dec-05
------------------------------------

SYSTEM NAME / COUNTY : Lake County

**WASTEWATER CIAC SCHEDULE "B"**  
 ADDITIONS TO CONTRIBUTIONS IN AID OF CONSTRUCTION  
 RECEIVED FROM ALL DEVELOPERS OR CONTRACTORS AGREEMENTS  
 WHICH CASH OR PROPERTY WAS RECEIVED DURING THE YEAR

DESCRIPTION (a)	INDICATE CASH OR PROPERTY (b)	AMOUNT (c)
<u>Tradds Landing Ph 1 &amp; 2</u>	<u>                    </u>	\$ <u>727,710</u>
Total Credits		\$ <u>727,710</u>



Reconciliation of Revenue to  
Regulatory Assessment Fee Revenue  
Wastewater Operations

**UTILITY NAME:** LAKE UTILITY SERVICES INC

YEAR OF REPORT 31-Dec-05
-----------------------------

(A)	(B)	(C)	(D)
Accounts	Gross Wastewater Revenues per Sch S-9	Gross Wastewater Revenues per RAF Return	Difference (B)-(C)
Gross Revenues:			-
Total Flat-Rate Revenues			-
Total Measured Revenues	804,471	804,471	-
Revenues from Public Authorities			-
Revenues from Other Systems			-
Interdepartmental Revenues			-
Total Other Wastewater Revenues			-
Reclaimed Water Sales			-
Total Wastewater Operating Revenue	804,471	804,471	-
Less: Expense for Purchased Wastewater from FPSC Regulated Utility			-
Net Wastewater Operating Revenues	804,471	804,471	-

UTILITY NAME: LAKE UTILITY SERVICES INC

<b>YEAR OF REPORT</b> <b>31-Dec-05</b>
---

SYSTEM NAME / COUNTY : Lake County

**WASTEWATER OPERATING REVENUE**

ACCT. NO. (a)	DESCRIPTION (b)	BEGINNING YEAR NO. CUSTOMERS * (c)	YEAR END NUMBER OF CUSTOMERS * (d)	AMOUNTS (e)
<b>WASTEWATER SALES</b>				
	Flat Rate Revenues:			
521.1	Residential Revenues	2,507	2,747	\$ 786,551
521.2	Commercial Revenues			
521.3	Industrial Revenues			
521.4	Revenues From Public Authorities			
521.5	Multiple Family Dwelling Revenues			
521.6	Other Revenues			
521	Total Flat Rate Revenues	2,507	2,747	\$ 786,551
	Measured Revenues:			
522.1	Residential Revenues			
522.2	Commercial Revenues			
522.3	Industrial Revenues			
522.4	Revenues From Public Authorities			
522.5	Multiple Family Dwelling Revenues			
522	Total Measured Revenues			\$ _____
523	Revenues From Public Authorities			
524	Revenues From Other Systems			
525	Interdepartmental Revenues			
Total Wastewater Sales		<u>2,507</u>	<u>2,747</u>	\$ <u>786,551</u>
<b>OTHER WASTEWATER REVENUES</b>				
530	Guaranteed Revenues			\$ _____
531	Sale of Sludge			
532	Forfeited Discounts			
534	Rents From Wastewater Property			
535	Interdepartmental Rents			
536	Other Wastewater Revenues (Including Allowance for Funds Prudently Invested or AFPI)			17,920
Total Other Wastewater Revenues				\$ <u>17,920</u>

\* Customer is defined by Rule 25-30.210(1), Florida Administrative Code.

UTILITY NAME: LAKE UTILITY SERVICES INC

<b>YEAR OF REPORT</b> 31-Dec-05
------------------------------------

SYSTEM NAME / COUNTY : Lake County

**WASTEWATER OPERATING REVENUE**

ACCT. NO. (a)	DESCRIPTION (b)	BEGINNING YEAR NO. CUSTOMERS *	YEAR END NUMBER OF CUSTOMERS *	AMOUNTS (e)
RECLAIMED WATER SALES				
540.1	Flat Rate Reuse Revenues: Residential Reuse Revenues	_____	_____	\$ _____
540.2	Commercial Reuse Revenues	_____	_____	_____
540.3	Industrial Reuse Revenues	_____	_____	_____
540.4	Reuse Revenues From Public Authorities	_____	_____	_____
540.5	Other Revenues	_____	_____	_____
540	Total Flat Rate Reuse Revenues	_____	_____	\$ _____
541.1	Measured Reuse Revenues: Residential Reuse Revenues	_____	_____	_____
541.2	Commercial Reuse Revenues	_____	_____	_____
541.3	Industrial Reuse Revenues	_____	_____	_____
541.4	Reuse Revenues From Public Authorities	_____	_____	_____
541	Total Measured Reuse Revenues	_____	_____	\$ _____
544	Reuse Revenues From Other Systems	_____	_____	_____
Total Reclaimed Water Sales				\$ _____
Total Wastewater Operating Revenues				\$ <u>804,471</u>

\* Customer is defined by Rule 25-30.210(1), Florida Administrative Code.

UTILITY NAME: LAKE UTILITY SERVICES INC

SYSTEM NAME / COUNTY Lake County

WASTEWATER UTILITY EXPENSE ACCOUNT MATRIX

ACCT. NO.	ACCOUNT NAME	CURRENT YEAR	.1	.2	.3	.4	.5	.6
(a)	(b)	(c)	COLLECTION EXPENSES- OPERATIONS (d)	COLLECTION EXPENSES- MAINTENANCE (e)	PUMPING EXPENSES- OPERATIONS (f)	PUMPING EXPENSES- MAINTENANCE (g)	TREATMENT & DISPOSAL EXPENSES - OPERATIONS (h)	TREATMENT & DISPOSAL EXPENSES - MAINTENANCE (i)
701	Salaries and Wages - Employees	\$ 81,127	\$ 2,434	\$ 9,735	\$ 16,225	\$ 4,056	\$ 38,941	\$ 9,736
703	Salaries and Wages - Officers, Directors and Majority Stockholders							
704	Employee Pensions and Benefits	10,758	323	753	1,291	538	3,227	1,291
710	Purchased Sewage Treatment							
711	Sludge Removal Expense	119,748			25,986		119,748	
715	Purchased Power	103,944					77,958	
716	Fuel for Power Purchased							
718	Chemicals	16,823					16,823	
720	Materials and Supplies	46,290	1,852	7,406	11,110	2,777	18,516	4,629
731	Contractual Services-Engineering	-						
732	Contractual Services - Accounting	2,892						
733	Contractual Services - Legal	543						
734	Contractual Services - Mgt. Fees	-						
735	Contractual Services - Testing							
736	Contractual Services - Other	2,951						
741	Rental of Building/Real Property							
742	Rental of Equipment							
750	Transportation Expenses	17,139	514	2,057	3,428	857	8,227	2,056
756	Insurance - Vehicle							
757	Insurance - General Liability							
758	Insurance - Workman's Comp.							
759	Insurance - Other	11,828						
760	Advertising Expense							
766	Regulatory Commission Expenses - Amortization of Rate Case Expense	-						
767	Regulatory Commission Exp.-Other							
770	Bad Debt Expense	2,010						
775	Miscellaneous Expenses	34,799						
Total Wastewater Utility Expenses		\$ 450,852	\$ 5,123	\$ 19,951	\$ 58,040	\$ 8,228	\$ 283,440	\$ 17,712

UTILITY NAME: LAKE UTILITY SERVICES INC

SYSTEM NAME / COUNTY : Lake County

WASTEWATER UTILITY EXPENSE ACCOUNT MATRIX

ACCT. NO.	ACCOUNT NAME (b)	.7 CUSTOMER ACCOUNTS EXPENSE (j)	.8 ADMIN. & GENERAL EXPENSES (k)	.9 RECLAIMED WATER TREATMENT EXPENSES- OPERATIONS (l)	.10 RECLAIMED WATER TREATMENT EXPENSES- MAINTENANCE (m)	.11 RECLAIMED WATER DISTRIBUTION EXPENSES- OPERATIONS (n)	.12 RECLAIMED WATER DISTRIBUTION EXPENSES- MAINTENANCE (o)
701	Salaries and Wages - Employees	\$	\$	\$	\$	\$	\$
703	Salaries and Wages - Officers, Directors and Majority Stockholders						
704	Employee Pensions and Benefits	3,335					
710	Purchased Sewage Treatment						
711	Sludge Removal Expense						
715	Purchased Power						
716	Fuel for Power Purchased						
718	Chemicals						
720	Materials and Supplies						
731	Contractual Services-Engineering		0				
732	Contractual Services - Accounting		2,892				
733	Contractual Services - Legal		543				
734	Contractual Services - Mgt. Fees		0				
735	Contractual Services - Testing		0				
736	Contractual Services - Other	1,475	1,476				
741	Rental of Building/Real Property						
742	Rental of Equipment						
750	Transportation Expenses						
756	Insurance - Vehicle						
757	Insurance - General Liability						
758	Insurance - Workman's Comp.						
759	Insurance - Other		11,828				
760	Advertising Expense						
766	Regulatory Commission Expenses - Amortization of Rate Case Expense		0				
767	Regulatory Commission Exp.-Other						
770	Bad Debt Expense	2,010					
775	Miscellaneous Expenses	17,400	17,399				
Total Wastewater Utility Expenses		\$ 24,220	\$ 34,138	\$ -	\$ -	\$ -	\$ -

UTILITY NAME:

LAKE UTILITY SERVICES, INC.

<p><b>YEAR OF REPORT</b> 31-Dec-05</p>
--

SYSTEM NAME / COUNTY :

LAKE UTILITY SERVICES, INC. INTERCONNECTED SYSTEMS

**CALCULATION OF THE WASTEWATER SYSTEM METER EQUIVALENTS**

WATER METER SIZE (a)	TYPE OF WATER METER (b)	EQUIVALENT FACTOR (c)	NUMBER OF WATER METERS (d)	TOTAL NUMBER OF METER EQUIVALENTS (c x d) (e)
All Residential		1.0	2,733	2,733
5/8"	Displacement	1.0	6	6.00
3/4"	Displacement	1.5		
1"	Displacement	2.5	6	15.00
1 1/2"	Displacement or Turbine	5.0	2	10.00
2"	Displacement, Compound or Turbine	8.0		
3"	Displacement	15.0		
3"	Compound	16.0		
3"	Turbine	17.5		
4"	Displacement or Compound	25.0	1	25.00
4"	Turbine	30.0		
6"	Displacement or Compound	50.0		
6"	Turbine	62.5		
8"	Compound	80.0		
8"	Turbine	90.0		
10"	Compound	115.0		
10"	Turbine	145.0		
12"	Turbine	215.0		
Total Wastewater System Meter Equivalents				<u>2,789</u>

**CALCULATION OF THE WASTEWATER SYSTEM EQUIVALENT RESIDENTIAL CONNECTIONS**

Provide a calculation used to determine the value of one wastewater equivalent residential connection (ERC).

Use one of the following methods:

(a) If actual flow data are available from the preceding 12 months, divide the total annual single family residence (SFR) gallons sold by the average number of single family residence customers for the same period and divide the result by 365 days.

(b) If no historical flow data are available, use:

$$ERC = ( \text{Total SFR gallons treated (Omit 000)} / 365 \text{ days} / 280 \text{ gallons per day} )$$

For wastewater only utilities:

Subtract all general use and other non residential customer gallons from the total gallons treated.

Divide the remainder (SFR customers) by 365 days to reveal single family residence customer gallons per day.

**NOTE:** Total gallons treated includes both treated and purchased treatment.

ERC Calculation:

$$541.201/2733/365 = 543$$

One (1) ERC = 543 gallons AADF

UTILITY NAME: LAKE UTILITY SERVICES, INC.

<b>YEAR OF REPORT</b> <b>31-Dec-05</b>
---

SYSTEM NAME / COUNTY : LAKE UTILITY SERVICES, INC. INTERCONNECTED SYSTEMS

**WASTEWATER TREATMENT PLANT INFORMATION**

Provide a separate sheet for each wastewater treatment facility

Permitted Capacity	<u>0.500 mgd</u>	<u>                    </u>	<u>                    </u>
Basis of Permit Capacity (1)	<u>AADF</u>	<u>                    </u>	<u>                    </u>
Manufacturer	<u>US Filter</u>	<u>                    </u>	<u>                    </u>
Type (2)	<u>5-Stage Activated Sludge</u>	<u>                    </u>	<u>                    </u>
Hydraulic Capacity	<u>0.500 mgd</u>	<u>                    </u>	<u>                    </u>
Average Daily Flow	<u>0.307</u> mgd	<u>                    </u>	<u>                    </u>
Total Gallons of Wastewater Treated	<u>112.180</u> mg	<u>                    </u>	<u>                    </u>
Method of Effluent Disposal	<u>Perc Ponds</u>	<u>                    </u>	<u>                    </u>

(1) Basis of permitted capacity as stated on the Florida DEP WWTP Operating Permit (i.e. average annual daily flow, etc.)

(2) Contact stabilization, advanced treatment, etc.

UTILITY NAME: LAKE UTILITY SERVICES, INC.

YEAR OF REPORT  
31-Dec-05

SYSTEM NAME / COUNTY : LAKE UTILITY SERVICES, INC. INTERCONNECTED SYSTEMS

**OTHER WASTEWATER SYSTEM INFORMATION**

Furnish information below for each system. A separate page should be supplied where necessary.

1. Present number of ERCs\* now being served 1314

2. Maximum number of ERCs\* which can be served 1785

3. Present system connection capacity (in ERCs\*) using existing lines \_\_\_\_\_

4. Future connection capacity (in ERCs\*) upon service area buildout N/A

5. Estimated annual increase in ERCs\* 78

6. Describe any plans and estimated completion dates for any enlargements or improvements of this system  
\_\_\_\_\_  
\_\_\_\_\_

7. If the utility uses reuse as a means of effluent disposal, attach a list of the reuse end users and the amount of reuse provided to each, if known. N/A

8. If the utility does not engage in reuse, has a reuse feasibility study been completed? Yes

If so, when? 1999

9. Has the utility been required by the DEP or water management district to implement reuse? No

If so, what are the utility's plans to comply with this requirement? \_\_\_\_\_  
\_\_\_\_\_

10. When did the company last file a capacity analysis report with the DEP? 2001

11. If the present system does not meet the requirements of DEP rules:

a. Attach a description of the plant upgrade necessary to meet the DEP rules.

b. Have these plans been approved by DEP? N/A

c. When will construction begin? N/A

d. Attach a description of the plant upgrade necessary to meet the DEP rules.

e. Is this system under any Consent Order with DEP? N/A

12. Department of Environmental Protection ID # FLA010630

\* An ERC is determined based on the calculation on S-11.