

CLASS "B"

WATER and/or SEWER UTILITIES

(Gross Revenue of \$150,000 or More but Less Than \$750,000 Each)

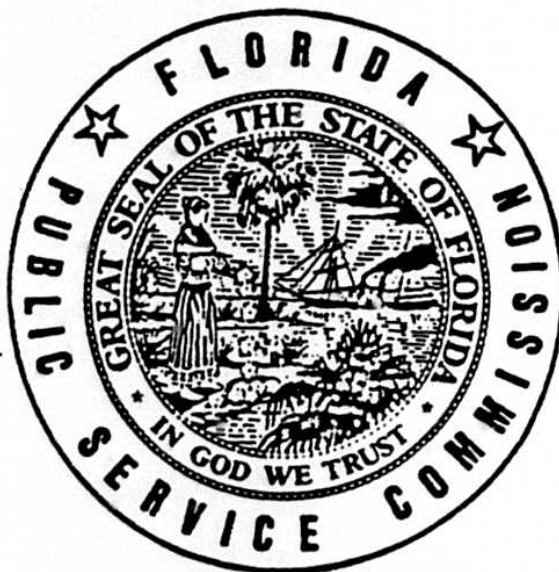
ANNUAL REPORT

OF

WU553
Lake Utility Services, Inc.
200 Weathersfield Avenue
Altamonte Springs, FL 32714-4027

35

496-W
Certificate Number(s)



Do Not Remove from this Office
OFFICIAL COPY
DIVISION OF
WATER AND SEWER

FOR THE
YEAR ENDED DECEMBER 31, 19 92

General Instructions

1. Prepare this report in conformity with the 1984 National Association of Regulatory Utility Commissioners Uniform System of Accounts for Water and/or Sewer Utilities.
2. Interpret all accounting words and phrases in accordance with the USOA.
3. Complete each question fully and accurately, even if it has been answered in a previous annual report. Enter the word "None" where it trebly and completely states the fact.
4. For any question, section, or page which is not applicable to the respondent enter the words "Not Applicable". Do not omit any pages.
5. Where dates are called for, the month and day should be stated as well as the year.
6. All schedules requiring dollar entries should be rounded to the nearest dollar unless otherwise specifically indicated.
7. Complete this report by means which result in a permanent record, such as by typewriter.
8. If there is not enough room on any schedule, an additional page or pages may be added provided the format of the added schedule matches the format of the schedule with not enough room. Such a schedule should reference the appropriate schedules, state the name of the utility, and state the year of the report.
9. If it is necessary or desirable to insert additional statements for the purpose of further explanation of schedules, such statement should be made at the bottom of the page or an additional page inserted. Any additional pages should state the name of the utility, the year of the report, and reference the appropriate schedule.
10. The report should be filled out in quadruplicate and the original and two copies returned by March 31 of the year following the date of the report. The report should be returned to:

Florida Public Service Commission
Division of Water and Sewer
101 East Gaines Street
Tallahassee, Florida 32399-0873

TABLE OF CONTENTS

Schedule	Page	Schedule	Page
----- Executive Summary -----			
Certification	E-1	Directors and Affiliates	E-7
General Information	E-2	Affiliation of Officers & Directors	E-8
Directory of Personnel Who Contact The Fla. Public Service Commission	E-3	Businesses Which Are A Byproduct, Coproduct or Joint Product Result of Providing Service	E-9
Company Profile	E-4	Business Transactions With Related Parties - Part I and II	E-10
Parent/Affiliate Organization Chart	E-5	Composite of Statistics	E-11
Compensation of Officers & Directors	E-6		
Business Contracts With Officers,			
----- Financial Section -----			
Comparative Balance Sheet - Assets and Other Debits	F-1	Companies	F-13
Comparative Balance Sheet - Equity Capital and Liabilities	F-2	Capital Stock	F-14
Comparative Operating Statement	F-3	Long Term Debt	F-14
Schedule of Year End Rate Base	F-4	Statement of Retained Earnings	F-15
Utility Plant	F-5	Bonds	F-16
Utility Plant Acquisition Adjustments	F-5	Advances from Associated Companies	F-16
Accumulated Depreciation	F-6	Accrued Taxes	F-17
Accumulated Amortization	F-6	Accrued Interest	F-18
Nonutility Property	F-7	Regulatory Commission Expense - Amortization of Rate Case Expense	F-18
Special Deposits	F-7	Misc. Current & Accrued Liabilities	F-19
Investments and Special Funds	F-8	Advances For Construction	F-19
Accounts and Notes Receivable - Net	F-9	Contributions In Aid Of Construction	F-20
Accounts Receivable from Associated Companies	F-10	Additions to CIAC Received from Capacity, Main Extension and Customer Connection Charges	F-21
Notes Receivable from Associated Companies	F-10	Accum. Amortization of C.I.A.C. Additions to CIAC Received from All Developers or Contractors Agreements	F-21
Prepayments	F-11	Reconciliation of Reported Net Income With Taxable Income For	F-22
Miscellaneous Deferred Debits	F-11	Federal Income Taxes	F-23
Unamortized Debt Discount and Expense and Premium on Debt	F-12	AFUDC Calculation	F-24
Extraordinary Property Losses	F-12	AFUDC Capital Structure Adjustments	F-25
Notes Payable	F-13		
Accounts Payable to Associated			
----- Water Operation Section -----			
Water Utility Plant Accounts	W-1	Statistics	W-6
Water Utility Expense Accounts	W-2	Water Treatment Plant, Mains, Services and Meters	W-7
Water Operating Revenue	W-3	Wells and Well Pumps, Reservoirs, and High Service Pumping	W-8
Basis for Water Depreciation Charges	W-4	Other Water System Information	W-9
Analysis of Entries in Water Depreciation Reserve	W-5	Calculation of ERC's	W-10
Pumping and Purchased Water			
----- Sewer Operation Section -----			
Sewer Utility Plant Accounts	S-1	Pumping Equipment and Service Connections	S-6
Sewer Utility Expense Accounts	S-2	Collecting and Force Mains	S-7
Sewer Operating Revenue	S-3	Other Sewer System Information	S-8
Basis for Sewer Depreciation Charges	S-4	Calculation of ERC's	S-9
Analysis of Entries in Sewer Depreciation Reserve	S-5		

EXECUTIVE

SUMMARY

CERTIFICATION OF ANNUAL REPORT

YEAR OF REPORT
DECEMBER 31, 1997

UTILITY NAME: LAKE UTILITY SERVICES, INC.

I HEREBY CERTIFY, to the best of my knowledge and belief:

YES NO
(X) () 1. The utility is in substantial compliance with the Uniform System of Accounts prescribed by the Florida Public Service Commission.

YES NO
(X) () 2. The utility is in substantial compliance with all applicable rules and orders of the Florida Public Service Commission.

YES NO
(X) () 3. There have been no communications from regulatory agencies concerning noncompliance with, or deficiencies in, financial reporting practices that could have a material effect on the financial statement of the utility.

YES NO
(X) () 4. The annual report fairly represents the financial condition and results of operations of the respondent for the period presented and other information and statements presented in the report as to the business affairs of the respondent are true, correct and complete for the period for which it represents.

Items Certified.

1. 2. 3. 4.
() () () () _____ *
(signature of chief executive officer of the utility)

1. 2. 3. 4.
(X) (X) (X) (X) _____ *
(signature of chief financial officer of the utility)

* Each of the four items must be certified YES or NO. Each item need not be certified by both officers. The items being certified by the officer should be indicated in the appropriate area to the left of the signature.

NOTICE: Section 837.06, Florida Statutes, provides that any person who knowingly makes a false statement in writing with the intent to mislead a public servant in the performance of his duty shall be guilty of a misdemeanor of the second degree.

ANNUAL REPORT OF

UTILITY NAME: LAKE UTILITY SERVICES, INC.
(Exact Name of Utility)

List below the exact mailing address of the utility for which normal correspondence should be sent:

2335 SANDERS ROAD
NORTHBROOK, IL 60062

Telephone: (847) 498-6440

Name and address of person to whom correspondence concerning this report should be addressed:

DOUGLAS P. TROY
2335 SANDERS ROAD
NORTHBROOK, IL 60062

Telephone: (847) 498-6440

List below the address of where the utility's books and records are located:

UTILITY NAME: LAKE UTILITY SERVICES, INC.

2335 SANDERS ROAD
NORTHBROOK, IL 60062

Telephone: (847) 498-6440

List below any groups auditing or reviewing the records and operations:

ARTHUR ANDERSEN LLP

Date of original organization of the utility: 1969

Check the appropriate business entity of the utility as filed with the Internal Revenue Service

Individual Partnership Sub S Corp 1120 Corporation

List below every corporation or person owning or holding directly or indirectly 5 percent or more of the voting securities of the utility.:

<u>Name</u>	<u>Percent Ownership</u>
<u>Utilities Inc.</u>	<u>100%</u>

UTILITY NAME: LAKE UTILITY SERVICES, INC.

YEAR OR REPORT
DECEMBER 31, 1997

DIRECTORY OF PERSONNEL WHO CONTACT THE FLORIDA PUBLIC SERVICE COMMISSION

NAME OF COMPANY REPRESENTATIVE (1) (2)	TITLE OR POSITION	ORGANIZATIONAL UNIT TITLE (3)	USUAL PURPOSE FOR CONTACT WITH FPSC
CARL J WENZ	TREASURER		RATE CASE
DAVID H. DEMAREE	SECRETARY		RATE CASE
ARTHUR ANDERSEN	AUDITORS		

- (1) Also list appropriate legal counsel, accountants and others who may not be on general payroll.
- (2) Provide individual telephone numbers if the person is not normally reached at the company.
- (3) Name of company employed by if not on general payroll.

UTILITY NAME: LAKE UTILITY SERVICES, INC.

COMPANY PROFILE

Provide a brief narrative company profile which covers the following areas:

- A. Brief company history.
- B. Public services rendered.
- C. Major goals and objectives.
- D. Major operating divisions and functions.
- E. Current and projected growth patterns.
- F. Major transactions having a material effect on operations.

- A. Lake Utility Services Inc. is a subsidiary of Utilities Inc.
- B. Lake Utility Services Inc. performs water services
- C. Maintain a high quality of service and earn a fair return.
- D. Only 13 subdivision is served
- E. Several of the subdivision are experiencing growth currently and are expected to continue to experience growth for the upcoming year.
- F. No major transactions have occurred.

UTILITY NAME: LAKE UTILITY SERVICES, INC.

YEAR OF REPORT
DECEMBER 31, 1997

PARENT/AFFILIATE ORGANIZATION CHART
Current as of 12/31/97

Complete below an organization chart that shows all parents and subsidiaries of the utility. The chart must also show the relationship between the utility and the affiliates listed on E-7, E-10 (a) and E-10(b).

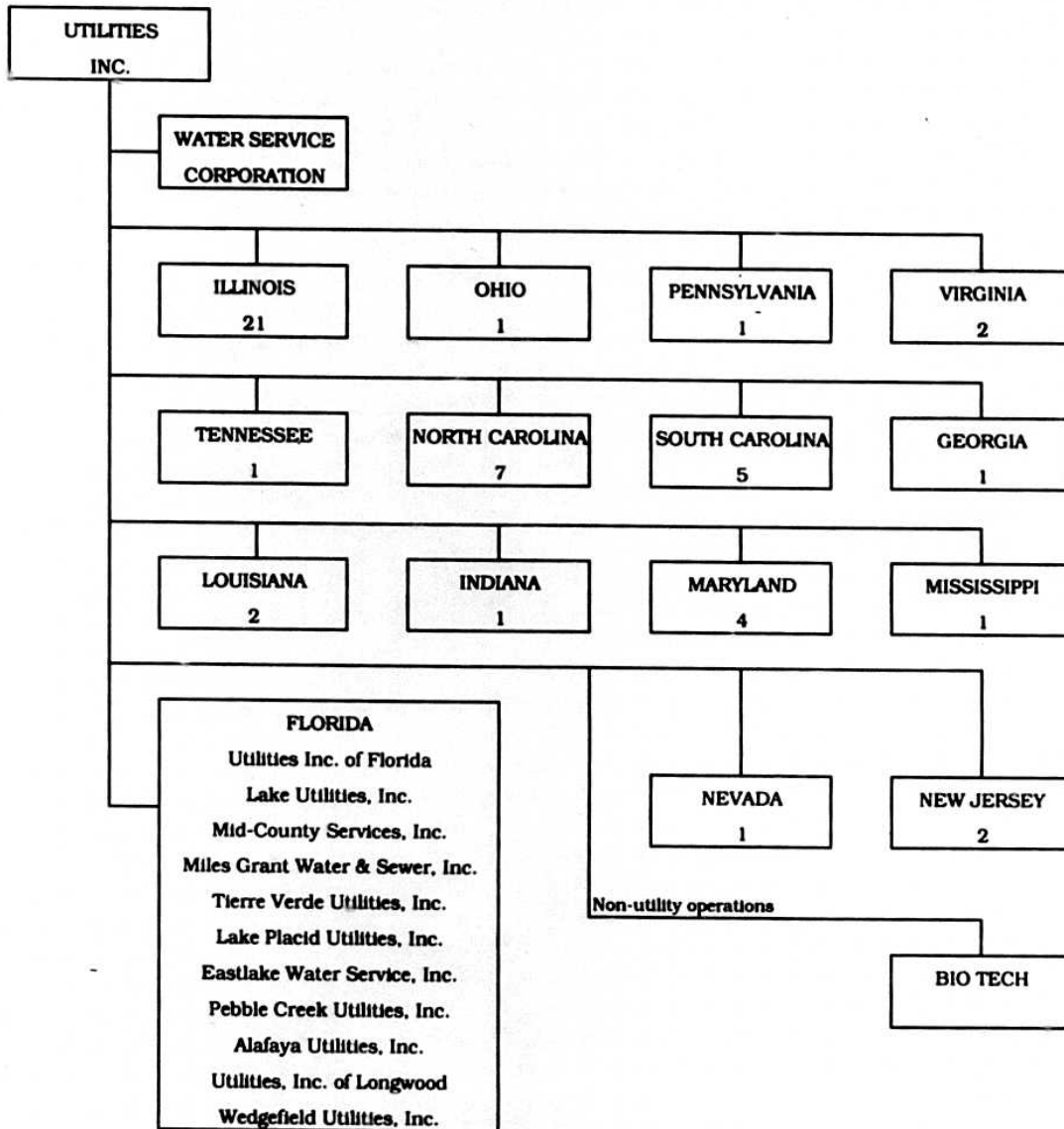
UTILITIES, INC. -- PARENT COMPANY

WATER SERVICE CORP. -- SERVICE COMPANY SUPPLYING MOST
SERVICES REQUIRED BY UTILITY.

UTILITIES INC. of FLORIDA -- provides office personnel and administrative
staff.

SEE ATTACHED

Parent And Affiliate Organizational Chart



UTILITIES, INC. - Parent Company

WATER SERVICE CORP. - Service organization providing administrative and other service functions for the utility.

NOTE: Within each state except Florida is the number of companies owned.

UTILITY NAME: LAKE UTILITY SERVICES, INC.

YEAR OF REPORT
DECEMBER 31, 1997

COMPENSATION OF OFFICERS

For each officer, list the time spent on respondent as an officer compared to time spent on total business activities and the compensation received as an officer from the respondent.

NAME (a)	TITLE (b)	% OF TIME SPENT AS OFFICER OF UTILITY (c)	OFFICERS COMPENSATION (d)
JAMES L. CAMAREN	CHAIRMAN & CEO	%	\$ NONE
		%	\$
		%	\$ NONE
DAVID H. DEMAREE	SECRETARY	%	\$
		%	\$ NONE
LAWRENCE N. SCHUMACHER	PRESIDENT	%	\$
		%	\$ NONE
		%	\$
		%	\$
		%	\$

COMPENSATION OF DIRECTORS

For each director, list the number of director meetings attended by each director and the compensation received as a director from the respondent.

NAME (a)	TITLE (b)	NUMBER OF DIRECTORS MEETINGS ATTENDED (c)	DIRECTORS COMPENSATION (d)
			\$ NONE
			\$ NONE
			\$ NONE
			\$ NONE
			\$ NONE
			\$ NONE
			\$ NONE
			\$ NONE
			\$ NONE
			\$ NONE

UTILITY NAME: LAKE UTILITY SERVICES, INC.

YEAR OF REPORT
DECEMBER 31, 1997

BUSINESS CONTRACTS WITH OFFICERS, DIRECTORS AND AFFILIATES

List all contracts, agreements, or other business arrangements* entered into during the calendar year (other than compensation related to position with Respondents) between the Respondent and officer and director listed on page E-6. In addition, provide the same information with respect to professional services for each firm, partnership, or organization with which the officer or director is affiliated.

NAME OF OFFICER, DIRECTOR OR AFFILIATE (a)	IDENTIFICATION OF SERVICE OR PRODUCT (b)	AMOUNT (c)	NAME AND ADDRESS OF AFFILIATED ENTITY (d)
NO BUSINESS CONTRACTS, AGREEMENTS OR OTHER ARRANGEMENTS WERE ENTERED INTO DURING THE CURRENT YEAR BY THE OFFICERS LISTED ON PAGE E6, THE DIRECTORS OR AFFILIATES.		\$	

*Business Agreement, for this schedule, shall mean any oral or written business deal which binds the concerned parties for products or services during the reporting year or future years. Although the Respondent and/or other companies will benefit from the arrangement, the officer or director is, however, acting on his behalf or for the benefit of other companies or persons.

UTILITY NAME: LAKE UTILITY SERVICES, INC.

YEAR OF REPORT
DECEMBER 31, 1997

AFFILIATION OF OFFICERS AND DIRECTORS

For each of the officials listed on page E-6, list the principle occupation or business affiliation and all affiliations or connections with any other business or financial organizations, firms, or partnerships. For purposes of this part, an official will be considered to have an affiliation with any business or financial organization, firm or partnership in which he is an officer, director, trustee, partner, or a person exercising similar functions.

NAME (a)	PRINCIPLE OCCUPATION OR BUSINESS AFFILIATION (b)	AFFILIATION OR CONNECTION (c)	NAME AND ADDRESS OF AFFILIATION OR CONNECTION (d)
<p>THE OFFICIALS LISTED ON PAGE E6 HAVE NO OTHER PRINCIPLE OCCUPATION OR BUSINESS AFFILIATION OR CONNECTIONS WITH ANY OTHER BUSINESS OR FINANCIAL ORGANIZATIONS, FIRMS, OR PARTNERSHIPS DURING THE REPORTED YEAR.</p>			

UTILITY NAME: LAKE UTILITY SERVICES, INC.

YEAR OF REPORT DECEMBER 31, 1997

BUSINESSES WHICH ARE A BYPRODUCT, COPRODUCT OR JOINT PRODUCT RESULT OF PROVIDING WATER OR SEWER SERVICE

Complete the following for any business which is conducted as a byproduct, coproduct or joint product as a result of providing water and/or sewer service. This would include any business which requires the use of utility land and facilities. Examples of these types of businesses would be orange groves, nurseries, tree farms, fertilizer manufacturing, etc. This would not include any business for which the assets are properly included in Account 121 - Nonutility Property along with the associated revenues and expenses segregated out as nonutility also.

BUSINESS OR SERVICE CONDUCTED (a)	ASSETS		REVENUES		EXPENSES	
	BOOK COST OF ASSETS (b)	ACCT. NO. (c)	REVENUES GENERATED (d)	ACCT. NO. (e)	EXPENSES INCURRED (f)	ACCT. NO. (g)
NO BUSINESS WHICH ARE A BYPRODUCT, COPRODUCT OR JOINT PRODUCT RESULTING FROM PROVIDING WATER AND/OR SEWER SERVICE.	\$		\$		\$	

UTILITY NAME: LAKE UTILITY SERVICES, INC.

YEAR OF REPORT
DECEMBER 31, 1997

BUSINESS TRANSACTIONS WITH RELATED PARTIES

List each contract, agreement, or other business transaction exceeding a cumulative amount of \$500 in any one year, entered into between the Respondent and a business or financial organization, firm, or partnership named on pages E-2 and E-6 identifying the parties, amounts, dates and product, asset, or service involved.

Part I. Specific Instructions: Services and Products Received or Provided

1. Enter in this part all transactions involving services and products received or provided.
2. Below are some types of transactions to include:
 - management, legal and accounting services
 - computer services
 - engineering & construction services
 - repairing and servicing of equipment
 - material and supplies furnished
 - leasing of structures, land and equipment
 - rental transactions
 - sale, purchase or transfer of various products

NAME OF COMPANY OR RELATED PARTY (a)	DESCRIPTION SERVICE AND/OR NAME OF PRODUCT (b)	CONTRACT OR AGREEMENT EFFECTIVE DATES (c)	ANNUAL CHARGES	
			(P)urchased/ or (S)old (d)	/ /AMOUNT (e)
WATER SERVICE CORP	Operators Salaries & Benefits	Continuous	P	\$ 118,678
	Insurance	Continuous	P	7,606
	Computer Operations	Continuous	P	2,703
	Supplies & Postage	Continuous	P	4,836
	Outside Services	Continuous	P	3,896
	Management Services	Continuous	P	22,359

BUSINESS TRANSACTIONS WITH RELATED PARTIES (Cont'd)

Part II. Specific Instructions: Sale, Purchase and Transfer of Assets

1. Enter in this part all transactions ~~fe~~. The columnar instructions follow: to the purchase, sale or transfer of assets.
 2. Below are examples of some types of transactions to include:
 - purchase, sale or transfer of equipment
 - purchase, sale or transfer of land and structures.
 - purchase, sale or transfer of securities
 - noncash transfers of assets.
 - noncash dividends other than stock dividends.
 - writeoff of bad debts or loans.
- (a) Enter name of related party or company.
 (b) Describe briefly the type of assets purchased, sold or transferred.
 (c) Enter the total received or paid. Indicate purchase with "P" and sale with "S".
 (d) Enter the net book value for each item reported.
 (e) Enter the net profit or loss for each item (column (c) - column (d)).
 (f) Enter the fair market value for each item reported. In space below or in a supplemental schedule, describe the basis used to calculate fair market value.

NAME OF COMPANY OR RELATED PARTY (a)	DESCRIPTION OF ITEMS (b)	SALE OR PURCHASE PRICE (c)	NET BOOK VALUE (d)	GAIN OR LOSS (e)	FAIR MARKET VALUE (f)
NO ASSETS WERE SOLD, PURCHASED OR TRANSFERRED WITH A RELATED PARTY DURING THE FISCAL YEAR ENDED DECEMBER 31, 1997		\$	\$	\$	\$

YEAR OF REPORT
DECEMBER 31, 1997

UTILITY NAME: LAKE UTILITY SERVICES, INC.

COMPOSITE STATISTICS FOR ALL
PRIVATELY OWNED WATER AND SEWER UTILITIES UNDER AGENCY JURISDICTION

DESCRIPTION (a)	WATER (b)	SEWER (c)
PLANT (Intrastate Only) (000's Omitted):		
Plant in Service _ _ _	\$ 2,773	\$ -
Construction Work In Progress		-
Plant Acquisition Adjustment		
Plant Held For Future Use _ _		
Materials and Supplies		
Less:		
Accumulated Depreciation and Accumulated Amortization	288	-
Contributions In Aid Of Construction _(NET)	1,820	-
Net Book Cost_ _ _ _ _	\$ 665	\$ -
REVENUES AND EXPENSES (Intrastate Only) (000's Omitted):		
Operating Revenues _ _	\$ 475	\$ -
Depreciation and Amortization Expense_ _ _ _ _	\$ 33	\$ -
Income Tax Expense _ _	85	-
Taxes Other Than Income	62	-
Other Operating Expenses	260	-
Total Operating Expenses	\$ 441	\$ -
Net Operating Income _	\$ 34	\$ -
Other Income _ _ _ _ _	\$ 1	\$ -
Other Income Deductions	31	-
Net Income _ _ _ _ _	\$ 4	\$ -
CUSTOMERS (Intrastate Only):		
Residential - Yearly Average	1,518	-
Commercial - Yearly Average_		-
Industrial - Yearly Average_		-
Others - Yearly Average_ _ _		-
Total_ _ _ _ _	1,518	-
OTHER STATISTICS (Intrastate Only):		
Average Annual Residential Use Per 1,000 Gallons _ _ _		
Average Annual Residential Cost Per 1,000 Gallons_ _ _	\$	\$
Average Residential Monthly Bill _ _ _ _ _	\$	\$
Gross Plant Investment Per Customer_ _ _ _ _	\$ 1,826	\$ #DIV/0!

FINANCIAL

SECTION

UTILITY NAME: LAKE UTILITY SERVICES, INC.

YEAR OF REPORT
DECEMBER 31, 1997

COMPARATIVE BALANCE SHEET - ASSETS AND OTHER DEBITS

ACCT. NO. (a)	ACCOUNT NAME (b)	REF. PAGE (c)	CURRENT YEAR (d)	PREVIOUS YEAR (e)
----- UTILITY PLANT -----				
101-105	Utility Plant_ _ _ _ _	F-5	\$ 2,772,607	\$ 2,199,296
108-110	Less: Accumulated Depreciation and Amortization_ _ _ _ _	F-6	<u>287,829</u>	<u>228,001</u>
	Net Plant_ _ _ _ _		\$ <u>2,484,778</u>	\$ <u>1,971,295</u>
114-115	Utility Plant Acquisition Adjustments (Net) _ _ _ _ _	F-5	(57,741)	(59,859)
	Other Plant Adj. (Specify) _ _ _ _ _			\$
	Total Net Utility Plant_ _ _ _ _		\$ <u>2,427,037</u>	\$ <u>1,911,436</u>
OTHER PROPERTY AND INVESTMENTS				
121	Nonutility Property_ _ _ _ _	F-7	\$	\$
122	Less: Accumulated Depreciation and Amortization_ _ _ _ _			
	Net Nonutility Property_ _ _ _ _		\$	\$
123	Investment In Associated Companies	F-8		
124	Utility Investments_ _ _ _ _	F-8		
125	Other Investments_ _ _ _ _	F-8		
127	Other Special Funds_ _ _ _ _	F-8		
	Total Other Property & Investments		\$	\$
CURRENT AND ACCRUED ASSETS				
131	Cash_ _ _ _ _		\$ 68	\$ 0
132	Special Deposits_ _ _ _ _	F-7	440	440
134	Working Funds_ _ _ _ _			
135	Temporary Cash Investments			
141-144	Accounts and Notes Receivable, Less Accumulated Provision for Uncollectible Accounts_ _ _ _ _	F-9	79,977	66,154
145	Accounts Receivable from Associated Companies_ _ _ _ _	F-10		
146	Notes Receivable from Associated Companies_ _ _ _ _	F-10		
151	Material and Supplies_ _ _ _ _			
162	Prepayments_ _ _ _ _	F-11	0	0
171	Accrued Interest and Dividends Receivable_ _ _ _ _		0	0
174	Misc. Current and Accrued Assets		<u>0</u>	<u>0</u>
	Total Current and Accrued Assets		\$ <u>80,485</u>	\$ <u>66,594</u>

UTILITY NAME: LAKE UTILITY SERVICES, INC.

YEAR OF REPORT
DECEMBER 31, 1997

COMPARATIVE BALANCE SHEET - ASSETS AND OTHER DEBITS

ACCT. NO. (a)	ACCOUNT NAME (b)	REF. PAGE (c)	CURRENT YEAR (d)	PREVIOUS YEAR (e)
DEFERRED DEBITS				
181	Unamortized Debt Discount & Expense	F-12	\$	\$
182	Extraordinary Property Losses	F-12		
186	Misc. Deferred Debits	F-11	137,841	67,959
190	Accumulated Deferred Income Taxes		74,597	81,355
	Total Deferred Debits		\$ 212,438	\$ 149,314
	TOTAL ASSETS AND OTHER DEBITS		\$ 2,719,960	\$ 2,127,344

NOTES TO THE BALANCE SHEET

The space below is provided for important notes regarding the balance sheet.

UTILITY NAME: LAKE UTILITY SERVICES, INC.

YEAR OF REPORT
DECEMBER 31, 1997

COMPARATIVE BALANCE SHEET - EQUITY CAPITAL AND LIABILITIES

ACCT. NO. (a)	ACCOUNT NAME (b)	REF. PAGE (c)	CURRENT YEAR (d)	PREVIOUS YEAR (e)
EQUITY CAPITAL				
201	Common Stock Issued	F-14	\$ 100	\$ 100
204	Preferred Stock Issued	F-14		
211	Other Paid-In Capital		1,222,997	1,129,303
212	Discount on Capital Stock			
213	Capital Stock Expense			
214-215	Retained Earnings	F-15	(105,762)	(110,093)
216	Reacquired Capital Stock			
218	Proprietary Capital (Proprietorship and Partnership Only)			
	Total Equity Capital		\$ 1,117,335	\$ 1,019,310
LONG TERM DEBT				
221	Bonds	F-16	\$	\$
223	Advances from Associated Companies	F-16		
224	Other Long Term Debt	F-14		
	Total Long Term Debt		\$	\$
CURRENT AND ACCRUED LIABILITIES				
231	Accounts Payable		\$ 151,139	\$ 895
232	Notes Payable	F-13		
233	Accounts Payable to Associated Co.	F-13	(686,504)	(493,105)
234	Notes Payable to Associated Co.	F-13		
235	Customer Deposits		28,855	23,220
236	Accrued Taxes	F-17	20,239	3,977
237	Accrued Interest	F-18	801	898
238	Accrued Dividends			
239	Matured Long Term Debt			
240	Matured Interest			
241	Miscellaneous Current and Accrued Liabilities	F-19		
	Total Current and Accrued Liabilities		\$ (485,470)	\$ (464,115)

UTILITY NAME: LAKE UTILITY SERVICES, INC.

YEAR OF REPORT
DECEMBER 31, 1997

COMPARATIVE BALANCE SHEET - EQUITY CAPITAL AND LIABILITIES

ACCT. NO. (a)	ACCOUNT NAME (b)	REF. PAGE (c)	CURRENT YEAR (d)	PREVIOUS YEAR (e)
DEFERRED CREDITS				
251	Unamortized Premium on Debt	F-12	\$	\$
252	Advances for Construction	F-19	38,400	0
253	Other Deferred Credits		24,435	24,175
255	Accumulated Deferred Investment Tax Credits			
	Total Deferred Credits		\$ 62,835	\$ 24,175
OPERATING RESERVES				
261	Property Insurance Reserve		\$	\$
262	Injuries and Damages Reserve			
263	Pensions and Benefits Reserve			
265	Miscellaneous Operating Reserves			
	Total Operating Reserves		\$	\$
CONTRIBUTIONS IN AID OF CONSTRUCTION				
271	Contributions In Aid of Construction	F-20	\$ 2,022,629	\$ 1,555,180
272	Accumulated Amortization of Contri- butions In Aid of Construction	F-21	202,376	158,702
	Total Net C.I.A.C.		\$ 1,820,253	\$ 1,396,478
ACCUMULATED DEFERRED INCOME TAXES				
281	Accumulated Deferred Income Taxes - Accelerated Depreciation		\$ 121,966	\$ 95,784
282	Accumulated Deferred Income Taxes - Liberalized Depreciation			
283	Accumulated Deferred Income Taxes - Other		83,041	55,712
	Total Accum. Deferred Income Taxes		\$ 205,007	\$ 151,496
	TOTAL EQUITY CAPITAL AND LIABILITIES		\$ 2,719,960	\$ 2,127,344

UTILITY NAME: LAKE UTILITY SERVICES, INC.

YEAR OF REPORT
DECEMBER 31, 1997

COMPARATIVE OPERATING STATEMENT

ACCT. NO. (a)	ACCOUNT NAME (b)	PREVIOUS YEAR (c)	REF. PAGE (d)	CURRENT YEAR (e)

UTILITY OPERATING INCOME				
400	Operating Revenues -----	\$ 444,407	F-3 (b)	\$ 474,822
401	Operating Expenses -----	\$ 273,794	F-3 (b)	\$ 260,474
403	Depreciation Expense -----	31,315	F-6	35,497
406	Amortization of Utility Plant Acquisition Adjustment -----	(2,128)		(2,118)
407	Amortization Expense - of CIA			
408.1	Taxes Other Than Income -----	46,417	F-17	61,577
409.1	Income Taxes -----	7,091	F-17	24,976
410.10	Deferred Income Taxes -----	31,833	F-17	60,269
411.10	Provision for Deferred Income Taxes Credit -----		F-17	
412.10	Investment Tax Credits Deferred to Future Periods -----		F-17	
412.11	Investment Tax Credits Restored to Operating Income -----	0	F-17	0
	Utility Operating Expenses -----	\$ 388,322		\$ 440,675
	Utility Operating Income -----	\$ 56,085		\$ 34,147
413	Income From Utility Plant Leased to Others -----			
414	Gains (Losses) From Disposition of Utility Property -----			
	Total Utility Operating Income [Enter here and on Page F-3 (c)] -----	\$ 56,085		\$ 34,147

COMPARATIVE OPERATING STATEMENT (Cont'd)

REF. PAGE (f)	WATER (g)	REF. PAGE (h)	SEWER (i)	OTHER (j)
W-3	\$ 474,822	S-3	\$ -	\$
W-2	\$ 260,474	S-2	\$ -	\$
F-6	35,497	F-6	-	
F-5	(2,118)	F-5	-	
F-17	61,577	F-17	-	
F-17	24,976	F-17	-	
	60,269		-	
	-		-	
	<u>\$ 440,675</u>		<u>\$ -</u>	<u>\$ -</u>
	<u>\$ 34,147</u>		<u>\$ -</u>	<u>\$ -</u>
	<u>\$ 34,147</u>		<u>\$ -</u>	<u>\$ -</u>

UTILITY NAME: LAKE UTILITY SERVICES, INC.

YEAR OF REPORT
DECEMBER 31, 1997

COMPARATIVE OPERATING STATEMENT (Cont'd)

ACCT. NO. (a)	ACCOUNT NAME (b)	PREVIOUS YEAR (c)	REF. PAGE (d)	CURRENT YEAR (e)
	Total Utility Operating Income [From Page F-3(a)]	\$ 56,085		\$ 34,147
	OTHER INCOME AND DEDUCTIONS			
415	Revenues From Merchandising, Jobbing and Contract Deductions	\$		\$
416	Costs and Expenses of Merchandising, Jobbing and Contract Work			
419	Interest and Dividend Income	(1,826)		(802)
420	Allowance for Funds Used During Construction	895		2,063
421	Nonutility Income	-		
426	Miscellaneous Nonutility Expenses			
	Total Other Income and Deductions	\$ (931)		\$ 1,261
	TAXES APPLICABLE TO OTHER INCOME			
408.20	Taxes Other Than Income	\$	F-17	\$
409.20	Income Taxes		F-17	
410.20	Provision for Deferred Income Taxes		F-17	
411.20	Provision for Deferred Income Taxes - Credit		F-17	
412.20	Investment Tax Credits - Net		F-17	
412.30	Investment Tax Credits Restored to Operating Income		F-17	
	Total Taxes Applicable To Other Income	\$		\$
	INTEREST EXPENSE			
427	Interest Expense	\$ 32,033	F-18	\$ 31,077
428	Amortization of Debt Discount & Expens		F-12	
429	Amortization of Premium on Debt		F-12	
	Total Interest Expense	\$ 32,033		\$ 31,077
	EXTRAORDINARY ITEMS			
433	Extraordinary Income	\$		\$
434	Extraordinary Deductions			
409.30	Income Taxes, Extraordinary Items			
	Total Extraordinary Items	\$		\$
	NET INCOME	\$ 23,121		\$ 4,331

UTILITY NAME: LAKE UTILITY SERVICES, INC.

YEAR OF REPORT
DECEMBER 31, 1997

SCHEDULE OF YEAR END RATE BASE

ACCT. NO. (a)	ACCOUNT NAME (b)	REF. PAGE (c)	WATER UTILITY (d)	SEWER UTILITY (e)
101	Utility Plant In Service	F-5	\$ 2,756,793	-
	Less:			
	Nonused and Useful Plant (1)			
108	Accumulated Depreciation	F-6	274,883	-
110	Accumulated Amortization	F-6	12,946	-
271	Contributions In Aid of Construction	F-20	2,022,629	-
252	Advances for Construction	F-19	38,400	-
	Subtotal		\$ 407,935	-
	Additions:			
272	Accumulated Amortization of Contributions In Aid of Construction	F-21	202,376	-
	Subtotal		\$ 610,311	-
	Plus or Minus:			
114	Net Acquisition Adjustments (2)	F-5		
115	Accumulated Amortization of Acquisition Adjustments (2)	F-5		
	Working Capital Allowance (3)		32,559	-
	Other (Specify):			
	RATE BASE		\$ 642,870	-
	UTILITY OPERATING INCOME		\$ 34,147	-
	ACHIEVED RATE OF RETURN		5.31%	#DIV/0!

NOTES :

- (1) Estimated if not known.
- (2) Include only those Acquisition Adjustments that have been approved by the Commission.
- (3) Calculate using the Balance Sheet Method, beginning-year end average.

UTILITY NAME: LAKE UTILITY SERVICES, INC.

YEAR OF REPORT
DECEMBER 31, 1997

UTILITY PLANT (ACCTS. 101 - 106)

ACCT. NO. (a)	DESCRIPTION (b)	WATER (c)	SEWER (d)	OTHER THAN REPORTING SYSTEMS (e)	TOTAL (f)
Plant Accounts:					
101	Utility Plant In Service	\$ 2,756,793	\$ -	\$	\$ 2,756,793
102	Utility Plant Leased to Others	0	0	0	0
103	Property Held for Future Use	0	0	0	0
104	Utility Plant Purchased or Sold	0	0	0	0
105	Construction Work In Progress	15,814	0	0	15,814
	Total Utility Plant	\$ 2,772,607	\$ -	\$	\$ 2,772,607

UTILITY PLANT ACQUISITION ADJUSTMENTS (ACCTS. 114 - 115)

Report each acquisition adjustment and related accumulated amortization separately. For any acquisition adjustment approved by the Commission, include the Order Number

DESCRIPTION (a)	WATER (b)	SEWER (c)	OTHER THAN REPORTING SYSTEMS (d)	TOTAL (e)
ACQUISITION ADJUSTMENTS (114):				
Beginning of year	\$ (59,859)	0	\$ 0	\$ (59,859)
Recording of Acquisition	0	0	0	0
Total Plant Acquisition Adjs.	\$ (59,859)	\$ 0	\$ 0	\$ (59,859)
ACCUMULATED AMORTIZATION (115):				
Accruals charged during year	\$ 2,118	\$ 0	\$	\$ 2,118
Total Accumulated Amortization	\$ 2,118	\$ 0	\$ 0	\$ 2,118
Net Acquisition Adjustments	\$ (57,741)	\$ 0	\$	\$ (57,741)

UTILITY NAME: LAKE UTILITY SERVICES, INC.

YEAR OF REPORT DECEMBER 31, 1997

ACCUMULATED DEPRECIATION (ACCT. 108)

DESCRIPTION (a)	WATER (b)	SEWER (c)	OTHER THAN REPORTING SYSTEMS (d)	TOTAL (e)
Balance first of year	\$ 217,460	\$ -	\$ -	\$ 217,460
Credit during year:				
Accruals charged to Account 108	\$ 76,766	\$ 0	\$ -	\$ 76,766
Accruals charged other accounts (specify) due to allocation of UIF plant	(8,842)	0	-	(8,842)
Salvage				
Other credits (specify)				
Total credits	\$ 67,924	\$ 0	\$ 0	\$ 67,924
Debits during year:				
Book cost of plant retired	\$ 10,501	\$ 0	\$ -	\$ 10,501
Cost of removal	0	0	-	0
Other debits (specify)	0	-	-	0
Allocated from UIF	0	0	-	0
Total debits	\$ 10,501	\$ 0	\$ 0	\$ 10,501
Balance end of year	\$ 274,883	\$ 0	\$ 0	\$ 274,883

ACCUMULATED AMORTIZATION (ACCT. 110)

DESCRIPTION (a)	WATER (b)	SEWER (c)	OTHER THAN REPORTING SYSTEMS (d)	TOTAL (e)
Balance first of year	\$ 10,541	\$ -	\$ -	\$ 10,541
Credit during year:				
Accruals charged to Account 110	\$ 2,405	\$ 0	\$ 0	\$ 2,405
Other credits (specify) Change in asset status--	0	0	0	0
Total credits	\$ 2,405	\$ 0	\$ 0	\$ 2,405
Debits during year:				
Book cost of plant retired	\$ 0	\$ 0	\$ 0	\$ 0
Other debits (specify)	-	-	-	-
Total debits	\$ 0	\$ 0	\$ 0	\$ 0
Balance end of year	\$ 12,946	\$ 0	\$ 0	\$ 12,946

UTILITY NAME: LAKE UTILITY SERVICES, INC.

YEAR OF REPORT
DECEMBER 31, 1997

NONUTILITY PROPERTY (ACCT. 121)

Report separately each item of property with a book cost of \$25,000 or more included in Account 121. Other items may be grouped by classes of property.

DESCRIPTION (a)	BEGINNING YEAR BALANCE (b)	ADDITIONS (c)	REDUCTIONS (d)	ENDING YEAR BALANCE (e)
NONE	\$ -	\$ -	\$ -	\$ -
	-	-	-	-
	-	-	-	-
	-	-	-	-
	-	-	-	-
	-	-	-	-
	-	-	-	-
	-	-	-	-
	-	-	-	-
	-	-	-	-
Total Nonutility Property_ _	\$ _____	\$ _____	\$ _____	\$ _____

SPECIAL DEPOSITS (ACCT. 132)

Report hereunder all special deposits carried in Accounts 132.

DESCRIPTION OF SPECIAL DEPOSITS (a)	ENDING YEAR END BOOK COST (b)
Electric Deposit - Florida Power.	\$ 440
Total Special Deposits_ _	\$ 440

UTILITY NAME: LAKE UTILITY SERVICES, INC.

YEAR OF REPORT
DECEMBER 31, 1997

INVESTMENTS AND SPECIAL FUNDS (ACCTS. 123 - 127)

Report hereunder all investments and special funds carried in Accounts 123 thru 127.

DESCRIPTION OF SECURITY OR SPECIAL FUND (a)	FACE OR PAR VALUE (b)	YEAR END BOOK COST (c)
INVESTMENT IN ASSOCIATED COMPANIES (ACCT. 123):		
NONE	\$ - - - - -	\$ - - - - -
_____	\$ - - - - -	_____
_____	\$ - - - - -	_____
_____	\$ - - - - -	_____
_____	\$ - - - - -	_____
Total Investment In Associated Companies - - - - -	\$ - - - - -	\$ _____

UTILITY INVESTMENTS (ACCT. 124):		
NONE	\$ - - - - -	\$ - - - - -
_____	\$ - - - - -	_____
_____	\$ - - - - -	_____
_____	\$ - - - - -	_____
_____	\$ - - - - -	_____
Total Utility Investments - - - - -	\$ - - - - -	\$ _____

OTHER INVESTMENTS (ACCT. 125):		
NONE	\$ - - - - -	\$ - - - - -
_____	\$ - - - - -	_____
_____	\$ - - - - -	_____
_____	\$ - - - - -	_____
_____	\$ - - - - -	_____
Total Other Investments - - - - -	\$ - - - - -	\$ _____

SPECIAL FUNDS (ACCT. 127):		
NONE	\$ - - - - -	\$ - - - - -
_____	\$ - - - - -	_____
_____	\$ - - - - -	_____
_____	\$ - - - - -	_____
_____	\$ - - - - -	_____
_____	\$ - - - - -	_____
_____	\$ - - - - -	_____
_____	\$ - - - - -	_____

UTILITY NAME: LAKE UTILITY SERVICES, INC.

YEAR OF REPORT DECEMBER 31, 1997

ACCOUNTS AND NOTES RECEIVABLE - NET (ACCTS. 141 - 144)

Report hereunder all accounts and notes receivable included in Accounts 141, 142 and 144. Amounts included in Accounts 142 and 144 should be listed individually.

DESCRIPTION (a)	TOTAL (b)
ACCOUNTS RECEIVABLE:	
Customer Accounts Receivable (Acct. 141):	
Water -----	\$ 79,977
Sewer -----	0
Other -----	
Total Customer Accounts Receivable -----	\$ 79,977
OTHER ACCOUNTS RECEIVABLE (Acct. 142):	
-----	\$ -----
-----	-----
Total Other Accounts Receivable -----	0
NOTES RECEIVABLE (Acct. 144):	
-----	\$ -----
-----	-----
Total Notes Receivable -----	0
Total Accounts and Notes Receivable -----	\$ 79,977
ACCUMULATED PROVISION FOR UNCOLLECTIBLE ACCOUNTS (Acct. 143):	
Balance first of year -----	\$ -----
Add: Provision for uncollectibles for current year -----	\$ -----
Collections of accounts previously written off -----	-----
Utility accounts -----	-----
Others -----	-----
Total Additions -----	\$ -----
Deduct accounts written off during year:	
Utility Accounts -----	\$ -----
Others -----	-----
Total accounts written off -----	\$ -----
Balance end of year -----	\$ 0
Total Accounts and Notes Receivable - Net -----	\$ 79,977

UTILITY NAME: LAKE UTILITY SERVICES, INC.

YEAR OF REPORT
DECEMBER 31, 1997

ACCOUNTS RECEIVABLE FROM ASSOCIATED COMPANIES (ACCT. 145)

Report each account receivable from associated companies separately.

DESCRIPTION (a)	TOTAL (b)
-----	-----
NONE	\$
-----	-----
-----	-----
-----	-----
-----	-----
-----	-----
-----	-----
-----	-----
-----	-----
Total	\$

NOTES RECEIVABLE FROM ASSOCIATED COMPANIES (ACCT. 146)

Report each note receivable from associated companies separately.

DESCRIPTION	INTEREST RATE (b)	TOTAL (c)
-----	-----	-----
NONE	%	\$
-----	%	-----
-----	%	-----
-----	%	-----
-----	%	-----
-----	%	-----
-----	%	-----
-----	%	-----
-----	%	-----
Total		\$

UTILITY NAME: LAKE UTILITY SERVICES, INC.

<p>YEAR OF REPORT DECEMBER 31, 1997</p>

PREPAYMENTS (ACCT. 162)

DESCRIPTION (a)	TOTAL (b)
Prepaid Insurance ----- NONE -----	\$ -----
Prepaid Rents -----	-----
Prepaid Interest -----	-----
Prepaid Taxes -----	-----
Other Prepayments (Specify):	
Misc -----	0
-----	-----
Total Prepayments -----	\$ 0

MISCELLANEOUS DEFERRED DEBITS (ACCT. 186)

DESCRIPTION (a)	TOTAL (b)
MISCELLANEOUS DEFERRED DEBITS (Acct. 186):	
Deferred Rate Case Expense (Acct. 186.1) -----	\$ 128,947
Other Deferred Debits (Acct. 186.2) -----	8,894
-----	-----
Total Miscellaneous Deferred Debits -----	\$ 137,841
	=====

UTILITY NAME: LAKE UTILITY SERVICES, INC.

YEAR OF REPORT
DECEMBER 31, 1997

UNAMORTIZED DEBT DISCOUNT AND EXPENSE AND PREMIUM ON DEBT (ACCTS. 181 and 251)

Report the net discount and expense or premium separately for each security issue.

DESCRIPTION (a)	AMOUNT WRITTEN OFF DURING YEAR (b)	YEAR END BALANCE (c)
UNAMORTIZED DEBT DISCOUNT AND EXPENSE (Acct. 181):		
NONE	\$ - - - - -	\$ - - - - -
	- - - - -	- - - - -
	- - - - -	- - - - -
Total Unamortized Debt Discount and Expense	\$ - - - - -	\$ - - - - -
UNAMORTIZED PREMIUM ON DEBT (Acct. 251):		
	\$ - - - - -	\$ - - - - -
	- - - - -	- - - - -
	- - - - -	- - - - -
Total Unamortized Premium on Debt	\$ - - - - -	\$ - - - - -

EXTRAORDINARY PROPERTY LOSSES (ACCT. 182)

Report each item separately.

DESCRIPTION (a)	TOTAL (b)
EXTRAORDINARY PROPERTY LOSSES (Acct. 182):	
NONE	\$ - - - - -
	- - - - -
	- - - - -
Total Extraordinary Property Losses	\$ - - - - -

UTILITY NAME. LAKE UTILITY SERVICES, INC.

YEAR OF REPORT
DECEMBER 31, 1997

NOTES PAYABLE (ACCTS. 232 and 234)

DESCRIPTION (a)	NOMINAL DATE OF ISSUE (b)	DATE OF MATURITY (c)	INTEREST		PRINCIPAL AMOUNT PER BALANCE SHE (f)
			RATE (d)	FREQUENCY OF PAYMENT (e)	
ACCOUNT 232 - NOTES PAYABLE:					
NONE	---	---	---	---	\$ ---
_____	---	---	---	---	---
_____	---	---	---	---	---
_____	---	---	---	---	---
_____	---	---	---	---	---
Total Account 232					\$ _____
ACCOUNT 234 - NOTES PAYABLE TO ASSOCIATED COMPANIES:					
NONE	---	---	---	---	\$ ---
_____	---	---	---	---	---
_____	---	---	---	---	---
_____	---	---	---	---	---
_____	---	---	---	---	---
Total Account 234					\$ _____

ACCOUNTS PAYABLE TO ASSOCIATED COMPANIES (ACCT. 233)

Report each account payable separately.

DESCRIPTION (a)	TOTAL (b)
WATER SERVICE CORP.	\$ (686,505)

Total	\$ (686,505) =====

UTILITY NAME: LAKE UTILITY SERVICES, INC.

YEAR OF REPORT DECEMBER 31, 1997

CAPITAL STOCK (ACCTS. 201 and 204)

DESCRIPTION (a)	COMMON STOCK (b)	PREFERRED STOCK (c)
Par or stated value per share	\$	\$
Shares authorized		
Shares issued and outstanding		
Total par value of stock issued	\$ 100	\$
Dividends declared per share for year	\$	\$

LONG TERM DEBT (ACCT. 224)

DESCRIPTION OF OBLIGATION (INCLUDING NOMINAL DATE OF ISSUE AND DATE OF MATURITY) (a)	INTEREST		PRINCIPAL AMOUNT PER BALANCE SHEET (d)
	RATE (b)	FREQUENCY OF PAYMENT (c)	
NONE	%		\$
	%		
	%		
	%		
	%		
	%		
	%		
	%		
	%		
	%		
	%		
	%		
	%		
	%		
	%		
	%		
	%		
	%		
	%		
	%		
	%		
	%		
	%		
Total			\$

UTILITY NAME: LAKE UTILITY SERVICES, INC.

YEAR OF REPORT
DECEMBER 31, 1997

STATEMENT OF RETAINED EARNINGS

1. Dividends should be shown for each class and series of capital stock. Show amounts of dividends per share.
2. Show separately the state and federal income tax effect of items shown in Account No. 439.

ACCT. NO. (a)	DESCRIPTION (b)	AMOUNTS (c)
215	Unappropriated Retained Earnings:	
	Balance beginning of year	\$ (110,093)
	Changes to account:	
439	Adjustments to Retained Earnings (requires Commission approval prior to use):	
	Credits:	\$
	-----	-----
	Total Credits	\$
	Debits:	\$
	-----	-----
	Total Debits	\$ 0
435	Balance Transferred from Income	\$ 4,331
436	Appropriations of Retained Earnings:	\$
	-----	-----
	Total Appropriations of Retained Earnings	\$ 0
	Dividends Declared:	
437	Preferred Stock Dividends Declared	\$
	-----	-----
438	Common Stock Dividends Declared	\$
	-----	-----
	Total Dividends Declared	\$ 0
	Balance end of year	\$ (105,762)
214	Appropriated Retained Earnings (state balance and purpose of each appropriated amount at year end):	\$
	-----	-----
	-----	-----
	Total Appropriated Retained Earnings	\$ 0
	Total Retained Earnings	\$ (105,762) =====

Notes to Statement of Retained Earnings:

UTILITY NAME: LAKE UTILITY SERVICES, INC.

YEAR OF REPORT
DECEMBER 31, 1997

BONDS (ACCT. 221)

DESCRIPTION OF OBLIGATION (INCLUDING NOMINAL DATE OF ISSUE AND DATE OF MATURITY) (a)	INTEREST		PRINCIPAL AMOUNT PER BALANCE SHEET (d)
	RATE (b)	FREQUENCY OF PAYMENT (c)	
NONE			\$ - - - - -
			- - - - -
			- - - - -
			- - - - -
			- - - - -
			- - - - -
			- - - - -
			- - - - -
			- - - - -
			- - - - -
Total			\$ <u> </u>

ADVANCES FROM ASSOCIATED COMPANIES (ACCT. 223)

Report each advance separately.

DESCRIPTION (a)	TOTAL (b)
NONE	\$ - - - - -
	- - - - -
	- - - - -
	- - - - -
	- - - - -
	- - - - -
	- - - - -
	- - - - -
Total	\$ <u> </u>

UTILITY NAME: LAKE UTILITY SERVICES, INC.

YEAR OF REPORT
DECEMBER 31, 1997

ACCRUED TAXES (ACCT. 236)

ACCT. NO. (a)	DESCRIPTION (b)	WATER (c)	SEWER (d)	OTHER (e)	TOTAL (f)
	Balance First of Year	\$ 3,977	\$ 0	\$	\$ 3,977
408.10	Accruals Charged:				
	Utility Regulatory				
408.11	Assessment Fees	\$ 20,164	\$ 0	\$	\$ 20,164
408.12	Property Taxes	31,406	0		31,406
408.13	Payroll Taxes	10,007	0		10,007
409.10	Other Taxes & Licenses				0
409.11	Federal Income Taxes	24,976	0		24,976
410.10	State Income Taxes	0	0		0
	Deferred FIT	55,439	0		55,439
	Deferred SIT	4,830	0		4,830
	ITC Restored	0	0		0
410.11	Taxes Applicable To Other Income (Accts. 408.2, 409.2, 409.3, 410.2)	\$	\$	\$	\$ 0
	Total Taxes Accrued	\$ 146,822	\$ 0	\$ -	\$ 146,822
	Taxes Paid During Year:				
	Utility Regulatory				
408.11	Assessment Fees	\$ 11,164	\$ 0	\$	\$ 11,164
408.12	Property Taxes	31,406	0		31,406
408.13	Payroll Taxes	10,007	0		10,007
408.13	Other Taxes & Licenses	0	0		0
409.10	Federal Income Taxes	24,976	0		24,976
409.11	State Income Taxes	(7,262)	0		(7,262)
	Deferred FIT	55,439	0		55,439
	Deferred SIT	4,830	0		4,830
	ITC Restored	0	0		0
	Taxes Applicable To Other Income (Accts. 408.2, 409.2, 409.3, 410.2)	0	0		0
	Total Taxes Paid	\$ 130,560	\$ 0	\$ -	\$ 130,560
	Balance End of Year	\$ 20,239	\$ 0	\$ 0	\$ 20,239

UTILITY NAME: LAKE UTILITY SERVICES, INC.

YEAR OF REPORT
DECEMBER 31, 1997

ACCRUED INTEREST (ACCT. 237)

DESCRIPTION OF DEBT (a)	INTEREST ACCRUED DURING YEAR			INTEREST PAID DURING YEAR (d)	BALANCE END OF YEAR (f)
	BALANCE BEGINNING OF YEAR (b)	ACCT. DEBIT (c)	AMOUNT (d)		
ACCOUNT NO. 237.1 - ACCRUED INTEREST ON LONG TERM DEBT:	\$ 0			\$ 0	0
UTILITIES, INC.	0			0	0
INTERCOMPANY INTEREST	0		31,077	31,077	0
	0				0
	0				0
Total Account No. 237.1	\$ 0		31,077	\$ 31,077	0
ACCOUNT NO. 237.2 - ACCRUED INTEREST ON OTHER LIABILITIES:					
Misc Items	\$ 898		(97)	\$ 0	801
	0				0
	0				0
	0				0
	0				0
Total Account No. 237.2	\$ 898		(97)	\$ 0	801
Total Account No. 237_ _	\$ 898	\$ 30,980		\$ 31,077	801

REGULATORY COMMISSION EXPENSE - AMORTIZATION
OF RATE CASE EXPENSE (ACCTS. 666 and 766)

DESCRIPTION OF CASE (DOCKET NO.) (a)	EXPENSE INCURRED DURING YEAR (b)	AMOUNT TRANSFERRED TO ACCT. NO. 186.1 (c)	CHARGED OFF DURING YEAR	
			ACCT. (d)	AMOUNT (e)
NONE	\$			
Total	\$			

UTILITY NAME: LAKE UTILITY SERVICES, INC.

YEAR OF REPORT
DECEMBER 31, 1997

MISCELLANEOUS CURRENT AND ACCRUED LIABILITIES (ACCT. 241)

DESCRIPTION (a)	BALANCE END OF YEAR (b)
NONE	\$ -
-----	-----
-----	-----
-----	-----
-----	-----
-----	-----
-----	-----
-----	-----
-----	-----
-----	-----
-----	-----
-----	-----
Total Miscellaneous Current And Accrued Liabilities	\$ _____

ADVANCES FOR CONSTRUCTION (ACCT. 252)

NAME OF PAYOR (a)	BALANCE BEGINNING OF YEAR (b)	DEBITS		CREDITS (e)	BALANCE END OF YEAR (f)
		ACCT. DEBIT (c)	AMOUNT (d)		
<u>Siena Home Corp.</u>	\$ -	n/a	\$ 38,400	\$ -	\$ 38,400
-----	-----	-----	-----	-----	-----
-----	-----	-----	-----	-----	-----
-----	-----	-----	-----	-----	-----
-----	-----	-----	-----	-----	-----
-----	-----	-----	-----	-----	-----
-----	-----	-----	-----	-----	-----
-----	-----	-----	-----	-----	-----
-----	-----	-----	-----	-----	-----
-----	-----	-----	-----	-----	-----
-----	-----	-----	-----	-----	-----
-----	-----	-----	-----	-----	-----
-----	-----	-----	-----	-----	-----
-----	-----	-----	-----	-----	-----
Total	\$ -		\$ 38,400	\$ -	\$ 38,400

UTILITY NAME: LAKE UTILITY SERVICES, INC.

YEAR OF REPORT
DECEMBER 31, 1997

CONTRIBUTIONS IN AID OF CONSTRUCTION (ACCT. 271)

DESCRIPTION (a)	WATER (b)	SEWER (c)	W & S OTHER THAN SYSTEM REPORTING (d)	TOTAL (e)
Balance first of year_ _ _ _	\$ 1,555,180	-	-	1,555,180
Add credits during year:				
Contributions received from Capacity, Main Extension and Customer Connection Charges (Schedule "A") _ _	\$ 220,780	-	-	220,780
Contributions received from Developer or Contractor Agreements in cash or property (Schedule "B") _	246,672	-	-	246,672
Contributed CIA by State for the public welfare	-	-	-	-
Total Credits_ _ _ _ _	\$ 467,452	-	-	467,452
Less debits charged during the year (All debits charged during the year must be explained below)*	\$ 3	-	-	3
Total Contributions In Aid of Construction _ _ _ _ _	\$ 2,022,629	-	-	2,022,629

Explain all debits charged to Account 271 below:

*Adjustment of rounding 3

UTILITY NAME: LAKE UTILITY SERVICES, INC.

YEAR OF REPORT
DECEMBER 31, 1997

SCHEDULE "A"
ADDITIONS TO CONTRIBUTIONS IN AID OF CONSTRUCTION RECEIVED
EXTENSION AND CUSTOMER CONNECTION CHARGES RECEIVED

DESCRIPTION OF CHARGES (a)	NUMBER OF CONNECTIONS (b)	CHARGE PER CONNECTION (c)	WATER (d)	SEWER (e)
Water Connection Fees	21	\$ 200	4,200	\$
	121	1,075	130,075	
	2	125	250	
	67	150	10,050	
	136	100	13,600	
	13	1,100	14,300	
	3	250	750	
	15	1,500	22,500	
	1	6,455	6,455	
	12	1,250	15,000	
	1	3,600	3,600	
Total Credits		\$	220,780	\$

ACCUMULATED AMORTIZATION OF CONTRIBUTIONS IN AID OF CONSTRUCTION (ACCT. 272)

DESCRIPTION (a)	WATER (b)	SEWER (c)	W & S OTHER THAN SYSTEM REPORTING (d)	TOTAL (e)
Balance first of year	\$ 158,702	0	0	158,702
Dedits during year:				
Accruals charged to Account	\$ 43,674	0	0	43,674
Other debits (specify):	0	0	0	0
Total debits	\$ 43,674	0	0	43,674
Credits during year (specify)				
	\$			
Total Credits	\$ 0	0	0	0
Balance end of year	\$ 202,376	0	0	202,376

UTILITY NAME: LAKE UTILITY SERVICES, INC.

YEAR OF REPORT
DECEMBER 31, 1997

RECONCILIATION OF REPORTED NET INCOME WITH TAXABLE INCOME FOR FEDERAL INCOME TAXES
(UTILITY OPERATIONS)

1. The reconciliation should include the same detail as furnished on Schedule M-1 of the federal tax return for the year. The reconciliation shall be submitted even though there is no taxable income for the year. Descriptions should clearly indicate the nature of each reconciling amount and show the computation of all tax accruals.

2. If the utility is a member of a group which files a consolidated federal tax return, reconcile reported net income with taxable net income as if a separate return were to be filed, indicating intercompany amounts to be eliminated in such consolidated return. State names of group members, tax assigned to each group member, and basis of allocation, assignment, or sharing of the consolidated tax among the group members.

DESCRIPTION (a)	REF (b)	AMOUNT (c)
Net income for the year		\$ 4,331
Reconciling items for the year:		
Taxable income not reported on books:		
TAP FEES		0
Deductions recorded on books not deducted for return:		
Net Change - Deferred Maintenance		(8,894)
Net Change - Rate Case		(60,988)
Excess Tax Depreciation over Book Depreciation		(93,111)
Current FIT		24,976
Deferred FIT		55,439
Deferred SIT		4,830
Income recorded on books not included in return:		
Interest During Construction		(895)
Accrued revenue		150,806
Deduction on return not charged against book income:		
Organization Exp		(3,035)
Federal tax net income		\$ 73,459
Computation of tax:		=====
73,459		
<u>348</u>		
24,976		

** COMPLETION OF SCHEDULE ONLY REQUIRED IF AFUDC WAS CHARGED DURING YEAR **

UTILITY NAME: LAKE UTILITY SERVICES, INC.

YEAR OF REPORT
DECEMBER 31, 1997

SCHEDULE "A"

SCHEDULE OF COST OF CAPITAL USED FOR AFUDC CALCULATION (2)

CLASS OF CAPITAL (a)	DOLLAR AMOUNT (1) (b)	PERCENTAGE OF CAPITAL (c)	ACTUAL COST RATES (d)	WEIGHTED COST [c x d] (e)
Common Equity	\$	%	%	%
Preferred Stock		%	%	%
Long Term Debt		%	%	%
Customer Deposits		%	%	%
Tax Credits - Zero Cost		%	0.00 %	%
Tax Credits - Weighted Cc		%	%	%
Deferred Income Taxes		%	%	%
Other (Explain)		%	%	%
Total	\$	100.00 %		%

(1) Should equal amounts on Schedule B, Column (f), Page F-25.

(2) Must be calculated using the same methodology used to calculate AFUDC rate approved by the Commission.

APPROVED AFUDC RATE

Current Commission approved AFUDC rate: 10.03 %

Commission order approving AFUDC rate: PSC-95-1490-FOF-WS

** COMPLETION OF SCHEDULE ONLY REQUIRED IF AFUDC WAS CHARGED DURING YEAR **

UTILITY NAME: LAKE UTILITY SERVICES, INC.

YEAR OF REPORT DECEMBER 31, 1997

SCHEDULE "B"

SCHEDULE OF CAPITAL STRUCTURE ADJUSTMENTS

CLASS OF CAPITAL (a)	PER BOOK BALANCE (b)	NON-UTILITY ADJUSTMENTS (c)	NON-JURIS. ADJUSTMENTS (d)	OTHER (1) ADJUSTMENTS (e)	CAPITAL STRUCTURE USED FOR AFUDC CALCULATION (f)
Common Equity	\$ N/A	\$	\$	\$	\$
Preferred Stock					
Long Term Debt					
Customer Deposits					
Tax Credits - Zero Cost					
Tax Credits - Weighted					
Cost of Capital					
Deferred Income Taxes					
Other (Explain)					
Total	\$ ----- =====	\$ ----- =====	\$ ----- =====	\$ ----- =====	\$ ----- =====

(1) Explain below all adjustments made in Column (e):

**WATER
OPERATION
SECTION**

UTILITY NAME: LAKE UTILITY SERVICES, INC.

YEAR OF REPORT
DECEMBER 31, 1997

WATER UTILITY PLANT ACCOUNTS

ACCT. NO. (a)	ACCOUNT NAME (b)	PREVIOUS YEAR (c)	ADDITIONS (d)	RETIREMENTS (e)
301	Organization	\$ 96,200	\$ 0	\$
302	Franchises	0	0	
303	Land and Land Rights	3,730	0	
304	Structures and Improvements	35,813	12,798	
305	Collecting and Impounding Reservoirs	0	0	
306	Lake, River and Other Intakes	0	0	
307	Wells and Springs	164,351	67,196	
308	Infiltration Galleries and Tunnels	0	0	
309	Supply Mains	0	0	
310	Power Generation Equipment	0	0	
311	Pumping Equipment	132,654	72,562	7,983
320	Water Treatment Equipment	82,549	5,739	1,296
330	Distribution Reservoirs and Standpipes	0	0	
331	Transmission and Distribution Mains	90,637	3,630	406
333	Services	1,346,644	227,342	
334	Meters and Meter Installations	142,297	78,629	
335	Hydrants	28,796	15,538	
339	Other Plant and Miscellaneous Equipment	24,109	19,631	816
340	Office Furniture and Equip.	0	0	
341	Transportation Equipment	0	0	
342	Stores Equipment	22,804	39,191	
343	Tools, Shop and Garage Equip.	0	0	
344	Laboratory Equipment	8,243	7,619	
345	Laboratory Equipment	261	0	
346	Power Operated Equipment	0	0	
347	Communication Equipment	2,553	0	
348	Miscellaneous Equipment	0	0	
	Other Tangible Plant (from UIF)	0	0	
	Total Water Plant	\$ 2,195,669	\$ 571,625	\$ 10,501
		=====	=====	=====

NOTE: Any adjustments made to reclassify property from one account to another must be footnoted.

WATER UTILITY PLANT MATRIX

CURRENT YEAR (f)	.1 INTANGIBLE PLANT (g)	.2 SOURCE OF SUPPLY AND PUMPING PLANT (h)	.3 WATER TREATMENT PLANT (i)	.4 TRANSMISSION AND DISTRIBUTION PLANT (j)	.5 GENERAL PLANT (k)
\$ 96,200	\$ 96,200	XXXXXXXXXXXXX	XXXXXXXXXXXXX	XXXXXXXXXXXXX	\$ XXXXXXXXXXXXX
0	0	XXXXXXXXXXXXX	XXXXXXXXXXXXX	XXXXXXXXXXXXX	XXXXXXXXXXXXX
3,730	XXXXXXXXXXXXX	3,730	0	0	0
48,611	XXXXXXXXXXXXX	48,611	0	0	0
0	XXXXXXXXXXXXX	0	XXXXXXXXXXXXX	XXXXXXXXXXXXX	XXXXXXXXXXXXX
0	XXXXXXXXXXXXX	0	XXXXXXXXXXXXX	XXXXXXXXXXXXX	XXXXXXXXXXXXX
0	XXXXXXXXXXXXX	0	XXXXXXXXXXXXX	XXXXXXXXXXXXX	XXXXXXXXXXXXX
231,547	XXXXXXXXXXXXX	231,547	XXXXXXXXXXXXX	XXXXXXXXXXXXX	XXXXXXXXXXXXX
0	XXXXXXXXXXXXX	0	XXXXXXXXXXXXX	XXXXXXXXXXXXX	XXXXXXXXXXXXX
0	XXXXXXXXXXXXX	0	XXXXXXXXXXXXX	XXXXXXXXXXXXX	XXXXXXXXXXXXX
0	XXXXXXXXXXXXX	0	XXXXXXXXXXXXX	XXXXXXXXXXXXX	XXXXXXXXXXXXX
197,233	XXXXXXXXXXXXX	197,233	XXXXXXXXXXXXX	XXXXXXXXXXXXX	XXXXXXXXXXXXX
86,992	XXXXXXXXXXXXX	XXXXXXXXXXXXX	86,992	XXXXXXXXXXXXX	XXXXXXXXXXXXX
0	XXXXXXXXXXXXX	XXXXXXXXXXXXX	XXXXXXXXXXXXX	0	XXXXXXXXXXXXX
93,861	XXXXXXXXXXXXX	XXXXXXXXXXXXX	XXXXXXXXXXXXX	93,861	XXXXXXXXXXXXX
0	XXXXXXXXXXXXX	XXXXXXXXXXXXX	XXXXXXXXXXXXX	0	XXXXXXXXXXXXX
1,573,986	XXXXXXXXXXXXX	XXXXXXXXXXXXX	XXXXXXXXXXXXX	1,573,986	XXXXXXXXXXXXX
220,926	XXXXXXXXXXXXX	XXXXXXXXXXXXX	XXXXXXXXXXXXX	220,926	XXXXXXXXXXXXX
44,334	XXXXXXXXXXXXX	XXXXXXXXXXXXX	XXXXXXXXXXXXX	44,334	XXXXXXXXXXXXX
42,924	XXXXXXXXXXXXX	XXXXXXXXXXXXX	XXXXXXXXXXXXX	42,924	XXXXXXXXXXXXX
0	0	0	0	0	XXXXXXXXXXXXX
0	0	0	0	0	XXXXXXXXXXXXX
0	XXXXXXXXXXXXX	XXXXXXXXXXXXX	XXXXXXXXXXXXX	XXXXXXXXXXXXX	0
61,995	XXXXXXXXXXXXX	XXXXXXXXXXXXX	XXXXXXXXXXXXX	XXXXXXXXXXXXX	61,995
0	XXXXXXXXXXXXX	XXXXXXXXXXXXX	XXXXXXXXXXXXX	XXXXXXXXXXXXX	0
15,862	XXXXXXXXXXXXX	XXXXXXXXXXXXX	XXXXXXXXXXXXX	XXXXXXXXXXXXX	15,862
261	XXXXXXXXXXXXX	XXXXXXXXXXXXX	XXXXXXXXXXXXX	XXXXXXXXXXXXX	261
0	XXXXXXXXXXXXX	XXXXXXXXXXXXX	XXXXXXXXXXXXX	XXXXXXXXXXXXX	0
2,553	XXXXXXXXXXXXX	XXXXXXXXXXXXX	XXXXXXXXXXXXX	XXXXXXXXXXXXX	2,553
0	XXXXXXXXXXXXX	XXXXXXXXXXXXX	XXXXXXXXXXXXX	XXXXXXXXXXXXX	0
35,778	XXXXXXXXXXXXX	XXXXXXXXXXXXX	XXXXXXXXXXXXX	XXXXXXXXXXXXX	35,778
\$ 2,756,793	\$ 96,200	481,121	86,992	1,976,031	116,449
=====	=====	=====	=====	=====	=====

UTILITY NAME: LAKE UTILITY SERVICES, INC.

YEAR OF REPORT
DECEMBER 31, 1997

WATER UTILITY EXPENSE ACCOUNTS

ACCT. NO. (a)	ACCOUNT NAME (b)	CURRENT YEAR (c)	.1 SOURCE OF SUPPLY AND EXPENSES - OPERATIONS (d)	.2 SOURCE OF SUPPLY AND EXPENSES - MAINTENANCE (e)
601	Salaries and Wages - Employees	\$ 91,809	20,198	5,509
603	Salaries and Wages - Officers, Directors and Majority Stockholders			
604	Employee Pensions and Benefits	19,854	4,368	1,191
610	Purchased Water			XXXXXXXXXXXX
615	Purchased Power	52,442	52,442	XXXXXXXXXXXX
616	Fuel for Power Purchased			XXXXXXXXXXXX
618	Chemicals	11,180		
620	Materials and Supplies	44,772	17,909	4,477
631	Contractual Services - Eng.	27		
632	Contractual Services - Acct.	1,348		
633	Contractual Services - Legal	780		
634	Contractual Services - Management Fees	349		
635	Contractual Services - Other	5,663		
641	Rental of Building/Real Property			
642	Rental of Equipment			
650	Transportation Expenses	5,424	1,193	325
656	Insurance - Vehicle			
657	Insurance - General Liability			
658	Insurance - Workman's Compensation			
659	Insurance - Other	7,606	1,673	456
660	Advertising Expense		XXXXXXXXXXXX	XXXXXXXXXXXX
666	Regulatory Commission Expenses - Amortization of Rate Case Expense	-	XXXXXXXXXXXX	XXXXXXXXXXXX
667	Regulatory Commission Expenses - Other	-	XXXXXXXXXXXX	XXXXXXXXXXXX
670	Bad Debt Expense	1,085	XXXXXXXXXXXX	XXXXXXXXXXXX
675	Miscellaneous Expenses	18,135		
	Total Water Utility Expenses	\$ 260,474	\$ 97,783	\$ 11,958

WATER EXPENSE ACCOUNT MATRIX

	.3 WATER TREATMENT EXPENSES - OPERATIONS (f)	.4 WATER TREATMENT EXPENSES - MAINTENANCE (g)	.5 TRANSMISSION & DISTRIBUTION EXPENSES - OPERATIONS (h)	.6 TRANSMISSION & DISTRIBUTION EXPENSES - MAINTENANCE (i)	.7 CUSTOMER ACCOUNTS EXPENSE (j)	.8 ADMINISTRATIVE & GENERAL EXPENSES (k)
601	\$ 20,198	5,509	32,133	8,262		
603						
604	4,368	1,191	6,949	1,787		
610	XXXXXXXXXXXXX	XXXXXXXXXXXXX	XXXXXXXXXXXXX	XXXXXXXXXXXXX	XXXXXXXXXXXXX	XXXXXXXXXXXXX
615		XXXXXXXXXXXXX		XXXXXXXXXXXXX		
616		XXXXXXXXXXXXX		XXXXXXXXXXXXX		
618	11,180				XXXXXXXXXXXXX	XXXXXXXXXXXXX
620			18,804	3,582		
631			27			
632						1,348
633						780
634						
635					349	
641					2,832	2,831
642						
650	1,193	325	1,898	490		
656						
657						
658						
659	1,673	456	2,662	686		
660	XXXXXXXXXXXXX	XXXXXXXXXXXXX	XXXXXXXXXXXXX	XXXXXXXXXXXXX	XXXXXXXXXXXXX	
666	XXXXXXXXXXXXX	XXXXXXXXXXXXX	XXXXXXXXXXXXX	XXXXXXXXXXXXX	XXXXXXXXXXXXX	
	XXXXXXXXXXXXX	XXXXXXXXXXXXX	XXXXXXXXXXXXX	XXXXXXXXXXXXX	XXXXXXXXXXXXX	
	XXXXXXXXXXXXX	XXXXXXXXXXXXX	XXXXXXXXXXXXX	XXXXXXXXXXXXX	XXXXXXXXXXXXX	
667						0
670	XXXXXXXXXXXXX	XXXXXXXXXXXXX	XXXXXXXXXXXXX	XXXXXXXXXXXXX	1,085	XXXXXXXXXXXXX
675					9,067	9,068
	\$ 38,612	\$ 7,481	\$ 62,473	\$ 14,807	\$ 13,333	\$ 14,027

UTILITY NAME: LAKE UTILITY SERVICES, INC.

YEAR OF REPORT
DECEMBER 31, 1997

WATER OPERATING REVENUE

ACCT. NO. (a)	DESCRIPTION (b)	BEGINNING YEAR NO. CUSTOMERS (c)	YEAR END NUMBER CUSTOMERS (d)	AMOUNTS (e)
	Operating Revenues:			
460	Unmetered Water Revenue			\$
	Metered Water Revenue:			
461.1	Metered Sales to Residential Customers	1,234	1,518	\$ 464,547
461.2	Metered Sales to Commercial Customers			
461.3	Metered Sales to Industrial Customers			
461.4	Metered Sales to Public Authorities			
461.5	Metered Sales to Multiple Family Dwellings			
	Total Metered Sales	1,234	1,518	\$ 464,547
	Fire Protection Revenue:			
462.1	Public Fire Protection			\$
462.2	Private Fire Protection			
	Total Fire Protection Revenue			\$
464	Other Sales To Public Authorities			\$
465	Sales To Irrigation Customers			
466	Sales For Resale			
467	Interdepartmental Sales			
	Totals	1,234	1,518	\$ 464,547
	Other Water Revenues:			
469	Guaranteed Revenues			\$
470	Forfeited Discounts			0
471	Miscellaneous Service Revenues			10,275
472	Rents From Water Property			
473	Interdepartmental Rents			
474	Other Water Revenues			
	Total Other Water Revenues			\$ 10,275
	Total Water Operating Revenues			\$ 474,822

UTILITY NAME: LAKE UTILITY SERVICES, INC.

YEAR OF REPORT
DECEMBER 31, 1997

BASIS FOR WATER DEPRECIATION CHARGES

ACCT. NO. (a)	ACCOUNT NAME (b)	AVERAGE SERVICE LIFE IN YEARS (c)	AVERAGE NET SALVAGE IN PERCENT (d)	DEPRECIATION RATE APPLIED IN PERCENT (100% - d) / c (e)
304	Structures and Improvements _		%	3.03%
305	Collecting and Impounding Reservoirs _ _ _ _ _		%	
306	Lake, River and Other Intakes		%	3.33%
307	Wells and Springs _ _ _ _ _		%	
308	Infiltration Galleries and Tunnels _ _ _ _ _		%	5.00%
309	Supply Mains _ _ _ _ _		%	
310	Power Generation Equipment _		%	4.55%
311	Pumping Equipment _ _ _ _ _		%	
320	Water Treatment Equipment _		%	2.70%
330	Distribution Reservoirs and Standpipes _ _ _ _ _		%	
331	Transmission and Distribution Mains _ _ _ _ _		%	2.33%
333	Services _ _ _ _ _		%	
334	Meters and Meter Installations		%	2.50%
335	Hydrants _ _ _ _ _		%	
339	Other Plant and Miscellaneous Equipment _ _ _ _ _		%	5.00%
340	Office Furniture and Equip. _		%	
341	Transportation Equipment _		%	6.25%
342	Stores Equipment _ _ _ _ _		%	
343	Tools, Shop and Garage Equip.		%	6.67%
344	Laboratory Equipment _ _ _ _		%	
345	Power Operated Equipment _		%	10.00%
346	Communication Equipment _ _		%	
347	Miscellaneous Equipment _ _		%	%
348	Other Tangible Plant _ _ _ _		%	
	Water Plant Composite Depreciation Rate *		%	

* If depreciation rates prescribed by this Commission are on a total composite basis, entries should be made on this line only.

UTILITY NAME: LAKE UTILITY SERVICES, INC.

YEAR OF REPORT
DECEMBER 31, 1997

ANALYSIS OF ENTRIES IN WATER ACCUMULATED DEPRECIATION

ACCT. NO. (a)	ACCOUNT NAME (b)	BALANCE AT BEGINNING OF YEAR (c)	ACCRUALS (d)	OTHER CREDITS * (e)	TOTAL CREDITS (d+e) (f)
304	Structures and Improvements _	\$ 3,527	\$ 1,448	\$ 0	\$ 1,448
305	Collecting and Impounding Reservoirs _ _ _ _ _	0			0
306	Lake, River and Other Intakes	0			0
307	Wells and Springs _ _ _ _ _	17,095	5,622	0	5,622
308	Infiltration Galleries and Tunnels _ _ _ _ _	0			0
309	Supply Mains _ _ _ _ _	0			0
310	Power Generation Equipment _	0			0
311	Pumping Equipment _ _ _ _ _	14,341	7,073	735	7,808
320	Water Treatment Equipment _	3,809	3,866	(736)	3,130
330	Distribution Reservoirs and Standpipes _ _ _ _ _	0			0
331	Transmission and Distribution Mains _ _ _ _ _	13,303	2,448	0	2,448
333	Services _ _ _ _ _	0			0
334	Meters and Meter Installations	122,736	32,303	0	32,303
335	Hydrants _ _ _ _ _	10,698	4,037	0	4,037
339	Other Plant and Miscellaneous Equipment _ _ _ _ _	2,598	1,869	0	1,869
340	Office Furniture and Equip. _	78	625	0	625
341	Transportation Equipment _ _	0			0
342	Stores Equipment _ _ _ _ _	0			0
343	Tools, Shop and Garage Equip.	19,848	11,975	(3,032)	8,943
344	Laboratory Equipment _ _ _ _	0			0
345	Power Operated Equipment _ _	879	1,318	(425)	893
346	Communication Equipment _ _ _	402	23	(390)	(367)
347	Miscellaneous Equipment _ _ _	0			0
348	Other Tangible Plant	0	394	246	640
		8,146	3,765	(5,240)	(1,475)
		0			0
	Total Depreciable Water Plant In Service	\$ 217,460	\$ 76,766	\$ (8,842)	\$ 67,924

* Specify nature of transaction.
Use () to denote reversal entries.

The "Other Credits (e)" in 1997 are the result of a change in the policy of recording depreciation expense by specific asset account per Docket # 940917-WS. The balance in "Other Credits (e)" is offset by the change in Accumulated Amortization on Pg F-6.

ANALYSIS OF ENTRIES IN WATER ACCUMULATED DEPRECIATION (Cont'd)

PLANT RETIRED (g)	ASSOCIATED SALVAGE AND INSURANCE (h)	ASSOCIATED COST OF REMOVAL (i)	OTHER CHARGES (j)	TOTAL CHARGES (g-h+i+j) (k)	BALANCE AT END OF YEAR (c+f-k) (l)
\$ 0	\$	\$	\$	\$ 0	\$ 4,975
0				0	0
0				0	0
0				0	0
0				0	22,717
0				0	0
0				0	0
0				0	0
0				0	0
7,983				7,983	14,166
1,296				1,296	5,643
0				0	0
406				406	15,345
0				0	0
0				0	155,039
0				0	14,735
0				0	4,467
816				816	(113)
0				0	0
0				0	0
0				0	0
0				0	28,791
0				0	0
0				0	1,772
0				0	35
0				0	0
0				0	640
0				0	0
0				0	6,671
0				0	0
<u>\$ 10,501</u>	<u>\$ 0</u>	<u>\$ 0</u>	<u>\$ 0</u>	<u>\$ 10,501</u>	<u>\$ 274,883</u>

YEAR OF REPORT
DECEMBER 31, 1997

UTILITY NAME: LAKE UTILITY SERVICES, INC.

SYSTEM NAME: AMBER HILL (Lake County)

PUMPING AND PURCHASED WATER STATISTICS

MONTH (a)	WATER PURCHASED FOR RESALE (Omit 000's) (b)	FINISHED WATER PUMPED FROM WELLS (Omit 000's) (c)	WATER USED FOR LINE FLUSHING, FIGHTING FIRES, ETC. (d)	TOTAL WATER PUMPED AND PURCHASED (Omit 000's) (b)+(c)-(d)] (e)	WATER SOLD TO CUSTOMERS (Omit 000's) (f)
January_	-----	4.083		-----	0.621
February_	-----	2.786	.000	-----	
March_	-----	5.086	.000	-----	2.181
April_	-----	3.776	.000	-----	
May_	-----	5.935	.000	-----	2.510
June_	-----	3.077	.000	-----	
July_	-----	3.057	.000	-----	2.814
August_	-----	4.092	.008	-----	
September_	-----	4.599	-	-----	2.313
October_	-----	4.757	-	-----	
November_	-----	6.610	-	-----	2.549
December_	-----	2.065	-	-----	1.355
Total for	=====	49.923	.008	49.915	14.343

If water is purchased for resale, indicate the following:

Vendor NONE

Point of delivery _____

If water is sold to other water utilities for redistribution, list names of such utilities below:

NOTE: System is interconnected with Clermont I and Lake Ridge Club systems, both owned by Utilities, Inc. of Florida.

UTILITY NAME: LAKE UTILITY SERVICES, INC.

YEAR OF REPORT
DECEMBER 31, 1997

SYSTEM NAME: AMBER HILL (Lake County)

WATER TREATMENT PLANT INFORMATION

Type of treatment (reverse osmosis, etc.): Chlorination

Methods used (sedimentation, chemical, aerated, etc.): Chemical

LIME TREATMENT

Unit rating (GPM): N/A Manufacturer: _____

FILTRATION

Type and area: Pressure ----> Square Feet: _____

Gravity ----> GPM/Square Feet: _____

MAINS

TYPE OF PIPE (Galvanized, Cast Iron, PVC, Etc.)	DIAMETER OF PIPE (in inches)	MAINS BEGINNING OF YEAR (in feet)	ADDITIONS	RETIREMENTS	MAINS END OF YEAR (in feet)
---	---	---	---	---	---
---	---	---	---	---	---
---	---	---	---	---	---
---	---	---	---	---	---
---	---	---	---	---	---
---	---	---	---	---	---
---	---	---	---	---	---
---	---	---	---	---	---
---	---	---	---	---	---
-----	-----	-----	-----	-----	-----
Total feet of mains	=====	=====	=====	=====	=====

SERVICES AND METERS

METERS IN SERVICE	METERS BEGINNING OF YEAR	ADDITIONS	RETIREMENTS	METERS END OF YEAR
5/8" - 3/4"	43	3	---	46
1"	---	---	---	---
2"	---	---	---	---
3"	---	---	---	---
4"	---	---	---	---
6"	---	---	---	---
8"	---	---	---	---
Other (Specify): _____	---	---	---	---
Total meters in service -----	43	3	-----	46
Total meters in stock -----	-----	-----	-----	-----
Number of services in use -----	43	3	-----	46

UTILITY NAME: LAKE UTILITY SERVICES, INC.

YEAR OF REPORT
DECEMBER 31, 1997

SYSTEM NAME: AMBER HILL (Lake County)

WELLS AND WELL PUMPS

(a)	(b)	(c)	(d)	(e)
Year Constructed _ _ _	1985	-----	-----	-----
Types of Well Construction and Casing _ _ _ _ _	Steel	-----	-----	-----
CASING DEPTH	168'	-----	-----	-----
Depth of Wells	600'	-----	-----	-----
Diameters of Wells	10"	-----	-----	-----
Pump - GPM	550	-----	-----	-----
Motor - HP	60	-----	-----	-----
Yields of Wells in GPD	.792 MG	-----	-----	-----
Auxiliary Power _ _ _	No	-----	-----	-----

RESERVOIRS

(a)	(b)	(c)	(d)	(e)
Description (steel, concrete or pneumatic) _ _ _ _	PNEUMATIC	-----	-----	-----
Capacity of Tank	7500	-----	-----	-----
Ground or Elevated _ _	GROUND	-----	-----	-----

HIGH SERVICE PUMPING

MOTORS (a)	(b)	(c)	(d)	(e)
Manufacturer	N/A	-----	-----	-----
Type	-----	-----	-----	-----
Rated Horsepower	-----	-----	-----	-----
PUMPS				
Manufacturer	-----	-----	-----	-----
Type	-----	-----	-----	-----
Capacity in GPM	-----	-----	-----	-----
Average Number Of Hours Operated Per Day	-----	-----	-----	-----
Auxiliary Power _ _ _	-----	-----	-----	-----

UTILITY NAME: LAKE UTILITY SERVICES, INC.

YEAR OF REPORT
DECEMBER 31, 1997

SYSTEM NAME: AMBER HILL (Lake County)

SOURCE OF SUPPLY

List for each source of supply:

Gals. per day of source	792,000	-----	-----	-----	-----
Type of source	WELL #1	-----	-----	-----	-----

WATER TREATMENT FACILITIES

List for each water treatment facility:

Type	Chlorination	-----	-----	-----	-----
Make	Regal	-----	-----	-----	-----
Gals. per day capacity	.792 MGD	-----	-----	-----	-----
Method of measurement		-----	-----	-----	-----

OTHER WATER SYSTEM INFORMATION

Furnish information below for each system not physically connected with another facility. A separate page should be supplied where necessary.

- Present ERC's * that system can efficiently serve. 100
- Estimated annual increase in ERC's * . 5 to 10
- List fire fighting facilities and capacities. HYDRANTS - SYSTEM
INTERCONNECTED WITH CLERMONT I AND LAKE RIDGE CLUB WITH COMBINED WELL
CAPACITY OF 1320 GPM.
- List percent of certificated area where service connections are installed (total for each county). 46%
- What is the current need for system upgrading and/or expansion? NONE
- What are plans for future system upgrading and/or expansion? NONE
- Have questions 6 and 7 been discussed with an engineer (if so, state name and address)? NO
- Have questions 6 and 7 been discussed with appropriate state sanitary engineering office? NO

* ERC = (Total Gallons Sold / 365 days) / 350 Gallons Per Day

UTILITY NAME: LAKE UTILITY SERVICES, INC.

YEAR OF REPORT
DECEMBER 31, 1997

SYSTEM NAME: AMBER HILL (Lake County)

CALCULATION OF THE WATER SYSTEMS EQUIVALENT RESIDENTIAL UNITS

METER SIZE (a)	TYPE OF METER (b)	EQUIVALENT FACTOR (c)	NUMBER OF METERS (d)	TOTAL NUMBER OF METER EQUIVALENTS (c x d) (e)
5/8"	Displacement	1.0	45	45
3/4"	Displacement	1.5		
1"	Displacement	2.5	1	2.5
1 1/2"	Displacement or Turbine	5.0		
2"	Displacement, Compound or Turbine	8.0		
3"	Displacement	15.0		
3"	Compound	16.0		
3"	Turbine	17.5		
4"	Displacement or Compound	25.0		
4"	Turbine	30.0		
6"	Displacement or Compound	50.0		
6"	Turbine	62.5		
8"	Compound	80.0		
8"	Turbine	90.0		
10"	Compound	115.0		
10"	Turbine	145.0		
12"	Turbine	215.0		
Total Water System Meter Equivalents				47.5

CALCULATION OF THE WATER SYSTEMS EQUIVALENT RESIDENTIAL CONNECTIONS

(14.343 / 365 days) / 350 gpd = 112
(total gallons sold)

YEAR OF REPORT
DECEMBER 31, 1997

UTILITY NAME: LAKE UTILITY SERVICES, INC.

SYSTEM NAME : CLERMONT I (Lake County)

PUMPING AND PURCHASED WATER STATISTICS

MONTH (a)	WATER PURCHASED FOR RESALE (Omit 000's) (b)	FINISHED WATER PUMPED FROM WELLS (Omit 000's) (c)	WATER USED FOR LINE FLUSHING, FIGHTING FIRES, ETC. (d)	TOTAL WATER PUMPED AND PURCHASED (Omit 000's) (b)+(c)-(d)] (e)	WATER SOLD TO CUSTOMERS (Omit 000's) (f)
January_	-----	.901		-----	1.721
February_	-----	1.207	.000	-----	7.757
March_	-----	1.794	.000	-----	
April_	-----	2.013	.000	-----	8.521
May_	-----	2.916	.000	-----	
June_	-----	2.067	.000	-----	8.364
July_	-----	1.836	.000	-----	
August_	-----	2.998	.008	-----	9.116
September_	-----	3.758	-	-----	
October_	-----	1.967	.005	-----	9.664
November_	-----	.786	-	-----	
December_	-----	.517	.000	-----	3.840
Total for	=====	22.760	.013	22.747	48.983
	=====	=====	=====	=====	=====

If water is purchased for resale, indicate the following:

Vendor NONE

Point of delivery _____

If water is sold to other water utilities for redistribution, list names of such utilities below:

NOTE: System is interconnected with Amber Hill & Lake Ridge Club systems, both owned by Utilities, Inc. of Florida

UTILITY NAME: LAKE UTILITY SERVICES, INC.

YEAR OF REPORT
DECEMBER 31, 1997

SYSTEM NAME : CLERMONT I (Lake County)

WATER TREATMENT PLANT INFORMATION

Type of treatment (reverse osmosis, etc.): Chlorination
 Methods used (sedimentation, chemical, aerated, etc.): Chemical

LIME TREATMENT

Unit rating (GPM): N/A Manufacturer: _____

FILTRATION

Type and area: Pressure ----> Square Feet: _____
 Gravity ----> GPM/Square Feet: _____

MAINS

TYPE OF PIPE (Galvanized, Cast Iron, PVC, Etc.)	DIAMETER OF PIPE (in inches)	MAINS BEGINNING OF YEAR (in feet)	ADDITIONS	RETIREMENTS	MAINS END OF YEAR (in feet)
P.V.C.	8"	2085	-	-	2085
P.V.C.	6"	8587	-	-	8587
P.V.C.	4"	1000	-	-	1000
P.V.C.	2-1/2"	1175	-	-	1175
P.V.C.	2"	5000	-	-	5000
-	-	-	-	-	-
-	-	-	-	-	-
Total feet of mains		17847			17847
=====		=====	=====	=====	=====

SERVICES AND METERS

METERS IN SERVICE	METERS BEGINNING OF YEAR	ADDITIONS	RETIREMENTS	METERS END OF YEAR
5/8" - 3/4"	113	4		117
1"	7			7
2"	-	-	-	-
3"	-	-	-	-
4"	-	-	-	-
6"	-	-	-	-
8"	-	-	-	-
Other (Specify): _____	-	-	-	-
Total meters in service	120	4		124
-----		-----	-----	-----
Total meters in stock	-----	-----	-----	-----
-----		-----	-----	-----
Number of services in use	120	4		124
=====		=====	=====	=====

UTILITY NAME: LAKE UTILITY SERVICES, INC.

YEAR OF REPORT
DECEMBER 31, 1997

SYSTEM NAME : CLERMONT I (Lake County)

WELLS AND WELL PUMPS

(a)	(b)	(c)	(d)	(e)
Year Constructed	1980	UNKNOWN		
Types of Well Construction and Casing	STEEL	STEEL		
CASING DEPTH	159	160		
Depth of Well	387	445		
Diameters of Wells	4"	6"		
Pump - GPM	60	110		
Motor - HP	7.5	20		
Yields of Wells in GPD	86,000	158,000		
Auxiliary Power	NO	NO		

RESERVOIRS

(a)	(b)	(c)	(d)	(e)
Description (steel, concrete or pneumatic)	PNEUMATIC	PNEUMATIC		
Capacity of Tank	1,000	1,000		
Ground or Elevated	GROUND	GROUND		

HIGH SERVICE PUMPING

MOTORS (a)	(b)	(c)	(d)	(e)
Manufacturer	N/A			
Type				
Rated Horsepower				
PUMPS				
Manufacturer				
Type				
Capacity in GPM				
Average Number Of Hours Operated Per Day				
Auxiliary Power				

UTILITY NAME: LAKE UTILITY SERVICES, INC.

YEAR OF REPORT
DECEMBER 31, 1997

SYSTEM NAME : CLERMONT I (Lake County)

SOURCE OF SUPPLY

List for each source of supply:

Gals. per day of source	86,000	-----	158,000	-----	-----	-----
Type of source	WELL #1	-----	WELL #2	-----	-----	-----

WATER TREATMENT FACILITIES

List for each water treatment facility:

Type	CHLORINATION	-----	-----	-----	-----
Make	CHEM TECH	-----	-----	-----	-----
Gals. per day capacity	30	-----	-----	-----	-----
Method of measurement		-----	-----	-----	-----

OTHER WATER SYSTEM INFORMATION

Furnish information below for each system not physically connected with another facility. A separate page should be supplied where necessary.

- Present ERC's * that system can efficiently serve. 100 PLUS INTERCONNECT
- Estimated annual increase in ERC's * . 10
- List fire fighting facilities and capacities. HYDRANT - SYSTEM INTERCONNECTED WITH AMBER HILL AND LAKE RIDGE SYSTEM WITH 1370 GPM CAPACITY FROM WELLS
- List percent of certificated area where service connections are installed (total for each county). 100%
- What is the current need for system upgrading and/or expansion? NONE
- What are plans for future system upgrading and/or expansion? NONE
- Have questions 6 and 7 been discussed with an engineer (if so, state name and address)? NO
- Have questions 6 and 7 been discussed with appropriate state sanitary engineering office? NO

* ERC = (Total Gallons Sold / 365 days) / 350 Gallons Per Day

UTILITY NAME: LAKE UTILITY SERVICES, INC.

YEAR OF REPORT
DECEMBER 31, 1997

SYSTEM NAME : CLERMONT I (Lake County)

CALCULATION OF THE WATER SYSTEMS EQUIVALENT RESIDENTIAL UNITS

METER SIZE (a)	TYPE OF METER (b)	EQUIVALENT FACTOR (c)	NUMBER OF METERS (d)	TOTAL NUMBER OF METER EQUIVALENTS (c x d) (e)
5/8"	Displacement	1.0	117	117
3/4"	Displacement	1.5		
1"	Displacement	2.5	7	17.5
1 1/2"	Displacement or Turbine	5.0		
2"	Displacement, Compound or Turbine	8.0		
3"	Displacement	15.0		
3"	Compound	16.0		
3"	Turbine	17.5		
4"	Displacement or Compound	25.0		
4"	Turbine	30.0		
6"	Displacement or Compound	50.0		
6"	Turbine	62.5		
8"	Compound	80.0		
8"	Turbine	90.0		
10"	Compound	115.0		
10"	Turbine	145.0		
12"	Turbine	215.0		
Total Water System Meter Equivalents				134.5

CALCULATION OF THE WATER SYSTEMS EQUIVALENT RESIDENTIAL CONNECTIONS

(48.983 / 365 days) / 350 gpd = 383
(total gallons sold)

YEAR OF REPORT
DECEMBER 31, 1997

UTILITY NAME: LAKE UTILITY SERVICES, INC.

SYSTEM NAME : CLERMONT II (Lake County)

PUMPING AND PURCHASED WATER STATISTICS

MONTH (a)	WATER PURCHASED FOR RESALE (Omit 000's) (b)	FINISHED WATER PUMPED FROM WELLS (Omit 000's) (c)	WATER USED FOR LINE FLUSHING, FIGHTING FIRES, ETC. (d)	TOTAL WATER PUMPED AND PURCHASED (Omit 000's) (b)+(c)-(d)] (e)	WATER SOLD TO CUSTOMERS (Omit 000's) (f)
January_	-----	.458		-----	.213
February_	-----	.488	.002	-----	.986
March_	-----	.805	.003	-----	
April_	-----	.675	.003	-----	1.189
May_	-----	.878	.004	-----	
June_	-----	.685	.002	-----	1.213
July_	-----	.546	.002	-----	
August_	-----	.702	.006	-----	1.449
September_	-----	1.015	.005	-----	
October_	-----	.799	.003	-----	1.324
November_	-----	.569	.003	-----	
December_	-----	.352	.003	-----	.557
Total for	=====	7.972	.036	7.936	6.931

If water is purchased for resale, indicate the following:

Vendor NONE

Point of delivery _____

If water is sold to other water utilities for redistribution, list names of such utilities below:

NONE

UTILITY NAME: LAKE UTILITY SERVICES, INC.

YEAR OF REPORT
DECEMBER 31, 1987

SYSTEM NAME : CLERMONT II (Lake County)

WATER TREATMENT PLANT INFORMATION

Type of treatment (reverse osmosis, etc.):		<u>Chlorination - Aqua Mag</u>	
Methods used (sedimentation, chemical, aerated, etc.):		<u>Chemical</u>	
LIME TREATMENT			
Unit rating (GPM):	<u>N/A</u>	Manufacturer:	_____
FILTRATION			
Type and area:	<input type="checkbox"/> Pressure	----> Square Feet:	_____
	<input type="checkbox"/> Gravity	----> GPM/Square Feet:	_____

MAINS

TYPE OF PIPE (Galvanized, Cast Iron, PVC, Etc.)	DIAMETER OF PIPE (in inches)	MAINS BEGINNING OF YEAR (in feet)	ADDITIONS	RETIREMENTS	MAINS END OF YEAR (in feet)
GALVANIZED	2"	3450	-	-	3450
P.V.C.	4"	555	-	-	555
-	-	-	-	-	-
-	-	-	-	-	-
-	-	-	-	-	-
-	-	-	-	-	-
-	-	-	-	-	-
-	-	-	-	-	-
Total feet of mains		4005			4005
		=====	=====	=====	=====

SERVICES AND METERS

METERS IN SERVICE	METERS BEGINNING OF YEAR	ADDITIONS	RETIREMENTS	METERS END OF YEAR
5/8" - 3/4"	33	-	-	33
1"	4	-	-	4
2"	-	-	-	-
3"	-	-	-	-
4"	-	-	-	-
6"	-	-	-	-
8"	-	-	-	-
Other (Specify): _____	-	-	-	-
Total meters in service	37			37
Total meters in stock	=====	=====	=====	=====
Number of services in use	37	=====	=====	=====
	=====	=====	=====	=====

UTILITY NAME: LAKE UTILITY SERVICES, INC.

<p>YEAR OF REPORT DECEMBER 31, 1997</p>

SYSTEM NAME : CLERMONT II (Lake County)

WELLS AND WELL PUMPS

(a)	(b)	(c)	(d)	(e)
Year Constructed	1939	1962		
Types of Well Construction and Casing	STEEL	STEEL		
CASING DEPTH	206	210		
Depth of Wells	243	328		
Diameters of Wells	4"	6"		
Pump - GPM	44	55		
Motor - HP	5	5		
Yields of Wells in GPD	63,000	79,000		
Auxiliary Power	NO	NO		

RESERVOIRS

(a)	(b)	(c)	(d)	(e)
Description (steel, concrete or pneumatic)	PNEUMATIC			
Capacity of Tank	3000			
Ground or Elevated	GROUND			

HIGH SERVICE PUMPING

MOTORS (a)	(b)	(c)	(d)	(e)
Manufacturer	N/A			
Type				
Rated Horsepower				
PUMPS				
Type				
Capacity in GPM				
Average Number Of Hours Operated Per Day				
Auxiliary Power				

UTILITY NAME: LAKE UTILITY SERVICES, INC.

YEAR OF REPORT
DECEMBER 31, 1997

SYSTEM NAME : CLERMONT II (Lake County)

SOURCE OF SUPPLY

List for each source of supply:					
Gals. per day of source	63,000	-----	79,000	-----	-----
Type of source	WELL #1	-----	WELL #2	-----	-----

WATER TREATMENT FACILITIES

List for each water treatment facility:					
Type	CHLORINATION	-----	-----	-----	-----
Make	CHEM TECH	-----	-----	-----	-----
Gals. per day capacity	30	-----	-----	-----	-----
Method of measurement	-----	-----	-----	-----	-----

OTHER WATER SYSTEM INFORMATION

Furnish information below for each system not physically connected with another facility. A separate page should be supplied where necessary.

1. Present ERC's * that system can efficiently serve.	90	-----	-----
2. Estimated annual increase in ERC's * .	0-5	-----	-----
3. List fire fighting facilities and capacities.	NONE	-----	-----
4. List percent of certificated area where service connections are installed (total for each county).	41%	-----	-----
5. What is the current need for system upgrading and/or expansion?	NONE	-----	-----
6. What are plans for future system upgrading and/or expansion?	NONE	-----	-----
7. Have questions 6 and 7 been discussed with an engineer (if so, state name and address)?	NO	-----	-----
8. Have questions 6 and 7 been discussed with	NO	-----	-----

* ERC = (Total Gallons Sold / 365 days) / 350 Gallons Per Day

UTILITY NAME: LAKE UTILITY SERVICES, INC.

YEAR OF REPORT
DECEMBER 31, 1997

SYSTEM NAME : CIERMONT II (Lake County)

CALCULATION OF THE WATER SYSTEMS EQUIVALENT RESIDENTIAL UNITS

METER SIZE (a)	TYPE OF METER (b)	EQUIVALENT FACTOR (c)	NUMBER OF METERS (d)	TOTAL NUMBER OF METER EQUIVALENTS (c x d) (e)
5/8"	Displacement	1.0	33	33
3/4"	Displacement	1.5		
1"	Displacement	2.5	4	10
1 1/2"	Displacement or Turbine	5.0		
2"	Displacement, Compound or Turbine	8.0		
3"	Displacement	15.0		
3"	Compound	16.0		
3"	Turbine	17.5		
4"	Displacement or Compound	25.0		
4"	Turbine	30.0		
6"	Displacement or Compound	50.0		
6"	Turbine	62.5		
8"	Compound	80.0		
8"	Turbine	90.0		
10"	Compound	115.0		
10"	Turbine	145.0		
12"	Turbine	215.0		
Total Water System Meter Equivalents				43

CALCULATION OF THE WATER SYSTEMS EQUIVALENT RESIDENTIAL CONNECTIONS

(total gallons sold)

YEAR OF REPORT
DECEMBER 31, 1997

UTILITY NAME: LAKE UTILITY SERVICES, INC.

SYSTEM NAME: AMBER HILL, CLERMONT I AND LAKE RIDGE CLUB COMBINED

PUMPING AND PURCHASED WATER STATISTICS

MONTH (a)	WATER PURCHASED FOR RESALE (Omit 000's) (b)	FINISHED WATER PUMPED FROM WELLS (Omit 000's) (c)	WATER USED FOR LINE FLUSHING, FIGHTING FIRES, ETC. (d)	TOTAL WATER PUMPED AND PURCHASED (Omit 000's) (b)+(c)-(d)] (e)	WATER SOLD TO CUSTOMERS (Omit 000's) (f)
January_	-----	-----	-----	-----	-----
February_	-----	-----	-----	-----	-----
March_	-----	-----	-----	-----	-----
April_	-----	-----	-----	-----	-----
May_	-----	-----	-----	-----	-----
June_	-----	-----	-----	-----	-----
July_	-----	-----	-----	-----	-----
August_	-----	-----	-----	-----	-----
September_	-----	-----	-----	-----	-----
October_	-----	-----	-----	-----	-----
November_	-----	-----	-----	-----	-----
December_	-----	-----	-----	-----	-----
Total for	-----	.000	.021	0.000	.000
	=====	=====	=====	=====	=====

If water is purchased for resale, indicate the following:

Vendor NONE

Point of delivery _____

If water is sold to other water utilities for redistribution, list names of such utilities below:

NOTE: ALL THREE SYSTEMS ARE INTERCONNECTED AND ALL ARE OWNED BY UTILITIES, INC. OF FLORIDA.

YEAR OF REPORT
DECEMBER 31, 1997

UTILITY NAME: LAKE UTILITY SERVICES, INC.

SYSTEM NAME: LAKE SAUNDERS

PUMPING AND PURCHASED WATER STATISTICS

MONTH (a)	WATER PURCHASED FOR RESALE (Omit 000's) (b)	FINISHED WATER PUMPED FROM WELLS (Omit 000's) (c)	WATER USED FOR LINE FLUSHING, FIGHTING FIRES, ETC. (d)	TOTAL WATER PUMPED AND PURCHASED (Omit 000's) (b) + (c) - (d) (e)	WATER SOLD TO CUSTOMERS (Omit 000's) (f)
January_	-----	.223	.200	-----	.075
February_	-----	.206	.056	-----	.314
March_	-----	.264	.056	-----	
April_	-----	.279	.070	-----	.425
May_	-----	.349	.065	-----	
June_	-----	.534	.218	-----	.371
July_	-----	.325	.082	-----	
August_	-----	.303	.083	-----	.408
September_	-----	.364	.074	-----	
October_	-----	.398	.076	-----	.512
November_	-----	.281	.074	-----	
December_	-----	.261	.088	-----	.281
Total for	=====	3.787	1.142	2.645	2.386

If water is purchased for resale, indicate the following:

Vendor NONE

Point of delivery _____

If water is sold to other water utilities for redistribution, list names of such utilities below:

NONE

UTILITY NAME: LAKE UTILITY SERVICES, INC.

YEAR OF REPORT
DECEMBER 31, 1997

SYSTEM NAME: LAKE SAUNDERS

WATER TREATMENT PLANT INFORMATION

Type of treatment (reverse osmosis, etc.):	<u>Chlorination - Aqua Mag</u>
Methods used (sedimentation, chemical, aerated, etc.):	<u>Chemical</u>
LIME TREATMENT	
Unit rating (GPM): <u>N/A</u>	Manufacturer: _____
FILTRATION	
Type and area: <input type="checkbox"/> Pressure	----> Square Feet: _____
<input type="checkbox"/> Gravity	----> GPM/Square Feet: _____

MAINS

TYPE OF PIPE (Galvanized, Cast Iron, PVC, Etc.)	DIAMETER OF PIPE (in inches)	MAINS BEGINNING OF YEAR (in feet)	ADDITIONS	RETIREMENTS	MAINS END OF YEAR (in feet)
P.V.C.	6"	2350	-	-	2350
-	-	-	-	-	-
-	-	-	-	-	-
-	-	-	-	-	-
-	-	-	-	-	-
-	-	-	-	-	-
-	-	-	-	-	-
-	-	-	-	-	-
-	-	-	-	-	-
-	-	-	-	-	-
Total feet of mains	=====	2350	=====	=====	2350

SERVICES AND METERS

METERS IN SERVICE	METERS BEGINNING OF YEAR	ADDITIONS	RETIREMENTS	METERS END OF YEAR
5/8" - 3/4"	38	2	-	40
1"	-	-	-	-
2"	-	-	-	-
3"	-	-	-	-
4"	-	-	-	-
6"	-	-	-	-
8"	-	-	-	-
Other (Specify): _____	-	-	-	-
Total meters in service	38	2	-	40
Total meters in stock	=====	=====	=====	=====
Number of services in use	38	2	-	40
	=====	=====	=====	=====

UTILITY NAME: LAKE UTILITY SERVICES, INC.

SYSTEM NAME: LAKE SUNDERS

YEAR OF REPORT
DECEMBER 31, 1997

WELLS AND WELL PUMPS

(a)	(b)	(c)	(d)	(e)
Year Constructed _ _ _	1984	1984		
Types of Well Construction and Casing _ _ _ _ _	STEEL	STEEL		
CASING DEPTH	105	105		
Depth of Wells	324	324		
Diameters of Wells	6"	6"		
Pump - GPM	300	300		
Motor - HP				
Yields of Wells in GPD	432,000	432,000		
Auxiliary Power _ _ _	NO	NO		

RESERVOIRS

(a)	(b)	(c)	(d)	(e)
Description (steel, concrete or pneumatic) _ _ _ _	PNEUMATIC			
Capacity of Tank	10000			
Ground or Elevated	GROUND			

HIGH SERVICE PUMPING

MOTORS (a)	(b)	(c)	(d)	(e)
Manufacturer	N/A			
Type				
Rated Horsepower				
PUMPS				
Manufacturer				
Type				
Capacity in GPM				
Average Number Of Hours Operated Per Day				
Auxiliary Power				

UTILITY NAME: LAKE UTILITY SERVICES, INC.

SYSTEM NAME: LAKE SAUNDERS

YEAR OF REPORT
DECEMBER 31, 1996

SOURCE OF SUPPLY

List for each source of supply:

Gals. per day of source	432,000	-----	432,000	-----	-----	-----
Type of source	WELL #1	-----	WELL #2	-----	-----	-----

WATER TREATMENT FACILITIES

List for each water treatment facility:

Type	CHLORINATION	-----	-----	-----	-----
Make	CHEM-TECH	-----	-----	-----	-----
Gals. per day capacity	864,000	-----	-----	-----	-----
Method of measurement	-----	-----	-----	-----	-----

OTHER WATER SYSTEM INFORMATION

Furnish information below for each system not physically connected with another facility. A separate page should be supplied where necessary.

1. Present ERC's * that system can efficiently serve. 100
2. Estimated annual increase in ERC's * 5
3. List fire fighting facilities and capacities. HYDRANTS WITH WELL CAPACITY
OF 600 GPM
4. List percent of certificated area where service connections are installed (total for each county). 40%
5. What is the current need for system upgrading and/or expansion? NONE
6. What are plans for future system upgrading and/or expansion? NONE
7. Have questions 6 and 7 been discussed with an engineer (if so, state name and address)? NO
8. Have questions 6 and 7 been discussed with appropriate state sanitary engineering office? NO

* ERC = (Total Gallons Sold / 365 days) / 350 Gallons Per Day

UTILITY NAME: LAKE UTILITY SERVICES, INC.

YEAR OF REPORT
DECEMBER 31, 1997

SYSTEM NAME: LAKE SAUNDERS

CALCULATION OF THE WATER SYSTEMS EQUIVALENT RESIDENTIAL UNITS

METER SIZE (a)	TYPE OF METER (b)	EQUIVALENT FACTOR (c)	NUMBER OF METERS (d)	TOTAL NUMBER OF METER EQUIVALENTS (c x d) (e)
5/8"	Displacement	1.0	40	40
3/4"	Displacement	1.5	---	---
1"	Displacement	2.5	---	---
1 1/2"	Displacement or Turbine	5.0	---	---
2"	Displacement, Compound or Turbine	8.0	---	---
3"	Displacement	15.0	---	---
3"	Compound	16.0	---	---
3"	Turbine	17.5	---	---
4"	Displacement or Compound	25.0	---	---
4"	Turbine	30.0	---	---
6"	Displacement or Compound	50.0	---	---
6"	Turbine	62.5	---	---
8"	Compound	80.0	---	---
8"	Turbine	90.0	---	---
10"	Compound	115.0	---	---
10"	Turbine	145.0	---	---
12"	Turbine	215.0	---	---
Total Water System Meter Equivalents				40

CALCULATION OF THE WATER SYSTEMS EQUIVALENT RESIDENTIAL CONNECTIONS

$$\left(\frac{3.787}{365 \text{ days}} \right) / 350 \text{ gpd} = 30$$

(total gallons sold)

YEAR OF REPORT
DECEMBER 31, 1997

UTILITY NAME: LAKE UTILITY SERVICES, INC.

SYSTEM NAME : FOUR LAKES (Lake County)

PUMPING AND PURCHASED WATER STATISTICS

MONTH (a)	WATER PURCHASED FOR RESALE (Omit 000's) (b)	FINISHED WATER PUMPED FROM WELLS (Omit 000's) (c)	WATER USED FOR LINE FLUSHING, FIGHTING FIRES, ETC. (d)	TOTAL WATER PUMPED AND PURCHASED (Omit 000's) (b)+(c)-(d)] (e)	WATER SOLD TO CUSTOMERS (Omit 000's) (f)
January		.574	.002		.242
February		.560	.002		1.089
March		.842	.001		
April		.933	.002		1.352
May		1.033	.002		
June		.780	.001		1.332
July		.549	.001		
August		.659	.001		1.252
September		.693	.002		
October		.612	.010		1.124
November		.530	.002		
December		.462	.002		.690
Total for		8.227	.028	8.199	7.081

If water is purchased for resale, indicate the following:

Vendor NONE

Point of delivery _____

If water is sold to other water utilities for redistribution, list names of such utilities below:

NONE

UTILITY NAME: LAKE UTILITY SERVICES, INC.

SYSTEM NAME : FOUR LAKES

YEAR OF REPORT
DECEMBER 31, 1997

WELLS AND WELL PUMPS

(a)	(b)	(c)	(d)	(e)
Year Constructed _ _ _	1979	1979	-----	-----
Types of Well Construction and Casing _ _ _ _ _	STEEL	STEEL	-----	-----
CASING DEPTH	58'	58'	-----	-----
Depth of Wells	190'	190'	-----	-----
Diameters of Wells	6"	6"	-----	-----
Pump - GPM	105	105	-----	-----
Motor - HP	7.5	7.5	-----	-----
Yields of Wells in GPD	151,000	151,000	-----	-----
Auxiliary Power _ _ _	NO	NO	-----	-----

RESERVOIRS

(a)	(b)	(c)	(d)	(e)
Description (steel, concrete or pneumatic) _ _ _ _	PNEUMATIC	-----	-----	-----
Capacity of Tank	2000	-----	-----	-----
Ground or Elevated _ _	GROUND	-----	-----	-----

HIGH SERVICE PUMPING

(a)	(b)	(c)	(d)	(e)
MOTORS				
Manufacturer _ _ _ _ _	N/A	-----	-----	-----
Type _ _ _ _ _	-----	-----	-----	-----
Rated Horsepower _ _ _	-----	-----	-----	-----
PUMPS				
Manufacturer _ _ _ _ _	-----	-----	-----	-----
Type _ _ _ _ _	-----	-----	-----	-----
Capacity in GPM _ _ _ _	-----	-----	-----	-----
Average Number Of Hours Operated Per Day _ _	-----	-----	-----	-----
Auxiliary Power _ _ _	-----	-----	-----	-----

UTILITY NAME: LAKE UTILITY SERVICES, INC.

YEAR OF REPORT
DECEMBER 31, 1997

SYSTEM NAME : FOUR LAKES (Lake County)

SOURCE OF SUPPLY

List for each source of supply:

Gals. per day of source	151,200	-----	151,200	-----	-----	-----
Type of source	WELL #1	-----	WELL #2	-----	-----	-----

WATER TREATMENT FACILITIES

List for each water treatment facility:

Type	CHLORINATION	-----	-----	-----	-----
Make	CHEM TECH	-----	-----	-----	-----
Gals. per day capacity	302,400	-----	-----	-----	-----
Method of measurement		-----	-----	-----	-----

OTHER WATER SYSTEM INFORMATION

Furnish information below for each system not physically connected with another facility. A separate page should be supplied where necessary.

- Present ERC's * that system can efficiently serve. ----- 100 -----
- Estimated annual increase in ERC's * . 5 -----
- List fire fighting facilities and capacities. ----- NONE -----
- List percent of certificated area where service connections are installed (total for each county). ----- 57% -----
- What is the current need for system upgrading and/or expansion? ----- NONE -----
- What are plans for future system upgrading and/or expansion? ----- NONE -----
- Have questions 6 and 7 been discussed with an engineer (if so, state name and address)? ----- NO -----
- Have questions 6 and 7 been discussed with appropriate state sanitary engineering office? ----- NO -----

* ERC = (Total Gallons Sold / 365 days) / 350 Gallons Per Day

UTILITY NAME: LAKE UTILITY SERVICES, INC.

YEAR OF REPORT
DECEMBER 31, 1997

SYSTEM NAME : FOUR LAKES (Lake County)

CALCULATION OF THE WATER SYSTEMS EQUIVALENT RESIDENTIAL UNITS

METER SIZE (a)	TYPE OF METER (b)	EQUIVALENT FACTOR (c)	NUMBER OF METERS (d)	TOTAL NUMBER OF METER EQUIVALENTS (c x d) (e)
5/8"	Displacement	1.0	57	57
3/4"	Displacement	1.5	---	---
1"	Displacement	2.5	---	---
1 1/2"	Displacement or Turbine	5.0	---	---
2"	Displacement, Compound or Turbine	8.0	---	---
3"	Displacement	15.0	---	---
3"	Compound	16.0	---	---
3"	Turbine	17.5	---	---
4"	Displacement or Compound	25.0	---	---
4"	Turbine	30.0	---	---
6"	Displacement or Compound	50.0	---	---
6"	Turbine	62.5	---	---
8"	Compound	80.0	---	---
8"	Turbine	90.0	---	---
10"	Compound	115.0	---	---
10"	Turbine	145.0	---	---
12"	Turbine	215.0	---	---
Total Water System Meter Equivalents				57

CALCULATION OF THE WATER SYSTEMS EQUIVALENT RESIDENTIAL CONNECTIONS

$$(7.081 / 365 \text{ days}) / 350 \text{ gpd} = 55$$

(total gallons sold)

YEAR OF REPORT
DECEMBER 31, 1997

UTILITY NAME: LAKE UTILITY SERVICES, INC.

SYSTEM NAME: LAKE RIDGE CLUB

PUMPING AND PURCHASED WATER STATISTICS

MONTH (a)	WATER PURCHASED FOR RESALE (Omit 000's) (b)	FINISHED WATER PUMPED FROM WELLS (Omit 000's) (c)	WATER USED FOR LINE FLUSHING, FIGHTING FIRES, ETC. (d)	TOTAL WATER PUMPED AND PURCHASED (Omit 000's) (b)+(c)-(d)] (e)	WATER SOLD TO CUSTOMERS (Omit 000's) (f)
January_	-----	3.966		-----	1.819
February_	-----	3.427	.000	-----	
March_	-----	2.960	.000	-----	6.436
April_	-----	3.598	.000	-----	
May_	-----	4.450	.000	-----	7.235
June_	-----	4.188	.000	-----	
July_	-----	2.140	.000	-----	7.514
August_	-----	2.638	.000	-----	
September_	-----	4.706	-	-----	6.582
October_	-----	4.192	-	-----	
November_	-----	1.209	-	-----	8.037
December_	-----	3.001	.000	-----	3.314
Total for	=====	40.475	.000	40.475	40.937
	=====	=====	=====	=====	=====

If water is purchased for resale, indicate the following:

Vendor N/A

Point of delivery _____

If water is sold to other water utilities for redistribution, list names of such utilities below:

NOTE: System interconnected with Clermont I and Amber Hill systems, both are owned by Utilities Inc. of Florida.

"WELL PUT ON LINE IN 1992"

UTILITY NAME: LAKE UTILITY SERVICES, INC.

YEAR OF REPORT
DECEMBER 31, 1997

SYSTEM NAME: LAKE RIDGE CLUB

WATER TREATMENT PLANT INFORMATION

Type of treatment (reverse osmosis, etc.): Chlorination
 Methods used (sedimentation, chemical, aerated, etc.): Chemical

LIME TREATMENT

Unit rating (GPM): N/A Manufacturer: _____

FILTRATION

Type and area: Pressure ---> Square Feet: _____
 Gravity ---> GPM/Square Feet: _____

MAINS

TYPE OF PIPE (Galvanized, Cast Iron, PVC, Etc.)	DIAMETER OF PIPE (in inches)	MAINS BEGINNING OF YEAR (in feet)	ADDITIONS	RETIREMENTS	MAINS END OF YEAR (in feet)
P.V.C.	8"	1225	-	-	1225
P.V.C.	6"	5075	-	-	5075
P.V.C.	4"	2625	-	-	2625
-	-	-	-	-	-
-	-	-	-	-	-
-	-	-	-	-	-
-	-	-	-	-	-
-----	-----	-----	-----	-----	-----
Total feet of mains		8925			8925
	=====	=====	=====	=====	=====

SERVICES AND METERS

METERS IN SERVICE	METERS BEGINNING OF YEAR	ADDITIONS	RETIREMENTS	METERS END OF YEAR
5/8" - 3/4"	77	7	0	84
1"	-	-	-	-
1-1/2"	-	0	0	-
3"	1	-	-	1
4"	-	-	-	-
6"	-	-	-	-
8"	-	-	-	-
Other (Specify): _____	-	-	-	-
-----	-----	-----	-----	-----
Total meters in service	78	7	0	85
	=====	=====	=====	=====
Total meters in stock	=====	=====	=====	=====
	=====	=====	=====	=====
Number of services in use	78	7	0	85
	=====	=====	=====	=====

UTILITY NAME: LAKE UTILITY SERVICES, INC.

YEAR OF REPORT
DECEMBER 31, 1997

SYSTEM NAME: LAKE RIDGE CLUB

WELLS AND WELL PUMPS

(a)	(b)	(c)	(d)	(e)
Year Constructed	1989			
Types of Well Construction and Casing	STEEL			
CASING DEPTH	140			
Depth of Wells	540			
Diameters of Wells	10"			
Pump - GPM	650			
Motor - HP	60			
Yields of Wells in GPD	936 MG			
Auxiliary Power	NO			

RESERVOIRS

(a)	(b)	(c)	(d)	(e)
Description (steel, concrete or pneumatic)	PNEUMATIC			
Capacity of Tank	8,000			
Ground or Elevated	GROUND			

HIGH SERVICE PUMPING

MOTORS (a)	(b)	(c)	(d)	(e)
Manufacturer	N/A			
Type				
Rated Horsepower				
PUMPS				
Manufacturer				
Type				
Capacity in GPM				
Average Number Of Hours Operated Per Day				
Auxiliary Power				

UTILITY NAME: LAKE UTILITY SERVICES, INC.

SYSTEM NAME: LAKE RIDGE CLUB

YEAR OF REPORT
DECEMBER 31, 1997

SOURCE OF SUPPLY

List for each source of supply:					
Gals. per day of source	936,000	-----	-----	-----	-----
Type of source	WELL #1	-----	-----	-----	-----

WATER TREATMENT FACILITIES

List for each water treatment facility:					
Type	CHLORINATION	-----	-----	-----	-----
Make	REGAL	-----	-----	-----	-----
Gals. per day capacity	936,000	-----	-----	-----	-----
Method of measurement		-----	-----	-----	-----

OTHER WATER SYSTEM INFORMATION

Furnish information below for each system not physically connected with another facility. A separate page should be supplied where necessary.

- Present ERC's * that system can efficiently serve. 100
- Estimated annual increase in ERC's * . 10
- List fire fighting facilities and capacities. HYDRANTS - SYSTEM
INTERCONNECTED WITH CLERMONT I AND AMBER HILL
- List percent of certificated area where service connections are installed (total for each county). 85%
- What is the current need for system upgrading and/or expansion? NONE
- What are plans for future system upgrading and/or expansion? NONE
- Have questions 6 and 7 been discussed with an engineer (if so, state name and address)? NO
- Have questions 6 and 7 been discussed with appropriate state sanitary engineering office? NO

* ERC = (Total Gallons Sold / 365 days) / 350 Gallons Per Day

UTILITY NAME: LAKE UTILITY SERVICES, INC.

YEAR OF REPORT
DECEMBER 31, 1996

SYSTEM NAME: LAKE RIDGE CLUB

CALCULATION OF THE WATER SYSTEMS EQUIVALENT RESIDENTIAL UNITS

METER SIZE (a)	TYPE OF METER (b)	EQUIVALENT FACTOR (c)	NUMBER OF METERS (d)	TOTAL NUMBER OF METER EQUIVALENTS (c x d) (e)
5/8"	Displacement	1.0	84	84
3/4"	Displacement	1.5	---	---
1"	Displacement	2.5	---	---
1 1/2"	Displacement or Turbine	5.0	1	5
2"	Displacement, Compound or Turbine	8.0	---	---
3"	Displacement	15.0	---	---
3"	Compound	16.0	---	---
3"	Turbine	17.5	---	---
4"	Displacement or Compound	25.0	---	---
4"	Turbine	30.0	---	---
6"	Displacement or Compound	50.0	---	---
6"	Turbine	62.5	---	---
8"	Compound	80.0	---	---
8"	Turbine	90.0	---	---
10"	Compound	115.0	---	---
10"	Turbine	145.0	---	---
12"	Turbine	215.0	---	---
Total Water System Meter Equivalents				89

CALCULATION OF THE WATER SYSTEMS EQUIVALENT RESIDENTIAL CONNECTIONS

(40,937 / 365 days) / 350 gpd = 344
(total gallons sold)

YEAR OF REPORT
DECEMBER 31, 1997

UTILITY NAME: LAKE UTILITY SERVICES, INC.

SYSTEM NAME: THE ORANGES

PUMPING AND PURCHASED WATER STATISTICS

MONTH (a)	WATER PURCHASED FOR RESALE (Omit 000's) (b)	FINISHED WATER PUMPED FROM WELLS (Omit 000's) (c)	WATER USED FOR LINE FLUSHING, FIGHTING FIRES, ETC. (d)	TOTAL WATER PUMPED AND PURCHASED (Omit 000's) (b)+(c)-(d)] (e)	WATER SOLD TO CUSTOMERS (Omit 000's) (f)
January	-----	2.086		-----	.425
February	-----	1.121	.003	-----	
March	-----	2.130	.002	-----	2.221
April	-----	1.379	.000	-----	
May	-----	2.921	.000	-----	2.822
June	-----	2.519	.000	-----	
July	-----	1.094	.009	-----	3.229
August	-----	2.985	-	-----	
September	-----	4.149	.009	-----	2.126
October	-----	.679	.005	-----	
November	-----	.902	-	-----	2.348
December	-----	.375	.011	-----	.942
Total for	=====	22.340	.039	22.301	14.113
	=====	=====	=====	=====	=====

If water is purchased for resale, indicate the following:

Vendor NONE

Point of delivery _____

If water is sold to other water utilities for redistribution, list names of such utilities below:

NONE

SYSTEM IS INTERCONNECTED WITH THE VISTAS, WHICH IS OWNED BY UTILITIES, INC. OF FLORIDA.

YEAR OF REPORT
DECEMBER 31, 1997

UTILITY NAME: LAKE UTILITY SERVICES, INC.

SYSTEM NAME: THE ORANGES and THE VISTAS COMBINED

PUMPING AND PURCHASED WATER STATISTICS

MONTH (a)	WATER PURCHASED FOR RESALE (Omit 000's) (b)	FINISHED WATER PUMPED FROM WELLS (Omit 000's) (c)	WATER USED FOR LINE FLUSHING, FIGHTING FIRES, ETC. (d)	TOTAL WATER PUMPED AND PURCHASED (Omit 000's) (b)+(c)-(d)] (e)	WATER SOLD TO CUSTOMERS (Omit 000's) (f)
January_	-----	-----	-----	-----	-----
February_	-----	-----	-----	-----	-----
March_	-----	-----	-----	-----	-----
April_	-----	-----	-----	-----	-----
May_	-----	-----	-----	-----	-----
June_	-----	-----	-----	-----	-----
July_	-----	-----	-----	-----	-----
August_	-----	-----	-----	-----	-----
September_	-----	-----	-----	-----	-----
October_	-----	-----	-----	-----	-----
November_	-----	-----	-----	-----	-----
December_	-----	-----	-----	-----	-----
Total for	=====	49.559 =====	.113 =====	49.446 =====	42.698 =====

If water is purchased for resale, indicate the following:

Vendor NONE

Point of delivery _____

If water is sold to other water utilities for redistribution, list names of such utilities below:

NONE

BOTH SYSTEMS ARE INTERCONNECTED AND BOTH ARE OWNED BY UTILITIES, INC. OF FLORIDA.

UTILITY NAME: LAKE UTILITY SERVICES, INC.

YEAR OF REPORT
DECEMBER 31, 1997

SYSTEM NAME: THE ORANGES

WATER TREATMENT PLANT INFORMATION

Type of treatment (reverse osmosis, etc.): Chlorination - Aqua Mag
 Methods used (sedimentation, chemical, aerated, etc.): Chemical

LIME TREATMENT

Unit rating (GPM): N/A Manufacturer: _____

FILTRATION

Type and area: Pressure ----> Square Feet: _____
 Gravity ----> GPM/Square Feet: _____

MAINS

TYPE OF PIPE (Galvanized, Cast Iron, PVC, Etc.)	DIAMETER OF PIPE (in inches)	MAINS BEGINNING OF YEAR (in feet)	ADDITIONS	RETIREMENTS	MAINS END OF YEAR (in feet)
P.V.C.	6"	6150	-	-	6150
P.V.C.	4"	200	-	-	200
P.V.C.	2"	275	-	-	275
-	-	-	-	-	-
-	-	-	-	-	-
-	-	-	-	-	-
-	-	-	-	-	-
-	-	-	-	-	-
Total feet of mains		6625			6625
	=====	=====	=====	=====	=====

SERVICES AND METERS

METERS IN SERVICE	METERS BEGINNING OF YEAR	ADDITIONS	RETIREMENTS	METERS END OF YEAR
5/8" - 3/4"	88	5	-	93
1"	-	-	-	-
2"	-	-	-	-
3"	-	-	-	-
4"	-	-	-	-
6"	-	-	-	-
8"	-	-	-	-
Other (Specify): _____	-	-	-	-
Total meters in service	88	5		93
	=====	=====	=====	=====
Total meters in stock	=====	=====	=====	=====
Number of services in use	88	5		93
	=====	=====	=====	=====

UTILITY NAME: LAKE UTILITY SERVICES, INC.

YEAR OF REPORT
DECEMBER 31, 1997

SYSTEM NAME: THE ORANGES

WELLS AND WELL PUMPS

(a)	(b)	(c)	(d)	(e)
Year Constructed _ _ _	1986			
Types of Well Construction and Casing _ _ _ _	STEEL			
CASING DEPTH _ _ _ _	237			
Depth of Wells _ _ _ _	297			
Diameters of Wells _ _	8			
Pump - GPM _ _ _ _	550			
Motor - HP _ _ _ _	40			
Yields of Wells in GPD	792,000			
Auxiliary Power _ _ _	NO			

RESERVOIRS

(a)	(b)	(c)	(d)	(e)
Description (steel, concrete or pneumatic) _ _ _ _	PNEUMATIC			
Capacity of Tank _ _ _	5,500			
Ground or Elevated _ _	GROUND			

HIGH SERVICE PUMPING

MOTORS (a)	(b)	(c)	(d)	(e)
Manufacturer _ _ _ _	N/A			
Type _ _ _ _				
Rated Horsepower _ _ _				
PUMPS				
Manufacturer _ _ _ _				
Type _ _ _ _				
Capacity in GPM _ _ _ _				
Average Number Of Hours Operated Per Day _ _				
Auxiliary Power _ _ _				

UTILITY NAME: LAKE UTILITY SERVICES, INC.

YEAR OF REPORT
DECEMBER 31, 1996

SYSTEM NAME: THE ORANGES

SOURCE OF SUPPLY

List for each source of supply:

Gals. per day of source	792,000	-----	-----	-----	-----
Type of source	WELL #1	-----	-----	-----	-----

WATER TREATMENT FACILITIES

List for each water treatment facility:

Type	CHLORINATION	-----	-----	-----	-----
Make	REGAL	-----	-----	-----	-----
Gals. per day capacity	792,000	-----	-----	-----	-----
Method of measurement		-----	-----	-----	-----

OTHER WATER SYSTEM INFORMATION

Furnish information below for each system not physically connected with another facility. A separate page should be supplied where necessary.

- Present ERC's * that system can efficiently serve. 100
- Estimated annual increase in ERC's * 5
- List fire fighting facilities and capacities. HYDRANTS - WELL CAPACITY OF
550 GPM
- List percent of certificated area where service connections are installed (total for each county). 93%
- What is the current need for system upgrading and/or expansion? NONE
- What are plans for future system upgrading and/or expansion? NONE
- Have questions 6 and 7 been discussed with an engineer (if so, state name and address)? NO
- Have questions 6 and 7 been discussed with appropriate state sanitary engineering office? NO

* ERC = (Total Gallons Sold / 365 days) / 350 Gallons Per Day

UTILITY NAME: LAKE UTILITY SERVICES, INC.

YEAR OF REPORT
DECEMBER 31, 1997

SYSTEM NAME: THE ORANGES

CALCULATION OF THE WATER SYSTEMS EQUIVALENT RESIDENTIAL UNITS

METER SIZE (a)	TYPE OF METER (b)	EQUIVALENT FACTOR (c)	NUMBER OF METERS (d)	TOTAL NUMBER OF METER EQUIVALENTS (c x d) (e)
5/8"	Displacement	1.0	93	93
3/4"	Displacement	1.5	---	---
1"	Displacement	2.5	---	---
1 1/2"	Displacement or Turbine	5.0	---	---
2"	Displacement, Compound or Turbine	8.0	---	---
3"	Displacement	15.0	---	---
3"	Compound	16.0	---	---
3"	Turbine	17.5	---	---
4"	Displacement or Compound	25.0	---	---
4"	Turbine	30.0	---	---
6"	Displacement or Compound	50.0	---	---
6"	Turbine	62.5	---	---
8"	Compound	80.0	---	---
8"	Turbine	90.0	---	---
10"	Compound	115.0	---	---
10"	Turbine	145.0	---	---
12"	Turbine	215.0	---	---
Total Water System Meter Equivalents				93

CALCULATION OF THE WATER SYSTEMS EQUIVALENT RESIDENTIAL CONNECTIONS

$$(14.113 / 365 \text{ days}) / 350 \text{ gpd} = 110$$

(total gallons sold)

YEAR OF REPORT
DECEMBER 31, 1997

UTILITY NAME: LAKE UTILITY SERVICES, INC.

SYSTEM NAME: THE VISTAS

PUMPING AND PURCHASED WATER STATISTICS

MONTH (a)	WATER PURCHASED FOR RESALE (Omit 000's) (b)	FINISHED WATER PUMPED FROM WELLS (Omit 000's) (c)	WATER USED FOR LINE FLUSHING, FIGHTING FIRES, ETC. (d)	TOTAL WATER PUMPED AND PURCHASED (Omit 000's) (b)+(c)-(d)] (e)	WATER SOLD TO CUSTOMERS (Omit 000's) (f)
January	-----	1.162		-----	.902
February	-----	2.225	.002	-----	
March	-----	2.030	.000	-----	3.812
April	-----	2.479	.000	-----	
May	-----	3.259	.000	-----	4.147
June	-----	2.435	.002	-----	
July	-----	2.455	.031	-----	5.495
August	-----	.967	.009	-----	
September	-----	1.283	.027	-----	4.860
October	-----	4.392	.003	-----	
November	-----	2.550	-	-----	6.377
December	-----	1.982	.000	-----	2.992
Total for	=====	27.219	.074	27.145	28.585
	=====	=====	=====	=====	=====

If water is purchased for resale, indicate the following:

Vendor N/A

Point of delivery _____

If water is sold to other water utilities for redistribution, list names of such utilities below:

SYSTEM IS INTERCONNECTED WITH THE ORANGES, WHICH IS OWNED BY UTILITIES, INC. OF FLORIDA.

UTILITY NAME: LAKE UTILITY SERVICES, INC.

<p>YEAR OF REPORT DECEMBER 31, 1997</p>

SYSTEM NAME: THE VISTAS

WELLS AND WELL PUMPS

(a)	(b)	(c)	(d)	(e)
Year Constructed _ _ _	1988	1993	-----	-----
Types of Well Construction and Casing _ _ _ _ _	STEEL	STEEL	-----	-----
CASING DEPTH	103	120	-----	-----
Depth of Wells	304	316	-----	-----
Diameters of Wells	10	8	-----	-----
Pump - GPM	1200	(*)	-----	-----
Motor - HP	160	(*)	-----	-----
Yields of Wells in GPD	1.7 MG	(*)	-----	-----
Auxiliary Power _ _ _	NO	-----	-----	-----

(*) NOT PUT IN SERVICE YET

RESERVOIRS

(a)	(b)	(c)	(d)	(e)
Description (steel, concrete or pneumatic) _ _ _ _ _	PNEUMATIC	-----	-----	-----
Capacity of Tank	10,000	-----	-----	-----
Ground or Elevated _ _	GROUND	-----	-----	-----

HIGH SERVICE PUMPING

MOTORS (a)	(b)	(c)	(d)	(e)
Manufacturer _ _ _ _ _	N/A	-----	-----	-----
Type _ _ _ _ _	-----	-----	-----	-----
Rated Horsepower _ _ _	-----	-----	-----	-----
PUMPS	-----	-----	-----	-----
Manufacturer _ _ _ _ _	-----	-----	-----	-----
Type _ _ _ _ _	-----	-----	-----	-----
Capacity in GPM _ _ _ _	-----	-----	-----	-----
Average Number Of Hours Operated Per Day _ _	-----	-----	-----	-----
Auxiliary Power _ _ _	-----	-----	-----	-----

UTILITY NAME: LAKE UTILITY SERVICES, INC.

YEAR OF REPORT
DECEMBER 31, 1997

SYSTEM NAME: THE VISTAS

SOURCE OF SUPPLY

List for each source of supply:

Gals. per day of source	1.700 MG	-----	-----	-----	-----
Type of source	WELL #1	-----	-----	-----	-----

WATER TREATMENT FACILITIES

List for each water treatment facility:

Type	CHLORINATION	-----	-----	-----	-----
Make	REGAL	-----	-----	-----	-----
Gals. per day capacity	1.7 MG	-----	-----	-----	-----
Method of measurement	-----	-----	-----	-----	-----

OTHER WATER SYSTEM INFORMATION

Furnish information below for each system not physically connected with another facility. A separate page should be supplied where necessary.

1. Present ERC's * that system can efficiently serve. 100
2. Estimated annual increase in ERC's * 5
3. List fire fighting facilities and capacities. HYDRANTS WITH WELL CAPACITY
OF 1200 GPM
4. List percent of certificated area where service connections are installed (total for each county). 93%
5. What is the current need for system upgrading and/or expansion? NONE
6. What are plans for future system upgrading and/or expansion? NONE
7. Have questions 6 and 7 been discussed with an engineer (if so, state name and address)? NO
8. Have questions 6 and 7 been discussed with appropriate state sanitary engineering office? NO

* ERC = (Total Gallons Sold / 365 days) / 350 Gallons Per Day

UTILITY NAME: LAKE UTILITY SERVICES, INC.

YEAR OF REPORT
DECEMBER 31, 1997

SYSTEM NAME: THE VISTAS

CALCULATION OF THE WATER SYSTEMS EQUIVALENT RESIDENTIAL UNITS

METER SIZE (a)	TYPE OF METER (b)	EQUIVALENT FACTOR (c)	NUMBER OF METERS (d)	TOTAL NUMBER OF METER EQUIVALENTS (c x d) (e)
5/8"	Displacement	1.0	92	92
3/4"	Displacement	1.5		
1"	Displacement	2.5	1	2.5
1 1/2"	Displacement or Turbine	5.0		
2"	Displacement, Compound or Turbine	8.0		
3"	Displacement	15.0		
3"	Compound	16.0		
3"	Turbine	17.5		
4"	Displacement or Compound	25.0		
4"	Turbine	30.0		
6"	Displacement or Compound	50.0		
6"	Turbine	62.5		
8"	Compound	80.0		
8"	Turbine	90.0		
10"	Compound	115.0		
10"	Turbine	145.0		
12"	Turbine	215.0		
Total Water System Meter Equivalents				94.5

CALCULATION OF THE WATER SYSTEMS EQUIVALENT RESIDENTIAL CONNECTIONS

(28.585 / 365 days) / 350 gpd = 224
(total gallons sold)

YEAR OF REPORT
DECEMBER 31, 1997

UTILITY NAME: LAKE UTILITY SERVICES, INC.

SYSTEM NAME: LAKE CRESCENT HILLS

PUMPING AND PURCHASED WATER STATISTICS

MONTH (a)	WATER PURCHASED FOR RESALE (Omit 000's) (b)	FINISHED WATER PUMPED FROM WELLS (Omit 000's) (c)	WATER USED FOR LINE FLUSHING, FIGHTING FIRES, ETC. (d)	TOTAL WATER PUMPED AND PURCHASED (Omit 000's) (b)+(c)-(d)] (e)	WATER SOLD TO CUSTOMERS (Omit 000's) (f)
January_	-----	3.403		-----	1.282
February_	-----	3.554	.000	-----	5.204
March_	-----	4.796	.000	-----	
April_	-----	4.251	.000	-----	5.584
May_	-----	6.495	.018	-----	
June_	-----	3.666	.000	-----	6.936
July_	-----	6.010	.000	-----	
August_	-----	2.294	.000	-----	6.693
September_	-----	4.582	.013	-----	
October_	-----	4.011	-	-----	5.983
November_	-----	5.710	-	-----	
December_	-----	6.915	.000	-----	2.794
Total for	=====	55.687	.031	55.656	34.476
	=====	=====	=====	=====	=====

If water is purchased for resale, indicate the following:

Vendor N/A

Point of delivery _____

If water is sold to other water utilities for redistribution, list names of such utilities below:

This system is combined with the Crescent Bay, Crescent West and Highland Point Systems. All are owned by Utilities, Inc. of Florida.

Crescent Bay Combined Systems 1997 Meter Count

System	5/8 "	1 "	1.5 "	2 "	Total
Lk. Cres. Hills	99		1		100
Highland Point	34	1			35
Crescent West	79	1	1	2	83
Crescent Bay	53	3			56
Preston Cove	82				82
So. Cler.(EDB)	574	6		2	582
	921	11	2	4	938

YEAR OF REPORT
DECEMBER 31, 1997

UTILITY NAME: LAKE UTILITY SERVICES, INC.

SYSTEM NAME: CRESCENT BAY/CRESCENT WEST/HIGHLAND POINT/
LAKE CRESCENT HILLS/PRESTON COVE/SOUTH CLERMONT (EDB)
COMBINED

PUMPING AND PURCHASED WATER STATISTICS

MONTH (a)	WATER PURCHASED FOR RESALE (Omit 000's) (b)	FINISHED WATER PUMPED FROM WELLS (Omit 000's) (c)	WATER USED FOR LINE FLUSHING, FIGHTING FIRES, ETC. (d)*	TOTAL WATER PUMPED AND PURCHASED (Omit 000's) (b)+(c)-(d)] (e)	WATER SOLD TO CUSTOMERS (Omit 000's) (f)**
January	-----	-----	-----	-----	-----
February	-----	-----	-----	-----	-----
March	-----	-----	-----	-----	-----
April	-----	-----	-----	-----	-----
May	-----	-----	-----	-----	-----
June	-----	-----	-----	-----	-----
July	-----	-----	-----	-----	-----
August	-----	-----	-----	-----	-----
September	-----	-----	-----	-----	-----
October	-----	-----	-----	-----	-----
November	-----	-----	-----	-----	-----
December	-----	-----	-----	-----	-----
Total for	=====	200.967 =====	.847 =====	200.120 =====	185.342 =====

If water is purchased for resale, indicate the following:

Vendor N/A

Point of delivery _____

If water is sold to other water utilities for redistribution, list names of such utilities below:

Note: Above systems are all interconnected and are all owned by Lake Utility Services, Inc.

* Includes Flushing for 666-Preston Cove and 667-South Clermont (EDB)

** Includes sold figures for 666-Preston Cove and 667-South Clermont (EDB)

YEAR OF REPORT
DECEMBER 31, 1997

UTILITY NAME: LAKE UTILITY SERVICES, INC.

SYSTEM NAME: CRESCENT BAY

PUMPING AND PURCHASED WATER STATISTICS

MONTH (a)	WATER PURCHASED FOR RESALE (Omit 000's) (b)	FINISHED WATER PUMPED FROM WELLS (Omit 000's) (c)	WATER USED FOR LINE FLUSHING, FIGHTING FIRES, ETC. (d)	TOTAL WATER PUMPED AND PURCHASED (Omit 000's) (b)+(c)-(d)] (e)	WATER SOLD TO CUSTOMERS (Omit 000's) (f)
January		3.060			.205
February		4.593	.000		.863
March		5.253	.002		
April		4.457	.000		.873
May		7.089	.000		
June		6.765	.015		1.028
July		4.993	.000		
August		8.209	.053		1.011
September		10.062	.013		
October		5.802	.030		.879
November		2.147	.011		
December		.859	.023		.580
Total for		63.289	.147	63.142	5.439

If water is purchased for resale, indicate the following:

Vendor N/A

Point of delivery _____

If water is sold to other water utilities for redistribution, list names of such utilities below:

This system is combined with the Crescent West, Highland Point and Lake Crescent Hills Systems. All are owned by Utilities, Inc. of Florida.

UTILITY NAME: LAKE UTILITY SERVICES, INC.

YEAR OF REPORT
DECEMBER 31, 1997

SYSTEM NAME: CRESCENT BAY

WATER TREATMENT PLANT INFORMATION

Type of treatment (reverse osmosis, etc.): Chlorination - Aqua Mag
 Methods used (sedimentation, chemical, aerated, etc.): Chemical

LIME TREATMENT

Unit rating (GPM): _____ Manufacturer: _____

FILTRATION

Type and area: Pressure ---> Square Feet: _____
 Gravity ---> GPM/Square Feet: _____

MAINS

TYPE OF PIPE (Galvanized, Cast Iron, PVC, Etc.)	DIAMETER OF PIPE (in inches)	MAINS BEGINNING OF YEAR (in feet)	ADDITIONS	RETIREMENTS	MAINS END OF YEAR (in feet)
P.V.C.	1.5"	1500		-	1500
P.V.C.	2"	4500	2792	-	7292
P.V.C.	3"	1600		-	1600
P.V.C.	4"	7523	3960	-	11483
P.V.C.	6"	26070	8280	-	34350
P.V.C.	8"	49490	8465	-	57955
D.I.P.	4"	110	80	-	190
D.I.P.	6"	494	80	-	574
D.I.P.	8"	1357	260	-	1617
-----		-----	-----	-----	-----
Total feet of mains		92644	23917		116561
	=====	=====	=====	=====	=====

SERVICES AND METERS

METERS IN SERVICE	METERS BEGINNING OF YEAR	ADDITIONS	RETIREMENTS	METERS END OF YEAR
5/8" - 3/4"	50	3	-	53
1"	3	-	-	3
2"	-	-	-	-
3"	-	-	-	-
4"	-	-	-	-
6"	-	-	-	-
8"	-	-	-	-
Other (Specify): _____	-	-	-	-
-----	-----	-----	-----	-----
Total meters in service	53	3		56
-----	-----	-----	-----	-----
Total meters in stock				
-----	-----	-----	-----	-----
Number of services in use	53	3		56
-----	-----	-----	-----	-----

YEAR OF REPORT
DECEMBER 31, 1997

UTILITY NAME: LAKE UTILITY SERVICES, INC.

SYSTEM NAME: CRESCENT WEST

PUMPING AND PURCHASED WATER STATISTICS

MONTH (a)	WATER PURCHASED FOR RESALE (Omit 000's) (b)	FINISHED WATER PUMPED FROM WELLS (Omit 000's) (c)	WATER USED FOR LINE FLUSHING, FIGHTING FIRES, ETC. (d)	TOTAL WATER PUMPED AND PURCHASED (Omit 000's) (b)+(c)-(d)] (e)	WATER SOLD TO CUSTOMERS (Omit 000's) (f)
January_	-----	5.612		-----	1.270
February_	-----	3.607	.000	-----	4.913
March_	-----	6.085	.000	-----	
April_	-----	5.860	.000	-----	4.850
May_	-----	7.863	.011	-----	
June_	-----	6.842	.000	-----	5.705
July_	-----	3.847	.000	-----	
August_	-----	9.241	.000	-----	4.534
September_	-----	10.623	.	-----	
October_	-----	12.298	.	-----	4.962
November_	-----	6.863	.	-----	
December_	-----	3.250	.000	-----	1.728
Total for	=====	81.991	.011	81.980	27.962
	=====	=====	=====	=====	=====

If water is purchased for resale, indicate the following:

Vendor N/A

Point of delivery _____

If water is sold to other water utilities for redistribution, list names of such utilities below:

This system is combined with the Crescent Bay, Highland Point and Lake Crescent Hills Systems. All are owned by Utilities, Inc. of Florida.

UTILITY NAME: LAKE UTILITY SERVICES, INC.

YEAR OF REPORT
DECEMBER 31, 1997

SYSTEM NAME: CRESCENT WEST

WATER TREATMENT PLANT INFORMATION

Type of treatment (reverse osmosis, etc.): Chlorination - Aqua Mag
 Methods used (sedimentation, chemical, aerated, etc.): Chemical

LIME TREATMENT

Unit rating (GPM): N/A Manufacturer: _____

FILTRATION

Type and area: Pressure ---> Square Feet: _____
 Gravity ---> GPM/Square Feet: _____

MAINS

TYPE OF PIPE (Galvanized, Cast Iron, PVC, Etc.)	DIAMETER OF PIPE (in inches)	MAINS BEGINNING OF YEAR (in feet)	ADDITIONS	RETIREMENTS	MAINS END OF YEAR (in feet)
P.V.C.	8"	200	-	-	200
P.V.C.	6"	5675	-	-	5675
P.V.C.	3"	1750	-	-	1750
P.V.C.	2"	800	-	-	800
-	-	-	-	-	-
-	-	-	-	-	-
-	-	-	-	-	-
-	-	-	-	-	-
Total feet of mains		8425			8425
	=====	=====	=====	=====	=====

SERVICES AND METERS

METERS IN SERVICE	METERS BEGINNING OF YEAR	ADDITIONS	RETIREMENTS	METERS END OF YEAR
5/8" - 3/4"	69	10	-	79
1"	1	-	-	1
1.5"	1	-	-	1
2"	2	-	-	2
3"	-	-	-	-
4"	-	-	-	-
6"	-	-	-	-
8"	-	-	-	-
Other (Specify): _____	-	-	-	-
Total meters in service	73	10		83
Total meters in stock	=====	=====	=====	=====
Number of services in use	73	10		83
	=====	=====	=====	=====

YEAR OF REPORT
DECEMBER 31, 1997

UTILITY NAME: LAKE UTILITY SERVICES, INC.

SYSTEM NAME: HIGHLAND POINT

PUMPING AND PURCHASED WATER STATISTICS

MONTH (a) *	WATER PURCHASED FOR RESALE (Omit 000's) (b)	FINISHED WATER PUMPED FROM WELLS (Omit 000's) (c)	WATER USED FOR LINE FLUSHING, FIGHTING FIRES, ETC. (d)	TOTAL WATER PUMPED AND PURCHASED (Omit 000's) (b)+(c)-(d)] (e)	WATER SOLD TO CUSTOMERS (Omit 000's) (f)
January_	-----	.000		-----	.317
February_	-----	.000	.002	-----	
March_	-----	.000	.000	-----	1.318
April_	-----	.000	.000	-----	
May_	-----	.000	.000	-----	1.481
June_	-----	.000	.000	-----	
July_	-----	.000	.000	-----	1.556
August_	-----	.000	.000	-----	
September_	-----	.000	.000	-----	1.630
October_	-----	.000	.018	-----	
November_	-----	.000	.008	-----	1.583
December_	-----	.000	.014	-----	.521
Total for	=====	.000	.042	-.042	8.406

If water is purchased for resale, indicate the following:

Vendor N/A

Point of delivery _____

If water is sold to other water utilities for redistribution, list names of such utilities below:

Note: *Plant out of service.

This system is combined with the Crescent Bay, Crescent West and Lake Crescent Hills Systems. All are owned by Utilities, Inc. of Florida.

UTILITY NAME: LAKE UTILITY SERVICES, INC.

YEAR OF REPORT
DECEMBER 31, 1997

SYSTEM NAME: LAKE CRESCENT HILLS

WATER TREATMENT PLANT INFORMATION

Type of treatment (reverse osmosis, etc.): Chlorination - Aqua Mag
 Methods used (sedimentation, chemical, aerated, etc.): Chemical

LIME TREATMENT

Unit rating (GPM): _____ Manufacturer: _____

FILTRATION

Type and area: Pressure ---> Square Feet: _____
 Gravity ---> GPM/Square Feet: _____

MAINS

TYPE OF PIPE (Galvanized, Cast Iron, PVC, Etc.)	DIAMETER OF PIPE (in inches)	MAINS BEGINNING OF YEAR (in feet)	ADDITIONS	RETIREMENTS	MAINS END OF YEAR (in feet)
P.V.C.	2"	770	-	-	770
P.V.C.	4"	2605	-	-	2605
P.V.C.	6"	6285	-	-	6285
-	-	-	-	-	-
-	-	-	-	-	-
-	-	-	-	-	-
-	-	-	-	-	-
-	-	-	-	-	-
Total feet of mains		9660			9660
	=====	=====	=====	=====	=====

SERVICES AND METERS

METERS IN SERVICE	METERS BEGINNING OF YEAR	ADDITIONS	RETIREMENTS	METERS END OF YEAR
5/8" - 3/4"	90	9	-	99
1"	-	-	-	-
1.5"	1	-	-	1
2"	-	-	-	-
3"	-	-	-	-
4"	-	-	-	-
6"	-	-	-	-
8"	-	-	-	-
Other (Specify): _____	-	-	-	-
Total meters in service	91	9		100
Total meters in stock	=====	=====	=====	=====
Number of services in use	91	9		100
	=====	=====	=====	=====

UTILITY NAME: LAKE UTILITY SERVICES, INC.

YEAR OF REPORT
DECEMBER 31, 1997

SYSTEM NAME: PRESTON COVE

WATER TREATMENT PLANT INFORMATION

Type of treatment (reverse osmosis, etc.): Chlorination - Aqua Mag
 Methods used (sedimentation, chemical, aerated, etc.): Chemical

LIME TREATMENT

Unit rating (GPM): _____ Manufacturer: _____

FILTRATION

Type and area: Pressure ---> Square Feet: _____
 Gravity ---> GPM/Square Feet: _____

MAINS

TYPE OF PIPE (Galvanized, Cast Iron, PVC, Etc.)	DIAMETER OF PIPE (in inches)	MAINS BEGINNING OF YEAR (in feet)	ADDITIONS	RETIREMENTS	MAINS END OF YEAR (in feet)
P.V.C.	2"	-	-	-	-
P.V.C.	4"	-	-	-	-
P.V.C.	6"	-	-	-	-
-	-	-	-	-	-
-	-	-	-	-	-
-	-	-	-	-	-
-	-	-	-	-	-
-	-	-	-	-	-
-	-	-	-	-	-
Total feet of mains	=====	=====	=====	=====	=====

SERVICES AND METERS

METERS IN SERVICE	METERS BEGINNING OF YEAR	ADDITIONS	RETIREMENTS	METERS END OF YEAR
5/8" - 3/4"	77	5	-	82
1"	-	-	-	-
2"	-	-	-	-
3"	-	-	-	-
4"	-	-	-	-
6"	-	-	-	-
8"	-	-	-	-
Other (Specify): _____	-	-	-	-
Total meters in service	77	5	-	82
Total meters in stock	=====	=====	=====	=====
Number of services in use	77	5	-	82
	=====	=====	=====	=====

UTILITY NAME: LAKE UTILITY SERVICES, INC.

SYSTEM NAME: CRESCENT BAY

<p>YEAR OF REPORT DECEMBER 31, 1997</p>

WELLS AND WELL PUMPS

(a)	(b)	(c)	(d)	(e)
Year Constructed	1995			
Types of Well Construction and Casing	STEEL			
CASING DEPTH	205			
Depth of Wells	425			
Diameters of Wells	10"			
Pump - GPM	650			
Motor - HP	30			
Yields of Wells in GPD	936,000			
Auxiliary Power	NO			

RESERVOIRS

(a)	(b)	(c)	(d)	(e)
Description (steel, concrete or pneumatic)	PNEUMATIC			
Capacity of Tank	10,000			
Ground or Elevated	GROUND			

HIGH SERVICE PUMPING

MOTORS (a)	(b)	(c)	(d)	(e)
Manufacturer	N/A			
Type				
Rated Horsepower				
PUMPS				
Manufacturer				
Type				
Capacity in GPM				
Average Number Of Hours Operated Per Day				
Auxiliary Power				

UTILITY NAME: LAKE UTILITY SERVICES, INC.

<p>YEAR OF REPORT DECEMBER 31, 1997</p>

SYSTEM NAME: CRESCENT WEST

WELLS AND WELL PUMPS

(a)	(b)	(c)	(d)	(e)
Year Constructed _ _ _	1987	-----	-----	-----
Types of Well Construction and Casing _ _ _ _	STEEL	-----	-----	-----
CASING DEPTH	-----	-----	-----	-----
Depth of Wells	-----	-----	-----	-----
Diameters of Wells	10"	-----	-----	-----
Pump - GPM	600	-----	-----	-----
Motor - HP	30	-----	-----	-----
Yields of Wells in GPD	864,000	-----	-----	-----
Auxiliary Power	NO	-----	-----	-----

RESERVOIRS

(a)	(b)	(c)	(d)	(e)
Description (steel, concrete or pneumatic) _ _ _ _	PNEUMATIC	-----	-----	-----
Capacity of Tank	10,000	-----	-----	-----
Ground or Elevated	GROUND	-----	-----	-----

HIGH SERVICE PUMPING

MOTORS (a)	(b)	(c)	(d)	(e)
Manufacturer	N/A	-----	-----	-----
Type	-----	-----	-----	-----
Rated Horsepower	-----	-----	-----	-----
PUMPS				
Manufacturer	-----	-----	-----	-----
Type	-----	-----	-----	-----
Capacity in GPM	-----	-----	-----	-----
Average Number Of Hours Operated Per Day	-----	-----	-----	-----
Auxiliary Power	-----	-----	-----	-----

UTILITY NAME: LAKE UTILITY SERVICES, INC.

<p>YEAR OF REPORT DECEMBER 31, 1997</p>

SYSTEM NAME: HIGHLAND POINT

WELLS AND WELL PUMPS

(a)	(b)	(c)	(d)	(e)
Year Constructed	1986			
Types of Well Construction and Casing	STEEL			
CASING DEPTH	72			
Depth of Wells	520			
Diameters of Wells	10"			
Pump - GPM	600			
Motor - HP	60			
Yields of Wells in GPD	864,000			
Auxiliary Power	NO			

RESERVOIRS

(a)	(b)	(c)	(d)	(e)
Description (steel, concrete or pneumatic)	PNEUMATIC			
Capacity of Tank	5,000			
Ground or Elevated	GROUND			

HIGH SERVICE PUMPING

MOTORS (a)	(b)	(c)	(d)	(e)
Manufacturer	N/A			
Type				
Rated Horsepower				
PUMPS				
Manufacturer				
Type				
Capacity in GPM				
Average Number Of Hours Operated Per Day				
Auxiliary Power				

UTILITY NAME: LAKE UTILITY SERVICES, INC.

YEAR OF REPORT
DECEMBER 31, 1997

SYSTEM NAME: LAKE CRESCENT HILLS

WELLS AND WELL PUMPS

(a)	(b)	(c)	(d)	(e)
Year Constructed _ _ _	1991			
Types of Well Construction and Casing _ _ _ _	STEEL			
CASING DEPTH _ _ _ _				
Depth of Wells _ _ _ _	500			
Diameters of Wells _ _ _	10"			
Pump - GPM _ _ _ _	600			
Motor - HP _ _ _ _				
Yields of Wells in GPD	864,000			
Auxiliary Power _ _ _	YES			

RESERVOIRS

(a)	(b)	(c)	(d)	(e)
Description (steel, concrete or pneumatic) _ _ _ _	PNEUMATIC			
Capacity of Tank _ _ _	10,000			
Ground or Elevated _ _	GROUND			

HIGH SERVICE PUMPING

MOTORS (a)	(b)	(c)	(d)	(e)
Manufacturer _ _ _ _	N/A			
Type _ _ _ _				
Rated Horsepower _ _ _				
PUMPS				
Manufacturer _ _ _ _				
Type _ _ _ _				
Capacity in GPM _ _ _				
Average Number Of Hours Operated Per Day _ _				
Auxiliary Power _ _ _				

UTILITY NAME: LAKE UTILITY SERVICES, INC.

YEAR OF REPORT
DECEMBER 31, 1997

SYSTEM NAME: CRESCENT BAY

SOURCE OF SUPPLY

List for each source of supply:

Gals. per day of source	1.08 MG	-----	-----	-----	-----
Type of source	WELL #1	-----	-----	-----	-----

WATER TREATMENT FACILITIES

List for each water treatment facility:

Type	CHLORINATION	-----	-----	-----	-----
Make	REGAL	-----	-----	-----	-----
Gals. per day capacity	1.08 MG	-----	-----	-----	-----
Method of measurement	-----	-----	-----	-----	-----

OTHER WATER SYSTEM INFORMATION

Furnish information below for each system not physically connected with another facility. A separate page should be supplied where necessary.

- Present ERC's * that system can efficiently serve. 110
- Estimated annual increase in ERC's * 10
- List fire fighting facilities and capacities. HYDRANTS WITH WELL CAPACITY
1070 GPM
- List percent of certificated area where service connections are installed (total for each county). 51%
- What is the current need for system upgrading and/or expansion? NONE
- What are plans for future system upgrading and/or expansion? NONE
- Have questions 6 and 7 been discussed with an engineer (if so, state name and address)? NO
- Have questions 6 and 7 been discussed with appropriate state sanitary engineering office? NO

* ERC = (Total Gallons Sold / 365 days) / 350 Gallons Per Day

UTILITY NAME: LAKE UTILITY SERVICES, INC.

YEAR OF REPORT
DECEMBER 31, 1997

SYSTEM NAME: CRESCENT WEST

SOURCE OF SUPPLY

List for each source of supply:

Gals. per day of source	864,000	-----	-----	-----	-----
Type of source	WELL #1	-----	-----	-----	-----

WATER TREATMENT FACILITIES

List for each water treatment facility:

Type	CHLORINATION	-----	-----	-----	-----
Make	REGAL	-----	-----	-----	-----
Gals. per day capacity	864,000	-----	-----	-----	-----
Method of measurement	-----	-----	-----	-----	-----

OTHER WATER SYSTEM INFORMATION

Furnish information below for each system not physically connected with another facility. A separate page should be supplied where necessary.

- Present ERC's * that system can efficiently serve. 100
- Estimated annual increase in ERC's * 5
- List fire fighting facilities and capacities. HYDRANTS - SYSTEM INTERCONNECTED WITH LAKE CRESCENT HILLS WITH COMBINED WELL CAPACITY OF 1200 GPM.
- List percent of certificated area where service connections are installed (total for each county). 83%
- What is the current need for system upgrading and/or expansion? NONE
- What are plans for future system upgrading and/or expansion? NONE
- Have questions 6 and 7 been discussed with an engineer (if so, state name and address)? NO
- Have questions 6 and 7 been discussed with appropriate state sanitary engineering office? NO

* ERC = (Total Gallons Sold / 365 days) / 350 Gallons Per Day

UTILITY NAME: LAKE UTILITY SERVICES, INC.

YEAR OF REPORT
DECEMBER 31, 1997

SYSTEM NAME: HIGHLAND POINT

SOURCE OF SUPPLY

List for each source of supply:

Gals. per day of source	864,000	-----	-----	-----	-----
Type of source	WELL #1	-----	-----	-----	-----

WATER TREATMENT FACILITIES

List for each water treatment facility:

Type	CHLORINATION	-----	-----	-----	-----
Make	REGAL	-----	-----	-----	-----
Gals. per day capacity	864,000	-----	-----	-----	-----
Method of measurement	-----	-----	-----	-----	-----

OTHER WATER SYSTEM INFORMATION

Furnish information below for each system not physically connected with another facility. A separate page should be supplied where necessary.

- Present ERC's * that system can efficiently serve. 100
- Estimated annual increase in ERC's * 5
- List fire fighting facilities and capacities. HYDRANTS - WELL PRODUCES
600 GPM
- List percent of certificated area where service connections are installed (total for each county). 35%
- What is the current need for system upgrading and/or expansion? NONE
- What are plans for future system upgrading and/or expansion? NONE
- Have questions 6 and 7 been discussed with an engineer (if so, state name and address)? NO
- Have questions 6 and 7 been discussed with appropriate state sanitary engineering office? NO

* ERC = (Total Gallons Sold / 365 days) / 350 Gallons Per Day

UTILITY NAME: LAKE UTILITY SERVICES, INC.

YEAR OF REPORT
DECEMBER 31, 1997

SYSTEM NAME: LAKE CRESCENT HILLS

SOURCE OF SUPPLY

List for each source of supply:

Gals. per day of source	864,000	-----	-----	-----	-----
Type of source	WELL #1	-----	-----	-----	-----

WATER TREATMENT FACILITIES

List for each water treatment facility:

Type	CHLORINATION	-----	-----	-----	-----
Make	REGAL	-----	-----	-----	-----
Gals. per day capacity	864,000	-----	-----	-----	-----
Method of measurement		-----	-----	-----	-----

OTHER WATER SYSTEM INFORMATION

Furnish information below for each system not physically connected with another facility. A separate page should be supplied where necessary.

- Present ERC's * that system can efficiently serve. 100
- Estimated annual increase in ERC's * 10
- List fire fighting facilities and capacities. HYDRANTS - SYSTEM INTERCONNECTED WITH CRESCENT WEST
- List percent of certificated area where service connections are installed (total for each county). 100%
- What is the current need for system upgrading and/or expansion? NONE
- What are plans for future system upgrading and/or expansion? NONE
- Have questions 6 and 7 been discussed with an engineer (if so, state name and address)? NO
- Have questions 6 and 7 been discussed with appropriate state sanitary engineering office? NO

* ERC = (Total Gallons Sold / 365 days) / 350 Gallons Per Day

UTILITY NAME: LAKE UTILITY SERVICES, INC.

YEAR OF REPORT DECEMBER 31, 1997

SYSTEM NAME: CRESCENT BAY, CRESCENT WEST, HIGHLAND
 POINT, LAKE CRESCENT HILLS, PRESTON COVE, SOUTH CLERMONT
COMBINED

CALCULATION OF THE WATER SYSTEMS EQUIVALENT RESIDENTIAL UNITS

METER SIZE (a)	TYPE OF METER (b)	EQUIVALENT FACTOR (c)	NUMBER OF METERS (d)	TOTAL NUMBER OF METER EQUIVALENTS (c x d) (e)
5/8"	Displacement	1.0	921	921
3/4"	Displacement	1.5		
1"	Displacement	2.5	11	27.5
1 1/2"	Displacement or Turbine	5.0	2	10
2"	Displacement, Compound or Turbine	8.0	4	32
3"	Displacement	15.0		
3"	Compound	16.0		
3"	Turbine	17.5		
4"	Displacement or Compound	25.0		
4"	Turbine	30.0		
6"	Displacement or Compound	50.0		
6"	Turbine	62.5		
8"	Compound	80.0		
8"	Turbine	90.0		
10"	Compound	115.0		
10"	Turbine	145.0		
12"	Turbine	215.0		
Total Water System Meter Equivalents			938	990.5

CALCULATION OF THE WATER SYSTEMS EQUIVALENT RESIDENTIAL CONNECTIONS

$$(185.342 / 365 \text{ days}) / 350 \text{ gpd} = 1,451$$

(total gallons sold)

UTILITY NAME: LAKE UTILITY SERVICES, INC.

YEAR OF REPORT
DECEMBER 31, 1997

SYSTEM NAME: CRESCENT BAY

CALCULATION OF THE WATER SYSTEMS EQUIVALENT RESIDENTIAL UNITS

METER SIZE (a)	TYPE OF METER (b)	EQUIVALENT FACTOR (c)	NUMBER OF METERS (d)	TOTAL NUMBER OF METER EQUIVALENTS (c x d) (e)
5/8"	Displacement	1.0	53	53
3/4"	Displacement	1.5		
1"	Displacement	2.5	3	7.5
1 1/2"	Displacement or Turbine	5.0		
2"	Displacement, Compound or Turbine	8.0		
3"	Displacement	15.0		
3"	Compound	16.0		
3"	Turbine	17.5		
4"	Displacement or Compound	25.0		
4"	Turbine	30.0		
6"	Displacement or Compound	50.0		
6"	Turbine	62.5		
8"	Compound	80.0		
8"	Turbine	90.0		
10"	Compound	115.0		
10"	Turbine	145.0		
12"	Turbine	215.0		
Total Water System Meter Equivalents				60.5

CALCULATION OF THE WATER SYSTEMS EQUIVALENT RESIDENTIAL CONNECTIONS

$$(5.439 / 365 \text{ days}) / 350 \text{ gpd} = 43$$

(total gallons sold)

UTILITY NAME: LAKE UTILITY SERVICES, INC.

SYSTEM NAME: CRESCENT WEST

YEAR OF REPORT
DECEMBER 31, 1997

CALCULATION OF THE WATER SYSTEMS EQUIVALENT RESIDENTIAL UNITS

METER SIZE (a)	TYPE OF METER (b)	EQUIVALENT FACTOR (c)	NUMBER OF METERS (d)	TOTAL NUMBER OF METER EQUIVALENTS (c x d) (e)
5/8"	Displacement	1.0	79	79
3/4"	Displacement	1.5	---	---
1"	Displacement	2.5	1	2.5
1 1/2"	Displacement or Turbine	5.0	1	5
2"	Displacement, Compound or Turbine	8.0	2	16
3"	Displacement	15.0	---	---
3"	Compound	16.0	---	---
3"	Turbine	17.5	---	---
4"	Displacement or Compound	25.0	---	---
4"	Turbine	30.0	---	---
6"	Displacement or Compound	50.0	---	---
6"	Turbine	62.5	---	---
8"	Compound	80.0	---	---
8"	Turbine	90.0	---	---
10"	Compound	115.0	---	---
10"	Turbine	145.0	---	---
12"	Turbine	215.0	---	---
Total Water System Meter Equivalents -----				102.5

CALCULATION OF THE WATER SYSTEMS EQUIVALENT RESIDENTIAL CONNECTIONS

(27.962 / 365 days) / 350 gpd = 219
(total gallons sold)

UTILITY NAME: LAKE UTILITY SERVICES, INC.

YEAR OF REPORT
DECEMBER 31, 1997

SYSTEM NAME: HIGHLAND POINT

CALCULATION OF THE WATER SYSTEMS EQUIVALENT RESIDENTIAL UNITS

METER SIZE (a)	TYPE OF METER (b)	EQUIVALENT FACTOR (c)	NUMBER OF METERS (d)	TOTAL NUMBER OF METER EQUIVALENTS (c x d) (e)
5/8"	Displacement	1.0	34	34
3/4"	Displacement	1.5		
1"	Displacement	2.5	1	2.5
1 1/2"	Displacement or Turbine	5.0		
2"	Displacement, Compound or Turbine	8.0		
3"	Displacement	15.0		
3"	Compound	16.0		
3"	Turbine	17.5		
4"	Displacement or Compound	25.0		
4"	Turbine	30.0		
6"	Displacement or Compound	50.0		
6"	Turbine	62.5		
8"	Compound	80.0		
8"	Turbine	90.0		
10"	Compound	115.0		
10"	Turbine	145.0		
12"	Turbine	215.0		
Total Water System Meter Equivalents				36.5

CALCULATION OF THE WATER SYSTEMS EQUIVALENT RESIDENTIAL CONNECTIONS

$$(8.406 / 365 \text{ days}) / 350 \text{ gpd} = 66$$

(total gallons sold)

UTILITY NAME: LAKE UTILITY SERVICES, INC.

SYSTEM NAME: LAKE CRESCENT HILLS

YEAR OF REPORT
DECEMBER 31, 1997

CALCULATION OF THE WATER SYSTEMS EQUIVALENT RESIDENTIAL UNITS

METER SIZE (a)	TYPE OF METER (b)	EQUIVALENT FACTOR (c)	NUMBER OF METERS (d)	TOTAL NUMBER OF METER EQUIVALENTS (c x d) (e)
5/8"	Displacement	1.0	99	99
3/4"	Displacement	1.5		
1"	Displacement	2.5		
1 1/2"	Displacement or Turbine	5.0	1	5
2"	Displacement, Compound or Turbine	8.0		
3"	Displacement	15.0		
3"	Compound	16.0		
3"	Turbine	17.5		
4"	Displacement or Compound	25.0		
4"	Turbine	30.0		
6"	Displacement or Compound	50.0		
6"	Turbine	62.5		
8"	Compound	80.0		
8"	Turbine	90.0		
10"	Compound	115.0		
10"	Turbine	145.0		
12"	Turbine	215.0		
Total Water System Meter Equivalents				104

CALCULATION OF THE WATER SYSTEMS EQUIVALENT RESIDENTIAL CONNECTIONS

(34.476 / 365 days) / 350 gpd = 270
(total gallons sold)

UTILITY NAME: LAKE UTILITY SERVICES, INC.

SYSTEM NAME: PRESTON COVE

YEAR OF REPORT
DECEMBER 31, 1997

CALCULATION OF THE WATER SYSTEMS EQUIVALENT RESIDENTIAL UNITS

METER SIZE (a)	TYPE OF METER (b)	EQUIVALENT FACTOR (c)	NUMBER OF METERS (d)	TOTAL NUMBER OF METER EQUIVALENTS (c x d) (e)
5/8"	Displacement	1.0	82	82
3/4"	Displacement	1.5	-----	-----
1"	Displacement	2.5	-----	-----
1 1/2"	Displacement or Turbine	5.0	-----	-----
2"	Displacement, Compound or Turbine	8.0	-----	-----
3"	Displacement	15.0	-----	-----
3"	Compound	16.0	-----	-----
3"	Turbine	17.5	-----	-----
4"	Displacement or Compound	25.0	-----	-----
4"	Turbine	30.0	-----	-----
6"	Displacement or Compound	50.0	-----	-----
6"	Turbine	62.5	-----	-----
8"	Compound	80.0	-----	-----
8"	Turbine	90.0	-----	-----
10"	Compound	115.0	-----	-----
10"	Turbine	145.0	-----	-----
12"	Turbine	215.0	-----	-----
Total Water System Meter Equivalents -----				82 =====

CALCULATION OF THE WATER SYSTEMS EQUIVALENT RESIDENTIAL CONNECTIONS

(21.586 / 365 days) / 350 gpd = 169
(total gallons sold)

UTILITY NAME: LAKE UTILITY SERVICES, INC.

SYSTEM NAME: SO. CLERMONT (EDB)

YEAR OF REPORT
DECEMBER 31, 1997

CALCULATION OF THE WATER SYSTEMS EQUIVALENT RESIDENTIAL UNITS

METER SIZE (a)	TYPE OF METER (b)	EQUIVALENT FACTOR (c)	NUMBER OF METERS (d)	TOTAL NUMBER OF METER EQUIVALENTS (c x d) (e)
5/8"	Displacement	1.0	582	582
3/4"	Displacement	1.5	-----	-----
1"	Displacement	2.5	-----	-----
1 1/2"	Displacement or Turbine	5.0	-----	-----
2"	Displacement, Compound or Turbine	8.0	-----	-----
3"	Displacement	15.0	-----	-----
3"	Compound	16.0	-----	-----
3"	Turbine	17.5	-----	-----
4"	Displacement or Compound	25.0	-----	-----
4"	Turbine	30.0	-----	-----
6"	Displacement or Compound	50.0	-----	-----
6"	Turbine	62.5	-----	-----
8"	Compound	80.0	-----	-----
8"	Turbine	90.0	-----	-----
10"	Compound	115.0	-----	-----
10"	Turbine	145.0	-----	-----
12"	Turbine	215.0	-----	-----
Total Water System Meter Equivalents -----				582 =====

CALCULATION OF THE WATER SYSTEMS EQUIVALENT RESIDENTIAL CONNECTIONS

$$(87.473 / 365 \text{ days}) / 350 \text{ gpd} = 685$$

(total gallons sold)

**SEWER
OPERATION
SECTION**

UTILITY NAME: LAKE UTILITY SERVICES, INC.

YEAR OF REPORT
DECEMBER 31, 1997

SEWER UTILITY PLANT ACCOUNTS

NONE

ACCT. NO. (a)	ACCOUNT NAME (b)	PREVIOUS YEAR (c)	ADDITIONS (d)	RETIREMENTS (e)
351	Organization_ _ _ _ _	\$	\$ 0	\$
352	Franchises_ _ _ _ _		0	
353	Land and Land Rights_ _ _ _ _		0	
354	Structures and Improvements_ _		0	
360	Collection Sewers - Force_ _		0	
361	Collection Sewers - Gravity_ _		0	
362	Special Collecting Structures		0	
363	Services to Customers_ _ _ _ _		0	
364	Flow Measuring Devices_ _ _ _ _		0	
365	Flow Measuring Installations_		0	
370	Receiving Wells_ _ _ _ _		0	
371	Pumping Equipment_ _ _ _ _		0	
380	Treatment and Disposal Equip.		0	
381	Plant Sewers_ _ _ _ _		0	
382	Outfall Sewer Lines_ _ _ _ _		0	
389	Other Plant and Miscellaneous Equipment_ _ _ _ _		0	
390	Office Furniture and Equip. _		0	
391	Transportation Equipment_ _ _		0	
392	Stores Equipment_ _ _ _ _		0	
393	Tools, Shop and Garage Equip.		0	
394	Laboratory Equipment_ _ _ _ _		0	
395	Power Operated Equipment_ _ _		0	
396	Communication Equipment_ _ _		0	
397	Miscellaneous Equipment_ _ _		0	
398	Other Tangible Plant_ _ _ _ _		0	
	Total Sewer Plant_ _ _ _ _	\$ 0	\$ 0	\$ 0

NOTE: Any adjustments made to reclassify property from one account to another must be footnoted.

NONE

UTILITY NAME: LAKE UTILITY SERVICES, INC.

YEAR OF REPORT DECEMBER 31, 1997

SEWER UTILITY EXPENSE ACCOUNTS

ACCT. NO. (a)	ACCOUNT NAME (b)	CURRENT YEAR (c)	.1 SOURCE OF SUPPLY AND EXPENSES - OPERATIONS (d)	.2 SOURCE OF SUPPLY AND EXPENSES - MAINTENANCE (e)
701	Salaries and Wages - Employees	\$ 0	-	-
703	Salaries and Wages - Officers, Directors and Majority Stockholders			
704	Employee Pensions and Benefits	0	-	-
710	Purchased Sewage Treatment			XXXXXXXXXXXX
711	Sludge Removal Expense	0		XXXXXXXXXXXX
715	Purchased Power	0		XXXXXXXXXXXX
716	Fuel for Power Purchased			
718	Chemicals	0		
720	Materials and Supplies	0	-	-
731	Contractual Services - Eng.	0		
732	Contractual Services - Acct.	0		
733	Contractual Services - Legal	0		
734	Contractual Services - Management Fees	0		
735	Contractual Services - Other	0		
742	Rental of Equipment Property			
750	Transportation Expenses	0	-	-
756	Insurance - Vehicle			
757	Insurance - General Liability			
758	Insurance - Workman's Compensation			
759	Insurance - Other	0		
760	Advertising Expense		XXXXXXXXXXXX	XXXXXXXXXXXX
766	Regulatory Commission Expenses - Amortization of Rate Case Expense	0	XXXXXXXXXXXX	XXXXXXXXXXXX
767	Regulatory Commission Expenses - Other	0	XXXXXXXXXXXX	XXXXXXXXXXXX
770	Bad Debt Expense	0	XXXXXXXXXXXX	XXXXXXXXXXXX
775	Miscellaneous Expenses	0		
	Total Sewer Utility Expenses	\$ -	\$ -	\$ -

NOTE

SEWER EXPENSE ACCOUNT MATRIX

.3 PUMPING EXPENSES - OPERATIONS (f)	.4 PUMPING EXPENSES - MAINTENANCE (g)	.5 TREATMENT & DISPOSAL EXPENSES - OPERATIONS (h)	.6 TREATMENT DISPOSAL EXPENSES - MAINTENANCE (i)	.7 CUSTOMER ACCOUNTS EXPENSE (j)	.8 ADMINISTRATIVE & GENERAL EXPENSES (k)
\$ -	\$ -	\$ -	\$ -	\$ -	\$ -
XXXXXXXXXXXX	XXXXXXXXXXXX	XXXXXXXXXXXX	XXXXXXXXXXXX	XXXXXXXXXXXX	XXXXXXXXXXXX
-	XXXXXXXXXXXX	-	XXXXXXXXXXXX	-	-
-	XXXXXXXXXXXX	-	XXXXXXXXXXXX	XXXXXXXXXXXX	XXXXXXXXXXXX
-	-	-	-	-	-
-	-	-	-	-	-
XXXXXXXXXXXX	XXXXXXXXXXXX	XXXXXXXXXXXX	XXXXXXXXXXXX	XXXXXXXXXXXX	-
XXXXXXXXXXXX	XXXXXXXXXXXX	XXXXXXXXXXXX	XXXXXXXXXXXX	XXXXXXXXXXXX	-
XXXXXXXXXXXX	XXXXXXXXXXXX	XXXXXXXXXXXX	XXXXXXXXXXXX	XXXXXXXXXXXX	-
XXXXXXXXXXXX	XXXXXXXXXXXX	XXXXXXXXXXXX	XXXXXXXXXXXX	XXXXXXXXXXXX	-
XXXXXXXXXXXX	XXXXXXXXXXXX	XXXXXXXXXXXX	XXXXXXXXXXXX	-	XXXXXXXXXXXX
XXXXXXXXXXXX	XXXXXXXXXXXX	XXXXXXXXXXXX	XXXXXXXXXXXX	-	-
\$ -	\$ -	\$ -	\$ -	\$ -	\$ -

UTILITY NAME: LAKE UTILITY SERVICES, INC.

YEAR OF REPORT
DECEMBER 31, 1997

NONE

SEWER OPERATING REVENUE

ACCT. NO. (a)	DESCRIPTION (b)	BEGINNING YEAR NO. CUSTOMERS (c)	YEAR END NUMBER CUSTOMERS (d)	AMOUNTS (e)

Operating Revenues:				
Flat Rate Revenues -----				
				\$ -----
521.1	Residential Revenues -----		-	\$ -
521.2	Commercial Revenues_			
521.3	Industrial Revenues_			
521.4	Revenues From Public Authorities_			
521.5	Multiple Family Dwelling Revenues			
521.6	Other Revenues_ -----			
	Total Flat Rate Revenues	-	-	\$ -
522.1	Residential Revenues -----			
522.2	Commercial Revenues_			\$
522.3	Industrial Revenues_			
522.4	Revenues From Public Authorities_			
522.5	Multiple Family Dwelling Revenues			\$
	Total Measured Revenues			\$
523	Revenues From Public Authorities_ -----			
524	Revenues From Other Systems_ -----			
525	Interdepartmental Revenues_ -----			
	Totals -----	<u>0</u>	<u>0</u>	\$ <u>-</u>

Other Sewer Revenues:				
530	Guaranteed Revenues_ -----			\$
531	Sale Of Sludge_ -----			
532	Forfeited Discounts -----			-
534	Rents From Sewer Property_ -----			
535	Interdepartmental Rents_ -----			
536	Other Sewer Revenues -----			-
	Total Other Sewer Revenues -----			\$ -
	Total Sewer Operating Revenues -----			\$ -

NONE

UTILITY NAME: LAKE UTILITY SERVICES, INC.

YEAR OF REPORT DECEMBER 31, 1997

ANALYSIS OF ENTRIES IN SEWER ACCUMULATED DEPRECIATION

ACCT. NO. (a)	ACCOUNT NAME (b)	BALANCE AT BEGINNING OF YEAR (c)	ACCRUALS (d)	OTHER CREDITS * (e)	TOTAL CREDITS (d+e) (f)
354	Structures and Improvements	\$	\$ 0	\$	\$ 0
360	Collection Sewers - Force		* 0		0
361	Collection Sewers - Gravity		0		0
362	Special collecting Structures		0		0
363	Services to Customers		0		0
364	Flow Measuring Devices		0		0
365	Flow Measuring Installations		0		0
370	Receiving Wells		0		0
371	Pumping Equipment		* 0		0
380	Treatment and Disposal Equip.		0		0
381	Plant Sewers		0		0
382	Outfall Sewer Lines		0		0
389	Other Plant and Miscellaneous		0		0
331	Equipment		0		0
390	Office Equipment and Equip.		0		0
391	Transportation Equipment		0		0
392	Stores Equipment		0		0
393	Tools, Shop and Garage Equip.		0		0
394	Laboratory Equipment		0		0
395	Power Operated Equipment		0		0
396	Communication Equipment		0		0
397	Miscellaneous Equipment		0		0
398	Other Tangible Plant		0		0
	Alloc from Util. Inc. of Fla.		0		0
	Total Depreciable Sewer Plant In Service	\$ 0	\$ 0	\$ 0	\$ 0
		=====	=====	=====	=====

* Specify nature of transaction.
Use () to denote reversal entries.

NOTE

UTILITY NAME: LAKE UTILITY SERVICES, INC.

YEAR OF REPORT
DECEMBER 31, 1997

UTILITY SYSTEM: _____

PUMPING EQUIPMENT

Lift station number _____	-----	-----	-----	-----	-----	-----
Make or type and nameplate data of pump _____	-----	-----	-----	-----	-----	-----
Year installed _____	-----	-----	-----	-----	-----	-----
Rated capacity _____	-----	-----	-----	-----	-----	-----
Size _____	-----	-----	-----	-----	-----	-----
Power:	-----	-----	-----	-----	-----	-----
Electric _____	-----	-----	-----	-----	-----	-----
Mechanical _____	-----	-----	-----	-----	-----	-----
Nameplate data of motor _____	-----	-----	-----	-----	-----	-----

Lift station number _____	-----	-----	-----	-----	-----	-----
Make or type and nameplate data of pump _____	-----	-----	-----	-----	-----	-----
Year installed _____	-----	-----	-----	-----	-----	-----
Rated capacity _____	-----	-----	-----	-----	-----	-----
Size _____	-----	-----	-----	-----	-----	-----
Power:	-----	-----	-----	-----	-----	-----
Electric _____	-----	-----	-----	-----	-----	-----
Mechanical _____	-----	-----	-----	-----	-----	-----
Nameplate data of motor _____	-----	-----	-----	-----	-----	-----

SERVICE CONNECTIONS

Size (inches) _____	-----	-----	-----	-----	-----	-----
Type (PVC, VCP, etc.) _____	-----	-----	-----	-----	-----	-----
Average length _____	-----	-----	-----	-----	-----	-----
Number of active service connections _____	-----	-----	-----	-----	-----	-----
Beginning of year _____	-----	-----	-----	-----	-----	-----
Added during year _____	-----	-----	-----	-----	-----	-----
Retired during year _____	-----	-----	-----	-----	-----	-----
End of year _____	-----	-----	-----	-----	-----	-----
Give full particulars concerning inactive connections _____	-----	-----	-----	-----	-----	-----

~~NONE~~

UTILITY NAME: LAKE UTILITY SERVICES, INC.

YEAR OF REPORT
DECEMBER 31, 1997

UTILITY SYSTEM: _____

COLLECTING MAINS

COLLECTING MAINS:							
Size (inches_	---	---	---	---	---	---	---
Type of main_	---	---	---	---	---	---	---
Length of main (nearest foot):							
Beginning of year	---	---	---	---	---	---	---
Added during year	---	---	---	---	---	---	---
Retired during year	---	---	---	---	---	---	---
End of year	---	---	---	---	---	---	---
MANHOLES:							
Size_	---	---	---	---	---	---	---
Type_	---	---	---	---	---	---	---
Number:							
Beginning of year	---	---	---	---	---	---	---
Added during year	---	---	---	---	---	---	---
Retired during year	---	---	---	---	---	---	---
End of year	---	---	---	---	---	---	---

FORCE MAINS

FORCE MAINS:							
Size (inches_	---	---	---	---	---	---	---
Type of main_	---	---	---	---	---	---	---
Length of main (nearest foot):							
Beginning of year	---	---	---	---	---	---	---
Added during year	---	---	---	---	---	---	---
Retired during year	---	---	---	---	---	---	---
End of year	---	---	---	---	---	---	---

NONE

UTILITY NAME: LAKE UTILITY SERVICES, INC.

YEAR OF REPORT
DECEMBER 31, 1997

SYSTEM NAME _____

TREATMENT PLANT

Manufacturer _____	_____	_____	_____
Type _____	_____	_____	_____
"Steel" or "Concrete" _____	_____	_____	_____
Total Capacity _____	_____	_____	_____
Average Daily Flow _____	_____	_____	_____
Effluent Disposal _____	_____	_____	_____
Total Gallons of Sewage Treated _____	_____	_____	_____

MASTER LIFT STATION PUMPS

Manufacturer _____	_____	_____	_____	_____
Capacity _____	_____	_____	_____	_____
Motor : Mfr. _____	_____	_____	_____	_____
Horsepower _____	_____	_____	_____	_____
Power (Electric or Mechanical) _____	_____	_____	_____	_____

OTHER SEWER SYSTEM INFORMATION

1. Maximum number of ERC's * which can be served. _____
2. Estimated annual increase in ERC's *. _____
3. List permit numbers required by Chapter 17-4, Rules of the Department of Environmental Regulation (DER) for systems in operation. _____
4. State any plans and estimated completion dates for any enlargements of this system. _____
5. If present systems do not meet the requirements of Chapter 17-4, Rules of the DER, submit the following:
 - a. Evaluation of the present plant or plants in regard to meeting the DER rules.
 - b. Plans for funding and construction of the required upgrading.
 - c. Have these plans been coordinated with the DER? _____
 - d. Do they concur? _____
 - e. When will construction begin? _____
6. In what percent of your certificated area have service connections been installed? _____ %

* $ERC = (Total\ Gallons\ Treated / 365\ days) / 275\ Gallons\ Per\ Day$

Note: Total Gallons Treated includes both sewage treated and purchased sewage treatment

NONE

UTILITY NAME: LAKE UTILITY SERVICES, INC.

YEAR OF REPORT
DECEMBER 31, 1997

UTILITY SYSTEM: _____

CALCULATION OF THE SEWER SYSTEMS EQUIVALENT RESIDENTIAL UNITS

METER SIZE* (a)	TYPE OF METER* (b)	EQUIVALENT FACTOR (c)	NUMBER OF METERS (d)	TOTAL NUMBER OF METER EQUIVALENTS (c x d) (e)
5/8"	Displacement	1.0	-----	-----
3/4"	Displacement	1.5	-----	-----
1"	Displacement	2.5	-----	-----
1 1/2"	Displacement or Turbine	5.0	-----	-----
2"	Displacement, Compound or Turbine	8.0	-----	-----
3"	Displacement	15.0	-----	-----
3"	Compound	16.0	-----	-----
3"	Turbine	17.5	-----	-----
4"	Displacement or Compound	25.0	-----	-----
4"	Turbine	30.0	-----	-----
6"	Displacement or Compound	50.0	-----	-----
6"	Turbine	62.5	-----	-----
8"	Compound	80.0	-----	-----
8"	Turbine	90.0	-----	-----
10"	Compound	115.0	-----	-----
10"	Turbine	145.0	-----	-----
12"	Turbine	215.0	-----	-----
Total Sewer System Meter Equivalents -----				-----

CALCULATION OF THE SEWER SYSTEMS EQUIVALENT RESIDENTIAL CONNECTIONS

(_____ / 365 days) / 350 gpd = _____
(total gallons sold)