

**David Christian**  
Assistant Vice President  
Regulatory Affairs Florida



106 E. College Ave  
Tallahassee, Florida 32301  
Telephone 850-224-3963  
Fax 850-222-2912  
david.christian@verizon.com

January 21, 2005

Ms. Beth W. Salak, Director  
Division of Competitive Markets and Enforcement  
Florida Public Service Commission  
2540 Shumard Oak Boulevard  
Tallahassee, FL 32399-0850

Dear Ms. Salak:

Attached are copies of new tariff pages filed as part of our Verizon Florida Inc. General Services Tariff. See Attachment A for a listing of the impacted tariff sheets.

The purpose of this filing is to redefine the descriptions of the Bradenton and Sarasota exchange boundary maps and to reflect how service is actually provisioned today. There is no impact to customers service with this exchange boundary filing.

If you require additional information, please contact Carlton A. Ball at (813) 483-2529.

Sincerely,  
David M. Christian  
Assistant Vice President  
Regulatory Affairs Florida

DMC:sv  
Attachments

Attachment A

**Verizon Florida Inc. General Services Tariff**

Section A200

3rd Revised Page 5  
2nd Revised Page 6  
5th Revised Page 7  
3rd Revised Page 65  
3rd Revised Page 66  
6th Revised Page 67

## A200. LOCAL EXCHANGE SERVICE AREA MAPS AND DESCRIPTIONS

A200.2 Bradenton (Continued)

## .2 Exchange Area Description by Metes and Bounds

- a. Beginning at a point along the Hillsborough-Manatee County Line approximately two miles northeast of Passage Key; then southeastwardly to a point in the center of the mouth of the Manatee River; then eastwardly along the center of the Manatee River approximately twenty-four and one-half miles to a point on the east-west half-section line of Section 14, T 34 S, R 19 E; then east along half-section line approximately four-tenths mile to the northeast corner of the southeast quarter of Section 14, T 34 S, R 19 E; then south along section line approximately four-tenths mile to a point in the center of the Manatee River; then southeastwardly along the center of said river approximately one mile to a point on the north boundary of Section 25, T 34 S, R 19 E; then east approximately two and one-half miles to the northeast corner of Section 29, T 34 S, R 20 E; then southerly along the section lines approximately three and one-half miles to the southeast corner of Section 8, T 35 S, R 20 E; thence westerly along the section lines approximately two miles to the northwest corner of Section 18, T 35 S, R 20 E; thence southerly along the section lines approximately three miles to the southeast corner of Section 25, T 35 S, R 19 E; then westerly along the section lines approximately two miles to the southwest corner of Section 26, T 35 S, R 19 E; then north along section lines one mile to the southeast corner of Section 22, T 35 S, R 19 E; then west approximately one mile to the intersection of the Braden River at the southeast corner of Section 21, T 35 S, R 19 E; then westerly and northwesterly along the Braden River approximately 5 and ½ miles to the (N) (D) Rattlesnake Slough River; thence southwestwardly along Rattlesnake Slough River to the north-south half section line of Section 21, T 35 S, R 18 E; then south along Lockwood Ridge Road approximately 323 feet to Whitfield Avenue; then west along Whitfield Avenue approximately 1350 feet to the northeast corner of the northwest ¼ of the north west ¼ of Section 28, T 35 S, R 18 E; then south to the southeast corner of the southwest ¼ of the northwest ¼ of Section 28, T 35 S, R 18 E; then west along 1/16 section lines to U.S. Highway 301; then south on U.S. Highway 301 3/8 mile to the south line of the north ½ of the northeast ¼ of the southeast ¼ of Section 30, T 35 S, R 18 E; thence west along 1/64 section lines to Seminole Gulf Railroad; thence north along railroad 3/8 mile to the south line of the north ½ of the northwest ¼ of Section 30, T 35 S, R 18 E; then west along 1/16 section lines to the northeast corner of the northwest ¼ of the southeast (N)

A200. LOCAL EXCHANGE SERVICE AREA MAPS AND DESCRIPTIONS

A200.2 Bradenton (Continued)

.2 Exchange Area Description by Metes and Bounds (Continued)

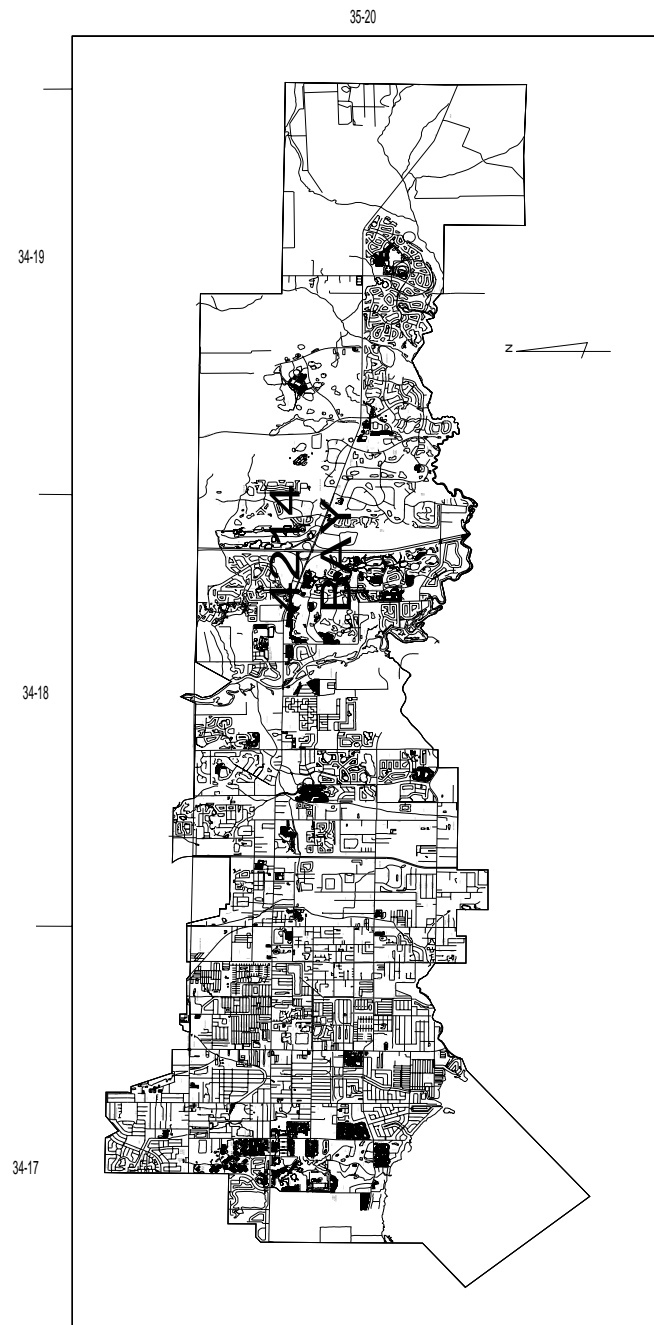
a. (Continued)

¼ of the northeast ¼ of Section 25, T 35 S, R 17 E; then south 1/8 mile to the southeast corner of the (N)  
 northwest ¼ of the southeast ¼ of the northeast ¼ of Section 25, T 35 S, R 17 E; then west along 1/16 lines  
 3/8 mile to the north-south half section line of Section 25, T 35 S, R 17 E; Then north along the north-south  
 half section line approximately ½ mile to Bowlees Creek; then westwardly along Bowlees Creek to Sarasota (N) (D)  
 Bay; then northwestwardly through Sarasota Bay and through Longboat Inlet to the north of Jewfish and  
 Longboat Keys into the Gulf of Mexico; then northwardly along the west shore of Anna Maria Key to the  
 Hillsborough-Manatee County Line; then northeastwardly along said line to point of beginning.

A200. LOCAL EXCHANGE SERVICE AREA MAPS AND DESCRIPTIONS

A200.2 Bradenton

.3 Exchange Service Area Map



(N)

(N)

A200. LOCAL EXCHANGE SERVICE AREA MAPS AND DESCRIPTIONS

A200.19 Sarasota (Continued)

.2 Exchange Area Description by Metes and Bounds

- a. Beginning at a point where Longboat Inlet enters the Gulf of Mexico; then eastwardly through Longboat Inlet to the north of Long Beach and Jewfish Key into Sarasota Bay; then southeastwardly across Sarasota Bay to the mouth of Bowlees Creek; then eastwardly along Bowlees Creek to a point where Bowlees Creek intersects the north-south half-section line of Section 24, T 35 S, R 17 E; then south along north-south half section line (N) (D) approximately 1/2 mile to the southwest corner of the northwest 1/4 of the southwest 1/4 of the northeast 1/4 of section 25, T 35 S, R17 E; then east approximately 3/8 mile to the southeast corner of the northwest 1/4 of the southeast 1/4 of the northeast 1/4 of section 25, T 35 S, R 17 E; then north 1/8 mile to the south line of the northeast 1/4 of the northeast 1/4 of Section 25, T 35 S, R 17 E; then east along 1/16 lines 3/8 mile to Seminole Gulf Railroad; thence south along railroad 3/8 mile to the southwest corner of the northwest 1/4 of the northeast 1/4 of the southwest 1/4 of Section 30, T 35 S, R 18 E; then east along 1/64 section lines to U.S. Highway 301; then north on U.S. Highway 301 3/8 mile to the south line of the northeast 1/4 of the northeast 1/4 of Section 30, T 35 S, R 18 E; then east along 1/16 section lines to the southeast corner of the southwest 1/4 of the northwest 1/4 of Section 28,T 35 S, R 18 E; then north to the northeast corner of the northwest 1/4 of the northwest 1/4 of Section 28, T 35 S R 18 E; then east along Whitfield Avenue approximately 1350 feet to Lockwood Ridge Road; then north along Lockwood Ridge Road approximately 323 feet to the Rattlesnake Slough River; thence northeasterly along Rattlesnake Slough River to the Braden River; thence southeasterly and easterly along the Braden River approximately 5 and 1/2 miles to the northeast corner of section 28, T35 S, R 19 E; then eastwardly along section line approximately one mile to the northeast corner of (N) Section 27, T 35 S, R 19 E; then south one mile to the northeast corner of Section 34, T 35 S, R 19 E; then east two miles to the northeast corner of Section 36, T 35 S, R 19 E; then south along range line approximately one mile to the Manatee-Sarasota County Line; then east along said county line approximately three and three-quarters miles to a point where the east section line of Section 34, T 35 S, R 20 E intersects the north section line of Section 3, T 36 S, R 20 E; then south five miles; then west approximately three-quarters mile to the northeast corner of Section 33, T 36 S, R 20 E; then south two miles; then east three miles; then south eight

(M) Material moved to Page 66.

(M)  
(N)

A200. LOCAL EXCHANGE SERVICE AREA MAPS AND DESCRIPTIONS

A200.19 Sarasota (Continued)

.2 Exchange Area Description by Metes and Bounds (Continued)

a. (Continued)

miles to the southeast corner of Section 13, T 38 S, R 20 E; then west along section lines six miles to the southwest corner of Section 18, T 38 S, R 20 E; then north along range line between R 19 E and R 20 E four miles; then west along section lines three miles; then north along section lines one and one-quarter miles to the southeast corner of the northeast quarter of the southeast quarter of Section 21, T 37 S, R 19 E; then west along quarter-section lines three miles to the northeast corner of the southeast quarter of Section 24, T 37 S, R 18 E; then south along section line two and one-quarter miles to the southeast corner of Section 36, T 37 S, R 18 E; then west along section line approximately one mile to the intersection with the Seaboard Coast Line Railroad in Section 35, T 37 S, R 18 E; then northwestwardly along said railroad approximately one mile to the south section line of Section 26, T 37 S, R 18 E; then west along section line approximately one and one-half miles to the centerline of U.S. Highway 41; then northwestwardly along said centerline approximately one-half mile to the intersection with the west boundary line of Section 27, T 37 S, R 18 E; then south along section line (Beneva and Vamo Roads) to the half-section line of fractional Section 28, T 37 S, R 18 E; then west along said half-section line approximately 823 feet; then south to Clower Creek; then southwestwardly through said creek to the intersection of a line approximately 1700 feet north of and parallel to the south boundary of fractional Section 28, T 37 S, R 18 E; then west along said line approximately 800 feet into Little Sarasota Bay; then westwardly and southwestwardly through Little Sarasota Bay to a point south of Midnight Pass; then northwestwardly through Midnight Pass into the Gulf of Mexico; then northwestwardly along the shoreline of the Gulf of Mexico to point of beginning.

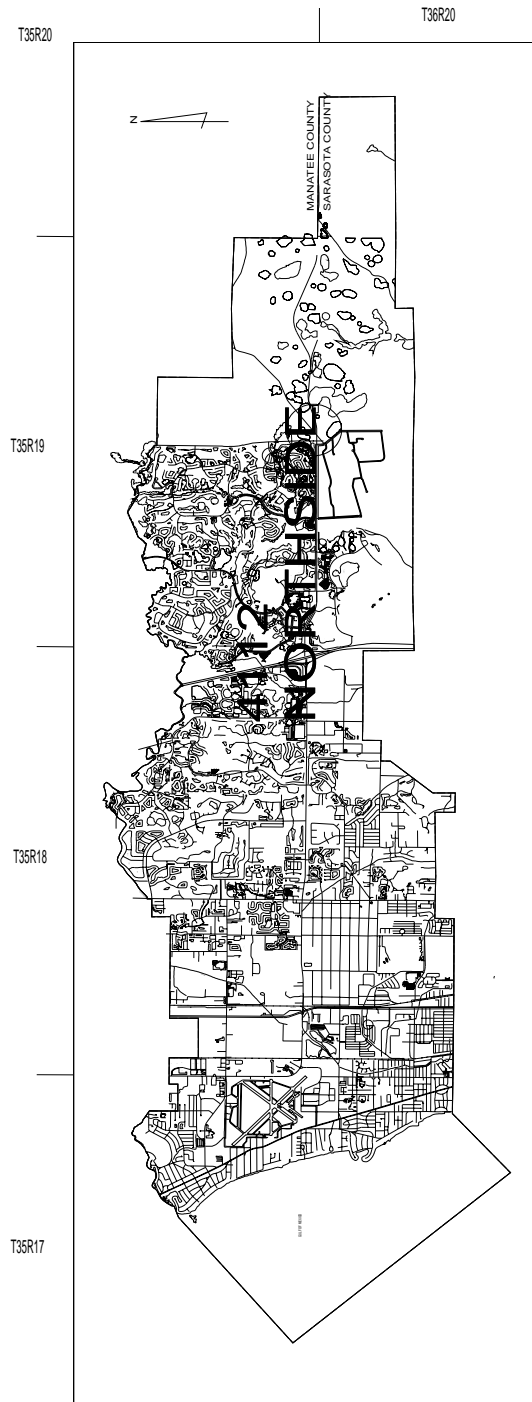
(M) Material moved from Page 65.

(N)

A200. LOCAL EXCHANGE SERVICE AREA MAPS AND DESCRIPTIONS

A200.19 Sarasota

.3 Exchange Service Area Map



(N)

(N)



A200. LOCAL EXCHANGE SERVICE AREA MAPS AND DESCRIPTIONS

A200.2 Bradenton (Continued)

.2 Exchange Area Description by Metes and Bounds

- a. Beginning at a point along the Hillsborough-Manatee County Line approximately two miles northeast of Passage Key; then southeastwardly to a point in the center of the mouth of the Manatee River; then eastwardly along the center of the Manatee River approximately twenty-four and one-half miles to a point on the east-west half-section line of Section 14, T 34 S, R 19 E; then east along half-section line approximately four-tenths mile to the northeast corner of the southeast quarter of Section 14, T 34 S, R 19 E; then south along section line approximately four-tenths mile to a point in the center of the Manatee River; then southeastwardly along the center of said river approximately one mile to a point on the north boundary of Section 25, T 34 S, R 19 E; then east approximately two and one-half miles to the northeast corner of Section 29, T 34 S, R 20 E; then southerly along the section lines approximately three and one-half miles to the southeast corner of Section 8, T 35 S, R 20 E; thence westerly along the section lines approximately two miles to the northwest corner of Section 18, T 35 S, R 20 E; thence southerly along the section lines approximately three miles to the southeast corner of Section 25, T 35 S, R 19 E; then westerly along the section lines approximately two miles to the southwest corner of Section 26, T 35 S, R 19 E; then north along section lines one mile to the southeast corner of Section 22, T 35 S, R 19 E; then west approximately one mile to the intersection of the Braden River at the southeast corner of Section 21, T 35 S, R 19 E; then westerly following the meanderings of the Braden River approximately four and one-half miles to the westernmost intersection of the Braden River with the south boundary line of Section 23, T 35 S, R 18 E; then west along section lines approximately one mile to the half section line of Section 22, T 35 S, R 18 E; then north along the half section line one quarter mile to the quarter section line of Section 22; then west along the quarter section line one mile to the half section line of Section 21, T 35 S, R 18 E; then south along the half section line one quarter mile to the south section line of Section 21; then west along the section lines approximately one half mile to the southwest corner of Section 21, T 35 S, R 18 E; then south along section line one quarter mile, then west along quarter section lines two and one-half miles to the southwest corner of the northwest quarter of the northeast quarter of Section 25, T 35 S, R 17 E; then north along half section line approximately one quarter mile to Boeels; then westerly and northwesterly along the Braden River approximately 5 and 1/2 miles to the Rattlesnake Slough River; thence southwesterly along Rattlesnake Slough River to the north-south half section line of Section 21, T 35 S, R 18 E; then south along Lockwood Ridge Road approximately 323 feet to Whitfield Avenue; then west along Whitfield Avenue approximately 1350 feet to the northeast corner of the northwest 1/4 of the north west 1/4 of Section 28, T 35 S, R 18 E; then south to the southeast corner of the southwest 1/4 of the northwest 1/4 of Section 28, T 35 S, R 18 E; then west along 1/16 section lines to U.S. Highway 301; then south on U.S. Highway 301 3/8 mile to the south line of the north 1/2 of the northeast 1/4 of the southeast 1/4 of Section 30, T 35 S, R 18 E; thence west along 1/64 section lines to Seminole Gulf Railroad; thence north along railroad 3/8 mile to the south line of the north 1/2 of the northwest 1/4 of Section 30, T 35 S, R 18 E; then west along 1/16 section lines to the northeast corner of the northwest 1/4 of the southeast

(D)

(D) (N)

(N)

A200. LOCAL EXCHANGE SERVICE AREA MAPS AND DESCRIPTIONS

A200.2 Bradenton (Continued)

.2 Exchange Area Description by Metes and Bounds (Continued)

a. (Continued)

~~Creek~~; ¼ of the northeast ¼ of Section 25, T 35 S, R 17 E; then south 1/8 mile to the southeast corner of the northwest ¼ of the (D) (N)  
southeast ¼ of the northeast ¼ of Section 25, T 35 S, R 17 E; then west along 1/16 lines 3/8 mile to the north-south half section line of  
Section 25, T 35 S, R 17 E; Then north along the north-south half section line approximately ½ mile to Bowlees Creek; then (N)  
westwardly along Bolees Creek to Sarasota Bay; then northwestwardly through Sarasota Bay and through Longboat Inlet to  
the north of Jewfish and Longboat Keys into the Gulf of Mexico; then northwardly along the west shore of Anna Maria Key to  
the Hillsborough-Manatee County Line; then northeastwardly along said line to point of beginning.

A200. LOCAL EXCHANGE SERVICE AREA MAPS AND DESCRIPTIONS

A200.2 Bradenton

.3 Exchange Service Area Map

(Insert Map)

(N)

(N)

A200. LOCAL EXCHANGE SERVICE AREA MAPS AND DESCRIPTIONS

A200.19 Sarasota (Continued)

.2 Exchange Area Description by Metes and Bounds

- a. Beginning at a point where Longboat Inlet enters the Gulf of Mexico; then eastwardly through Longboat Inlet to the north of Long Beach and Jewfish Key into Sarasota Bay; then southeastwardly across Sarasota Bay to the mouth of Bowlees Creek; then eastwardly along Bowlees Creek to a point where Bowlees Creek intersects the north-south half-section line of Section 24, T 35 S, R 17 E; ~~then south approximately one quarter mile to the southeast corner of the northeast quarter of the northwest quarter of Section 25, T 35 S, R 17 E; then east along quarter section lines two and one-half miles; then north along section line one quarter mile to the northwest corner of Section 28, T 35 S, R 18 E; then east along section lines one-half mile to the half section line of Section 21, T 35 S, R 18 E; then north along half section line one quarter mile to the quarter section line of Section 21, T 35 S, R 18 E; then east along quarter section line one mile to the half section line of Section 22, T 35 S, R 18 E; then south along the half section line one quarter mile to the south section line of Section 22, T 35 S, R 18 E; then east along section lines approximately one mile to the Braden River; then eastwardly along the Braden River approximately four and one-half miles to the northeast corner of Section 28, T 35 S, R 19 E; then south along north-south half section line approximately 1/2 mile to the southwest corner of the northwest 1/4 of the southwest 1/4 of the northeast 1/4 of section 25, T 35 S, R 17 E; then east approximately 3/8 mile to the southeast corner of the northwest 1/4 of the southeast 1/4 of the northeast 1/4 of section 25, T 35 S, R 17 E; then north 1/8 mile to the south line of the northeast 1/4 of the northeast 1/4 of Section 25, T 35 S, R 17 E; then east along 1/16 lines 3/8 mile to Seminole Gulf Railroad; thence south along railroad 3/8 mile to the southwest corner of the northwest 1/4 of the northeast 1/4 of the southwest 1/4 of Section 30, T 35 S, R 18 E; then east along 1/64 section lines to U.S. Highway 301; then north on U.S. Highway 301 3/8 mile to the south line of the northeast 1/4 of the northeast 1/4 of Section 30, T 35 S, R 18 E; then east along 1/16 section lines to the southeast corner of the southwest 1/4 of the northwest 1/4 of Section 28, T 35 S, R 18 E; then north to the northeast corner of the northwest 1/4 of the northwest 1/4 of Section 28, T 35 S R 18 E; then east along Whitfield Avenue approximately 1350 feet to Lockwood Ridge Road; then north along Lockwood Ridge Road approximately 323 feet to the Rattlesnake Slough River; thence northeasterly along Rattlesnake Slough River to the Braden River; thence southeasterly and easterly along the Braden River approximately 5 and 1/2 miles to the northeast corner of section 28, T35 S, R 19 E; then eastwardly along section line approximately one mile to the northeast corner of Section 27, T 35 S, R 19 E; then south one mile to the northeast corner of Section 34, T 35 S, R 19 E; then east two miles to the northeast corner of Section 36, T 35 S, R 19 E; then south along range line approximately one mile to the Manatee-Sarasota County Line; then east along said county line approximately three and three-quarters miles to a point where the east section line of Section 34, T 35 S, R 20 E intersects the north section line of Section 3, T 36 S, R 20 E; then south five miles; then west approximately three-quarters mile to the northeast corner of Section 33, T 36 S, R 20 E; then south two miles; then east three miles; then south eight miles to the southeast corner of Section 13, T 38 S, R 20 E; then west along section lines six miles to the southwest corner of Section 18, T 38 S, R 20 E; then north along range line between R 19 E and R 20 E four miles; then west along section lines three miles; then north along section lines one and one-quarter miles to the southeast corner of the northeast quarter of the southeast quarter of Section 21, T 37 S, R 19 E; then west along quarter-section lines three miles to the northeast corner of the southeast quarter of Section 24, T 37 S, R 18 E; then south along~~ (D) (N) (M)

(M) Material moved to Page 66.

(N)

A200. LOCAL EXCHANGE SERVICE AREA MAPS AND DESCRIPTIONS

A200.19 Sarasota (Continued)

.2 Exchange Area Description by Metes and Bounds (Continued)

a. (Continued)

miles to the southeast corner of Section 13, T 38 S, R 20 E; then west along section lines six miles to the southwest corner of (M)  
Section 18, T 38 S, R 20 E; then north along range line between R 19 E and R 20 E four miles; then west along section lines three  
miles; then north along section lines one and one-quarter miles to the southeast corner of the northeast quarter of the southeast  
quarter of Section 21, T 37 S, R 19 E; then west along quarter-section lines three miles to the northeast corner of the southeast (M)  
quarter of Section 24, T 37 S, R 18 E; then south along section line two and one-quarter miles to the southeast corner of Section  
36, T 37 S, R 18 E; then west along section line approximately one mile to the intersection with the Seaboard Coast Line  
Railroad in Section 35, T 37 S, R 18 E; then northwestwardly along said railroad approximately one mile to the south section  
line of Section 26, T 37 S, R 18 E; then west along section line approximately one and one-half miles to the centerline of U.S.  
Highway 41; then northwestwardly along said centerline approximately one-half mile to the intersection with the west  
boundary line of Section 27, T 37 S, R 18 E; then south along section line (Beneva and Vamo Roads) to the half-section line  
of fractional Section 28, T 37 S, R 18 E; then west along said half-section line approximately 823 feet; then south to Clower  
Creek; then southwestwardly through said creek to the intersection of a line approximately 1700 feet north of and parallel to  
the south boundary of fractional Section 28, T 37 S, R 18 E; then west along said line approximately 800 feet into Little  
Sarasota Bay; then westwardly and southwestwardly through Little Sarasota Bay to a point south of Midnight Pass; then  
northwestwardly through Midnight Pass into the Gulf of Mexico; then northwestwardly along the shoreline of the Gulf of  
Mexico to point of beginning.

(M) Material moved from Page 65.

(N)

A200. LOCAL EXCHANGE SERVICE AREA MAPS AND DESCRIPTIONS

A200.19 Sarasota

.3 Exchange Service Area Map

(N)

(Insert Map)

(N)