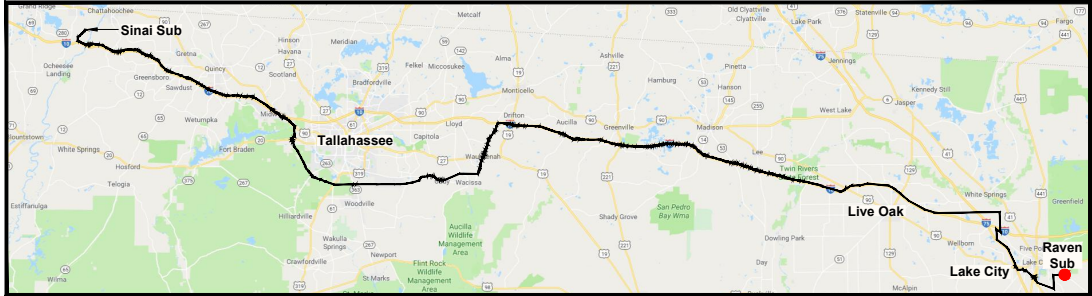


NOTES:  
1. SURVEY BOUNDARIES AND WETLAND DELINEATION PROVIDED BY OTHERS.

LEGEND	
	WETLAND
	DITCH, STREAM & WATERBODY
	TRANSMISSION POLE TO BE INSTALLED
	TRANSMISSION POLE TO BE REMOVED
	PROJECT MILE MARKER
	EXISTING FPL EASEMENT
	PROPOSED EASEMENT
	PROPERTY LINE
	INDICATES STRUCTURE FROM ORIGINAL SUBMITTAL

24 x 36 Scale: 1" = 200'  
11 x 17 Scale: 1" = 400'  
200' 0 100' 200' 400'



REV	DATE	DESCRIPTION	GCC	JRC	MKL
1	10/25/19	REVISIONS, CLARIFICATIONS FOR RAI RESPONSE 10-25-19	BY	CKD	APP

**GULF POWER COMPANY**

SCALE: 1" = 400'  
DRAWN BY: GCC  
ENGINEER: MKL  
COUNTY: COLUMBIA  
SHEET 1 OF 15

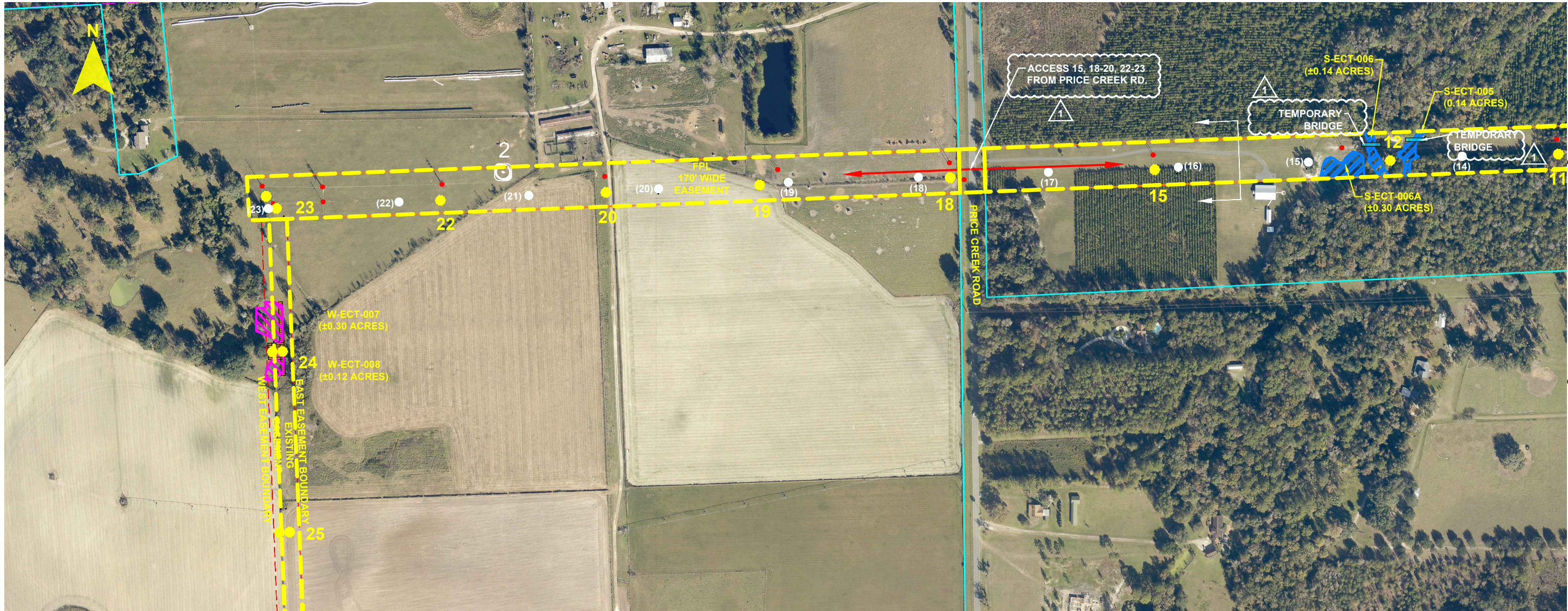
**NORTH FLORIDA RESILIENCY CONNECTION**

DATE: 10/25/19  
CHECKED BY: JRC  
SECTION: AS SHOWN  
FILE NAME: PHASE 1\_ROL

**RAI Response - Question 3A**

FPL 035565  
20210015-EI

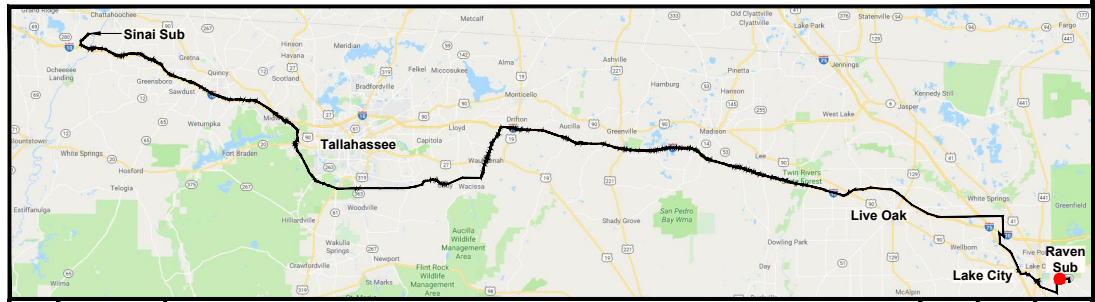
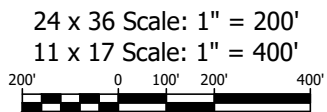
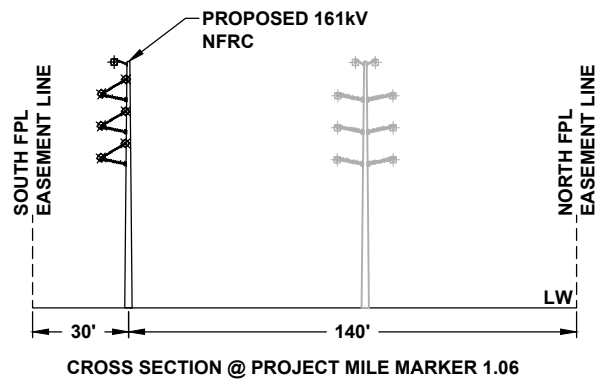




B-----B

NOTES:  
1. SURVEY BOUNDARIES AND WETLAND DELINEATION PROVIDED BY OTHERS.

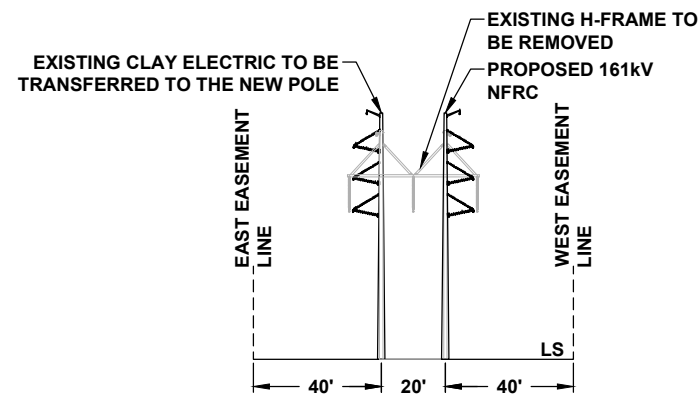
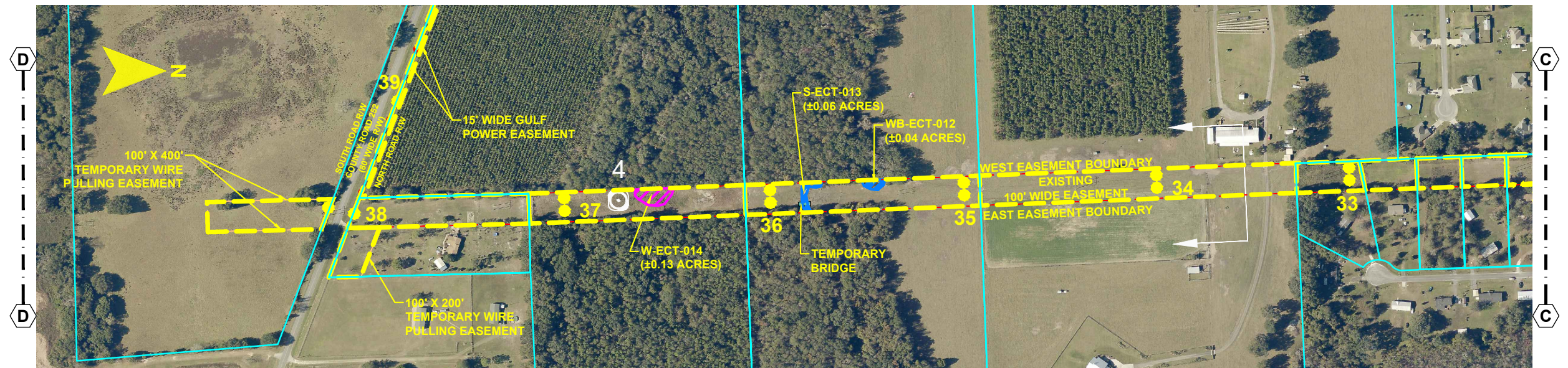
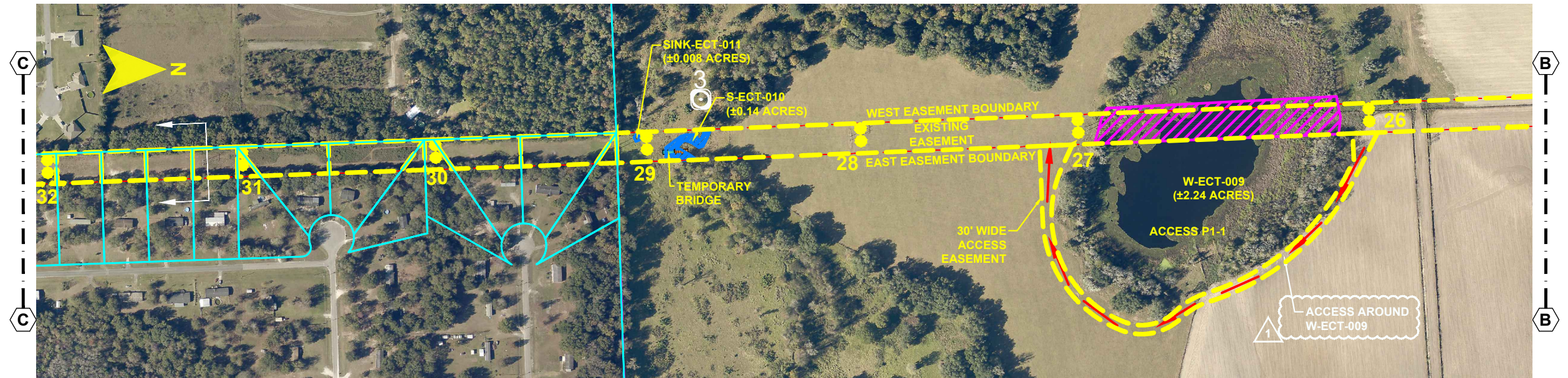
LEGEND			
	WETLAND		EXISTING FPL EASEMENT
	DITCH, STREAM & WATERBODY		PROPOSED EASEMENT
	TRANSMISSION POLE TO BE INSTALLED		PROPERTY LINE
	TRANSMISSION POLE TO BE REMOVED		INDICATES STRUCTURE FROM ORIGINAL SUBMITTAL
	PROJECT MILE MARKER		



REV		DATE	DESCRIPTION	BY	CKD	APP
1		10/25/19	REVISIONS, CLARIFICATIONS FOR RAI RESPONSE 10-25-19	GCC	JRC	MKL

GULF POWER COMPANY		NORTH FLORIDA RESILIENCY CONNECTION	
SCALE: 1" = 400' DRAWN BY: GCC ENGINEER: MKL COUNTY: COLUMBIA SHEET 2 OF 15		DATE: 10/25/19 CHECKED BY: JRC SECTION: AS SHOWN FILE NAME: PHASE 1_ROL	
		RAI Response - Question 3A	
		FPL 035566 20210015-EI	



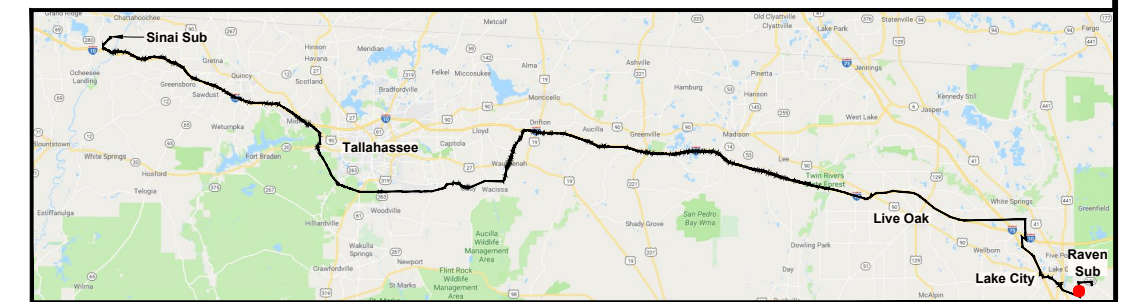
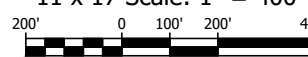


CROSS SECTION @ PROJECT MILE MARKER 3.52

NOTES:  
1. SURVEY BOUNDARIES AND WETLAND DELINEATION PROVIDED BY OTHERS.

LEGEND	
	WETLAND
	DITCH, STREAM & WATERBODY
	TRANSMISSION POLE TO BE INSTALLED
	TRANSMISSION POLE TO BE REMOVED
	PROJECT MILE MARKER
	EXISTING FPL EASEMENT
	PROPOSED EASEMENT
	PROPERTY LINE

24 x 36 Scale: 1" = 200'  
11 x 17 Scale: 1" = 400'



REV	DATE	DESCRIPTION	BY	CKD	APP
1	10/25/19	REVISIONS, CLARIFICATIONS FOR RAI RESPONSE 10-25-19	GCC	JRC	MKL

GULF POWER COMPANY

NORTH FLORIDA RESILIENCY CONNECTION

SCALE: 1" = 400'  
DRAWN BY: GCC  
ENGINEER: MKL  
COUNTY: COLUMBIA  
SHEET 3 OF 15

DATE: 10/25/19  
CHECKED BY: JRC  
SECTION: AS SHOWN  
FILE NAME: PHASE 1\_ROL

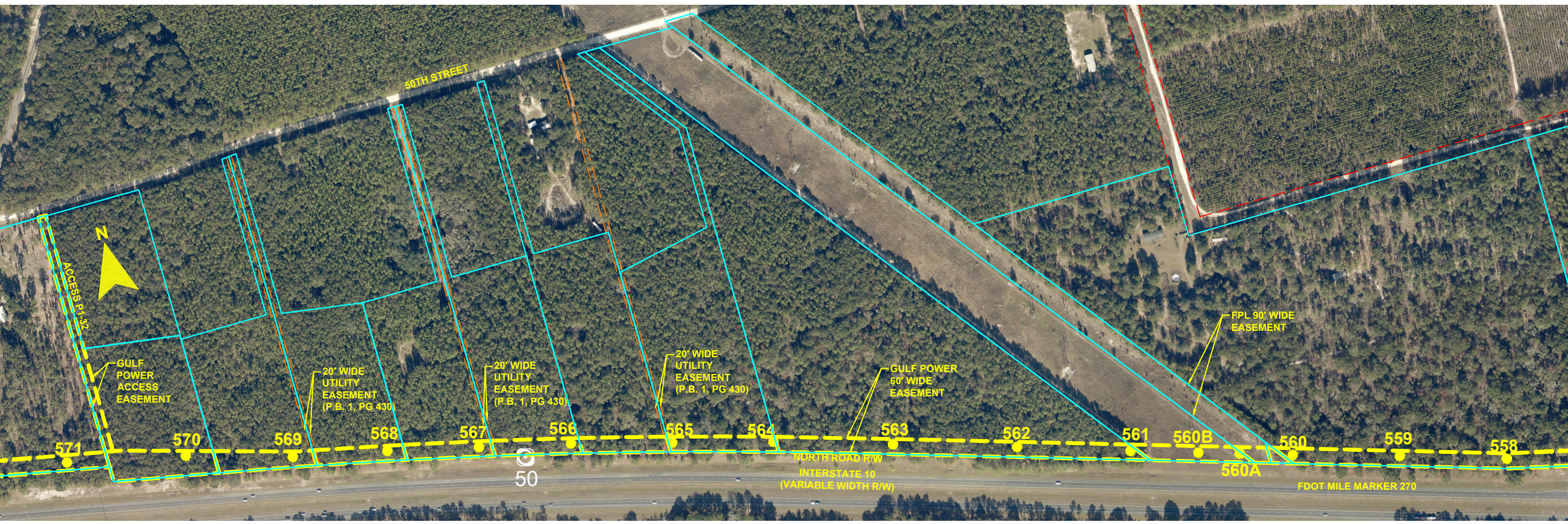


RAI Response - Question 3A

FPL 035567  
20210015-EI

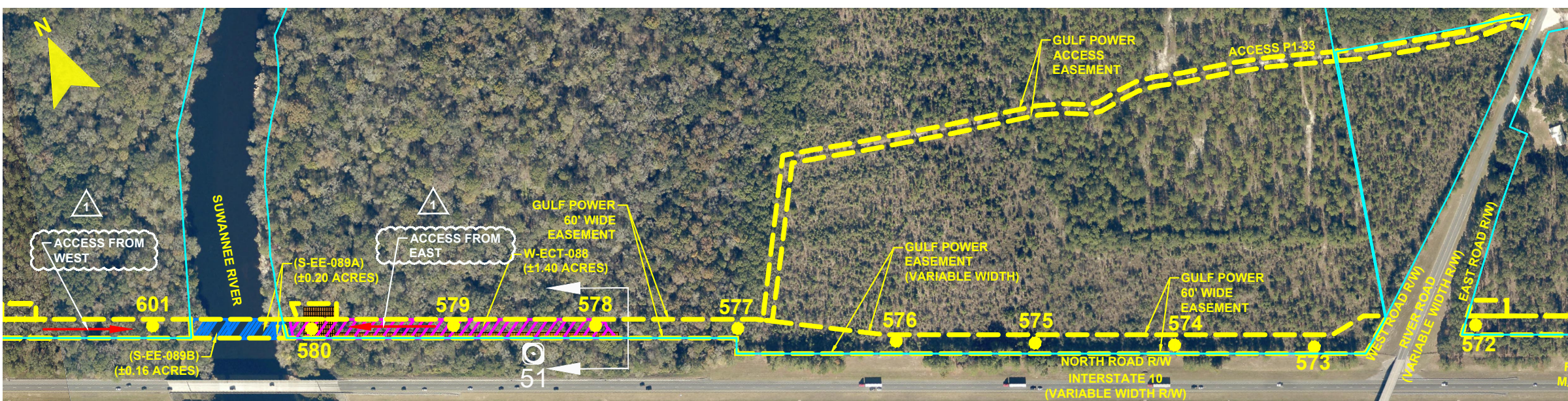


A  
A

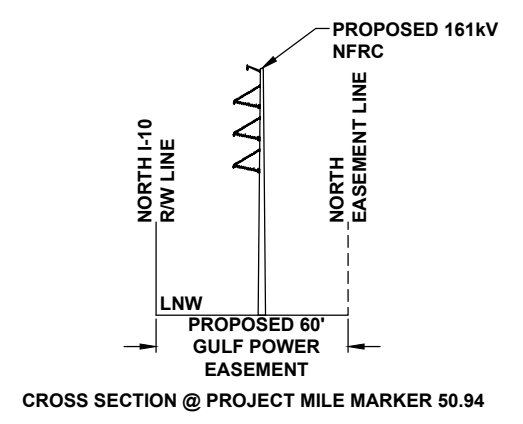


BEGINNING OF SECTION

END OF SECTION



A  
A



NOTES:  
1. SURVEY BOUNDARIES AND WETLAND DELINEATION PROVIDED BY OTHERS.

LEGEND

WETLAND

DITCH, STREAM & WATERBODY

2A2

TRANSMISSION POLE TO BE INSTALLED

2A2

TRANSMISSION POLE TO BE REMOVED

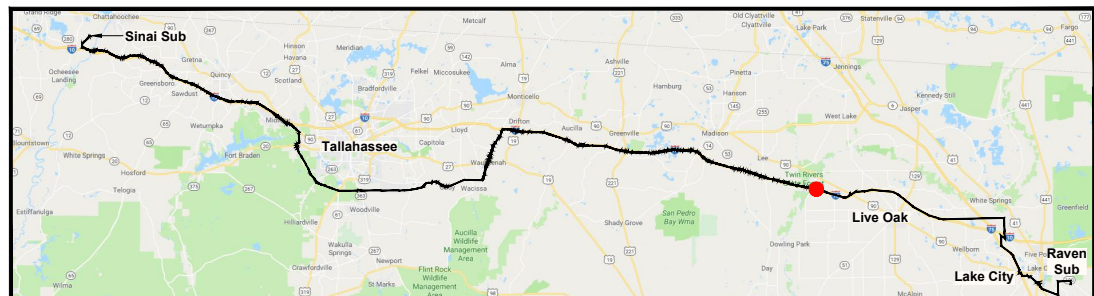
1

PROJECT MILE MARKER

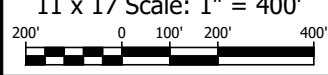
EXISTING FPL EASEMENT

PROPOSED EASEMENT

PROPERTY LINE



24 x 36 Scale: 1" = 200'  
11 x 17 Scale: 1" = 400'



1	10/25/19	REVISIONS, CLARIFICATIONS FOR RAI RESPONSE 10-25-19	GCC	JRC	MKL
REV	DATE	DESCRIPTION	BY	CHKD	APP
GULF POWER COMPANY			NORTH FLORIDA RESILIENCY CONNECTION		
SCALE: 1" = 400' DRAWN BY: GCC ENGINEER: MKL COUNTY: SUWANNEE SHEET 4 OF 15			RAI Response - Question 3A FPL 035568 20210015-EI		





NOTES:  
1. SURVEY BOUNDARIES AND WETLAND DELINEATION PROVIDED BY OTHERS.

LEGEND

WETLAND

DITCH, STREAM & WATERBODY

2A2

TRANSMISSION POLE TO BE INSTALLED

2A2

TRANSMISSION POLE TO BE REMOVED

1

PROJECT MILE MARKER

EXISTING FPL EASEMENT

PROPOSED EASEMENT

PROPERTY LINE

24 x 36 Scale: 1" = 200'  
11 x 17 Scale: 1" = 400'

1	10/25/19	REVISIONS, CLARIFICATIONS FOR RAI RESPONSE 10-25-19	GCC	JRC	MKL
REV	DATE	DESCRIPTION	BY	CKD	APP

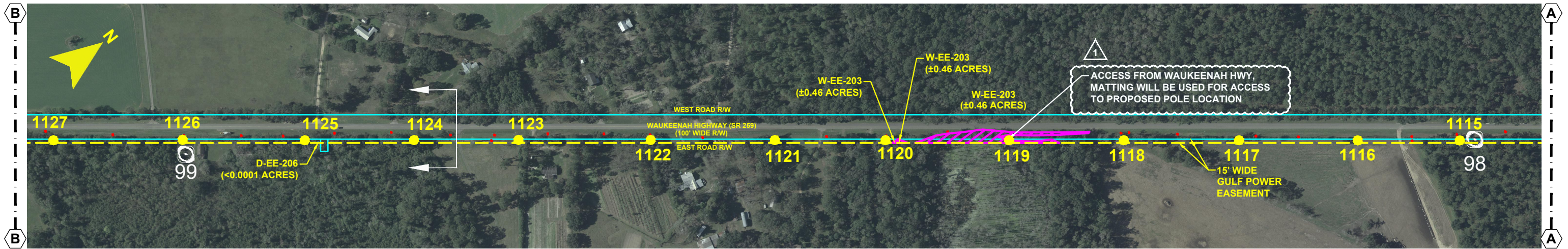
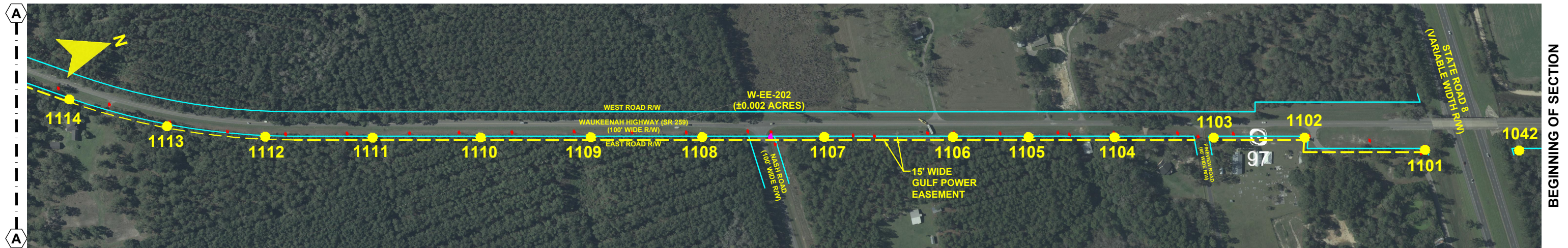
GULF POWER COMPANY

SCALE: 1" = 400'  
DRAWN BY: GCC  
ENGINEER: MKL  
COUNTY: MADISON  
SHEET 5 OF 15

NORTH FLORIDA RESILIENCY CONNECTION

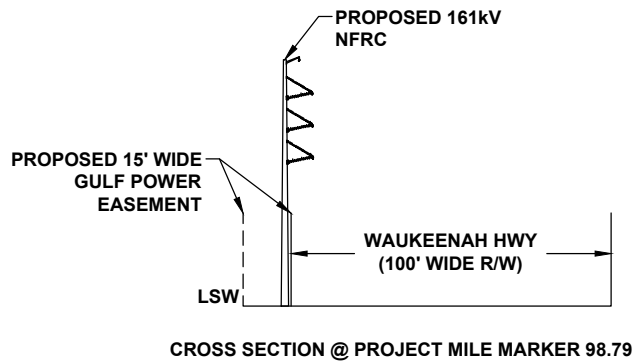
RAI Response - Question 3A  
FPL 035569  
20210015-EI



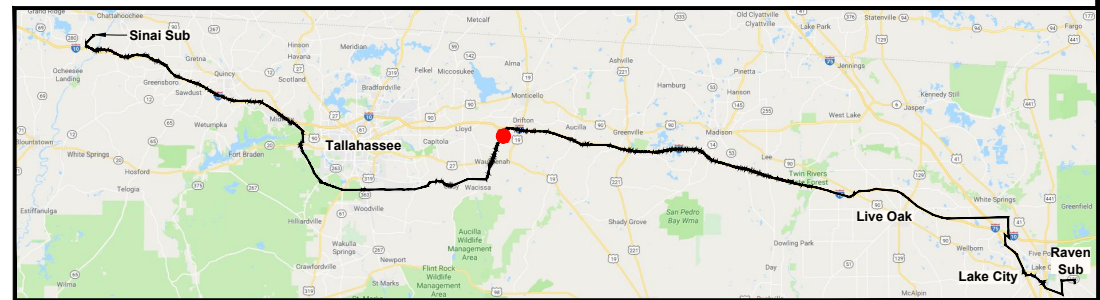


NOTES:  
1. SURVEY BOUNDARIES AND WETLAND DELINEATION PROVIDED BY OTHERS.

LEGEND	
	WETLAND
	DITCH, STREAM & WATERBODY
	TRANSMISSION POLE TO BE INSTALLED
	TRANSMISSION POLE TO BE REMOVED
	COT TRANSMISSION POLE TO BE INSTALLED
	COT TRANSMISSION POLE TO REMAIN
	PROJECT MILE MARKER
	EXISTING DISTRIBUTION POLE
	EXISTING FPL EASEMENT
	PROPOSED EASEMENT
	PROPERTY LINE



24 x 36 Scale: 1" = 200'  
11 x 17 Scale: 1" = 400'  
200' 0 100' 200' 400'



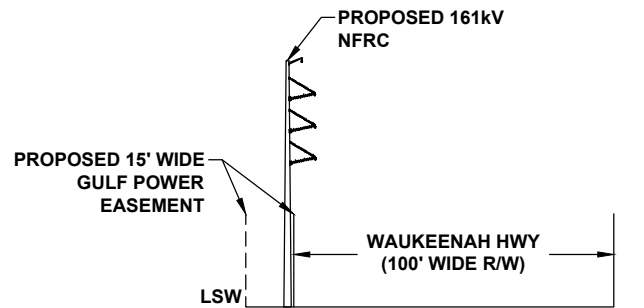
GULF POWER COMPANY		NORTH FLORIDA RESILIENCY CONNECTION	
SCALE: 1" = 400'	DATE: 10/25/19	RAI Response - Question 3A	
DRAWN BY: GCC	CHECKED BY: JRC		
ENGINEER: MKL	SECTION: AS SHOWN		
COUNTY: JEFFERSON	FILE NAME: PHASE 2B_ROL	FPL 035570 20210015-EI	
SHEET 6 OF 15			





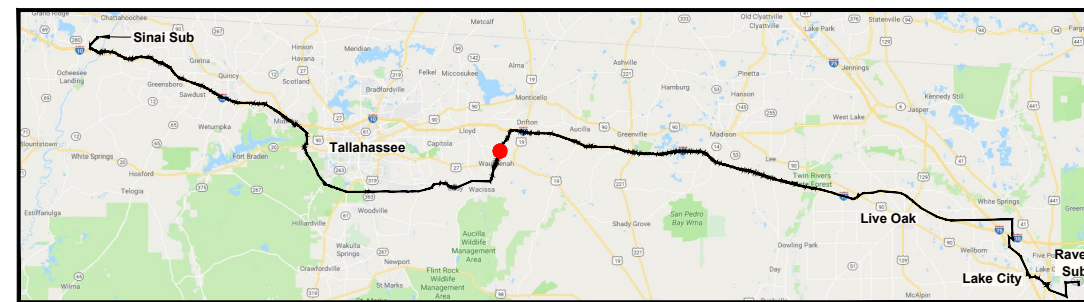
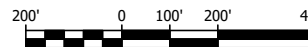
NOTES:  
1. SURVEY BOUNDARIES AND WETLAND DELINEATION PROVIDED BY OTHERS.

LEGEND	
	WETLAND
	DITCH, STREAM & WATERBODY
	TRANSMISSION POLE TO BE INSTALLED
	TRANSMISSION POLE TO BE REMOVED
	COT TRANSMISSION POLE TO BE INSTALLED
	COT TRANSMISSION POLE TO REMAIN
	PROJECT MILE MARKER
	EXISTING DISTRIBUTION POLE
	EXISTING FPL EASEMENT
	PROPOSED EASEMENT
	PROPERTY LINE



CROSS SECTION @ PROJECT MILE MARKER 100.52

24 x 36 Scale: 1" = 200'  
11 x 17 Scale: 1" = 400'



REV	DATE	DESCRIPTION	BY	CHKD	APP
1	10/25/19	REVISIONS, CLARIFICATIONS FOR RAI RESPONSE 10-25-19	GCC	JRC	MKL

GULF POWER COMPANY

NORTH FLORIDA RESILIENCY CONNECTION

SCALE: 1" = 400'  
DRAWN BY: GCC  
ENGINEER: MKL  
COUNTY: JEFFERSON  
SHEET 7 OF 15

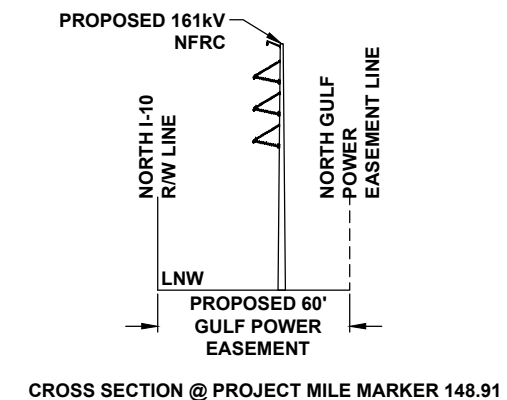
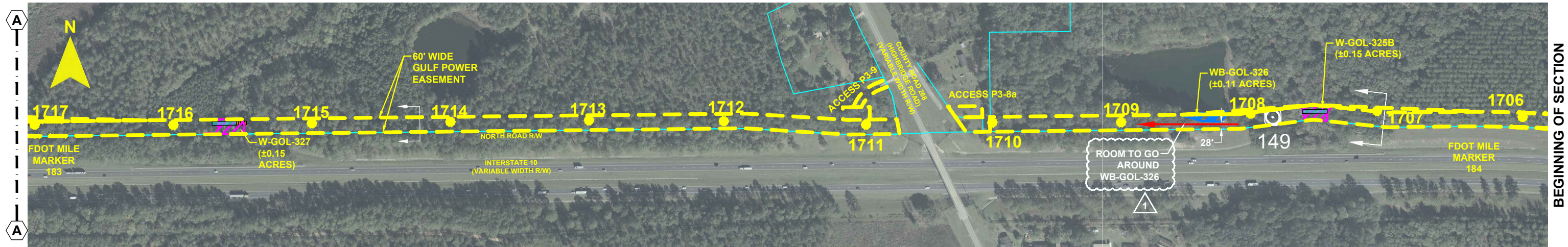
DATE: 10/25/19  
CHECKED BY: JRC  
SECTION: AS SHOWN  
FILE NAME: PHASE 2B\_ROL



RAI Response - Question 3A

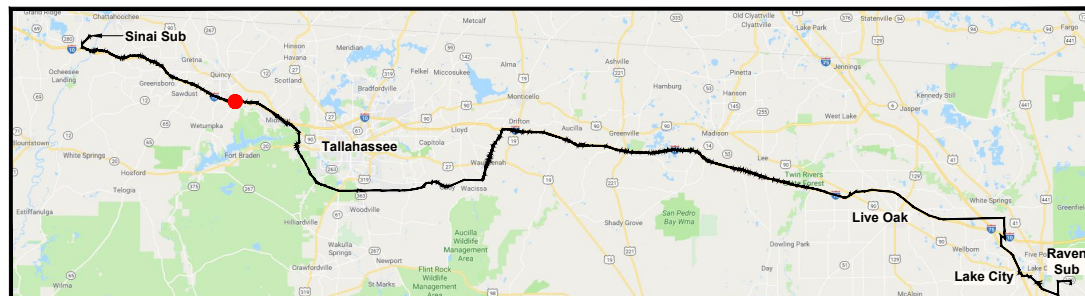
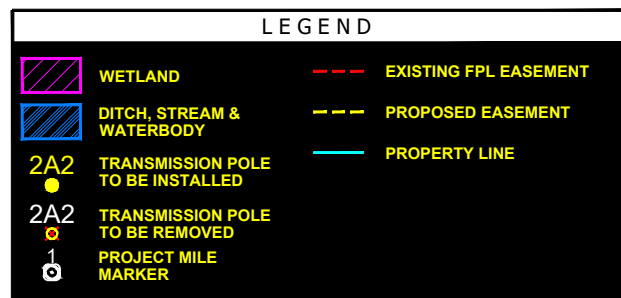
FPL 035571  
20210015-EI



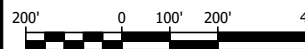



NOTES:

1. SURVEY BOUNDARIES AND WETLAND DELINEATION PROVIDED BY OTHERS.

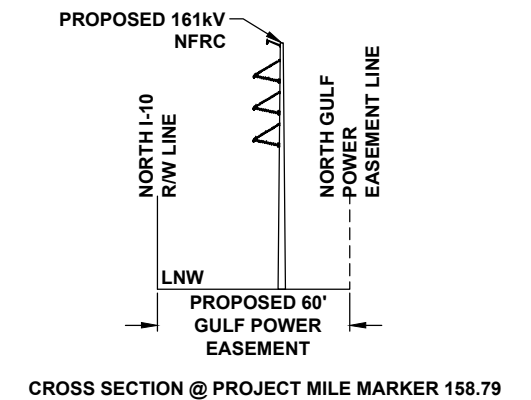
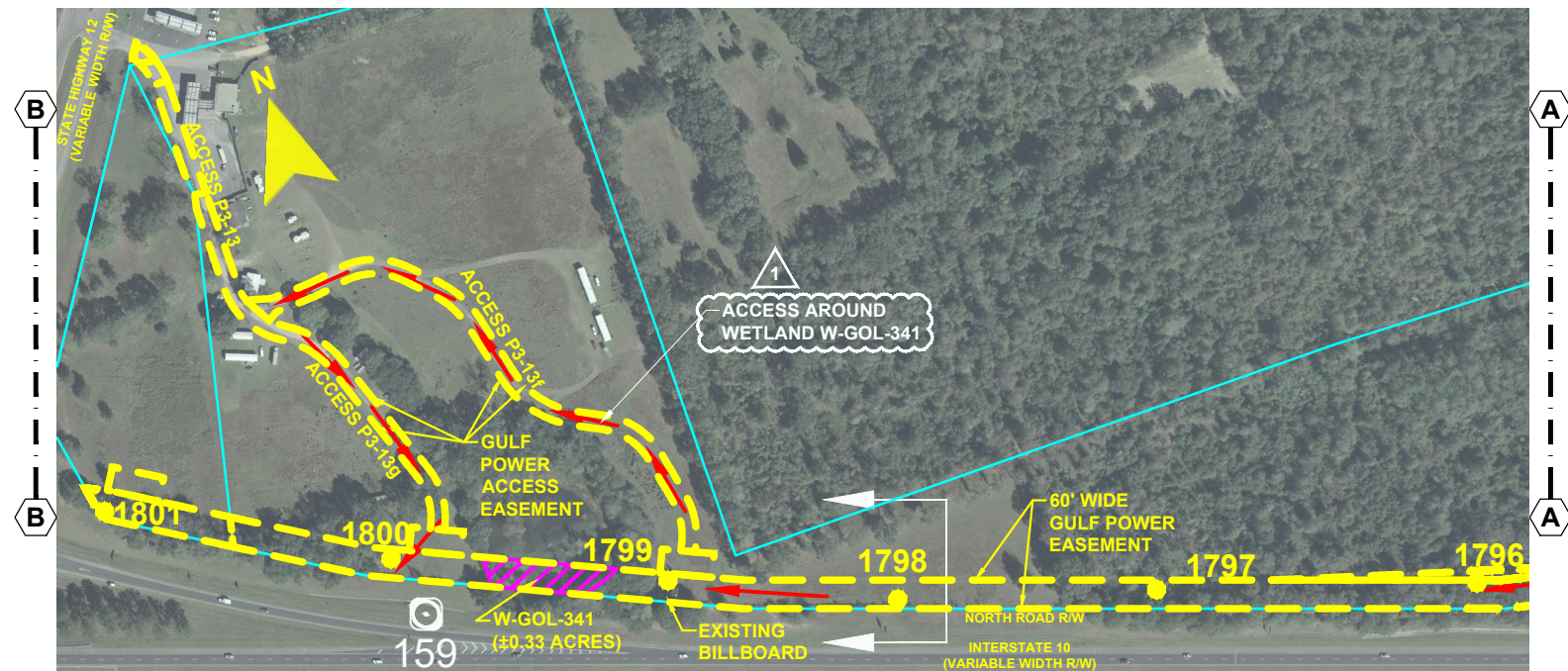
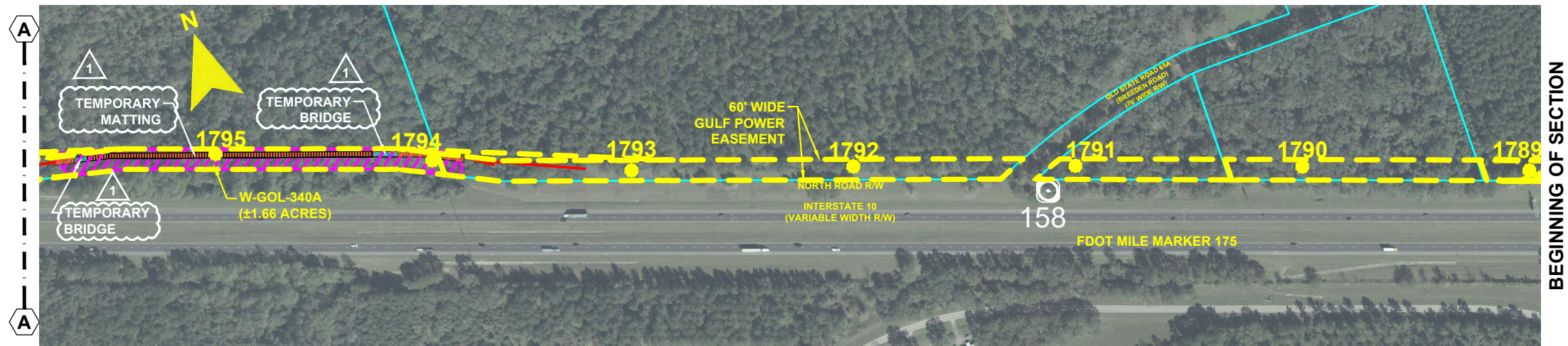


24 x 36 Scale: 1" = 200'  
11 x 17 Scale: 1" = 400'



GULF POWER COMPANY		NORTH FLORIDA RESILIENCY CONNECTION	
SCALE: 1" = 400'	DATE: 10/25/19	 Gulf Power®	RAI Response - Question 3A
DRAWN BY: GCC	CHECKED BY: JRC		FPL 035572
ENGINEER: MKL	SECTION: AS SHOWN		
COUNTY: GADSDEN	FILE NAME: PHASE 3_ROL		
SHEET 8 OF 15			

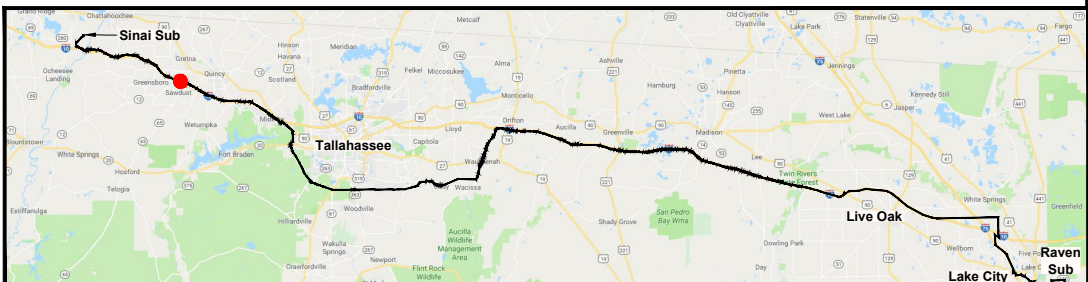




NOTES:  
1. SURVEY BOUNDARIES AND WETLAND DELINEATION PROVIDED BY OTHERS.

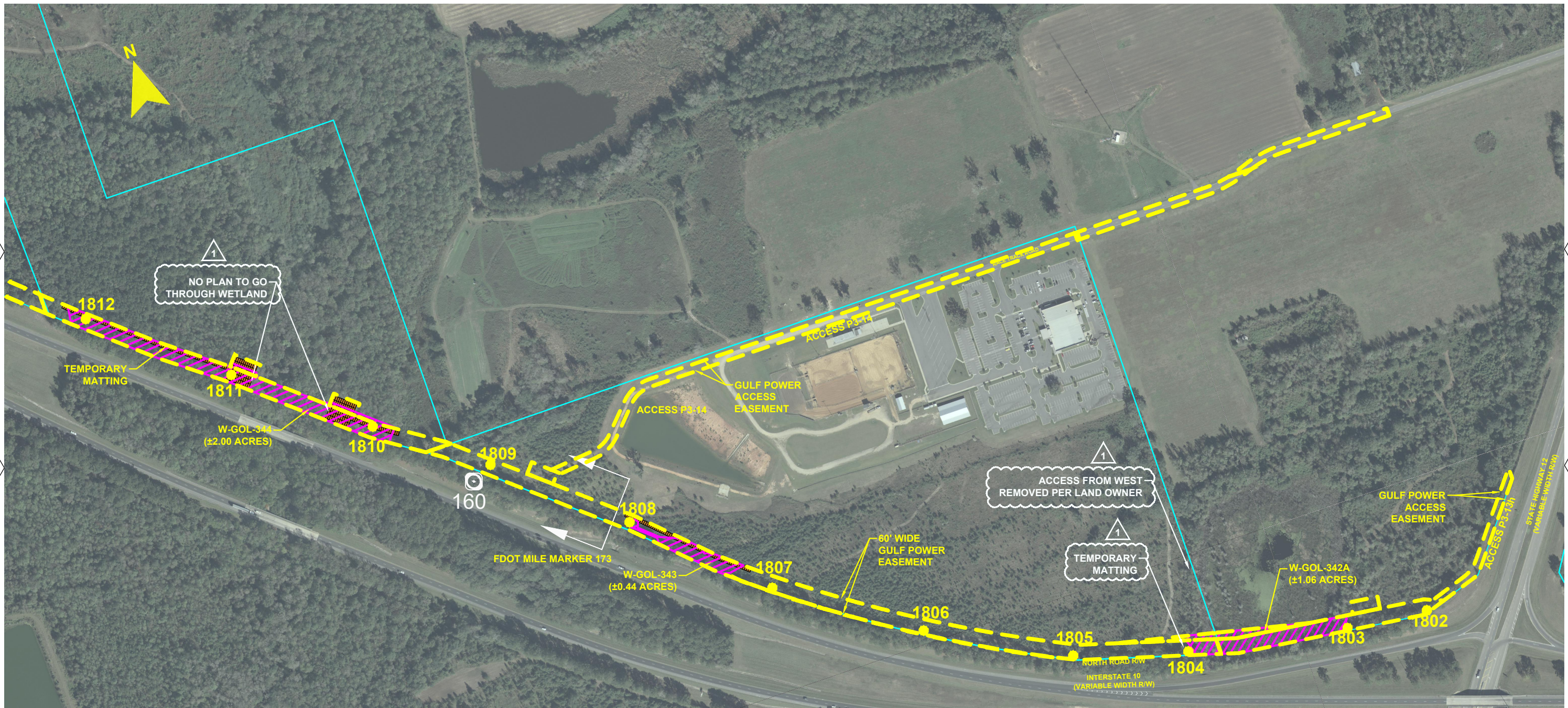
LEGEND	
	WETLAND
	DITCH, STREAM & WATERBODY
	EXISTING FPL EASEMENT
	PROPOSED EASEMENT
	PROPERTY LINE
	TRANSMISSION POLE TO BE INSTALLED
	TRANSMISSION POLE TO BE REMOVED
	PROJECT MILE MARKER

24 x 36 Scale: 1" = 200'  
11 x 17 Scale: 1" = 400'  
200' 0 100' 200' 400'

					
1	10/25/19	REVISIONS, CLARIFICATIONS FOR RAI RESPONSE 10-25-19			GCC JRC MKL
REV	DATE	DESCRIPTION			BY CKD APP

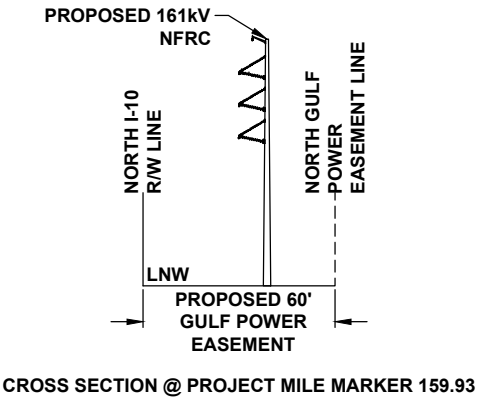
GULF POWER COMPANY		NORTH FLORIDA RESILIENCY CONNECTION	
SCALE: 1" = 400' DRAWN BY: GCC ENGINEER: MKL COUNTY: GADSDEN SHEET 9 OF 15		DATE: 10/25/19 CHECKED BY: JRC SECTION: AS SHOWN FILE NAME: PHASE 3_ROL	
		RAI Response - Question 3A	
		FPL 035573 20210015-EI	



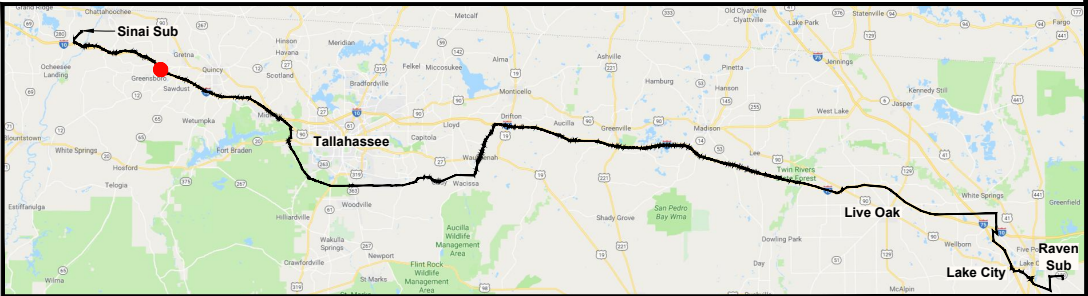


NOTES:  
1. SURVEY BOUNDARIES AND WETLAND DELINEATION PROVIDED BY OTHERS.

LEGEND	
	WETLAND
	DITCH, STREAM & WATERBODY
	2A2 TRANSMISSION POLE TO BE INSTALLED
	2A2 TRANSMISSION POLE TO BE REMOVED
	1 PROJECT MILE MARKER
	EXISTING FPL EASEMENT
	PROPOSED EASEMENT
	PROPERTY LINE

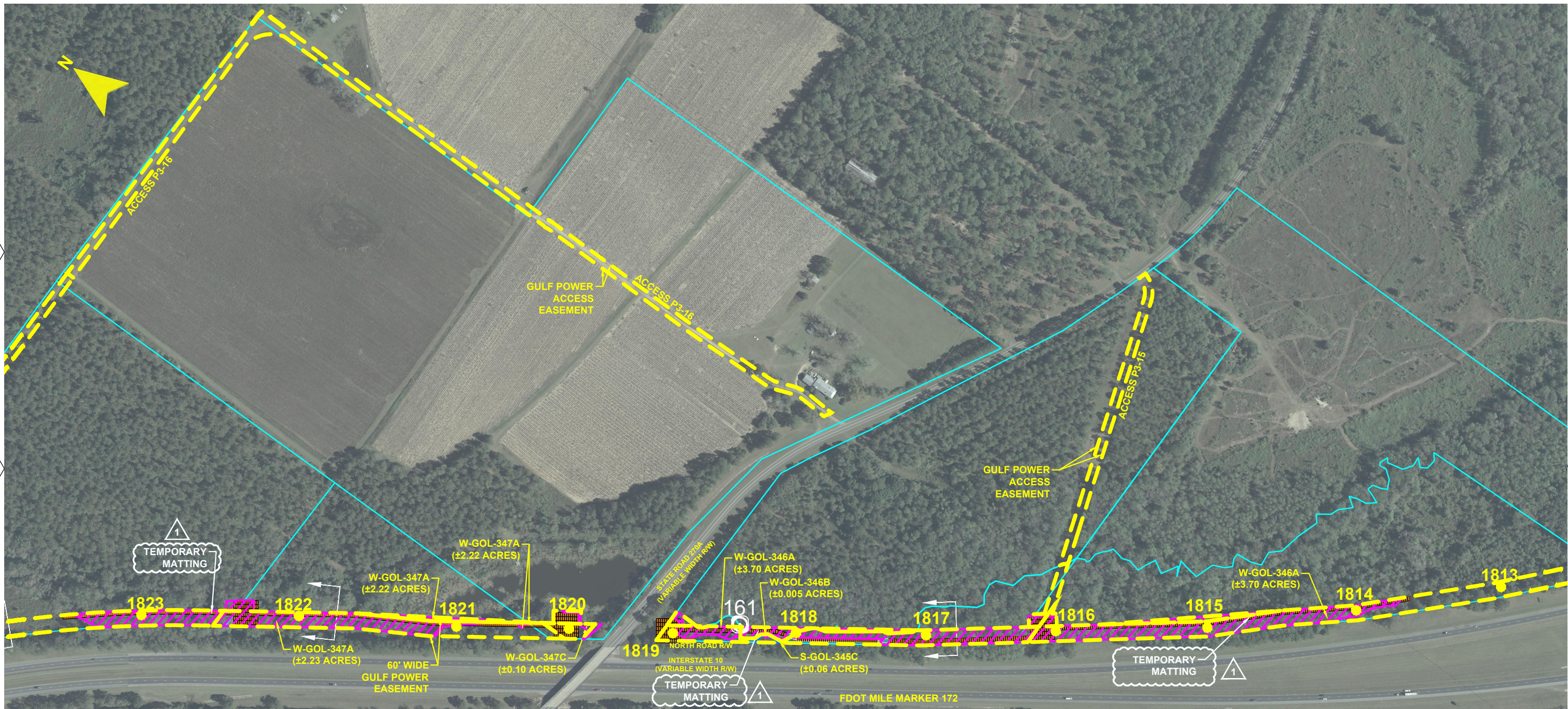


24 x 36 Scale: 1" = 200'  
11 x 17 Scale: 1" = 400'



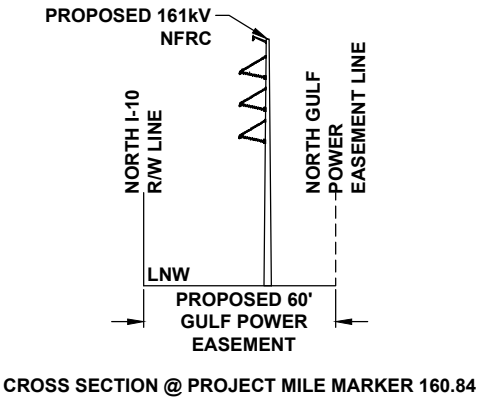
GULF POWER COMPANY		NORTH FLORIDA RESILIENCY CONNECTION	
SCALE: 1" = 400'	DATE: 10/25/19	RAI Response - Question 3A	
DRAWN BY: GCC	CHECKED BY: JRC		
ENGINEER: MKL	SECTION: AS SHOWN	FPL 035574 20210015-EI	
COUNTY: GADSDEN	FILE NAME: PHASE 3_ROL		
SHEET 10 OF 15			



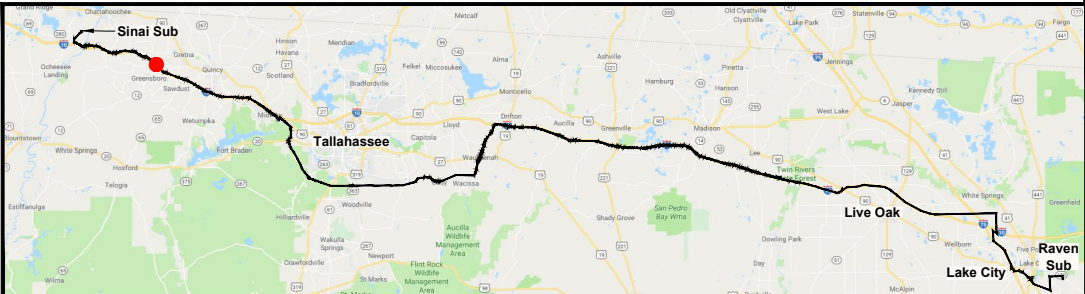


NOTES:  
1. SURVEY BOUNDARIES AND WETLAND DELINEATION PROVIDED BY OTHERS.

LEGEND	
	WETLAND
	DITCH, STREAM & WATERBODY
	2A2 TRANSMISSION POLE TO BE INSTALLED
	2A2 TRANSMISSION POLE TO BE REMOVED
	PROJECT MILE MARKER
	EXISTING FPL EASEMENT
	PROPOSED EASEMENT
	PROPERTY LINE



24 x 36 Scale: 1" = 200'  
11 x 17 Scale: 1" = 400'

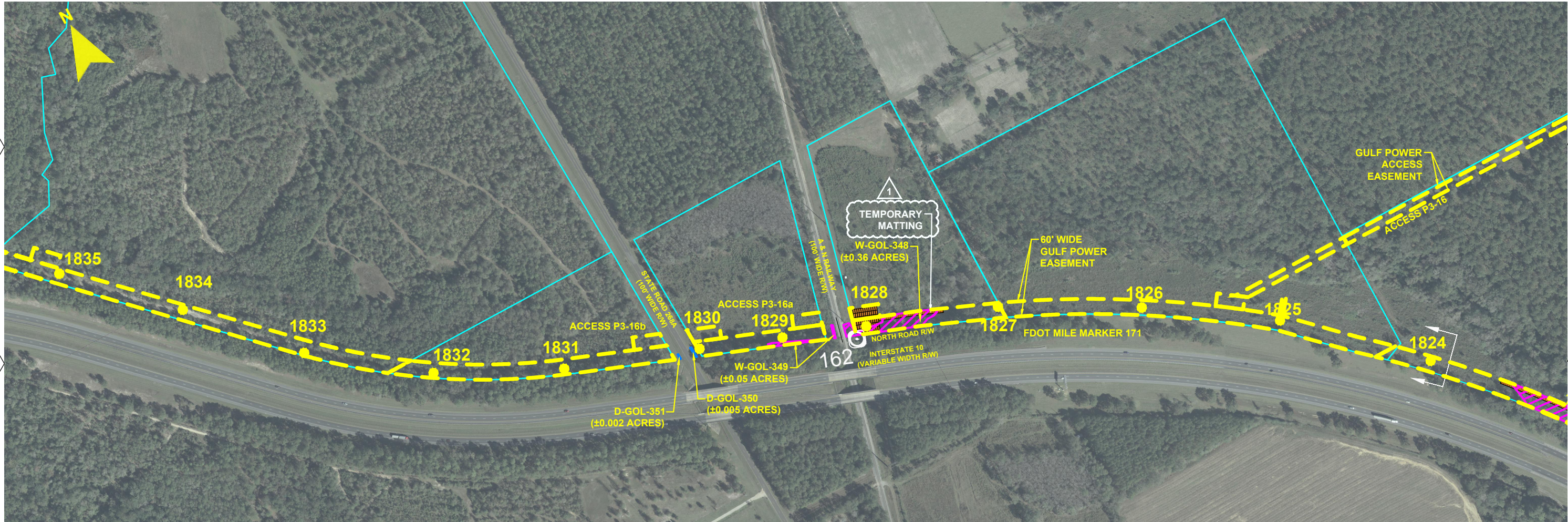


REV	DATE	DESCRIPTION	BY	CHKD	APP
1	10/25/19	REVISIONS, CLARIFICATIONS FOR RAI RESPONSE 10-25-19	GCC	JRC	MKL

GULF POWER COMPANY		NORTH FLORIDA RESILIENCY CONNECTION	
--------------------	--	-------------------------------------	--

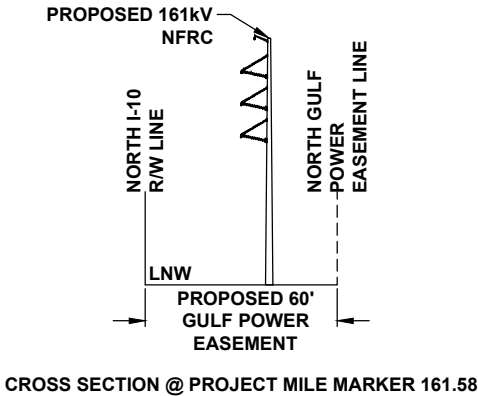
SCALE: 1" = 400' DRAWN BY: GCC ENGINEER: MKL COUNTY: GADSDEN SHEET 11 OF 15		DATE: 10/25/19 CHECKED BY: JRC SECTION: AS SHOWN FILE NAME: PHASE 3_ROL	
		RAI Response - Question 3A	
		FPL 035575 20210015-EI	



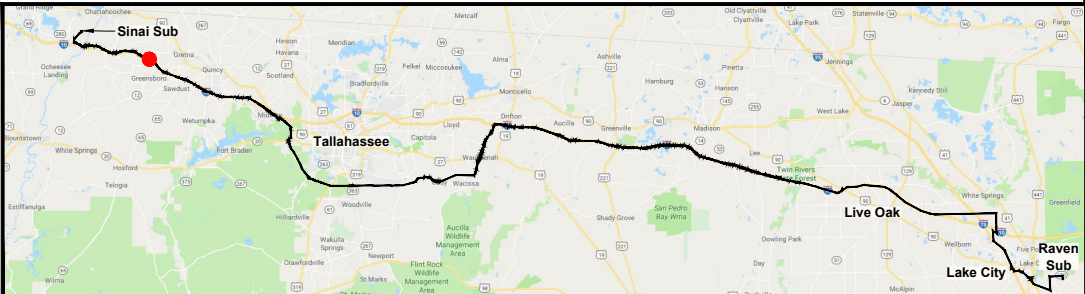


NOTES:  
1. SURVEY BOUNDARIES AND WETLAND DELINEATION PROVIDED BY OTHERS.

LEGEND	
	WETLAND
	DITCH, STREAM & WATERBODY
	EXISTING FPL EASEMENT
	PROPOSED EASEMENT
	PROPERTY LINE
	2A2 TRANSMISSION POLE TO BE INSTALLED
	2A2 TRANSMISSION POLE TO BE REMOVED
	PROJECT MILE MARKER



24 x 36 Scale: 1" = 200'  
11 x 17 Scale: 1" = 400'



REV	DATE	DESCRIPTION	BY	CHKD	APP
1	10/25/19	REVISIONS, CLARIFICATIONS FOR RAI RESPONSE 10-25-19	GCC	JRC	MKL

GULF POWER COMPANY		NORTH FLORIDA RESILIENCY CONNECTION	
SCALE: 1" = 400'		RAI Response - Question 3A	

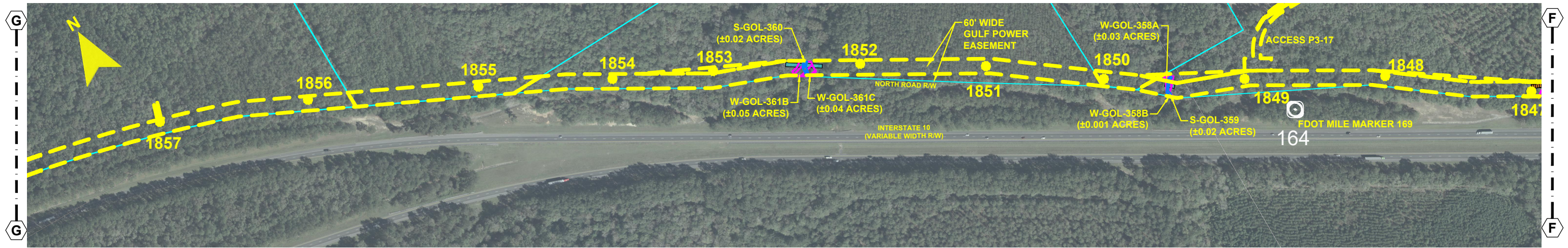
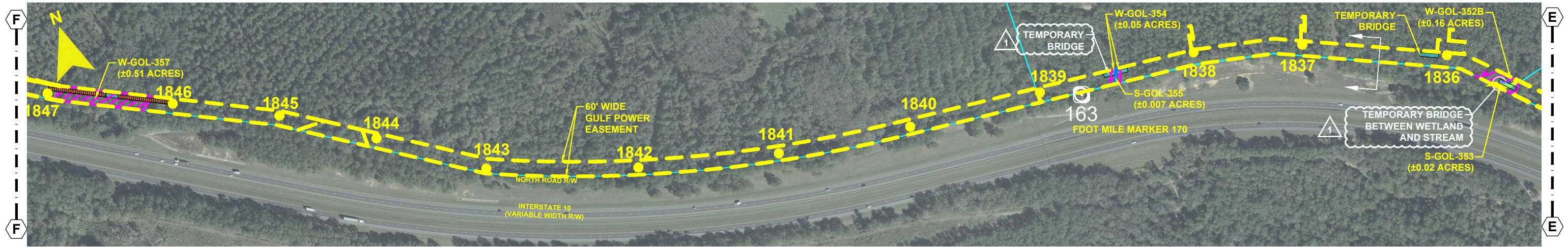
SCALE: 1" = 400'  
DRAWN BY: GCC  
ENGINEER: MKL  
COUNTY: GADSDEN  
SHEET 12 OF 15

DATE: 10/25/19  
CHECKED BY: JRC  
SECTION: AS SHOWN  
FILE NAME: PHASE 3\_ROL



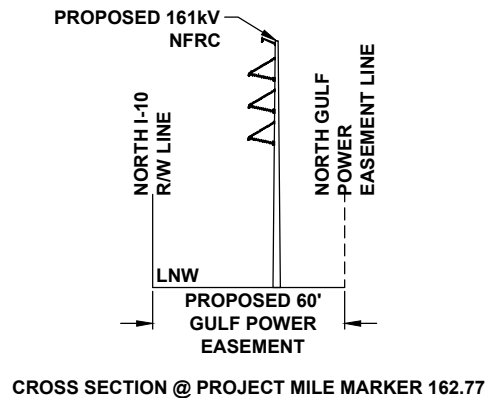
FPL 035576  
20210015-EI



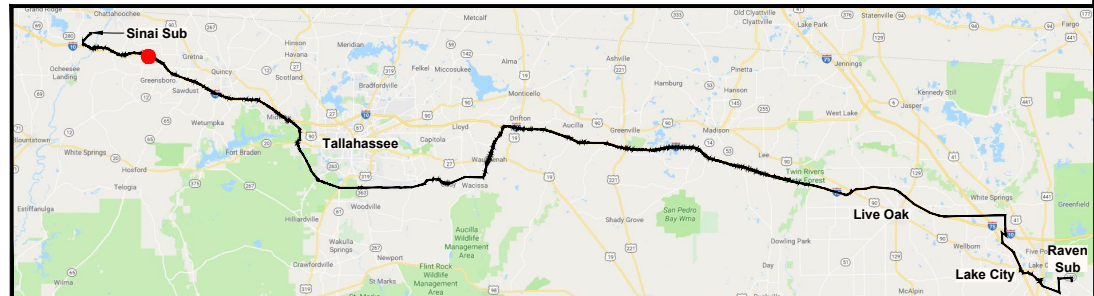


NOTES:  
1. SURVEY BOUNDARIES AND WETLAND DELINEATION PROVIDED BY OTHERS.

LEGEND	
	WETLAND
	DITCH, STREAM & WATERBODY
	TRANSMISSION POLE TO BE INSTALLED
	TRANSMISSION POLE TO BE REMOVED
	PROJECT MILE MARKER
	EXISTING FPL EASEMENT
	PROPOSED EASEMENT
	PROPERTY LINE



24 x 36 Scale: 1" = 200'  
11 x 17 Scale: 1" = 400'

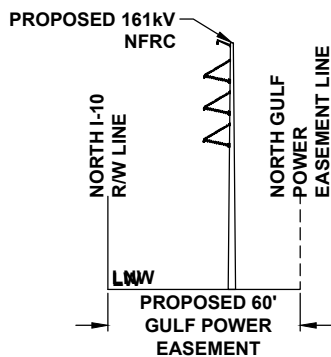
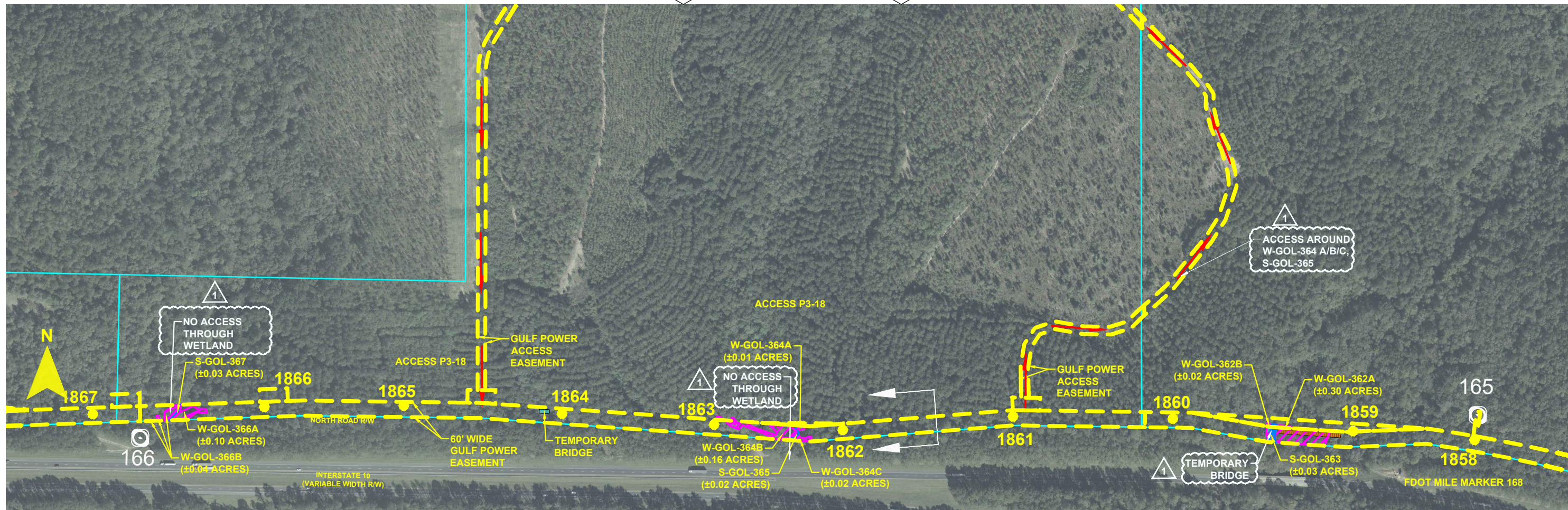


<b>GULF POWER COMPANY</b>		<b>NORTH FLORIDA RESILIENCY CONNECTION</b>	
SCALE: 1" = 400'		DATE: 10/25/19	
DRAWN BY: GCC		CHECKED BY: JRC	
ENGINEER: MKL		SECTION: AS SHOWN	
COUNTY: GADSDEN		FILE NAME: PHASE 3_ROL	
SHEET 13 OF 15			
		RAI Response - Question 3A	
		FPL 035577 20210015-EI	



1 SEE SHEET 14a 1

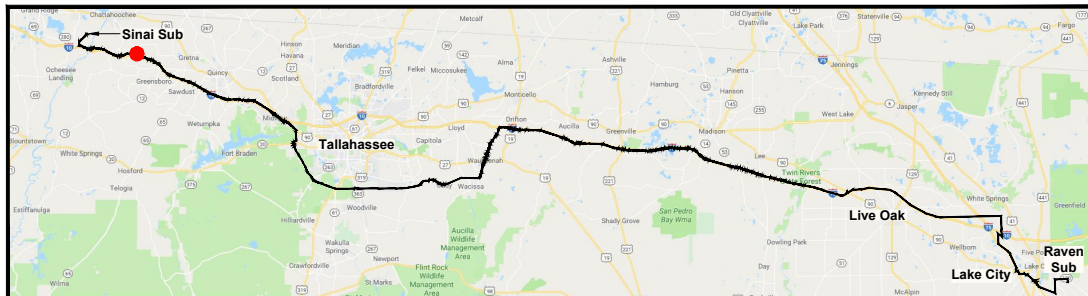
END OF SECTION



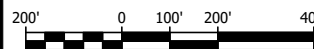
CROSS SECTION @ PROJECT MILE MARKER 165.36

- NOTES:
1. SURVEY BOUNDARIES AND WETLAND DELINEATION PROVIDED BY OTHERS.

LEGEND	
	WETLAND
	DITCH, STREAM & WATERBODY
	EXISTING FPL EASEMENT
	PROPOSED EASEMENT
	PROPERTY LINE
	TRANSMISSION POLE TO BE INSTALLED
	TRANSMISSION POLE TO BE REMOVED
	PROJECT MILE MARKER



24 x 36 Scale: 1" = 200'  
11 x 17 Scale: 1" = 400'



1	10/25/19	REVISIONS, CLARIFICATIONS FOR RAI RESPONSE 10-25-19	GCC	JRC	MKL
REV	DATE	DESCRIPTION	BY	CKD	APP

GULF POWER COMPANY

NORTH FLORIDA RESILIENCY CONNECTION

SCALE: 1" = 400'  
DRAWN BY: GCC  
ENGINEER: MKL  
COUNTY: GADSDEN  
SHEET 14 OF 15

DATE: 10/25/19  
CHECKED BY: JRC  
SECTION: AS SHOWN  
FILE NAME: PHASE 3\_ROL

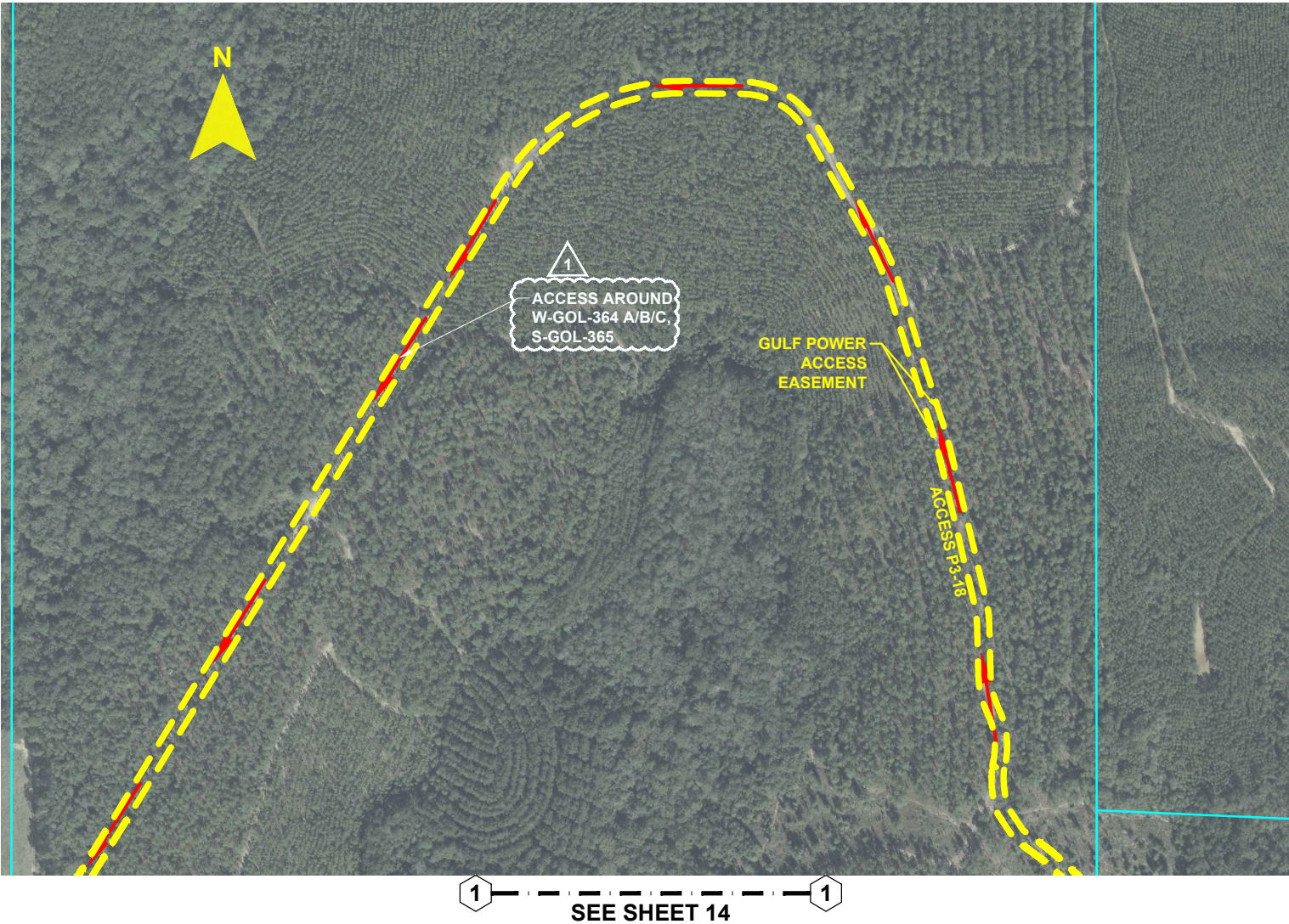


RAI Response - Question 3A

FPL 035578  
20210015-EI



END OF SECTION



NOTES:  
1. SURVEY BOUNDARIES AND WETLAND DELINEATION PROVIDED BY OTHERS.

LEGEND

WETLAND

DITCH, STREAM & WATERBODY

2A2

TRANSMISSION POLE TO BE INSTALLED

2A2

TRANSMISSION POLE TO BE REMOVED

1


PROJECT MILE MARKER

EXISTING FPL EASEMENT

PROPOSED EASEMENT

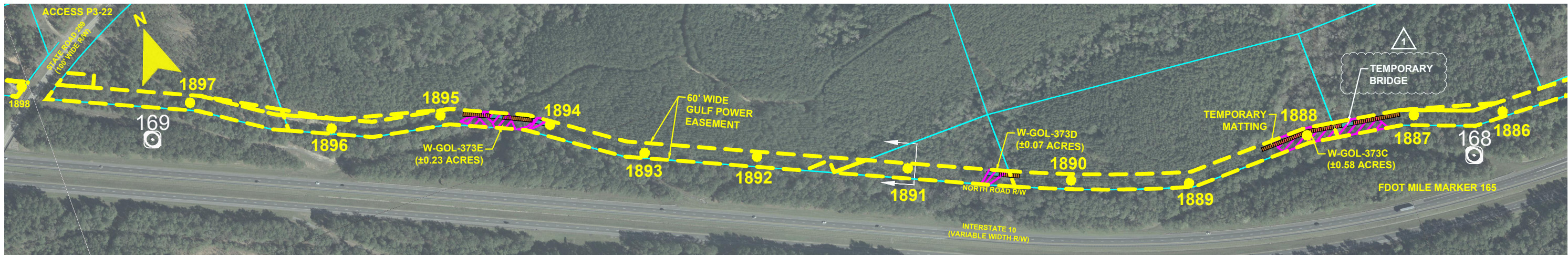
PROPERTY LINE

24 x 36 Scale: 1" = 200'  
11 x 17 Scale: 1" = 400'

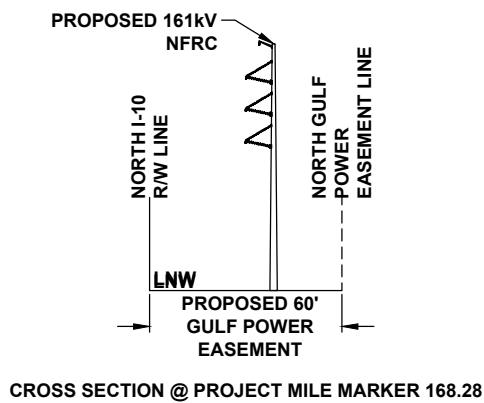
1	10/25/19	REVISIONS, CLARIFICATIONS FOR RAI RESPONSE 10-25-19	GCC	JRC	MKL		
REV	DATE	DESCRIPTION	BY	CKD	APP		
GULF POWER COMPANY			NORTH FLORIDA RESILIENCY CONNECTION				
SCALE: 1" = 400'		DATE: 10/25/19					
DRAWN BY: GCC		CHECKED BY: JRC					
ENGINEER: MKL		SECTION: AS SHOWN					
COUNTY: GADSDEN		FILE NAME: PHASE 3_ROL					
SHEET 14a			RAI Response - Question 3A				
			FPL 035579 20210015-EI				



END OF SECTION



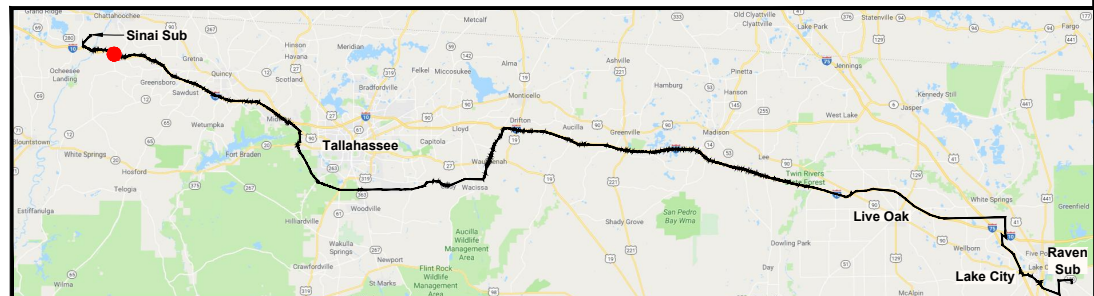
BEGINNING OF SECTION



NOTES:  
1. SURVEY BOUNDARIES AND WETLAND DELINEATION PROVIDED BY OTHERS.

LEGEND	
	WETLAND
	DITCH, STREAM & WATERBODY
	EXISTING FPL EASEMENT
	PROPOSED EASEMENT
	PROPERTY LINE
	TRANSMISSION POLE TO BE INSTALLED
	TRANSMISSION POLE TO BE REMOVED
	PROJECT MILE MARKER

24 x 36 Scale: 1" = 200'  
11 x 17 Scale: 1" = 400'



1	10/25/19	REVISIONS, CLARIFICATIONS FOR RAI RESPONSE 10-25-19	GCC	JRC	MKL
REV	DATE	DESCRIPTION	BY	CKD	APP

**GULF POWER COMPANY**

SCALE: 1" = 400'  
DRAWN BY: GCC  
ENGINEER: MKL  
COUNTY: GADSDEN  
SHEET 15 OF 15

DATE: 10/25/19  
CHECKED BY: JRC  
SECTION: AS SHOWN  
FILE NAME: PHASE 3\_ROL

**NORTH FLORIDA RESILIENCY CONNECTION**

RAI Response - Question 3A

FPL 035580  
20210015-EI