



151 Southhall Lane, Ste 450  
Maitland, FL 32751  
P.O. Drawer 200  
Winter Park, FL 32790-0200  
www.inteserra.com

August 9, 2021  
Via Email

Mr. Cayce Hinton, Director, Regulatory Analysis  
Florida Public Service Commission  
2540 Shumard Oak Boulevard  
Tallahassee, FL 32399-0850

**RE: Bandwidth.com CLEC, LLC  
Amended Revisions to Florida Price List No. 2 (Access)  
Tariff No – T20210038**

Dear Mr. Hinton:

Please find the original of amendments to the tariff filing referenced above, submitted on behalf of Bandwidth.com CLEC, LLC (“Company”). This amended filing is to include additional revisions that conform to the intrastate rates, terms and conditions to those contained in the Company’s interstate access tariff. The revisions include non-substantive text changes, changes and additions to the definitions, changes to the description of services and application of rates, revisions to diagrams and changes to the rates and charges in order to mirror the interstate rates and rate structure. This filing also is made to revise certain switched access rates in compliance with the requirements of the Report and Order, FCC 20-143, on 8YY Access Charge Reform issued by the Federal Communications Commission in WC Docket No. 18-156. The Company respectfully requests an effective date of July 1, 2021, for this filing.

The following tariff pages are included with this filing:

5 <sup>th</sup> Revised Sheet 2	Updates Check Sheet
2 <sup>nd</sup> Revised Sheet 6	Makes Changes to Definition
2 <sup>nd</sup> Revised Sheet 7	Makes Changes to Definition
2 <sup>nd</sup> Revised Sheet 8	Makes Changes to Definition
2 <sup>nd</sup> Revised Sheet 9	Makes Changes to Definition and Adds New Definition
1 <sup>st</sup> Revised Sheet 26	Makes Changes to Payment for Service
1 <sup>st</sup> Revised Sheet 34	Makes Changes to Noticed and Communications
2 <sup>nd</sup> Revised Sheet 38	Makes Changes to Switched Access Service
2 <sup>nd</sup> Revised Sheet 39	Makes Changes to Switched Access Service
3 <sup>rd</sup> Revised Sheet 41	Adds New Text and Moves Text
Original Sheet 41.1	Adds New Text
Original Sheet 41.2	Adds New Text
Original Sheet 41.3	Makes Changes to Switched Access Service, Moves and Adds New Text
3 <sup>rd</sup> Revised Sheet 42	Makes Changes to Switched Access Rates, Moves and Adds New Text
2 <sup>nd</sup> Revised Sheet 43	Moves Text
5 <sup>th</sup> Revised Sheet 44	Makes Changes to Switched Access Rates

Mr. Cayce Hinton, Director, Regulatory Analysis  
Florida Public Service Commission  
August 9, 2021  
Page 2

---

The following tariff pages are included with this filing: (Cont'd.)

Original Sheet 44.0.1	Adds Switched Access Rates, Moves Text, Revises Data Base Query
1 <sup>st</sup> Revised Sheet 46	Makes Diagram Changes to Tandem Switching Access Service – Direct Connection
1 <sup>st</sup> Revised Sheet 47	Makes Diagram Changes to Tandem Switching Access Service – Direct Connection
1 <sup>st</sup> Revised Sheet 48	Makes Diagram Changes to Tandem Switching Access Service – Indirect Connection
Original Sheet 49	Adds Tandem Switched Access Service – Indirect Connection Example 2 Diagram
Original Sheet 50	Adds Local Switching Access Service – Direct Connection Example 1 Diagram
Original Sheet 51	Adds Local Switching Access Service – Direct Connection Example 2 Diagram
Original Sheet 52	Adds Local Switching Access Service – Indirect Connection Example 1 Diagram
Original Sheet 53	Adds Local Switching Access Service – Indirect Connection Example 2 Diagram

Any questions you may have regarding this filing should be directed to my attention at 407-740-3031 or via email to [Sthomas@inteserra.com](mailto:Sthomas@inteserra.com). Thank you for your assistance in this matter.

Sincerely,

/s/ Sharon Thomas

Sharon Thomas  
Consultant

cc: Lisa Jill Freeman - Bandwidth.com CLEC  
tms: FLa2101a

Enclosures  
ST/sd

---

 COMPETITIVE TELECOMMUNICATIONS ACCESS SERVICES PRICE LIST
 

---

## CHECK SHEET

Sheets of this tariff are effective as of the date shown at the bottom of the respective sheet(s). Original and revised sheets as named below comprise all changes from the original tariff and are currently in effect as of the date on the bottom of this sheet.

PAGE	REVISION		PAGE	REVISION	
1	First Revised		28	Original	
2	Fifth Revised	*	29	Original	
3	First Revised		30	First Revised	
4	Original		31	Original	
5	Original		32	Original	
6	Second Revised	*	33	Original	
7	Second Revised	*	34	First Revised	*
8	Second Revised	*	35	Original	
9	Second Revised	*	36	Original	
10	Original		37	First Revised	
11	Original		37.1	Original	
12	Original		38	Second Revised	*
13	Original		39	Second Revised	*
14	First Revised		40	First Revised	
15	First Revised		41	Third Revised	*
16	Original		41.1	Original	*
17	Original		41.2	Original	*
18	Original		41.3	Original	*
19	Original		42	Third Revised	*
20	Original		43	Second Revised	*
21	Original		44	Fifth Revised	*
22	Original		44.0.1	Original	*
23	Original		44.1	Original	
24	Original		45	Original	
25	Original		46	First Revised	*
26	First Revised	*	47	First Revised	*
27	Original		48	First Revised	*
			49	Original	*
			50	Original	*
			51	Original	*
			52	Original	*
			53	Original	*

\* Indicates pages included in this filing

---

 Issued: June 30, 2021

Effective: July 1, 2021

By: Lisa Jill Freeman, Vice President & Regulatory Compliance Officer  
900 Main Campus Drive, Suite 100  
Raleigh, NC 27606

---

**COMPETITIVE TELECOMMUNICATIONS ACCESS SERVICES PRICE LIST**

---

**SECTION 1- DEFINITIONS**

Certain terms used generally throughout this tariff for the Access Services of this Company are defined below.

Access Code: A uniform seven-digit code assigned by the Company to an individual Customer. The seven-digit code has the form 950-XXXX or 101XXXX.

Access Service: Access to the network of an Interexchange Carrier for the purpose of originating or terminating communications. (T)

Access Service Request (ASR): The industry service order format used by Access Service Customers and access providers as agreed to by the Ordering and Billing Forum.

Authorized User: A person, firm, corporation or other entity that either is authorized by the Customer to use Access Services or is placed in a position by the Customer, either through acts or omissions, to use Access Services.

Carrier or Common Carrier: See Interexchange Carrier or Exchange Carrier.

Channel: A communications path between two or more points.

Commission: The Florida Public Service Commission.

Common Channel Signaling (CCS): A high-speed packet switched communications network that is separate (out of band) from the public packet switched and message networks. It is used to carry addressed signaling messages for individual trunk circuits and/or database related services between signaling points in the CCS network.

Company: Bandwidth.com CLEC, LLC, dba Bandwidth.com, issuer of this tariff.

Constructive Order: Delivery of calls to or acceptance of calls from the Company's End User locations over Company-switched local exchange services constitutes a Constructive Order by the Customer to purchase switched access services as described herein. Similarly the selection by a Company's End User of the Customer as the presubscribed IXC constitutes a Constructive Order of switched access by the Customer.

---

**COMPETITIVE TELECOMMUNICATIONS ACCESS SERVICES PRICE LIST**

---

**SECTION 1- DEFINITIONS, (Cont'd.)**

**Customer:** The person, firm, corporation or other entity that orders Service and is responsible for the payment of charges and for compliance with the Company's tariff regulations. The Customer could be an interexchange carrier, a wireless provider, or any other carrier authorized to operate in the state.

**8YY Data Base Access Service:** The term "8YY Data Base Access Service" denotes a toll-free originating Trunk side Access Service when the 8YY Service Access Code (i.e., 800, 822, 833, 844, 855, 866, 877, or 888 as available) is used.

**End User:** Any individual, association, corporation, governmental agency or any other entity subscribing to telecommunications or VoIP service provided by an Exchange Carrier or VoIP Provider Partner where such individual, association, corporation, governmental agency or other entity is not an Interexchange Carrier, Local Exchange Carrier, Wireless Carrier or other entity otherwise utilizing the Company's services to provide a telecommunications service (as defined by applicable law) to its own customers. (C)

**Exchange Carrier:** Any individual, partnership, association, joint-stock company, trust, governmental entity or corporation engaged in the provision of local exchange telephone service.

**Firm Order Confirmation (FOC):** Acknowledgment by the Company of receipt of an Access Service Request from the Customer and commitment by the Company of a Service Date.

**Individual Case Basis:** A service arrangement in which the regulations, rates and charges are developed based on the specific circumstances of the Customer's situation.

**Interexchange Carrier (IXC) or Interexchange Common Carrier:** Any individual, partnership, association, joint-stock company, trust, governmental entity or corporation engaged in state or foreign communication for hire by wire or radio, between two or more exchanges.

**LATA:** A local access and transport area established pursuant to the Modification of Final Judgment entered by the United States District Court for the District of Columbia in Civil Action No. 82-0192 for the provision and administration of communications services.

**Line Information Data Base (LIDB):** The data base which contains base information such as telephone numbers, calling card numbers and associated billed number restriction data used in connection with the validation and billing of calls.

---

COMPETITIVE TELECOMMUNICATIONS ACCESS SERVICES PRICE LIST

---

SECTION 1- DEFINITIONS, (Cont'd.)

Local Switching Center: The switching system that provides service to the End User.

(C)

Local Traffic: Traffic is “Local Traffic” under this tariff is: (i) the call originates and terminates in the same exchange area; or (ii) the call originates and terminates within different Company Exchanges that share a common mandatory local calling area, e.g., a mandatory Extended Local Calling Service (ELCS) or Extended Area Service areas (EAS) or other like types of mandatory local calling scopes.

Meet Point: A point of interconnection that is not an end office or tandem.

Meet Point Billing: The arrangement through which multiple Exchange Carriers involved in providing Access Services, divide the ordering, rating, and billing of such services on a proportional basis, so that each Exchange Carrier involved in providing a portion of the Access Service agrees to bill under its respective tariff.

Non-Recurring Charges: The one-time initial charges for services or facilities, including but not limited to charges for construction, installation, or special fees, for which the Customer becomes liable at the time the Service Order is executed.

COMPETITIVE TELECOMMUNICATIONS ACCESS SERVICES PRICE LIST

SECTION 1- DEFINITIONS, (Cont'd.)

Out of Band Signaling: An exchange access signaling feature which allows customers to exchange call control and signaling information over a communications path which is separate from the message path.

Premises: The space occupied by a Customer or Authorized User in a building or buildings or on contiguous property (except railroad rights-of-way, etc.).

Presubscription: An arrangement whereby an End User or other user of the Company's services may select and designate to the Company an Interexchange Carrier (IXC) or Carriers it wishes to access, without an Access Code, for completing both intraLATA toll calls and/or interLATA calls. The selected IXC(s) are referred to as the End User's or user's Primary Interexchange Carrier (PIC).

Recurring Charges: The monthly charges to the Customer for services, facilities and equipment, which continue for the duration of the service.

Service Order: See Access Service Request.

Signaling Point of Interface: The Customer designated location where the SS7 signaling information is exchanged between the Company and the Customer.

Signaling System 7 (SS7): The common Channel Out of Band Signaling protocol developed by the Consultative Committee for International Telephone and Telegraph (CCITT) and the American National Standards Institute (ANSI).

Station: Refers to telephone, conference bridge, or IP compatible customer premise equipment from or to which calls are placed. (C)  
(C)

Tandem Switching: Tandem switching is a communication switching function that provides a concentration and distribution function for originating or terminating traffic between Local Switching Centers. (N)  
|  
(N)

Trunk: A communications path connecting two switching systems in a network, used in the establishment of an end-to-end connection.

VoIP Service – Transmission of communication by aid of wire, cable, radio, or other like connection using Voice Over Internet Protocol that is originated or terminated in Internet Protocol (IP) format. VoIP services are those services that require the use of IP compatible customer premises equipment. (N)  
|  
|  
|

VoIP Provider Partner – A provider of VoIP Service to End Users where the Company provides the connectivity and supporting functions for PSTN interconnection and/or number resources. A VoIP Provider Partner may or may not provide a physical connection to the last-mile facilities used to serve an End User. (N)  
|  
(N)

Wireless Provider: Any carrier authorized to operate as a provider of cellular, personal communications, paging or any other form of wireless transmission.

---

COMPETITIVE TELECOMMUNICATIONS ACCESS SERVICES PRICE LIST

---

SECTION 2- RULES AND REGULATIONS, (Cont'd.)

2.4 Customer Equipment and Channels, (Cont'd.)

2.4.4 Inspections, (Cont'd.)

- B. If the protective requirements for Customer-provided equipment are not being complied with, the Company may take such action as it deems necessary to protect its facilities, equipment, and personnel. The Company will notify the Customer promptly if there is any need for further corrective action. Within ten days of receiving this notice, the Customer must take this corrective action and notify the Company of the action taken. If the Customer fails to do this, the Company may take whatever additional action is deemed necessary, including the suspension of service, to protect its facilities, equipment, and personnel from harm. The Company will, upon request five business days in advance, provide the Customer with a statement of technical parameters that the Customer's equipment must meet.

2.5 Payment Arrangements

2.5.1 Payment for Service

The Customer is responsible for payment of all charges for services and facilities provided by the Company to the Customer or its Joint or Authorized Users. (T)

Taxes - The Customer is responsible for the payment of any sales, use, gross receipts, excise, access or other local, state and federal taxes, charges or surcharges (however designated) excluding taxes on the Company's net income imposed on or based upon the provision, sale or use of Access Services. All such taxes shall be separately designated on the Company's invoices.



---

**COMPETITIVE TELECOMMUNICATIONS ACCESS SERVICES PRICE LIST**

---

**SECTION 2- RULES AND REGULATIONS, (Cont'd.)****2.7 Transfers and Assignments**

Neither the Company nor the Customer may assign or transfer its rights or duties in connection with the services and facilities provided by the Company without the written consent of the other party, except that the Company may assign its rights and duties (a) to any subsidiary, parent Company or affiliate of the Company (b) pursuant to any sale or transfer of substantially all the assets of the Company; or pursuant to any financing, merger or reorganization of the Company.

**2.8 Notices and Communications**

- 2.8.1 Delivery of calls to or acceptance of calls from the Company's End User Stations over Company-switched local exchange services constitutes an order by the Customer to purchase Switched Access Services as described herein. Similarly, the selection by a Company's End User of the Customer as the presubscribed IXC constitutes an order of switched access by the Customer. In these cases, an invoice will be the first communication from the Company to the Customer. In other instances a Service Order may be used. (C)  
(C)  
(T)
- 2.8.2 The Customer shall designate on the Service Order an address to which the Company shall mail or deliver all notices and other communications, except that the Customer may also designate a separate address to which the Company's bills for service shall be mailed.
- 2.8.3 The Company shall designate on the Service Order an address to which the Customer shall mail or deliver all notices and other communications, except that the Company may designate a separate address, on each bill for service, to which the Customer shall mail payment of that bill.
- 2.8.4 All notices or other communications required to be given pursuant to this tariff shall be in writing. Notices and other communications of either party, and all bills mailed by the Company, shall be presumed to have been delivered to the other party on the third business day following deposit of the notice, communication, or bill with the U.S. Mail or a private delivery service, prepaid and properly addressed, or when actually received or refused by the addressee, whichever occurs first.
- 2.8.5 The Company or the Customer shall advise the other party of any changes to the addresses designated for notices, other communications or billing, by following the procedures for giving notice set forth herein.

---

COMPETITIVE TELECOMMUNICATIONS ACCESS SERVICES PRICE LIST

---

SECTION 4- SWITCHED ACCESS SERVICE

4.1 General

Switched Access Service involves the use of common terminating, switching and transport facilities. Switched Access Service provides the ability to originate or terminate calls between an End User's Station, and other Stations on the PSTN. (C)

Rates and charges are set forth in Section 5. The application of rates for Switched Access Service is described in Section 5.

4.2 Provision and Description of Switched Access Service Arrangements

4.2.1 Feature Group Access

Feature Group ("FG") Access provides trunk-side access to Tandem Switches and Local Switching Center switches, for the Customer's use in originating and terminating communications. Basic FG Access service will be provided with Multi-Frequency In-Band Signaling (SS7 is also available, where capabilities exist). (C)

All traffic is routed to and from the Company's Local Switching Center via the Customer's tandem provider or via end office trunking, where available. (T)

4.2.2 Manner of Provision

Trunks used for Switched Access Service may be configured for one-way (either originating only or terminating only) or for two-way directionality.

---

 COMPETITIVE TELECOMMUNICATIONS ACCESS SERVICES PRICE LIST
 

---

## SECTION 4- SWITCHED ACCESS SERVICE, (Cont'd.)

## 4.2 Provision and Description of Switched Access Service Arrangements, (Cont'd.)

## 4.2.3 Call Types

The following Switched Access Service call types are available:

- A. Originating FG Access
- B. Originating 800 FG Access
- C. Terminating FG Access

## 4.2.4 Originating FG Access

The access code for FG Access switching is a uniform access code of the form 1+, 011+ or 101XXXX. For 101XXXX dialing a single access code will be the assigned number of all FG Access provided to the Customer by the Company. When the access code is used, FG Access switching also provides for dialing the digit 0 for access to the Customer's operator service, 911 for access to emergency service, and/or the end of dialing digit (#) for cut-through access to the Customer's premises. The Company will provide originating FG access consistent with dialing parity obligations.

## 4.2.5 Originating 800 FG Access

800 Data Base Access Service is a service utilizing originating Trunk side Switched Access Service. When an 8YY + NXX + XXXX call is originated by an End User, VoIP Provider Partner's End User or other users of the Company's services, the Company will perform Customer identification based on screening of the full ten-digits of the 8YY number to determine the Customer location to which the call is to be routed. This tariff applies only to intrastate 8YY calls originated by End Users and other users of the Company's services served by the Company.

(C)

(C)

(T)

## 4.2.6 Terminating FG Access

FG Access, when used in the terminating direction, may only be used to access End Users who are subscribing to the Company's Local Exchange Services or other users of the Company's services. Calls in the terminating direction will not be completed to 950-0XXX or 950-1XXX access codes, local operator assistance (0- and 0+), Directory Assistance, (411 or 555-1212) service codes 611 and 911 and 101XXXX access codes.



---

 COMPETITIVE TELECOMMUNICATIONS ACCESS SERVICES PRICE LIST
 

---

## SECTION 5- SWITCHED ACCESS RATES

## 5.1 General (cont'd.)

## 5.1.2 Identification and rating of VOIP-PSTN Access Traffic (cont'd.)

(N)

## B. Calculation and application of Facilities-Based VoIP Usage Factors to VOIP-PSTN Access Traffic

Facilities-based (“FB”) refers to VOIP-PSTN Access Traffic that is originated or terminated over a physical connection to the last-mile facilities used to serve an End User. Company will assess switched access charges based upon a FB percent usage factor (“FBU”) that reflects the percentage amount of VOIP-PSTN Access Traffic that travels over a physical connection to the last-mile facilities used to serve an End User. When Customer orders a service from this tariff, the customer shall be responsible for the payment of Access Service charges that reflect Company’s FBU. If the Company or its VoIP Provider Partner provides a physical connection to the last-mile facilities used to serve an End User, the Local Switching Access Service rates will apply. If the Company or its VoIP Provider Partner does not provide a physical connection to the last-mile facilities used to serve the End User, the Tandem Switching Access Service rates will apply.

FCC Form 477 Instructions collect information about two types of interconnected VoIP subscriptions. Those instructions require providers of interconnected VoIP service to report subscriptions as “Over-the-top Subscriptions” if the provider (including affiliates) does not sell to the end user the high capacity connection that terminates at the end user’s premises and delivers the interconnected VoIP service. If a subscription is not an Over-the-top Subscription, providers report it as “All Other Subscriptions”.

The Company FBU shall be based on information such as the number of the Company’s and its VoIP Provider Partner’s reported “All Other Subscriptions” to interconnected VoIP service in the state (e.g. as reported on FCC Form 477), traffic studies, actual call detail or other relevant and verifiable information. The Company shall retain the call detail, work papers, and information used to develop the FBU factors for a minimum of one year.

The Company may update the FBU factors quarterly or annually. The revised FBU factors will serve as the basis for future billing and will be effective on the bill date of each such month and shall serve as the basis for subsequent monthly billing until superseded by new FBU factors. No prorating or back billing will be done based on the updated FBU factors.

(N)

---

COMPETITIVE TELECOMMUNICATIONS ACCESS SERVICES PRICE LIST

---

SECTION 5- SWITCHED ACCESS RATES

5.1 General (cont'd.)

5.1.2 Identification and rating of VOIP-PSTN Access Traffic (cont'd.)

B. Calculation and application of Facilities-Based VoIP Usage Factors to VOIP-PSTN Access Traffic

The Company may choose to provide credits based on the FBU factors on a quarterly basis until such time as the Company can implement billing system modifications to apply the FBU factors in monthly invoices.

Not more than once in any year, the Customer may request from the Company an overview of the process used to determine the FBU factors and other information used to determine the FBU factors in order to validate the FBU factors supplied. The Company shall reasonably supply the requested data and information within 30 days of the Customer's request.

(N)  
-----  
(N)

COMPETITIVE TELECOMMUNICATIONS ACCESS SERVICES PRICE LIST

SECTION 5- SWITCHED ACCESS RATES

5.2 Rate Categories (M)

5.2.1 Tandem Switching Access Service (M)(C)

A. Direct Connection (Originating and Terminating)

Tandem Switching Access Service – Direct Connection is an access service providing transmission and tandem switching between the Customer designated premises and the Company switch(es) where the Customer’s traffic is switched from or to an entity other than an End User, including a (i) VoIP Provider Partner that does not provide the last-mile connection to the End User Station or (ii) a Carrier, for purposes of originating or terminating the Customer’s communications, and where the Customer’s switch is connected directly to the Company’s switch. The following rate elements will apply to Tandem Switching Access Service – Direct Connection. Access Tandem Switching, Tandem-Switched Transport Termination, Tandem-Switched Transport – Facility, Common Multiplexing, Dedicated Trunk Port or Common Trunk Port. For originating 8YY calls, the Toll-Free 8YY Data Base Query charge will also apply. The third-party access tandem provider may apply additional charges for switching and transport functions performed by that provider. For Terminating calls, Access Tandem Switching only applies when calls are terminated to a 3<sup>rd</sup> Party and not the Company switch. With Direct Connection, Customer is responsible for ordering or providing dedicated facilities or reasonable and appropriate bandwidth to the Company’s point of presence in the access tandem serving area. Where applicable, the Dedicated Trunk Port charge will be applied on an Individual Case Basis. If Customer prefers to connect via IP, the Common Trunk Port charge will apply. The application of access charges to Tandem Switching Access Service is illustrated in diagrams in Section 7. (M)(C)

B. Indirect Connection (Originating and Terminating) (N)

Tandem Switching Access Service – Indirect Connection is an access service providing transmission and tandem switching between the Customer designated premises and the Company switch(es) as well as transport to or from the Customer’s tandem provider, where the Customer’s traffic is switched from or to an entity other than an End User, including (i) a VoIP Provider Partner that does not provide the last-mile connection to the End User or (ii) a Carrier, for purposes of originating or terminating the Customer’s communications. The following rate elements will apply to Tandem Switching Access Service – Indirect Connection: Access Tandem Switching, Tandem-Switched Transport Termination, Tandem-Switched Transport–Facility, Common Multiplexing, and Common Trunk Port. For originating 8YY calls, the Toll-Free 8YY Data Base Query charge will also apply. The third-party access tandem provider may apply additional charges for switching and transport functions performed by that provider. For Terminating calls, Access Tandem Switching only applies when calls are terminated to a 3<sup>rd</sup> Party and not the Company switch. The application of access charges to Tandem Switching Access Service is illustrated in diagrams in Section 7. (N)

*Material found on this sheet was previously located on Sheet 41.*

Issued: June 30, 2021

Effective: July 1, 2021

By: Lisa Jill Freeman, Vice President & Regulatory Compliance Officer  
900 Main Campus Drive, Suite 100  
Raleigh, NC 27606

COMPETITIVE TELECOMMUNICATIONS ACCESS SERVICES PRICE LIST

SECTION 5- SWITCHED ACCESS RATES, (Cont'd.)

5.2 Rate Categories, (Cont'd.)

5.2.2 Local Switching Access Service - Direct Connection (Originating and Terminating)

(M)

Local Switching Access Service - Direct Connection is an access service providing the Customer connections to and use of end office switching equipment for the origination or termination of the Customer's communications to the Company's End Users or End Users of a VoIP Provider Partner that provides the last mile connection to the End User. Charges for Local Switching Access Service – Direct Connection include the following rate elements: End Office Switching, Common Trunk Port, Tandem Switched Transport Termination and Common Multiplexing, and Tandem Switched Transport Facility. The third-party access tandem provider may apply additional charges for switching and transport functions performed by that provider.

(M)(C)

With Direct Connection, Customer is responsible for ordering or providing dedicated facilities or reasonable and appropriate bandwidth to the Company's point of presence in the access tandem serving area. Where applicable, the Dedicated Trunk Port charge will be applied on an Individual Case Basis. If Customer prefers to connect via IP, the Common Trunk Port charge will apply. The application of access charges to Local Switching Access Service is illustrated in diagrams in Section 7.

(N)

(N)

5.2.3 Local Switching Access Service - Indirect Connection (Originating and Terminating)

Local Switching Access Service - Indirect Connection is an access service providing the Customer use of end office switching equipment for the origination or termination of the Customer's communications to the Company's End Users or End Users of a VoIP Provider Partner that provides the last-mile connection to the End User as well as transport to or from the Customer's tandem provider. Charges for Local Switching Access Service - Indirect Connection include the following rate elements: End Office Switching, Common Trunk Port, Tandem Switched Transport Termination and Common Multiplexing, and Tandem Switched Transport Facility. For originating 8YY calls, the Toll-Free 8YY Data Base Query charge will also apply. The third-party access tandem provider may apply additional charges for switching and transport functions performed by that provider. The application of access charges to Local Switching Access Service is illustrated in diagrams in Section 7.

(C)

(C)

5.2.4 Toll-Free 8YY Data Base Query

The Toll-Free Data Base Query Charge, will apply for each Toll-Free 8YY call query received at the Company's (or its provider's) toll-free 8YY data base.

5.2.5 Toll-Free 8YY Switched Access Service

The Toll-Free 8YY Switched Access Service is an originating access service in which the Company delivers Toll Free calls to Customers. Rate elements apply as set forth in Section 5.4.5.

5.2.6 Optional Features

Other optional features may be available on an Individual Case Basis.

(M)

*Material previously located in this sheet has been moved to Sheet 43.  
 Material found on this sheet was previously located on Sheet 41.*

(M)



---

COMPETITIVE TELECOMMUNICATIONS ACCESS SERVICES PRICE LIST

---

SECTION 5- SWITCHED ACCESS RATES, (Cont'd.)

5.3 Billing of Access Minutes

When recording originating calls over FG Access with multi-frequency address signaling, usage measurement begins when the first wink supervisory signal is forwarded from the Customer's facilities. The measurement of originating call usage over FG Access ends when the originating FG Access entry switch receives disconnect supervision from either the originating End User's or other user's Local Switching Center – indicating the originating End User or other user has disconnected), or the Customer's facilities, whichever is recognized first by the entry switch.

(M)  
|  
|  
|  
|  
(M)

For terminating calls over FG Access with multi-frequency address signaling, the measurement of access minutes begins when a seizure signal is received from the Carrier's trunk group at the Point of Presence within the LATA. The measurement of terminating call usage over FG Access ends when a disconnect signal is received, indicating that either the originating or terminating user has disconnected.

When recording originating calls over FG Access with SS7 signaling, usage measurement begins with the transmission of the initial address message by the switch for direct trunk groups and with the receipt of an exit message by the switch for tandem trunk groups. The measurement of originating FG Access usage ends when the entry switch receives or sends a release message, whichever occurs first.

For terminating calls over FG Access with SS7 signaling, the measurement of access minutes begins when the terminating recording switch receives the initial address message from the terminating End User or other user. On directly routed trunk groups or on tandem routed trunk groups, the Company switch receives the initial address message and sends the indication to the Customer in the form of an answer message. The measurement of terminating FG Access call usage ends when the entry switch receives or sends a release message, whichever occurs first.

*Material found on this sheet was previously located on Sheet 42.*

---

Issued: June 30, 2021

Effective: July 1, 2021

By: Lisa Jill Freeman, Vice President & Regulatory Compliance Officer  
900 Main Campus Drive, Suite 100  
Raleigh, NC 27606

COMPETITIVE TELECOMMUNICATIONS ACCESS SERVICES PRICE LIST

---

SECTION 5-SWITCHED ACCESS RATES, (Cont'd.)

5.4 Rates and Charges

5.4.1 AT&T Territory

	Originating	Terminating
Tandem-Switched Transport - Termination, per minute	*	*
Tandem-Switched Transport - Facility, per minute per mile	*	*
Access Tandem Switching, per minute	*	*
CMUX, per minute	*	*
CTP, per minute	*	*
End Office Switching, per minute	*	*

5.4.2 CenturyLink (formerly Embarq) Territory

	Originating	Terminating
Tandem-Switched Transport - Termination, per minute	*	*
Tandem-Switched Transport - Facility, per minute per mile	*	*
Access Tandem Switching, per minute	*	*
CMUX, per minute	*	*
CTP, per minute, all zones	*	*
End Office Switching, per minute, all zones	*	*

(C)

(C)

(M)

(M)

\* Switched Access Services will be assessed applicable switched access usage charges at the rates set forth in the Company's Federal Access Tariff, FCC No. 1 posted at:  
<https://apps.fcc.gov/etfs/public/lecTariffs.action?idLec=365>

*Material previously located on this sheet has been moved to Sheet 44.0.1.*

COMPETITIVE TELECOMMUNICATIONS ACCESS SERVICES PRICE LIST

---

SECTION 5-SWITCHED ACCESS RATES, (Cont'd.)

5.4 Rates and Charges, (cont'd.)

5.4.3 Frontier (formerly Verizon) Territory

	Originating	Terminating
Tandem-Switched Transport - Termination, per minute	*	*
Tandem-Switched Transport - Facility, per minute per mile	*	*
Access Tandem Switching, per minute	*	*
CMUX, per minute	*	*
CTP, per minute, all zones	*	*
End Office Switching, per minute, all zones	*	*

5.4.4 Toll-Free 8YY Data Base Query

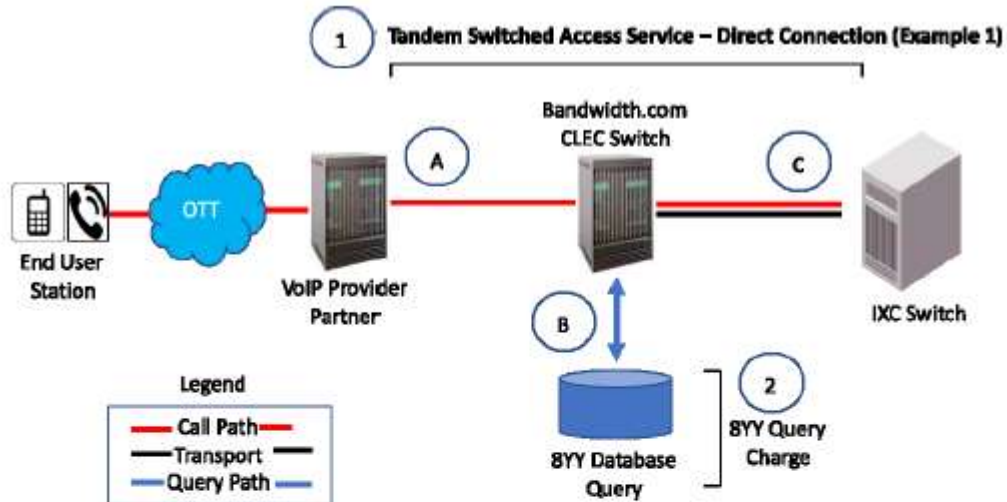
<u>Effective:</u>	<u>7/1/2021 – 6/30/2022</u>	<u>7/1/2022 – 6/30/2023</u>	<u>7/1/2023</u>	(C)
Per Query				
AT&T Areas	\$0.004000 (R)	\$0.002100 (R)	\$0.000200 (R)	
All Other Areas	\$0.004210	\$0.002205 (R)	\$0.000200 (R)	(C)

\* Switched Access Services will be assessed applicable switched access usage charges at the rates set forth in the Company's Federal Access Tariff, FCC No. 1 posted at:  
<https://apps.fcc.gov/etfs/public/lecTariffs.action?idLec=365>

COMPETITIVE TELECOMMUNICATIONS ACCESS SERVICES PRICE LIST

SECTION 7 – CALL FLOW DIAGRAMS

Tandem Switching Access Service – Direct Connection  
 Section 5.2.1.A (Sections 5.2.4 and 5.2.5 also apply to Originating 8YY Calls)



**Originating Call Flow:**

- A. End User places long distance call that is routed to Bandwidth.com CLEC switch.
- B. If 8YY call, Bandwidth.com CLEC looks up IXC that should receive the call in 8YY Database.
- C. Call is routed to IXC switch via dedicated transport.

**Originating Charges:**

Bandwidth.com CLEC charges IXC for:

- (1) Tandem Switching Access Service – Direct Connection, which is comprised of:
  - (a) Access Tandem switching;
  - (b) Tandem-Switched Transport Termination and Common Multiplexing;
  - (c) Tandem-Switched Transport - Facility;
  - (d) Dedicated Trunk Port (ICB) or Common Trunk Port
- (2) 8YY Query Charge, as applicable.

Customer is responsible for providing or ordering dedicated facilities to Bandwidth.com CLEC's point of presence in the access tandem serving area.

**Terminating Call Flow:**

- C. IXC delivers terminating long distance call to Bandwidth.com CLEC switch via dedicated transport.
- A. Bandwidth.com CLEC switches and routes call to VoIP Provider Partner

**Terminating Charges:**

Bandwidth.com CLEC charges IXC for:

- (1) Tandem Switching Access Service – Direct Connection, which is comprised of:
  - (a) Tandem-Switched Transport Termination and Common Multiplexing;
  - (b) Tandem-Switched Transport - Facility;
  - (c) Dedicated Trunk Port (ICB) or Common Trunk Port

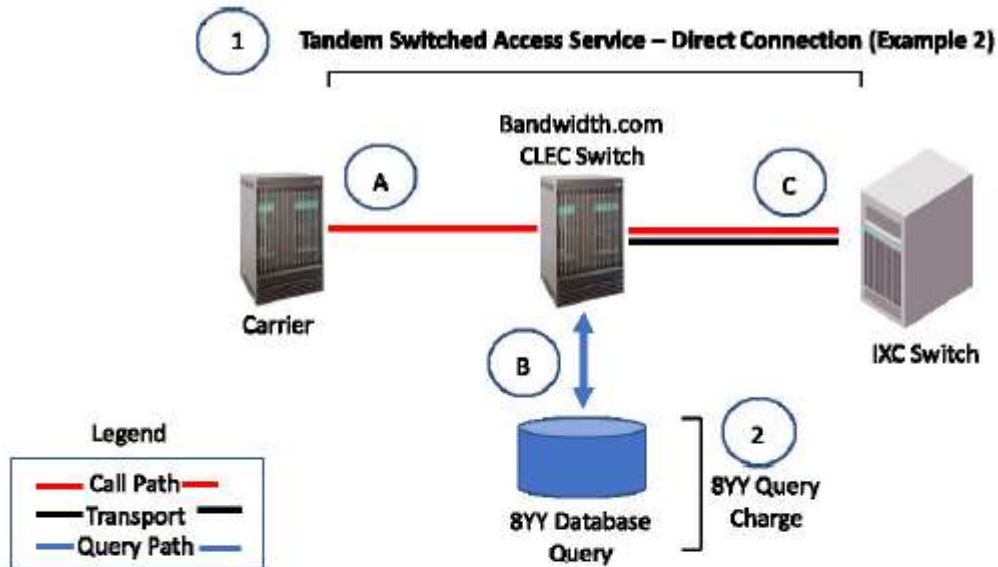
Customer is responsible for providing or ordering dedicated facilities to Bandwidth.com CLEC's point of presence in the access tandem serving area

(C)

(C)

COMPETITIVE TELECOMMUNICATIONS ACCESS SERVICES PRICE LIST

SECTION 7 – CALL FLOW DIAGRAMS, (Cont'd.)



**Originating Call Flow:**

- A. 3<sup>rd</sup> Party Carrier routes long distance call to Bandwidth.com CLEC switch.
- B. If 8YY call, Bandwidth.com CLEC looks up INC that should receive the call in 8YY Database.
- C. Call is routed to IXC switch via dedicated transport.

**Originating Charges:**

Bandwidth.com CLEC charges INC for:

- (1) Tandem Switching Access Service – Direct Connection, which is comprised of:
  - (a) Access Tandem switching;
  - (b) Tandem-Switched Transport Termination and Common Multiplexing;
  - (c) Tandem-Switched Transport - Facility;
  - (d) Dedicated Trunk Port (ICB) or Common Trunk Port
- (2) 8YY Query Charge, as applicable.

Customer is responsible for providing or ordering dedicated facilities to Bandwidth.com CLEC's point of presence in the access tandem serving area.

**Terminating Call Flow:**

- C. IXC delivers terminating long distance call to Bandwidth.com CLEC switch via dedicated transport.
- A. Bandwidth.com CLEC switches and routes call to 3<sup>rd</sup> Party Carrier.

**Terminating Charges:**

Bandwidth.com CLEC charges INC for:

- (1) Tandem Switching Access Service – Direct Connection, which is comprised of:
  - (a) Access Tandem Switching
  - (b) Tandem-Switched Transport Termination and Common Multiplexing;
  - (c) Tandem-Switched Transport - Facility;
  - (d) Dedicated Trunk Port (ICB) or Common Trunk Port

Customer is responsible for providing or ordering dedicated facilities to Bandwidth.com CLEC's point of presence in the access tandem serving area.

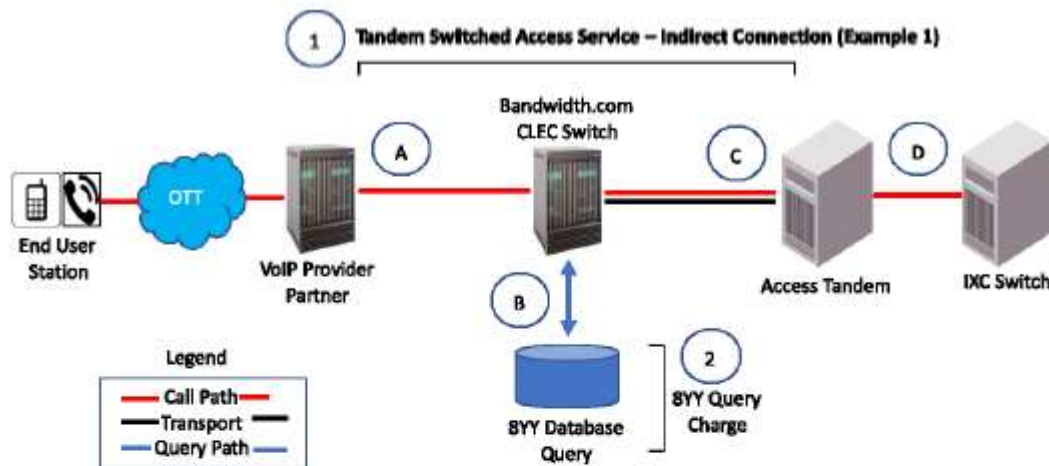
(C)

(C)

COMPETITIVE TELECOMMUNICATIONS ACCESS SERVICES PRICE LIST

SECTION 7 – CALL FLOW DIAGRAMS, (Cont'd.)

**Tandem Switching Access Service – Indirect Connection**  
 Section 5.2.1.B (Sections 5.2.4 and 5.2.5 also apply to Originating 8YY Calls)



**Originating Call Flow:**

- A. End User places long distance call that is routed to Bandwidth.com CLEC switch.
- B. If 8YY call, Bandwidth.com CLEC looks up IXC that should receive the call in 8YY Database.
- C. Call is routed from Bandwidth.com CLEC switch to Third-Party Access Tandem over shared transport.
- D. Third-Party Access Tandem provider routes call to IXC.

**Originating Charges:**

Bandwidth.com CLEC charges IXC for:

- (1) Tandem Switching Access Service – Indirect Connection, which is comprised of:
  - (a) Access Tandem switching;
  - (b) Tandem-Switched Transport Termination and Common Multiplexing;
  - (c) Tandem-Switched Transport – Facility;
  - (d) Common Trunk Port
- (2) 8YY Query Charge, as applicable

Additional charges may be assessed by the third-party access tandem provider.

**Terminating Call Flow:**

- D. IXC delivers terminating long distance call to Third-Party Access Tandem.
- C. Third-Party Access Tandem provider routes call over shared transport to Bandwidth.com CLEC switch.
- A. Call is routed from Bandwidth.com CLEC switch to VoIP Provider Partner.

**Terminating Charges:**

Bandwidth.com CLEC charges IXC for:

- (1) Tandem Switching Access Service – Indirect Connection, which is comprised of:
  - (a) Access Tandem switching;
  - (b) Tandem-Switched Transport Termination and Common Multiplexing;
  - (c) Tandem-Switched Transport – Facility.

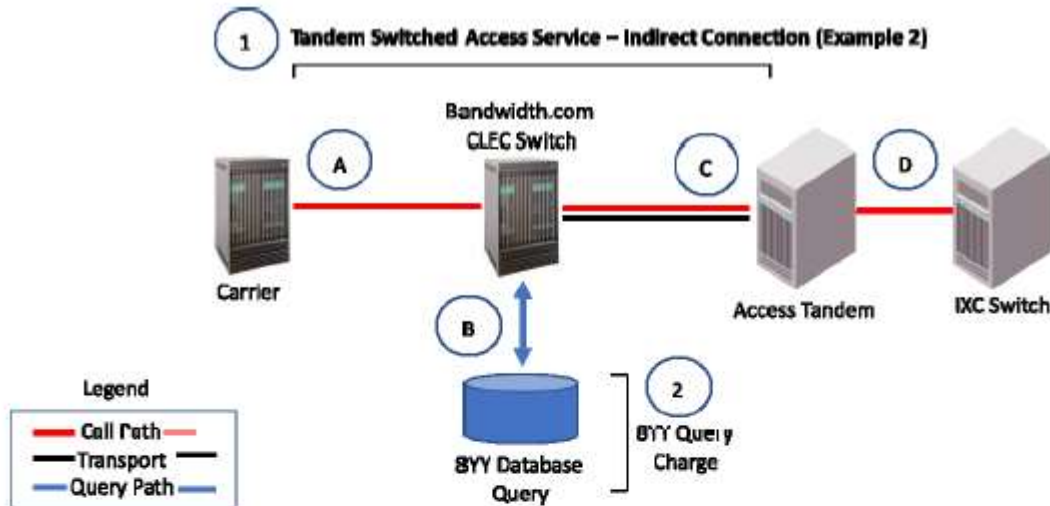
Additional charges may be assessed by the third-party access tandem provider

(C)

(C)

COMPETITIVE TELECOMMUNICATIONS ACCESS SERVICES PRICE LIST

SECTION 7 – CALL FLOW DIAGRAMS, (Cont'd.)



**Originating Call Flow:**

- A. 3<sup>rd</sup> Party Carrier routes long distance call to Bandwidth.com CLEC switch.
- B. If 8YY call, Bandwidth.com CLEC looks up IXC that should receive the call in 8YY Database.
- C. Call is routed from Bandwidth.com CLEC switch to Third-Party Access Tandem over shared transport.
- D. Third-Party Access Tandem provider routes call to IXC.

**Originating Charges:**

- Bandwidth.com CLEC charges IXC for:
- (1) Tandem Switching Access Service – Indirect Connection, which is comprised of:
    - (a) Access Tandem switching;
    - (b) Tandem-Switched Transport Termination and Common Multiplexing;
    - (c) Tandem-Switched Transport – Facility;
    - (d) Common Trunk Port
  - (2) 8YY Query Charge, as applicable.
- Additional charges may be assessed by the third-party access tandem provider.

**Terminating Call Flow:**

- D. IXC delivers terminating long distance call to Third-Party Access Tandem.
- C. Third-Party Access Tandem provider routes call over shared transport to Bandwidth.com CLEC switch.
- A. Call is routed from Bandwidth.com CLEC switch to 3<sup>rd</sup> Party Carrier.

**Terminating Charges:**

- Bandwidth.com CLEC charges IXC for:
- (1) Tandem Switching Access Service – Indirect Connection, which is comprised of:
    - (a) Access Tandem Switching
    - (b) Tandem-Switched Transport Termination and Common Multiplexing;
    - (c) Tandem-Switched Transport – Facility.
- Additional charges may be assessed by the third-party access tandem provider

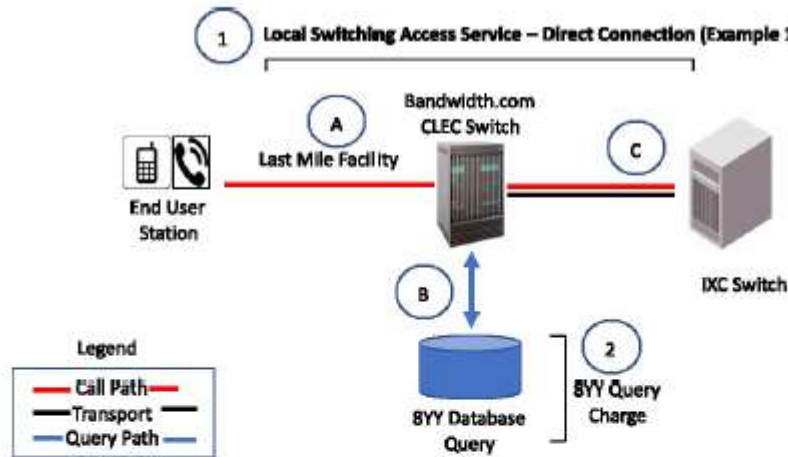
(N)

(N)

COMPETITIVE TELECOMMUNICATIONS ACCESS SERVICES PRICE LIST

SECTION 7 – CALL FLOW DIAGRAMS, (Cont'd.)

Local Switching Access Service – Direct Connection  
Section 5.2.2 (Sections 5.2.4 and 5.2.5 also apply to Originating 8YY Calls)



**Originating Call Flow:**

- A. End User places a long distance call that is routed to Bandwidth.com CLEC switch.
- B. If 8YY call, Bandwidth.com CLEC looks up IXC that should receive the call in 8YY Database.
- C. Call is routed from Bandwidth.com CLEC switch to IXC switch via dedicated transport.

**Originating Charges:**

- Bandwidth.com CLEC charges IXC for:
- (1) Local Switching Access Service – Direct Connection, which is comprised of:
    - (a) End Office Switching,
    - (b) Dedicated Trunk Port (ICB) or Common Trunk Port
  - (2) 8YY Query Charge, as applicable.

**Terminating Call Flow:**

- C. IXC delivers terminating long distance call to Bandwidth.com CLEC switch via dedicated transport
- A. Call is routed from Bandwidth.com CLEC switch to Bandwidth.com CLEC-End User.

**Terminating Charges:**

- CLEC charges IXC for:
- (1) Local Switching Access Service – Direct Connection, which is comprised of:
    - (a) End Office Switching;
    - (b) Dedicated Trunk Port (ICB) or Common Trunk Port;

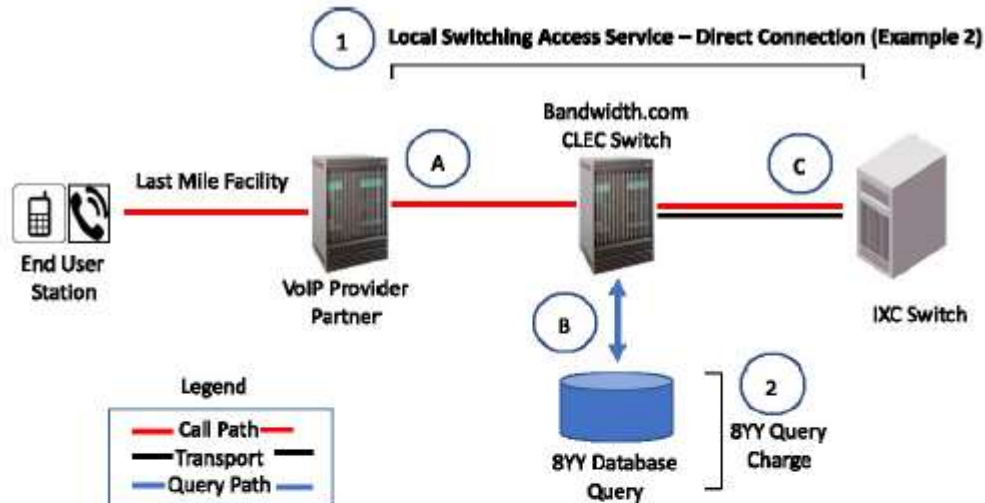
(N)

(N)



COMPETITIVE TELECOMMUNICATIONS ACCESS SERVICES PRICE LIST

SECTION 7 – CALL FLOW DIAGRAMS, (Cont'd.)



**Originating Call Flow:**

- A. End User places a long distance call that is routed to Bandwidth.com CLEC switch.
- B. If 8YY call, Bandwidth.com CLEC looks up IXC that should receive the call in 8YY Database.
- C. Call is routed from Bandwidth.com CLEC switch to IXC switch via dedicated transport.

**Originating Charges:**

- Bandwidth.com CLEC charges IXC for:
- (1) Local Switching Access Service – Direct Connection, which is comprised of:
    - (a) End Office Switching.
    - (b) Dedicated Trunk Port (ICB) or Common Trunk Port.
  - (2) 8YY Query Charge, as applicable.

**Terminating Call Flow:**

- C. IXC delivers terminating long distance call to Bandwidth.com CLEC switch via dedicated transport
- A. Call is routed from Bandwidth.com CLEC switch to VoIP Provider Partner

**Terminating Charges:**

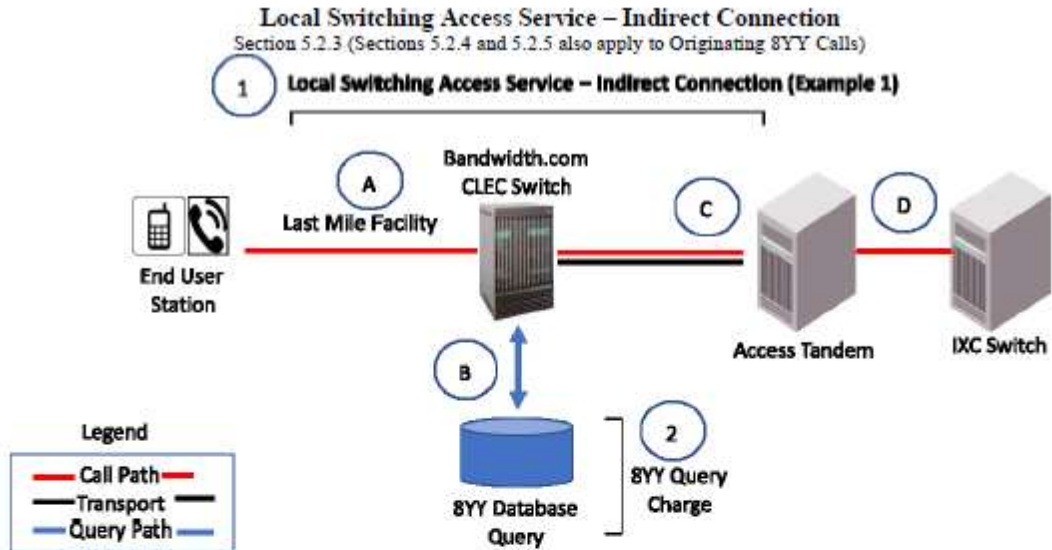
- CLEC charges IXC for:
- (1) Local Switching Access Service – Direct Connection, which is comprised of:
    - (a) End Office Switching.
    - (b) Dedicated Trunk Port (ICB) or Common Trunk Port.

(N)

(N)

COMPETITIVE TELECOMMUNICATIONS ACCESS SERVICES PRICE LIST

SECTION 7 – CALL FLOW DIAGRAMS, (Cont'd.)



**Originating Call Flow:**

- A. End User places a long distance call that is routed to Bandwidth.com CLEC switch.
- B. If 8YY call, Bandwidth.com CLEC looks up IXC that should receive the call in 8YY Database.
- C. Call is routed from Bandwidth.com CLEC switch to Third-Party Access Tandem over shared transport.
- D. Third-Party Access Tandem provider routes call to IXC.

**Originating Charges:**

Bandwidth.com CLEC charges IXC for:

- (1) Local Switching Access Service – Indirect Connection, which is comprised of:
  - (a) End Office Switching;
  - (b) Common Trunk Port;
  - (c) Tandem-Switched Transport Termination and Common Multiplexing;
  - (d) Tandem-Switched Transport - Facility.
- (2) 8YY Query Charge, as applicable.

Additional charges may be assessed by the third-party access tandem provider.

**Terminating Call Flow:**

- D. IXC delivers terminating long distance call to Third-Party Access Tandem.
- C. Third-Party Access Tandem provider routes call over shared transport to Bandwidth.com CLEC switch.
- A. Call is routed from Bandwidth.com CLEC switch to Bandwidth.com CLEC End User.

**Terminating Charges:**

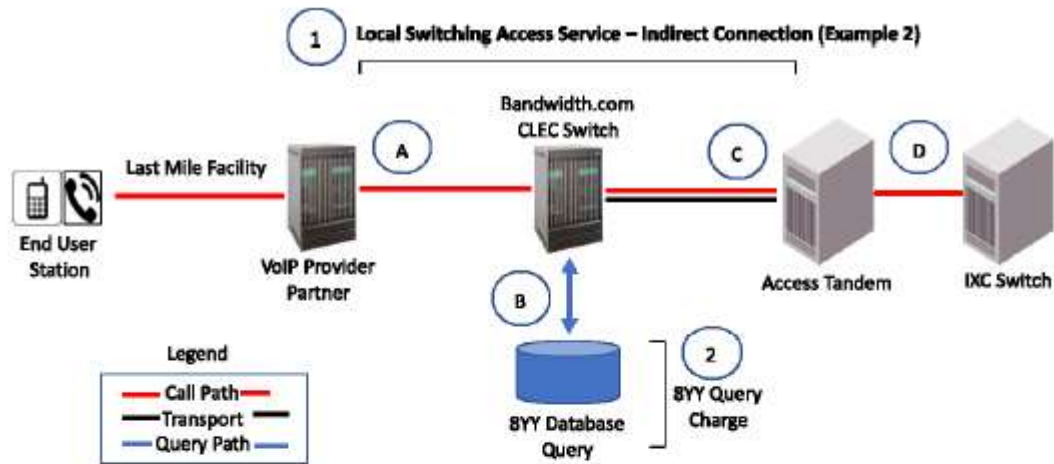
CLEC charges IXC for:

- (1) Local Switching Access Service – Indirect Connection, which is comprised of:
  - (a) End Office Switching;
  - (b) Common Trunk Port;
  - (c) Tandem-Switched Transport Termination and Common Multiplexing;
  - (d) Tandem-Switched Transport - Facility.

Additional charges may be assessed by the third-party access tandem provider.

COMPETITIVE TELECOMMUNICATIONS ACCESS SERVICES PRICE LIST

SECTION 7 – CALL FLOW DIAGRAMS, (Cont'd.)



(N)

**Originating Call Flow:**

- A. End User places a long distance call that is routed to Bandwidth.com CLEC switch.
- B. If 8YY call, Bandwidth.com CLEC looks up IXC that should receive the call in 8YY Database.
- C. Call is routed from Bandwidth.com CLEC switch to Third-Party Access Tandem over shared transport.
- D. Third-Party Access Tandem provider routes call to IXC.

**Originating Charges:**

- Bandwidth.com CLEC charges IXC for:
- (1) Local Switching Access Service – Indirect Connection, which is comprised of:
    - (a) End Office Switching.
    - (b) Common Trunk Port.
    - (c) Tandem-Switched Transport Termination and Common Multiplexing.
    - (d) Tandem-Switched Transport - Facility.
  - (2) 8YY Query Charge, as applicable.
- Additional charges may be assessed by the third-party access tandem provider.

**Terminating Call Flow:**

- D. IXC delivers terminating long distance call to Third-Party Access Tandem.
- C. Third-Party Access Tandem provider routes call over shared transport to Bandwidth.com CLEC switch.
- A. Call is routed from Bandwidth.com CLEC switch to VoIP Provider Partner.

**Terminating Charges:**

- CLEC charges IXC for:
- (1) Local Switching Access Service – Indirect Connection, which is comprised of:
    - (a) End Office Switching.
    - (b) Common Trunk Port.
    - (c) Tandem-Switched Transport Termination and Common Multiplexing.
    - (d) Tandem-Switched Transport - Facility.
- Additional charges may be assessed by the third-party access tandem provider

(N)