

BEFORE THE FLORIDA PUBLIC SERVICE COMMISSION

IN RE: Amendment of Rules)	DOCKET NO: 910204-TP
25-4.076(9)(10) and)	
25-24.515(13)(14), F.A.C.,)	ORDER NO: PSC-92-0115-FOF-TP
regarding accessibility of)	
pay telephone paystations)	ISSUED: 03/30/92
to the physically handicapped)	
and other pay telephone)	
capabilities)	
_____)	

NOTICE OF ADOPTION OF RULE AMENDMENTS

NOTICE is hereby given that the Commission, pursuant to section 120.54, Florida Statutes, has adopted the amendments to Rules 25-4.076(9)(10) and 25-24.515(13)(14), F.A.C., relating to pay telephone paystations to the physically handicapped and other pay telephone capabilities, with changes.

The rule amendments were filed with the Department of State on March 25, 1992, and will be effective on April 14, 1992. A copy of the relevant portions of the certification filed with the Secretary of State is attached to this Notice.

This docket is closed upon issuance of this notice.

By Direction of the Florida Public Service Commission, this 30th day of MARCH, 1992.



STEVE TRIBBLE, Director
Division of Records & Reporting

(S E A L)

DES
adp76515.dcp

DOCUMENT NUMBER-DATE

03099 MAR 30 1992

FPSC-RECORDS/REPORTING

CERTIFICATION OF
PUBLIC SERVICE COMMISSION ADMINISTRATIVE RULES
FILED WITH THE
DEPARTMENT OF STATE

I do hereby certify:

- (1) The time limitations prescribed by paragraph 120.54(11)(a), F.S., have been complied with; and
- (2) There is no administrative determination under section 120.54(4), F.S., pending on any rule covered by this certification; and
- (3) All rules covered by this certification are filed within the prescribed time limitations of paragraph 120.54(11)(b), F.S. They are filed not less than 28 days after the notice required by subsection 120.54(1), F.S., and;
- (a) And are filed not more than 90 days after the notice; or
- (b) Are filed not more than 90 days after the notice not including days an administrative determination was pending; or
- (c) Are filed within 21 days after the adjournment of the final public hearing on the rule; or
- (d) Are filed within 21 days after the date of receipt of all material authorized to be submitted at the hearing; or
- (e) Are filed within 21 days after the date the transcript was received by this agency.

9
MAR 25 PM 3:43
DEPARTMENT OF STATE
TALLAHASSEE
FLORIDA
FILED

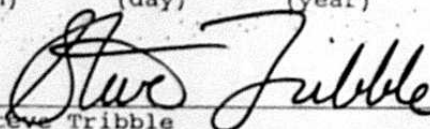
DOCUMENT NUMBER-DATE
03099 MAR 30 1992
PSC-RECORDS/REPORTING

Attached are the original and two copies of each rule covered by this certification. The rules are hereby adopted by the undersigned agency by and upon their filing with the Department of State.

<u>Rule No.</u>	<u>Rulemaking Authority</u>	<u>Specific Law Being Implemented, Interpreted or Made Specific</u>
25-4.076	350.127(2)	364.03

Under the provision of paragraph 120.54(13)(a), F.S., the rules take effect 20 days from the date filed with the Department of State or a later date as set out below:

Effective: _____
(month) (day) (year)



Steve Tribble

Director, Division of Records & Reporting
Title

Number of Pages Certified

(S E A L)

adp76515.dcp

FILED
92 MAR 25 PM 3:43
DEPARTMENT OF STATE
TALLAHASSEE, FLORIDA

1 25-4.076 Pay Telephone Service Provided By Local Exchange
2 Companies.

3 (1) Each local exchange company shall, where practical,
4 supply at least one coin telephone in each exchange that will be
5 available to the public on a twenty-four (24) hour basis. This
6 coin telephone shall be located in a prominent location in the
7 exchange. Except as provided herein, a telephone company may not
8 be required to provide pay telephone service at locations where the
9 revenues derived therefrom are insufficient to support the required
10 investment unless reasonable public requirements will be served.
11 Pay stations shall be lighted during the hours of darkness when
12 light from other sources is not adequate to read instructions and
13 use the instrument.

14 (2) Each telephone station shall return any deposited amount
15 if the call is not completed, except messages to a Feature Group A
16 access number.

17 (3) Each telephone station shall have the capability of coin
18 free access to a local exchange company toll operator and the
19 universal emergency telephone number "911" where operable; and coin
20 free or coin return access to local directory assistance,
21 intercept, repair service and calls to the business office of the
22 company.

23 (4) Each telephone station shall be equipped with a legible
24 sign, card or plate of reasonable permanence which shall identify
25 the following: the telephone number and location address of such

CODING: Words underlined are additions; words in
~~struck-through~~ type are deletions from existing law.

1 station, the name or recognizable logo of the owner and the party
2 responsible for repairs or refunds, free telephone number of
3 responsible party and clear dialing instructions (including notice
4 of the lack of availability of local or toll service). The
5 identification of the location address for local exchange and pay
6 telephone companies shall be coordinated with the appropriate "911"
7 or emergency center where applicable.

8 (5) Each telephone station which provides access to any long
9 distance company must provide access to all locally available long
10 distance companies regardless of which form of access is available.

11 (6) Each telephone station must allow incoming calls to be
12 received, with the exception of those located at penal
13 institutions, hospitals and schools, and at locations specifically
14 exempted by the Commission. There shall be no charge for receiving
15 incoming local calls. Where incoming calls are not received,
16 intercept shall be provided.

17 (7) Where there are fewer than three telephones located in a
18 group, a directory for the entire local calling area shall be
19 maintained at each station. Where there are three or more
20 telephones located in a group, a directory for the entire local
21 calling area shall be maintained at every other station. However,
22 where telephone stations are fully enclosed, a directory shall be
23 maintained at each station.

24 (8) Normal maintenance and coin collection activity shall
25 include a review of the cleanliness of each station and reasonable

CODING: Words underlined are additions; words in
~~struck-through~~ type are deletions from existing law.

1 efforts shall be made to ensure that 95% of all stations are clean
2 and free of obstructions.

3 (9) Except as provided in paragraphs (9)(a), (9)(b), and 9(c)
4 below, each telephone station installed after January 5, 1987
5 shall conform to subsections 4.29.2 - 4.29.4 and 4.29.7 - 4.29.8 of
6 the American National Standards Specifications for Making Buildings
7 and Facilities Accessible and Usable by Physically Handicapped
8 People, approved February 5, 1986 by the American National
9 Standards Institute, Inc. (ANSI A117.1-1986), which is incorporated
10 by reference into this rule. Each telephone station installed
11 prior to January 5, 1987 shall conform to the above standards by
12 January 1, 1995.

13 (a) Effective June 1, 1992, where there are two or more
14 telephone stations located in a group, there shall be a minimum of
15 one telephone per group of ten which conforms to the above
16 mentioned standards. The conforming station must be physically
17 located in the group of telephone stations or within a clear line
18 of sight within fifteen (15) feet of the group and free from
19 wheelchair barriers.

20 (b) Except for locations on floors above or below entry level
21 in buildings not serviced by a ramp or elevator, such stations
22 shall be placed in areas accessible to the physically handicapped.

23 (c) Stations located in buildings which are not accessible to
24 physically handicapped persons must comply with the above mentioned
25 standards upon modification of the building to make it handicap-

CODING: Words underlined are additions; words in
~~struck-through~~ type are deletions from existing law.

1 accessible, according to the Americans with Disabilities Act.
2 (10) Effective September 1, 1992, each telephone shall permit
3 end users to input the additional digits necessary to complete
4 calling card calls, using any locally available carrier, without
5 operator intervention, and to utilize features such as voice mail
6 box and menu driven answering devices. This requirement shall not
7 be applicable to pay telephones located in confinement facilities.
8 Specific Authority: 350.127(2), F.S.
9 Law Implemented: 364.03, F.S.
10 History: New 12/1/68, Amended 3/31/76, formerly 25-4.76, Amended
11 1/5/87, _____.

CODING: Words underlined are additions; words in
~~struck-through~~ type are deletions from existing law.

Order No. PSC-92-0115-FOF-TP
Docket No. 910204-TP
Page 8 - Corrected

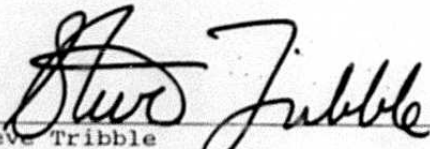
THIS PAGE
INTENTIONALLY
LEFT BLANK.

CERTIFICATION OF
PUBLIC SERVICE COMMISSION
OF MATERIAL INCORPORATED BY REFERENCE IN RULE 25-4.076
FILED WITH THE DEPARTMENT OF STATE

I hereby certify that attached is a true and complete copy of RULES-ANSI STANDARDS which is incorporated by reference by Rule 25-4.076, Florida Administrative Code.

Under the provisions of paragraph 120.54(13)(a), F.S., the incorporated material takes effect 20 days from the date filed with the Department of State or a later date as set out below:

Effective: _____
(month) (day) (year)



Steve Tribble

Director, Division of Records & Reporting
Title

Number of Pages Certified

(S E A L)

DES

adp76515.dcp

FILED
52 MAR 25 PM 3:43
DEPARTMENT OF STATE
TALLAHASSEE, FLORIDA

Order No. PSC-92-0115-FOF-TP
Docket No. 910204-TP
Page 10

SOP 2013-2
Page 10 of 41
EXHIBIT 5

FLORIDA PUBLIC SERVICE COMMISSION
PAY TELEPHONE SERVICE
(PATS)
PHYSICALLY HANDICAPPED
RULES-ANSI STANDARDS

92 MAR 25 PM 3:43
DEPARTMENT OF STATE
TALLAHASSEE, FLORIDA

FILED

Florida Public Service Commission
Division of Communications
101 East Gaines Street
Tallahassee, Florida 32301

TABLE OF CONTENTS

	<u>PAGE</u>
RULE REQUIREMENTS	12
AMERICAN NATIONAL STANDARDS INSTITUTE, INC. (ANSI) PUBLIC TELEPHONE STANDARDS	
4.29.2 Clear Floor or Ground Space	13
4.29.3 Mounting Height	30
4.29.4 Protruding Objects	33
4.29.7 Telephone Directories	38
4.29.8 Cord Length	41

RULE REQUIREMENTS

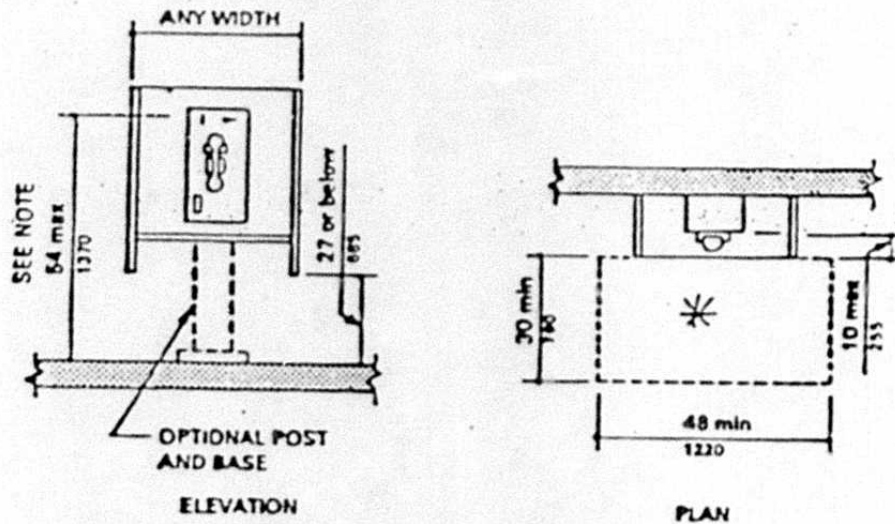
25-24.515(13), Pay Telephone Service. . . . Each telephone station installed after January 5, 1987, shall conform to subsections 4.29.2-4.29.4 and 4.29.7-4.29.8 of the American National Standards Specifications for making buildings and facilities accessible and usable by physically handicapped people, approved February 5, 1986, by the American National Standards Institute, Inc. (ANSI A117.1-1986). Except for locations on floors above or below entry level in buildings not serviced by a ramp or elevator, such stations shall be placed in areas accessible to the physically handicapped.

- 4.29.2 Clear Floor or Ground Space
- .3 Mounting Height
- .4 Protruding Objects
- .7 Telephone Directories
- .8 Cord Length

ANSI PUBLIC TELEPHONE STANDARDS

1. 4.29.2 Clear Floor or Ground Space:

4.29.2 Clear Floor or Ground Space. Clear floor or ground spaces at each accessible public telephone shall be at least 30 in by 48 in (760 mm by 1220 mm) and shall allow either a forward or parallel approach by a person using a wheelchair (see Fig. 44).



NOTE: This dimension represents the height of the highest operable parts that are essential to the basic operation of the telephone.

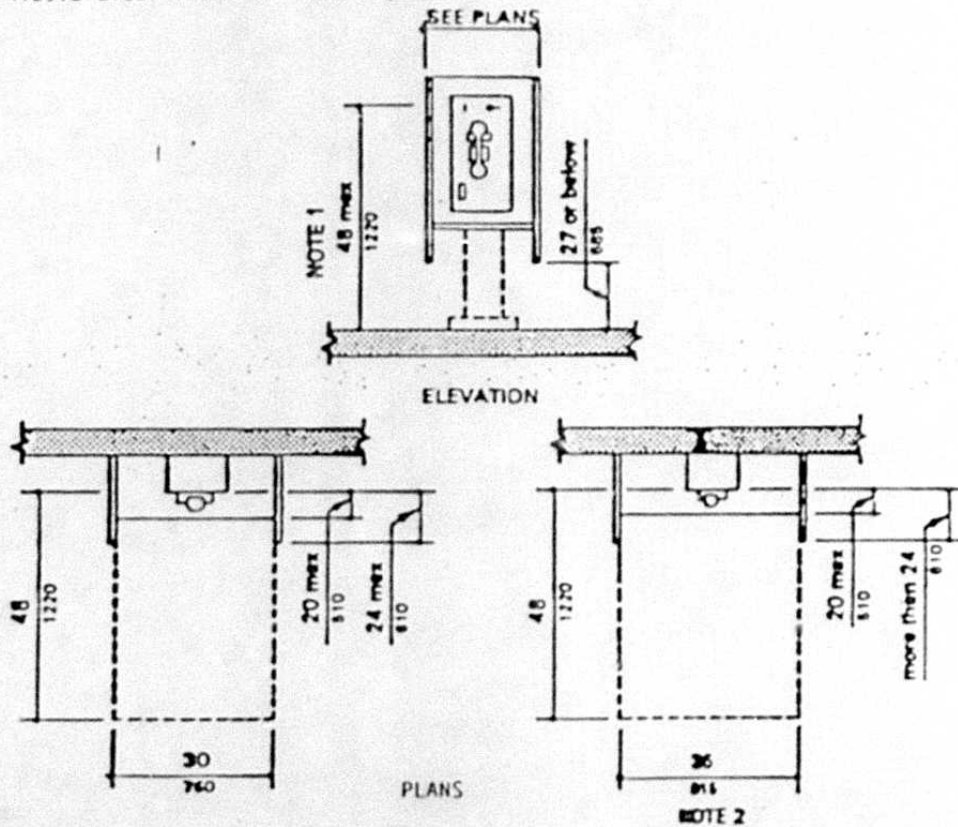
(a) Side Reach Possible

Fig. 44
Mounting Heights and Clearances for Telephone

*The required clear space shall comply with ^{4.2.4} 4x2x4 and shall not be restricted by bases, enclosures and fixed seats.

ANSI PUBLIC TELEPHONE STANDARDS

1. 4.29.2 Clear Floor or Ground Space:



NOTES:

- (1) This dimension represents the height of the highest operable parts that are essential to the Basic operation of the telephone.
- (2) The required clear floor space increases to 36 in (915 mm) when the enclosure extends more than 24 in (610 mm) from the face of the telephone.

(b) Forward Reach Required

Fig. 44 Mounting Heights and Clearances for Telephones (Continued)

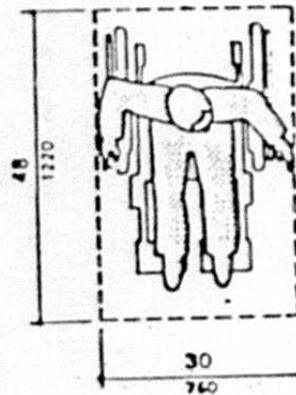
ANSI PUBLIC TELEPHONE STANDARDS

I. 4.29.2 Clear Floor or Ground Space:

The required clear space shall comply with 4.2.4 and shall not be restricted by bases, enclosures, and fixed seats.

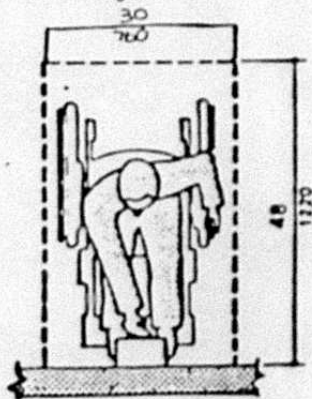
4.2.4 Clear Floor or Ground Space for Wheelchairs

4.2.4.1 Size and Approach. The minimum clear floor or ground space required to accommodate a single, stationary wheelchair and occupant is 30 in by 48 in (760 mm by 1220 mm) (see Fig. 4(a)).

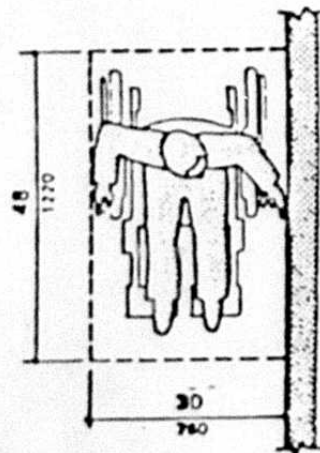


(a) Clear Floor Space

The minimum clear floor or ground space for wheelchairs may be positioned for forward or parallel approach to an object (see Fig. 4(b) and (c)). Clear floor or ground space for wheelchairs may be part of the knee space required under some objects.



(b) Forward Approach

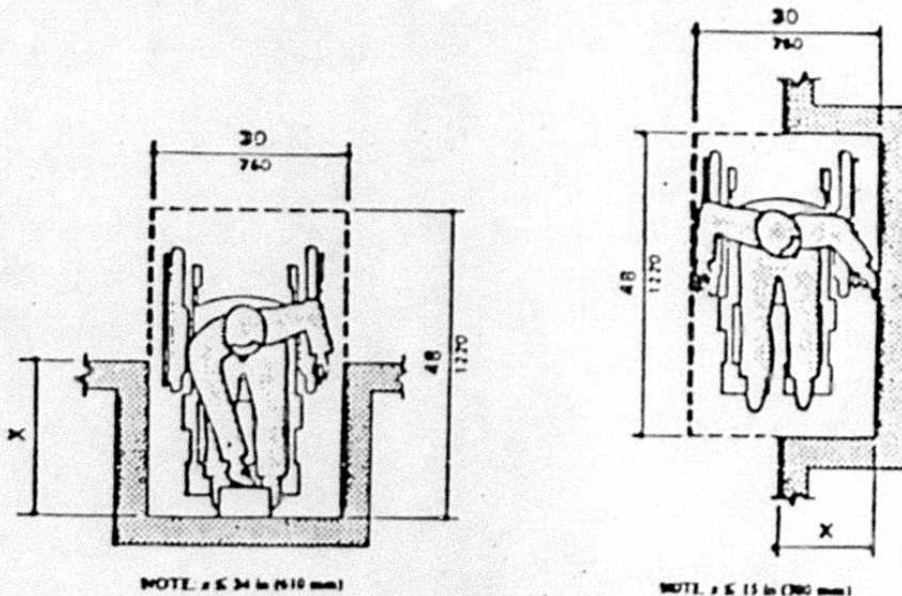


(c) Parallel Approach
Fig. 4
Minimum Clear Floor Space
for Wheelchairs

ANSI PUBLIC TELEPHONE STANDARDS

1. 4.29.2 Clear Floor or Ground Space:

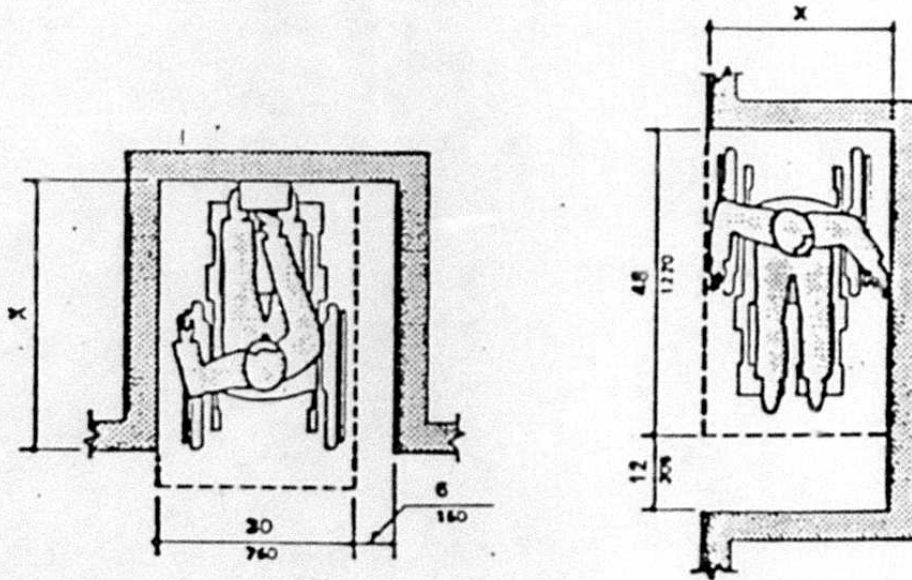
4.2.4.2. Relationship of Maneuvering Clearances to Wheelchair Spaces. One full unobstructed side of the clear floor or ground space for a wheelchair shall adjoin or overlap an accessible route or adjoin another wheelchair clear floor space. If a clear floor space is located in an alcove or otherwise confined on all or part of three sides, additional maneuvering clearances shall be provided as shown in fig. 4(d) and (e).



(d) Clear Floor Space In Alcoves

ANSI PUBLIC TELEPHONE STANDARDS

1. 4.29.2 Clear Floor or Ground Space:



NOTE: If $x > 24$ in (610 mm), then an additional maneuvering clearance of 6 in (150 mm) shall be provided as shown.

NOTE: If $x > 15$ in (360 mm), then an additional maneuvering clearance of 12 in (305 mm) shall be provided as shown.

(c) Additional Maneuvering Clearances for Alcoves

Fig. 4 Minimum Clear Floor Space for Wheelchair (Continued)

ANSI PUBLIC TELEPHONE STANDARDS

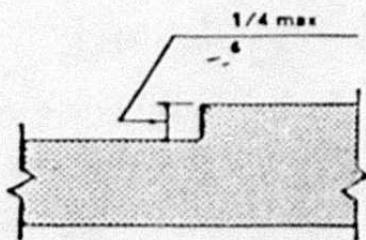
I. 4.29.2 Clear Floor or Ground Space:

4.2.4.3 Surfaces of Wheelchair Spaces. Clear floor or ground space for wheelchairs shall comply with 4.5.

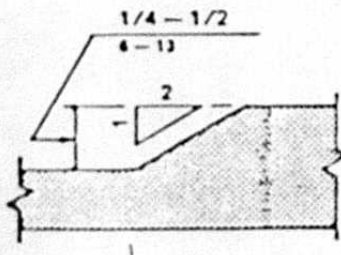
4.5 Ground and Floor Surfaces.

4.5.1* General. Ground and floor surfaces along accessible routes and in accessible rooms and spaces, including floors, walks, ramps, stairs, and curb ramps, shall be stable, firm and slip resistant, and shall comply with 4.5.

4.5.2 Changes in Level. Changes in level up to 1/4 in (6mm) may be vertical and without edge treatment. Changes in level between 1/4 in and 1/2 in (6 mm and 13 mm) shall be beveled with a slope no greater than 1:2 (see Fig. 7(c) and (d)).



(c) Vertical Changes in Level



(d) Beveled Changes in Level

Fig. 7
Accessible Routes and Ground and Floor Surfaces (Continued)

ANSI PUBLIC TELEPHONE STANDARDS:

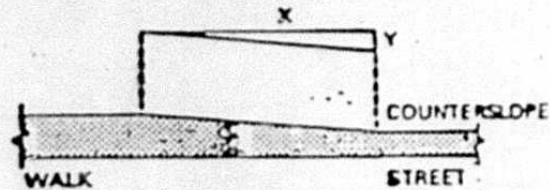
I. 4.29.2 Clear Floor or Ground Space:

Changes in level greater than 1/2 in (13 mm) shall be accomplished by means of a ramp that complies with 4.7 or 4.8

4.7 Curb Ramps

4.7.1 Location. Curb ramps complying with 4.7 shall be provided wherever an accessible route crosses a curb.

4.7.2 Slope. Slopes of curb ramps shall comply with 4.8.2. The slope shall be measured as shown in Fig. 11. Maximum counterslopes of adjoining gutters and road surfaces immediately adjacent to the curb ramp or accessible route shall not exceed 1:20.



NOTES:

- (1) Slope = y/x , where a is a level plane.
- (2) Counterslope shall not exceed 1:20.

Fig. 11
Measurement of Curb Ramp Slopes

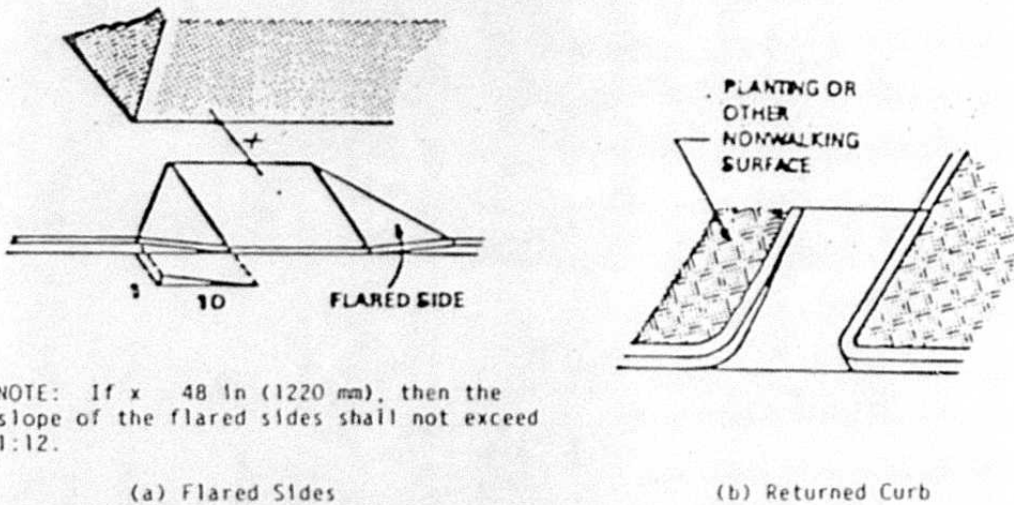
4.7.3 Width. The minimum width of a curb ramp shall be 36 in (915 mm), exclusive of flared sides.

4.7.4. Surface. Surfaces of curb ramps shall comply with 4.5.

ANSI PUBLIC TELEPHONE STANDARDS:

1. 4.29.2 Clear Floor or Ground Space:

4.7.5. Sides of Curb Ramps. If a curb ramp is located where pedestrians must walk across the ramp, then it shall have flared sides; the maximum slope of the flare shall be 1:10 (see Fig. 12(a)). Curb ramps with returned curbs may be used where pedestrians would not normally walk across the ramp (see Fig. 12(b)).



NOTE: If $x > 48$ in (1220 mm), then the slope of the flared sides shall not exceed 1:12.

Fig. 12
Sides of Curb Ramps

ANSI PUBLIC TELEPHONE STANDARDS:

I. 4.29.2 Clear Floor or Ground Space:

4.7.6. Built-Up Curb Ramps. Built-up curb ramps shall be located so that they do not project into vehicular traffic lanes (see Fig. 13).

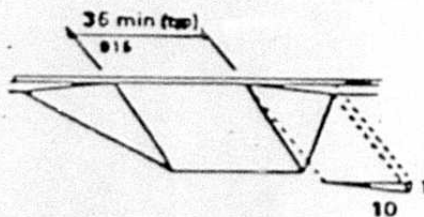


Fig. 13
Built-Up Curb Ramp

ANSI PUBLIC TELEPHONE STANDARDS:

1. 4.29.2 Clear Floor or Ground Space:

4.7.7 Warning Textures. A curb ramp shall have a detectable warning texture complying with 4.27 and extending the full width and depth of the curb ramp, including any flares (see Fig. 14).

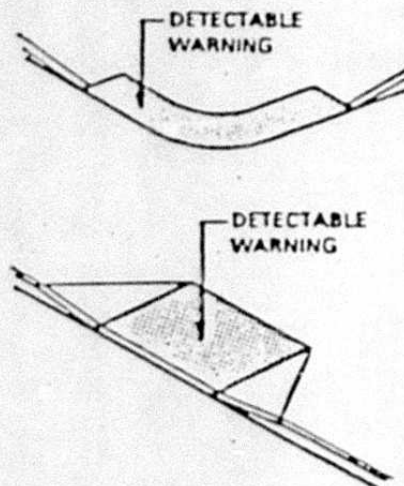


Fig. 14
Warning Signals at Curb Ramps

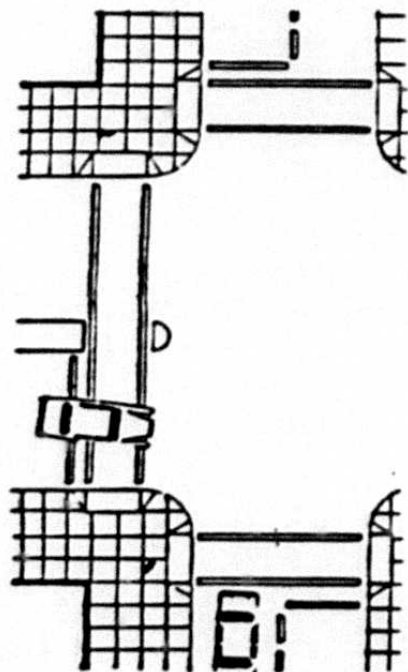
4.7.8. Obstructions. Curb ramps shall be located or protected to prevent their obstruction by parked vehicles.

ANSI PUBLIC TELEPHONE STANDARDS:

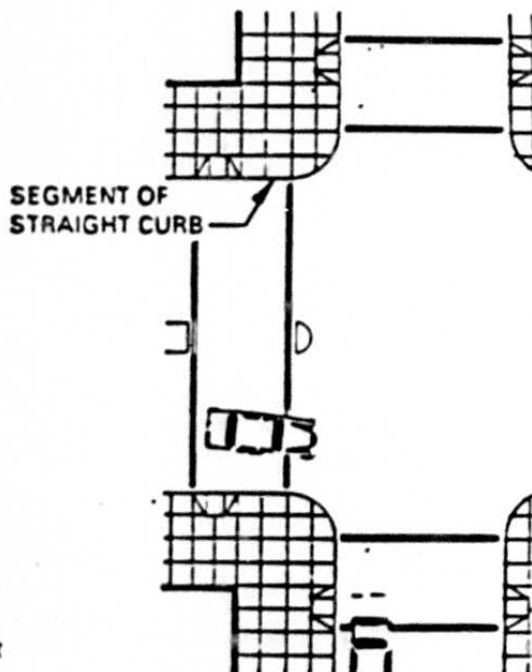
I. 4.29.2 Clear Floor or Ground Space:

4.7.9. Location at Marked Crossings. Curb ramps at marked crossings shall be wholly contained within the markings, excluding any flared sides (see Fig. 15).

4.7.10 Diagonal Curb Ramps. If diagonal (or corner-type) curb ramps have returned curbs or other well-defined edges, such edges shall be parallel to the direction of pedestrian flow. The bottom of diagonal curb ramps shall have 48-in (1220-mm) minimum clear space as shown in Fig. 15(c) and (d). If diagonal curb ramps are provided at marked crossings, the 48-in (1220 mm) clear space shall be within the markings (see Fig. 15(c) and (d)). If diagonal curb ramps have flared sides, they shall also have a segment of straight curb at least 24 in (610 mm) long located on each side of the curb ramp and within the marked crossing (see Fig. 15(c)).



(a)



(b)

ANSI PUBLIC TELEPHONE STANDARDS:

1. 4.29.2 Clear Floor or Ground Space:

4.7.11 Islands. Any raised islands in crossings shall be cut through level with the street or have curb ramps at both sides and a level area at least 48 in (1220 mm) long in the part of the island intersected by the crossings (see Fig. 15(a) and (b)).

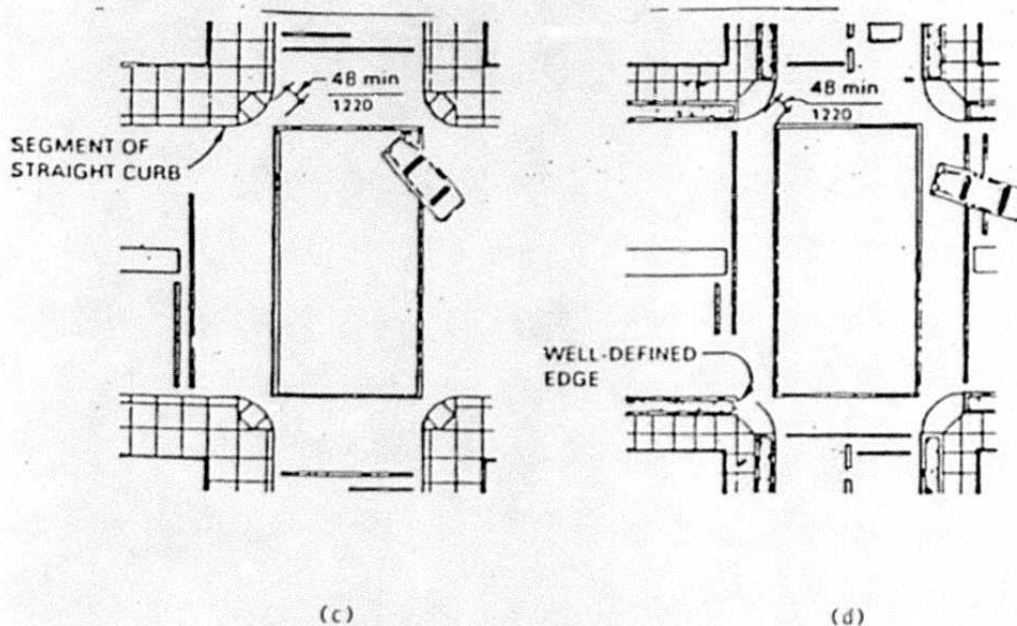


Fig. 15
Curb Ramps at Marked Crossings

13

ANSI PUBLIC TELEPHONE STANDARDS:

I. 4.29.2 Clear Floor or Ground Space:

4.27.12 Uncurbed Intersections. If there is no curb at the intersection of a walk and an adjoining street, parking lot, or busy driveway, then the walk shall have a detectable warning texture complying with 4.27.5 at the edge of the vehicular way.

4.27.5* Detectable Warnings at Hazardous Vehicular Areas. If a walk crosses or adjoins a frequently used vehicular way, and if there are no curbs, railings, or other elements detectable by a person who has a severe visual impairment separating the pedestrian and vehicular areas, the boundary between the areas shall be defined by a continuous, detectable warning texture, which is 36 in (915 mm) wide, complying with 4.27.2 (see Fig. 42).

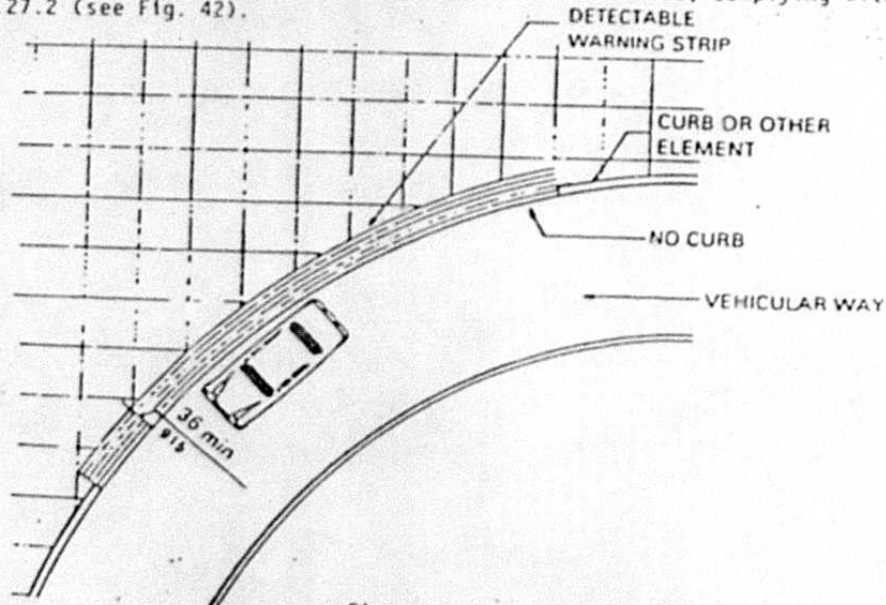
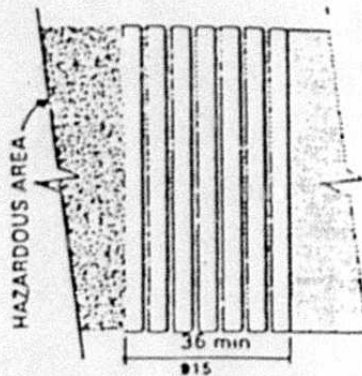


Fig. 42
Detectable Warning at Hazardous Vehicular Areas

ANSI PUBLIC TELEPHONE STANDARDS:

I. 4.29.2 Clear Floor or Ground Space:

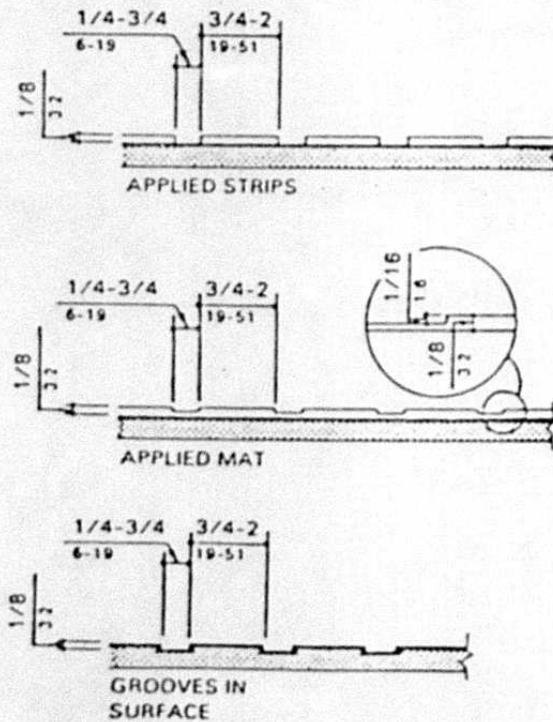
4.27.2*Detectable Warnings on Walking Surfaces. Detectable warning textures on walking surfaces shall consist of exposed aggregate concrete, cushioned surfaces made of rubber or plastic, raised strips, or grooves. Textures shall contrast with that of the surrounding surface. Raised strips or grooves shall comply with Fig. 40. Grooves may be used indoors only.



(a) Plan of Detectable Warning Surface

ANSI PUBLIC TELEPHONE STANDARDS:

1. 4.29.2 Clear Floor or Ground Space:



NOTE: Grooves may only be used indoors.

(b) Sections of Detectable Warning Surfaces

Fig. 40
Strips and Grooves Used as Detectable Warnings on Walking Surfaces.

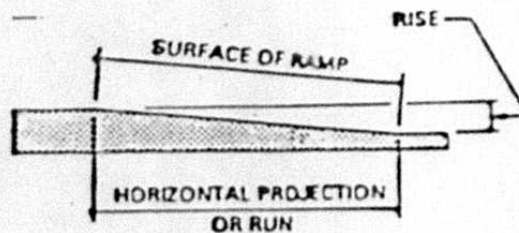
ANSI PUBLIC TELEPHONE STANDARDS:

1. 4.29.2 Clear Floor or Ground Space:

4.8 Ramps

4.8.1*General. Any part of an accessible route with a slope greater than 1:20 shall be considered a ramp and shall comply with 4.8.

4.8.2* Slope and Rise. The least possible slope shall be used for any ramp. The maximum slope of a ramp in new construction shall be 1:12. The maximum rise for any ramp run shall be 30 in (760 mm) (see Fig. 16).



Slope	Maximum Rise		Max. Horizontal Projection	
	In	mm	ft	mm
1:12 to 1:15	30	760	30	9
1:16 to 1:19	30	760	40	12
1:20	30	760	50	15

Fig. 16
 Components of a Single Ramp Run and
 Sample Ramp Dimensions

ANSI PUBLIC TELEPHONE STANDARDS:

I. 4.29.2 Clear Floor or Ground Space:

Curb ramps and ramps to be constructed on existing sites or in existing buildings or facilities may have slopes and rises as shown in Table 3 if space limitations prohibit the use of a 1:12 slope or less.

Table 3

Allowable Ramp Dimensions for Construction in Existing Sites, Buildings, and Facilities

Slope	Max. Rise		Max. Run	
	in	mm	ft	mm
Steeper than 1:10 but no steeper than 1:8	3	75	2	0.6
Steeper than 1:12 but no steeper than 1:10	6	150	5	1.5

4.5.3* Carpet. If carpet or carpet tile is used on a ground or floor surface, then it shall be securely attached; have a firm cushion, pad, or backing or no cushion pad; and have a level loop, textured loop, level cut pile, or level cut/uncut pile texture. The maximum pile heights shall be 1/2 in (13 mm). Exposed edges of carpet shall be fastened to floor surfaces and have trim along the entire length of the exposed edge. Carpet edge trim shall comply with 4.5.2.

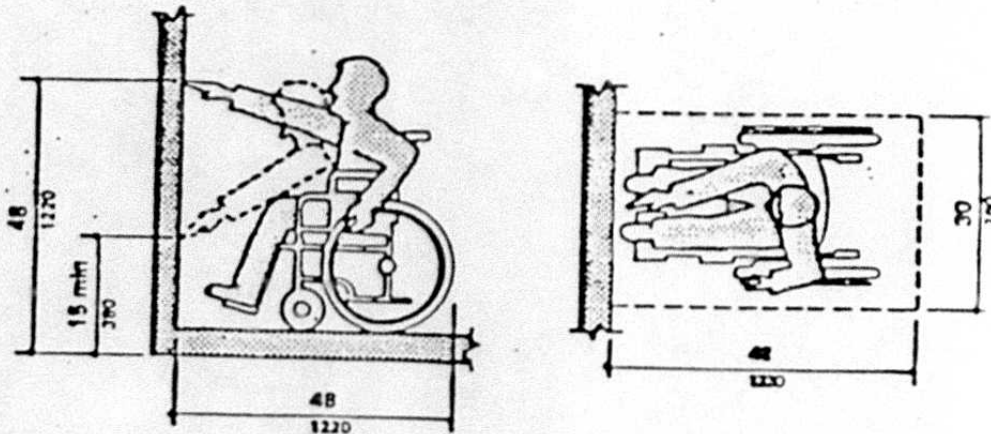
4.5.4 Gratings. If gratings are located in walking surfaces, then they shall have spaces no greater than 1/2 in (13 mm) wide in one direction. If gratings have elongated openings, then they shall be placed so that the long dimension is perpendicular to the dominant direction of travel.

ANSI PUBLIC TELEPHONE STANDARDS:

11. 4.29.3 Mounting Height:

4.29.2* Mounting Height. The highest operable parts that are essential to the basic operation of the telephone shall be located within reach ranges specified in 4.2.5 or 4.2.6.

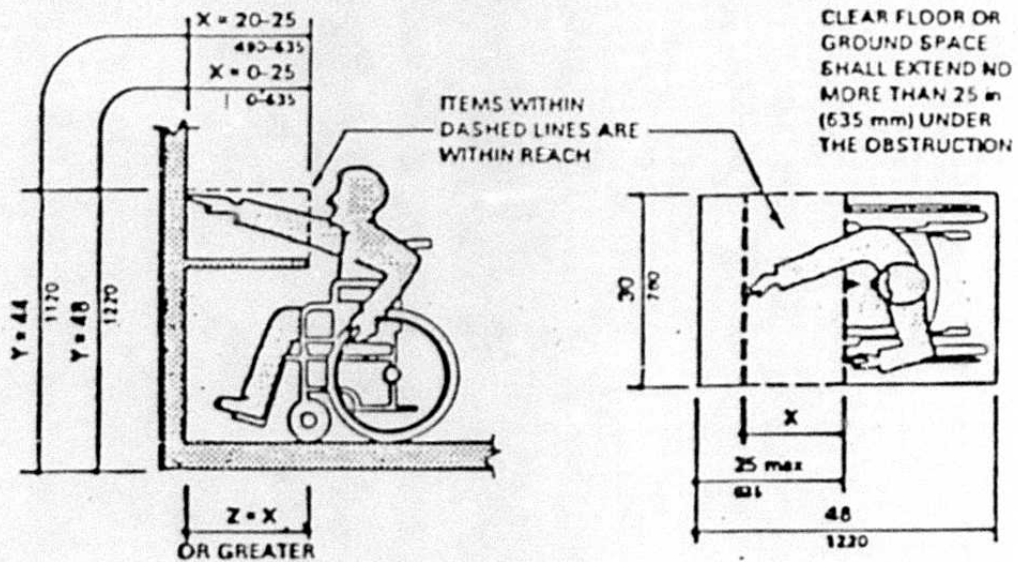
4.2.5 Forward Reach. If the clear floor space allows only forward approach to an object, the maximum high forward reach allowed shall be 48 in (1220 mm) and the minimum low forward reach shall be unobstructed and no less than 15 in (380 mm) above the floor (see Fig. 5(a)). If the high forward reach is over an obstruction, reach and clearances shall be as shown in Fig. 5(b).



(a) Forward Reach Limit

ANSI PUBLIC TELEPHONE STANDARDS:

II. 4.29.3 Mounting Height:



NOTE: x = Reach distance. y = Maximum height.
 z = Clear knee space. x is the clear space below the obstruction which shall be at least as deep as the reach distance, x .

(b) Maximum Forward Reach over an Obstruction

Fig. 5
 Forward Reach

ANSI PUBLIC TELEPHONE STANDARDS:

II. 4.29.3 Mounting Height:

4.2.6 Side Reach. If the clear floor space allows parallel approach by a person in a wheelchair, the maximum high side reach allowed shall be 54 in (1370 mm) and the low side reach shall be no less than 9 in (230 mm) above the floor (Fig. 6(a) and (b)). If the side reach is over an obstruction, the reach and clearances shall be as shown in Fig. 6(c).

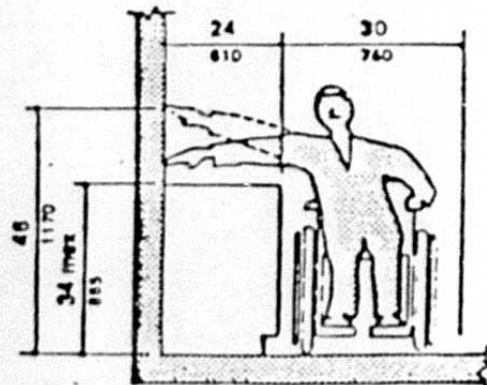
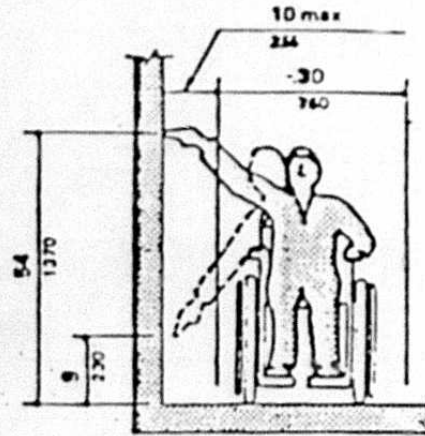
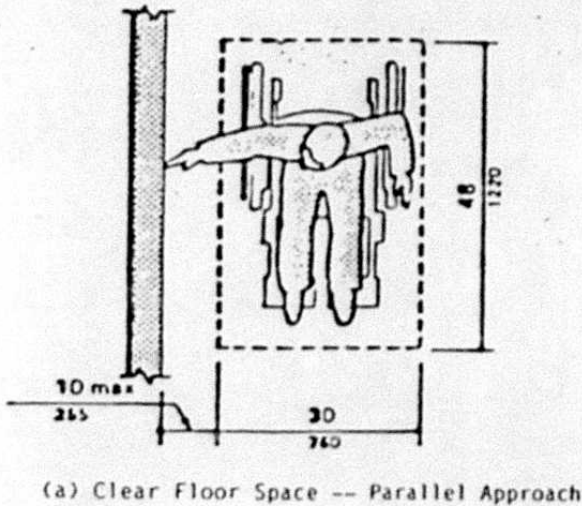


Fig. 6
 Side Reach

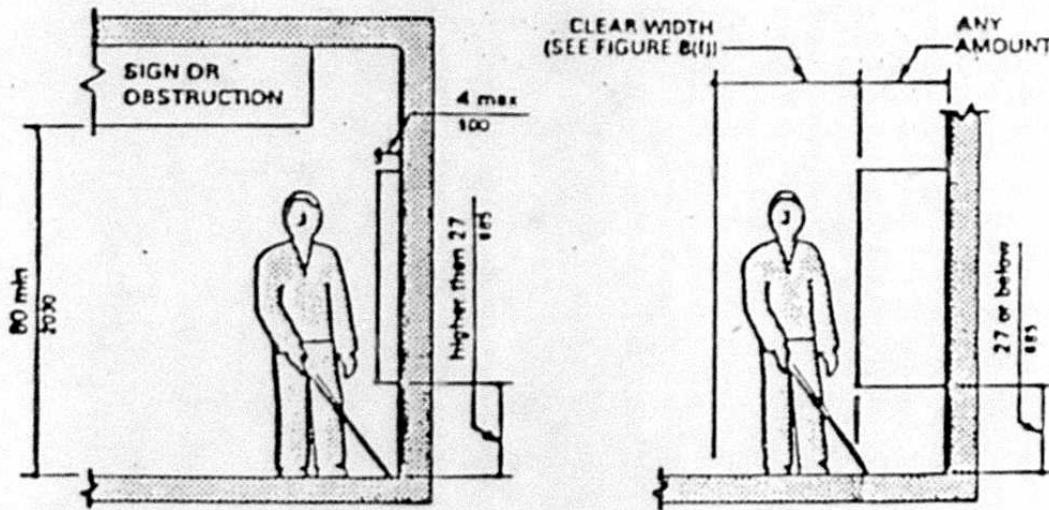
ANSI PUBLIC TELEPHONE STANDARDS:

III. 4.29.4 Protruding Objects:

4.29.4 Protruding Objects. Telephones, enclosures, and related equipment shall comply with 4.4.

4.4 Protruding Objects.

4.4.1* General. Objects projecting from walls (for example, telephones) with their leading edges between 27 in and 80 in (685 mm and 2030 mm) above the finished floor shall protrude no more than 4 in (100 mm) into walks, halls, corridors, passageways, or aisles (see Fig. 8(a)).



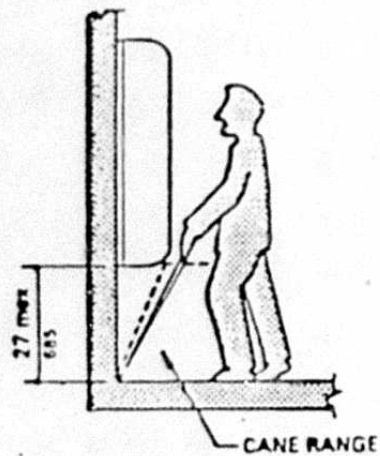
(a) Walking Parallel to a Hall

Fig. 8
Protruding Objects

ANSI PUBLIC TELEPHONE STANDARDS:

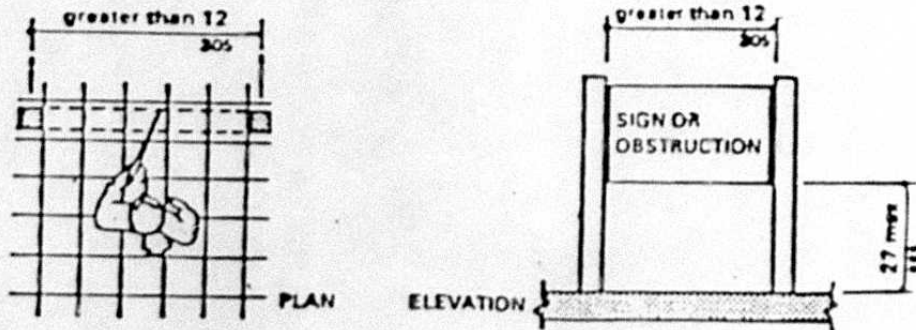
III. 4.29.4 Protruding Objects:

Objects mounted with their leading edges at or below 27 in (685 mm) above the finished floor may protrude any amount (see Fig. 8(a) and (b)).



(b) Walking Perpendicular to a Wall

Free-standing objects mounted on posts or pylons may overhang 12 in (305 mm) maximum from 27 in to 80 in (685 mm to 2030 mm) above the ground or finished floor (see Fig. 8(c), (d), and (e)).

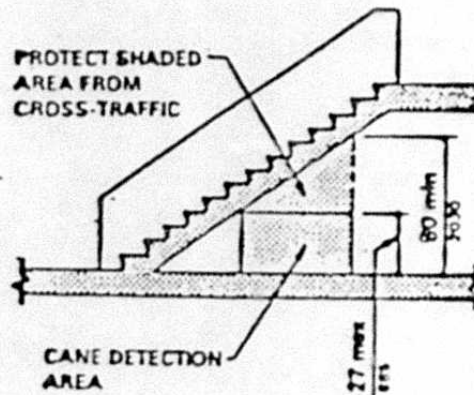


(c) Free-Standing Objects

ANSI PUBLIC TELEPHONE STANDARDS:

III. 4.29.4 Protruding Objects:

Free-standing objects mounted on posts or pylons may overhang 12 in (305 mm) maximum from 27 in to 80 in (685 mm to 2030 mm) above the ground or finished floor (see Fig. 8(c), (d), and (e)).



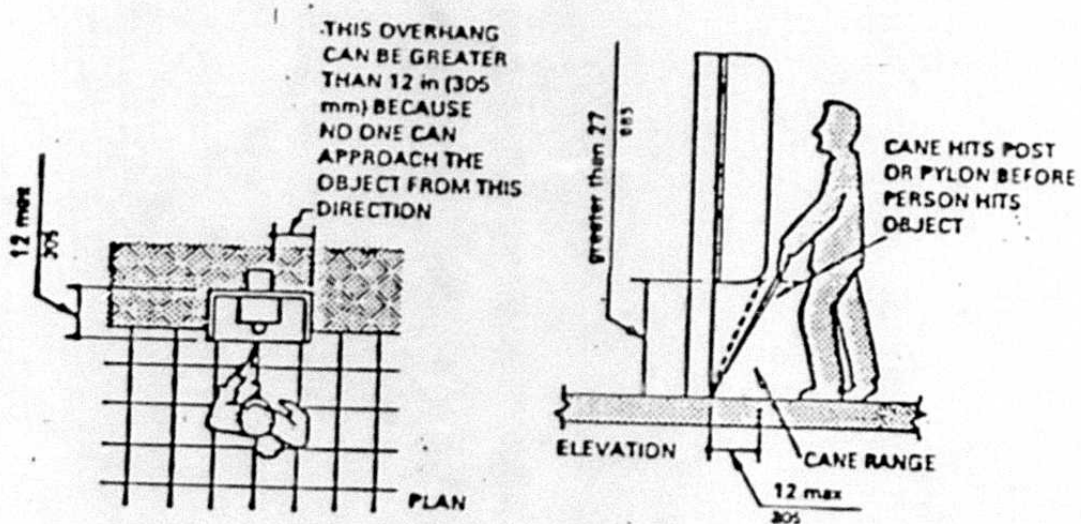
(d) Overhead Hazards

Fig. 8 Protruding Objects (Continued)

ANSI PUBLIC TELEPHONE STANDARDS:

III. 4.29.4 Protruding Objects:

Free-standing objects mounted on posts or pylons may overhang 12 in (305 mm) maximum from 27 in to 80 in (685 mm to 2030 mm) above the ground or finished floor (see Fig. 8(c), (d), and (e)).



(c) Objects Mounted on Posts or Pylons

ANSI PUBLIC TELEPHONE STANDARDS:

IV. 4.29.7 Telephone Directories:

4.29.7 Telephone Directories. Telephone directories, if provided, shall be located in accordance with 4.2.

4.2 Space Allowances and Reach Ranges

4.2.1*Wheelchair Passage Width. The minimum clear width for single wheelchair passage shall be 32 in (815 mm) at a point and 36 in (915 mm) continuously (see Fig. 1).

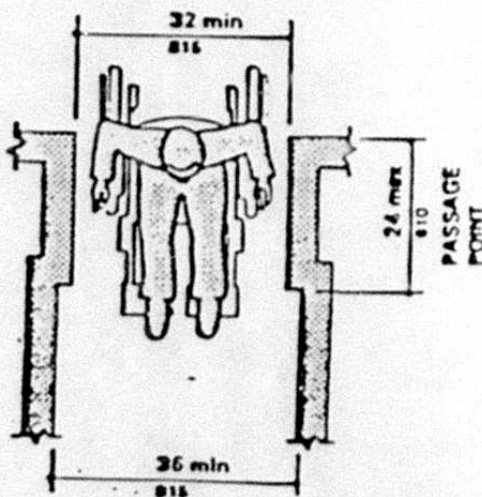


Fig. 1
Minimum Clear Width for Single Wheelchair

ANSI PUBLIC TELEPHONE STANDARDS:

IV. 4.29.7 Telephone Directories:

4.2.2 Width for Wheelchair Passing. The minimum width for two wheelchairs to pass is 60 in (1525 mm) (see Fig. 2).

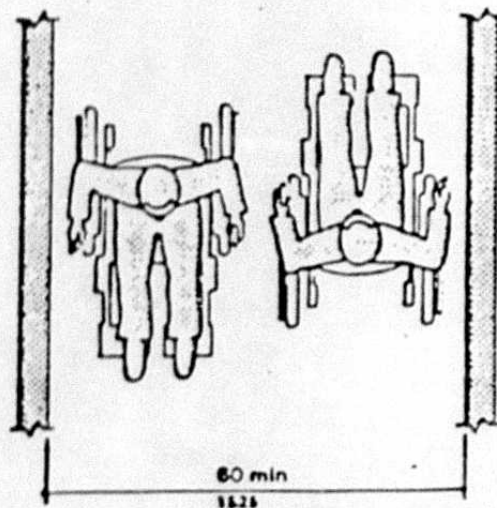
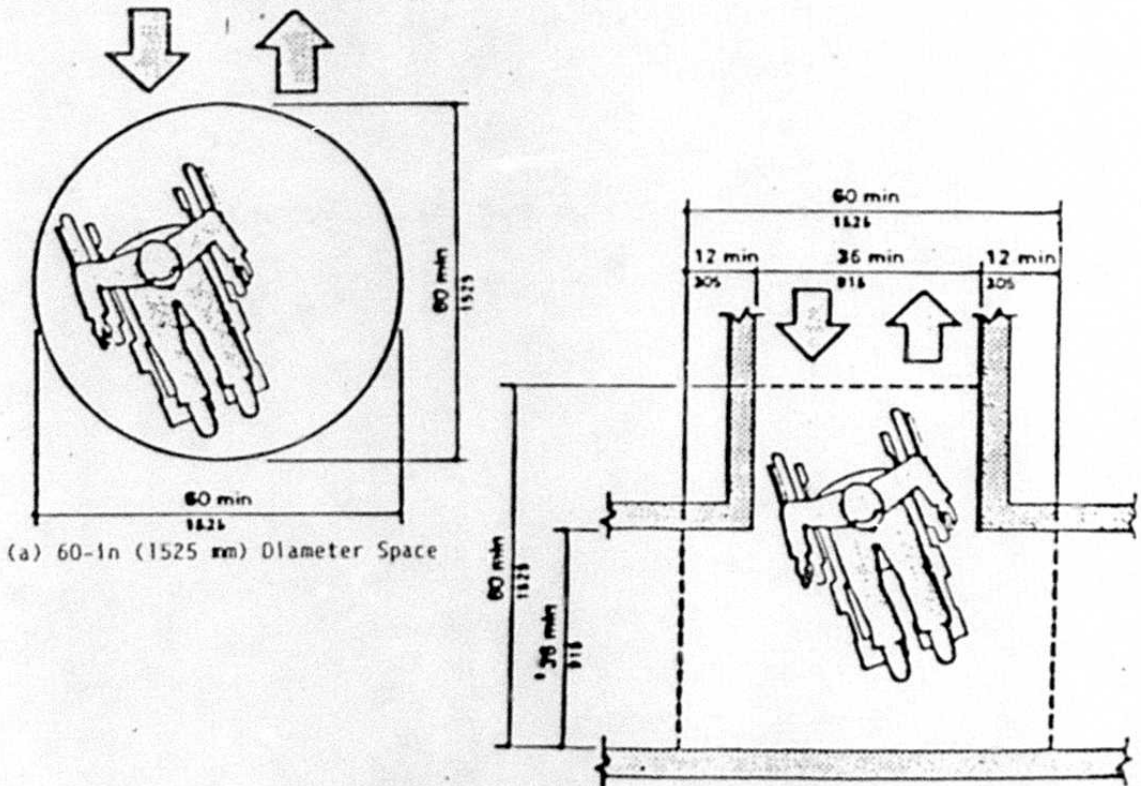


Fig. 2
Minimum Clear Width for Two Wheelchairs

ANSI PUBLIC TELEPHONE STANDARDS:

IV. 4.29.7 Telephone Directories:

4.2.3***Wheelchair Turning Space.** The space required for a wheelchair to make a 180-degree turn is a clear space of 60 in (1525 mm) diameter (see Fig. 3(a)) or a T-shaped space (see Fig. 3(b)).



(a) 60-in (1525 mm) Diameter Space

NOTE: Dashed lines indicate length of clear space required on each arm of the T-shaped space in order to complete the turn.

(b) T-Shaped Space for 180° Turns

Fig. 3
Wheelchair Turning Space

SOP 2013-2
Page 41 of 41
EXHIBIT 5

ANSI PUBLIC TELEPHONE STANDARDS:

V. 4.29.8 Cord Length:

4.29.8 Cord Length. Accessible telephones shall be equipped with a minimum handset cord length of 29 in (735 mm).

SOP 2013-6.7
 Page 33 of 66
 EXHIBIT 8

ATCH: OF

PATS
PHYSICALLY HANDICAPPED EVALUATION

TELEPHONE NO:

DATE OF EVALUATION:

ADDRESS:

NO.	RULE-ANSI STANDARDS EVALUATED	YES	NO	NA
1.	Is the station located on a floor above or below entry level not serviced by a ramp or elevator (rule 25-24.515(13))?			
2.	Is the highest operable part 54" or less when measured from the floor-ground surface (ANSI Fig. 44)?			
3.	Is the height of the mounted enclosure 27" or less when measured from the floor-ground surface to the bottom side of the enclosure (ANSI Fig. 44)?			
4.	If the telephone is accessible to allow side reach, does the enclosure extend 10" or less when measured to the face of the telephone (ANSI fig.44)?			
5.	If access is via side reach, is the clear floor-ground space at least 30" by 48" (ANSI fig.44)?			
6.	If the telephone is accessible via forward reach and the enclosure is 24" or less from the face of the telephone, is the clear floor-ground space			
7.	Are curb ramps located or protected to prevent their obstruction by parked vehicles (ANSI Fig. 14)?			
8.	Are the floor-ground surfaces (along accessible routes and in accessible rooms and spaces, including floors, walks, ramps, stairs and curb ramps) stable, firm, slip resistant and meet the changes in level of ANSI Fig. 7?			
9.	If the accessible route crosses a curb, is a curb ramp provided (ANSI Fig. 11)?			
10.	Is the minimum width of the curb ramp at least 36" exclusive of flared sides (ANSI Fig. 7)?			

0257C(96)

SOP 2013-2
 Page 9 of 41
 EXHIBIT 4
 ATCH: OF

PATS
 PHYSICALLY HANDICAPPED EVALUATION

TELEPHONE NO:

DATE OF EVALUATION:

ADDRESS:

NO.	RULE-ANSI STANDARDS EVALUATED	YES	NO	NA
11.	Are curb ramps located or protected to prevent their obstruction by parked vehicles (ANSI Fig. 14)?			
12.	Is the maximum curb ramp rise 30" or less (ANSI Fig. 16)?			
13.	If the telephone housing is mounted between 27" and 80" above the floor-ground level, does the housing protrude 4" or less into walks, halls, corridors, aisles, etc. (ANSI Fig. 8)?			
14.	If the clear floor-ground space allows only forward approach to the telephone, does the forward reach extend a maximum of 25" to the operable telephone controls (ANSI Fig. 5)?			
15.	If the clear floor-ground space allows only side reach to the telephone, does the side reach extend a maximum of 24" to the operable telephone controls (ANSI Fig. 6)?			
16.	Is the telephone handset cord at least 29" in length (ANSI 4.29.8)?			

NOTES:

Rule 25-4.076
Docket No. 910204-TP

SUMMARY OF RULE

Rule 25-4.076 (9), F.A.C., is amended to specify that all pay telephone stations installed after January 5, 1987 must conform to the handicapped-accessibility standards as set forth in subsections 4.29.2-4.29.4 and 4.29.7-4.29.8 of the American Standards Specifications for Making Buildings and Facilities Accessible and Usable by Physically Handicapped People, approved February 5, 1986 by the American National Standards Institute, Inc. (ANSI A117.1-1986). These standards were previously incorporated by reference in the rule. In addition, the rule specifies that pay telephones installed prior to January 5, 1987 must comply with these standards by January 1, 1995.

Subsection 9 of the rule is amended to by June 1, 1992, at least one pay telephone in any group of two or more must conform to the handicapped-accessibility standards. The minimum conformity rate shall be one in ten telephones.

Subsection (10) of the rule is amended to add the requirement that by July 1, 1992, each pay telephone station must allow a caller to dial the additional digits necessary to reach his long distance carrier of choice without operator intervention and enable the caller to reach other services such as voicemail and menu driven answering devices by the same process.

92 MAR 25 PM 3:44
FILED
DEPARTMENT OF STATE
TALLAHASSEE, FLORIDA

SUMMARY OF HEARINGS ON THE RULE

In response to the Commission's Notice of Rulemaking, comments were filed by the Florida Pay Telephone Association (FPTA), Public Communications Associates Ltd., Inc., and Value-Added Communications, Inc. GTE Florida, Incorporated filed comments and a request for hearing. A rulemaking hearing was held at 9:30 a.m., Friday, January 10, 1992 in which the following parties participated: Florida Pay Telephone Association; GTE Florida Incorporated (GTEFL); United Telephone Company of Florida (United); Southern Bell Telephone and Telegraph Company (Southern Bell); and Commission Staff. At the conclusion of the hearing, post-hearing comments were submitted by these parties as well as the AT&T Communications of the Southern States, Inc. (AT&T) and U.S. Sprint.

The main focus of the discussion at hearing centered on certain "Fraud Protection" amendments to the rule proposed by FPTA. These additions to the rule would have established guidelines apportioning responsibility for fraudulent calls billed to payphones. Both procedural and substantive objections were raised to FPTA's amendments, both at hearing and in post-hearing comments.

On March 10, 1992, at an Agenda Conference, the Commission voted to adopt the amendments on handicapped accessibility as proposed in Rules 25-4.076(9)(a) and 25-24.515(13)(a). No parties filing comments or attending the hearing objected to these amendments as proposed.

In the same Agenda Conference, the Commission adopted rule

FILED
MAR 25 PM 3:44
TALLAHASSEE, FLORIDA
DEPARTMENT OF STATE

sections 25-4.076(9)(c) and 25-24.515(13)(a), to allow grandfathered paystations in non-accessible locations to remain exempt from the accessibility standards until the building is modified to allow wheel chair access. This change was proposed by staff in response to comments filed by GTE of Florida. No party objected to this provision and the Hearing Officer recommended its adoption.

Also adopted at the March 10, 1992 Agenda Conference were the open key pad amendments of Rules 25-4.076(10) and 25-24.515(14), with a September 1, 1992 effective date, and the additional provision that the amendment not apply to pay telephones located in confinement facilities. The Florida Pay Telephone Association expressed reservations about this amendment because of increased exposure to fraudulent calls which result in uncollectible charges. The fraud protection amendments were not adopted by the Commission at its public agenda conference on March 10, 1992. Instead, the Commission directed its staff to begin a separate rulemaking proceeding on these proposals.

FACTS AND CIRCUMSTANCES JUSTIFYING THE RULE

By Order No. 24348, issued April 11, 1991, the Commission granted the petitions of Southern Bell Telephone Company and the Florida Pay Telephone Association which asked the Commission to amend Rules 25-4.076(9), and 25-24.515(13), F.A.C., which govern accessibility of pay stations to the physically handicapped. In the Order, the Commission agreed that the rules need to be amended such that all individuals, handicapped and non-handicapped, are assured easy access to pay telephones.

92 MAR 25 PM 3:44
FILED
DEPARTMENT OF STATE
TALLAHASSEE, FLORIDA

Subsequent to that Order, Communications staff raised other concerns about pay telephones that could be resolved through rulemaking. A decision was made to combine those issues, regarding the input of additional digits from payphones, with the handicap access changes in the same rulemaking docket. The additional digits requirement insures that payphone users can complete calling card calls, using any locally available carrier, without operator intervention, and can utilize features such as voice mail box and menu driven answering devices.

handicapped, are assured easy access to pay telephones.

Subsequent to that Order, Communications staff raised other concerns about pay telephones that could be resolved through rulemaking. A decision was made to combine those issues, regarding the input of additional digits from payphones, with the handicap access changes in the same rulemaking docket. The additional digits requirement insures that payphone users can complete calling card calls, using any locally available carrier, without operator intervention, and can utilize features such as voice mail box and menu driven answering devices.

CERTIFICATION OF
PUBLIC SERVICE COMMISSION ADMINISTRATIVE RULES
FILED WITH THE
DEPARTMENT OF STATE

I do hereby certify:

- (1) The time limitations prescribed by paragraph 120.54(11)(a), F.S., have been complied with; and
- (2) There is no administrative determination under section 120.54(4), F.S., pending on any rule covered by this certification; and
- (3) All rules covered by this certification are filed within the prescribed time limitations of paragraph 120.54(11)(b), F.S. They are filed not less than 28 days after the notice required by subsection 120.54(1), F.S., and;
- (a) And are filed not more than 90 days after the notice; or
- (b) Are filed not more than 90 days after the notice not including days an administrative determination was pending; or
- (c) Are filed within 21 days after the adjournment of the final public hearing on the rule; or
- (d) Are filed within 21 days after the date of receipt of all material authorized to be submitted at the hearing; or
- (e) Are filed within 21 days after the date transcript was received by this agency.

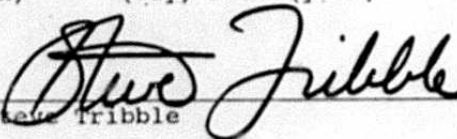
FILED
92 MAR 25 PM 3:40
DEPARTMENT OF STATE
TALLAHASSEE FLORIDA

Attached are the original and two copies of each rule covered by this certification. The rules are hereby adopted by the undersigned agency by and upon their filing with the Department of State.

<u>Rule No.</u>	<u>Rulemaking Authority</u>	<u>Specific Law Being Implemented, Interpreted or Made Specific</u>
25-24.515	350.127(2)	364.03, 364.035, 364.063, 364.337, 364.345

Under the provision of paragraph 120.54(13)(a), F.S., the rules take effect 20 days from the date filed with the Department of State or a later date as set out below:

Effective: _____
(month) (day) (year)



Steve Fribble

Director, Division of Records & Reporting
Title

Number of Pages Certified

(S E A L)

adp76515.dcp

92 MAR 25 PM 3:40
FILED
DEPARTMENT OF STATE
TALLAHASSEE, FLORIDA

1 25-24.515 Pay Telephone Service.

2 (1) Pay stations shall be lighted during the hours of
3 darkness when light from other sources is not adequate to read
4 instructions and use the instrument.

5 (2) Each telephone station shall return any deposited amount
6 if the call is not completed, except messages to a Feature Group A
7 access number.

8 (3) Each telephone station shall permit access to the
9 universal telephone number "911" where operable, without requiring
10 the use of a coin, paper money or a credit card. Where such number
11 is not operable, the station shall permit access to a local
12 exchange company toll operator under the same conditions.

13 (4) Each telephone station shall, without charge, permit
14 access to local directory assistance and the telephone number of
15 any person responsible for repairs or refunds but may provide
16 access by coin return. Any long distance directory assistance
17 charges applied to the pay telephone service company may be passed
18 on to the customer.

19 (5) Each telephone station shall be equipped with a legible
20 sign, card or plate of reasonable permanence which shall identify
21 the following: telephone number and location address of such
22 station, name or recognizable logo of the owner and the party
23 responsible for repairs and refunds, address of responsible party,
24 free phone number of responsible party, clear dialing instructions
25 (including notice of the lack of availability of local or toll

CODING: Words underlined are additions; words in
~~struck-through~~ type are deletions from existing law.

1 services), and, where applicable, a statement that the phone is not
2 maintained by the local exchange company.

3 (6) Each telephone station which provides access to any
4 interexchange company must provide access to all locally available
5 interexchange companies.

6 (7) Each telephone station must allow incoming calls to be
7 received, with the exception of those located at penal
8 institutions, hospitals and schools, and at locations specifically
9 exempted by the Commission. Where incoming calls are not received,
10 intercept shall be provided. There shall be no charge for
11 receiving incoming local calls.

12 (8) Each telephone station must be connected as provided in
13 the pay telephone access tariff offered by the local exchange
14 company.

15 (9) The charge for calls may not exceed the rates shown in
16 the local exchange company Pay Telephone Access Tariff.

17 (10) (a) Each pay telephone service company shall make all
18 reasonable efforts to minimize the extent and duration of
19 interruptions of service. Service repair programs should have as
20 their objective the restoration of service on the same day that the
21 interruption is reported to the company. (Sundays and holidays
22 excepted).

23 (b) Each telephone utility shall conduct its operations in
24 such manner to ensure that, in each exchange, ninety-five (95%)
25 percent of all interruptions in telephone service occurring in any

CODING: Words underlined are additions; words in
~~struck-through~~ type are deletions from existing law.

1 calendar month shall be cleared and service restored within
2 twenty-four (24) hours (Sundays and holidays excepted) after the
3 trouble is reported to the company, except where such interruptions
4 are caused by emergency situations, unavoidable casualties and acts
5 of God affecting large groups of subscribers.

6 (11) Where there are fewer than three telephones located in
7 a group, a directory for the entire local calling area shall be
8 maintained at each station. Where there are three or more
9 telephones located in a group, a directory for the entire local
10 calling area shall be maintained at every other station. However,
11 where telephone stations are fully enclosed, a directory shall be
12 maintained at each station.

13 (12) Normal maintenance and coin collection activity shall
14 include a review of the cleanliness of each station and reasonable
15 efforts shall be made to ensure that 95% of all stations are clean
16 and free of obstructions.

17 (13) Except as provided in subsections (13)(a), (13)(b), and
18 13(c) below, each telephone station installed after January 5,
19 1987 shall conform to subsections 4.29.2 - 4.29.4 and 4.29.7 -
20 4.29.8 of the American National Standards Specifications for Making
21 Buildings and Facilities Accessible and Usable by Physically
22 Handicapped People, approved February 5, 1986 by the American
23 National Standards Institute, Inc. (ANSI A117.1-1986), which is
24 incorporated by reference into this rule. Each telephone station
25 installed prior to January 5, 1987 shall conform to the above

CODING: Words underlined are additions; words in
~~struck-through~~ type are deletions from existing law.

1 standards by January 1, 1995.

2 (a) Effective June 1, 1992, where there are two or more
3 telephone stations located in a group, there shall be a minimum of
4 one telephone per group of ten which conforms to the above
5 mentioned standards. The conforming station must be physically
6 located in the group of telephone stations or within a clear line
7 of sight within fifteen (15) feet of the group and free from
8 wheelchair barriers.

9 (b) Except for locations on floors above or below entry level
10 in buildings not serviced by a ramp or elevator, such stations
11 shall be placed in areas accessible to the physically handicapped.

12 (c) Stations located in buildings which are not accessible to
13 physically handicapped persons must comply to the above mentioned
14 standards upon modification of the building to make it handicap-
15 accessible, according to the Americans with Disabilities Act.

16 (14) Effective September 1, 1992, each telephone shall permit
17 end users to input the additional digits necessary to complete
18 calling card calls, using any locally available carrier, without
19 operator intervention, and to utilize features such as voice mail
20 box and menu driven answering devices. This requirement shall not
21 be applicable to pay telephones located in confinement facilities.

22 **Specific Authority:** 350.127(2), F. S.

23 **Law Implemented:** 364.03, 364.035, 364.063, 364.337, 364.345, F.S.

24 **History:** New 1/5/87, _____.

CODING: Words underlined are additions; words in
~~struck-through~~ type are deletions from existing law.

CERTIFICATION OF
PUBLIC SERVICE COMMISSION
OF MATERIAL INCORPORATED BY REFERENCE IN RULE 25-24.515
FILED WITH THE DEPARTMENT OF STATE

I hereby certify that attached is a true and complete copy of RULES-ANSI STANDARDS which is incorporated by reference by Rule 25-24.515, Florida Administrative Code.

Under the provisions of paragraph 120.54(13)(a), F.S., the incorporated material takes effect 20 days from the date filed with the Department of State or a later date as set out below:

Effective: _____
(month) (day) (year)



Steve Tribble

Director, Division of Records & Reporting
Title

Number of Pages Certified

(S E A L)

DES

adp76515.dcp

DEPARTMENT OF STATE
TALLAHASSEE, FLORIDA

92 MAR 25 PM 3:40

FILED

Order No. PSC-92-0115-FOF-TP
Docket No. 910204-TP
Page 54

SOP 2013-2
Page 10 of 41
EXHIBIT 5

FLORIDA PUBLIC SERVICE COMMISSION
PAY TELEPHONE SERVICE
(PATS)
PHYSICALLY HANDICAPPED
RULES-ANSI STANDARDS

FILED
92 MAR 25 PM 3:40
DEPARTMENT OF STATE
TALLAHASSEE, FLORIDA

Florida Public Service Commission
Division of Communications
101 East Gaines Street
Tallahassee, Florida 32301

TABLE OF CONTENTS

	<u>PAGE</u>
RULE REQUIREMENTS	12
AMERICAN NATIONAL STANDARDS INSTITUTE, INC. (ANSI) PUBLIC TELEPHONE STANDARDS	
4.29.2 Clear Floor or Ground Space	13
4.29.3 Mounting Height	30
4.29.4 Protruding Objects	33
4.29.7 Telephone Directories	38
4.29.8 Cord Length	41

RULE REQUIREMENTS

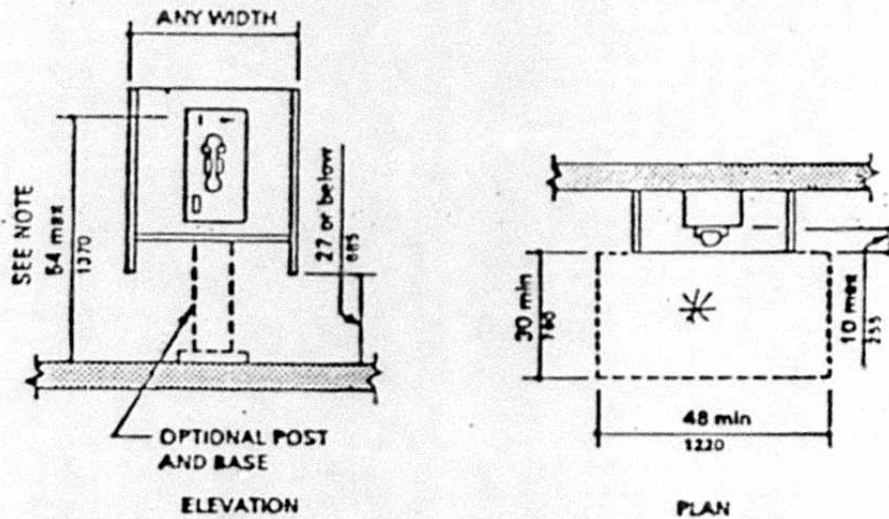
25-24.515(13), Pay Telephone Service, . . . Each telephone station installed after January 5, 1987, shall conform to subsections 4.29.2-4.29.4 and 4.29.7-4.29.8 of the American National Standards Specifications for making buildings and facilities accessible and usable by physically handicapped people, approved February 5, 1986, by the American National Standards Institute, Inc. (ANSI A117.1-1986). Except for locations on floors above or below entry level in buildings not serviced by a ramp or elevator, such stations shall be placed in areas accessible to the physically handicapped.

- 4.29.2 Clear Floor or Ground Space
 - .3 Mounting Height
 - .4 Protruding Objects
 - .7 Telephone Directories
 - .8 Cord Length

ANSI PUBLIC TELEPHONE STANDARDS

1. 4.29.2 Clear Floor or Ground Space:

4.29.2 Clear Floor or Ground Space. Clear floor or ground spaces at each accessible public telephone shall be at least 30 in by 48 in (760 mm by 1220 mm) and shall allow either a forward or parallel approach by a person using a wheelchair (see Fig. 44).



NOTE: This dimension represents the height of the highest operable parts that are essential to the basic operation of the telephone.

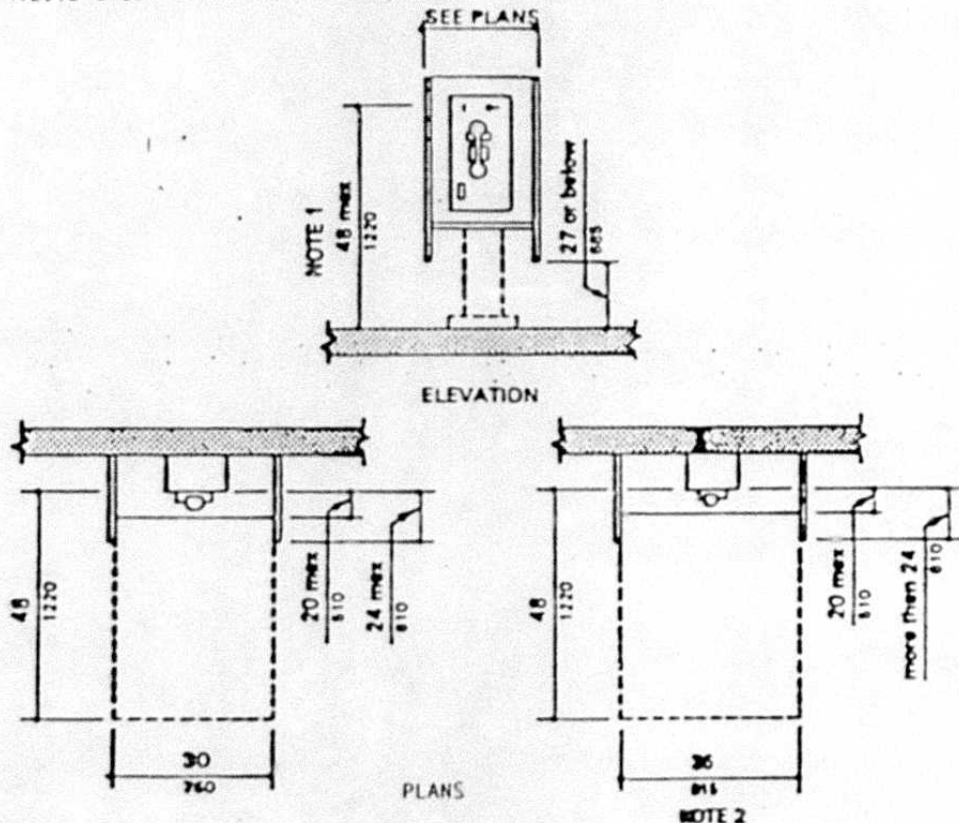
(a) Side Reach Possible

Fig. 44
Mounting Heights and Clearances for Telephone

*The required clear space shall comply with 4.2.4 and shall not be restricted by bases, enclosures and fixed seats.

ANSI PUBLIC TELEPHONE STANDARDS

1. 4.29.2 Clear Floor or Ground Space:



NOTES:

(1) This dimension represents the height of the highest operable parts that are essential to the Basic operation of the telephone.

(2) The required clear floor space increases to 36 in (915 mm) when the enclosure extends more than 24 in (610 mm) from the face of the telephone.

(b) Forward Reach Required

Fig. 44 Mounting Heights and Clearances for Telephones (Continued)

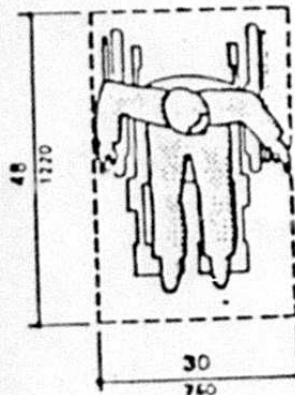
ANSI PUBLIC TELEPHONE STANDARDS

I. 4.29.2 Clear Floor or Ground Space:

The required clear space shall comply with 4.2.4 and shall not be restricted by bases, enclosures, and fixed seats.

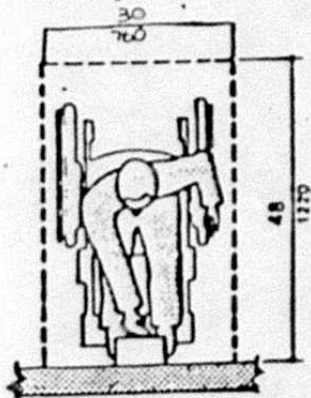
4.2.4 Clear Floor or Ground Space for Wheelchairs

4.2.4.1 Size and Approach. The minimum clear floor or ground space required to accommodate a single, stationary wheelchair and occupant is 30 in by 48 in (760 mm by 1220 mm) (see Fig. 4(a)).

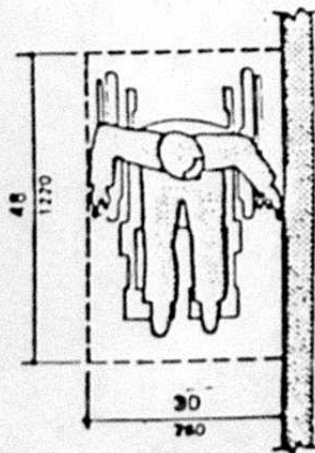


(a) Clear Floor Space

The minimum clear floor or ground space for wheelchairs may be positioned for forward or parallel approach to an object (see Fig. 4(b) and (c)). Clear floor or ground space for wheelchairs may be part of the knee space required under some objects.



(b) Forward Approach

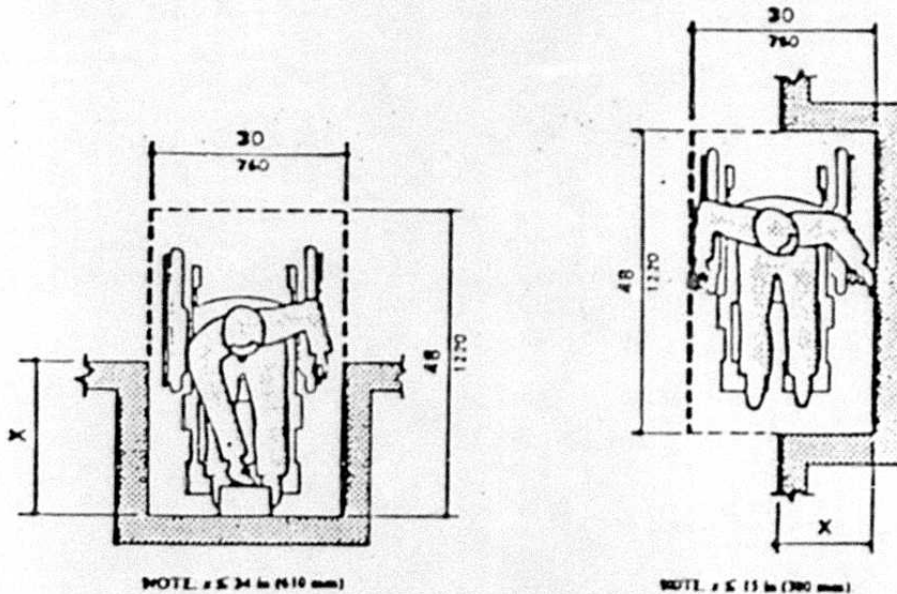


(c) Parallel Approach
Fig. 4
Minimum Clear Floor Space
for Wheelchairs

ANSI PUBLIC TELEPHONE STANDARDS

1. 4.29.2 Clear Floor or Ground Space:

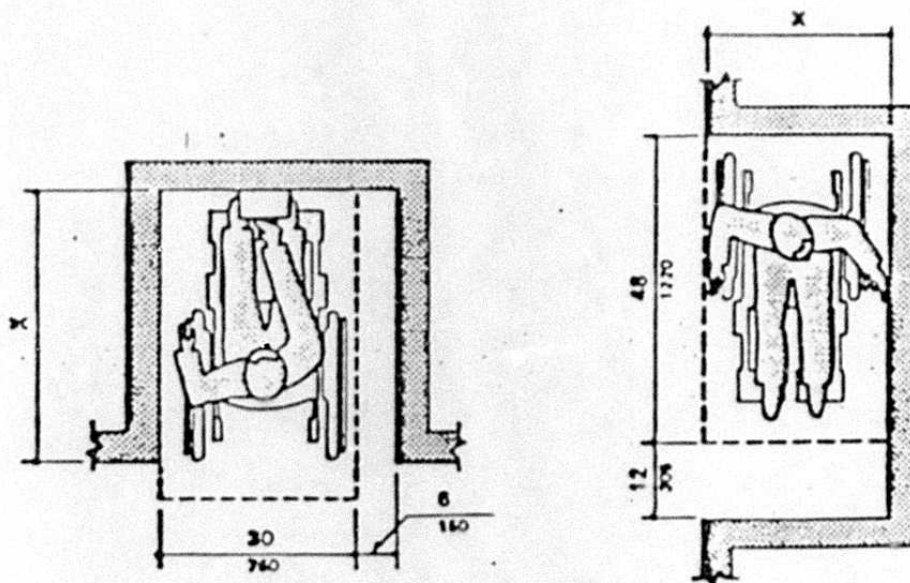
4.2.4.2. Relationship of Maneuvering Clearances to Wheelchair Spaces. One full unobstructed side of the clear floor or ground space for a wheelchair shall adjoin or overlap an accessible route or adjoin another wheelchair clear floor space. If a clear floor space is located in an alcove or otherwise confined on all or part of three sides, additional maneuvering clearances shall be provided as shown in Fig. 4(d) and (e).



(d) Clear Floor Space in Alcoves

ANSI PUBLIC TELEPHONE STANDARDS

I. 4.29.2 Clear Floor or Ground Space:



NOTE: If $x > 24$ in (610 mm), then an additional maneuvering clearance of 6 in (150 mm) shall be provided as shown.

NOTE: If $x > 15$ in (360 mm), then an additional maneuvering clearance of 12 in (305 mm) shall be provided as shown.

(c) Additional Maneuvering Clearances for Alcoves

Fig. 4 Minimum Clear Floor Space for Wheelchair (Continued)

ANSI PUBLIC TELEPHONE STANDARDS

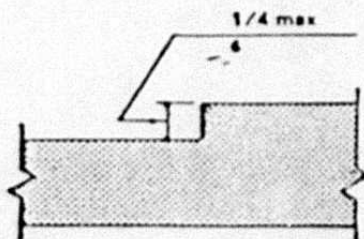
I. 4.29.2 Clear Floor or Ground Space:

4.2.4.3 Surfaces of Wheelchair Spaces. Clear floor or ground space for wheelchairs shall comply with 4.5.

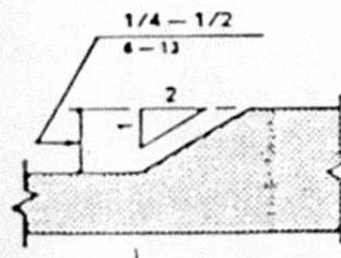
4.5 Ground and Floor Surfaces.

4.5.1* General. Ground and floor surfaces along accessible routes and in accessible rooms and spaces, including floors, walks, ramps, stairs, and curb ramps, shall be stable, firm and slip resistant, and shall comply with 4.5.

4.5.2 Changes in Level. Changes in level up to 1/4 in (6mm) may be vertical and without edge treatment. Changes in level between 1/4 in and 1/2 in (6 mm and 13 mm) shall be beveled with a slope no greater than 1:2 (see Fig. 7(c) and (d)).



(c) Vertical Changes in Level.



(d) Beveled Changes in Level

Fig. 7
Accessible Routes and Ground and Floor Surfaces (Continued)

ANSI PUBLIC TELEPHONE STANDARDS:

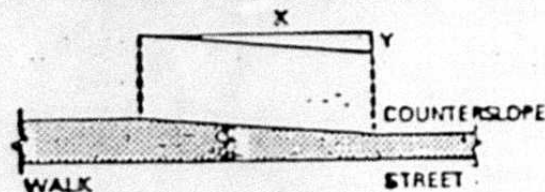
1. 4.29.2 Clear Floor or Ground Space:

Changes in level greater than 1/2 in (13 mm) shall be accomplished by means of a ramp that complies with 4.7 or 4.8.

4.7 Curb Ramps

4.7.1 Location. Curb ramps complying with 4.7 shall be provided wherever an accessible route crosses a curb.

4.7.2 Slope. Slopes of curb ramps shall comply with 4.8.2. The slope shall be measured as shown in Fig. 11. Maximum counterslopes of adjoining gutters and road surfaces immediately adjacent to the curb ramp or accessible route shall not exceed 1:20.



NOTES:

- (1) Slope = y/x , where x is a level plane.
- (2) Counterslope shall not exceed 1:20.

Fig. 11
Measurement of Curb Ramp Slopes

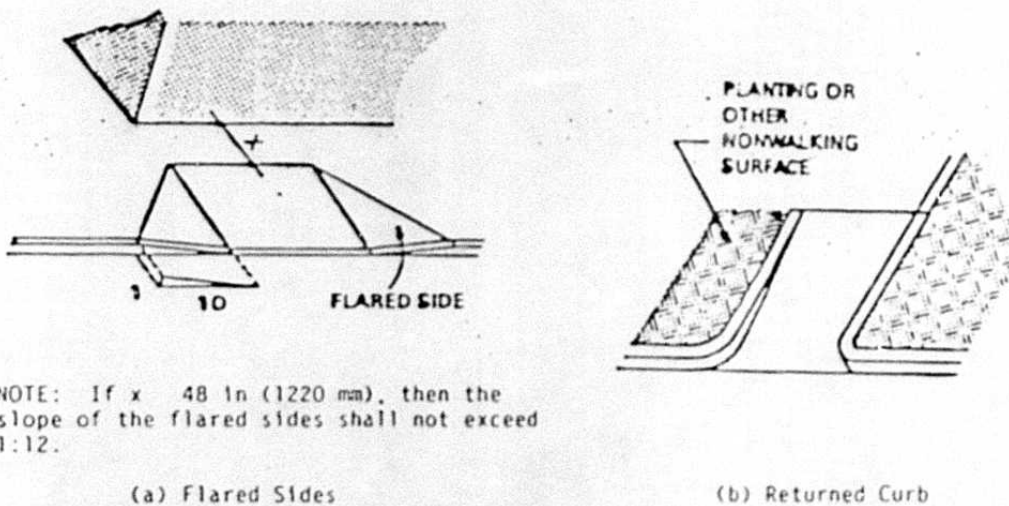
4.7.3 Width. The minimum width of a curb ramp shall be 36 in (915 mm), exclusive of flared sides.

4.7.4. Surface. Surfaces of curb ramps shall comply with 4.5.

ANSI PUBLIC TELEPHONE STANDARDS:

1. 4.29.2 Clear Floor or Ground Space:

4.7.5. Sides of Curb Ramps. If a curb ramp is located where pedestrians must walk across the ramp, then it shall have flared sides; the maximum slope of the flare shall be 1:10 (see Fig. 12(a)). Curb ramps with returned curbs may be used where pedestrians would not normally walk across the ramp (see Fig. 12(b)).



NOTE: If $x = 48$ in (1220 mm), then the slope of the flared sides shall not exceed 1:12.

Fig. 12
Sides of Curb Ramps

ANSI PUBLIC TELEPHONE STANDARDS:

1. 4.29.2 Clear Floor or Ground Space:

4.7.6. Built-Up Curb Ramps. Built-up curb ramps shall be located so that they do not project into vehicular traffic lanes (see Fig. 13).

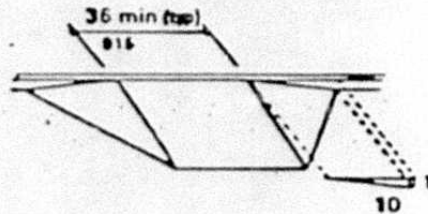


Fig. 13
Built-Up Curb Ramp

ANSI PUBLIC TELEPHONE STANDARDS:

1. 4.29.2 Clear Floor or Ground Space:

4.7.7 Warning Textures. A curb ramp shall have a detectable warning texture complying with 4.27 and extending the full width and depth of the curb ramp, including any flares (see Fig. 14).

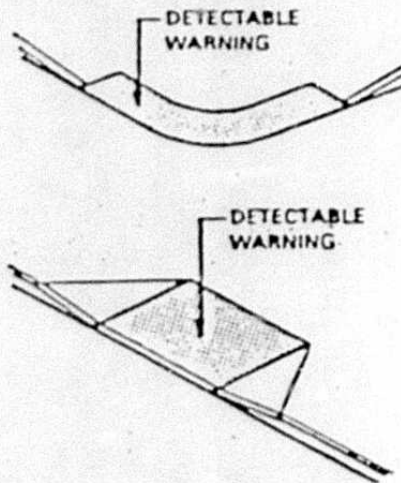


Fig. 14
Warning Signals at Curb Ramps

4.7.8. Obstructions. Curb ramps shall be located or protected to prevent their obstruction by parked vehicles.

ANSI PUBLIC TELEPHONE STANDARDS:

I. 4.29.2 Clear Floor or Ground Space:

4.7.11 Islands. Any raised islands in crossings shall be cut through level with the street or have curb ramps at both sides and a level area at least 48 in (1220 mm) long in the part of the island intersected by the crossings (see Fig. 15(a) and (b)).

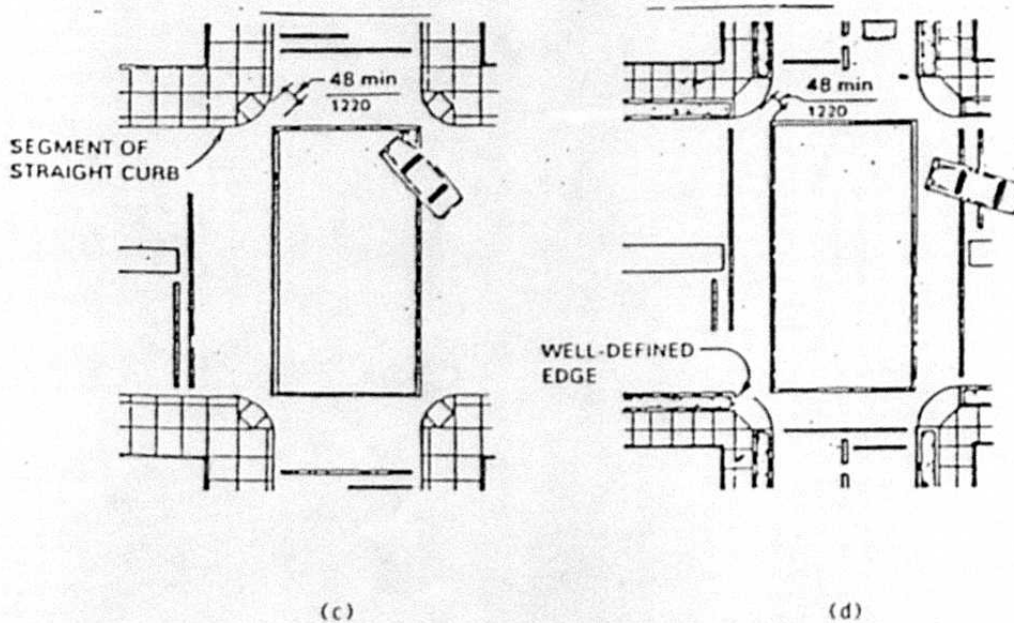


Fig. 15
Curb Ramps at Marked Crossings

ANSI PUBLIC TELEPHONE STANDARDS:

1. 4.29.2 Clear Floor or Ground Space:

4.27.12 **Uncurbed Intersections.** If there is no curb at the intersection of a walk and an adjoining street, parking lot, or busy driveway, then the walk shall have a detectable warning texture complying with 4.27.5 at the edge of the vehicular way.

4.27.5* **Detectable Warnings at Hazardous Vehicular Areas.** If a walk crosses or adjoins a frequently used vehicular way, and if there are no curbs, railings, or other elements detectable by a person who has a severe visual impairment separating the pedestrian and vehicular areas, the boundary between the areas shall be defined by a continuous, detectable warning texture, which is 36 in (915 mm) wide, complying with 4.27.2 (see Fig. 42).

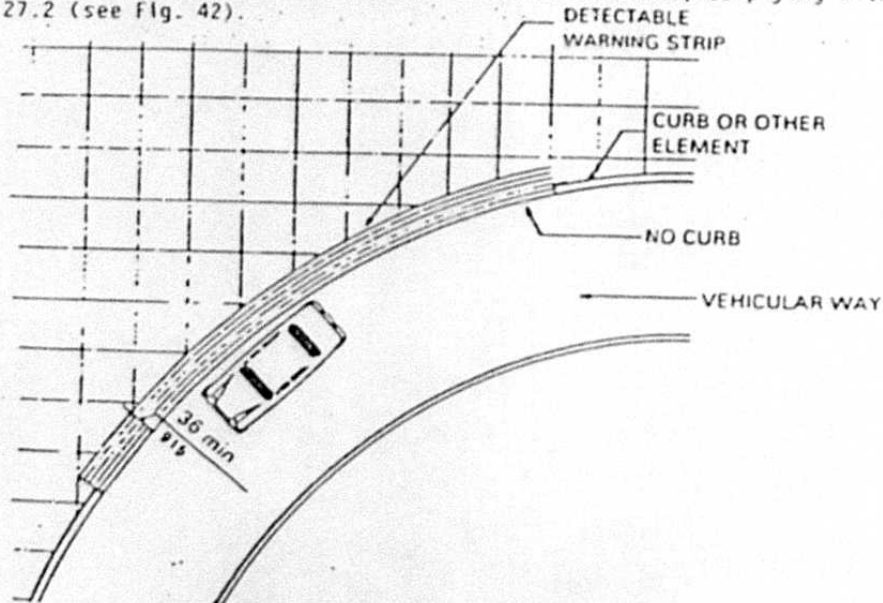
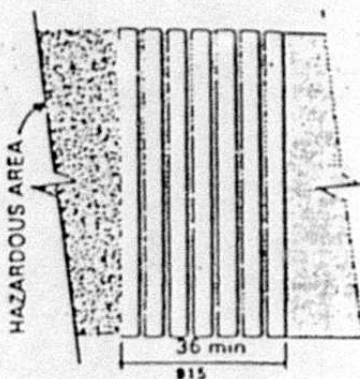


Fig. 42
Detectable Warning at Hazardous Vehicular Areas

ANSI PUBLIC TELEPHONE STANDARDS:

I. 4.29.2 Clear Floor or Ground Space:

4.27.2*Detectable Warnings on Walking Surfaces. Detectable warning textures on walking surfaces shall consist of exposed aggregate concrete, cushioned surfaces made of rubber or plastic, raised strips, or grooves. Textures shall contrast with that of the surrounding surface. Raised strips or grooves shall comply with Fig. 40. Grooves may be used indoors only.

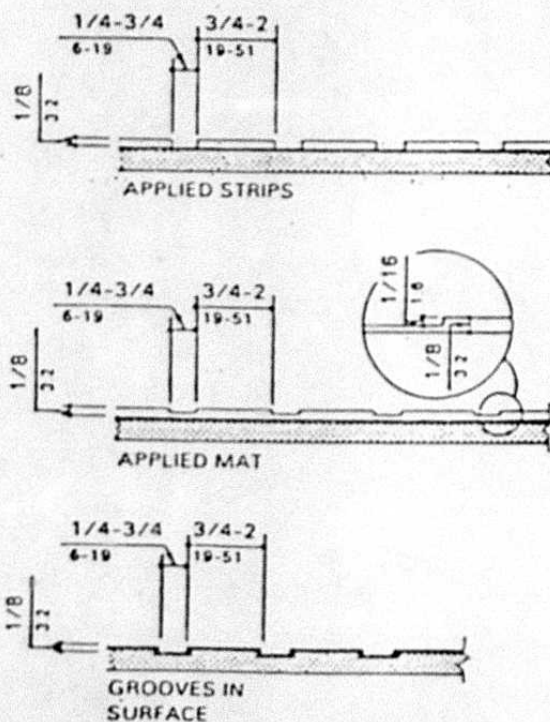


(a) Plan of Detectable Warning Surface

SOP 2013-2
Page 27 of 41
EXHIBIT 5

ANSI PUBLIC TELEPHONE STANDARDS:

1. 4.29.2 Clear Floor or Ground Space:



NOTE: Grooves may only be used indoors.

(b) Sections of Detectable Warning Surfaces

Fig. 40
Strips and Grooves Used as Detectable Warnings on Walking Surfaces

16

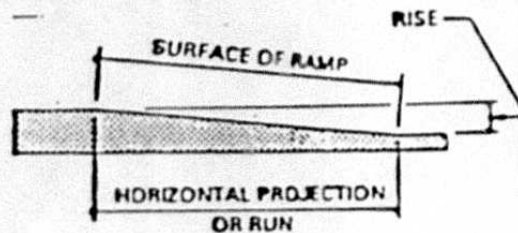
ANSI PUBLIC TELEPHONE STANDARDS:

1. 4.29.2 Clear Floor or Ground Space:

4.8 Ramps

4.8.1*General. Any part of an accessible route with a slope greater than 1:20 shall be considered a ramp and shall comply with 4.8.

4.8.2* Slope and Rise. The least possible slope shall be used for any ramp. The maximum slope of a ramp in new construction shall be 1:12. The maximum rise for any ramp run shall be 30 in (760 mm) (see Fig. 16).



Slope	Maximum Rise		Max. Horizontal Projection	
	in	mm	ft	mm
1:12 to 1:15	30	760	30	9
1:16 to 1:19	30	760	40	12
1:20	30	760	50	15

Fig. 16
 Components of a Single Ramp Run and
 Sample Ramp Dimensions

ANSI PUBLIC TELEPHONE STANDARDS:

I. 4.29.2 Clear Floor or Ground Space:

Curb ramps and ramps to be constructed on existing sites or in existing buildings or facilities may have slopes and rises as shown in Table 3 if space limitations prohibit the use of a 1:12 slope or less.

Table 3

Allowable Ramp Dimensions for Construction
in Existing Sites, Buildings, and Facilities

Slope	Max. Rise		Max. Run	
	in	mm	ft	mm
Steeper than 1:10 but no steeper than 1:8	3	75	2	0.6
Steeper than 1:12 but no steeper than 1:10	6	150	5	1.5

4.5.3* Carpet. If carpet or carpet tile is used on a ground or floor surface, then it shall be securely attached; have a firm cushion, pad, or backing or no cushion pad; and have a level loop, textured loop, level cut pile, or level cut/uncut pile texture. The maximum pile heights shall be 1/2 in (13 mm). Exposed edges of carpet shall be fastened to floor surfaces and have trim along the entire length of the exposed edge. Carpet edge trim shall comply with 4.5.2.

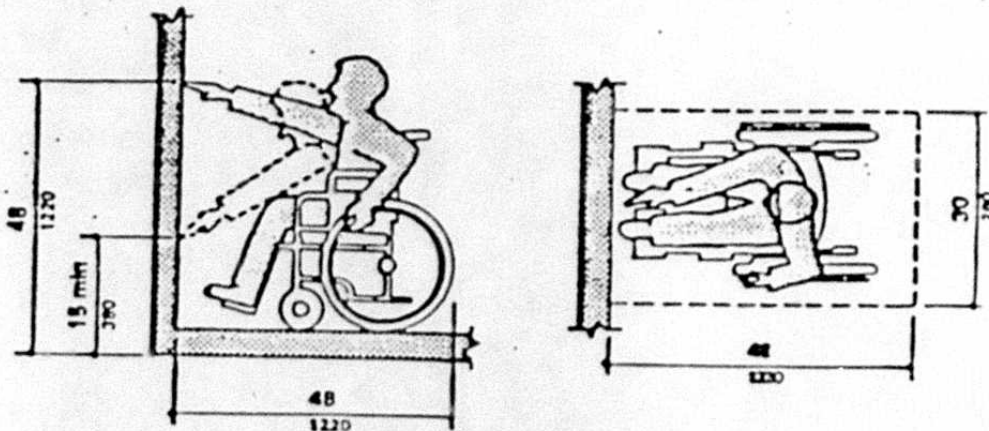
4.5.4 Gratings. If gratings are located in walking surfaces, then they shall have spaces no greater than 1/2 in (13 mm) wide in one direction. If gratings have elongated openings, then they shall be placed so that the long dimension is perpendicular to the dominant direction of travel.

ANSI PUBLIC TELEPHONE STANDARDS:

II. 4.29.3 Mounting Height:

4.29.2* Mounting Height. The highest operable parts that are essential to the basic operation of the telephone shall be located within reach ranges specified in 4.2.5 or 4.2.6.

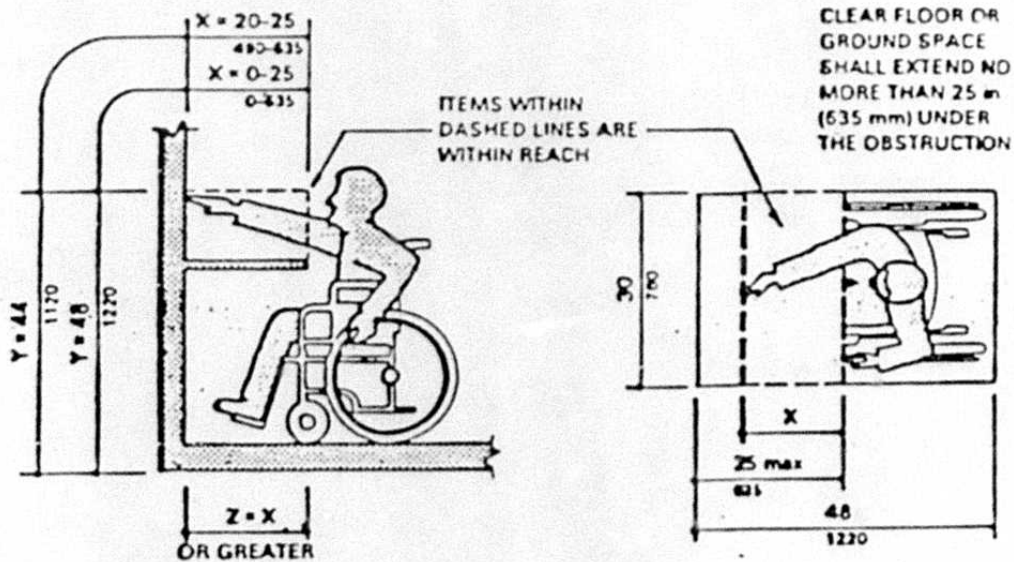
4.2.5 Forward Reach. If the clear floor space allows only forward approach to an object, the maximum high forward reach allowed shall be 48 in (1220 mm) and the minimum low forward reach shall be unobstructed and no less than 15 in (380 mm) above the floor (see Fig. 5(a)). If the high forward reach is over an obstruction, reach and clearances shall be as shown in Fig. 5(b).



(a) Forward Reach Limit

ANSI PUBLIC TELEPHONE STANDARDS:

II. 4.29.3 Mounting Height:



NOTE: x - Reach distance. y - Maximum height.
 z - Clear knee space. x is the clear space below the obstruction which shall be at least as deep as the reach distance, x.

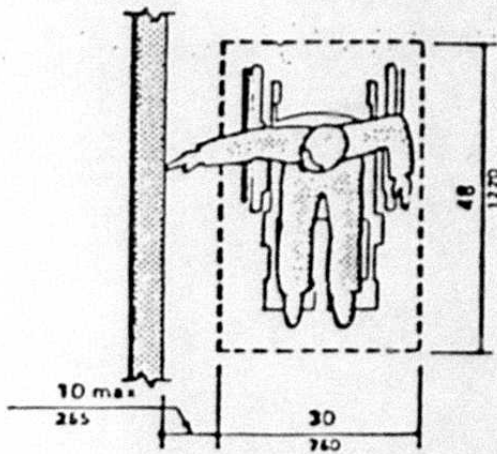
(b) Maximum Forward Reach over an Obstruction

Fig. 5
 Forward Reach

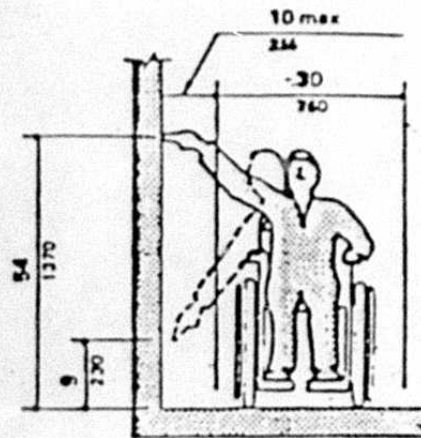
ANSI PUBLIC TELEPHONE STANDARDS:

II. 4.29.3 Mounting Height:

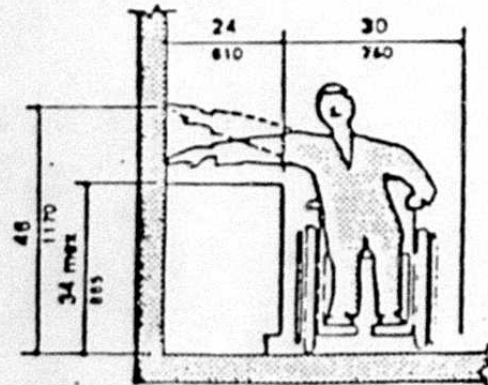
4.2.6 Side Reach. If the clear floor space allows parallel approach by a person in a wheelchair, the maximum high side reach allowed shall be 54 in (1370 mm) and the low side reach shall be no less than 9 in (230 mm) above the floor (Fig. 6(a) and (b)). If the side reach is over an obstruction, the reach and clearances shall be as shown in Fig. 6(c).



(a) Clear Floor Space -- Parallel Approach



(b) High and Low Side Reach Limits



(c) Maximum Side Reach and Obstruction

Fig. 6
Side Reach

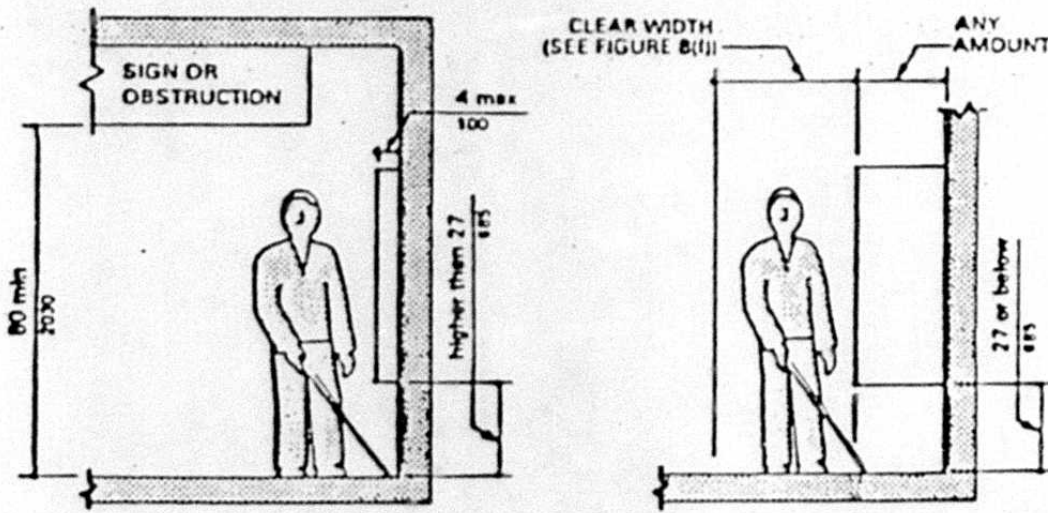
ANSI PUBLIC TELEPHONE STANDARDS:

III. 4.29.4 Protruding Objects:

4.29.4 Protruding Objects. Telephones, enclosures, and related equipment shall comply with 4.4.

4.4 Protruding Objects.

4.4.1* General. Objects projecting from walls (for example, telephones) with their leading edges between 27 in and 80 in (685 mm and 2030 mm) above the finished floor shall protrude no more than 4 in (100 mm) into walks, halls, corridors, passageways, or aisles (see Fig. 8(a)).



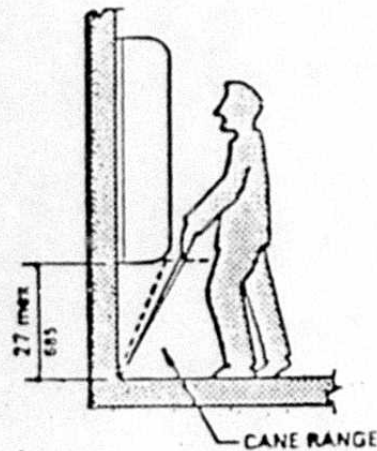
(a) Walking Parallel to a Hall

Fig. 8
Protruding Objects

ANSI PUBLIC TELEPHONE STANDARDS:

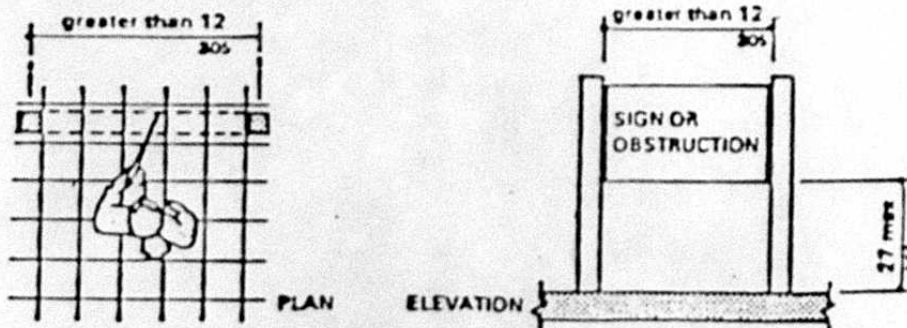
III. 4.29.4 Protruding Objects:

Objects mounted with their leading edges at or below 27 in (685 mm) above the finished floor may protrude any amount (see Fig. 8(a) and (b)).



(b) Walking Perpendicular to a Hall

Free-standing objects mounted on posts or pylons may overhang 12 in (305 mm) maximum from 27 in to 80 in (685 mm to 2030 mm) above the ground or finished floor (see Fig. 8(c), (d), and (e)).

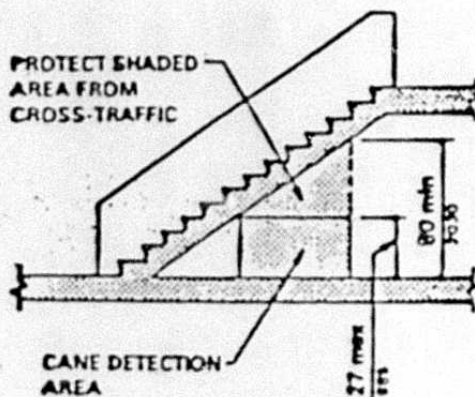


(c) Free-Standing Objects

ANSI PUBLIC TELEPHONE STANDARDS:

III. 4.29.4 Protruding Objects:

Free-standing objects mounted on posts or pylons may overhang 12 in (305 mm) maximum from 27 in to 80 in (685 mm to 2030 mm) above the ground or finished floor (see Fig. 8(c), (d), and (e)).



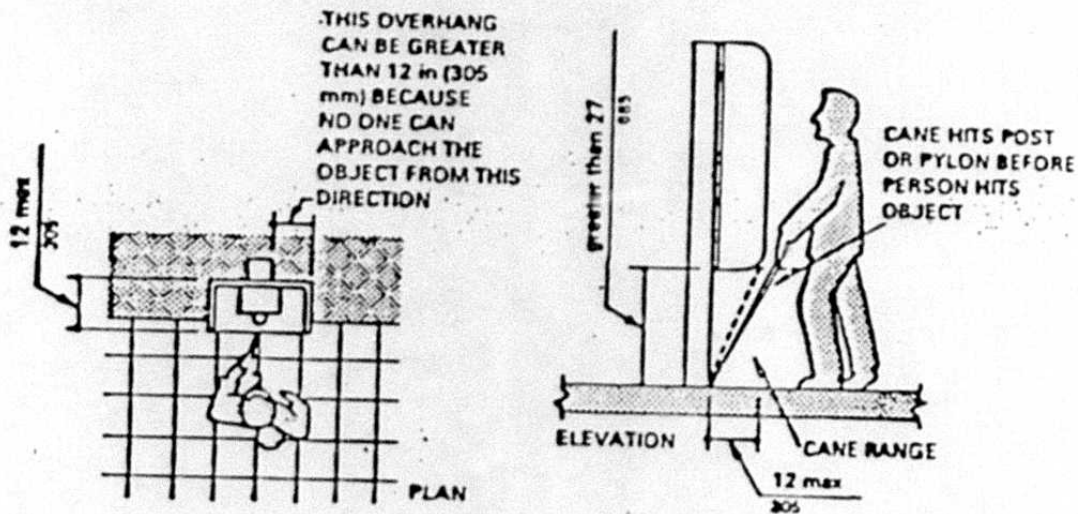
(d) Overhead Hazards

Fig. 8 Protruding Objects (Continued)

ANSI PUBLIC TELEPHONE STANDARDS:

III. 4.29.4 Protruding Objects:

Free-standing objects mounted on posts or pylons may overhang 12 in (305 mm) maximum from 27 in to 80 in (685 mm to 2030 mm) above the ground or finished floor (see Fig. 8(c), (d), and (e)).

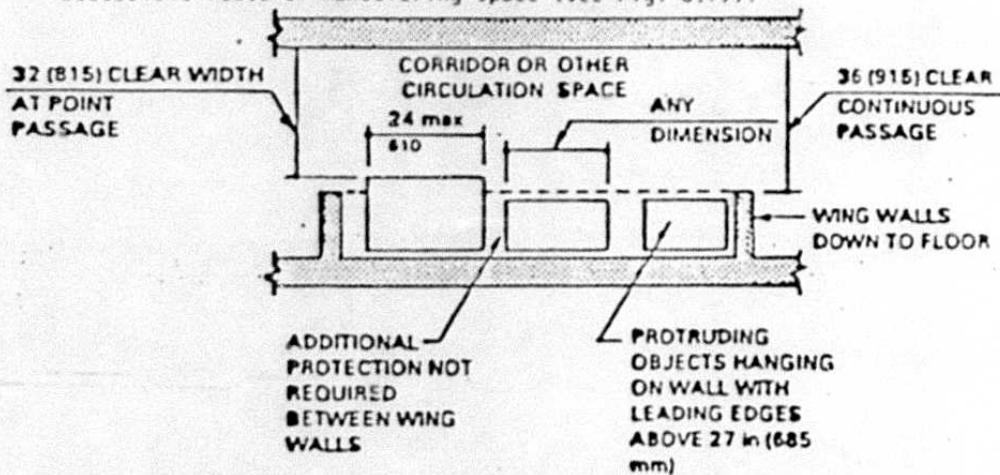


(c) Objects Mounted on Posts or Pylons

ANSI PUBLIC TELEPHONE STANDARDS:

III. 4.29.4 Protruding Objects:

Protruding objects shall not reduce the clear width required for an accessible route or maneuvering space (see Fig. 8(f)).



(f) Example of Protection around Wall-Mounted Objects and Measurements of Clear Widths

Fig. 8 Protruding Objects (Continued)

4.4.2 Headroom. Walks, halls, corridors, passageways, aisles, or other circulation spaces shall have 80 in (2030 mm) minimum clear headroom (see Fig. 8(a)). If vertical clearance of an area adjoining an accessible route is reduced to less than 80 in (2030 mm) nominal dimension, a guardrail or other barrier having its leading edge at or below 27 in (685 mm) above the finished floor shall be provided (see Fig. 8(c) and (d)).

ANSI PUBLIC TELEPHONE STANDARDS:

IV. 4.29.7 Telephone Directories:

4.29.7 Telephone Directories. Telephone directories, if provided, shall be located in accordance with 4.2.

4.2 Space Allowances and Reach Ranges

4.2.1*Wheelchair Passage Width. The minimum clear width for single wheelchair passage shall be 32 in (815 mm) at a point and 36 in (915 mm) continuously (see Fig. 1).

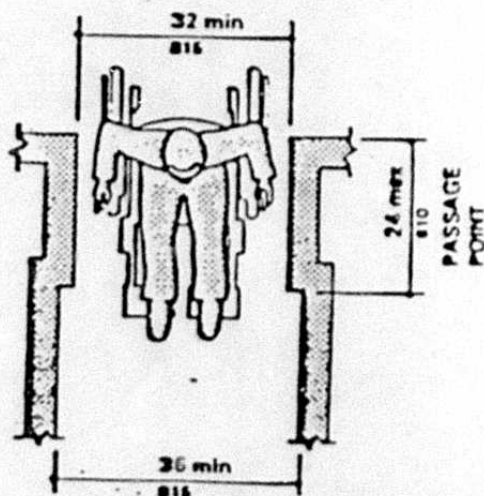


Fig. 1
Minimum Clear Width for Single Wheelchair

ANSI PUBLIC TELEPHONE STANDARDS:

IV. 4.29.7 Telephone Directories:

4.2.2 Width for Wheelchair Passing. The minimum width for two wheelchairs to pass is 60 in (1525 mm) (see Fig. 2).

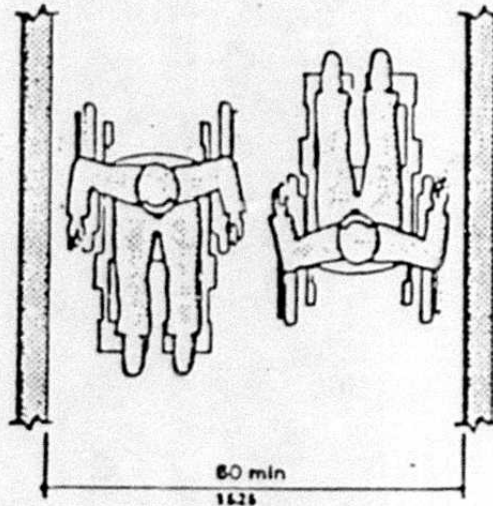
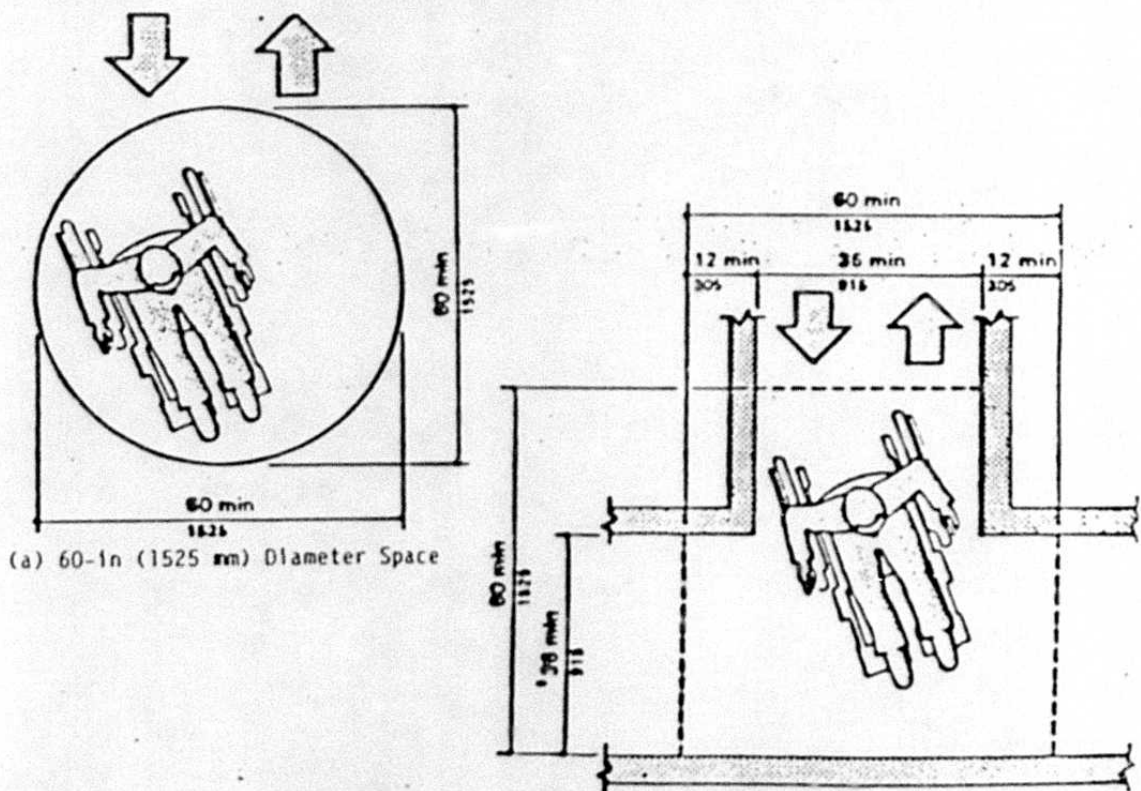


Fig. 2
Minimum Clear Width for Two Wheelchairs

ANSI PUBLIC TELEPHONE STANDARDS:

IV. 4.29.7 Telephone Directories:

4.2.3*Wheelchair Turning Space. The space required for a wheelchair to make a 180-degree turn is a clear space of 60 in (1525 mm) diameter (see Fig. 3(a)) or a T-shaped space (see Fig. 3(b)).



NOTE: Dashed lines indicate length of clear space required on each arm of the T-shaped space in order to complete the turn.

(b) T-Shaped Space for 180° Turns

Fig. 3
Wheelchair Turning Space

Order No. PSC-92-0115-FOF-TP
Docket No. 910204-TP
Page 84

SOP 2013-2
Page 41 of 41
EXHIBIT 5

ANSI PUBLIC TELEPHONE STANDARDS:

V. 4.29.8 Cord Length:

4.29.8 Cord Length. Accessible telephones shall be equipped with a minimum handset cord length of 29 in (735 mm).

30

SOP 2013-6.7
 Page 33 of 66
 EXHIBIT 8
 ATCH: OF

PATS
PHYSICALLY HANDICAPPED EVALUATION

TELEPHONE NO:

DATE OF EVALUATION:

ADDRESS:

NO.	RULE-ANSI STANDARDS EVALUATED	YES	NO	NA
1.	Is the station located on a floor above or below entry level not serviced by a ramp or elevator (rule 25-24.515(13))?			
2.	Is the highest operable part 54" or less when measured from the floor-ground surface (ANSI Fig. 44)?			
3.	Is the height of the mounted enclosure 27" or less when measured from the floor-ground surface to the bottom side of the enclosure (ANSI Fig. 44)?			
4.	If the telephone is accessible to allow side reach, does the enclosure extend 10" or less when measured to the face of the telephone (ANSI fig. 44)?			
5.	If access is via side reach, is the clear floor-ground space at least 30" by 48" (ANSI fig. 44)?			
6.	If the telephone is accessible via forward reach and the enclosure is 24" or less from the face of the telephone, is the clear floor-ground space			
7.	Are curb ramps located or protected to prevent their obstruction by parked vehicles (ANSI Fig. 14)?			
8.	Are the floor-ground surfaces (along accessible routes and in accessible rooms and spaces, including floors, walks, ramps, stairs and curb ramps) stable, firm, slip resistant and meet the changes in level of ANSI Fig. 7?			
9.	If the accessible route crosses a curb, is a curb ramp provided (ANSI Fig. 11)?			
10.	Is the minimum width of the curb ramp at least 36" exclusive of flared sides (ANSI Fig. 7)?			

0257C(96)

SOP 2013-2
Page 9 of 41
EXHIBIT 4
ATCH: OF

PAIS
PHYSICALLY HANDICAPPED EVALUATION

TELEPHONE NO:

DATE OF EVALUATION:

ADDRESS:

NO.	RULE-ANSI STANDARDS EVALUATED	YES	NO	NA
11.	Are curb ramps located or protected to prevent their obstruction by parked vehicles (ANSI Fig. 14)?			
12.	Is the maximum curb ramp rise 30" or less (ANSI Fig. 16)?			
13.	If the telephone housing is mounted between 27" and 80" above the floor-ground level, does the housing protrude 4" or less into walks, halls, corridors, aisles, etc. (ANSI Fig. 8)?			
14.	If the clear floor-ground space allows only forward approach to the telephone, does the forward reach extend a maximum of 25" to the operable telephone controls (ANSI Fig. 5)?			
15.	If the clear floor-ground space allows only side reach to the telephone, does the side reach extend a maximum of 24" to the operable telephone controls (ANSI Fig. 6)?			
16.	Is the telephone handset cord at least 29" in length (ANSI 4.29.8)?			

NOTES:

Rule 25-24.515
Docket No. 910204-TP

SUMMARY OF RULE

SUMMARY: Rule 25-24.515(13), F.A.C., is amended to specify that all pay telephone stations installed after January 5, 1987 must conform to the handicapped-accessibility standards as set forth in subsections 4.29.2-4.29.4 and 4.29.7-4.29.8 of the American Standards Specifications for Making Buildings and Facilities Accessible and Usable by Physically Handicapped People, approved February 5, 1986 by the American National Standards Institute, Inc. (ANSI A117.1-1986). These standards were previously incorporated by reference in the rule. In addition, the rule specifies that pay telephones installed prior to January 5, 1987 must comply with these standards by January 1, 1995.

Subsection 13(a) of the rule is amended to require that by June 1, 1992, at least one pay telephone in any group of two or more must conform to the handicapped-accessibility standards. The minimum conformity rate shall be one in ten telephones.

Subsection (14) of the rule is amended to add the requirement that by September 1, 1992, each pay telephone station must allow a caller to dial the additional digits necessary to reach his long distance carrier of choice without operator intervention and enable the caller to reach other services such as voice mailbox and menu driven answering devices by the same process.

92 MAR 25 PM 3:41
FILED
DEPARTMENT OF STATE
TALLAHASSEE, FLORIDA

SUMMARY OF HEARINGS ON THE RULE

In response to the Commission's Notice of Rulemaking, comments were filed by the Florida Pay Telephone Association (FPTA), Public Communications Associates Ltd., Inc., and Value-Added Communications, Inc. GTE Florida, Incorporated filed comments and a request for hearing. A rulemaking hearing was held at 9:30 a.m., Friday, January 10, 1992 in which the following parties participated: Florida Pay Telephone Association; GTE Florida Incorporated (GTEFL); United Telephone Company of Florida (United); Southern Bell Telephone and Telegraph Company (Southern Bell); and Commission Staff. After conclusion of the hearing, post-hearing comments were submitted by these parties as well as the AT&T Communications of the Southern States, Inc. (AT&T) and U.S. Sprint.

The main focus of the discussion at hearing centered on certain "Fraud Protection" amendments to the rule proposed by FPTA. These additions to the rule would have established guidelines apportioning responsibility for fraudulent calls billed to payphones. Both procedural and substantive objections were raised to FPTA's amendments, both at hearing and in post-hearing comments.

On March 10, 1992, at an Agenda Conference, the Commission voted to adopt the amendments on handicapped accessibility as proposed in Rules 25-4.076(9)(a) and 25-24.515(13)(a). No parties filing comments or attending the hearing objected to these amendments as proposed.

In the same Agenda Conference, the Commission adopted rule

92 MAR 25 PM 3:41
FILED
DEPARTMENT OF STATE
TALLAHASSEE, FLORIDA

sections 25-4.076(9)(c) and 25-24.515(13)(a), to allow grandfathered paystations in non-accessible locations to remain exempt from the accessibility standards until the building is modified to allow wheel chair access. This change was proposed by staff in response to comments filed by GTE of Florida. No party objected to this provision and the Hearing Officer recommended its adoption.

Also adopted at the March 10, 1992 Agenda Conference were the open key pad amendments of Rules 25-4.076(10) and 25-24.515(14), with a September 1, 1992 effective date, and the additional provision that the amendment not apply to pay telephones located in confinement facilities. The Florida Pay Telephone Association expressed reservations about this amendment because of increased exposure to fraudulent calls which result in uncollectible charges. The fraud protection amendments were not adopted by the Commission at its public agenda conference on March 10, 1992. Instead, the Commission directed its staff to begin a separate rulemaking proceeding on these proposals.

FACTS AND CIRCUMSTANCES JUSTIFYING THE RULE

By Order No. 24348, issued April 11, 1991, the Commission granted the petitions of Southern Bell Telephone Company and the Florida Pay Telephone Association which asked the Commission to amend Rules 25-4.076(9), and 25-24.515(13), F.A.C., which govern accessibility of pay stations to the physically handicapped. In the Order, the Commission agreed that the rules need to be amended such that all individuals, handicapped and non-

92 MAR 25 PM 3:41
FILED
DEPARTMENT OF STATE
TALLAHASSEE, FLORIDA