

BEFORE THE FLORIDA PUBLIC SERVICE COMMISSION

In re: Determination of the cost
of basic local
telecommunications service,
pursuant to Section 364.025,
Florida Statutes.

DOCKET NO. 980696-TP
ORDER NO. PSC-99-0068A-FOF-TP
ISSUED: February 2, 1999

AMENDATORY ORDER

BY THE COMMISSION:

On January 7, 1999, we issued Order No. PSC-99-0068-FOF-TP in Docket No. 980696-TP with Appendix A and a notation that Appendix B would be filed with our Report to the Legislature. That Order set forth our determination on the appropriate cost proxy model for determining the cost of basic local telecommunications service in compliance with Section 364.025(b) and (c), Florida Statutes. Appendix A to the Order set forth the input values that we approved for the cost proxy model. Appendix B to the Order set forth the results of the cost proxy model run with the approved input values.

Since that time, we have discovered several footnotes and input values that were inadvertently either omitted or listed incorrectly in Appendix A. The corresponding information in the body of Order No. PSC-99-0068-FOF-TP, however, was listed correctly. Therefore, we hereby amend Appendix A to Order No. PSC-99-0068-FOF-TP to include the necessary corrections. Attached to this Order are the corrected replacement pages for Appendix A. The corrected input values and additional information are shaded appropriately on each replacement page.

Based on the foregoing, it is

ORDERED by the Florida Public Service Commission that Appendix A to Order No. PSC-99-0068-FOF-TP is hereby amended to include the corrections and additions specified in the Attachment to this Order. It is further

ORDERED that Order No. PSC-99-0068-FOF-TP is reaffirmed in all other respects.

DOCUMENT NUMBER-DATE

01288 FEB-28

FPSC-RECORDS/REPORTING

ORDER NO. PSC-99-0068A-FOF-TP
DOCKET NO. 980696-TP
PAGE 2

By ORDER of the Florida Public Service Commission, this 2nd
day of February, 1999.

BLANCA S. BAYÓ, Director
Division of Records and Reporting

By: Kay Flynn
Kay Flynn, Chief
Bureau of Records

(S E A L)

WPC

**Table V-A(3): Commission-Ordered Lives
 and BellSouth, GTEFL, and Sprint Recommended Lives**

	Commission-Ordered	BellSouth	GTEFL	Sprint
Account	(Yrs.)	(Yrs.)	(Yrs.)	(Yrs.)
Motor Vehicles	7.5	8.0	8.0	4.2
Aircraft	5.0		5.0	
Special Purpose Vehicle	7.0	7.0	10.0	8.0
Garage Work Equipment	12.0	12.0	10.0	7.0
Other Work Equipment	12.0	15.0	10.0	7.0
Buildings	40.0	45.0	30.0	31.5
Furniture	11.0	15.0	10.0	10.0
Office Support Equipment	10.0	11.0	10.0	5.0
Company Comm. Equipment	7.0	7.0	10.0	
Genl Purpose Computers	5.0	5.0	5.0	3.0
Digital Switching	13.0	10.0	10.0	11.0
Operator Systems	10.0	10.0	10.0	
Radio Systems	9.0	9.0	10.0	
Circuit-DDS	8.0	8.0	8.0	11.0
Circuit-Digital	8.0	9.0	8.0	11.0
Circuit-Analog	8.0	7.8	8.0	11.0
Station Apparatus	6.0	6.0	7.0	
Large PBX	6.0	6.0		
Other Terminal Equipment	6.0	6.0	5.0	
Poles	30.0	34.0	25.0	14.0
Aerial Cable-Metallic	18.0	14.0	15.0	15.0
Aerial Cable-Fiber	20.0	20.0	20.0	20.0
Undergrd Cable-Metallic	23.0	12.0	15.0	15.0
Undergrd Cable-Fiber	20.0	20.0	20.0	20.0
Buried Cable-Metallic	18.0	14.0	14.0	18.0
Buried Cable-Fiber	20.0	20.0	20.0	20.0
Submarine Cable-Metallic	18.0	14.0	15.0	
Submarine Cable-Fiber	20.0		20.0	
Intra-Bldg Netwk Cable-Met.	20.0		15.0	
Intra-Bldg Netwk Cable-Fiber	20.0	20.0	20.0	
Conduit	50.0	55.0	40.0	39.7

Table V-A(3): AT&T/MCI Recommended Lives

	BellSouth	GTEFL	Sprint	Centel
	(Yrs.)	(Yrs.)	(Yrs.)	(Yrs.)
Motor Vehicles	7.5	7.5	7.5	7.5
Aircraft				
Special Purpose Veh.				
Garage Work Equipment	12.0	12.0	12.0	12.0
Other Work Equipment	15.0	12.0	12.0	12.0
Buildings	40.0	40.0		
Furniture	11.0	15.0	15.0	15.0
Office Support Equipment	10.5	10.0	10.0	10.0
Company Comm. Equipment	7.0	7.0	7.0	7.0
Genl Purpose Computers	4.4	6.0	6.0	6.0
Digital Switching	16.0	16.0	16.0	16.0
Operator Systems	10.0	8.0	8.0	8.0
Radio Systems				
Circuit-DDS				
Circuit-Digital	10.0	9.0	11.0	11.0
Circuit-Analog				
Station Apparatus				
Large PBX				
Other Terminal Equipment	7.0	7.0	7.0	7.0
Poles	35.0	25.0	25.0	25.0
Aerial Cable-Metallic	18.0	20.0	20.0	20.0
Aerial Cable-Fiber	25.0	25.0	25.0	25.0
Undergrd Cable-Metallic	23.0	25.0	25.0	25.0
Undergrd Cable-Fiber	25.0	25.0	25.0	25.0
Buried Cable-Metallic	18.0	20.0	20.0	20.0
Buried Cable-Fiber	25.0	25.0	25.0	25.0
Submarine Cable-Metallic				
Submarine Cable-Fiber				
Intra-Bldg Netwk Cable-Met.	20.0	20.0	20.0	20.0
Intra-Bldg Netwk Cable-Fiber	20.0	20.0	25.0	25.0
Conduit	55.0	50.0	50.0	50.0

Table V-A(3): Commission-Ordered Salvage Values and BellSouth, GTEFL, and Sprint Recommended Salvage Values

	Commission-Ordered	BellSouth	GTEFL	Sprint
Account	(%)	(%)	(%)	(%)
Motor Vehicles	15.0	16.0	10.0	20.0
Aircraft	50.0		50.0	
Special Purpose Veh.	0.0	0.0	0.0	0.0
Garage Work Equipment	0.0	0.0	0.0	0.0
Other Work Equipment	0.0	0.0	0.0	0.0
Buildings	0.0	0.0	0.0	0.0
Furniture	10.0	10.0	0.0	0.0
Office Support Equipment	0.0	50.0	0.0	0.0
Company Comm. Equipment	10.0	10.0	0.0	
Genl Purpose Computers	0.0	0.0	0.0	0.0
Digital Switching	0.0	0.0	0.0	3.0
Operator Systems	0.0	0.0	0.0	
Radio Systems	(5.0)	(5.0)	0.0	
Circuit-DDS	0.0	2.0		
Circuit-Digital	0.0	0.0	0.0	(1.0)
Circuit-Analog	(5.0)	(3.0)		
Station Apparatus	0.0	0.0	0.0	
Large PBX	0.0	0.0		
Other Terminal Equipment	0.0	5.0	0.0	
Poles	(75.0)	(60.0)	(10.0)	(43.0)
Aerial Cable-Metallic	(35.0)	(14.0)	(10.0)	(18.0)
Aerial Cable-Fiber	(35.0)	(14.0)	(10.0)	(20.0)
Undergrd Cable-Metallic	(10.0)	(8.0)	(10.0)	(12.0)
Undergrd Cable-Fiber	(10.0)	(8.0)	(10.0)	(14.0)
Buried Cable-Metallic	(10.0)	(7.0)	(10.0)	(9.0)
Buried Cable-Fiber	(10.0)	(7.0)	(10.0)	(10.0)
Submarine Cable-Metallic	(5.0)	(5.0)	(10.0)	
Submarine Cable-Fiber	(5.0)		(10.0)	
Intra-Bldg Netwk Cable-Met.	(10.0)		(10.0)	
Intra-Bldg Netwk Cable-Fiber	(10.0)	(10.0)	(10.0)	
Conduit	(10.0)	(10.0)	(10.0)	(10.0)

Table V-A(3): AT&T/MCI Recommended Salvage Values

	BellSouth	GTEFL	Sprint	Centel
Account	(%)	(%)	(%)	(%)
Motor Vehicles	10.0	18.0	10.0	10.0
Aircraft				
Special Purpose Veh.				
Garage Work Equipment	0.0	0.0	0.0	0.0
Other Work Equipment	1.0	0.0	0.0	0.0
Buildings	4.0	0.0		
Furniture	14.0	9.0	0.0	0.0
Office Support Equipment	10.0	8.0	0.0	0.0
Company Comm. Equipment	10.0	(5.0)	(5.0)	(5.0)
Genl Purpose Computers	0.0	0.0	0.0	0.0
Digital Switching	0.0	0.0	0.0	0.0
Operator Systems	0.0	0.0	0.0	0.0
Radio Systems				
Circuit-DDS				
Circuit-Digital	0.0	3.0	0.0	0.0
Circuit-Analog				
Station Apparatus				
Large PBX				
Other Terminal Equipment	10.0	0.0	0.0	0.0
Poles	(75.0)	(75.0)	(75.0)	(75.0)
Aerial Cable-Metallic	(11.0)	(35.0)	(35.0)	(35.0)
Aerial Cable-Fiber	(11.0)	(25.0)	(25.0)	(25.0)
Undergrd Cable-Metallic	(7.0)	(17.0)	(30.0)	(30.0)
Undergrd Cable-Fiber	(6.0)	(9.0)	(20.0)	(20.0)
Buried Cable-Metallic	(8.0)	(10.0)	(10.0)	(10.0)
Buried Cable-Fiber	0.0	(10.0)	(10.0)	(10.0)
Submarine Cable-Metallic				
Submarine Cable-Fiber				
Intra-Bldg Netwk Cable-Met.	(12.0)	(10.0)	(30.0)	(30.0)
Intra-Bldg Netwk Cable-Fiber	(12.0)	(10.0)	(15.0)	(15.0)
Conduit	(7.0)	(10.0)	(10.0)	(10.0)

APPENDIX A - COMMISSION-ORDERED INPUT VALUES

Section V-A: Depreciation Rates*

Account	Lives	Salvage Values
Motor Vehicles	7.5	15.0
Aircraft	5.0	50.0
Special Purpose Veh.	7.0	0.0
Garage Work Equipment	12.0	0.0
Other Work Equipment	12.0	0.0
Buildings	40.0	0.0
Furniture	11.0	10.0
Office Support Equipment	10.0	0.0
Company Comm. Equipment	7.0	10.0
Genl. Purpose Computers	5.0	0.0
Digital Switching	13.0	0.0
Operator Systems	10.0	0.0
Radio Systems	9.0	(5.0)
Circuit-DDS	8.0	0.0
Circuit-Digital	8.0	0.0
Circuit-Analog	8.0	(5.0)
Station Apparatus	6.0	0.0
Large PBX	6.0	0.0
Other Terminal Equipment	6.0	0.0
Poles	30.0	(75.0)
Aerial Cable-Metallic	18.0	(35.0)
Aerial Cable-Fiber	20.0	(35.0)
Underground Cable-Metallic	23.0	(10.0)
Underground Cable-Fiber	20.0	(10.0)
Buried Cable-Metallic	18.0	(10.0)
Buried Cable-Fiber	20.0	(10.0)

Account	Lives	Salvage Values
Submarine Cable-Metallic	18.0	(5.0)
Submarine Cable-Fiber	20.0	(5.0)
Intra-Bldg. Netwk Cable-Met.	20.0	(10.0)
Intra-Bldg. Netwk Cable-Fiber	20.0	(10.0)
Conduit	50.0	(10.0)

*As discussed on page 71, the Equal Life Group (ELG) mechanism should be disabled and the Vintage Group (VG) mechanism be enabled when calculating the capital cost factors.

Section V-B: Cost of Money	
Debt Ratio:	40%
Equity Ratio:	60%
Cost of Debt:	6.5%
Cost of Equity:	11.5%
Overall Cost of Capital:	9.5%

Section V-C: Tax Rates	
State Income Tax*	5.5%
Federal Income Tax	35%
Combined Federal & State Income Tax*	38.57%
Gross Receipts	1.53%
Ad Valorem	.90%
Other	.30%

*As discussed on page 104, the combined rate is a mathematical combination of the state and federal income tax rates. This calculated amount should be entered in the federal income tax field. The state income tax field should be left blank.

APPENDIX A - COMMISSION-ORDERED INPUT VALUES

BellSouth's & GTEFL's Territory - Normal, Soft Rock, Hard Rock Aerial Feeder and Distribution					
Activity	Base Cost Per unit	Density Zones 0-650			
		Cost Adjustment	Installation Costs	% Assigned Telephone	Weighted Amount
Poles	\$229.89		\$161.81	39.88%	\$156.21
Anchors and Guys	\$ 28.45		\$72.01	100%	\$16.74
					\$172.96
BellSouth's & GTEFL's Territory - Normal, Soft Rock, Hard Rock Aerial Feeder and Distribution					
Activity	Base Cost Per unit	Density Zone 615-850			
		Cost Adjustment	Installation Costs	% Assigned Telephone	Weighted Amount
Poles	\$229.89		\$161.81	39.88%	\$156.21
Anchors and Guys	\$ 28.45		\$72.01	100%	\$15.07
					\$171.28
BellSouth's & GTEFL's Territory - Normal, Soft Rock, Hard Rock Aerial Feeder and Distribution					
Activity	Base Cost Per unit	Density Zone 851->10001			
		Cost Adjustment	Installation Costs	% Assigned Telephone	Weighted Amount
Poles	\$229.89		\$161.81	39.88%	\$156.21
Anchors and Guys	\$ 28.45		\$ 72.01	100%	\$ 30.14
					\$186.35
GTEFL's Territory - Normal, Soft Rock, Hard Rock Aerial Feeder and Distribution					
Activity	Base Cost Per unit	Density Zones - ALL			
		Cost Adjustment	Installation Costs	% Assigned Telephone	Weighted Amount
Poles	\$229.89		\$161.81	53.58%	\$209.89
Anchors and Guys	\$ 28.45		\$ 72.01	100%	\$ 10.05
					\$219.94

APPENDIX A - COMMISSION-ORDERED INPUT VALUES

BellSouth's Territory - Buried Distribution Cable					
Activity	Base Cost Per Foot Installed	Density Zone 0-5			
		Cost Adjustment	% Activity	% Assigned Telephone	Weighted Amount
Plow	\$3.06		86.00%	96.00%	\$2.53
Rocky Plow	3.06		0.00%	96.00%	0
Trench & Backfill	3.06		10.00%	96.00%	.29
Rocky Trench	3.06		0.00%	96.00%	0
Backhoe Trench	3.06		0.00%	96.00%	0
Hand Dig Trench	3.06		0.00%	96.00%	0
Bore Cable	23.50		0.00%	96.00%	0
Push Pipe & Pull Cable	26.96		0.00%	96.00%	0
Cut & Restore Asphalt	6.01		1.00%	96.00%	.06
Cut & Restore Concrete	8.90		1.00%	96.00%	.09
Cut & Restore Sod	4.80		2.00%	96.00%	.09
			100%		\$3.06

APPENDIX A - COMMISSION-ORDERED INPUT VALUES

BellSouth's Territory - Buried Distribution Cable					
Activity	Base Cost Per Foot Installed	Density Zone 6-100			
		Cost Adjustment	% Activity	% Assigned Telephone	Weighted Amount
Plow	\$3.06		80.00%	96.00%	\$2.35
Rocky Plow	3.06		0.00%	96.00%	0
Trench & Backfill	3.06		11.00%	96.00%	.32
Rocky Trench	3.06		0.00%	96.00%	0
Backhoe Trench	3.06		3.00%	96.00%	.09
Hand Dig Trench	3.06		0.00%	96.00%	0
Bore Cable	23.50		0.00%	96.00%	0
Push Pipe & Pull Cable	26.96		0.00%	96.00%	0
Cut & Restore Asphalt	6.01		2.00%	96.00%	.12
Cut & Restore Concrete	8.90		2.00%	96.00%	.17
Cut & Restore Sod	4.80		2.00%	96.00%	.09
			100%		\$3.14

AMENDATORY ORDER NO. PSC-99-0068A-FOF-TP
 DOCKET NO. 980696-TP
 REPLACEMENT PAGE 268

APPENDIX A - COMMISSION-ORDERED INPUT VALUES

BellSouth's Territory - Buried Distribution Cable					
Activity	Base Cost Per Foot Installed	Density Zone 101-200			
		Cost Adjustment	% Activity	% Assigned Telephone	Weighted Amount
Plow	\$3.06		69.00%	96.00%	\$2.03
Rocky Plow	3.06		0.00%	96.00%	0
Trench & Backfill	3.06		11.00%	96.00%	.32
Rocky Trench	3.06		0.00%	96.00%	0
Backhoe Trench	3.06		3.00%	96.00%	.09
Hand Dig Trench	3.06		0.00%	96.00%	0
Bore Cable	23.50		1.00%	96.00%	.23
Push Pipe & Pull Cable	26.96		1.00%	96.00%	.26
Cut & Restore Asphalt	6.01		5.00%	96.00%	.29
Cut & Restore Concrete	8.90		4.00%	96.00%	.34
Cut & Restore Sod	4.80		6.00%	96.00%	.28
			100%		\$3.83

AMENDATORY ORDER NO. PSC-99-0068A-FOF-TP
 DOCKET NO. 980696-TP
 REPLACEMENT PAGE 269

APPENDIX A - COMMISSION-ORDERED INPUT VALUES

BellSouth's Territory- Buried Distribution Cable					
Activity	Base Cost Per Foot Installed	Density Zone 201-650			
		Cost Adjustment	% Activity	% Assigned Telephone	Weighted Amount
Plow	\$3.06		21.00%	96.00%	\$.62
Rocky Plow	3.06		0.00%	96.00%	0
Trench & Backfill	3.06		30.00%	96.00%	.88
Rocky Trench	3.06		0.00%	96.00%	0
Backhoe Trench	3.06		12.00%	96.00%	.35
Hand Dig Trench	3.06		3.00%	96.00%	.09
Bore Cable	23.50		4.00%	96.00%	.90
Push Pipe & Pull Cable	26.96		5.00%	96.00%	1.29
Cut & Restore Asphalt	6.01		8.00%	96.00%	.46
Cut & Restore Concrete	8.90		7.00%	96.00%	..60
Cut & Restore Sod	4.80		10.00%	96.00%	.46
			100%		\$5.66

AMENDATORY ORDER NO. PSC-99-0068A-FOF-TP
 DOCKET NO. 980696-TP
 REPLACEMENT PAGE 270

APPENDIX A - COMMISSION-ORDERED INPUT VALUES

BellSouth's Territory- Buried Distribution Cable					
Activity	Base Cost Per Foot Installed	Density Zone 651-2550			
		Cost Adjustment	% Activity	% Assigned Telephone	Weighted Amount
Plow	\$3.06		20.00%	96.00%	\$.59
Rocky Plow	3.06		0.00%	96.00%	0
Trench & Backfill	3.06		20.00%	96.00%	.59
Rocky Trench	3.06		0.00%	96.00%	0
Backhoe Trench	3.06		2.00%	96.00%	.06
Hand Dig Trench	3.06		6.00%	96.00%	.18
Bore Cable	23.50		2.00%	96.00%	.45
Push Pipe & Pull Cable	26.96		5.00%	96.00%	1.29
Cut & Restore Asphalt	6.01		13.00%	96.00%	.75
Cut & Restore Concrete	8.90		12.00%	96.00%	1.03
Cut & Restore Sod	4.80		20.00%	96.00%	.92
			100%		\$5.85

AMENDATORY ORDER NO. PSC-99-0068A-FOF-TP
 DOCKET NO. 980696-TP
 REPLACEMENT PAGE 271

APPENDIX A - COMMISSION-ORDERED INPUT VALUES

BellSouth's Territory- Buried Distribution Cable					
Activity	Base Cost Per Foot Installed	Density Zone 2551-10000			
		Cost Adjustment	% Activity	% Assigned Telephone	Weighted Amount
Plow	\$3.06		0%	96.00%	\$.0
Rocky Plow	3.06		0	96.00%	0
Trench & Backfill	3.06		5	96.00%	.15
Rocky Trench	3.06		0	96.00%	0
Backhoe Trench	3.06		19	96.00%	.56
Hand Dig Trench	3.06		8	96.00%	.24
Bore Cable	23.50		15	96.00%	3.38
Push Pipe & Pull Cable	26.96		0	96.00%	0
Cut & Restore Asphalt	6.01		25	96.00%	.1.44
Cut & Restore Concrete	8.90		20	96.00%	1.71
Cut & Restore Sod	4.80		8	96.00%	.37
			100%		\$7.84

APPENDIX A - COMMISSION-ORDERED INPUT VALUES

BellSouth's Territory - Buried Distribution Cable					
Activity	Base Cost Per Foot Installed	Density Zone >10000			
		Cost Adjustment	% Activity	% Assigned Telephone	Weighted Amount
Plow	\$3.06		0%	96.00%	\$0
Rocky Plow	3.06		0	96.00%	0
Trench & Backfill	3.06		3	96.00%	.09
Rocky Trench	3.06		0	96.00%	0
Backhoe Trench	3.06		15	96.00%	44
Hand Dig Trench	3.06		8	96.00%	.24
Bore Cable	23.50		10	96.00%	2.26
Push Pipe & Pull Cable	26.96		0	96.00%	0
Cut & Restore Asphalt	6.01		33	96.00%	1.90
Cut & Restore Concrete	8.90		28	96.00%	2.39
Cut & Restore Sod	4.80		3	96.00%	.14
			100%		\$7.46

AMENDATORY ORDER NO. PSC-99-0068A-FOF-TP
 DOCKET NO. 980696-TP
 REPLACEMENT PAGE 287

APPENDIX A - COMMISSION-ORDERED INPUT VALUES

BellSouth's Territory- Soft Rock Buried Distribution Cable					
Activity	Base Cost Per Foot Installed	Density Zone 0-5			
		Cost Adjustment	% Activity	% Assigned Telephone	Weighted Amount
Plow	\$3.06		47.00%	96.00%	\$1.38
Rocky Plow	3.06		29	96.00%	.85
Trench & Backfill	3.06		5	96.00%	.15
Rocky Trench	3.06		4	96.00%	.12
Backhoe Trench	3.06		2	96.00%	.06
Hand Dig Trench	3.06		3	96.00%	.09
Bore Cable	23.50		1	96.00%	.23
Push Pipe & Pull Cable	26.96		5	96.00%	1.29
Cut & Restore Asphalt	6.01		1	96.00%	.06
Cut & Restore Concrete	8.90		1	96.00%	.09
Cut & Restore Sod	4.80		2	96.00%	.09
			100%		\$4.40

AMENDATORY ORDER NO. PSC-99-0068A-FOF-TP
 DOCKET NO. 980696-TP
 REPLACEMENT PAGE 288

APPENDIX A - COMMISSION-ORDERED INPUT VALUES

BellSouth's Territory - Soft Rock Buried Distribution Cable					
Activity	Base Cost Per Foot Installed	Density Zone 6-100			
		Cost Adjustment	% Activity	% Assigned Telephone	Weighted Amount
Plow	\$3.06		46.00%	96.00%	\$1.35
Rocky Plow	3.06		28	96.00%	.82
Trench & Backfill	3.06		10	96.00%	.29
Rocky Trench	3.06		4	96.00%	.12
Backhoe Trench	3.06		2	96.00%	.06
Hand Dig Trench	3.06		3	96.00%	.09
Bore Cable	23.50		1	96.00%	.23
Push Pipe & Pull Cable	26.96		0	96.00%	0
Cut & Restore Asphalt	6.01		2	96.00%	.12
Cut & Restore Concrete	8.90		2	96.00%	.17
Cut & Restore Sod	4.80		2	96.00%	.09
			100%		\$3.34

AMENDATORY ORDER NO. PSC-99-0068A-FOF-TP
 DOCKET NO. 980696-TP
 REPLACEMENT PAGE 289

APPENDIX A - COMMISSION-ORDERED INPUT VALUES

BellSouth's Territory- Soft Rock Buried Distribution Cable					
Activity	Base Cost Per Foot Installed	Density Zone 101-200			
		Cost Adjustment	% Activity	% Assigned Telephone	Weighted Amount
Plow	\$3.06		29.00%	96.00%	\$.85
Rocky Plow	3.06		30	96.00%	.88
Trench & Backfill	3.06		12	96.00%	.35
Rocky Trench	3.06		8	96.00%	.24
Backhoe Trench	3.06		2	96.00%	.06
Hand Dig Trench	3.06		2	96.00%	.06
Bore Cable	23.50		1	96.00%	.23
Push Pipe & Pull Cable	26.96		1	96.00%	.26
Cut & Restore Asphalt	6.01		5	96.00%	.29
Cut & Restore Concrete	8.90		4	96.00%	.34
Cut & Restore Sod	4.80		6	96.00%	.28
			100%		\$3.83

AMENDATORY ORDER NO. PSC-99-0068A-FOF-TP
 DOCKET NO. 980696-TP
 REPLACEMENT PAGE 290

APPENDIX A - COMMISSION-ORDERED INPUT VALUES

BellSouth's Territory- Soft Rock Buried Distribution Cable					
Activity	Base Cost Per Foot Installed	Density Zone 201-650			
		Cost Adjustment	% Activity	% Assigned Telephone	Weighted Amount
Plow	\$3.06		3.00%	96.00%	\$.09
Rocky Plow	3.06		12	96.00%	.35
Trench & Backfill	3.06		5	96.00%	.15
Rocky Trench	3.06		27	96.00%	.79
Backhoe Trench	3.06		16	96.00%	.47
Hand Dig Trench	3.06		3	96.00%	.09
Bore Cable	23.50		4	96.00%	.90
Push Pipe & Pull Cable	26.96		5	96.00%	1.29
Cut & Restore Asphalt	6.01		8	96.00%	.46
Cut & Restore Concrete	8.90		7	96.00%	.60
Cut & Restore Sod	4.80		10	96.00%	.46
			100%		\$5.66

AMENDATORY ORDER NO. PSC-99-0068A-FOF-TP
 DOCKET NO. 980696-TP
 REPLACEMENT PAGE 291

APPENDIX A - COMMISSION-ORDERED INPUT VALUES

BellSouth's Territory- Soft Rock Buried Distribution Cable					
Activity	Base Cost Per Foot Installed	Density Zone 651-2550			
		Cost Adjustment	% Activity	% Assigned Telephone	Weighted Amount
Plow	\$3.06		2.00%	96.00%	\$.06
Rocky Plow	3.06		2	96.00%	.06
Trench & Backfill	3.06		5	96.00%	.15
Rocky Trench	3.06		25	96.00%	.74
Backhoe Trench	3.06		8	96.00%	.24
Hand Dig Trench	3.06		6	96.00%	.18
Bore Cable	23.50		2	96.00%	.45
Push Pipe & Pull Cable	26.96		5	96.00%	1.29
Cut & Restore Asphalt	6.01		13	96.00%	.75
Cut & Restore Concrete	8.90		12	96.00%	1.03
Cut & Restore Sod	4.80		20	96.00%	.92
			100%		\$5.85

AMENDATORY ORDER NO. PSC-99-0068A-FOF-TP
 DOCKET NO. 980696-TP
 REPLACEMENT PAGE 292

APPENDIX A - COMMISSION-ORDERED INPUT VALUES

BellSouth's Territory- Soft Rock Buried Distribution Cable					
Activity	Base Cost Per Foot Installed	Density Zone 2551-10000			
		Cost Adjustment	% Activity	% Assigned Telephone	Weighted Amount
Plow	\$3.06		0%	96.00%	\$0
Rocky Plow	3.06		0	96.00%	0
Trench & Backfill	3.06		2	96.00%	.06
Rocky Trench	3.06		5	96.00%	.15
Backhoe Trench	3.06		17	96.00%	.50
Hand Dig Trench	3.06		8	96.00%	.24
Bore Cable	23.50		15	96.00%	3.38
Push Pipe & Pull Cable	26.96		0	96.00%	0
Cut & Restore Asphalt	6.01		25	96.00%	1.44
Cut & Restore Concrete	8.90		20	96.00%	1.71
Cut & Restore Sod	4.80		8	96.00%	.37
			100%		\$7.84

APPENDIX A - COMMISSION-ORDERED INPUT VALUES

BellSouth's Territory- Soft Rock Buried Distribution Cable					
Activity	Base Cost Per Foot Installed	Density Zone >10000			
		Cost Adjustment	% Activity	% Assigned Telephone	Weighted Amount
Plow	\$3.06		0%	96.00%	\$0
Rocky Plow	3.06		0	96.00%	0
Trench & Backfill	3.06		0	96.00%	0
Rocky Trench	3.06		6	96.00%	.18
Backhoe Trench	3.06		12	96.00%	.35
Hand Dig Trench	3.06		8	96.00%	.24
Bore Cable	23.50		10	96.00%	2.26
Push Pipe & Pull Cable	26.96		0	96.00%	0
Cut & Restore Asphalt	6.01		33	96.00%	1.90
Cut & Restore Concrete	8.90		28	96.00%	2.39
Cut & Restore Sod	4.80		3	96.00%	.14
			100%		\$7.46

APPENDIX A - COMMISSION-ORDERED INPUT VALUES

BellSouth's Territory- Hard Rock Feeder Conduit					
Activity	Base Cost Per Foot Installed	Density Zones 651-2550			
		Cost Adjustment	% Activity	% Assigned Telephone	Weighted Amount
Trench & Backfill	\$60.98		0.00%	99.00%	\$0
Rocky Trench	60.98		45.00%	99.00%	27.17
Backhoe Trench	60.98		12.00%	99.00%	7.42
Hand Dig Trench	60.98		6.00%	99.00%	3.62
Boring	53.94		2.00%	99.00%	1.07
Cut & Restore Asphalt	64.48		13.00%	99.00%	8.30
Cut & Restore Concrete	66.65		12.00%	99.00%	- 7.92
Cut & Restore Sod	61.79		10.00%	99.00%	6.12
			100%		\$61.44
BellSouth's Territory- Hard Rock Feeder Conduit					
Activity	Base Cost Per Foot Installed	Density Zones 2551-10000			
		Cost Adjustment	% Activity	% Assigned Telephone	Weighted Amount
Trench & Backfill	\$60.98		0.00%	99.00%	\$0
Rocky Trench	60.98		15.00%	99.00%	9.06
Backhoe Trench	60.98		10.00%	99.00%	6.04
Hand Dig Trench	60.98		8.00%	99.00%	4.83
Boring	53.94		15.00%	99.00%	8.01
Cut & Restore Asphalt	64.48		25.00%	99.00%	15.96
Cut & Restore Concrete	66.65		20.00%	99.00%	13.20
Cut & Restore Sod	61.79		7.00%	99.00%	4.28
			100%		\$61.37

AMENDATORY ORDER NO. PSC-99-0068A-FOF-TP
 DOCKET NO. 980696-TP
 REPLACEMENT PAGE 301

APPENDIX A - COMMISSION-ORDERED INPUT VALUES

BellSouth's Territory- Hard Rock Buried Feeder Cable					
Activity	Base Cost Per Foot Installed	Density Zone 0-5			
		Cost Adjustment	% Activity	% Assigned Telephone	Weighted Amount
Plow	\$3.06		0.00%	99.00%	\$0
Rocky Plow	3.06		55.00%	99.00%	1.67
Trench & Backfill	3.06		5.00%	99.00%	.15
Rocky Trench	3.06		29.00%	99.00%	.88
Backhoe Trench	3.06		4.00%	99.00%	.12
Hand Dig Trench	3.06		1.00%	99.00%	.03
Bore Cable	23.50		1.00%	99.00%	.23
Push Pipe & Pull Cable	26.96		1.00%	99.00%	.27
Cut & Restore Asphalt	6.56		1.00%	99.00%	.06
Cut & Restore Concrete	8.73		1.00%	99.00%	.09
Cut & Restore Sod	3.87		2.00%	99.00%	.08
			100%		\$3.58

AMENDATORY ORDER NO. PSC-99-0068A-FOF-TP
 DOCKET NO. 980696-TP
 REPLACEMENT PAGE 302

APPENDIX A - COMMISSION-ORDERED INPUT VALUES

BellSouth's Territory- Hard Rock Buried Feeder Cable					
Activity	Base Cost Per Foot Installed	Density Zone 6-100			
		Cost Adjustment	% Activity	% Assigned Telephone	Weighted Amount
Plow	\$3.06		0.00%	99.00%	\$0
Rocky Plow	3.06		48.00%	99.00%	1.46
Trench & Backfill	3.06		10.00%	99.00%	.30
Rocky Trench	3.06		31.00%	99.00%	.94
Backhoe Trench	3.06		2.00%	99.00%	.06
Hand Dig Trench	3.06		1.00%	99.00%	.03
Bore Cable	23.50		1.00%	99.00%	.23
Push Pipe & Pull Cable	26.96		1.00%	99.00%	.27
Cut & Restore Asphalt	6.56		2.00%	99.00%	.13
Cut & Restore Concrete	8.37		2.00%	99.00%	.17
Cut & Restore Sod	3.87		2.00%	99.00%	.08
			100%		\$3.67

APPENDIX A - COMMISSION-ORDERED INPUT VALUES

BellSouth's Territory- Hard Rock Buried Feeder Cable					
Activity	Base Cost Per Foot Installed	Density Zone 101-200			
		Cost Adjustment	% Activity	% Assigned Telephone	Weighted Amount
Plow	\$3.06		0.00%	99.00%	\$0
Rocky Plow	3.06		45.00%	99.00%	1.36
Trench & Backfill	3.06		3.00%	99.00%	.09
Rocky Trench	3.06		28.00%	99.00%	.85
Backhoe Trench	3.06		2.00%	99.00%	.06
Hand Dig Trench	3.06		5.00%	99.00%	.15
Bore Cable	23.50		1.00%	99.00%	.23
Push Pipe & Pull Cable	26.96		1.00%	99.00%	.27
Cut & Restore Asphalt	6.56		5.00%	99.00%	.32
Cut & Restore Concrete	8.37		4.00%	99.00%	.35
Cut & Restore Sod	3.87		6.00%	99.00%	.23
			100%		\$3.92

APPENDIX A - COMMISSION-ORDERED INPUT VALUES

BellSouth's Territory- Hard Rock Buried Feeder Cable					
Activity	Base Cost Per Foot Installed	Density Zone 201-650			
		Cost Adjustment	% Activity	% Assigned Telephone	Weighted Amount
Plow	\$3.06		0.00%	99.00%	\$0
Rocky Plow	3.06		13.00%	99.00%	.39
Trench & Backfill	3.06		0.00%	99.00%	0
Rocky Trench	3.06		40.00%	99.00%	1.21
Backhoe Trench	3.06		10.00%	99.00%	.30
Hand Dig Trench	3.06		3.00%	99.00%	.09
Bore Cable	23.50		4.00%	99.00%	.93
Push Pipe & Pull Cable	26.96		5.00%	99.00%	1.33
Cut & Restore Asphalt	6.56		8.00%	99.00%	.52
Cut & Restore Concrete	8.37		7.00%	99.00%	.61
Cut & Restore Sod	3.87		10.00%	99.00%	.38
			100%		\$5.77

AMENDATORY ORDER NO. PSC-99-0068A-FOF-TP
 DOCKET NO. 980696-TP
 REPLACEMENT PAGE 305

APPENDIX A - COMMISSION-ORDERED INPUT VALUES

BellSouth's Territory- Hard Rock Buried Feeder Cable					
Activity	Base Cost Per Foot Installed	Density Zones 651-2550			
		Cost Adjustment	% Activity	% Assigned Telephone	Weighted Amount
Plow	\$3.06		0.00%	99.00%	\$0
Rocky Plow	3.06		3.00%	99.00%	.09
Trench & Backfill	3.06		0.00%	99.00%	0
Rocky Trench	3.06		35.00%	99.00%	1.06
Backhoe Trench	3.06		14.00%	99.00%	.42
Hand Dig Trench	3.06		6.00%	99.00%	.18
Eore Cable	23.50		2.00%	99.00%	.47
Push Pipe & Pull Cable	26.96		5.00%	99.00%	1.33
Cut & Restore Asphalt	6.56		13.00%	99.00%	.84
Cut & Restore Concrete	8.37		12.00%	99.00%	1.04
Cut & Restore Sod	3.87		10.00%	99.00%	.38
			100%		\$5.82

AMENDATORY ORDER NO. PSC-99-0068A-FOF-TP
 DOCKET NO. 980696-TP
 REPLACEMENT PAGE 306

APPENDIX A - COMMISSION-ORDERED INPUT VALUES

BellSouth's Territory- Hard Rock Buried Feeder Cable					
Activity	Base Cost Per Foot Installed	Density Zones 2551-10000			
		Cost Adjustment	% Activity	% Assigned Telephone	Weighted Amount
Plow	\$3.06		0.00%	99.00%	\$0
Rocky Plow	3.06		0.00%	99.00%	0
Trench & Backfill	3.06		0.00%	99.00%	0
Rocky Trench	3.06		15.00%	99.00%	.45
Backhoe Trench	3.06		10.00%	99.00%	.30
Hand Dig Trench	3.06		8.00%	99.00%	.24
Bore Cable	23.50		15.00%	99.00%	3.49
Push Pipe & Pull Cable	26.96		0.00%	99.00%	0
Cut & Restore Asphalt	6.56		25.00%	99.00%	1.62
Cut & Restore Concrete	8.37		20.00%	99.00%	1.73
Cut & Restore Sod	3.87		7.00%	99.00%	.27
			100%		\$8.11

AMENDATORY ORDER NO. PSC-99-0068A-FOF-TP
 DOCKET NO. 980696-TP
 REPLACEMENT PAGE 307

APPENDIX A - COMMISSION-ORDERED INPUT VALUES

BellSouth's Territory- Hard Rock Buried Feeder Cable					
Activity	Base Cost Per Foot Installed	Density Zone >10000			
		Cost Adjustment	% Activity	% Assigned Telephone	Weighted Amount
Flow	\$3.06		0.00%	99.00%	\$0
Rocky Flow	3.06		0.00%	99.00%	0
Trench & Backfill	3.06		0.00%	99.00%	0
Rocky Trench	3.06		10.00%	99.00%	.30
Backhoe Trench	3.06		8.00%	99.00%	.24
Hand Dig Trench	3.06		8.00%	99.00%	.24
Bore Cable	23.50		10.00%	99.00%	2.33
Push Pipe & Pull Cable	26.96		0.00%	99.00%	0
Cut & Restore Asphalt	6.56		33.00%	99.00%	2.14
Cut & Restore Concrete	8.37		28.00%	99.00%	2.42
Cut & Restore Sod	3.87		3.00%	99.00%	.11
			100%		\$7.79

AMENDATORY ORDER NO. PSC-99-0068A-FOF-TP
 DOCKET NO. 980696-TP
 REPLACEMENT PAGE 308

APPENDIX A - COMMISSION-ORDERED INPUT VALUES

BellSouth's Territory- Hard Rock Buried Distribution Cable					
Activity	Base Cost Per Foot Installed	Density Zone 0-5			
		Cost Adjustment	% Activity	% Assigned Telephone	Weighted Amount
Plow	\$3.06		0.00%	96.00%	\$0
Rocky Plow	\$3.06		48.00%	96.00%	1.41
Trench & Backfill	\$3.06		5.00%	96.00%	.15
Rocky Trench	\$3.06		38.00%	96.00%	1.12
Backhoe Trench	\$3.06		2.00%	96.00%	.06
Hand Dig Trench	\$3.06		1.00%	96.00%	.03
Bore Cable	\$23.50		1.00%	96.00%	.23
Push Pipe & Pull Cable	\$26.96		1.00%	96.00%	.26
Cut & Restore Asphalt	\$6.56		1.00%	96.00%	.06
Cut & Restore Concrete	\$8.73		1.00%	96.00%	.08
Cut & Restore Sod	\$3.87		2.00%	96.00%	.07
			100%		\$3.47

APPENDIX A - COMMISSION-ORDERED INPUT VALUES

BellSouth's Territory- Hard Rock Buried Distribution Cable					
Activity	Base Cost Per Foot Installed	Density Zone 6-100			
		Cost Adjustment	% Activity	% Assigned Telephone	Weighted Amount
Plow	\$3.06		0.00%	96.00%	\$0
Rocky Plow	3.06		47.00%	96.00%	1.38
Trench & Backfill	3.06		10.00%	96.00%	.29
Rocky Trench	3.06		29.00%	96.00%	.85
Backhoe Trench	3.06		5.00%	96.00%	.15
Hand Dig Trench	3.06		1.00%	96.00%	.03
Bore Cable	23.50		1.00%	96.00%	.23
Push Pipe & Pull Cable	26.96		1.00%	96.00%	.26
Cut & Restore Asphalt	6.56		2.00%	96.00%	.13
Cut & Restore Concrete	8.73		2.00%	96.00%	.17
Cut & Restore Sod	3.87		2.00%	96.00%	.07
			100%		\$3.56

APPENDIX A - COMMISSION-ORDERED INPUT VALUES

BellSouth's Territory- Hard Rock Buried Distribution Cable					
Activity	Base Cost Per Foot Installed	Density Zone 101-200			
		Cost Adjustment	% Activity	% Assigned Telephone	Weighted Amount
Plow	\$3.06		0.00%	96.00%	\$0
Rocky Plow	3.06		40.00%	96.00%	1.18
Trench & Backfill	3.06		7.00%	96.00%	.21
Rocky Trench	3.06		32.00%	96.00%	.94
Backhoe Trench	3.06		2.00%	96.00%	.06
Hand Dig Trench	3.06		2.00%	96.00%	.06
Bore Cable	23.50		1.00%	96.00%	.23
Push Pipe & Pull Cable	26.96		1.00%	96.00%	.26
Cut & Restore Asphalt	6.56		5.00%	96.00%	.31
Cut & Restore Concrete	8.73		4.00%	96.00%	.34
Cut & Restore Sod	3.87		6.00%	96.00%	.22
			100%		\$3.80

AMENDATORY ORDER NO. PSC-99-0068A-FOF-TP
 DOCKET NO. 980696-TP
 REPLACEMENT PAGE 311

APPENDIX A - COMMISSION-ORDERED INPUT VALUES

BellSouth's Territory- Hard Rock Buried Distribution Cable					
Activity	Base Cost Per Foot Installed	Density Zone 201-650			
		Cost Adjustment	% Activity	% Assigned Telephone	Weighted Amount
Plow	\$3.06		0.00%	96.00%	\$0
Rocky Plow	3.06		13.00%	96.00%	.38
Trench & Backfill	3.06		8.00%	96.00%	.24
Rocky Trench	3.06		30.00%	96.00%	.88
Backhoe Trench	3.06		12.00%	96.00%	.35
Hand Dig Trench	3.06		3.00%	96.00%	.09
Bore Cable	23.50		4.00%	96.00%	.90
Push Pipe & Pull Cable	26.96		5.00%	96.00%	1.29
Cut & Restore Asphalt	6.56		8.00%	96.00%	.50
Cut & Restore Concrete	8.73		7.00%	96.00%	.59
Cut & Restore Sod	3.87		10.00%	96.00%	.37
			100%		\$5.60

AMENDATORY ORDER NO. PSC-99-0068A-FOF-TP
 DOCKET NO. 980696-TP
 REPLACEMENT PAGE 312

APPENDIX A - COMMISSION-ORDERED INPUT VALUES

BellSouth's Territory- Hard Rock Buried Distribution Cable					
Activity	Base Cost Per Foot Installed	Density Zones 651-2550			
		Cost Adjustment	% Activity	% Assigned Telephone	Weighted Amount
Plow	\$3.06		0.00%	96.00%	\$0
Rocky Plow	3.06		3.00%	96.00%	.09
Trench & Backfill	3.06		0.00%	96.00%	0
Rocky Trench	3.06		27.00%	96.00%	.79
Backhoe Trench	3.06		12.00%	96.00%	.35
Hand Dig Trench	3.06		6.00%	96.00%	.18
Bore Cable	23.50		2.00%	96.00%	.45
Push Pipe & Pull Cable	26.96		5.00%	96.00%	1.29
Cut & Restore Asphalt	6.56		13.00%	96.00%	.82
Cut & Restore Concrete	8.73		12.00%	96.00%	1.01
Cut & Restore Sod	3.87		20.00%	96.00%	.74
			100%		\$5.72

AMENDATORY ORDER NO. PSC-99-0068A-FOF-TP
 DOCKET NO. 980696-TP
 REPLACEMENT PAGE 313

APPENDIX A - COMMISSION-ORDERED INPUT VALUES

BellSouth's Territory- Hard Rock Buried Distribution Cable					
Activity	Base Cost Per Foot Installed	Density Zones 2551-10000			
		Cost Adjustment	% Activity	% Assigned Telephone	Weighted Amount
Plow	\$3.06		0.00%	96.00%	\$0
Rocky Plow	3.06		0.00%	96.00%	0
Trench & Backfill	3.06		0.00%	96.00%	0
Rocky Trench	3.06		14.00%	96.00%	.41
Backhoe Trench	3.06		10.00%	96.00%	.29
Hand Dig Trench	3.06		8.00%	96.00%	.24
Bore Cable	23.50		15.00%	96.00%	3.38
Push Pipe & Pull Cable	26.96		0.00%	96.00%	0
Cut & Restore Asphalt	6.56		25.00%	96.00%	1.57
Cut & Restore Concrete	8.73		20.00%	96.00%	1.68
Cut & Restore Sod	3.87		8.00%	96.00%	.30
			100%		\$7.87

AMENDATORY ORDER NO. PSC-99-0068A-FOF-TP
 DOCKET NO. 980696-TP
 REPLACEMENT PAGE 314

APPENDIX A - COMMISSION-ORDERED INPUT VALUES

BellSouth's Territory- Hard Rock Buried Distribution Cable					
Activity	Base Cost Per Foot Installed	Density Zone >10000			
		Cost Adjustment	% Activity	% Assigned Telephone	Weighted Amount
Plow	\$3.06		0.00%	96.00%	\$0
Rocky Plow	3.06		0.00%	96.00%	0
Trench & Backfill	3.06		0.00%	96.00%	0
Rocky Trench	3.06		10.00%	96.00%	.29
Backhoe Trench	3.06		8.00%	96.00%	.24
Hand Dig Trench	3.06		8.00%	96.00%	.24
Bore Cable	23.50		10.00%	96.00%	2.26
Push Pipe & Pull Cable	26.96		0.00%	96.00%	0
Cut & Restore Asphalt	6.56		33.00%	96.00%	2.08
Cut & Restore Concrete	8.73		28.00%	96.00%	2.35
Cut & Restore Sod	3.87		3.00%	96.00%	.11
			100%		\$7.56

AMENDATORY ORDER NO. PSC-99-0068A-FOF-TP
 DOCKET NO. 980696-TP
 REPLACEMENT PAGE 342

APPENDIX A - COMMISSION-ORDERED INPUT VALUES

GTE Territory-Soft Rock Distribution Conduit					
Activity	Base Cost Per Foot Installed	Density Zone 0 -5			
		Cost Adjustment	% Activity	% Assigned Telephone	Weighted Amount
Trench & Backfill	\$2.34	-	8	97.18%	\$0.18
Rocky Trench	4.32	-	46	97.18%	1.93
Backhoe Trench	2.81	-	32	97.18%	0.87
Hand Dig Trench	5.15	-	5	97.18%	0.25
Boring	12.05	-	5	97.18%	0.59
Cut & Restore Asphalt	10.84	-	1	97.18%	0.11
Cut & Restore Concrete	11.70	-	1	97.18%	0.11
Cut & Restore Sod	4.54	-	2	97.18%	0.09
			100%		\$4.13

GTE Territory-Soft Rock Distribution Conduit					
Activity	Base Cost Per Foot Installed	Density Zone 6-100			
		Cost Adjustment	% Activity	% Assigned Telephone	Weighted Amount
Trench & Backfill	\$2.34	\$.12	8	97.18%	\$0.19
Rocky Trench	4.32	.17	51	97.18%	2.23
Backhoe Trench	2.81	.19	27	97.18%	0.79
Hand Dig Trench	5.15	.28	5	97.18%	0.26
Boring	12.05	.40	3	97.18%	0.36
Cut & Restore Asphalt	10.84	.21	2	97.18%	0.21
Cut & Restore Concrete	11.70	.22	2	97.18%	0.23
Cut & Restore Sod	4.54	.19	2	97.18%	0.09
			100%		\$4.37

AMENDATORY ORDER NO. PSC-99-0068A-FOF-TP
 DOCKET NO. 980696-TP
 REPLACEMENT PAGE 344

APPENDIX A - COMMISSION-ORDERED INPUT VALUES

GTE Territory-Soft Rock Buried Feeder Cable					
Activity	Base Cost Per Foot Installed	Density Zone 6-100			
		Cost Adjustment	% Activity	% Assigned Telephone	Weighted Amount
Plow	\$1.15	0.02	35.00%	100.00%	\$0.41
Rocky Plow	1.39	0.04	28.00%	100.00%	0.40
Trench & Backfill	2.34	0.12	10.00%	100.00%	0.25
Rocky Trench	4.32	0.17	5.00%	100.00%	0.22
Backhoe Trench	2.81	0.19	12.00%	100.00%	0.36
Hand Dig Trench	5.15	0.28	3.00%	100.00%	0.16
Bore Cable	12.05	0.40	1.00%	100.00%	0.12
Push Pipe & Pull Cable	7.00	0.33	0.00%	100.00%	0.00
Cut & Restore Asphalt	10.84	0.21	2.00%	100.00%	0.22
Cut & Restore Concrete	11.74	0.18	2.00%	100.00%	0.24
Cut & Restore Sod	4.54	0.19	2.00%	100.00%	0.09
			100.00%		\$2.48

AMENDATORY ORDER NO. PSC-99-0068A-FOF-TP
 DOCKET NO. 980696-TP
 REPLACEMENT PAGE 358

APPENDIX A - COMMISSION-ORDERED INPUT VALUES

GTEFL's Territory-Soft Rock Buried Distribution Cable					
Activity	Base Cost Per Foot Installed	Density Zones 651-2550			
		Cost Adjustment	% Activity	% Assigned Telephone	Weighted Amount
Plow	\$1.15	\$.09	2.00%	100%	\$..02
Rocky Plow	1.39	.15	2.00%	100%	.03
Trench & Backfill	2.34	.47	5.00%	100%	.14
Rocky Trench	4.32	.67	25.00%	100%	1.25
Backhoe Trench	2.81	.76	8.00%	100%	.29
Hand Dig Trench	5.15	1.13	6.00%	100%	.38
Bore Cable	12.05	1.61	2.00%	100%	.27
Push Pipe & Pull Cable	7.00	1.31	5.00%	100%	.42
Cut & Restore Asphalt	10.84	.82	13.00%	100%	1.52
Cut & Restore Concrete	11.74	.74	12.00%	100%	1.50
Cut & Restore Sod	4.54	.74	20.00%	100%	1.06
			100%		\$6.86

AMENDATORY ORDER NO. PSC-99-0068A-FOF-TP
 DOCKET NO. 980696-TP
 REPLACEMENT PAGE 362

APPENDIX A - COMMISSION-ORDERED INPUT VALUES

GTEFL's Territory- Hard Rock Feeder Conduit					
Activity	Base Cost Per Foot Installed	Density Zone 100-200			
		Cost Adjustment	% Activity	% Assigned Telephone	Weighted Amount
Trench & Backfill	\$3.04	\$.47	0.00%	97.18%	\$0
Rocky Trench	5.33	.67	53.00%	97.18%	3.09
Backhoe Trench	3.95	.75	25.00%	97.18%	1.14
Hand Dig Trench	6.84	1.12	4.00%	97.18%	.31
Boring	14.47	1.62	3.00%	97.18%	.47
Cut & Restore Asphalt	12.06	.82	5.00%	97.18%	.63
Cut & Restore Concrete	12.86	.74	4.00%	97.18%	.53
Cut & Restore Sod	5.65	.75	6.00%	97.18%	.37
			100%		\$6.54
GTEFL's Territory- Hard Rock Feeder Conduit					
Activity	Base Cost Per Foot Installed	Density Zone 201-650			
		Cost Adjustment	% Activity	% Assigned Telephone	Weighted Amount
Trench & Backfill	\$3.04	\$.70	0.00%	97.18%	\$0
Rocky Trench	5.33	1.01	50.00%	97.18%	3.08
Backhoe Trench	3.95	1.13	18.00%	97.18%	.89
Hand Dig Trench	6.84	1.68	3.00%	97.18%	.25
Boring	14.47	2.43	4.00%	97.18%	.66
Cut & Restore Asphalt	12.06	1.22	8.00%	97.18%	1.03
Cut & Restore Concrete	12.86	1.11	7.00%	97.18%	.95
Cut & Restore Sod	5.65	1.11	10.00%	97.18%	.66
			100%		\$7.51

APPENDIX A - COMMISSION-ORDERED INPUT VALUES

GTEFL's Territory- Hard Rock Feeder Conduit					
Activity	Base Cost Per Foot Installed	Density Zone 100-200			
		Cost Adjustment	% Activity	% Assigned Telephone	Weighted Amount
Trench & Backfill	\$3.04	\$.47	0.00%	97.18%	\$0
Rocky Trench	5.33	.67	53.00%	97.18%	3.09
Backhoe Trench	3.95	.75	25.00%	97.18%	1.14
Hand Dig Trench	6.84	1.12	4.00%	97.18%	.31
Boring	14.47	1.62	3.00%	97.18%	.47
Cut & Restore Asphalt	12.06	.82	5.00%	97.18%	.63
Cut & Restore Concrete	12.86	.74	4.00%	97.18%	.53
Cut & Restore Sod	5.65	.75	6.00%	97.18%	.37
			100%		\$6.54
GTEFL's Territory- Hard Rock Feeder Conduit					
Activity	Base Cost Per Foot Installed	Density Zone 201-650			
		Cost Adjustment	% Activity	% Assigned Telephone	Weighted Amount
Trench & Backfill	\$3.04	\$.70	0.00%	97.18%	\$0
Rocky Trench	5.33	1.01	50.00%	97.18%	3.08
Backhoe Trench	3.95	1.13	18.00%	97.18%	.89
Hand Dig Trench	6.84	1.68	3.00%	97.18%	.25
Boring	14.47	2.43	4.00%	97.18%	.66
Cut & Restore Asphalt	12.06	1.22	8.00%	97.18%	1.03
Cut & Restore Concrete	12.86	1.11	7.00%	97.18%	.95
Cut & Restore Sod	5.65	1.11	10.00%	97.18%	.66
			100%		\$7.51

APPENDIX A - COMMISSION-ORDERED INPUT VALUES

GTEFL's Territory- Hard Rock Distribution Conduit					
Activity	Base Cost Per Foot Installed	Density Zone 2551-10000			
		Cost Adjustment	% Activity	% Assigned Telephone	Weighted Amount
Trench & Backfill	\$3.04	\$1.17	0.00%	97.18%	\$0
Rocky Trench	5.33	1.68	14.00%	97.18%	.95
Backhoe Trench	3.95	1.89	10.00%	97.18%	.57
Hand Dig Trench	6.84	2.80	8.00%	97.18%	.75
Boring	14.47	4.04	15.00%	97.18%	2.70
Cut & Restore Asphalt	12.06	2.04	25.00%	97.18%	3.43
Cut & Restore Concrete	12.86	1.86	20.00%	97.18%	2.86
Cut & Restore Sod	5.65	1.85	8.00%	97.18%	.58
			100%		\$11.84
GTEFL's Territory- Hard Rock Distribution Conduit					
Activity	Base Cost Per Foot Installed	Density Zone >10001			
		Cost Adjustment	% Activity	% Assigned Telephone	Weighted Amount
Trench & Backfill	\$3.04	\$1.29	0.00%	97.18%	\$0
Rocky Trench	5.33	1.85	10.00%	97.18%	.70
Backhoe Trench	3.95	2.08	8.00%	97.18%	.47
Hand Dig Trench	6.84	3.09	8.00%	97.18%	.77
Boring	14.47	4.45	10.00%	97.18%	1.84
Cut & Restore Asphalt	12.06	2.24	33.00%	97.18%	4.59
Cut & Restore Concrete	12.86	2.05	28.00%	97.18%	4.06
Cut & Restore Sod	5.65	2.05	3.00%	97.18%	.22
			100%		\$12.64

AMENDATORY ORDER NO. PSC-99-0068A-FOF-TP
 DOCKET NO. 980696-TP
 REPLACEMENT PAGE 376

APPENDIX A - COMMISSION-ORDERED INPUT VALUES

GTEFL's Territory-Hard Rock Buried Distribution Cable					
Activity	Base Cost Per Foot Installed	Density Zone 6-100			
		Cost Adjustment	% Activity	% Assigned Telephone	Weighted Amount
Plow	\$1.29	\$.37	0.00%	100%	\$0
Rocky Plow	1.62	.09	47.00%	100%	.80
Trench & Backfill	3.04	.24	10.00%	100%	.33
Rocky Trench	5.33	.34	29.00%	100%	1.64
Backhoe Trench	3.95	.37	5.00%	100%	.22
Hand Dig Trench	6.89	.51	1.00%	100%	.07
Bore Cable	14.47	.81	1.00%	100%	.15
Push Pipe & Pull Cable	8.96	.65	1.00%	100%	.10
Cut & Restore Asphalt	12.06	.41	2.00%	100%	.25
Cut & Restore Concrete	12.86	.37	2.00%	100%	.26
Cut & Restore Sod	5.65	.38	2.00%	100%	.12
			100%		\$3.95

APPENDIX A - COMMISSION-ORDERED INPUT VALUES

GTEFL's Territory-Hard Rock Buried Distribution Cable					
Activity	Base Cost Per Foot Installed	Density Zone 201-650			
		Cost Adjustment	% Activity	% Assigned Telephone	Weighted Amount
Plow	\$1.29	\$.14	0.00%	100%	\$0
Rocky Plow	1.62	.23	13.00%	100%	.24
Trench & Backfill	3.04	.70	8.00%	100%	.30
Rocky Trench	5.33	1.01	30.00%	100%	1.90
Backhoe Trench	3.95	1.13	12.00%	100%	.61
Hand Dig Trench	6.89	1.63	3.00%	100%	.26
Bore Cable	14.47	2.43	4.00%	100%	.68
Push Pipe & Pull Cable	8.96	1.96	5.00%	100%	.55
Cut & Restore Asphalt	12.06	1.22	8.00%	100%	1.06
Cut & Restore Concrete	12.86	1.11	7.00%	100%	.98
Cut & Restore Sod	5.65	1.11	10.00%	100%	.68
			100%		\$7.25

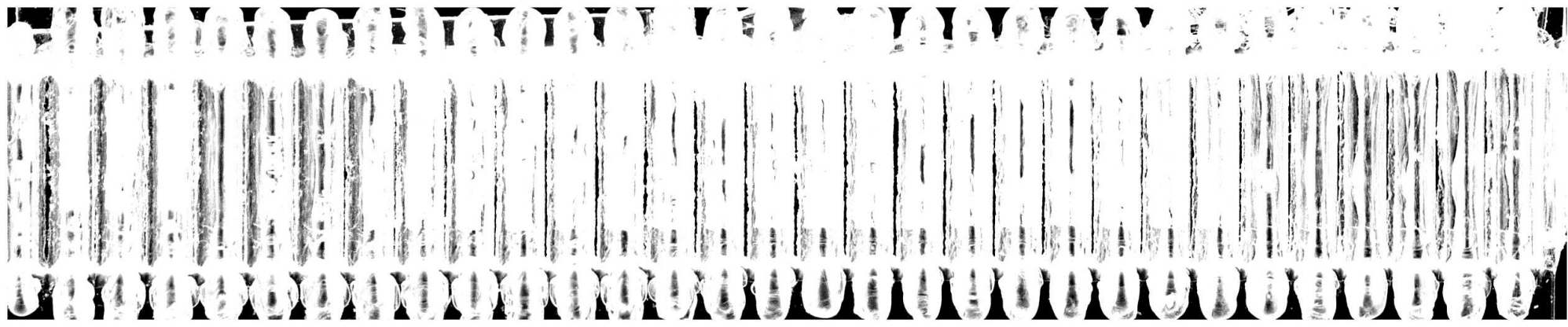
AMENDATORY ORDER NO. PSC-99-0068A-FOF-TP
 DOCKET NO. 980696-TP
 REPLACEMENT PAGE 397

APPENDIX A - COMMISSION-ORDERED INPUT VALUES

Sprint's Territory- Normal Buried Feeder Cable					
Activity	Base Cost Per Foot Installed	Density Zones 5001->10000			Weighted Amount
		Cost Adjustment	% Activity	% Assigned Telephone	
Plow	\$1.90		89.95%	100.00%	\$1.71
Rocky Plow	1.90		0.00%	100.00%	\$0.00
Trench & Backfill	1.90		0.00%	95.00%	\$0.00
Rocky Trench	1.90		0.00%	95.00%	\$0.00
Backhoe Trench	1.90		0.00%	95.00%	\$0.00
Hand Dig Trench	1.90		0.00%	95.00%	\$0.00
Bore Cable	15.15		1.83e-02	95.00%	\$0.26
Push Pipe & Pull Cable	10.12		3.62e-02	95.00%	\$0.35
Cut & Restore Asphalt	12.63		1.02e-02	95.00%	\$0.12
Cut & Restore Concrete	15.37		2.14e-02	95.00%	\$0.31
Cut & Restore Sod	3.00		1.44e-02	95.00%	\$0.04
			100%		\$2.80

APPENDIX A - COMMISSION-ORDERED INPUT VALUES

Sprint's Territory- Soft Rock Feeder Conduit					
Activity	Base Cost Per Foot Installed	Density Zone 651-850			
		Cost Adjustment	% Activity	% Assigned Telephone	Weighted Amount
Trench & Backfill	\$1.90		94.85%	95.00%	\$1.71
Rocky Trench	1.90		0.00%	95.00%	\$0.00
Backhoe Trench	1.90		0.00%	95.00%	\$0.00
Hand Dig Trench	1.90		0.00%	95.00%	\$0.00
Boring	15.15		1.17%	95.00%	\$0.17
Cut & Restore Asphalt	12.63		0.87%	95.00%	\$0.10
Cut & Restore Concrete	15.37		1.18%	95.00%	\$0.17
Cut & Restore Sod	3.00		1.94%	95.00%	\$0.06
			100.01%		\$2.21
Sprint's Territory- Soft Rock Feeder Conduit					
Activity	Base Cost Per Foot Installed	Density Zone 851-2550			
		Cost Adjustment	% Activity	% Assigned Telephone	Weighted Amount
Trench & Backfill	\$1.90		94.33%	95.00%	\$1.70
Rocky Trench	1.90		0.00%	95.00%	\$0.00
Backhoe Trench	1.90		0.00%	95.00%	\$0.00
Hand Dig Trench	1.90		0.00%	95.00%	\$0.00
Boring	15.15		1.41%	95.00%	\$0.20
Cut & Restore Asphalt	12.63		0.93%	95.00%	\$0.11
Cut & Restore Concrete	15.37		1.53%	95.00%	\$0.22
Cut & Restore Sod	3.00		1.79%	95.00%	\$0.05
			100%		\$2.29



APPENDIX A - COMMISSION-ORDERED INPUT VALUES

Section V-F: Fill Factors	
Distribution Fill Factors	1.5 pairs per housing unit 3 pairs per business location 90% cable sizing factor
Feeder Fill Factors	68% in lowest density zone (0-5) 72% in next lowest density zone (6-100) 75% in remaining zones

Section V-G: Manholes, Handholes, Adders and Conduit				
	Material Cost	Installation	% Assigned Telephone	Recommended Input
Handhole - 3*5 or 4*6	\$951.64	\$437.30	98%	\$1,361.16
-Normal	951.64	437.30	98%	1,361.16
-Soft Rock	951.64	841.22	98%	1,757.00
-Hard Rock				
Manhole - 4*6*7	\$6,384.00	\$0	98%	\$6,256.32
-Normal	6,384.00	0	98%	6,256.32
-Soft Rock	6,384.00	3,231.36	98%	9,423.05
-Hard Rock				
Manhole - 12*6*7	\$9,480.24	\$0	98%	\$9,290.64
-Normal	9,480.24	0	98%	9,290.64
-Soft Rock	9,480.24	8482.32	98%	17,603.31
-Hard Rock				
Adder -12*6*7				
-Normal	\$2,800.00	\$500.00	98%	\$3,234.00
-Soft Rock	2,800.00	700.00	98%	3,430.00
-Hard Rock	2,800.00	900.00	98%	3,626.00
Conduit per Duct Foot	\$.91		98%	\$.89