

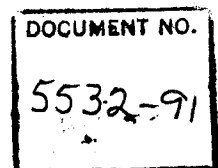
SOUTHERN BELL TELEPHONE AND TELEGRAPH COMPANY
FLORIDA
MONTHLY MESSAGES AND CALLING RATE PER ACCESS LINE
DOCKET NO. 87-0790-TL ORDER NO. 24257

EAS-NEWBERRY TO TRENTON, TRENTON (POCKET)
-TRENTON TO NEWBERRY, NEWBERRY (POCKET), BRANFORD (I), HIGH SPRINGS (I)
-NEWBERRY (POCKET) TO TRENTON, TRENTON (POCKET), BRANFORD (I)
-TRENTON (POCKET) TO NEWBERRY, NEWBERRY (POCKET)

STUDY ROUTE	MONTHLY MESSAGES			CALLING RATE PER ACCESS LINE PER MONTH*			
	RESIDENCE	BUSINESS	COMBINED	RESIDENCE	BUSINESS	COMBINED ONE-WAY	COMBINED 2-WAY
NEWBERRY TO TRENTON ¹	10210	939	11149	4.01	3.29	3.94	3.31
TRENTON TO NEWBERRY ¹	5057	1622	6679	2.41	3.56	2.62	3.31
NEWBERRY (POCKET) TO TRENTON	8355	204	8559	12.14	5.10	11.76	4.06
TRENTON TO NEWBERRY (POCKET)	3661	1113	4774	1.74	2.45	1.87	4.06
NEWBERRY TO TRENTON (POCKET)	9231	779	10010	3.62	2.73	3.53	3.36
TRENTON (POCKET) TO NEWBERRY	4853	1196	6049	2.94	4.11	3.12	3.36
NEWBERRY (POCKET) TO TRENTON (POCKET)	6897	177	7074	10.02	4.43	9.72	4.12
TRENTON (POCKET) TO NEWBERRY (POCKET)	3197	727	3924	1.94	2.50	2.02	4.12
1 NEWBERRY (POCKET) TO BRANFORD (I)							N/A
2 TRENTON TO BRANFORD (I)							N/A
3 TRENTON TO HIGH SPRINGS (I)							N/A
4 NEWBERRY TO BRANFORD (I)							N/A

*Official, coin and centrex messages are not included in call distribution studies; therefore, official coin and centrex access lines from Attachment C were excluded in calculating calling rates.

Source: Call distribution study (02-01-91 THRU 03-03-91)
¹(02-11-91 THRU 03-13-91)



edito 2 version 5531-91

SOUTHERN BELL TELEPHONE AND TELEGRAPH COMPANY
FLORIDA
MONTHLY MESSAGES AND CALLING RATE PER ACCESS LINE
DOCKET NO. 87-0790-TL ORDER NO. 24257

EAS-NEWBERRY TO TRENTON, TRENTON (POCKET)
-TRENTON TO NEWBERRY, NEWBERRY (POCKET), BRANFORD (I), HIGH SPRINGS (I)
-NEWBERRY (POCKET) TO TRENTON, TRENTON (POCKET), BRANFORD (I)
-TRENTON (POCKET) TO NEWBERRY, NEWBERRY (POCKET)

ONE-WAY

ROUTE	ACCESS LINES & TRUNKS*	MESSAGES	CALLING RATE M/M/M	TOTAL CUSTOMERS	CUSTOMERS MAKING 2 OR MORE CALLS/MONTH	
					NUMBER	PERCENT
PART I - ROUTES OVER 3 M/M/M						
NEWBERRY TO TRENTON ¹	2833	11149	3.94	2796	705	25.21
NEWBERRY (POCKET) TO TRENTON	728	8559	11.76	728	396	54.40
NEWBERRY TO TRENTON (POCKET)	2833	10010	3.53	2932	655	22.34
NEWBERRY (POCKET) TO TRENTON (POCKET)	728	7074	9.72	728	370	50.82
TRENTON (POCKET) TO NEWBERRY	1940	6049	3.12	1940	563	29.02
PART II - ROUTES 2.99 TO 2.00 M/M/M						
TRENTON TO NEWBERRY ¹	2554	6679	2.62	2466	655	26.56
TRENTON (POCKET) TO NEWBERRY (POCKET)	1940	3924	2.02	1940	389	20.05
PART III - ROUTES 1.99 TO 1.00 M/M/M						
TRENTON TO NEWBERRY (POCKET)	2554	4774	1.87	2614	463	17.71
PART IV - ROUTES BELOW .99 M/M/M						
1 NEWBERRY TO BRANFORD (I)	2833			3049		
2 NEWBERRY (POCKET) TO BRANFORD (I)	728			728		
3 TRENTON TO BRANFORD (I)	2554			2614		
4 TRENTON TO HIGH SPRINGS (I)	2554			2614		

*Official, coin and centrex messages are not included in call distribution studies; therefore, official, coin and centrex access lines from Attachment C were excluded in calculating calling rates.

Source: Call distribution study (02-01-91 THRU 03-03-91)

¹(02-11-91 THRU 03-13-91)

SOUTHERN BELL TELEPHONE AND TELEGRAPH COMPANY
FLORIDA
MONTHLY MESSAGES AND CALLING RATE PER ACCESS LINE
DOCKET NO. 87-0790-TL ORDER NO. 24257

EAS-NEWBERRY TO TRENTON, TRENTON (POCKET)
-TRENTON TO NEWBERRY, NEWBERRY (POCKET), BRANFORD (I), HIGH SPRINGS (I)
-NEWBERRY (POCKET) TO TRENTON, TRENTON (POCKET), BRANFORD (I)
-TRENTON (POCKET) TO NEWBERRY, NEWBERRY (POCKET)

TWO-WAY

<u>ROUTE</u>	<u>ACCESS LINES & TRUNKS*</u>	<u>MESSAGES</u>	<u>CALLING RATE M/M/M</u>	<u>TOTAL CUSTOMERS</u>	<u>CUSTOMERS MAKING 1 OR MORE CALLS/MONTH</u>	
					<u>NUMBER</u>	<u>PERCENT</u>

PART I - ROUTES OVER 3 M/M/M

NEWBERRY TO/FM TRENTON ¹	5387	17828	3.31	5262	1834	34.85
NEWBERRY (POCKET) TO/FM TRENTON	3282	13333	4.06	3342	1149	34.38
NEWBERRY TO/FM TRENTON (POCKET)	4773	16059	3.36	4872	1664	34.15
NEWBERRY (POCKET) TO/FM TRENTON (POCKET)	2668	10998	4.12	2668	451	16.90

PART II - ROUTES 2.99 TO 2.00 M/M/M

PART III - ROUTES 1.99 TO 1.00 M/M/M

PART IV - ROUTES BELOW .99 M/M/M

*Official, coin and centrex messages are not included in call distribution studies; therefore, official, coin and centrex access lines from Attachment C were excluded in calculating calling rates.
Source: Call distribution study (02-01-91 THRU 03-03-91)

¹(02-11-91 THRU 03-13-91)

Long Distance Calling for Southern Bell Exchanges, As Follows:

Study Period 02/11/91 through 03/13/91

Route: NEWBERRY TO TRENTON

NUMBER OF ACCOUNTS MAKING CALLS AT THESE LEVELS

NUMBER OF MESSAGES PLACED BY THESE LEVELS

MESSAGE LEVEL PER ACCOUNT	RES	BUS	RES BUS TOTAL	PERCENT OF TOTAL	ACCUM. PERCENT OF TOTAL	RES	BUS	RES BUS TOTAL	PERCENT OF TOTAL	ACCUM. PERCENT OF TOTAL
26 +	106	9	115	4.11%	4.11%	6641	340	6981	62.62%	62.62%
25	5	0	5	0.18%	4.29%	125	0	125	1.12%	63.74%
24	6	2	8	0.29%	4.58%	144	48	192	1.72%	65.46%
23	2	0	2	0.07%	4.65%	46	0	46	0.41%	65.87%
22	5	0	5	0.18%	4.83%	110	0	110	0.99%	66.86%
21	2	4	6	0.21%	5.04%	42	84	126	1.13%	67.99%
20	4	1	5	0.18%	5.22%	80	20	100	0.90%	68.89%
19	2	1	3	0.11%	5.33%	38	19	57	0.51%	69.40%
18	7	2	9	0.32%	5.65%	126	36	162	1.45%	70.85%
17	4	0	4	0.14%	5.79%	68	0	68	0.61%	71.46%
16	8	0	8	0.29%	6.08%	128	0	128	1.15%	72.61%
15	11	0	11	0.39%	6.47%	165	0	165	1.48%	74.09%
14	10	2	12	0.43%	6.90%	140	28	168	1.51%	75.59%
13	10	1	11	0.39%	7.30%	130	13	143	1.28%	76.88%
12	10	5	15	0.54%	7.83%	120	60	180	1.61%	78.49%
11	9	4	13	0.46%	8.30%	99	44	143	1.28%	79.77%
10	19	2	21	0.75%	9.05%	190	20	210	1.88%	81.66%
9	12	1	13	0.46%	9.51%	108	9	117	1.05%	82.71%
8	25	2	27	0.97%	10.48%	200	16	216	1.94%	84.64%
7	30	3	33	1.18%	11.66%	210	21	231	2.07%	86.72%
6	29	6	35	1.25%	12.91%	174	36	210	1.88%	88.60%
5	41	5	46	1.65%	14.56%	205	25	230	2.06%	90.66%
4	58	8	66	2.36%	16.92%	232	32	264	2.37%	93.03%
3	76	12	88	3.15%	20.06%	228	36	264	2.37%	95.40%
2	130	14	144	5.15%	25.21%	260	28	288	2.58%	97.98%
1	201	24	225	8.05%	33.26%	201	24	225	2.02%	100.00%
0	1698	168	1866	66.74%	100.00%	0	0	0	0.00%	
TOTAL	2520	276	2796	100.00%		10210	939	11149	100.00%	

Long Distance Calling for Southern Bell Exchanges, As Follows:

Study Period 02/11/91 through 03/13/91

Route: TRENTON TO NEWBERRY

NUMBER OF ACCOUNTS MAKING CALLS AT THESE LEVELS

NUMBER OF MESSAGES PLACED BY THESE LEVELS

MESSAGE LEVEL PER ACCOUNT	RES	BUS	RES BUS TOTAL	PERCENT OF TOTAL	ACCUM. PERCENT OF TOTAL	RES	BUS	RES BUS TOTAL	PERCENT OF TOTAL	ACCUM. PERCENT OF TOTAL
26 +	41	15	56	2.27%	2.27%	1877	778	2655	39.75%	39.75%
25	0	1	1	0.04%	2.31%	0	25	25	0.37%	40.13%
24	3	0	3	0.12%	2.43%	72	0	72	1.08%	41.20%
23	3	0	3	0.12%	2.55%	69	0	69	1.03%	42.24%
22	5	2	7	0.28%	2.84%	110	44	154	2.31%	44.54%
21	2	1	3	0.12%	2.96%	42	21	63	0.94%	45.49%
20	5	1	6	0.24%	3.20%	100	20	120	1.80%	47.28%
19	5	1	6	0.24%	3.45%	95	19	114	1.71%	48.99%
18	4	2	6	0.24%	3.69%	72	36	108	1.62%	50.61%
17	1	2	3	0.12%	3.81%	17	34	51	0.76%	51.37%
16	4	1	5	0.20%	4.01%	64	16	80	1.20%	52.57%
15	4	1	5	0.20%	4.22%	60	15	75	1.12%	53.69%
14	8	6	14	0.57%	4.79%	112	84	196	2.93%	56.63%
13	12	2	14	0.57%	5.35%	156	26	182	2.72%	59.35%
12	14	1	15	0.61%	5.96%	168	12	180	2.70%	62.05%
11	11	2	13	0.53%	6.49%	121	22	143	2.14%	64.19%
10	18	4	22	0.89%	7.38%	180	40	220	3.29%	67.48%
9	16	4	20	0.81%	8.19%	144	36	180	2.70%	70.18%
8	22	7	29	1.18%	9.37%	176	56	232	3.47%	73.65%
7	33	6	39	1.58%	10.95%	231	42	273	4.09%	77.74%
6	17	9	26	1.05%	12.00%	102	54	156	2.34%	80.07%
5	36	11	47	1.91%	13.91%	180	55	235	3.52%	83.59%
4	50	13	63	2.55%	16.46%	200	52	252	3.77%	87.36%
3	75	22	97	3.93%	20.40%	225	66	291	4.36%	91.72%
2	132	20	152	6.16%	26.56%	264	40	304	4.55%	96.27%
1	220	29	249	10.10%	36.66%	220	29	249	3.73%	100.00%
0	1366	196	1562	63.34%	100.00%	0	0	0	0.00%	
TOTAL	2107	359	2466	100.00%		5057	1622	6679	100.00%	

Long Distance Calling for Southern Bell Exchanges, As Follows:

Study Period 02/01/91 through 03/03/91

Route: NEWBERRY (POCKET) TO TRENTON

NUMBER OF ACCOUNTS MAKING CALLS AT THESE LEVELS NUMBER OF MESSAGES PLACED BY THESE LEVELS

MESSAGE LEVEL PER ACCOUNT	RES	BUS	RES BUS TOTAL	PERCENT OF TOTAL	ACCUM. PERCENT OF TOTAL	RES	BUS	RES BUS TOTAL	PERCENT OF TOTAL	ACCUM. PERCENT OF TOTAL
26 +	91	2	93	12.77%	12.77%	6123	58	6181	72.22%	72.22%
25	5	0	5	0.69%	13.46%	125	0	125	1.46%	73.68%
24	3	0	3	0.41%	13.87%	72	0	72	0.84%	74.52%
23	1	0	1	0.14%	14.01%	23	0	23	0.27%	74.79%
22	3	1	4	0.55%	14.56%	66	22	88	1.03%	75.81%
21	3	0	3	0.41%	14.97%	63	0	63	0.74%	76.55%
20	7	1	8	1.10%	16.07%	140	20	160	1.87%	78.42%
19	1	0	1	0.14%	16.21%	19	0	19	0.22%	78.64%
18	3	0	3	0.41%	16.62%	54	0	54	0.63%	79.27%
17	6	1	7	0.96%	17.58%	102	17	119	1.39%	80.66%
16	10	0	10	1.37%	18.96%	160	0	160	1.87%	82.53%
15	6	1	7	0.96%	19.92%	90	15	105	1.23%	83.76%
14	4	0	4	0.55%	20.47%	56	0	56	0.65%	84.41%
13	3	0	3	0.41%	20.88%	39	0	39	0.46%	84.87%
12	5	2	7	0.96%	21.84%	60	24	84	0.98%	85.85%
11	7	1	8	1.10%	22.94%	77	11	88	1.03%	86.88%
10	6	0	6	0.82%	23.76%	60	0	60	0.70%	87.58%
9	11	1	12	1.65%	25.41%	99	9	108	1.26%	88.84%
8	14	0	14	1.92%	27.34%	112	0	112	1.31%	90.15%
7	17	0	17	2.34%	29.67%	119	0	119	1.39%	91.54%
6	20	1	21	2.88%	32.55%	120	6	126	1.47%	93.01%
5	26	1	27	3.71%	36.26%	130	5	135	1.58%	94.59%
4	39	1	40	5.49%	41.76%	156	4	160	1.87%	96.46%
3	38	1	39	5.36%	47.12%	114	3	117	1.37%	97.83%
2	50	3	53	7.28%	54.40%	100	6	106	1.24%	99.07%
1	76	4	80	10.99%	65.38%	76	4	80	0.93%	100.00%
0	233	19	252	34.62%	100.00%	0	0	0	0.00%	
TOTAL	688	40	728	100.00%		8355	204	8559	100.00%	

Long Distance Calling for Southern Bell Exchanges, As Follows:

Study Period 02/01/91 through 03/03/91

Route: TRENTON TO NEWBERRY (POCKET)

NUMBER OF ACCOUNTS MAKING CALLS AT THESE LEVELS NUMBER OF MESSAGES PLACED BY THESE LEVELS

MESSAGE LEVEL PER ACCOUNT	RES	BUS	RES BUS TOTAL	PERCENT OF TOTAL	ACCUH. PERCENT OF TOTAL	RES	BUS	RES BUS TOTAL	PERCENT OF TOTAL	ACCUH. PERCENT OF TOTAL
26 +	33	6	39	1.49%	1.49%	1492	444	1936	40.55%	40.55%
25	3	1	4	0.15%	1.64%	75	25	100	2.09%	42.65%
24	2	1	3	0.11%	1.76%	48	24	72	1.51%	44.16%
23	2	1	3	0.11%	1.87%	46	23	69	1.45%	45.60%
22	1	0	1	0.04%	1.91%	22	0	22	0.46%	46.06%
21	1	0	1	0.04%	1.95%	21	0	21	0.44%	46.50%
20	1	0	1	0.04%	1.99%	20	0	20	0.42%	46.92%
19	1	2	3	0.11%	2.10%	19	38	57	1.19%	48.11%
18	1	1	2	0.08%	2.18%	18	18	36	0.75%	48.87%
17	6	1	7	0.27%	2.45%	102	17	119	2.49%	51.36%
16	2	1	3	0.11%	2.56%	32	16	48	1.01%	52.37%
15	4	0	4	0.15%	2.72%	60	0	60	1.26%	53.62%
14	8	0	8	0.31%	3.02%	112	0	112	2.35%	55.97%
13	7	2	9	0.34%	3.37%	91	26	117	2.45%	58.42%
12	9	1	10	0.38%	3.75%	108	12	120	2.51%	60.93%
11	5	3	8	0.31%	4.06%	55	33	88	1.84%	62.78%
10	15	3	18	0.69%	4.74%	150	30	180	3.77%	66.55%
9	14	7	21	0.80%	5.55%	126	63	189	3.96%	70.51%
8	10	7	17	0.65%	6.20%	80	56	136	2.85%	73.36%
7	15	2	17	0.65%	6.85%	105	14	119	2.49%	75.85%
6	18	9	27	1.03%	7.88%	108	54	162	3.39%	79.24%
5	18	14	32	1.22%	9.10%	90	70	160	3.35%	82.59%
4	44	14	58	2.22%	11.32%	176	56	232	4.86%	87.45%
3	45	10	55	2.10%	13.43%	135	30	165	3.46%	90.91%
2	95	17	112	4.28%	17.71%	190	34	224	4.69%	95.60%
1	180	30	210	8.03%	25.75%	180	30	210	4.40%	100.00%
0	1652	289	1941	74.25%	100.00%	0	0	0	0.00%	
TOTAL	2192	422	2614	100.00%		3661	1113	4774	100.00%	

Long Distance Calling for Southern Bell Exchanges, As Follows:

Study Period 02/01/91 through 03/03/91

Route: NEWBERRY TO TRENTON (POCKET)

NUMBER OF ACCOUNTS MAKING CALLS AT THESE LEVELS NUMBER OF MESSAGES PLACED BY THESE LEVELS

MESSAGE LEVEL PER ACCOUNT	RES	BUS	RES BUS TOTAL	PERCENT OF TOTAL	ACCUM. PERCENT OF TOTAL	RES	BUS	RES BUS TOTAL	PERCENT OF TOTAL	ACCUM. PERCENT OF TOTAL
26 +	91	5	96	3.27%	3.27%	5753	191	5944	59.38%	59.38%
25	4	1	5	0.17%	3.44%	100	25	125	1.25%	60.63%
24	3	1	4	0.14%	3.58%	72	24	96	0.96%	61.59%
23	2	0	2	0.07%	3.65%	46	0	46	0.46%	62.05%
22	5	1	6	0.20%	3.85%	110	22	132	1.32%	63.37%
21	2	0	2	0.07%	3.92%	42	0	42	0.42%	63.79%
20	11	3	14	0.48%	4.40%	220	60	280	2.80%	66.58%
19	4	0	4	0.14%	4.54%	76	0	76	0.76%	67.34%
18	3	0	3	0.10%	4.64%	54	0	54	0.54%	67.88%
17	5	3	8	0.27%	4.91%	85	51	136	1.36%	69.24%
16	13	0	13	0.44%	5.35%	208	0	208	2.08%	71.32%
15	7	1	8	0.27%	5.63%	105	15	120	1.20%	72.52%
14	7	3	10	0.34%	5.97%	98	42	140	1.40%	73.92%
13	7	2	9	0.31%	6.28%	91	26	117	1.17%	75.08%
12	12	4	16	0.55%	6.82%	144	48	192	1.92%	77.00%
11	5	2	7	0.24%	7.06%	55	22	77	0.77%	77.77%
10	17	2	19	0.65%	7.71%	170	20	190	1.90%	79.67%
9	13	4	17	0.58%	8.29%	117	36	153	1.53%	81.20%
8	25	2	27	0.92%	9.21%	200	16	216	2.16%	83.36%
7	23	3	26	0.89%	10.10%	161	21	182	1.82%	85.17%
6	38	6	44	1.50%	11.60%	228	36	264	2.64%	87.81%
5	50	5	55	1.88%	13.47%	250	25	275	2.75%	90.56%
4	50	4	54	1.84%	15.31%	200	16	216	2.16%	92.72%
3	69	11	80	2.73%	18.04%	207	33	240	2.40%	95.11%
2	113	13	126	4.30%	22.34%	226	26	252	2.52%	97.63%
1	213	24	237	8.08%	30.42%	213	24	237	2.37%	100.00%
0	1820	220	2040	69.58%	100.00%	0	0	0	0.00%	
TOTAL	2612	320	2932	100.00%		9231	779	10010	100.00%	

Long Distance Calling for Southern Bell Exchanges, As Follows:

Study Period 02/01/91 through 03/03/91

Route: TRENTON (POCKET) TO NEWBERRY

NUMBER OF ACCOUNTS MAKING CALLS AT THESE LEVELS

NUMBER OF MESSAGES PLACED BY THESE LEVELS

MESSAGE LEVEL PER ACCOUNT	RES	BUS	RES BUS TOTAL	PERCENT OF TOTAL	ACCUM. PERCENT OF TOTAL	RES	BUS	RES BUS TOTAL	PERCENT OF TOTAL	ACCUM. PERCENT OF TOTAL
26 +	43	8	51	2.63%	2.63%	2080	403	2483	41.05%	41.05%
25	2	1	3	0.15%	2.78%	50	25	75	1.24%	42.29%
24	2	0	2	0.10%	2.89%	48	0	48	0.79%	43.08%
23	1	2	3	0.15%	3.04%	23	46	69	1.14%	44.22%
22	1	1	2	0.10%	3.14%	22	22	44	0.73%	44.95%
21	2	0	2	0.10%	3.25%	42	0	42	0.69%	45.64%
20	2	1	3	0.15%	3.40%	40	20	60	0.99%	46.64%
19	2	2	4	0.21%	3.61%	38	38	76	1.26%	47.89%
18	4	2	6	0.31%	3.92%	72	36	108	1.79%	49.68%
17	8	1	9	0.46%	4.38%	136	17	153	2.53%	52.21%
16	3	2	5	0.26%	4.64%	48	32	80	1.32%	53.53%
15	10	2	12	0.62%	5.26%	150	30	180	2.98%	56.51%
14	9	0	9	0.46%	5.72%	126	0	126	2.08%	58.59%
13	8	6	14	0.72%	6.44%	104	78	182	3.01%	61.60%
12	13	4	17	0.88%	7.32%	156	48	204	3.37%	64.97%
11	11	4	15	0.77%	8.09%	121	44	165	2.73%	67.70%
10	18	6	24	1.24%	9.33%	180	60	240	3.97%	71.66%
9	14	3	17	0.88%	10.21%	126	27	153	2.53%	74.19%
8	13	3	16	0.82%	11.03%	104	24	128	2.12%	76.31%
7	22	0	22	1.13%	12.16%	154	0	154	2.55%	78.86%
6	22	9	31	1.60%	13.76%	132	54	186	3.07%	81.93%
5	23	10	33	1.70%	15.46%	115	50	165	2.73%	84.66%
4	50	9	59	3.04%	18.51%	200	36	236	3.90%	88.56%
3	61	14	75	3.87%	22.37%	183	42	225	3.72%	92.28%
2	109	20	129	6.65%	29.02%	218	40	258	4.27%	96.54%
1	185	24	209	10.77%	39.79%	185	24	209	3.46%	100.00%
0	1011	157	1168	60.21%	100.00%	0	0	0	0.00%	
TOTAL	1649	291	1940	100.00%		4853	1196	6049	100.00%	

Long Distance Calling for Southern Bell Exchanges, As Follows:

Study Period 02/01/91 through 03/03/91

Route: NEWBERRY (POCKET) TO TRENTON (POCKET)

NUMBER OF ACCOUNTS MAKING CALLS AT THESE LEVELS NUMBER OF MESSAGES PLACED BY THESE LEVELS

MESSAGE LEVEL PER ACCOUNT	RES	BUS	RES BUS TOTAL	PERCENT OF TOTAL	ACCUM. PERCENT OF TOTAL	RES	BUS	RES BUS TOTAL	PERCENT OF TOTAL	ACCUM. PERCENT OF TOTAL
26 +	79	1	80	10.99%	10.99%	4909	32	4941	69.85%	69.85%
25	2	0	2	0.27%	11.26%	50	0	50	0.71%	70.55%
24	1	0	1	0.14%	11.40%	24	0	24	0.34%	70.89%
23	2	0	2	0.27%	11.68%	46	0	46	0.65%	71.54%
22	4	0	4	0.55%	12.23%	88	0	88	1.24%	72.79%
21	0	0	0	0.00%	12.23%	0	0	0	0.00%	72.79%
20	9	1	10	1.37%	13.60%	180	20	200	2.83%	75.61%
19	1	0	1	0.14%	13.74%	19	0	19	0.27%	75.88%
18	2	0	2	0.27%	14.01%	36	0	36	0.51%	76.39%
17	3	2	5	0.69%	14.70%	51	34	85	1.20%	77.59%
16	8	0	8	1.10%	15.80%	128	0	128	1.81%	79.40%
15	7	0	7	0.96%	16.76%	105	0	105	1.48%	80.89%
14	6	0	6	0.82%	17.58%	84	0	84	1.19%	82.08%
13	1	1	2	0.27%	17.86%	13	13	26	0.37%	82.44%
12	6	3	9	1.24%	19.09%	72	36	108	1.53%	83.97%
11	3	0	3	0.41%	19.51%	33	0	33	0.47%	84.44%
10	8	1	9	1.24%	20.74%	80	10	90	1.27%	85.71%
9	10	1	11	1.51%	22.25%	90	9	99	1.40%	87.11%
8	12	0	12	1.65%	23.90%	96	0	96	1.36%	88.46%
7	10	0	10	1.37%	25.27%	70	0	70	0.99%	89.45%
6	21	0	21	2.88%	28.16%	126	0	126	1.78%	91.24%
5	31	2	33	4.53%	32.69%	155	10	165	2.33%	93.57%
4	32	1	33	4.53%	37.23%	128	4	132	1.87%	95.43%
3	44	0	44	6.04%	43.27%	132	0	132	1.87%	97.30%
2	53	2	55	7.55%	50.82%	106	4	110	1.55%	98.85%
1	76	5	81	11.13%	61.95%	76	5	81	1.15%	100.00%
0	257	20	277	38.05%	100.00%	0	0	0	0.00%	
TOTAL	688	40	728	100.00%		6897	177	7074	100.00%	

Long Distance Calling for Southern Bell Exchanges, As Follows:

Study Period 02/01/91 through 03/03/91

Route: TRENTON (POCKET) TO NEWBERRY (POCKET)

NUMBER OF ACCOUNTS MAKING CALLS AT THESE LEVELS NUMBER OF MESSAGES PLACED BY THESE LEVELS

MESSAGE LEVEL PER ACCOUNT	RES	BUS	RES BUS TOTAL	PERCENT OF TOTAL	ACCUM. PERCENT OF TOTAL	RES	BUS	RES BUS TOTAL	PERCENT OF TOTAL	ACCUM. PERCENT OF TOTAL
26 +	29	4	33	1.70%	1.70%	1348	223	1571	40.04%	40.04%
25	3	0	3	0.15%	1.86%	75	0	75	1.91%	41.95%
24	1	1	2	0.10%	1.96%	24	24	48	1.22%	43.17%
23	1	1	2	0.10%	2.06%	23	23	46	1.17%	44.34%
22	1	0	1	0.05%	2.11%	22	0	22	0.56%	44.90%
21	1	0	1	0.05%	2.16%	21	0	21	0.54%	45.44%
20	0	0	0	0.00%	2.16%	0	0	0	0.00%	45.44%
19	1	2	3	0.15%	2.32%	19	38	57	1.45%	46.89%
18	1	1	2	0.10%	2.42%	18	18	36	0.92%	47.81%
17	3	2	5	0.26%	2.68%	51	34	85	2.17%	49.97%
16	1	1	2	0.10%	2.78%	16	16	32	0.82%	50.79%
15	4	0	4	0.21%	2.99%	60	0	60	1.53%	52.32%
14	8	0	8	0.41%	3.40%	112	0	112	2.85%	55.17%
13	7	2	9	0.46%	3.87%	91	26	117	2.98%	58.15%
12	9	1	10	0.52%	4.38%	108	12	120	3.06%	61.21%
11	5	1	6	0.31%	4.69%	55	11	66	1.68%	62.90%
10	12	2	14	0.72%	5.41%	120	20	140	3.57%	66.46%
9	13	2	15	0.77%	6.19%	117	18	135	3.44%	69.90%
8	10	5	15	0.77%	6.96%	80	40	120	3.06%	72.96%
7	12	2	14	0.72%	7.68%	84	14	98	2.50%	75.46%
6	14	6	20	1.03%	8.71%	84	36	120	3.06%	78.52%
5	15	9	24	1.24%	9.95%	75	45	120	3.06%	81.57%
4	40	10	50	2.58%	12.53%	160	40	200	5.10%	86.67%
3	42	10	52	2.68%	15.21%	126	30	156	3.98%	90.65%
2	79	15	94	4.85%	20.05%	158	30	188	4.79%	95.44%
1	150	29	179	9.23%	29.28%	150	29	179	4.56%	100.00%
0	1187	185	1372	70.72%	100.00%	0	0	0	0.00%	
TOTAL	1649	291	1940	100.00%		3197	727	3924	100.00%	

Long Distance Calling for Southern Bell Exchanges, As Follows:

Study Period 02/01/91 through 03/03/91

Route: TRENTON TO HIGH SPRINGS (I)

NUMBER OF ACCOUNTS MAKING CALLS AT THESE LEVELS

NUMBER OF MESSAGES PLACED BY THESE LEVELS

MESSAGE LEVEL PER ACCOUNT	RES	BUS	RES BUS TOTAL	PERCENT OF TOTAL	ACCUM. PERCENT OF TOTAL	RES	BUS	RES BUS TOTAL	PERCENT OF TOTAL	ACCUM. PERCENT OF TOTAL
1	26 +									
2	25									
3	24									
4	23									
5	22									
6	21									
7	20									
8	19									
9	18									
10	17									
11	16									
12	15									
13	14									
14	13									
15	12									
16	11									
17	10									
18	9									
19	8									
20	7									
21	6									
22	5									
23	4									
24	3									
25	2									
26	1									
27	0									
28	TOTAL	=	==	=	=	=	==	=	=	=

SOUTHERN BELL TELEPHONE AND TELEGRAPH COMPANY
FLORIDA
MONTHLY MESSAGES AND CALLING RATE PER ACCESS LINE
DOCKET NO. 87-0790-TL ORDER NO. 24257

EAS-NEWBERRY TO TRENTON, TRENTON (POCKET)
-TRENTON TO NEWBERRY, NEWBERRY (POCKET), BRANFORD (I), HIGH SPRINGS (I)
-NEWBERRY (POCKET) TO TRENTON, TRENTON (POCKET), BRANFORD (I)
-TRENTON (POCKET) TO NEWBERRY, NEWBERRY (POCKET)

STATION CLASSIFICATION DATA

	NEWBERRY	NEWBERRY (POCKET)	TRENTON	TRENTON (POCKET)
1FR	2546	688	2099	1649
1FR - ROTARY	2	0	0	0
2FR	0	0	0	0
4FR	0	0	0	0
MEASURED SERVICE	0	0	0	0
RESIDENCE SUBTOTAL	2548	688	2099	1649
1FB - WITHOUT ROTARY + BUSINESS AUXILIARY	236	40	308	291
1FB - WITH ROTARY	31	0	114	0
2FB	0	0	0	0
4FB	0	0	0	0
1MB	4	0	6	0
MEASURED SERVICE	0	0	0	0
SPT	7	0	13	0
MOBILE	0	0	0	0
PBX - 1ST MSG TRK	N/A	N/A	N/A	N/A
PBX - TOTAL MSG TRK	0	0	4	0
PBX - MEASURED TRUNK	0	0	0	0
PBX - FLAT INWARD	0	0	2	0
PBX - FLAT OUT AND 2 WAY	7	0	8	0
BUSINESS SUBTOTAL	285	40	455	291
SUB OWNED PBX & CTX	N/A	N/A	N/A	N/A
CENTREX LINES	0	0	45	0
OFFICIAL	62	0	58	0
PT	20	0	56	0
TOTAL	2915	728	2713	1940

*SOURCE: MONTHLY REPORT #7
AS OF 01/31/91

SOUTHERN BELL TELEPHONE AND TELEGRAPH COMPANY
FLORIDA
MONTHLY MESSAGES AND CALLING RATE PER ACCESS LINE
DOCKET NO. 87-0790-TL ORDER NO. 24257
EAS-NEWBERRY TO TRENTON, TRENTON (POCKET)
-TRENTON TO NEWBERRY, NEWBERRY (POCKET), BRANFORD (I), HIGH SPRINGS (I)
-NEWBERRY (POCKET) TO TRENTON, TRENTON (POCKET), BRANFORD (I)
-TRENTON (POCKET) TO NEWBERRY, NEWBERRY (POCKET)

	RATE (DAY PERIOD)		AIRLINE MILES*	REV PER MSG
	<u>INITIAL MINUTE</u>	<u>OVERTIME MINUTE</u>		
FROM: NEWBERRY TO: TRENTON	.18	.12	13	.24 ¹
FROM: TRENTON TO: NEWBERRY	.18	.12	13	.39 ¹
FROM: NEWBERRY (POCKET) TO: TRENTON	.18	.12	13	.25 ¹
FROM: TRENTON TO: NEWBERRY (POCKET)	.18	.12	13	.38 ¹
FROM: NEWBERRY TO: TRENTON (POCKET)	.18	.12	13	.25 ¹
FROM: TRENTON (POCKET) TO: NEWBERRY	.18	.12	13	.39 ¹
FROM: NEWBERRY (POCKET) TO: TRENTON (POCKET)	.18	.12	13	.25 ¹
FROM: TRENTON (POCKET) TO: NEWBERRY (POCKET)	.18	.12	13	.38 ¹
1 FROM: NEWBERRY (POCKET) TO: BRANFORD (I)	.265	.22	30	
2 FROM: TRENTON TO: BRANFORD (I)	.265	.22	25	
3 FROM: TRENTON TO: HIGH SPRINGS (I)	.265	.16	21	
4 FROM: NEWBERRY TO: BRANFORD (I)	.265	.22	30	

*RATE CENTER TO RATE CENTER

¹ADJUSTED TO REFLECT EOEAS MESSAGES (I.E., DISCOUNTED TOLL)

FSD: MJ04-00-2-C
 DATE: 03/19/91
 TIME: 14:24
 CYCLE: 072 JES NUMBER: JOB04493

EAS/OPTIONAL CALLING PLAN STUDY
 NEWBERRY TO TRENTON - RES
 JOB NAME: MJ04A03 JOB STEP: MJ04A03 PROC STEP: S010

FORM: 4311-3
 RETAIN: OPT
 AREA: JACKSONVILL
 PAGE: 3

ORIGINATING RATE-CENTER: 162*****
 TERMINATING RATE-CENTER: 225*****

PROGRAM NAME: MJ04A020
 STUDY PERIOD: 02/11/91 THRU 03/13/91
 REQUEST NUMBER: 04

MESSAGES BY RATE CLASS

HR OF DAY	DAY RATE				EVENING RATE				NIGHT RATE/WEEKEND			
	BUS	RES	COIN	TOTAL	BUS	RES	COIN	TOTAL	BUS	RES	COIN	TOTAL
AM 8	0	413	0	413	0	0	0	0	0	144	0	144
9	0	430	0	430	0	0	0	0	0	166	0	166
10	0	379	0	379	0	0	0	0	0	205	0	205
11	0	383	0	383	0	0	0	0	0	159	0	159
12	0	300	0	300	0	0	0	0	0	198	0	198
PM 1	0	336	0	336	0	0	0	0	0	165	0	165
2	0	345	0	345	0	0	0	0	0	156	0	156
3	0	428	0	428	0	0	0	0	0	141	0	141
4	0	712	0	712	0	0	0	0	0	173	0	173
5	0	0	0	0	0	656	0	656	0	213	0	213
6	0	0	0	0	0	809	0	809	0	197	0	197
7	0	0	0	0	0	686	0	686	0	208	0	208
8	0	0	0	0	0	651	0	651	0	167	0	167
9	0	0	0	0	0	464	0	464	0	164	0	164
10	0	0	0	0	0	158	0	158	0	55	0	55
11	0	0	0	0	0	0	0	0	0	57	0	57
12	0	0	0	0	0	0	0	0	0	17	0	17
AM 1	0	0	0	0	0	0	0	0	0	9	0	9
2	0	0	0	0	0	0	0	0	0	1	0	1
3	0	0	0	0	0	0	0	0	0	5	0	5
4	0	0	0	0	0	0	0	0	0	1	0	1
5	0	0	0	0	0	0	0	0	0	16	0	16
6	0	0	0	0	0	0	0	0	0	91	0	91
7	0	0	0	0	0	0	0	0	0	352	0	352
TOTAL	0	3,726	0	3,726	0	3,424	0	3,424	0	3,060	0	3,060

ATTACHMENT D
 DOCKET NO. 87-0790-11
 ORDER NO. 24257
 PAGE 2 OF 49

FSD: MJ04-00-2-C
 DATE: 03/19/91
 TIME: 14:24

EAS/OPTIONAL CALLING PLAN STUDY
 NEWBERRY TO TRENTON - RES

FORM: 4311-3
 RETAIN: OPT
 AREA: JACKSONVILL
 PAGE: 4

CYCLE: 072 JES NUMBER: JOB04493 JOB NAME: MJ04A03 JOB STEP: MJ04A03 PROC STEP: S010 PROGRAM NAME: MJ04A020

ORIGINATING RATE-CENTER: 162*****
 TERMINATING RATE-CENTER: 225*****
 STUDY PERIOD: 02/11/91 THRU 03/13/91
 REQUEST NUMBER: 04

MINUTES OF USAGE BY RATE CLASS

HR OF DAY	DAY RATE				EVENING RATE				NIGHT RATE/WEEKEND			
	BUS	RES	COIN	TOTAL	BUS	RES	COIN	TOTAL	BUS	RES	COIN	TOTAL
AM 8	0	1,634	0	1,634	0	0	0	0	0	978	0	978
9	0	1,683	0	1,683	0	0	0	0	0	768	0	768
10	0	1,382	0	1,382	0	0	0	0	0	903	0	903
11	0	1,456	0	1,456	0	0	0	0	0	843	0	843
12	0	1,050	0	1,050	0	0	0	0	0	1,041	0	1,041
PM 1	0	1,281	0	1,281	0	0	0	0	0	649	0	649
2	0	1,564	0	1,564	0	0	0	0	0	908	0	908
3	0	1,547	0	1,547	0	0	0	0	0	655	0	655
4	0	3,406	0	3,406	0	0	0	0	0	705	0	705
5	0	0	0	0	0	3,660	0	3,660	0	1,091	0	1,091
6	0	0	0	0	0	4,367	0	4,367	0	939	0	939
7	0	0	0	0	0	4,884	0	4,884	0	1,260	0	1,260
8	0	0	0	0	0	6,089	0	6,089	0	1,408	0	1,408
9	0	0	0	0	0	4,061	0	4,061	0	1,781	0	1,781
10	0	0	0	0	0	1,750	0	1,750	0	570	0	570
11	0	0	0	0	0	0	0	0	0	606	0	606
12	0	0	0	0	0	0	0	0	0	77	0	77
AM 1	0	0	0	0	0	0	0	0	0	27	0	27
2	0	0	0	0	0	0	0	0	0	1	0	1
3	0	0	0	0	0	0	0	0	0	12	0	12
4	0	0	0	0	0	0	0	0	0	0	0	0
5	0	0	0	0	0	0	0	0	0	15	0	15
6	0	0	0	0	0	0	0	0	0	536	0	536
7	0	0	0	0	0	0	0	0	0	1,461	0	1,461
TOTAL	0	15,003	0	15,003	0	24,811	0	24,811	0	17,234	0	17,234

ATTACHMENT D
 DOCKET NO. 87-0790-TL
 ORDER NO. 24257
 PAGE 3 OF 49

!!!

FSD: MJ04-00-2-C
DATE: 03/19/91
TIME: 14:24

EAS/OPTIONAL CALLING PLAN STUDY
NEWBERRY TO TRENTON - BUS

FORM: 4311-3
RETAIN: OPT
AREA: JACKSONVILL
PAGE: 3

CYCLE: 072 JES NUMBER: JOB04493 JOB NAME: MJ04A03 JOB STEP: MJ04A03 PROC STEP: S010

PROGRAM NAME: MJ04A020

ORIGINATING RATE-CENTER: 162*****
TERMINATING RATE-CENTER: 225*****

STUDY PERIOD: 02/11/91 THRU 03/13/91
REQUEST NUMBER: 03

MESSAGES BY RATE CLASS

HR OF DAY	DAY RATE				EVENING RATE				NIGHT RATE/WEEKEND			
	BUS	RES	COIN	TOTAL	BUS	RES	COIN	TOTAL	BUS	RES	COIN	TOTAL
AM 8	56	0	0	56	0	0	0	0	4	0	0	4
9	106	0	0	106	0	0	0	0	11	0	0	11
10	78	0	0	78	0	0	0	0	12	0	0	12
11	80	0	0	80	0	0	0	0	13	0	0	13
12	62	0	0	62	0	0	0	0	10	0	0	10
PM 1	71	0	0	71	0	0	0	0	4	0	0	4
2	71	0	0	71	0	0	0	0	7	0	0	7
3	56	0	0	56	0	0	0	0	3	0	0	3
4	64	0	0	64	0	0	0	0	6	0	0	6
5	0	0	0	0	39	0	0	39	15	0	0	15
6	0	0	0	0	37	0	0	37	9	0	0	9
7	0	0	0	0	26	0	0	26	6	0	0	6
8	0	0	0	0	11	0	0	11	2	0	0	2
9	0	0	0	0	12	0	0	12	5	0	0	5
10	0	0	0	0	3	0	0	3	1	0	0	1
11	0	0	0	0	0	0	0	0	1	0	0	1
AM 12	0	0	0	0	0	0	0	0	0	0	0	0
1	0	0	0	0	0	0	0	0	0	0	0	0
2	0	0	0	0	0	0	0	0	1	0	0	1
3	0	0	0	0	0	0	0	0	0	0	0	0
4	0	0	0	0	0	0	0	0	0	0	0	0
5	0	0	0	0	0	0	0	0	0	0	0	0
6	0	0	0	0	0	0	0	0	3	0	0	3
7	0	0	0	0	0	0	0	0	17	0	0	17
									37	0	0	37
TOTAL	644	0	0	644	128	0	0	128	167	0	0	167

ATTACHMENT D
DOCKET NO. 87-0790-TL
ORDER NO. 24257
PAGE 4 OF 49

III

FSD: MJ04-00-2-C
DATE: 03/19/91
TIME: 14:24

EAS/OPTIONAL CALLING PLAN STUDY

FORM: 4311-3
RETAIN: OPT
AREA: JACKSONVILL
PAGE: 4

NEWBERRY TO TRENTON - BUS
CYCLE: 072 JES NUMBER: JOB04493 JOB NAME: MJ04A03 JOB STEP: MJ04A03 PROC STEP: S010

PROGRAM NAME: MJ04A020

ORIGINATING RATE-CENTER: 162*****
TERMINATING RATE-CENTER: 225*****

STUDY PERIOD: 02/11/91 THRU 03/13/91
REQUEST NUMBER: 03

MINUTES OF USAGE BY RATE CLASS

HR OF DAY	DAY RATE				EVENING RATE				NIGHT RATE/WEEKEND			
	BUS	RES	COIN	TOTAL	BUS	RES	COIN	TOTAL	BUS	RES	COIN	TOTAL
AM 8	98	0	0	98	0	0	0	0	6	0	0	6
9	211	0	0	211	0	0	0	0	11	0	0	11
10	179	0	0	179	0	0	0	0	14	0	0	14
11	240	0	0	240	0	0	0	0	16	0	0	16
12	138	0	0	138	0	0	0	0	24	0	0	24
PM 1	146	0	0	146	0	0	0	0	4	0	0	4
2	112	0	0	112	0	0	0	0	12	0	0	12
3	76	0	0	76	0	0	0	0	9	0	0	9
4	132	0	0	132	0	0	0	0	19	0	0	19
5	0	0	0	0	82	0	0	82	16	0	0	16
6	0	0	0	0	86	0	0	86	11	0	0	11
7	0	0	0	0	65	0	0	65	12	0	0	12
8	0	0	0	0	22	0	0	22	7	0	0	7
9	0	0	0	0	57	0	0	57	16	0	0	16
10	0	0	0	0	3	0	0	3	1	0	0	1
11	0	0	0	0	0	0	0	0	1	0	0	1
12	0	0	0	0	0	0	0	0	0	0	0	0
AM 1	0	0	0	0	0	0	0	0	0	0	0	0
2	0	0	0	0	0	0	0	0	4	0	0	4
3	0	0	0	0	0	0	0	0	0	0	0	0
4	0	0	0	0	0	0	0	0	0	0	0	0
5	0	0	0	0	0	0	0	0	0	0	0	0
6	0	0	0	0	0	0	0	0	24	0	0	24
7	0	0	0	0	0	0	0	0	56	0	0	56
TOTAL	1,332	0	0	1,332	315	0	0	315	263	0	0	263

ATTACHMENT D
DOCKET NO. 87-0790-TL
ORDER NO. 24257
PAGE 5 OF 49

III

FSD: MJ04-00-2-C
DATE: 03/19/91
TIME: 14:24
CYCLE: 072 JES NUMBER: JOB04493

EAS/OPTIONAL CALLING PLAN STUDY
TRENTON TO NEWBERRY - RES
JOB NAME: MJ04A03 JOB STEP: MJ04A03 PROC STEP: S010

FORM: 4311-3
RETAIN: OPT
AREA: JACKSONVILL
PAGE: 3
PROGRAM NAME: MJ04A020

ORIGINATING RATE-CENTER: 225*****
TERMINATING RATE-CENTER: 162*****

STUDY PERIOD: 02/11/91 THRU 03/13/91
REQUEST NUMBER: 02

MESSAGES BY RATE CLASS

HUR OF DAY	DAY RATE				EVENING RATE				NIGHT RATE/WEEKEND			
	BUS	RES	COIN	TOTAL	BUS	RES	COIN	TOTAL	BUS	RES	COIN	TOTAL
AM 8	0	131	0	131	0	0	0	0	0	85	0	85
9	0	141	0	141	0	0	0	0	0	112	0	112
10	0	119	0	119	0	0	0	0	0	113	0	113
11	0	93	0	93	0	0	0	0	0	90	0	90
12	0	111	0	111	0	0	0	0	0	118	0	118
PM 1	0	83	0	83	0	0	0	0	0	96	0	96
2	0	79	0	79	0	0	0	0	0	94	0	94
3	0	120	0	120	0	0	0	0	0	86	0	86
4	0	297	0	297	0	0	0	0	0	105	0	105
5	0	0	0	0	0	355	0	355	0	127	0	127
6	0	0	0	0	0	491	0	491	0	137	0	137
7	0	0	0	0	0	425	0	425	0	126	0	126
8	0	0	0	0	0	345	0	345	0	109	0	109
9	0	0	0	0	0	292	0	292	0	78	0	78
10	0	0	0	0	0	130	0	130	0	43	0	43
11	0	0	0	0	0	0	0	0	0	36	0	36
12	0	0	0	0	0	0	0	0	0	18	0	18
AM 1	0	0	0	0	0	0	0	0	0	3	0	3
2	0	0	0	0	0	0	0	0	0	1	0	1
3	0	0	0	0	0	0	0	0	0	2	0	2
4	0	0	0	0	0	0	0	0	0	3	0	3
5	0	0	0	0	0	0	0	0	0	16	0	16
6	0	0	0	0	0	0	0	0	0	58	0	58
7	0	0	0	0	0	0	0	0	0	189	0	189
TOTAL	0	1,174	0	1,174	0	2,038	0	2,038	0	1,845	0	1,845

ATTACHMENT D
DOCKET NO. 87-0790-TL
ORDER NO. 24257
PAGE 6 OF 49

...

III

FSD: MJ04-00-2-C
DATE: 03/19/91
TIME: 14:24
CYCLE: 072 JES NUMBER: JOB04493

EAS/OPTIONAL CALLING PLAN STUDY
TRENTON TO NEWBERRY - RES
JOB NAME: MJ04A03 JOB STEP: MJ04A03 PROC STEP: S010

PROGRAM NAME: MJ04A020
FORM: 4311-3
RETAIN: OPT
AREA: JACKSONVILL
PAGE: 4

ORIGINATING RATE-CENTER: 225*****
TERMINATING RATE-CENTER: 162*****

STUDY PERIOD: 02/11/91 THRU 03/13/91
REQUEST NUMBER: 02

MINUTES OF USAGE BY RATE CLASS

HR OF DAY	DAY RATE				EVENING RATE				NIGHT RATE/WEEKEND			
	BUS	RES	COIN	TOTAL	BUS	RES	COIN	TOTAL	BUS	RES	COIN	TOTAL
AM 8	0	589	0	589	0	0	0	0	0	362	0	362
9	0	563	0	563	0	0	0	0	0	491	0	491
10	0	907	0	907	0	0	0	0	0	492	0	492
11	0	364	0	364	0	0	0	0	0	364	0	364
12	0	482	0	482	0	0	0	0	0	488	0	488
PM 1	0	312	0	312	0	0	0	0	0	327	0	327
2	0	453	0	453	0	0	0	0	0	322	0	322
3	0	481	0	481	0	0	0	0	0	268	0	268
4	0	1,183	0	1,183	0	0	0	0	0	429	0	429
5	0	0	0	0	0	1,356	0	1,356	0	506	0	506
6	0	0	0	0	0	2,011	0	2,011	0	540	0	540
7	0	0	0	0	0	2,016	0	2,016	0	672	0	672
8	0	0	0	0	0	2,244	0	2,244	0	677	0	677
9	0	0	0	0	0	2,412	0	2,412	0	516	0	516
10	0	0	0	0	0	1,046	0	1,046	0	210	0	210
11	0	0	0	0	0	0	0	0	0	214	0	214
12	0	0	0	0	0	0	0	0	0	238	0	238
AM 1	0	0	0	0	0	0	0	0	0	76	0	76
2	0	0	0	0	0	0	0	0	0	0	0	0
3	0	0	0	0	0	0	0	0	0	1	0	1
4	0	0	0	0	0	0	0	0	0	1	0	1
5	0	0	0	0	0	0	0	0	0	38	0	38
6	0	0	0	0	0	0	0	0	0	160	0	160
7	0	0	0	0	0	0	0	0	0	517	0	517
TOTAL	0	5,334	0	5,334	0	11,085	0	11,085	0	7,909	0	7,909

ATTACHMENT D
DOCKET NO. 87-0790-TL
ORDER NO. 24257
PAGE 7 OF 49

FSD: MJ04-00-2-C
 DATE: 03/19/91
 TIME: 14:24
 CYCLE: 072 JES NUMBER: JOB04493

EAS/OPTIONAL CALLING PLAN STUDY
 TRENTON TO NEWBERRY - BUS

FORM: 4311-3
 RETAIN: OPT
 AREA: JACKSONVILL
 PAGE: 3

ORIGINATING RATE-CENTER: 225*****
 TERMINATING RATE-CENTER: 162*****

PROGRAM NAME: MJ04A020

STUDY PERIOD: 02/11/91 THRU 03/13/91
 REQUEST NUMBER: 01

MESSAGES BY RATE CLASS

HR OF DAY	DAY RATE				EVENING RATE				NIGHT RATE/WEEKEND			
	BUS	RES	COIN	TOTAL	BUS	RES	COIN	TOTAL	BUS	RES	COIN	TOTAL
AM 8	127	0	0	127	0	0	0	0	12	0	0	12
9	132	0	0	132	0	0	0	0	18	0	0	18
10	161	0	0	161	0	0	0	0	20	0	0	20
11	123	0	0	123	0	0	0	0	10	0	0	10
12	98	0	0	98	0	0	0	0	14	0	0	14
PM 1	137	0	0	137	0	0	0	0	16	0	0	16
2	124	0	0	124	0	0	0	0	22	0	0	22
3	107	0	0	107	0	0	0	0	13	0	0	13
4	104	0	0	104	0	0	0	0	13	0	0	13
5	0	0	0	0	64	0	0	64	16	0	0	16
6	0	0	0	0	47	0	0	47	8	0	0	8
7	0	0	0	0	43	0	0	43	9	0	0	9
8	0	0	0	0	32	0	0	32	8	0	0	8
9	0	0	0	0	34	0	0	34	5	0	0	5
10	0	0	0	0	21	0	0	21	3	0	0	3
11	0	0	0	0	0	0	0	0	8	0	0	8
12	0	0	0	0	0	0	0	0	2	0	0	2
AM 1	0	0	0	0	0	0	0	0	2	0	0	2
2	0	0	0	0	0	0	0	0	0	0	0	0
3	0	0	0	0	0	0	0	0	1	0	0	1
4	0	0	0	0	0	0	0	0	0	0	0	0
5	0	0	0	0	0	0	0	0	0	0	0	0
6	0	0	0	0	0	0	0	0	16	0	0	16
7	0	0	0	0	0	0	0	0	52	0	0	52
TOTAL	1,113	0	0	1,113	241	0	0	241	268	0	0	268

ATTACHMENT D
 DOCKET NO. 87-0790-TL
 ORDER NO. 24257
 PAGE 8 OF 49

FSD: MJ04-00-2-C
 DATE: 03/19/91
 TIME: 14:24
 CYCLE: 072 JES NUMBER: 7

EAS/OPTIONAL CALLING PLAN STUDY
 TRENTON TO NEWBERRY - BUS
 JOB NAME: MJ04A03 JOB STEP: MJ04A03 PROC STEP: S010

FORM: 4311-3
 RETAIN: OPT
 AREA: JACKSONVILL
 PAGE: 4
 PROGRAM NAME: MJ04A020

ORIGINATING RATE-CENTER: 225*****
 TERMINATING RATE-CENTER: 162*****

STUDY PERIOD: 02/11/91 THRU 03/13/91
 REQUEST NUMBER: 01

MINUTES OF USAGE BY RATE CLASS

HR OF DAY	DAY RATE				EVENING RATE				NIGHT RATE/WEEKEND			
	BUS	RES	COIN	TOTAL	BUS	RES	COIN	TOTAL	BUS	RES	COIN	TOTAL
AM 8	225	0	0	225	0	0	0	0	23	0	0	23
9	238	0	0	238	0	0	0	0	29	0	0	29
10	271	0	0	271	0	0	0	0	55	0	0	55
11	183	0	0	183	0	0	0	0	10	0	0	10
12	212	0	0	212	0	0	0	0	17	0	0	17
PM 1	285	0	0	285	0	0	0	0	43	0	0	43
2	229	0	0	229	0	0	0	0	71	0	0	71
3	233	0	0	233	0	0	0	0	66	0	0	66
4	306	0	0	306	0	0	0	0	84	0	0	84
5	0	0	0	0	170	0	0	170	33	0	0	33
6	0	0	0	0	228	0	0	228	24	0	0	24
7	0	0	0	0	73	0	0	73	25	0	0	25
8	0	0	0	0	128	0	0	128	88	0	0	88
9	0	0	0	0	194	0	0	194	38	0	0	38
10	0	0	0	0	100	0	0	100	14	0	0	14
11	0	0	0	0	0	0	0	0	11	0	0	11
12	0	0	0	0	0	0	0	0	2	0	0	2
AM 1	0	0	0	0	0	0	0	0	0	0	0	0
2	0	0	0	0	0	0	0	0	0	0	0	0
3	0	0	0	0	0	0	0	0	3	0	0	3
4	0	0	0	0	0	0	0	0	0	0	0	0
5	0	0	0	0	0	0	0	0	0	0	0	0
6	0	0	0	0	0	0	0	0	57	0	0	57
7	0	0	0	0	0	0	0	0	121	0	0	121
TOTAL	2,182	0	0	2,182	893	0	0	893	816	0	0	816

ATTACHMENT D
 DOCKET NO. 87-0790-TL
 ORDER NO. 24257
 PAGE 9 OF 49

FSD: MJ04-00-2-C
 DATE: 04/01/91
 TIME: 09:33
 CYCLE: 039 JES NUMBER: JOB06947 JOB NAME: MJ04A03 JOB STEP: MJ04A03 PROC STEP: S010

EAS/OPTIONAL CALLING PLAN STUDY
 NEWBERRY (POCKET) TO TRENTON - RES

PROGRAM NAME: MJ04A020

FORM: 4311-3
 RETAIN: OPT
 AREA: JACKSONVILL
 PAGE: 3

ORIGINATING RATE-CENTER: 162*****
 TERMINATING RATE-CENTER: 225*****

STUDY PERIOD: 02/01/91 THRU 03/03/91
 REQUEST NUMBER: 02

MESSAGES BY RATE CLASS

HR OF DAY	DAY RATE				EVENING RATE				NIGHT RATE/WEEKEND			
	BUS	RES	COIN	TOTAL	BUS	RES	COIN	TOTAL	BUS	RES	COIN	TOTAL
AM 8	0	308	0	308	0	0	0	0	0	124	0	124
9	0	308	0	308	0	0	0	0	0	158	0	158
10	0	272	0	272	0	0	0	0	0	211	0	211
11	0	265	0	265	0	0	0	0	0	163	0	163
12	0	197	0	197	0	0	0	0	0	166	0	166
PM 1	0	232	0	232	0	0	0	0	0	152	0	152
2	0	276	0	276	0	0	0	0	0	190	0	190
3	0	344	0	344	0	0	0	0	0	155	0	155
4	0	602	0	602	0	0	0	0	0	150	0	150
5	0	0	0	0	0	545	0	545	0	221	0	221
6	0	0	0	0	0	603	0	603	0	187	0	187
7	0	0	0	0	0	540	0	540	0	199	0	199
8	0	0	0	0	0	513	0	513	0	145	0	145
9	0	0	0	0	0	360	0	360	0	137	0	137
10	0	0	0	0	0	128	0	128	0	52	0	52
11	0	0	0	0	0	0	0	0	0	50	0	50
12	0	0	0	0	0	0	0	0	0	18	0	18
AM 1	0	0	0	0	0	0	0	0	0	11	0	11
2	0	0	0	0	0	0	0	0	0	4	0	4
3	0	0	0	0	0	0	0	0	0	3	0	3
4	0	0	0	0	0	0	0	0	0	1	0	1
5	0	0	0	0	0	0	0	0	0	12	0	12
6	0	0	0	0	0	0	0	0	0	60	0	60
7	0	0	0	0	0	0	0	0	0	293	0	293
TOTAL	0	2,804	0	2,804	0	2,689	0	2,689	0	2,862	0	2,862

ATTACHMENT D
 DOCKET NO. 87-0790-TL
 ORDER NO. 24257
 PAGE 10 OF 49

FSD: MJ04-00-2-C
 DATE: 04/01/91
 TIME: 09:38
 CYCLE: 039

EAS/OPTIONAL CALLING PLAN STUDY
 NEWBERRY (POCKET) TO TRENTON - RES

FORM: 4311-3
 RETAIN: OPT
 AREA: JACKSONVILLE
 PAGE: 4

JES NUMBER: JOB06947 JOB NAME: MJ04A03 JOB STEP: MJ04A03 PROC STEP: S010 PROGRAM NAME: MJ04A020

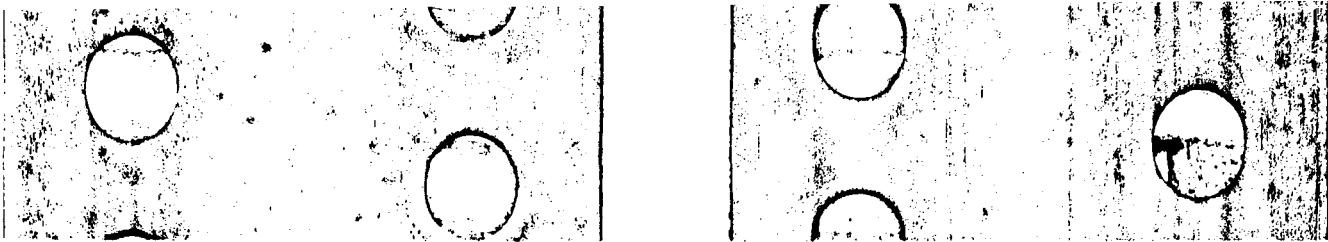
ORIGINATING RATE-CENTER: 162*****
 TERMINATING RATE-CENTER: 225*****

STUDY PERIOD: 02/01/91 THRU 03/03/91
 REQUEST NUMBER: 02

MINUTES OF USAGE BY RATE CLASS

HR OF DAY	DAY RATE				EVENING RATE				NIGHT RATE/WEEKEND			
	BUS	RES	COIN	TOTAL	BUS	RES	COIN	TOTAL	BUS	RES	COIN	TOTAL
AM 8	0	1,060	0	1,060	0	0	0	0	0	947	0	947
9	0	1,228	0	1,228	0	0	0	0	0	686	0	686
10	0	944	0	944	0	0	0	0	0	949	0	949
11	0	977	0	977	0	0	0	0	0	801	0	801
12	0	646	0	646	0	0	0	0	0	943	0	943
PM 1	0	965	0	965	0	0	0	0	0	699	0	699
2	0	1,238	0	1,238	0	0	0	0	0	774	0	774
3	0	1,273	0	1,273	0	0	0	0	0	708	0	708
4	0	2,785	0	2,785	0	0	0	0	0	447	0	447
5	0	0	0	0	0	3,209	0	3,209	0	1,025	0	1,025
6	0	0	0	0	0	3,263	0	3,263	0	861	0	861
7	0	0	0	0	0	4,083	0	4,083	0	1,435	0	1,435
8	0	0	0	0	0	4,690	0	4,690	0	1,330	0	1,330
9	0	0	0	0	0	3,169	0	3,169	0	1,636	0	1,636
10	0	0	0	0	0	1,458	0	1,458	0	639	0	639
11	0	0	0	0	0	0	0	0	0	843	0	843
12	0	0	0	0	0	0	0	0	0	125	0	125
AM 1	0	0	0	0	0	0	0	0	0	87	0	87
2	0	0	0	0	0	0	0	0	0	75	0	75
3	0	0	0	0	0	0	0	0	0	6	0	6
4	0	0	0	0	0	0	0	0	0	0	0	0
5	0	0	0	0	0	0	0	0	0	11	0	11
6	0	0	0	0	0	0	0	0	0	493	0	493
7	0	0	0	0	0	0	0	0	0	1,421	0	1,421
TOTAL	0	11,116	0	11,116	0	19,872	0	19,872	0	16,941	0	16,941

ATTACHMENT D
 DOCKET NO. 87-0790-TL
 ORDER NO. 24257
 PAGE 11 OF 49



FSD: MJ04-00-2-C
DATE: 04/01/91
TIME: 09:38
CYCLE: 039 JES NUMBER: JOB06947

EAS/OPTIONAL CALLING PLAN STUDY
NEWBERRY (POCKET) TO TRENTON - BUS
JOB NAME: MJ04A03 JOB STEP: MJ04A03 PROC STEP: S010

PROGRAM NAME: MJ04A020

FORM: 4311-3
RETAIN: OPT
AREA: JACKSONVILL
PAGE: 3

ORIGINATING RATE-CENTER: 162*****
TERMINATING RATE-CENTER: 225*****

STUDY PERIOD: 02/01/91 THRU 03/03/91
REQUEST NUMBER: 01

MESSAGES BY RATE CLASS

HR OF DAY	DAY RATE				EVENING RATE				NIGHT RATE/WEEKEND			
	BUS	RES	COIN	TOTAL	BUS	RES	COIN	TOTAL	BUS	RES	COIN	TOTAL
AM 8	12	0	0	12	0	0	0	0	2	0	0	2
9	17	0	0	17	0	0	0	0	1	0	0	1
10	10	0	0	10	0	0	0	0	5	0	0	5
11	13	0	0	13	0	0	0	0	2	0	0	2
12	11	0	0	11	0	0	0	0	4	0	0	4
PM 1	16	0	0	16	0	0	0	0	5	0	0	5
2	10	0	0	10	0	0	0	0	3	0	0	3
3	13	0	0	13	0	0	0	0	2	0	0	2
4	20	0	0	20	0	0	0	0	1	0	0	1
5	0	0	0	0	8	0	0	8	5	0	0	5
6	0	0	0	0	11	0	0	11	2	0	0	2
7	0	0	0	0	9	0	0	9	0	0	0	0
8	0	0	0	0	2	0	0	2	1	0	0	1
9	0	0	0	0	3	0	0	3	3	0	0	3
10	0	0	0	0	0	0	0	0	0	0	0	0
11	0	0	0	0	0	0	0	0	0	0	0	0
12	0	0	0	0	0	0	0	0	0	0	0	0
AM 1	0	0	0	0	0	0	0	0	0	0	0	0
2	0	0	0	0	0	0	0	0	0	0	0	0
3	0	0	0	0	0	0	0	0	0	0	0	0
4	0	0	0	0	0	0	0	0	0	0	0	0
5	0	0	0	0	0	0	0	0	0	0	0	0
6	0	0	0	0	0	0	0	0	5	0	0	5
7	0	0	0	0	0	0	0	0	8	0	0	8
TOTAL	122	0	0	122	33	0	0	33	49	0	0	49

ATTACHMENT D
DOCKET NO. 87-0790-TL
ORDER NO. 24257
PAGE 12 OF 49

FSD: MJ04-00-2-C
 DATE: 04/01/91
 TIME: 09:38
 CYCLE: 039 JES NUMBER: JOB06947

EAS/OPTIONAL CALLING PLAN STUDY
 NEWBERRY (POCKET) TO TRENTON - BUS

FORM: 4311-3
 RETAIN: OPT
 AREA: JACKSONVILL
 PAGE: 4
 PROGRAM NAME: MJ04A020

ORIGINATING RATE-CENTER: 162*****
 TERMINATING RATE-CENTER: 225*****

STUDY PERIOD: 02/01/91 THRU 03/03/91
 REQUEST NUMBER: 01

MINUTES OF USAGE BY RATE CLASS

HR OF DAY	DAY RATE				EVENING RATE				NIGHT RATE/WEEKEND			
	BUS	RES	COIN	TOTAL	BUS	RES	COIN	TOTAL	BUS	RES	COIN	TOTAL
AM 8	13	0	0	13	0	0	0	0	3	0	0	3
9	25	0	0	25	0	0	0	0	1	0	0	1
10	14	0	0	14	0	0	0	0	2	0	0	2
11	22	0	0	22	0	0	0	0	7	0	0	7
12	44	0	0	44	0	0	0	0	24	0	0	24
PM 1	21	0	0	21	0	0	0	0	12	0	0	12
2	13	0	0	13	0	0	0	0	4	0	0	4
3	22	0	0	22	0	0	0	0	1	0	0	1
4	53	0	0	53	0	0	0	0	8	0	0	8
5	0	0	0	0	44	0	0	44	13	0	0	13
6	0	0	0	0	36	0	0	36	3	0	0	3
7	0	0	0	0	8	0	0	8	0	0	0	0
8	0	0	0	0	6	0	0	6	5	0	0	5
9	0	0	0	0	24	0	0	24	10	0	0	10
10	0	0	0	0	0	0	0	0	0	0	0	0
11	0	0	0	0	0	0	0	0	0	0	0	0
12	0	0	0	0	0	0	0	0	0	0	0	0
AM 1	0	0	0	0	0	0	0	0	0	0	0	0
2	0	0	0	0	0	0	0	0	0	0	0	0
3	0	0	0	0	0	0	0	0	0	0	0	0
4	0	0	0	0	0	0	0	0	0	0	0	0
5	0	0	0	0	0	0	0	0	0	0	0	0
6	0	0	0	0	0	0	0	0	6	0	0	6
7	0	0	0	0	0	0	0	0	11	0	0	11
TOTAL	227	0	0	227	118	0	0	118	110	0	0	110

ATTACHMENT D
 DOCKET NO. 87-0790-TL
 ORDER NO. 24257
 PAGE 13 OF 49

FSD: MJ06-00-2-C
 DATE: 04/01/91
 TIME: 09:38

EAS/OPTIONAL CALLING PLAN STUDY
 TRENTON TO NEWBERRY (POCKET) - RES
 JOB NAME: MJ04A03 JOB STEP: MJ04A03 PROC STEP: S010 PROGRAM NAME: MJ04A020
 STUDY PERIOD: 02/01/91 THRU 03/03/91
 REQUEST NUMBER: 04

FORM: 4311-3
 RETAIN: OPT
 AREA: JACKSONVILL
 PAGE: 3

ORIGINATING RATE-CENTER: 225*****
 TERMINATING RATE-CENTER: 162*****

MESSAGES BY RATE CLASS

HR OF DAY	DAY RATE			EVENING RATE			NIGHT RATE/WEEKEND		
	BUS	RES	TOTAL	BUS	RES	TOTAL	BUS	RES	TOTAL
AM 8	0	67	67	0	0	0	0	80	80
9	0	65	65	0	0	0	0	97	97
10	0	63	63	0	0	0	0	95	95
11	0	60	60	0	0	0	0	98	98
12	0	53	53	0	0	0	0	78	78
PH 1	0	54	54	0	0	0	0	81	81
2	0	90	90	0	0	0	0	85	85
3	0	192	192	0	0	0	0	96	96
4	0	0	0	0	0	0	0	0	0
5	0	0	0	262	262	262	0	113	113
6	0	0	0	343	343	343	0	101	101
7	0	0	0	297	297	297	0	95	95
8	0	0	0	260	260	260	0	66	66
9	0	0	0	211	211	211	0	36	36
10	0	0	0	87	87	87	0	0	0
11	0	0	0	0	0	0	0	26	26
12	0	0	0	0	0	0	0	9	9
AM 1	0	0	0	0	0	0	0	1	1
2	0	0	0	0	0	0	0	1	1
3	0	0	0	0	0	0	0	2	2
4	0	0	0	0	0	0	0	2	2
5	0	0	0	0	0	0	0	15	15
6	0	0	0	0	0	0	0	38	38
7	0	0	0	0	0	0	0	110	110
TOTAL	0	694	694	0	1,460	1,460	0	1,507	1,507

FSD: MJ04-00-2-C
 DATE: 04/01/91
 TIME: 09:38
 CYCLE: 039 JES NUMBER: JOB06947

EAS/OPTIONAL CALLING PLAN STUDY
 TRENTON TO NEWBERRY (POCKET) - RES
 JOB NAME: MJ04A03 JOB STEP: MJ04A03 PROC STEP: S010

FORM: 4311-3
 RETAIN: OPT
 AREA: JACKSONVILL
 PROGRAM NAME: MJ04A020 PAGE: 4

ORIGINATING RATE-CENTER: 225*****
 TERMINATING RATE-CENTER: 162*****

STUDY PERIOD: 02/01/91 THRU 03/03/91
 REQUEST NUMBER: 04

MINUTES OF USAGE BY RATE CLASS

HR OF DAY	DAY RATE				EVENING RATE				NIGHT RATE/WEEKEND			
	BUS	RES	COIN	TOTAL	BUS	RES	COIN	TOTAL	BUS	RES	COIN	TOTAL
AM 8	0	366	0	366	0	0	0	0	0	317	0	317
9	0	295	0	295	0	0	0	0	0	357	0	357
10	0	660	0	660	0	0	0	0	0	377	0	377
11	0	179	0	179	0	0	0	0	0	424	0	424
12	0	296	0	296	0	0	0	0	0	328	0	328
PM 1	0	241	0	241	0	0	0	0	0	256	0	256
2	0	252	0	252	0	0	0	0	0	273	0	273
3	0	379	0	379	0	0	0	0	0	251	0	251
4	0	875	0	875	0	0	0	0	0	351	0	351
5	0	0	0	0	0	995	0	995	0	429	0	429
6	0	0	0	0	0	1,248	0	1,248	0	404	0	404
7	0	0	0	0	0	1,119	0	1,119	0	510	0	510
8	0	0	0	0	0	1,892	0	1,892	0	471	0	471
9	0	0	0	0	0	1,988	0	1,988	0	341	0	341
10	0	0	0	0	0	657	0	657	0	170	0	170
11	0	0	0	0	0	0	0	0	0	206	0	206
12	0	0	0	0	0	0	0	0	0	266	0	266
AM 1	0	0	0	0	0	0	0	0	0	45	0	45
2	0	0	0	0	0	0	0	0	0	0	0	0
3	0	0	0	0	0	0	0	0	0	0	0	0
4	0	0	0	0	0	0	0	0	0	1	0	1
5	0	0	0	0	0	0	0	0	0	29	0	29
6	0	0	0	0	0	0	0	0	0	111	0	111
7	0	0	0	0	0	0	0	0	0	419	0	419
TOTAL	0	3,543	0	3,543	0	7,899	0	7,899	0	6,336	0	6,336

ATTACHMENT D
 DOCKET NO. 87-0790-TL
 ORDER NO. 24257
 PAGE 15 OF 49

FSD: MJ04-00-2-C
 DATE: 04/01/91
 TIME: 09:38
 CYCLE: 039 JES NUMBER: JOB06947

EAS/OPTIONAL CALLING PLAN STUDY
 TRENTON TO NEWBERRY (POCKET) - BUS
 JOB NAME: MJ04A03 JOB STEP: MJ04A03 PROC STEP: S010

PROGRAM NAME: MJ04A020

FORM: 4311-3
 RETAIN: OPT
 AREA: JACKSONVILL
 PAGE: 3

ORIGINATING RATE-CENTER: 225*****
 TERMINATING RATE-CENTER: 162*****

STUDY PERIOD: 02/01/91 THRU 03/03/91
 REQUEST NUMBER: 03

MESSAGES BY RATE CLASS

HR OF DAY	DAY RATE				EVENING RATE				NIGHT RATE/WEEKEND			
	BUS	RES	COIN	TOTAL	BUS	RES	COIN	TOTAL	BUS	RES	COIN	TOTAL
AM 8	91	0	0	91	0	0	0	0	6	0	0	6
9	79	0	0	79	0	0	0	0	17	0	0	17
10	83	0	0	83	0	0	0	0	16	0	0	16
11	64	0	0	64	0	0	0	0	8	0	0	8
12	60	0	0	60	0	0	0	0	14	0	0	14
PM 1	78	0	0	78	0	0	0	0	16	0	0	16
2	81	0	0	81	0	0	0	0	21	0	0	21
3	82	0	0	82	0	0	0	0	13	0	0	13
4	78	0	0	78	0	0	0	0	15	0	0	15
5	0	0	0	0	45	0	0	45	14	0	0	14
6	0	0	0	0	44	0	0	44	9	0	0	9
7	0	0	0	0	34	0	0	34	5	0	0	5
8	0	0	0	0	20	0	0	20	3	0	0	3
9	0	0	0	0	26	0	0	26	3	0	0	3
10	0	0	0	0	18	0	0	18	1	0	0	1
11	0	0	0	0	0	0	0	0	5	0	0	5
12	0	0	0	0	0	0	0	0	2	0	0	2
AM 1	0	0	0	0	0	0	0	0	1	0	0	1
2	0	0	0	0	0	0	0	0	0	0	0	0
3	0	0	0	0	0	0	0	0	0	0	0	0
4	0	0	0	0	0	0	0	0	0	0	0	0
5	0	0	0	0	0	0	0	0	0	0	0	0
6	0	0	0	0	0	0	0	0	7	0	0	7
7	0	0	0	0	0	0	0	0	54	0	0	54
TOTAL	696	0	0	696	187	0	0	187	230	0	0	230

ATTACHMENT D
 DOCKET NO. 87-0790-TL
 ORDER NO. 24257
 PAGE 16 OF 49

FSD: MJ04-00-2-C
DATE: 04/01/91
TIME: 09:38
CYCLE: 039 JES NUMBER: JOB06947 JOB NAME: MJ04A03 JOB STEP: MJ04A03 PROC STEP: S010 PROGRAM NAME: MJ04A020
FORM: 4311-3
RETAIN: OPT
AREA: JACKSONVILL
PAGE: 4
EAS/OPTIONAL CALLING PLAN STUDY
TRENTON TO NEWBERRY (POCKET) - BUS
STUDY PERIOD: 02/01/91 THRU 03/03/91
REQUEST NUMBER: 03

ORIGINATING RATE-CENTER: 225*****
TERMINATING RATE-CENTER: 162*****

MINUTES OF USAGE BY RATE CLASS

HR OF DAY	DAY RATE			EVENING RATE			NIGHT RATE/WEEKEND					
	BUS	RES	COIN	TOTAL	BUS	RES	COIN	TOTAL	BUS	RES	COIN	TOTAL
AM 8	0	0	0	152	0	0	0	0	10	0	0	10
9	0	0	0	168	0	0	0	0	42	0	0	42
10	0	0	0	122	0	0	0	0	45	0	0	45
11	0	0	0	160	0	0	0	0	6	0	0	6
12	0	0	0	96	0	0	0	0	15	0	0	15
PH 1	0	0	0	150	0	0	0	0	46	0	0	46
2	0	0	0	98	0	0	0	0	56	0	0	56
3	0	0	0	193	0	0	0	0	66	0	0	66
4	0	0	0	212	0	0	0	0	62	0	0	62
5	0	0	0	0	102	0	0	102	35	0	0	35
6	0	0	0	0	87	0	0	87	24	0	0	24
7	0	0	0	0	97	0	0	97	8	0	0	8
8	0	0	0	0	53	0	0	53	60	0	0	60
9	0	0	0	0	100	0	0	100	12	0	0	12
10	0	0	0	0	26	0	0	26	4	0	0	4
11	0	0	0	0	0	0	0	0	5	0	0	5
12	0	0	0	0	0	0	0	0	2	0	0	2
AM 1	0	0	0	0	0	0	0	0	0	0	0	0
2	0	0	0	0	0	0	0	0	0	0	0	0
3	0	0	0	0	0	0	0	0	0	0	0	0
4	0	0	0	0	0	0	0	0	0	0	0	0
5	0	0	0	0	0	0	0	0	0	0	0	0
6	0	0	0	0	0	0	0	0	0	0	0	0
7	0	0	0	0	0	0	0	0	21	0	0	21
TOTAL	1,351	0	0	1,351	465	0	0	465	639	0	0	639

FSD: MJ04-00-2-C
 DATE: 04/01/91
 TIME: 09:38
 CYCLE: 039 JES NUMBER: JOB06947

EAS/OPTIONAL CALLING PLAN STUDY

NEWBERRY TO TRENTON (POCKET) - RES
 JOB NAME: MJ04A03 JOB STEP: MJ04A03 PROC STEP: S010

FORM: 4311-3
 RETAIN: OPT
 AREA: JACKSONVILLE
 PAGE: 3

PROGRAM NAME: MJ04A020

ORIGINATING RATE-CENTER: 162*****
 TERMINATING RATE-CENTER: 225*****

STUDY PERIOD: 02/01/91 THRU 03/03/91
 REQUEST NUMBER: 06

MESSAGES BY RATE CLASS

HR OF DAY	DAY RATE				EVENING RATE				NIGHT RATE/WEEKEND			
	BUS	RES	COIN	TOTAL	BUS	RES	COIN	TOTAL	BUS	RES	COIN	TOTAL
AM 8	0	342	0	342	0	0	0	0	0	159	0	159
9	0	369	0	369	0	0	0	0	0	203	0	203
10	0	300	0	300	0	0	0	0	0	247	0	247
11	0	303	0	303	0	0	0	0	0	192	0	192
12	0	217	0	217	0	0	0	0	0	195	0	195
PM 1	0	271	0	271	0	0	0	0	0	167	0	167
2	0	307	0	307	0	0	0	0	0	189	0	189
3	0	355	0	355	0	0	0	0	0	170	0	170
4	0	650	0	650	0	0	0	0	0	169	0	169
5	0	0	0	0	0	585	0	585	0	241	0	241
6	0	0	0	0	0	674	0	674	0	230	0	230
7	0	0	0	0	0	603	0	603	0	213	0	213
8	0	0	0	0	0	540	0	540	0	167	0	167
9	0	0	0	0	0	403	0	403	0	150	0	150
10	0	0	0	0	0	133	0	133	0	50	0	50
11	0	0	0	0	0	0	0	0	0	52	0	52
12	0	0	0	0	0	0	0	0	0	16	0	16
AM 1	0	0	0	0	0	0	0	0	0	13	0	13
2	0	0	0	0	0	0	0	0	0	4	0	4
3	0	0	0	0	0	0	0	0	0	4	0	4
4	0	0	0	0	0	0	0	0	0	2	0	2
5	0	0	0	0	0	0	0	0	0	17	0	17
6	0	0	0	0	0	0	0	0	0	65	0	65
7	0	0	0	0	0	0	0	0	0	264	0	264
TOTAL	0	3,114	0	3,114	0	2,938	0	2,938	0	3,179	0	3,179

ATTACHMENT D
 DOCKET NO. 87-0790-TL
 ORDER NO. 24257
 PAGE 18 OF 49

FSD: MJ04-00-2-C
 DATE: 04/01/91
 TIME: 09:38
 CYCLE: 039 JES NUMBER: JOB06947

EAS/OPTIONAL CALLING PLAN STUDY
 NEWBERRY TO TRENTON (POCKET) - RES
 JOB NAME: MJ04A03 JOB STEP: MJ04A03 PROC STEP: S010

FORM: 4311-3
 RETAIN: OPT
 AREA: JACKSONVILL
 PROGRAM NAME: MJ04A020 PAGE: 4

ORIGINATING RATE-CENTER: 162*****
 TERMINATING RATE-CENTER: 225*****

STUDY PERIOD: 02/01/91 THRU 03/03/91
 REQUEST NUMBER: 06

MINUTES OF USAGE BY RATE CLASS

HR OF DAY	DAY RATE				EVENING RATE				NIGHT RATE/WEEKEND			
	BUS	RES	COIN	TOTAL	BUS	RES	COIN	TOTAL	BUS	RES	COIN	TOTAL
AM 8	0	1,592	0	1,592	0	0	0	0	0	1,038	0	1,038
9	0	1,515	0	1,515	0	0	0	0	0	884	0	884
10	0	1,214	0	1,214	0	0	0	0	0	1,080	0	1,080
11	0	1,233	0	1,233	0	0	0	0	0	942	0	942
12	0	917	0	917	0	0	0	0	0	1,026	0	1,026
PM 1	0	1,150	0	1,150	0	0	0	0	0	960	0	960
2	0	1,455	0	1,455	0	0	0	0	0	769	0	769
3	0	1,298	0	1,298	0	0	0	0	0	781	0	781
4	0	3,184	0	3,184	0	0	0	0	0	566	0	566
5	0	0	0	0	0	3,599	0	3,599	0	1,307	0	1,307
6	0	0	0	0	0	3,534	0	3,534	0	995	0	995
7	0	0	0	0	0	4,249	0	4,249	0	1,490	0	1,490
8	0	0	0	0	0	4,906	0	4,906	0	1,396	0	1,396
9	0	0	0	0	0	3,782	0	3,782	0	1,918	0	1,918
10	0	0	0	0	0	1,449	0	1,449	0	517	0	517
11	0	0	0	0	0	0	0	0	0	821	0	821
12	0	0	0	0	0	0	0	0	0	121	0	121
AH 1	0	0	0	0	0	0	0	0	0	91	0	91
2	0	0	0	0	0	0	0	0	0	75	0	75
3	0	0	0	0	0	0	0	0	0	10	0	10
4	0	0	0	0	0	0	0	0	0	0	0	0
5	0	0	0	0	0	0	0	0	0	9	0	9
6	0	0	0	0	0	0	0	0	0	480	0	480
7	0	0	0	0	0	0	0	0	0	1,460	0	1,460
TOTAL	0	13,558	0	13,558	0	21,519	0	21,519	0	18,736	0	18,736

ATTACHMENT D
 DOCKET NO. 87-0790-TI
 ORDER NO. 24257
 PAGE 19 OF 49

FSD: MJ06-00-2-C
 DATE: 04/01/91
 TIME: 09:38
 CYCLE: 039 JES NUMBER: JOB06947 JOB NAME: MJ04A03 JOB STEP: MJ04A03 PROC STEP: S010
 EAS/OPTIONAL CALLING PLAN STUDY
 NEWBERRY TO TRENTON (POCKET) -- BUS
 PROGRAM NAME: MJ04A020
 STUDY PERIOD: 02/01/91 THRU 03/03/91
 REQUEST NUMBER: 05
 FORM: 4311-3
 RETAIN: OPT
 AREA: JACKSONVILLE
 PAGE: 3
 ORIGINATING RATE-CENTER: 162*****
 TERMINATING RATE-CENTER: 225*****

MESSAGES BY RATE CLASS

HR OF DAY	DAY RATE			EVENING RATE			NIGHT RATE/WEEKEND					
	BUS	RES	COIN	TOTAL	BUS	RES	COIN	TOTAL	BUS	RES	COIN	TOTAL
AM 8	31	0	0	31	0	0	0	0	7	0	0	7
9	76	0	0	76	0	0	0	0	14	0	0	14
10	68	0	0	68	0	0	0	0	10	0	0	10
11	54	0	0	54	0	0	0	0	16	0	0	16
12	49	0	0	49	0	0	0	0	13	0	0	13
PM 1	57	0	0	57	0	0	0	0	11	0	0	11
2	63	0	0	63	0	0	0	0	7	0	0	7
3	48	0	0	48	0	0	0	0	7	0	0	7
4	54	0	0	54	0	0	0	0	8	0	0	8
5	0	0	0	0	32	0	0	32	10	0	0	10
6	0	0	0	0	39	0	0	39	8	0	0	8
7	0	0	0	0	19	0	0	19	3	0	0	3
8	0	0	0	0	10	0	0	10	1	0	0	1
9	0	0	0	0	4	0	0	4	6	0	0	6
10	0	0	0	0	1	0	0	1	1	0	0	1
11	0	0	0	0	0	0	0	0	2	0	0	2
12	0	0	0	0	0	0	0	0	1	0	0	1
AM 1	0	0	0	0	0	0	0	0	0	0	0	0
2	0	0	0	0	0	0	0	0	0	0	0	0
3	0	0	0	0	0	0	0	0	0	0	0	0
4	0	0	0	0	0	0	0	0	0	0	0	0
5	0	0	0	0	0	0	0	0	0	0	0	0
6	0	0	0	0	0	0	0	0	2	0	0	2
7	0	0	0	0	0	0	0	0	9	0	0	9
TOTAL	500	0	0	500	105	0	0	105	174	0	0	174

FSD: MJ04-00-2-C
DATE: 04/01/91
TIME: 09:38
CYCLE: 039 JES NUMBER: JOB06947 JOB NAME: MJ04A03 JOB STEP: S010 PROGRAM NAME: MJ04A020
FORM: 4311-3
RETAIN: OPT
AREA: JACKSONVILLE
PAGE: 4
EAS/OPTIONAL CALLING PLAN STUDY
NEWBERRY TO TRENTON (POCKET) - BUS

ORIGINATING RATE-CENTER: 162*****
TERMINATING RATE-CENTER: 225*****
STUDY PERIOD: 02/01/91 THRU 03/03/91
REQUEST NUMBER: 05

MINUTES OF USAGE BY RATE CLASS

HR OF DAY	DAY RATE			EVENING RATE			NIGHT RATE/WEEKEND			
	BUS	RES	COIN	BUS	RES	COIN	BUS	RES	COIN	TOTAL
AM 8	50	0	0	0	0	0	0	0	0	11
9	139	0	0	0	0	0	0	0	0	33
10	117	0	0	0	0	0	0	0	0	14
11	108	0	0	0	0	0	0	0	0	18
12	99	0	0	0	0	0	0	0	0	44
PH 1	98	0	0	0	0	0	0	0	0	15
2	98	0	0	0	0	0	0	0	0	12
3	86	0	0	0	0	0	0	0	0	18
4	100	0	0	0	0	0	0	0	0	28
5	0	0	0	0	0	0	0	0	0	20
6	0	0	0	73	0	0	73	0	0	11
7	0	0	0	119	0	0	119	0	0	11
8	0	0	0	58	0	0	58	0	0	5
9	0	0	0	29	0	0	29	0	0	22
10	0	0	0	26	0	0	26	0	0	1
11	0	0	0	1	0	0	1	0	0	3
12	0	0	0	0	0	0	0	0	0	1
AM 1	0	0	0	0	0	0	0	0	0	0
2	0	0	0	0	0	0	0	0	0	0
3	0	0	0	0	0	0	0	0	0	0
4	0	0	0	0	0	0	0	0	0	0
5	0	0	0	0	0	0	0	0	0	0
6	0	0	0	0	0	0	0	0	0	0
7	0	0	0	0	0	0	0	0	0	0
TOTAL	895	0	0	306	0	0	306	0	0	345

FSD: MJ04-00-2-C
 DATE: 04/01/91
 TIME: 09:38

EAS/OPTIONAL CALLING PLAN STUDY
 TRENTON (POCKET) TO NEWBERRY - RES

FORM: 4311-3
 RETAIN: OPT
 AREA: JACKSHVILL
 PAGE: 3

CYCLE: 039 JES NUMBER: JOB06947 JOB NAME: MJ04A03 JOB STEP: MJ04A03 PROC STEP: S010

PROGRAM NAME: MJ04A020

ORIGINATING RATE-CENTER: 225*****
 TERMINATING RATE-CENTER: 162*****

STUDY PERIOD: 02/01/91 THRU 03/03/91
 REQUEST NUMBER: 08

MESSAGES BY RATE CLASS

HR OF DAY	DAY RATE				EVENING RATE				NIGHT RATE/WEEKEND			
	BUS	RES	COIN	TOTAL	BUS	RES	COIN	TOTAL	BUS	RES	COIN	TOTAL
AM 8	0	109	0	109	0	0	0	0	0	91	0	91
9	0	124	0	124	0	0	0	0	0	126	0	126
10	0	103	0	103	0	0	0	0	0	130	0	130
11	0	90	0	90	0	0	0	0	0	111	0	111
12	0	102	0	102	0	0	0	0	0	120	0	120
PM 1	0	95	0	95	0	0	0	0	0	105	0	105
2	0	86	0	86	0	0	0	0	0	98	0	98
3	0	132	0	132	0	0	0	0	0	101	0	101
4	0	273	0	273	0	0	0	0	0	114	0	114
5	0	0	0	0	0	342	0	342	0	130	0	130
6	0	0	0	0	0	417	0	417	0	134	0	134
7	0	0	0	0	0	380	0	380	0	130	0	130
8	0	0	0	0	0	316	0	316	0	114	0	114
9	0	0	0	0	0	256	0	256	0	82	0	82
10	0	0	0	0	0	103	0	103	0	43	0	43
11	0	0	0	0	0	0	0	0	0	35	0	35
12	0	0	0	0	0	0	0	0	0	16	0	16
AM 1	0	0	0	0	0	0	0	0	0	7	0	7
2	0	0	0	0	0	0	0	0	0	2	0	2
3	0	0	0	0	0	0	0	0	0	2	0	2
4	0	0	0	0	0	0	0	0	0	2	0	2
5	0	0	0	0	0	0	0	0	0	15	0	15
6	0	0	0	0	0	0	0	0	0	52	0	52
7	0	0	0	0	0	0	0	0	0	160	0	160
TOTAL	0	1,114	0	1,114	0	1,819	0	1,819	0	1,920	0	1,920

ATTACHMENT D
 DOCKET NO. 87-0790-TL
 ORDER NO. 24257
 PAGE 22 OF 49

FSD: MJ04-00-2-C
DATE: 04/01/91
TIME: 09:38
CYCLE: 039 JES NUMBER: JOB06947 JOB NAME: MJ04A03 JOB STEP: MJ04A03 PROC STEP: S010
PROGRAM NAME: MJ04A020
FORM: 4311-3
RETAIN: OPT
AREA: JACKSONVILLE
PAGE: 4
EAS/OPTIONAL CALLING PLAN STUDY
TRENTON (POCKET) TO NEWBERRY - RES
STUDY PERIOD: 02/01/91 THRU 03/03/91
REQUEST NUMBER: 08

ORIGINATING RATE-CENTER: 225*****
TERMINATING RATE-CENTER: 162*****

MINUTES OF USAGE BY RATE CLASS

HR OF DAY	DAY RATE			EVENING RATE			NIGHT RATE/WEEKEND					
	BUS	RES	COIN	TOTAL	BUS	RES	COIN	TOTAL	BUS	RES	COIN	TOTAL
AM 8	0	508	0	508	0	0	0	0	0	371	0	371
9	0	485	0	485	0	0	0	0	0	467	0	467
10	0	777	0	777	0	0	0	0	0	551	0	551
11	0	325	0	325	0	0	0	0	0	544	0	544
12	0	438	0	438	0	0	0	0	0	480	0	480
PH 1	0	357	0	357	0	0	0	0	0	341	0	341
2	0	434	0	434	0	0	0	0	0	315	0	315
3	0	495	0	495	0	0	0	0	0	291	0	291
4	0	1,163	0	1,163	0	0	0	0	0	417	0	417
5	0	0	0	0	0	1,301	0	1,301	0	465	0	465
6	0	0	0	0	0	1,488	0	1,488	0	575	0	575
7	0	0	0	0	0	1,580	0	1,580	0	555	0	555
8	0	0	0	0	0	2,301	0	2,301	0	608	0	608
9	0	0	0	0	0	2,246	0	2,246	0	444	0	444
10	0	0	0	0	0	2,780	0	2,780	0	145	0	145
11	0	0	0	0	0	0	0	0	0	231	0	231
12	0	0	0	0	0	0	0	0	0	274	0	274
AM 1	0	0	0	0	0	0	0	0	0	55	0	55
2	0	0	0	0	0	0	0	0	0	1	0	1
3	0	0	0	0	0	0	0	0	0	1	0	1
4	0	0	0	0	0	0	0	0	0	0	0	0
5	0	0	0	0	0	0	0	0	0	29	0	29
6	0	0	0	0	0	0	0	0	0	131	0	131
7	0	0	0	0	0	0	0	0	0	468	0	468
TOTAL	0	4,982	0	4,982	0	9,696	0	9,696	0	7,759	0	7,759

FSD: MJ04-00-2-C
 DATE: 04/01/91
 TIME: 09:38
 CYCLE: 039

EAS/OPTIONAL CALLING PLAN STUDY
 TRENTON (POCKET) TO NEWBERRY - BUS

FORM: 4311-3
 RETAIN: OPT
 AREA: JACKSONVILL
 PAGE: 3

ORIGINATING RATE-CENTER: 225*****
 TERMINATING RATE-CENTER: 162*****

PROGRAM NAME: MJ04A020

STUDY PERIOD: 02/01/91 THRU 03/03/91
 REQUEST NUMBER: 07

MESSAGES BY RATE CLASS

HR OF DAY	DAY RATE				EVENING RATE				NIGHT RATE/WEEKEND			
	BUS	RES	COIN	TOTAL	BUS	RES	COIN	TOTAL	BUS	RES	COIN	TOTAL
AM 8	77	0	0	77	0	0	0	0	9	0	0	9
9	81	0	0	81	0	0	0	0	22	0	0	22
10	105	0	0	105	0	0	0	0	14	0	0	14
11	73	0	0	73	0	0	0	0	10	0	0	10
12	69	0	0	69	0	0	0	0	14	0	0	14
PH 1	87	0	0	87	0	0	0	0	17	0	0	17
2	72	0	0	72	0	0	0	0	21	0	0	21
3	87	0	0	87	0	0	0	0	16	0	0	16
4	89	0	0	89	0	0	0	0	18	0	0	18
5	0	0	0	0	43	0	0	43	14	0	0	14
6	0	0	0	0	52	0	0	52	8	0	0	8
7	0	0	0	0	36	0	0	36	9	0	0	9
8	0	0	0	0	25	0	0	25	10	0	0	10
9	0	0	0	0	29	0	0	29	8	0	0	8
10	0	0	0	0	16	0	0	16	1	0	0	1
11	0	0	0	0	0	0	0	0	6	0	0	6
AM 12	0	0	0	0	0	0	0	0	1	0	0	1
1	0	0	0	0	0	0	0	0	3	0	0	3
2	0	0	0	0	0	0	0	0	1	0	0	1
3	0	0	0	0	0	0	0	0	0	0	0	0
4	0	0	0	0	0	0	0	0	0	0	0	0
5	0	0	0	0	0	0	0	0	0	0	0	0
6	0	0	0	0	0	0	0	0	7	0	0	7
7	0	0	0	0	0	0	0	0	46	0	0	46
TOTAL	740	0	0	740	201	0	0	201	255	0	0	255

ATTACHMENT D
 DOCKETNO. 87-0790-TL
 ORDER NO. 24257
 PAGE 24 OF 49

FSD: MJ04-00-2-C
 DATE: 04/01/91
 TIME: 09:38
 CYCLE: 039 JES NUMBER: JOB06947 JOB NAME: MJ04A03 JOB STEP: MJ04A03 PROC STEP: S010

EAS/OPTIONAL CALLING PLAN STUDY

TRENTON (POCKET) TO NEWBERRY - BUS

PROGRAM NAME: MJ04A020

FORM: 4311-3
 RETAIN: OPT
 AREA: JACKSONVILL
 PAGE: 4

STUDY PERIOD: 02/01/91 THRU 03/03/91
 REQUEST NUMBER: 07

ORIGINATING RATE-CENTER: 225*****
 TERMINATING RATE-CENTER: 162*****

MINUTES OF USAGE BY RATE CLASS

HR OF DAY	DAY RATE			EVENING RATE			NIGHT RATE/WEEKEND					
	BUS	RES	COIN	TOTAL	BUS	RES	COIN	TOTAL	BUS	RES	COIN	TOTAL
AM 8	139	0	0	139	0	0	0	0	18	0	0	18
9	158	0	0	158	0	0	0	0	55	0	0	55
10	249	0	0	249	0	0	0	0	37	0	0	37
11	122	0	0	122	0	0	0	0	8	0	0	8
12	217	0	0	217	0	0	0	0	27	0	0	27
PH 1	265	0	0	265	0	0	0	0	38	0	0	38
2	250	0	0	250	0	0	0	0	107	0	0	107
3	235	0	0	235	0	0	0	0	47	0	0	47
4	248	0	0	248	0	0	0	0	148	0	0	148
5	0	0	0	0	130	0	0	130	67	0	0	67
6	0	0	0	0	303	0	0	303	45	0	0	45
7	0	0	0	0	123	0	0	123	14	0	0	14
8	0	0	0	0	95	0	0	95	233	0	0	233
9	0	0	0	0	209	0	0	209	142	0	0	142
10	0	0	0	0	48	0	0	48	10	0	0	10
11	0	0	0	0	0	0	0	0	105	0	0	105
12	0	0	0	0	0	0	0	0	23	0	0	23
AM 1	0	0	0	0	0	0	0	0	6	0	0	6
2	0	0	0	0	0	0	0	0	38	0	0	38
3	0	0	0	0	0	0	0	0	0	0	0	0
4	0	0	0	0	0	0	0	0	0	0	0	0
5	0	0	0	0	0	0	0	0	0	0	0	0
6	0	0	0	0	0	0	0	0	0	0	0	0
7	0	0	0	0	0	0	0	0	20	0	0	20
TOTAL	1,883	0	0	1,883	908	0	0	908	1,286	0	0	1,286

DATE: 06/11/91
 TIME: 10:28
 CYCLE: 853 JES NUMBER: JOB07736 JOB NAME: NJ04A83J JOB STEP: 3
 RETAIN: OPT
 AREA: JACKSONVILLE
 PAGE: 3
 PROGRAM NAME: NJ04A828
 STUDY PERIOD: 02/01/91 THRU 03/03/91
 REQUEST NUMBER: 10

NEWBERRY (POCKET) TO TRENTON (POCKET) -- RES
 PROC STEP: S010

MESSAGES BY RATE CLASS

HR OF DAY	DAY RATE			EVENING RATE			NIGHT RATE/WEEKEND			
	BUS	RES	COIN	BUS	RES	COIN	BUS	RES	COIN	
AM 8	0	230	0	0	0	0	0	111	0	111
9	0	230	0	0	0	0	0	142	0	142
10	0	216	0	0	0	0	0	186	0	186
11	0	216	0	0	0	0	0	139	0	139
12	0	146	0	0	0	0	0	140	0	140
PM 1	0	185	0	0	0	0	0	126	0	126
2	0	223	0	0	0	0	0	158	0	158
3	0	258	0	0	0	0	0	150	0	150
4	0	525	0	0	0	0	0	121	0	121
5	0	0	0	0	450	0	0	190	0	190
6	0	0	0	0	512	0	0	167	0	167
7	0	0	0	0	466	0	0	161	0	161
8	0	0	0	0	417	0	0	123	0	123
9	0	0	0	0	302	0	0	110	0	110
10	0	0	0	0	110	0	0	39	0	39
11	0	0	0	0	0	0	0	41	0	41
12	0	0	0	0	0	0	0	15	0	15
1	0	0	0	0	0	0	0	11	0	11
2	0	0	0	0	0	0	0	4	0	4
3	0	0	0	0	0	0	0	3	0	3
4	0	0	0	0	0	0	0	1	0	1
5	0	0	0	0	0	0	0	19	0	19
6	0	0	0	0	0	0	0	52	0	52
7	0	0	0	0	0	0	0	204	0	204
TOTAL	0	2,251	0	2,257	0	2,257	0	2,389	0	2,389

FSD: NJ04-00-2-C
 DATE: 04/11/91
 TIME: 10:28
 CYCLE: 053 JES NUMBER: JOB07736

EAS/OPTIONAL CALLING PLAN STUDY
 NEWBERRY (POCKET) TO TRENTON (POCKTE) - RES
 PROC STEP: S010

FUNNY: 4311-3
 RETAIN: OPT
 AREA: JACKSONVILLE
 PAGE: 4

ORIGINATING RATE-CENTER: 162
 TERMINATING RATE-CENTER: 225

STUDY PERIOD: 02/01/91 THRU 03/03/91
 REQUEST NUMBER: 10

MINUTES OF USAGE BY RATE CLASS

HR OF DAY	DAY RATE				EVENING RATE				NIGHT RATE/WEKEND			
	BUS	RES	COIN	TOTAL	BUS	RES	COIN	TOTAL	BUS	RES	COIN	TOTAL
AM 8	0	826	0	826	0	0	0	0	0	899	0	899
9	0	953	0	953	0	0	0	0	0	631	0	631
10	0	806	0	806	0	0	0	0	0	803	0	803
11	0	843	0	843	0	0	0	0	0	694	0	694
12	0	557	0	557	0	0	0	0	0	738	0	738
PM 1	0	776	0	776	0	0	0	0	0	641	0	641
2	0	1,066	0	1,066	0	0	0	0	0	652	0	652
3	0	892	0	892	0	0	0	0	0	651	0	651
4	0	2,554	0	2,554	0	0	0	0	0	352	0	352
5	0	0	0	0	0	2,789	0	2,789	0	917	0	917
6	0	0	0	0	0	2,742	0	2,742	0	805	0	805
7	0	0	0	0	0	3,407	0	3,407	0	1,211	0	1,211
8	0	0	0	0	0	3,952	0	3,952	0	1,138	0	1,138
9	0	0	0	0	0	2,668	0	2,668	0	1,331	0	1,331
10	0	0	0	0	0	1,117	0	1,117	0	397	0	397
11	0	0	0	0	0	0	0	0	0	736	0	736
12	0	0	0	0	0	0	0	0	0	120	0	120
AM 1	0	0	0	0	0	0	0	0	0	87	0	87
2	0	0	0	0	0	0	0	0	0	75	0	75
3	0	0	0	0	0	0	0	0	0	6	0	6
4	0	0	0	0	0	0	0	0	0	0	0	0
5	0	0	0	0	0	0	0	0	0	5	0	5
6	0	0	0	0	0	0	0	0	0	461	0	461
7	0	0	0	0	0	0	0	0	0	1,204	0	1,204
TOTAL	0	9,273	0	9,273	0	16,675	0	16,675	0	14,554	0	14,554

DATE: 10:20
 CYCLE: 053 RES NUMBER: J0847756 JOB NAME: NJ04A03J JOB STEP: 10 IRENTION (FUGNEL) - BUS
 AREA: JACKSONVILLE
 PROGRAM NAME: NJ04A020 PAGE: 3
 STUDY PERIOD: 02/01/91 THRU 03/03/91
 REQUEST NUMBER: 09

MESSAGES BY RATE CLASS

HR OF DAY	DAY RATE			EVENING RATE			NIGHT RATE/WEKEND		
	BUS	RES	TOTAL	BUS	RES	TOTAL	BUS	RES	TOTAL
AM 8	0	0	0	0	0	0	0	0	0
AM 9	15	0	15	0	0	0	2	0	2
AM 10	11	0	11	0	0	0	1	0	1
AM 11	11	0	11	0	0	0	1	0	1
PM 12	12	0	12	0	0	0	1	0	1
PM 1	10	0	10	0	0	0	1	0	1
PM 2	11	0	11	0	0	0	1	0	1
PM 3	11	0	11	0	0	0	1	0	1
PM 4	10	0	10	0	0	0	1	0	1
5	0	0	0	0	0	0	0	0	0
6	0	0	0	0	0	0	0	0	0
7	0	0	0	0	0	0	0	0	0
8	0	0	0	0	0	0	0	0	0
9	0	0	0	0	0	0	0	0	0
10	0	0	0	0	0	0	0	0	0
11	0	0	0	0	0	0	0	0	0
AM 11	0	0	0	0	0	0	0	0	0
AM 12	0	0	0	0	0	0	0	0	0
1	0	0	0	0	0	0	0	0	0
2	0	0	0	0	0	0	0	0	0
3	0	0	0	0	0	0	0	0	0
4	0	0	0	0	0	0	0	0	0
5	0	0	0	0	0	0	0	0	0
6	0	0	0	0	0	0	0	0	0
7	0	0	0	0	0	0	0	0	0
8	0	0	0	0	0	0	0	0	0
9	0	0	0	0	0	0	0	0	0
10	0	0	0	0	0	0	0	0	0
11	0	0	0	0	0	0	0	0	0
12	0	0	0	0	0	0	0	0	0
TOTAL	101	0	101	31	0	31	45	0	45

FSD: NJ04-00-2-C
 DATE: 04/11/91
 TIME: 10:28
 CYCLE: 053 JES NUMBER: JOB07736 JOB NAME: NJ04A03J JOB STEP:

EAS/OPTIONAL CALLING PLAN STUDY
 NEWBERRY (POCKET) TO TRENTON (POCKET) - BUS

PROC STEP: S010

PROGRAM NAME: NJ04A020

FORM: 4311-3
 RETAIN: OPT
 AREA: JACKSONVILLE
 PAGE: 6

ORIGINATING RATE-CENTER: 162
 TERMINATING RATE-CENTER: 225

STUDY PERIOD: 02/01/91 THRU 03/03/91
 REQUEST NUMBER: 09

MINUTES OF USAGE BY RATE CLASS

HR OF DAY	DAY RATE			EVENING RATE			NIGHT RATE/WEEKEND					
	BUS	RES	COIN	TOTAL	BUS	RES	COIN	TOTAL	BUS	RES	COIN	TOTAL
AM 8	11	0	0	11	0	0	0	0	3	0	0	3
9	24	0	0	24	0	0	0	0	1	0	0	1
10	9	0	0	9	0	0	0	0	2	0	0	2
11	14	0	0	14	0	0	0	0	5	0	0	5
12	41	0	0	41	0	0	0	0	24	0	0	24
PM 1	20	0	0	20	0	0	0	0	12	0	0	12
2	13	0	0	13	0	0	0	0	4	0	0	4
3	17	0	0	17	0	0	0	0	1	0	0	1
4	49	0	0	49	0	0	0	0	0	0	0	0
5	0	0	0	0	44	0	0	44	13	0	0	13
6	0	0	0	0	36	0	0	36	3	0	0	3
7	0	0	0	0	0	0	0	0	0	0	0	0
8	0	0	0	0	6	0	0	6	5	0	0	5
9	0	0	0	0	24	0	0	24	10	0	0	10
10	0	0	0	0	0	0	0	0	0	0	0	0
11	0	0	0	0	0	0	0	0	0	0	0	0
12	0	0	0	0	0	0	0	0	0	0	0	0
AM 1	0	0	0	0	0	0	0	0	0	0	0	0
2	0	0	0	0	0	0	0	0	0	0	0	0
3	0	0	0	0	0	0	0	0	0	0	0	0
4	0	0	0	0	0	0	0	0	0	0	0	0
5	0	0	0	0	0	0	0	0	0	0	0	0
6	0	0	0	0	0	0	0	0	0	0	0	0
7	0	0	0	0	0	0	0	0	11	0	0	11
TOTAL	198	0	0	198	118	0	0	118	104	0	0	104

ATTACHMENT D
 DOCKET NO. 87-0790-TL
 ORDER NO. 24257
 PAGE 29 OF 49

DATE: 06/11/91
 TIME: 10:20
 CYCLE: 053-JES NUMBER: JOB07756 JOB NAME: NJ06A05J JOB STEP: 3
 TRENTON (POCKET) TO NEWBERRY (POCKET) - RES
 PROC STEP: S010 PROGRAM NAME: NJ06A020 PAGE: 3
 FURMS: 0311-3
 RETAIN: 001
 AREA: JACKSONWILL
 ORIGINATING RATE-CENTER: 225
 TERMINATING RATE-CENTER: 162
 STUDY PERIOD: 02/01/91 THRU 03/03/91
 REQUEST NUMBER: 12

MESSAGES BY RATE CLASS

HR OF DAY	DAY RATE			EVENING RATE			NIGHT RATE/WEEKEND		
	BUS	RES	TOTAL	BUS	RES	TOTAL	BUS	RES	TOTAL
AM 8	0	65	65	0	0	0	0	66	66
9	0	61	61	0	0	0	0	85	85
10	0	58	58	0	0	0	0	81	81
11	0	48	48	0	0	0	0	86	86
12	0	56	56	0	0	0	0	77	77
PM 1	0	52	52	0	0	0	0	66	66
2	0	45	45	0	0	0	0	69	69
3	0	86	86	0	0	0	0	72	72
4	0	165	165	0	0	0	0	83	83
5	0	0	0	224	0	224	0	98	98
6	0	0	0	301	0	301	0	88	88
7	0	0	0	254	0	254	0	80	80
8	0	0	0	233	0	233	0	74	74
9	0	0	0	179	0	179	0	59	59
10	0	0	0	75	0	75	0	32	32
11	0	0	0	0	0	0	20	20	20
12	0	0	0	0	0	0	0	0	0
AM 1	0	0	0	0	0	0	0	1	1
2	0	0	0	0	0	0	0	2	2
3	0	0	0	0	0	0	0	2	2
4	0	0	0	0	0	0	0	13	13
5	0	0	0	0	0	0	0	34	34
6	0	0	0	0	0	0	0	98	98
TOTAL	0	636	636	0	1,266	1,266	0	1,295	1,295

FSD: NJ04-00-2-C
 DATE: 04/11/91
 TIME: 10:28
 CYCLE: 053

EAS/OPTIONAL CALLING PLAN STUDY
 TRENTON (POCKET) TO NEWBERRY (POCKET) - BUS
 JOB NUMBER: JOB07736 JOB NAME: NJ04A03J JOB STEP:
 PROC STEP: S010 PROGRAM NAME: NJ04A020

FORM: 4311-3
 RETAIN: OPT
 AREA: JACKSONVILLE
 PAGE: 3

ORIGINATING RATE-CENTER: 225
 TERMINATING RATE-CENTER: 162

STUDY PERIOD: 02/01/91 THRU 03/03/91
 REQUEST NUMBER: 11

MESSAGES BY RATE CLASS

HR OF DAY	DAY RATE				EVENING RATE				NIGHT RATE/WEEKEND			
	BUS	RES	COIN	TOTAL	BUS	RES	COIN	TOTAL	BUS	RES	COIN	TOTAL
AM 8	59	0	0	59	0	0	0	0	5	0	0	5
9	52	0	0	52	0	0	0	0	14	0	0	14
10	53	0	0	53	0	0	0	0	7	0	0	7
11	40	0	0	40	0	0	0	0	7	0	0	7
12	36	0	0	36	0	0	0	0	11	0	0	11
PM 1	50	0	0	50	0	0	0	0	11	0	0	11
2	47	0	0	47	0	0	0	0	15	0	0	15
3	51	0	0	51	0	0	0	0	11	0	0	11
4	53	0	0	53	0	0	0	0	7	0	0	7
5	0	0	0	0	32	0	0	32	8	0	0	8
6	0	0	0	0	31	0	0	31	6	0	0	6
7	0	0	0	0	25	0	0	25	5	0	0	5
8	0	0	0	0	16	0	0	16	2	0	0	2
9	0	0	0	0	17	0	0	17	5	0	0	5
10	0	0	0	0	12	0	0	12	0	0	0	0
11	0	0	0	0	0	0	0	0	3	0	0	3
12	0	0	0	0	0	0	0	0	0	0	0	0
AM 1	0	0	0	0	0	0	0	0	1	0	0	1
2	0	0	0	0	0	0	0	0	0	0	0	0
3	0	0	0	0	0	0	0	0	0	0	0	0
4	0	0	0	0	0	0	0	0	0	0	0	0
5	0	0	0	0	0	0	0	0	0	0	0	0
6	0	0	0	0	0	0	0	0	0	0	0	0
7	0	0	0	0	0	0	0	0	6	0	0	6
TOTAL	441	0	0	441	133	0	0	133	153	0	0	153

MINUTES OF USAGE BY RATE CLASS

HR OF DAY	DAY RATE				EVENING RATE				NIGHT RATE/WEKEND			
	BUS	RES	COIN	TOTAL	BUS	RES	COIN	TOTAL	BUS	RES	COIN	TOTAL
AM 8	116	0	0	116	0	0	0	0	9	0	0	9
9	92	0	0	92	0	0	0	0	36	0	0	36
10	86	0	0	86	0	0	0	0	15	0	0	15
11	57	0	0	57	0	0	0	0	5	0	0	5
12	53	0	0	53	0	0	0	0	13	0	0	13
PM 1	112	0	0	112	0	0	0	0	19	0	0	19
2	45	0	0	45	0	0	0	0	38	0	0	38
3	121	0	0	121	0	0	0	0	33	0	0	33
4	150	0	0	150	0	0	0	0	38	0	0	38
5	0	0	0	0	89	0	0	89	32	0	0	32
6	0	0	0	0	68	0	0	68	20	0	0	20
7	0	0	0	0	69	0	0	69	8	0	0	8
8	0	0	0	0	42	0	0	42	59	0	0	59
9	0	0	0	0	82	0	0	82	12	0	0	12
10	0	0	0	0	22	0	0	22	0	0	0	0
11	0	0	0	0	0	0	0	0	3	0	0	3
12	0	0	0	0	0	0	0	0	0	0	0	0
AM 1	0	0	0	0	0	0	0	0	2	0	0	2
2	0	0	0	0	0	0	0	0	0	0	0	0
3	0	0	0	0	0	0	0	0	0	0	0	0
4	0	0	0	0	0	0	0	0	0	0	0	0
5	0	0	0	0	0	0	0	0	0	0	0	0
6	0	0	0	0	0	0	0	0	20	0	0	20
7	0	0	0	0	0	0	0	0	75	0	0	75
TOTAL	832	0	0	832	372	0	0	372	437	0	0	437

FSD: MJ04-00-2-C
 DATE: 04/01/91
 TIME: 09:38
 CYCLE: 039

EAS/OPTIONAL CALLING PLAN STUDY
 NEWBERRY (POCKET) TO BRANFORD (I) - RES

FORM: 4311-3
 RETAIN: OPT
 AREA: JACKSNVILL
 PAGE: 3

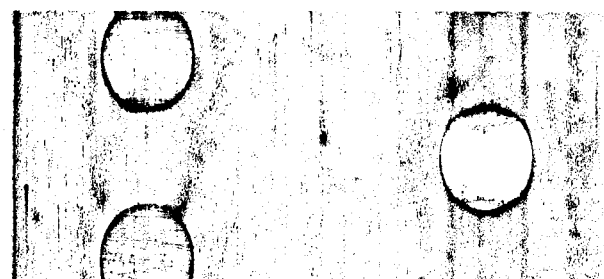
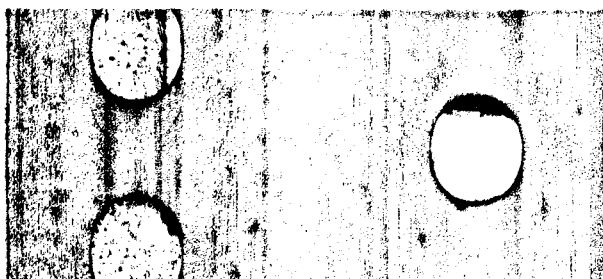
ORIGINATING RATE-CENTER: 162*****
 TERMINATING RATE-CENTER: 024*****

STUDY PERIOD: 02/01/91 THRU 03/03/91
 REQUEST NUMBER: 14

MESSAGES BY RATE CLASS

HR OF DAY	DAY RATE				EVENING RATE				NIGHT RATE/WEEKEND			
	BUS	RES	COIN	TOTAL	BUS	RES	COIN	TOTAL	BUS	RES	COIN	TOTAL
1 AM												
2												
3												
4												
5												
6												
7												
8												
9												
10												
11												
12												
1 PM												
2												
3												
4												
5												
6												
7												
8												
9												
10												
11												
12												
1 AM												
2												
3												
4												
5												
6												
7												
25 TOTAL												

ATTACHMENT D
 DOCKET NO. 87-0790-TL
 ORDER NO. 24257
 PAGE 34 OF 49



FSD: MJ04-00-2-C
 DATE: 04/01/91
 TIME: 09:38

EAS/OPTIONAL CALLING PLAN STUDY
 NEWBERRY (POCKET) TO BRANFORD (I) - RES

FORM: 4311-3
 RETAIN: OPT
 AREA: JACKSONVILL
 PAGE: 4

CYCLE: 039 JES NUMBER: JOB06947 JOB NAME: MJ04A03 JOB STEP: MJ04A03 PROC STEP: S010 PROGRAM NAME: MJ04A020

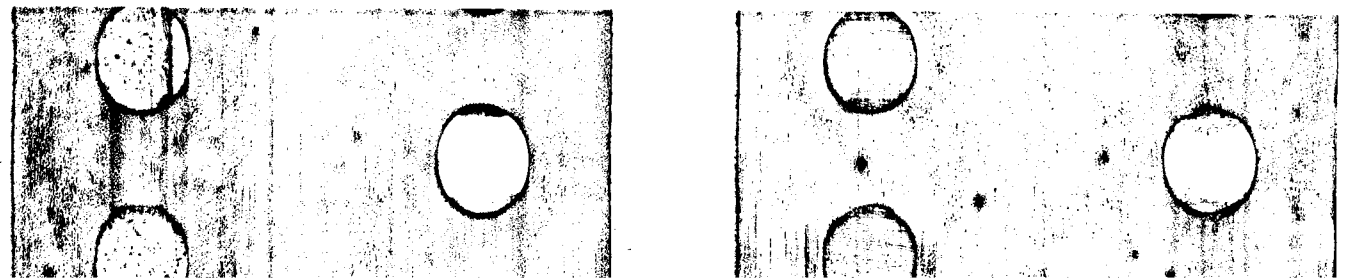
ORIGINATING RATE-CENTER: 162*****
 TERMINATING RATE-CENTER: 024*****

STUDY PERIOD: 02/01/91 THRU 03/03/91
 REQUEST NUMBER: 14

MINUTES OF USAGE BY RATE CLASS

HR OF DAY	DAY RATE				EVENING RATE				NIGHT RATE/WEEKEND			
	BUS	RES	COIN	TOTAL	BUS	RES	COIN	TOTAL	BUS	RES	COIN	TOTAL
1 AM	8											
2	9											
3	10											
4	11											
5	12											
6 PM	1											
7	2											
8	3											
9	4											
10	5											
11	6											
12	7											
13	8											
14	9											
15	10											
16	11											
17	12											
18 AM	1											
19	2											
20	3											
21	4											
22	5											
23	6											
24	7											
25 TOTAL												

ATTACHMENT D
 DOCKET NO. 87-0790-TL
 ORDER NO. 24257
 PAGE 35 OF 49



FSD: MJ04-00-2-C
 DATE: 04/01/91
 TIME: 09:38
 CYCLE: 039

EAS/OPTIONAL CALLING PLAN STUDY
 NEWBERRY (POCKET) TO BRANFORD (I) - BUS

FORM: 4311-3
 RETAIN: OPT
 AREA: JACKSONVILL
 PAGE: 3

ORIGINATING RATE-CENTER: 162*****
 TERMINATING RATE-CENTER: 024*****

JES NUMBER: JOB06947 JOB NAME: MJ04A03 JOB STEP: MJ04A03 PROC STEP: S010 PROGRAM NAME: MJ04A020
 STUDY PERIOD: 02/01/91 THRU 03/03/91
 REQUEST NUMBER: 13

MESSAGES BY RATE CLASS

HR OF DAY	DAY RATE				EVENING RATE				NIGHT RATE/WEEKEND			
	BUS	RES	COIN	TOTAL	BUS	RES	COIN	TOTAL	BUS	RES	COIN	TOTAL
1 AM												
2												
3												
4												
5												
6 PM												
7												
8												
9												
10												
11												
12												
13												
14												
15												
16												
17												
18 AM												
19												
20												
21												
22												
23												
24												
25 TOTAL												

ATTACHMENT D
 DOCKET NO. 87-0790-TL
 ORDER NO. 24257
 PAGE 36 OF 49



FSD: MJ04-00-2-C
 DATE: 04/01/91
 TIME: 09:38
 CYCLE: 039 JES NUMBER: JOB06947

EAS/OPTIONAL CALLING PLAN STUDY
 NEWBERRY (POCKET) TO BRANFORD (I) - BUS

FORM: 4311-3
 RETAIN: OPT
 AREA: JACKSONVILL
 PAGE: 4
 PROGRAM NAME: MJ04A020

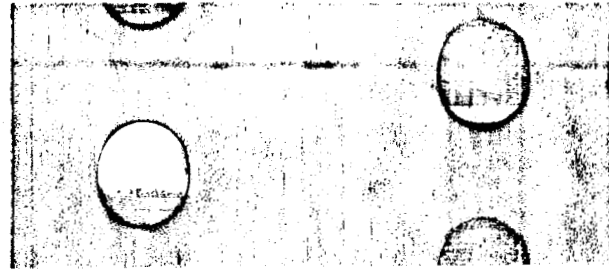
ORIGINATING RATE-CENTER: 162*****
 TERMINATING RATE-CENTER: 024*****

STUDY PERIOD: 02/01/91 THRU 03/03/91
 REQUEST NUMBER: 13

MINUTES OF USAGE BY RATE CLASS

HR OF DAY	DAY RATE				EVENING RATE				NIGHT RATE/WEEKEND			
	BUS	RES	COIN	TOTAL	BUS	RES	COIN	TOTAL	BUS	RES	COIN	TOTAL
1 AM	8											
2	9											
3	10											
4	11											
5	12											
6 PM	1											
7	2											
8	3											
9	4											
10	5											
11	6											
12	7											
13	8											
14	9											
15	10											
16	11											
17	12											
18 AM	1											
19	2											
20	3											
21	4											
22	5											
23	6											
24	7											
25 TOTAL												

ATTACHMENT D
 DOCKET NO. 87-0790-TL
 ORDER NO. 24257
 PAGE 37 OF 49



FSD: MJ04-00-2-C
 DATE: 04/01/91
 TIME: 09:38

EAS/OPTIONAL CALLING PLAN STUDY
 TRENTON TO BRANFORD (I) - RES

FORM: 4311-3
 RETAIN: OPT
 AREA: JACKSONVILL
 PAGE: 3

CYCLE: 039 JES NUMBER: JOB06947 JOB NAME: MJ04A03 JOB STEP: MJ04A03 PROC STEP: S010

PROGRAM NAME: MJ04A020

ORIGINATING RATE-CENTER: 225*****
 TERMINATING RATE-CENTER: 024*****

STUDY PERIOD: 02/01/91 THRU 03/03/91
 REQUEST NUMBER: 18

MESSAGES BY RATE CLASS

HR OF DAY	DAY RATE			EVENING RATE			NIGHT RATE/WEEKEND					
	BUS	RES	COIN	TOTAL	BUS	RES	COIN	TOTAL	BUS	RES	COIN	TOTAL
1 AM	8											
2	9											
3	10											
4	11											
5	12											
6 PM	1											
7	2											
8	3											
9	4											
10	5											
11	6											
12	7											
13	8											
14	9											
15	10											
16	11											
17	12											
18 AM	1											
19	2											
20	3											
21	4											
22	5											
23	6											
24	7											
2) TOTAL												

ATTACHMENT D
 DOCKET NO. 87-0790-TL
 ORDER NO. 24257
 PAGE 38 OF 49



FSD: MJ04-00-2-C
 DATE: 04/01/91
 TIME: 09:38

EAS/OPTIONAL CALLING PLAN STUDY
 TRENTON TO BRANFORD (I) - RES

FORM: 4311-3
 RETAIN: OPT
 AREA: JACKSONVILL
 PAGE: 4

CYCLE: 039 JES NUMBER: JOB06947 JOB NAME: MJ04A03 JOB STEP: MJ04A03 PROC STEP: S010 PROGRAM NAME: MJ04A020

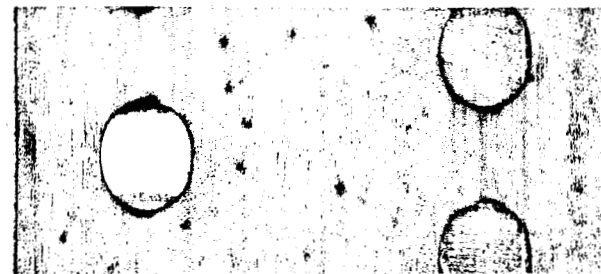
ORIGINATING RATE-CENTER: 225*****
 TERMINATING RATE-CENTER: 024*****

STUDY PERIOD: 02/01/91 THRU 03/03/91
 REQUEST NUMBER: 18

MINUTES OF USAGE BY RATE CLASS

HR OF DAY	DAY RATE			EVENING RATE			NIGHT RATE/WEEKEND					
	BUS	RES	COIN	TOTAL	BUS	RES	COIN	TOTAL	BUS	RES	COIN	TOTAL
1 AM	8											
2	9											
3	10											
4	11											
5	12											
6 PM	1											
7	2											
8	3											
9	4											
10	5											
11	6											
12	7											
13	8											
14	9											
15	10											
16	11											
17	12											
18 AM	1											
19	2											
20	3											
21	4											
22	5											
23	6											
24	7											
25 TOTAL												

ATTACHMENT D
 DOCKET NO. 87-0790-TL
 ORDER NO. 24257
 PAGE 39 OF 49



FSD: MJ04-00-2-C
DATE: 04/01/91
TIME: 09:38

EAS/OPTIONAL CALLING PLAN STUDY
TRENTON TO BRANFORD (I) - BUS

FORM: 4311-3
RETAIN: OPT
AREA: JACKSONVILL
PAGE: 3

CYCLE: 039 JES NUMBER: JOB06947 JOB NAME: MJ04A03 JOB STEP: MJ04A03 PROC STEP: S010 PROGRAM NAME: MJ04A020

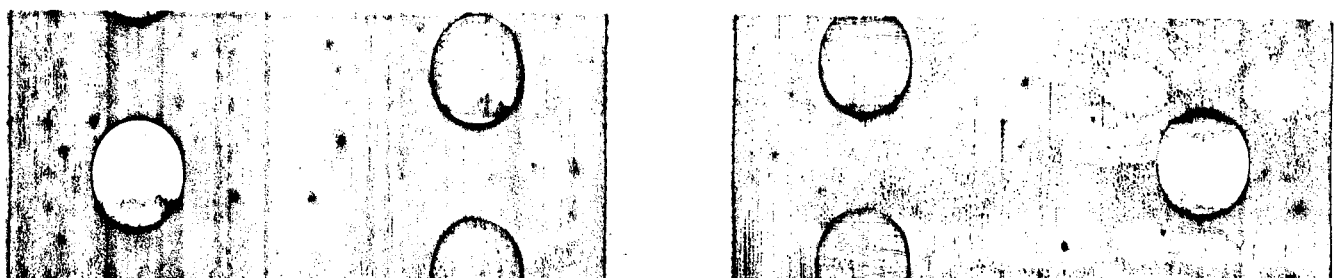
ORIGINATING RATE-CENTER: 225*****
TERMINATING RATE-CENTER: 024*****

STUDY PERIOD: 02/01/91 THRU 03/03/91
REQUEST NUMBER: 17

MESSAGES BY RATE CLASS

HR OF DAY	DAY RATE				EVENING RATE				NIGHT RATE/WEEKEND			
	BUS	RES	COIN	TOTAL	BUS	RES	COIN	TOTAL	BUS	RES	COIN	TOTAL
1 AM												
2												
3												
4												
5 PM												
6												
7												
8												
9												
10												
11												
12												
13												
14												
15												
16												
17 AM												
18												
19												
20												
21												
22												
23												
24												
25 TOTAL												

ATTACHMENT D
DOCKET NO. 87-0790-TL
ORDER NO. 24257
PAGE 40 OF 49



FSD: MJ04-00-2-C
DATE: 04/01/91
TIME: 09:38

EAS/OPTIONAL CALLING PLAN STUDY
TRENTON TO BRANFORD (I) - BUS

FORM: 4311-3
RETAIN: OPT
AREA: JACKSONVILL
PAGE: 4

CYCLE: 039 JES NUMBER: JOB06947 JOB NAME: MJ04A03 JOB STEP: MJ04A03 PROC STEP: S010

PROGRAM NAME: MJ04A020

ORIGINATING RATE-CENTER: 225*****
TERMINATING RATE-CENTER: 024*****

STUDY PERIOD: 02/01/91 THRU 03/03/91
REQUEST NUMBER: 17

MINUTES OF USAGE BY RATE CLASS

DAY RATE

EVENING RATE

NIGHT RATE/WEEKEND

HR OF DAY	DAY RATE			EVENING RATE			NIGHT RATE/WEEKEND			
	BUS	RES	COIN	BUS	RES	COIN	BUS	RES	COIN	TOTAL
1 AM	8									
2 AM	9									
3 AM	10									
4 AM	11									
5 AM	12									
6 AM	1									
7 AM	2									
8 AM	3									
9 AM	4									
10 AM	5									
11 AM	6									
12 PM	7									
13 PM	8									
14 PM	9									
15 PM	10									
16 PM	11									
17 PM	12									
18 PM	1									
19 PM	2									
20 PM	3									
21 PM	4									
22 PM	5									
23 PM	6									
24 PM	7									
TOTAL	20									

ATTACHMENT D
DOCKET NO. 87-0790-TL
ORDER NO. 24257
PAGE 41 OF 49

FSD: MJ04-00-2-C
DATE: 04/01/91
TIME: 09:38

EAS/OPTIONAL CALLING PLAN STUDY
TRENTON TO HIGH SPRINGS (I) - RES

FORM: 4311-3
RETAIN: OPT
AREA: JACKSONVILL
PAGE: 4

CYCLE: 039 JES NUMBER: JOB06947 JOB NAME: MJ04A03 JOB STEP: MJ04A03 PROC STEP: S010

PROGRAM NAME: MJ04A020

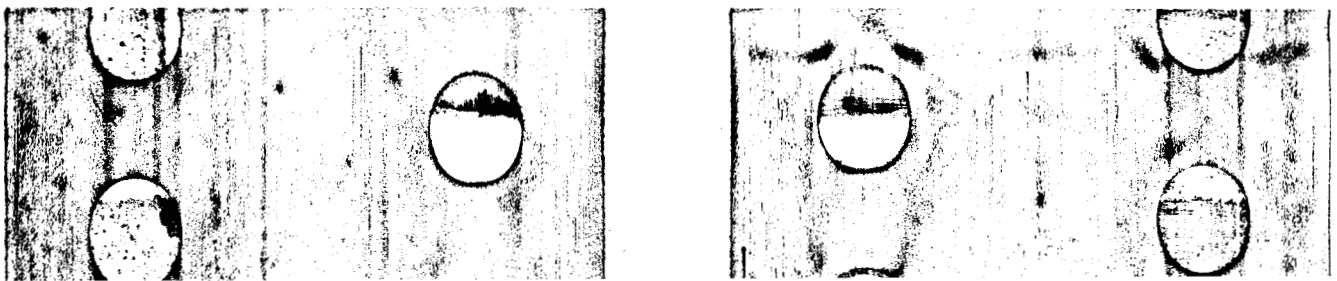
ORIGINATING RATE-CENTER: 225*****
TERMINATING RATE-CENTER: 100*****

STUDY PERIOD: 02/01/91 THRU 03/03/91
REQUEST NUMBER: 20

MINUTES OF USAGE BY RATE CLASS

HR OF DAY	DAY RATE			EVENING RATE			NIGHT RATE/WEEKEND			
	BUS	RES	COIN	BUS	RES	COIN	BUS	RES	COIN	TOTAL
2 AM										
3										
4										
5 PM										
6										
7										
8										
9										
10										
11										
12										
1										
2										
3										
4										
5										
6										
7										
8										
9										
10										
11										
12										
1 AM										
2										
3										
4										
5										
6										
7										
25 TOTAL										

ATTACHMENT D
DOCKET NO. 87-0790-TL
ORDER NO. 24257
PAGE 43 OF 49



FSD: MJ04-00-2-C
 DATE: 04/01/91
 TIME: 09:38
 CYCLE: 039 JES NUMBER: JOB06947

EAS/OPTIONAL CALLING PLAN STUDY
 TRENTON TO HIGH SPRINGS (I) - BUS

FORM: 4311-3
 RETAIN: OPT
 AREA: JACKSONVILL
 PAGE: 3

ORIGINATING RATE-CENTER: 225*****
 TERMINATING RATE-CENTER: 100*****

PROGRAM NAME: MJ04A020
 STUDY PERIOD: 02/01/91 THRU 03/03/91
 REQUEST NUMBER: 19

MESSAGES BY RATE CLASS

HR OF DAY	DAY RATE				EVENING RATE				NIGHT RATE/WEEKEND			
	BUS	RES	COIN	TOTAL	BUS	RES	COIN	TOTAL	BUS	RES	COIN	TOTAL
1 AM												
2												
3												
4												
5												
6												
7												
8												
9												
10												
11												
12												
1 PM												
2												
3												
4												
5												
6												
7												
8												
9												
10												
11												
12												
1 AM												
2												
3												
4												
5												
6												
7												
21 TOTAL												

ATTACHMENT D
 DOCKET NO. 87-0790-TL
 ORDER NO. 24257
 PAGE 44 OF 49

FSD: MJ04-00-2-C
DATE: 04/01/91
TIME: 09:38
CYCLE: 039

EAS/OPTIONAL CALLING PLAN STUDY
TRENTON TO HIGH SPRINGS (I) - BUS

FORM: 4311-3
RETAIN: OPT
AREA: JACKSONVILLE
PAGE: 4

ORIGINATING RATE-CENTER: 225*****
TERMINATING RATE-CENTER: 100*****

JES NUMBER: JOB06947 JOB NAME: MJ04A03 JOB STEP: MJ04A03 PROC STEP: S010
PROGRAM NAME: MJ04A020
STUDY PERIOD: 02/01/91 THRU 03/03/91
REQUEST NUMBER: 19

MINUTES OF USAGE BY RATE CLASS

DAY RATE

EVENING RATE

NIGHT RATE/WEEKEND

HR OF DAY

1 AM 8
2 9
3 10
4 11
5 12
6 PM 1
7 2
8 3
9 4
10 5
11 6
12 7
13 8
14 9
15 10
16 11
17 12
18 AM 1
19 2
20 3
21 4
22 5
23 6
24 7

23 TOTAL

ATTACHMENT D
DOCKET NO. 87-0790-TL
ORDER NO. 24257
PAGE 45 OF 49



FSD: MJ04-00-2-C
 DATE: 04/23/91
 TIME: 12:29
 CYCLE: 063

EAS/OPTIONAL CALLING PLAN STUDY

NEWBERRY TO BRANFORD (I) - RES

JES NUMBER: JOB02969 JOB NAME: MJ04A03 JOB STEP: MJ04A03 PROC STEP: S010

PROGRAM NAME: MJ04A020

FORM: 4311-3
 RETAIN: OPT
 AREA: JACKSONVILLE
 PAGE: 3

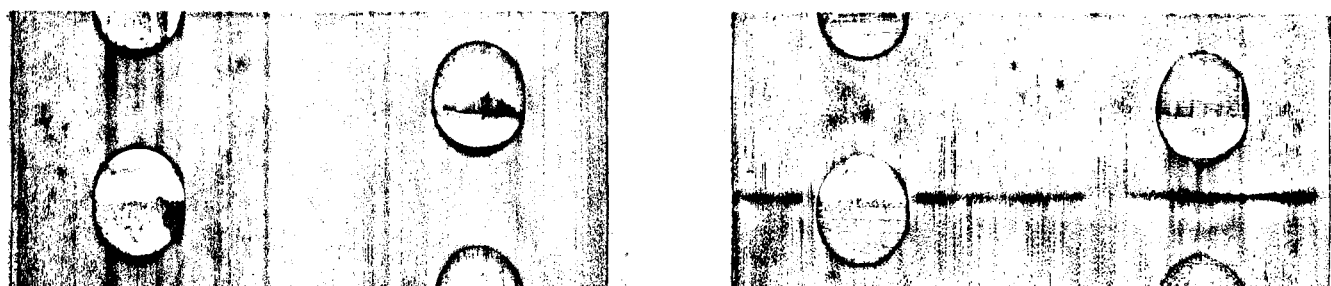
ORIGINATING RATE-CENTER: 162*****
 TERMINATING RATE-CENTER: 024*****

STUDY PERIOD: 02/01/91 THRU 03/03/91
 REQUEST NUMBER: 06

MESSAGES BY RATE CLASS

HR OF DAY	DAY RATE			EVENING RATE			NIGHT RATE/WEEKEND					
	BUS	RES	COIN	TOTAL	BUS	RES	COIN	TOTAL	BUS	RES	COIN	TOTAL
1 AM												
2												
3												
4												
5												
6 PM												
7												
8												
9												
10												
11												
12												
1 AM												
2												
3												
4												
5												
6												
7												
20 TOTAL												

ATTACHMENT D
 DOCKET NO. 87-0790-TL
 ORDER NO. 24257
 PAGE 46 OF 49



FSD: MJ04-00-2-C
 DATE: 04/23/91
 TIME: 12:29
 CYCLE: 063

EAS/OPTIONAL CALLING PLAN STUDY
 NEWBERRY TO BRANFORD (I) - BUS

FORM: 4311-3
 RETAIN: OPT
 AREA: JACKSONVILLE
 PAGE: 3

JES NUMBER: JOB02969 JOB NAME: MJ04A03 JOB STEP: MJ04A03 PROC STEP: S010

PROGRAM NAME: MJ04A020

ORIGINATING RATE-CENTER: 162*****
 TERMINATING RATE-CENTER: 024*****

STUDY PERIOD: 02/01/91 THRU 03/03/91
 REQUEST NUMBER: 05

MESSAGES BY RATE CLASS

HR OF DAY	DAY RATE				EVENING RATE				NIGHT RATE/WEEKEND			
	BUS	RES	COIN	TOTAL	BUS	RES	COIN	TOTAL	BUS	RES	COIN	TOTAL
8 AM												
9												
10												
11												
12												
1 PM												
2												
3												
4												
5												
6												
7												
8												
9												
10												
11												
12												
1 AM												
2												
3												
4												
5												
6												
7												
25 TOTAL												

ATTACHMENT D
 DOCKET NO. 87-0790-TL
 ORDER NO. 24257
 PAGE 48 OF 49

FSD: MJ04-00-2-C
DATE: 04/23/91
TIME: 12:29

EAS/OPTIONAL CALLING PLAN STUDY
NEWBERRY TO BRANFORD (I) - BUS

FORM: 4311-3
RETAIN: OPT
AREA: JACKSONVILL
PAGE: 4

CYCLE: 063 JES NUMBER: JOB02969 JOB NAME: MJ04A03 JOB STEP: MJ04A03 PROC STEP: S010 PROGRAM NAME: MJ04A020

ORIGINATING RATE-CENTER: 162*****
TERMINATING RATE-CENTER: 024*****

STUDY PERIOD: 02/01/91 THRU 03/03/91
REQUEST NUMBER: 05

MINUTES OF USAGE BY RATE CLASS

HR OF DAY	DAY RATE				EVENING RATE				NIGHT RATE/WEEKEND			
	BUS	RES	COIN	TOTAL	BUS	RES	COIN	TOTAL	BUS	RES	COIN	TOTAL
1 AM	8											
2	9											
3	10											
4	11											
5	12											
6 PM	1											
7	2											
8	3											
9	4											
10	5											
11	6											
12	7											
1	8											
2	9											
3	10											
4	11											
5	12											
6 AM	1											
7	2											
8	3											
9	4											
10	5											
11	6											
12	7											
TOTAL	23											

ATTACHMENT D
DOCKET NO. 87-0790-TL
ORDER NO. 24257
PAGE 49 OF 49

SOUTHERN BELL TELEPHONE AND TELEGRAPH COMPANY
FLORIDA
INTER-EXCHANGE TRAFFIC DATA
BETWEEN
EAS-NEWBERRY TO TRENTON, TRENTON (POCKET)
-TRENTON TO NEWBERRY, NEWBERRY (POCKET), BRANFORD (I), HIGH SPRINGS (I)
-NEWBERRY (POCKET) TO TRENTON, TRENTON (POCKET), BRANFORD (I)
-TRENTON (POCKET) TO NEWBERRY, NEWBERRY (POCKET)

FOREIGN EXCHANGE SERVICE

<u>TELEPHONE NO. IN (PHYSICAL LOCATION)</u>	<u>SERVED FROM LOC (DIAL TONE)</u>	<u>NUMBER OF LINES</u> ¹	<u>ESTIMATED MONTHLY CALLS</u> ²	<u>ESTIMATED BUSY HOUR CCS</u> ³
NEWBERRY	TRENTON	0	0	0
TRENTON	NEWBERRY	14	13699	84
NEWBERRY (POCKET)	TRENTON	0	0	0
TRENTON	NEWBERRY (POCKET)	0	0	0
NEWBERRY	TRENTON (POCKET)	0	0	0
TRENTON (POCKET)	NEWBERRY	0	0	0
NEWBERRY (POCKET)	TRENTON (POCKET)	0	0	0
TRENTON (POCKET)	NEWBERRY (POCKET)	0	0	0
1 NEWBERRY (POCKET)	BRANFORD (I)			
2 TRENTON	BRANFORD (I)			
3 TRENTON	HIGH SPRINGS (I)			
4 NEWBERRY	BRANFORD (I)			

NOTE 1: AS OF MARCH 11, 1991

NOTE 2: CALLS DEFINED AS MESSAGES OR COMPLETED CALLS

NOTE 3: 1 CCS EQUALS 100 SECONDS

SOURCE: SPECIAL FX EXTRACTION

SOUTHERN BELL TELEPHONE AND TELEGRAPH COMPANY
FLORIDA
MONTHLY MESSAGES AND CALLING RATE PER ACCESS LINE
DOCKET NO. 87-0790-TL ORDER NO. 24257

EAS-NEWBERRY TO TRENTON, TRENTON (POCKET)
-TRENTON TO NEWBERRY, NEWBERRY (POCKET), BRANFORD (I), HIGH SPRINGS (I)
-NEWBERRY (POCKET) TO TRENTON, TRENTON (POCKET), BRANFORD (I)
-TRENTON (POCKET) TO NEWBERRY, NEWBERRY (POCKET)

FOREIGN EXCHANGE INCLUDED

STUDY ROUTE	MONTHLY MESSAGES			CALLING RATE PER ACCESS LINE			PER MONTH*
	RESIDENCE	BUSINESS	COMBINED	RESIDENCE	BUSINESS	COMBINED	COMBINED 2-WAY
NEWBERRY TO TRENTON ¹	10210	7788	17998	4.01	27.33	6.35	5.85
TRENTON TO NEWBERRY ¹	5057	8472	13529	2.41	18.62	5.30	5.85
NEWBERRY (POCKET) TO TRENTON	8355	204	8559	12.14	5.10	11.76	4.06
TRENTON TO NEWBERRY (POCKET)	3661	1113	4774	1.74	2.45	1.87	4.06
NEWBERRY TO TRENTON (POCKET)	9231	779	10010	3.62	2.73	3.53	3.36
TRENTON (POCKET) TO NEWBERRY	4853	1196	6049	2.94	4.11	3.12	3.36
NEWBERRY (POCKET) TO TRENTON (POCKET)	6897	177	7074	10.02	4.43	9.72	4.12
TRENTON (POCKET) TO NEWBERRY (POCKET)	3197	727	3924	1.94	2.50	2.02	4.12
NEWBERRY (POCKET) TO 1 BRANFORD (I)							N/A
TRENTON TO 2 BRANFORD (I)							N/A
TRENTON TO 3 HIGH SPRINGS (I)							N/A
NEWBERRY TO 4 BRANFORD (I)							N/A

*Official, coin and centrex messages are not included in call distribution studies; therefore, official, coin and centrex access lines from Attachment C were excluded in calculating calling rates.

Source: Call distribution study (02-01-91 THRU 03-03-91) Monthly Report #7 (03/11/91) Special FX Extracti n.

¹(02-11-91 THRU 03-13-91)

MAP OF
 GILCHRIST COUNTY

SOUTHERN BELL TELEPHONE AND TELEGRAPH COMPANY
 FLORIDA

MONTHLY MESSAGES AND CALLING RATE PER ACCESS LINE

DOCKET NO. 87-0790-TL ORDER NO. 24257

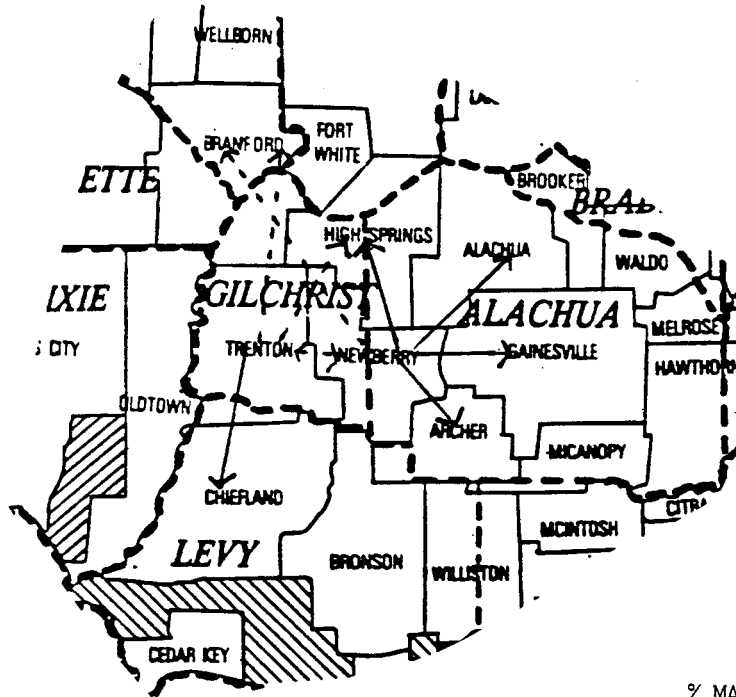
EAS-NEWBERRY TO TRENTON, TRENTON (POCKET)

-TRENTON TO NEWBERRY, NEWBERRY (POCKET), BRANFORD (I), HIGH SPRINGS (I)

-NEWBERRY (POCKET) TO TRENTON, TRENTON (POCKET), BRANFORD (I)

-TRENTON (POCKET) TO NEWBERRY, NEWBERRY (POCKET)

INDICATING EXISTING TELEPHONE EXCHANGES AND EAS STUDY ROUTES



←——→ EXISTING EAS
 - - - - - STUDY ROUTE

% MAKING 2
 OR MORE
 CALLS PER MONTH

FROM	TO	MILEAGE	M/M/M	% MAKING 2 OR MORE CALLS PER MONTH
NEWBERRY	TRENTON	13	3.94	25.21
TRENTON	NEWBERRY	13	2.62	26.56
NEWBERRY (POCKET)	TRENTON	13	11.76	54.40
TRENTON	NEWBERRY (POCKET)	13	1.87	17.71
NEWBERRY	TRENTON (POCKET)	13	3.53	22.34
TRENTON (POCKET)	NEWBERRY	13	3.12	29.02
NEWBERRY (POCKET)	TRENTON (POCKET)	13	9.72	50.82
TRENTON (POCKET)	NEWBERRY (POCKET)	13	2.02	20.05
1 NEWBERRY (POCKET)	BRANFORD (I)	30		
2 TRENTON	BRANFORD (I)	25		
3 TRENTON	HIGH SPRINGS (I)	21		
4 NEWBERRY	BRANFORD	30		

SUBJECT: DEMOGRAPHIC DESCRIPTIONS

NEWBERRY TO HIGH SPRINGS EXCHANGE

THE NEWBERRY EXCHANGE IS LOCATED PRIMARILY IN ALACHUA COUNTY, AS ARE THE MAJORITY OF NEWBERRY TELEPHONE SUBSCRIBERS (75%). THE TOWN OF NEWBERRY, POPULATION 2115, IS THE ONLY INCORPORATED COMMUNITY IN THIS EXCHANGE AND THE TOWN ITSELF IS LOCATED IN ALACHUA COUNTY. MOST OF THE LAND IN THIS EXCHANGE IS EXTREMELY RURAL. THE PRIMARY SOURCES OF LOCAL EMPLOYMENT ARE AGRICULTURE AND TIMBER RELATED. IN ADDITION, THE GAINESVILLE AND N.W. GAINESVILLE WIRE CENTERS OFFER MAJOR OPPORTUNITIES FOR EMPLOYMENT FOR RESIDENTS WHO RETREAT TO THE NEWBERRY AREA AS A "BEDROOM COMMUNITY". FOR MOST GOODS AND SERVICES, OTHER THAN BASIC SHOPPING, MOST NEWBERRY SUBSCRIBERS, PARTICULARLY THOSE RESIDING IN ALACHUA COUNTY, RELY ON THE GAINESVILLE AREA FOR EXPANDED SHOPPING, ENTERTAINMENT, SERVICES, AND MEDICAL SERVICES.

THE HIGH SPRINGS EXCHANGE HAS PORTIONS LOCATED IN THREE COUNTIES; ALACHUA, GILCHRIST AND COLUMBIA. THE TOWN OF HIGH SPRINGS ITSELF, POPULATION 2888, IS LOCATED IN ALACHUA COUNTY. THE OUTLYING PORTIONS OF THE EXCHANGE, MOST OF WHICH ARE LOCATED IN COLUMBUS AND GILCHRIST COUNTIES, ARE EXTREMELY RURAL. MOST OF THE CUSTOMERS IN THE ENTIRE EXCHANGE WOULD RELY PRIMARILY ON THE CITY OF GAINESVILLE, THE TOWN OF ALACHUA, AND THE TOWN OF HIGH SPRINGS ITSELF FOR GOODS AND SERVICES, ENTERTAINMENT, EMPLOYMENT AND MEDICAL SERVICES. NEWBERRY AND HIGH SPRINGS ARE ADJACENT EXCHANGES, AND THERE MAY BE SOME FAMILY TIES AND COMMUNITY OF INTEREST NEAR THEIR COMMON BOUNDARY.

NEWBERRY TO BRANFORD EXCHANGE

THE NEWBERRY EXCHANGE IS LOCATED PRIMARILY IN ALACHUA COUNTY, AS ARE THE MAJORITY OF NEWBERRY TELEPHONE SUBSCRIBERS (75%). THE TOWN OF NEWBERRY, POPULATION 2115, IS THE ONLY INCORPORATED COMMUNITY IN THIS EXCHANGE AND THE TOWN ITSELF IS LOCATED IN ALACHUA COUNTY. MOST OF THE LAND IN THIS EXCHANGE IS EXTREMELY RURAL. THE PRIMARY SOURCES OF LOCAL EMPLOYMENT ARE AGRICULTURE AND TIMBER RELATED. IN ADDITION, THE GAINESVILLE AND N.W. GAINESVILLE WIRE CENTERS OFFER MAJOR OPPORTUNITIES FOR EMPLOYMENT FOR RESIDENTS WHO RETREAT TO THE NEWBERRY AREA AS A "BEDROOM COMMUNITY". FOR MOST GOODS AND SERVICES, OTHER THAN BASIC SHOPPING, MOST NEWBERRY SUBSCRIBERS, PARTICULARLY THOSE RESIDING IN ALACHUA COUNTY, RELY ON THE GAINESVILLE AREA FOR EXPANDED SHOPPING, ENTERTAINMENT, SERVICES, AND MEDICAL SERVICES.

THE BRANFORD EXCHANGE ENCOMPASSES TERRITORY IN SUWANNEE, LAFAYETTE AND GILCHRIST COUNTIES. THE TOWN OF BRANFORD ITSELF, POPULATION 739, IS LOCATED IN SUWANNEE COUNTY. THE EXCHANGE IS EXTREMELY RURAL IN NATURE. MOST BRANFORD SUBSCRIBERS WOULD BE EXPECTED TO GRAVITATE TOWARD LAKE CITY AND LIVE OAK FOR GOODS AND SERVICES, SOME EMPLOYMENT, AND MEDICAL CARE. ALTHOUGH PORTIONS OF BOTH THE BRANFORD AND NEWBERRY EXCHANGES ARE LOCATED IN GILCHRIST COUNTY, THEY ARE NOT EVEN ADJACENT EXCHANGES; THE TRENTON EXCHANGE STANDS BETWEEN THEM. THEREFORE, IT IS EXPECTED THAT THERE WOULD BE VERY LITTLE COMMUNITY OF INTEREST BETWEEN THE TWO EXCHANGES.

TRENTON TO HIGH SPRINGS

THE TRENTON EXCHANGE IS LOCATED PRIMARILY IN GILCHRIST COUNTY, WITH A SMALL PORTION LOCATED IN LEVY COUNTY. THE TOWN OF TRENTON, POPULATION 1468, IS THE COUNTY SEAT FOR GILCHRIST COUNTY. THE TRENTON EXCHANGE ALSO INCLUDES THE TOWN OF BELL, POPULATION 214, AND THE EASTERN PORTION OF THE TOWN OF FANNING SPRINGS, POPULATION 244. MOST OF THE LAND IN THIS EXCHANGE IS EXTREMELY RURAL. THE PRIMARY SOURCES OF LOCAL PRIVATE EMPLOYMENT ARE CONCENTRATED IN THE FIELDS OF AGRICULTURE, NURSING HOME CARE, AND CONSTRUCTION. ALSO PROVIDING LOCAL EMPLOYMENT OPPORTUNITIES IS THE LANCASTER YOUTH CORRECTIONAL CENTER, WHICH EMPLOYS APPROXIMATELY 200 PERSONS. THE SUWANNEE RIVER FORMS THE WESTERN BOUNDARY OF THE EXCHANGE, AND ADDS SOME SEASONAL CHARACTERISTICS TO THE ECONOMY.

THE HIGH SPRINGS EXCHANGE ENCOMPASSES TERRITORY IN ALACHUA, COLUMBIA, AND GILCHRIST. THE TOWN OF HIGH SPRINGS ITSELF, POPULATION 2888, IS GEOGRAPHICALLY LOCATED IN ALACHUA COUNTY. THE OUTLYING PORTIONS OF THE EXCHANGE, PRIMARILY THE TERRITORY IN COLUMBIA AND GILCHRIST COUNTIES, IS EXTREMELY RURAL. MOST OF THE CUSTOMERS IN THE ENTIRE HIGH SPRINGS EXCHANGE RELY ON THE CITY OF GAINESVILLE, AND ON THE TOWNS OF ALACHUA AND THE HIGH SPRINGS ITSELF FOR EMPLOYMENT, SHOPPING, MEDICAL SERVICES, SCHOOLS, AND ENTERTAINMENT. ONLY THAT PORTION OF THE HIGH SPRINGS EXCHANGE WHICH IS LOCATED IN GILCHRIST COUNTY WOULD BE EXPECTED TO HAVE AN ONGOING NEED TO CALL TRENTON, THE COUNTY SEAT.

TRENTON TO BRANFORD EXCHANGE

THE TRENTON EXCHANGE IS LOCATED PRIMARILY IN GILCHRIST COUNTY, WITH A SMALL PORTION LOCATED IN LEVY COUNTY. THE TOWN OF TRENTON, POPULATION 1468, IS THE COUNTY SEAT FOR GILCHRIST COUNTY. THE TRENTON EXCHANGE ALSO INCLUDES THE TOWN OF BELL, POPULATION 214, AND THE EASTERN PORTION OF THE TOWN OF FANNING SPRINGS, POPULATION 244. MOST OF THE LAND IN THIS EXCHANGE IS EXTREMELY RURAL. THE PRIMARY SOURCES OF LOCAL PRIVATE EMPLOYMENT ARE CONCENTRATED IN THE FIELDS OF AGRICULTURE, NURSING HOME CARE, AND CONSTRUCTION. ALSO PROVIDING LOCAL EMPLOYMENT OPPORTUNITIES IS THE LANCASTER YOUTH CORRECTIONAL CENTER, WHICH EMPLOYS APPROXIMATELY 200 PERSONS. THE SUWANNEE RIVER FORMS THE WESTERN BOUNDARY OF THE EXCHANGE, AND ADDS SOME SEASONAL CHARACTERISTICS TO THE ECONOMY.

THE BRANFORD EXCHANGE ENCOMPASSES TERRITORY IN SUWANNEE, LAFAYETTE, AND GILCHRIST. THE TOWN OF BRANFORD ITSELF, POPULATION 739, IS LOCATED IN SUWANNEE COUNTY. THE EXCHANGE IS EXTREMELY RURAL IN NATURE. ASIDE FROM THE BRANFORD SUBSCRIBERS WHO LIVE IN GILCHRIST COUNTY, THERE WOULD BE LITTLE COMMUNITY OF INTEREST BETWEEN THE TWO EXCHANGES. MOST BRANFORD SUBSCRIBERS WOULD BE EXPECTED TO GRAVITATE TOWARD LAKE CITY AND LIVE OAK FOR GOODS, SERVICES, SOME EMPLOYMENT AND MEDICAL CARE. FOR THOSE SUBSCRIBERS IN THE GILCHRIST COUNTY PORTION OF THE EXCHANGE, CALLING TO TRENTON, THE COUNTY SEAT, WOULD SOMETIMES BE NECESSARY.

NEWBERRY TO TRENTON EXCHANGE

THE NEWBERRY EXCHANGE IS LOCATED PRIMARILY IN ALACHUA COUNTY, AS ARE THE MAJORITY OF NEWBERRY TELEPHONE SUBSCRIBERS (75%). THE TOWN OF NEWBERRY, POPULATION 2115, IS THE ONLY INCORPORATED COMMUNITY IN THIS EXCHANGE AND THE TOWN ITSELF IS LOCATED IN ALACHUA COUNTY. MOST OF THE LAND IN THIS EXCHANGE IS EXTREMELY RURAL. THE PRIMARY SOURCES OF LOCAL EMPLOYMENT ARE AGRICULTURE AND TIMBER RELATED. IN ADDITION, THE GAINESVILLE AND N.W. GAINESVILLE WIRE CENTERS OFFER MAJOR OPPORTUNITIES FOR EMPLOYMENT FOR RESIDENTS WHO RETREAT TO THE NEWBERRY AREA AS A "BEDROOM COMMUNITY". FOR MOST GOODS AND SERVICES, OTHER THAN BASIC SHOPPING, MOST NEWBERRY SUBSCRIBERS, PARTICULARLY THOSE RESIDING IN ALACHUA COUNTY, RELY ON THE GAINESVILLE AREA FOR EXPANDED SHOPPING, ENTERTAINMENT, SERVICES, AND MEDICAL SERVICES.

WHILE THE APPROXIMATELY 25% OF NEWBERRY SUBSCRIBERS WHO LIVE IN GILCHRIST COUNTY ALSO RELY ON THE COMMUNITIES OF NEWBERRY, N.W. GAINESVILLE AND GAINESVILLE PROPER FOR JOBS, GOODS, SERVICES, ENTERTAINMENT AND MEDICAL SERVICES, THEIR COUNTY GOVERNMENT IS LOCATED IN TRENTON. THUS THEY WOULD EXPERIENCE A GREATER NEED FOR LOCAL CALLING TO TRENTON THAN THE ALACHUA COUNTY SUBSCRIBERS OF THE NEWBERRY EXCHANGE. TRENTON MAY ALSO SERVE AS A SOURCE OF EMPLOYMENT FOR SOME, AND FAMILY TIES MAY EXTEND ACROSS THE EXCHANGE BOUNDARY.

TRENTON TO NEWBERRY EXCHANGE

THE TRENTON EXCHANGE IS LOCATED PRIMARILY IN GILCHRIST COUNTY, WITH A SMALL PORTION LOCATED IN LEVY COUNTY. THE TOWN OF TRENTON, POPULATION 1468, IS THE COUNTY SEAT FOR GILCHRIST COUNTY. THE TRENTON EXCHANGE ALSO INCLUDES THE TOWN OF BELL, POPULATION 214, AND THE EASTERN PORTION OF THE TOWN OF FANNING SPRINGS, POPULATION 244. MOST OF THE LAND IN THIS EXCHANGE IS EXTREMELY RURAL. THE PRIMARY SOURCES OF LOCAL PRIVATE EMPLOYMENT ARE CONCENTRATED IN THE FIELDS OF AGRICULTURE, NURSING HOME CARE, AND CONSTRUCTION. ALSO PROVIDING LOCAL EMPLOYMENT OPPORTUNITIES IS THE LANDCASTER YOUTH CORRECTIONAL CENTER, WHICH EMPLOYS APPROXIMATELY 200 PERSONS. THE SUWANNEE RIVER FORMS THE WESTERN BOUNDARY OF THE EXCHANGE, AND ADDS SOME SEASONAL CHARACTERISTICS TO THE ECONOMY.

THE RESIDENTS OF THE TRENTON EXCHANGE HAVE ACCESS TO BASIC SHOPPING NEEDS IN TRENTON. FOR OTHER THAN STAPLES, HOWEVER, THEY PROBABLY RELY ON THE NORTHWEST GAINESVILLE AREA FOR EXPANDED SHOPPING. THE GAINESVILLE AREA WOULD ALSO BE THEIR PRIMARY SOURCE FOR ENTERTAINMENT, SERVICES, AND MEDICAL SERVICES, AND MAY PROVIDE SOME EMPLOYMENT.

THE NEED FOR LOCAL CALLING FROM TRENTON TO NEWBERRY WOULD APPEAR TO BE EXPERIENCED PRIMARILY BY COUNTY GOVERNMENTAL AGENCIES. APPROXIMATELY 25% OF THE NEWBERRY EXCHANGE SUBSCRIBERS ARE LOCATED IN GILCHRIST COUNTY, THE MAJORITY BEING LOCATED IN ALACHUA COUNTY. IN ADDITION, THERE MIGHT BE SOME NEED FOR GILCHRIST COUNTY RESIDENTS TO CALL NEWBERRY WHEN WORKING OR SHOPPING IN TRENTON, OR WHEN CONTACTING FAMILY WHO LIVE IN THE GILCHRIST COUNTY PORTION OF NEWBERRY. THERE WOULD APPEAR TO BE LITTLE DEMAND TO CALL NEWBERRY FOR EMPLOYMENT, GOODS, OR SERVICES, AS NEWBERRY IS ONLY SLIGHTLY LARGER THAN TRENTON.