

1. BEFORE THE PUBLIC SERVICE COMMISSION
2. GULF POWER COMPANY and
3. GULF COAST ELECTRIC COOPERATIVE, INC.
4. DOCKET NO. ██████████
5. DIRECT TESTIMONY OF
6. ARCHIE W. GORDON

7. Q. State your name.

8. A. Archie W. Gordon.

9. Q. State your address.

10. A. Post Office Box 877, 1815 NE Jacksonville Road, Ocala, Florida
11. 34478-0877.

12. Q. State your profession.

13. A. I am a professional engineer certified to practice in the States of
14. Alabama, Florida and Georgia.

15. Q. State your educational background.

16. A. I graduated from local schools in Ocala, Florida and then
17. attended the University of Miami in Coral Gables, Florida; Miami
18. University at Oxford, Ohio; and, the University of Florida at
19. Gainesville, Florida. I received a Bachelor of Electrical
20. Engineering degree from the University of Florida which was bestowed
21. "with honors" in June, 1948.

22. Q. State your professional and employment background.

23. A. I was employed in September, 1948, by Marion Engineering Associates,
24. Inc., of Ocala, Florida. That firm was engaged in engineering and
25. surveying, and had outstanding contracts with various rural

1. electrification projects over the State of Florida. I was placed
2. in charge of electrical engineering, and finally, the total
3. engineering department of that firm. After approximately five (5)
4. years of professional experience, I became a Registered Professional
5. Engineer. I left that firm in September, 1966, to form Gordon
6. Engineering Associates, Inc., of which I am now president.

7. Q. Are you associated with Gulf Coast Electric Cooperative?

8. A. Yes.

9. Q. What is Gulf Coast Electric Cooperative, Inc.

10. A. It is an REA cooperative organized pursuant to Chapter 425, Florida
11. Statutes.

12. Q. How long have you been associated with Gulf Coast Electric
13. Cooperative?

14. A. Since July 9, 1949, when Marion Engineering Associates was named
15. system engineer. Gordon Engineering was subsequently selected during
16. the fall of 1966 to succeed the prior firm.

17. Q. In what capacity have you been associated with Gulf Coast Electric
18. Cooperative?

19. A. I served as resident engineer, both in person and as representative
20. of the professional companies which employed me. I have served as
21. engineer of record, advisor, consultant, supervisor, foreman,
22. assistant, etc., on various matters affecting the Cooperative during
23. the past 45 years.

24. Q. What has been the scope of your duties or responsibilities with Gulf
25. Coast Electric Cooperative?

1. A. I have represented Gulf Coast Electric on project of long range
2. planning, area coverage, surveys, preparation of plans and
3. specifications, supervision of contractors and force account
4. construction, financial forecasting, preparation of current work
5. plans, feasibility reports, loan applications, power requirement
6. studies, rate studies, etc. I have also been invited and designated
7. by various board of trustees and managers to represent Gulf Coast
8. in negotiations and deliberations concerning power supply, service
9. areas, service reliability, maintenance programs, etc. As a result,
10. I have become the individual with the longest tenure of service who
11. can provide a complete historical chronology of events and details
12. concerning Gulf Coast Electric Cooperative.

13. Q. Are you familiar with Gulf Coast Electric Cooperative's distribution
14. system and its facilities?

15. A. Yes, I have been so familiar for the past 45 years.

16. Q. How did you become familiar with Gulf Coast Electric's distribution
17. system and facilities?

18. A. By physically riding the many roads through the service area, mapping
19. the electric facility, both existing and proposed; periodically
20. updating construction records, examining historical records of the
21. Cooperative, attending formal and informal meetings of the Board of
22. Trustees and its committies, attending other meetings and projects
23. assigned to me, such as law suits, consumer complaints, consumer
24. affairs, hearings, service negotiations, etc.

25. Q. When you first became associated with the cooperative in 1949, what,

1. if anything, did you have to do with the design and long range
2. planning of Gulf Coast Electric's distribution facilities?

3. A. Both were under my direct control and responsibility. The results
4. reflect my methodology, thinking and recommendation.

5. Q. Are you familiar with the area of south Washington County, Florida,
6. generally from the Bay-Washington County line, west of State Road
7. 77, and southeast of the community of Vernon, Florida?

8. A. Yes.

9. Q. How did you first become familiar with it?

10. A. During the years 1949 and 1950, I travelled all the roads in that
11. area in order to locate unelectrified residences. At the same time,
12. I corrected a set of system maps which were provided to me by Gulf
13. Coast Electric. These maps indicated some existing construction that
14. had occurred prior to my presence in the area, and I made field
15. additions and/or revisions to reflect the electric distribution
16. system as I found it in the field.

17. Q. At that time, how many paved roads extended west of State Road 77?

18. A. None. The next existing paved road west was State Road 79, which
19. ran northerly and northeasterly from West Bay to Ebro, and then to
20. Vernon. State Road 278 was paved from Vernon to Wausau.

21. Q. What kind of maps were provided to you by Gulf Coast Electric, and
22. how and when were they drawn?

23. A. The maps were a complete set of drafting ink on linen media
24. drawings that generally covered the entire area in which Gulf Coast
25. provided service. The roads and topographic features shown on the

1. maps had been reproduced from State Road Department maps of
2. Washington County, and the dates of these State Road Department base
3. maps were shown to be from 1945 through 1948.

4. Q. Did you have any other type of map of this vicinity?

5. A. Yes, the U.S. Geological Survey, Washington, D.C., was preparing maps
6. of the area, and I was fortunate to secure an advance set of USGS
7. work prints to actually avoid becoming lost. There was a great
8. inaccuracy in the State Road Department products of 1945 through
9. 1948.

10. Q. Are you specifically familiar with the roads that left State Road
11. 77 in the vicinity of the Greenhead Cemetary, the ones that went
12. northerly towards Vernon?

13. A. Yes.

14. Q. What was along these roads when your first travelled them?

15. A. There were Gulf Coast Electric Cooperative power lines along the
16. general course of the existing roads. These lines and prompt
17. subsequent extensions served all unelectrified residences in the
18. area.

19. Q. Can you tell us where the Gulf Coast Electric power lines were
20. located?

21. A. In the fall of 1950, there was one line that went west along a
22. straight graded road known as "Red Sapp Road" through the center of
23. land Sections 4 and 5, west of State Road 77. This line served
24. residences on the south side of Martin Lake, a residence or so on
25. to the south, two residences on Martin Lake at its west side, another

1. residence up on the west side of Bowen Pond. It then went north and
2. passed between Horselot Pond and Dunford Pond. There was a residence
3. on the west side of the road that was receiving service, and it was
4. occupied by A. M. Everett. The line then went around the south and
5. east side of Payne Pond and continued on north where it had served
6. two other residences which were disconnected when I viewed them.
7. A new service to Thomas Payne was on this line just east of the
8. Everett service.

9. Q. Mr. Gordon, how can you be so specific about all of this?

10. A. The detail of the original maps in this vicinity, and the previous
11. construction mapping prior to my arrival in this area in 1950 was
12. badly at odds with the actual topography and location of the
13. facilities. It required that I totally revise the base maps to more
14. accurately reflect the line and area which I have just described to
15. you.

16. Q. Do you still have copies of this?

17. A. Yes, here is a xeroxed composite of a portion of two adjacent maps
18. which are combined to illustrate the problem. You can still detect
19. the presence of earlier mapping by the erasure shadows and the
20. different styles and shading of the ink work. I attach this print
21. to my testimony as Exhibit "1".

22. Q. Where is the disputed area in regard to this map?

23. A. The disputed area is twofold. First, it is all of south Washington
24. County which lies south of a general line drawn from Moss Hill Church
25. on State Road No. 279 to a point just south of Wausau on State Road

1. No. 77 and this line extends to both east and west in Washington
2. County. The area then extends southerly and easterly to the
3. boundaries of Bay County. This includes areas to the west of S.R.
4. 279 and east of S.R. 77.

5. Second, it is the site of the Washington County Correctional
6. Institute which lies north of the junction of S.R. 279 and S.R. 77
7. in a portion of land sections 4 and 5 which we have previously
8. discussed. The Correctional Institute does not extend easterly,
9. westerly or southerly from these two roads.

10. The disputed area is not formally indicated as such on Exhibit "1"
11. because all of the area indicated thereon is in south Washington
12. County and it does not indicate State Road 279 as even existing.

13. Q. Were there any other Gulf Coast powerlines between Greenhead Cemetery
14. and Vernon?

15. A. Yes, there was a major side tap that served the Pleasant Hill
16. vicinity which is west of State Road No. 77 and another which was
17. known as the "Double Branch" tap. The Double Branch tap left the
18. main powerline on State Road No. 77 approximate to the forestry
19. lookout tower and went westerly to Spring Hollow and Double Branch
20. Pond. I personally staked a westerly extension of this tap to the
21. vicinity of the Moss Hill Church which is about 2 miles southeast
22. of Vernon.

23. Q. Were these lines which you have described originally joined together
24. along their western extremities?

25. A. No. There were no reliable all weather roads available for easy

1. traverse of the area.
2. Q. What happened to this area to change it, and how did the Gulf
3. Coast power lines fit in with the changes?
4. A. The State Road Department built new State Road No. 279 from the
5. Greenhead Cemetery to Vernon by way of Dunford Pond and Moss Hill
6. Church. I believe this was done just prior to 1970. This State Road
7. has more recently become a County road and I use the term State Road
8. as interchangeable with County Road as may be applicable on recent
9. dates. The new road utilized the old route generally, but by-passed
10. portions of the old road and the adjacent electrical facilities of
11. Gulf Coast which provided traditional retail electric service to the
12. entire area south of the Moss Hill Church.
13. Q. What happened next?
14. A. Next, came the Deltona development at Sunny Hills, and this was
15. followed by the first intrusive electrical construction by Gulf Power
16. Company along the east right of way of State Road No. 279, and west
17. right of way of State Road No. 77 in the year 1971 for the purpose
18. of making initial service to Sunny Hills.
19. Q. Did this new line cross the facilities of Gulf Coast Electric?
20. A. Yes it did at numerous places, but at that time it did not serve any
21. electrical load south of the Moss Hill Church vicinity. My memory
22. is that it crossed over Gulf Coast facilities 13 times and crossed
23. under two times. It served nothing enroute until it reached Sunny
24. Hills and entered into that property.
25. Q. Has Gulf Power provided electric service to any of the disputed

1. area around the intersection of S.R. 279 and S.R. 77 during the years
2. since 1971, or has any Gulf Power electric facility ever been located
3. thereon?

4. A. No sir, but they have since and approximate to 1984 built an
5. intrusive electrical facility into the Leisure Lakes area. This
6. facility was constructed southerly from the north side of the S.R.
7. 279 - S.R. 77 intersection and through the community of "Green Head".
8. It serves no electrical load. It prevents the Gulf Coast Electric
9. main 30 feeder line on the east side of S.R. 77 from having
10. unobstructed access to its active member accounts on the west side
11. of S.R. 77 and it crosses the Gulf Coast facilities four times.

12. Q. How does this handicap Gulf Coast Electric?

13. A. It leaves a Gulf Power feeder line in location where it effectively
14. serves as a barrier to Gulf Coast's access to areas where Gulf Coast
15. has actively and continuously provided electric service since before
16. 1949.

17. Q. Has Gulf Coast provided electric service to any of the disputed area
18. of the Correctional Institute during the 44 years since 1950, or had
19. any electric facility located thereon?

20. A. Yes, sir, they have. At the time of the siting process for the
21. Correctional Institute, the service located on the south side of
22. Martin Lake was still active. The main tap along Red Sapp Road was
23. still energized and provided electric service beyond and to the west.
24. Portions of this same tap are still existing on the institute site
25. and are currently providing construction power to the contractors.

1. Q. Can you tell us some of the details of Gulf Coast's facilities and
2. operations?

3. A. Currently, Gulf Coast provides electrical service to approximately
4. 12,450 active member/consumers which is delivered over about 1940
5. miles of electrical distribution line. About 90% of the distribution
6. lines operate at 25/12.5 KV.

7. Gulf Coast receives its supply of electrical energy from
8. Alabama Electric Cooperative, a generating and transmission
9. cooperative. Electricity is delivered to Gulf Coast through 115 KV
10. and 46 KV transmission lines and the delivery points consist of seven
11. (7) substations with a combined capacity of 68,000 KVA (normal rating
12. at 55° rise OA. Other ratings at 65° rise OA and 65° FA are higher.)
13. Gulf Coast's electrical peak was 37,987 KW during the winter of 1993
14. and 42,098 KW during the summer of 1993. The summer peak was
15. approximately 50% of the higher transformer ratings. Normal load
16. growth will not require additinal substation capacity until
17. approximately year 2000. A one line diagram of the A.E.C. facility
18. is attached as Exhibit "2".

19. Gulf Coast provides, owns and maintains all secondary bus,
20. switches, reclosers, etc. within the 7 substations. The secondary
21. distribution structures and circuitry are designed to accomodate
22. multiple outgoing feeder lines from each substation. This means
23. fewer consumers without power during outages and convenient means
24. of normal switching and load transfer. A one line diagram of the
25. Gulf Coast secondary bus, switches and reclosers as well as the load

1. transfer switches is attached as Exhibit "3".

2. The Crystal Lake Substation (rated 7,500 KVA; 8,400 KVA; 10,500
3. KVA) is located near the junction of S.R. 20 & S.R. 77 and supplies
4. electrical current to the disputed area in south Washington County
5. and the site of the Washington County Correctional Institute at S.R.
6. 279 and S.R. 77. The substation circuit is designated #3101C and
7. consists of 25 KV, 30 construction of 2/0 ACSR which has a continuous
8. current rating of 270 amperes. Continuous current circuit rating
9. is therefore approximately 11,660 KW. Current peak load on circuit
10. #3101C approximates 1900 KW. A one line diagram of this distribution
11. circuit is attached as Exhibit "4".

12. A similar circuit of 25 KV, 30, 2/0 ACSR ties the Crystal Lake
13. Substation to the Southport Substation and that substation is rated
14. 15,000 KVA; 16,800 KVA; 21,800 KVA. Southport Substation is
15. similarly connected to Bayou George South Substation by means of a
16. feeder of 4/0 ACSR and that substation is connected to Wewahitchka
17. Substation by means of a feeder of 1/0 Cu (3/0 ACSR, equivalent).

18. This network of substations, transformer capacities, feeder
19. capacities, load break gang operated switches, etc. etc. is capable
20. of total load transfer of the Crystal Lake Substation load through
21. the year 2000 without any additional substation capacity. Adequate
22. capacity exists to add 2500 KW of unnamed potential load to the
23. Crystal Lake Substation without upsetting its existing capacity or
24. affecting the system backup capabilities.

25. Q. Have you assisted in the preparation of comparative rates to serve

1. the Correctional Institute?
2. A. Yes, I assisted Mr. Roy Barnes, Gulf Coast Office Manager in such
3. a comparison.
4. Q. How did you go about such a task?
5. A. We accepted the load as being 372 demand and 163,450 KWH usage/mo.
6. and then applied Gulf Coast standard large power rate to the terms
7. of the required tariff.
8. Q. How much would the average monthly estimated bill be?
9. A. \$8,284.14 per month.
10. Q. How much was the average monthly estimated Gulf Power bill?
11. A. We accepted their calculation of \$7,442.66 per month.
12. Q. What was the difference between the two?
13. A. \$841.48 per month or \$10,097.76 per year, this difference was in
14. favor of Gulf Power.
15. Q. But the amount is less than indicated by the Gulf Power estimate
16. submitted?
17. A. Yes it is. The reduction in the Gulf Coast estimated bill results
18. from a variation in how the Cost of Power Sold adjustment is applied
19. over a year, it is seasonal and may go up and down and how the
20. capital credit policy is applied whereby margins are member equity
21. and are returned to the members.
22. Q. Do you have a copy of the Gulf Coast comparison?
23. A. Yes, I'll attach the copy as Exhibit "5".
24. Q. Have you attended any negotiations between Gulf Power and Gulf Coast
25. that were intended to resolve this territorial dispute?

1 A. Yes, initially representatives of both parties met, exchanged views and compared
2 consumer data associated with the conflicting facilities in South Washington County.
3 Gulf Power received the data from Gulf Coast and carried it back consultation.

4 Q. What happened then?

5 A. Gulf Power representatives returned to inform Gulf Coast that a resolution might be made if
6 Gulf Coast agreed to include Bay County in the mediation.

7 Q. Was this done?

8 A. Yes, Gulf Coast prepared a supplemental map of Bay County showing each company's facilities
9 and the areas where there was natural division existing between these facilities. The companies
10 shared consumer counts and then prepared maps indicating areas where conditional agreement
11 might be reached.

12 Q. What were the final results?

13 A. Neither company could agree with the others line drawn on the Bay County map.

14 Q. Do you have an exhibit that shows each company's facilities generally in Bay and South
15 Washington Counties?

16 A. Yes, Exhibit _____(AWG-6) and Exhibit _____(AWG-7). These are not final
17 engineering diagrams, but you can see where the facilities are generally and observe the potential
18 for continuing territorial disputes.

19 Q. Does this conclude your testimony?

20 A. Yes.

21


22

AFFIDAVIT

STATE OF FLORIDA)
COUNTY OF MARION)

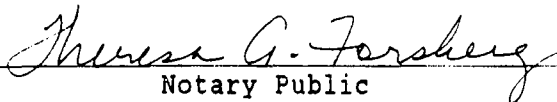
Docket No. 930885-EU

Before me the undersigned authority, personally appeared Archie W. Gordon, who being first duly sworn, deposes and says that he is the President of Gordon Engineering Associates, Inc. of Ocala, Florida, that the foregoing is true and correct to the best of his knowledge, information and belief. He is personally known to me.



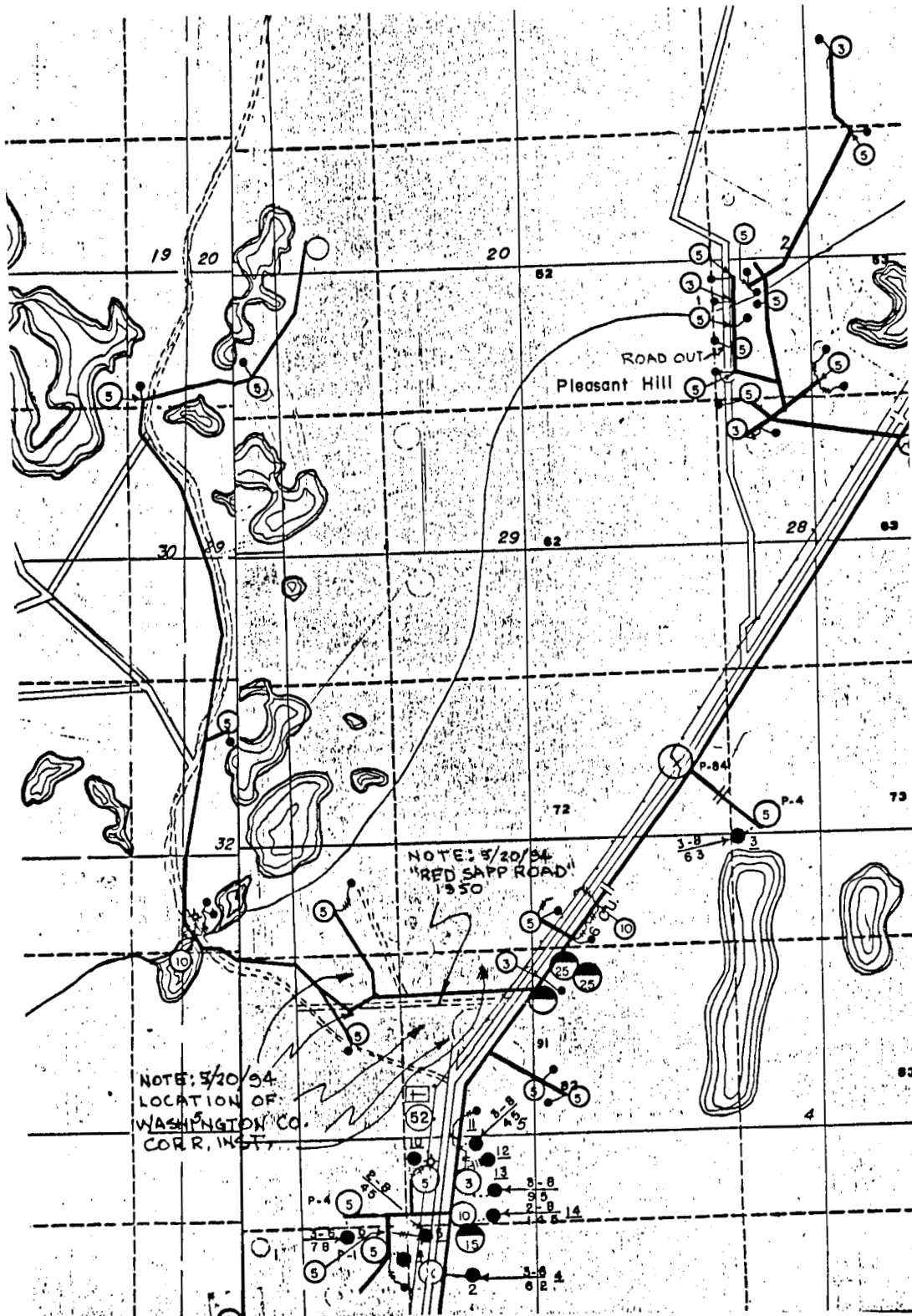
Archie W. Gordon, President
Gordon Engineering Associates, Inc.

Sworn to and subscribed before me this 23rd day of May, 1994.



Notary Public

THERESA A. FORSBERG
Notary Public, State of Florida
My comm. expires May 23, 1995
Comm. No. CC 112530



NOTE: 5/20/54
LOCATION OF
WASHINGTON CO.
CORR. INST.

NOTE: 5/20/54
"RED SAPPHIRE"
1950

EXHIBIT "1"
(Testimony, Archie W. Gordon)

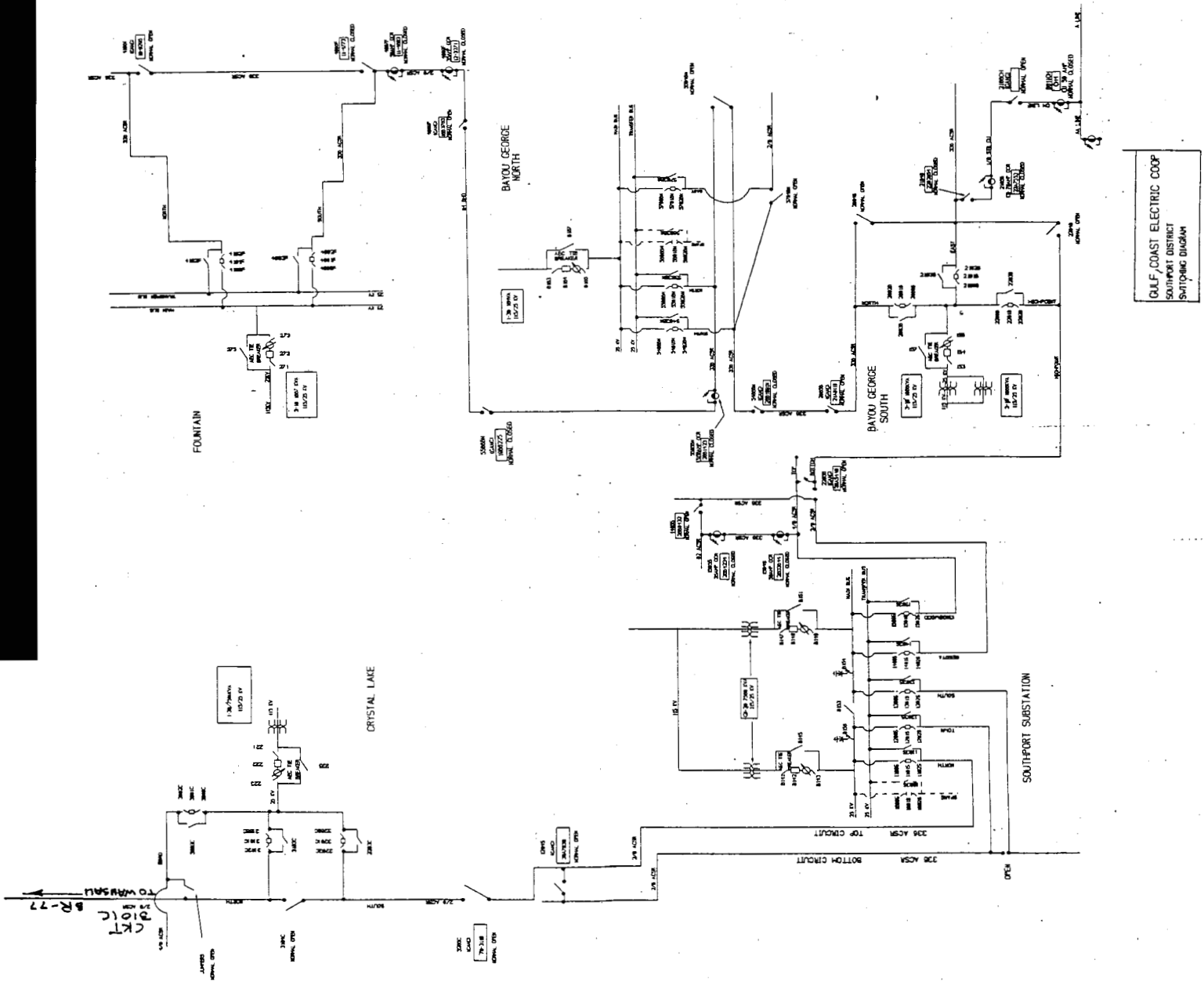
COMPOSITE COPY OF ORIGINAL
DISTRIBUTION MAPS

GULF COAST ELECTRIC COOPERATIVE

FPSC Docket No. 93085 -EU

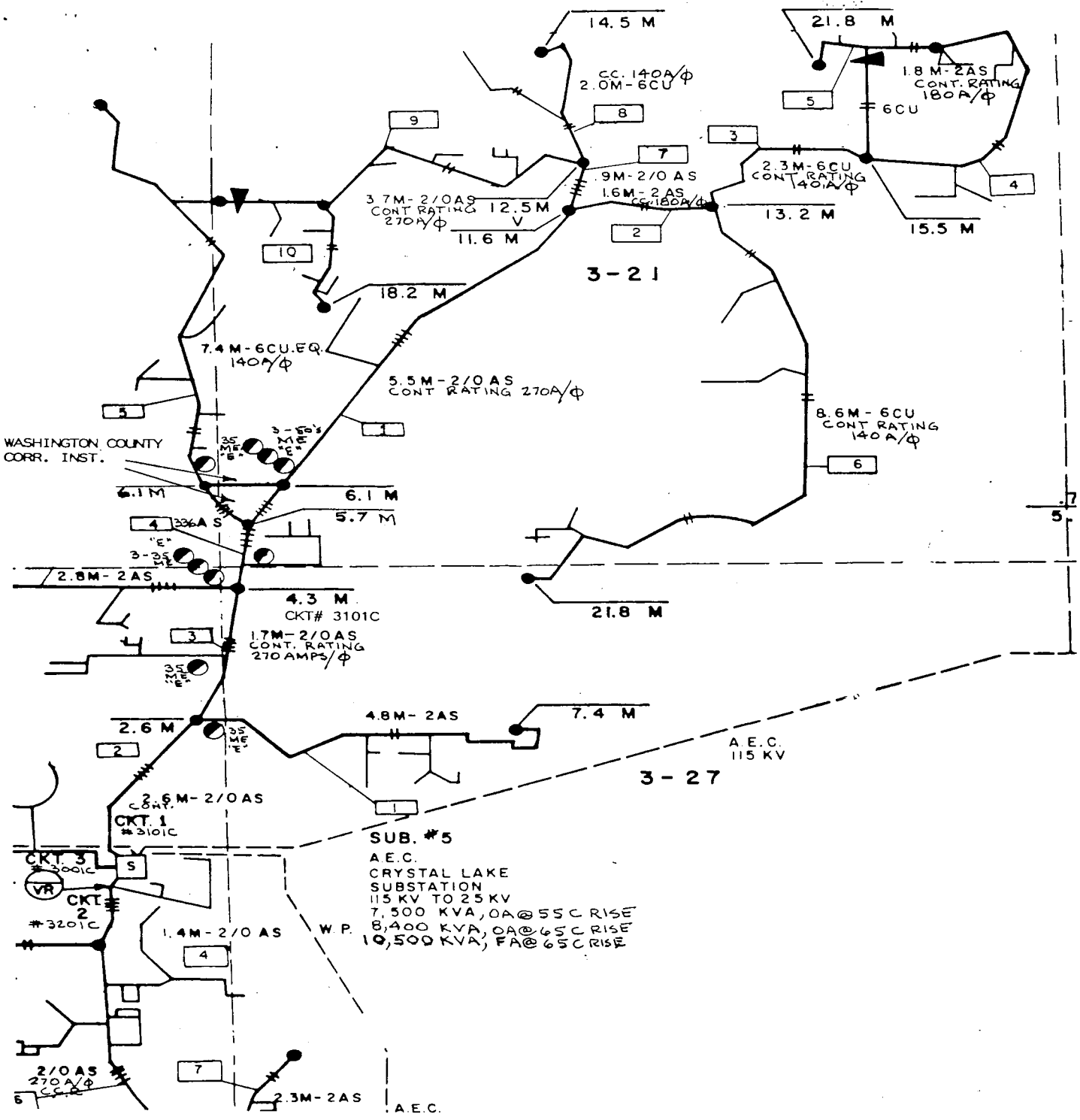
Exhibit (AWG - 1)

EXHIBIT "3"
 (Testimony, Archie W. Gordon)
 ONE LINE SUBSTATION AND
 MAIN FEEDER SWITCHING DIAGRAM
 GULF COAST ELECTRIC FACILITIES
 SOUTHPORT DISTRICT



GULF COAST ELECTRIC COOP
 SOUTHPORT DISTRICT
 SWITCHING DIAGRAM

FPSC Docket No. 93-0865-EU
 Exhibit (A) 3



SUB. #5
 A.E.C.
 CRYSTAL LAKE
 SUBSTATION
 115 KV TO 25 KV
 7,500 KVA, OA@55C RISE
 8,400 KVA, OA@65C RISE
 10,500 KVA, FA@65C RISE

EXHIBIT "4"
 (Testimony, Archie W. Gordon)
 ONE LINE DIAGRAM
 DISTRIBUTION CRT
 CRYSTAL LAKE - S.R. 279

PPSC Docket No. 930885 -EU
 Exhibit RWG 4

GULF COAST ELECTRIC COOPERATIVE, INC.
May 14, 1993

ESTIMATED ELECTRICAL LOAD
FOR PROPOSED STATE PRISON
IN WASHINGTON COUNTY

Based on conversations with Department of Corrections officials, estimates indicate that the proposed Washington County facility would use 372 KW demand and 163,450 KWH/month. It is also our understanding that primary service (12 KV) will be requested.

ESTIMATED MONTHLY BILL

Gulf Coast Electric Co-op

\$12.00 customer charge
\$4.00/KW demand charge
.04950/KWH energy charge
**\$.00110/KWH C.O.P.S.A. charge

Discount 7% of customer charge
for primary voltage
Discount 7% of demand charge
for primary voltage
Discount 7% of energy charge
for primary voltage

TOTAL ESTIMATED MONTHLY BILL:

\$9,103.45
** -819.31

\$8,284.14

Gulf Power Company

\$40.35 customer charge
\$4.56/KW demand charge
\$.01300/KWH energy charge
\$.02243/KWH fuel charge
\$.00015/KWH ECCR charge
\$.00036/KWH PPCC charge

Discount \$.35/KW for primary
voltage
Discount 1% of demand charge
for primary voltage
Discount 1% of energy charge
for primary voltage

TOTAL ESTIMATED MONTHLY BILL:

\$7,442.66

\$8,284.14
-7,442.66

● 841.48 monthly difference
X 12 months

\$10,097.76 yearly difference

* The Cost of Power Sold Adjustment (C.O.P.S.A.) is calculated monthly and includes such factors as load factor, meter reading dates, line loss, etc. and is carried as a rolling average and is therefore seasonally variable. Our best estimate for an annual average charge is 1.1 mils/KWH.

** Gulf Coast Electric Cooperative's return of patronage capital to its members is an important part of the Cooperative's corporate structure. With patronage capital credited back to the State of Florida account directly related to the Washington County Correctional Institute patronage, we anticipate a return of approximately 9%.

Gulf Coast Electric Cooperative's bill is then 11% higher than Gulf Power Company's bill.

Prefiled testimony, Archie W. Gordon

EXHIBIT "5"

COMPARATIVE ESTIMATED BILLING

FPSC Docket No. 93-885 -EU
Exhibit (Alc. 5)

FISC Docket No. 930885 .BU
 Exhibit AWG-71

GENERAL LEGEND

- 1. UNIMPROVED HIGHWAY RIGHT-OF-WAY
- 2. IMPROVED HIGHWAY RIGHT-OF-WAY
- 3. UNIMPROVED HIGHWAY
- 4. IMPROVED HIGHWAY
- 5. UNIMPROVED ROAD
- 6. IMPROVED ROAD
- 7. UNIMPROVED DRIVE
- 8. IMPROVED DRIVE
- 9. UNIMPROVED ALLEY
- 10. IMPROVED ALLEY
- 11. UNIMPROVED STREET
- 12. IMPROVED STREET
- 13. UNIMPROVED AVENUE
- 14. IMPROVED AVENUE
- 15. UNIMPROVED BOULEVARD
- 16. IMPROVED BOULEVARD
- 17. UNIMPROVED PARKWAY
- 18. IMPROVED PARKWAY
- 19. UNIMPROVED BLVD
- 20. IMPROVED BLVD
- 21. UNIMPROVED HWY
- 22. IMPROVED HWY
- 23. UNIMPROVED TRAIL
- 24. IMPROVED TRAIL
- 25. UNIMPROVED PATH
- 26. IMPROVED PATH
- 27. UNIMPROVED WALKWAY
- 28. IMPROVED WALKWAY
- 29. UNIMPROVED BRIDGE
- 30. IMPROVED BRIDGE
- 31. UNIMPROVED TUNNEL
- 32. IMPROVED TUNNEL
- 33. UNIMPROVED UNDERPASS
- 34. IMPROVED UNDERPASS
- 35. UNIMPROVED OVERPASS
- 36. IMPROVED OVERPASS
- 37. UNIMPROVED RAMP
- 38. IMPROVED RAMP
- 39. UNIMPROVED JUNCTION
- 40. IMPROVED JUNCTION
- 41. UNIMPROVED INTERCHANGE
- 42. IMPROVED INTERCHANGE
- 43. UNIMPROVED ROUNDABOUT
- 44. IMPROVED ROUNDABOUT
- 45. UNIMPROVED TRUCK STOP
- 46. IMPROVED TRUCK STOP
- 47. UNIMPROVED REST AREA
- 48. IMPROVED REST AREA
- 49. UNIMPROVED SERVICE AREA
- 50. IMPROVED SERVICE AREA
- 51. UNIMPROVED FUEL TANK
- 52. IMPROVED FUEL TANK
- 53. UNIMPROVED RESTROOM
- 54. IMPROVED RESTROOM
- 55. UNIMPROVED SHOWER
- 56. IMPROVED SHOWER
- 57. UNIMPROVED CAFE
- 58. IMPROVED CAFE
- 59. UNIMPROVED STORE
- 60. IMPROVED STORE
- 61. UNIMPROVED GAS STATION
- 62. IMPROVED GAS STATION
- 63. UNIMPROVED PHARMACY
- 64. IMPROVED PHARMACY
- 65. UNIMPROVED POST OFFICE
- 66. IMPROVED POST OFFICE
- 67. UNIMPROVED BANK
- 68. IMPROVED BANK
- 69. UNIMPROVED HOTEL
- 70. IMPROVED HOTEL
- 71. UNIMPROVED MOTEL
- 72. IMPROVED MOTEL
- 73. UNIMPROVED INN
- 74. IMPROVED INN
- 75. UNIMPROVED LODGE
- 76. IMPROVED LODGE
- 77. UNIMPROVED CAMP
- 78. IMPROVED CAMP
- 79. UNIMPROVED TRAILHEAD
- 80. IMPROVED TRAILHEAD
- 81. UNIMPROVED PARKING LOT
- 82. IMPROVED PARKING LOT
- 83. UNIMPROVED BUS STOP
- 84. IMPROVED BUS STOP
- 85. UNIMPROVED TRAIN STATION
- 86. IMPROVED TRAIN STATION
- 87. UNIMPROVED AIRPORT
- 88. IMPROVED AIRPORT
- 89. UNIMPROVED SEAPORT
- 90. IMPROVED SEAPORT
- 91. UNIMPROVED RAILROAD
- 92. IMPROVED RAILROAD
- 93. UNIMPROVED CANAL
- 94. IMPROVED CANAL
- 95. UNIMPROVED DAM
- 96. IMPROVED DAM
- 97. UNIMPROVED LOCK
- 98. IMPROVED LOCK
- 99. UNIMPROVED TOWER
- 100. IMPROVED TOWER
- 101. UNIMPROVED LIGHTHOUSE
- 102. IMPROVED LIGHTHOUSE
- 103. UNIMPROVED BEACON
- 104. IMPROVED BEACON
- 105. UNIMPROVED BUOY
- 106. IMPROVED BUOY
- 107. UNIMPROVED MARINA
- 108. IMPROVED MARINA
- 109. UNIMPROVED DOCK
- 110. IMPROVED DOCK
- 111. UNIMPROVED WHARF
- 112. IMPROVED WHARF
- 113. UNIMPROVED PIER
- 114. IMPROVED PIER
- 115. UNIMPROVED BREAKWATER
- 116. IMPROVED BREAKWATER
- 117. UNIMPROVED TIDE GAUGE
- 118. IMPROVED TIDE GAUGE
- 119. UNIMPROVED WINDMILL
- 120. IMPROVED WINDMILL
- 121. UNIMPROVED WATER TOWER
- 122. IMPROVED WATER TOWER
- 123. UNIMPROVED POWER PLANT
- 124. IMPROVED POWER PLANT
- 125. UNIMPROVED SUBSTATION
- 126. IMPROVED SUBSTATION
- 127. UNIMPROVED TRANSMISSION LINE
- 128. IMPROVED TRANSMISSION LINE
- 129. UNIMPROVED TELEPHONE LINE
- 130. IMPROVED TELEPHONE LINE
- 131. UNIMPROVED CABLE
- 132. IMPROVED CABLE
- 133. UNIMPROVED FERRY
- 134. IMPROVED FERRY
- 135. UNIMPROVED TUGBOAT
- 136. IMPROVED TUGBOAT
- 137. UNIMPROVED BOAT
- 138. IMPROVED BOAT
- 139. UNIMPROVED YACHT
- 140. IMPROVED YACHT
- 141. UNIMPROVED SAILBOAT
- 142. IMPROVED SAILBOAT
- 143. UNIMPROVED MOTORBOAT
- 144. IMPROVED MOTORBOAT
- 145. UNIMPROVED CANOE
- 146. IMPROVED CANOE
- 147. UNIMPROVED KAYAK
- 148. IMPROVED KAYAK
- 149. UNIMPROVED SUP
- 150. IMPROVED SUP
- 151. UNIMPROVED PADDLE
- 152. IMPROVED PADDLE
- 153. UNIMPROVED OAR
- 154. IMPROVED OAR
- 155. UNIMPROVED ROW
- 156. IMPROVED ROW
- 157. UNIMPROVED SLED
- 158. IMPROVED SLED
- 159. UNIMPROVED SKI
- 160. IMPROVED SKI
- 161. UNIMPROVED SNOWSHOE
- 162. IMPROVED SNOWSHOE
- 163. UNIMPROVED ICE SKATE
- 164. IMPROVED ICE SKATE
- 165. UNIMPROVED SKI LIFT
- 166. IMPROVED SKI LIFT
- 167. UNIMPROVED SKI TOWER
- 168. IMPROVED SKI TOWER
- 169. UNIMPROVED SKI BINDING
- 170. IMPROVED SKI BINDING
- 171. UNIMPROVED SKI BOOTS
- 172. IMPROVED SKI BOOTS
- 173. UNIMPROVED SKI GOGGLES
- 174. IMPROVED SKI GOGGLES
- 175. UNIMPROVED SKI STICKS
- 176. IMPROVED SKI STICKS
- 177. UNIMPROVED SKI GLOVES
- 178. IMPROVED SKI GLOVES
- 179. UNIMPROVED SKI SOCKS
- 180. IMPROVED SKI SOCKS
- 181. UNIMPROVED SKI HELMETS
- 182. IMPROVED SKI HELMETS
- 183. UNIMPROVED SKI PANTS
- 184. IMPROVED SKI PANTS
- 185. UNIMPROVED SKI JACKET
- 186. IMPROVED SKI JACKET
- 187. UNIMPROVED SKI GEAR
- 188. IMPROVED SKI GEAR
- 189. UNIMPROVED SKI ACCESSORIES
- 190. IMPROVED SKI ACCESSORIES
- 191. UNIMPROVED SKI REPAIRS
- 192. IMPROVED SKI REPAIRS
- 193. UNIMPROVED SKI RENTALS
- 194. IMPROVED SKI RENTALS
- 195. UNIMPROVED SKI LESSONS
- 196. IMPROVED SKI LESSONS
- 197. UNIMPROVED SKI TRIPS
- 198. IMPROVED SKI TRIPS
- 199. UNIMPROVED SKI TOURS
- 200. IMPROVED SKI TOURS

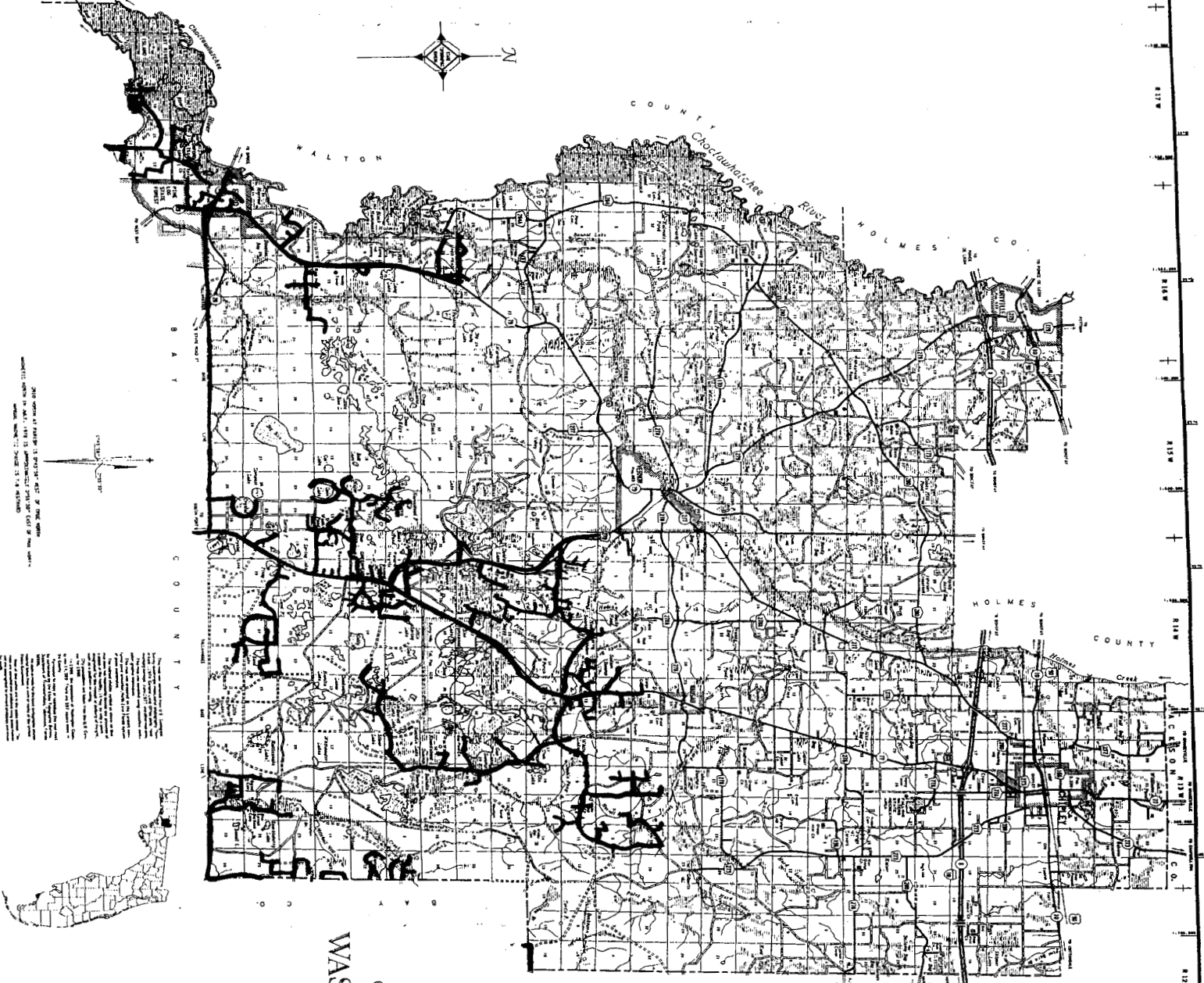
RED - GULF COAST ELECTRIC
 GREEN - GULF POWER CORP

GENERAL HIGHWAY MAP
 WASHINGTON COUNTY
 FLORIDA

STATE OF FLORIDA
 DEPARTMENT OF TRANSPORTATION
 IN COOPERATION WITH THE
 FEDERAL HIGHWAY ADMINISTRATION

JUNE, 1977

CLASSIFICATION	NO.	DESCRIPTION
1	1	UNIMPROVED HIGHWAY RIGHT-OF-WAY
2	2	IMPROVED HIGHWAY RIGHT-OF-WAY
3	3	UNIMPROVED HIGHWAY
4	4	IMPROVED HIGHWAY
5	5	UNIMPROVED ROAD
6	6	IMPROVED ROAD
7	7	UNIMPROVED DRIVE
8	8	IMPROVED DRIVE
9	9	UNIMPROVED ALLEY
10	10	IMPROVED ALLEY
11	11	UNIMPROVED STREET
12	12	IMPROVED STREET
13	13	UNIMPROVED AVENUE
14	14	IMPROVED AVENUE
15	15	UNIMPROVED BOULEVARD
16	16	IMPROVED BOULEVARD
17	17	UNIMPROVED PARKWAY
18	18	IMPROVED PARKWAY
19	19	UNIMPROVED BLVD
20	20	IMPROVED BLVD
21	21	UNIMPROVED HWY
22	22	IMPROVED HWY
23	23	UNIMPROVED TRAIL
24	24	IMPROVED TRAIL
25	25	UNIMPROVED PATH
26	26	IMPROVED PATH
27	27	UNIMPROVED WALKWAY
28	28	IMPROVED WALKWAY
29	29	UNIMPROVED BRIDGE
30	30	IMPROVED BRIDGE
31	31	UNIMPROVED TUNNEL
32	32	IMPROVED TUNNEL
33	33	UNIMPROVED UNDERPASS
34	34	IMPROVED UNDERPASS
35	35	UNIMPROVED OVERPASS
36	36	IMPROVED OVERPASS
37	37	UNIMPROVED RAMP
38	38	IMPROVED RAMP
39	39	UNIMPROVED JUNCTION
40	40	IMPROVED JUNCTION
41	41	UNIMPROVED INTERCHANGE
42	42	IMPROVED INTERCHANGE
43	43	UNIMPROVED ROUNDABOUT
44	44	IMPROVED ROUNDABOUT
45	45	UNIMPROVED TRUCK STOP
46	46	IMPROVED TRUCK STOP
47	47	UNIMPROVED REST AREA
48	48	IMPROVED REST AREA
49	49	UNIMPROVED SERVICE AREA
50	50	IMPROVED SERVICE AREA
51	51	UNIMPROVED FUEL TANK
52	52	IMPROVED FUEL TANK
53	53	UNIMPROVED RESTROOM
54	54	IMPROVED RESTROOM
55	55	UNIMPROVED SHOWER
56	56	IMPROVED SHOWER
57	57	UNIMPROVED CAFE
58	58	IMPROVED CAFE
59	59	UNIMPROVED STORE
60	60	IMPROVED STORE
61	61	UNIMPROVED GAS STATION
62	62	IMPROVED GAS STATION
63	63	UNIMPROVED PHARMACY
64	64	IMPROVED PHARMACY
65	65	UNIMPROVED POST OFFICE
66	66	IMPROVED POST OFFICE
67	67	UNIMPROVED BANK
68	68	IMPROVED BANK
69	69	UNIMPROVED HOTEL
70	70	IMPROVED HOTEL
71	71	UNIMPROVED MOTEL
72	72	IMPROVED MOTEL
73	73	UNIMPROVED INN
74	74	IMPROVED INN
75	75	UNIMPROVED LODGE
76	76	IMPROVED LODGE
77	77	UNIMPROVED CAMP
78	78	IMPROVED CAMP
79	79	UNIMPROVED TRAILHEAD
80	80	IMPROVED TRAILHEAD
81	81	UNIMPROVED PARKING LOT
82	82	IMPROVED PARKING LOT
83	83	UNIMPROVED BUS STOP
84	84	IMPROVED BUS STOP
85	85	UNIMPROVED TRAIN STATION
86	86	IMPROVED TRAIN STATION
87	87	UNIMPROVED AIRPORT
88	88	IMPROVED AIRPORT
89	89	UNIMPROVED SEAPORT
90	90	IMPROVED SEAPORT
91	91	UNIMPROVED RAILROAD
92	92	IMPROVED RAILROAD
93	93	UNIMPROVED CANAL
94	94	IMPROVED CANAL
95	95	UNIMPROVED DAM
96	96	IMPROVED DAM
97	97	UNIMPROVED LOCK
98	98	IMPROVED LOCK
99	99	UNIMPROVED TOWER
100	100	IMPROVED TOWER
101	101	UNIMPROVED LIGHTHOUSE
102	102	IMPROVED LIGHTHOUSE
103	103	UNIMPROVED BEACON
104	104	IMPROVED BEACON
105	105	UNIMPROVED BUOY
106	106	IMPROVED BUOY
107	107	UNIMPROVED MARINA
108	108	IMPROVED MARINA
109	109	UNIMPROVED DOCK
110	110	IMPROVED DOCK
111	111	UNIMPROVED WHARF
112	112	IMPROVED WHARF
113	113	UNIMPROVED PIER
114	114	IMPROVED PIER
115	115	UNIMPROVED BREAKWATER
116	116	IMPROVED BREAKWATER
117	117	UNIMPROVED TIDE GAUGE
118	118	IMPROVED TIDE GAUGE
119	119	UNIMPROVED WINDMILL
120	120	IMPROVED WINDMILL
121	121	UNIMPROVED WATER TOWER
122	122	IMPROVED WATER TOWER
123	123	UNIMPROVED POWER PLANT
124	124	IMPROVED POWER PLANT
125	125	UNIMPROVED SUBSTATION
126	126	IMPROVED SUBSTATION
127	127	UNIMPROVED TRANSMISSION LINE
128	128	IMPROVED TRANSMISSION LINE
129	129	UNIMPROVED TELEPHONE LINE
130	130	IMPROVED TELEPHONE LINE
131	131	UNIMPROVED CABLE
132	132	IMPROVED CABLE
133	133	UNIMPROVED FERRY
134	134	IMPROVED FERRY
135	135	UNIMPROVED TUGBOAT
136	136	IMPROVED TUGBOAT
137	137	UNIMPROVED BOAT
138	138	IMPROVED BOAT
139	139	UNIMPROVED YACHT
140	140	IMPROVED YACHT
141	141	UNIMPROVED SAILBOAT
142	142	IMPROVED SAILBOAT
143	143	UNIMPROVED MOTORBOAT
144	144	IMPROVED MOTORBOAT
145	145	UNIMPROVED CANOE
146	146	IMPROVED CANOE
147	147	UNIMPROVED KAYAK
148	148	IMPROVED KAYAK
149	149	UNIMPROVED SUP
150	150	IMPROVED SUP
151	151	UNIMPROVED PADDLE
152	152	IMPROVED PADDLE
153	153	UNIMPROVED OAR
154	154	IMPROVED OAR
155	155	UNIMPROVED ROW
156	156	IMPROVED ROW
157	157	UNIMPROVED SLED
158	158	IMPROVED SLED
159	159	UNIMPROVED SKI
160	160	IMPROVED SKI
161	161	UNIMPROVED SNOWSHOE
162	162	IMPROVED SNOWSHOE
163	163	UNIMPROVED ICE SKATE
164	164	IMPROVED ICE SKATE
165	165	UNIMPROVED SKI LIFT
166	166	IMPROVED SKI LIFT
167	167	UNIMPROVED SKI TOWER
168	168	IMPROVED SKI TOWER
169	169	UNIMPROVED SKI BINDING
170	170	IMPROVED SKI BINDING
171	171	UNIMPROVED SKI BOOTS
172	172	IMPROVED SKI BOOTS
173	173	UNIMPROVED SKI GOGGLES
174	174	IMPROVED SKI GOGGLES
175	175	UNIMPROVED SKI STICKS
176	176	IMPROVED SKI STICKS
177	177	UNIMPROVED SKI GLOVES
178	178	IMPROVED SKI GLOVES
179	179	UNIMPROVED SKI SOCKS
180	180	IMPROVED SKI SOCKS
181	181	UNIMPROVED SKI HELMETS
182	182	IMPROVED SKI HELMETS
183	183	UNIMPROVED SKI PANTS
184	184	IMPROVED SKI PANTS
185	185	UNIMPROVED SKI JACKET
186	186	IMPROVED SKI JACKET
187	187	UNIMPROVED SKI GEAR
188	188	IMPROVED SKI GEAR
189	189	UNIMPROVED SKI ACCESSORIES
190	190	IMPROVED SKI ACCESSORIES
191	191	UNIMPROVED SKI REPAIRS
192	192	IMPROVED SKI REPAIRS
193	193	UNIMPROVED SKI RENTALS
194	194	IMPROVED SKI RENTALS
195	195	UNIMPROVED SKI LESSONS
196	196	IMPROVED SKI LESSONS
197	197	UNIMPROVED SKI TRIPS
198	198	IMPROVED SKI TRIPS
199	199	UNIMPROVED SKI TOURS
200	200	IMPROVED SKI TOURS



STATE OF FLORIDA
 DEPARTMENT OF TRANSPORTATION
 IN COOPERATION WITH THE
 FEDERAL HIGHWAY ADMINISTRATION

CLASSIFICATION	NO.	DESCRIPTION
1	1	UNIMPROVED HIGHWAY RIGHT-OF-WAY
2	2	IMPROVED HIGHWAY RIGHT-OF-WAY
3	3	UNIMPROVED HIGHWAY
4	4	IMPROVED HIGHWAY
5	5	UNIMPROVED ROAD
6	6	IMPROVED ROAD
7	7	UNIMPROVED DRIVE
8	8	IMPROVED DRIVE
9	9	UNIMPROVED ALLEY
10	10	IMPROVED ALLEY
11	11	UNIMPROVED STREET
12	12	IMPROVED STREET
13	13	UNIMPROVED AVENUE
14	14	IMPROVED AVENUE
15	15	UNIMPROVED BOULEVARD
16	16	IMPROVED BOULEVARD
17	17	UNIMPROVED PARKWAY
18	18	IMPROVED PARKWAY
19	19	UNIMPROVED BLVD
20	20	IMPROVED BLVD
21	21	UNIMPROVED HWY
22	22	IMPROVED HWY
23	23	UNIMPROVED TRAIL
24	24	IMPROVED TRAIL
25	25	UNIMPROVED PATH
26	26	IMPROVED PATH
27	27	UNIMPROVED WALKWAY
28	28	IMPROVED WALKWAY
29	29	UNIMPROVED BRIDGE
30	30	IMPROVED BRIDGE
31	31	UNIMPROVED TUNNEL
32	32	IMPROVED TUNNEL
33	33	UNIMPROVED UNDERPASS
34	34	IMPROVED UNDERPASS
35	35	UNIMPROVED OVERPASS
36	36	IMPROVED OVERPASS
37	37	