

DOCUMENT NO. 1

WITNESS: R. SILVA

DOCKET NO. 960001-EI

GENERATING PERFORMANCE INCENTIVE FACTOR

APRIL, 1996 THROUGH SEPTEMBER, 1996

FLORIDA PUBLIC SERVICE COMMISSION

DOCKET NO. 960001-EI EXHIBIT NO. 15
COMPANY: FPL/Silva
WITNESS: FPL/Silva
DATE: 2/21/96

DOCUMENT NUMBER-DATE

00729 JAN 22 88

FPSC-RECORDS/REPORTING

DOCUMENT NUMBER 1 INDEX

FLORIDA POWER & LIGHT COMPANY

PERIOD OF: APRIL, 1996 THROUGH SEPTEMBER, 1996

<u>DOCUMENT</u>	<u>INDEX OF MANUAL PAGES</u>	<u>TITLE</u>
1	6.201.001	Index of Manual Pages
	6.201.002 to 6.201.003	Generating Unit Selection Criteria
	6.201.004	GPIF Reward/(Penalty) Table (Estimated)
	6.201.005	GPIF Calculation of Maximum Allowed Dollars (Estimated)
	6.201.006 and 6.201.007	GPIF Target and Range Summary
	6.201.008	GPIF Predicted Unit Heat Rate Equations
	6.201.009	Derivation of Waiting Factors
	6.201.010	Estimated Unit Performance Data
	6.201.011 through 6.201.029	Unit MOF and FOF versus Time Graphs
	6.201.030	Planned Outage Schedules

Issued By: Florida Power & Light Company

Docket No.: 960001-EI

FPL Witness: R. Silva

Exhibit No.:

Document 1 Page 1 of 30

TABLE 2.0
 PROMOD PROJECTED SYSTEM GENERATION
 PERIOD OF: APRIL 1996 THRU SEPTEMBER 1996

PLANT	UNIT	CAPACITY (MW)	SERVICE HOURS	NET	NOF %	% OF	CUMULATIVE PRODUCTION	COST (\$000)
				OUTPUT (MWH)		TOTAL OUTPUT	% OF TOTAL OUTPUT	
ST. LUCIE	2	714	4186	2989990	100.0	8.24	8.24	12433
TURKEY POINT	3	666	4196	2795095	100.0	7.71	15.95	9952
TURKEY POINT	4	666	3670	2444014	100.0	6.74	22.69	8331
SCHERER	4	610	3988	2399406	98.6	6.62	29.31	40784
ST. LUCIE	1	839	2821	2367148	100.0	6.53	35.83	9729
MARTIN	4	430	4220	1786581	98.5	4.33	40.76	15748
LAUDERDALE	4	430	4132	1774481	99.9	4.89	45.65	16783
LAUDERDALE	5	430	4120	1773035	100.1	4.89	50.54	16765
MARTIN	3	430	3844	1655180	100.1	4.56	55.11	14577
MANATEE	2	798	1926	1321381	86.0	3.64	58.75	32780
PORT EVERGLADES	4	386	3558	1239844	90.3	3.42	62.17	28120
FORT MYERS	2	391	3423	1189646	88.9	3.28	65.45	28708
CAPE CANAVERAL	2	397	3101	1134944	92.2	3.13	68.58	14575
PORT EVERGLADES	3	389	2921	1056352	93.0	2.91	71.49	25252
CAPE CANAVERAL	1	397	2868	1039731	91.3	2.87	74.36	16610
PUTNAM	2	239	4059	966075	99.6	2.66	77.02	10527
TURKEY POINT	1	403	2576	960946	92.6	2.65	79.67	13729
PUTNAM	1	239	3958	936337	99.0	2.58	82.25	10214
TURKEY POINT	2	403	2307	844244	90.8	2.33	84.58	15781
MANATEE	1	798	1298	773810	74.7	2.13	86.72	19757
RIVIERA	3	290	2706	740375	94.3	2.04	88.76	15961
RIVIERA	4	290	2629	715396	93.8	1.97	90.73	14637
SANFORD	5	398	1805	624540	86.9	1.72	92.45	8976
PORT EVERGLADES	2	212	2540	507234	94.2	1.40	93.85	12473
ST. JOHNS RIVER	1	116	4280	497997	100.3	1.37	95.22	7756
ST. JOHNS RIVER	2	116	4187	486231	100.1	1.34	96.57	7510
MARTIN	2	798	727	384930	66.4	1.06	97.63	5487
PORT EVERGLADES	1	211	1656	303224	86.8	0.84	98.46	6296
FORT MYERS	1	141	1564	206818	93.8	0.57	99.03	5213
SANFORD	4	398	531	161742	76.5	0.45	99.48	2183
MARTIN	1	812	330	151260	56.4	0.42	99.90	2234
SANFORD	3	145	84	10028	82.3	0.03	99.92	140
PORT EVERGLADES	(1-12)	29	29	9026	89.4	0.02	99.95	197
CUTLER	6	144	59	7238	85.2	0.02	99.97	103
FORT MYERS	(1-12)	47	3	1436	84.9	0.00	99.97	93
CUTLER	5	71	45	2829	84.5	0.01	99.98	41
LAUDERDALE GT	(1-24)	29	11	7014	91.6	0.02	100.00	153
TOTALS				36265558		100.00	100.00	450608

Issued By: Florida Power & Light Company

Docket No.: 960001-EI

FPL Witness: R. Silva

Exhibit No.:

Document 1 Page 2 of 30

TABLE 3.0

**FLORIDA POWER & LIGHT COMPANY
UNITS TO BE USED TO DETERMINE THE
GENERATING PERFORMANCE INCENTIVE FACTOR**

APRIL, 1996 THROUGH SEPTEMBER, 1996

**Cape Canaveral Unit No. 1
Cape Canaveral Unit No. 2**

**Ft. Lauderdale Unit No. 4
Ft. Lauderdale Unit No. 5**

Ft. Myers Unit No. 2

Manatee Unit No. 2

**Martin Unit No. 3
Martin Unit No. 4**

**Port Everglades Unit No. 3
Port Everglades Unit No. 4**

**Putnam Unit No. 1
Putnam Unit No. 2**

**Turkey Point Unit No. 1
Turkey Point Unit No. 2
Turkey Point Unit No. 3
Turkey Point Unit No. 4**

**St. Lucie Unit No. 1
St. Lucie Unit No. 2**

Scherer Unit No. 4

GENERATING PERFORMANCE INCENTIVE FACTOR

REWARD/PENALTY TABLE (ESTIMATED)

FLORIDA POWER & LIGHT COMPANY
PERIOD OF: APRIL 1996 THROUGH SEPTEMBER 1996

GENERATING PERFORMANCE INCENTIVE POINTS (GPIF)	FUEL SAVINGS/(LOSS) (5000)	GENERATING PERFORMANCE INCENTIVE FACTOR (5000)
+10	15845.92	9067.79
+ 9	14261.33	8161.01
+ 8	12676.73	7254.23
+ 7	11092.14	6347.45
+ 6	9507.55	5440.67
+ 5	7922.96	4533.89
+ 4	6338.37	3627.12
+ 3	4753.78	2720.34
+ 2	3169.19	1813.56
+ 1	1584.59	906.78
0	0.00	0.00
- 1	(1597.13)	(906.78)
- 2	(3194.26)	(1813.56)
- 3	(4791.39)	(2720.34)
- 4	(6388.52)	(3627.12)
- 5	(7985.66)	(4533.89)
- 6	(9582.79)	(5440.67)
- 7	(11179.92)	(6347.45)
- 8	(12777.05)	(7254.23)
- 9	(14374.18)	(8161.01)
-10	(15971.31)	(9067.79)

Issued By: Florida Power & Light Company

Docket No.: 960001-EI

FPL Witness: R. Silva

Exhibit No.:

Document 1 Page 4 of 30

GENERATING PERFORMANCE INCENTIVE FACTOR
 CALCULATION OF MAXIMUM ALLOWED INCENTIVE DOLLARS
 ESTIMATED
 FLORIDA POWER & LIGHT COMPANY
 PERIOD OF: APRIL 1996 THROUGH SEPTEMBER 1996

LINE 1	BEGINNING OF PERIOD BALANCE OF COMMON EQUITY END OF MONTH BALANCE OF COMMON EQUITY:		\$ 4541762000
LINE 2	MONTH OF APRIL	96	\$ 4550182000
LINE 3	MONTH OF MAY	96	\$ 4571613000
LINE 4	MONTH OF JUNE	96	\$ 4632189000
LINE 5	MONTH OF JULY	96	\$ 4649239000
LINE 6	MONTH OF AUGUST	96	\$ 4654642000
LINE 7	MONTH OF SEPTEMBER	96	\$ 4676249000
LINE 8	AVERAGE COMMON EQUITY FOR THE PERIOD (SUMMATION OF LINE 1 THROUGH LINE 7 DIVIDED BY 7)		\$ 4610839000
LINE 9	25 BASIS POINTS		0.0025
LINE 10	REVENUE EXPANSION FACTOR		60.4525%
LINE 11	MAXIMUM ALLOWED INCENTIVE DOLLARS (LINE 8 TIMES LINE 9 DIVIDED BY LINE 10 TIMES 0.5)		\$ 9534008
LINE 12	JURISDICTIONAL SALES		40889121000 KWH
LINE 13	TOTAL SALES		42989753000 KWH
LINE 14	JURISDICTIONAL SEPARATION FACTOR (LINE 12 DIVIDED BY LINE 13)		95.11%
LINE 15	MAXIMUM ALLOWED JURISDICTIONAL INCENTIVE DOLLARS (LINE 11 TIMES LINE 14)		\$ 9067794

Issued By: Florida Power & Light Company

Docket No.: 960001-EI
 FPL Witness: R. Silva
 Exhibit No.:

Document 1 Page 5 of 30

PAGE 1 OF 2

GPIF TARGET AND RANGE SUMMARY

FLORIDA POWER & LIGHT COMPANY
 PERIOD OF: APRIL 1996 THRU SEPTEMBER 1996

PLANT/UNIT		WEIGHTING FACTOR (%)	EAF	EAF RANGE		MAX. FUEL	MAX. FUEL
			TARGET (%)	MAX. (%)	MIN. (%)	SAVINGS (\$000)	LOSS (\$000)
CAPE CANAVERAL	1	0.33	84.6	87.1	82.1	52.2	52.1
CAPE CANAVERAL	2	0.34	92.2	94.7	89.7	54.3	54.2
LAUDERDALE	4	1.53	96.0	98.0	94.0	242.2	242.4
LAUDERDALE	5	1.53	96.0	98.0	94.0	242.4	242.0
FORT MYERS	2	0.20	94.5	97.0	92.0	31.1	31.0
MANATEE	2	0.34	90.8	93.3	88.3	53.7	53.7
MARTIN	3	1.67	93.5	95.5	91.5	264.9	265.1
MARTIN	4	3.57	74.6	79.6	69.6	565.1	565.7
PORT EVERGLADES	3	0.25	70.1	72.6	67.6	39.9	40.0
PORT EVERGLADES	4	0.29	92.3	94.8	89.8	45.5	27.3
PUTNAM	1	0.48	95.5	97.5	93.5	75.9	75.9
PUTNAM	2	0.48	96.0	96.0	94.0	75.8	75.8
TURKEY POINT	1	0.13	95.8	97.8	93.8	21.0	21.0
TURKEY POINT	2	0.13	94.3	96.8	91.8	20.5	20.4
TURKEY POINT	3	11.79	93.6	96.6	90.6	1867.9	1868.8
TURKEY POINT	4	10.38	82.4	85.4	79.4	1644.7	1645.3
ST. LUCIE	1	14.98	53.1	57.6	48.6	2374.2	2375.5
ST. LUCIE	2	18.45	84.2	88.7	79.7	2923.9	2926.5
SCHERER	4	2.06	84.1	86.6	81.6	326.9	452.8
		-----				-----	-----
		68.93				10922.1	11036.1

Issued By: Florida Power & Light Company

Docket No.: 960001-EI

FPL Witness: R. Silva

Exhibit No.:

Document 1 Page 6 of 30

PAGE 2 OF 2

GPIF TARGET AND RANGE SUMMARY

FLORIDA POWER & LIGHT COMPANY
 PERIOD OF: APRIL 1996 THRU SEPTEMBER 1996

PLANT/UNIT		WEIGHTING FACTOR (%)	ANOTHER TARGET		ANOTHER RANGE		MAX. FUEL SAVINGS	MAX. FUEL LOSS
			BTU/KWH	NOF	MIN. BTU/KWH	MAX. BTU/KWH	(\$000)	(\$000)
CAPE CANAVERAL	1	1.10	9342	91.3	9169	9515	174.2	174.2
CAPE CANAVERAL	2	1.63	9331	92.2	9091	9571	257.7	257.7
LAUDERDALE	4	3.06	7309	99.9	7023	7595	484.5	484.5
LAUDERDALE	5	1.10	7375	100.1	7223	7527	175.0	175.0
FORT MYERS	2	3.18	9330	88.9	9091	9569	504.6	504.6
MANATEE	2	2.54	9459	86.0	9268	9650	402.0	402.0
MARTIN	3	0.41	6946	100.1	6840	7052	65.1	65.1
MARTIN	4	0.47	6942	98.5	6834	7050	74.9	74.9
PORT EVERGLADES	3	1.31	9465	93.0	9312	9618	208.1	208.1
PORT EVERGLADES	4	2.70	9449	90.3	9230	9668	428.5	428.5
PUTNAM	1	0.80	8658	99.0	8475	8841	127.4	127.4
PUTNAM	2	0.46	8379	99.6	8246	8512	72.9	72.9
TURKEY POINT	1	0.74	9088	92.6	8935	9241	117.8	117.8
TURKEY POINT	2	2.79	9107	90.8	8777	9437	441.9	441.9
TURKEY POINT	3	0.37	11139	100.0	11018	11260	58.1	61.2
TURKEY POINT	4	3.06	11196	100.0	11051	11341	484.2	494.8
ST. LUCIE	1	1.65	10937	100.0	10846	11028	261.1	254.5
ST. LUCIE	2	1.89	10995	100.0	10833	11157	300.0	304.3
SCHERER	4	1.80	9988	98.6	9843	10133	285.8	285.8
GPIF SYSTEM :		31.07					4923.8	4935.2

Issued By: Florida Power & Light Company

Docket No.: 960001-EI

FPL Witness: R. Silva

Exhibit: No.:

Document 1 Page 7 of 30

PROJECTED UNIT HEAT RATE EQUATIONS
 FLORIDA POWER & LIGHT COMPANY
 APRIL, 1996 THROUGH SEPTEMBER, 1996

Plant/Unit	ANOHR	NOF	NSC*	ANOHR Equation		Bounds	R-sqr	First	Last	Exclusions
				a	b					
Cape Canaveral 1	9342	91.3	397	9863.2	-5.71	173.1	0.12	04-93	09-95	
Cape Canaveral 2	9331	92.2	397	10283.2	-10.33	240.2	0.22	04-93	09-95	
Lauderdale 4	7308	99.9	430	8207.2	-9.00	285.5	0.28	04-93	09-95	
Lauderdale 5	7375	100.1	430	7690.2	-3.15	151.8	0.06	06-93	09-95	
Fort Myers 2	9330	88.9	391	10920.9	-17.90	239.1	0.62	04-93	09-95	03-94
Manatee 2	9459	86.0	798	11499.5	-23.73	190.5	0.57	04-93	09-95	
Martin 3	6946	100.1	430	7347.3	-4.01	106.3	0.37	04-94	09-95	
Martin 4	6942	98.5	430	7246.7	-3.09	108.0	0.33	04-94	09-95	
Port Everglades 3	9465	93.0	397	10303.8	-9.02	152.6	0.30	04-93	09-95	
Port Everglades 4	9449	90.3	386	10198.6	-8.30	218.8	0.15	04-93	09-95	
Putnam 1	8658	99.0	239	9321.4	-6.71	183.3	0.17	04-93	09-95	
Putnam 2	8379	99.6	239	10035.0	-16.63	133.1	0.29	04-93	09-95	
Turkey Point 1	9088	92.6	403	10608.6	-16.43	152.7	0.54	04-93	09-95	
Turkey Point 2	9107	90.8	400	11717.5	-28.75	329.4	0.42	04-93	09-95	
Turkey Point 3	11140	100.0	666	15561.8	-44.22	121.3	0.60	04-93	09-95	04-94, 05-94, 09-95
Turkey Point 4	11196	100.0	666	12906.2	-17.10	145.1	0.38	06-93	09-95	
St.Lucie 1	10937	100.0	839	13064.6	-21.27	91.0	0.73	07-93	07-95	
St.Lucie 2	10996	100.0	714	13611.8	-26.16	161.5	0.68	04-93	09-95	04-94
Scherer 4	9988	98.6	625	10002.4	-0.14	145.5	0.04	04-94	09-95	

Issued By: Florida Power & Light Company

110289

Docket No.: 960001-EI
 FPL Witness: R. Silva
 Exhibit: No.:
 Document 1 Page 8 of 30

Original Sheet No. 6.201.008

DERIVATION OF WEIGHT FACTORS

FLORIDA POWER & LIGHT COMPANY
PERIOD OF: APRIL 1996 THRU SEPTEMBER 1996

PRODUCTION COSTING SIMULATION
FUEL COST (\$000)

UNIT PERFORMANCE INDICATOR			AT TARGET (1)	AT MAXIMUM IMPROVEMENT (2)	SAVINGS (3)	FACTOR (% OF SAVINGS)
CAPE CANAVERAL	1	EA	450608	450555.7	52.2	0.33
		AHR	450608	450433.7	174.2	1.10
CAPE CANAVERAL	2	EA	450608	450553.7	54.3	0.34
		AHR	450608	450350.2	257.7	1.63
LAUDERDALE	4	EA	450608	450365.7	242.2	1.53
		AHR	450608	450123.4	484.5	3.06
LAUDERDALE	5	EA	450608	450365.6	242.4	1.53
		AHR	450608	450432.9	175.0	1.10
FORT MYERS	2	EA	450608	450576.9	31.1	0.20
		AHR	450608	450103.4	504.6	3.18
MANATEE	2	EA	450608	450554.2	53.7	0.34
		AHR	450608	450206.0	402.0	2.54
MARTIN	3	EA	450608	450343.1	264.9	1.67
		AHR	450608	450542.9	65.1	0.41
MARTIN	4	EA	450608	450042.9	565.1	3.57
		AHR	450608	450533.1	74.9	0.47
PORT EVERGLADES	3	EA	450608	450568.1	39.9	0.25
		AHR	450608	450399.9	208.1	1.31
PORT EVERGLADES	4	EA	450608	450562.5	45.5	0.29
		AHR	450608	450179.4	428.5	2.70
PUTNAM	1	EA	450608	450532.1	75.9	0.48
		AHR	450608	450480.6	127.4	0.80
PUTNAM	2	EA	450608	450532.2	75.8	0.48
		AHR	450608	450535.1	72.9	0.46
TURKEY POINT	1	EA	450608	450587.0	21.0	0.13
		AHR	450608	450490.1	117.8	0.74
TURKEY POINT	2	EA	450608	450587.5	20.5	0.13
		AHR	450608	450166.1	441.9	2.79
TURKEY POINT	3	EA	450608	448740.1	1867.9	11.79
		AHR	450608	450549.9	58.1	0.37
TURKEY POINT	4	EA	450608	448963.2	1644.7	10.38
		AHR	450608	450123.7	484.2	3.06
ST. LUCIE	1	EA	450608	448233.7	2374.2	14.98
		AHR	450608	450346.9	261.1	1.65
ST. LUCIE	2	EA	450608	447684.1	2923.9	18.45
		AHR	450608	450308.0	300.0	1.89
SCHERER	4	EA	450608	450281.1	326.9	2.06
		AHR	450608	450322.1	285.8	1.80
TOTAL:					15845.9	100.00

- (1) FUEL ADJUSTMENT BASE CASE - ALL UNIT PERFORMANCE INDICATORS AT TARGET
(2) ALL OTHER UNIT PERFORMANCE AT TARGET
(3) EXPRESSED IN REPLACEMENT ENERGY COSTS.

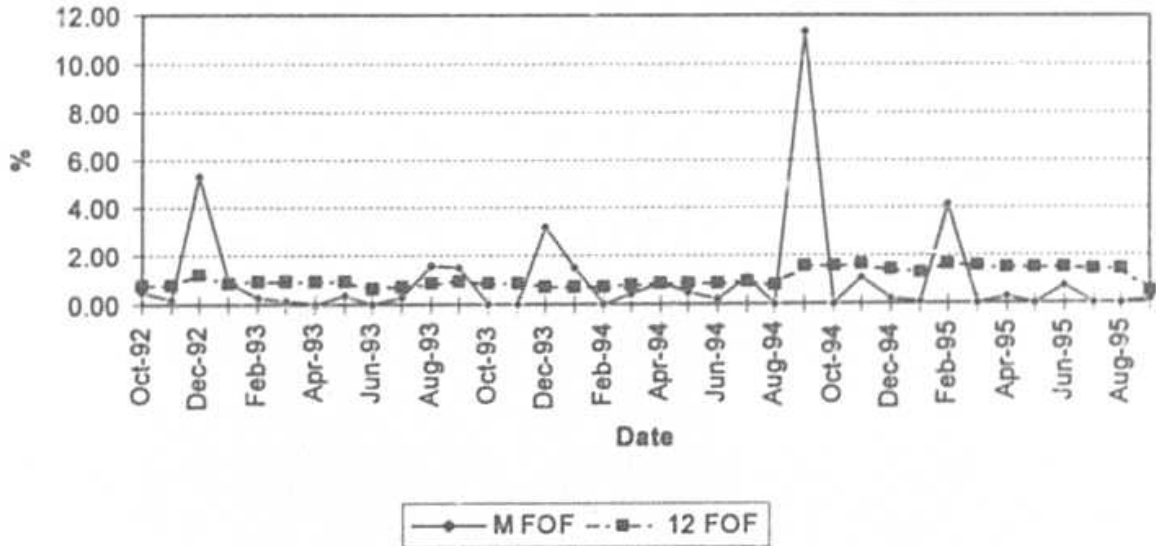
Issued By: Florida Power & Light Company

ESTIMATED UNIT PERFORMANCE DATA
FLORIDA POWER & LIGHT COMPANY
APRIL, 1996 THROUGH SEPTEMBER, 1996

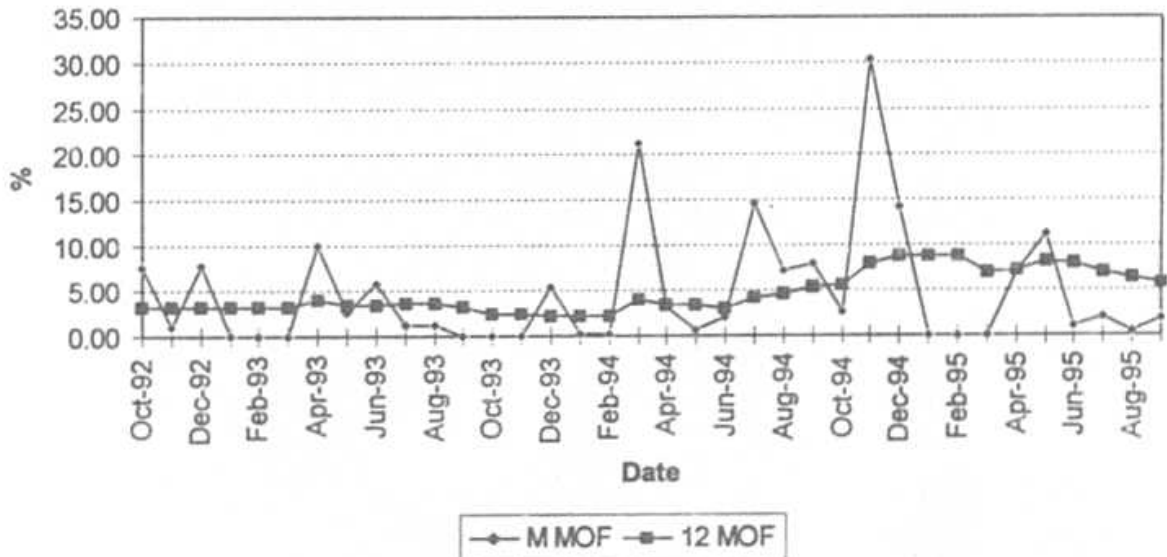
<u>Plant/Unit</u>	<u>EAF</u>	<u>EPOF</u>	<u>EUOF</u>	<u>EUOR</u>	<u>PH</u>	<u>SH</u>	<u>RSH</u>	<u>LH</u>	<u>EPOH</u>	<u>EFOH</u>	<u>EMOH</u>	<u>NET GEN</u>
Cape Canaveral 1	84.6	8.2	7.2	9.9	4391	2866	846.8	676.2	360.1	79.0	237.1	1039731
Cape Canaveral 2	92.2	0.0	7.8	9.9	4391	3101	947.5	342.5	0.0	87.8	254.7	1134944
Lauderdale 4	96.0	0.0	4.0	4.1	4391	4132	83.4	175.6	0.0	87.8	87.8	1774481
Lauderdale 5	96.0	0.0	4.0	4.1	4391	4120	95.4	175.6	0.0	87.8	87.8	1773035
Fort Myers 2	94.5	0.0	5.5	6.6	4391	3423	726.5	241.5	0.0	109.8	131.7	1189648
Manatee 2	90.8	3.8	5.4	11.0	4391	1926	2061.0	404.0	166.9	83.4	153.7	1321381
Martin 3	93.5	2.7	3.8	4.2	4391	3844	261.6	285.4	118.6	83.4	83.4	1655180
Martin 4	74.6	2.2	23.2	23.7	4391	3276	0.0	1115.3	96.6	693.8	324.9	1786581
Port Everglades 3	70.1	24.6	5.3	7.4	4391	2921	157.1	1312.9	1080.2	65.9	166.9	1056352
Port Everglades 4	92.3	0.0	7.7	8.7	4391	3558	494.9	338.1	0.0	210.8	127.3	1239844
Putnam 1	95.5	0.0	4.5	4.8	4391	3958	235.4	197.6	0.0	87.8	109.8	936337
Putnam 2	96.0	0.0	4.0	4.1	4391	4059	156.4	175.6	0.0	87.8	87.8	968075
Turkey Point 1	95.6	0.0	4.2	6.7	4391	2576	1630.6	184.4	0.0	87.8	96.6	960946
Turkey Point 2	94.3	0.0	5.7	9.8	4391	2307	1833.7	250.3	0.0	87.8	162.5	844244
Turkey Point 3	93.6	0.0	6.4	6.4	4391	4110	0.0	281.0	0.0	140.5	140.5	2795095
Turkey Point 4	82.4	12.0	5.6	6.4	4391	3618	0.0	772.8	526.9	122.9	122.9	2444014
St. Lucie 1	53.1	31.7	15.2	22.3	4391	2332	0.0	2059.4	1391.9	570.8	96.6	2367148
St. Lucie 2	84.2	0.0	15.8	15.8	4391	3697	0.0	693.8	0.0	553.3	140.5	2989990
Scherer 4	84.1	8.7	7.2	7.9	4391	3693	0.0	698.2	382.0	237.1	79.0	2399406

Docket No.: 960001-EI
FPL Witness: R. Silva
Exhibit No.:
Document 1 Page 10 of 30

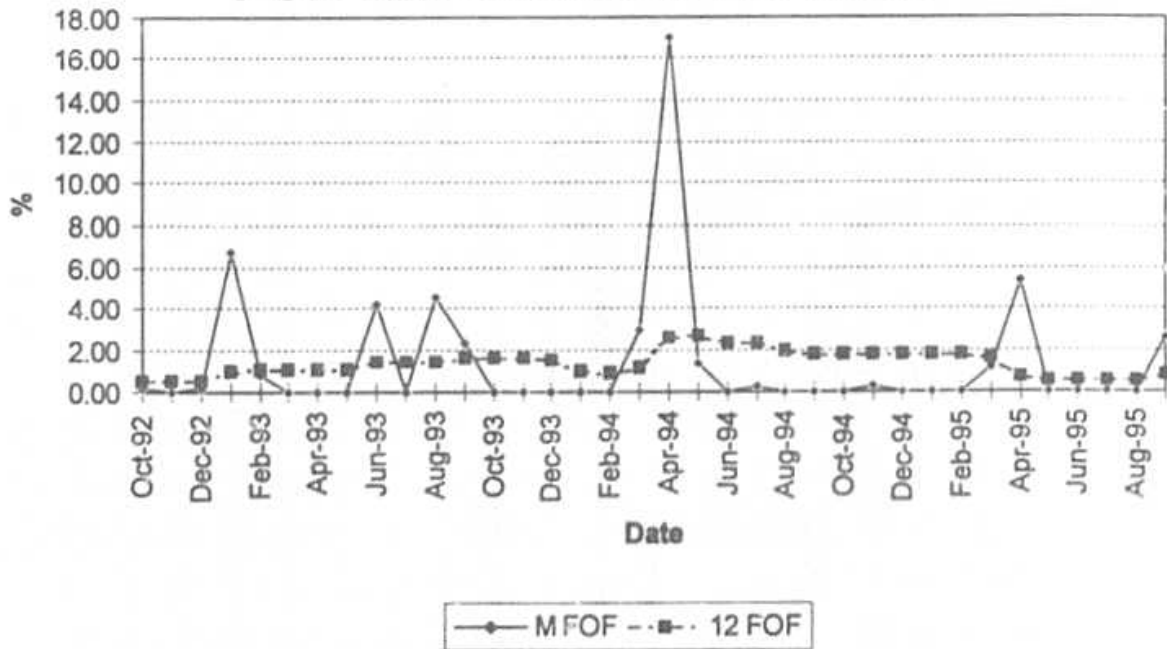
PCC 1 FORCED OUTAGE FACTOR



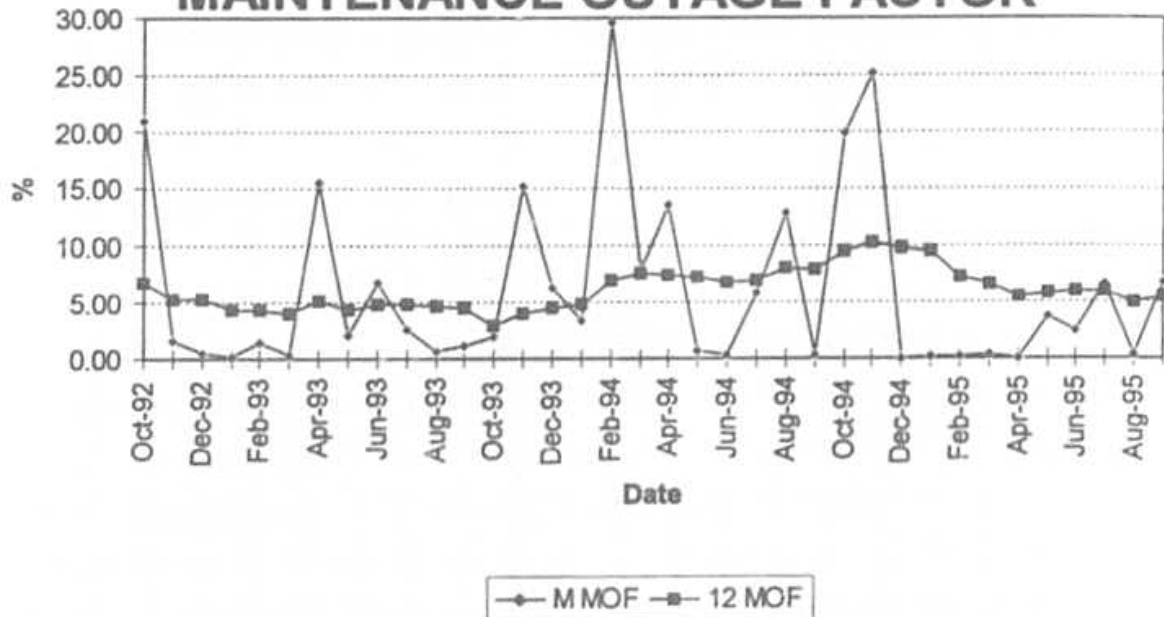
MAINTENANCE OUTAGE FACTOR



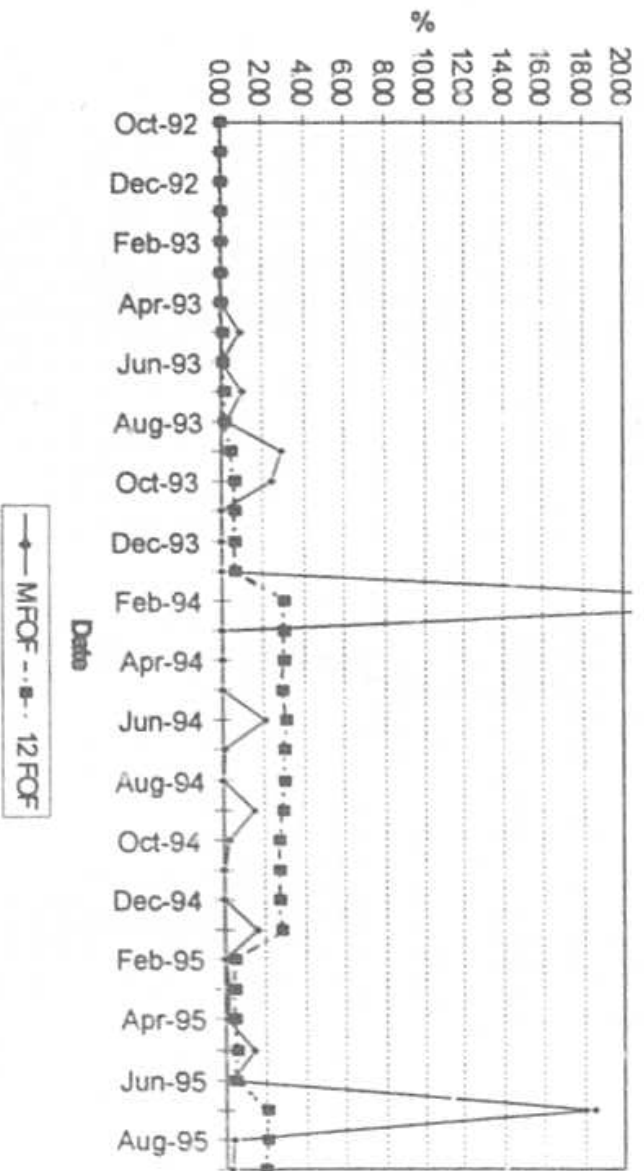
PCC 2 FORCED OUTAGE FACTOR



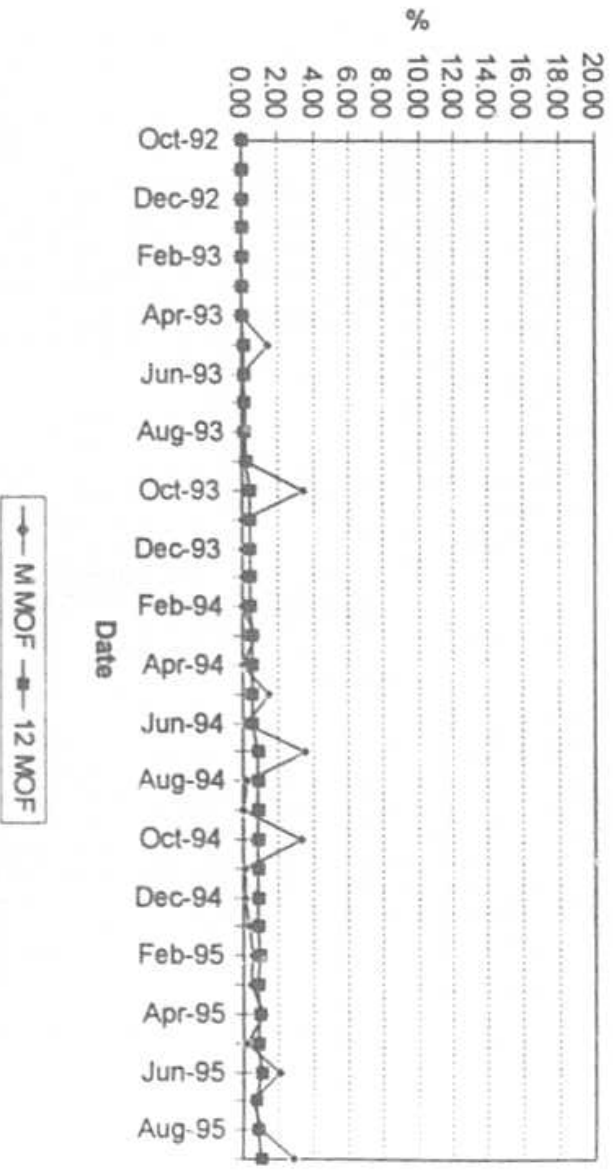
MAINTENANCE OUTAGE FACTOR



PFL 4 FORCED OUTAGE FACTOR



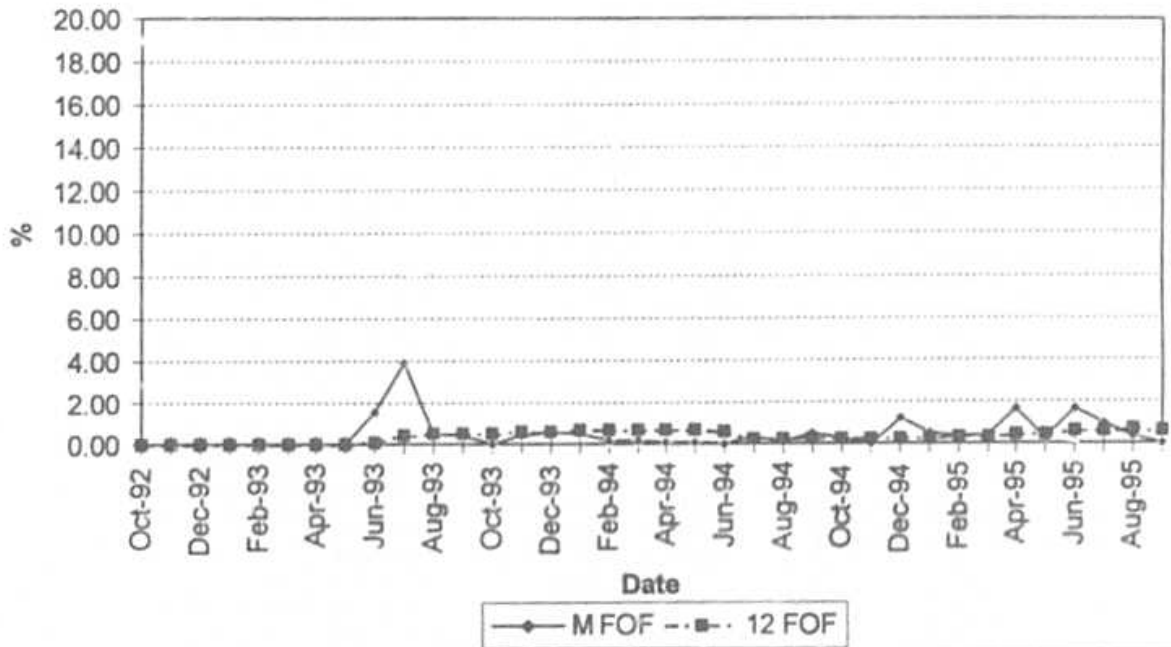
MAINTENANCE OUTAGE FACTOR



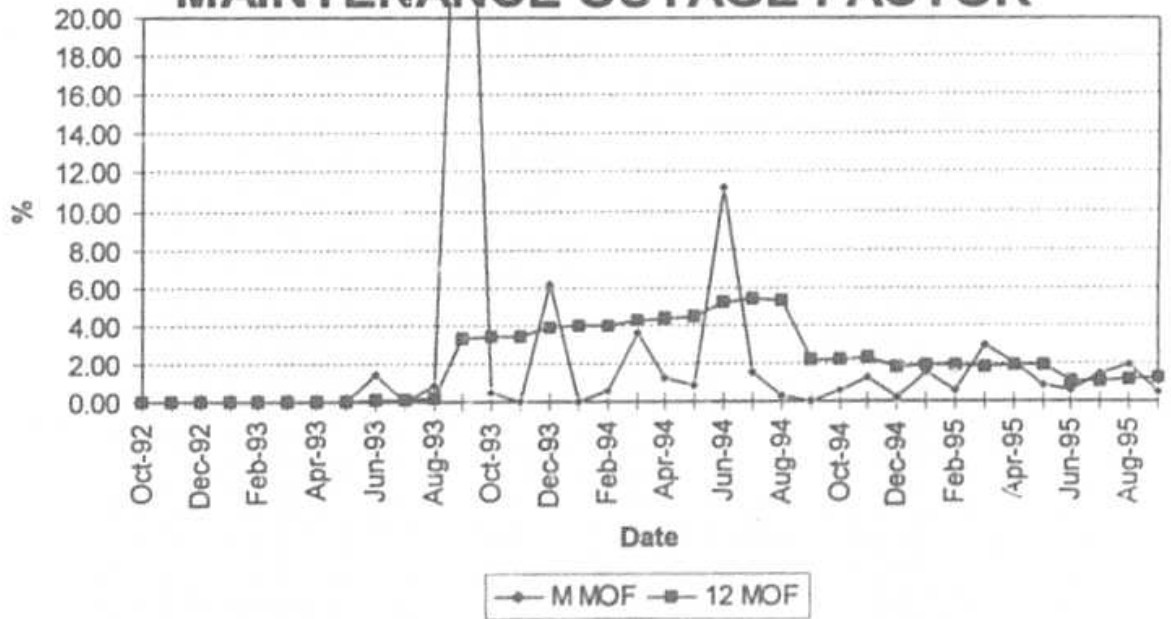
Issued By: Florida Power & Light Company

110289

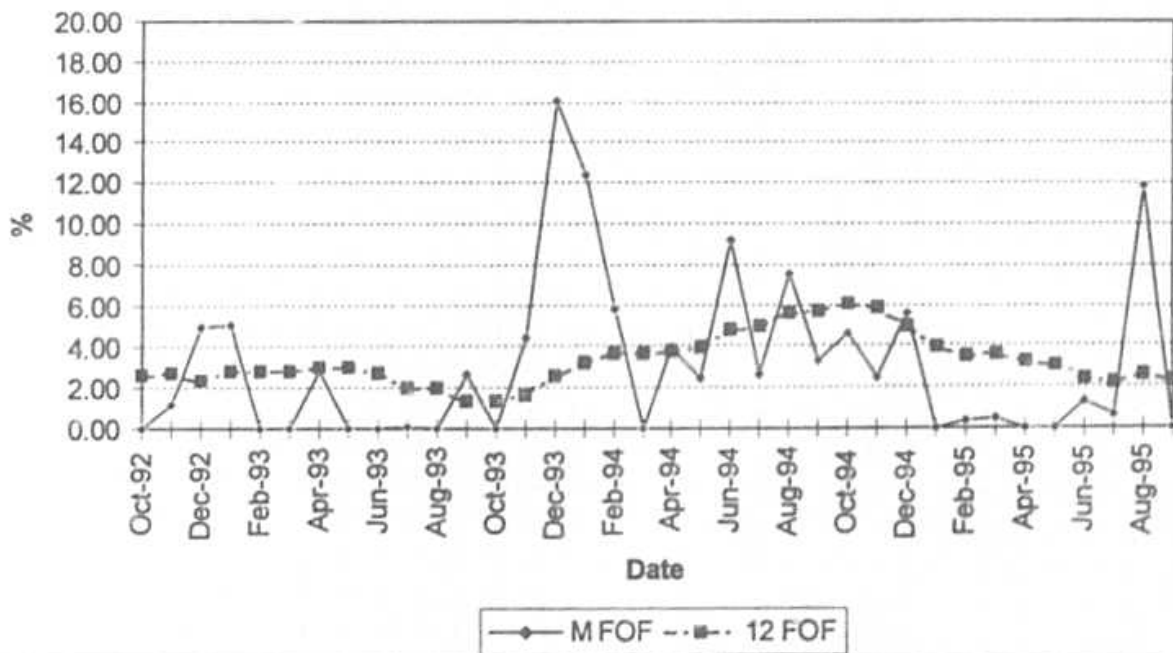
PFL 5 FORCED OUTAGE FACTOR



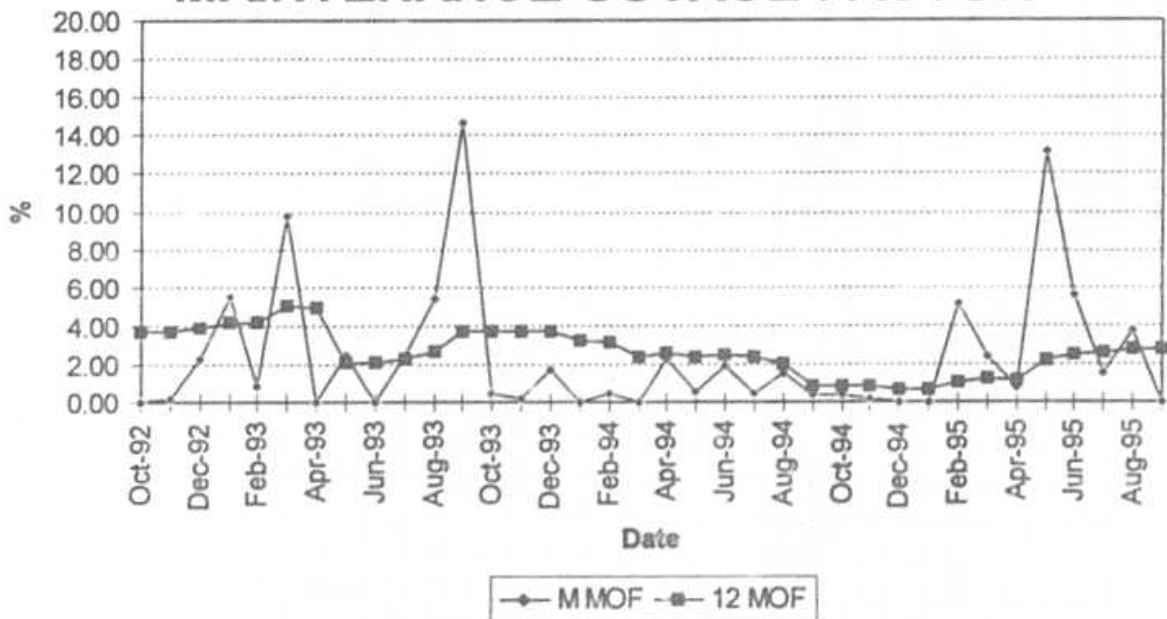
MAINTENANCE OUTAGE FACTOR



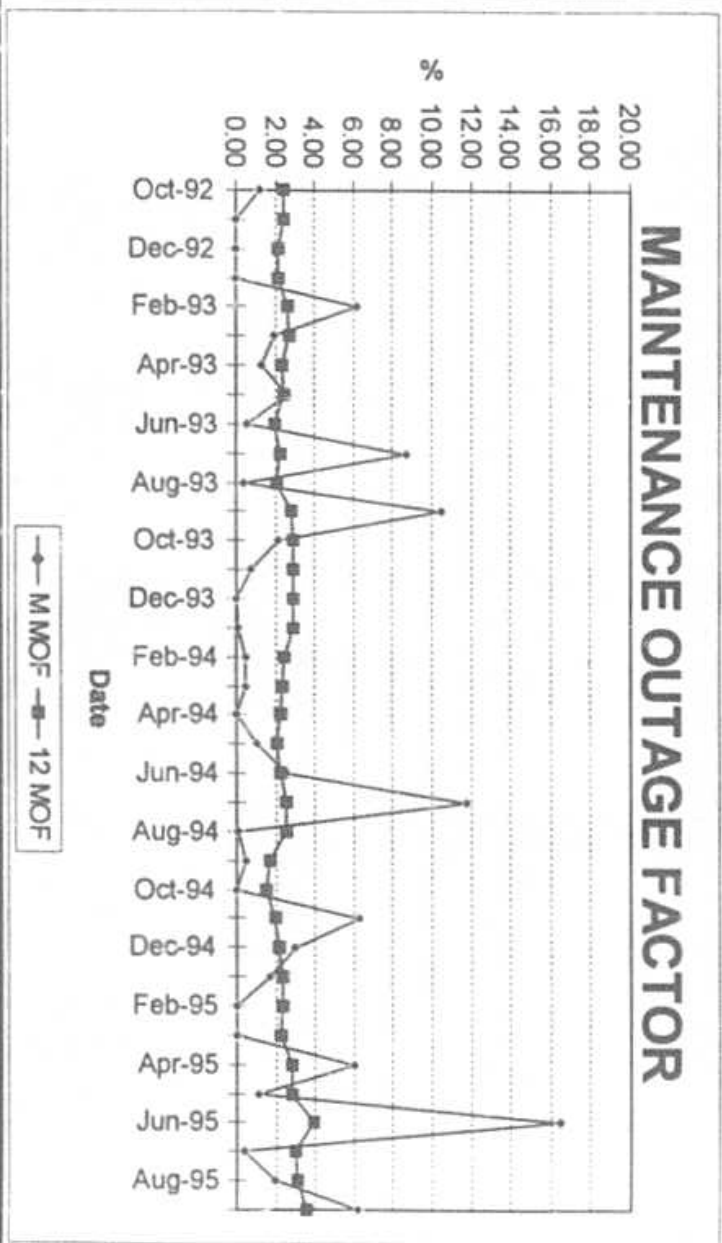
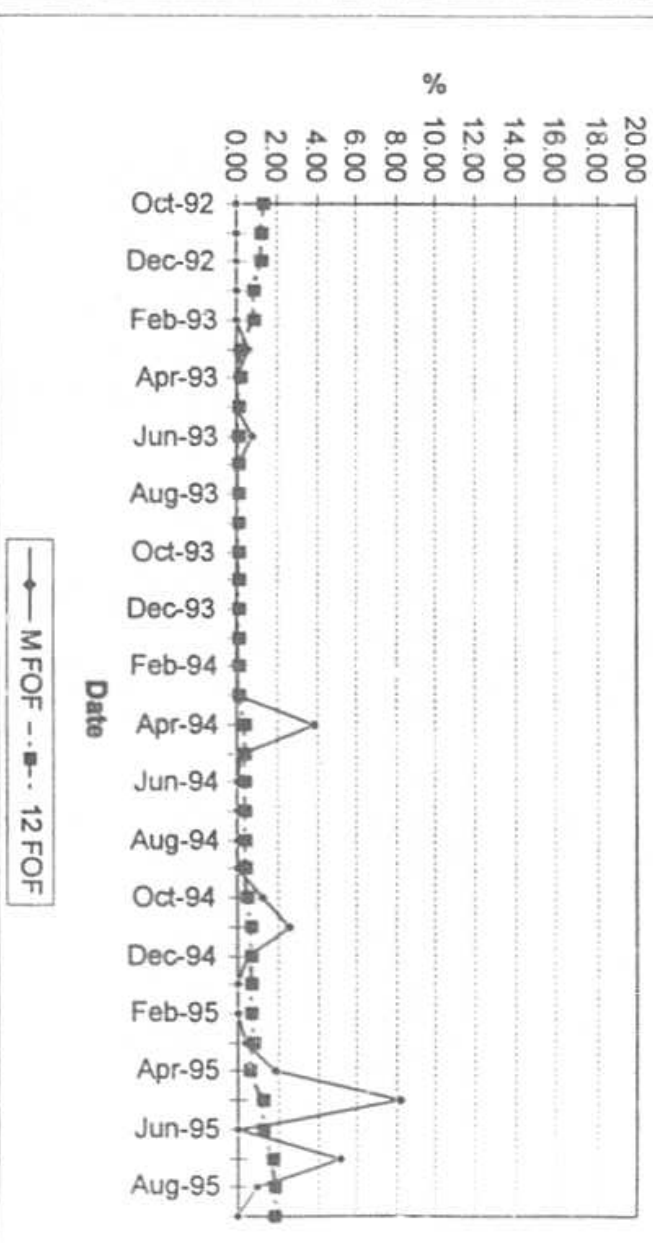
PFM 2 FORCED OUTAGE FACTOR



MAINTENANCE OUTAGE FACTOR



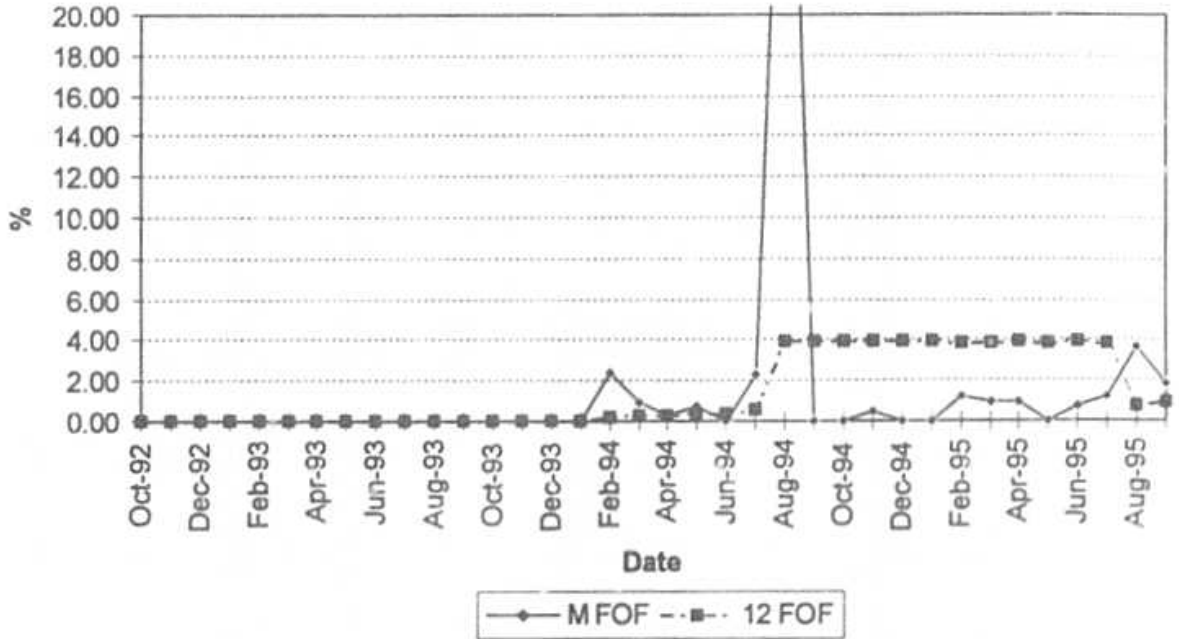
PMT 2 FORCED OUTAGE FACTOR



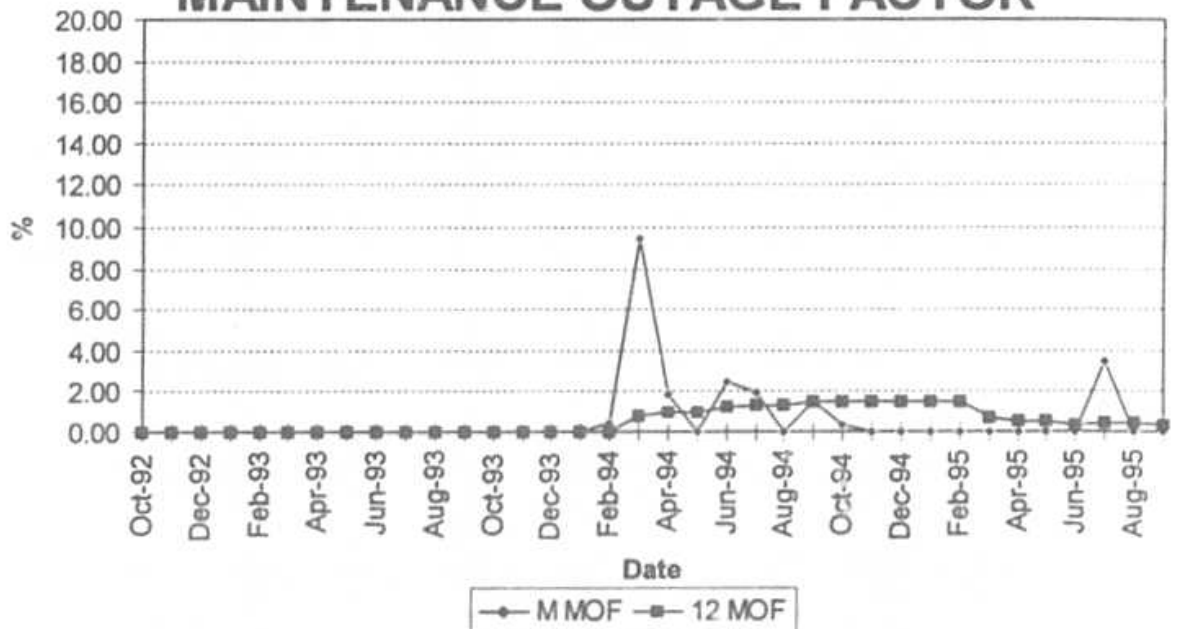
Issued By: Florida Power & Light Company

110Z89

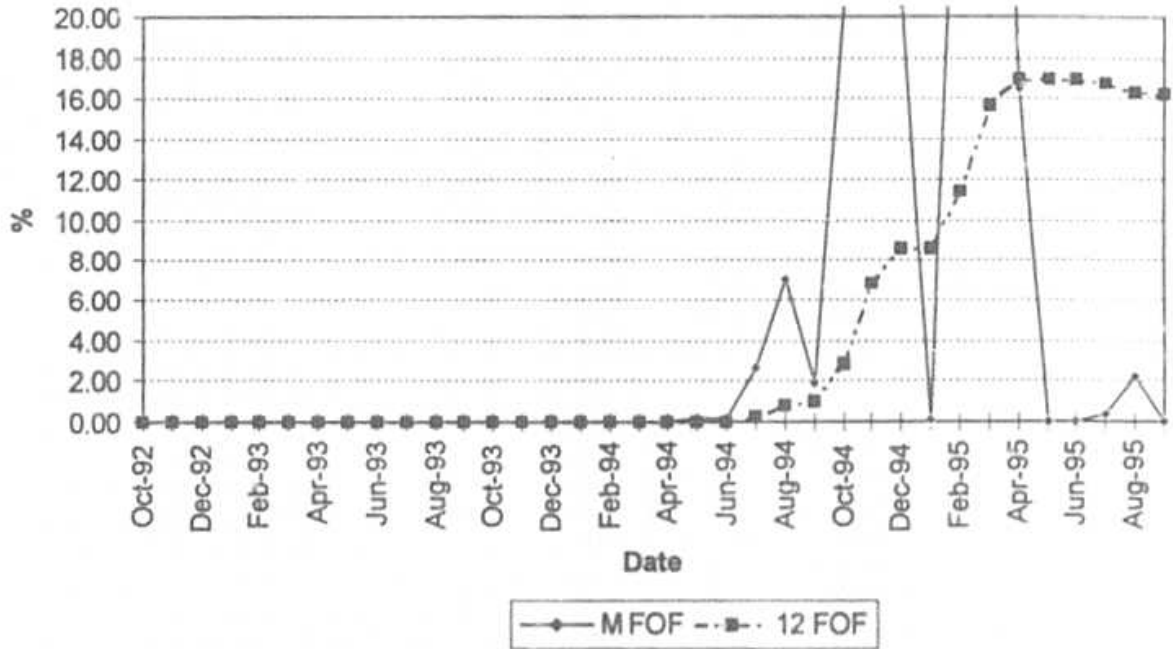
PMG 3 FORCED OUTAGE FACTOR



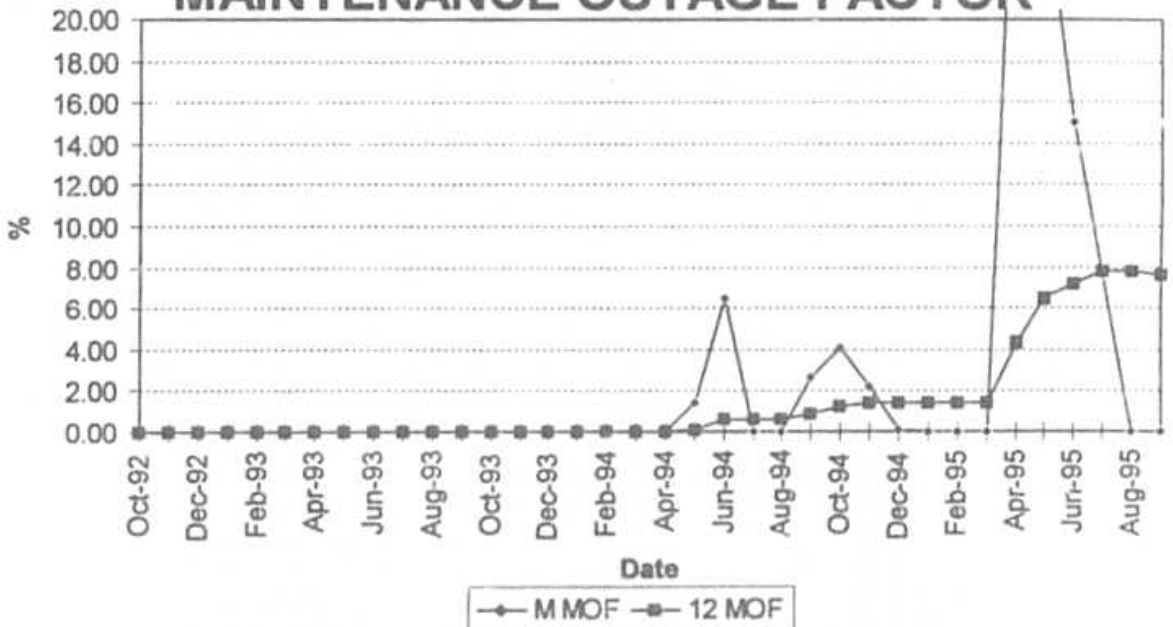
MAINTENANCE OUTAGE FACTOR



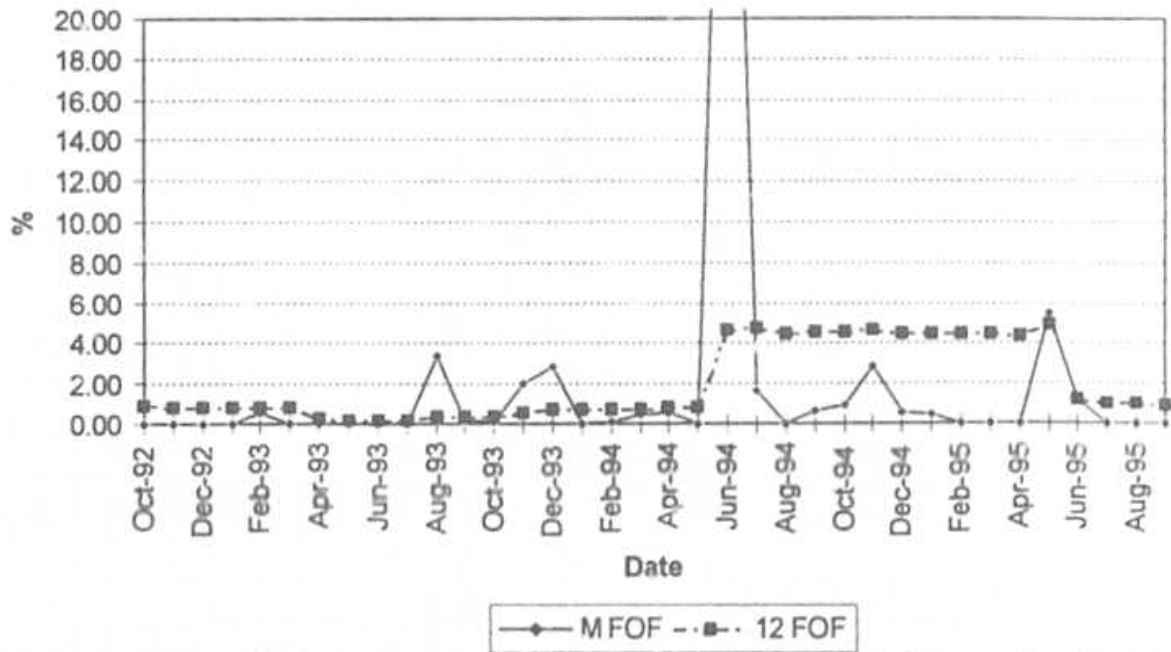
PMG 4 FORCED OUTAGE FACTOR



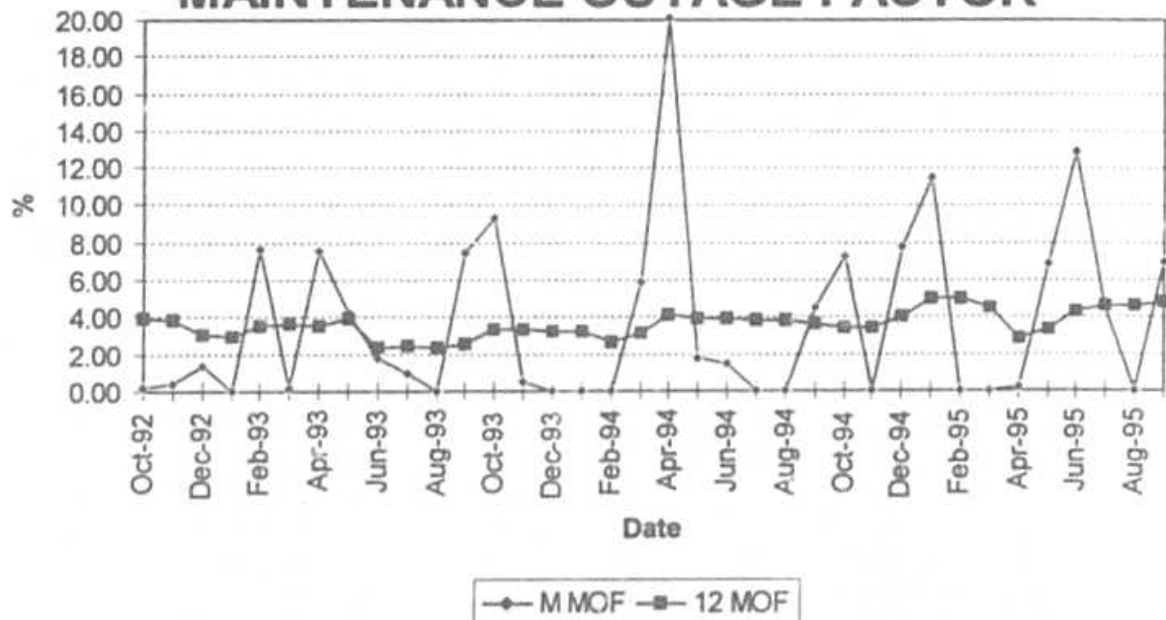
MAINTENANCE OUTAGE FACTOR



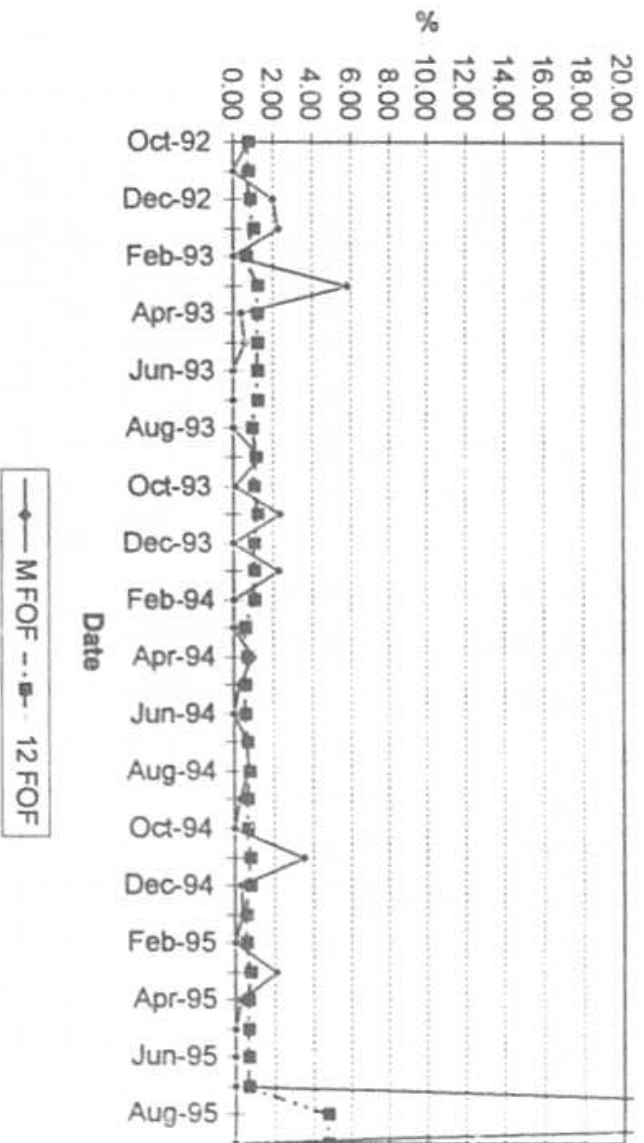
PPE 3 FORCED OUTAGE FACTOR



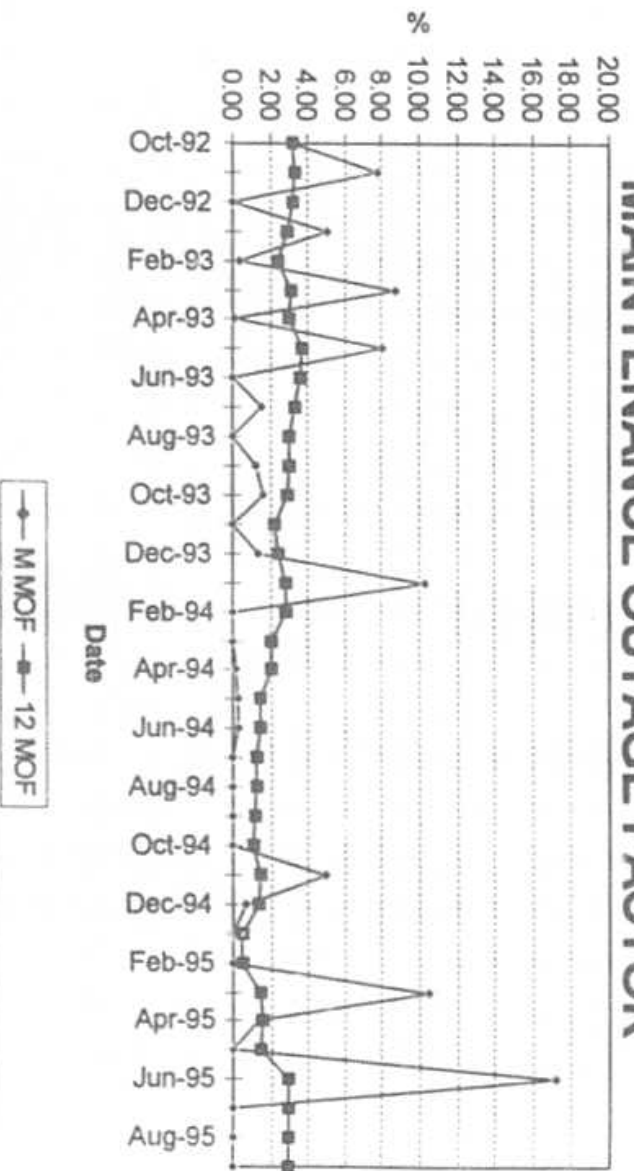
MAINTENANCE OUTAGE FACTOR



PPE 4 FORCED OUTAGE FACTOR



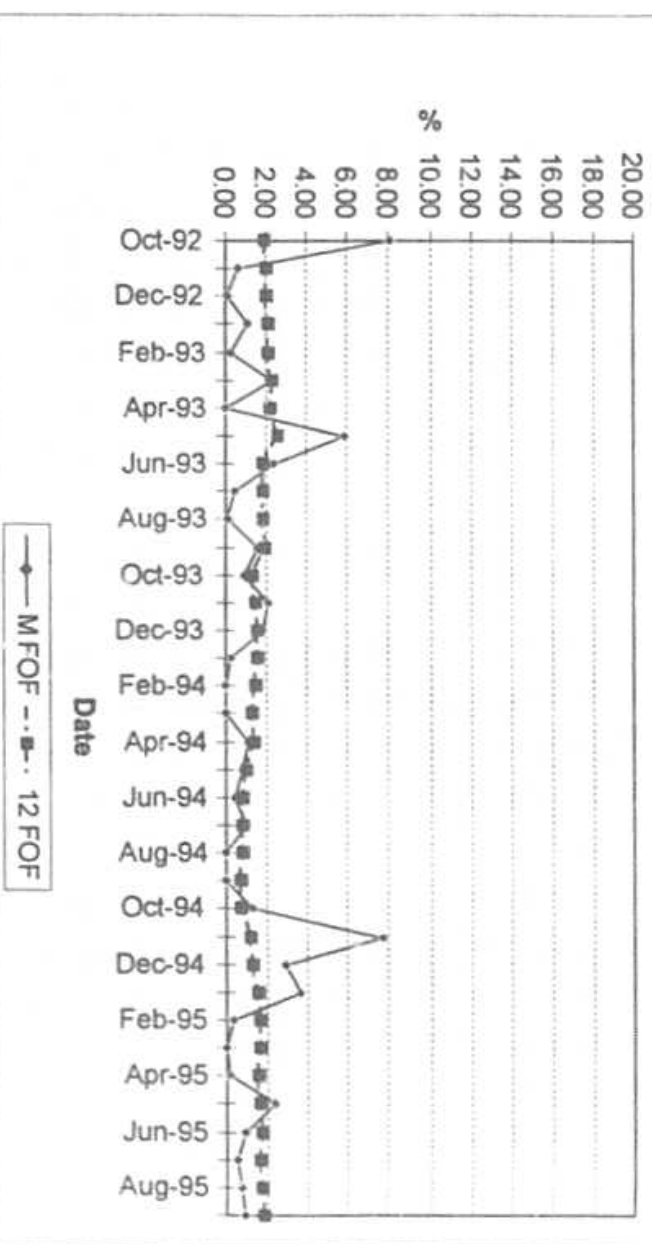
MAINTENANCE OUTAGE FACTOR



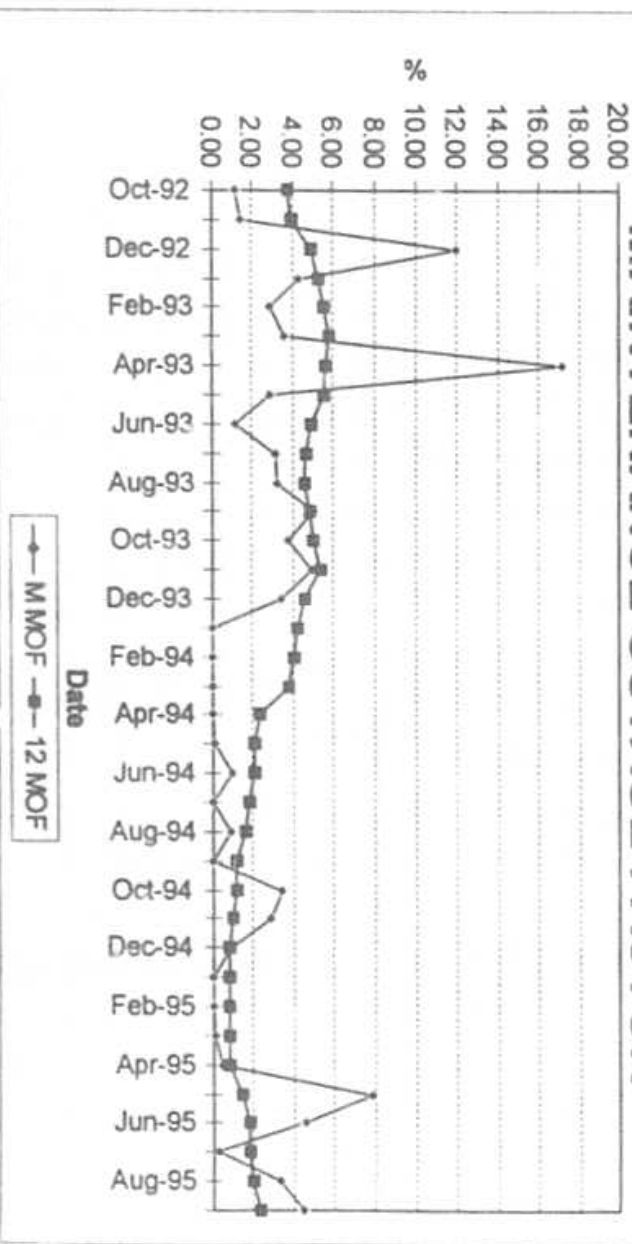
Issued By: Florida Power & Light Company

Docket No.: 960001-EI
 FPL Witness: R. Silva
 Exhibit: No.: _____
 Document 1 Page 20 of 30

PPN 1 FORCED OUTAGE FACTOR



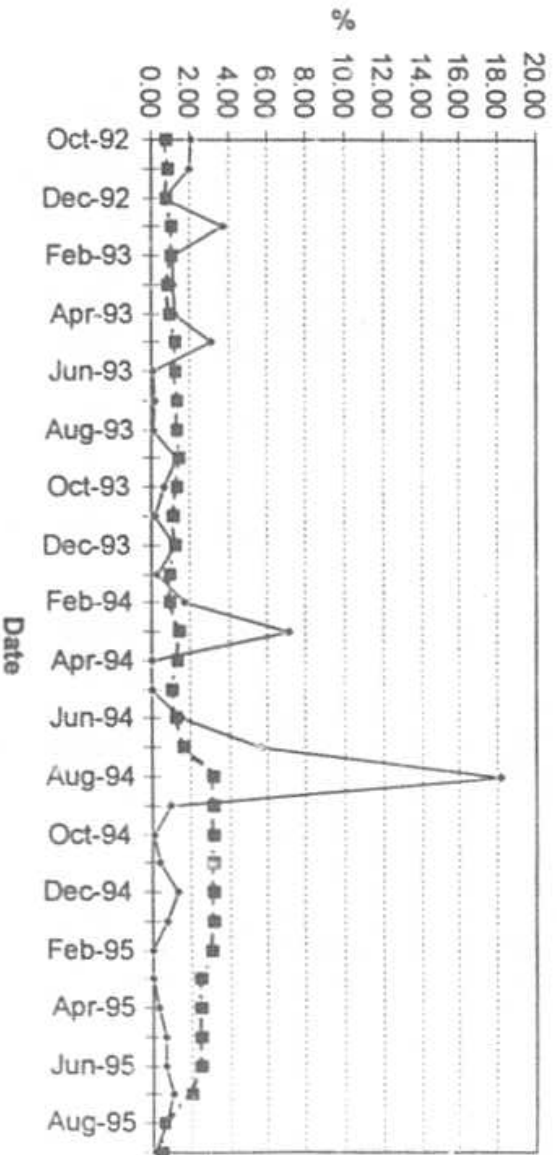
MAINTENANCE OUTAGE FACTOR



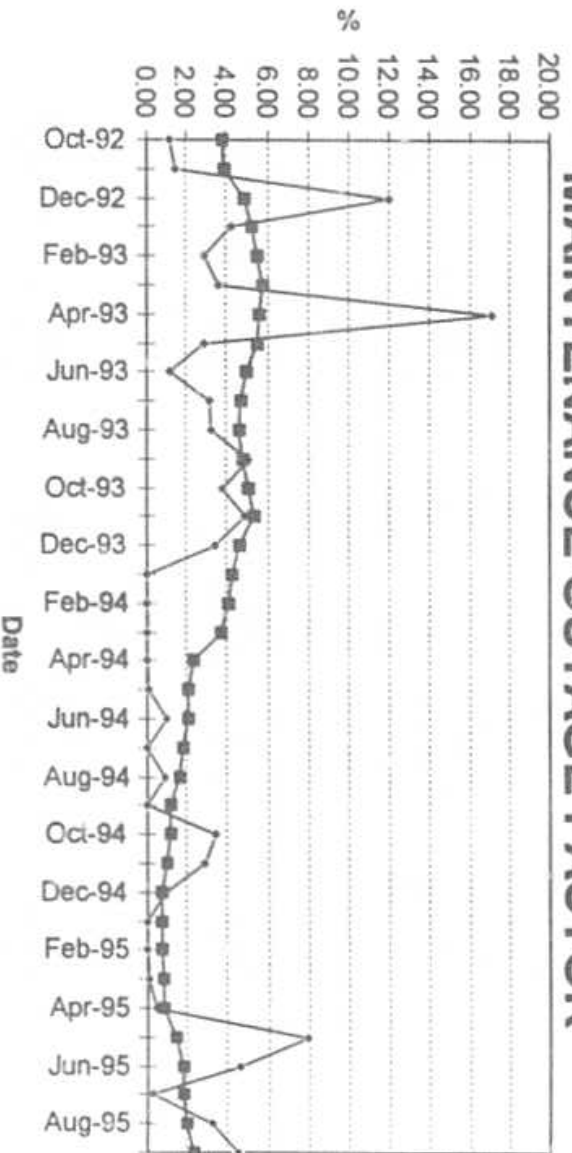
Issued By: Florida Power & Light Company

110289

PPN 2 FORCED OUTAGE FACTOR



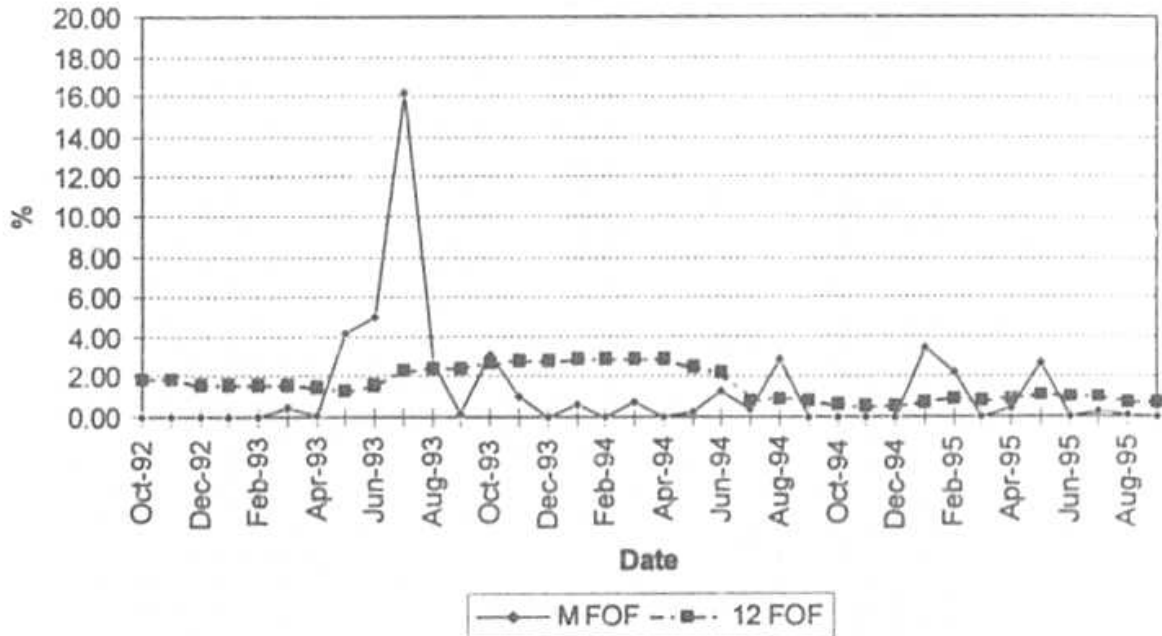
MAINTENANCE OUTAGE FACTOR



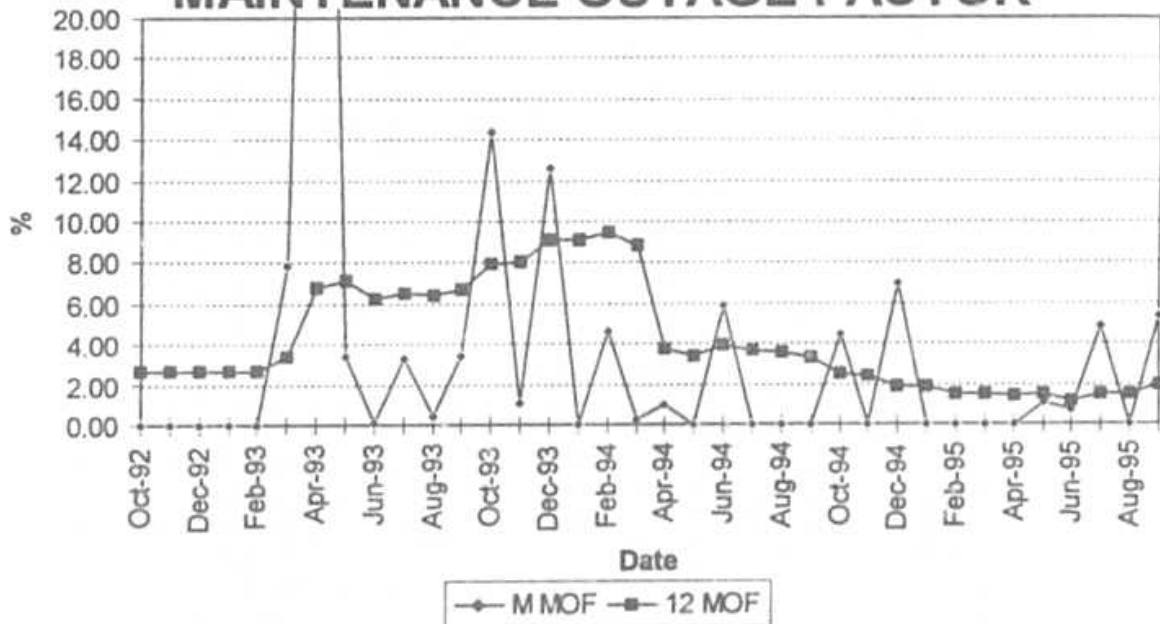
Issued By: Florida Power & Light Company

1102269

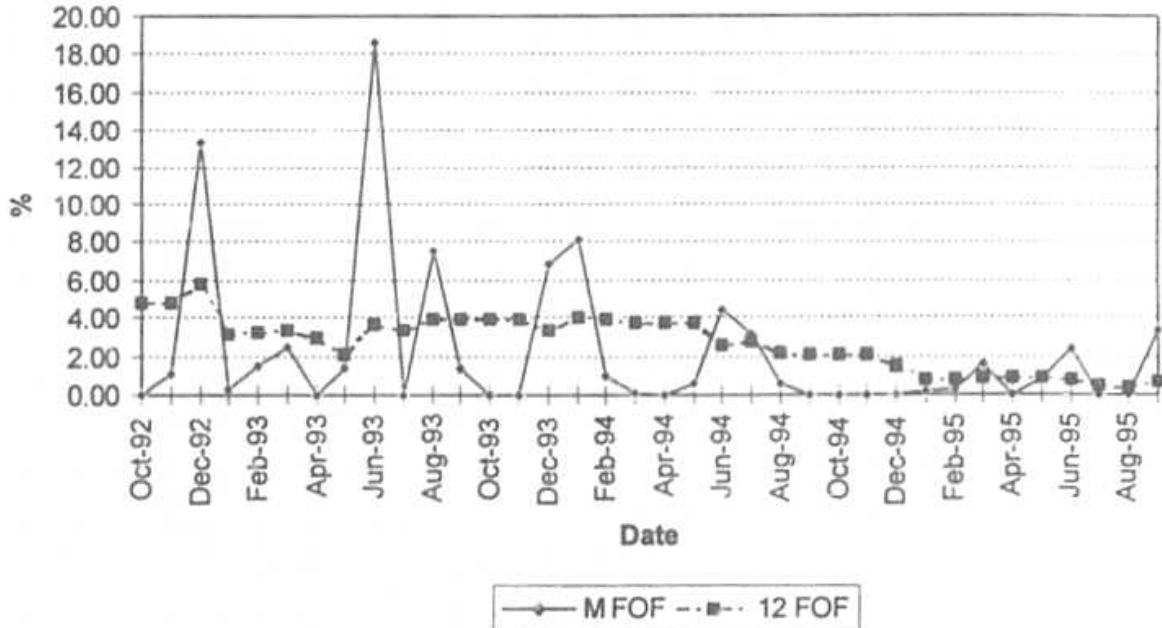
PTP 1 FORCED OUTAGE FACTOR



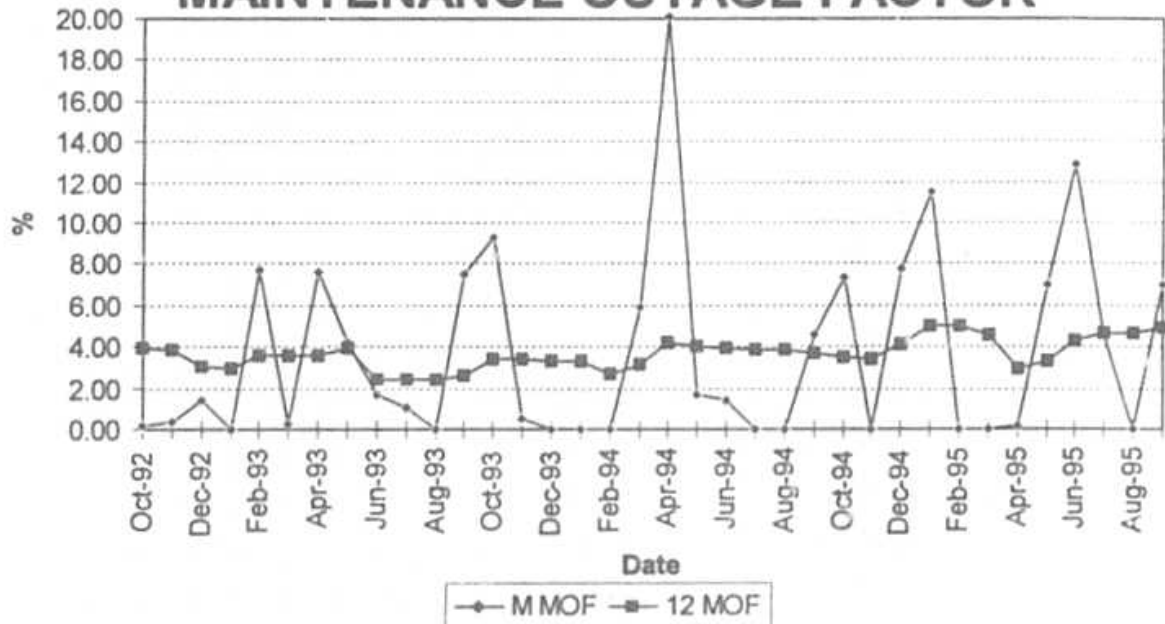
MAINTENANCE OUTAGE FACTOR



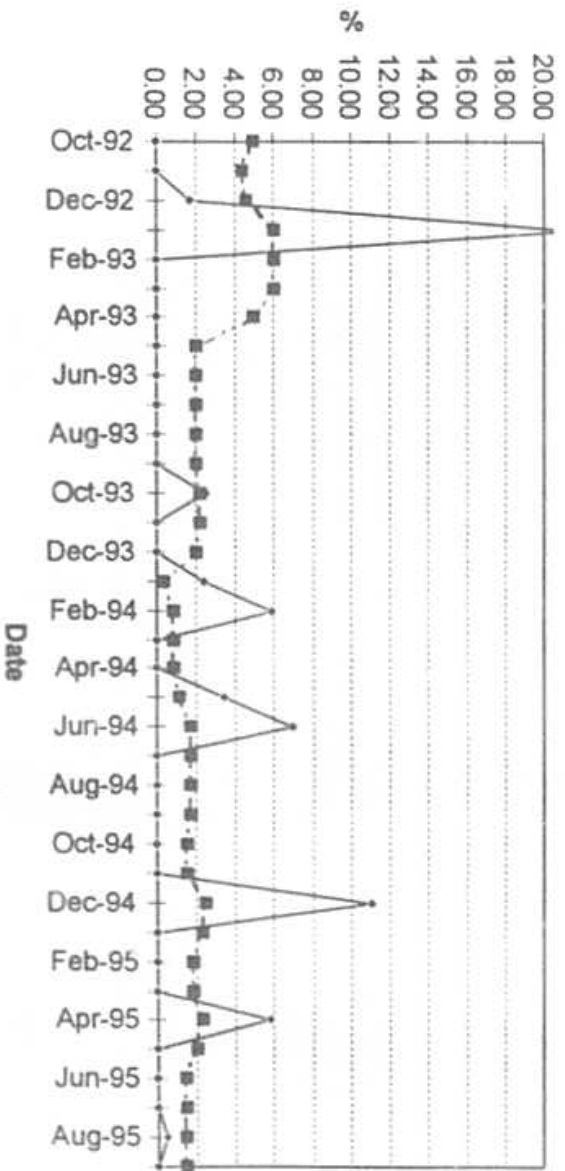
PTP 2 FORCED OUTAGE FACTOR



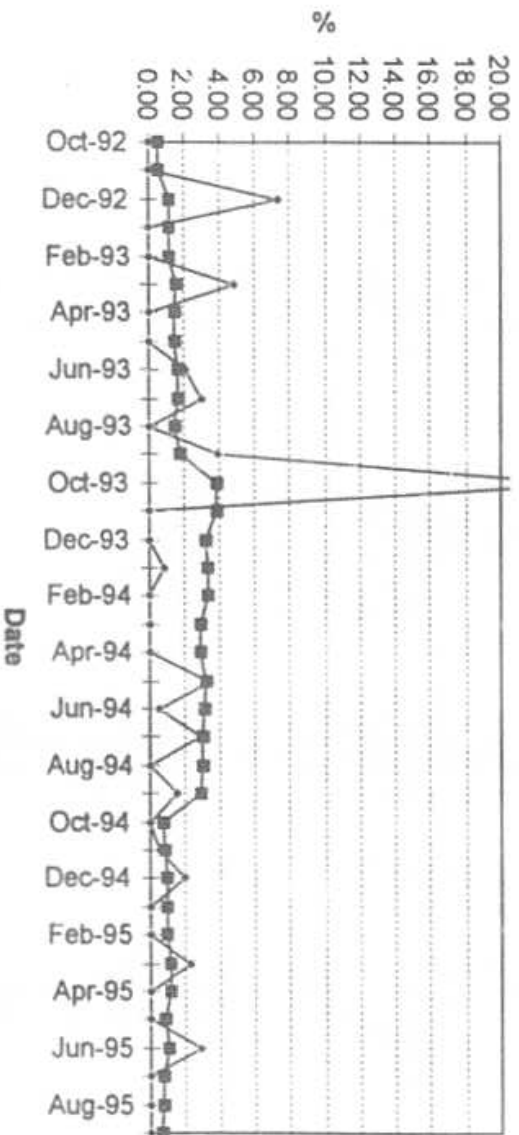
MAINTENANCE OUTAGE FACTOR



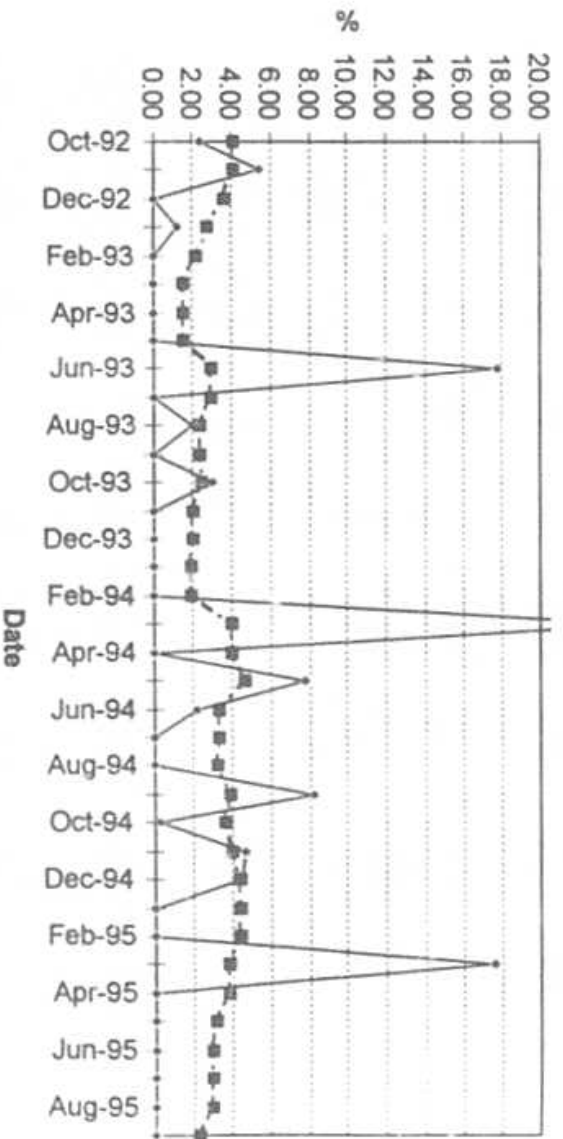
PTN 3 FORCED OUTAGE FACTOR



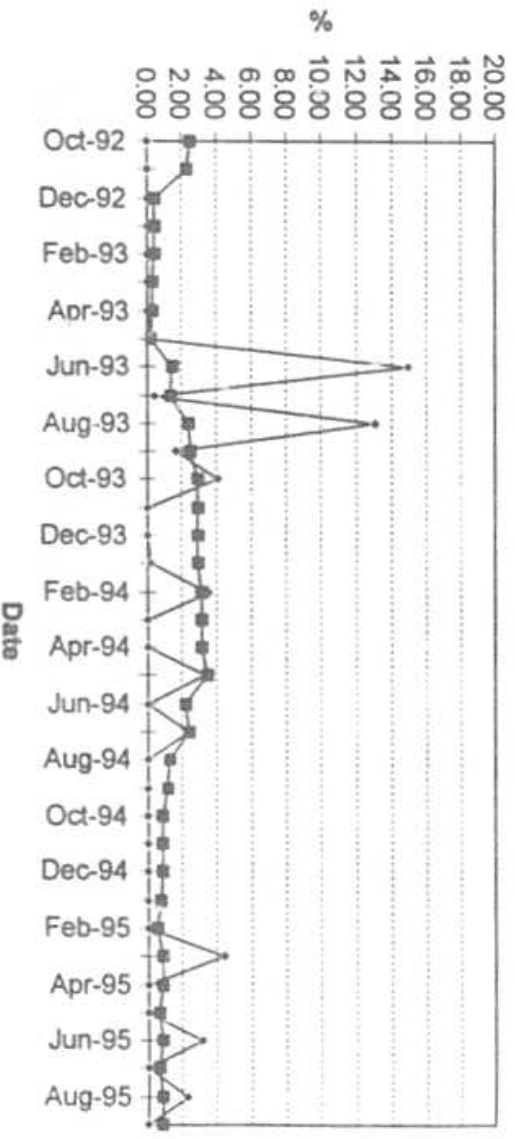
MAINTENANCE OUTAGE FACTOR



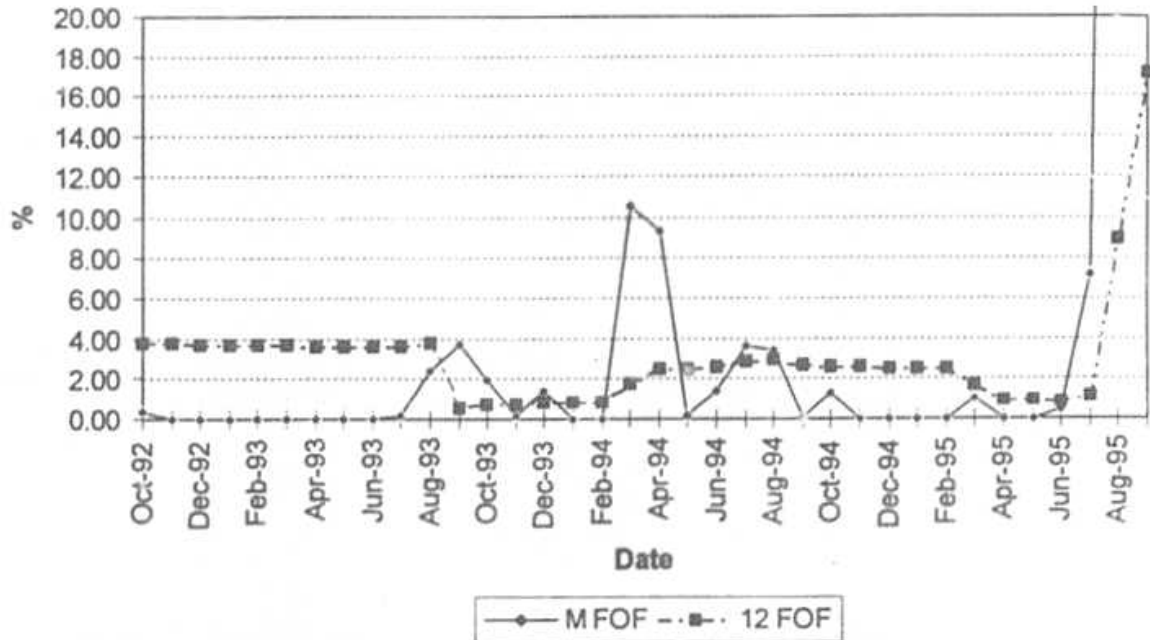
PTN 4 FORCED OUTAGE FACTOR



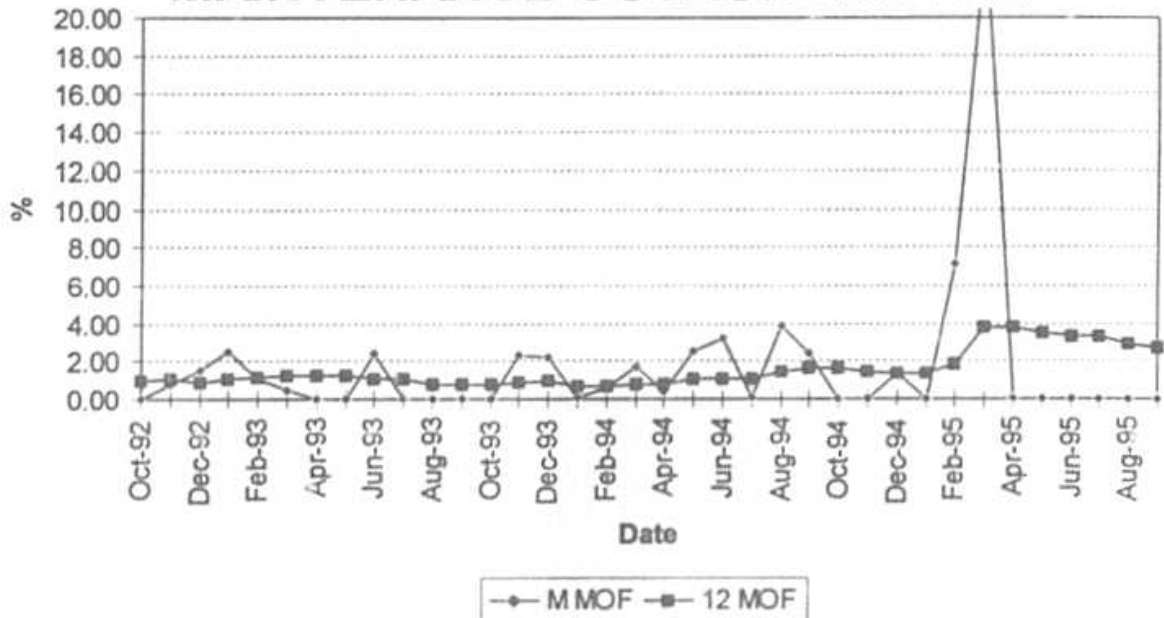
MAINTENANCE OUTAGE FACTOR



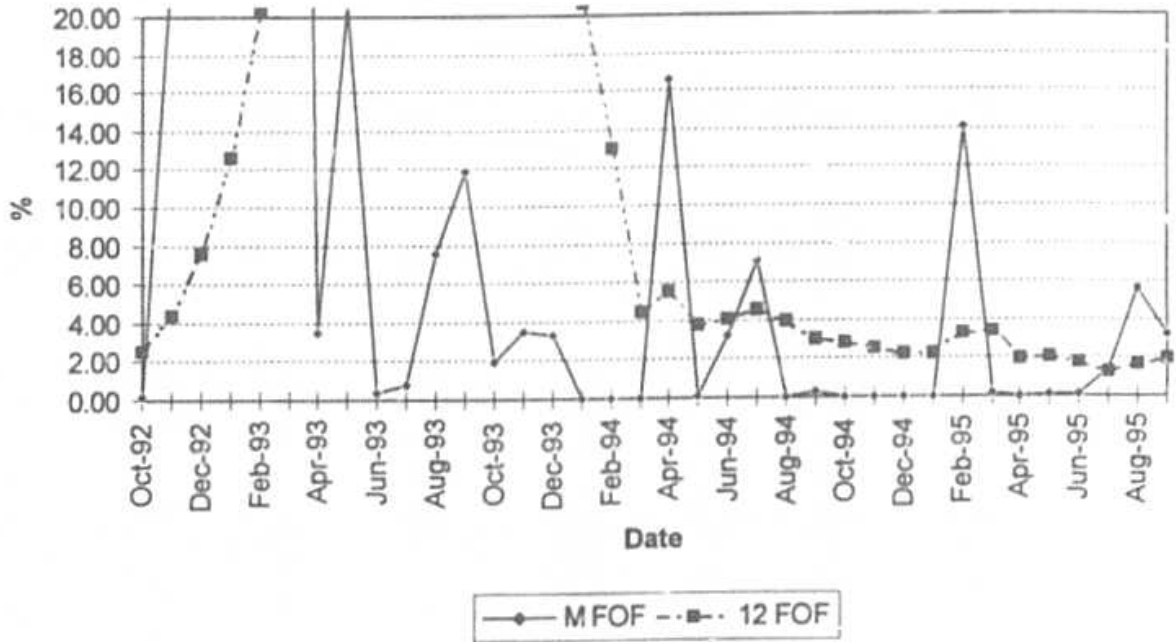
PSL 1 FORCED OUTAGE FACTOR



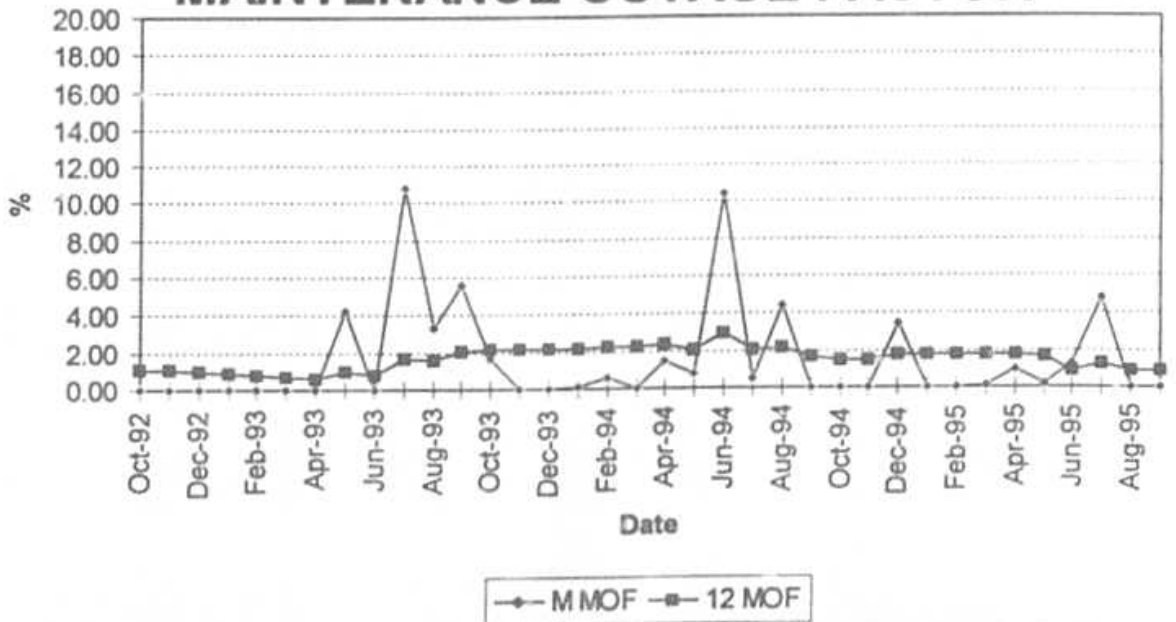
MAINTENANCE OUTAGE FACTOR



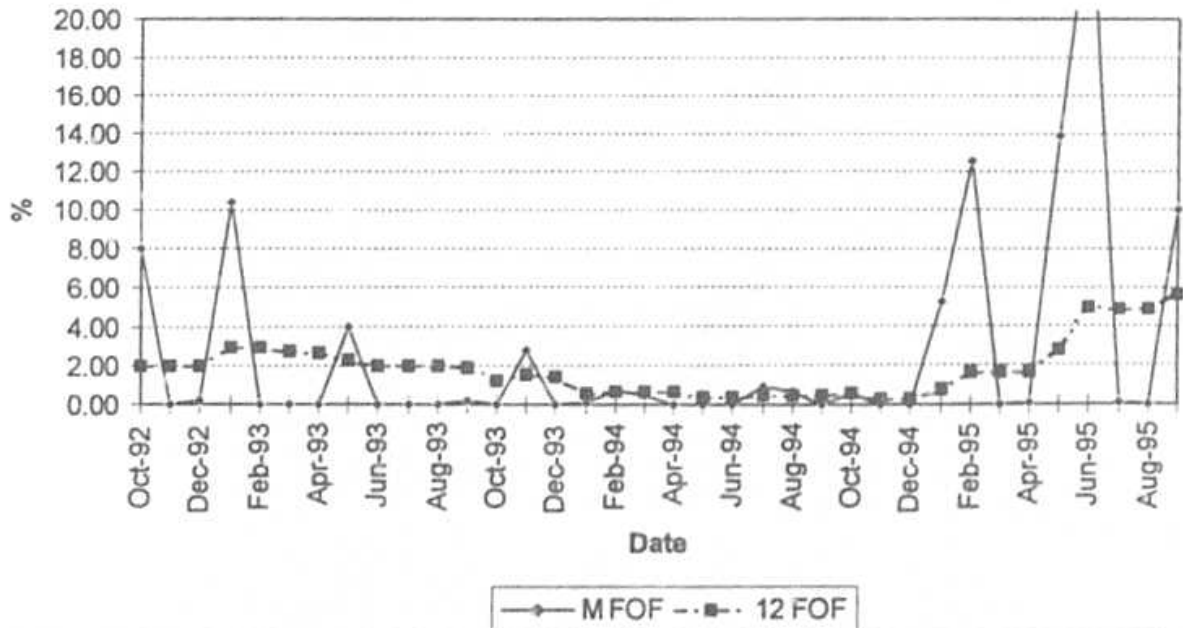
PSL 2 FORCED OUTAGE FACTOR



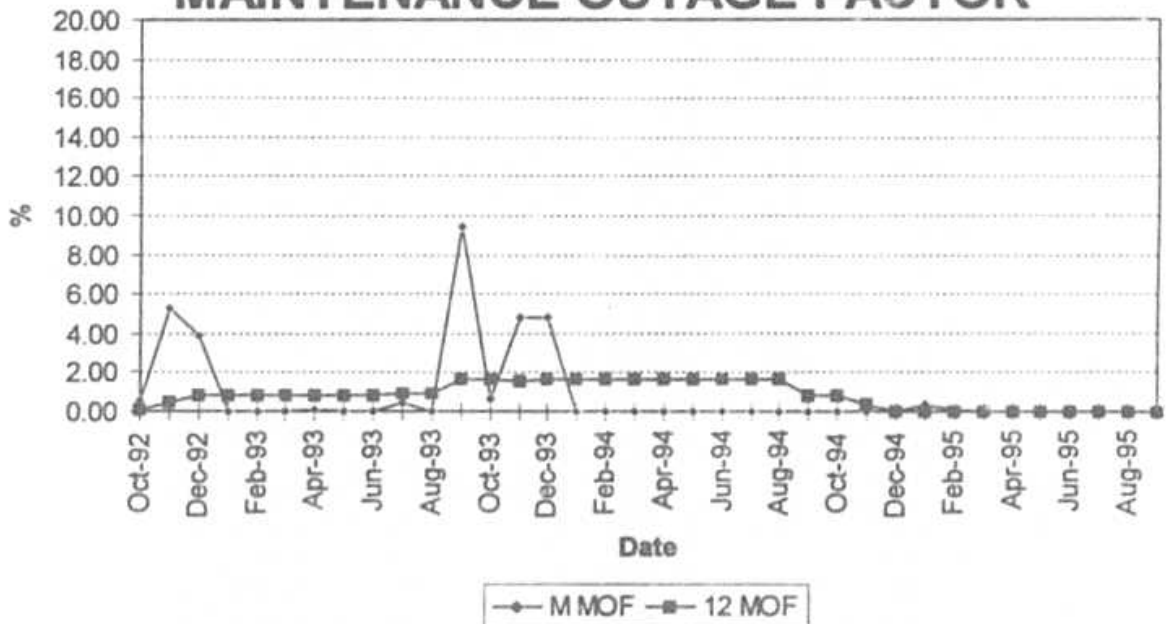
MAINTENANCE OUTAGE FACTOR



PSG 4 FORCED OUTAGE FACTOR



MAINTENANCE OUTAGE FACTOR



PLANNED OUTAGE SCHEDULES (ESTIMATED)

FLORIDA POWER & LIGHT COMPANY

PERIOD OF: APRIL 1996 THRU SEPTEMBER 1996

<u>PLANT/UNIT</u>		<u>PLANNED OUTAGE DATES</u>	<u>REASON FOR OUTAGE (1)</u>	<u>LR MW</u>
CAPE CANAVERAL	1	4/ 7/96 - 4/21/96	MINOR BOILER OVERHAUL	397
CAPE CANAVERAL	2	NONE		
LAUDERDALE	4	NONE		
LAUDERDALE	5	NONE		
FORT MYERS	2	NONE		
MANATEE	2	4/ 1/96 - 4/ 7/96	MINOR BOILER OVERHAUL	798
MARTIN	3	4/27/96 - 5/ 6/96	COMBUST. TURBINE OVERHAUL	215
MARTIN	4	9/23/96 - 9/30/96	COMBUST. TURBINE OVERHAUL	215
PORT EVERGLADES	3	4/ 6/96 - 5/20/96	STM TURBINE/GEN OVERHAUL	389
PORT EVERGLADES	4	NONE		
PUTNAM	1	NONE		
PUTNAM	2	NONE		
TURKEY POINT	1	NONE		
TURKEY POINT	2	NONE		
TURKEY POINT	3	NONE		
TURKEY POINT	4	4/ 1/96 - 4/22/96	REFUELING OVERHAUL	666
ST. LUCIE	1	4/ 1/96 - 5/28/96	REFUELING OVERHAUL	839
ST. LUCIE	2	NONE		
SCHERER	4	9/15/96 - 9/30/96	MAJOR TURB./GEN. OVERHAUL	844

(1) TO BE ACCOMPANIED BY A CRITICAL PATH BAR CHART OR MILESTONE DATE CHART OF MAJOR WORK ACTIVITY TO BE PERFORMED DURING THE OUTAGE.