

MACFARLANE ALISLEY FERGUSON & McMULLEN

ATTORNEYS AND COUNSELORS AT LAW

227 SOUTH CALHOUN STREET
P.O. BOX 391 (ZIP 32302)
TALLAHASSEE, FLORIDA 32301
19041 224-9115 FAX 19041 222-7560

111 MADISON STREET, SUITE 2300
P.O. BOX 1531 (ZIP 33601)
TAMPA, FLORIDA 33602
18131 273-4200 FAX 18131 273-4396

400 CLEVELAND STREET
P.O. BOX 1669 (ZIP 34617)
CLEARWATER, FLORIDA 34615
18131 441-8988 FAX 18131 442-8470

March 12, 1996

IN REPLY REFER TO

Tallahassee

BY HAND DELIVERY

Ms. Blanca S. Bayo, Director
Division of Records and Reporting
Florida Public Service Commission
2540 Shumard Oak Boulevard
Tallahassee, Florida 32399-0850

960325-EI

Re: Petition of Tampa Electric Company for Approval
Of Charges for Underground Distribution Facilities

Dear Ms. Bayo:

Enclosed for filing are the original and fifteen (15) copies of Tampa Electric's Petition in the above-referenced.

Please acknowledge receipt and filing of the above by stamping the duplicate copy of this letter and returning the same to this writer.

Thank you for your assistance in this matter.

Sincerely,


James D. Beasley

JDB/bjm

Enclosures

cc: All Parties of Record (w/encls.)



DOCUMENT NUMBER-DATE

03015 MAR 12 1996

FPSC-RECORDS/REPORTING

BEFORE THE FLORIDA PUBLIC SERVICE COMMISSION

In re: Petition of Tampa Electric)
Company for Approval of Charges for)
Underground Distribution Facilities)

DOCKET NO. _____
FILED: March 12, 1996

PETITION OF TAMPA ELECTRIC COMPANY

Tampa Electric Company ("Tampa Electric" or "the company"), by and through its undersigned attorneys, files this Petition for approval of charges for underground distribution facilities and respectively represents that:

1. Tampa Electric is a Florida corporation with its headquarters located at 702 N. Franklin Street in the City of Tampa, Florida. The company is an electric utility operating under the jurisdiction of this Commission. This petition is filed under Section 366.06(3), Florida Statutes, with respect to changing of electric utility rates and charges under the jurisdiction of the Commission.

2. The names and addresses of the persons authorized to receive notice and communications in respect to this petition are:

Lee L. Willis
James D. Beasley
Macfarlane Ausley
Ferguson & McMullen
Post Office Box 391
Tallahassee, Florida 32302

Jana Hathorne
Regulatory Specialist
Tampa Electric Company
Post Office Box 111
Tampa, Florida 33601

3. Tampa Electric has made its annual review of the New Single-phase Service Laterals from Overhead Distribution System charge and Single-phase Service Laterals Converted from Existing Overhead Service Drops charge contained in its Second Revised Sheet No. 5.515 and finds that on the basis of the Commission's practices and procedures, the proper charge for the New Single-phase Service

DOCUMENT NUMBER-DATE

03015 MAR 12 96

FPSC-RECORDS/REPORTING

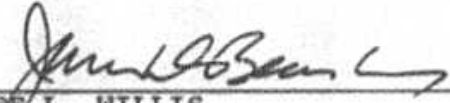
Lateral from Overhead Distribution Systems should be \$2.90 per foot with a 6 ft credit for services 100 ft or less and a 63 ft credit for services longer than 100 ft. The charge is now \$2.96 per foot with a 25 ft credit for services 100 ft or less and a 67 ft credit for services longer than 100 ft. In addition, the proper charge for a Single-phase Service Lateral Converted from Existing Overhead Service Drops should be a base charge of \$96.00 plus \$2.90 per foot with a 6 ft credit for services 100 ft or less and a base charge of \$300.00 plus \$2.90 per foot with a 63 ft credit for services longer than 100 ft. The conversion cost now is a base charge of \$153.00 plus \$2.96 per foot with a 25 ft credit for services 100 ft or less and a base charge of \$285.00 plus \$2.96 per foot with a 67 ft credit for services greater than 100 ft.

4. Attached hereto and made a part hereof is Third Revised Sheet No. 5.515 which incorporates the new proper service lateral charges in paragraphs 3.7.1.2. and 3.7.1.3.

WHEREFORE, Tampa Electric Company requests that this Commission consent to its above described Revised Tariff Sheets under the provisions of Section 366.06(3), Florida Statutes.

DATED this 12th day of March, 1996.

Respectfully submitted,



LEE L. WILLIS
JAMES D. BEASLEY of
Macfarlane Ausley Ferguson & McMullen
Post Office Box 391
Tallahassee, Florida 32302
(904) 224-9115
Attorneys for Tampa Electric Company

3.7 SCHEDULE OF STANDARD CHARGES AND NON-REFUNDABLE DEPOSITS FOR COST ESTIMATES FOR UNDERGROUND ELECTRIC DISTRIBUTION SYSTEMS

3.7.1 Standard Charges

The Standard charges listed here are Contributions In Aid of Construction (CIAC) which are referenced by other sections of these rules and regulations.

3.7.1.1 Residential Subdivisions

Low Density Subdivisions per service lateral or dwelling unit . . .	\$251.00
High Density Subdivisions per service lateral or dwelling unit . . .	\$195.00

3.7.1.2 New Single-phase Service Laterals from Overhead Distribution Systems

For 200' lateral or less per trench foot (w/ 6' of credit for services 100' or less and 63' of credit for services greater than 100').	\$2.90
--	--------

3.7.1.3 Single-phase Service Laterals Converted from Existing Overhead Service Drops

For 100' lateral or less	\$96.00
For 101'-200' lateral	\$300.00
For 200' lateral or less per trench foot (w/ 6' of credit for services 100' or less and 63' of credit for services greater than 100').	\$2.90

3.7.1.4 New Commercial Three-phase Pad-mounted Transformers

<u>Transformer Size</u>	<u>CIAC</u>
75 KVA	\$1,000
150 KVA	1,000
225 KVA	1,250
300 KVA	1,500
500 KVA	1,750
750 KVA	2,000

3.7.2 Non-refundable Deposits for Estimates of CIAC

3.7.2.1 New Construction

Requests for construction of new underground systems, except for residential subdivisions covered under Section 3.4.2, will be accompanied by a non-refundable amount as follows:

<u>Density Class</u>	<u>Deposit Amount</u>
Urban Commercial or Residential	\$3,200 per mile *
Rural Commercial or Residential	\$1,800 per mile *

* Measured along centerline of roadways or proposed roadways

TAMPA ELECTRIC COMPANY

3.7 SCHEDULE OF STANDARD CHARGES AND NON-REFUNDABLE DEPOSITS FOR COST ESTIMATES FOR UNDERGROUND ELECTRIC DISTRIBUTION SYSTEMS

3.7.1 Standard Charges

The Standard charges listed here are Contributions In Aid of Construction (CIAC) which are referenced by other sections of these rules and regulations.

3.7.1.1 Residential Subdivisions

Low Density Subdivisions per service lateral or dwelling unit . . .	\$274.00 \$251.00
High Density Subdivisions per service lateral or dwelling unit . . .	\$183.00 \$195.00

3.7.1.2 New Single-phase Service Laterals from Overhead Distribution Systems

For 200' lateral or less per trench foot (w/ 25' 6' of credit for services less than 100' or less and 67' 63' of credit for services greater than 100').	\$2.96 \$2.90
--	---------------

3.7.1.3 Single-phase Service Laterals Converted from Existing Overhead Service Drops

For 100' lateral or less	\$153.00 \$96.00
For 100'-200' lateral	\$285.00 \$300.00

For 200' lateral or less per trench foot (w/ 25' 6' of credit for services less than 100' or less and 67' 63' of credit for services greater than 100').	\$2.96 \$2.90
--	---------------

3.7.1.4 New Commercial Three-phase Pad-mounted Transformers

Transformer Size	CIAC
75 KVA	\$1,000
150 KVA	1,000
225 KVA	1,250
300 KVA	1,500
500 KVA	1,750
750 KVA	2,000

3.7.2 Non-refundable Deposits for Estimates of CIAC

3.7.2.1 New Construction

Requests for construction of new underground systems, except for residential subdivisions covered under Section 3.4.2, will be accompanied by a non-refundable amount as follows:

Density Class	Deposit Amount
Urban Commercial or Residential	\$3,200 per mile*
Rural Commercial or Residential	\$1,800 per mile*

* Measured along centerline of roadways or proposed roadways

March 11, 1996

TAMPA ELECTRIC COMPANY

1996

OVERHEAD DISTRIBUTION COSTS

VS.

UNDERGROUND DISTRIBUTION COSTS

This report presents the details of estimated construction of overhead distribution and underground distribution to serve residential Customers in subdivisions. The estimates were made for the typical subdivisions presented in the Answer to Commission Order No. 6031-B filed jointly by Florida Power and Light Company, Florida Power Corporation, Florida Public Utilities Company, Gulf Power Company and Tampa Electric Company, utilizing the appropriate formats for supporting data presented in that Answer. The information contained in this report represents the updating of the data filed March 17, 1995 by Tampa Electric Company.

Included in this report are the cumulative number of Customers served by overhead facilities and by underground facilities, the diversity tables used to design the distribution systems, the total dollars charged in 1995 to each of the various operating and maintenance accounts specifically related to overhead distribution and to underground distribution and information related to joint trenching activity.

C O N T E N T S

DESCRIPTION	Page
Summary of Overhead vs. Underground Residential Distribution Cost Differentials	1
Low Density (Single Family Residential) Overhead vs. Underground Summary Sheet	2
Diversity Table	3
Overhead Material and Labor Summary	4
Overhead Distribution Layout	5
Underground Material and Labor Summary	6
Underground Distribution Layout	7
High Density (Mobile Home-Townhouses) Overhead vs. Underground Summary Sheet	8
Diversity Table	9
Overhead Material and Labor Summary	10
Overhead Distribution Layout	11
Underground Material and Labor Summary	12
Underground Distribution Layout	13
Totals of the Operating and Maintenance Accounts for Overhead and Underground Distribution	14
The Cumulative Number of Customers Served by Overhead Facilities and by Underground Facilities	15
Joint Trenching Underground Residential Distribution	16

A summary of Overhead Versus Underground Residential Distribution Cost Differentials follows:

I. ESTIMATED AVERAGE COST DIFFERENTIAL FOR LOW DENSITY (SINGLE FAMILY) RESIDENTIAL DISTRIBUTION

COST PER LOT - LOW DENSITY RESIDENTIAL

<u>ITEM</u>	<u>OVERHEAD</u>	<u>UNDERGROUND</u>	<u>DIFFERENTIAL</u>
Labor	264.32	422.72	158.40
Material	395.86	488.13	92.27
TOTAL	660.18	910.85	250.67

II. ESTIMATED AVERAGE COST DIFFERENTIAL FOR HIGH DENSITY (MOBILE HOMES - TOWNHOUSES) RESIDENTIAL DISTRIBUTION

COST PER LOT - HIGH DENSITY RESIDENTIAL

<u>ITEM</u>	<u>OVERHEAD</u>	<u>UNDERGROUND</u>	<u>DIFFERENTIAL</u>
Labor	241.60	366.87	125.27
Material	308.75	378.28	69.53
TOTAL	550.35	745.15	194.80

TAMPA ELECTRIC COMPANY

MARCH 11, 1996

URD REPORT TO THE FLORIDA PUBLIC SERVICE COMMISSION

Tampa Electric Company
(Company)

Date: March 11, 1996

OVERHEAD VS UNDERGROUND

SUMMARY SHEET

COST PER LOT

LOW DENSITY (SINGLE FAMILY RESIDENTIAL)

ITEM	OVERHEAD	UNDERGROUND	DIFFERENTIAL
Labor	264.32	422.72	158.40
Material	395.86	488.13	92.27
TOTAL	660.18	910.85	250.67

Load Diversity Table - Low Density
(Single Family Residential)

No. Cust.	3000 sq ft House				2000 sq ft House				1250 sq ft House				Single Wide Mobile Home				900 sq ft Apt			
	kW	kVA	Transformer Size	VD	kW	kVA	Transformer Size	VD	kW	kVA	Transformer Size	VD	kW	kVA	Transformer Size	VD	kW	kVA	Transformer Size	VD
1	15	16.7	10	8.0	13	14.4	10	6.9	12	13.3	10	6.4	11	12.2	10	5.9	8	8.9	10	4.3
2	24	26.7	25	5.1	18	20.0	15	6.4	16	17.8	15	5.7	14	15.6	10	7.5	14	15.6	10	7.5
3	32	35.6	25	6.8	23	25.6	25	4.9	19	21.1	15	6.8	17	18.9	15	6.0	18	20.0	15	6.4
4	40	44.4	37.5	5.7	28	31.1	25	6.0	23	25.6	25	4.9	20	22.2	15	7.1	22	24.4	15	7.8
5	48	53.3	37.5	6.8	33	36.7	25	7.0	26	28.9	25	5.5	24	26.7	25	5.1	26	28.0	25	5.5
6	56	62.2	37.5	8.0	37	41.1	25	7.9	30	33.3	25	6.4	26	28.9	25	5.5	30	33.3	25	6.4
7	63	70.0	50	6.7	40	44.4	37.5	5.7	34	37.8	25	7.3	29	32.2	25	6.2	33	36.7	25	7.0
8	71	78.9	50	7.6	44	48.9	37.5	6.3	38	42.2	25	8.1	31	34.4	25	6.6	37	41.1	25	7.9
9	77	85.6	75	5.5	48	53.3	37.5	6.8	42	46.7	37.5	6.0	34	37.8	25	7.3	41	45.6	37.5	5.8
10	84	93.3	75	6.0	52	57.8	37.5	7.4	46	51.1	37.5	6.5	36	40.0	25	7.7	45	50.0	37.5	6.4
11	91	101.1	75	6.5	56	62.2	37.5	8.0	50	55.6	37.5	7.1	39	43.3	37.5	5.5	48	53.3	37.5	6.8
12	98	108.9	75	7.0	61	67.8	50	6.5	54	60.0	37.5	7.7	41	45.6	37.5	5.8	51	56.7	37.5	7.3
13					65	72.2	50	6.9	58	64.4	50	6.2	43	47.8	37.5	6.1	53	58.9	37.5	7.5
14					70	77.8	50	7.5	62	68.9	50	6.6	46	51.1	37.5	6.5	55	63.1	37.5	7.8
15					74	82.2	50	7.9	65	72.2	50	6.9	48	53.3	37.5	6.8	57	63.3	37.5	8.1
16					78	86.7	75	5.5	70	77.8	50	7.5	50	55.6	37.5	7.1	58	64.4	50	6.2

COST PER LOT

LOW DENSITY

OVERHEAD MATERIAL & LABOR

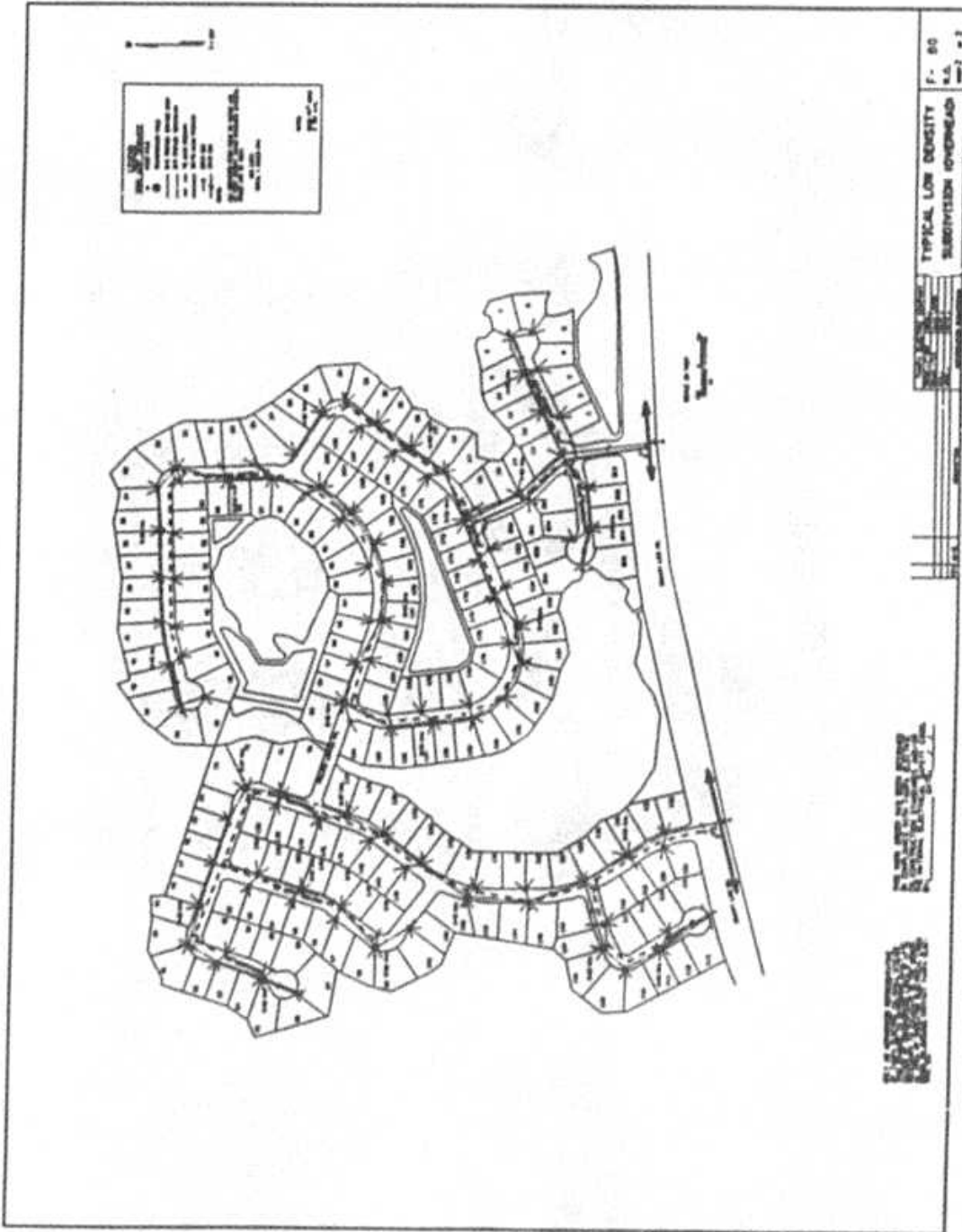
ITEM	MATERIAL	LABOR ²	TOTAL
Service	\$ 91.73	\$ 68.08	\$ 159.81
Primary	\$ 9.08	\$ 16.71	\$ 25.79
Secondary	\$ 57.60	\$ 27.52	\$ 85.12
Initial Tree Trim	-	\$ 0.00	\$ 0.00
Poles	\$ 67.49	\$ 70.51	\$ 138.00
Transformers	\$ 133.97	\$ 39.05	\$ 173.02

Sub-Total	\$ 359.87	\$ 221.87	\$ 581.74
Stores Handling ¹	\$ 35.99	-	\$ 35.99
Sub-Total	\$ 395.86	\$ 221.87	\$ 617.73
Engineering ³	-	\$ 42.45	\$ 42.45
TOTAL	\$ 395.86	\$ 264.32	\$ 660.18

1 - 10% of all material

2 - Includes Administration, General & Transportation

3 - 0% of Material, 19% of Labor



COST PER LOT

LOW DENSITY

UNDERGROUND MATERIAL & LABOR

ITEM	MATERIAL	LABOR ²	TOTAL
Service	\$ 106.18	\$ 60.40	\$ 166.58
Primary	\$ 99.30	\$ 21.09	\$ 120.39
Secondary	\$ 107.21	\$ 44.29	\$ 151.50
Transformers	\$ 131.06	\$ 15.97	\$ 147.03
Trenching			
Pri. & Secondary	-	\$ 115.33	\$ 115.33
Services	-	\$ 123.19	\$ 123.19

Sub-Total	\$ 443.75	\$ 380.27	\$ 824.02
Stores Handling ¹	\$ 44.38	-	\$ 44.38
Sub-Total	\$ 488.13	\$ 380.27	\$ 868.40
Engineering ³	-	\$ 42.45	\$ 42.45
TOTAL	\$ 488.13	\$ 422.72	\$ 910.85

1 - 10 % of all material

2 - Includes Administration, General & Transportation

3 - 0 % of Material, 11 % of Labor



TAMPA ELECTRIC COMPANY

MARCH 11, 1996

URD REPORT TO THE FLORIDA PUBLIC SERVICE COMMISSION

Tampa Electric Company
(Company)

Date: March 11, 1996

OVERHEAD VS UNDERGROUND

SUMMARY SHEET

COST PER LOT

HIGH DENSITY (MOBILE HOMES - TOWNHOUSES)

ITEM	OVERHEAD	UNDERGROUND	DIFFERENTIAL
Labor	\$ 241.60	\$ 366.87	\$ 125.27
Material	\$ 308.75	\$ 378.28	\$ 69.53
TOTAL	\$ 550.35	\$ 745.15	\$ 194.80

Load Diversity Table - High Density

No. Cust.	1000 sq ft House Transformer				1000 sq ft House Transformer				1250 sq ft House Transformer				Single Wide Mobile Home Transformer				900 sq ft Apt Transformer			
	KW	KVA	Size	VD	KW	KVA	Size	VD	KW	KVA	Size	VD	KW	KVA	Size	VD	KW	KVA	Size	VD
1	15	16.7	10	8.0	13	14.4	10	8.5	12	13.2	10	8.4	11	12.2	10	8.9	9	9.9	10	8.3
2	24	26.7	25	5.1	18	20.0	15	8.4	14	17.8	15	8.7	14	15.6	10	7.5	14	15.4	10	7.7
3	32	35.4	25	6.8	23	25.8	25	4.9	19	21.1	15	8.8	17	18.9	15	6.0	19	20.0	15	8.4
4	40	44.4	37.5	5.7	28	31.1	25	8.0	23	25.8	25	4.9	20	22.2	15	7.1	12	24.4	15	7.9
5	48	53.2	37.5	6.8	33	34.7	25	7.0	24	28.9	25	5.5	24	24.7	25	5.1	24	24.9	15	5.1
6	56	62.2	37.5	8.0	37	41.1	25	7.9	30	33.3	25	6.4	24	28.9	25	5.5	30	33.3	25	6.4
7	63	70.0	50	6.7	40	44.4	37.5	5.7	34	37.8	25	7.3	29	32.2	25	6.2	33	36.7	25	7.0
8	71	78.8	50	7.4	44	48.5	37.5	6.3	38	42.2	25	8.1	31	34.4	25	6.4	37	41.1	25	7.9
9	77	85.4	75	5.5	48	53.1	37.5	6.8	42	46.7	37.5	6.0	34	37.8	25	7.3	41	45.4	37.5	5.8
10	84	92.2	75	6.0	52	57.8	37.5	7.4	46	51.1	37.5	6.5	34	40.0	25	7.7	45	50.0	37.5	6.4
11	91	101.1	75	6.5	54	62.2	37.5	8.0	50	55.4	37.5	7.1	37	43.3	37.5	5.5	49	53.3	37.5	6.8
12	98	108.9	75	7.0	61	67.8	50	6.5	54	60.0	37.5	7.7	41	45.4	37.5	5.9	51	54.7	37.5	7.3
13					65	72.2	50	6.9	58	64.4	50	6.2	43	47.8	37.5	6.1	53	58.9	37.5	7.5
14					70	77.8	80	7.5	62	68.9	50	6.8	46	51.1	37.5	6.5	55	61.1	37.5	7.8
15					74	82.2	80	7.9	65	72.2	50	6.9	48	53.2	37.5	6.8	57	63.2	37.5	8.1
16					78	84.7	75	8.3	70	77.8	80	7.5	50	55.4	37.5	7.1	59	64.4	50	6.2

(Mobile Homes - Townhouses)

COST PER LOT

HIGH DENSITY

OVERHEAD MATERIAL & LABOR

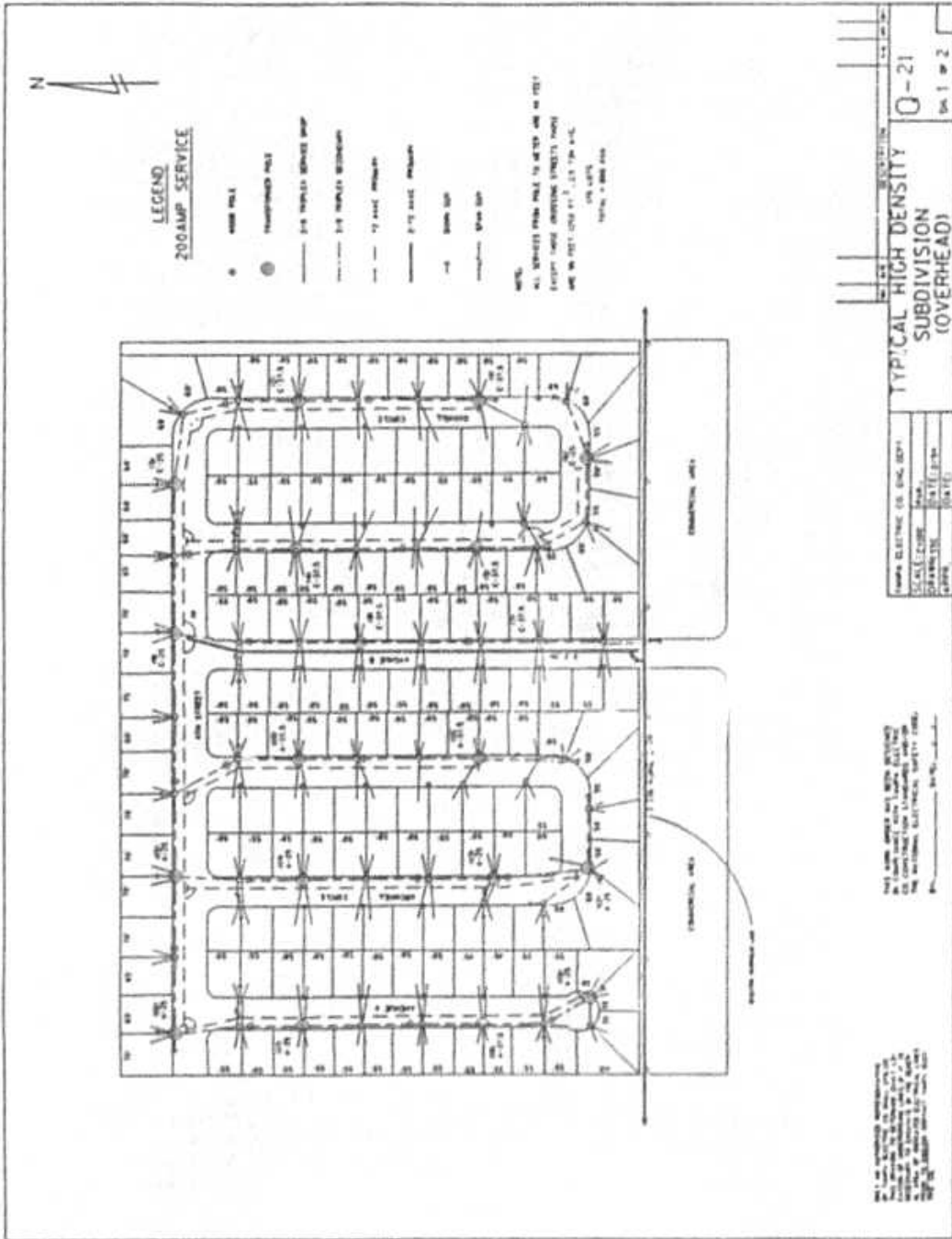
ITEM	MATERIAL	LABOR ²	TOTAL
Service	\$ 73.60	\$ 63.65	\$ 137.25
Primary	\$ 6.97	\$ 16.23	\$ 23.20
Secondary	\$ 35.43	\$ 27.98	\$ 63.41
Initial Tree Trim	-	\$ 0.00	\$ 0.00
Poles	\$ 60.91	\$ 54.99	\$ 115.90
Transformers	\$ 103.77	\$ 36.30	\$ 140.07

Sub-Total	\$ 280.68	\$ 199.15	\$ 479.83
Stores Handling ¹	\$ 28.07	-	\$ 28.07
Sub-Total	\$ 308.75	\$ 199.15	\$ 507.90
Engineering ³	-	\$ 42.45	\$ 42.45
TOTAL	\$ 308.75	\$ 241.60	\$ 550.35

1 - 10% of all material

2 - Includes Administration, General & Transportation

3 - 0% of Material, 21% of Labor



COST PER LOT

HIGH DENSITY

UNDERGROUND MATERIAL & LABOR

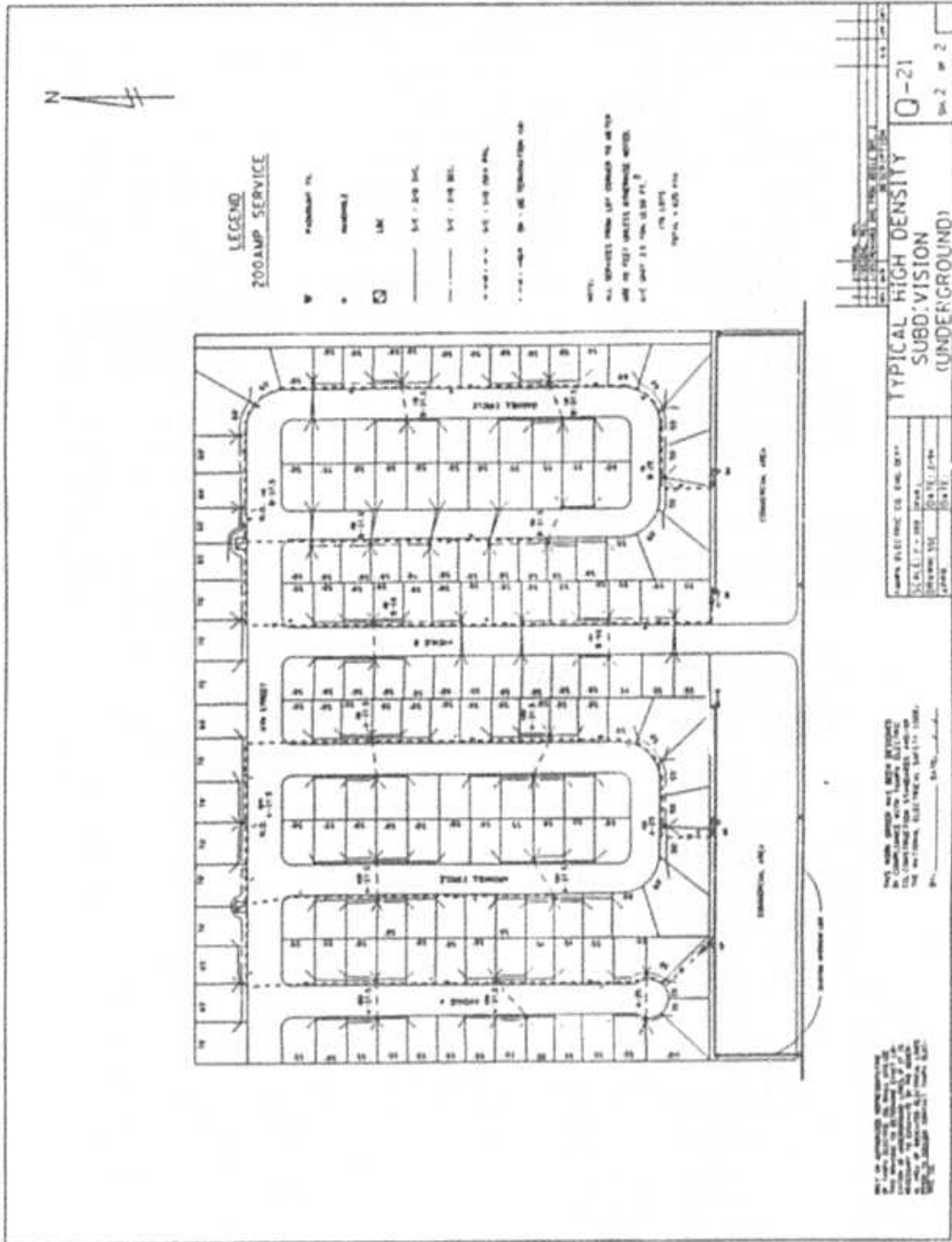
ITEM	MATERIAL	LABOR ²	TOTAL
Service	\$ 112.06	\$ 69.82	\$ 181.88
Primary	\$ 69.05	\$ 32.18	\$ 101.23
Secondary	\$ 24.95	\$ 14.64	\$ 39.59
Transformers	\$ 137.83	\$ 18.08	\$ 155.91
Trenching			
Pri. & Secondary	-	\$ 65.92	\$ 65.92
Services	-	\$ 123.78	\$ 123.78

Sub-Total	\$ 343.89	\$ 324.42	\$ 668.31
Stores Handling ¹	\$ 34.39	-	\$ 34.39
Sub-Total	\$ 378.28	\$ 324.42	\$ 702.70
Engineering ³	-	\$ 42.45	\$ 42.45
TOTAL	\$ 378.28	\$ 366.87	\$ 745.15

1 - 10% of all material

2 - Includes Administration, General & Transportation

3 - 0% of Material, 13% of Labor



DISTRIBUTION OPERATION AND MAINTENANCE EXPENSE ACCOUNTSOVERHEAD AND UNDERGROUND

<u>Account.</u>	Total \$ <u>1995</u>
583 Operation Overhead Distribution Line	416,470
584 Operation Underground Distribution Line	307,326
593 Maintenance Overhead Distribution Line	9,970,107
594 Maintenance Underground Distribution Line	697,574
595 Maintenance Overhead Distribution Transformers	100,824
595 Maintenance Distribution Padmount Transformers	160,276

A cumulative number of Customers served by overhead and by underground follows:

I. Cumulative Number of Overhead Year End 1995	256,122
II. Cumulative Number of Underground Year End 1995	245,816

TAMPA ELECTRIC COMPANY

MARCH 11, 1996

1995

JOINT TRENCHING

UNDERGROUND RESIDENTIAL DISTRIBUTION

No joint trenching was done by Tampa Electric Company during calendar year 1995